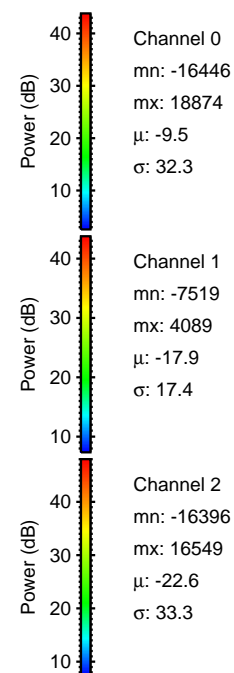
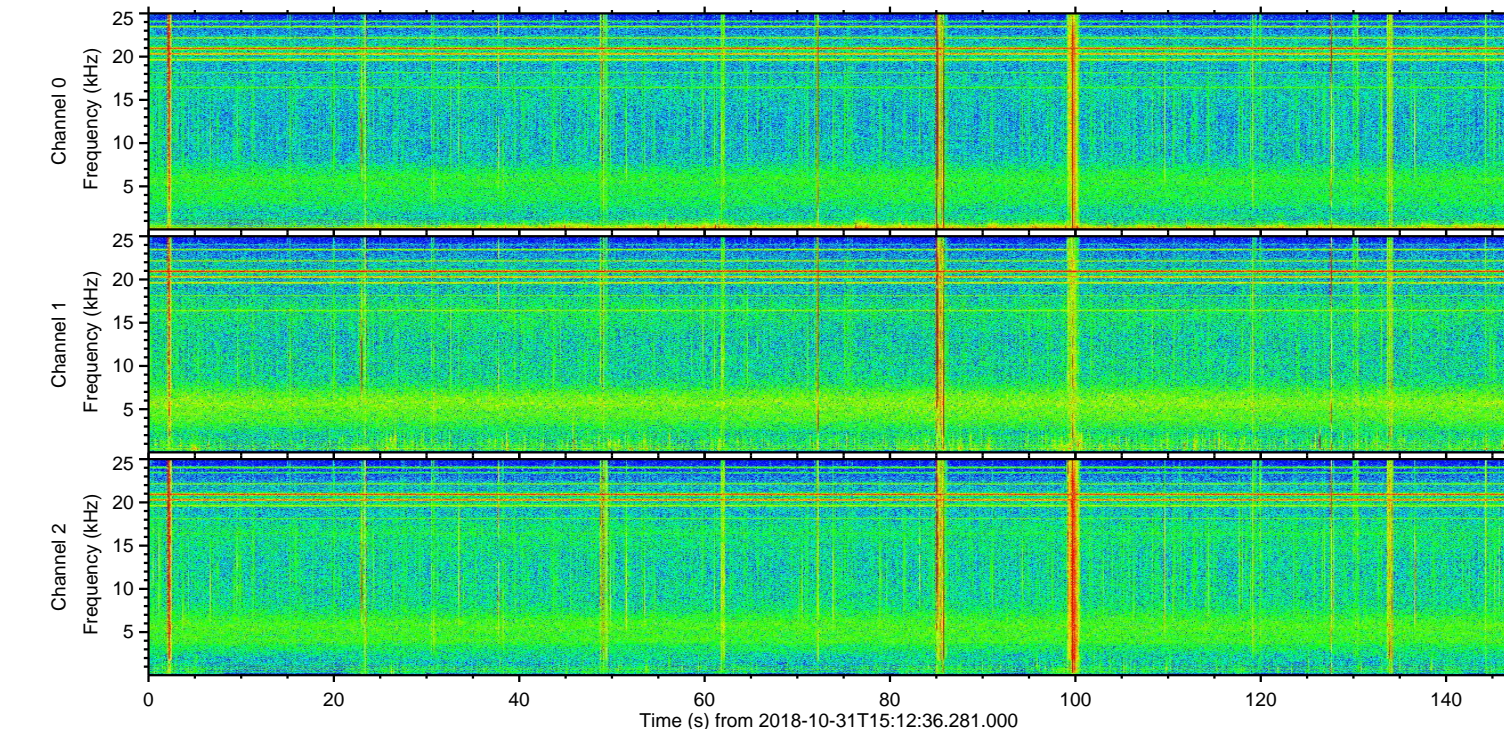
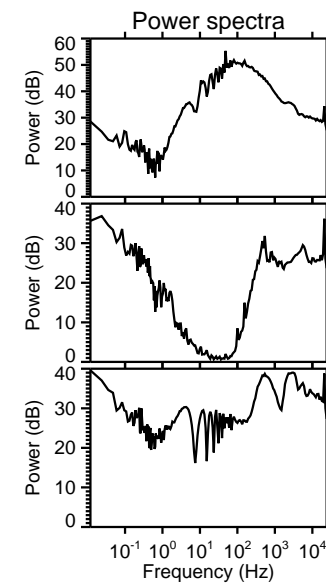
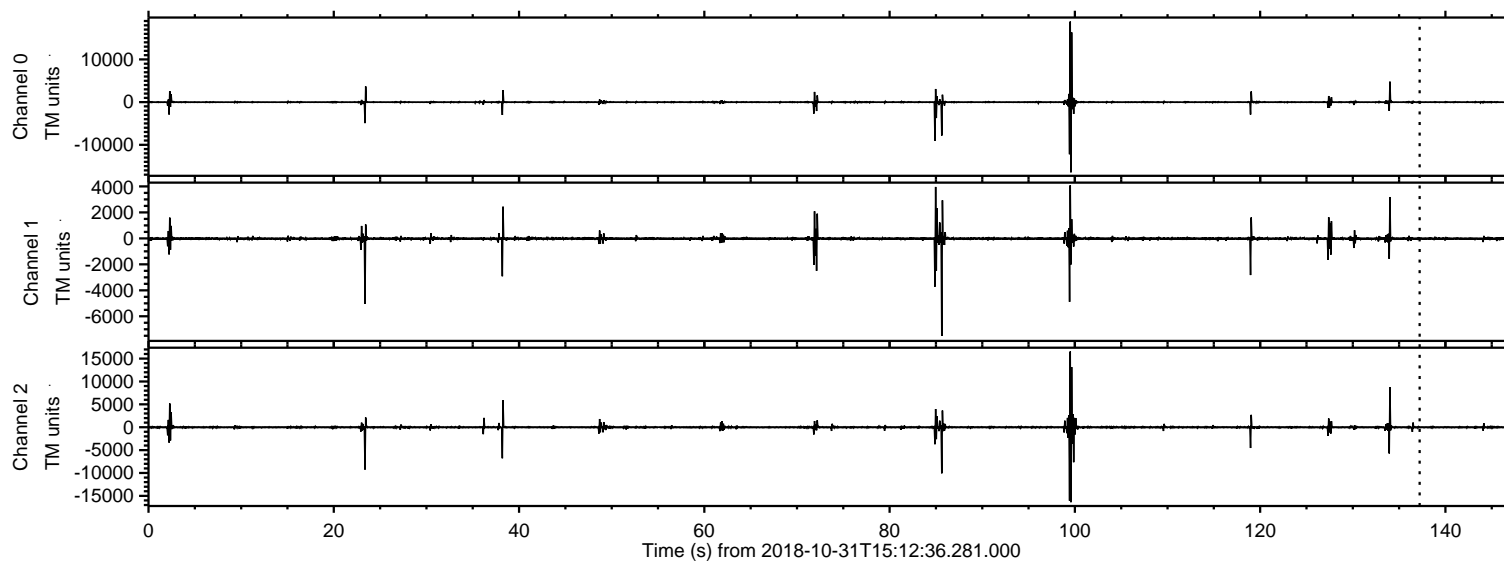


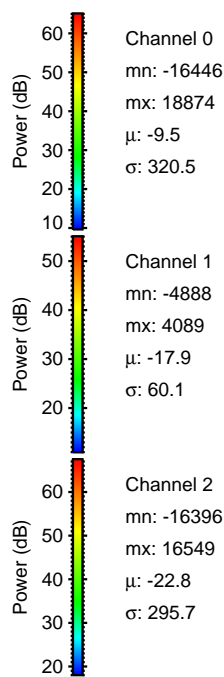
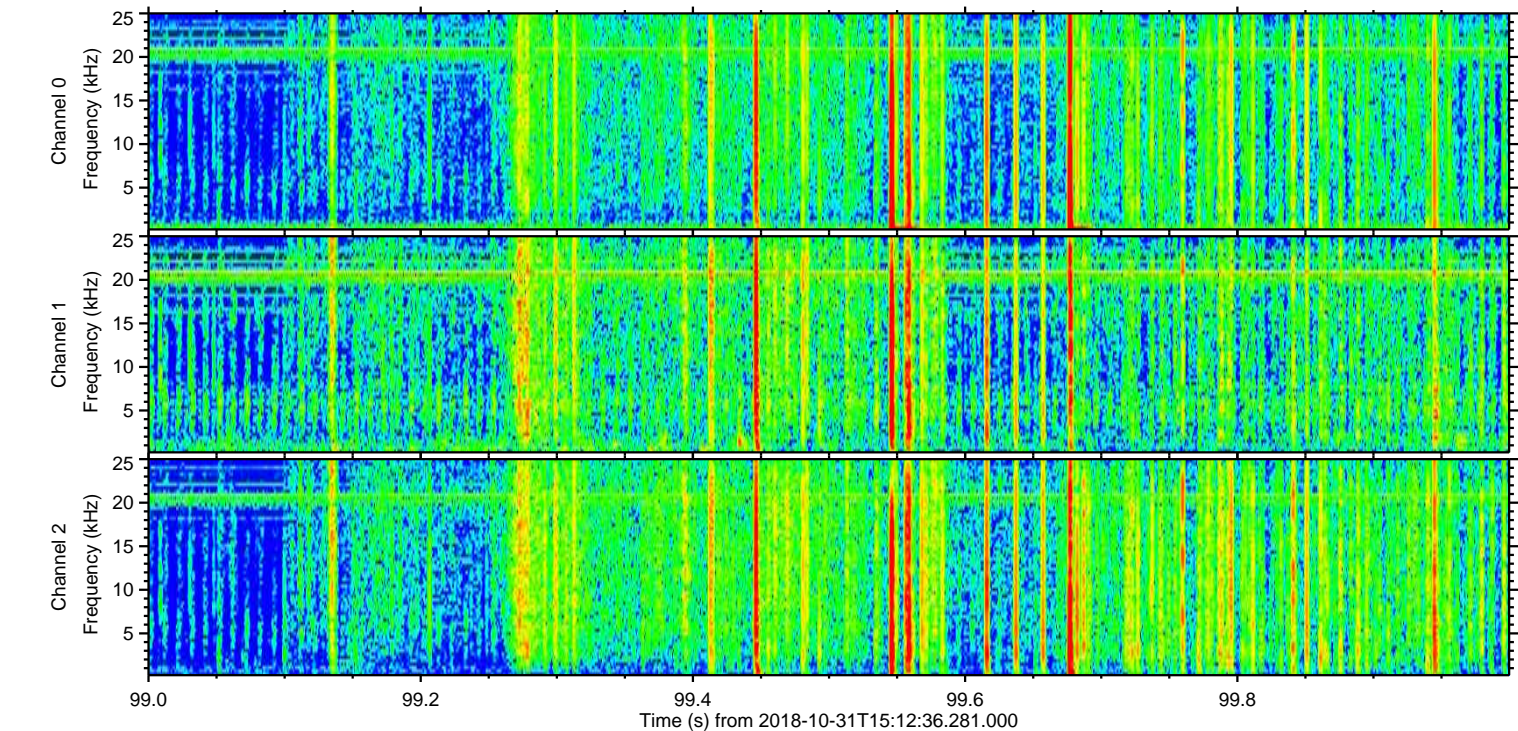
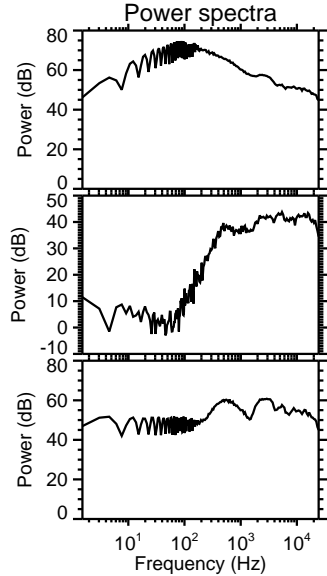
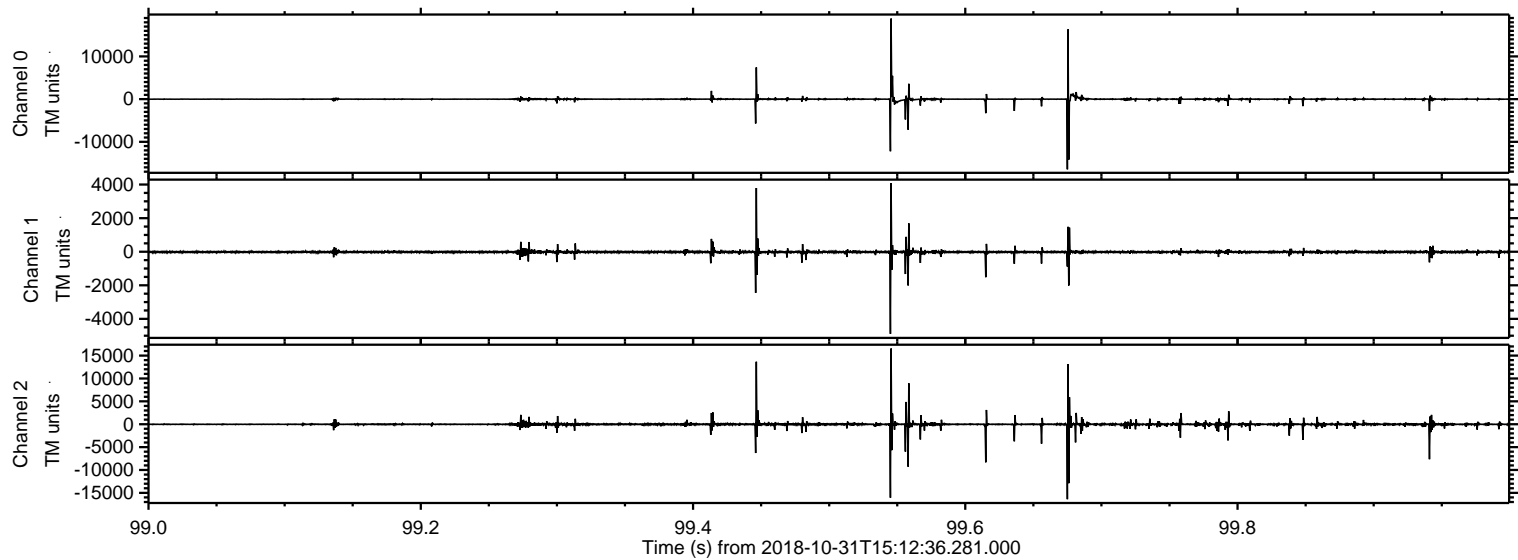
ELMAVAN 3D WAVEFORMS (Measured data sampled at 50 kHz) 50999 packets of 144 samples from 2018-10-31T15:12:36.281.000.

Processed Wed Oct 31 16:21:03 2018 by ELM ver.2012-10-06 from 001__elm20181031_151235__dat00.bin

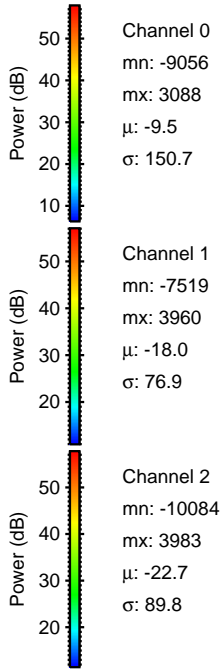
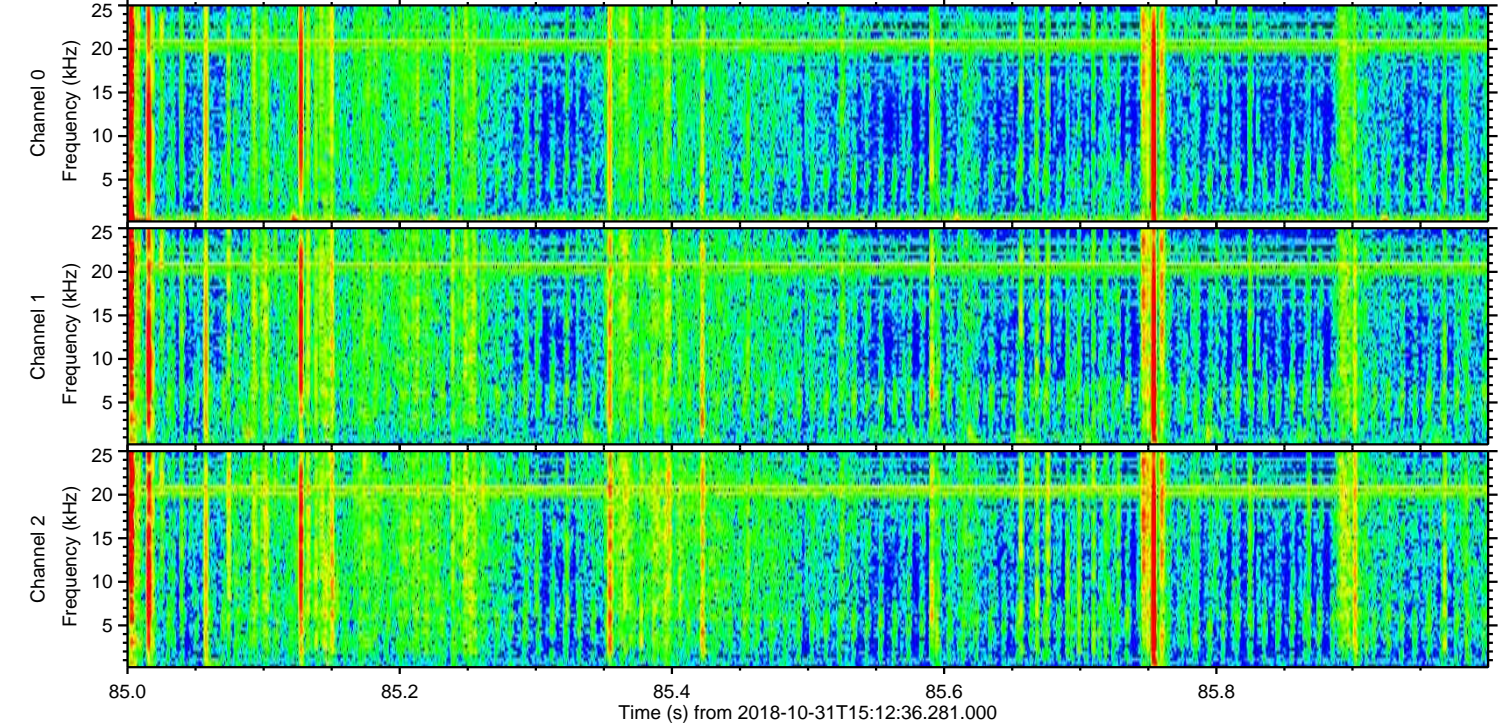
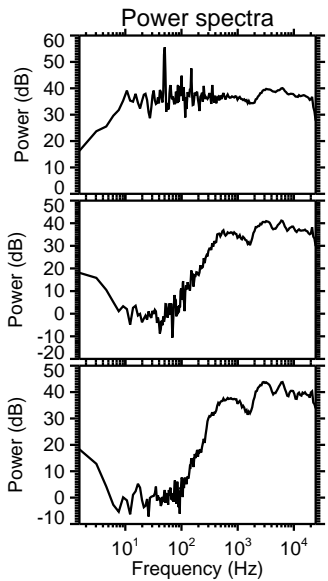
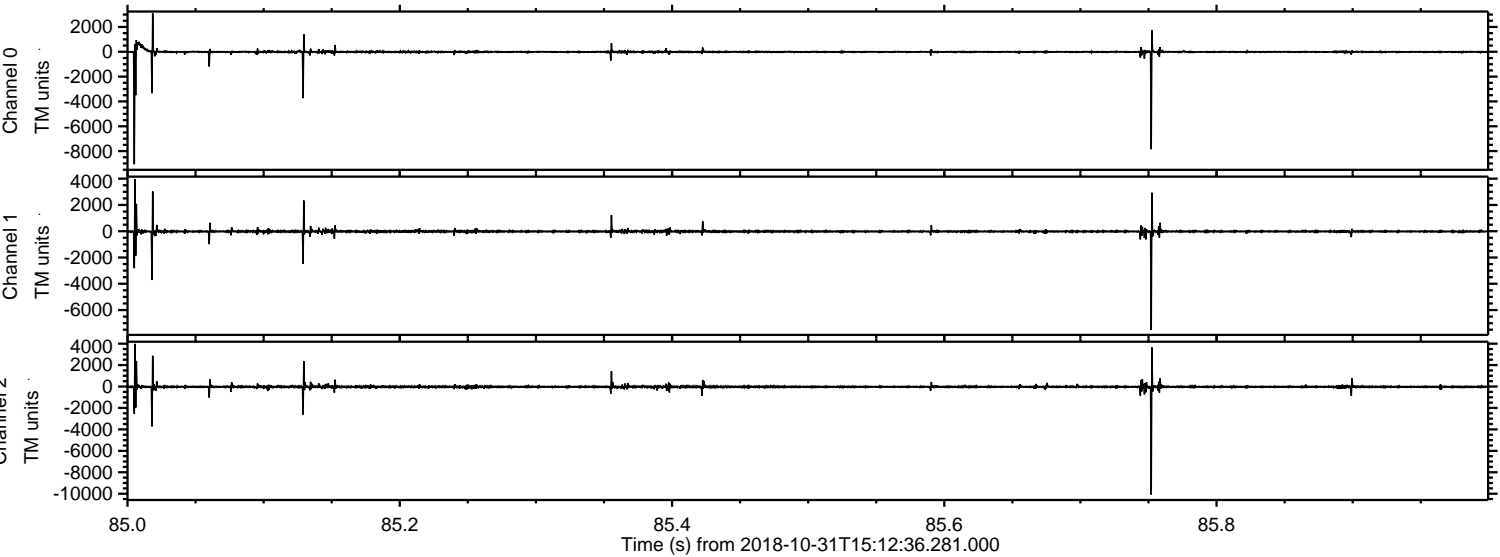


ELMAVAN 3D WAVEFORMS (Measured data sampled at 50 kHz) 50999 packets of 144 samples from 2018-10-31T15:12:36.281.000. Part 100/147

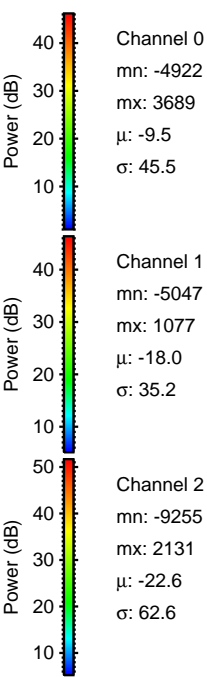
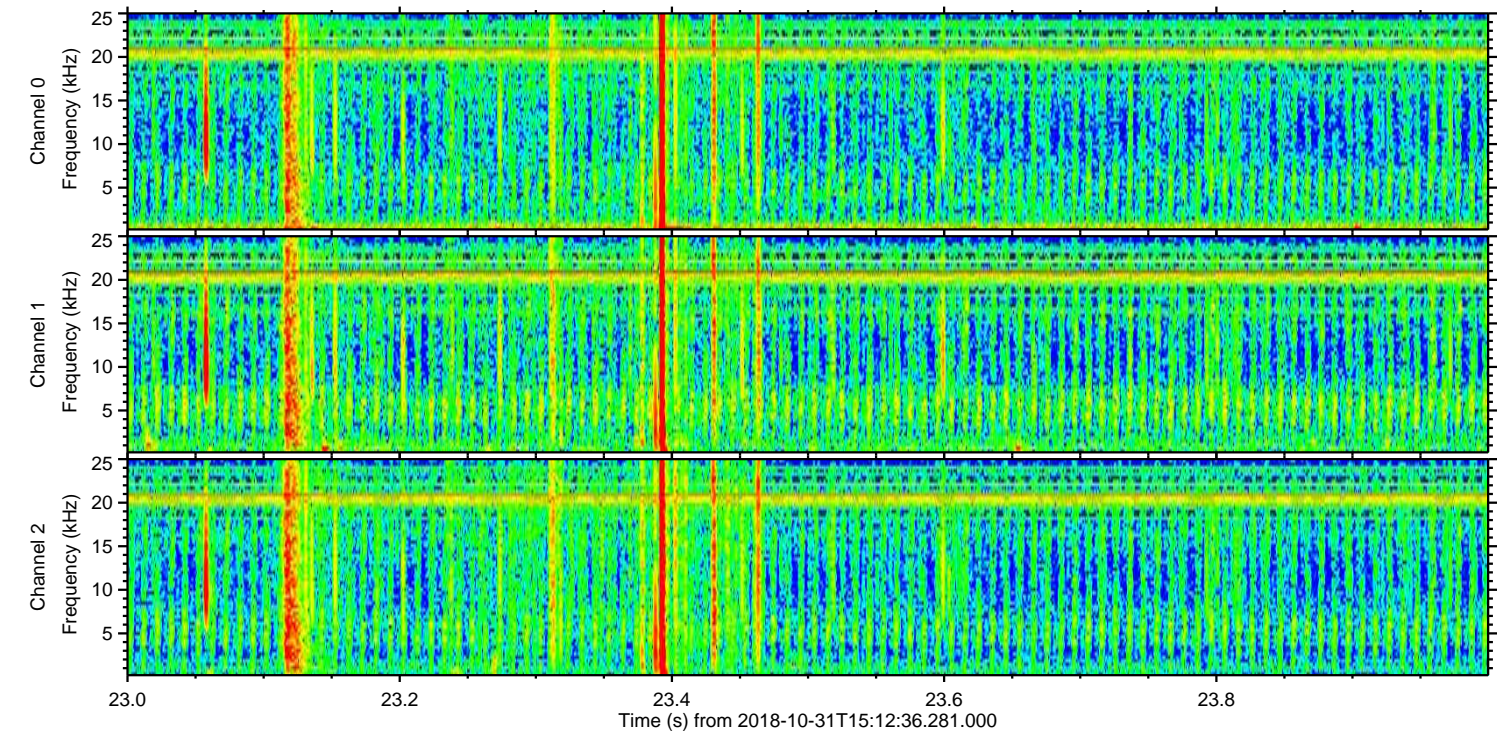
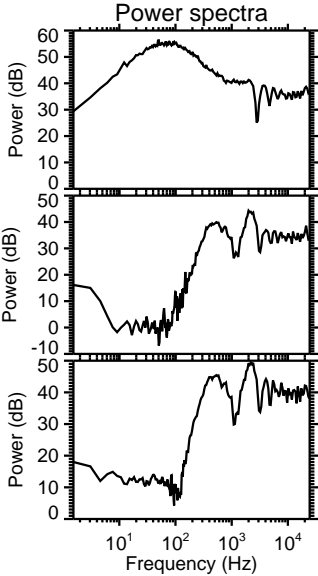
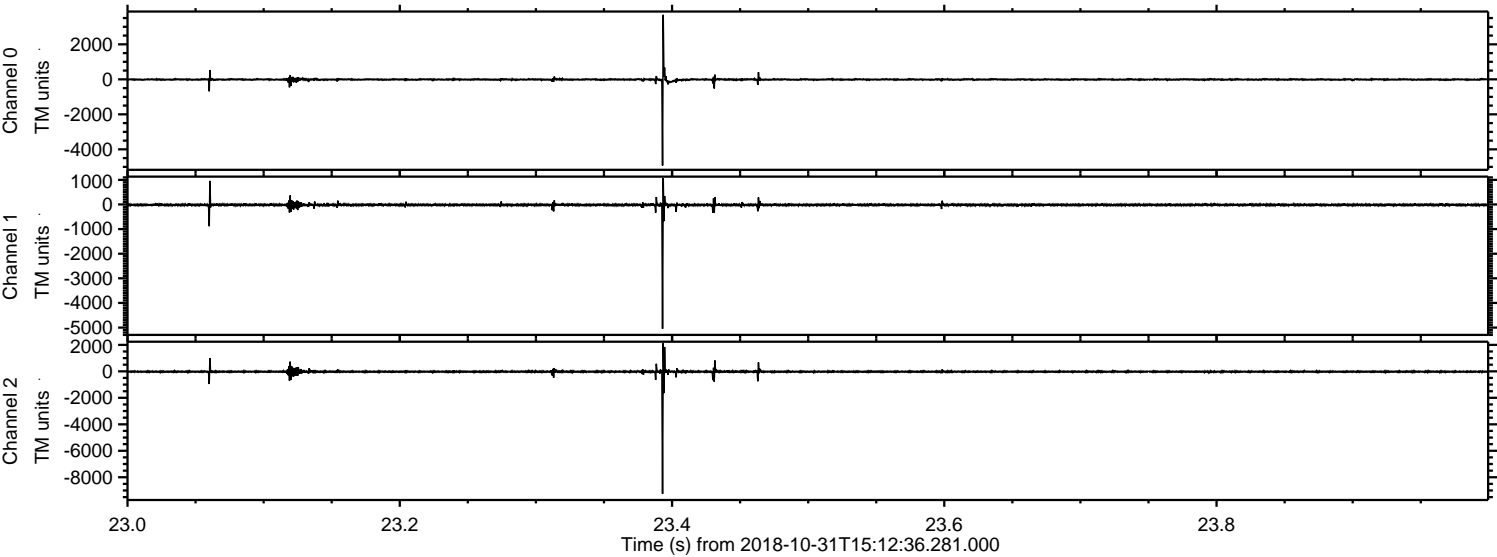
Processed Wed Oct 31 16:21:09 2018 by ELM ver.2012-10-06 from 001__elm20181031_151235__dat00.bin



Processed Wed Oct 31 16:21:10 2018 by ELM ver.2012-10-06 from 001__elm20181031_151235__dat00.bin

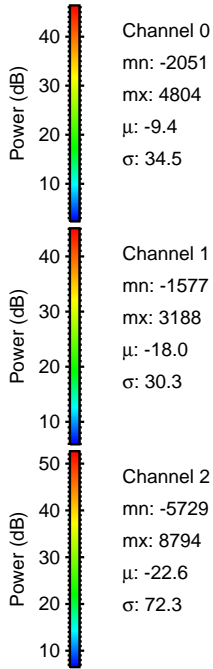
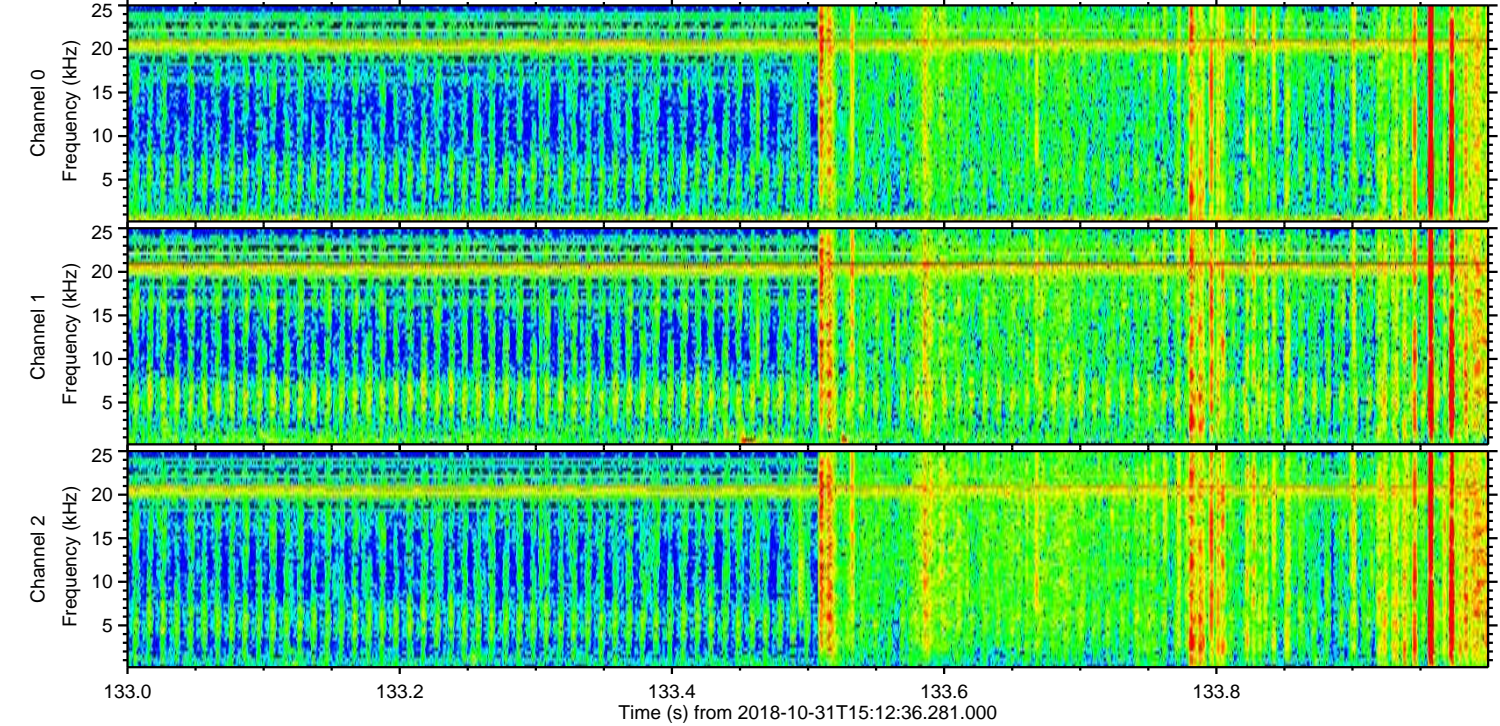
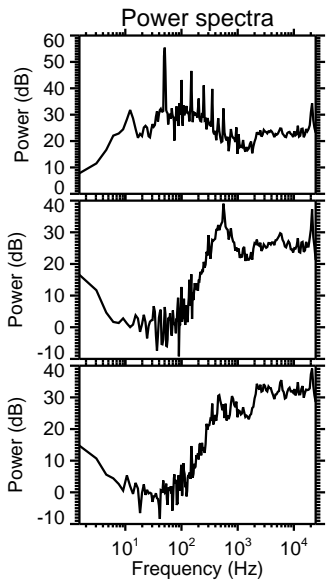
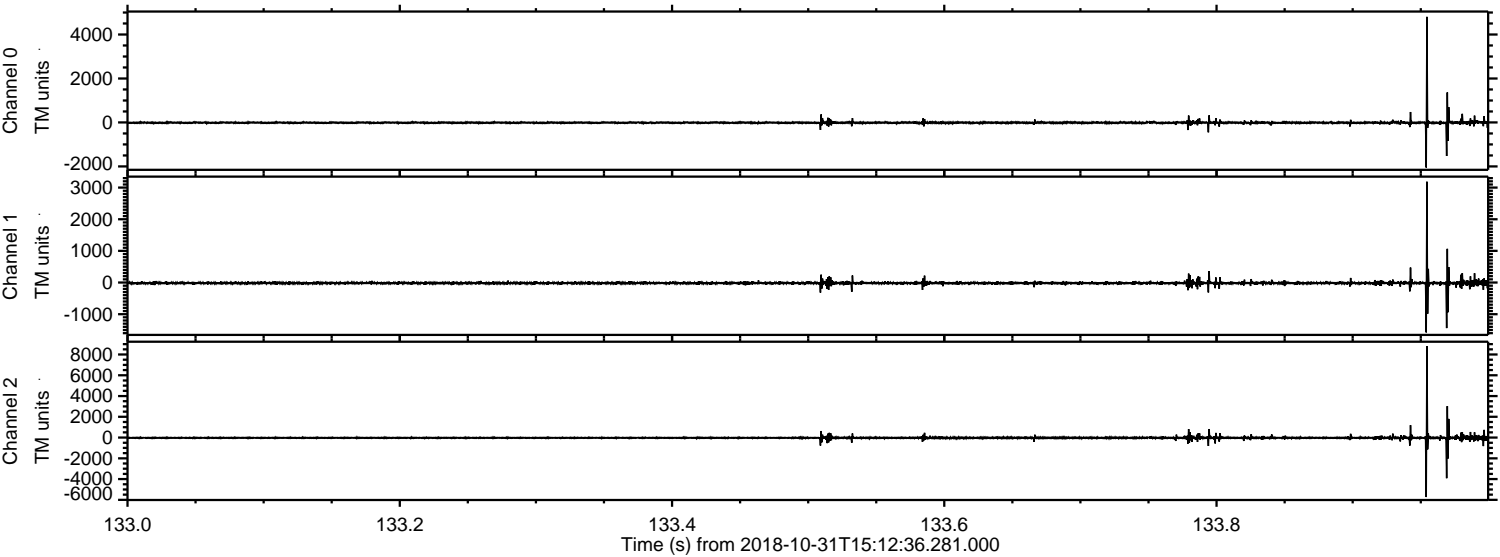


Processed Wed Oct 31 16:21:11 2018 by ELM ver.2012-10-06 from 001__elm20181031_151235__dat00.bin

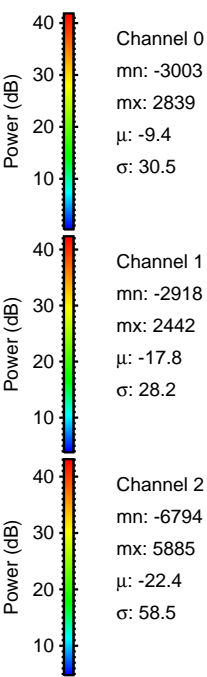
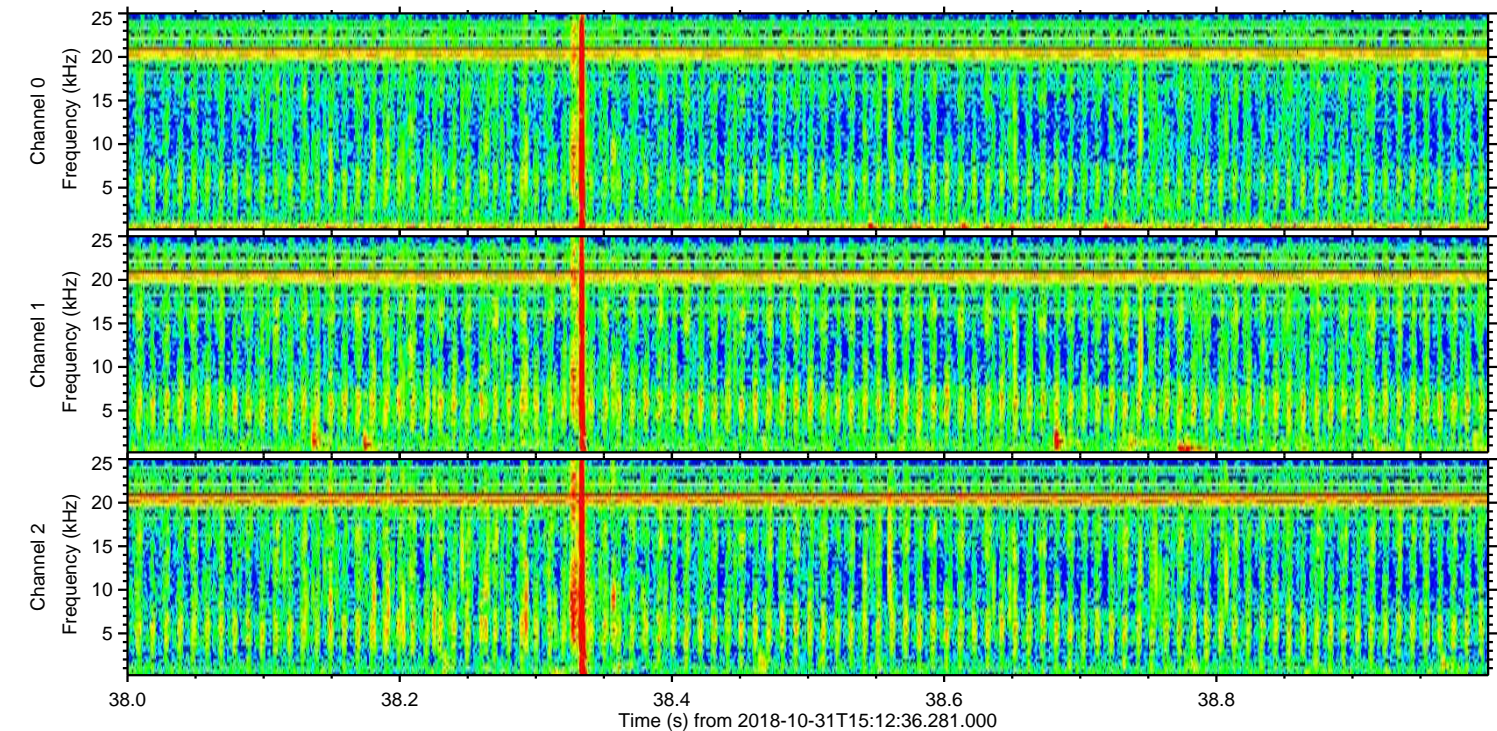
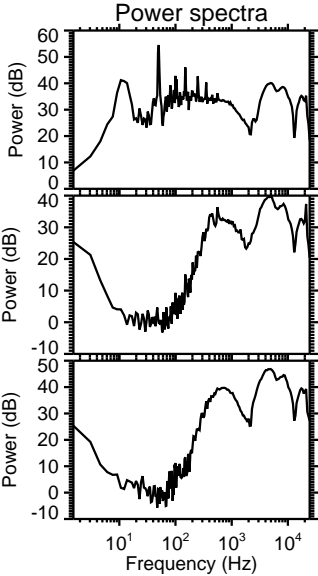
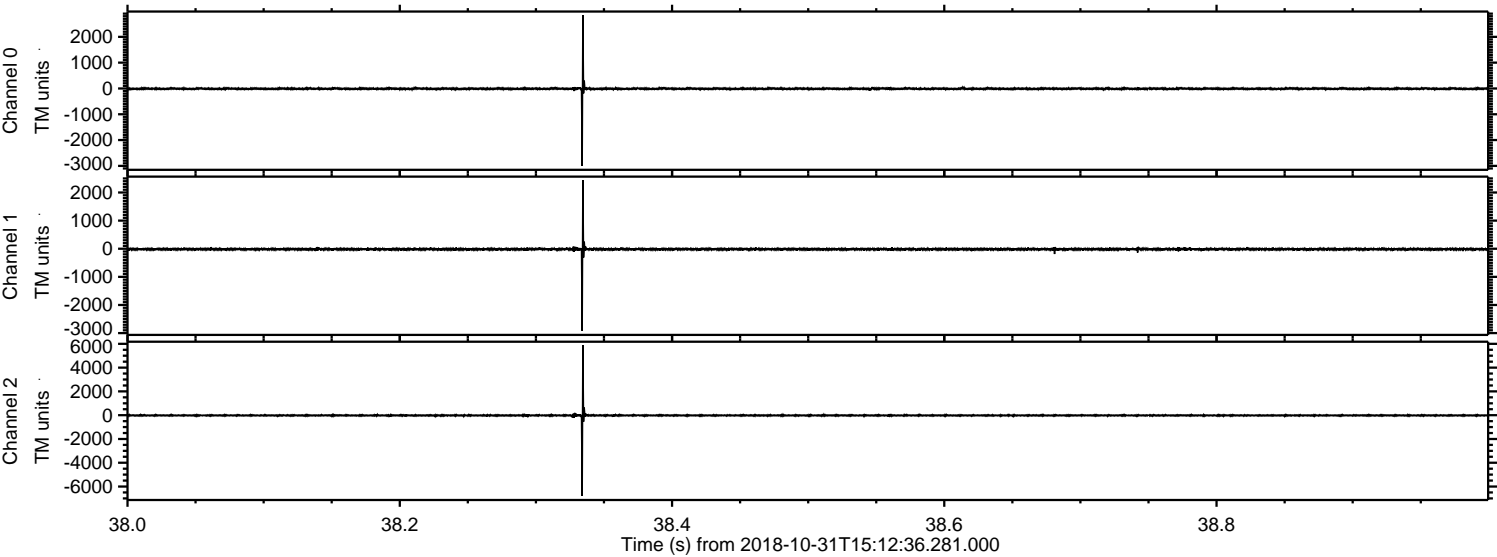


ELMAVAN 3D WAVEFORMS (Measured data sampled at 50 kHz) 50999 packets of 144 samples from 2018-10-31T15:12:36.281.000. Part 134/147

Processed Wed Oct 31 16:21:11 2018 by ELM ver.2012-10-06 from 001__elm20181031_151235__dat00.bin

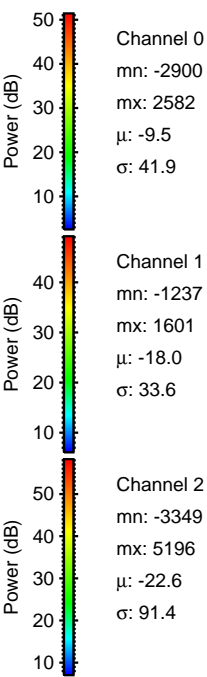
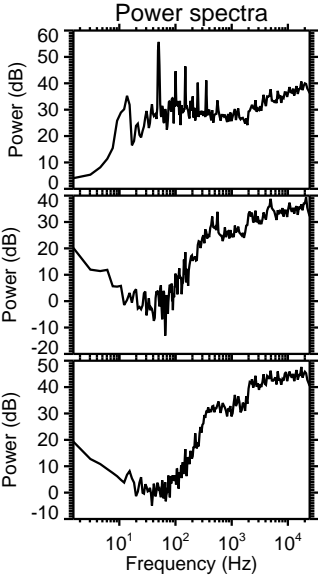
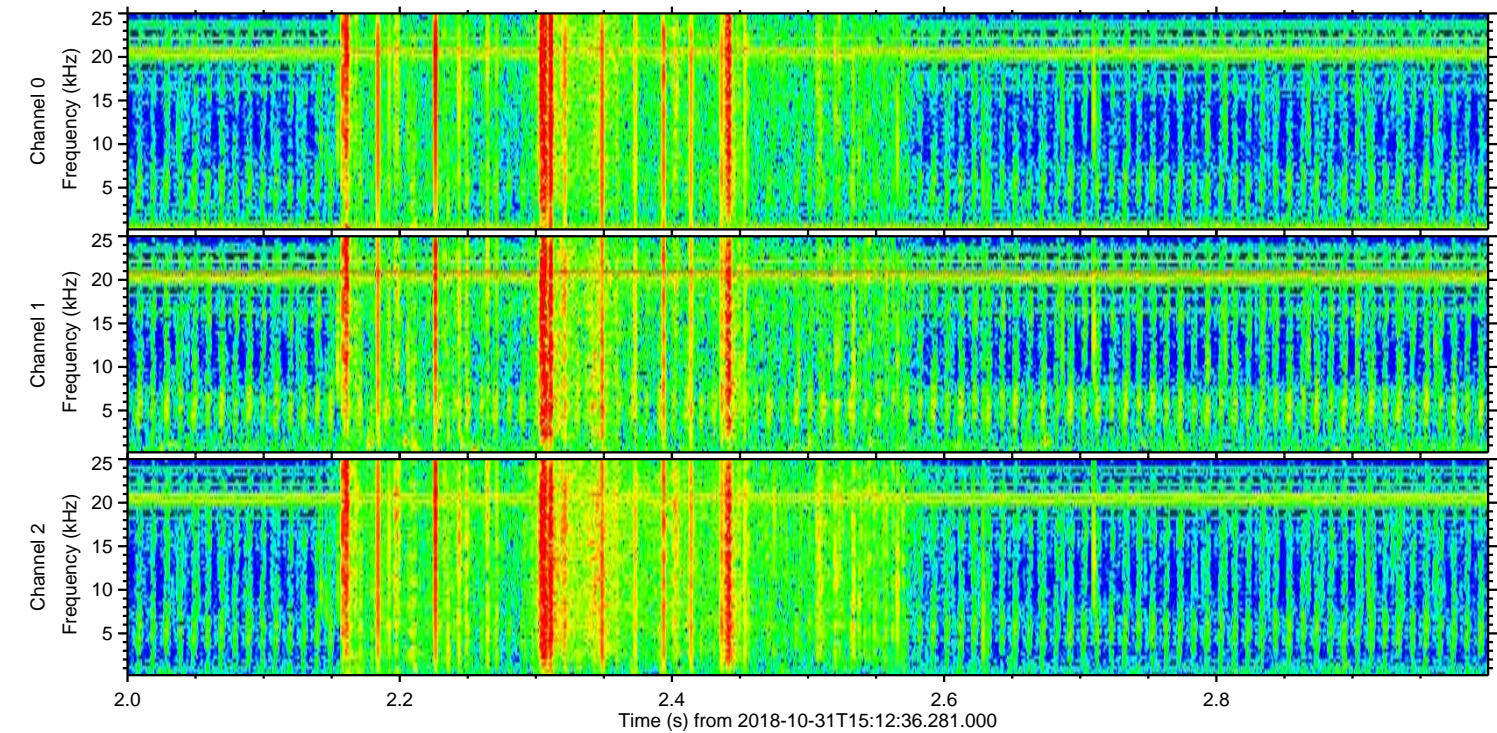
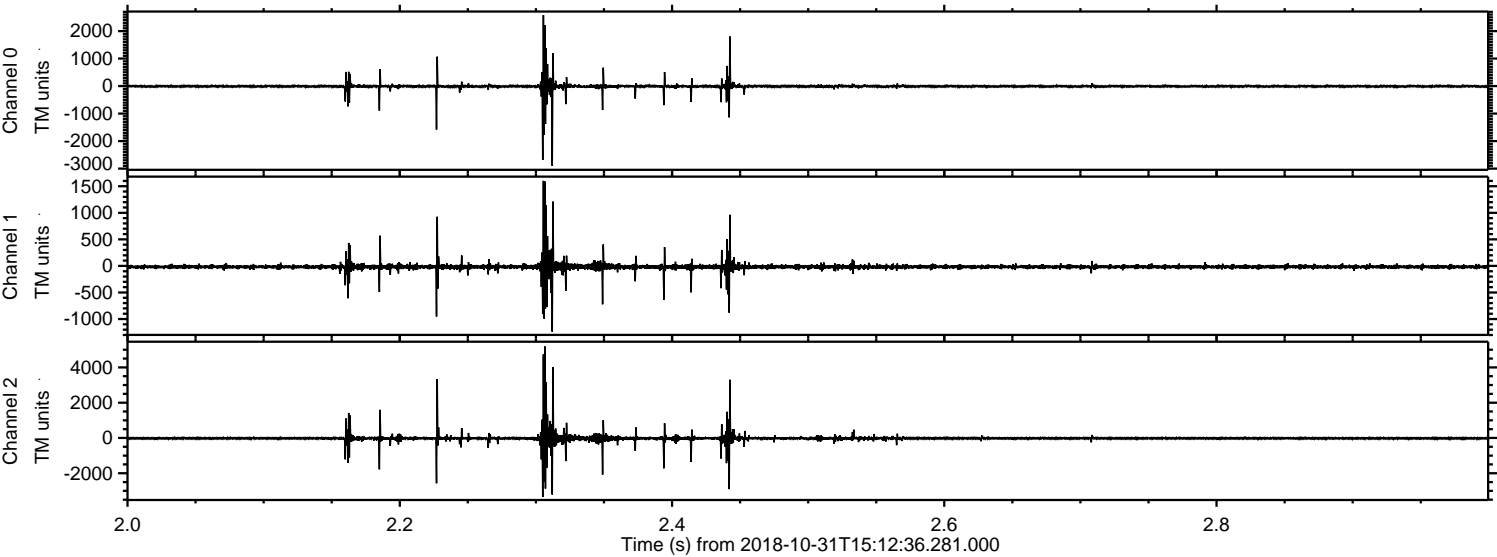


Processed Wed Oct 31 16:21:12 2018 by ELM ver.2012-10-06 from 001__elm20181031_151235__dat00.bin



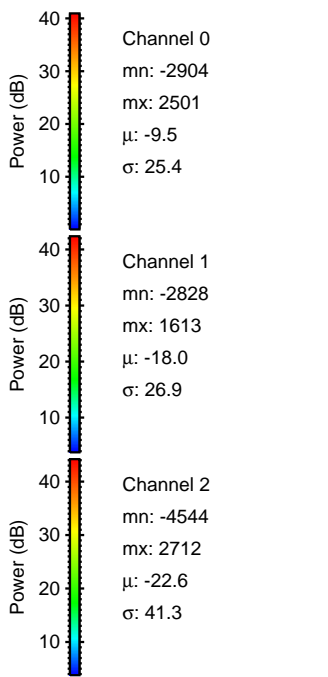
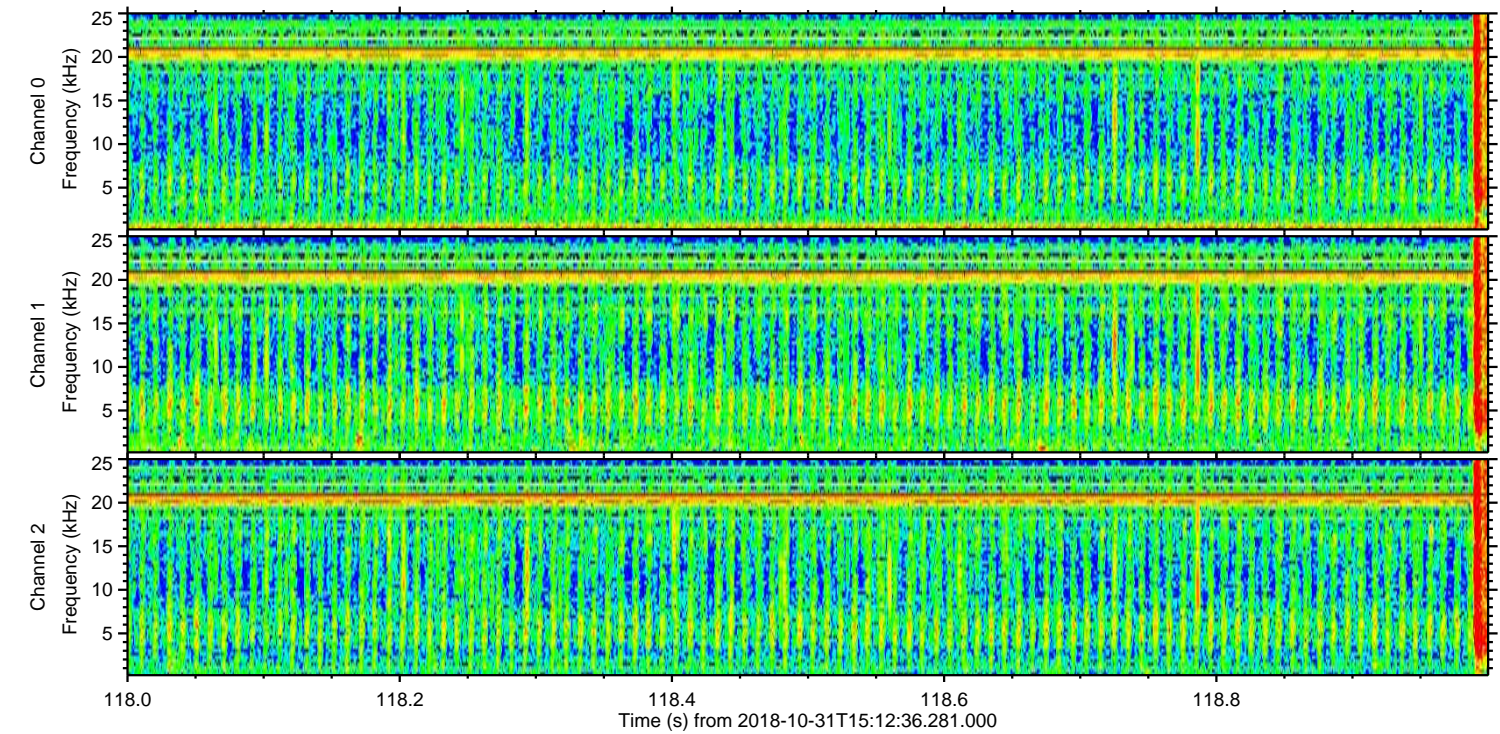
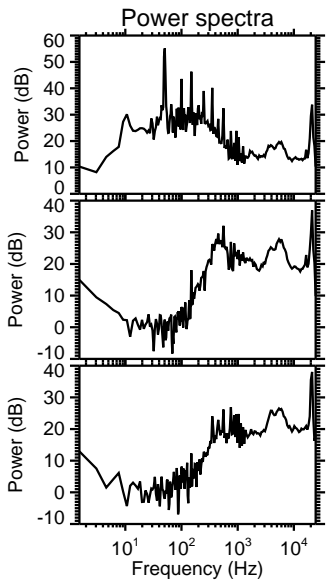
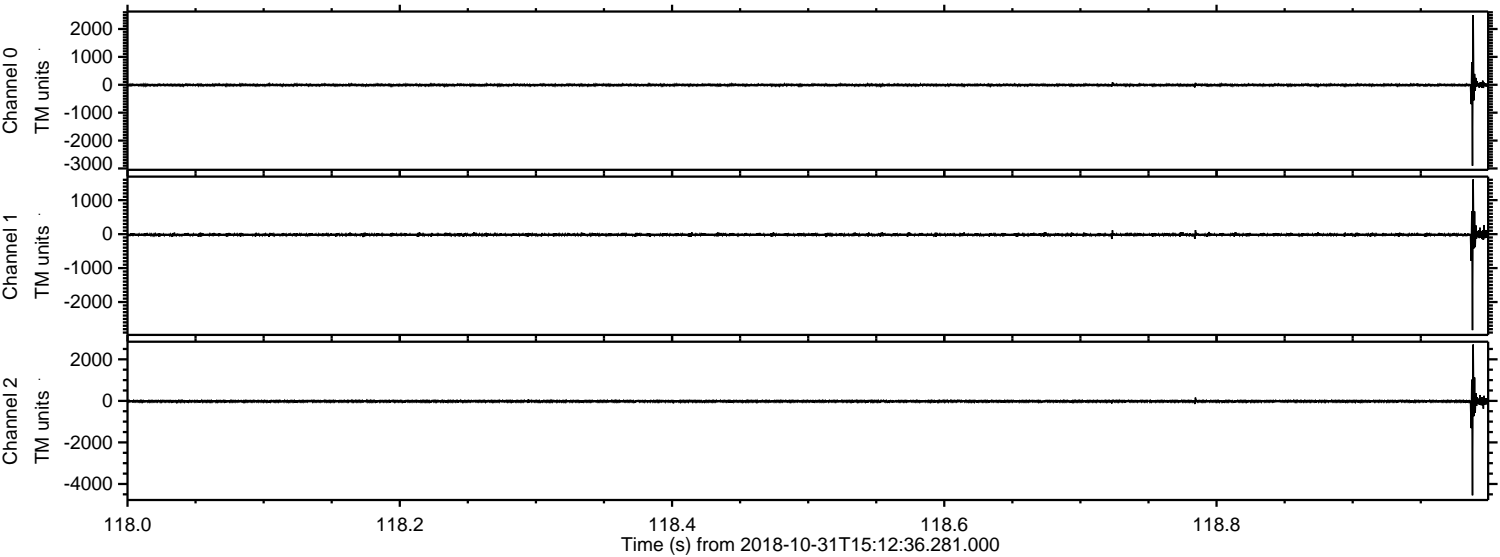
ELMAVAN 3D WAVEFORMS (Measured data sampled at 50 kHz) 50999 packets of 144 samples from 2018-10-31T15:12:36.281.000. Part 3/147

Processed Wed Oct 31 16:21:13 2018 by ELM ver.2012-10-06 from 001__elm20181031_151235__dat00.bin

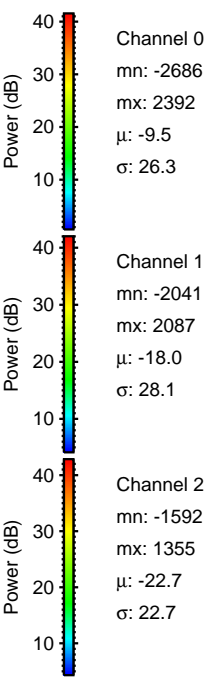
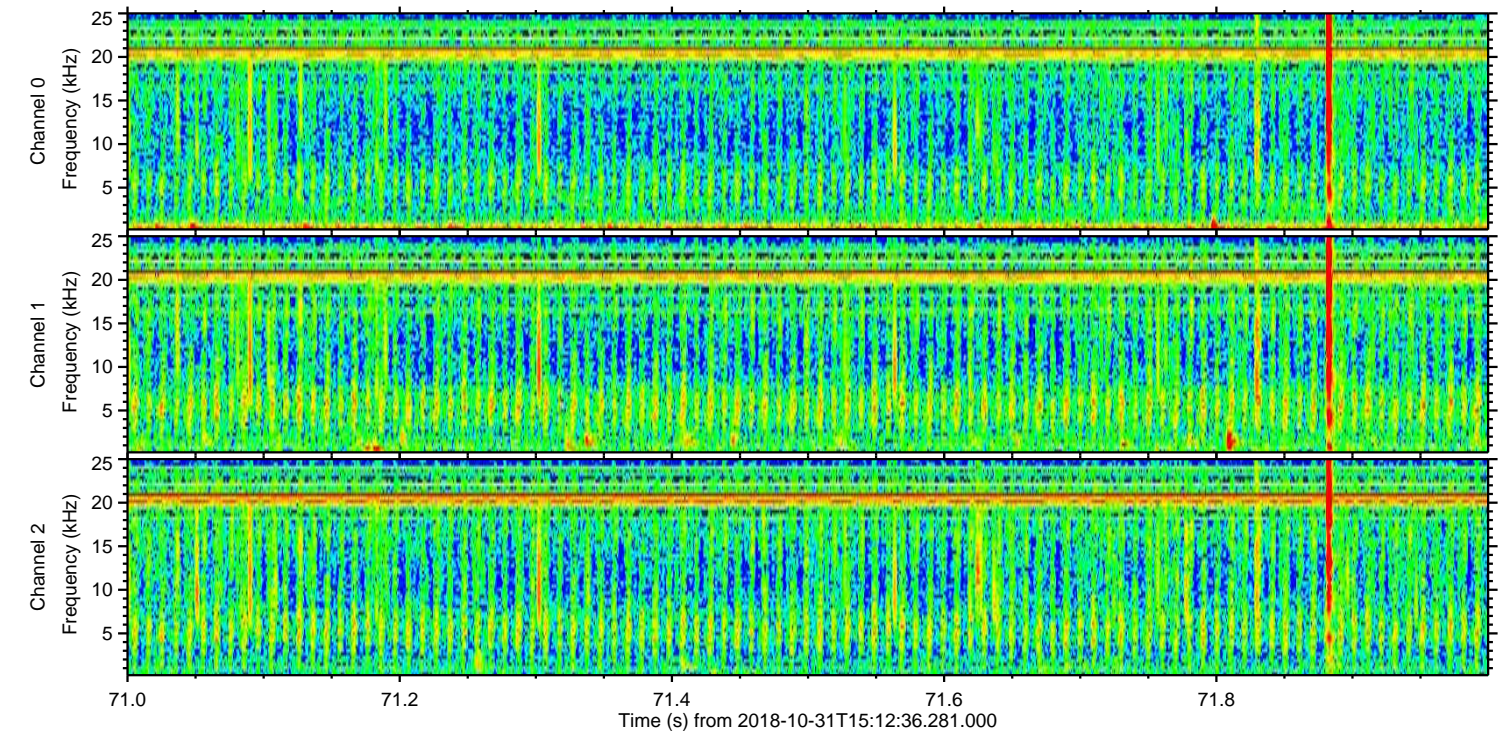
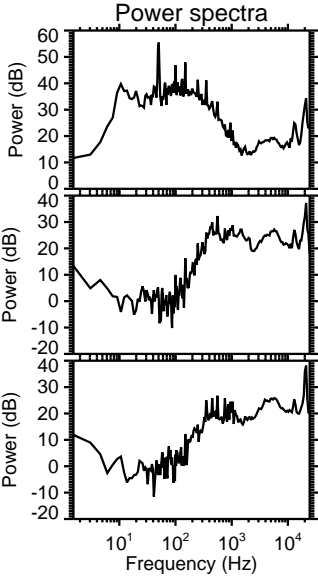
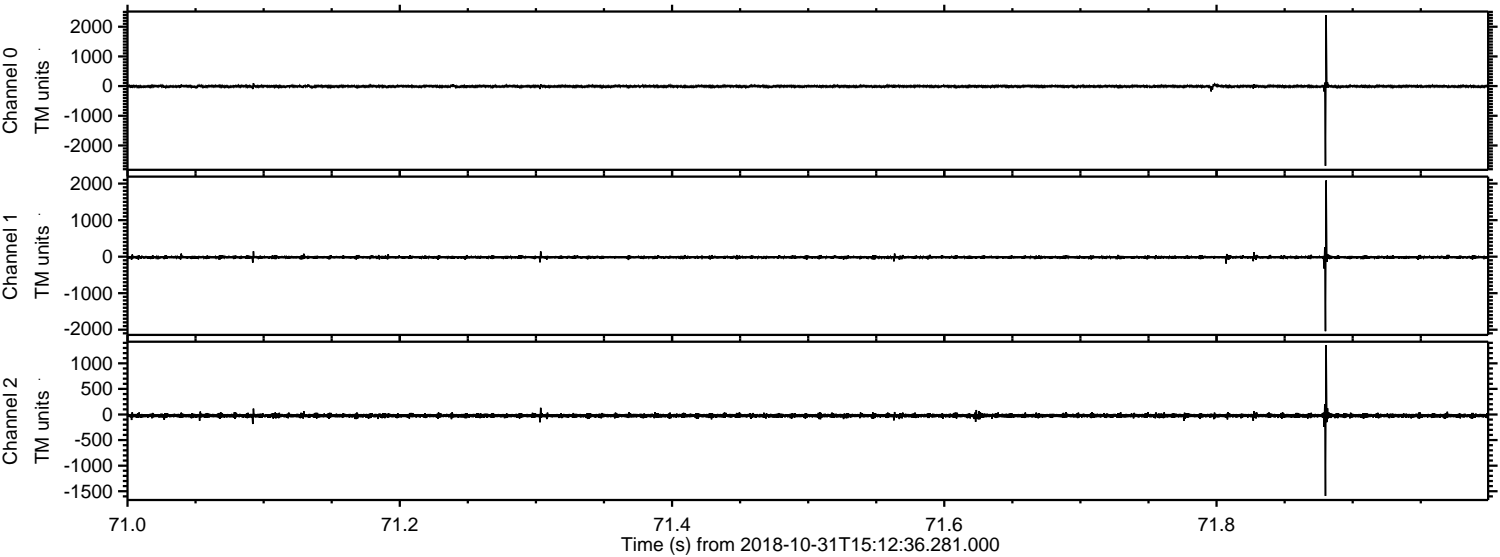


ELMAVAN 3D WAVEFORMS (Measured data sampled at 50 kHz) 50999 packets of 144 samples from 2018-10-31T15:12:36.281.000. Part 119/147

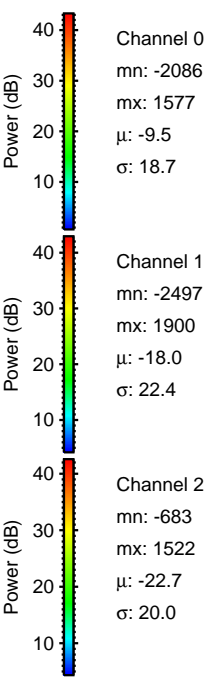
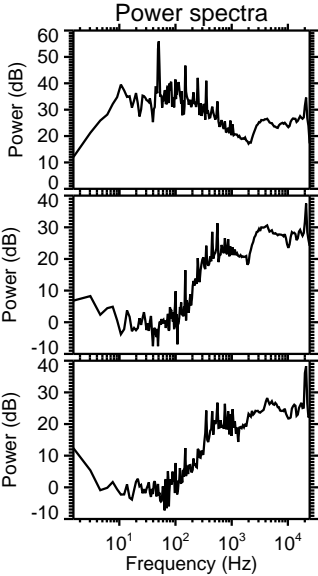
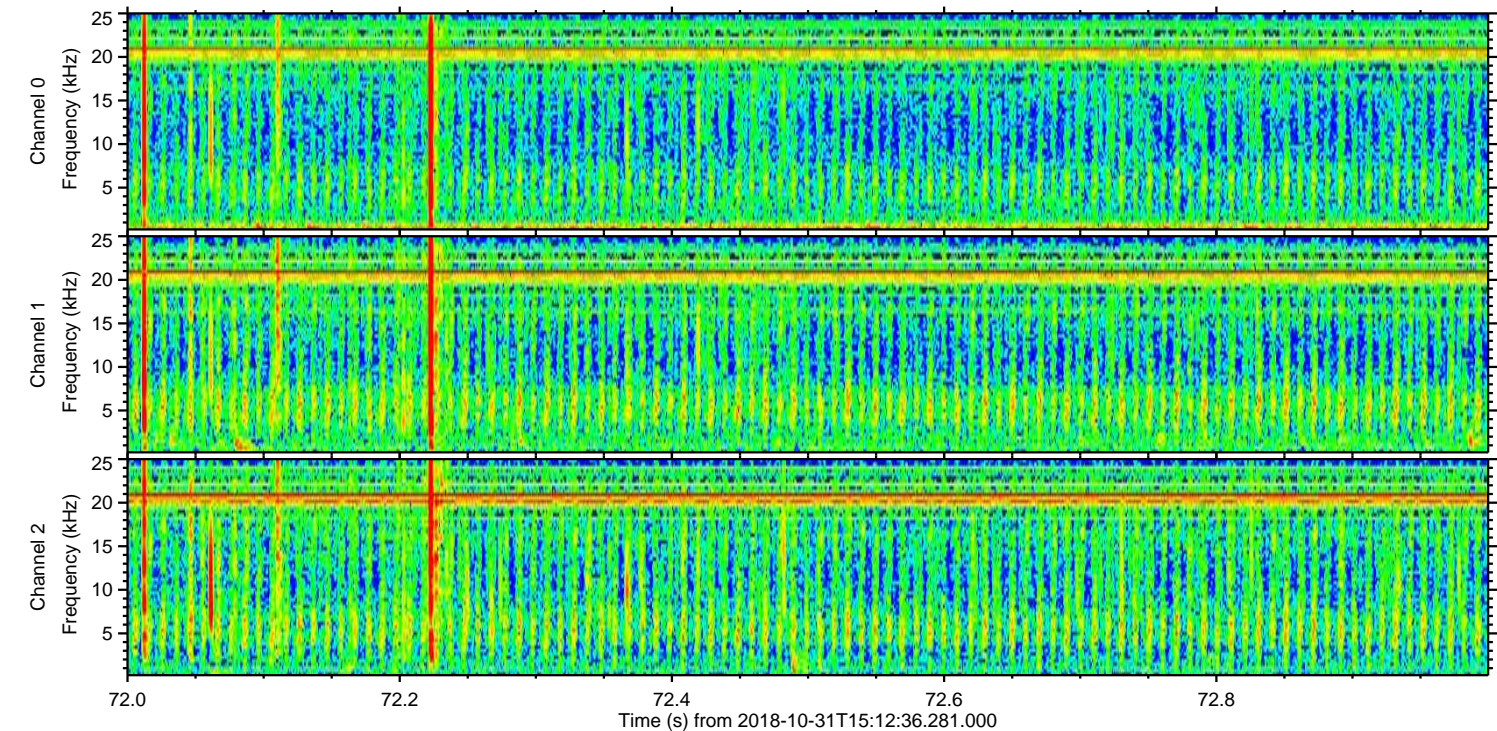
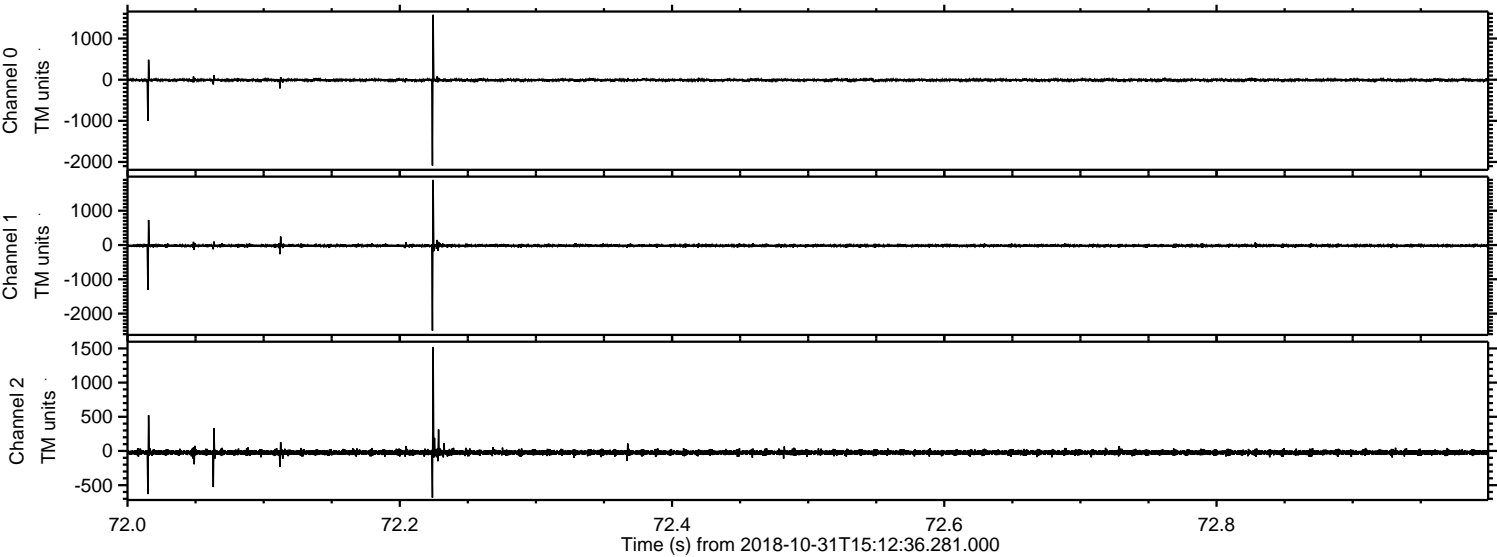
Processed Wed Oct 31 16:21:14 2018 by ELM ver.2012-10-06 from 001__elm20181031_151235__dat00.bin



Processed Wed Oct 31 16:21:14 2018 by ELM ver.2012-10-06 from 001__elm20181031_151235__dat00.bin



Processed Wed Oct 31 16:21:15 2018 by ELM ver.2012-10-06 from 001__elm20181031_151235__dat00.bin



Channel 0
mn: -2086
mx: 1577
 μ : -9.5
 σ : 18.7

Channel 1
mn: -2497
mx: 1900
 μ : -18.0
 σ : 22.4

Channel 2
mn: -683
mx: 1522
 μ : -22.7
 σ : 20.0

Processed Wed Oct 31 16:21:16 2018 by ELM ver.2012-10-06 from 001__elm20181031_151235__dat00.bin

