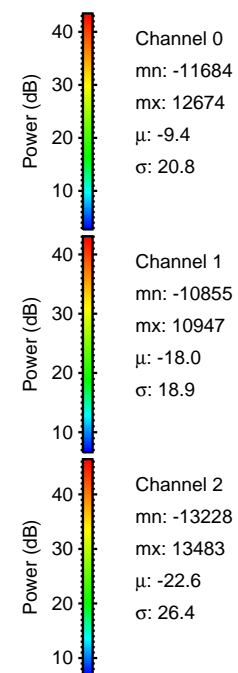
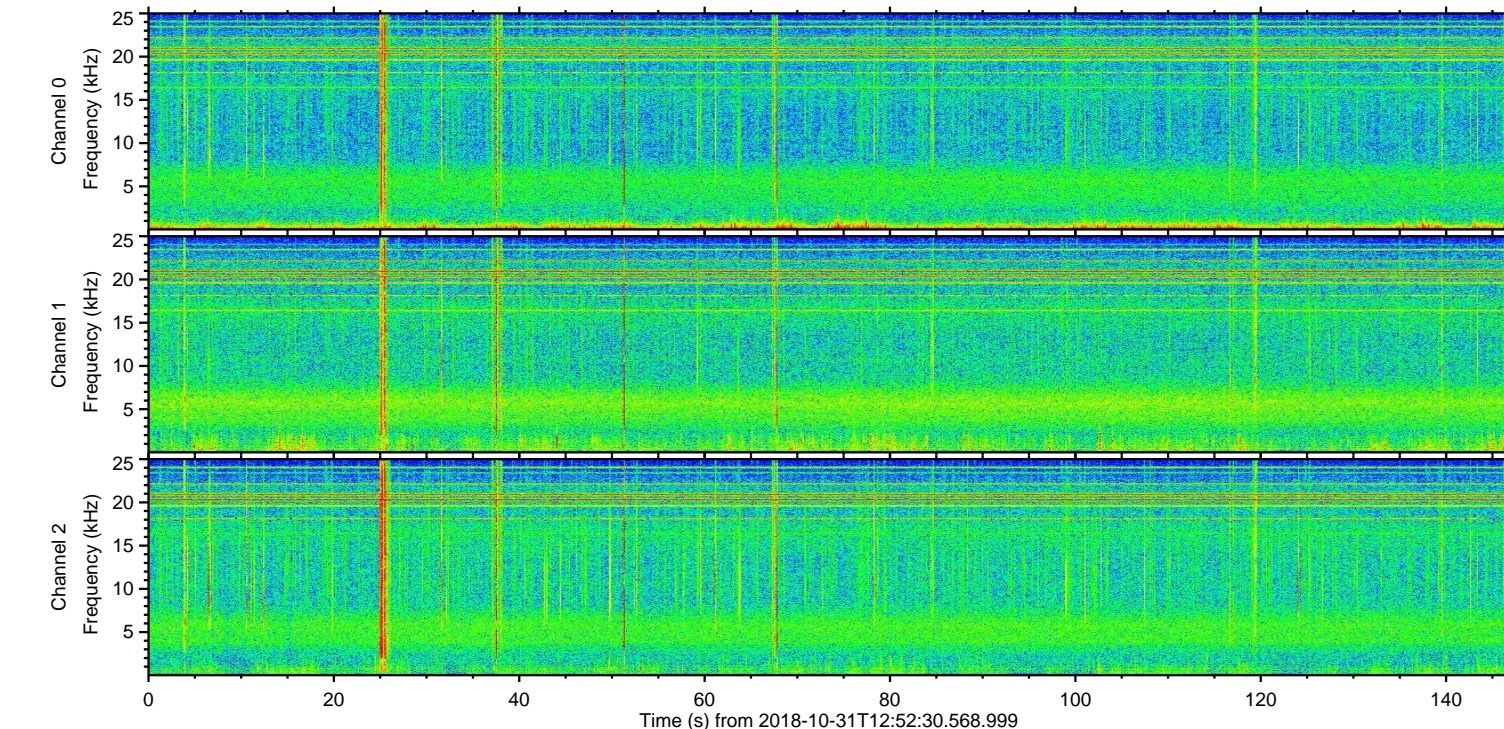
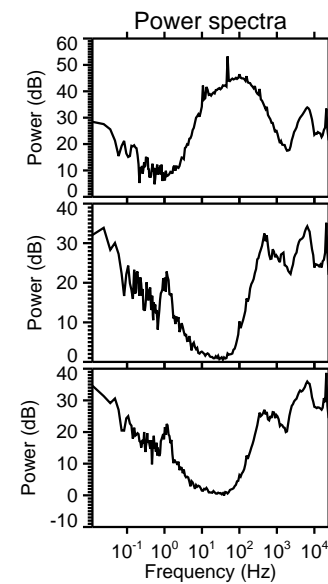
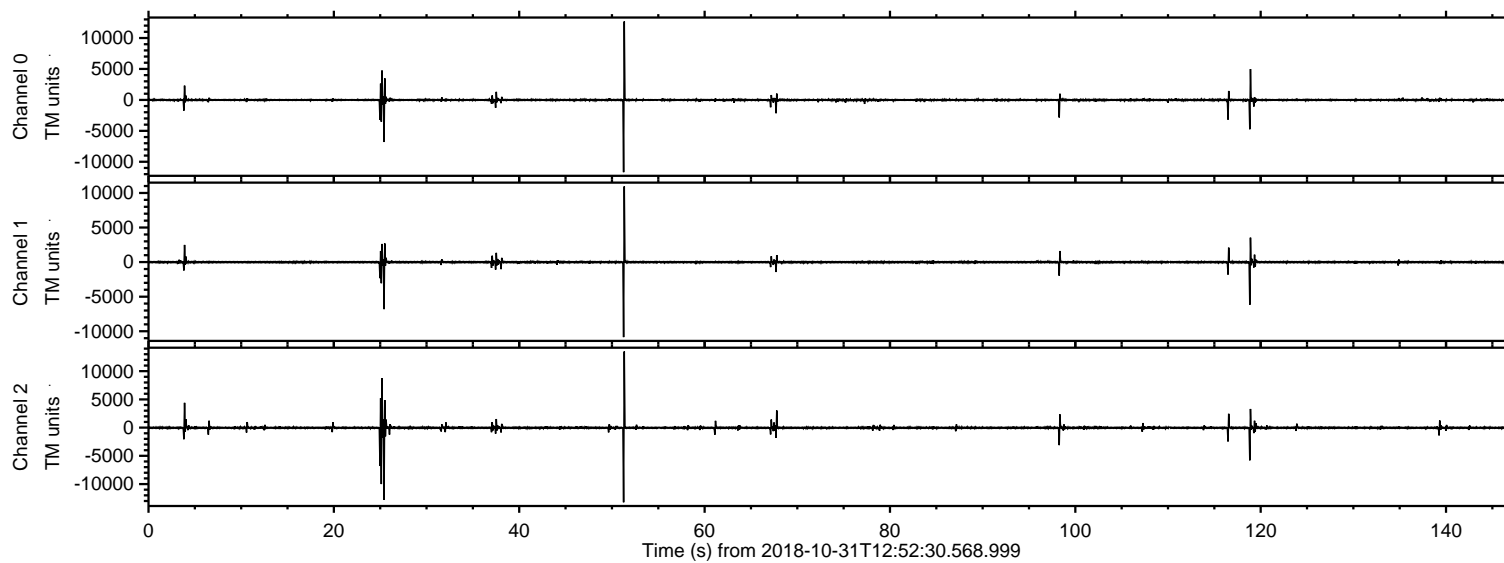
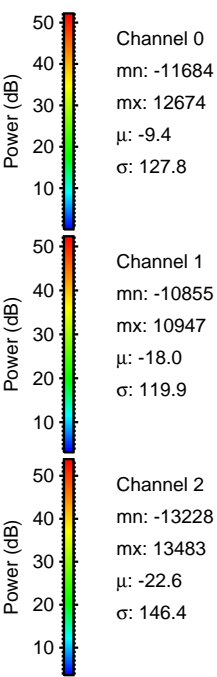
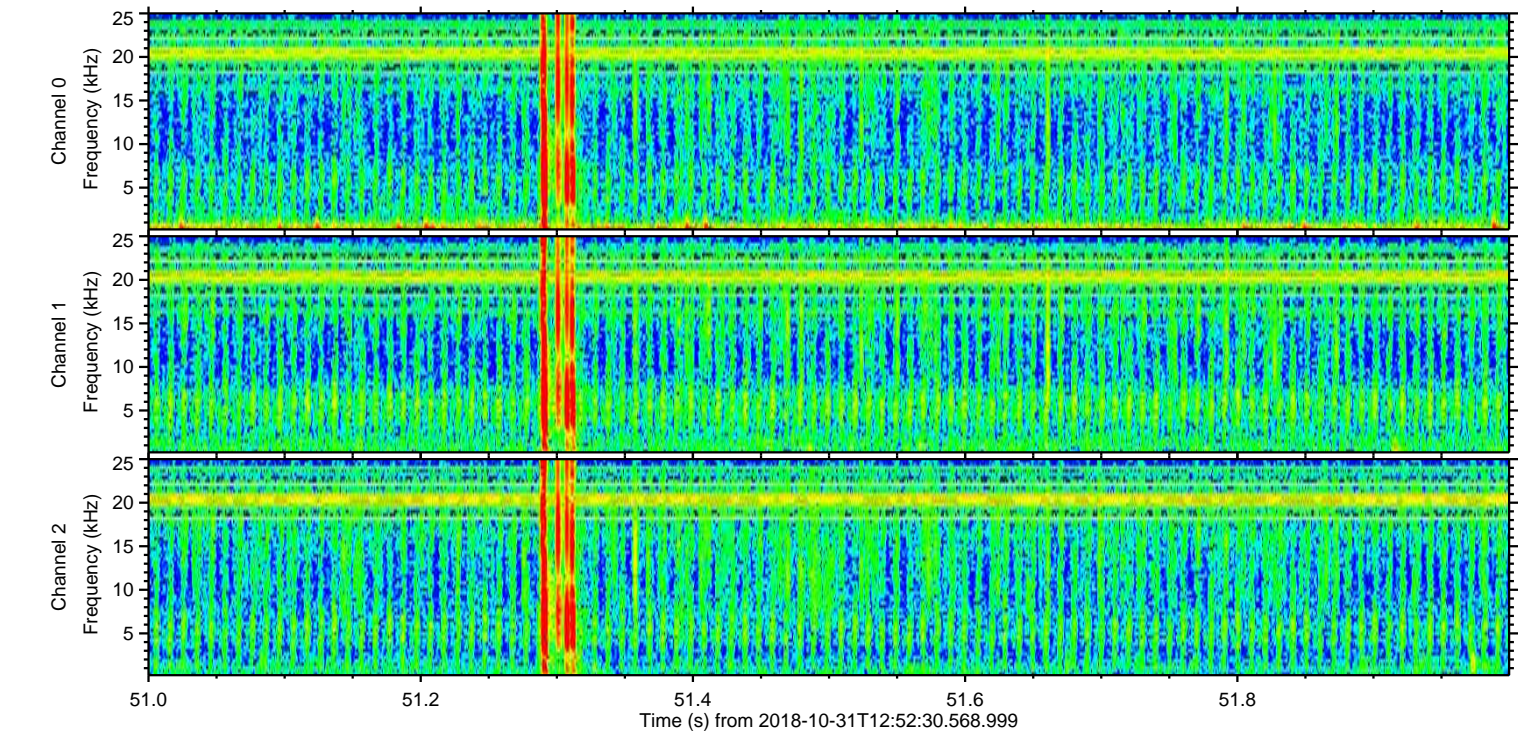
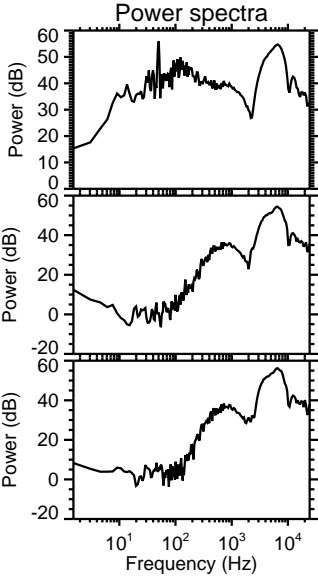
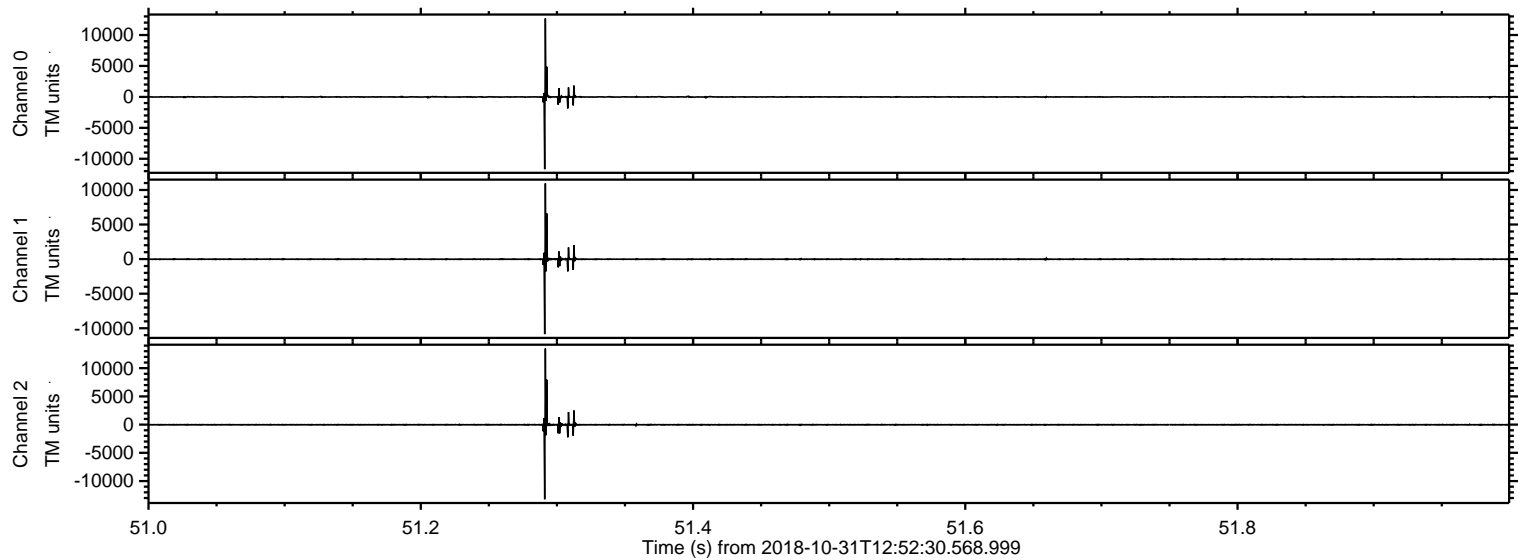


ELMAVAN 3D WAVEFORMS (Measured data sampled at 50 kHz) 51000 packets of 144 samples from 2018-10-31T12:52:30.568.999.

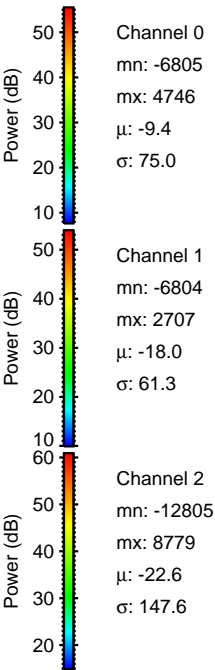
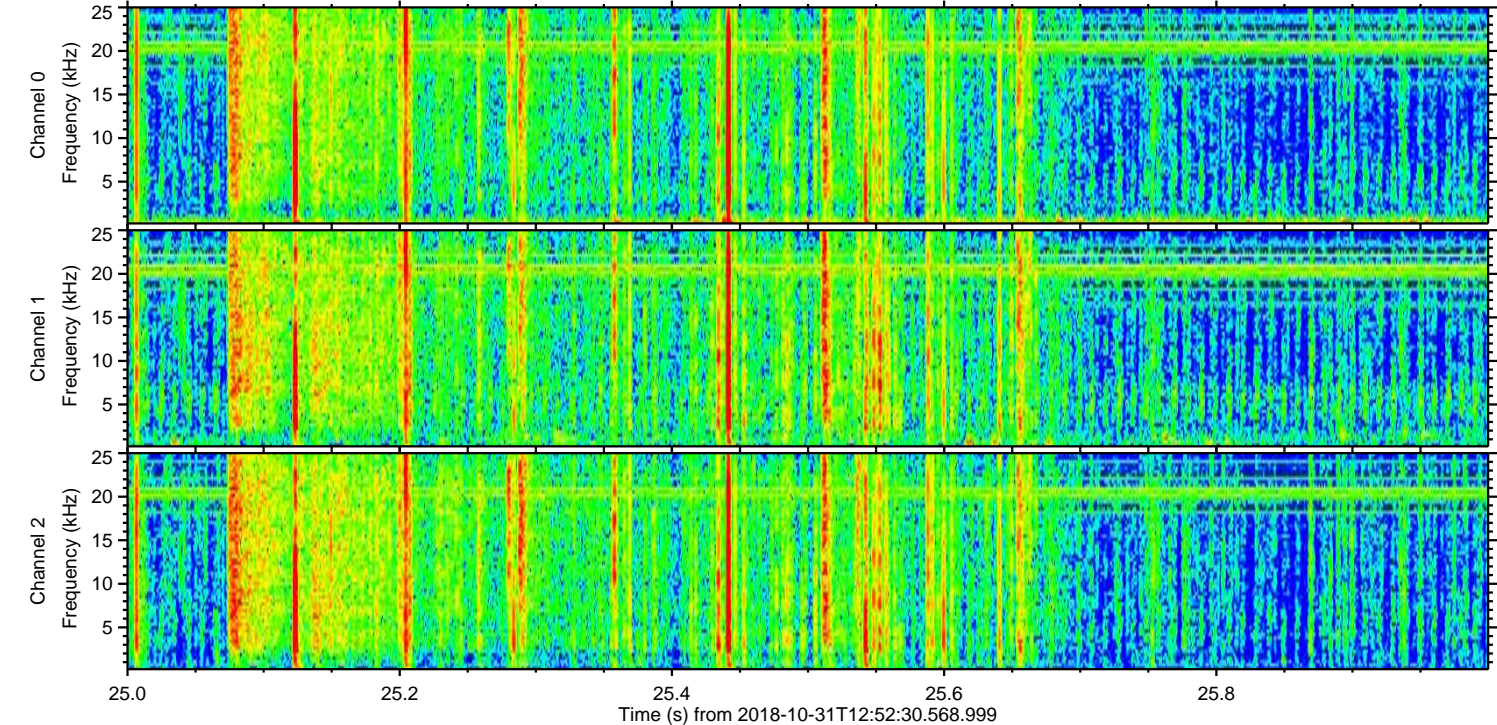
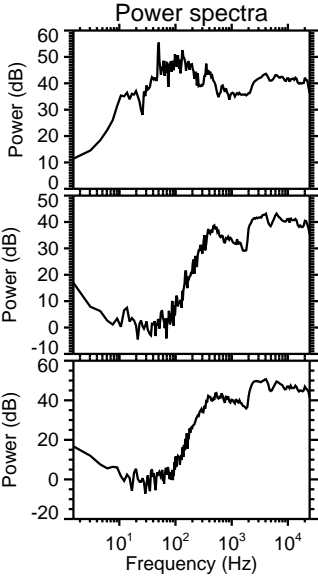
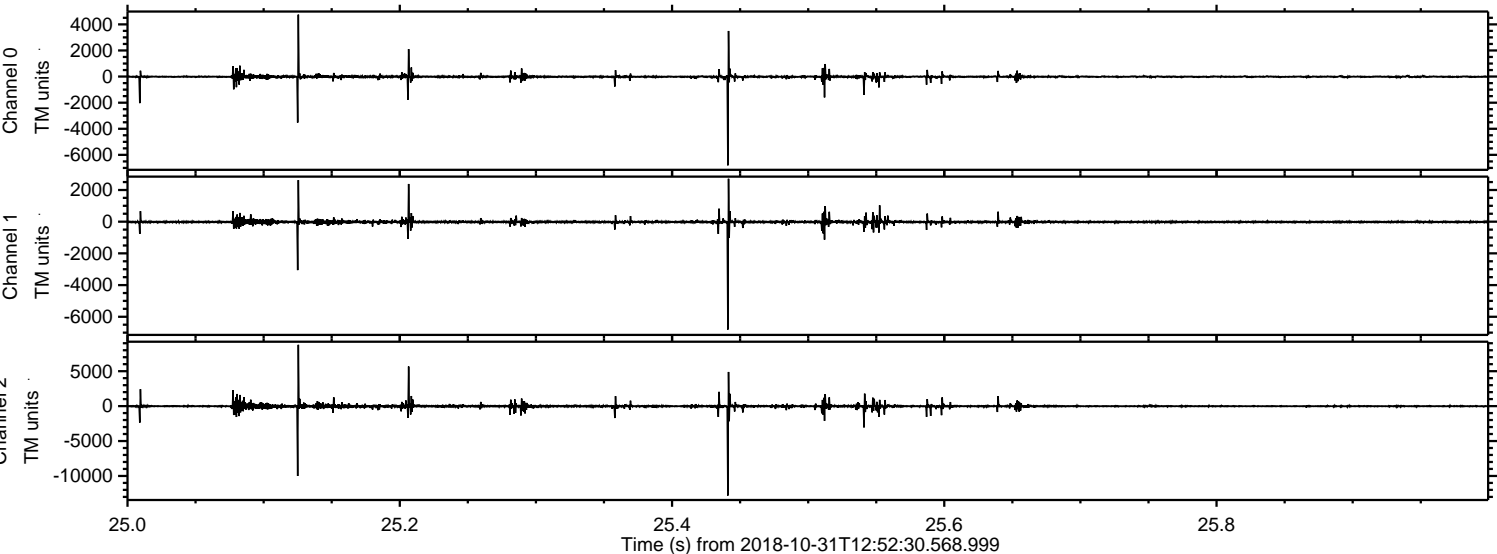
Processed Wed Oct 31 14:00:40 2018 by ELM ver.2012-10-06 from 001__elm20181031_125229__dat00.bin



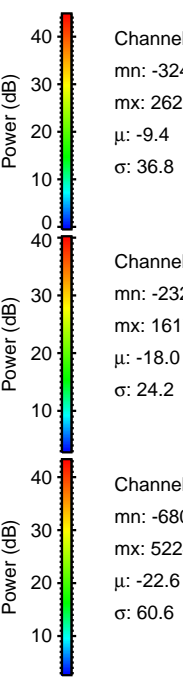
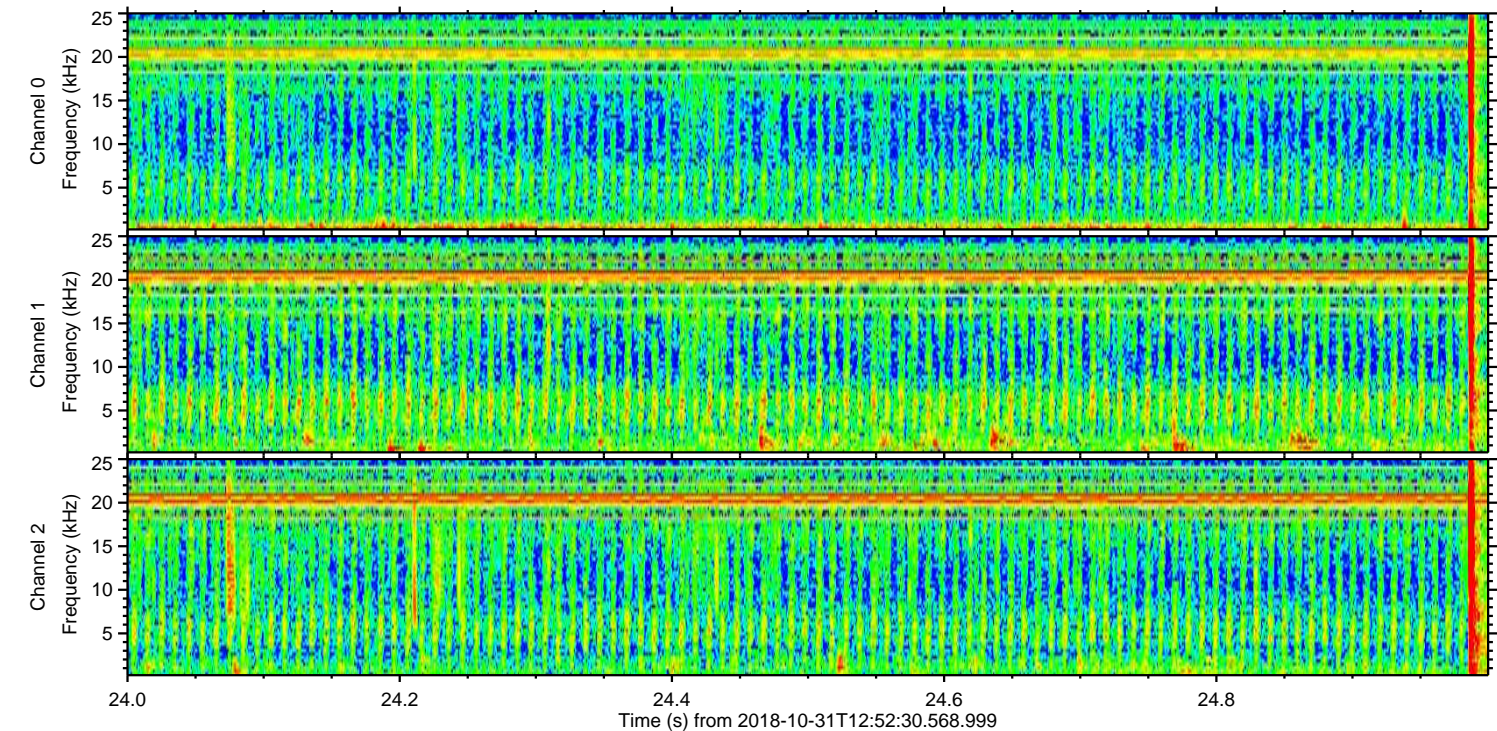
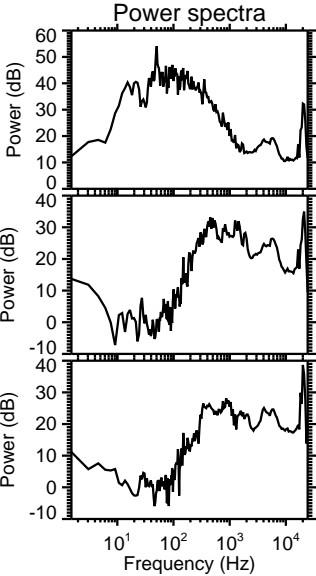
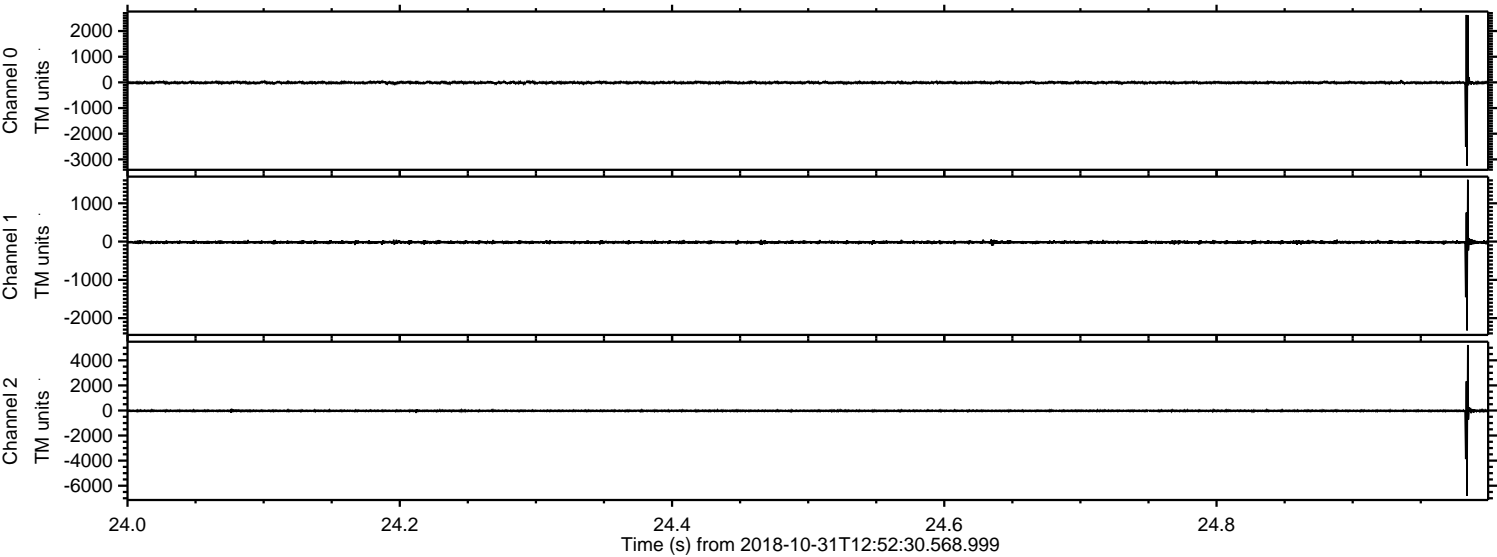
Processed Wed Oct 31 14:00:46 2018 by ELM ver.2012-10-06 from 001__elm20181031_125229__dat00.bin



Processed Wed Oct 31 14:00:47 2018 by ELM ver.2012-10-06 from 001__elm20181031_125229__dat00.bin



Processed Wed Oct 31 14:00:48 2018 by ELM ver.2012-10-06 from 001__elm20181031_125229__dat00.bin



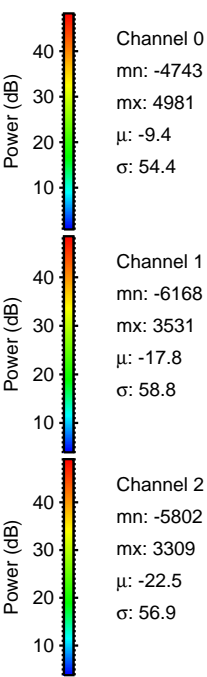
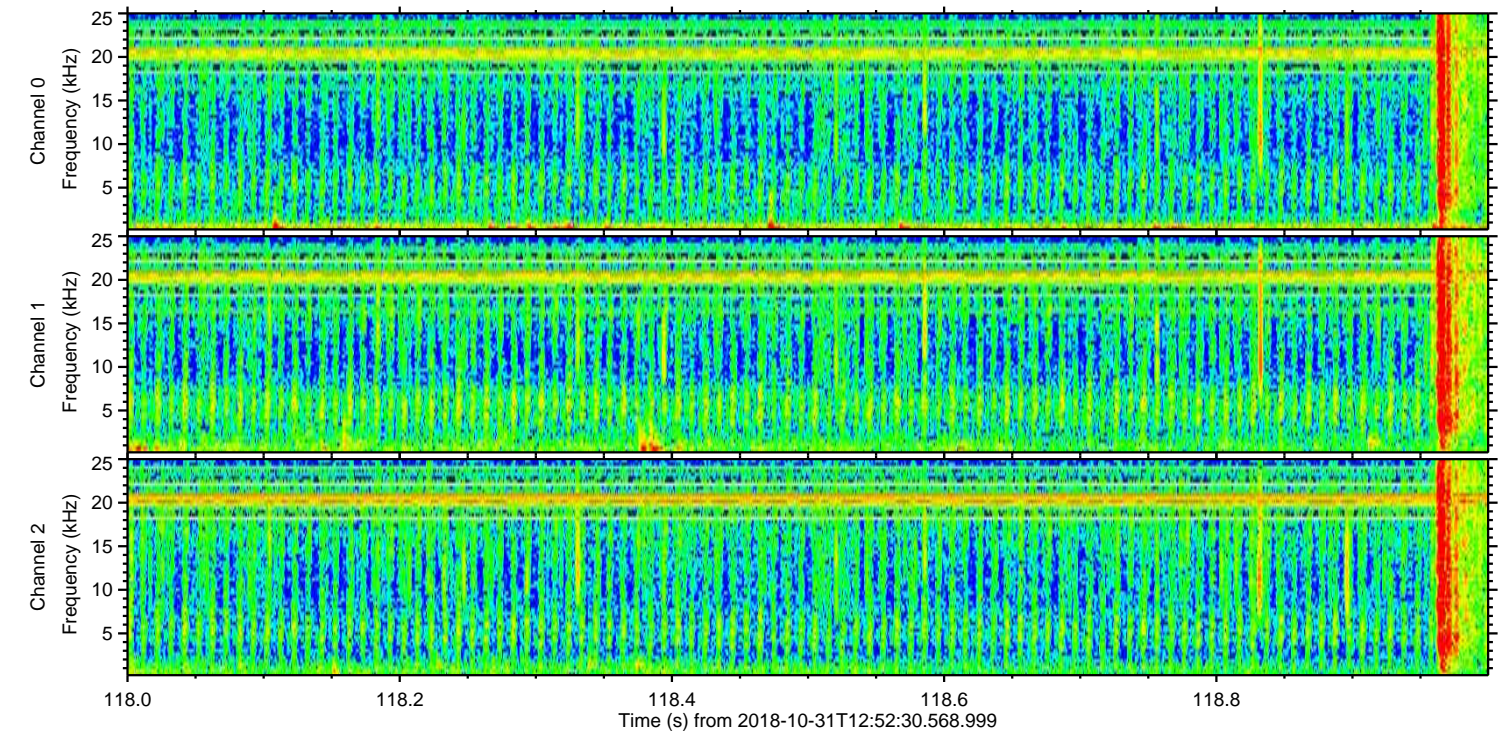
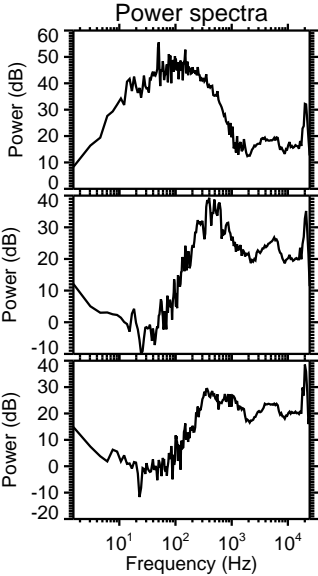
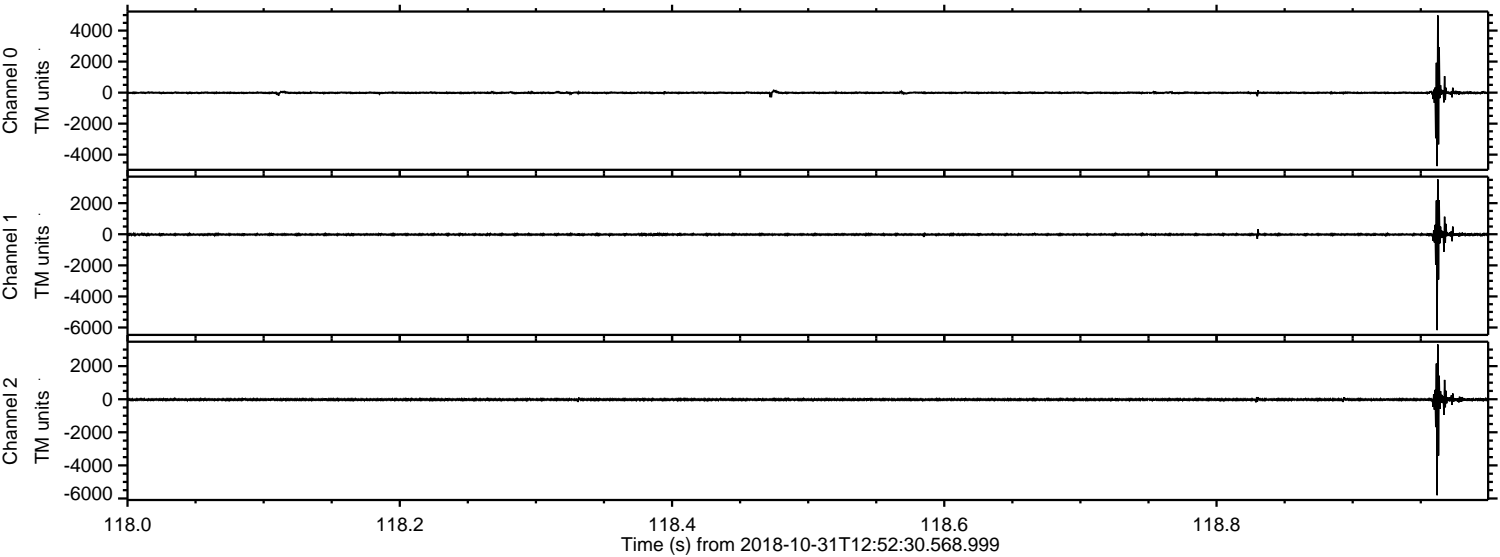
Channel 0
mn: -3244
mx: 2629
 μ : -9.4
 σ : 36.8

Channel 1
mn: -2323
mx: 1617
 μ : -18.0
 σ : 24.2

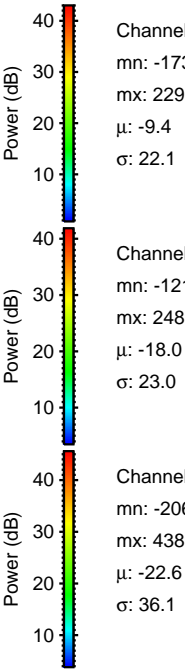
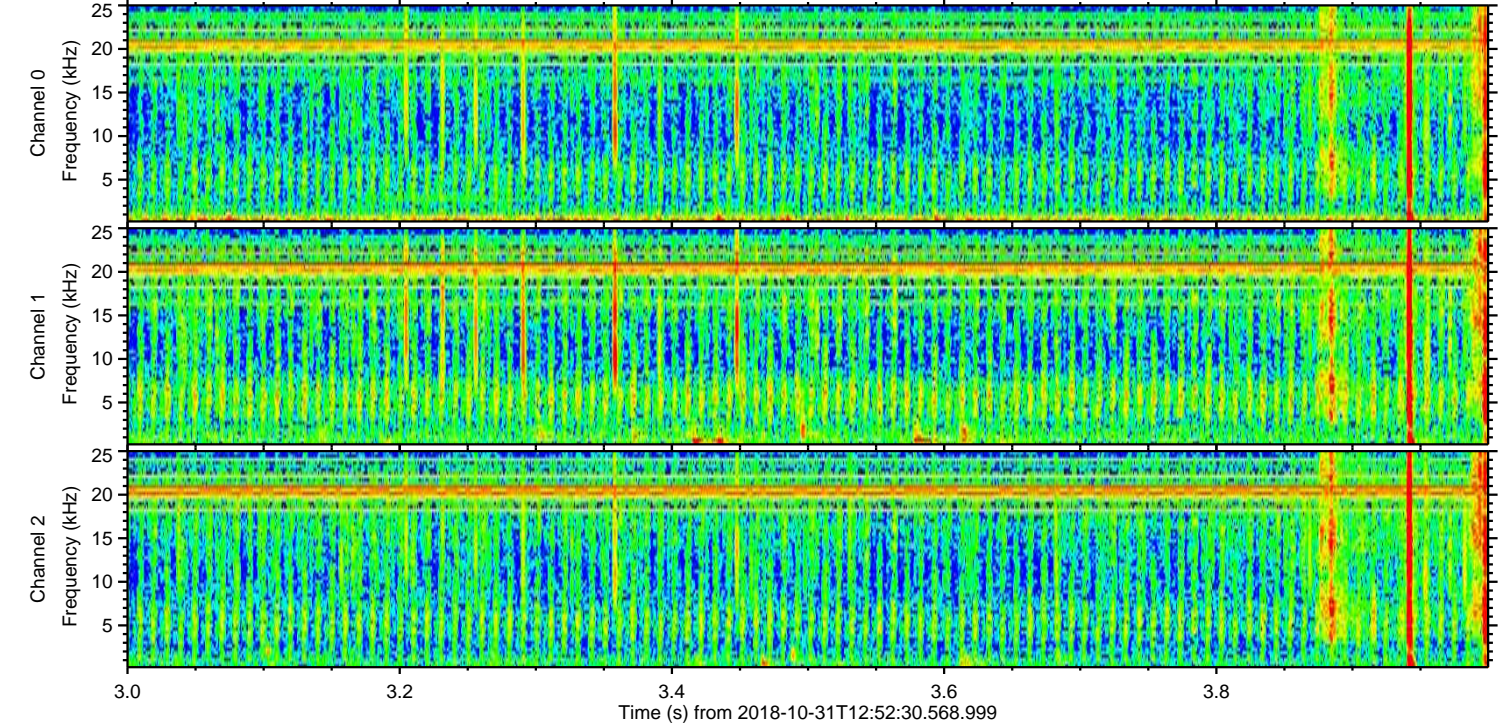
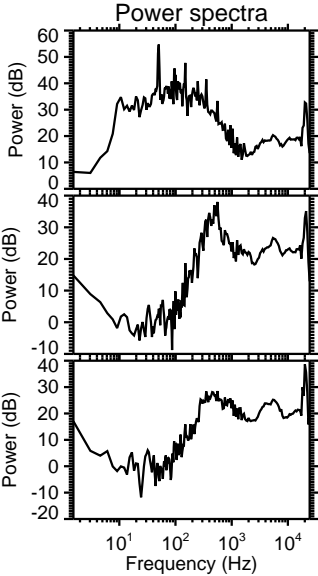
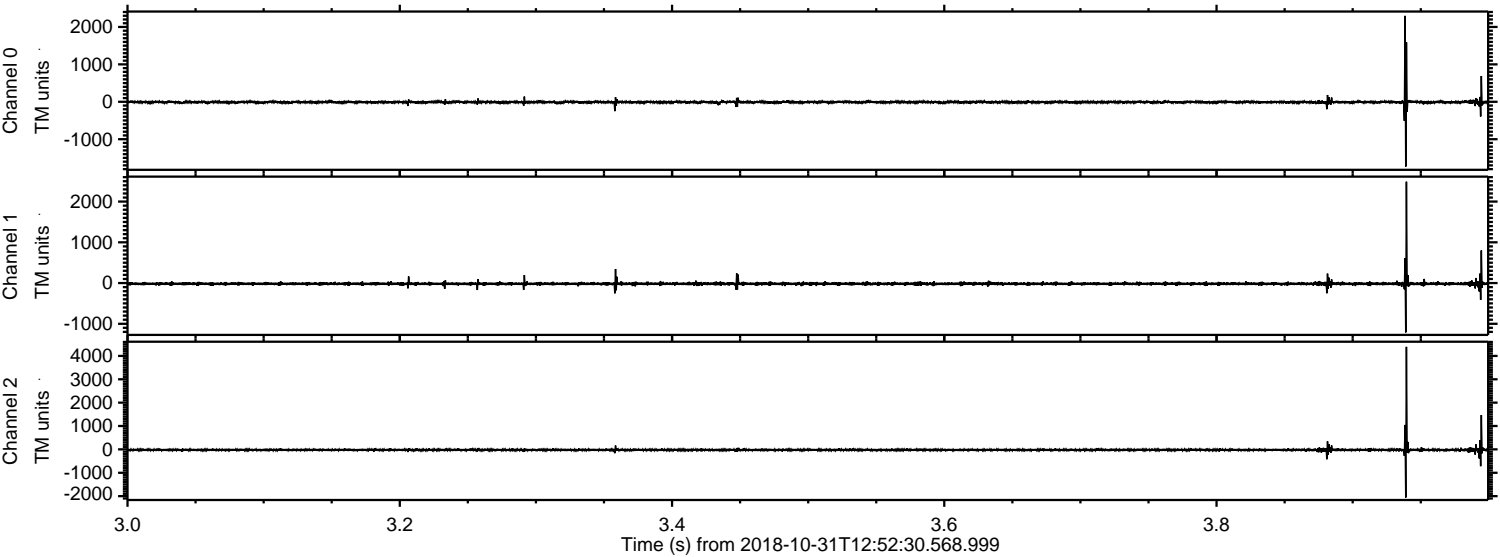
Channel 2
mn: -6800
mx: 5224
 μ : -22.6
 σ : 60.6

ELMAVAN 3D WAVEFORMS (Measured data sampled at 50 kHz) 51000 packets of 144 samples from 2018-10-31T12:52:30.568.999. Part 119/147

Processed Wed Oct 31 14:00:49 2018 by ELM ver.2012-10-06 from 001__elm20181031_125229__dat00.bin

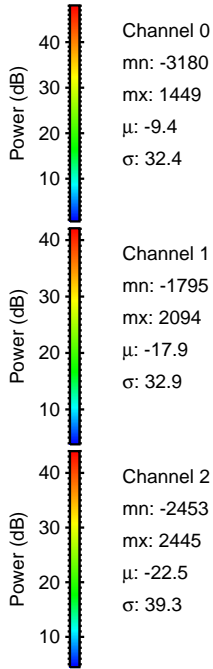
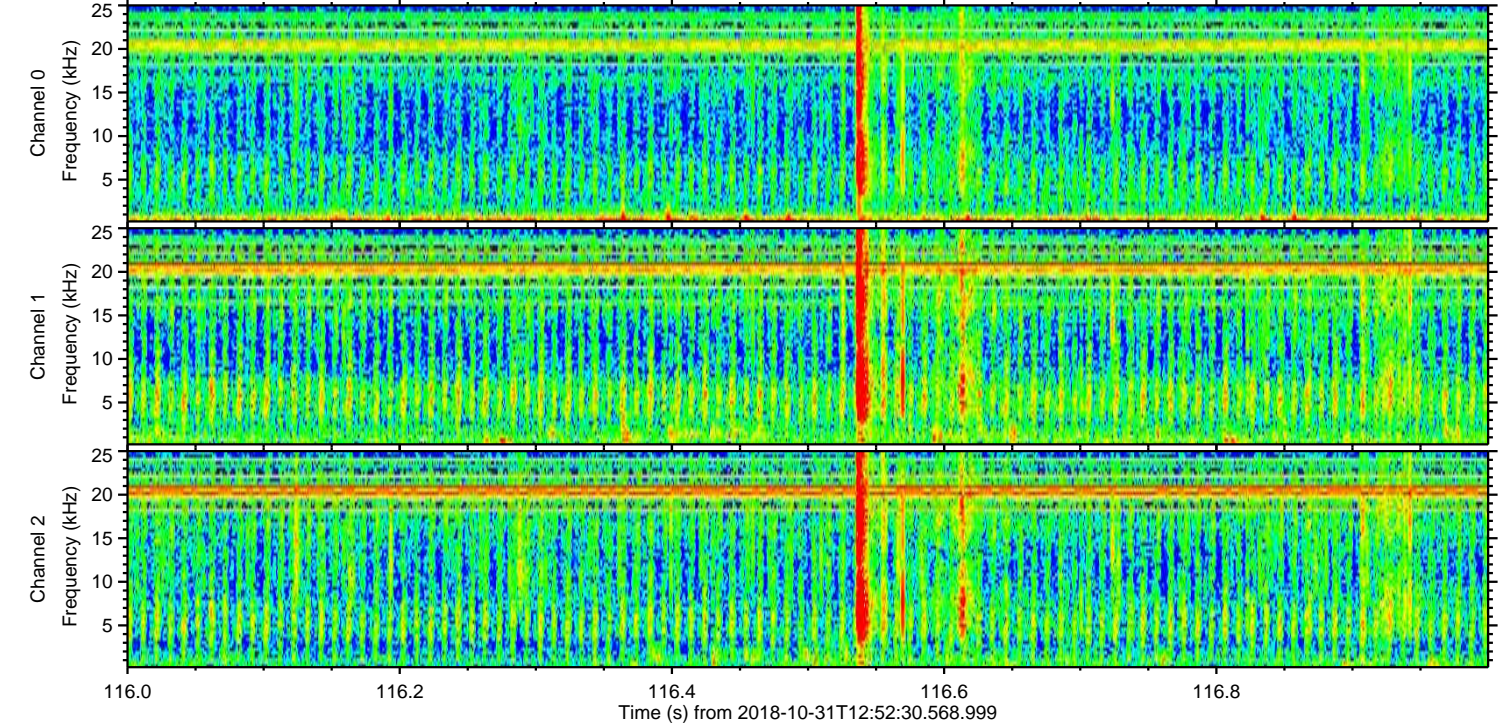
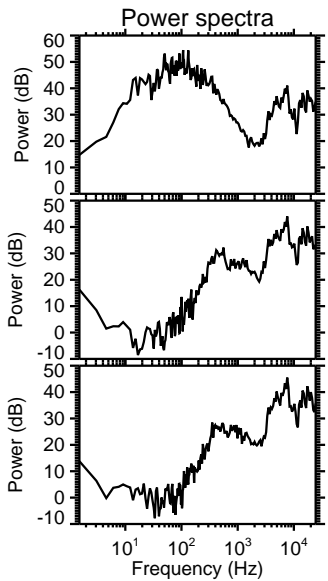
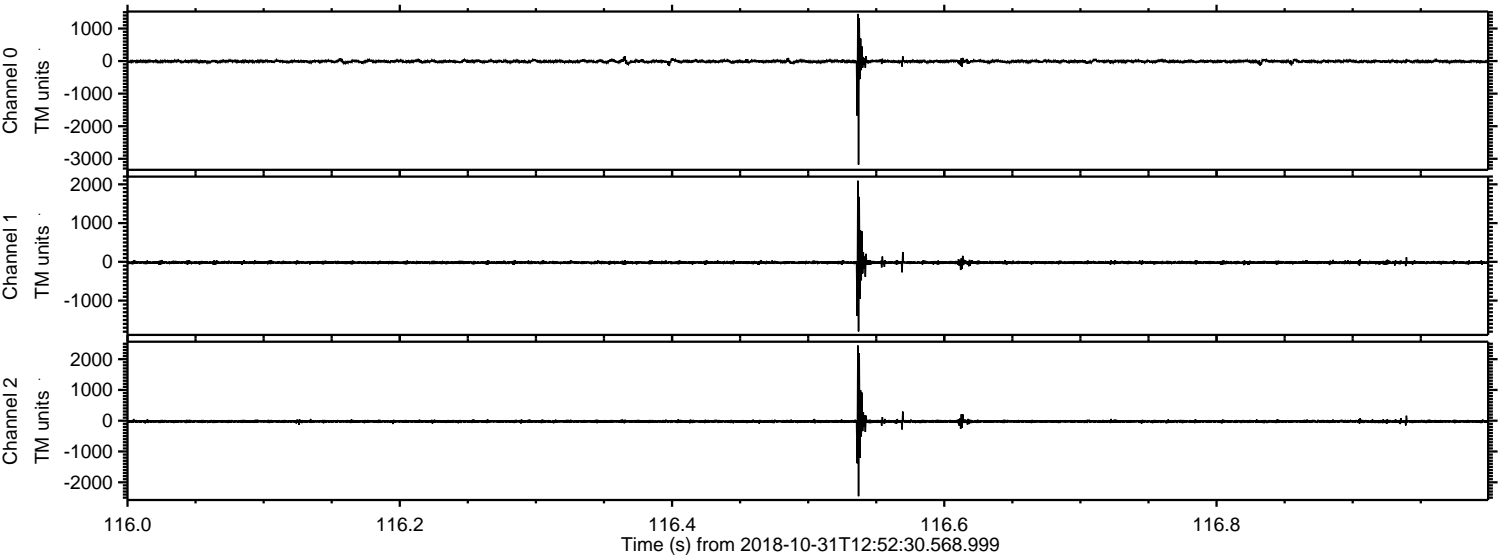


Processed Wed Oct 31 14:00:50 2018 by ELM ver.2012-10-06 from 001__elm20181031_125229__dat00.bin

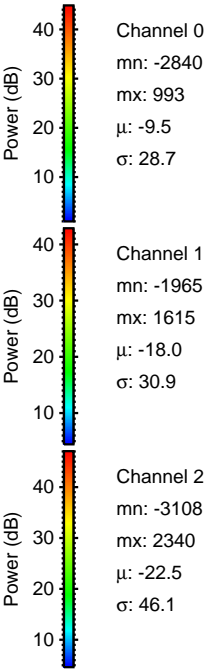
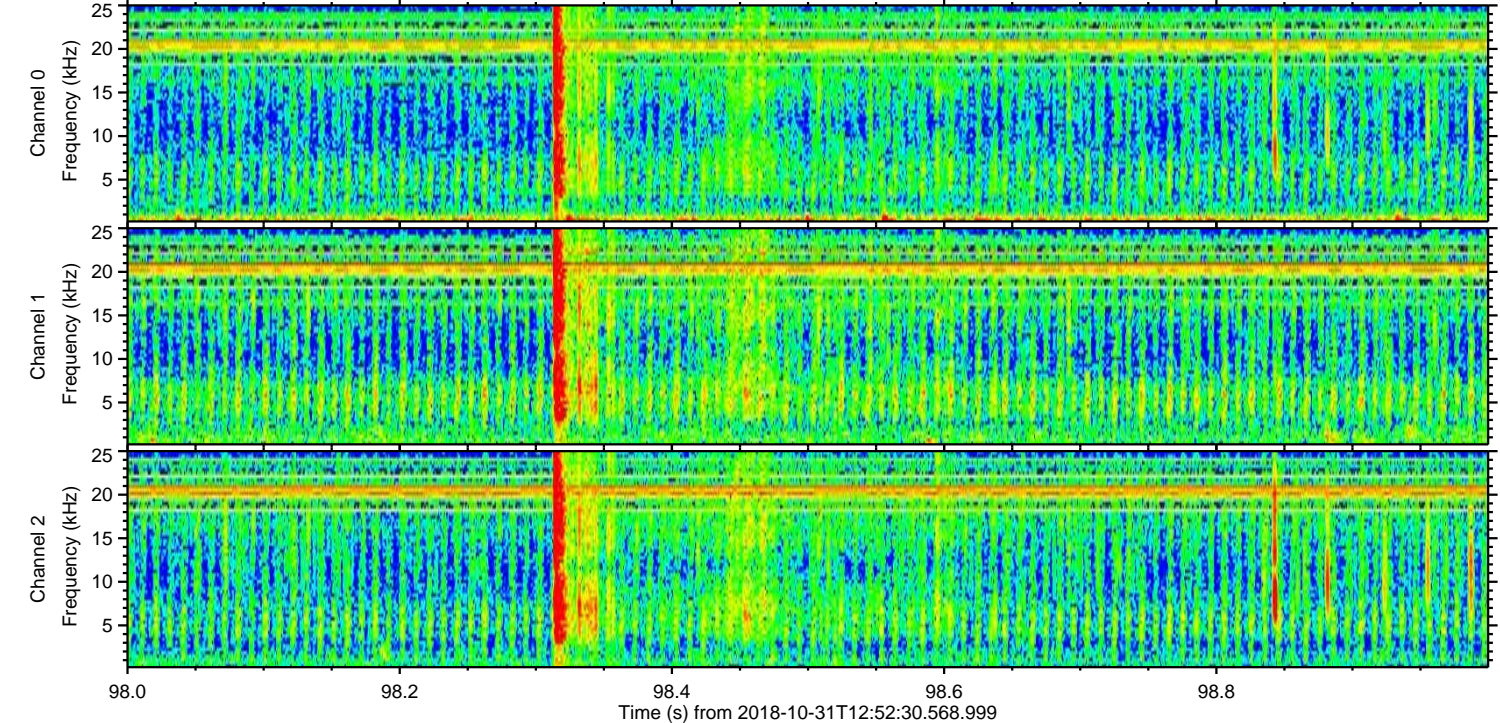
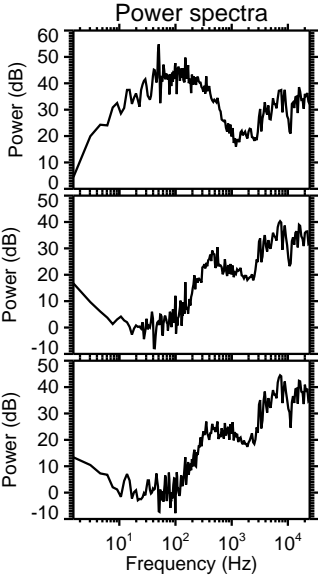
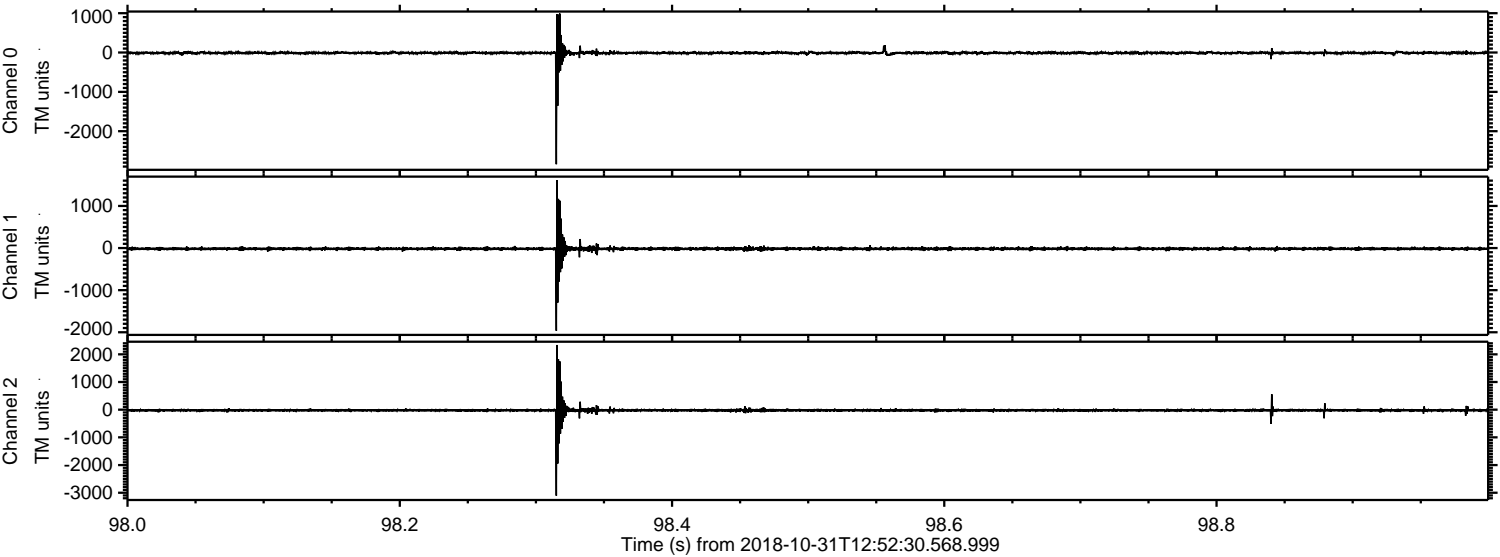


ELMAVAN 3D WAVEFORMS (Measured data sampled at 50 kHz) 51000 packets of 144 samples from 2018-10-31T12:52:30.568.999. Part 117/147

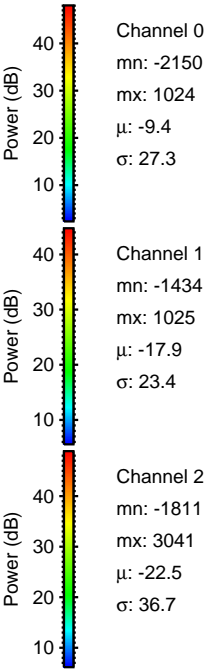
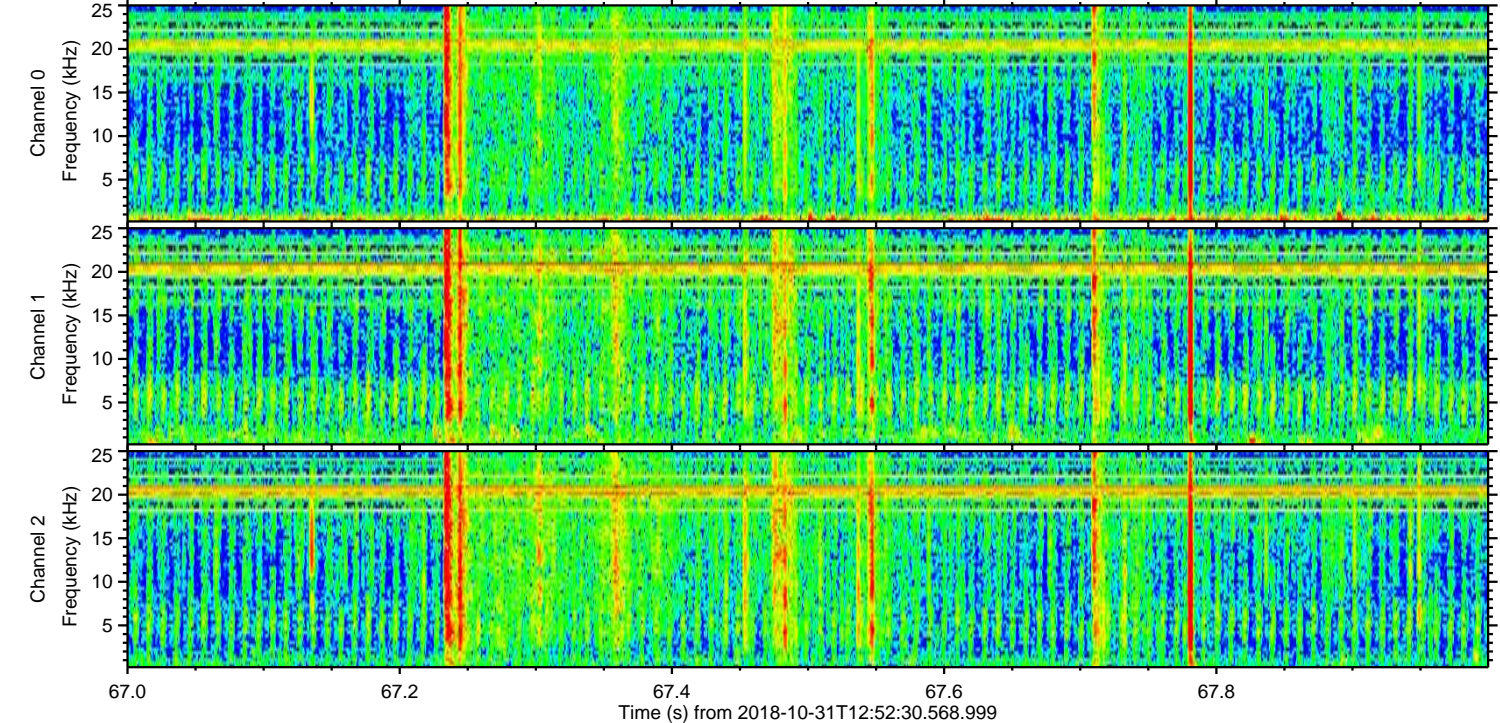
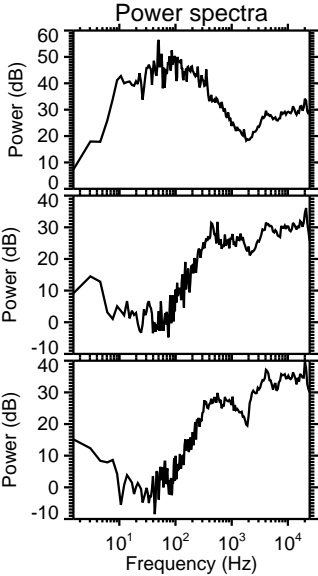
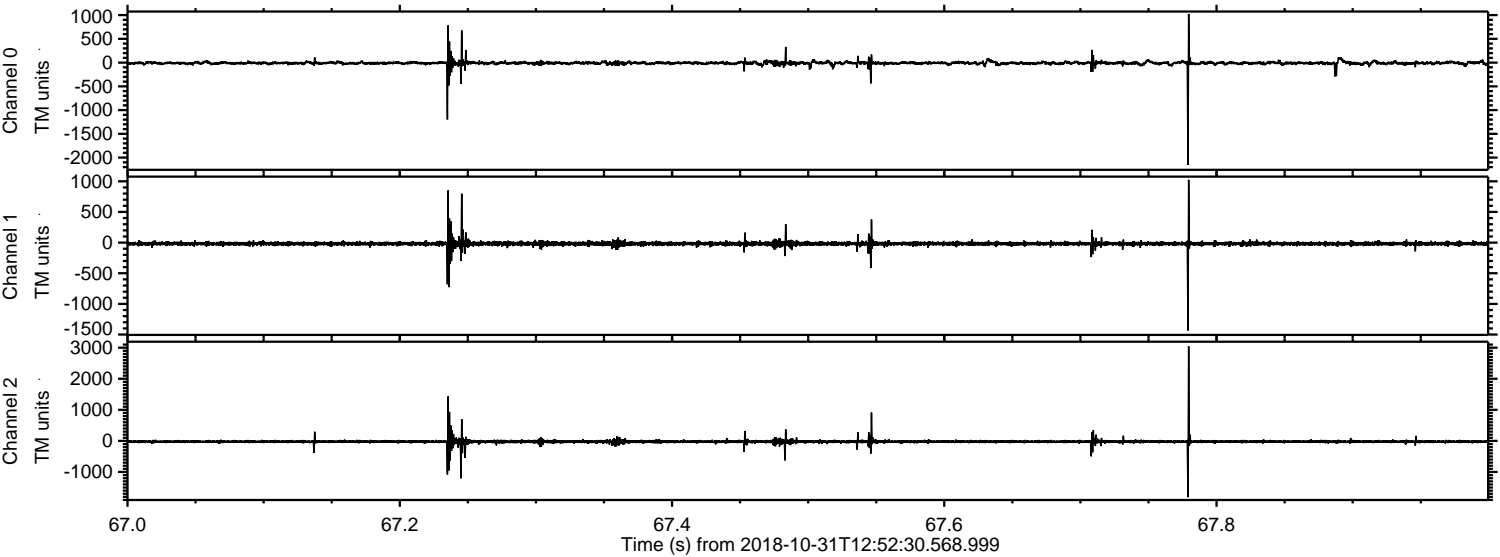
Processed Wed Oct 31 14:00:50 2018 by ELM ver.2012-10-06 from 001__elm20181031_125229__dat00.bin



Processed Wed Oct 31 14:00:51 2018 by ELM ver.2012-10-06 from 001__elm20181031_125229__dat00.bin



Processed Wed Oct 31 14:00:52 2018 by ELM ver.2012-10-06 from 001__elm20181031_125229__dat00.bin

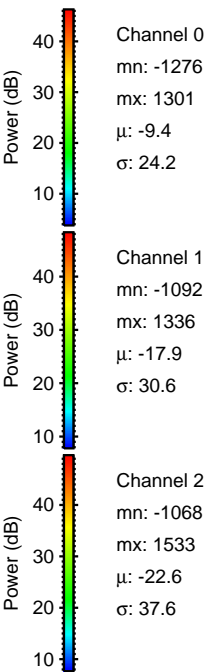
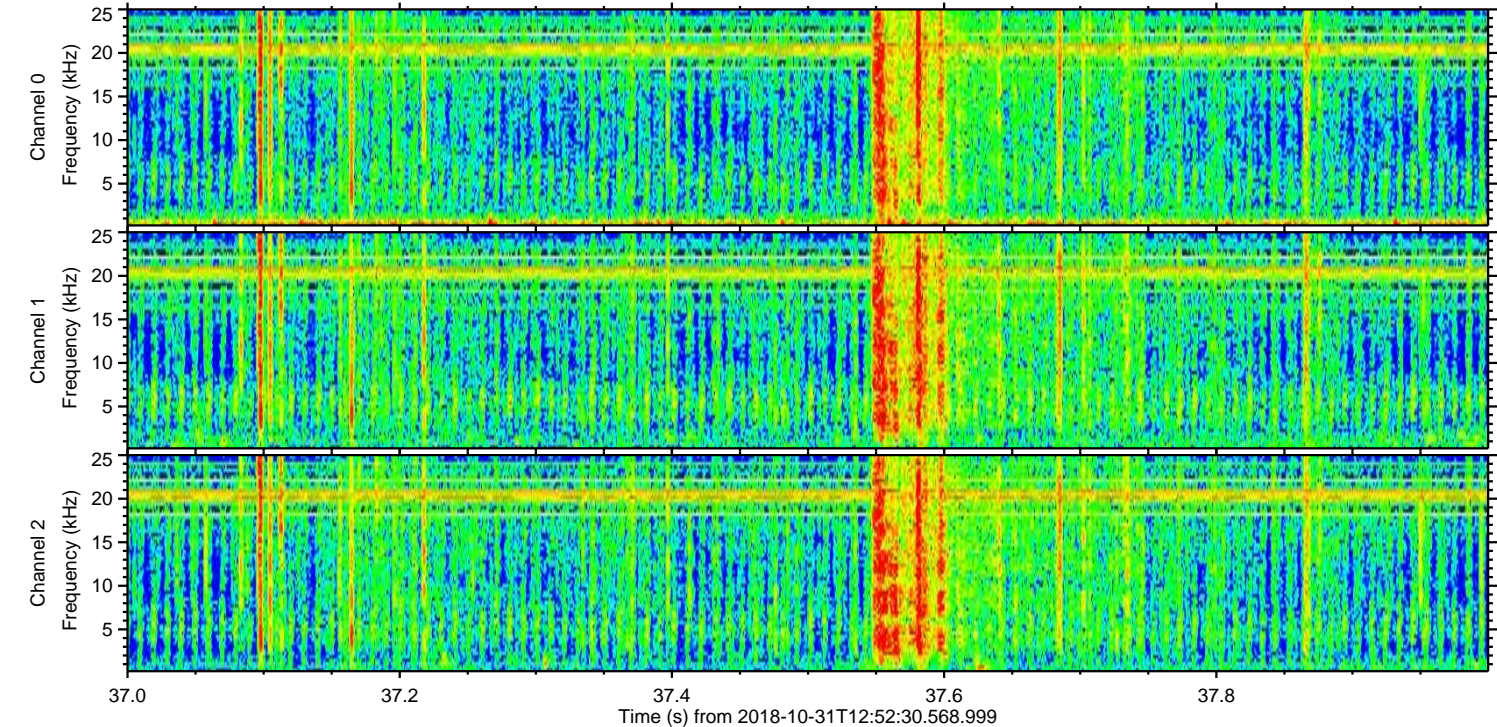
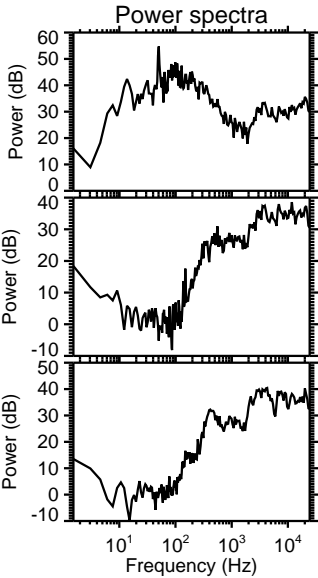
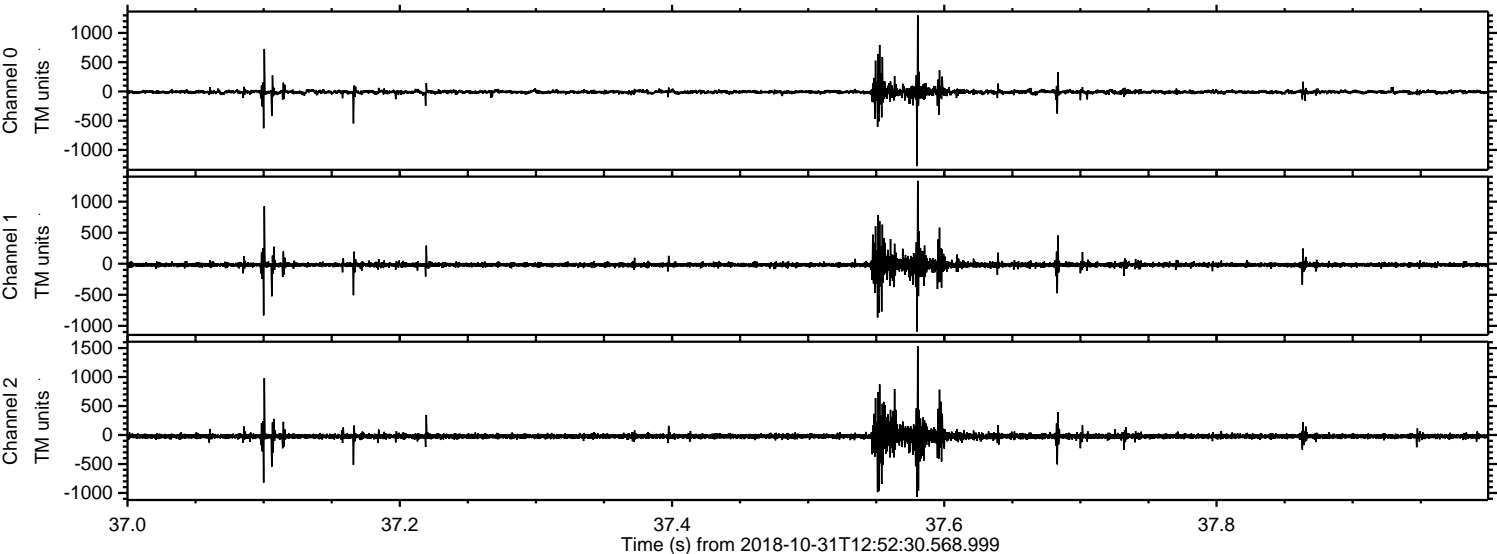


Channel 0
mn: -2150
mx: 1024
 μ : -9.4
 σ : 27.3

Channel 1
mn: -1434
mx: 1025
 μ : -17.9
 σ : 23.4

Channel 2
mn: -1811
mx: 3041
 μ : -22.5
 σ : 36.7

Processed Wed Oct 31 14:00:53 2018 by ELM ver.2012-10-06 from 001__elm20181031_125229__dat00.bin



Processed Wed Oct 31 14:00:53 2018 by ELM ver.2012-10-06 from 001__elm20181031_125229__dat00.bin

