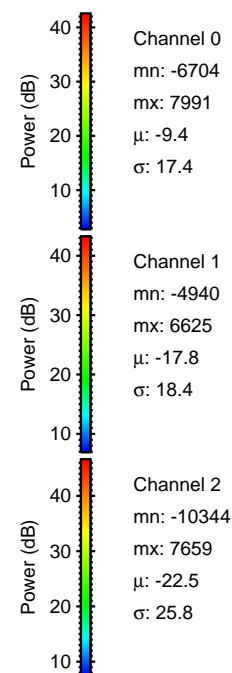
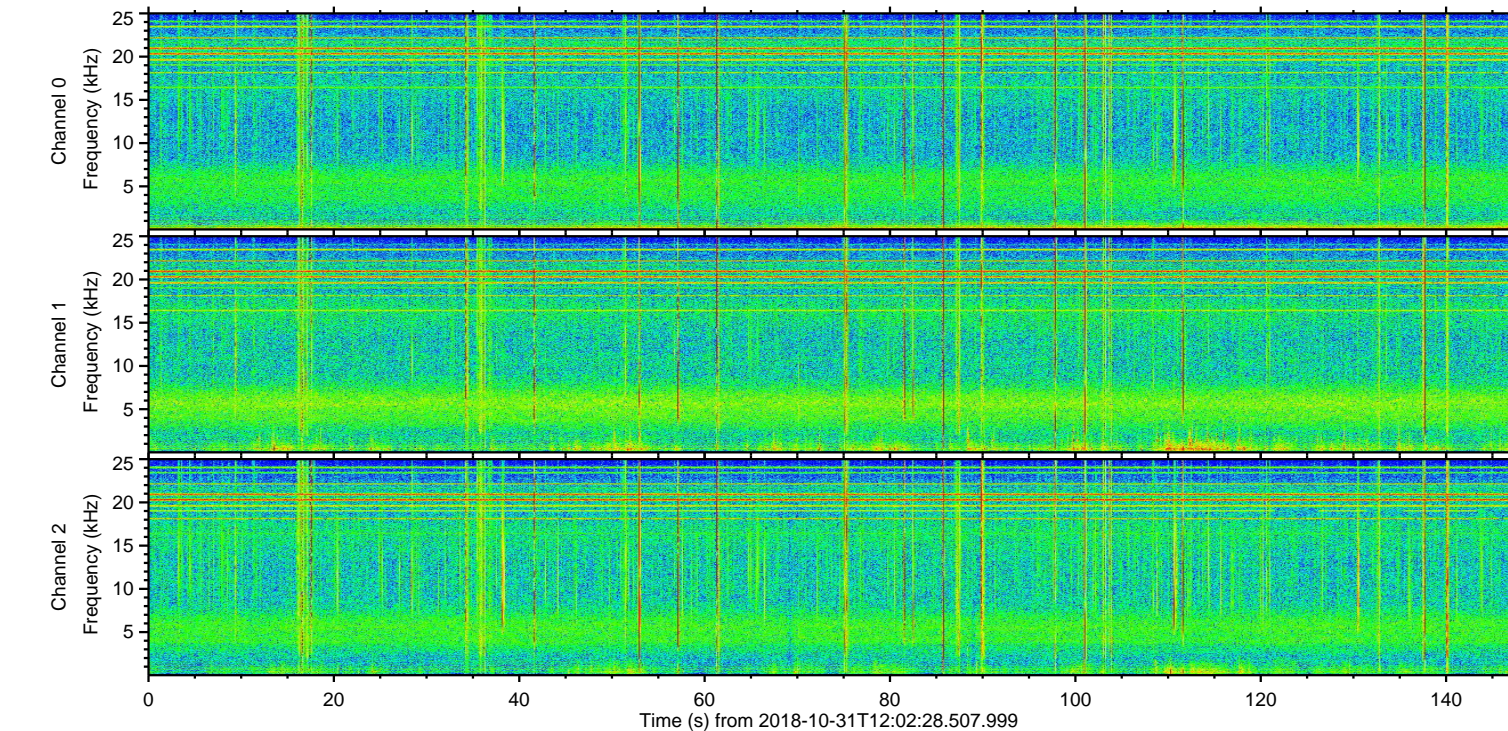
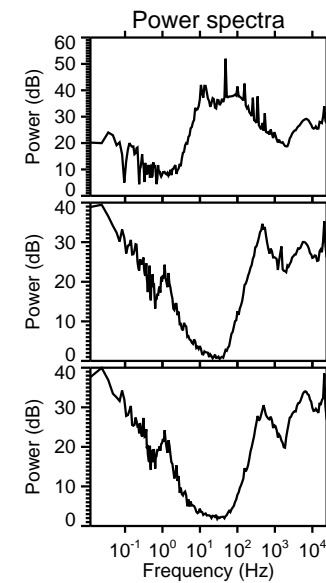
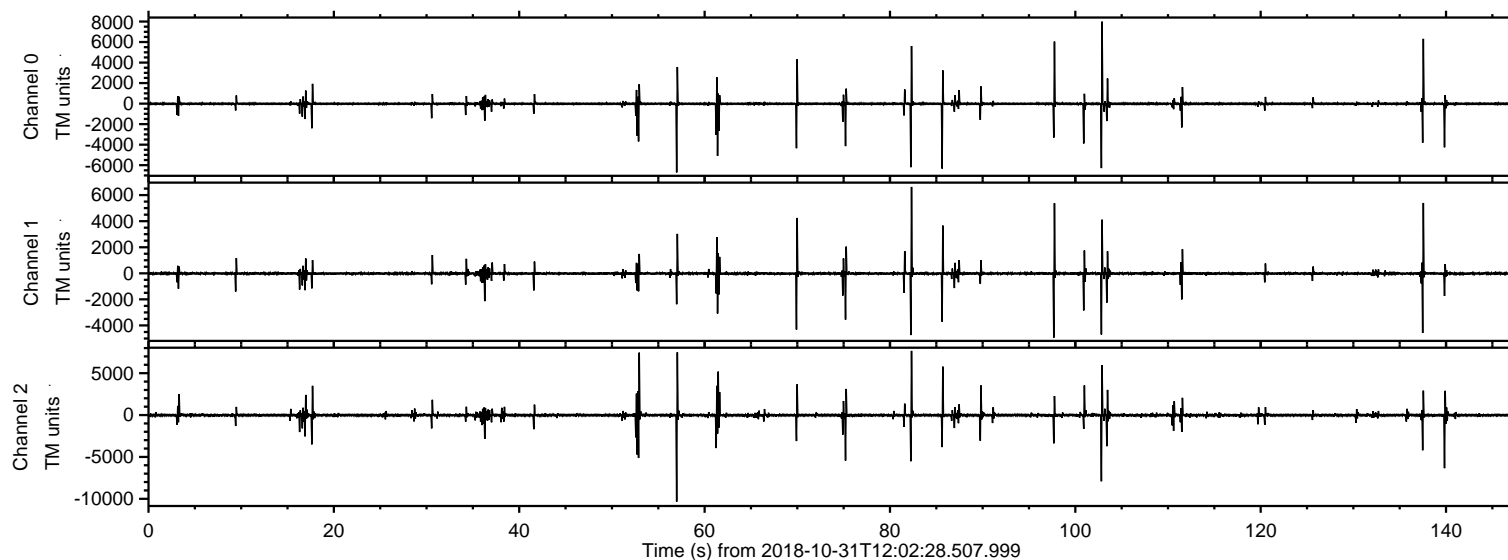
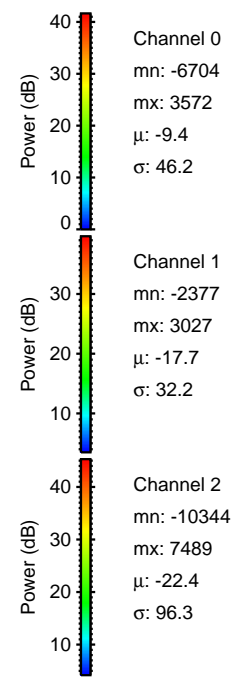
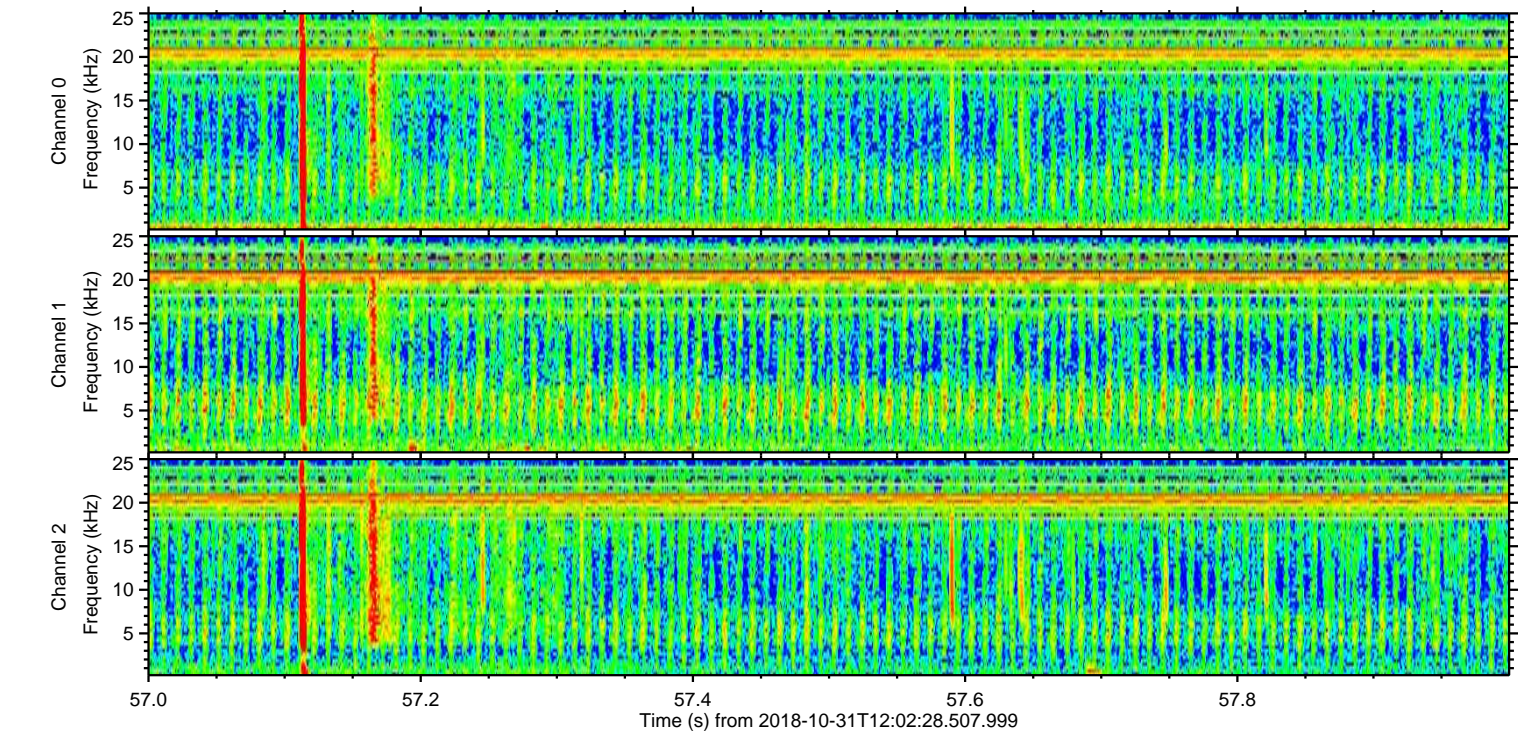
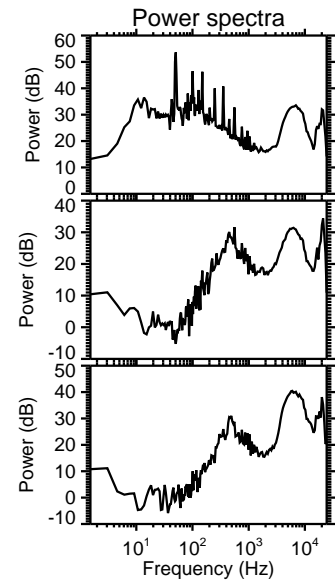
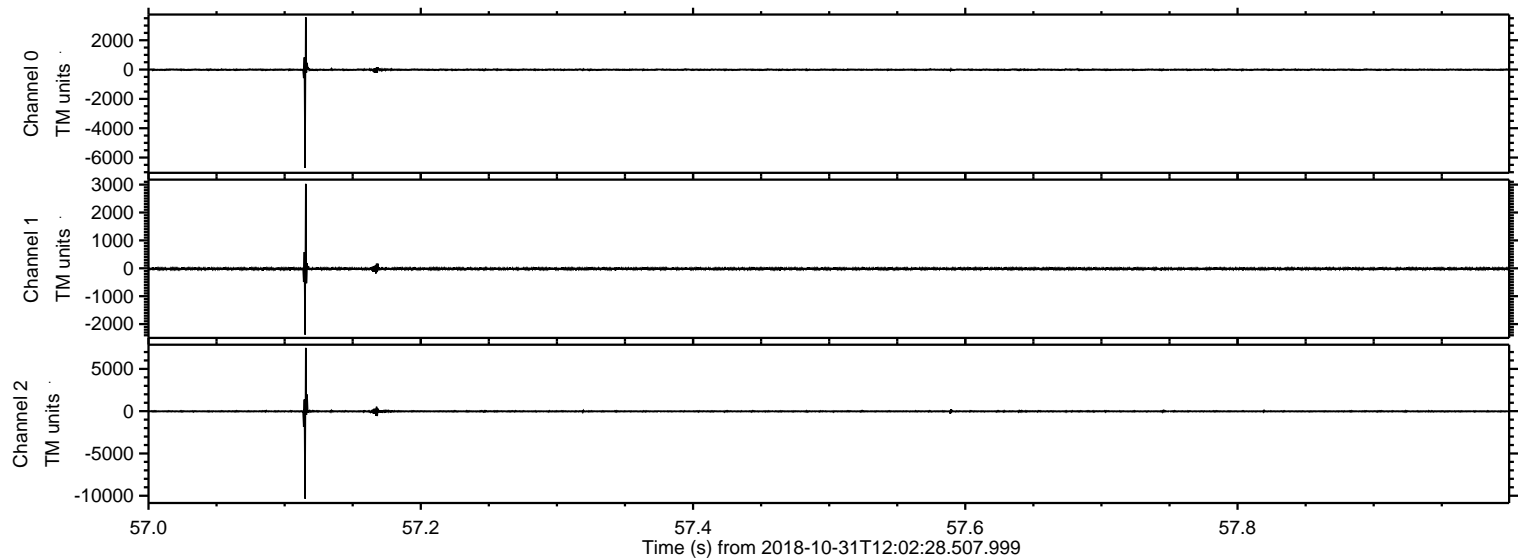


ELMAVAN 3D WAVEFORMS (Measured data sampled at 50 kHz) 51000 packets of 144 samples from 2018-10-31T12:02:28.507.999.

Processed Wed Oct 31 13:10:26 2018 by ELM ver.2012-10-06 from 001__elm20181031_120227__dat00.bin

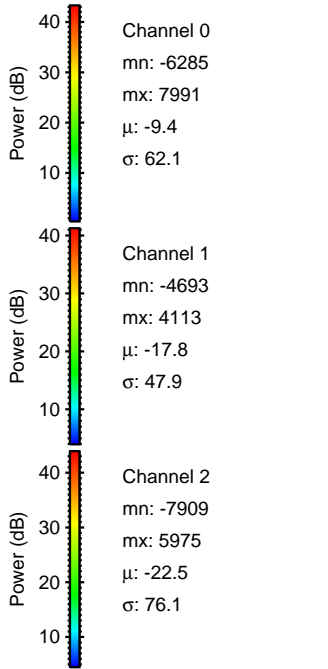
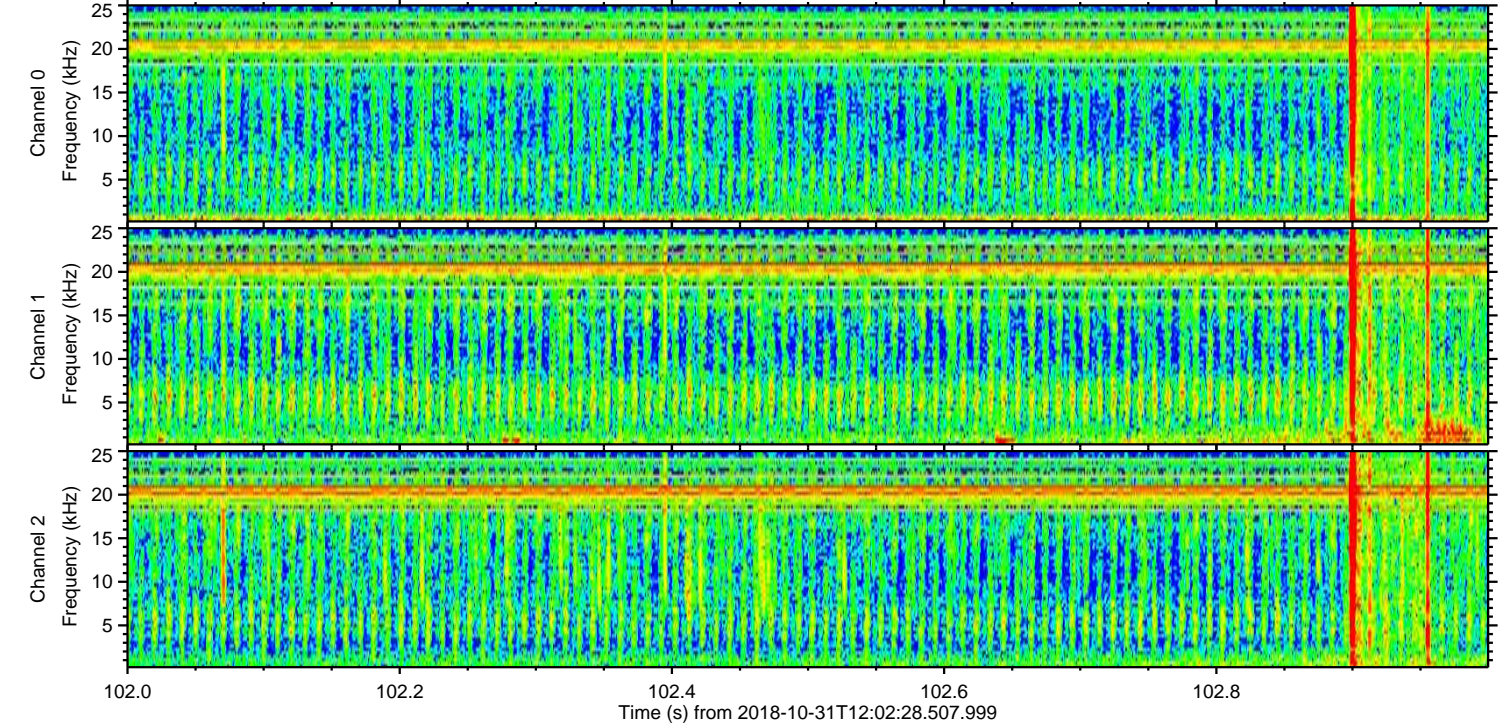
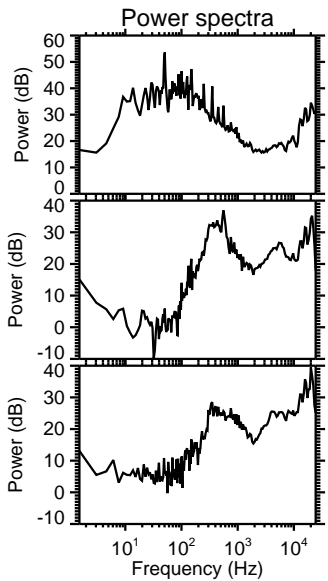
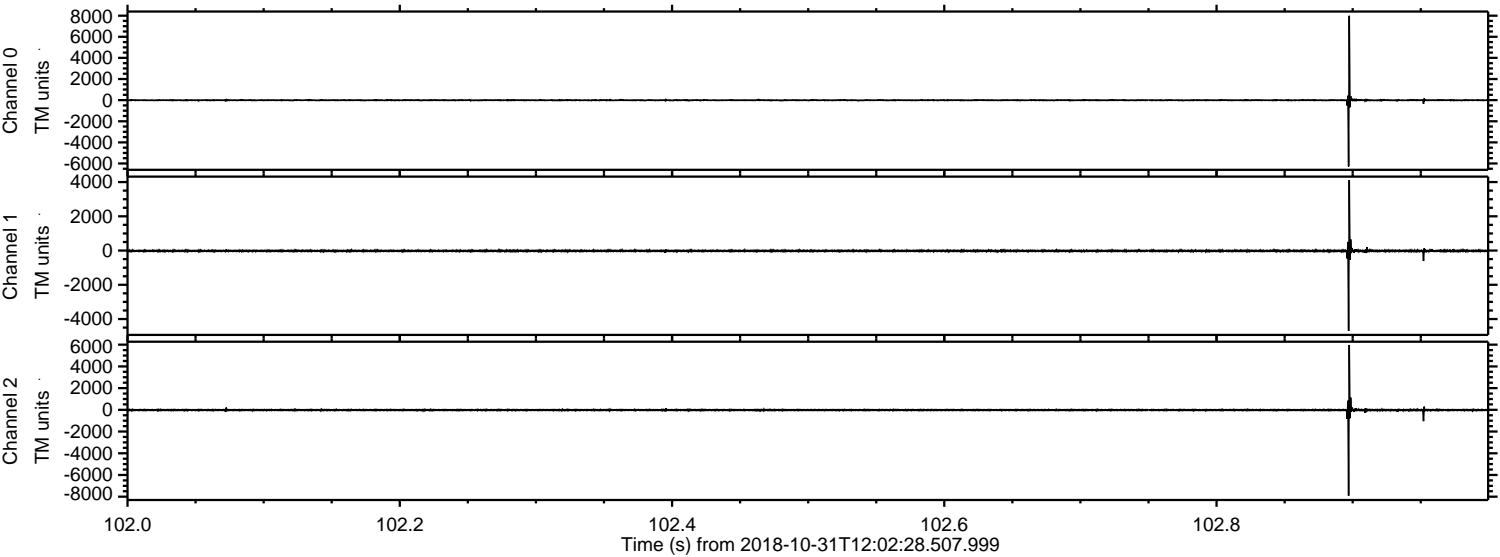


Processed Wed Oct 31 13:10:33 2018 by ELM ver.2012-10-06 from 001__elm20181031_120227__dat00.bin

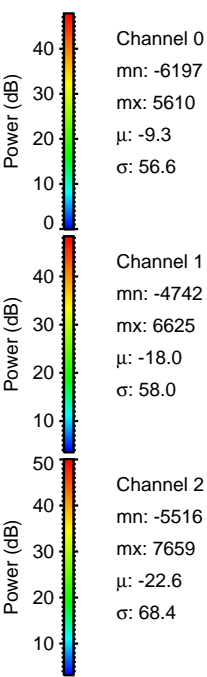
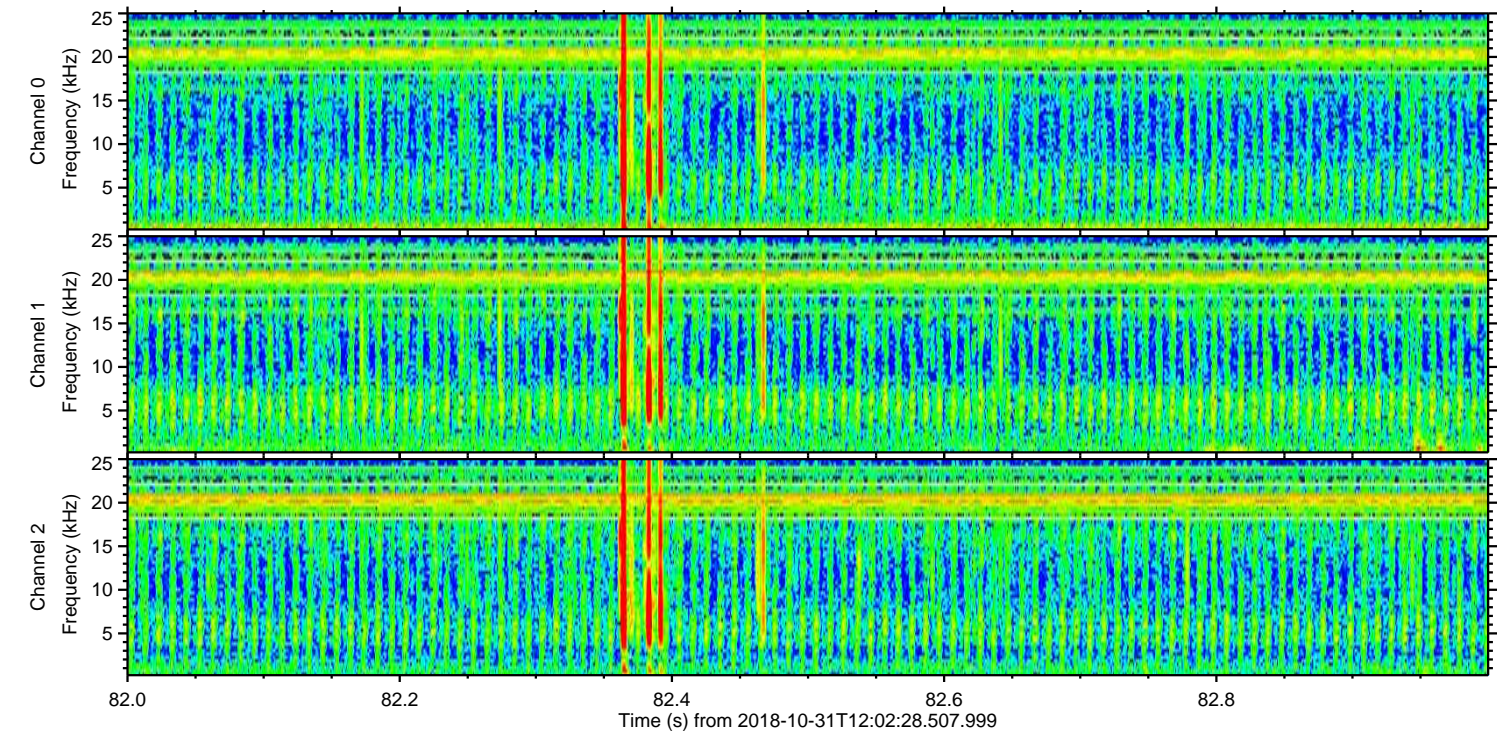
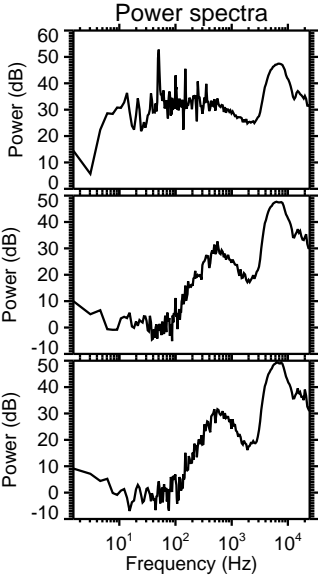
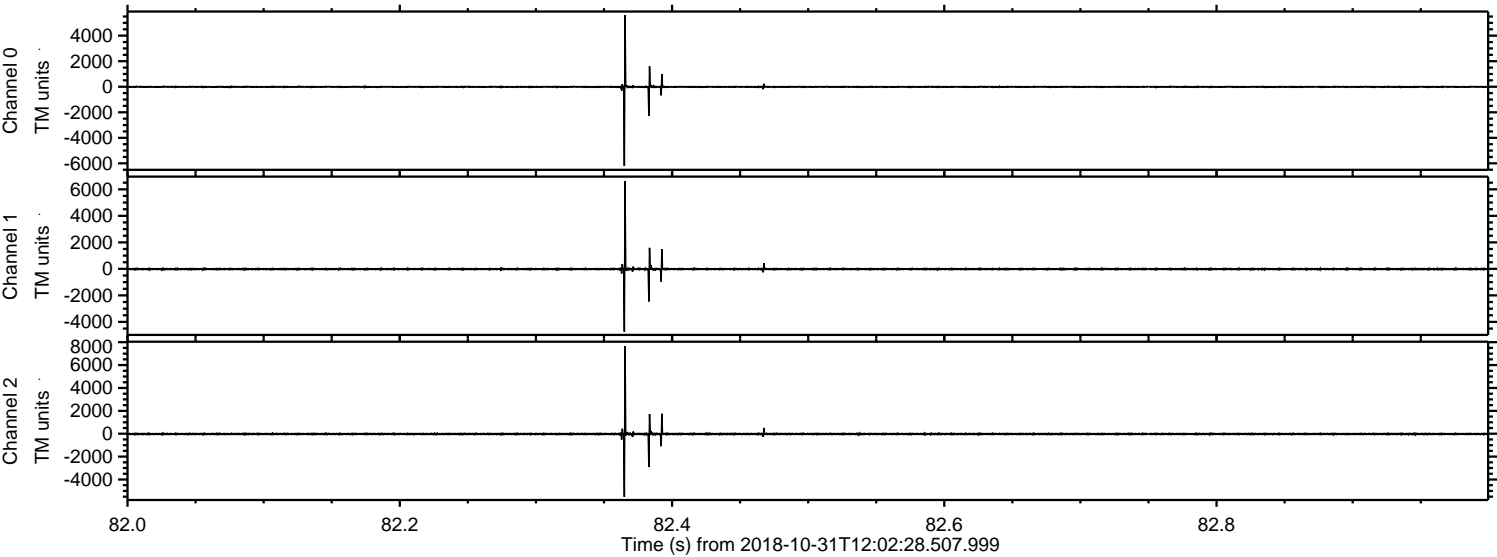


ELMAVAN 3D WAVEFORMS (Measured data sampled at 50 kHz) 51000 packets of 144 samples from 2018-10-31T12:02:28.507.999. Part 103/147

Processed Wed Oct 31 13:10:34 2018 by ELM ver.2012-10-06 from 001__elm20181031_120227__dat00.bin



Processed Wed Oct 31 13:10:34 2018 by ELM ver.2012-10-06 from 001_elm20181031_120227__dat00.bin

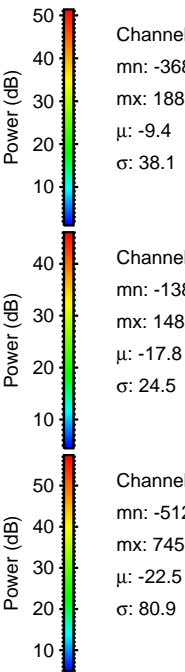
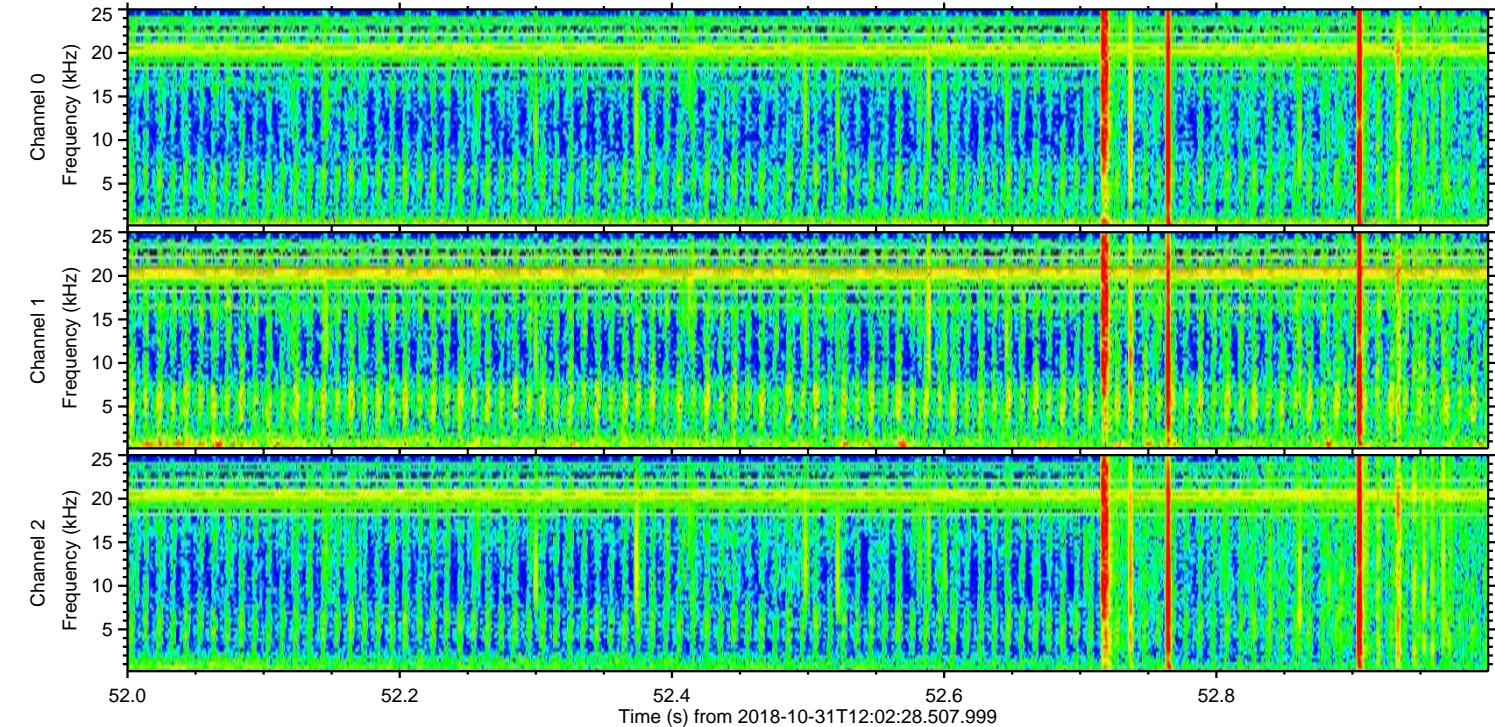
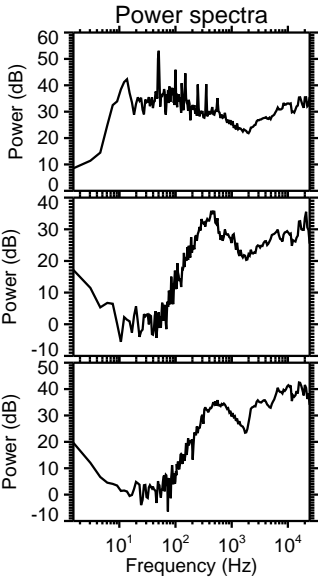
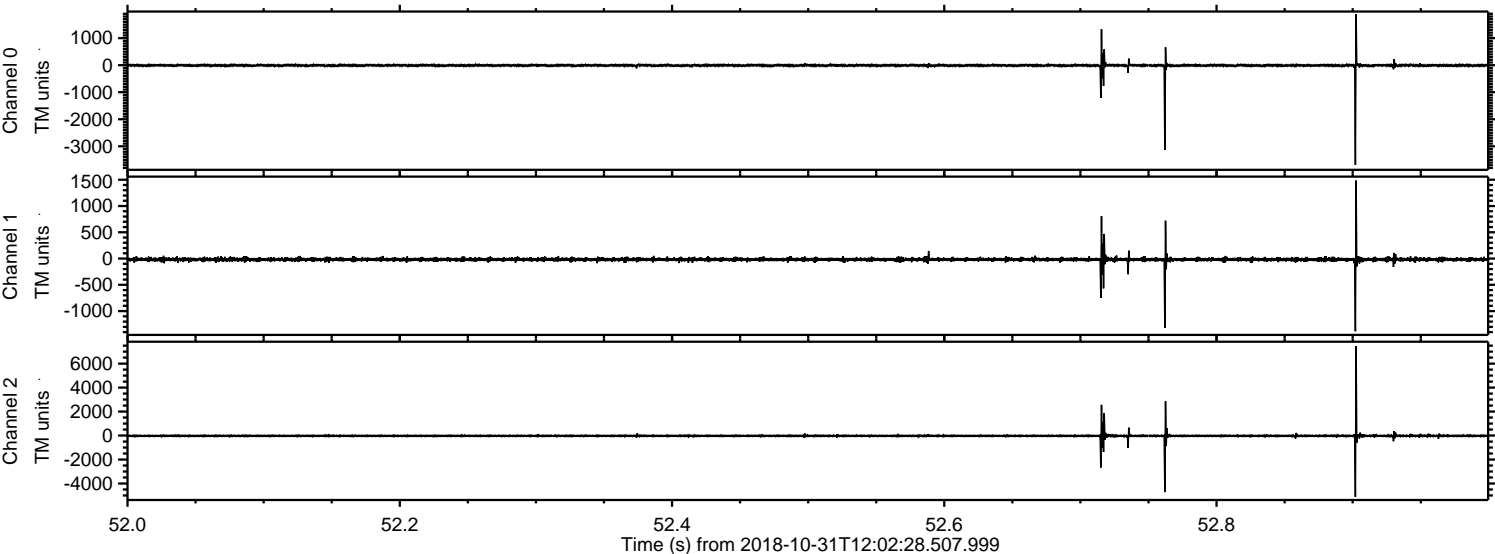


Channel 0
mn: -6197
mx: 5610
 μ : -9.3
 σ : 56.6

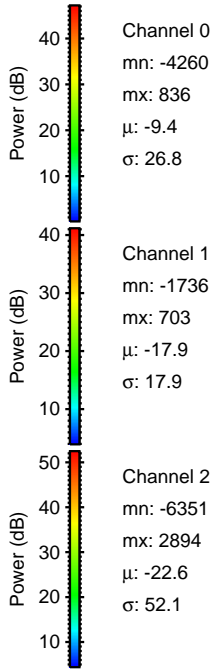
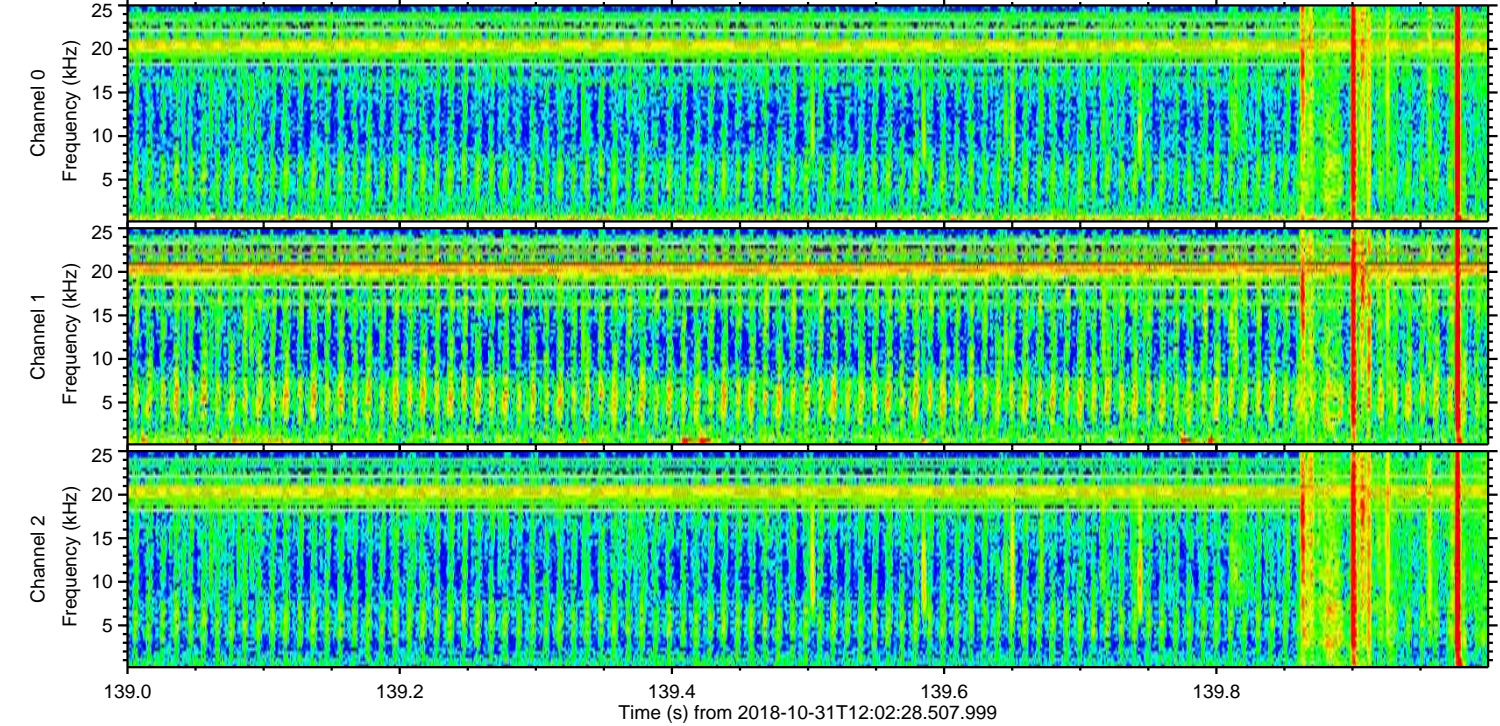
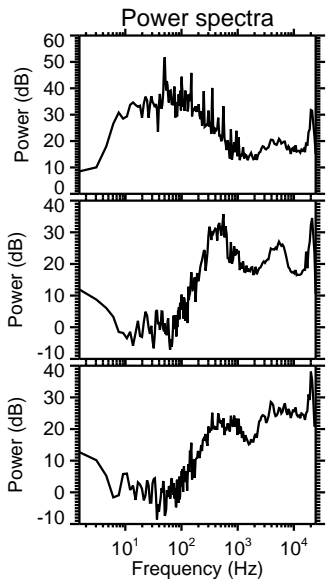
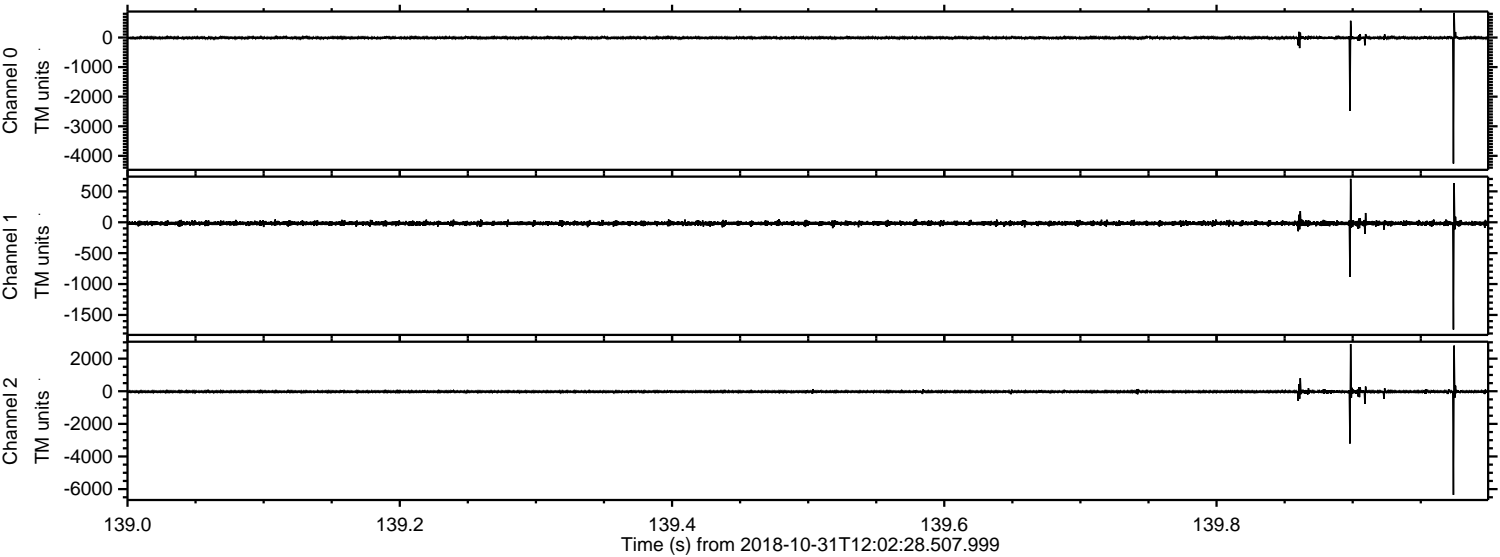
Channel 1
mn: -4742
mx: 6625
 μ : -18.0
 σ : 58.0

Channel 2
mn: -5516
mx: 7659
 μ : -22.6
 σ : 68.4

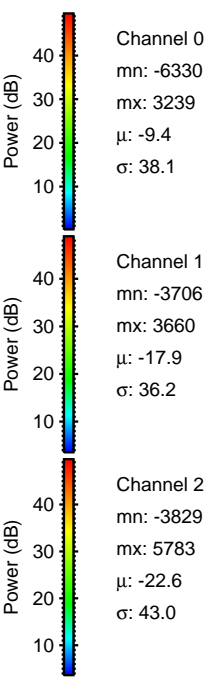
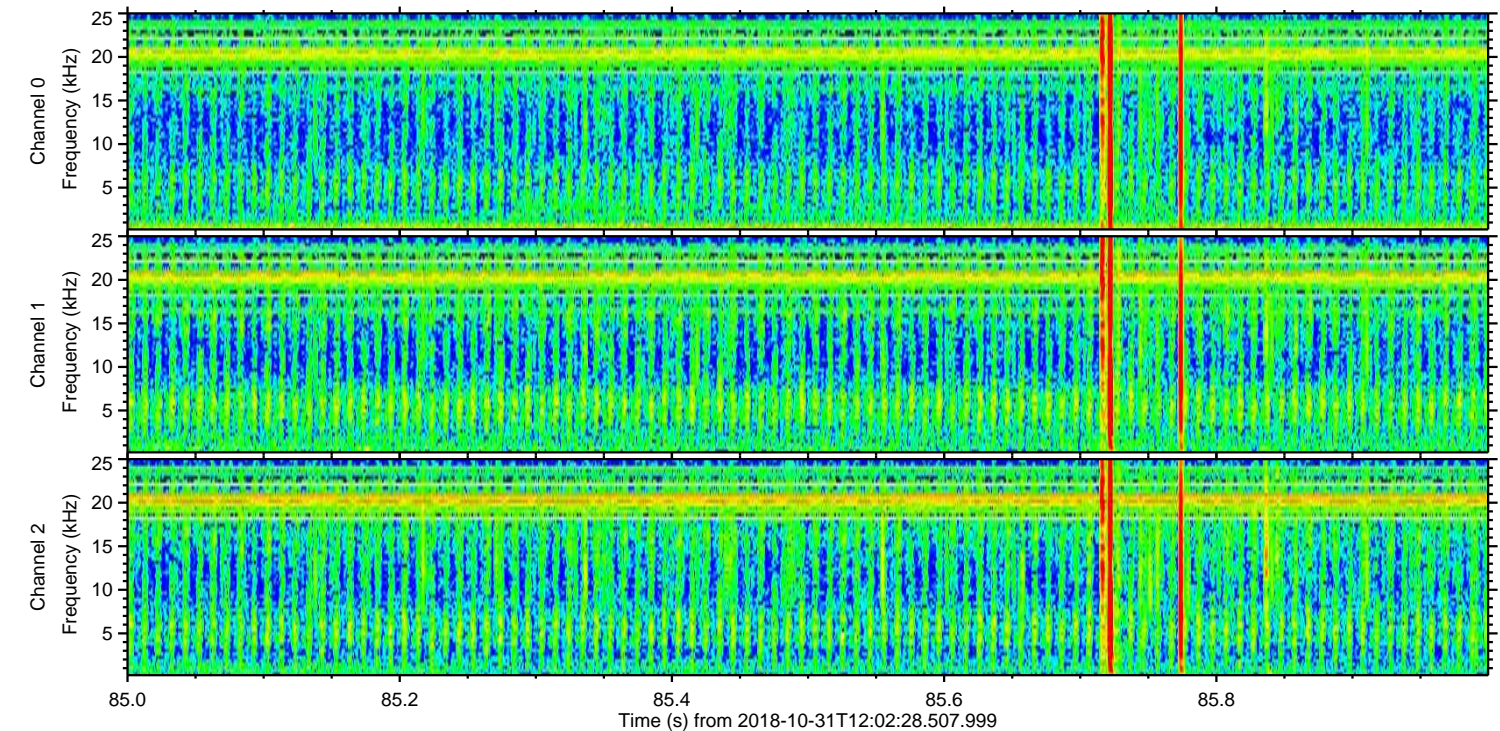
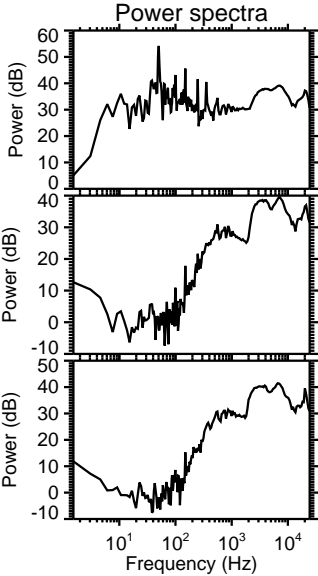
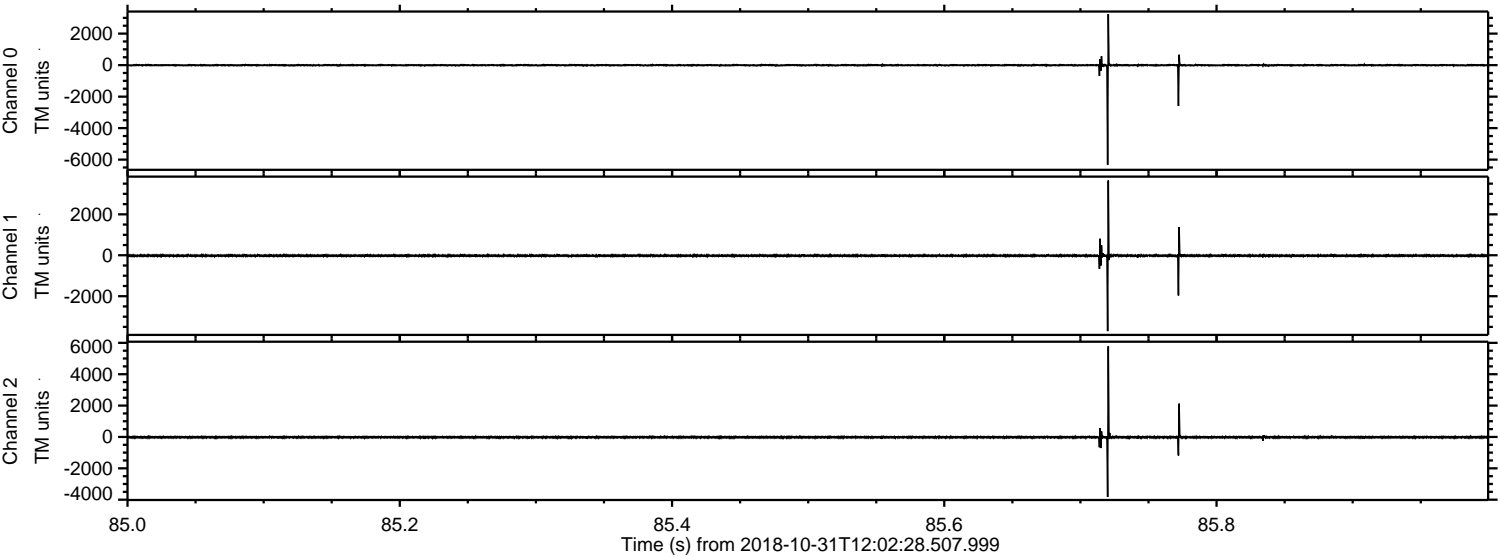
Processed Wed Oct 31 13:10:35 2018 by ELM ver.2012-10-06 from 001__elm20181031_120227__dat00.bin



Processed Wed Oct 31 13:10:36 2018 by ELM ver.2012-10-06 from 001__elm20181031_120227__dat00.bin

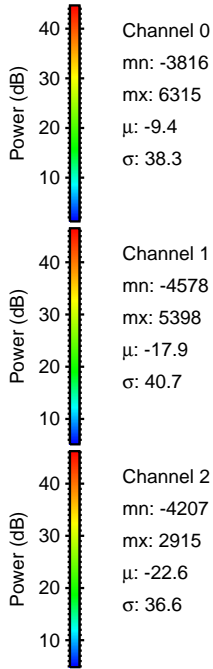
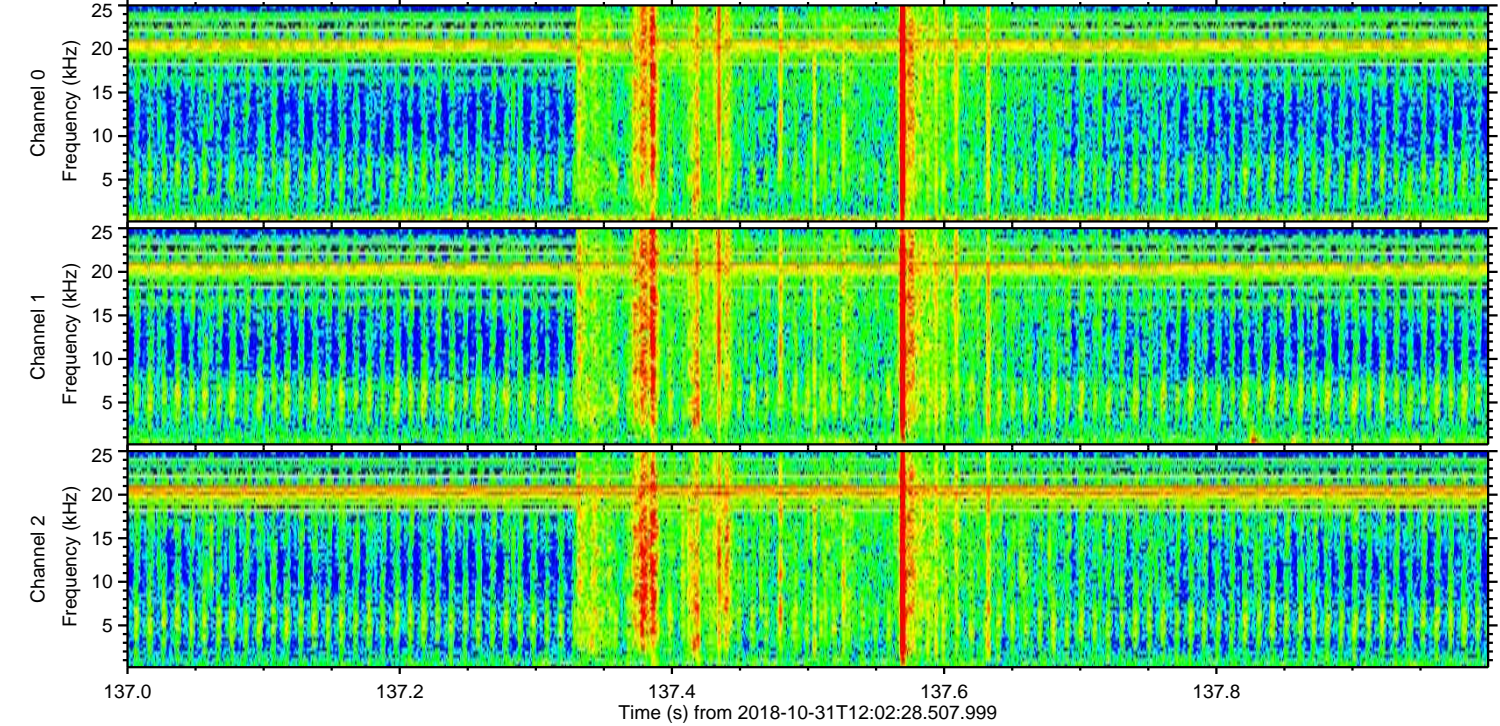
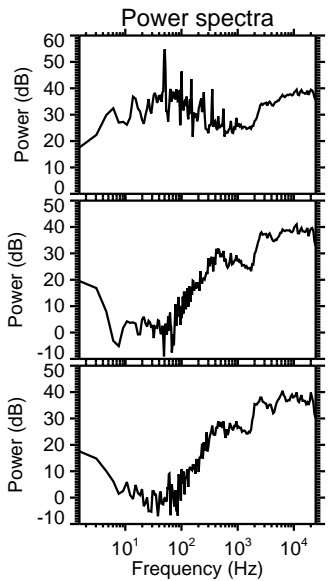
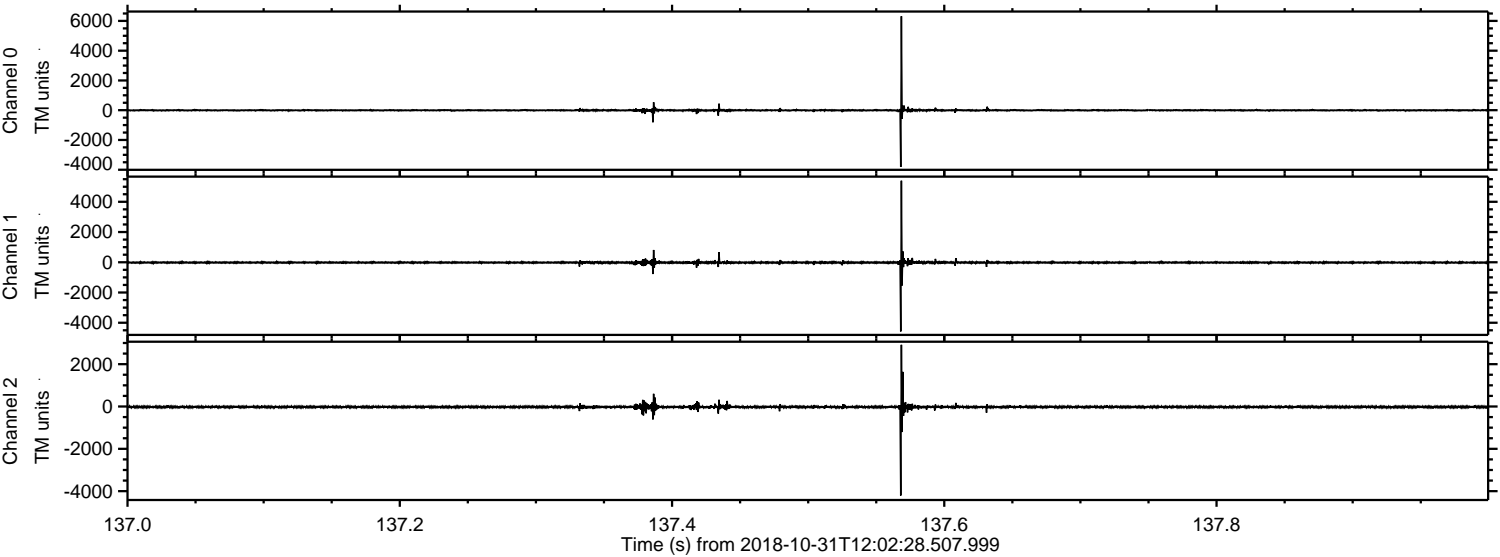


Processed Wed Oct 31 13:10:36 2018 by ELM ver.2012-10-06 from 001__elm20181031_120227__dat00.bin

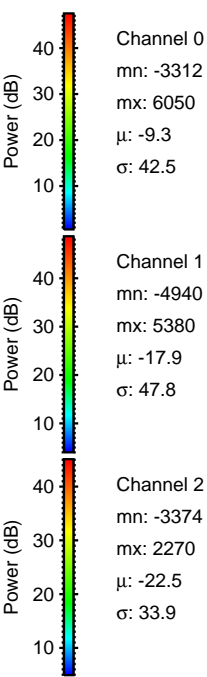
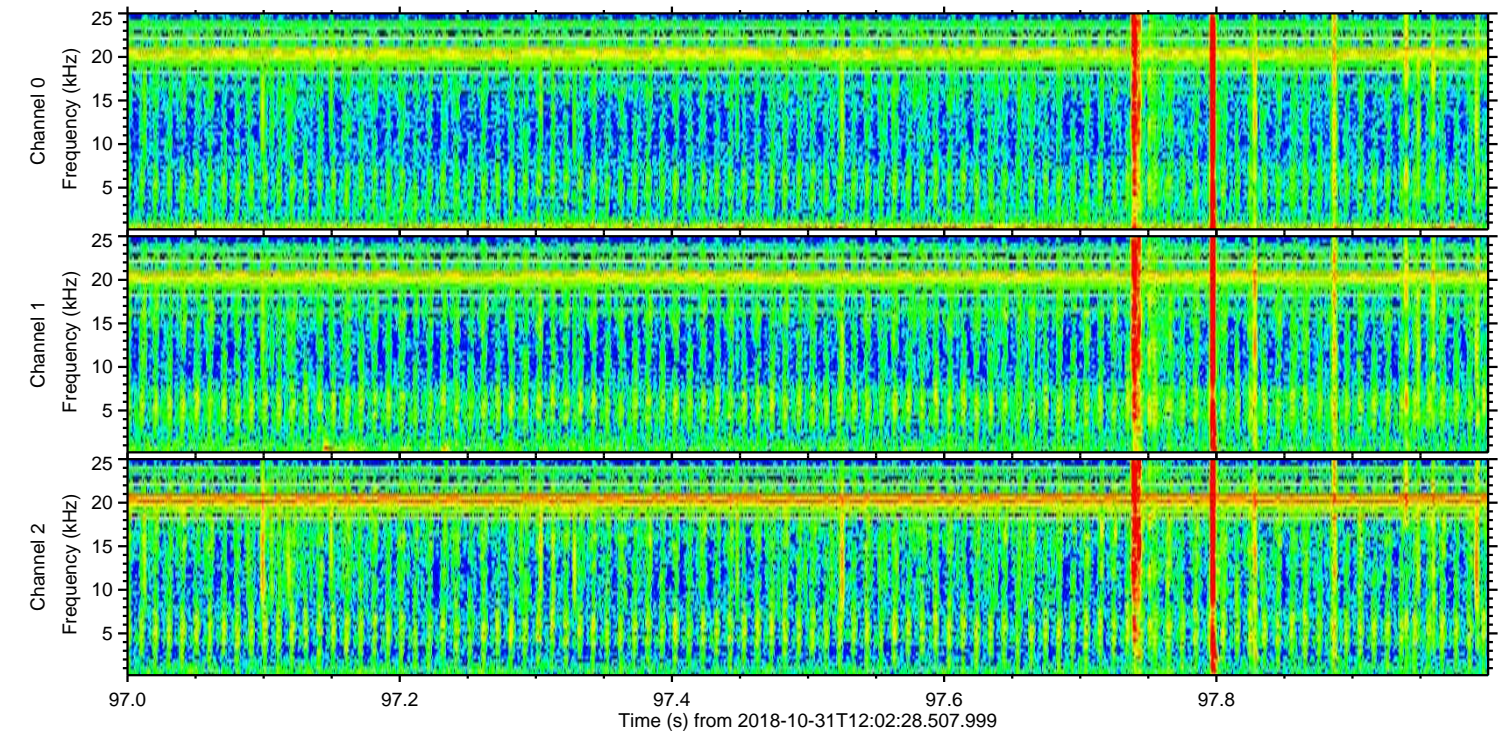
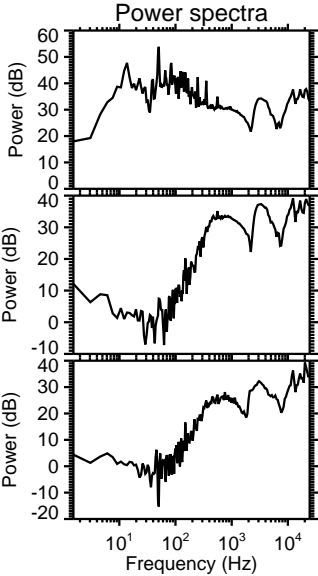
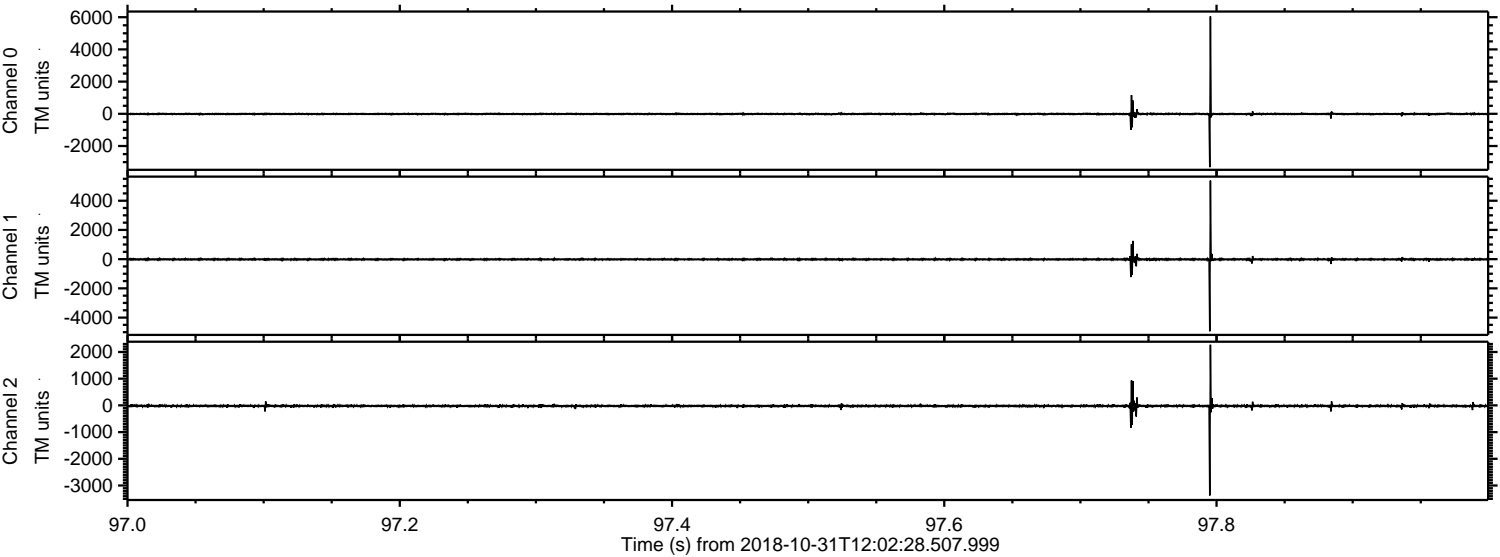


ELMAVAN 3D WAVEFORMS (Measured data sampled at 50 kHz) 51000 packets of 144 samples from 2018-10-31T12:02:28.507.999. Part 138/147

Processed Wed Oct 31 13:10:37 2018 by ELM ver.2012-10-06 from 001__elm20181031_120227__dat00.bin



Processed Wed Oct 31 13:10:38 2018 by ELM ver.2012-10-06 from 001__elm20181031_120227__dat00.bin



Channel 0
mn: -3312
mx: 6050
 μ : -9.3
 σ : 42.5

Channel 1
mn: -4940
mx: 5380
 μ : -17.9
 σ : 47.8

Channel 2
mn: -3374
mx: 2270
 μ : -22.5
 σ : 33.9

Processed Wed Oct 31 13:10:39 2018 by ELM ver.2012-10-06 from 001__elm20181031_120227__dat00.bin

