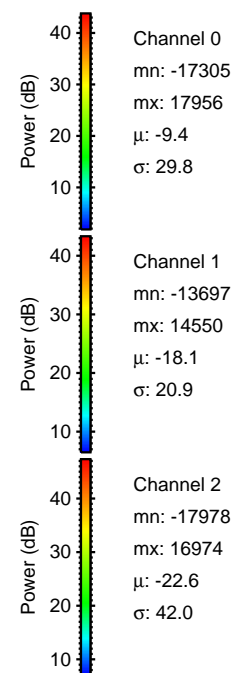
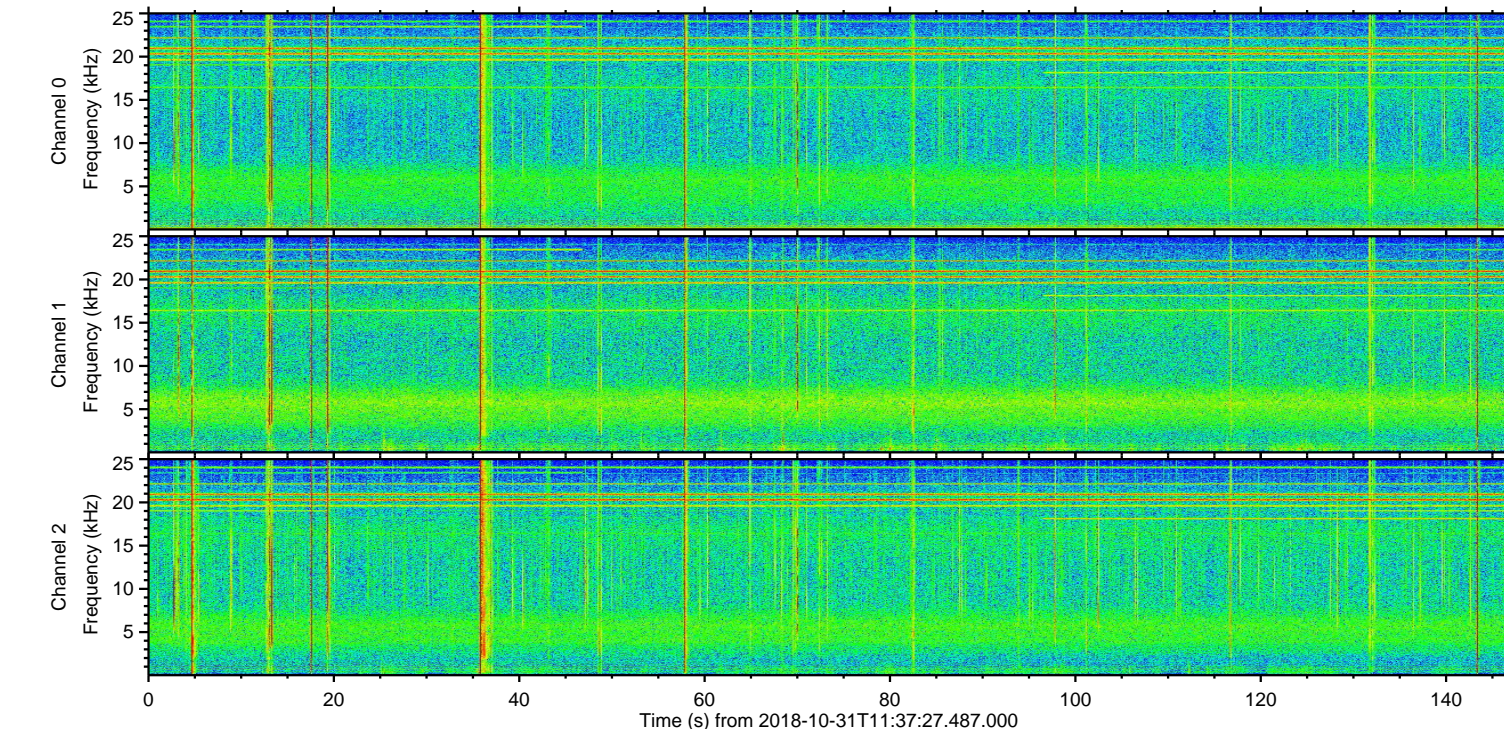
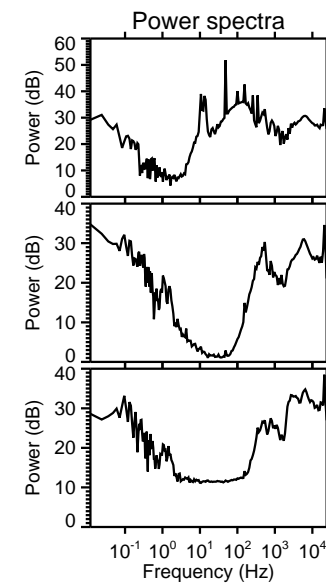
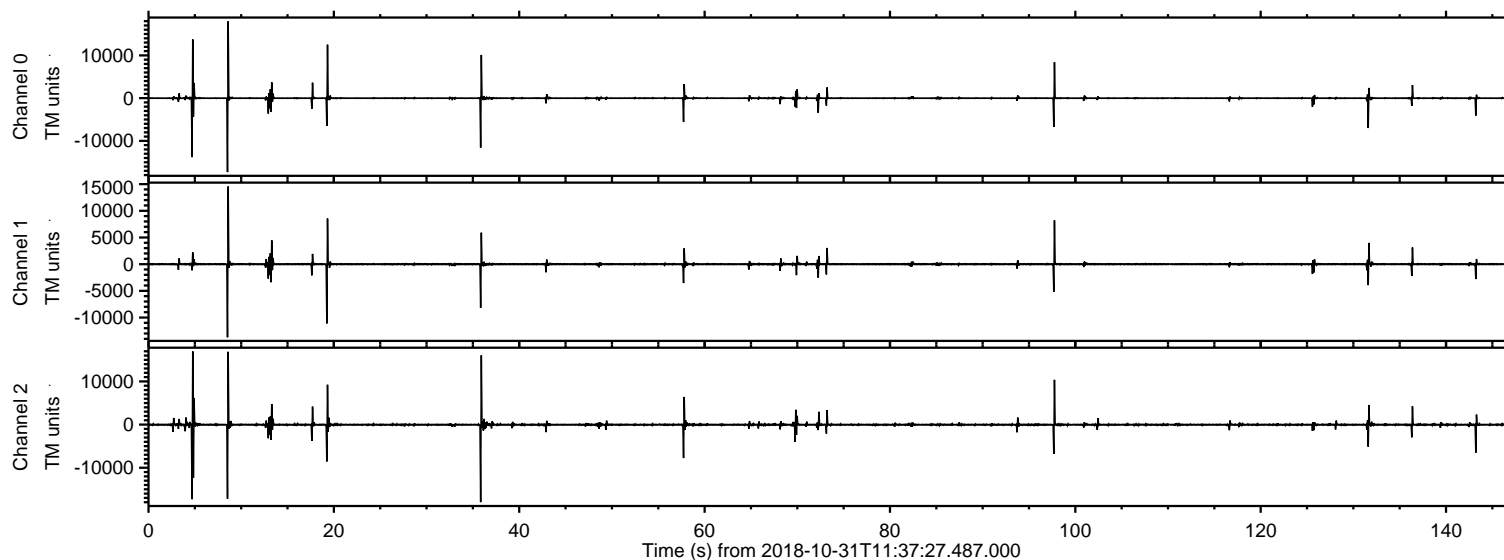
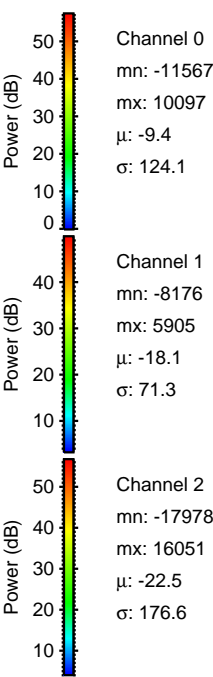
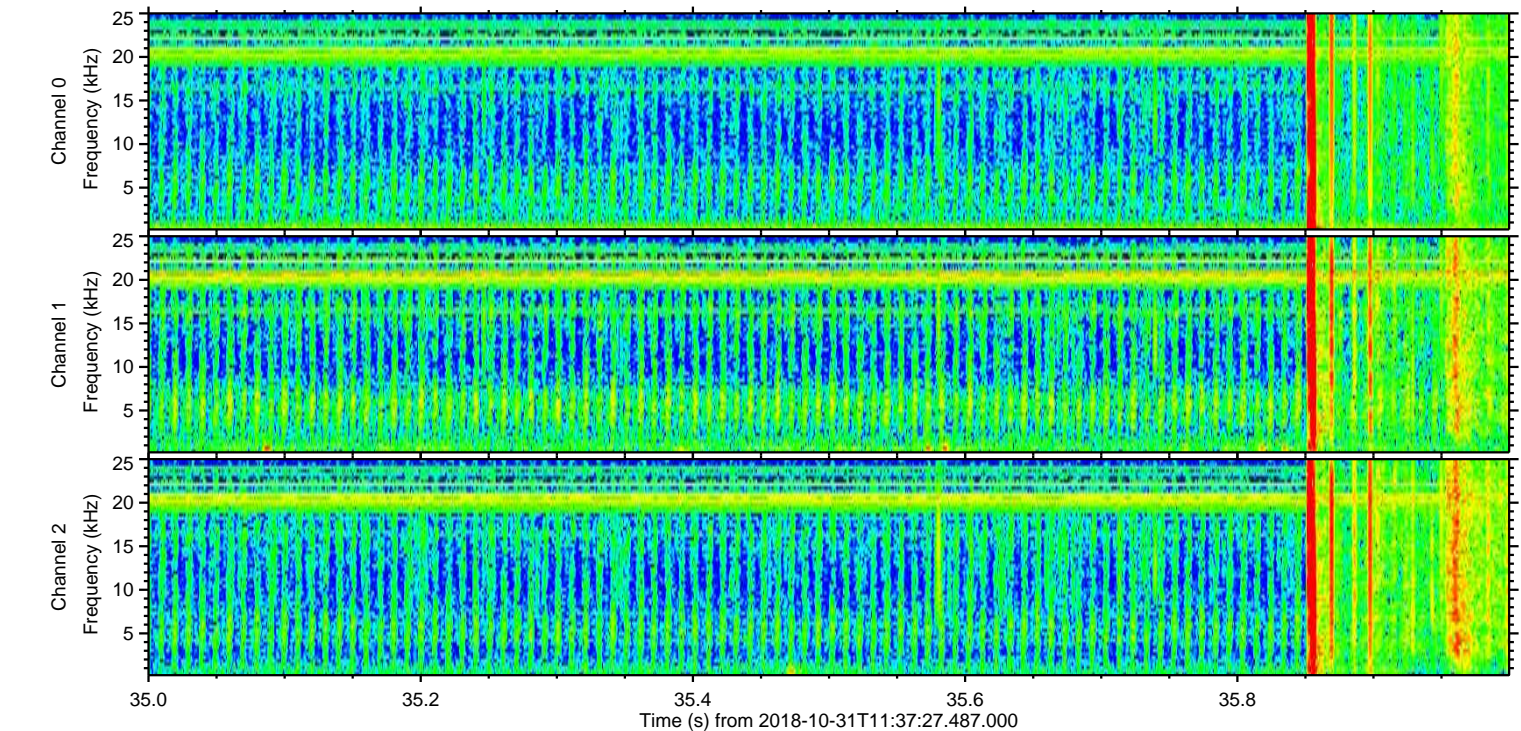
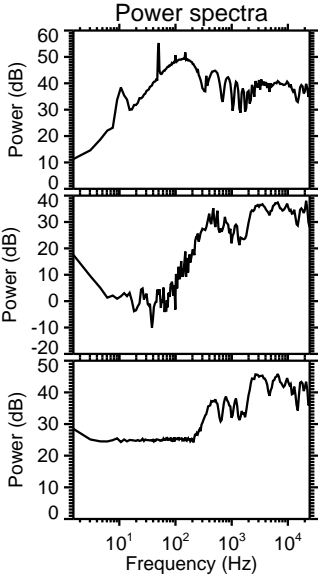
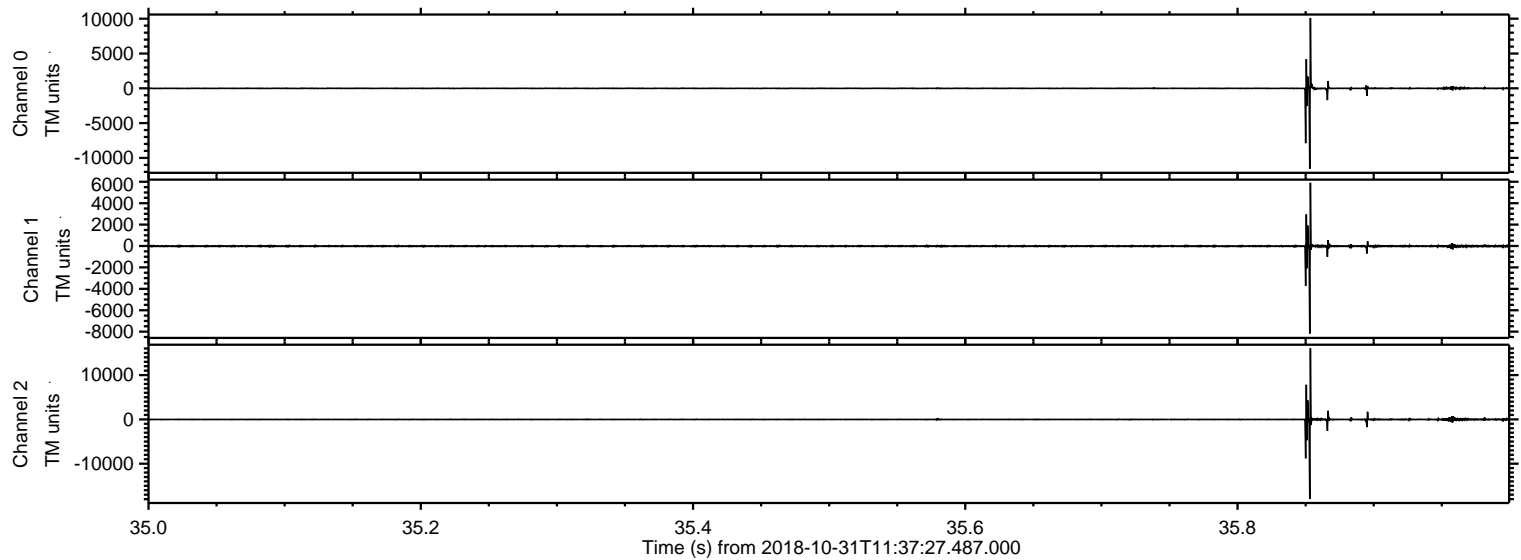


ELMAVAN 3D WAVEFORMS (Measured data sampled at 50 kHz) 51000 packets of 144 samples from 2018-10-31T11:37:27.487.000.

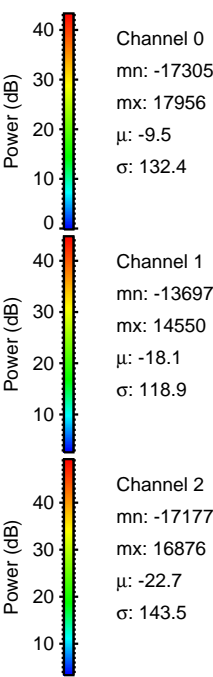
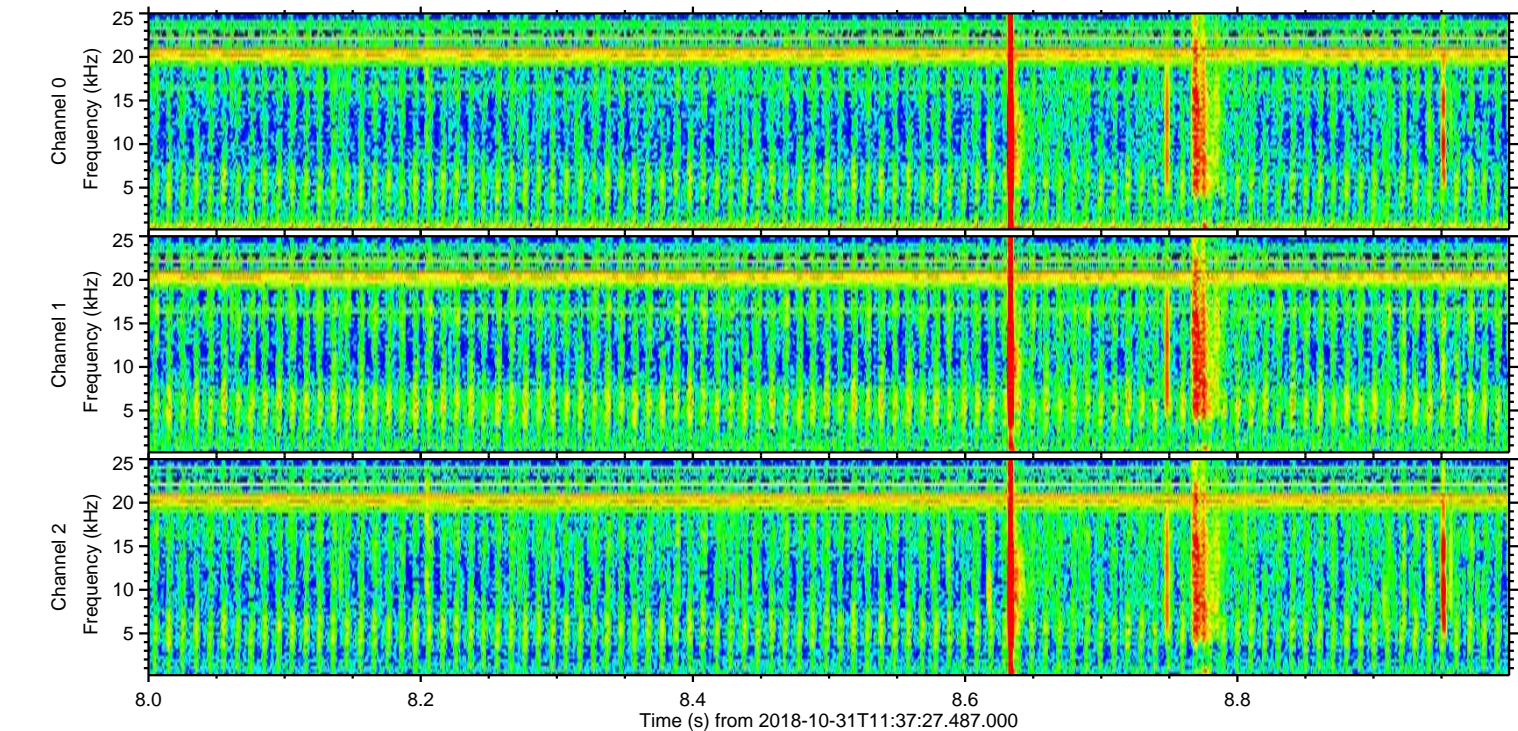
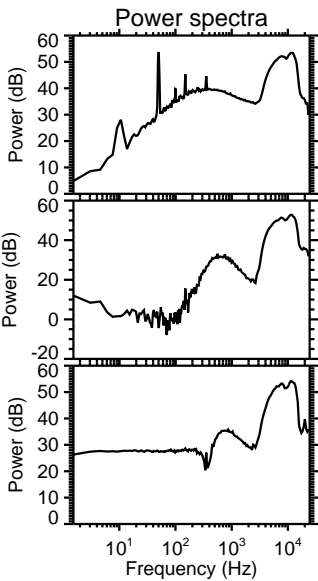
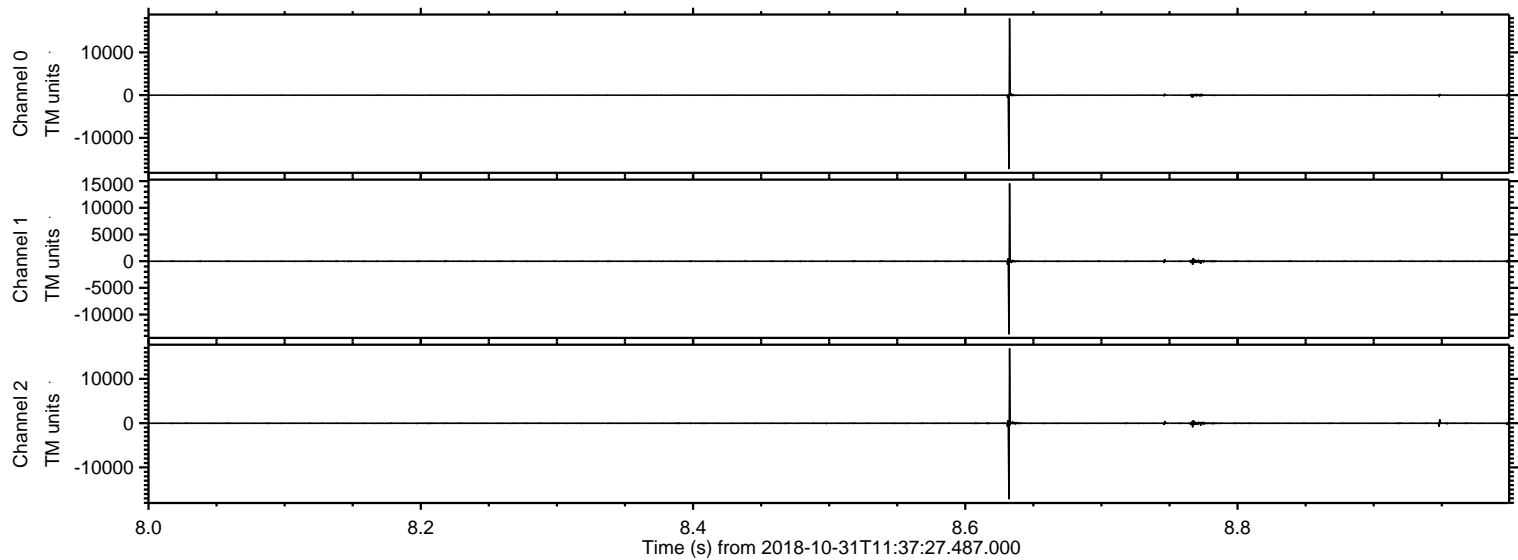
Processed Wed Oct 31 12:45:37 2018 by ELM ver.2012-10-06 from 001__elm20181031_113726__dat00.bin



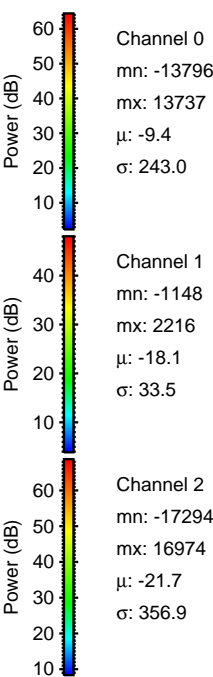
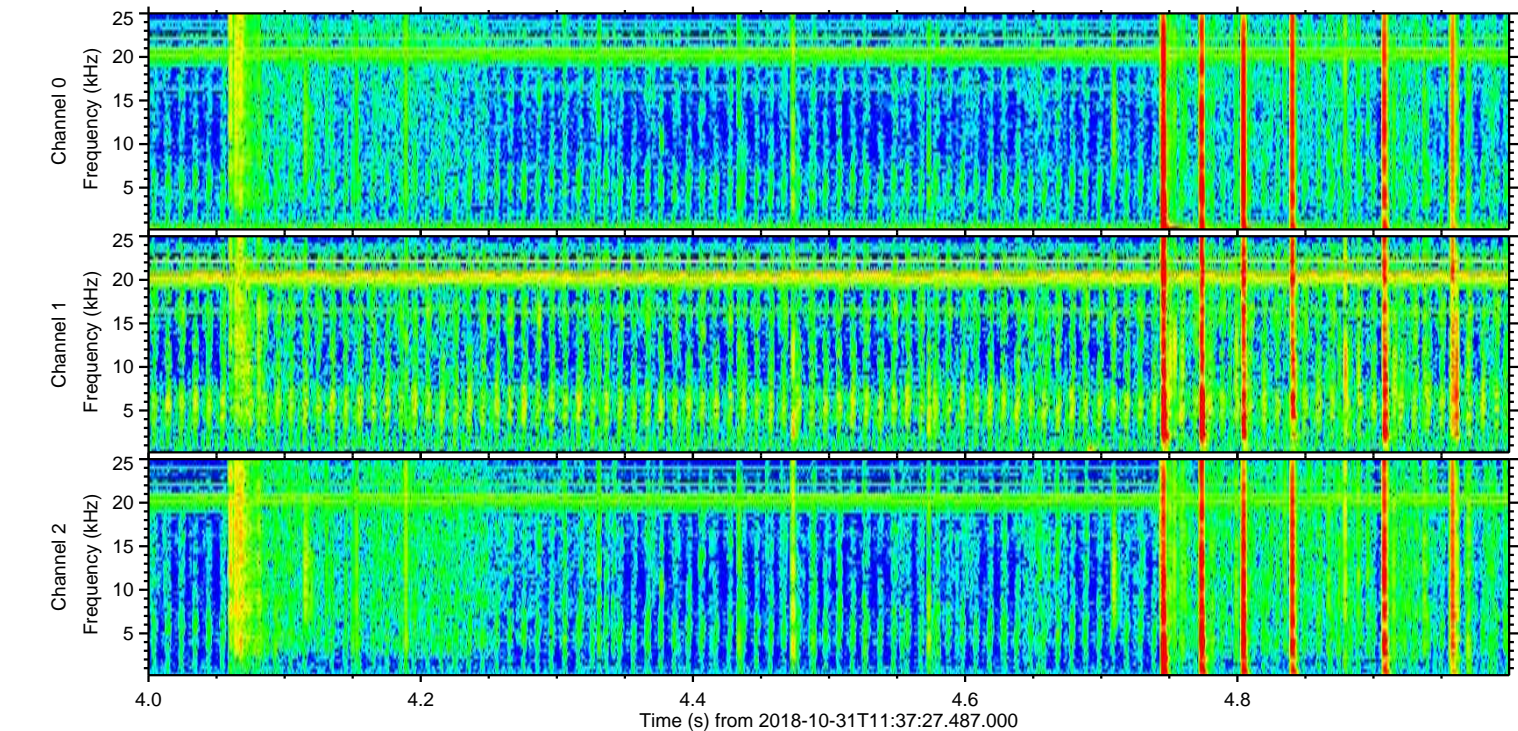
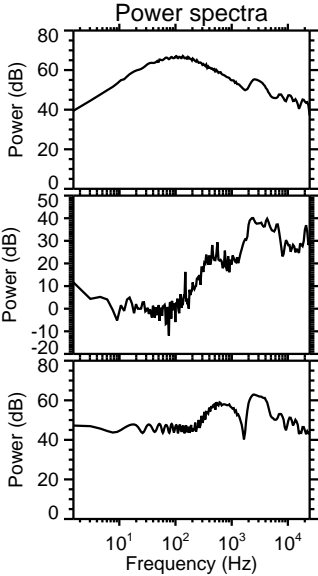
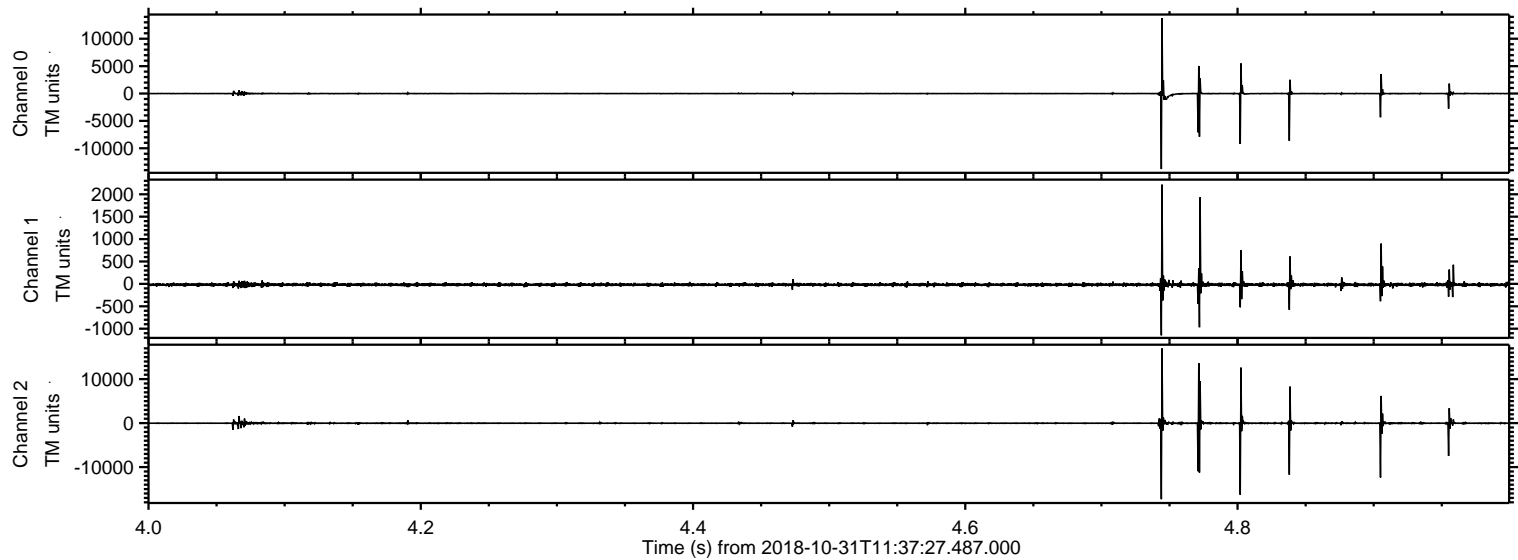
Processed Wed Oct 31 12:45:43 2018 by ELM ver.2012-10-06 from 001__elm20181031_113726__dat00.bin



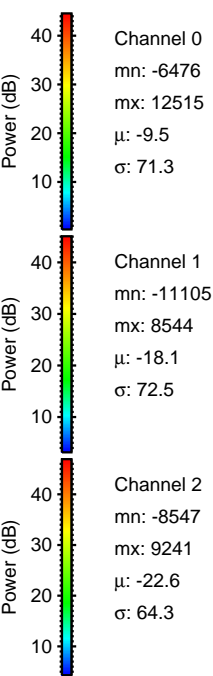
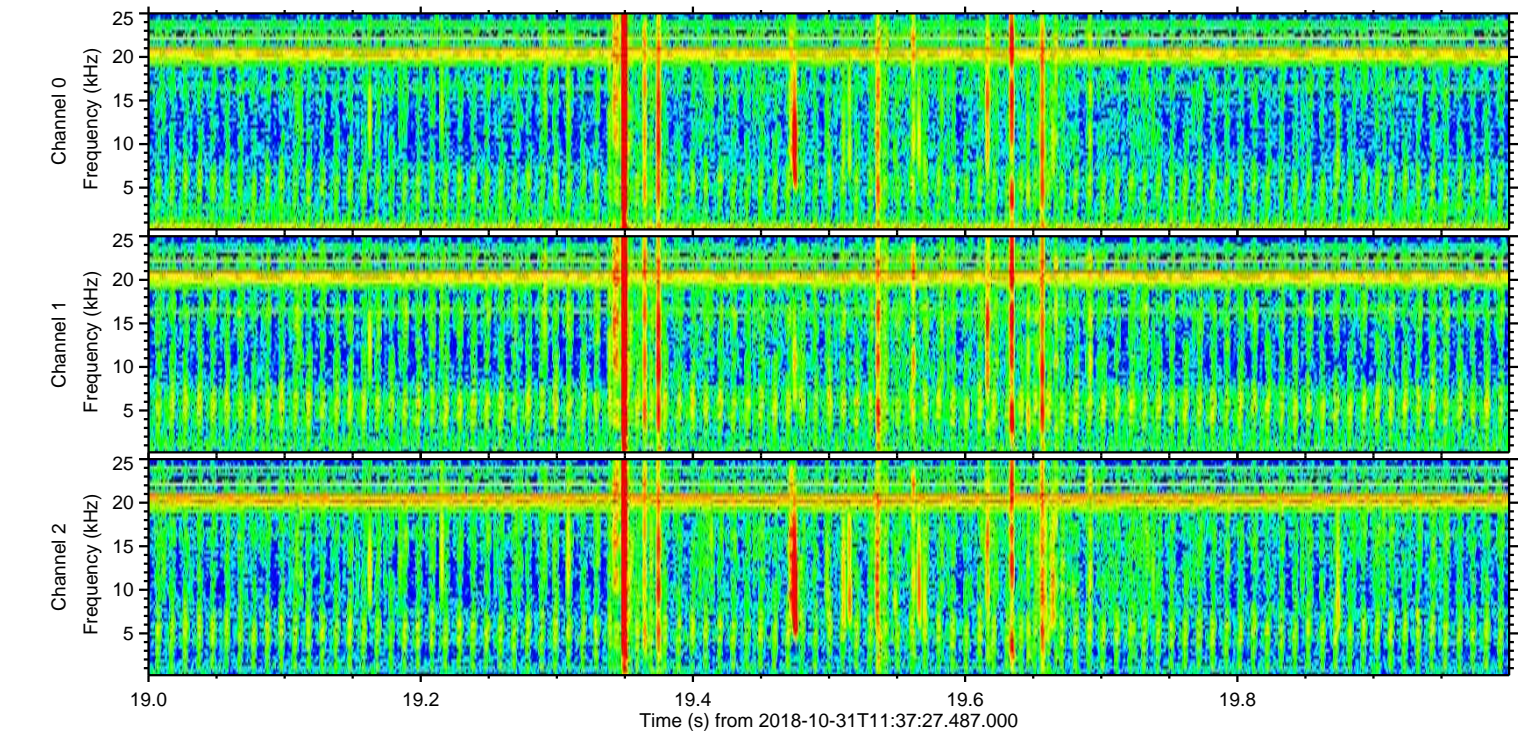
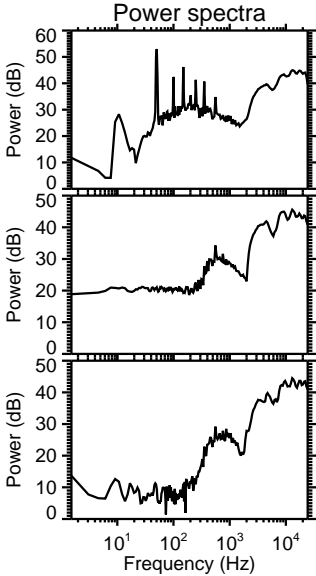
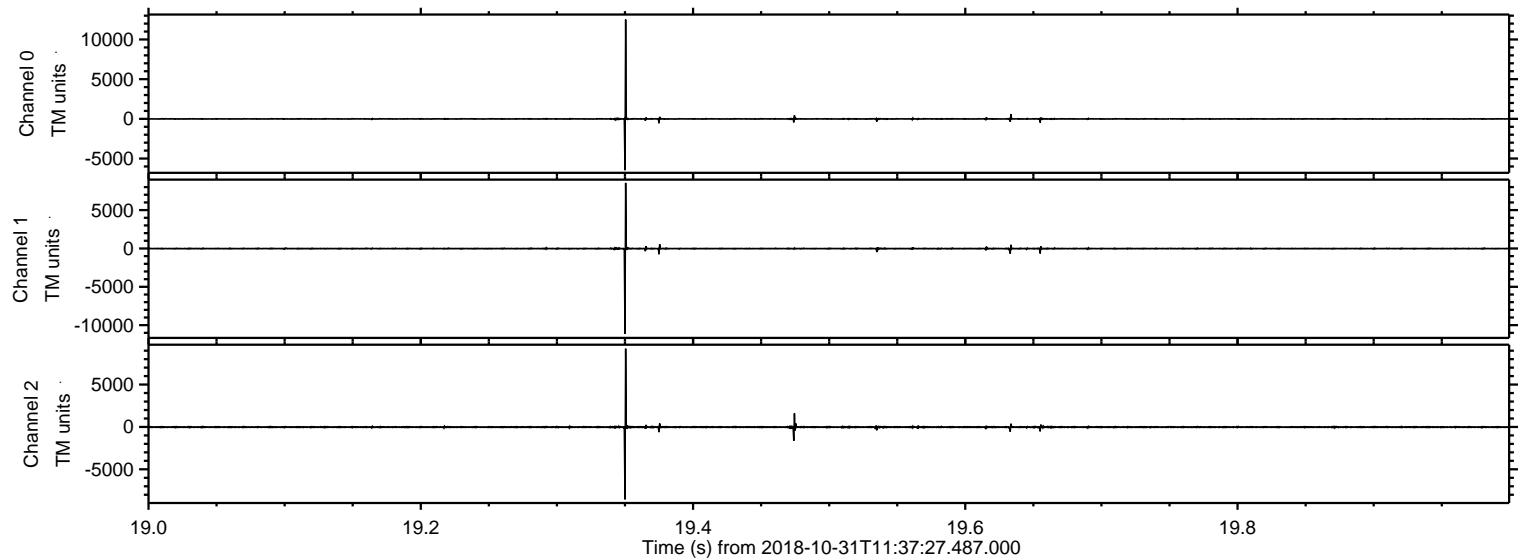
Processed Wed Oct 31 12:45:44 2018 by ELM ver.2012-10-06 from 001__elm20181031_113726__dat00.bin



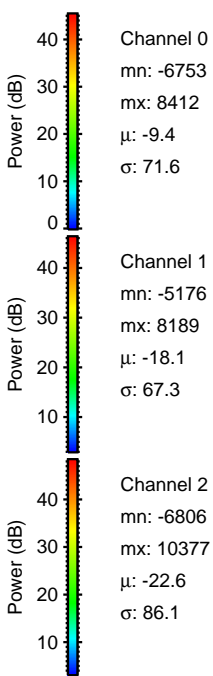
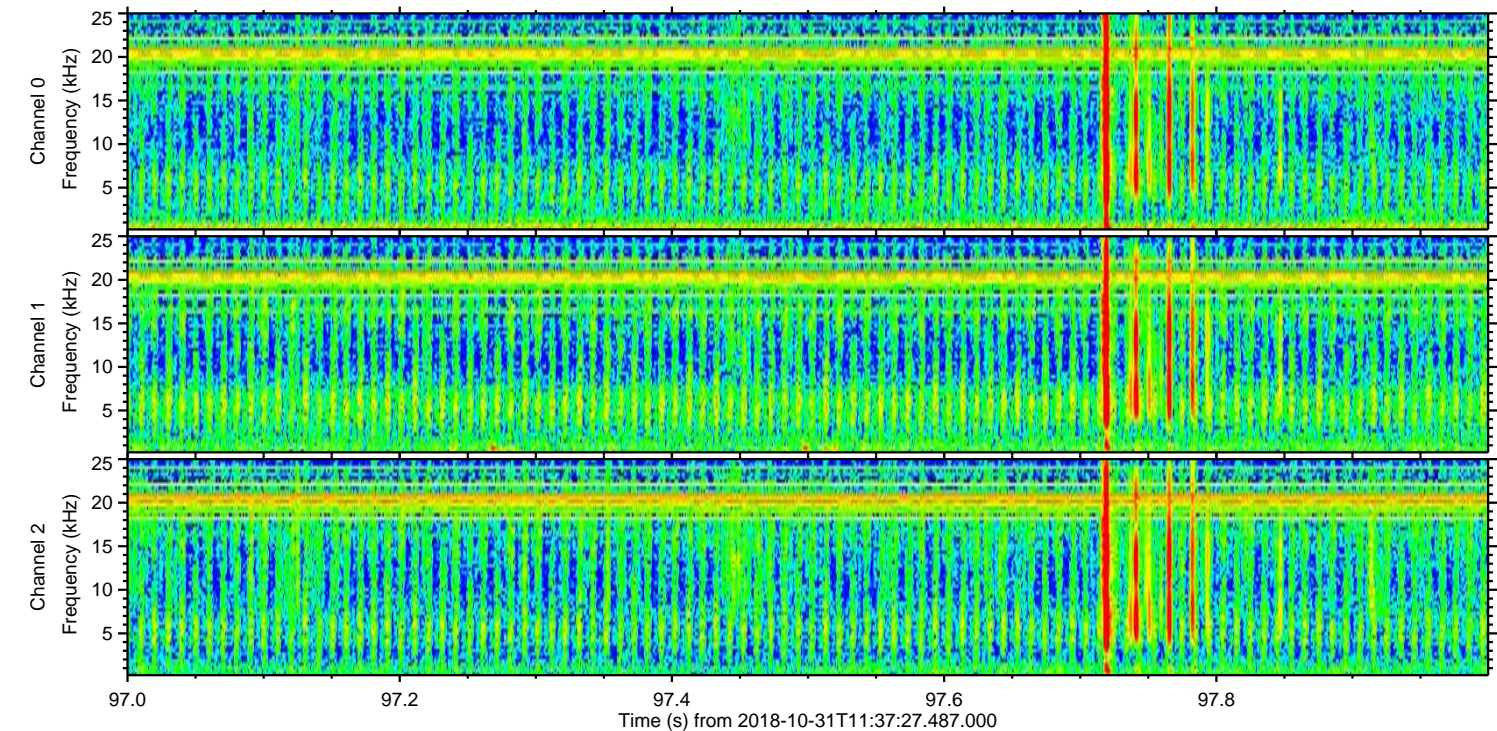
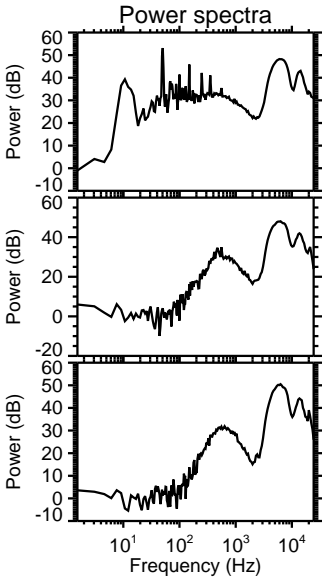
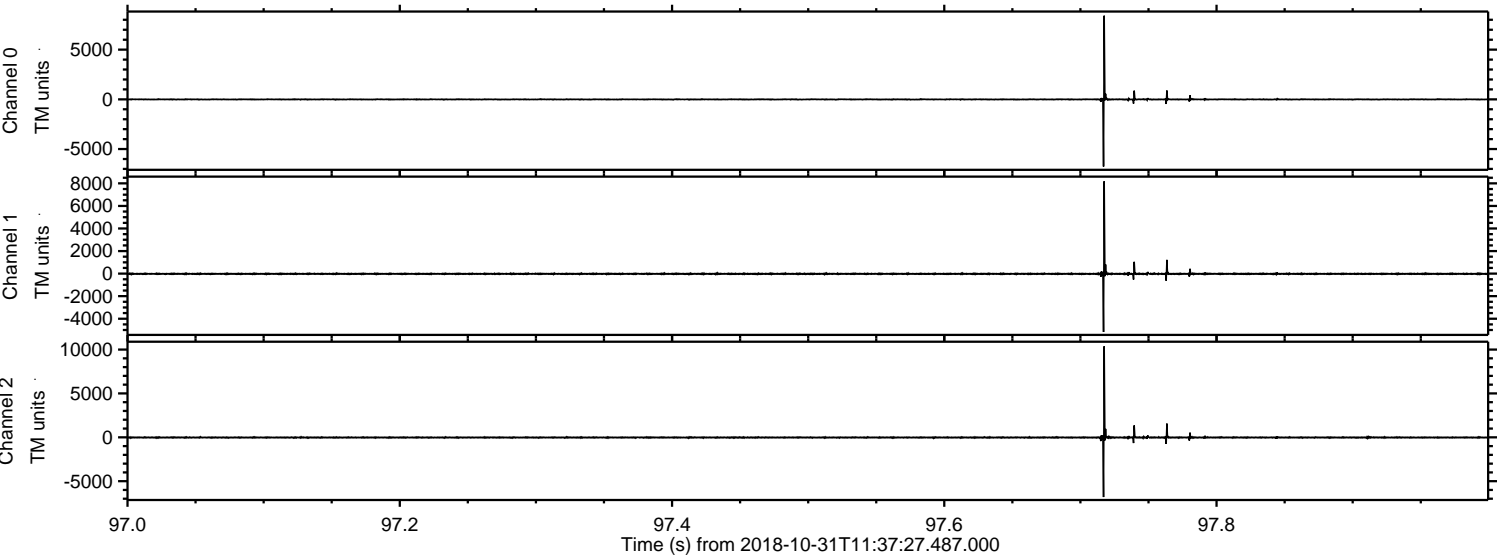
Processed Wed Oct 31 12:45:45 2018 by ELM ver.2012-10-06 from 001__elm20181031_113726__dat00.bin



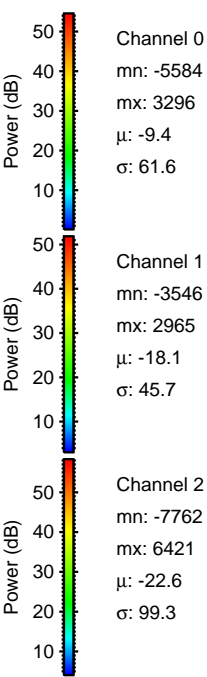
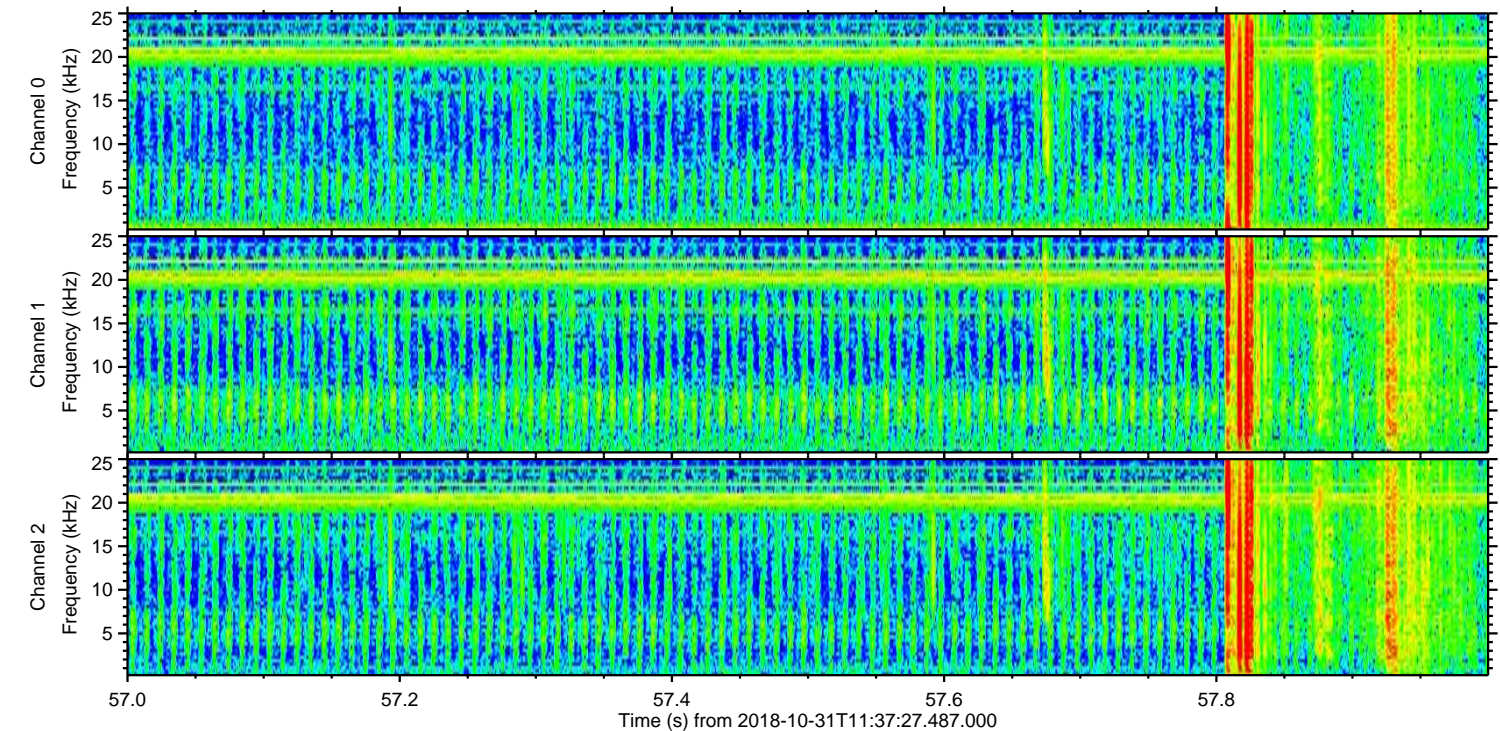
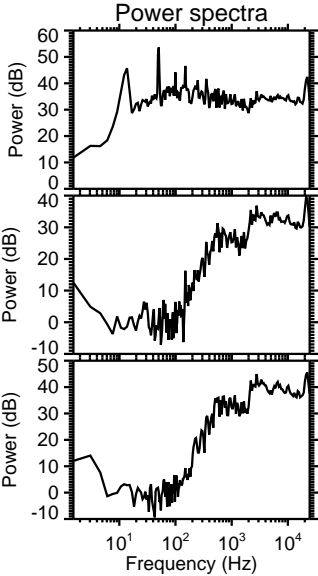
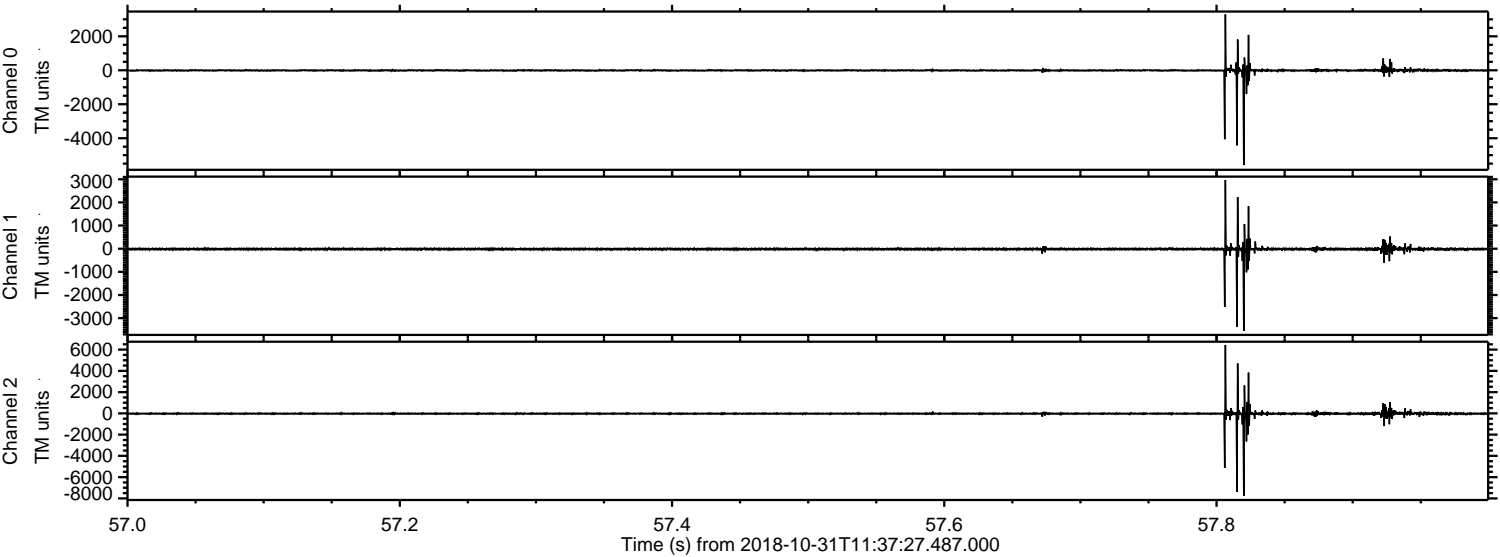
Processed Wed Oct 31 12:45:46 2018 by ELM ver.2012-10-06 from 001__elm20181031_113726__dat00.bin



Processed Wed Oct 31 12:45:47 2018 by ELM ver.2012-10-06 from 001__elm20181031_113726__dat00.bin

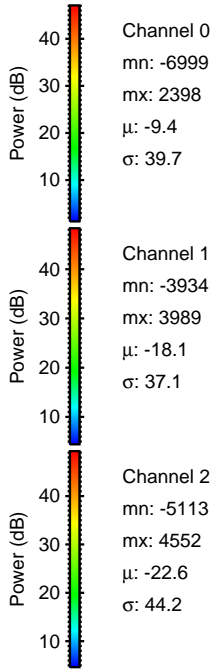
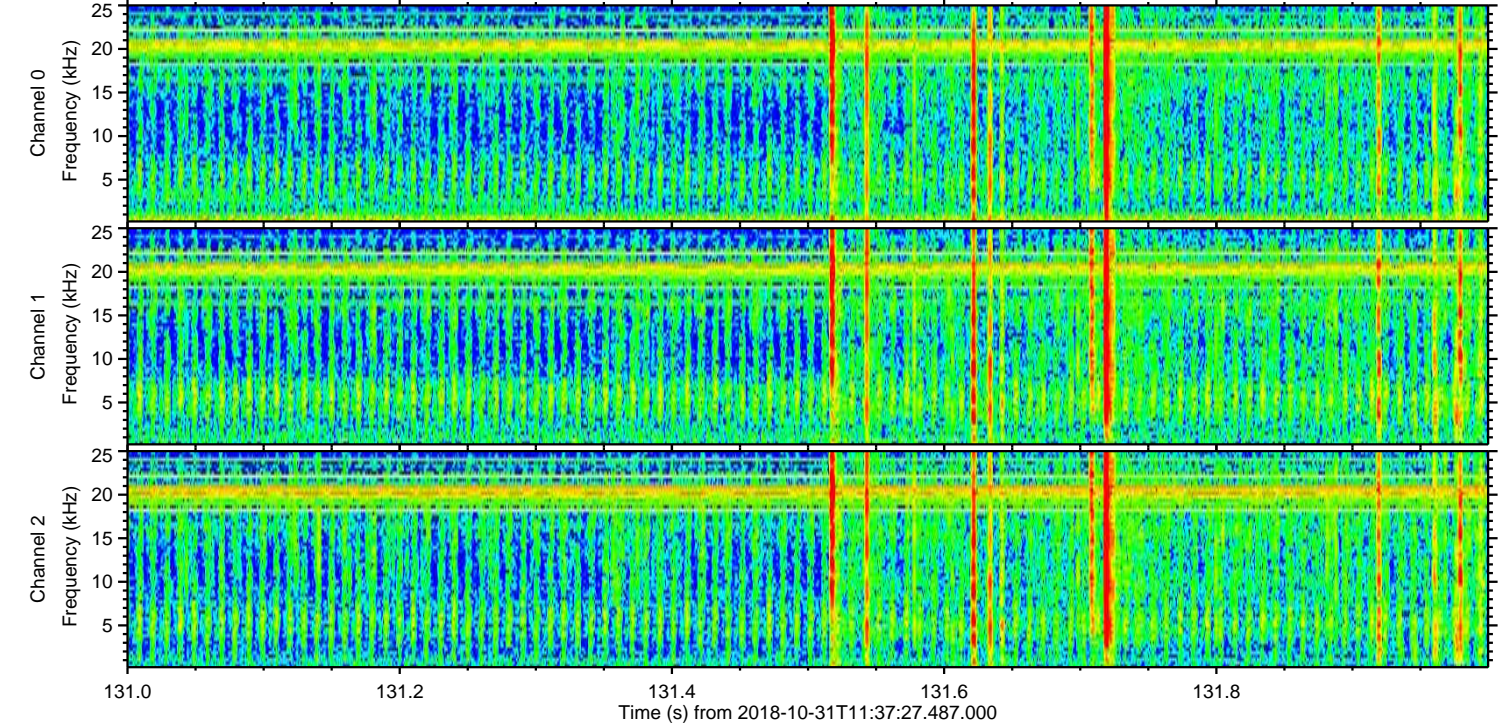
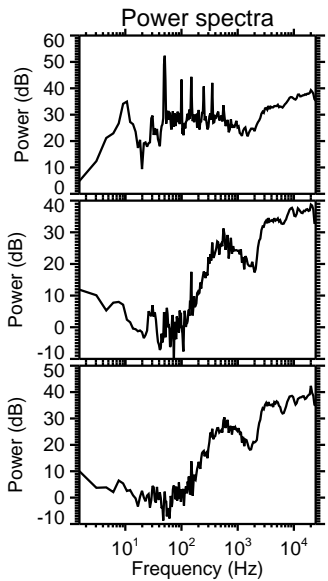
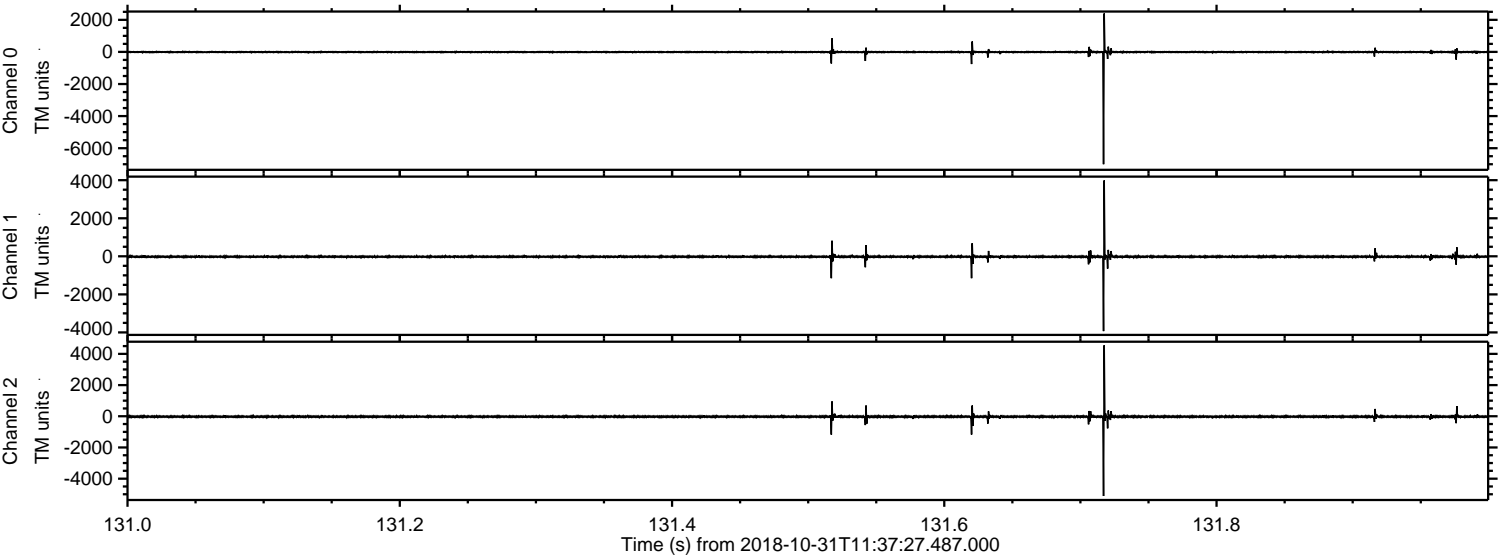


Processed Wed Oct 31 12:45:47 2018 by ELM ver.2012-10-06 from 001__elm20181031_113726__dat00.bin



ELMAVAN 3D WAVEFORMS (Measured data sampled at 50 kHz) 51000 packets of 144 samples from 2018-10-31T11:37:27.487.000. Part 132/147

Processed Wed Oct 31 12:45:48 2018 by ELM ver.2012-10-06 from 001__elm20181031_113726__dat00.bin



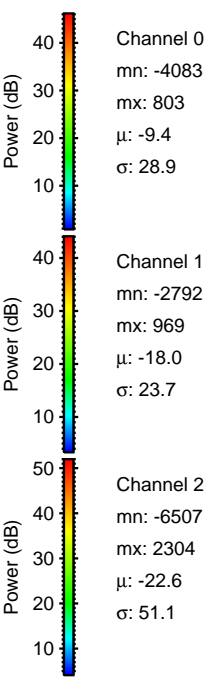
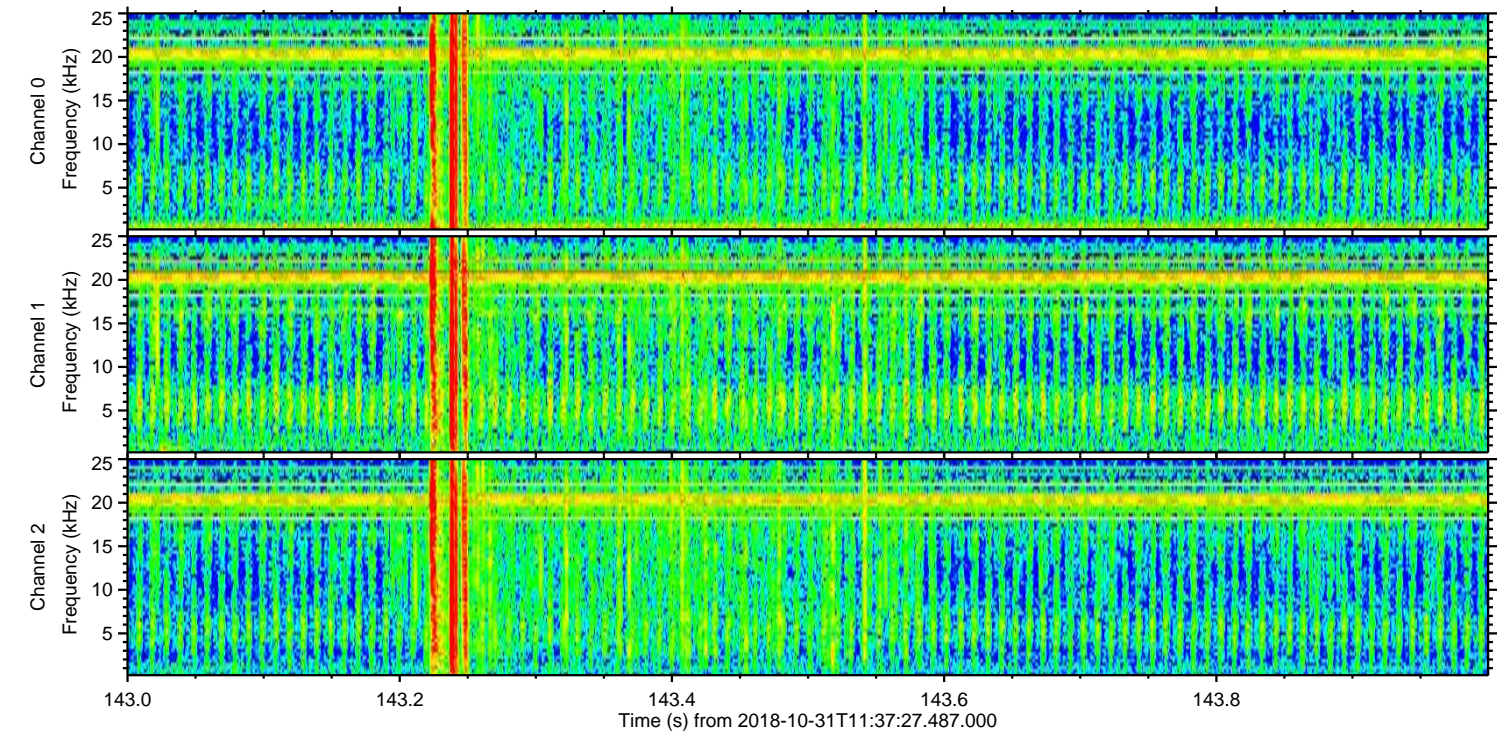
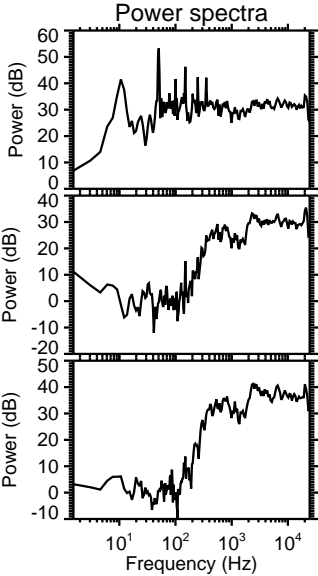
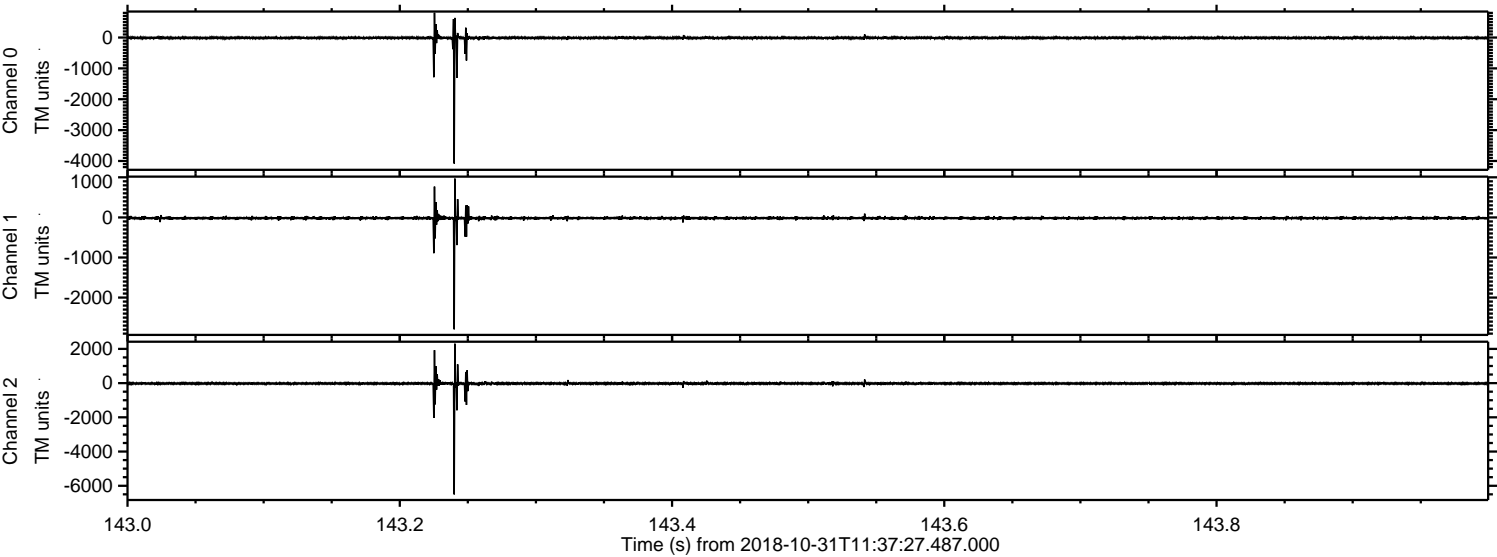
Channel 0
mn: -6999
mx: 2398
 μ : -9.4
 σ : 39.7

Channel 1
mn: -3934
mx: 3989
 μ : -18.1
 σ : 37.1

Channel 2
mn: -5113
mx: 4552
 μ : -22.6
 σ : 44.2

ELMAVAN 3D WAVEFORMS (Measured data sampled at 50 kHz) 51000 packets of 144 samples from 2018-10-31T11:37:27.487.000. Part 144/147

Processed Wed Oct 31 12:45:49 2018 by ELM ver.2012-10-06 from 001__elm20181031_113726__dat00.bin



Channel 0
mn: -4083
mx: 803
 μ : -9.4
 σ : 28.9

Channel 1
mn: -2792
mx: 969
 μ : -18.0
 σ : 23.7

Channel 2
mn: -6507
mx: 2304
 μ : -22.6
 σ : 51.1

Processed Wed Oct 31 12:45:49 2018 by ELM ver.2012-10-06 from 001__elm20181031_113726__dat00.bin

