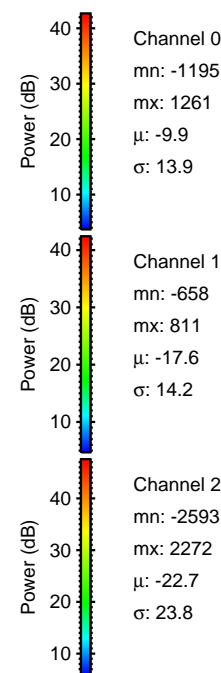
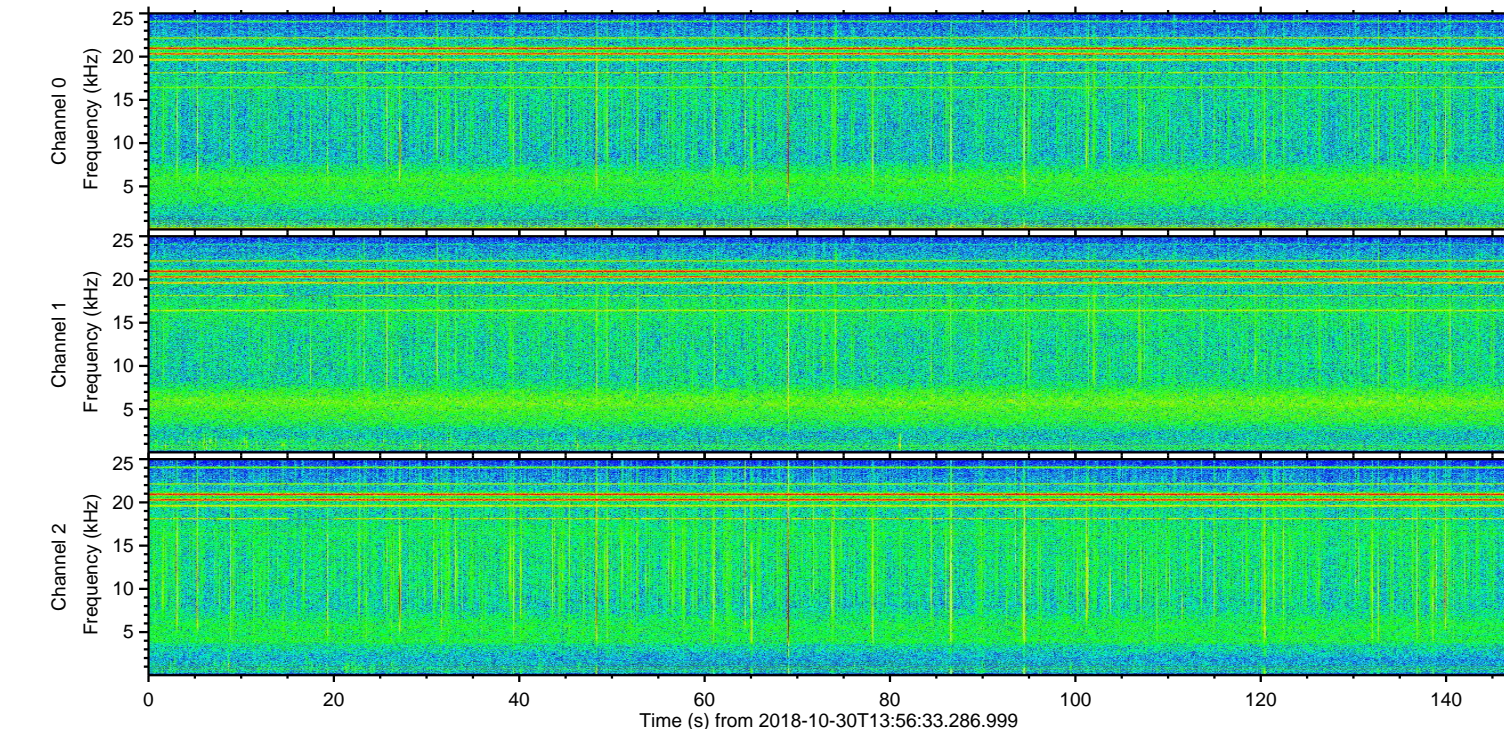
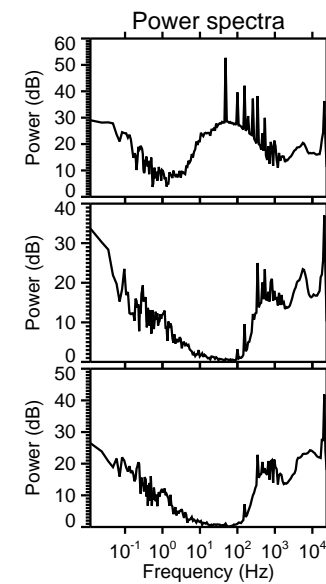
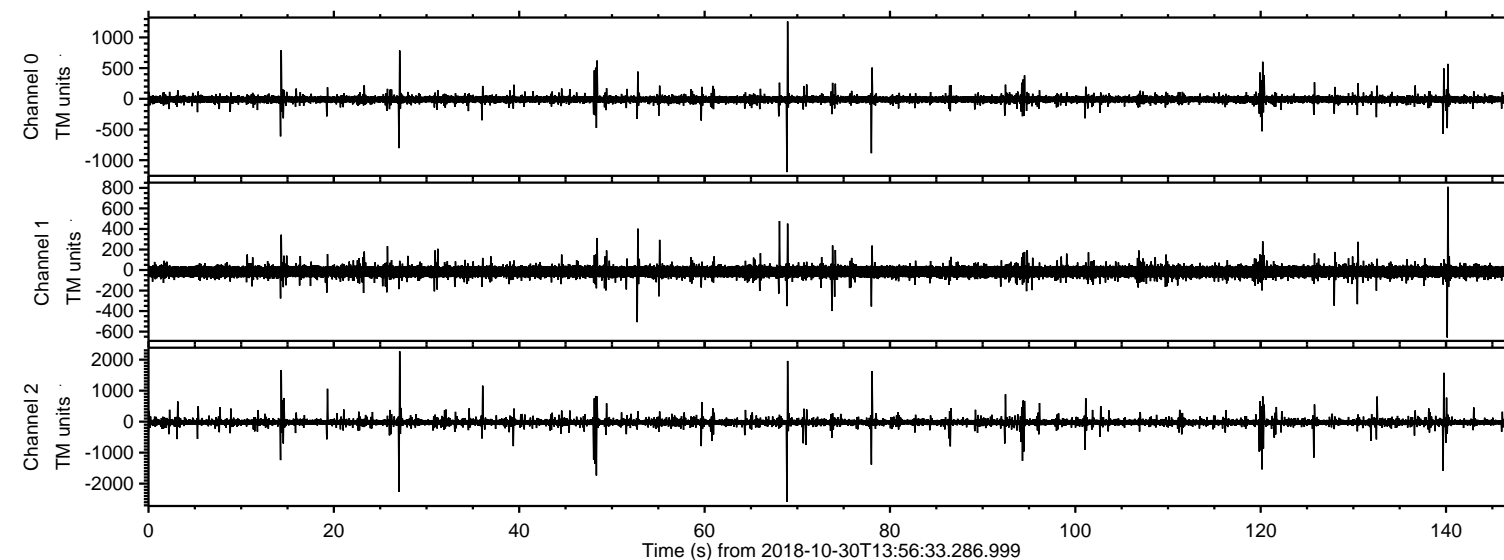
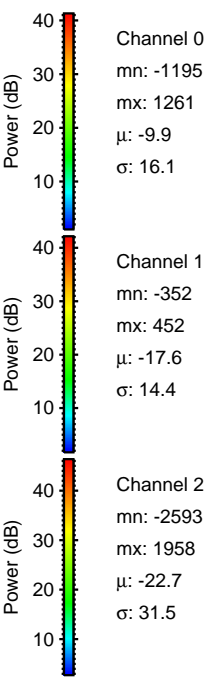
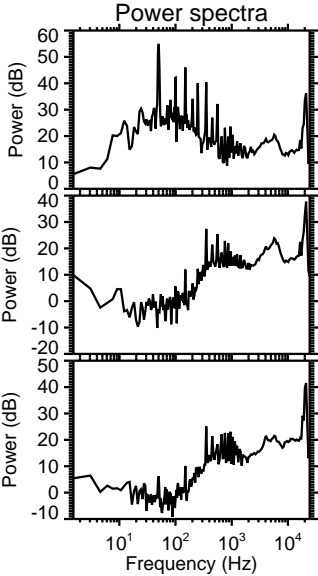
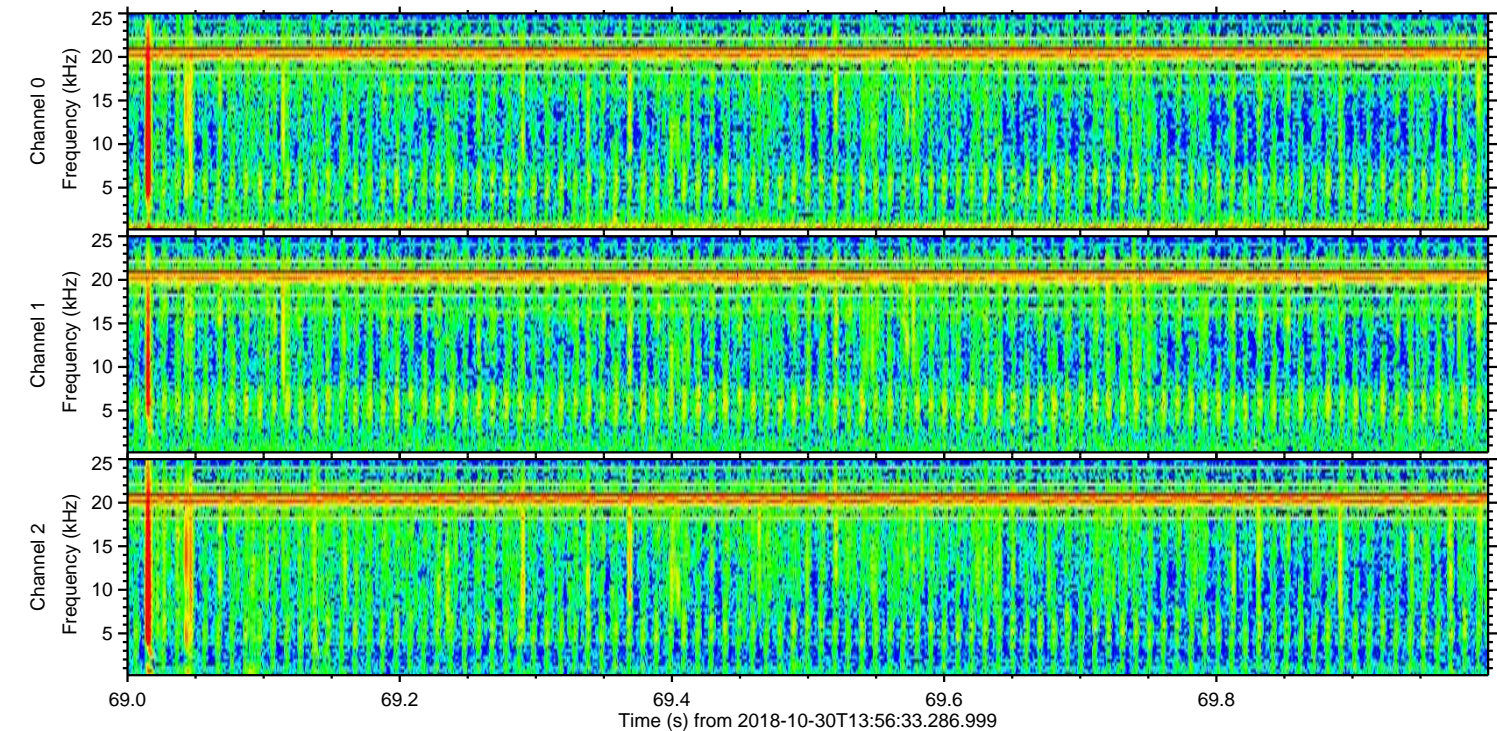
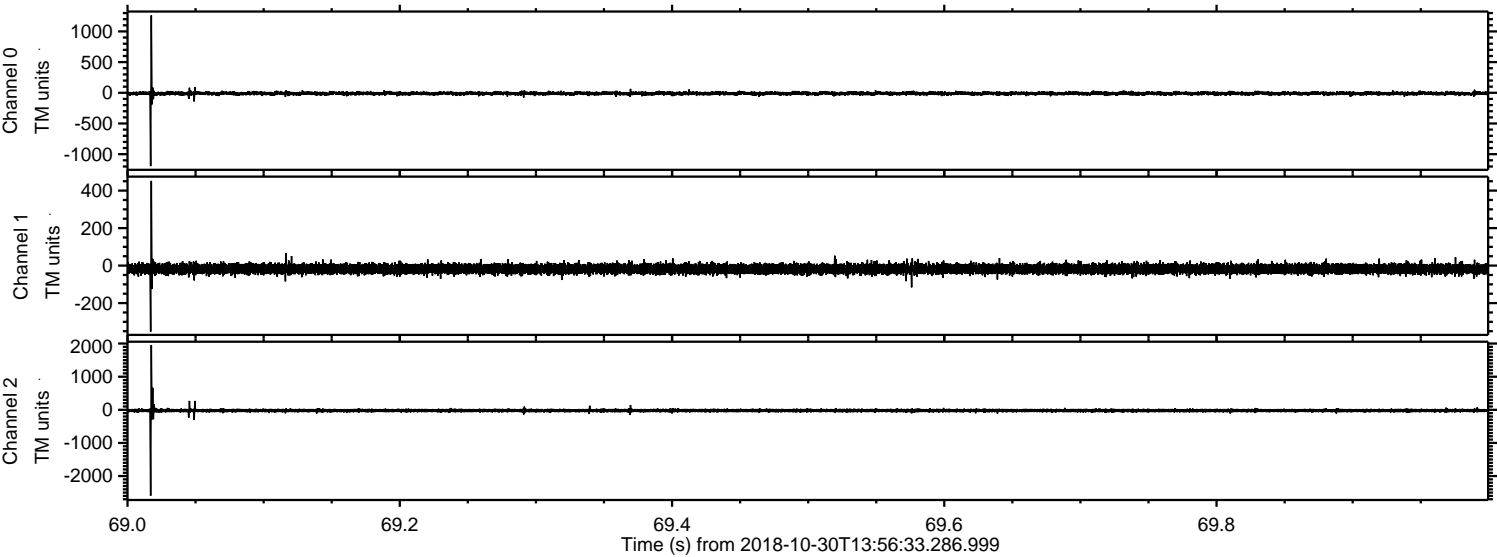


ELMAVAN 3D WAVEFORMS (Measured data sampled at 50 kHz) 51000 packets of 144 samples from 2018-10-30T13:56:33.286.999.

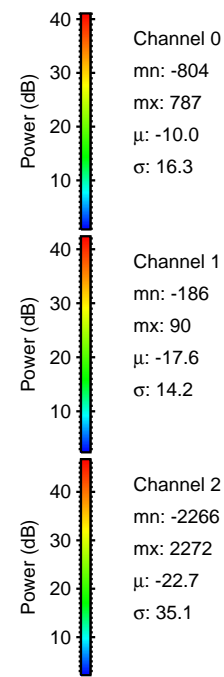
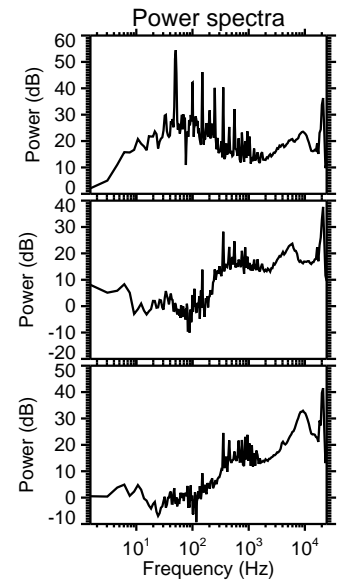
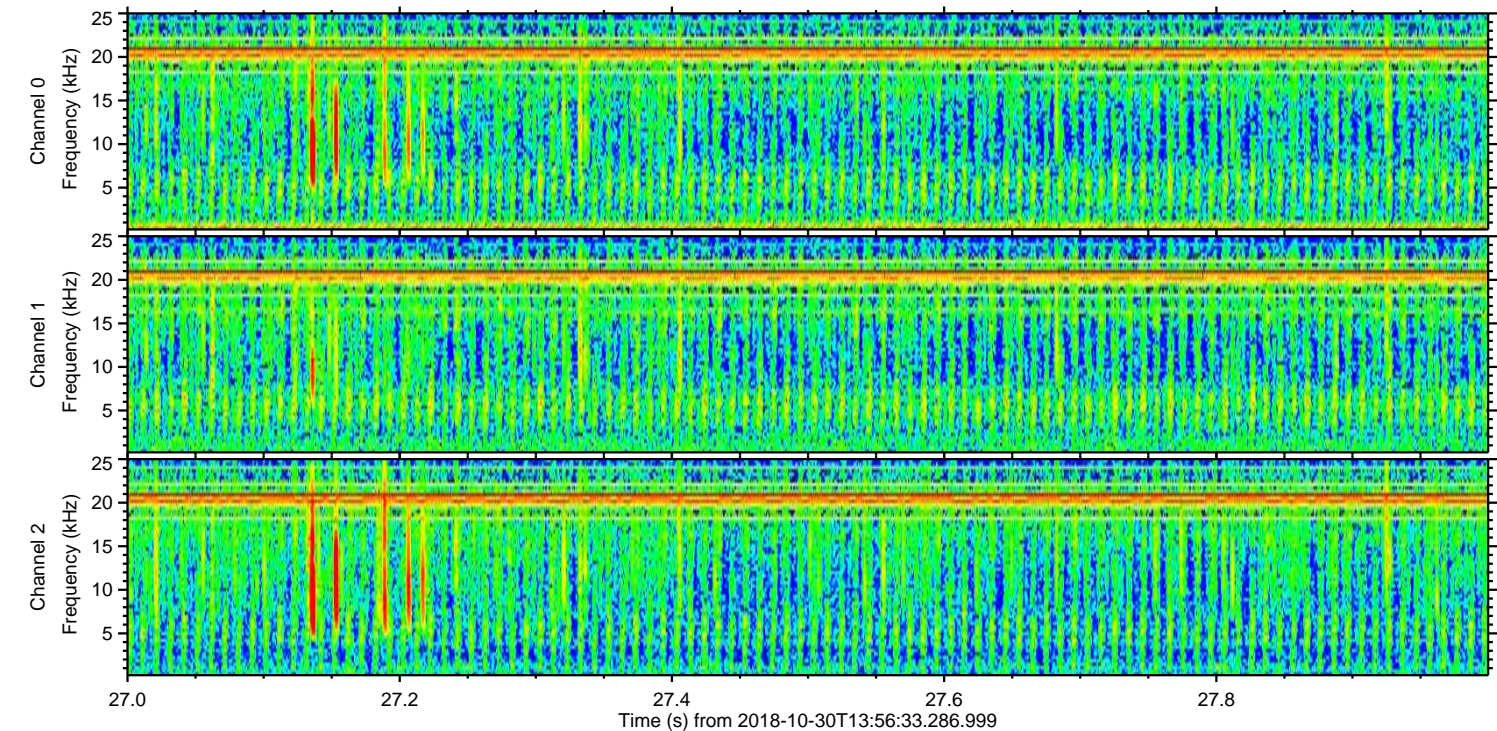
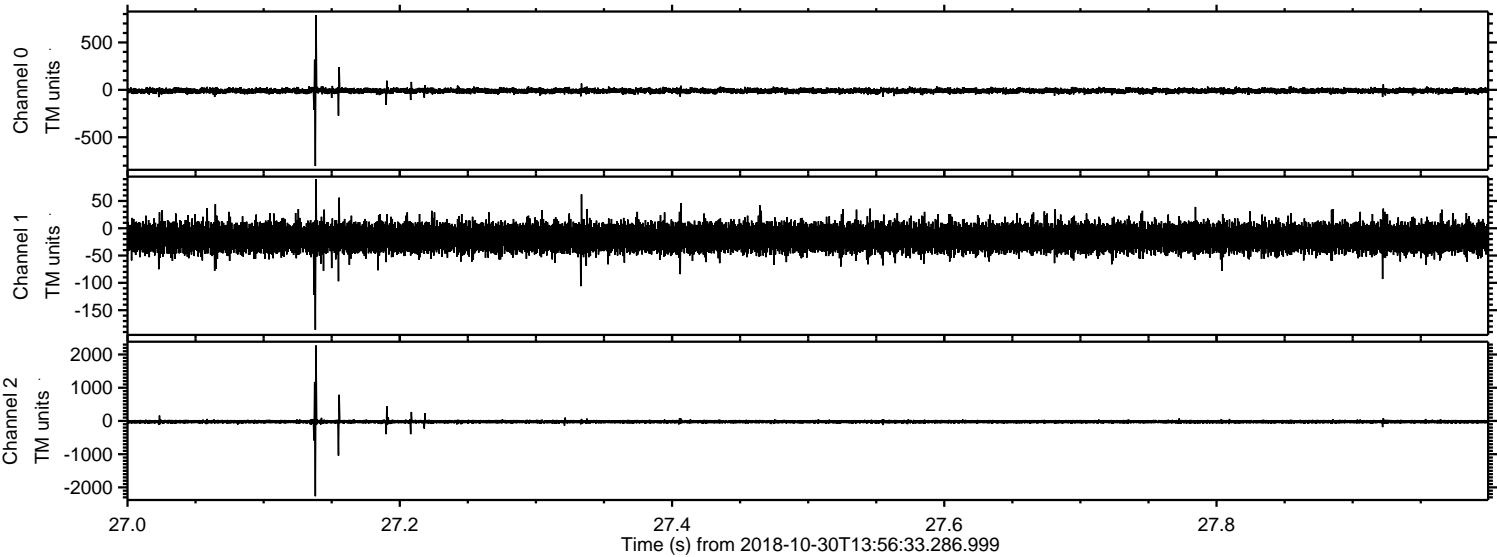
Processed Tue Oct 30 15:04:08 2018 by ELM ver.2012-10-06 from 001__elm20181030_135632__dat00.bin



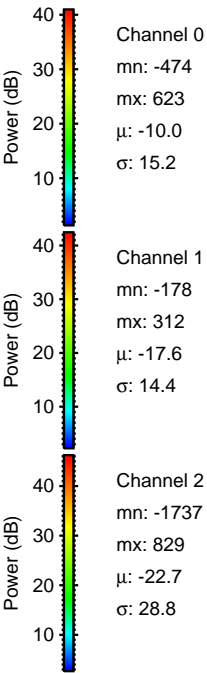
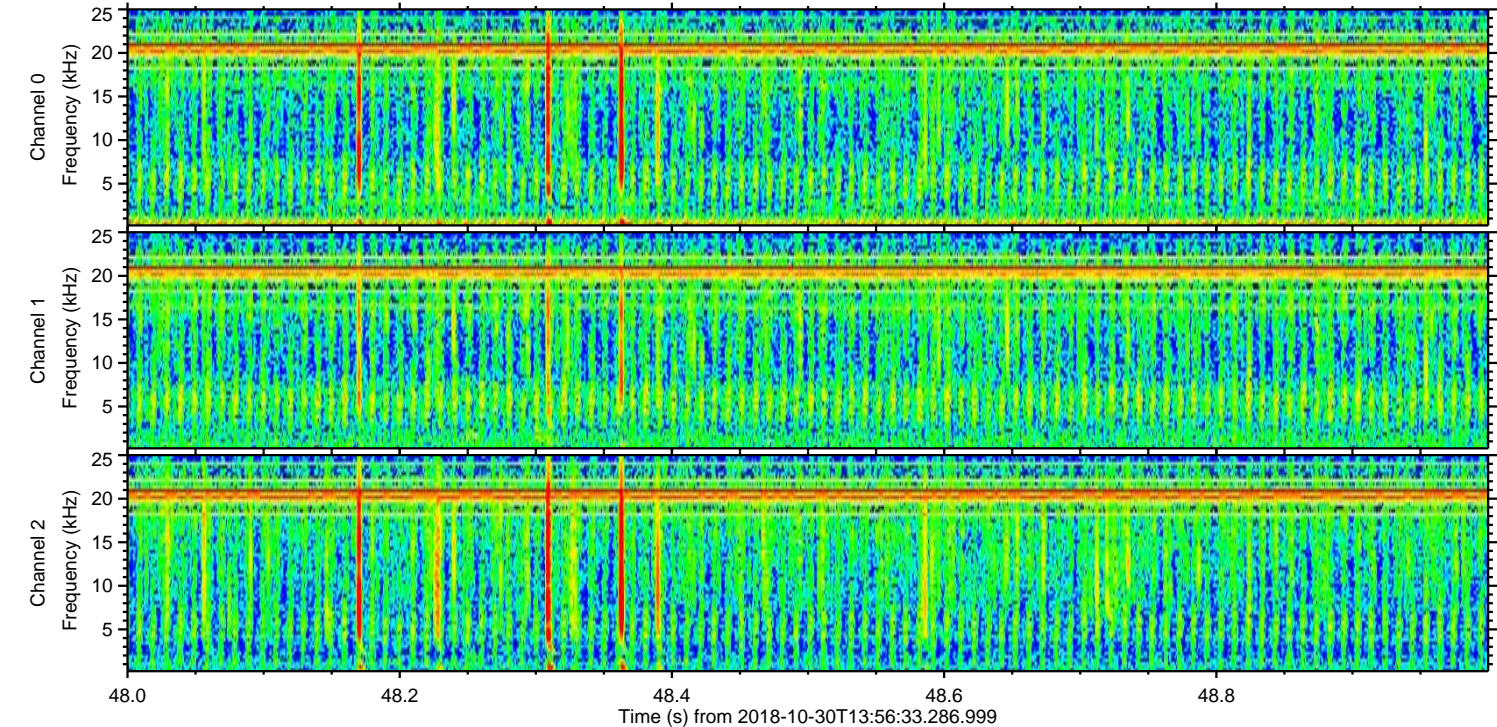
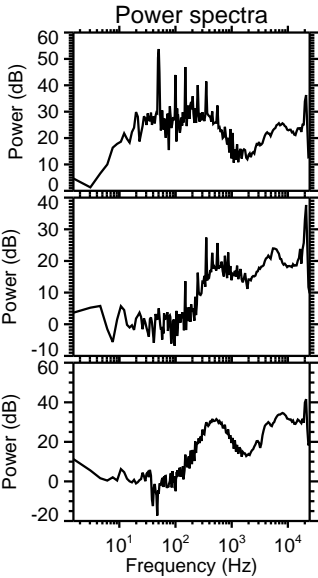
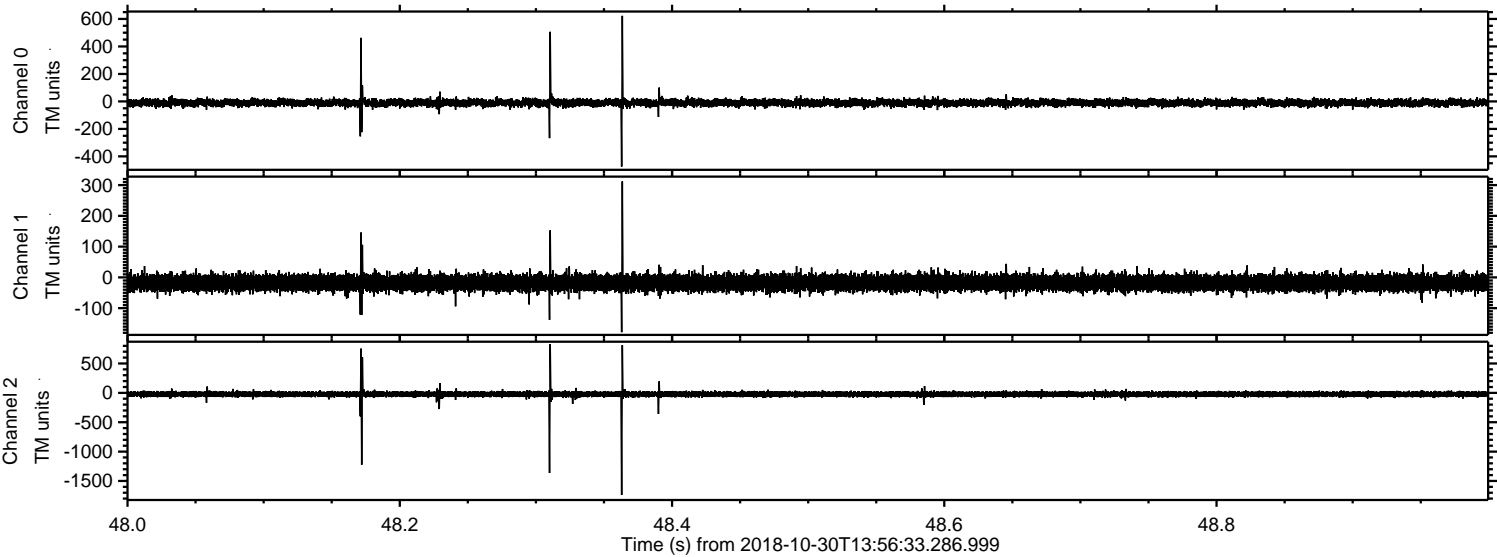
Processed Tue Oct 30 15:04:17 2018 by ELM ver.2012-10-06 from 001__elm20181030_135632__dat00.bin



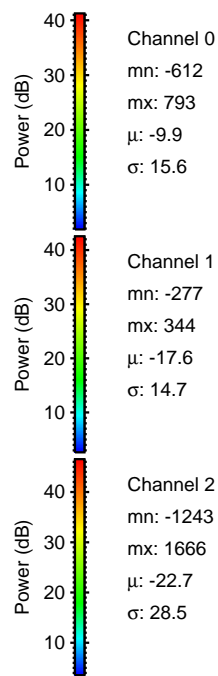
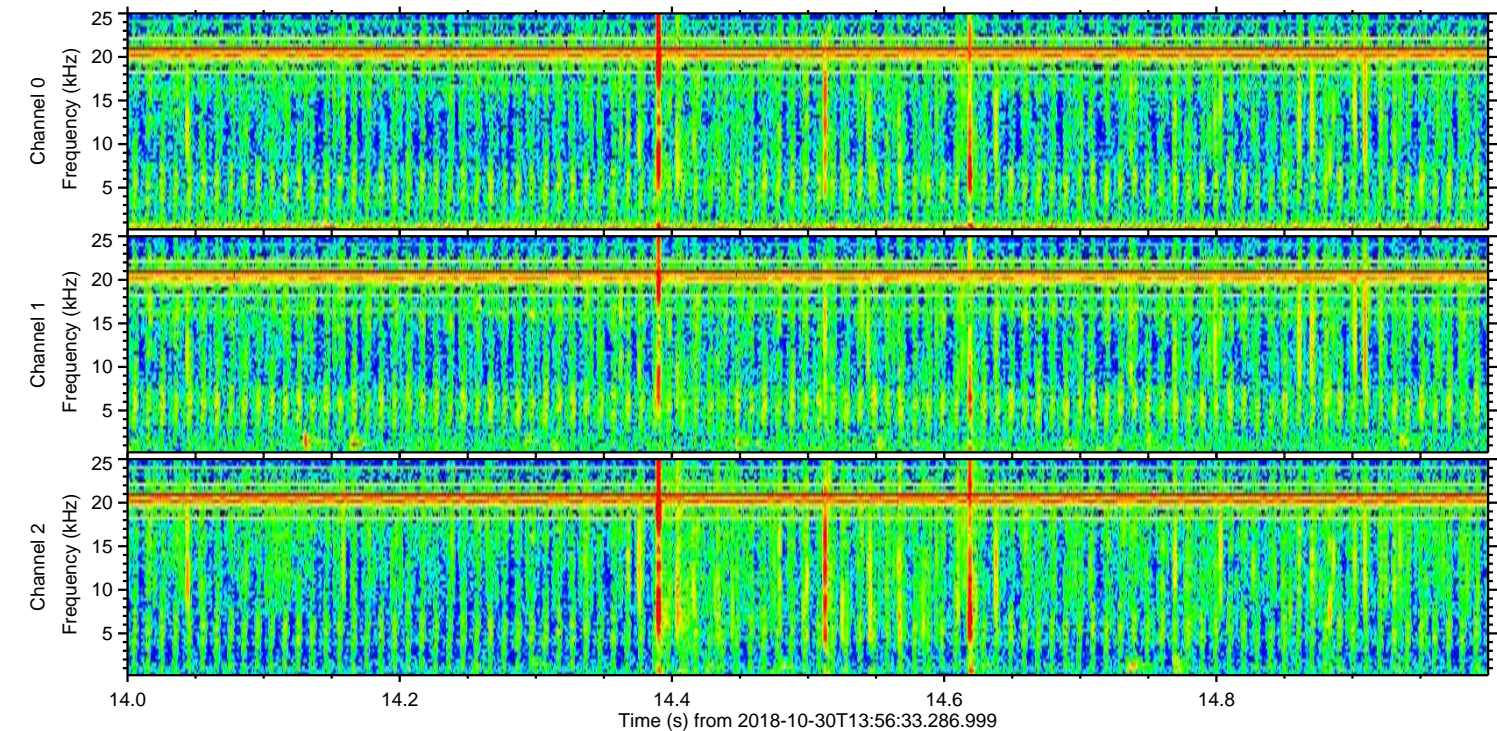
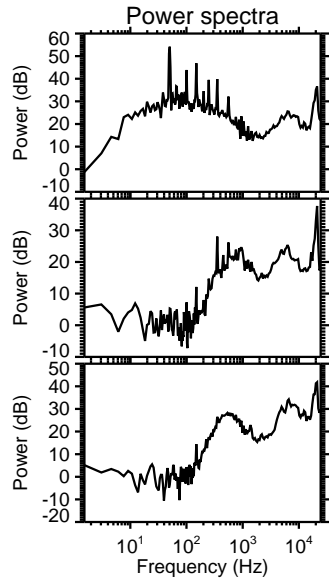
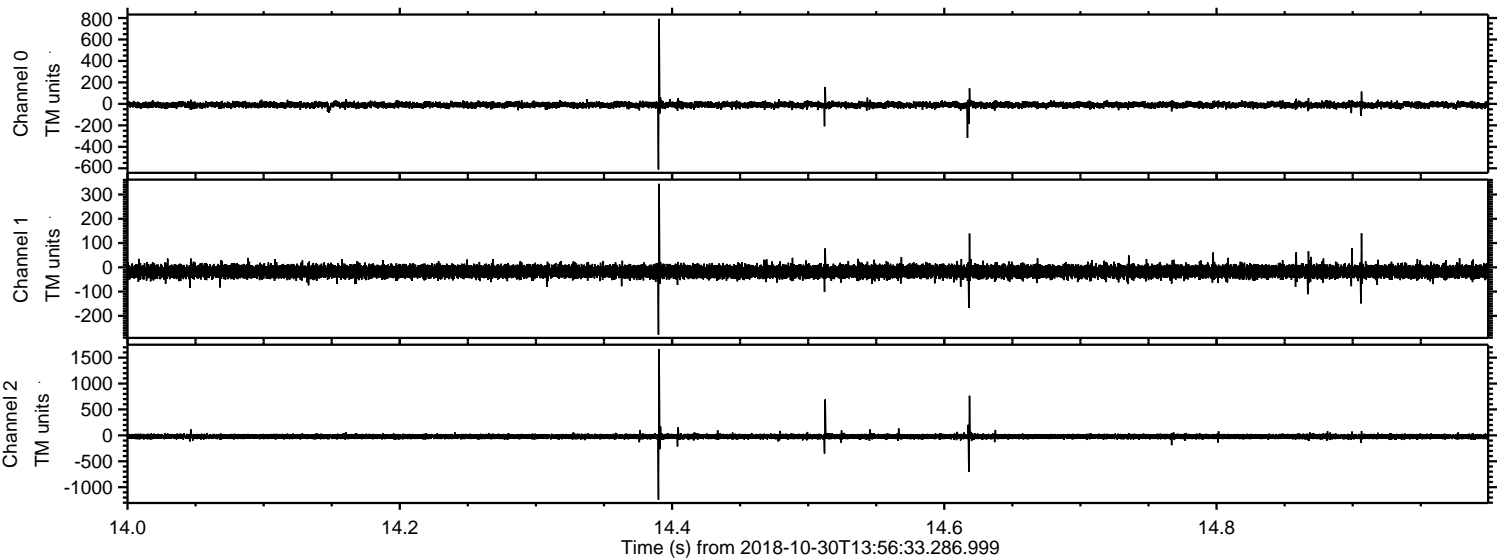
Processed Tue Oct 30 15:04:18 2018 by ELM ver.2012-10-06 from 001__elm20181030_135632__dat00.bin



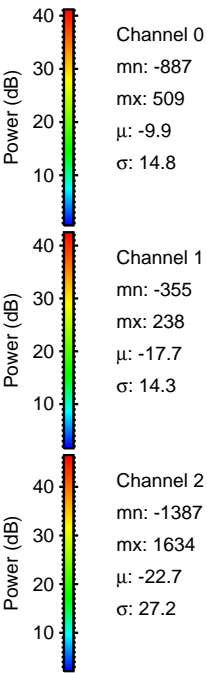
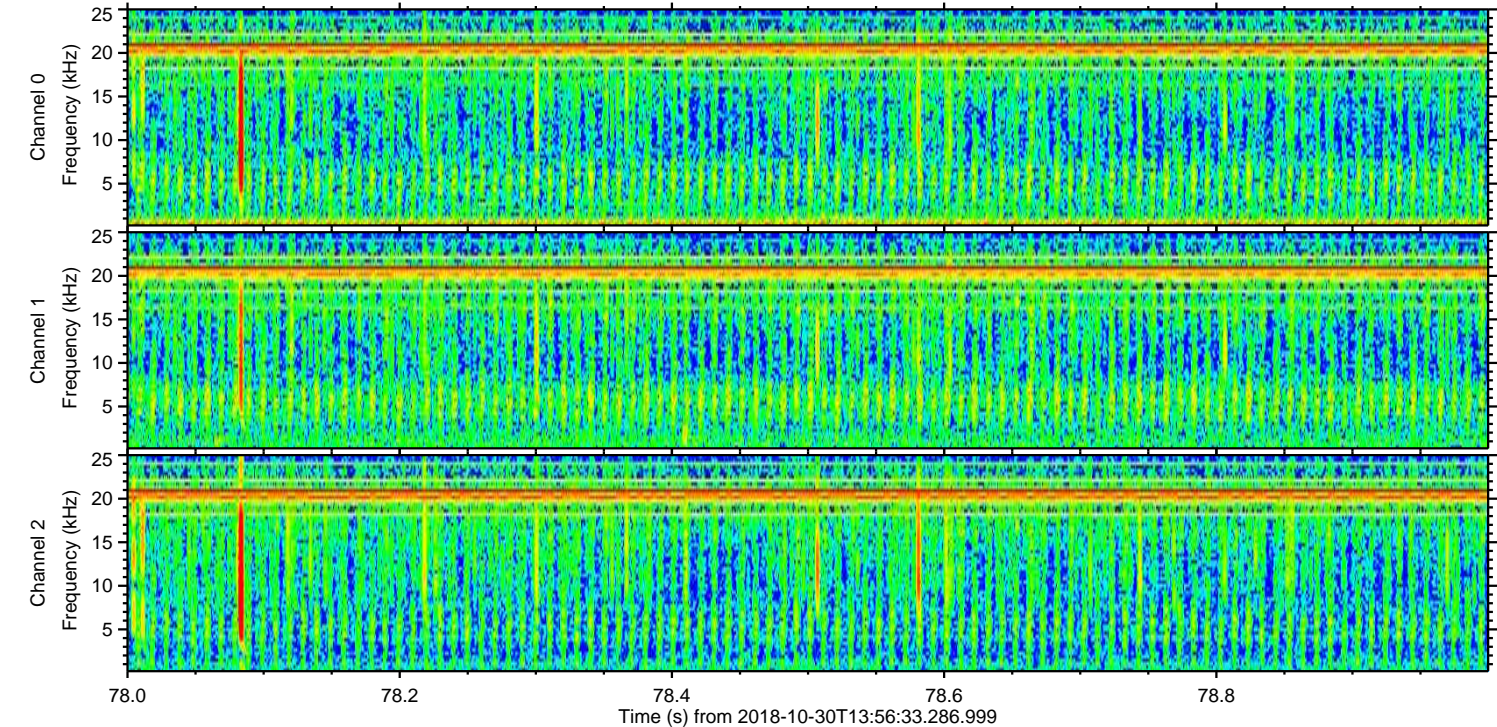
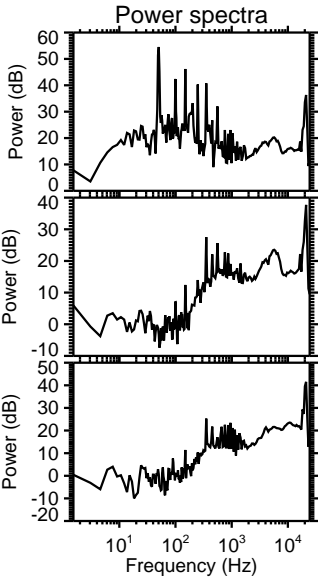
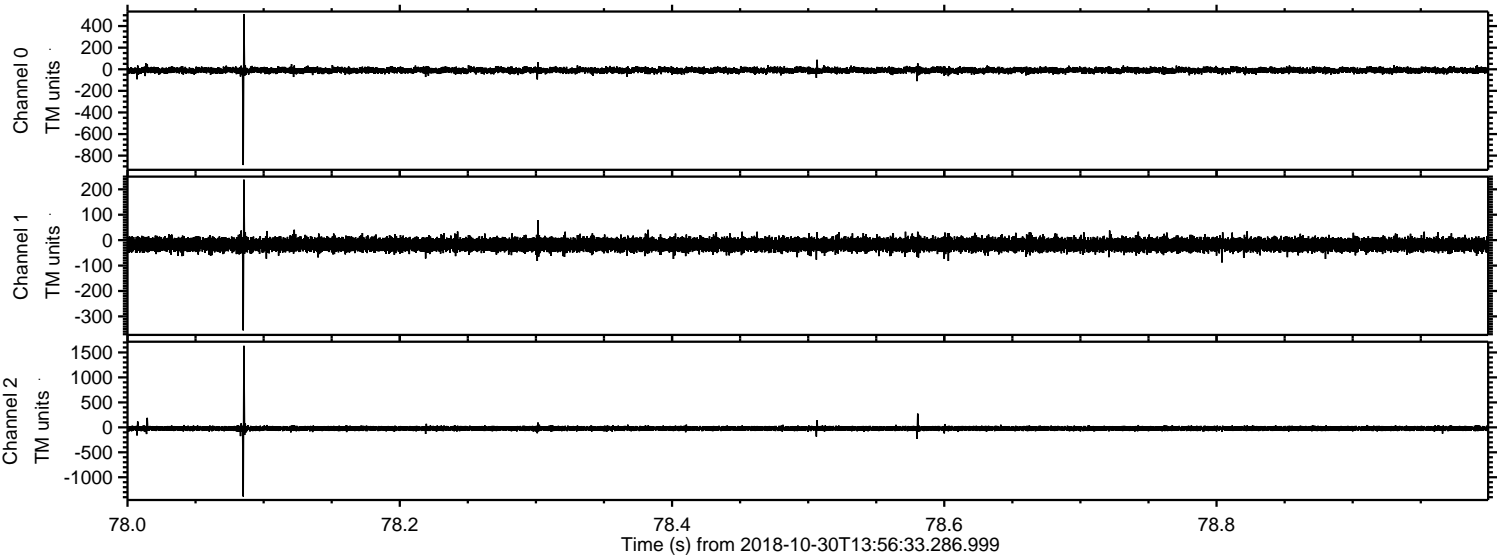
Processed Tue Oct 30 15:04:19 2018 by ELM ver.2012-10-06 from 001__elm20181030_135632__dat00.bin



Processed Tue Oct 30 15:04:20 2018 by ELM ver.2012-10-06 from 001__elm20181030_135632__dat00.bin

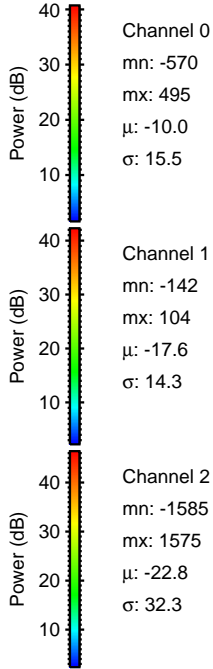
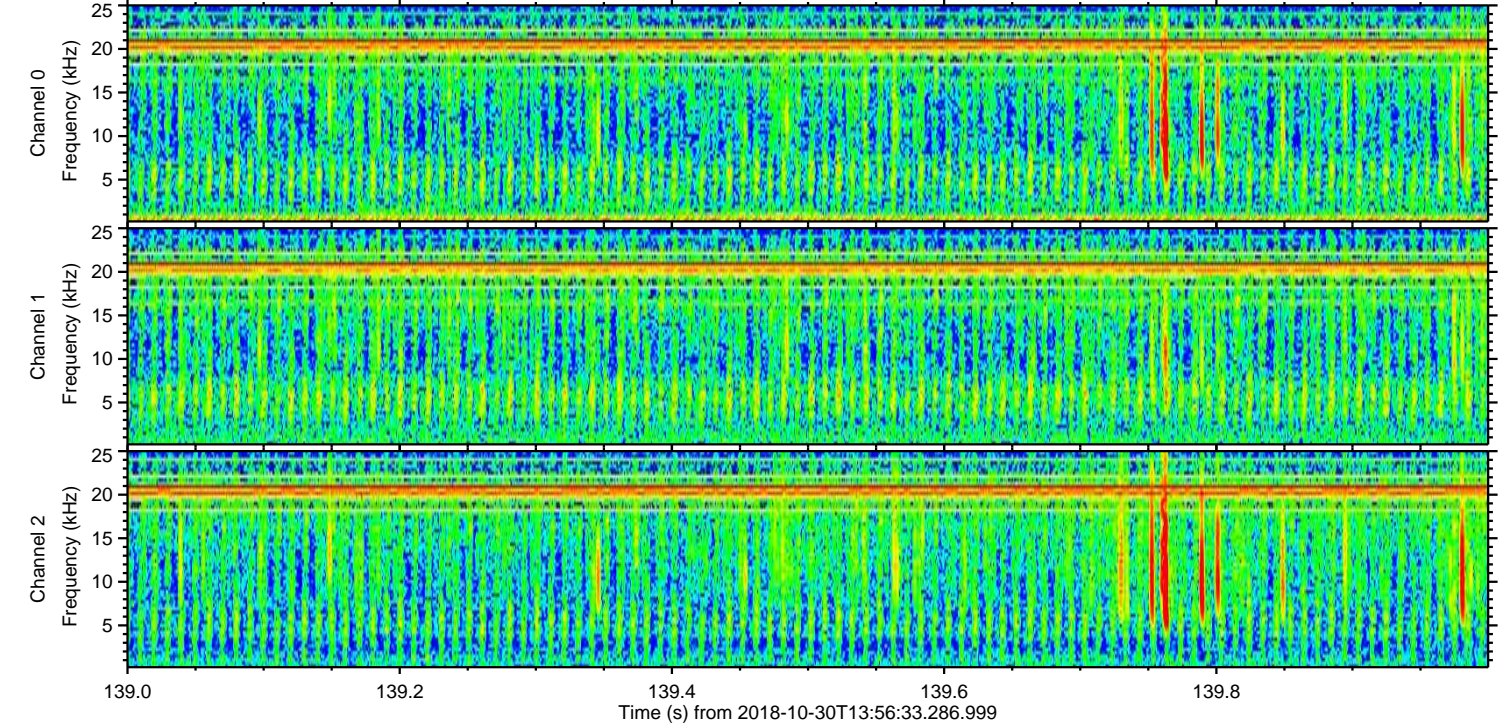
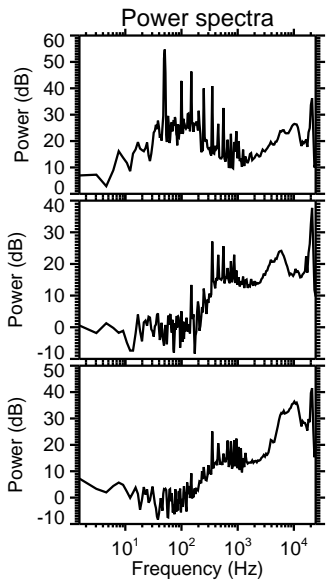
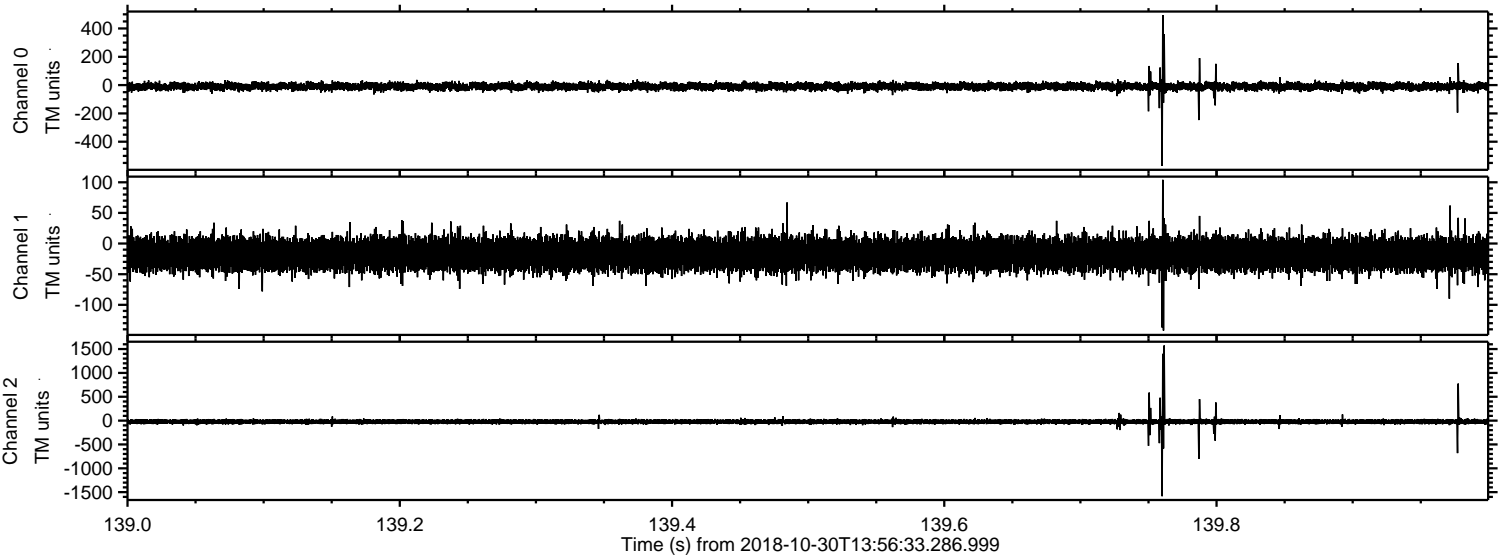


Processed Tue Oct 30 15:04:20 2018 by ELM ver.2012-10-06 from 001__elm20181030_135632__dat00.bin

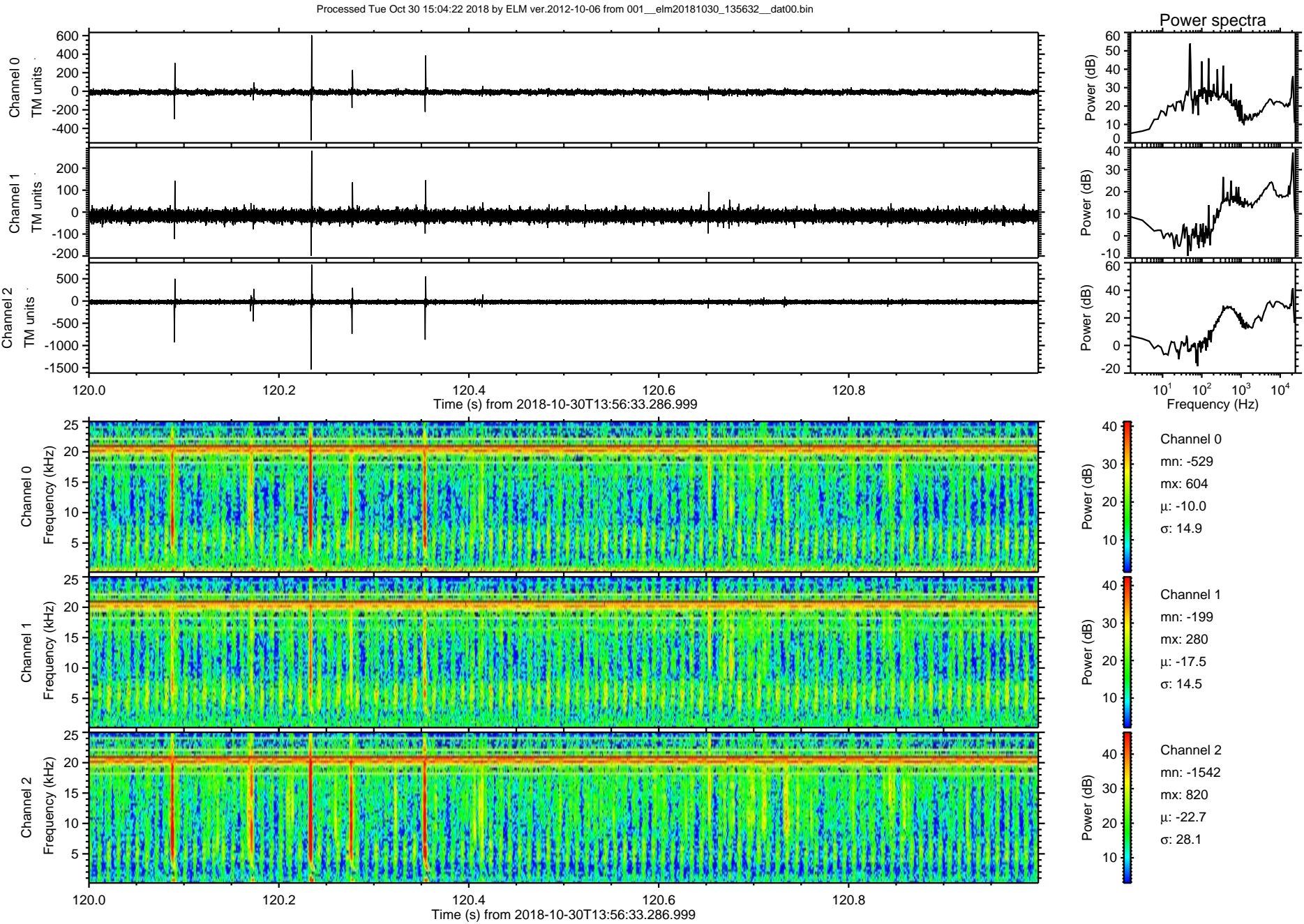


ELMAVAN 3D WAVEFORMS (Measured data sampled at 50 kHz) 51000 packets of 144 samples from 2018-10-30T13:56:33.286.999. Part 140/147

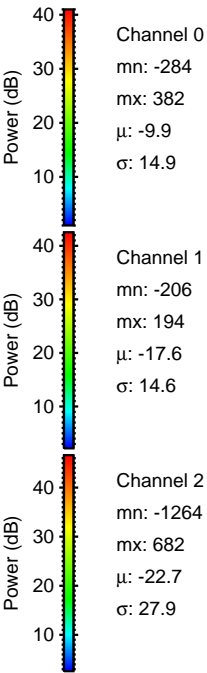
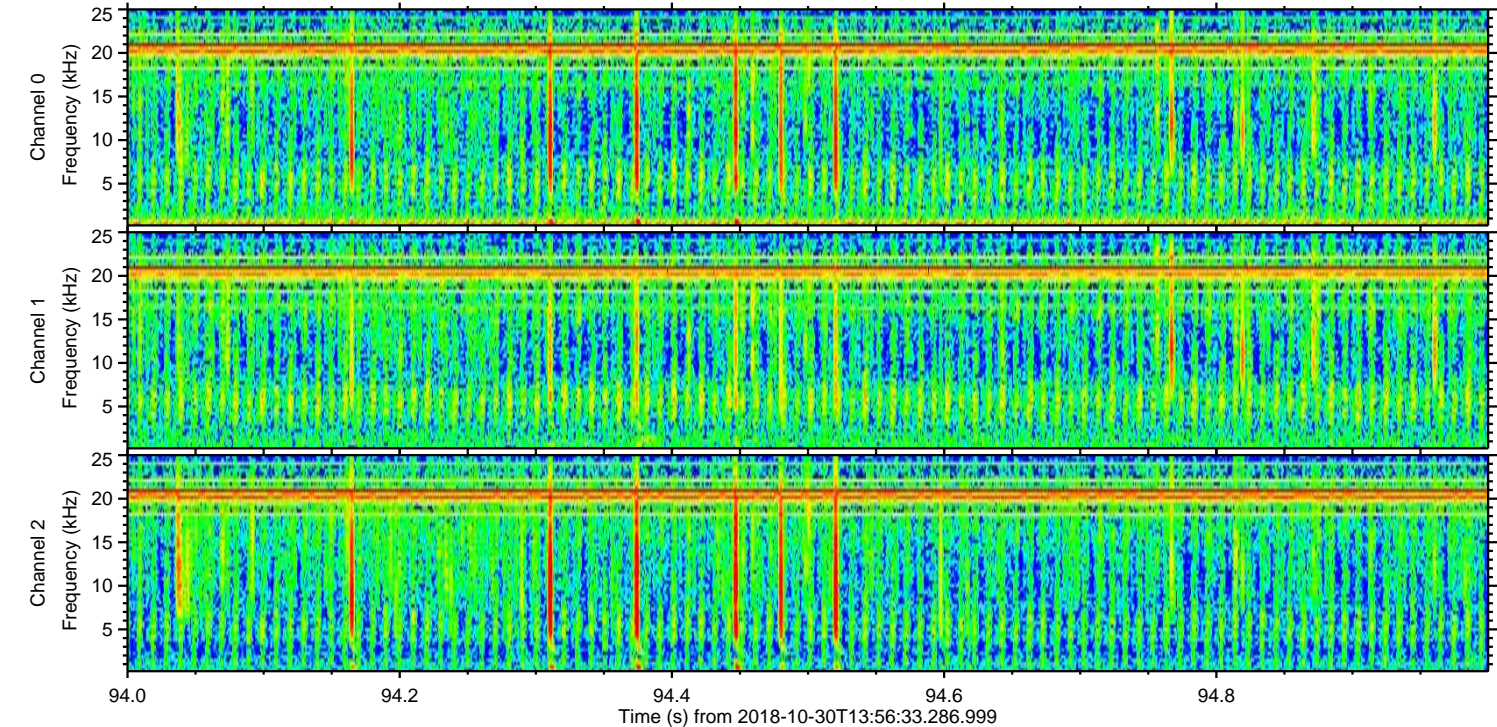
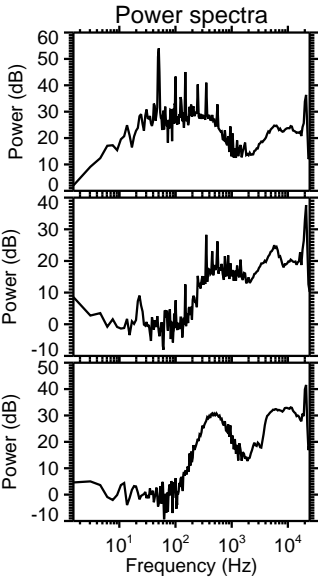
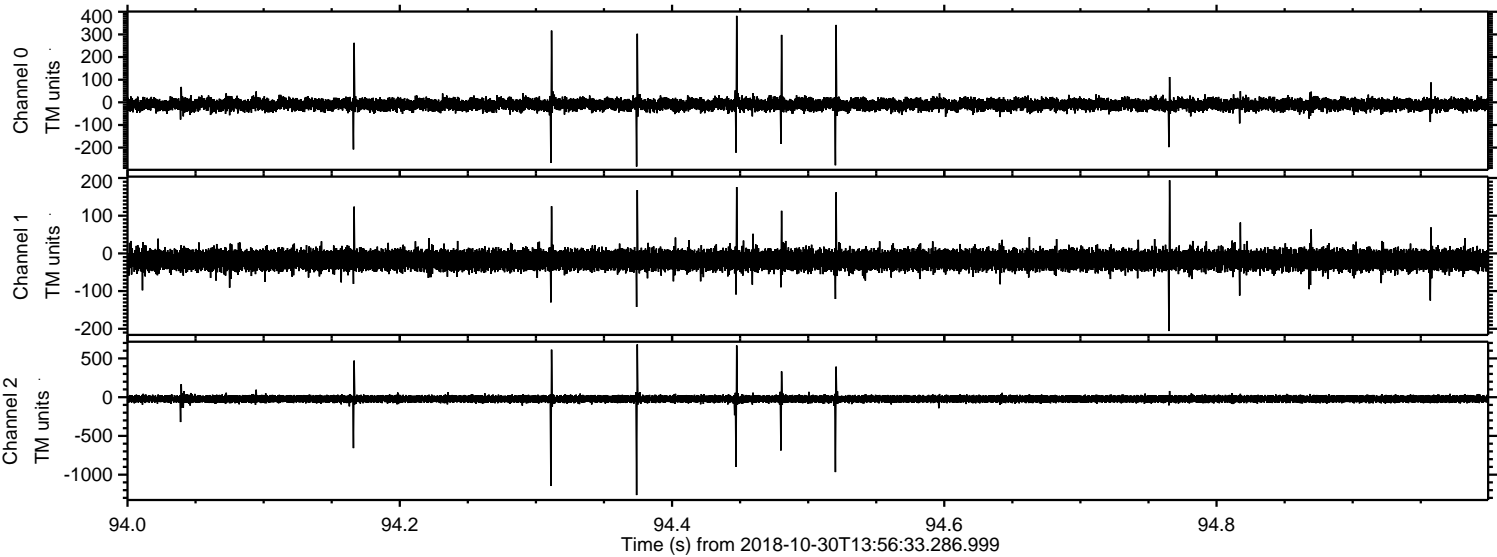
Processed Tue Oct 30 15:04:21 2018 by ELM ver.2012-10-06 from 001__elm20181030_135632__dat00.bin



ELMAVAN 3D WAVEFORMS (Measured data sampled at 50 kHz) 51000 packets of 144 samples from 2018-10-30T13:56:33.286.999. Part 121/147

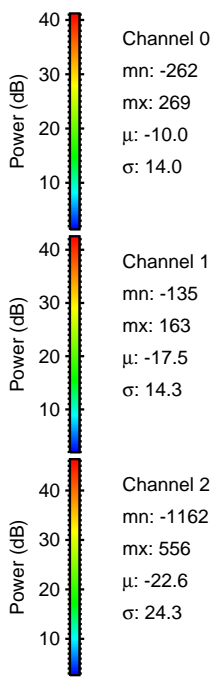
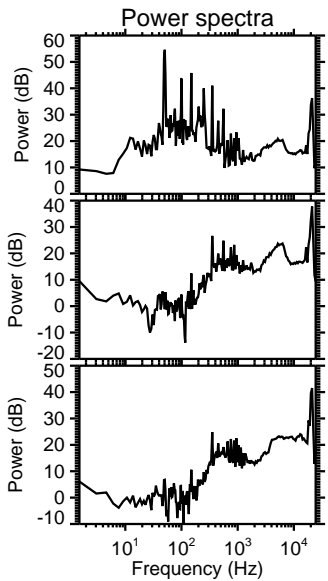
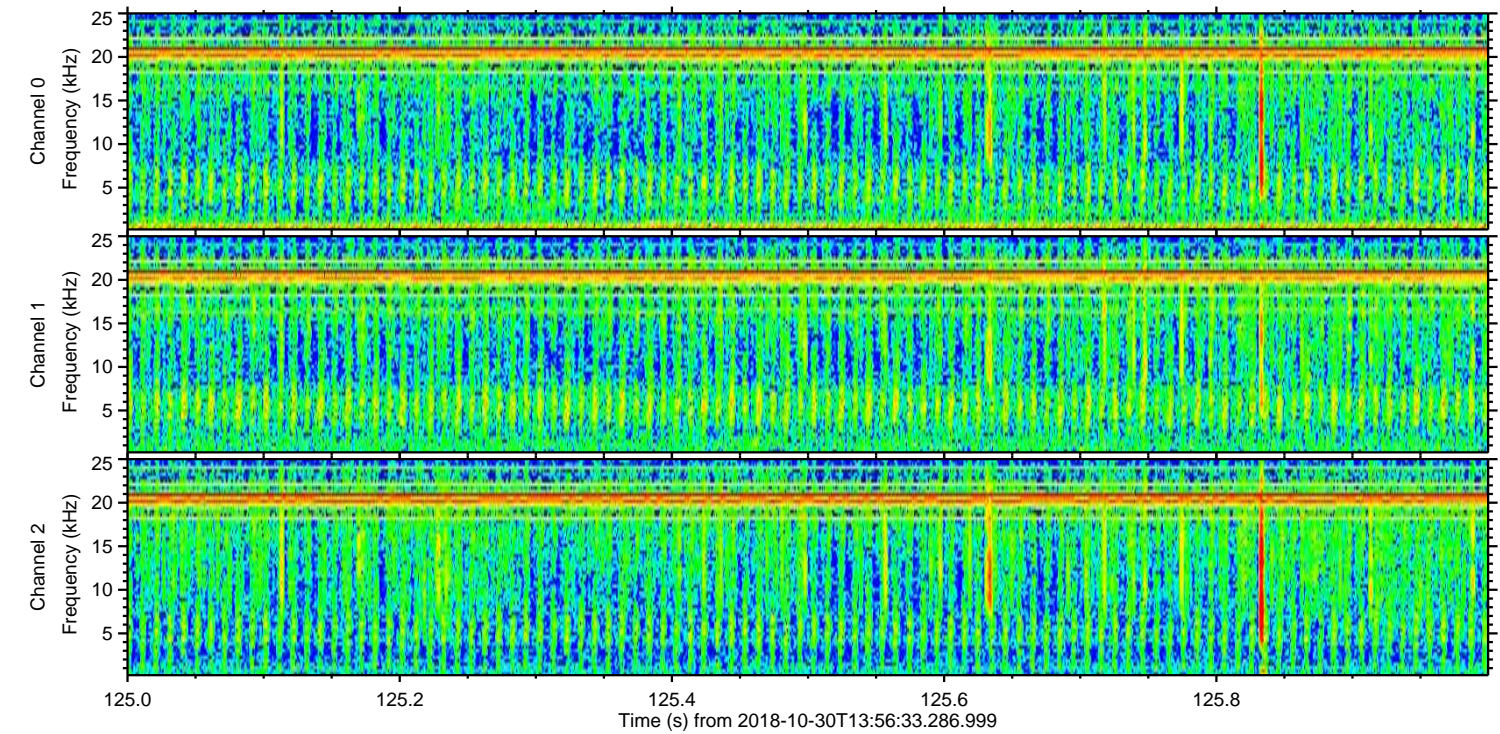
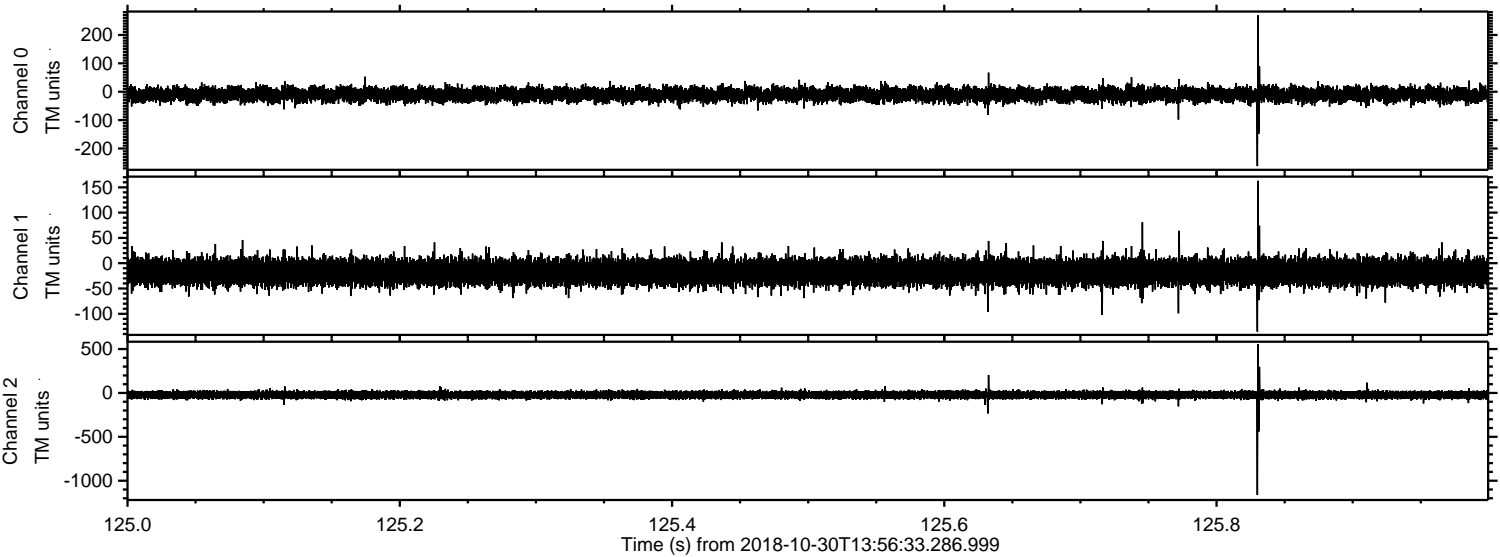


Processed Tue Oct 30 15:04:23 2018 by ELM ver.2012-10-06 from 001__elm20181030_135632__dat00.bin



ELMAVAN 3D WAVEFORMS (Measured data sampled at 50 kHz) 51000 packets of 144 samples from 2018-10-30T13:56:33.286.999. Part 126/147

Processed Tue Oct 30 15:04:24 2018 by ELM ver.2012-10-06 from 001__elm20181030_135632__dat00.bin



Channel 0
mn: -262
mx: 269
 μ : -10.0
 σ : 14.0

Channel 1
mn: -135
mx: 163
 μ : -17.5
 σ : 14.3

Channel 2
mn: -1162
mx: 556
 μ : -22.6
 σ : 24.3

Processed Tue Oct 30 15:04:25 2018 by ELM ver.2012-10-06 from 001__elm20181030_135632__dat00.bin

