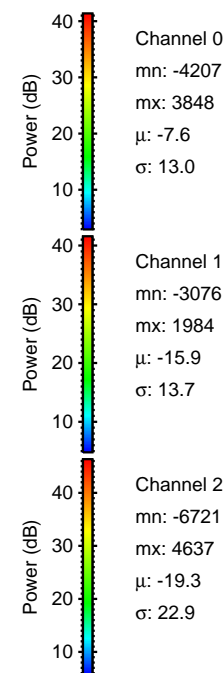
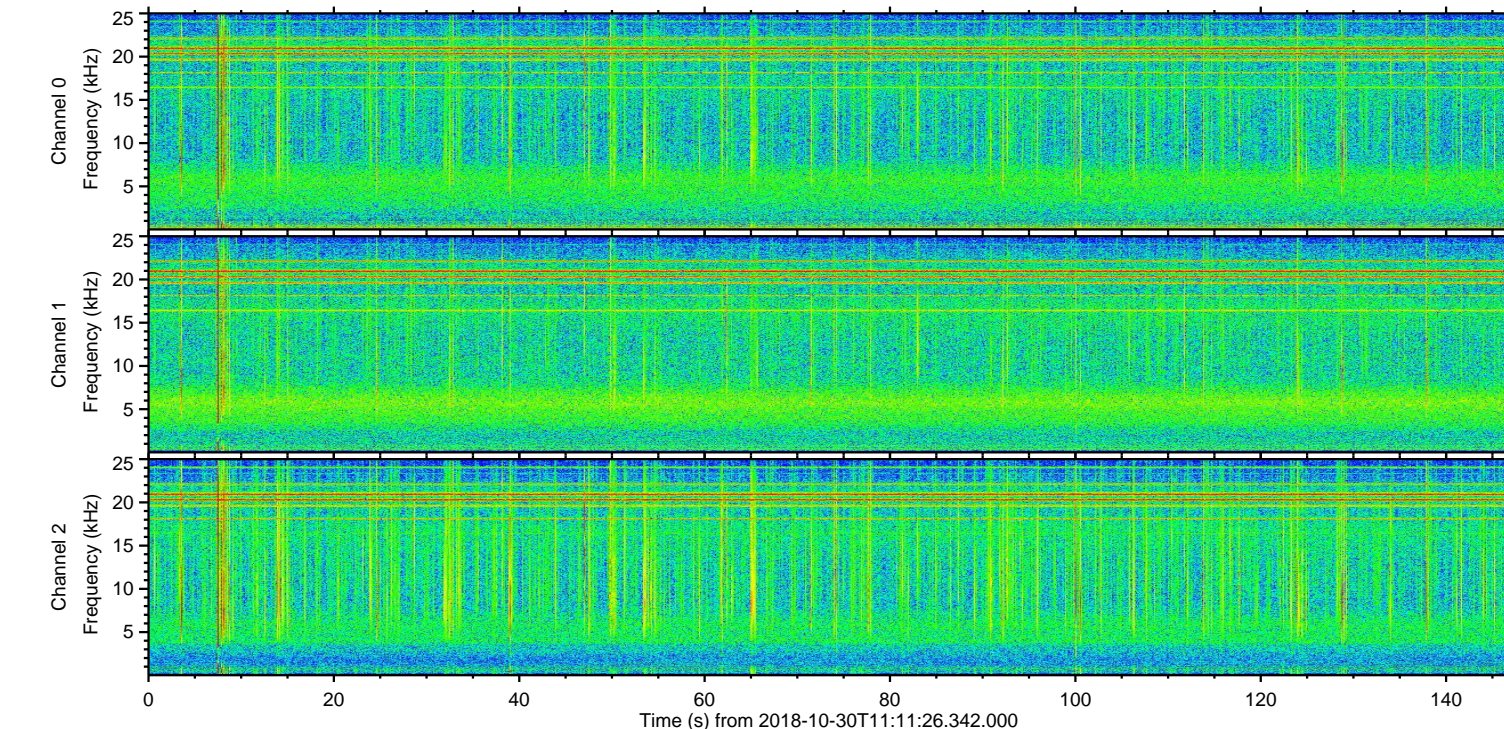
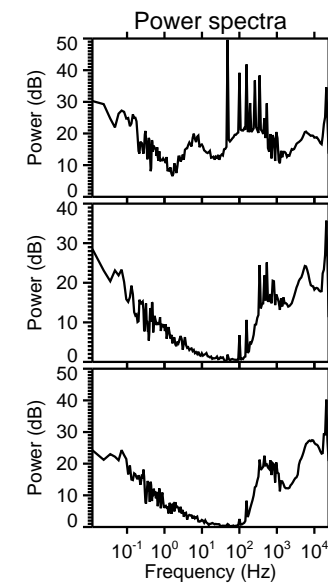
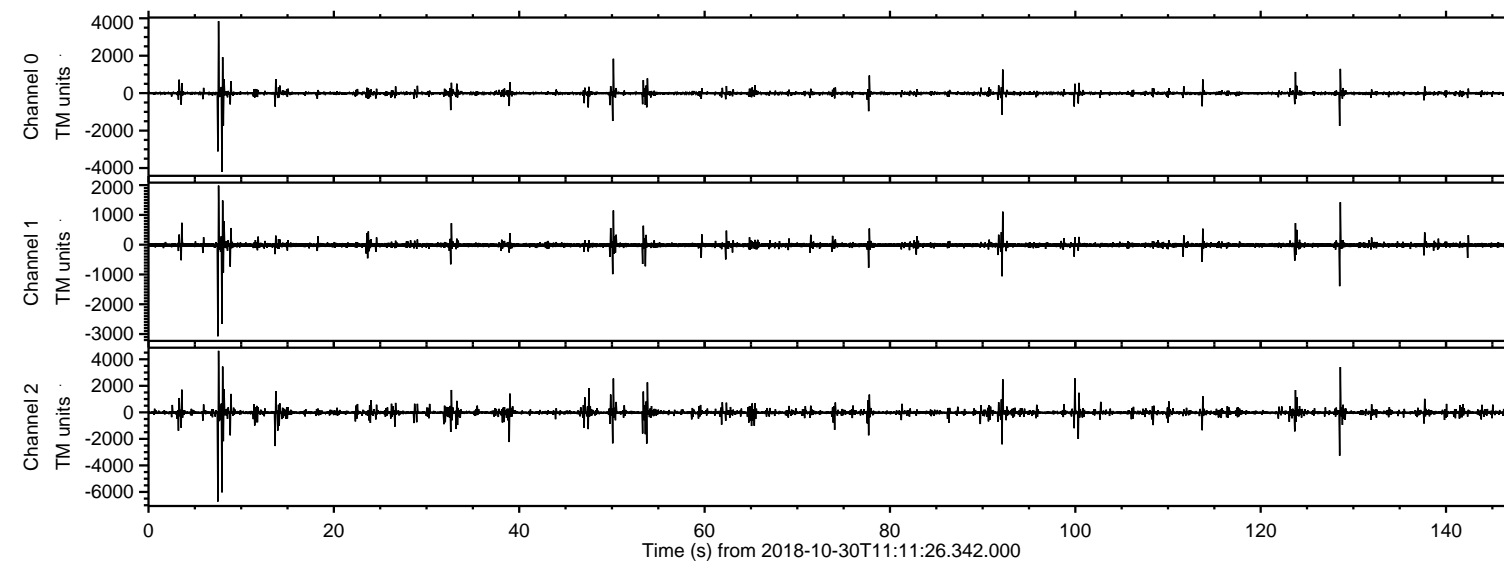
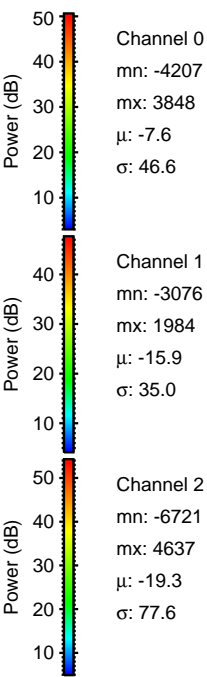
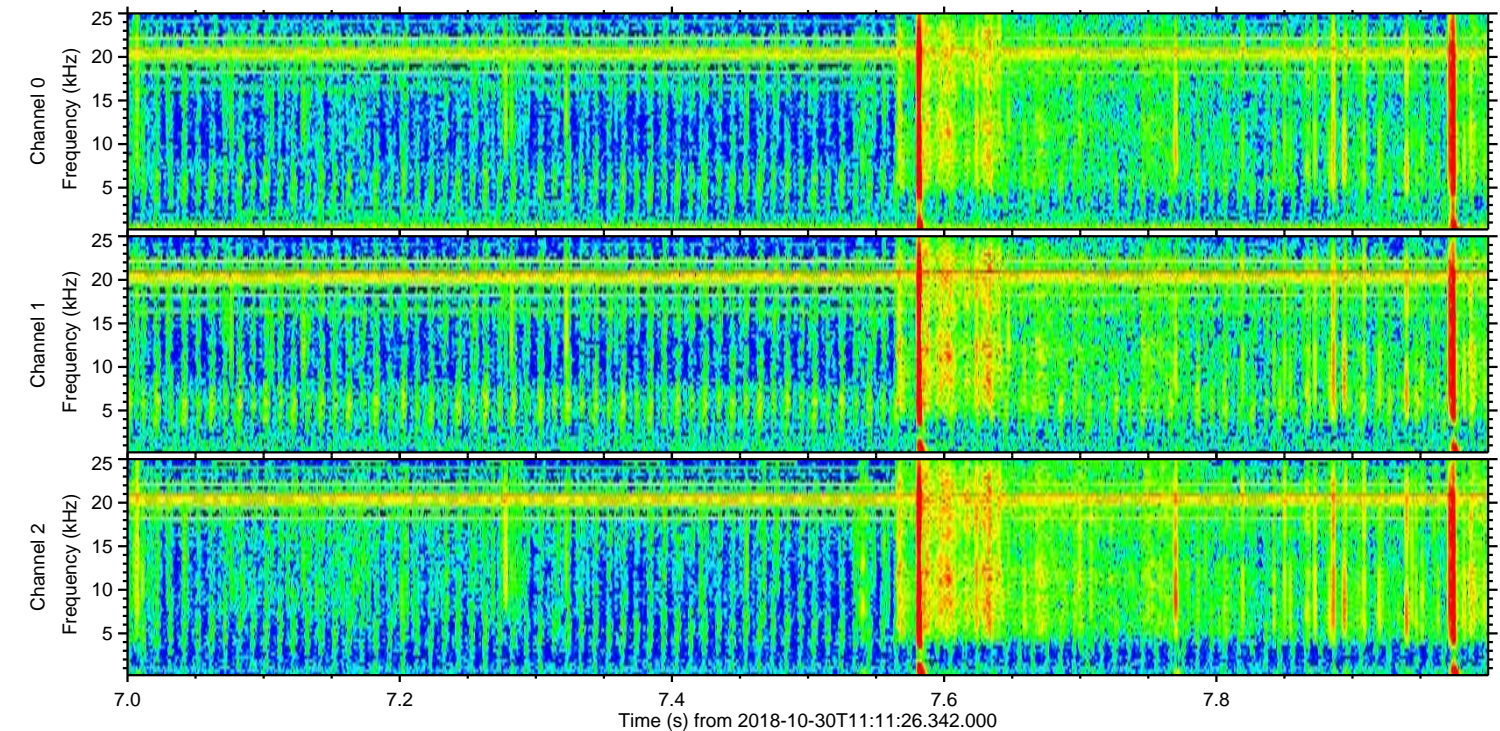
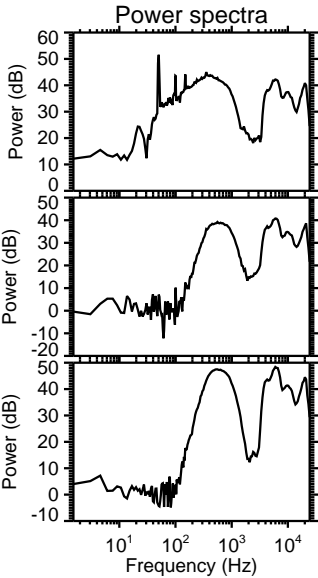
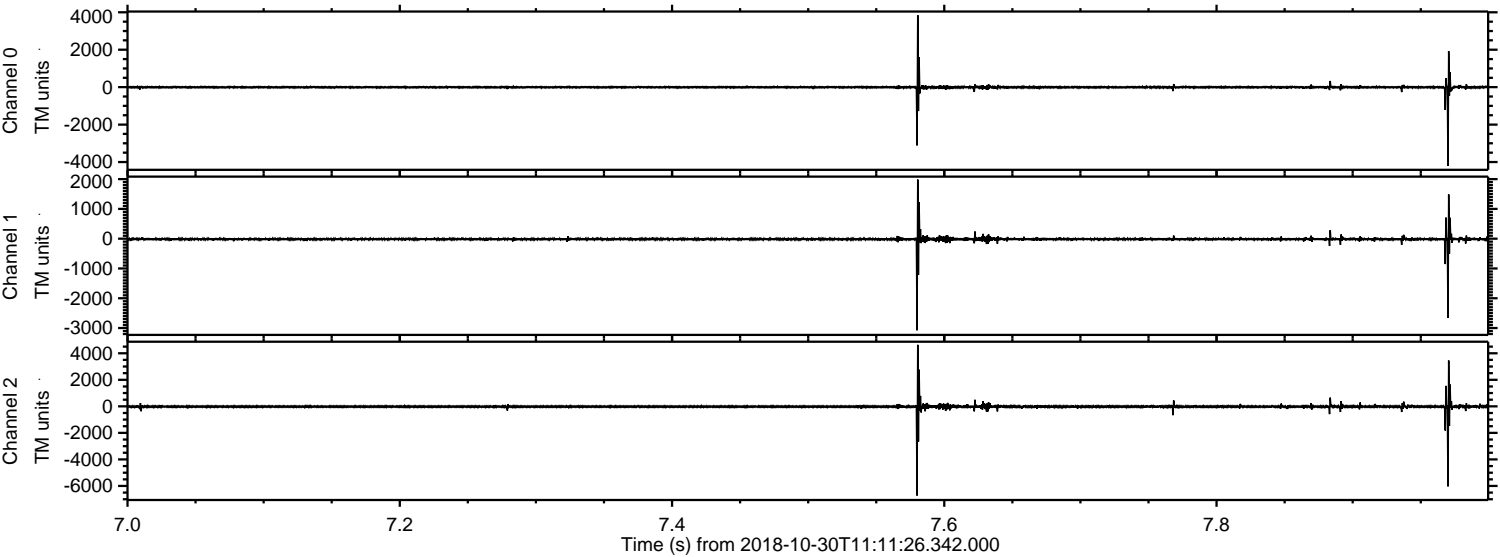


ELMAVAN 3D WAVEFORMS (Measured data sampled at 50 kHz) 51000 packets of 144 samples from 2018-10-30T11:11:26.342.000.

Processed Tue Oct 30 12:19:46 2018 by ELM ver.2012-10-06 from 001__elm20181030_111125__dat00.bin

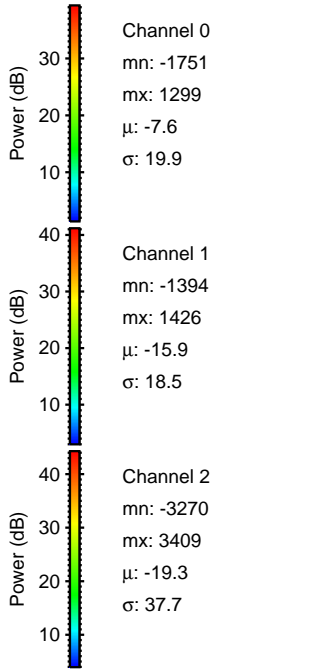
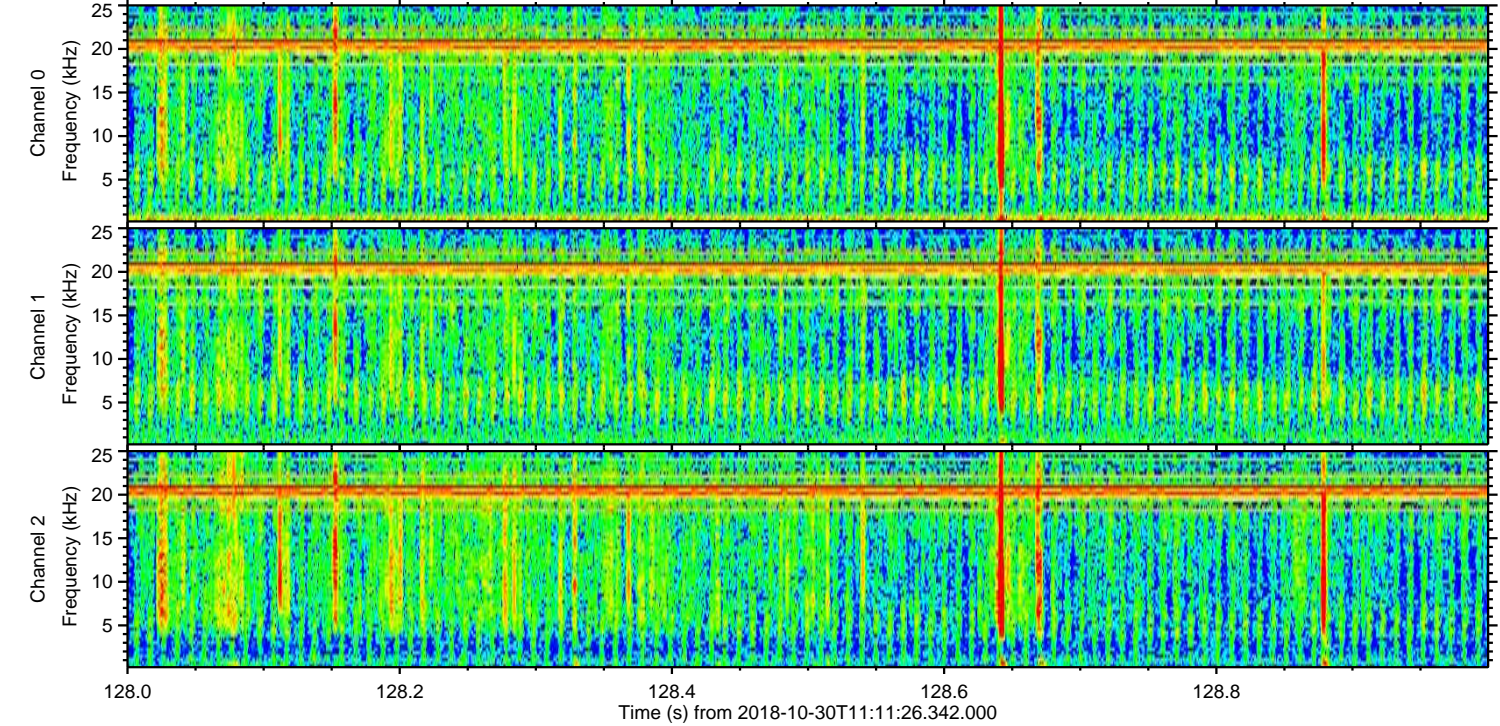
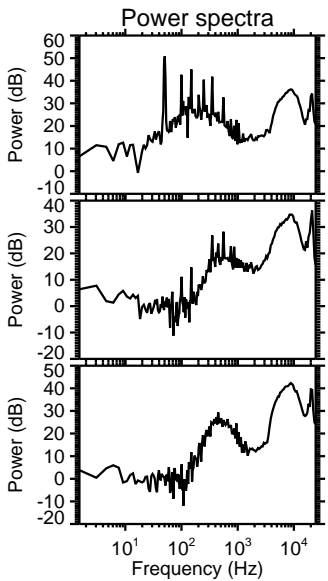
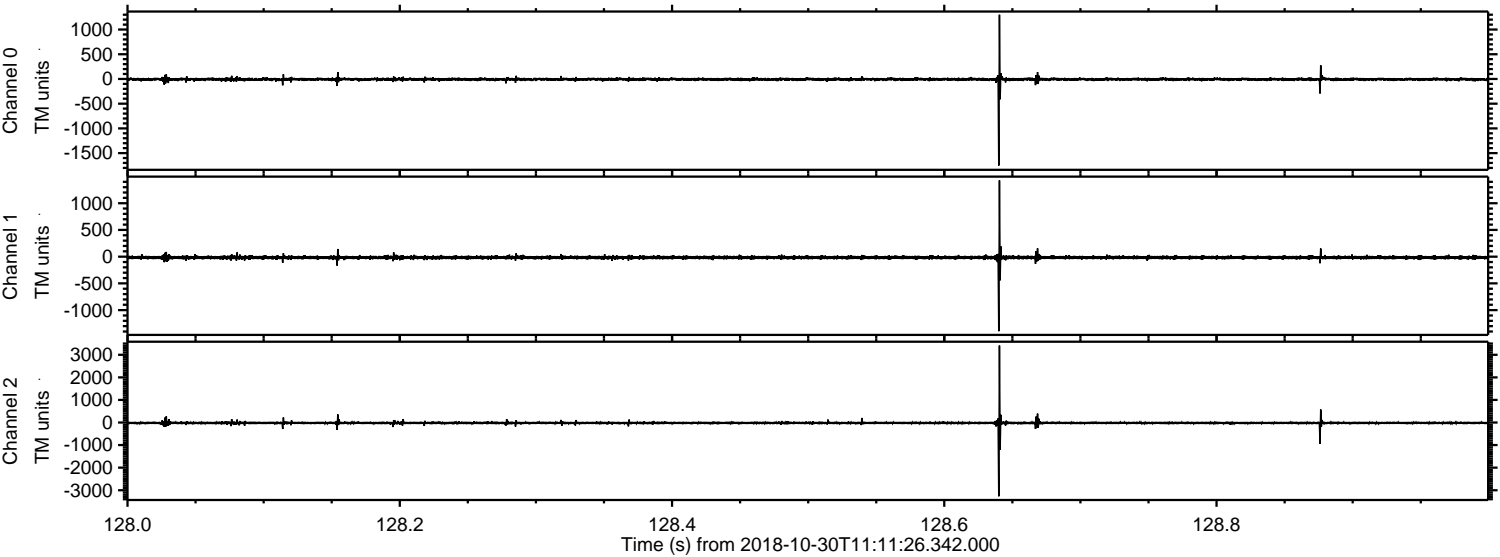


Processed Tue Oct 30 12:19:55 2018 by ELM ver.2012-10-06 from 001__elm20181030_111125__dat00.bin



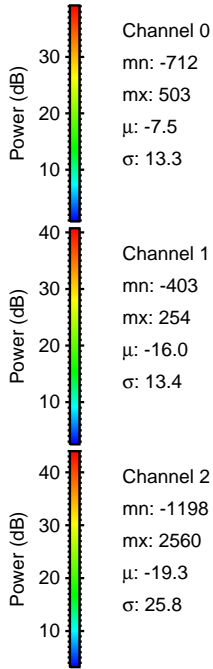
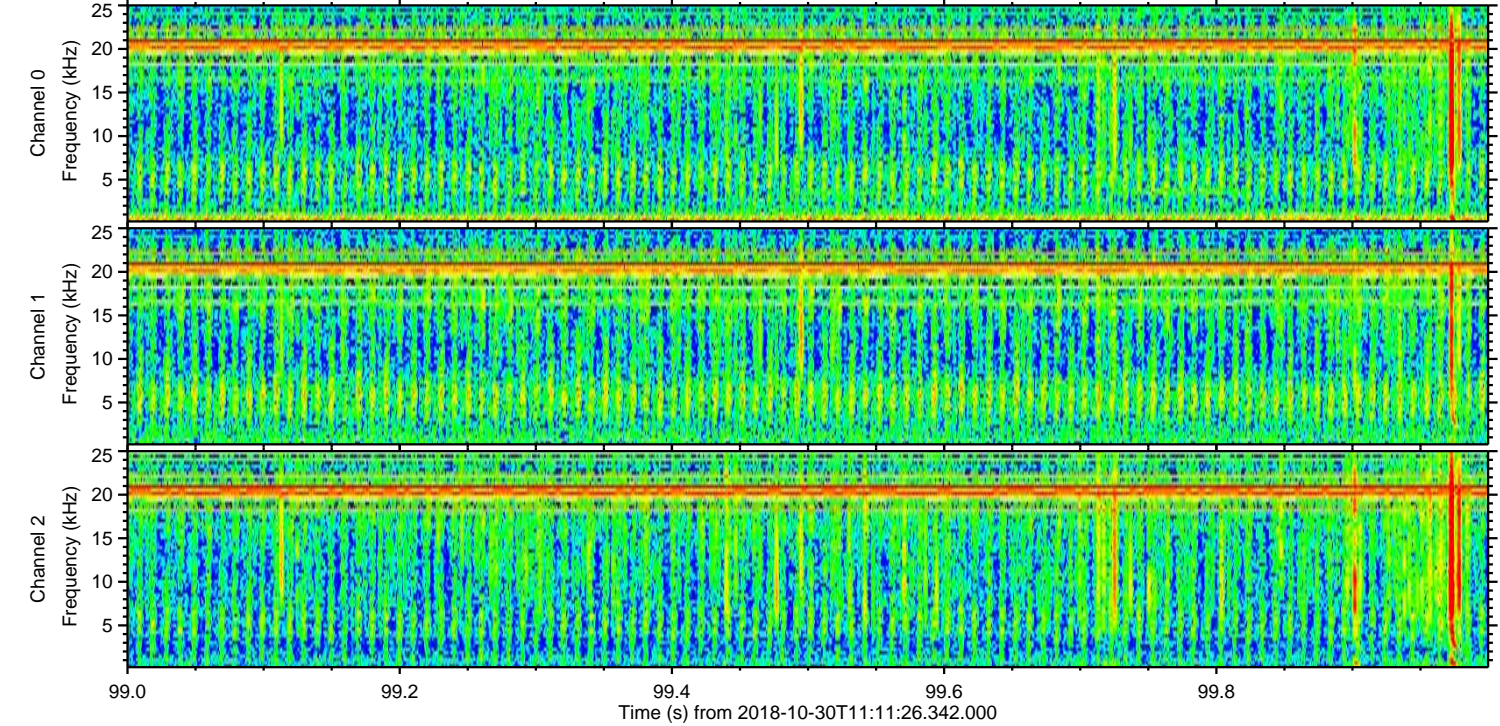
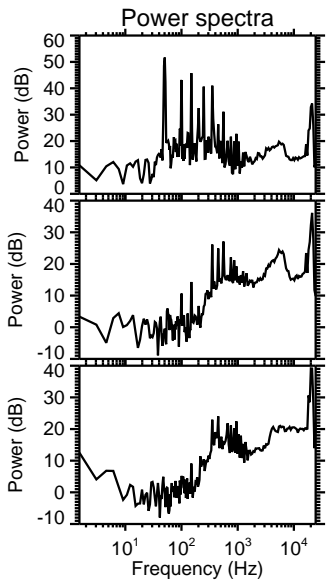
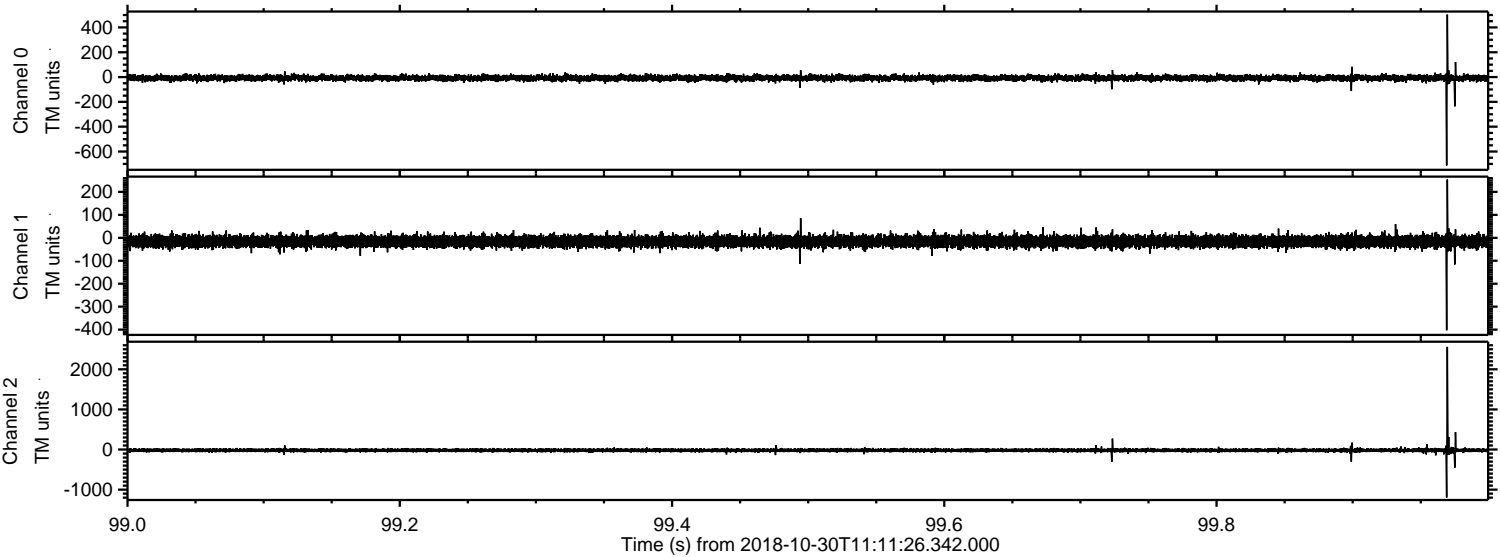
ELMAVAN 3D WAVEFORMS (Measured data sampled at 50 kHz) 51000 packets of 144 samples from 2018-10-30T11:11:26.342.000. Part 129/147

Processed Tue Oct 30 12:19:56 2018 by ELM ver.2012-10-06 from 001__elm20181030_111125__dat00.bin

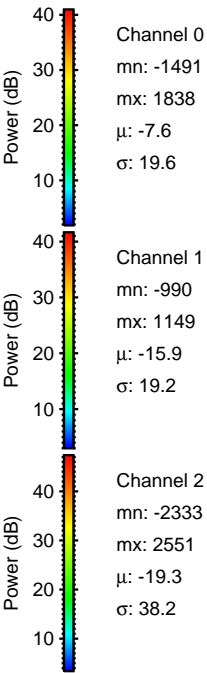
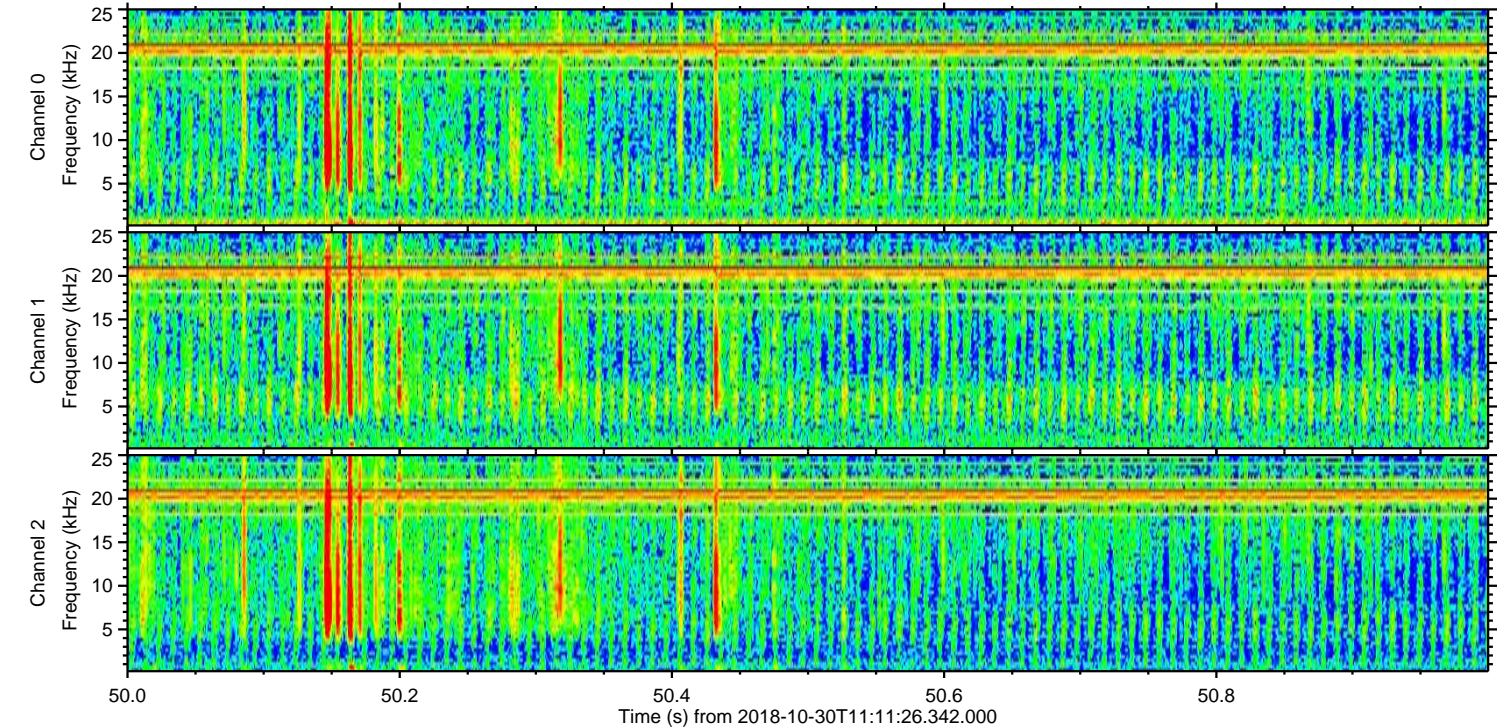
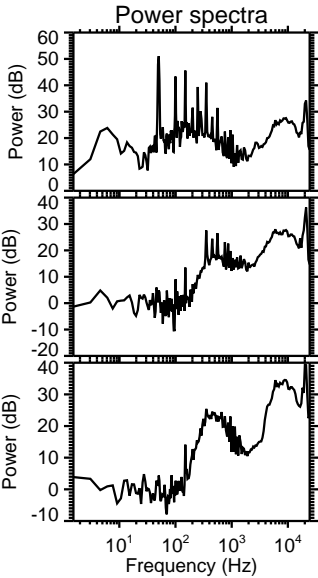
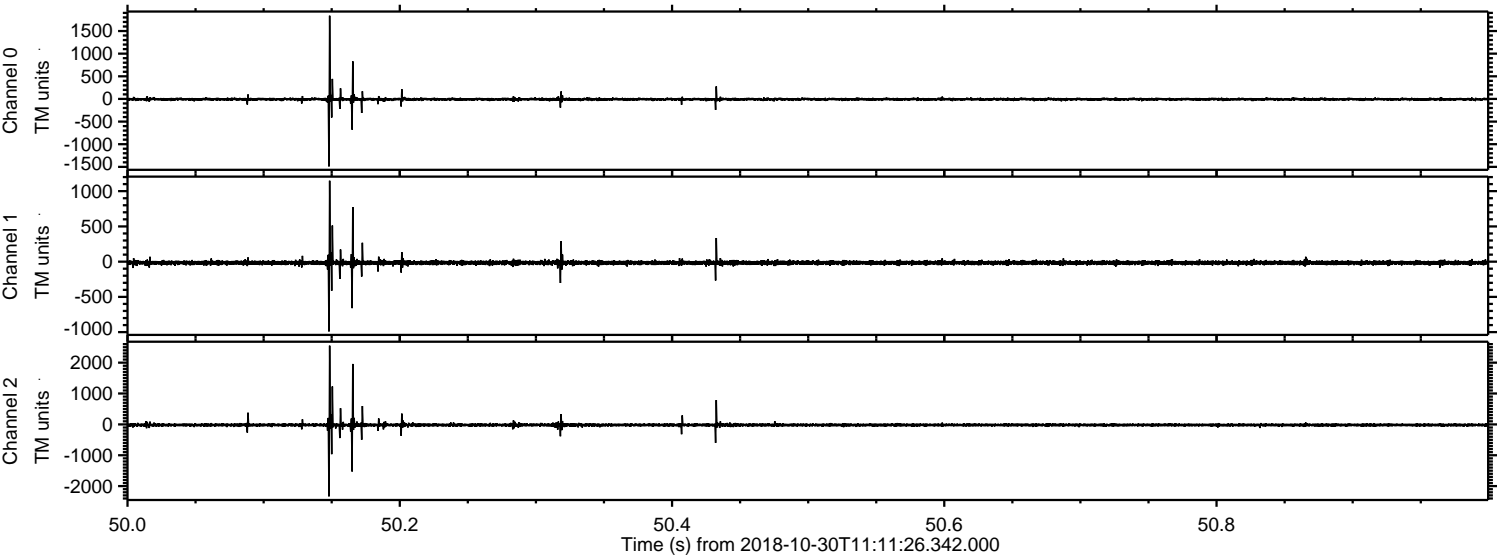


ELMAVAN 3D WAVEFORMS (Measured data sampled at 50 kHz) 51000 packets of 144 samples from 2018-10-30T11:11:26.342.000. Part 100/147

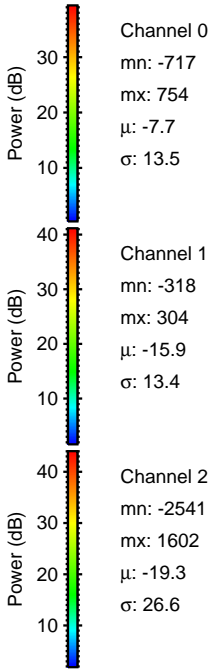
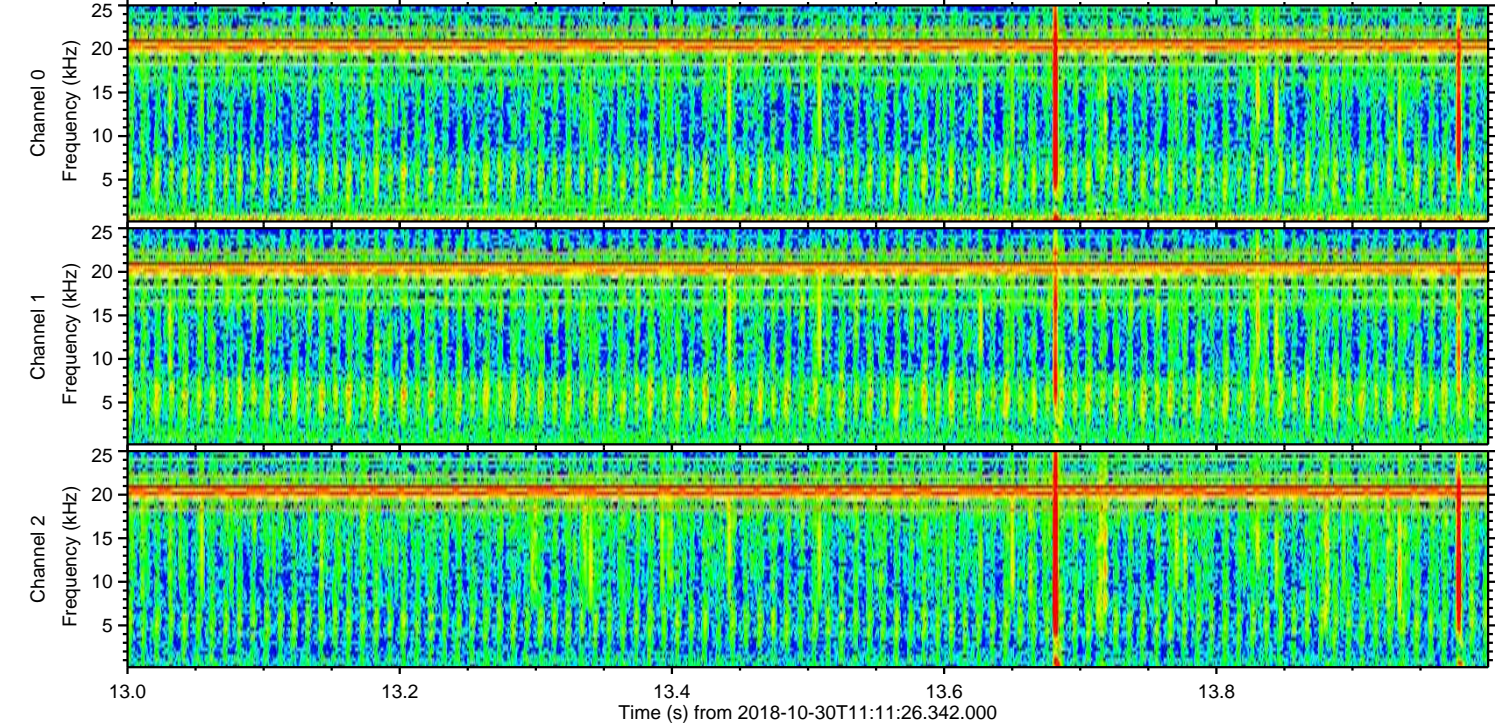
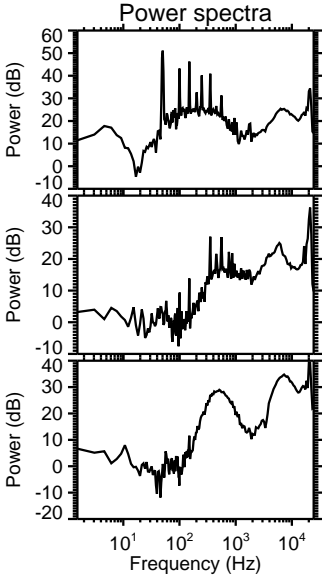
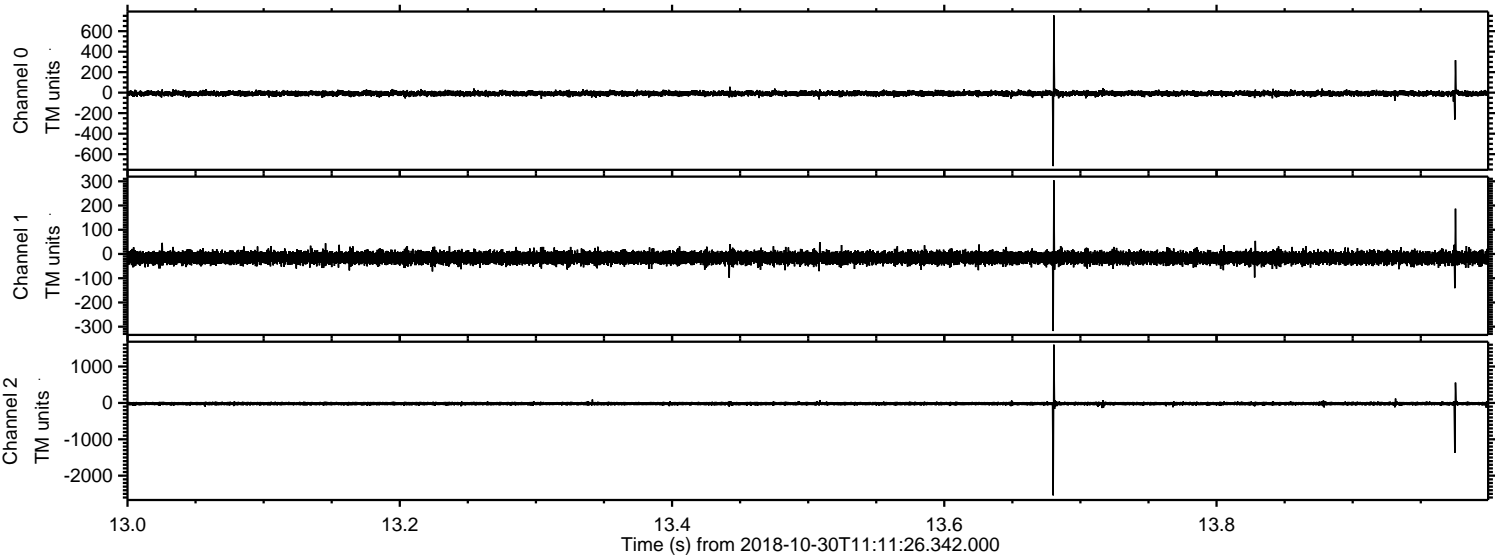
Processed Tue Oct 30 12:19:56 2018 by ELM ver.2012-10-06 from 001__elm20181030_111125__dat00.bin



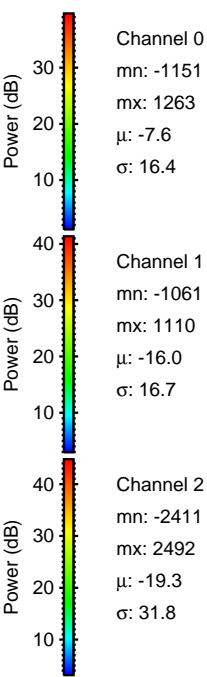
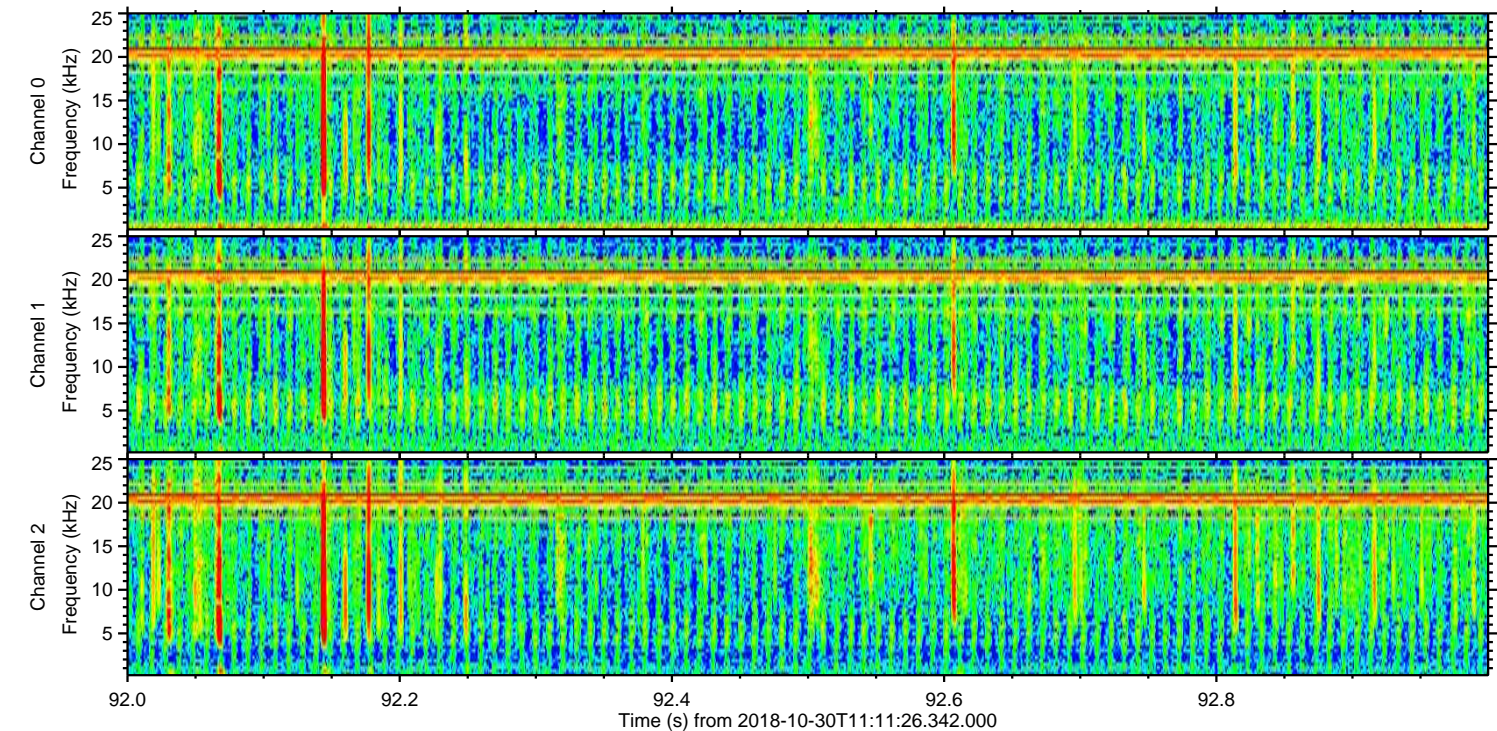
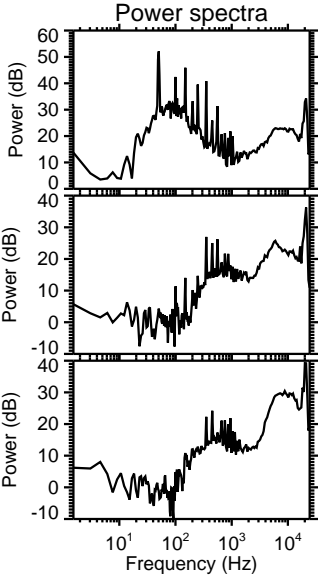
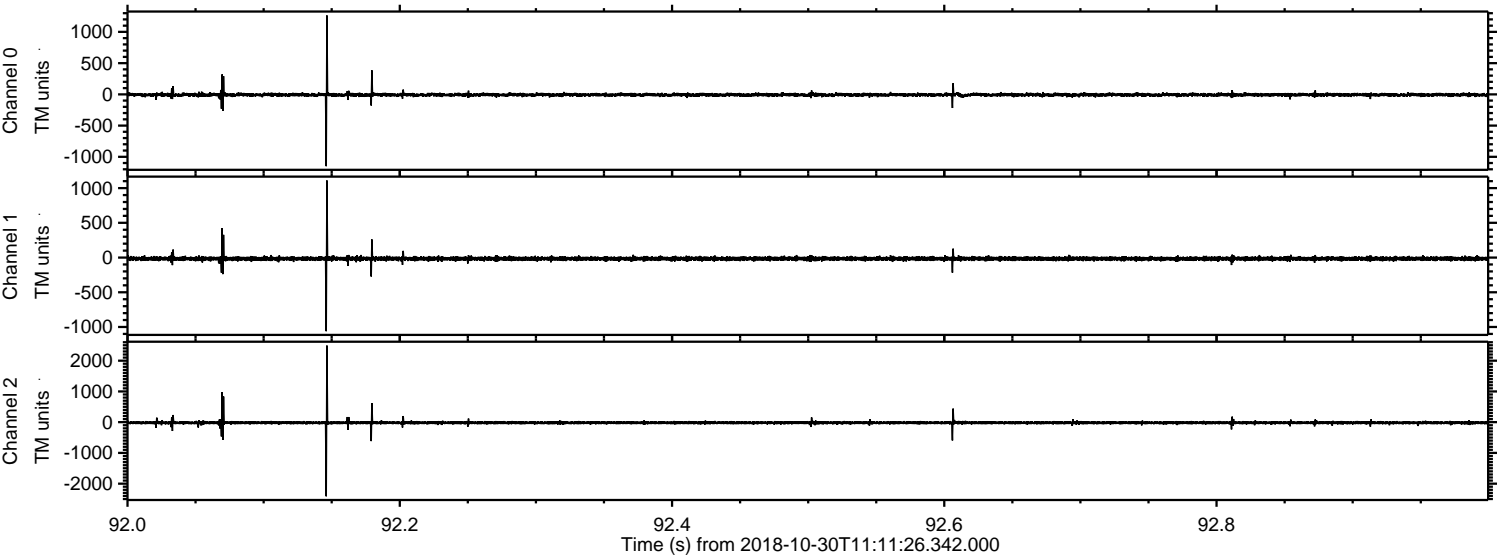
Processed Tue Oct 30 12:19:57 2018 by ELM ver.2012-10-06 from 001__elm20181030_111125__dat00.bin



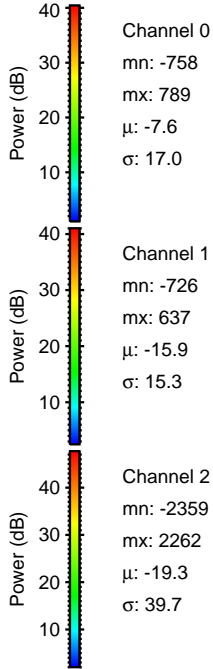
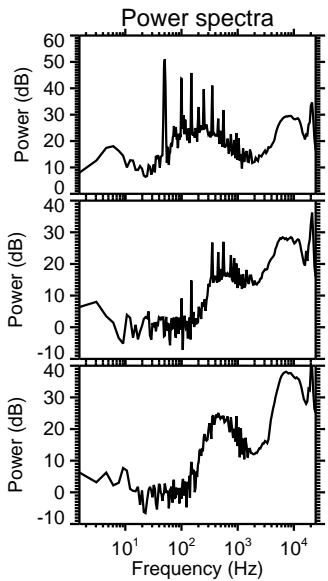
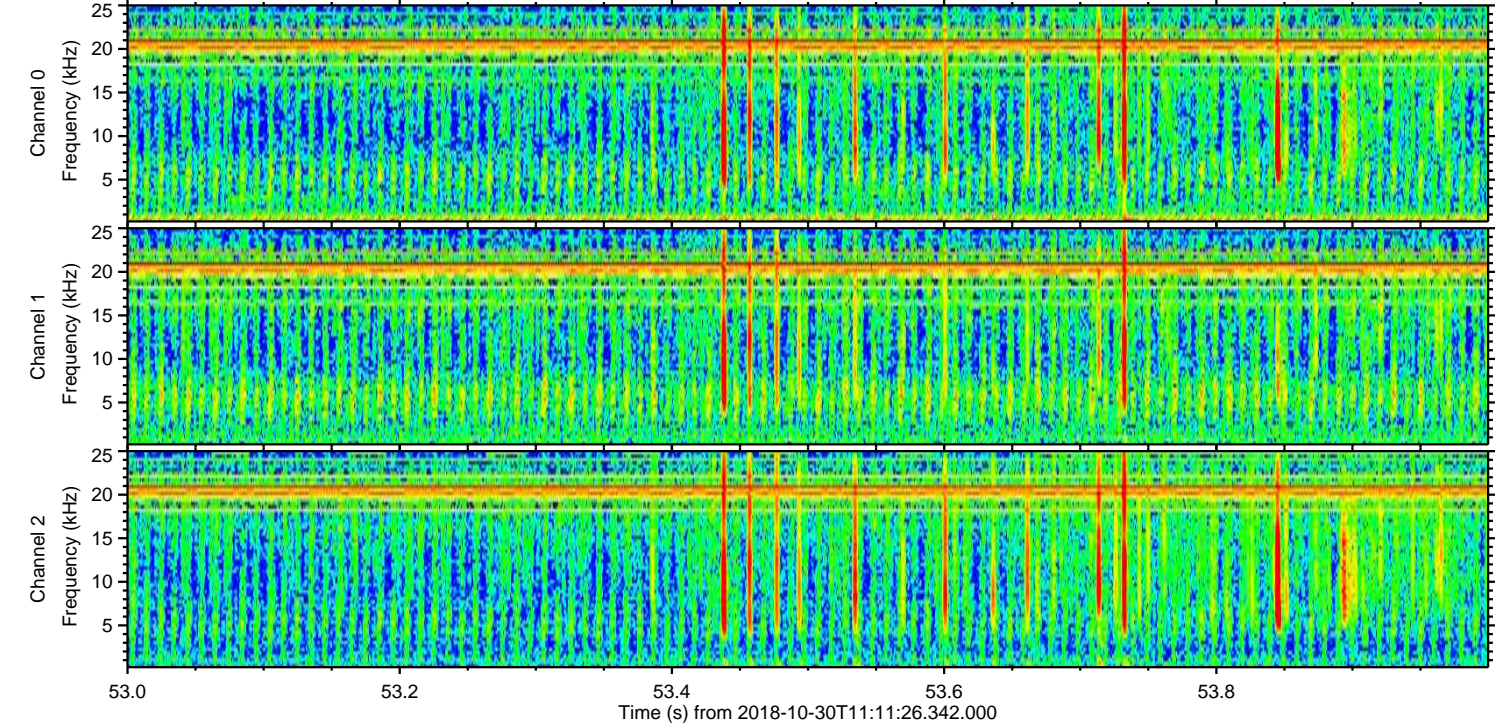
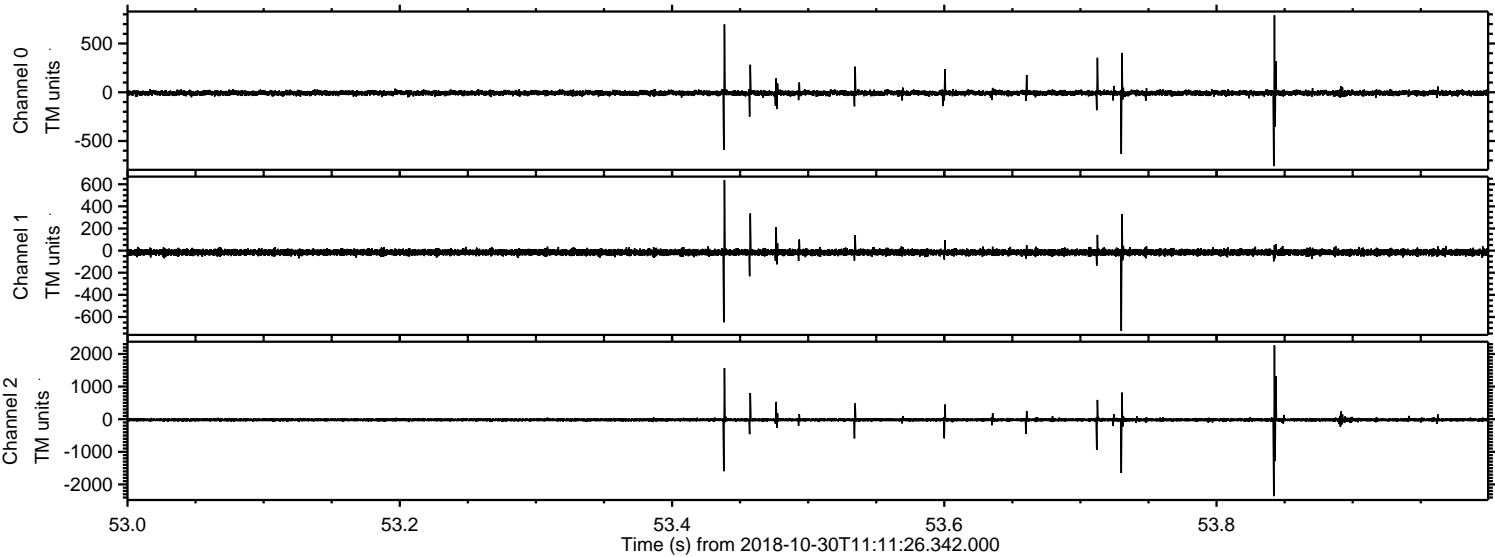
Processed Tue Oct 30 12:19:58 2018 by ELM ver.2012-10-06 from 001__elm20181030_111125__dat00.bin



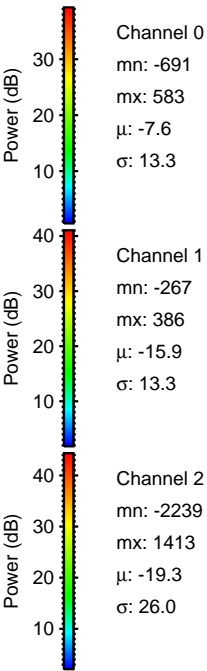
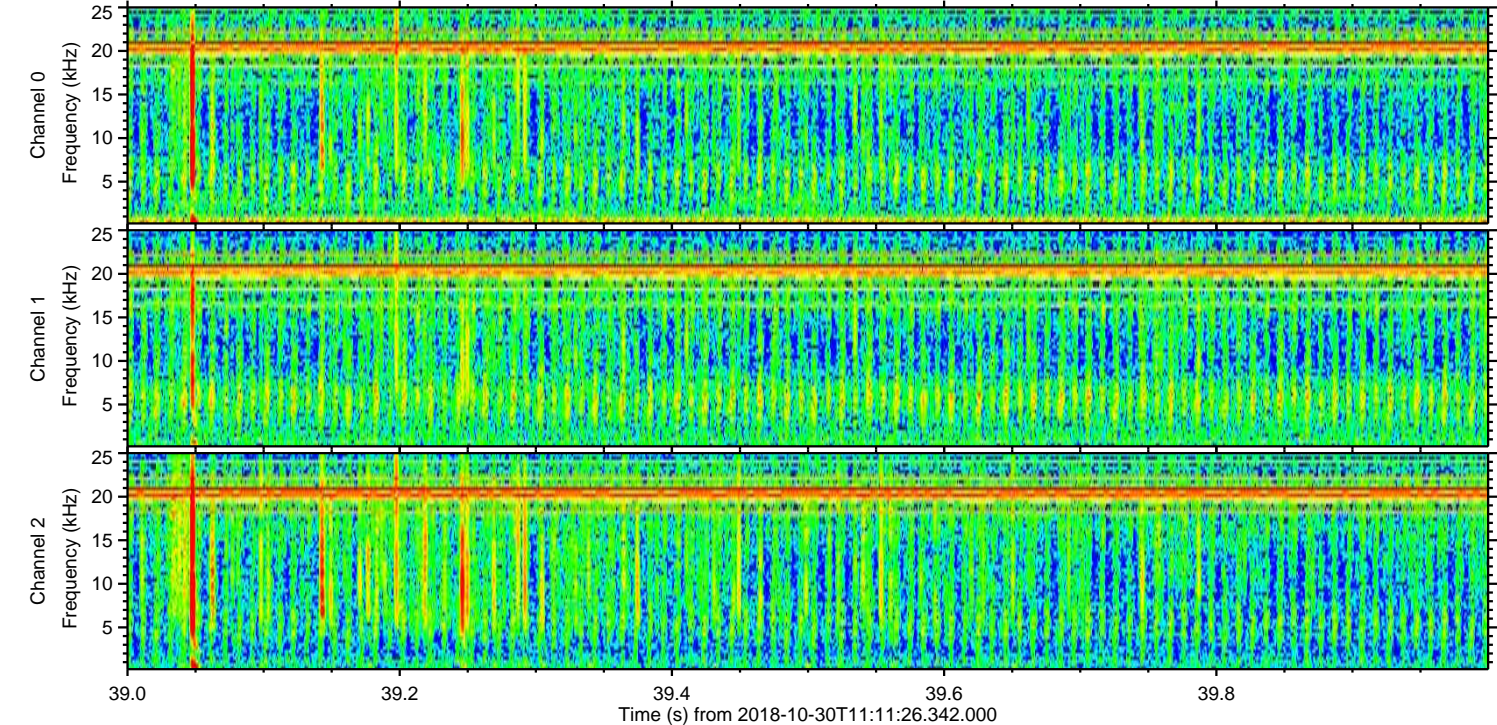
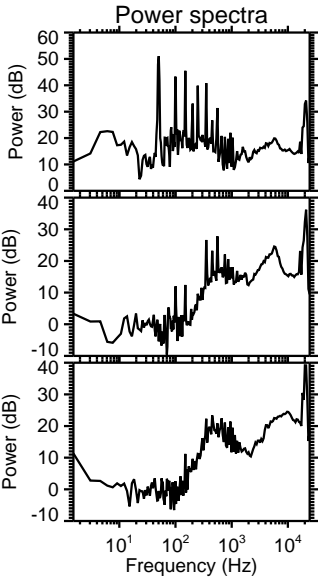
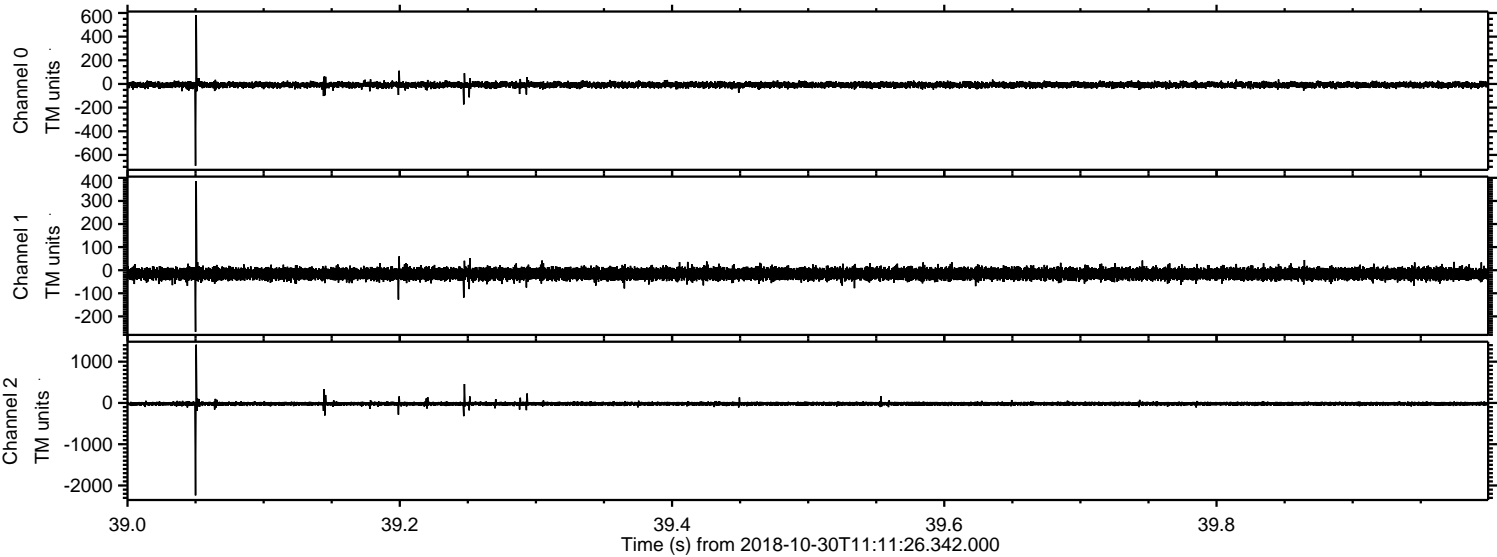
Processed Tue Oct 30 12:19:59 2018 by ELM ver.2012-10-06 from 001__elm20181030_111125__dat00.bin



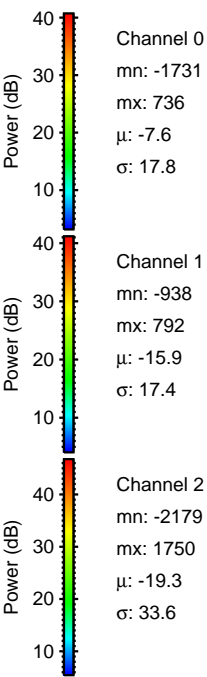
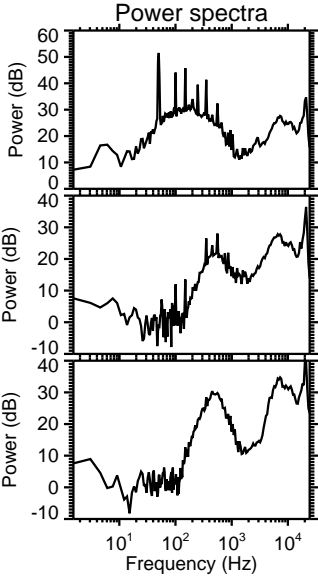
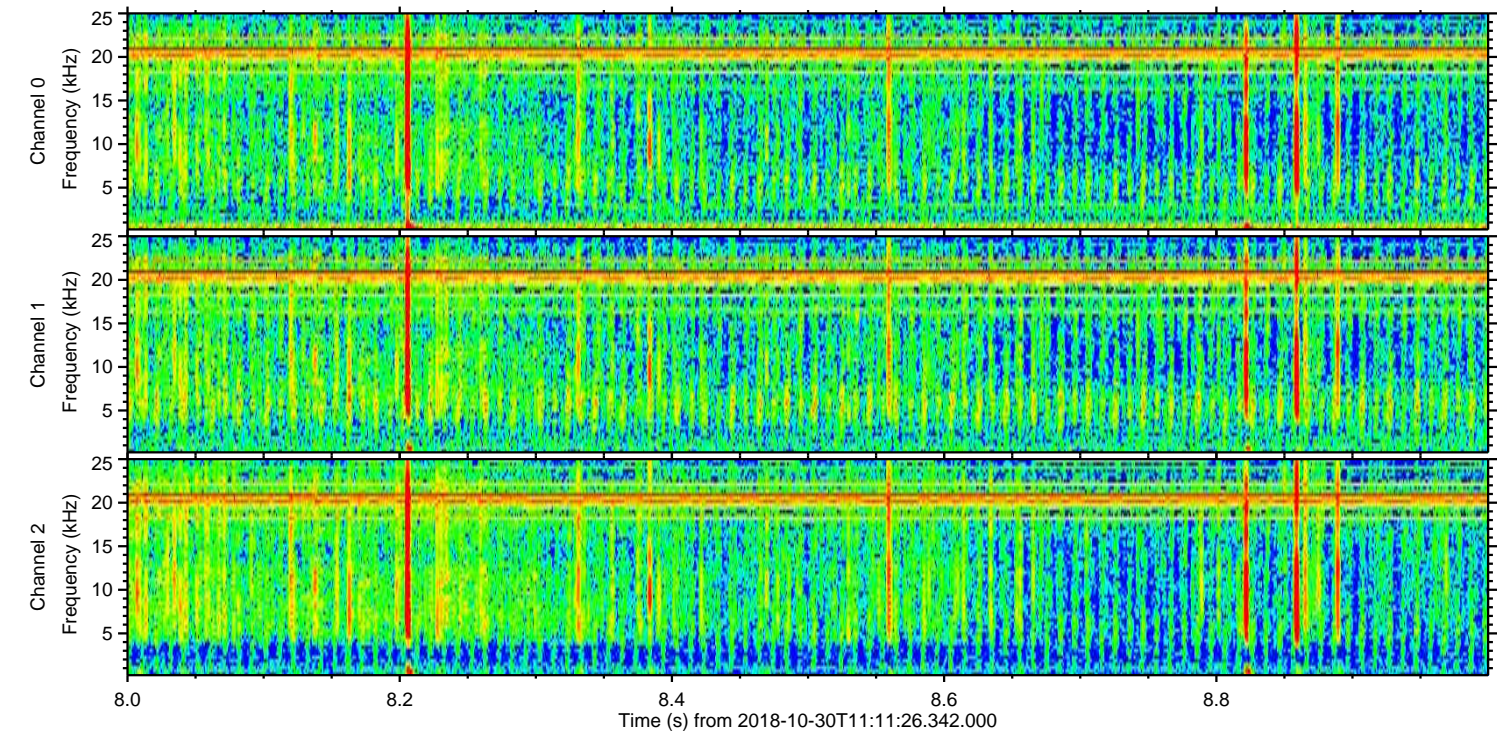
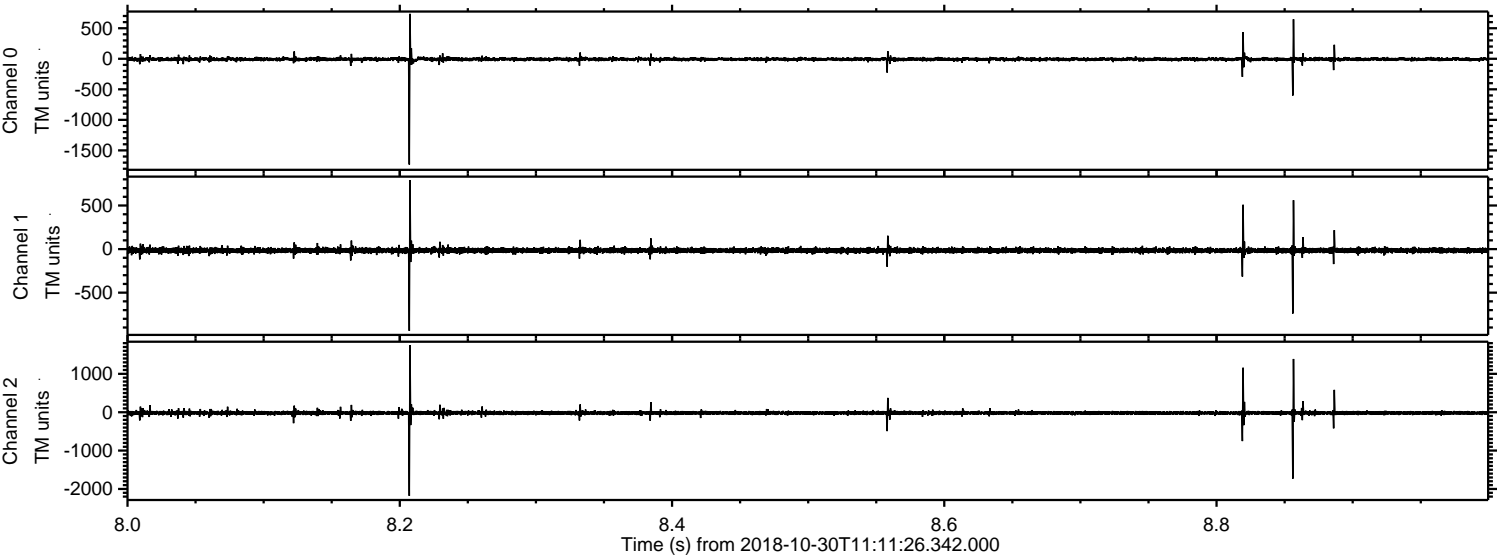
Processed Tue Oct 30 12:19:59 2018 by ELM ver.2012-10-06 from 001__elm20181030_111125__dat00.bin



Processed Tue Oct 30 12:20:00 2018 by ELM ver.2012-10-06 from 001__elm20181030_111125__dat00.bin



Processed Tue Oct 30 12:20:01 2018 by ELM ver.2012-10-06 from 001__elm20181030_111125__dat00.bin



Channel 0
mn: -1731
mx: 736
 μ : -7.6
 σ : 17.8

Channel 1
mn: -938
mx: 792
 μ : -15.9
 σ : 17.4

Channel 2
mn: -2179
mx: 1750
 μ : -19.3
 σ : 33.6

Processed Tue Oct 30 12:20:02 2018 by ELM ver.2012-10-06 from 001__elm20181030_111125__dat00.bin

