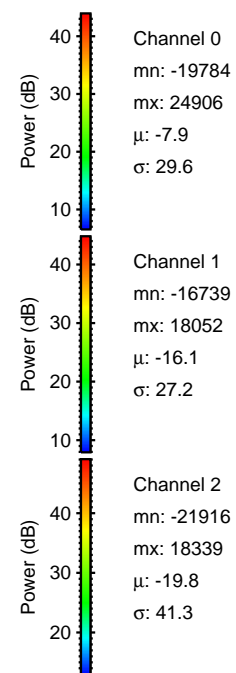
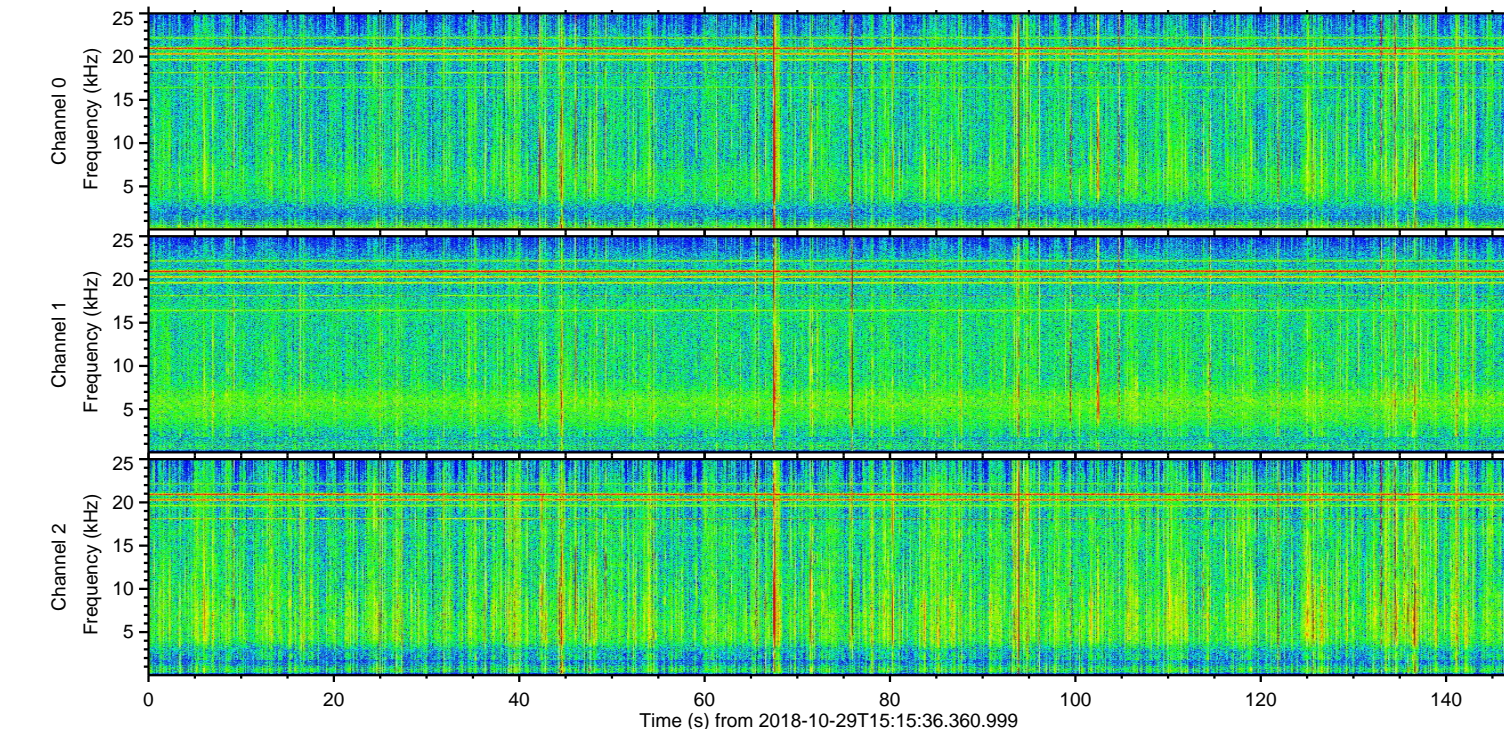
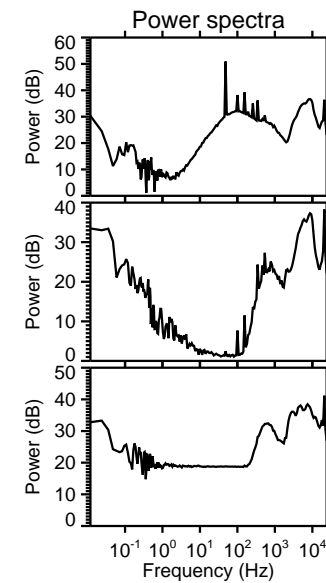
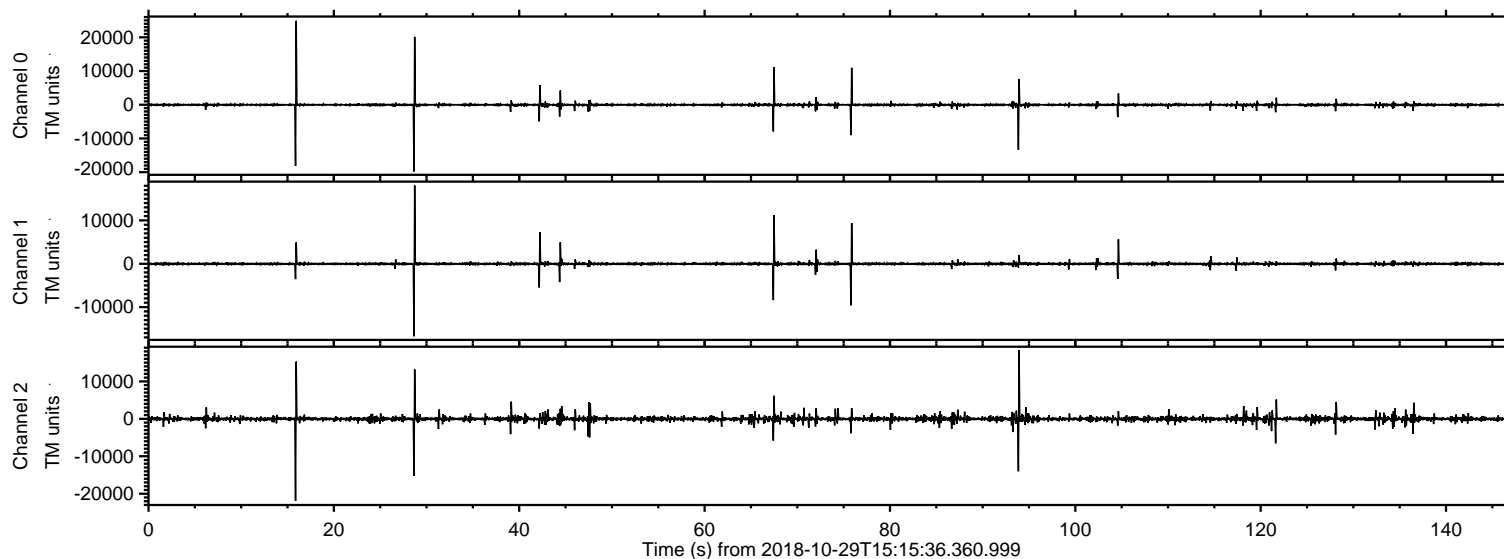
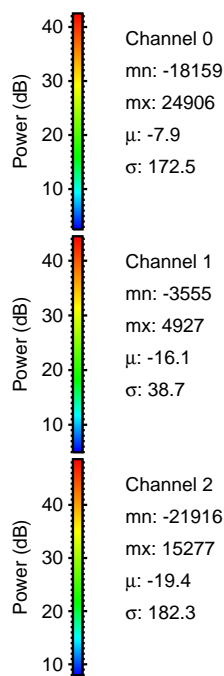
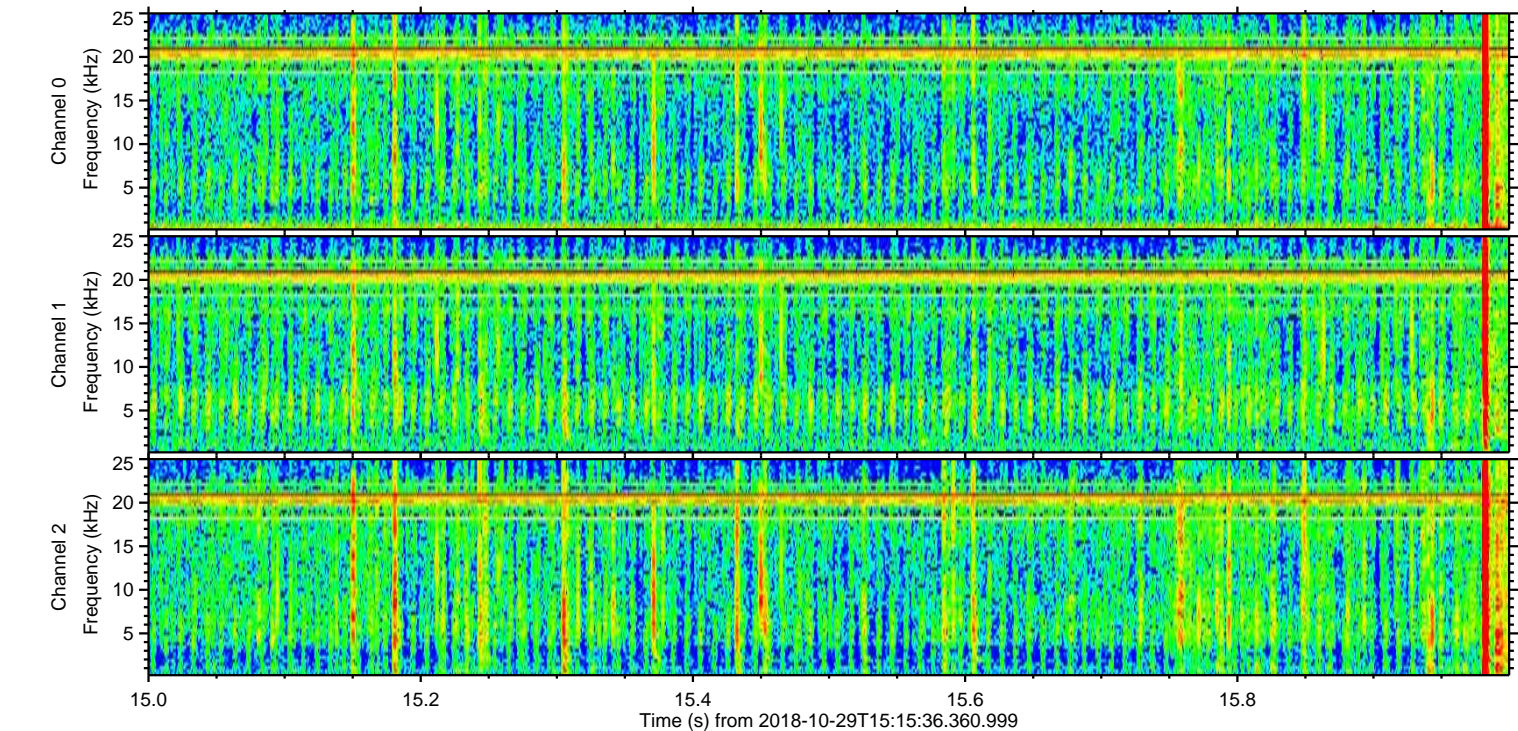
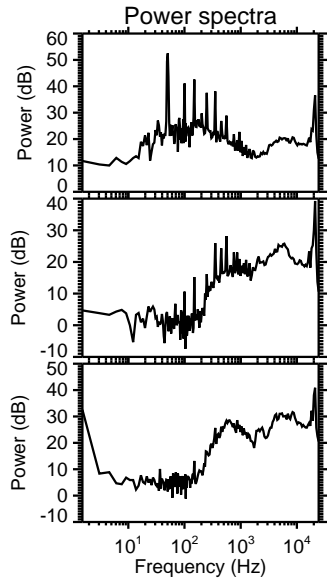
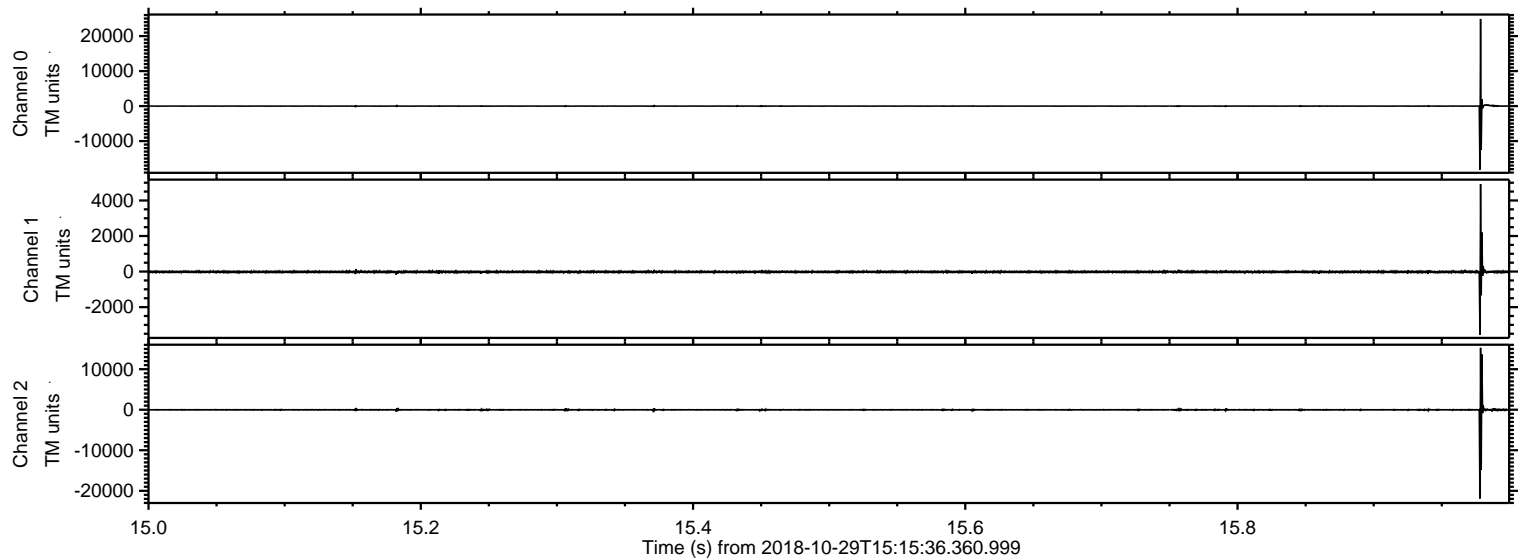


ELMAVAN 3D WAVEFORMS (Measured data sampled at 50 kHz) 51000 packets of 144 samples from 2018-10-29T15:15:36.360.999.

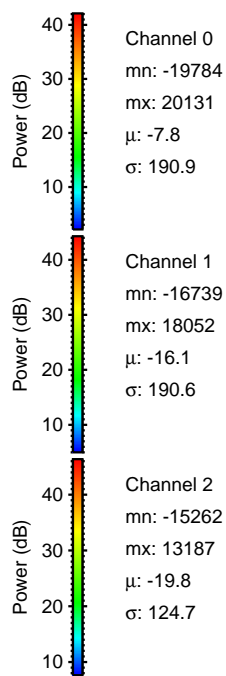
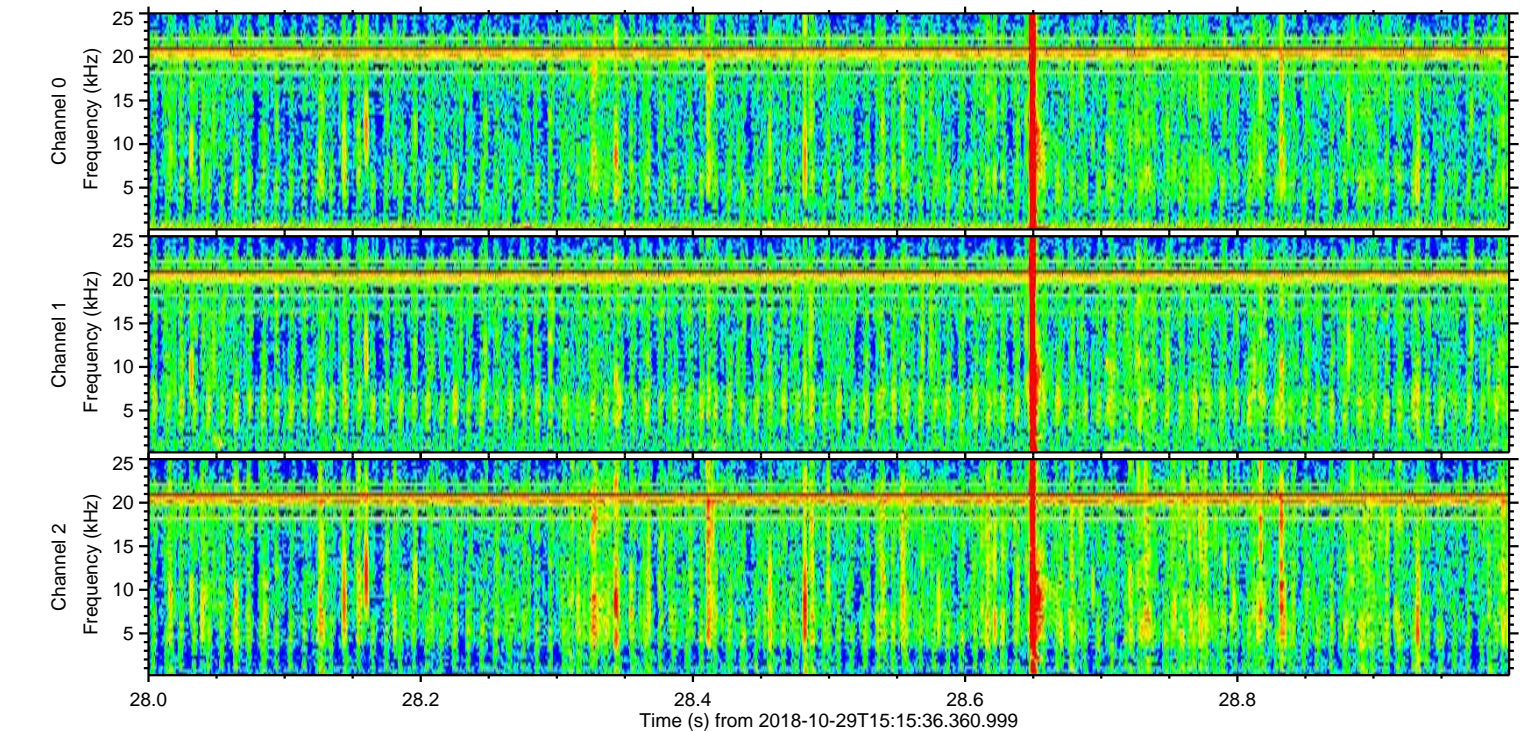
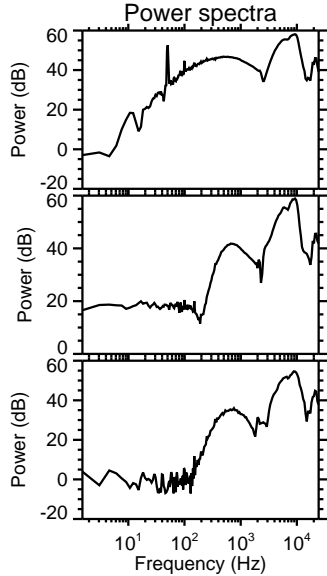
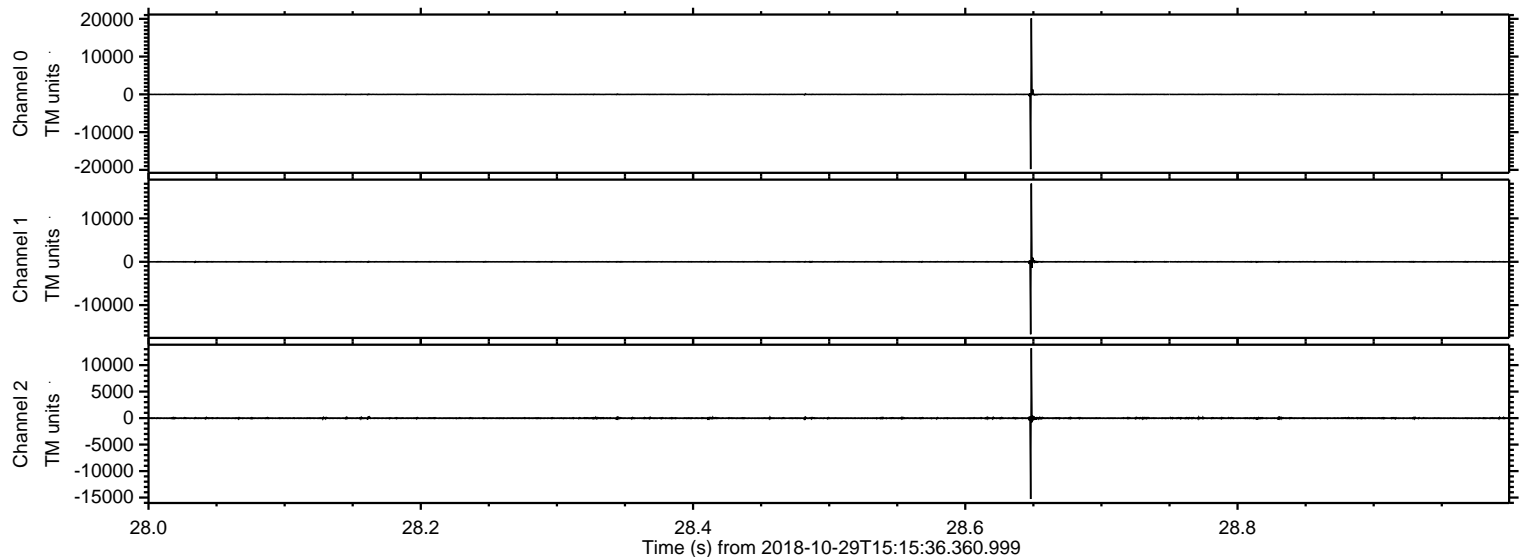
Processed Mon Oct 29 16:23:18 2018 by ELM ver.2012-10-06 from 001__elm20181029_151535__dat00.bin



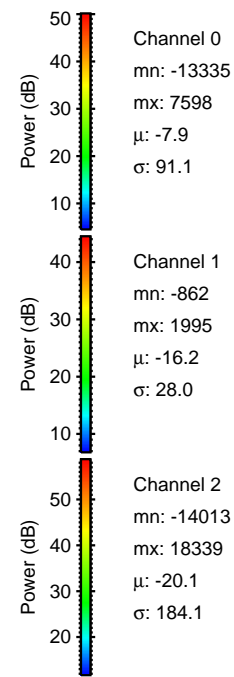
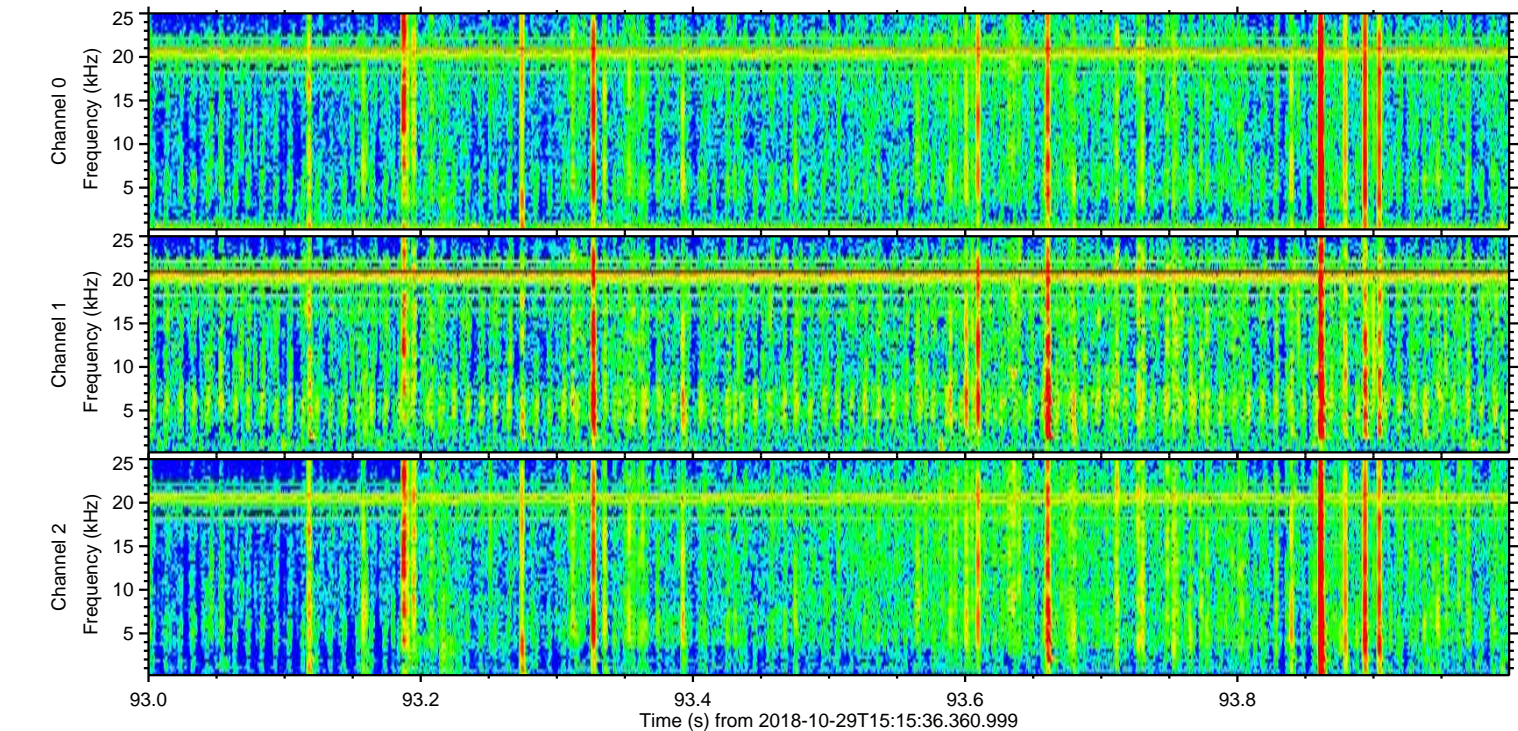
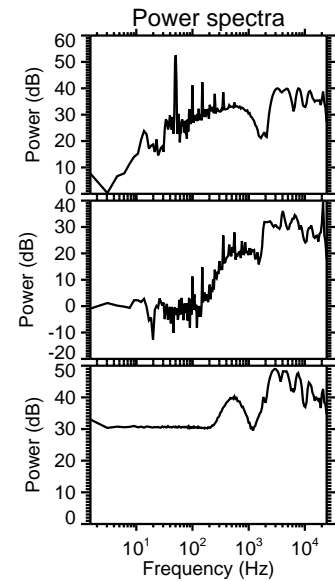
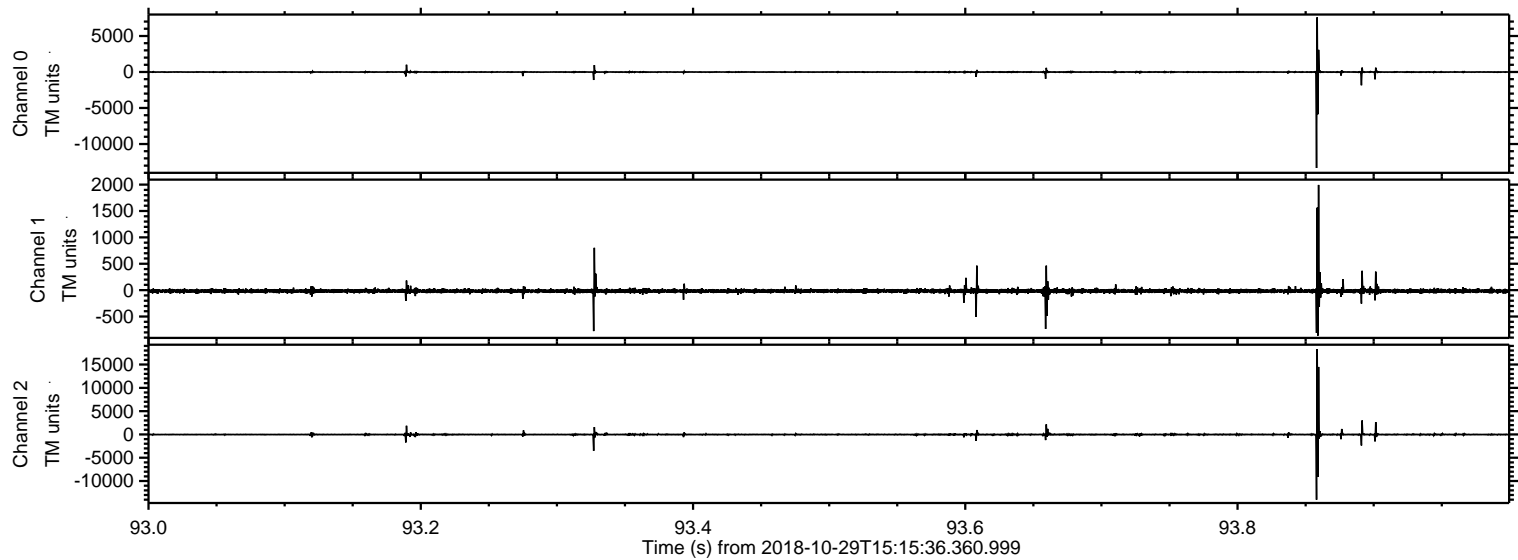
Processed Mon Oct 29 16:23:26 2018 by ELM ver.2012-10-06 from 001__elm20181029_151535__dat00.bin



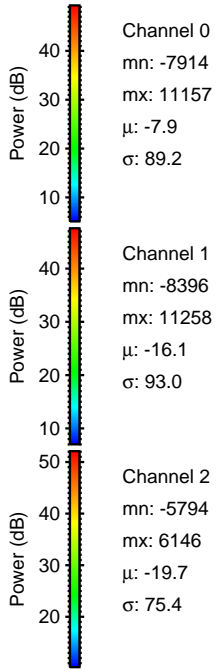
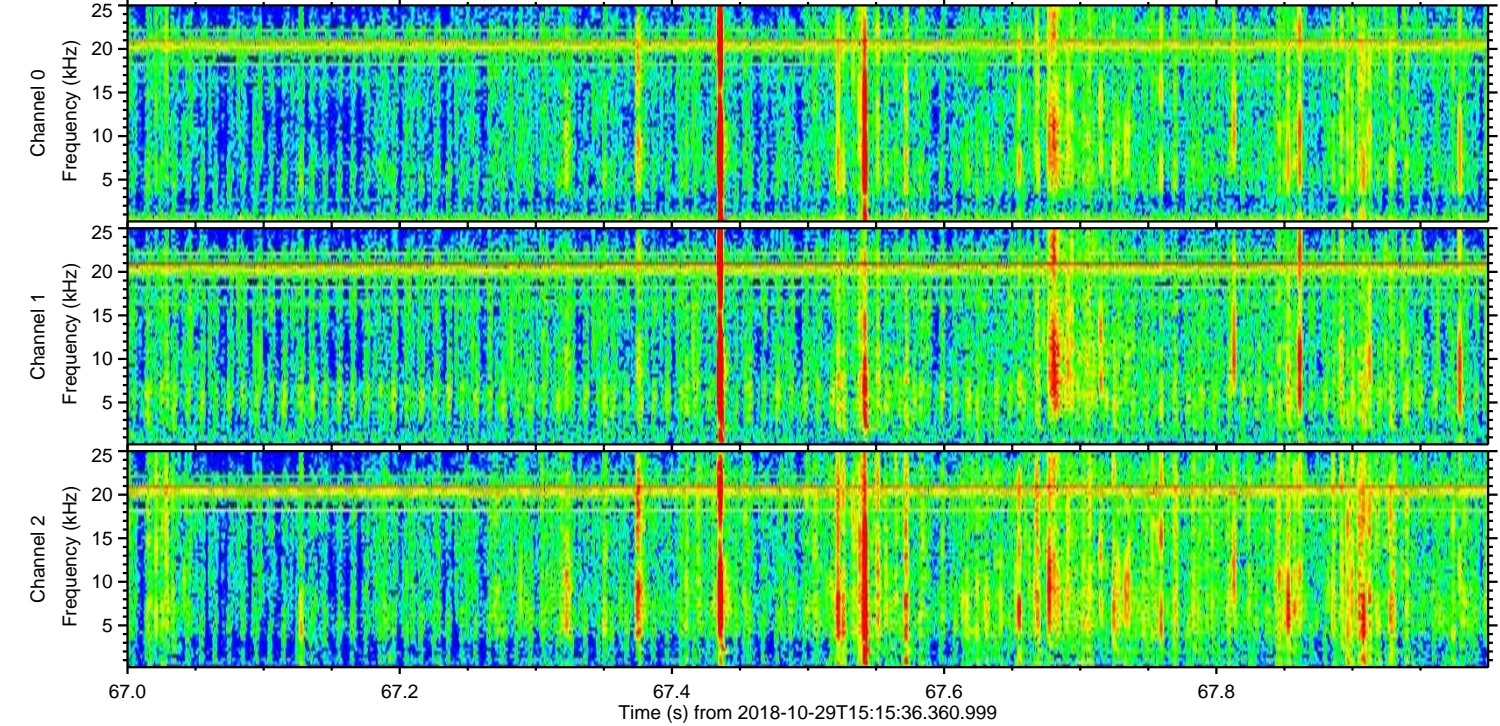
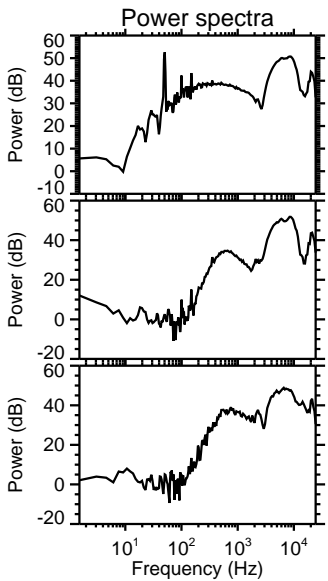
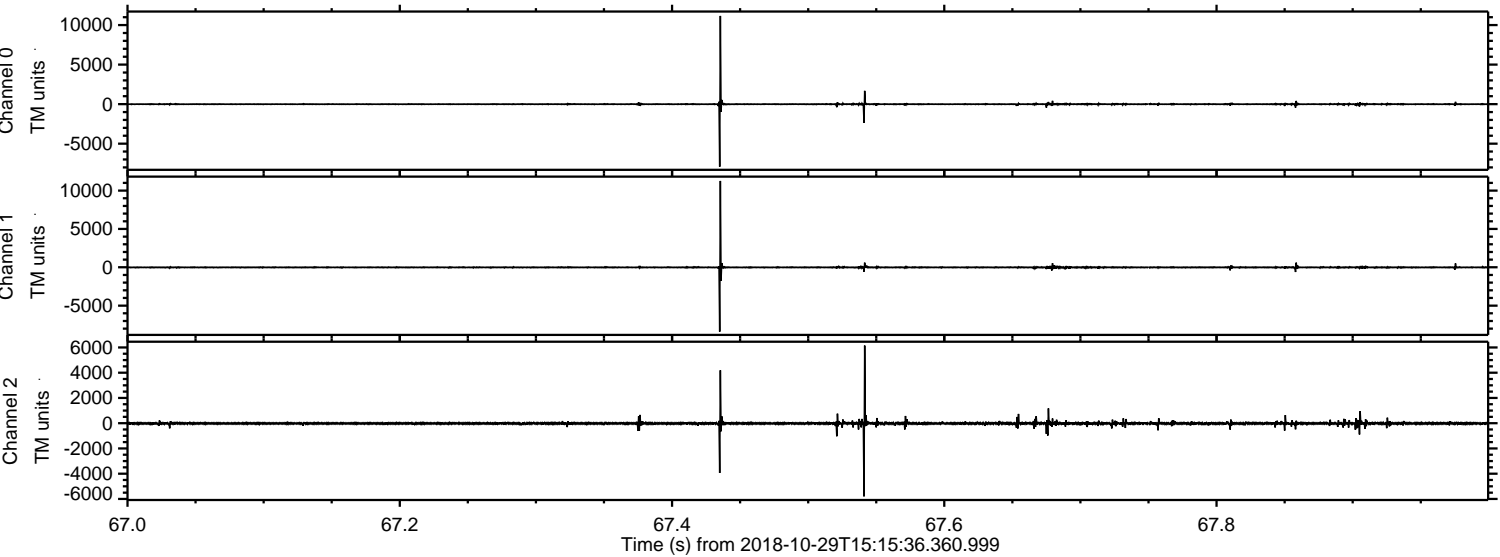
Processed Mon Oct 29 16:23:27 2018 by ELM ver.2012-10-06 from 001__elm20181029_151535__dat00.bin



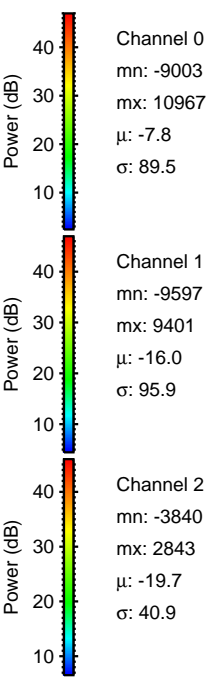
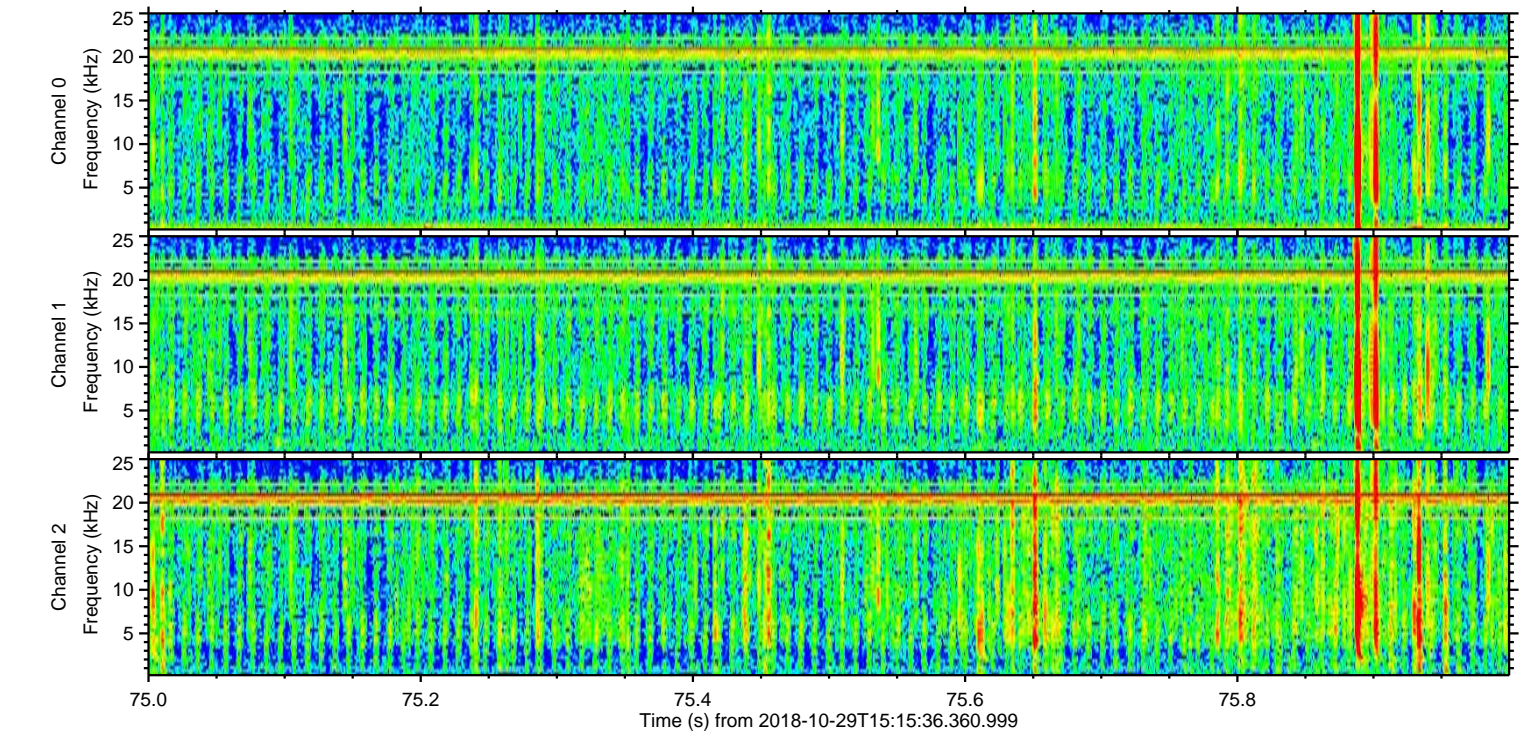
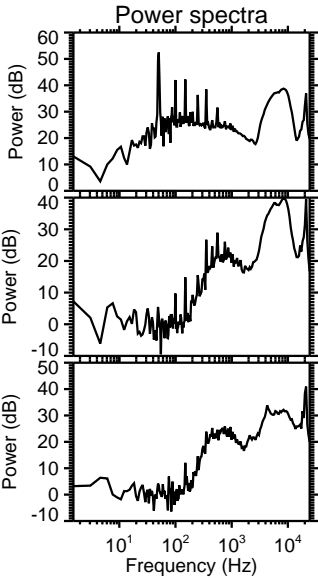
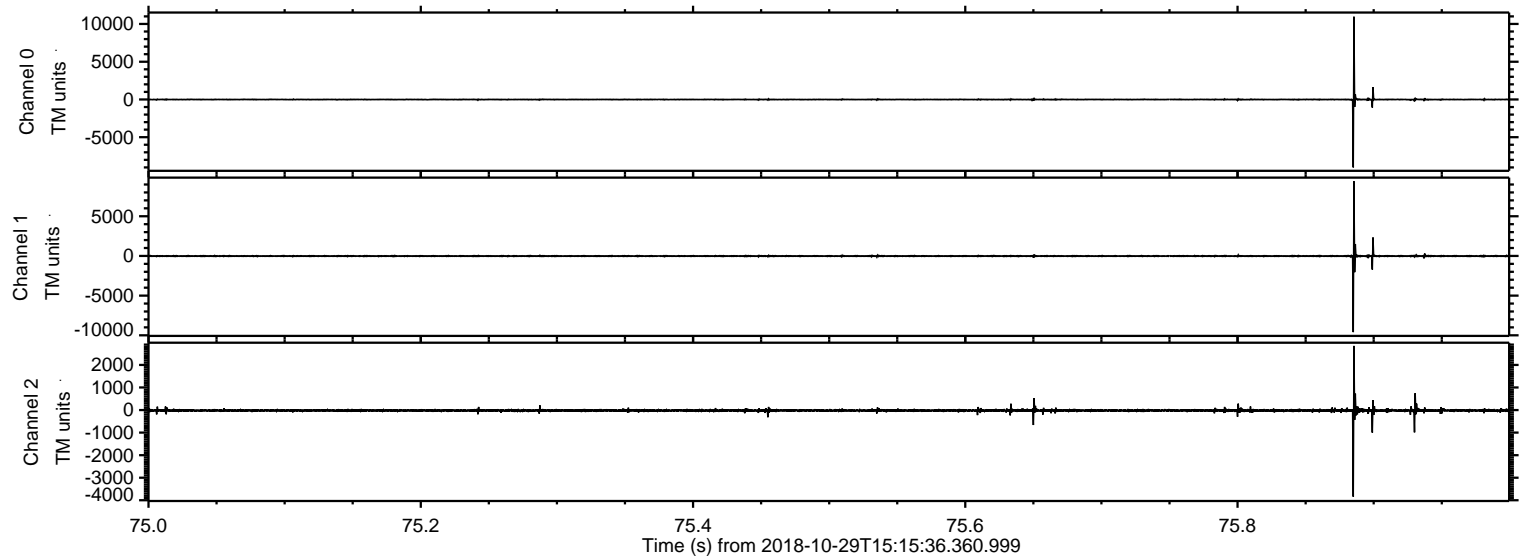
Processed Mon Oct 29 16:23:28 2018 by ELM ver.2012-10-06 from 001__elm20181029_151535__dat00.bin



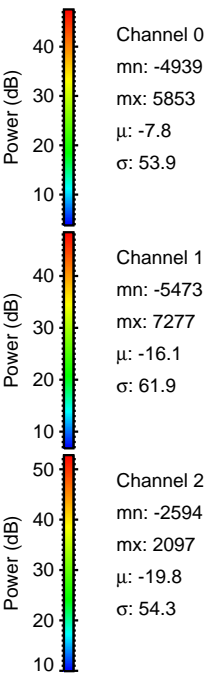
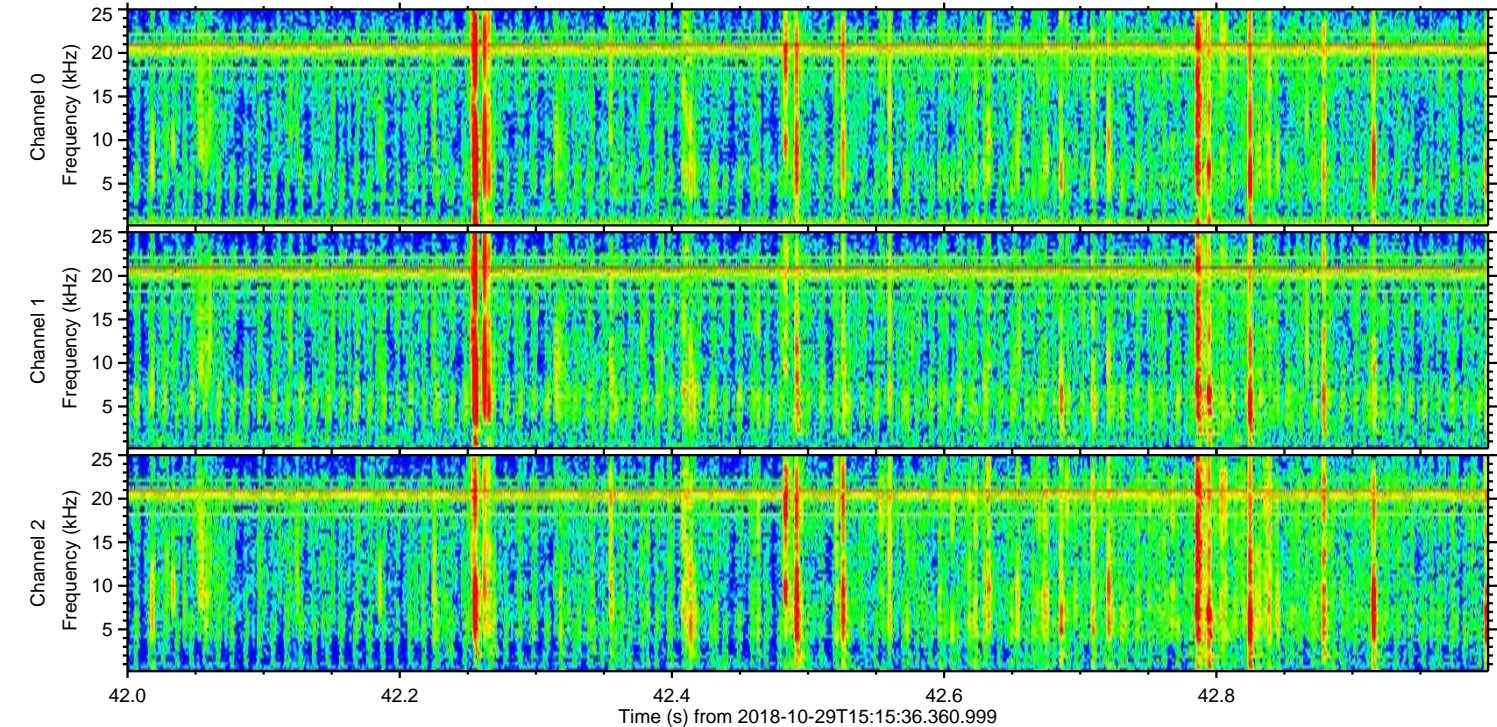
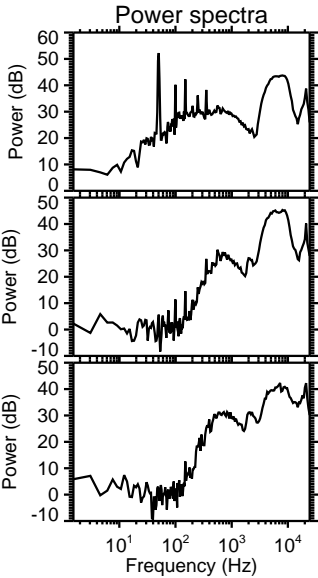
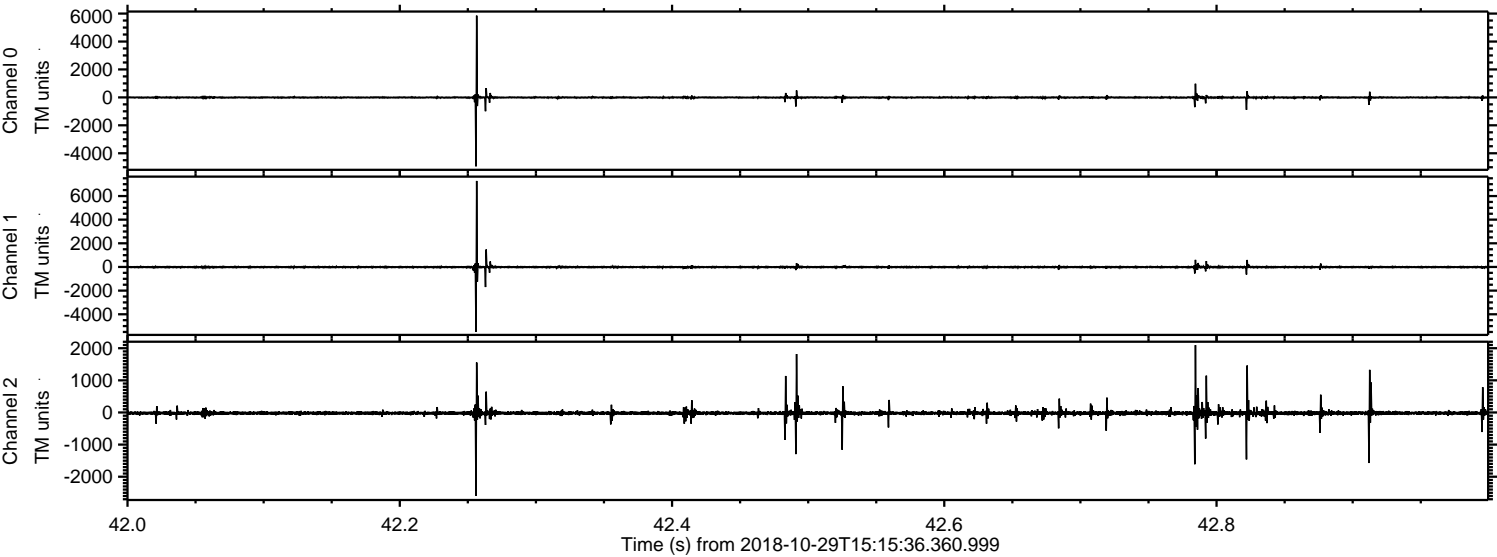
Processed Mon Oct 29 16:23:29 2018 by ELM ver.2012-10-06 from 001__elm20181029_151535__dat00.bin



Processed Mon Oct 29 16:23:29 2018 by ELM ver.2012-10-06 from 001__elm20181029_151535__dat00.bin

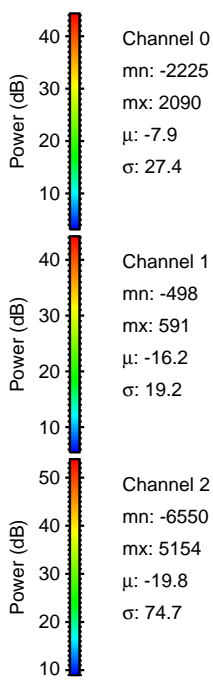
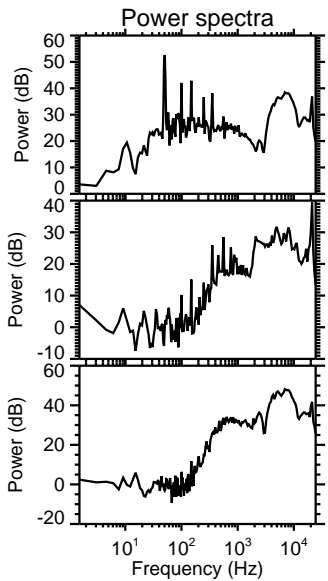
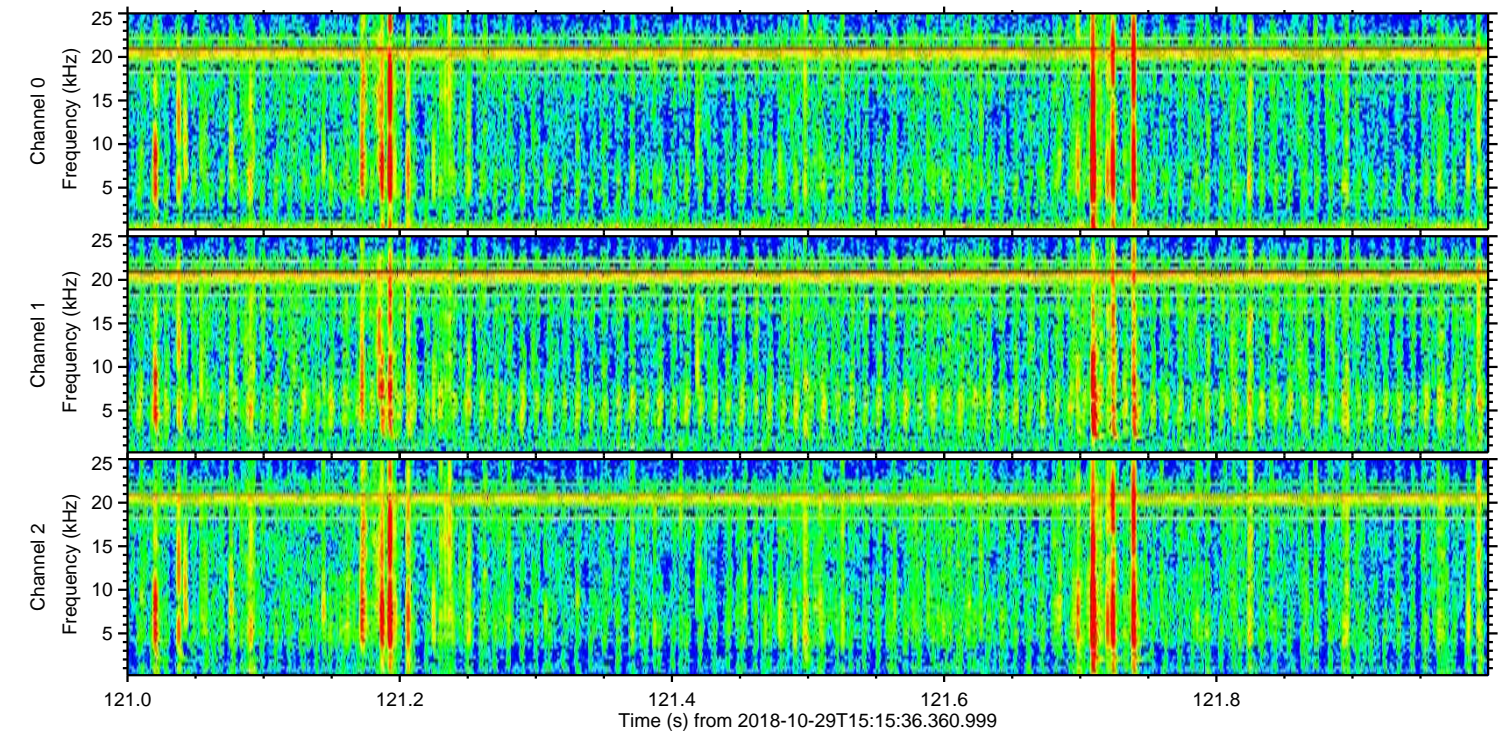
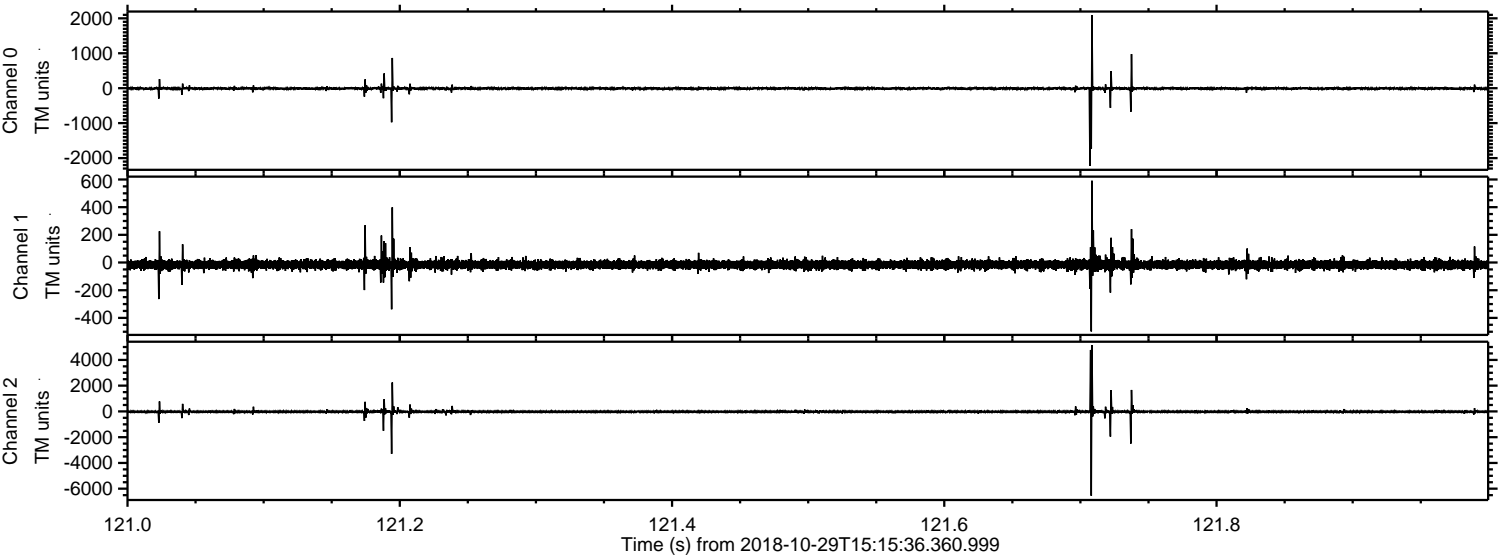


Processed Mon Oct 29 16:23:30 2018 by ELM ver.2012-10-06 from 001__elm20181029_151535__dat00.bin



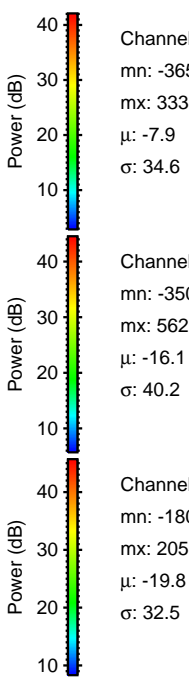
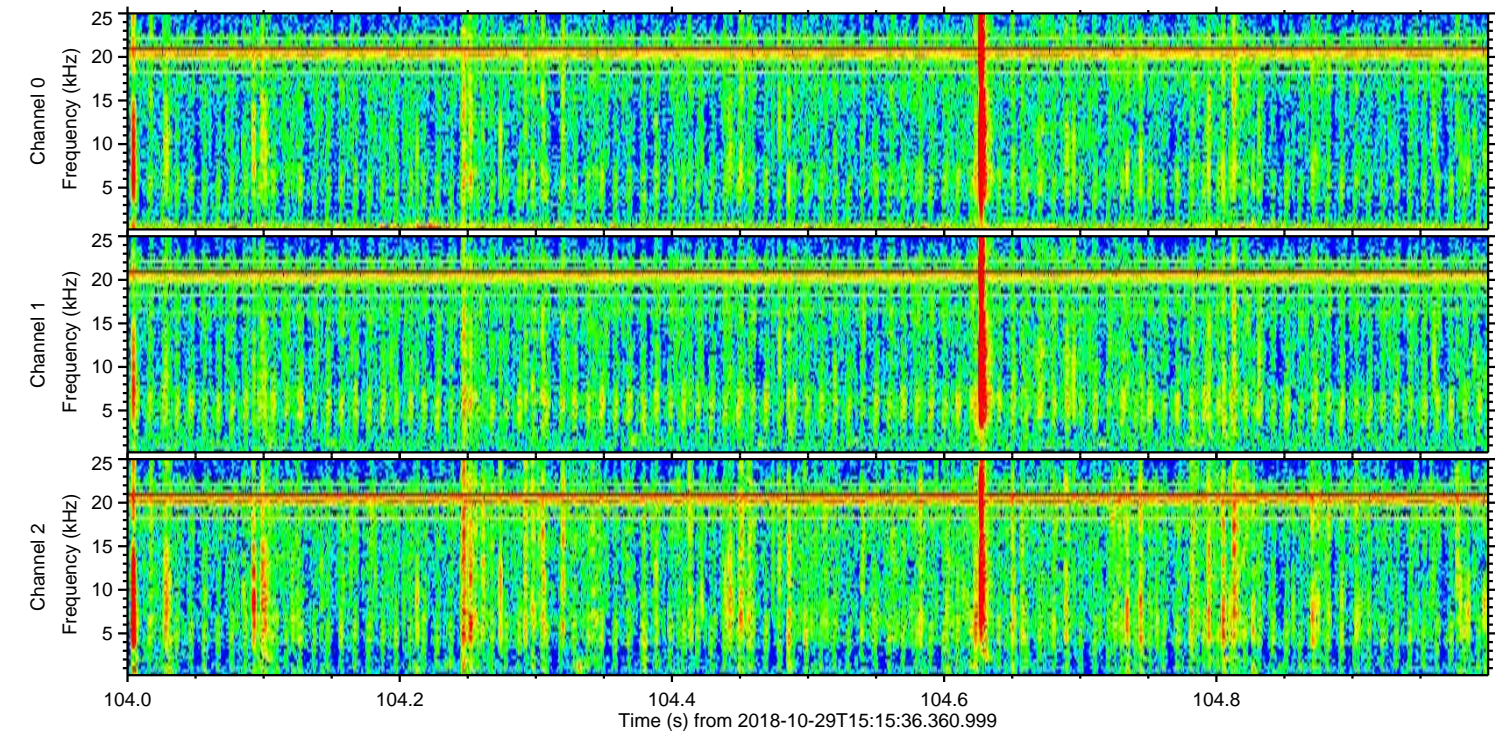
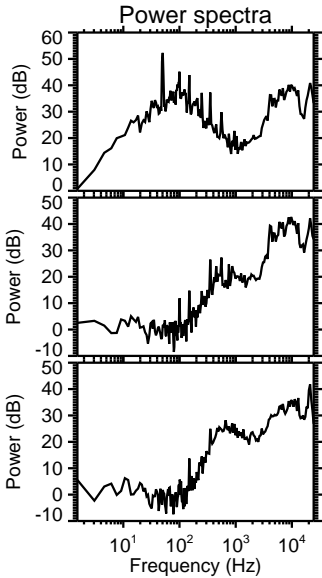
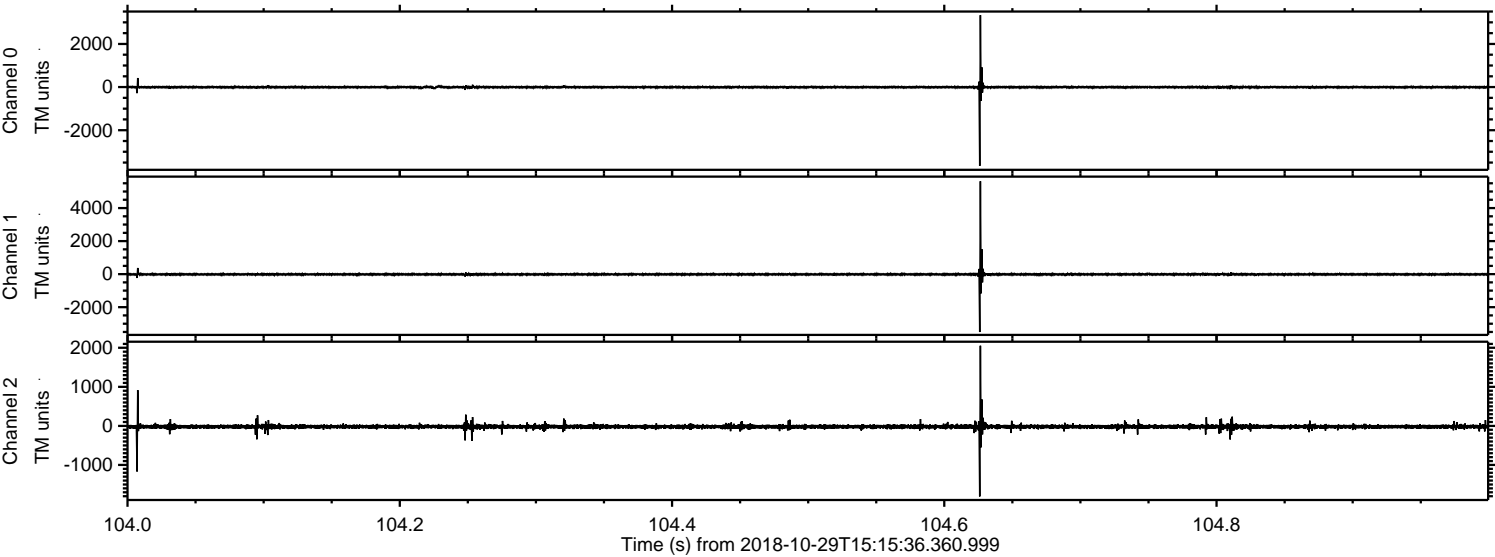
ELMAVAN 3D WAVEFORMS (Measured data sampled at 50 kHz) 51000 packets of 144 samples from 2018-10-29T15:15:36.360.999. Part 122/147

Processed Mon Oct 29 16:23:31 2018 by ELM ver.2012-10-06 from 001__elm20181029_151535__dat00.bin



ELMAVAN 3D WAVEFORMS (Measured data sampled at 50 kHz) 51000 packets of 144 samples from 2018-10-29T15:15:36.360.999. Part 105/147

Processed Mon Oct 29 16:23:32 2018 by ELM ver.2012-10-06 from 001__elm20181029_151535__dat00.bin



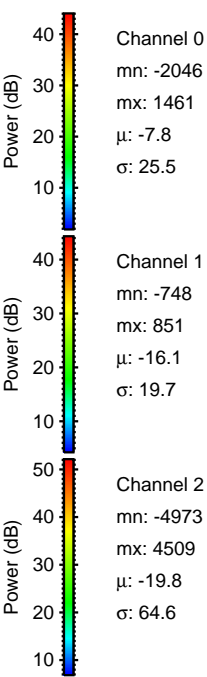
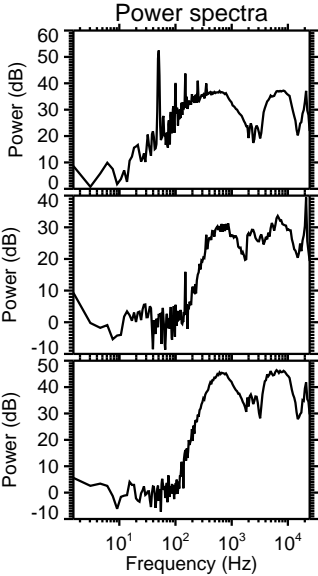
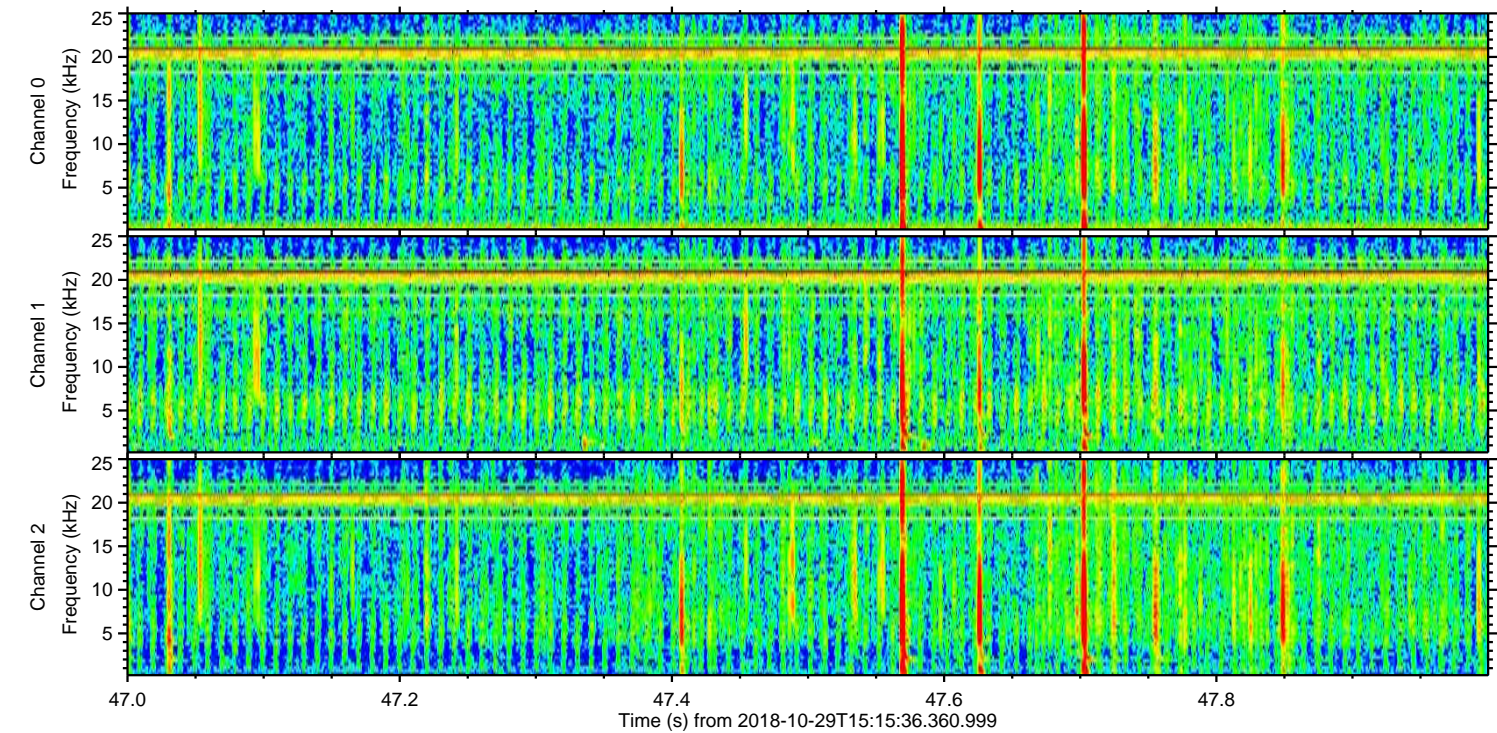
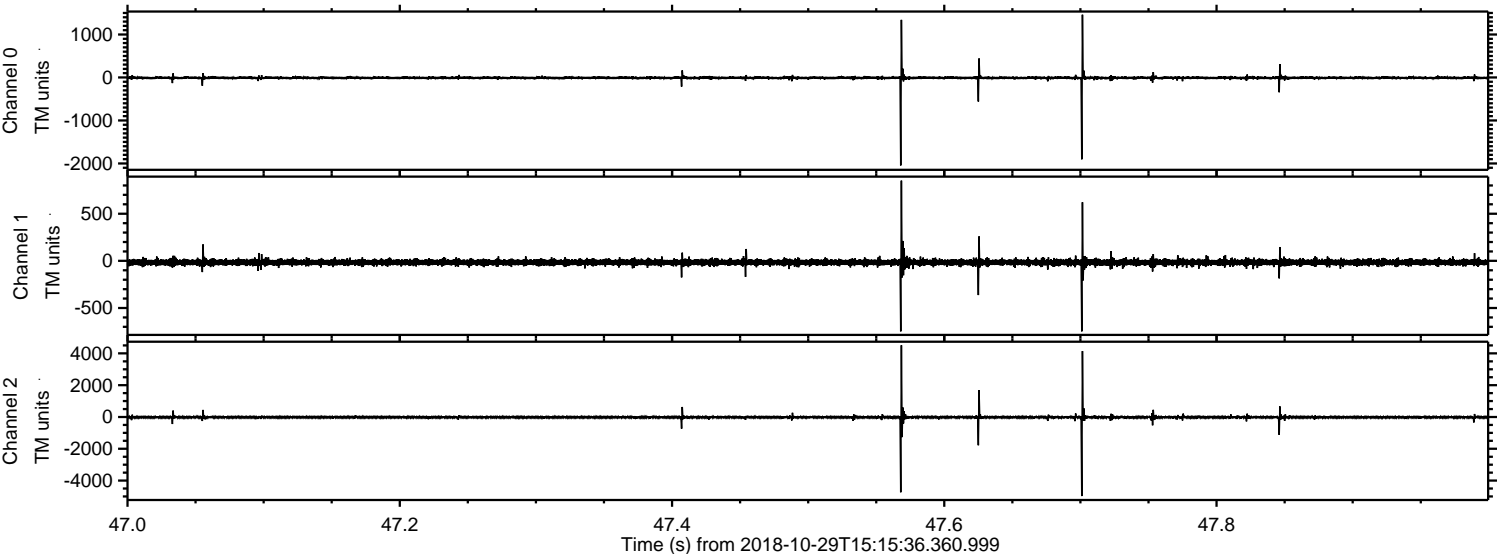
Power spectra

Channel 0
mn: -3654
mx: 3335
 μ : -7.9
 σ : 34.6

Channel 1
mn: -3504
mx: 5621
 μ : -16.1
 σ : 40.2

Channel 2
mn: -1807
mx: 2053
 μ : -19.8
 σ : 32.5

Processed Mon Oct 29 16:23:33 2018 by ELM ver.2012-10-06 from 001__elm20181029_151535__dat00.bin



Processed Mon Oct 29 16:23:34 2018 by ELM ver.2012-10-06 from 001__elm20181029_151535__dat00.bin

