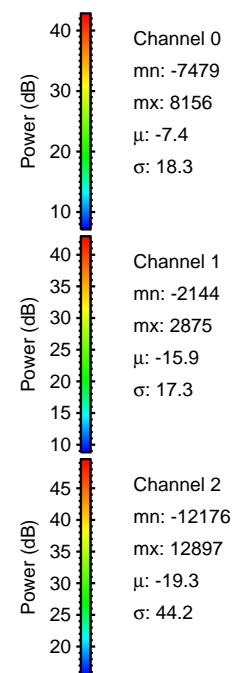
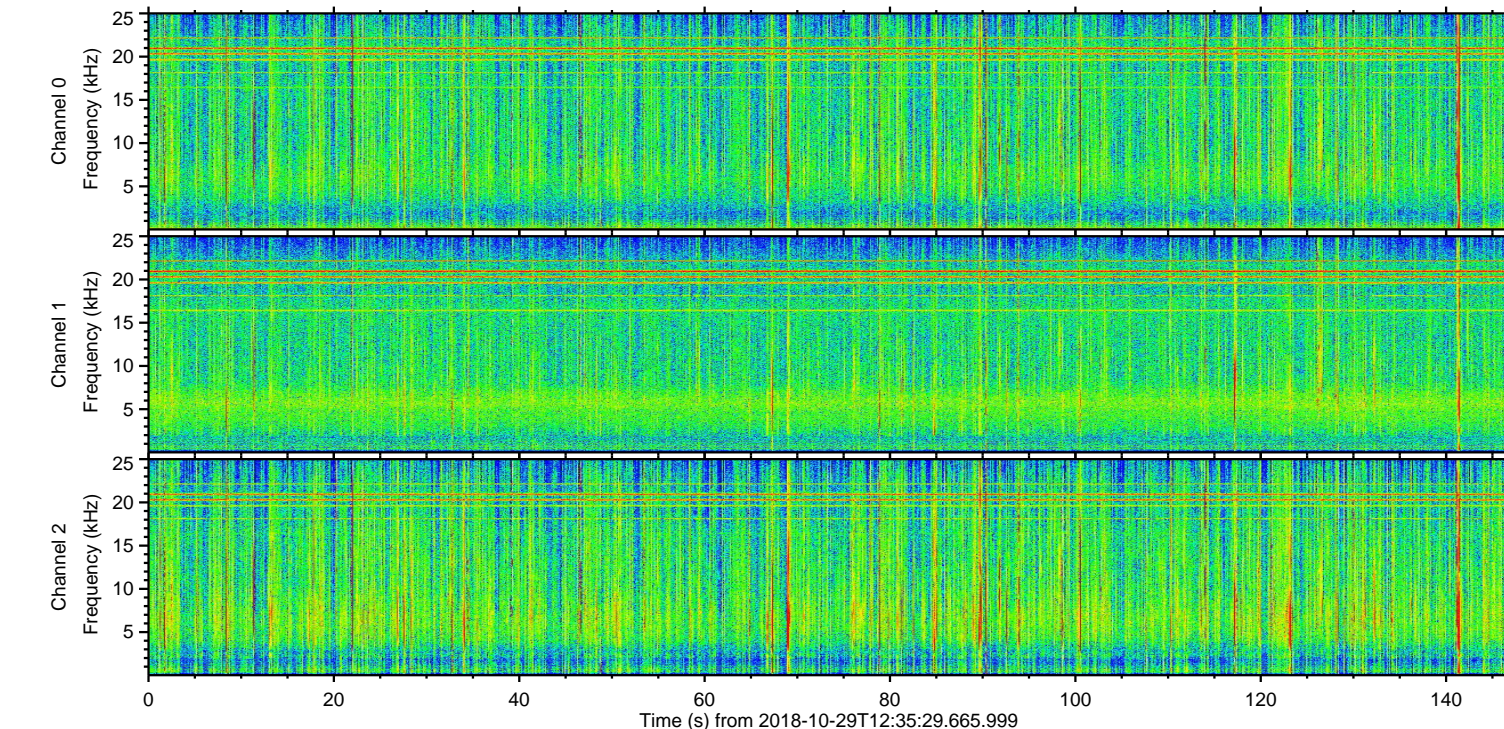
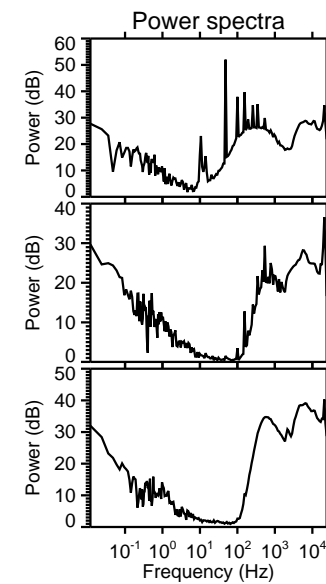
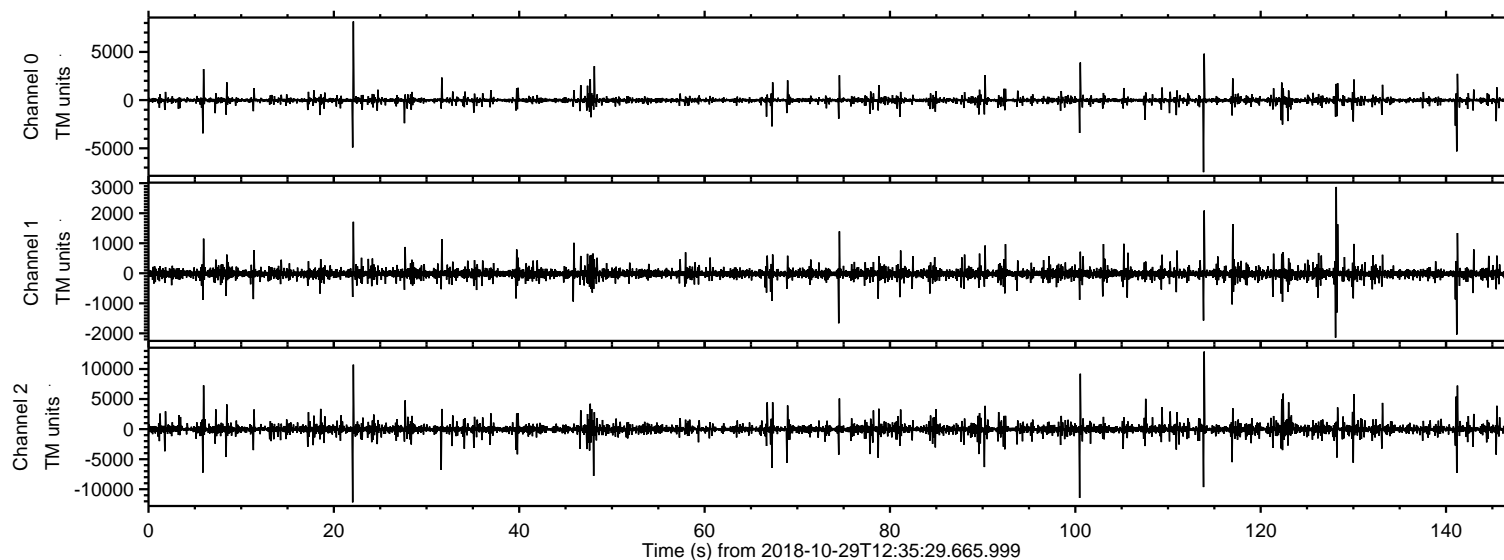


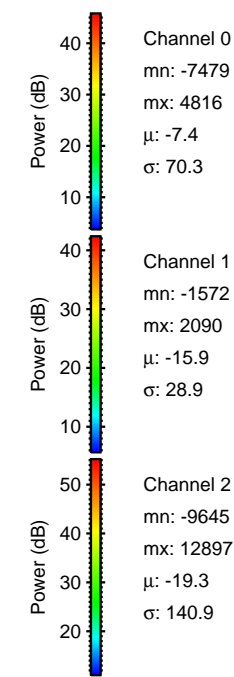
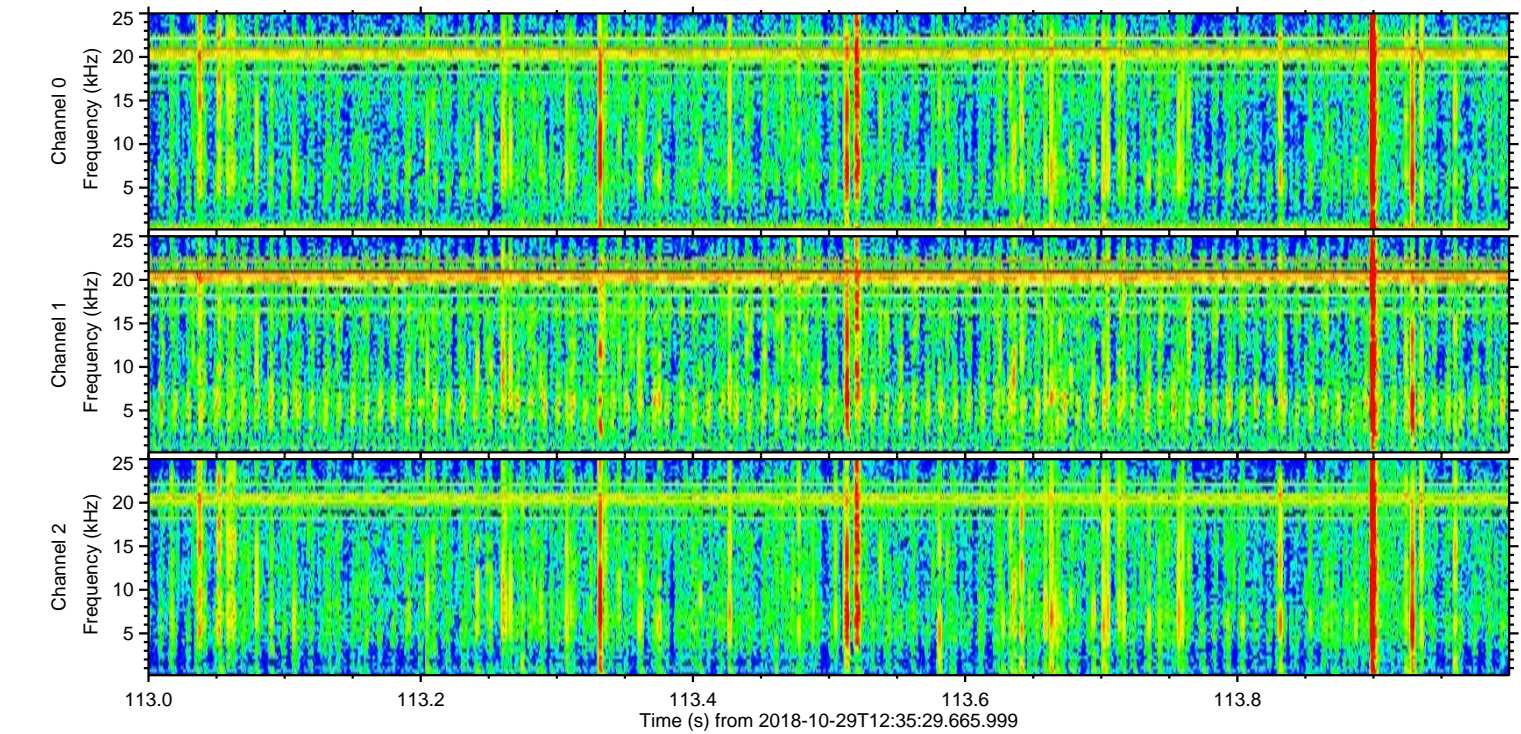
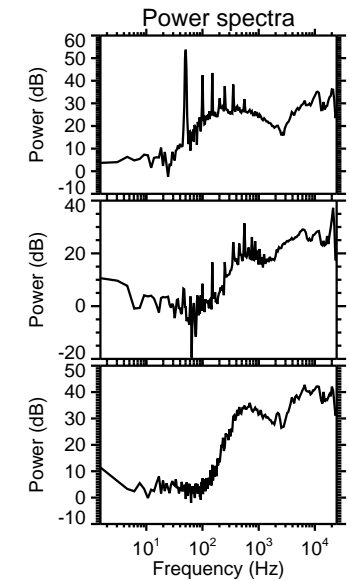
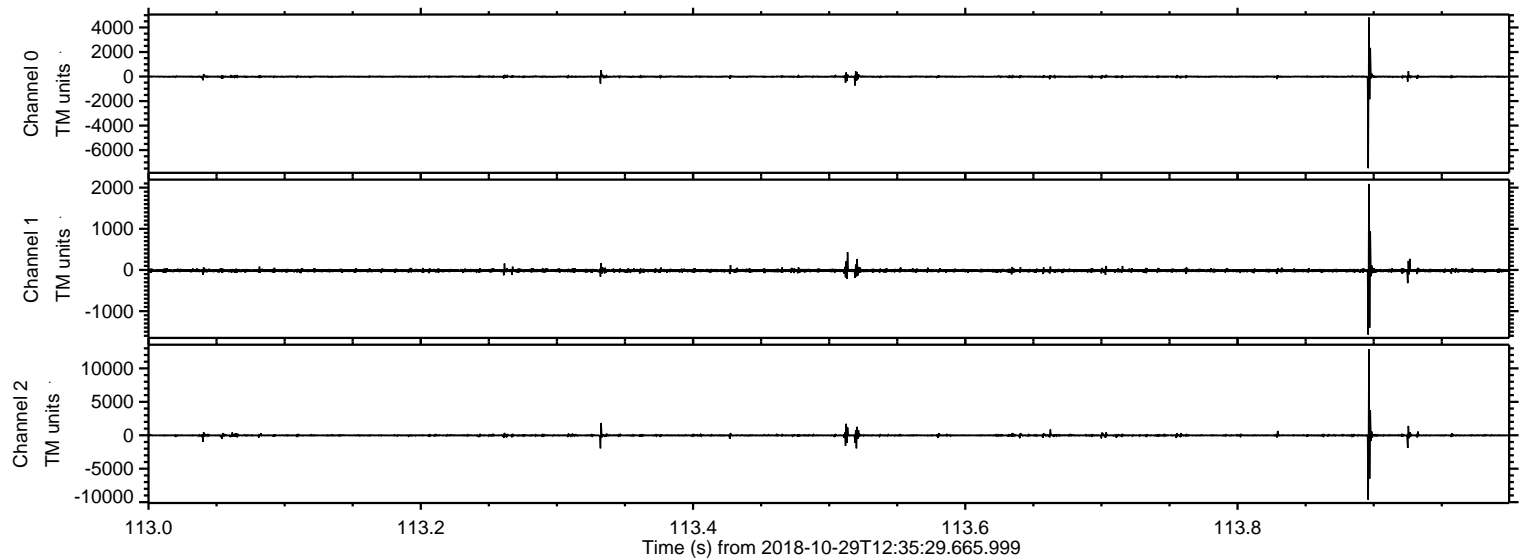
ELMAVAN 3D WAVEFORMS (Measured data sampled at 50 kHz) 51000 packets of 144 samples from 2018-10-29T12:35:29.665.999.

Processed Mon Oct 29 13:43:46 2018 by ELM ver.2012-10-06 from 001__elm20181029_123528__dat00.bin

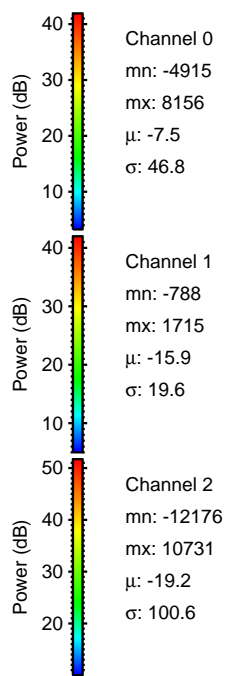
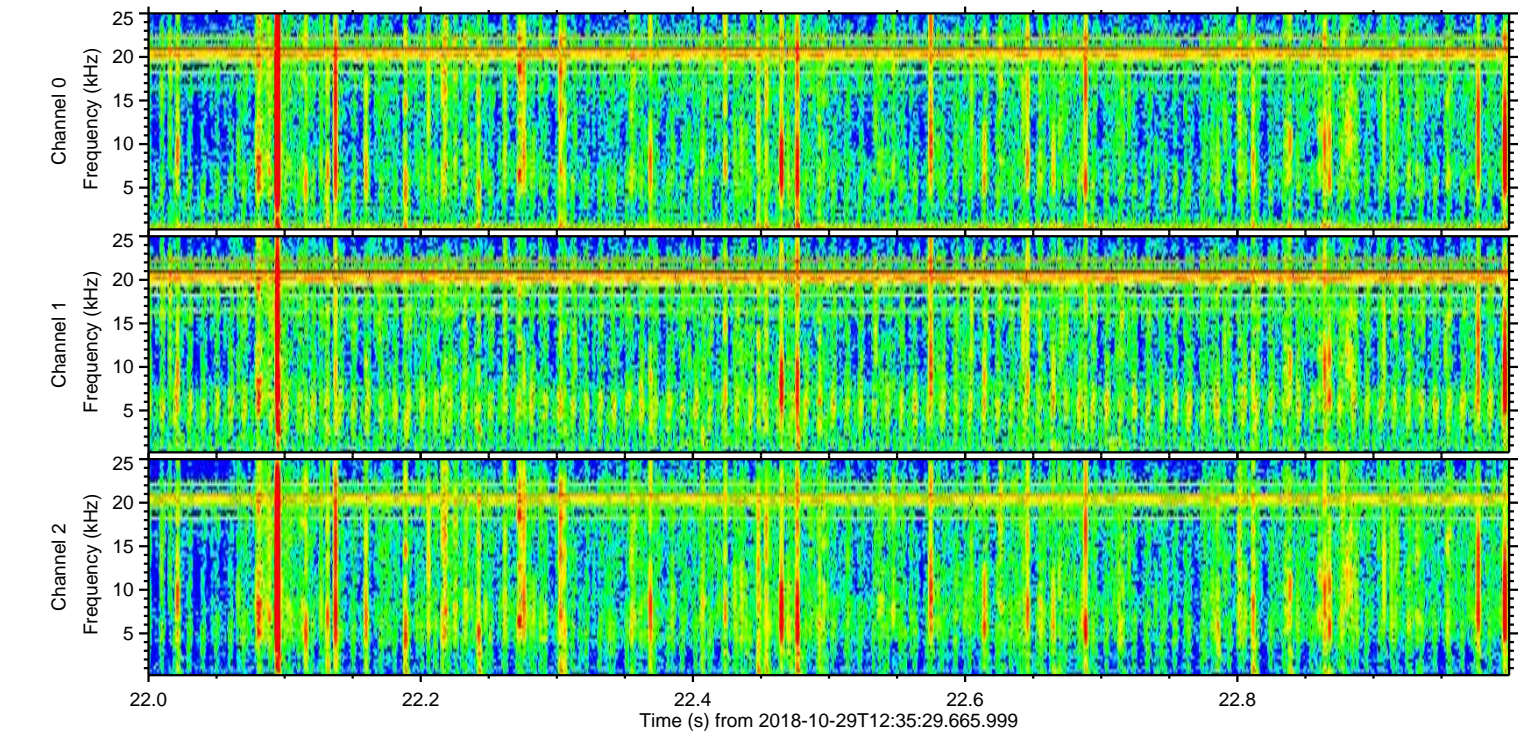
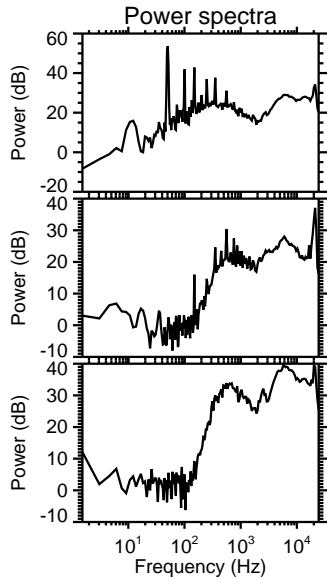
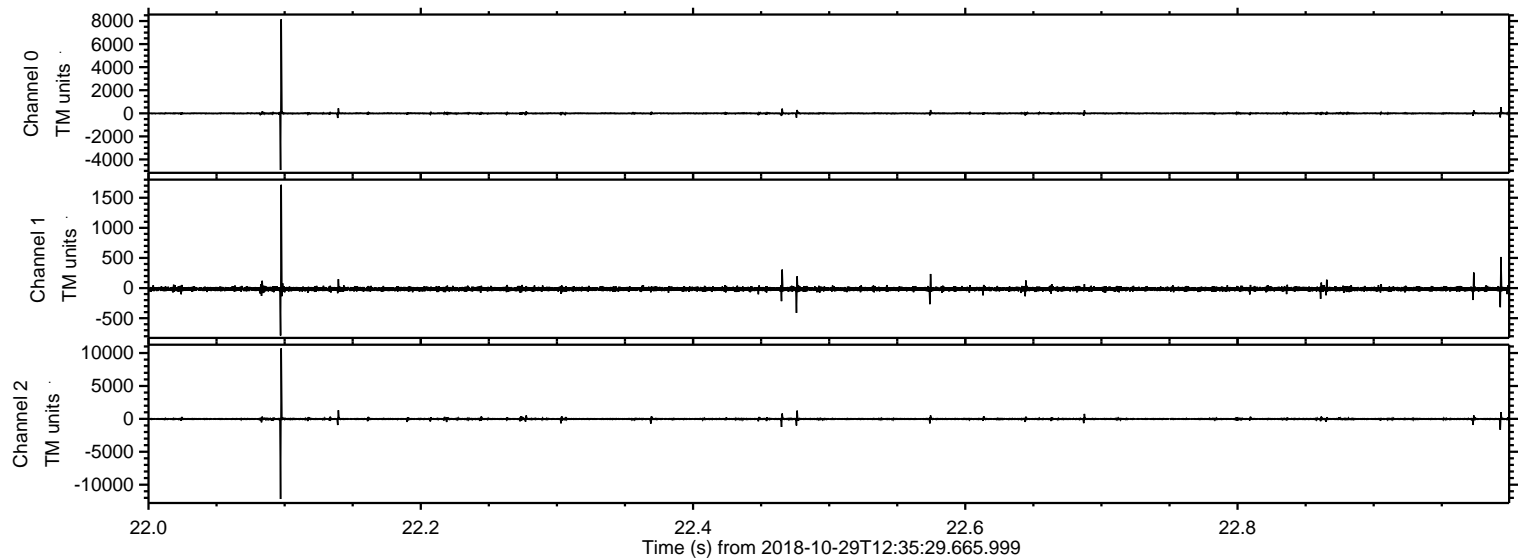


ELMAVAN 3D WAVEFORMS (Measured data sampled at 50 kHz) 51000 packets of 144 samples from 2018-10-29T12:35:29.665.999. Part 114/147

Processed Mon Oct 29 13:43:53 2018 by ELM ver.2012-10-06 from 001__elm20181029_123528__dat00.bin

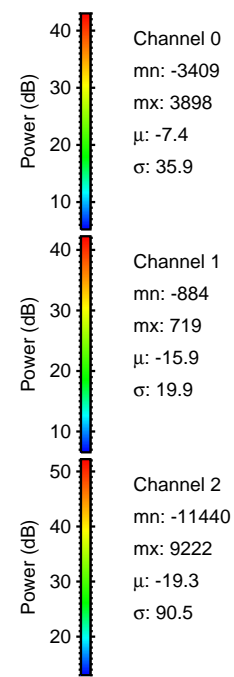
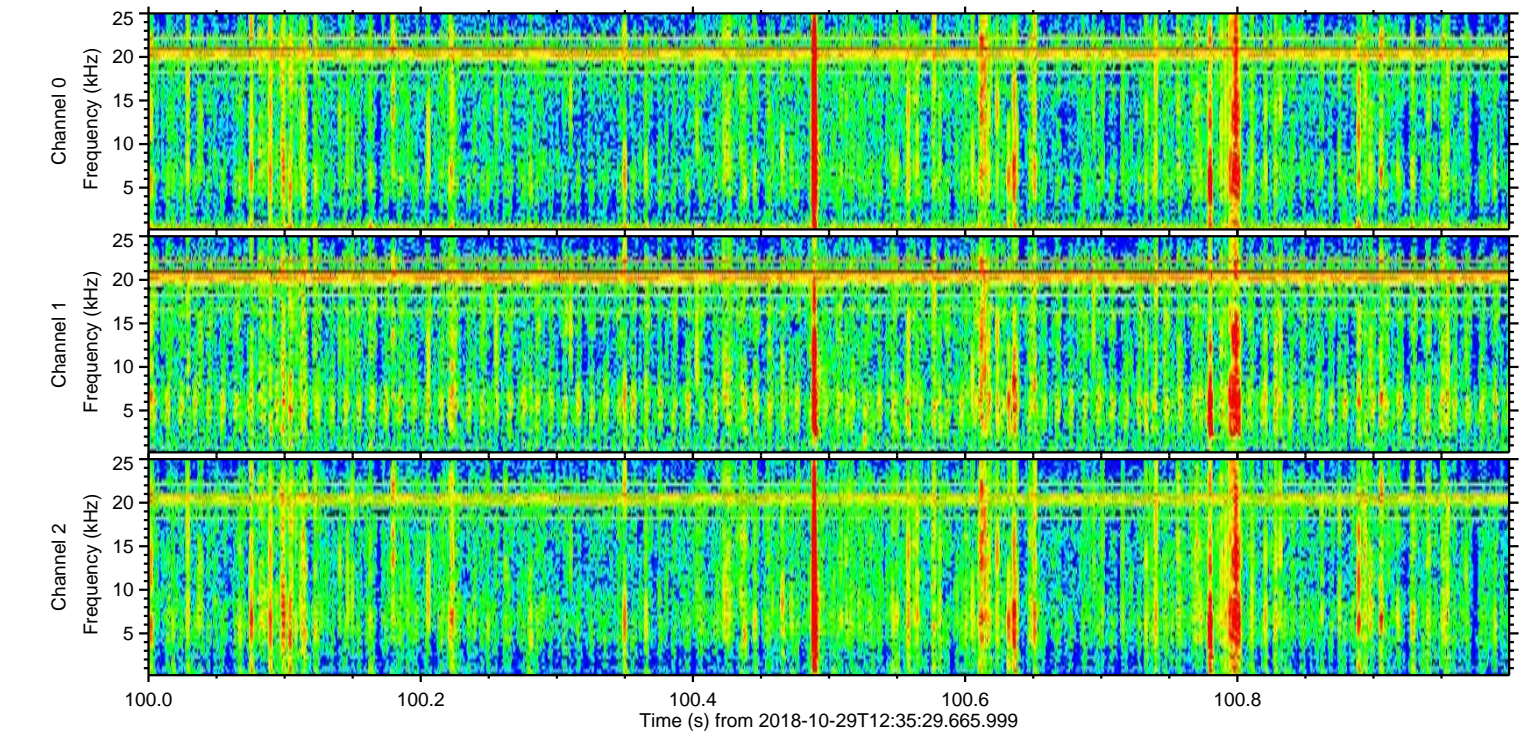
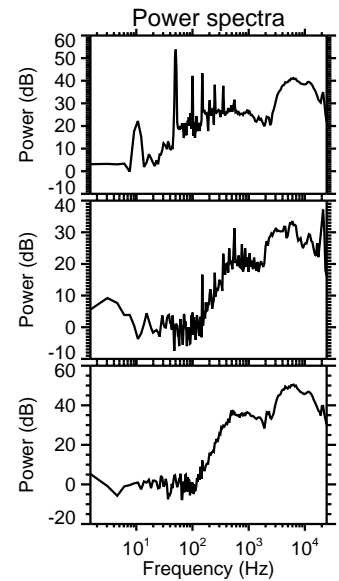
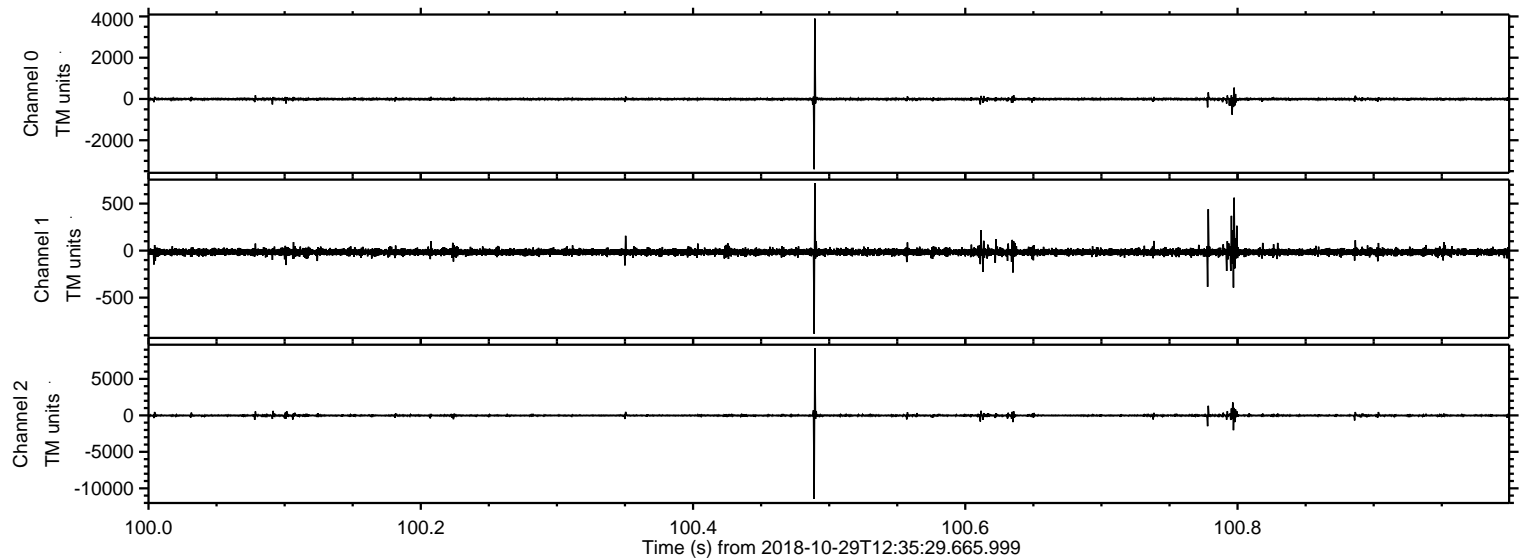


Processed Mon Oct 29 13:43:54 2018 by ELM ver.2012-10-06 from 001__elm20181029_123528__dat00.bin



ELMAVAN 3D WAVEFORMS (Measured data sampled at 50 kHz) 51000 packets of 144 samples from 2018-10-29T12:35:29.665.999. Part 101/147

Processed Mon Oct 29 13:43:54 2018 by ELM ver.2012-10-06 from 001__elm20181029_123528__dat00.bin

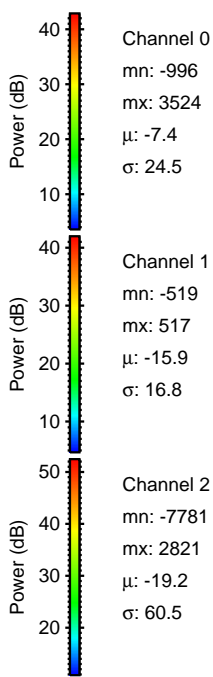
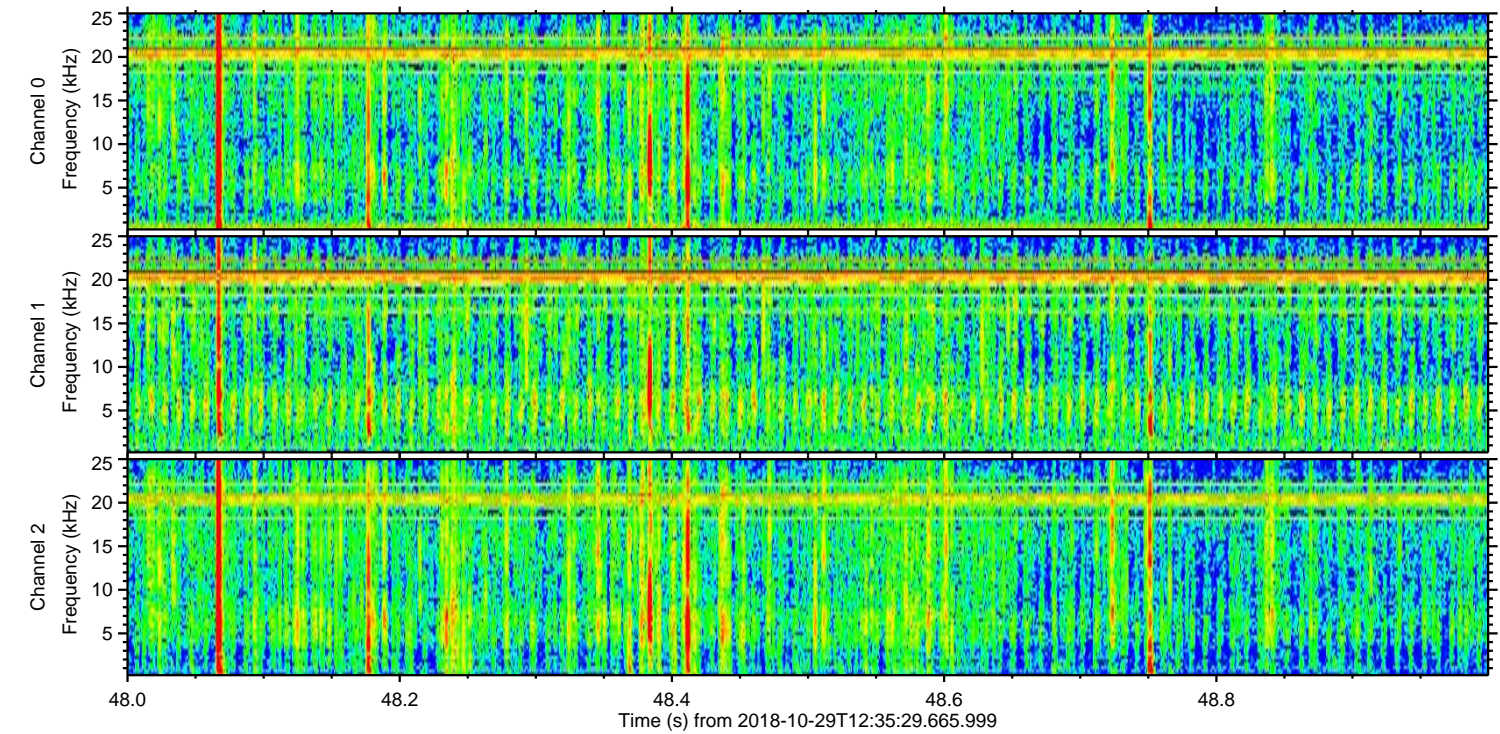
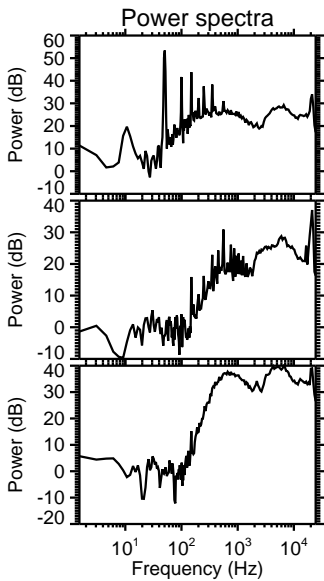
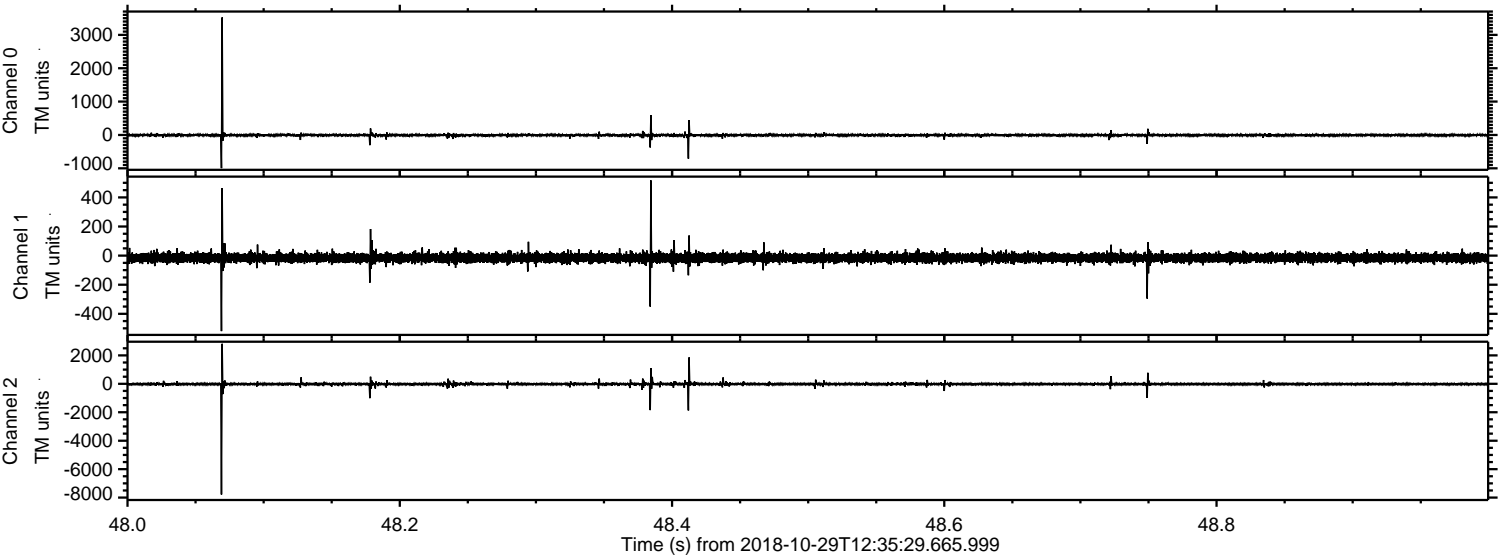


Channel 0
mn: -3409
mx: 3898
 μ : -7.4
 σ : 35.9

Channel 1
mn: -884
mx: 719
 μ : -15.9
 σ : 19.9

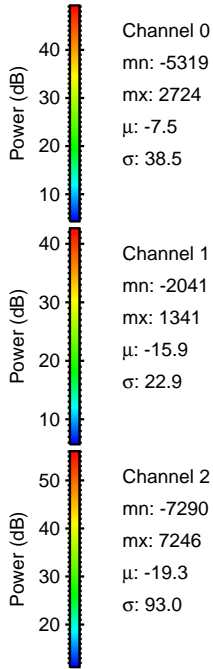
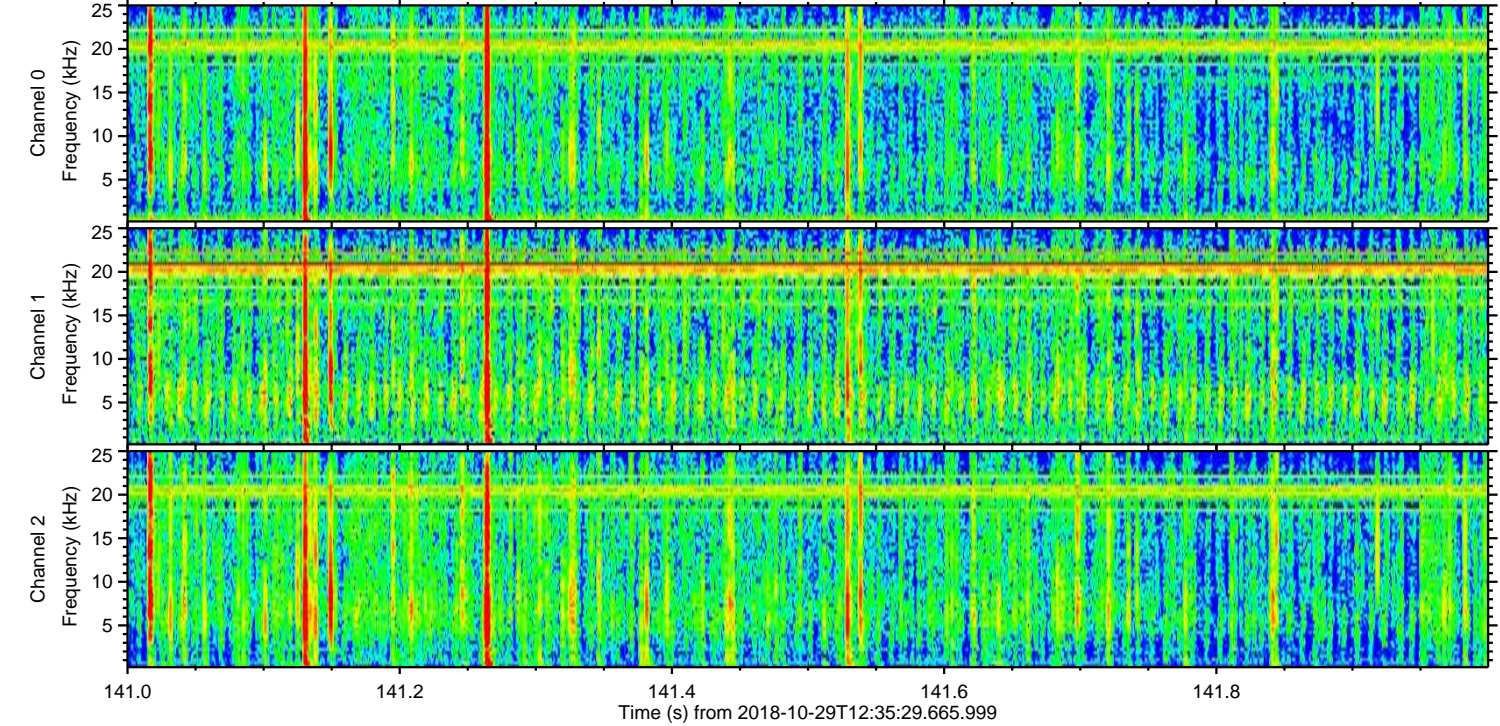
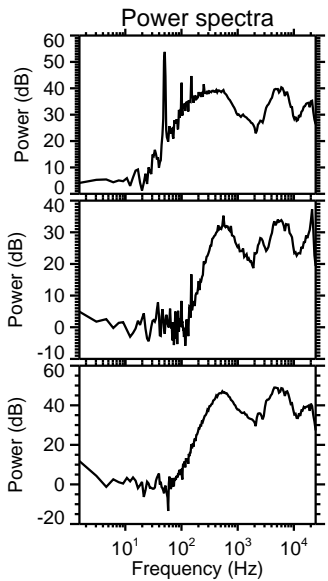
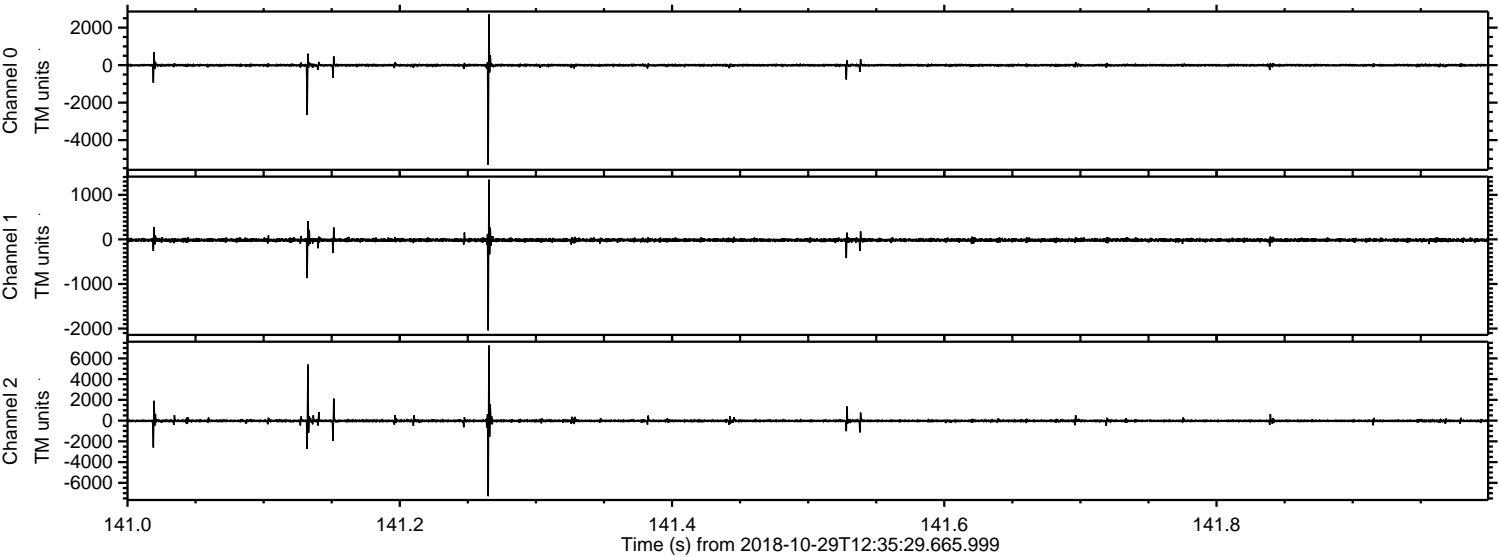
Channel 2
mn: -11440
mx: 9222
 μ : -19.3
 σ : 90.5

Processed Mon Oct 29 13:43:55 2018 by ELM ver.2012-10-06 from 001__elm20181029_123528__dat00.bin

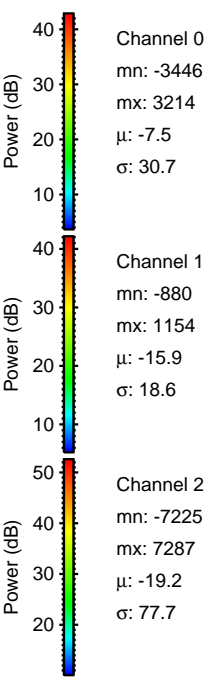
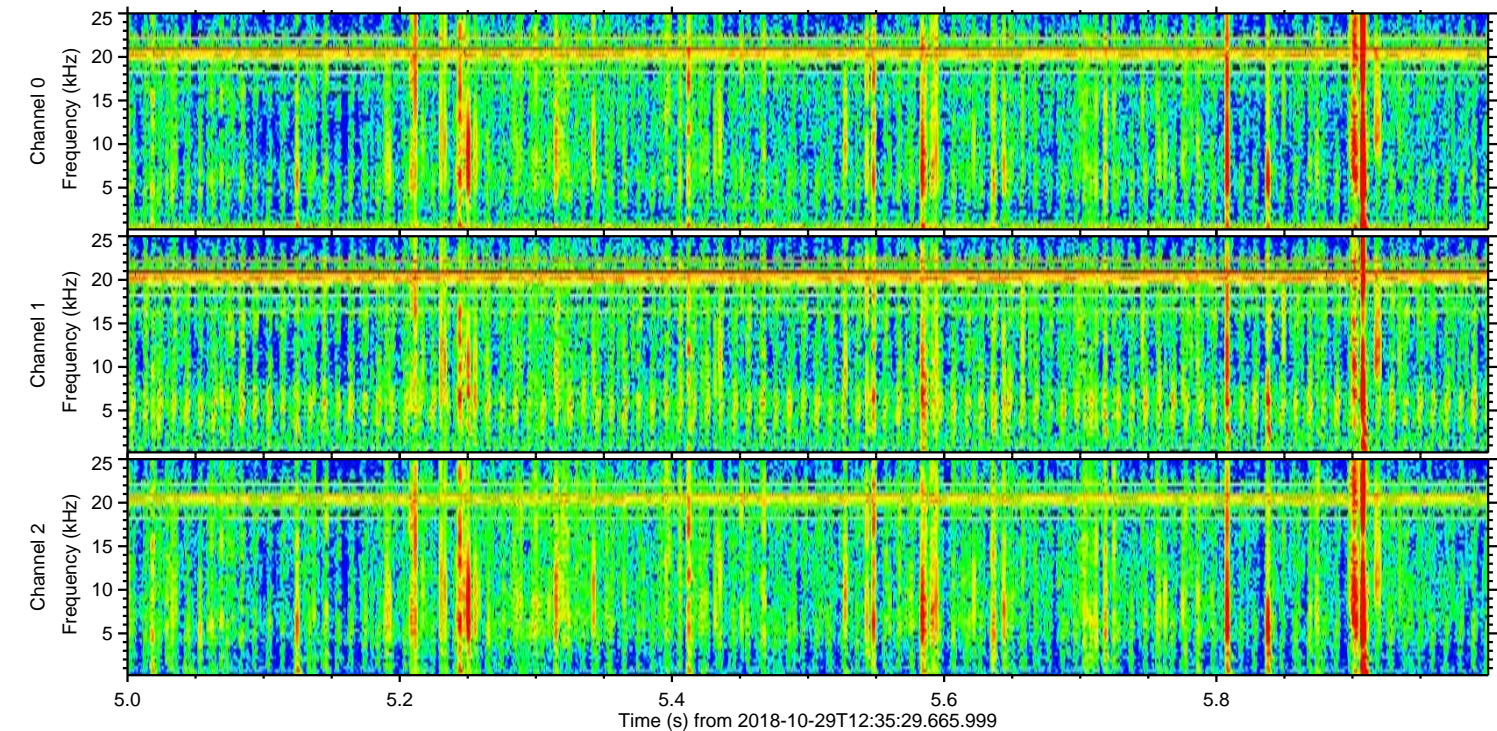
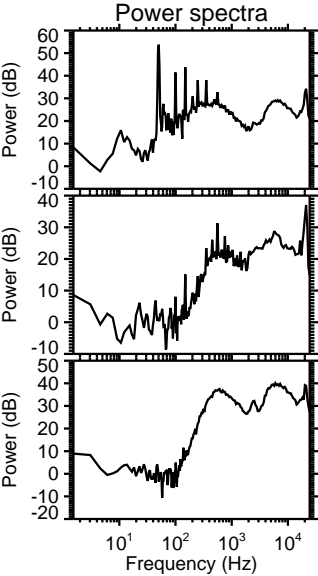
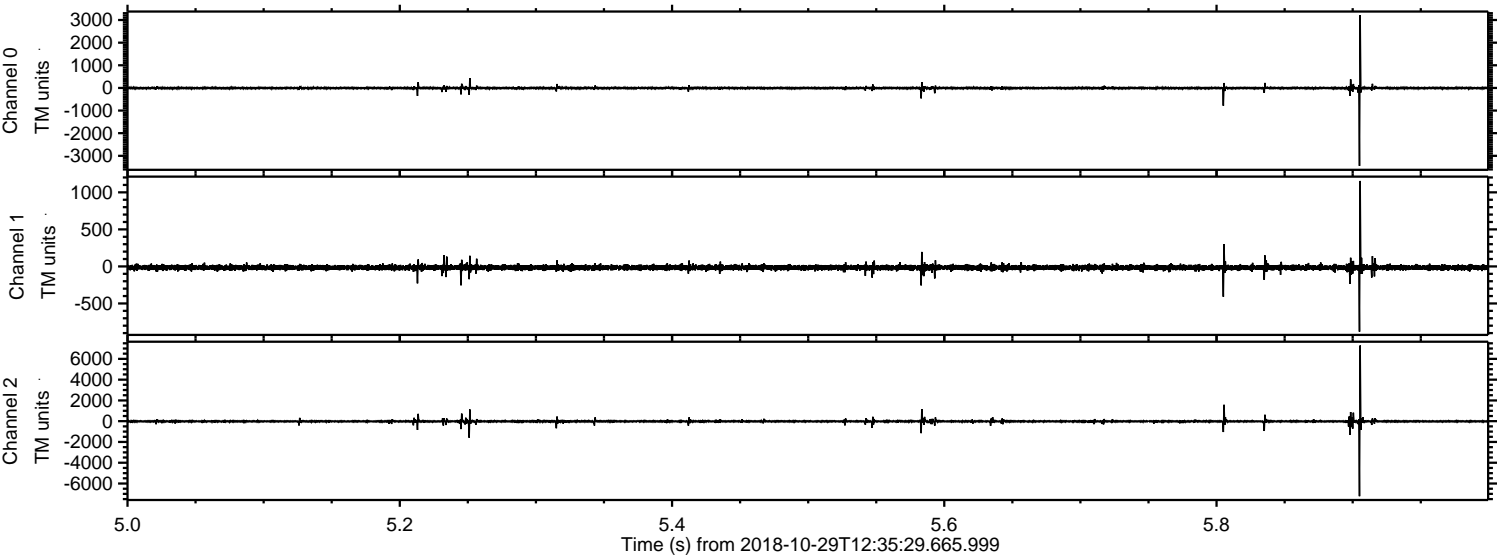


ELMAVAN 3D WAVEFORMS (Measured data sampled at 50 kHz) 51000 packets of 144 samples from 2018-10-29T12:35:29.665.999. Part 142/147

Processed Mon Oct 29 13:43:56 2018 by ELM ver.2012-10-06 from 001__elm20181029_123528__dat00.bin



Processed Mon Oct 29 13:43:57 2018 by ELM ver.2012-10-06 from 001__elm20181029_123528__dat00.bin

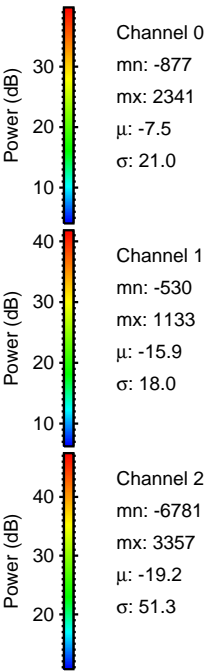
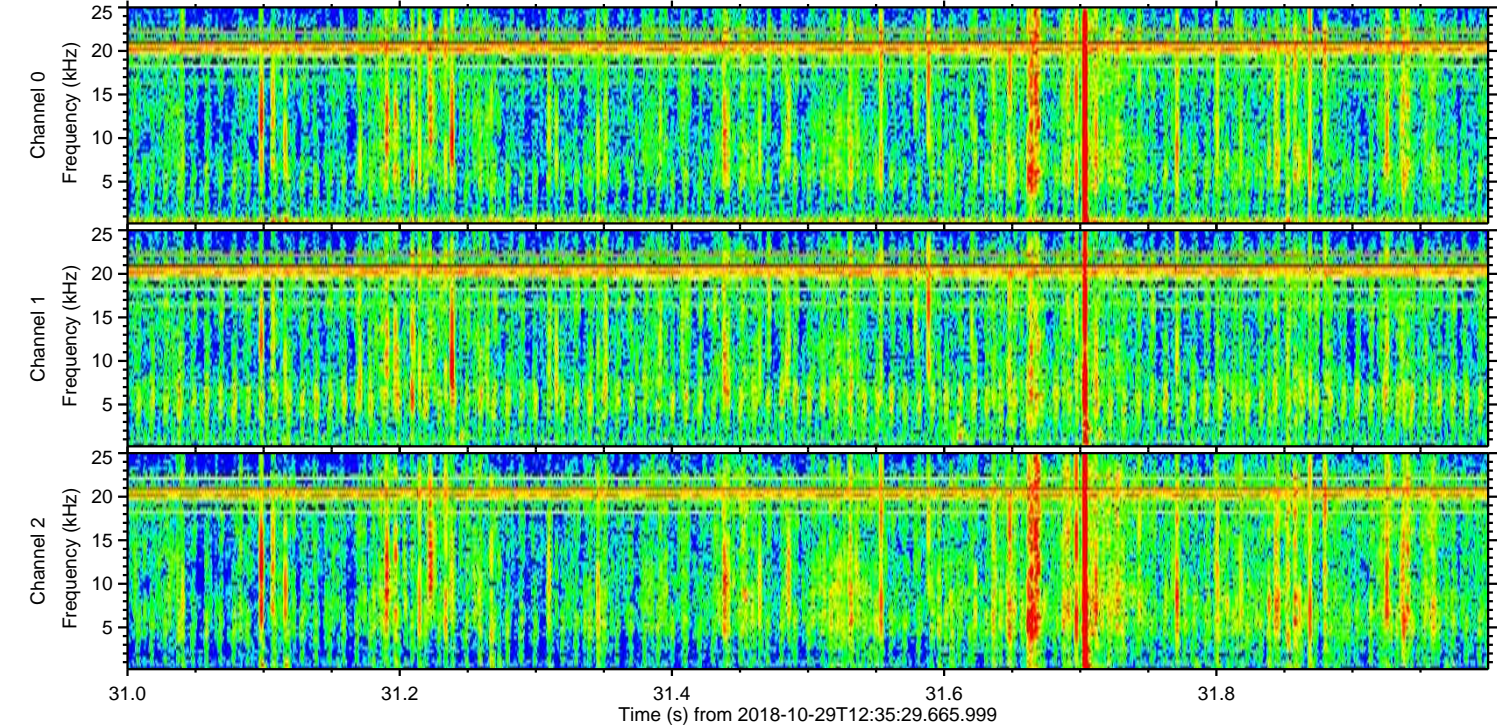
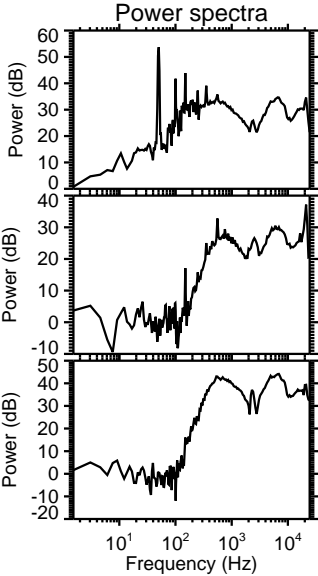
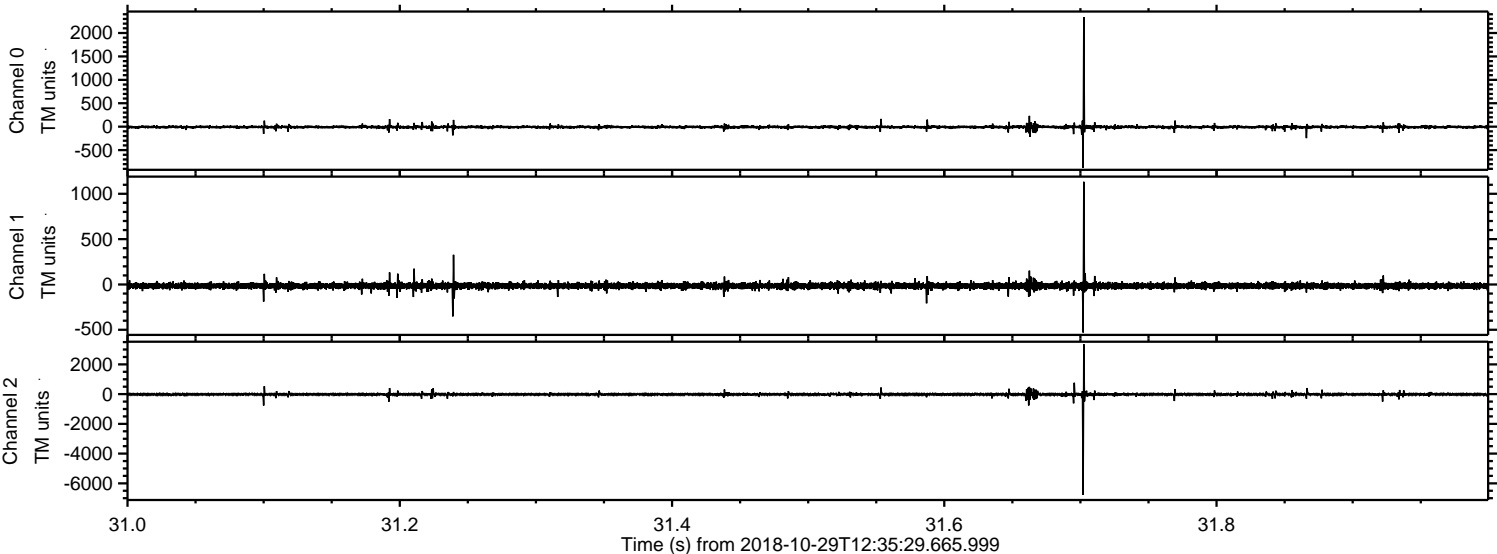


Channel 0
mn: -3446
mx: 3214
 μ : -7.5
 σ : 30.7

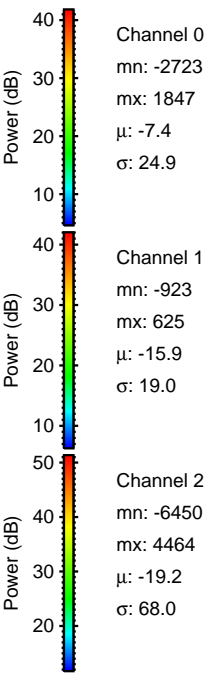
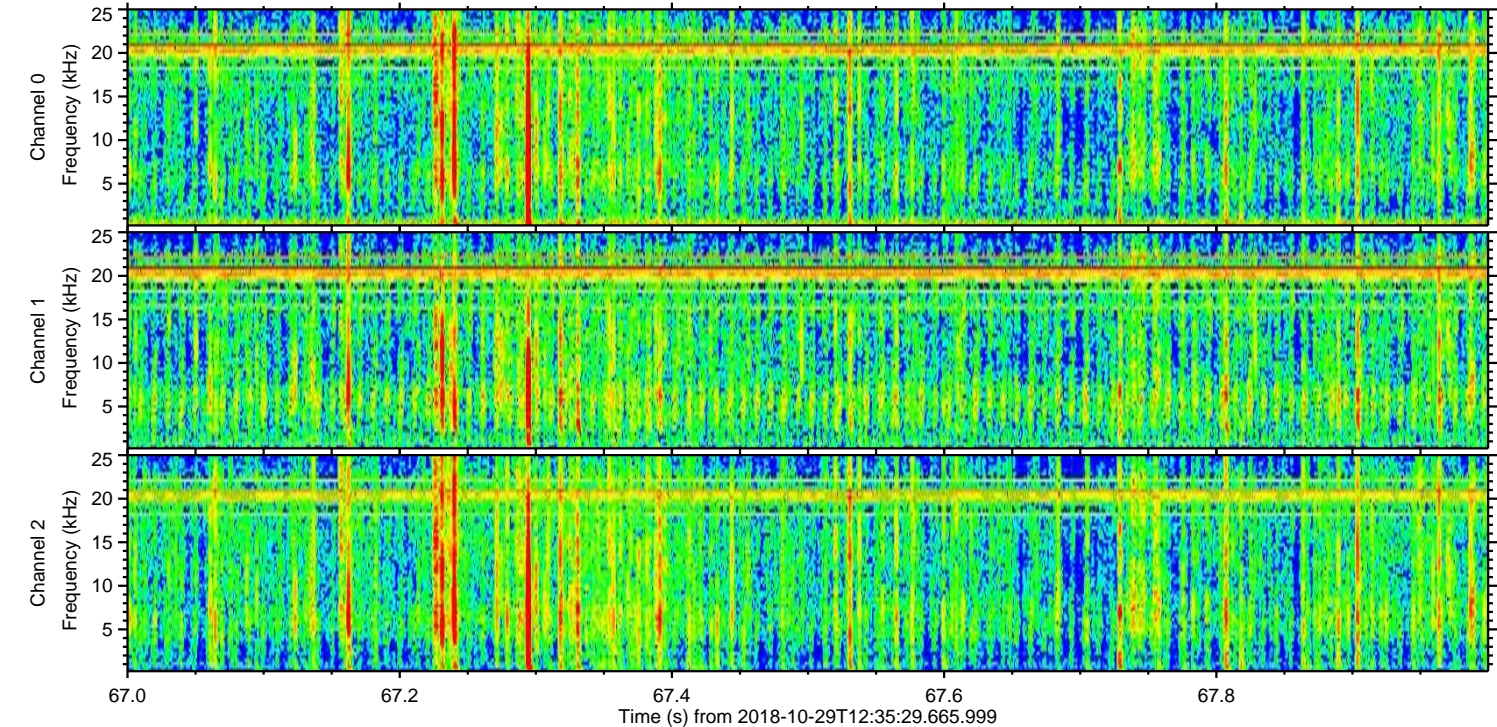
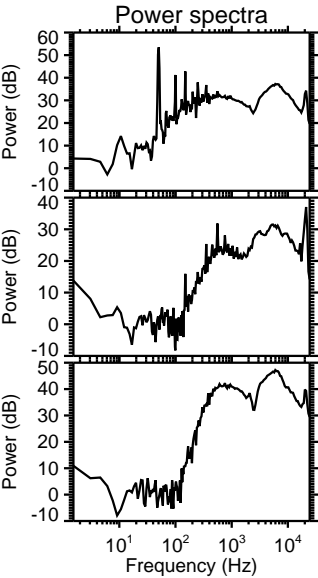
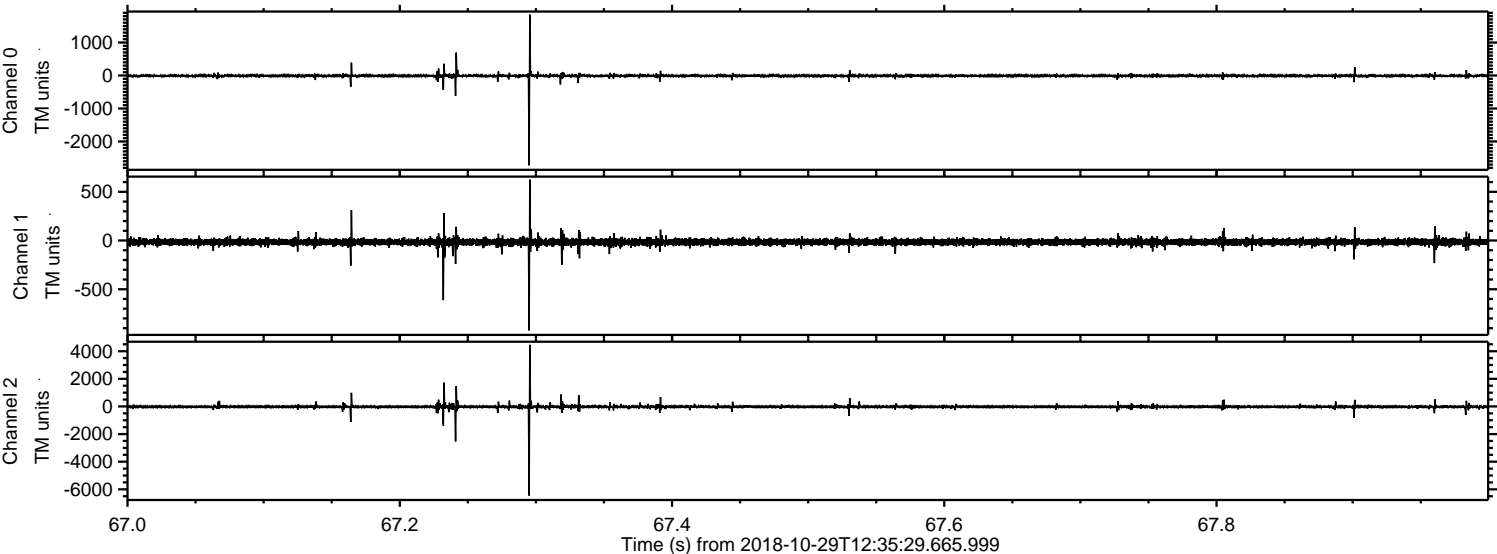
Channel 1
mn: -880
mx: 1154
 μ : -15.9
 σ : 18.6

Channel 2
mn: -7225
mx: 7287
 μ : -19.2
 σ : 77.7

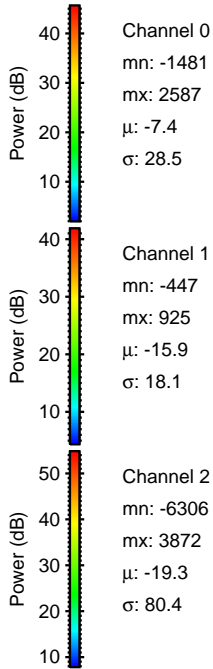
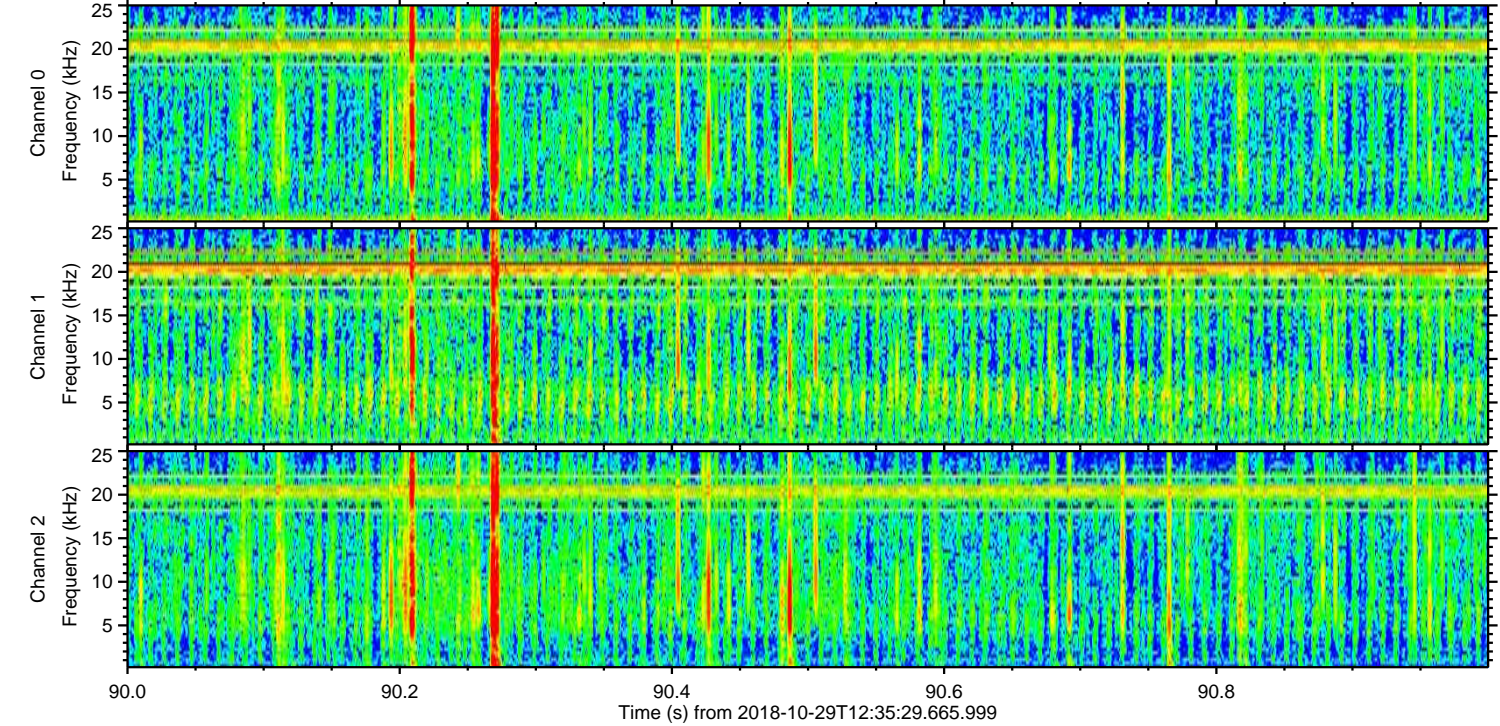
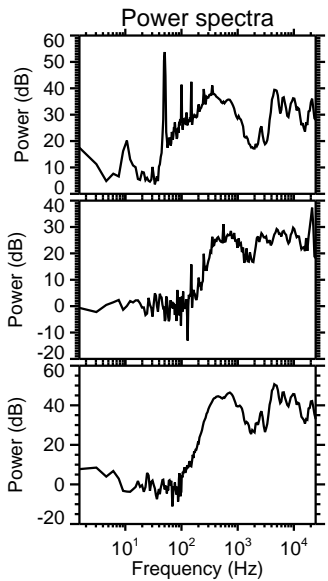
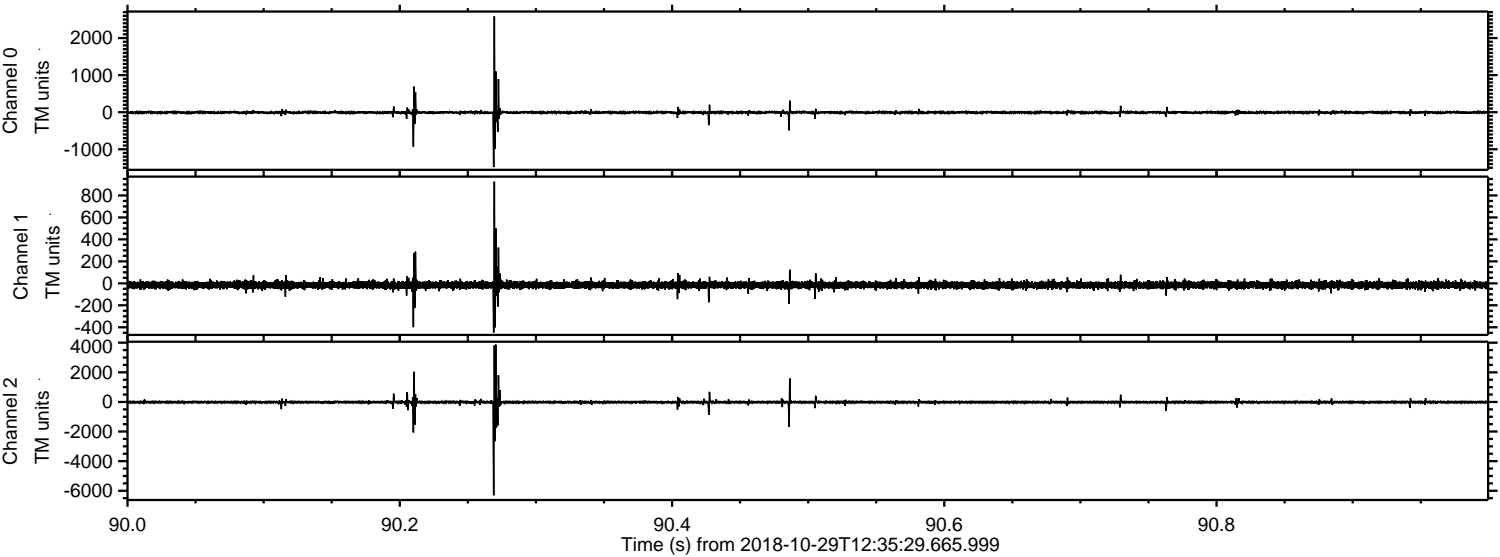
Processed Mon Oct 29 13:43:57 2018 by ELM ver.2012-10-06 from 001__elm20181029_123528__dat00.bin



Processed Mon Oct 29 13:43:58 2018 by ELM ver.2012-10-06 from 001__elm20181029_123528__dat00.bin



Processed Mon Oct 29 13:43:59 2018 by ELM ver.2012-10-06 from 001__elm20181029_123528__dat00.bin



Processed Mon Oct 29 13:44:00 2018 by ELM ver.2012-10-06 from 001__elm20181029_123528__dat00.bin

