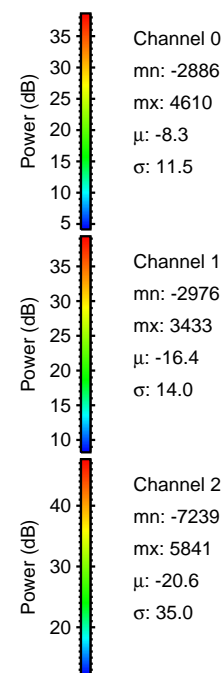
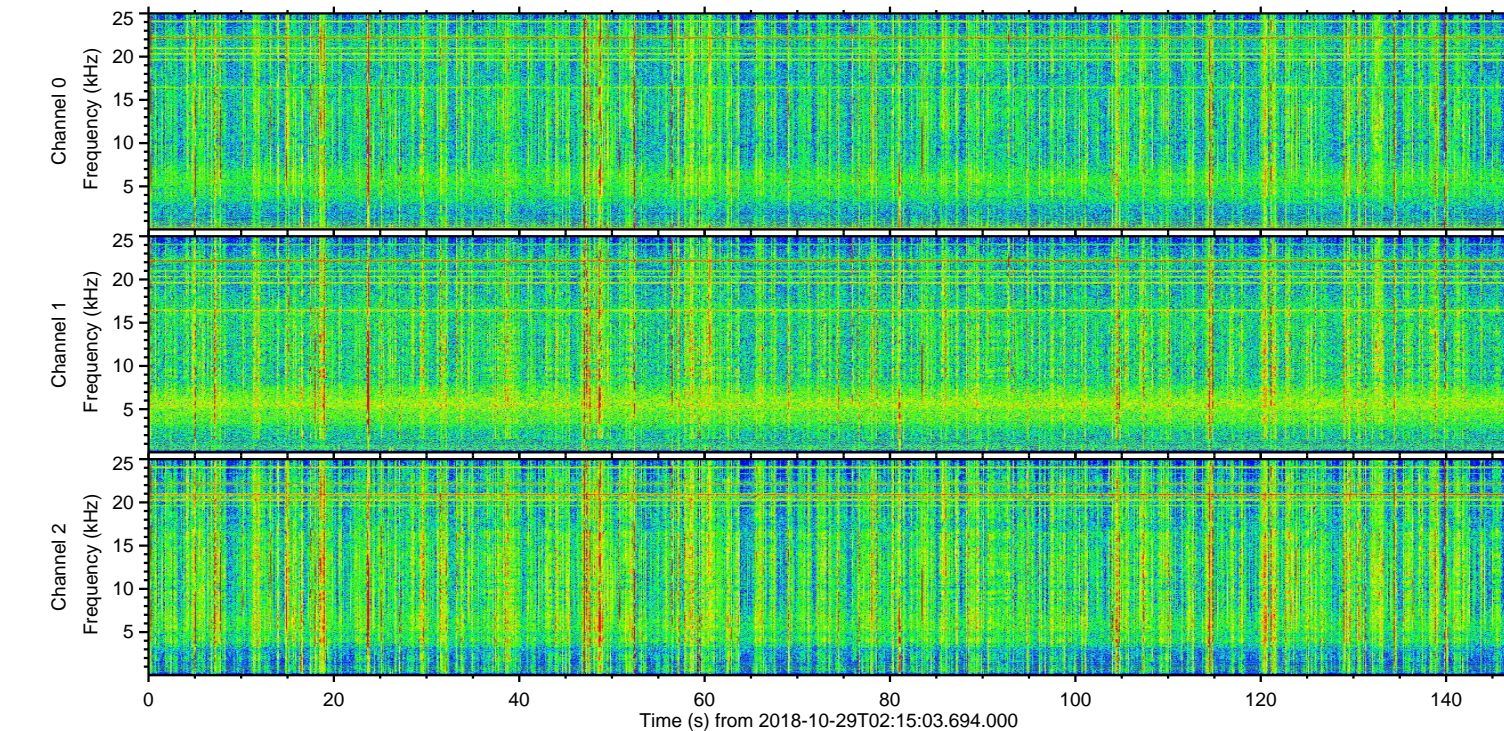
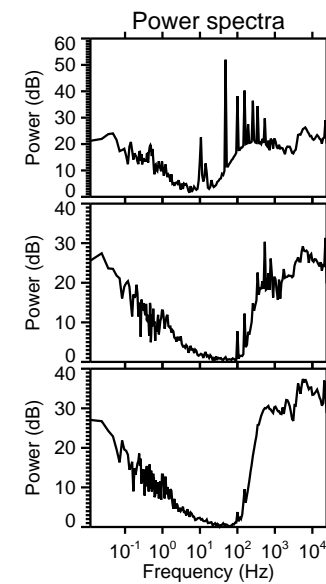
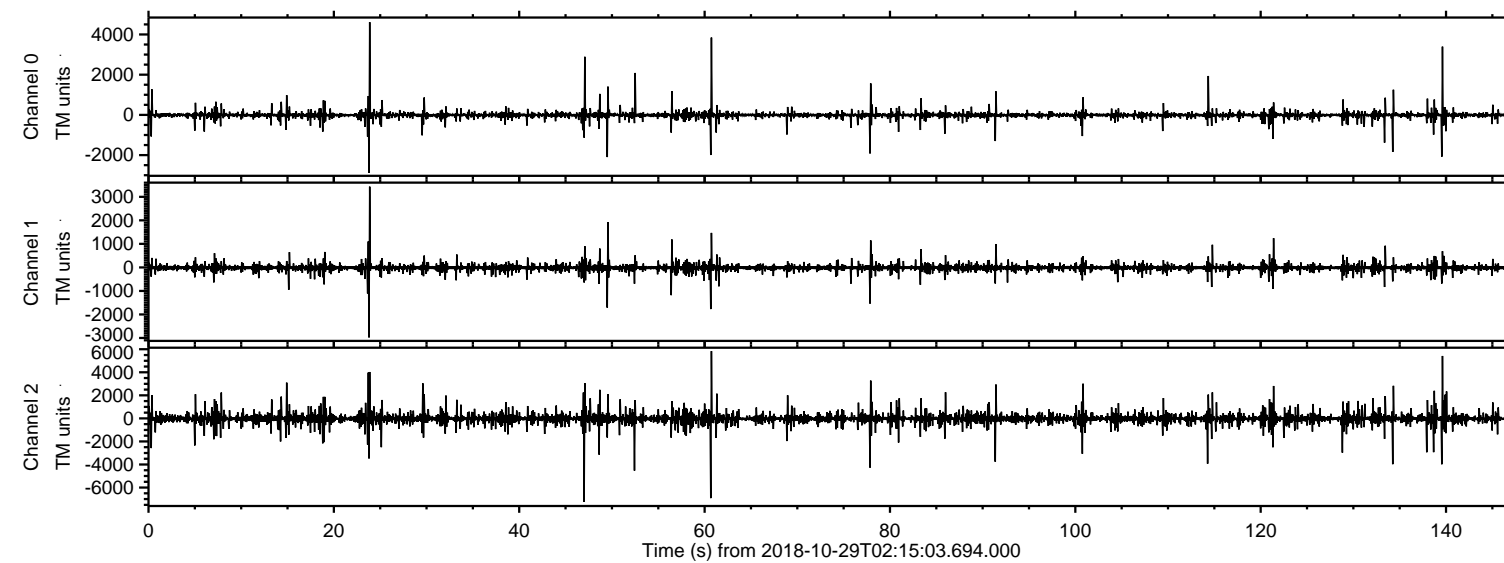
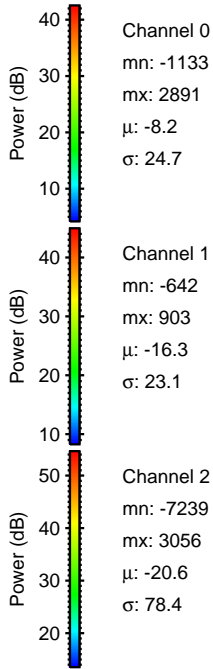
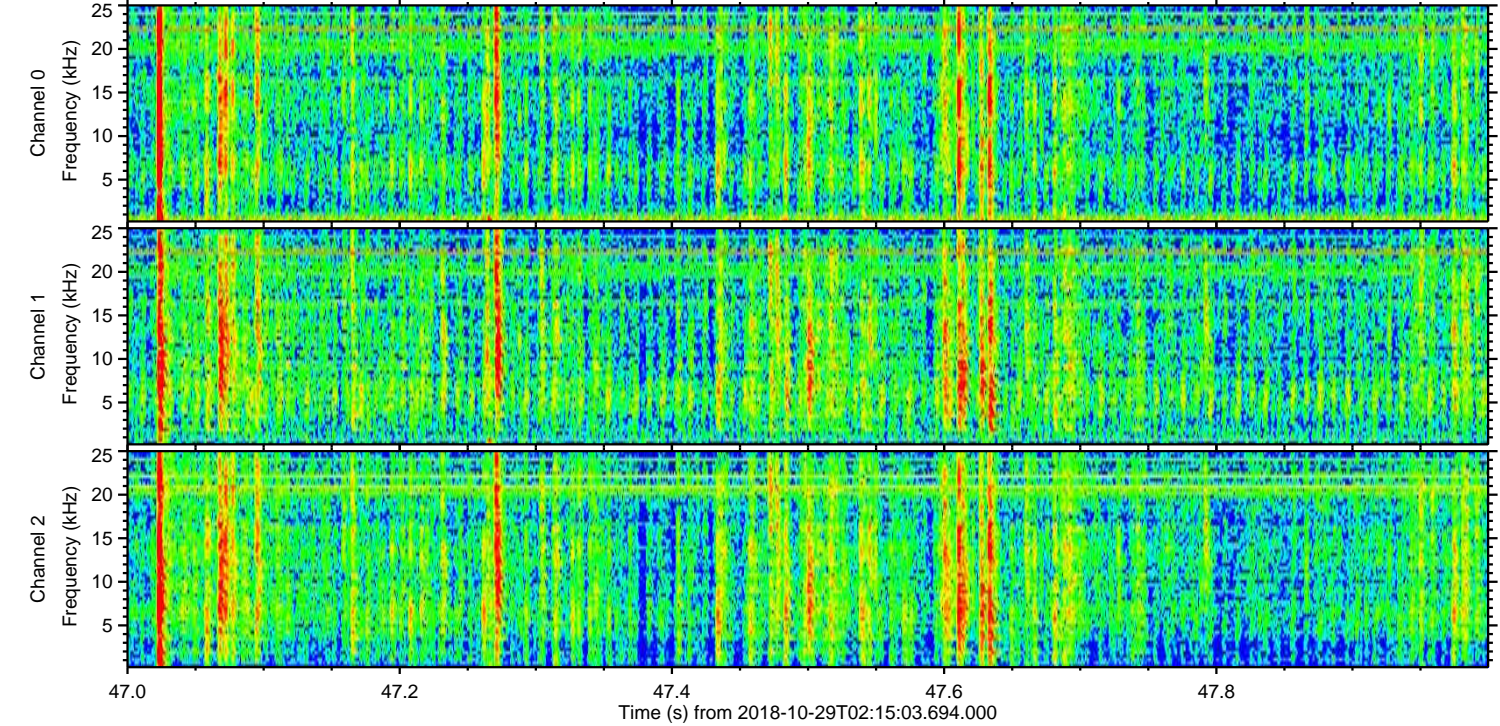
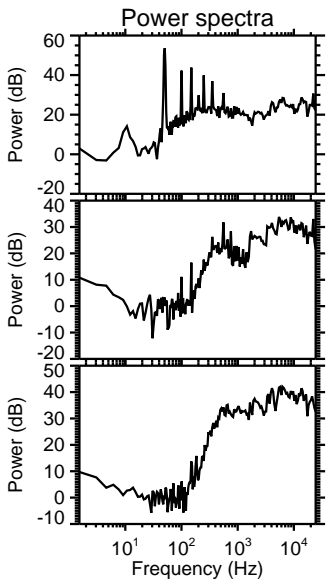
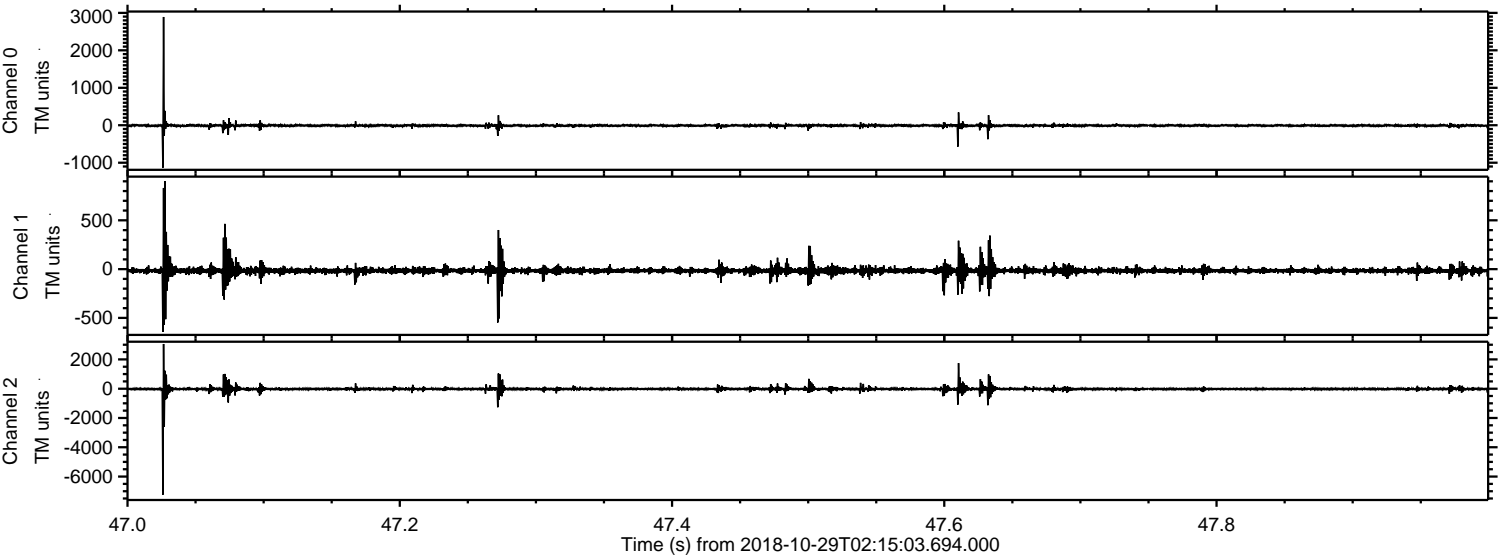


ELMAVAN 3D WAVEFORMS (Measured data sampled at 50 kHz) 51000 packets of 144 samples from 2018-10-29T02:15:03.694.000.

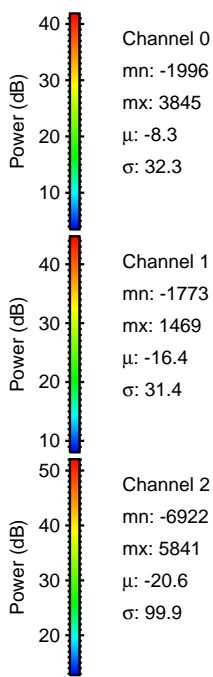
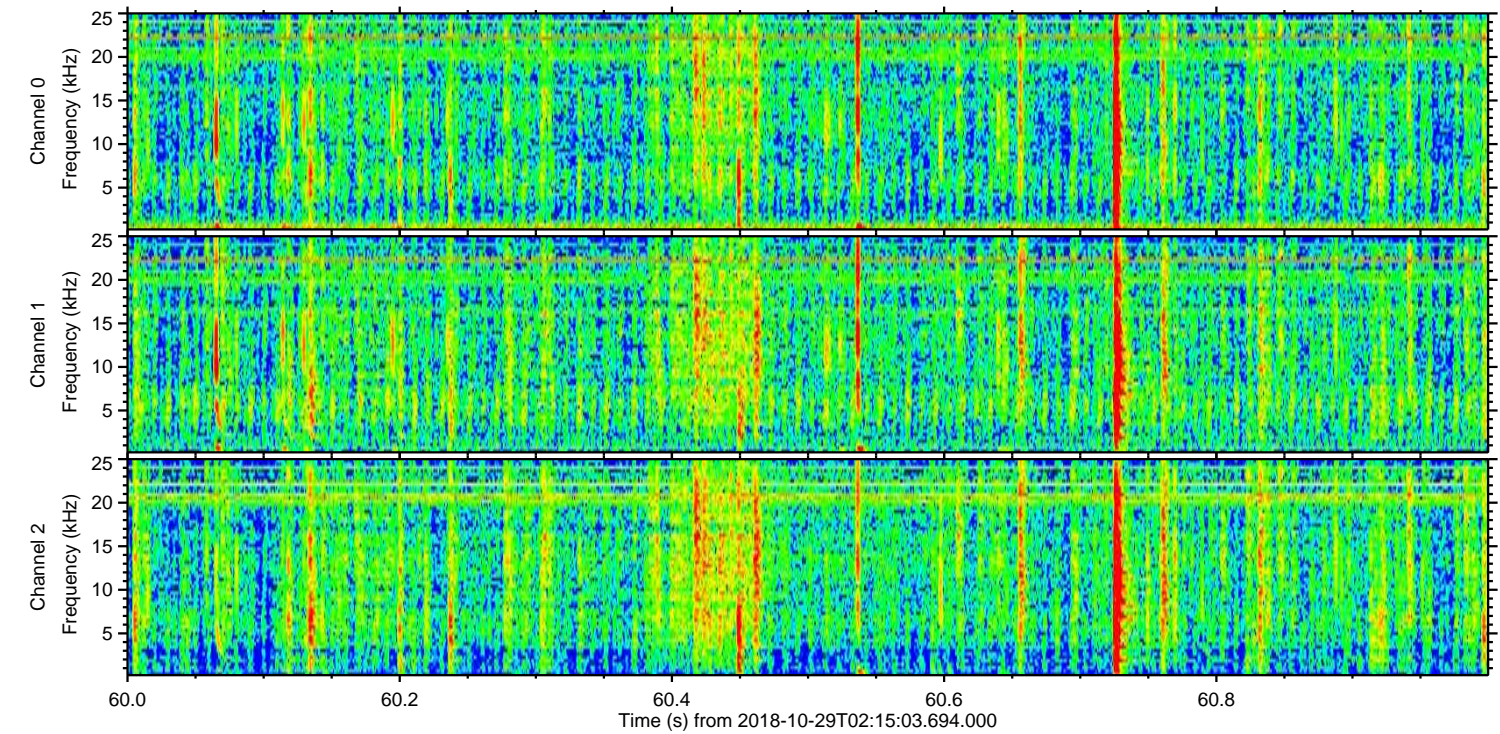
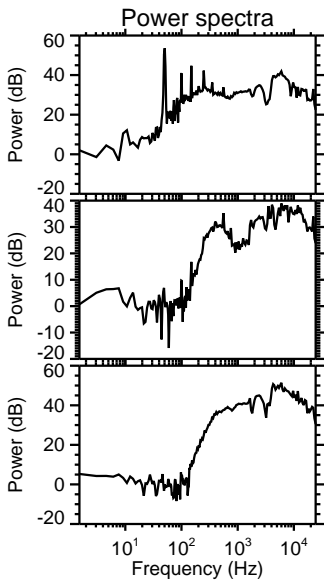
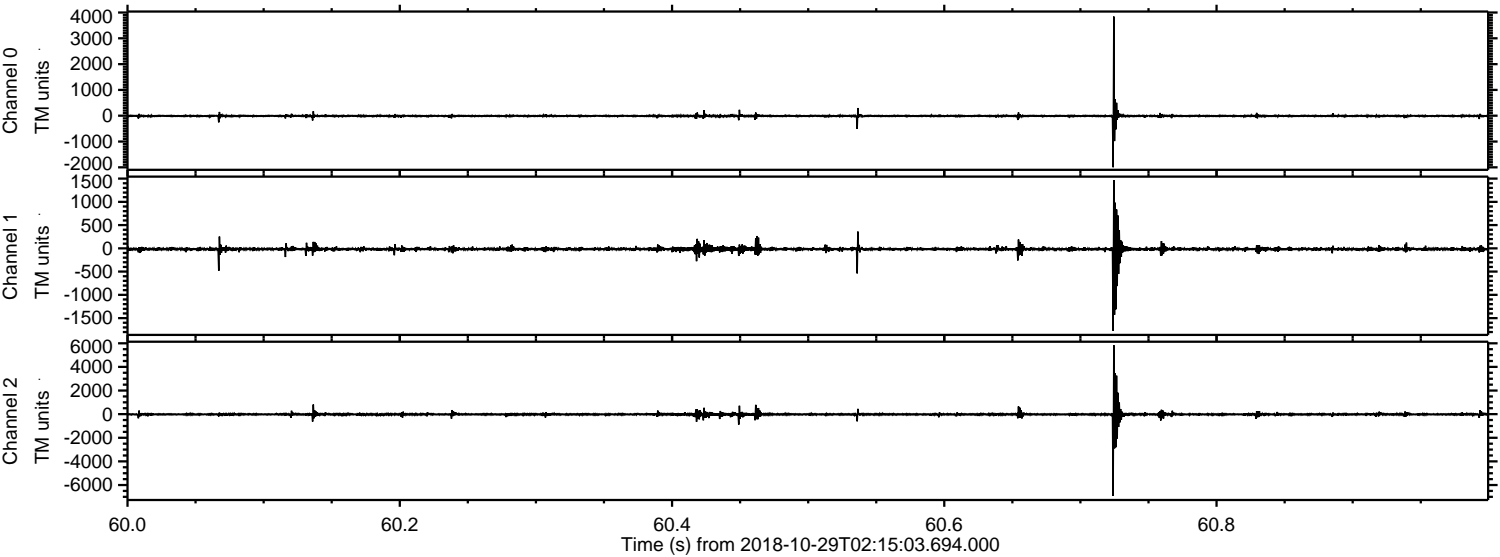
Processed Mon Oct 29 03:23:10 2018 by ELM ver.2012-10-06 from 001__elm20181029_021502__dat00.bin



Processed Mon Oct 29 03:23:21 2018 by ELM ver.2012-10-06 from 001__elm20181029_021502__dat00.bin

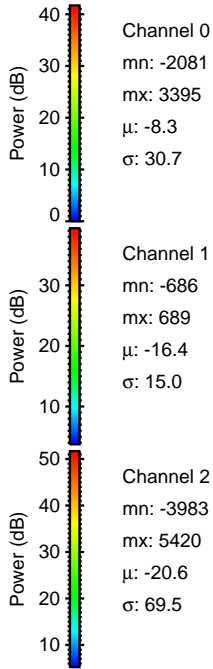
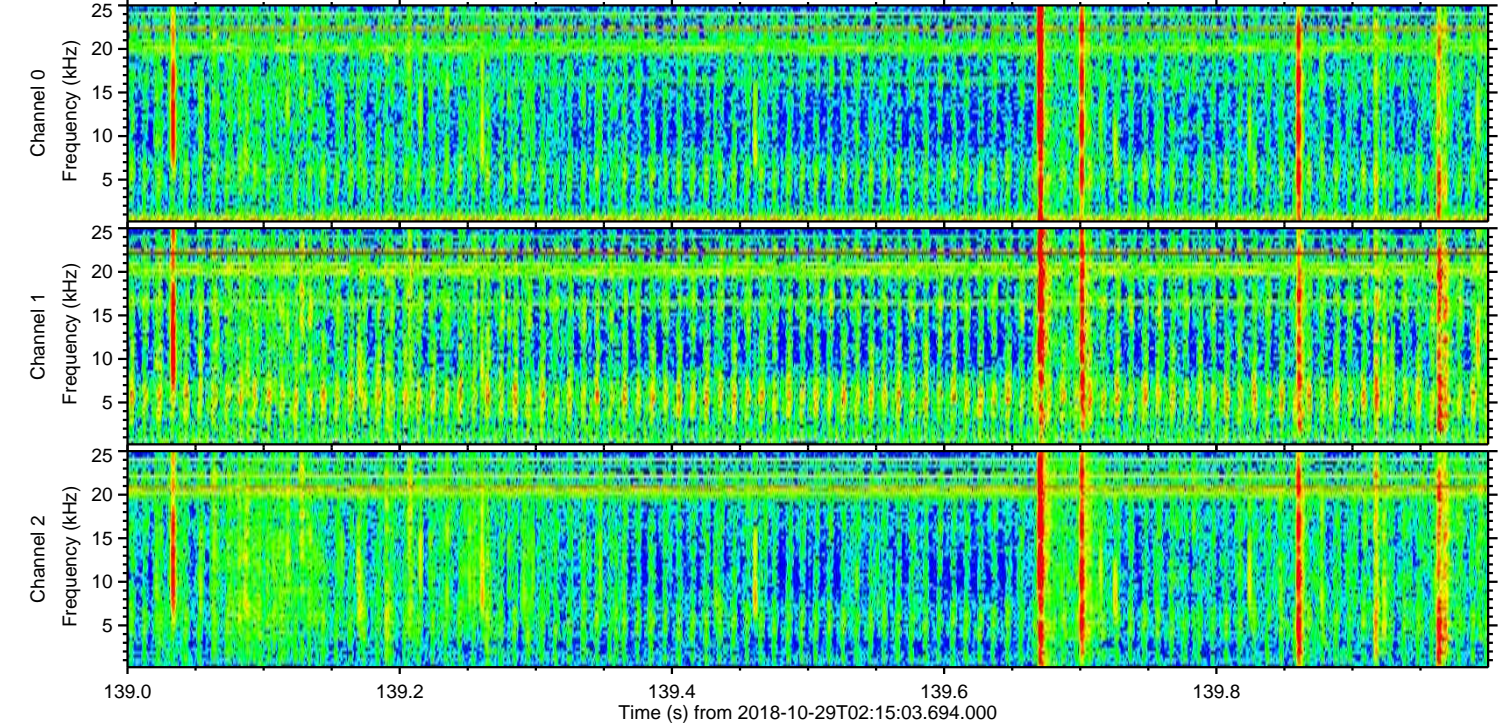
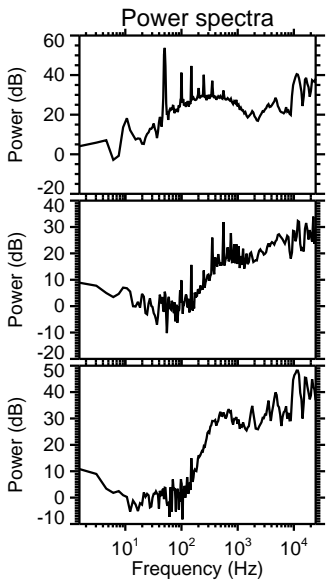
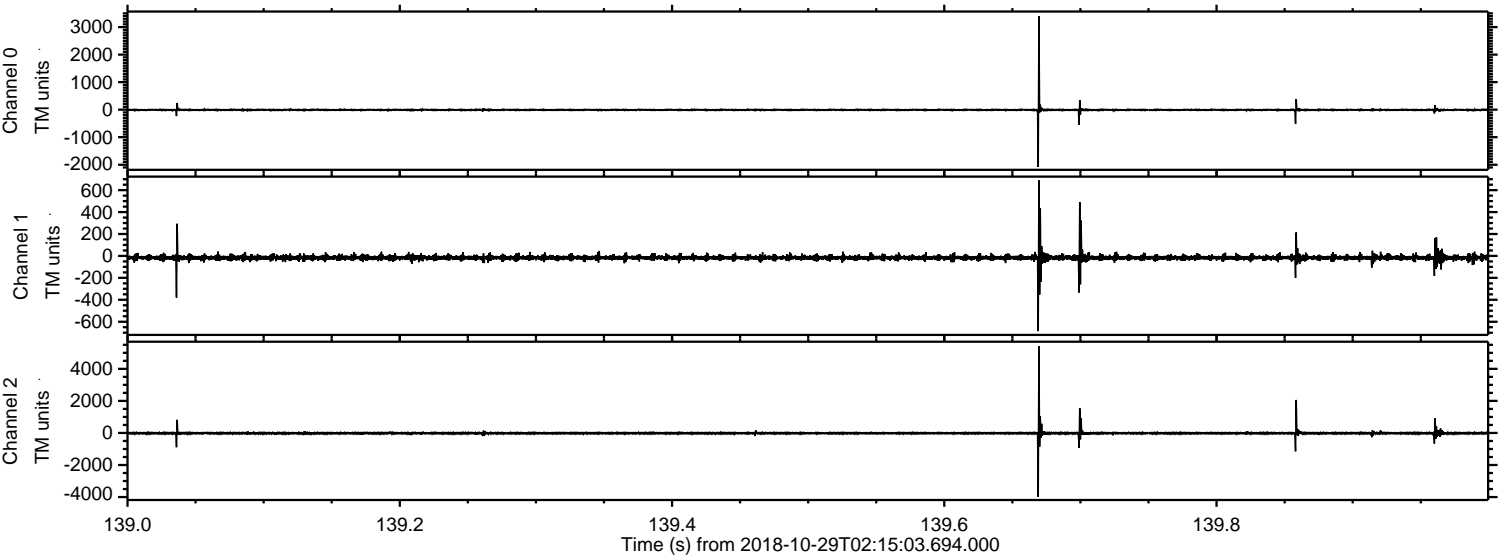


Processed Mon Oct 29 03:23:22 2018 by ELM ver.2012-10-06 from 001__elm20181029_021502__dat00.bin

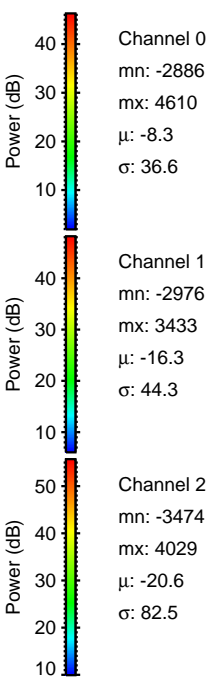
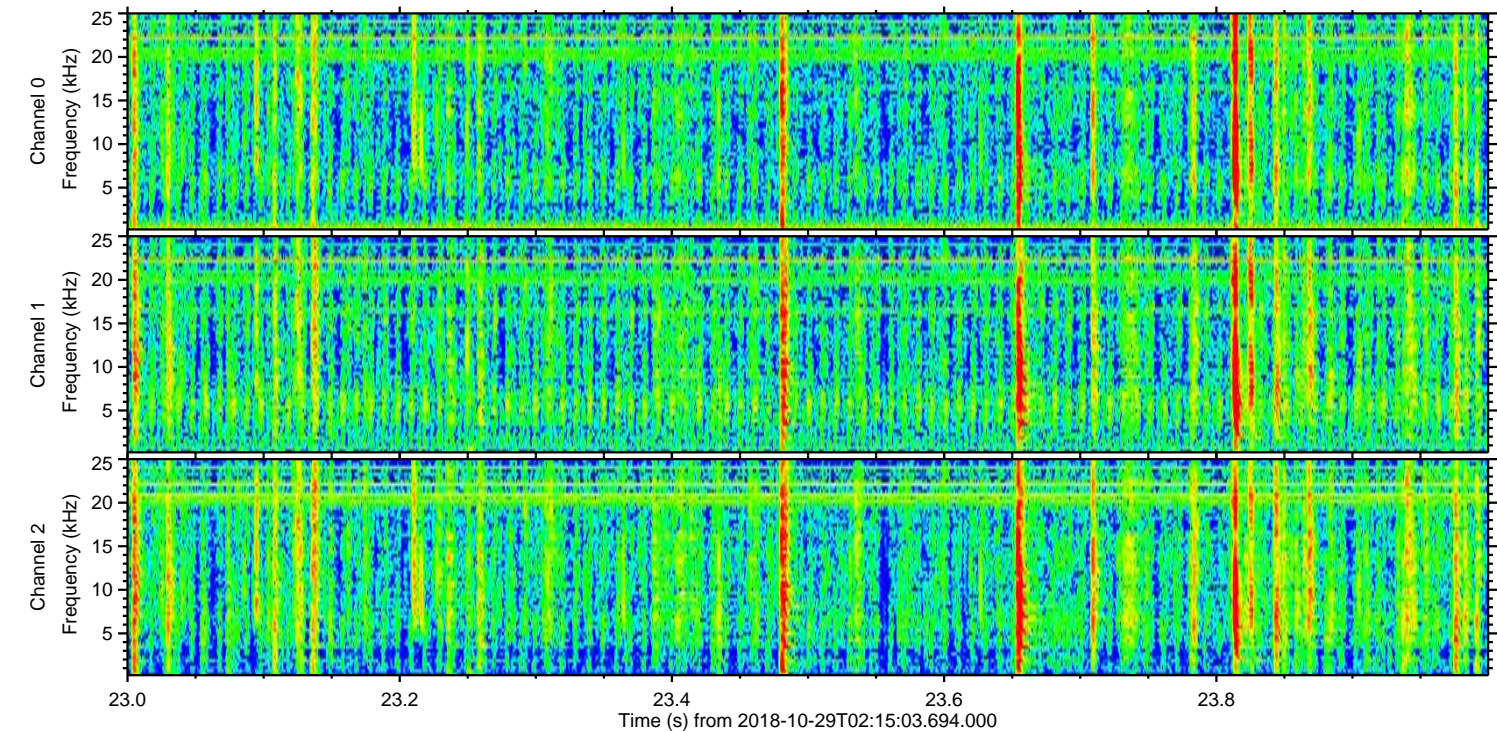
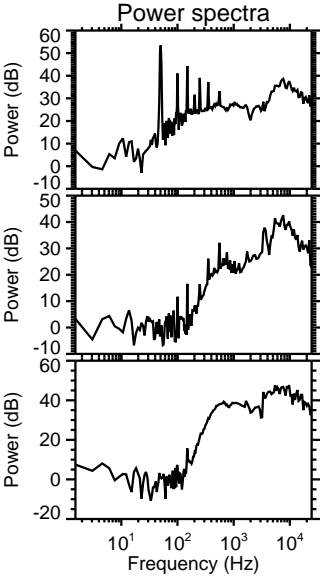
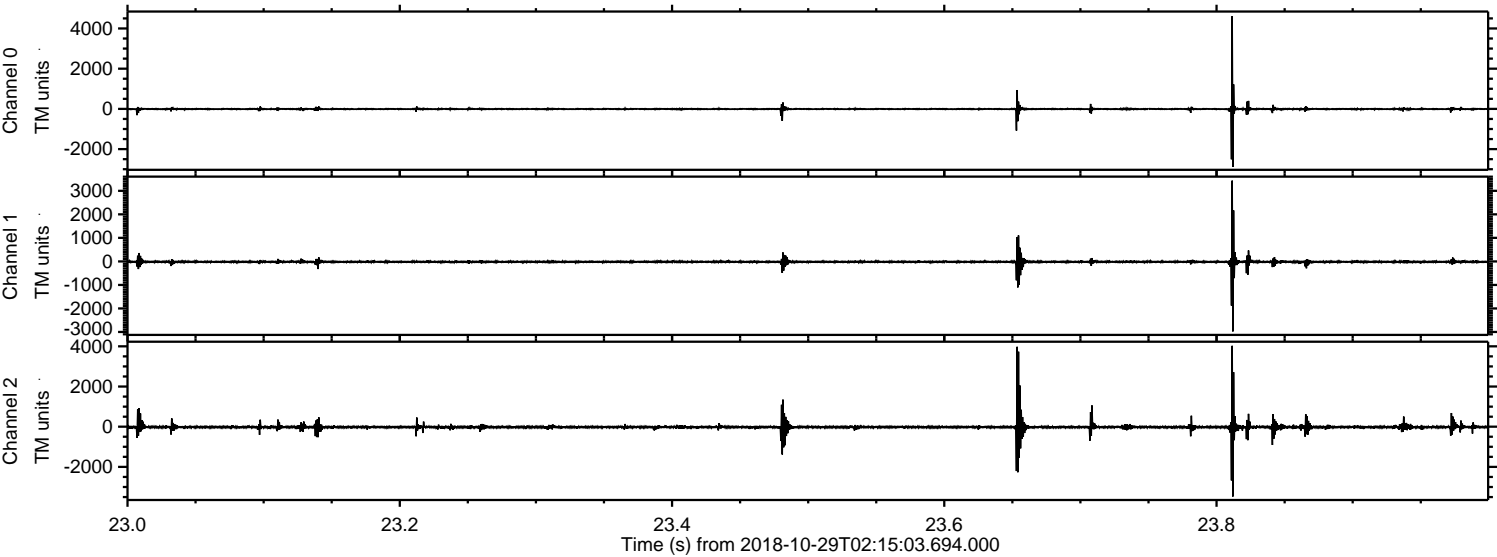


ELMAVAN 3D WAVEFORMS (Measured data sampled at 50 kHz) 51000 packets of 144 samples from 2018-10-29T02:15:03.694.000. Part 140/147

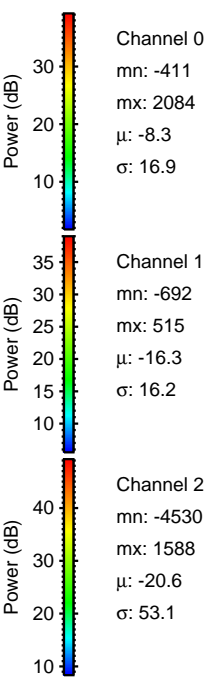
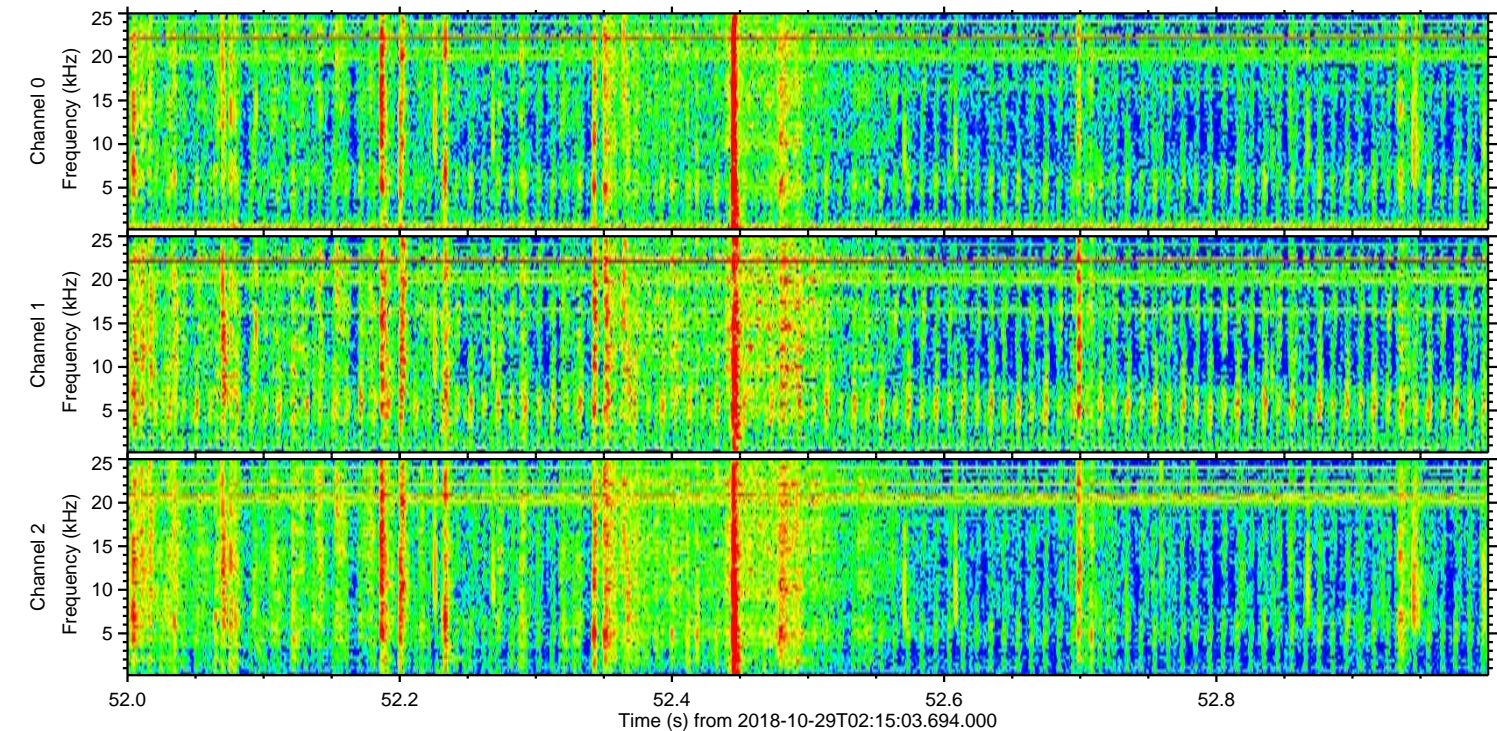
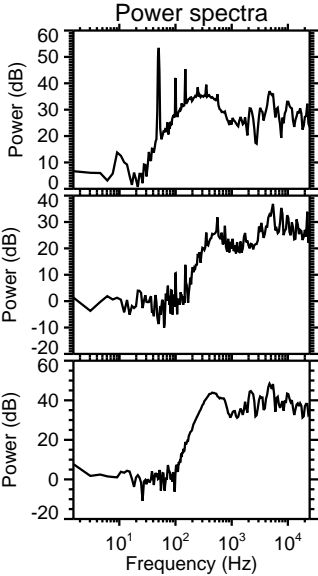
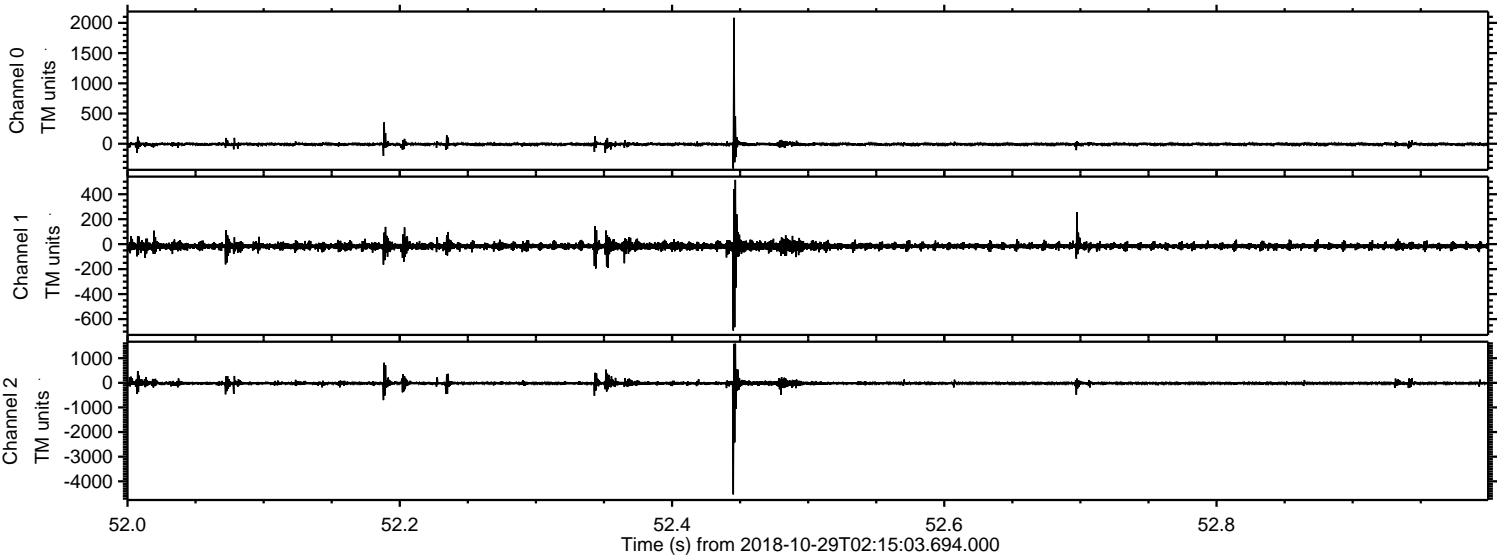
Processed Mon Oct 29 03:23:23 2018 by ELM ver.2012-10-06 from 001__elm20181029_021502__dat00.bin



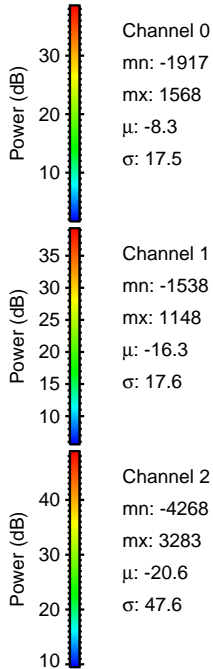
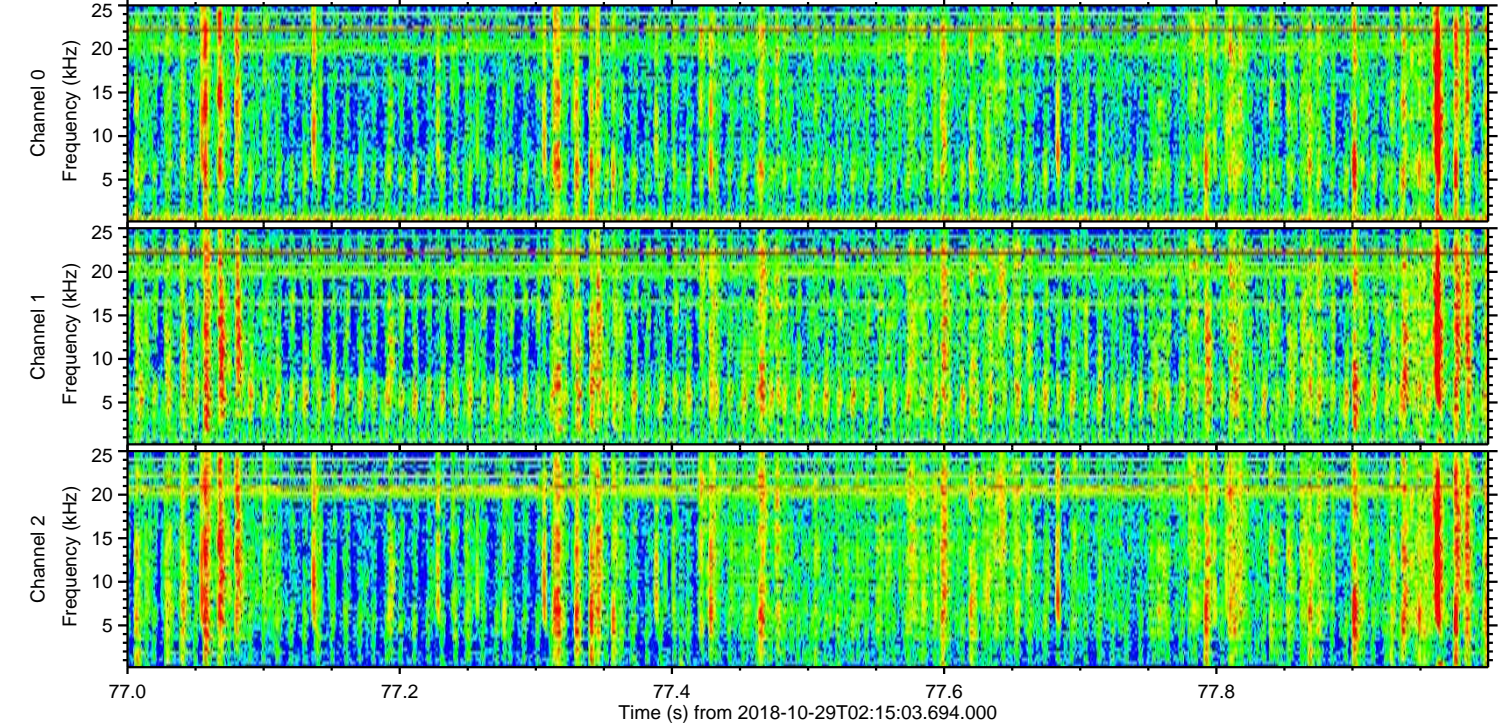
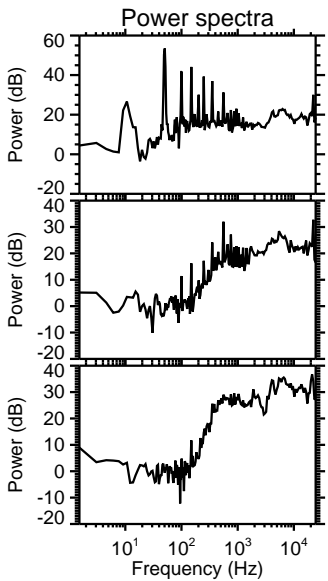
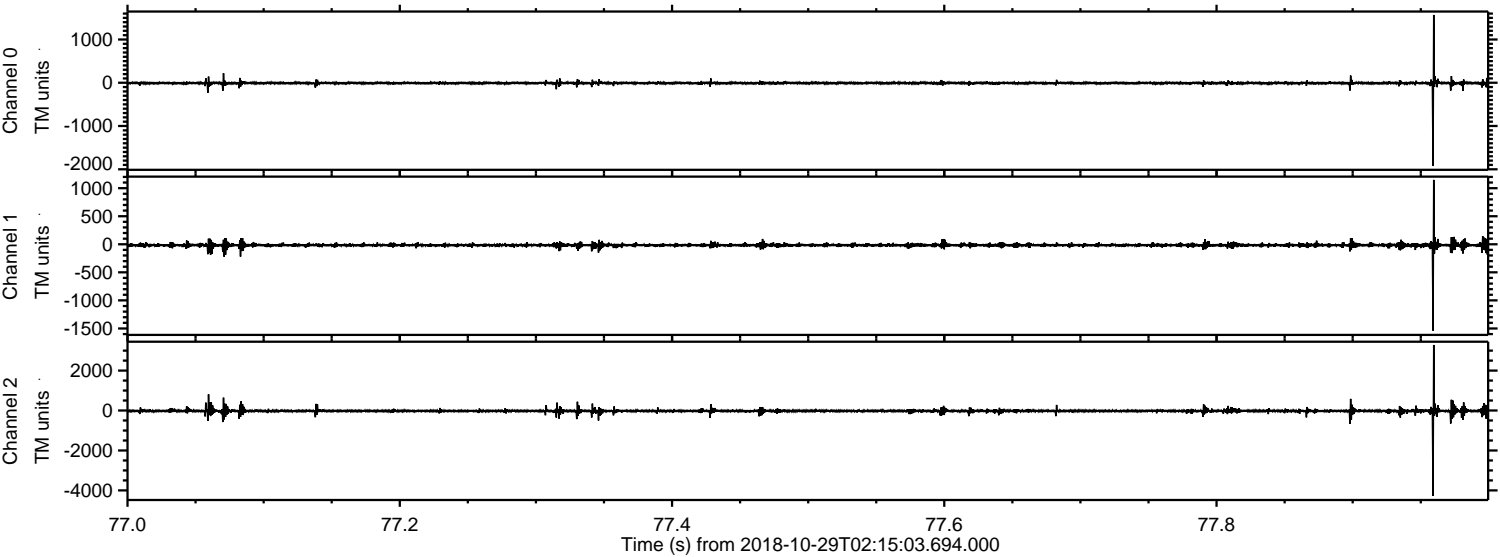
Processed Mon Oct 29 03:23:24 2018 by ELM ver.2012-10-06 from 001__elm20181029_021502__dat00.bin



Processed Mon Oct 29 03:23:25 2018 by ELM ver.2012-10-06 from 001__elm20181029_021502__dat00.bin

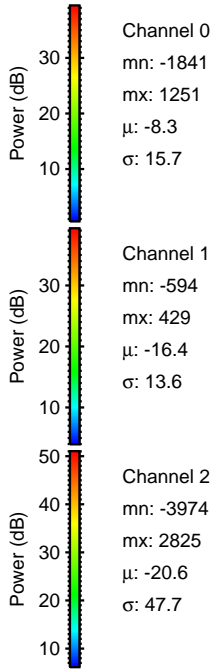
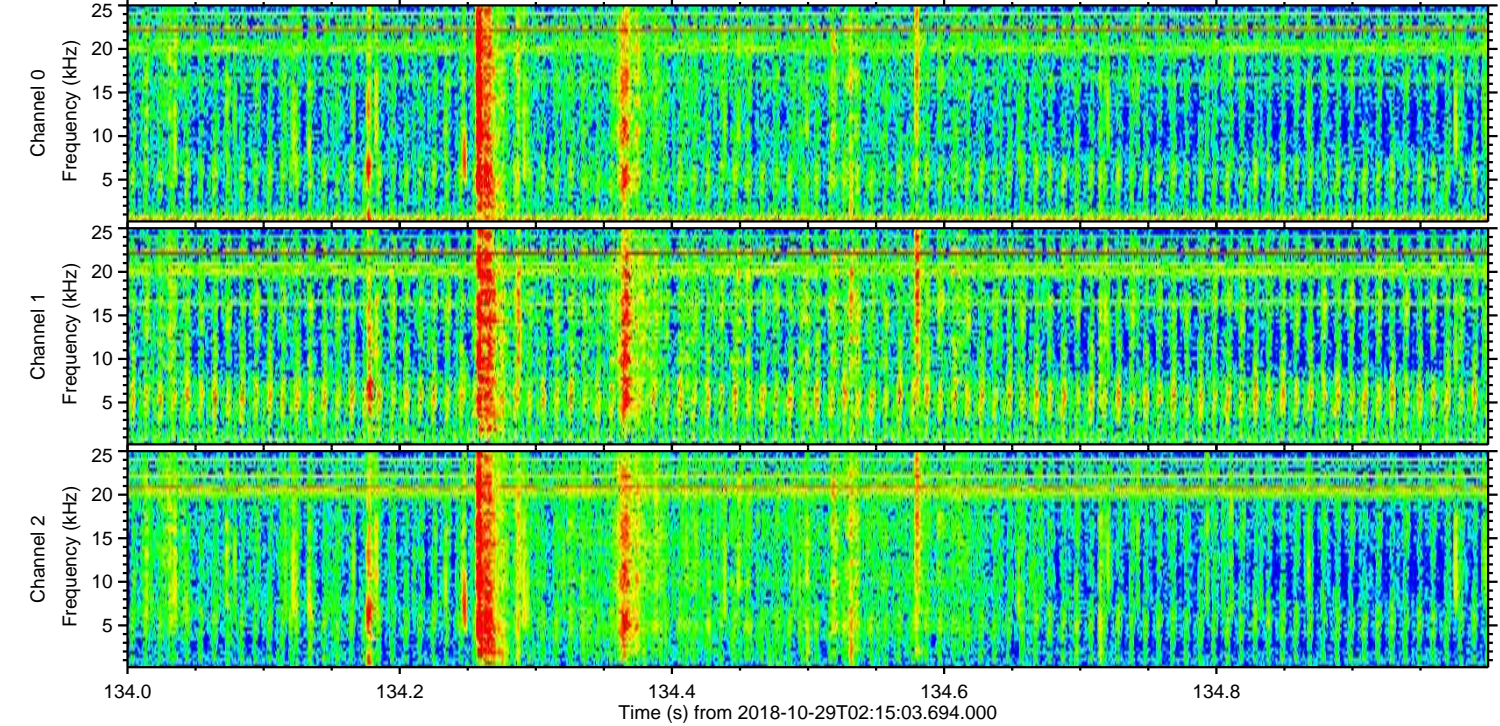
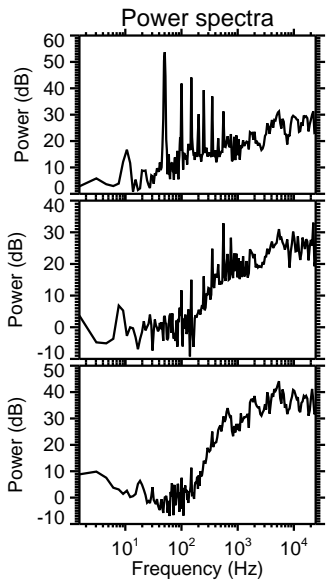
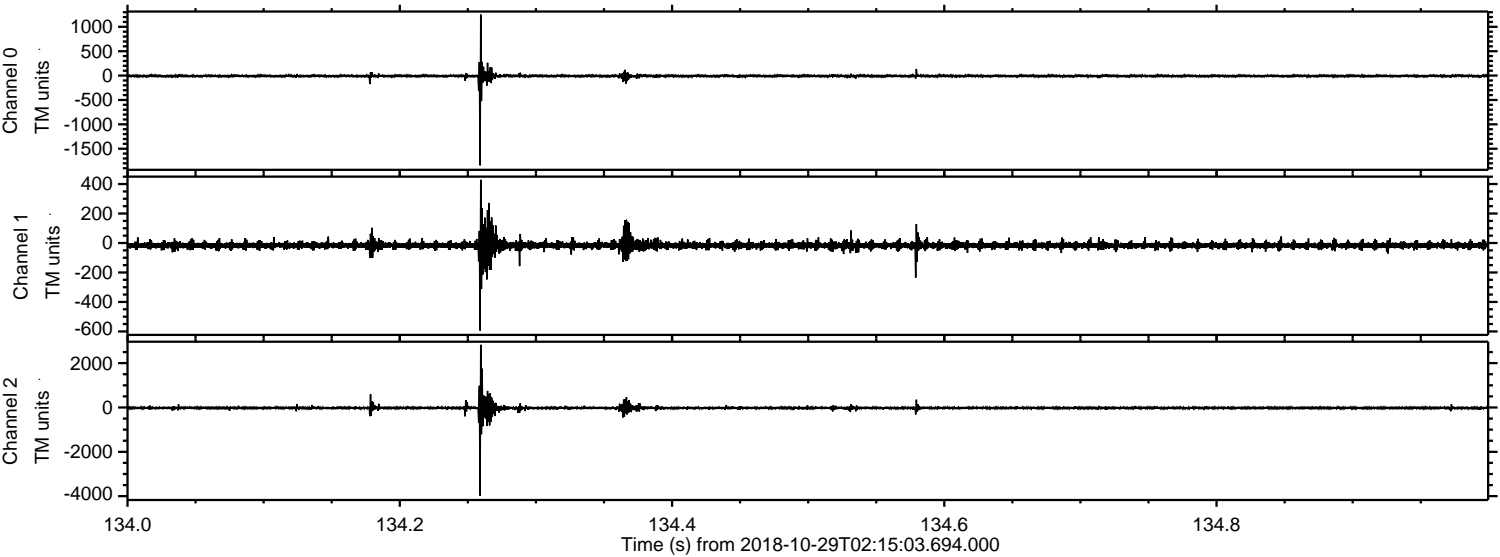


Processed Mon Oct 29 03:23:26 2018 by ELM ver.2012-10-06 from 001__elm20181029_021502__dat00.bin



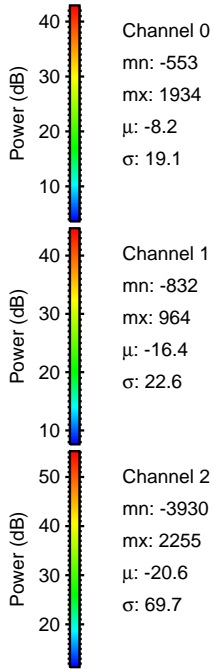
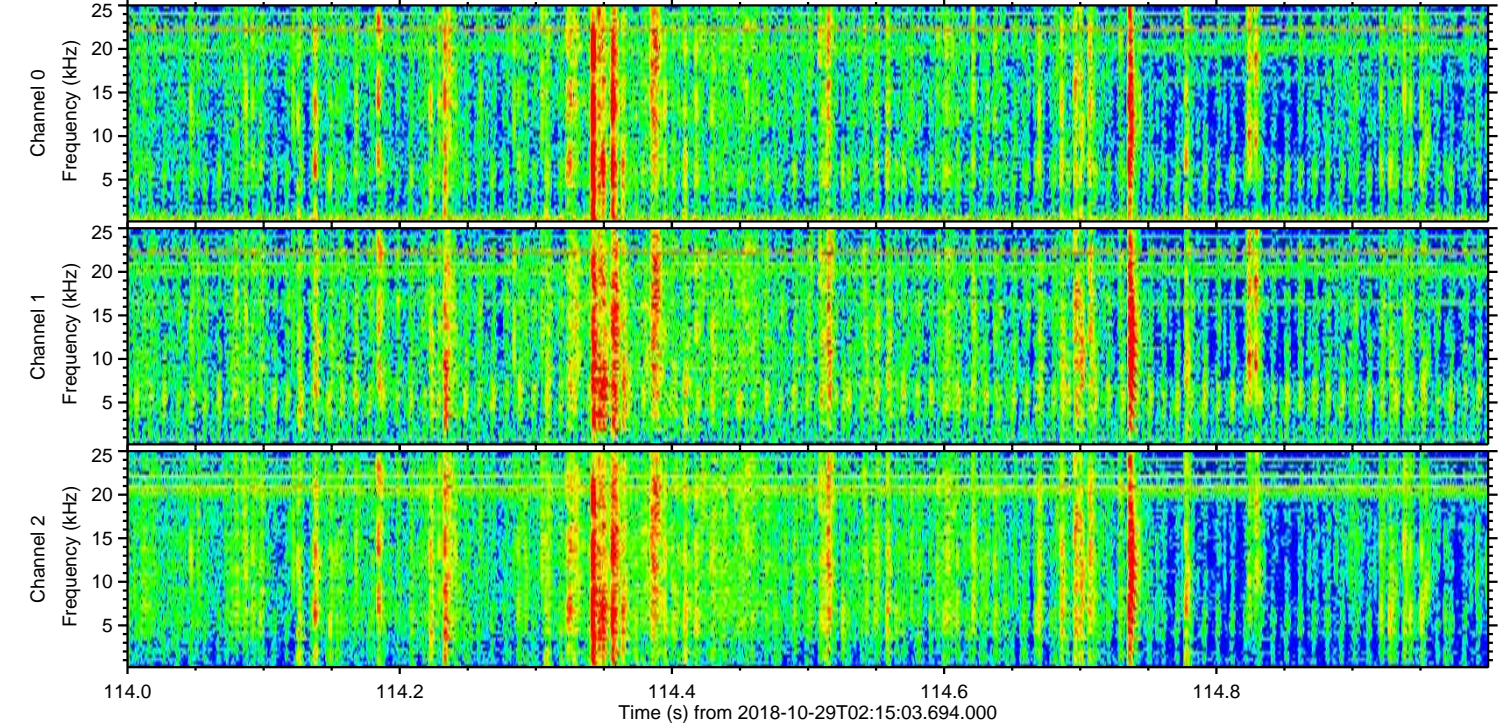
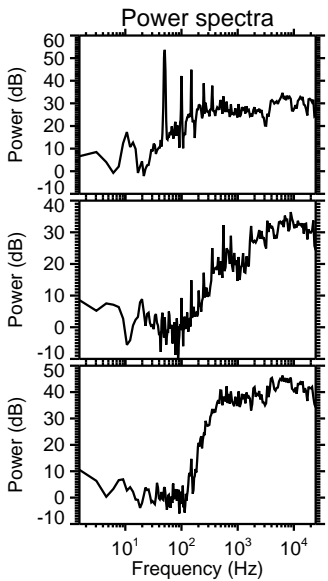
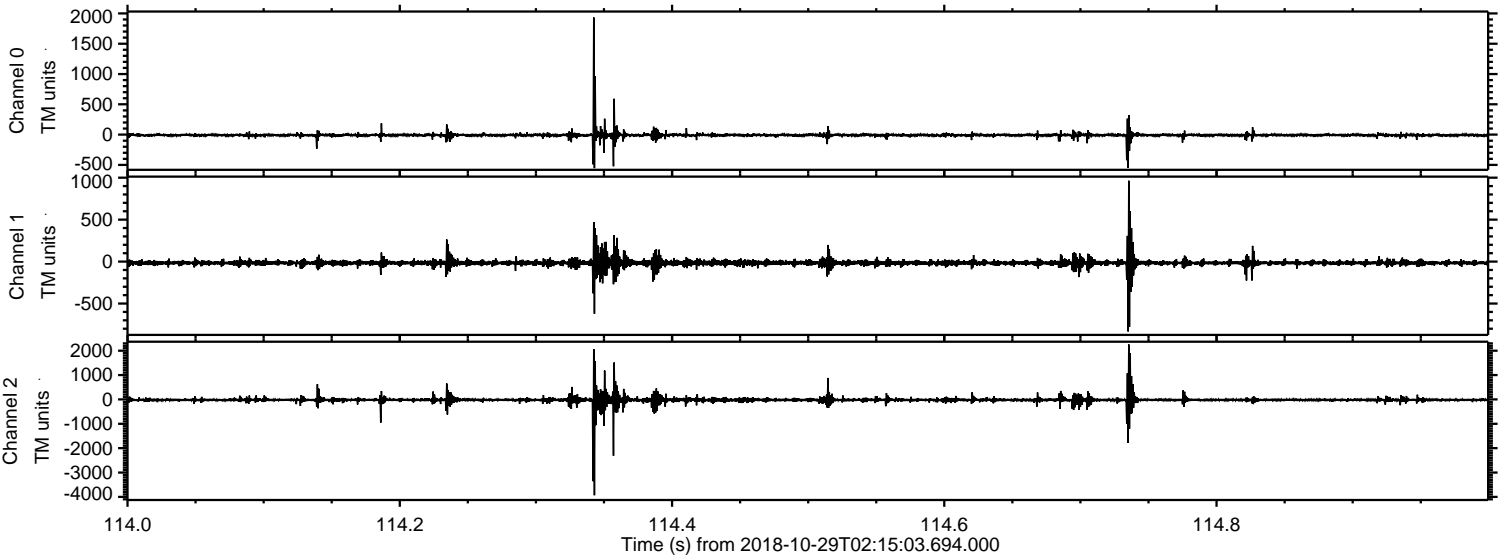
ELMAVAN 3D WAVEFORMS (Measured data sampled at 50 kHz) 51000 packets of 144 samples from 2018-10-29T02:15:03.694.000. Part 135/147

Processed Mon Oct 29 03:23:27 2018 by ELM ver.2012-10-06 from 001__elm20181029_021502__dat00.bin



ELMAVAN 3D WAVEFORMS (Measured data sampled at 50 kHz) 51000 packets of 144 samples from 2018-10-29T02:15:03.694.000. Part 115/147

Processed Mon Oct 29 03:23:28 2018 by ELM ver.2012-10-06 from 001__elm20181029_021502__dat00.bin

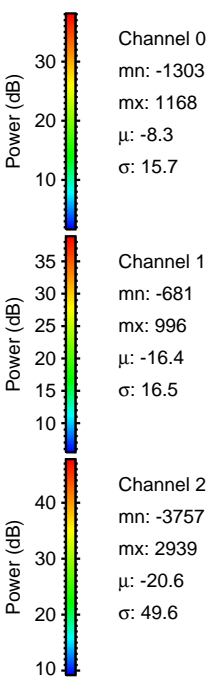
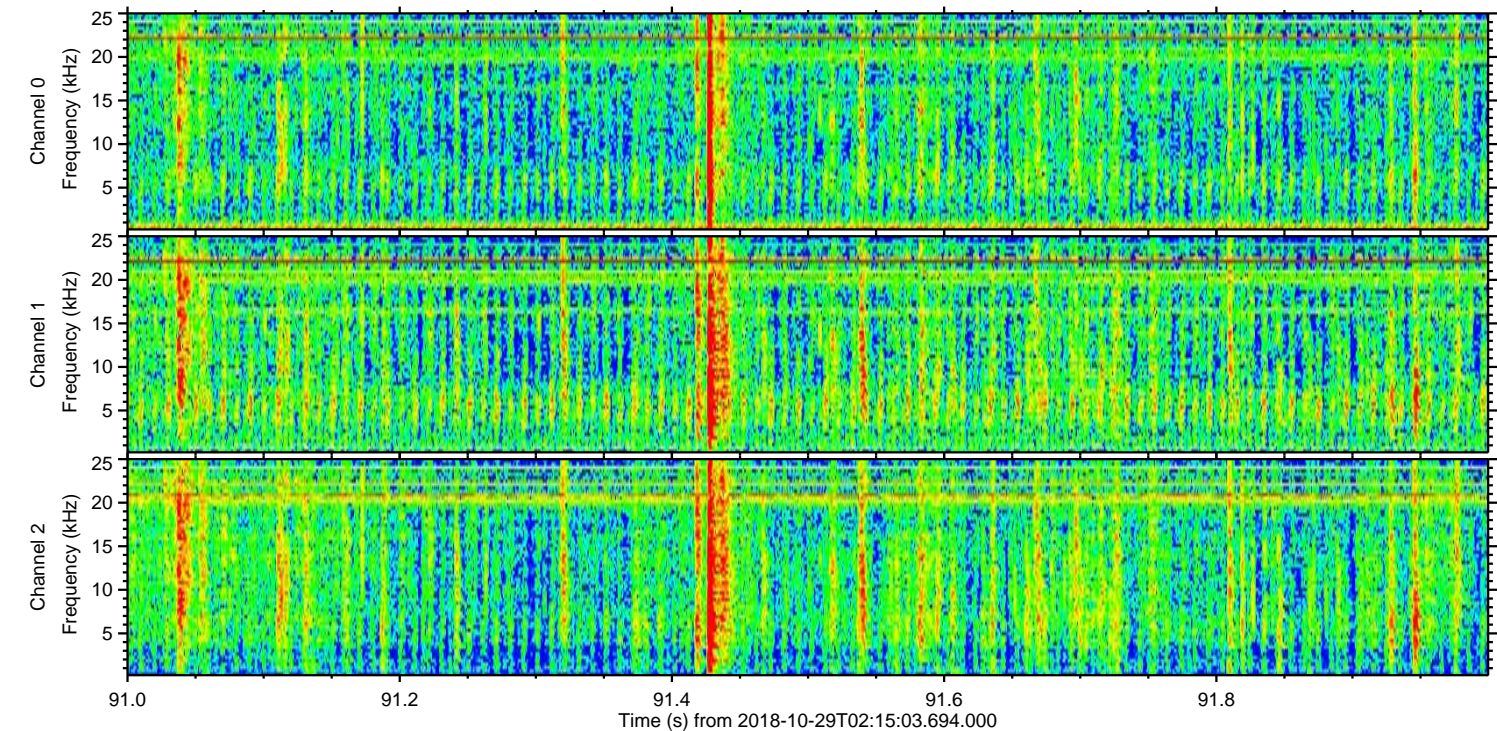
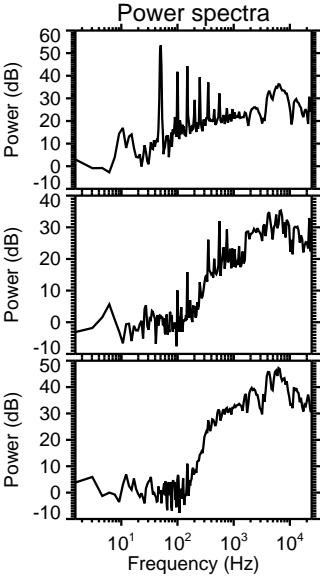
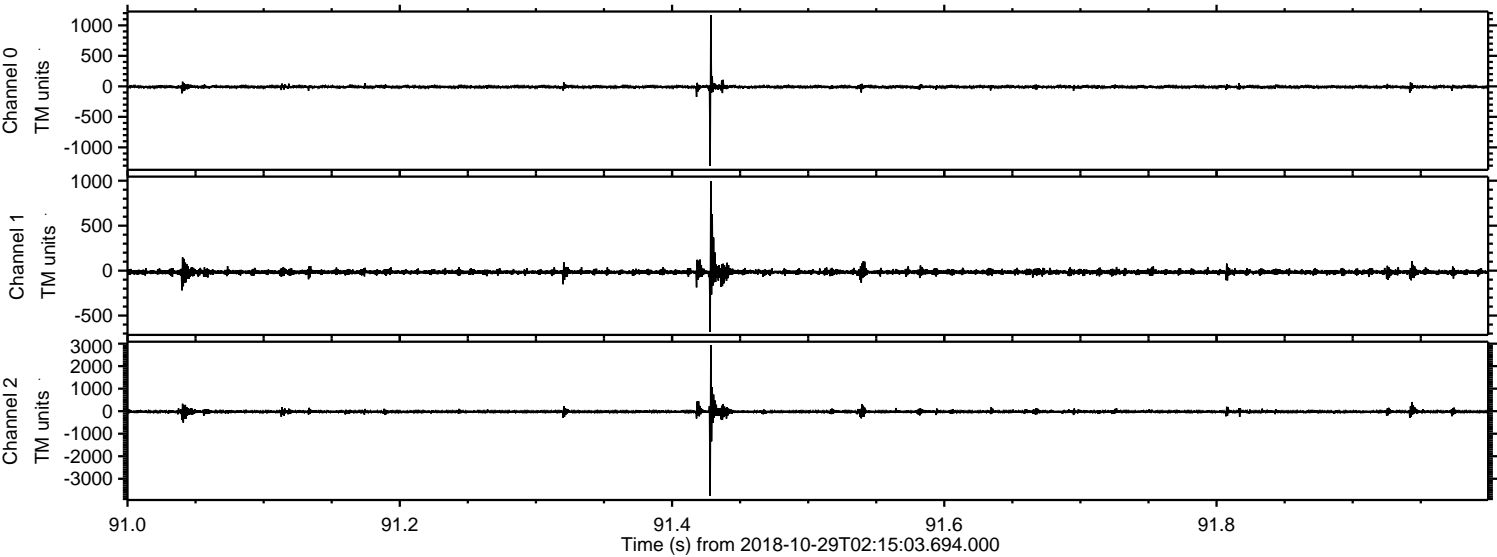


Channel 0
mn: -553
mx: 1934
 μ : -8.2
 σ : 19.1

Channel 1
mn: -832
mx: 964
 μ : -16.4
 σ : 22.6

Channel 2
mn: -3930
mx: 2255
 μ : -20.6
 σ : 69.7

Processed Mon Oct 29 03:23:29 2018 by ELM ver.2012-10-06 from 001__elm20181029_021502__dat00.bin



Processed Mon Oct 29 03:23:30 2018 by ELM ver.2012-10-06 from 001__elm20181029_021502__dat00.bin

