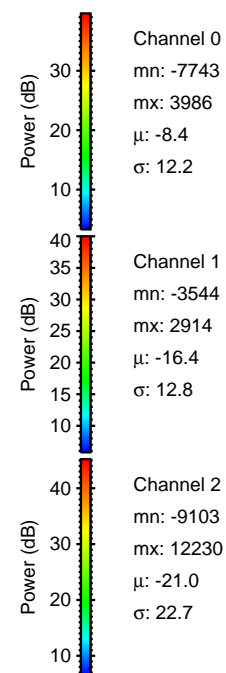
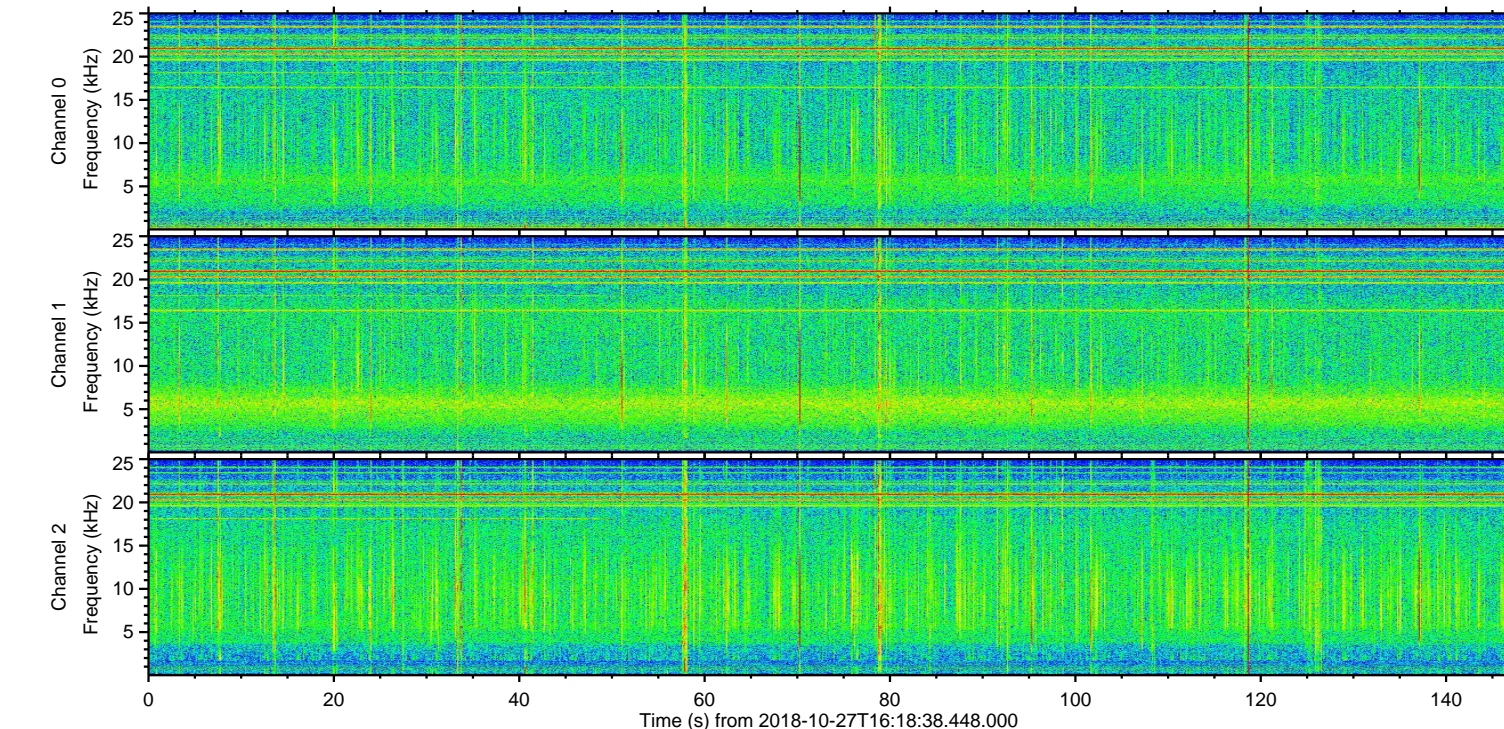
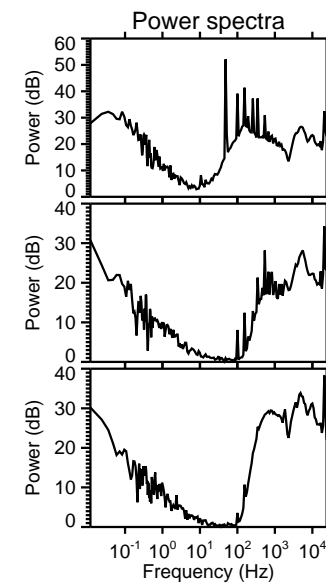
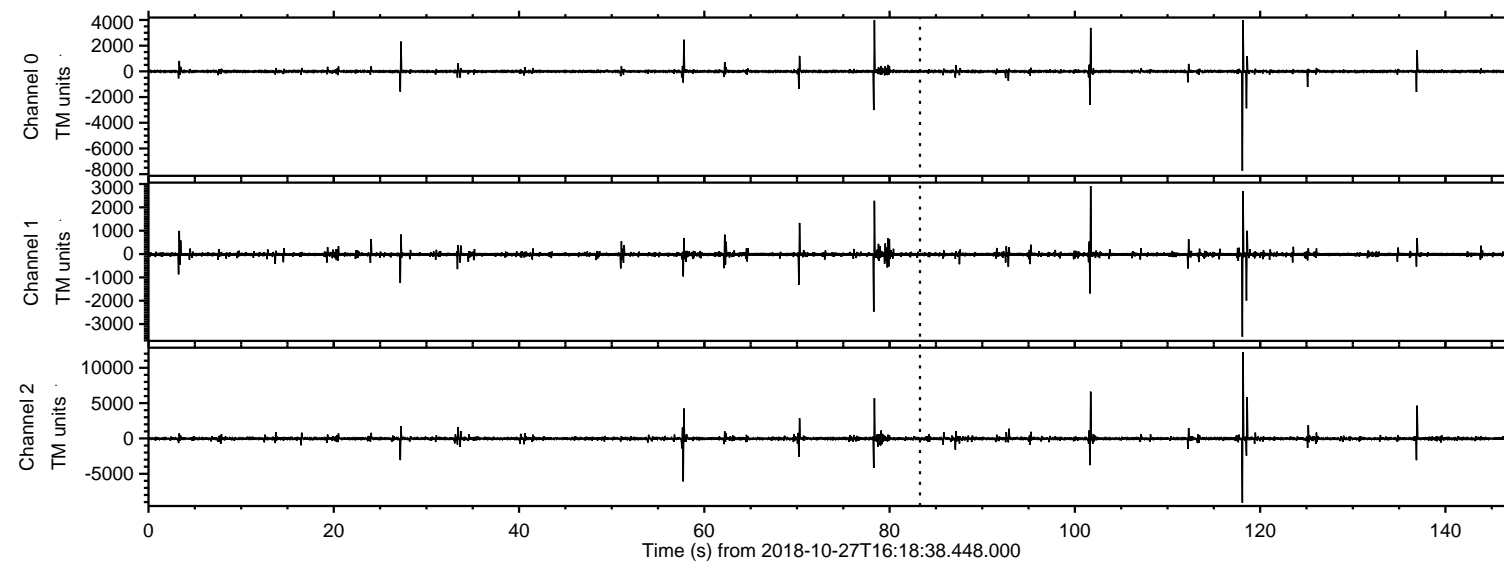


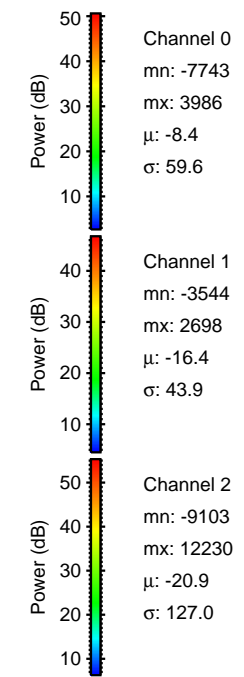
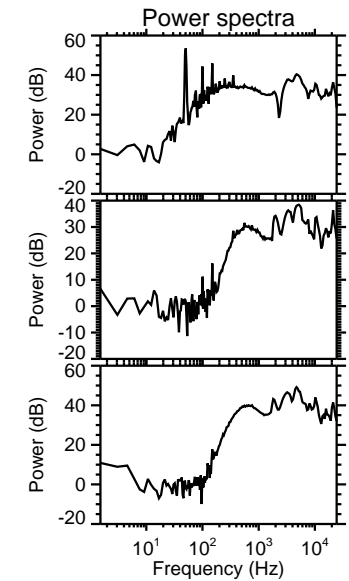
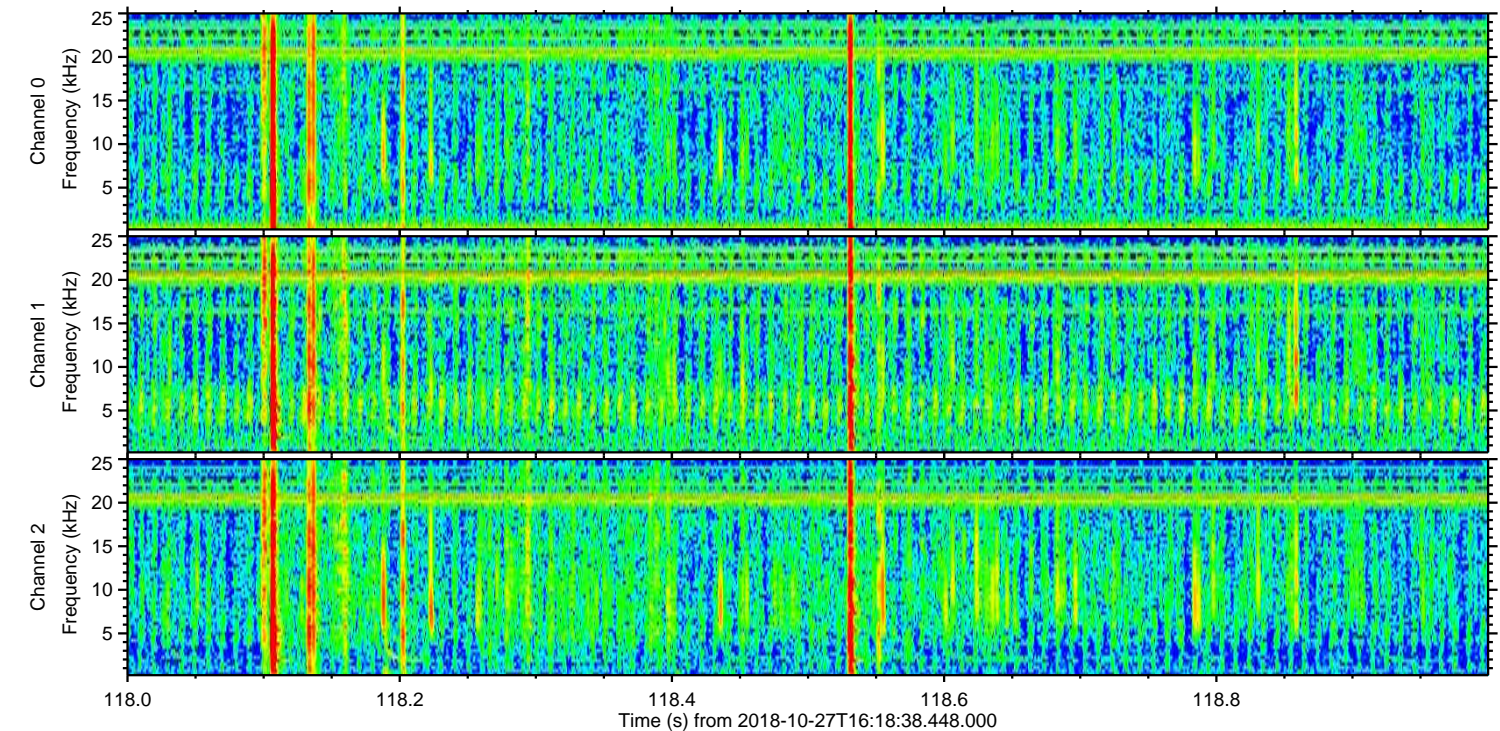
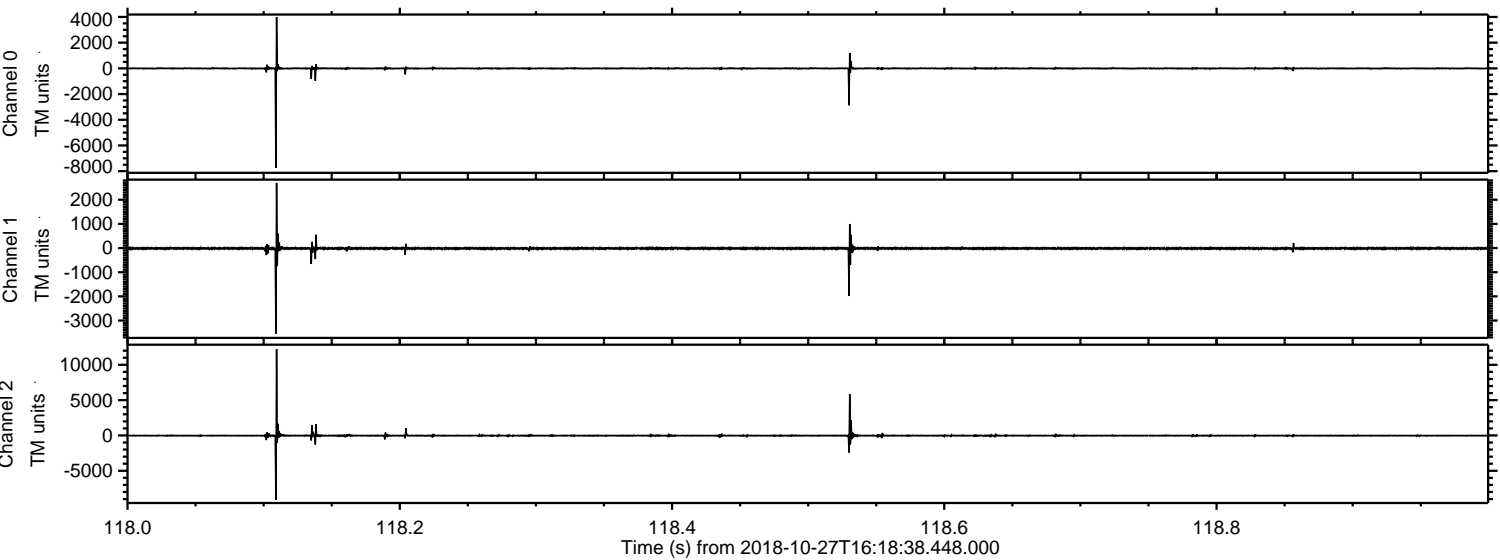
ELMAVAN 3D WAVEFORMS (Measured data sampled at 50 kHz) 50999 packets of 144 samples from 2018-10-27T16:18:38.448.000.

Processed Sat Oct 27 18:27:04 2018 by ELM ver.2012-10-06 from 001__elm20181027_161837__dat00.bin



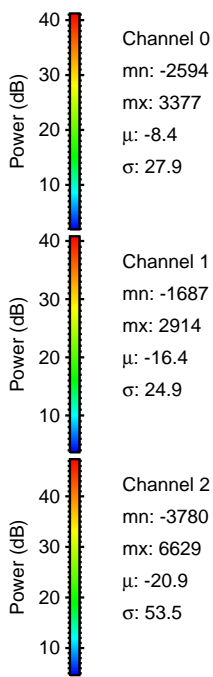
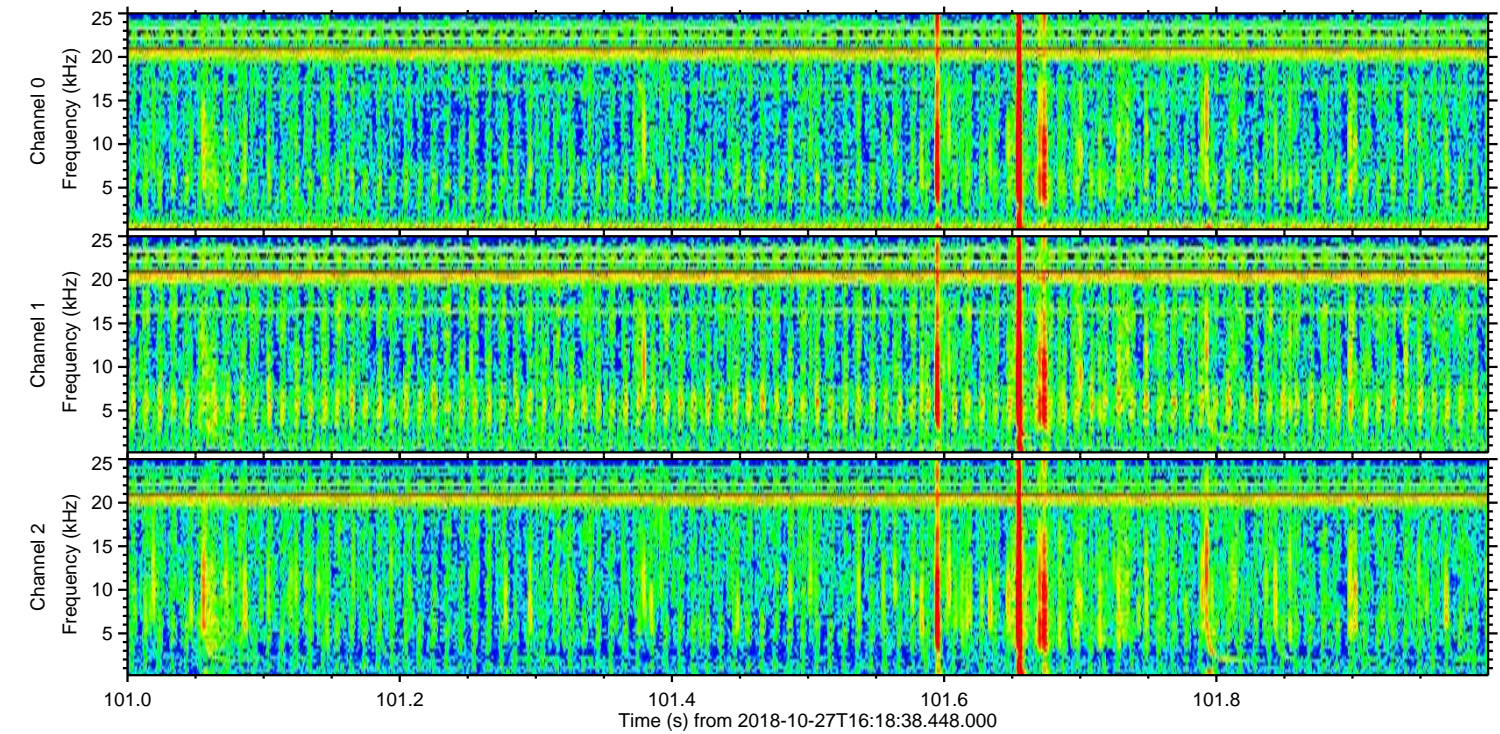
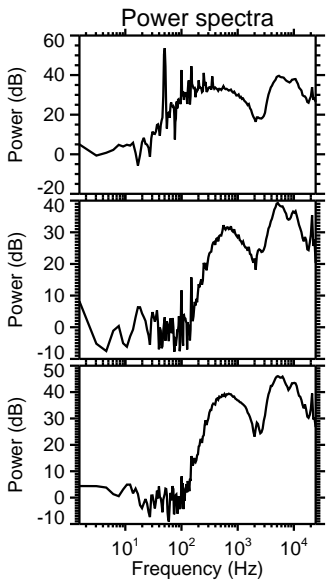
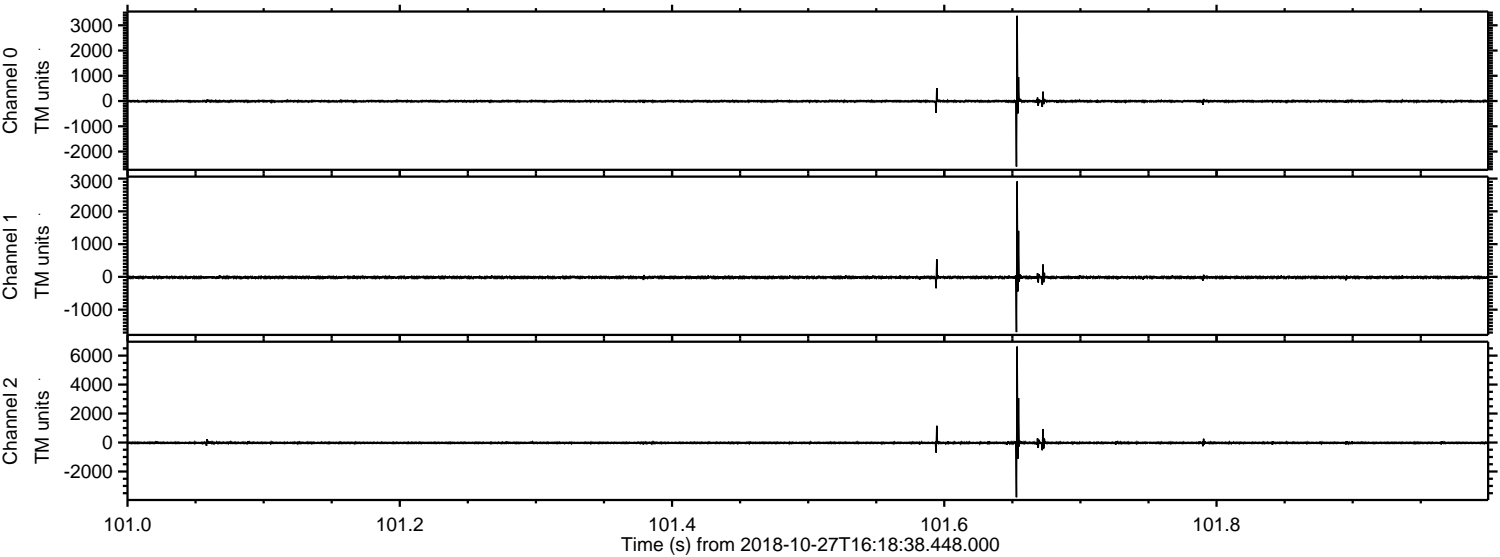
ELMAVAN 3D WAVEFORMS (Measured data sampled at 50 kHz) 50999 packets of 144 samples from 2018-10-27T16:18:38.448.000. Part 119/147

Processed Sat Oct 27 18:27:10 2018 by ELM ver.2012-10-06 from 001__elm20181027_161837__dat00.bin

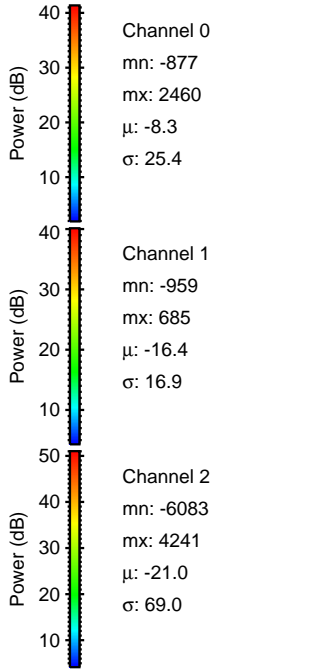
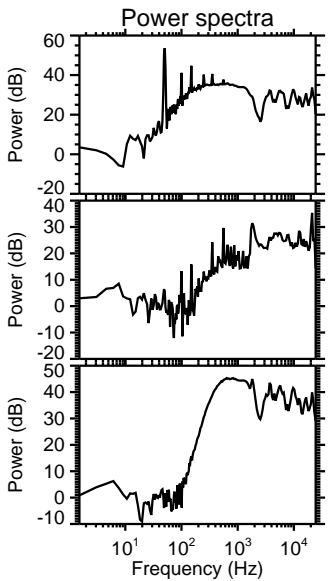
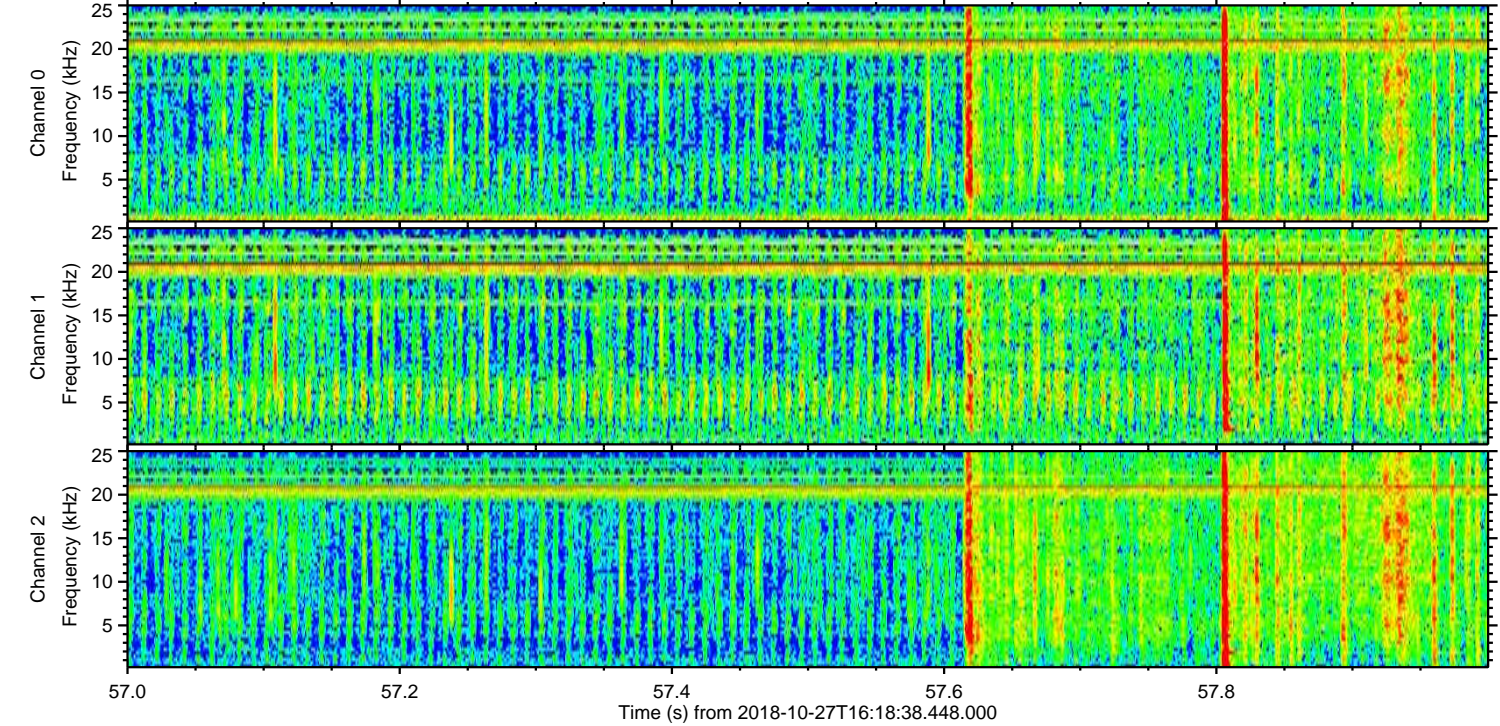
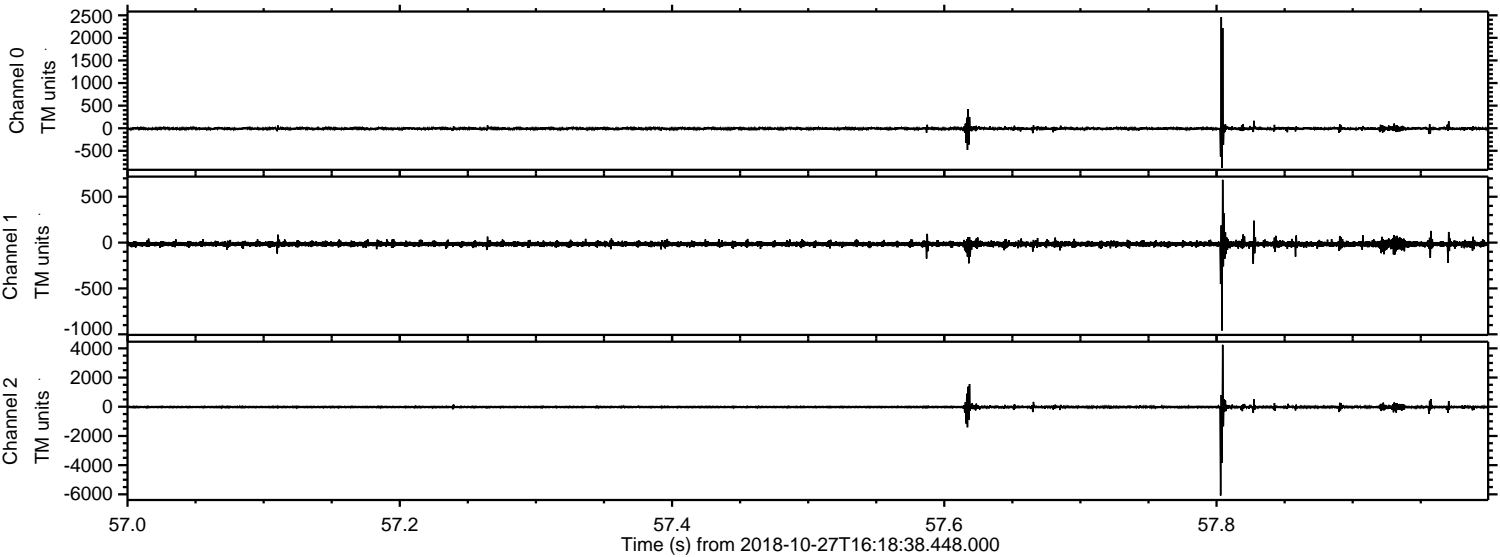


ELMAVAN 3D WAVEFORMS (Measured data sampled at 50 kHz) 50999 packets of 144 samples from 2018-10-27T16:18:38.448.000. Part 102/147

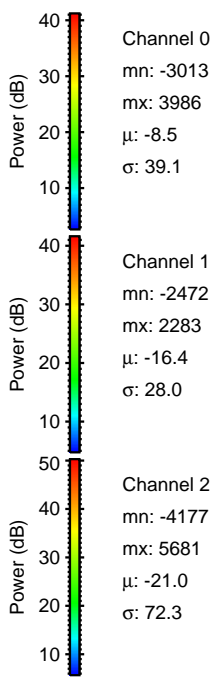
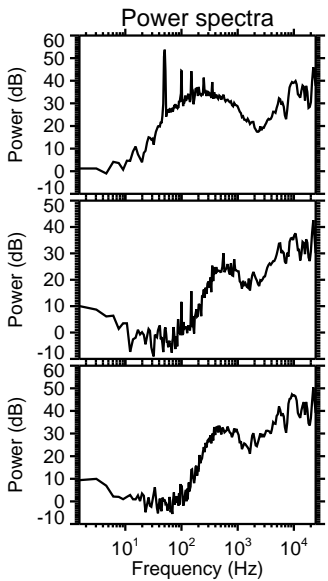
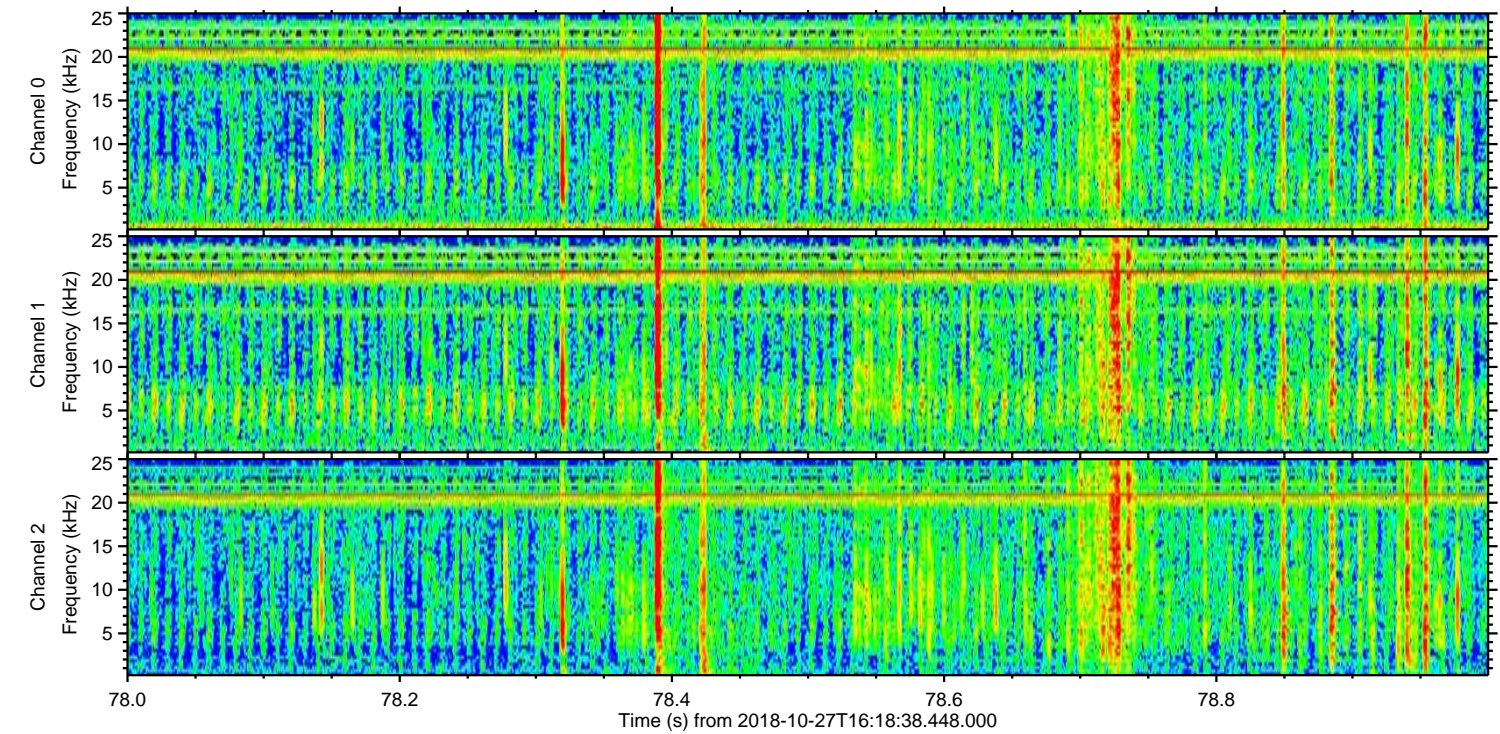
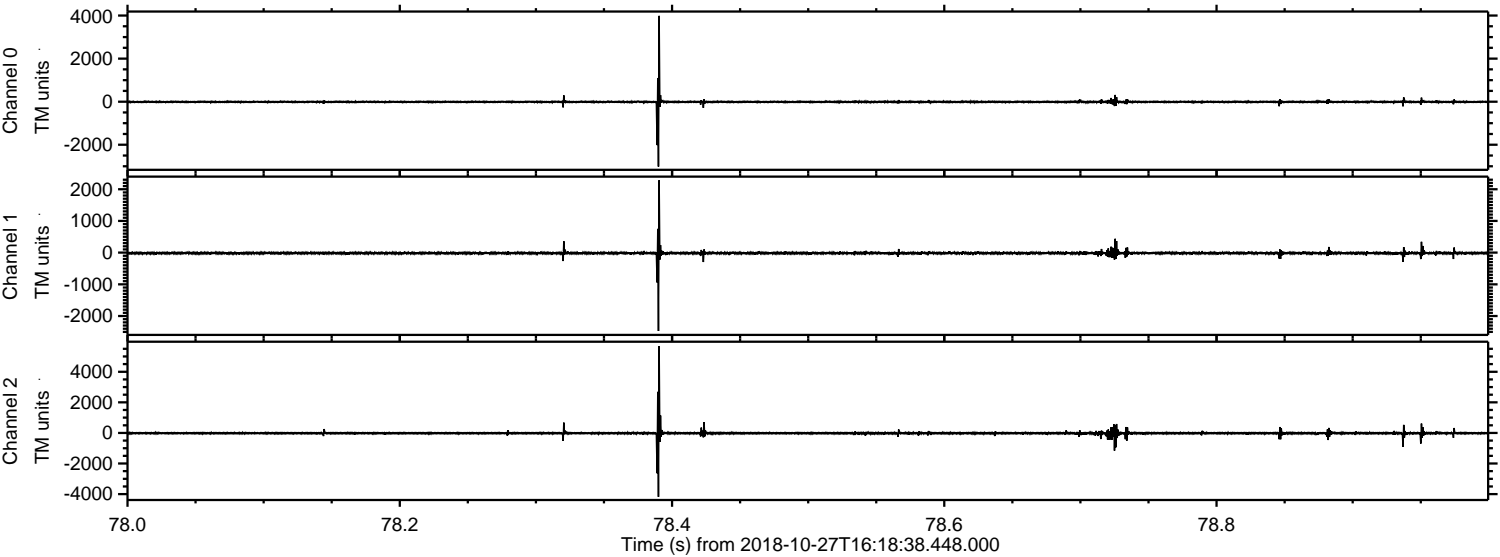
Processed Sat Oct 27 18:27:11 2018 by ELM ver.2012-10-06 from 001__elm20181027_161837__dat00.bin



Processed Sat Oct 27 18:27:12 2018 by ELM ver.2012-10-06 from 001__elm20181027_161837__dat00.bin

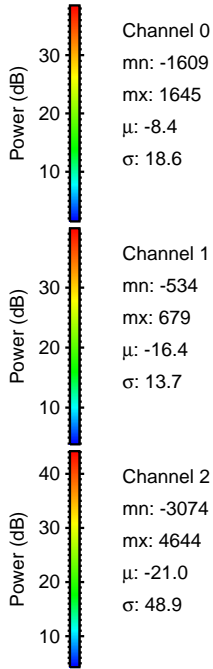
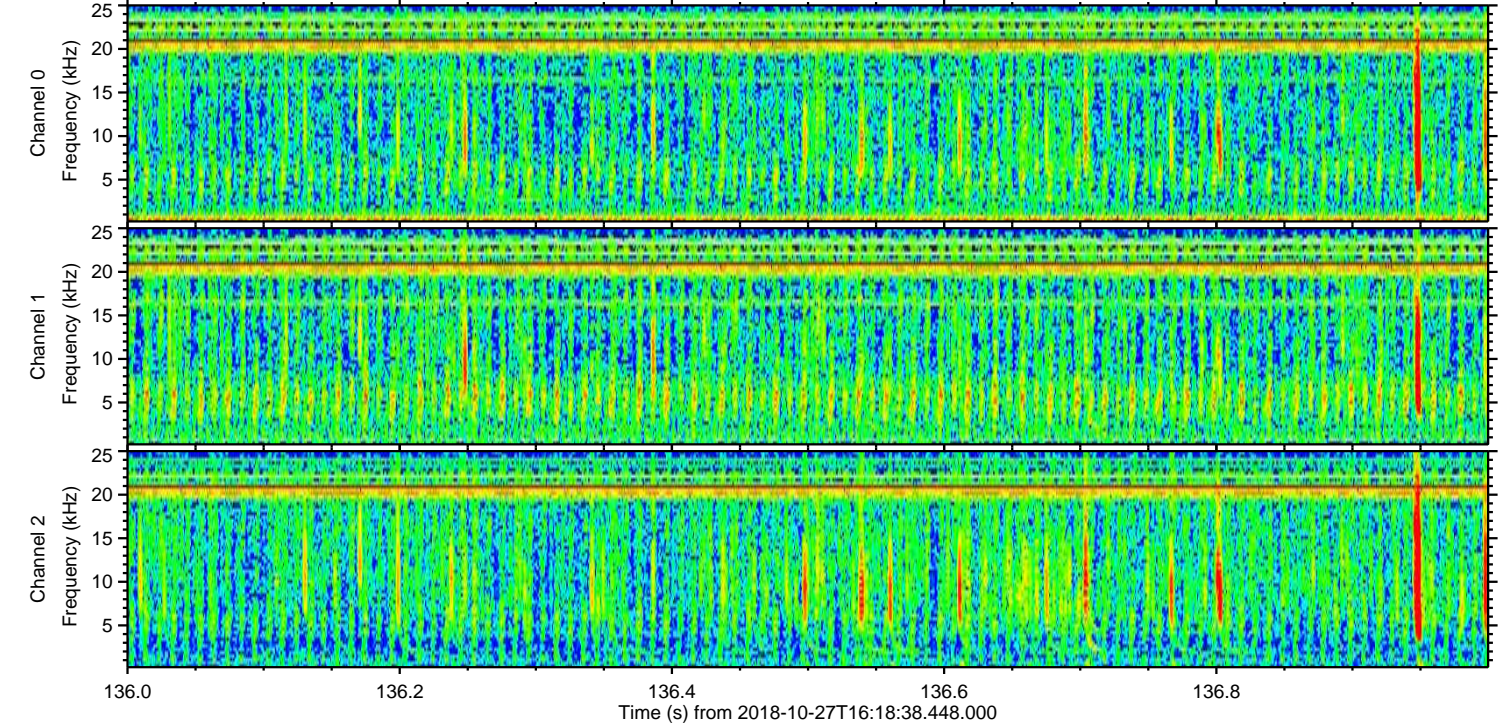
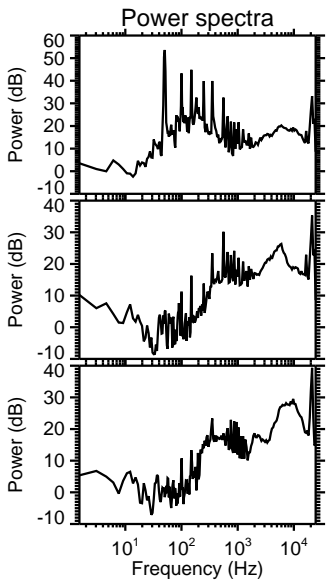
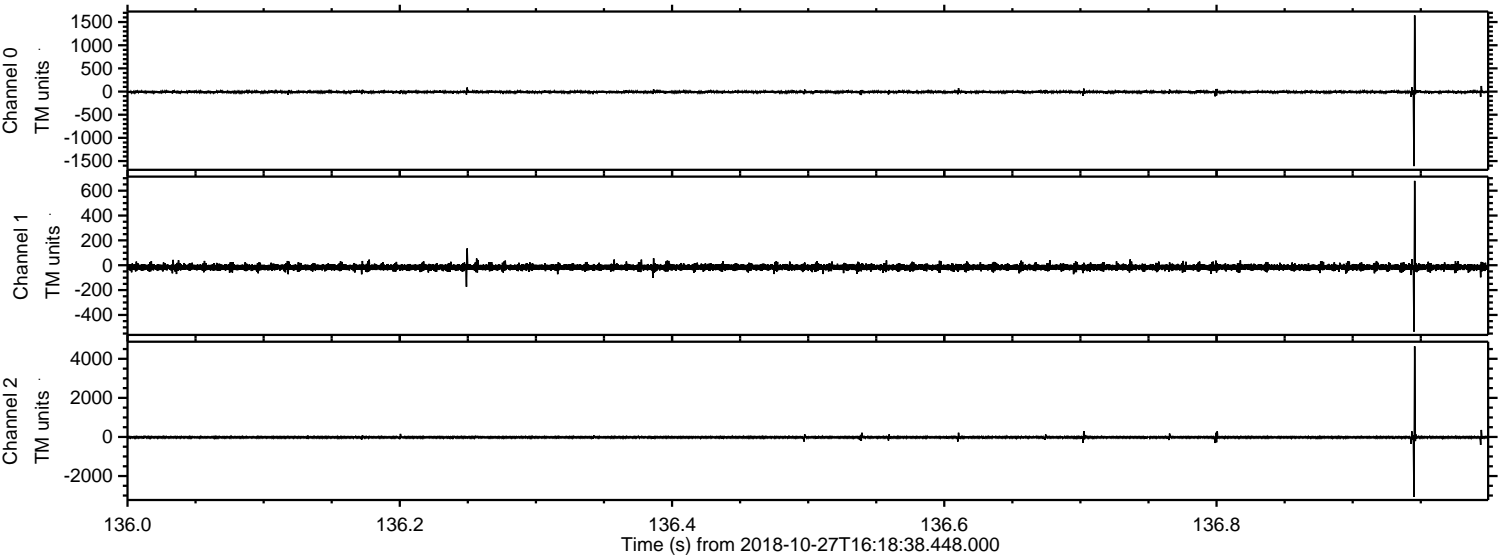


Processed Sat Oct 27 18:27:13 2018 by ELM ver.2012-10-06 from 001__elm20181027_161837__dat00.bin

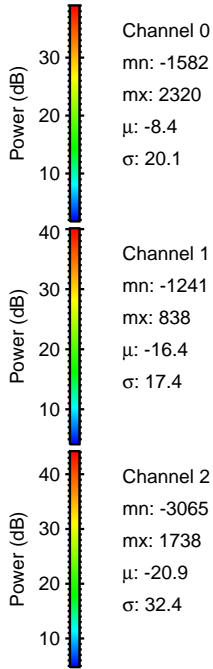
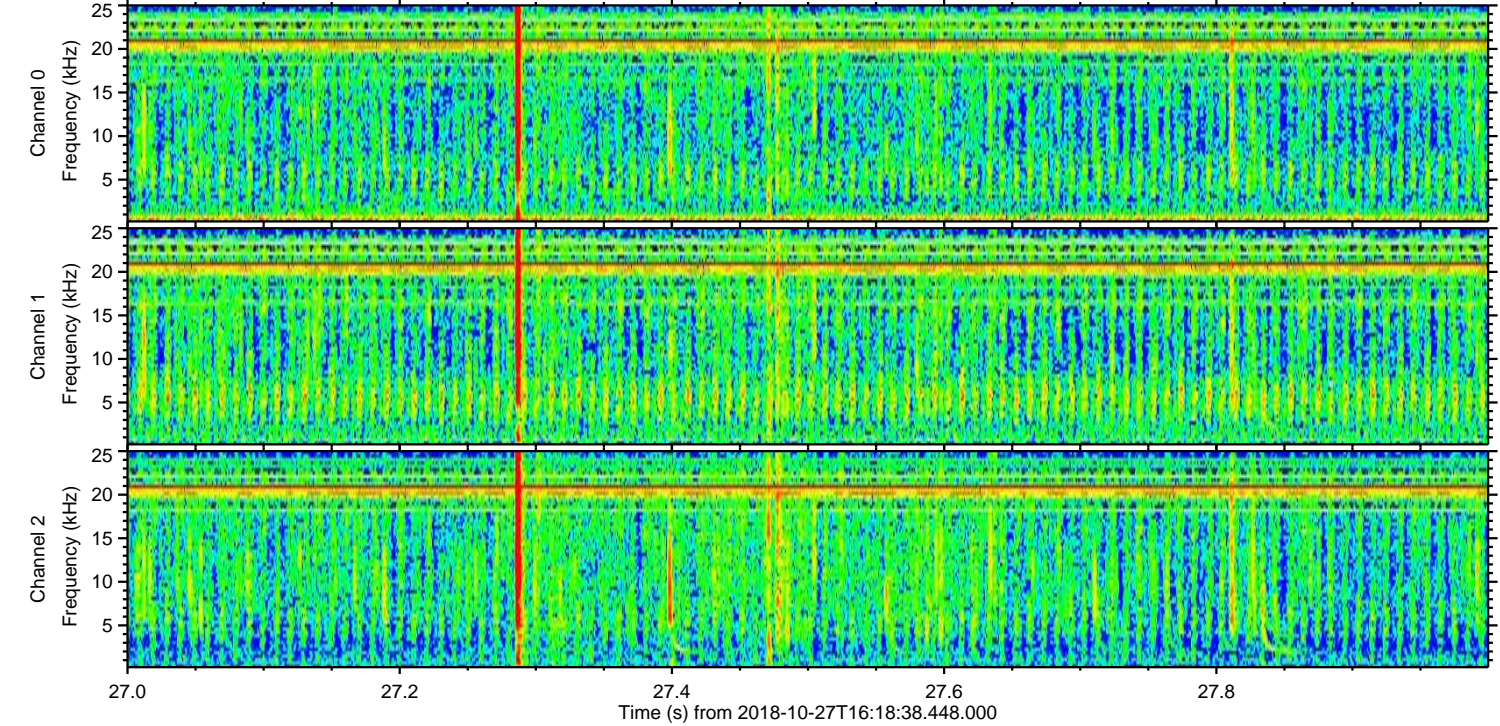
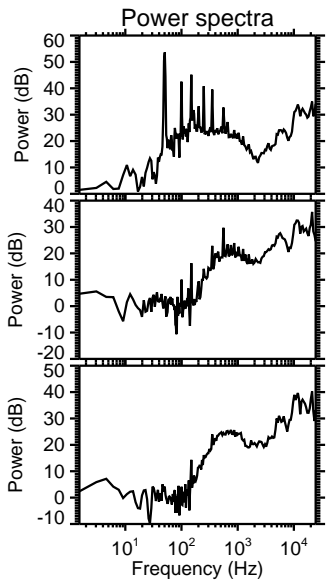
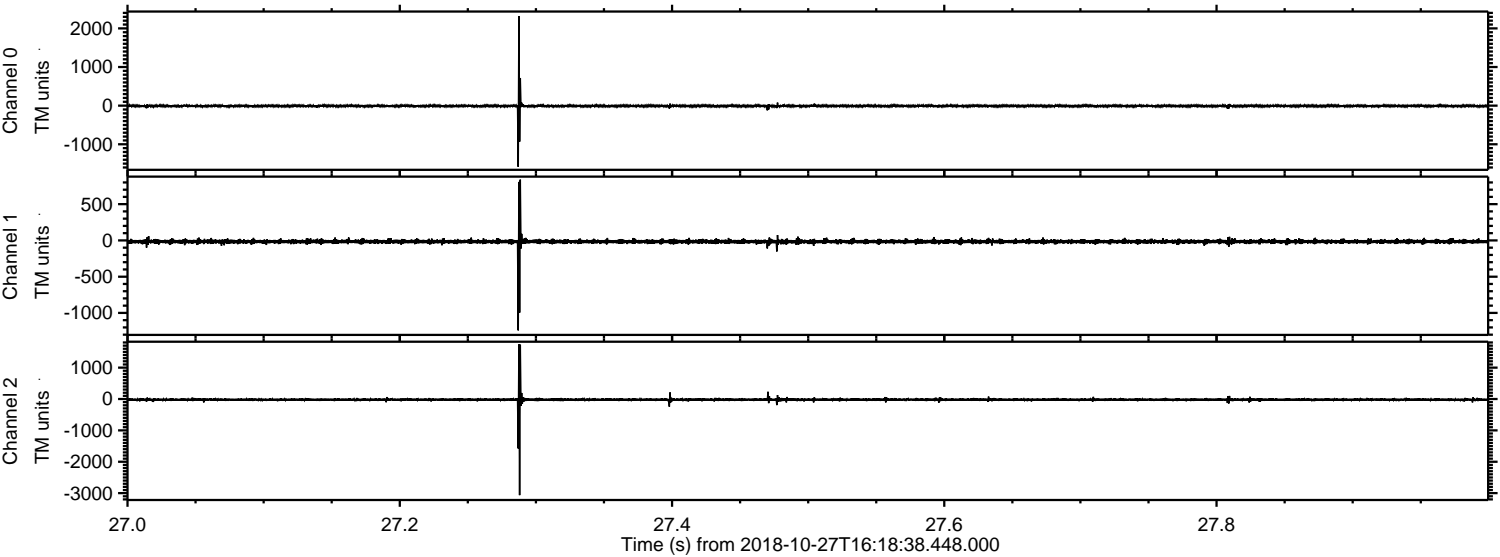


ELMAVAN 3D WAVEFORMS (Measured data sampled at 50 kHz) 50999 packets of 144 samples from 2018-10-27T16:18:38.448.000. Part 137/147

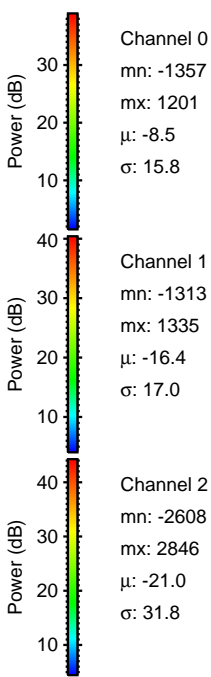
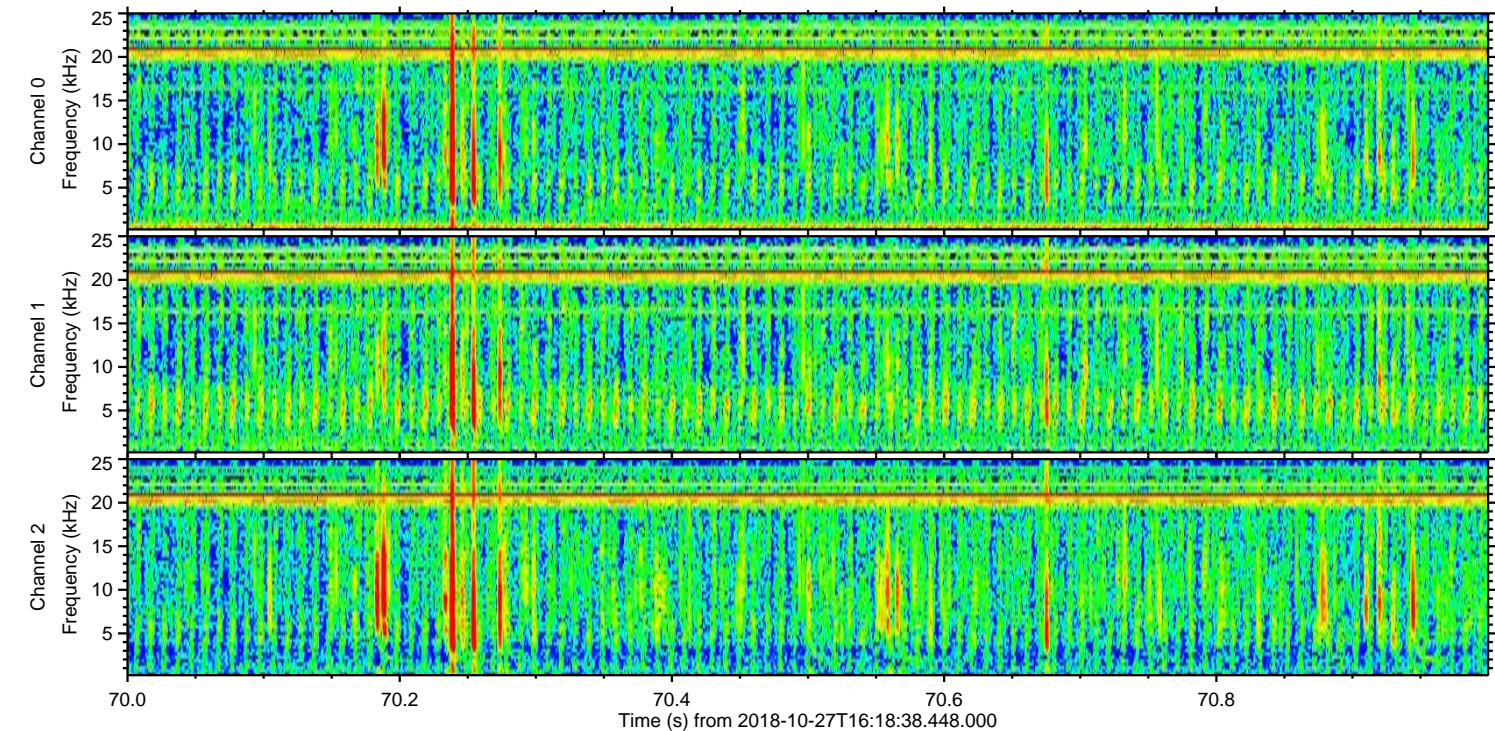
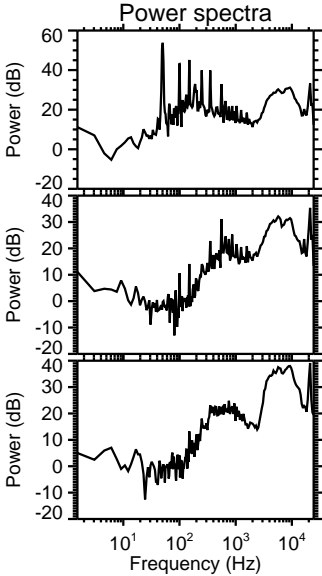
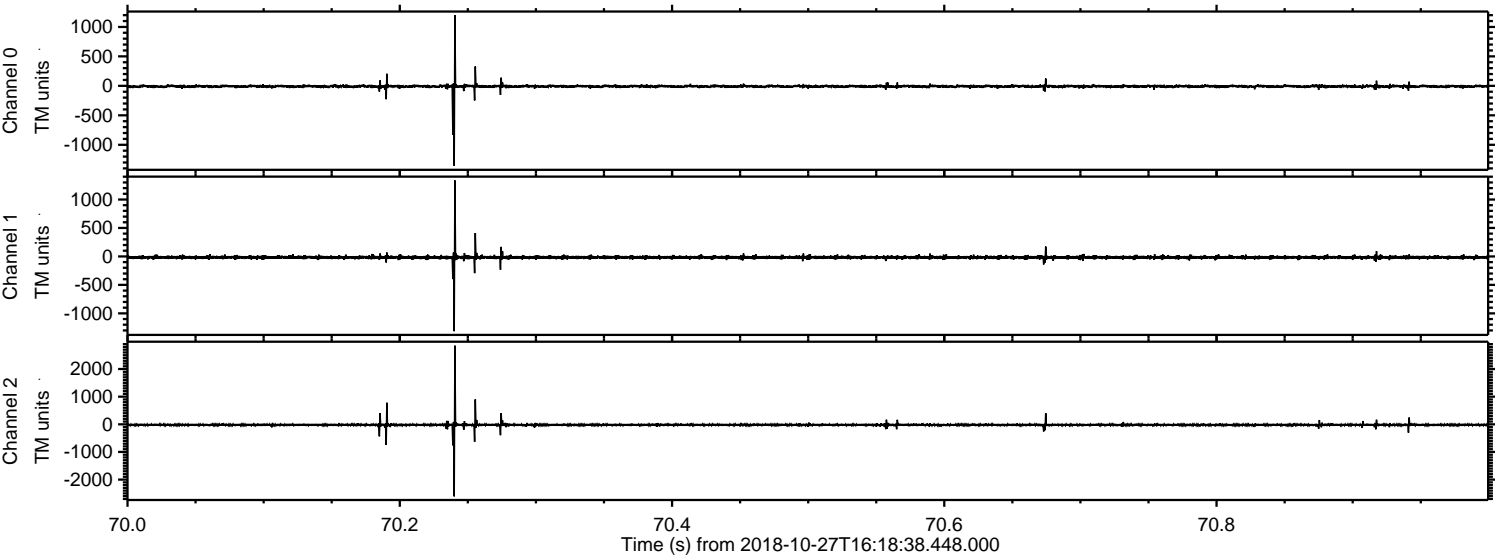
Processed Sat Oct 27 18:27:13 2018 by ELM ver.2012-10-06 from 001__elm20181027_161837__dat00.bin



Processed Sat Oct 27 18:27:14 2018 by ELM ver.2012-10-06 from 001__elm20181027_161837__dat00.bin

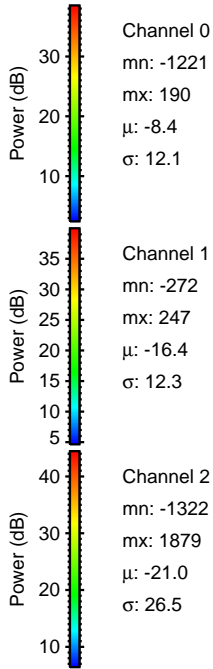
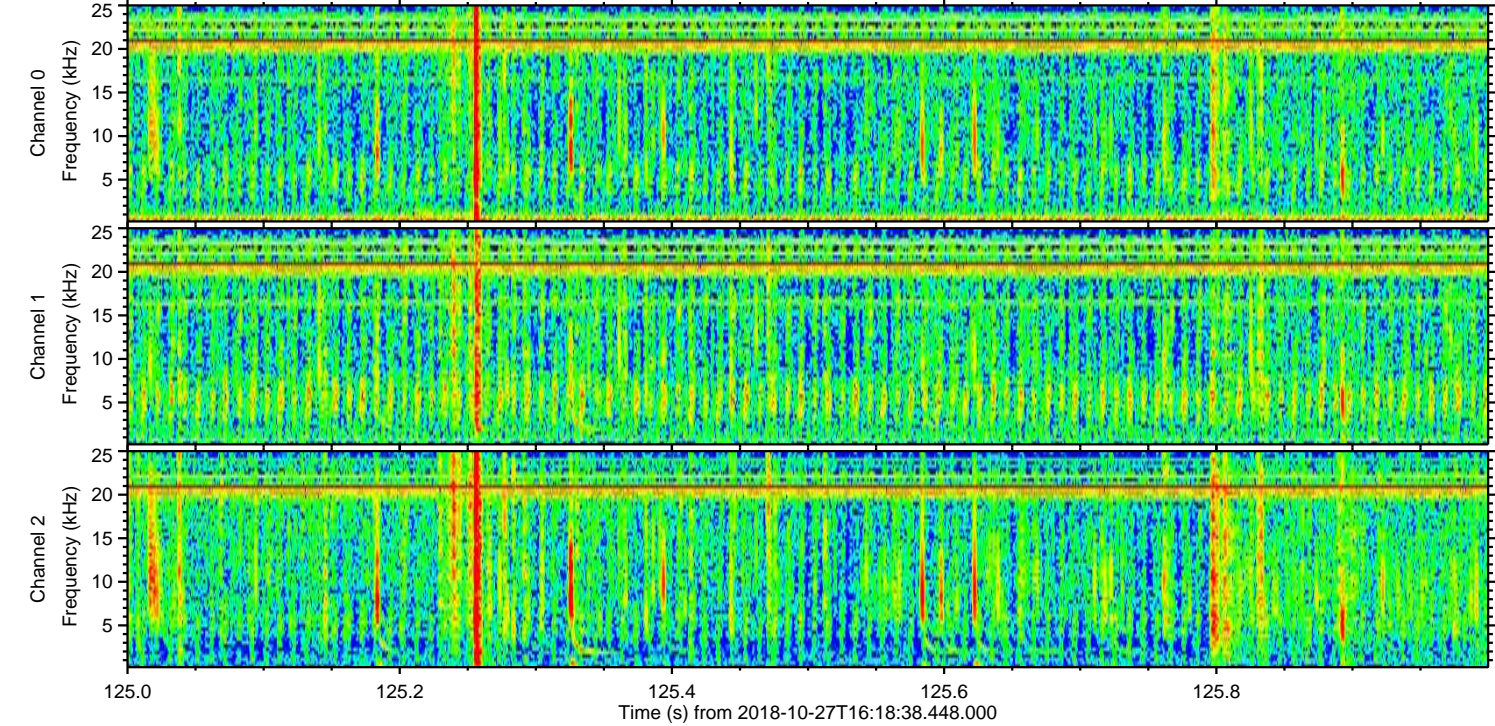
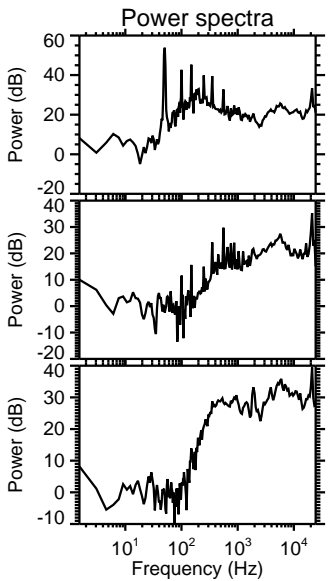
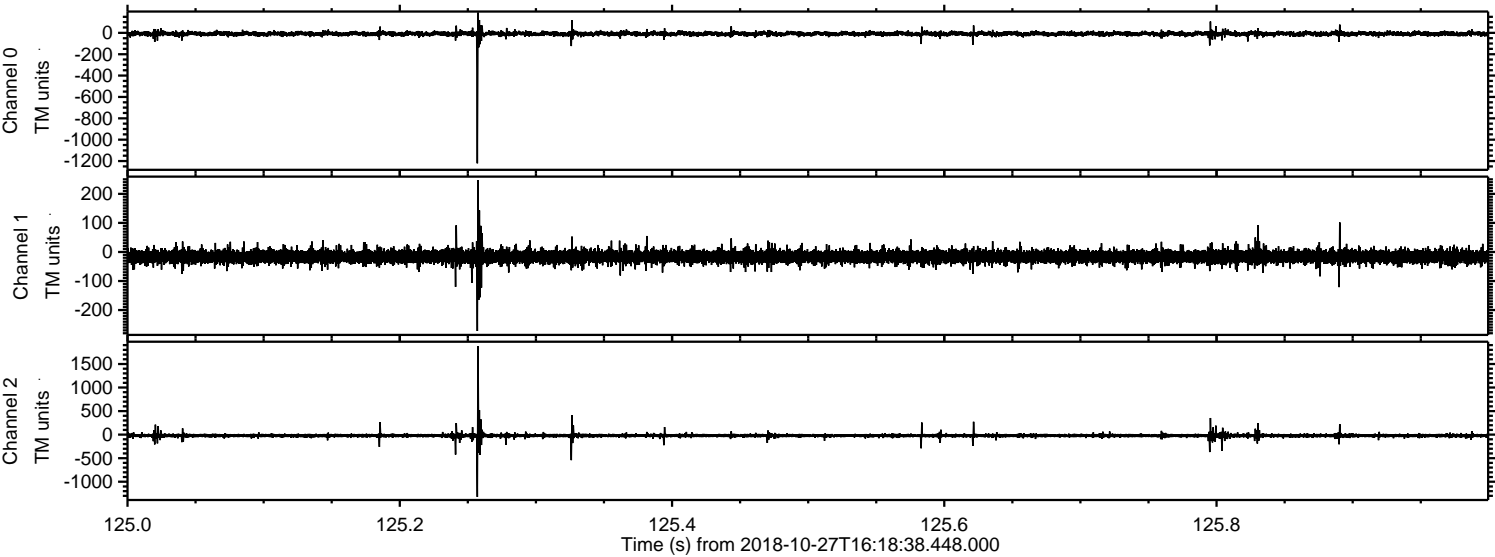


Processed Sat Oct 27 18:27:15 2018 by ELM ver.2012-10-06 from 001__elm20181027_161837__dat00.bin



ELMAVAN 3D WAVEFORMS (Measured data sampled at 50 kHz) 50999 packets of 144 samples from 2018-10-27T16:18:38.448.000. Part 126/147

Processed Sat Oct 27 18:27:16 2018 by ELM ver.2012-10-06 from 001__elm20181027_161837__dat00.bin



Channel 0
mn: -1221
mx: 190
 μ : -8.4
 σ : 12.1

Channel 1
mn: -272
mx: 247
 μ : -16.4
 σ : 12.3

Channel 2
mn: -1322
mx: 1879
 μ : -21.0
 σ : 26.5

Processed Sat Oct 27 18:27:16 2018 by ELM ver.2012-10-06 from 001__elm20181027_161837__dat00.bin

