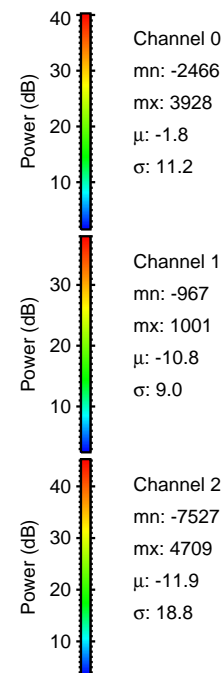
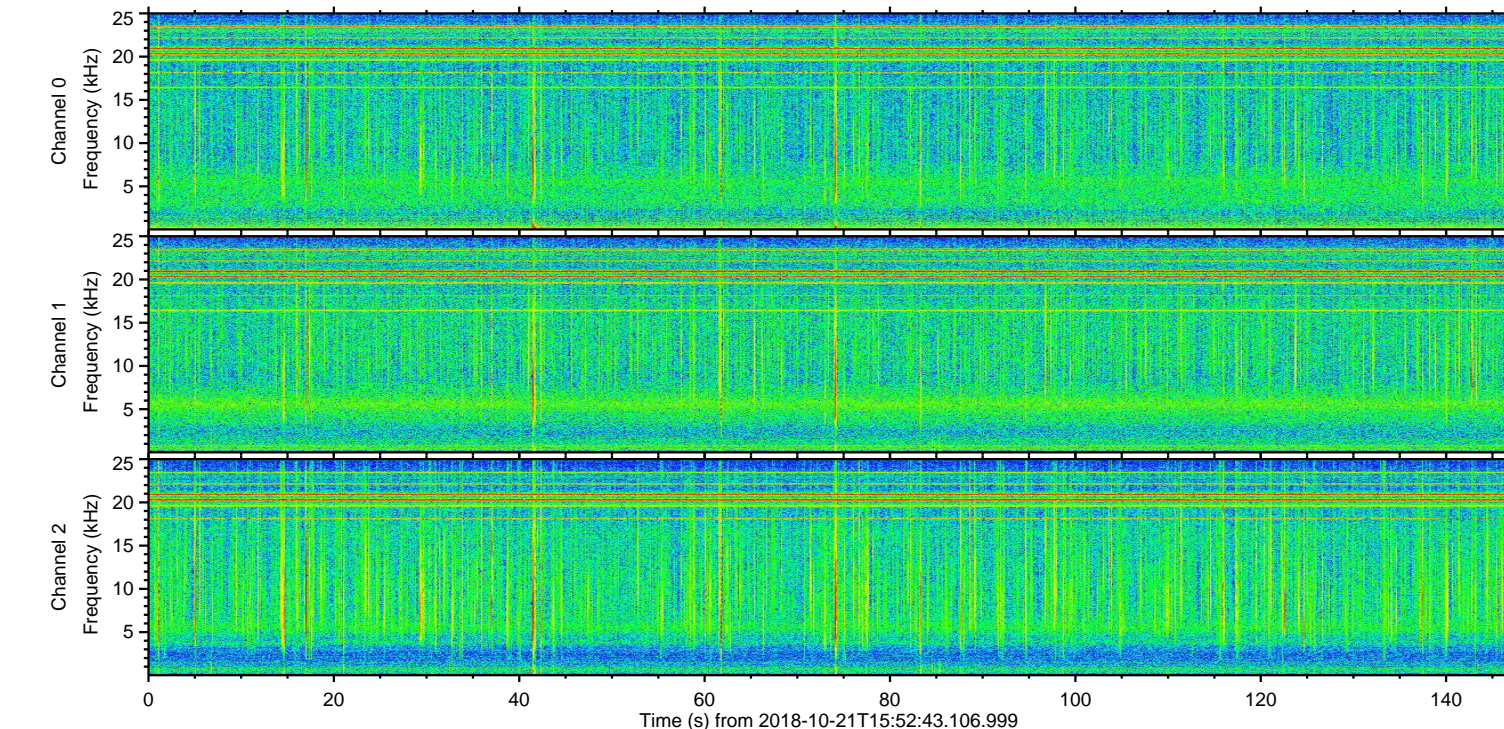
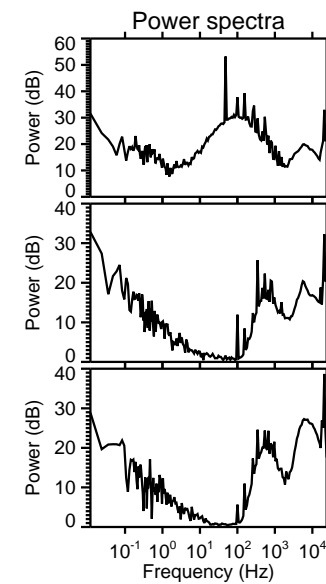
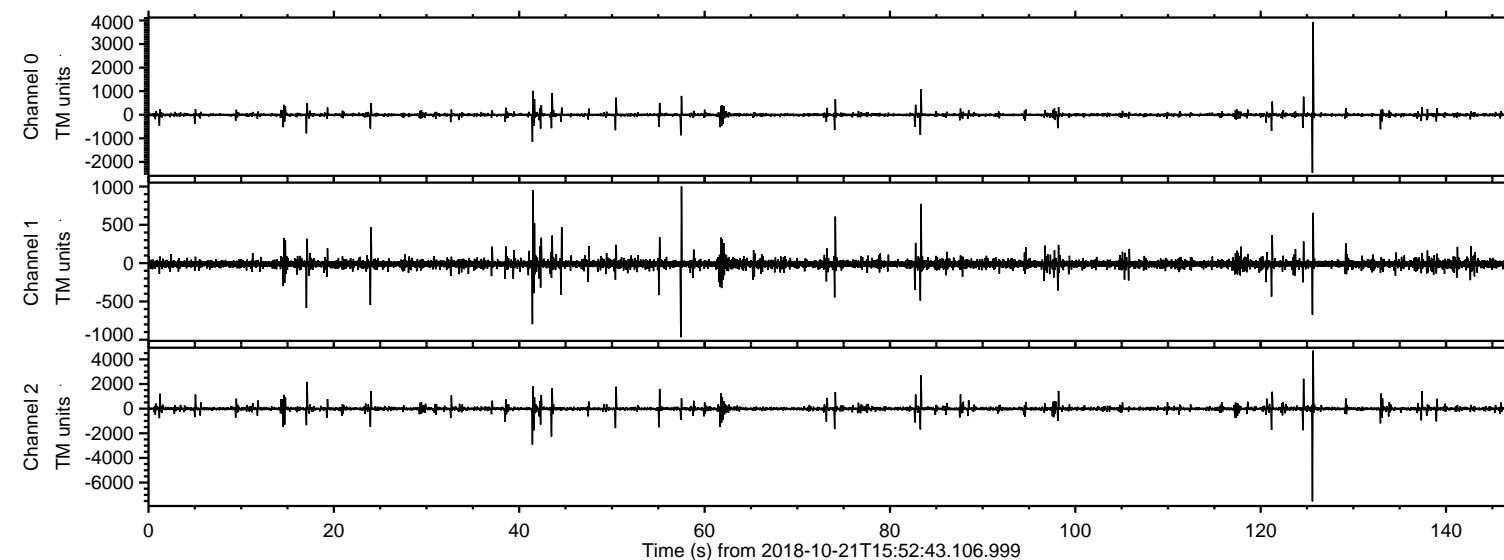


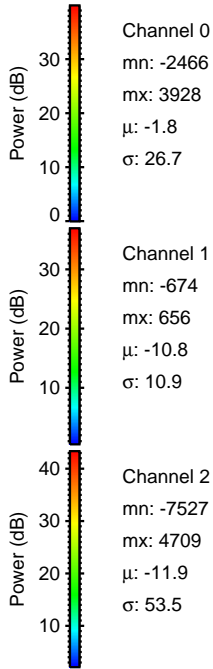
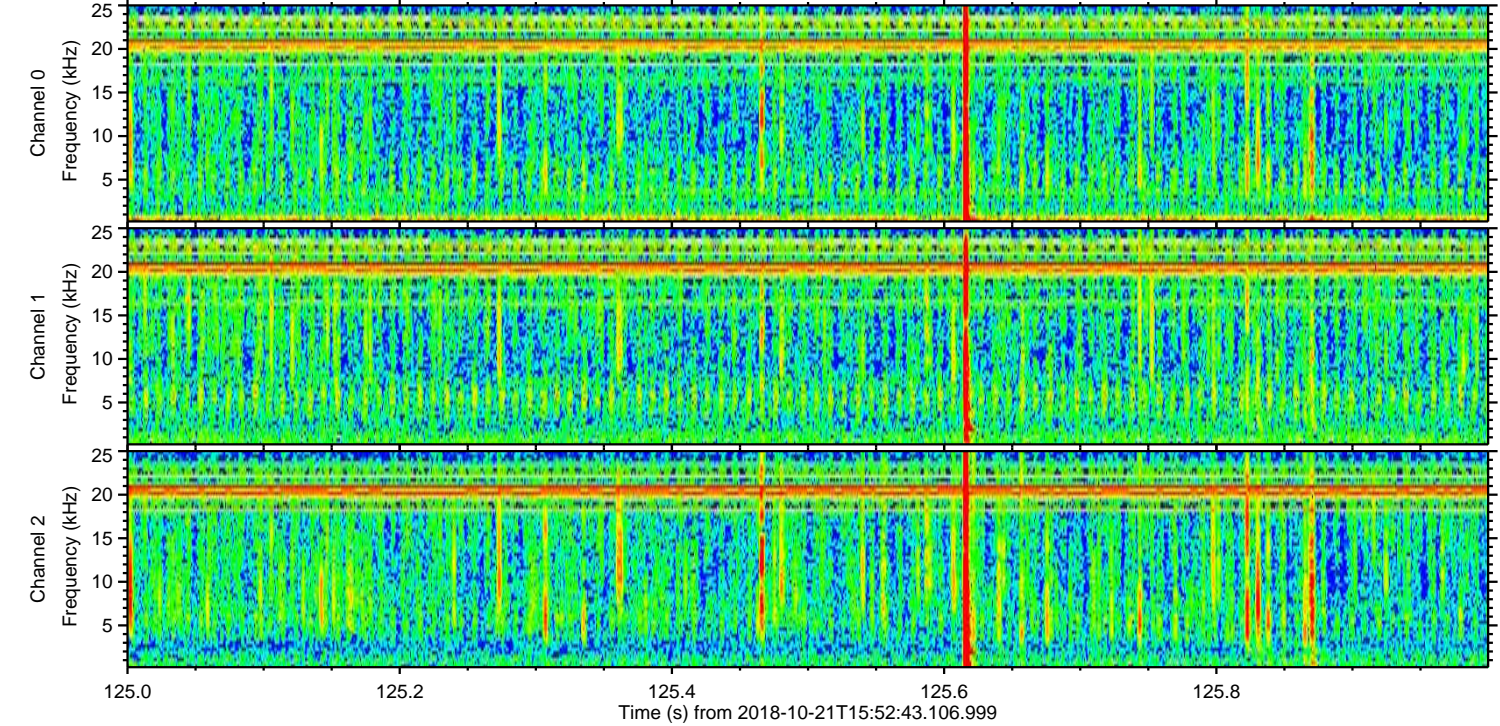
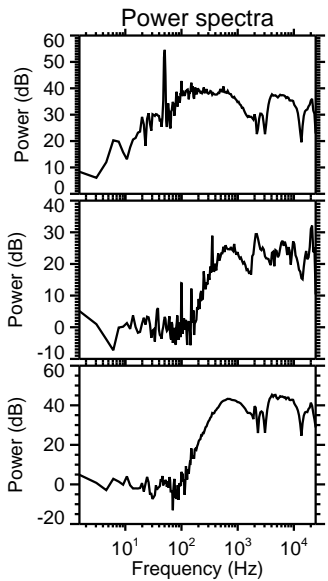
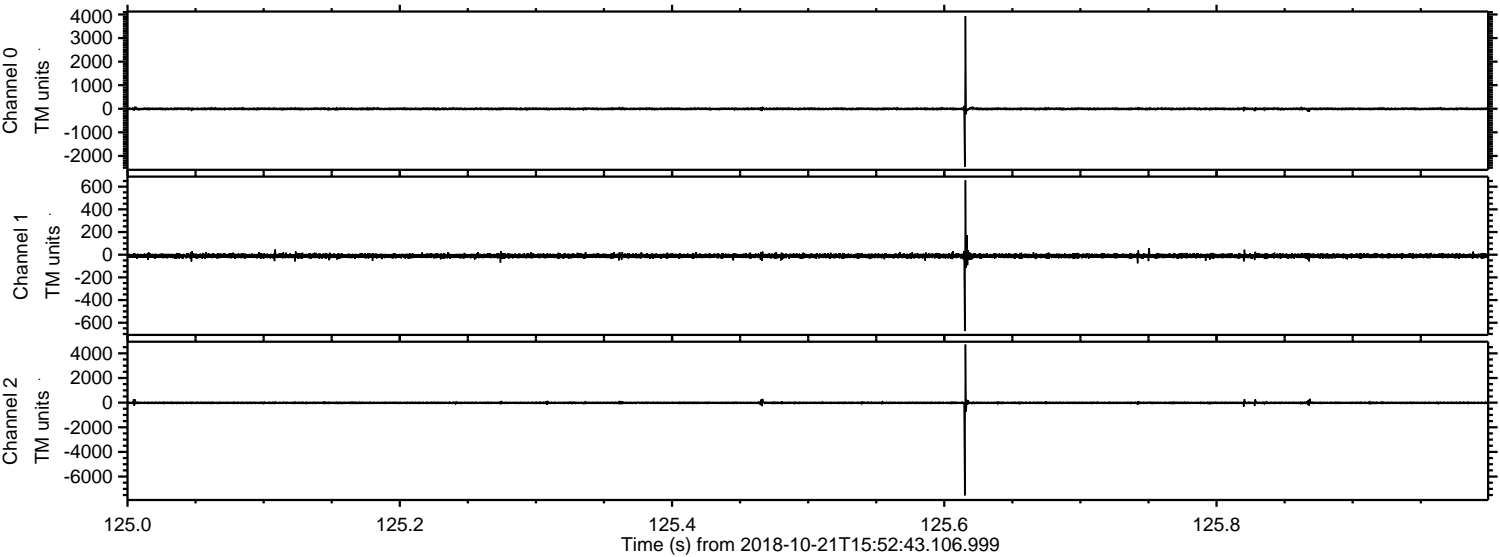
ELMAVAN 3D WAVEFORMS (Measured data sampled at 50 kHz) 51000 packets of 144 samples from 2018-10-21T15:52:43.106.999.

Processed Sun Oct 21 18:01:14 2018 by ELM ver.2012-10-06 from 001__elm20181021_155242__dat00.bin

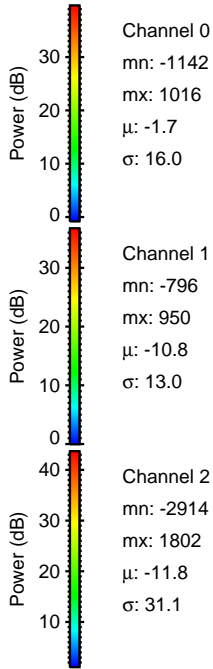
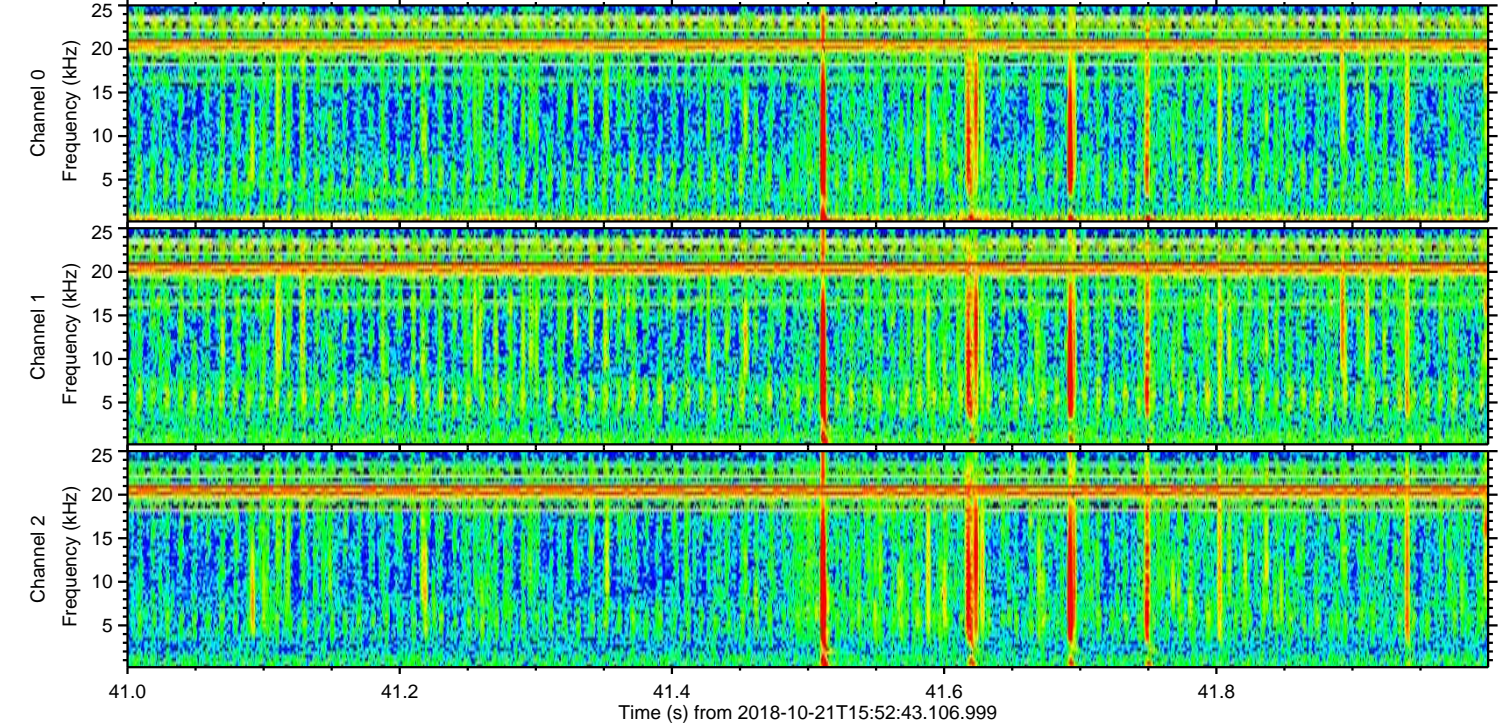
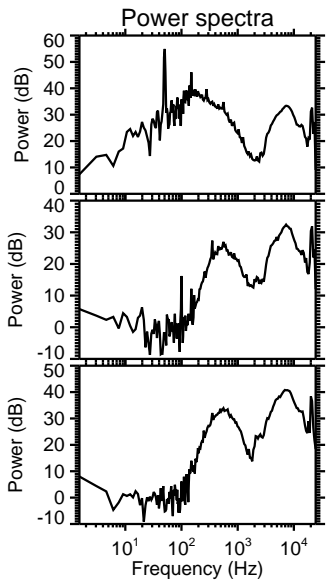
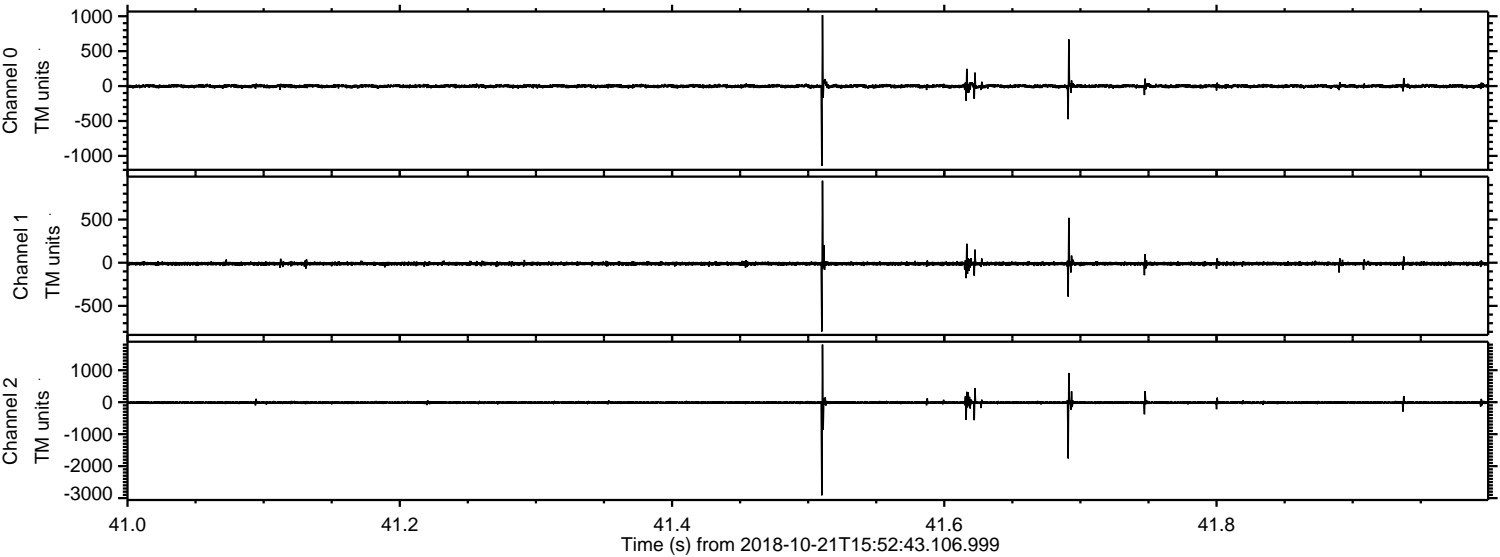


ELMAVAN 3D WAVEFORMS (Measured data sampled at 50 kHz) 51000 packets of 144 samples from 2018-10-21T15:52:43.106.999. Part 126/147

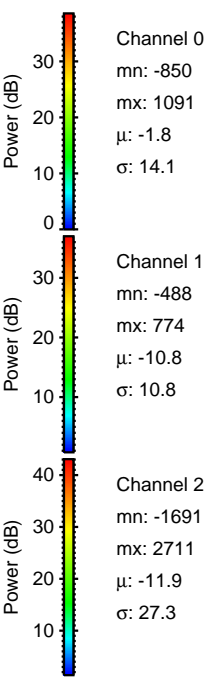
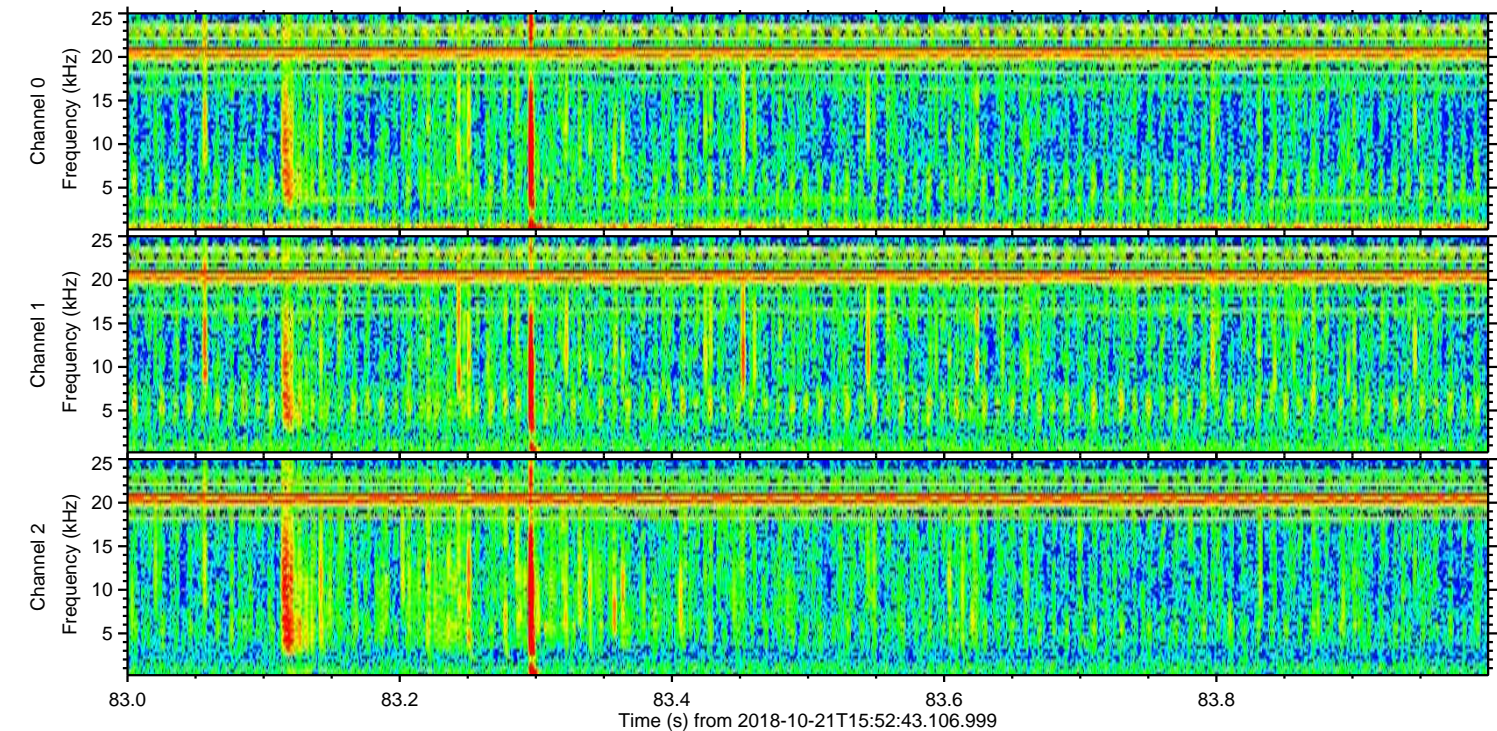
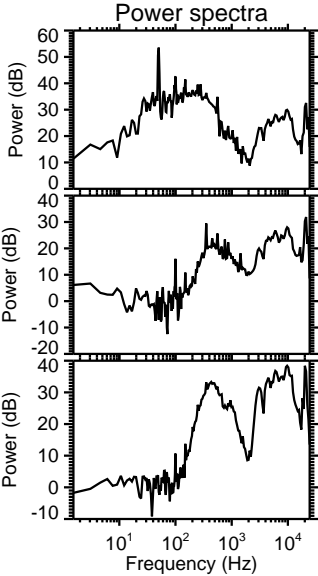
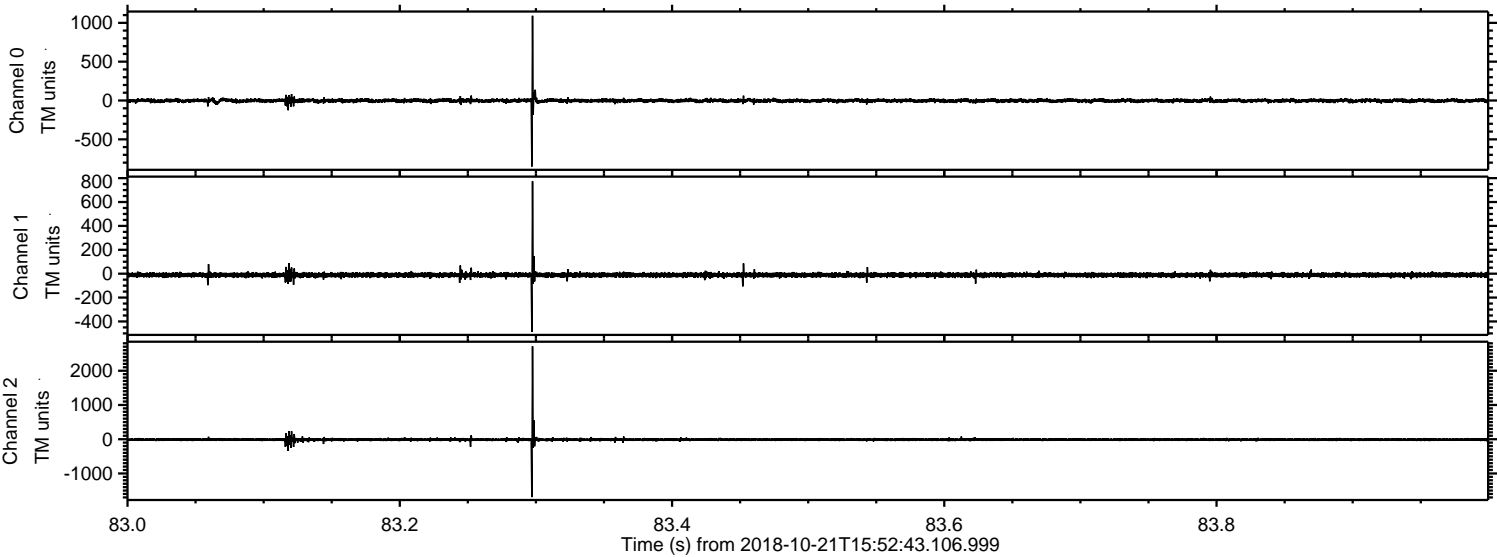
Processed Sun Oct 21 18:01:20 2018 by ELM ver.2012-10-06 from 001__elm20181021_155242__dat00.bin



Processed Sun Oct 21 18:01:21 2018 by ELM ver.2012-10-06 from 001__elm20181021_155242__dat00.bin

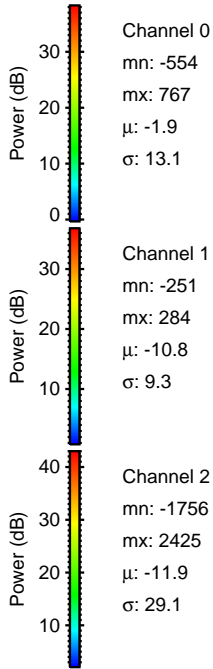
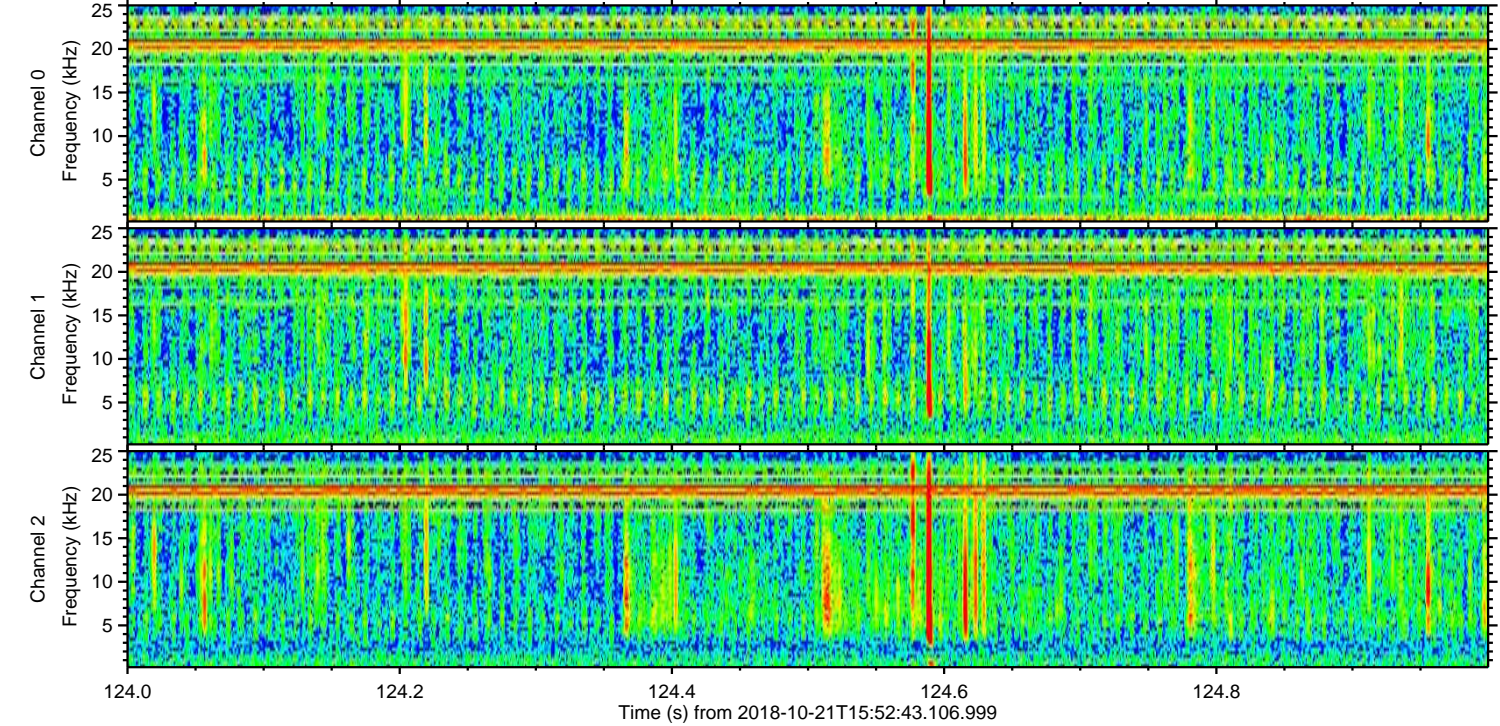
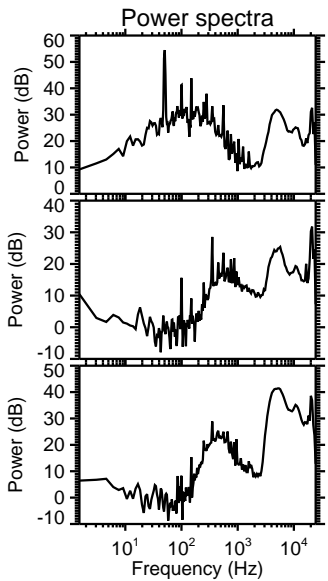
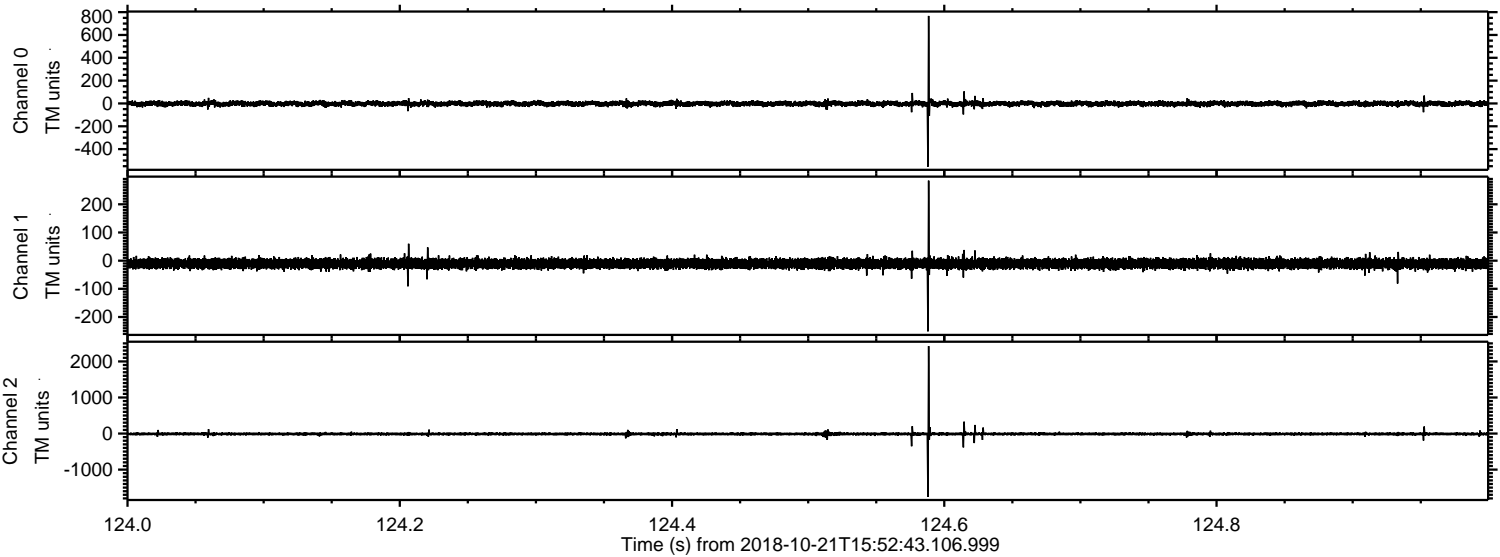


Processed Sun Oct 21 18:01:22 2018 by ELM ver.2012-10-06 from 001__elm20181021_155242__dat00.bin

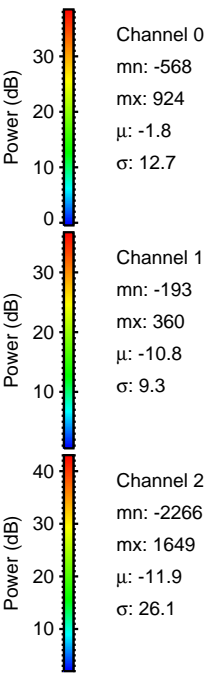
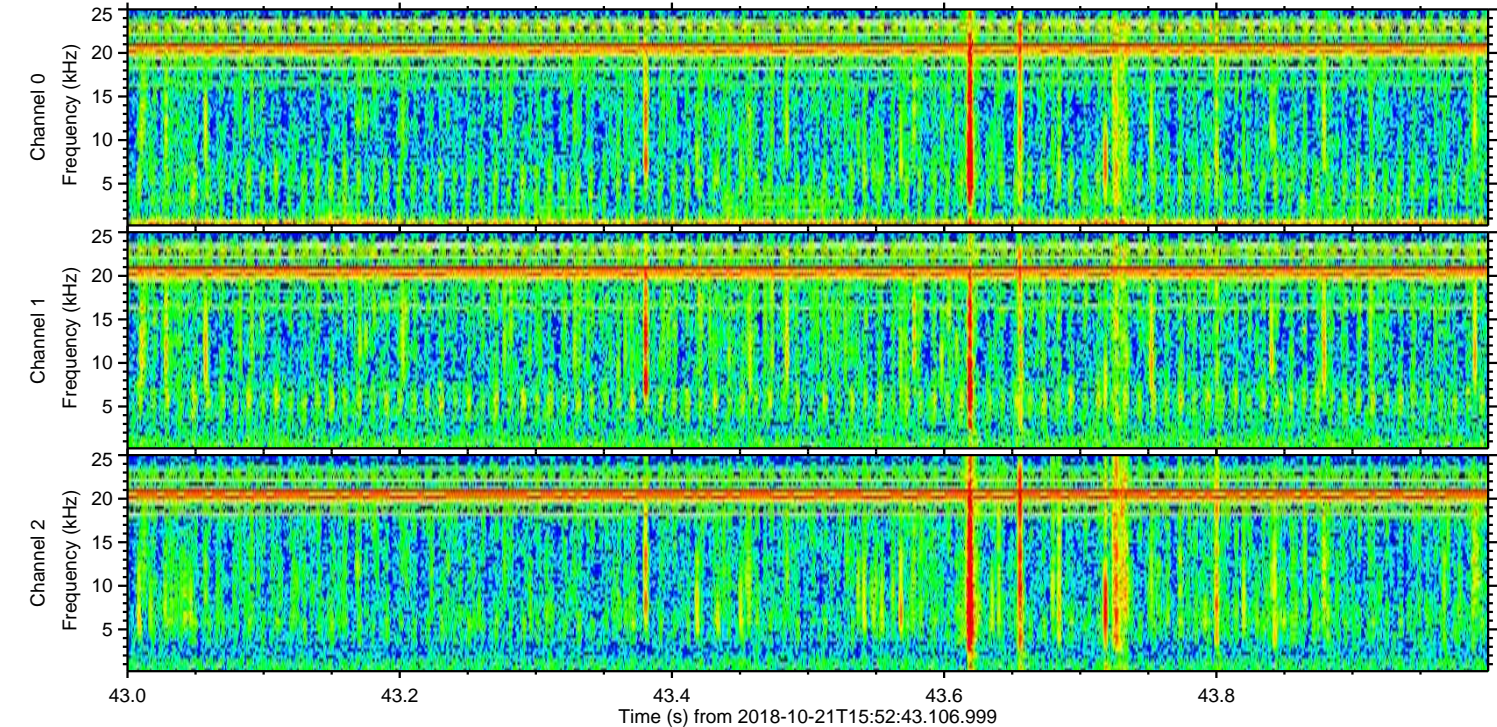
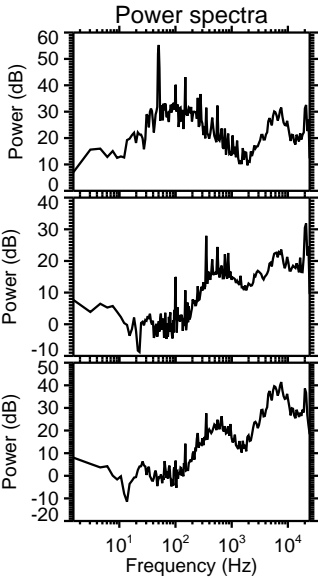
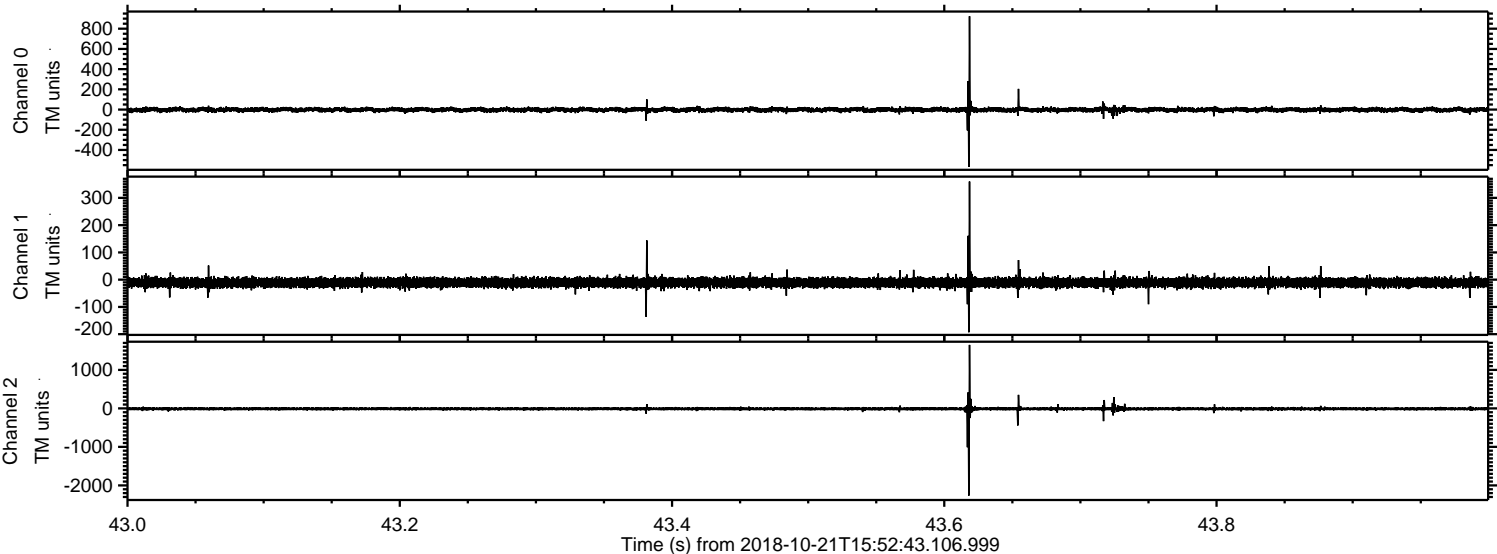


ELMAVAN 3D WAVEFORMS (Measured data sampled at 50 kHz) 51000 packets of 144 samples from 2018-10-21T15:52:43.106.999. Part 125/147

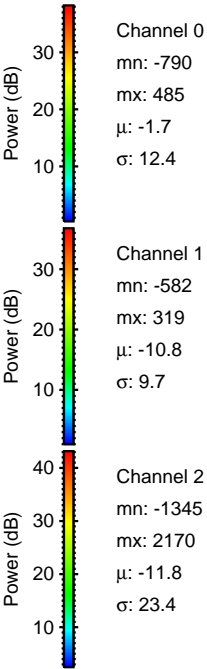
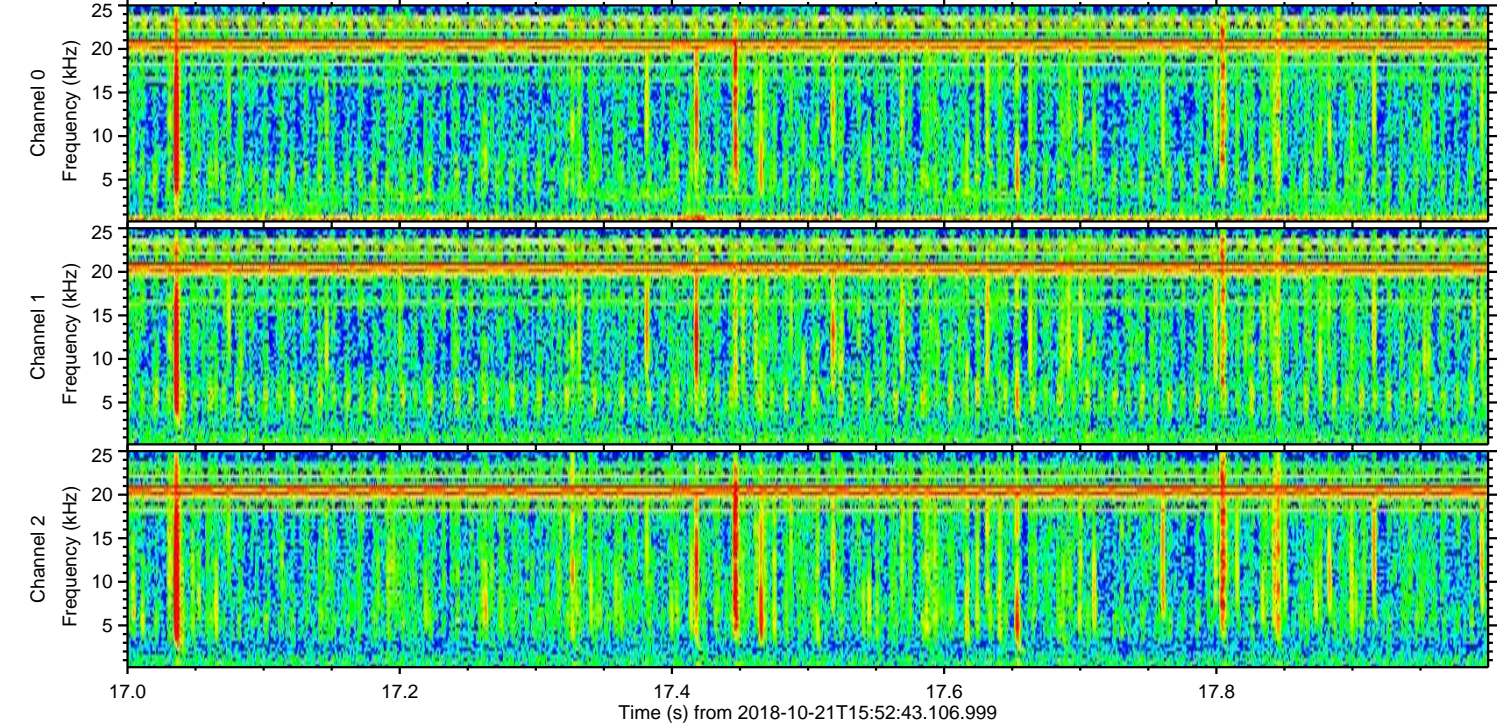
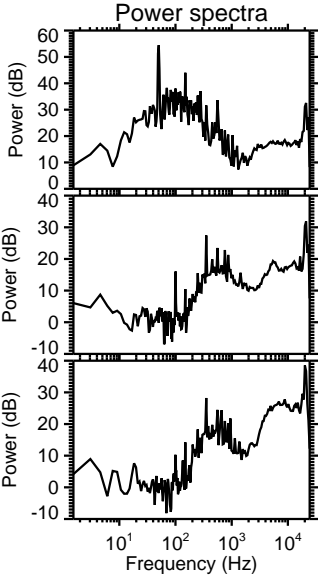
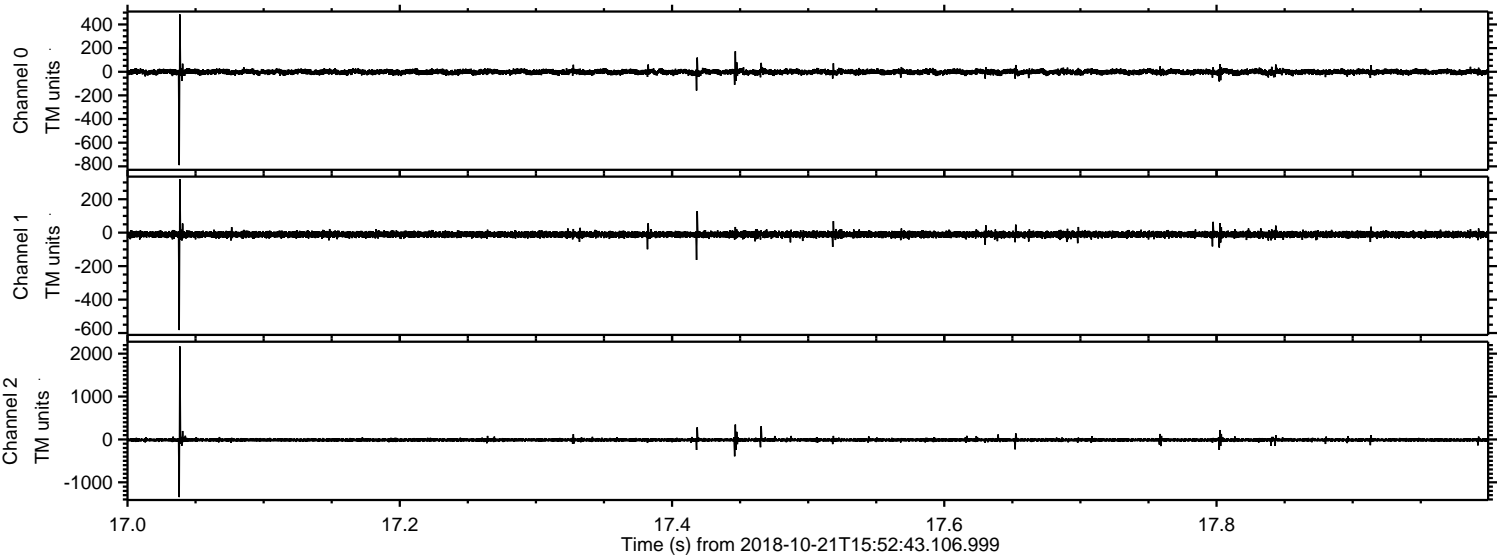
Processed Sun Oct 21 18:01:22 2018 by ELM ver.2012-10-06 from 001__elm20181021_155242__dat00.bin



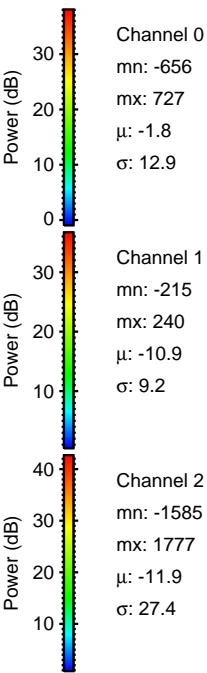
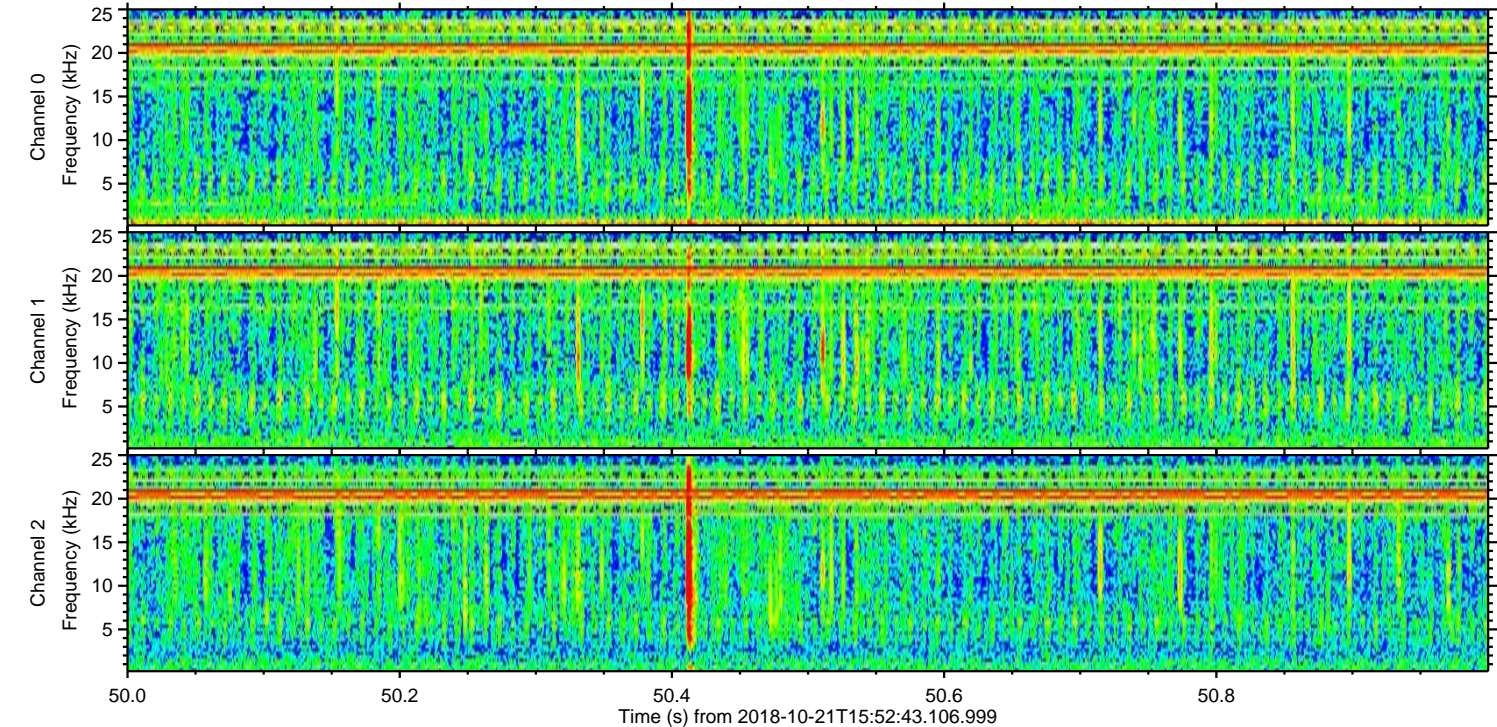
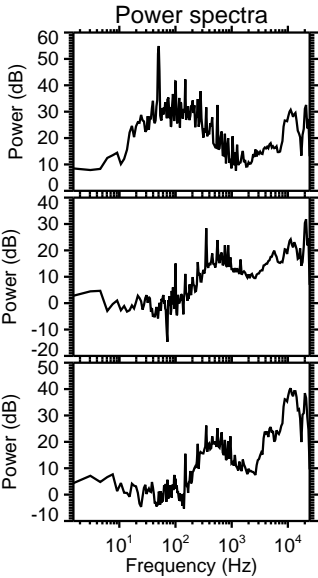
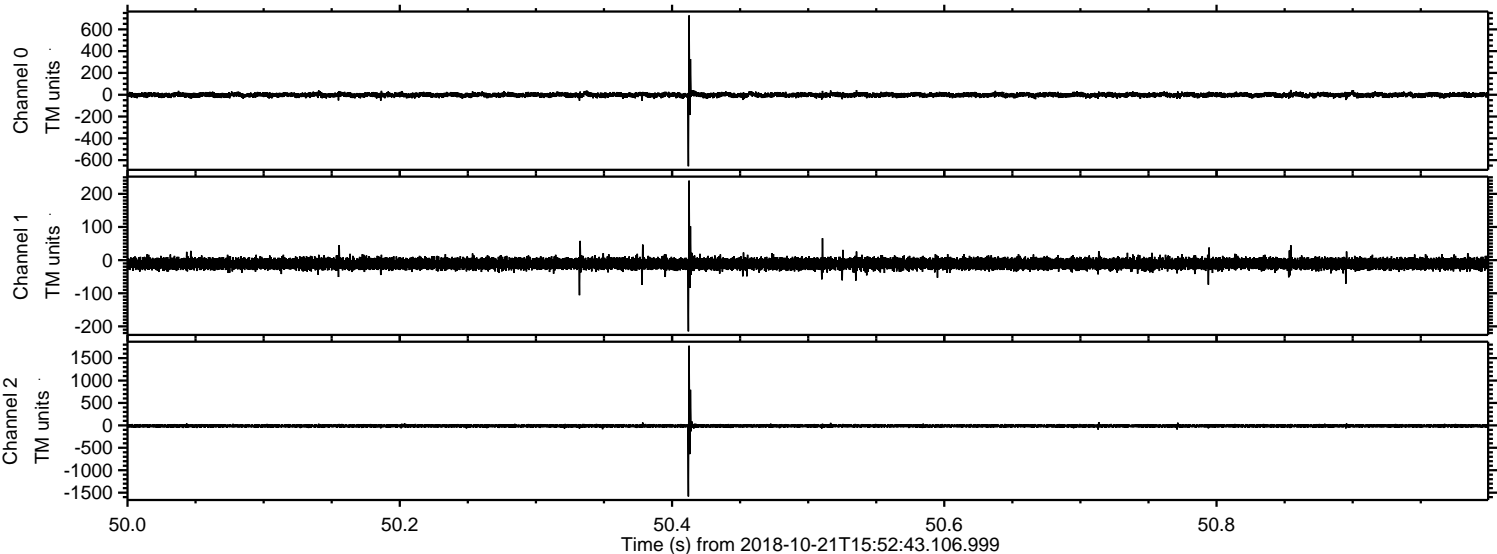
Processed Sun Oct 21 18:01:23 2018 by ELM ver.2012-10-06 from 001__elm20181021_155242__dat00.bin



Processed Sun Oct 21 18:01:24 2018 by ELM ver.2012-10-06 from 001__elm20181021_155242__dat00.bin

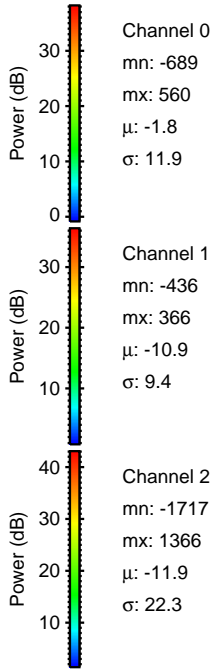
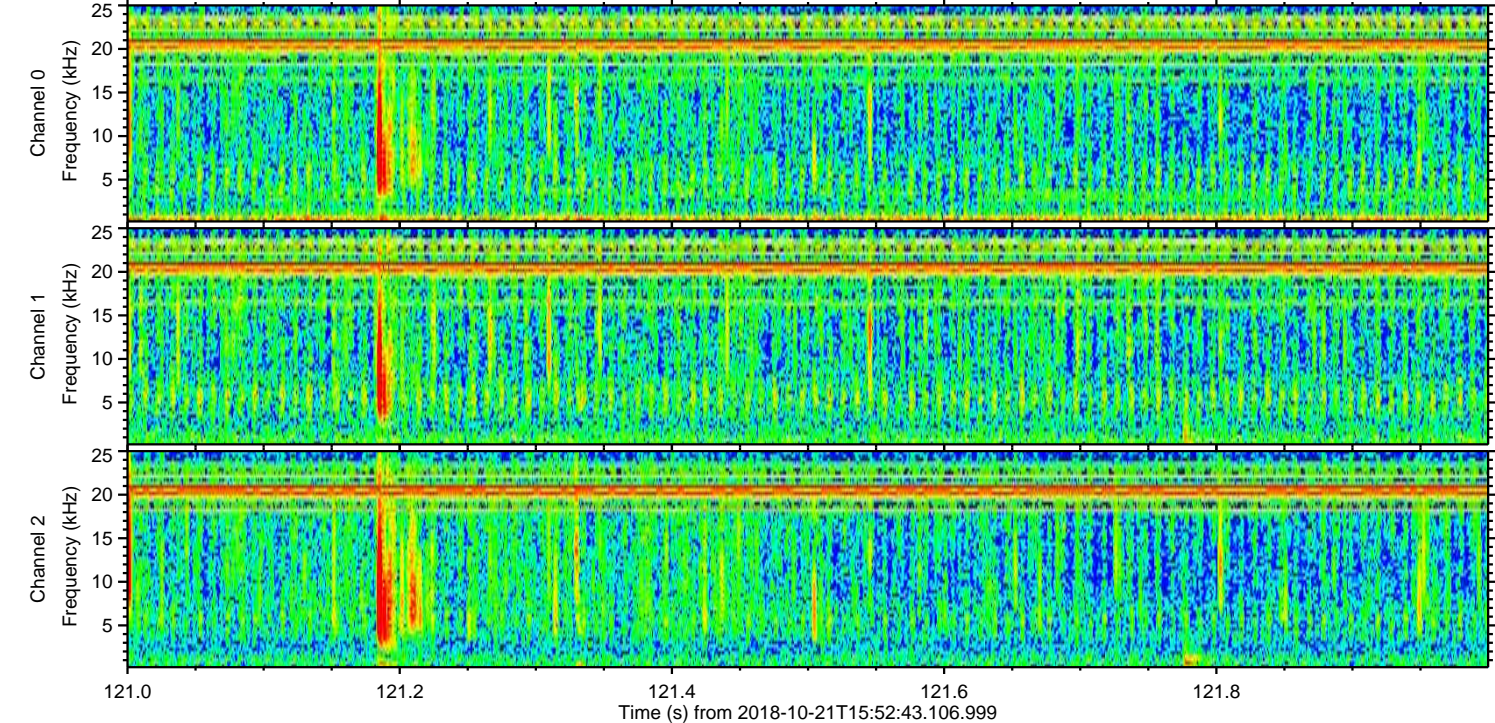
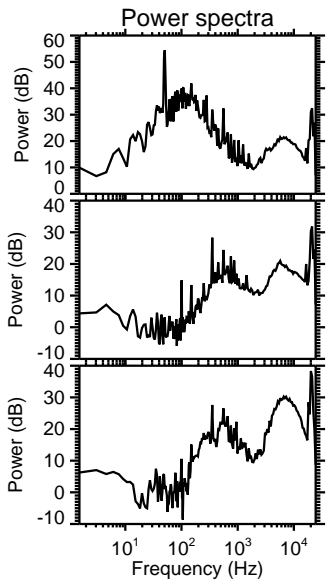
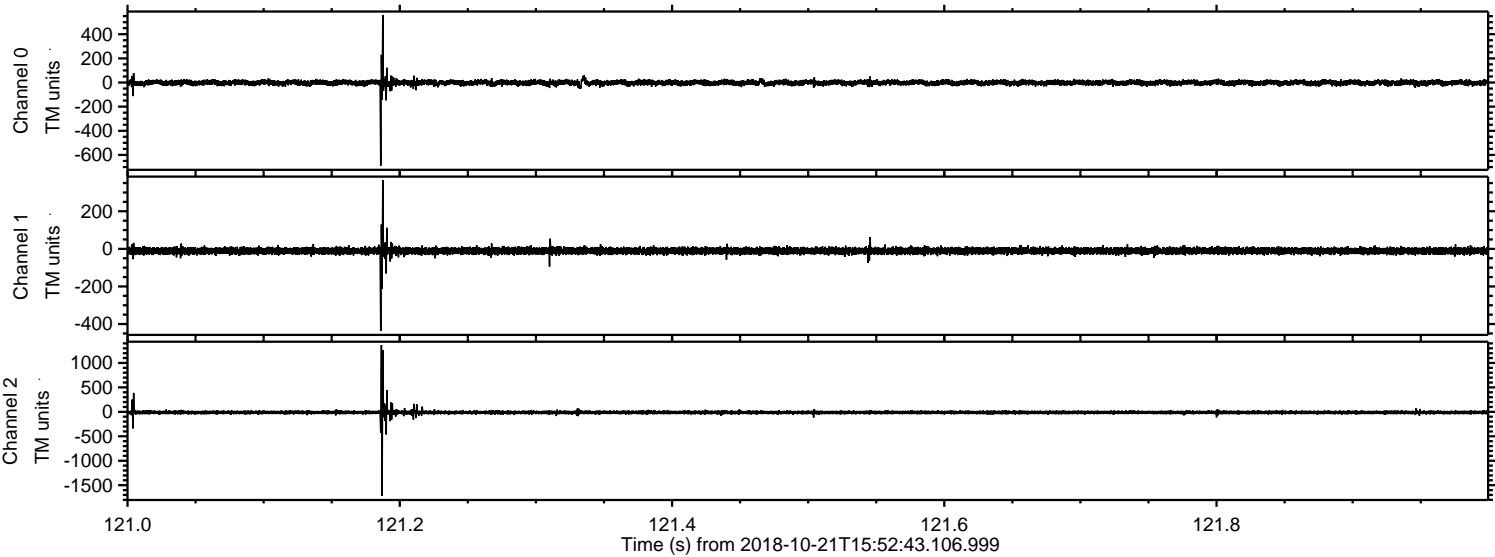


Processed Sun Oct 21 18:01:24 2018 by ELM ver.2012-10-06 from 001__elm20181021_155242__dat00.bin



ELMAVAN 3D WAVEFORMS (Measured data sampled at 50 kHz) 51000 packets of 144 samples from 2018-10-21T15:52:43.106.999. Part 122/147

Processed Sun Oct 21 18:01:25 2018 by ELM ver.2012-10-06 from 001__elm20181021_155242__dat00.bin

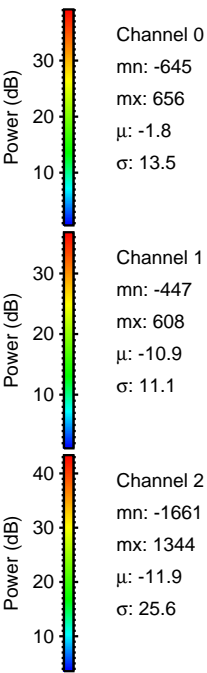
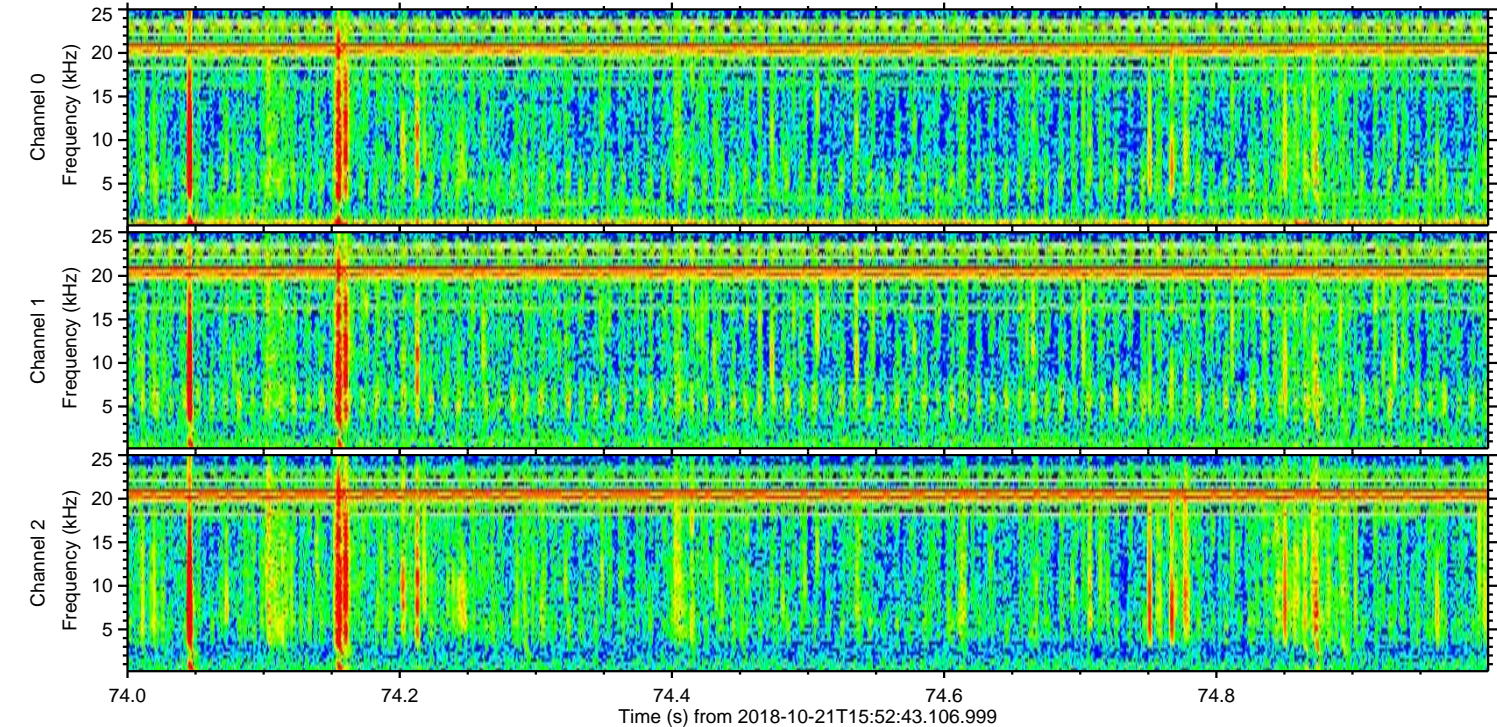
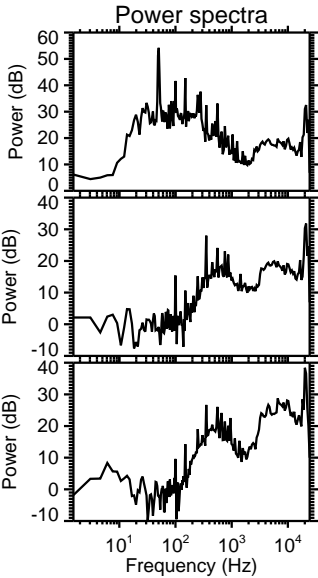
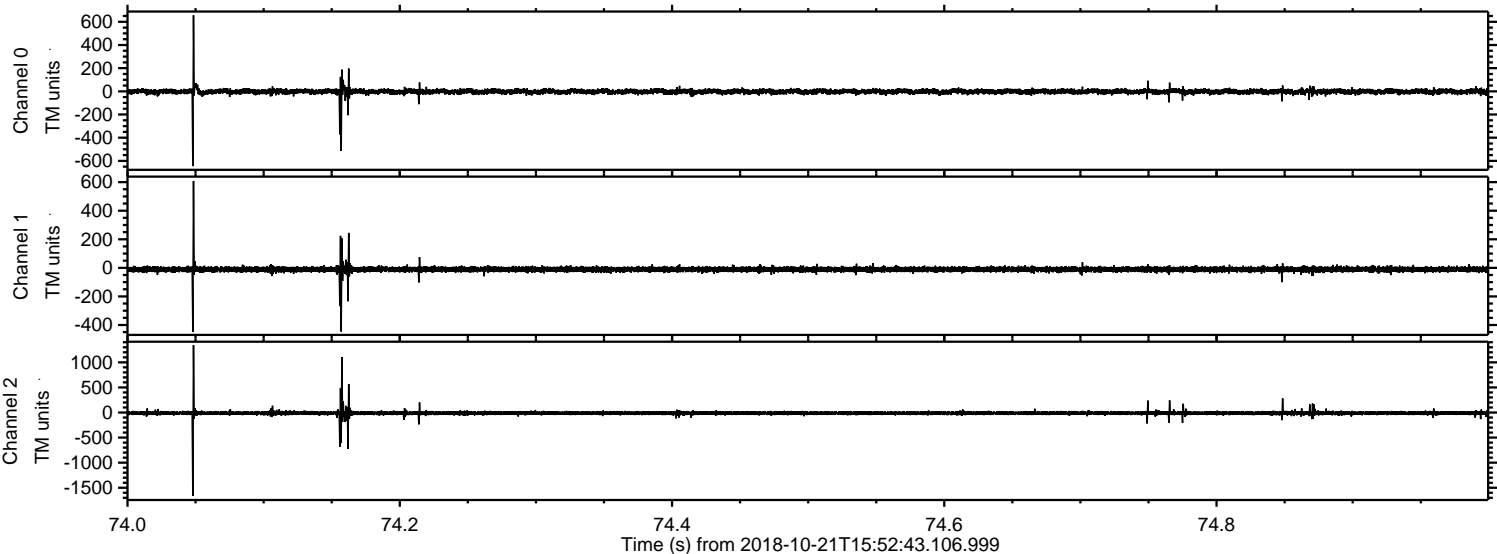


Channel 0
mn: -689
mx: 560
 μ : -1.8
 σ : 11.9

Channel 1
mn: -436
mx: 366
 μ : -10.9
 σ : 9.4

Channel 2
mn: -1717
mx: 1366
 μ : -11.9
 σ : 22.3

Processed Sun Oct 21 18:01:26 2018 by ELM ver.2012-10-06 from 001__elm20181021_155242__dat00.bin



Processed Sun Oct 21 18:01:27 2018 by ELM ver.2012-10-06 from 001__elm20181021_155242__dat00.bin

