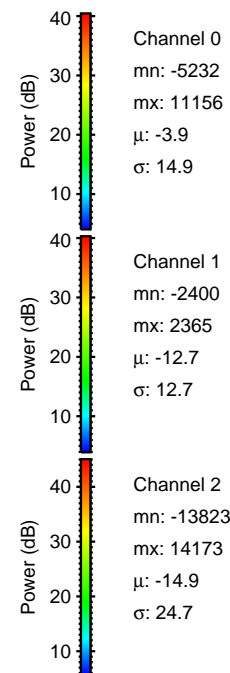
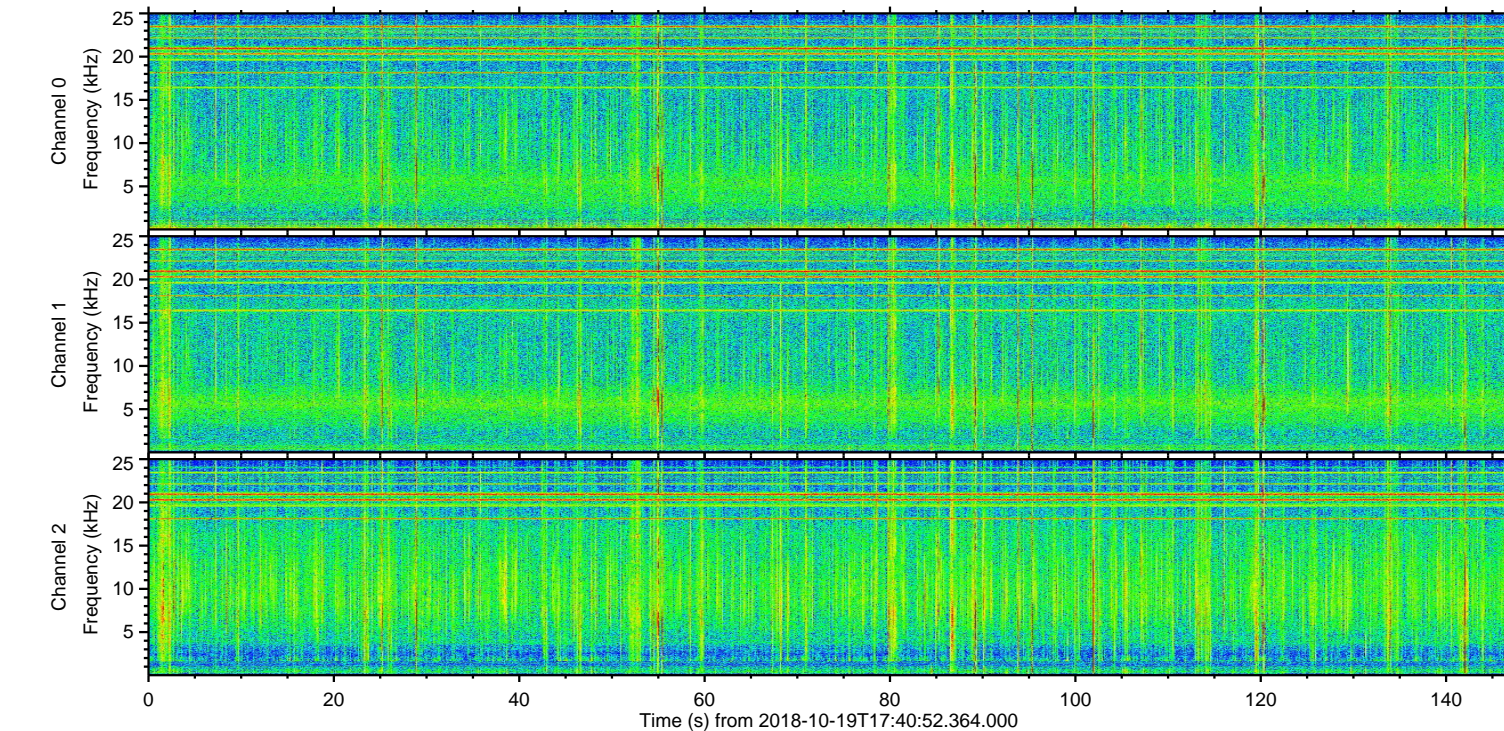
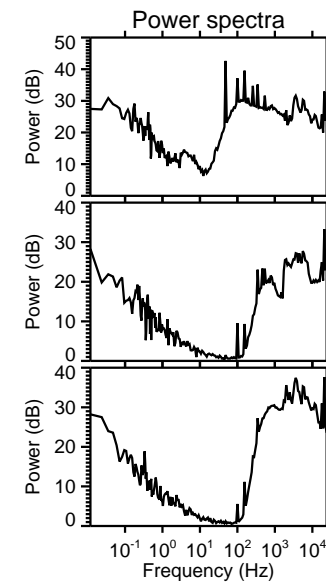
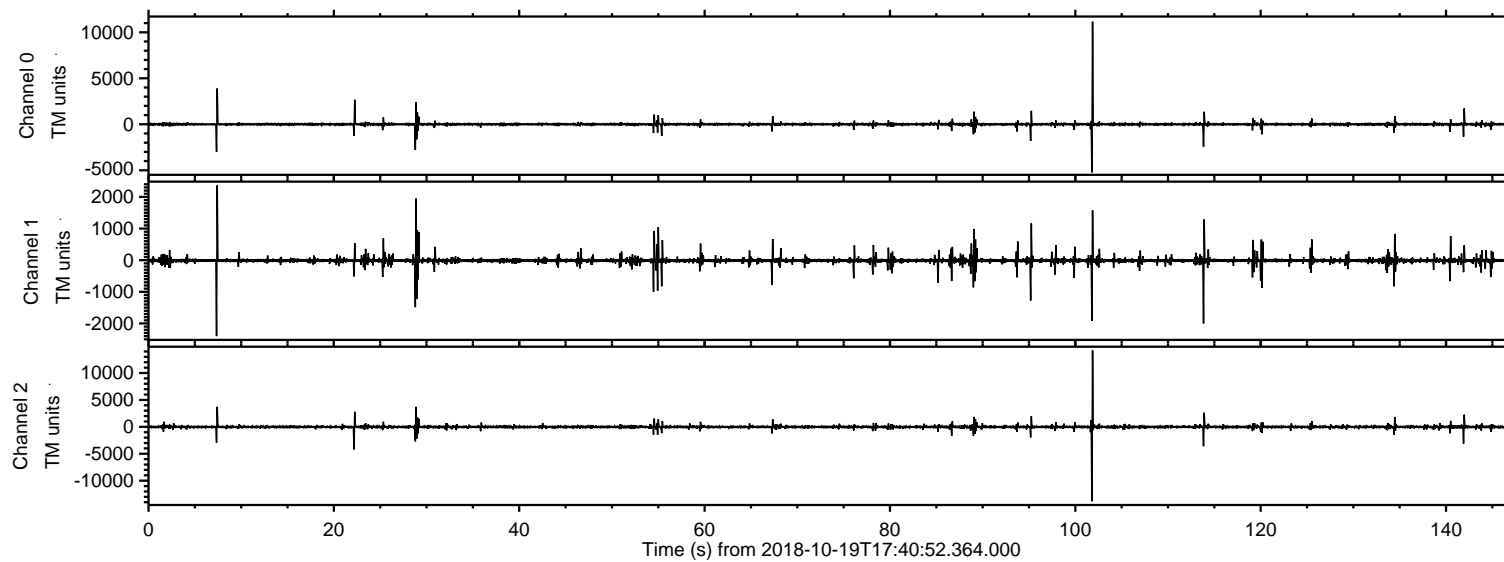


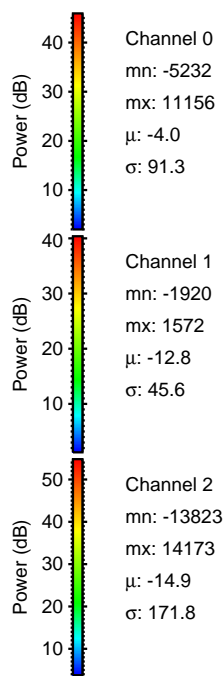
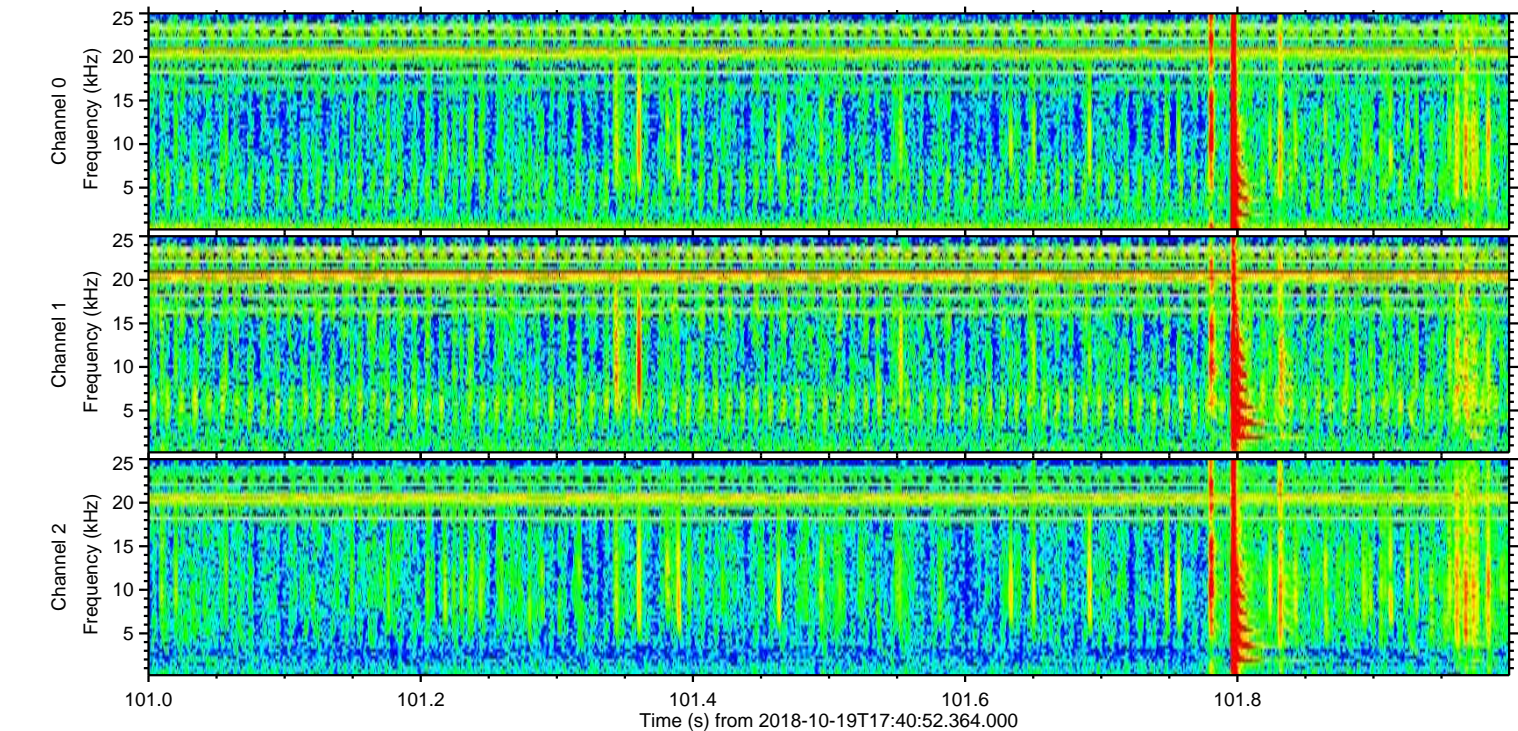
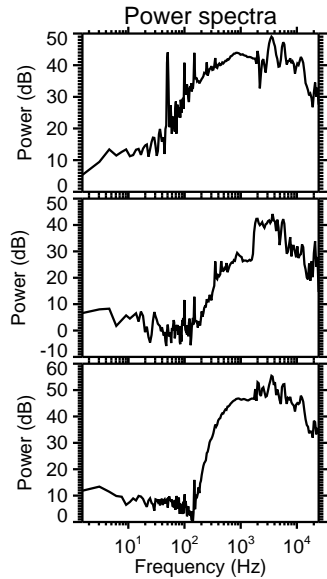
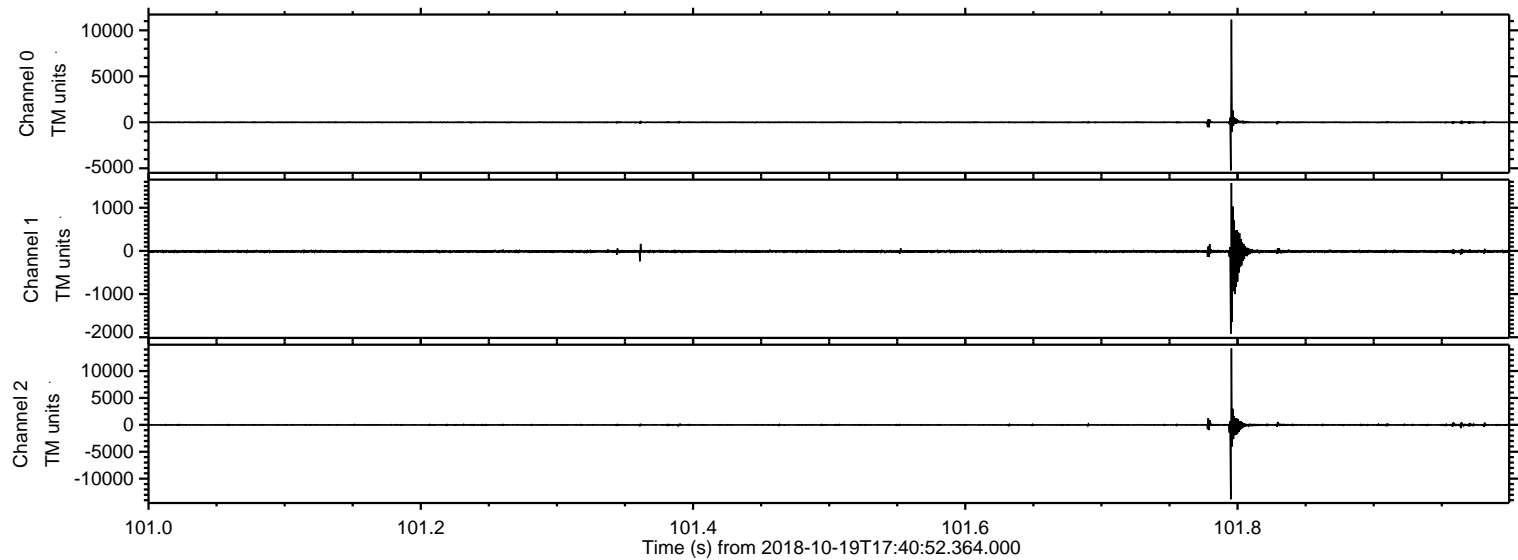
ELMAVAN 3D WAVEFORMS (Measured data sampled at 50 kHz) 51000 packets of 144 samples from 2018-10-19T17:40:52.364.000.

Processed Fri Oct 19 19:49:23 2018 by ELM ver.2012-10-06 from 001__elm20181019_174051__dat00.bin

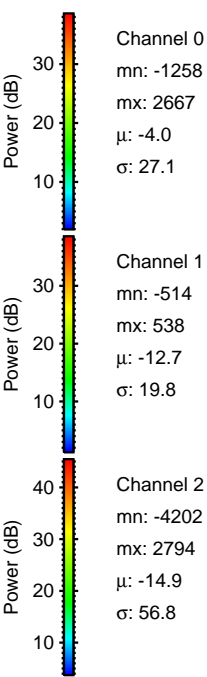
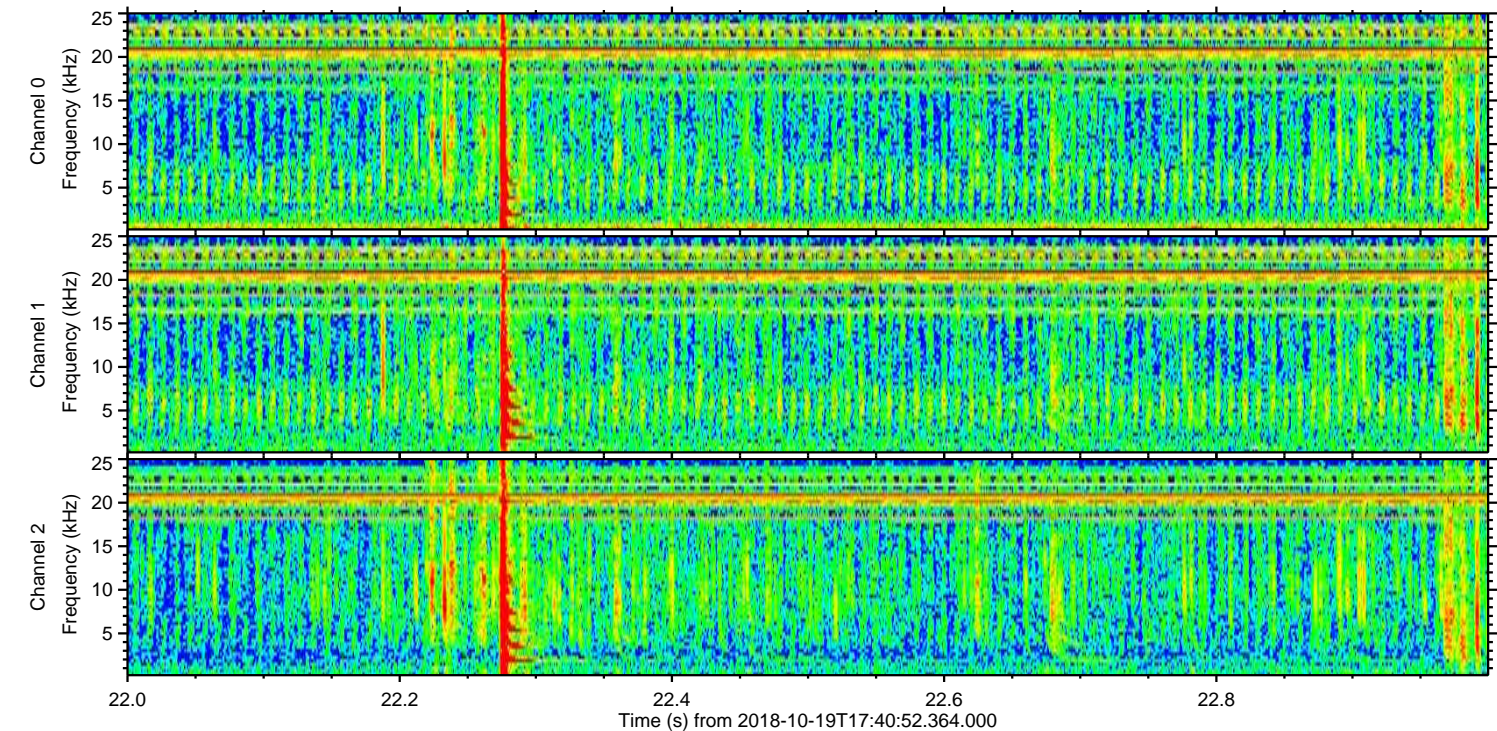
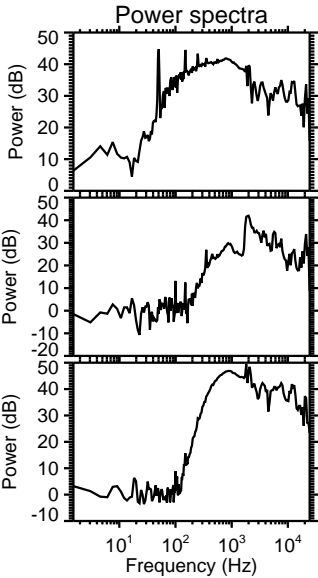
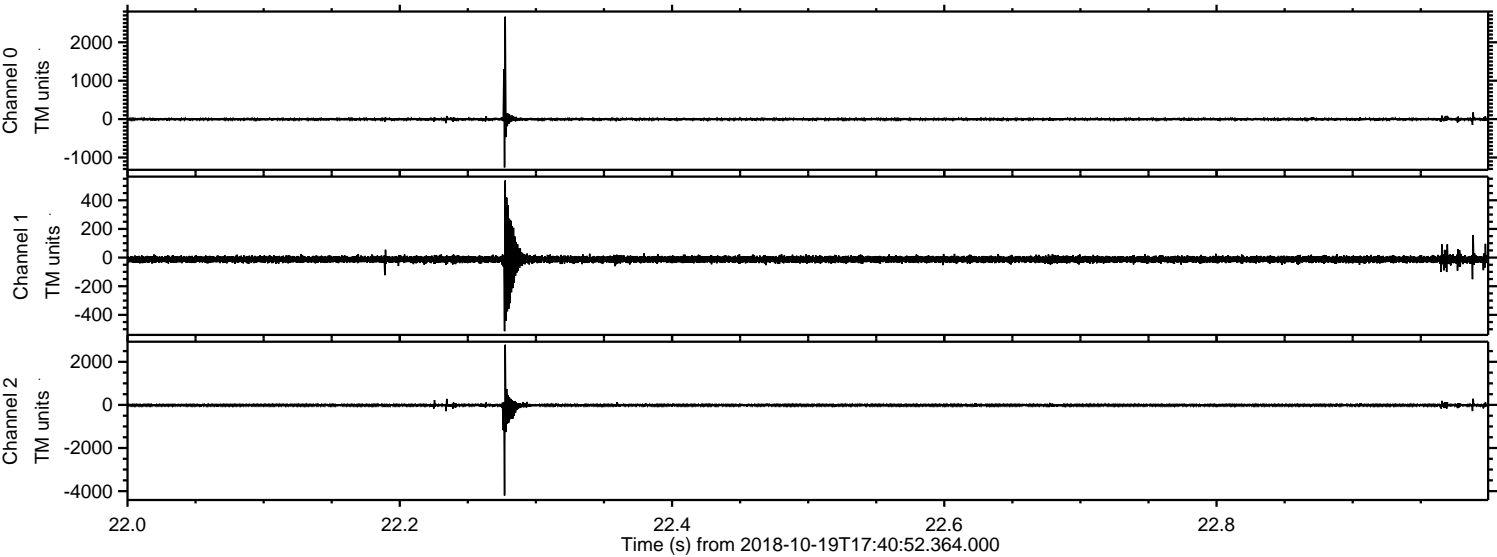


ELMAVAN 3D WAVEFORMS (Measured data sampled at 50 kHz) 51000 packets of 144 samples from 2018-10-19T17:40:52.364.000. Part 102/147

Processed Fri Oct 19 19:49:31 2018 by ELM ver.2012-10-06 from 001__elm20181019_174051__dat00.bin

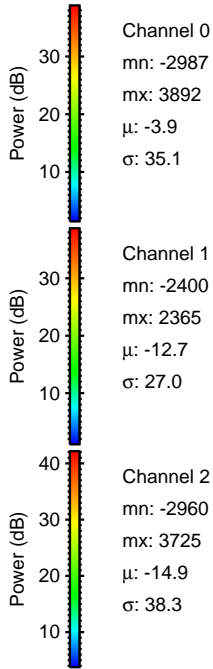
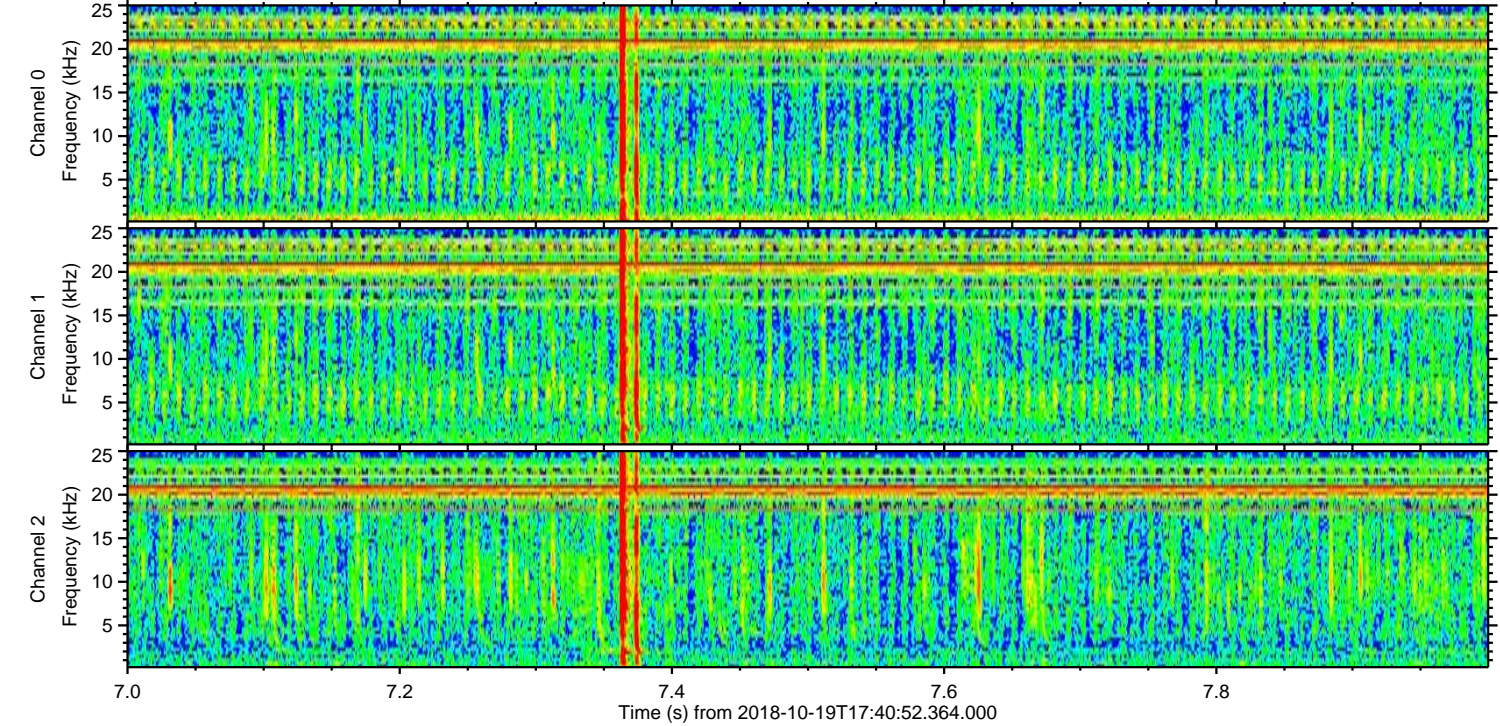
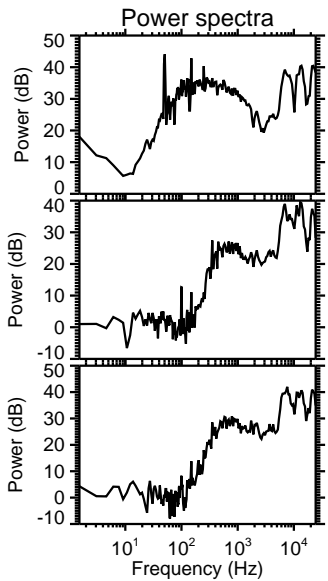
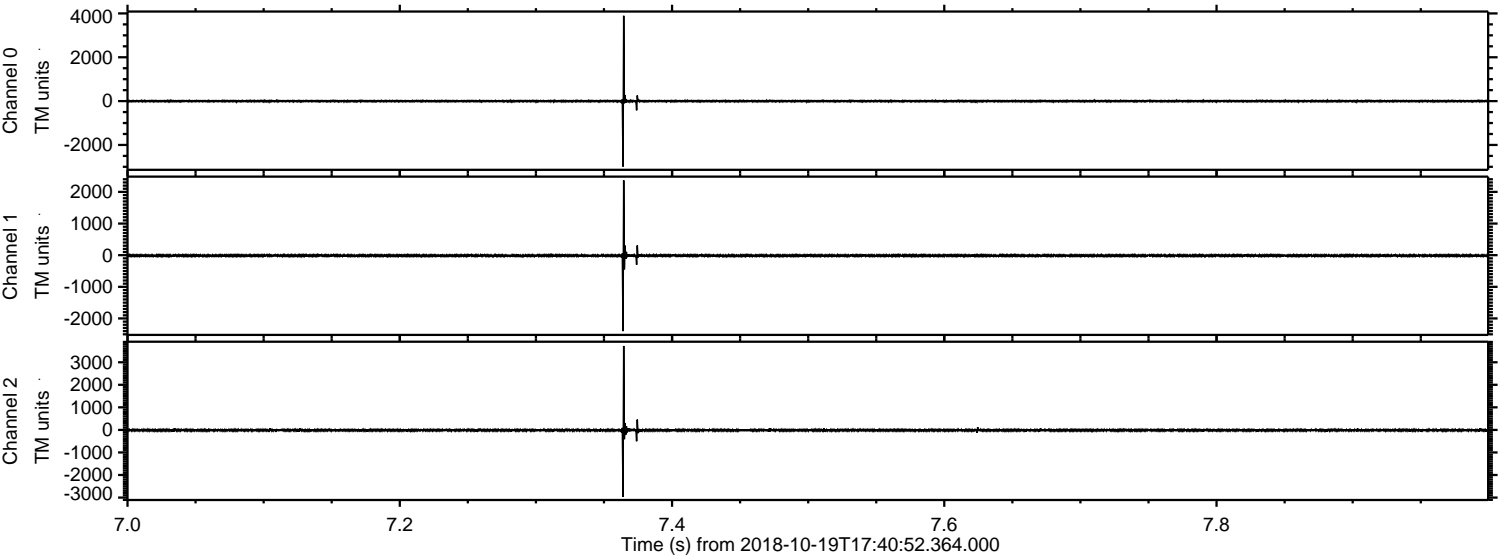


Processed Fri Oct 19 19:49:32 2018 by ELM ver.2012-10-06 from 001__elm20181019_174051__dat00.bin

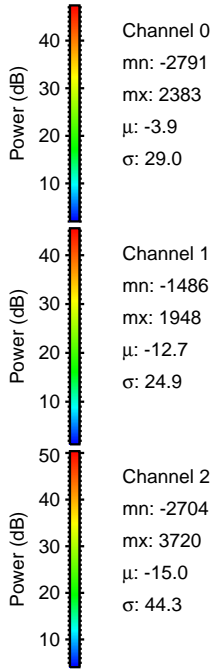
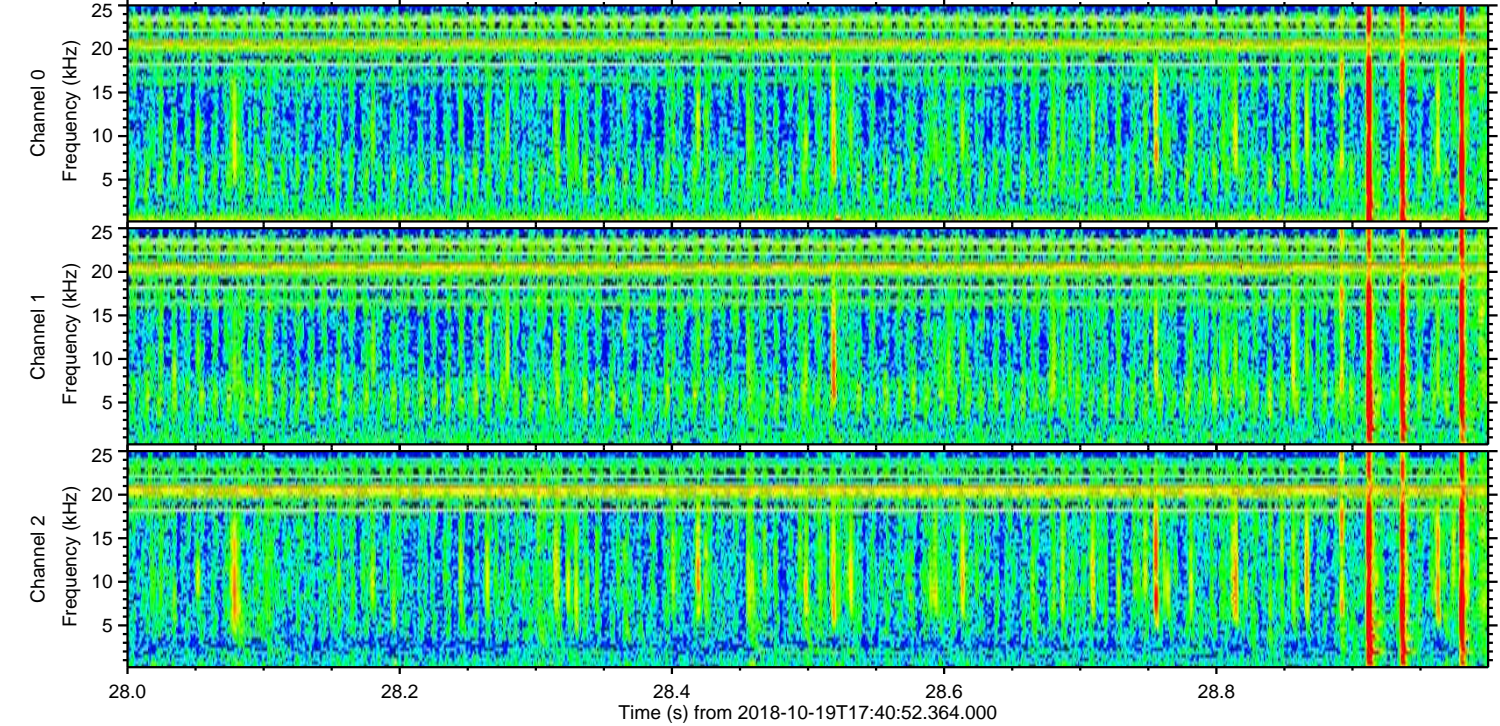
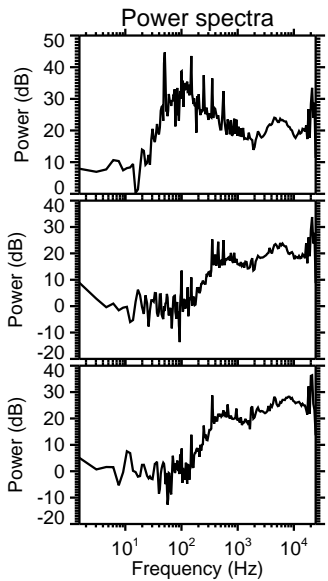
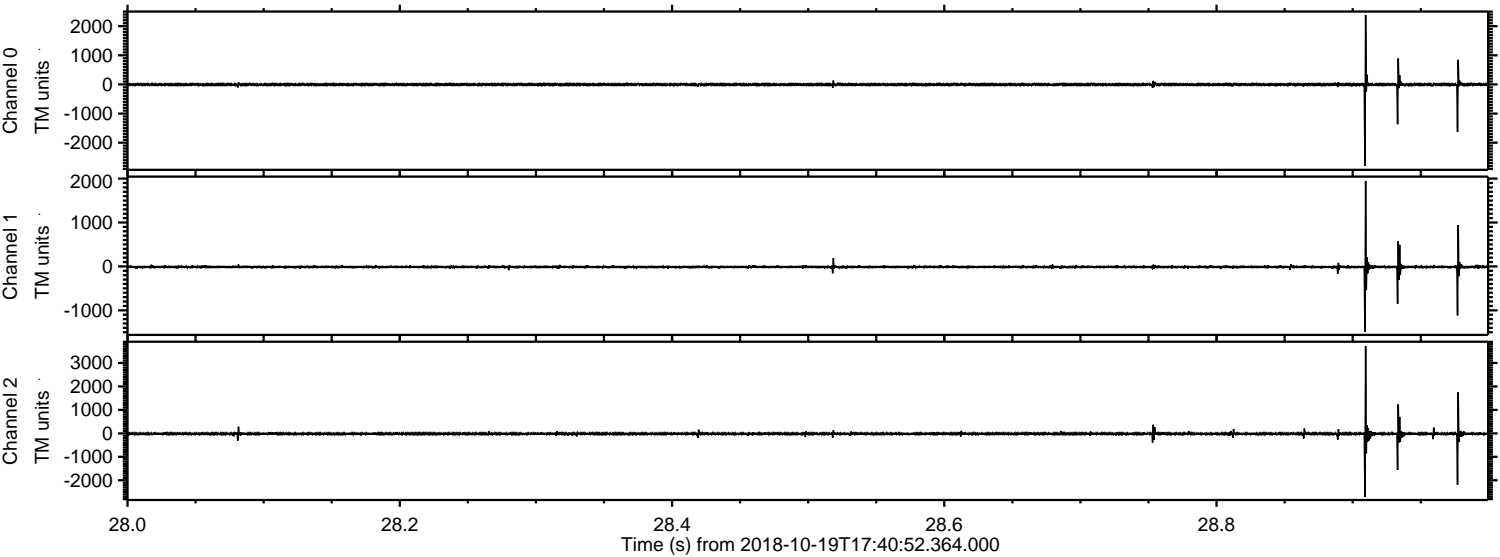


ELMAVAN 3D WAVEFORMS (Measured data sampled at 50 kHz) 51000 packets of 144 samples from 2018-10-19T17:40:52.364.000. Part 8/147

Processed Fri Oct 19 19:49:32 2018 by ELM ver.2012-10-06 from 001__elm20181019_174051__dat00.bin



Processed Fri Oct 19 19:49:33 2018 by ELM ver.2012-10-06 from 001__elm20181019_174051__dat00.bin



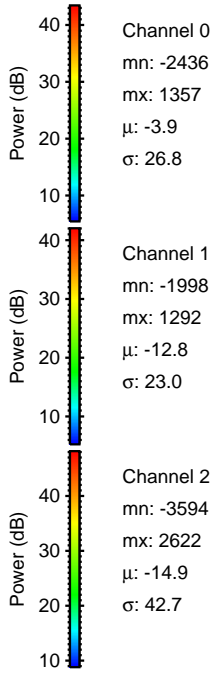
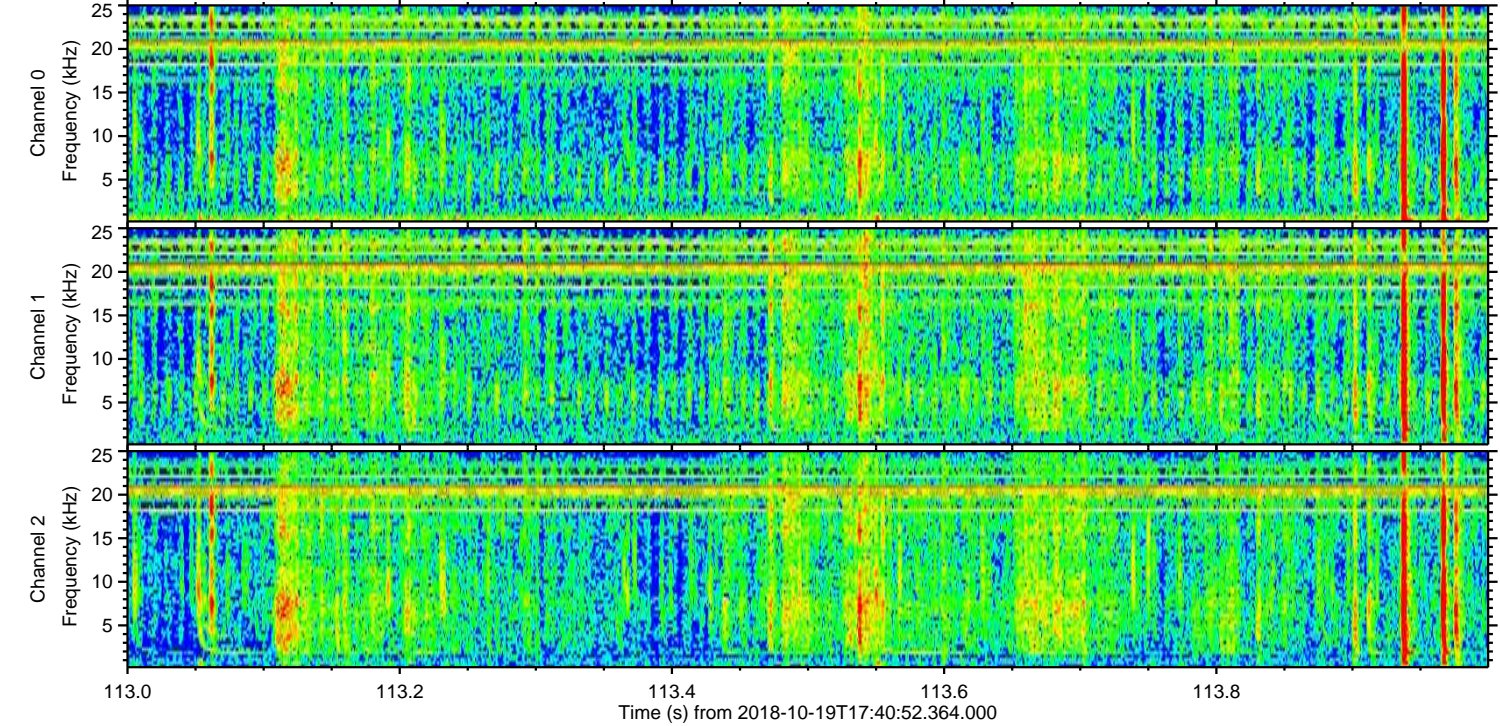
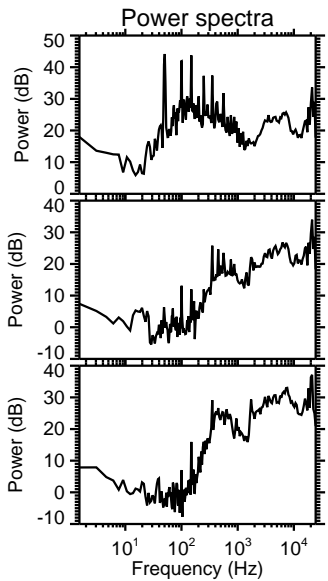
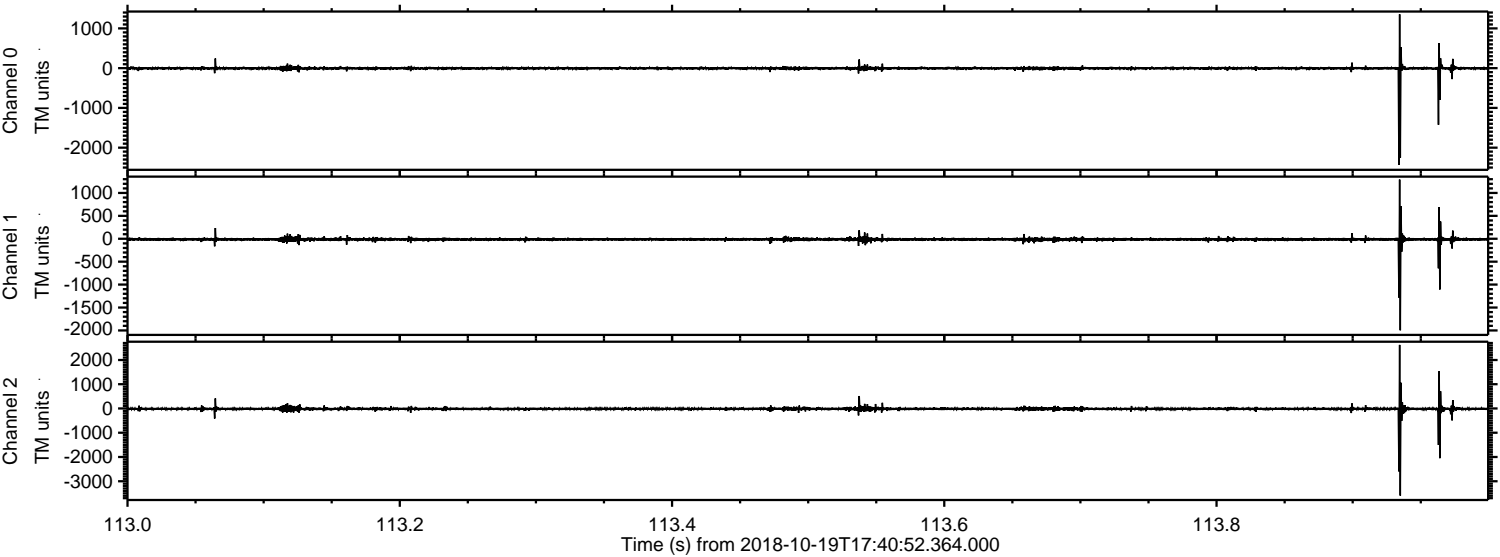
Channel 0
mn: -2791
mx: 2383
 μ : -3.9
 σ : 29.0

Channel 1
mn: -1486
mx: 1948
 μ : -12.7
 σ : 24.9

Channel 2
mn: -2704
mx: 3720
 μ : -15.0
 σ : 44.3

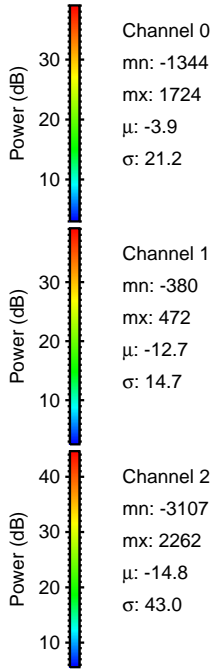
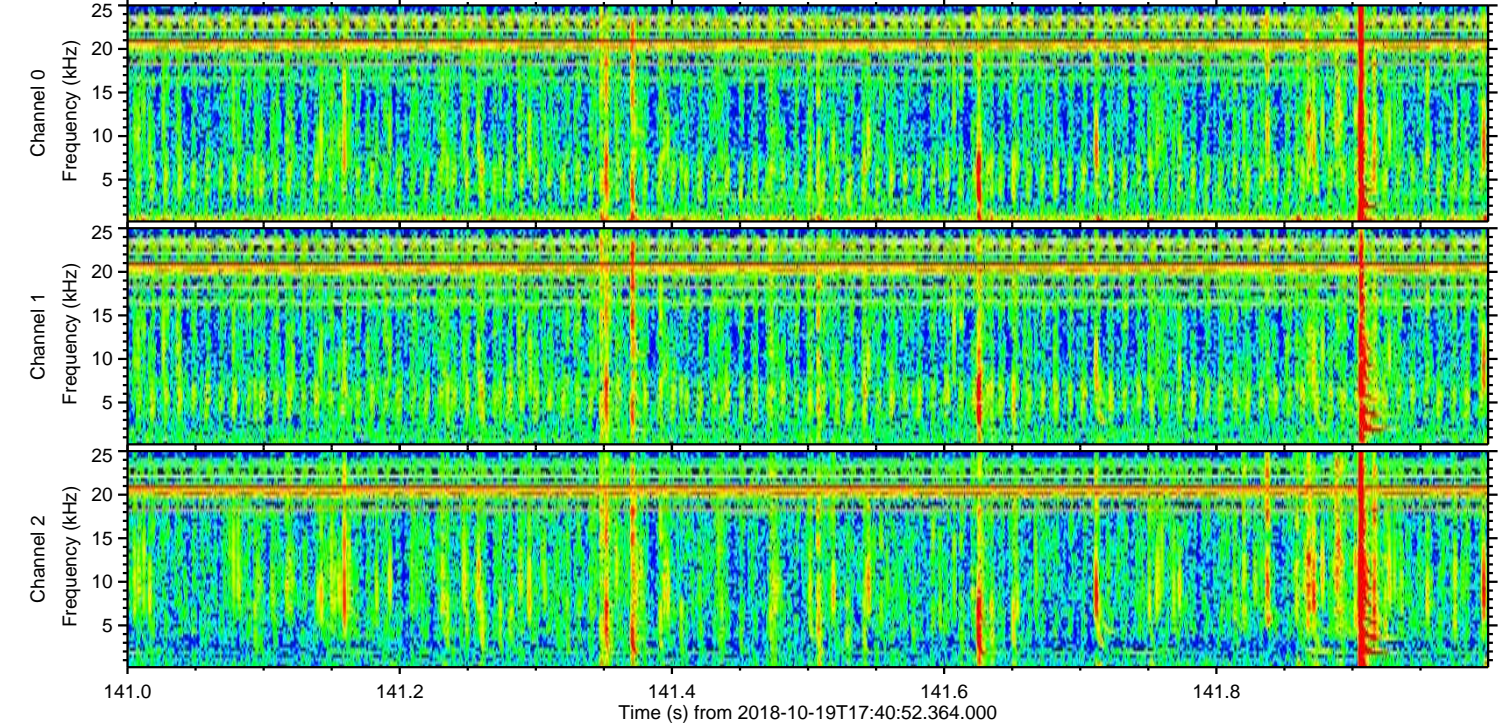
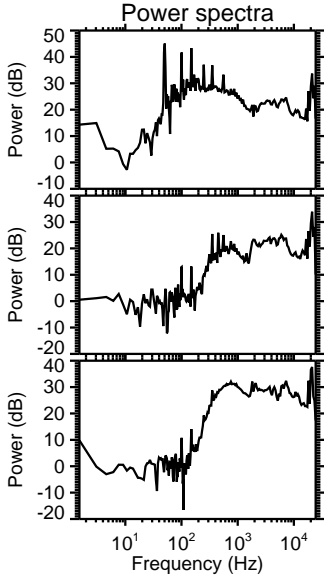
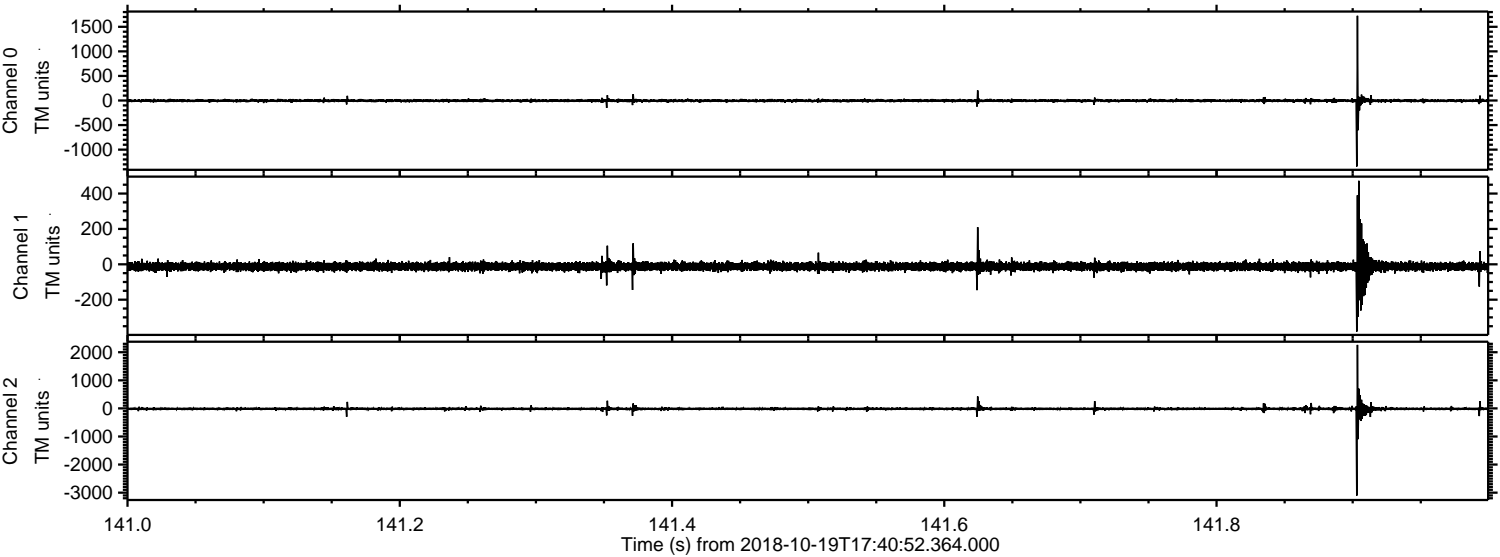
ELMAVAN 3D WAVEFORMS (Measured data sampled at 50 kHz) 51000 packets of 144 samples from 2018-10-19T17:40:52.364.000. Part 114/147

Processed Fri Oct 19 19:49:34 2018 by ELM ver.2012-10-06 from 001__elm20181019_174051__dat00.bin

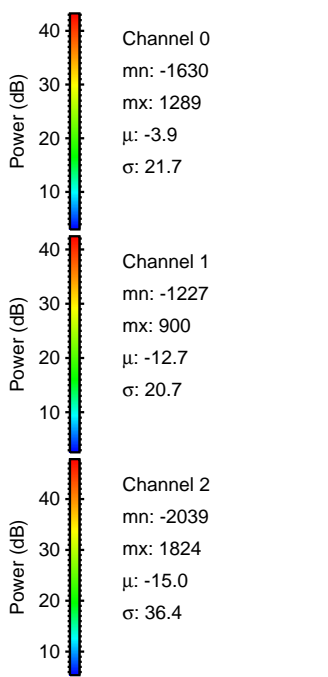
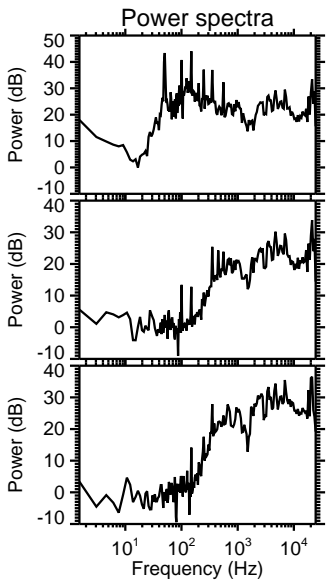
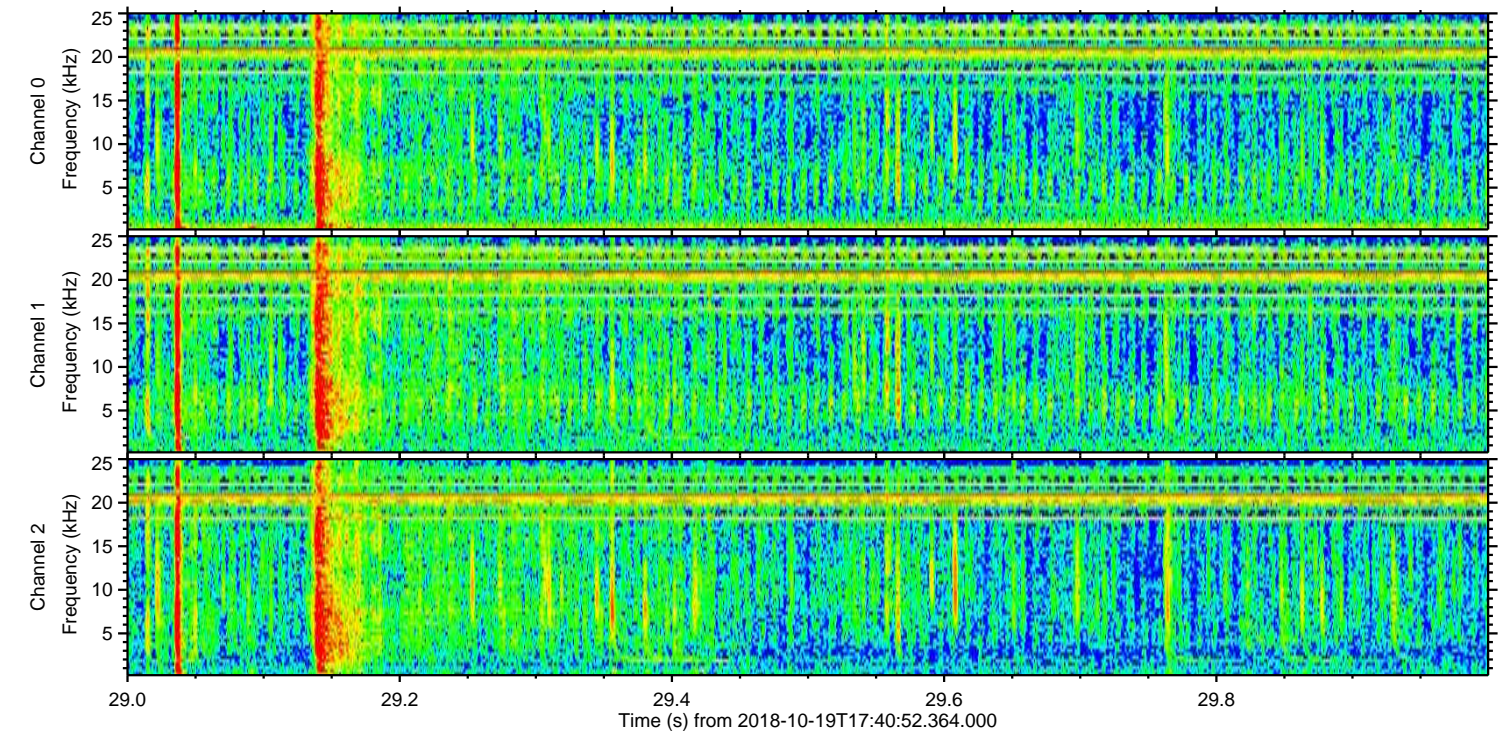
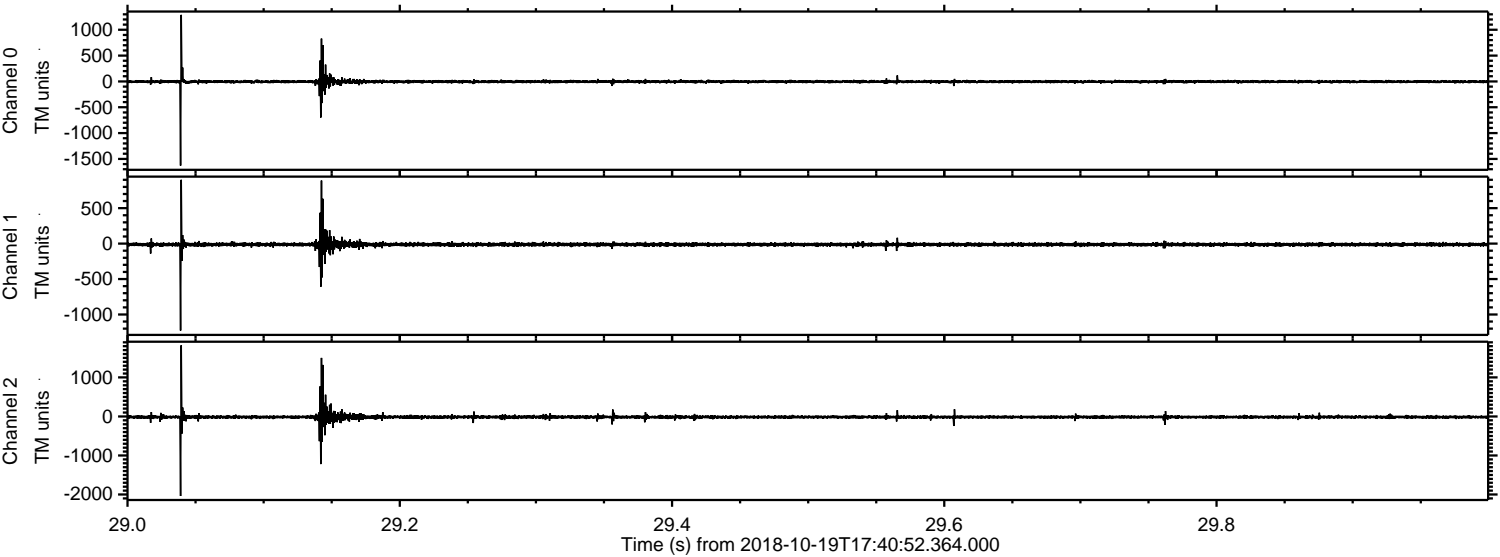


ELMAVAN 3D WAVEFORMS (Measured data sampled at 50 kHz) 51000 packets of 144 samples from 2018-10-19T17:40:52.364.000. Part 142/147

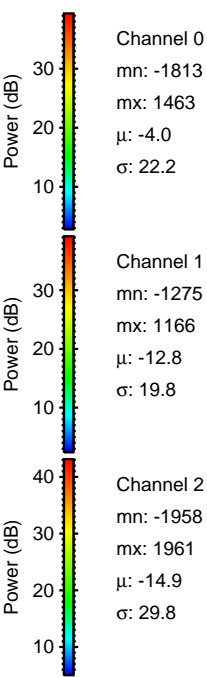
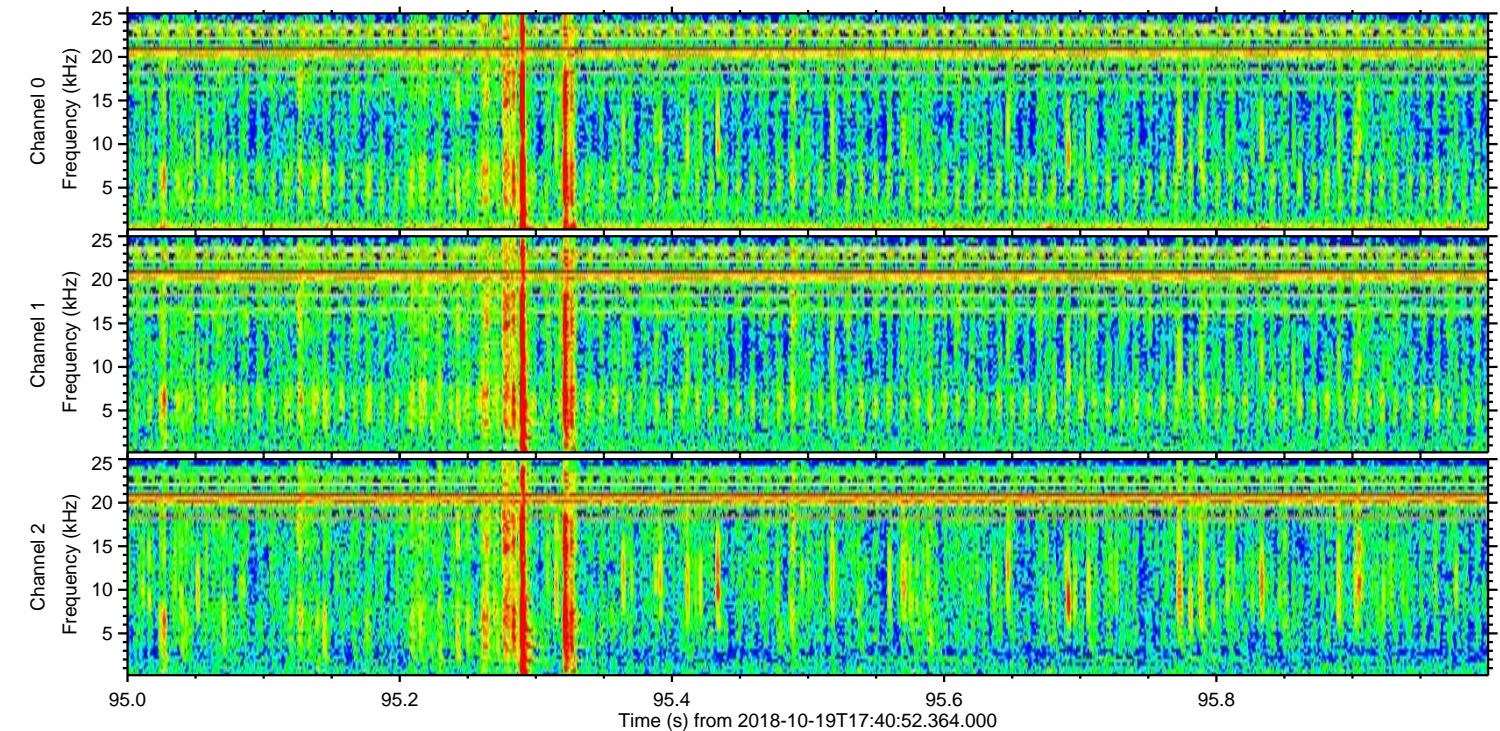
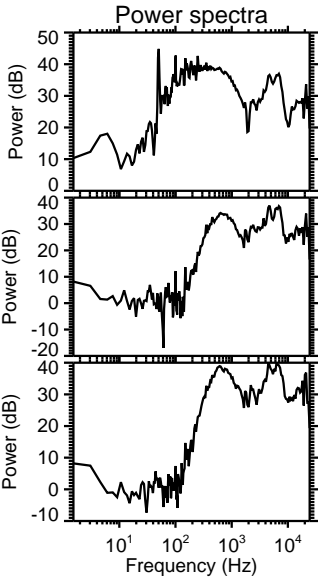
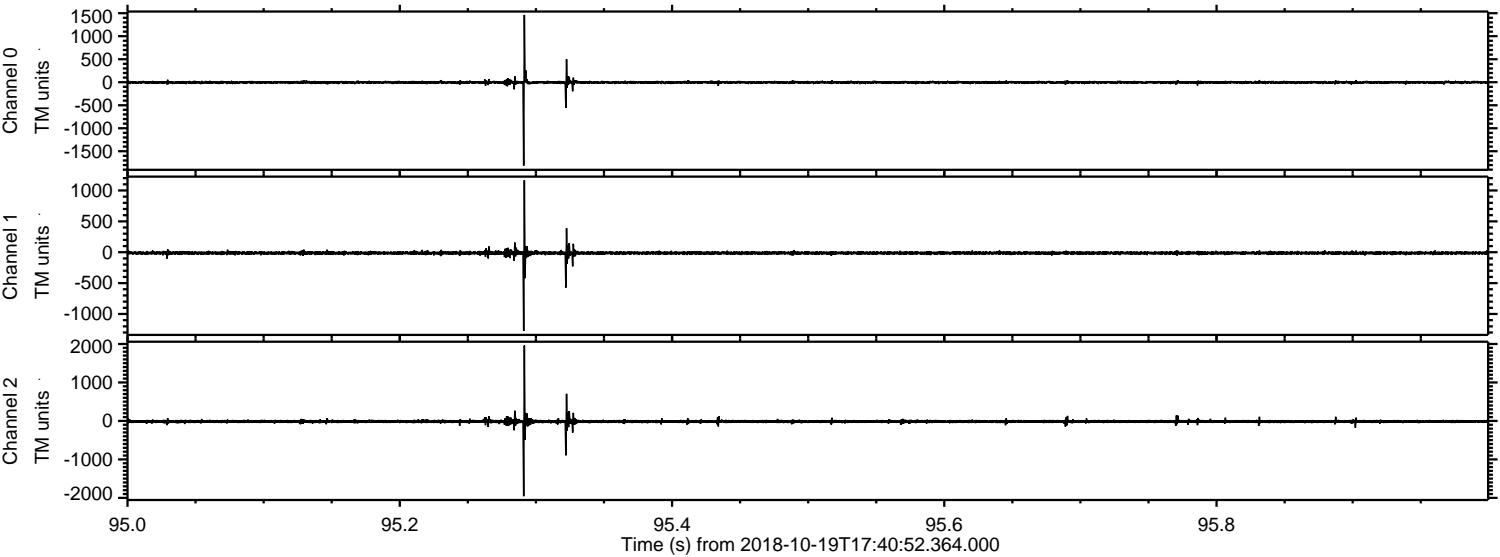
Processed Fri Oct 19 19:49:35 2018 by ELM ver.2012-10-06 from 001__elm20181019_174051__dat00.bin



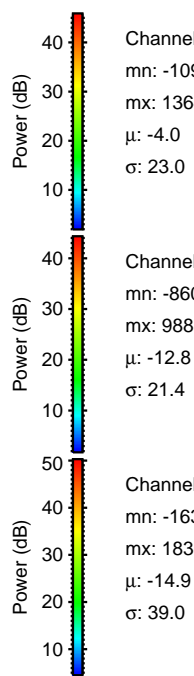
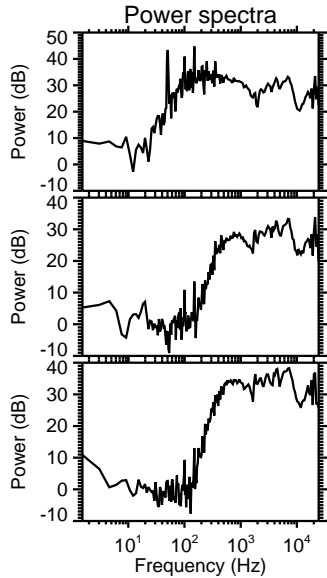
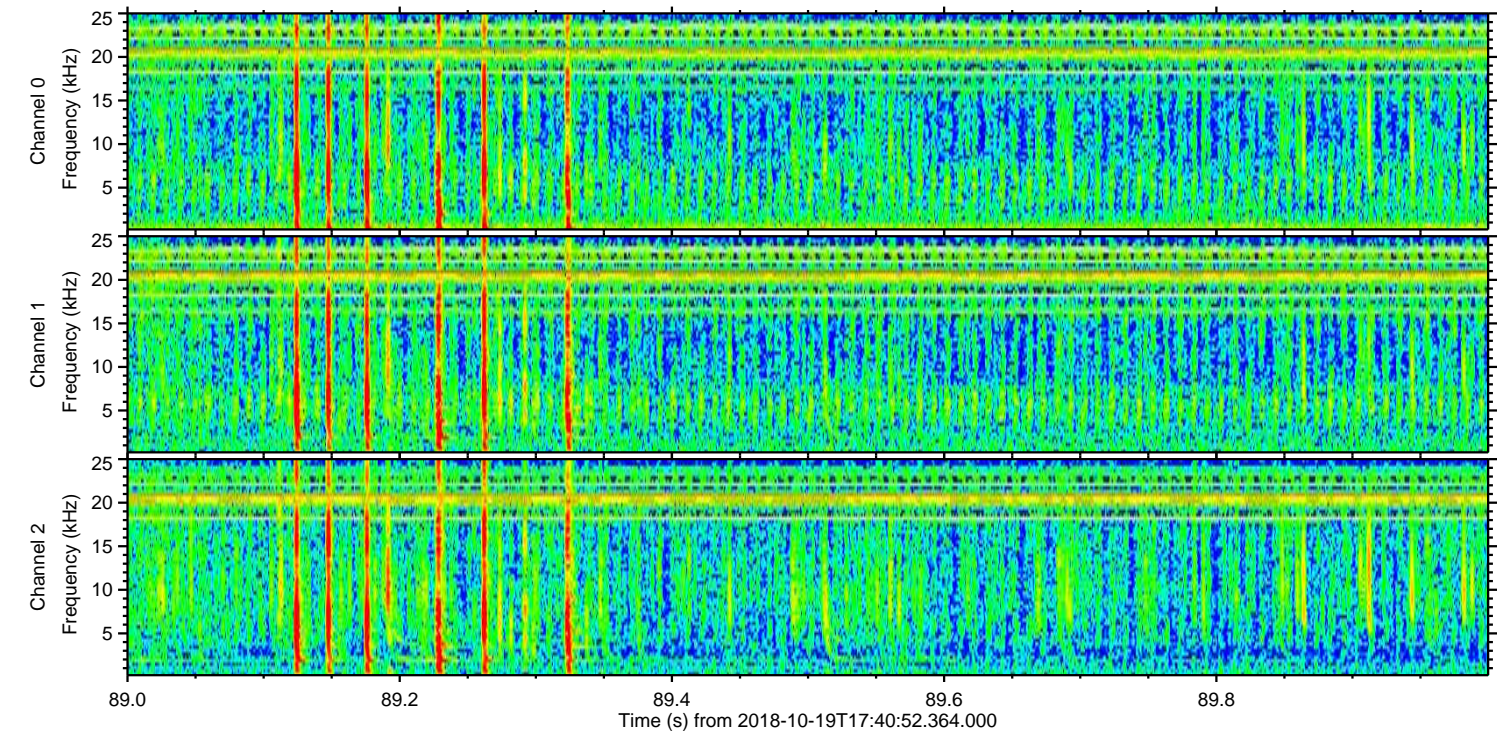
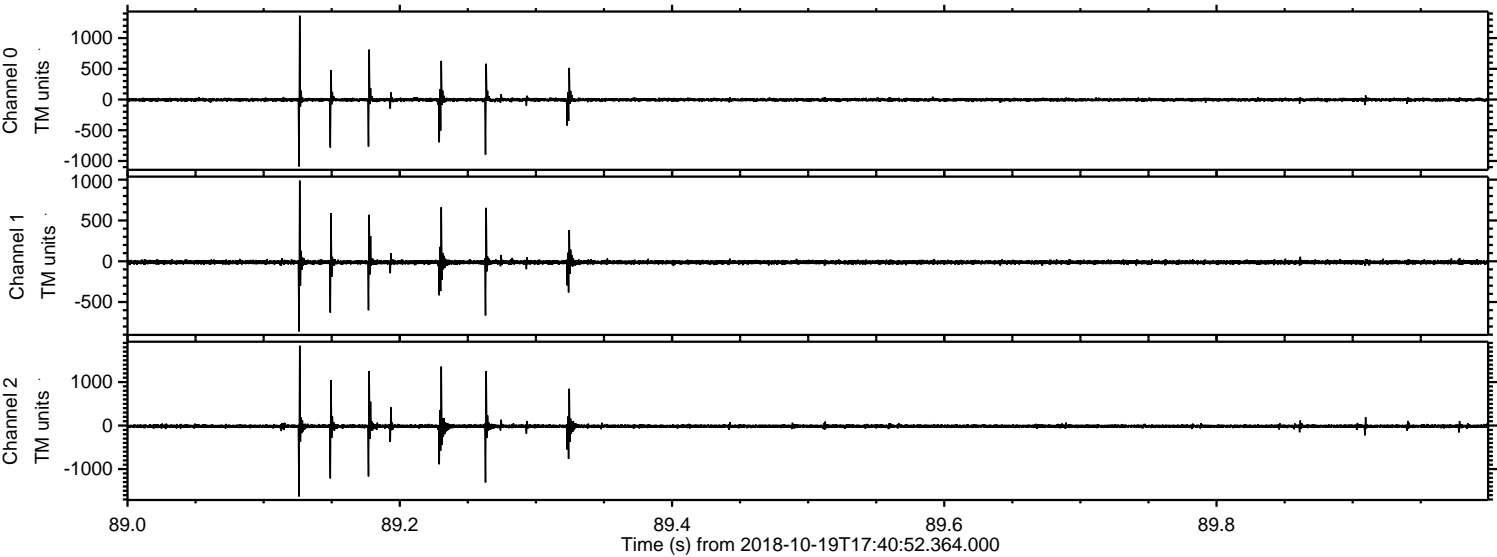
Processed Fri Oct 19 19:49:35 2018 by ELM ver.2012-10-06 from 001__elm20181019_174051__dat00.bin



Processed Fri Oct 19 19:49:36 2018 by ELM ver.2012-10-06 from 001__elm20181019_174051__dat00.bin



Processed Fri Oct 19 19:49:37 2018 by ELM ver.2012-10-06 from 001__elm20181019_174051__dat00.bin



Channel 0
mn: -1090
mx: 1364
 μ : -4.0
 σ : 23.0

Channel 1
mn: -860
mx: 988
 μ : -12.8
 σ : 21.4

Channel 2
mn: -1630
mx: 1836
 μ : -14.9
 σ : 39.0

