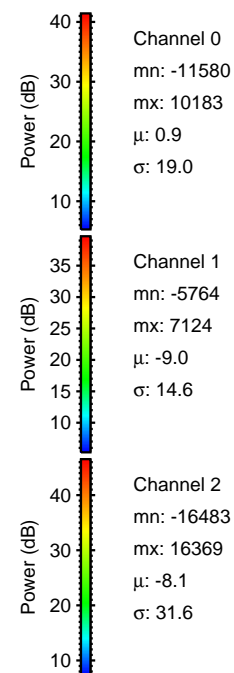
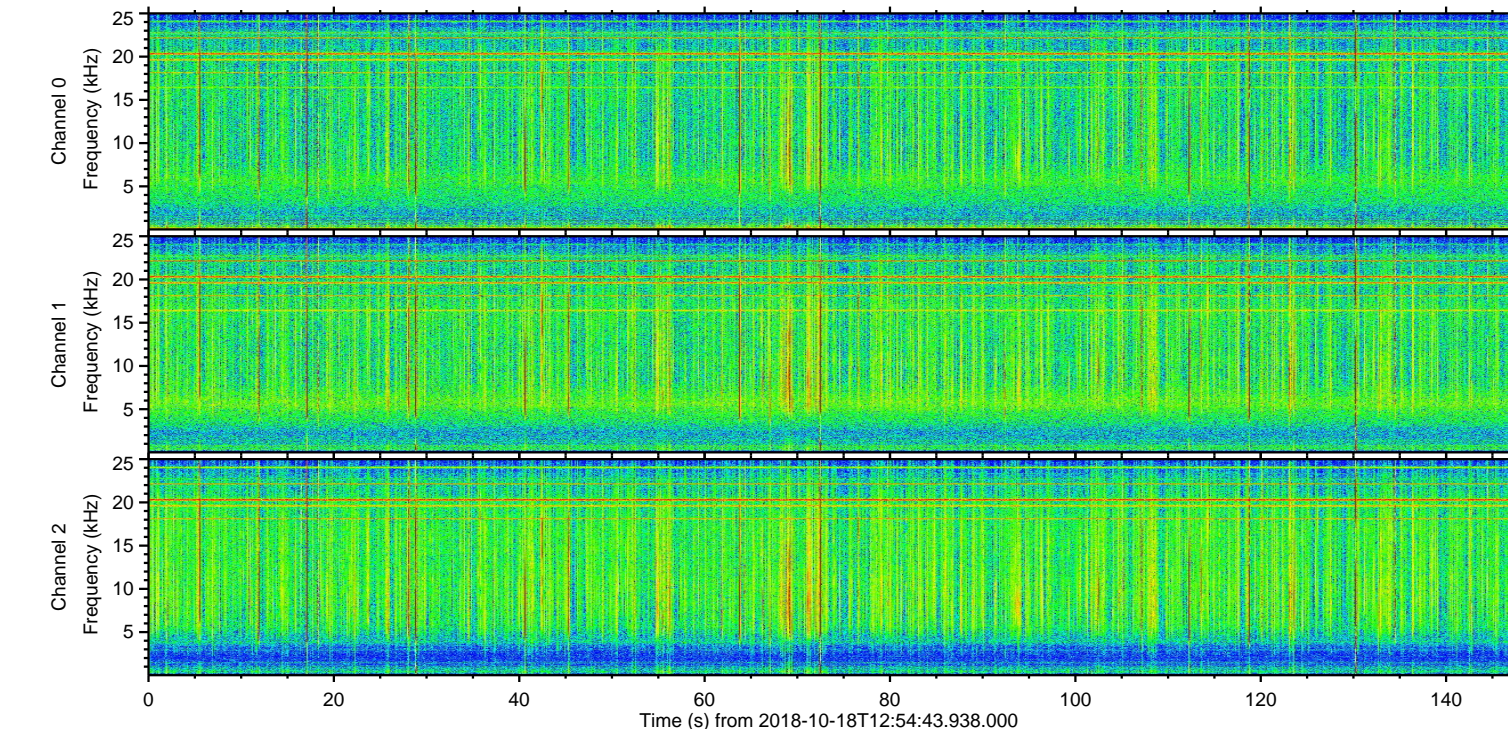
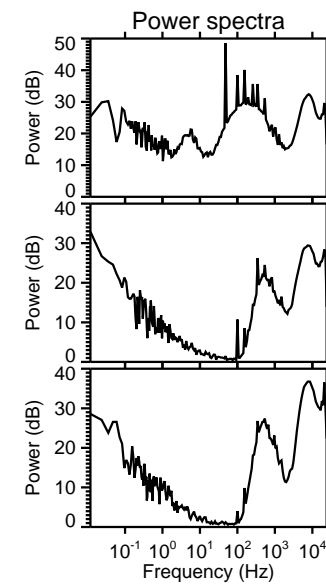
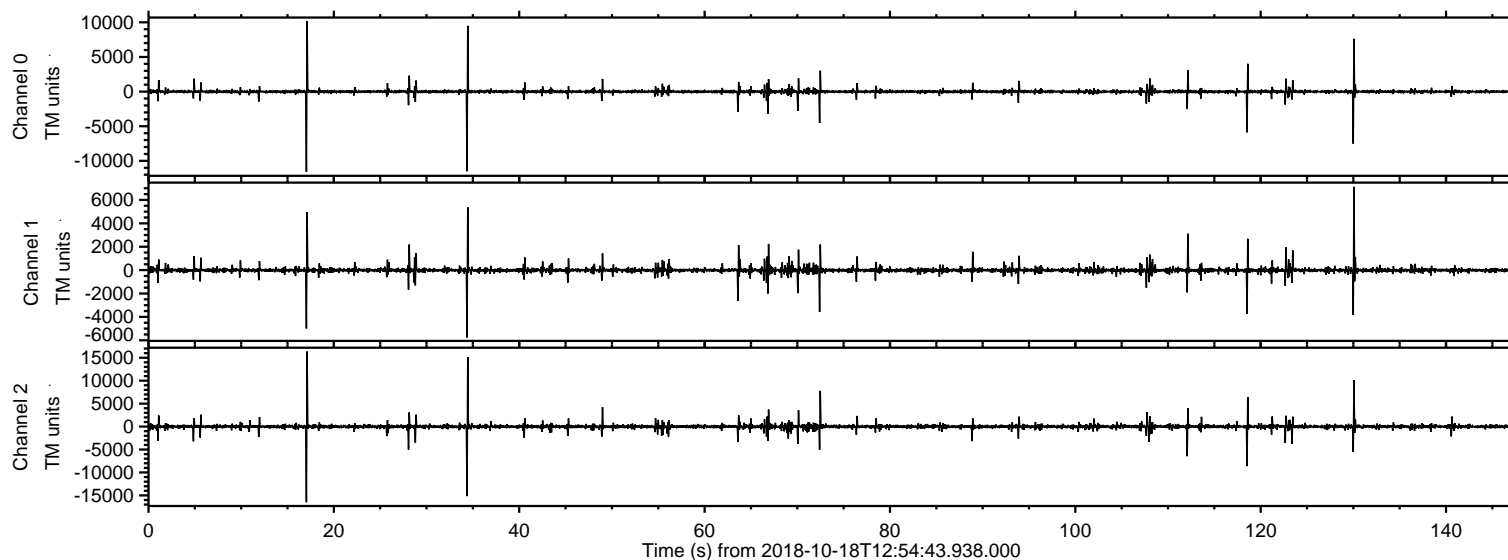


# ELMAVAN 3D WAVEFORMS (Measured data sampled at 50 kHz) 51000 packets of 144 samples from 2018-10-18T12:54:43.938.000.

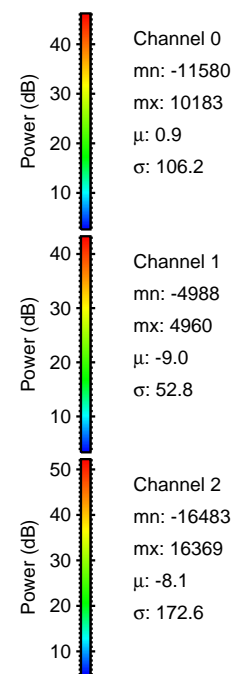
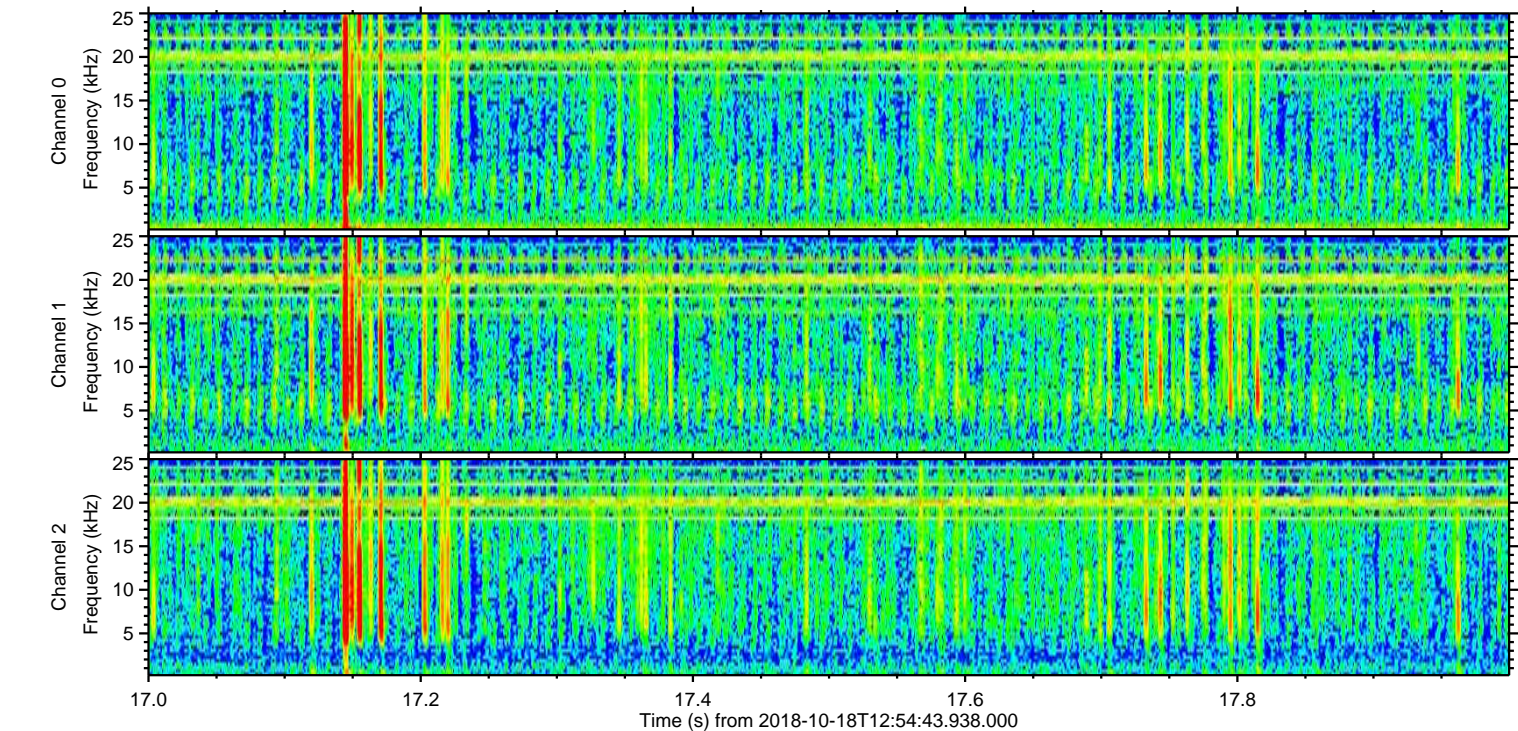
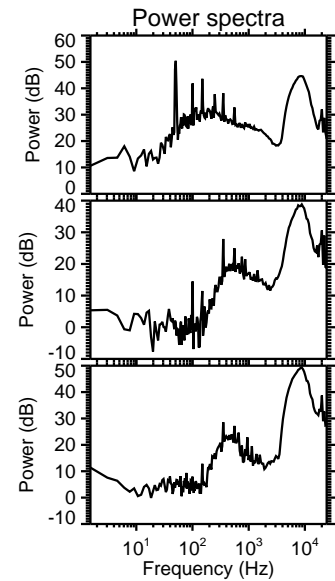
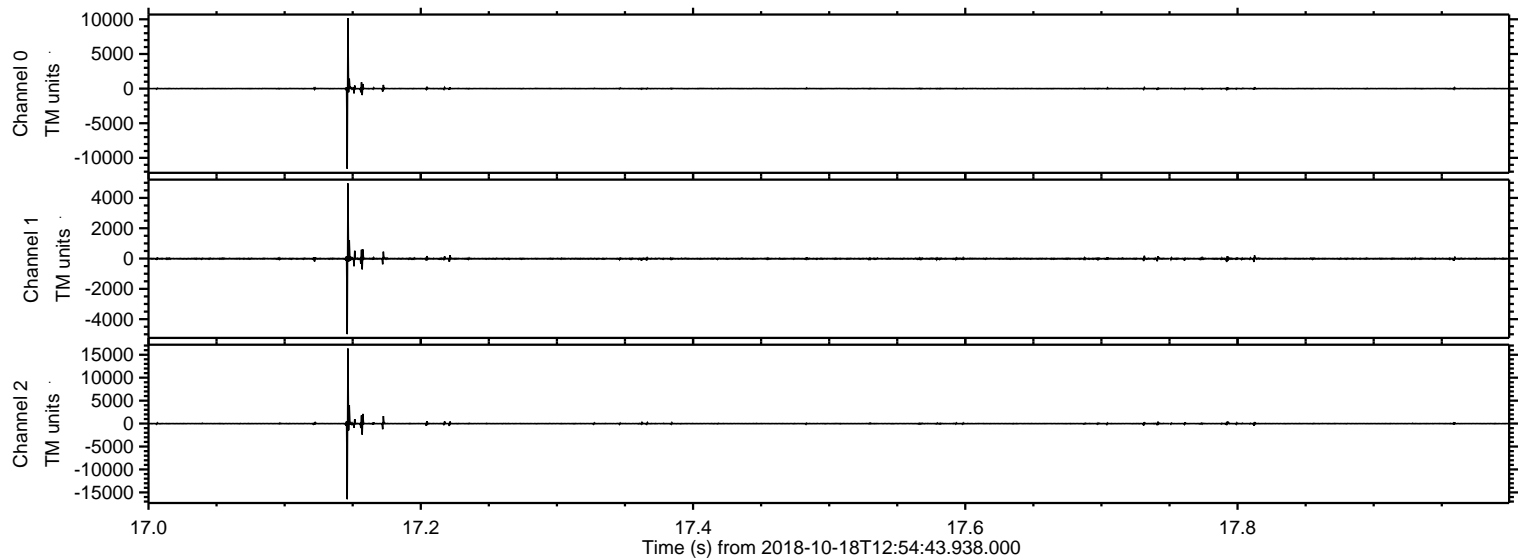
Processed Thu Oct 18 15:02:31 2018 by ELM ver.2012-10-06 from 001\_\_elm20181018\_125442\_\_dat00.bin





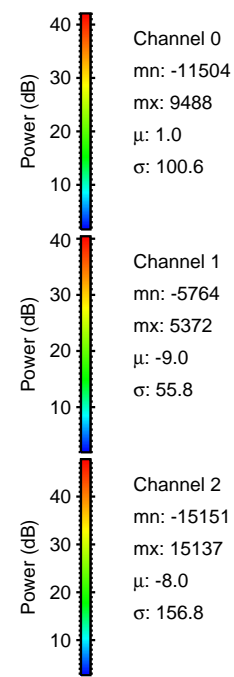
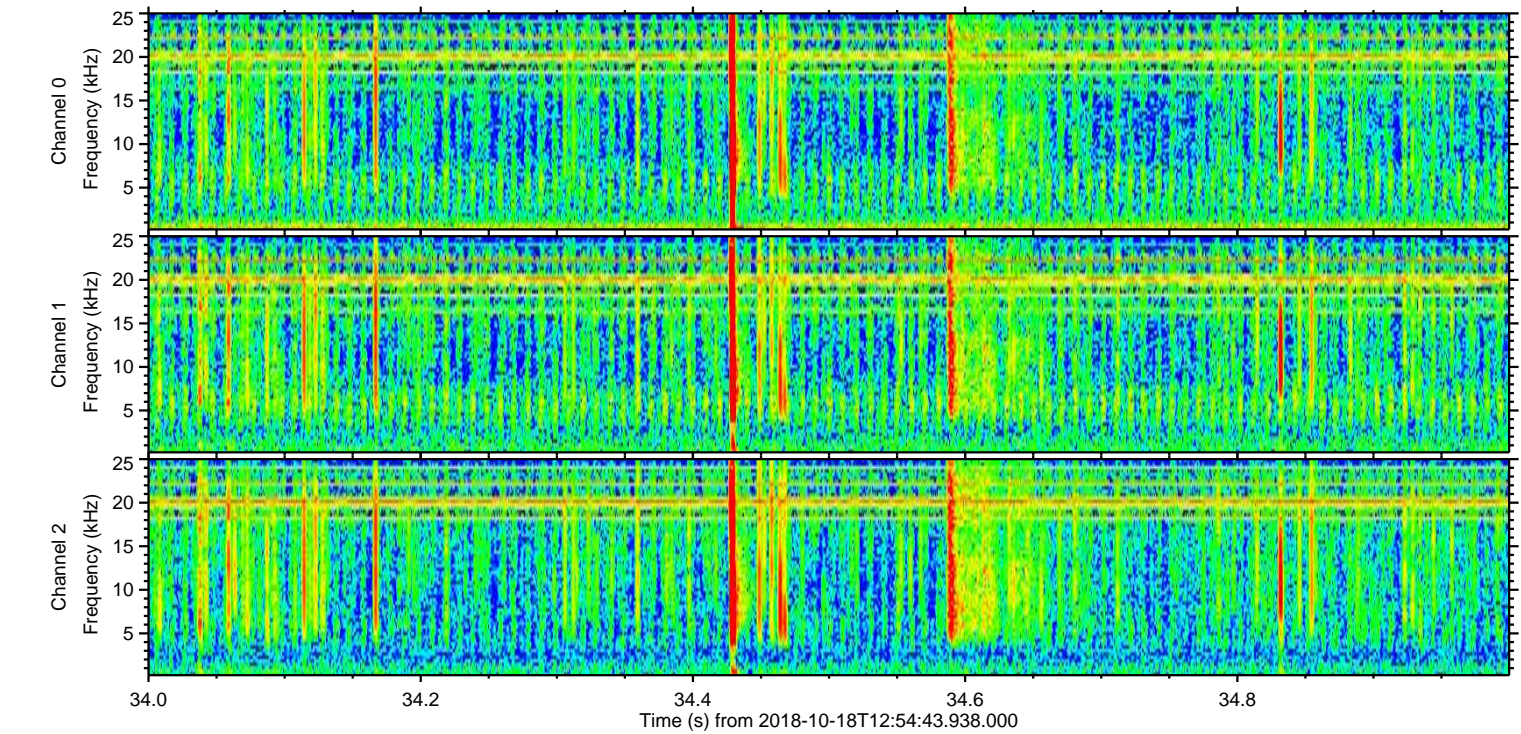
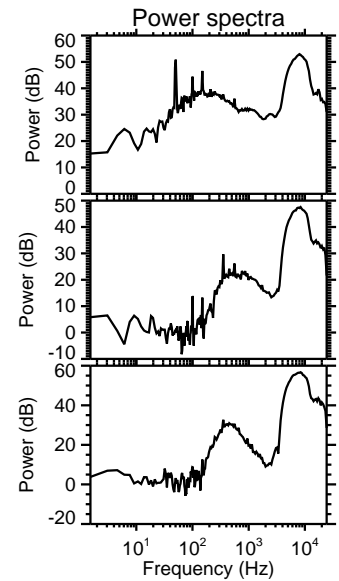
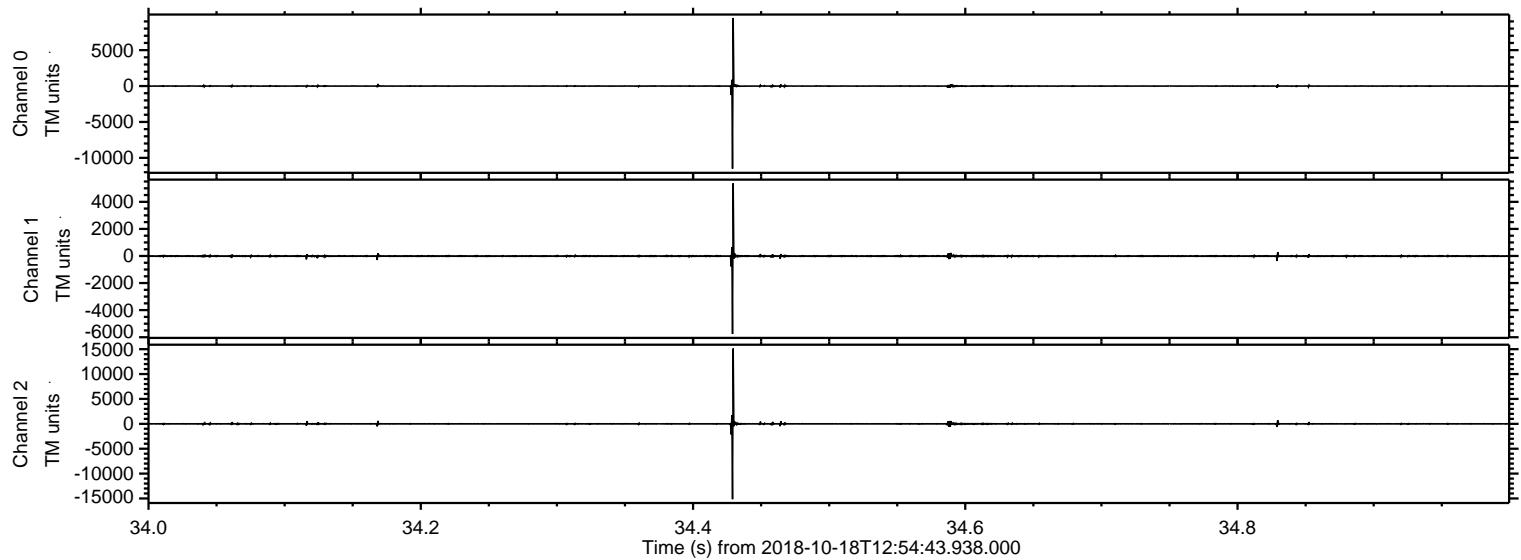
ELMAVAN 3D WAVEFORMS (Measured data sampled at 50 kHz) 51000 packets of 144 samples from 2018-10-18T12:54:43.938.000. Part 18/147

Processed Thu Oct 18 15:02:41 2018 by ELM ver.2012-10-06 from 001\_\_elm20181018\_125442\_\_dat00.bin





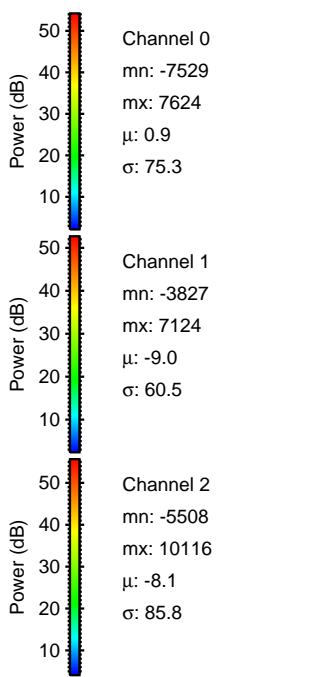
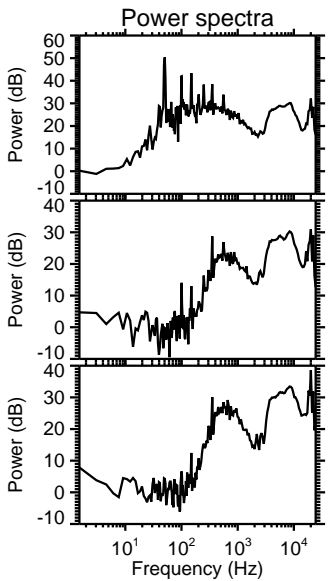
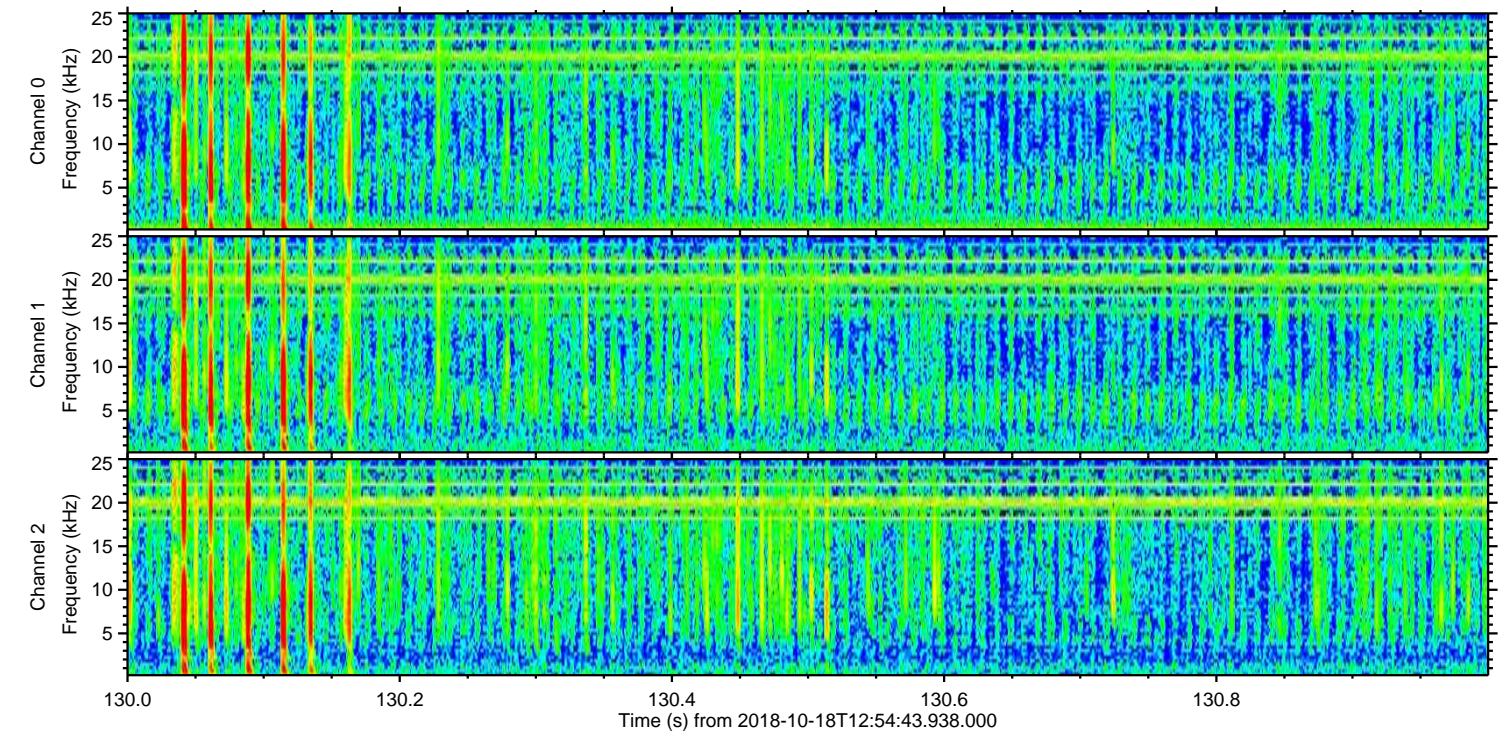
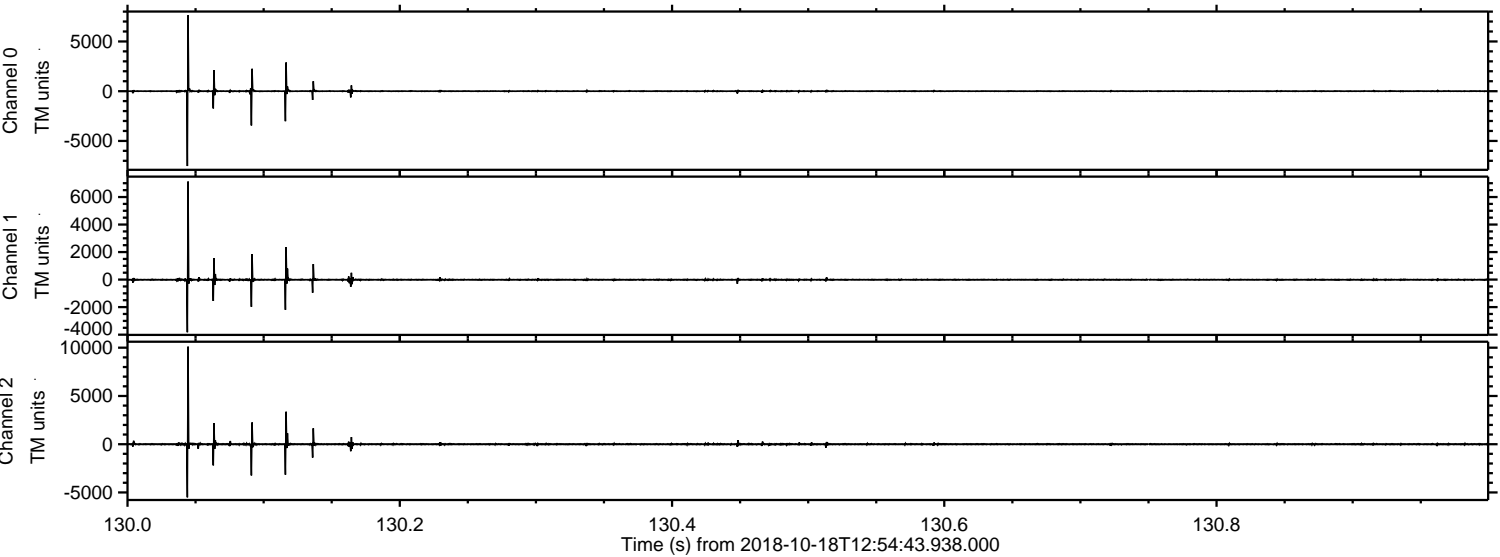
Processed Thu Oct 18 15:02:42 2018 by ELM ver.2012-10-06 from 001\_\_elm20181018\_125442\_\_dat00.bin





ELMAVAN 3D WAVEFORMS (Measured data sampled at 50 kHz) 51000 packets of 144 samples from 2018-10-18T12:54:43.938.000. Part 131/147

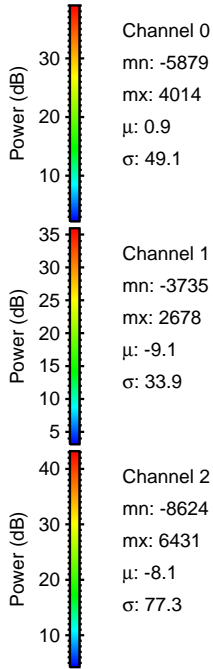
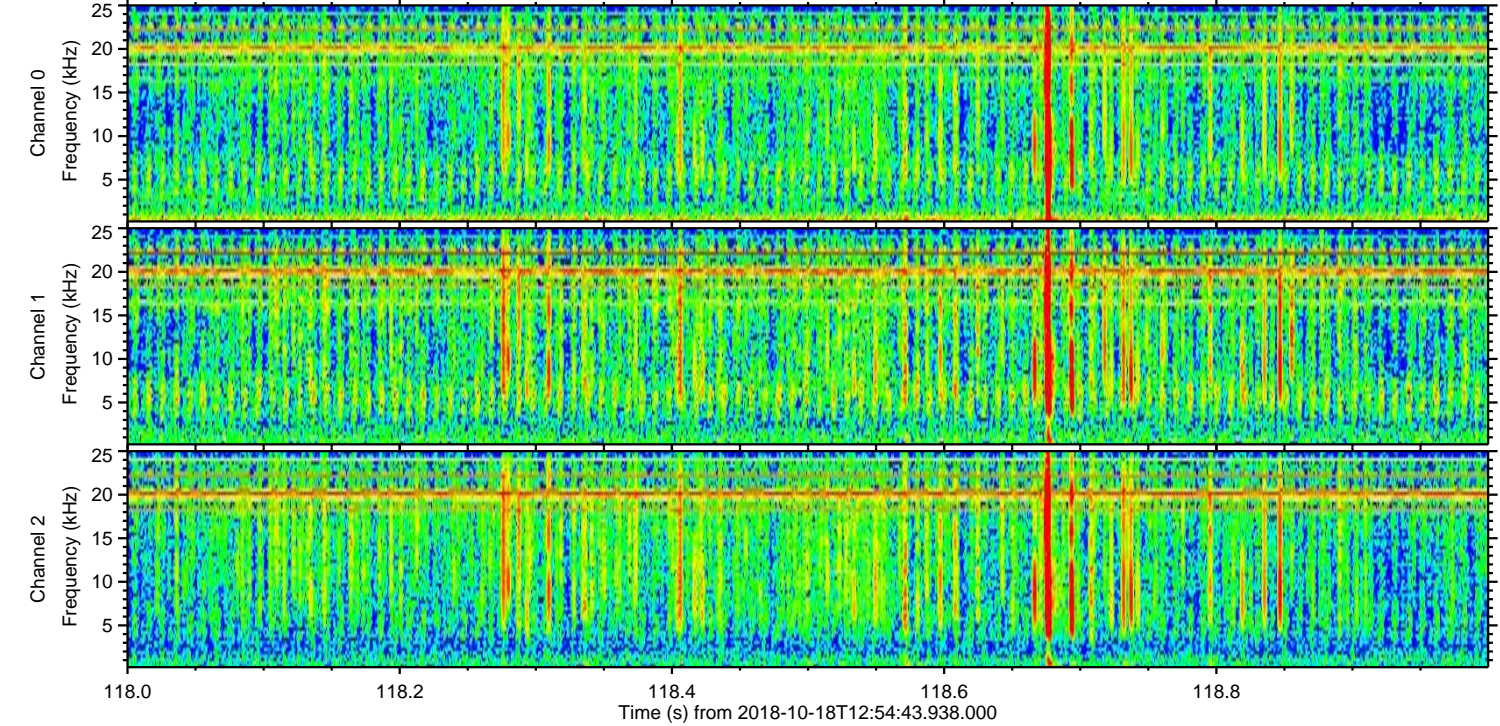
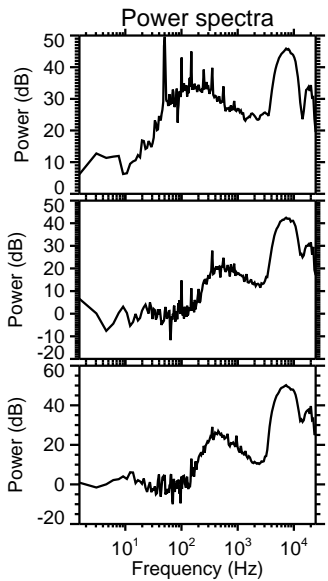
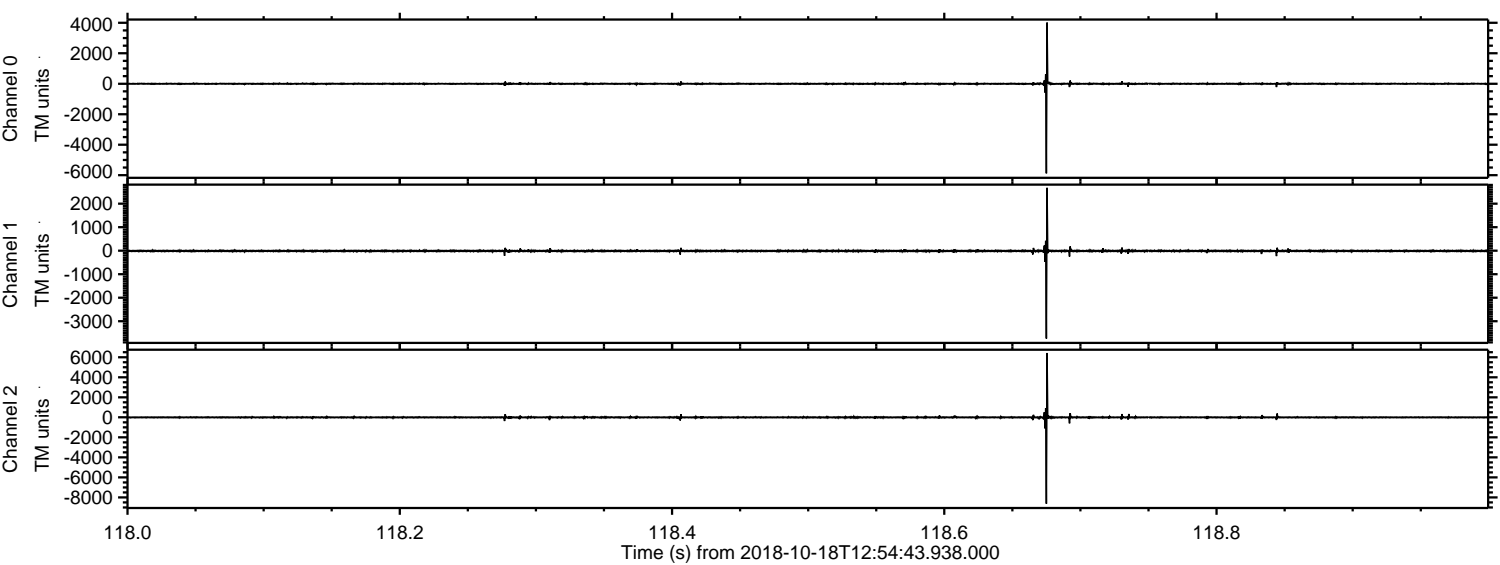
Processed Thu Oct 18 15:02:43 2018 by ELM ver.2012-10-06 from 001\_\_elm20181018\_125442\_\_dat00.bin





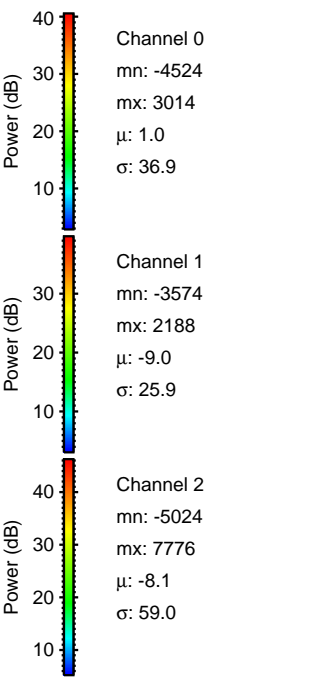
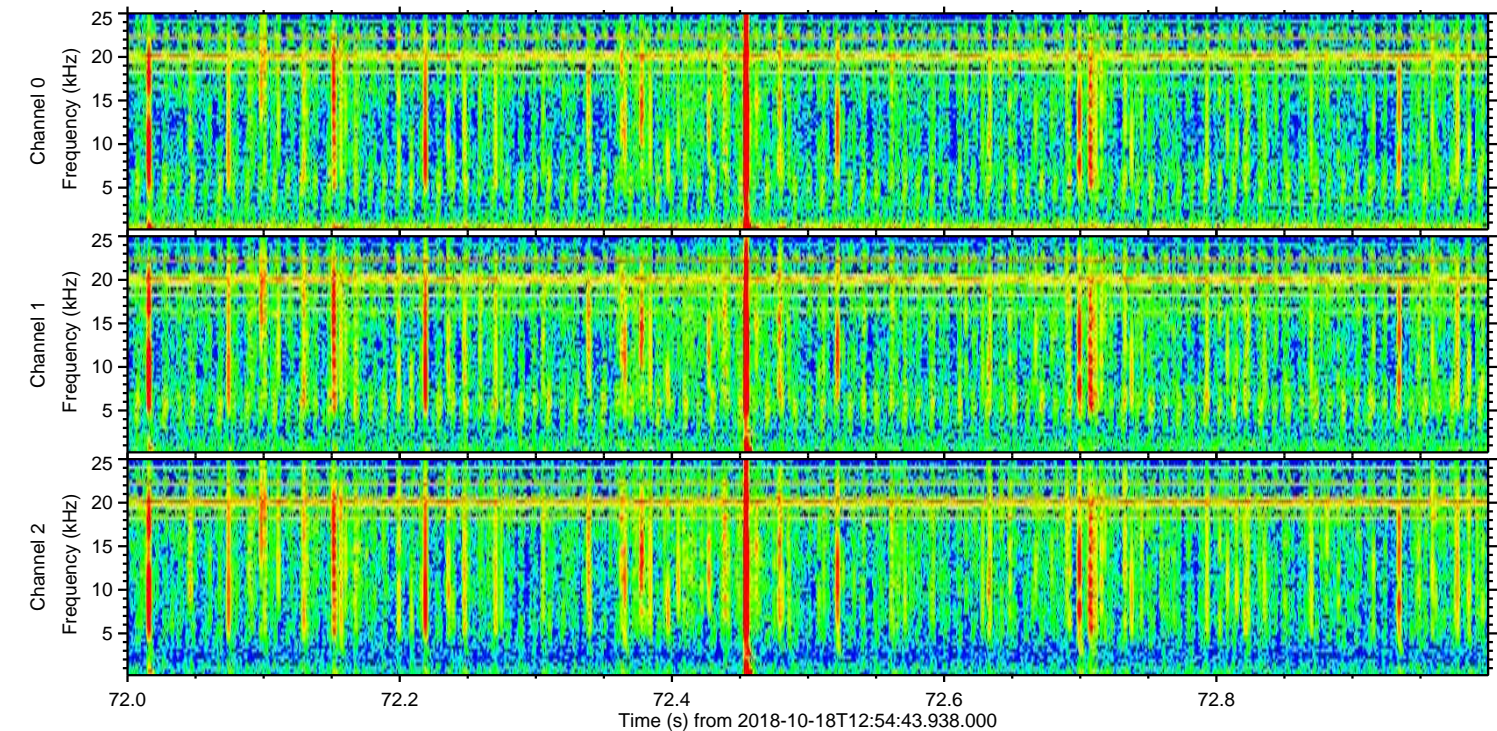
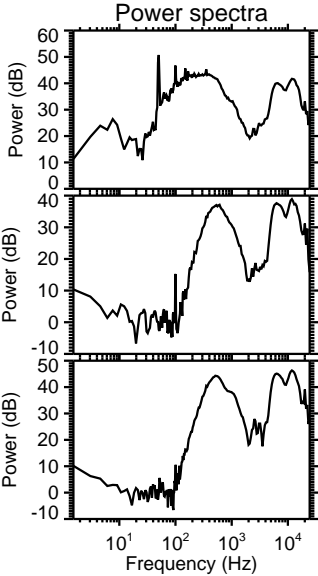
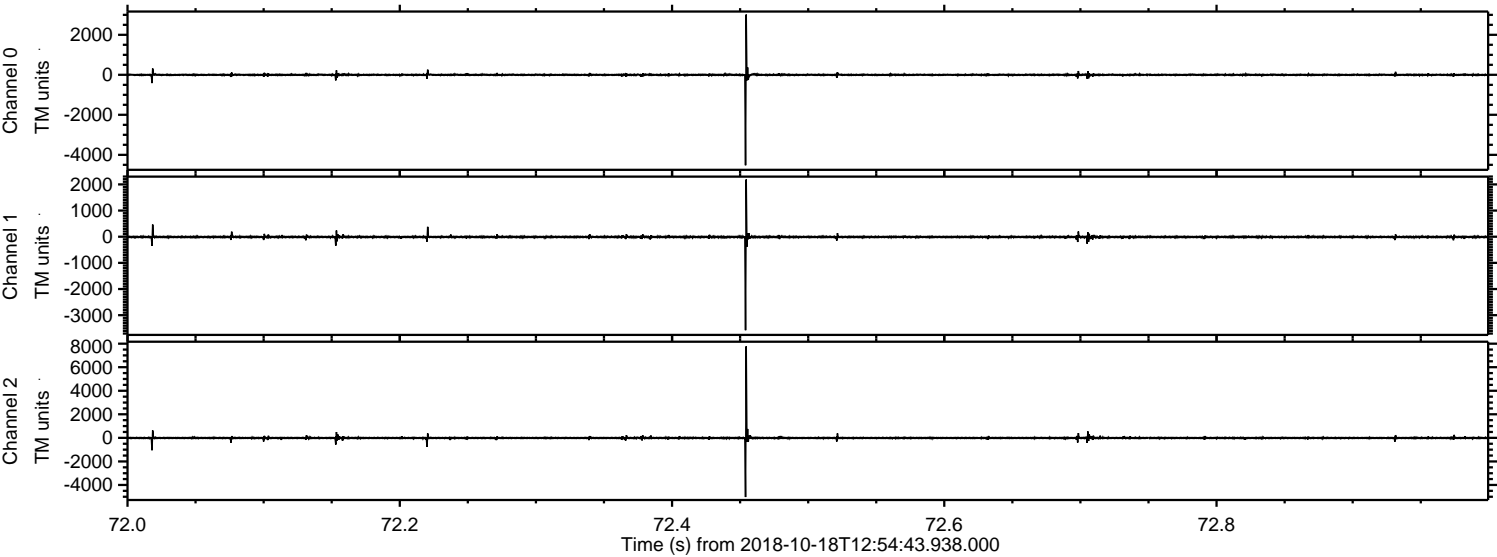
ELMAVAN 3D WAVEFORMS (Measured data sampled at 50 kHz) 51000 packets of 144 samples from 2018-10-18T12:54:43.938.000. Part 119/147

Processed Thu Oct 18 15:02:44 2018 by ELM ver.2012-10-06 from 001\_\_elm20181018\_125442\_\_dat00.bin





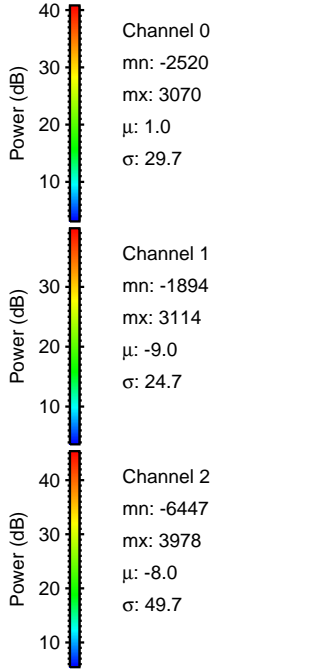
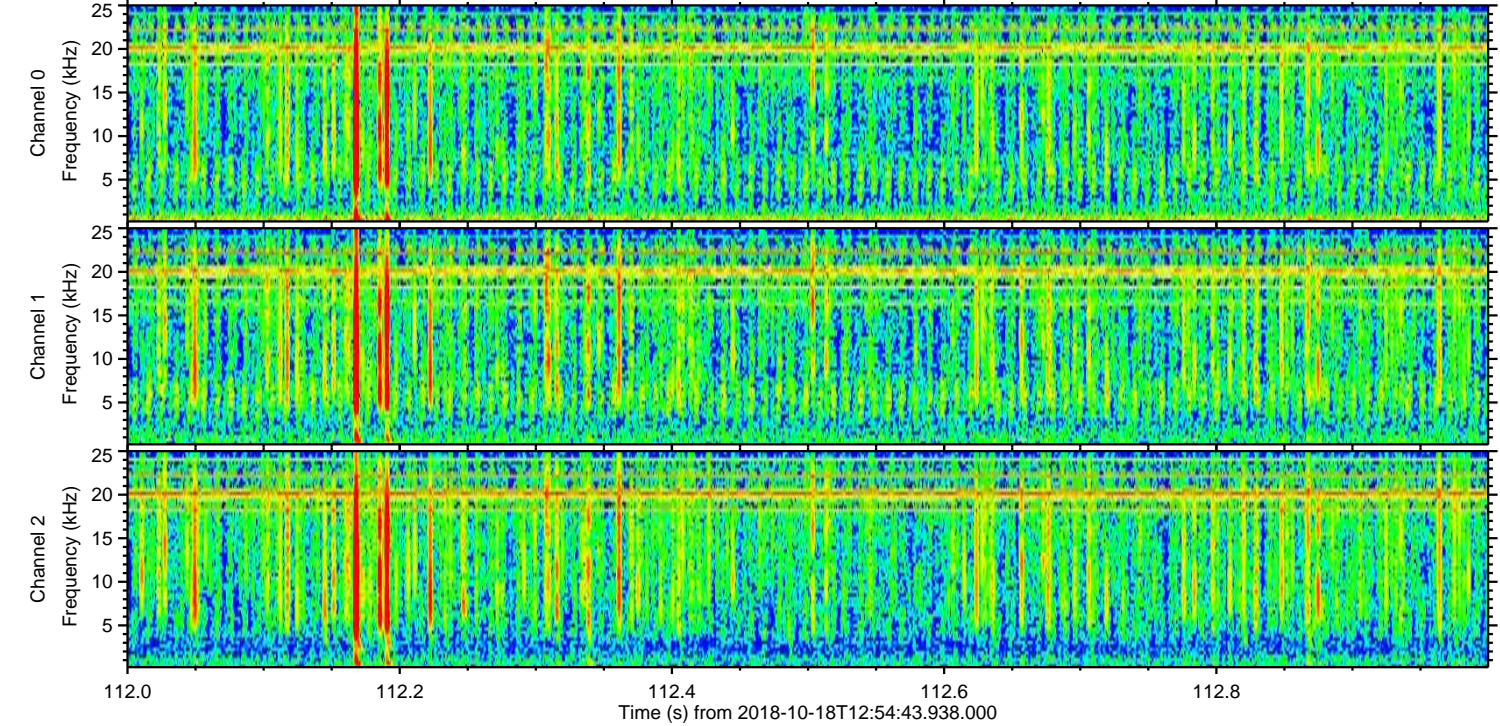
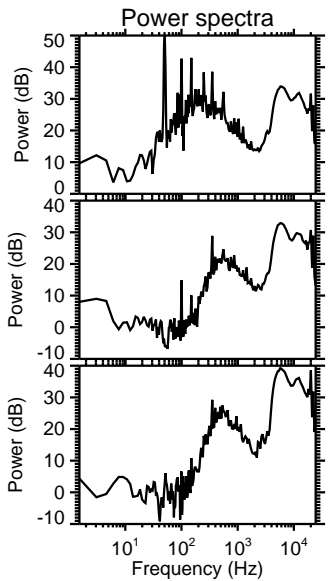
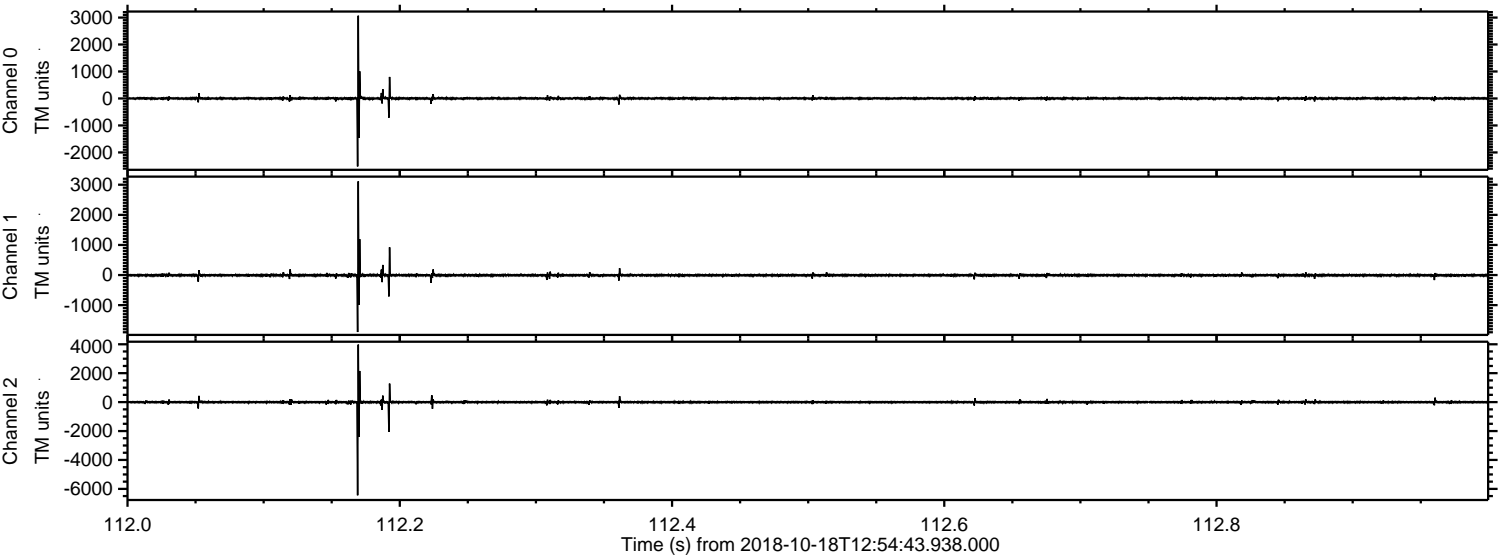
Processed Thu Oct 18 15:02:44 2018 by ELM ver.2012-10-06 from 001\_\_elm20181018\_125442\_\_dat00.bin





ELMAVAN 3D WAVEFORMS (Measured data sampled at 50 kHz) 51000 packets of 144 samples from 2018-10-18T12:54:43.938.000. Part 113/147

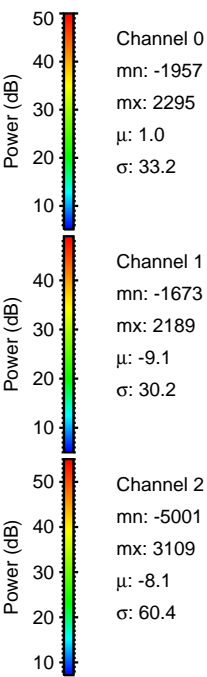
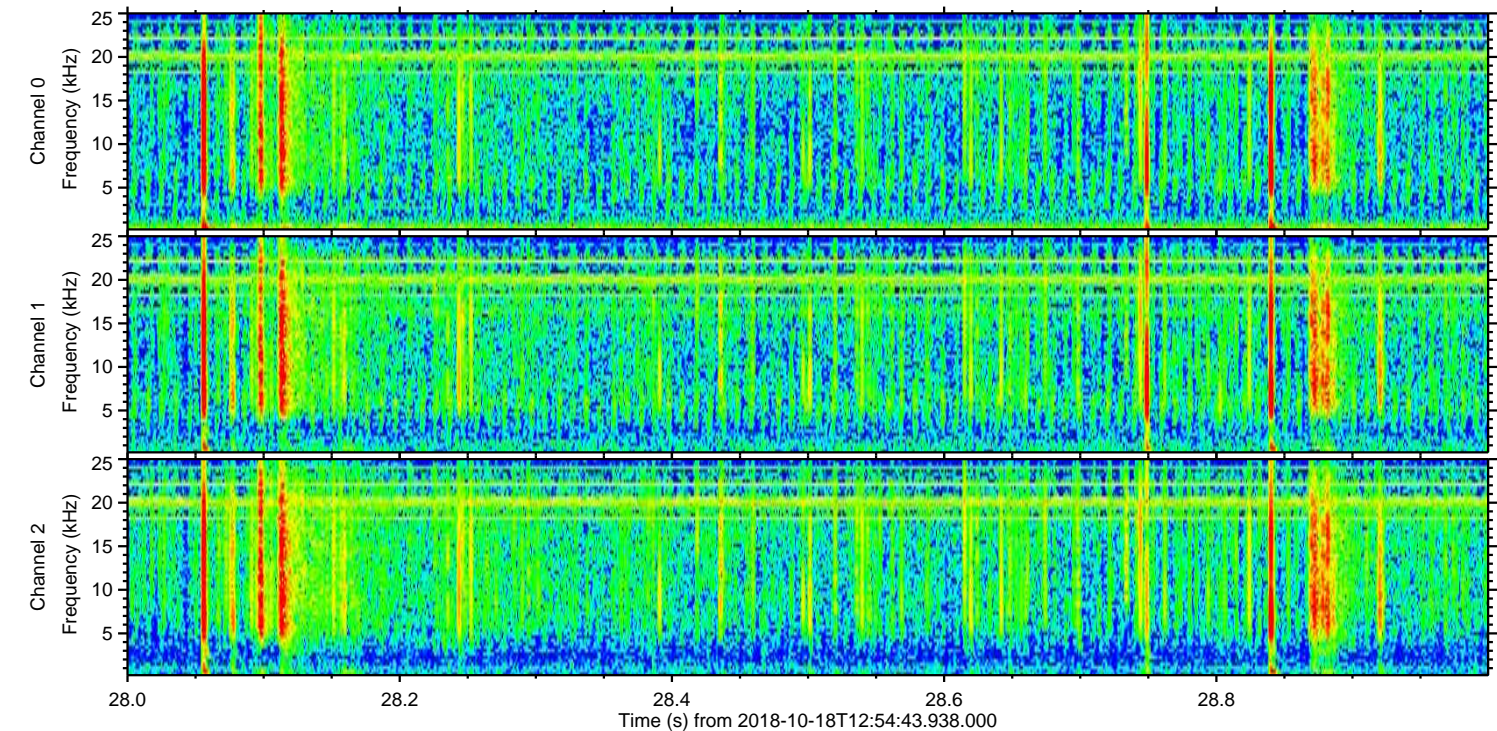
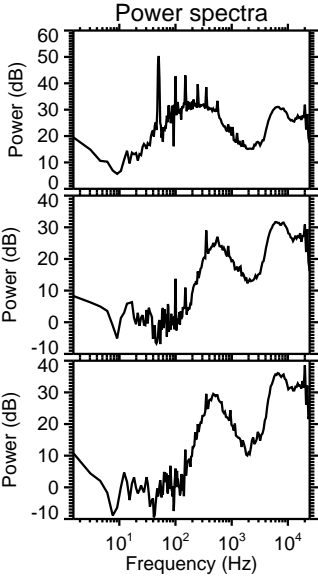
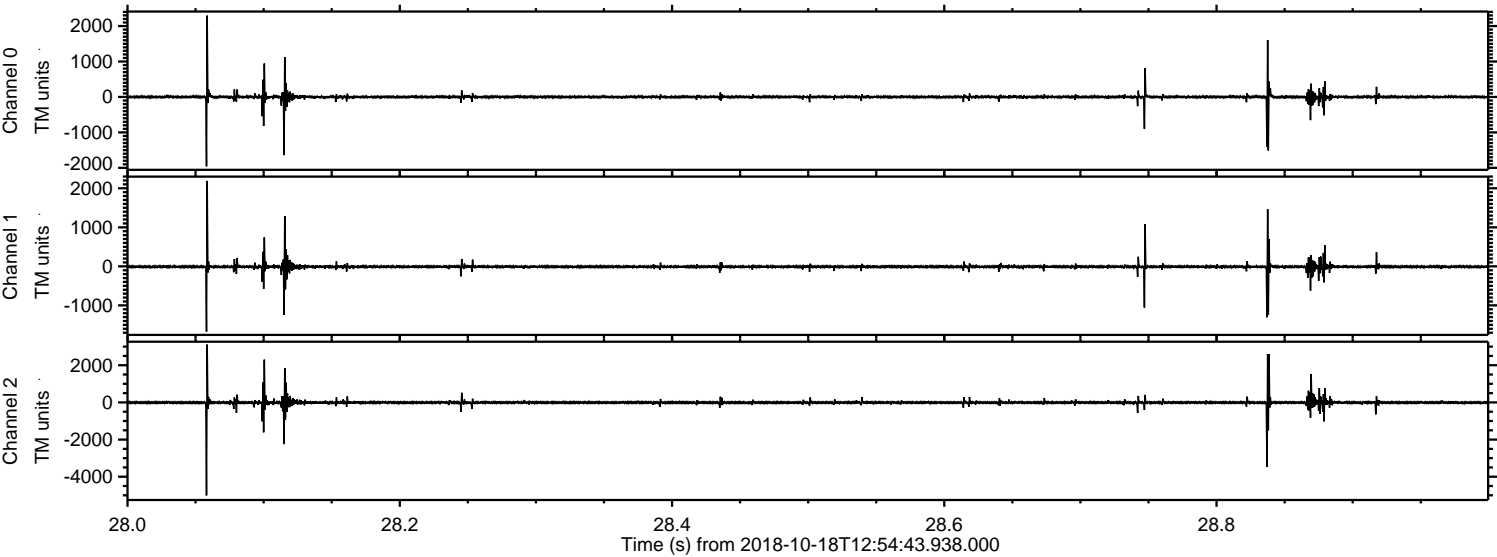
Processed Thu Oct 18 15:02:45 2018 by ELM ver.2012-10-06 from 001\_\_elm20181018\_125442\_\_dat00.bin





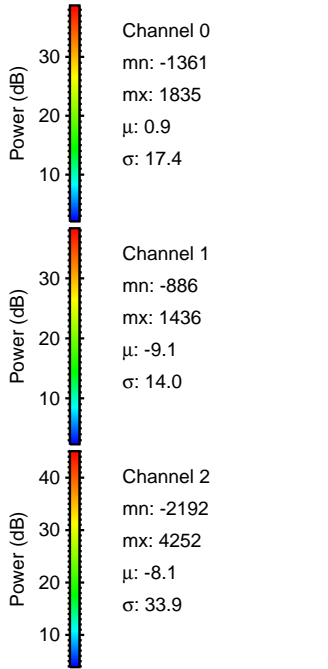
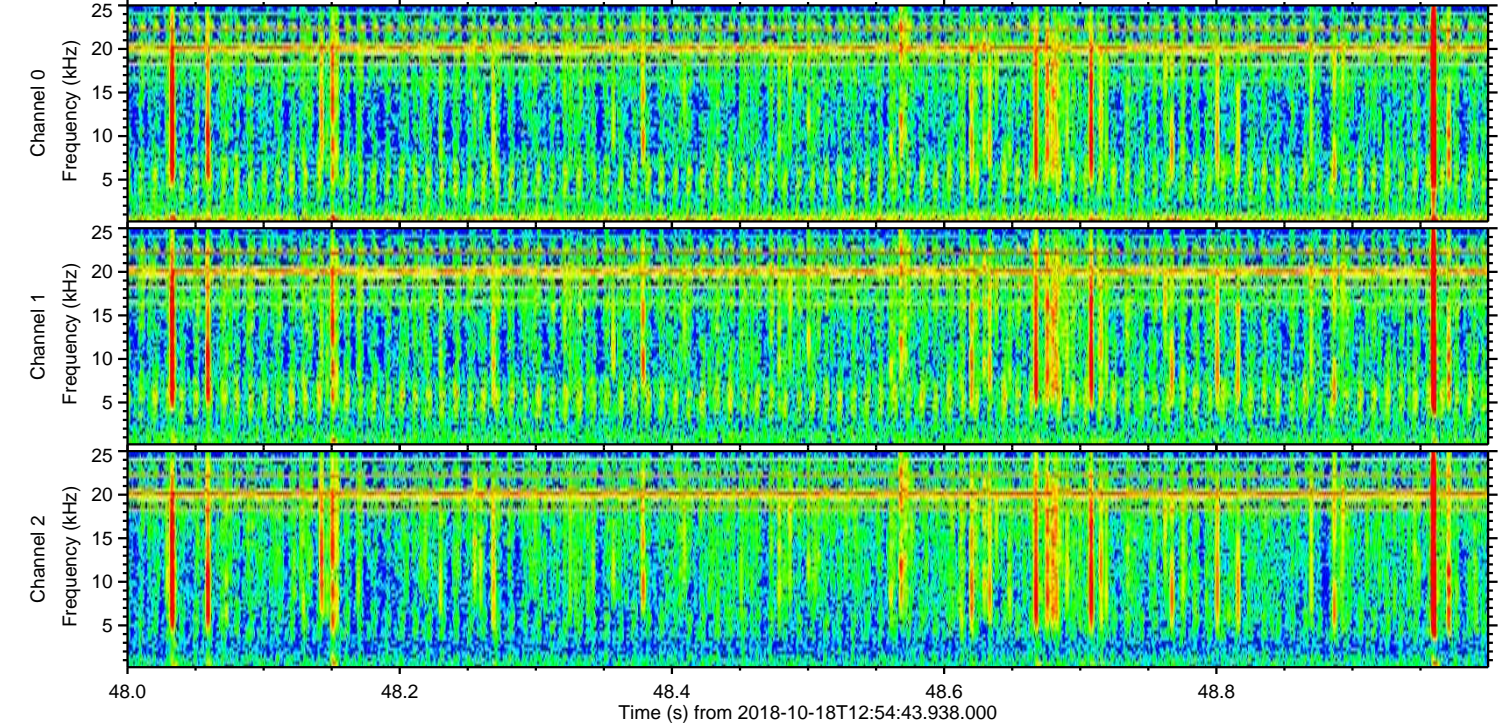
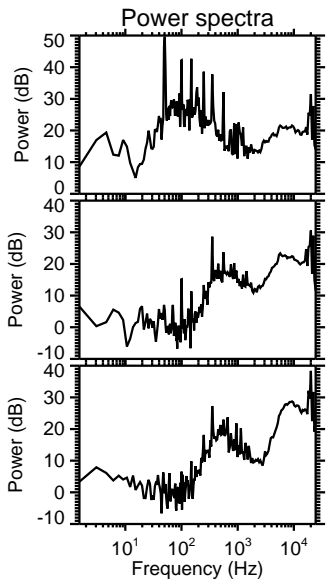
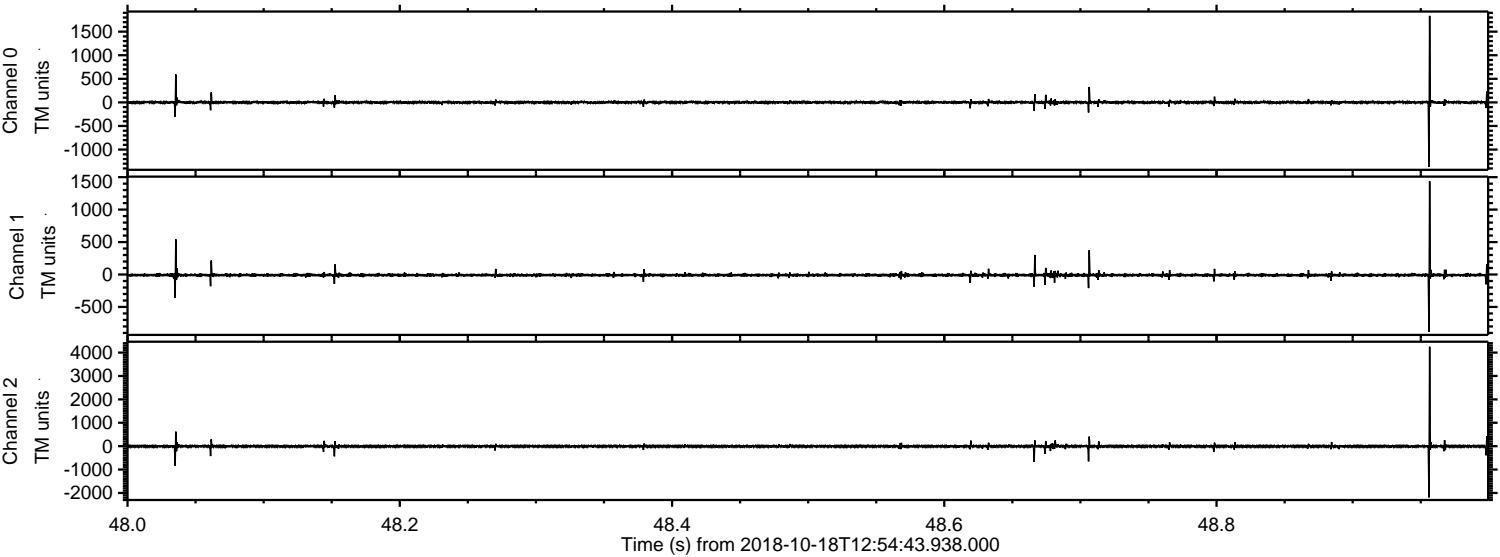
ELMAVAN 3D WAVEFORMS (Measured data sampled at 50 kHz) 51000 packets of 144 samples from 2018-10-18T12:54:43.938.000. Part 29/147

Processed Thu Oct 18 15:02:46 2018 by ELM ver.2012-10-06 from 001\_\_elm20181018\_125442\_\_dat00.bin



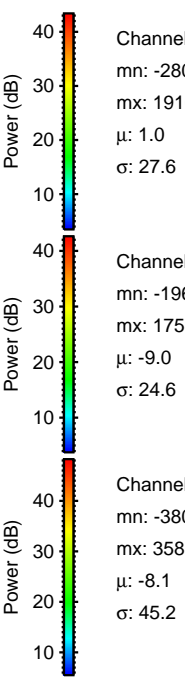
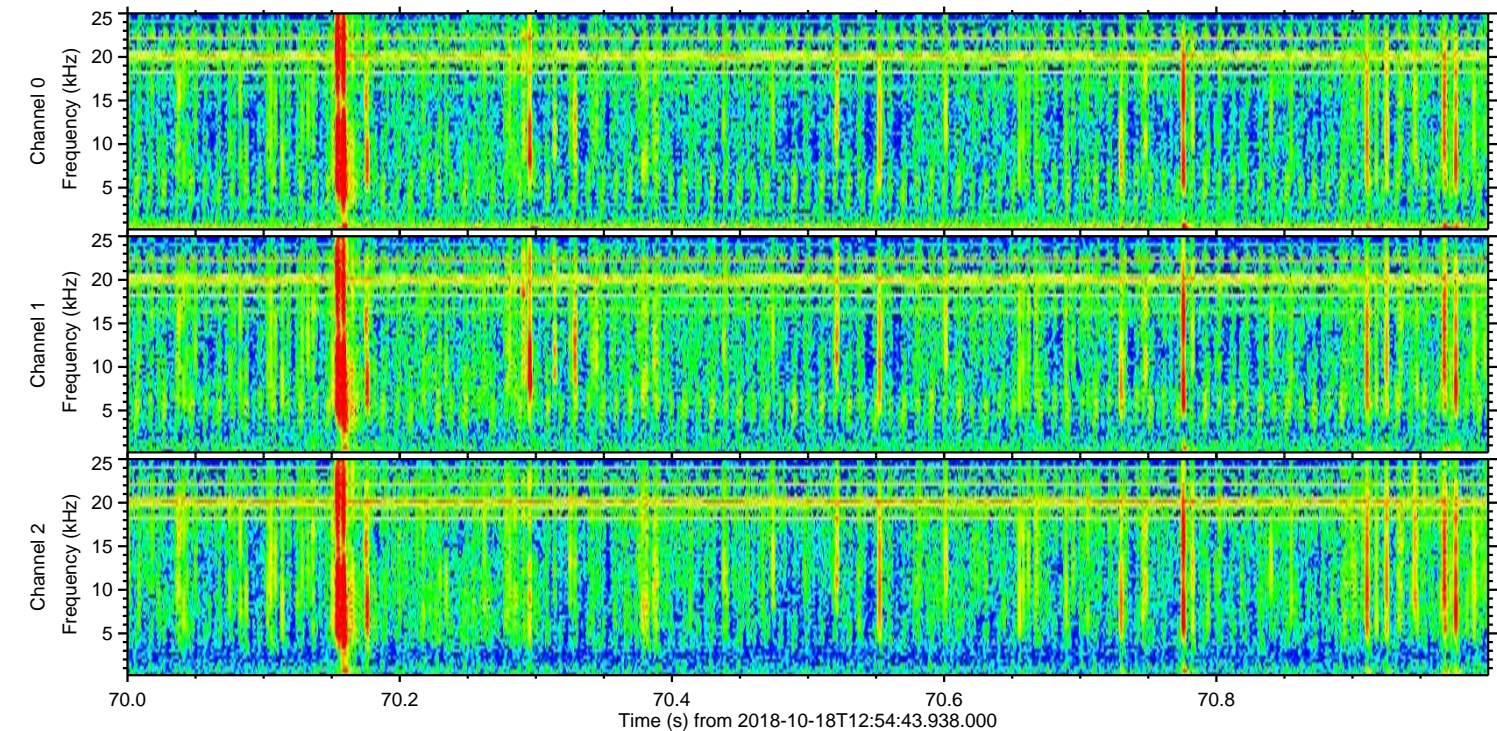
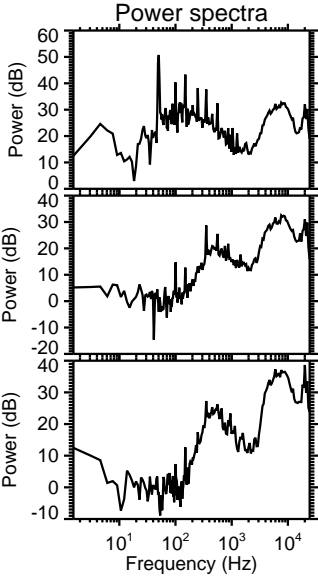
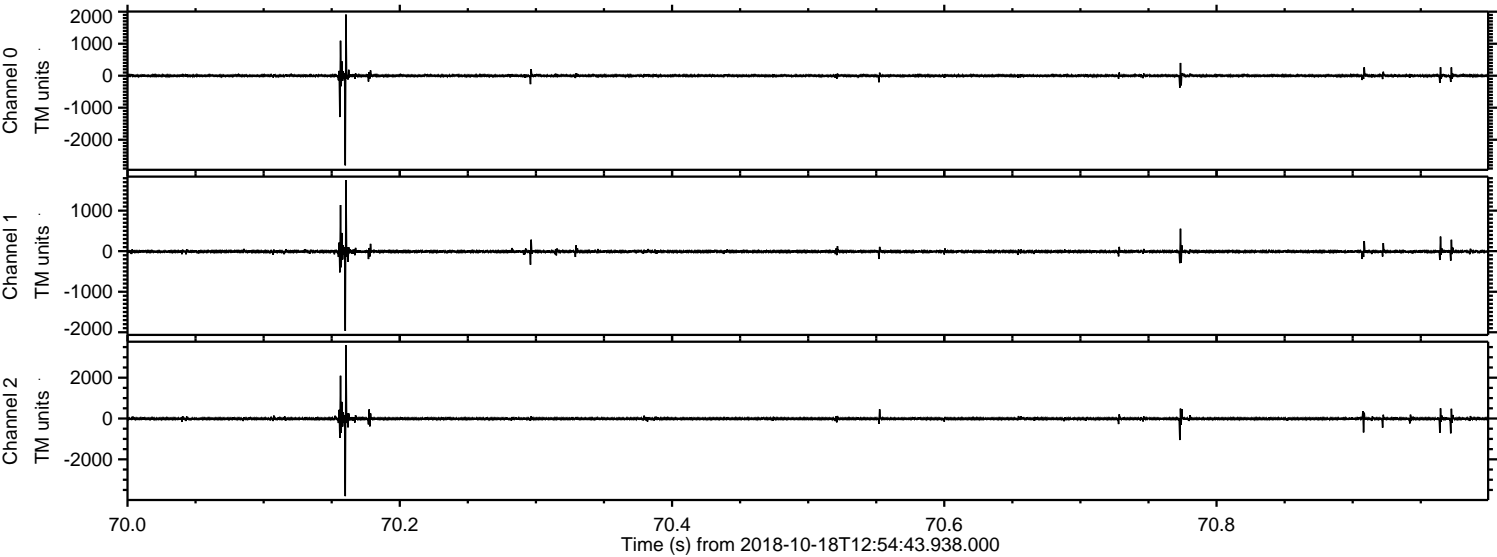


Processed Thu Oct 18 15:02:47 2018 by ELM ver.2012-10-06 from 001\_\_elm20181018\_125442\_\_dat00.bin





Processed Thu Oct 18 15:02:47 2018 by ELM ver.2012-10-06 from 001\_\_elm20181018\_125442\_\_dat00.bin



Channel 0  
mn: -2801  
mx: 1910  
 $\mu$ : 1.0  
 $\sigma$ : 27.6

Channel 1  
mn: -1967  
mx: 1751  
 $\mu$ : -9.0  
 $\sigma$ : 24.6

Channel 2  
mn: -3803  
mx: 3585  
 $\mu$ : -8.1  
 $\sigma$ : 45.2



Processed Thu Oct 18 15:02:48 2018 by ELM ver.2012-10-06 from 001\_\_elm20181018\_125442\_\_dat00.bin

