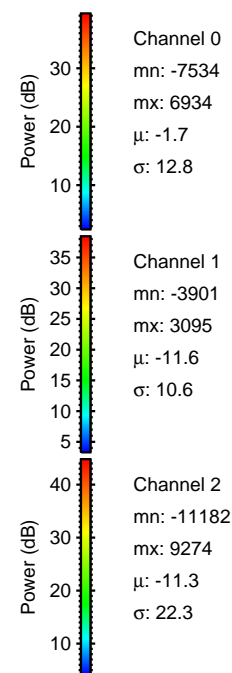
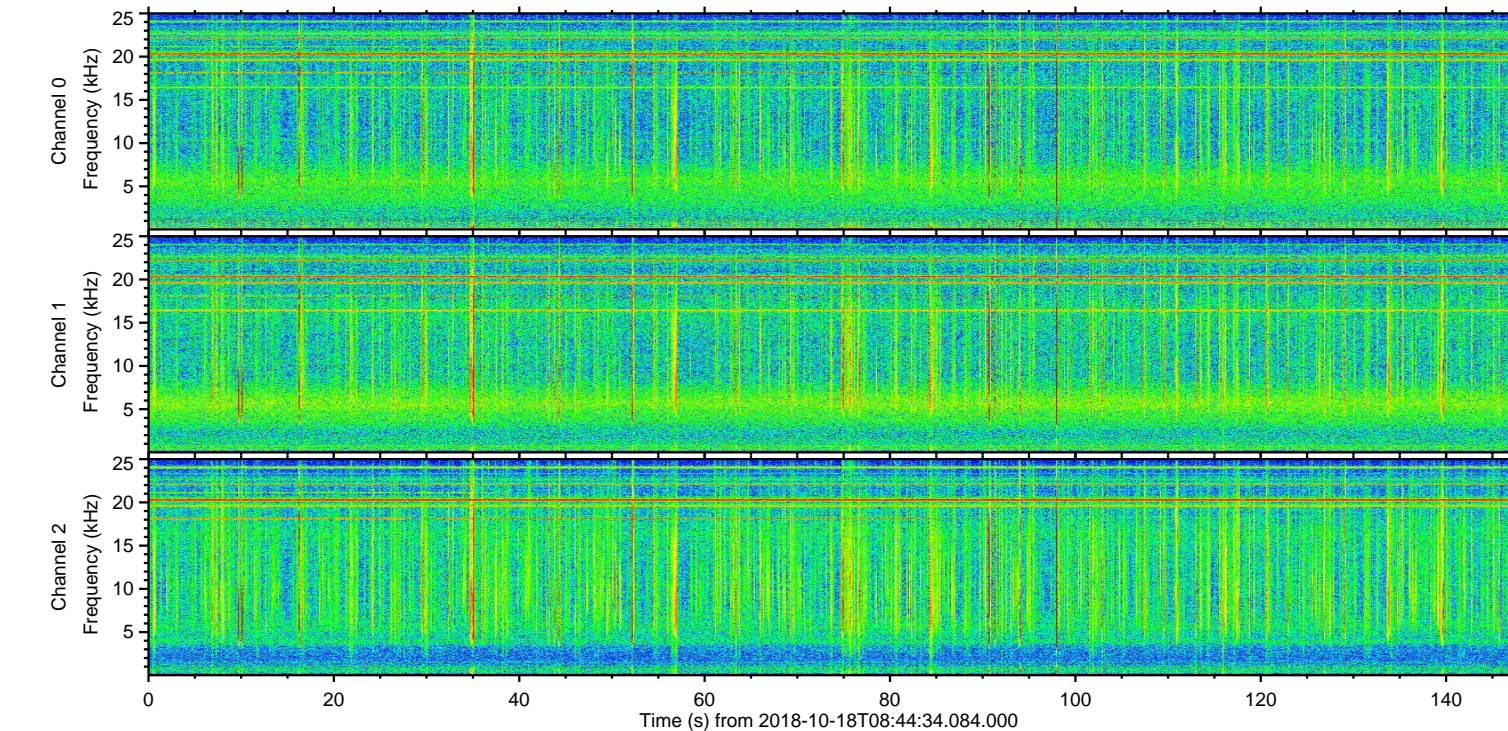
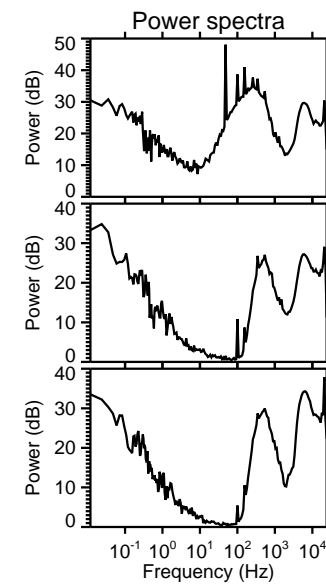
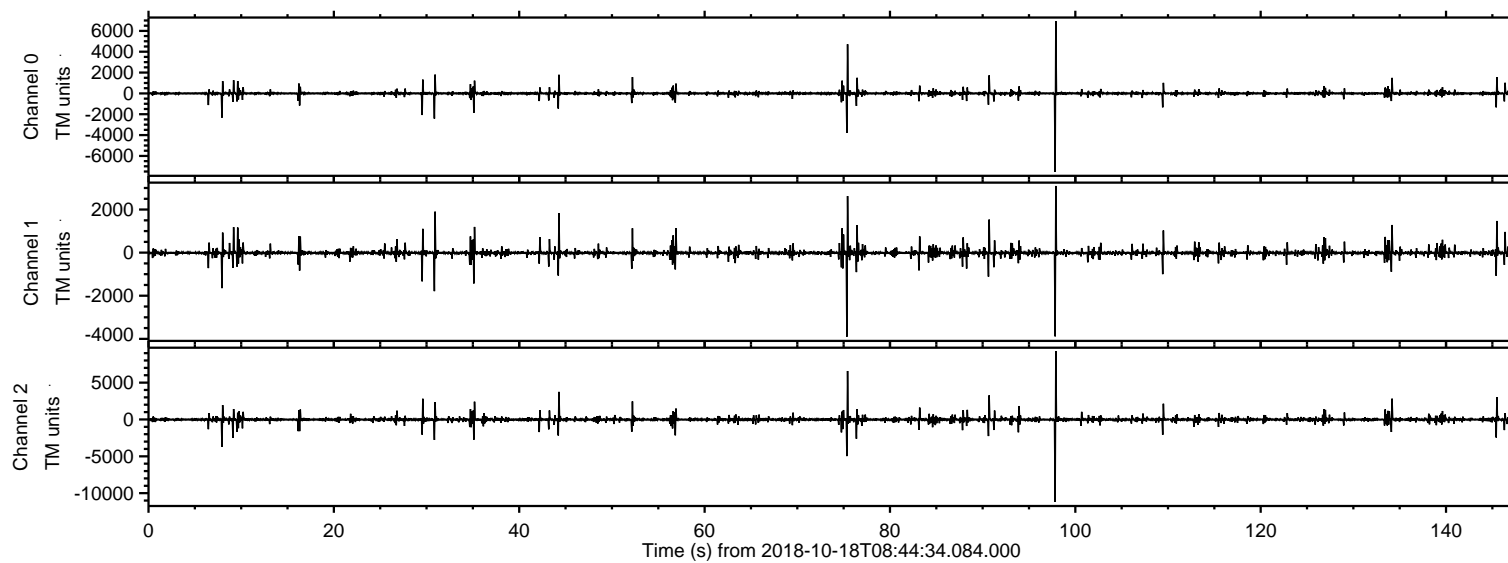
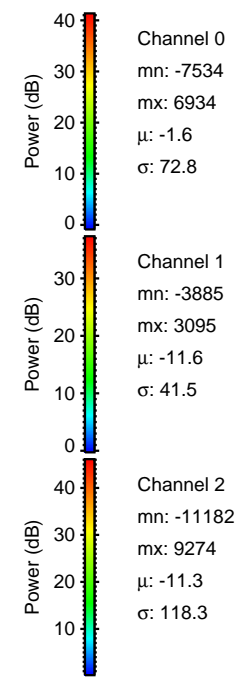
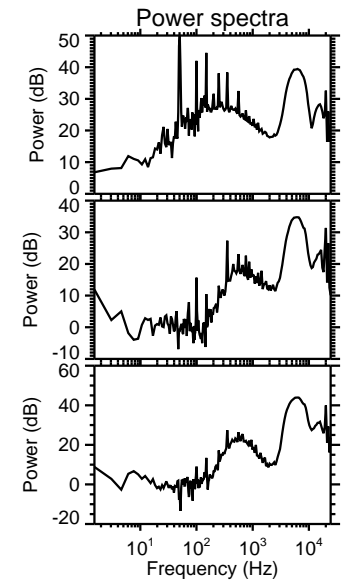
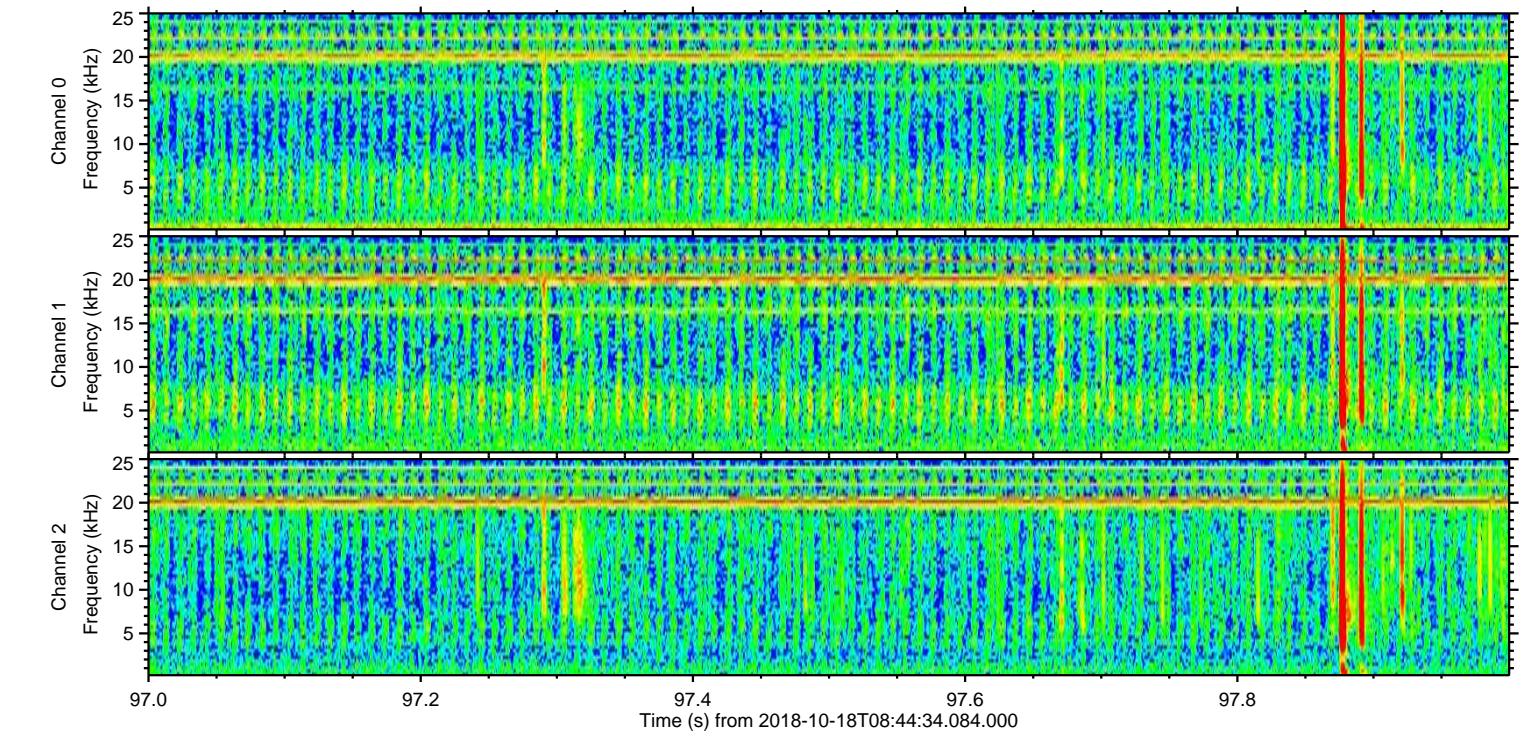
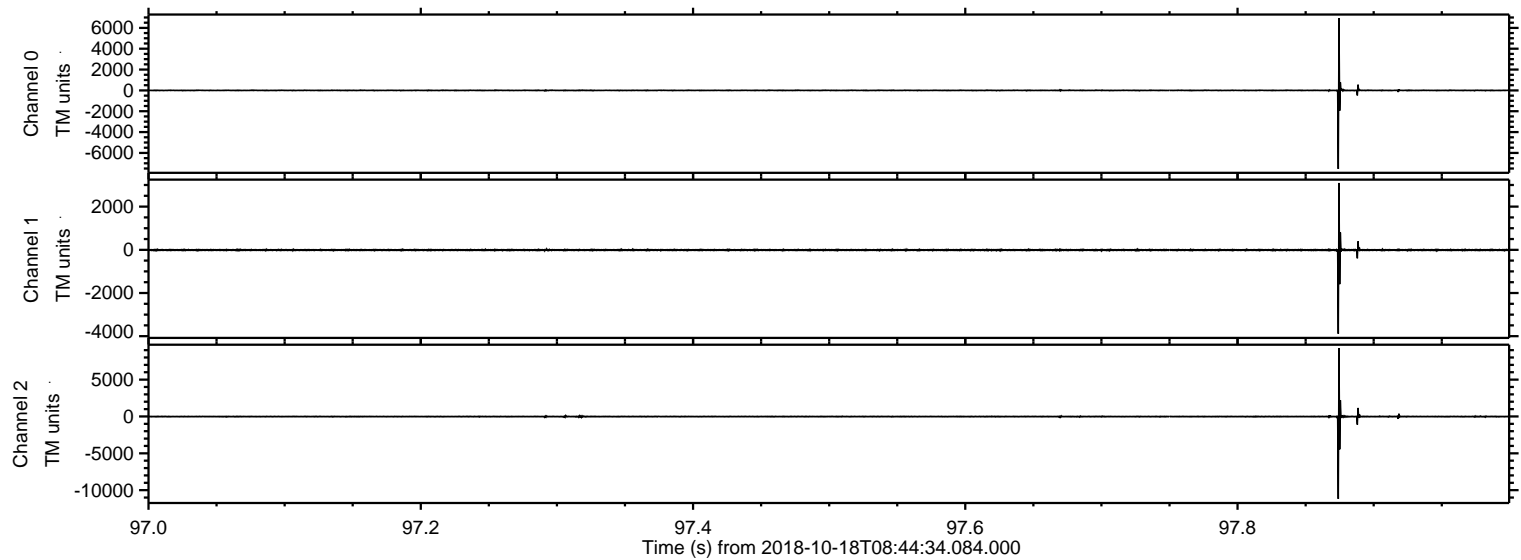


ELMAVAN 3D WAVEFORMS (Measured data sampled at 50 kHz) 51000 packets of 144 samples from 2018-10-18T08:44:34.084.000.

Processed Thu Oct 18 10:52:42 2018 by ELM ver.2012-10-06 from 001__elm20181018_084433__dat00.bin

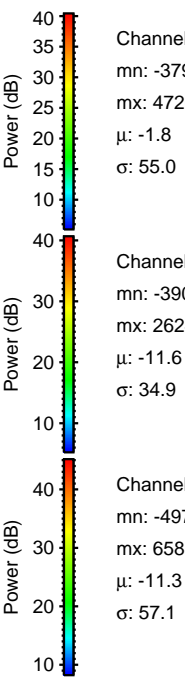
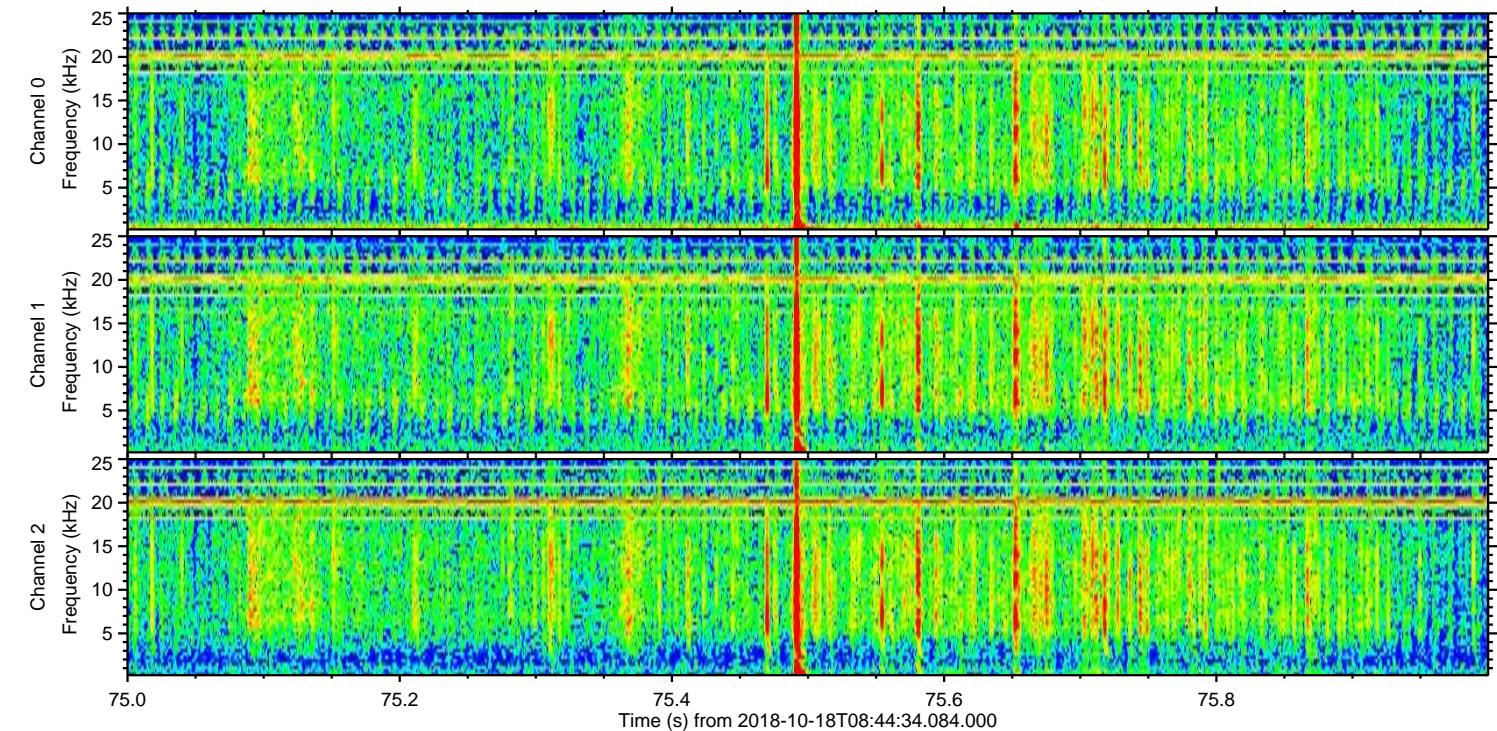
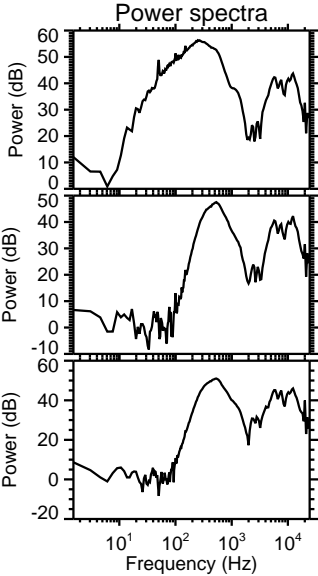
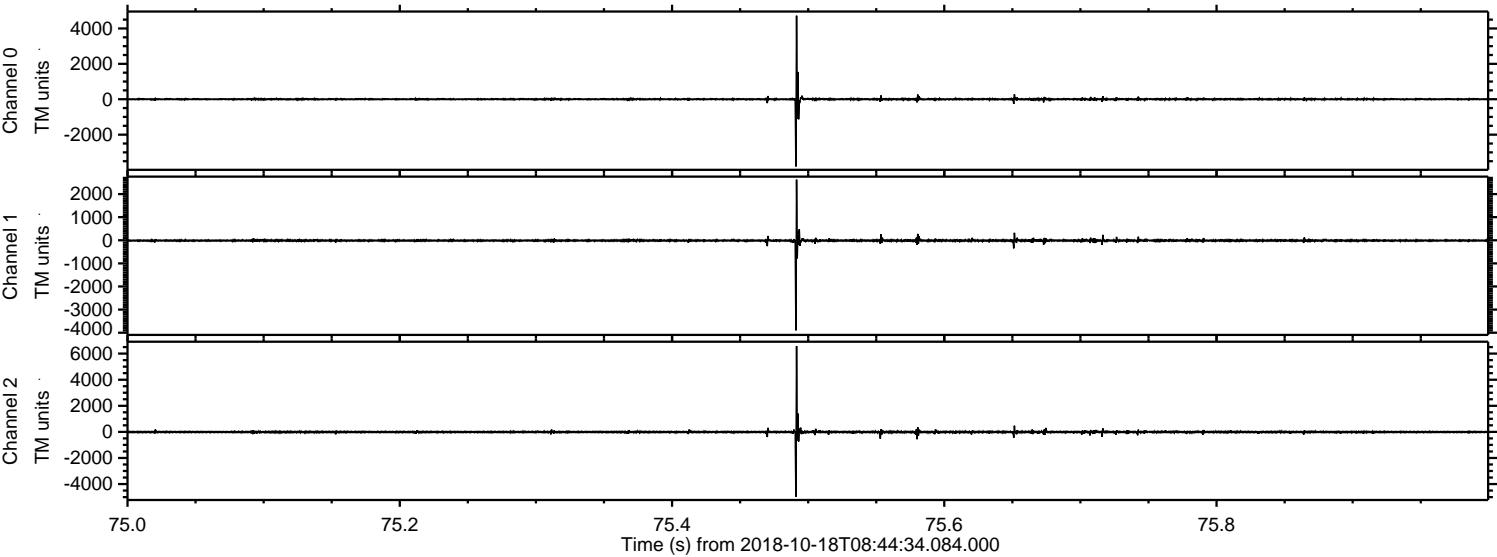


Processed Thu Oct 18 10:52:51 2018 by ELM ver.2012-10-06 from 001__elm20181018_084433__dat00.bin

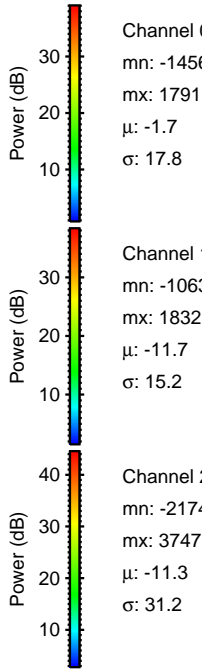
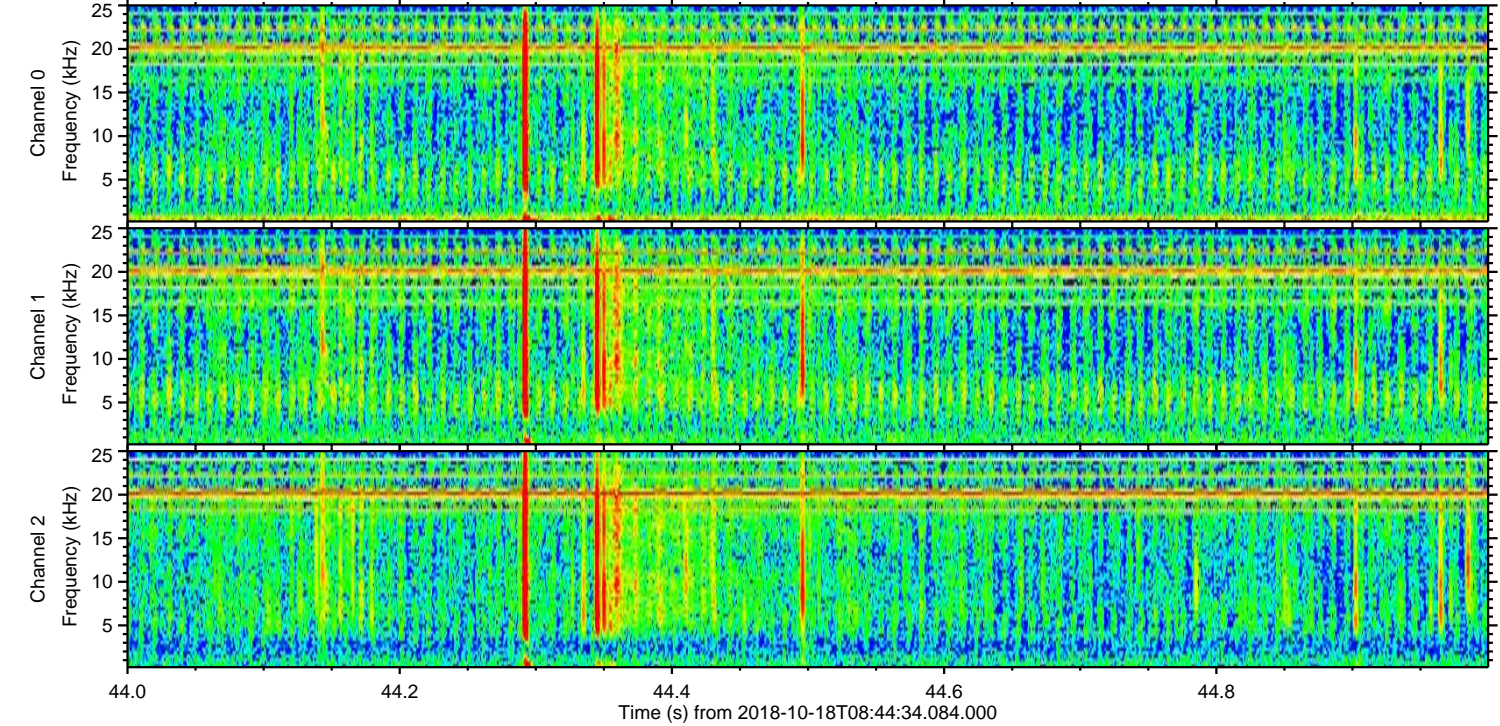
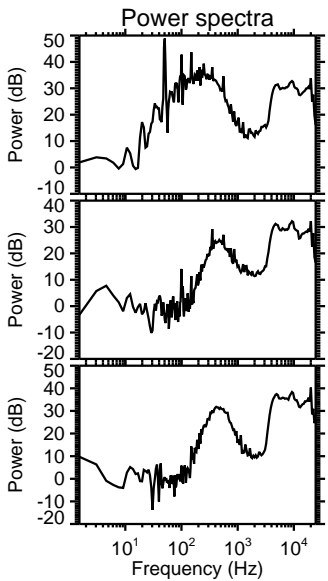
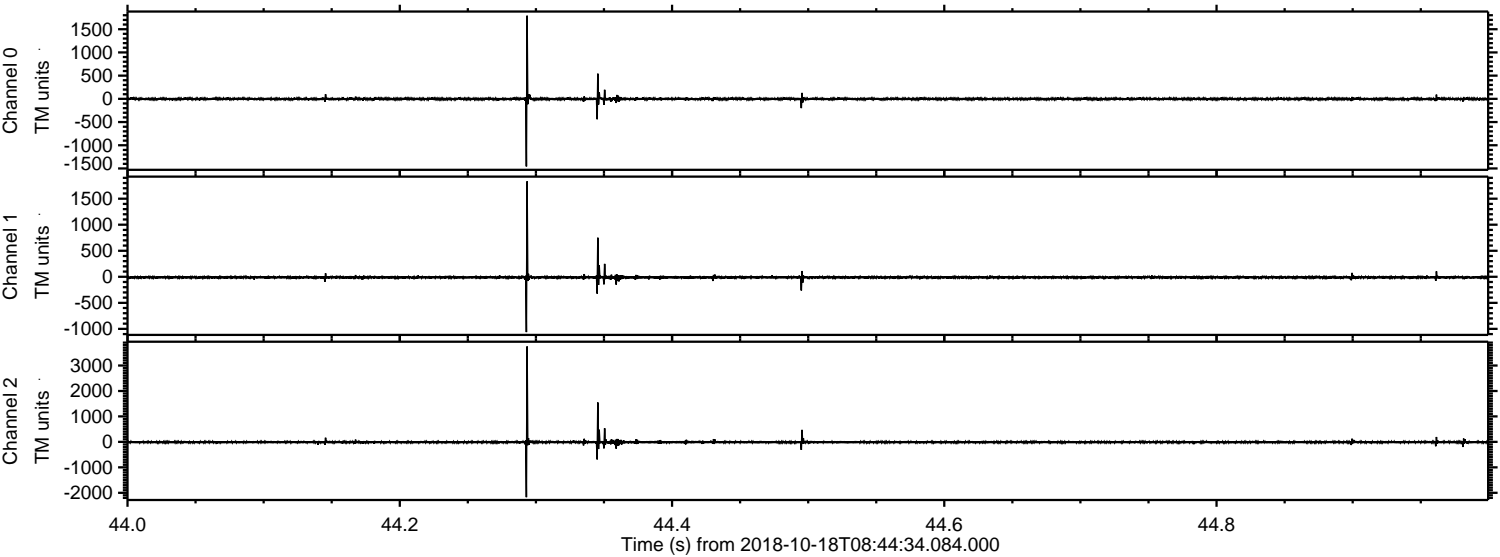


ELMAVAN 3D WAVEFORMS (Measured data sampled at 50 kHz) 51000 packets of 144 samples from 2018-10-18T08:44:34.084.000. Part 76/147

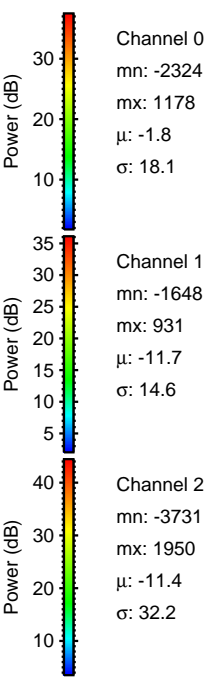
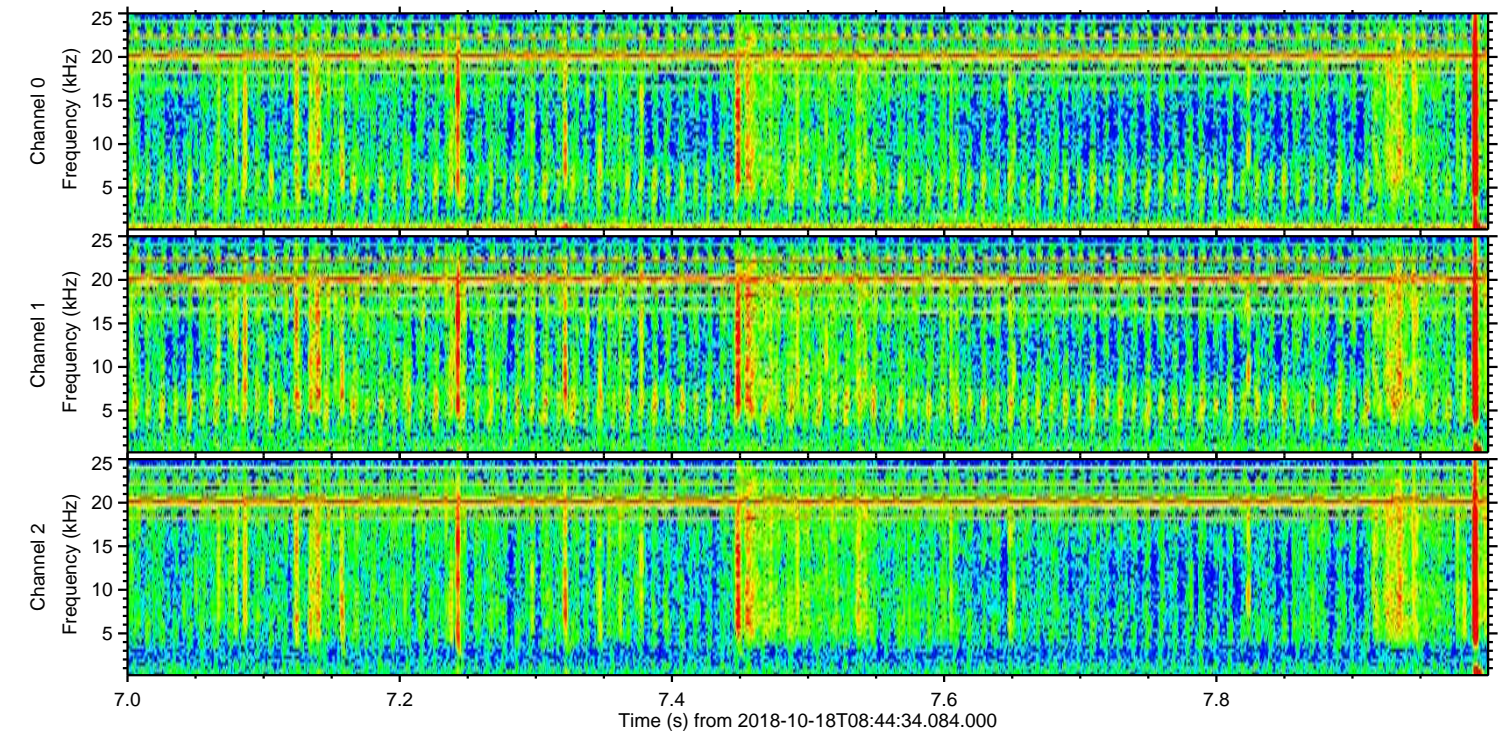
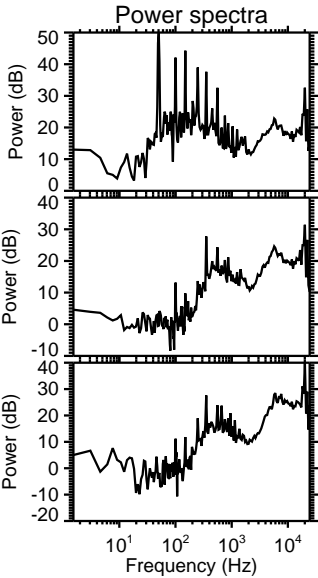
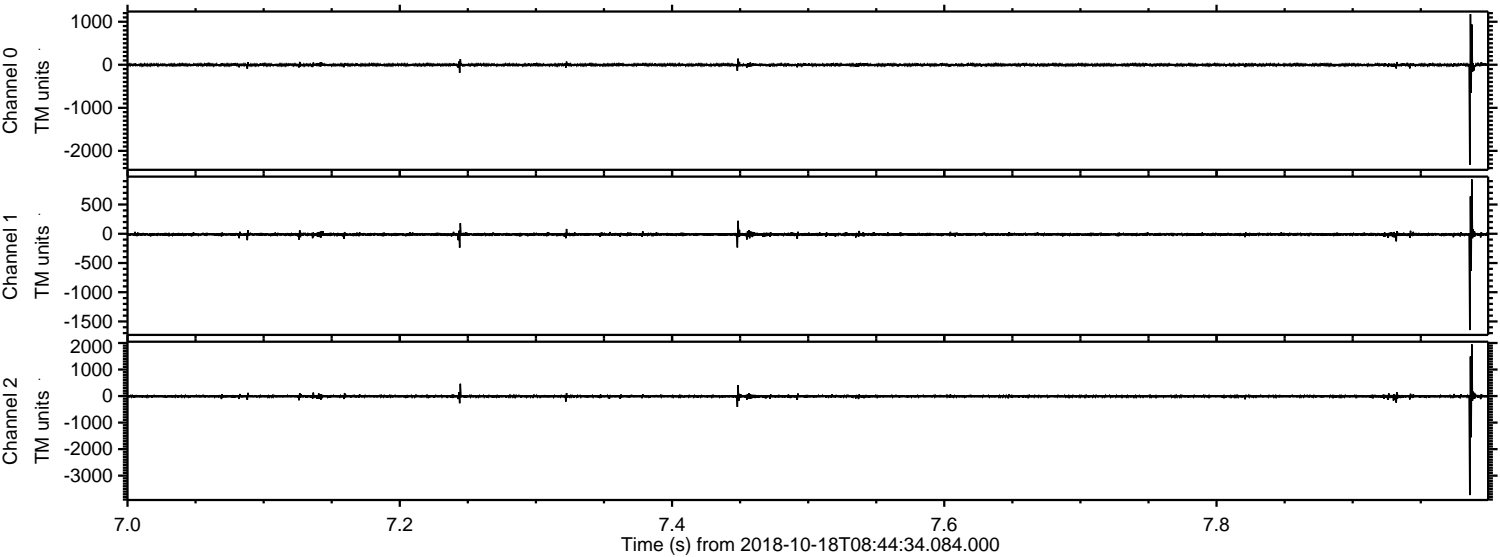
Processed Thu Oct 18 10:52:52 2018 by ELM ver.2012-10-06 from 001__elm20181018_084433__dat00.bin



Processed Thu Oct 18 10:52:53 2018 by ELM ver.2012-10-06 from 001__elm20181018_084433__dat00.bin



Processed Thu Oct 18 10:52:54 2018 by ELM ver.2012-10-06 from 001__elm20181018_084433__dat00.bin

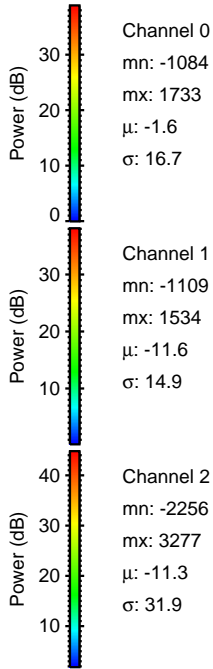
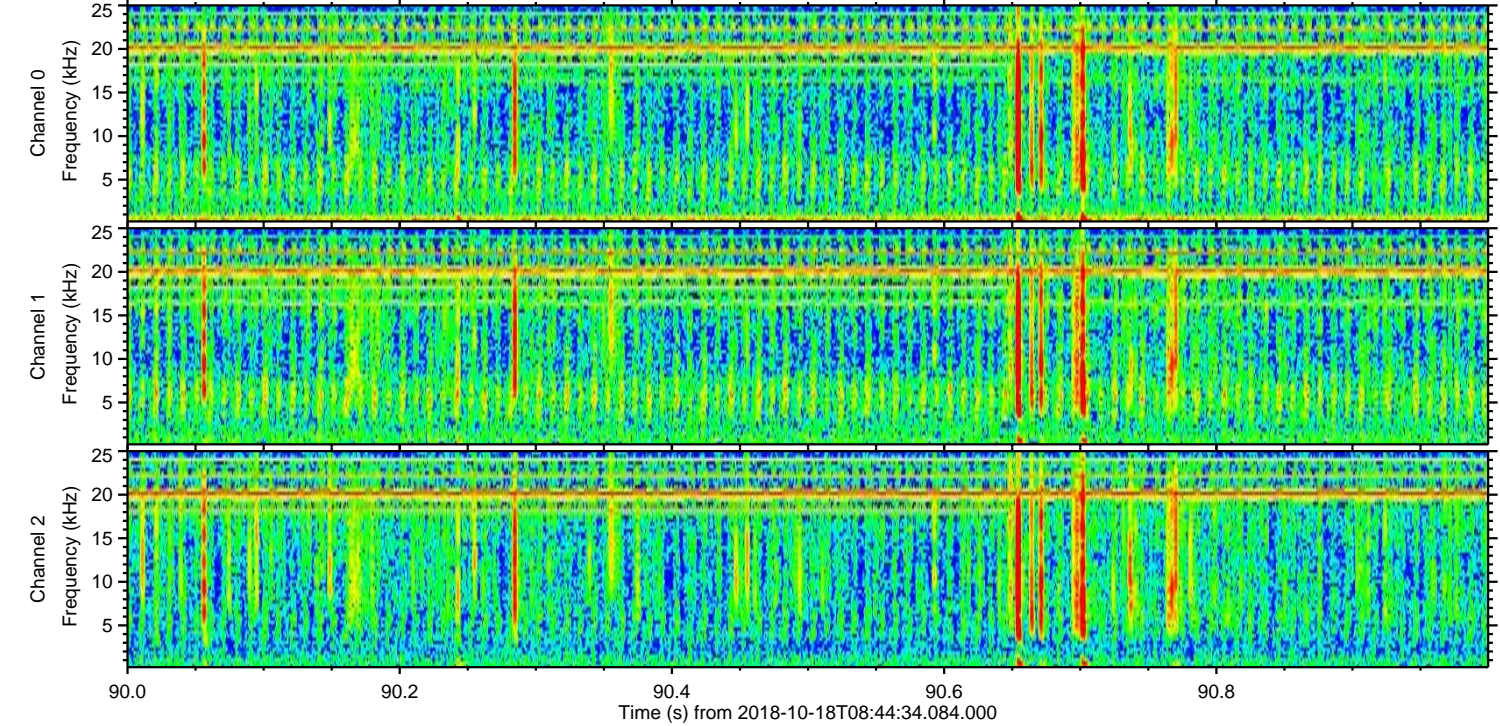
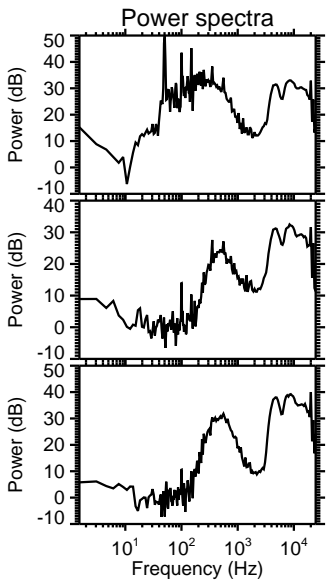
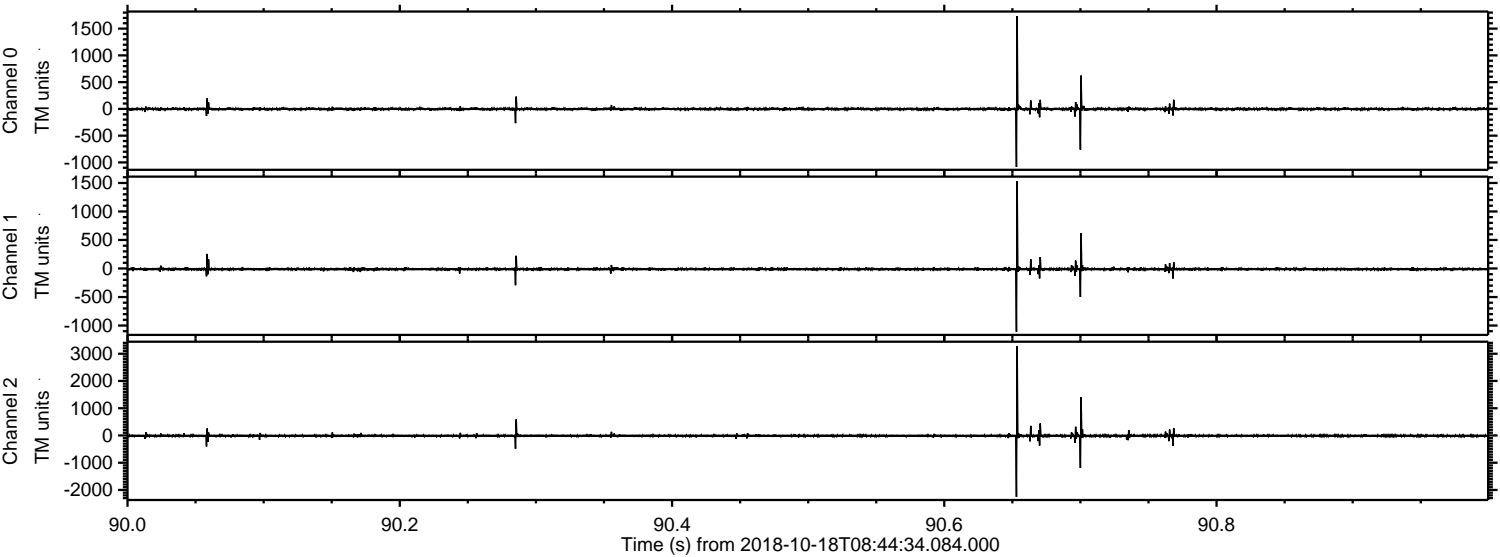


Channel 0
mn: -2324
mx: 1178
 μ : -1.8
 σ : 18.1

Channel 1
mn: -1648
mx: 931
 μ : -11.7
 σ : 14.6

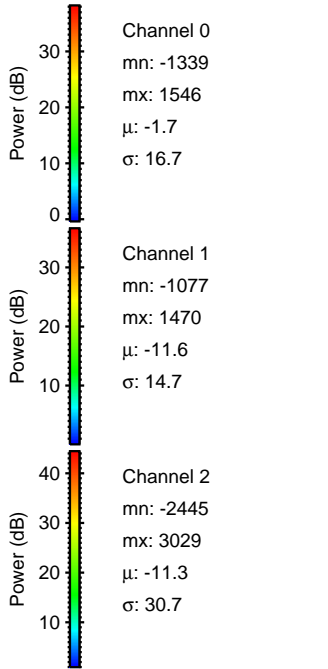
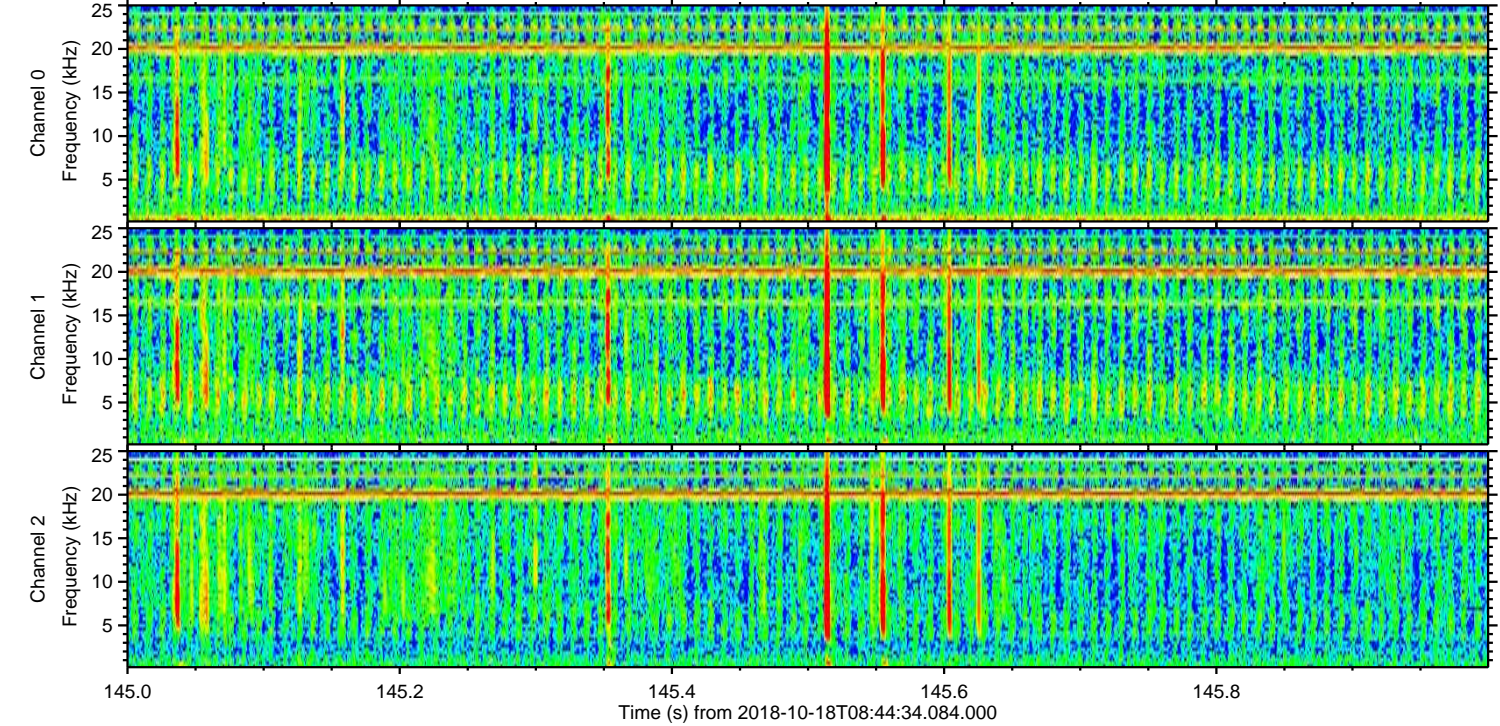
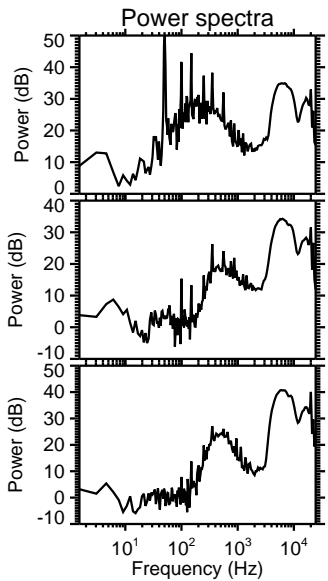
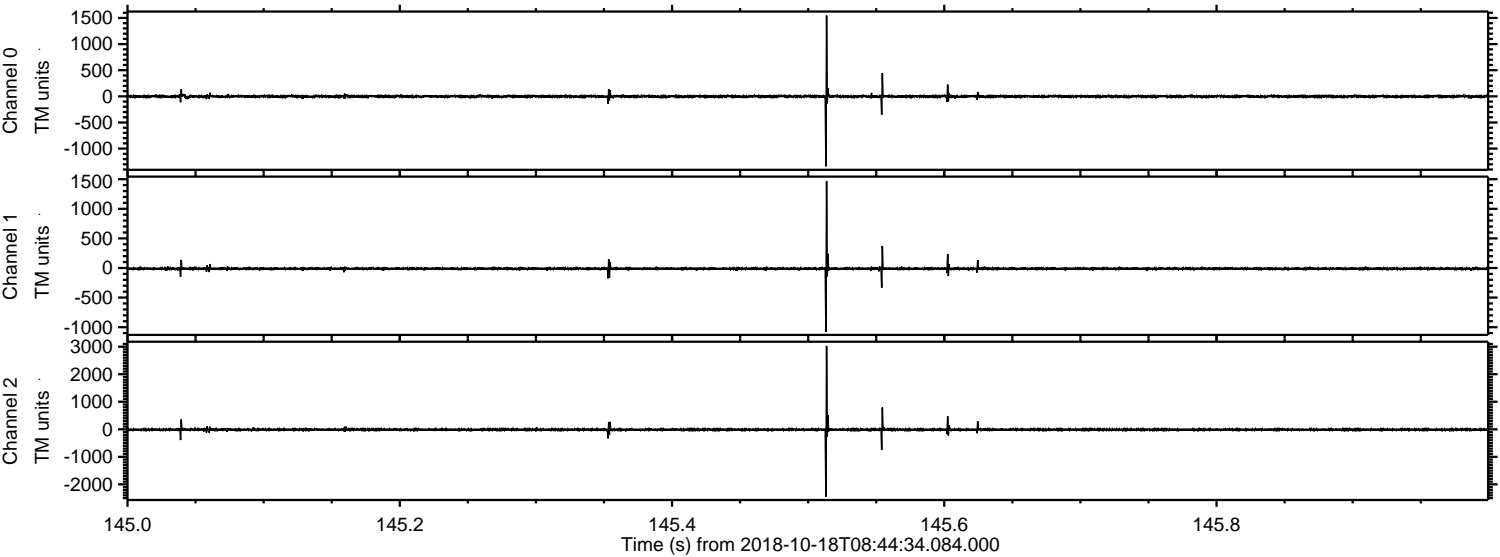
Channel 2
mn: -3731
mx: 1950
 μ : -11.4
 σ : 32.2

Processed Thu Oct 18 10:52:55 2018 by ELM ver.2012-10-06 from 001__elm20181018_084433__dat00.bin



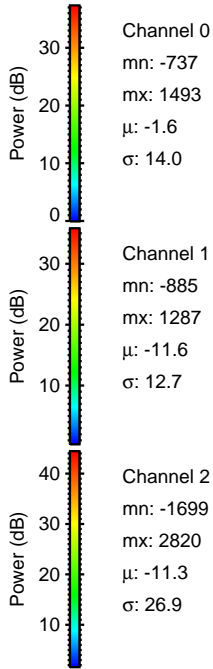
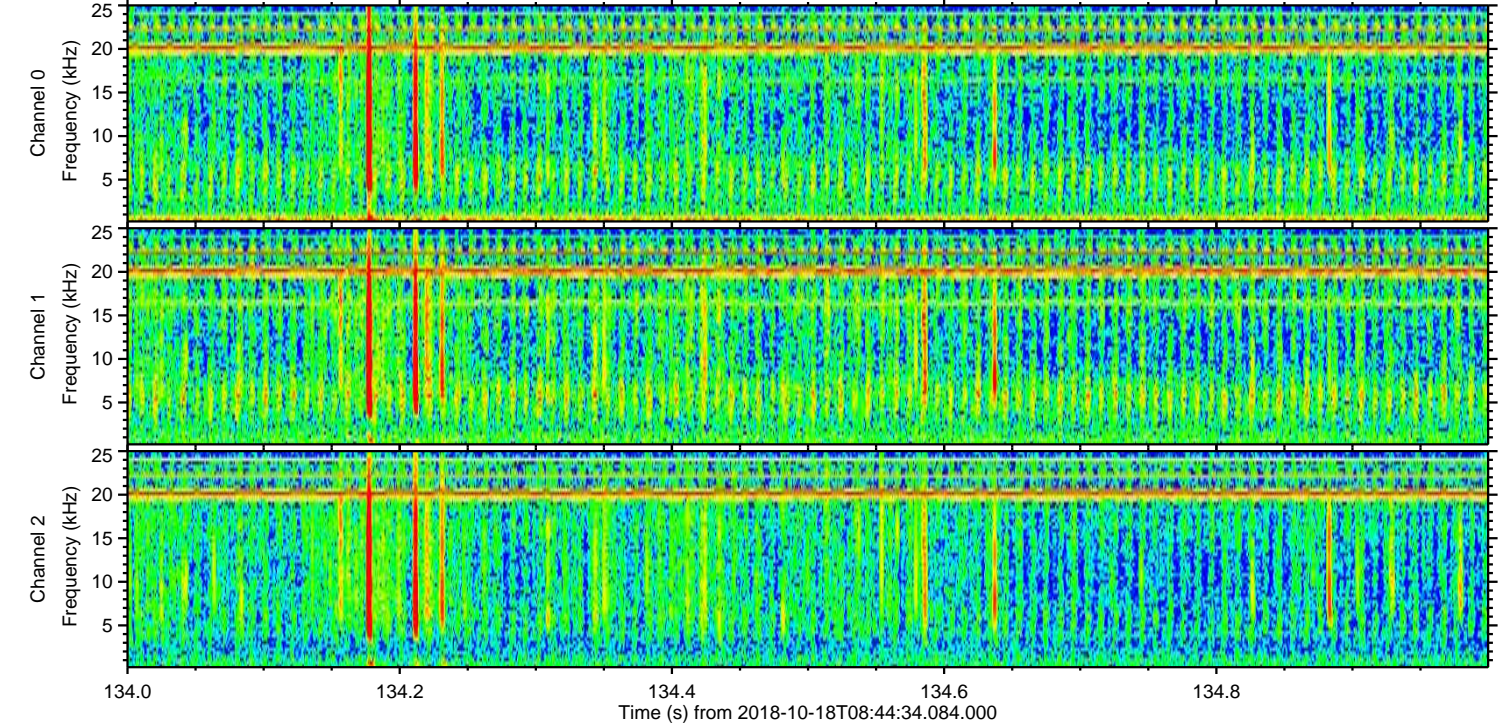
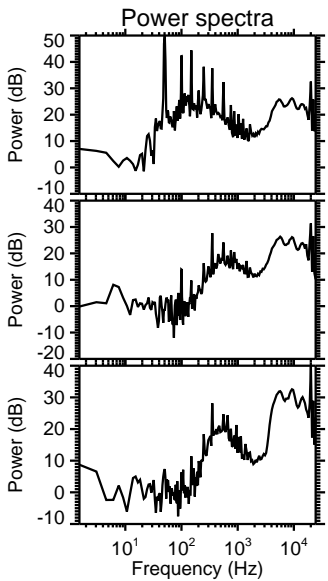
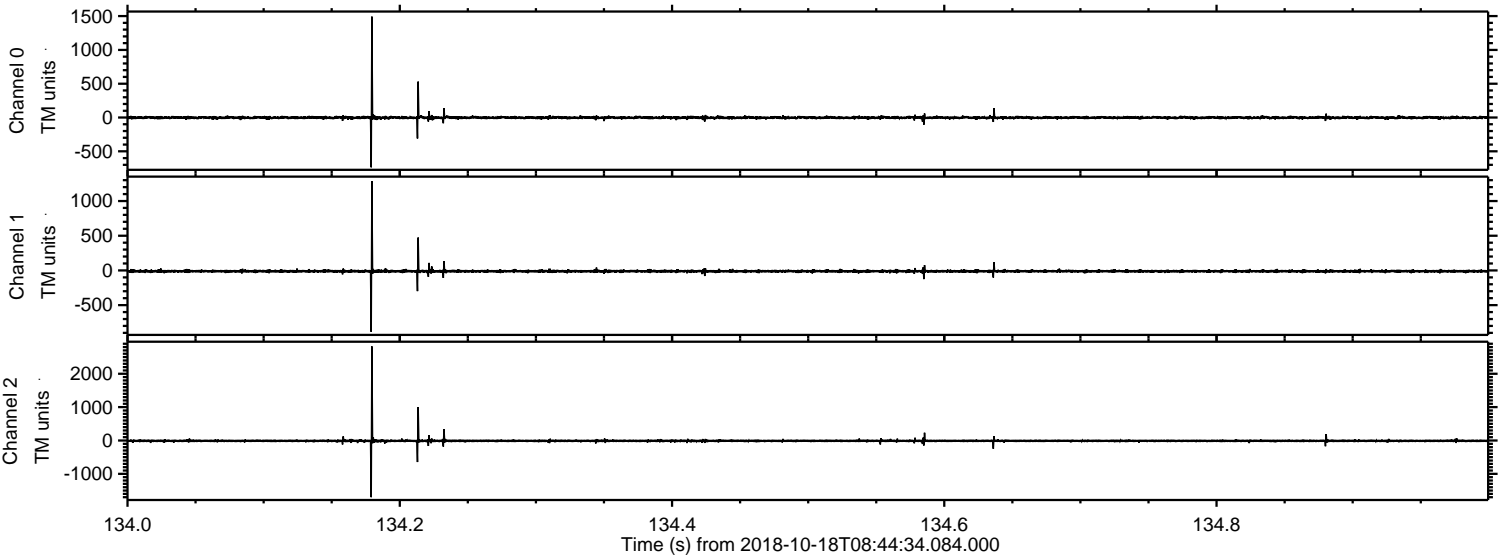
ELMAVAN 3D WAVEFORMS (Measured data sampled at 50 kHz) 51000 packets of 144 samples from 2018-10-18T08:44:34.084.000. Part 146/147

Processed Thu Oct 18 10:52:56 2018 by ELM ver.2012-10-06 from 001__elm20181018_084433__dat00.bin

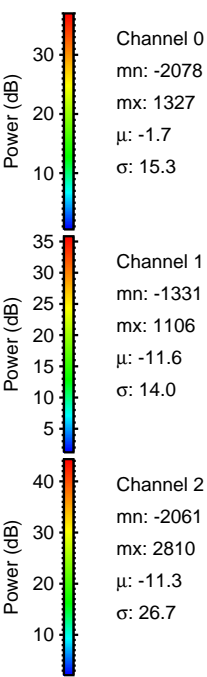
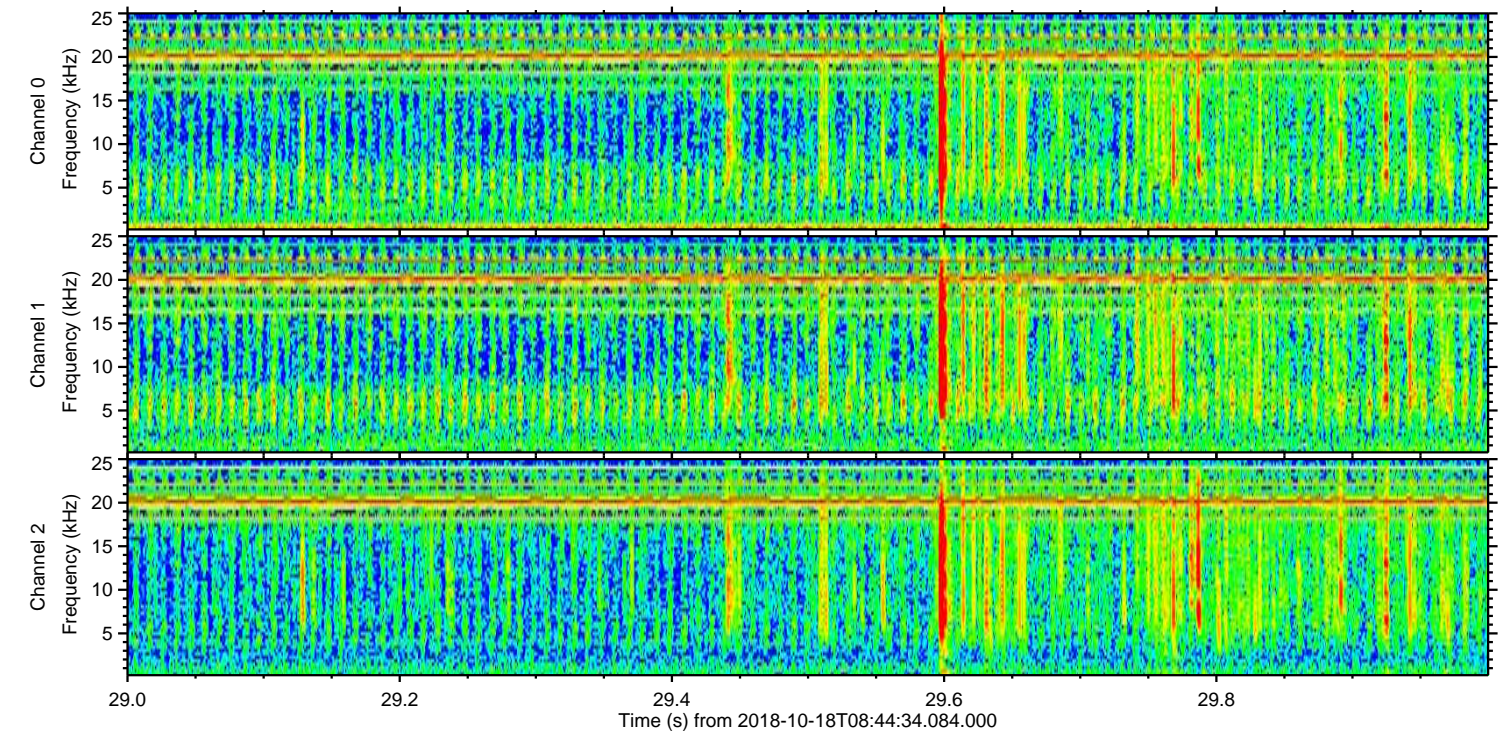
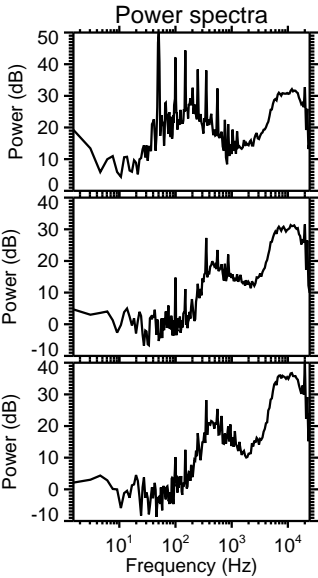
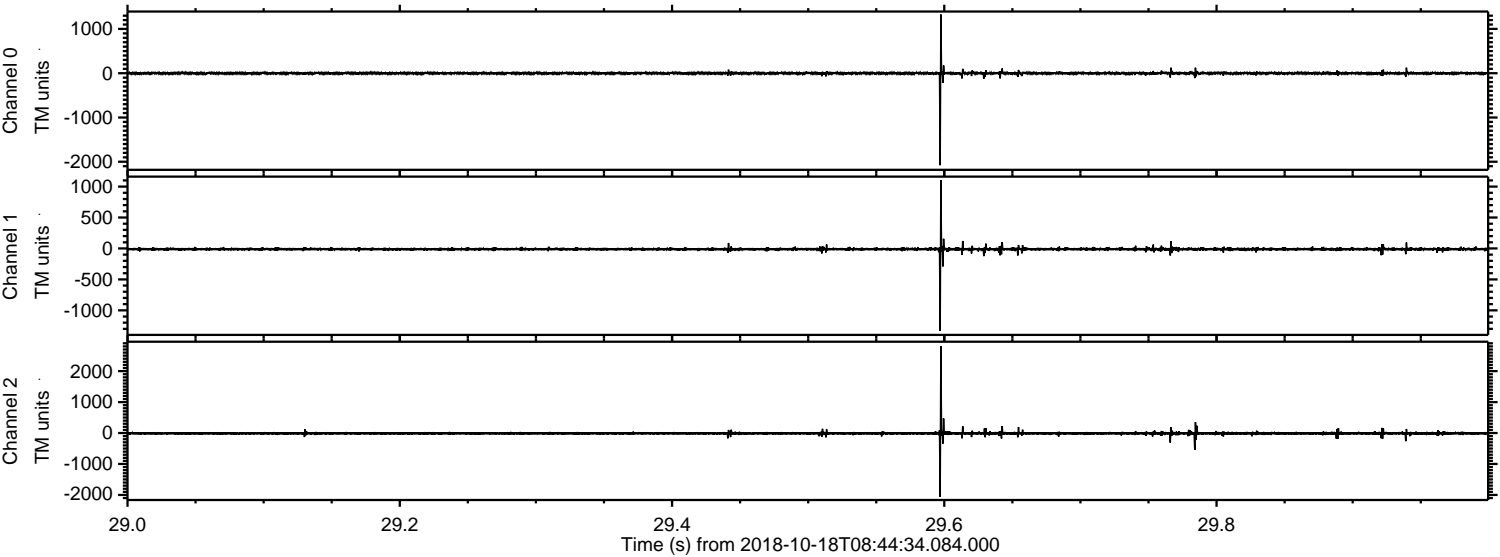


ELMAVAN 3D WAVEFORMS (Measured data sampled at 50 kHz) 51000 packets of 144 samples from 2018-10-18T08:44:34.084.000. Part 135/147

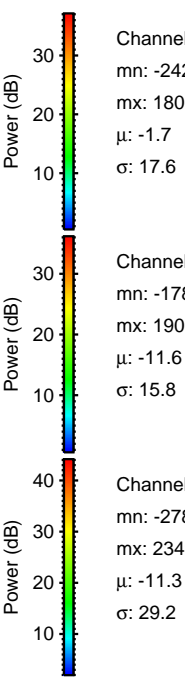
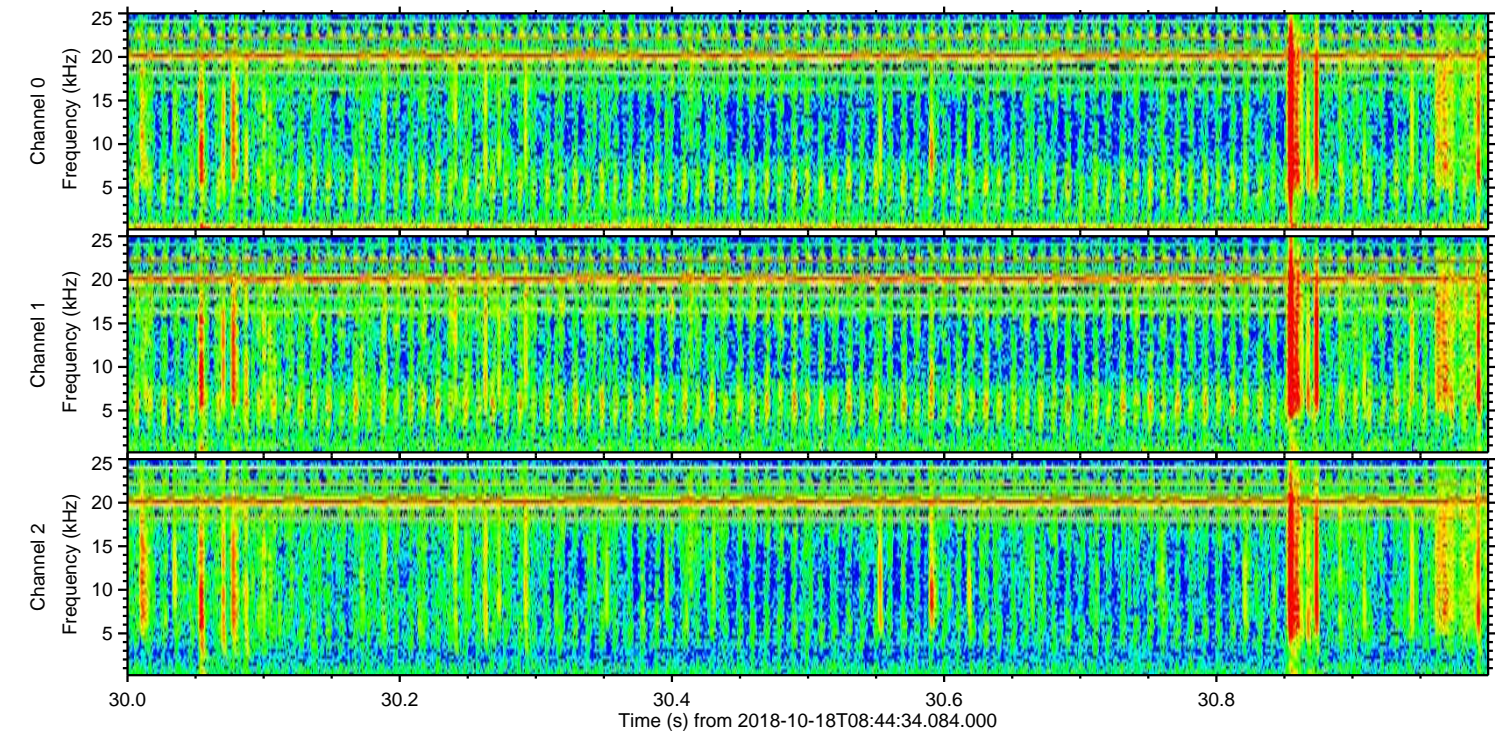
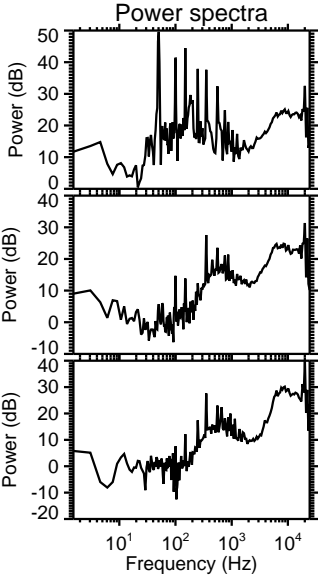
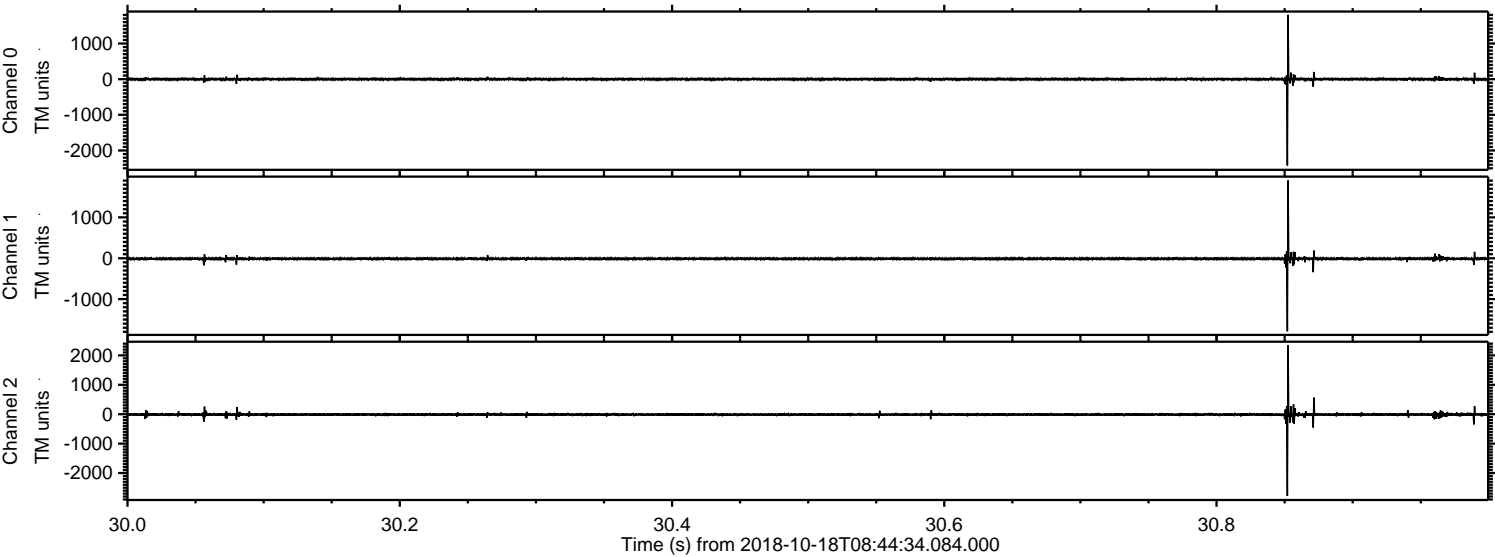
Processed Thu Oct 18 10:52:56 2018 by ELM ver.2012-10-06 from 001__elm20181018_084433__dat00.bin



Processed Thu Oct 18 10:52:57 2018 by ELM ver.2012-10-06 from 001__elm20181018_084433__dat00.bin



Processed Thu Oct 18 10:52:58 2018 by ELM ver.2012-10-06 from 001__elm20181018_084433__dat00.bin



Channel 0
mn: -2421
mx: 1806
 μ : -1.7
 σ : 17.6

Channel 1
mn: -1787
mx: 1903
 μ : -11.6
 σ : 15.8

Channel 2
mn: -2780
mx: 2349
 μ : -11.3
 σ : 29.2

Processed Thu Oct 18 10:52:58 2018 by ELM ver.2012-10-06 from 001__elm20181018_084433__dat00.bin

