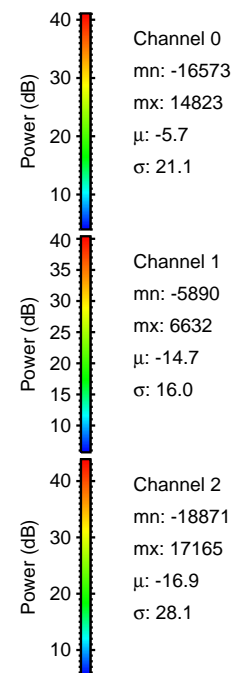
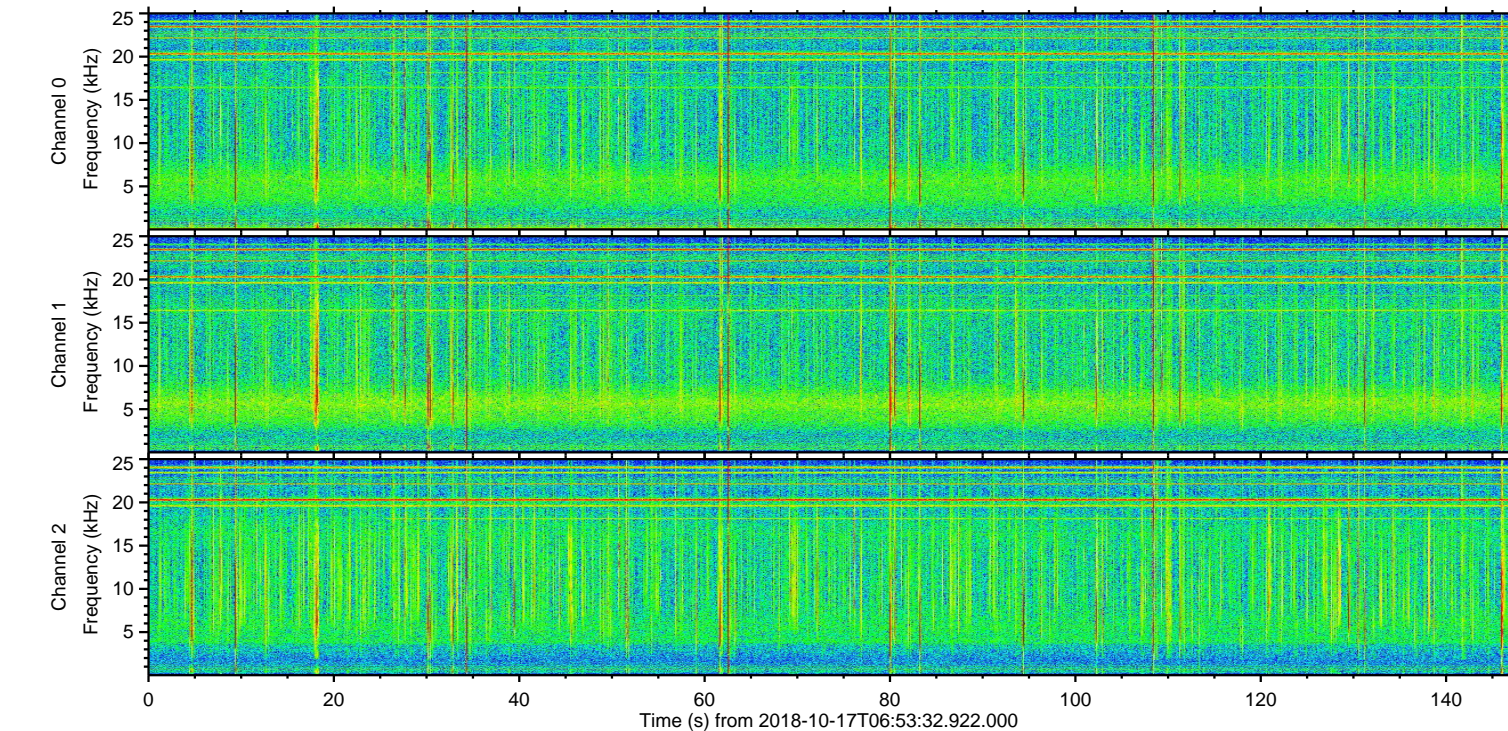
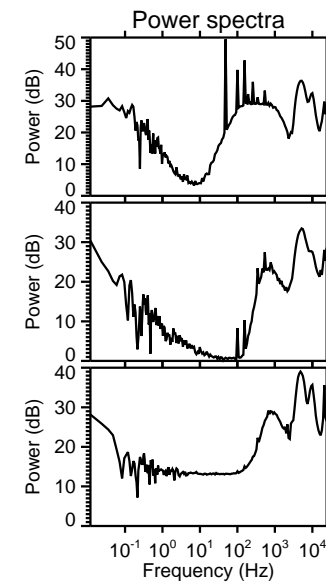
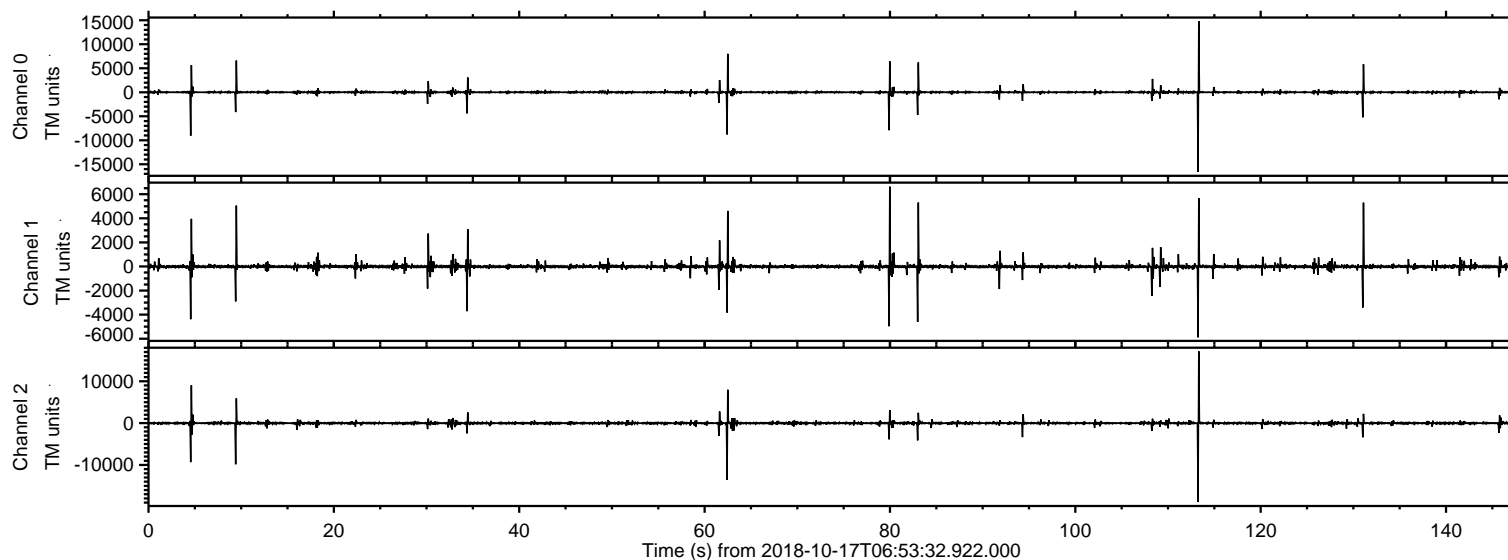


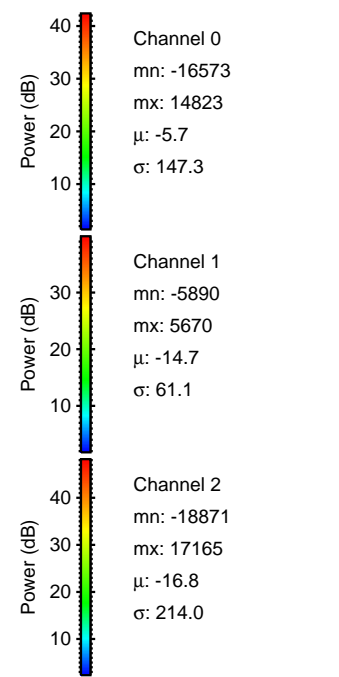
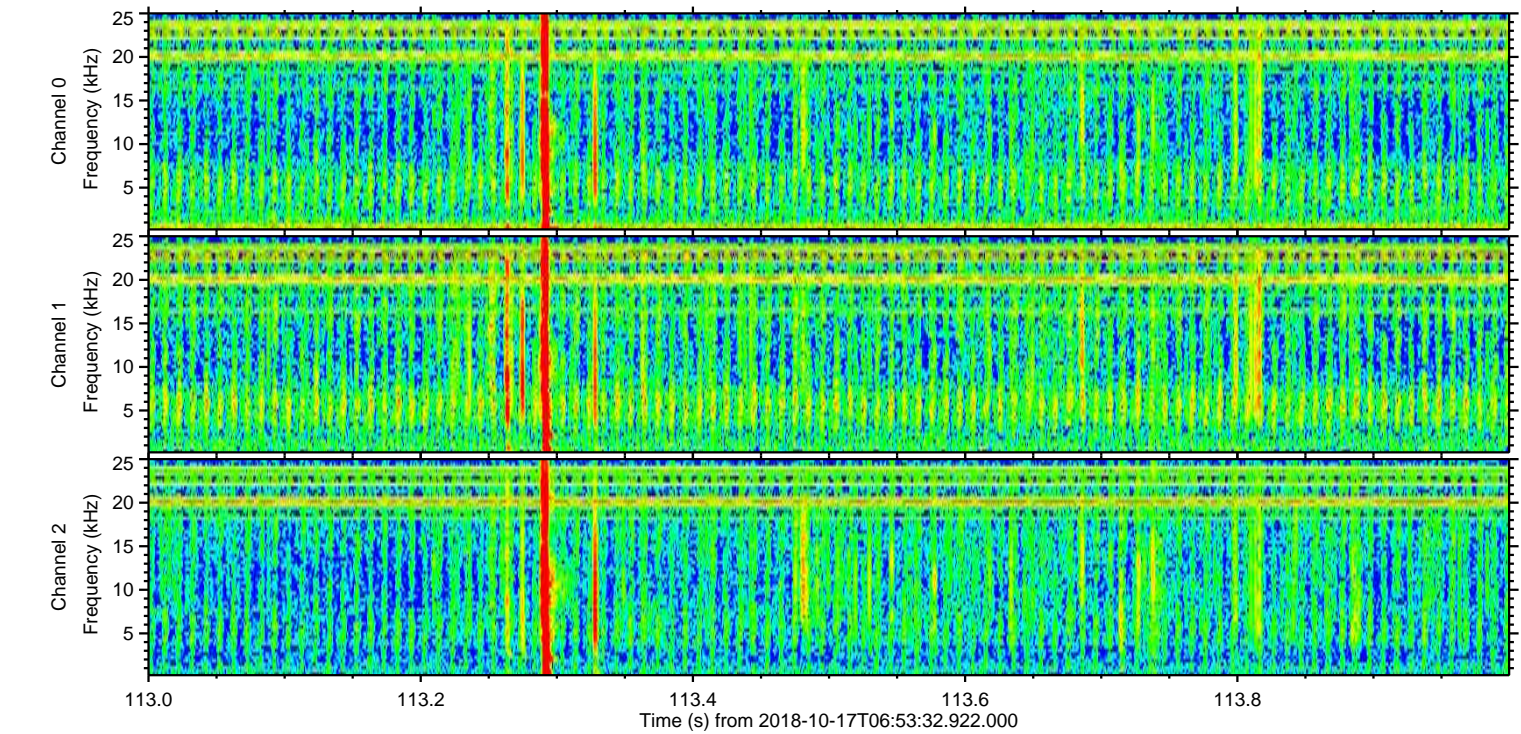
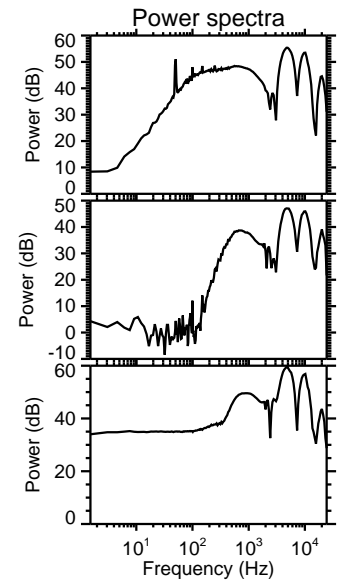
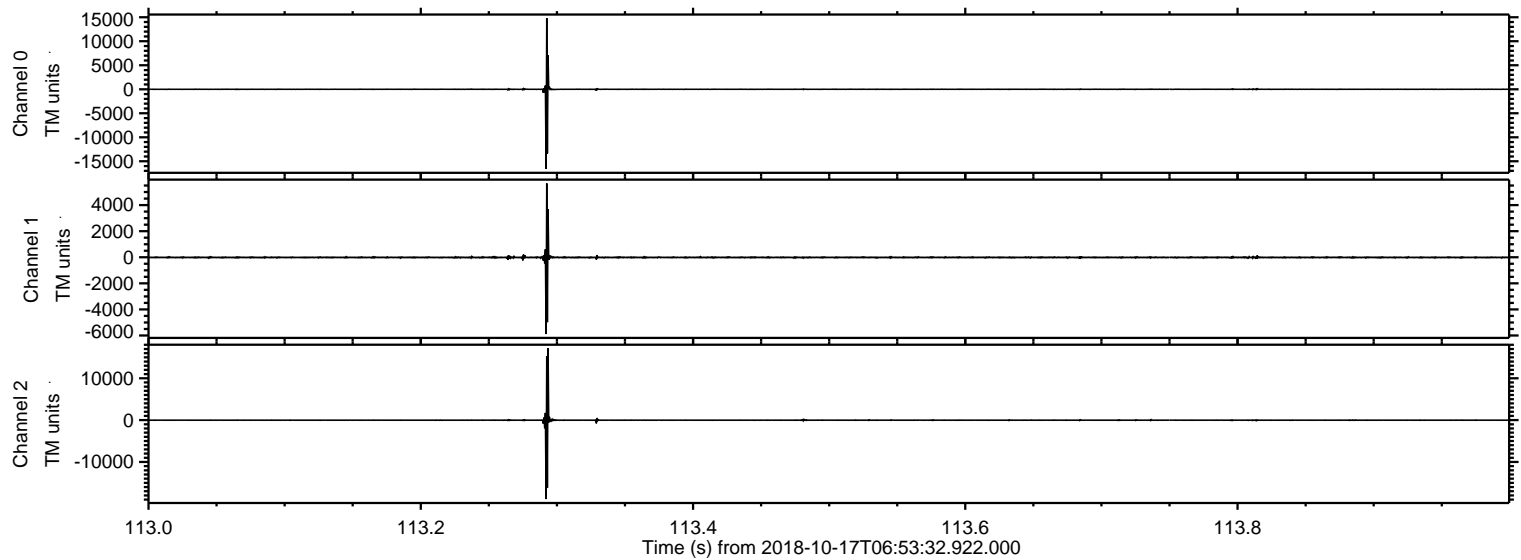
ELMAVAN 3D WAVEFORMS (Measured data sampled at 50 kHz) 51000 packets of 144 samples from 2018-10-17T06:53:32.922.000.

Processed Wed Oct 17 09:02:01 2018 by ELM ver.2012-10-06 from 001__elm20181017_065331__dat00.bin

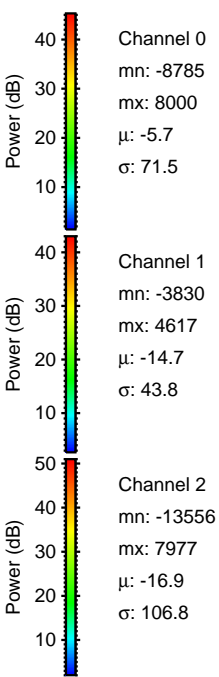
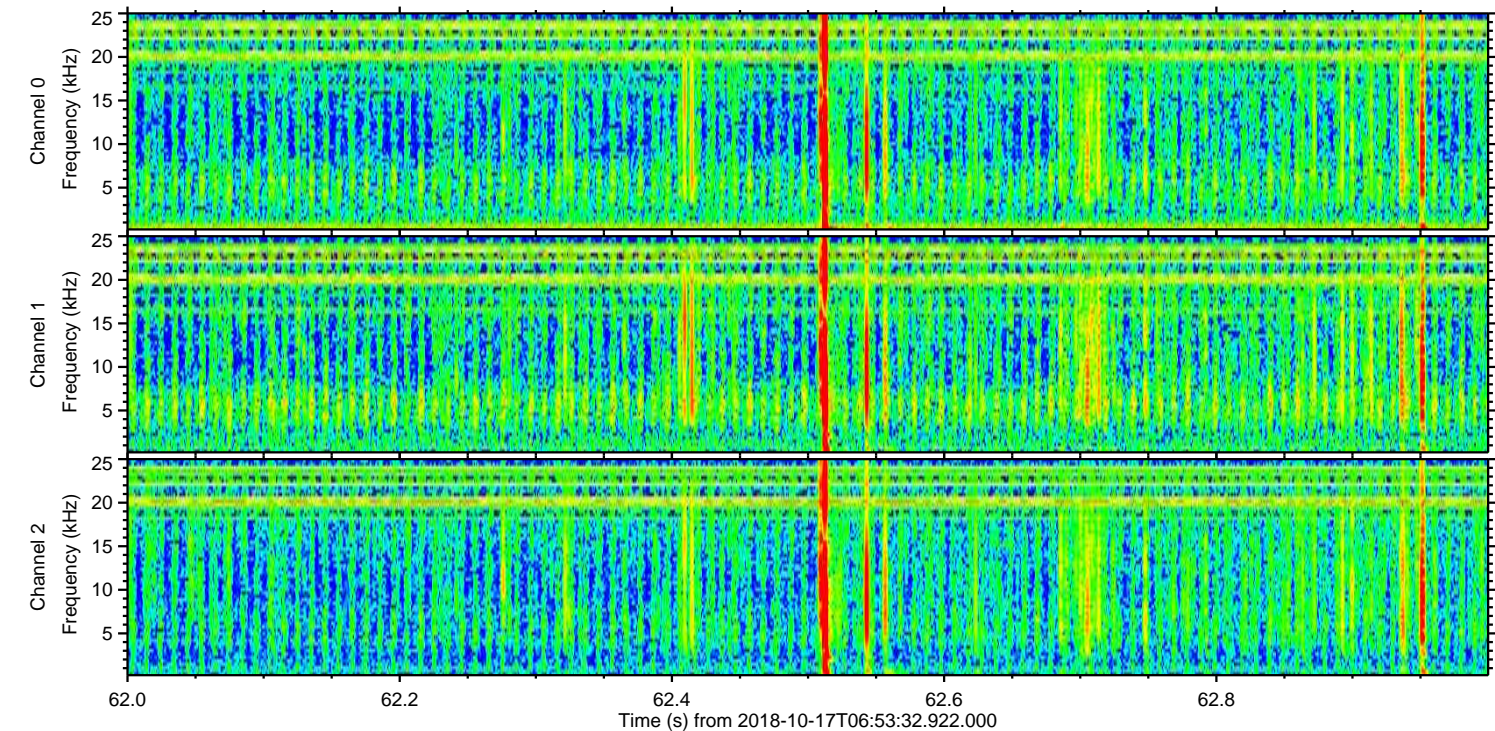
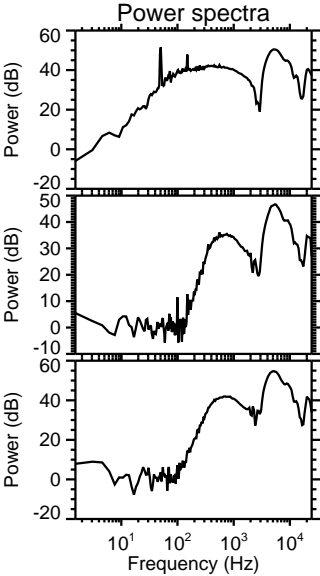
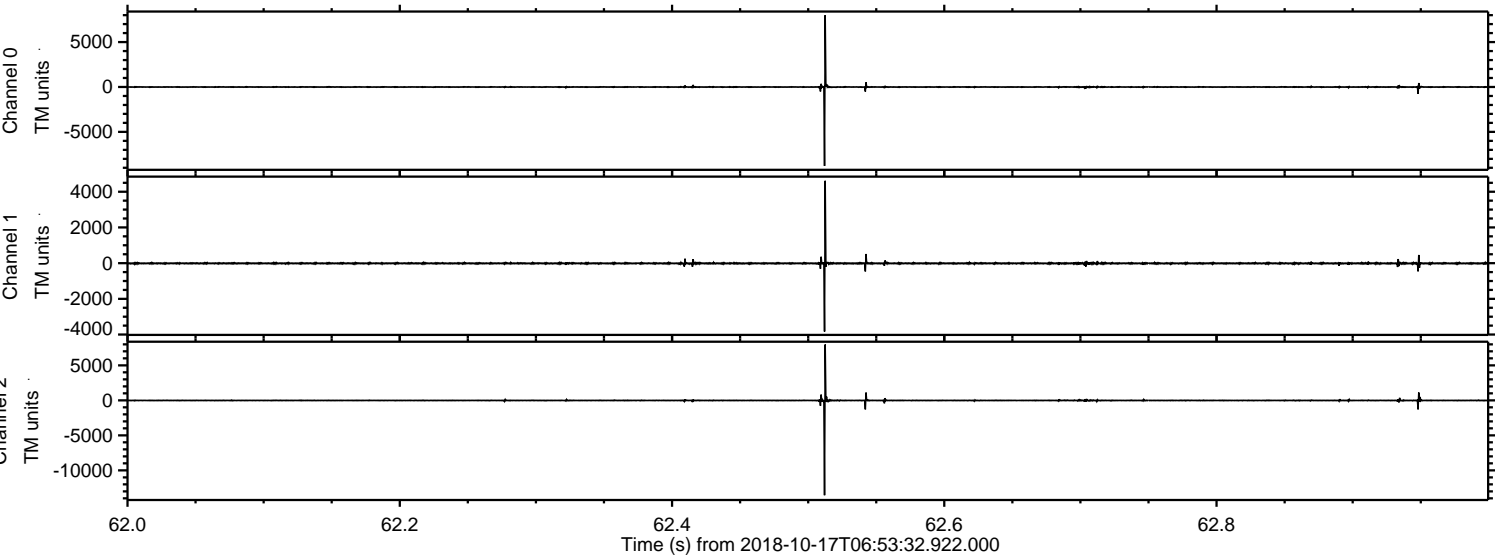


ELMAVAN 3D WAVEFORMS (Measured data sampled at 50 kHz) 51000 packets of 144 samples from 2018-10-17T06:53:32.922.000. Part 114/147

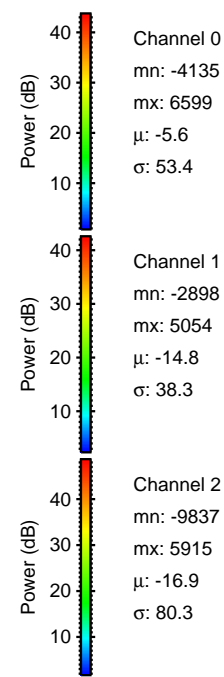
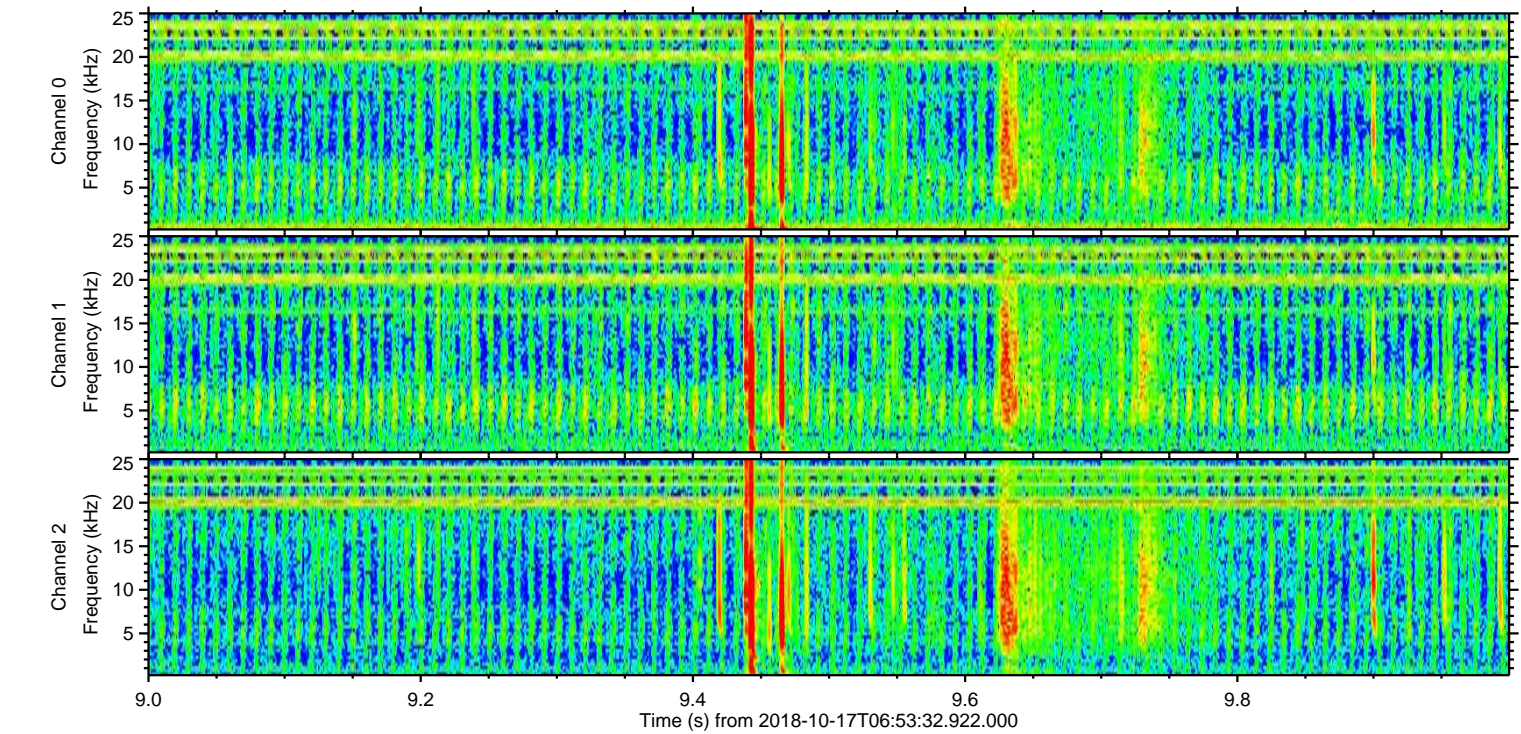
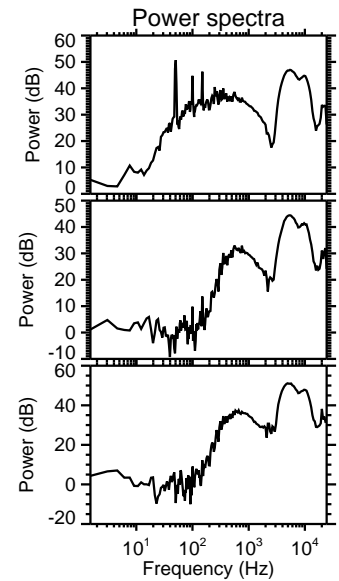
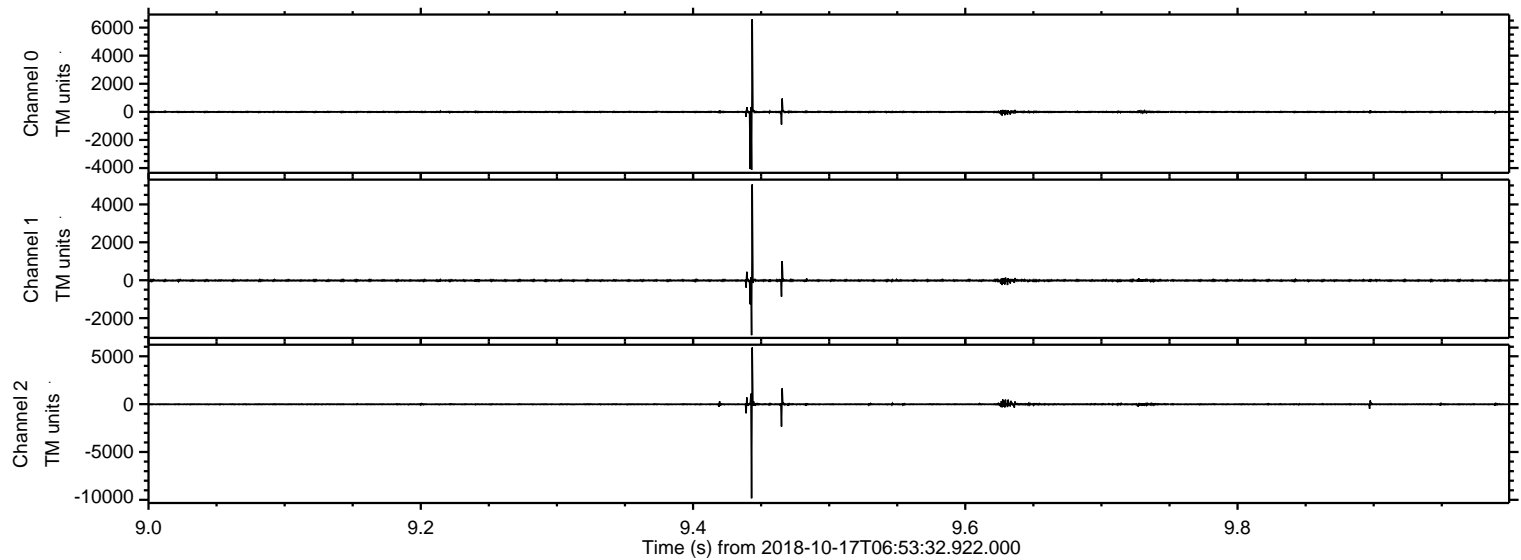
Processed Wed Oct 17 09:02:11 2018 by ELM ver.2012-10-06 from 001__elm20181017_065331__dat00.bin



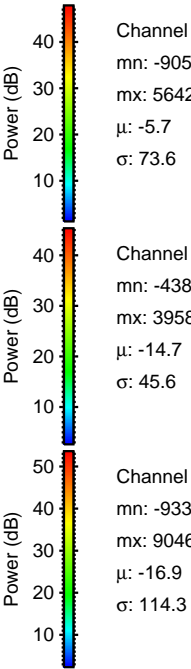
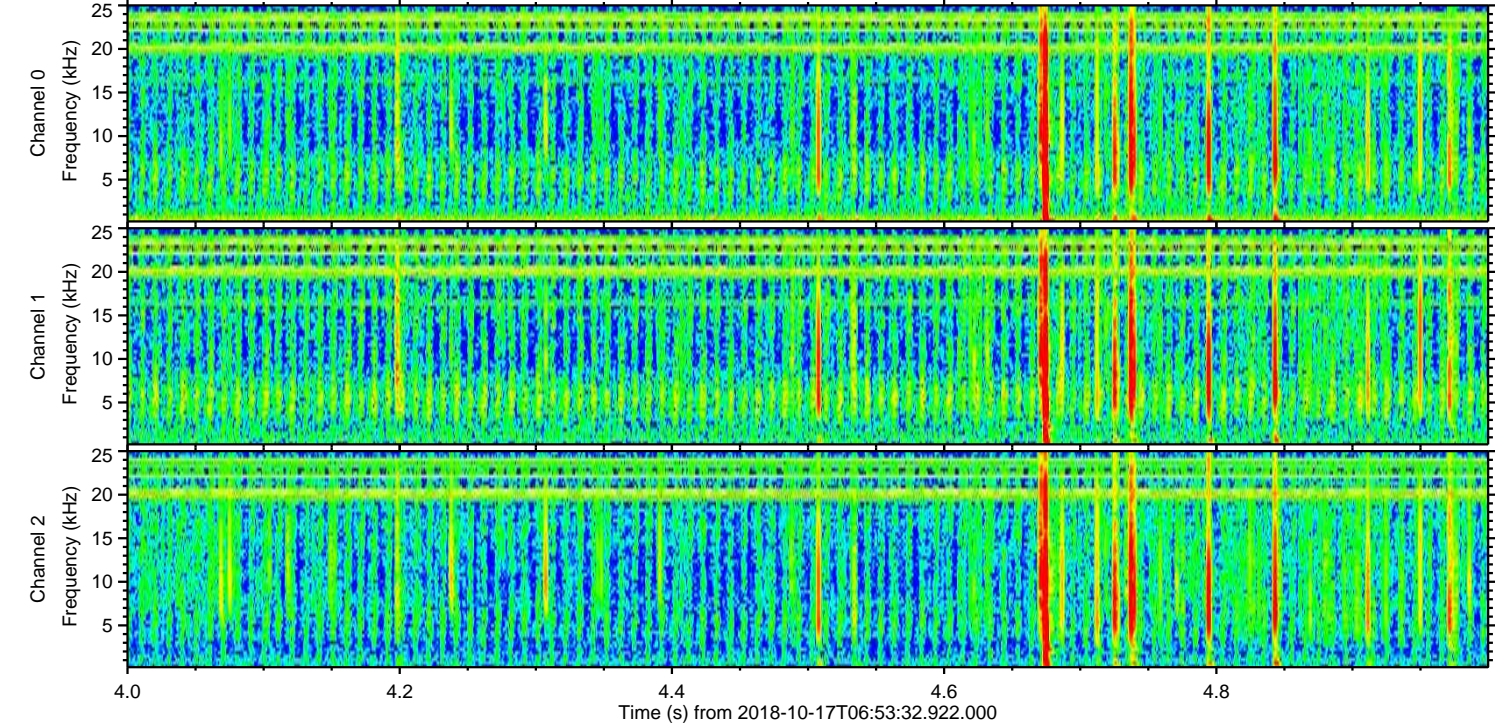
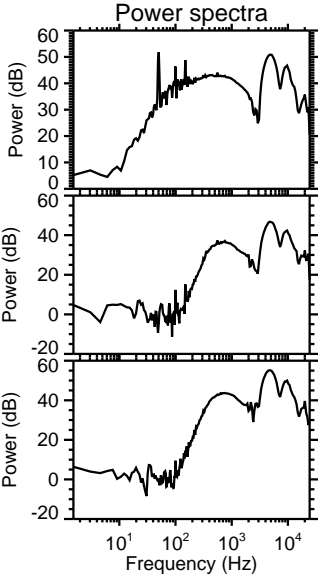
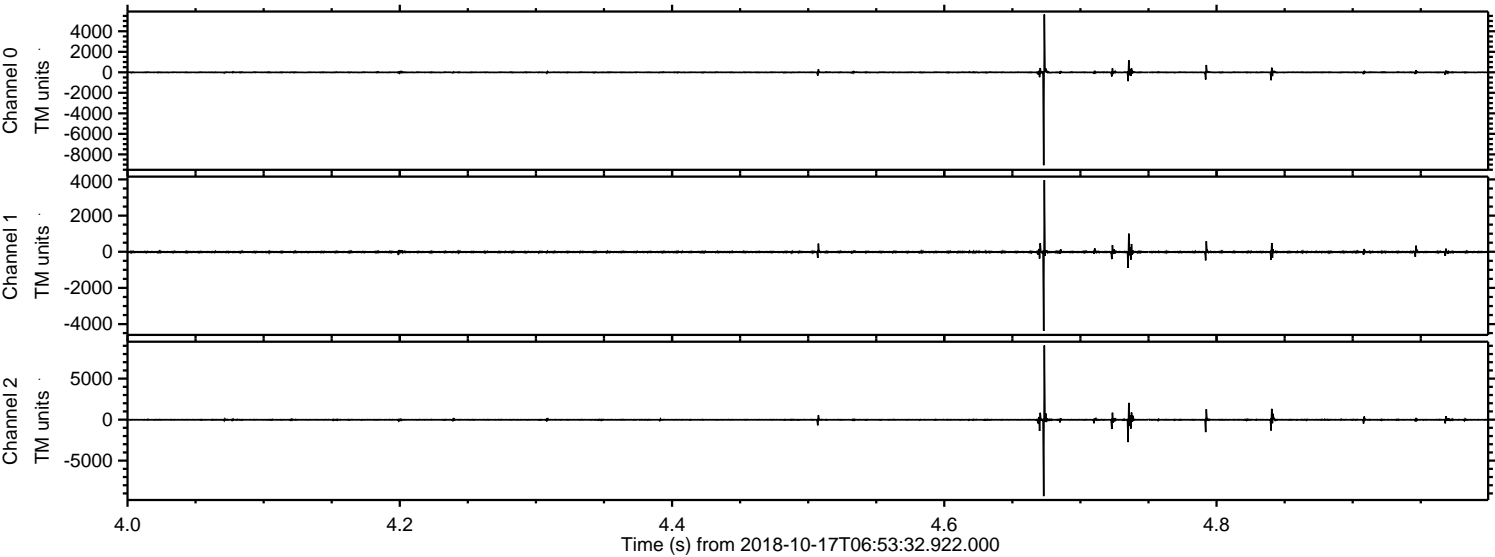
Processed Wed Oct 17 09:02:12 2018 by ELM ver.2012-10-06 from 001__elm20181017_065331__dat00.bin



Processed Wed Oct 17 09:02:13 2018 by ELM ver.2012-10-06 from 001__elm20181017_065331__dat00.bin



Processed Wed Oct 17 09:02:13 2018 by ELM ver.2012-10-06 from 001__elm20181017_065331__dat00.bin

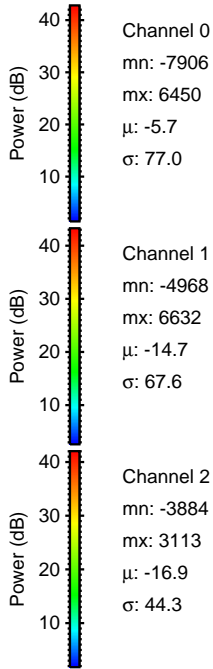
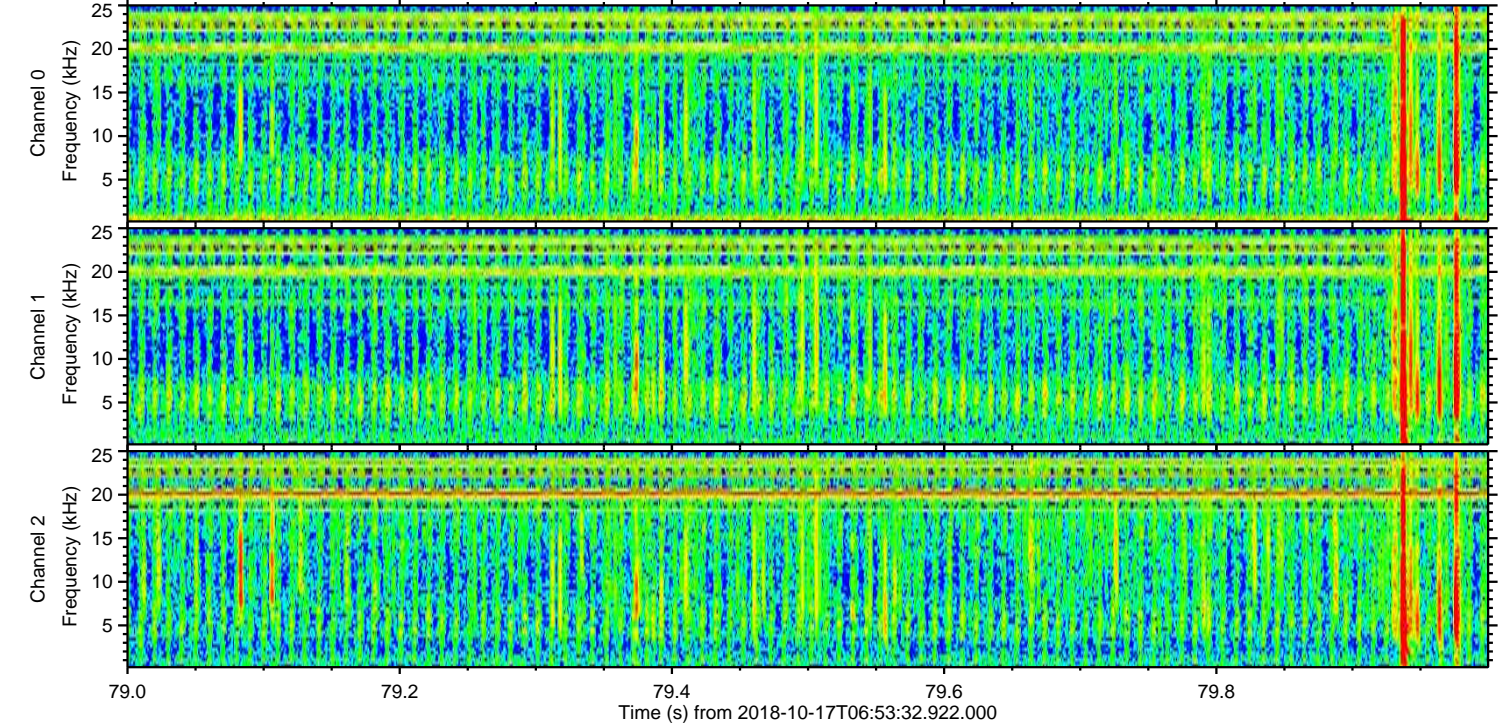
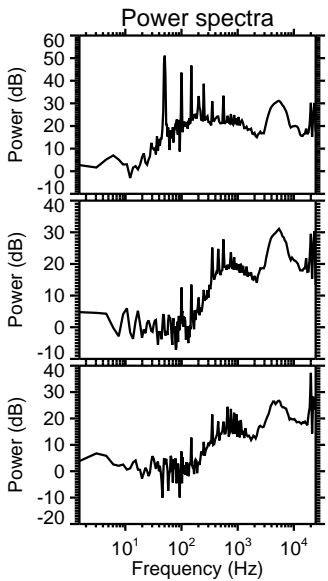
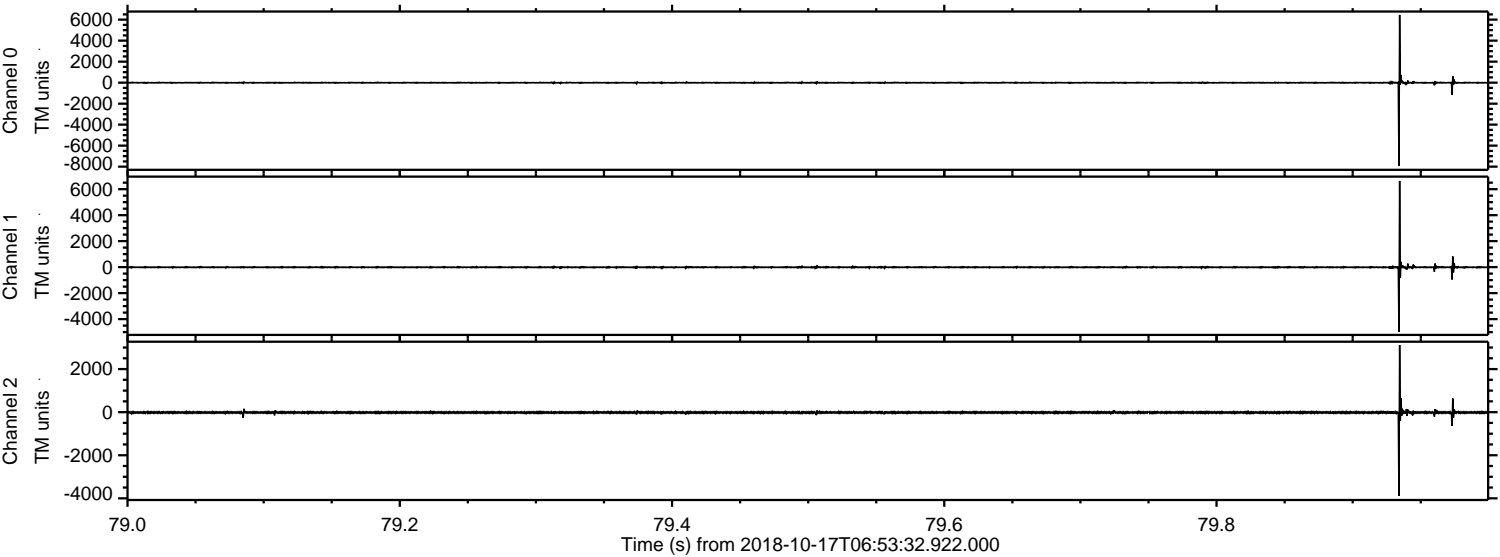


Channel 0
mn: -9053
mx: 5642
 μ : -5.7
 σ : 73.6

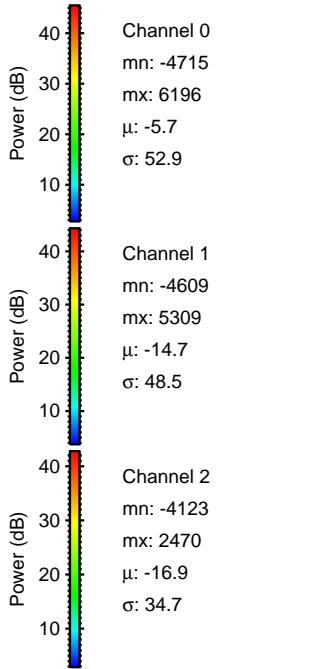
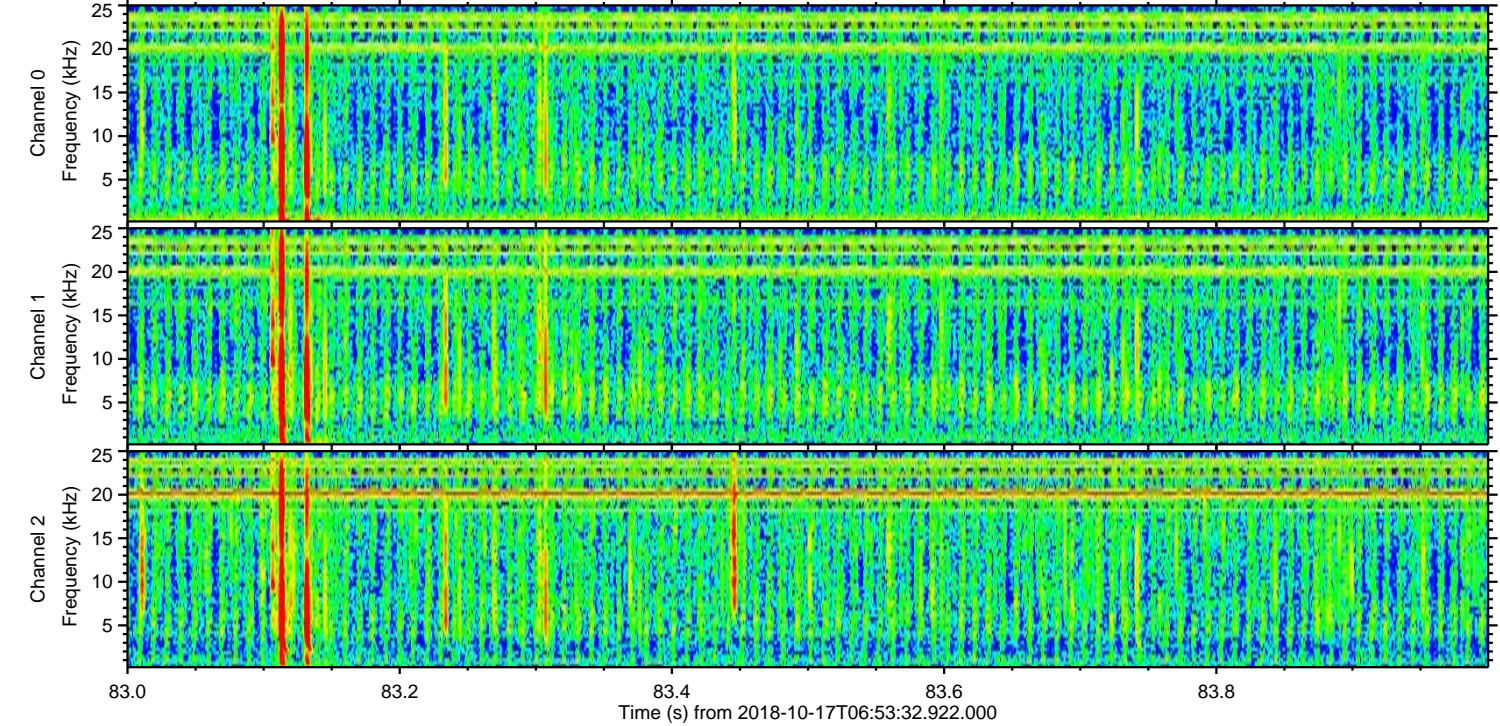
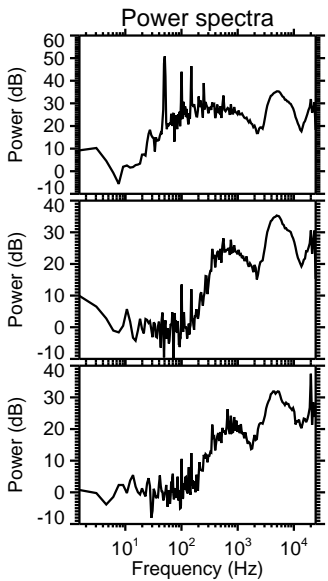
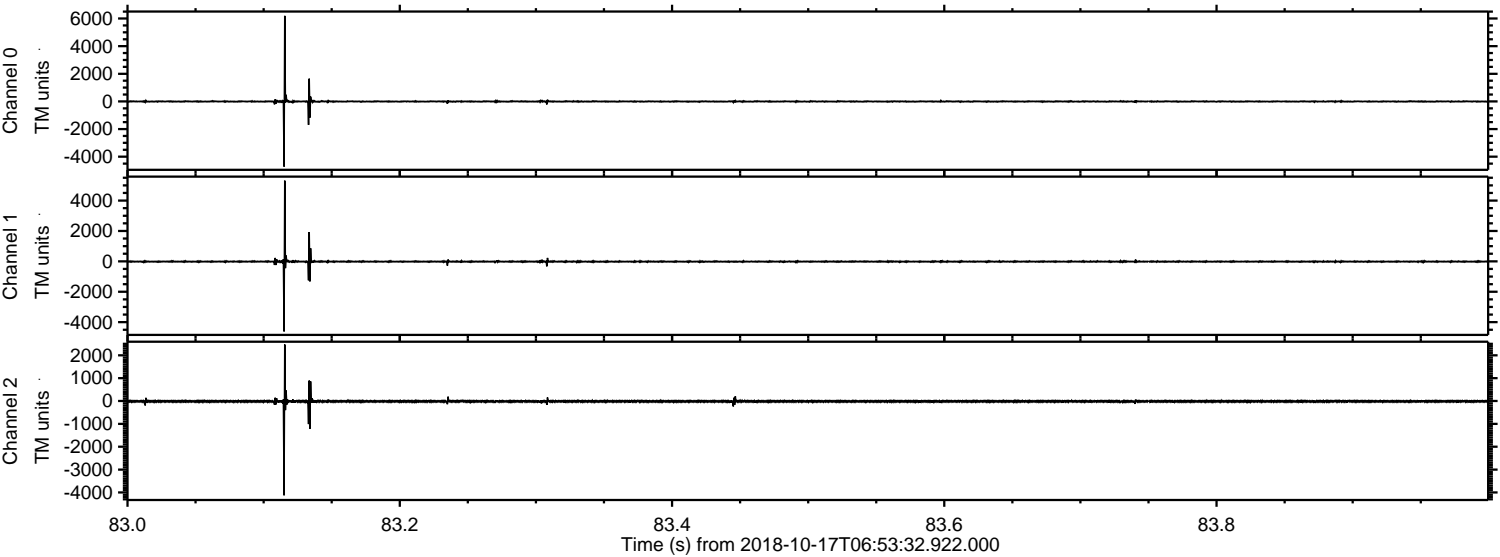
Channel 1
mn: -4380
mx: 3958
 μ : -14.7
 σ : 45.6

Channel 2
mn: -9332
mx: 9046
 μ : -16.9
 σ : 114.3

Processed Wed Oct 17 09:02:14 2018 by ELM ver.2012-10-06 from 001__elm20181017_065331__dat00.bin

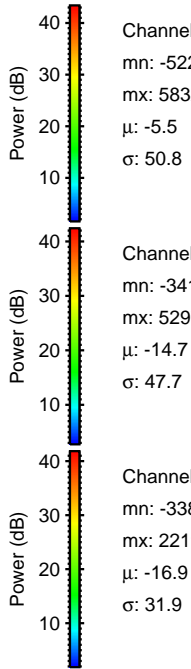
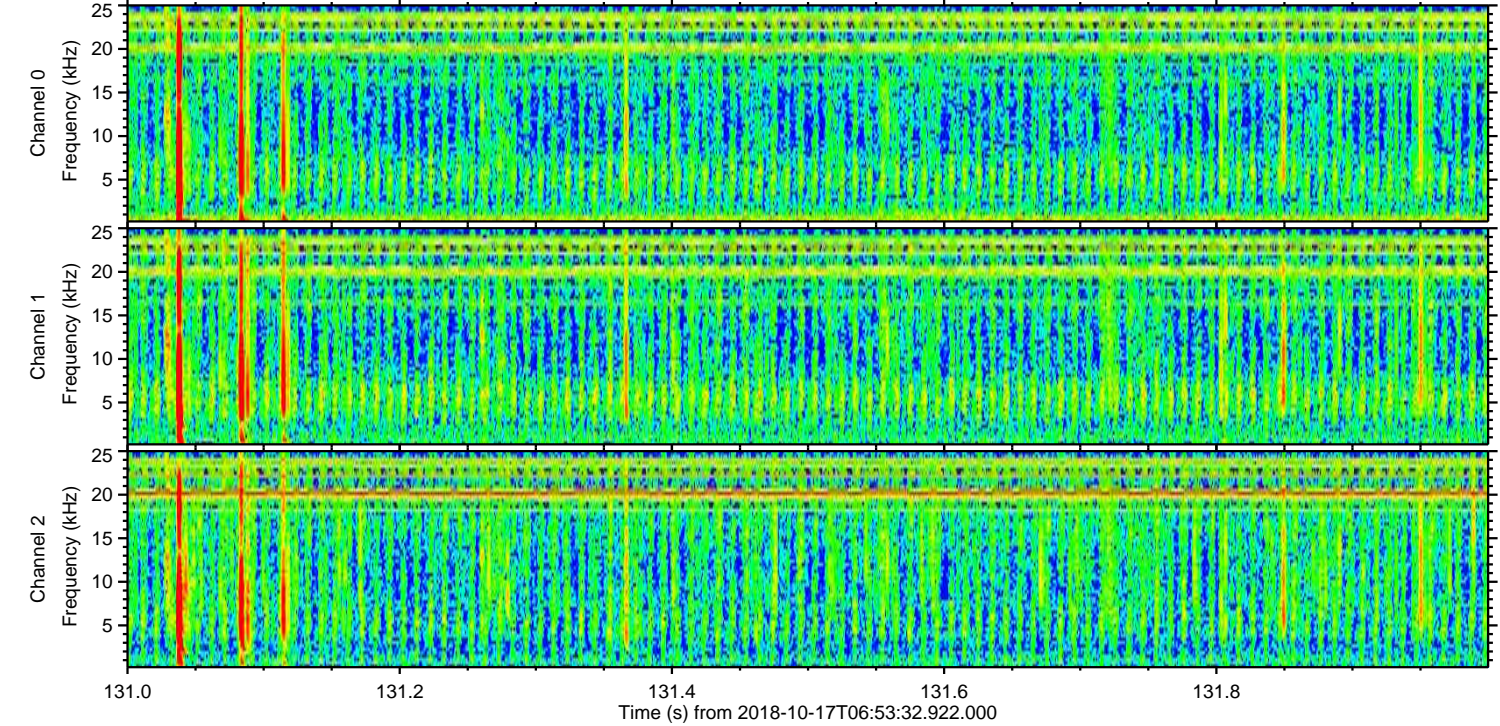
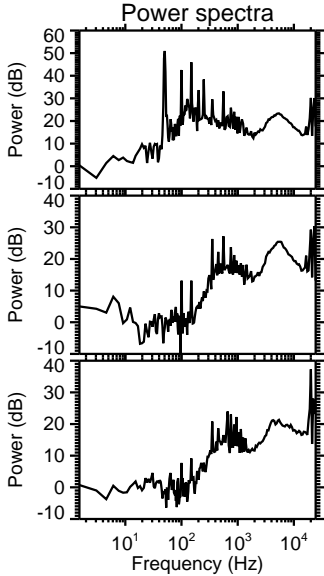
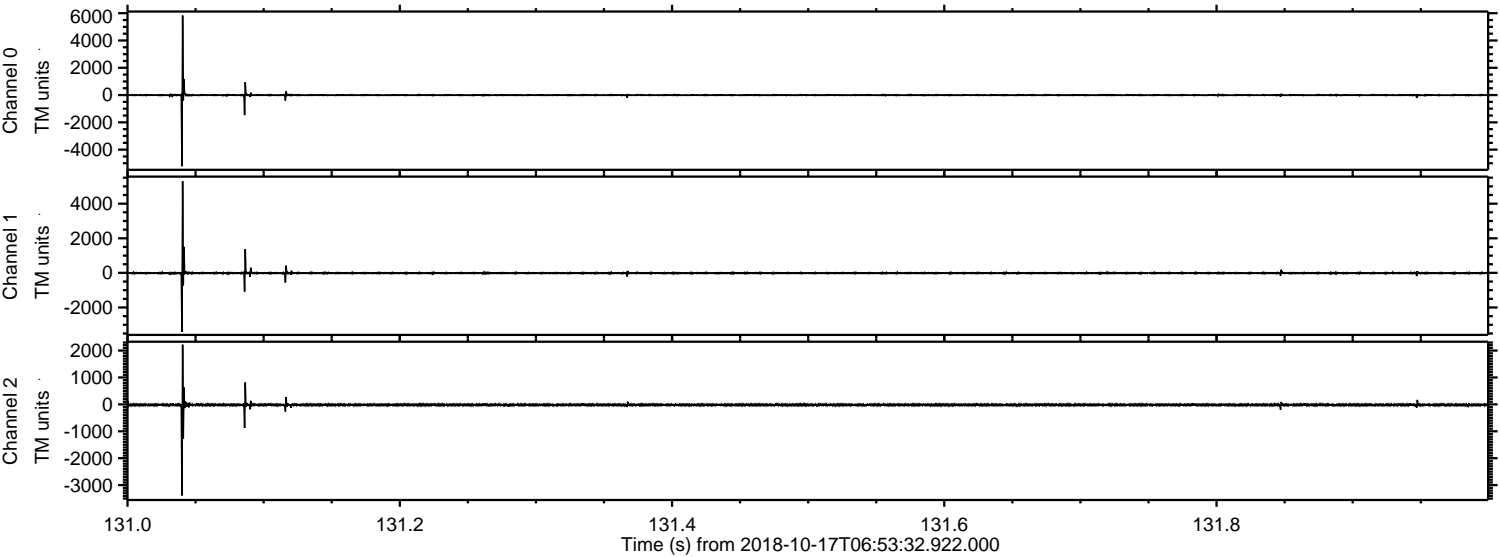


Processed Wed Oct 17 09:02:15 2018 by ELM ver.2012-10-06 from 001__elm20181017_065331__dat00.bin

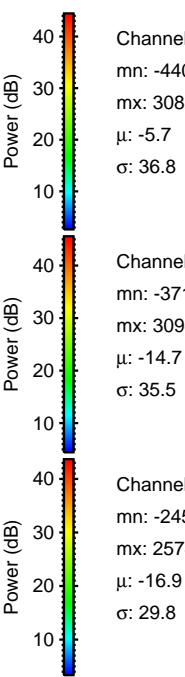
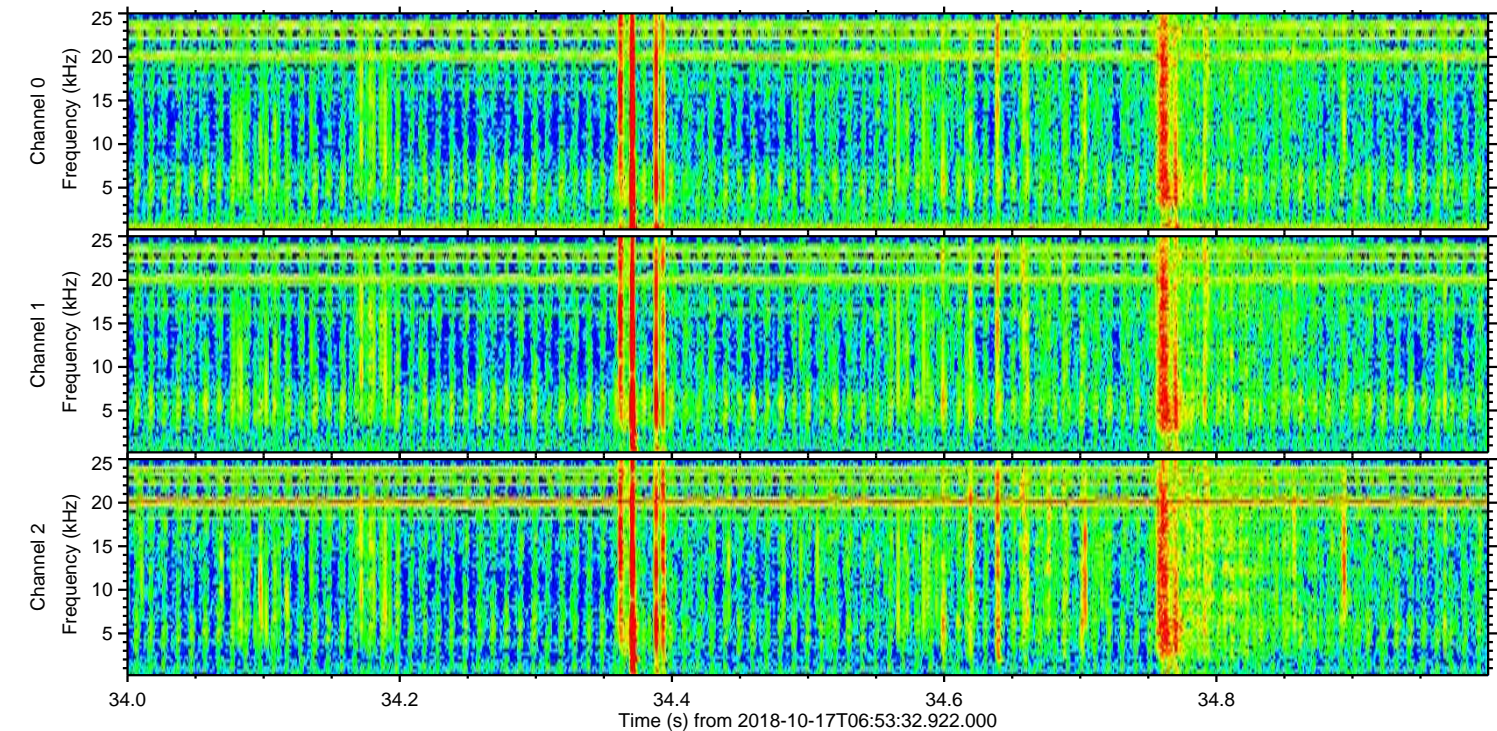
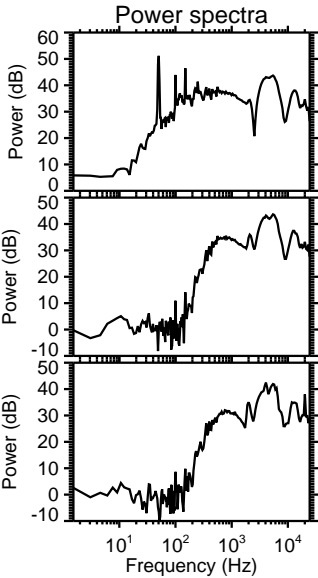
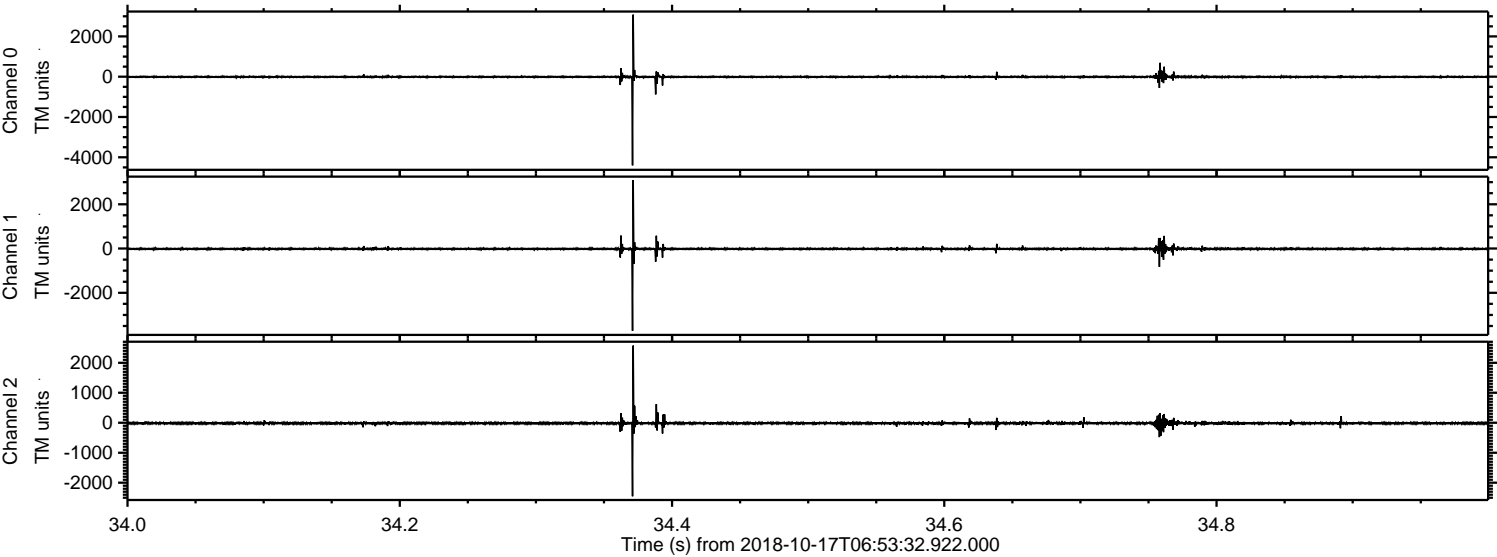


ELMAVAN 3D WAVEFORMS (Measured data sampled at 50 kHz) 51000 packets of 144 samples from 2018-10-17T06:53:32.922.000. Part 132/147

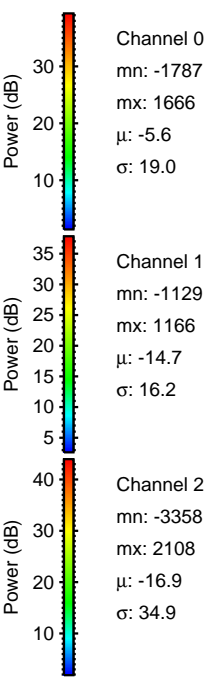
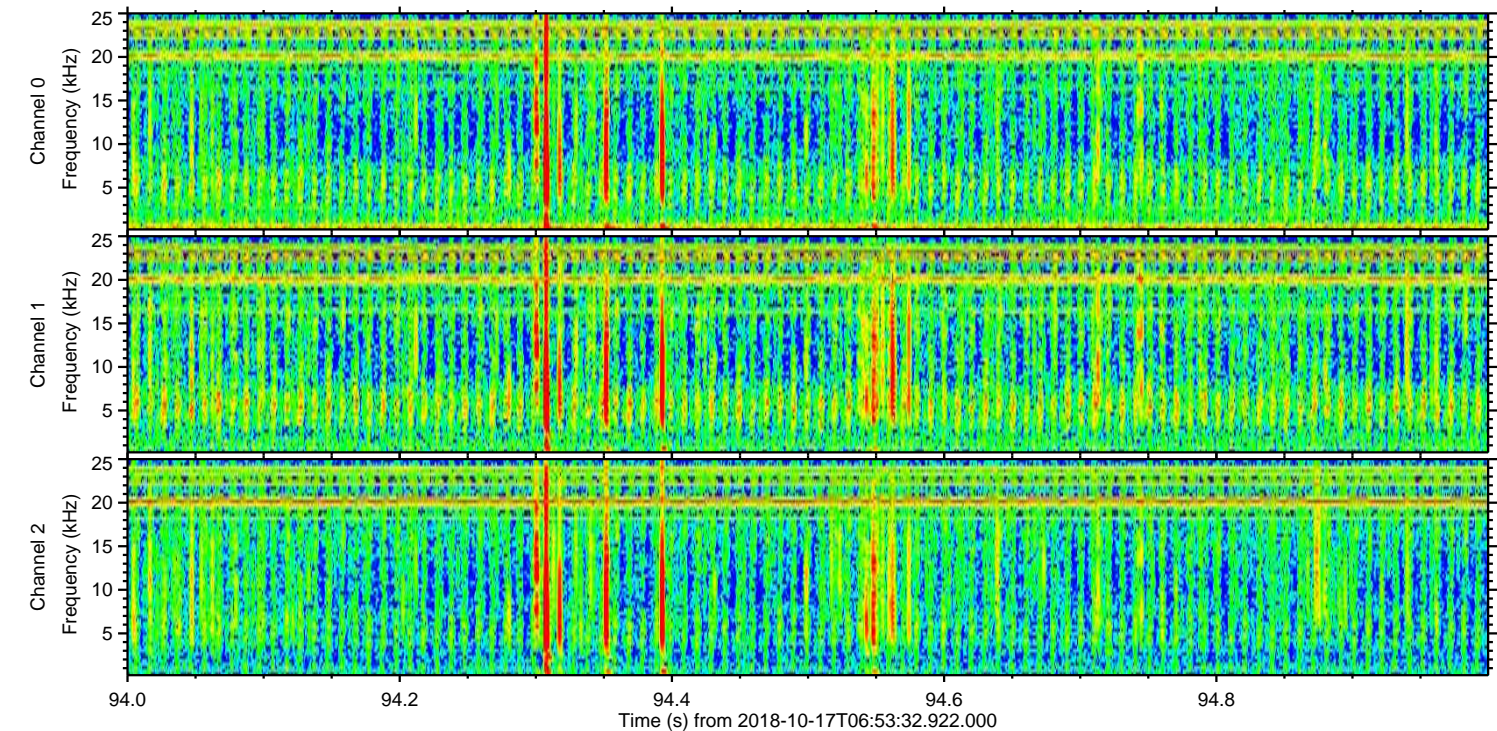
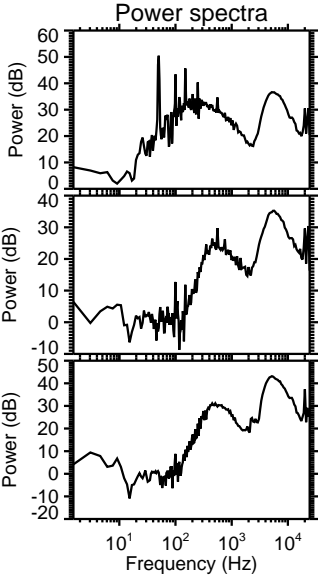
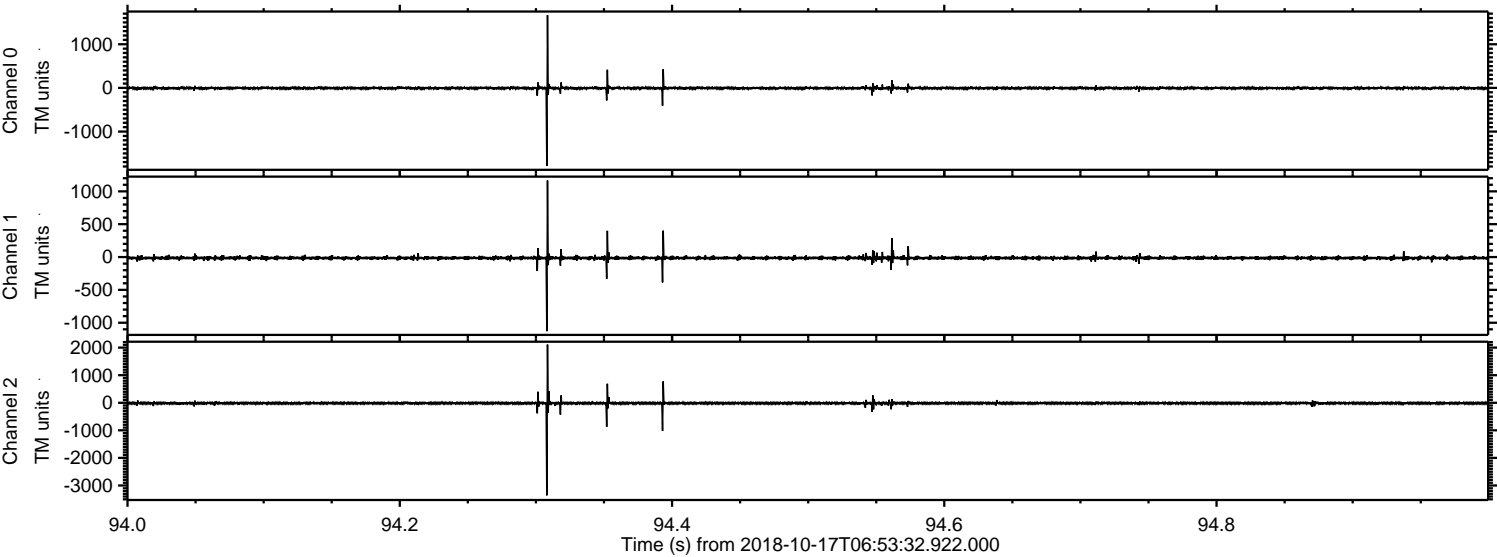
Processed Wed Oct 17 09:02:17 2018 by ELM ver.2012-10-06 from 001__elm20181017_065331__dat00.bin



Processed Wed Oct 17 09:02:17 2018 by ELM ver.2012-10-06 from 001__elm20181017_065331__dat00.bin



Processed Wed Oct 17 09:02:18 2018 by ELM ver.2012-10-06 from 001__elm20181017_065331__dat00.bin



Channel 0
mn: -1787
mx: 1666
 μ : -5.6
 σ : 19.0

Channel 1
mn: -1129
mx: 1166
 μ : -14.7
 σ : 16.2

Channel 2
mn: -3358
mx: 2108
 μ : -16.9
 σ : 34.9

Processed Wed Oct 17 09:02:19 2018 by ELM ver.2012-10-06 from 001__elm20181017_065331__dat00.bin

