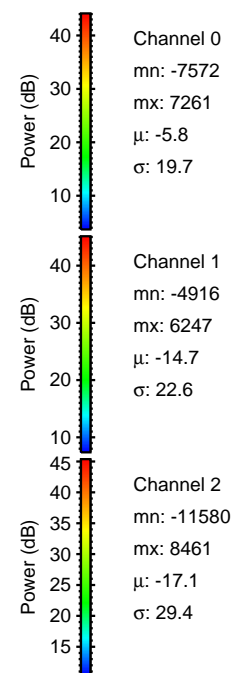
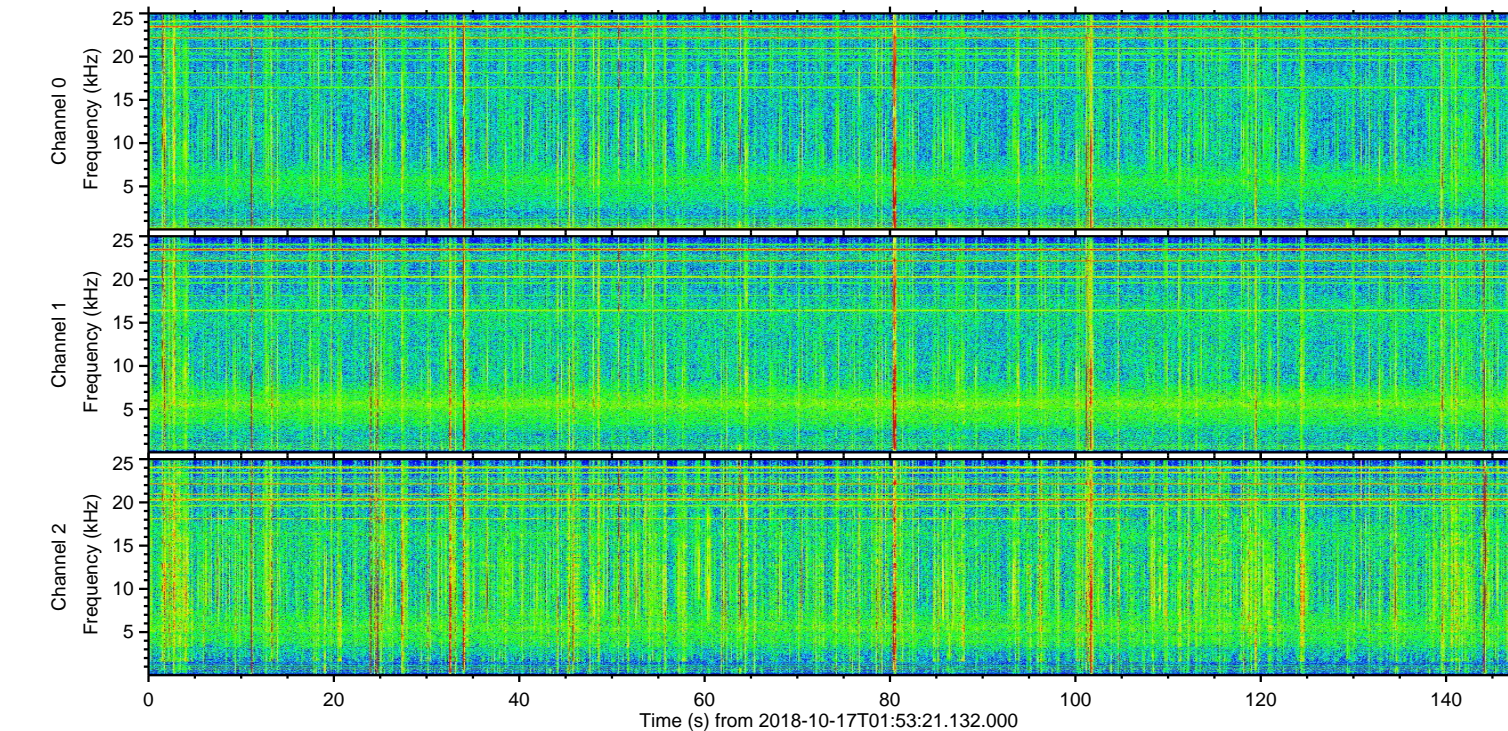
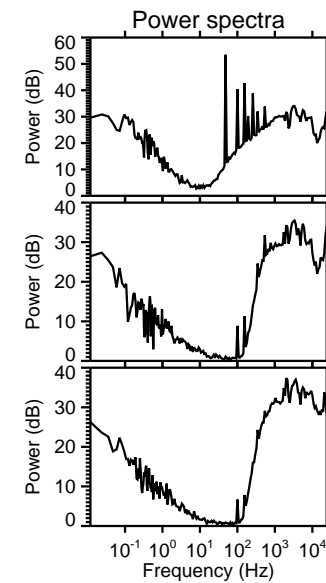
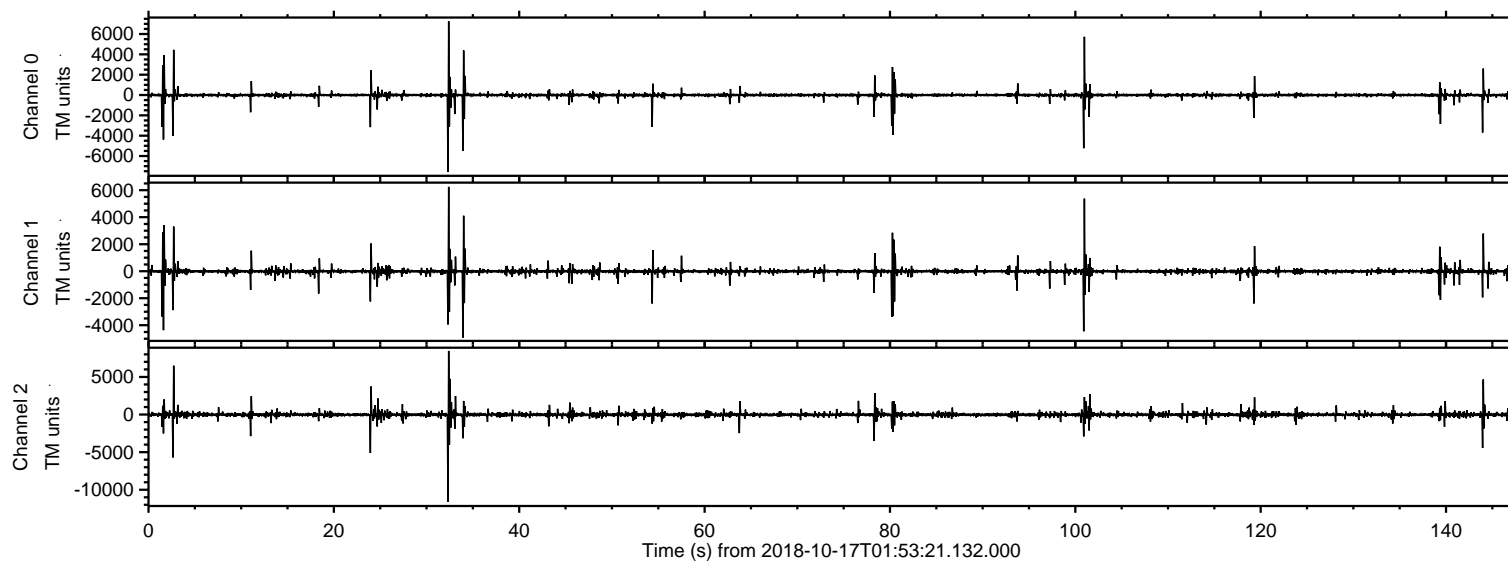


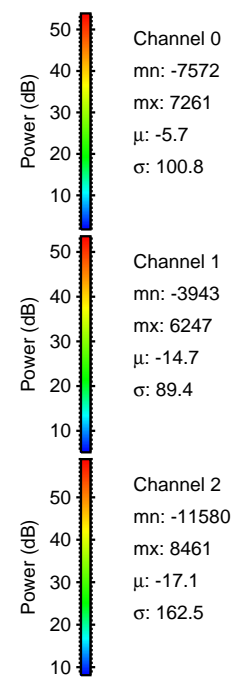
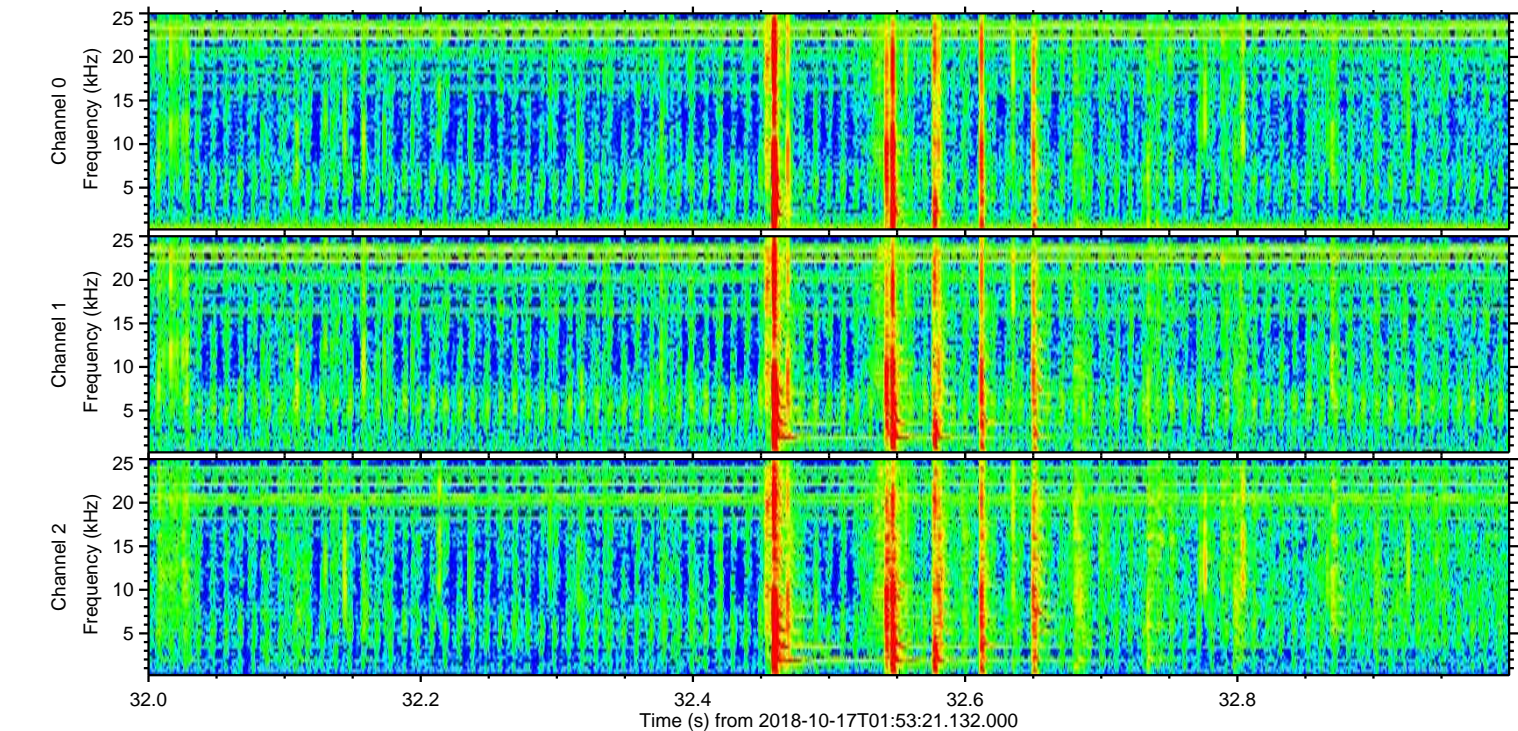
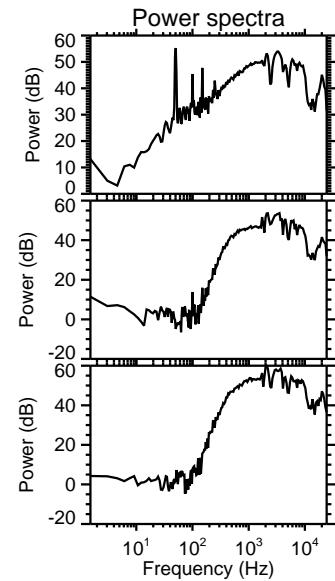
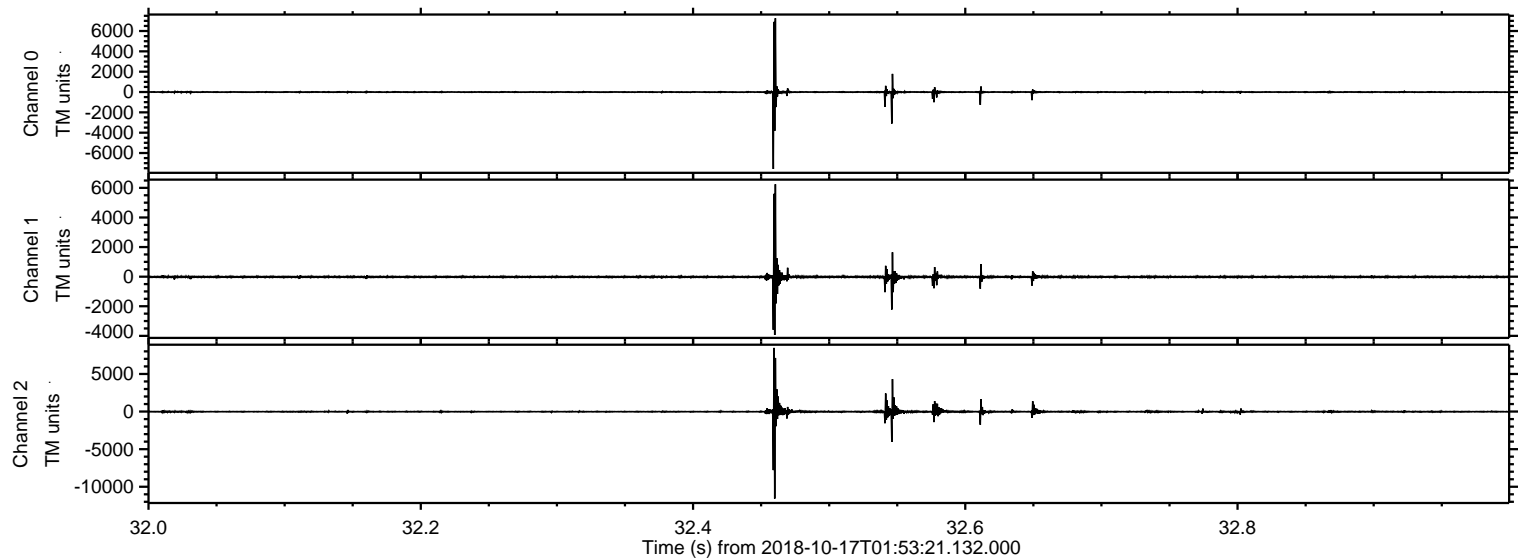
ELMAVAN 3D WAVEFORMS (Measured data sampled at 50 kHz) 51000 packets of 144 samples from 2018-10-17T01:53:21.132.000.

Processed Wed Oct 17 04:01:36 2018 by ELM ver.2012-10-06 from 001__elm20181017_015320__dat00.bin

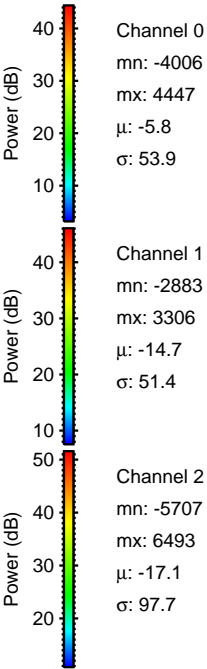
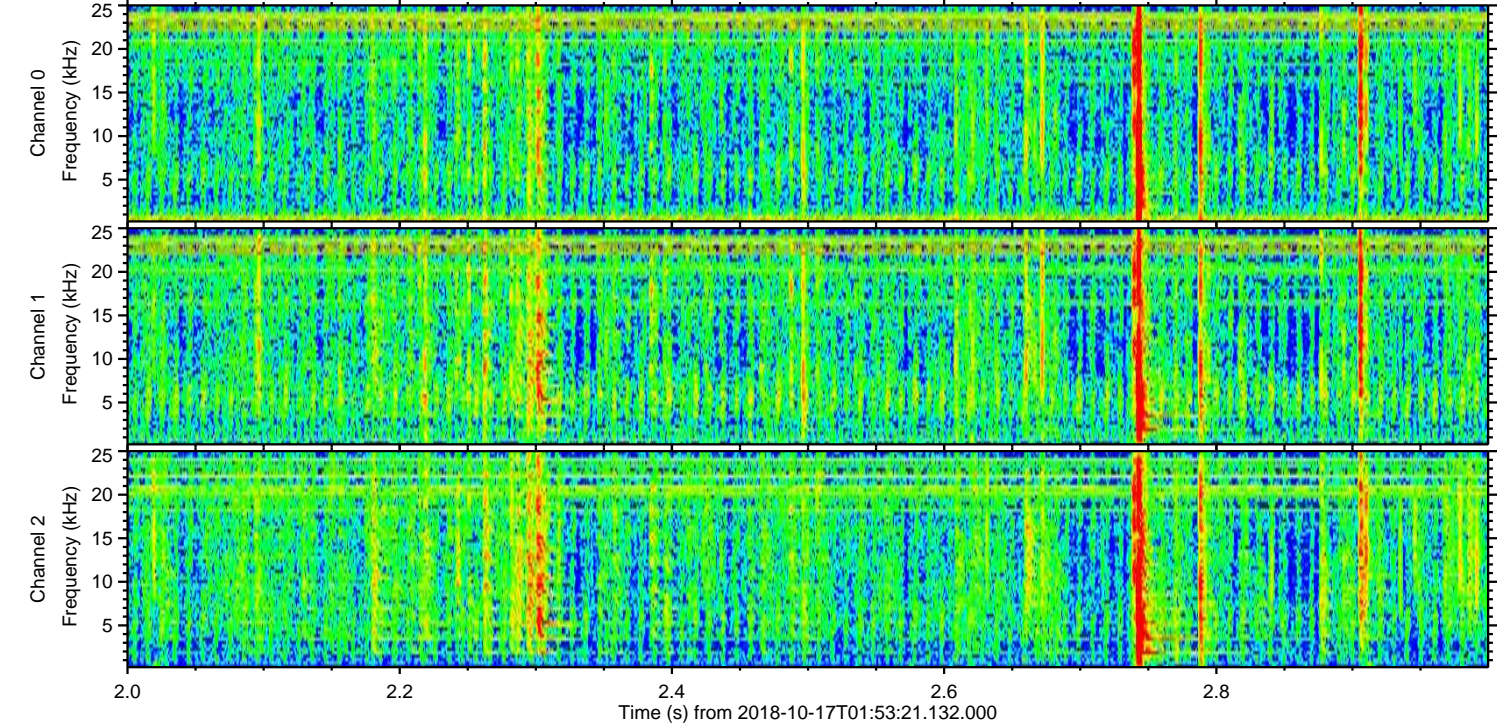
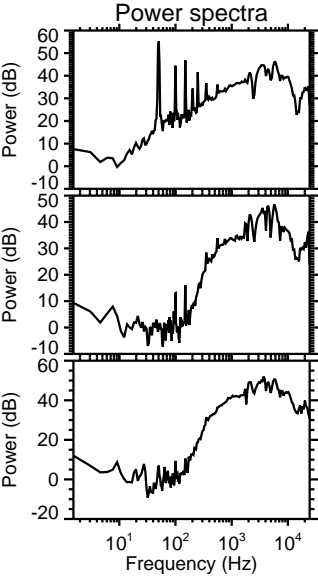
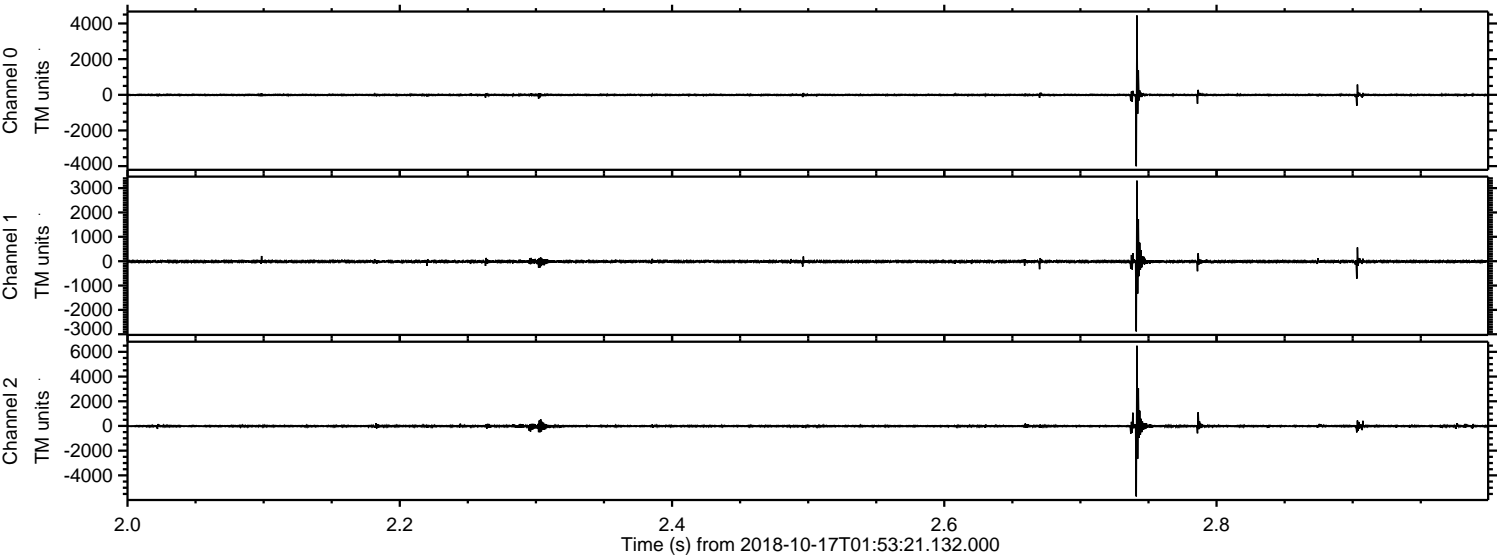


ELMAVAN 3D WAVEFORMS (Measured data sampled at 50 kHz) 51000 packets of 144 samples from 2018-10-17T01:53:21.132.000. Part 33/147

Processed Wed Oct 17 04:01:46 2018 by ELM ver.2012-10-06 from 001__elm20181017_015320__dat00.bin

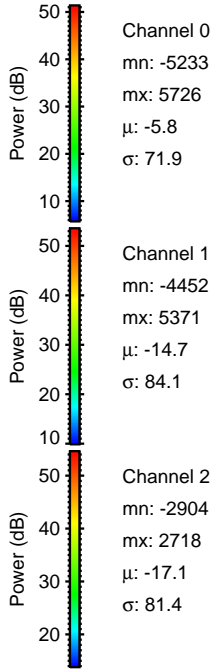
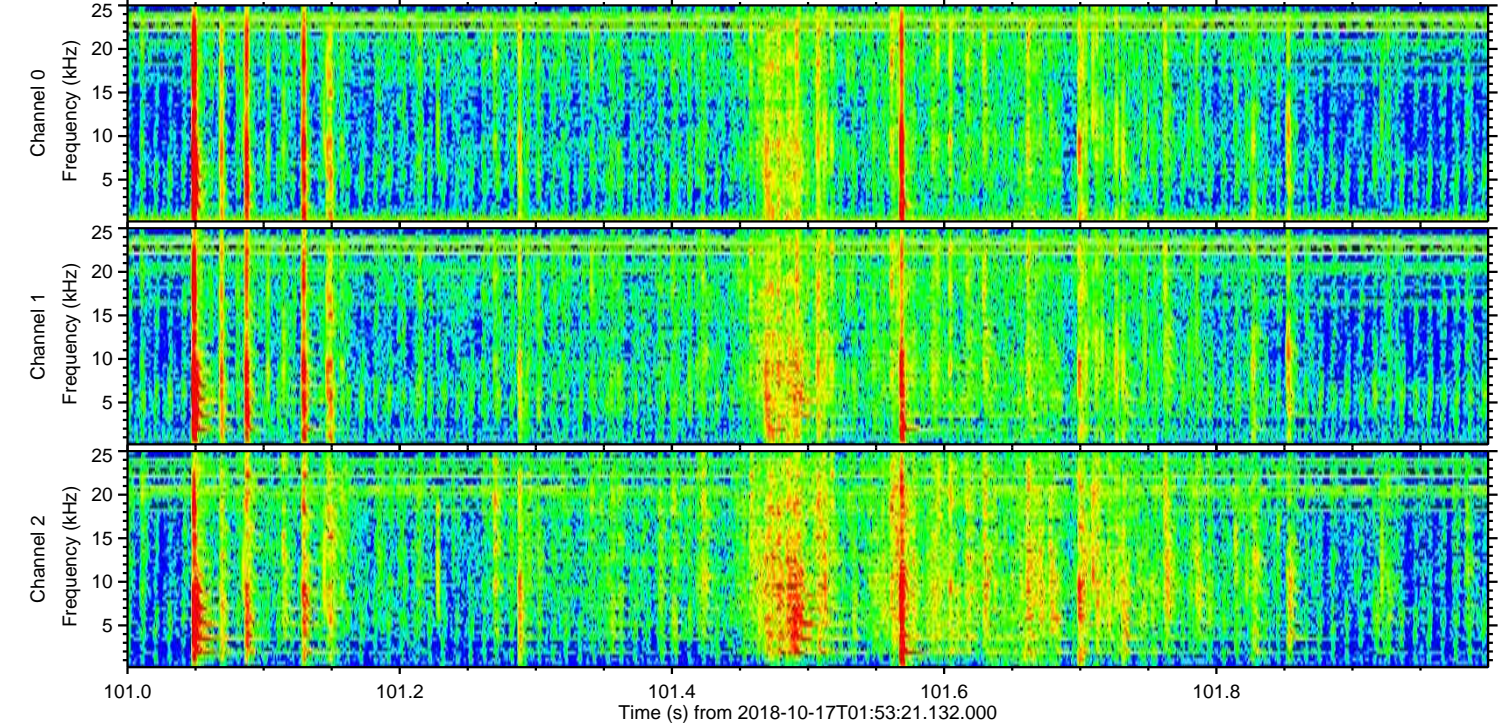
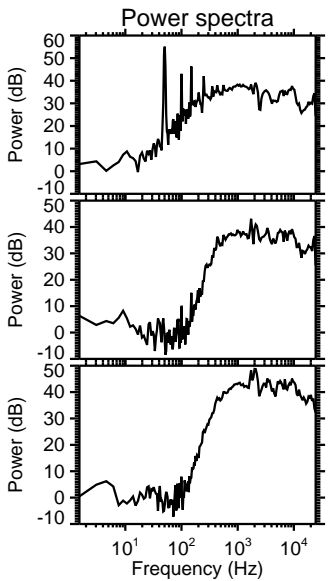
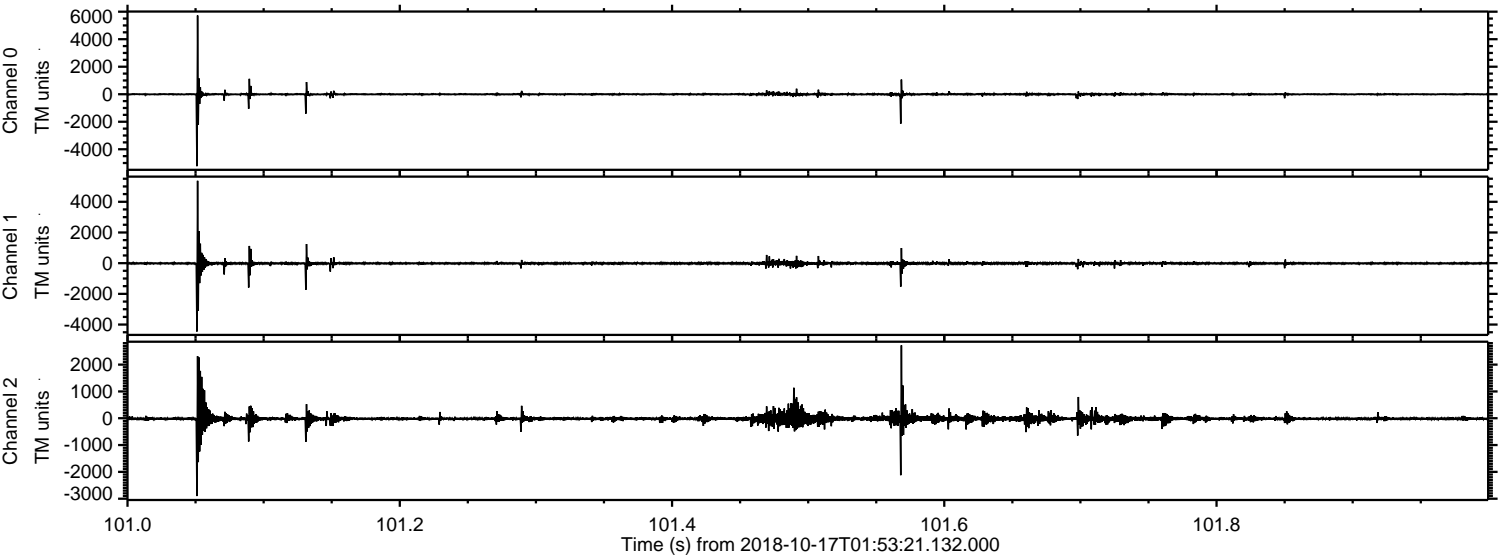


Processed Wed Oct 17 04:01:47 2018 by ELM ver.2012-10-06 from 001__elm20181017_015320__dat00.bin

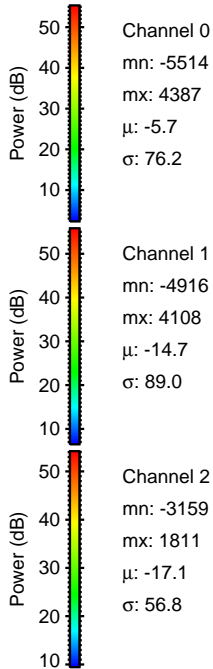
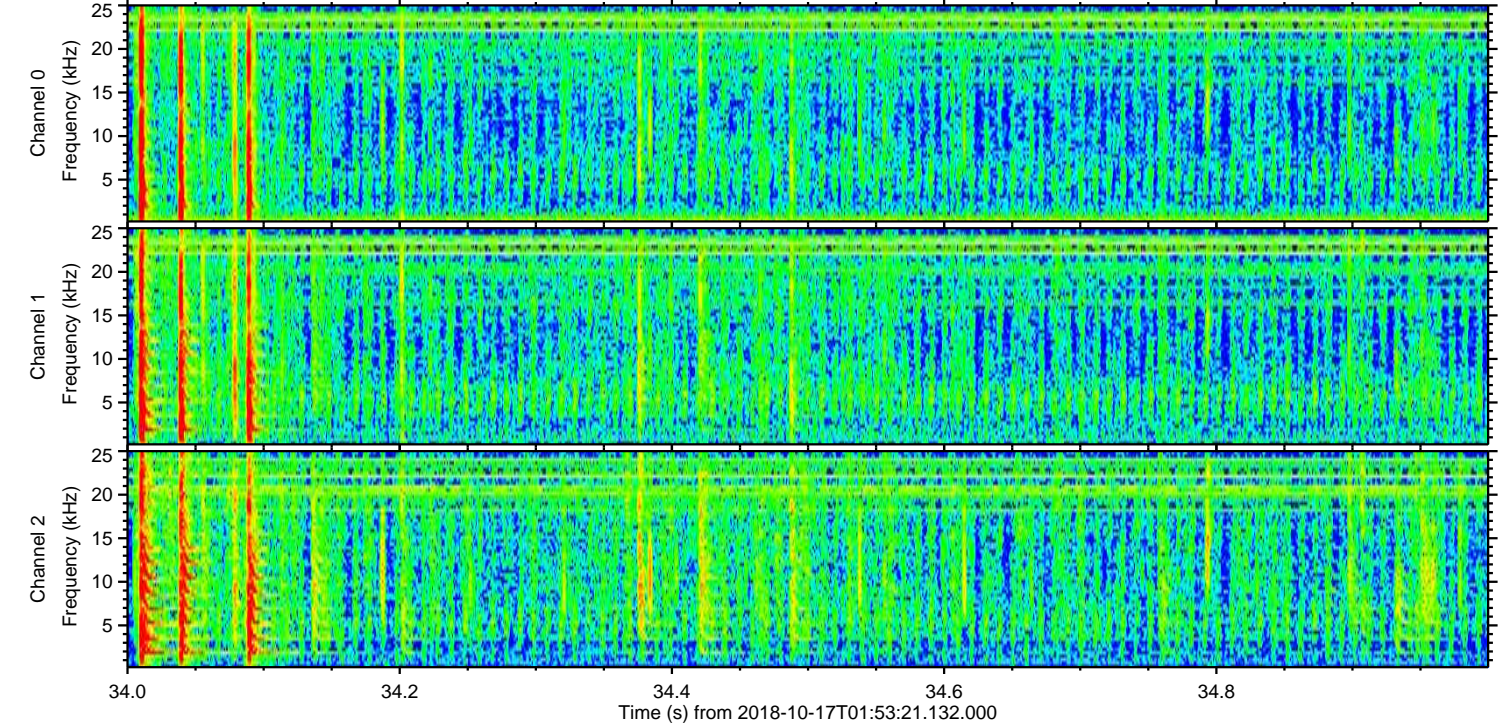
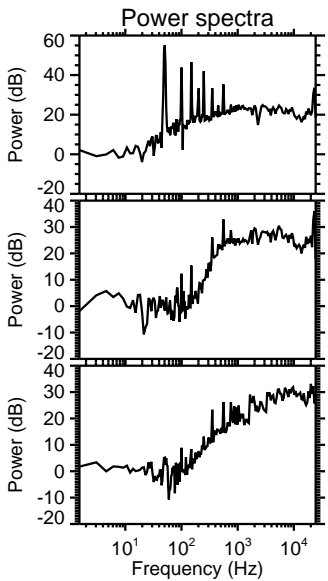
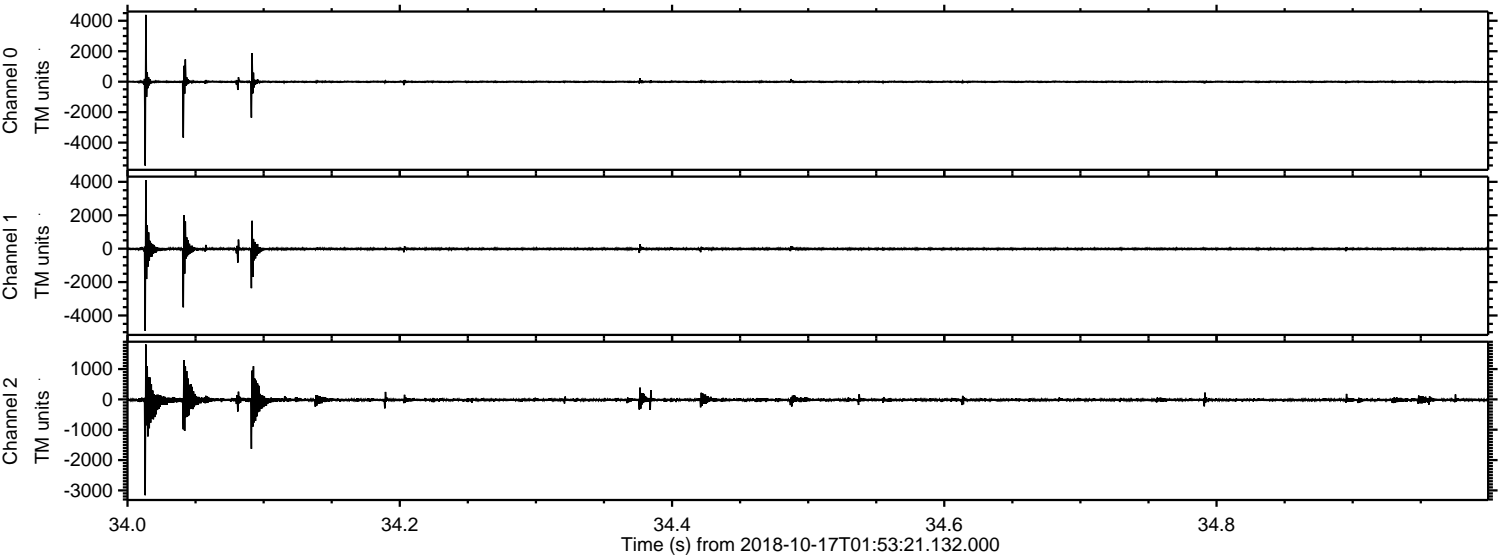


ELMAVAN 3D WAVEFORMS (Measured data sampled at 50 kHz) 51000 packets of 144 samples from 2018-10-17T01:53:21.132.000. Part 102/147

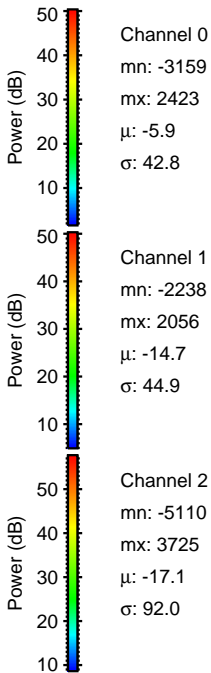
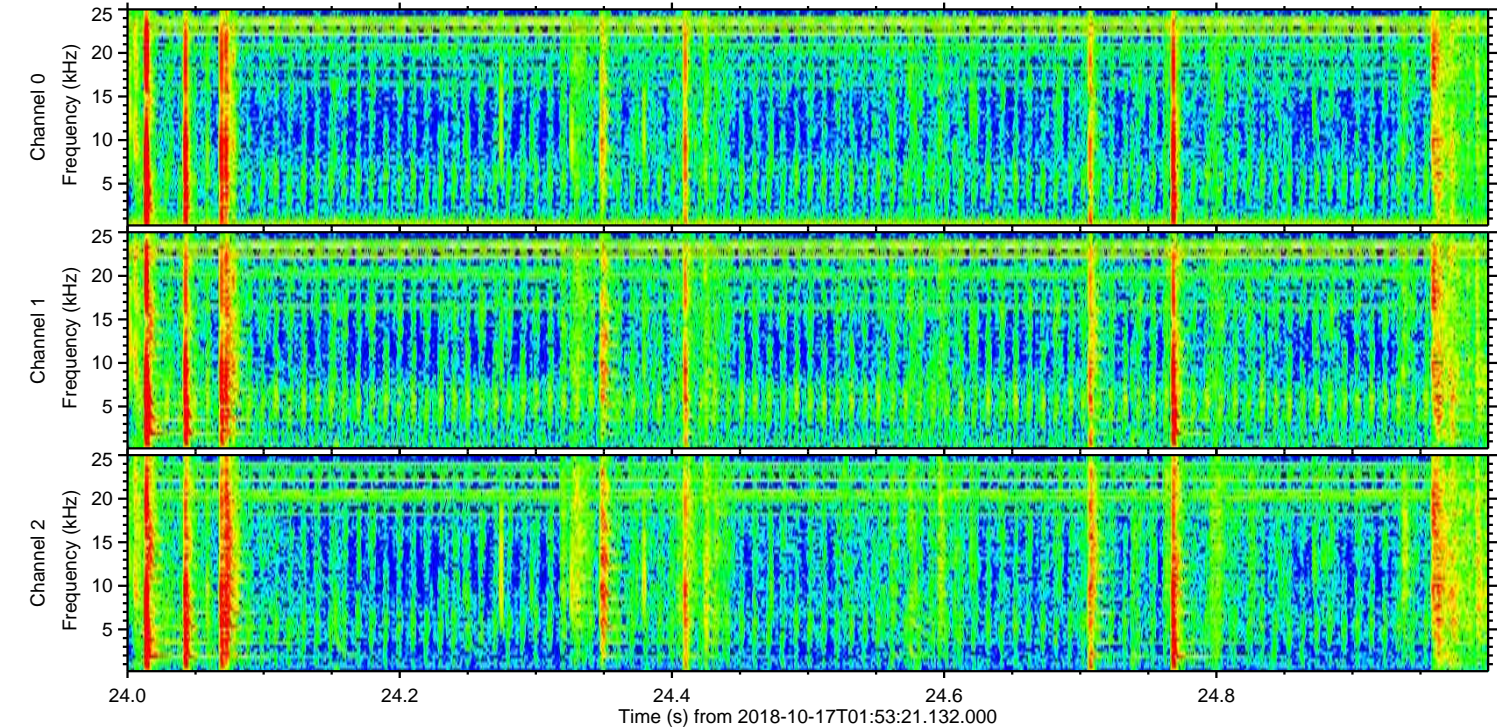
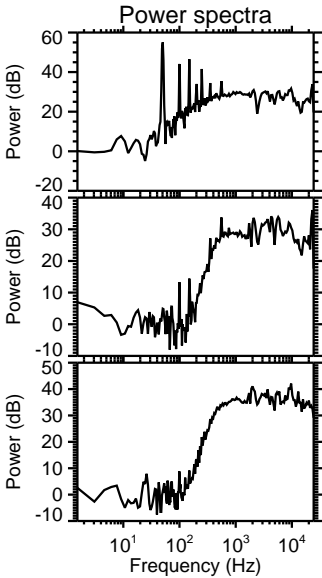
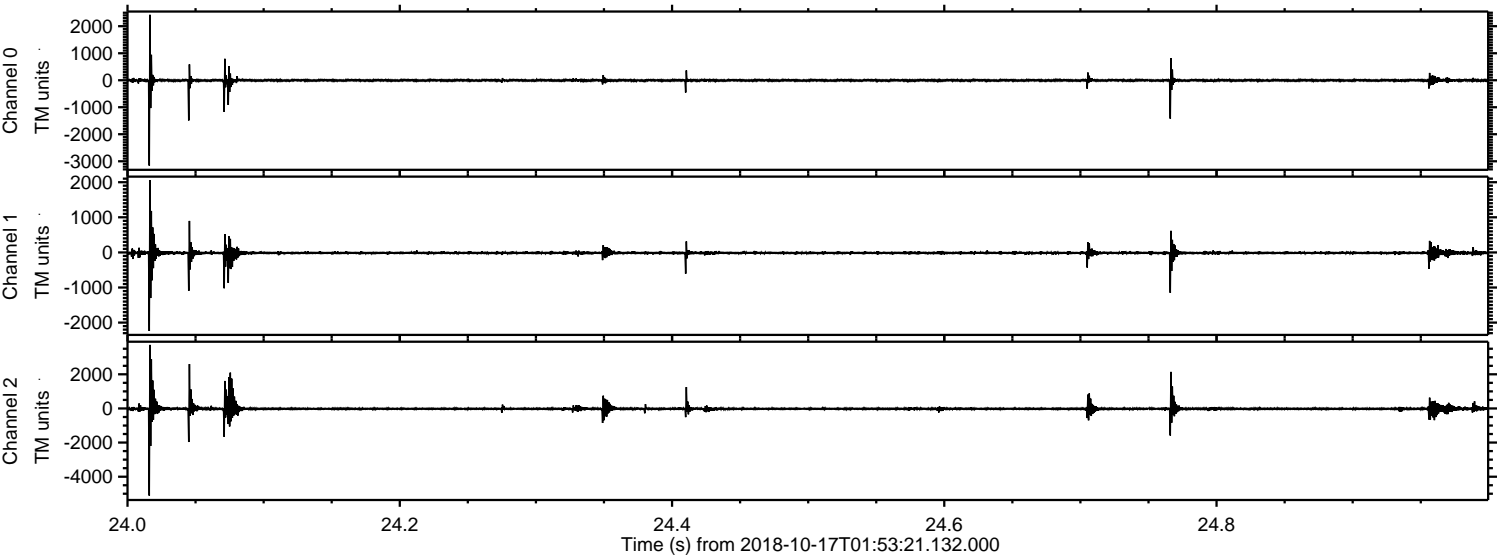
Processed Wed Oct 17 04:01:48 2018 by ELM ver.2012-10-06 from 001__elm20181017_015320__dat00.bin



Processed Wed Oct 17 04:01:49 2018 by ELM ver.2012-10-06 from 001__elm20181017_015320__dat00.bin

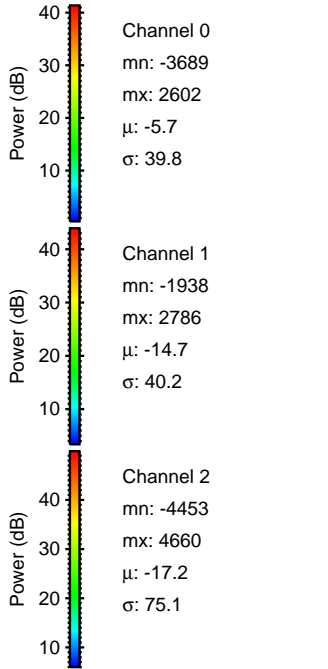
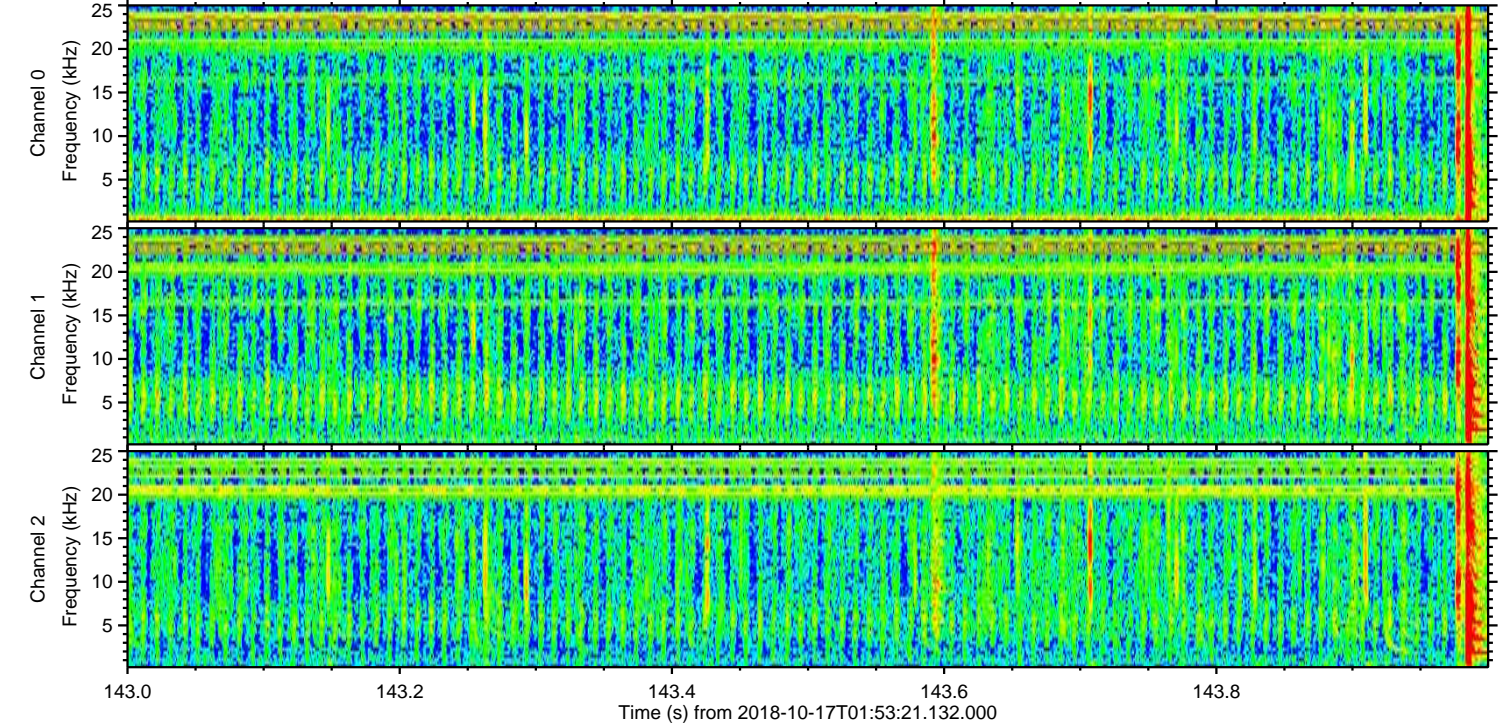
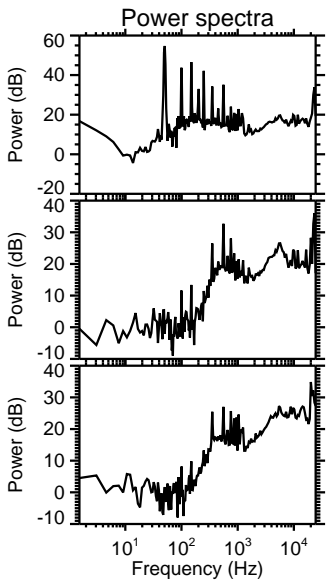
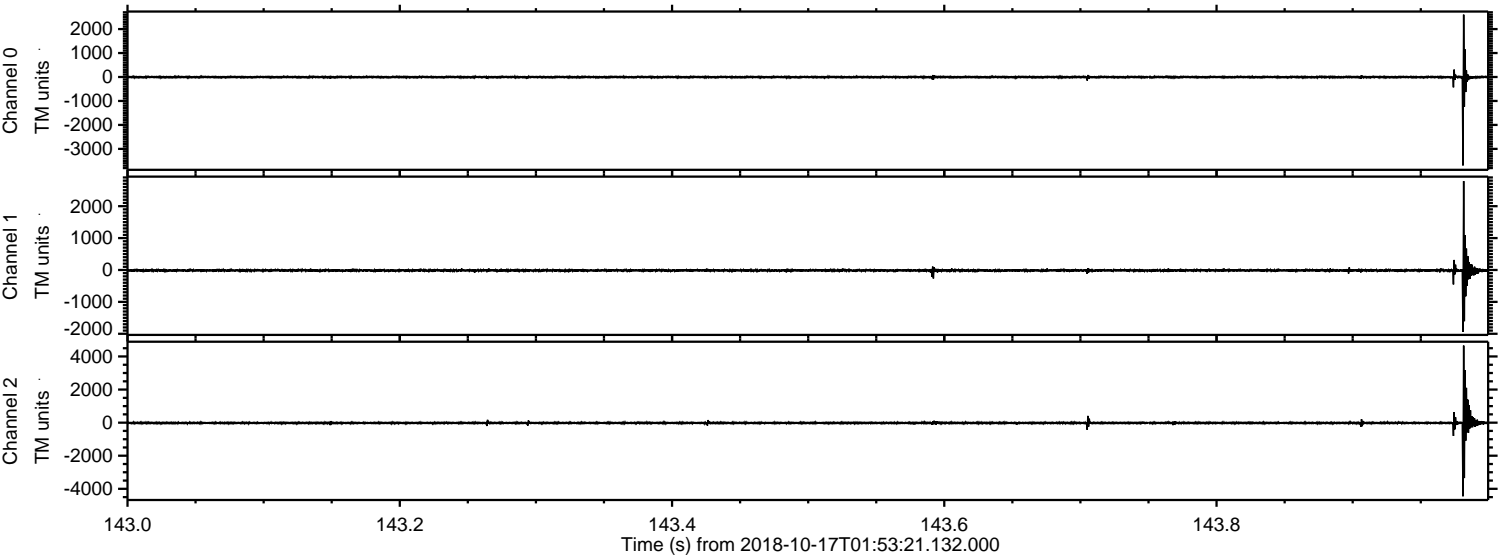


Processed Wed Oct 17 04:01:49 2018 by ELM ver.2012-10-06 from 001__elm20181017_015320__dat00.bin

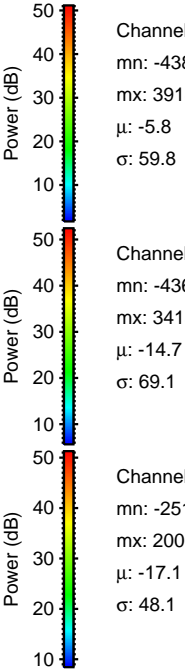
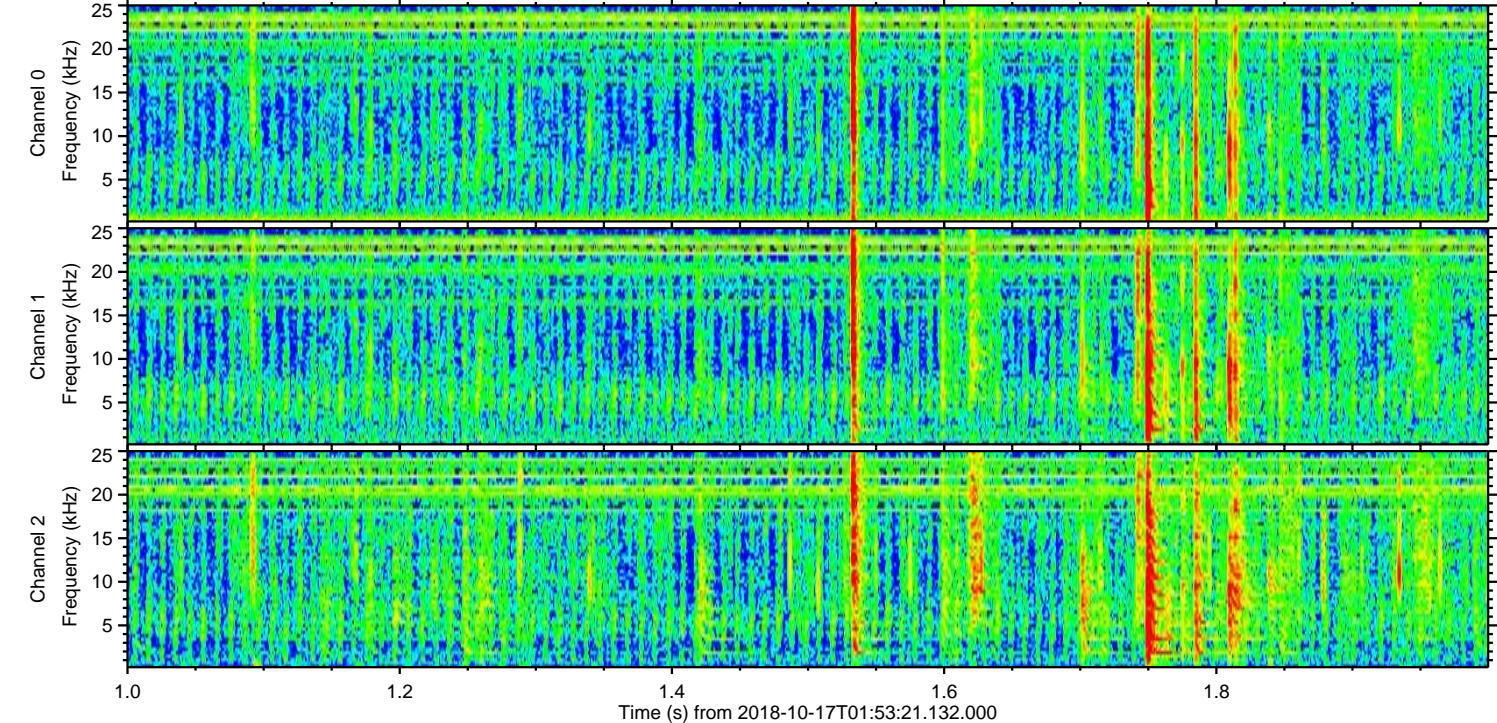
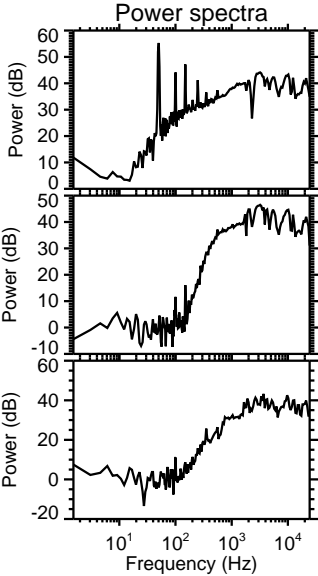
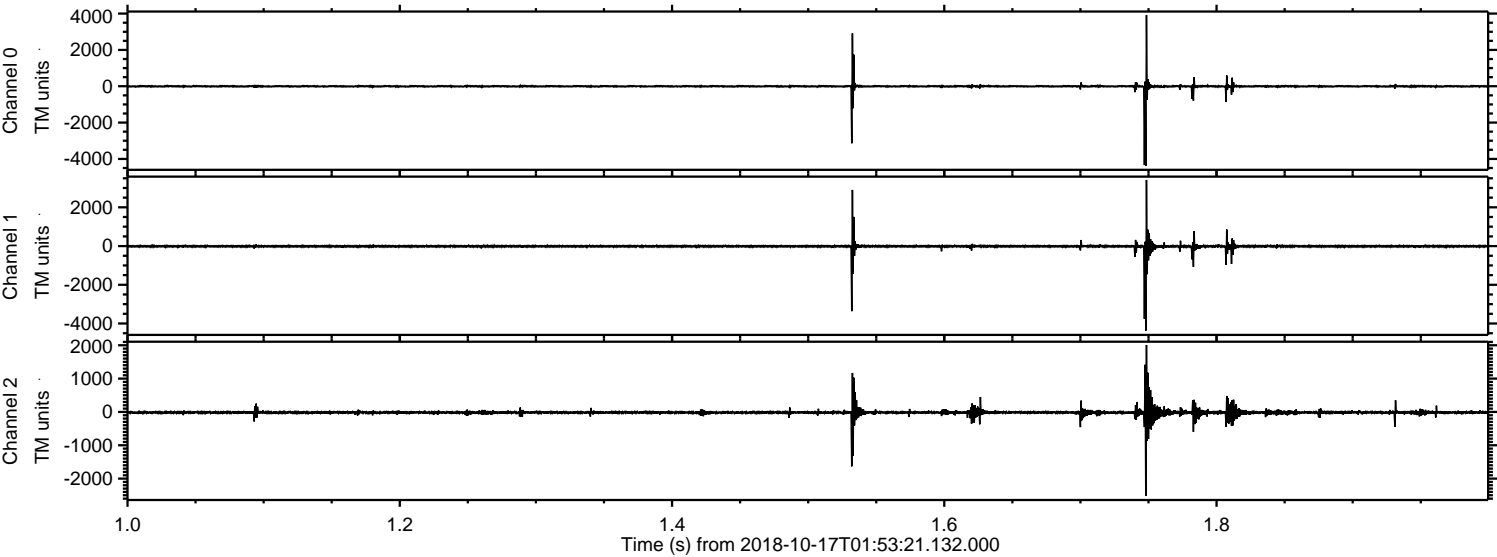


ELMAVAN 3D WAVEFORMS (Measured data sampled at 50 kHz) 51000 packets of 144 samples from 2018-10-17T01:53:21.132.000. Part 144/147

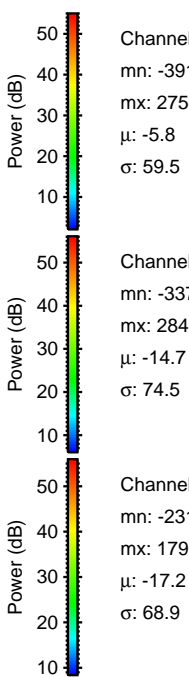
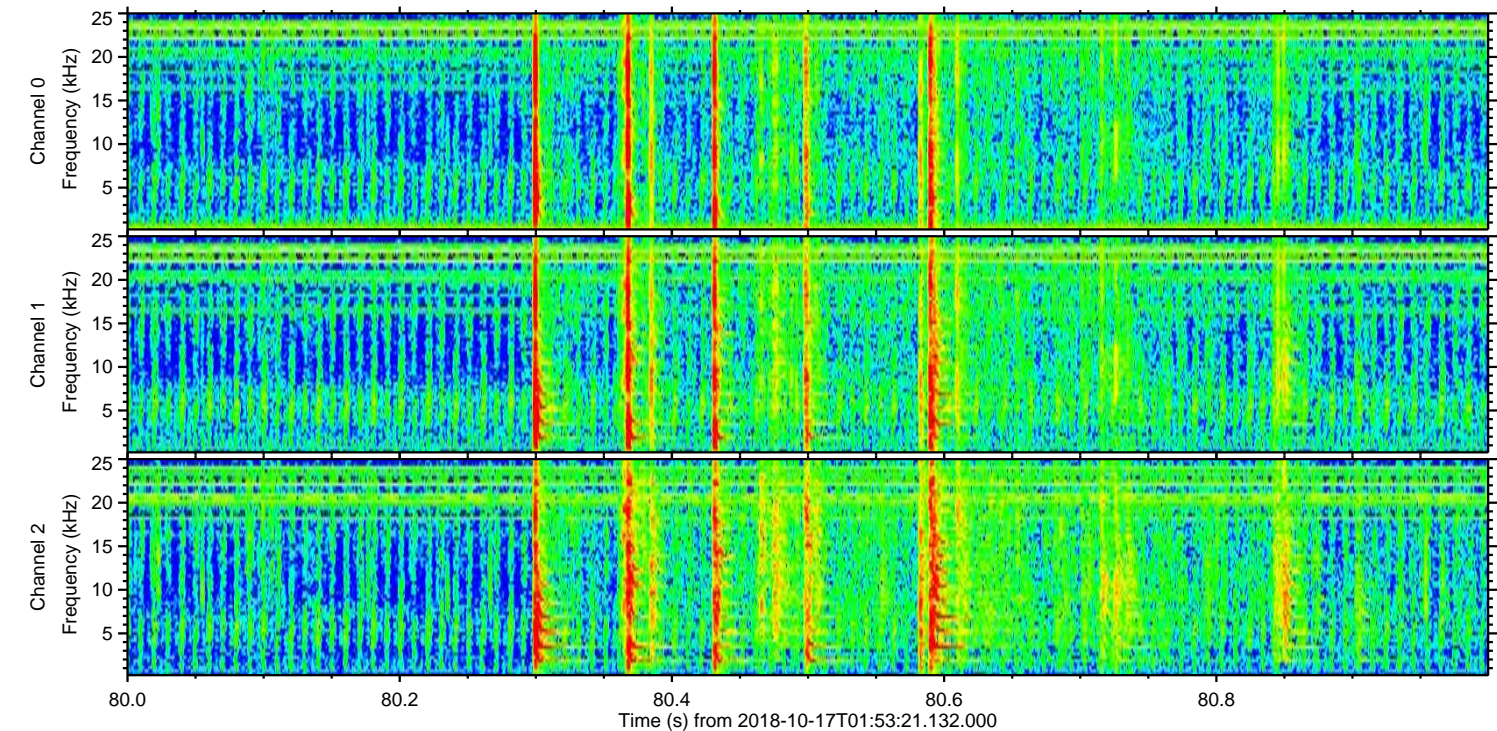
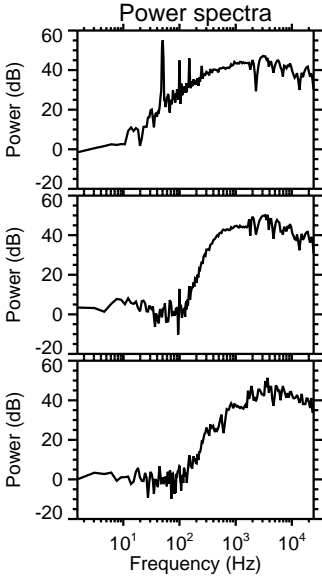
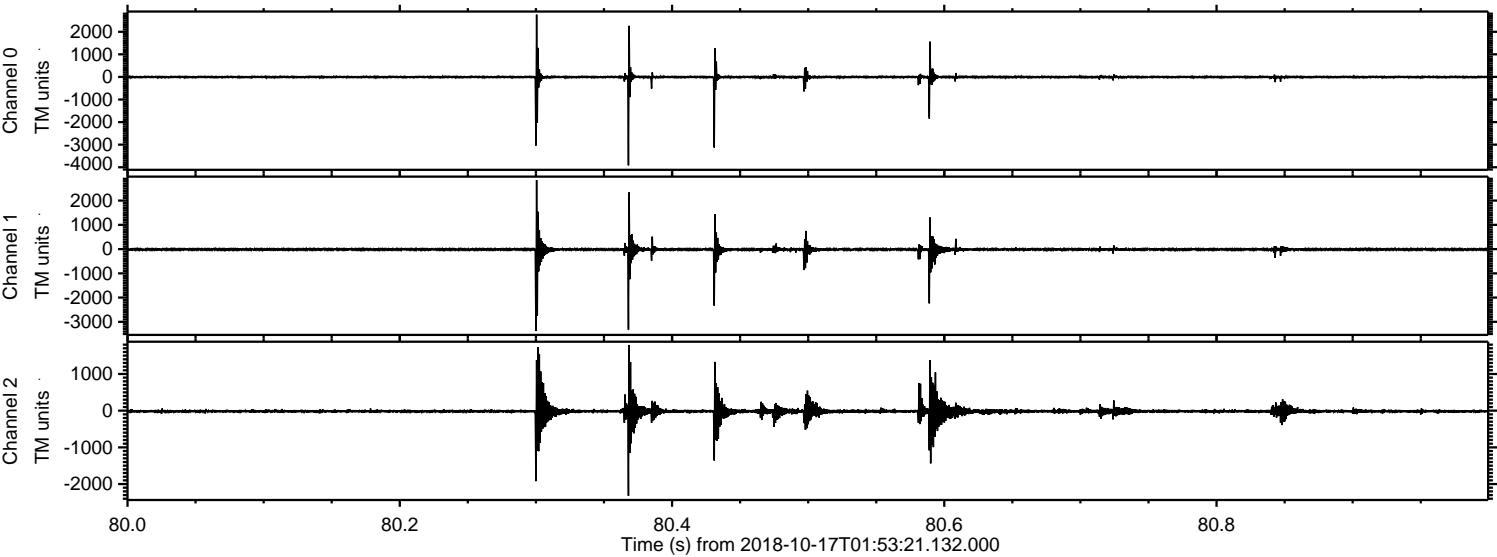
Processed Wed Oct 17 04:01:50 2018 by ELM ver.2012-10-06 from 001__elm20181017_015320__dat00.bin



Processed Wed Oct 17 04:01:51 2018 by ELM ver.2012-10-06 from 001__elm20181017_015320__dat00.bin



Processed Wed Oct 17 04:01:52 2018 by ELM ver.2012-10-06 from 001__elm20181017_015320__dat00.bin



Channel 0
mn: -3918
mx: 2758
 μ : -5.8
 σ : 59.5

Channel 1
mn: -3370
mx: 2847
 μ : -14.7
 σ : 74.5

Channel 2
mn: -2319
mx: 1790
 μ : -17.2
 σ : 68.9

Processed Wed Oct 17 04:01:53 2018 by ELM ver.2012-10-06 from 001__elm20181017_015320__dat00.bin

