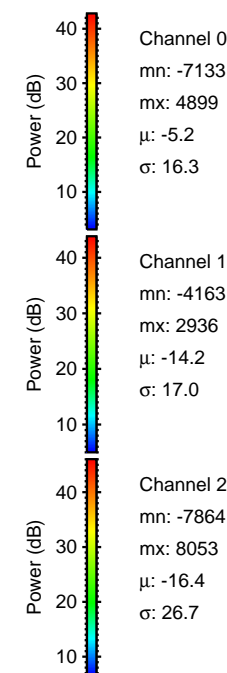
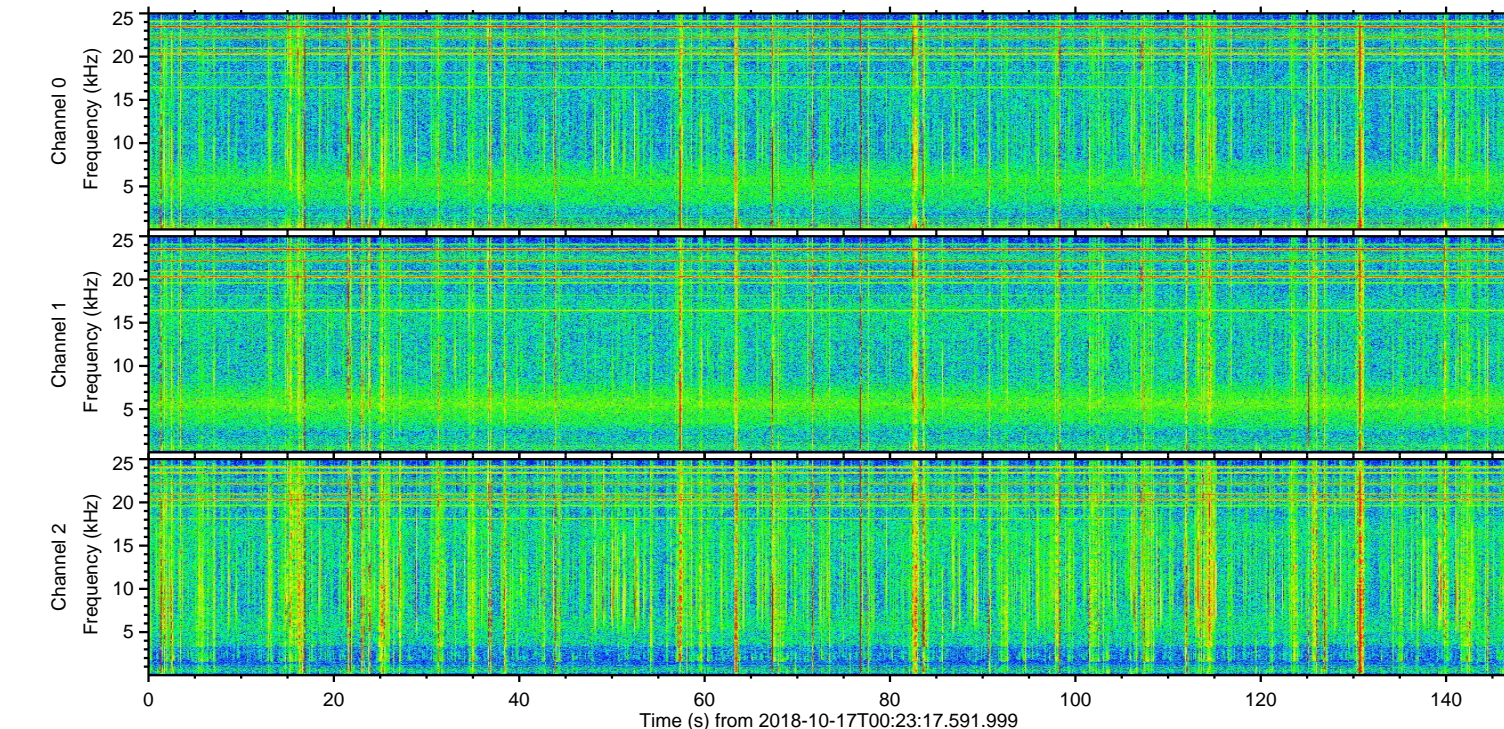
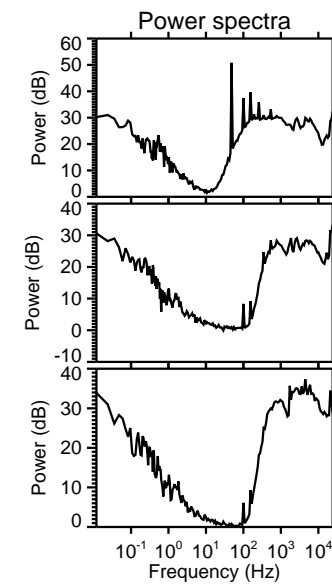
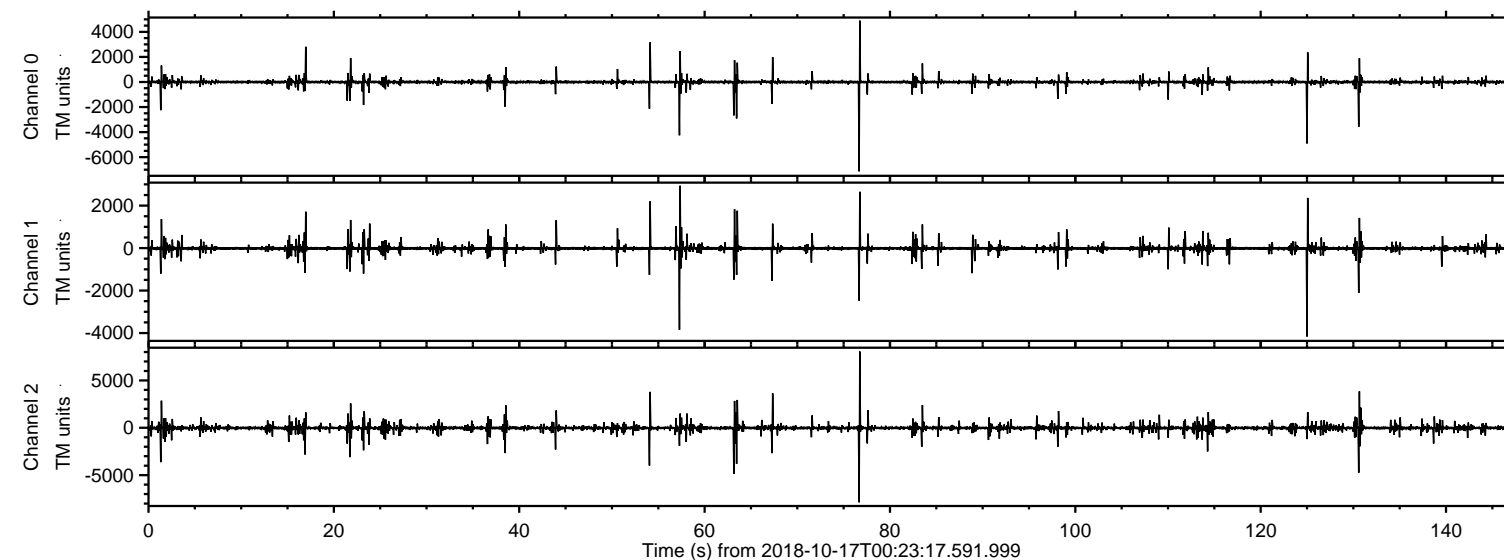


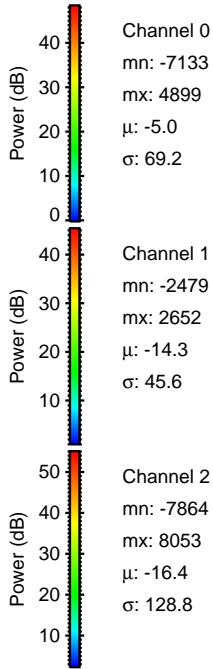
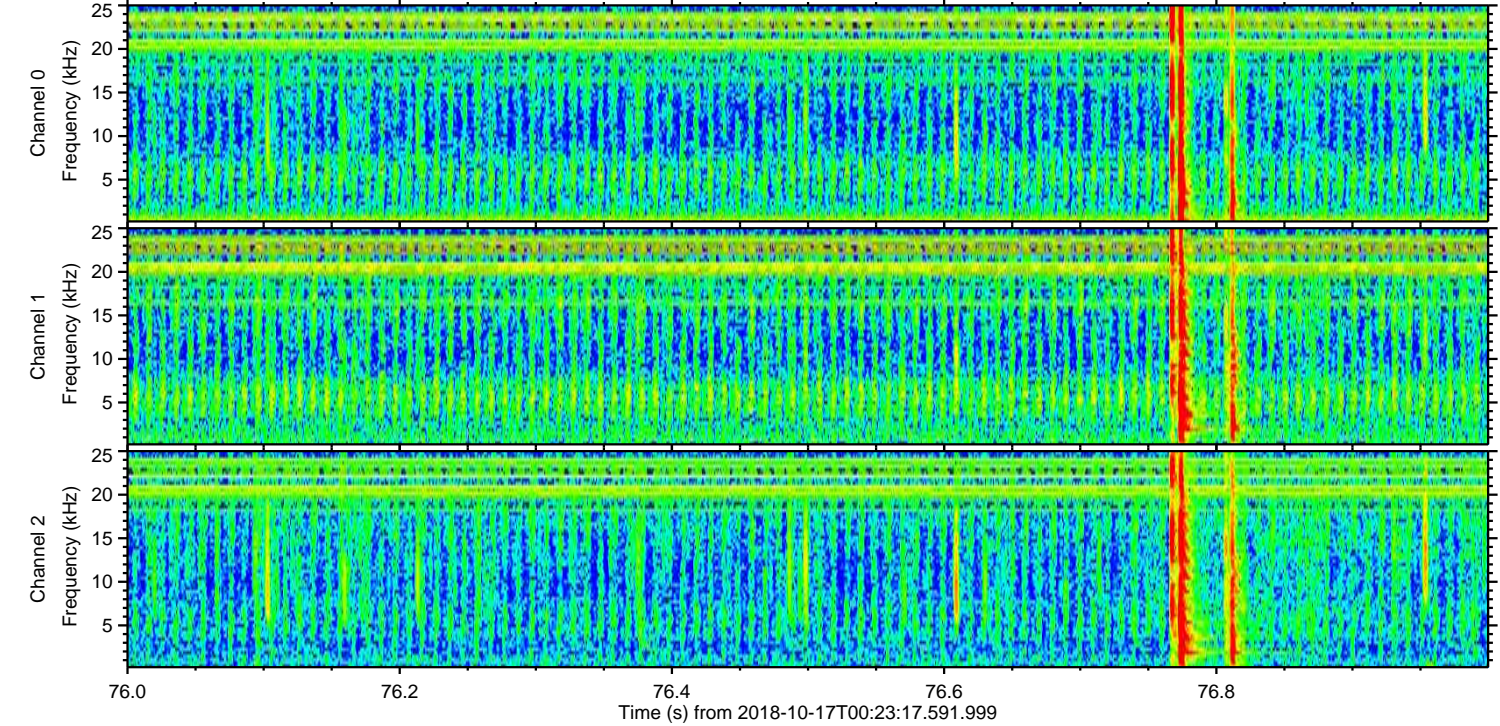
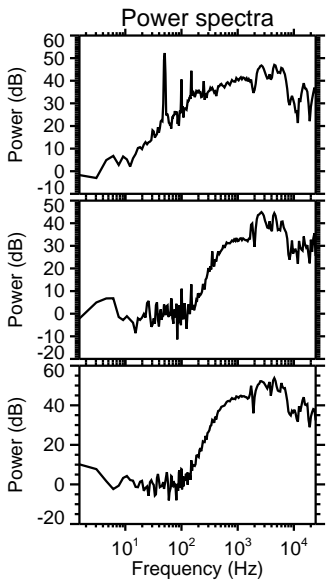
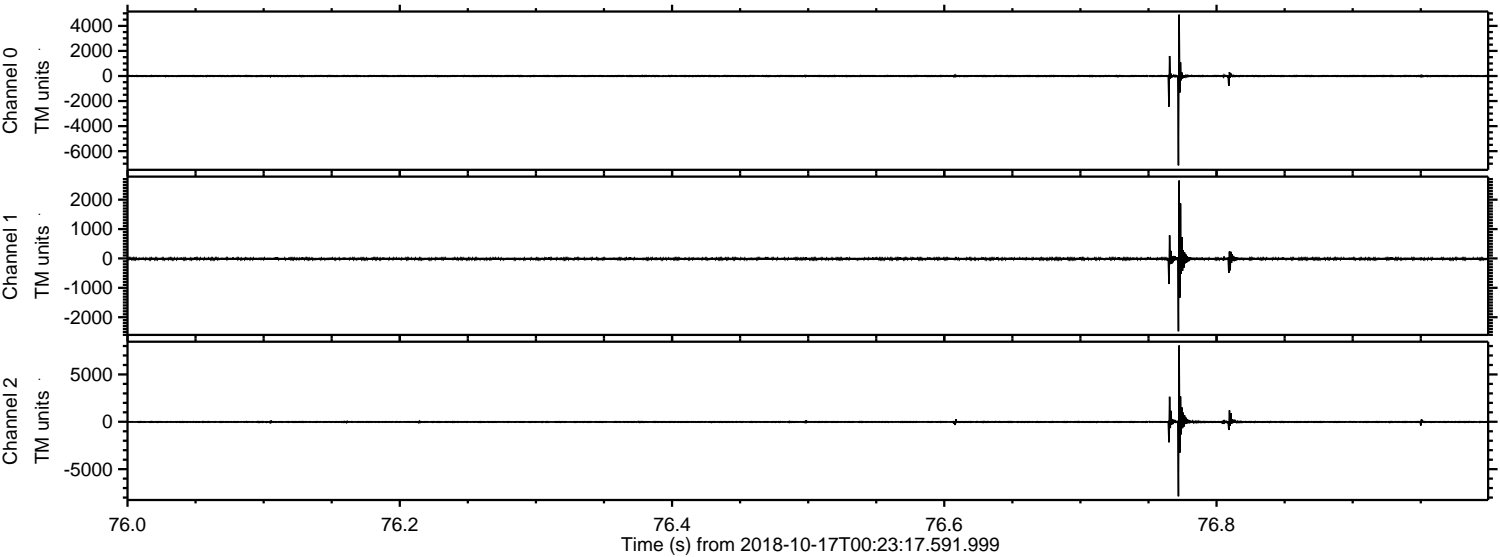
# ELMAVAN 3D WAVEFORMS (Measured data sampled at 50 kHz) 51000 packets of 144 samples from 2018-10-17T00:23:17.591.999.

Processed Wed Oct 17 02:31:45 2018 by ELM ver.2012-10-06 from 001\_\_elm20181017\_002316\_\_dat00.bin





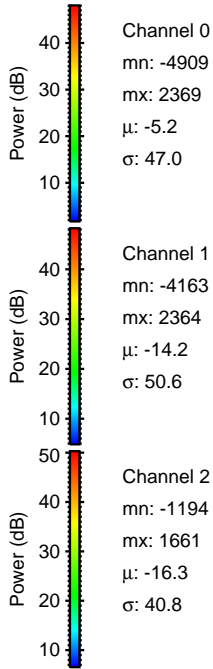
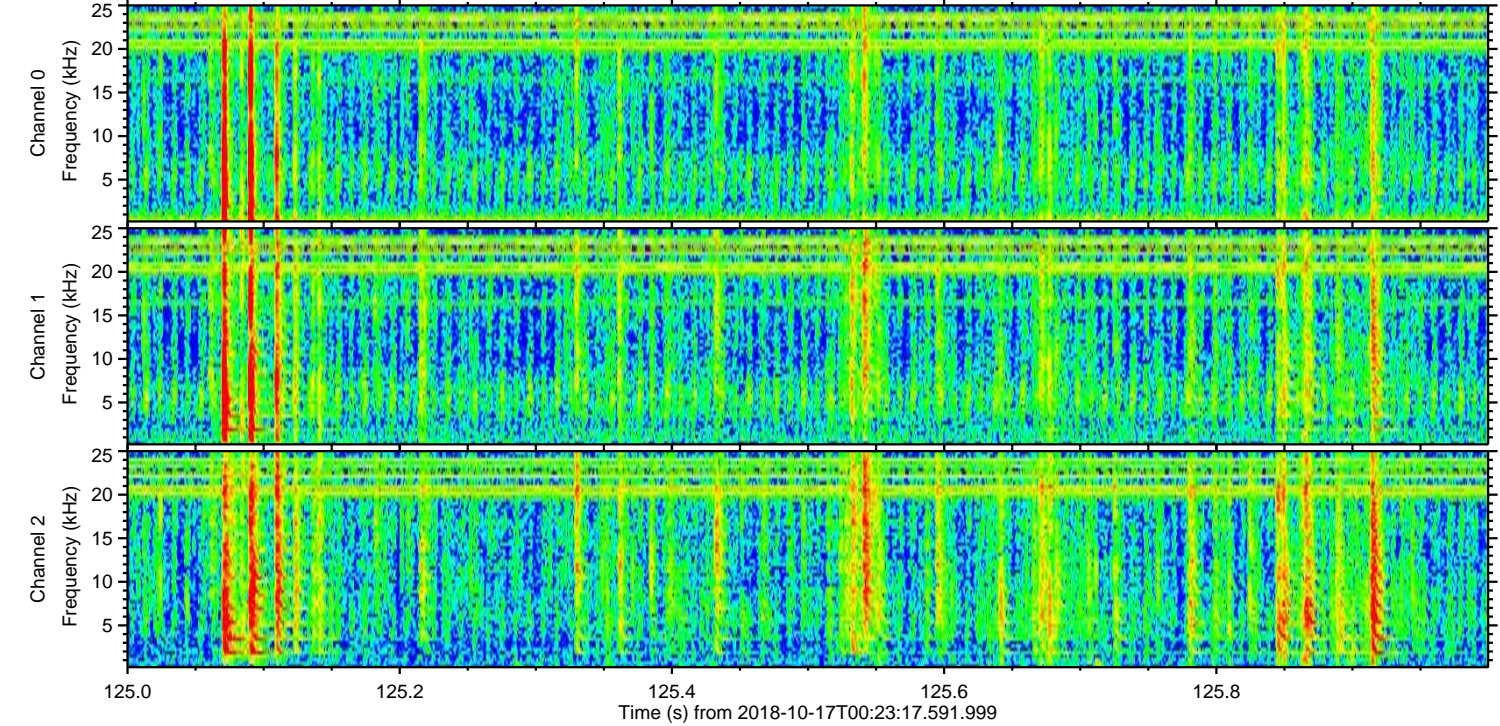
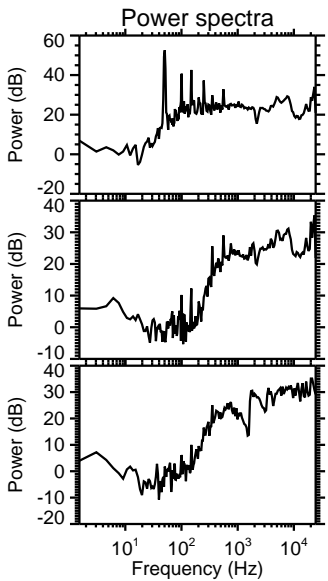
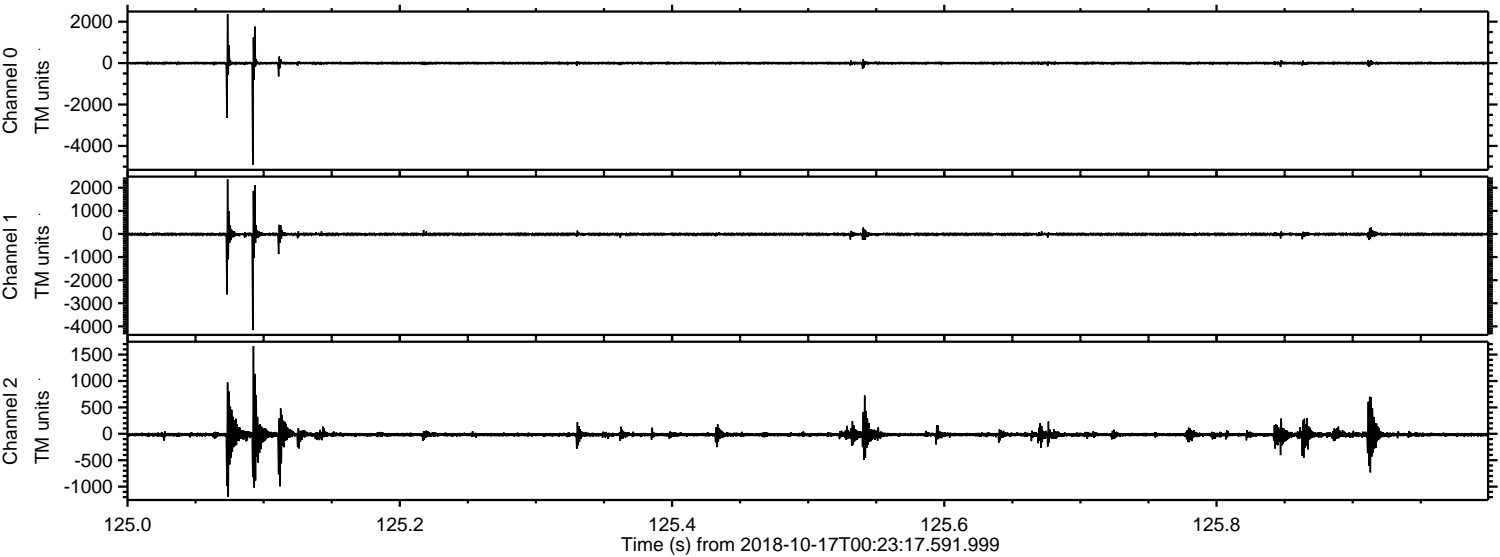
Processed Wed Oct 17 02:31:56 2018 by ELM ver.2012-10-06 from 001\_\_elm20181017\_002316\_\_dat00.bin





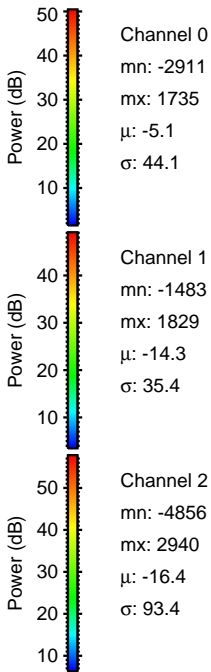
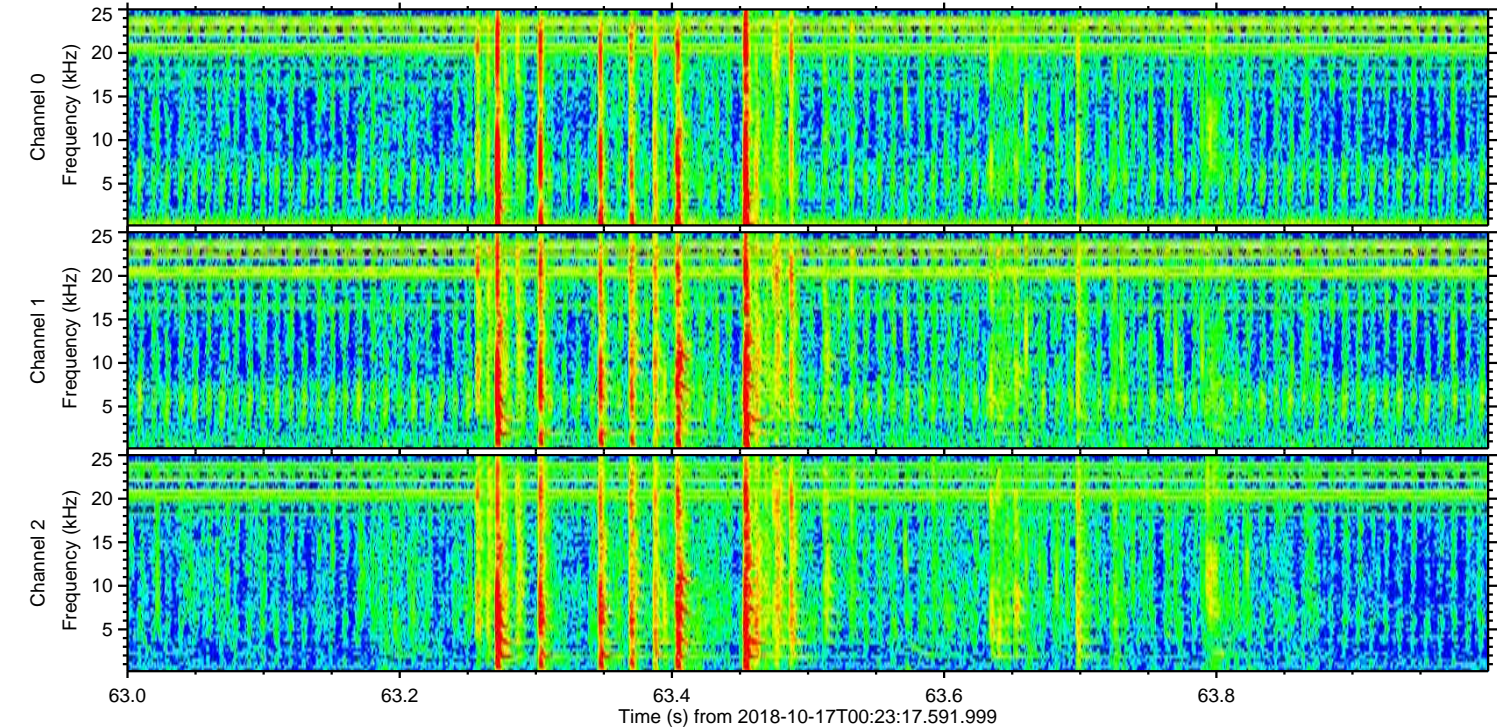
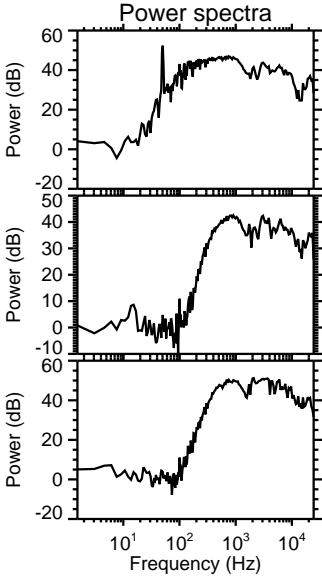
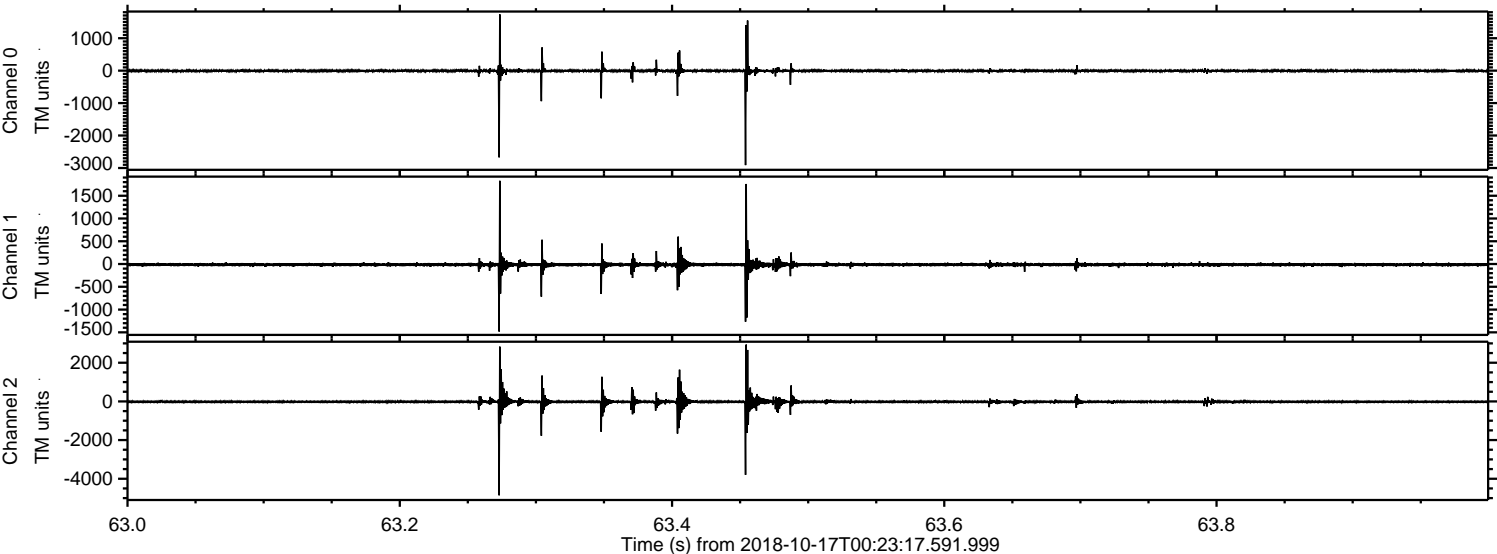
ELMAVAN 3D WAVEFORMS (Measured data sampled at 50 kHz) 51000 packets of 144 samples from 2018-10-17T00:23:17.591.999. Part 126/147

Processed Wed Oct 17 02:31:57 2018 by ELM ver.2012-10-06 from 001\_\_elm20181017\_002316\_\_dat00.bin





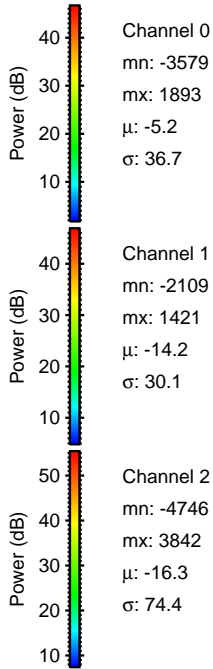
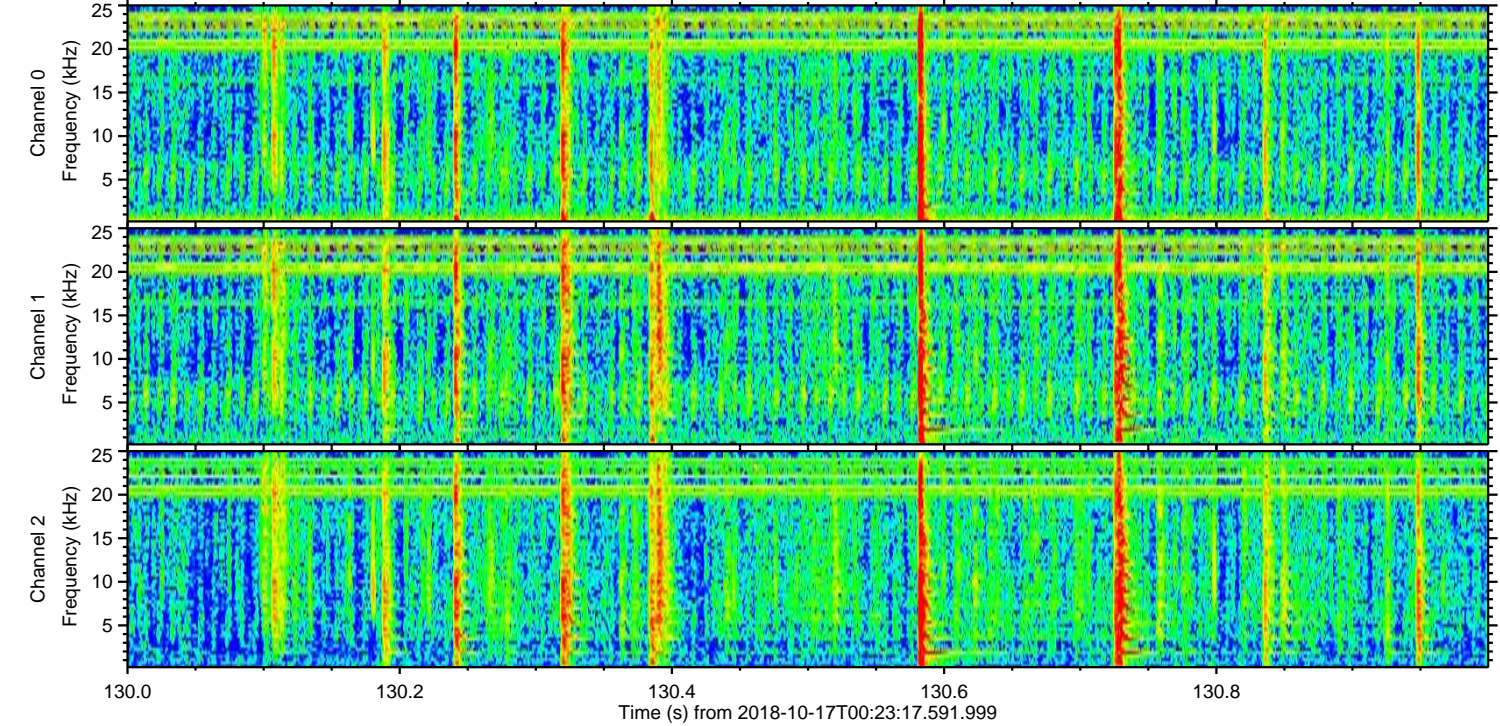
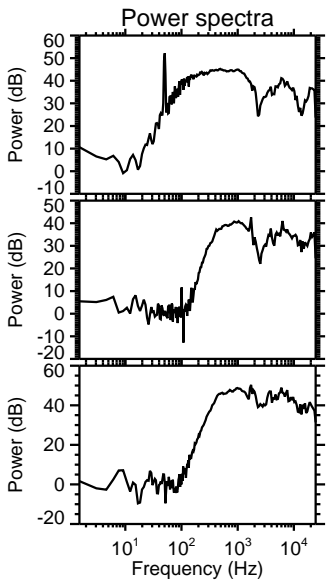
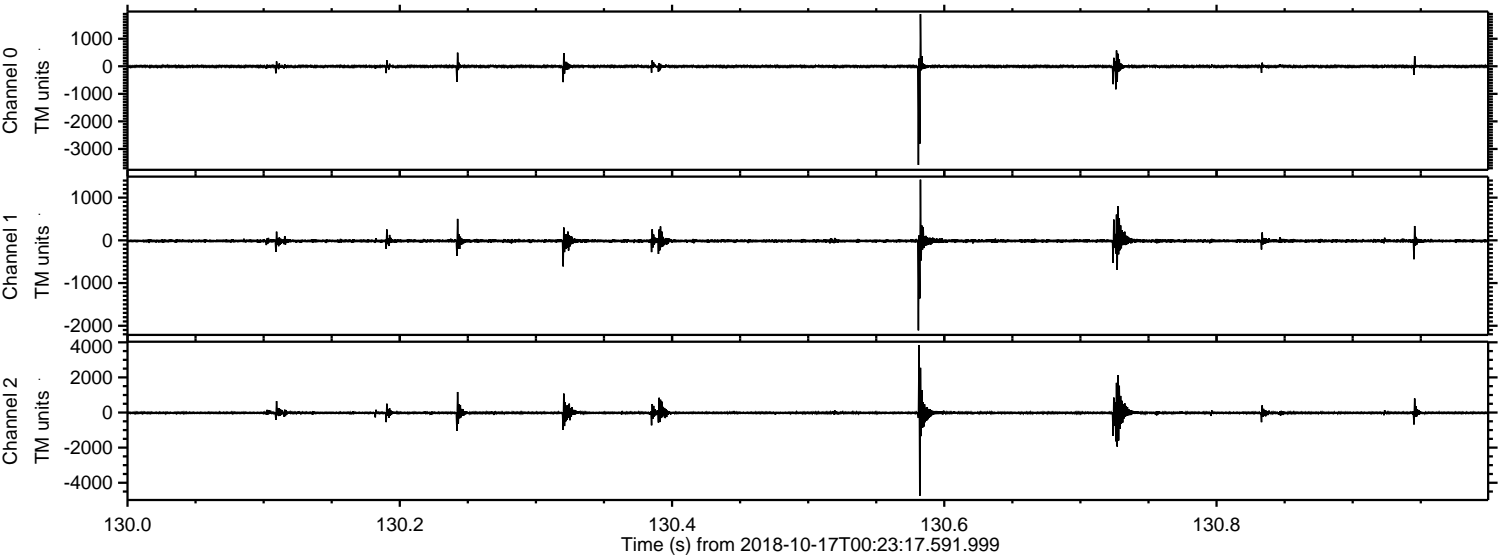
Processed Wed Oct 17 02:31:58 2018 by ELM ver.2012-10-06 from 001\_\_elm20181017\_002316\_\_dat00.bin





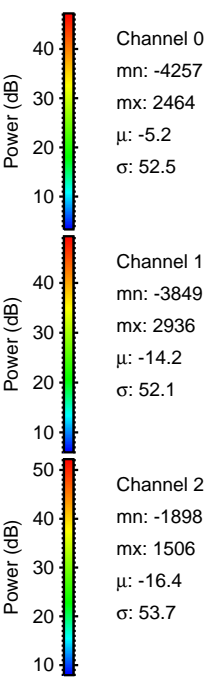
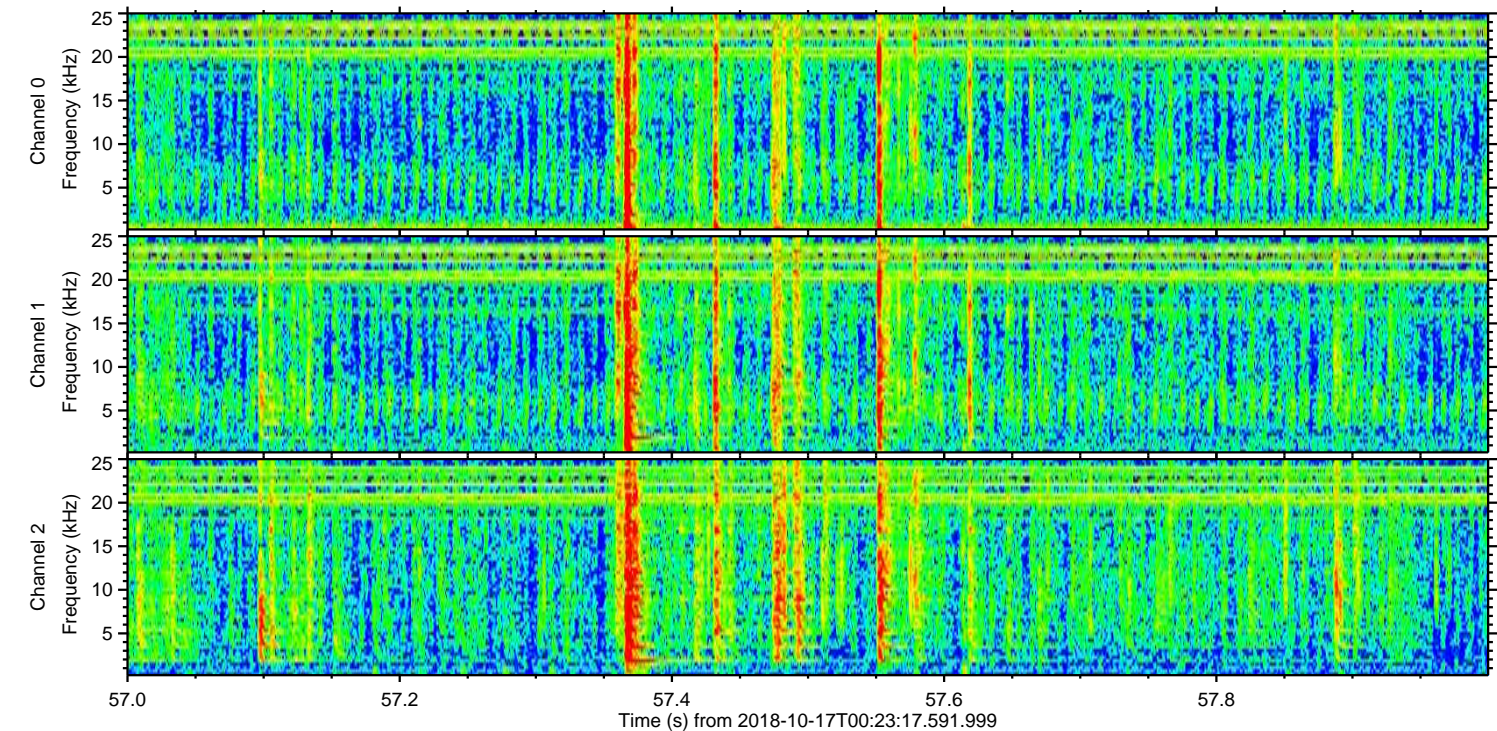
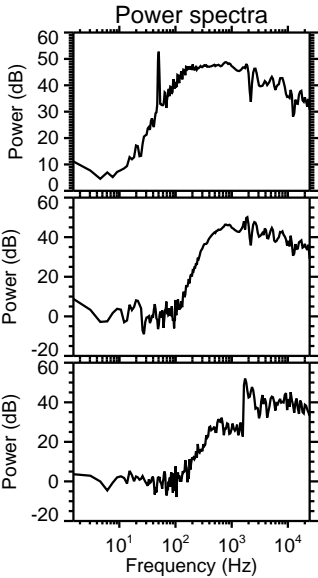
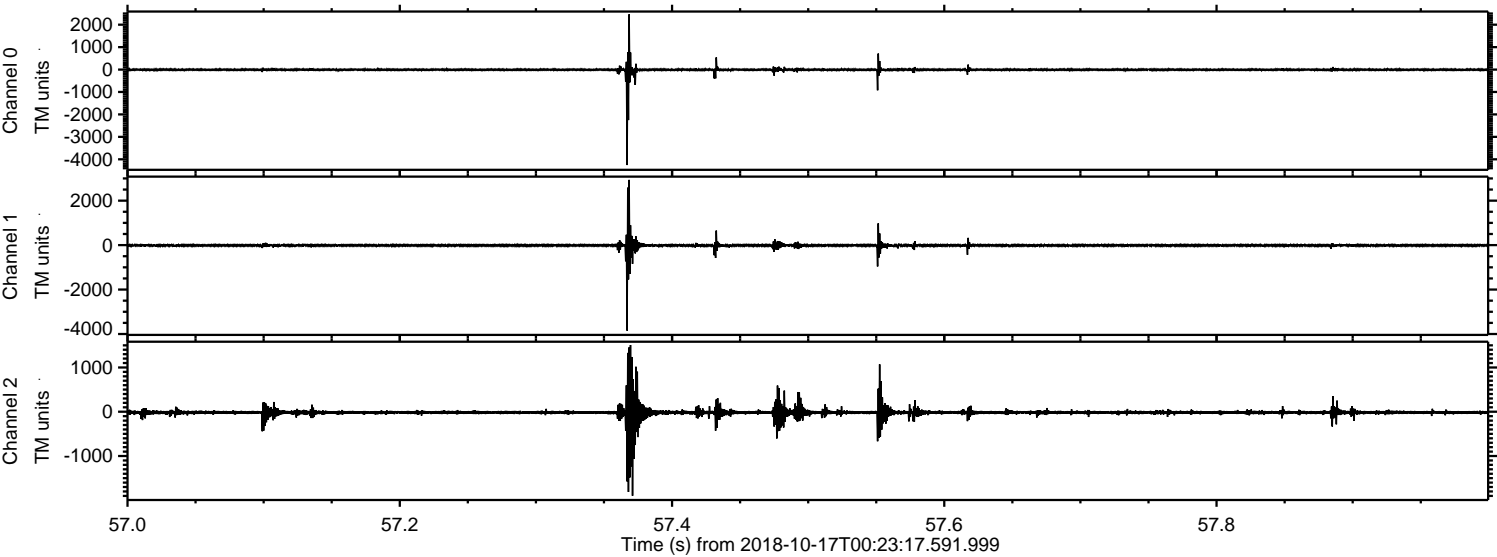
ELMAVAN 3D WAVEFORMS (Measured data sampled at 50 kHz) 51000 packets of 144 samples from 2018-10-17T00:23:17.591.999. Part 131/147

Processed Wed Oct 17 02:31:59 2018 by ELM ver.2012-10-06 from 001\_\_elm20181017\_002316\_\_dat00.bin



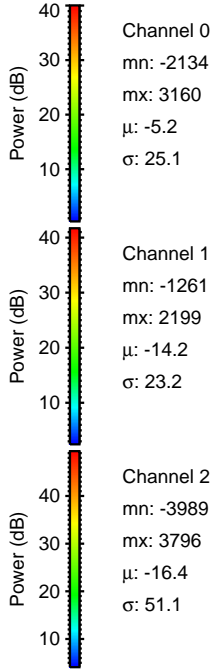
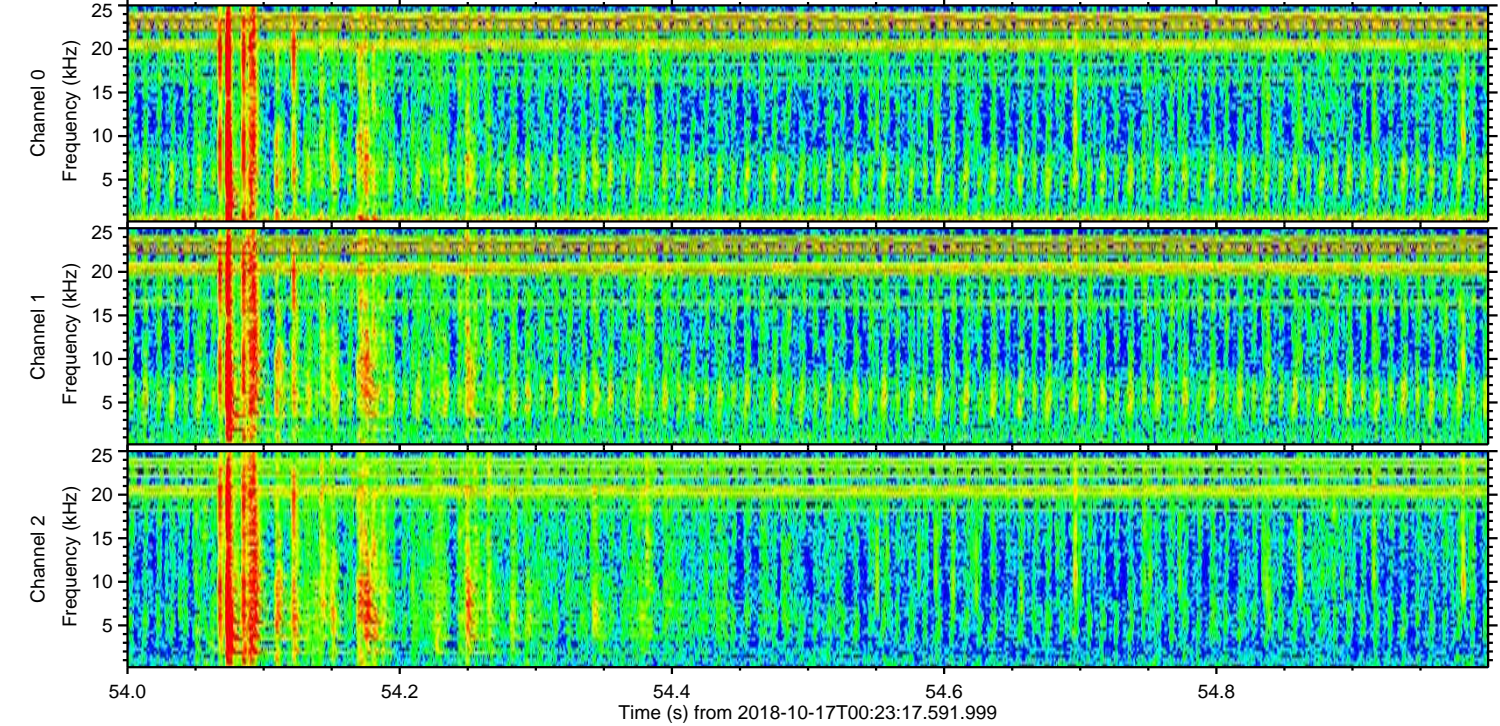
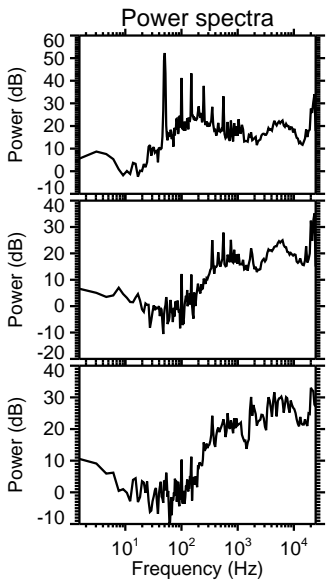
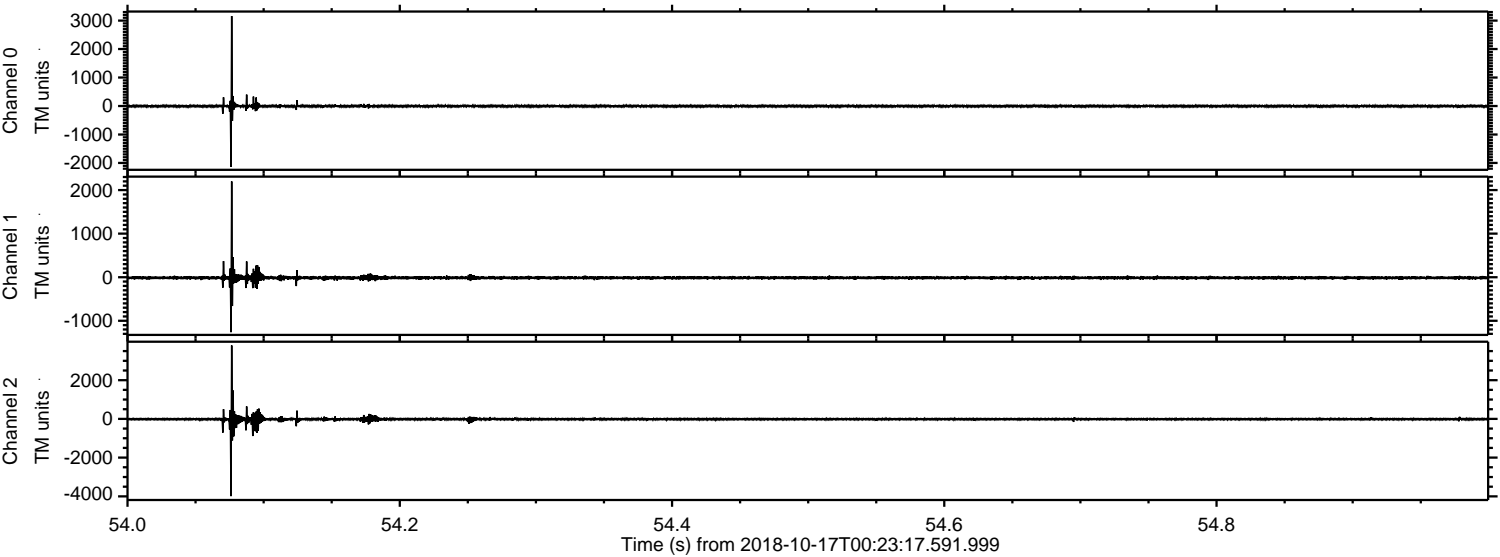


Processed Wed Oct 17 02:32:00 2018 by ELM ver.2012-10-06 from 001\_\_elm20181017\_002316\_\_dat00.bin



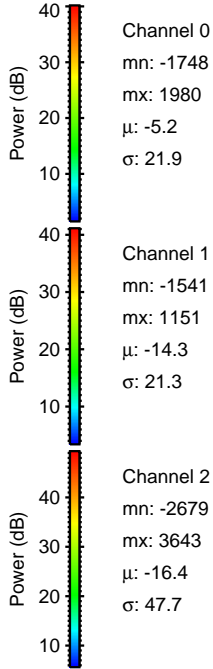
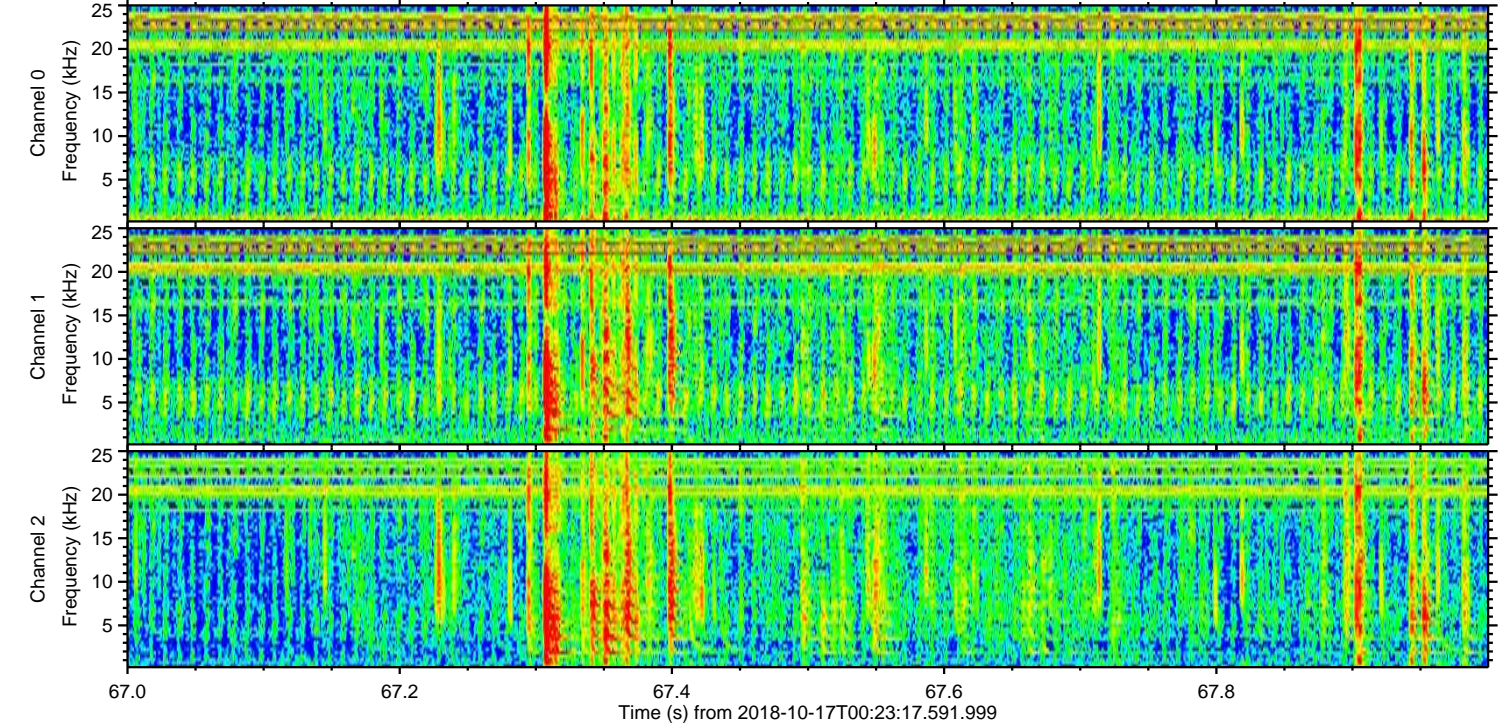
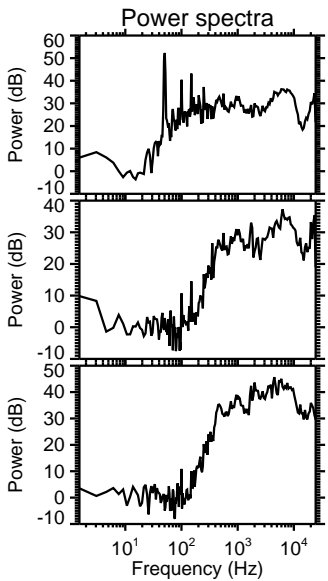
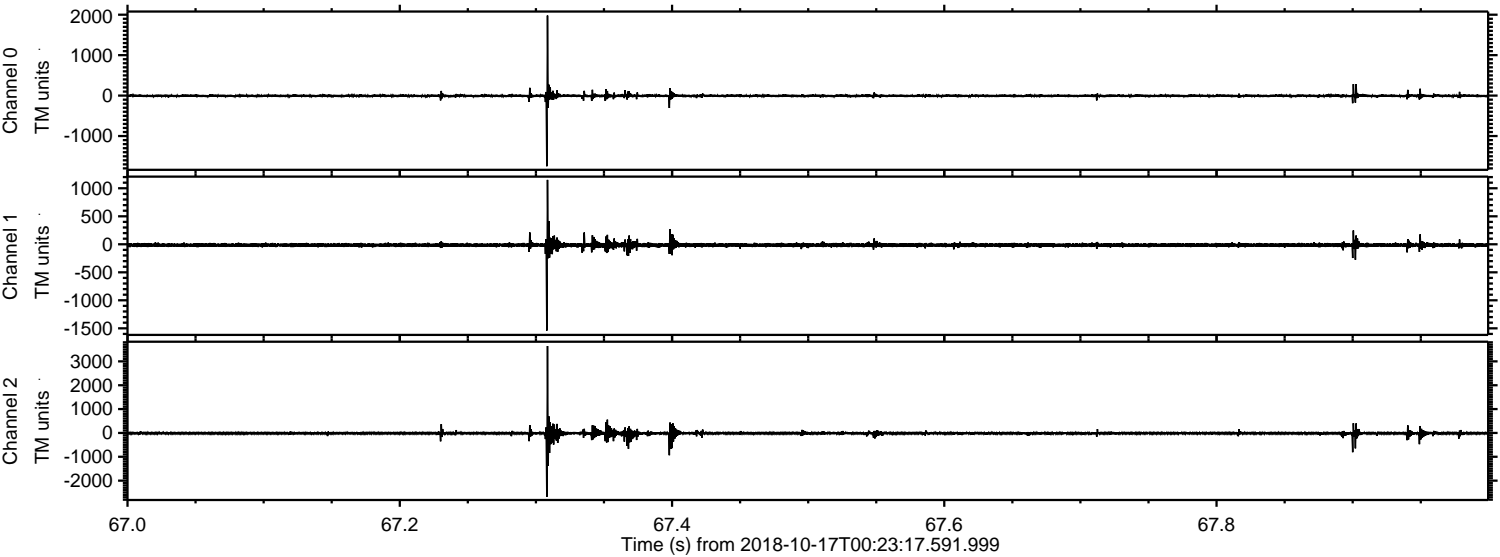


Processed Wed Oct 17 02:32:01 2018 by ELM ver.2012-10-06 from 001\_\_elm20181017\_002316\_\_dat00.bin



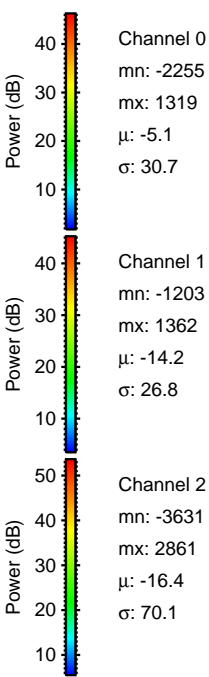
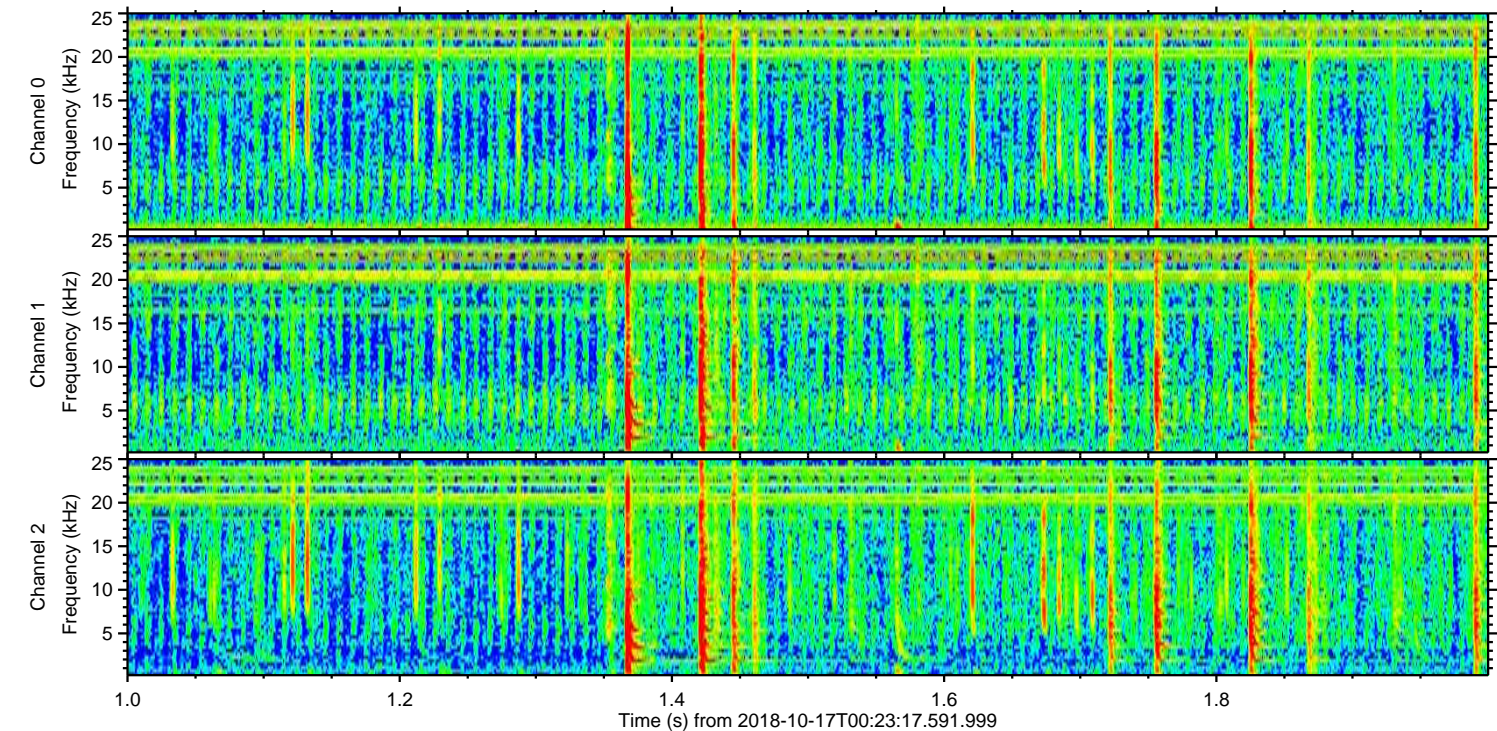
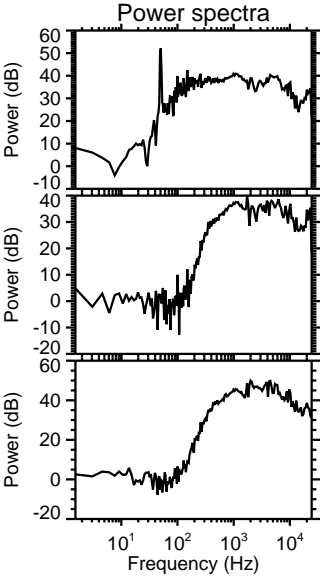
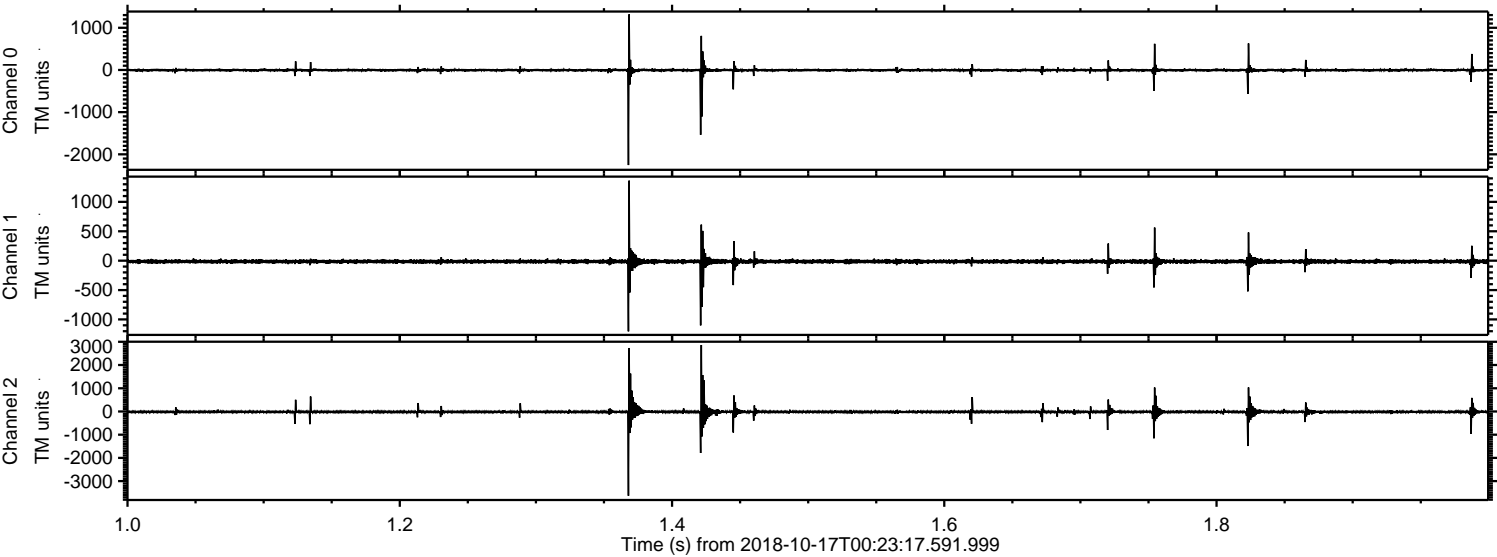


Processed Wed Oct 17 02:32:02 2018 by ELM ver.2012-10-06 from 001\_\_elm20181017\_002316\_\_dat00.bin





Processed Wed Oct 17 02:32:03 2018 by ELM ver.2012-10-06 from 001\_\_elm20181017\_002316\_\_dat00.bin



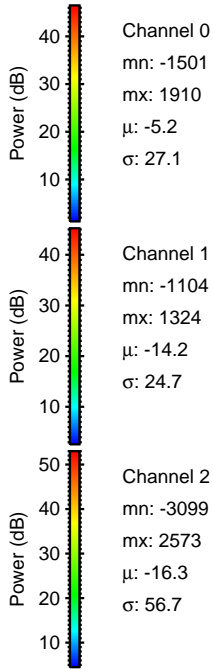
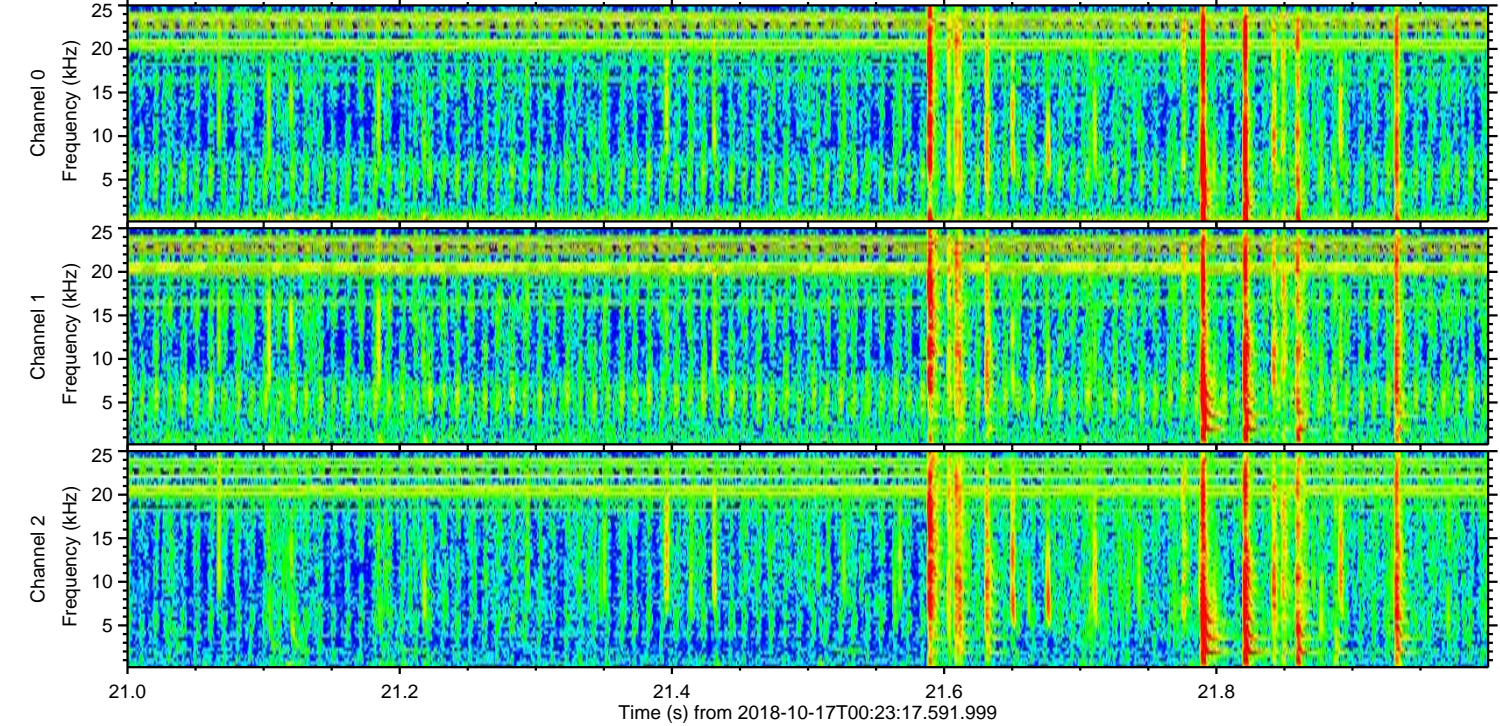
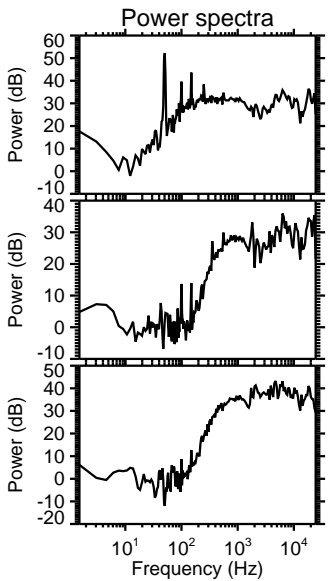
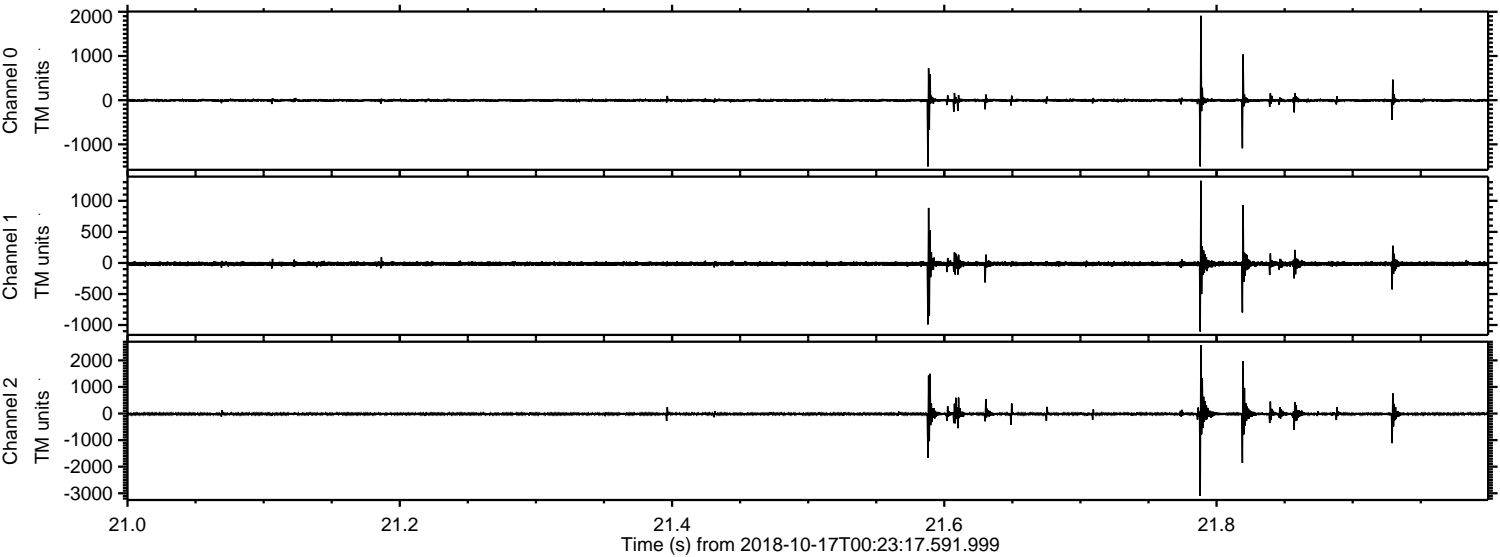
Channel 0  
mn: -2255  
mx: 1319  
 $\mu$ : -5.1  
 $\sigma$ : 30.7

Channel 1  
mn: -1203  
mx: 1362  
 $\mu$ : -14.2  
 $\sigma$ : 26.8

Channel 2  
mn: -3631  
mx: 2861  
 $\mu$ : -16.4  
 $\sigma$ : 70.1



Processed Wed Oct 17 02:32:04 2018 by ELM ver.2012-10-06 from 001\_\_elm20181017\_002316\_\_dat00.bin





Processed Wed Oct 17 02:32:05 2018 by ELM ver.2012-10-06 from 001\_\_elm20181017\_002316\_\_dat00.bin

