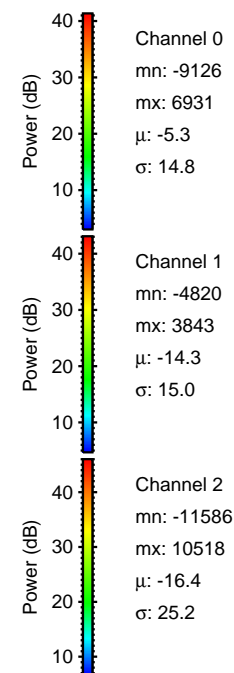
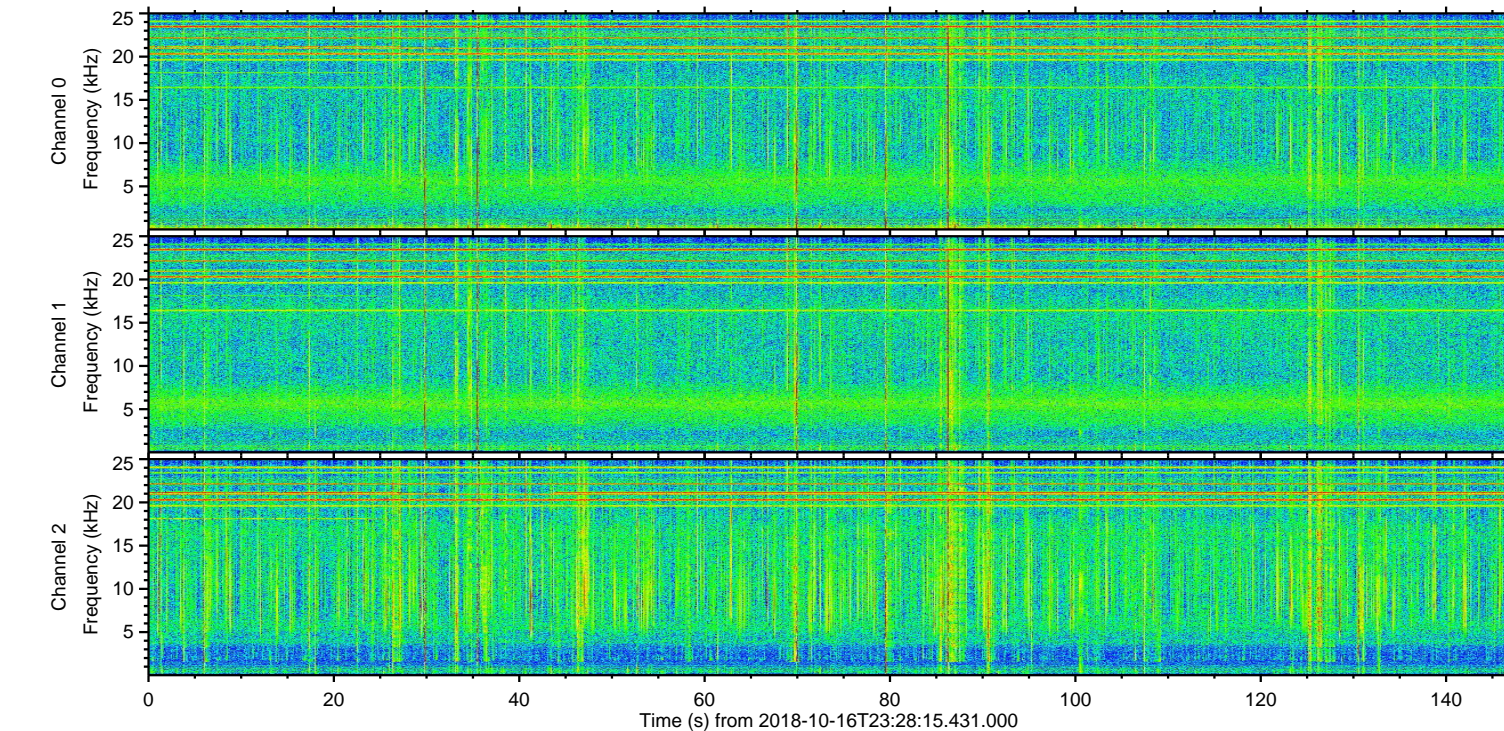
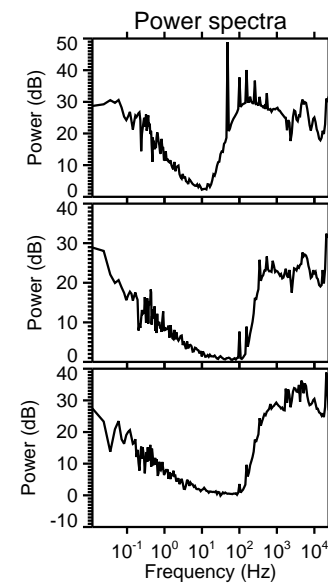
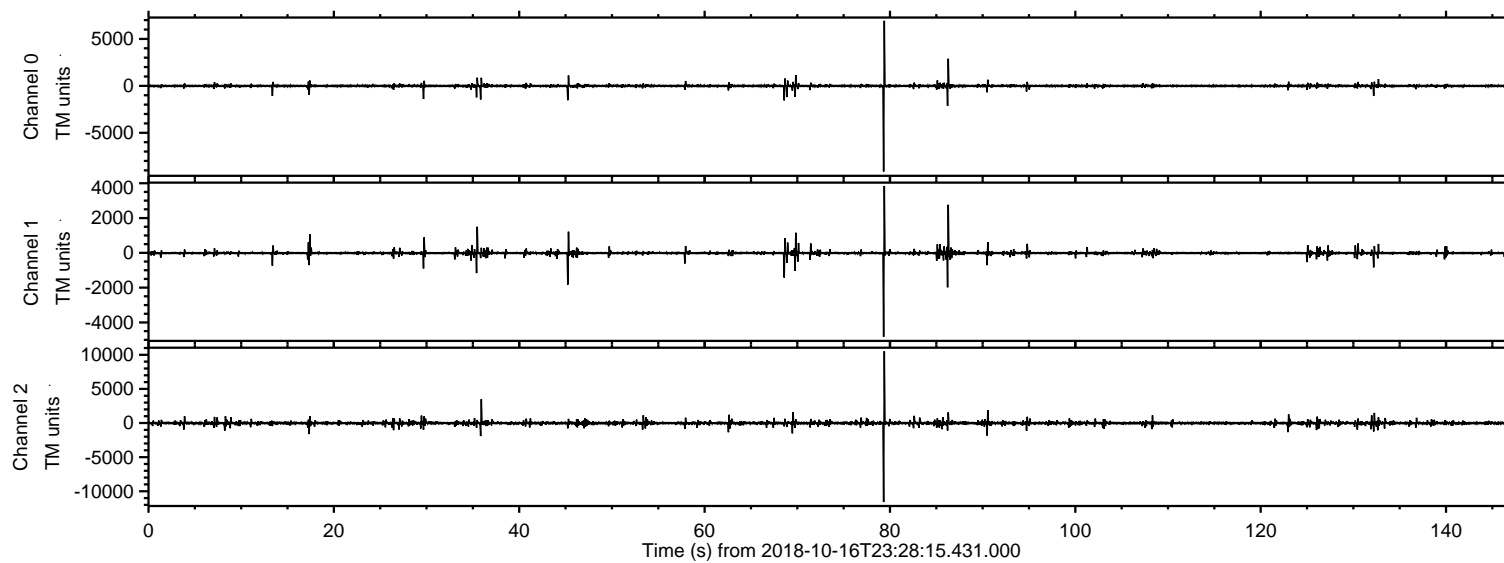
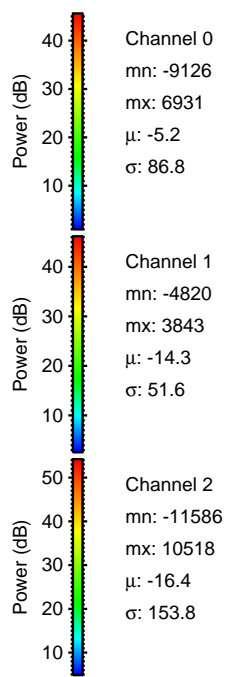
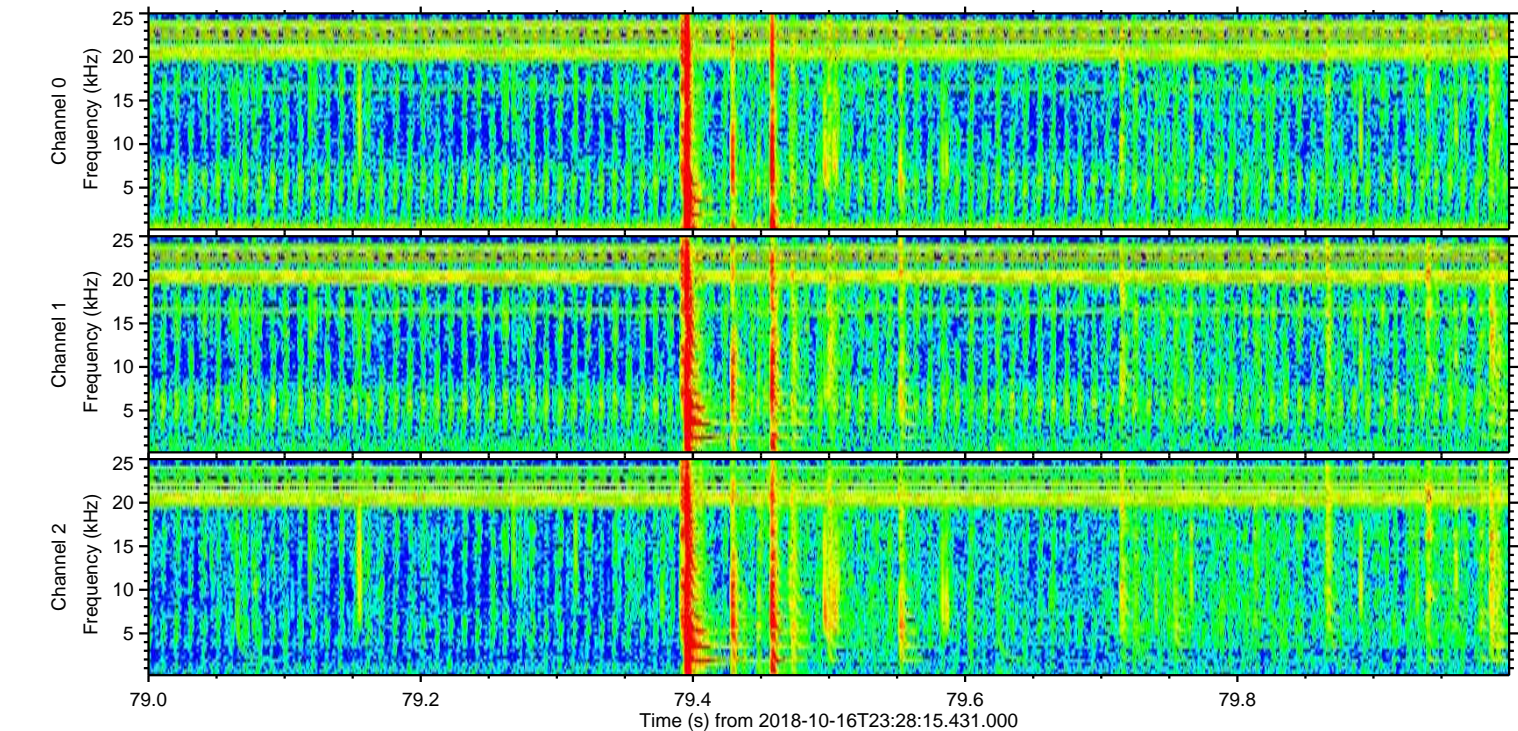
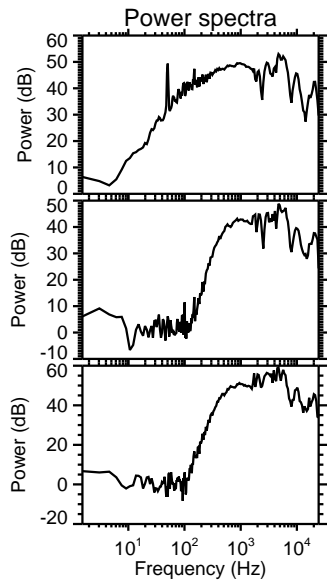
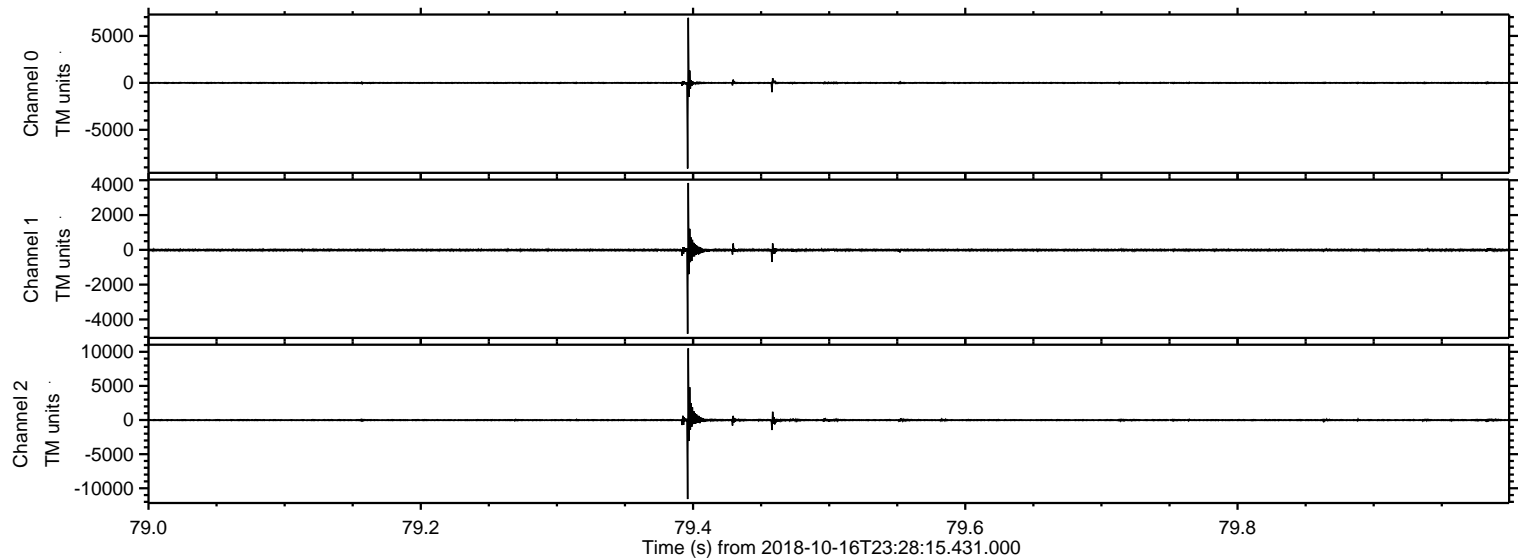


ELMAVAN 3D WAVEFORMS (Measured data sampled at 50 kHz) 51000 packets of 144 samples from 2018-10-16T23:28:15.431.000.

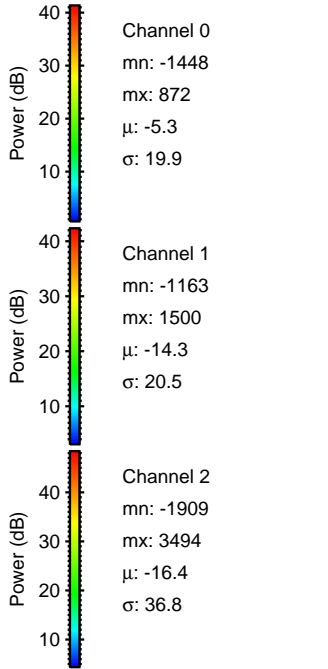
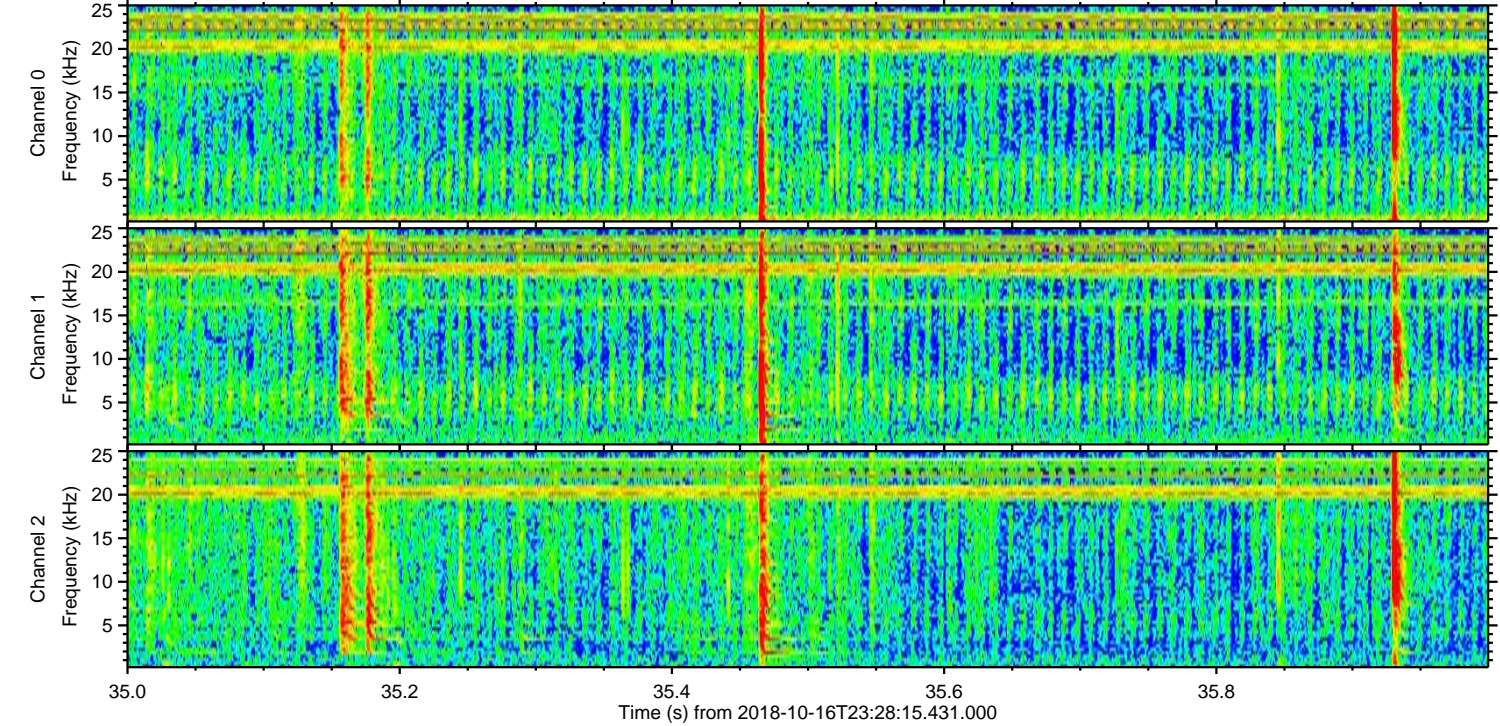
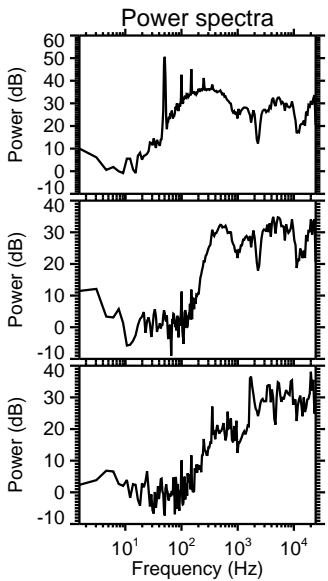
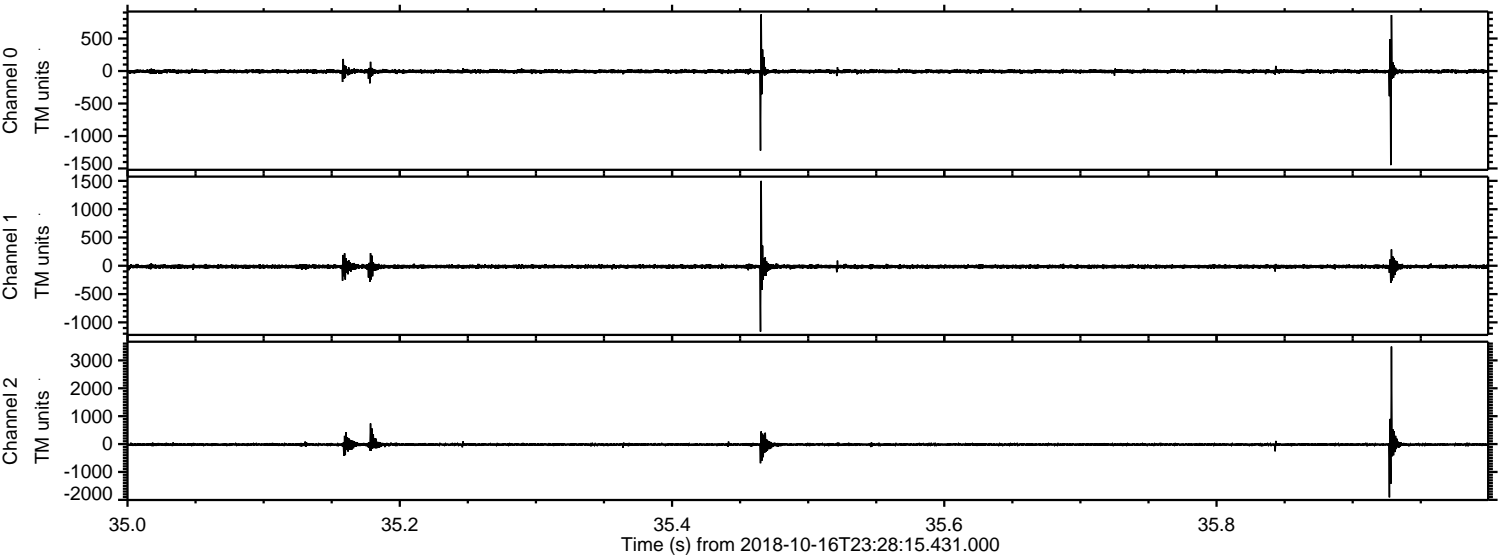
Processed Wed Oct 17 01:36:03 2018 by ELM ver.2012-10-06 from 001__elm20181016_232814__dat00.bin



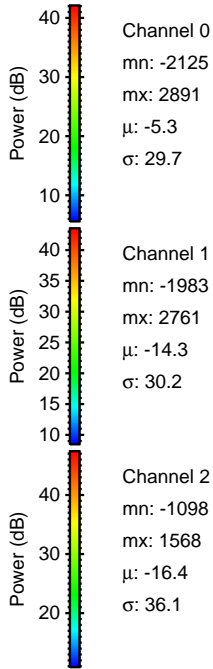
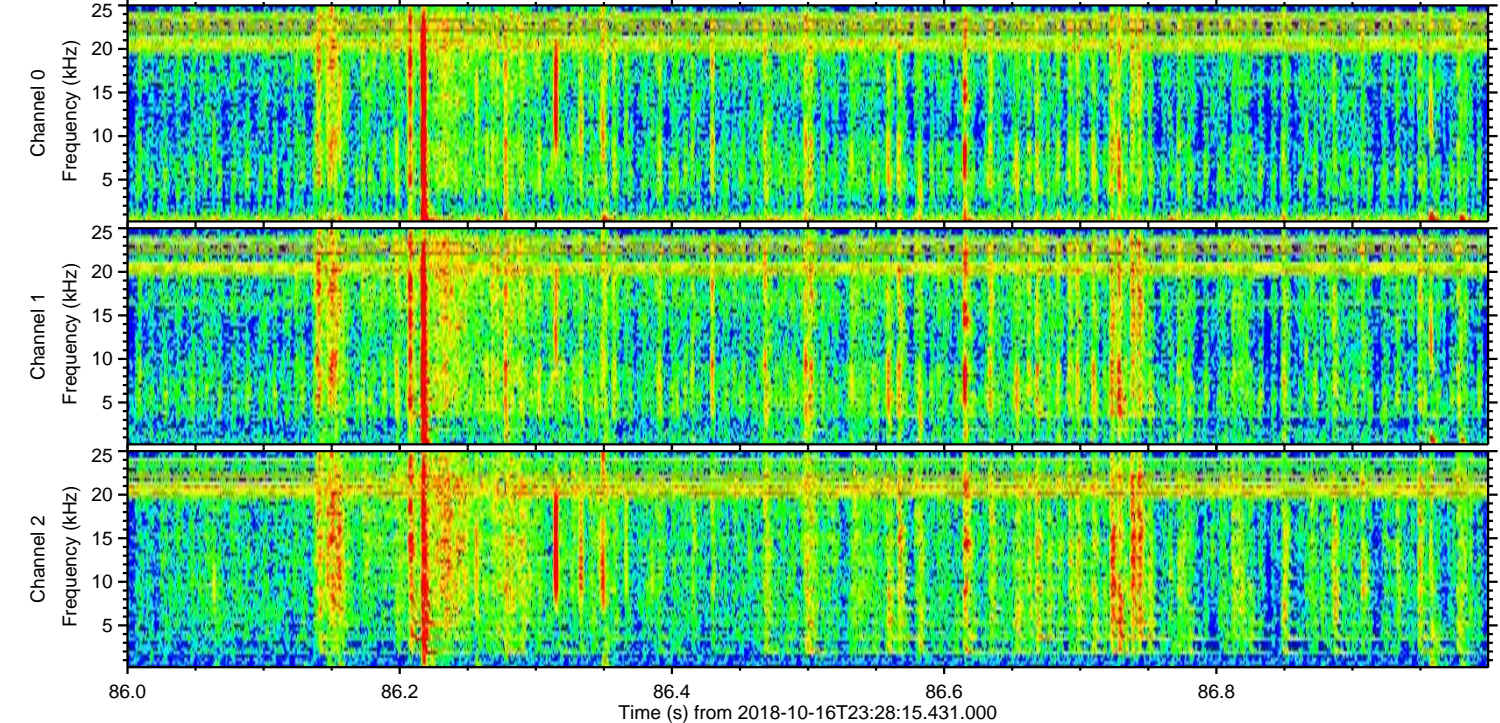
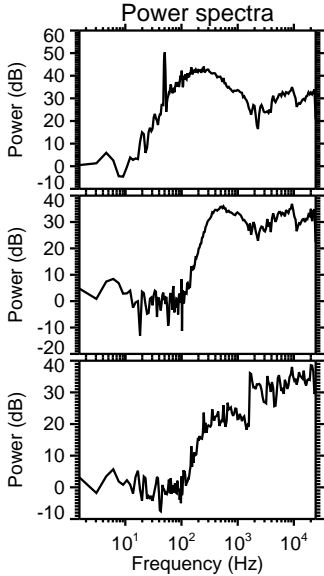
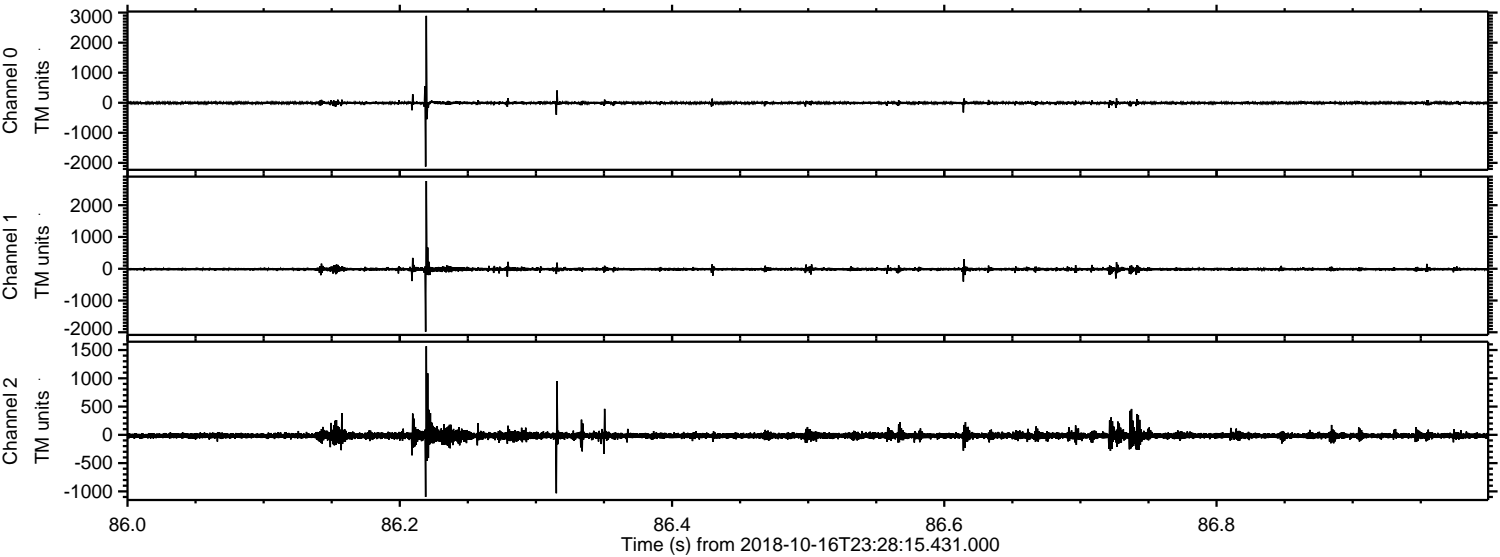
Processed Wed Oct 17 01:36:11 2018 by ELM ver.2012-10-06 from 001__elm20181016_232814__dat00.bin



Processed Wed Oct 17 01:36:12 2018 by ELM ver.2012-10-06 from 001__elm20181016_232814__dat00.bin



Processed Wed Oct 17 01:36:13 2018 by ELM ver.2012-10-06 from 001__elm20181016_232814__dat00.bin

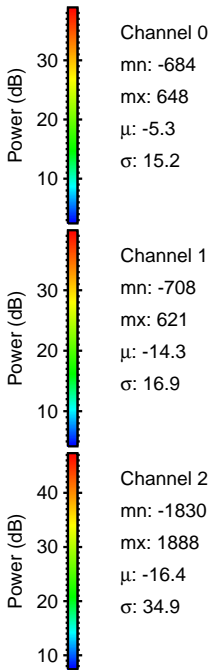
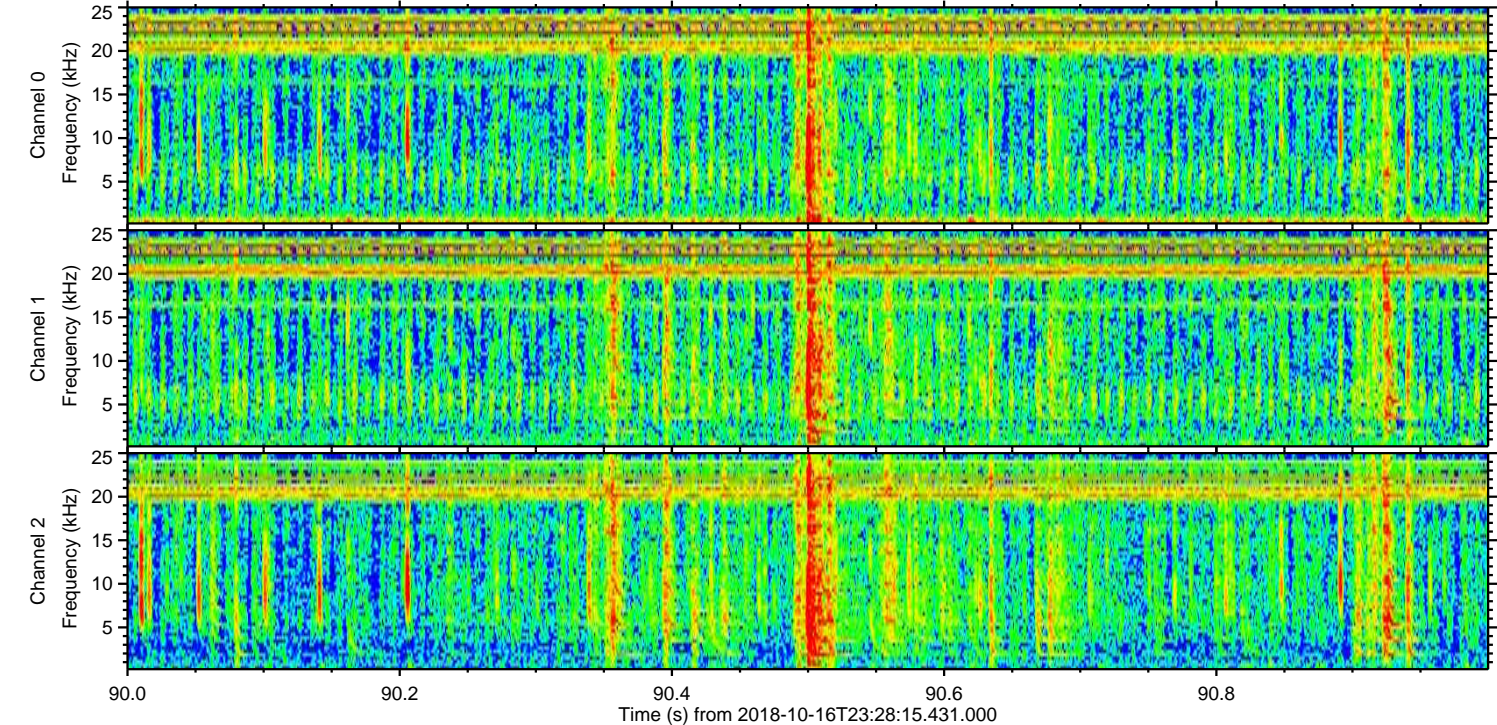
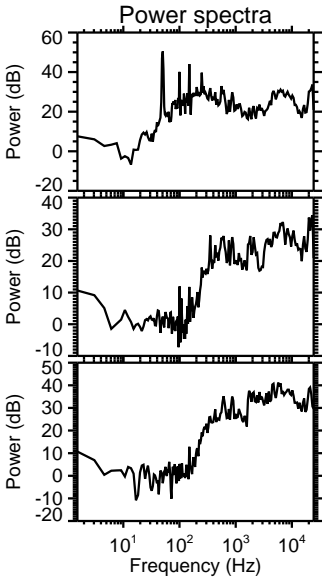
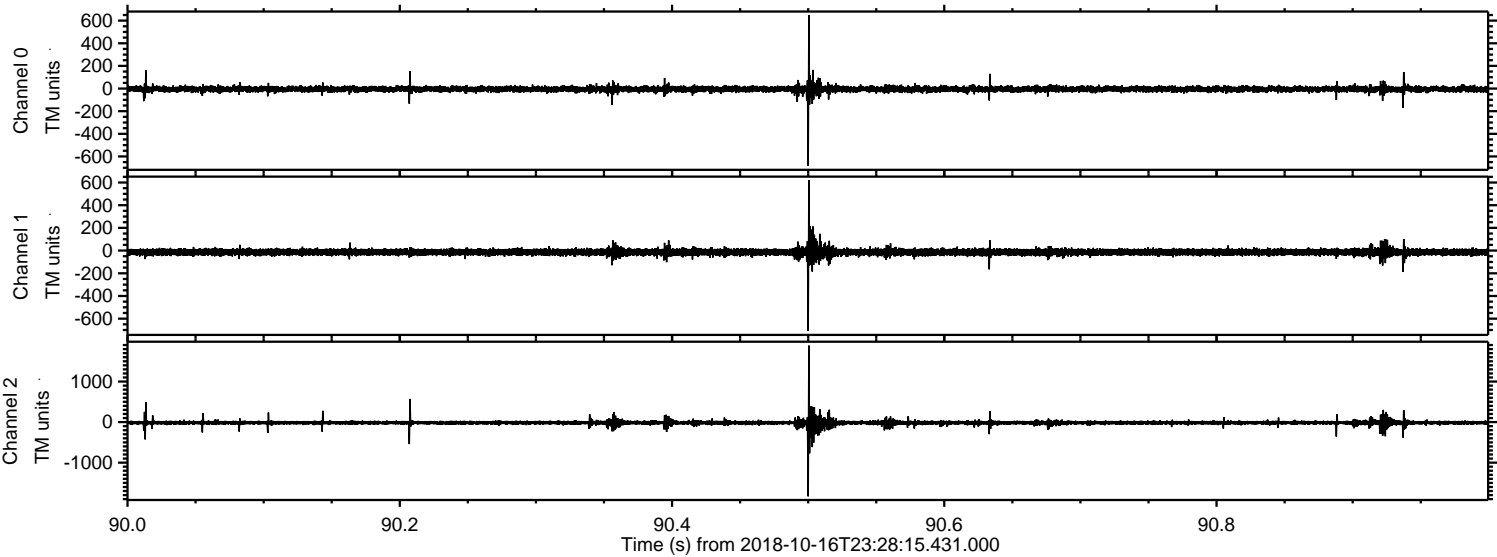


Channel 0
mn: -2125
mx: 2891
 μ : -5.3
 σ : 29.7

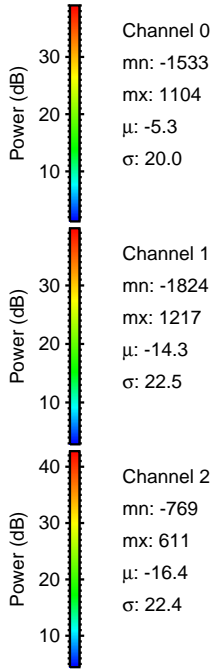
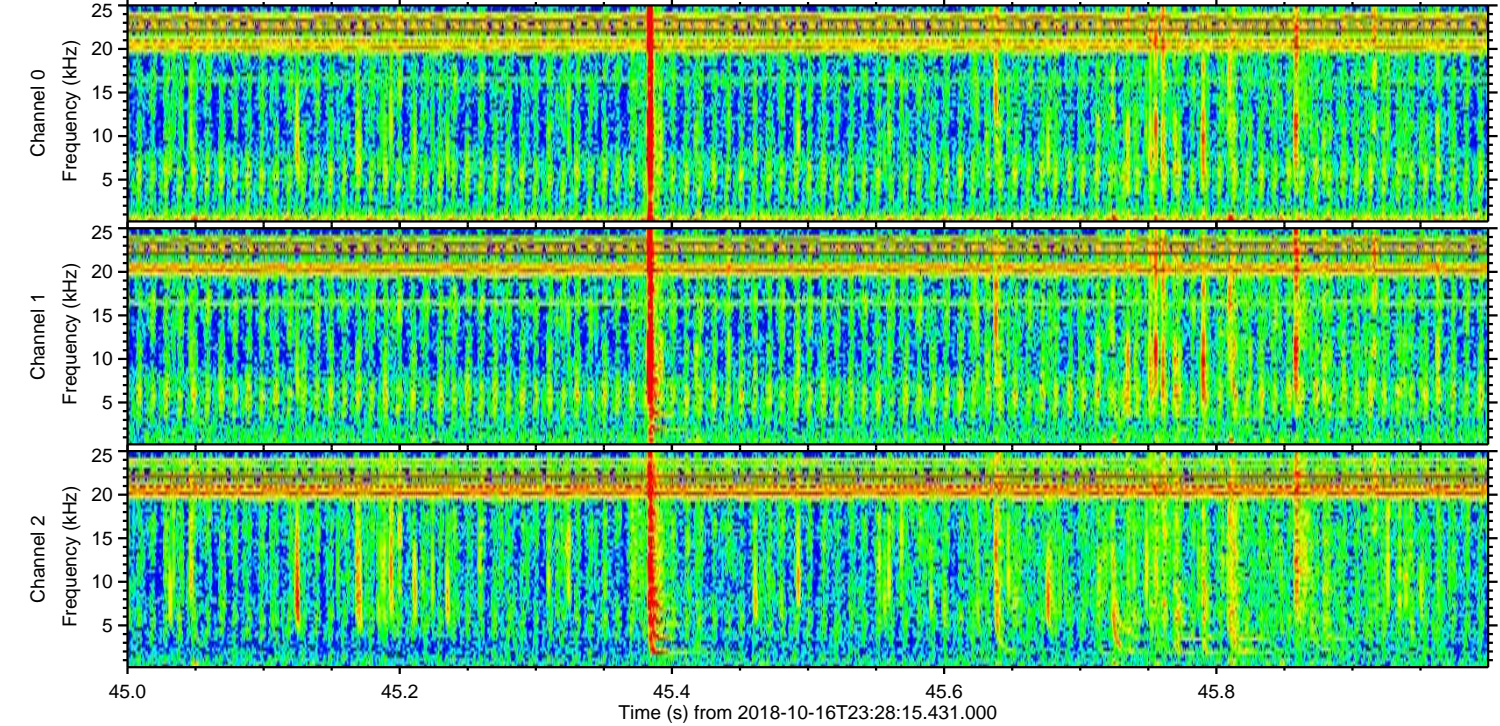
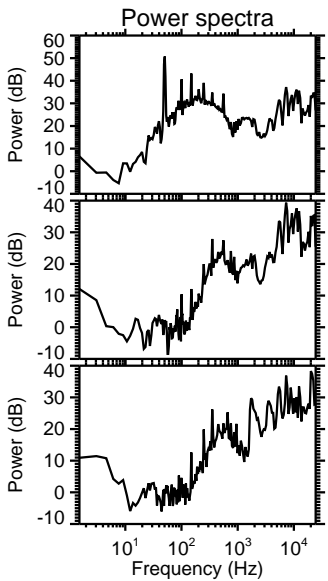
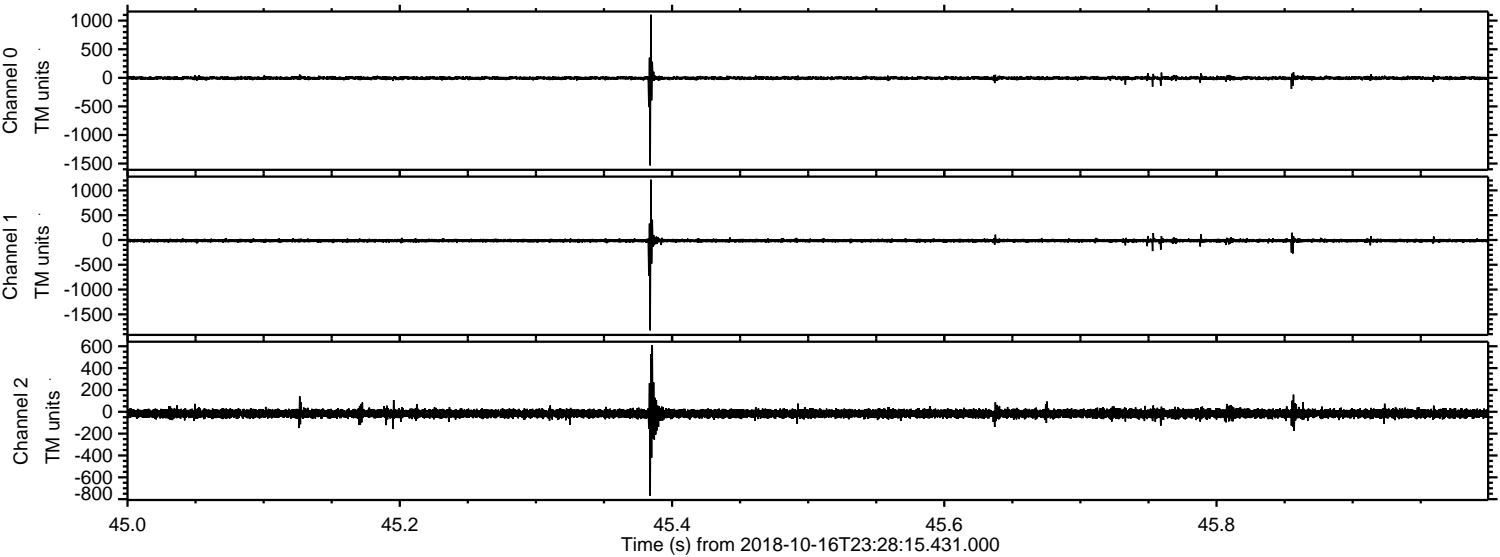
Channel 1
mn: -1983
mx: 2761
 μ : -14.3
 σ : 30.2

Channel 2
mn: -1098
mx: 1568
 μ : -16.4
 σ : 36.1

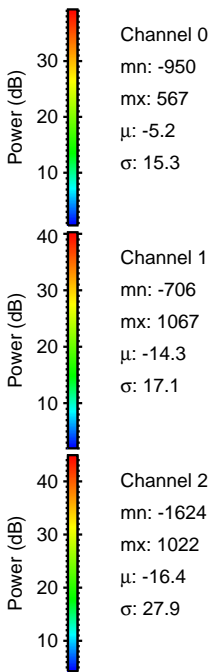
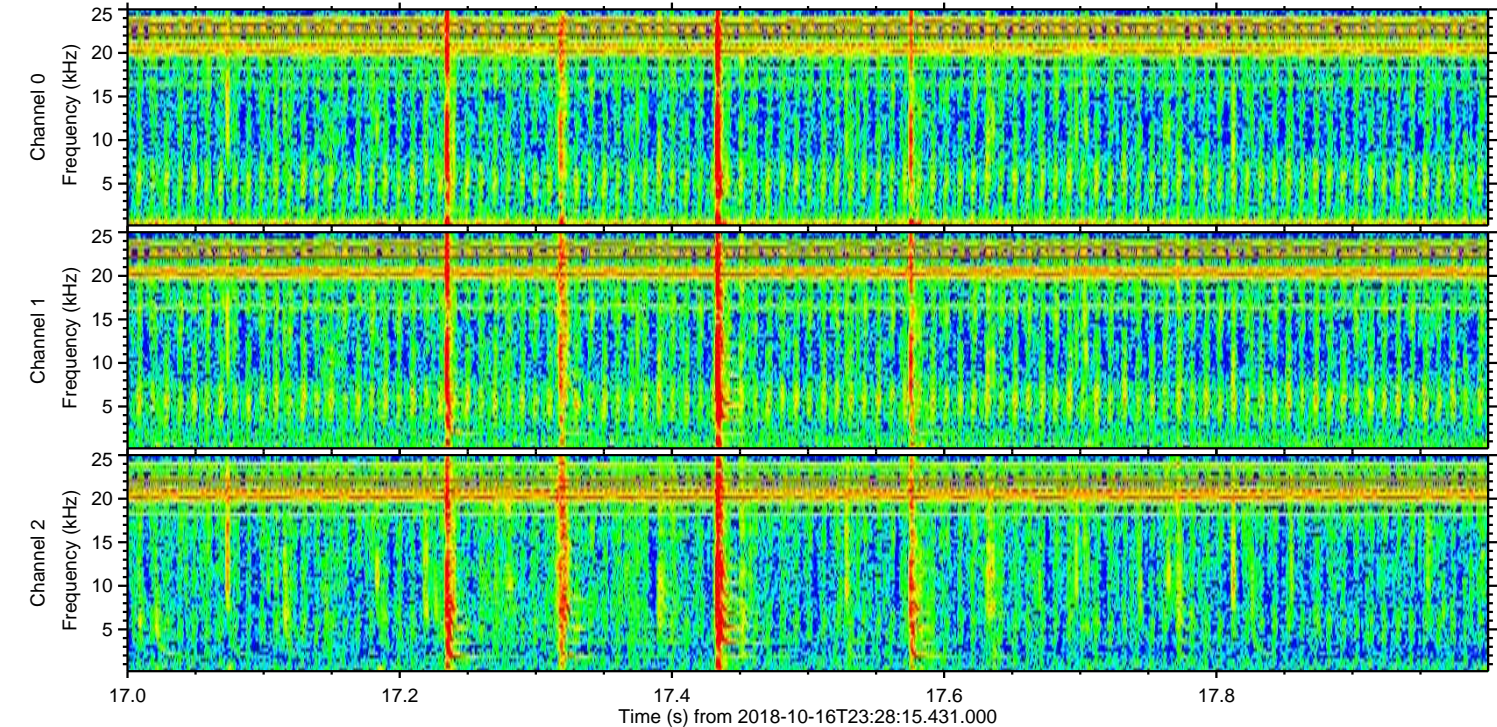
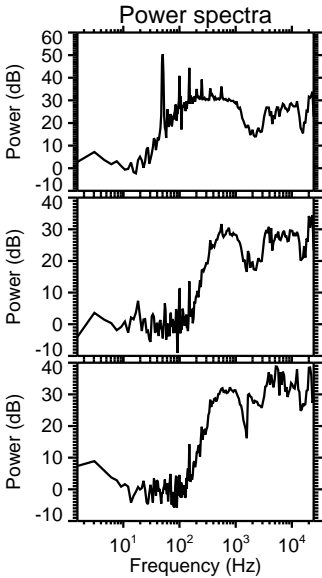
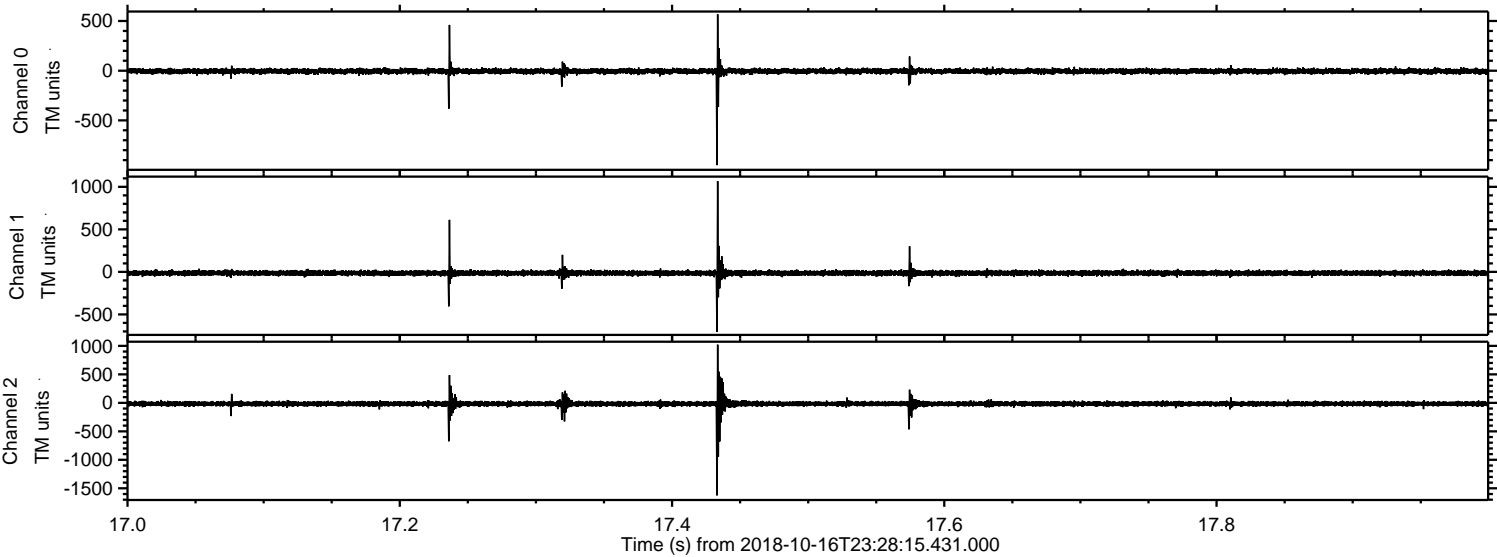
Processed Wed Oct 17 01:36:14 2018 by ELM ver.2012-10-06 from 001__elm20181016_232814__dat00.bin



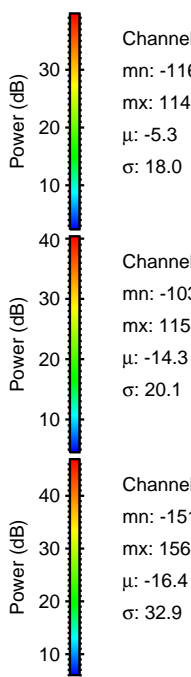
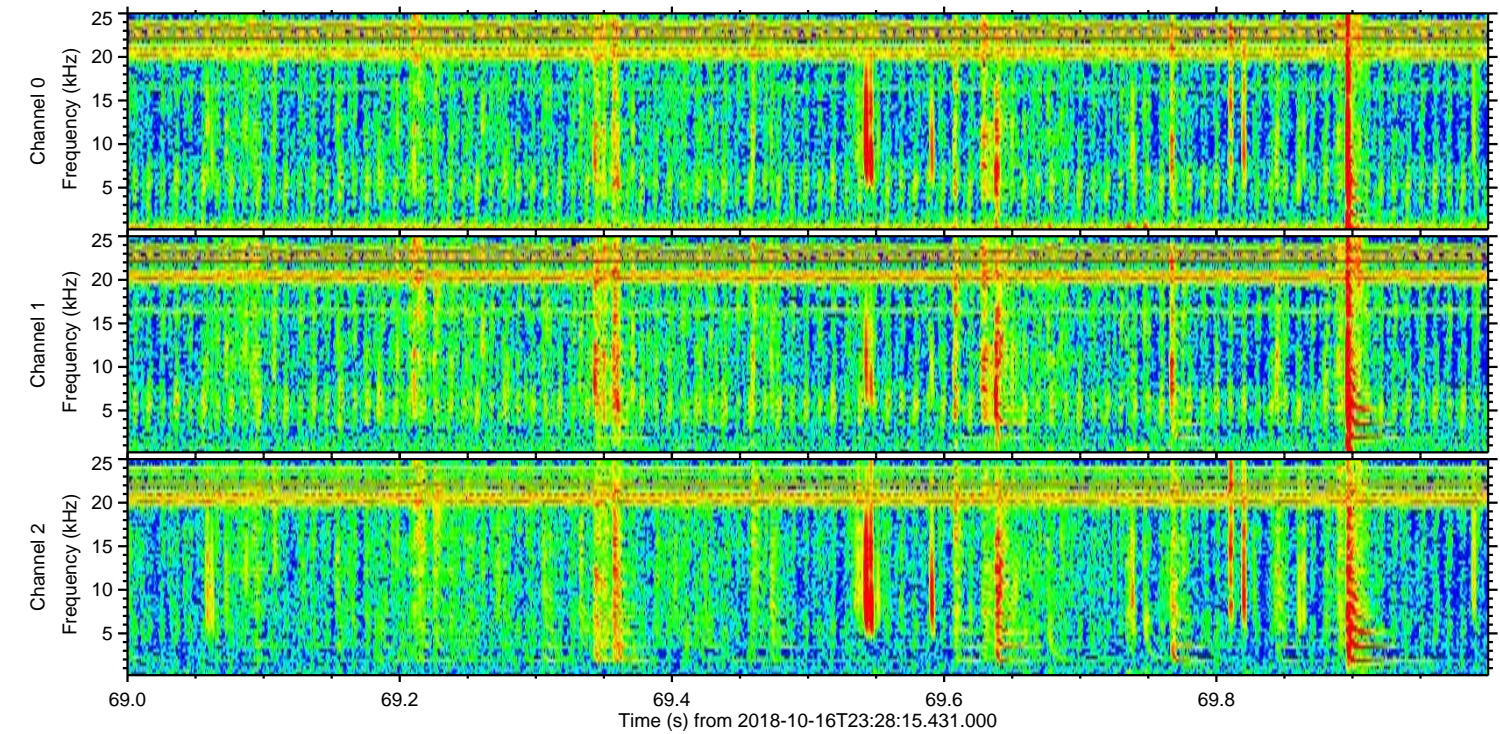
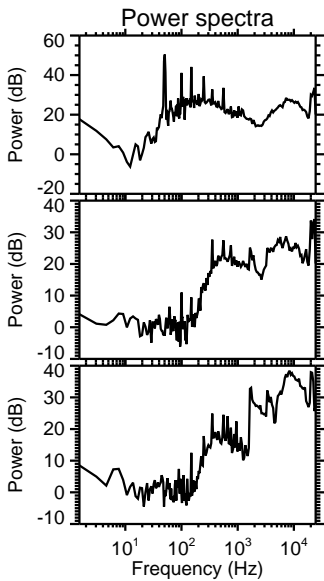
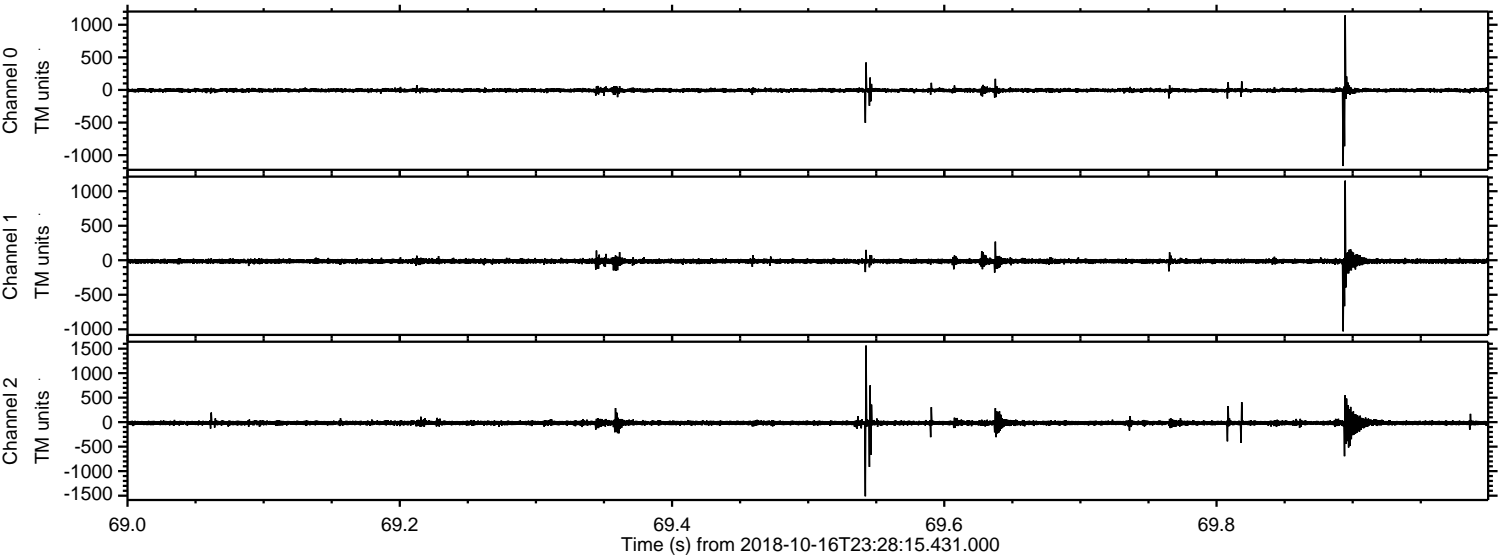
Processed Wed Oct 17 01:36:15 2018 by ELM ver.2012-10-06 from 001__elm20181016_232814__dat00.bin



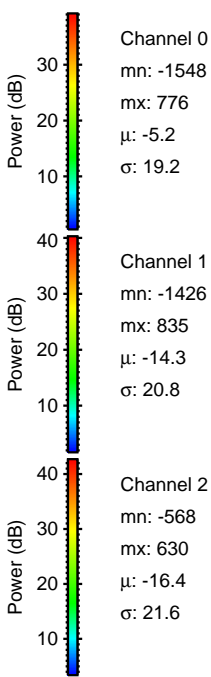
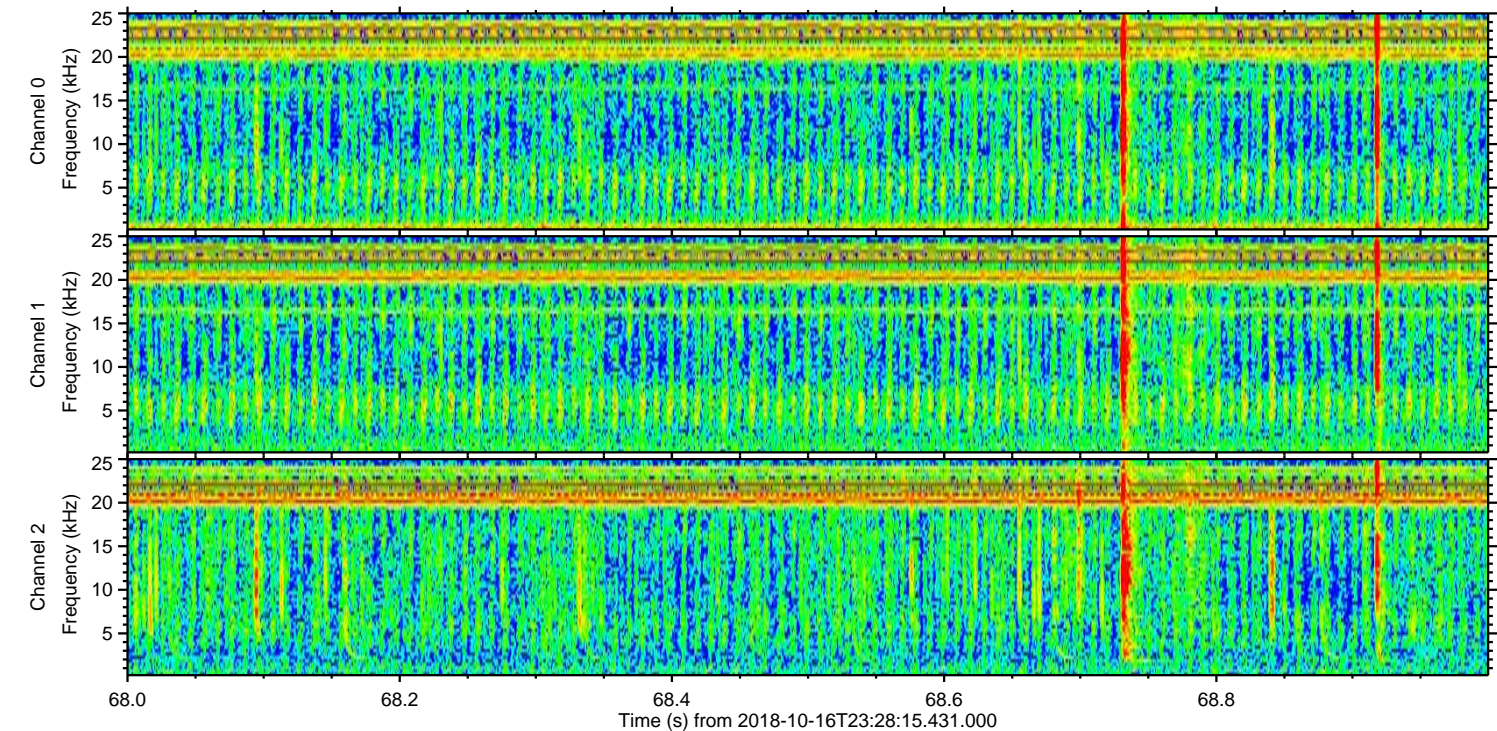
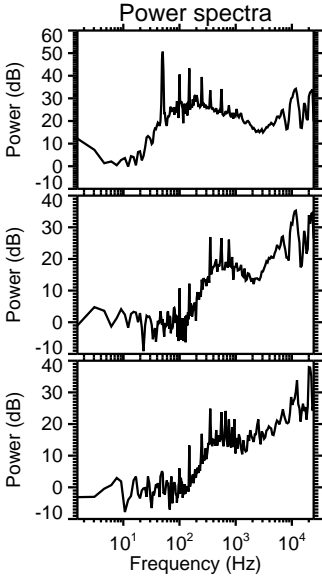
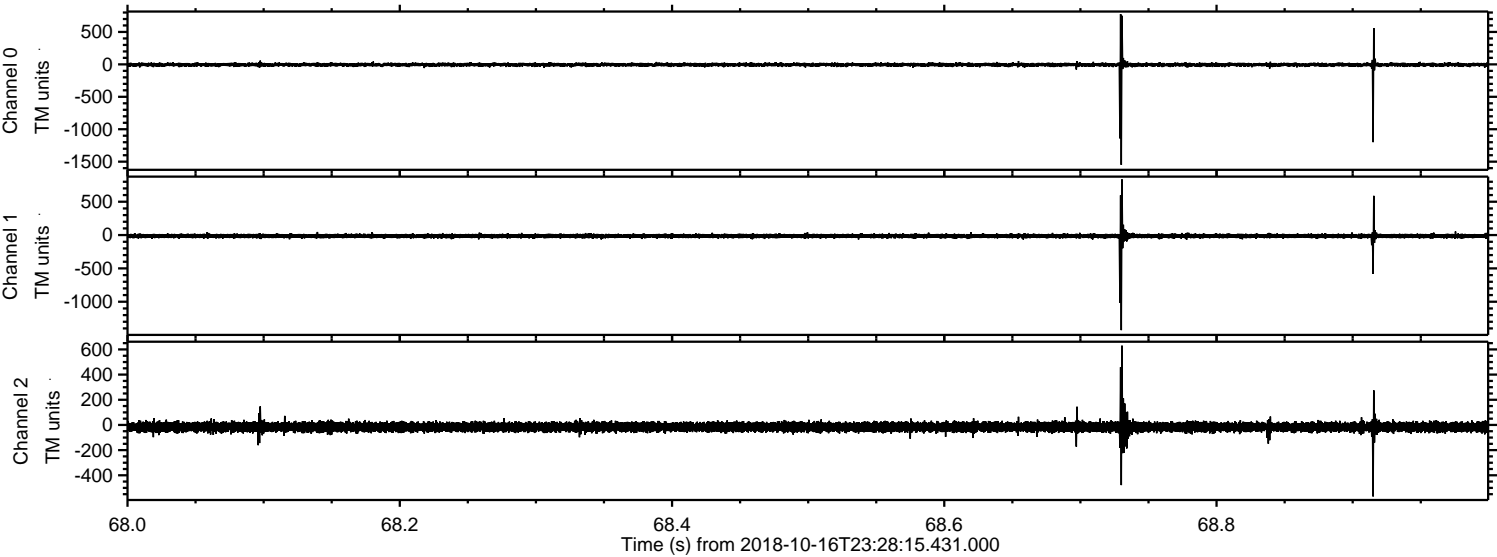
Processed Wed Oct 17 01:36:15 2018 by ELM ver.2012-10-06 from 001__elm20181016_232814__dat00.bin



Processed Wed Oct 17 01:36:16 2018 by ELM ver.2012-10-06 from 001__elm20181016_232814__dat00.bin

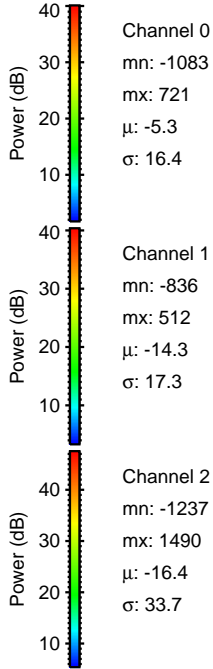
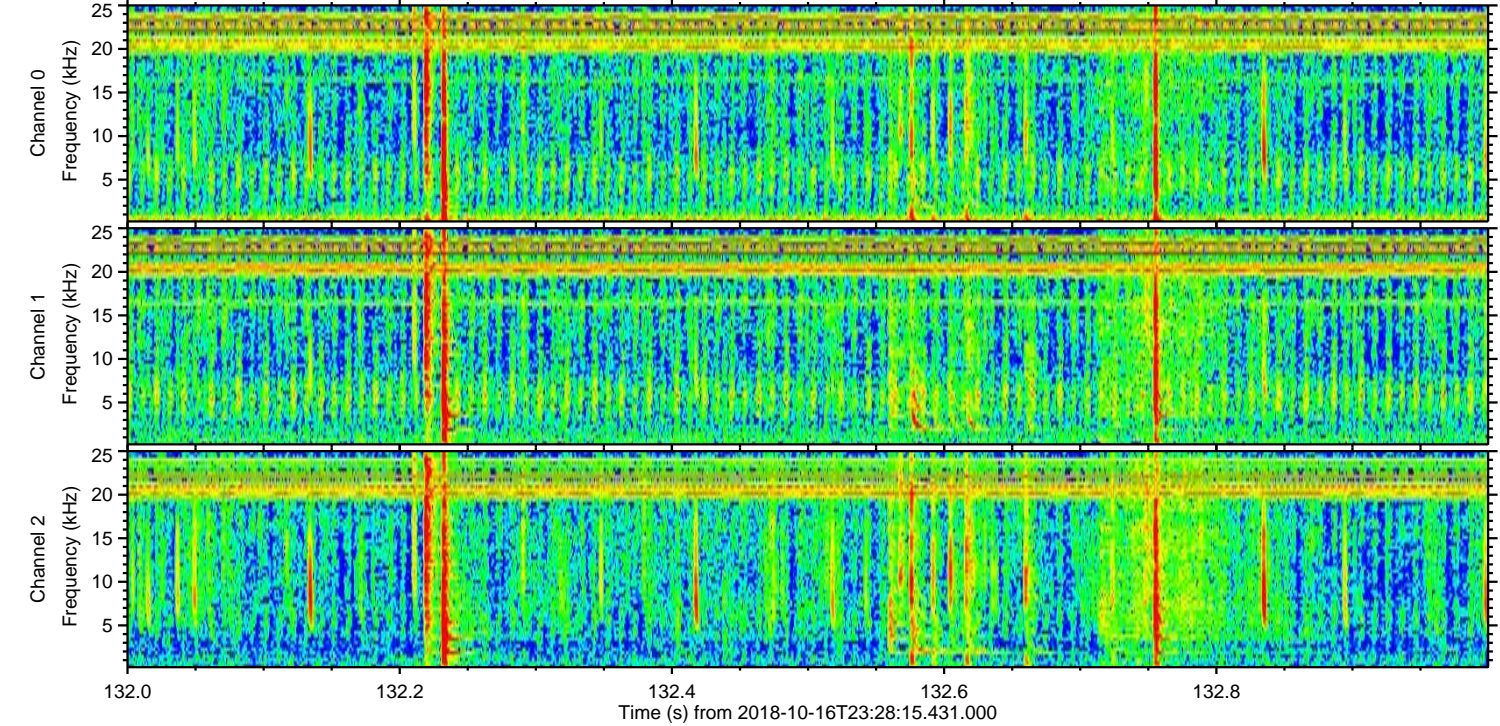
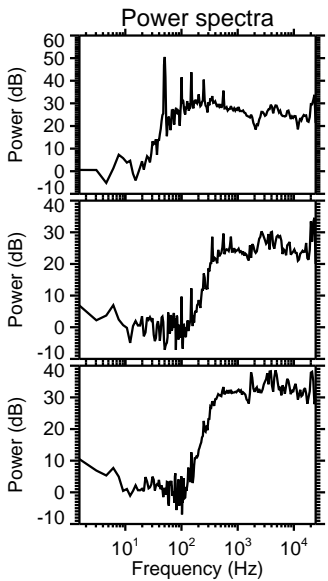
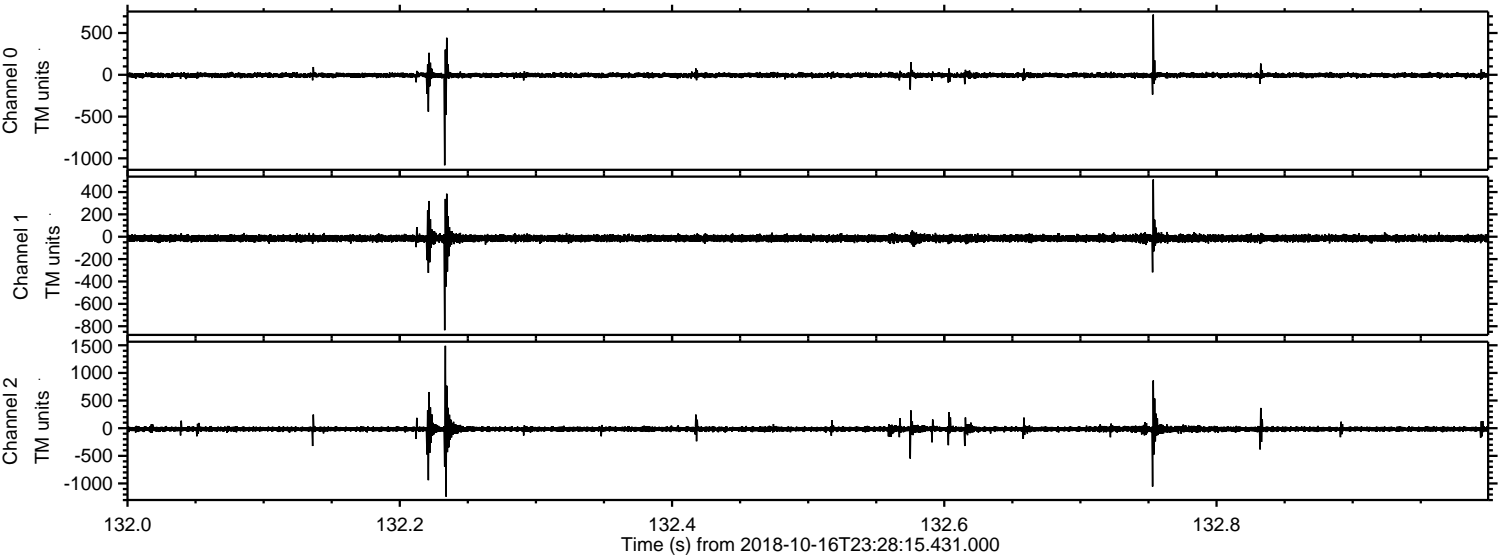


Processed Wed Oct 17 01:36:17 2018 by ELM ver.2012-10-06 from 001__elm20181016_232814__dat00.bin



ELMAVAN 3D WAVEFORMS (Measured data sampled at 50 kHz) 51000 packets of 144 samples from 2018-10-16T23:28:15.431.000. Part 133/147

Processed Wed Oct 17 01:36:17 2018 by ELM ver.2012-10-06 from 001__elm20181016_232814__dat00.bin



Channel 0
mn: -1083
mx: 721
 μ : -5.3
 σ : 16.4

Channel 1
mn: -836
mx: 512
 μ : -14.3
 σ : 17.3

Channel 2
mn: -1237
mx: 1490
 μ : -16.4
 σ : 33.7

Processed Wed Oct 17 01:36:18 2018 by ELM ver.2012-10-06 from 001__elm20181016_232814__dat00.bin

