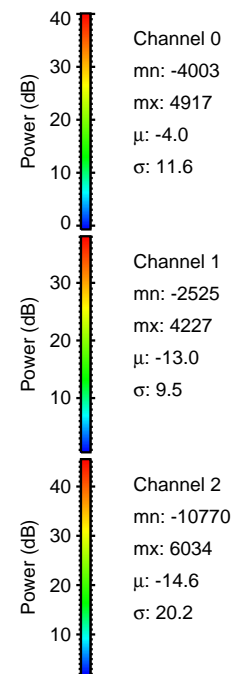
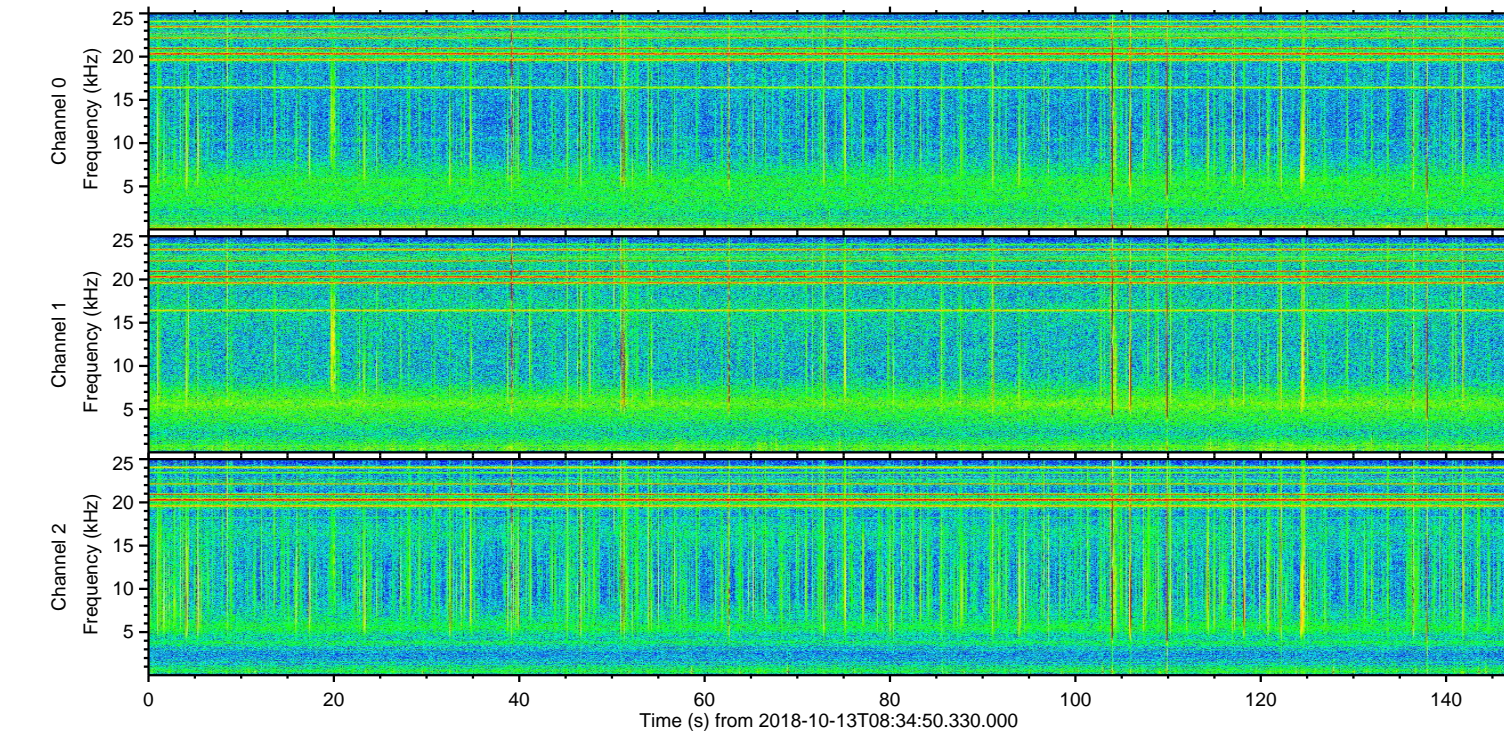
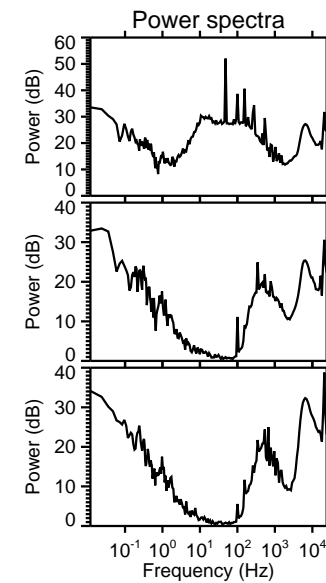
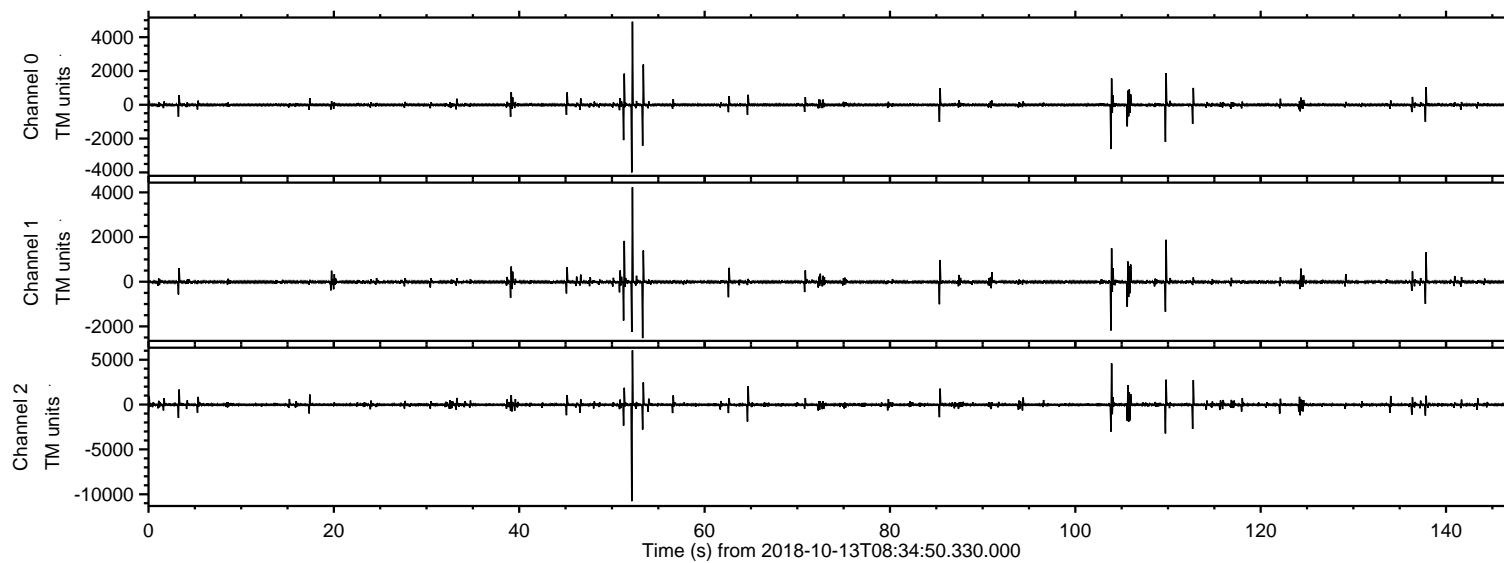
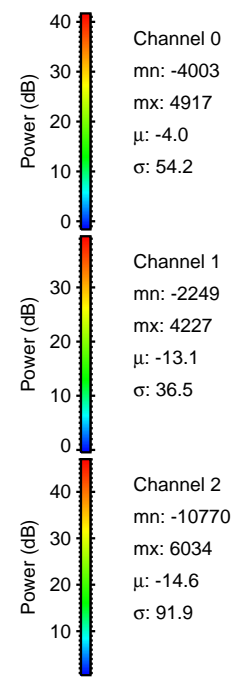
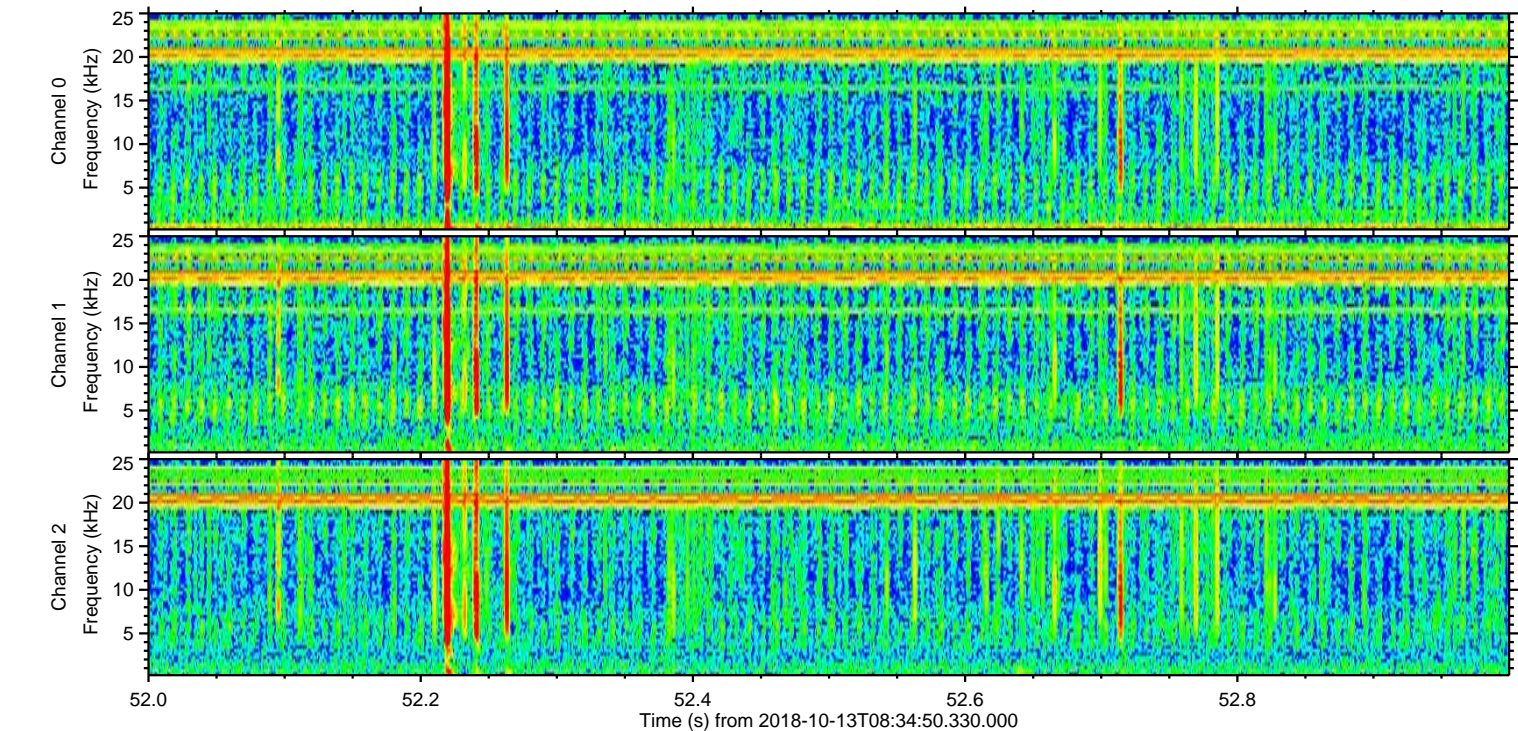
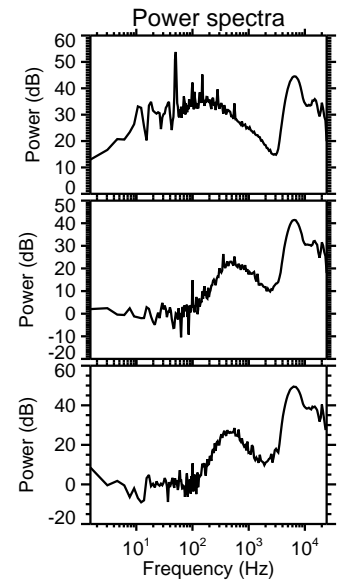
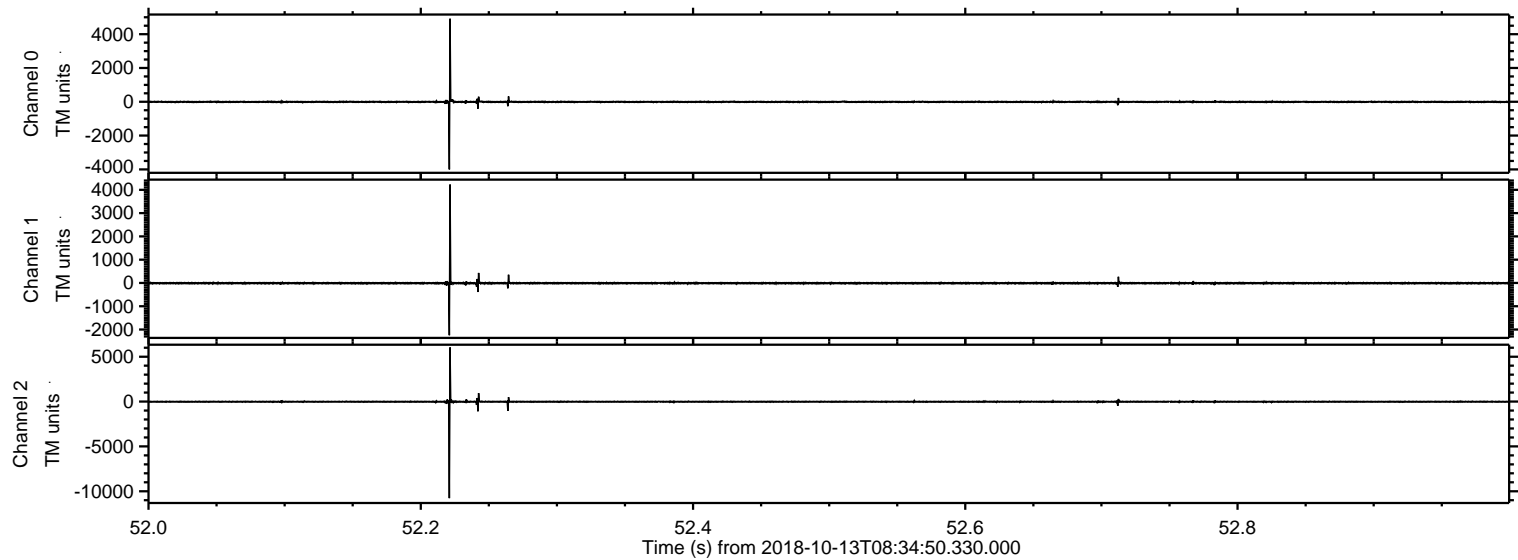


ELMAVAN 3D WAVEFORMS (Measured data sampled at 50 kHz) 51000 packets of 144 samples from 2018-10-13T08:34:50.330.000.

Processed Sat Oct 13 10:42:57 2018 by ELM ver.2012-10-06 from 001__elm20181013_083449__dat00.bin

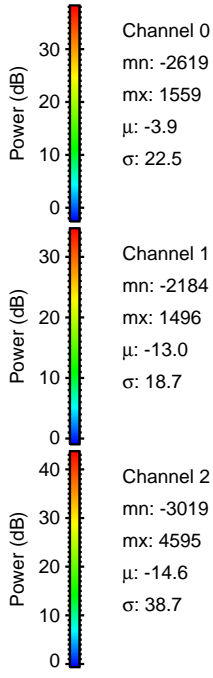
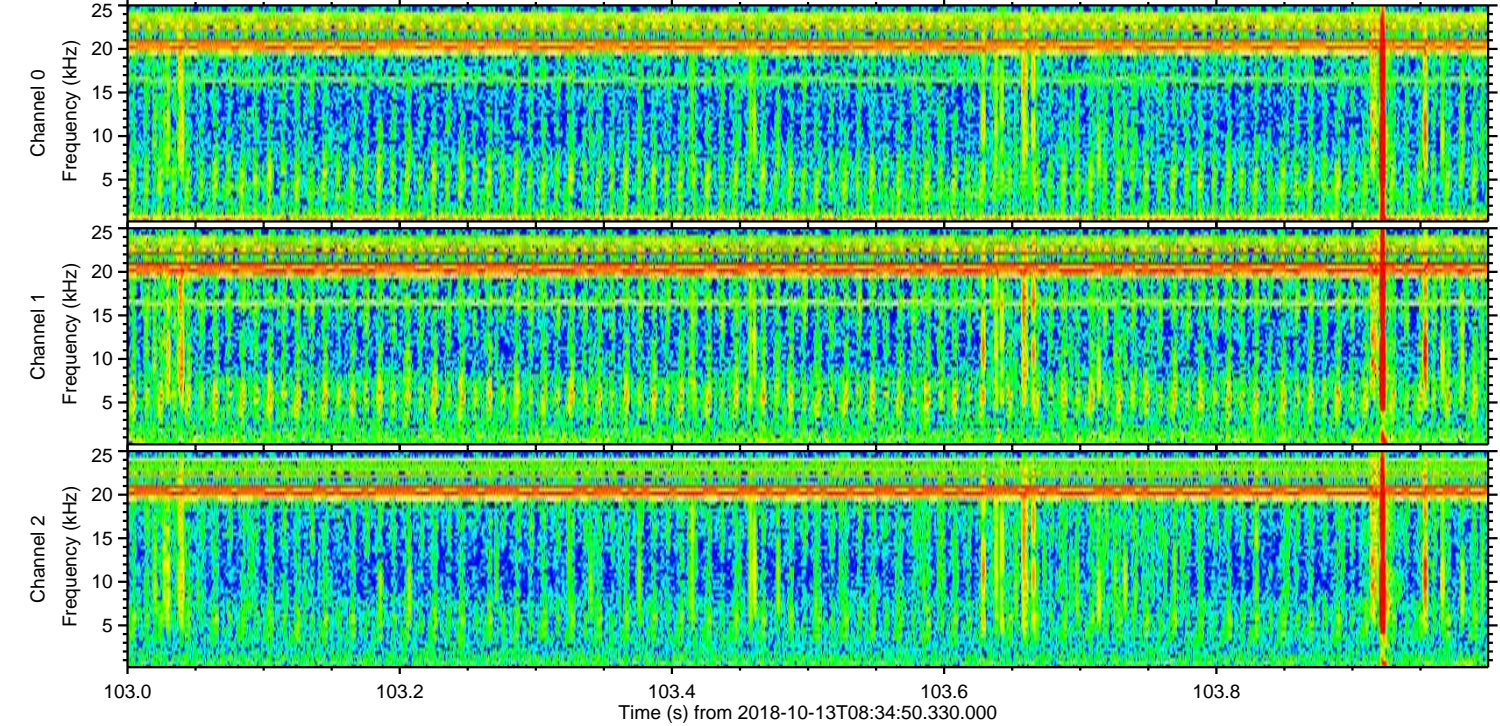
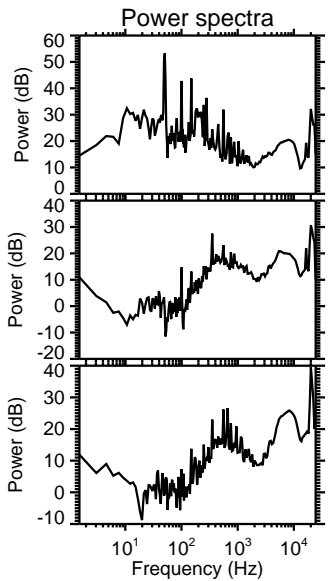
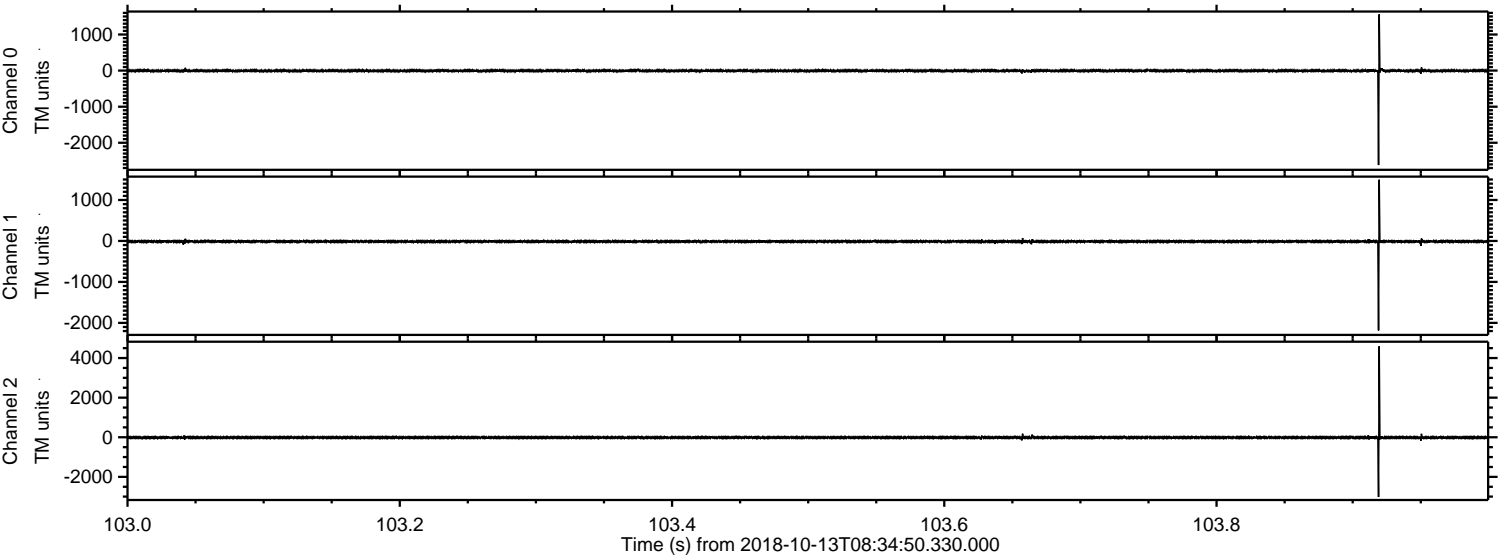


Processed Sat Oct 13 10:43:06 2018 by ELM ver.2012-10-06 from 001__elm20181013_083449__dat00.bin



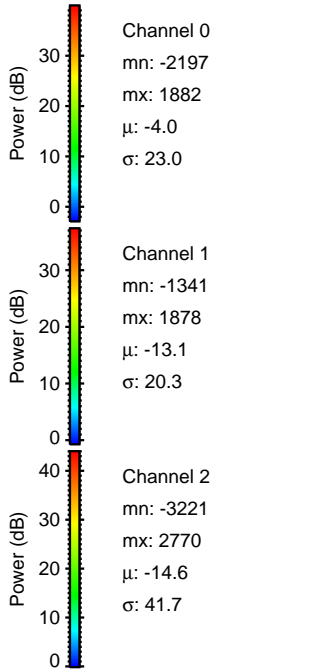
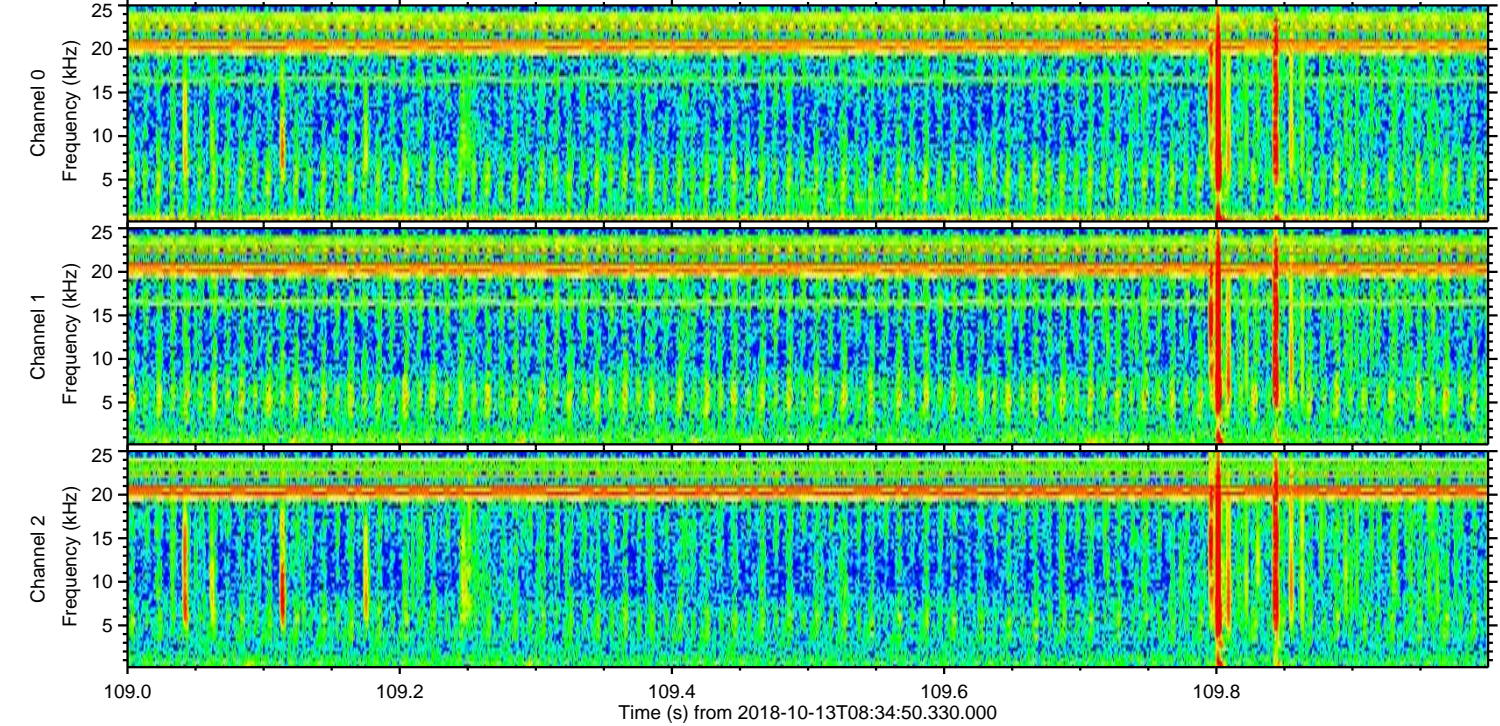
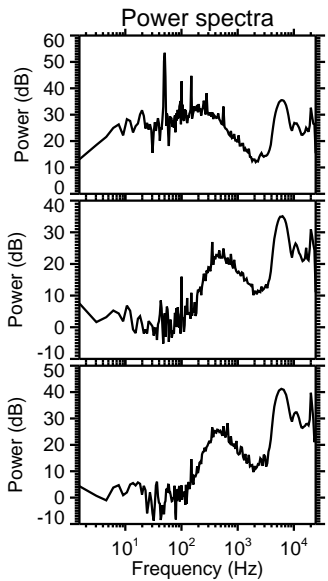
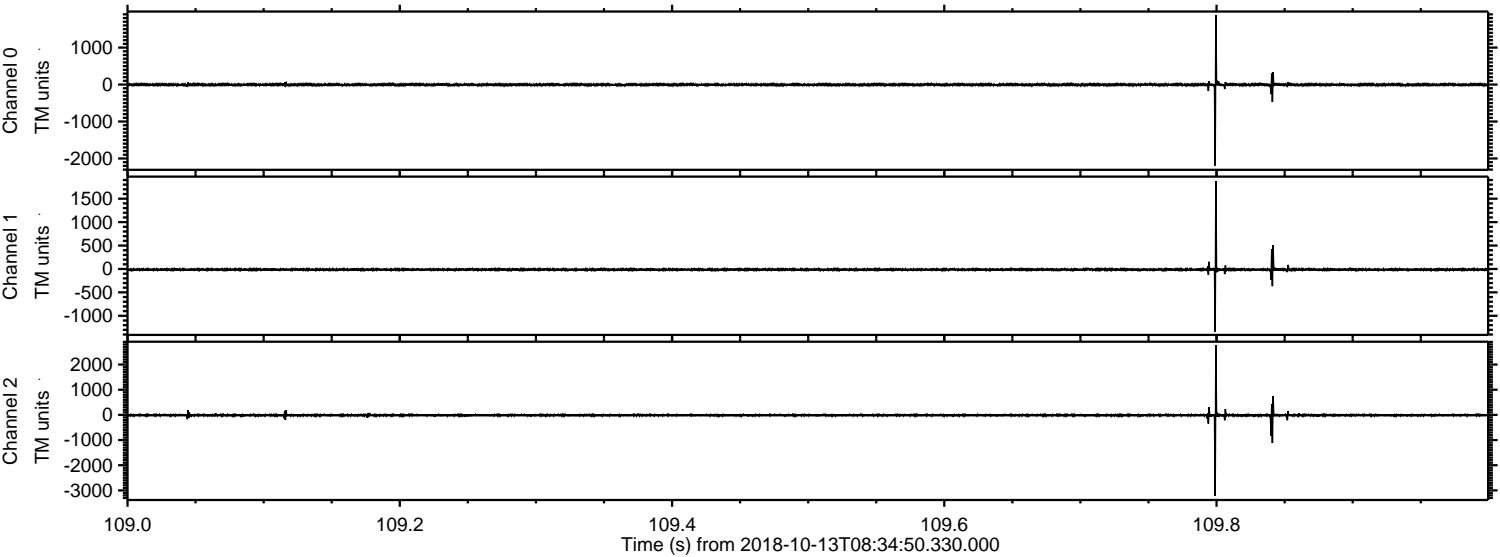
ELMAVAN 3D WAVEFORMS (Measured data sampled at 50 kHz) 51000 packets of 144 samples from 2018-10-13T08:34:50.330.000. Part 104/147

Processed Sat Oct 13 10:43:07 2018 by ELM ver.2012-10-06 from 001__elm20181013_083449__dat00.bin

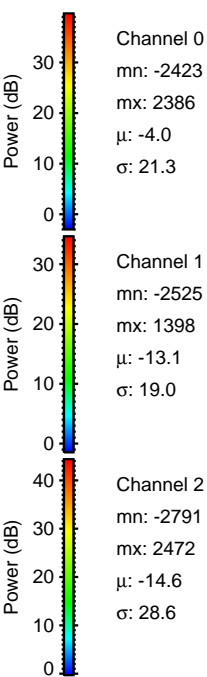
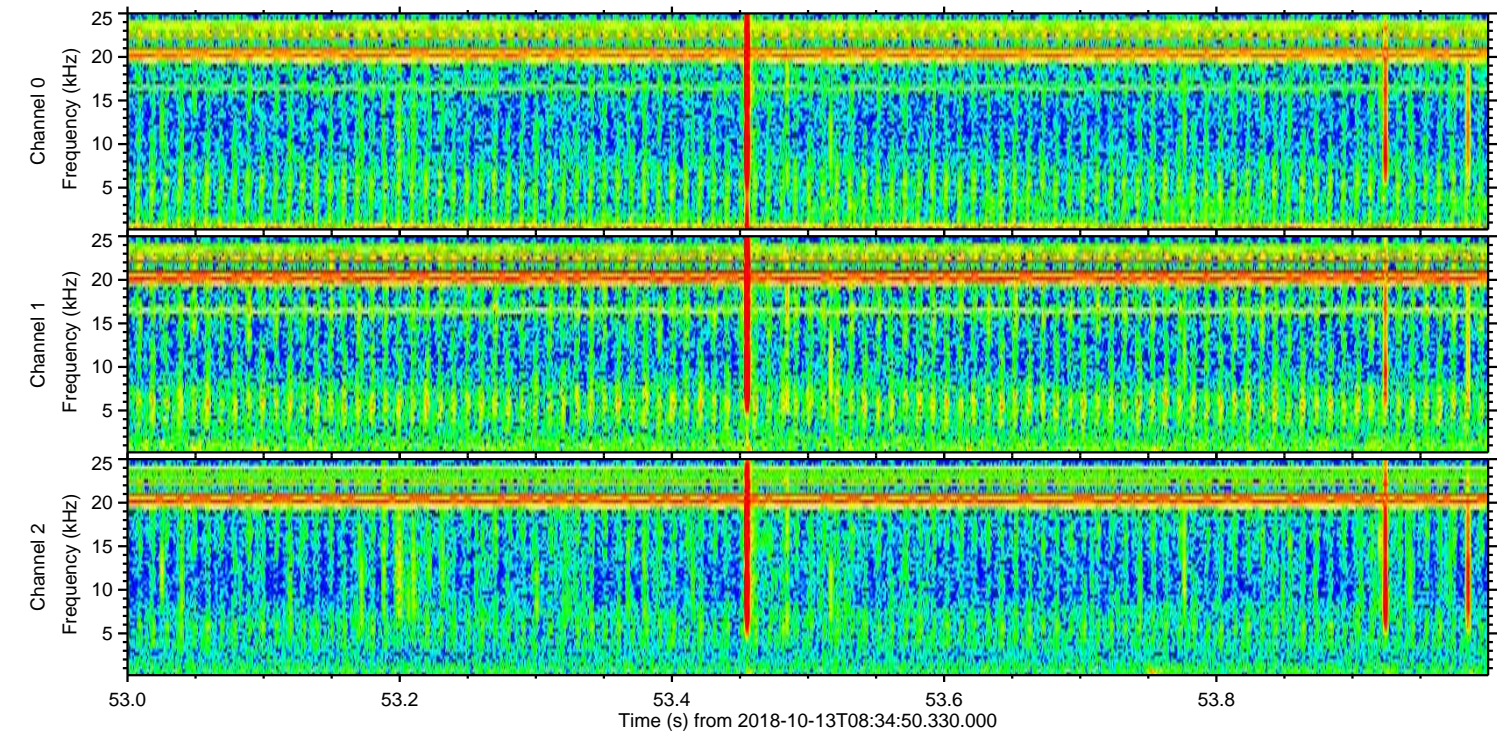
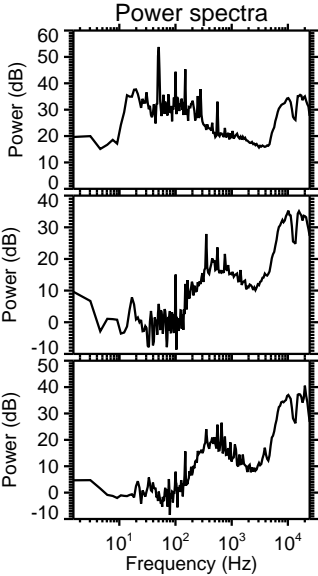
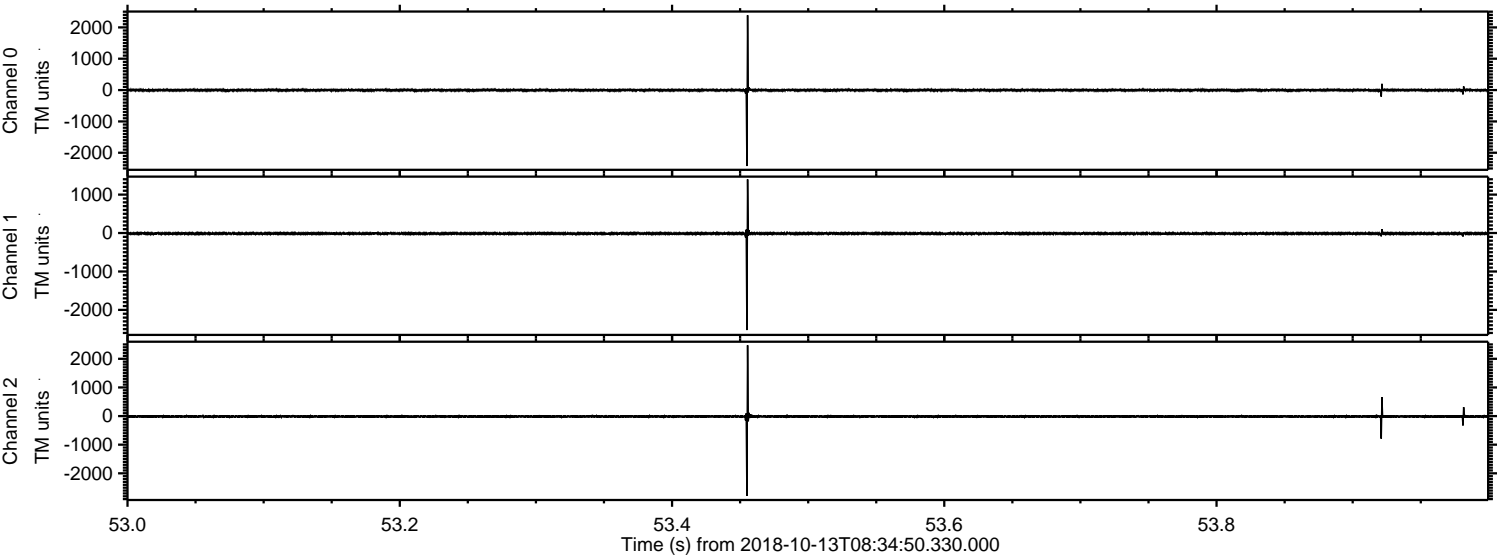


ELMAVAN 3D WAVEFORMS (Measured data sampled at 50 kHz) 51000 packets of 144 samples from 2018-10-13T08:34:50.330.000. Part 110/147

Processed Sat Oct 13 10:43:08 2018 by ELM ver.2012-10-06 from 001__elm20181013_083449__dat00.bin

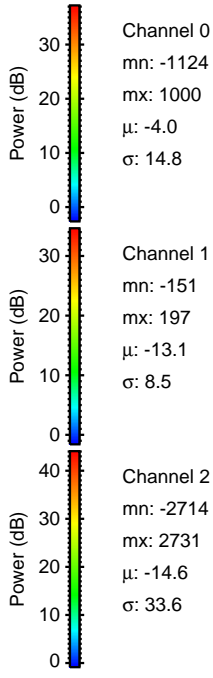
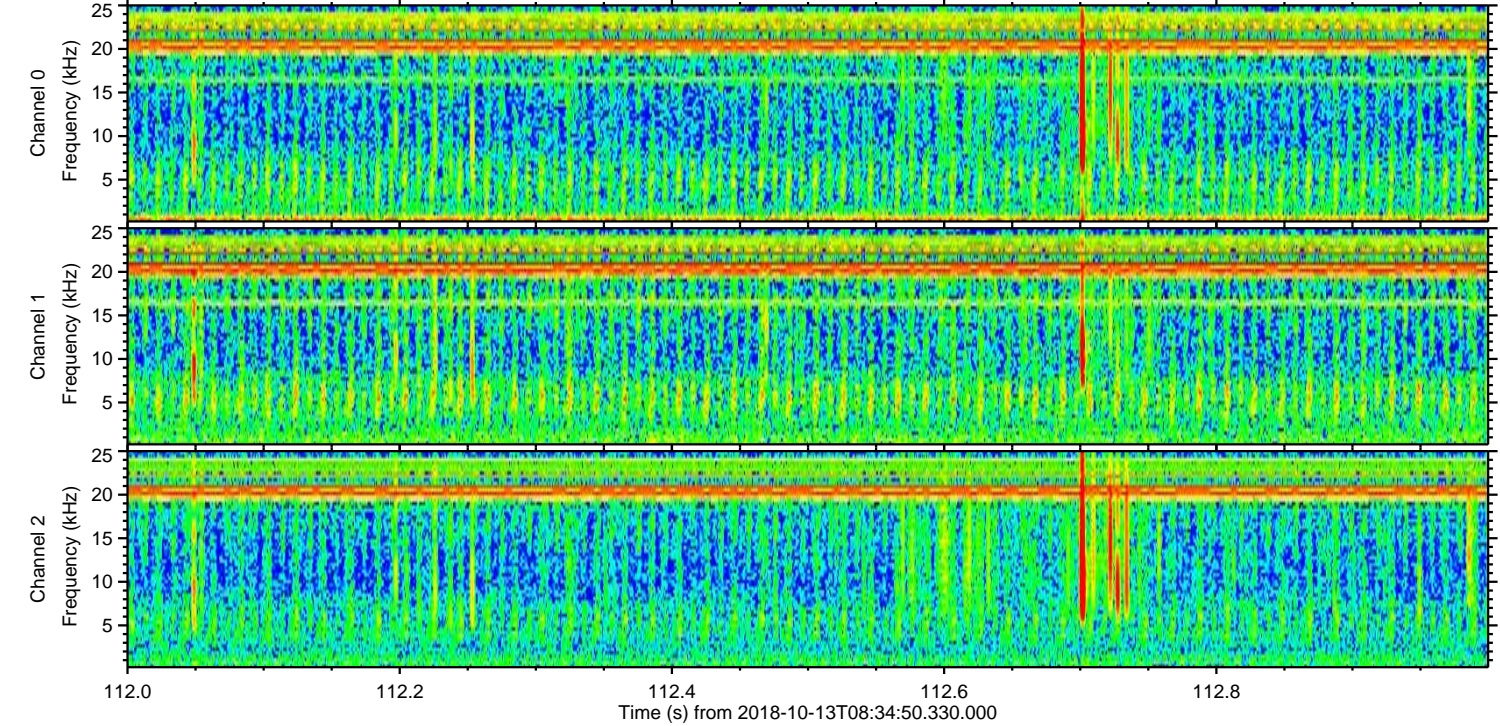
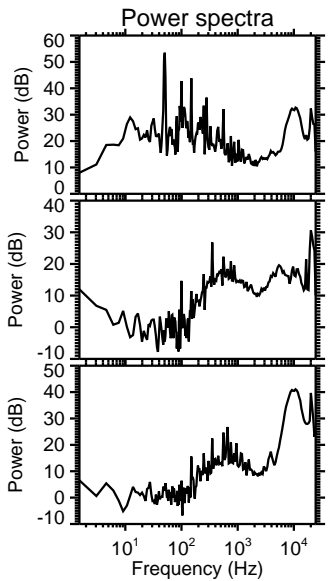
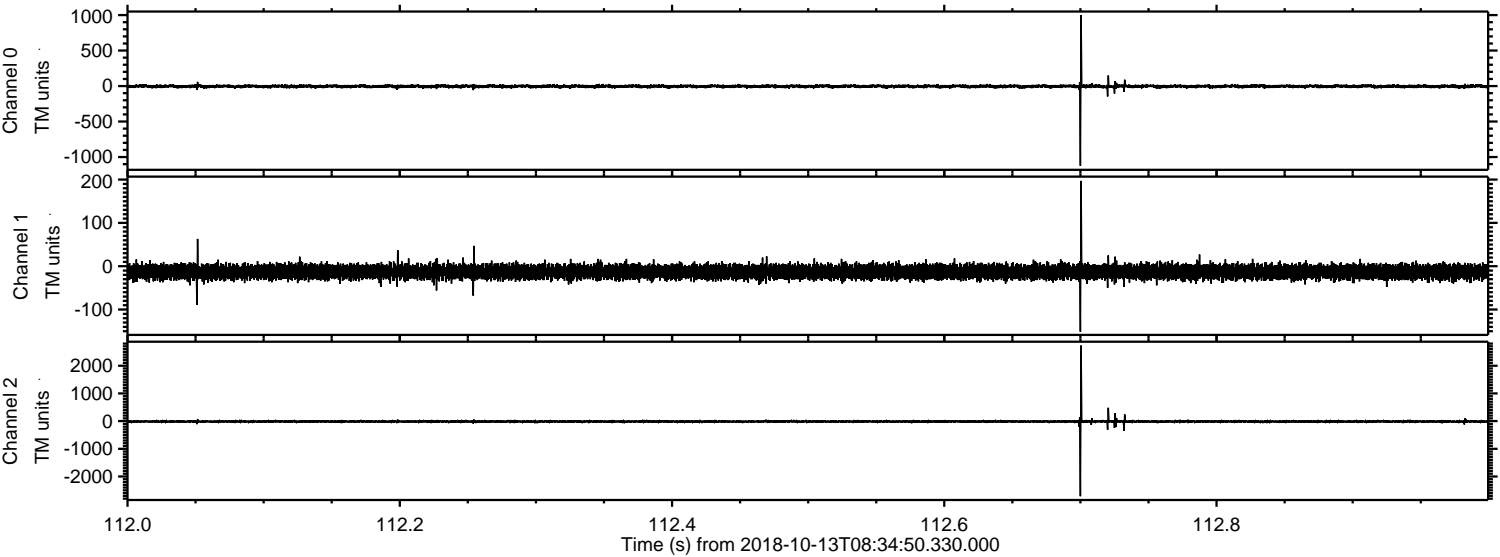


Processed Sat Oct 13 10:43:09 2018 by ELM ver.2012-10-06 from 001__elm20181013_083449__dat00.bin

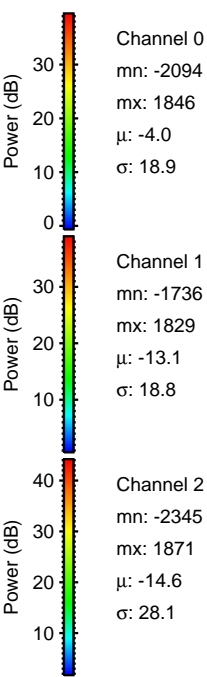
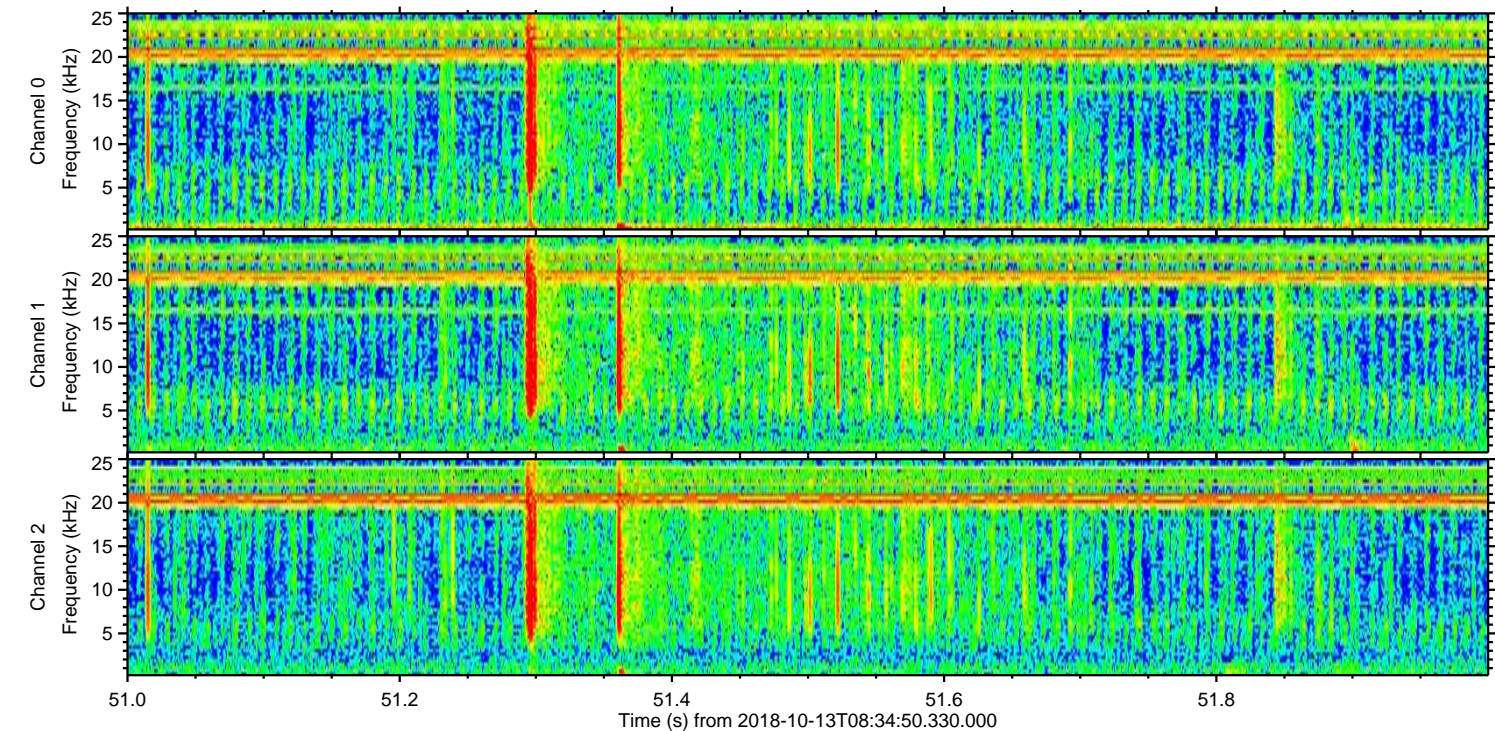
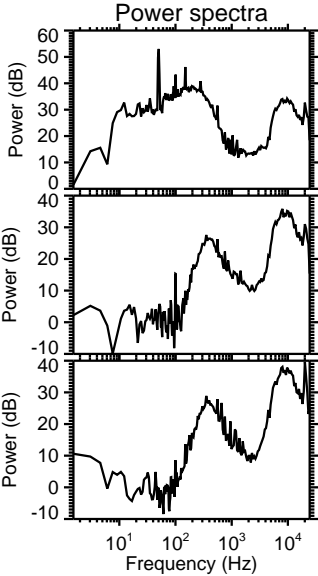
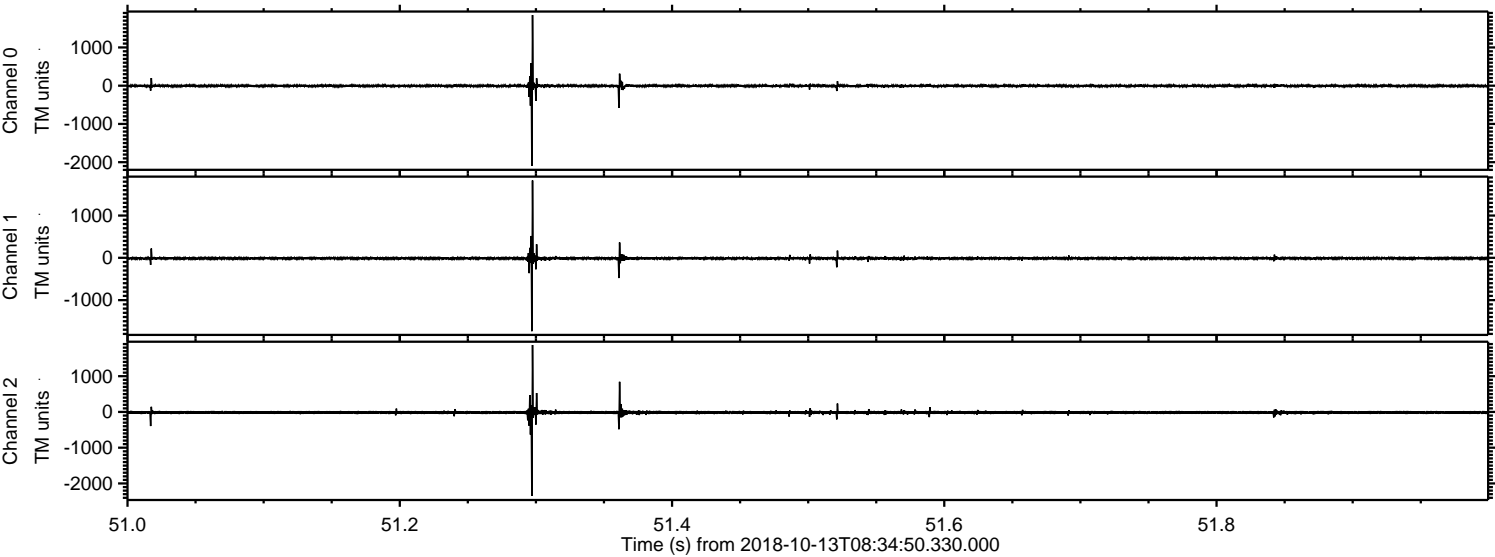


ELMAVAN 3D WAVEFORMS (Measured data sampled at 50 kHz) 51000 packets of 144 samples from 2018-10-13T08:34:50.330.000. Part 113/147

Processed Sat Oct 13 10:43:09 2018 by ELM ver.2012-10-06 from 001__elm20181013_083449__dat00.bin

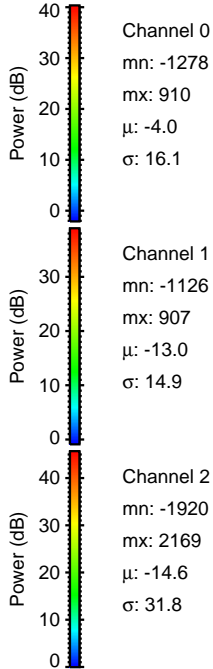
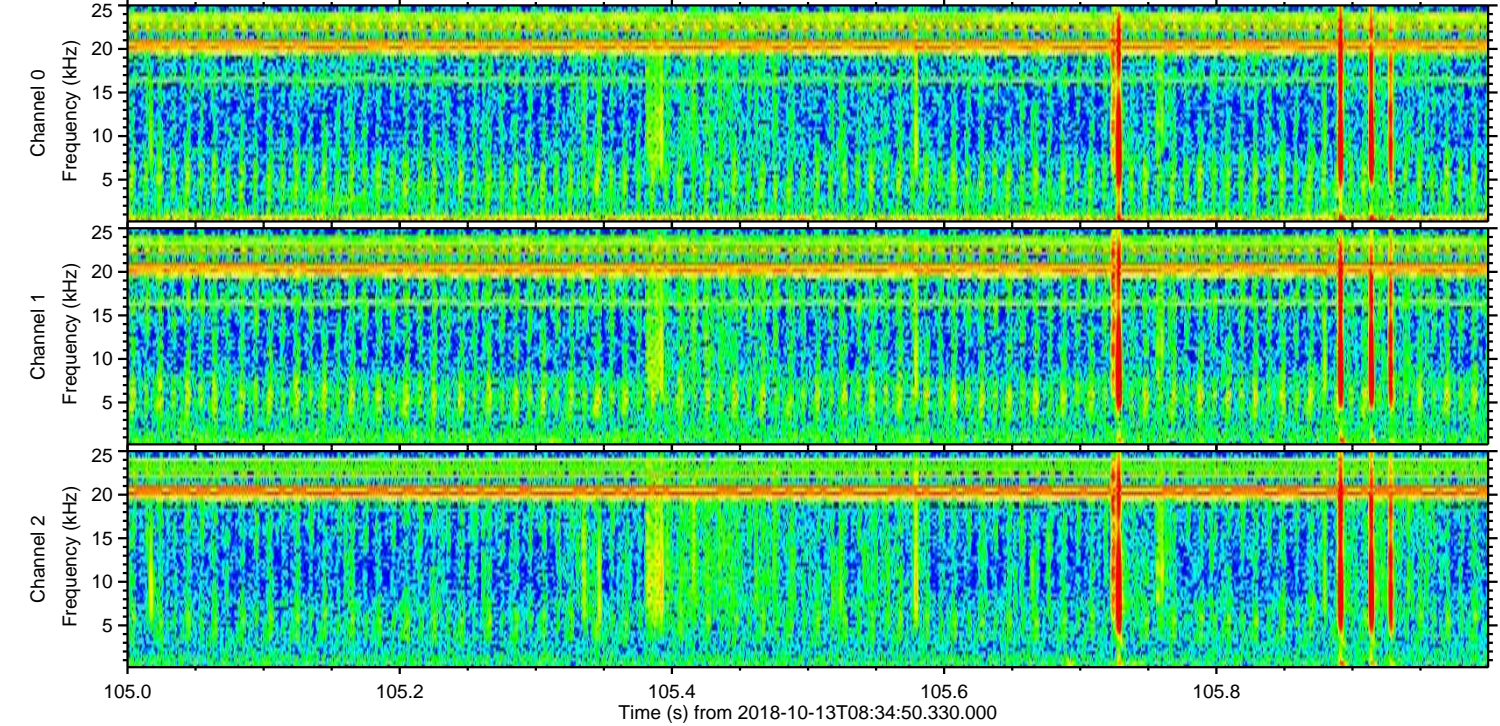
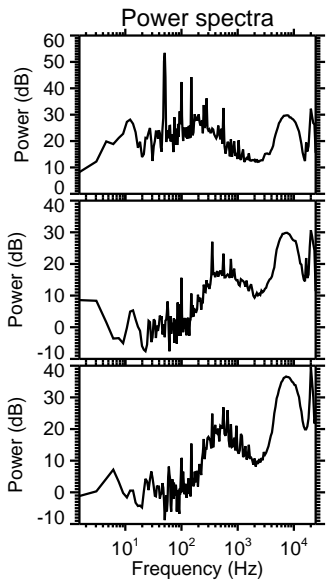
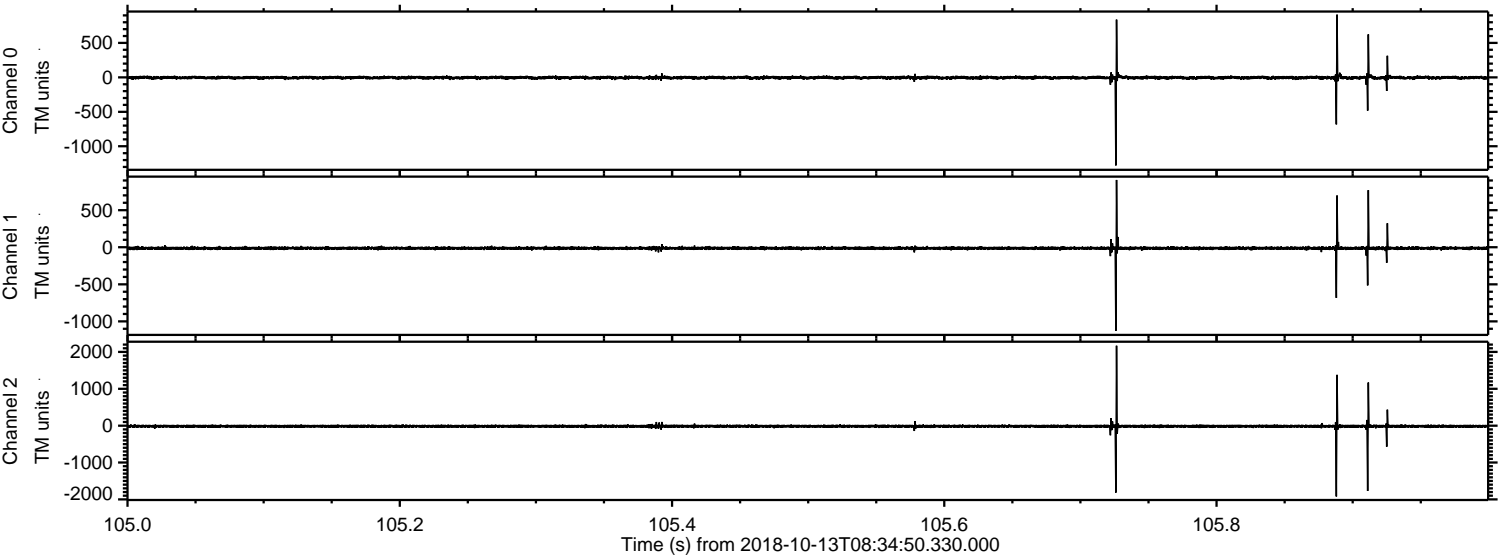


Processed Sat Oct 13 10:43:10 2018 by ELM ver.2012-10-06 from 001__elm20181013_083449__dat00.bin



ELMAVAN 3D WAVEFORMS (Measured data sampled at 50 kHz) 51000 packets of 144 samples from 2018-10-13T08:34:50.330.000. Part 106/147

Processed Sat Oct 13 10:43:11 2018 by ELM ver.2012-10-06 from 001__elm20181013_083449__dat00.bin

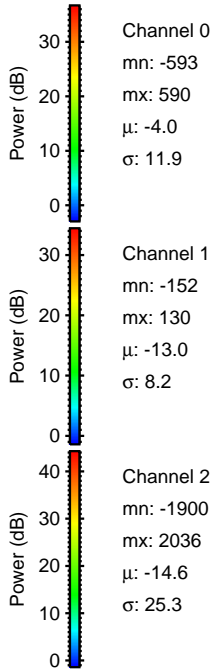
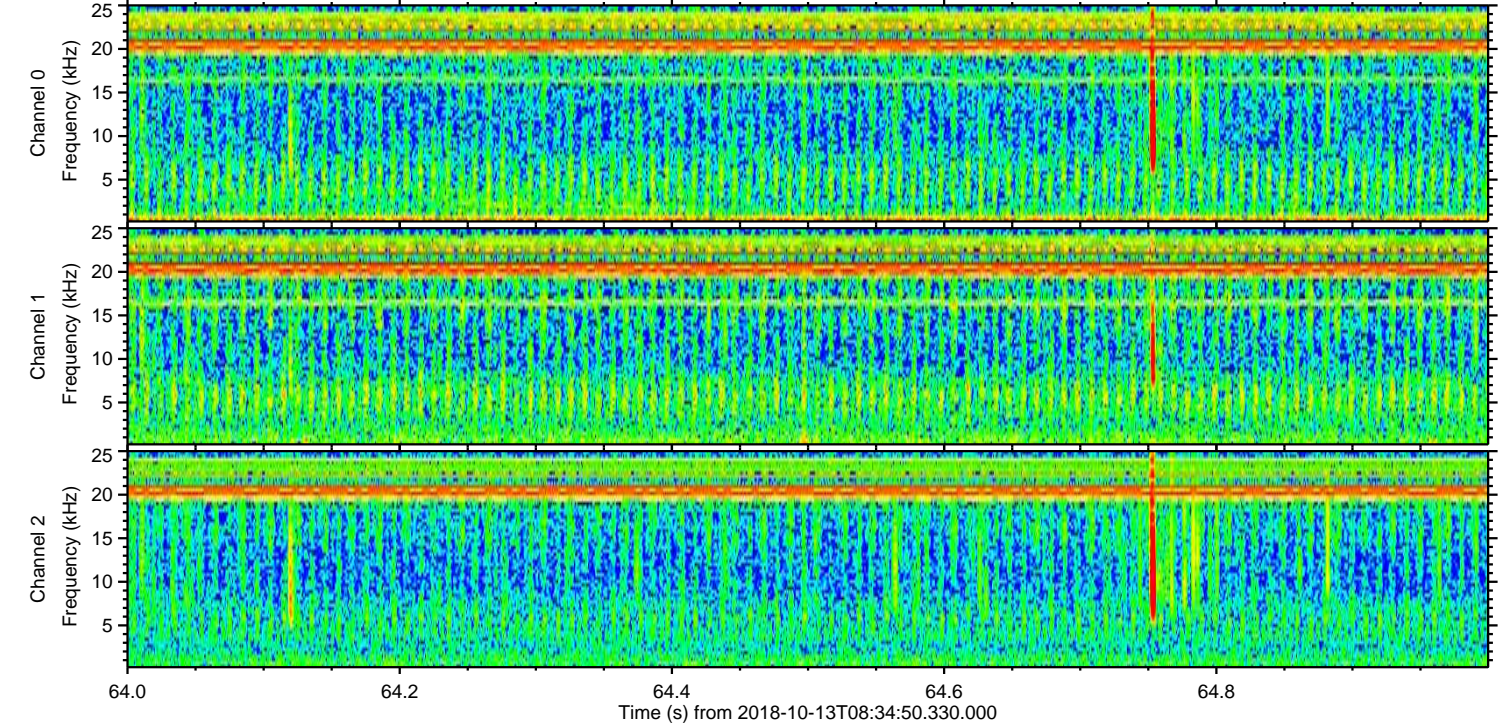
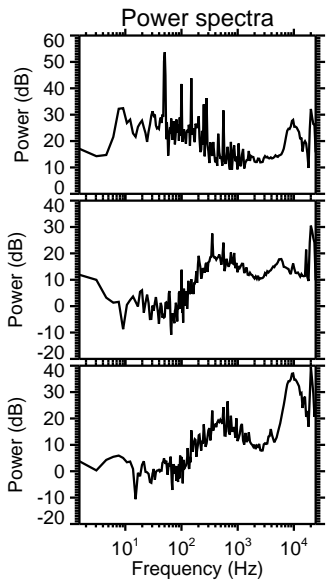
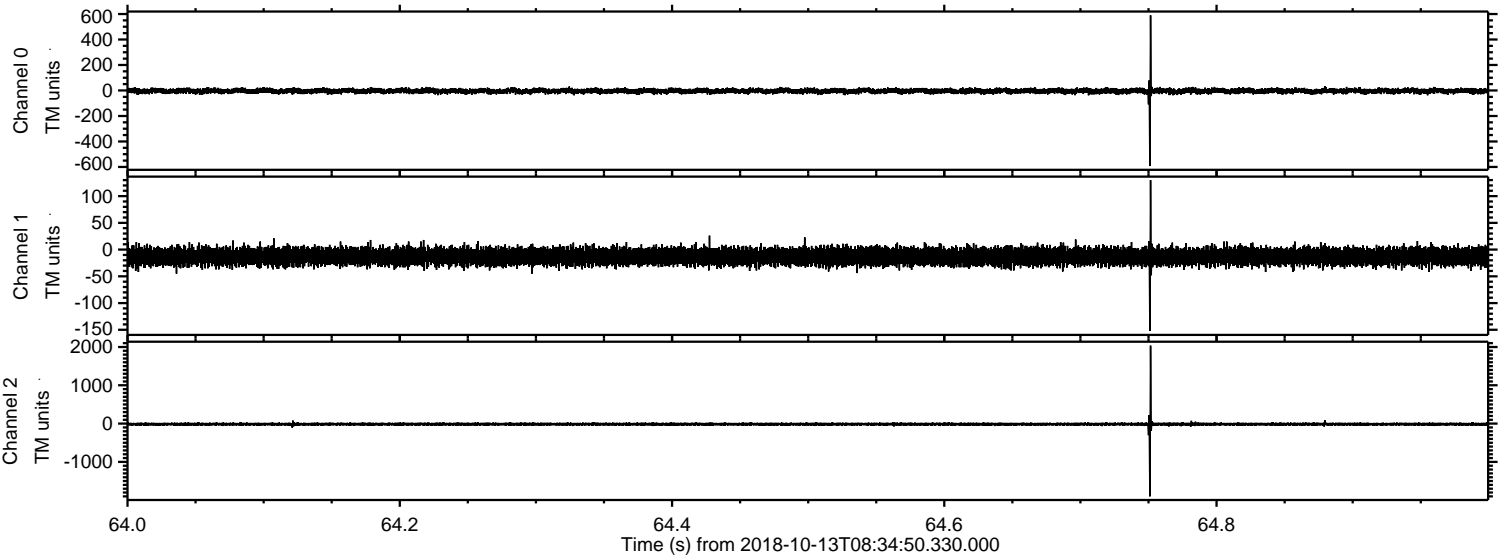


Channel 0
mn: -1278
mx: 910
 μ : -4.0
 σ : 16.1

Channel 1
mn: -1126
mx: 907
 μ : -13.0
 σ : 14.9

Channel 2
mn: -1920
mx: 2169
 μ : -14.6
 σ : 31.8

Processed Sat Oct 13 10:43:12 2018 by ELM ver.2012-10-06 from 001__elm20181013_083449__dat00.bin



Processed Sat Oct 13 10:43:13 2018 by ELM ver.2012-10-06 from 001__elm20181013_083449__dat00.bin

