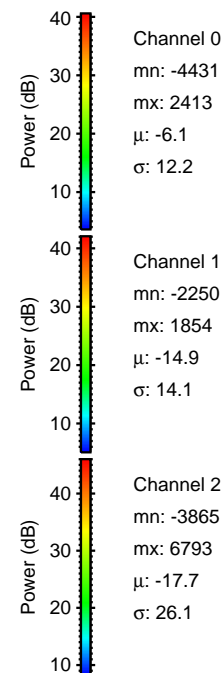
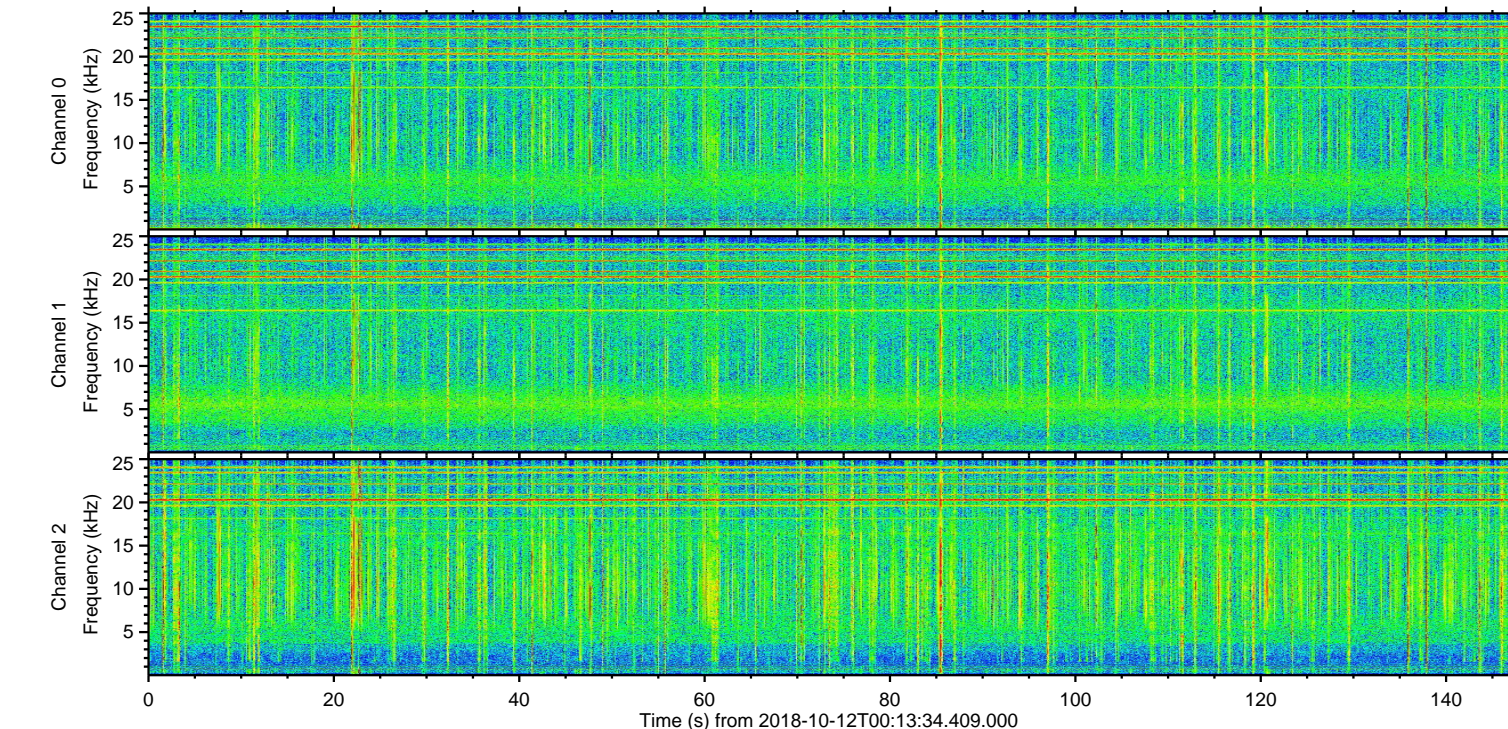
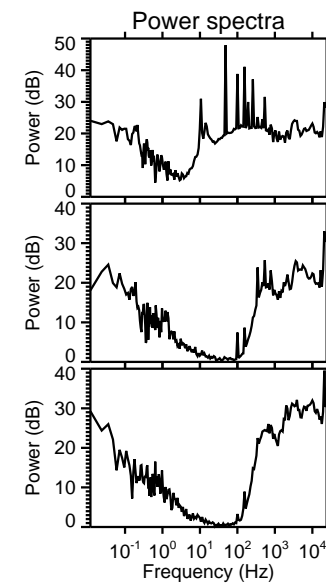
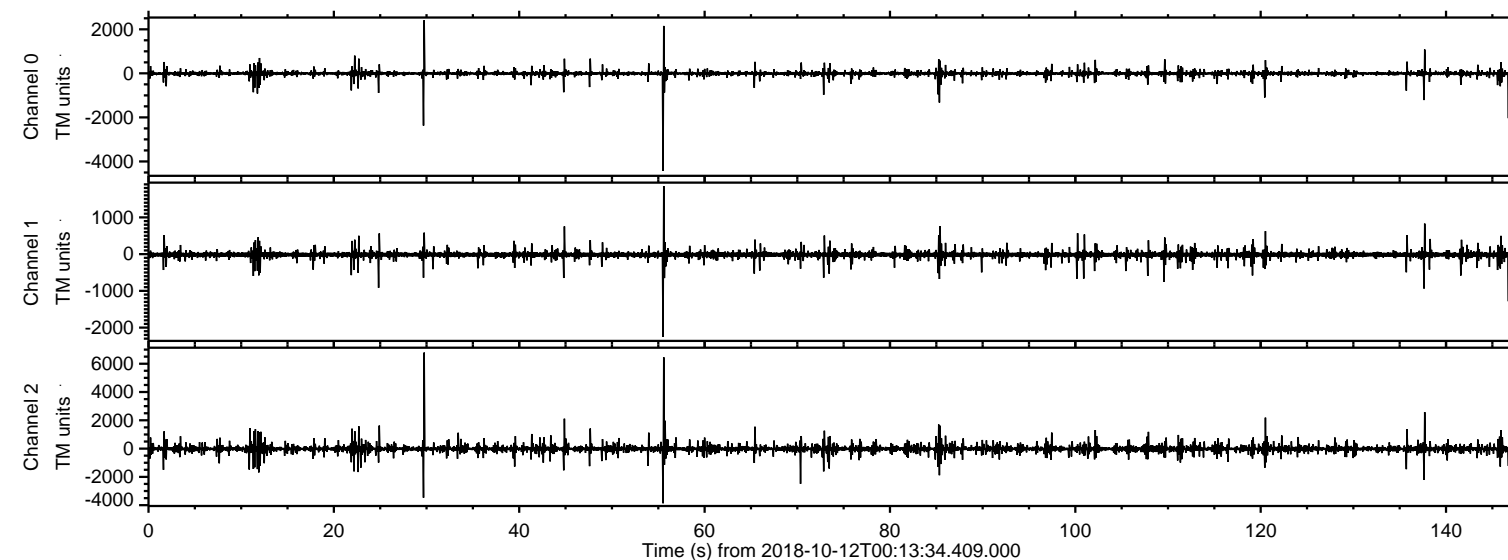
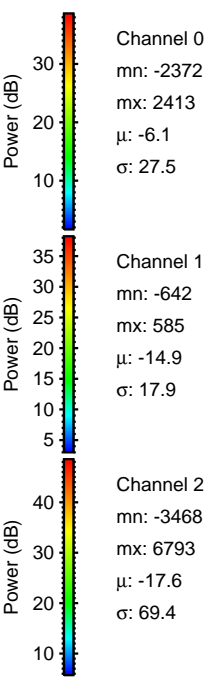
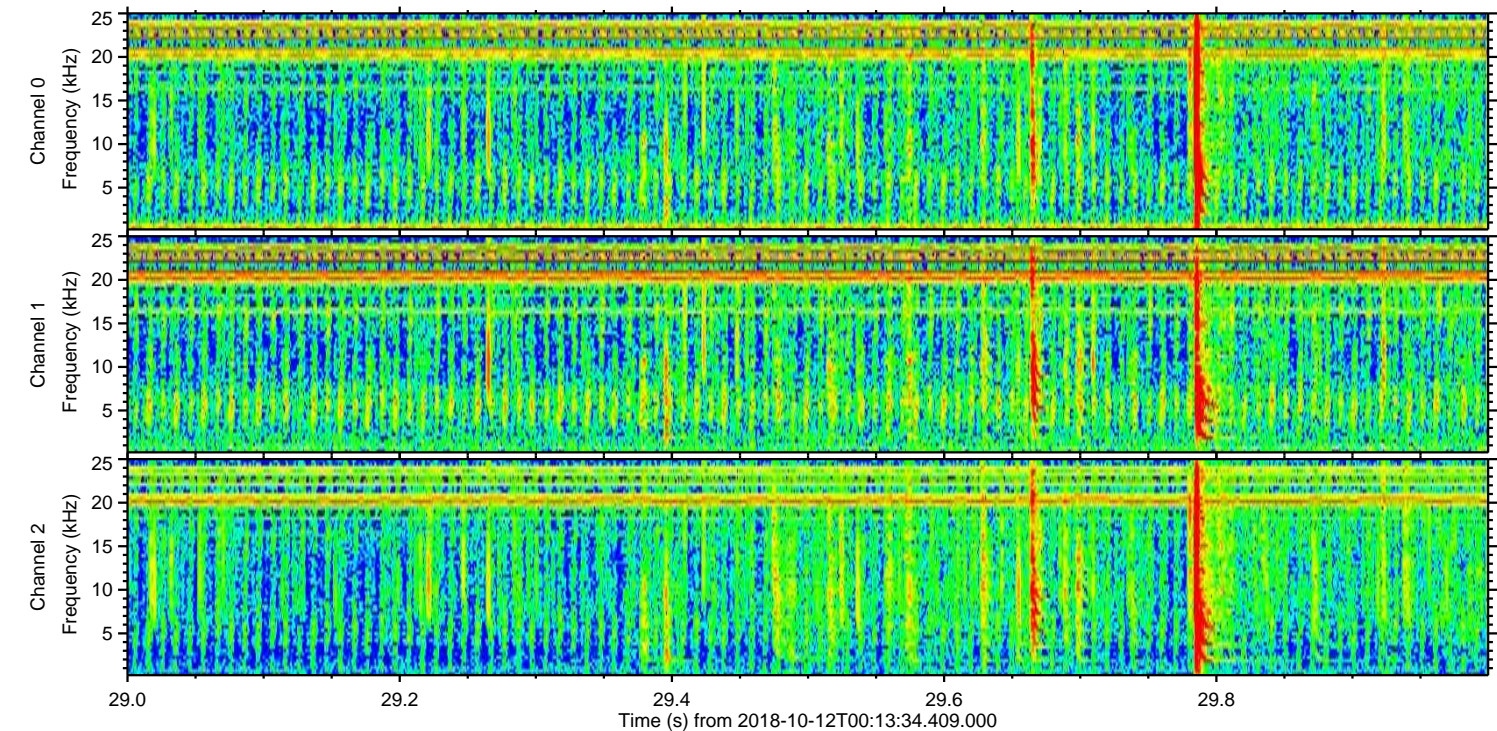
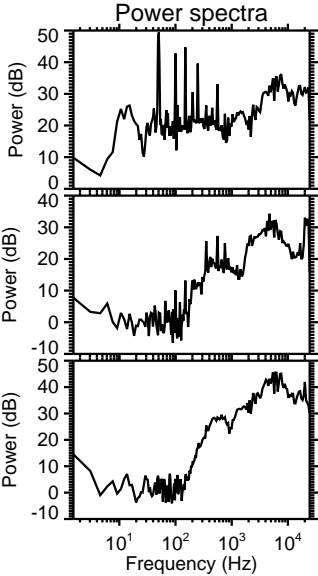
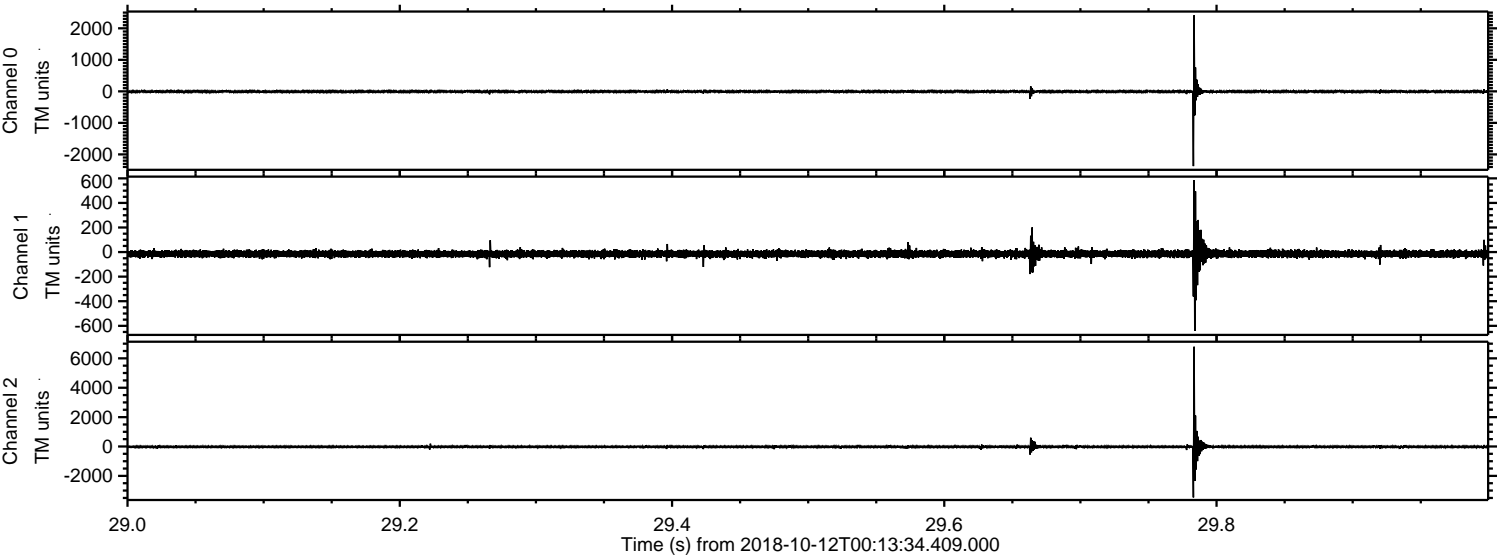


ELMAVAN 3D WAVEFORMS (Measured data sampled at 50 kHz) 51000 packets of 144 samples from 2018-10-12T00:13:34.409.000.

Processed Fri Oct 12 02:21:15 2018 by ELM ver.2012-10-06 from 001__elm20181012_001333__dat00.bin



Processed Fri Oct 12 02:21:22 2018 by ELM ver.2012-10-06 from 001__elm20181012_001333__dat00.bin

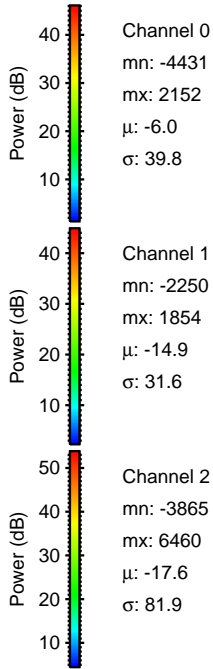
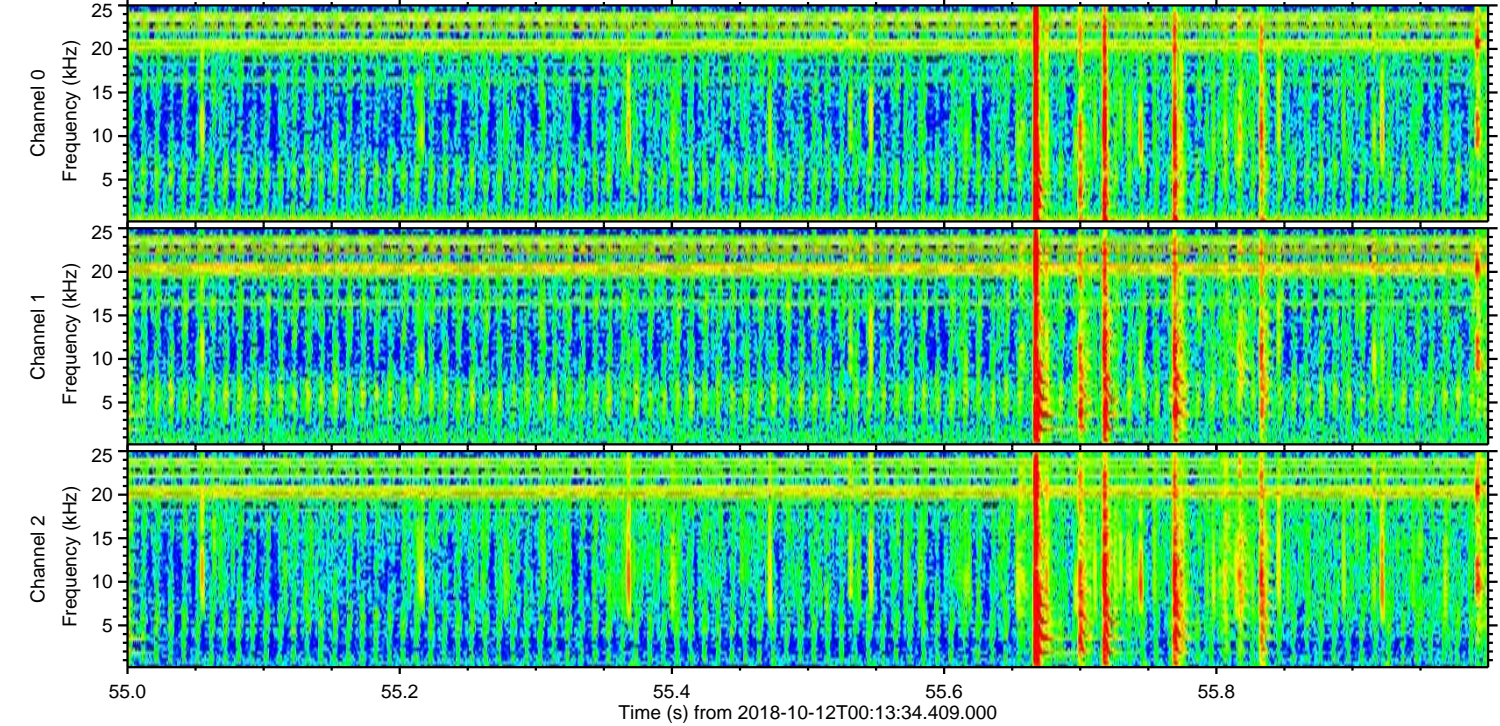
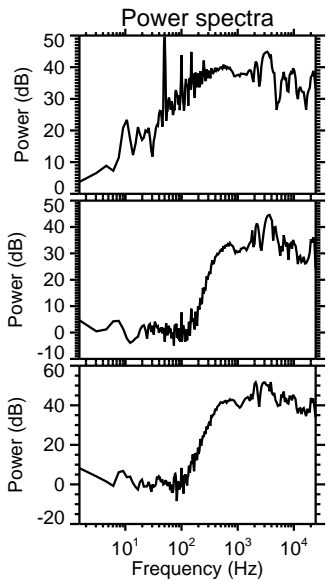
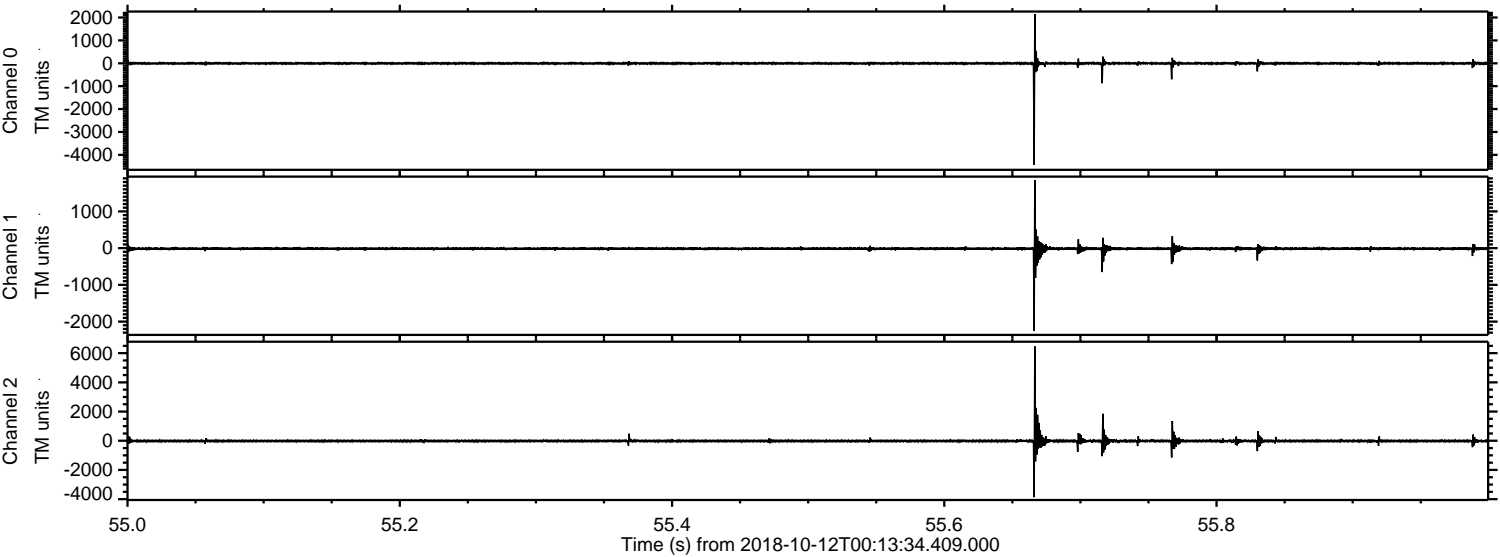


Channel 0
mn: -2372
mx: 2413
 μ : -6.1
 σ : 27.5

Channel 1
mn: -642
mx: 585
 μ : -14.9
 σ : 17.9

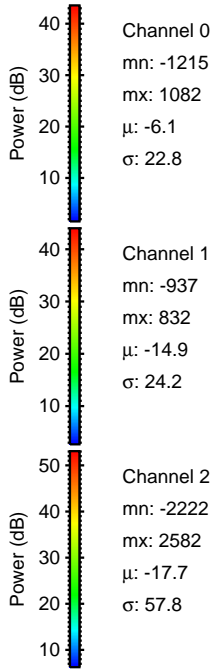
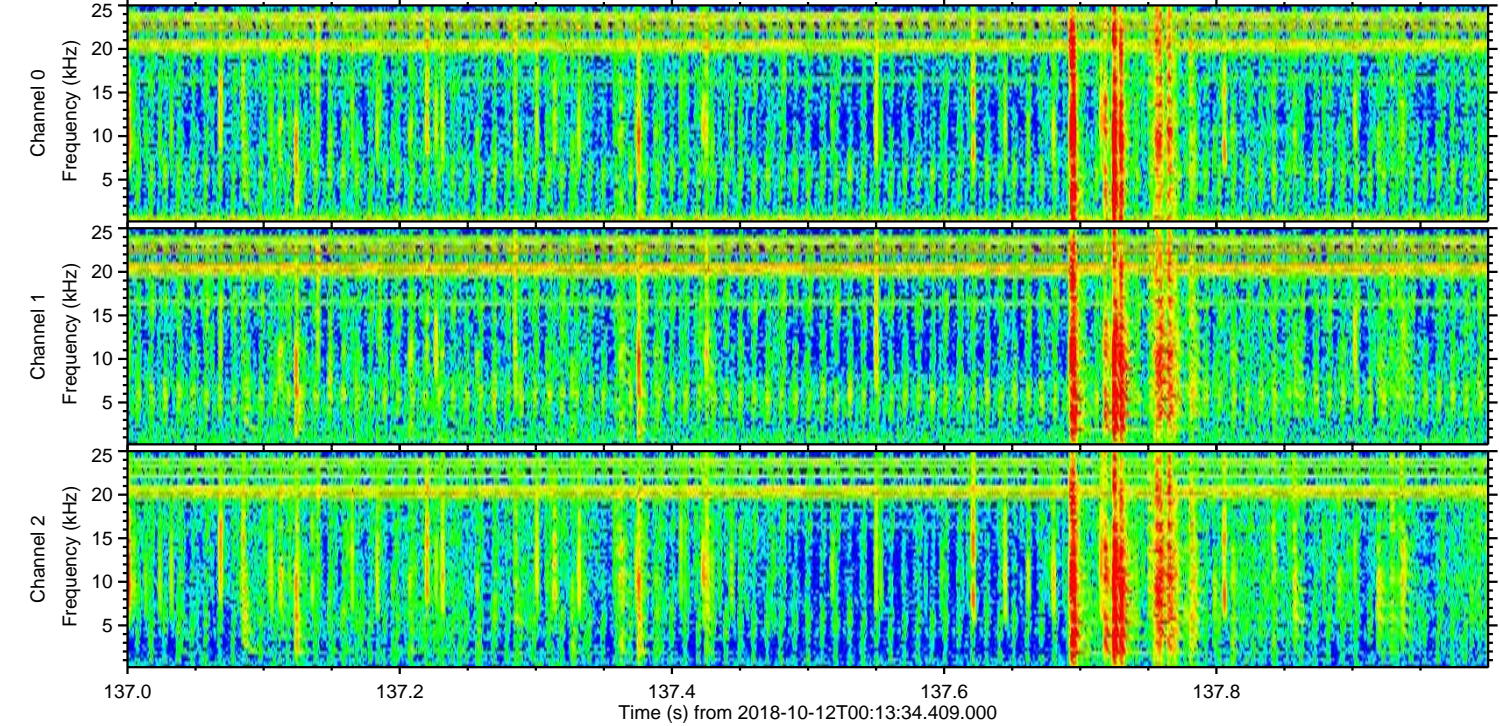
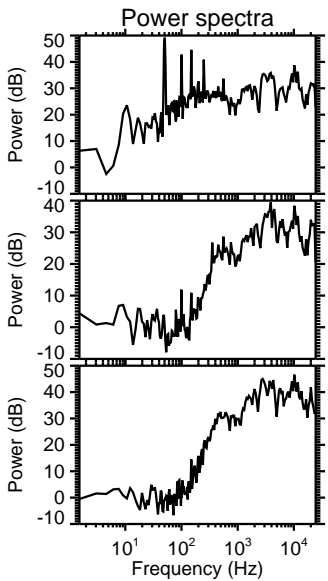
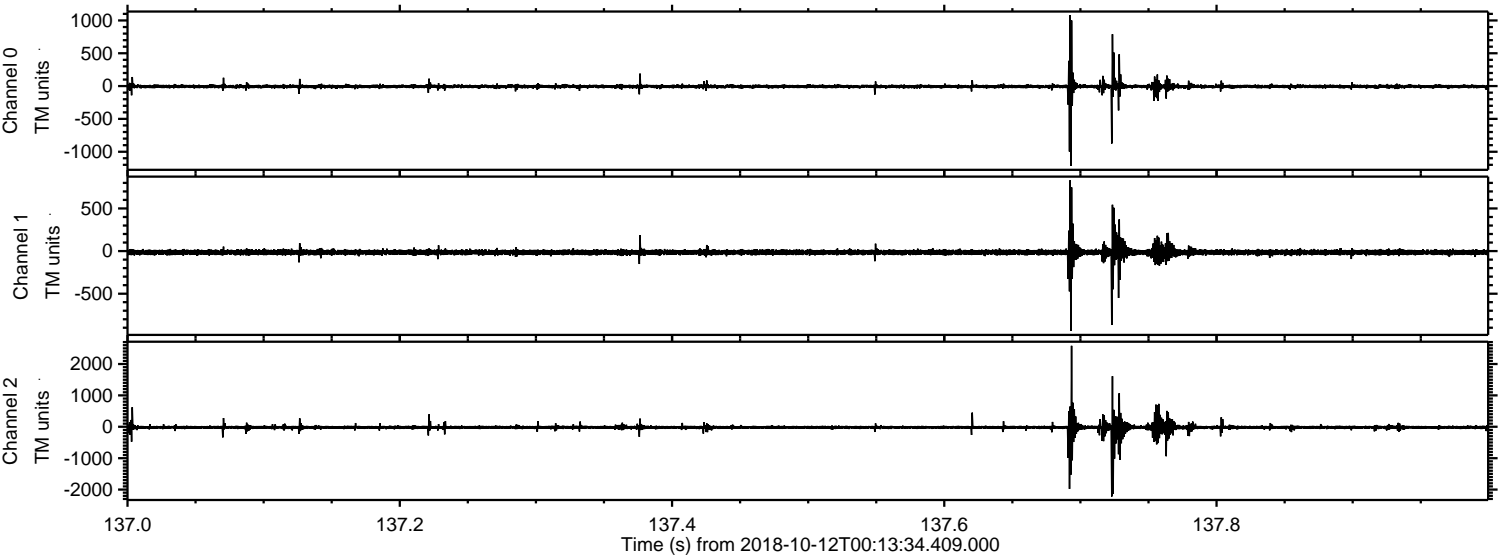
Channel 2
mn: -3468
mx: 6793
 μ : -17.6
 σ : 69.4

Processed Fri Oct 12 02:21:22 2018 by ELM ver.2012-10-06 from 001__elm20181012_001333__dat00.bin

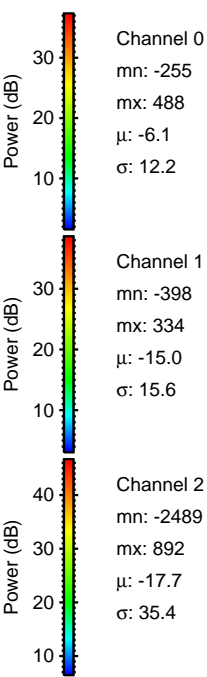
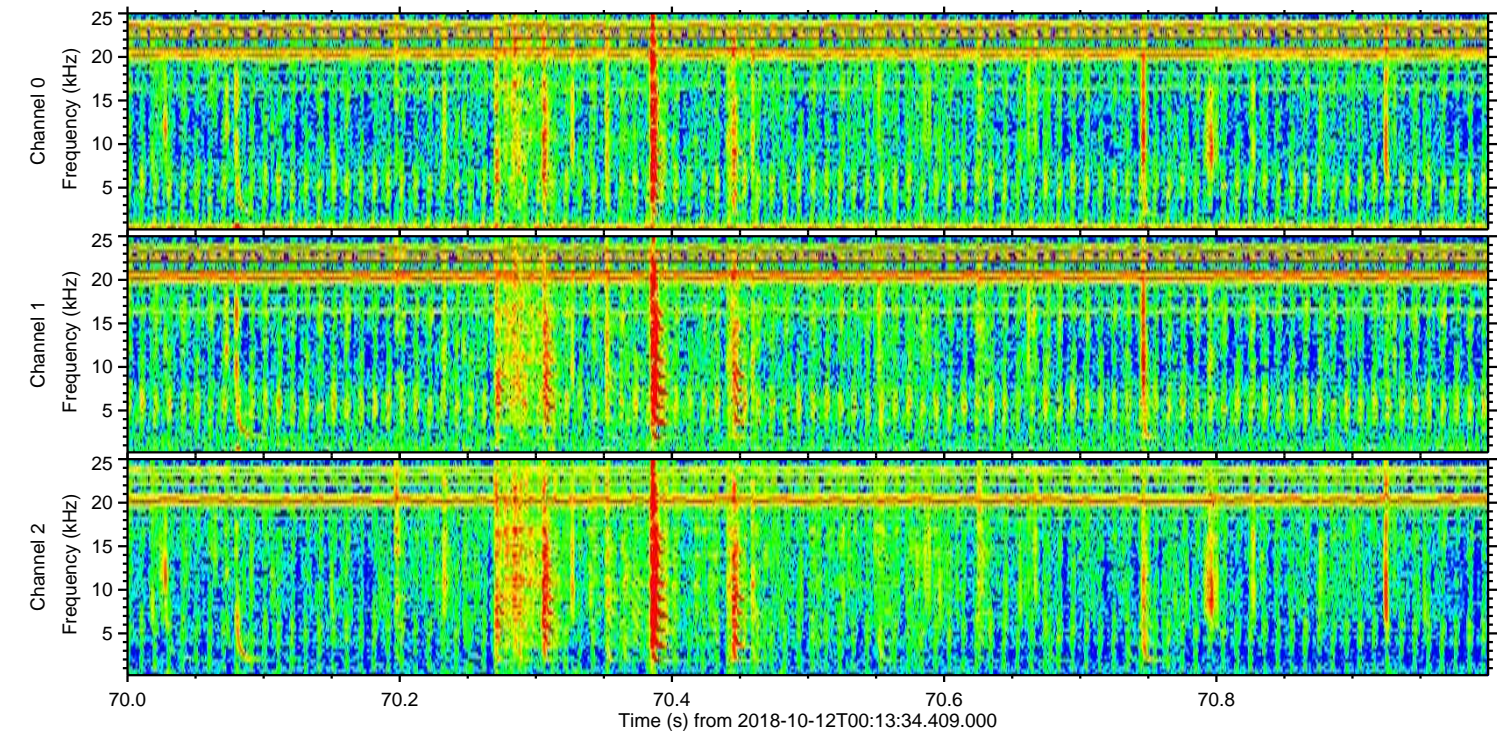
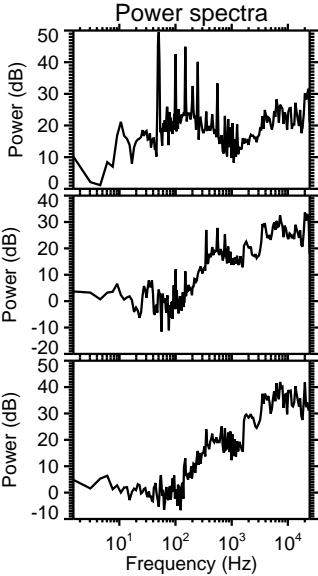
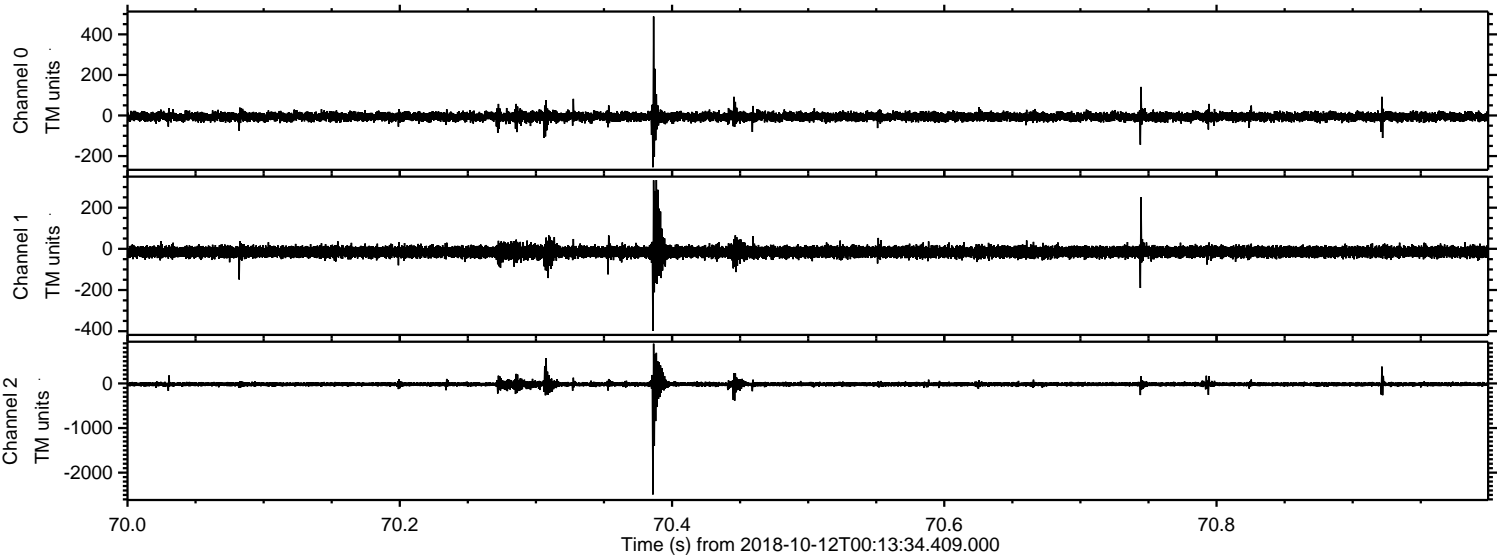


ELMAVAN 3D WAVEFORMS (Measured data sampled at 50 kHz) 51000 packets of 144 samples from 2018-10-12T00:13:34.409.000. Part 138/147

Processed Fri Oct 12 02:21:23 2018 by ELM ver.2012-10-06 from 001__elm20181012_001333__dat00.bin

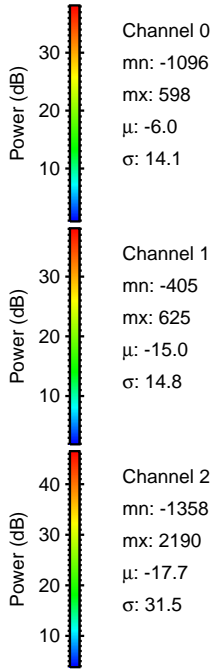
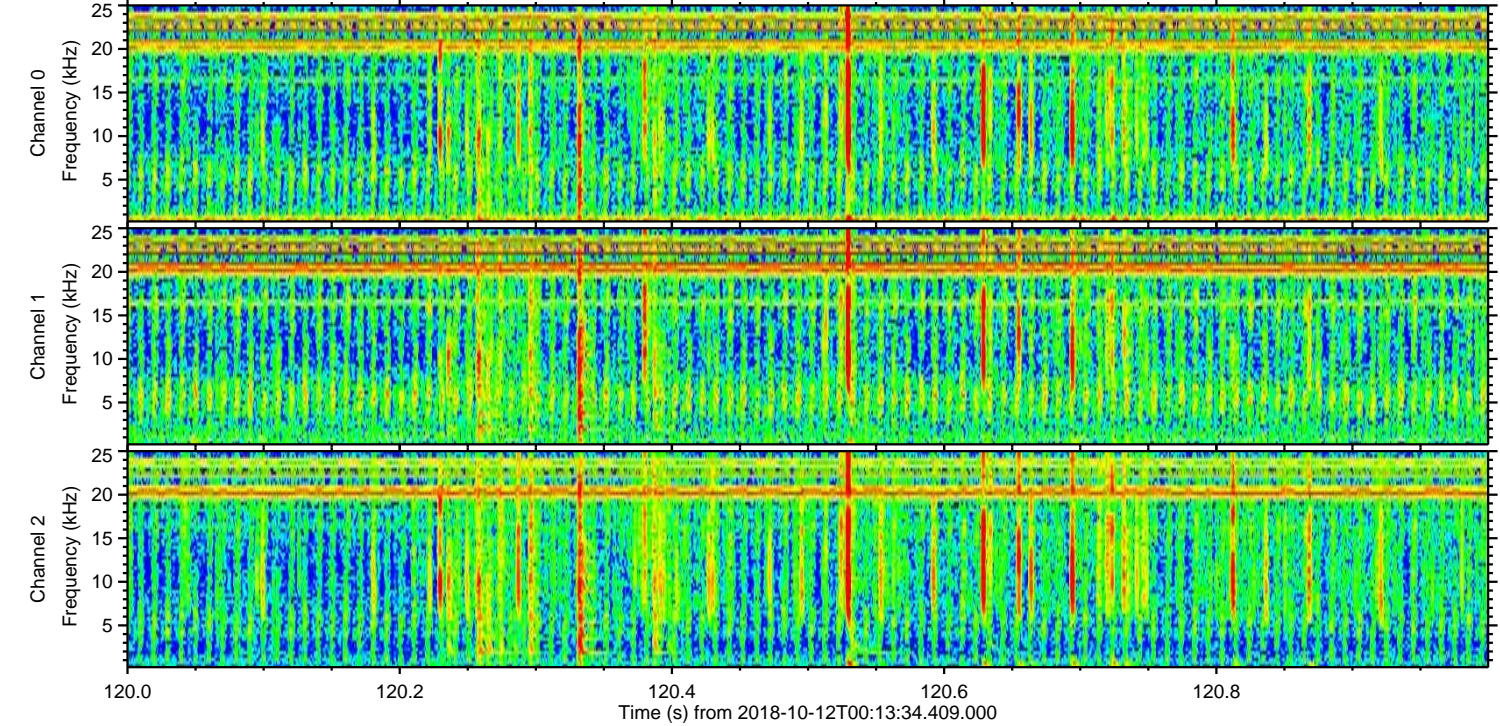
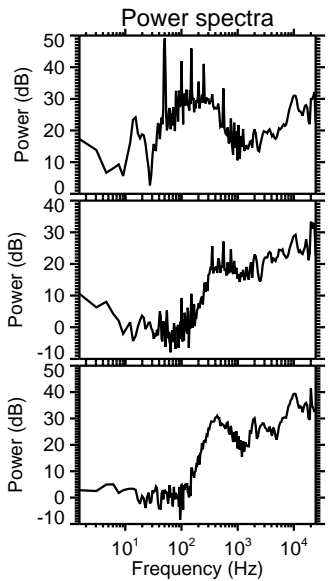
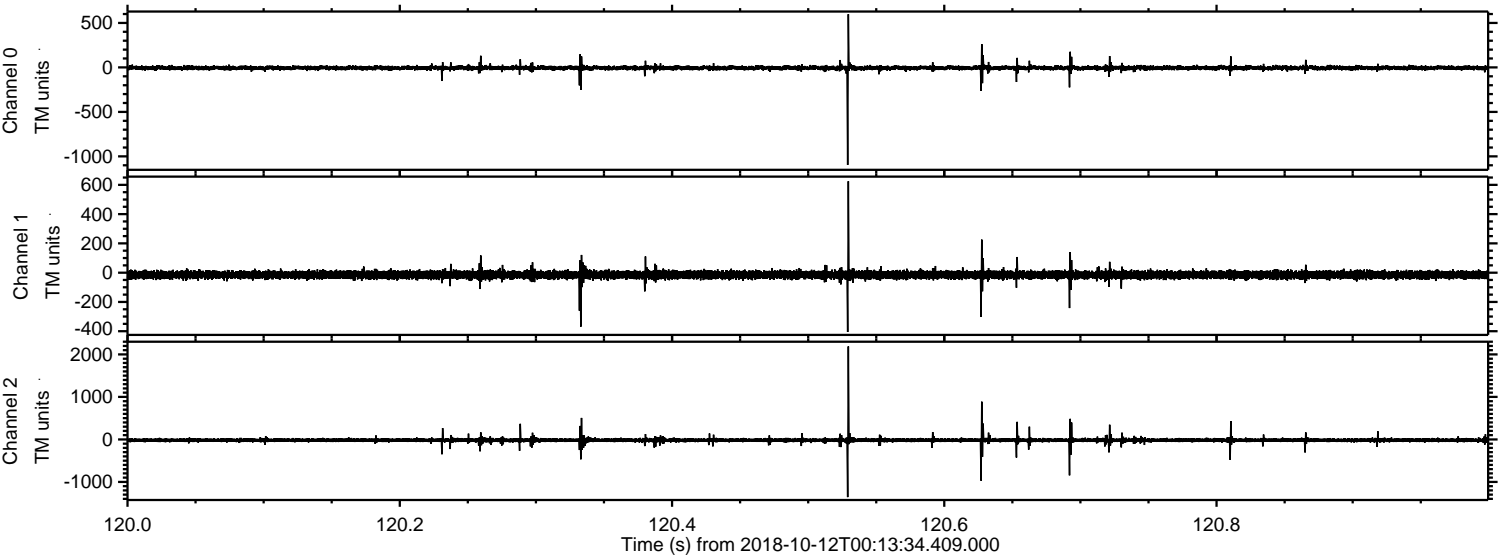


Processed Fri Oct 12 02:21:24 2018 by ELM ver.2012-10-06 from 001__elm20181012_001333__dat00.bin

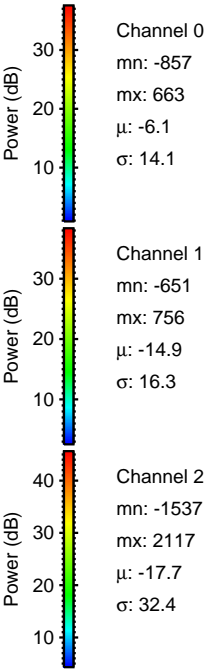
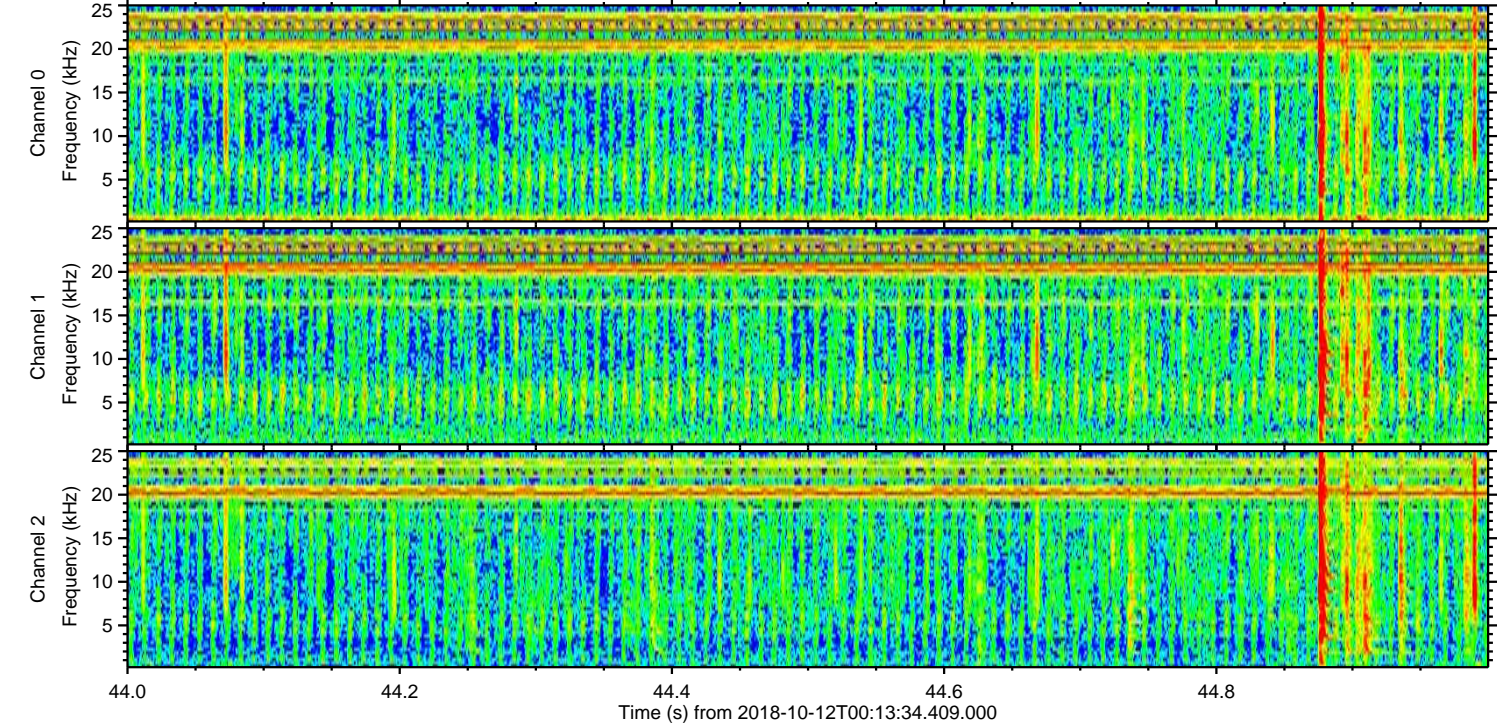
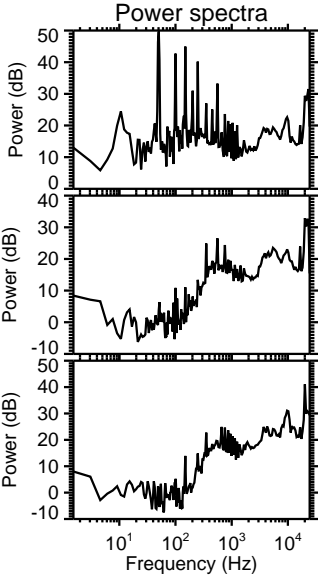
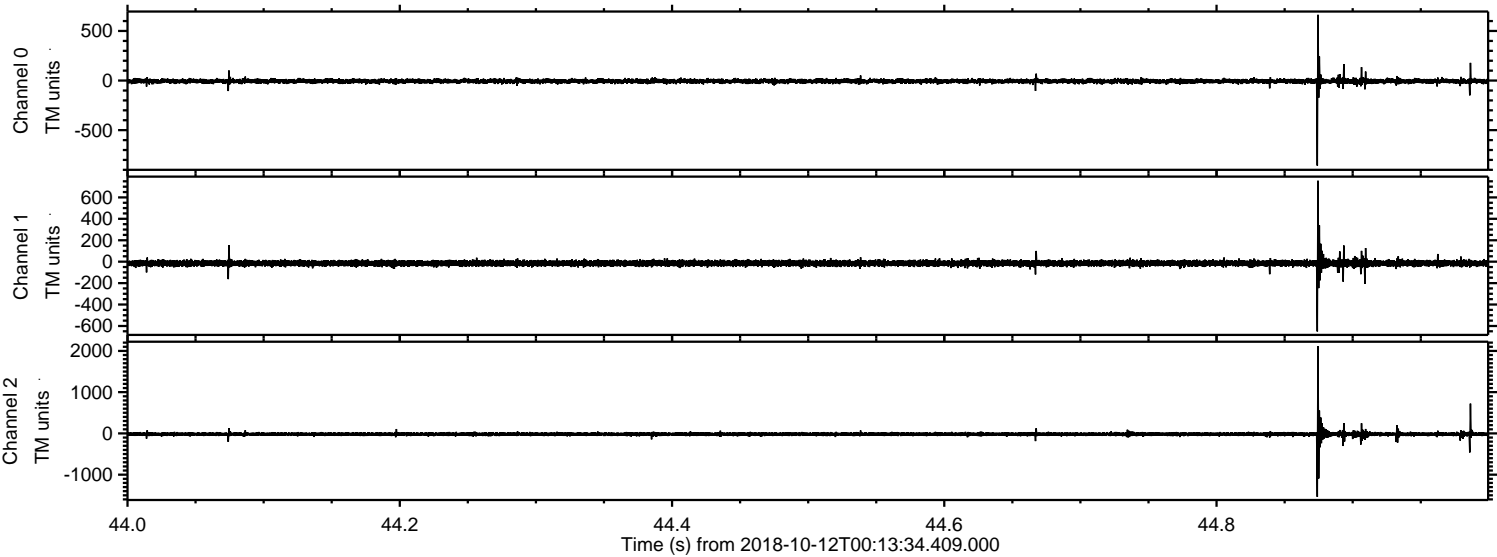


ELMAVAN 3D WAVEFORMS (Measured data sampled at 50 kHz) 51000 packets of 144 samples from 2018-10-12T00:13:34.409.000. Part 121/147

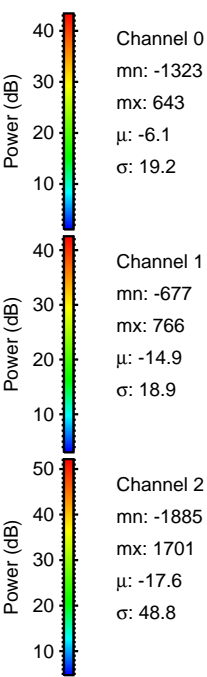
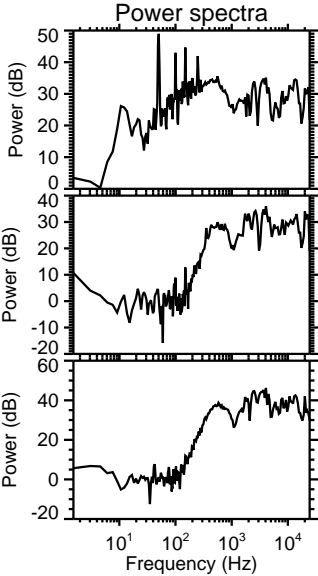
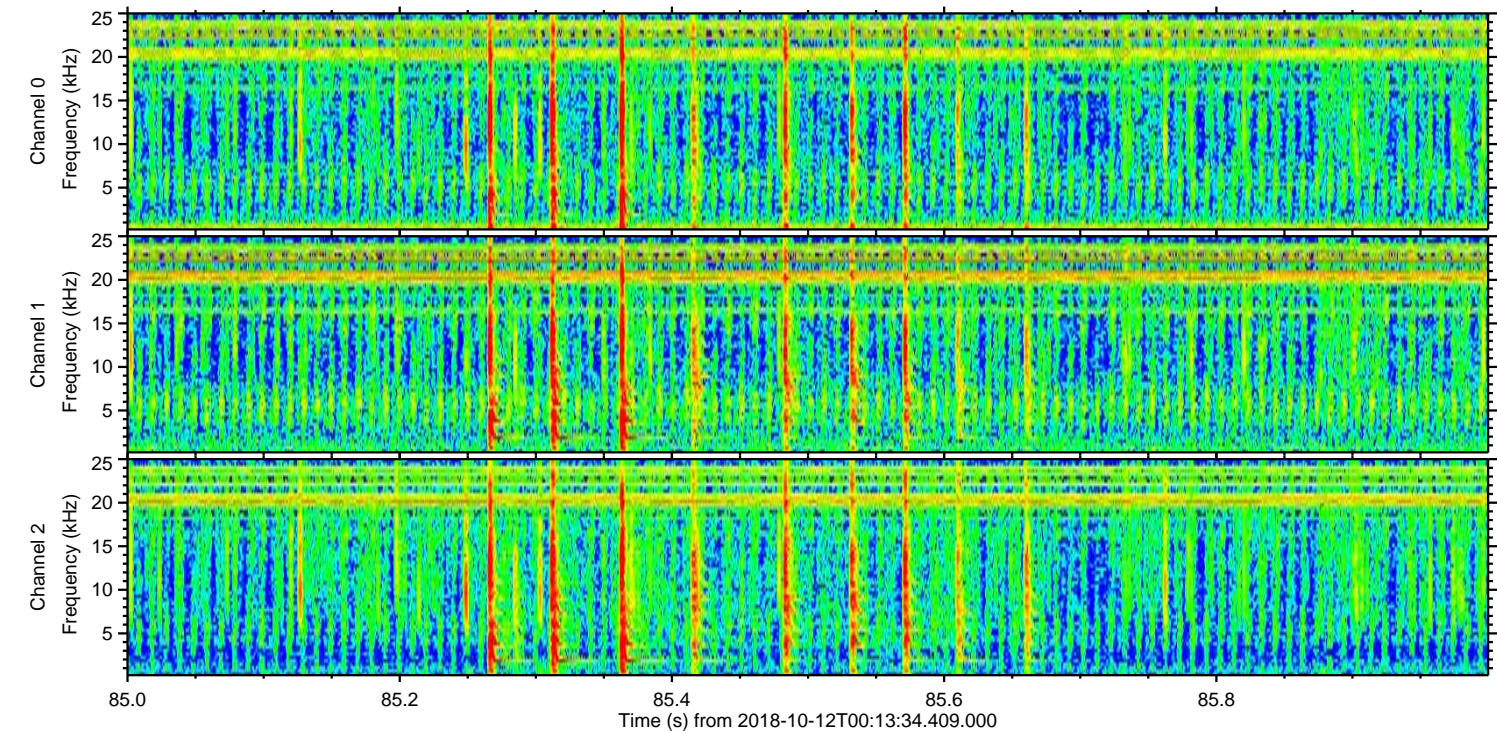
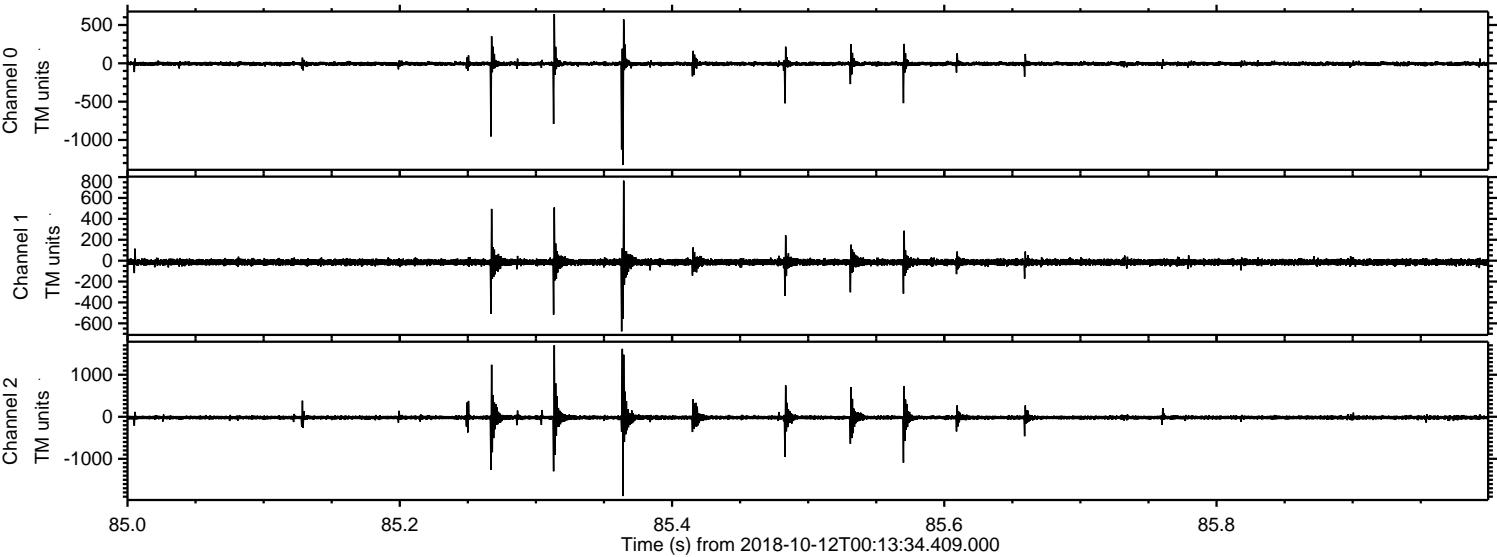
Processed Fri Oct 12 02:21:24 2018 by ELM ver.2012-10-06 from 001__elm20181012_001333__dat00.bin



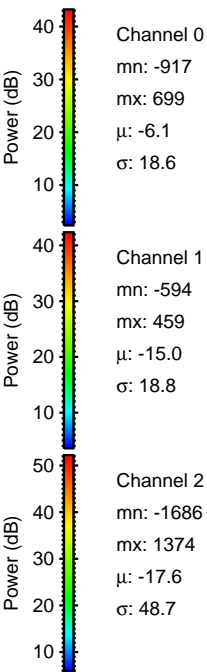
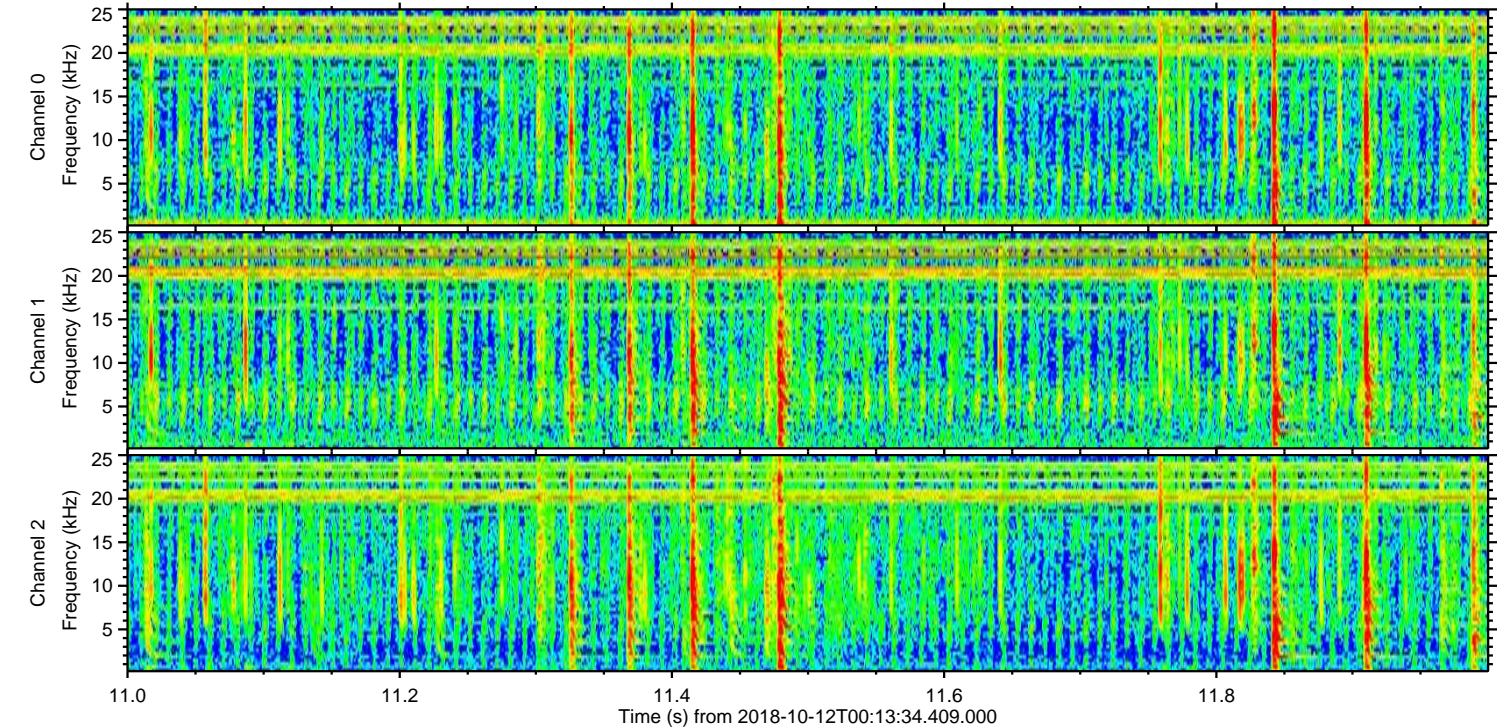
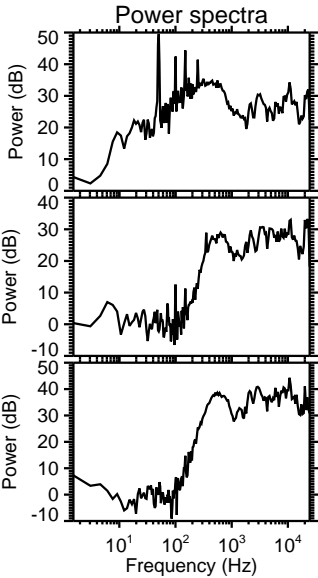
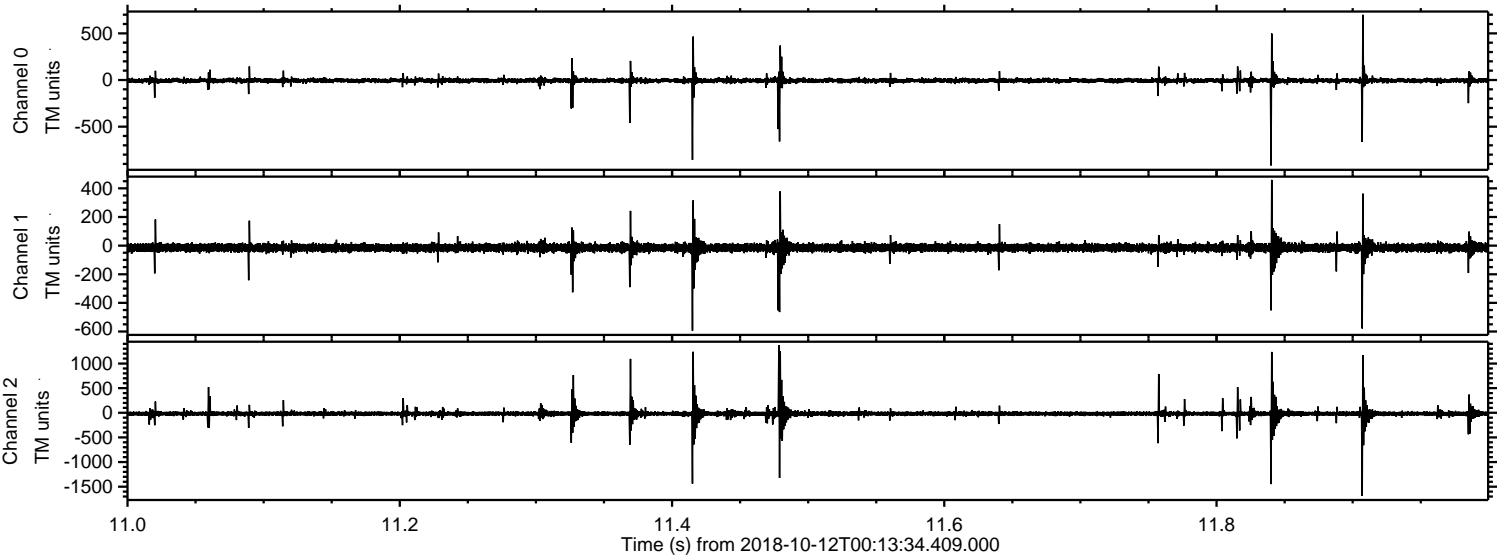
Processed Fri Oct 12 02:21:25 2018 by ELM ver.2012-10-06 from 001__elm20181012_001333__dat00.bin



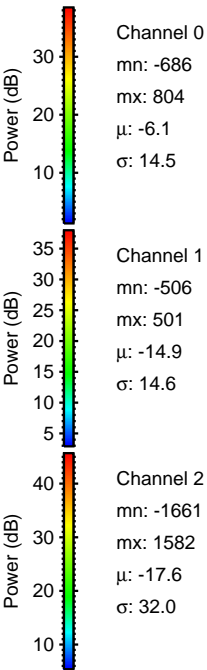
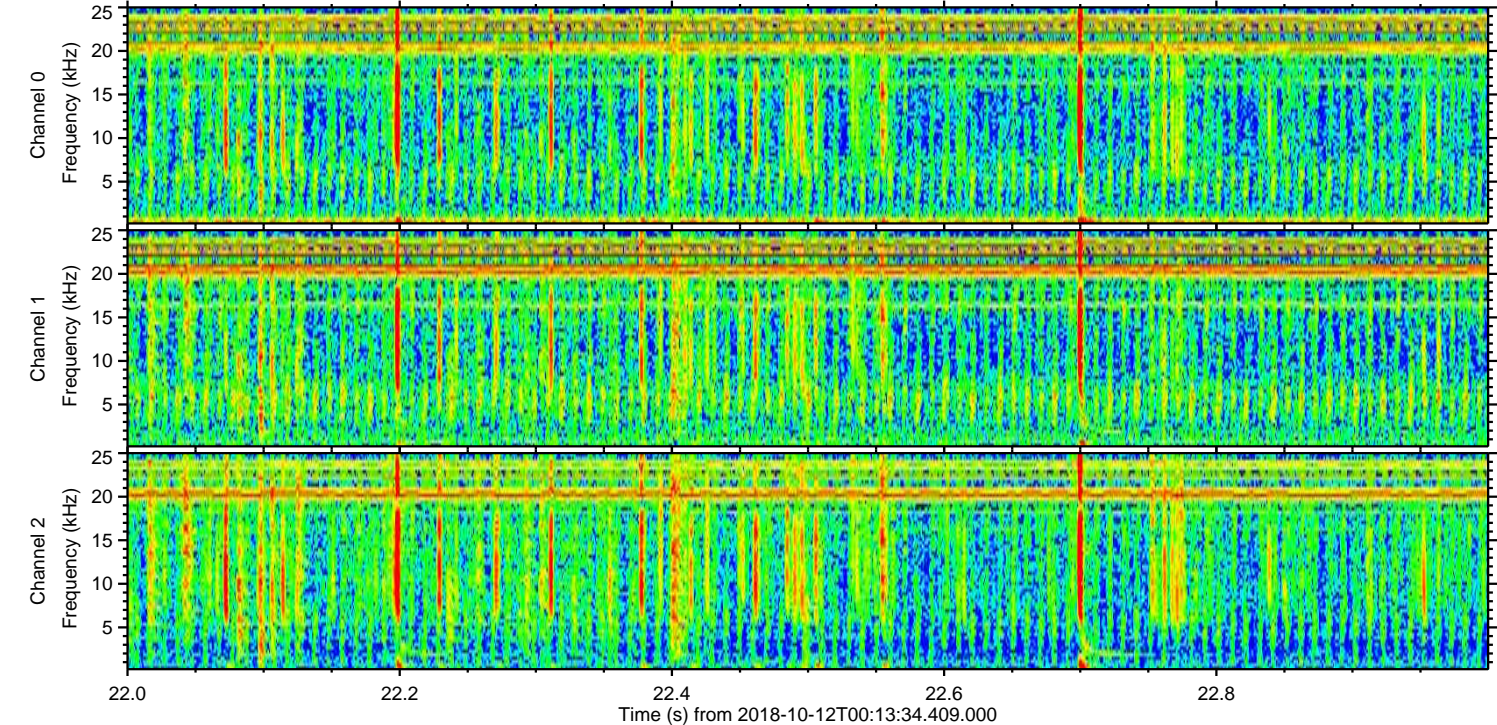
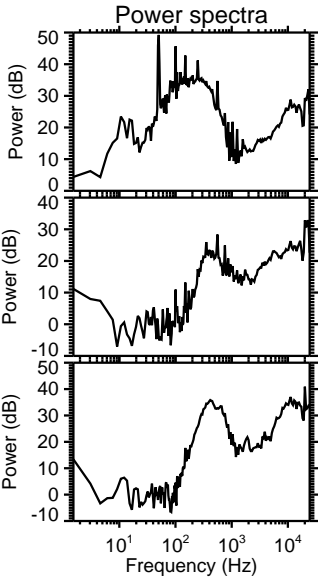
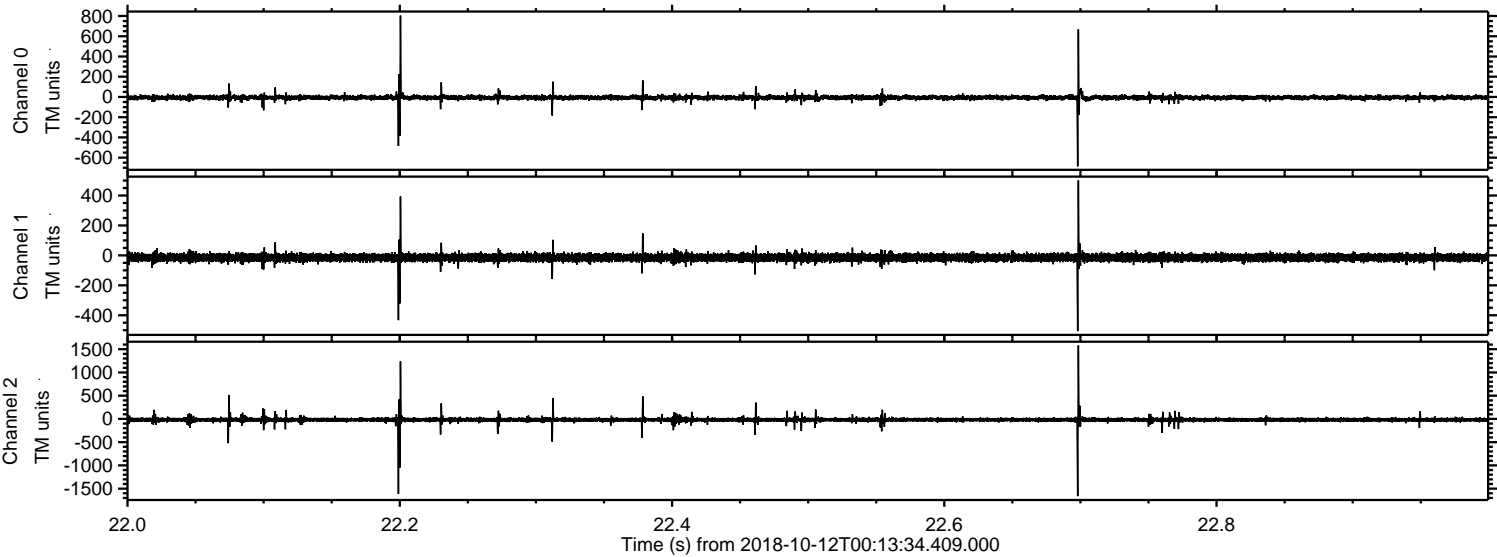
Processed Fri Oct 12 02:21:25 2018 by ELM ver.2012-10-06 from 001__elm20181012_001333__dat00.bin



Processed Fri Oct 12 02:21:26 2018 by ELM ver.2012-10-06 from 001__elm20181012_001333__dat00.bin



Processed Fri Oct 12 02:21:27 2018 by ELM ver.2012-10-06 from 001__elm20181012_001333__dat00.bin



Channel 0
mn: -686
mx: 804
 μ : -6.1
 σ : 14.5

Channel 1
mn: -506
mx: 501
 μ : -14.9
 σ : 14.6

Channel 2
mn: -1661
mx: 1582
 μ : -17.6
 σ : 32.0

