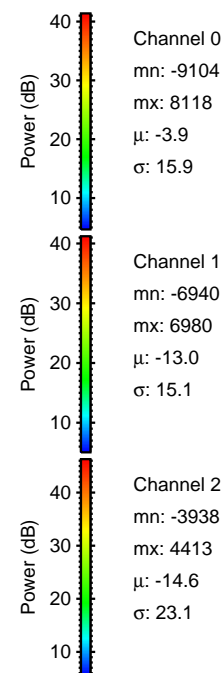
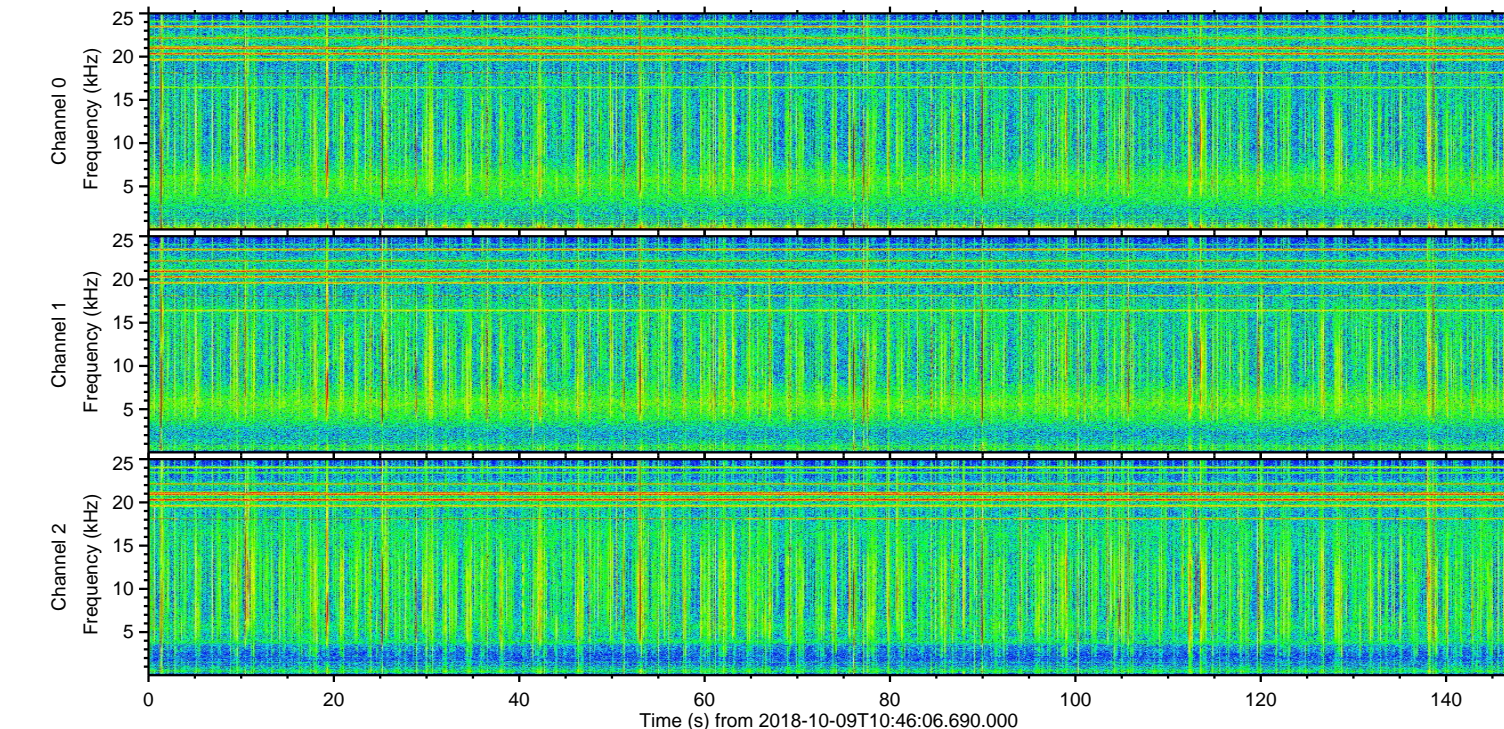
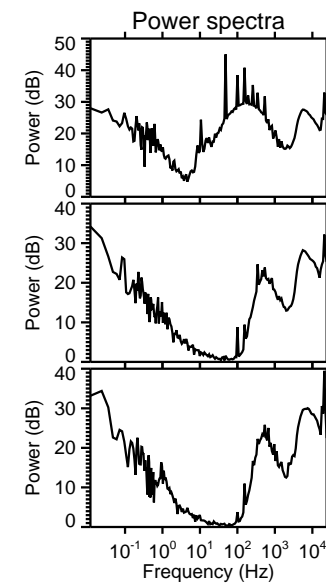
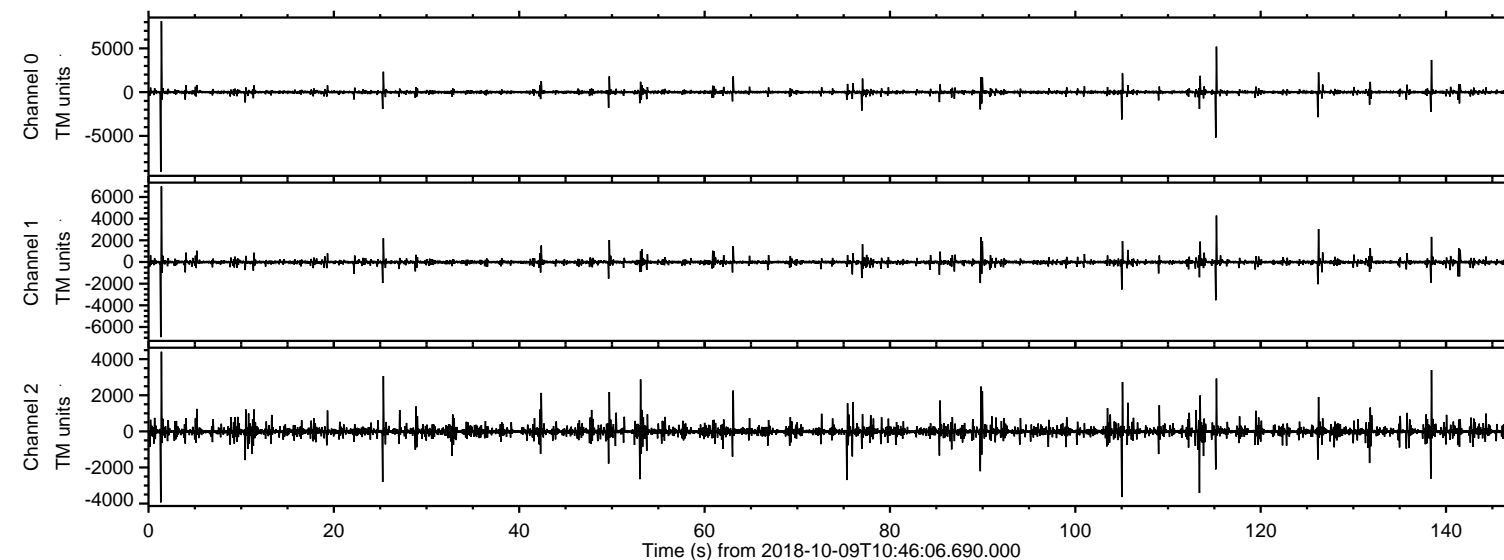
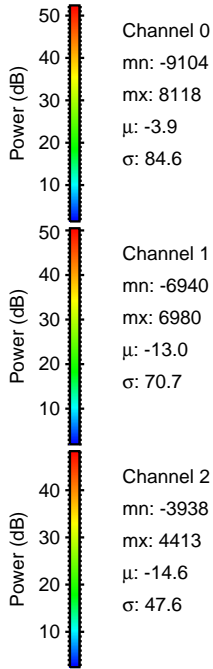
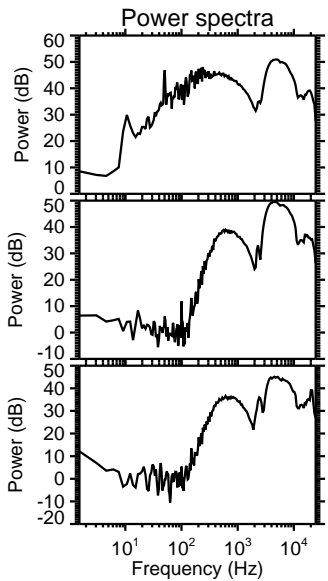
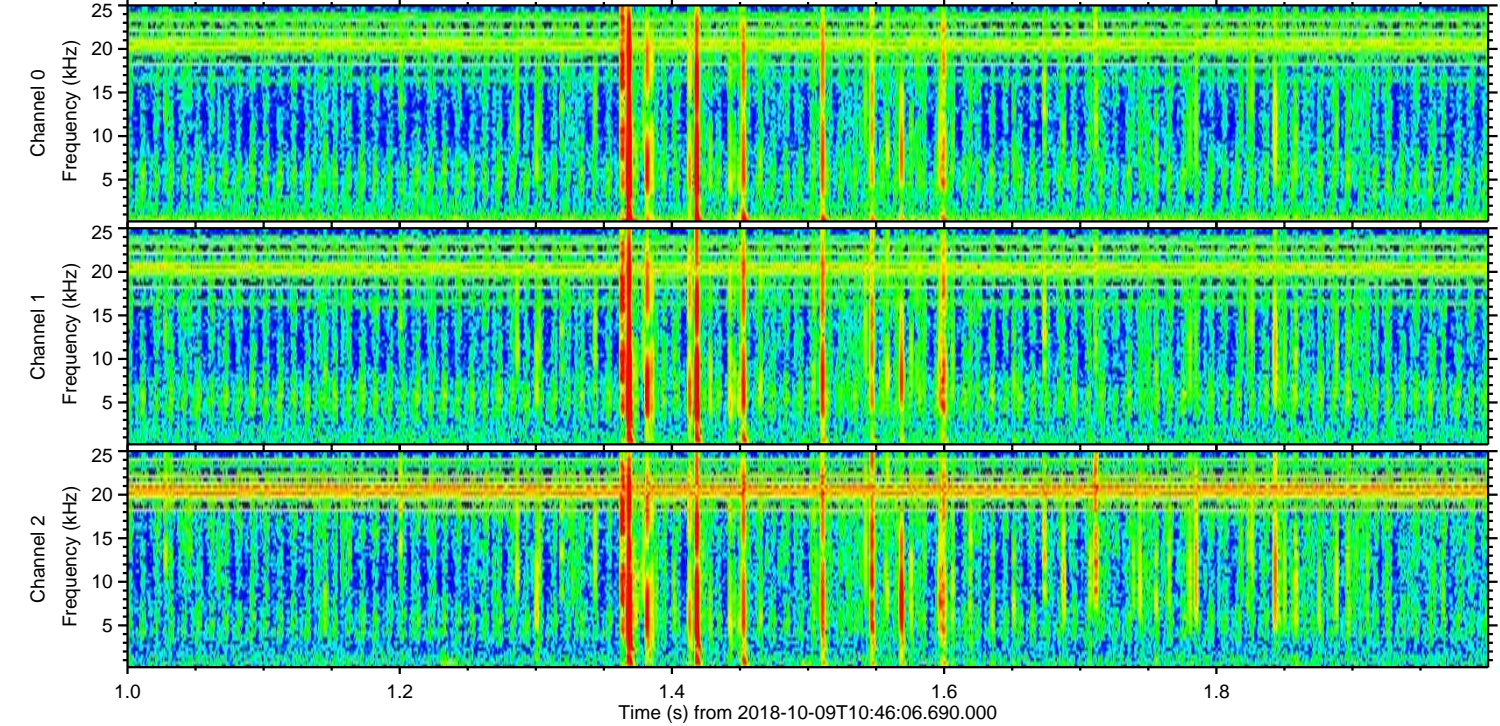
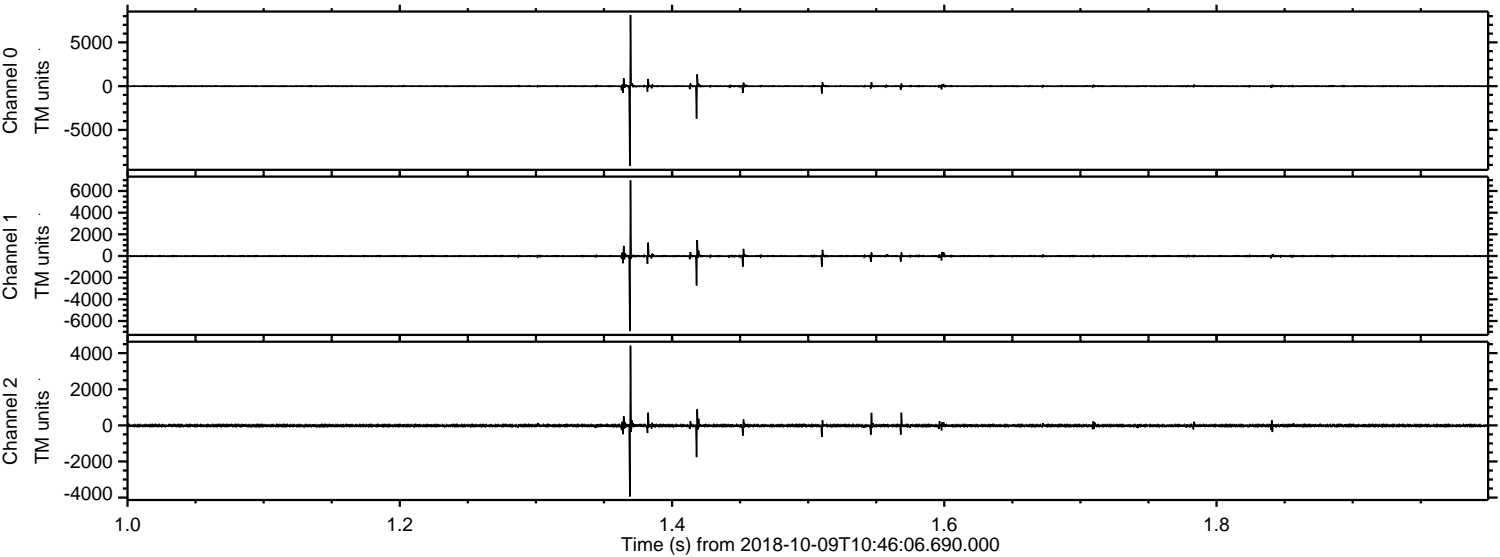


ELMAVAN 3D WAVEFORMS (Measured data sampled at 50 kHz) 51000 packets of 144 samples from 2018-10-09T10:46:06.690.000.

Processed Tue Oct 9 12:53:50 2018 by ELM ver.2012-10-06 from 001__elm20181009_104605__dat00.bin

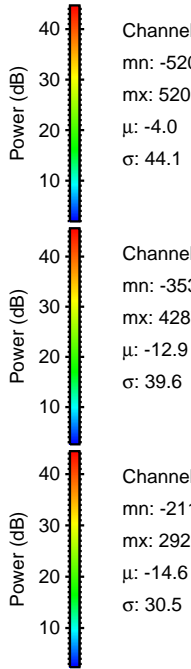
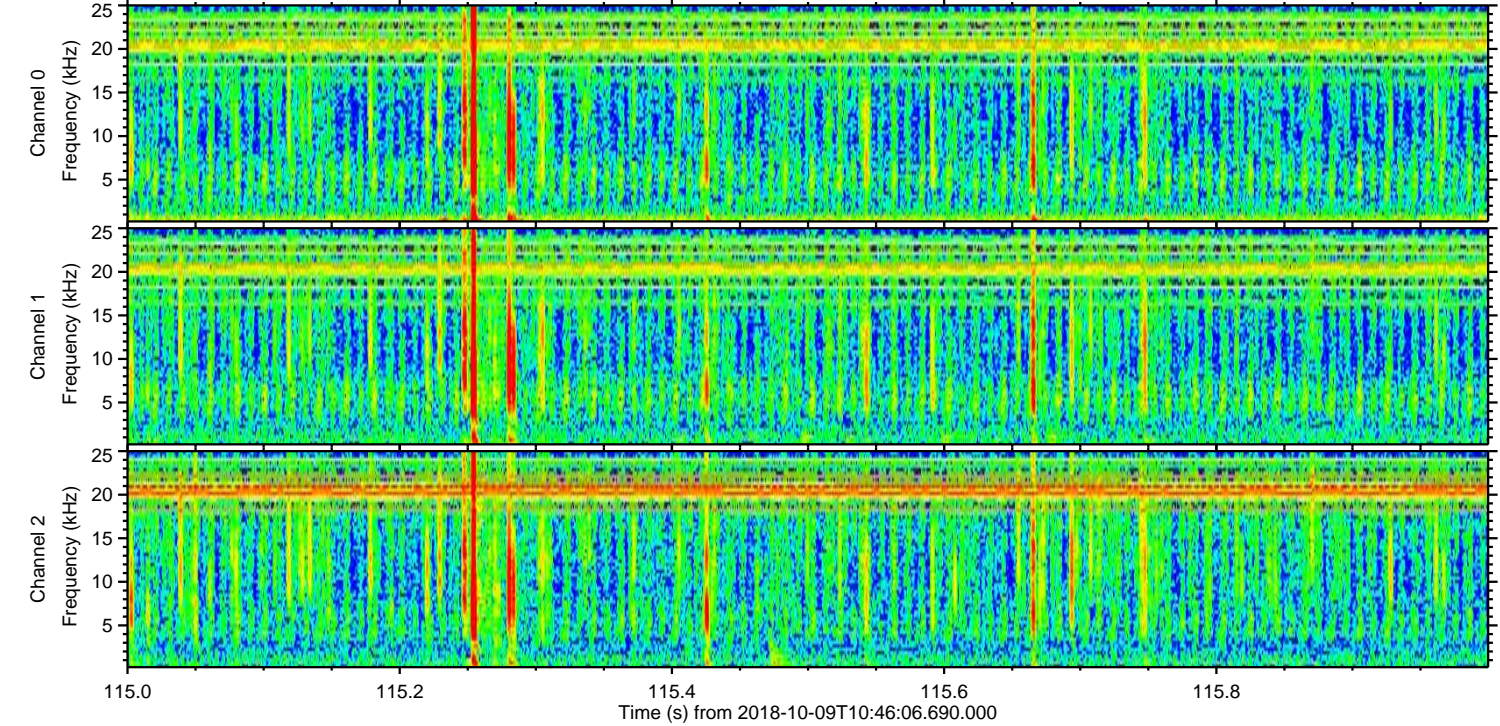
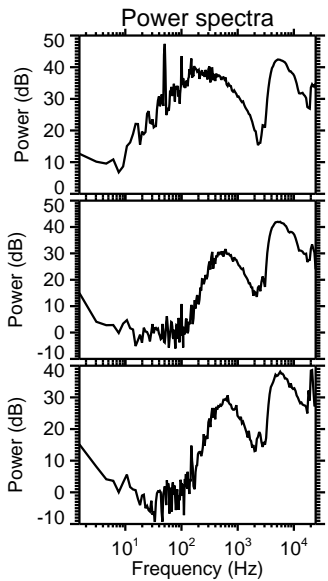
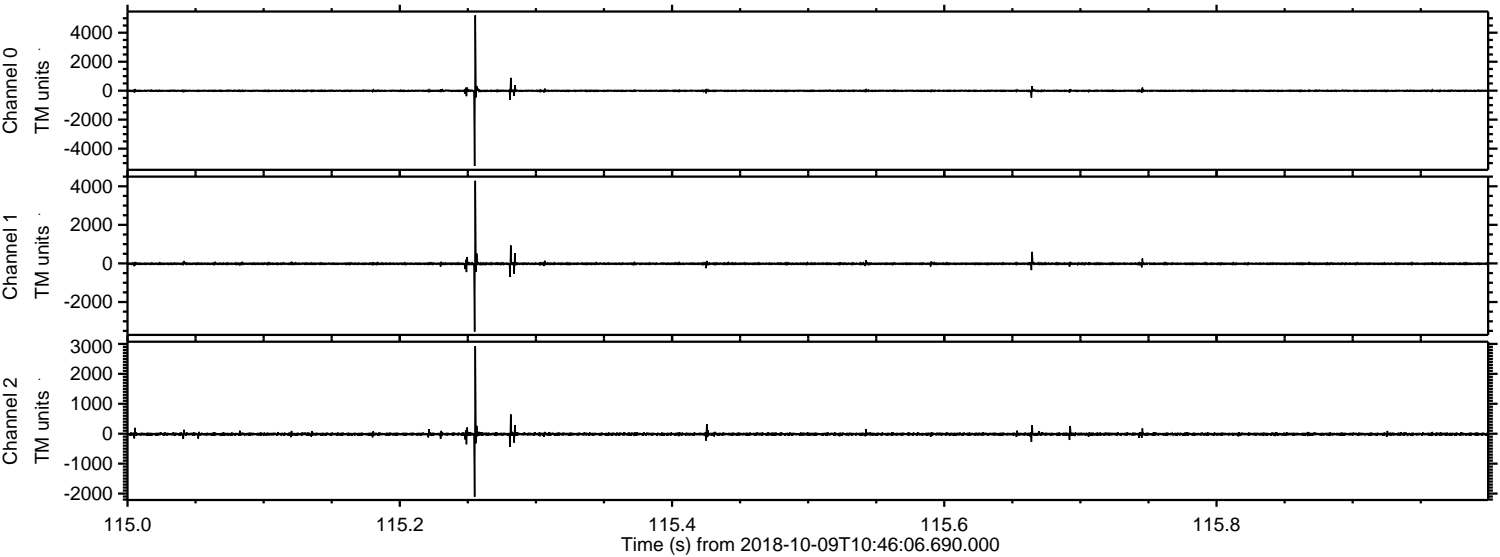


Processed Tue Oct 9 12:53:56 2018 by ELM ver.2012-10-06 from 001__elm20181009_104605__dat00.bin



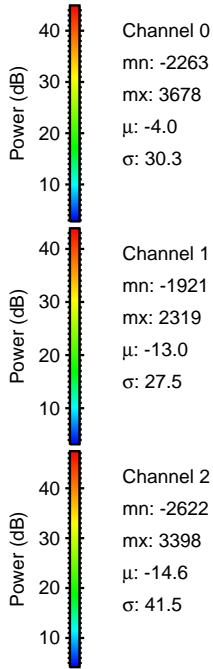
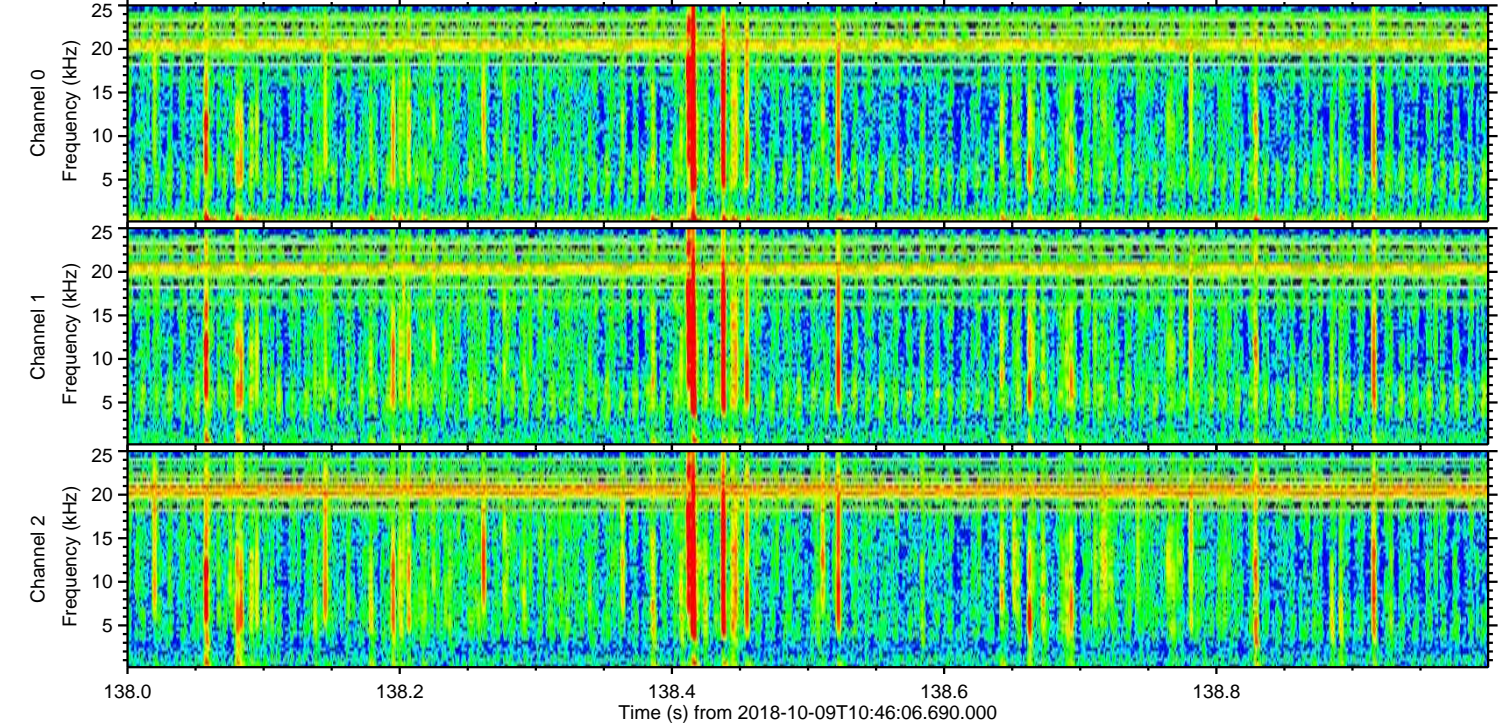
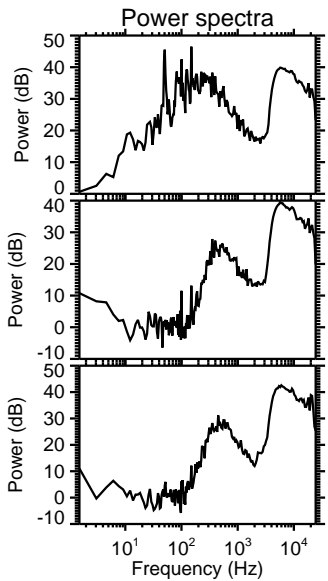
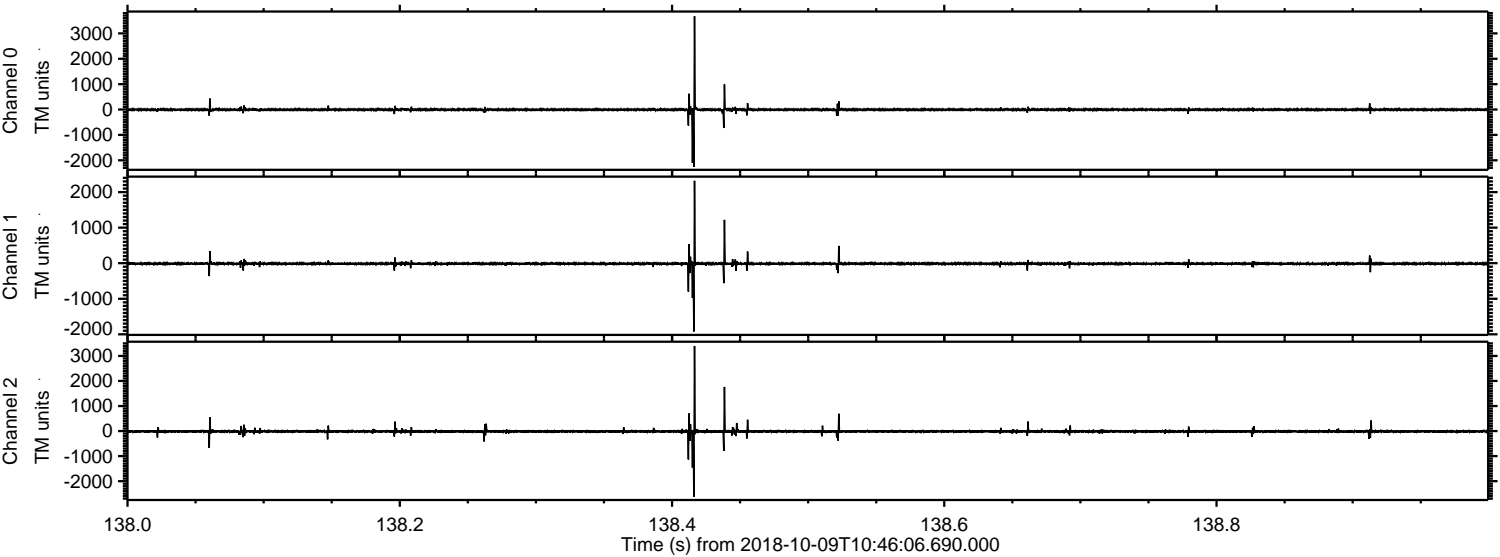
ELMAVAN 3D WAVEFORMS (Measured data sampled at 50 kHz) 51000 packets of 144 samples from 2018-10-09T10:46:06.690.000. Part 116/147

Processed Tue Oct 9 12:53:57 2018 by ELM ver.2012-10-06 from 001__elm20181009_104605__dat00.bin



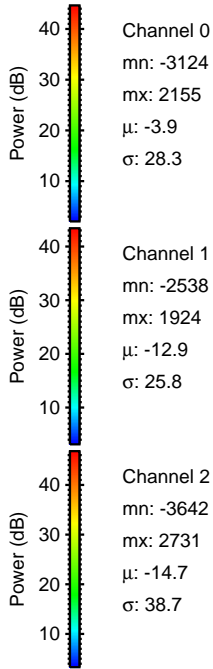
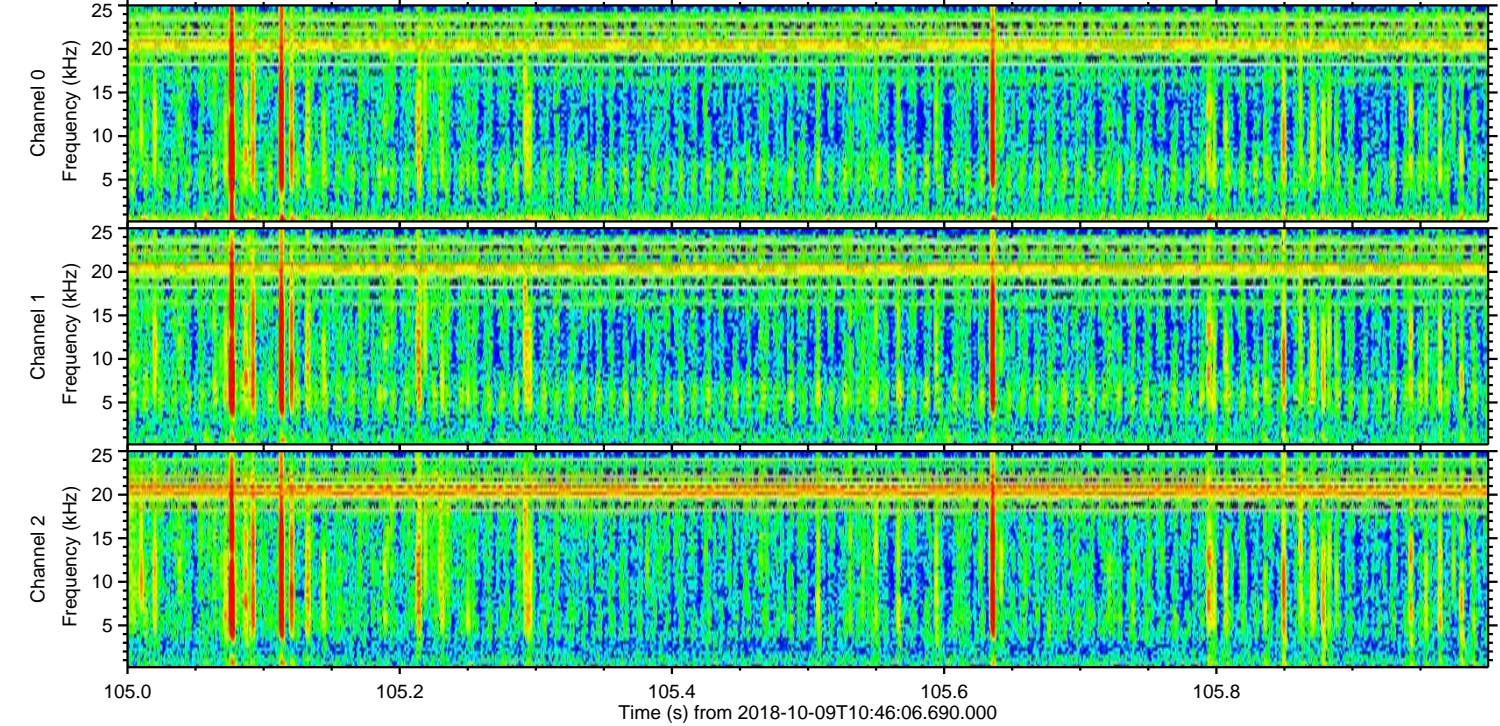
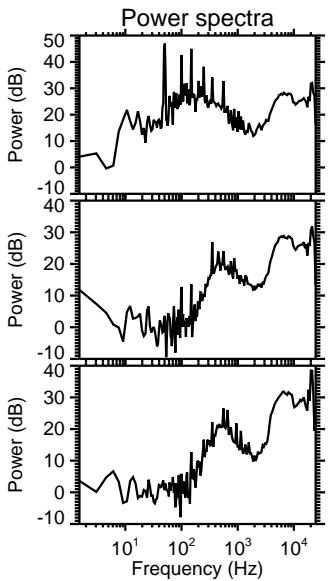
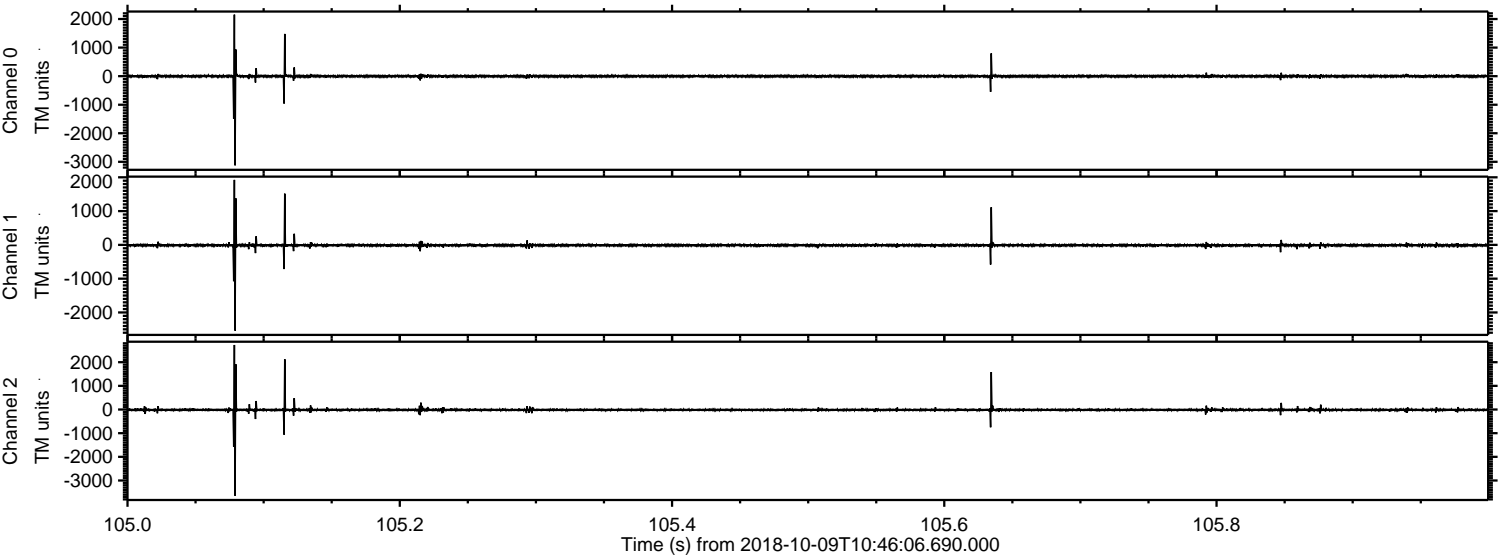
ELMAVAN 3D WAVEFORMS (Measured data sampled at 50 kHz) 51000 packets of 144 samples from 2018-10-09T10:46:06.690.000. Part 139/147

Processed Tue Oct 9 12:53:57 2018 by ELM ver.2012-10-06 from 001__elm20181009_104605__dat00.bin



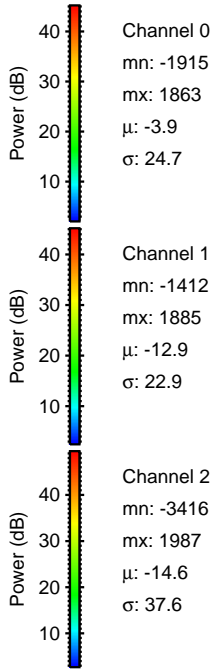
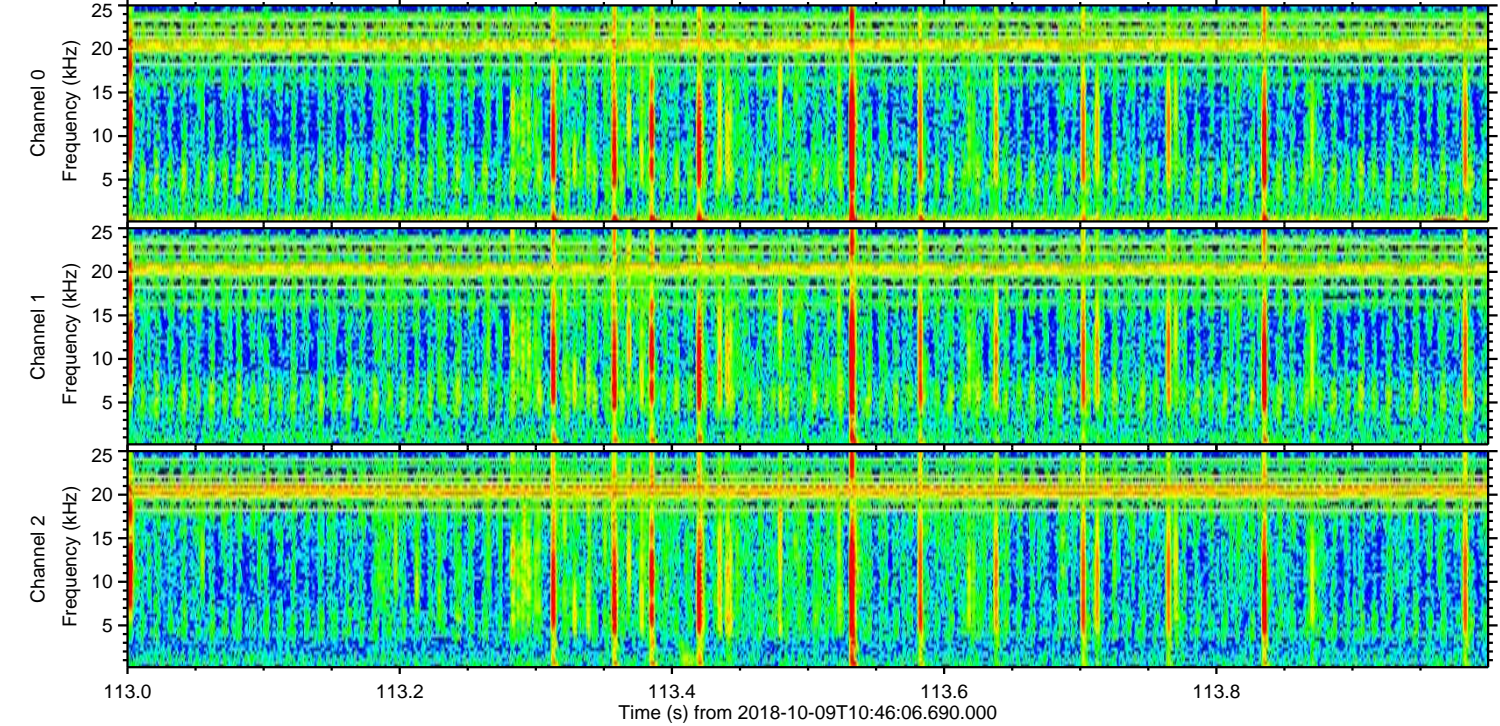
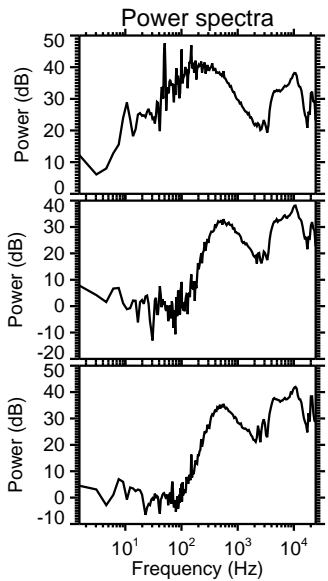
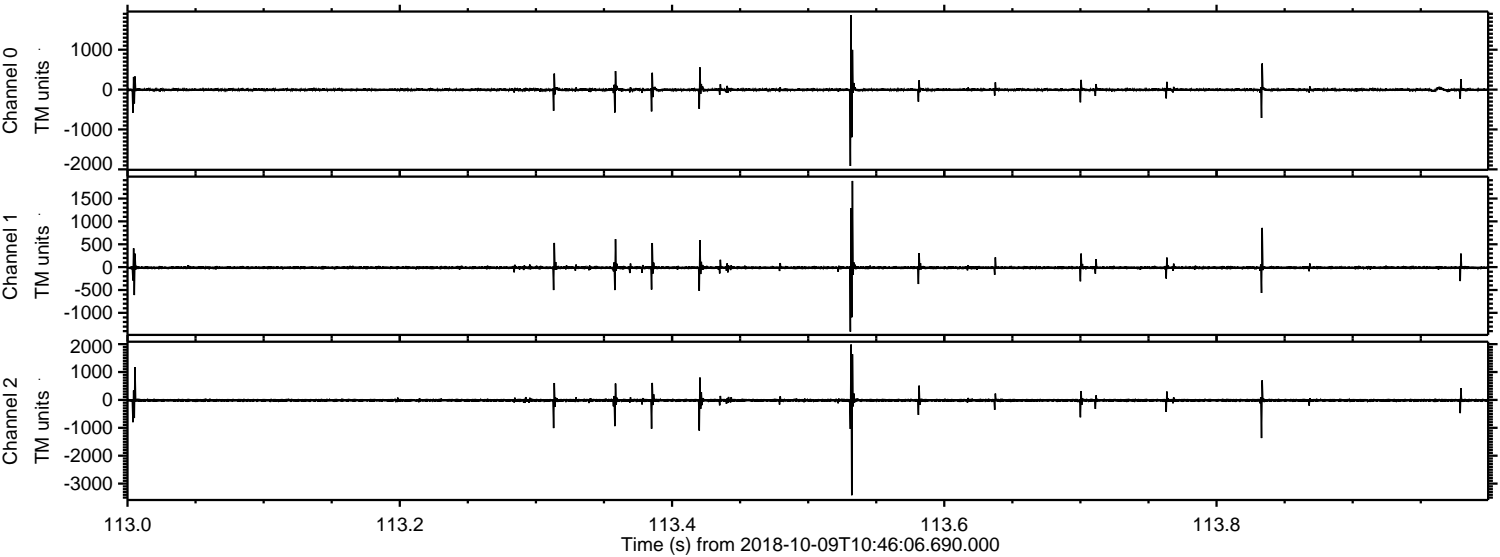
ELMAVAN 3D WAVEFORMS (Measured data sampled at 50 kHz) 51000 packets of 144 samples from 2018-10-09T10:46:06.690.000. Part 106/147

Processed Tue Oct 9 12:53:58 2018 by ELM ver.2012-10-06 from 001__elm20181009_104605__dat00.bin

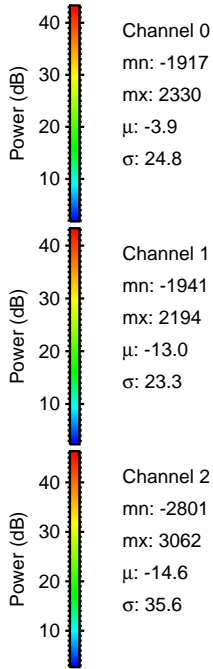
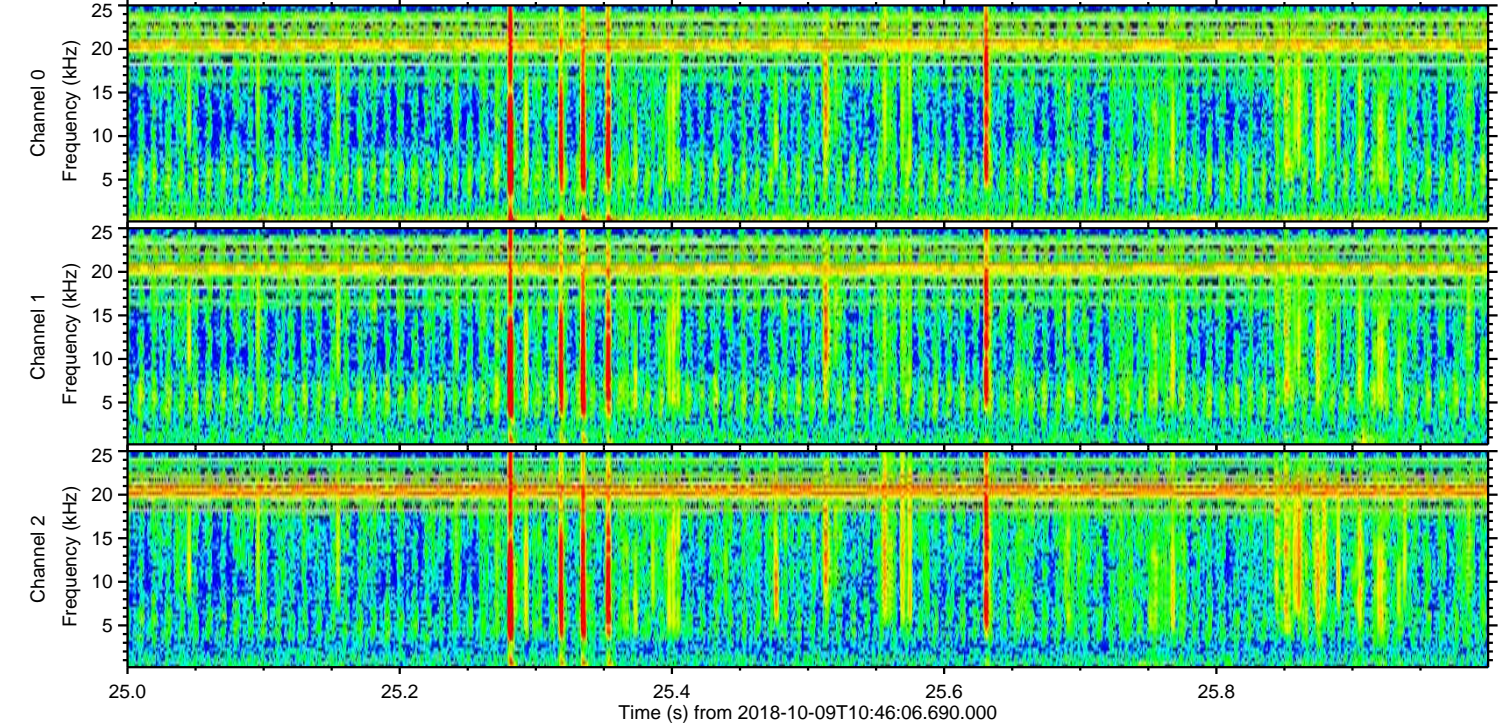
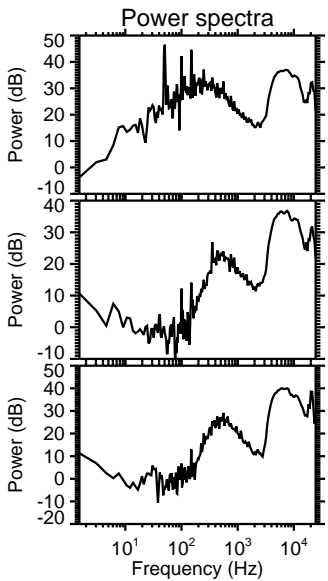
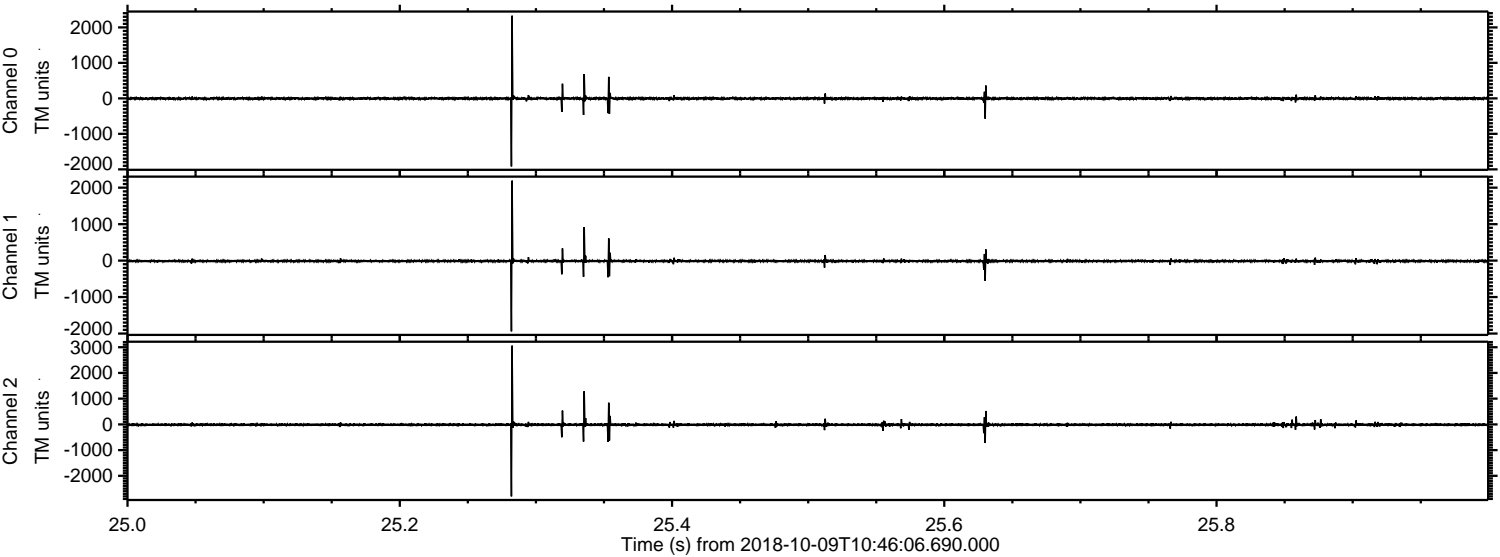


ELMAVAN 3D WAVEFORMS (Measured data sampled at 50 kHz) 51000 packets of 144 samples from 2018-10-09T10:46:06.690.000. Part 114/147

Processed Tue Oct 9 12:53:59 2018 by ELM ver.2012-10-06 from 001__elm20181009_104605__dat00.bin

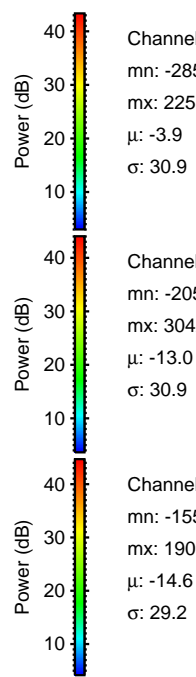
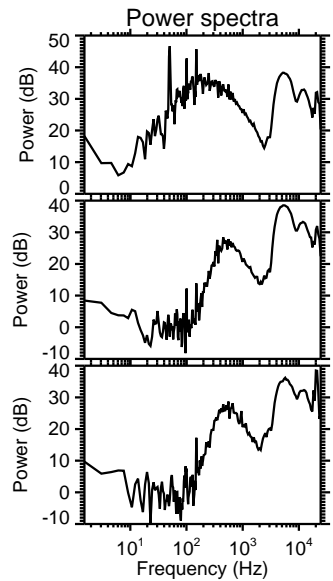
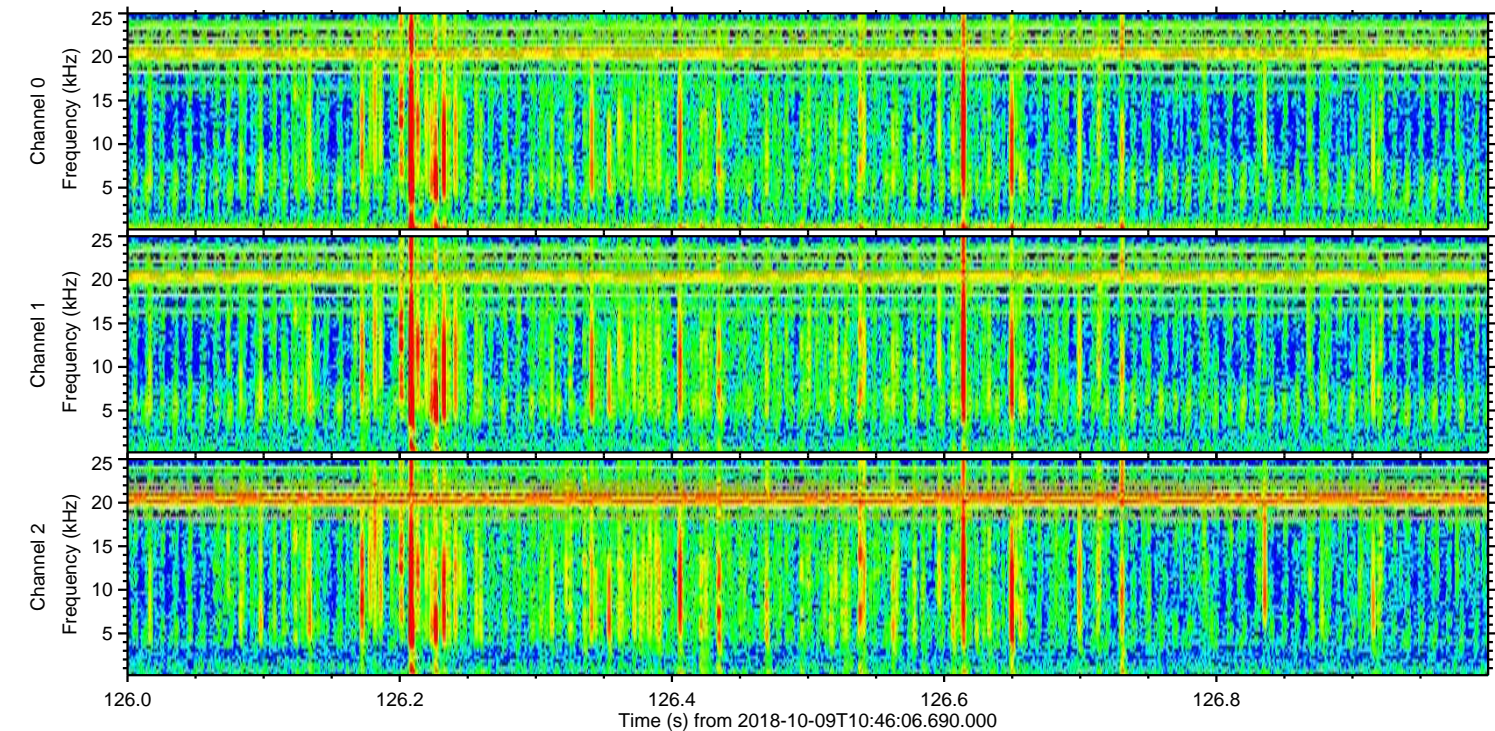
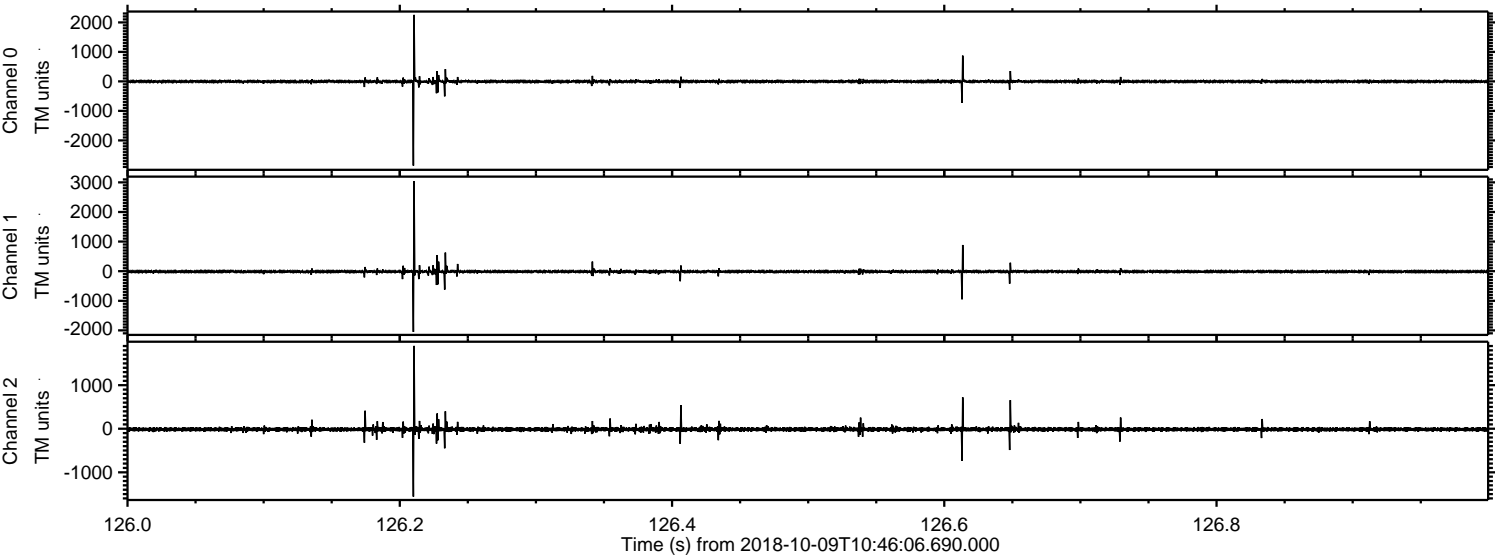


Processed Tue Oct 9 12:54:00 2018 by ELM ver.2012-10-06 from 001__elm20181009_104605__dat00.bin



ELMAVAN 3D WAVEFORMS (Measured data sampled at 50 kHz) 51000 packets of 144 samples from 2018-10-09T10:46:06.690.000. Part 127/147

Processed Tue Oct 9 12:54:00 2018 by ELM ver.2012-10-06 from 001__elm20181009_104605__dat00.bin

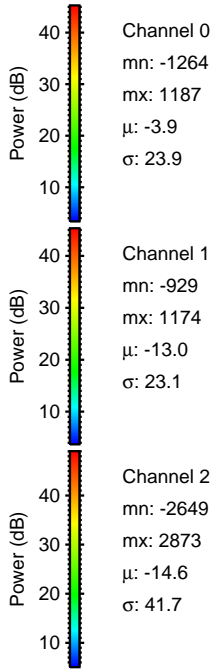
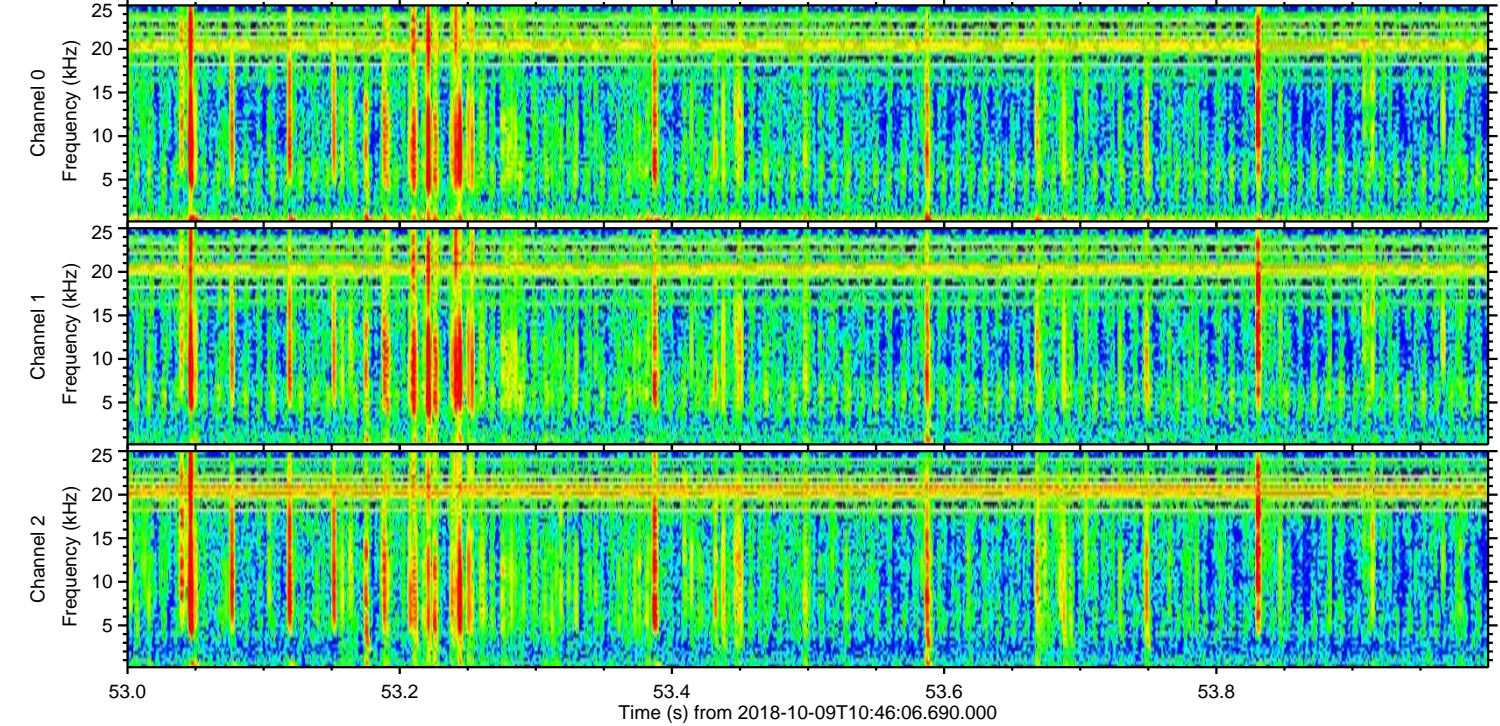
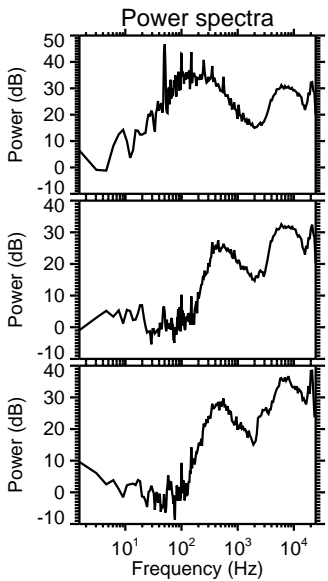
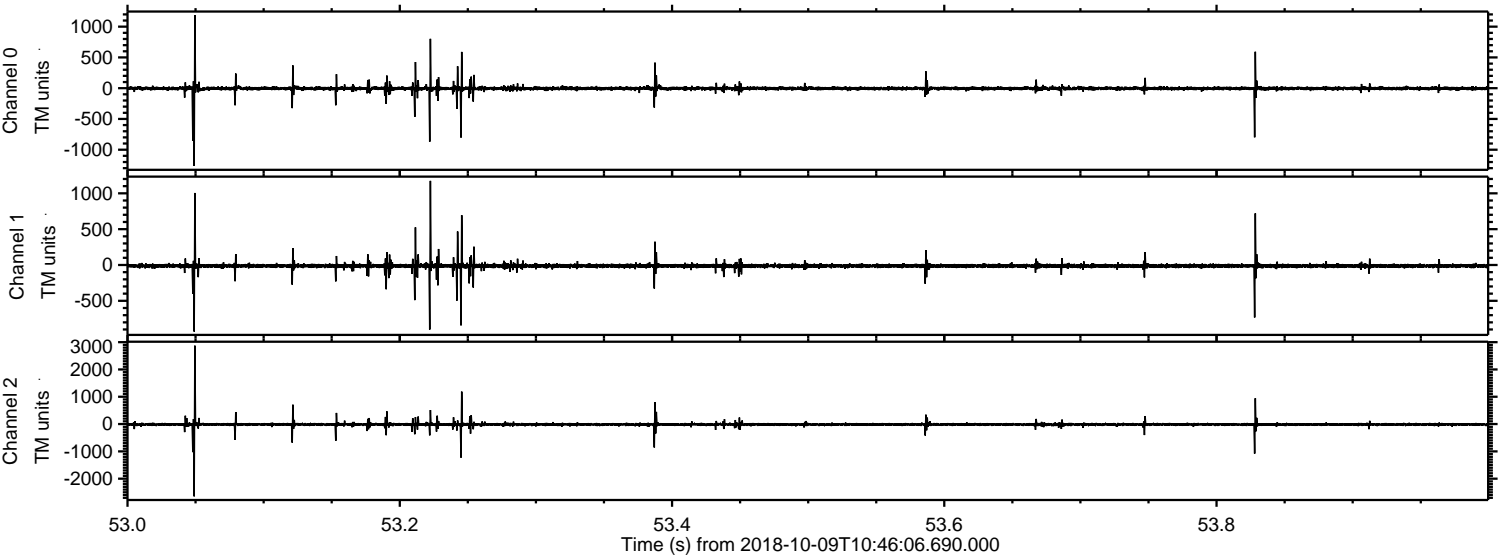


Channel 0
mn: -2855
mx: 2255
 μ : -3.9
 σ : 30.9

Channel 1
mn: -2050
mx: 3042
 μ : -13.0
 σ : 30.9

Channel 2
mn: -1558
mx: 1903
 μ : -14.6
 σ : 29.2

Processed Tue Oct 9 12:54:01 2018 by ELM ver.2012-10-06 from 001__elm20181009_104605__dat00.bin



Processed Tue Oct 9 12:54:02 2018 by ELM ver.2012-10-06 from 001__elm20181009_104605__dat00.bin

