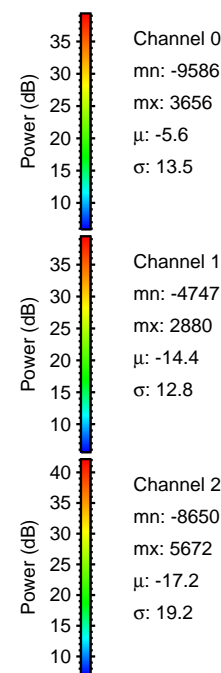
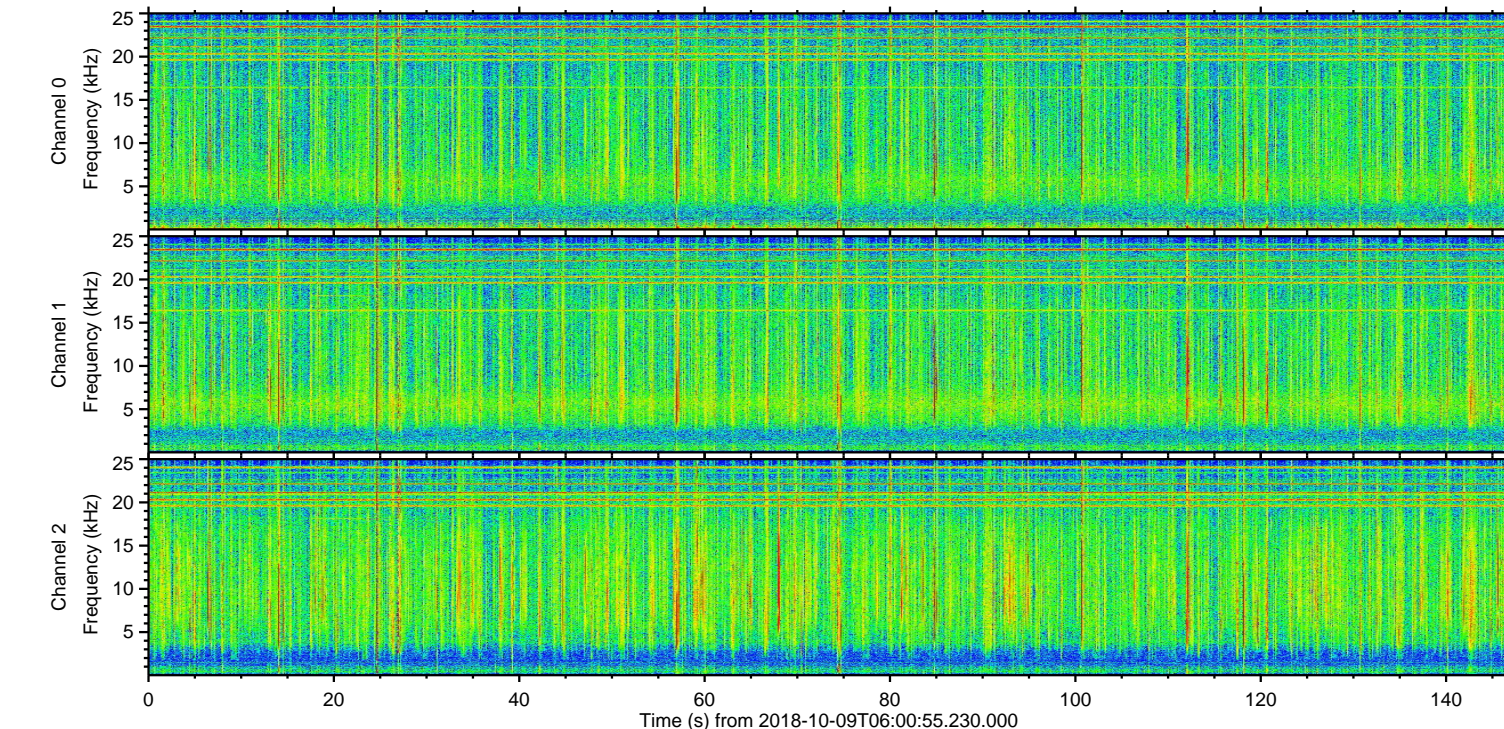
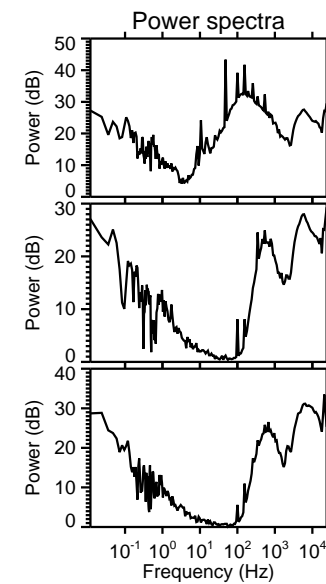
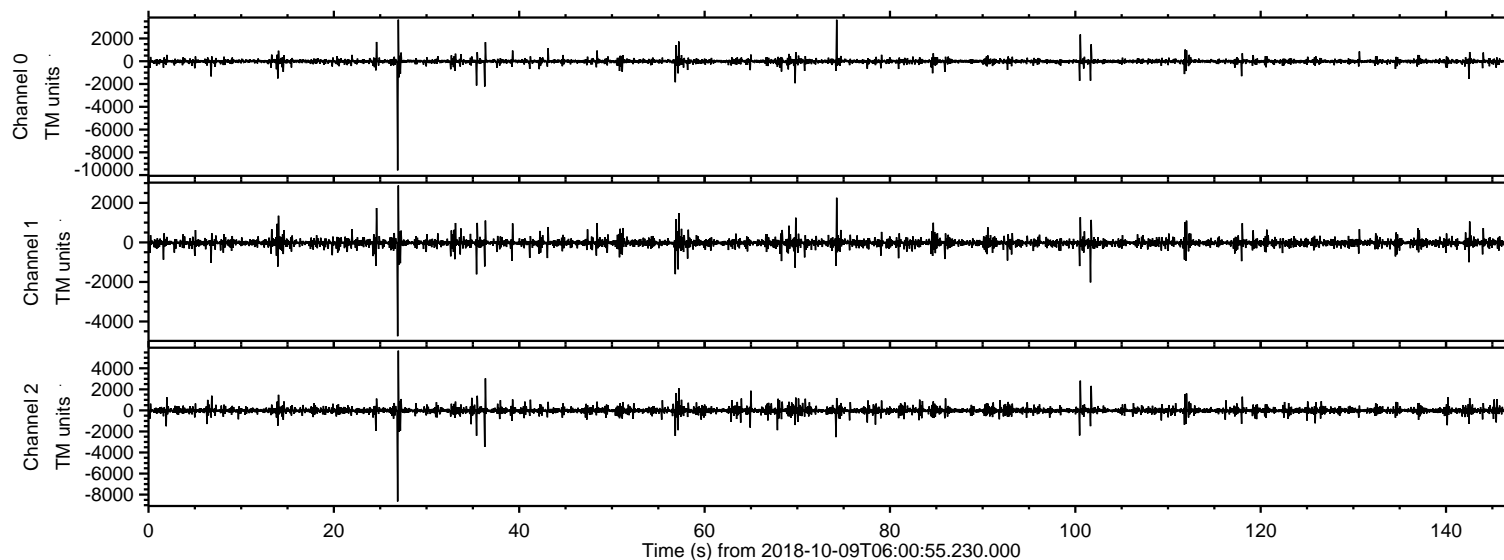
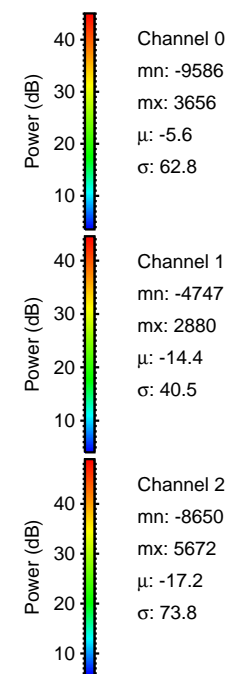
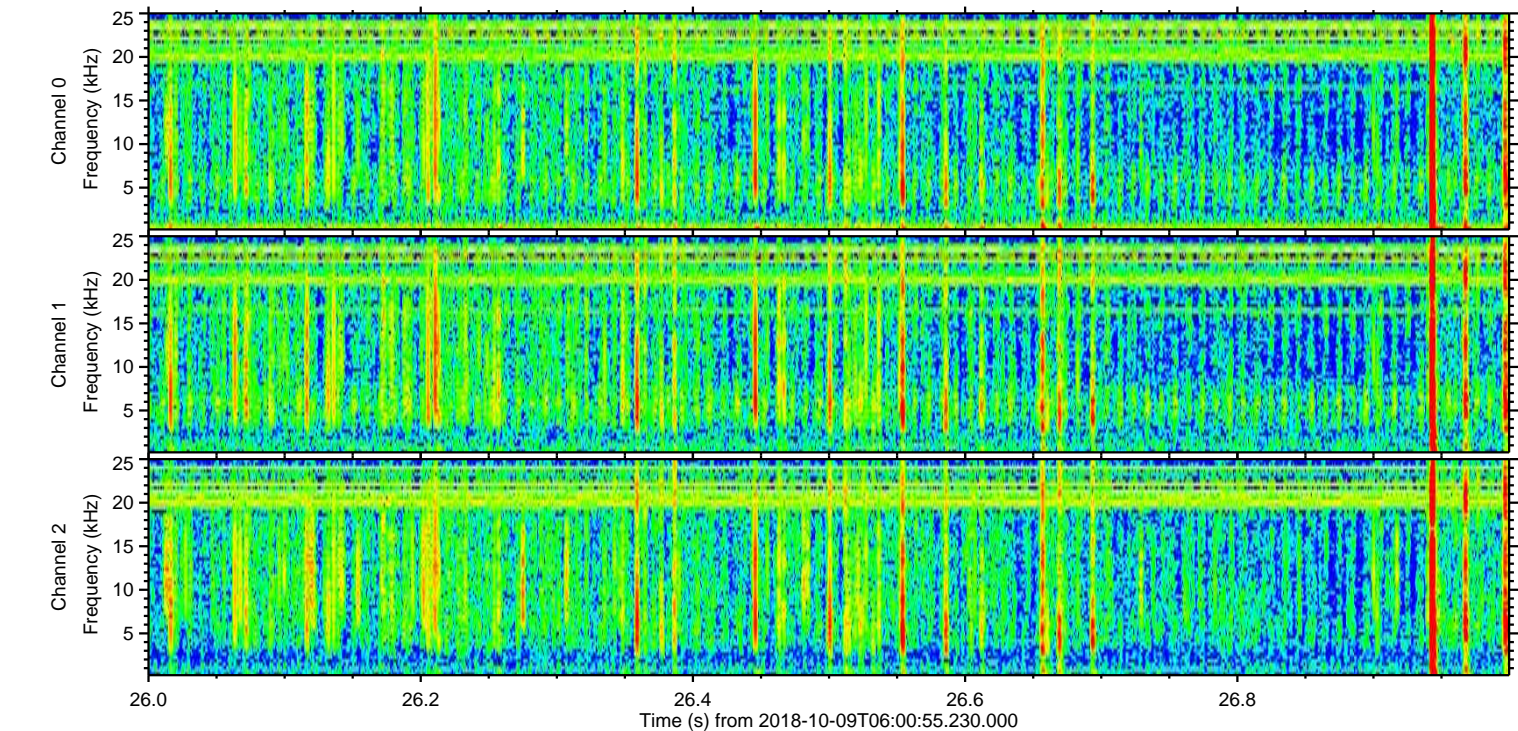
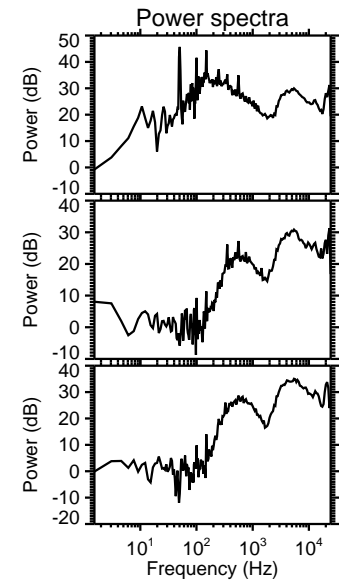
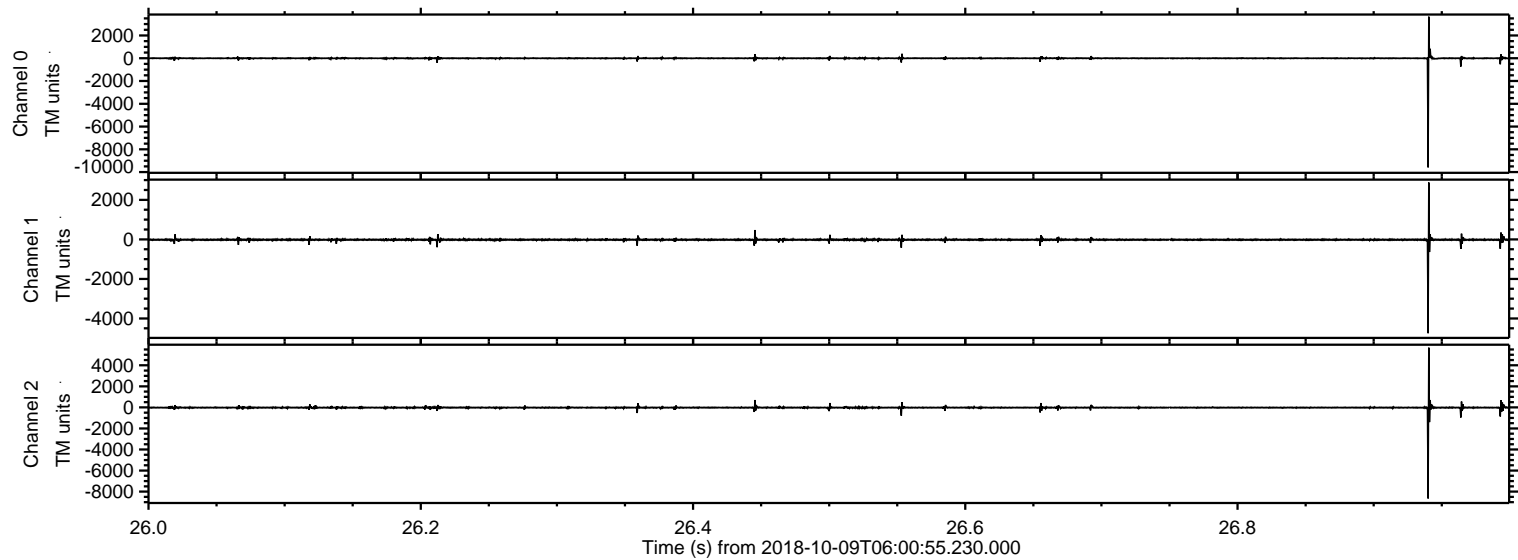


ELMAVAN 3D WAVEFORMS (Measured data sampled at 50 kHz) 51000 packets of 144 samples from 2018-10-09T06:00:55.230.000.

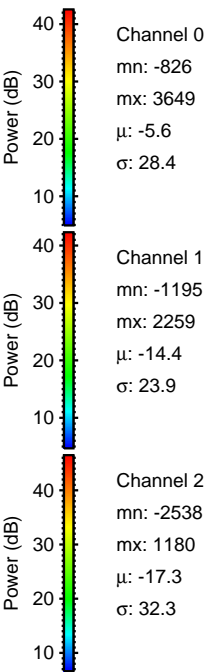
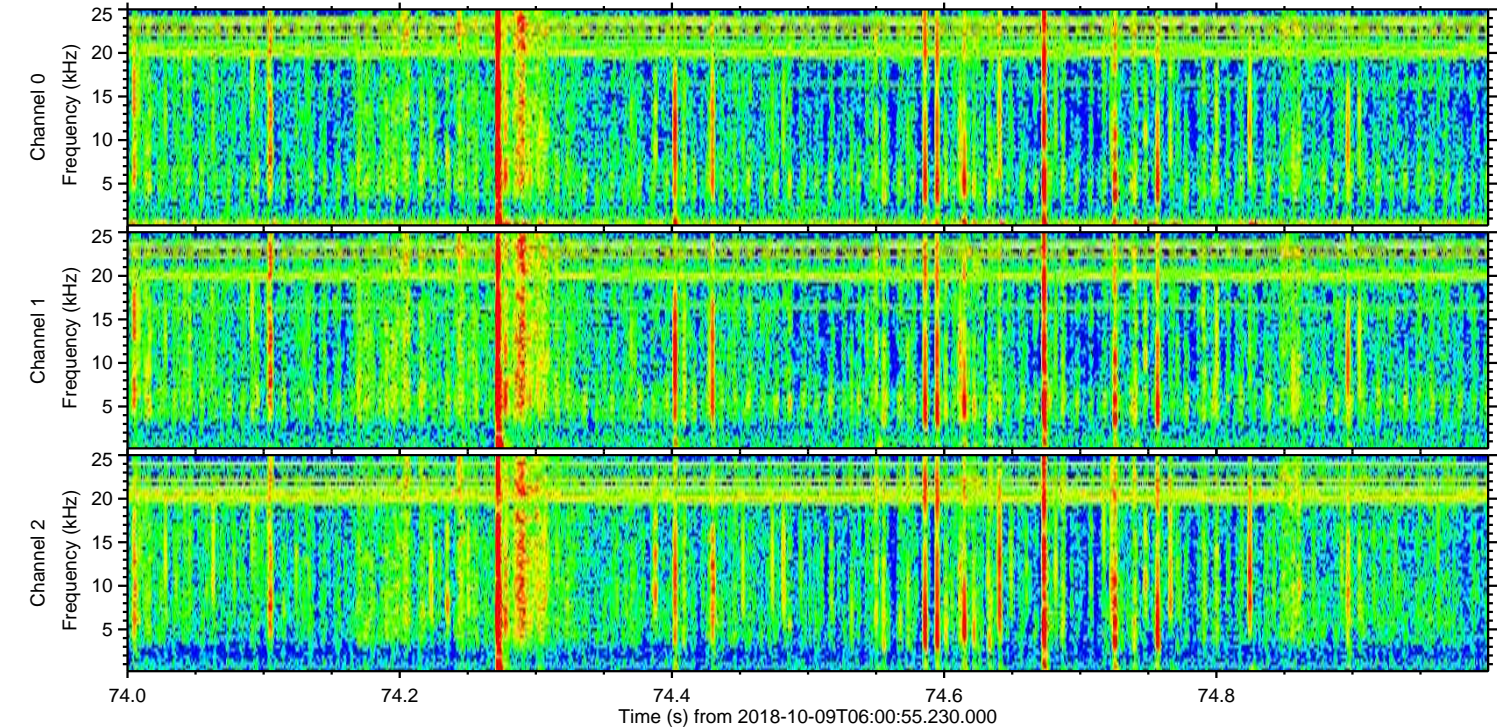
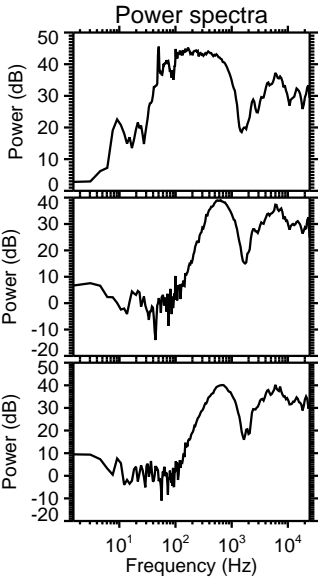
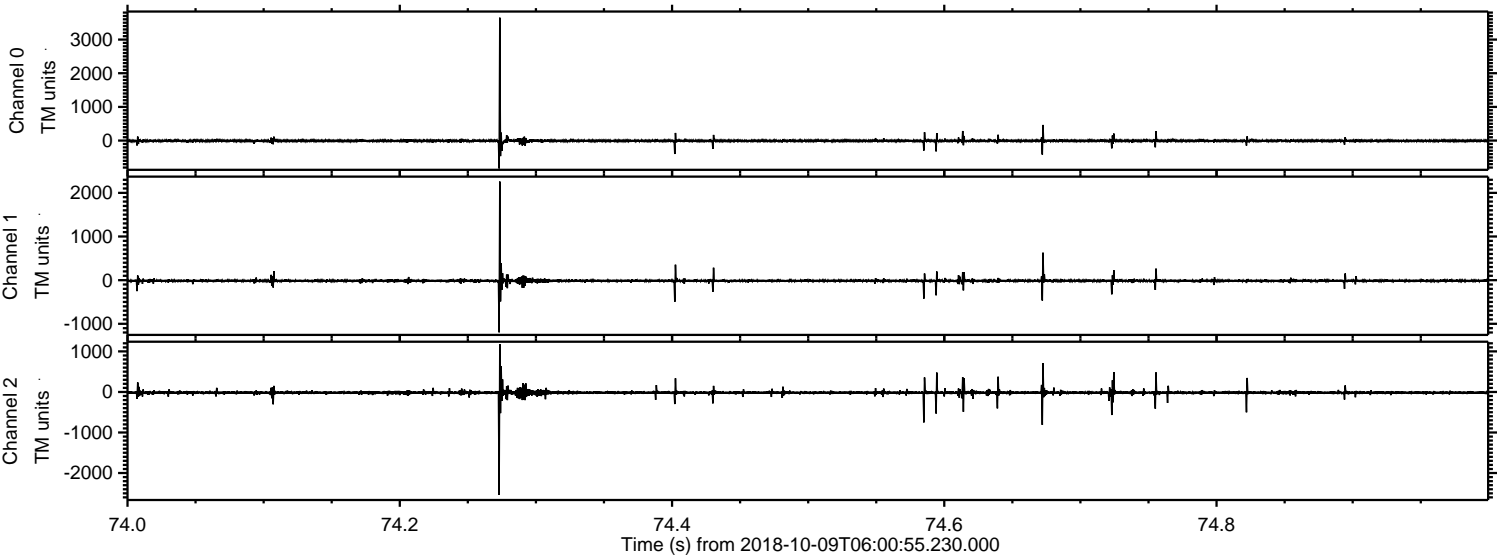
Processed Tue Oct 9 08:09:25 2018 by ELM ver.2012-10-06 from 001__elm20181009_060054__dat00.bin



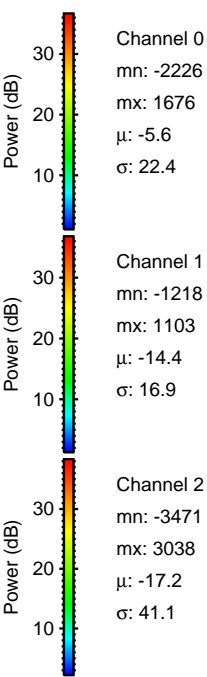
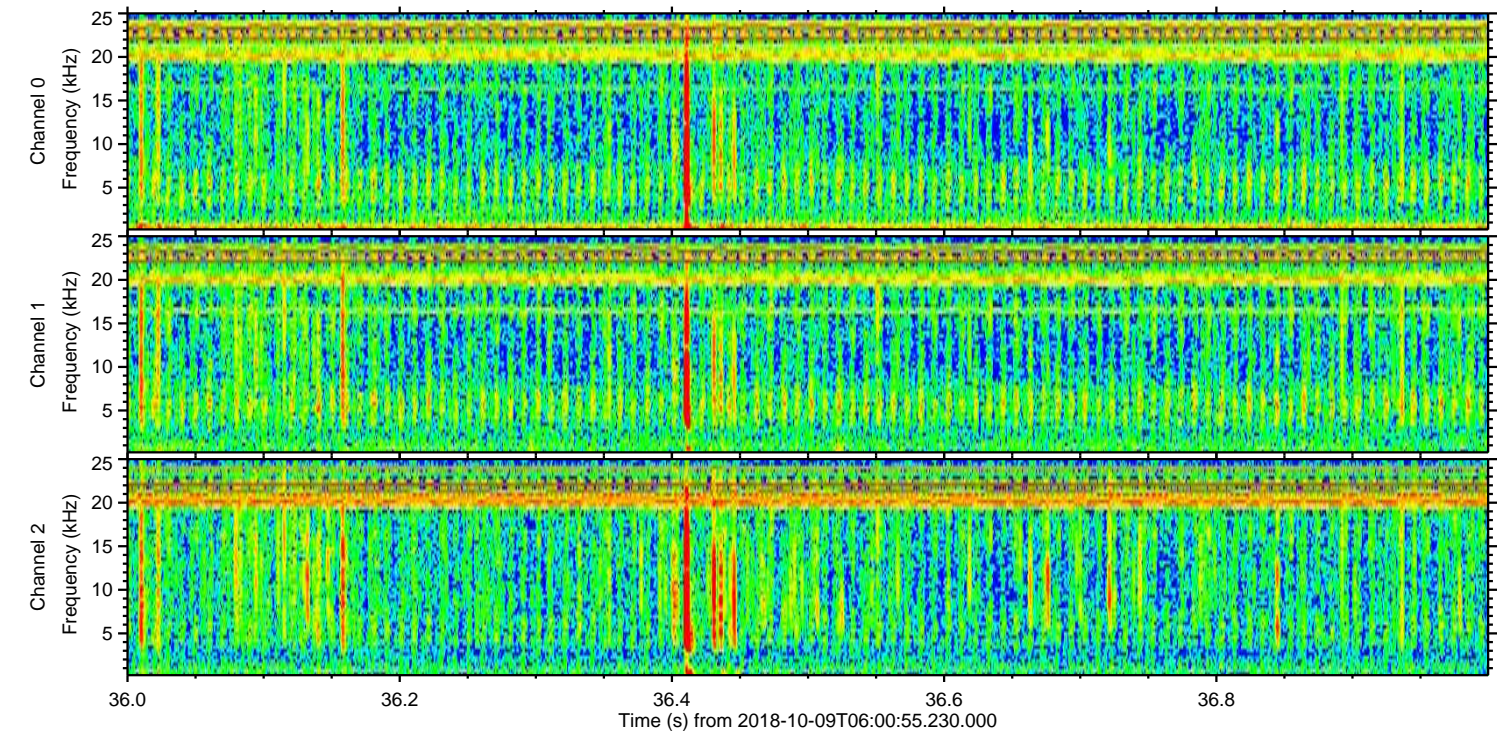
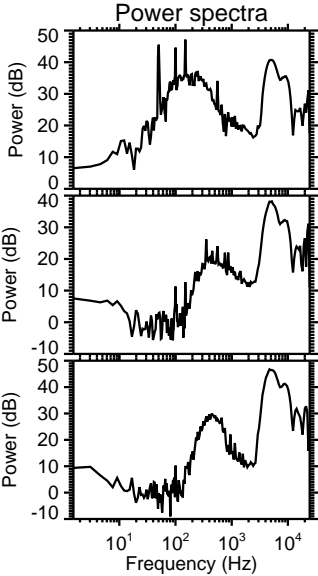
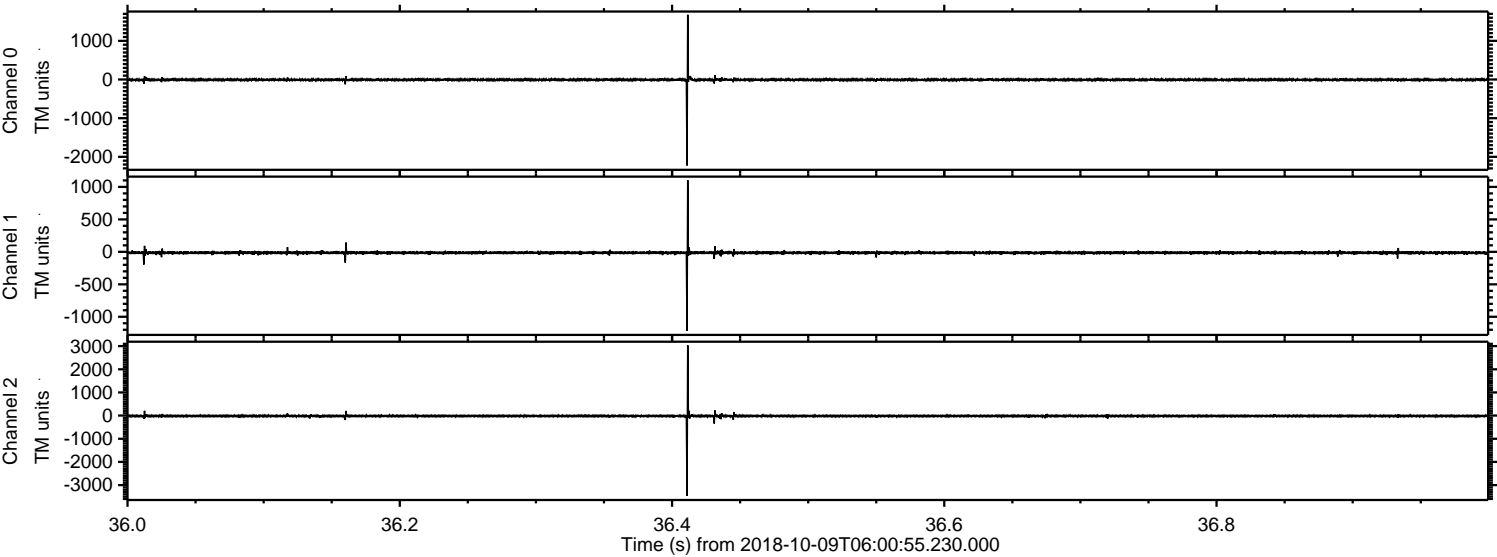
Processed Tue Oct 9 08:09:31 2018 by ELM ver.2012-10-06 from 001__elm20181009_060054__dat00.bin



Processed Tue Oct 9 08:09:32 2018 by ELM ver.2012-10-06 from 001__elm20181009_060054__dat00.bin

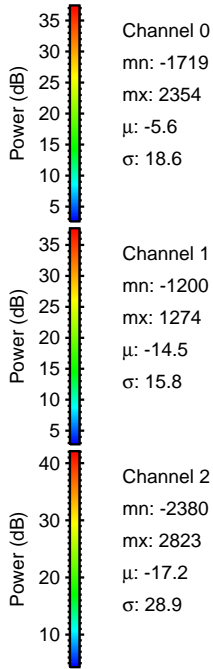
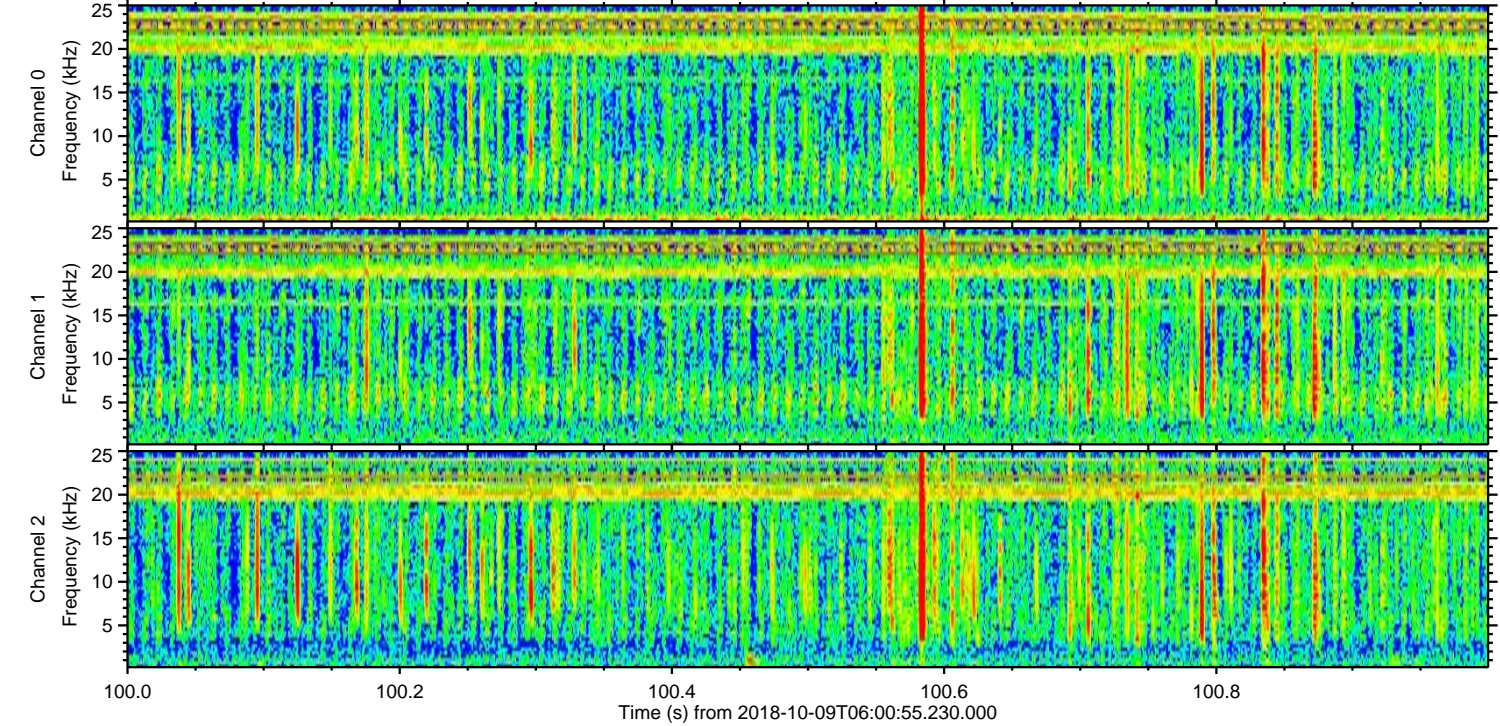
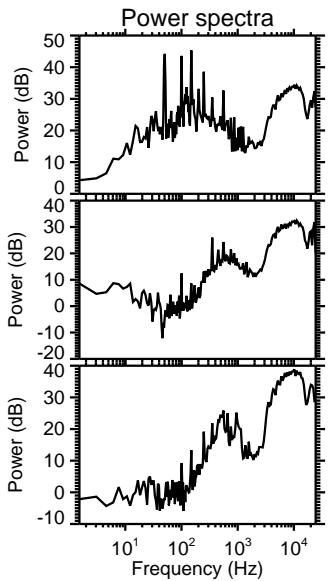
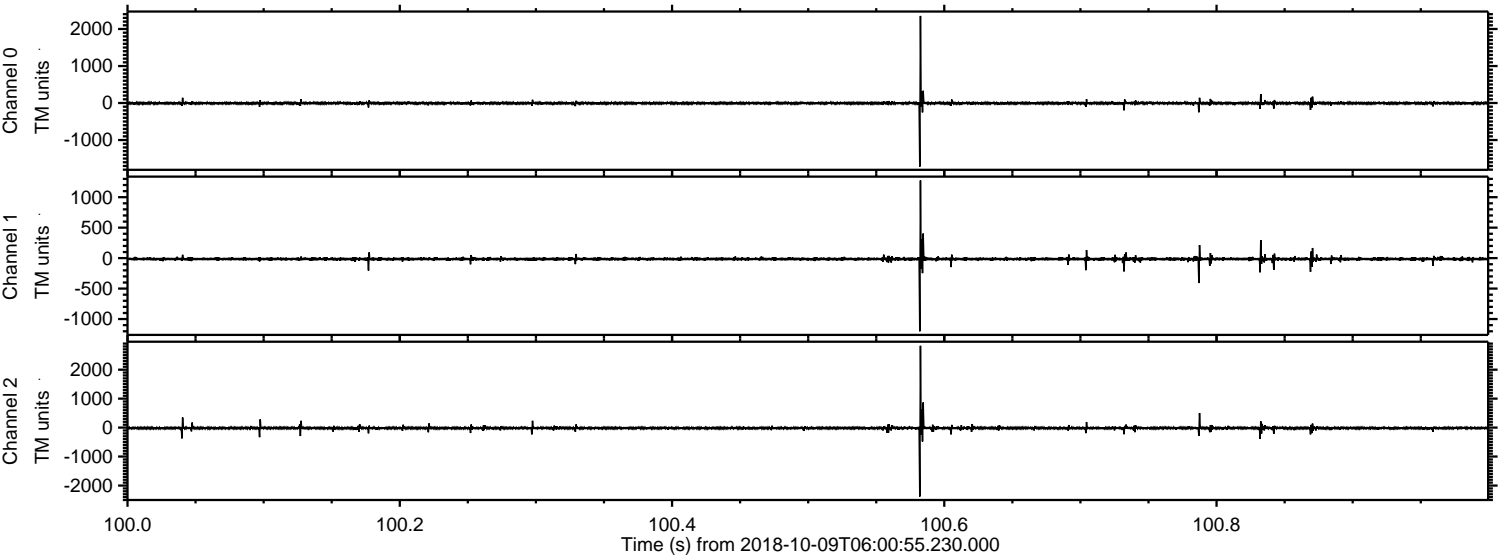


Processed Tue Oct 9 08:09:32 2018 by ELM ver.2012-10-06 from 001__elm20181009_060054__dat00.bin

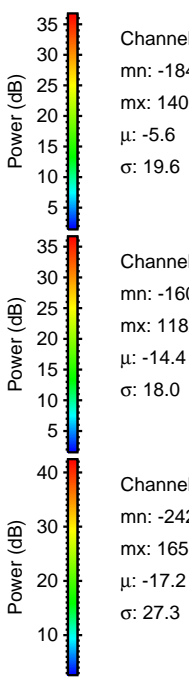
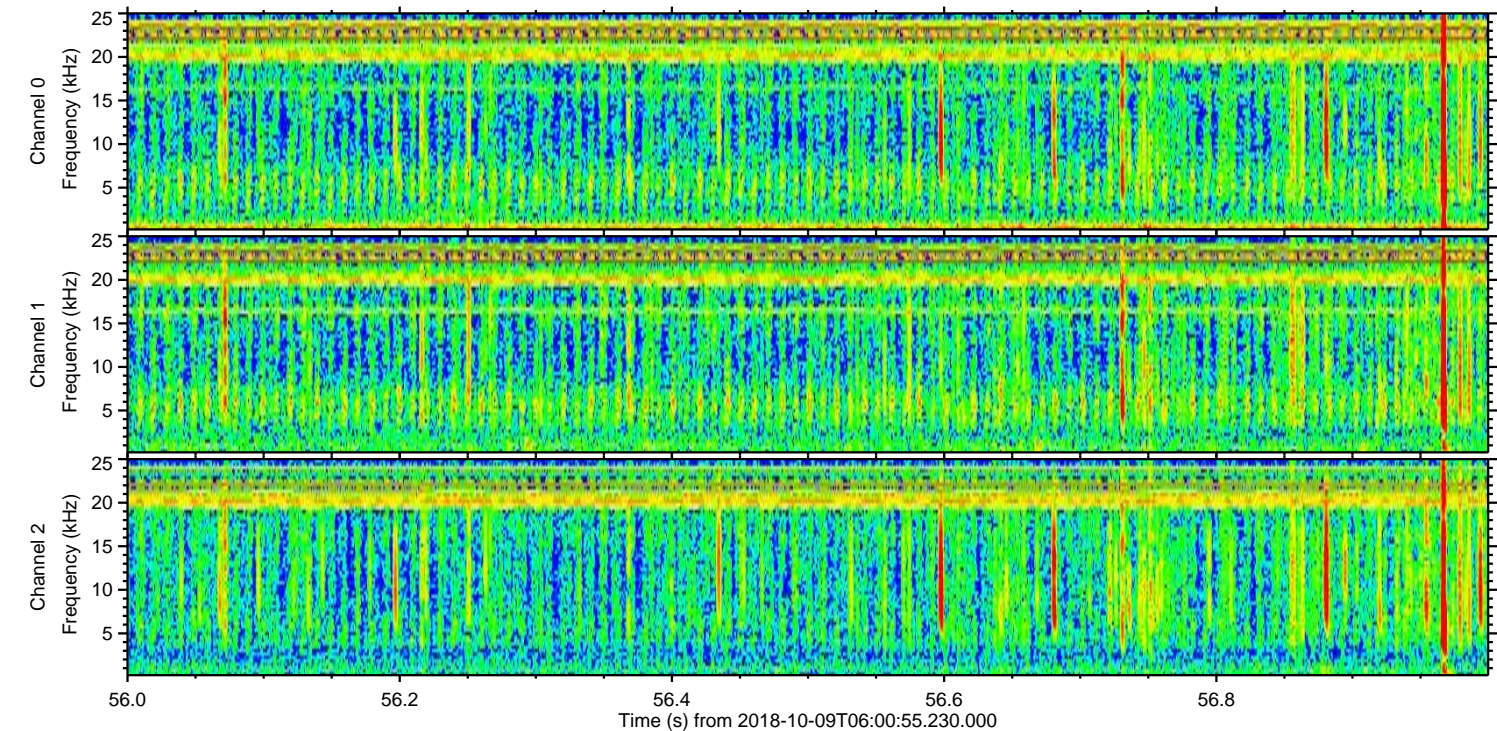
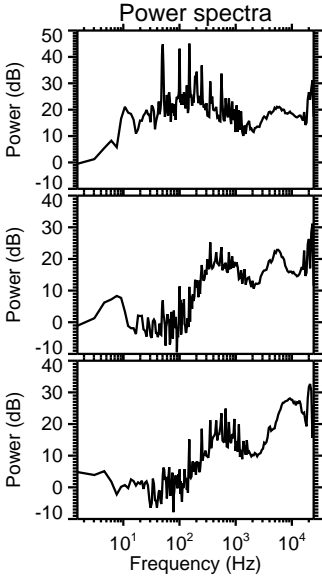
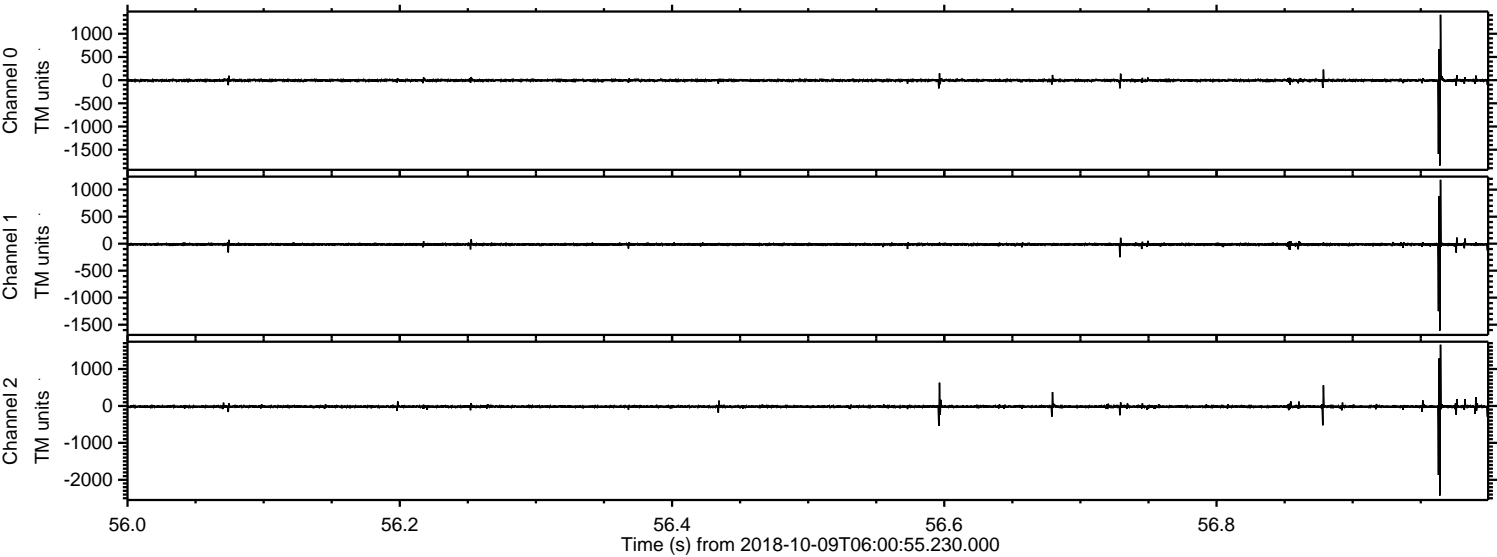


ELMAVAN 3D WAVEFORMS (Measured data sampled at 50 kHz) 51000 packets of 144 samples from 2018-10-09T06:00:55.230.000. Part 101/147

Processed Tue Oct 9 08:09:33 2018 by ELM ver.2012-10-06 from 001__elm20181009_060054__dat00.bin



Processed Tue Oct 9 08:09:34 2018 by ELM ver.2012-10-06 from 001__elm20181009_060054__dat00.bin

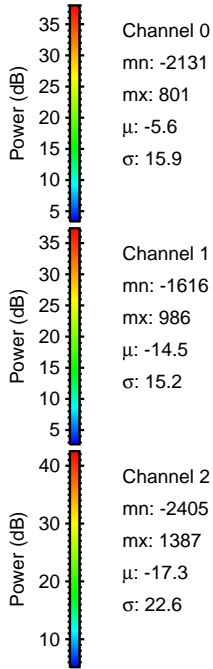
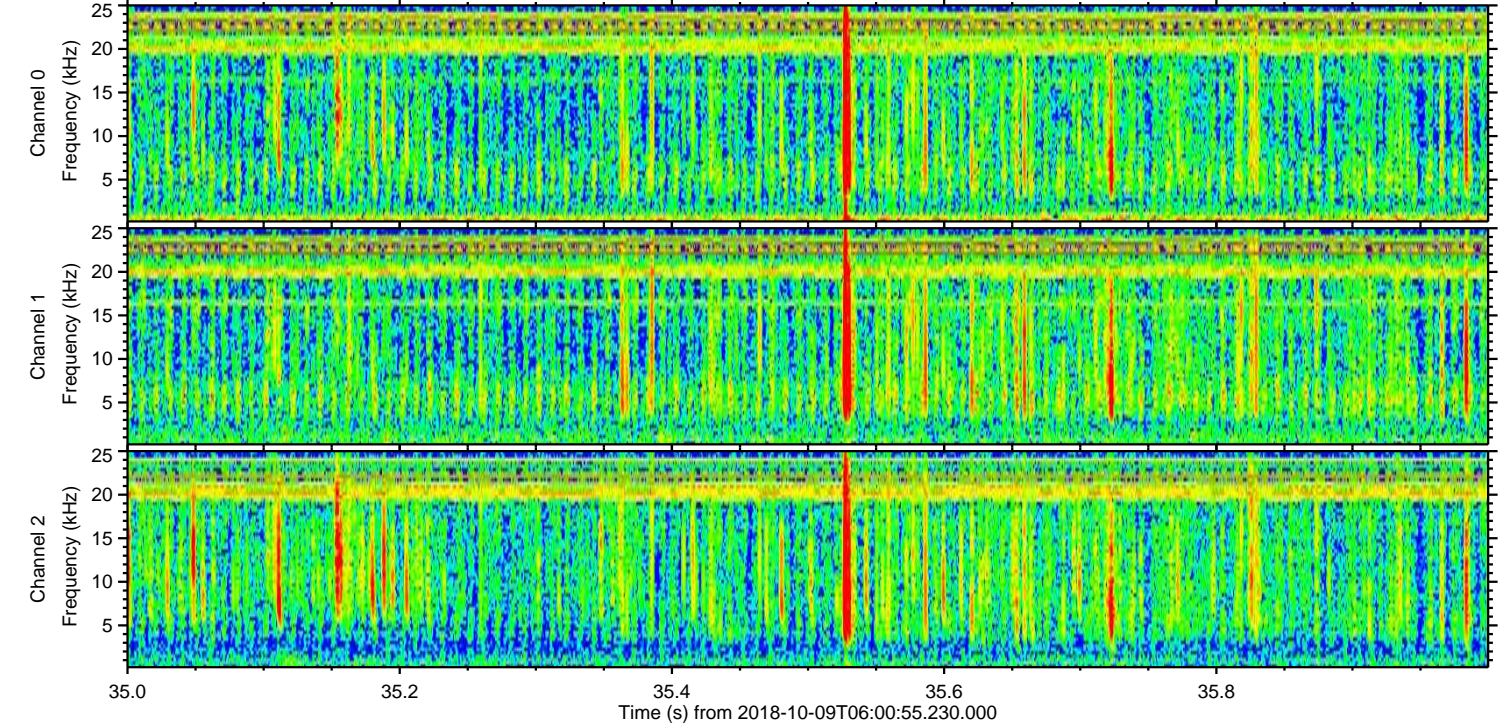
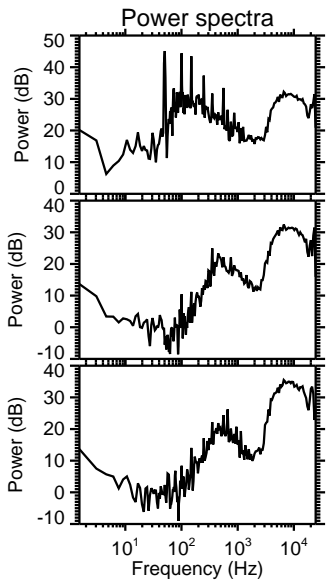
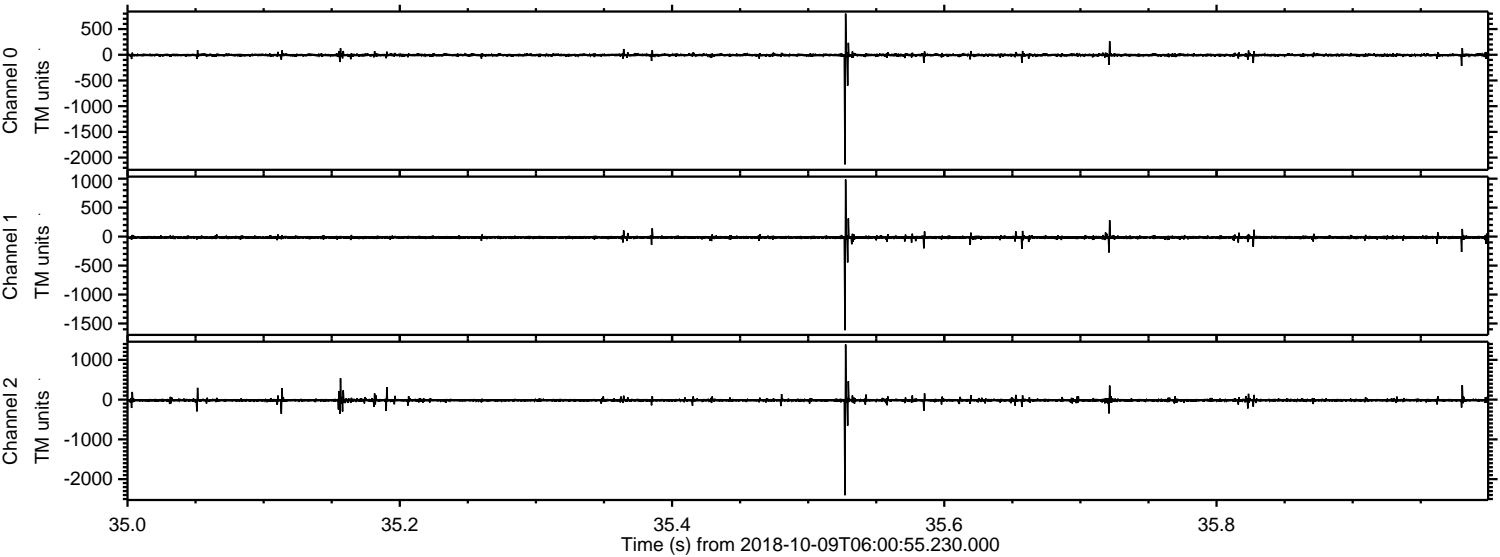


Channel 0
mn: -1842
mx: 1409
 μ : -5.6
 σ : 19.6

Channel 1
mn: -1609
mx: 1182
 μ : -14.4
 σ : 18.0

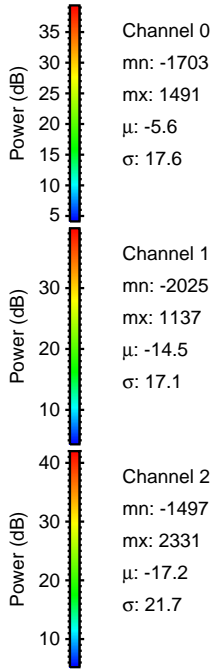
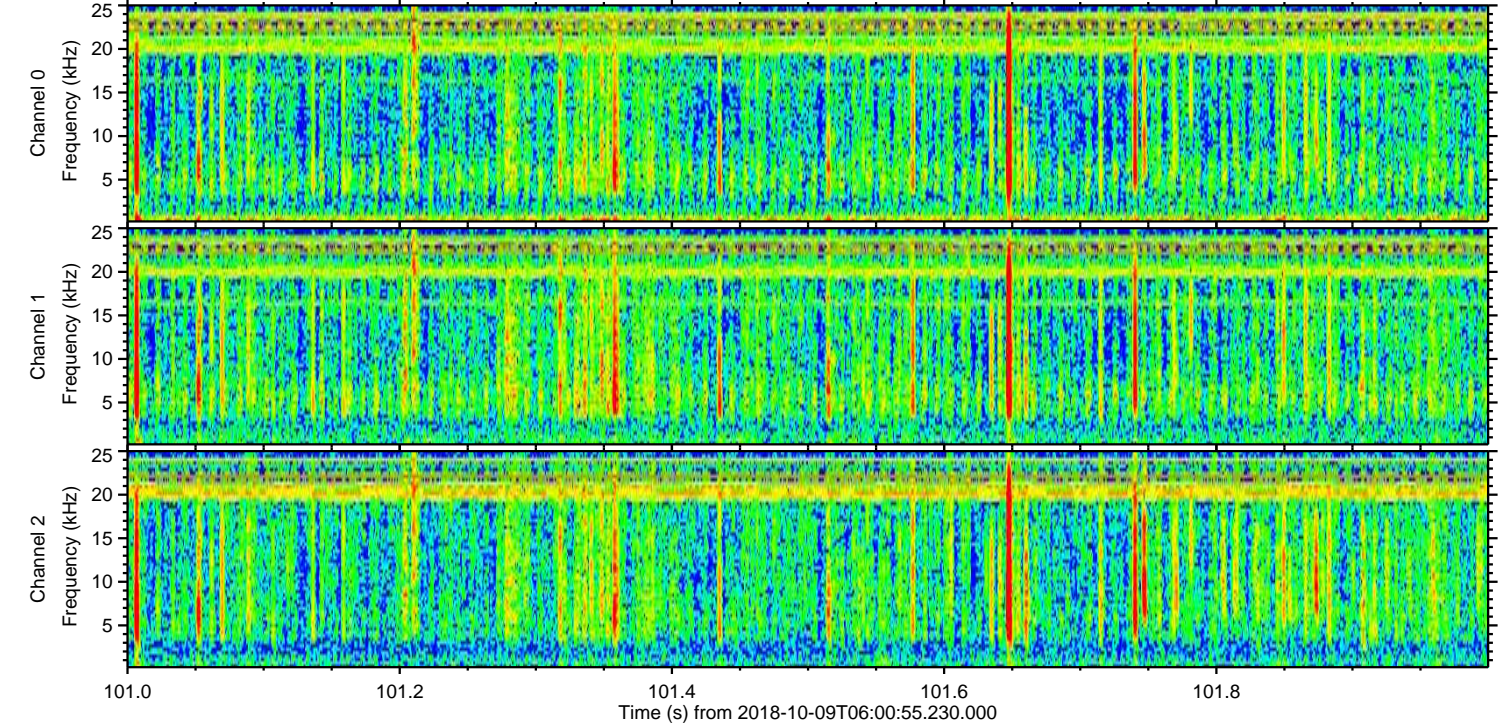
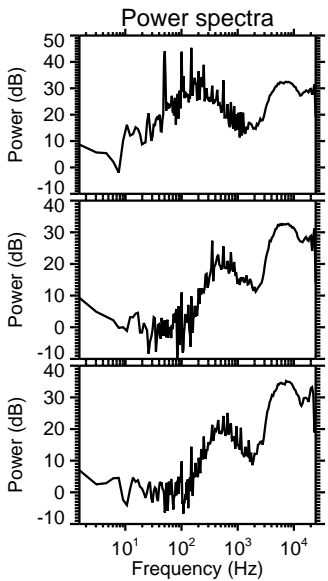
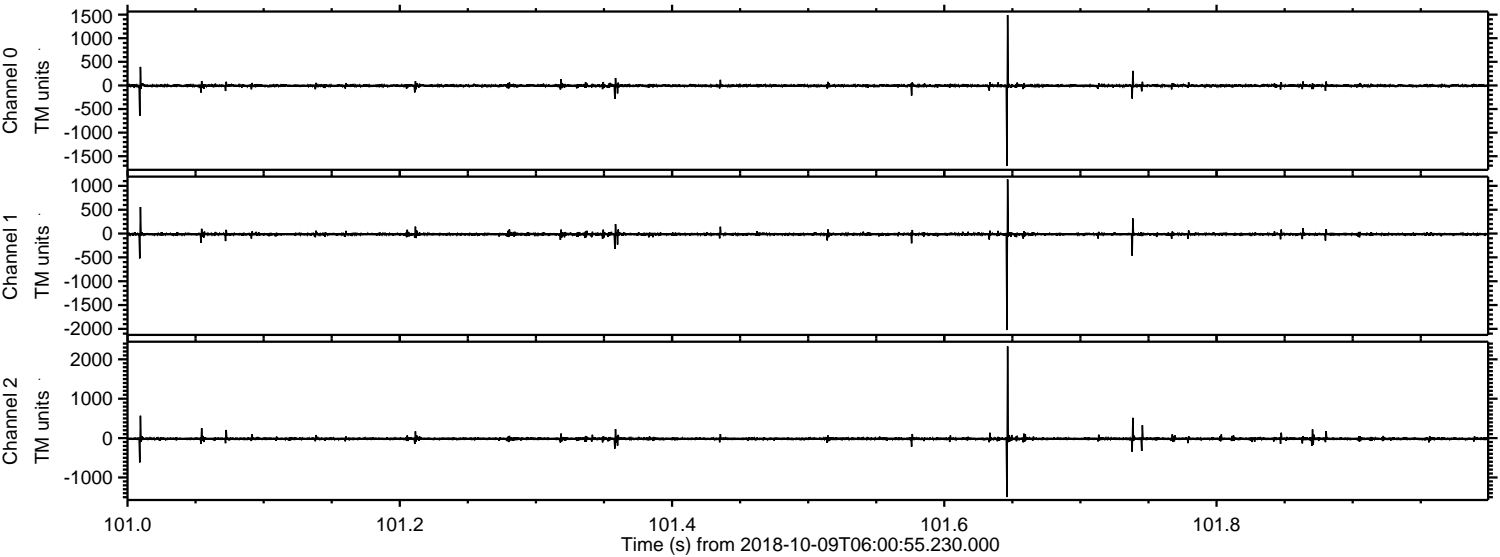
Channel 2
mn: -2426
mx: 1656
 μ : -17.2
 σ : 27.3

Processed Tue Oct 9 08:09:34 2018 by ELM ver.2012-10-06 from 001__elm20181009_060054__dat00.bin



ELMAVAN 3D WAVEFORMS (Measured data sampled at 50 kHz) 51000 packets of 144 samples from 2018-10-09T06:00:55.230.000. Part 102/147

Processed Tue Oct 9 08:09:35 2018 by ELM ver.2012-10-06 from 001__elm20181009_060054__dat00.bin

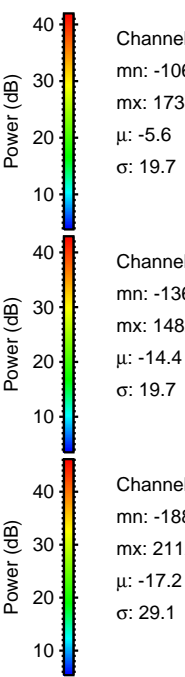
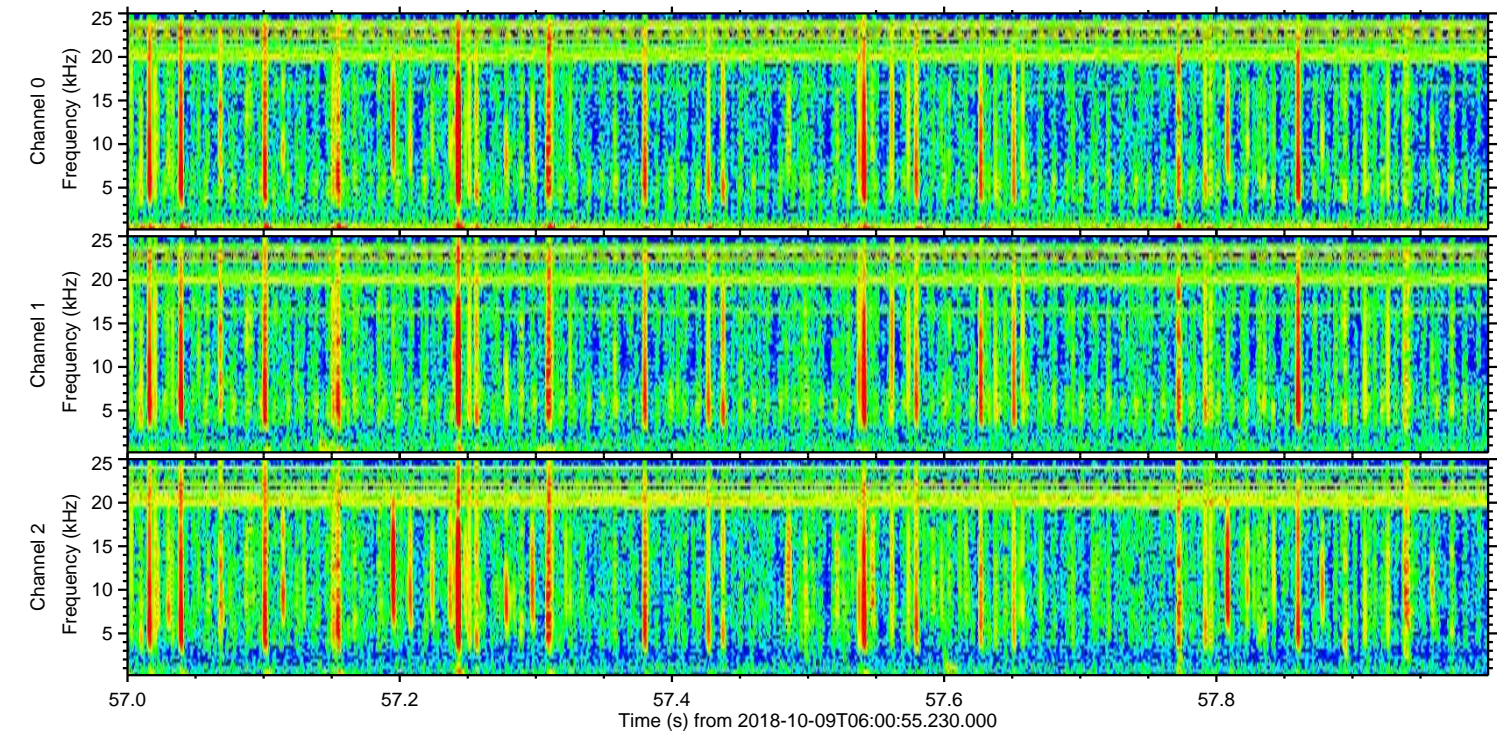
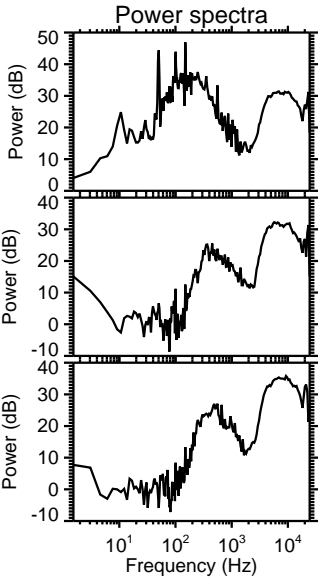
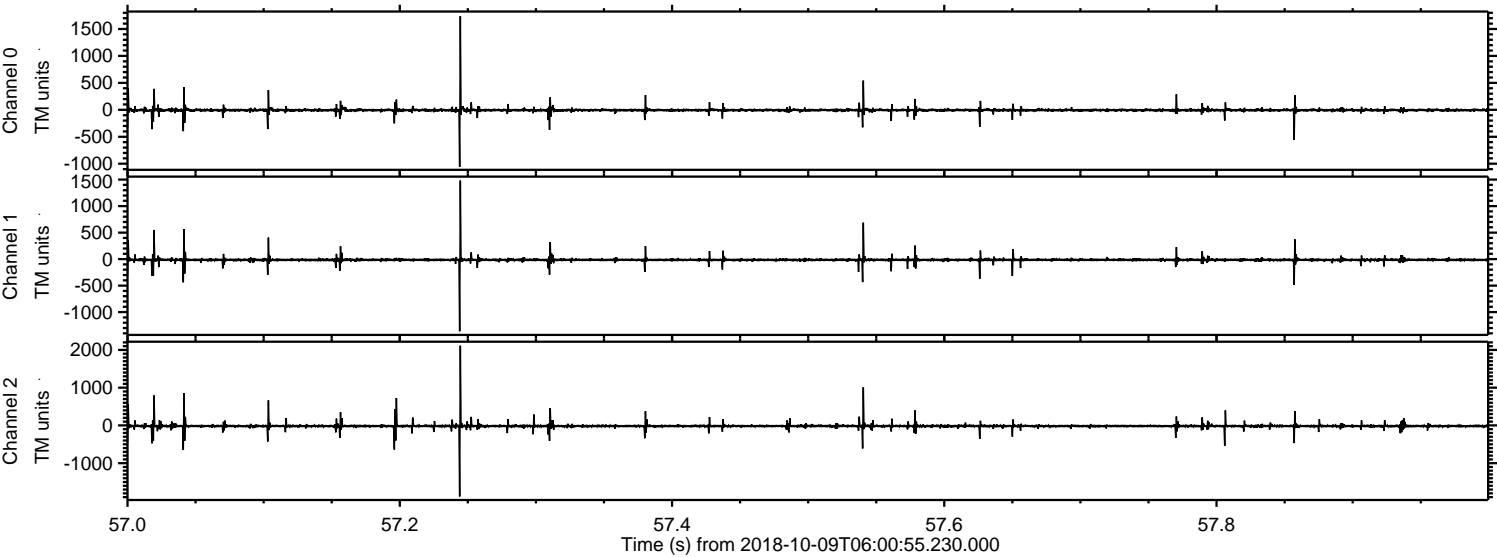


Channel 0
mn: -1703
mx: 1491
 μ : -5.6
 σ : 17.6

Channel 1
mn: -2025
mx: 1137
 μ : -14.5
 σ : 17.1

Channel 2
mn: -1497
mx: 2331
 μ : -17.2
 σ : 21.7

Processed Tue Oct 9 08:09:36 2018 by ELM ver.2012-10-06 from 001__elm20181009_060054__dat00.bin

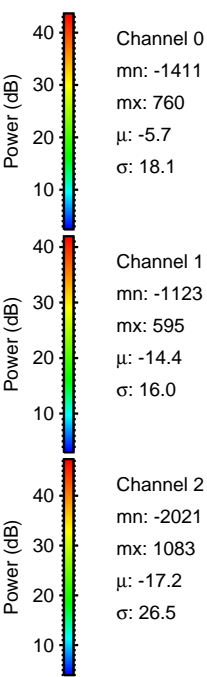
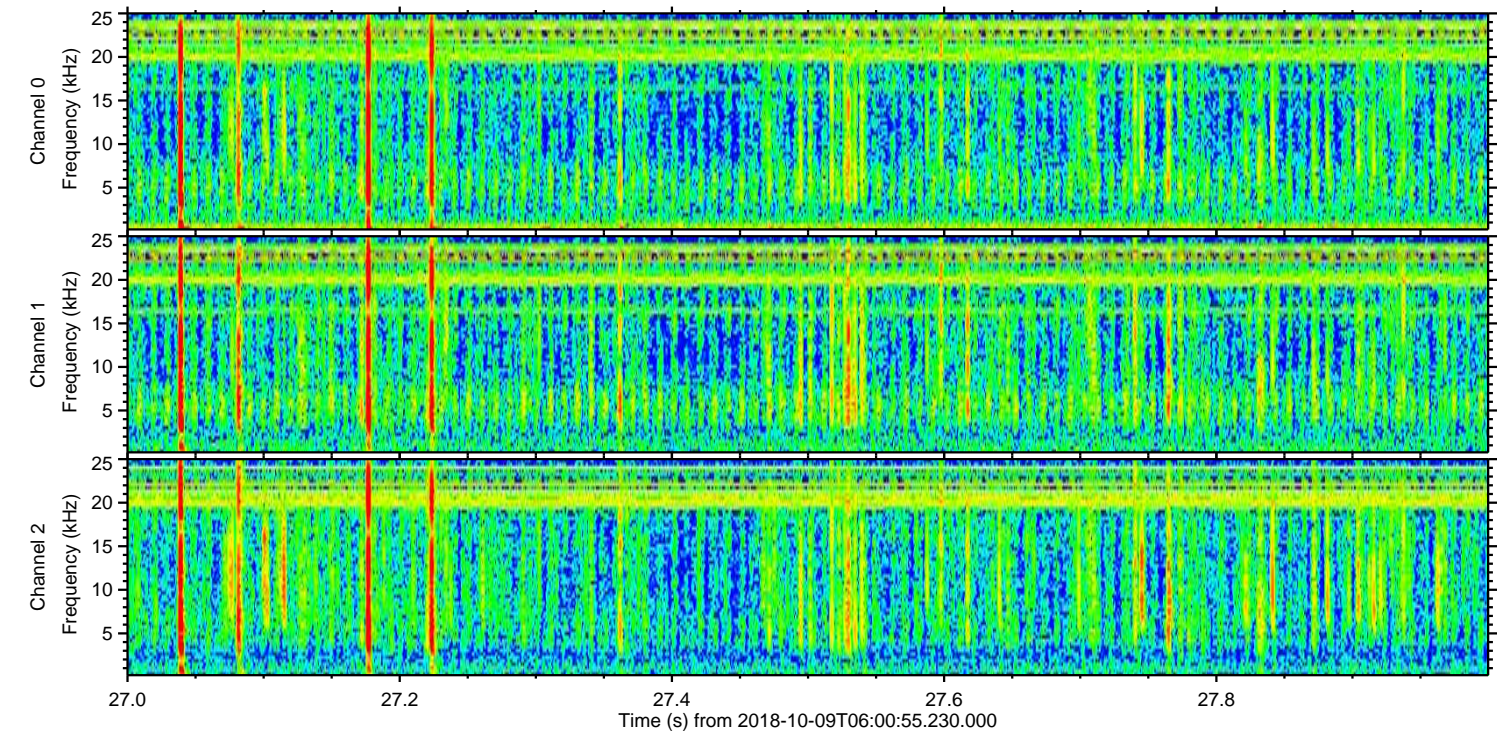
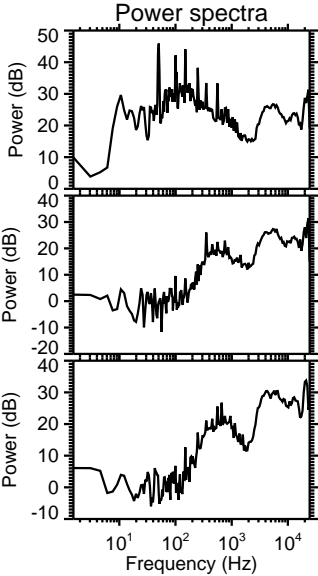
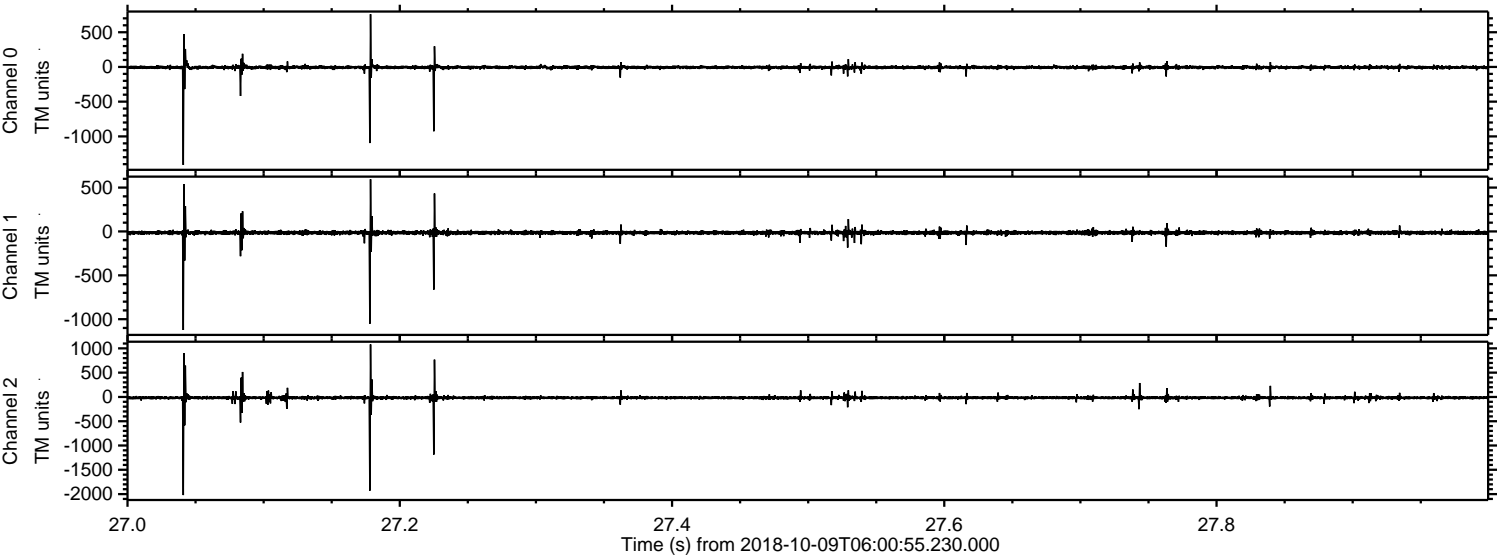


Channel 0
mn: -1060
mx: 1737
 μ : -5.6
 σ : 19.7

Channel 1
mn: -1362
mx: 1482
 μ : -14.4
 σ : 19.7

Channel 2
mn: -1882
mx: 2112
 μ : -17.2
 σ : 29.1

Processed Tue Oct 9 08:09:37 2018 by ELM ver.2012-10-06 from 001__elm20181009_060054__dat00.bin



Processed Tue Oct 9 08:09:37 2018 by ELM ver.2012-10-06 from 001__elm20181009_060054__dat00.bin

