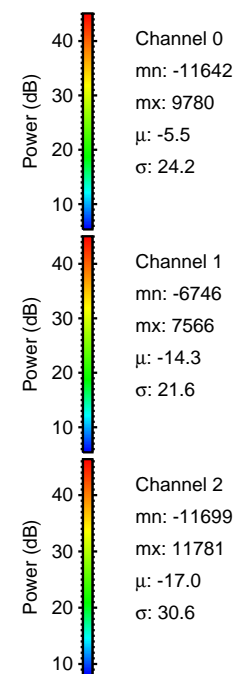
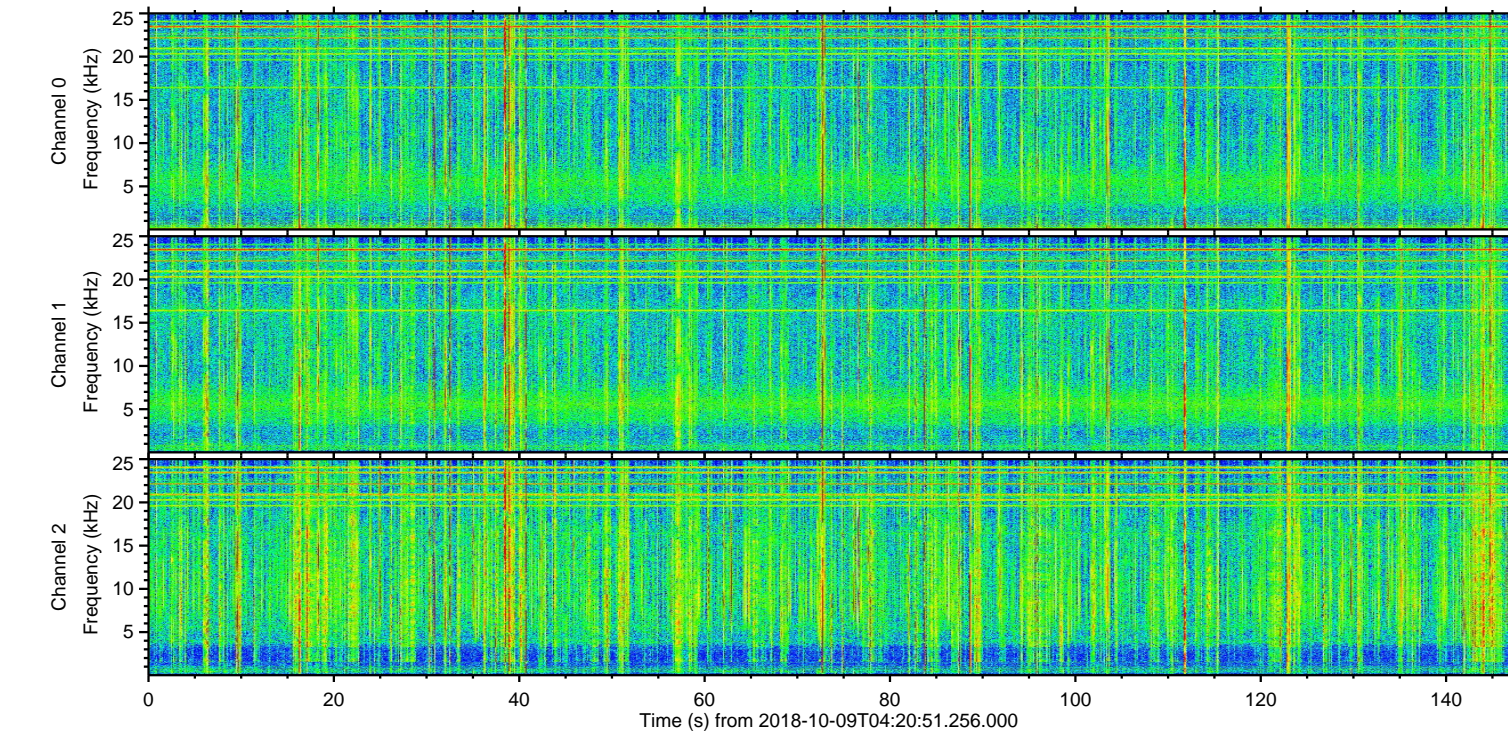
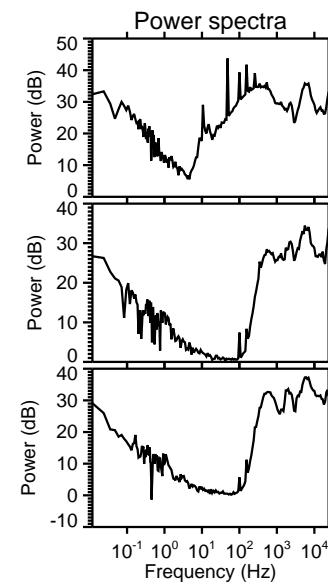
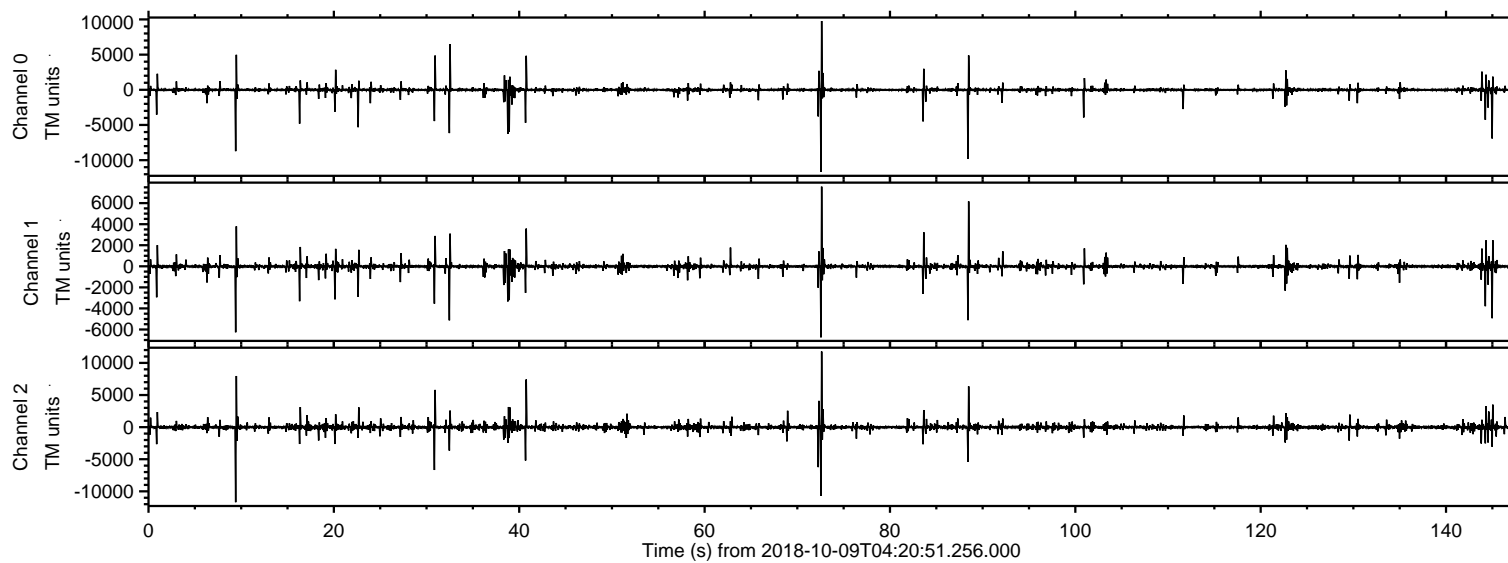


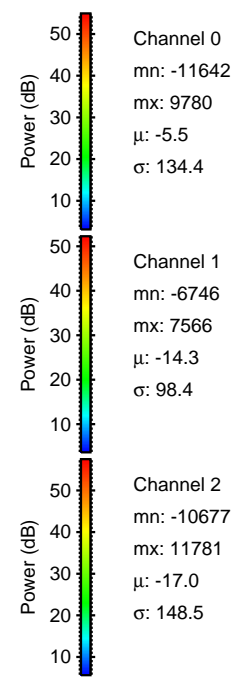
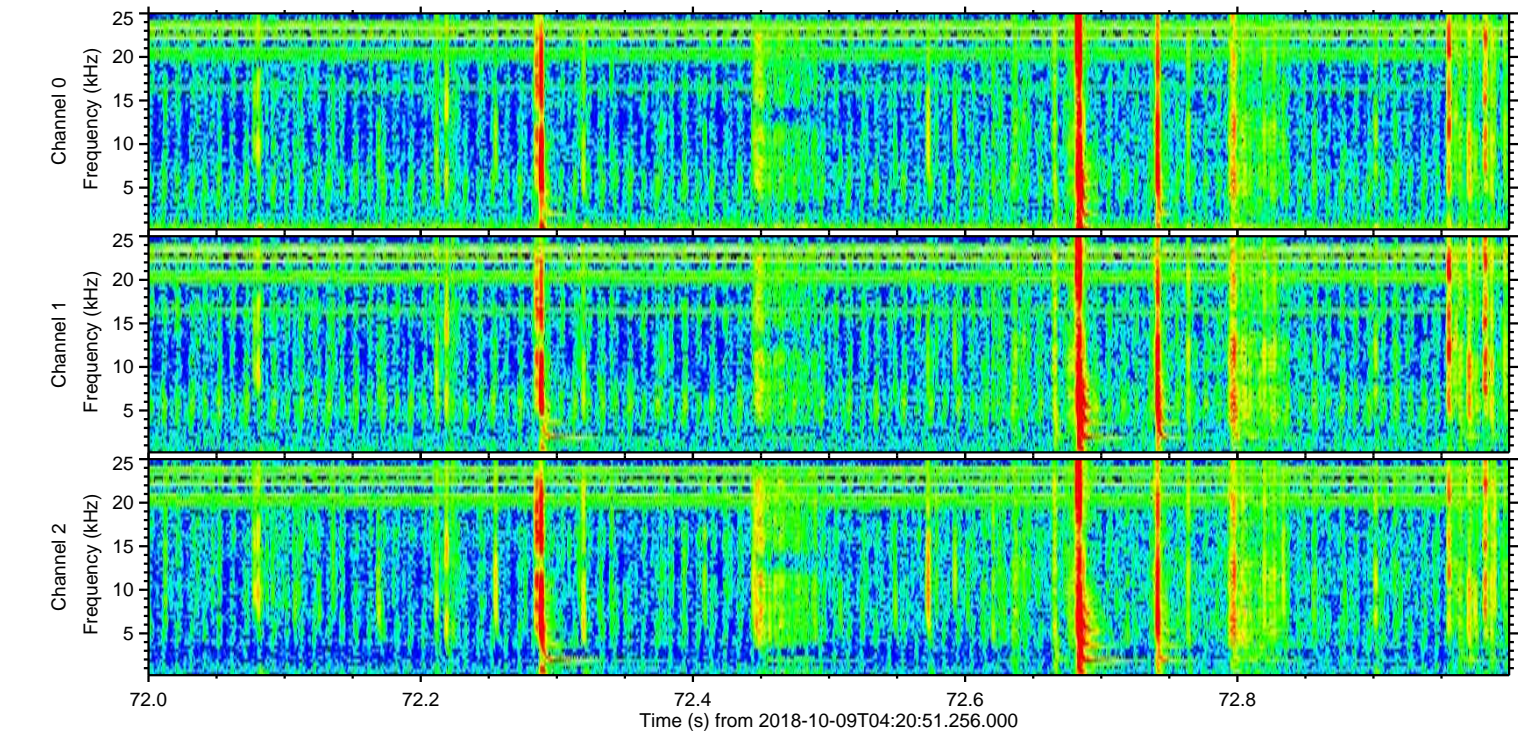
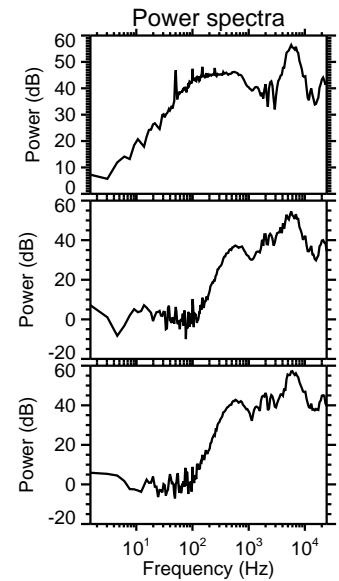
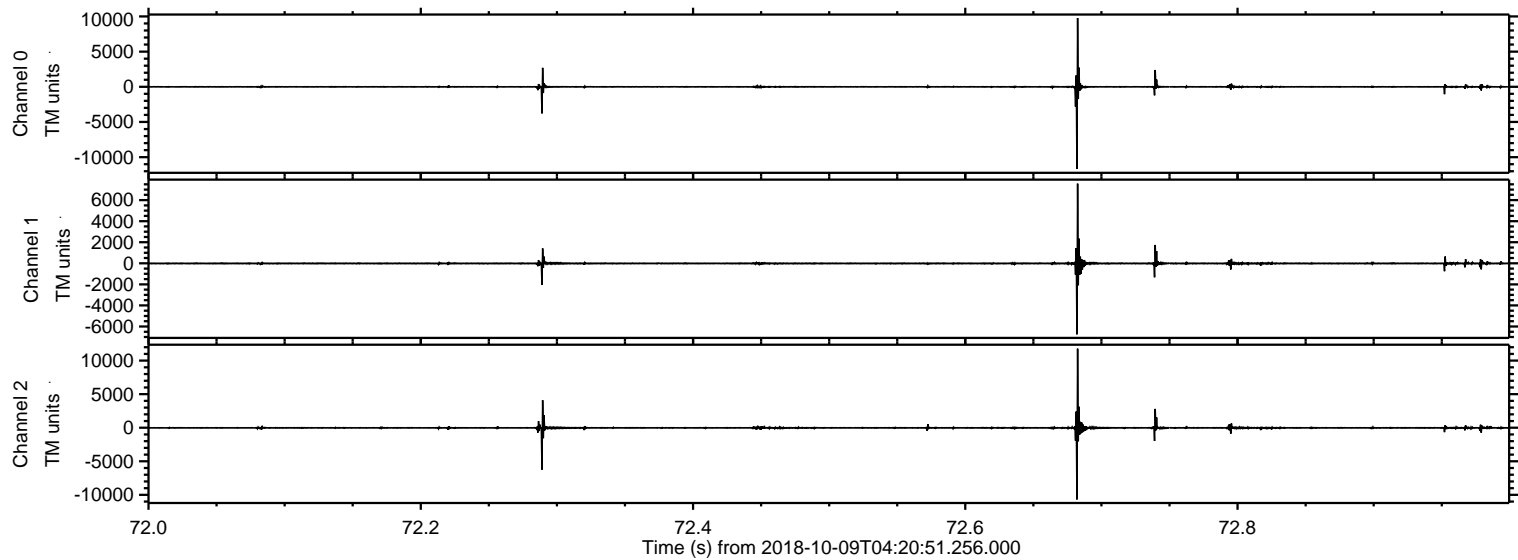
ELMAVAN 3D WAVEFORMS (Measured data sampled at 50 kHz) 51000 packets of 144 samples from 2018-10-09T04:20:51.256.000.

Processed Tue Oct 9 06:28:25 2018 by ELM ver.2012-10-06 from 001__elm20181009_042050__dat00.bin



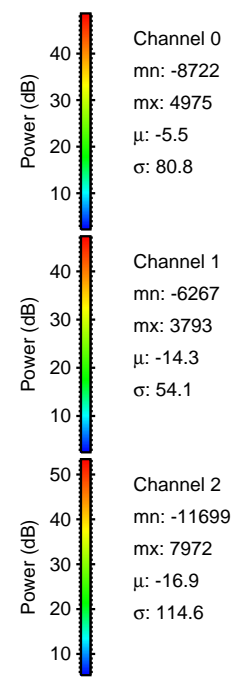
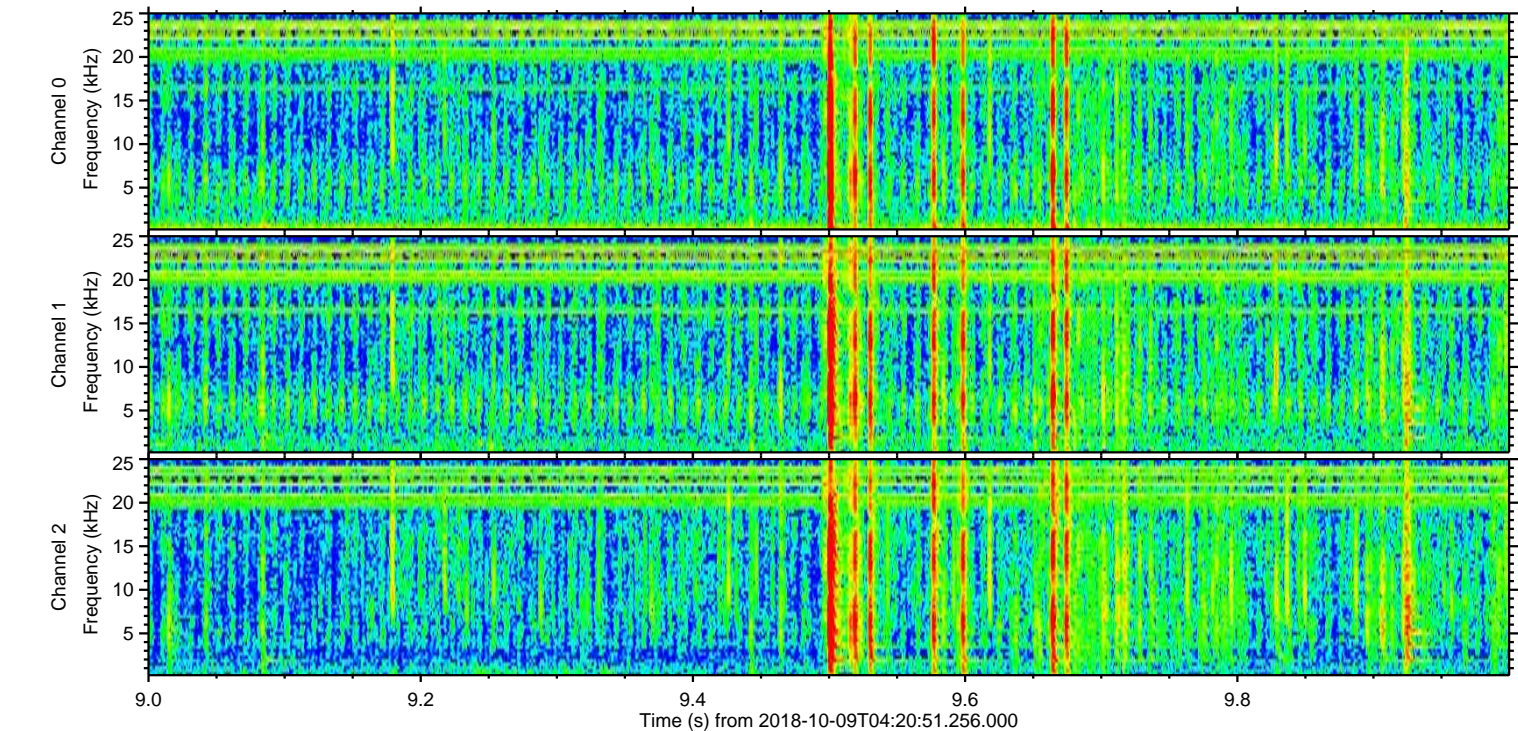
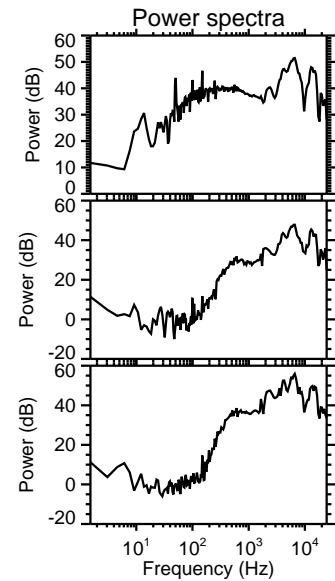
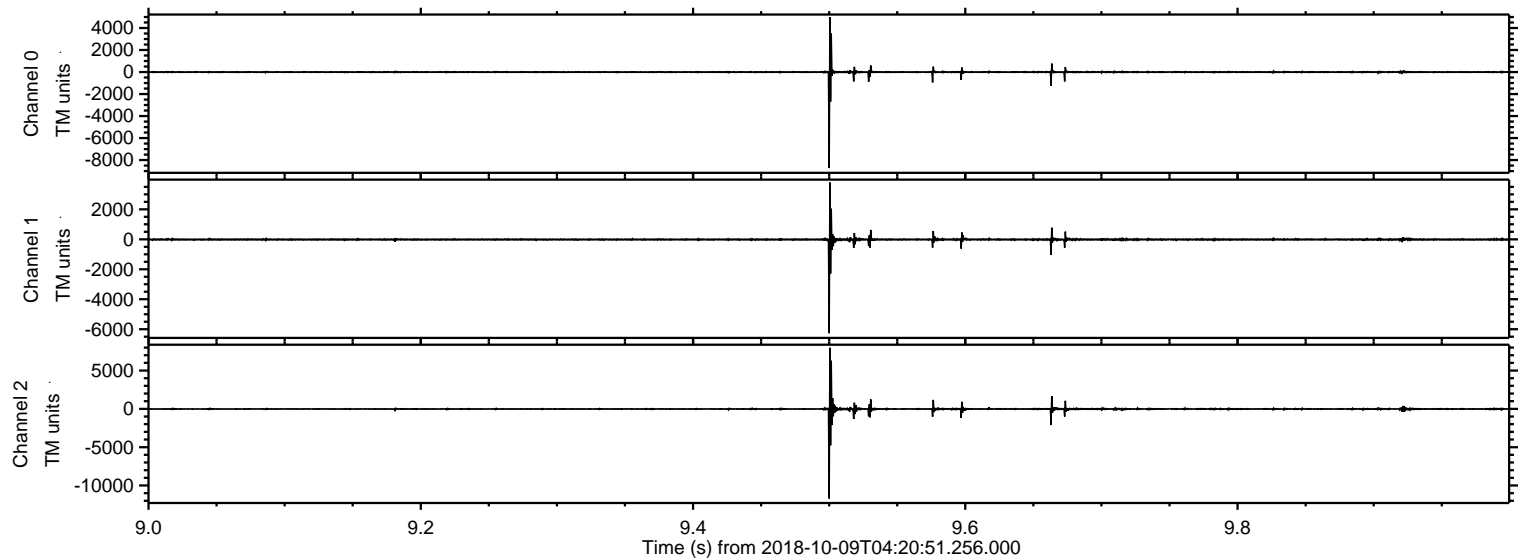
ELMAVAN 3D WAVEFORMS (Measured data sampled at 50 kHz) 51000 packets of 144 samples from 2018-10-09T04:20:51.256.000. Part 73/147

Processed Tue Oct 9 06:28:31 2018 by ELM ver.2012-10-06 from 001__elm20181009_042050__dat00.bin

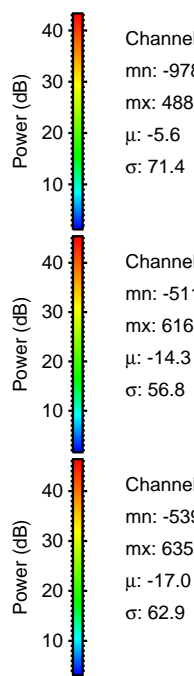
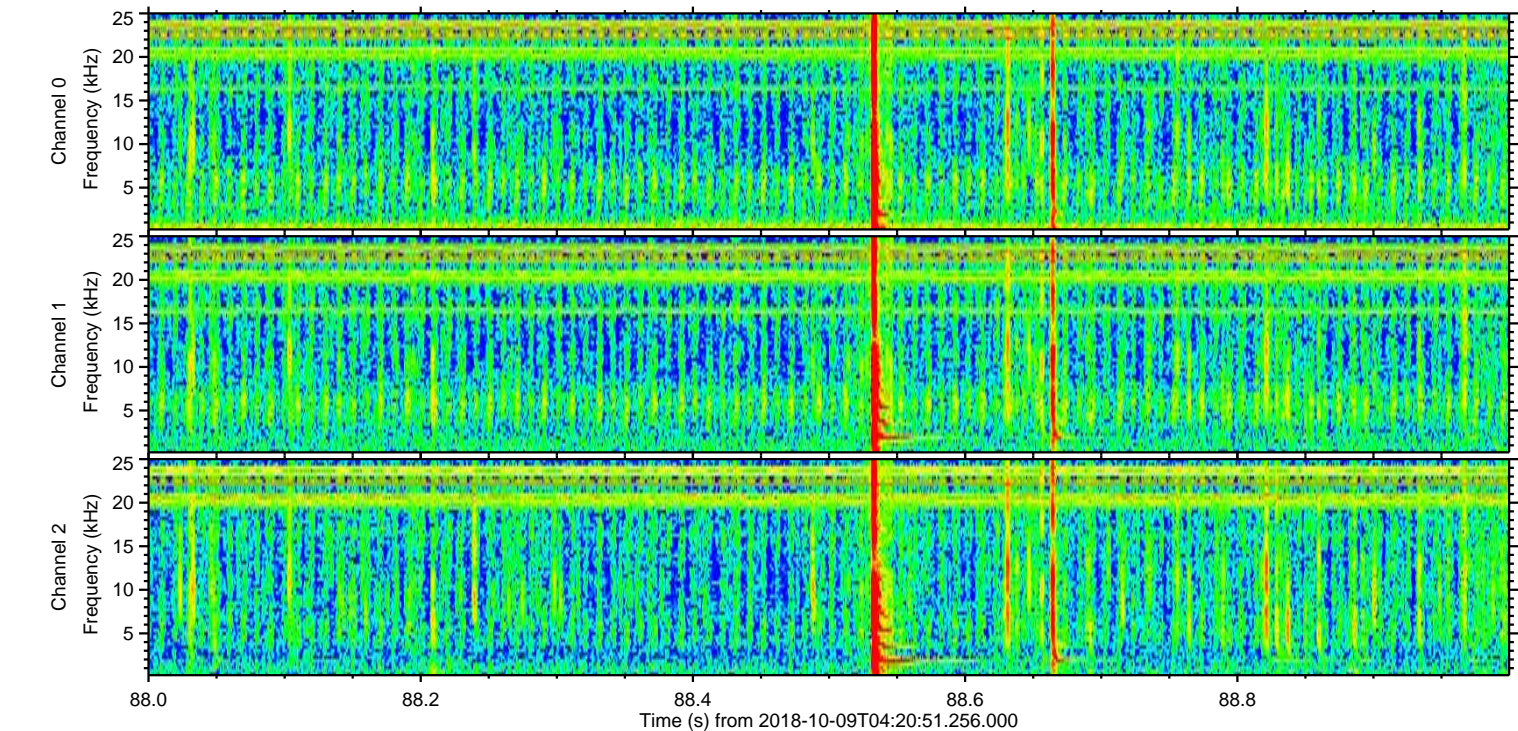
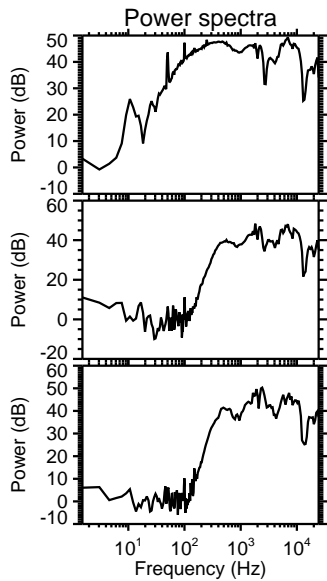
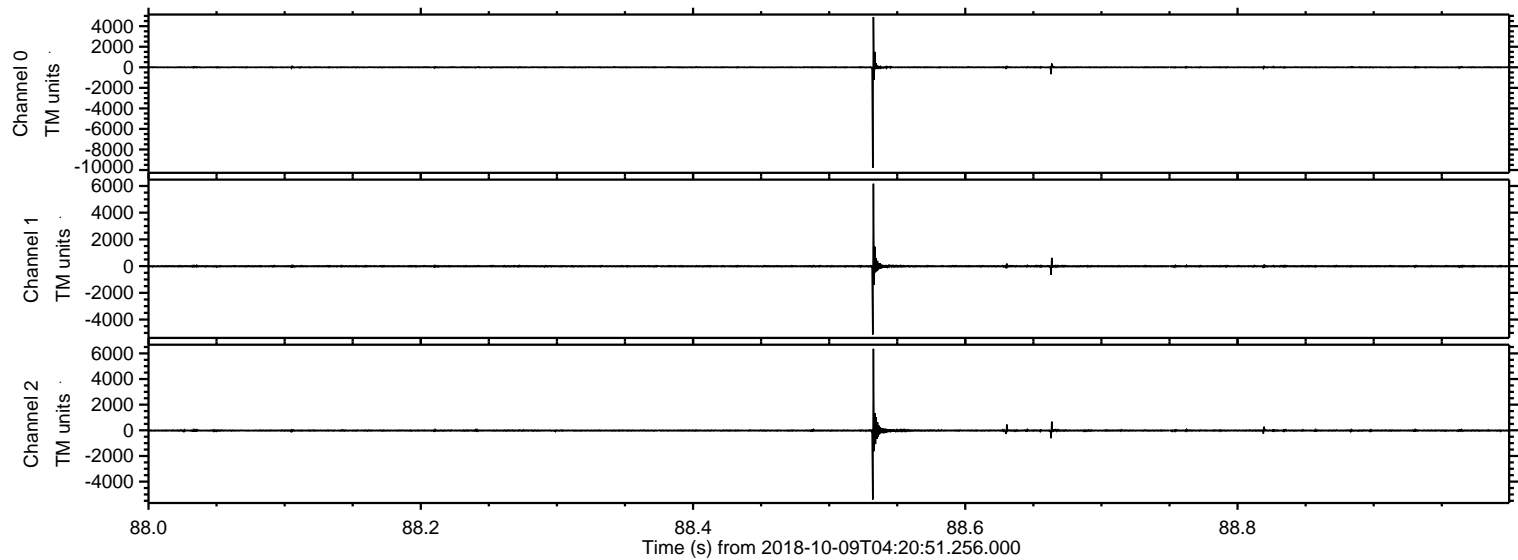


ELMAVAN 3D WAVEFORMS (Measured data sampled at 50 kHz) 51000 packets of 144 samples from 2018-10-09T04:20:51.256.000. Part 10/147

Processed Tue Oct 9 06:28:32 2018 by ELM ver.2012-10-06 from 001__elm20181009_042050__dat00.bin

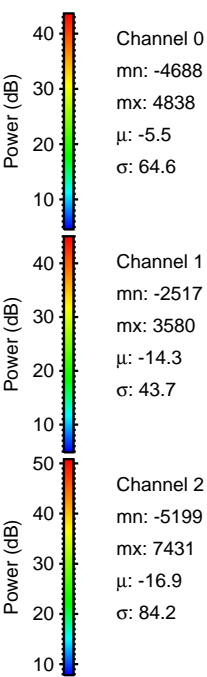
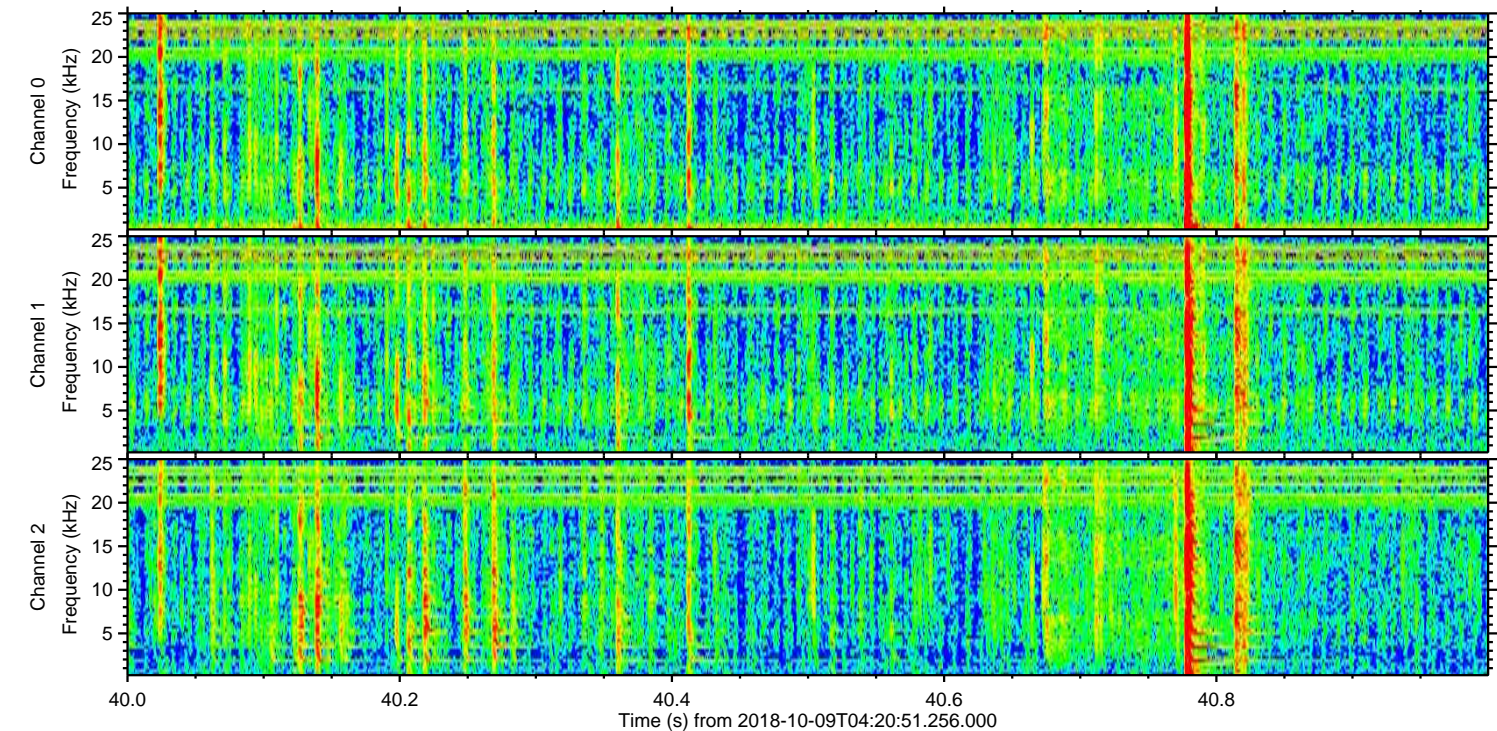
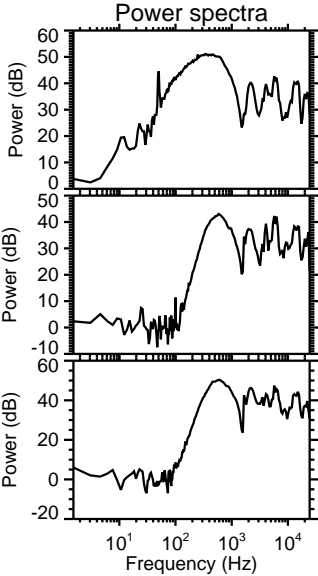
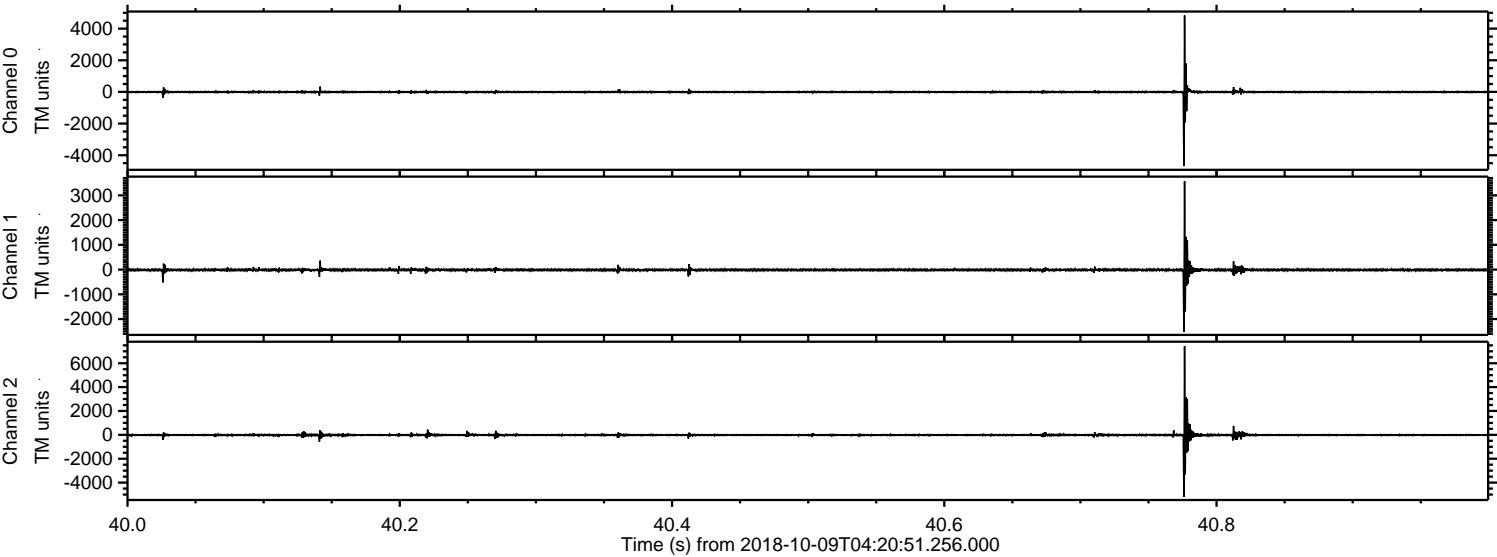


Processed Tue Oct 9 06:28:33 2018 by ELM ver.2012-10-06 from 001__elm20181009_042050__dat00.bin



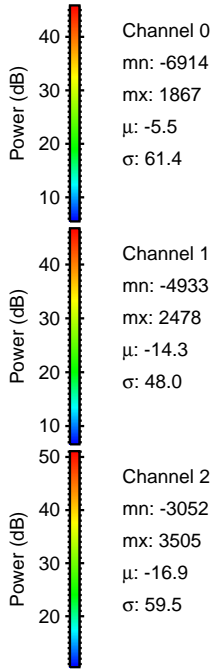
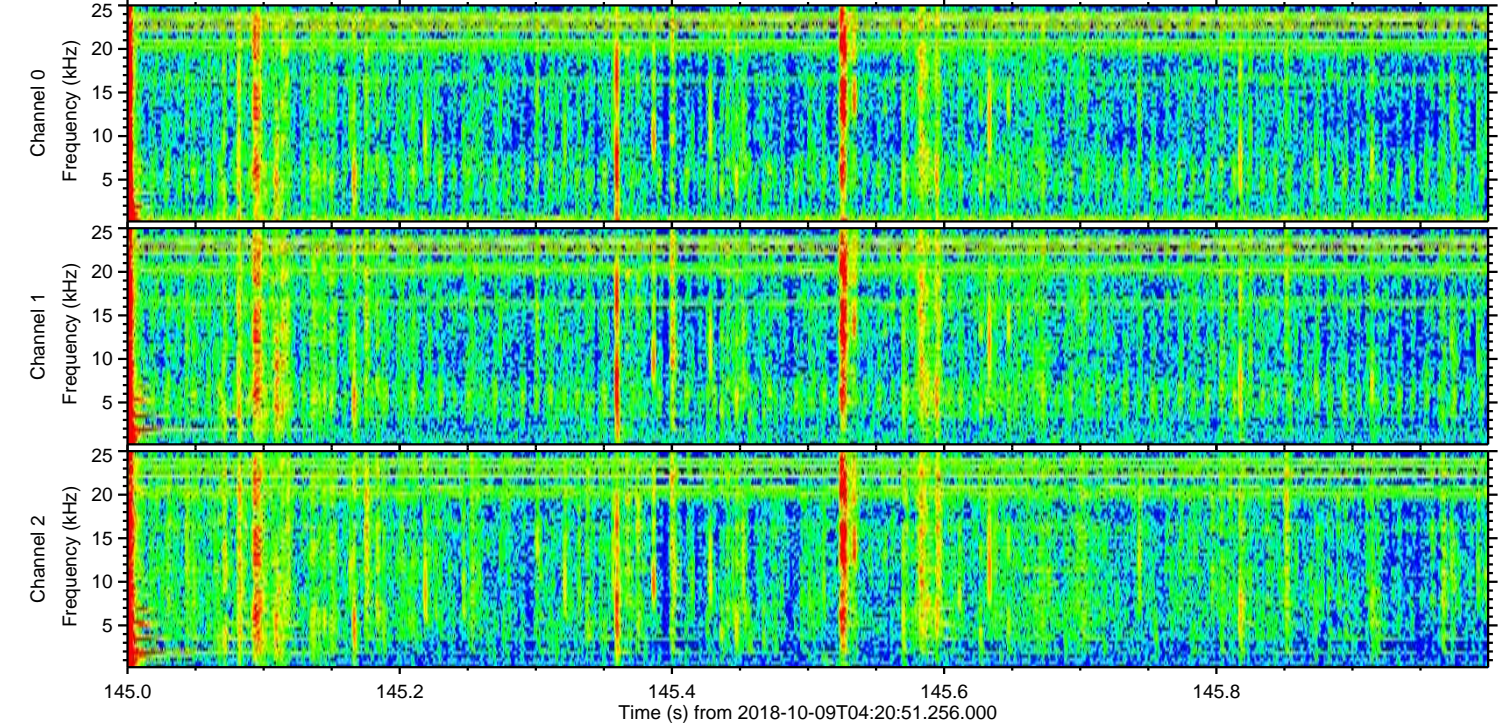
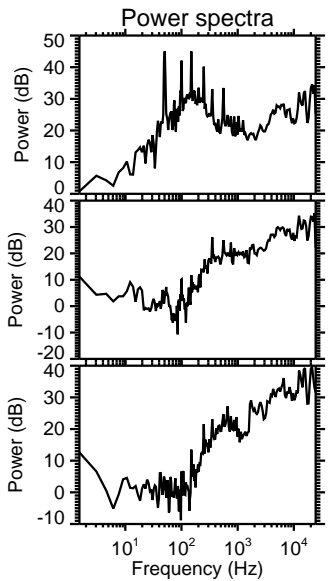
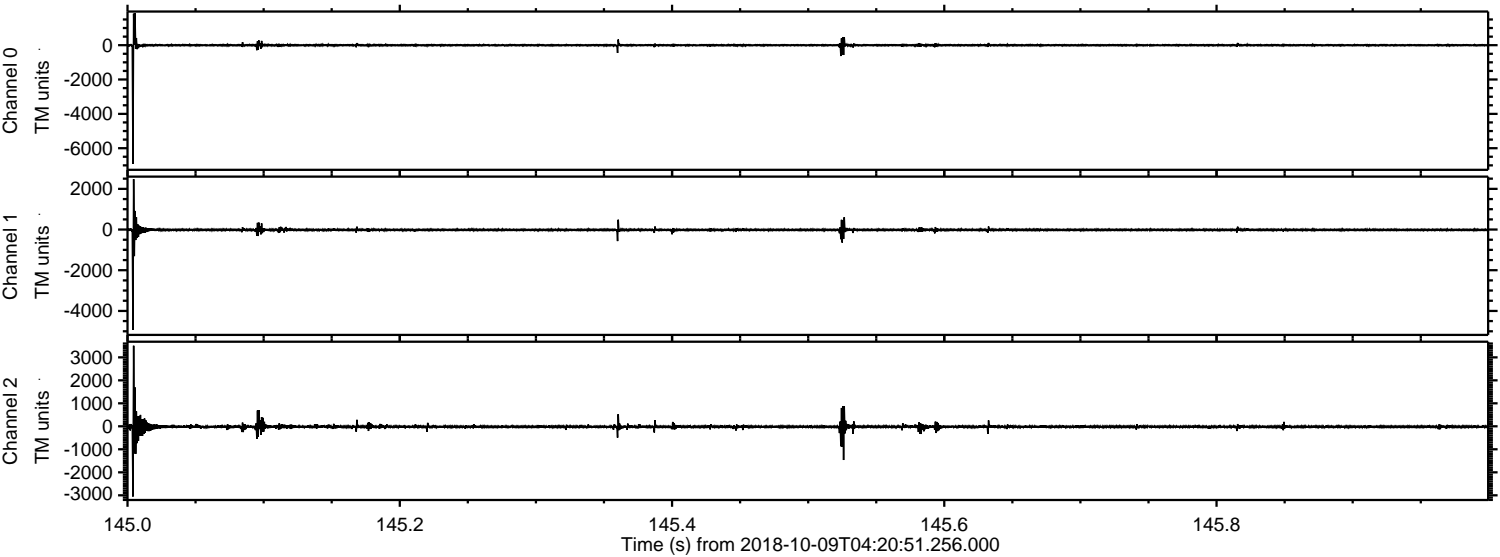
ELMAVAN 3D WAVEFORMS (Measured data sampled at 50 kHz) 51000 packets of 144 samples from 2018-10-09T04:20:51.256.000. Part 41/147

Processed Tue Oct 9 06:28:34 2018 by ELM ver.2012-10-06 from 001__elm20181009_042050__dat00.bin



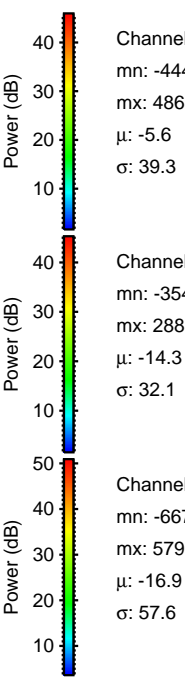
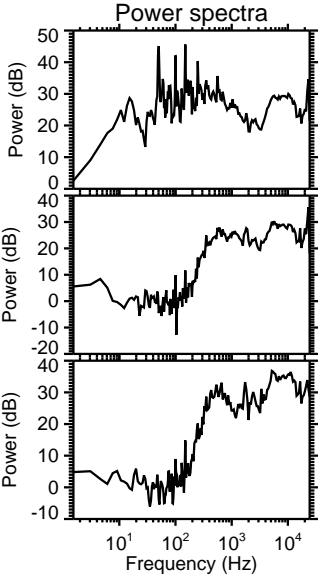
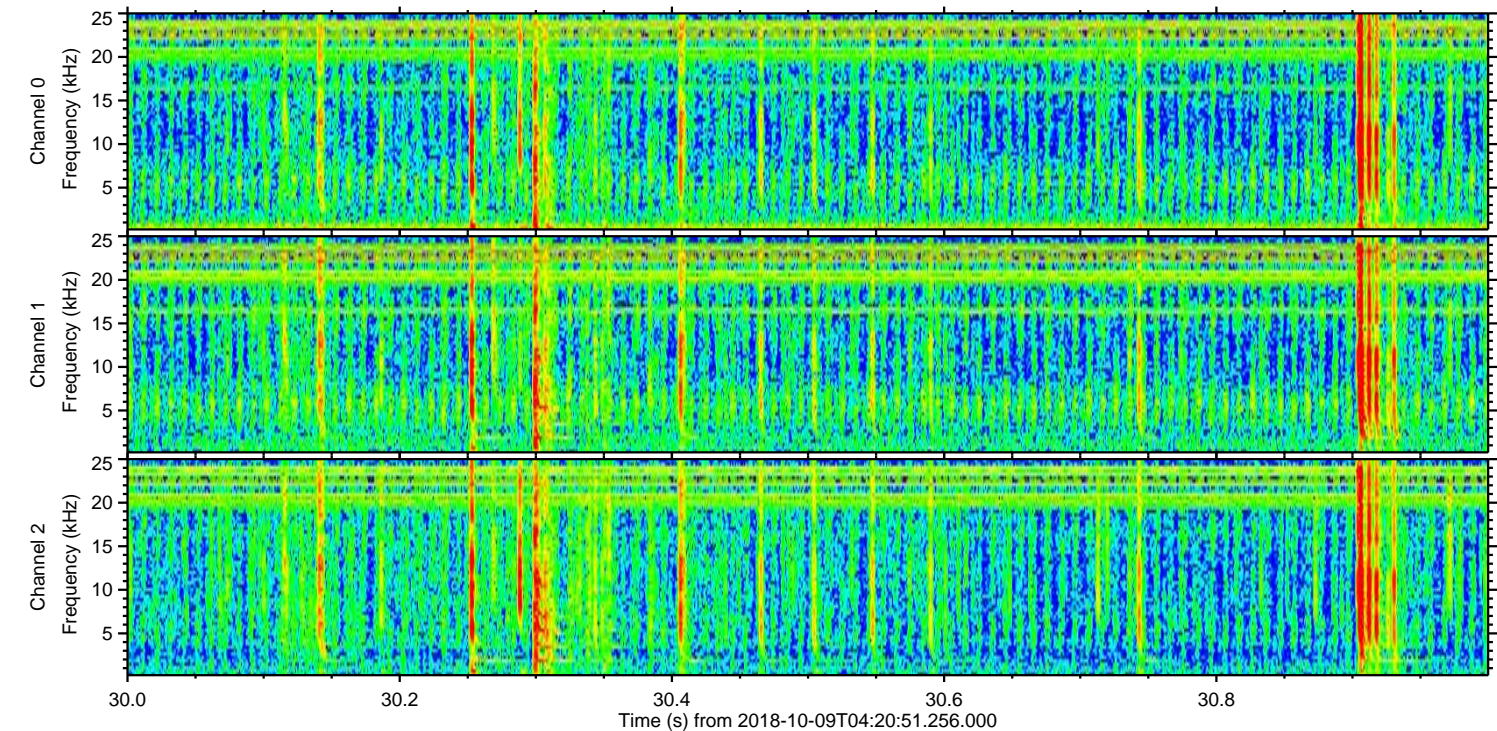
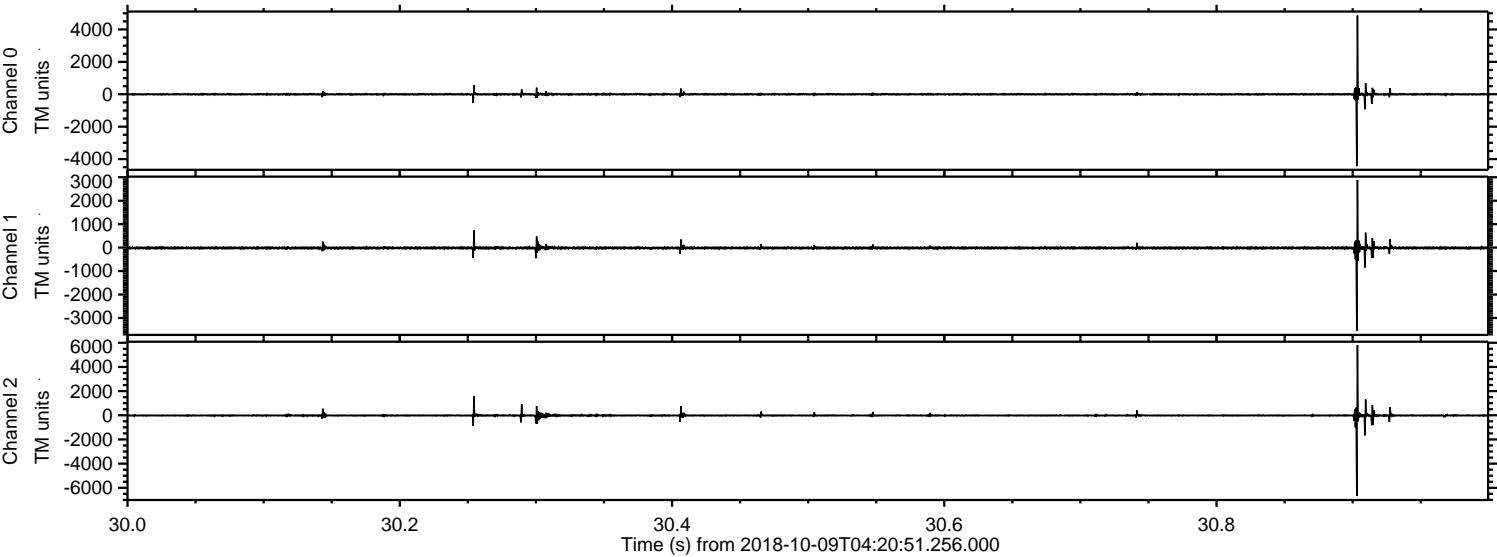
ELMAVAN 3D WAVEFORMS (Measured data sampled at 50 kHz) 51000 packets of 144 samples from 2018-10-09T04:20:51.256.000. Part 146/147

Processed Tue Oct 9 06:28:34 2018 by ELM ver.2012-10-06 from 001__elm20181009_042050__dat00.bin

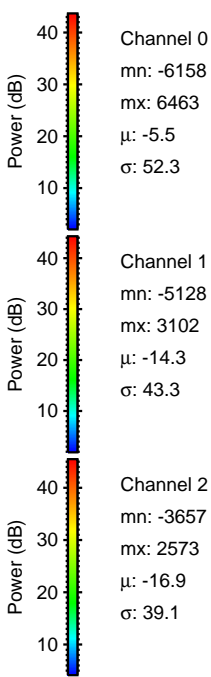
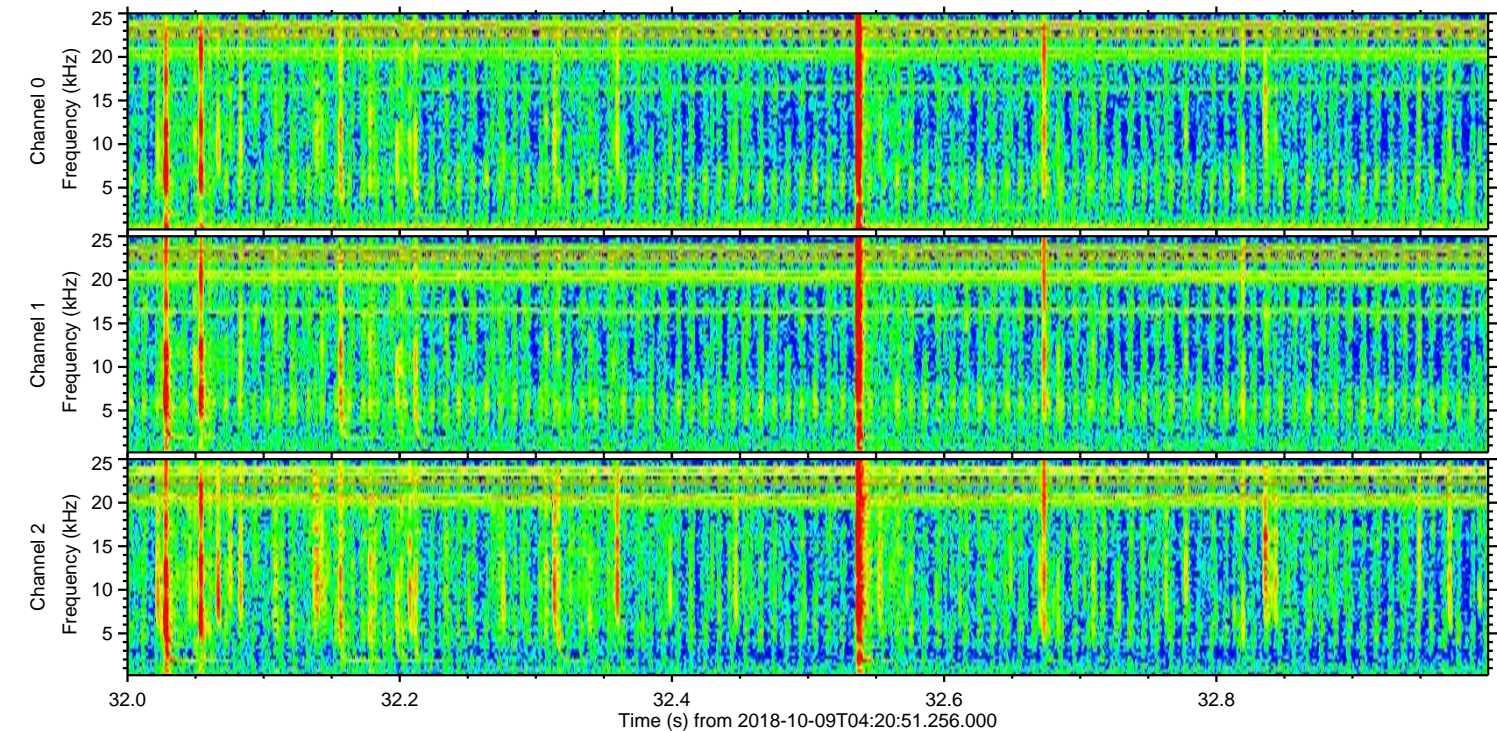
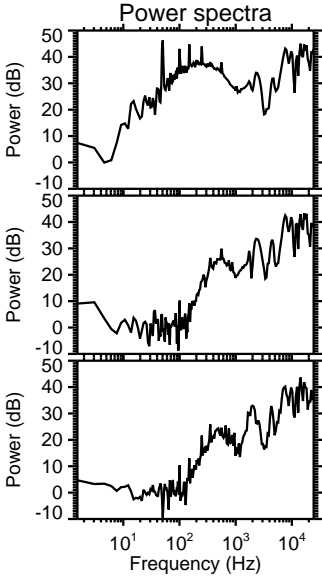
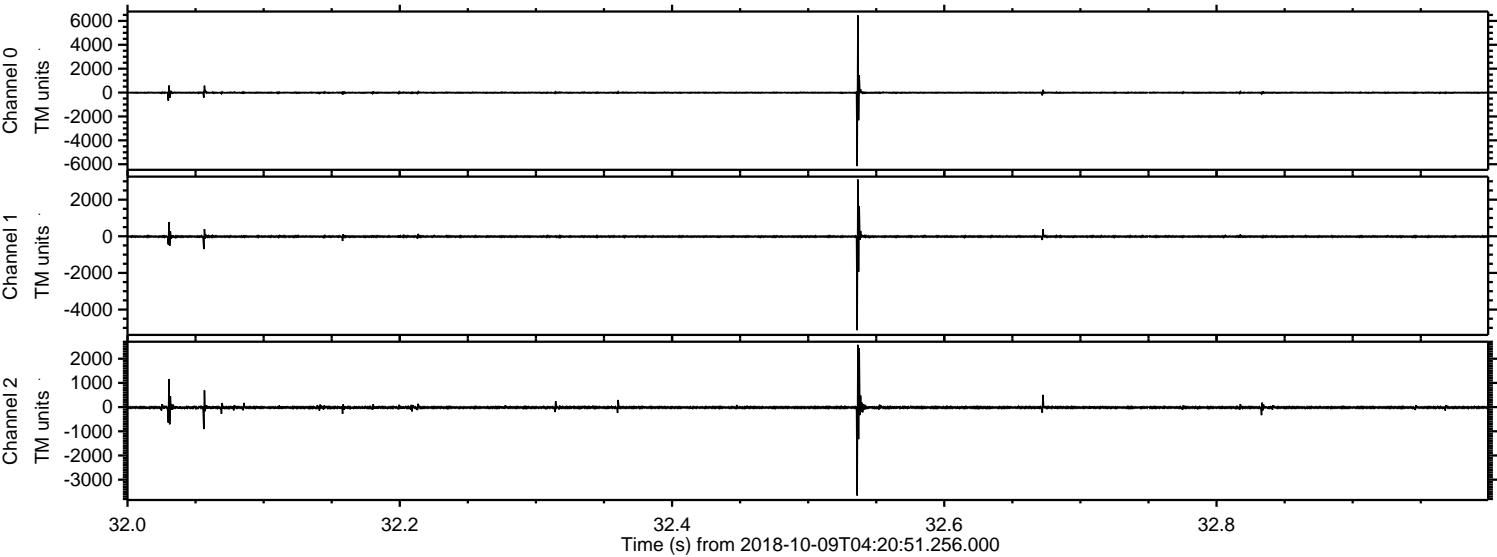


ELMAVAN 3D WAVEFORMS (Measured data sampled at 50 kHz) 51000 packets of 144 samples from 2018-10-09T04:20:51.256.000. Part 31/147

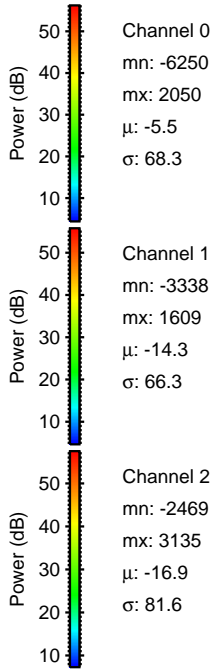
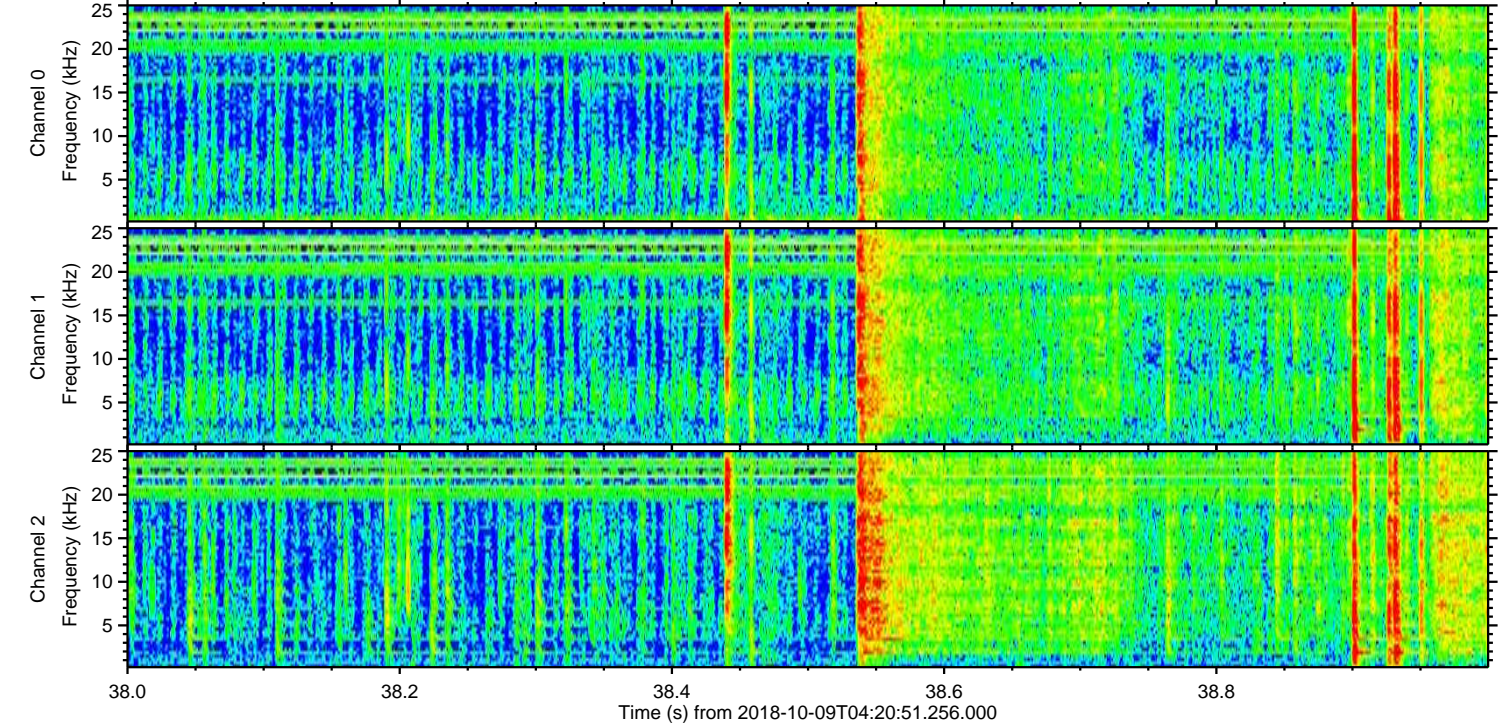
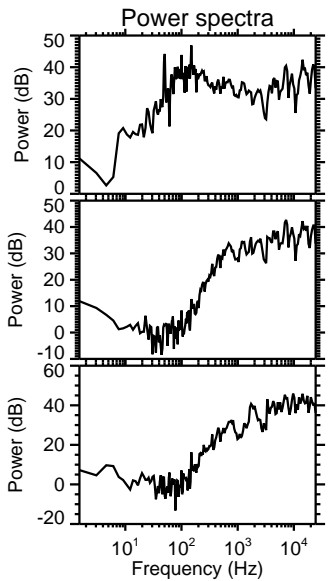
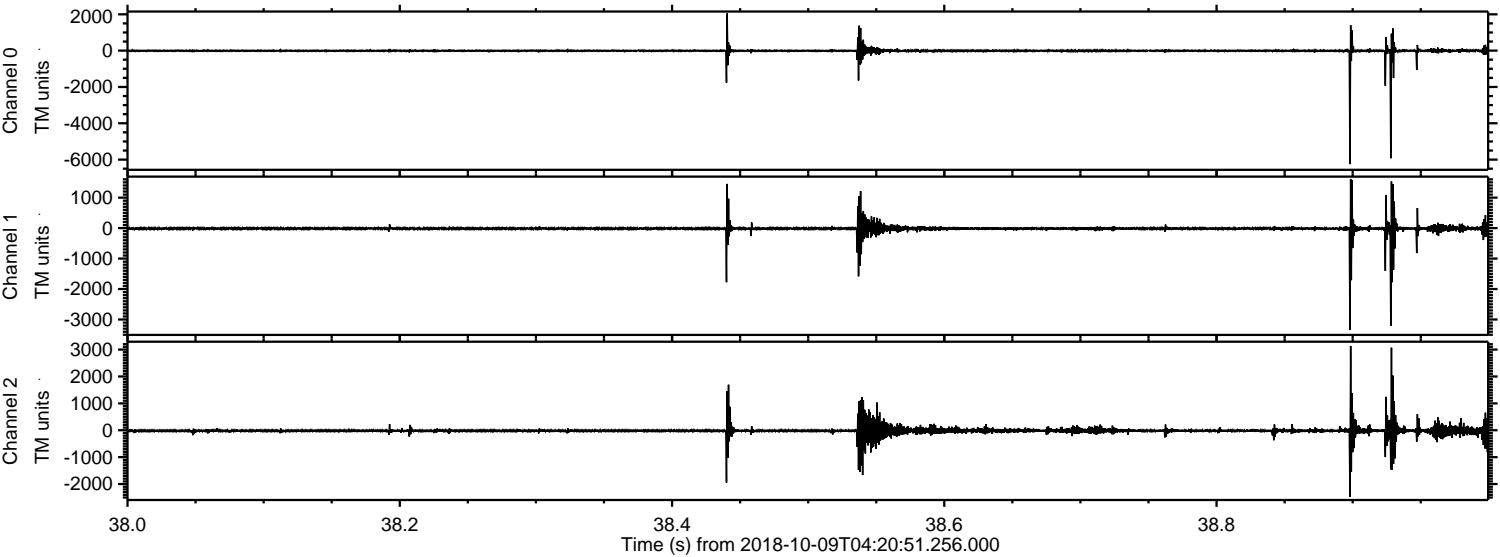
Processed Tue Oct 9 06:28:35 2018 by ELM ver.2012-10-06 from 001__elm20181009_042050__dat00.bin



Processed Tue Oct 9 06:28:36 2018 by ELM ver.2012-10-06 from 001__elm20181009_042050__dat00.bin



Processed Tue Oct 9 06:28:36 2018 by ELM ver.2012-10-06 from 001__elm20181009_042050__dat00.bin

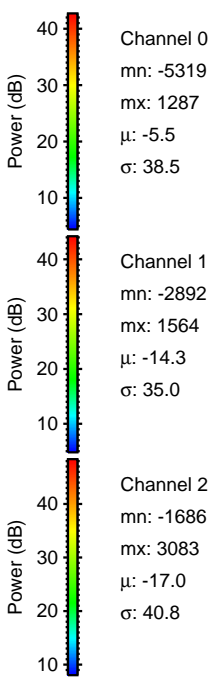
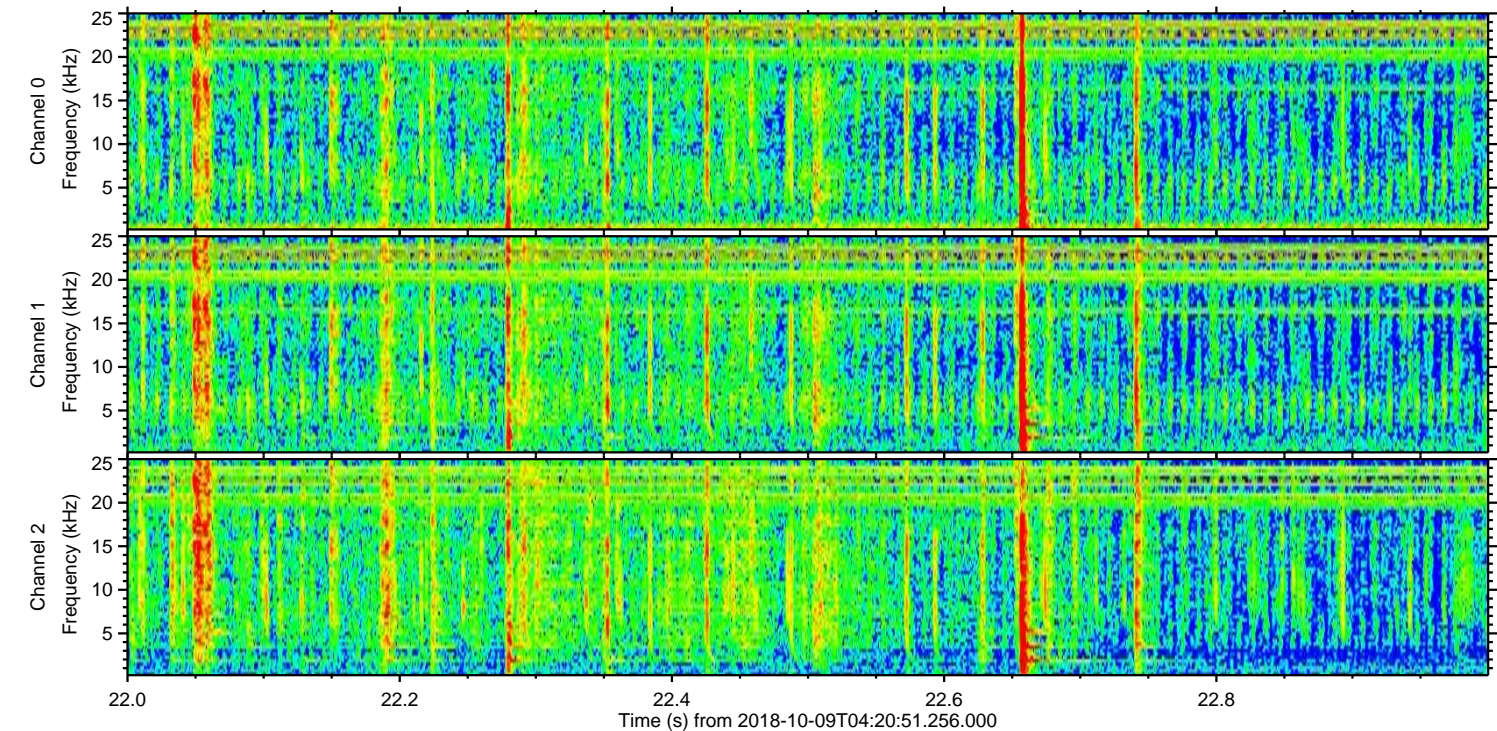
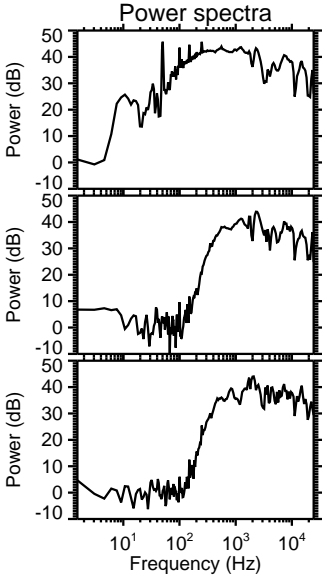
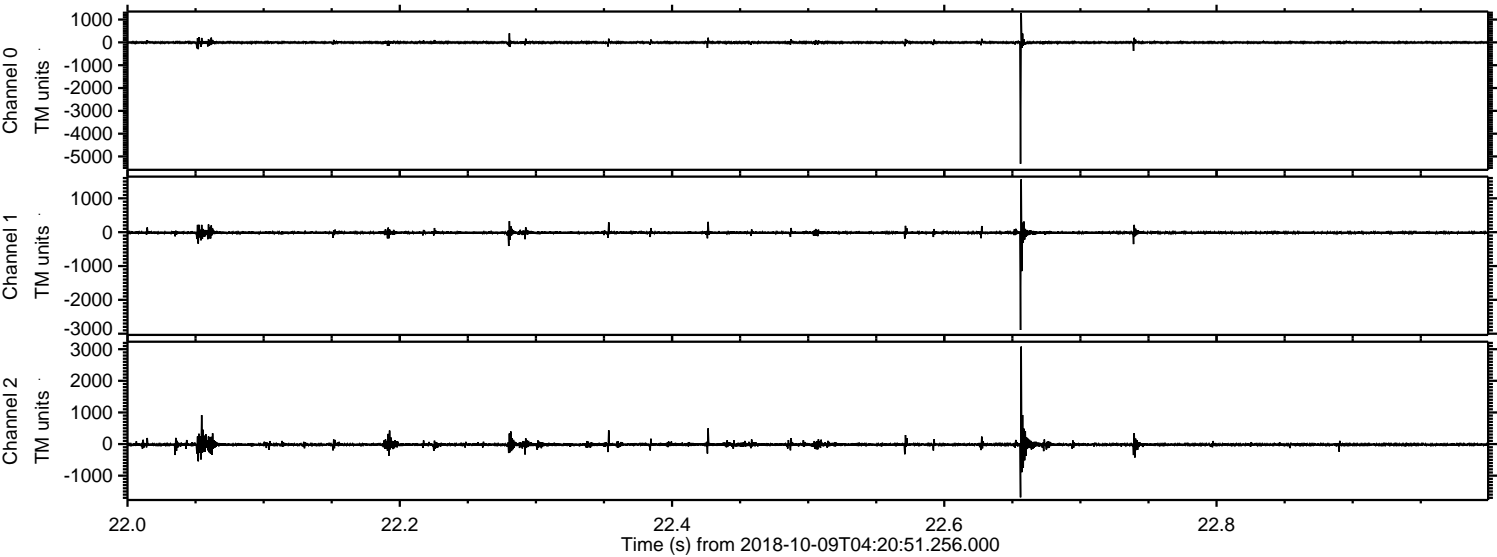


Channel 0
mn: -6250
mx: 2050
 μ : -5.5
 σ : 68.3

Channel 1
mn: -3338
mx: 1609
 μ : -14.3
 σ : 66.3

Channel 2
mn: -2469
mx: 3135
 μ : -16.9
 σ : 81.6

Processed Tue Oct 9 06:28:37 2018 by ELM ver.2012-10-06 from 001__elm20181009_042050__dat00.bin



Processed Tue Oct 9 06:28:38 2018 by ELM ver.2012-10-06 from 001__elm20181009_042050__dat00.bin

