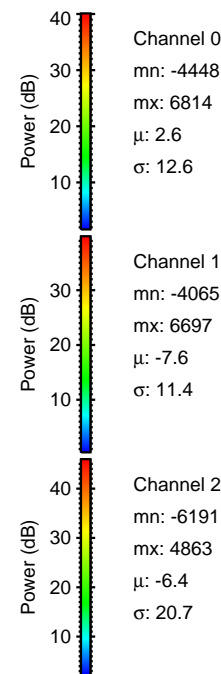
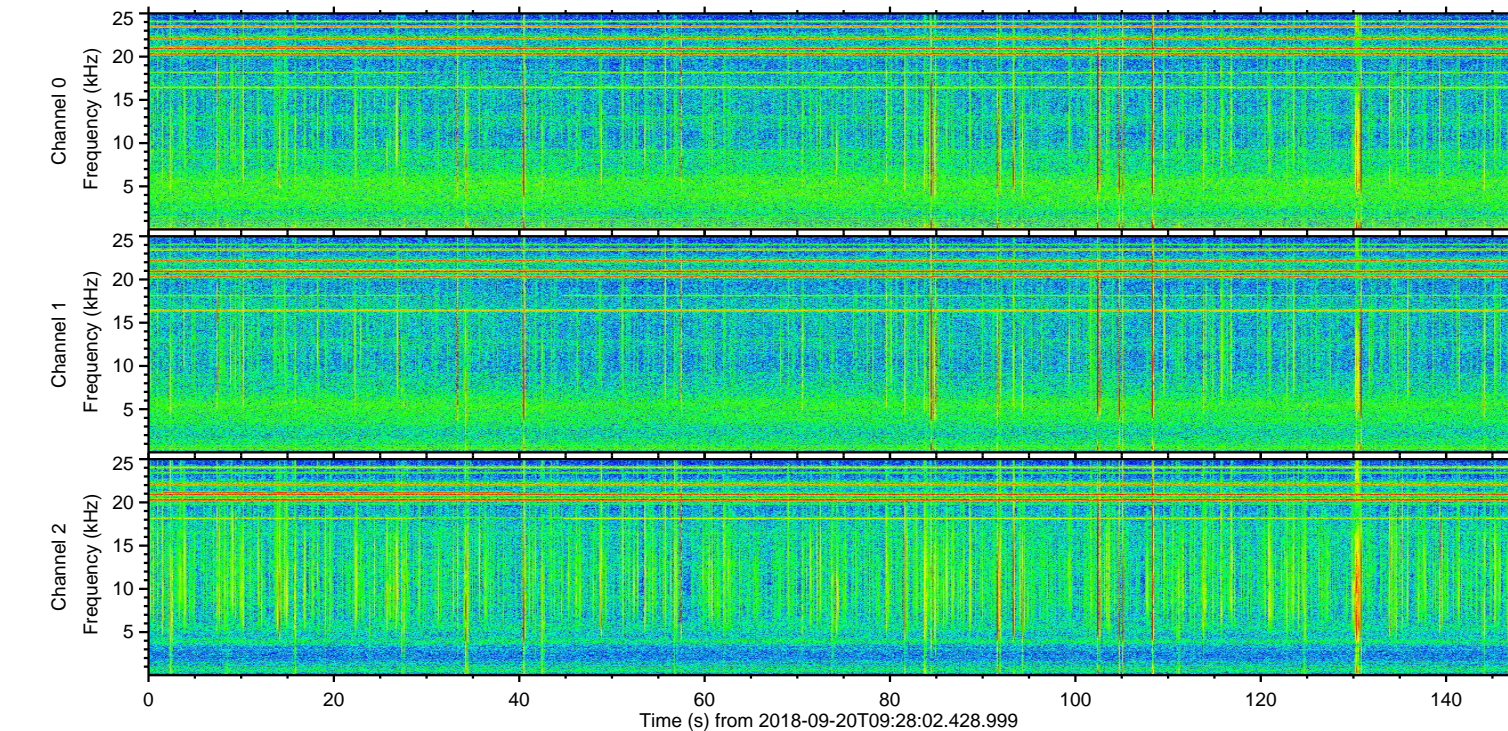
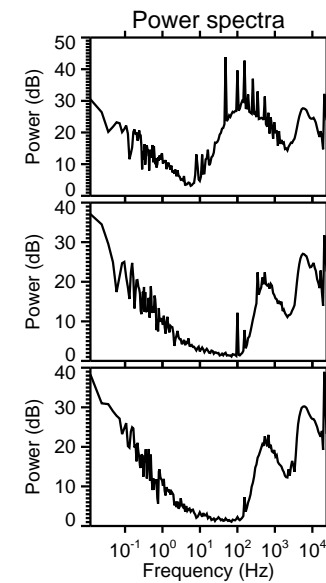
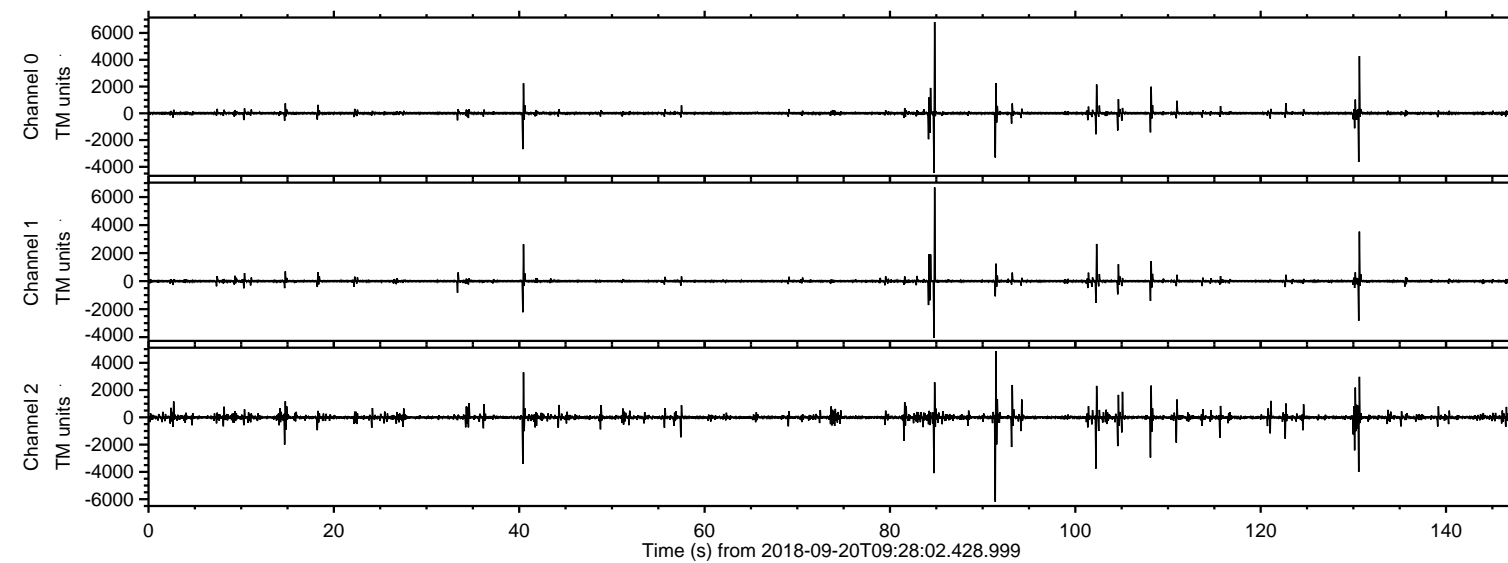
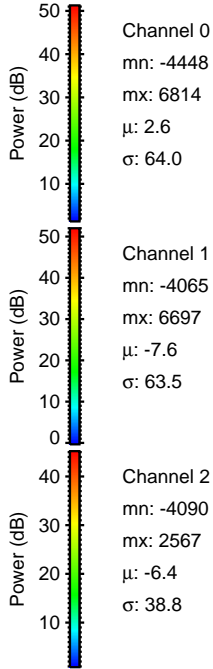
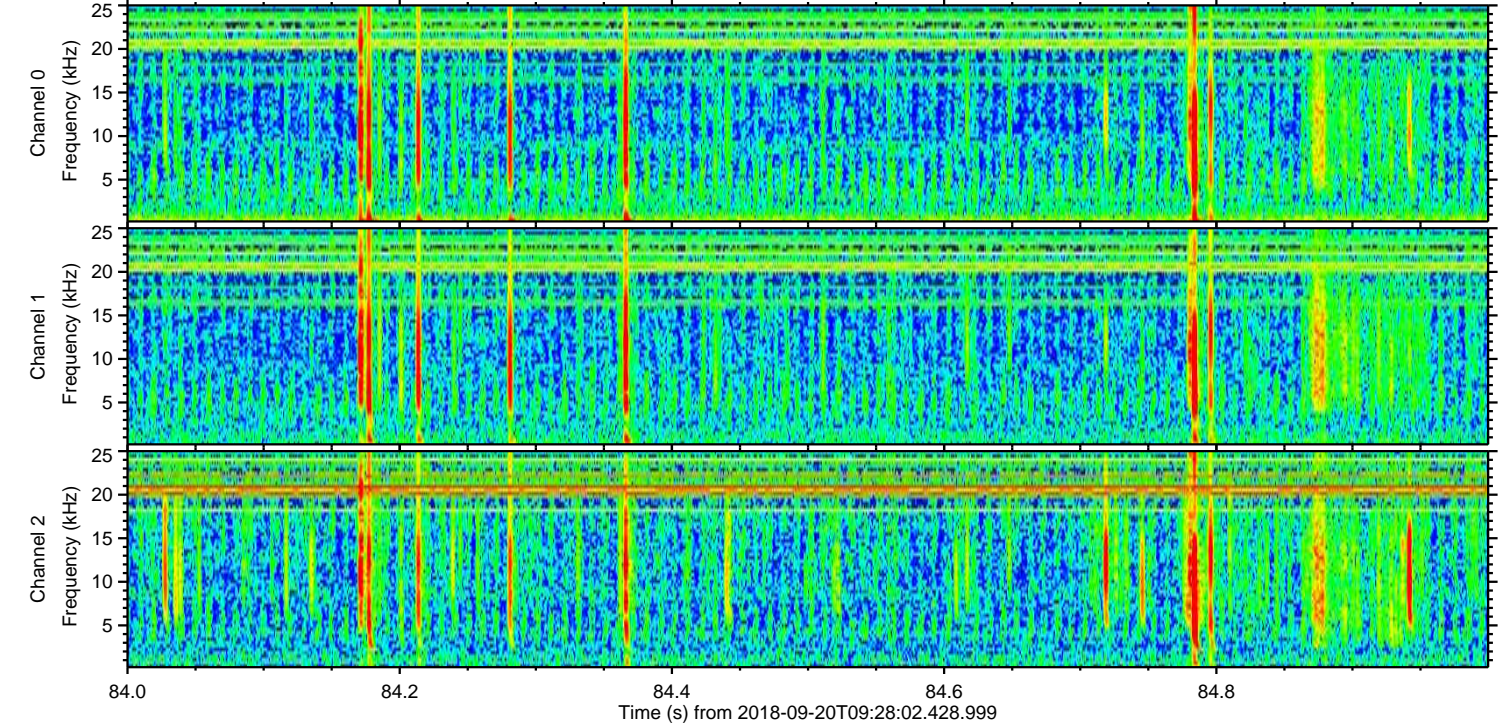
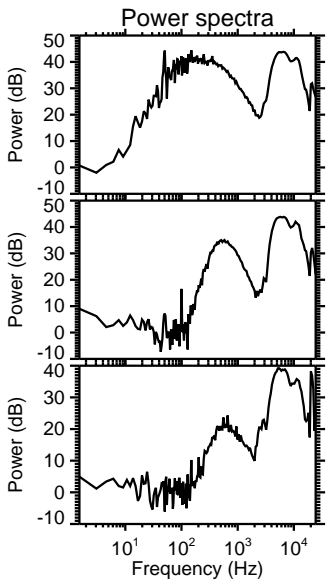
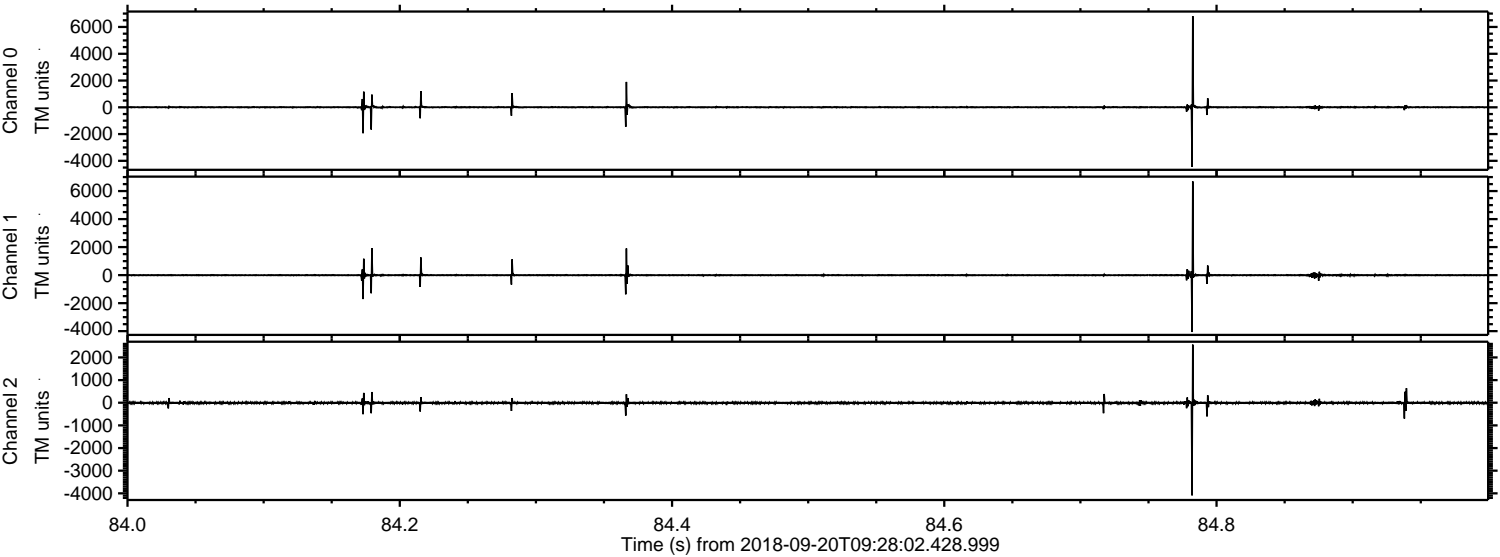


ELMAVAN 3D WAVEFORMS (Measured data sampled at 50 kHz) 51000 packets of 144 samples from 2018-09-20T09:28:02.428.999.

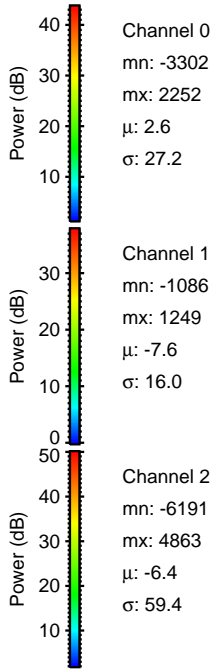
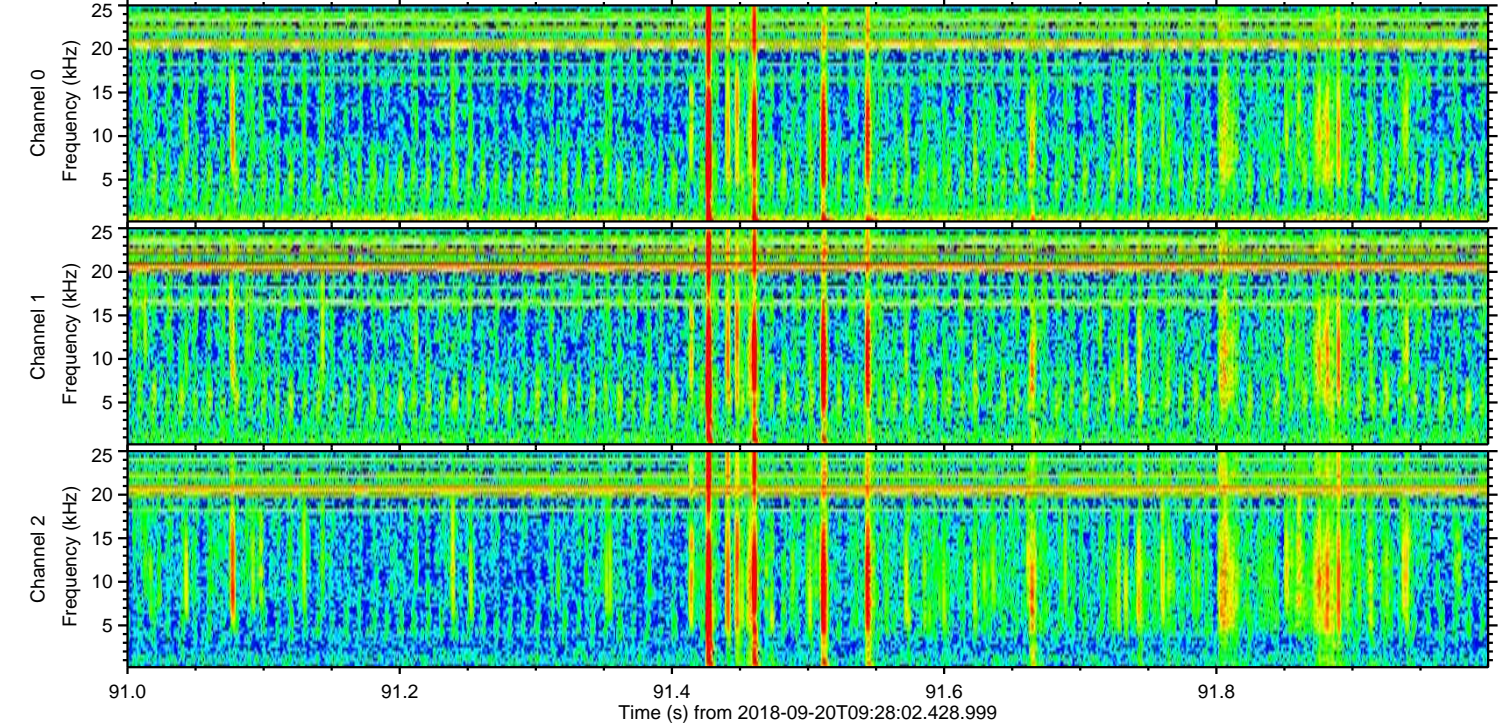
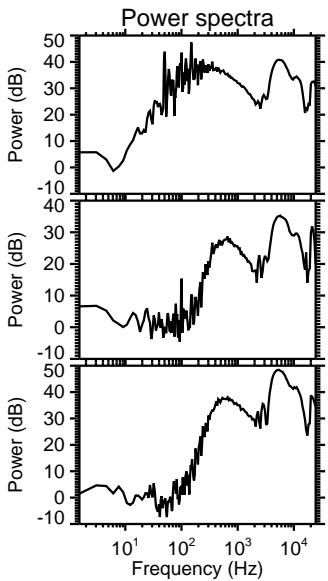
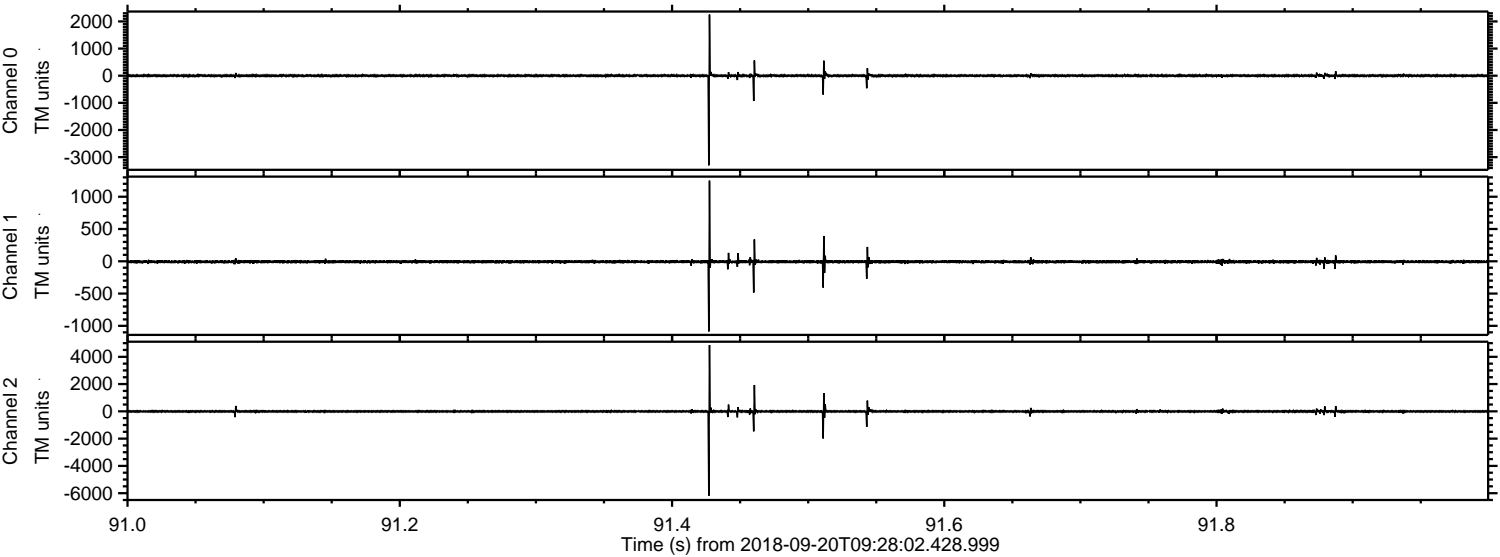
Processed Thu Sep 20 11:36:29 2018 by ELM ver.2012-10-06 from 001__elm20180920_092801__dat00.bin



Processed Thu Sep 20 11:36:35 2018 by ELM ver.2012-10-06 from 001__elm20180920_092801__dat00.bin

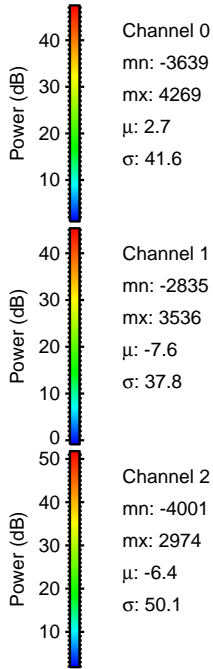
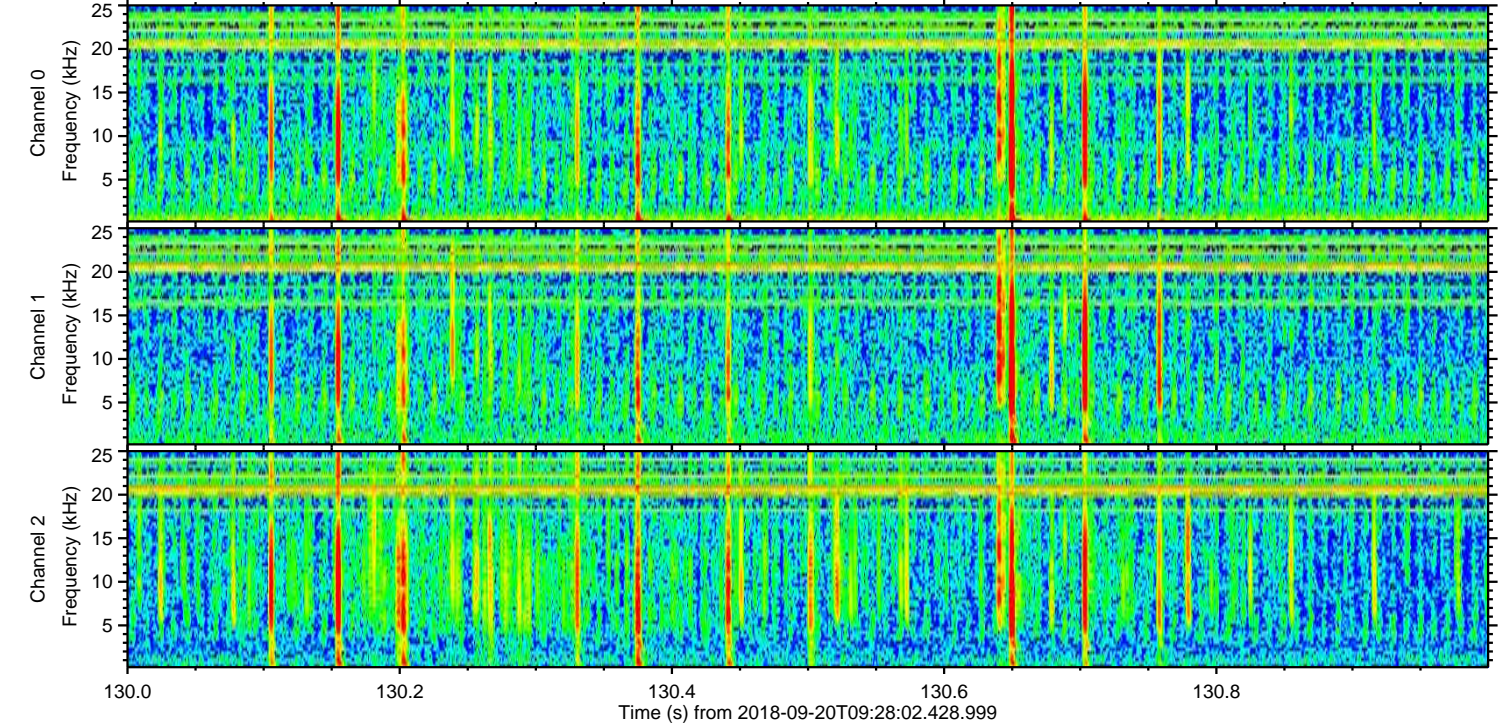
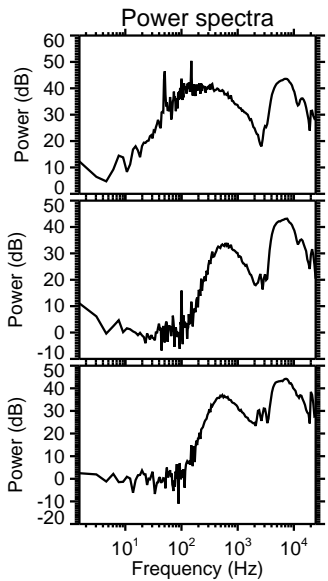
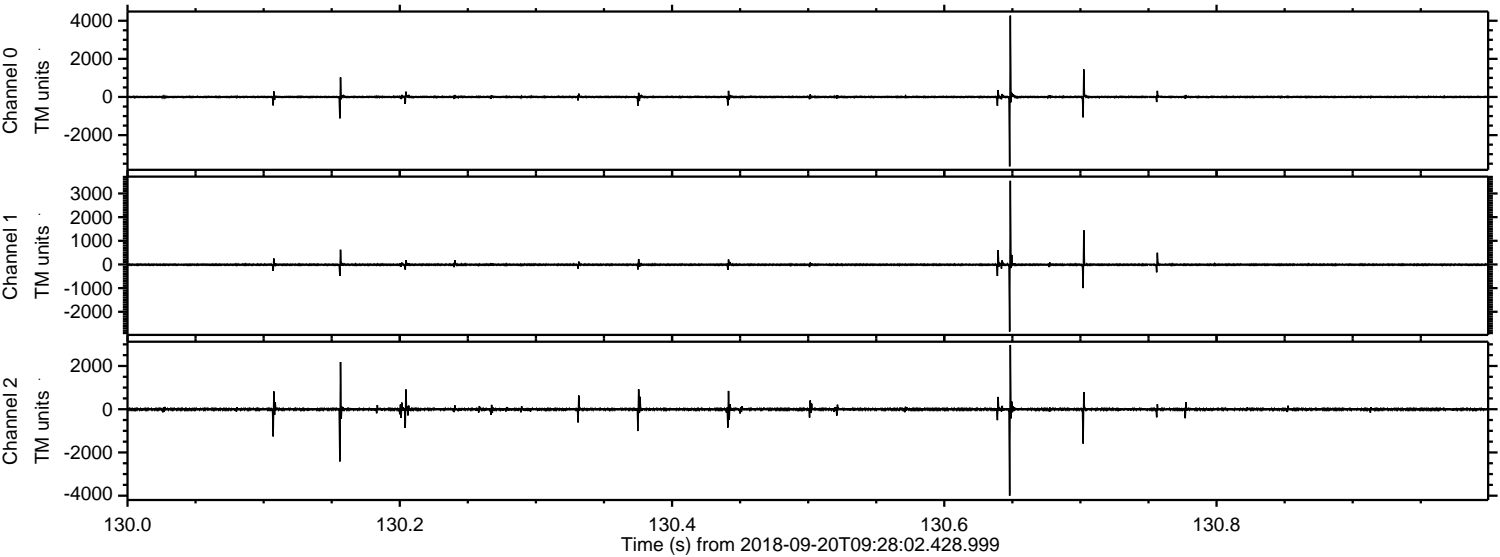


Processed Thu Sep 20 11:36:36 2018 by ELM ver.2012-10-06 from 001__elm20180920_092801__dat00.bin



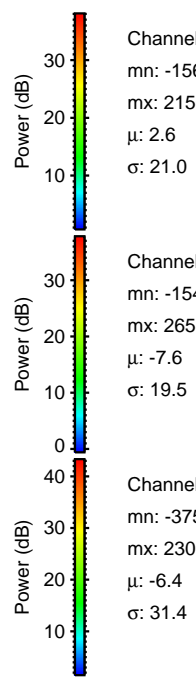
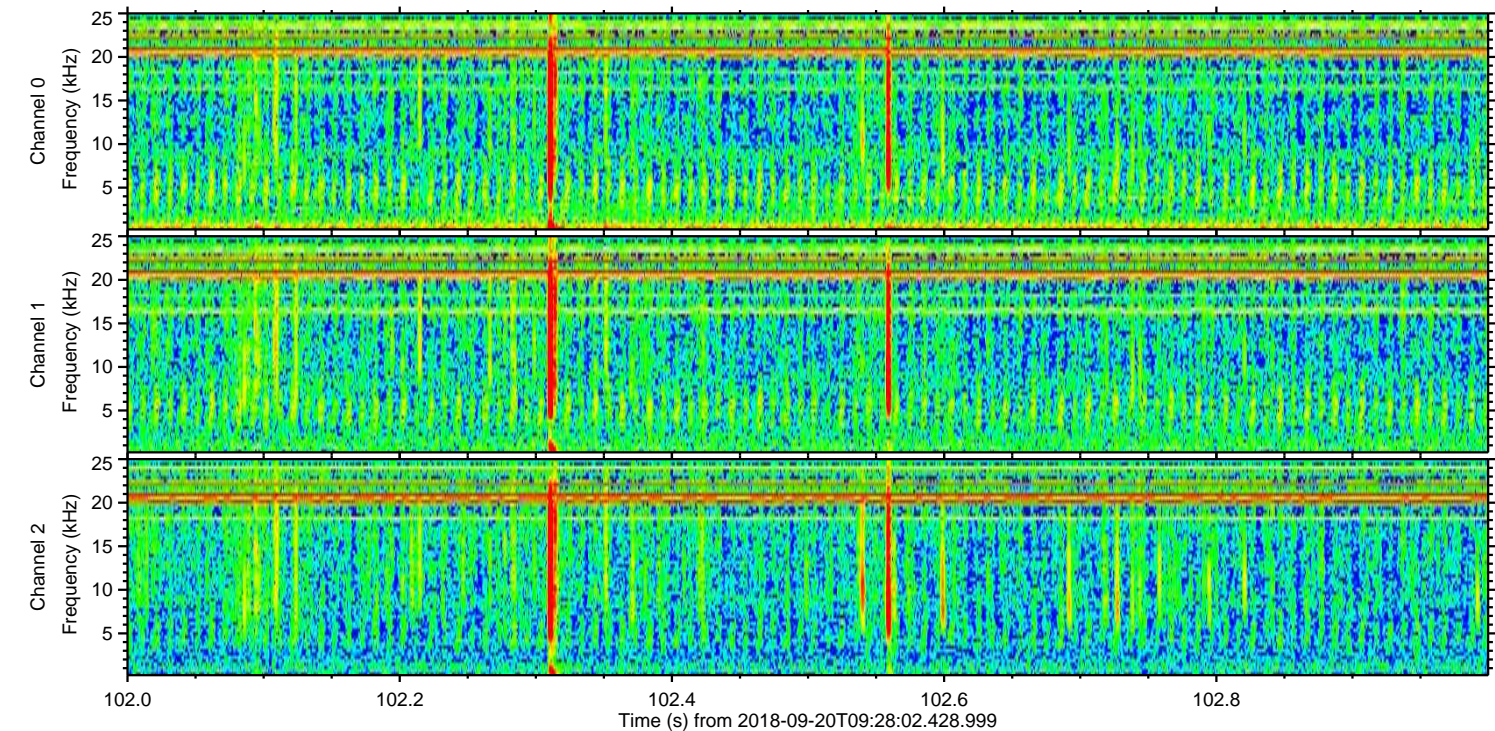
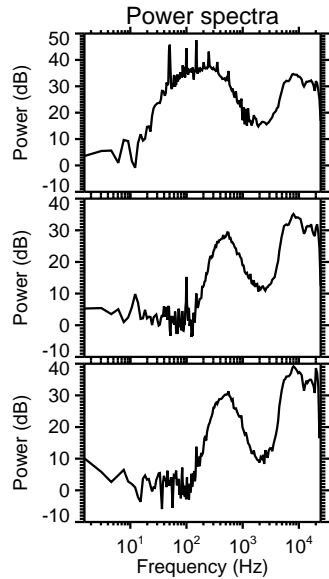
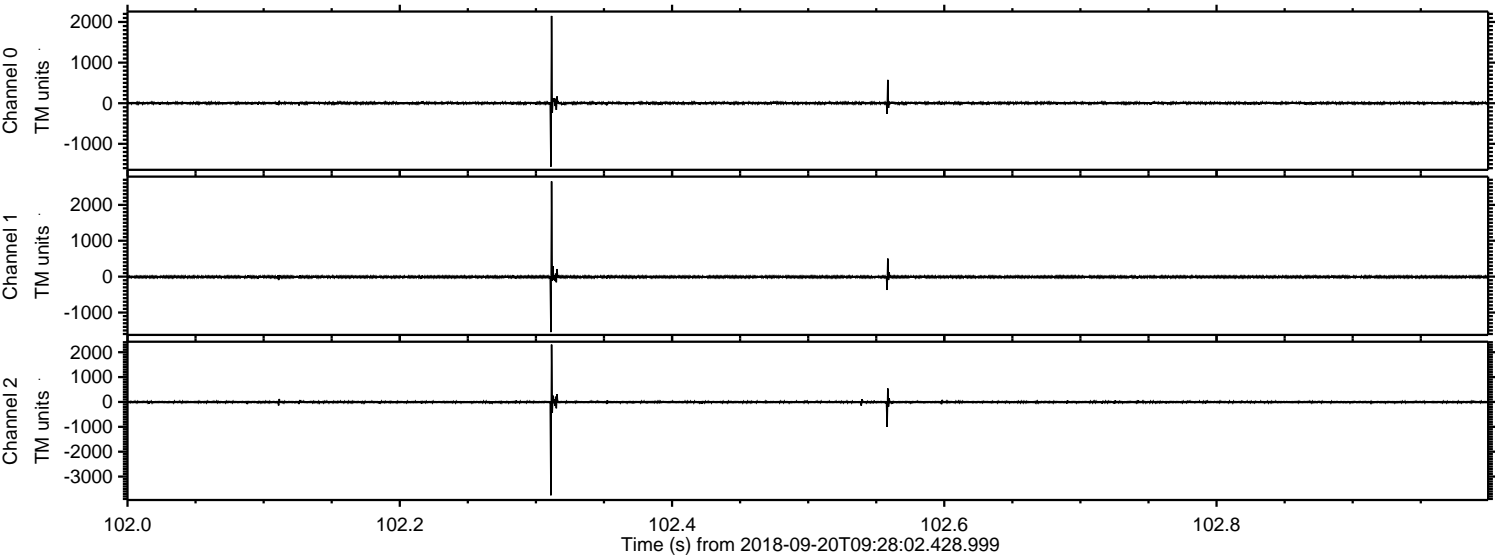
ELMAVAN 3D WAVEFORMS (Measured data sampled at 50 kHz) 51000 packets of 144 samples from 2018-09-20T09:28:02.428.999. Part 131/147

Processed Thu Sep 20 11:36:37 2018 by ELM ver.2012-10-06 from 001__elm20180920_092801__dat00.bin

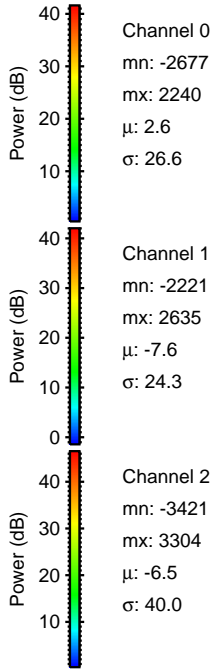
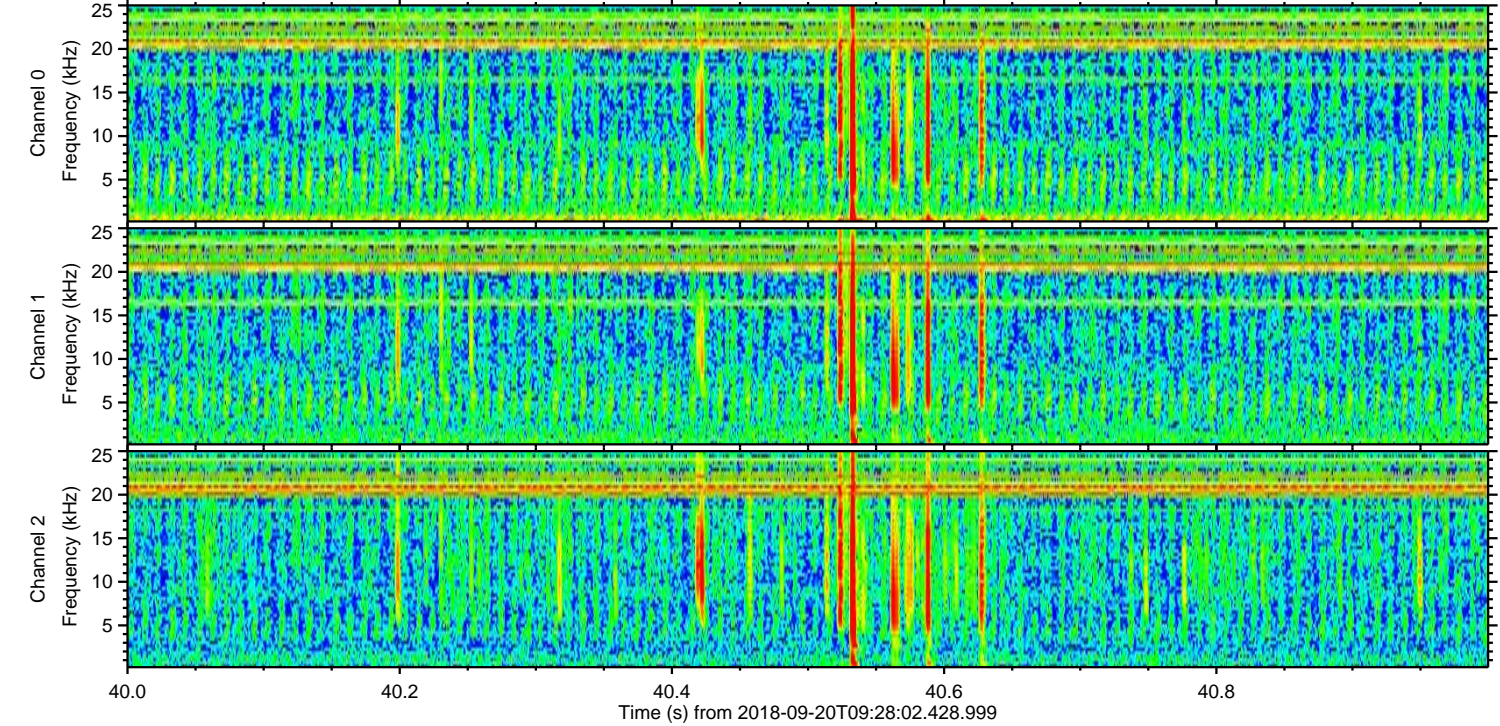
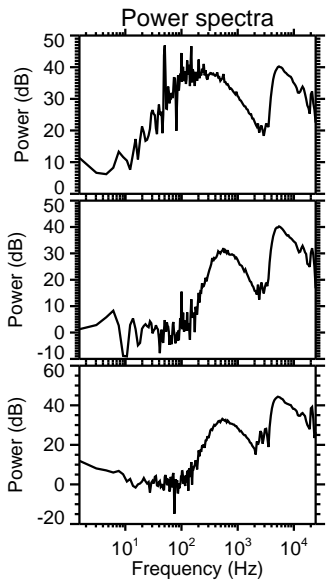
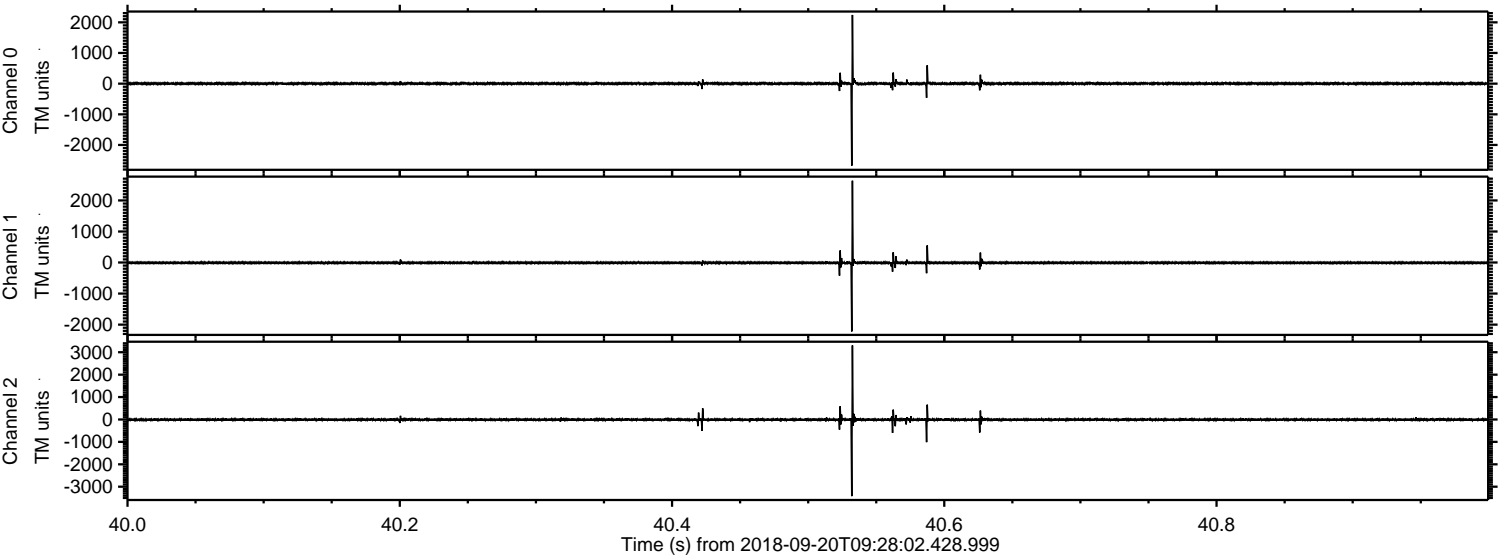


ELMAVAN 3D WAVEFORMS (Measured data sampled at 50 kHz) 51000 packets of 144 samples from 2018-09-20T09:28:02.428.999. Part 103/147

Processed Thu Sep 20 11:36:37 2018 by ELM ver.2012-10-06 from 001__elm20180920_092801__dat00.bin

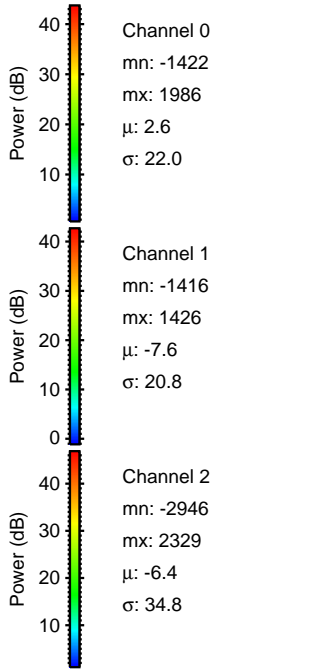
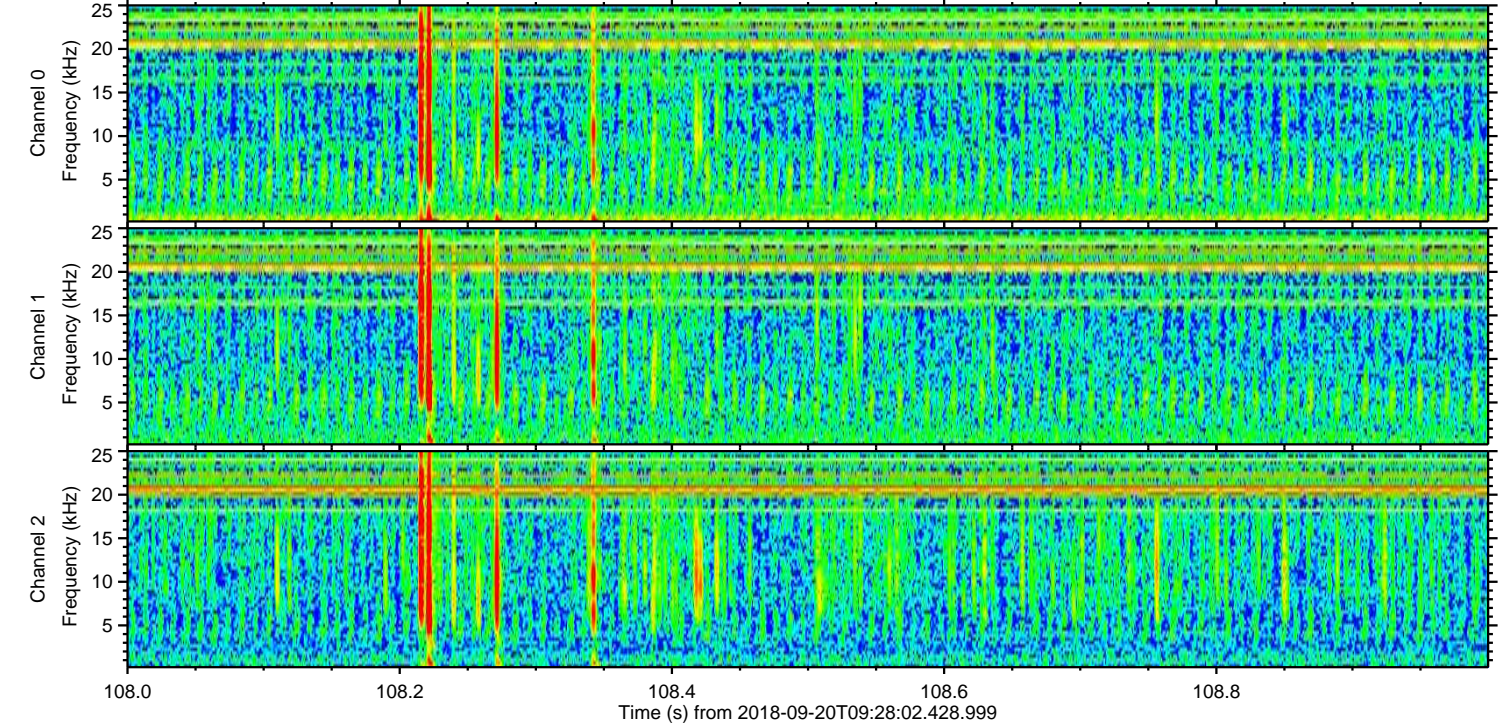
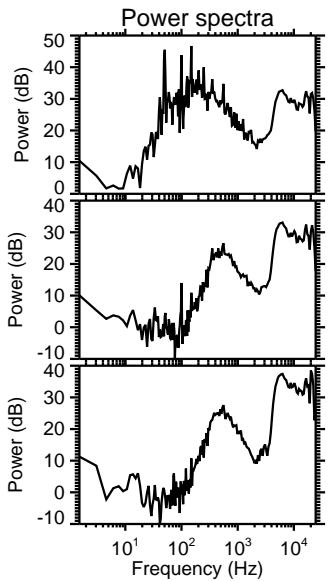
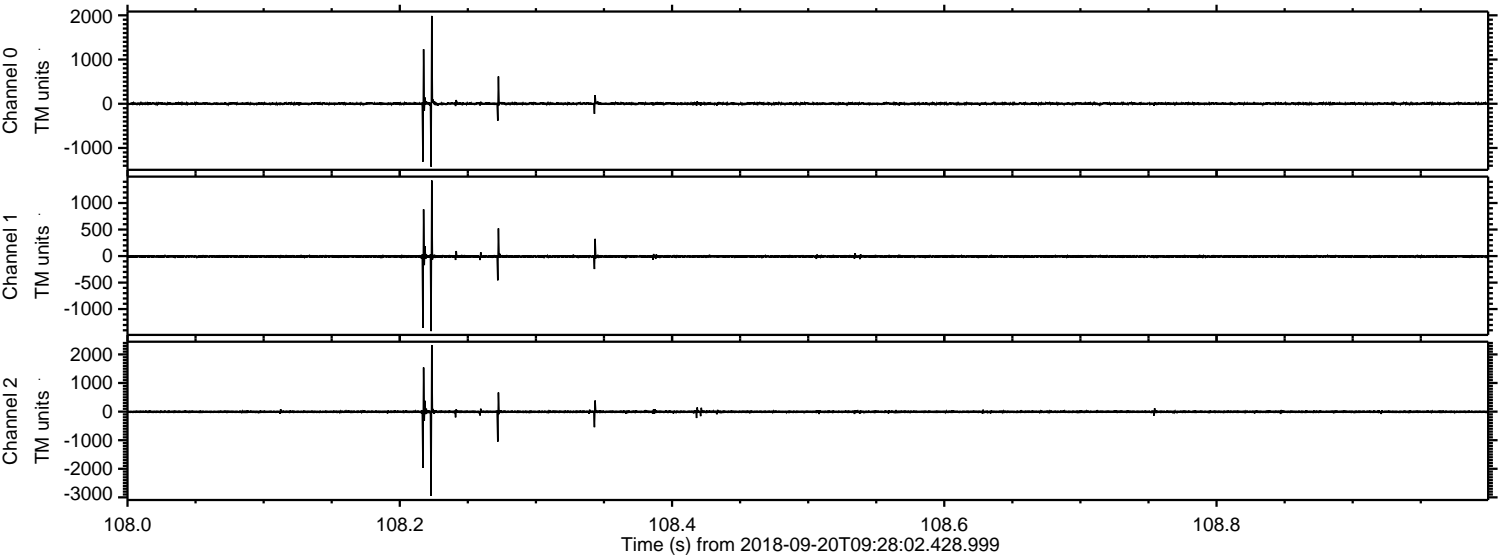


Processed Thu Sep 20 11:36:38 2018 by ELM ver.2012-10-06 from 001__elm20180920_092801__dat00.bin

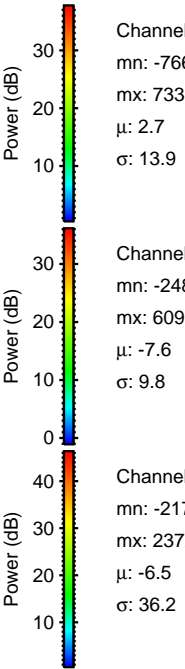
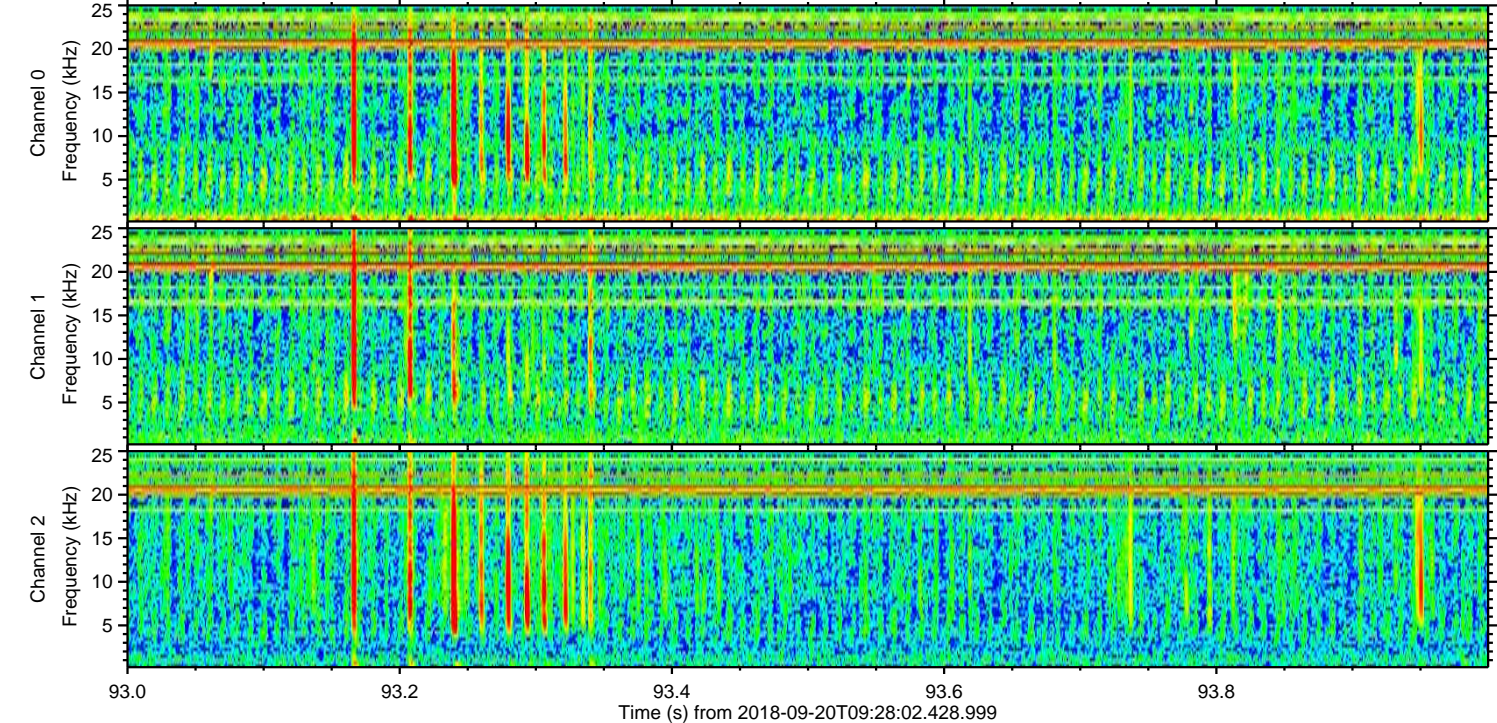
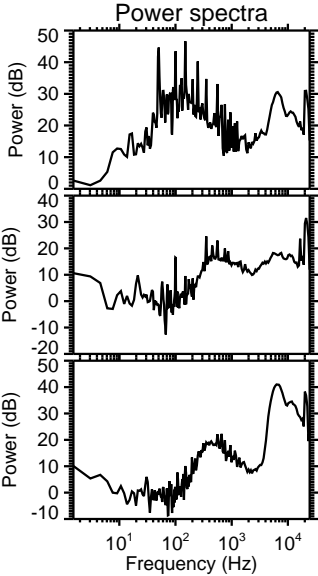
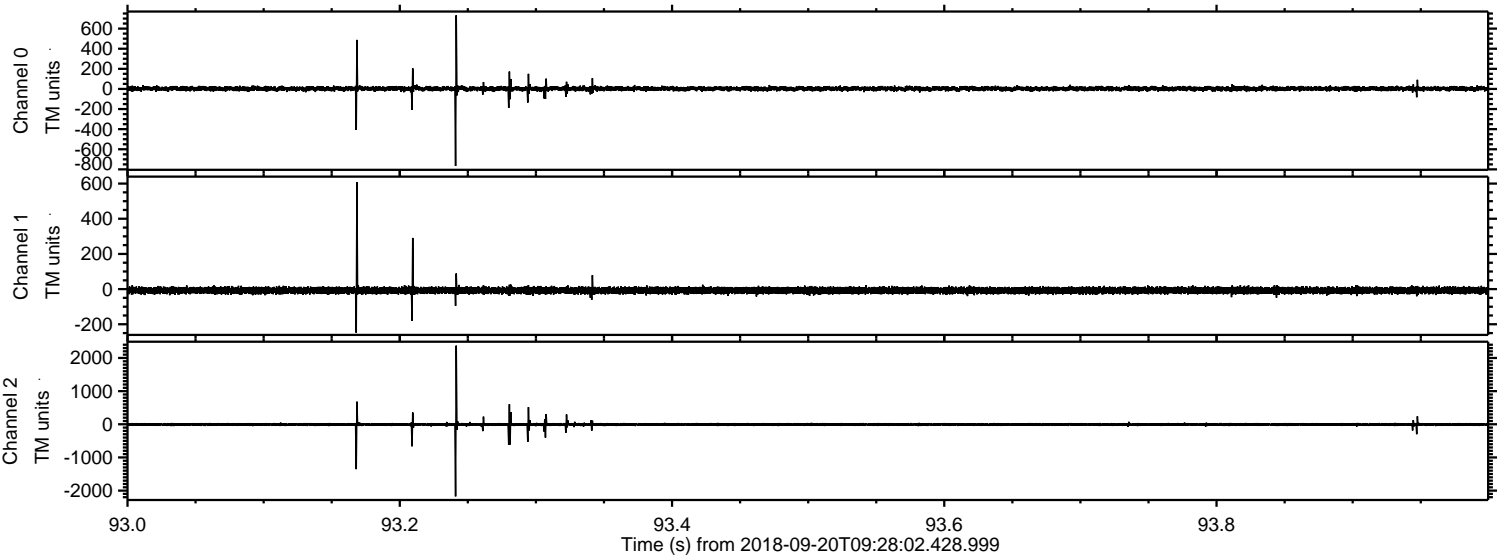


ELMAVAN 3D WAVEFORMS (Measured data sampled at 50 kHz) 51000 packets of 144 samples from 2018-09-20T09:28:02.428.999. Part 109/147

Processed Thu Sep 20 11:36:39 2018 by ELM ver.2012-10-06 from 001__elm20180920_092801__dat00.bin

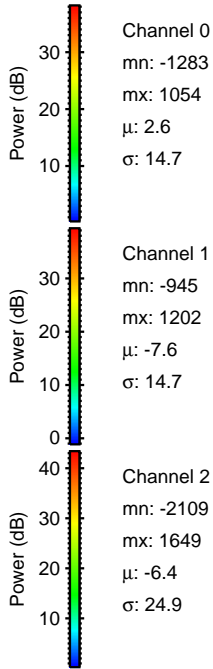
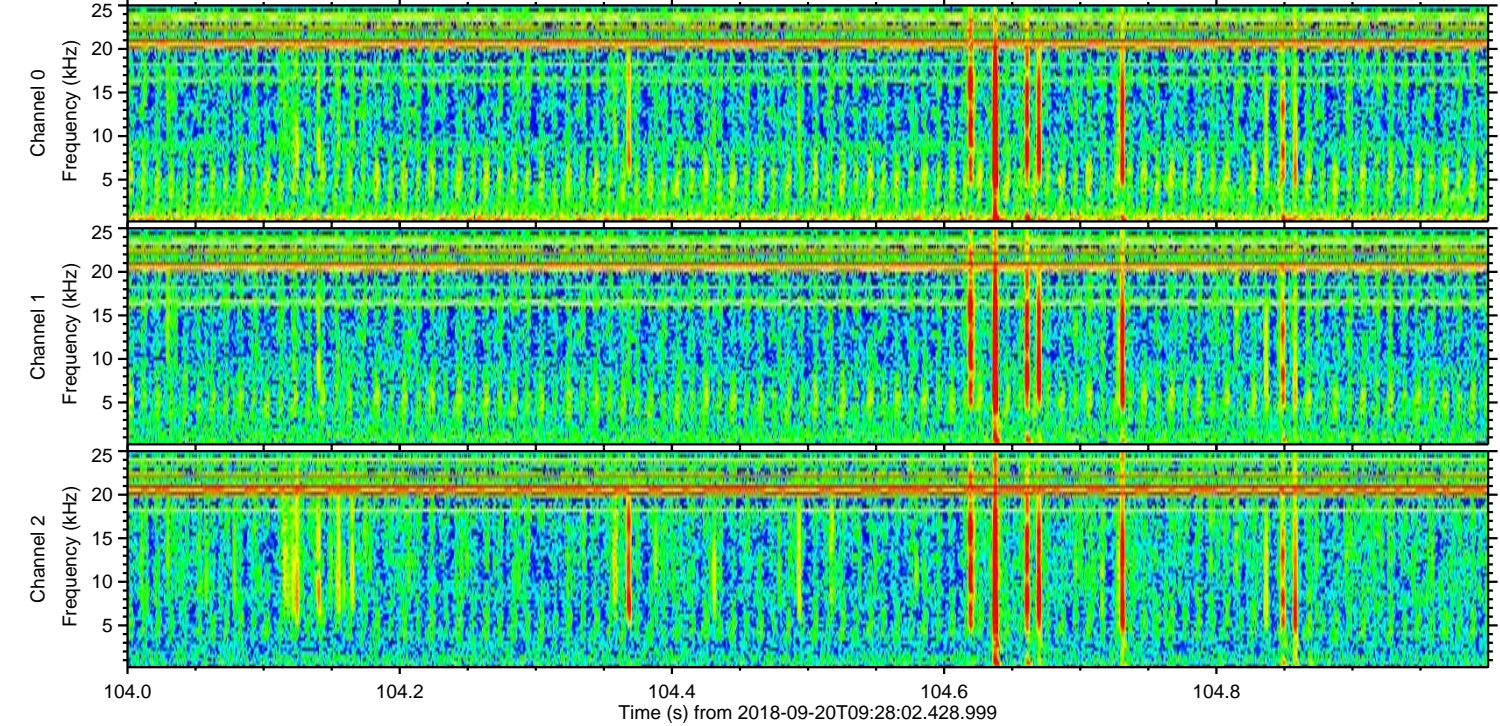
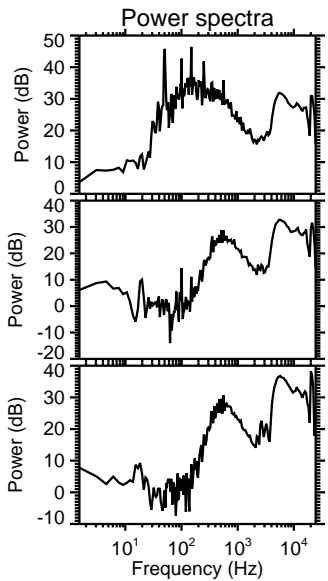
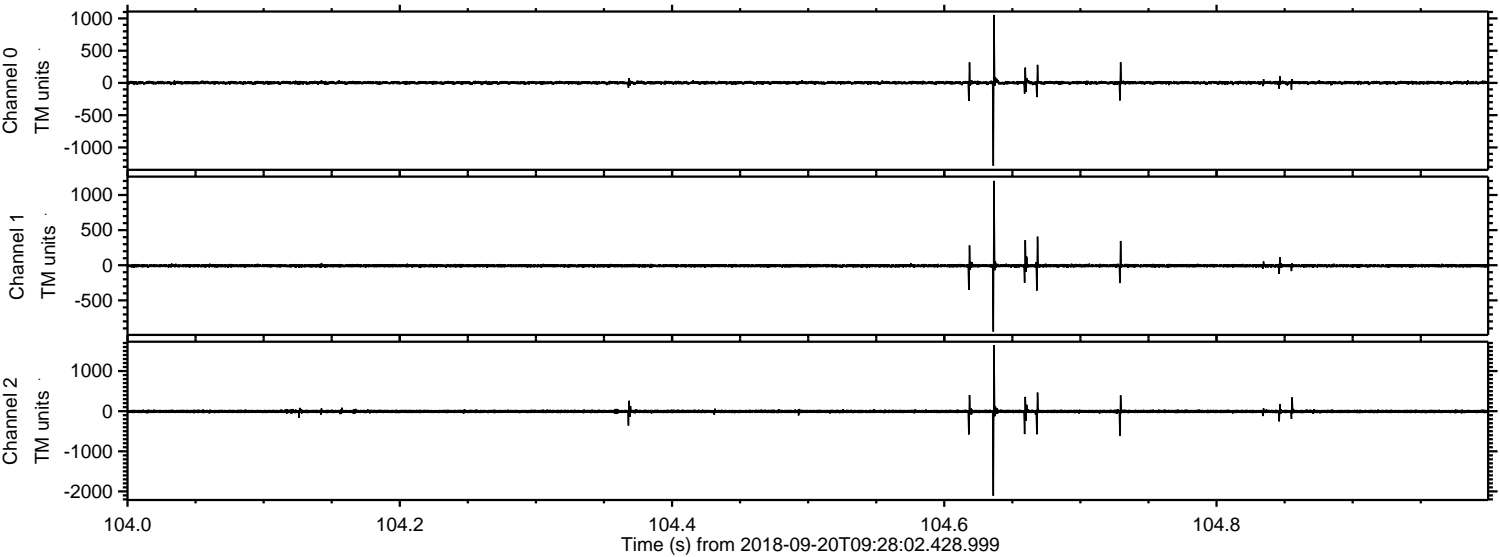


Processed Thu Sep 20 11:36:40 2018 by ELM ver.2012-10-06 from 001__elm20180920_092801__dat00.bin



ELMAVAN 3D WAVEFORMS (Measured data sampled at 50 kHz) 51000 packets of 144 samples from 2018-09-20T09:28:02.428.999. Part 105/147

Processed Thu Sep 20 11:36:40 2018 by ELM ver.2012-10-06 from 001__elm20180920_092801__dat00.bin



Channel 0
mn: -1283
mx: 1054
 μ : 2.6
 σ : 14.7

Channel 1
mn: -945
mx: 1202
 μ : -7.6
 σ : 14.7

Channel 2
mn: -2109
mx: 1649
 μ : -6.4
 σ : 24.9

Processed Thu Sep 20 11:36:41 2018 by ELM ver.2012-10-06 from 001__elm20180920_092801__dat00.bin

