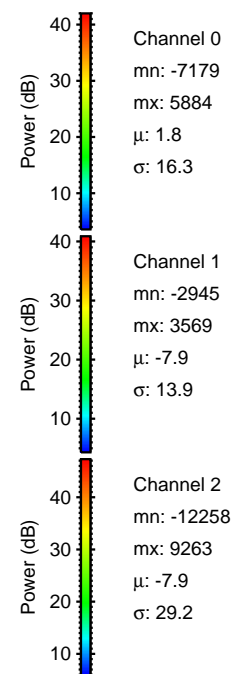
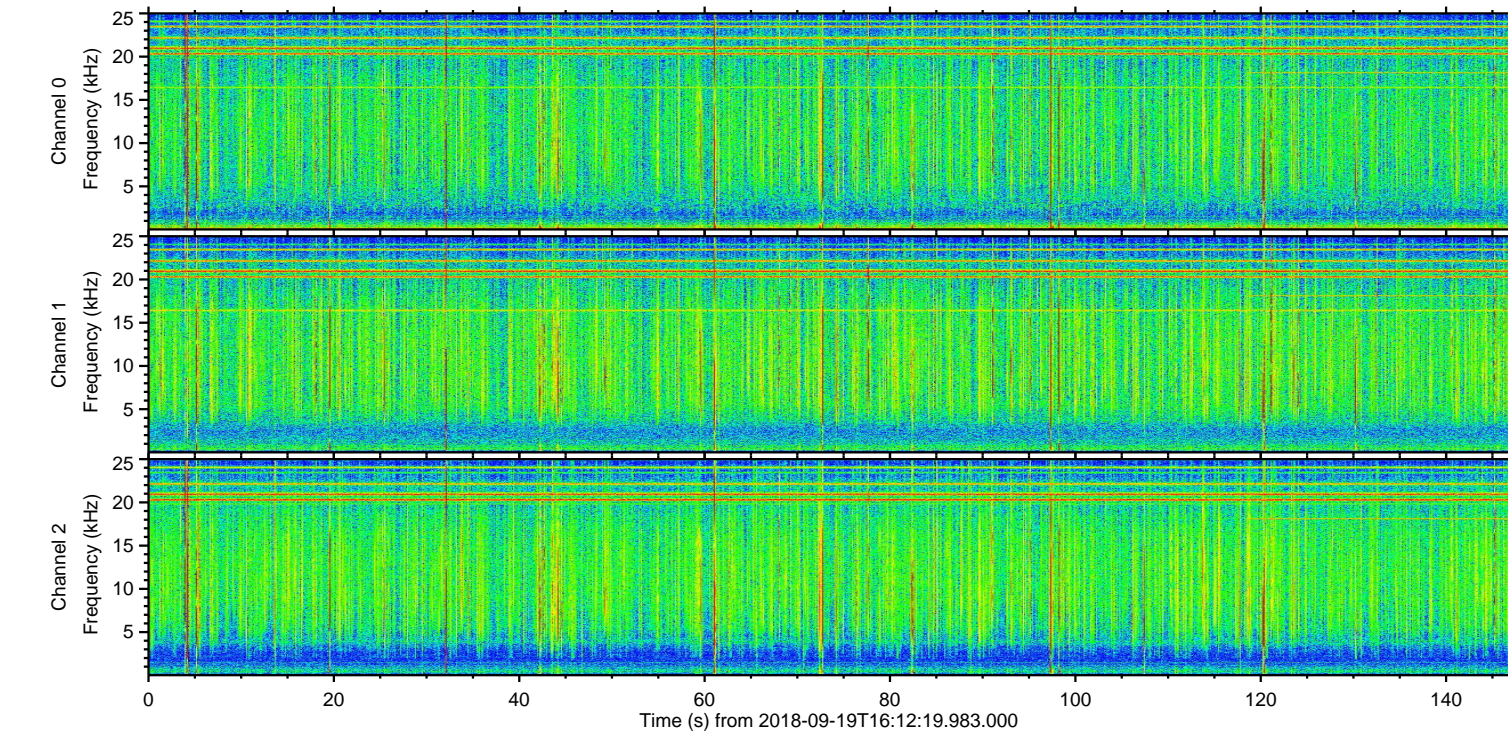
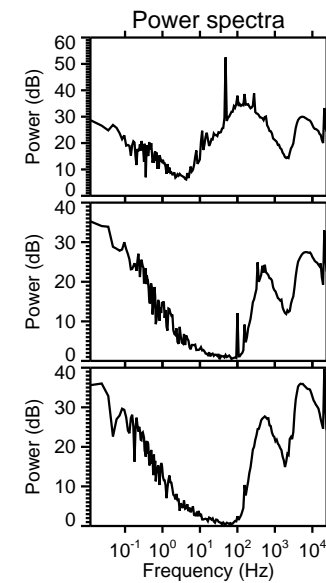
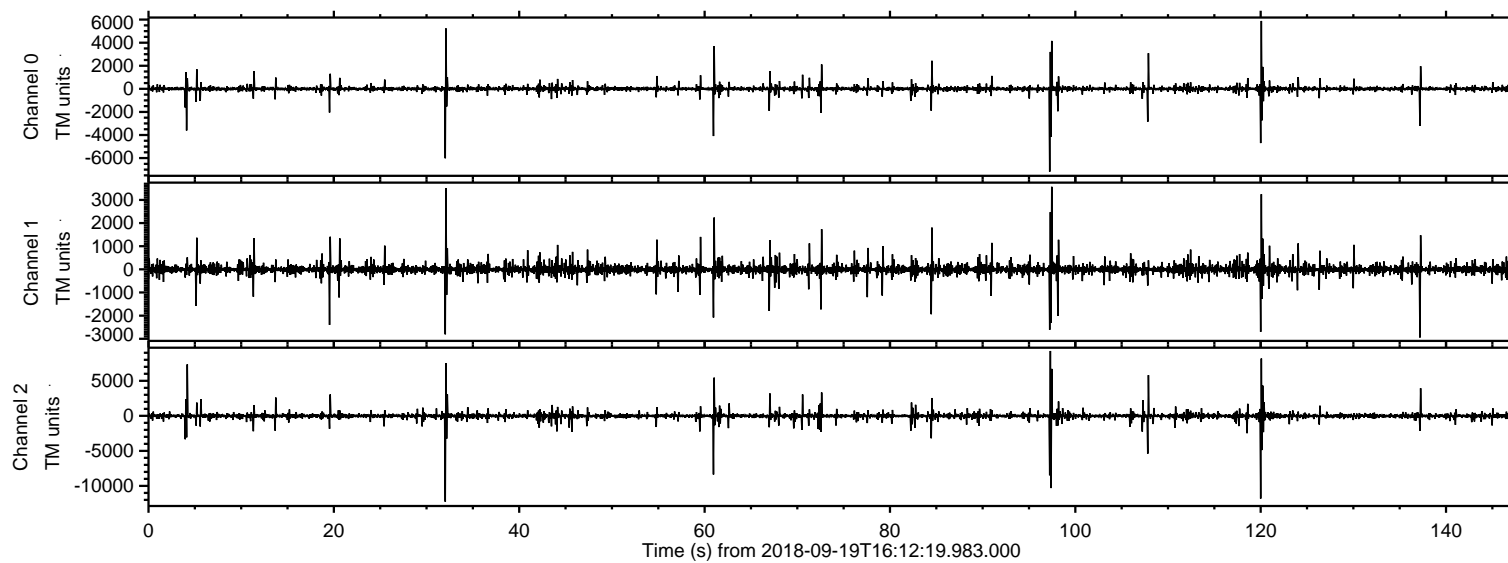
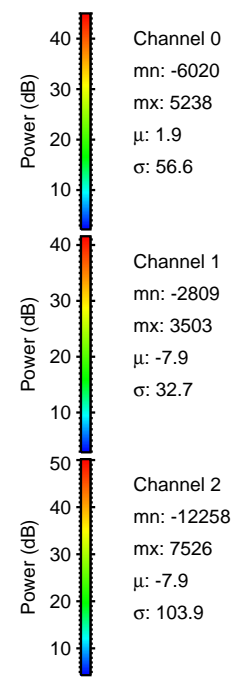
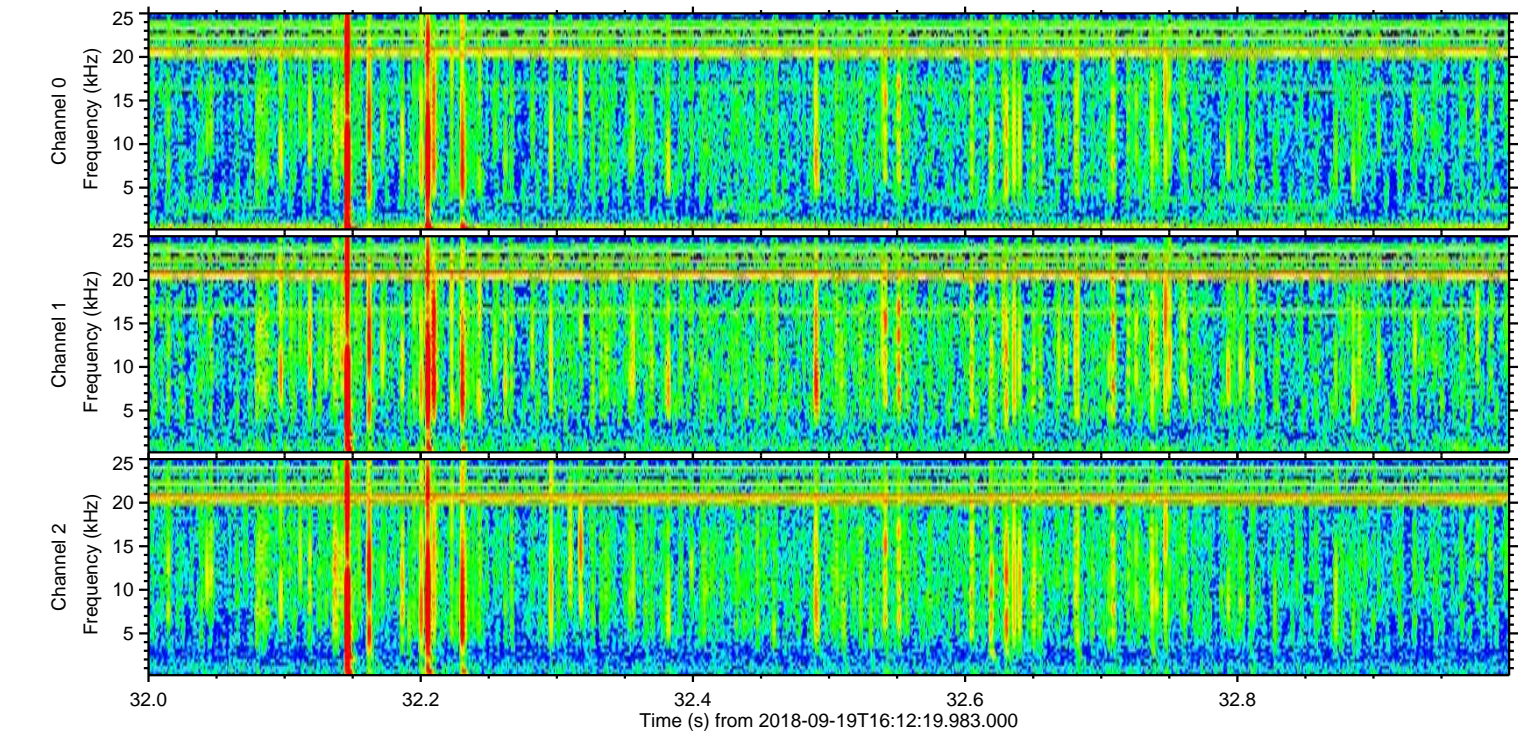
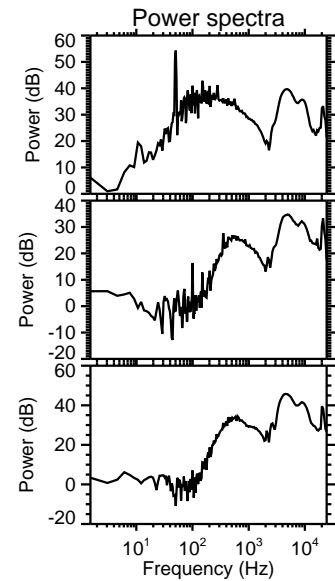
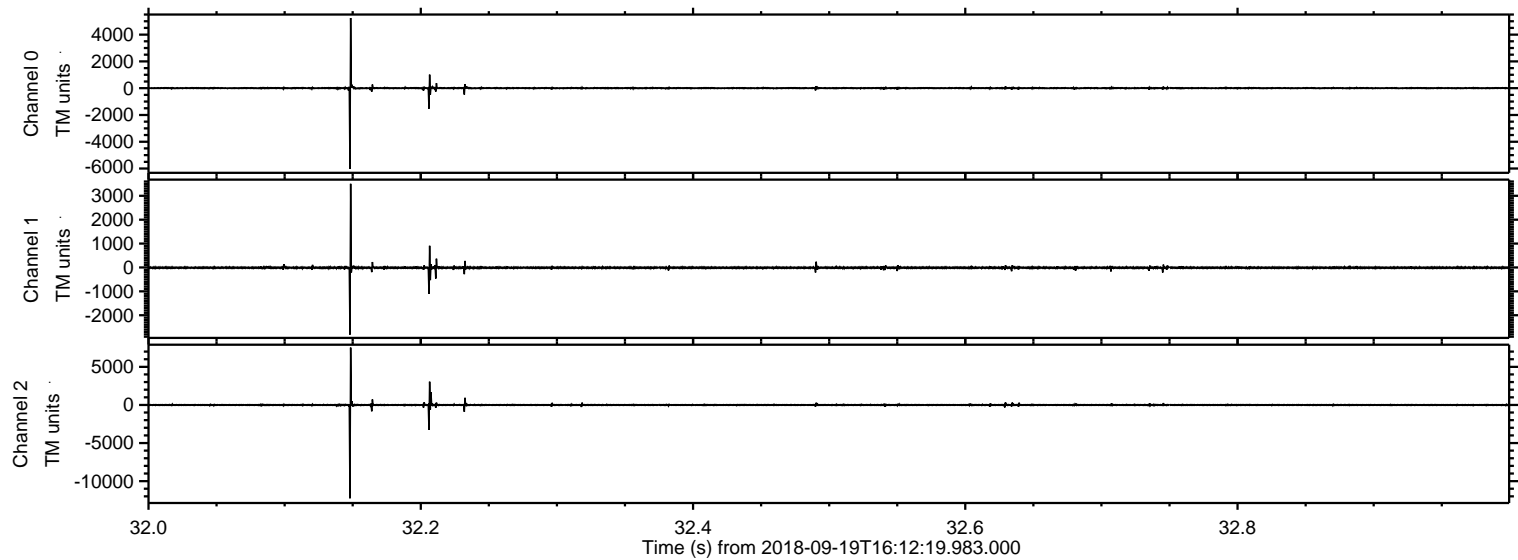


ELMAVAN 3D WAVEFORMS (Measured data sampled at 50 kHz) 51000 packets of 144 samples from 2018-09-19T16:12:19.983.000.

Processed Wed Sep 19 18:19:58 2018 by ELM ver.2012-10-06 from 001__elm20180919_161218__dat00.bin

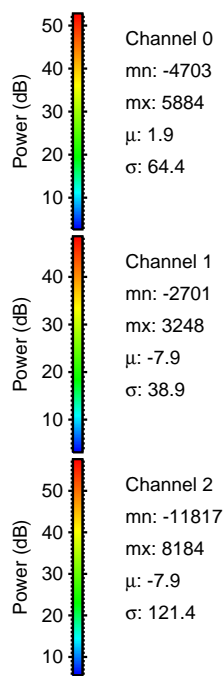
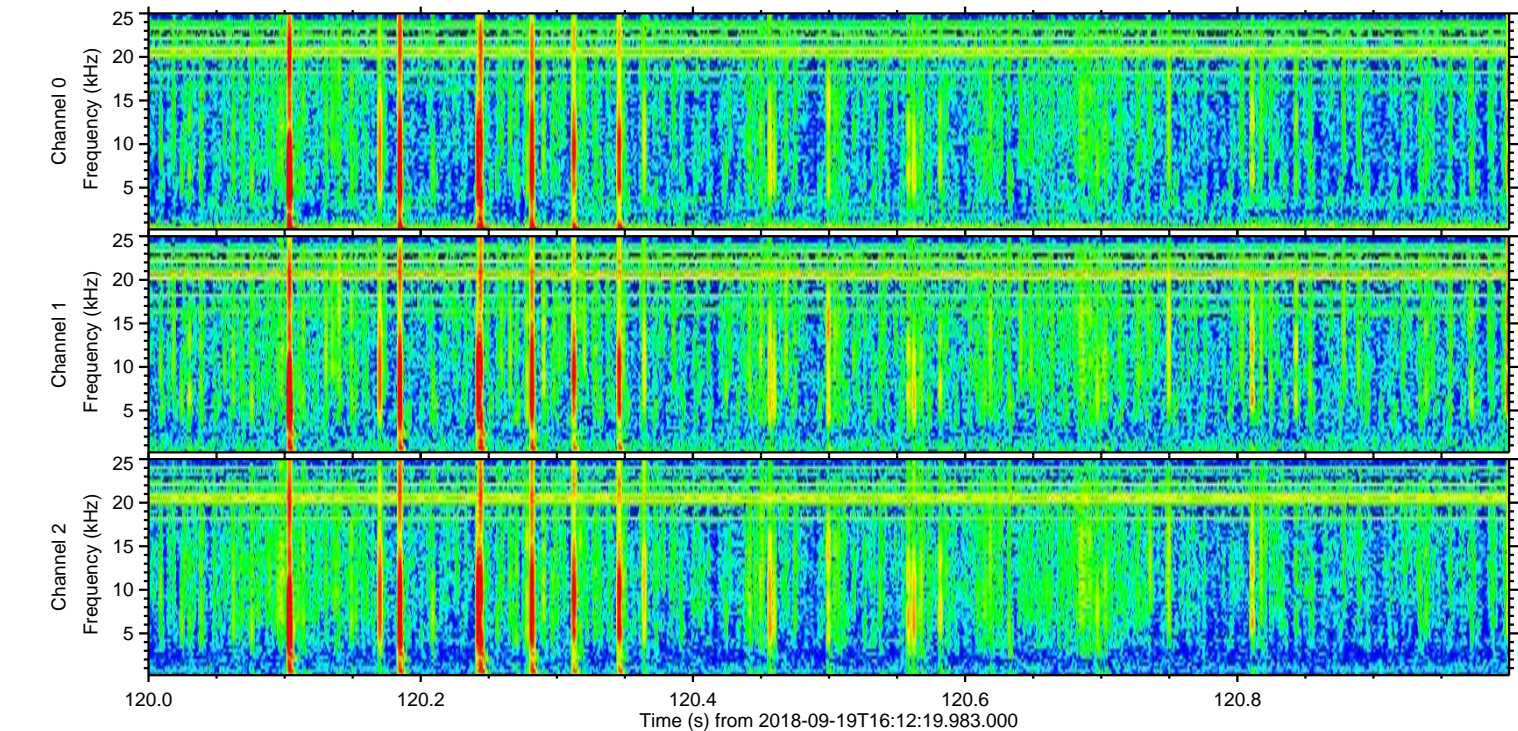
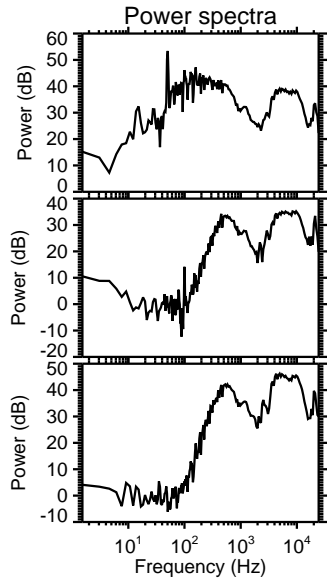
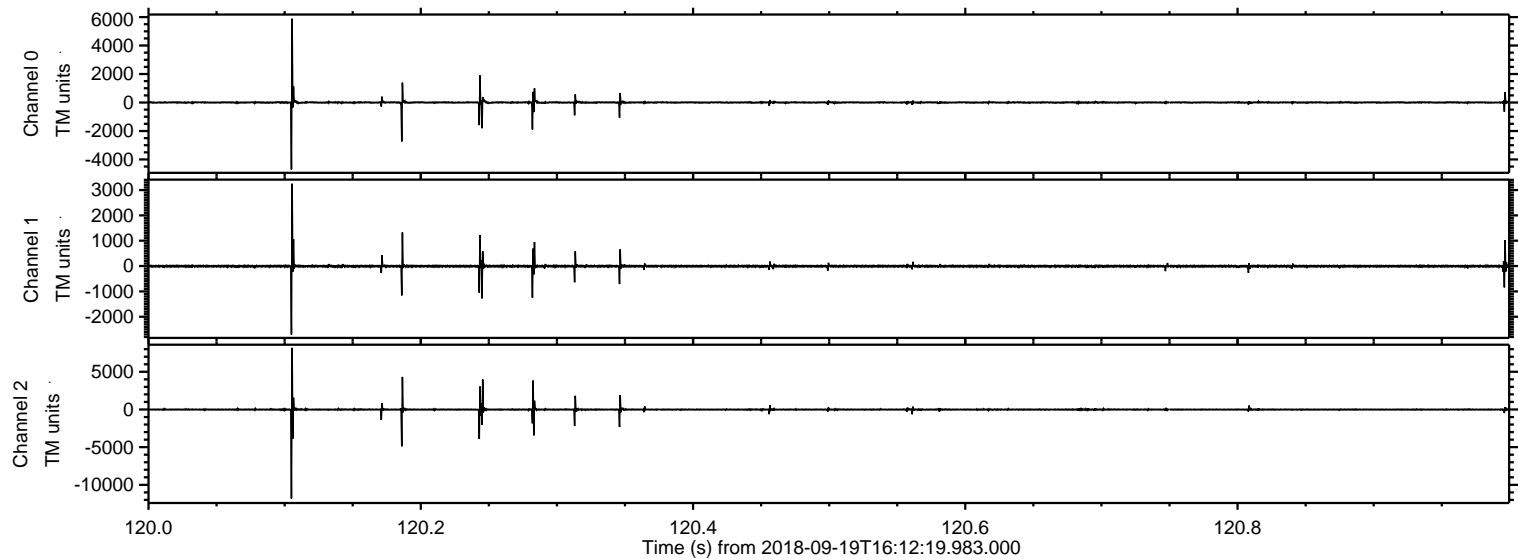


Processed Wed Sep 19 18:20:05 2018 by ELM ver.2012-10-06 from 001__elm20180919_161218__dat00.bin

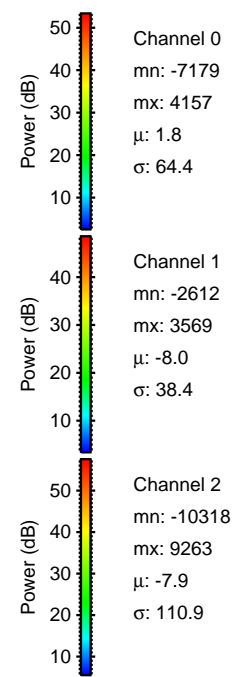
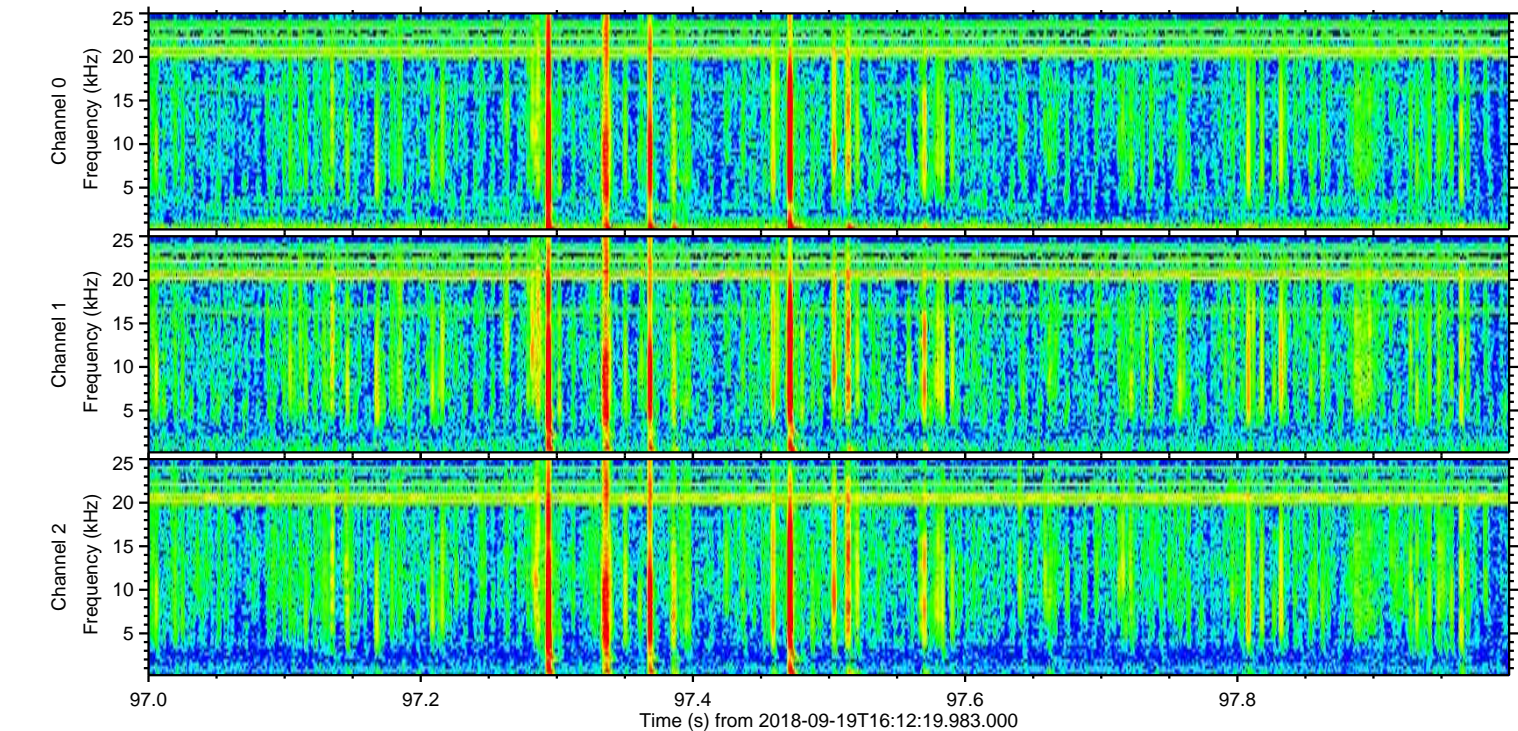
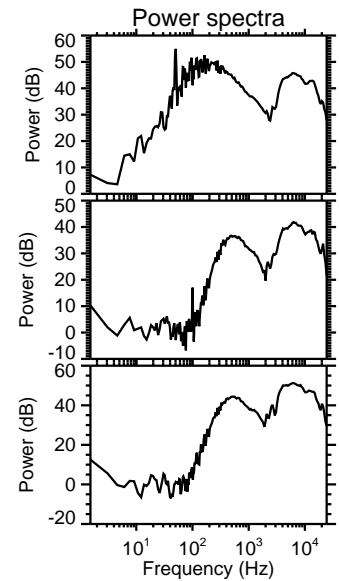
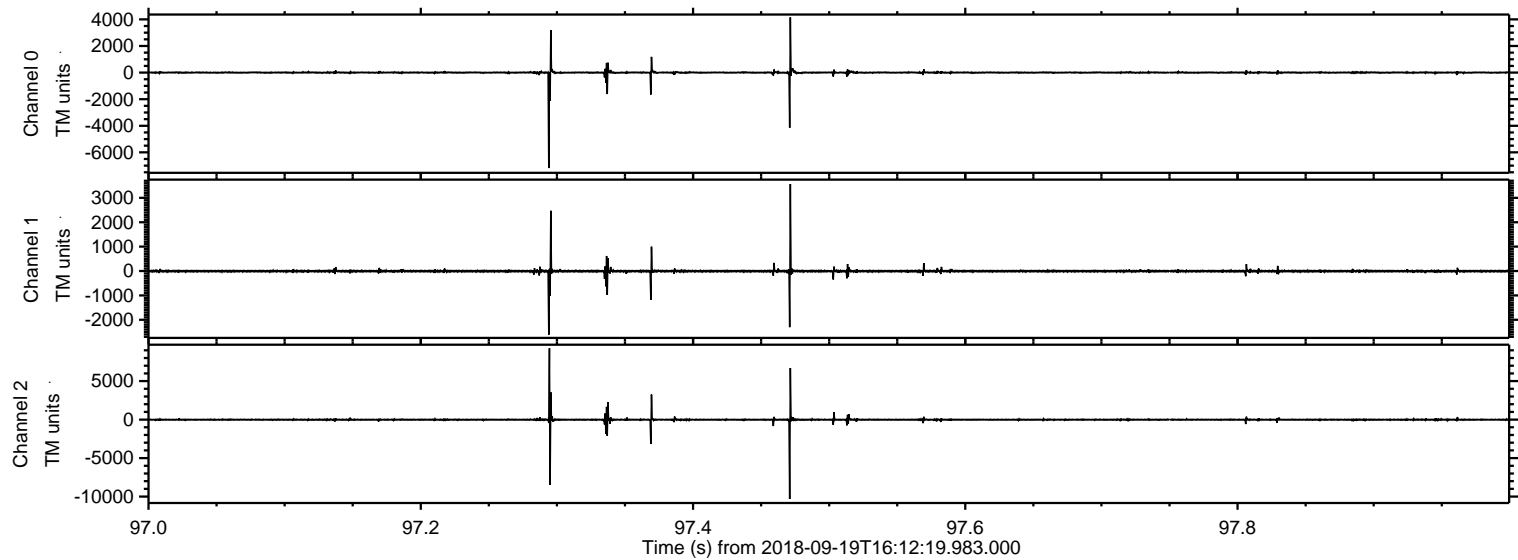


ELMAVAN 3D WAVEFORMS (Measured data sampled at 50 kHz) 51000 packets of 144 samples from 2018-09-19T16:12:19.983.000. Part 121/147

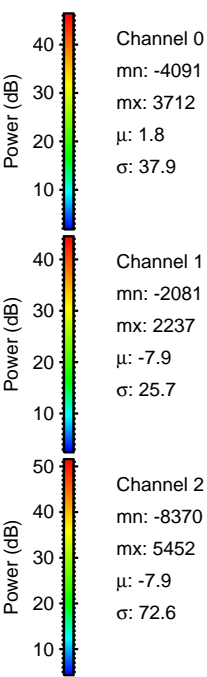
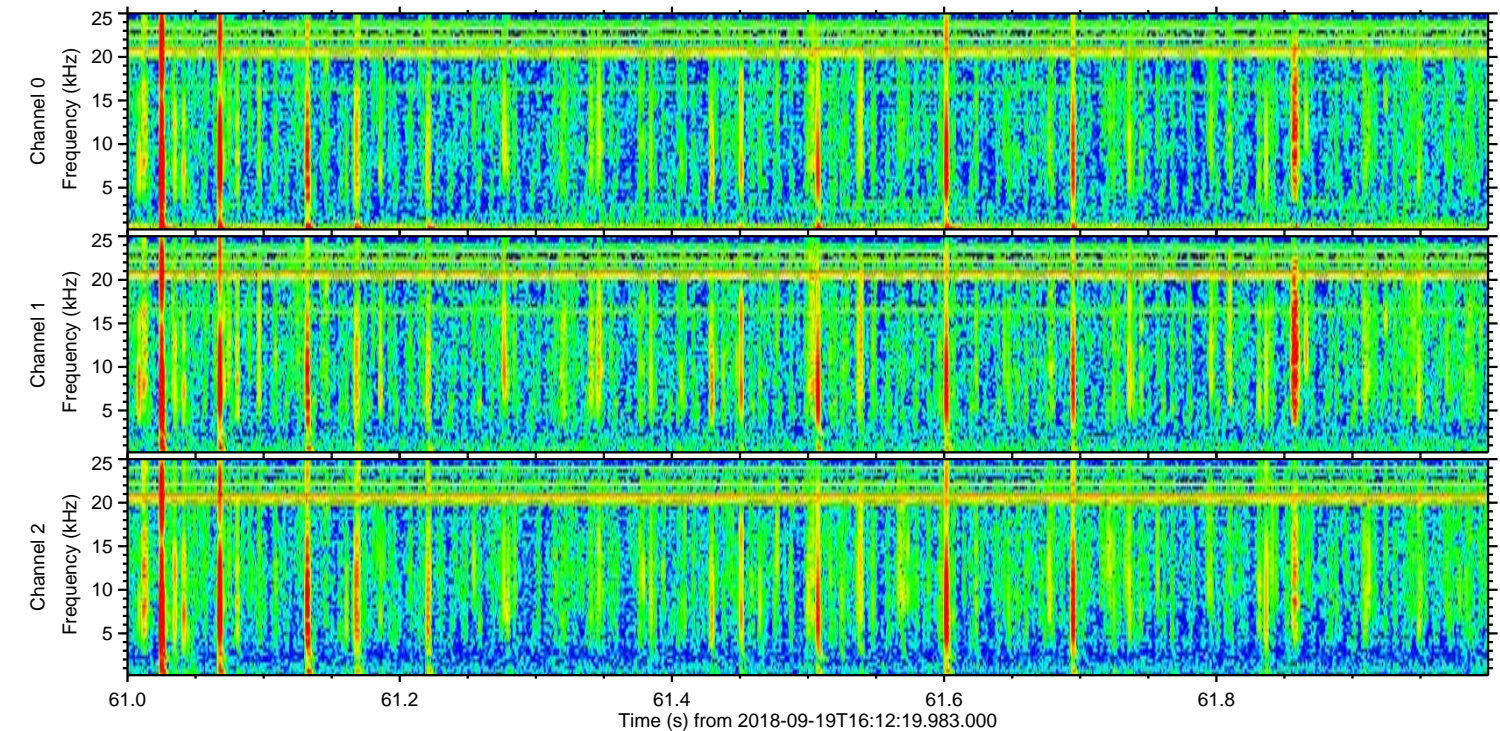
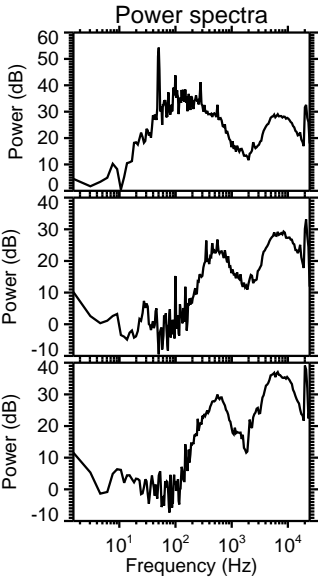
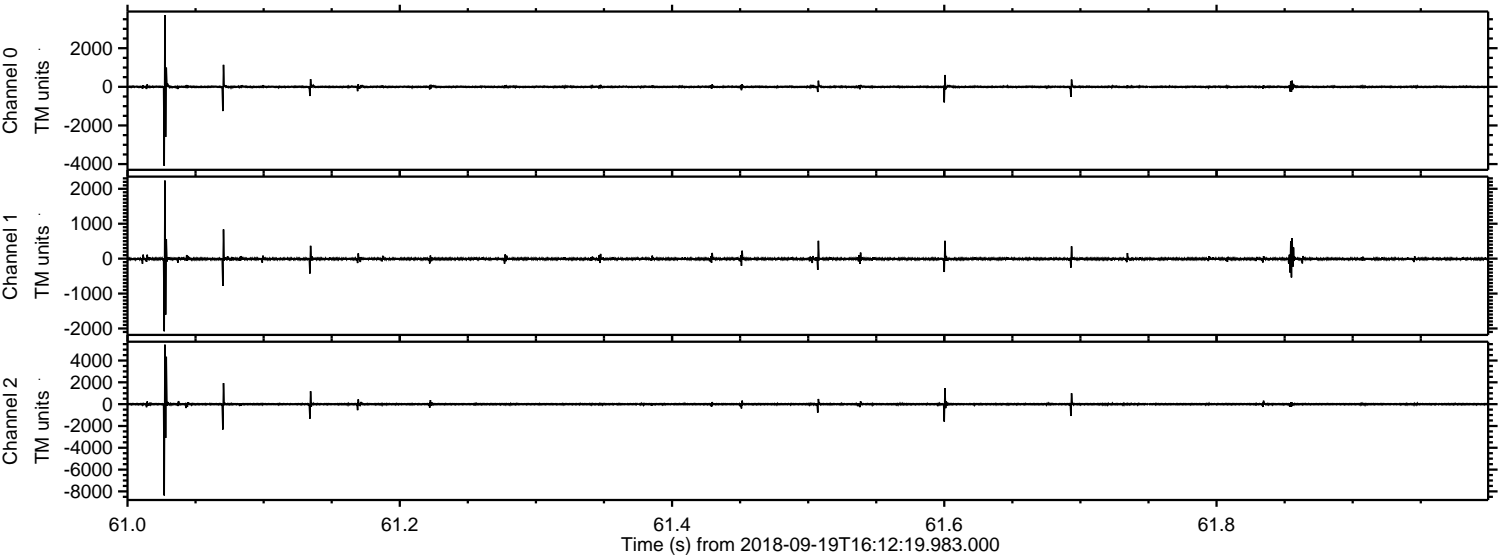
Processed Wed Sep 19 18:20:05 2018 by ELM ver.2012-10-06 from 001__elm20180919_161218__dat00.bin



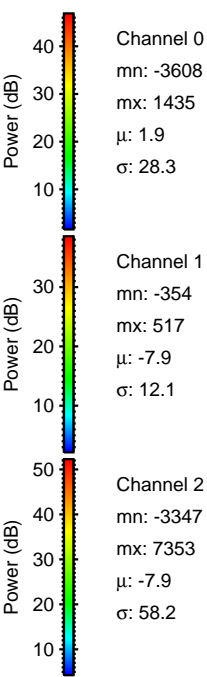
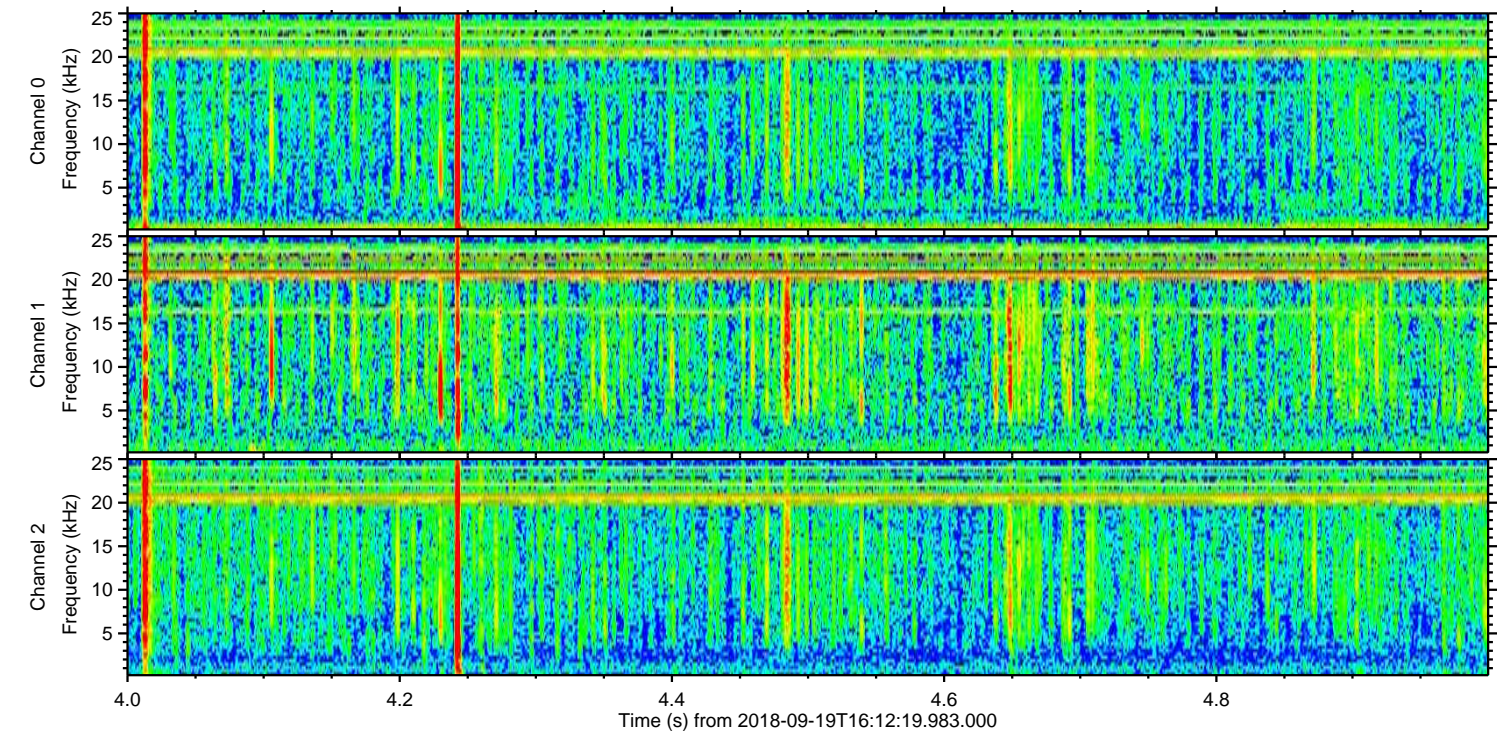
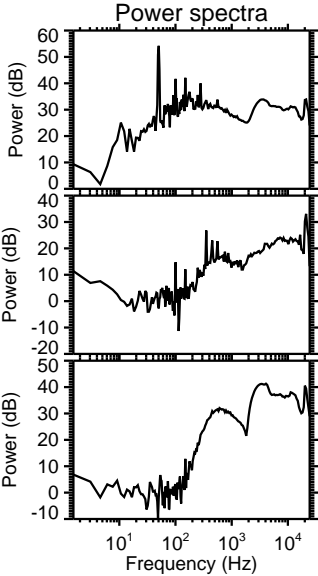
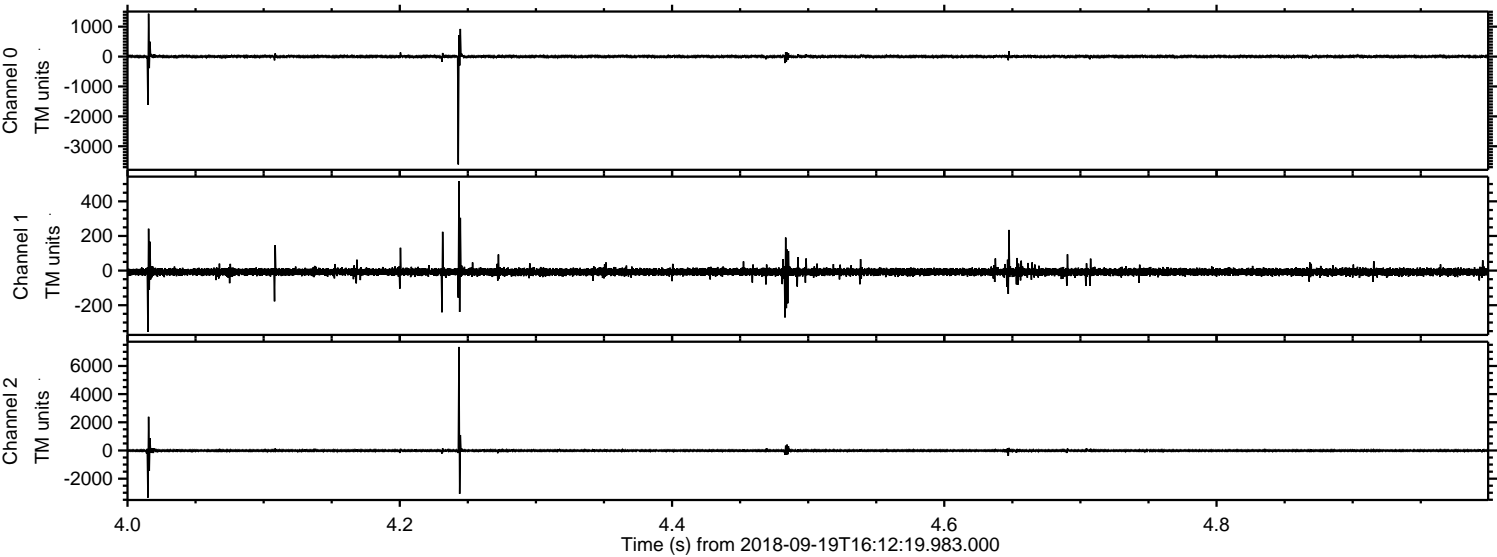
Processed Wed Sep 19 18:20:06 2018 by ELM ver.2012-10-06 from 001__elm20180919_161218__dat00.bin



Processed Wed Sep 19 18:20:07 2018 by ELM ver.2012-10-06 from 001__elm20180919_161218__dat00.bin

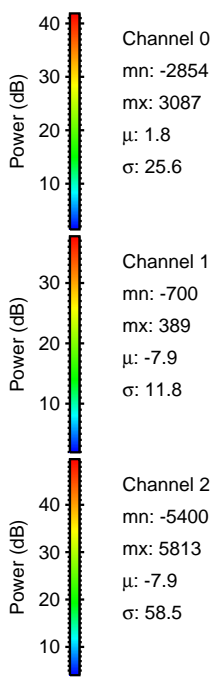
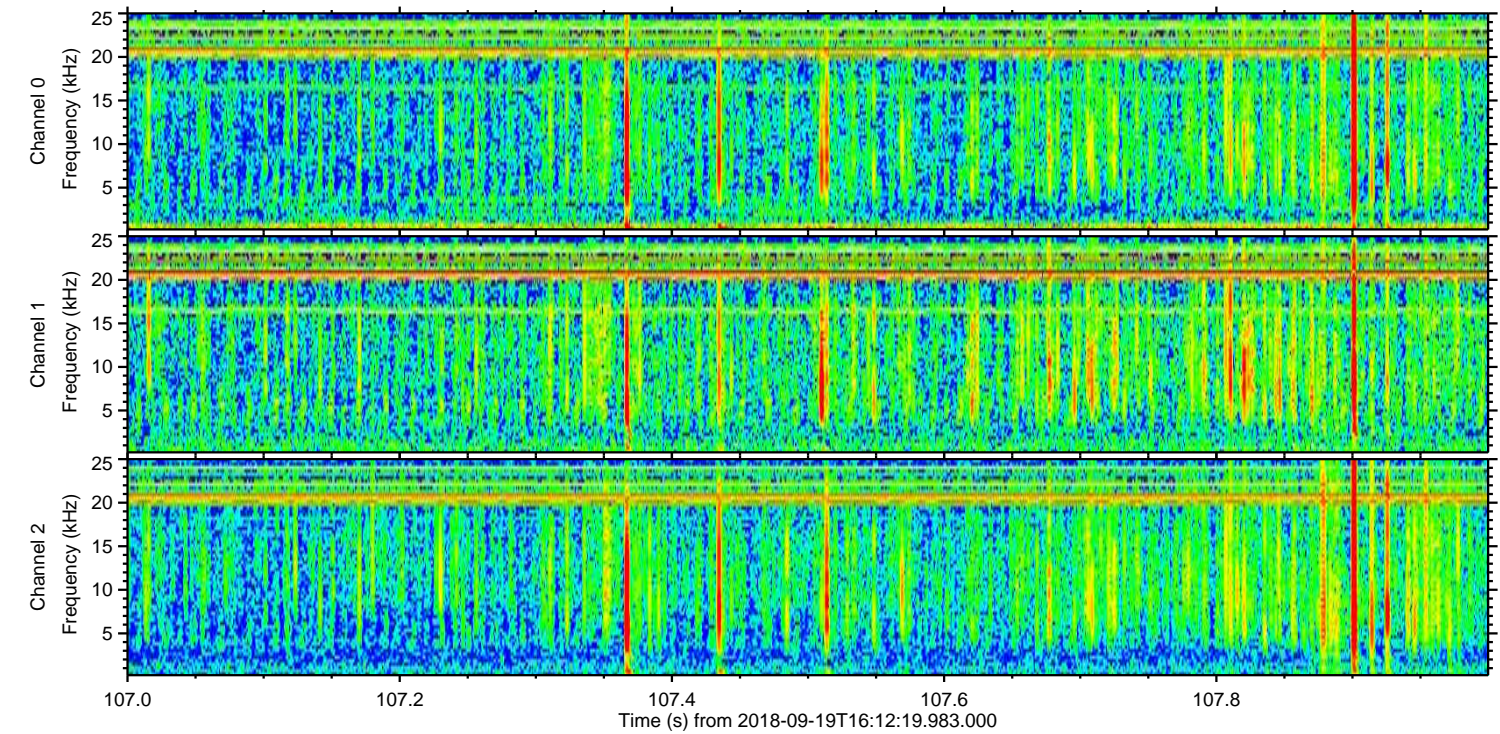
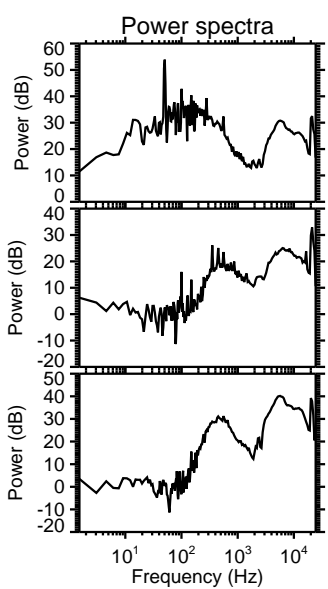
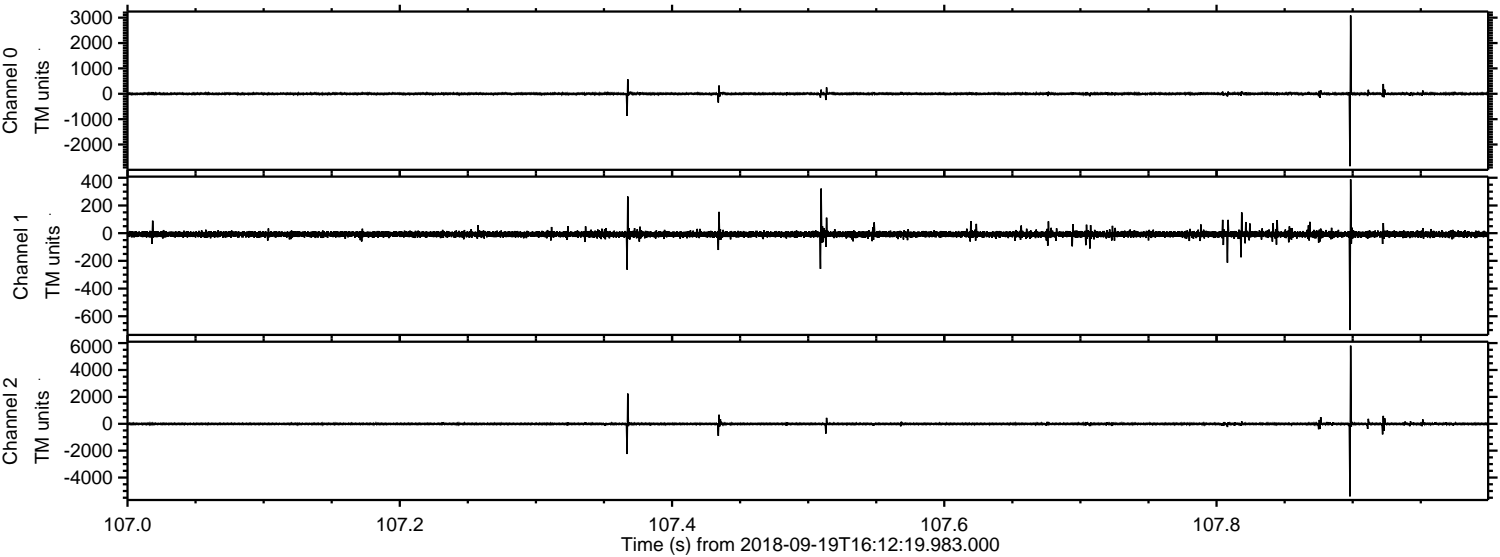


Processed Wed Sep 19 18:20:07 2018 by ELM ver.2012-10-06 from 001__elm20180919_161218__dat00.bin



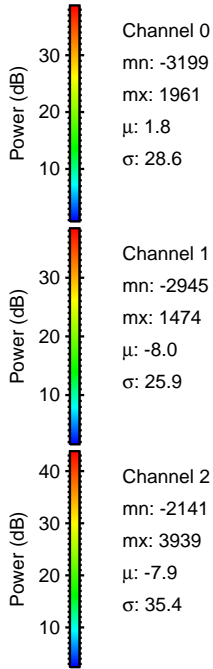
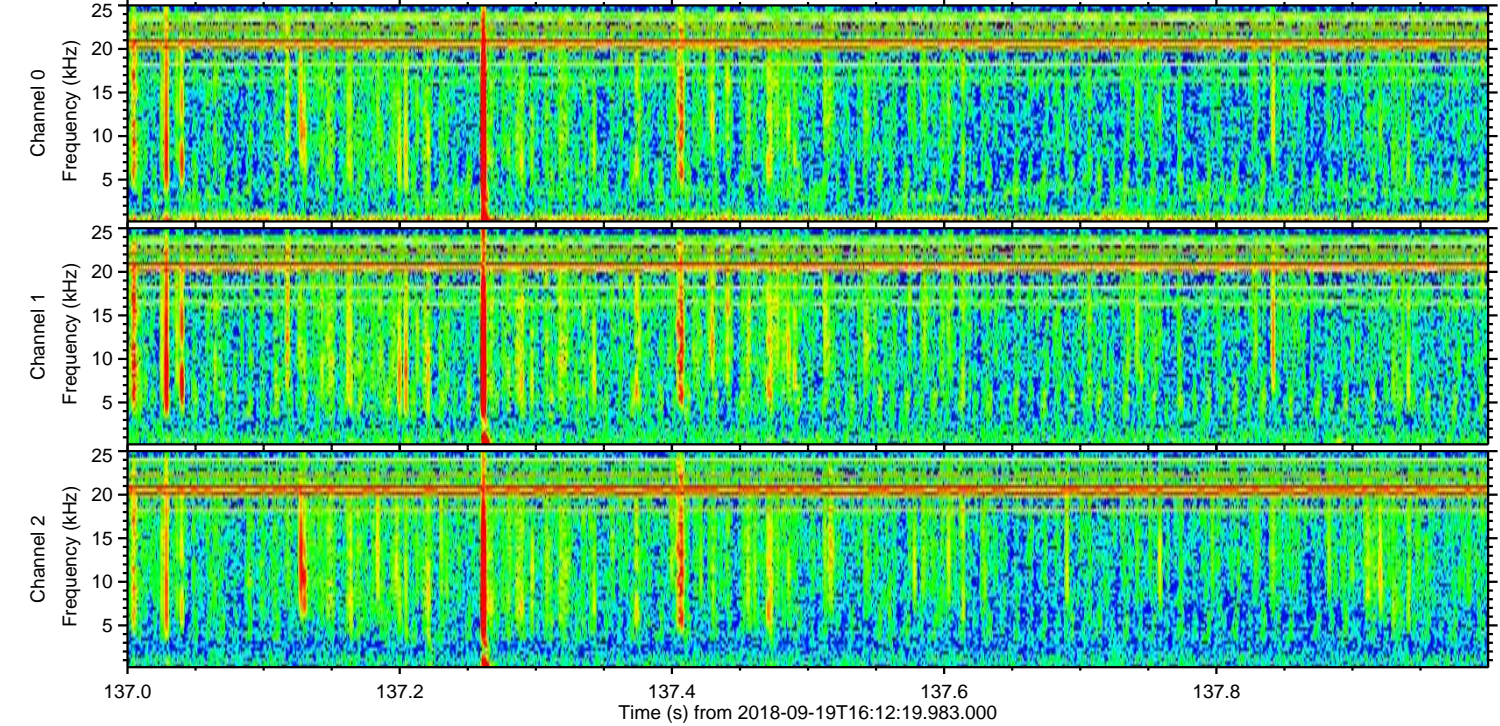
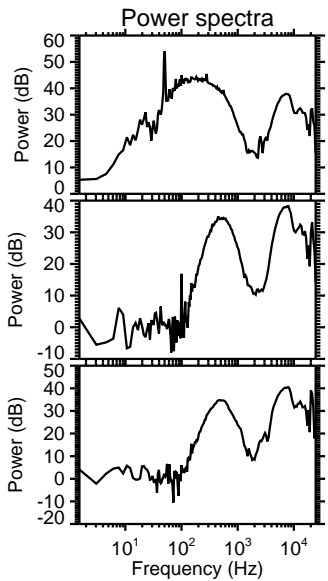
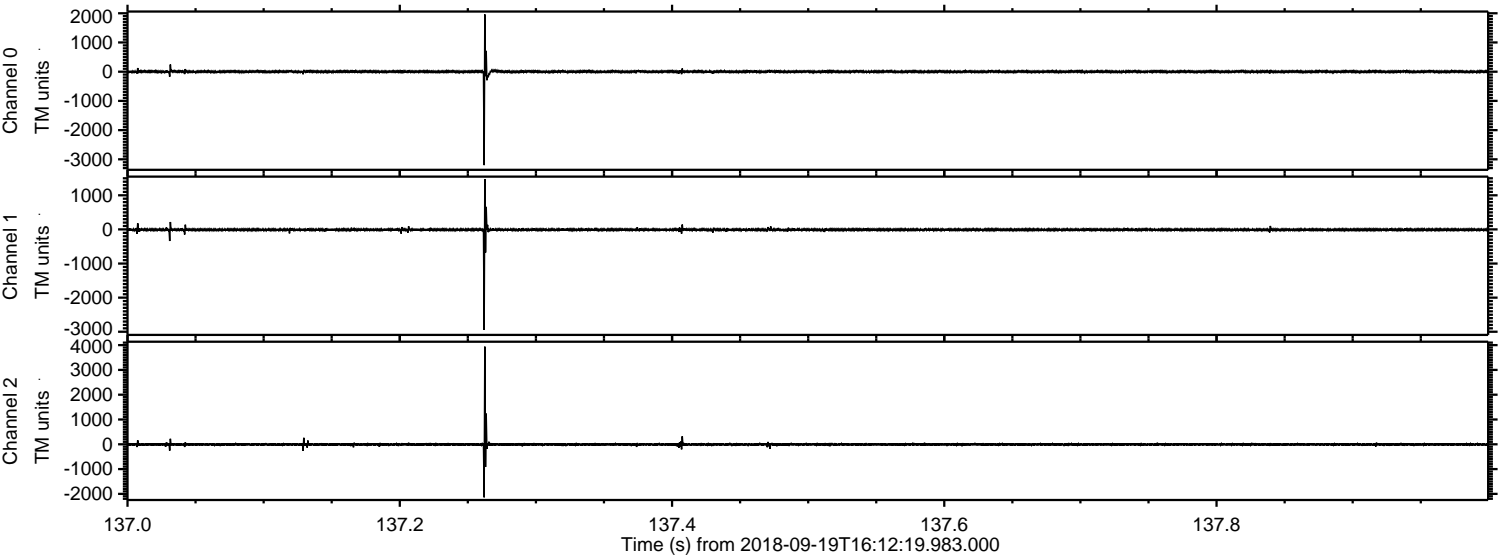
ELMAVAN 3D WAVEFORMS (Measured data sampled at 50 kHz) 51000 packets of 144 samples from 2018-09-19T16:12:19.983.000. Part 108/147

Processed Wed Sep 19 18:20:08 2018 by ELM ver.2012-10-06 from 001__elm20180919_161218__dat00.bin



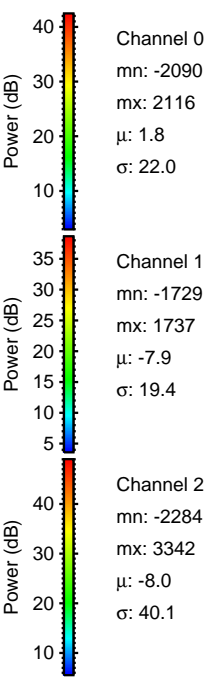
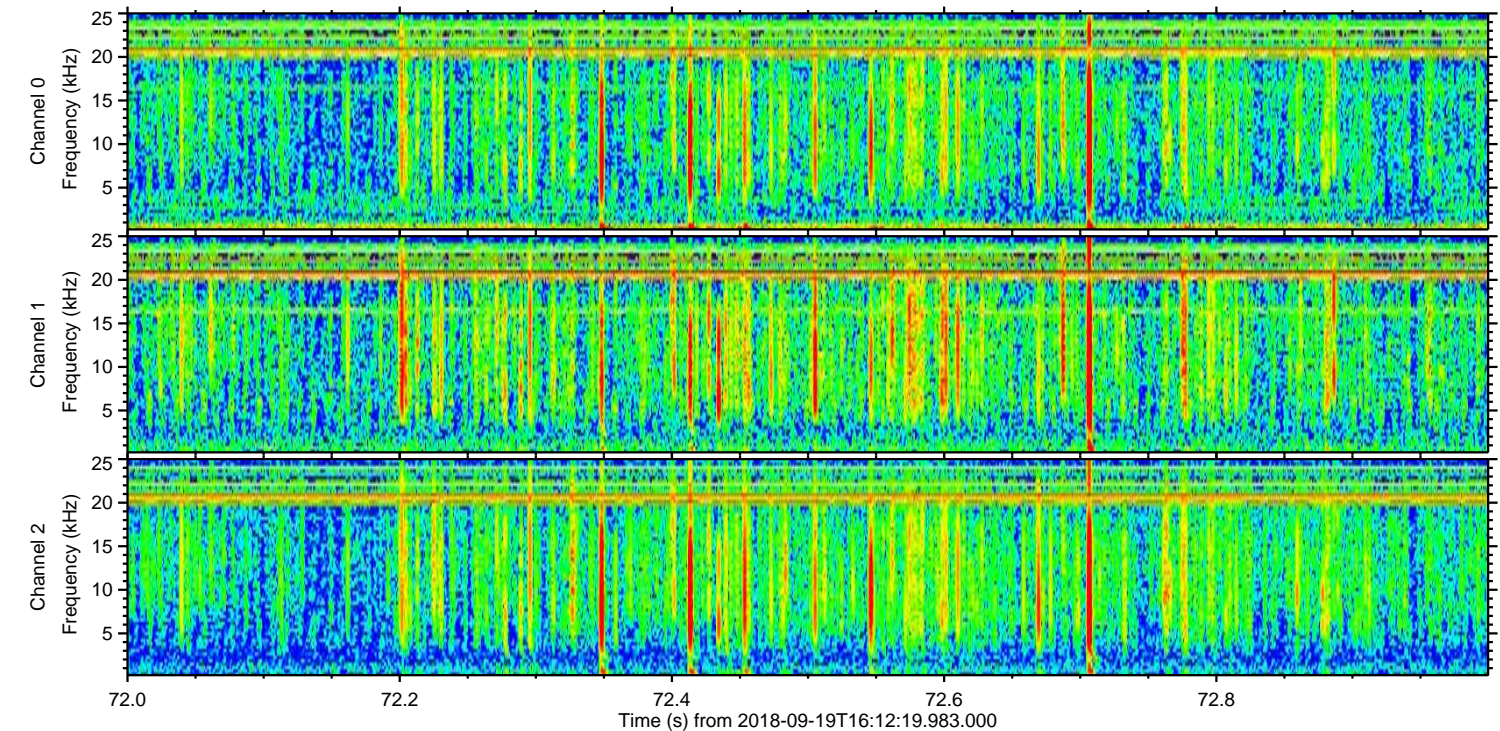
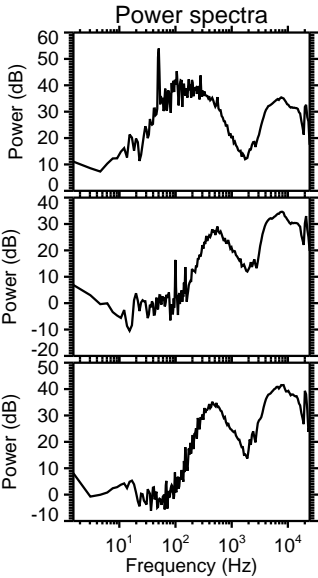
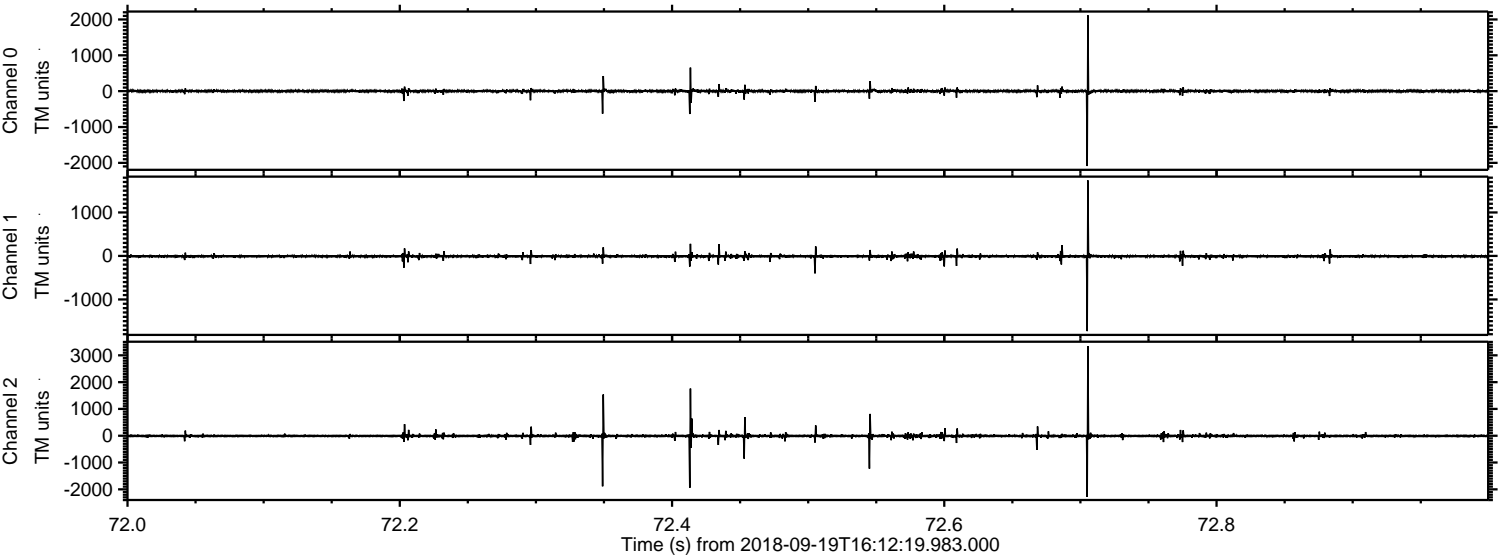
ELMAVAN 3D WAVEFORMS (Measured data sampled at 50 kHz) 51000 packets of 144 samples from 2018-09-19T16:12:19.983.000. Part 138/147

Processed Wed Sep 19 18:20:09 2018 by ELM ver.2012-10-06 from 001__elm20180919_161218__dat00.bin



ELMAVAN 3D WAVEFORMS (Measured data sampled at 50 kHz) 51000 packets of 144 samples from 2018-09-19T16:12:19.983.000. Part 73/147

Processed Wed Sep 19 18:20:09 2018 by ELM ver.2012-10-06 from 001__elm20180919_161218__dat00.bin



Channel 0
mn: -2090
mx: 2116
 μ : 1.8
 σ : 22.0

Channel 1
mn: -1729
mx: 1737
 μ : -7.9
 σ : 19.4

Channel 2
mn: -2284
mx: 3342
 μ : -8.0
 σ : 40.1

Processed Wed Sep 19 18:20:10 2018 by ELM ver.2012-10-06 from 001__elm20180919_161218__dat00.bin

