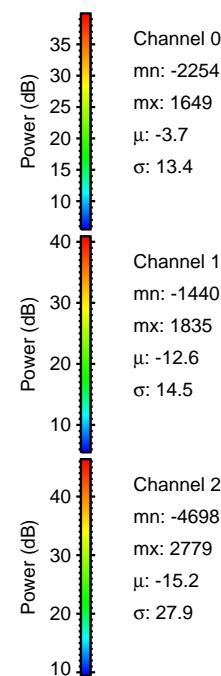
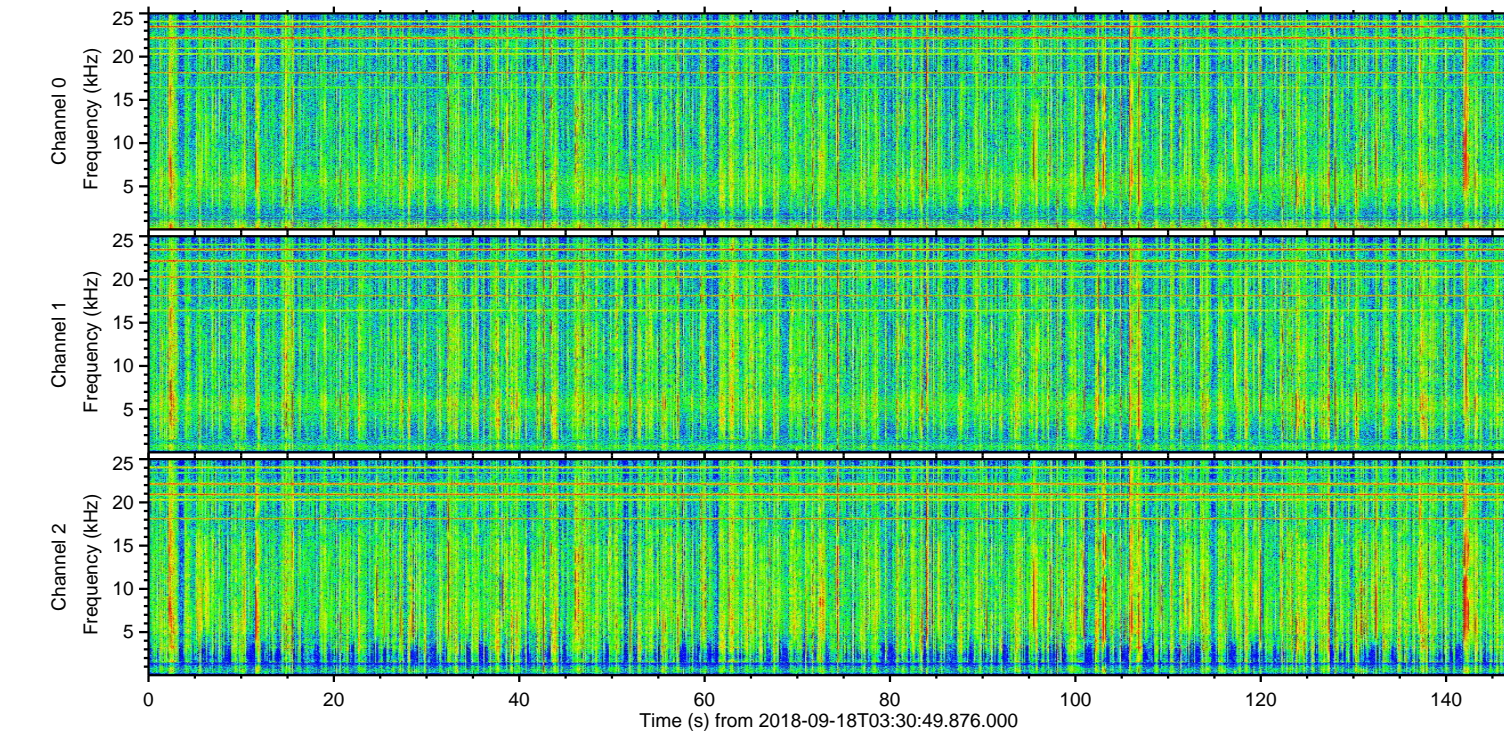
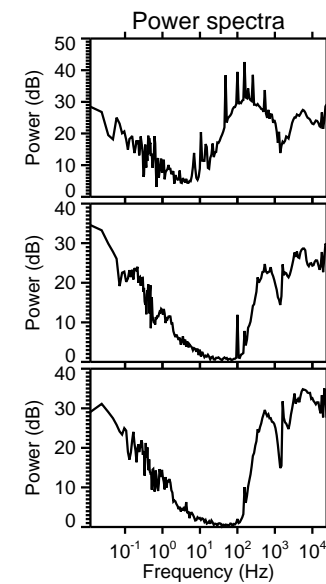
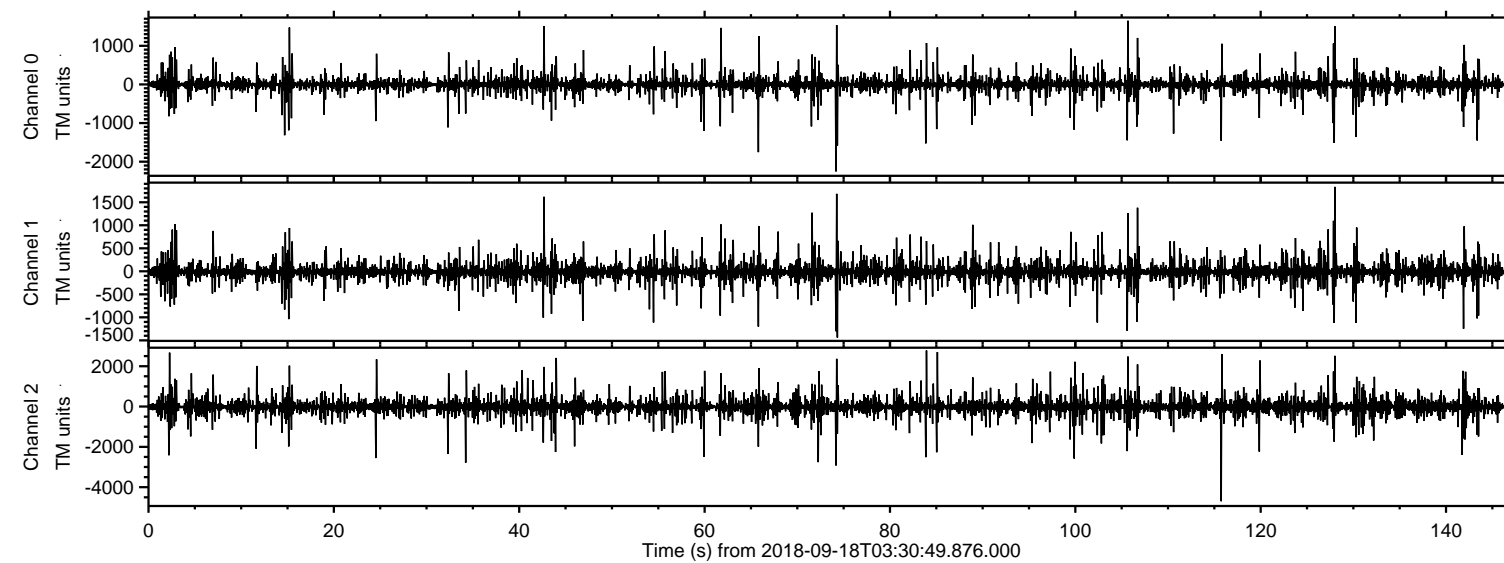


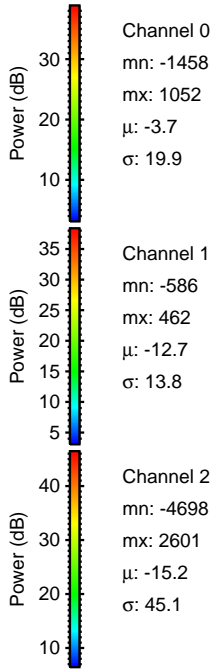
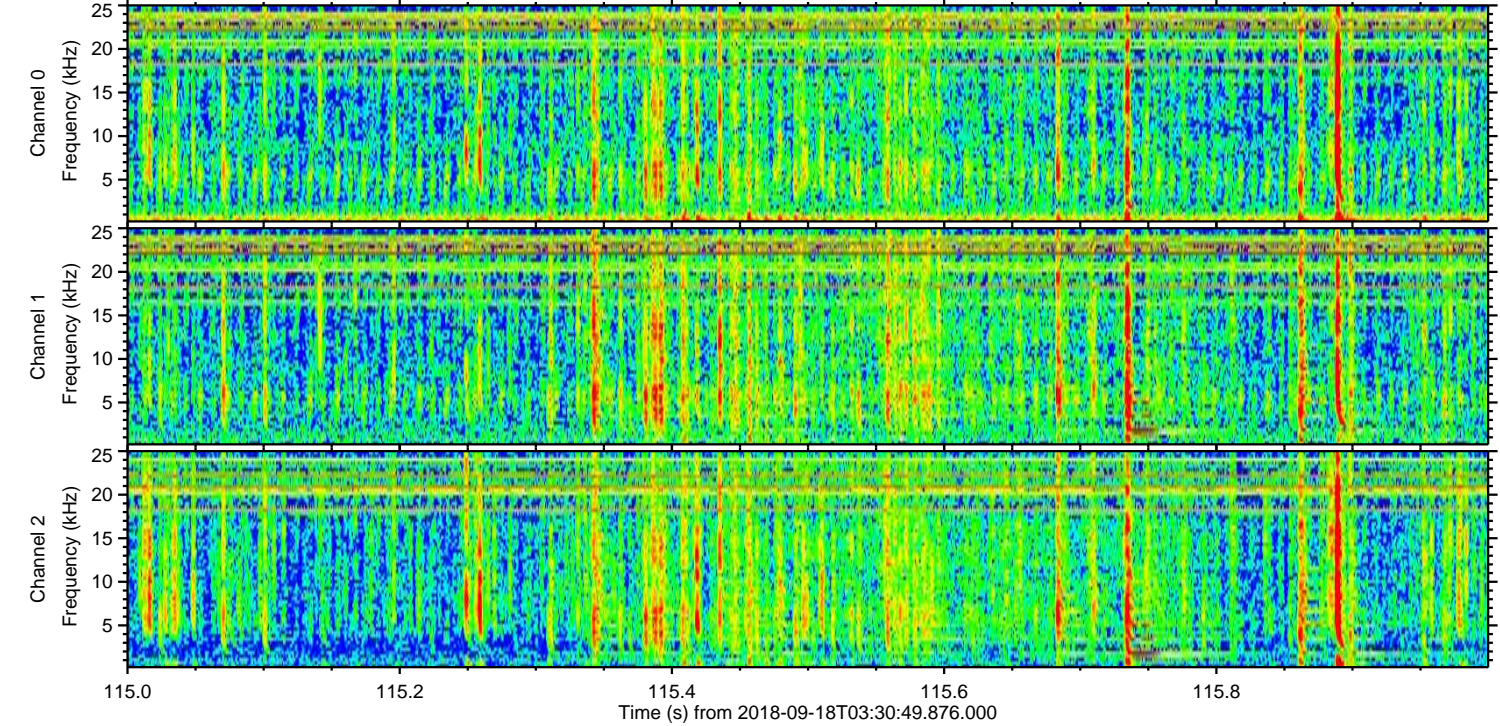
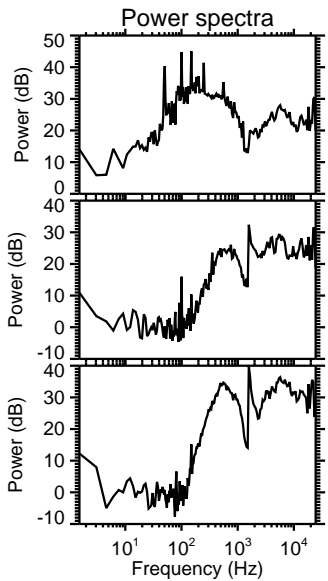
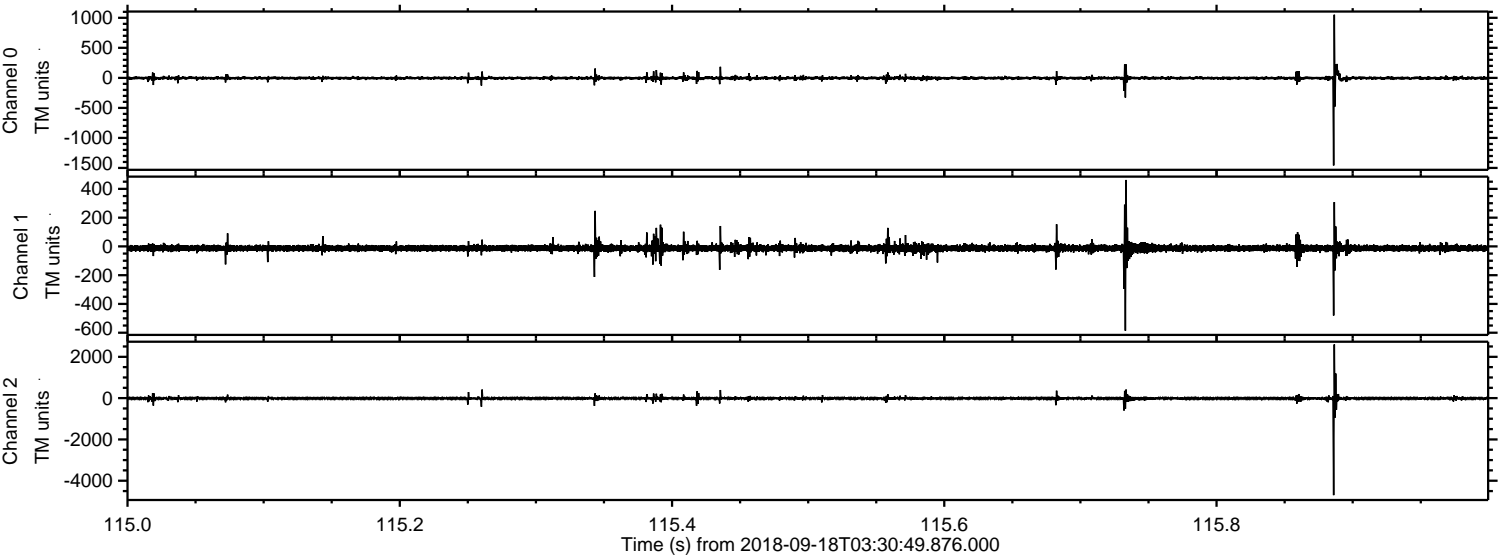
ELMAVAN 3D WAVEFORMS (Measured data sampled at 50 kHz) 51000 packets of 144 samples from 2018-09-18T03:30:49.876.000.

Processed Tue Sep 18 05:39:00 2018 by ELM ver.2012-10-06 from 001__elm20180918_033048__dat00.bin

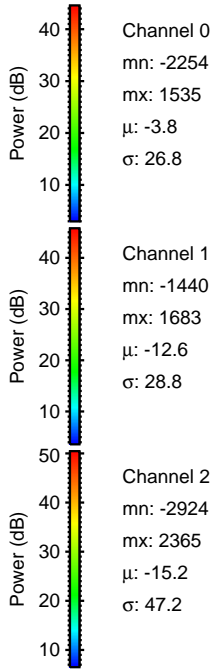
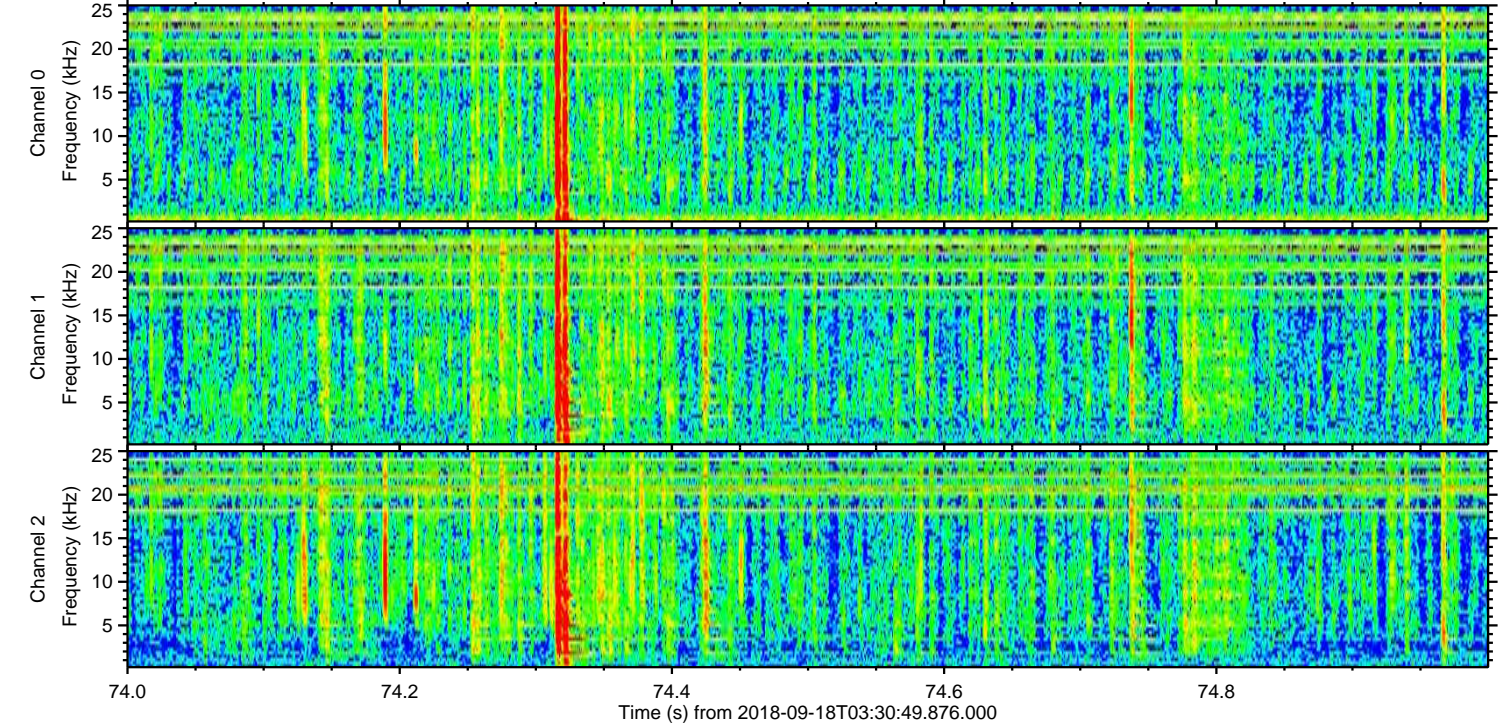
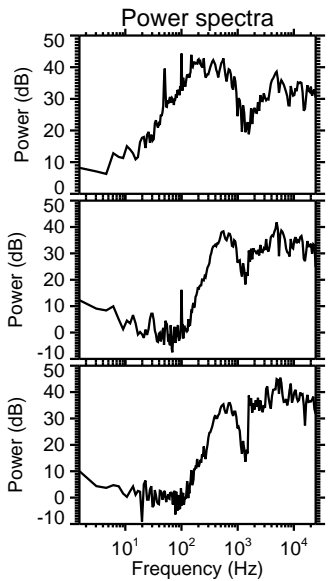
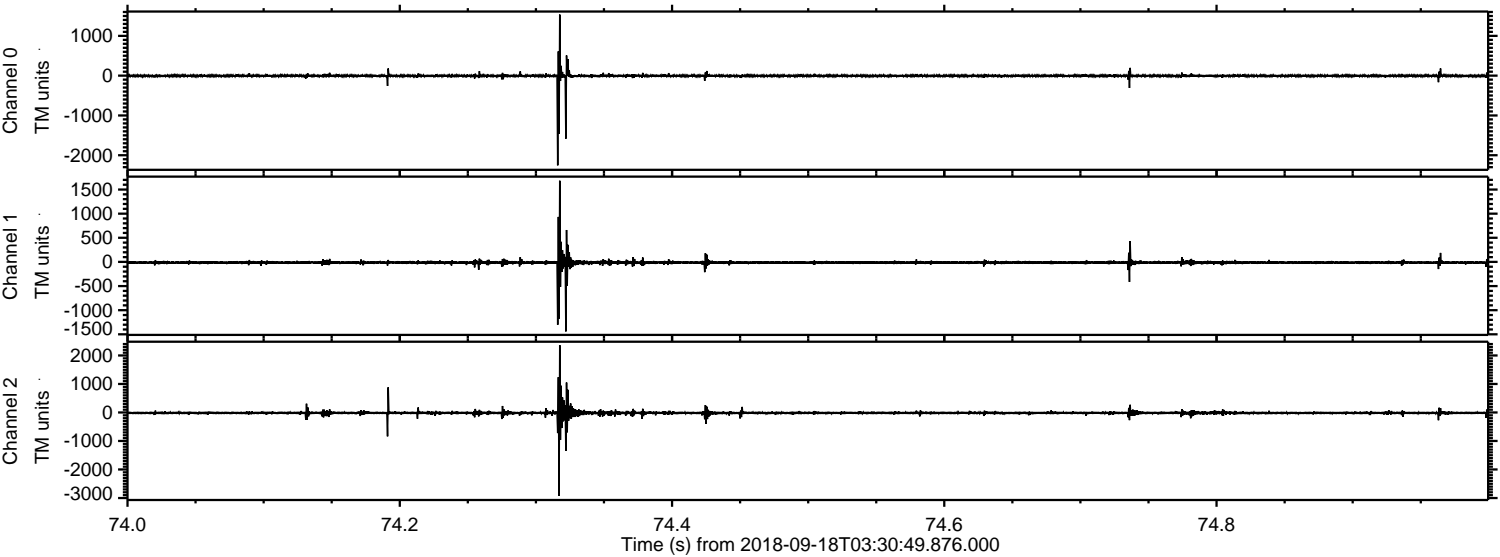


ELMAVAN 3D WAVEFORMS (Measured data sampled at 50 kHz) 51000 packets of 144 samples from 2018-09-18T03:30:49.876.000. Part 116/147

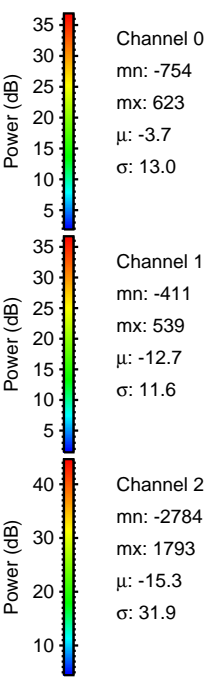
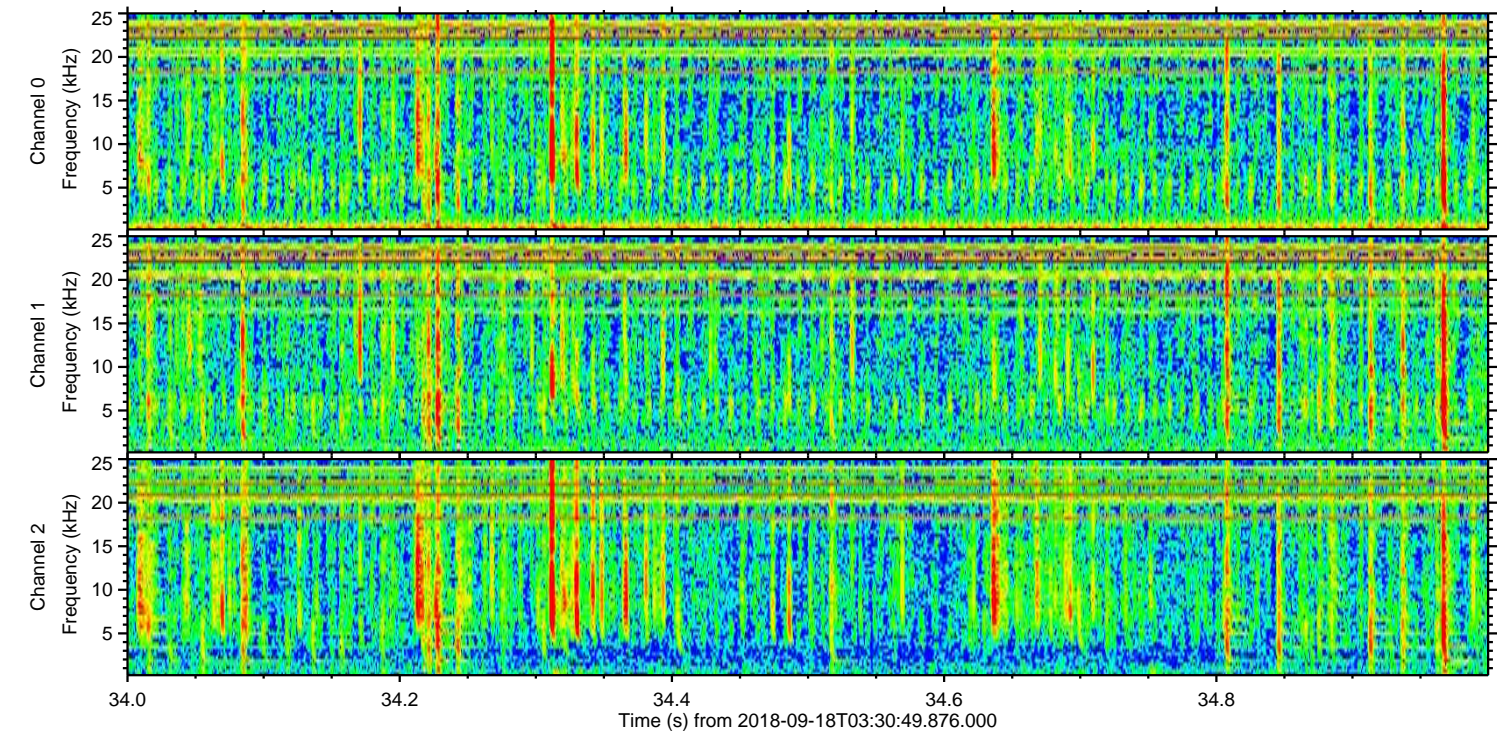
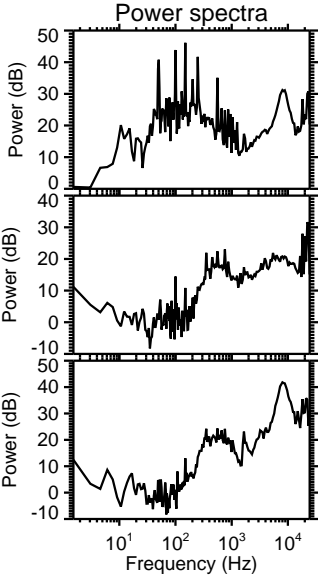
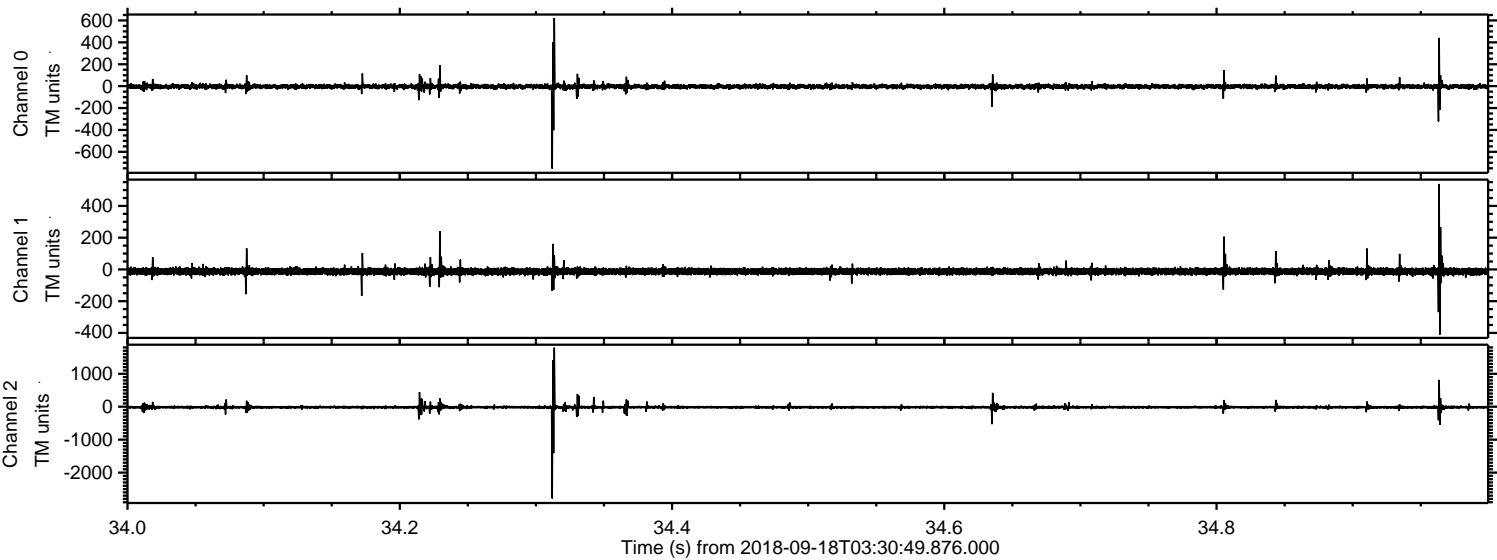
Processed Tue Sep 18 05:39:06 2018 by ELM ver.2012-10-06 from 001__elm20180918_033048__dat00.bin



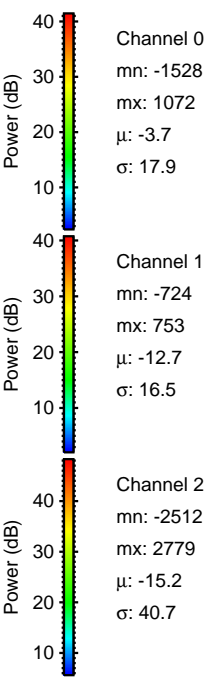
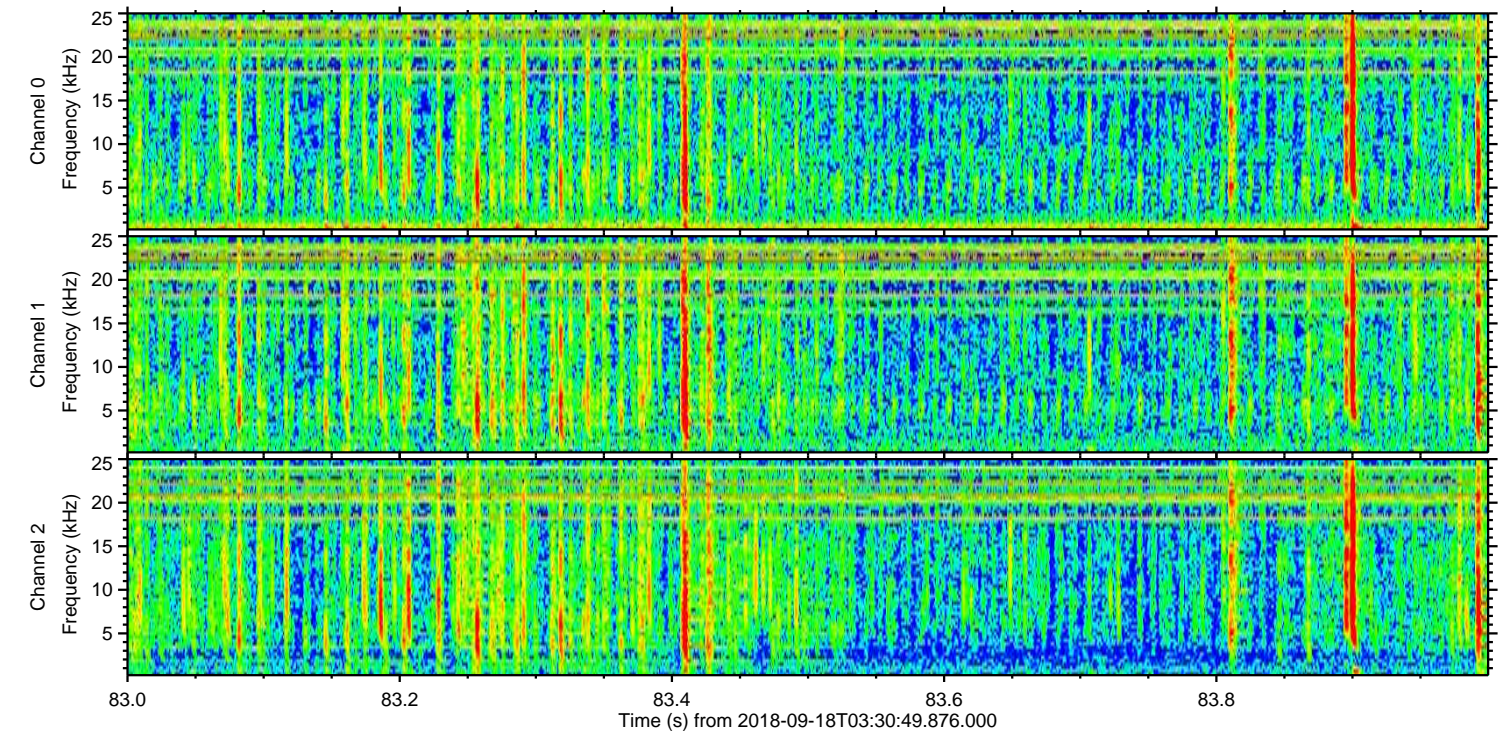
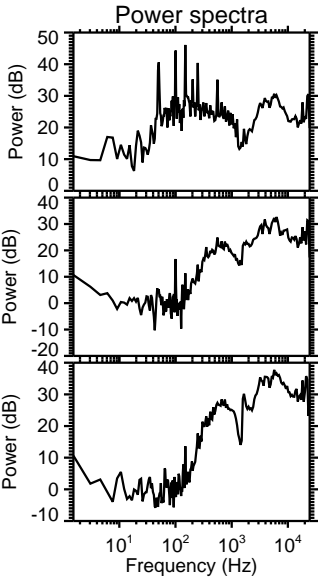
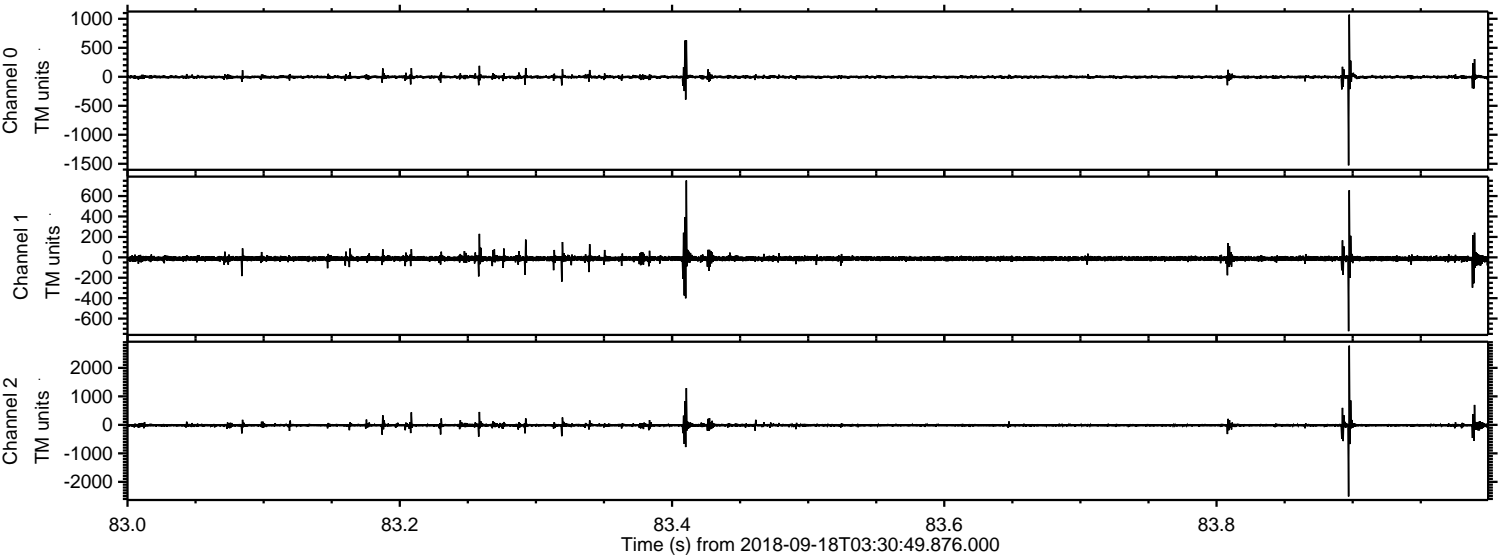
Processed Tue Sep 18 05:39:07 2018 by ELM ver.2012-10-06 from 001__elm20180918_033048__dat00.bin



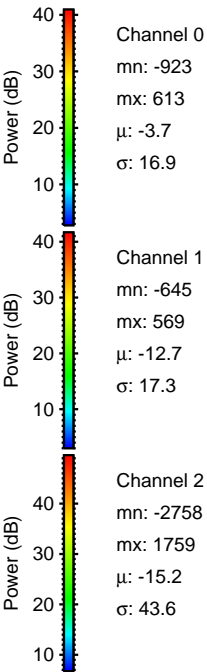
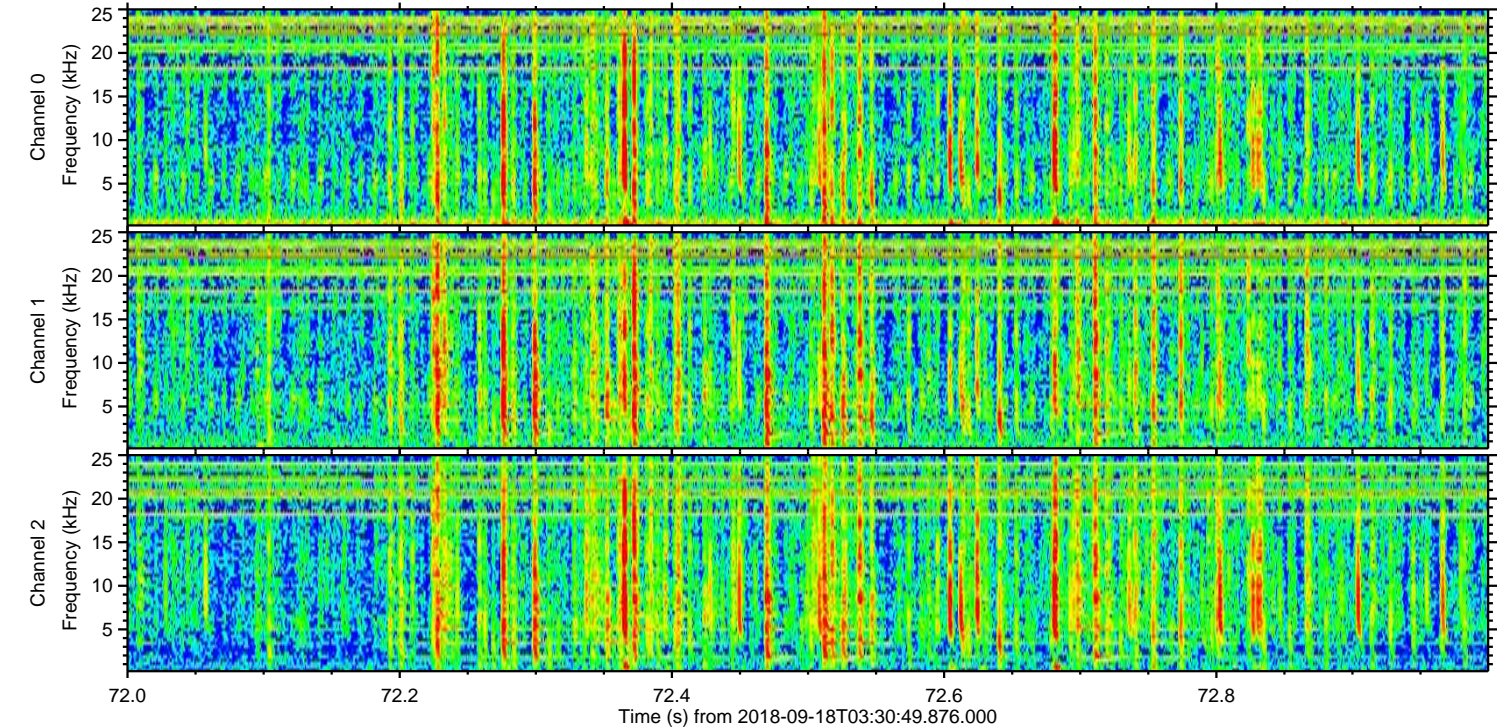
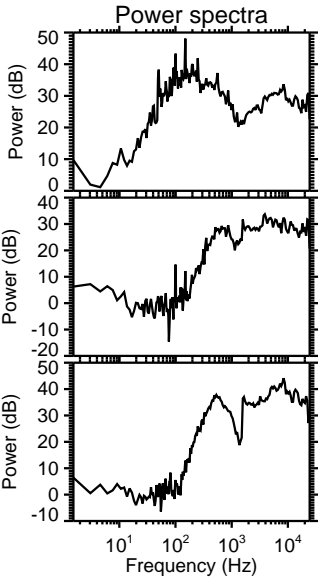
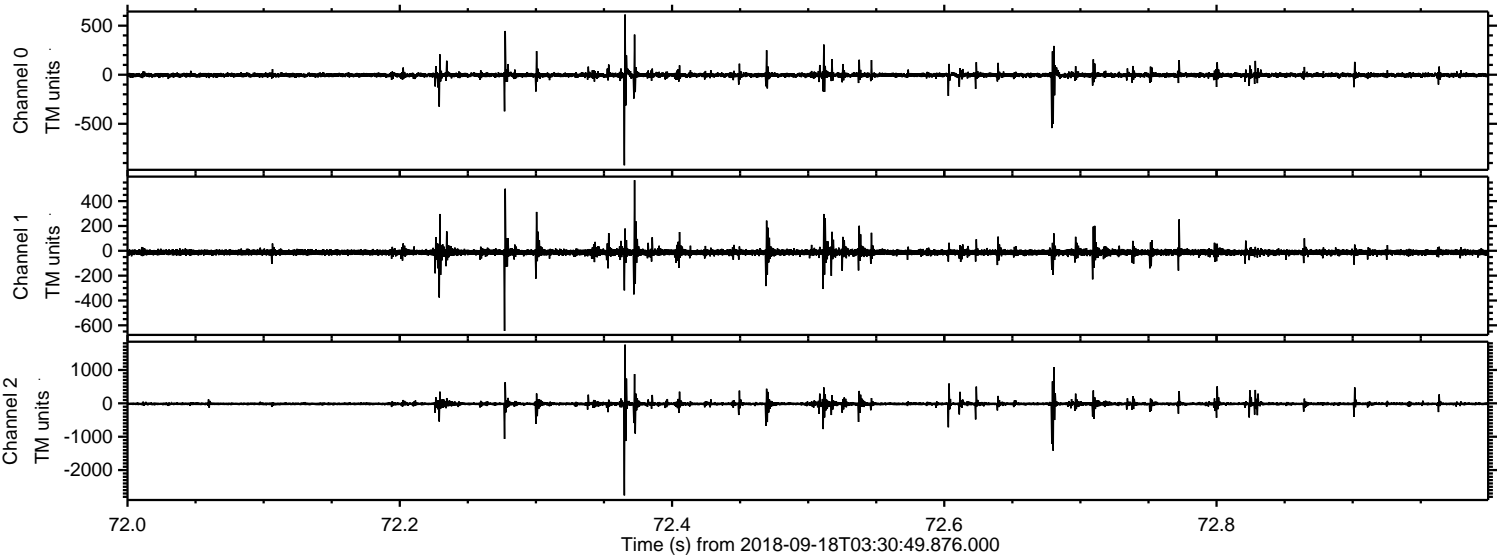
Processed Tue Sep 18 05:39:08 2018 by ELM ver.2012-10-06 from 001__elm20180918_033048__dat00.bin



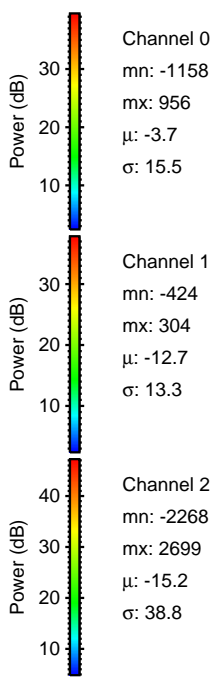
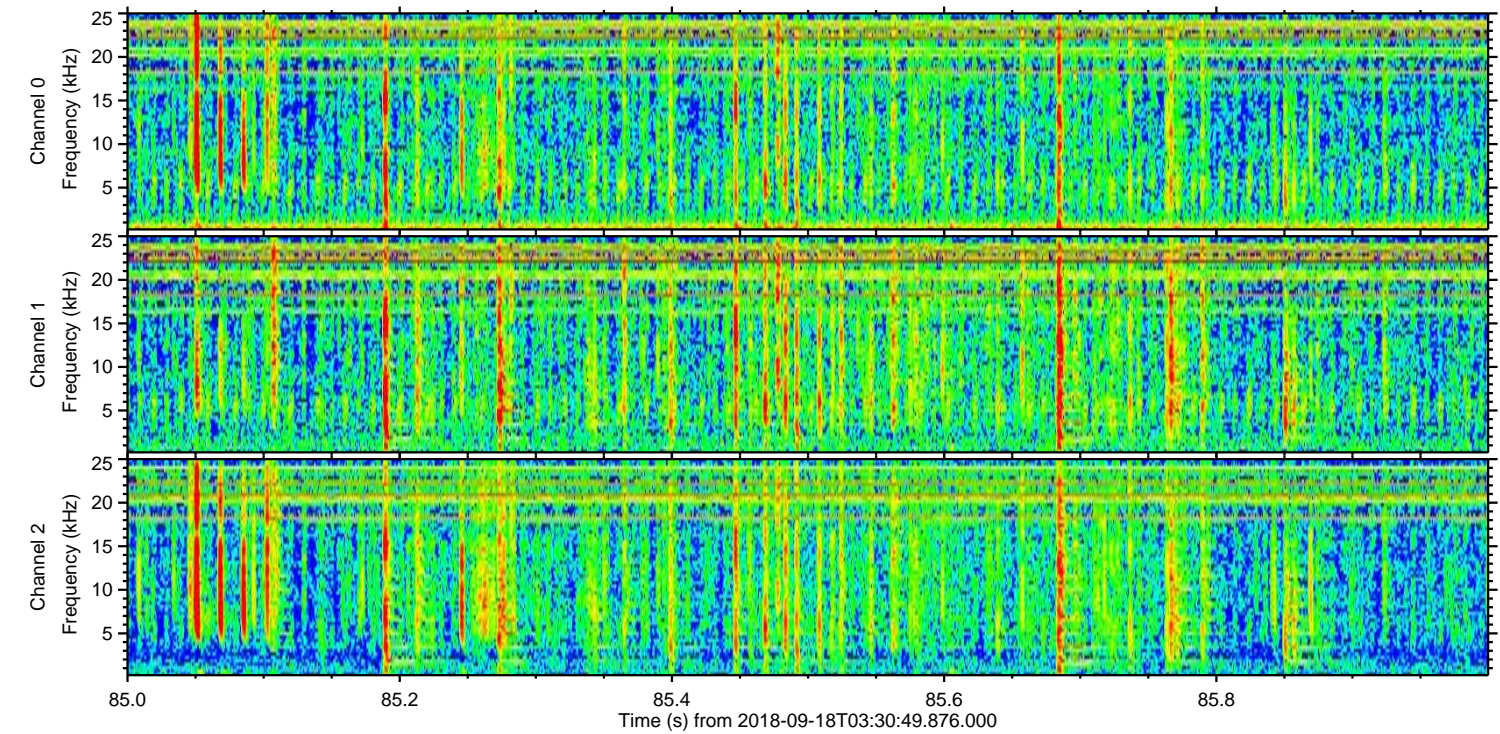
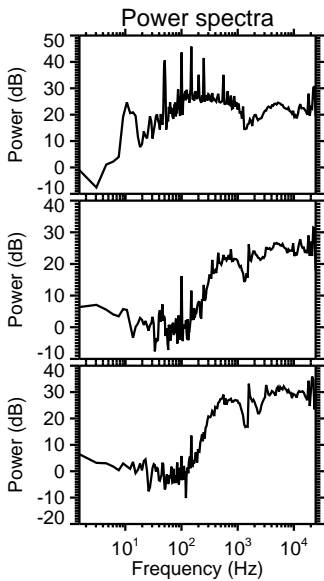
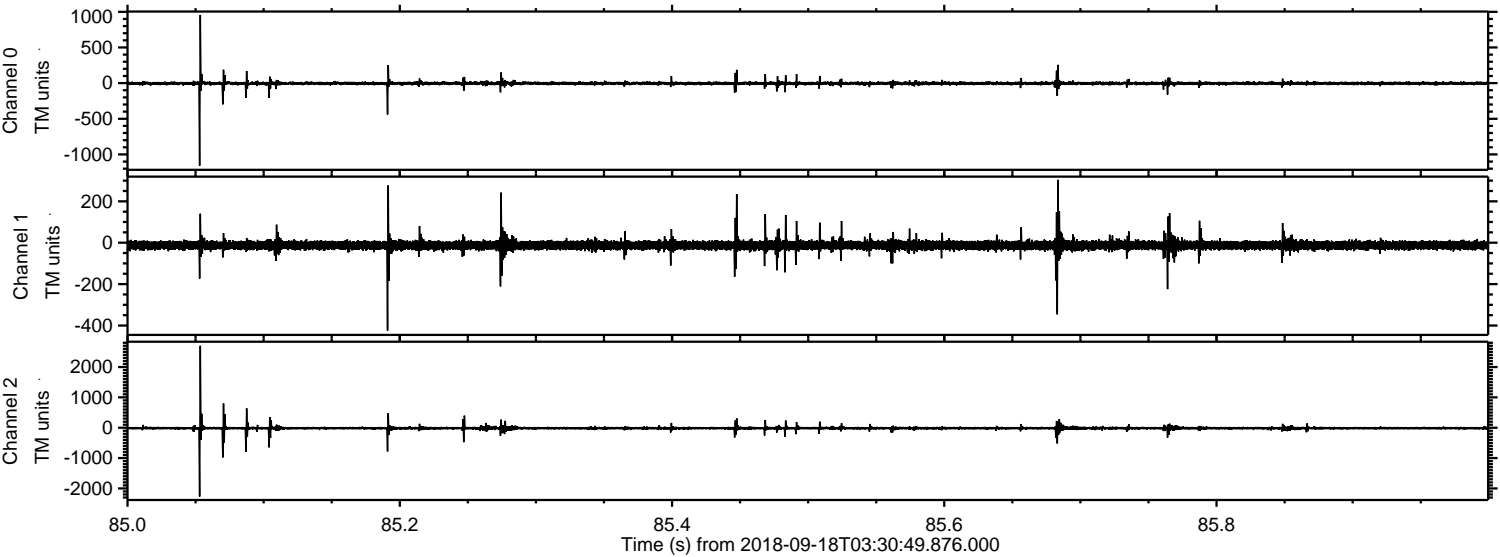
Processed Tue Sep 18 05:39:08 2018 by ELM ver.2012-10-06 from 001__elm20180918_033048__dat00.bin



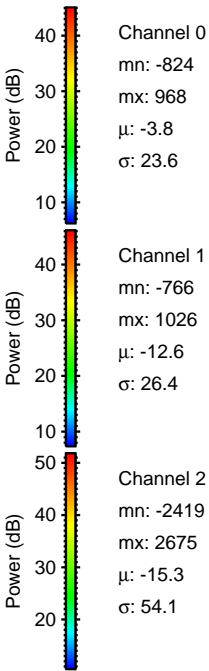
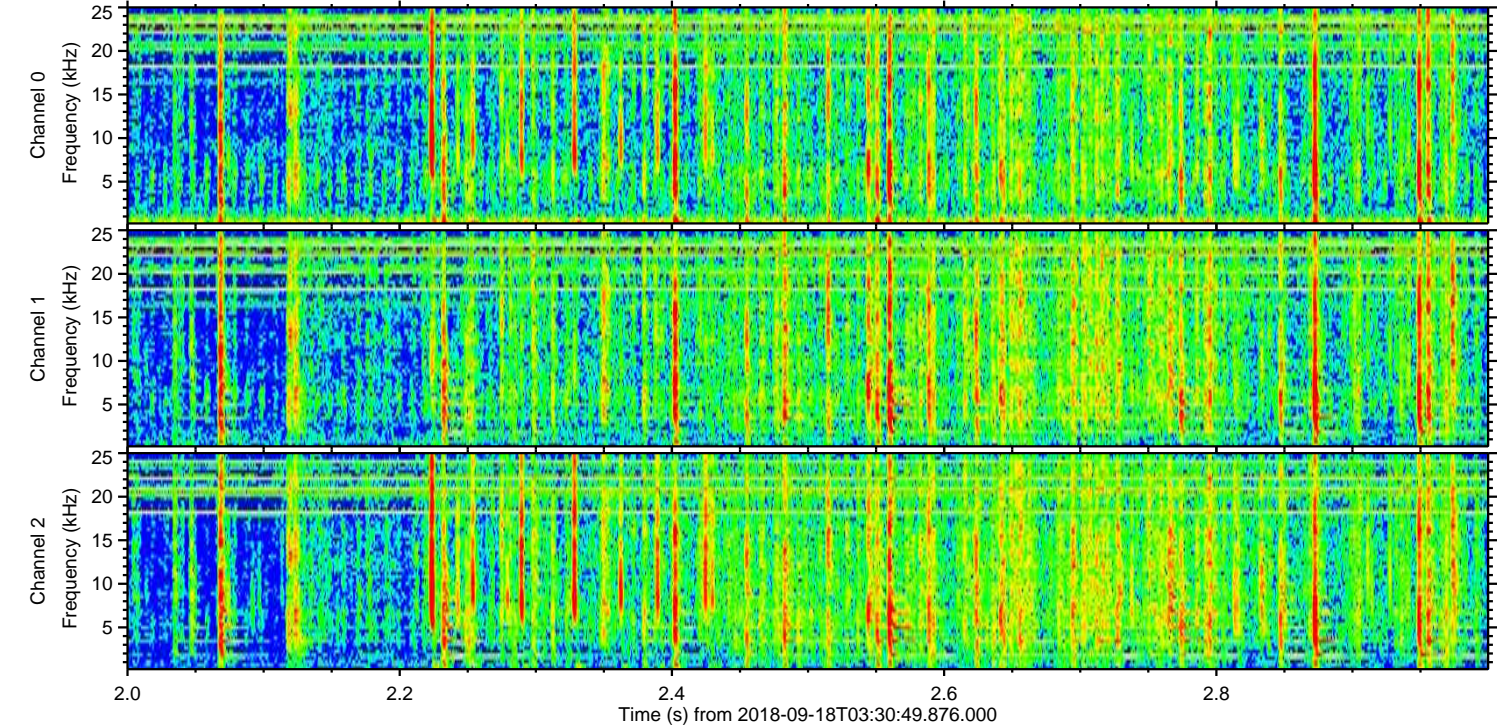
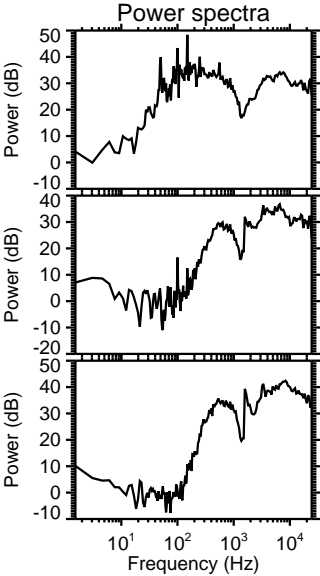
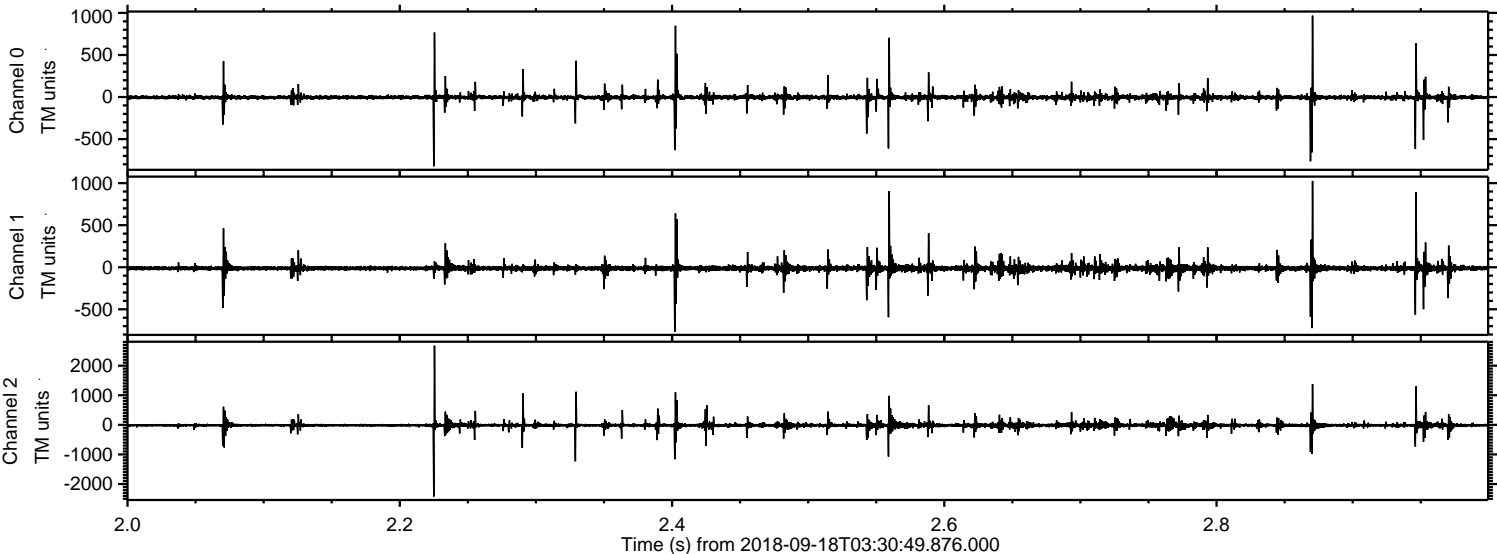
Processed Tue Sep 18 05:39:09 2018 by ELM ver.2012-10-06 from 001__elm20180918_033048__dat00.bin



Processed Tue Sep 18 05:39:10 2018 by ELM ver.2012-10-06 from 001__elm20180918_033048__dat00.bin

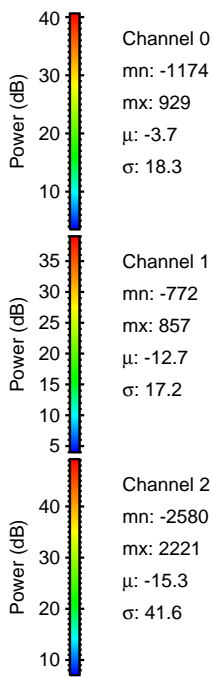
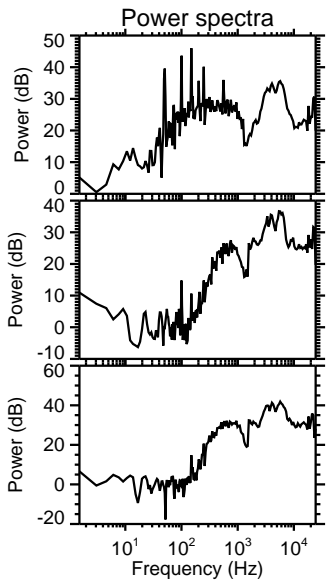
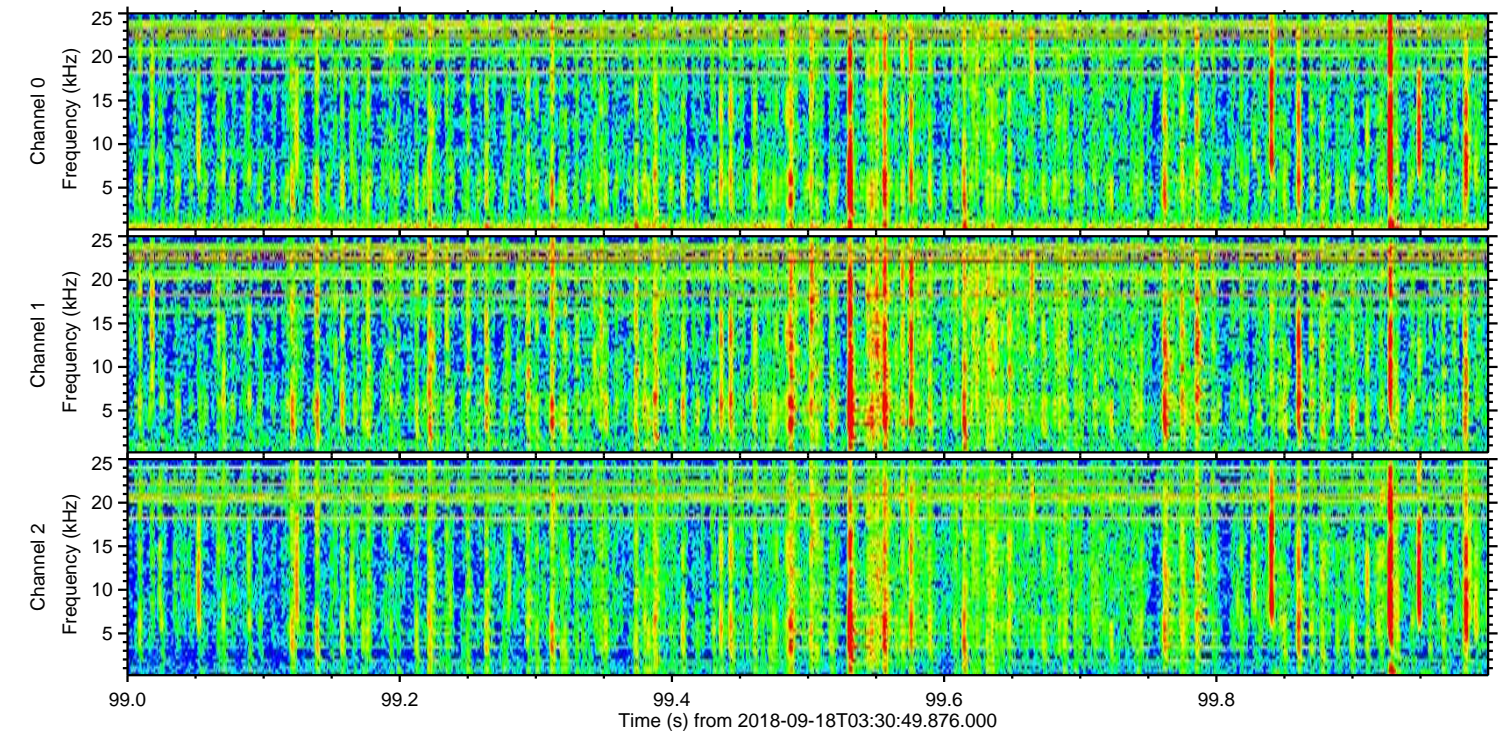
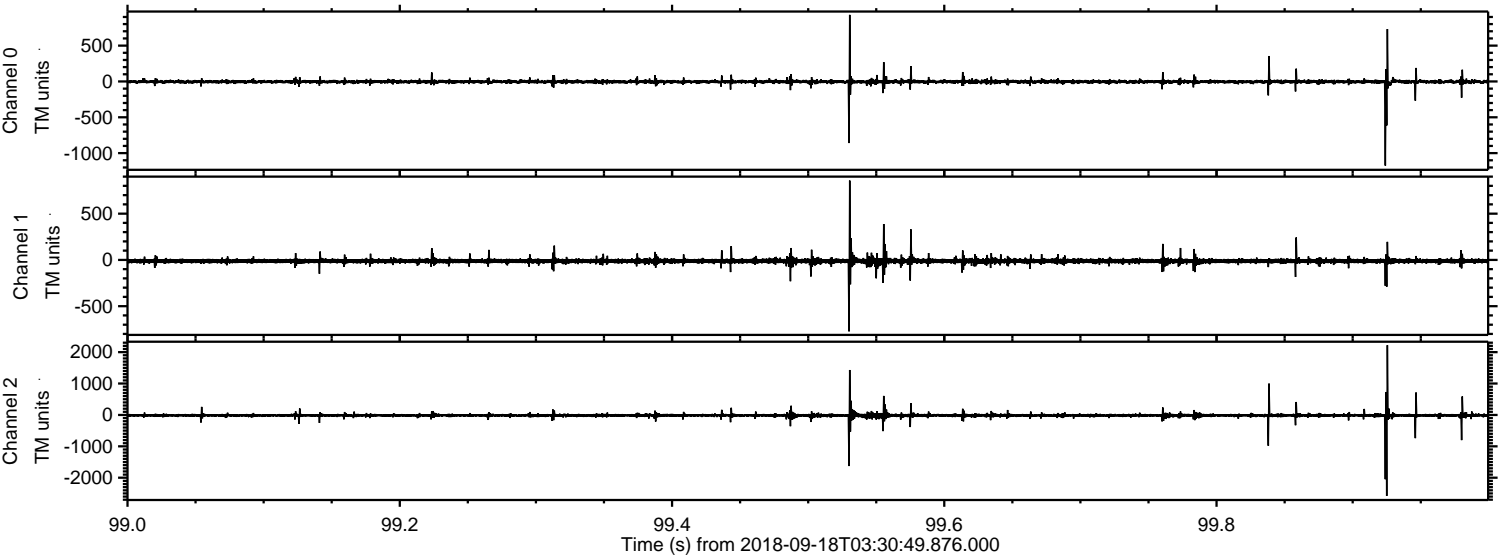


Processed Tue Sep 18 05:39:10 2018 by ELM ver.2012-10-06 from 001__elm20180918_033048__dat00.bin



ELMAVAN 3D WAVEFORMS (Measured data sampled at 50 kHz) 51000 packets of 144 samples from 2018-09-18T03:30:49.876.000. Part 100/147

Processed Tue Sep 18 05:39:11 2018 by ELM ver.2012-10-06 from 001__elm20180918_033048__dat00.bin

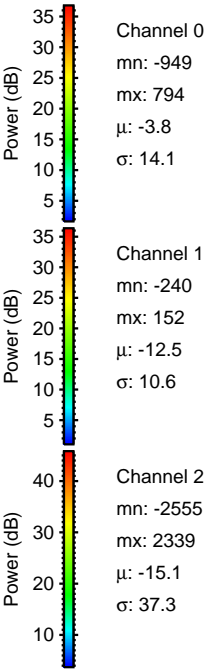
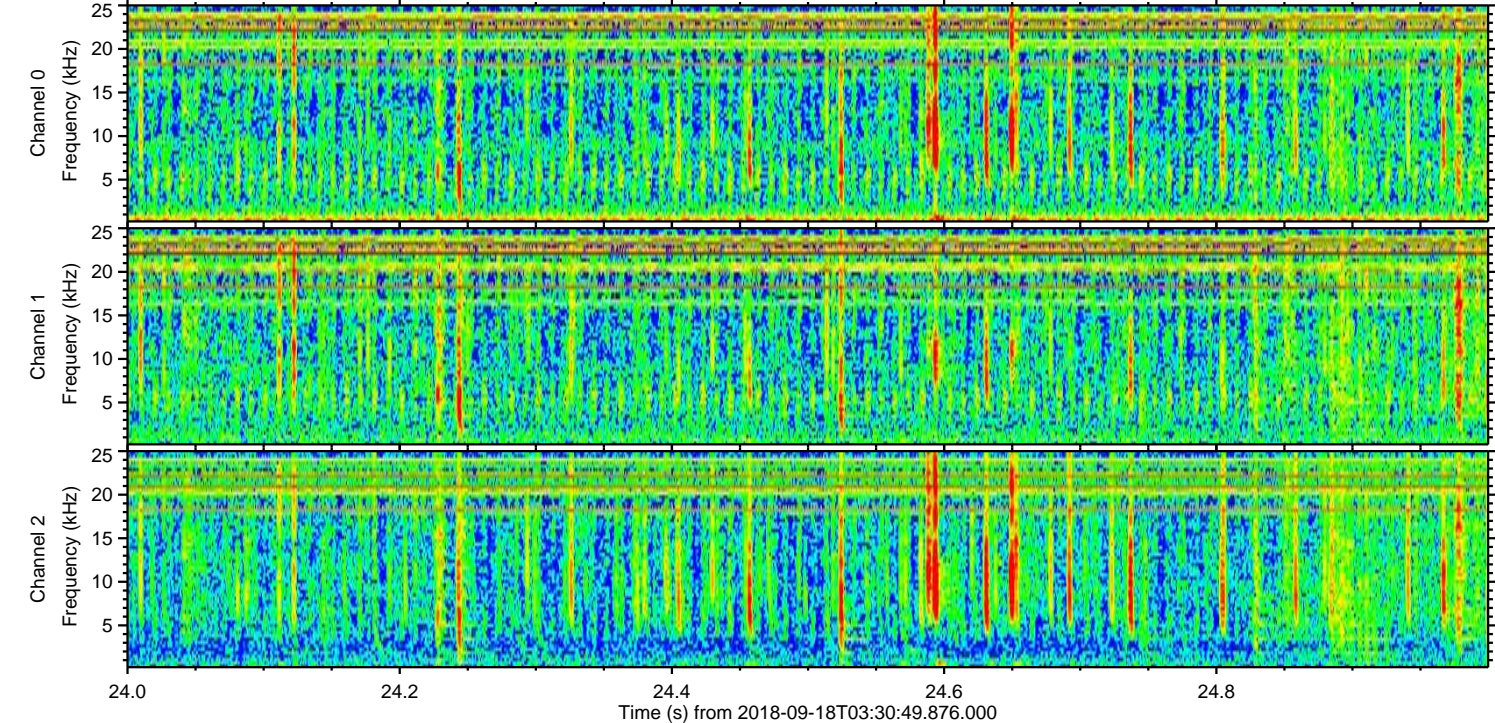
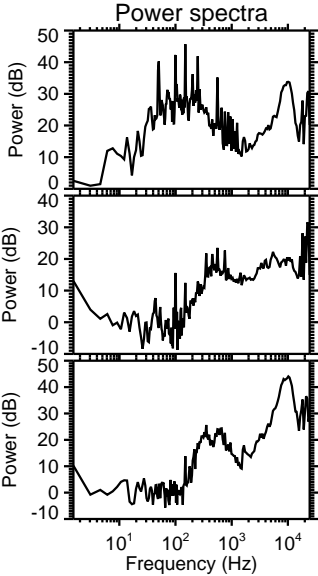
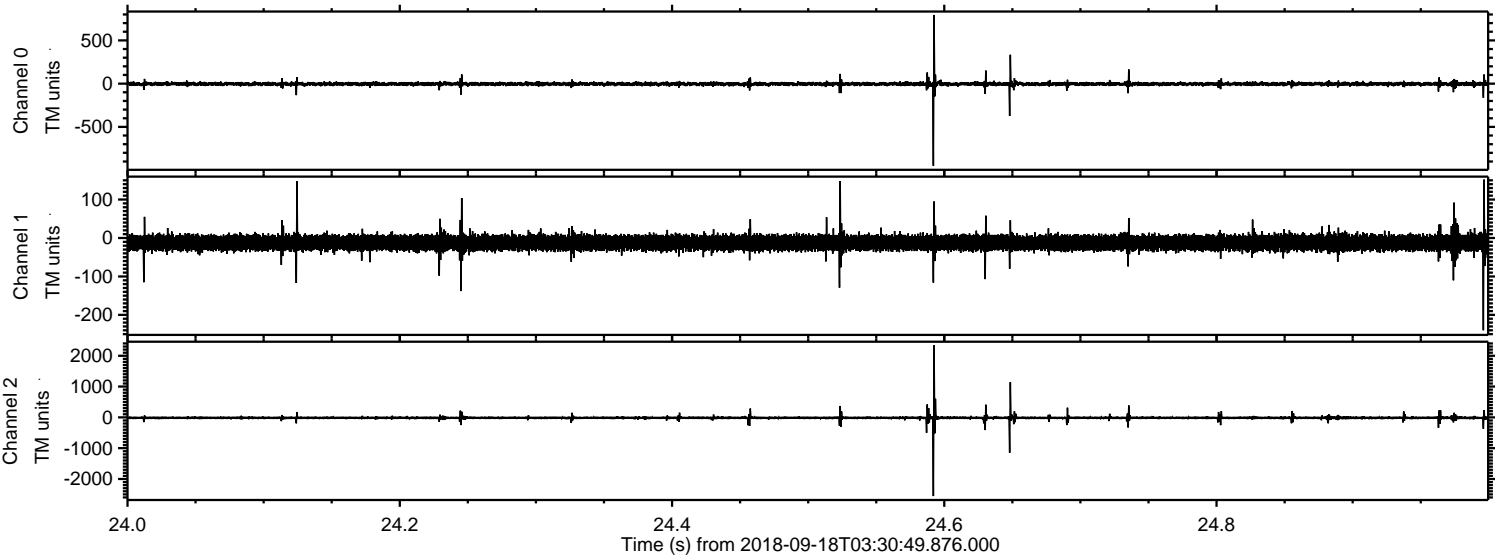


Channel 0
mn: -1174
mx: 929
 μ : -3.7
 σ : 18.3

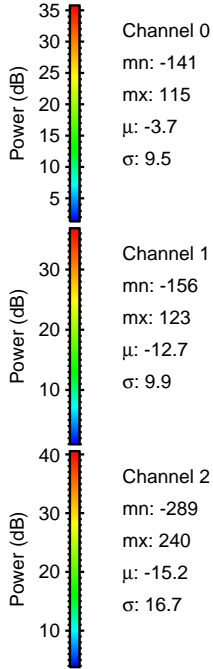
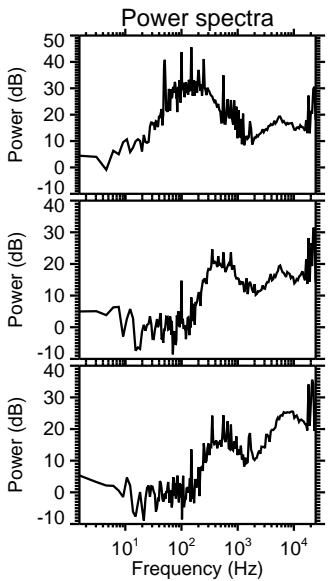
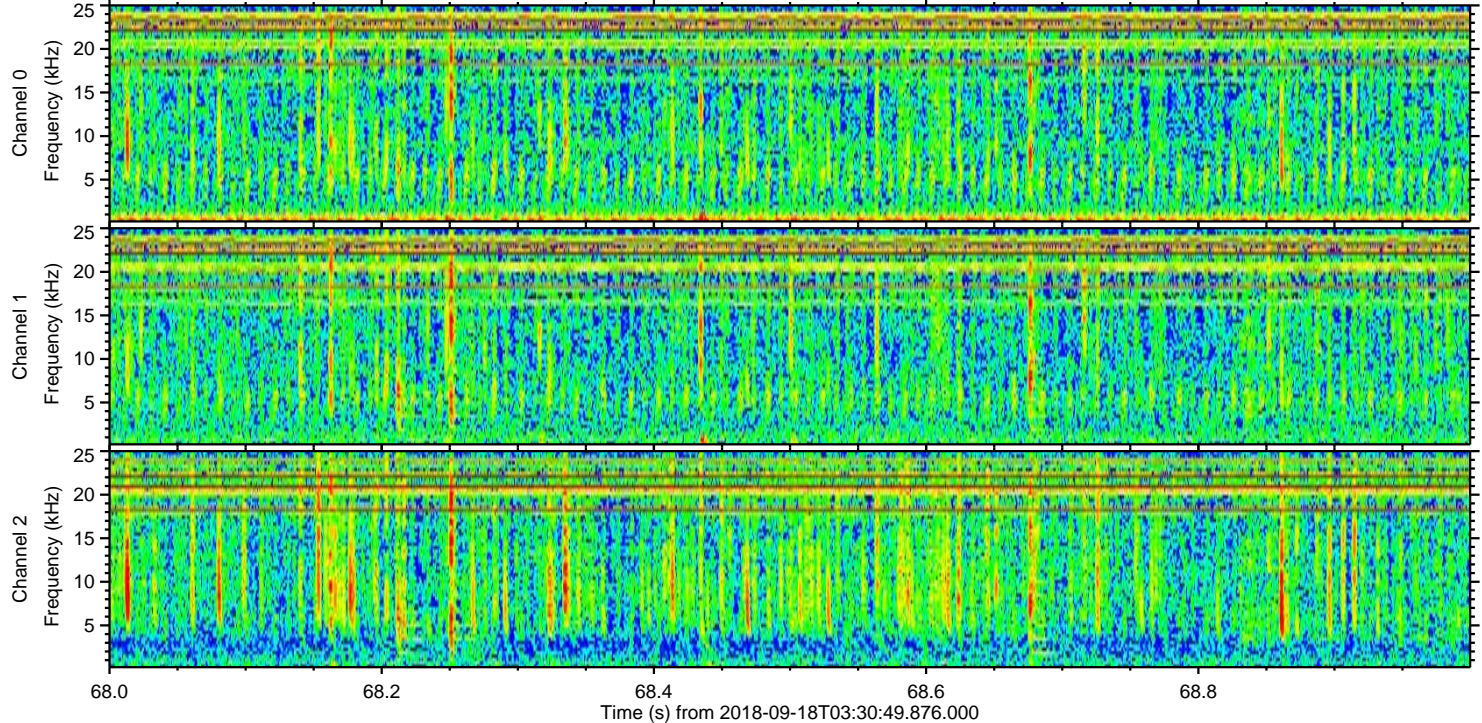
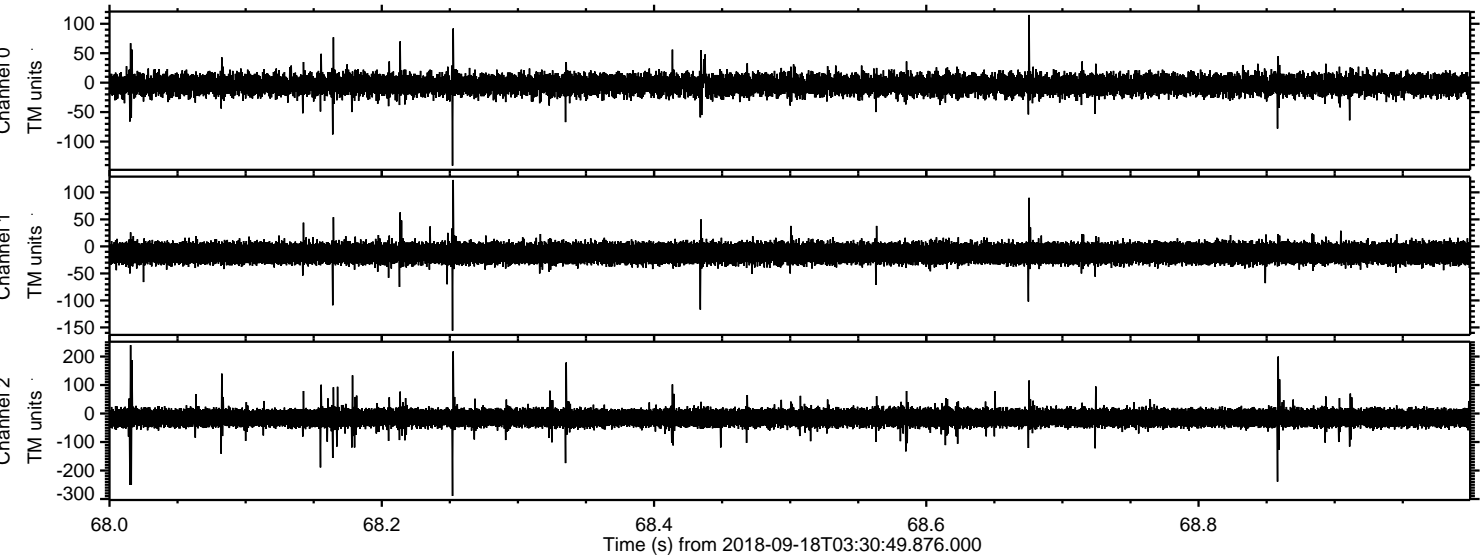
Channel 1
mn: -772
mx: 857
 μ : -12.7
 σ : 17.2

Channel 2
mn: -2580
mx: 2221
 μ : -15.3
 σ : 41.6

Processed Tue Sep 18 05:39:12 2018 by ELM ver.2012-10-06 from 001__elm20180918_033048__dat00.bin



Processed Tue Sep 18 05:39:12 2018 by ELM ver.2012-10-06 from 001__elm20180918_033048__dat00.bin



Channel 0
mn: -141
mx: 115
 μ : -3.7
 σ : 9.5

Channel 1
mn: -156
mx: 123
 μ : -12.7
 σ : 9.9

Channel 2
mn: -289
mx: 240
 μ : -15.2
 σ : 16.7