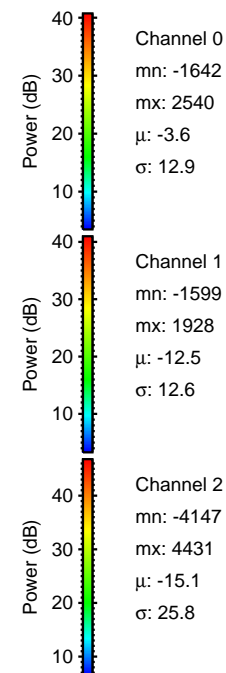
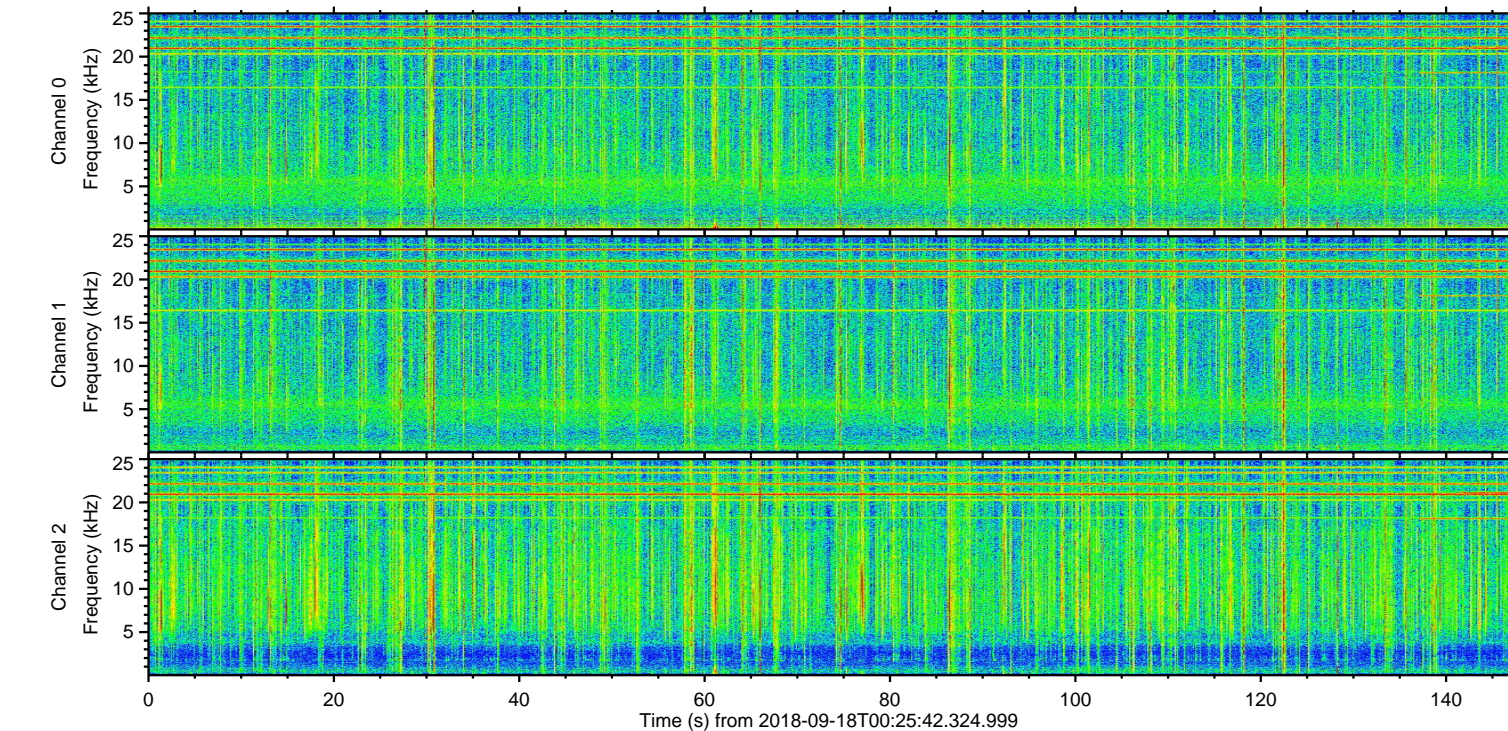
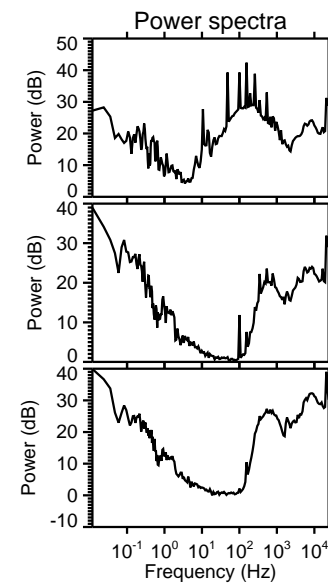
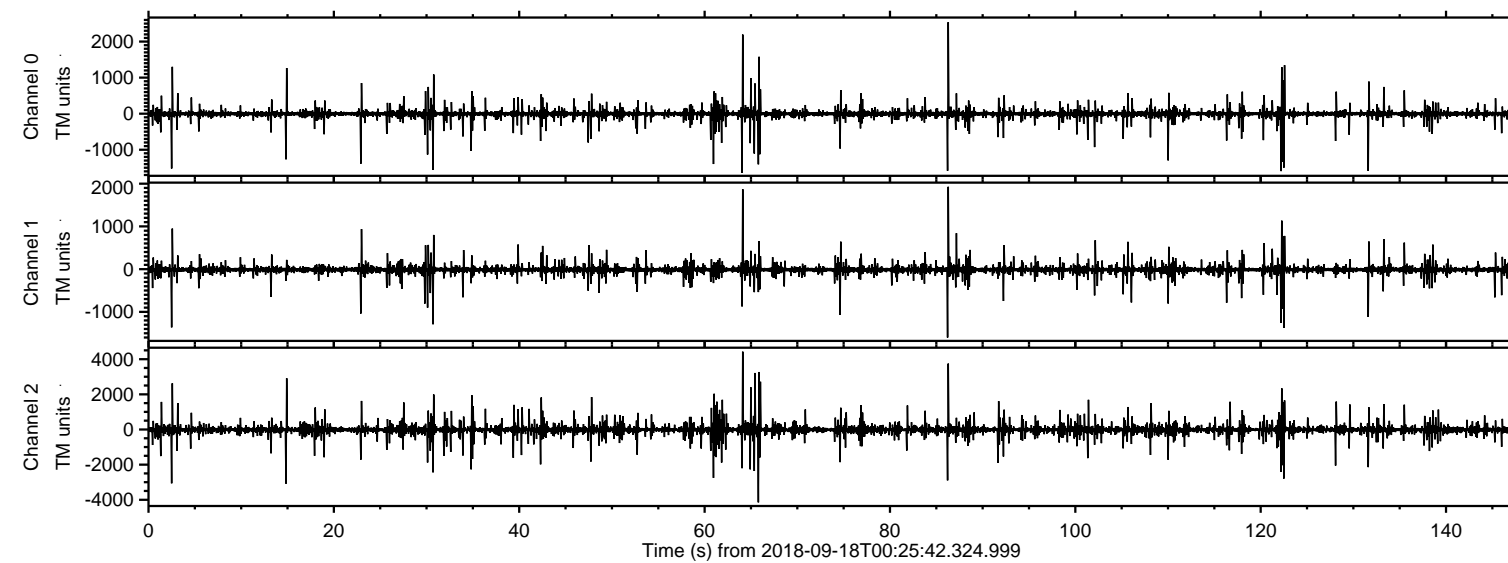


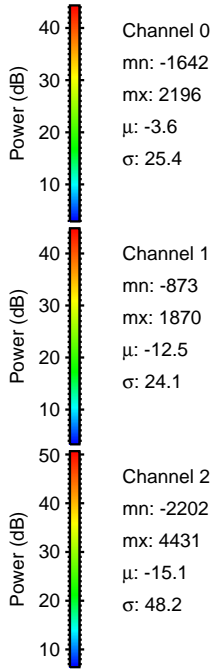
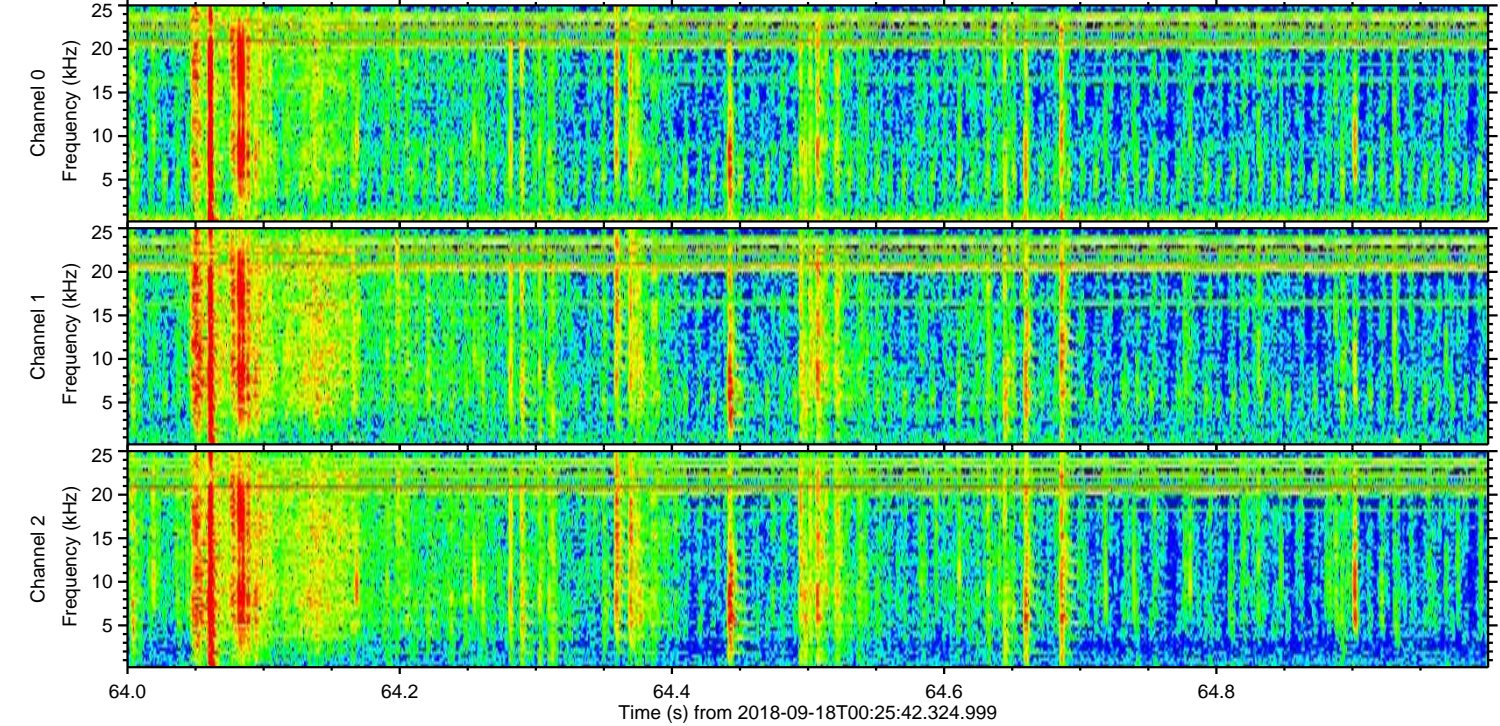
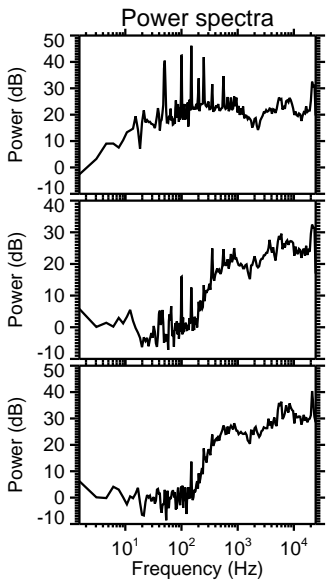
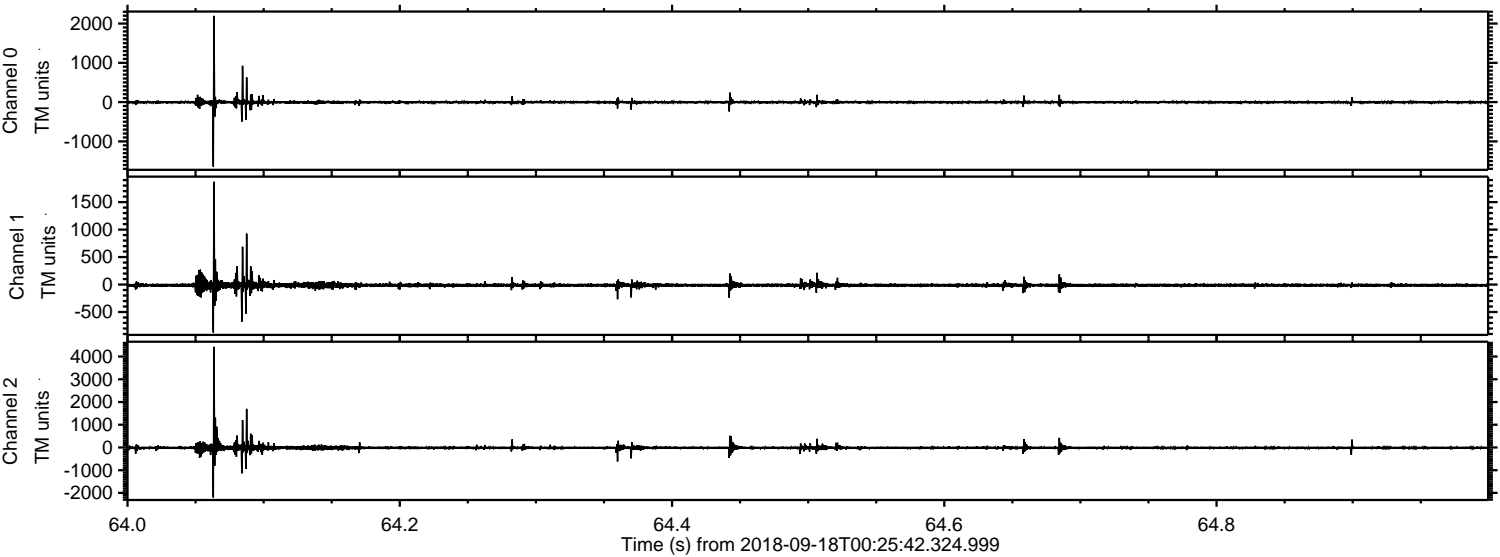
# ELMAVAN 3D WAVEFORMS (Measured data sampled at 50 kHz) 51000 packets of 144 samples from 2018-09-18T00:25:42.324.999.

Processed Tue Sep 18 02:34:09 2018 by ELM ver.2012-10-06 from 001\_\_elm20180918\_002541\_\_dat00.bin



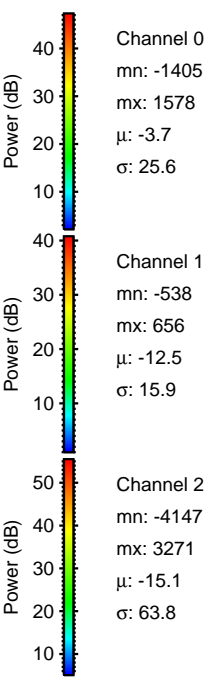
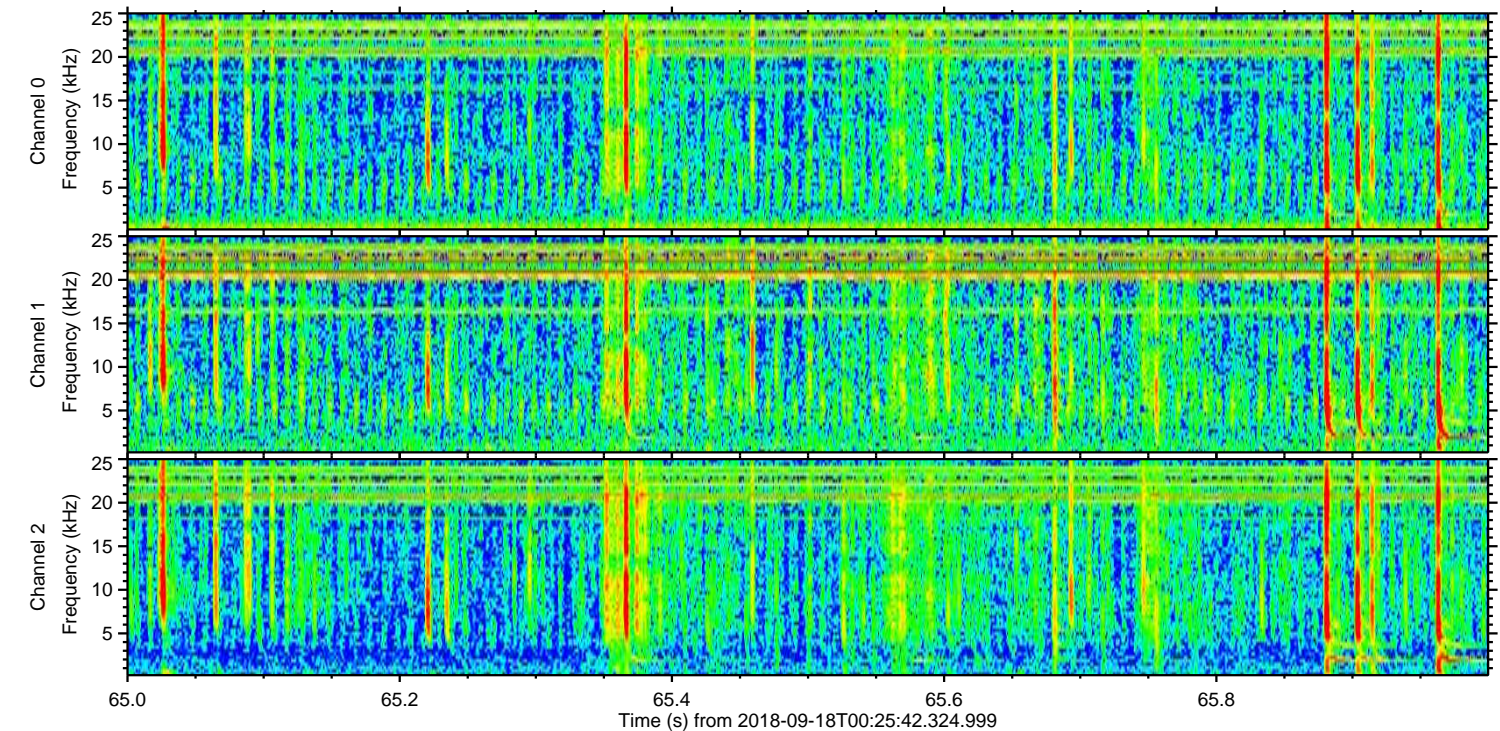
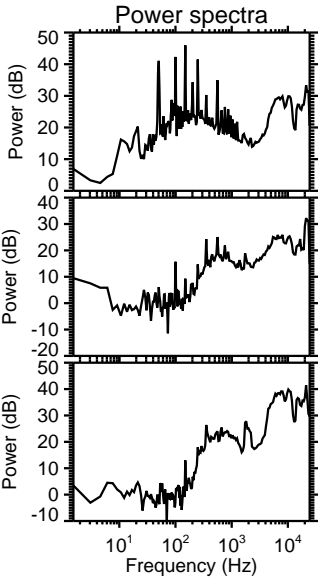
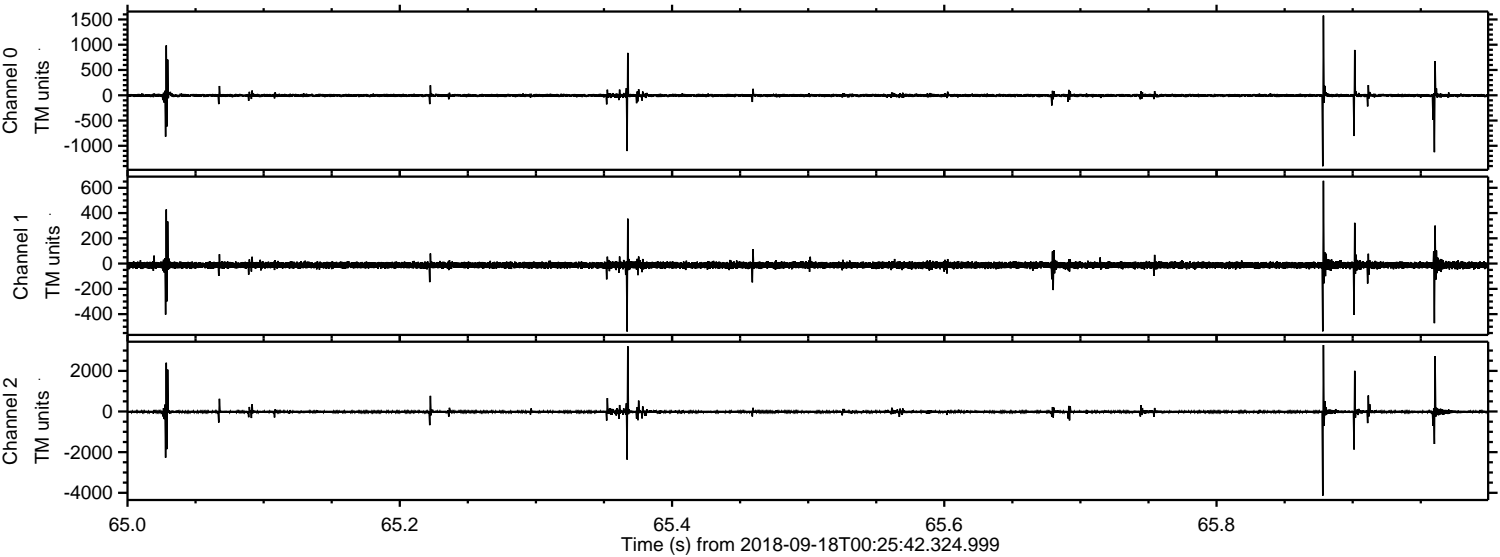


Processed Tue Sep 18 02:34:15 2018 by ELM ver.2012-10-06 from 001\_\_elm20180918\_002541\_\_dat00.bin



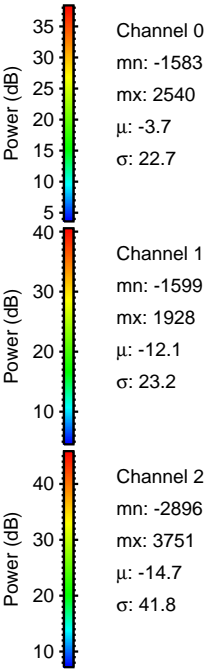
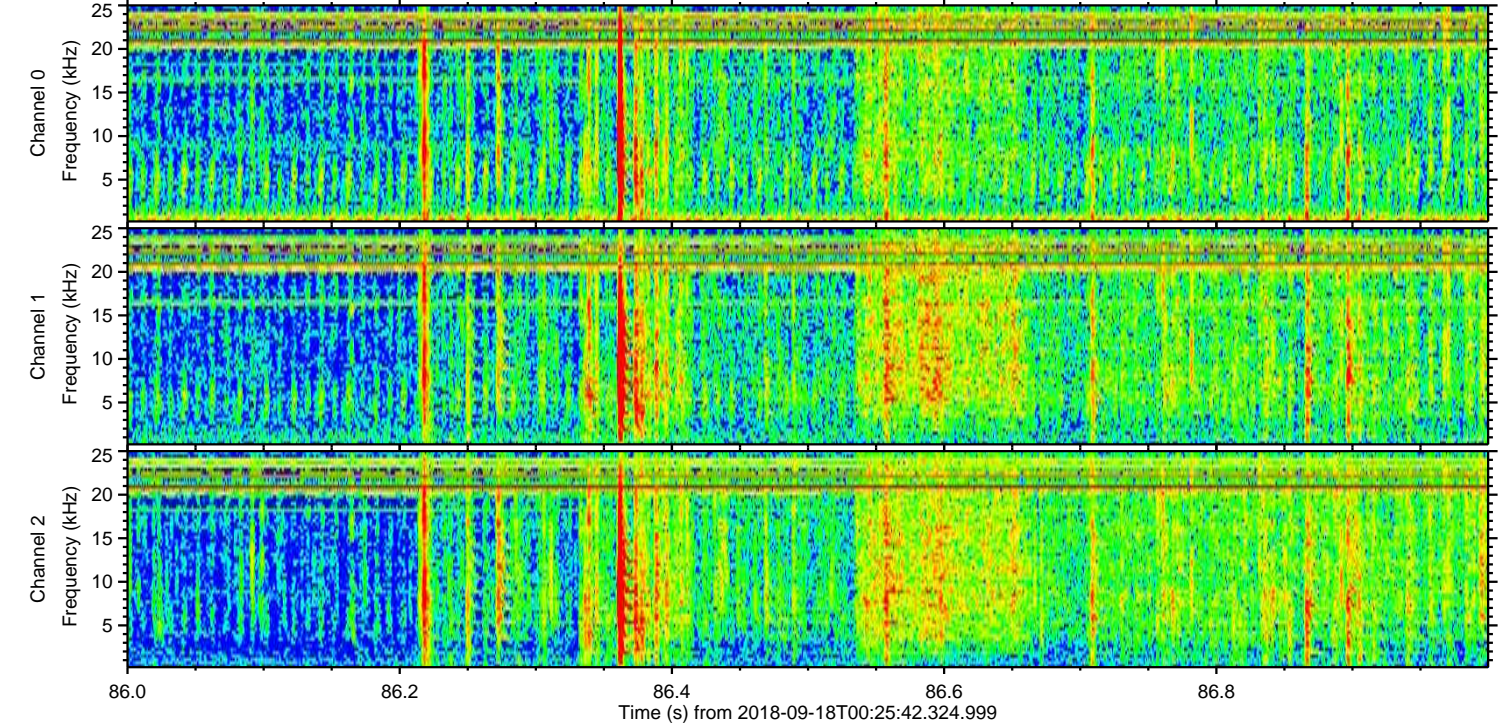
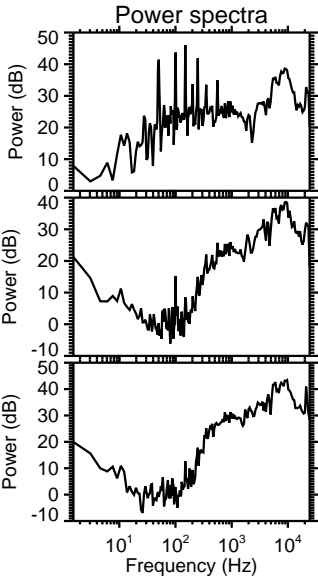
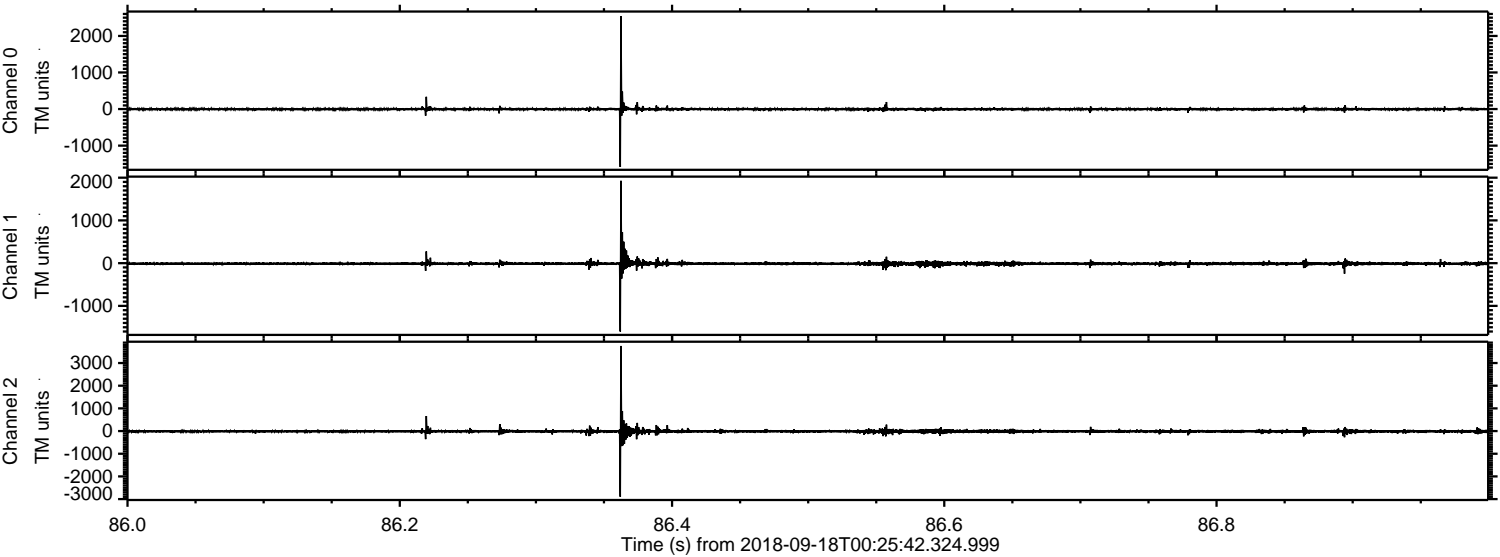


Processed Tue Sep 18 02:34:16 2018 by ELM ver.2012-10-06 from 001\_\_elm20180918\_002541\_\_dat00.bin



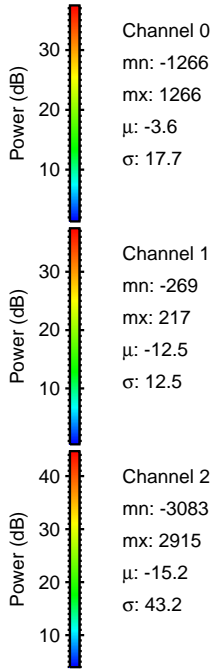
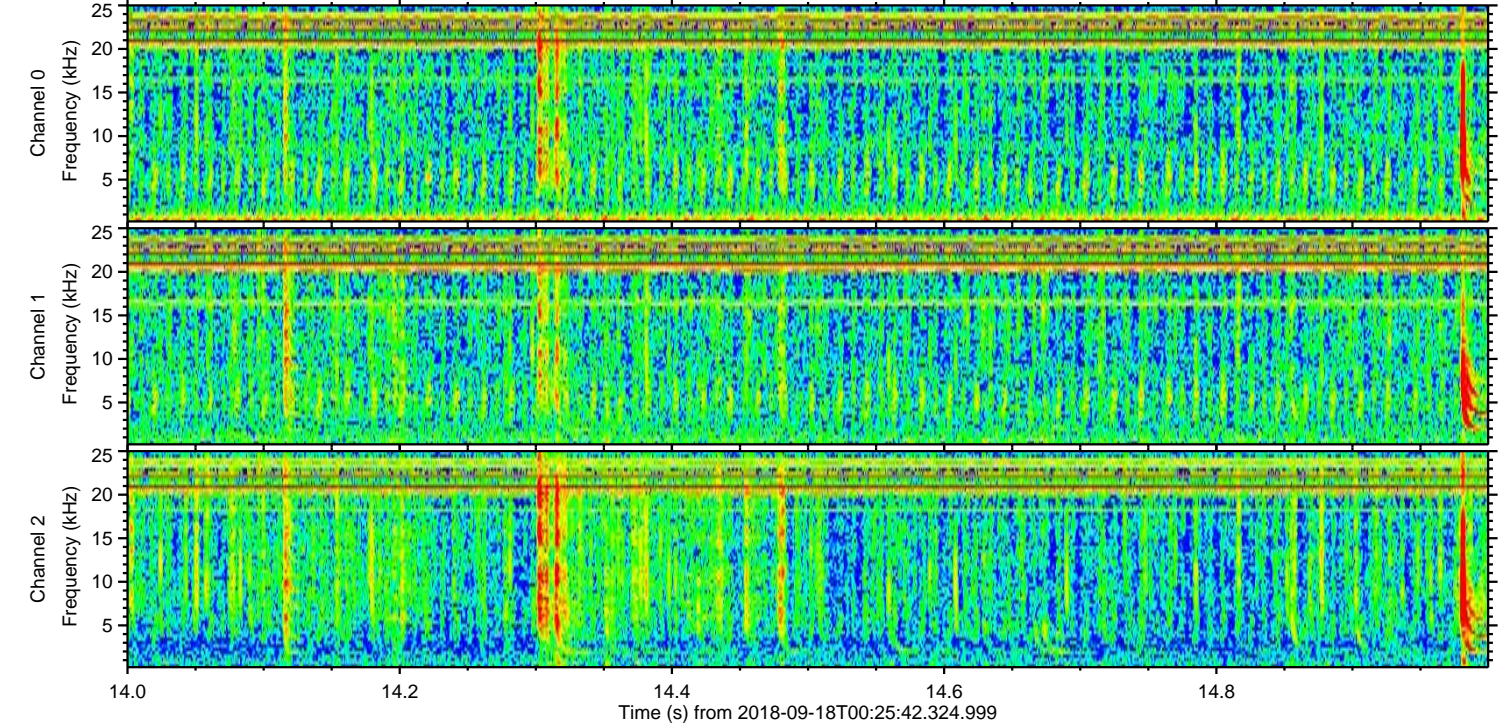
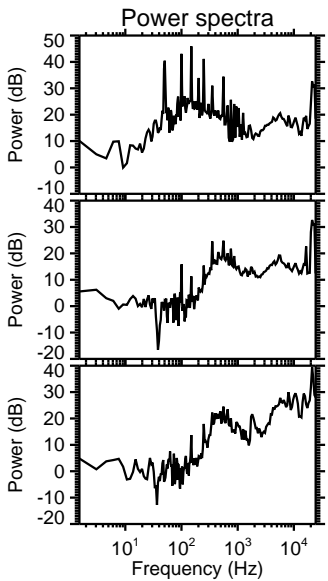
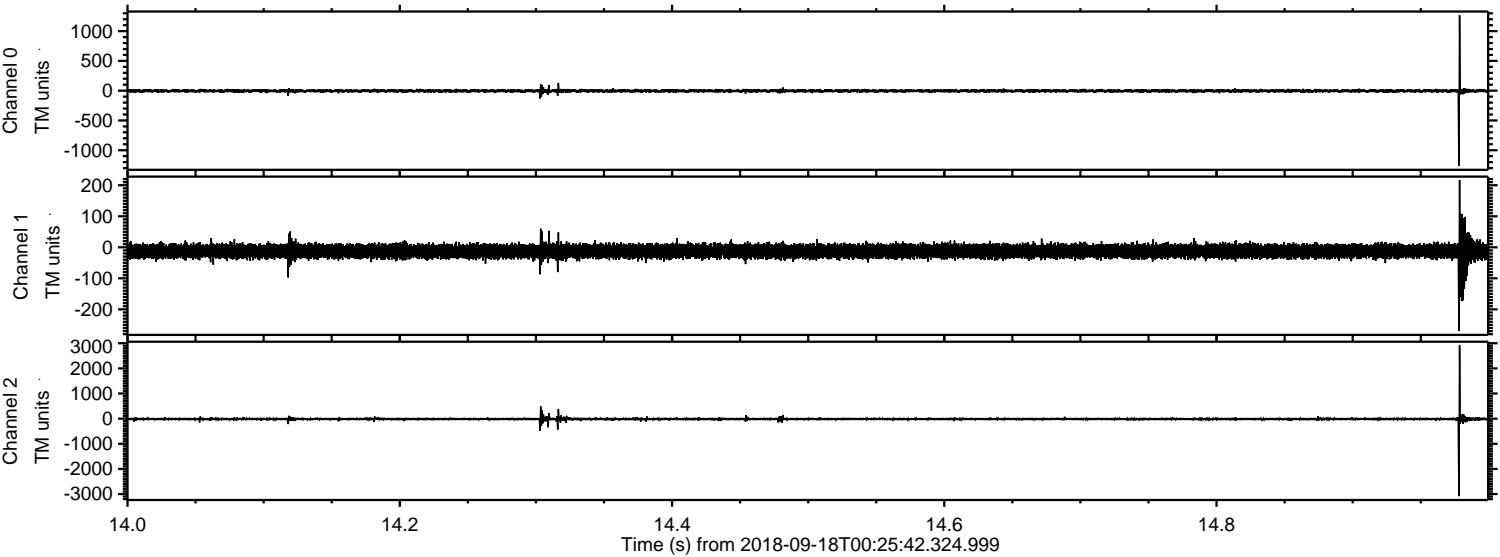


Processed Tue Sep 18 02:34:17 2018 by ELM ver.2012-10-06 from 001\_\_elm20180918\_002541\_\_dat00.bin





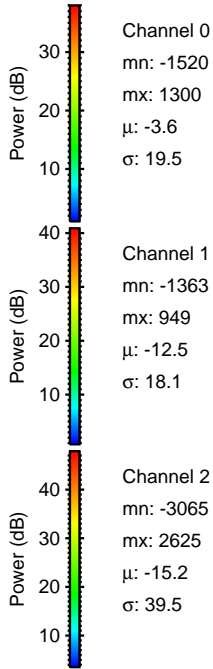
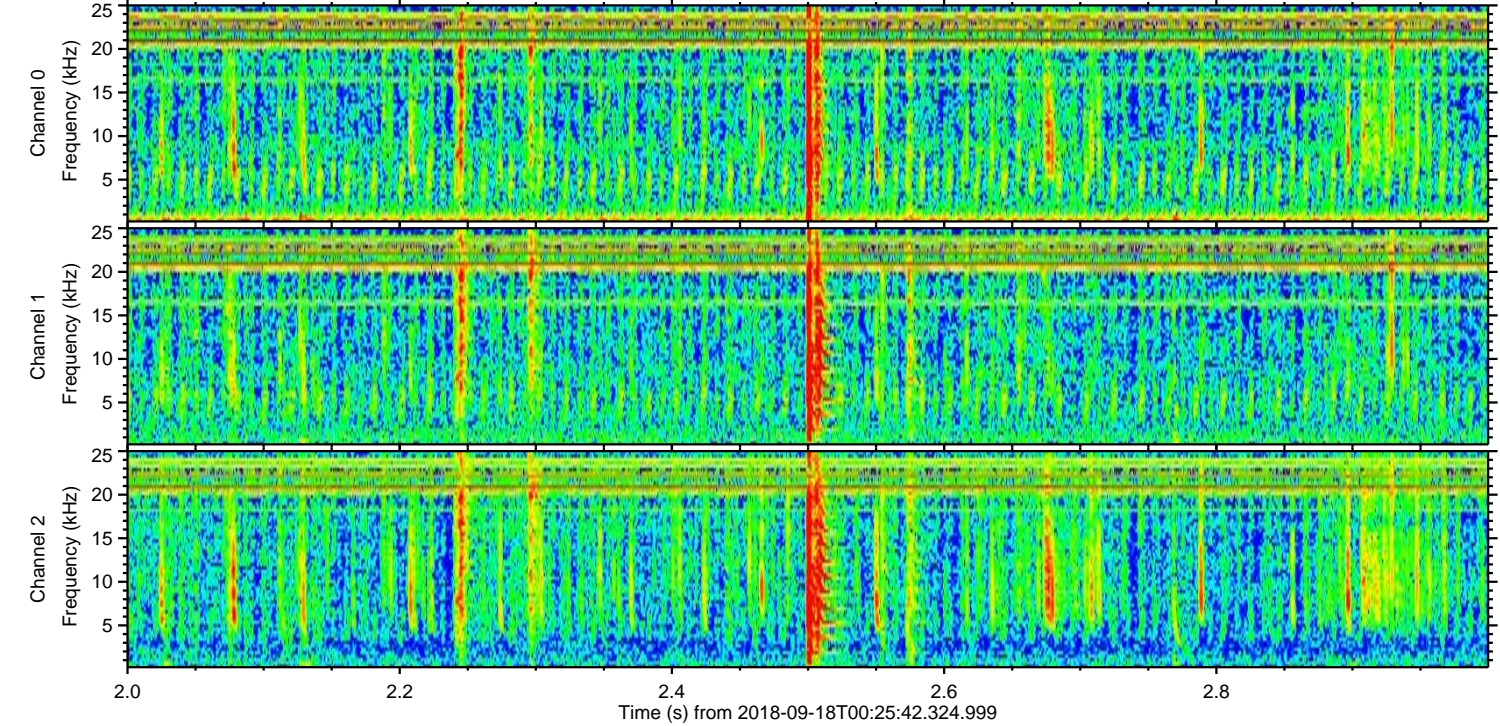
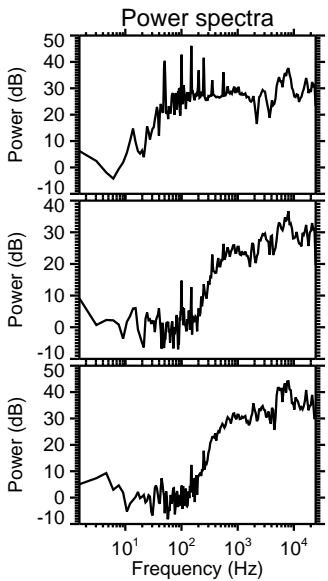
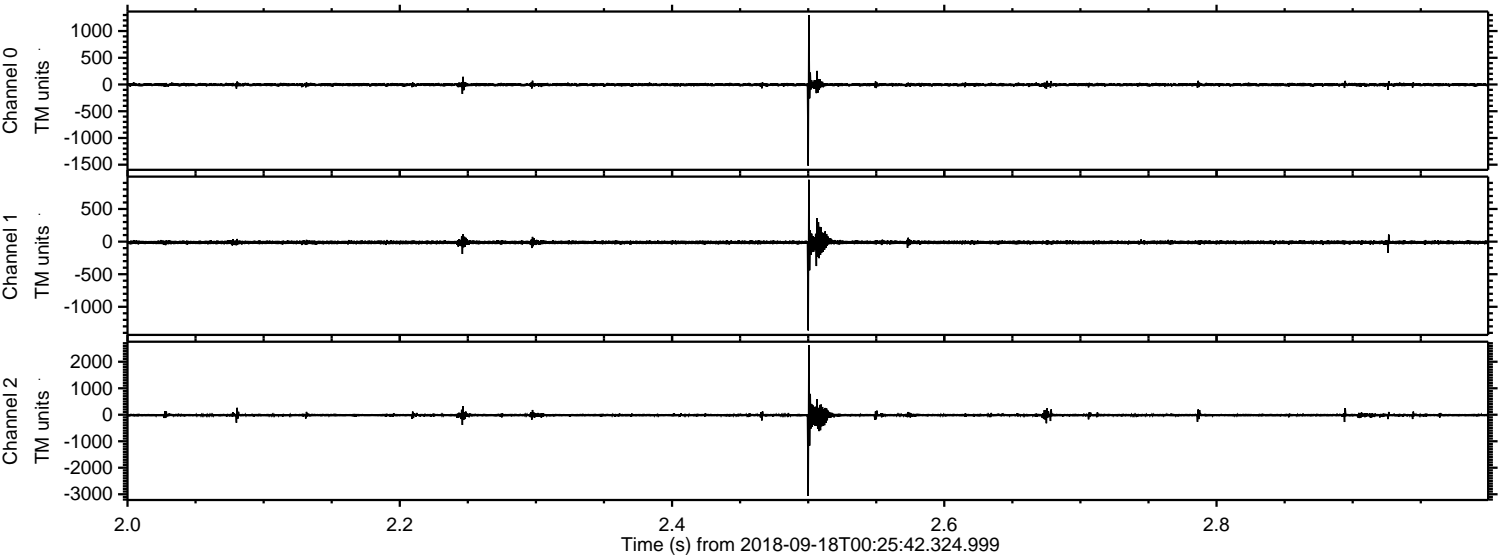
Processed Tue Sep 18 02:34:17 2018 by ELM ver.2012-10-06 from 001\_\_elm20180918\_002541\_\_dat00.bin





ELMAVAN 3D WAVEFORMS (Measured data sampled at 50 kHz) 51000 packets of 144 samples from 2018-09-18T00:25:42.324.999. Part 3/147

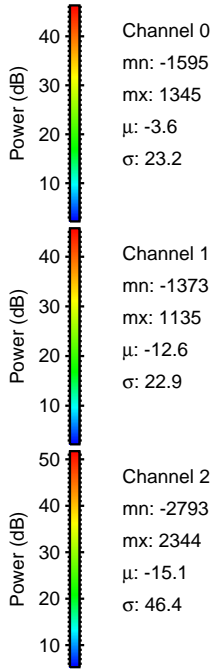
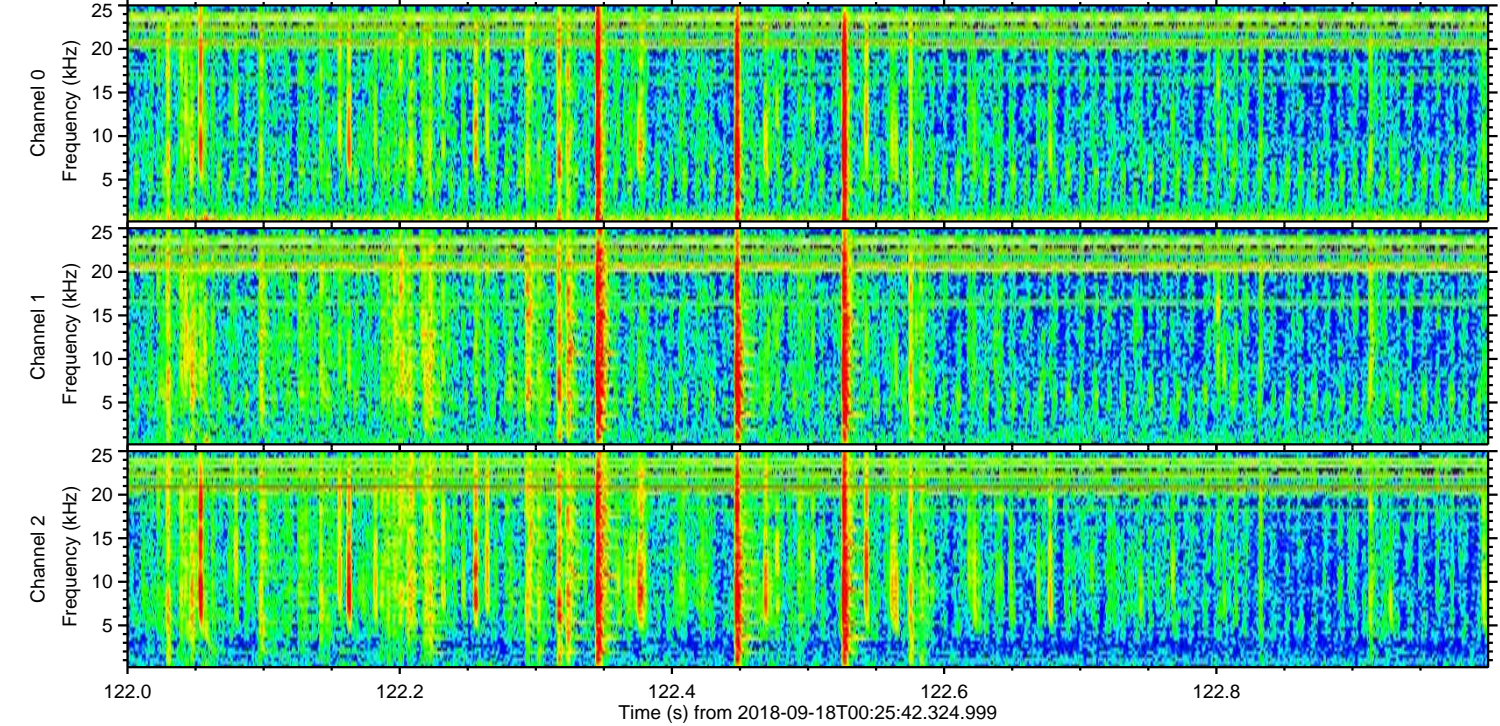
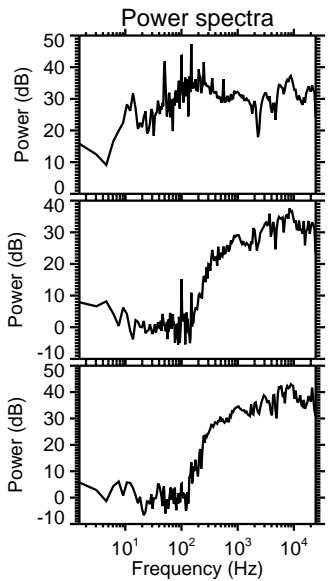
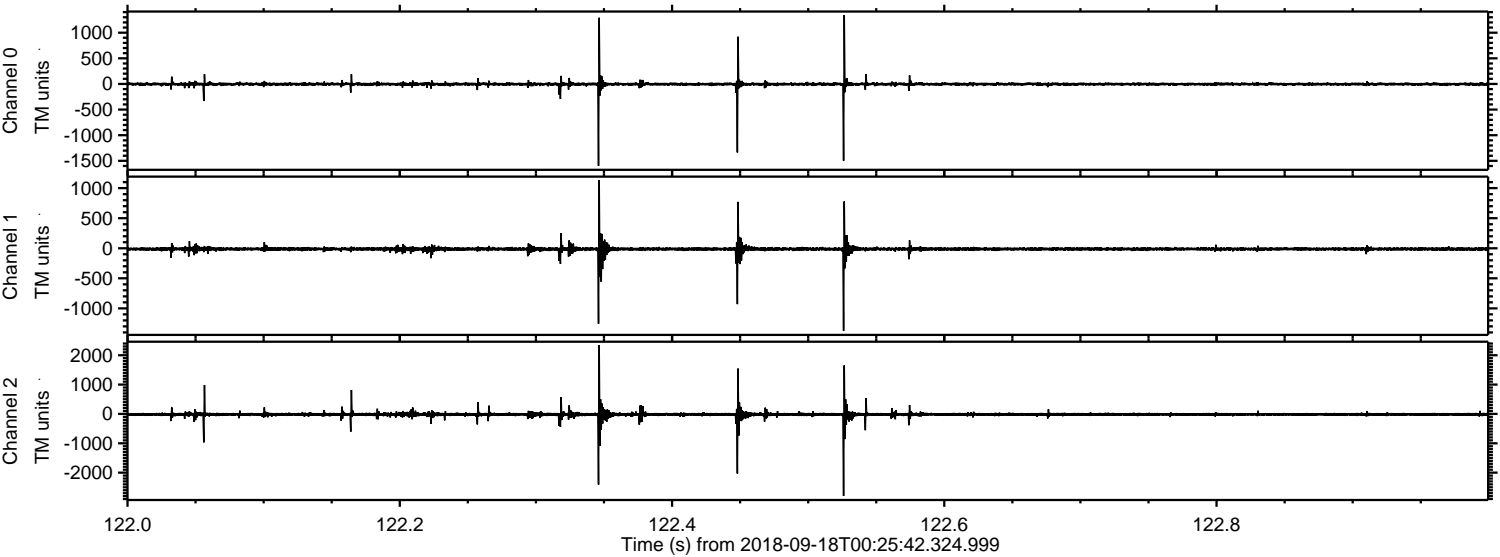
Processed Tue Sep 18 02:34:18 2018 by ELM ver.2012-10-06 from 001\_\_elm20180918\_002541\_\_dat00.bin





ELMAVAN 3D WAVEFORMS (Measured data sampled at 50 kHz) 51000 packets of 144 samples from 2018-09-18T00:25:42.324.999. Part 123/147

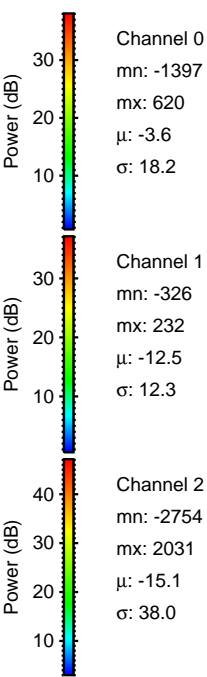
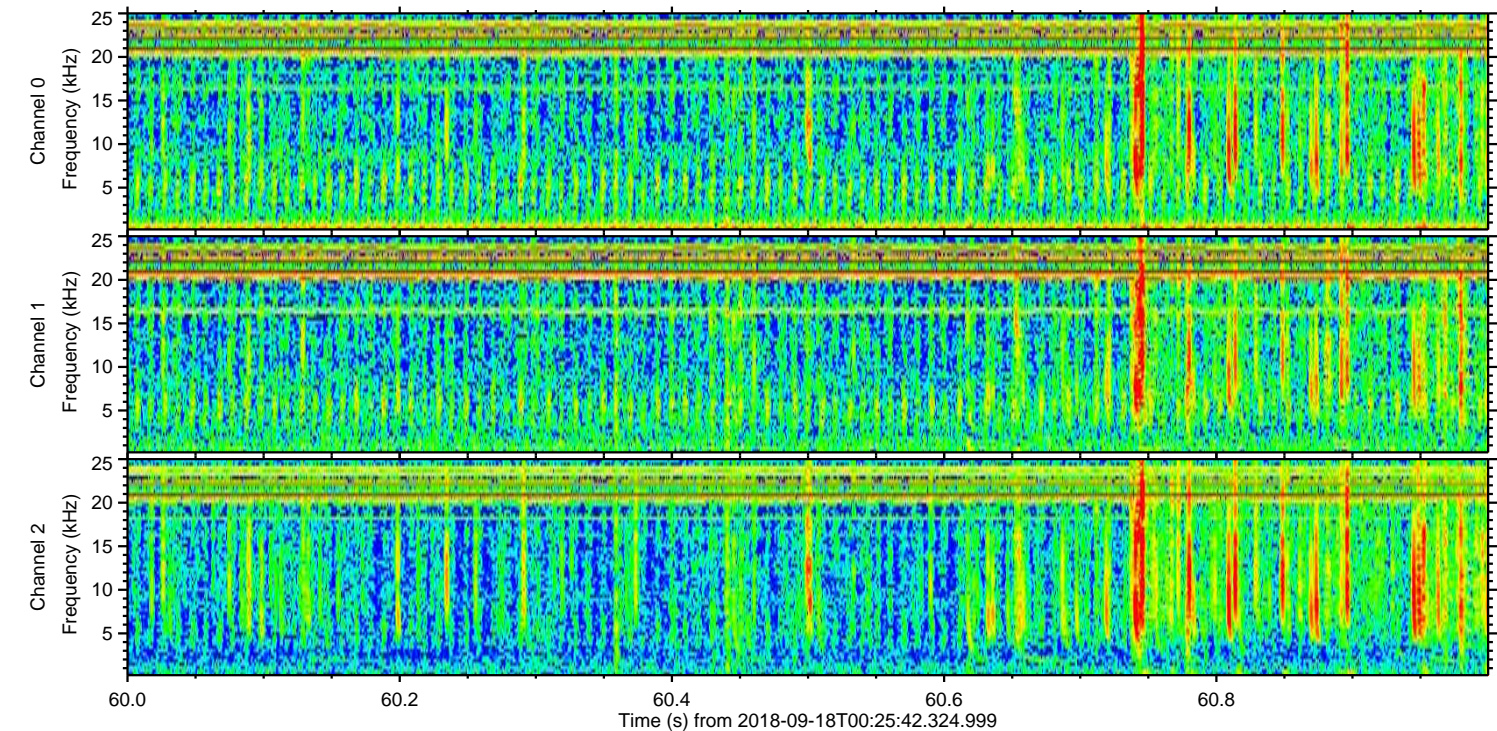
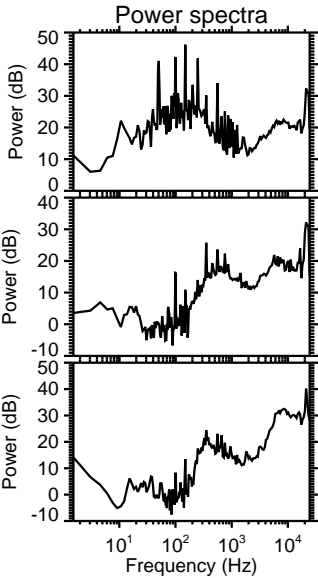
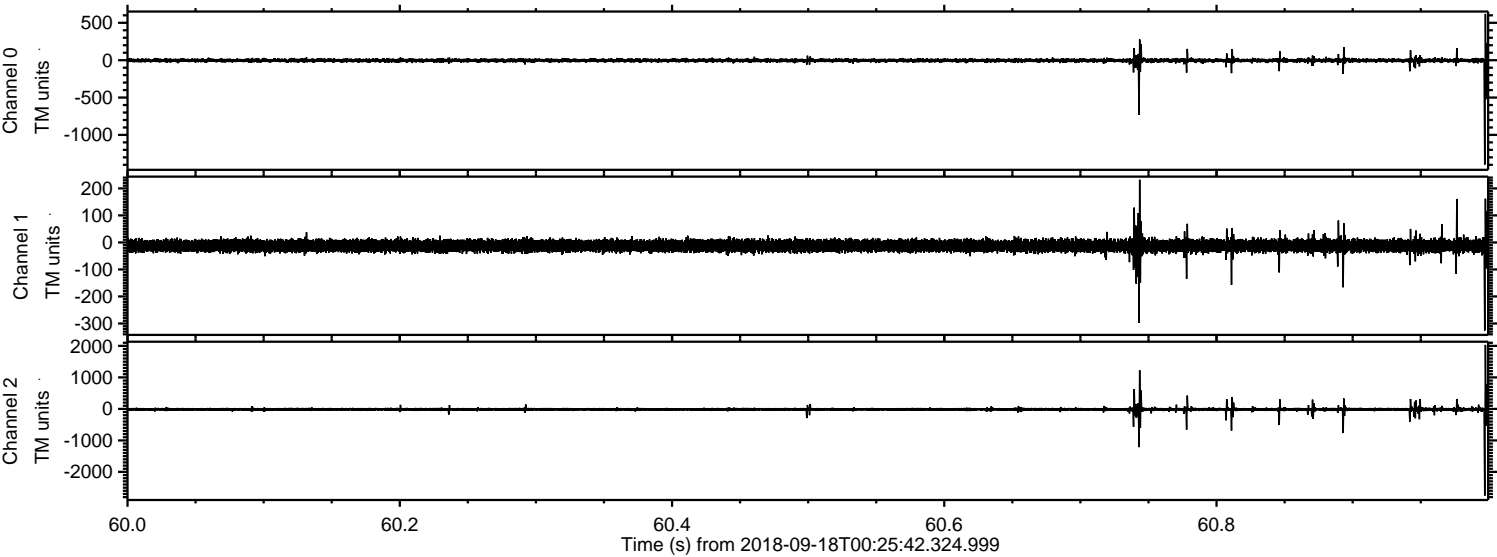
Processed Tue Sep 18 02:34:19 2018 by ELM ver.2012-10-06 from 001\_\_elm20180918\_002541\_\_dat00.bin





ELMAVAN 3D WAVEFORMS (Measured data sampled at 50 kHz) 51000 packets of 144 samples from 2018-09-18T00:25:42.324.999. Part 61/147

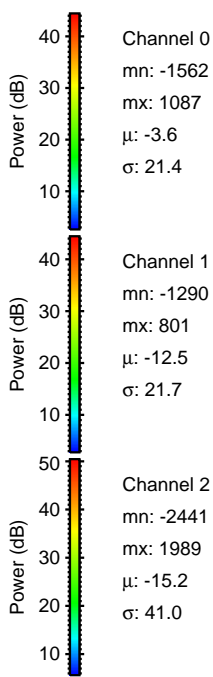
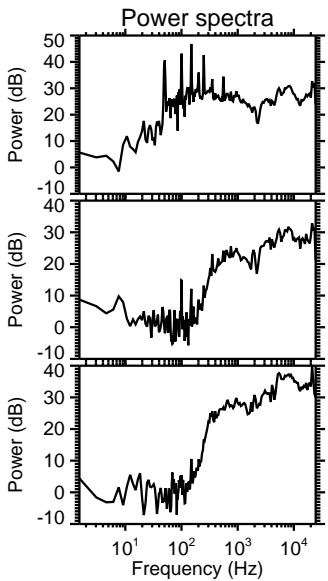
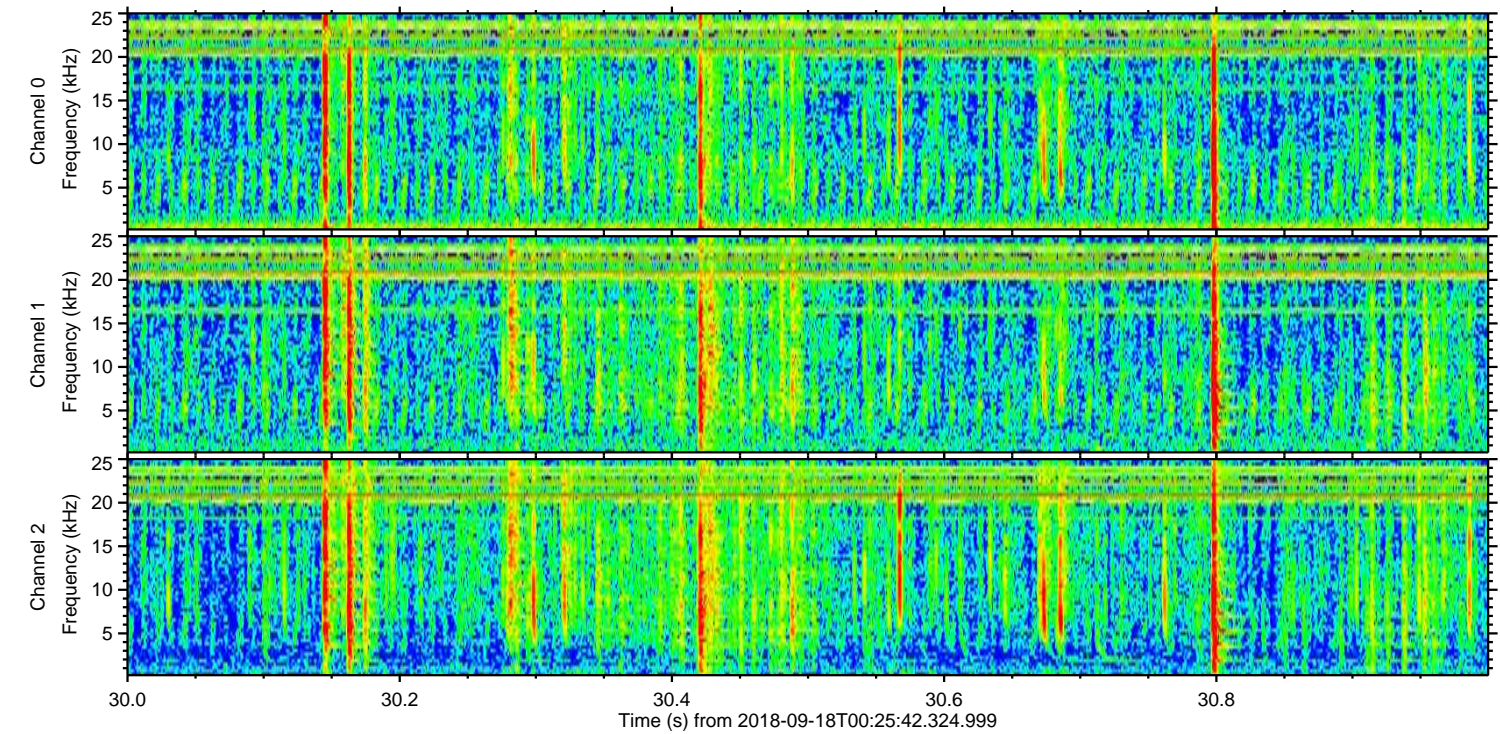
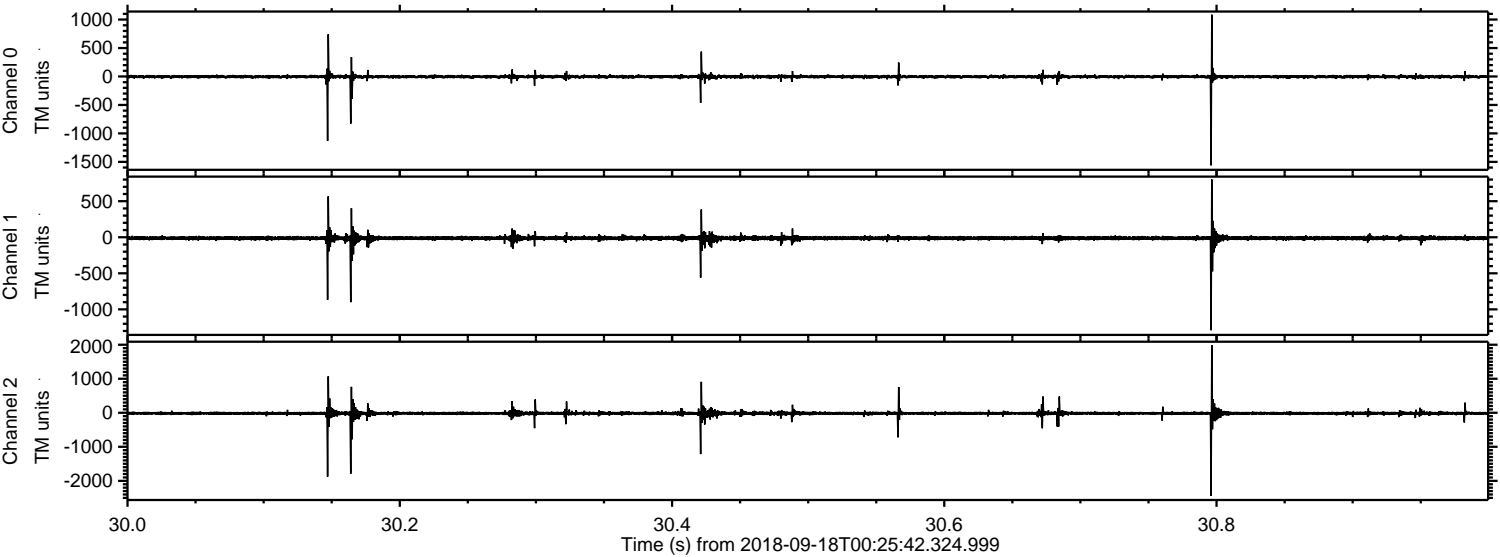
Processed Tue Sep 18 02:34:19 2018 by ELM ver.2012-10-06 from 001\_\_elm20180918\_002541\_\_dat00.bin





ELMAVAN 3D WAVEFORMS (Measured data sampled at 50 kHz) 51000 packets of 144 samples from 2018-09-18T00:25:42.324.999. Part 31/147

Processed Tue Sep 18 02:34:20 2018 by ELM ver.2012-10-06 from 001\_\_elm20180918\_002541\_\_dat00.bin



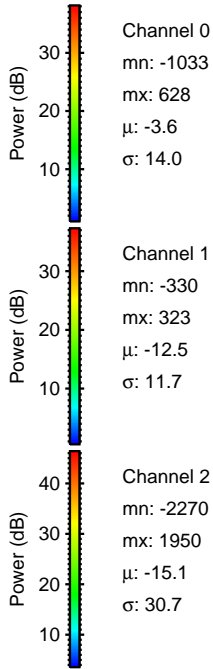
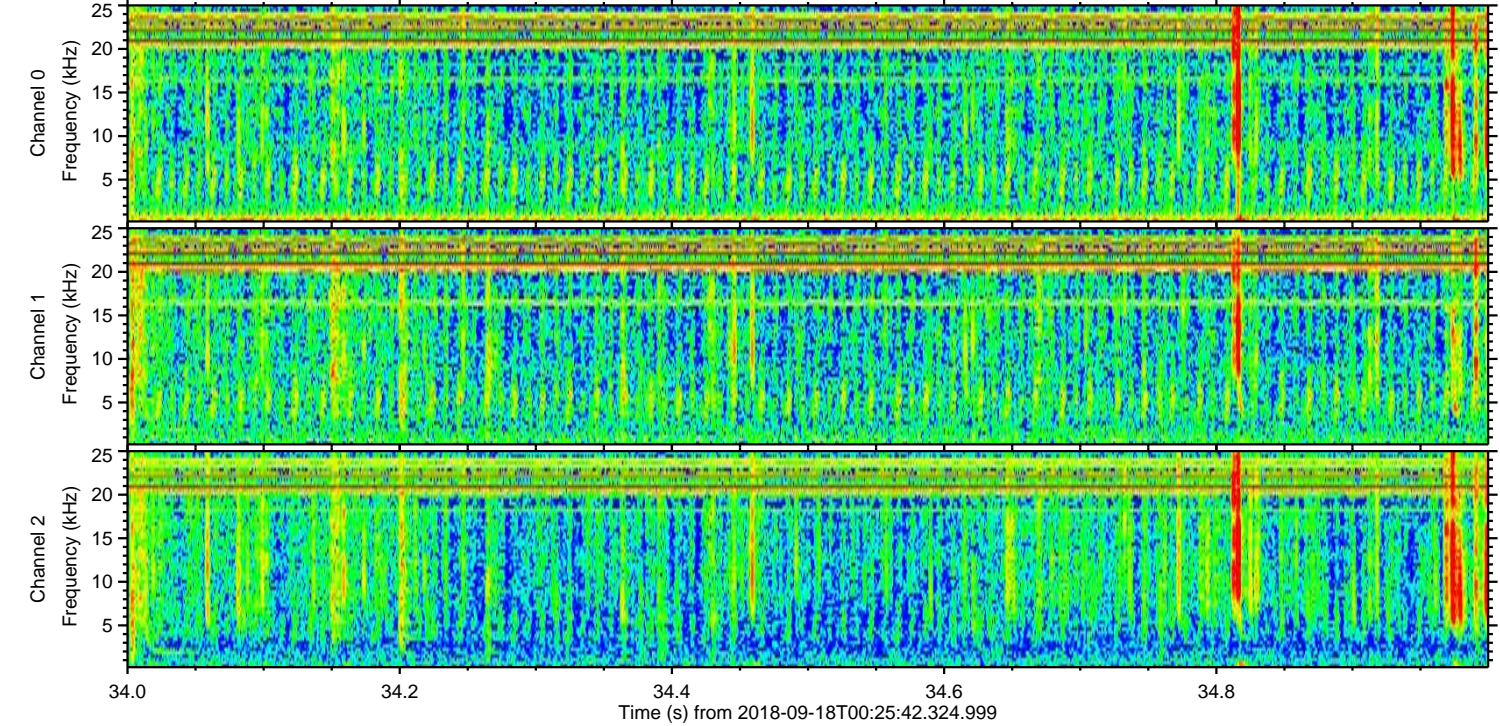
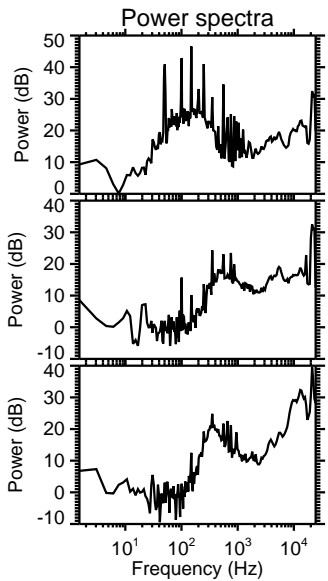
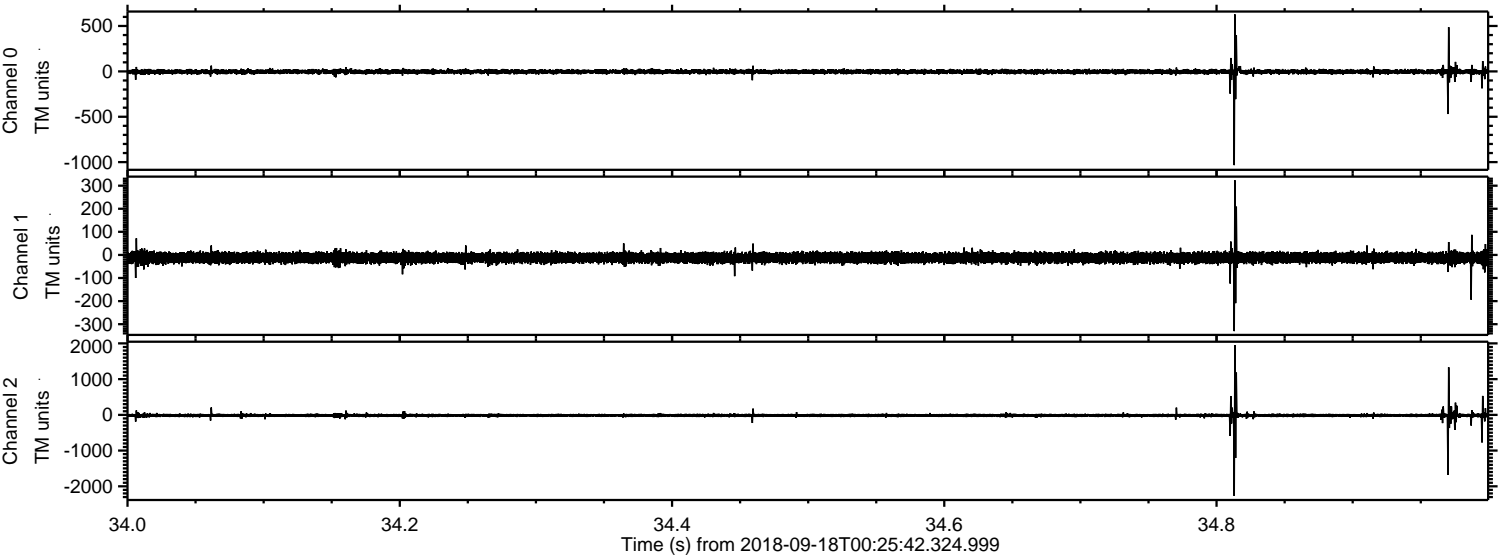
Channel 0  
mn: -1562  
mx: 1087  
 $\mu$ : -3.6  
 $\sigma$ : 21.4

Channel 1  
mn: -1290  
mx: 801  
 $\mu$ : -12.5  
 $\sigma$ : 21.7

Channel 2  
mn: -2441  
mx: 1989  
 $\mu$ : -15.2  
 $\sigma$ : 41.0



Processed Tue Sep 18 02:34:21 2018 by ELM ver.2012-10-06 from 001\_\_elm20180918\_002541\_\_dat00.bin





Processed Tue Sep 18 02:34:21 2018 by ELM ver.2012-10-06 from 001\_\_elm20180918\_002541\_\_dat00.bin

