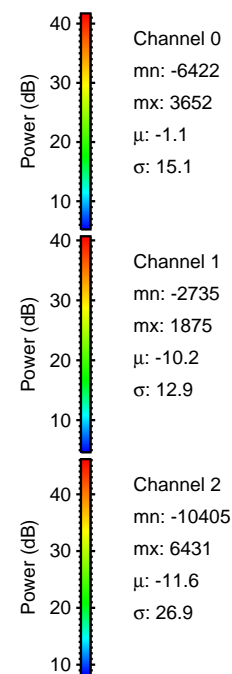
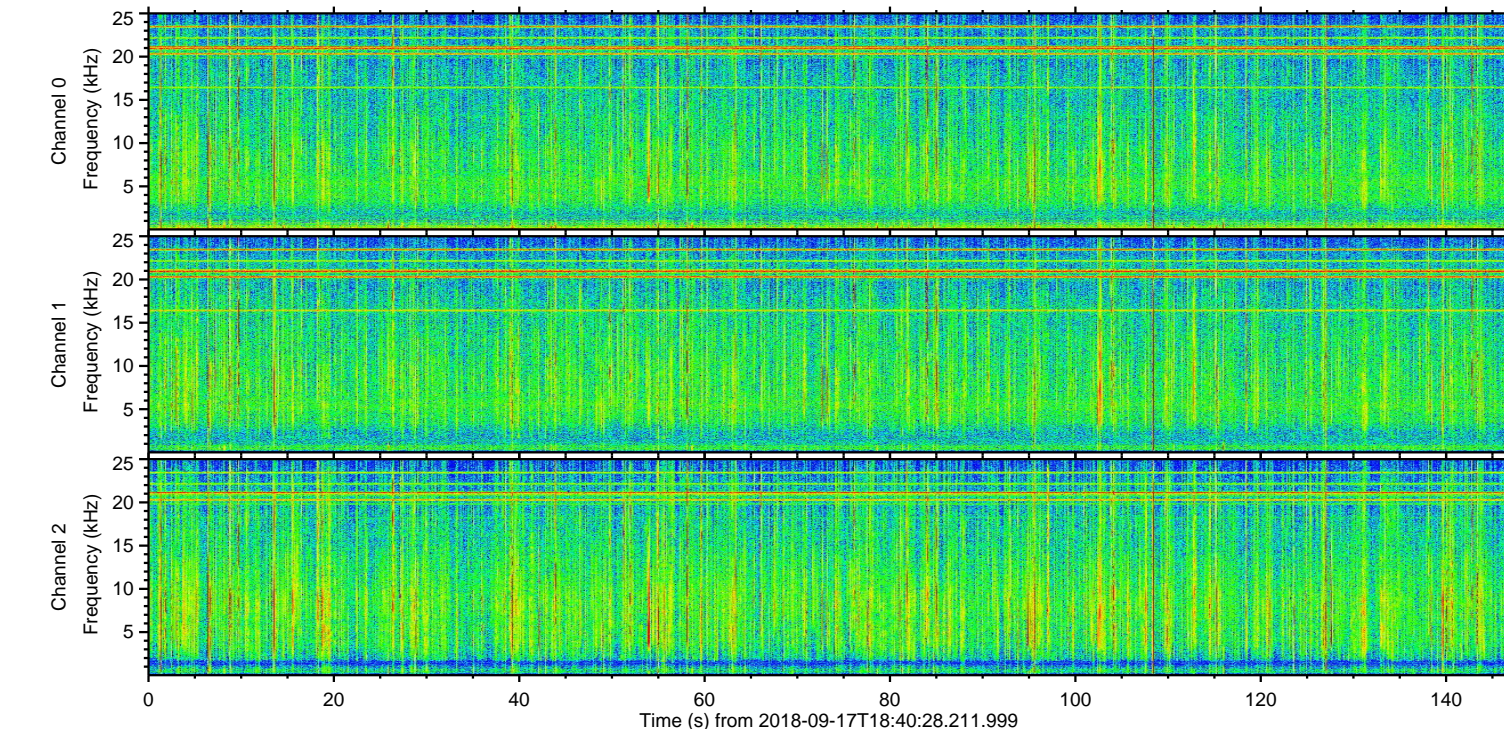
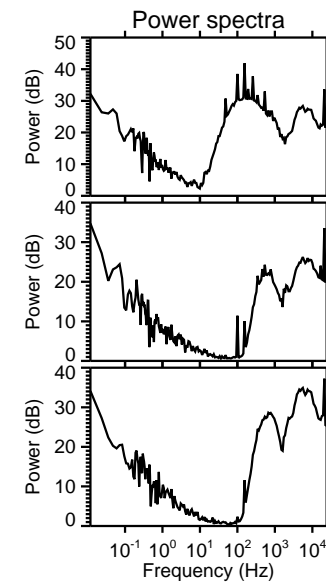
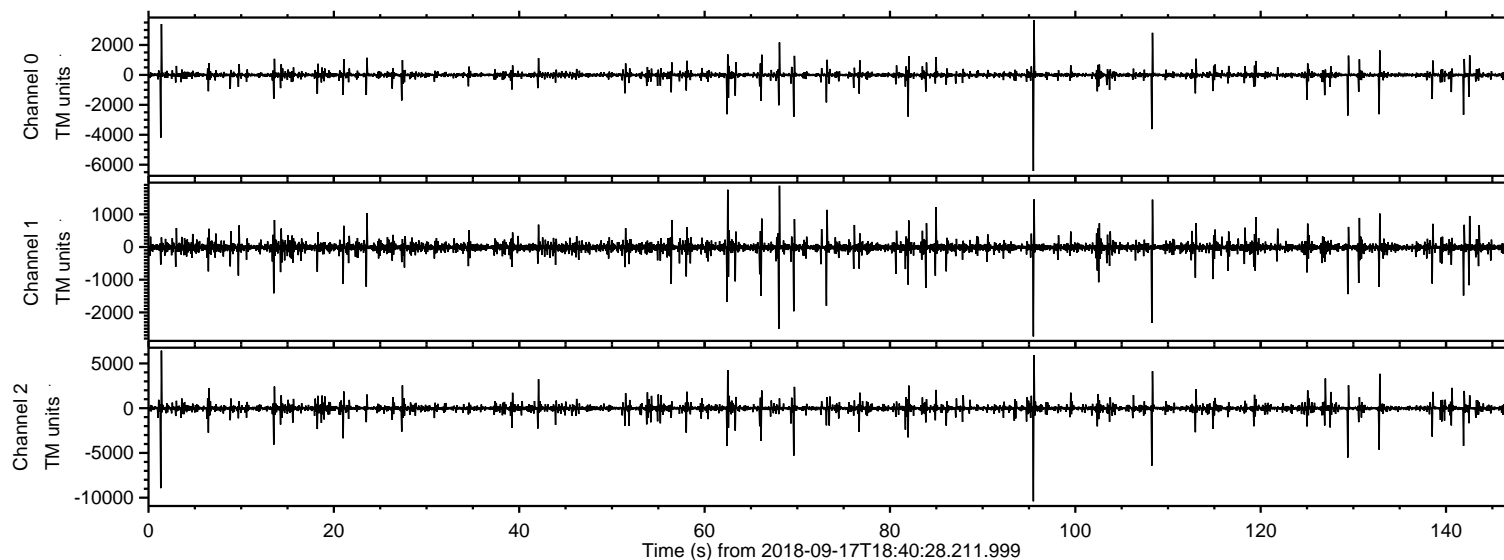
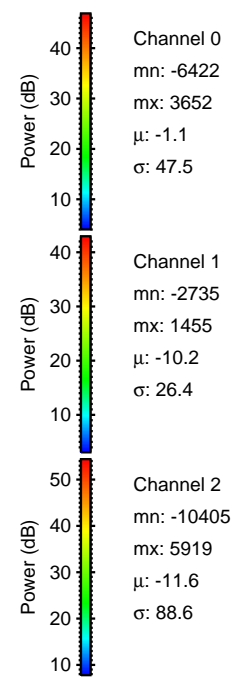
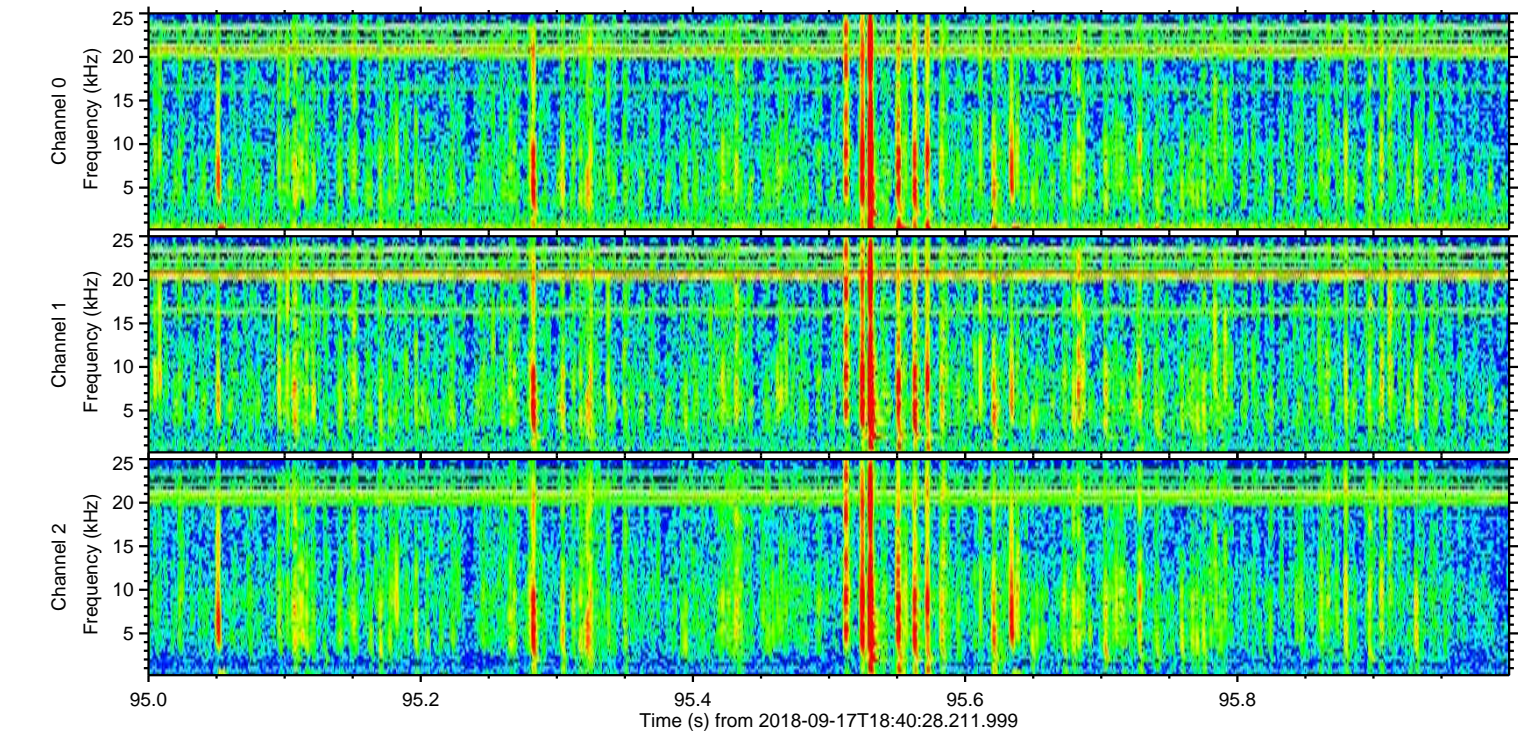
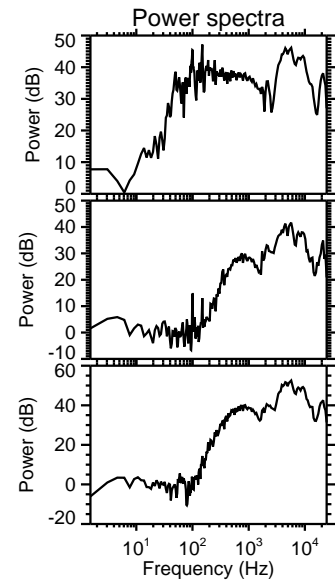
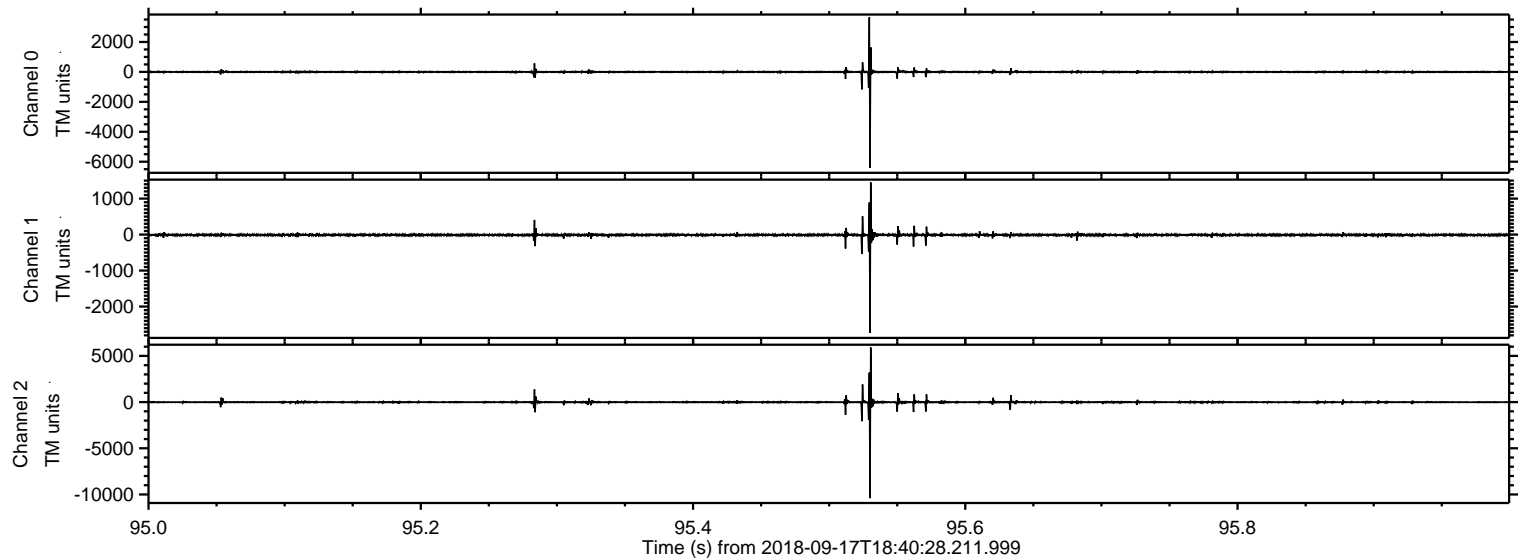


ELMAVAN 3D WAVEFORMS (Measured data sampled at 50 kHz) 51000 packets of 144 samples from 2018-09-17T18:40:28.211.999.

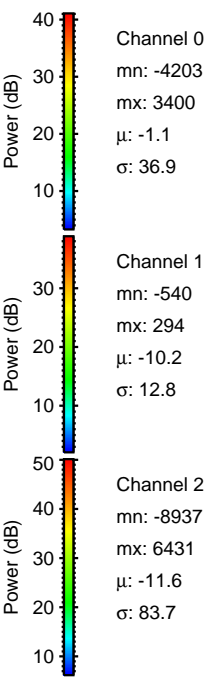
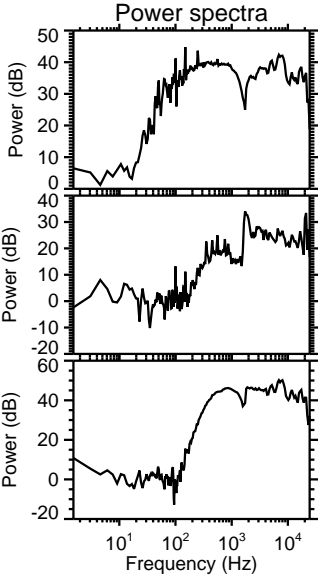
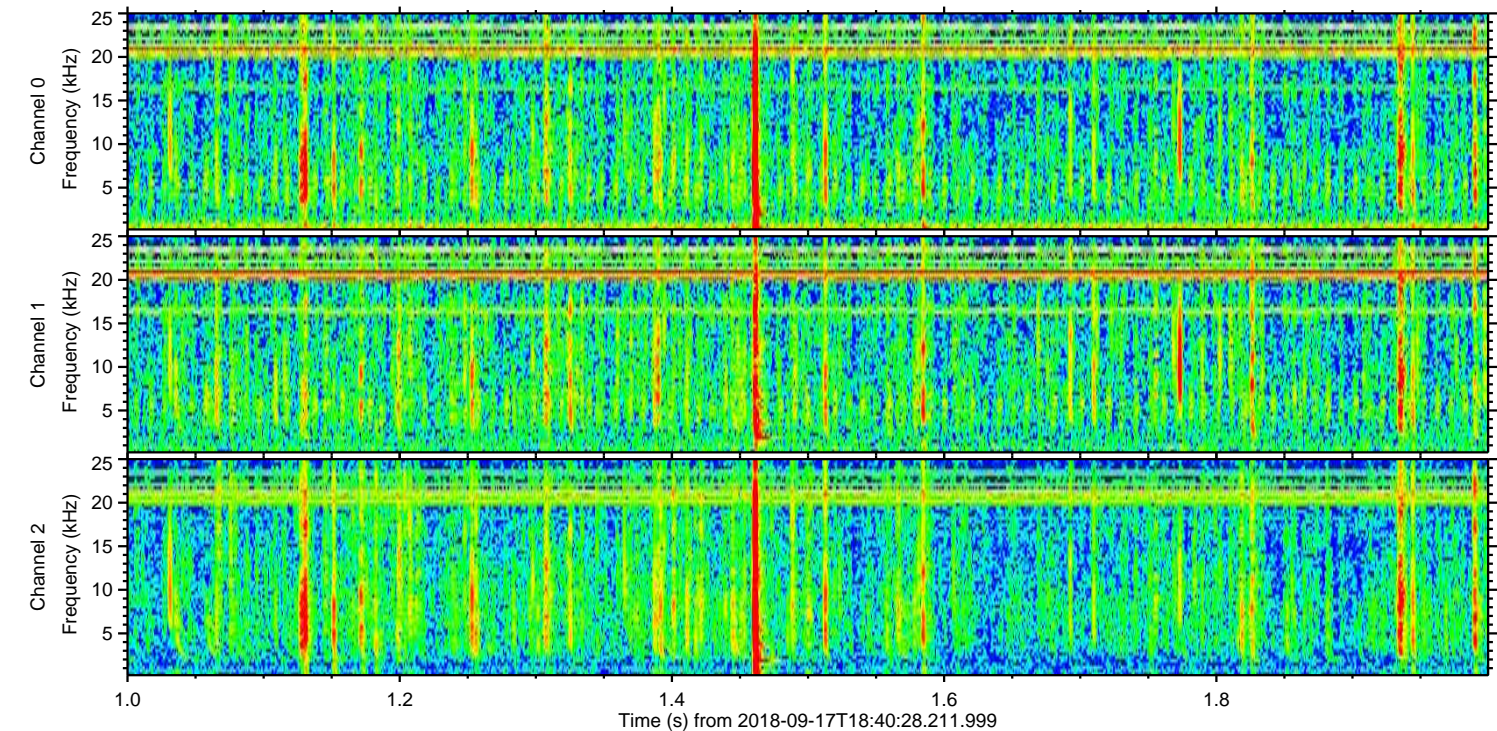
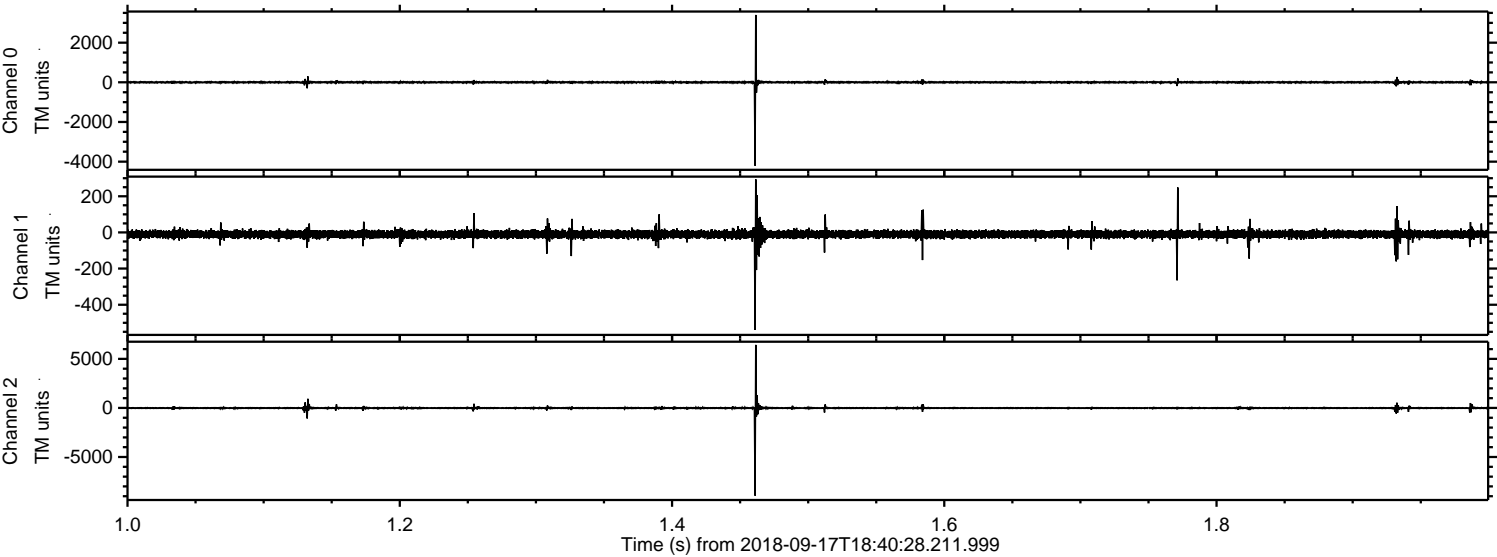
Processed Mon Sep 17 20:48:42 2018 by ELM ver.2012-10-06 from 001__elm20180917_184027__dat00.bin



Processed Mon Sep 17 20:48:48 2018 by ELM ver.2012-10-06 from 001__elm20180917_184027__dat00.bin

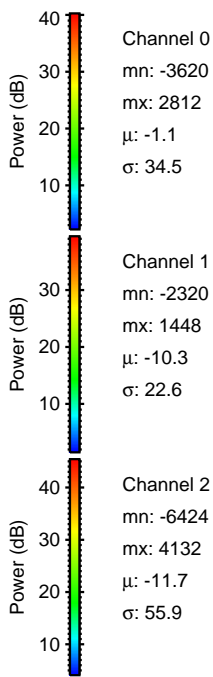
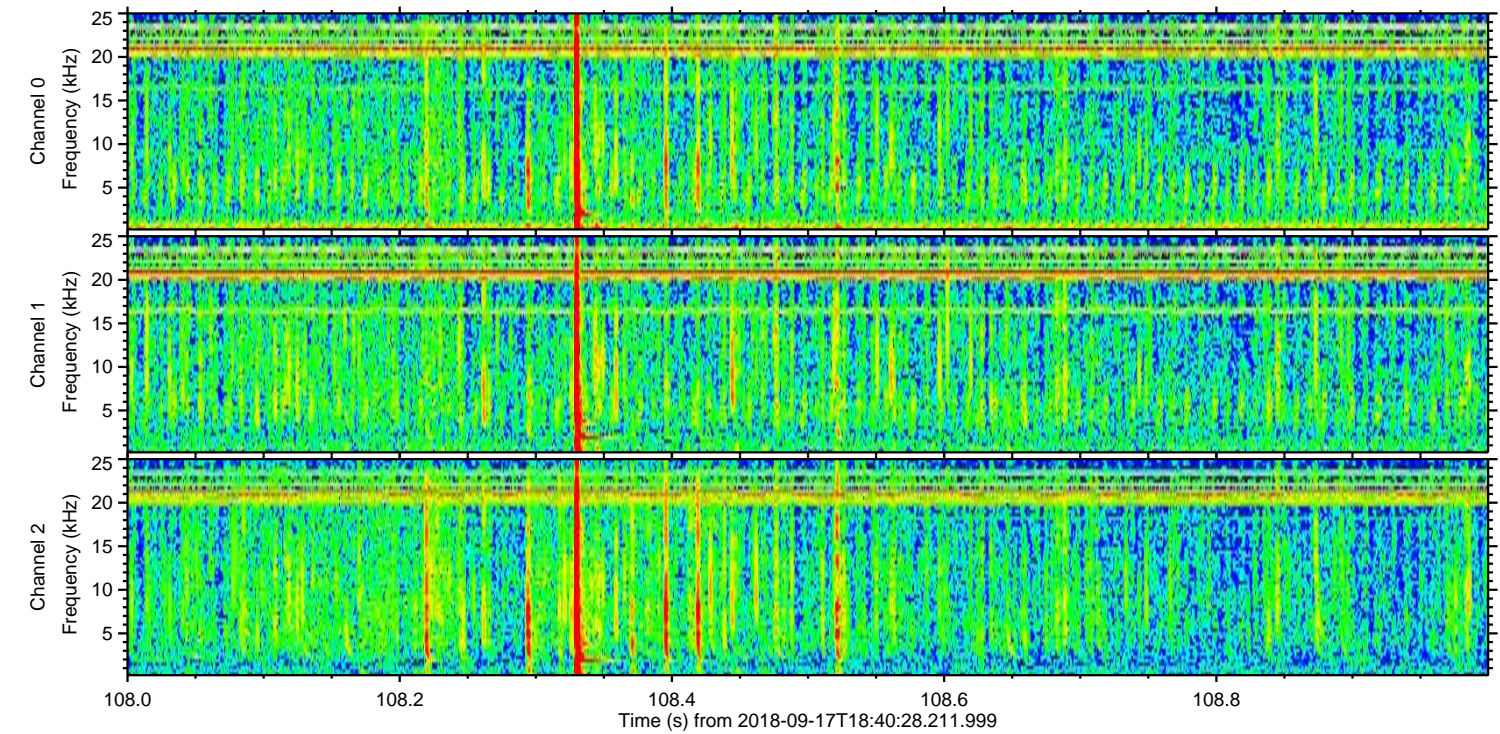
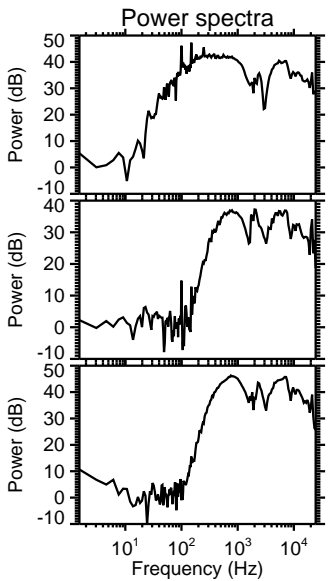
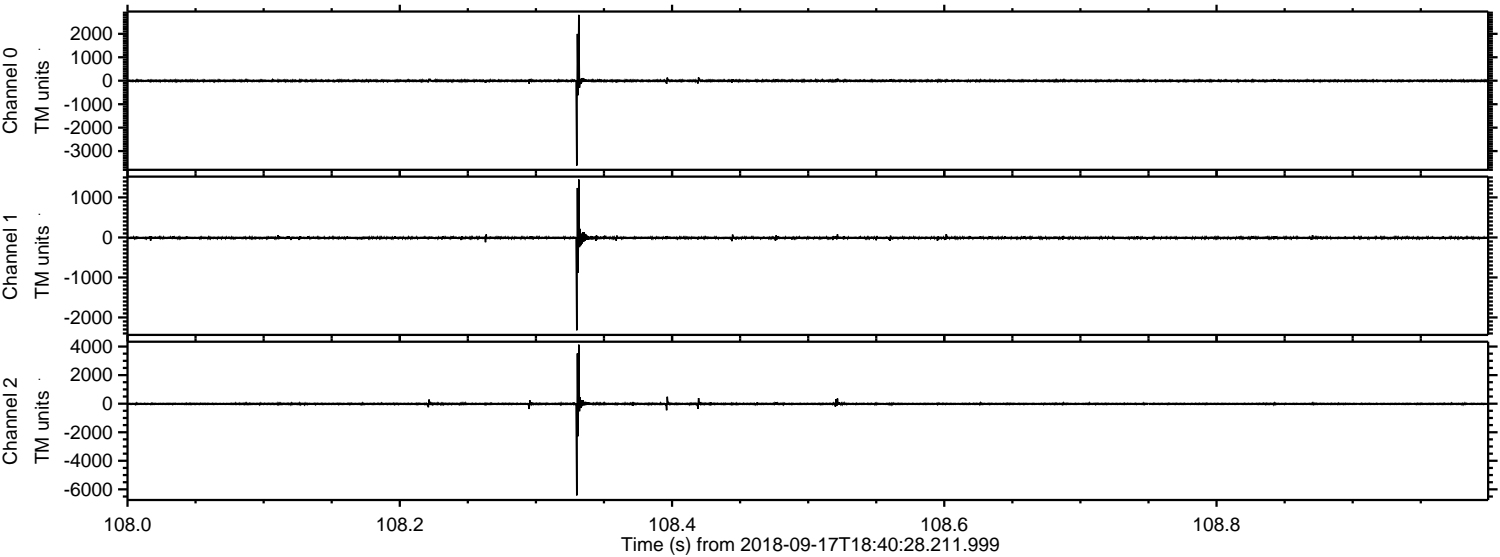


Processed Mon Sep 17 20:48:48 2018 by ELM ver.2012-10-06 from 001__elm20180917_184027__dat00.bin



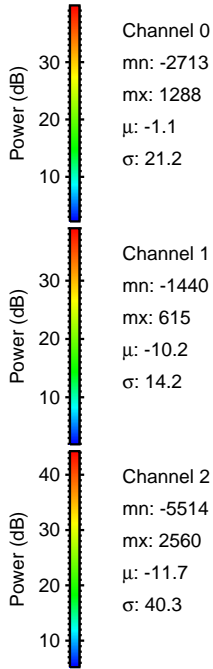
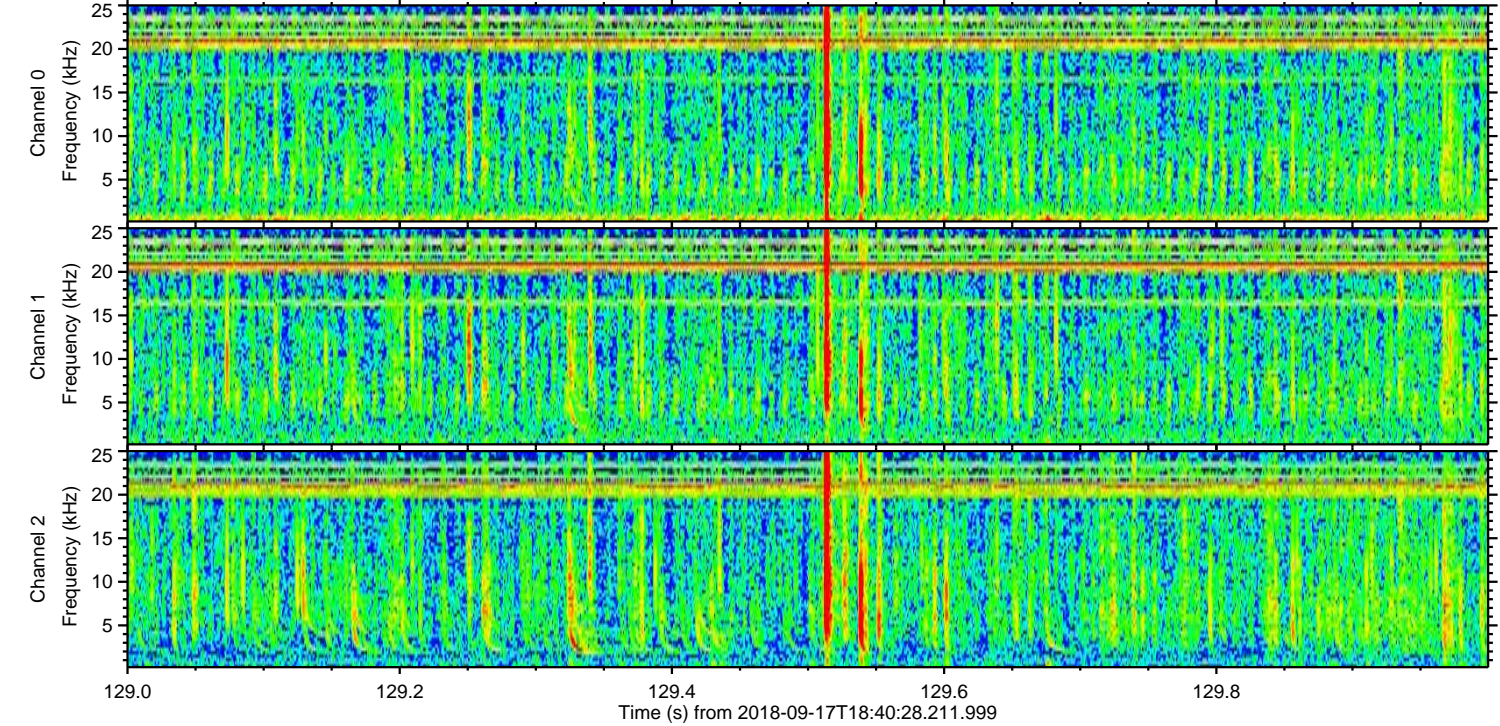
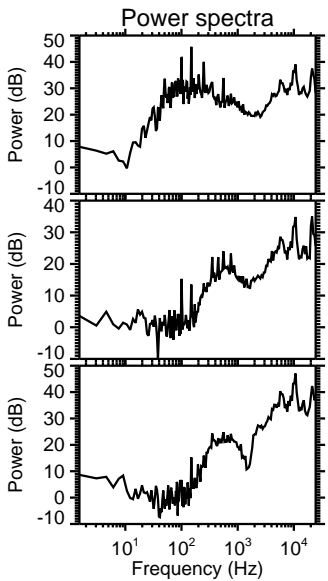
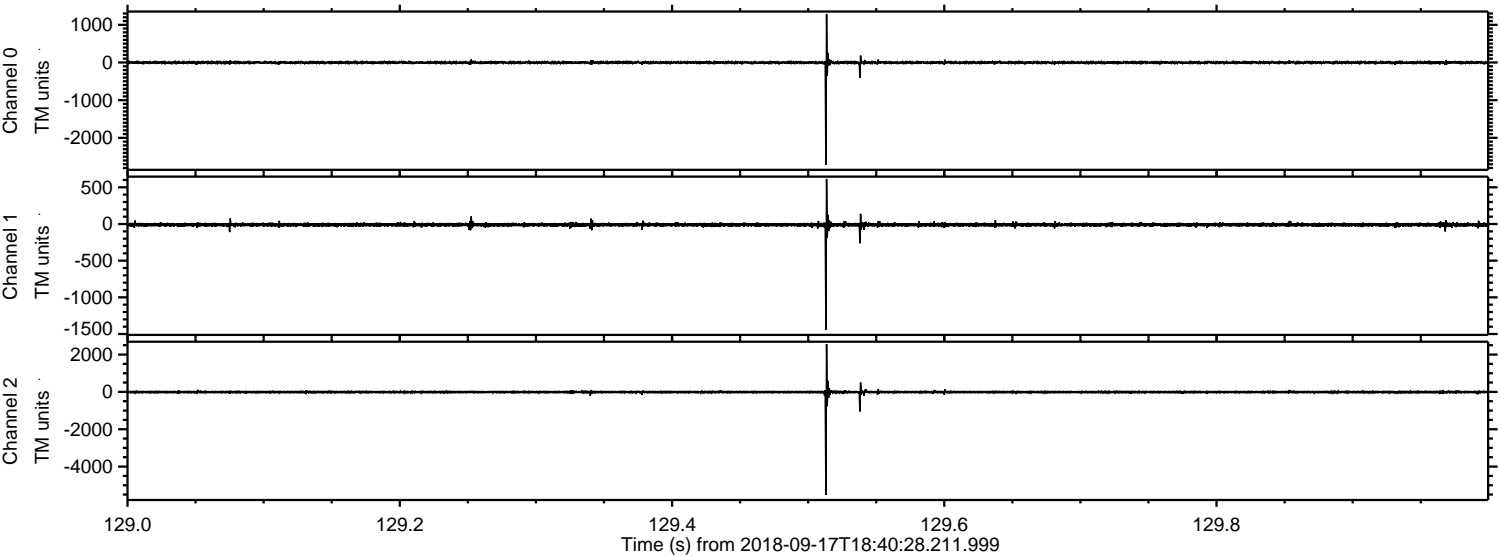
ELMAVAN 3D WAVEFORMS (Measured data sampled at 50 kHz) 51000 packets of 144 samples from 2018-09-17T18:40:28.211.999. Part 109/147

Processed Mon Sep 17 20:48:49 2018 by ELM ver.2012-10-06 from 001__elm20180917_184027__dat00.bin

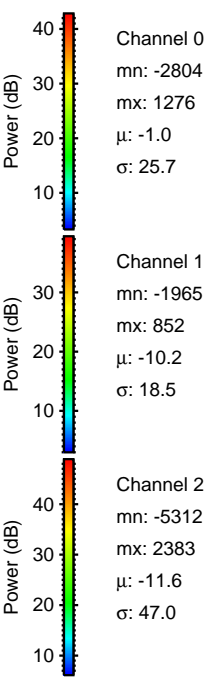
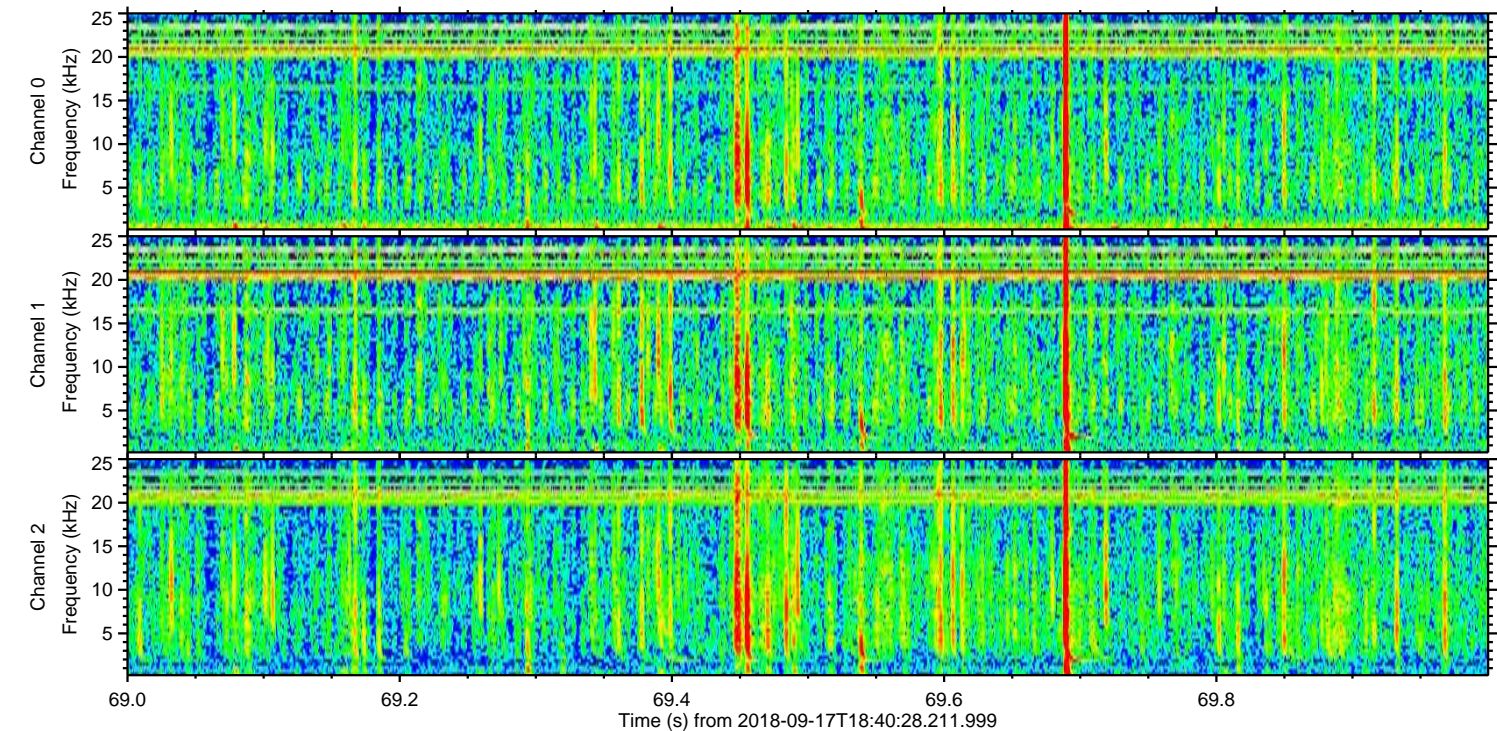
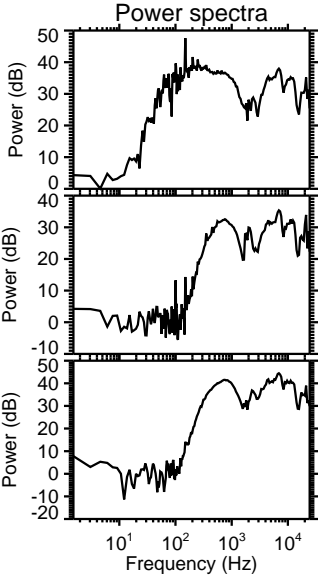
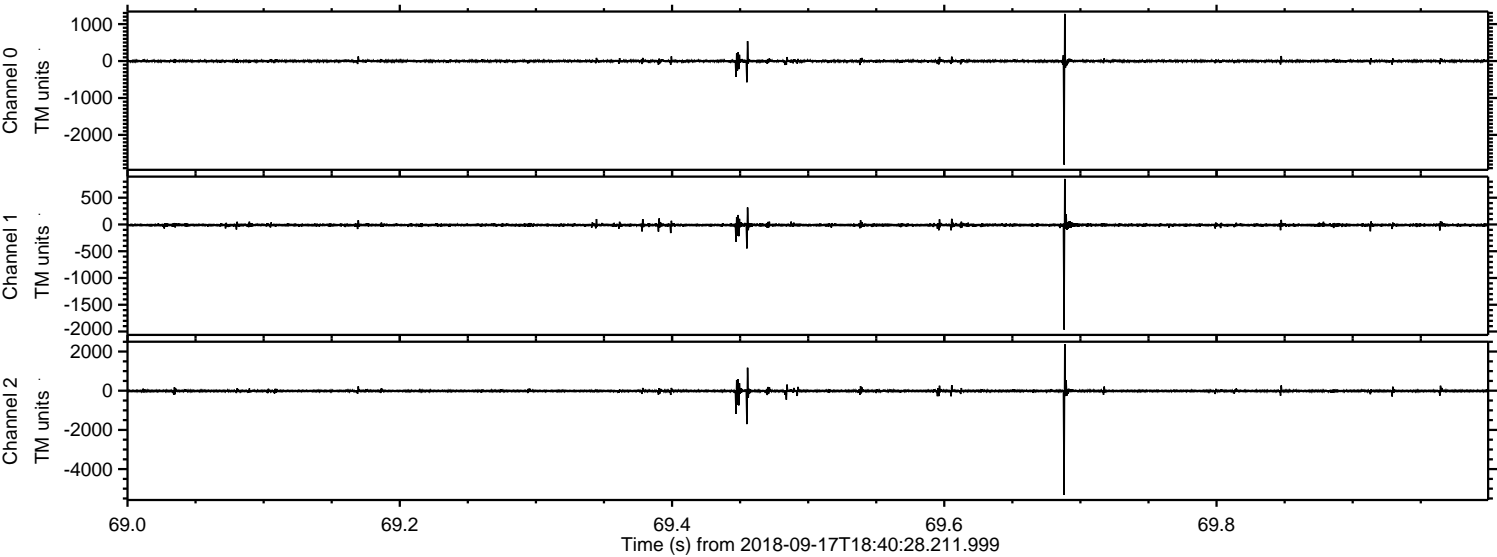


ELMAVAN 3D WAVEFORMS (Measured data sampled at 50 kHz) 51000 packets of 144 samples from 2018-09-17T18:40:28.211.999. Part 130/147

Processed Mon Sep 17 20:48:50 2018 by ELM ver.2012-10-06 from 001__elm20180917_184027__dat00.bin

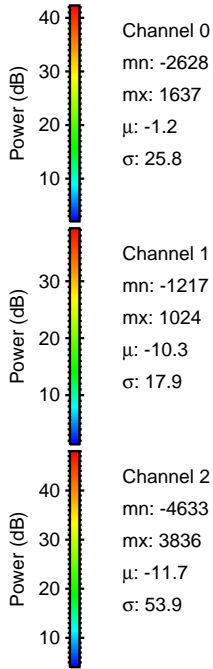
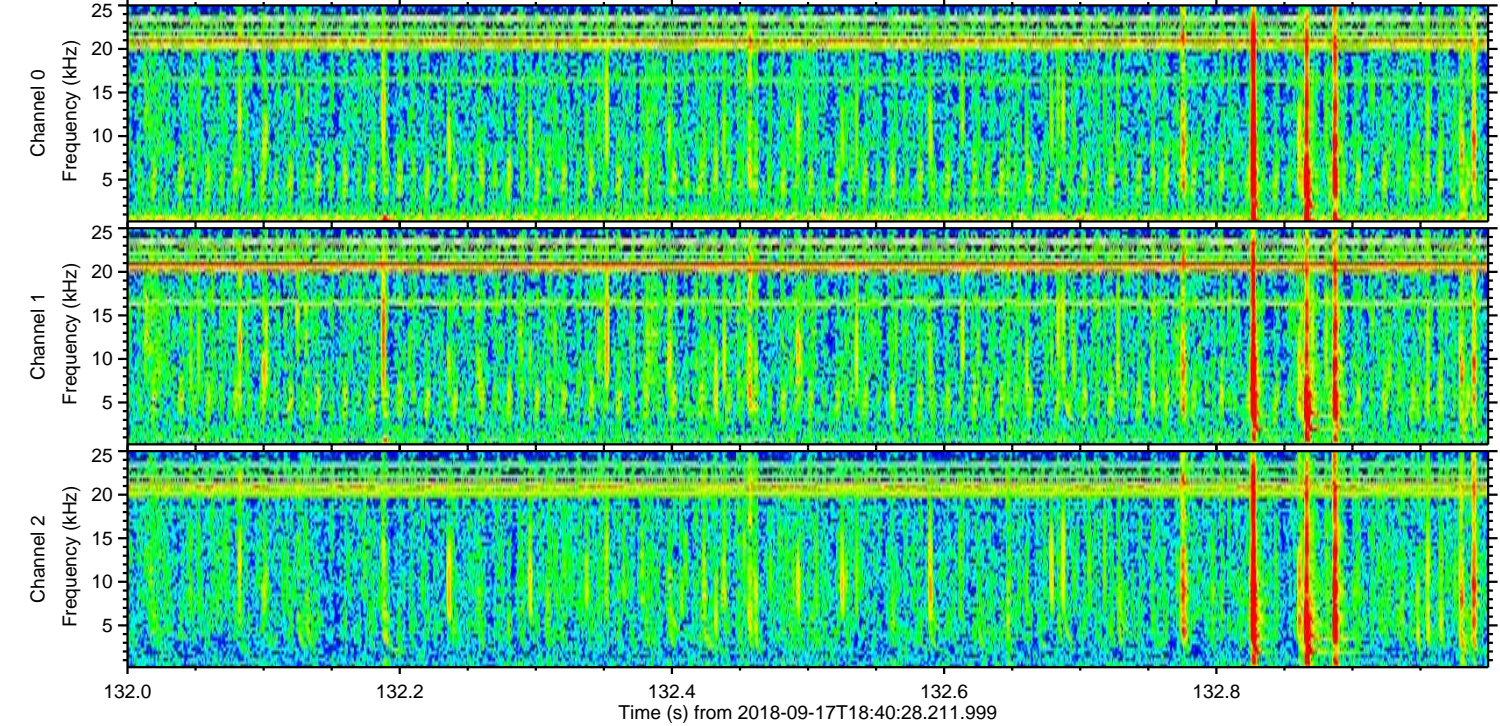
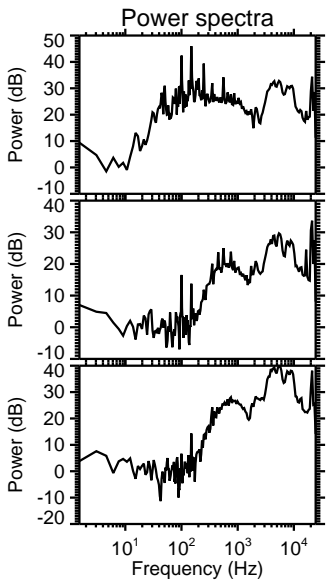
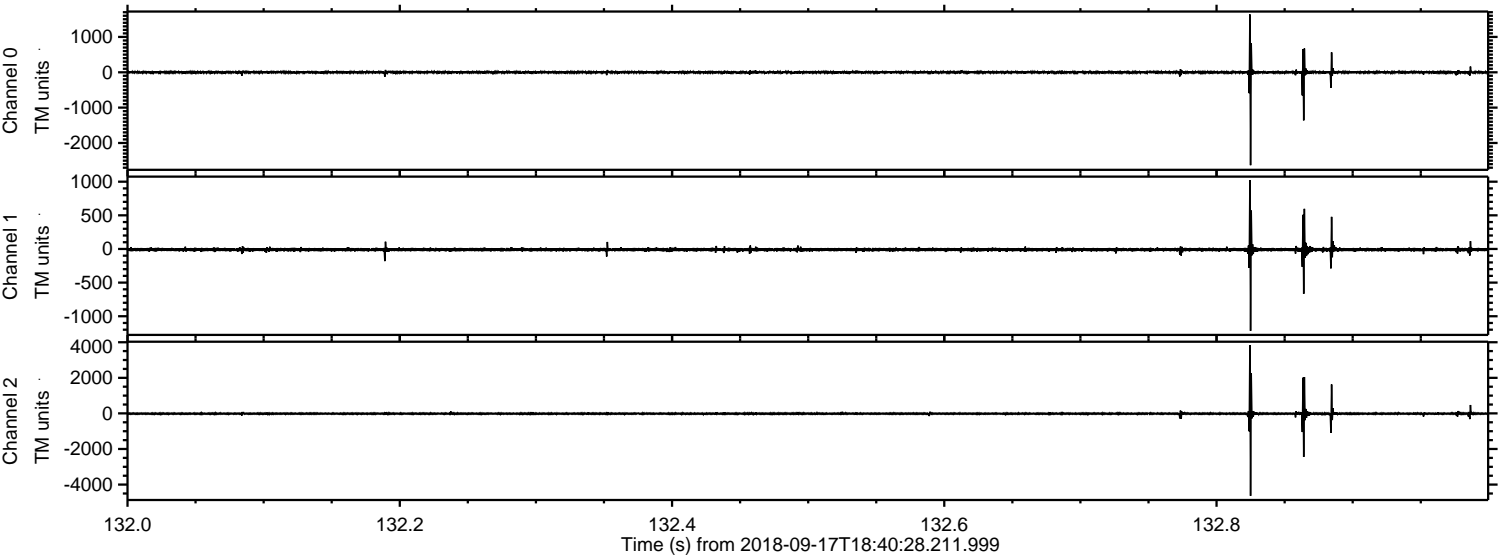


Processed Mon Sep 17 20:48:51 2018 by ELM ver.2012-10-06 from 001__elm20180917_184027__dat00.bin

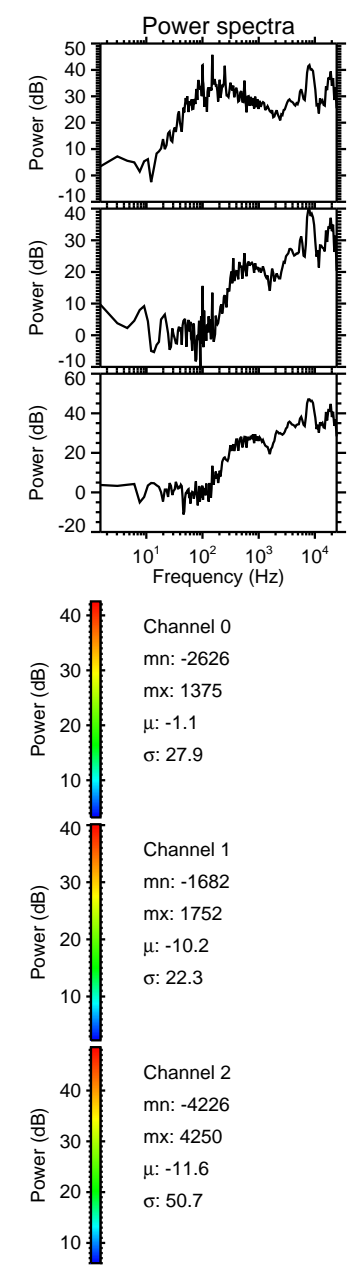
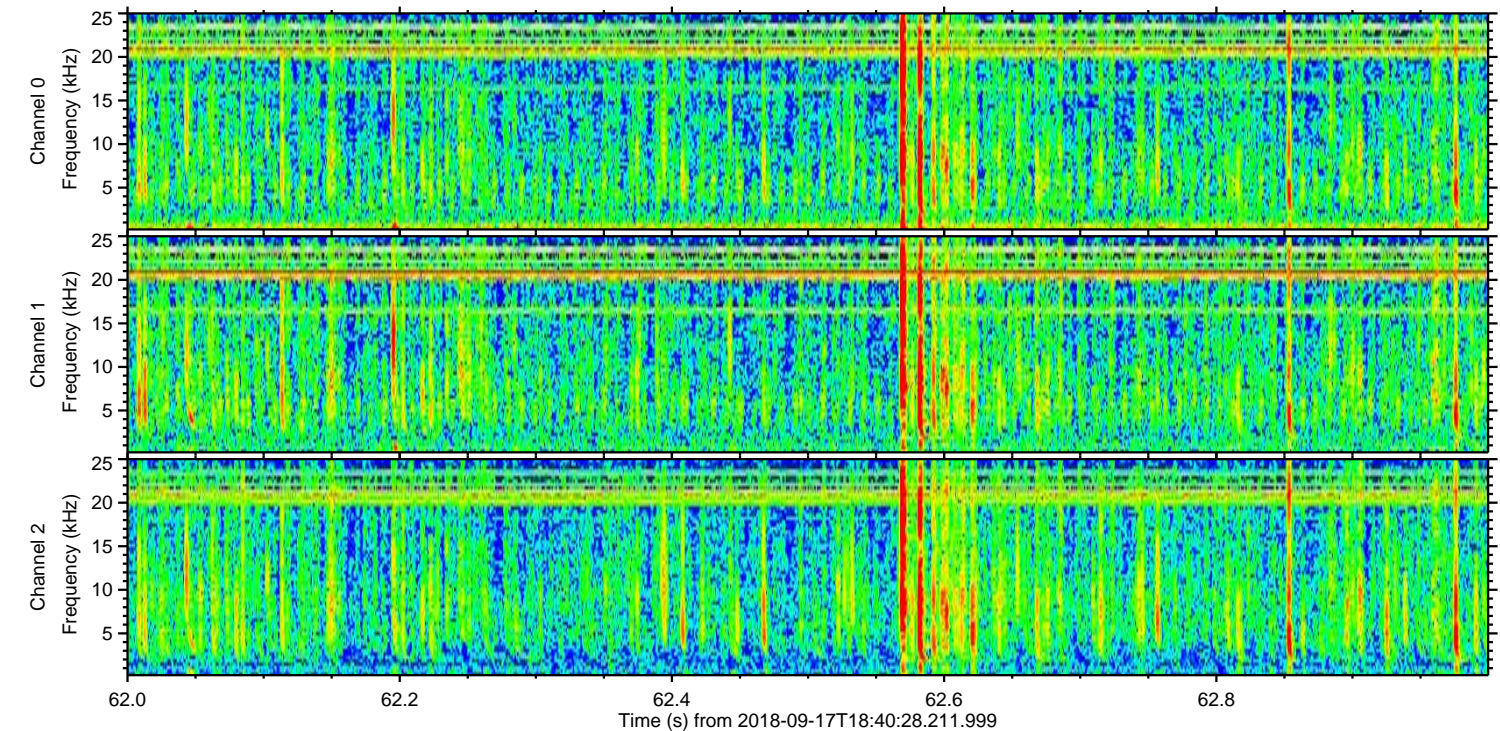
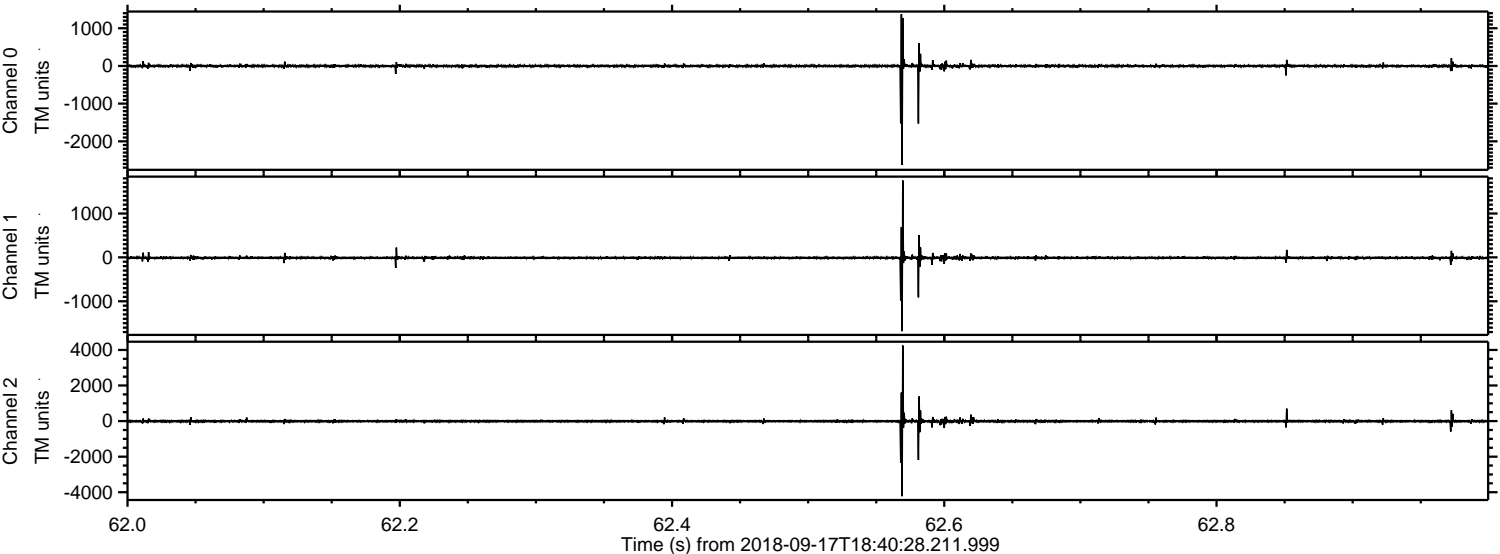


ELMAVAN 3D WAVEFORMS (Measured data sampled at 50 kHz) 51000 packets of 144 samples from 2018-09-17T18:40:28.211.999. Part 133/147

Processed Mon Sep 17 20:48:51 2018 by ELM ver.2012-10-06 from 001__elm20180917_184027__dat00.bin

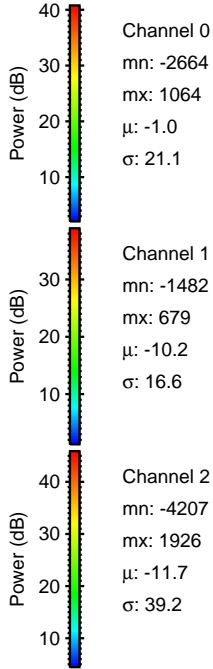
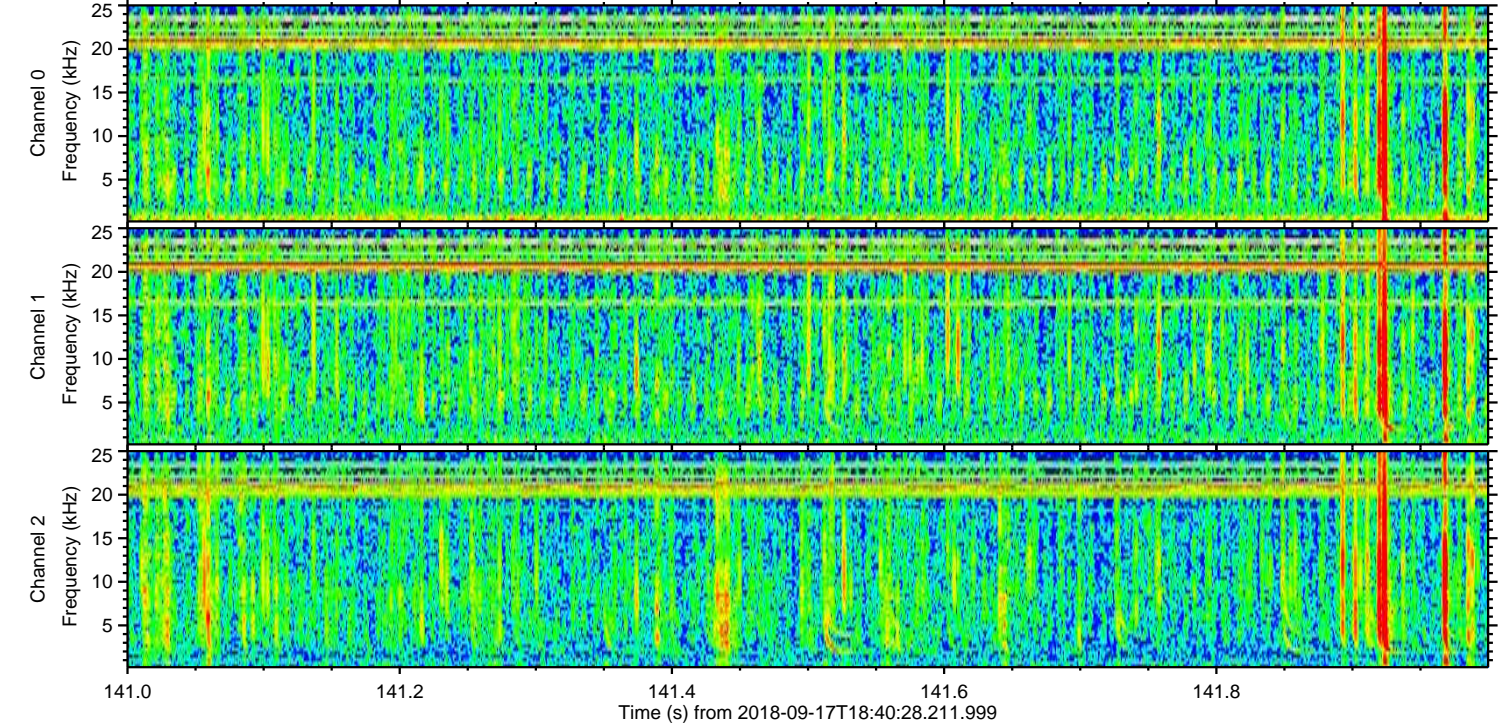
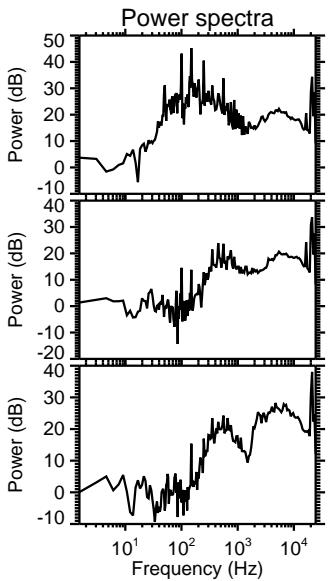
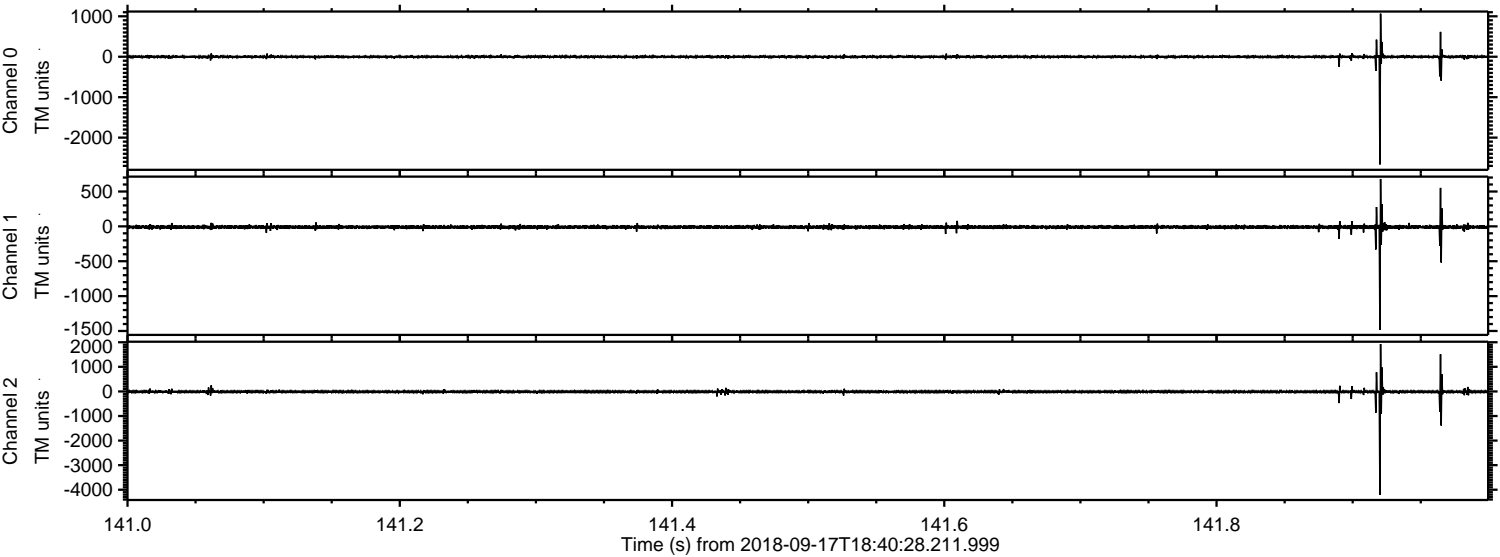


Processed Mon Sep 17 20:48:52 2018 by ELM ver.2012-10-06 from 001__elm20180917_184027__dat00.bin

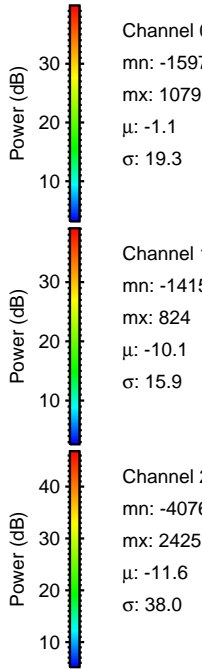
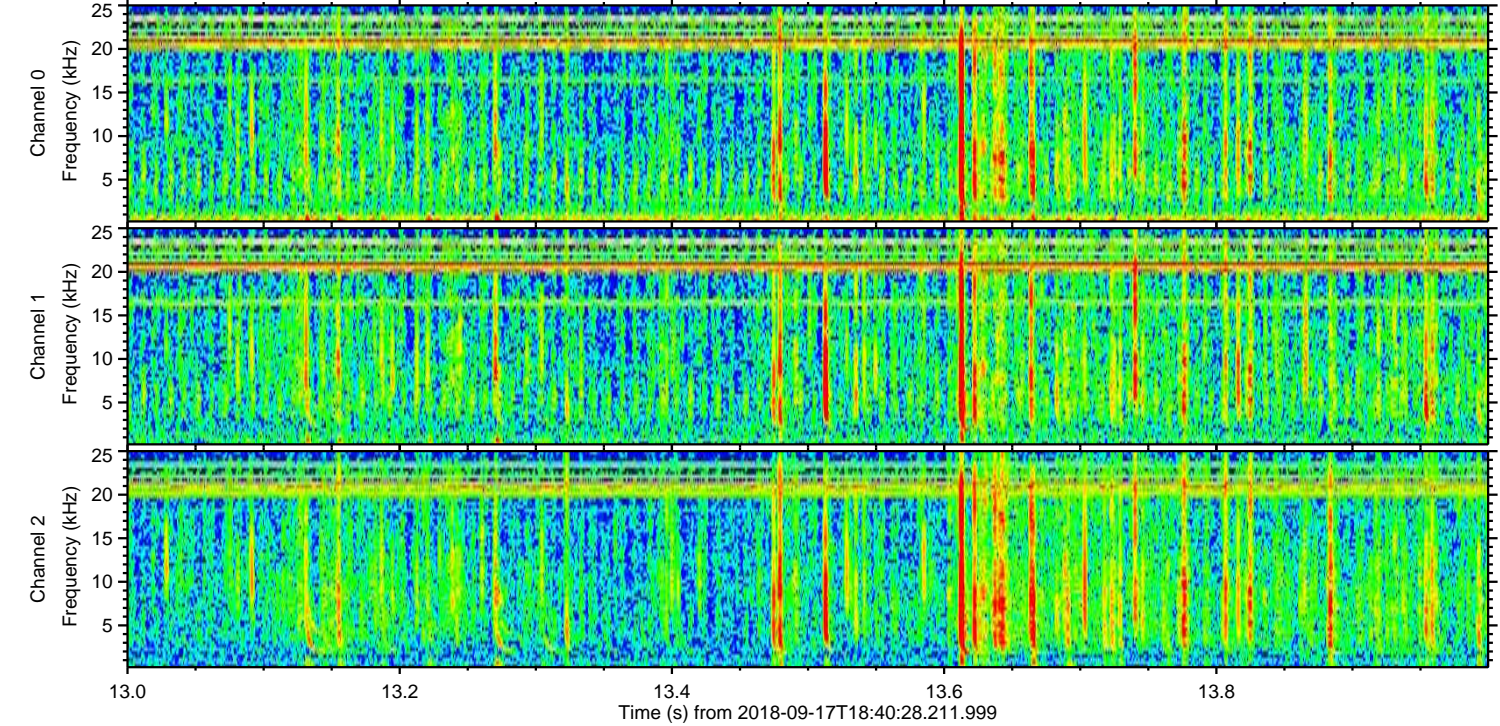
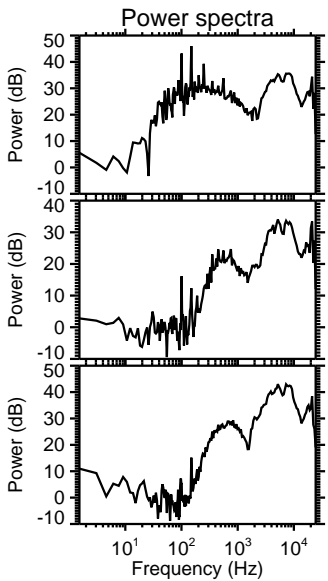
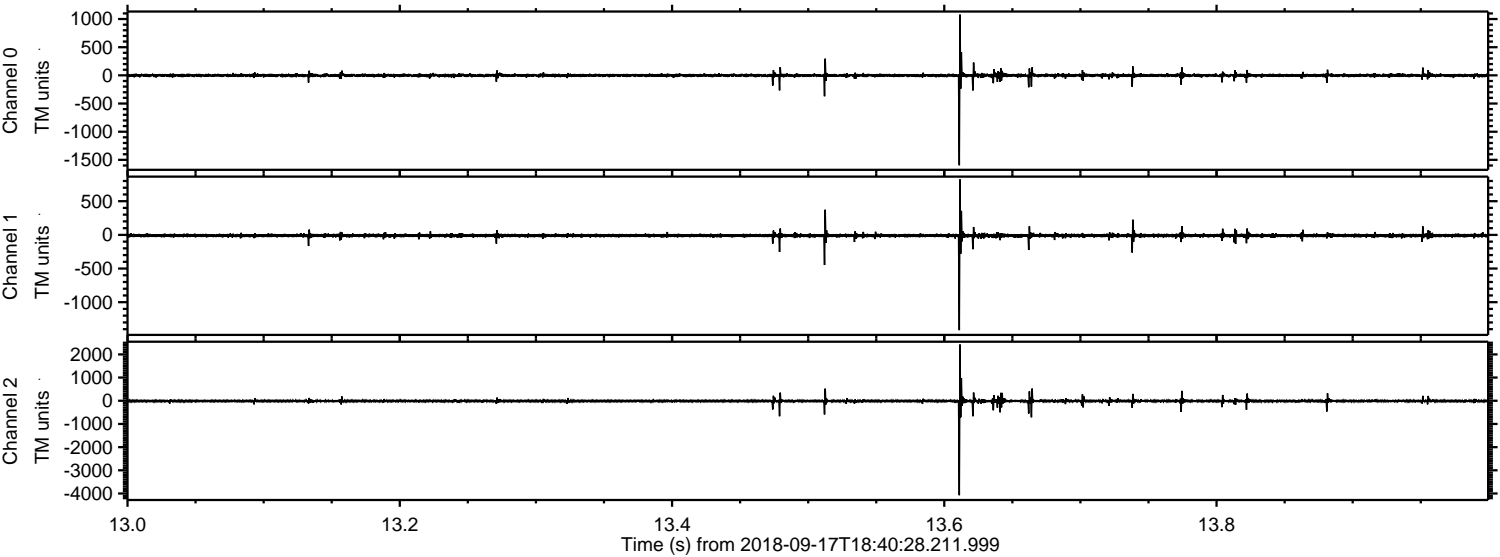


ELMAVAN 3D WAVEFORMS (Measured data sampled at 50 kHz) 51000 packets of 144 samples from 2018-09-17T18:40:28.211.999. Part 142/147

Processed Mon Sep 17 20:48:53 2018 by ELM ver.2012-10-06 from 001__elm20180917_184027__dat00.bin



Processed Mon Sep 17 20:48:53 2018 by ELM ver.2012-10-06 from 001__elm20180917_184027__dat00.bin



Channel 0
mn: -1597
mx: 1079
 μ : -1.1
 σ : 19.3

Channel 1
mn: -1415
mx: 824
 μ : -10.1
 σ : 15.9

Channel 2
mn: -4076
mx: 2425
 μ : -11.6
 σ : 38.0

Processed Mon Sep 17 20:48:54 2018 by ELM ver.2012-10-06 from 001__elm20180917_184027__dat00.bin

