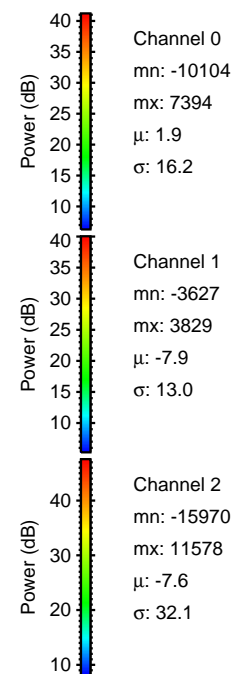
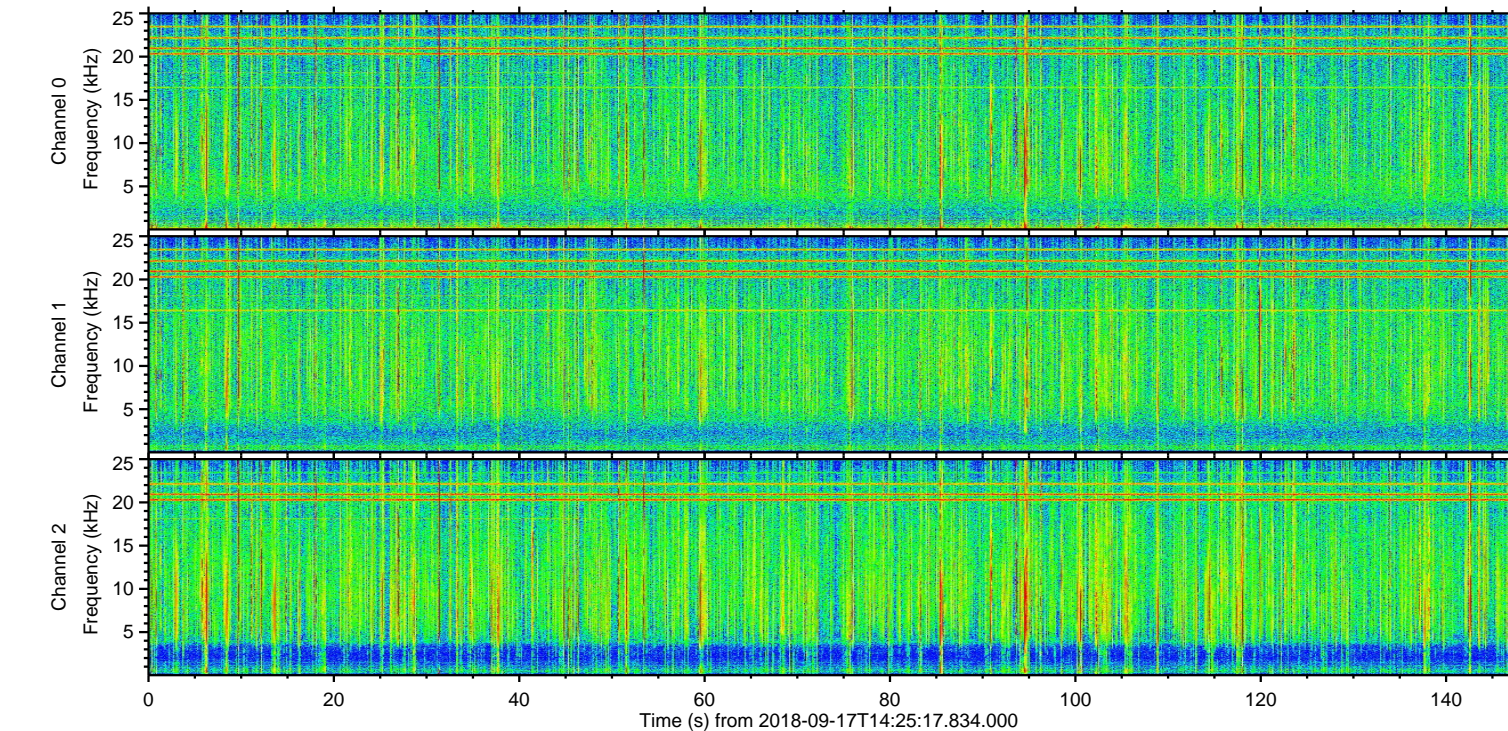
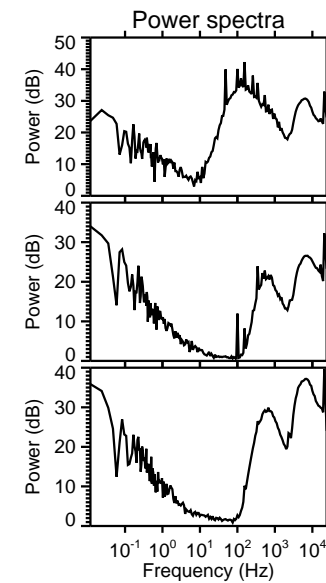
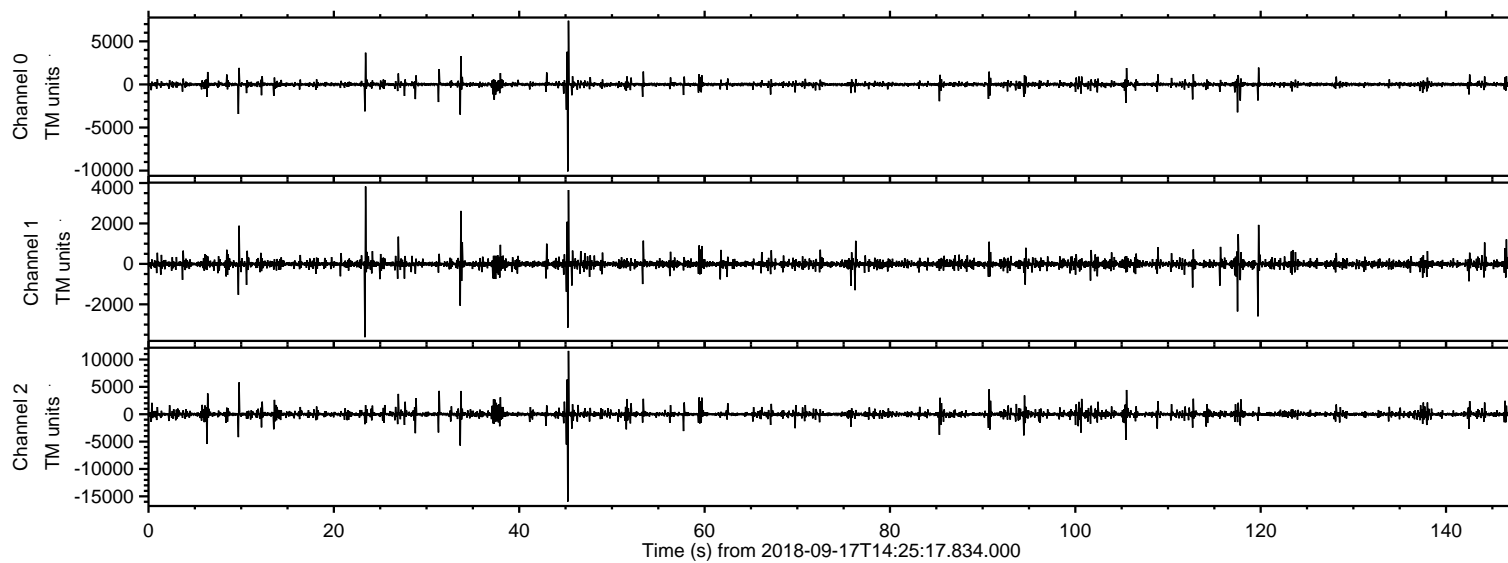
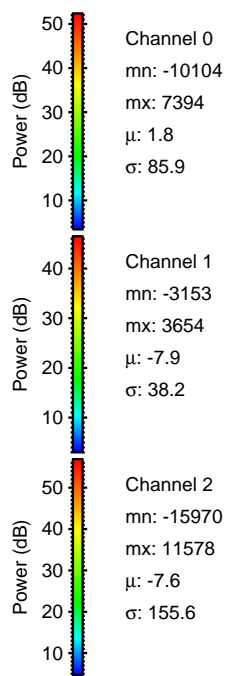
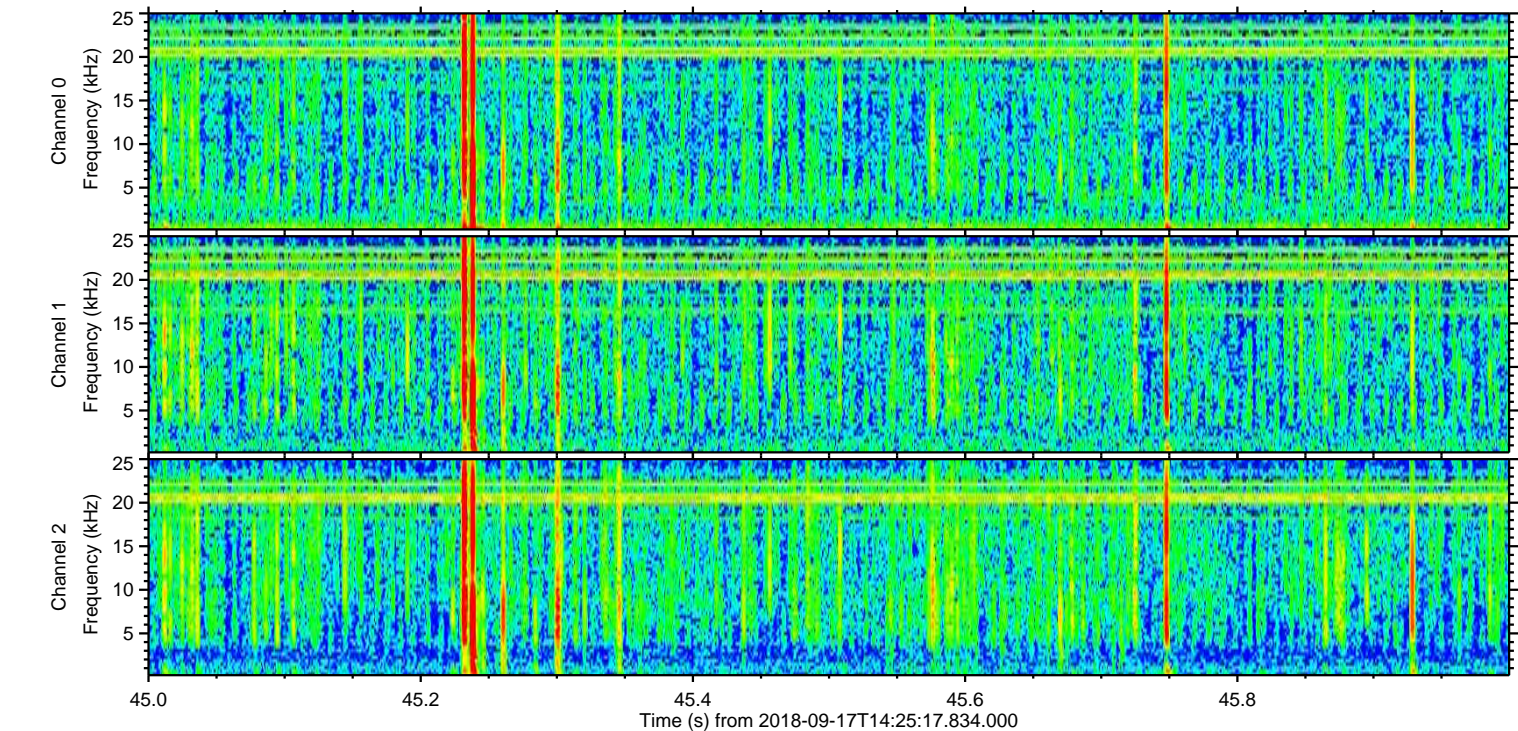
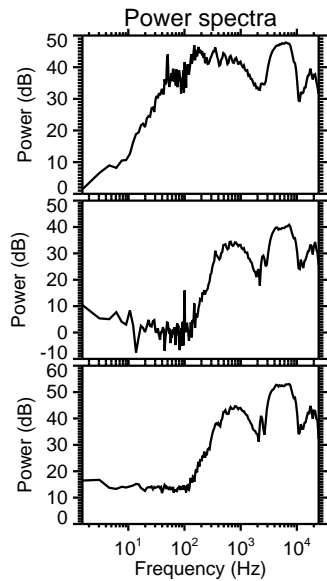
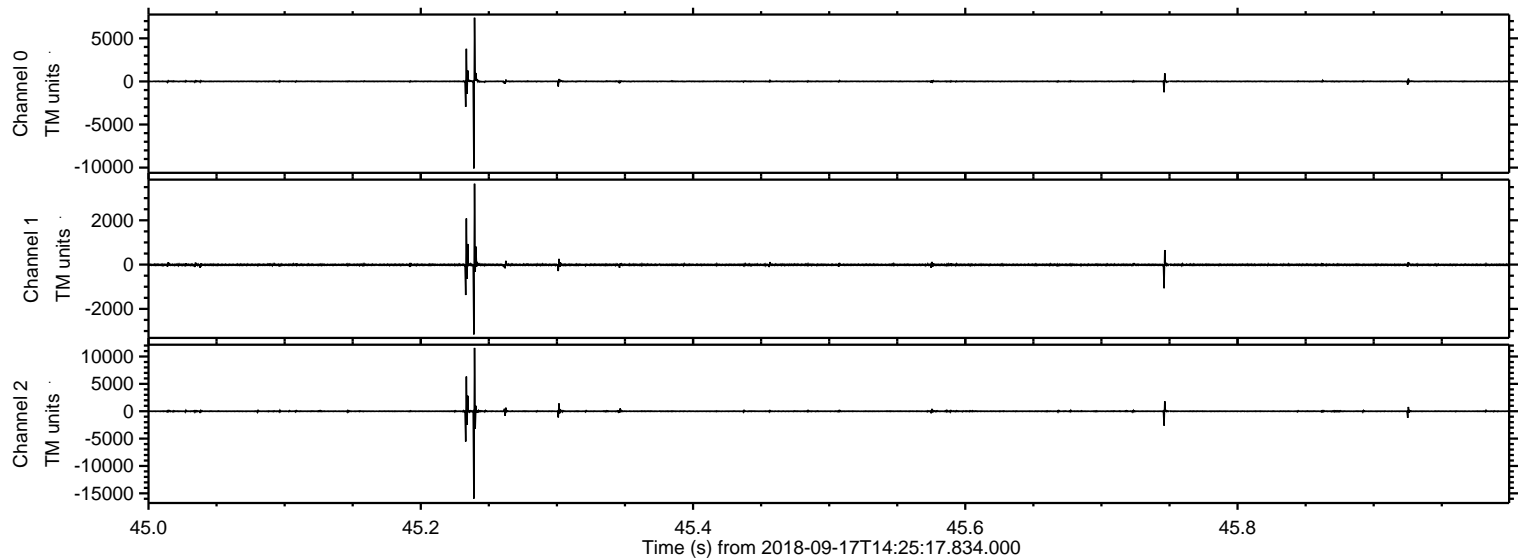


ELMAVAN 3D WAVEFORMS (Measured data sampled at 50 kHz) 51000 packets of 144 samples from 2018-09-17T14:25:17.834.000.

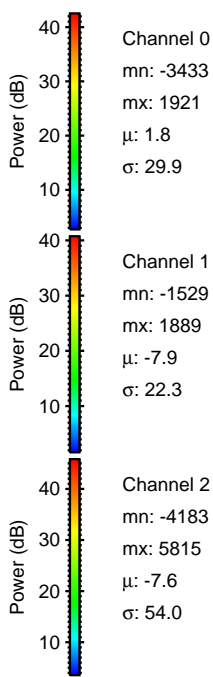
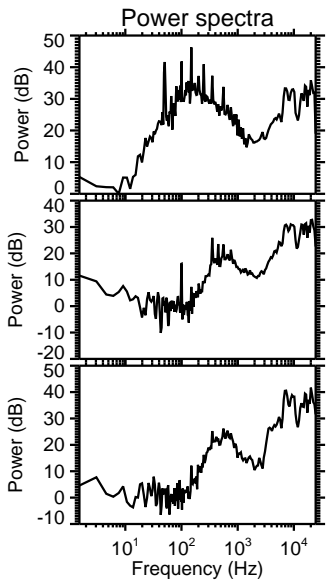
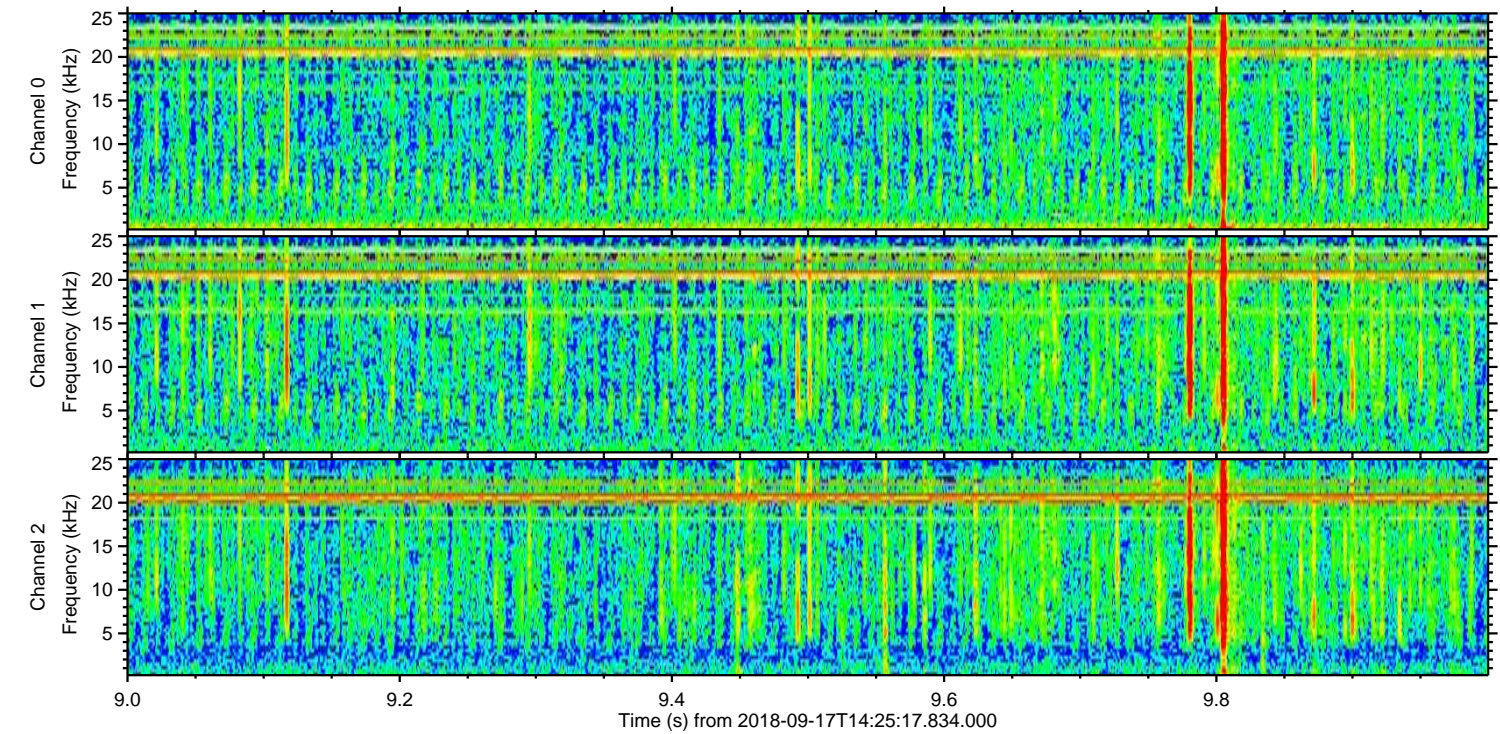
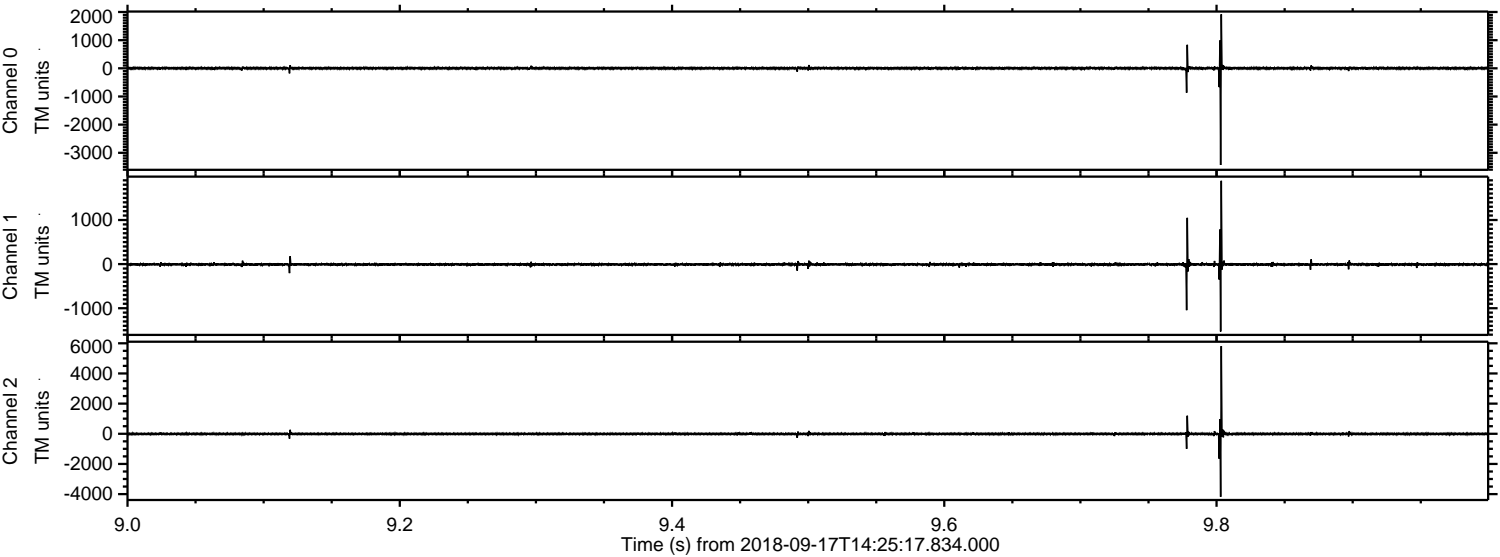
Processed Mon Sep 17 16:33:17 2018 by ELM ver.2012-10-06 from 001__elm20180917_142516__dat00.bin



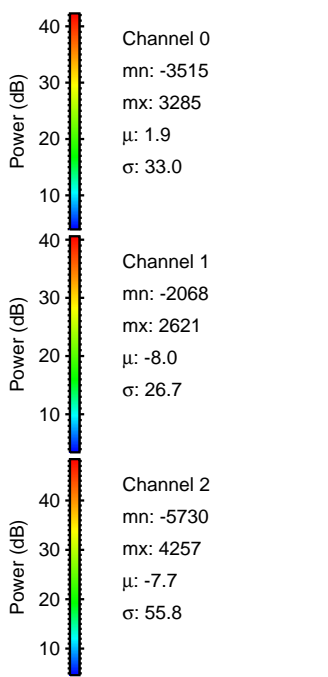
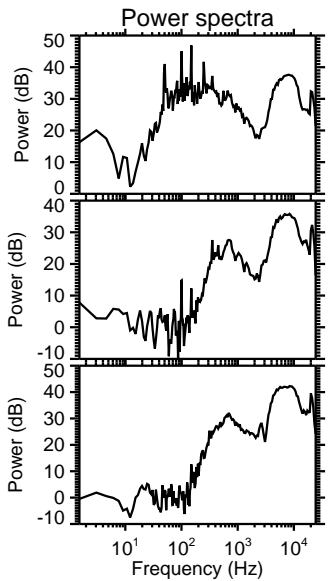
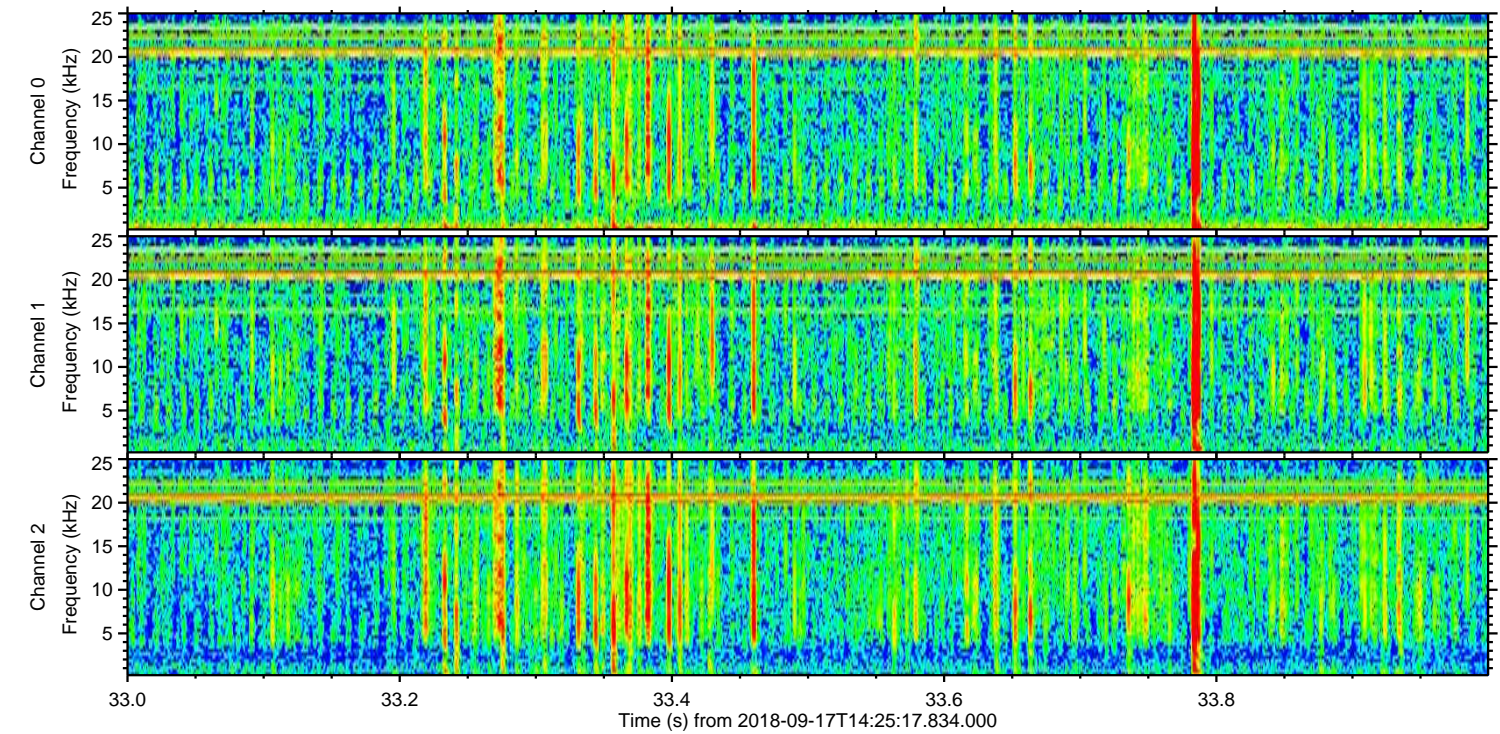
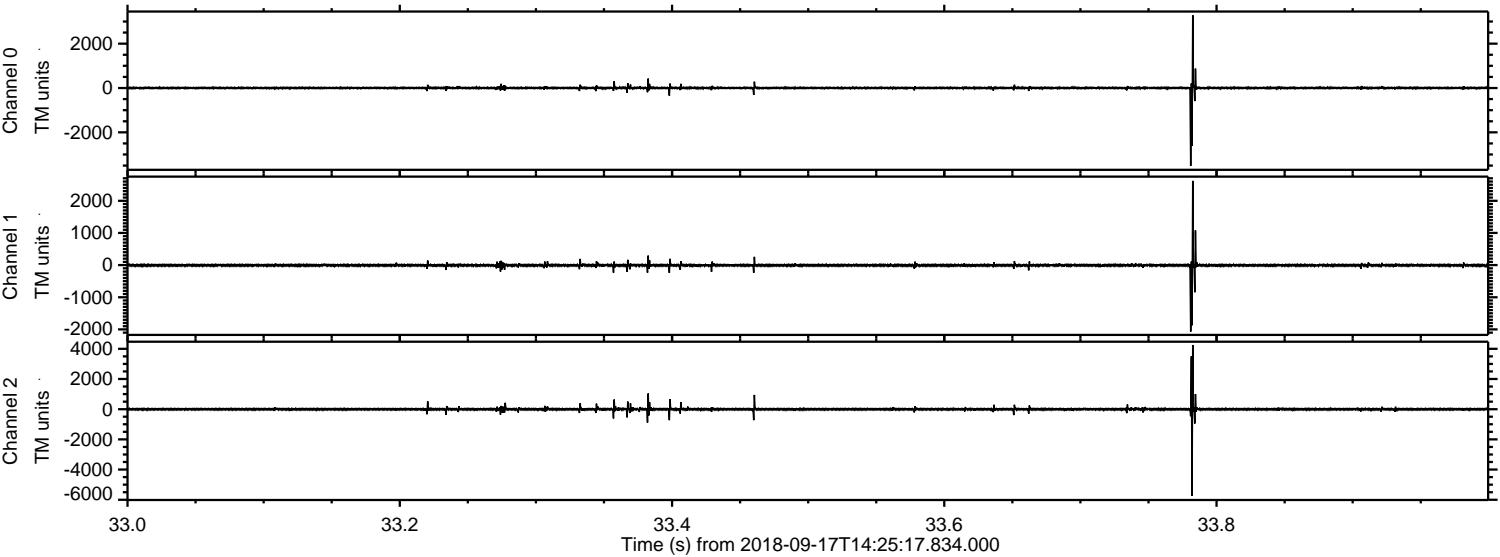
Processed Mon Sep 17 16:33:23 2018 by ELM ver.2012-10-06 from 001__elm20180917_142516__dat00.bin



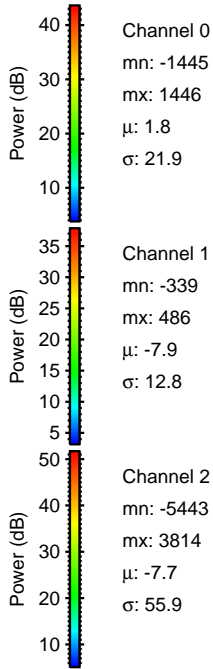
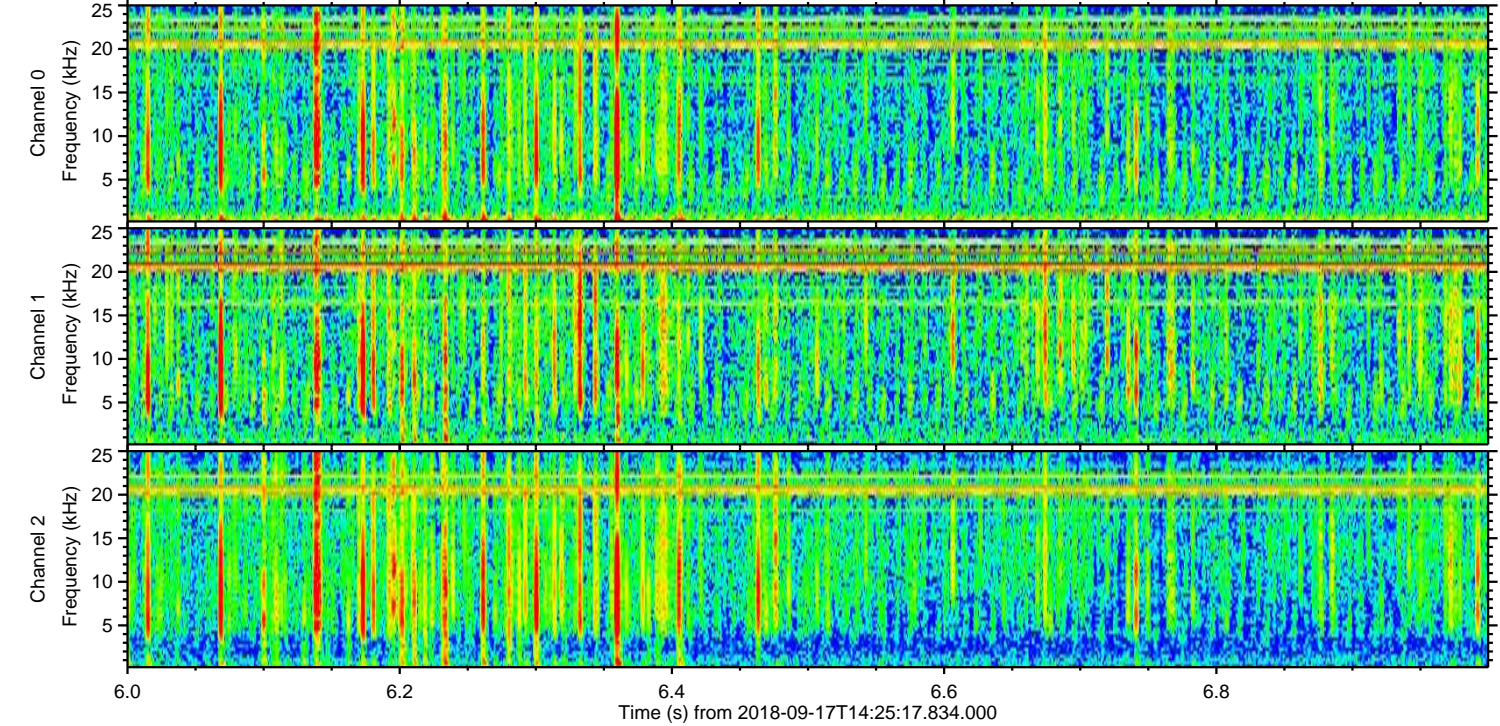
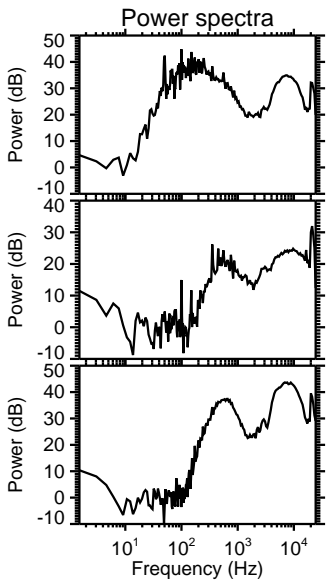
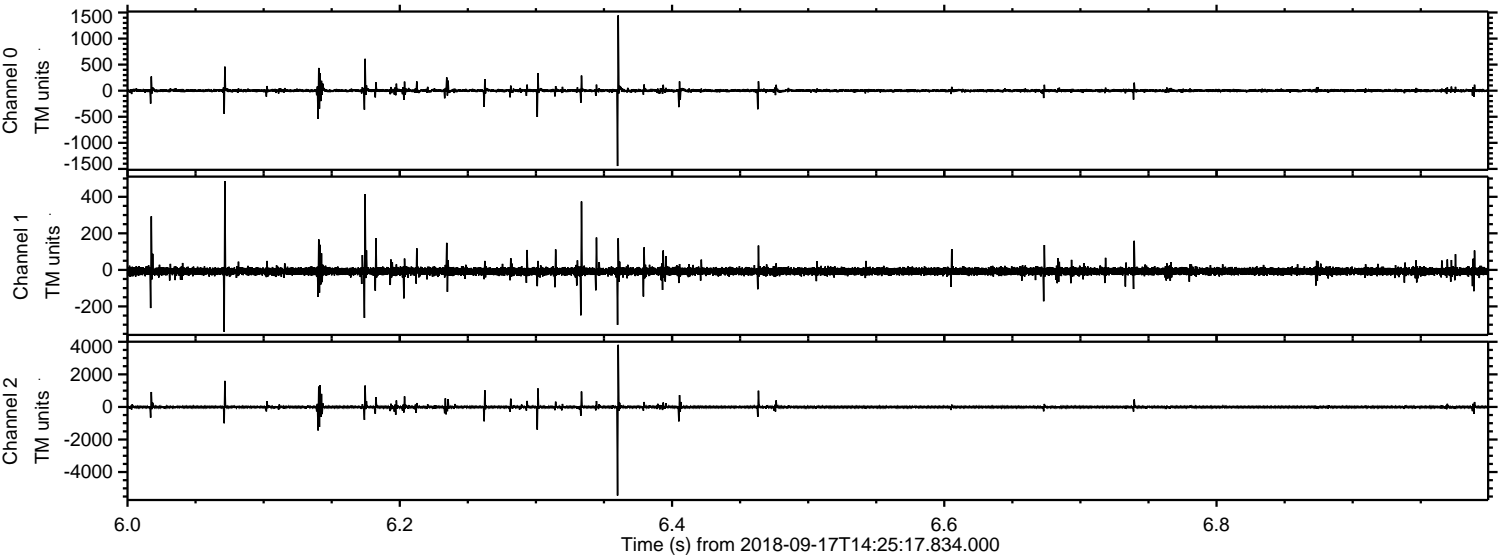
Processed Mon Sep 17 16:33:24 2018 by ELM ver.2012-10-06 from 001__elm20180917_142516__dat00.bin



Processed Mon Sep 17 16:33:25 2018 by ELM ver.2012-10-06 from 001__elm20180917_142516__dat00.bin



Processed Mon Sep 17 16:33:25 2018 by ELM ver.2012-10-06 from 001__elm20180917_142516__dat00.bin



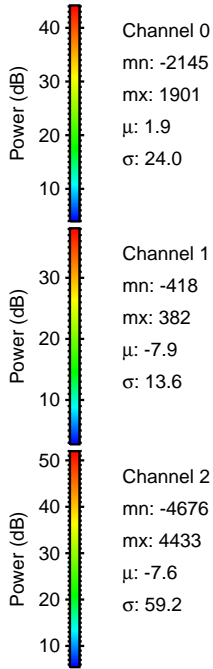
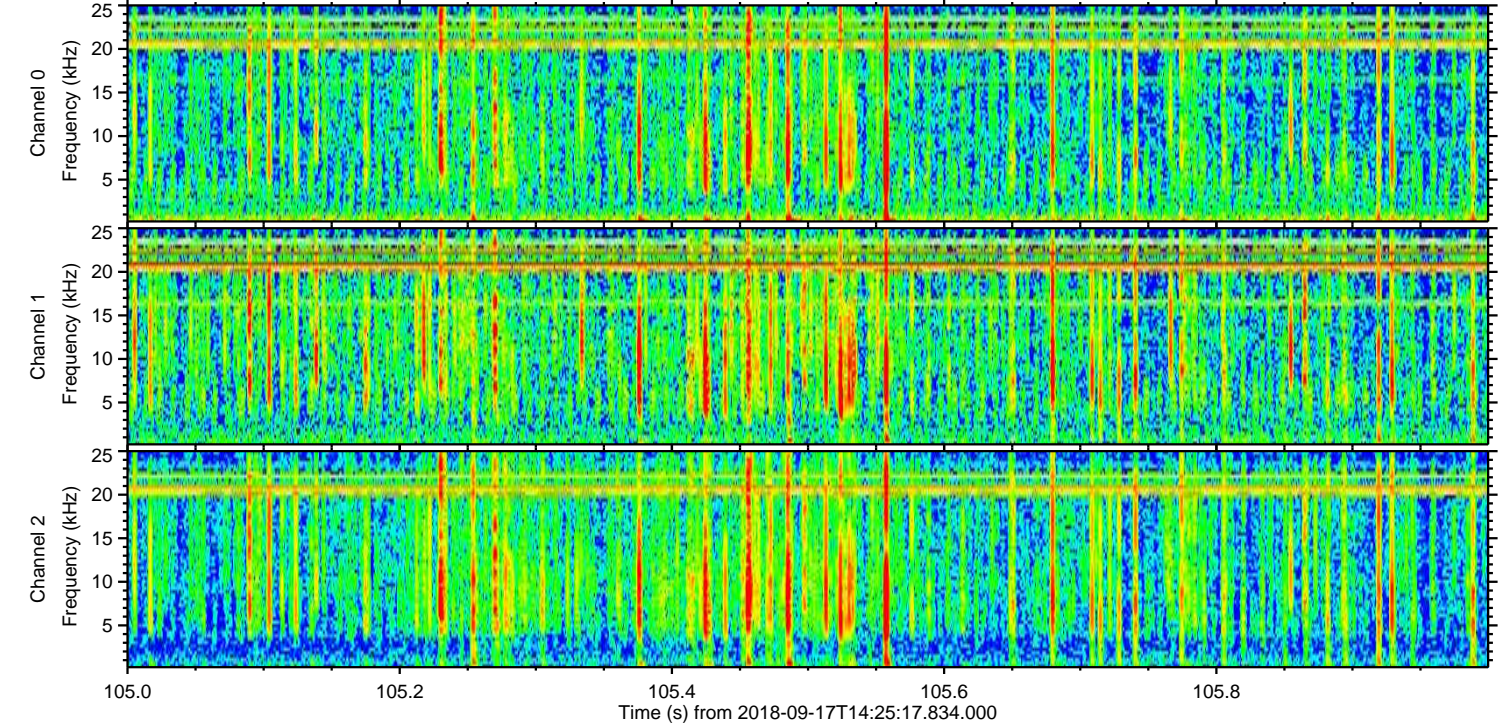
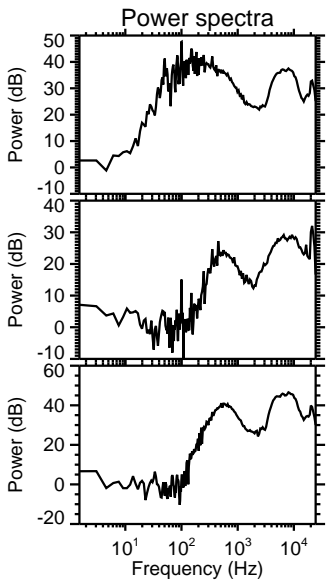
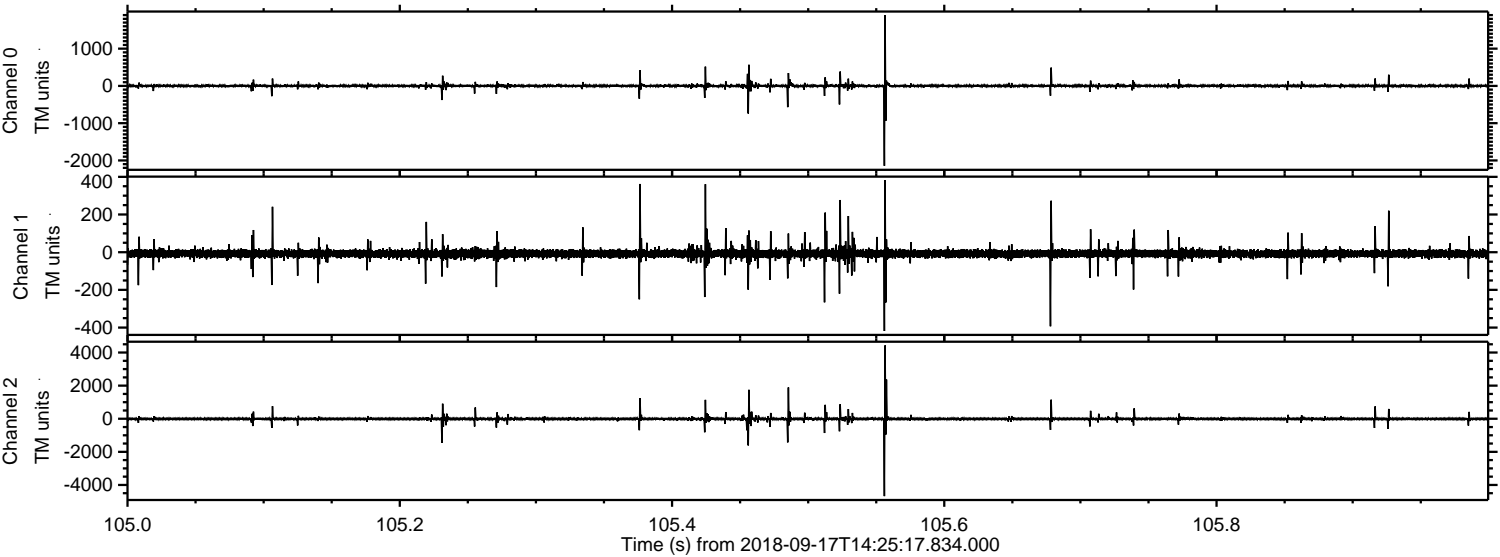
Channel 0
mn: -1445
mx: 1446
 μ : 1.8
 σ : 21.9

Channel 1
mn: -339
mx: 486
 μ : -7.9
 σ : 12.8

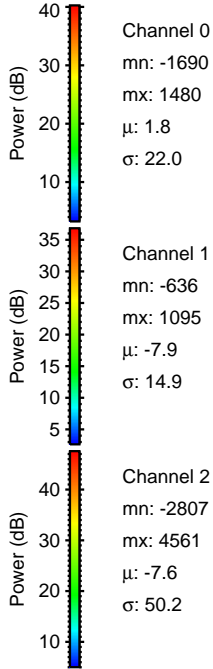
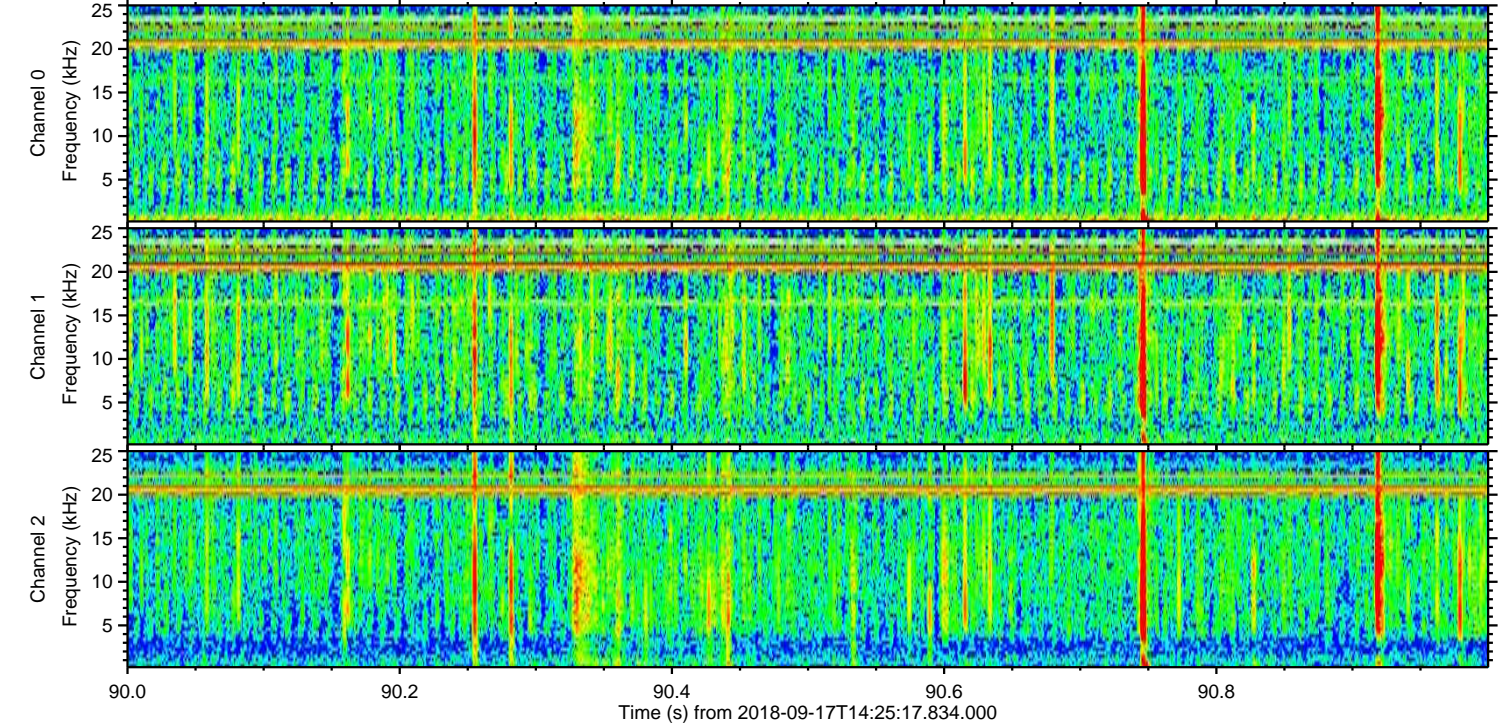
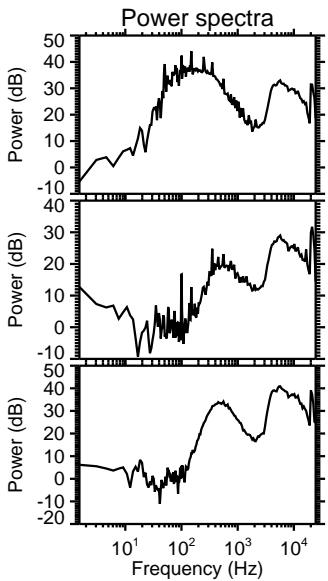
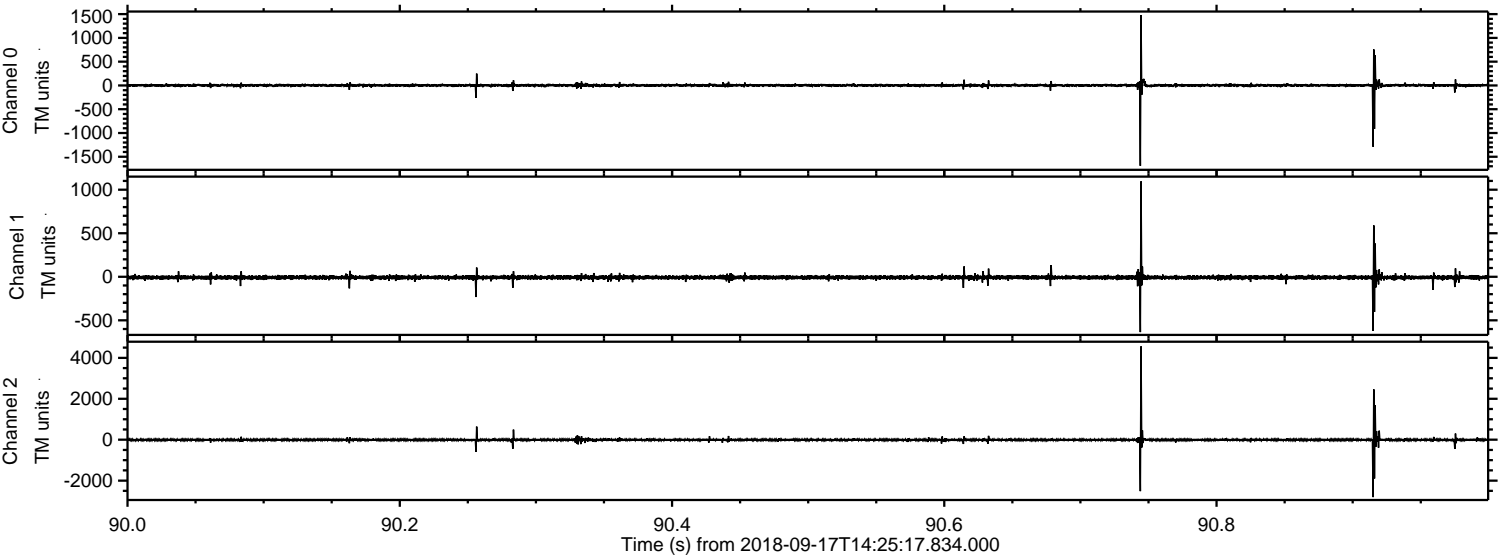
Channel 2
mn: -5443
mx: 3814
 μ : -7.7
 σ : 55.9

ELMAVAN 3D WAVEFORMS (Measured data sampled at 50 kHz) 51000 packets of 144 samples from 2018-09-17T14:25:17.834.000. Part 106/147

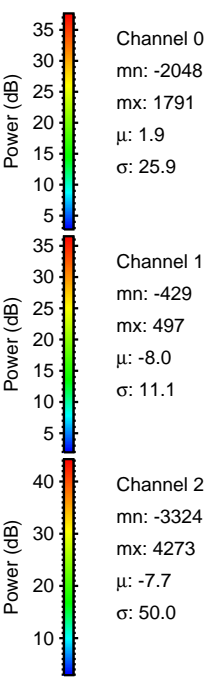
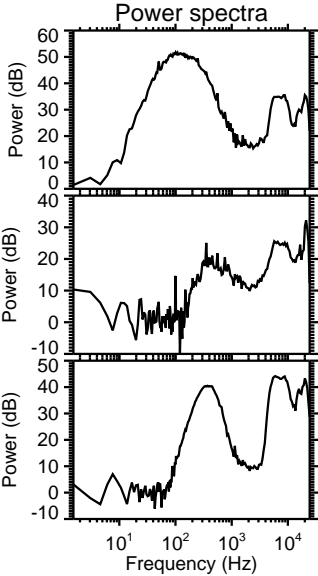
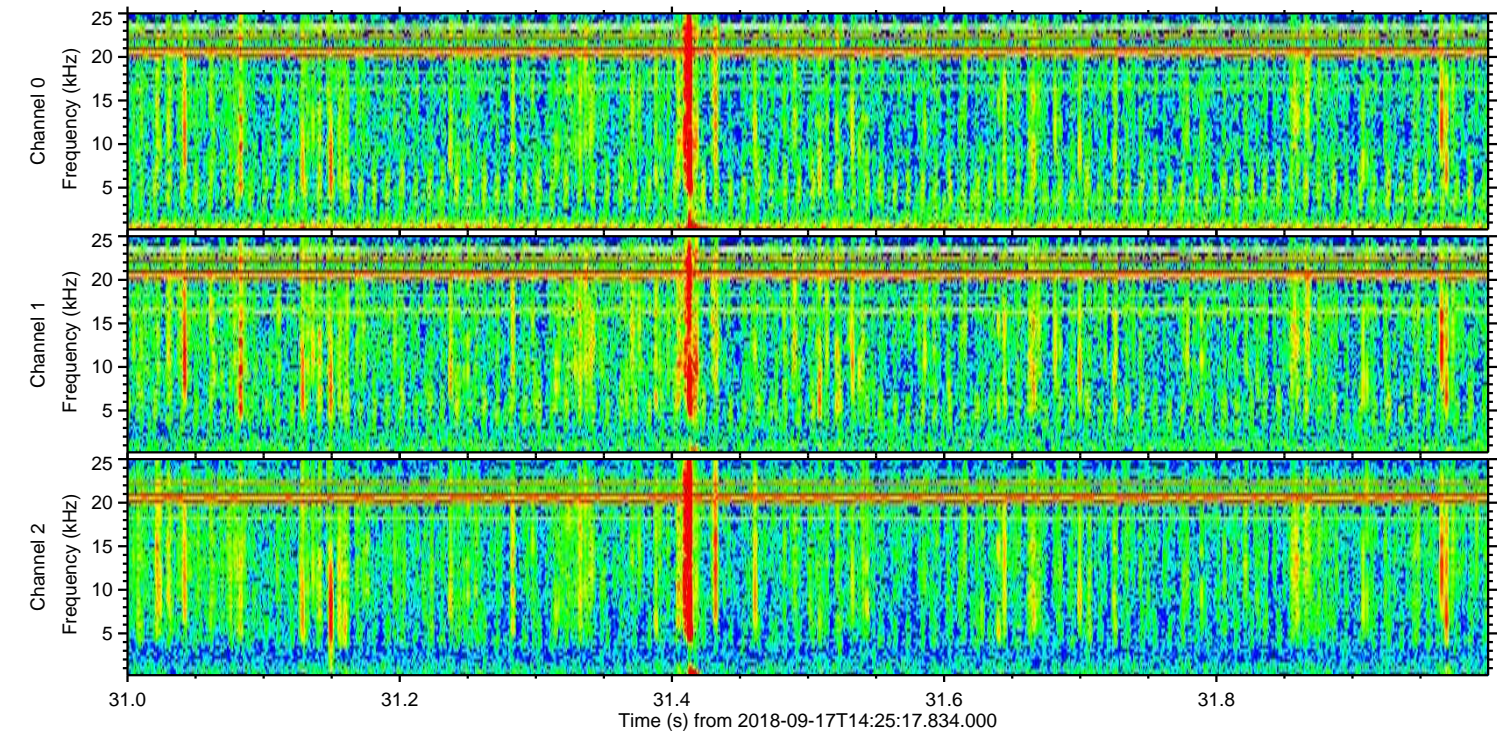
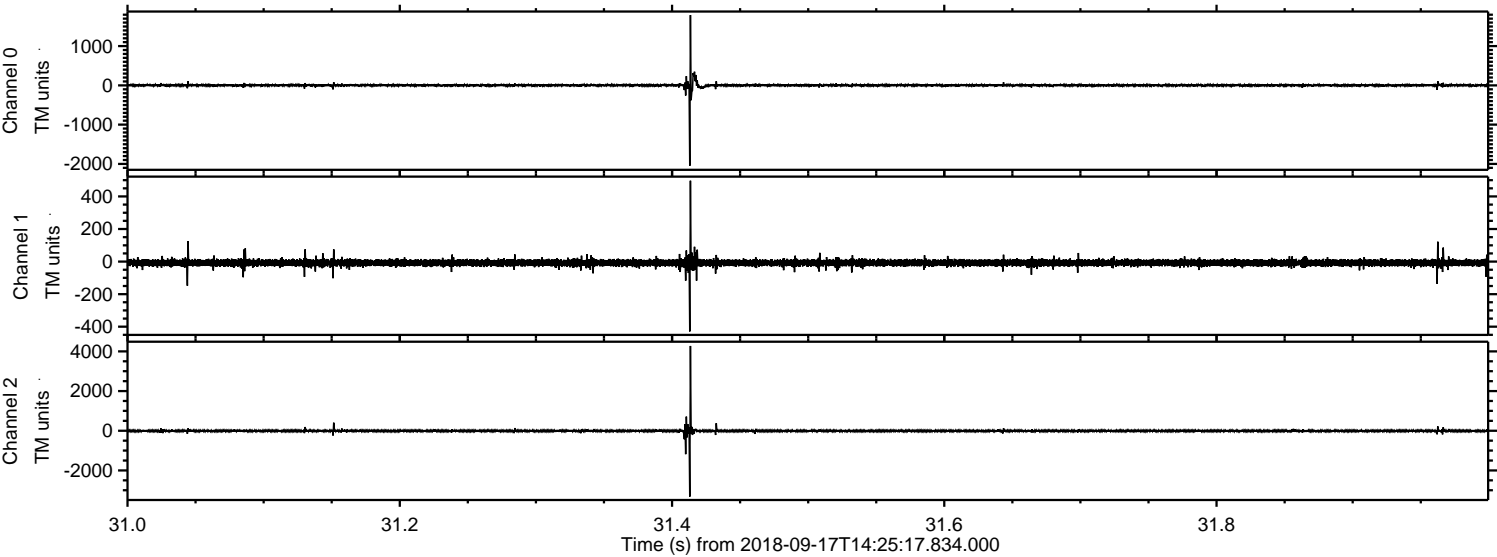
Processed Mon Sep 17 16:33:26 2018 by ELM ver.2012-10-06 from 001__elm20180917_142516__dat00.bin



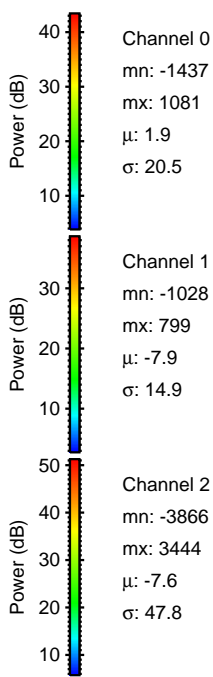
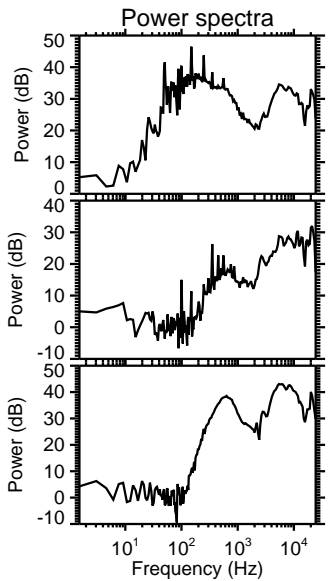
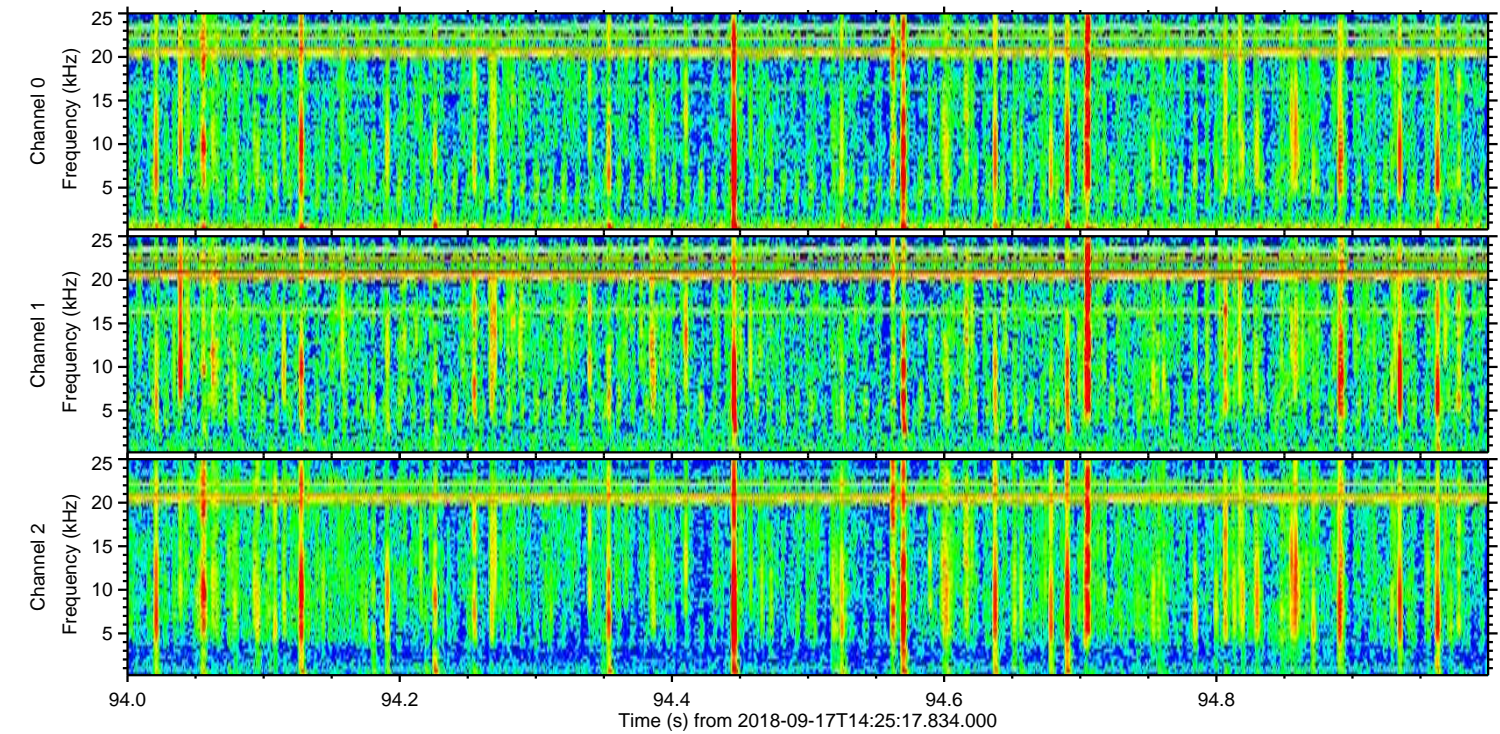
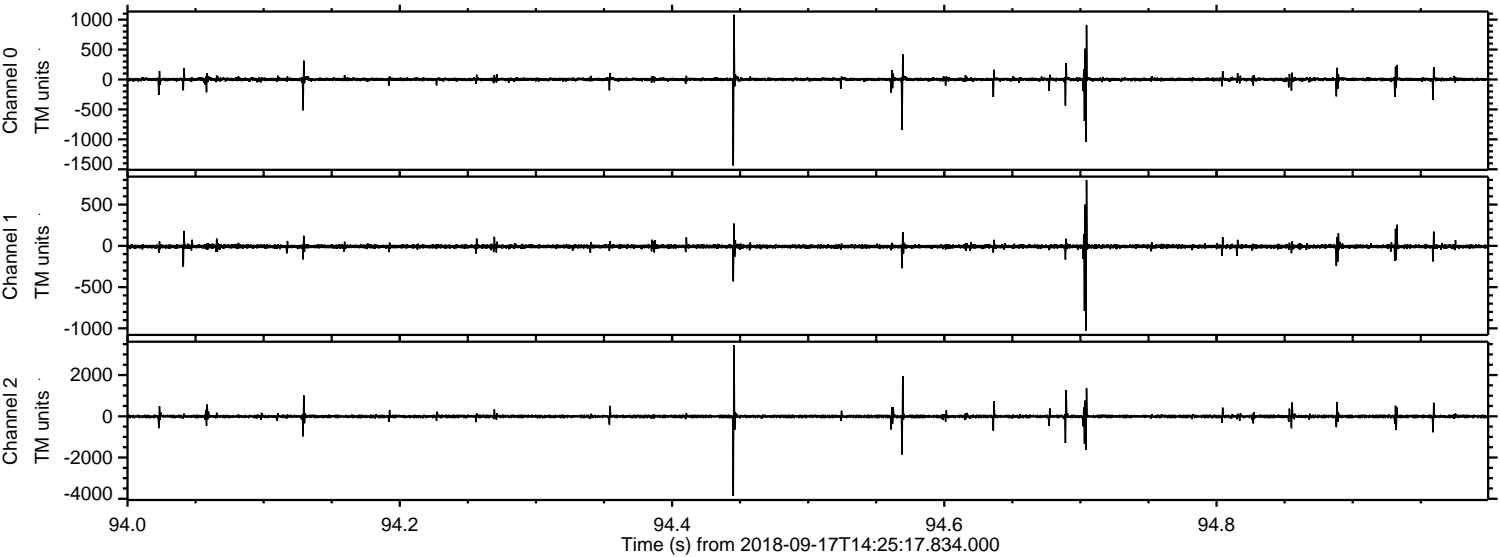
Processed Mon Sep 17 16:33:27 2018 by ELM ver.2012-10-06 from 001__elm20180917_142516__dat00.bin



Processed Mon Sep 17 16:33:27 2018 by ELM ver.2012-10-06 from 001__elm20180917_142516__dat00.bin



Processed Mon Sep 17 16:33:28 2018 by ELM ver.2012-10-06 from 001__elm20180917_142516__dat00.bin

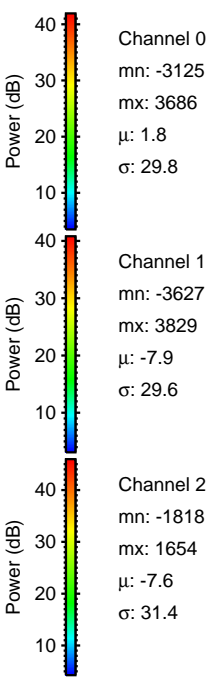
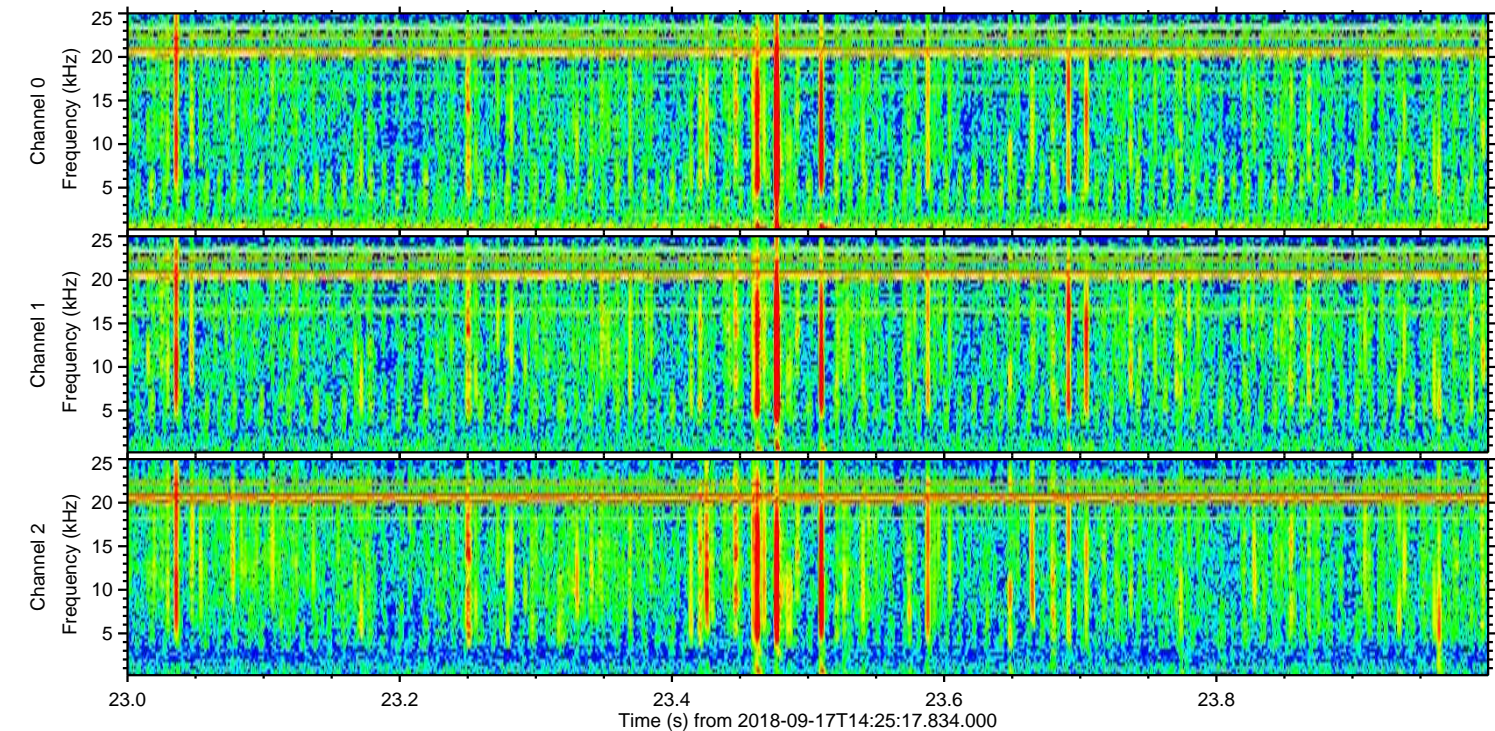
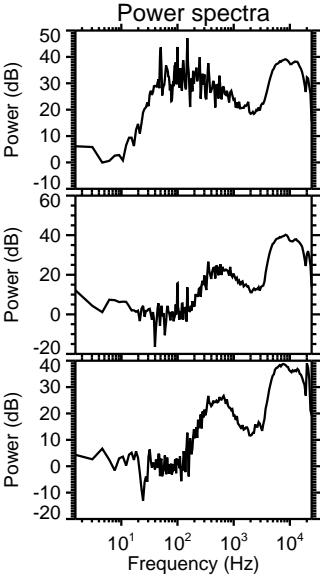
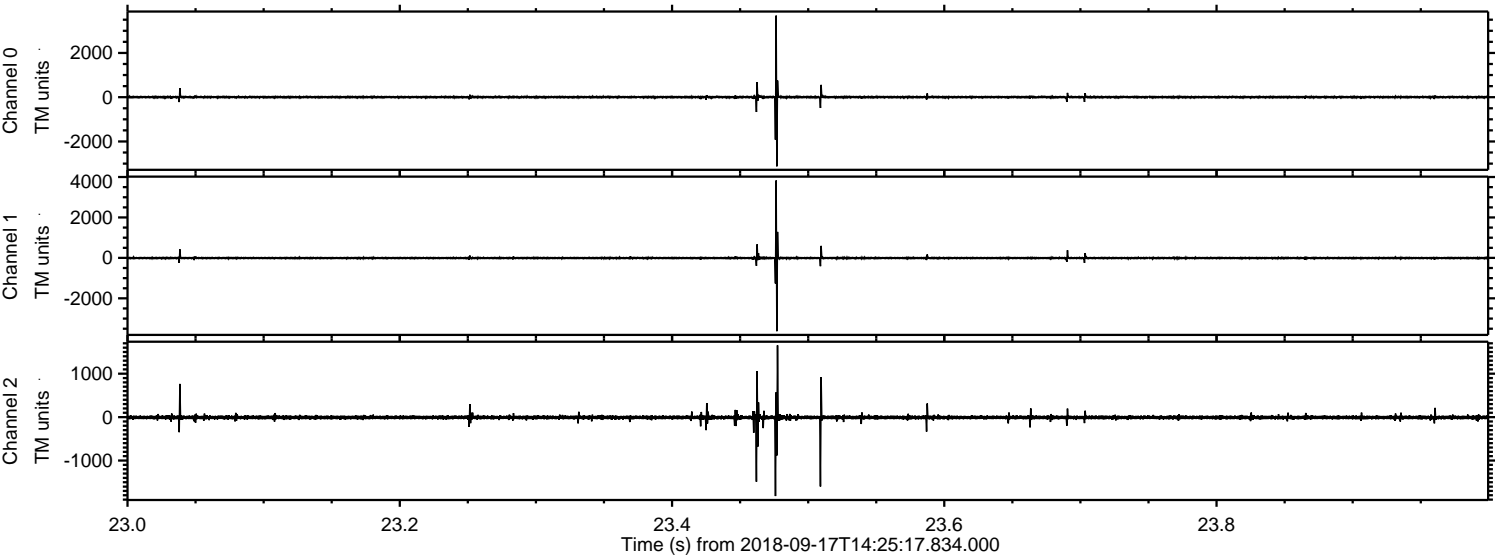


Channel 0
mn: -1437
mx: 1081
 μ : 1.9
 σ : 20.5

Channel 1
mn: -1028
mx: 799
 μ : -7.9
 σ : 14.9

Channel 2
mn: -3866
mx: 3444
 μ : -7.6
 σ : 47.8

Processed Mon Sep 17 16:33:29 2018 by ELM ver.2012-10-06 from 001__elm20180917_142516__dat00.bin



Processed Mon Sep 17 16:33:29 2018 by ELM ver.2012-10-06 from 001__elm20180917_142516__dat00.bin

