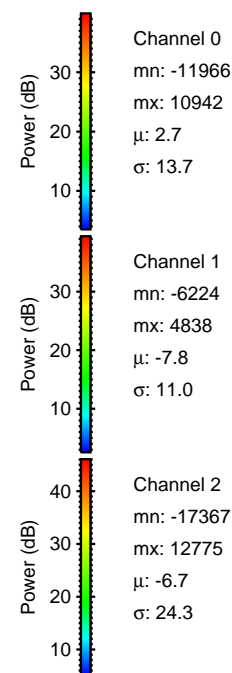
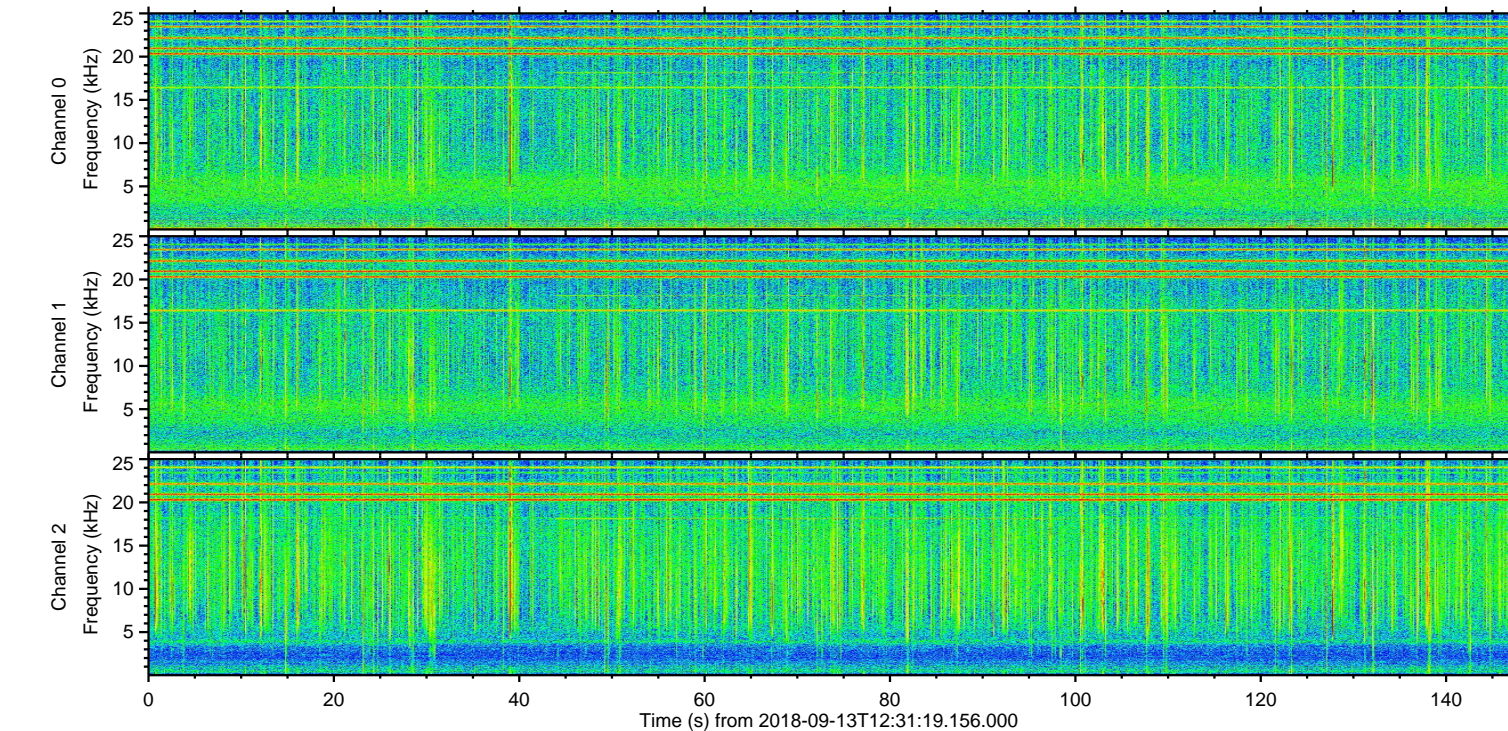
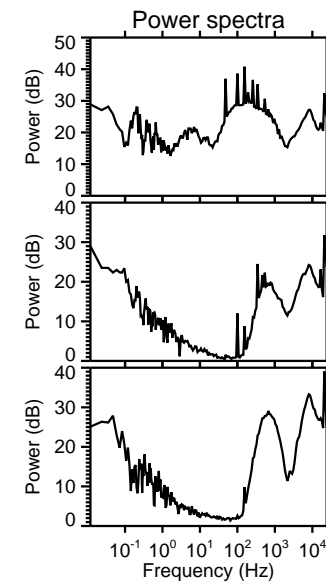
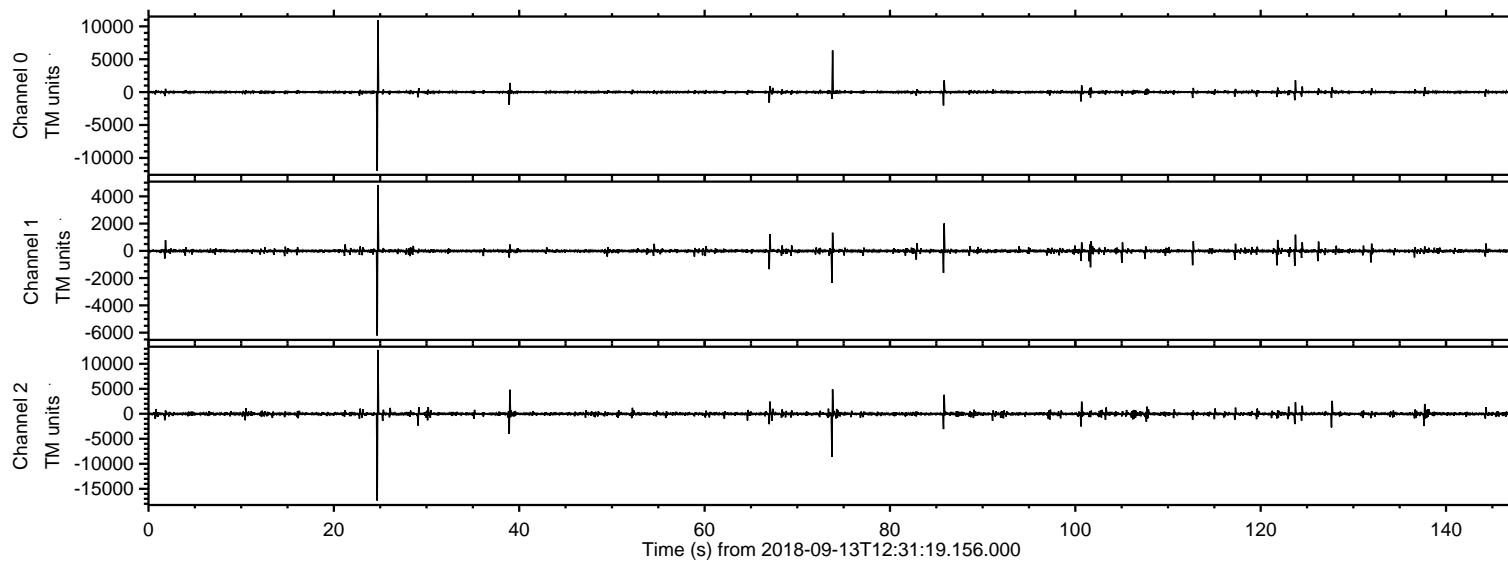


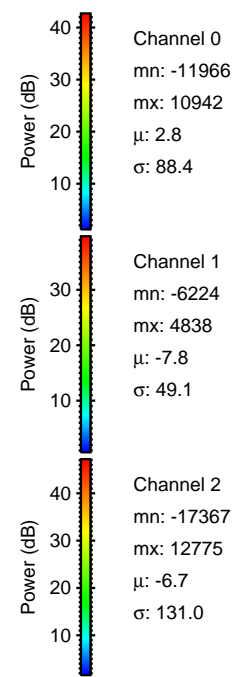
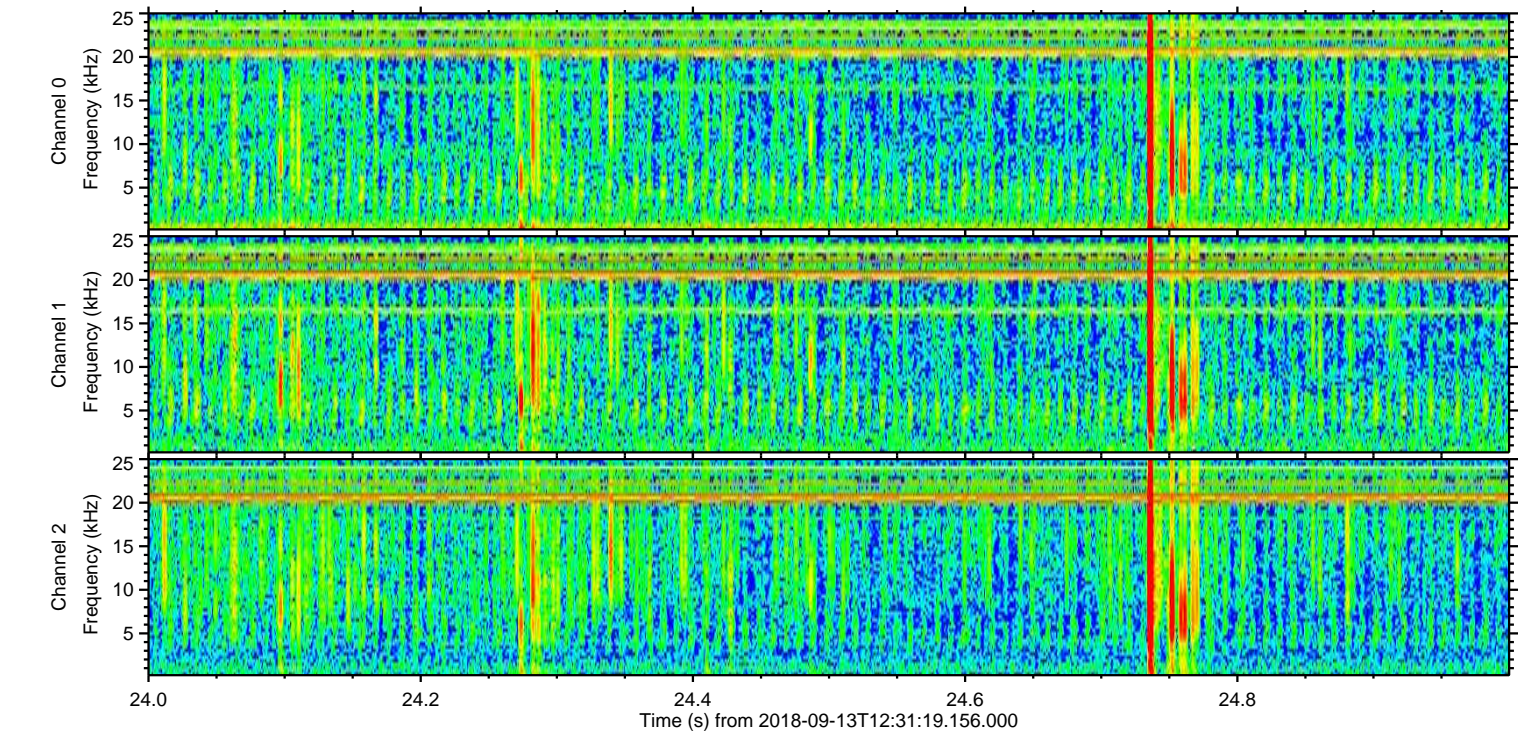
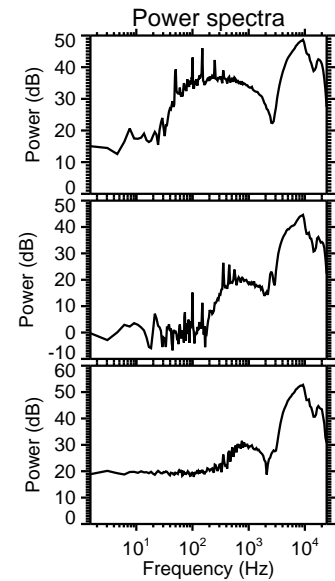
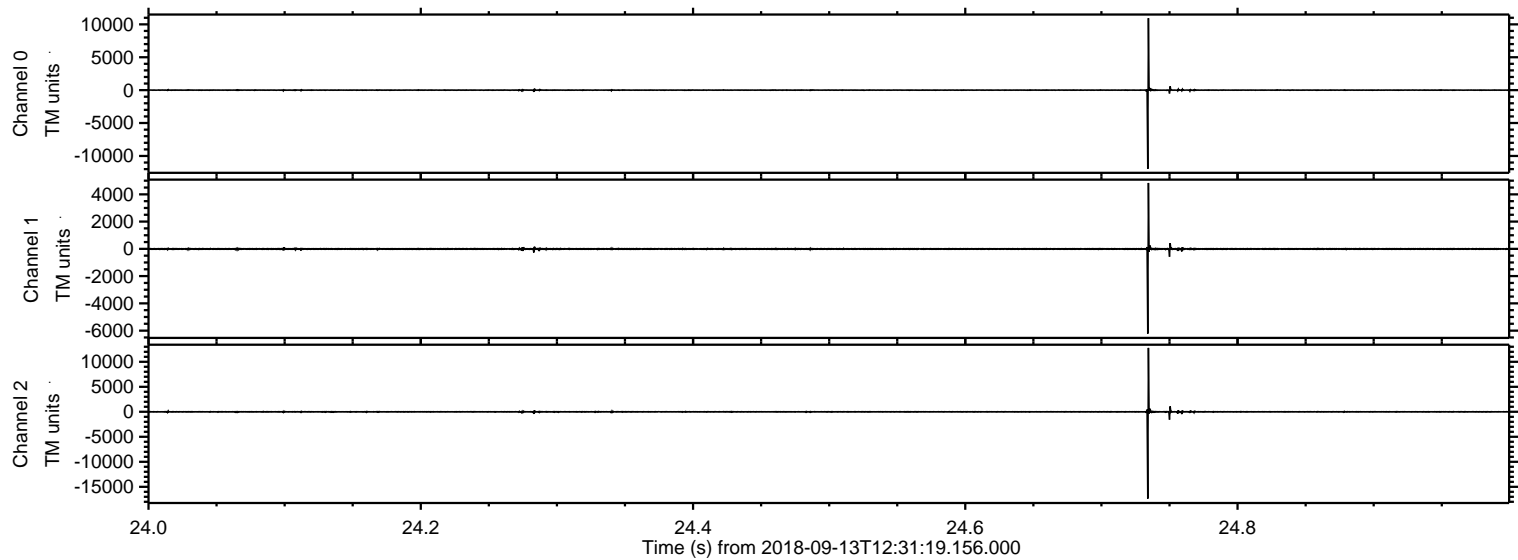
# ELMAVAN 3D WAVEFORMS (Measured data sampled at 50 kHz) 51000 packets of 144 samples from 2018-09-13T12:31:19.156.000.

Processed Thu Sep 13 14:39:30 2018 by ELM ver.2012-10-06 from 001\_\_elm20180913\_123118\_\_dat00.bin



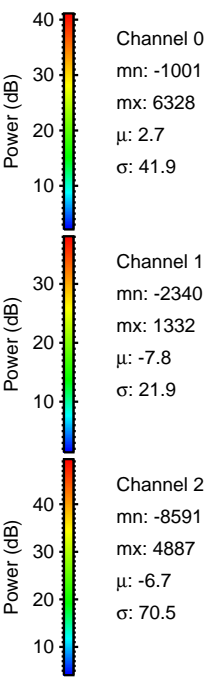
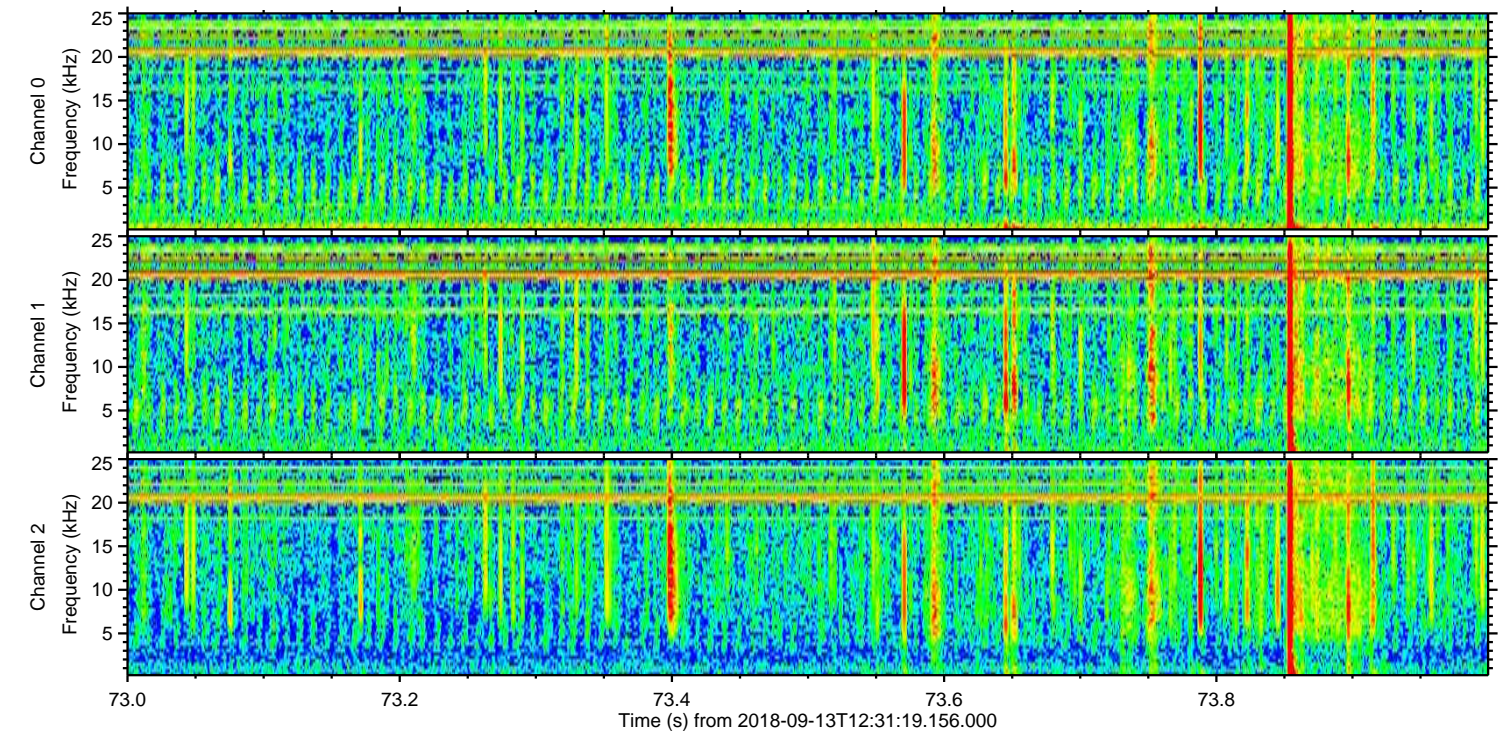
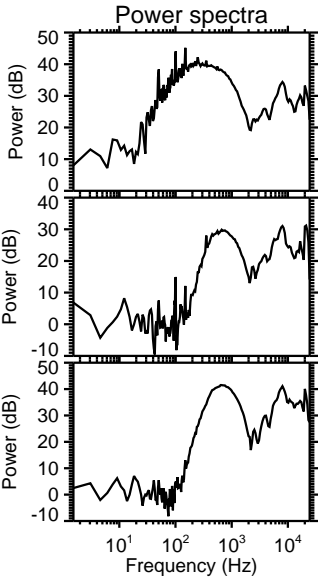
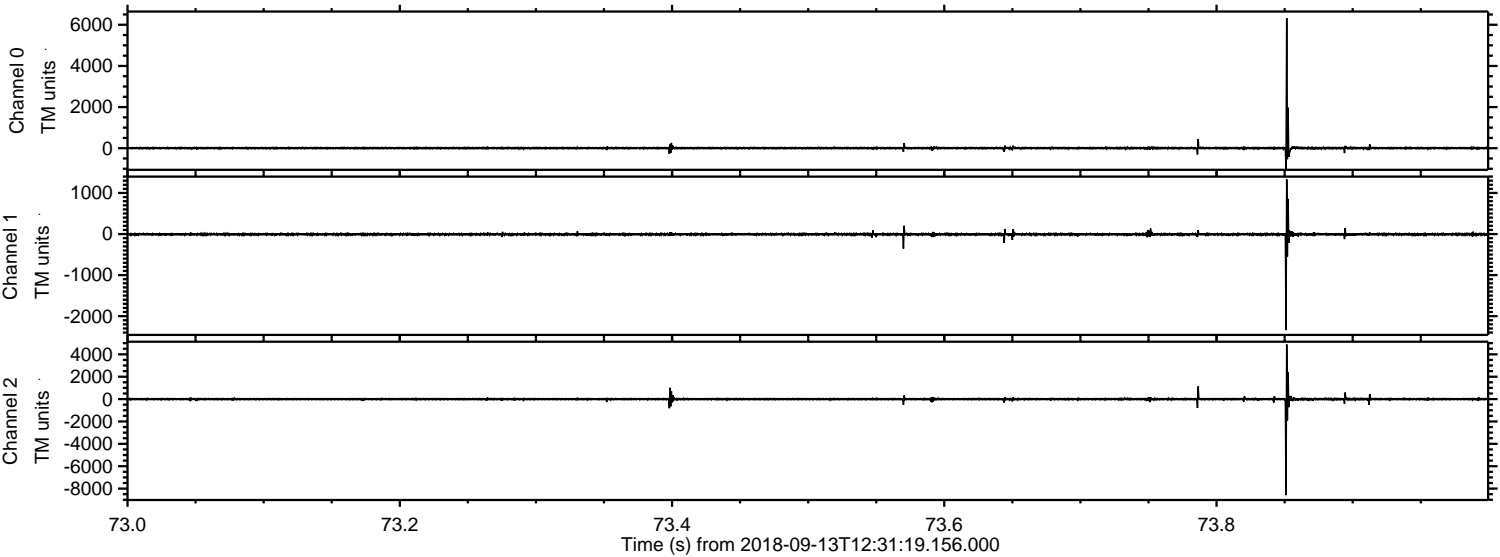


Processed Thu Sep 13 14:39:40 2018 by ELM ver.2012-10-06 from 001\_\_elm20180913\_123118\_\_dat00.bin



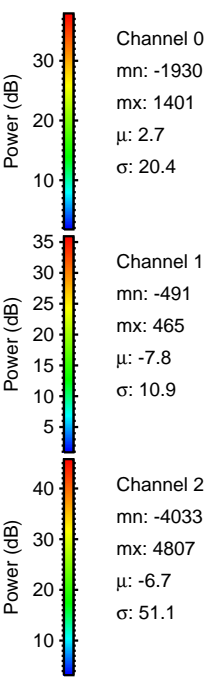
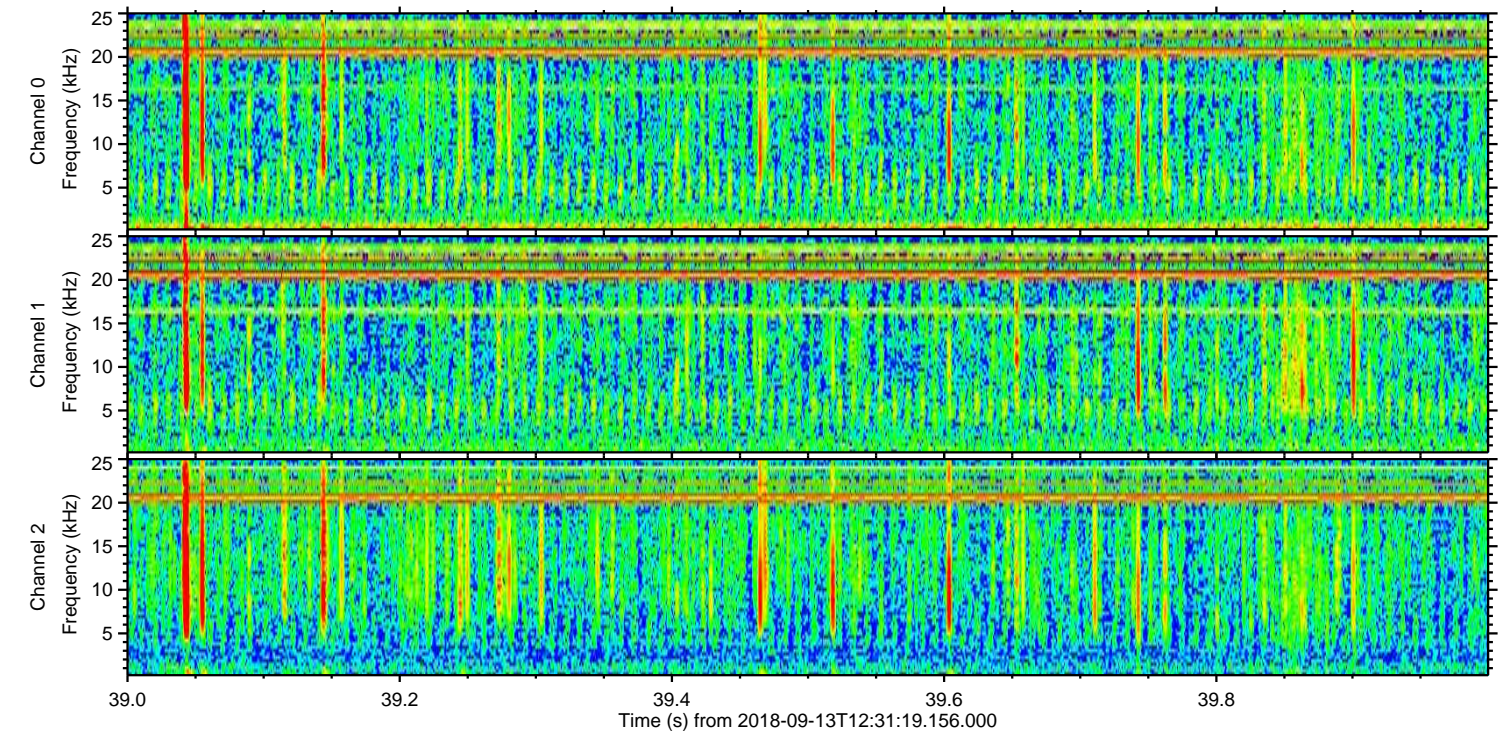
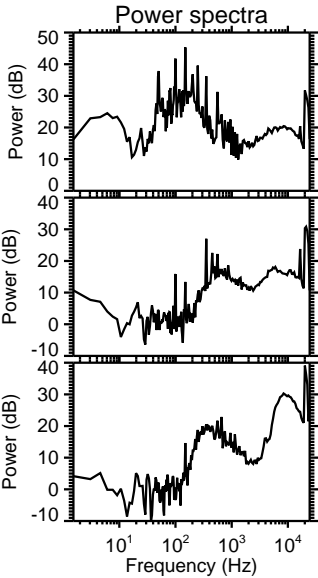
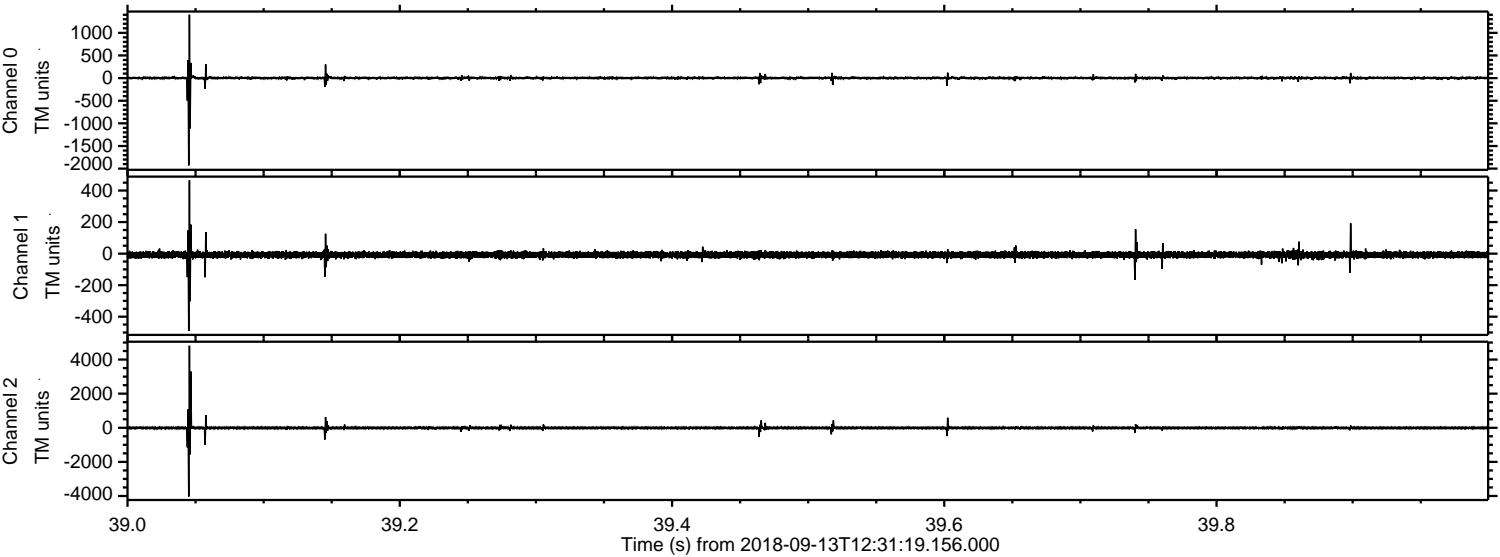


Processed Thu Sep 13 14:39:41 2018 by ELM ver.2012-10-06 from 001\_\_elm20180913\_123118\_\_dat00.bin



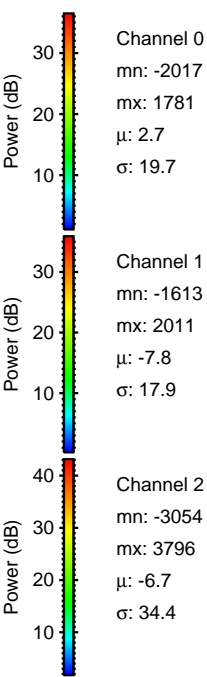
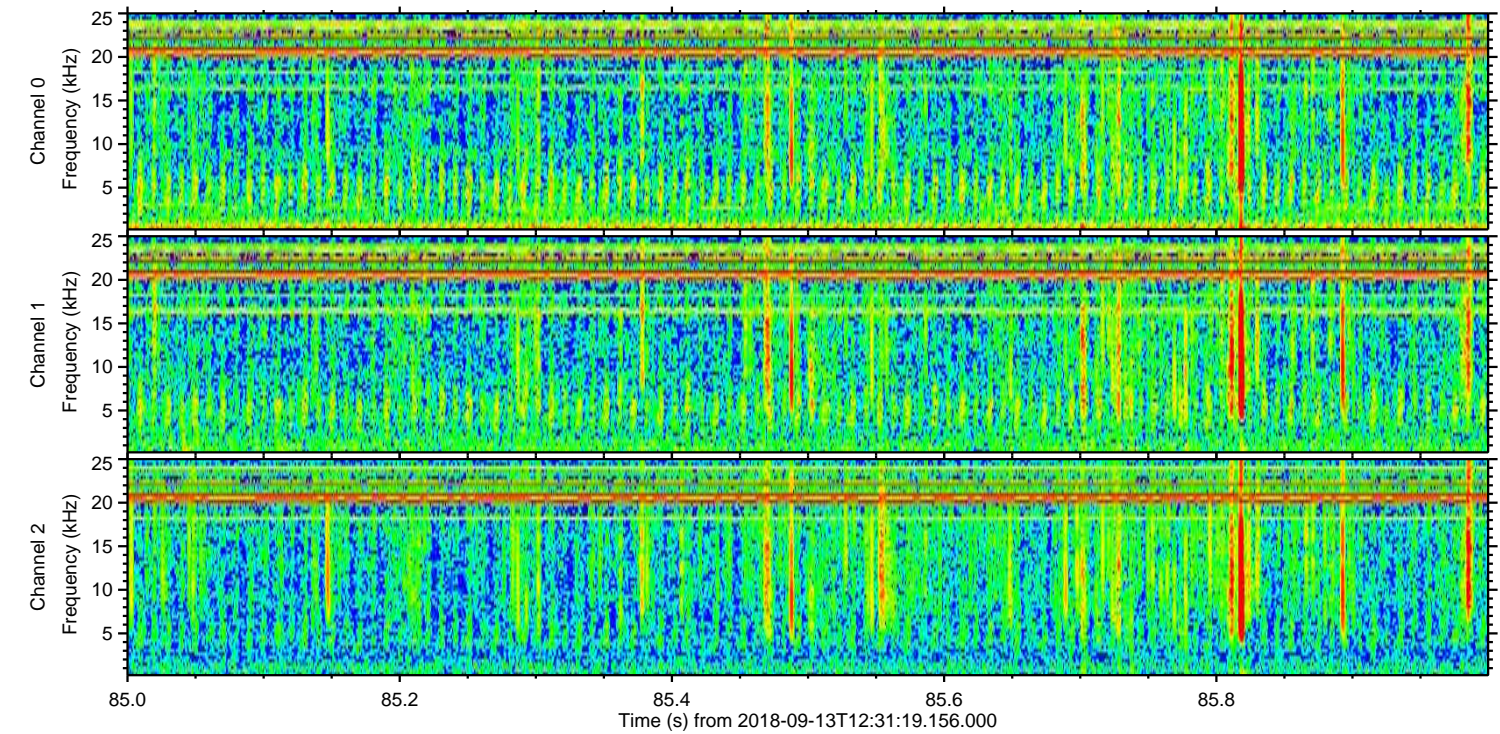
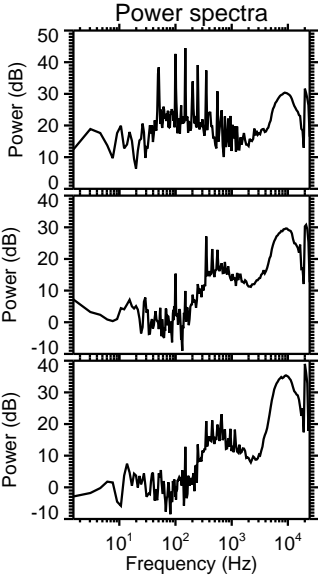
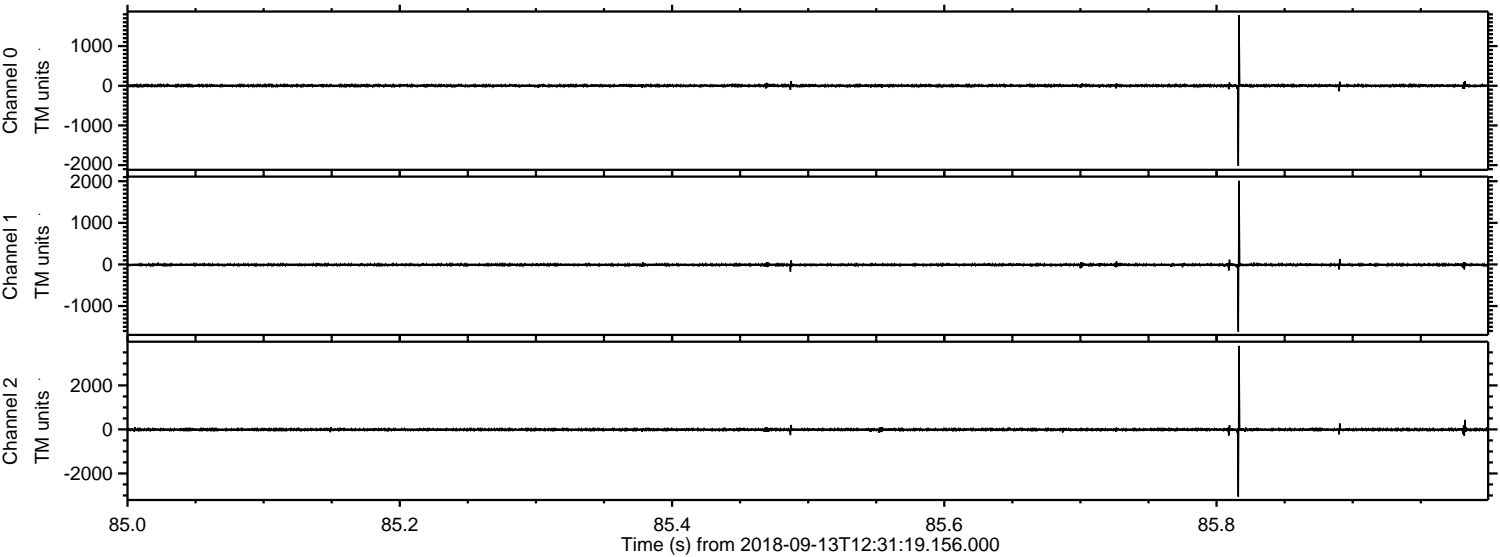


Processed Thu Sep 13 14:39:42 2018 by ELM ver.2012-10-06 from 001\_\_elm20180913\_123118\_\_dat00.bin





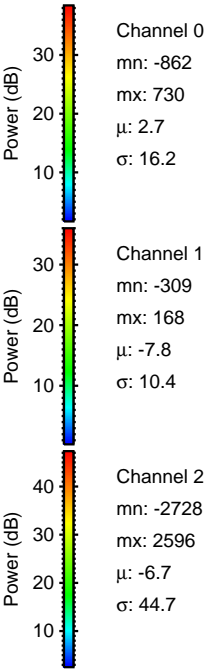
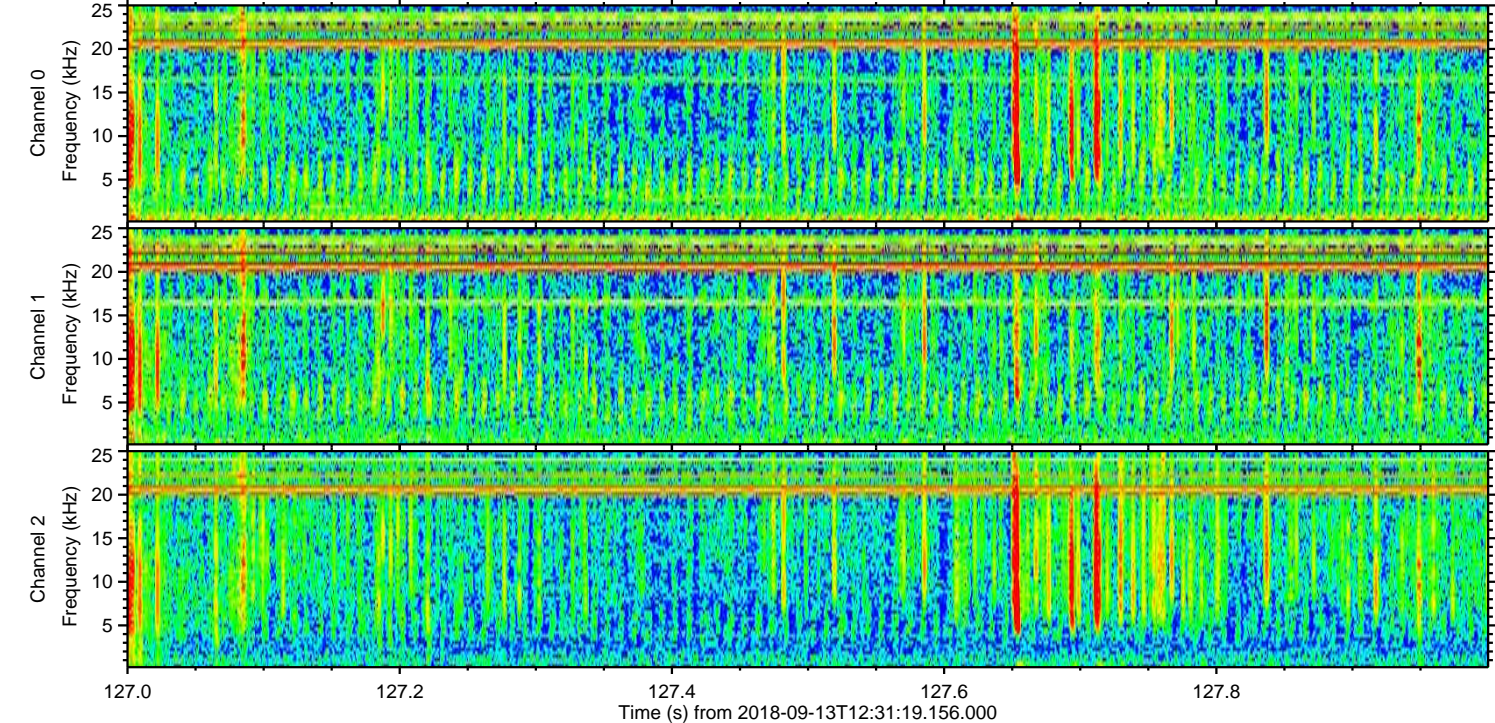
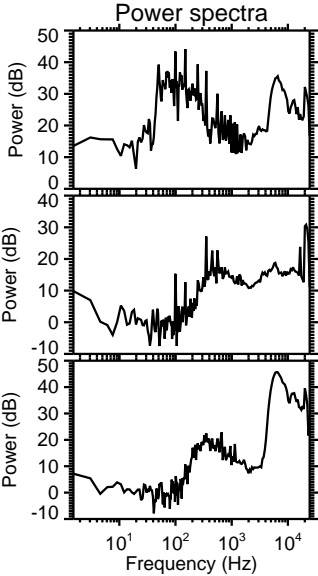
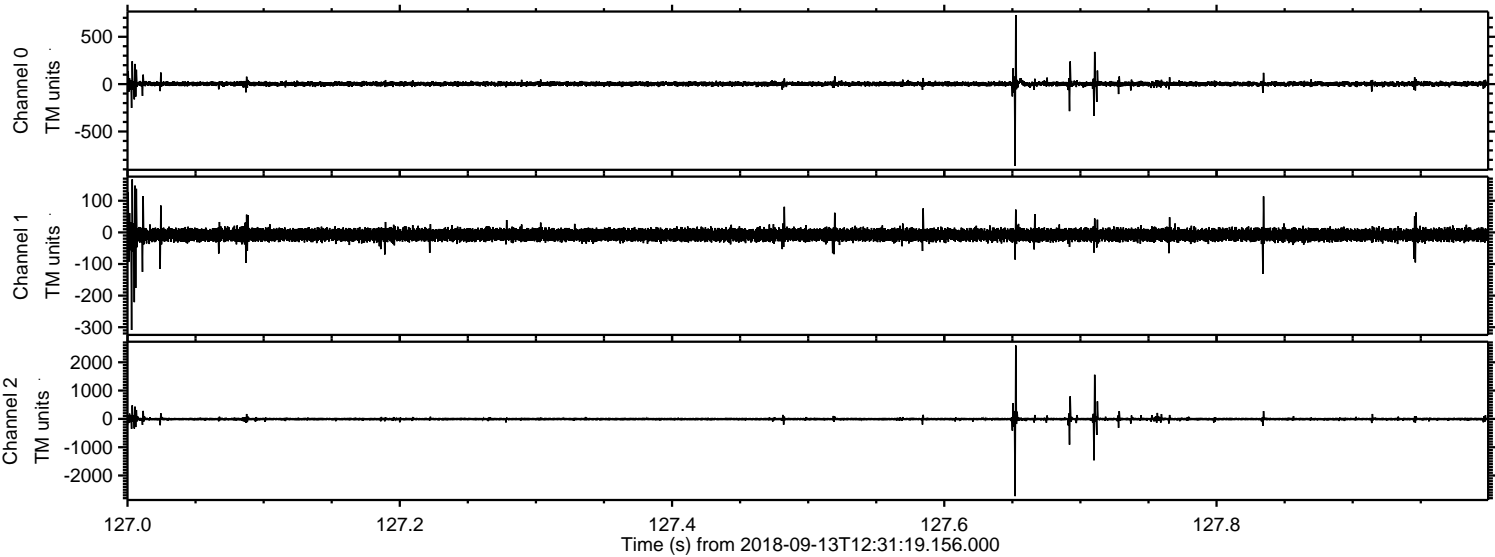
Processed Thu Sep 13 14:39:43 2018 by ELM ver.2012-10-06 from 001\_\_elm20180913\_123118\_\_dat00.bin





ELMAVAN 3D WAVEFORMS (Measured data sampled at 50 kHz) 51000 packets of 144 samples from 2018-09-13T12:31:19.156.000. Part 128/147

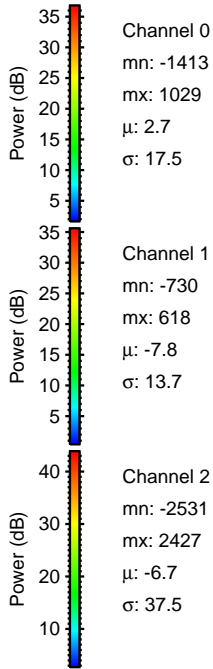
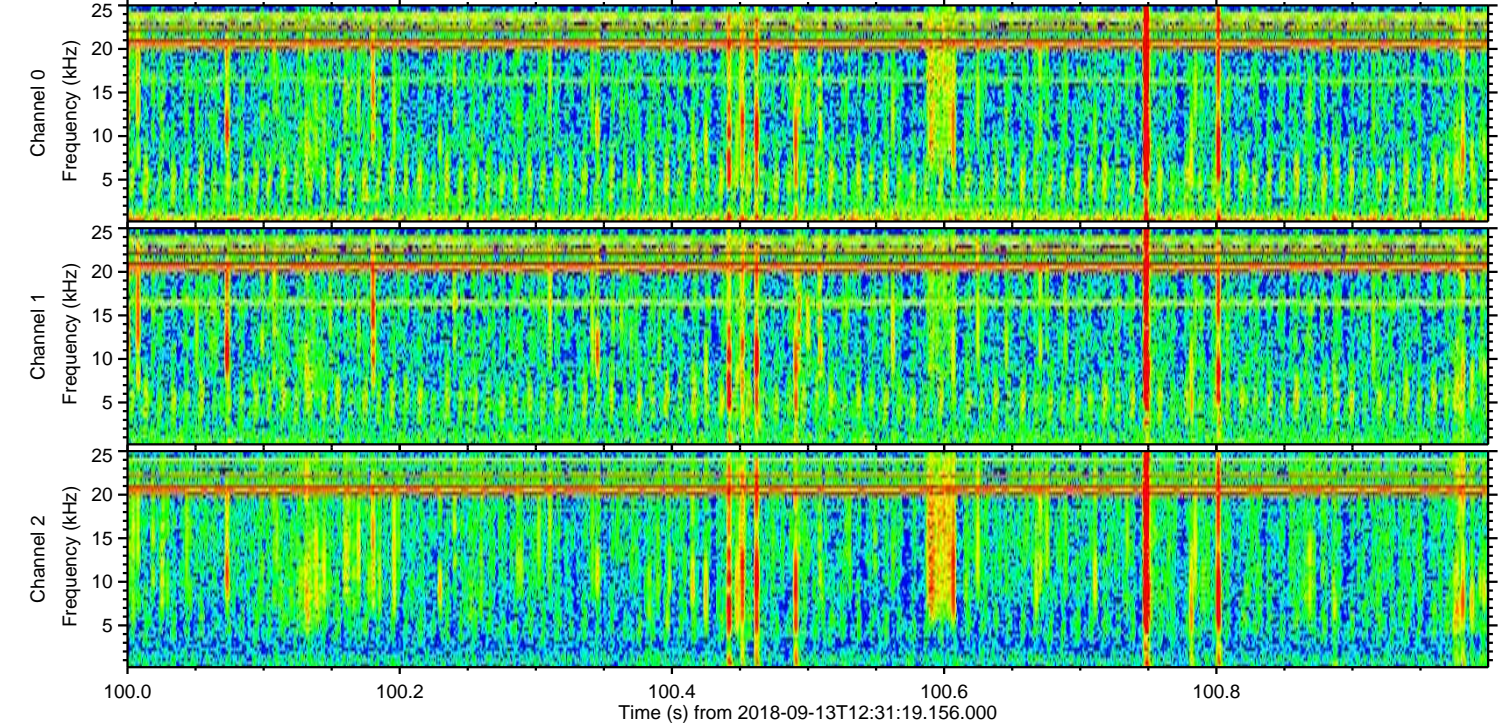
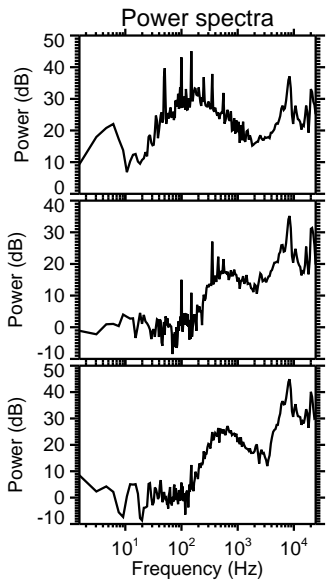
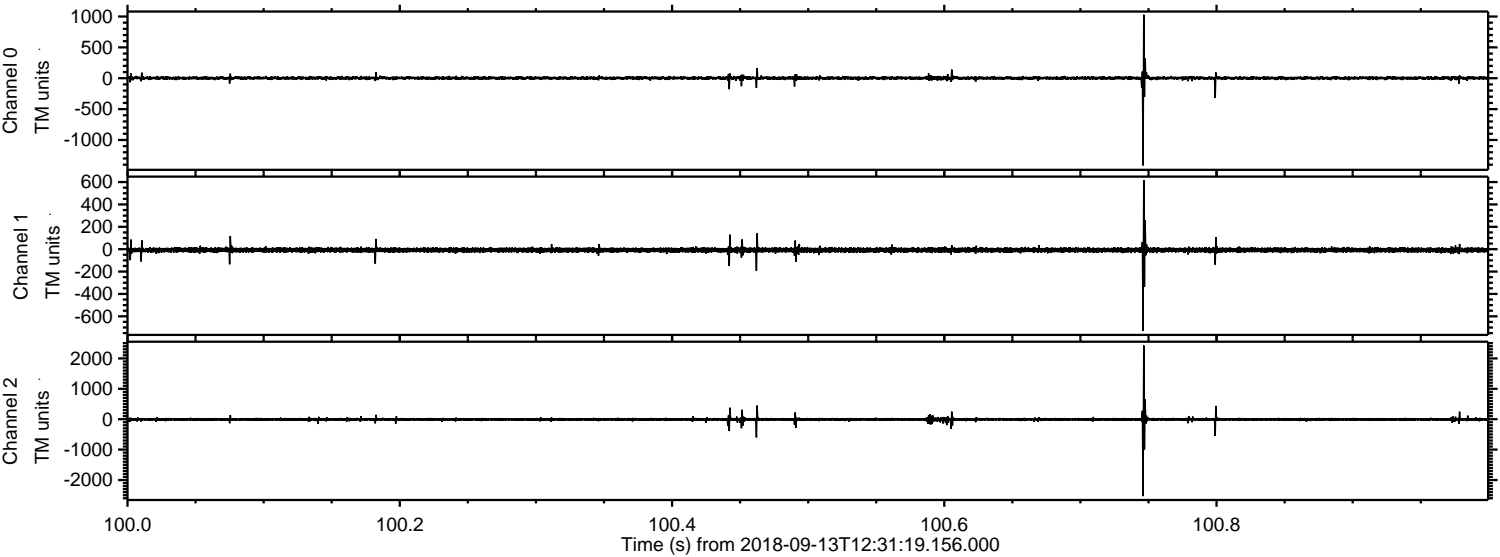
Processed Thu Sep 13 14:39:44 2018 by ELM ver.2012-10-06 from 001\_\_elm20180913\_123118\_\_dat00.bin





ELMAVAN 3D WAVEFORMS (Measured data sampled at 50 kHz) 51000 packets of 144 samples from 2018-09-13T12:31:19.156.000. Part 101/147

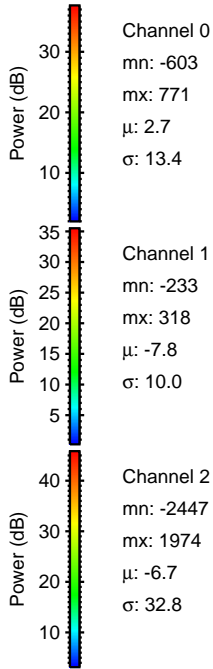
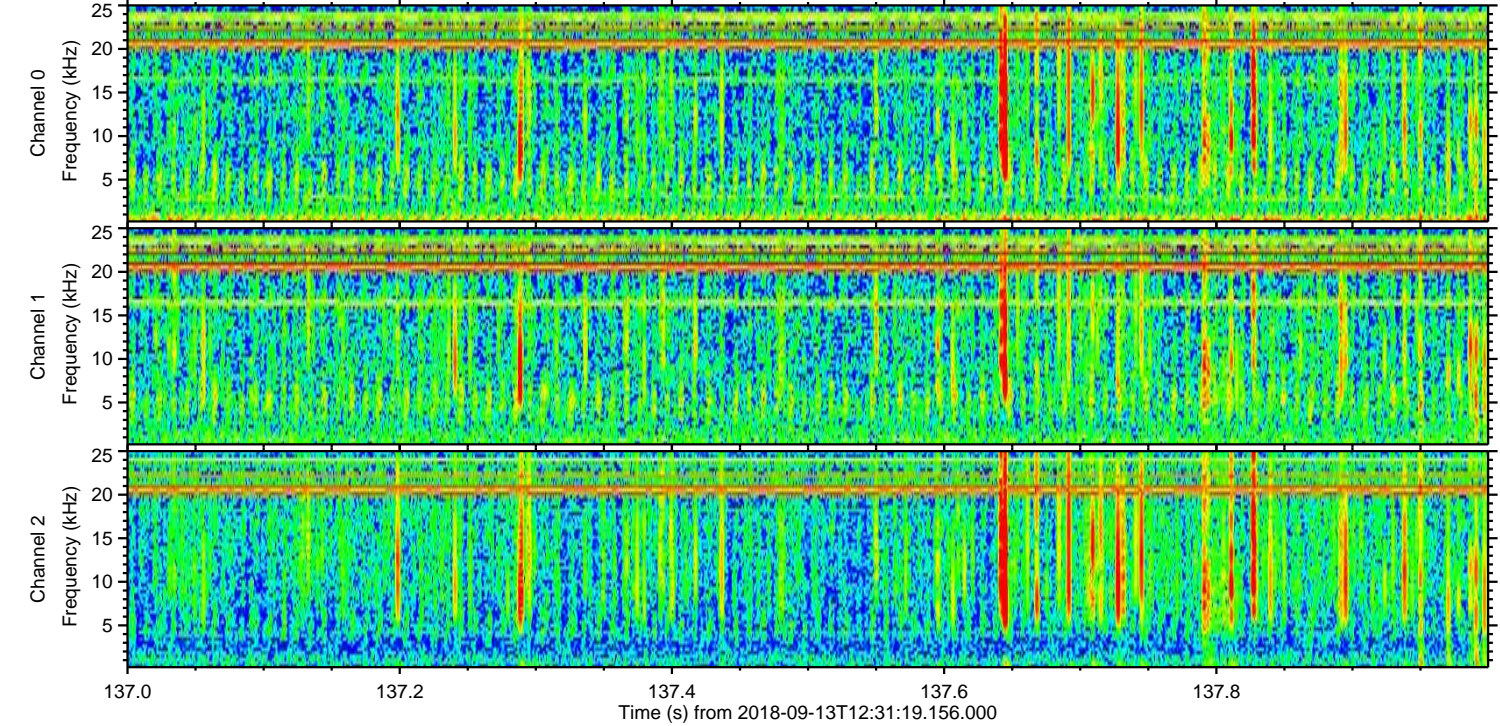
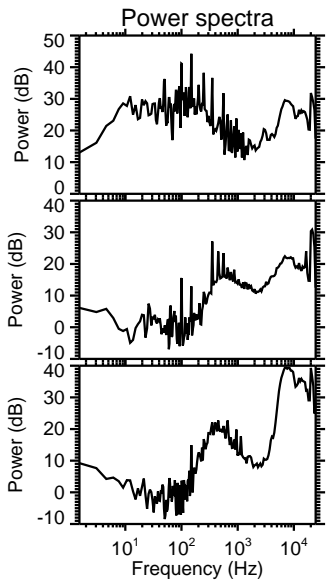
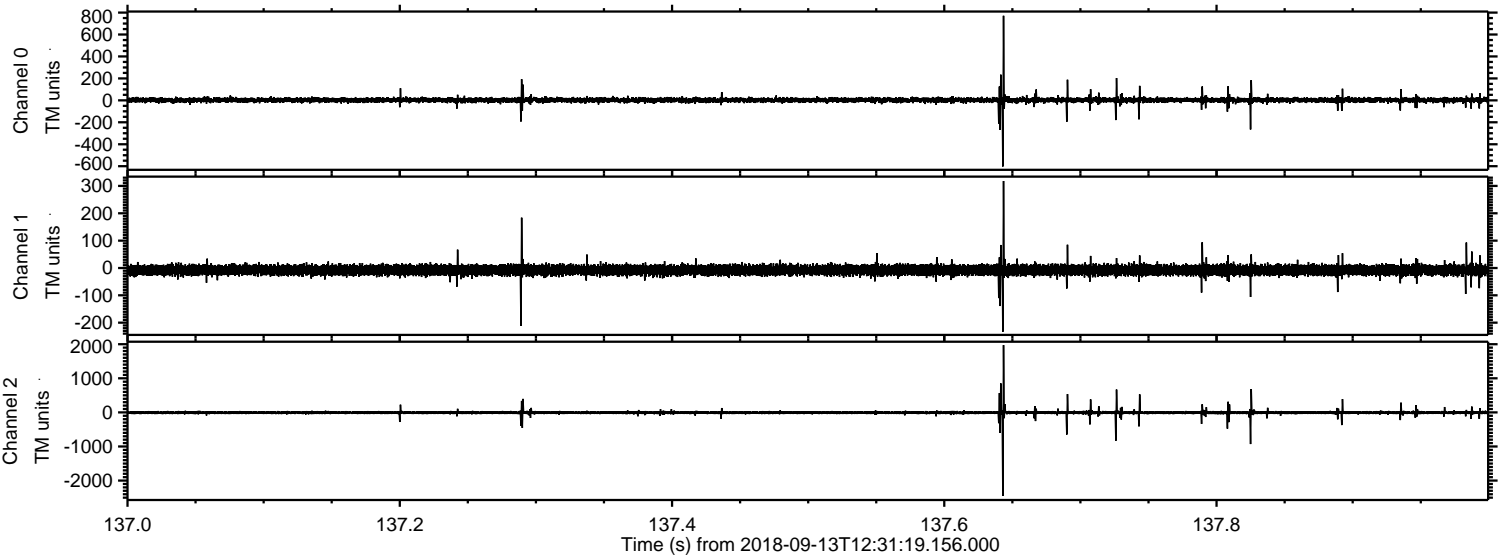
Processed Thu Sep 13 14:39:45 2018 by ELM ver.2012-10-06 from 001\_\_elm20180913\_123118\_\_dat00.bin





ELMAVAN 3D WAVEFORMS (Measured data sampled at 50 kHz) 51000 packets of 144 samples from 2018-09-13T12:31:19.156.000. Part 138/147

Processed Thu Sep 13 14:39:46 2018 by ELM ver.2012-10-06 from 001\_\_elm20180913\_123118\_\_dat00.bin



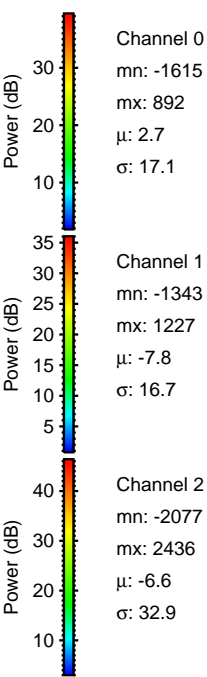
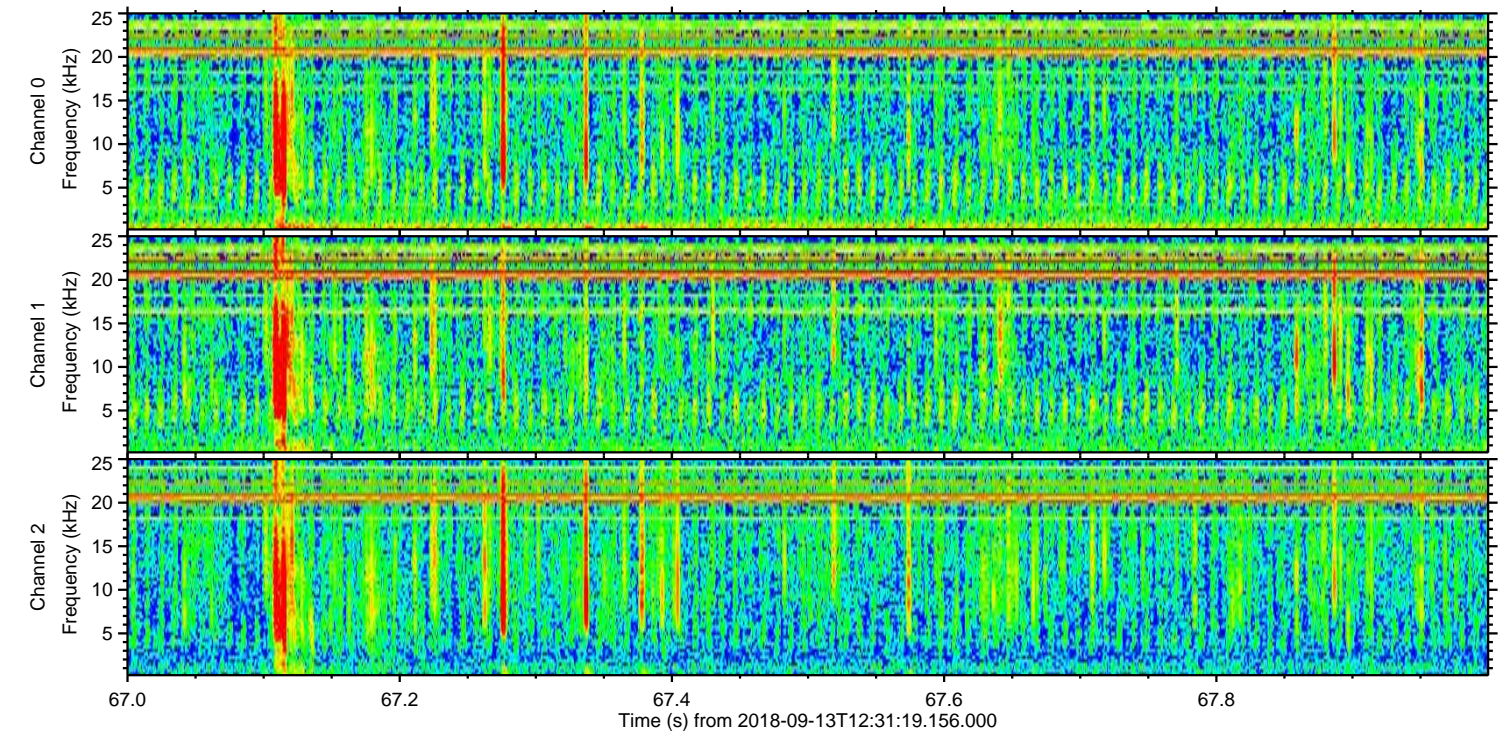
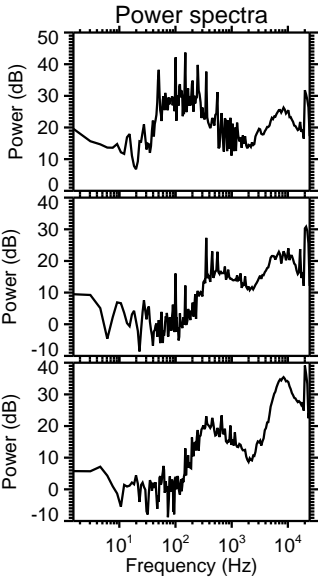
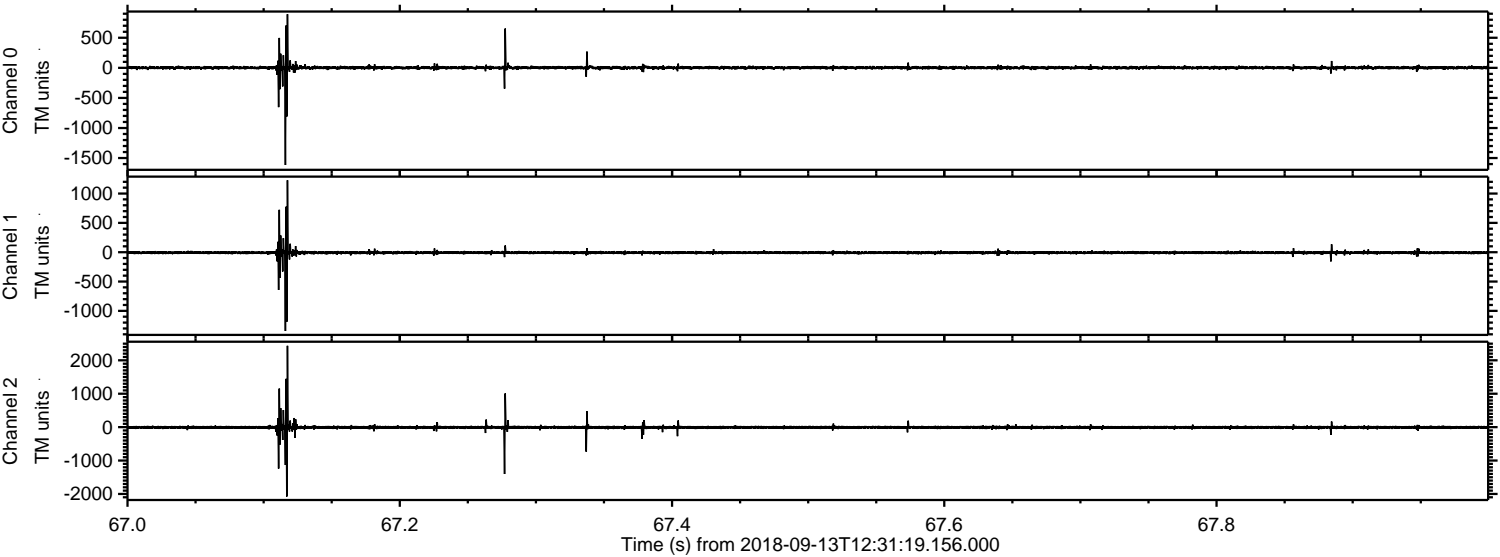
Channel 0  
mn: -603  
mx: 771  
 $\mu$ : 2.7  
 $\sigma$ : 13.4

Channel 1  
mn: -233  
mx: 318  
 $\mu$ : -7.8  
 $\sigma$ : 10.0

Channel 2  
mn: -2447  
mx: 1974  
 $\mu$ : -6.7  
 $\sigma$ : 32.8

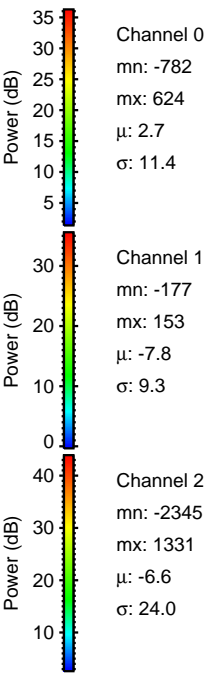
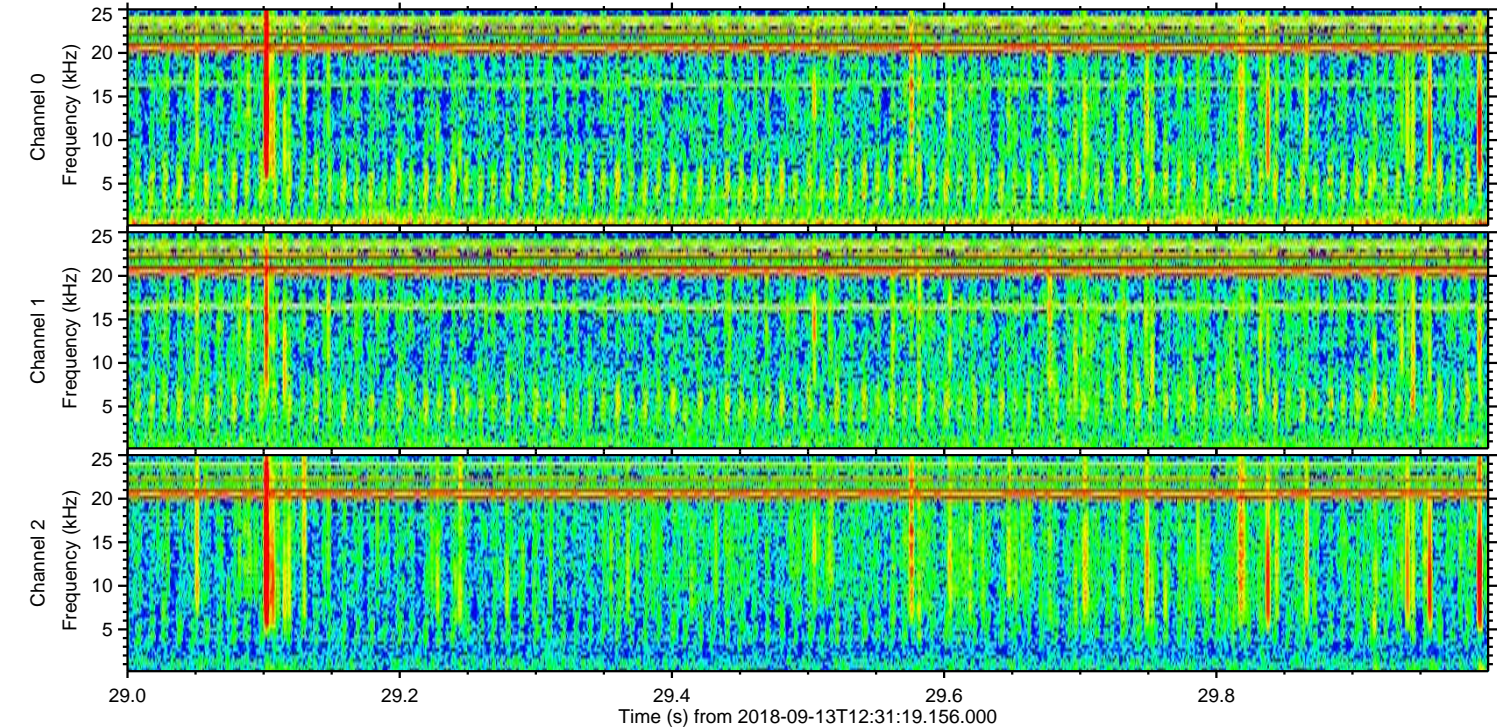
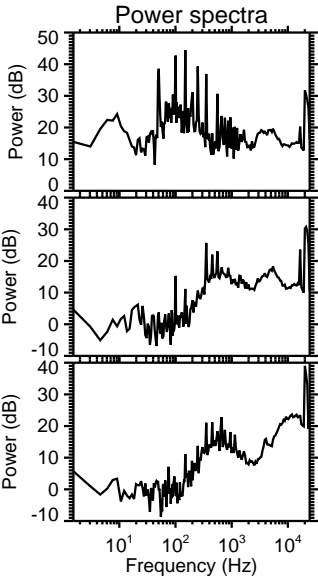
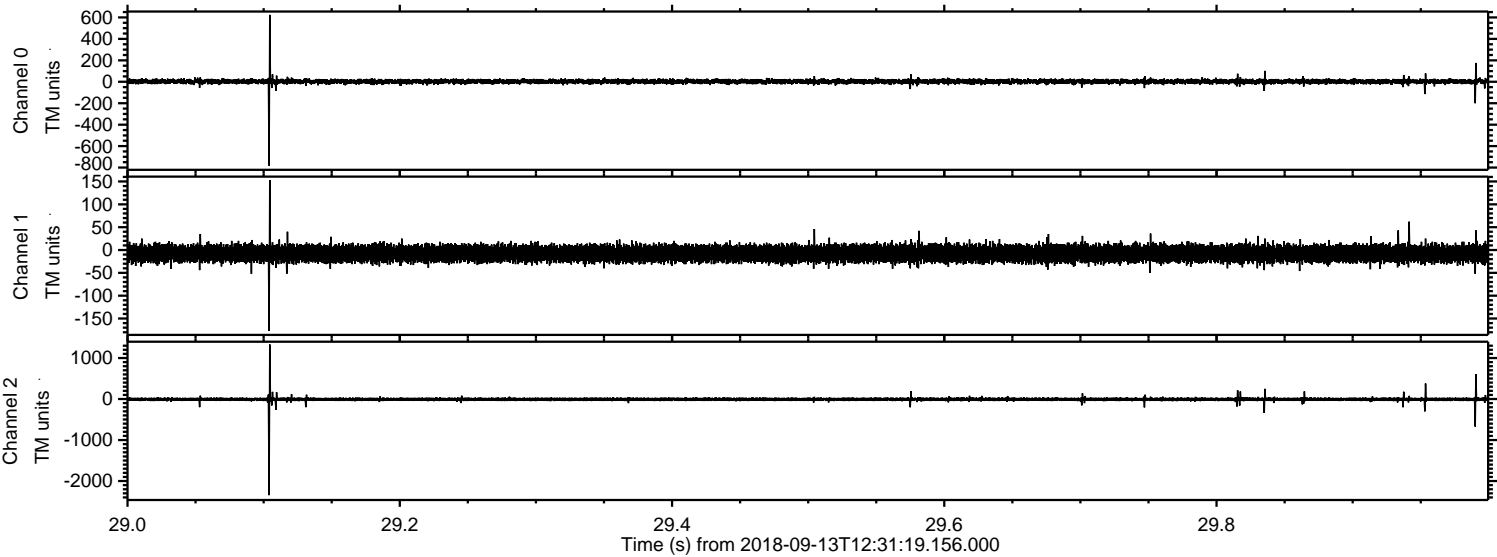


Processed Thu Sep 13 14:39:46 2018 by ELM ver.2012-10-06 from 001\_\_elm20180913\_123118\_\_dat00.bin





Processed Thu Sep 13 14:39:47 2018 by ELM ver.2012-10-06 from 001\_\_elm20180913\_123118\_\_dat00.bin





Processed Thu Sep 13 14:39:48 2018 by ELM ver.2012-10-06 from 001\_\_elm20180913\_123118\_\_dat00.bin

