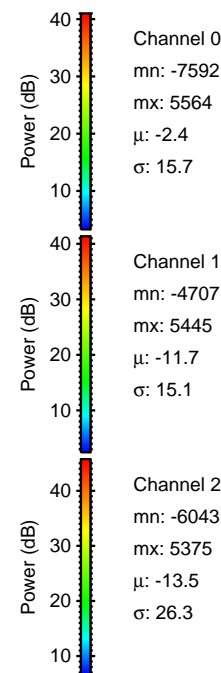
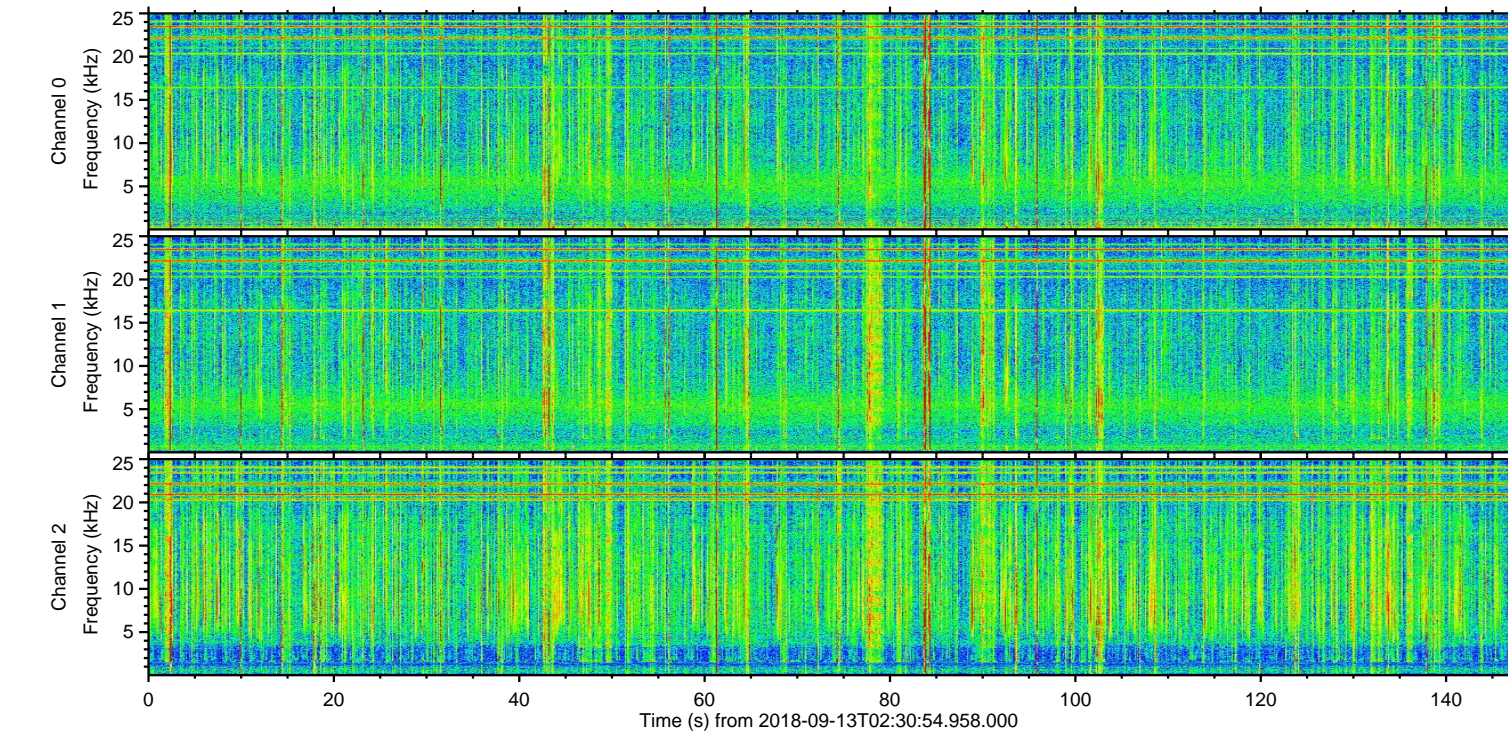
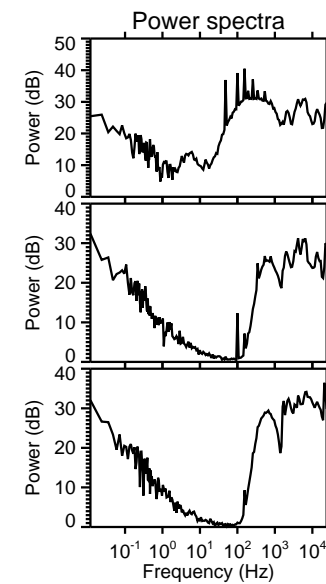
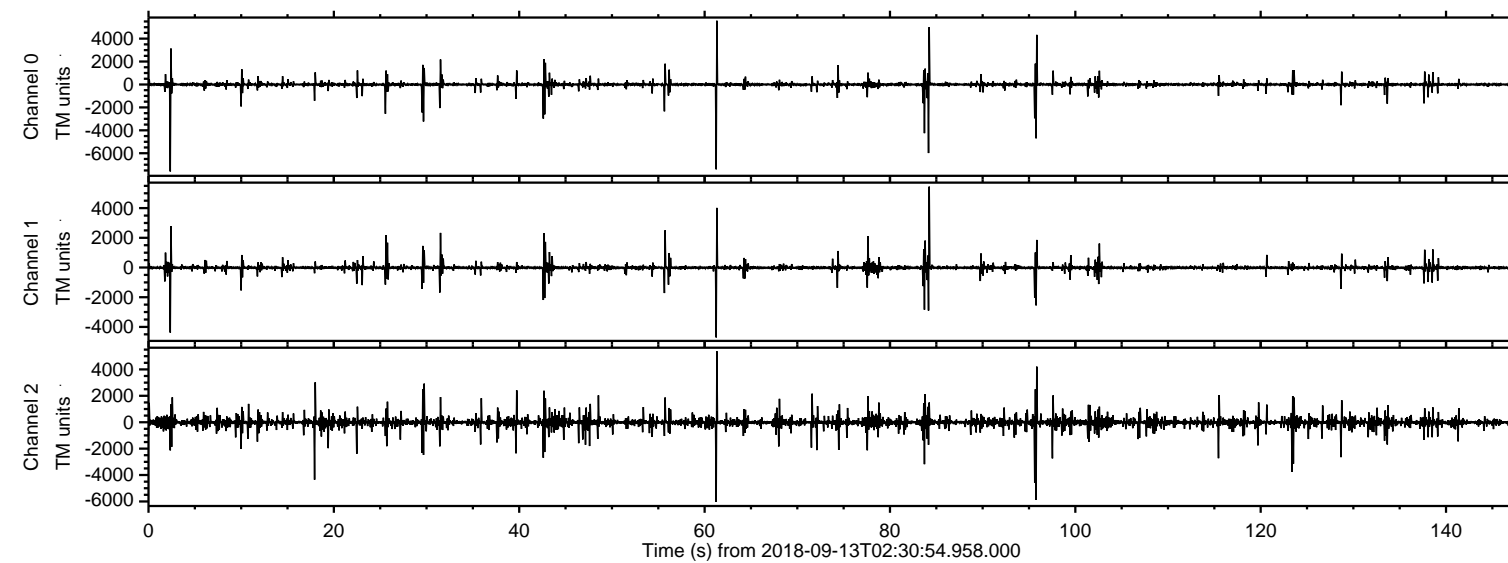


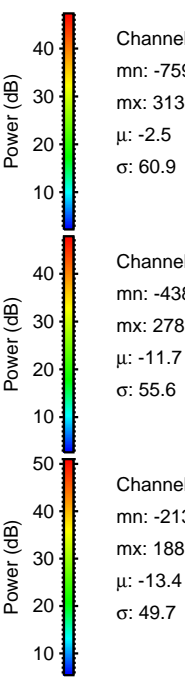
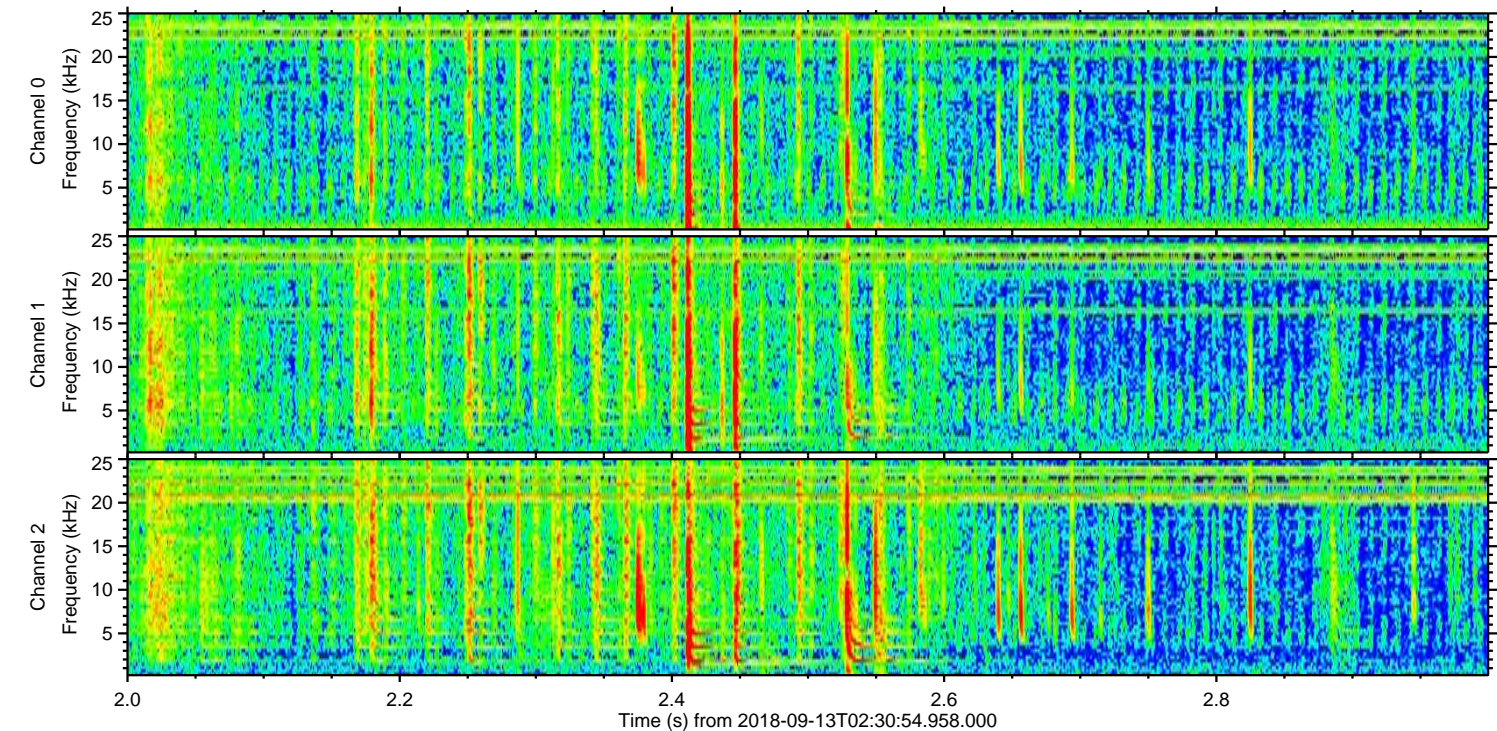
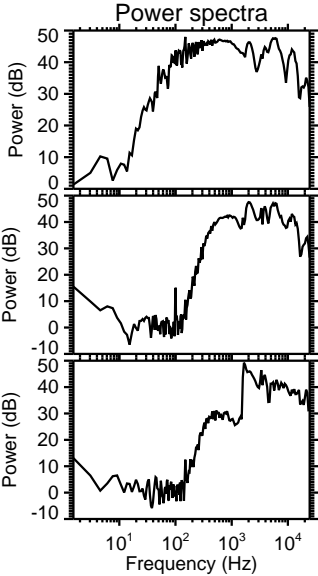
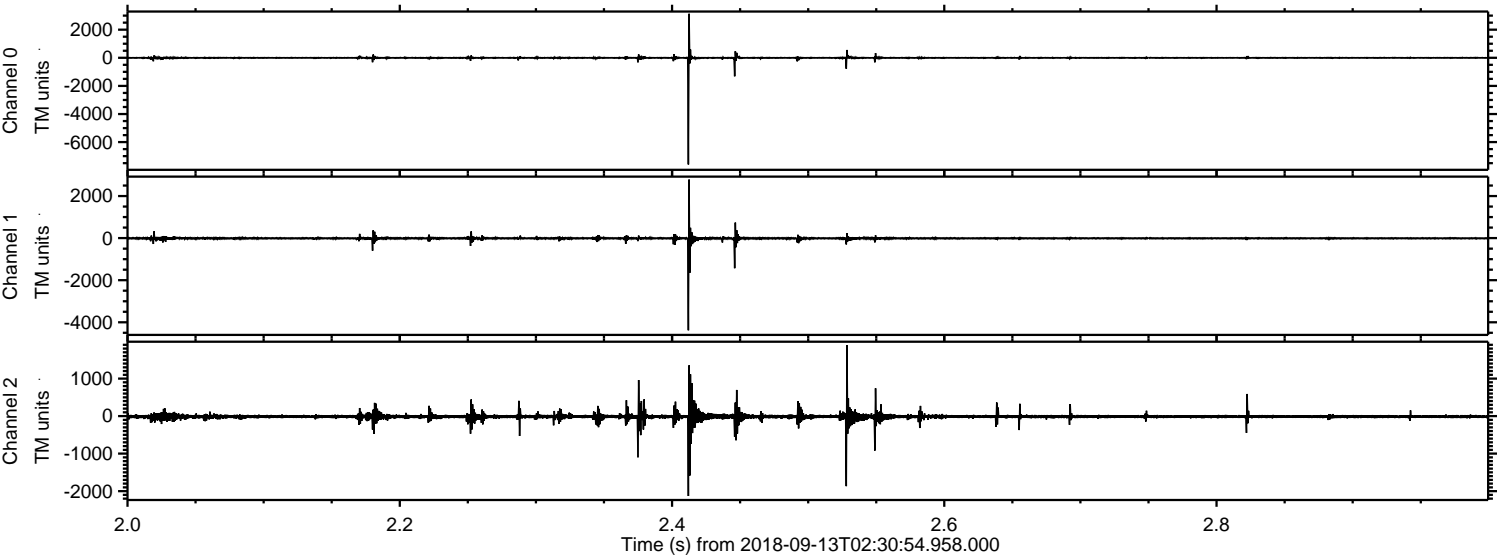
# ELMAVAN 3D WAVEFORMS (Measured data sampled at 50 kHz) 51000 packets of 144 samples from 2018-09-13T02:30:54.958.000.

Processed Thu Sep 13 04:38:48 2018 by ELM ver.2012-10-06 from 001\_\_elm20180913\_023053\_\_dat00.bin

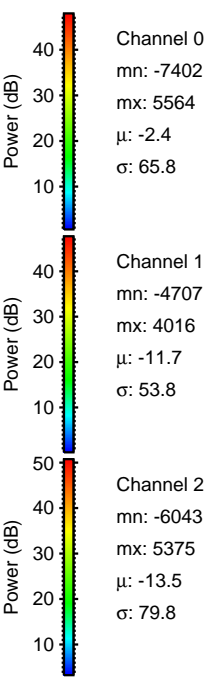
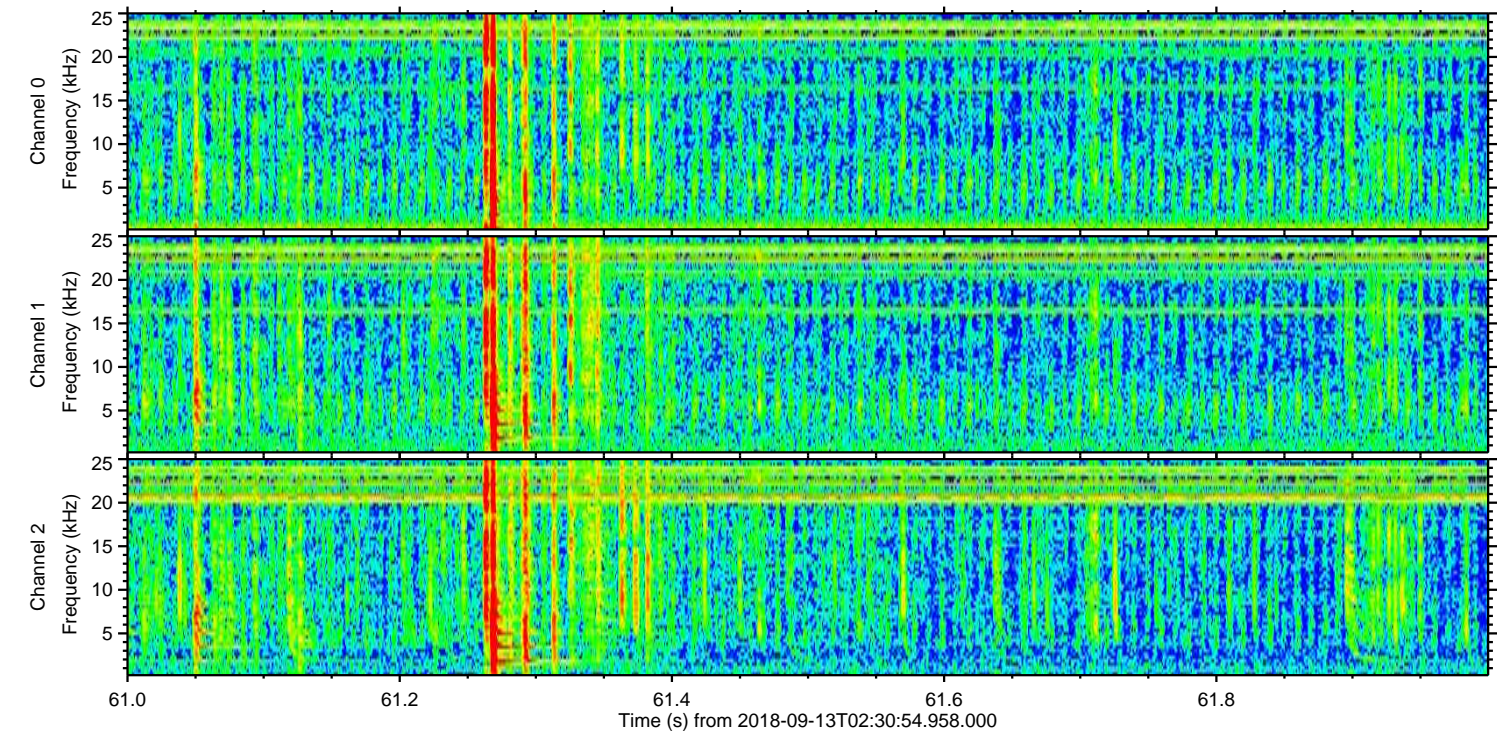
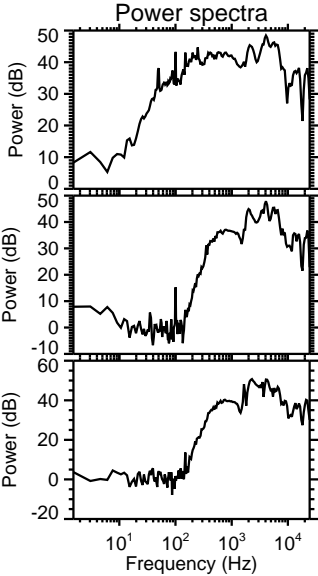
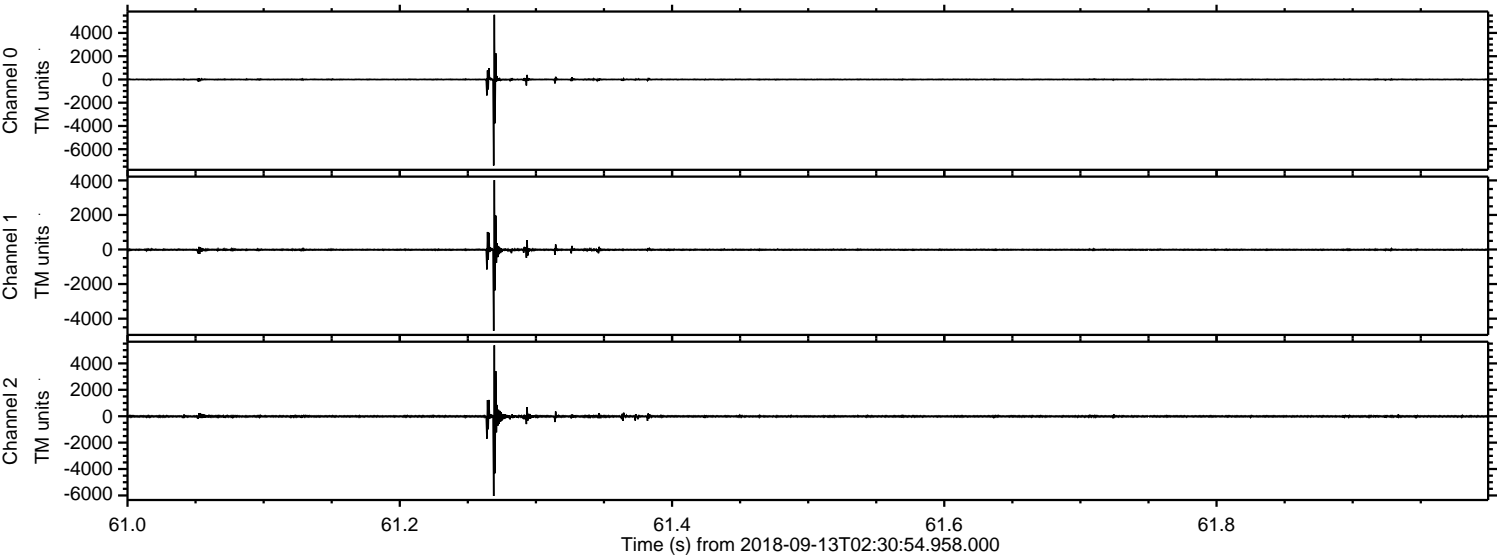


ELMAVAN 3D WAVEFORMS (Measured data sampled at 50 kHz) 51000 packets of 144 samples from 2018-09-13T02:30:54.958.000. Part 3/147

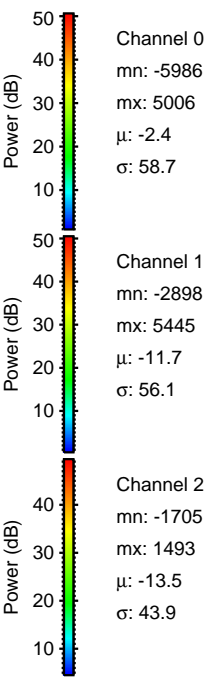
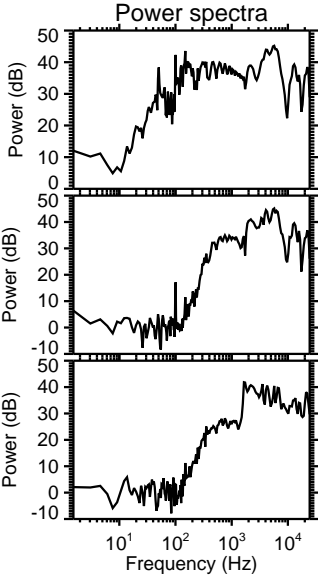
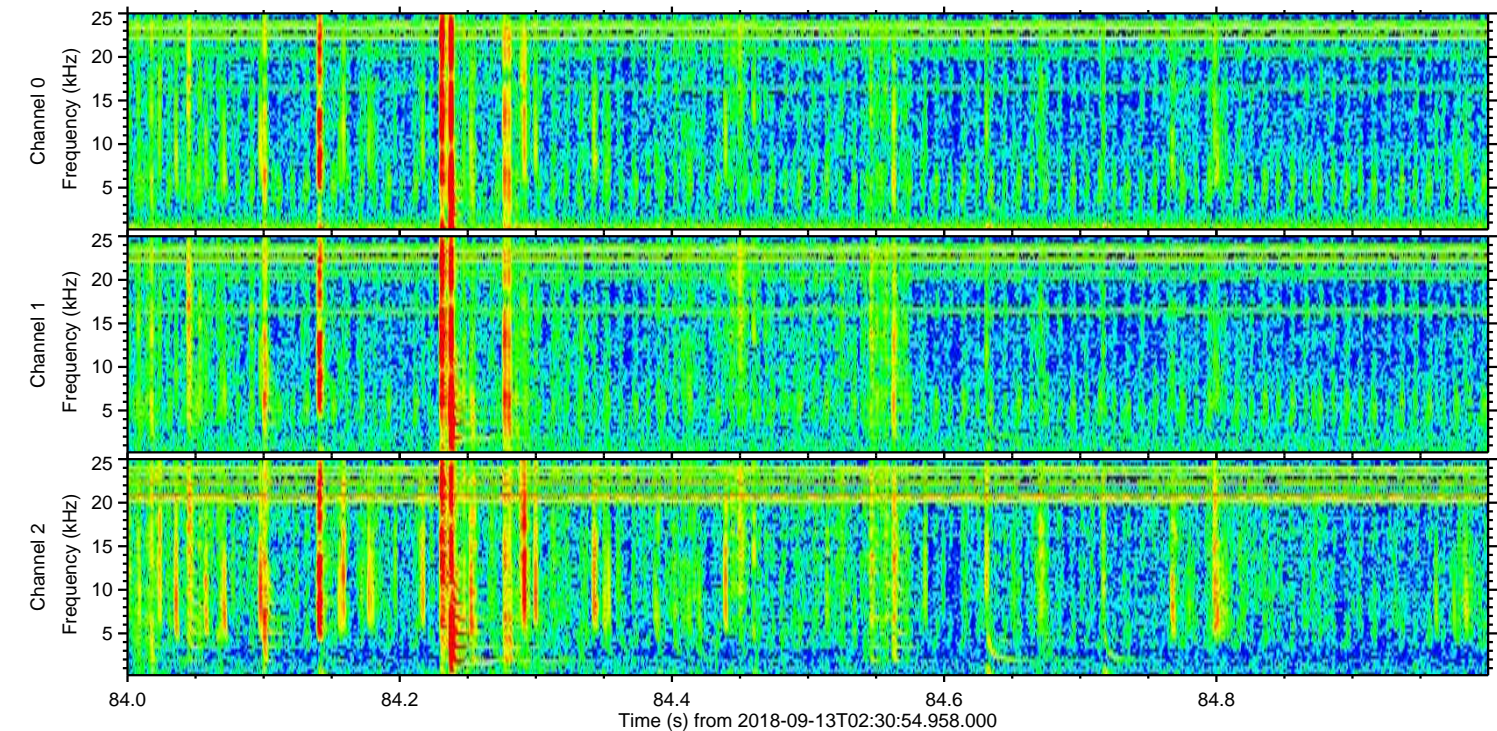
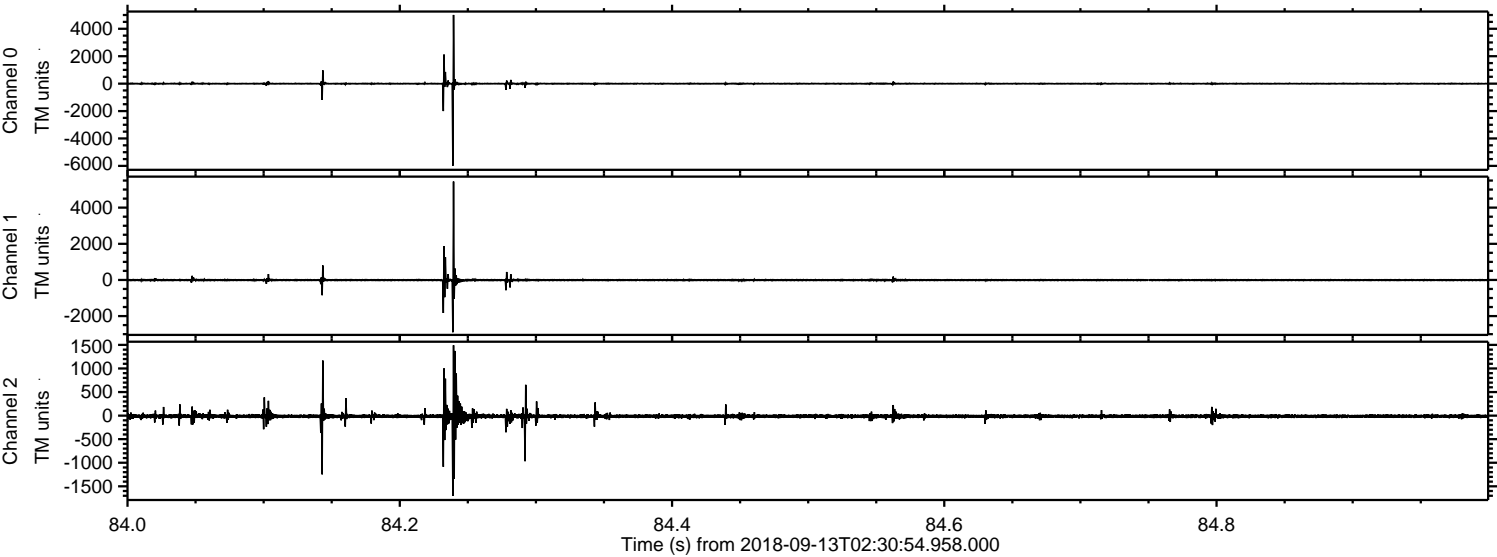
Processed Thu Sep 13 04:38:56 2018 by ELM ver.2012-10-06 from 001\_\_elm20180913\_023053\_\_dat00.bin



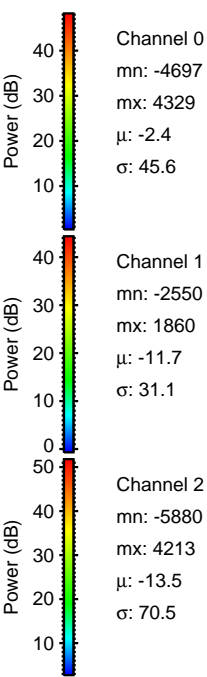
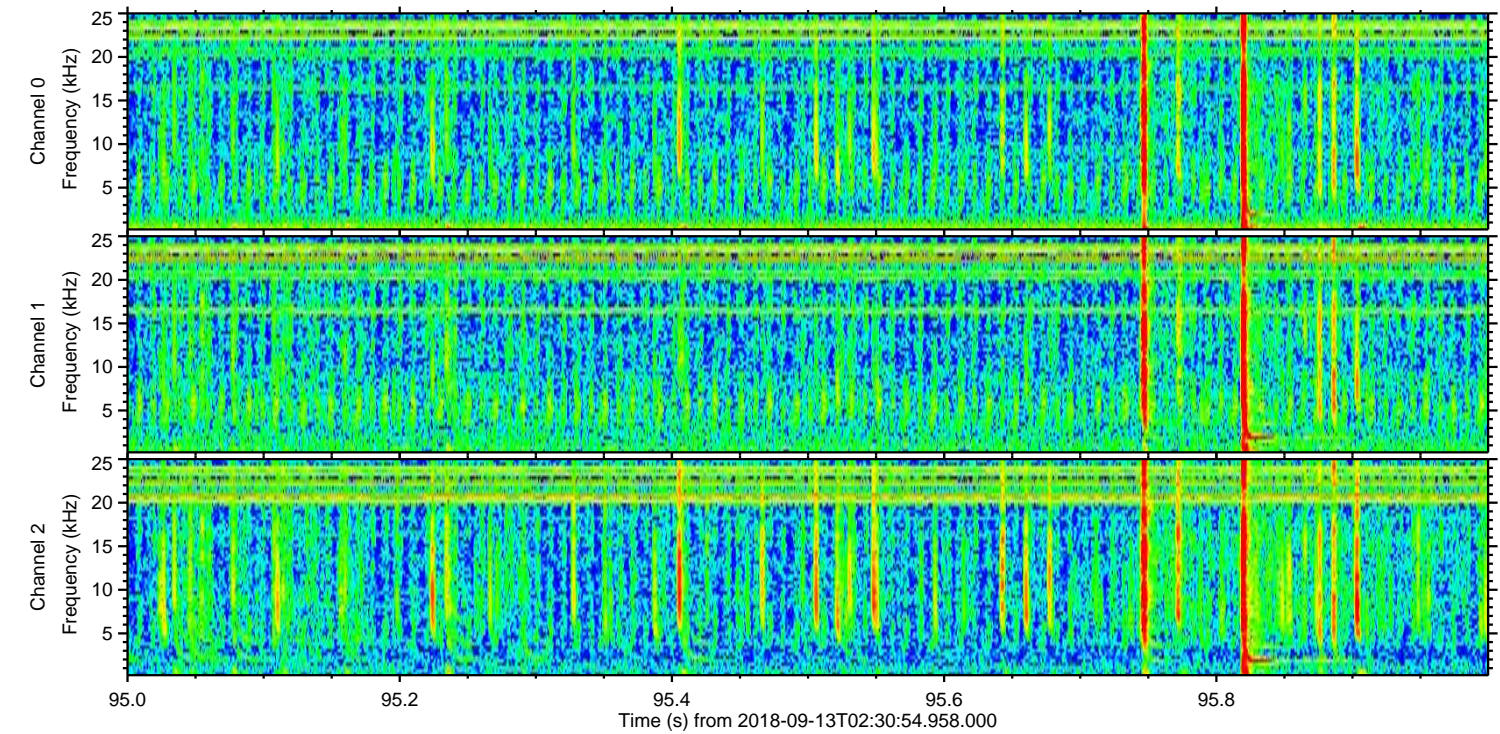
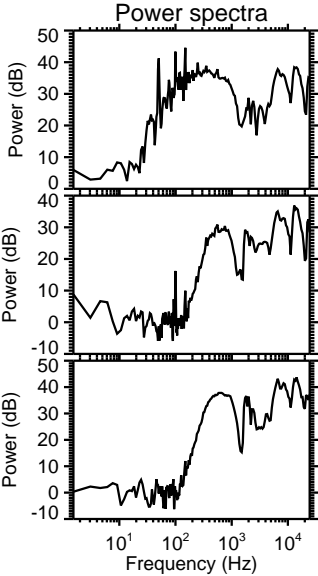
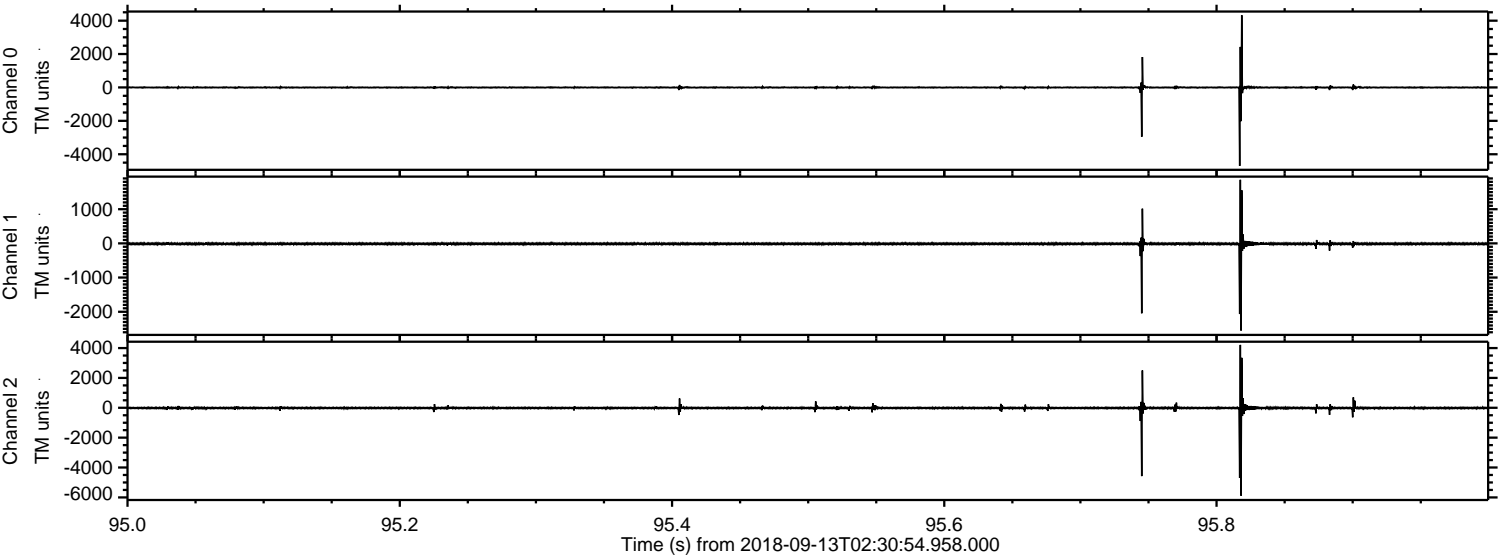
Processed Thu Sep 13 04:38:57 2018 by ELM ver.2012-10-06 from 001\_\_elm20180913\_023053\_\_dat00.bin



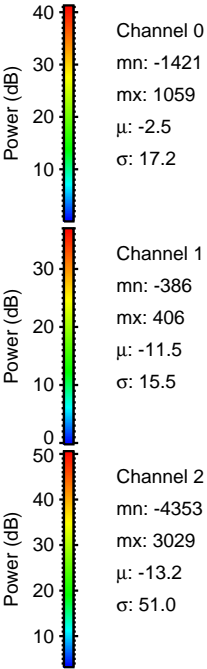
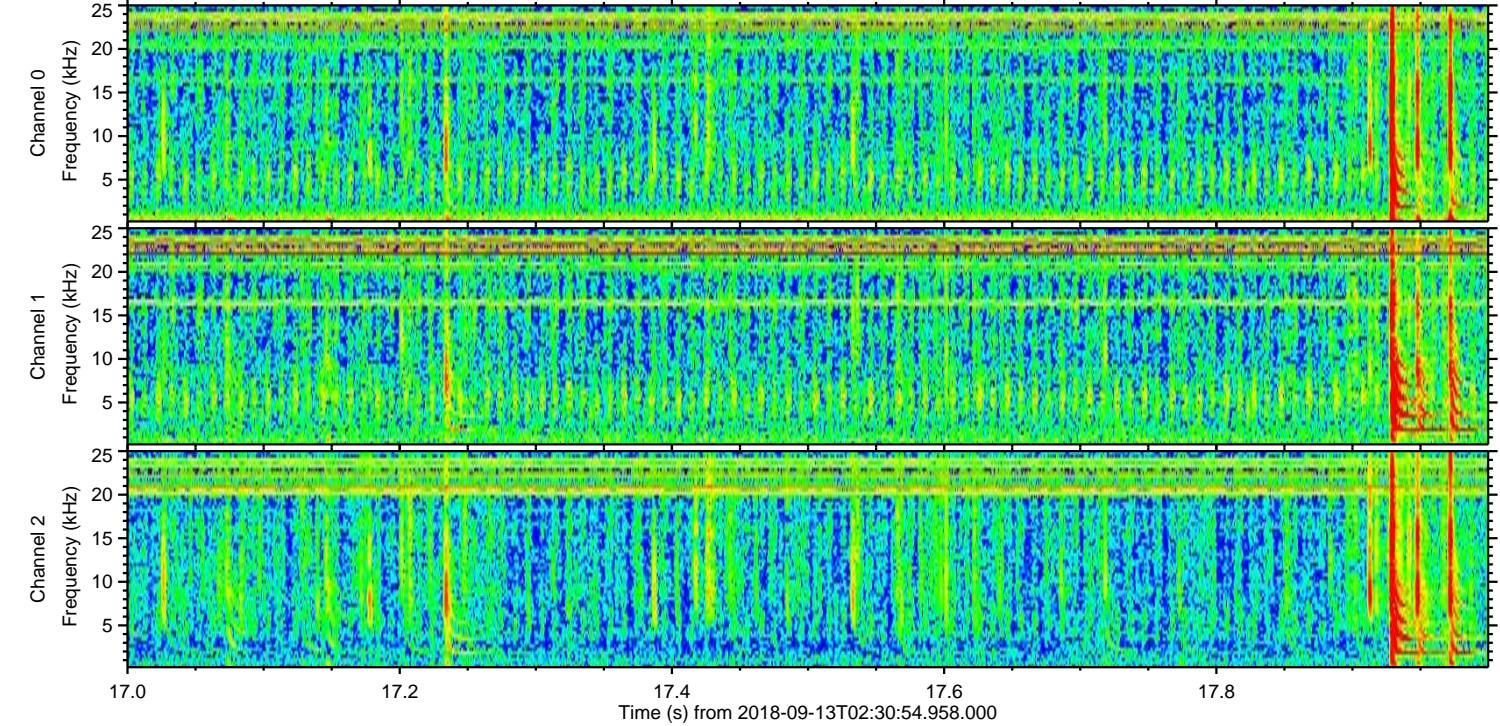
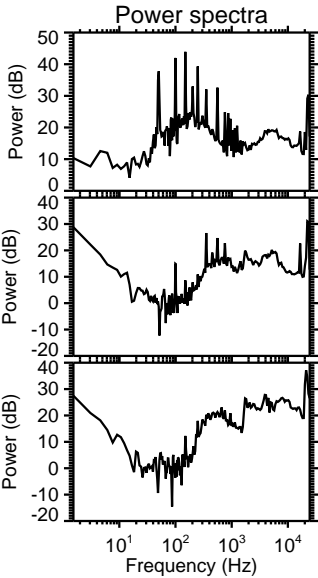
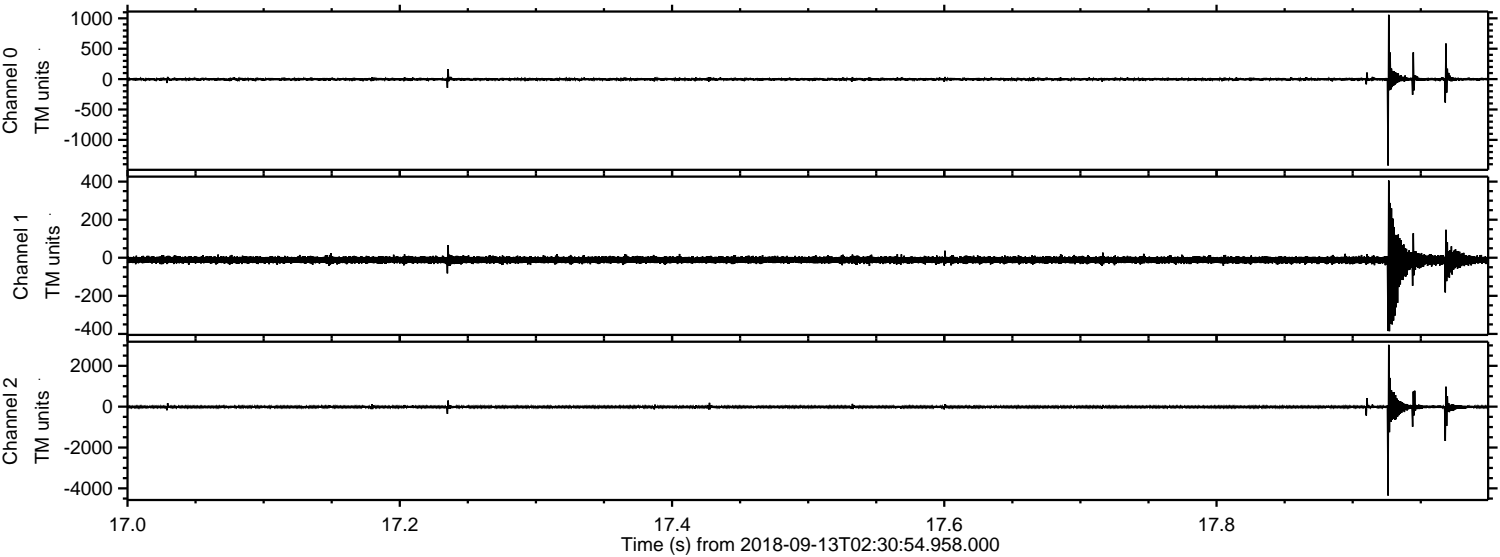
Processed Thu Sep 13 04:38:58 2018 by ELM ver.2012-10-06 from 001\_\_elm20180913\_023053\_\_dat00.bin



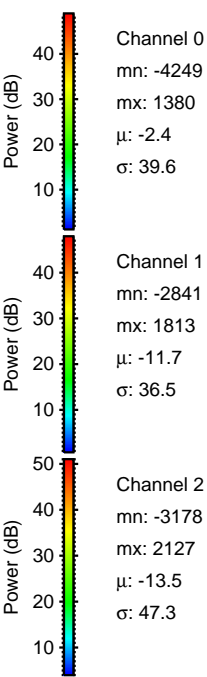
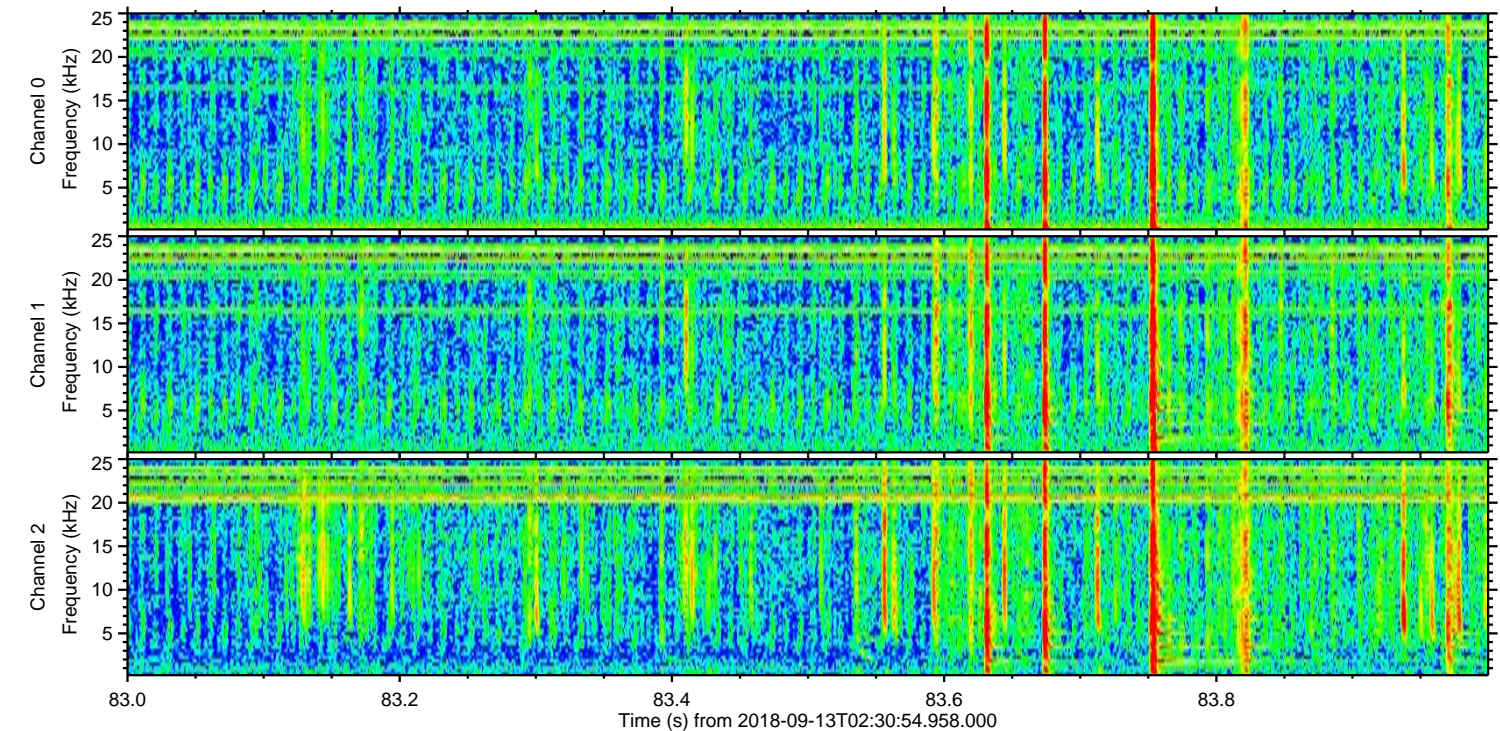
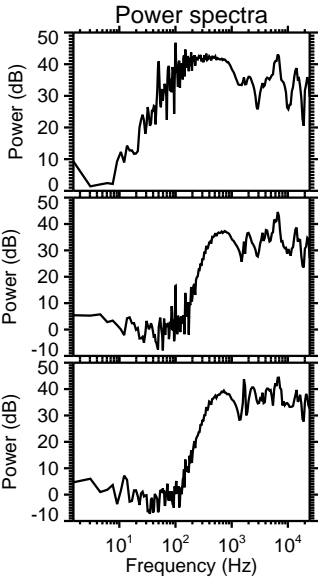
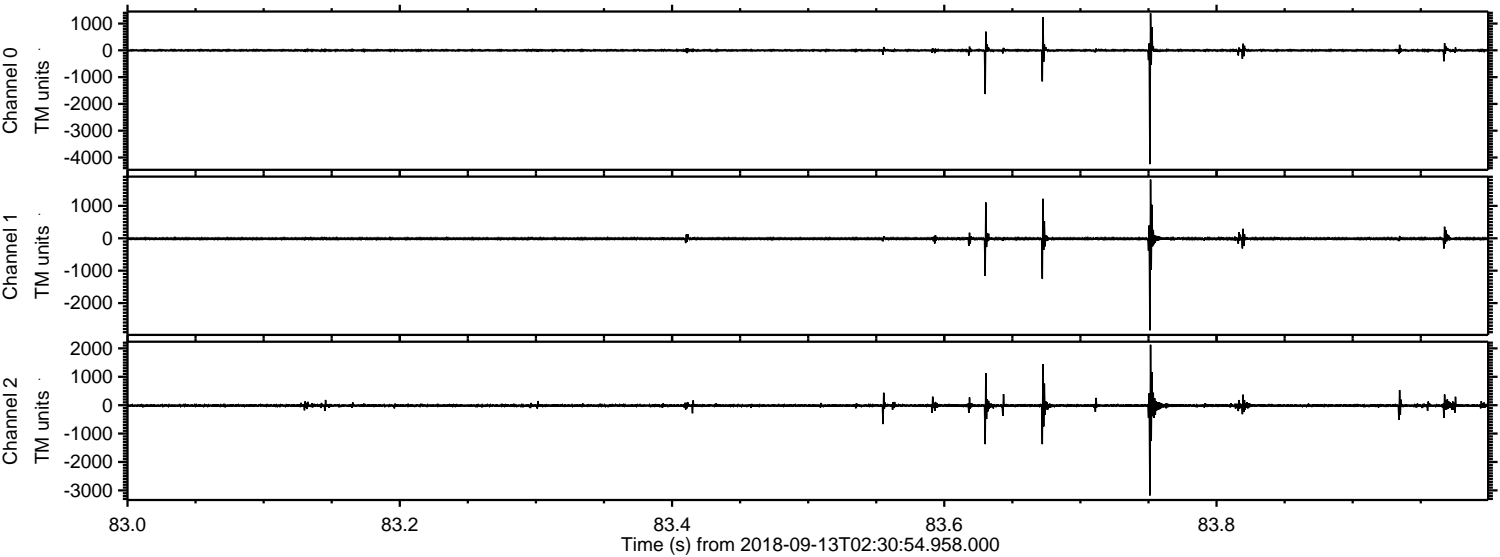
Processed Thu Sep 13 04:39:00 2018 by ELM ver.2012-10-06 from 001\_\_elm20180913\_023053\_\_dat00.bin



Processed Thu Sep 13 04:39:00 2018 by ELM ver.2012-10-06 from 001\_\_elm20180913\_023053\_\_dat00.bin

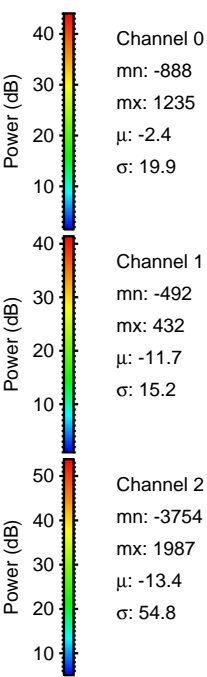
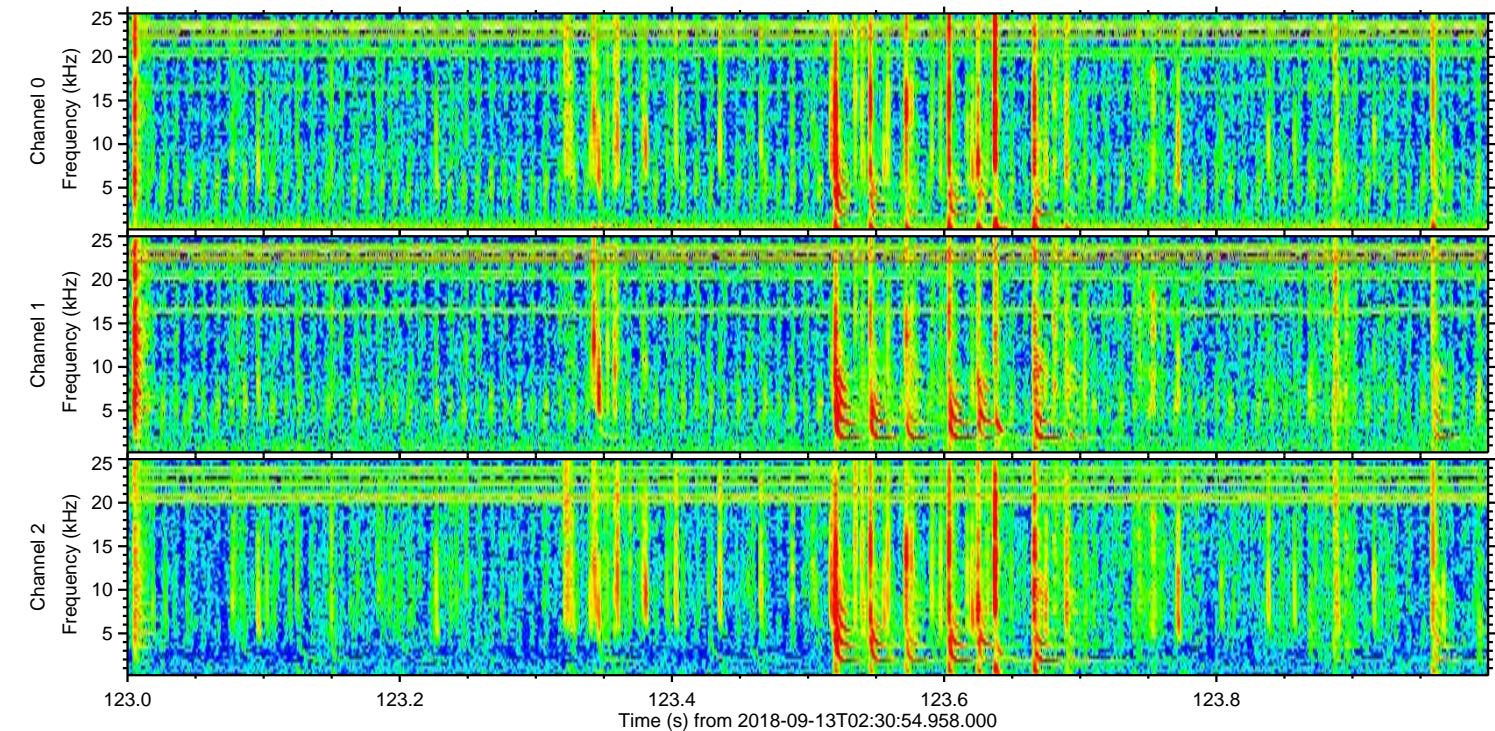
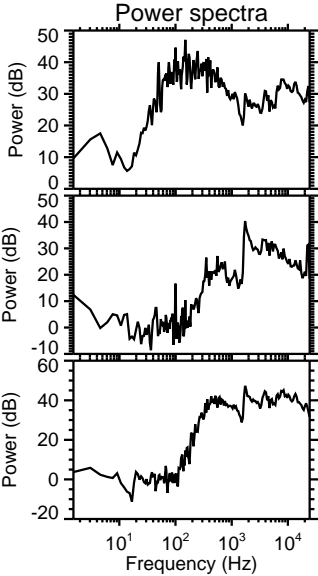
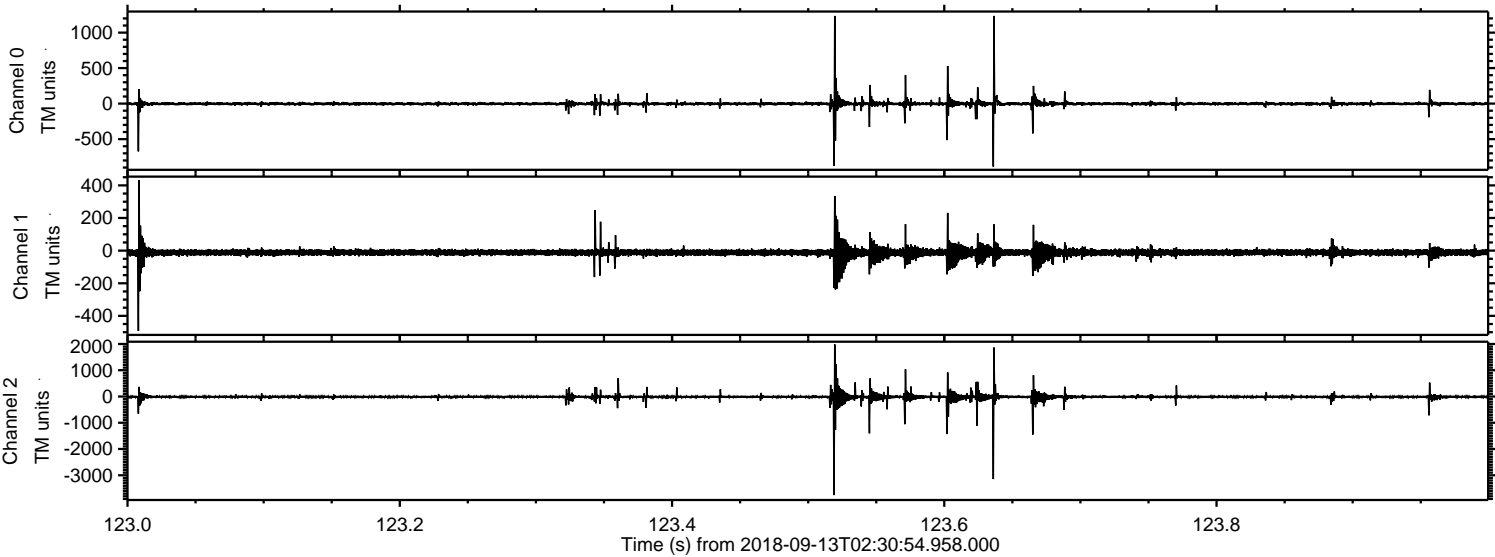


Processed Thu Sep 13 04:39:01 2018 by ELM ver.2012-10-06 from 001\_\_elm20180913\_023053\_\_dat00.bin

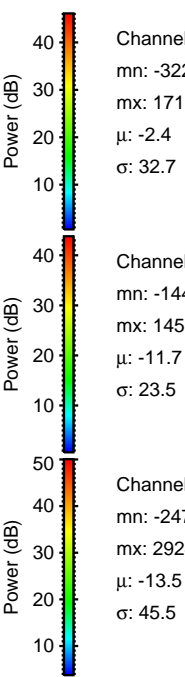
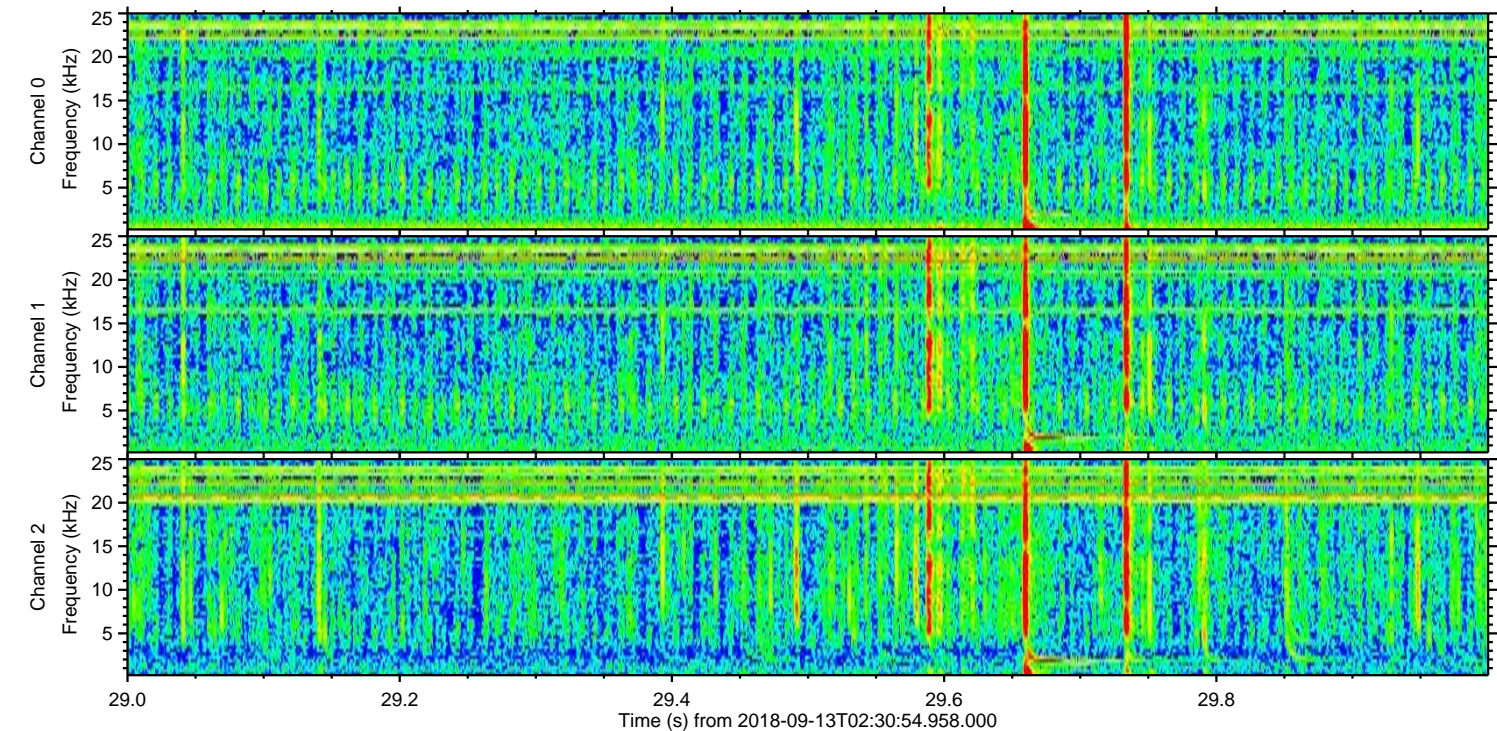
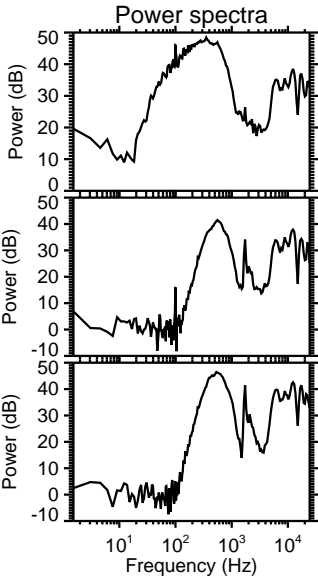
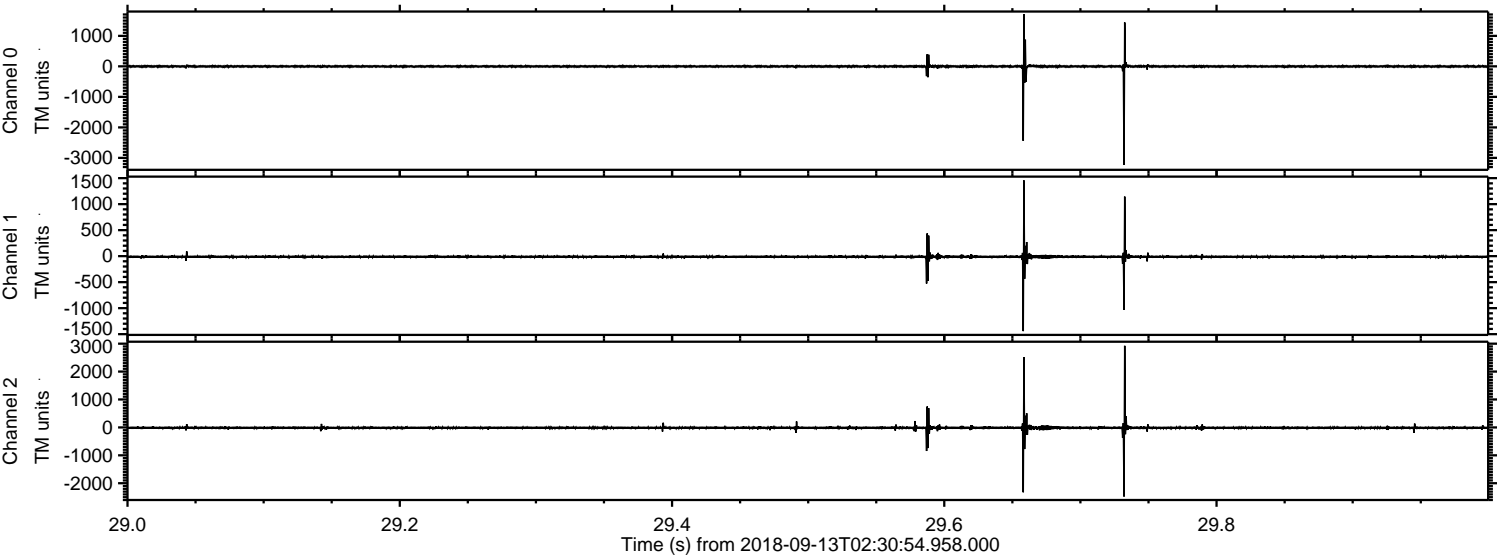


ELMAVAN 3D WAVEFORMS (Measured data sampled at 50 kHz) 51000 packets of 144 samples from 2018-09-13T02:30:54.958.000. Part 124/147

Processed Thu Sep 13 04:39:02 2018 by ELM ver.2012-10-06 from 001\_\_elm20180913\_023053\_\_dat00.bin



Processed Thu Sep 13 04:39:03 2018 by ELM ver.2012-10-06 from 001\_\_elm20180913\_023053\_\_dat00.bin

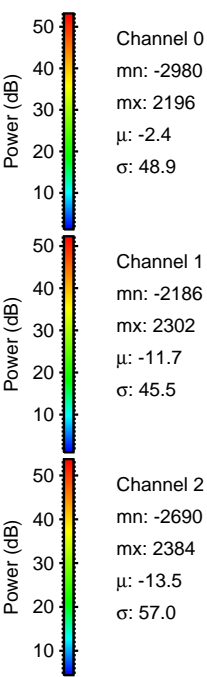
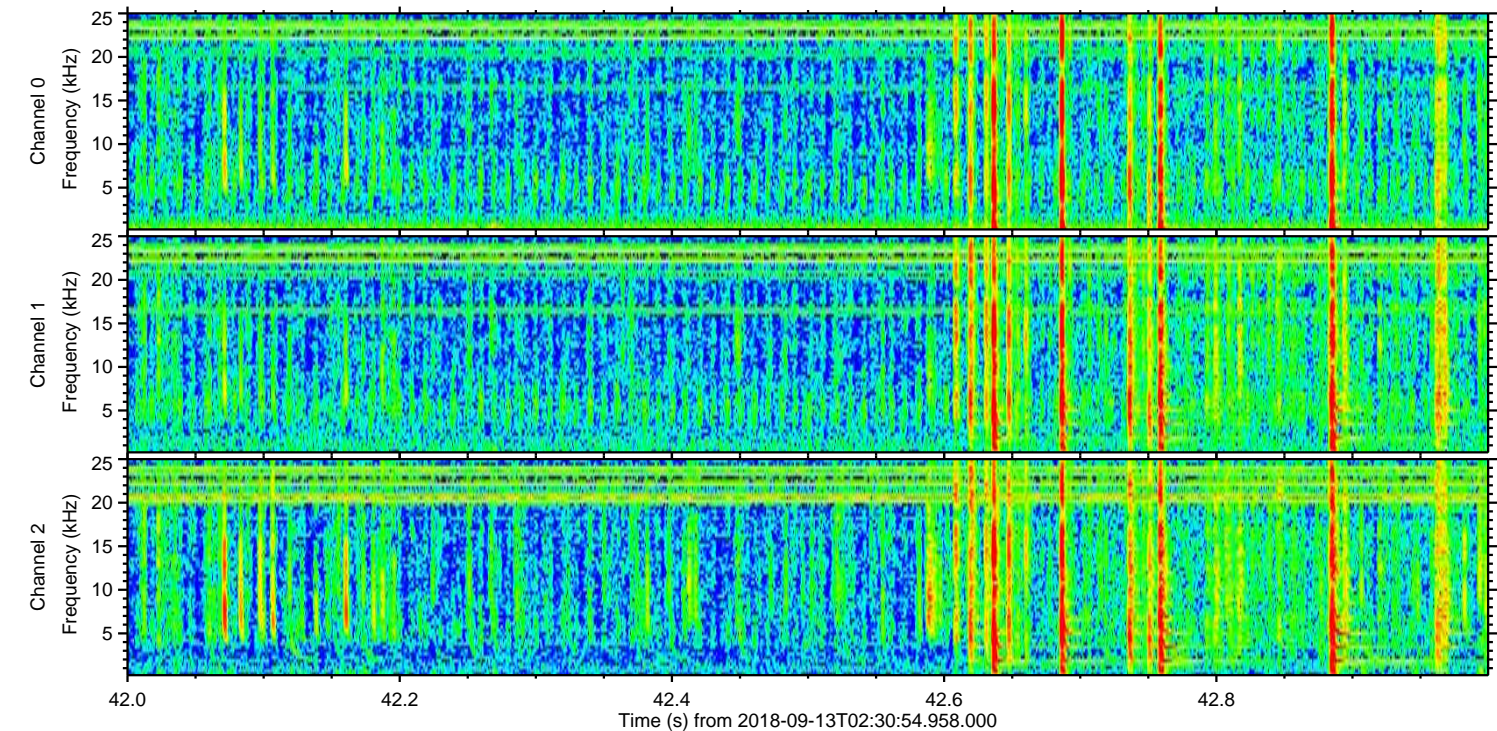
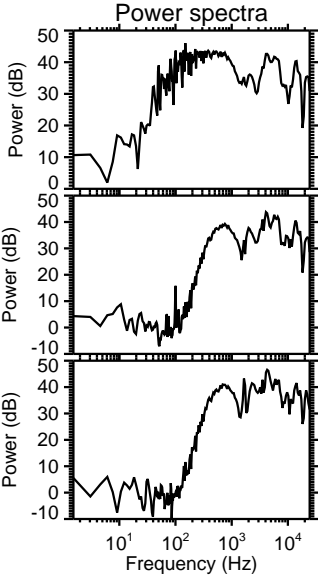
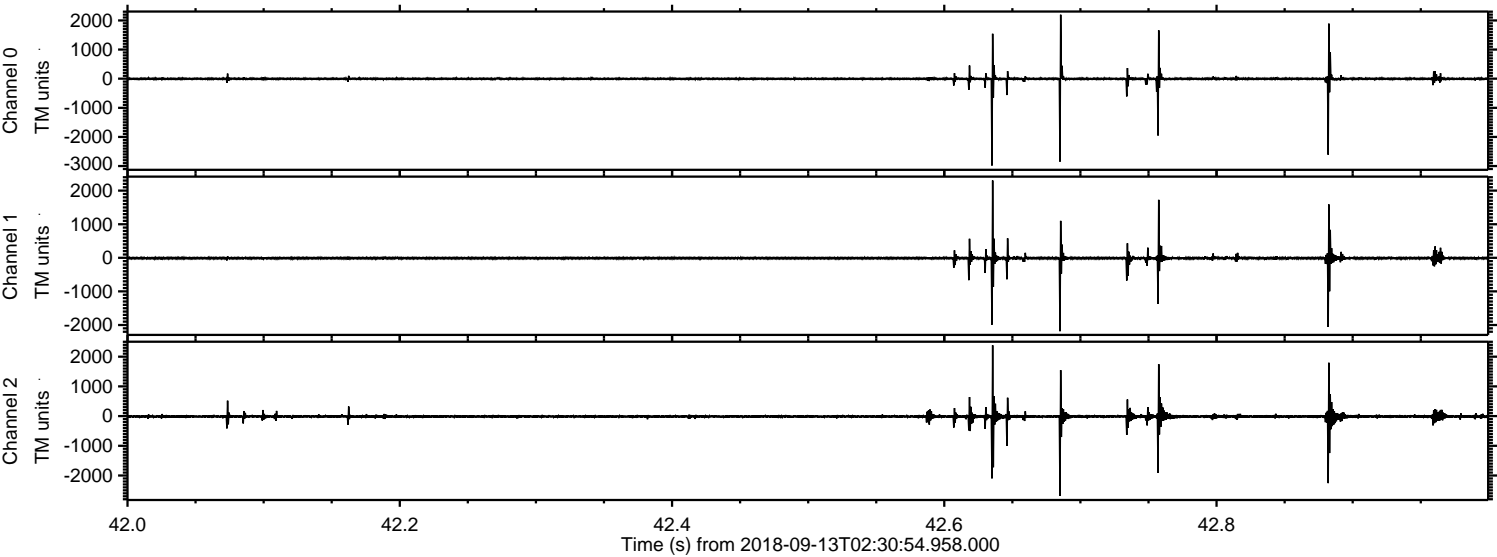


Channel 0  
mn: -3229  
mx: 1711  
 $\mu$ : -2.4  
 $\sigma$ : 32.7

Channel 1  
mn: -1443  
mx: 1456  
 $\mu$ : -11.7  
 $\sigma$ : 23.5

Channel 2  
mn: -2477  
mx: 2924  
 $\mu$ : -13.5  
 $\sigma$ : 45.5

Processed Thu Sep 13 04:39:04 2018 by ELM ver.2012-10-06 from 001\_\_elm20180913\_023053\_\_dat00.bin



Processed Thu Sep 13 04:39:05 2018 by ELM ver.2012-10-06 from 001\_\_elm20180913\_023053\_\_dat00.bin

