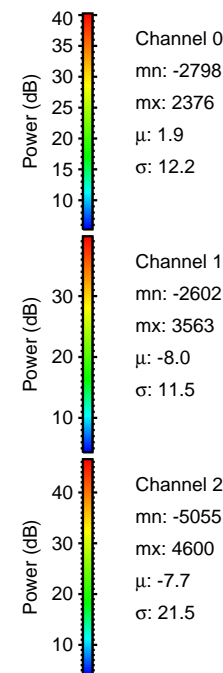
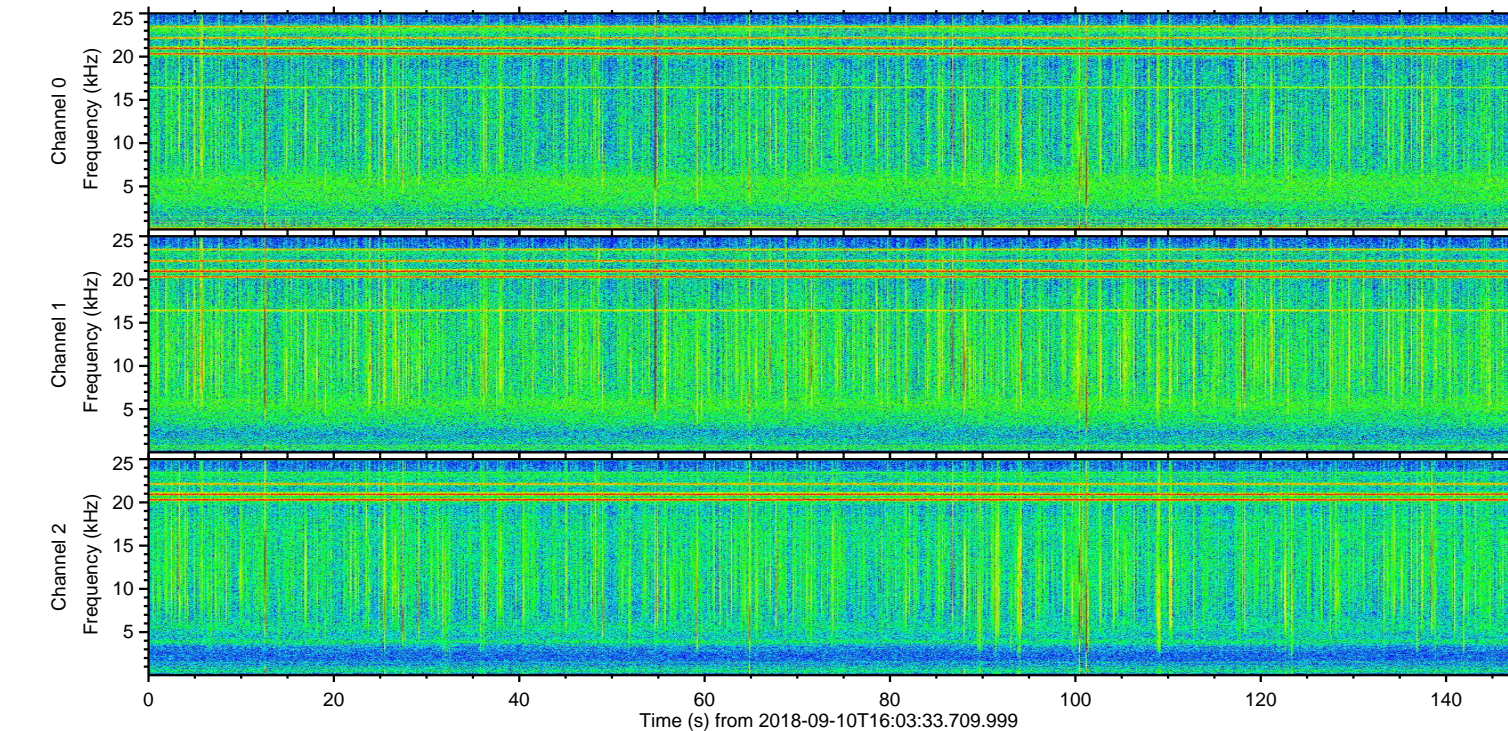
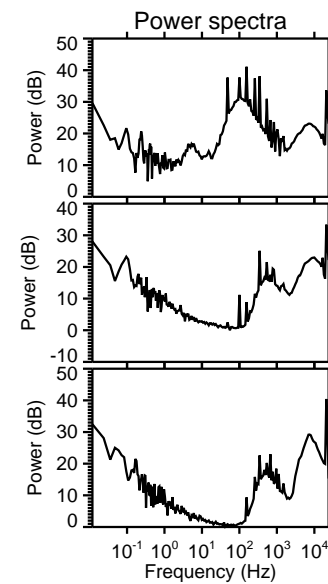
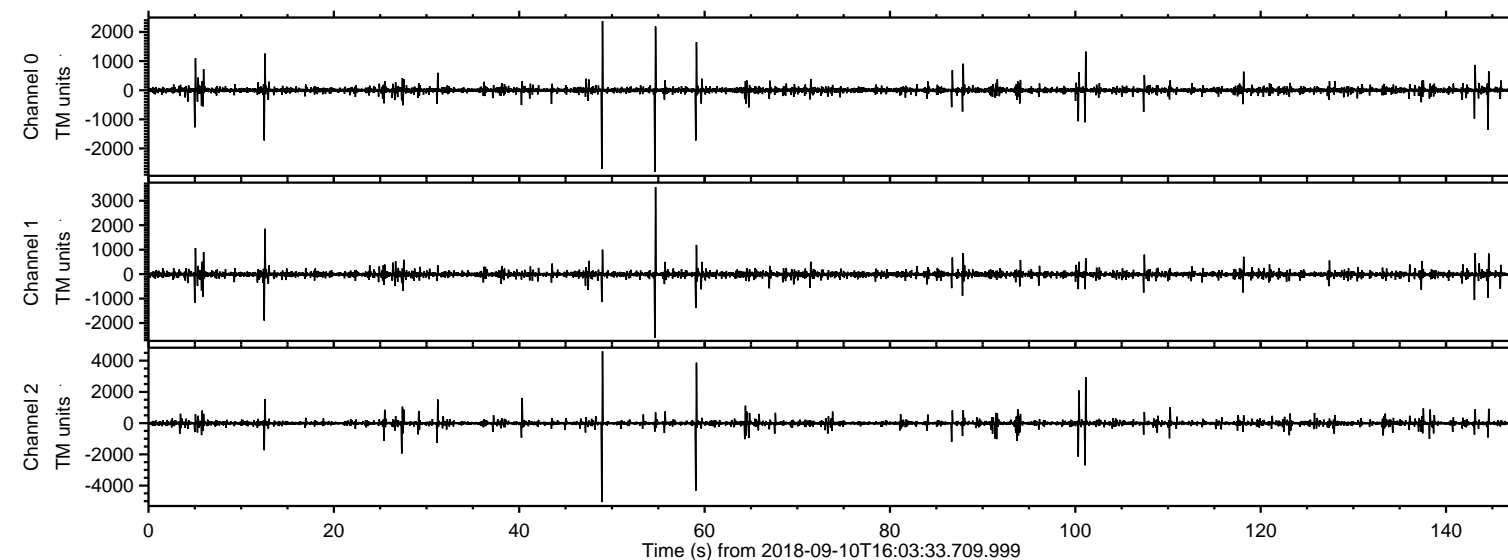
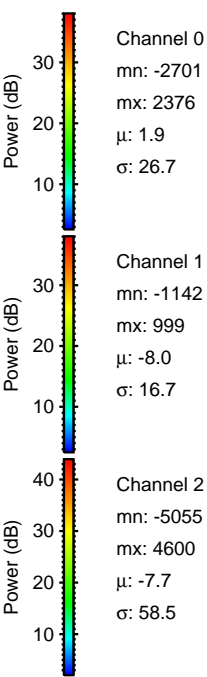
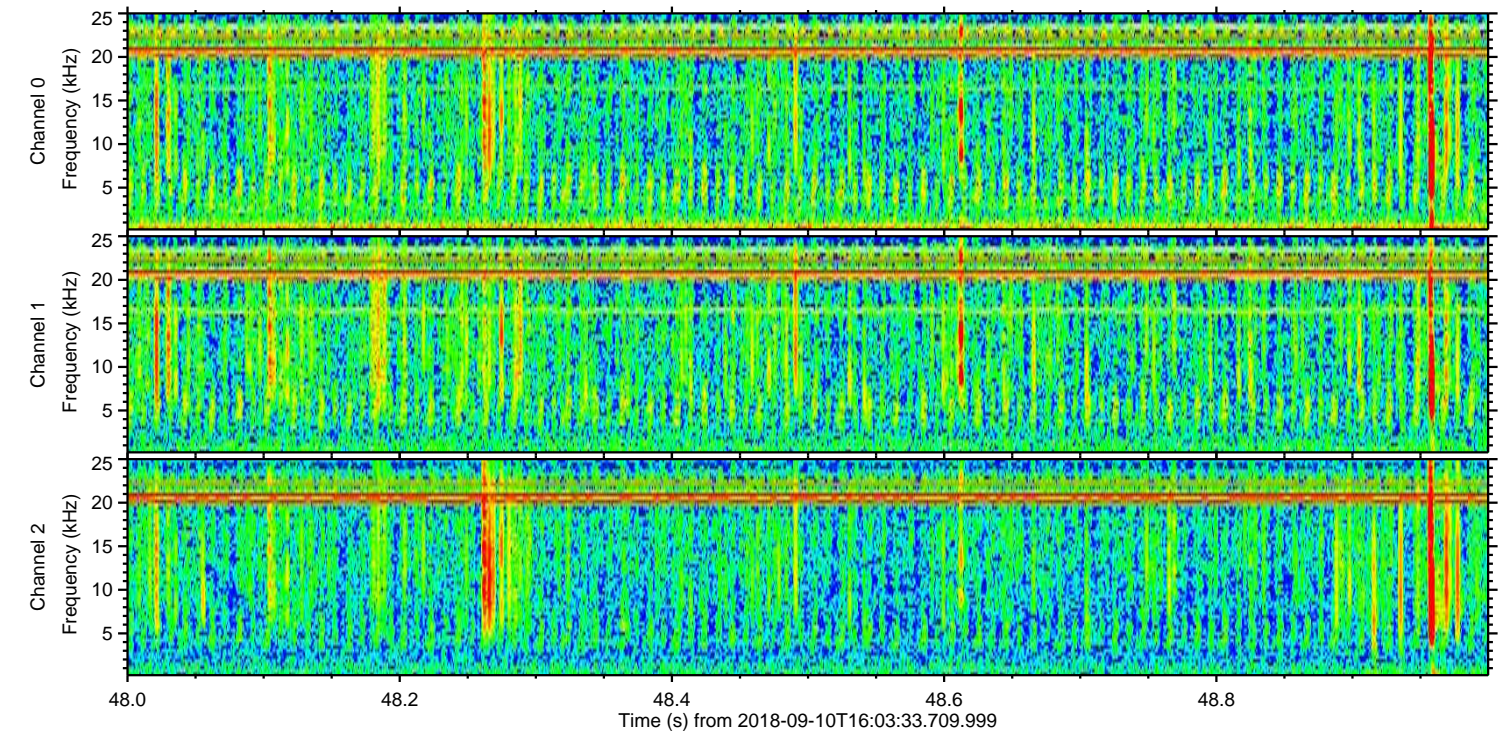
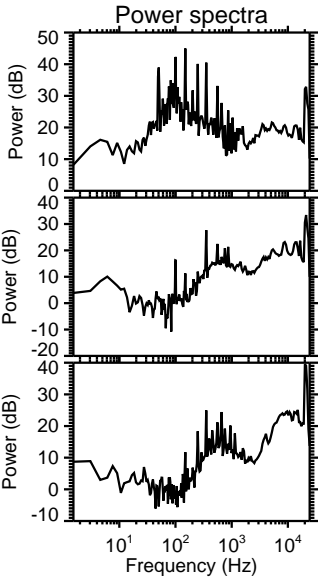
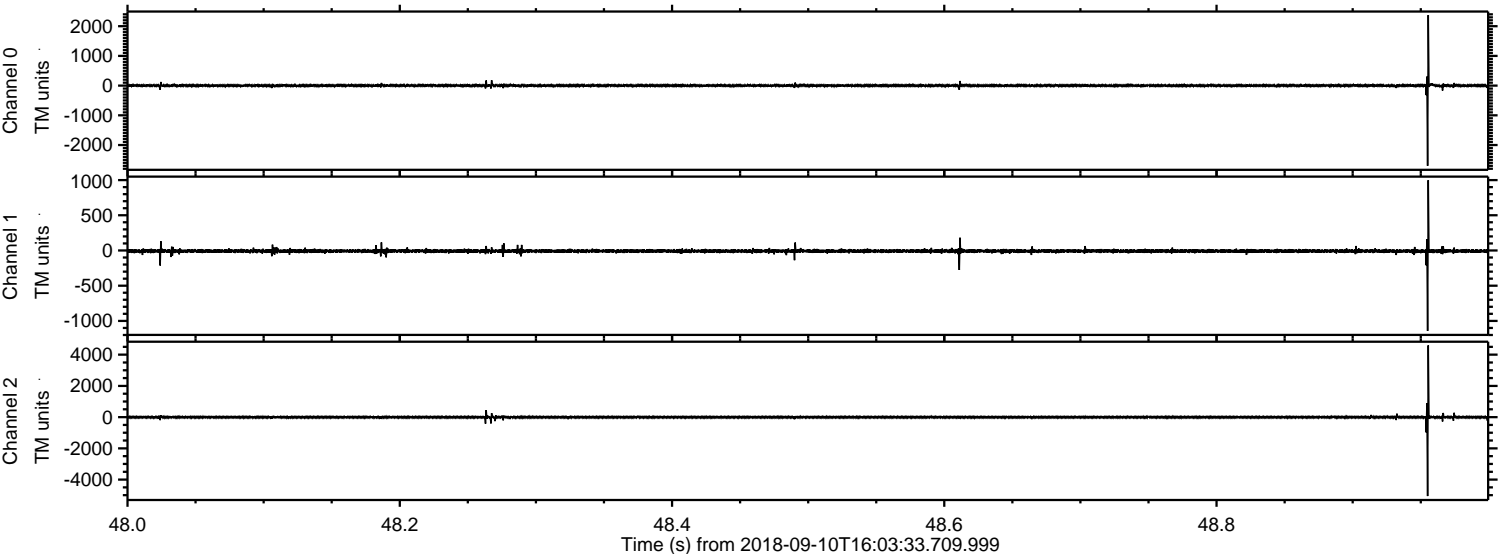


ELMAVAN 3D WAVEFORMS (Measured data sampled at 50 kHz) 51000 packets of 144 samples from 2018-09-10T16:03:33.709.999.

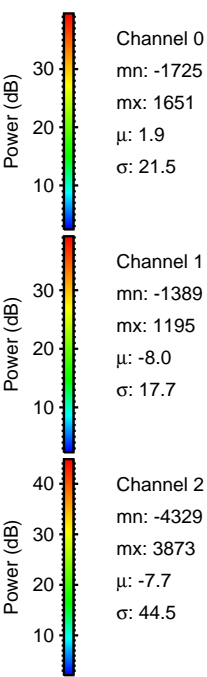
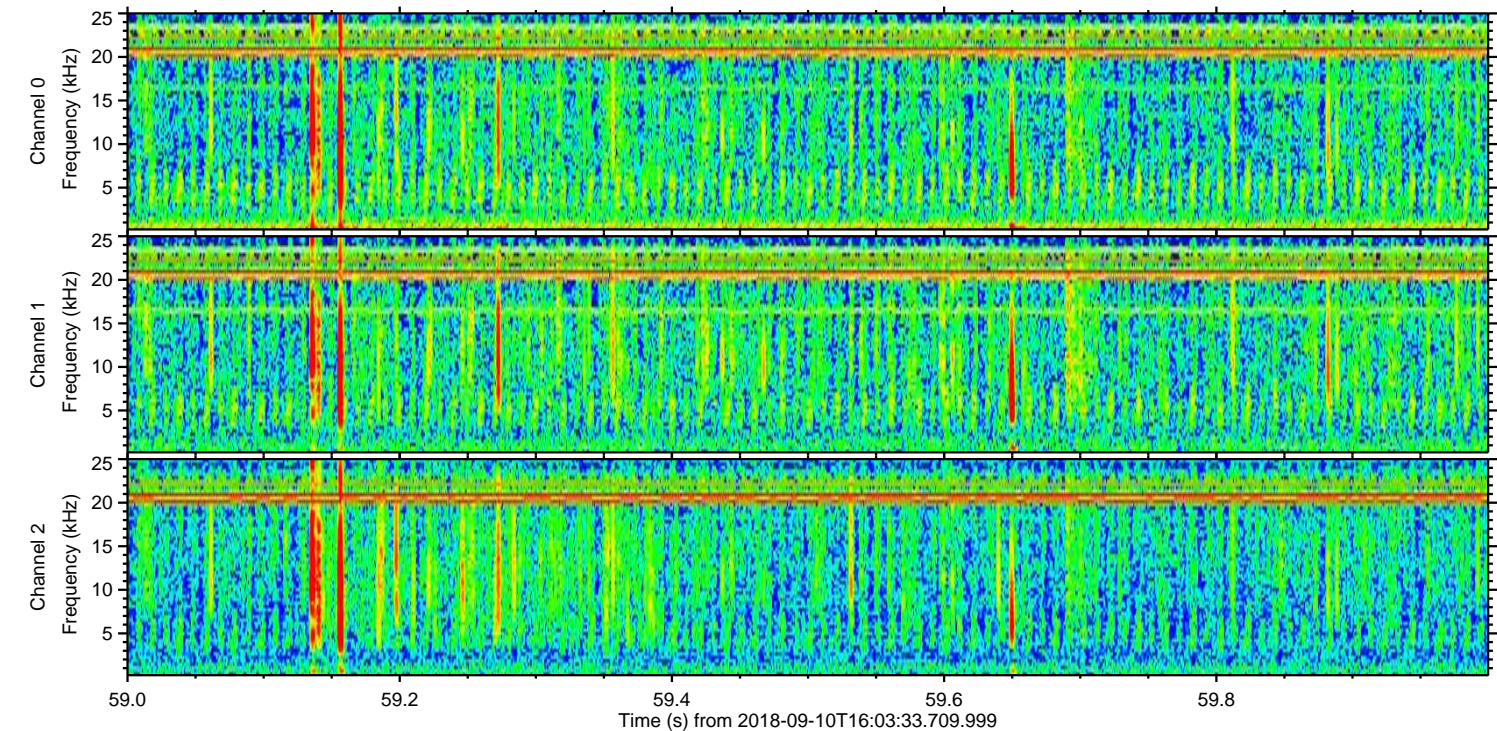
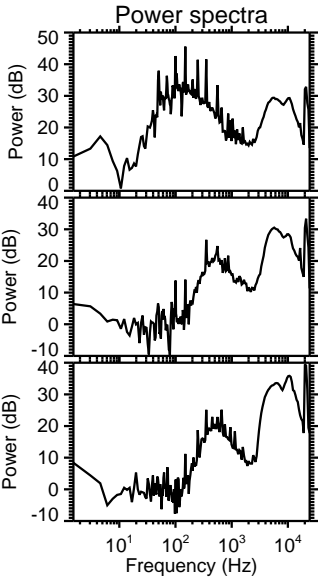
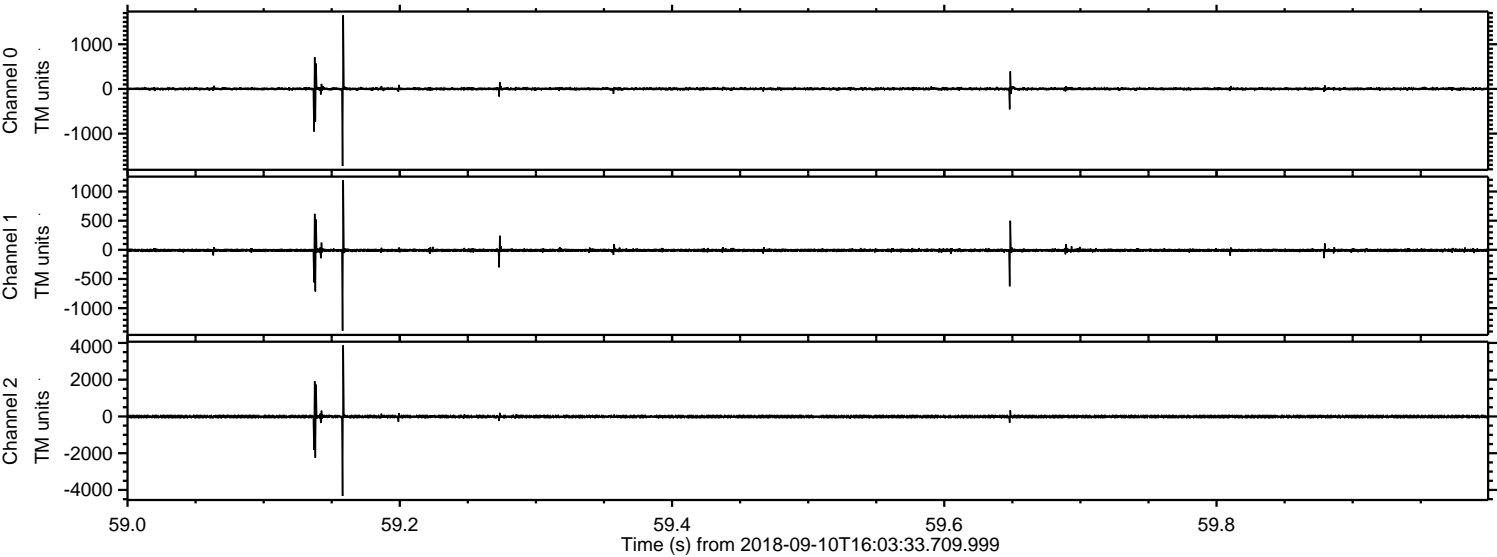
Processed Mon Sep 10 18:12:02 2018 by ELM ver.2012-10-06 from 001__elm20180910_160332__dat00.bin



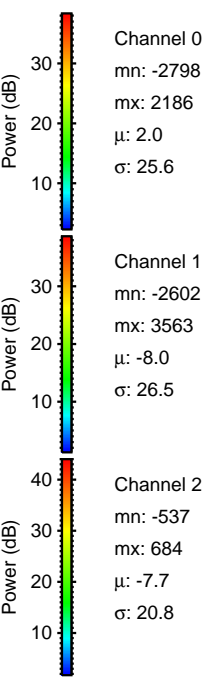
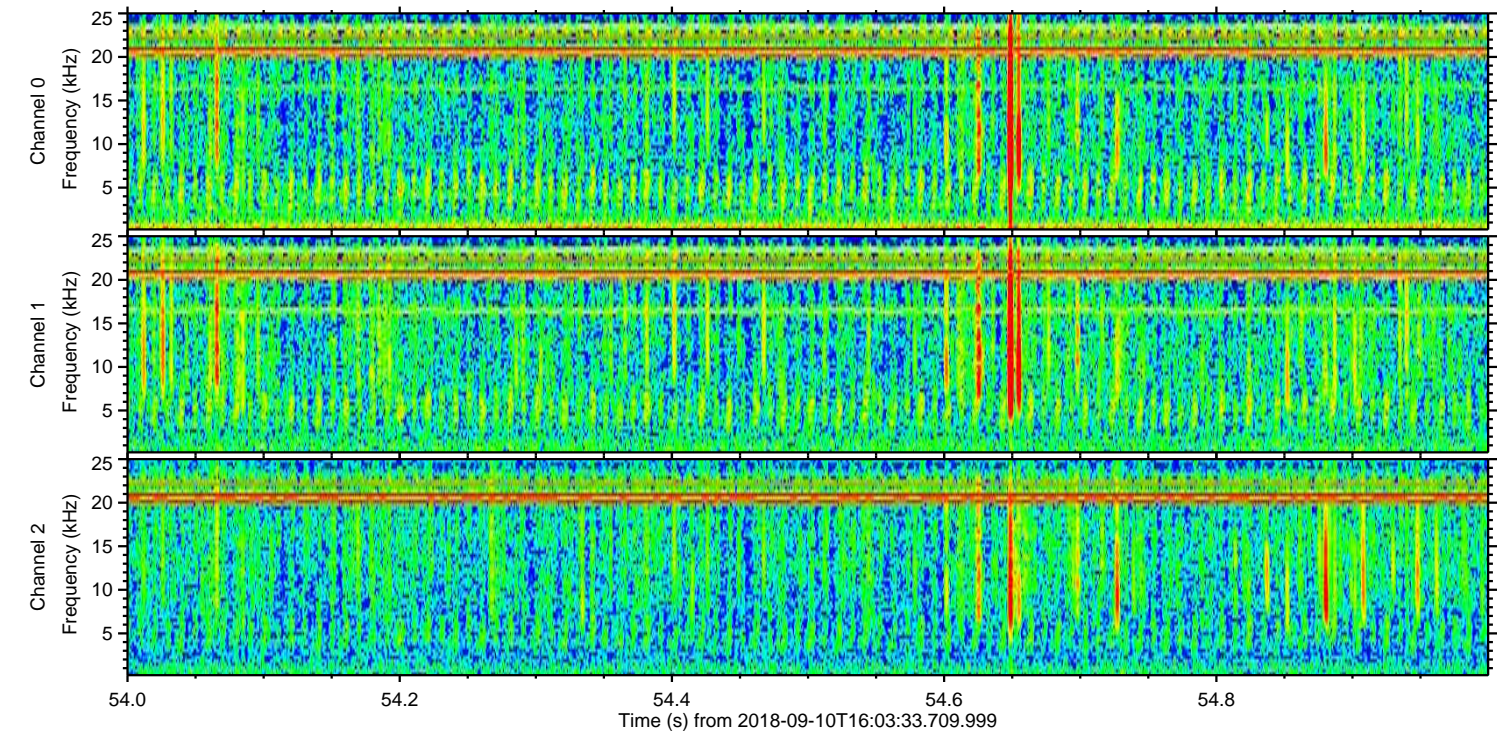
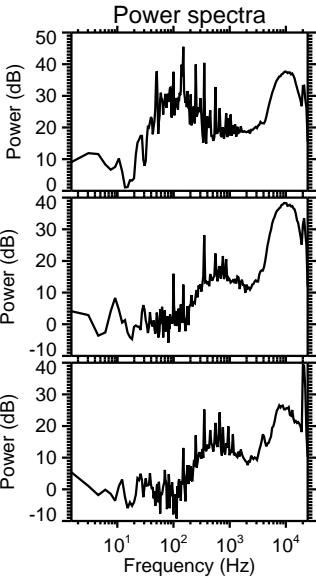
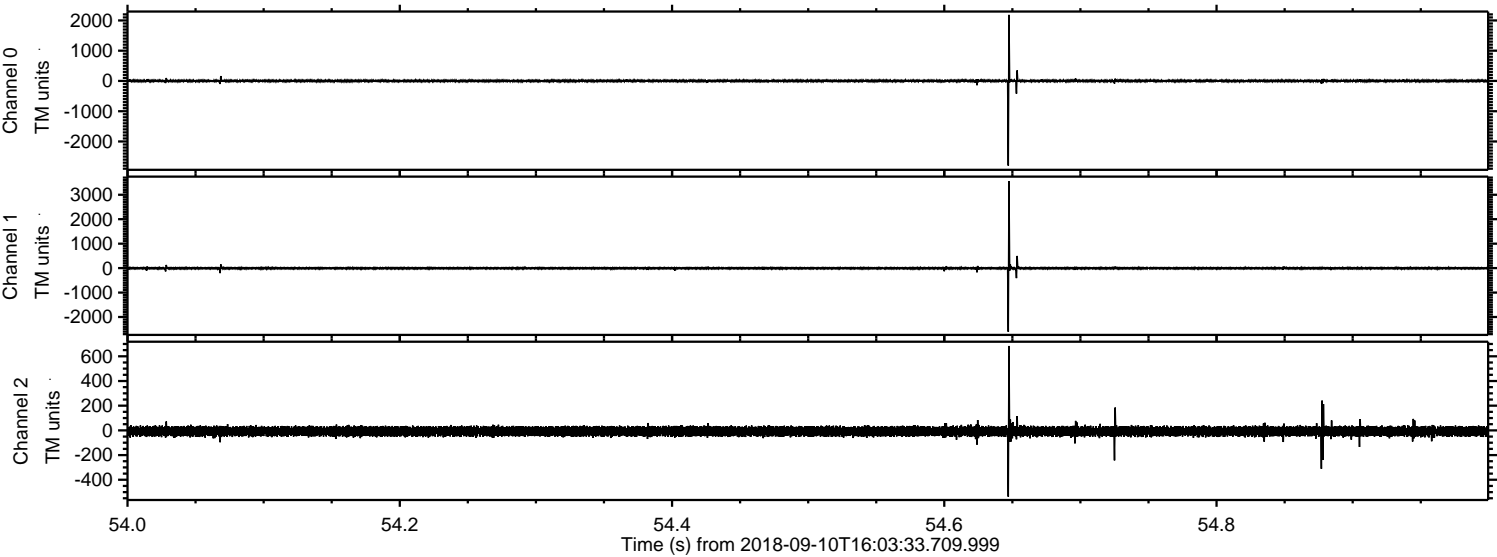
Processed Mon Sep 10 18:12:10 2018 by ELM ver.2012-10-06 from 001__elm20180910_160332__dat00.bin



Processed Mon Sep 10 18:12:10 2018 by ELM ver.2012-10-06 from 001__elm20180910_160332__dat00.bin

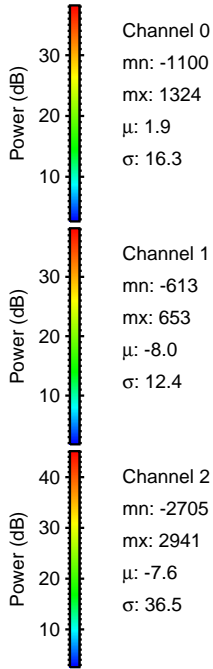
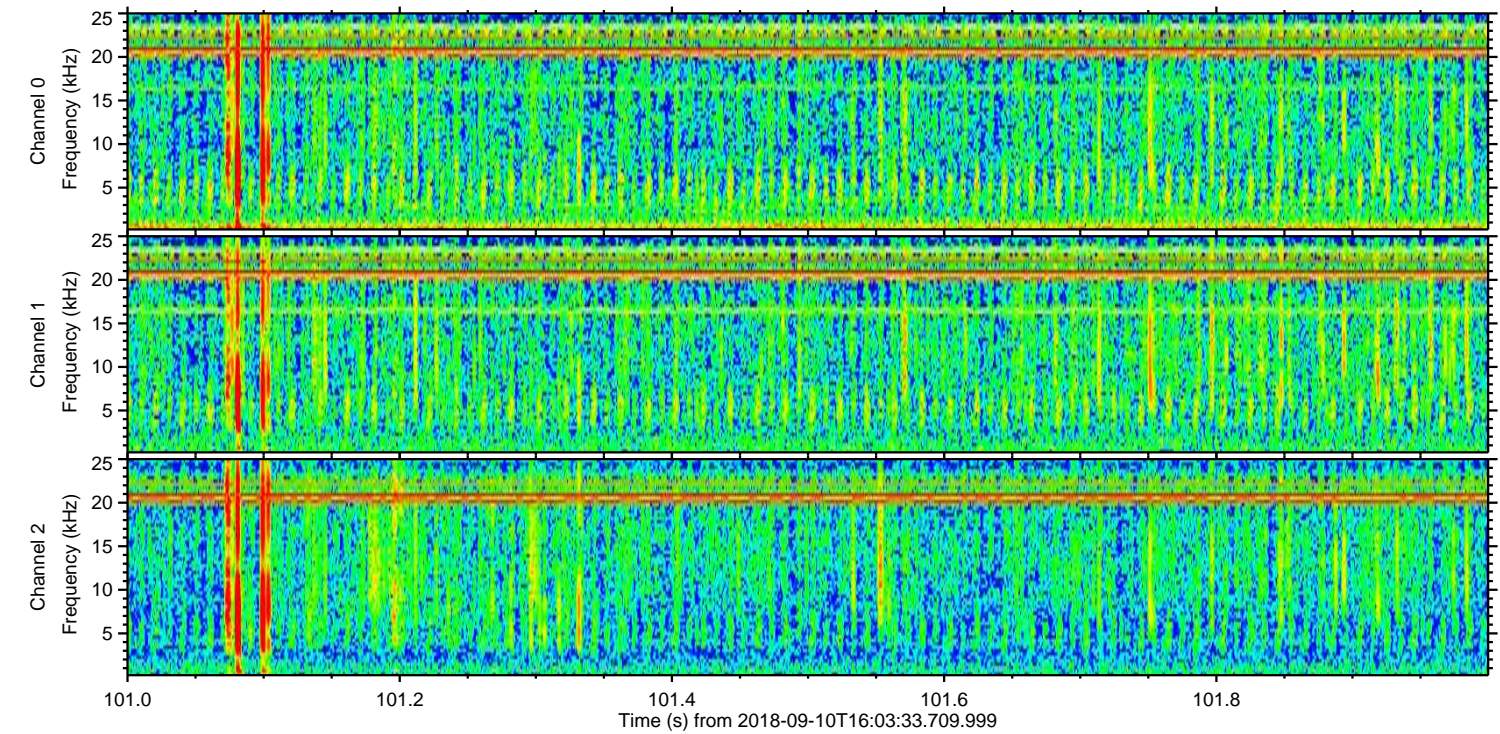
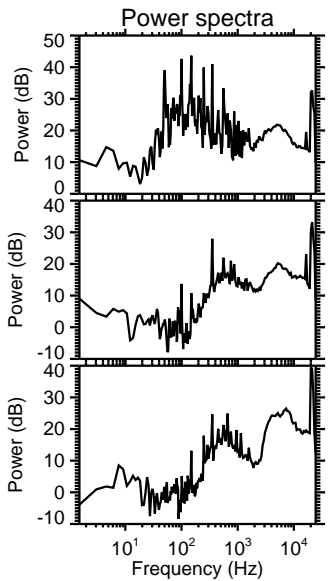
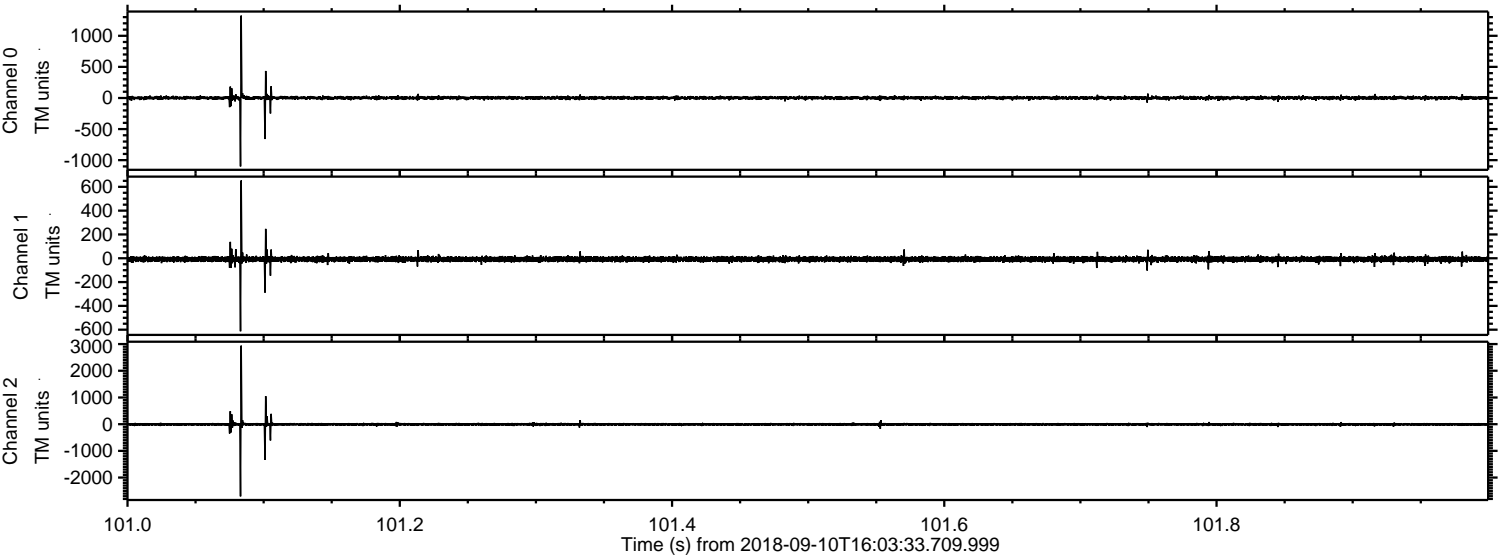


Processed Mon Sep 10 18:12:11 2018 by ELM ver.2012-10-06 from 001__elm20180910_160332__dat00.bin



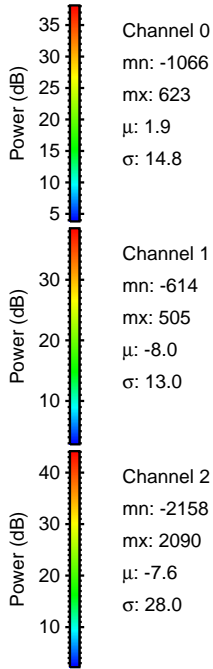
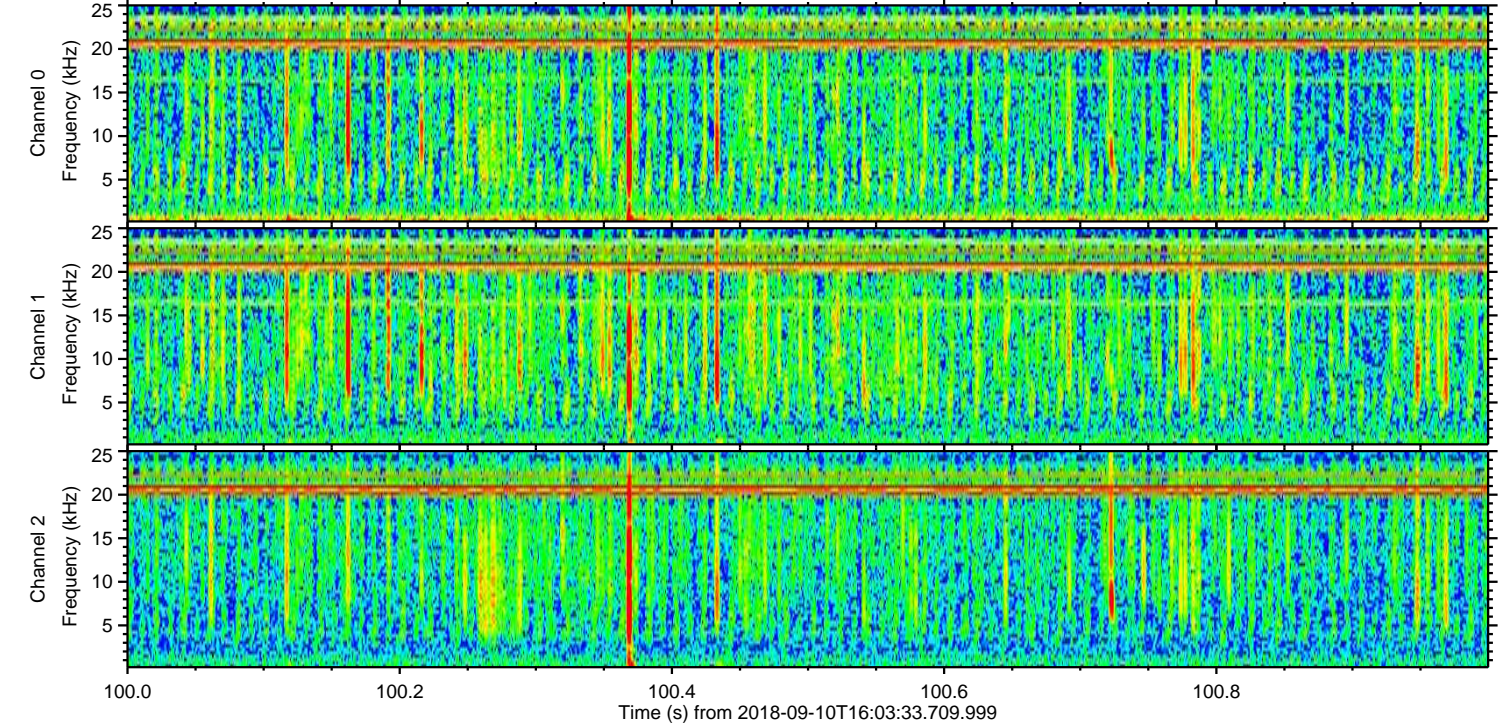
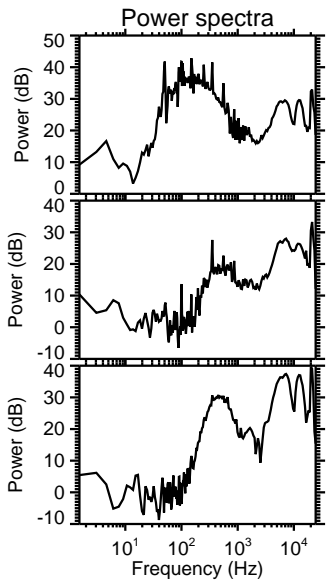
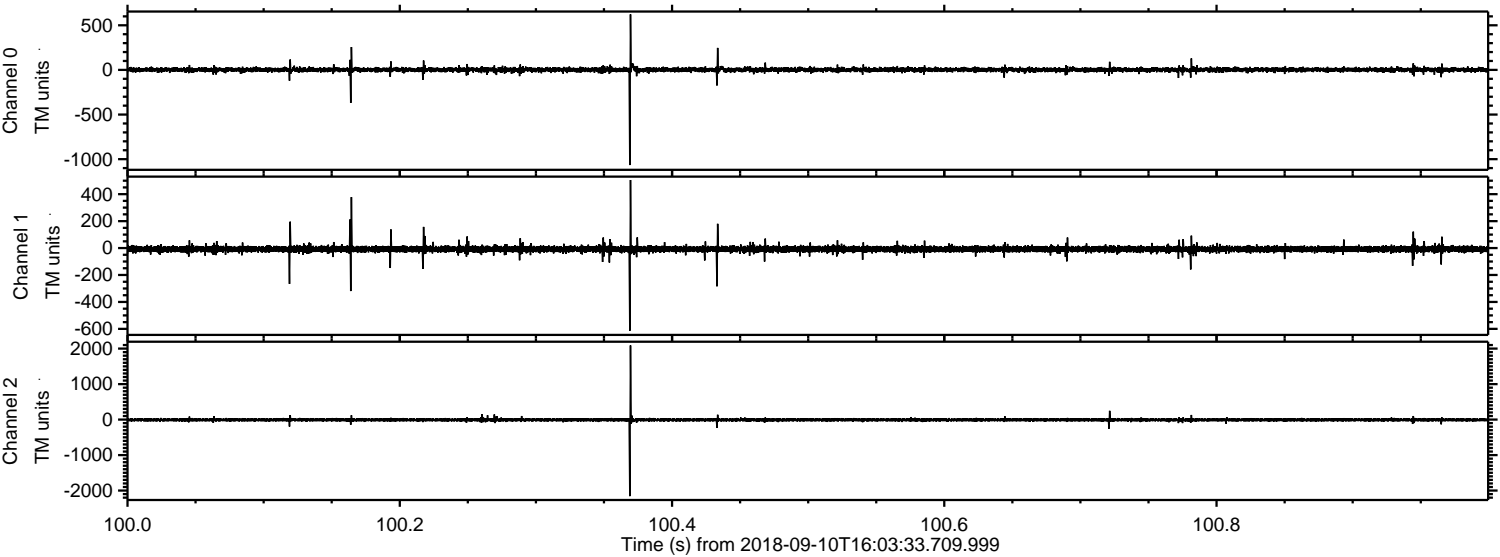
ELMAVAN 3D WAVEFORMS (Measured data sampled at 50 kHz) 51000 packets of 144 samples from 2018-09-10T16:03:33.709.999. Part 102/147

Processed Mon Sep 10 18:12:12 2018 by ELM ver.2012-10-06 from 001__elm20180910_160332__dat00.bin

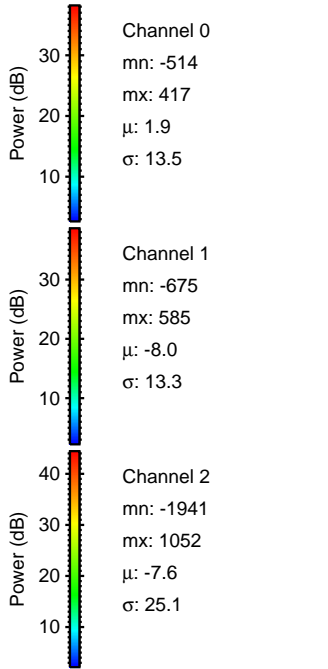
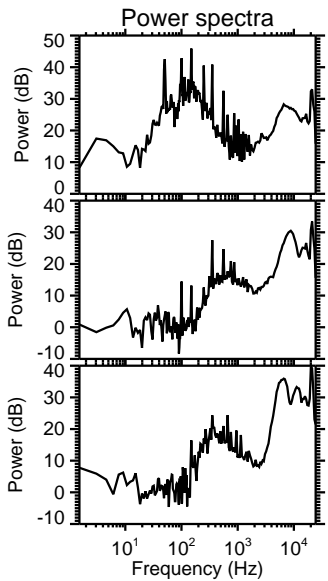
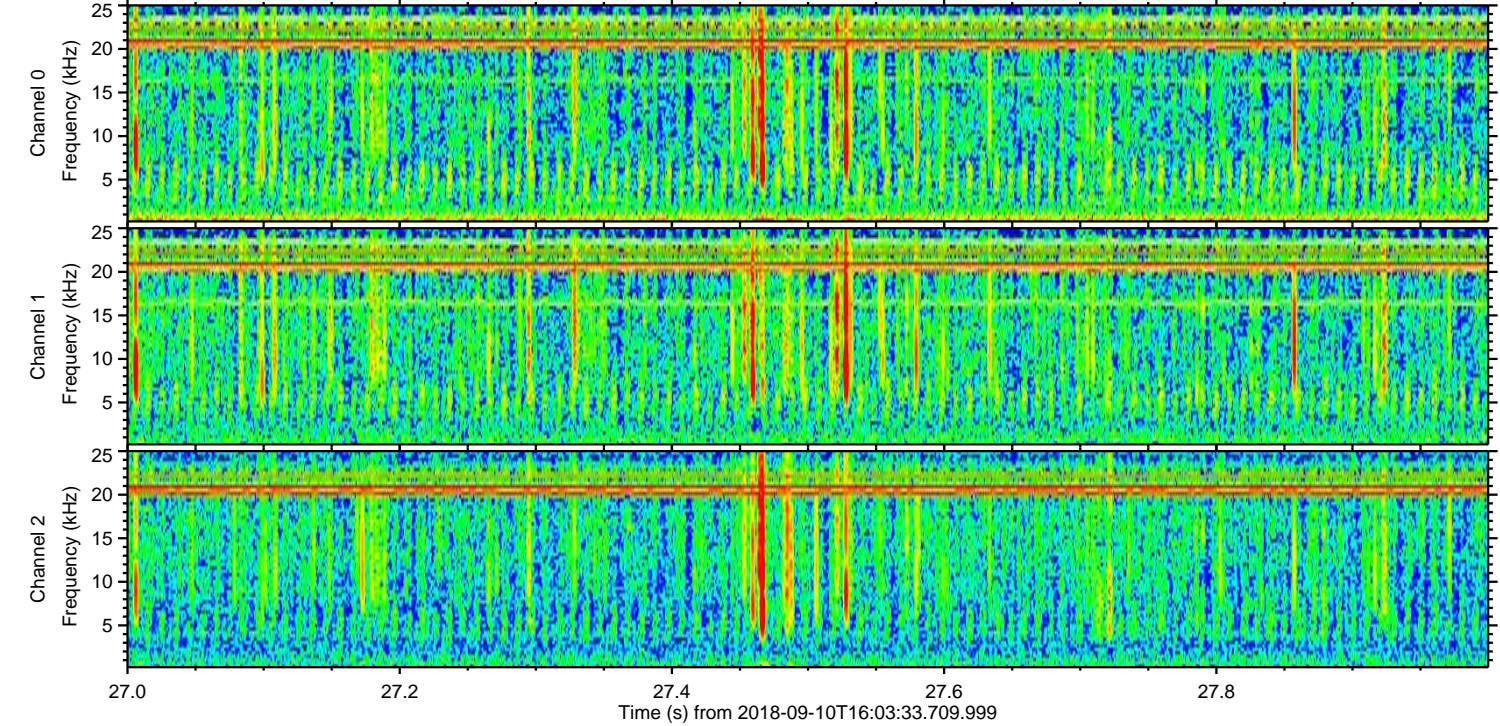
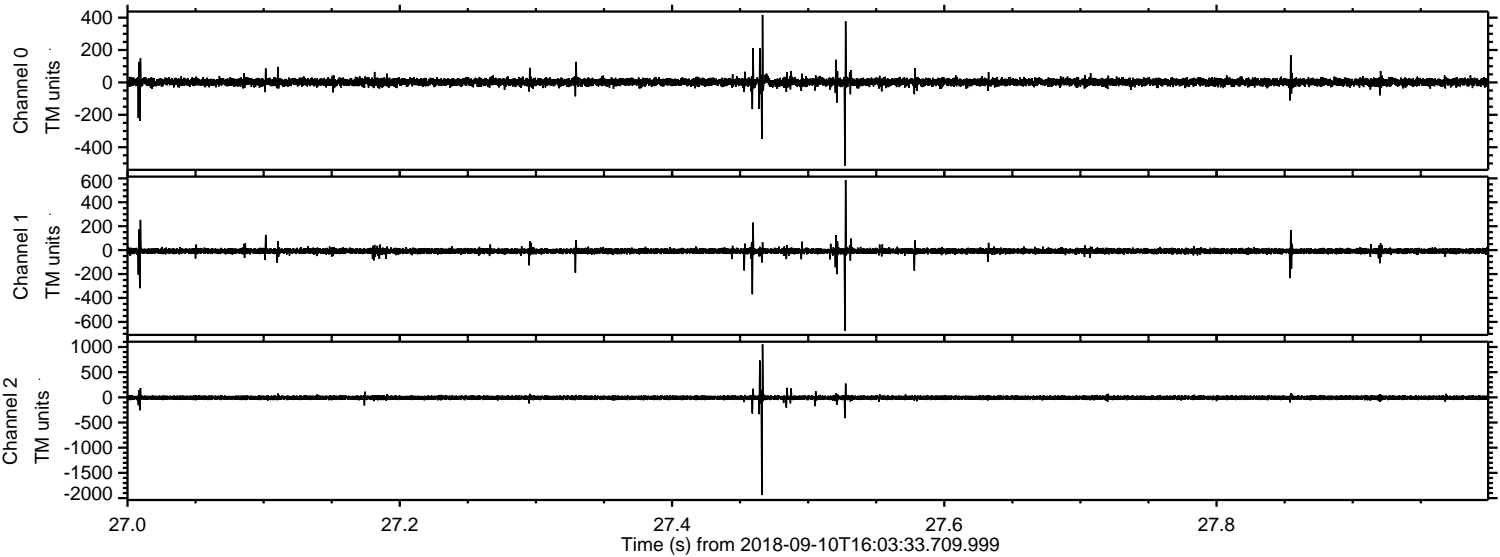


ELMAVAN 3D WAVEFORMS (Measured data sampled at 50 kHz) 51000 packets of 144 samples from 2018-09-10T16:03:33.709.999. Part 101/147

Processed Mon Sep 10 18:12:13 2018 by ELM ver.2012-10-06 from 001__elm20180910_160332__dat00.bin

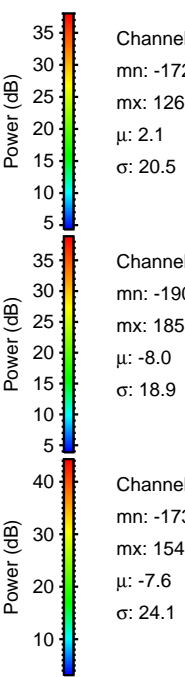
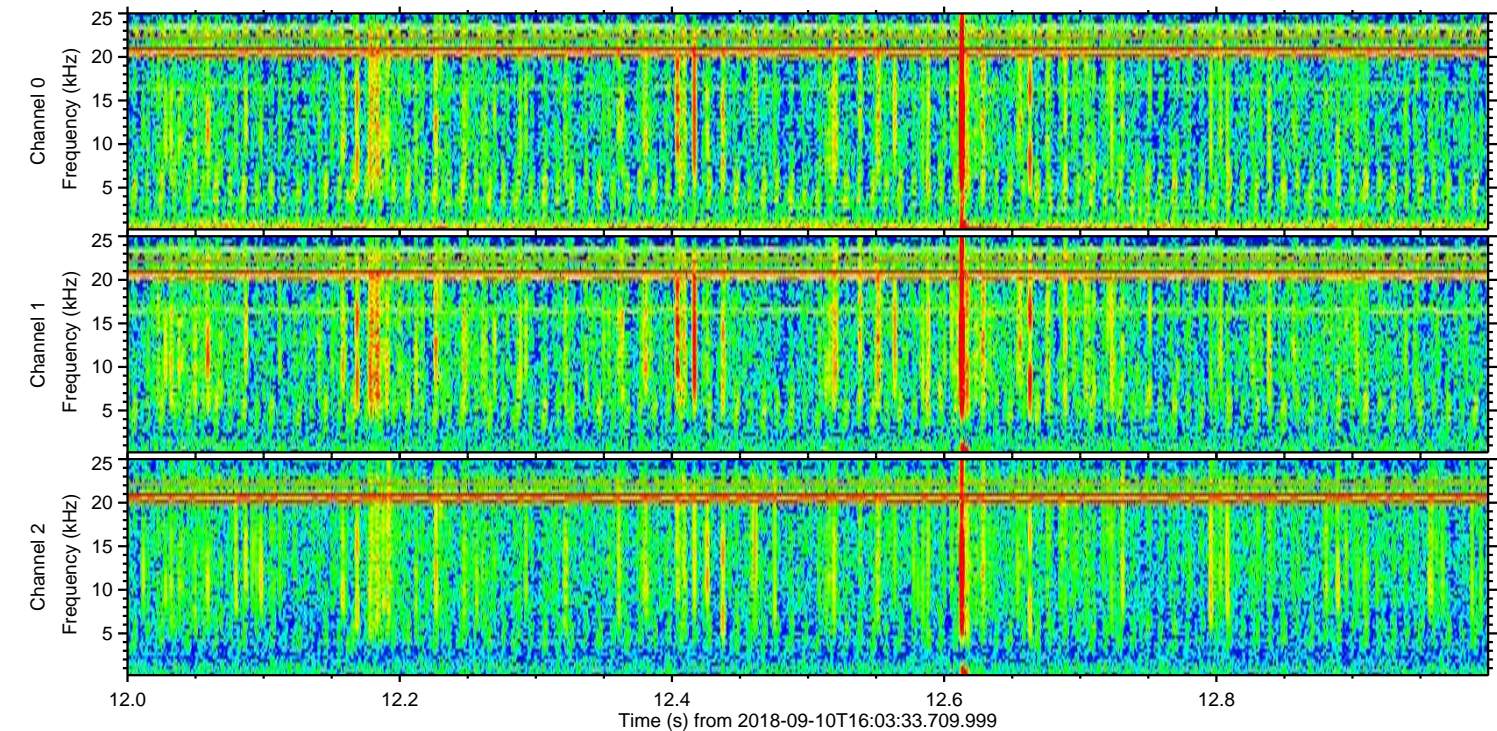
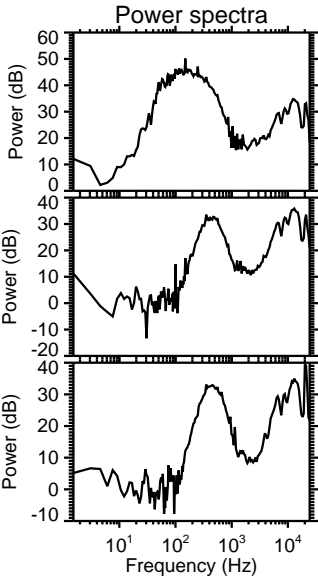
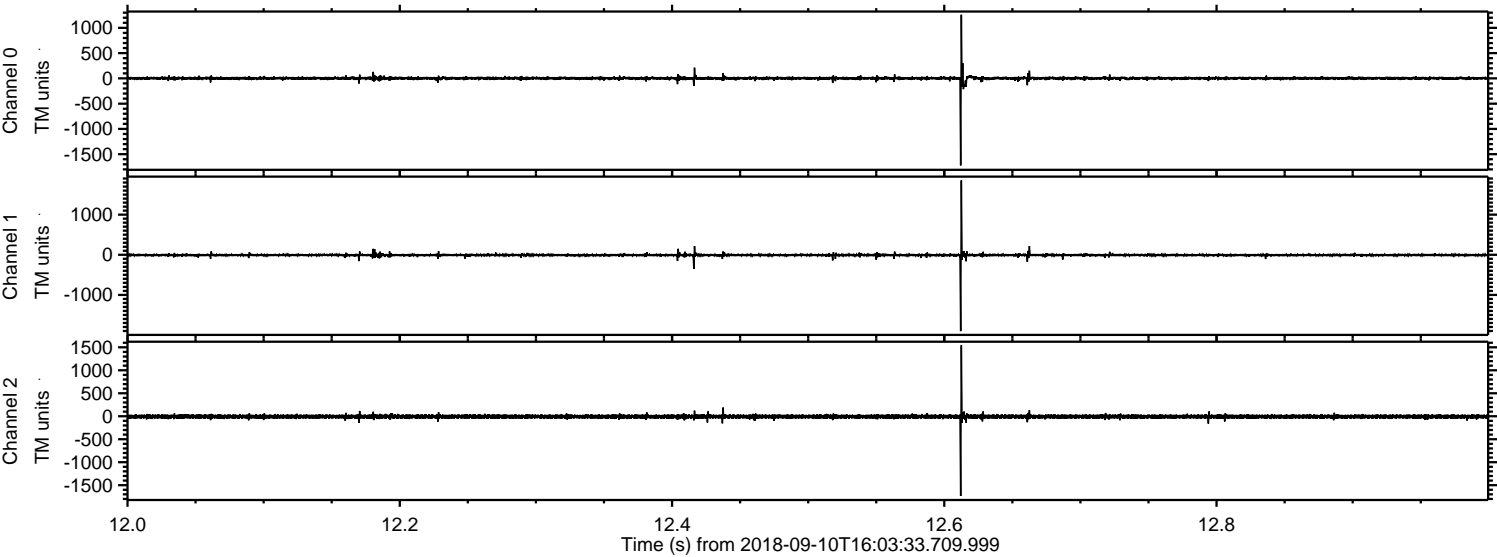


Processed Mon Sep 10 18:12:13 2018 by ELM ver.2012-10-06 from 001__elm20180910_160332__dat00.bin



ELMAVAN 3D WAVEFORMS (Measured data sampled at 50 kHz) 51000 packets of 144 samples from 2018-09-10T16:03:33.709.999. Part 13/147

Processed Mon Sep 10 18:12:14 2018 by ELM ver.2012-10-06 from 001__elm20180910_160332__dat00.bin

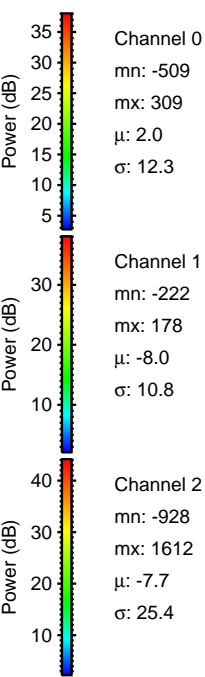
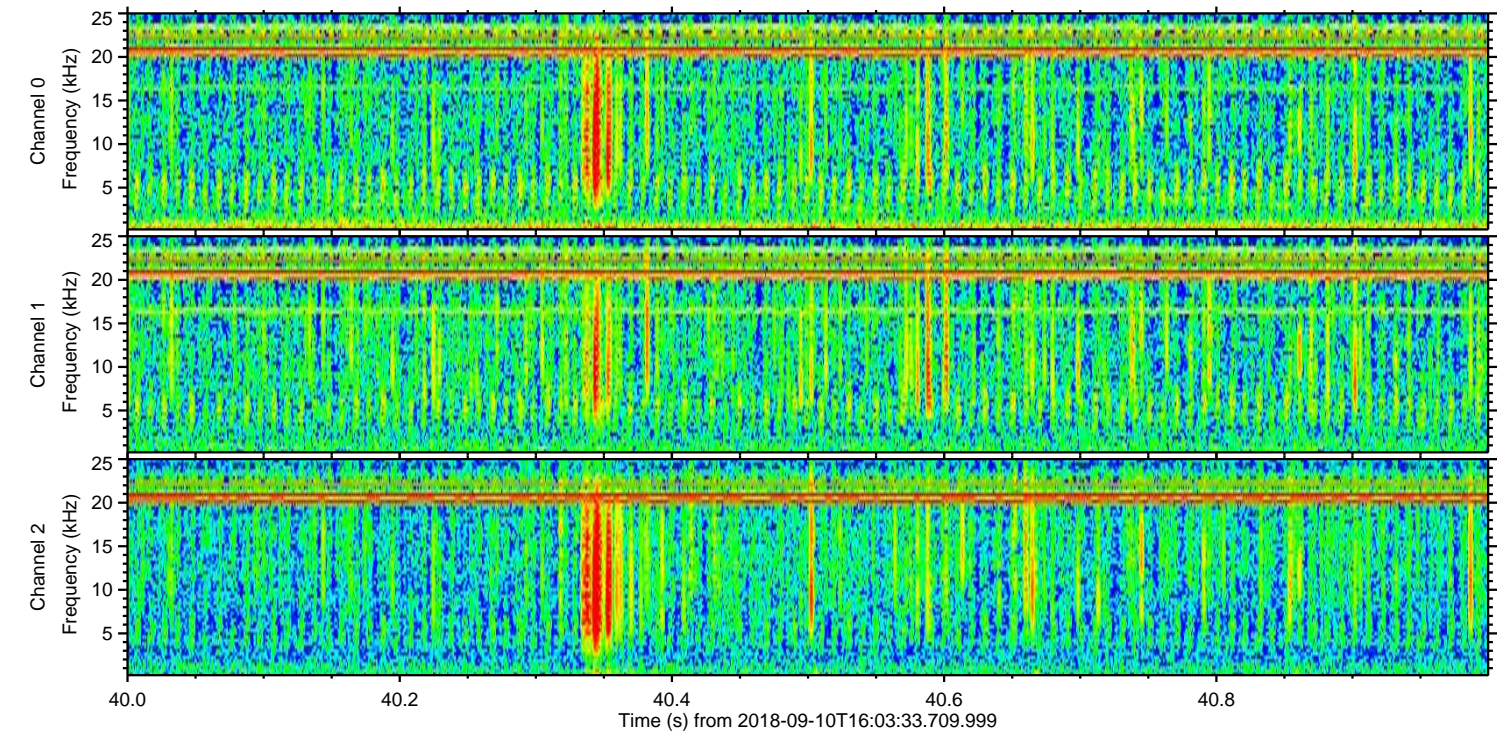
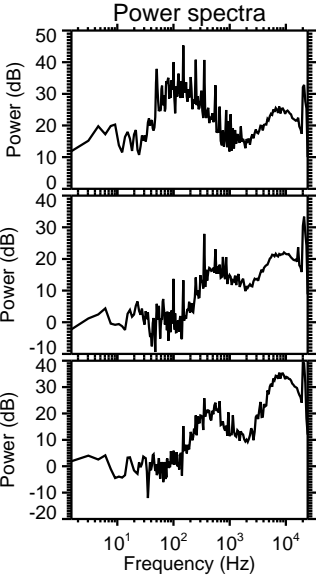
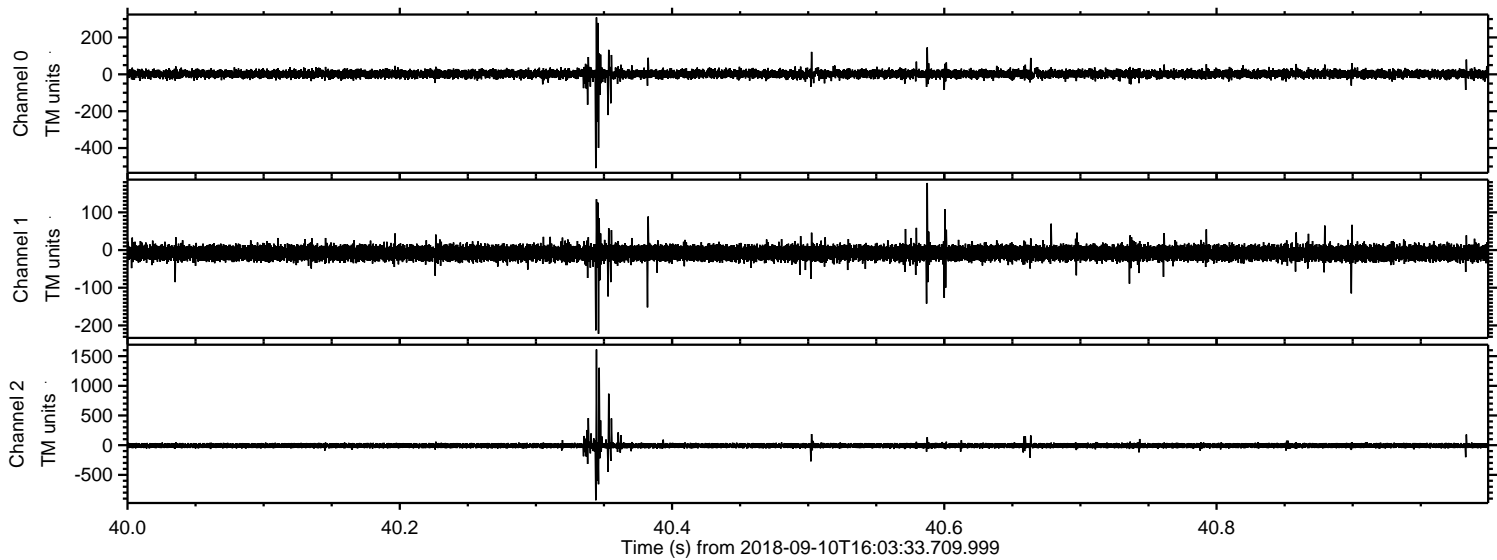


Channel 0
mn: -1723
mx: 1260
 μ : 2.1
 σ : 20.5

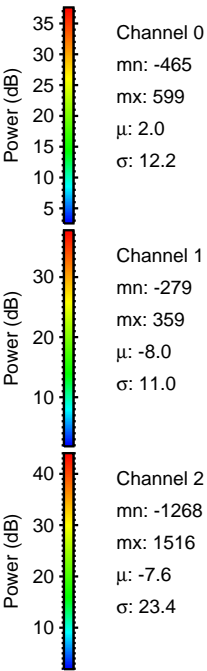
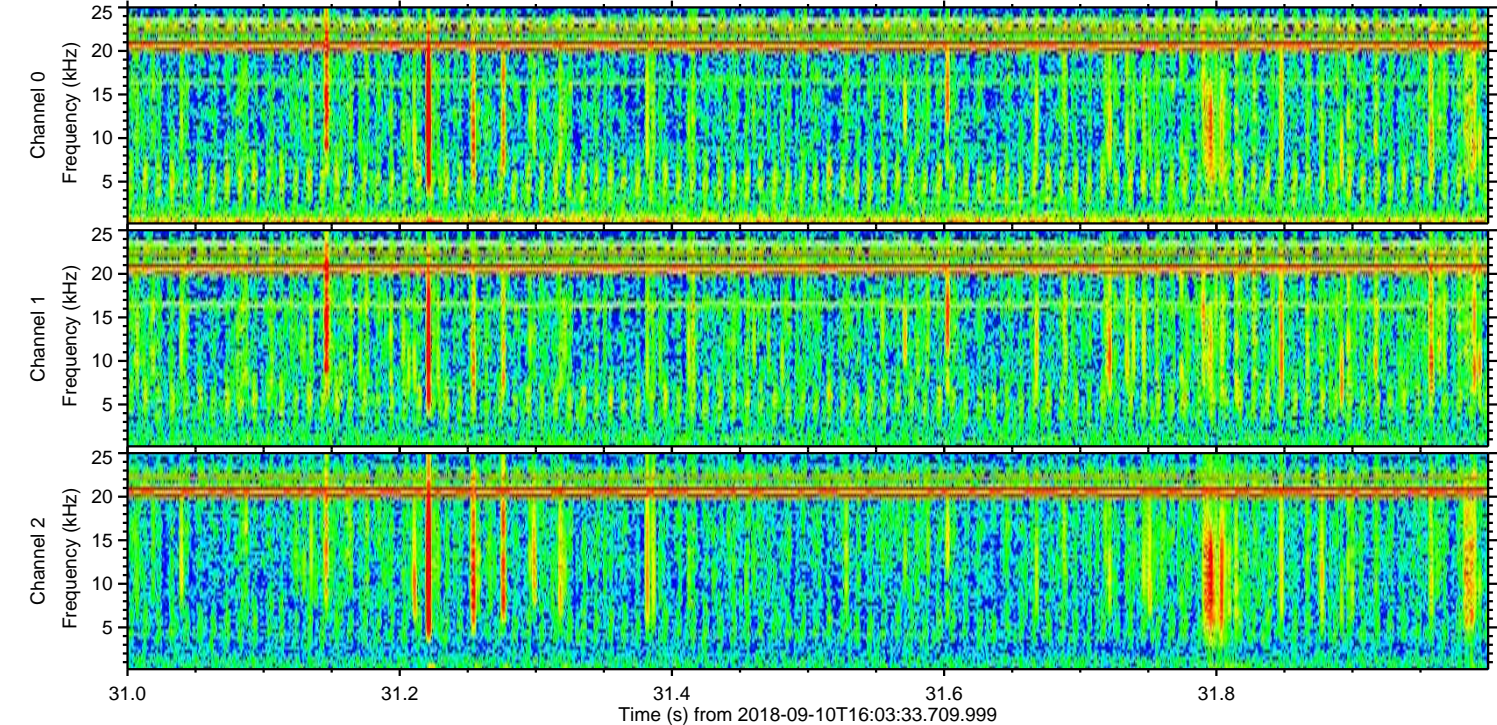
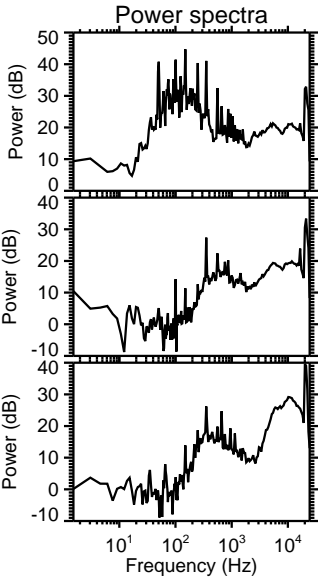
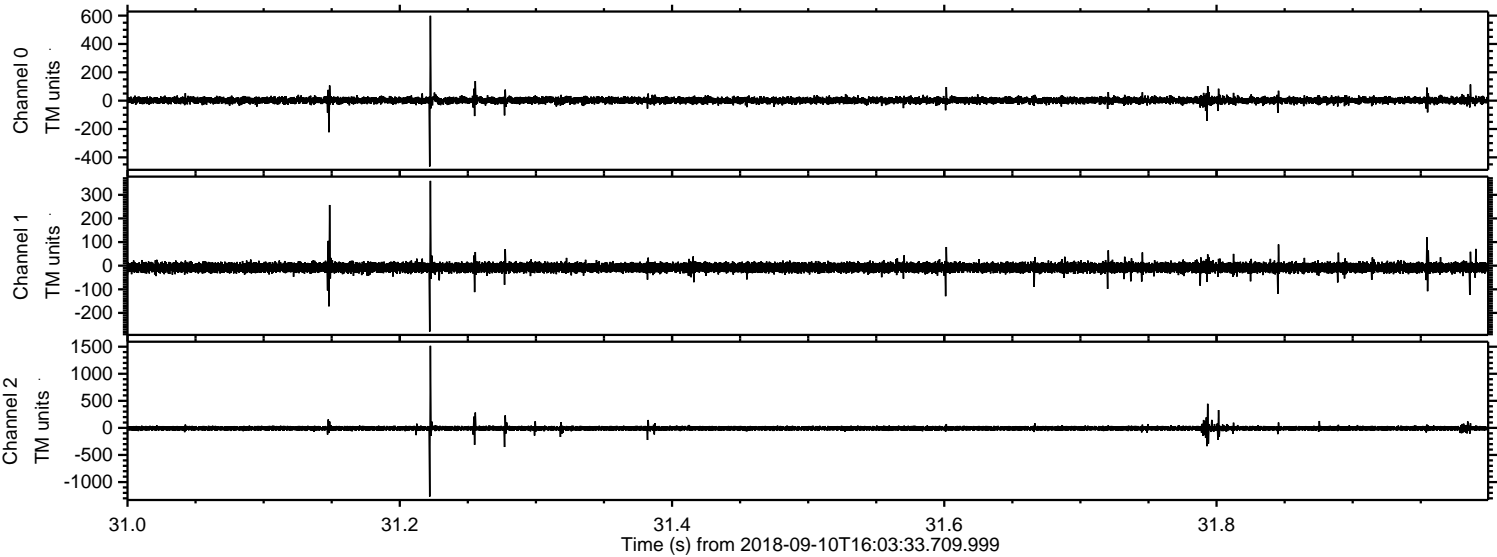
Channel 1
mn: -1902
mx: 1855
 μ : -8.0
 σ : 18.9

Channel 2
mn: -1736
mx: 1545
 μ : -7.6
 σ : 24.1

Processed Mon Sep 10 18:12:15 2018 by ELM ver.2012-10-06 from 001__elm20180910_160332__dat00.bin



Processed Mon Sep 10 18:12:16 2018 by ELM ver.2012-10-06 from 001__elm20180910_160332__dat00.bin



Processed Mon Sep 10 18:12:17 2018 by ELM ver.2012-10-06 from 001__elm20180910_160332__dat00.bin

