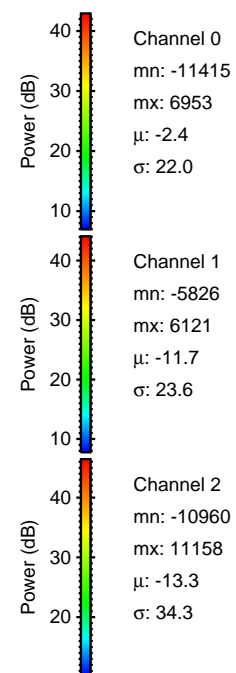
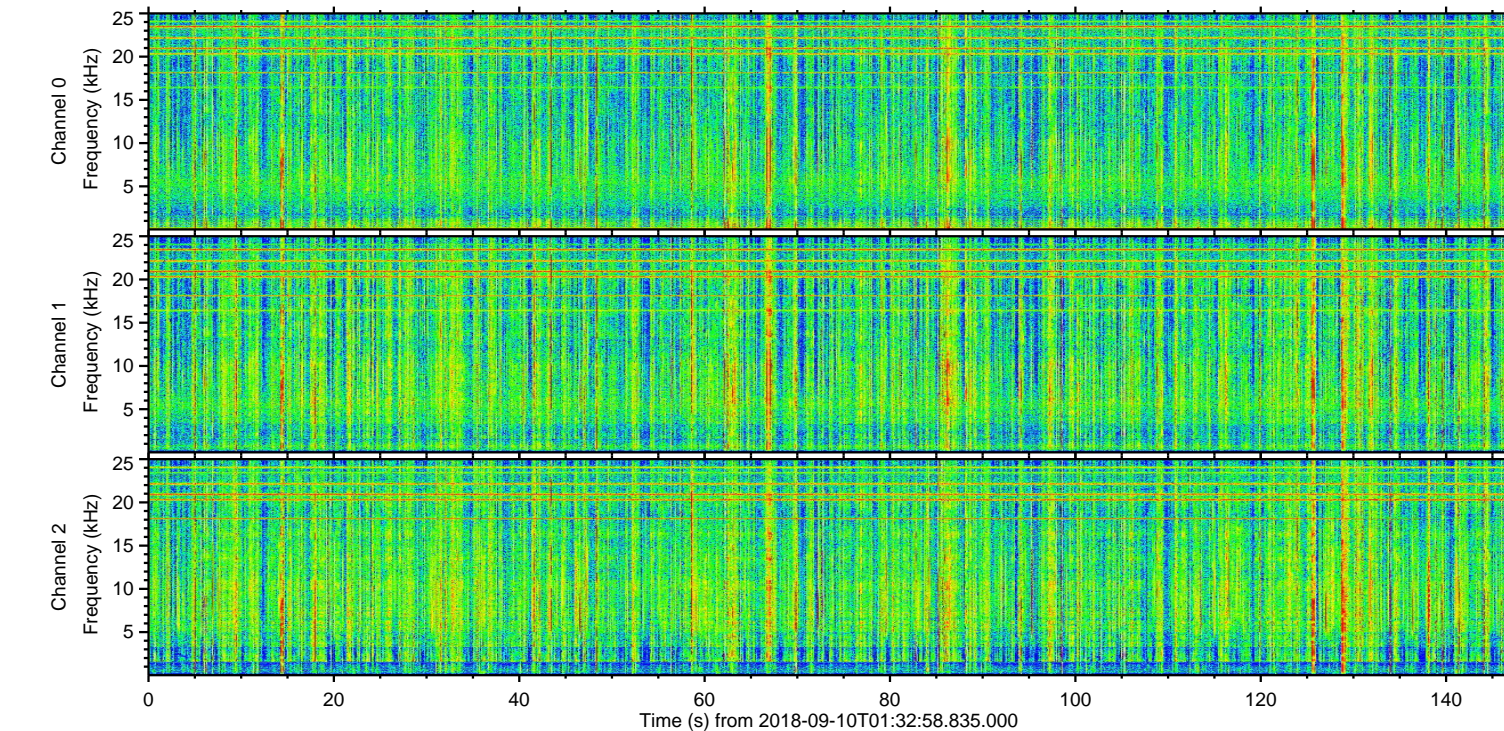
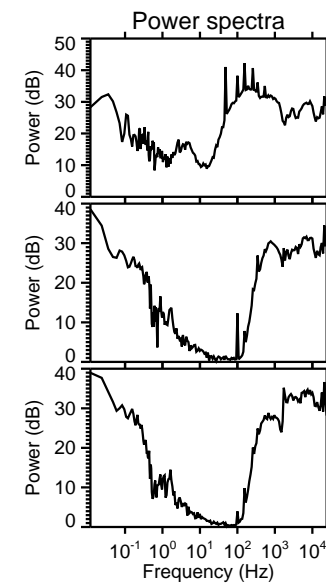
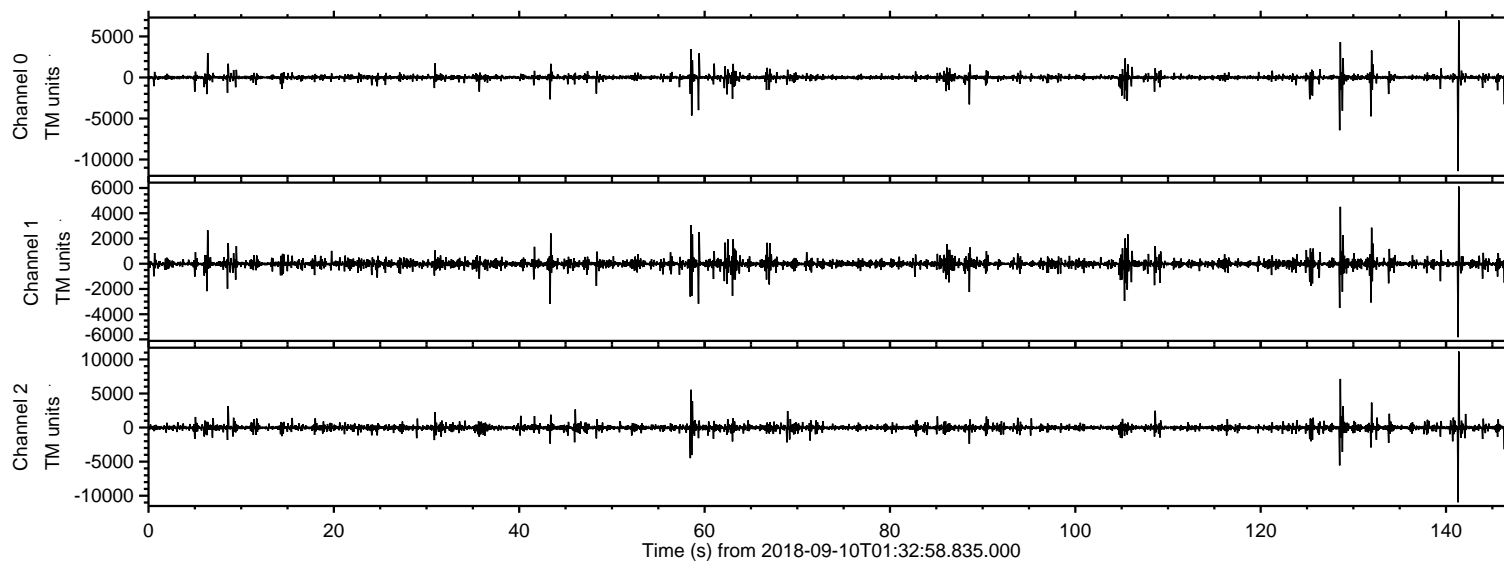


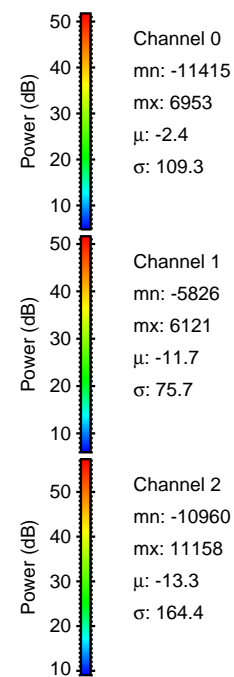
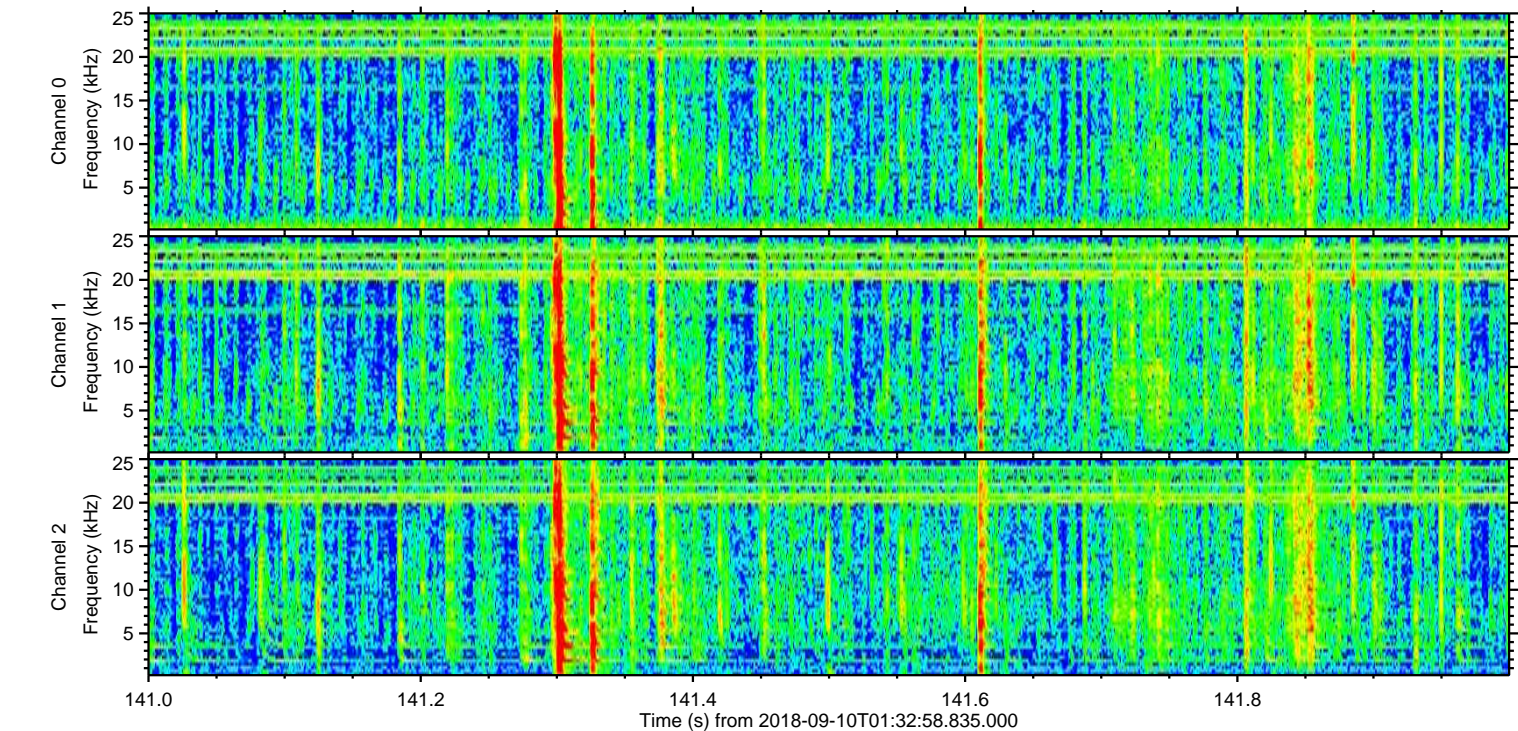
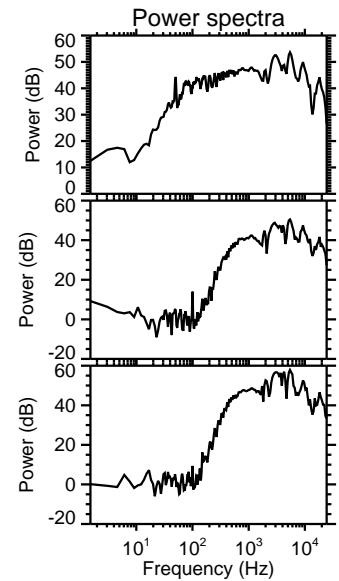
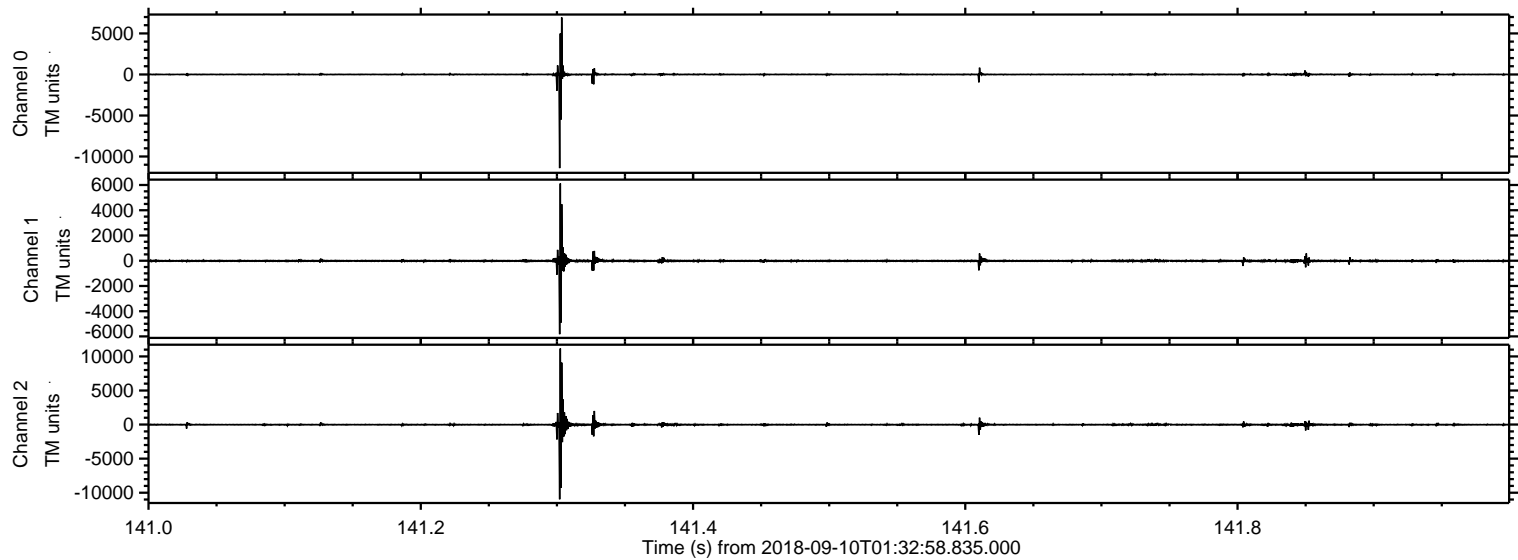
ELMAVAN 3D WAVEFORMS (Measured data sampled at 50 kHz) 51000 packets of 144 samples from 2018-09-10T01:32:58.835.000.

Processed Mon Sep 10 03:41:29 2018 by ELM ver.2012-10-06 from 001__elm20180910_013257__dat00.bin



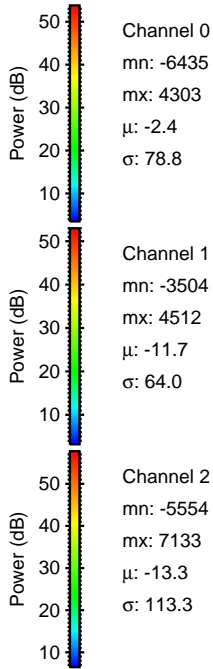
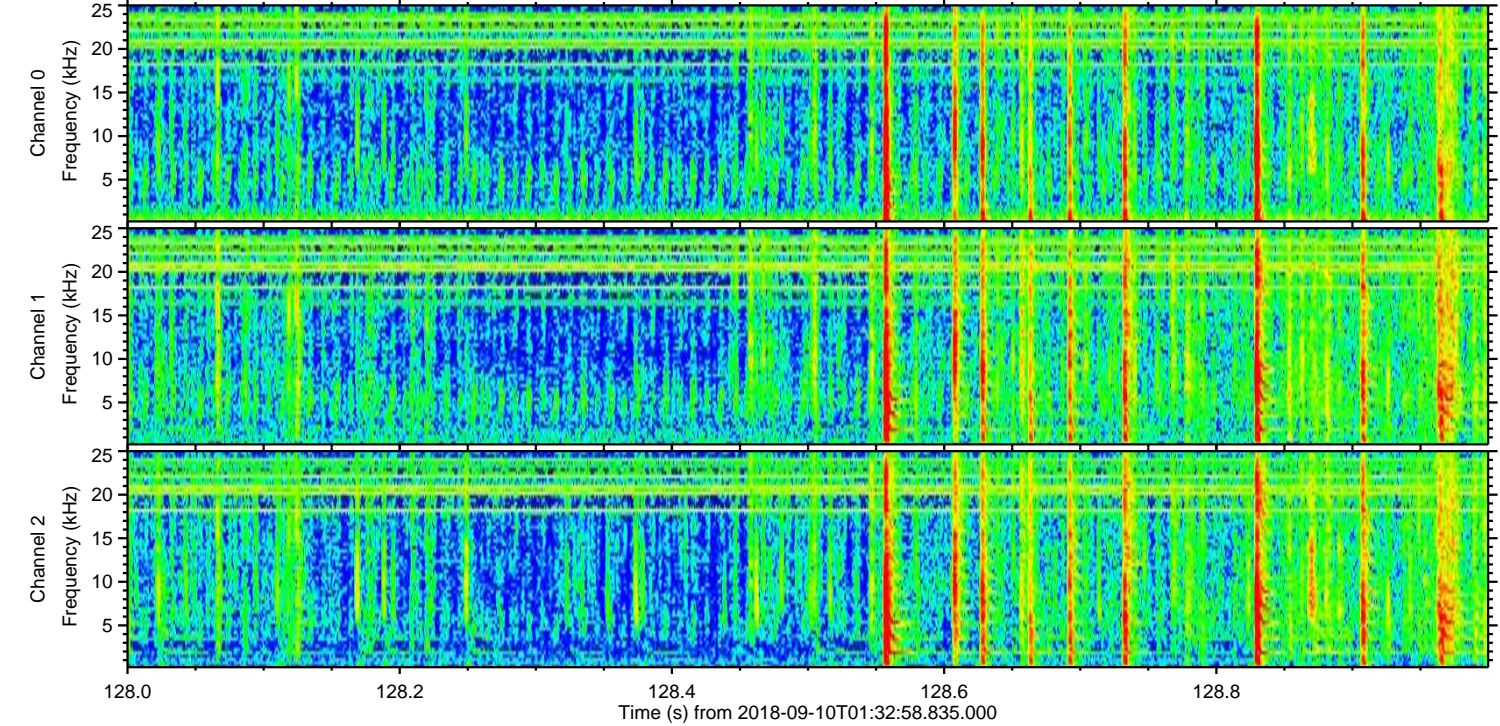
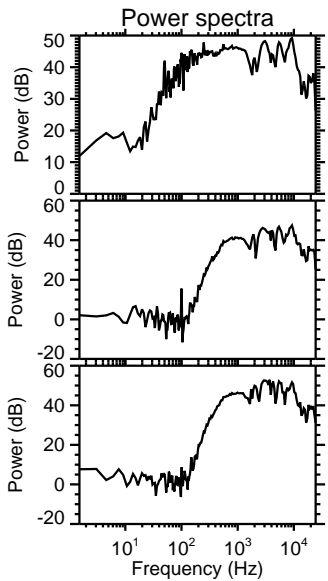
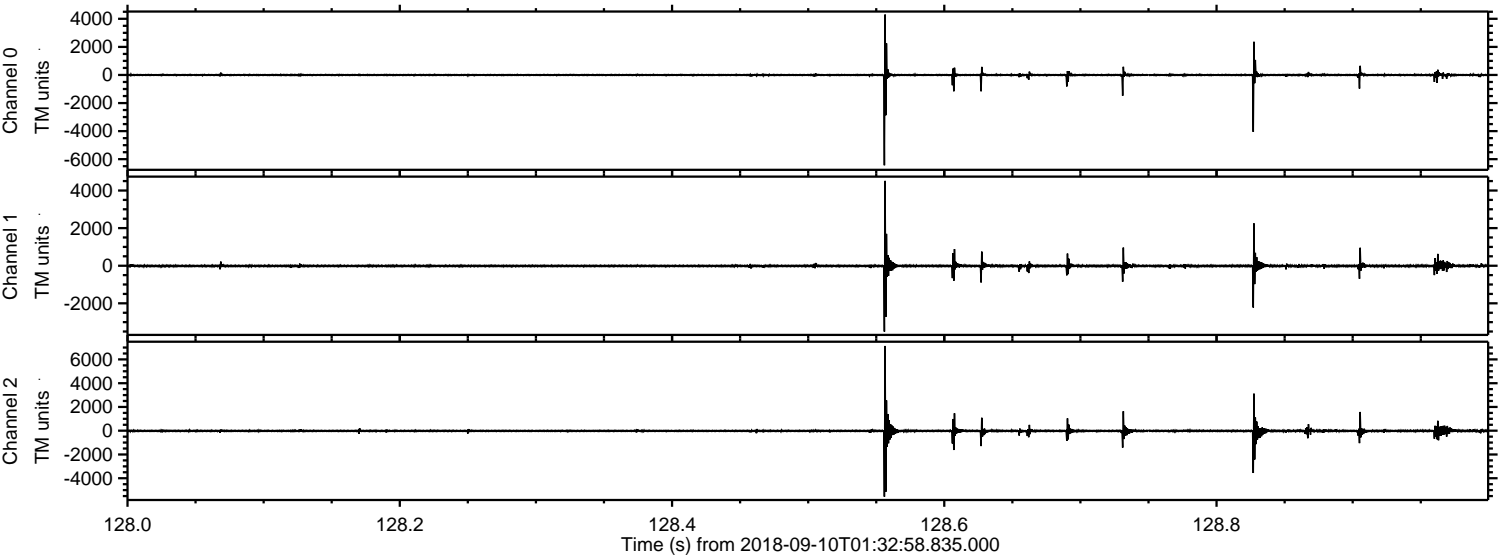
ELMAVAN 3D WAVEFORMS (Measured data sampled at 50 kHz) 51000 packets of 144 samples from 2018-09-10T01:32:58.835.000. Part 142/147

Processed Mon Sep 10 03:41:36 2018 by ELM ver.2012-10-06 from 001__elm20180910_013257__dat00.bin

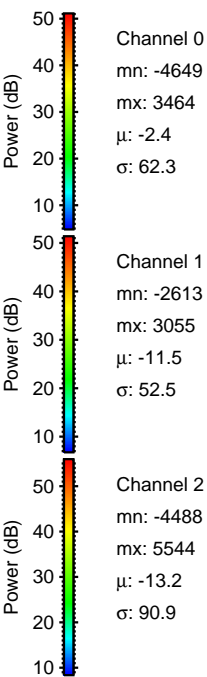
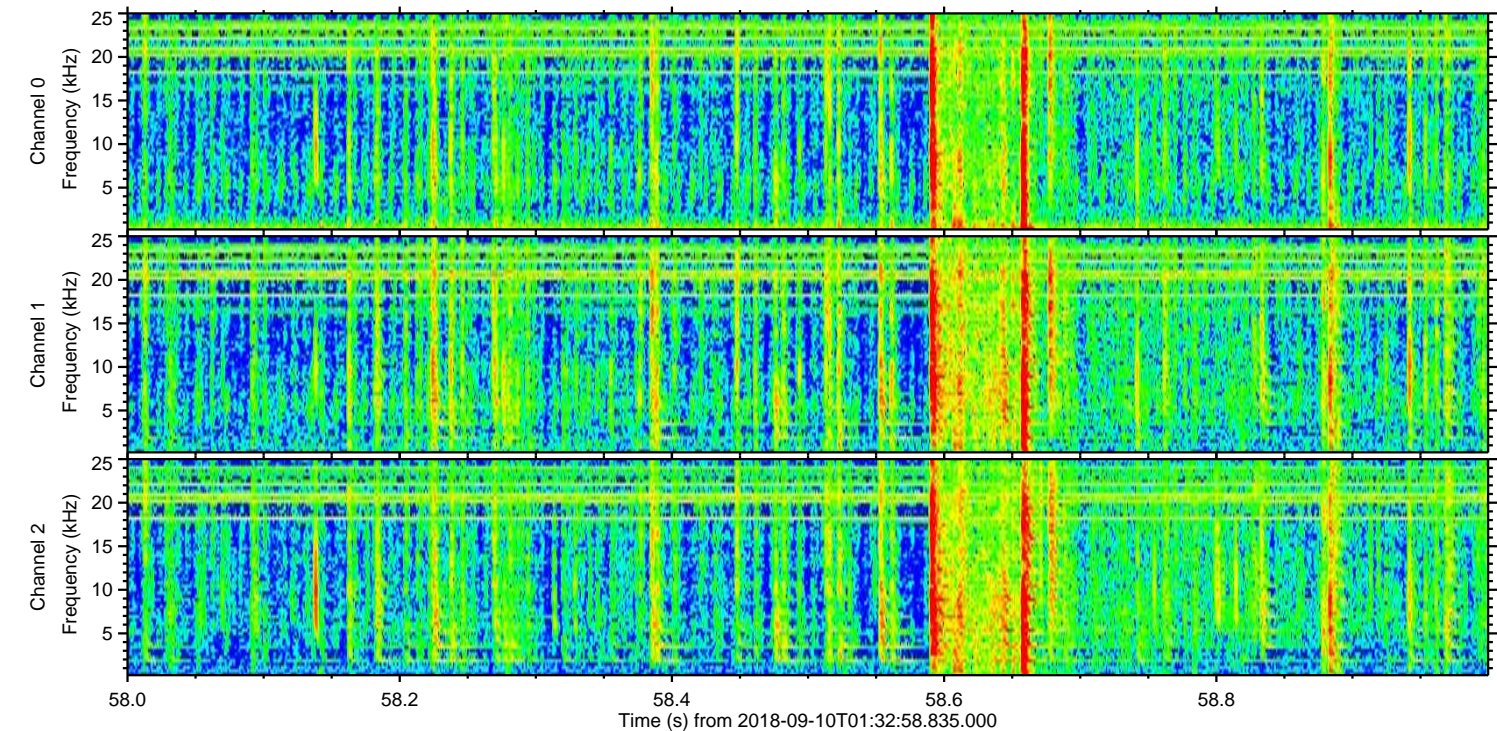
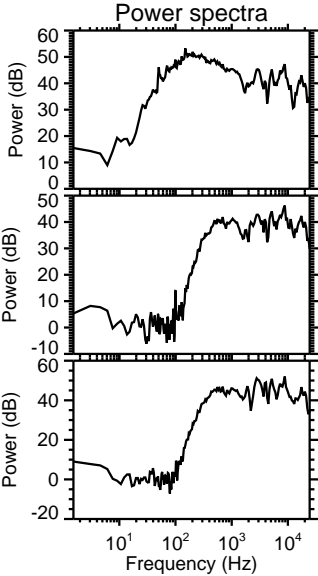
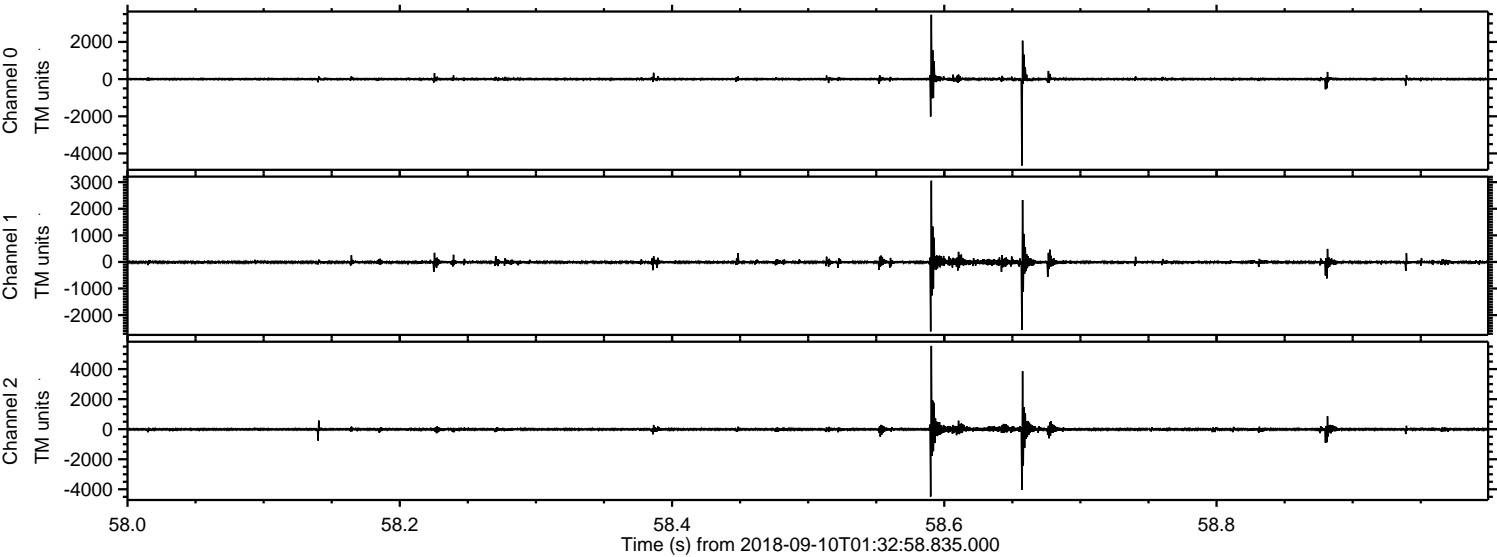


ELMAVAN 3D WAVEFORMS (Measured data sampled at 50 kHz) 51000 packets of 144 samples from 2018-09-10T01:32:58.835.000. Part 129/147

Processed Mon Sep 10 03:41:36 2018 by ELM ver.2012-10-06 from 001__elm20180910_013257__dat00.bin

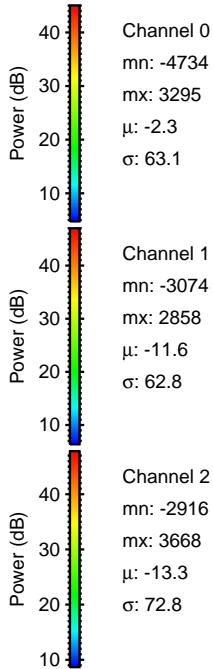
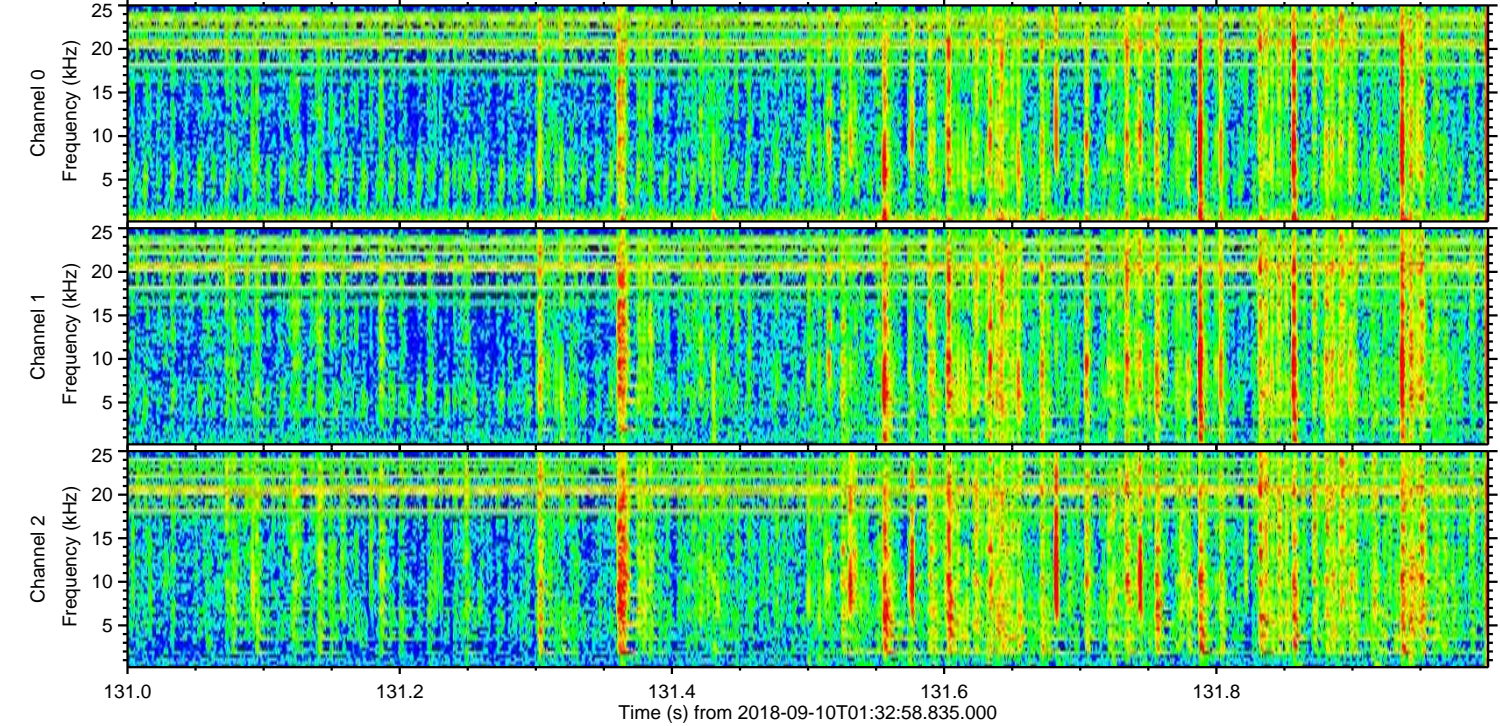
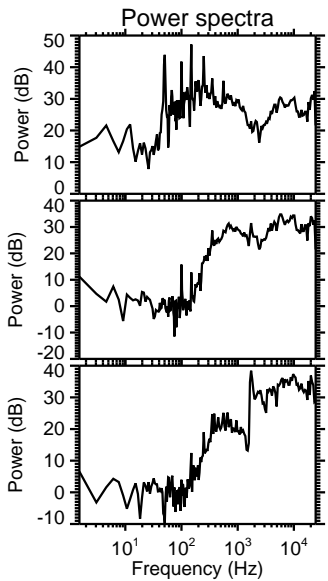
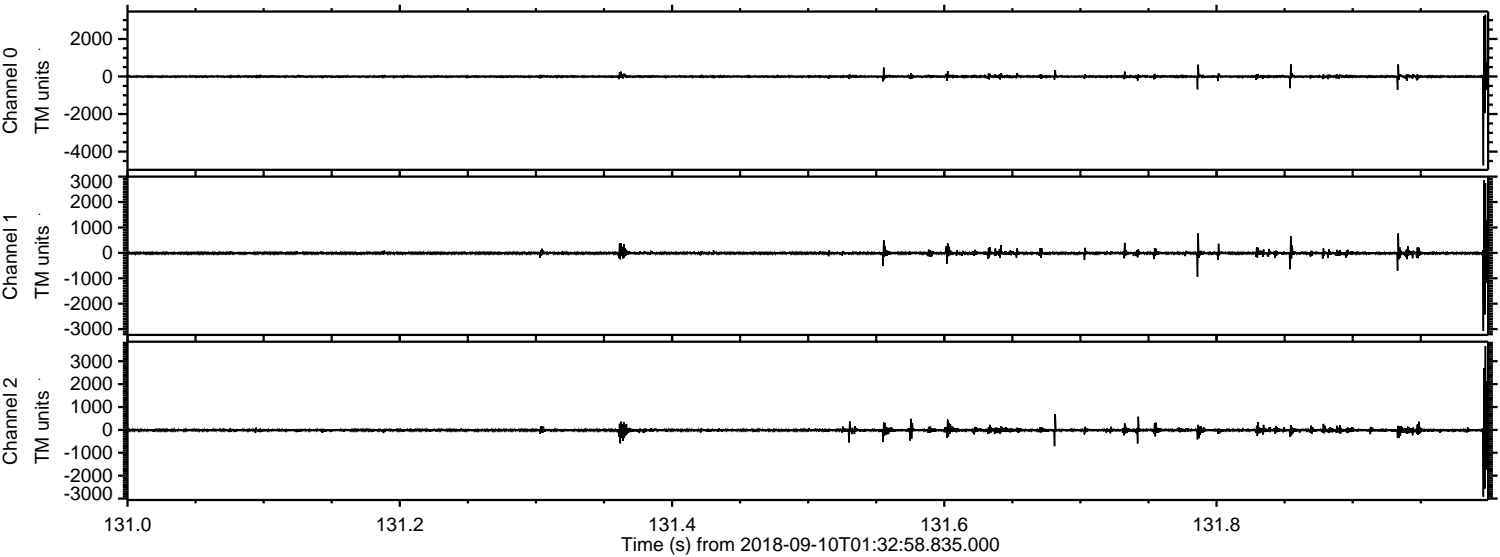


Processed Mon Sep 10 03:41:37 2018 by ELM ver.2012-10-06 from 001__elm20180910_013257__dat00.bin



ELMAVAN 3D WAVEFORMS (Measured data sampled at 50 kHz) 51000 packets of 144 samples from 2018-09-10T01:32:58.835.000. Part 132/147

Processed Mon Sep 10 03:41:38 2018 by ELM ver.2012-10-06 from 001__elm20180910_013257__dat00.bin

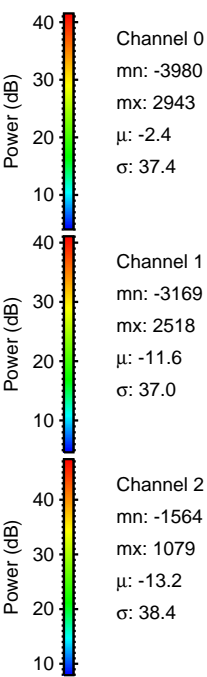
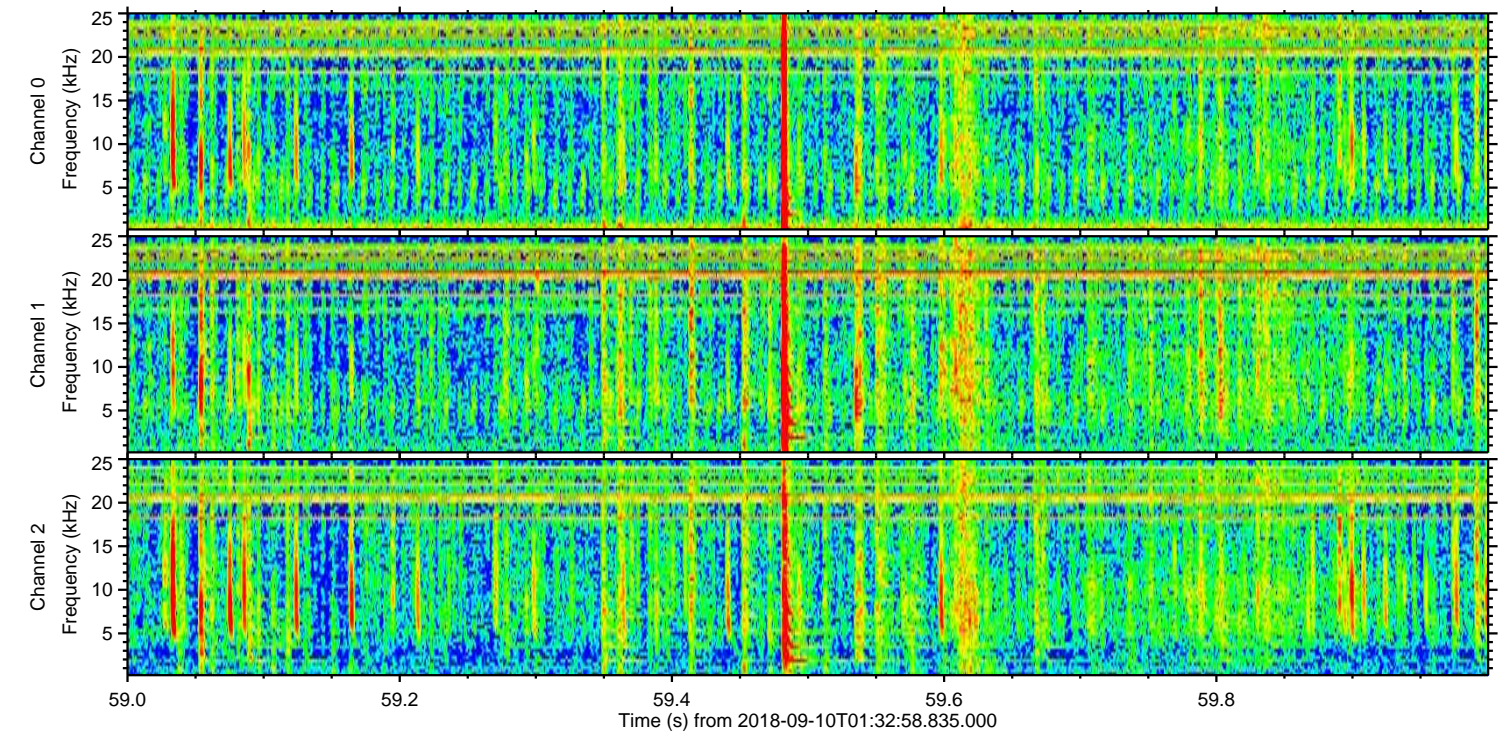
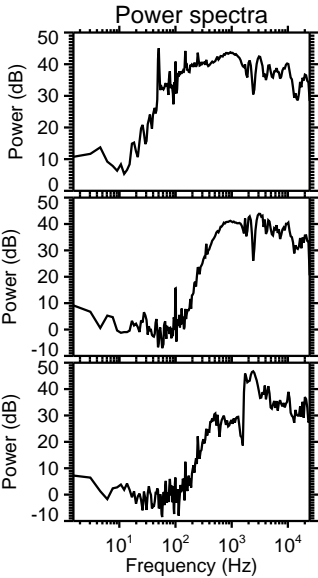
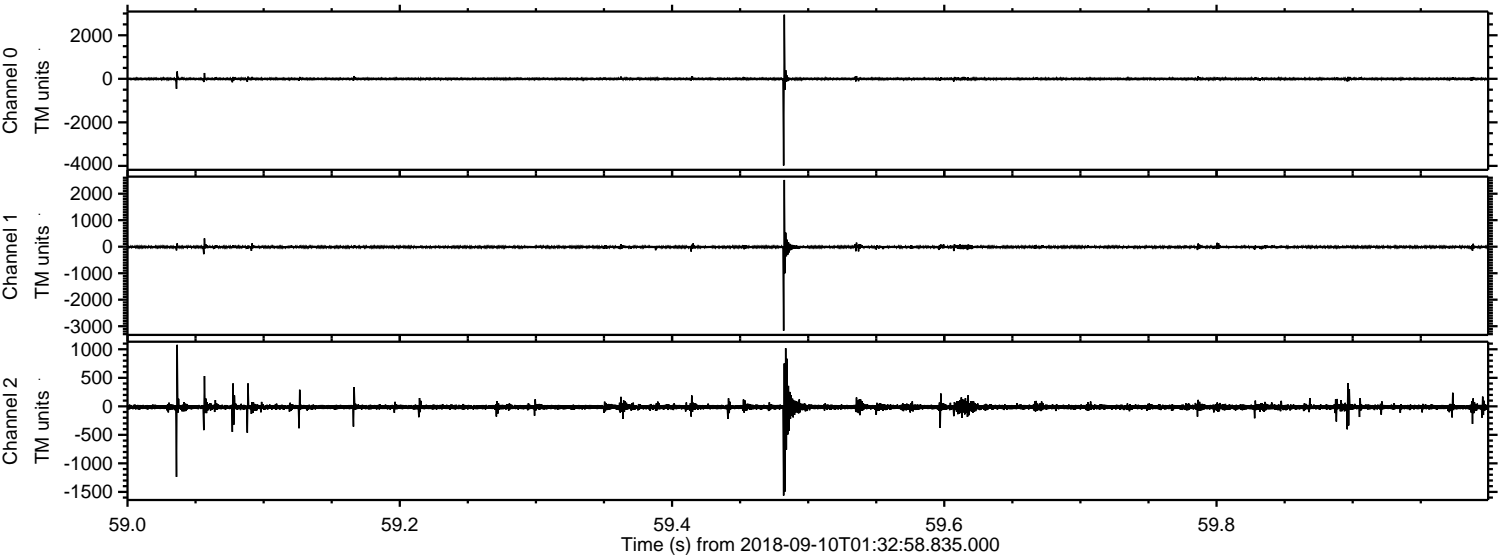


Channel 0
mn: -4734
mx: 3295
 μ : -2.3
 σ : 63.1

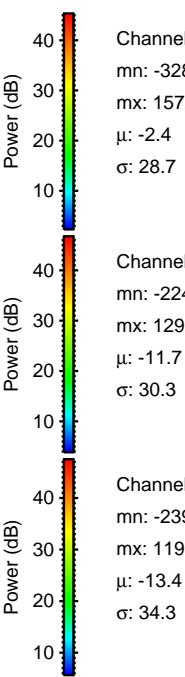
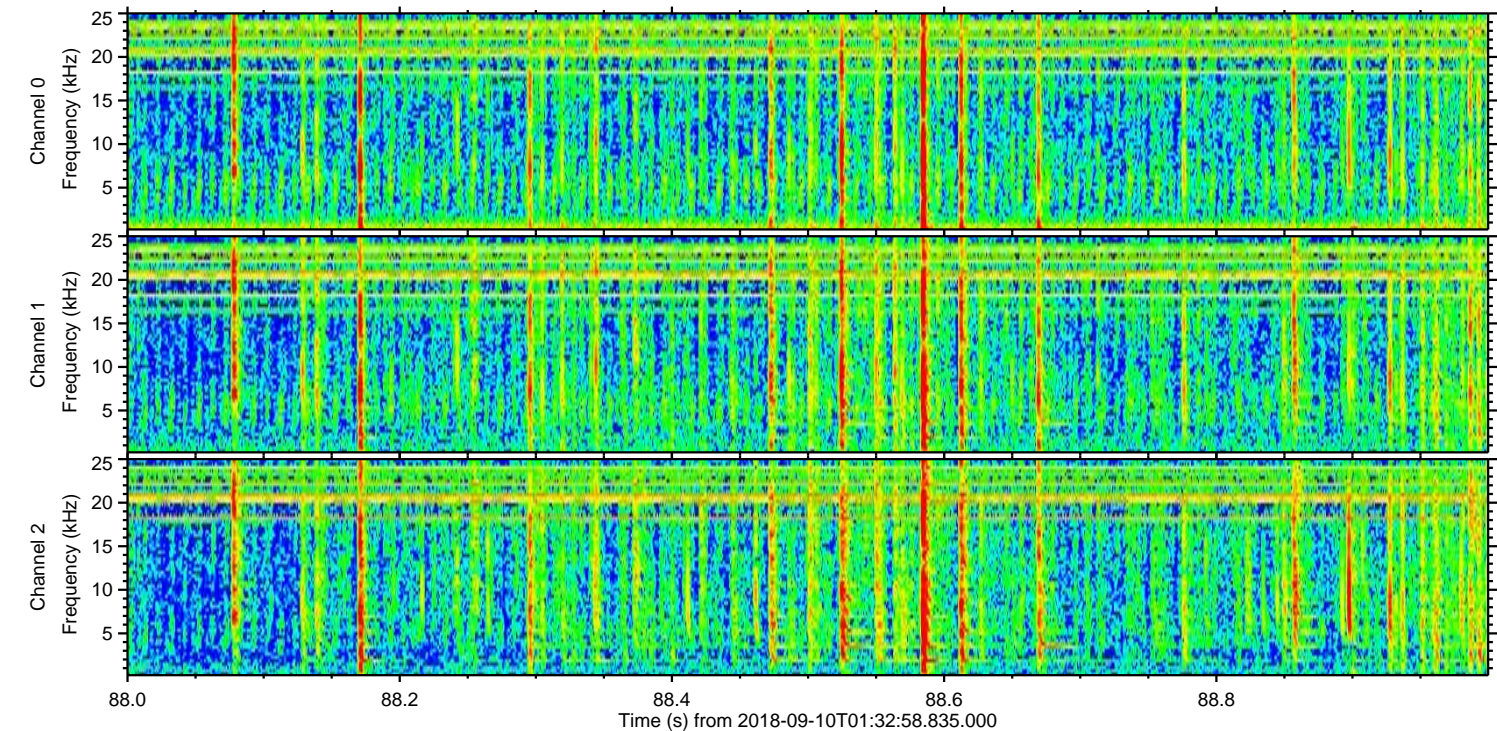
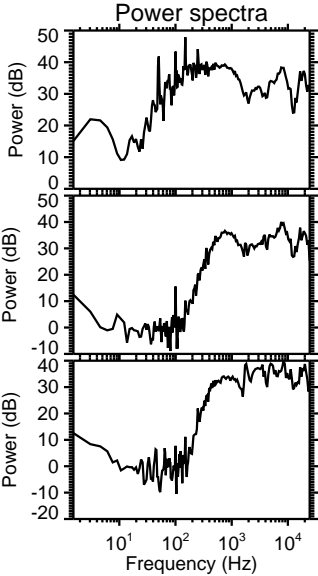
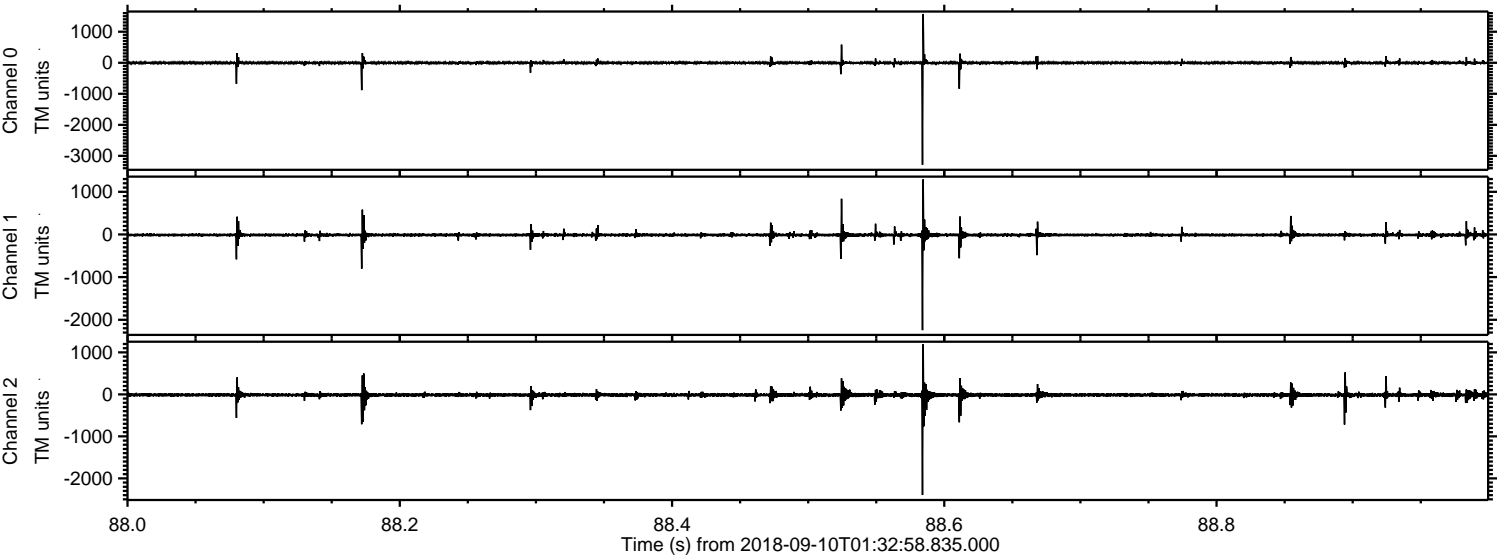
Channel 1
mn: -3074
mx: 2858
 μ : -11.6
 σ : 62.8

Channel 2
mn: -2916
mx: 3668
 μ : -13.3
 σ : 72.8

Processed Mon Sep 10 03:41:38 2018 by ELM ver.2012-10-06 from 001__elm20180910_013257__dat00.bin



Processed Mon Sep 10 03:41:39 2018 by ELM ver.2012-10-06 from 001__elm20180910_013257__dat00.bin

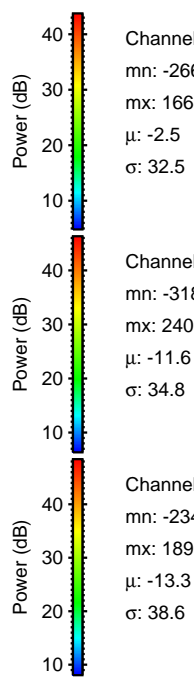
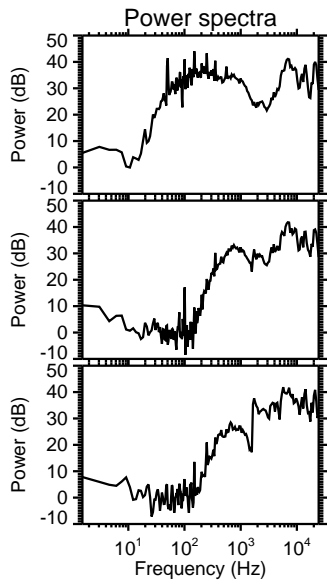
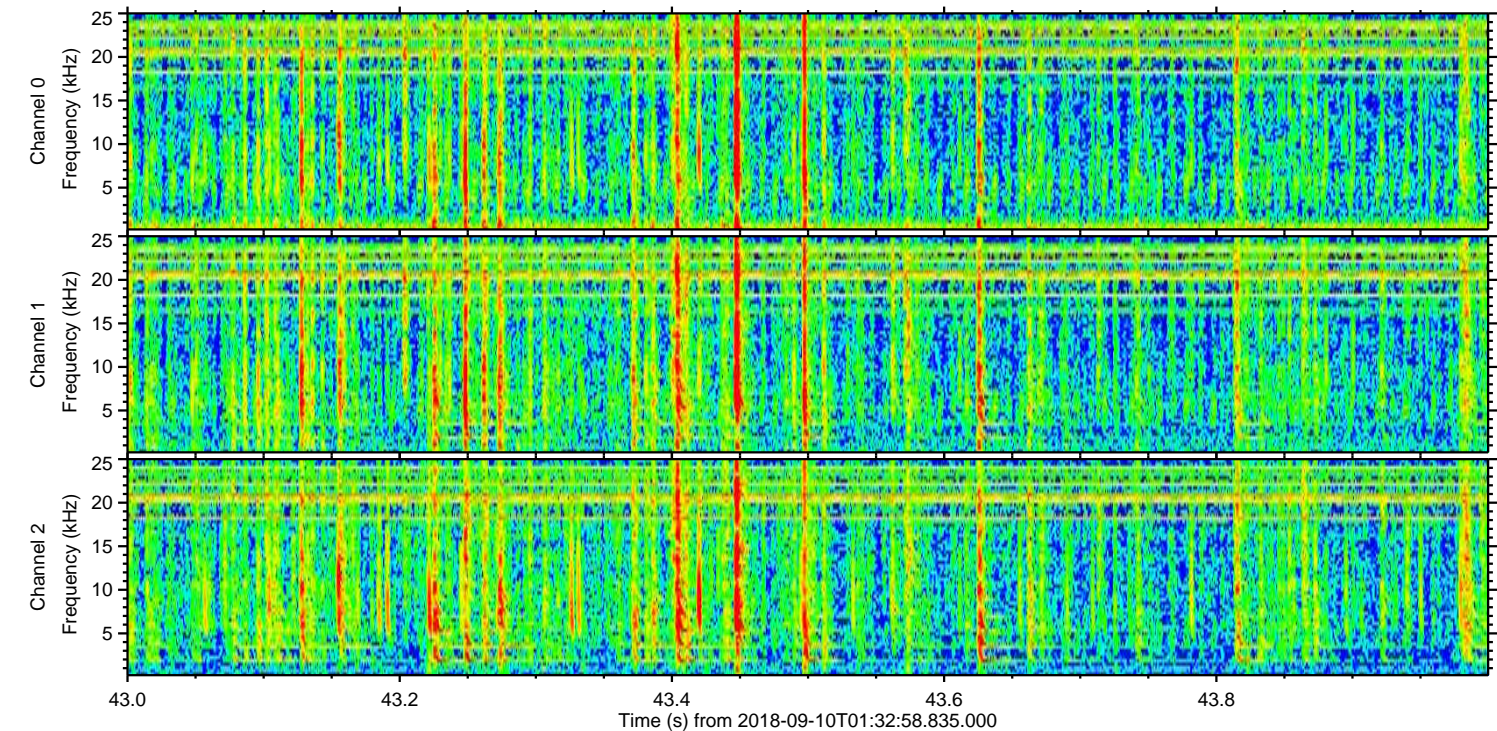
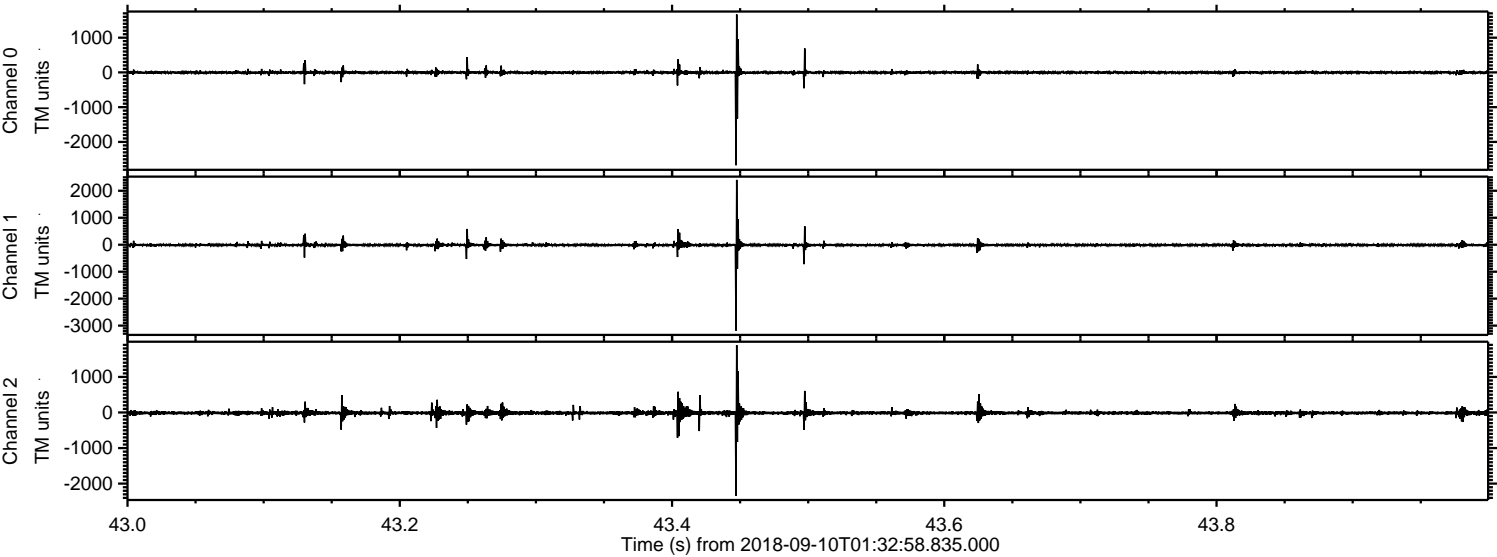


Channel 0
mn: -3286
mx: 1572
 μ : -2.4
 σ : 28.7

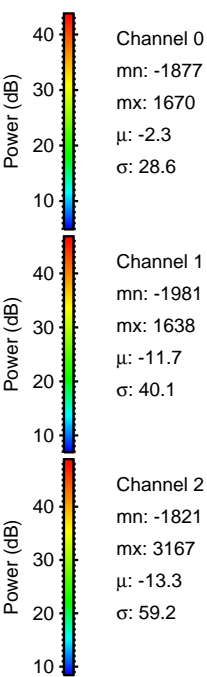
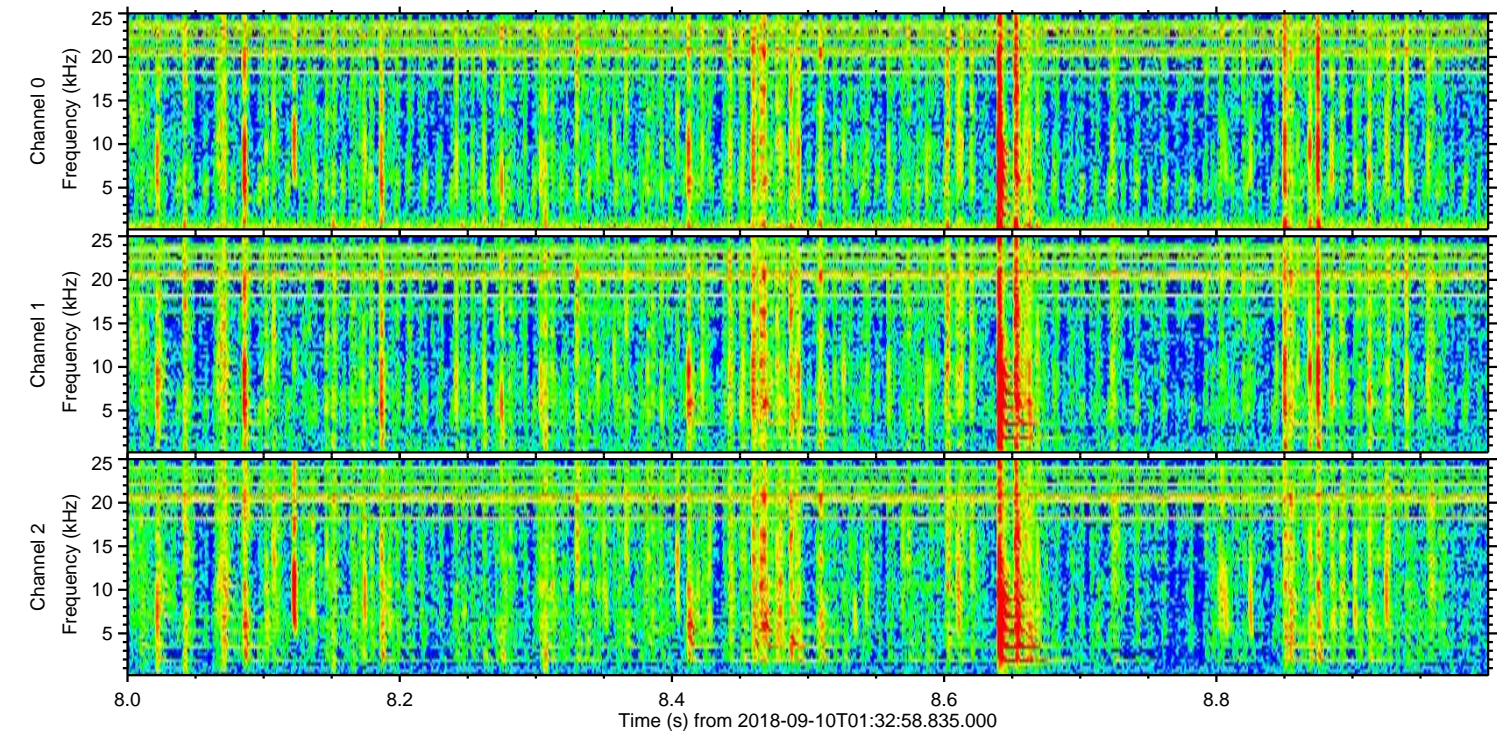
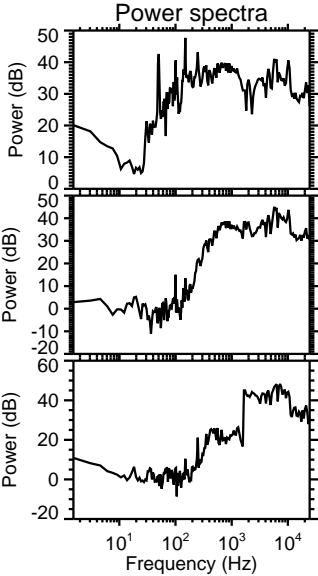
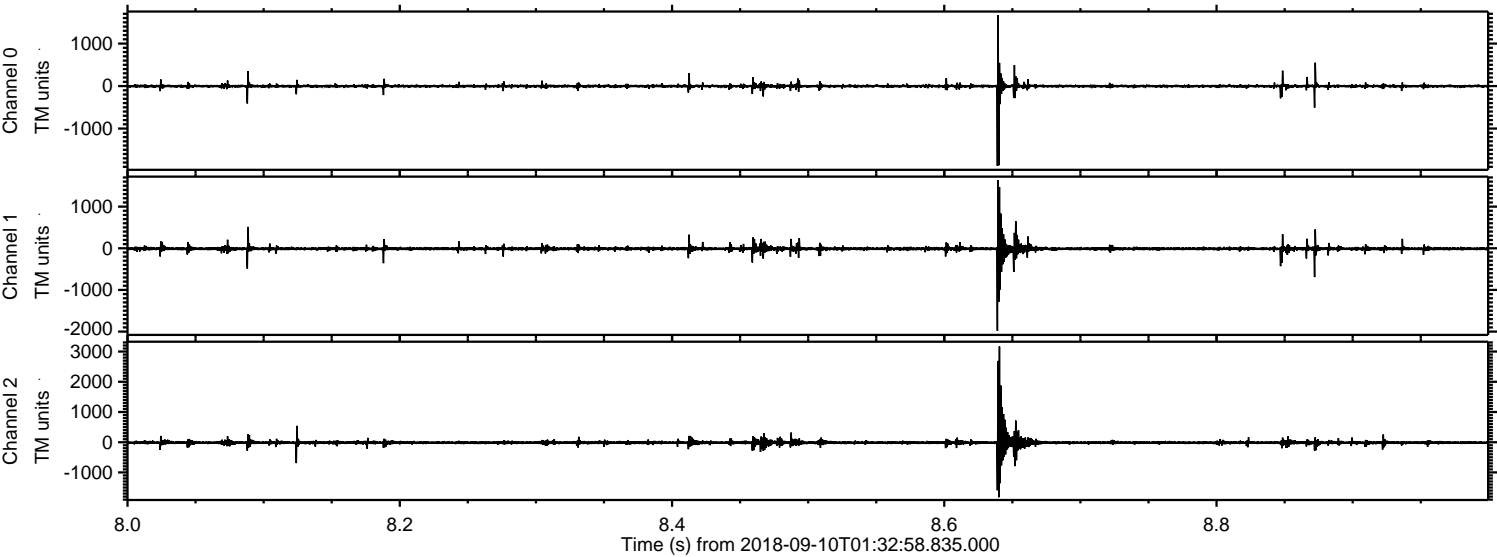
Channel 1
mn: -2243
mx: 1292
 μ : -11.7
 σ : 30.3

Channel 2
mn: -2396
mx: 1195
 μ : -13.4
 σ : 34.3

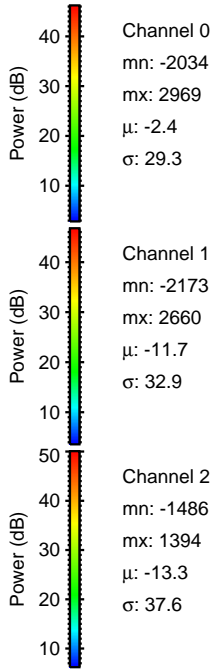
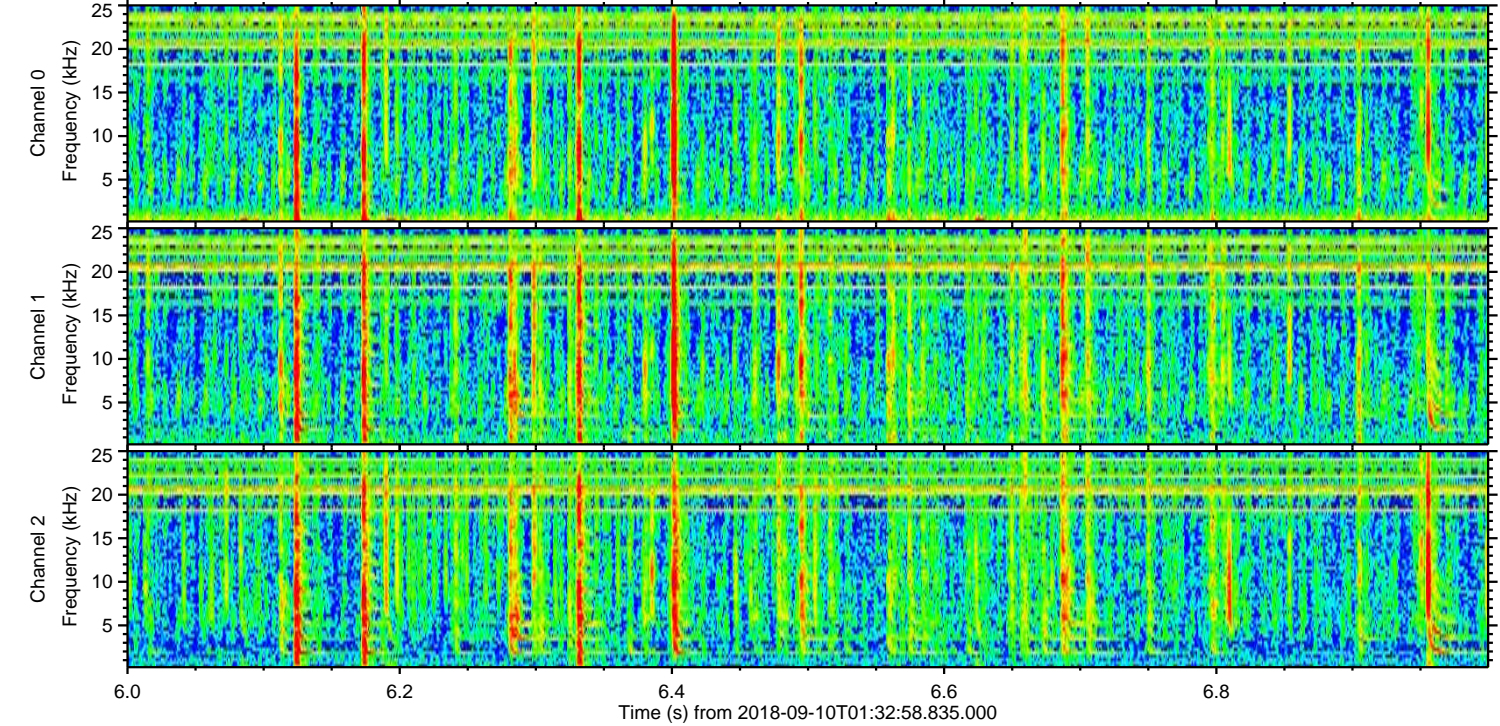
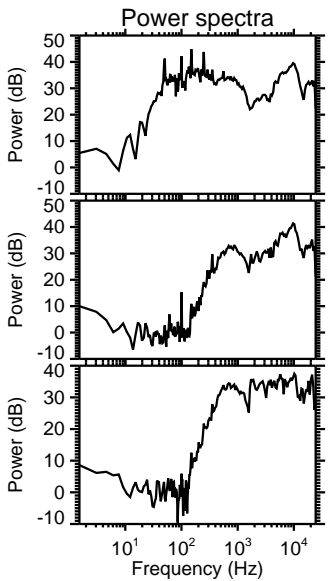
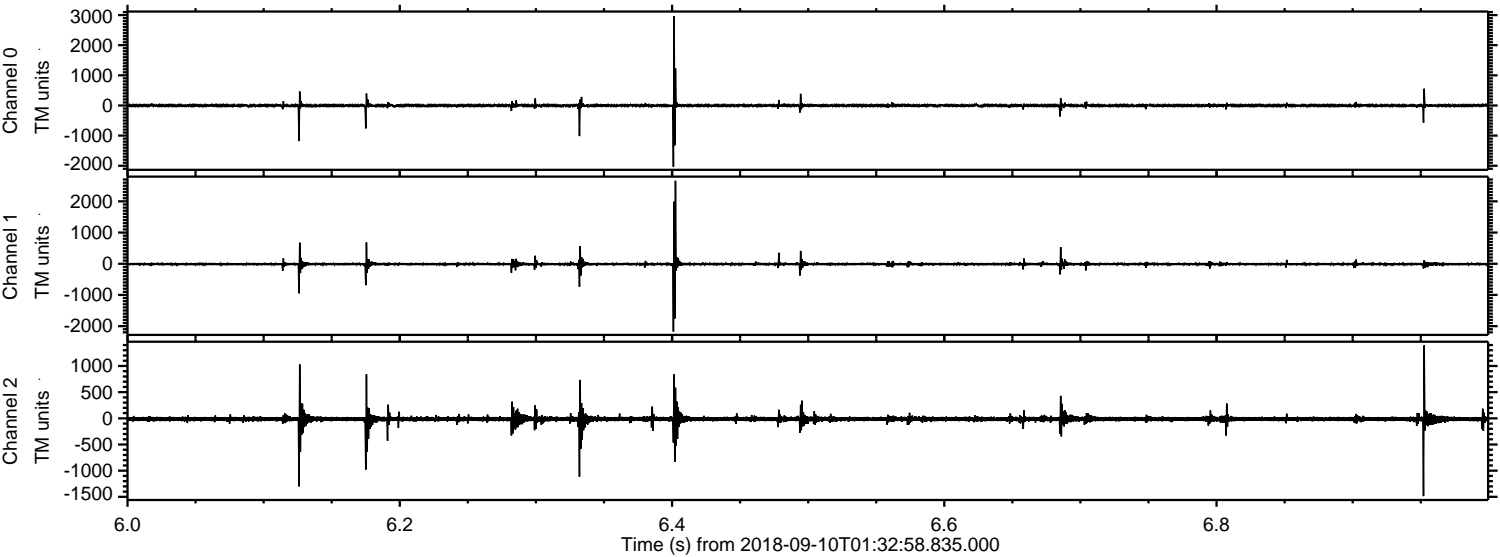
Processed Mon Sep 10 03:41:40 2018 by ELM ver.2012-10-06 from 001__elm20180910_013257__dat00.bin



Processed Mon Sep 10 03:41:41 2018 by ELM ver.2012-10-06 from 001__elm20180910_013257__dat00.bin



Processed Mon Sep 10 03:41:41 2018 by ELM ver.2012-10-06 from 001__elm20180910_013257__dat00.bin



Channel 0
mn: -2034
mx: 2969
 μ : -2.4
 σ : 29.3

Channel 1
mn: -2173
mx: 2660
 μ : -11.7
 σ : 32.9

Channel 2
mn: -1486
mx: 1394
 μ : -13.3
 σ : 37.6

Processed Mon Sep 10 03:41:42 2018 by ELM ver.2012-10-06 from 001__elm20180910_013257__dat00.bin

