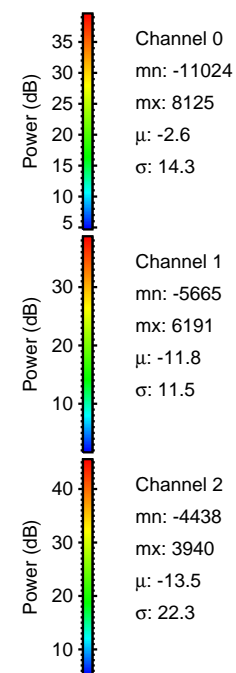
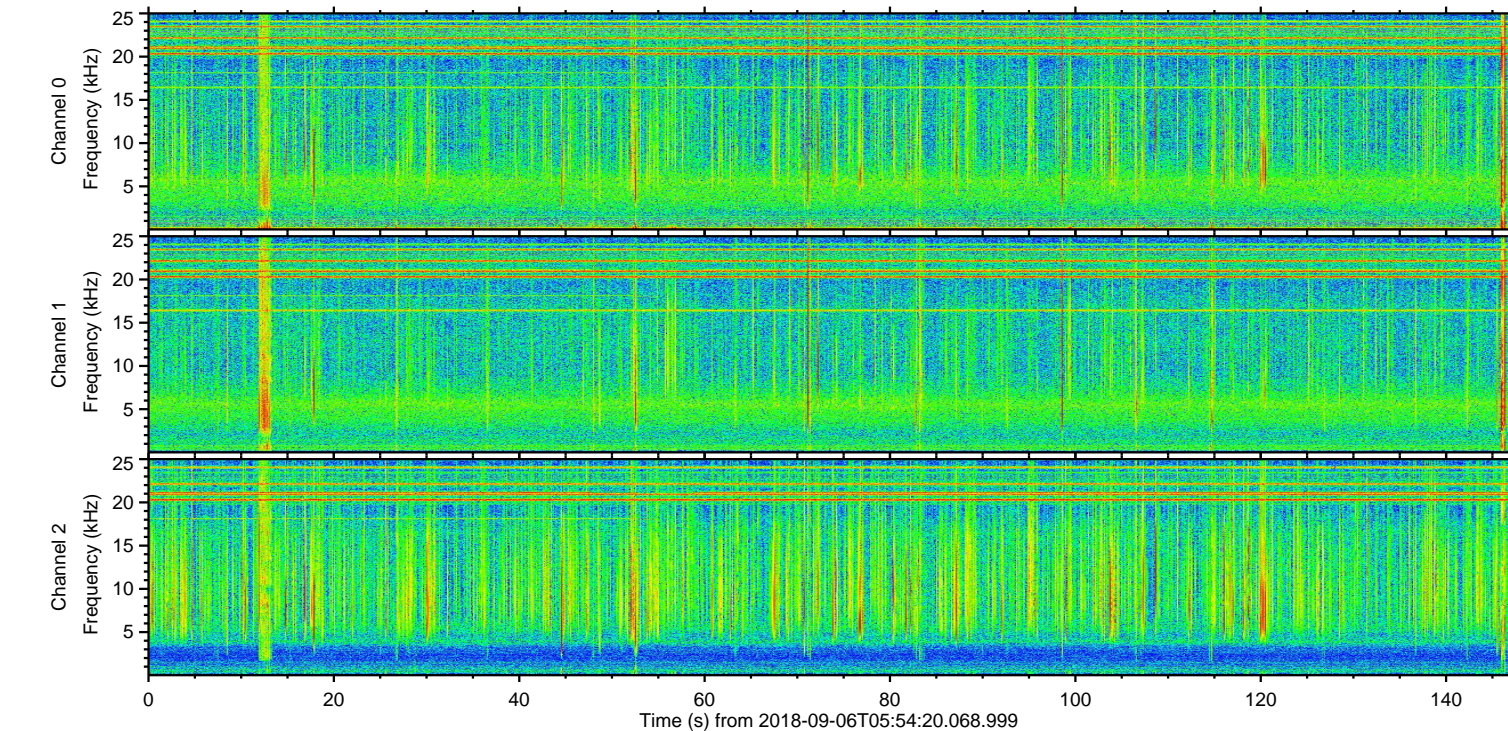
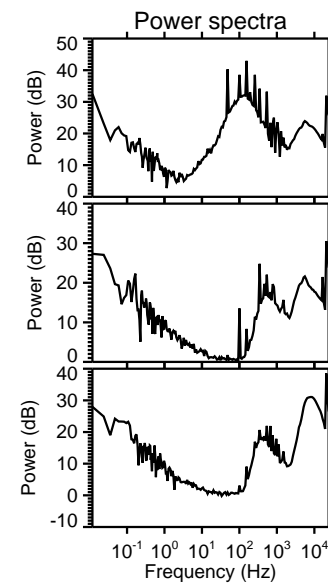
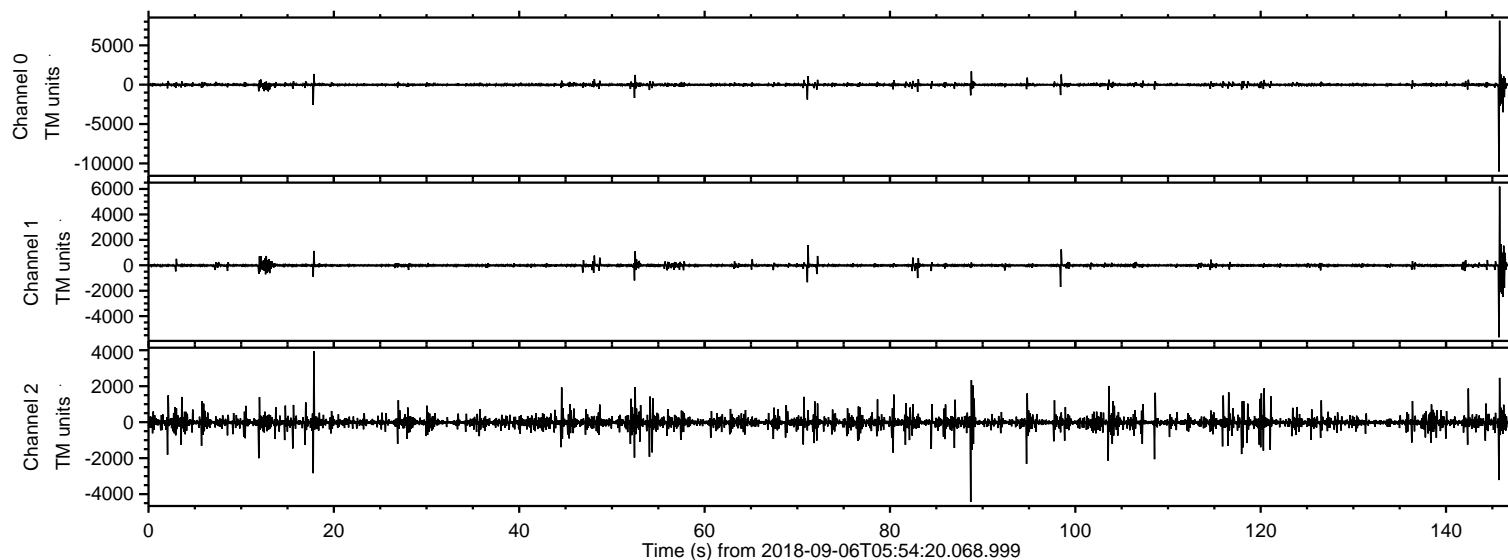


# ELMAVAN 3D WAVEFORMS (Measured data sampled at 50 kHz) 51000 packets of 144 samples from 2018-09-06T05:54:20.068.999.

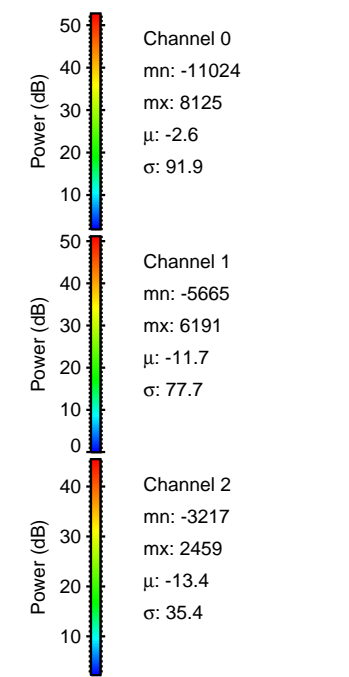
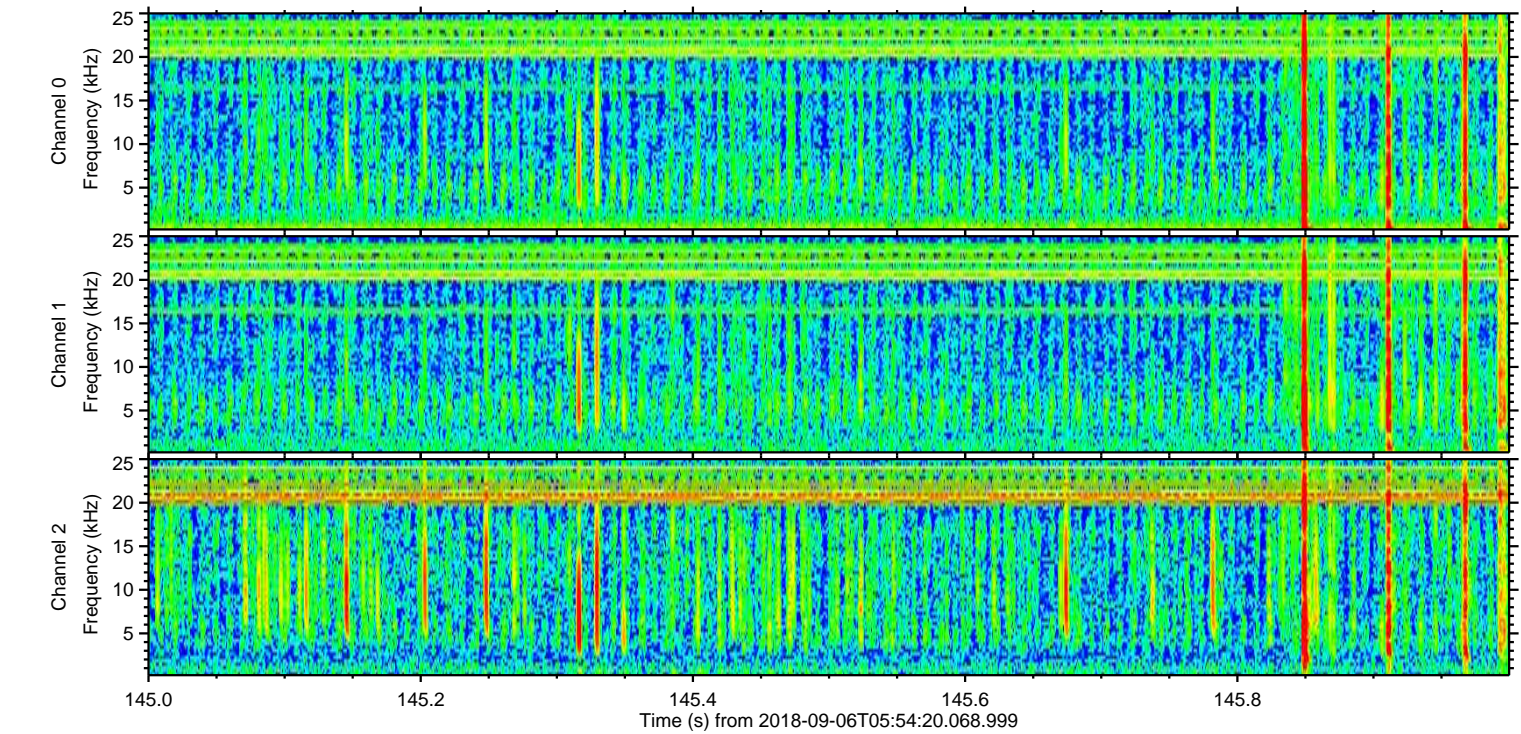
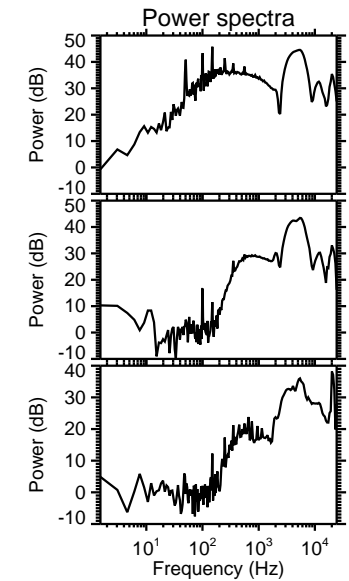
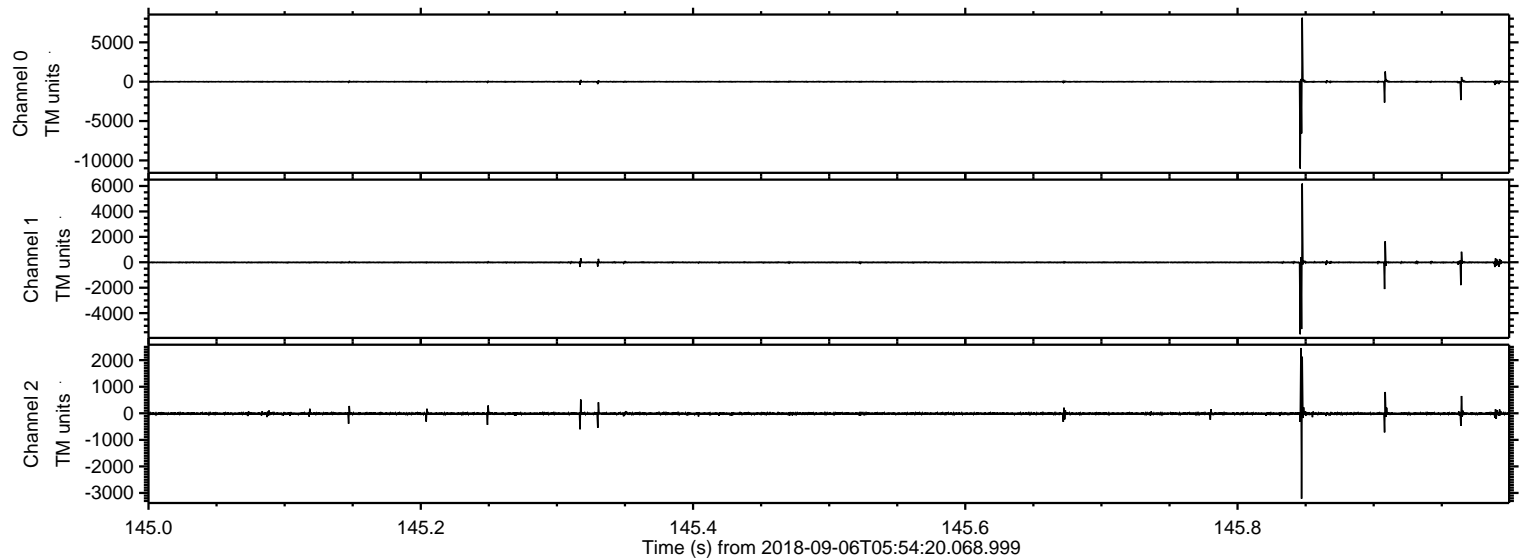
Processed Thu Sep 6 08:02:53 2018 by ELM ver.2012-10-06 from 001\_\_elm20180906\_055419\_\_dat00.bin





ELMAVAN 3D WAVEFORMS (Measured data sampled at 50 kHz) 51000 packets of 144 samples from 2018-09-06T05:54:20.068.999. Part 146/147

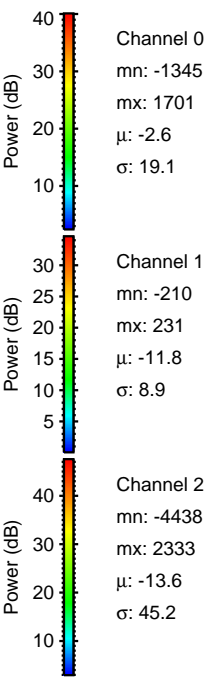
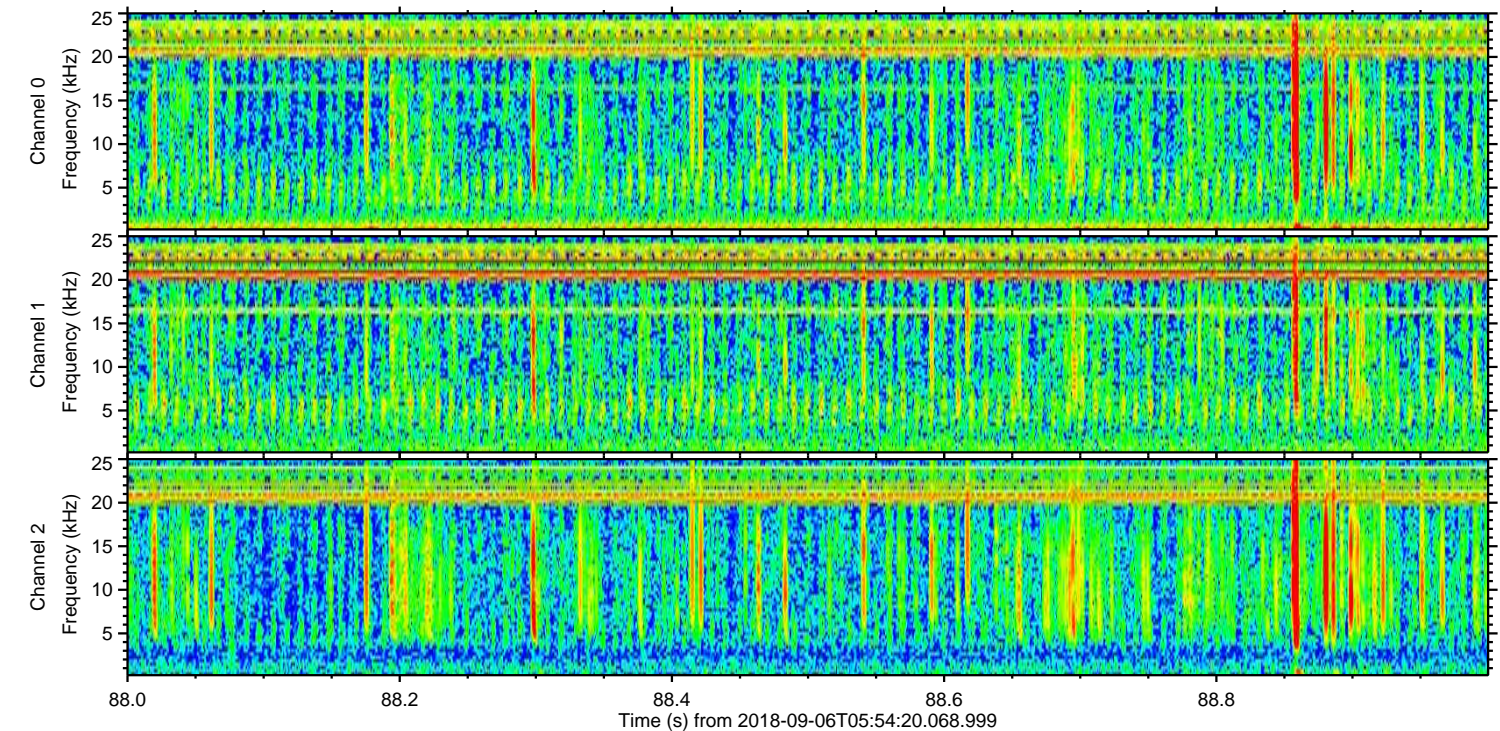
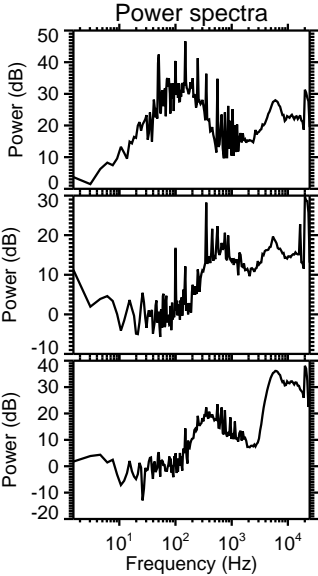
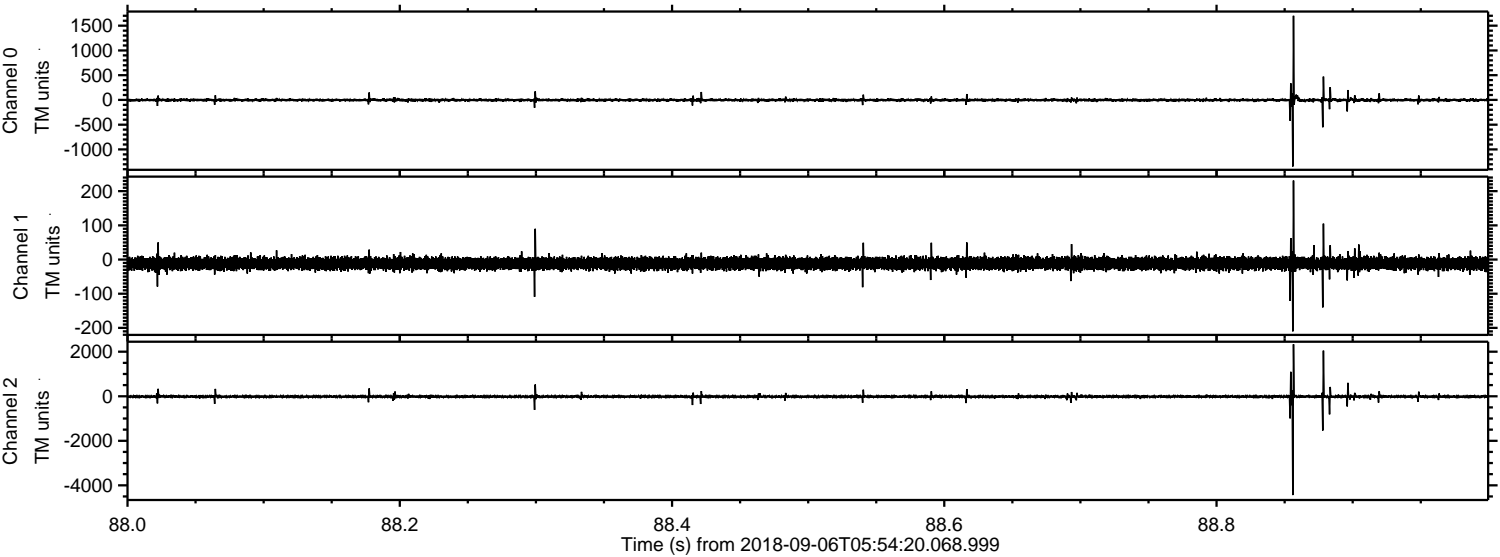
Processed Thu Sep 6 08:03:00 2018 by ELM ver.2012-10-06 from 001\_\_elm20180906\_055419\_\_dat00.bin





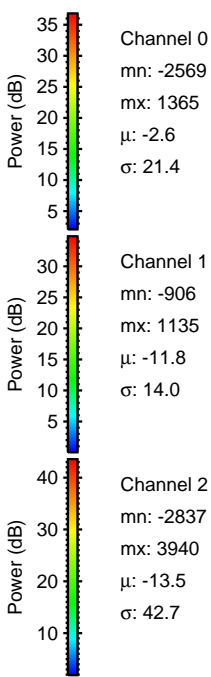
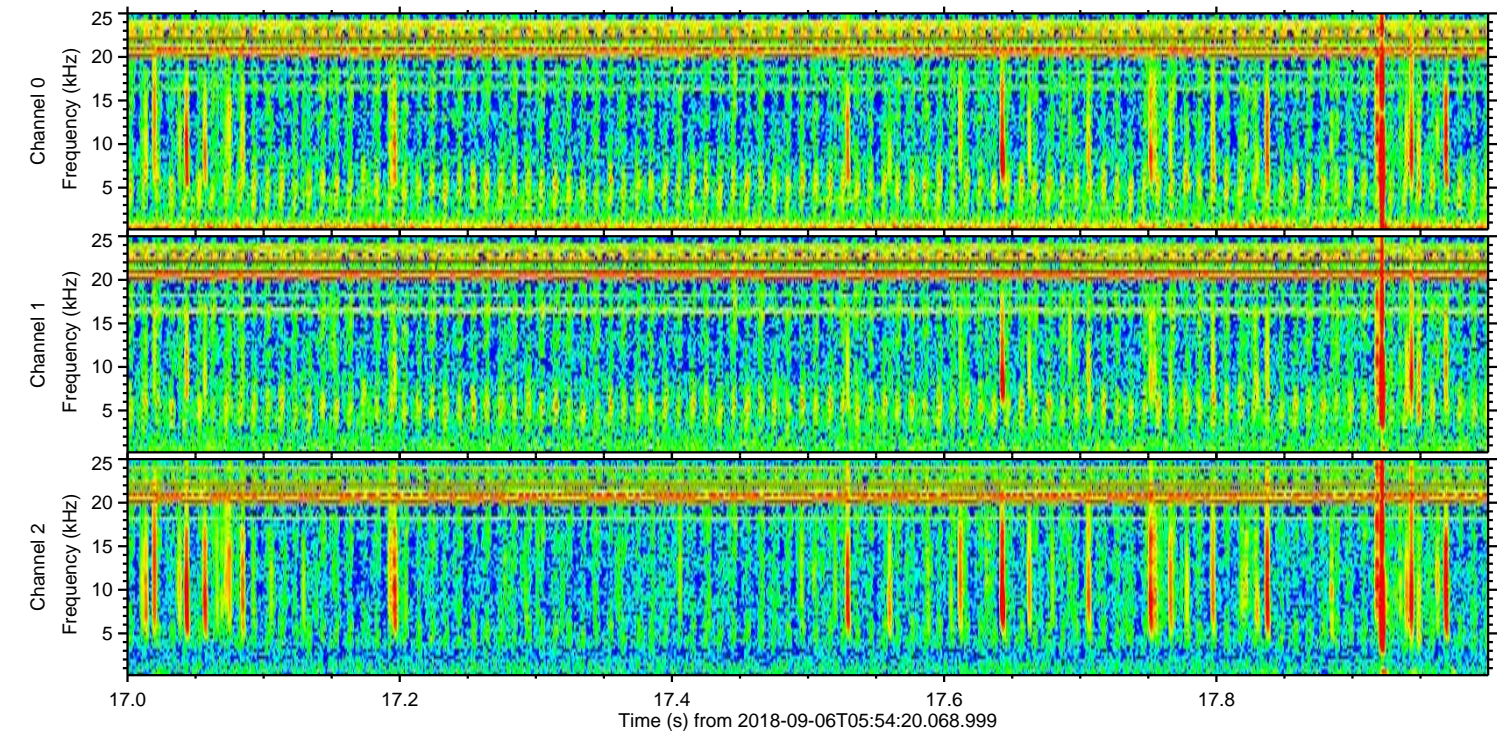
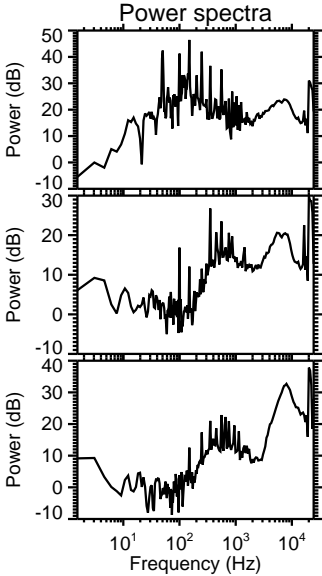
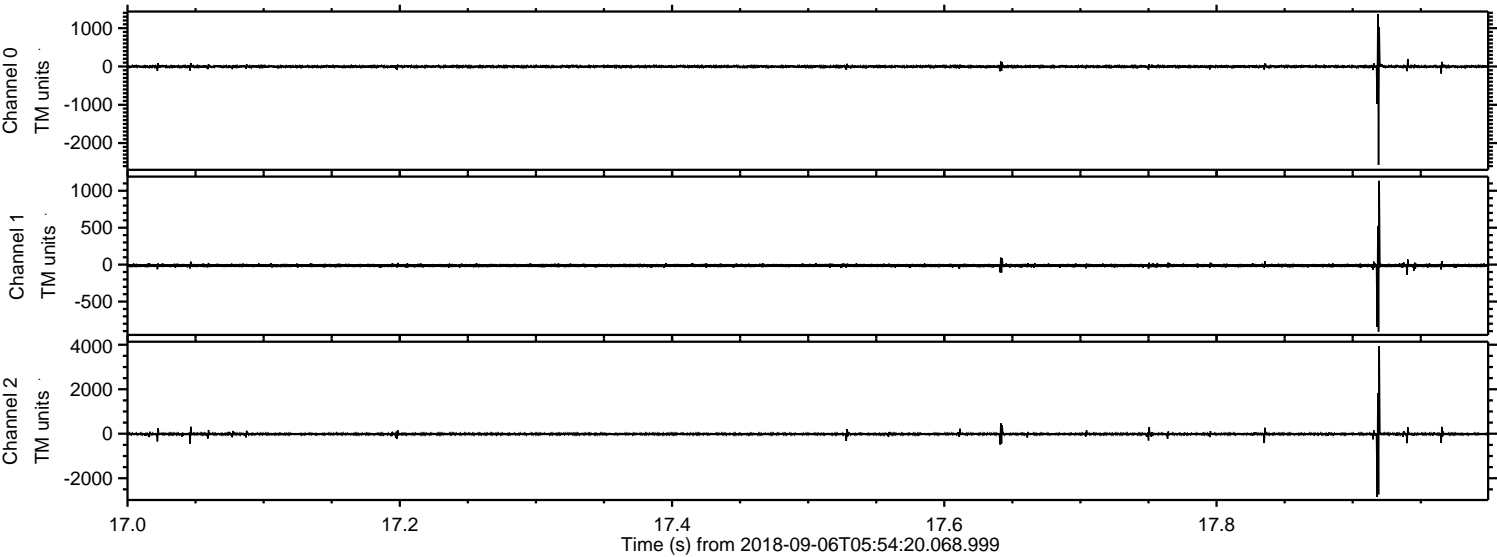
ELMAVAN 3D WAVEFORMS (Measured data sampled at 50 kHz) 51000 packets of 144 samples from 2018-09-06T05:54:20.068.999. Part 89/147

Processed Thu Sep 6 08:03:01 2018 by ELM ver.2012-10-06 from 001\_\_elm20180906\_055419\_\_dat00.bin



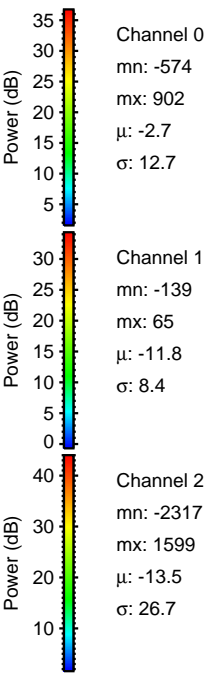
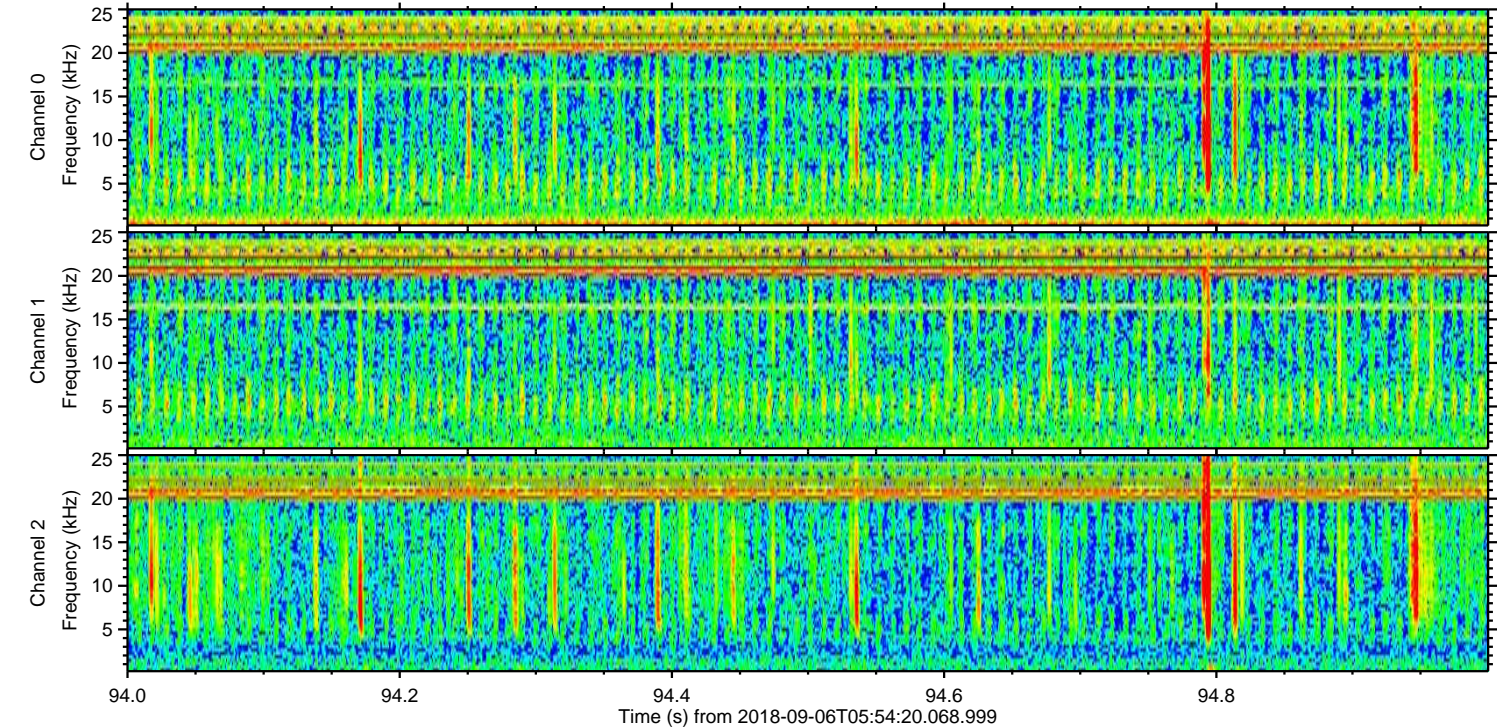
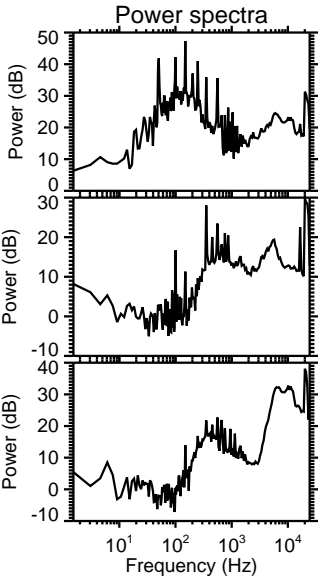
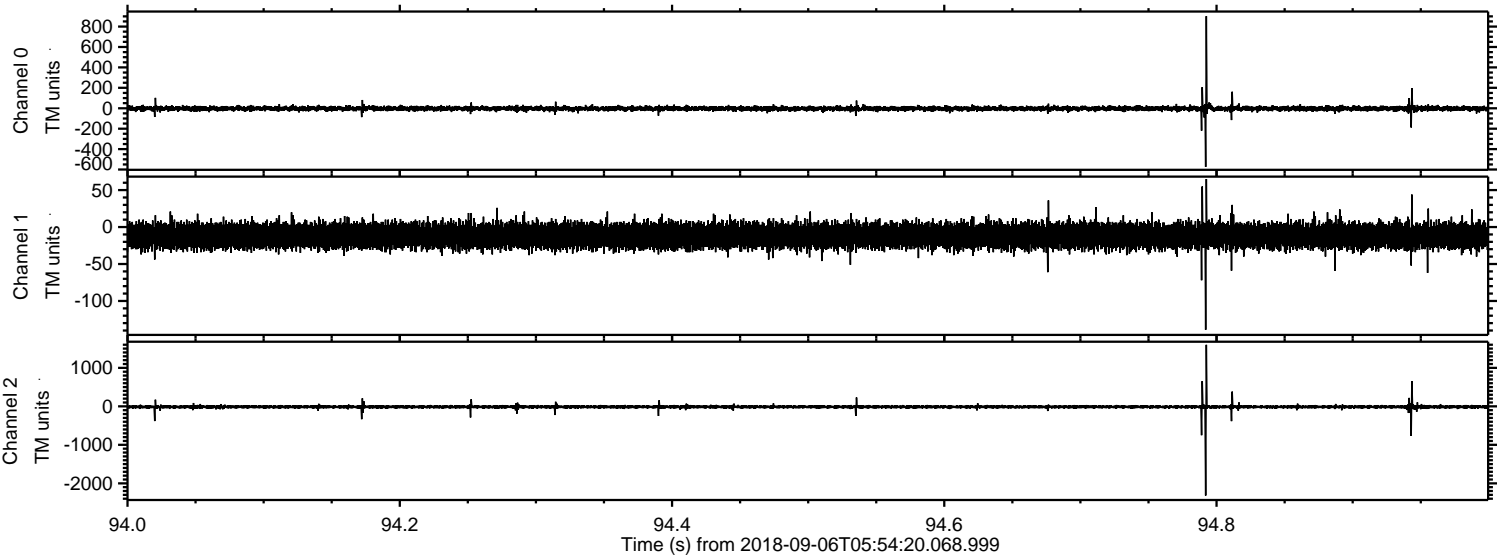


Processed Thu Sep 6 08:03:01 2018 by ELM ver.2012-10-06 from 001\_\_elm20180906\_055419\_\_dat00.bin



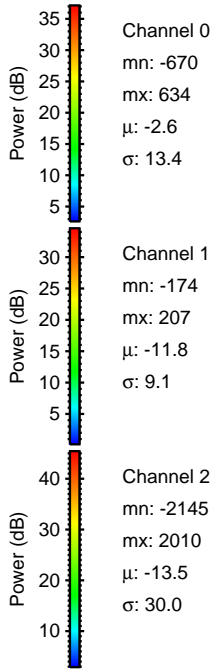
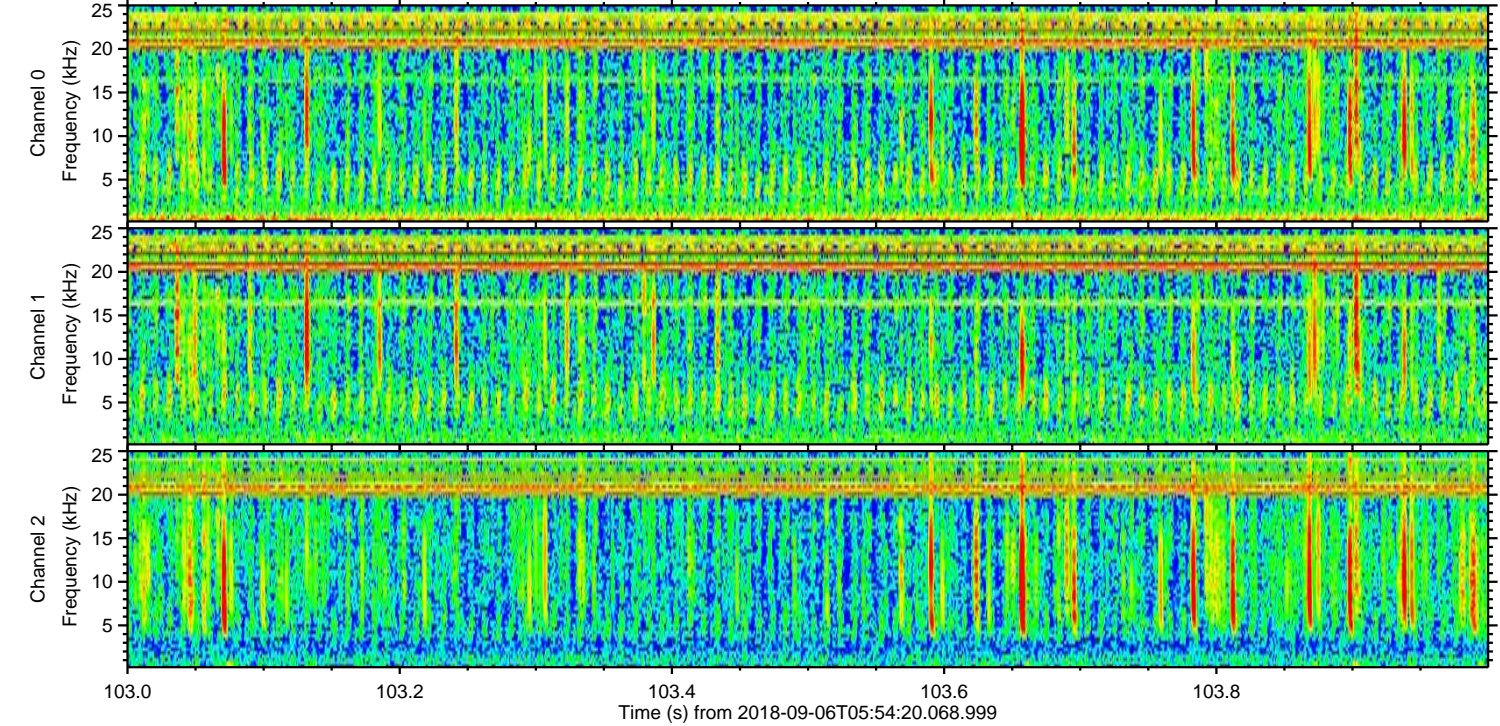
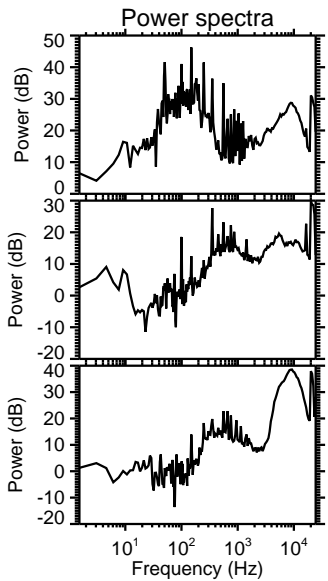
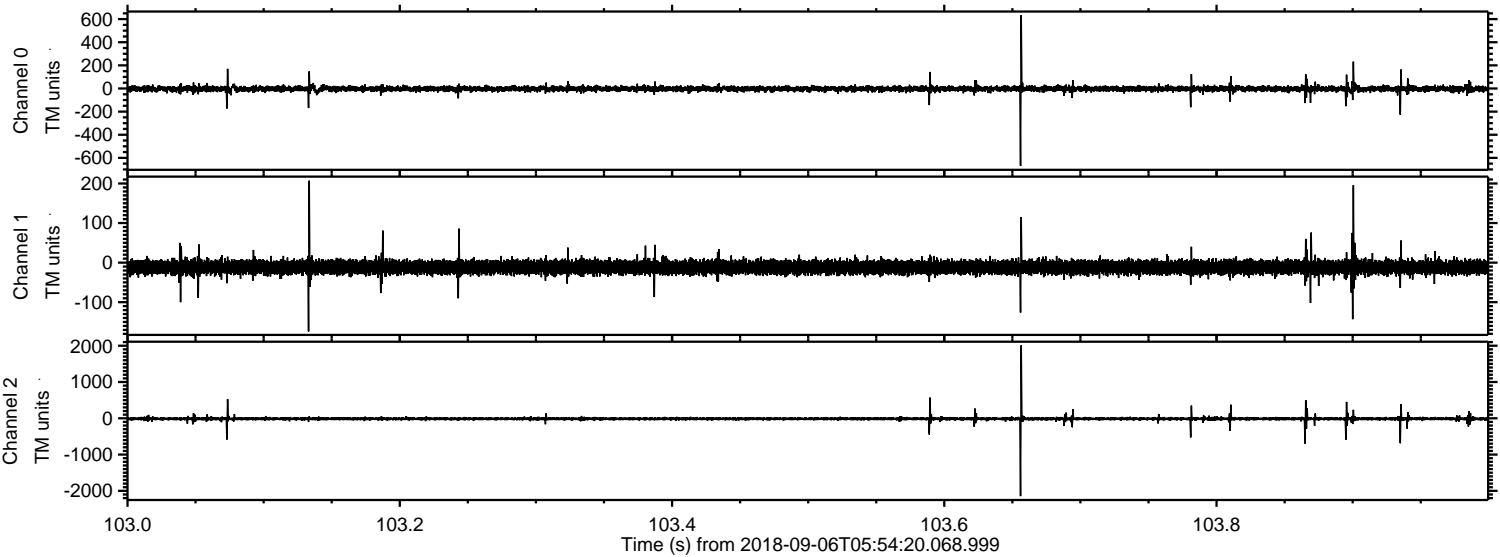


Processed Thu Sep 6 08:03:02 2018 by ELM ver.2012-10-06 from 001\_\_elm20180906\_055419\_\_dat00.bin



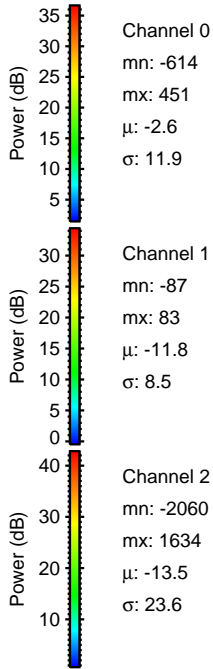
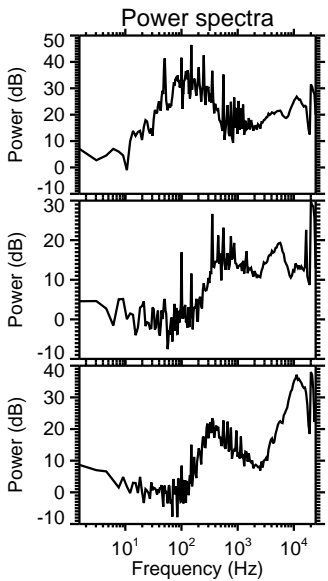
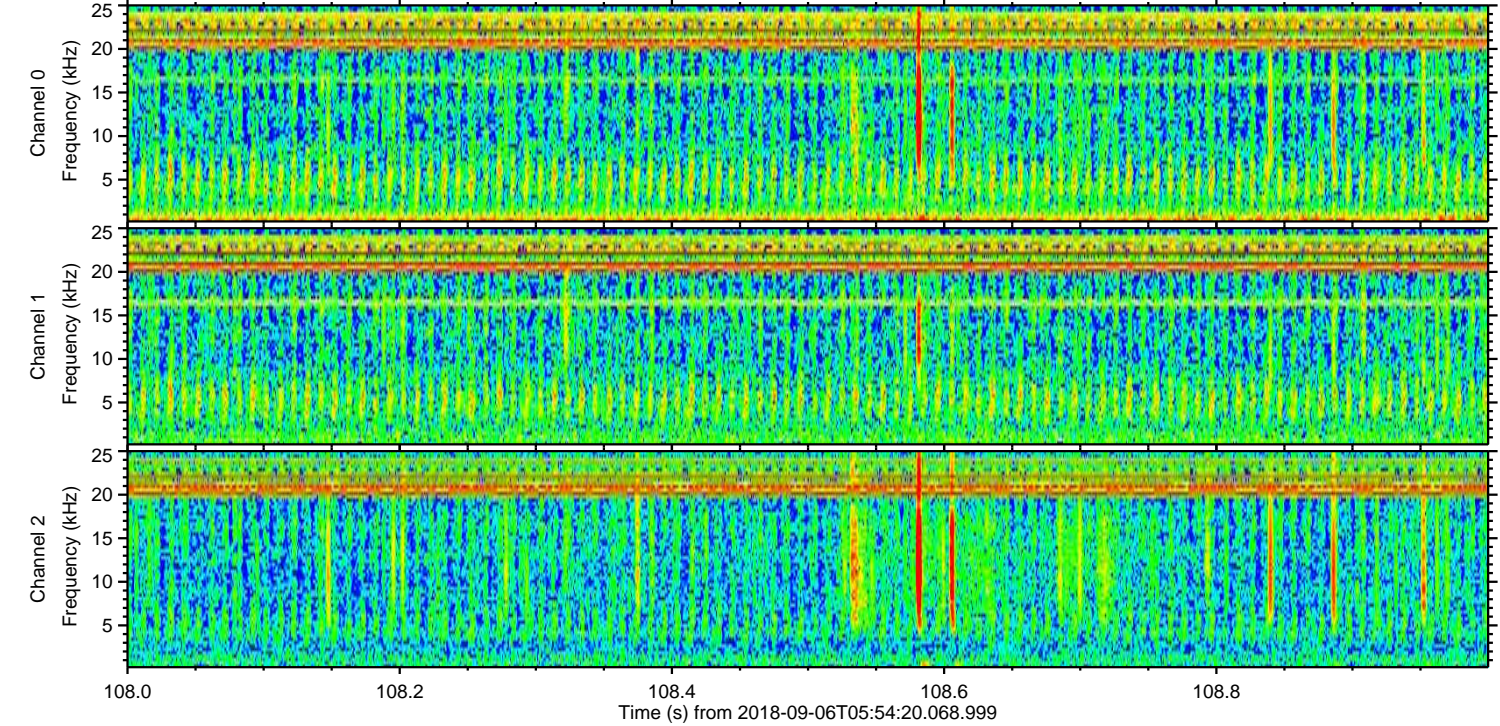
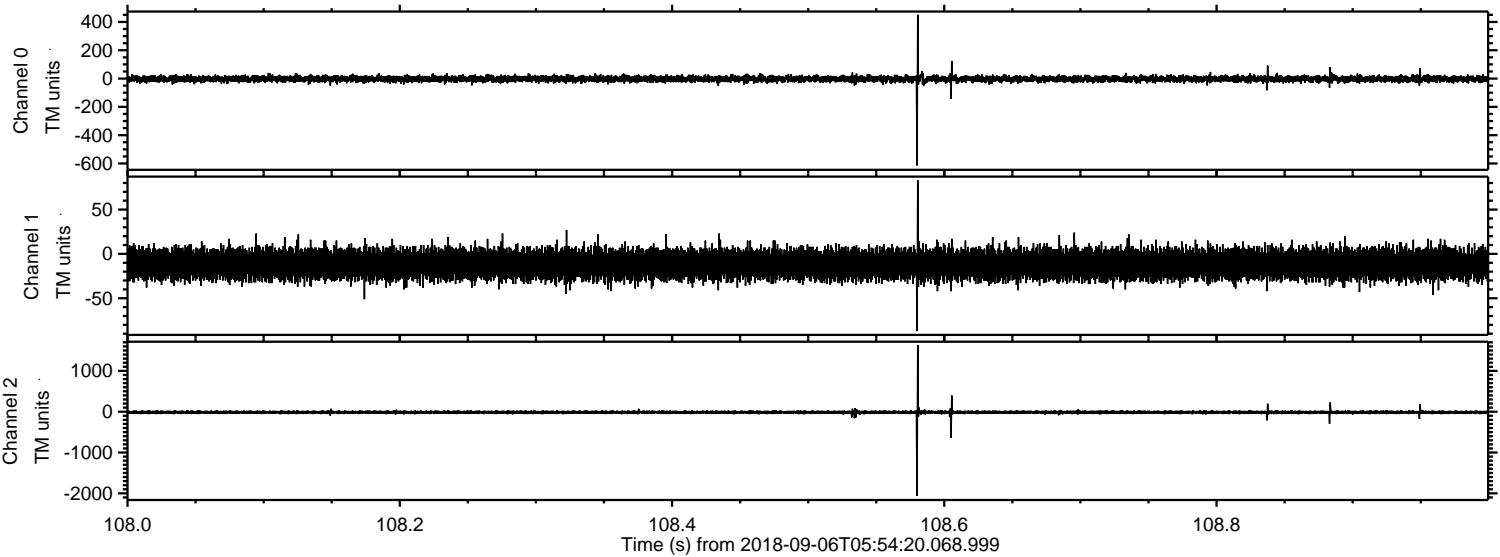


Processed Thu Sep 6 08:03:03 2018 by ELM ver.2012-10-06 from 001\_\_elm20180906\_055419\_\_dat00.bin



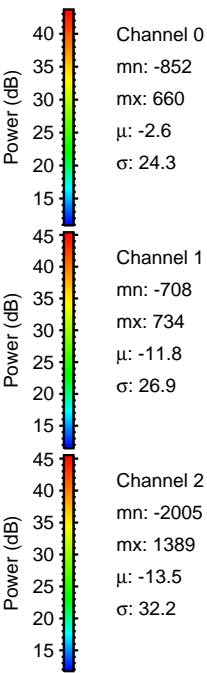
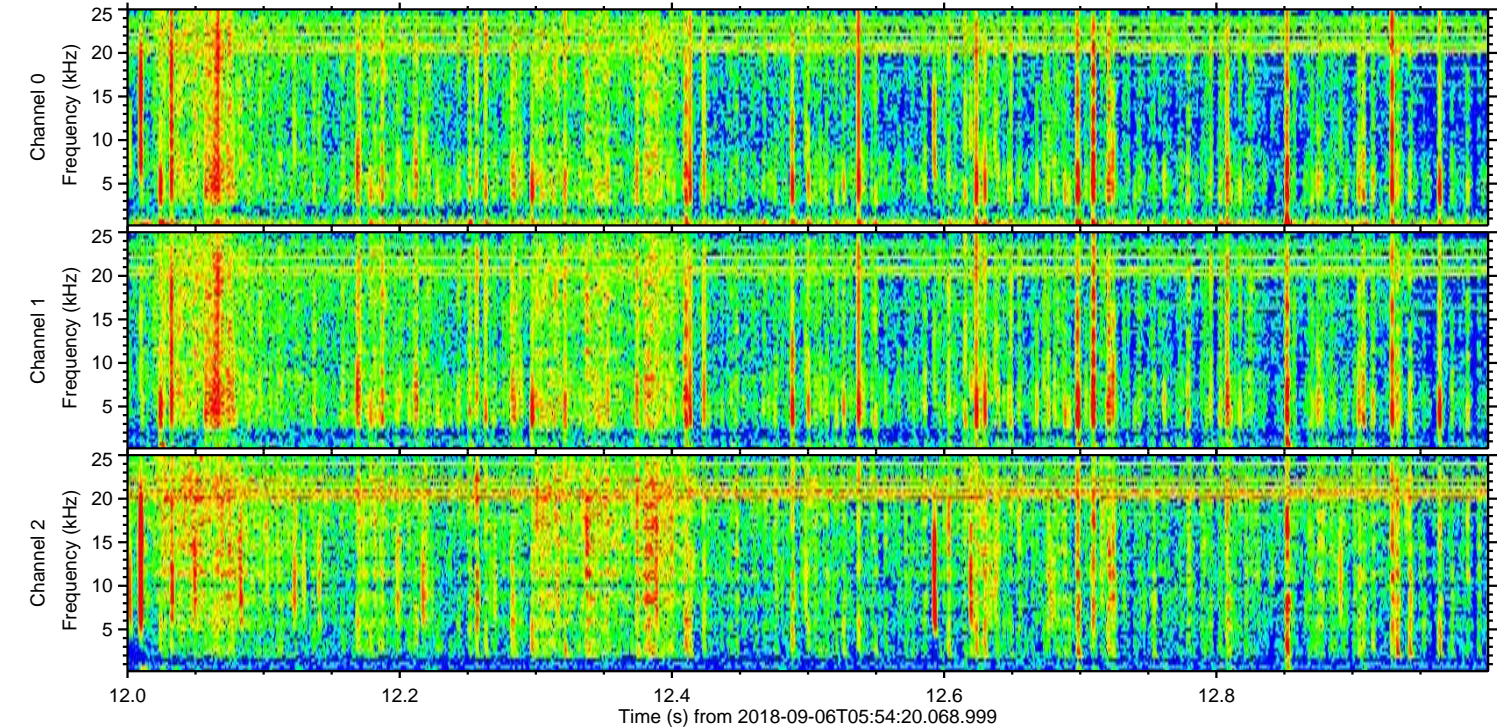
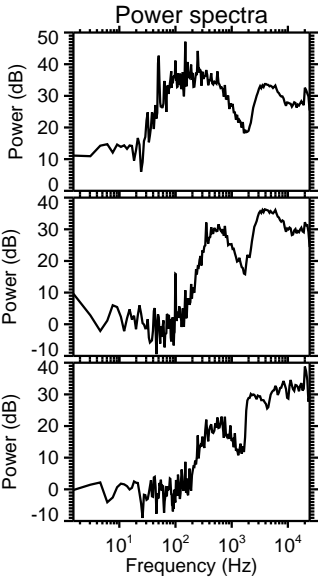
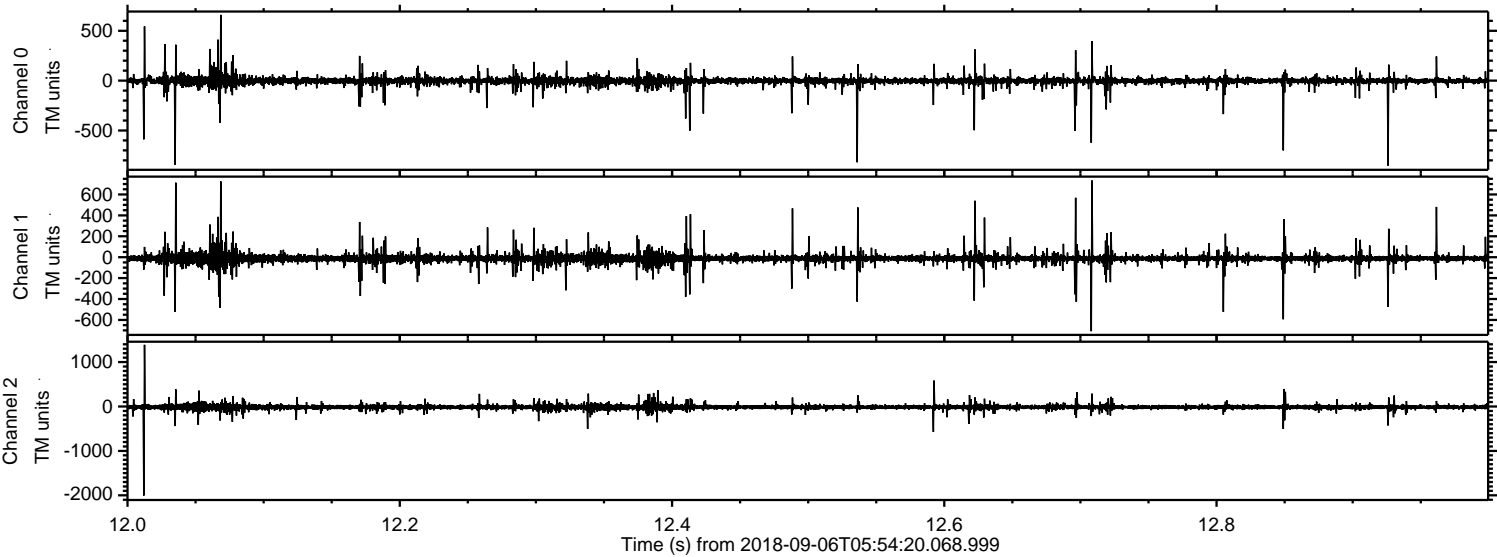


Processed Thu Sep 6 08:03:04 2018 by ELM ver.2012-10-06 from 001\_\_elm20180906\_055419\_\_dat00.bin



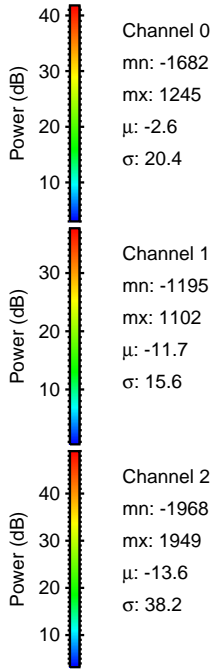
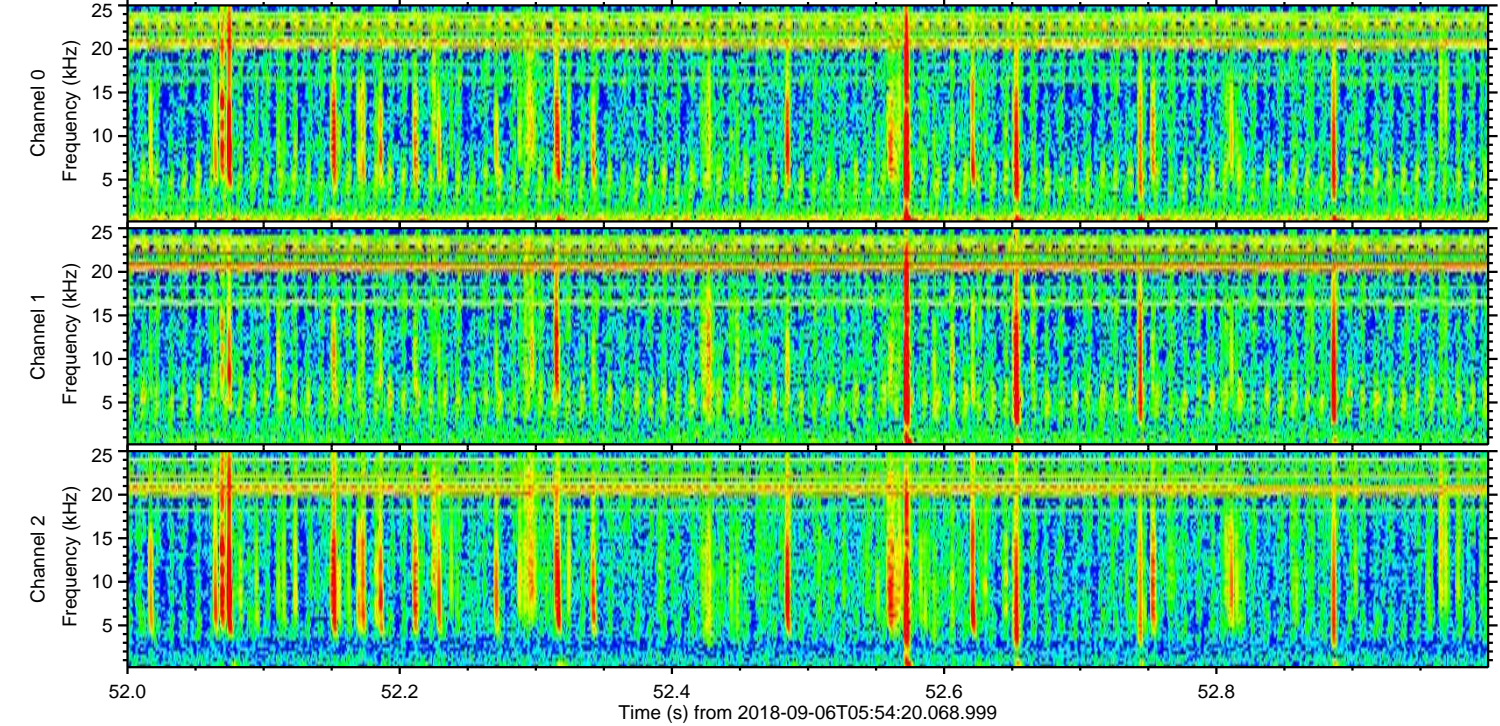
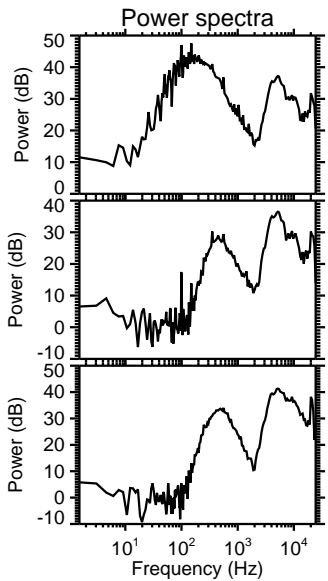
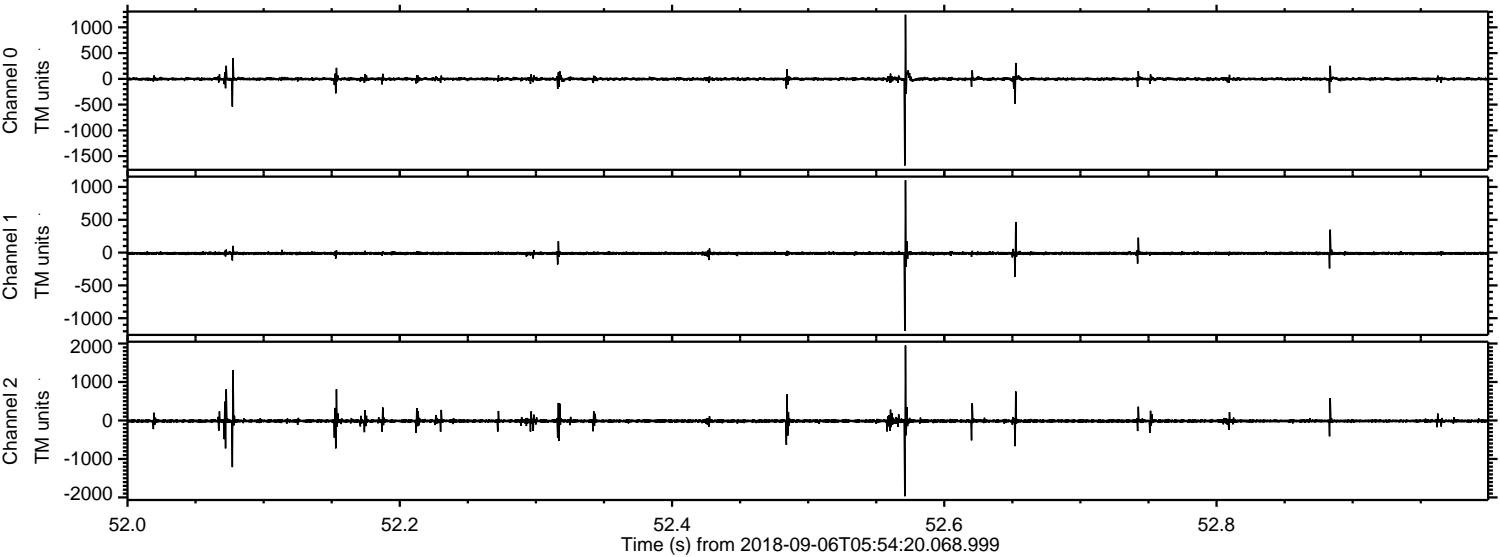


Processed Thu Sep 6 08:03:04 2018 by ELM ver.2012-10-06 from 001\_\_elm20180906\_055419\_\_dat00.bin





Processed Thu Sep 6 08:03:05 2018 by ELM ver.2012-10-06 from 001\_\_elm20180906\_055419\_\_dat00.bin





Processed Thu Sep 6 08:03:06 2018 by ELM ver.2012-10-06 from 001\_\_elm20180906\_055419\_\_dat00.bin

