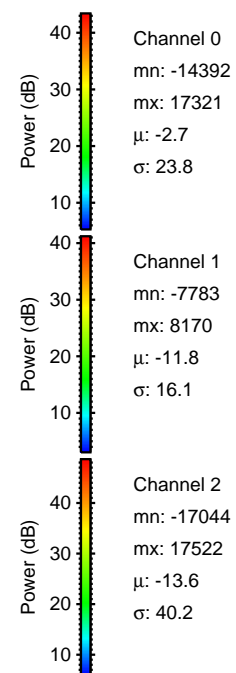
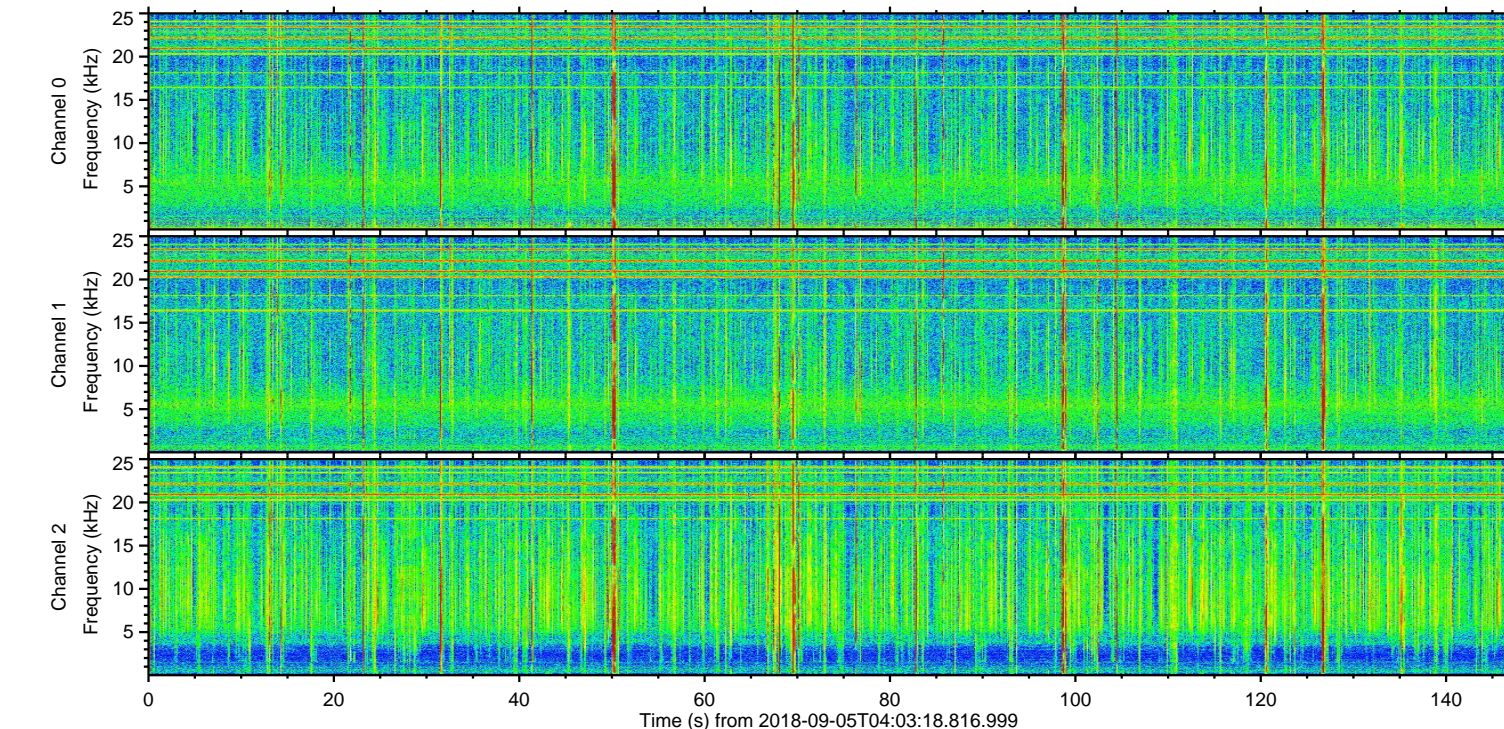
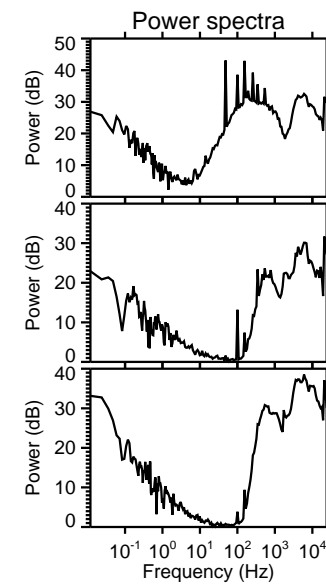
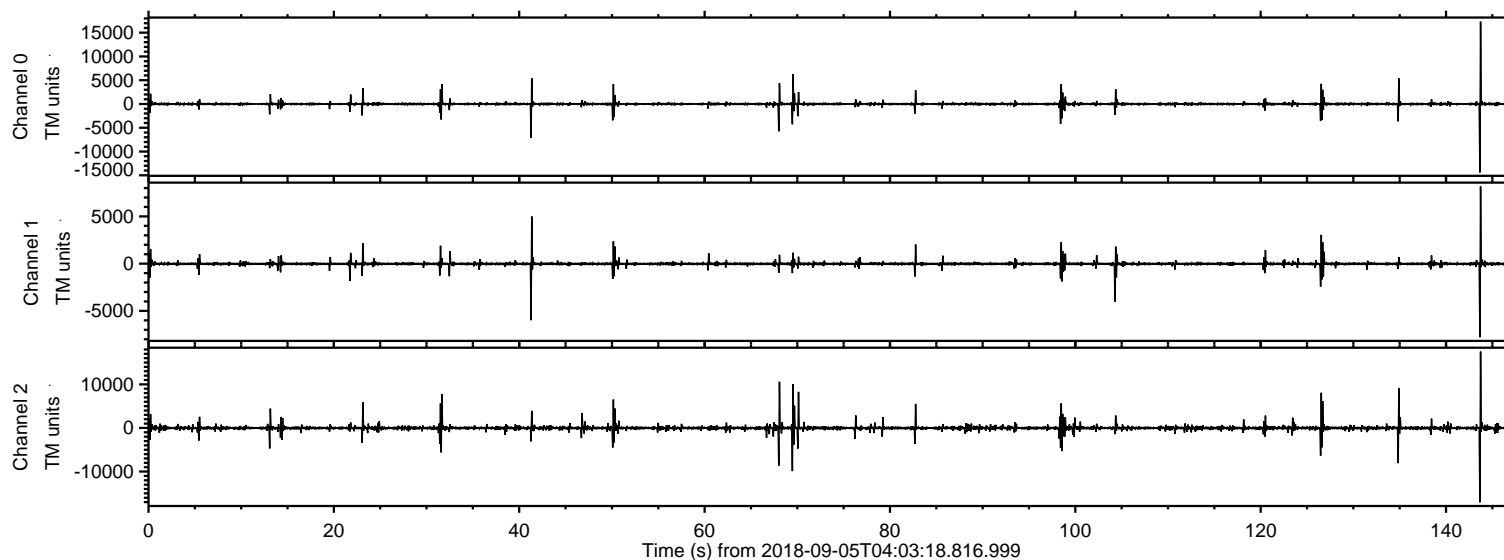


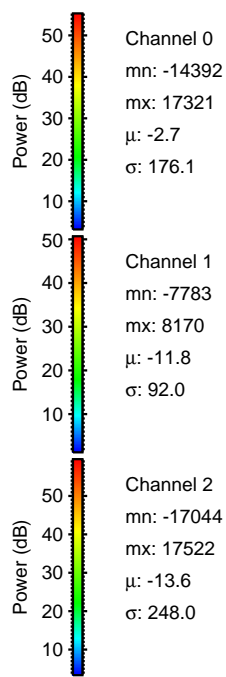
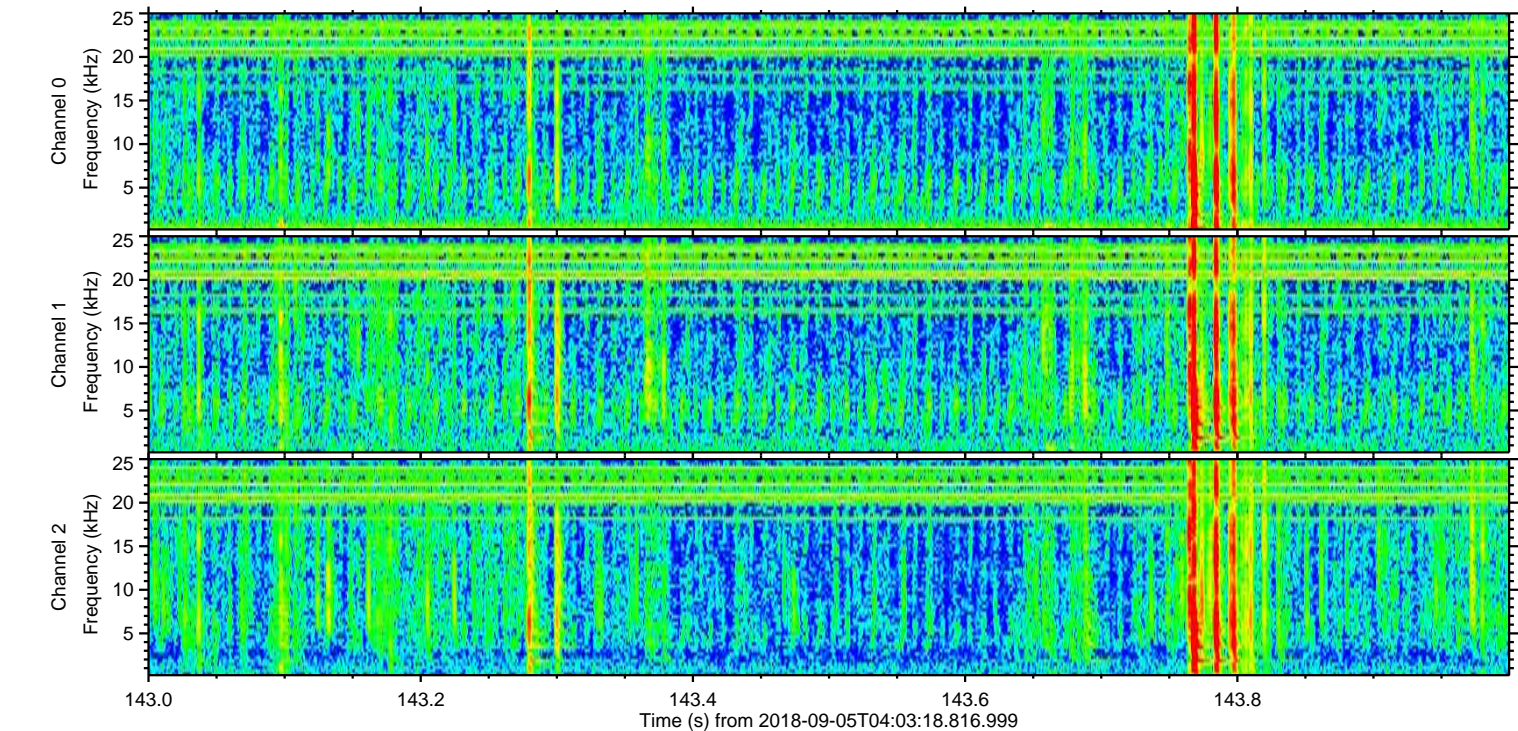
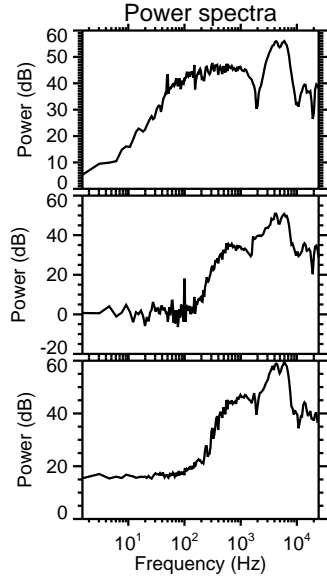
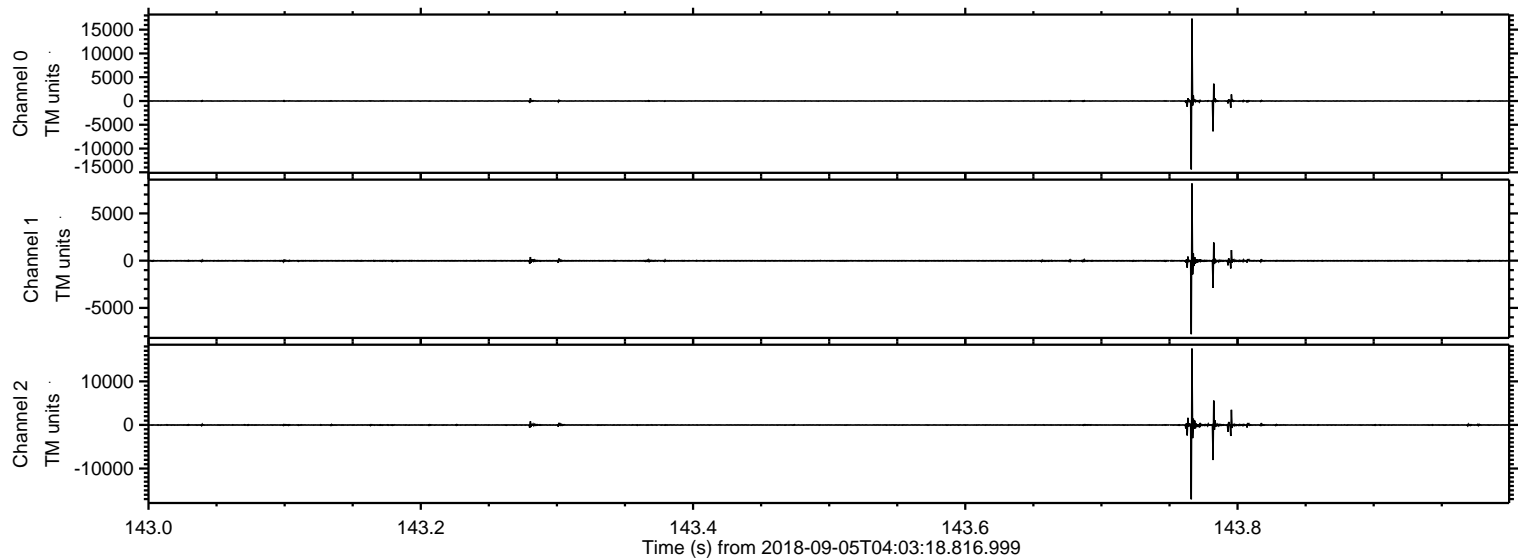
ELMAVAN 3D WAVEFORMS (Measured data sampled at 50 kHz) 51000 packets of 144 samples from 2018-09-05T04:03:18.816.999.

Processed Wed Sep 5 06:11:13 2018 by ELM ver.2012-10-06 from 001__elm20180905_040317__dat00.bin

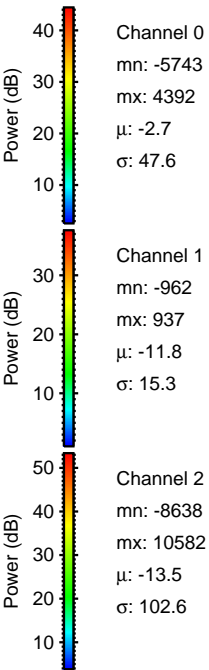
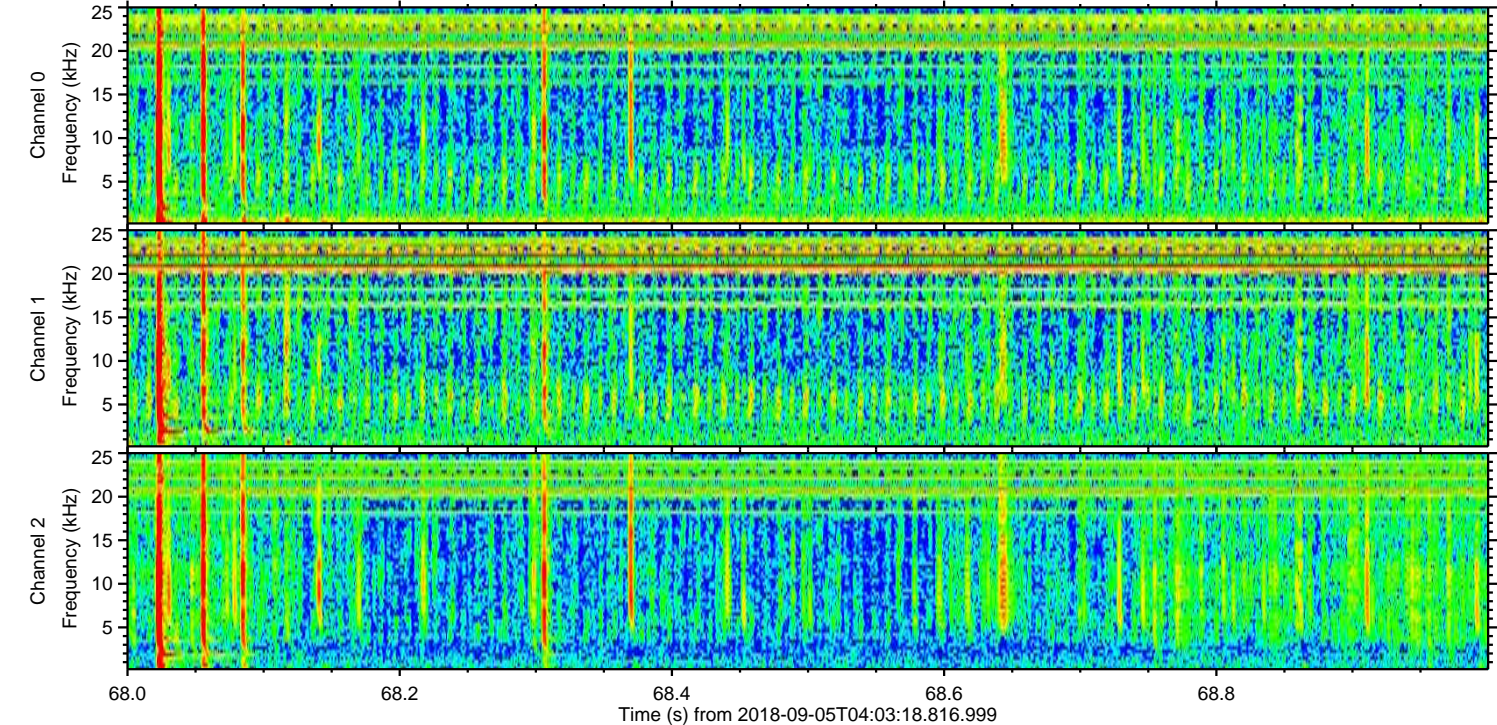
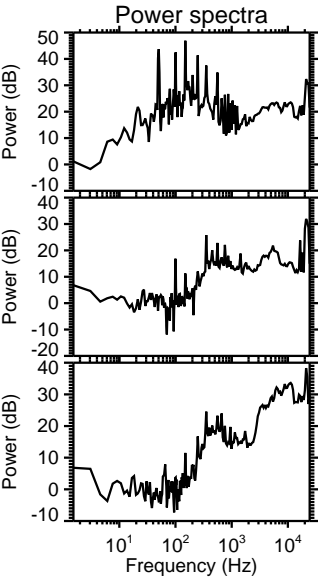
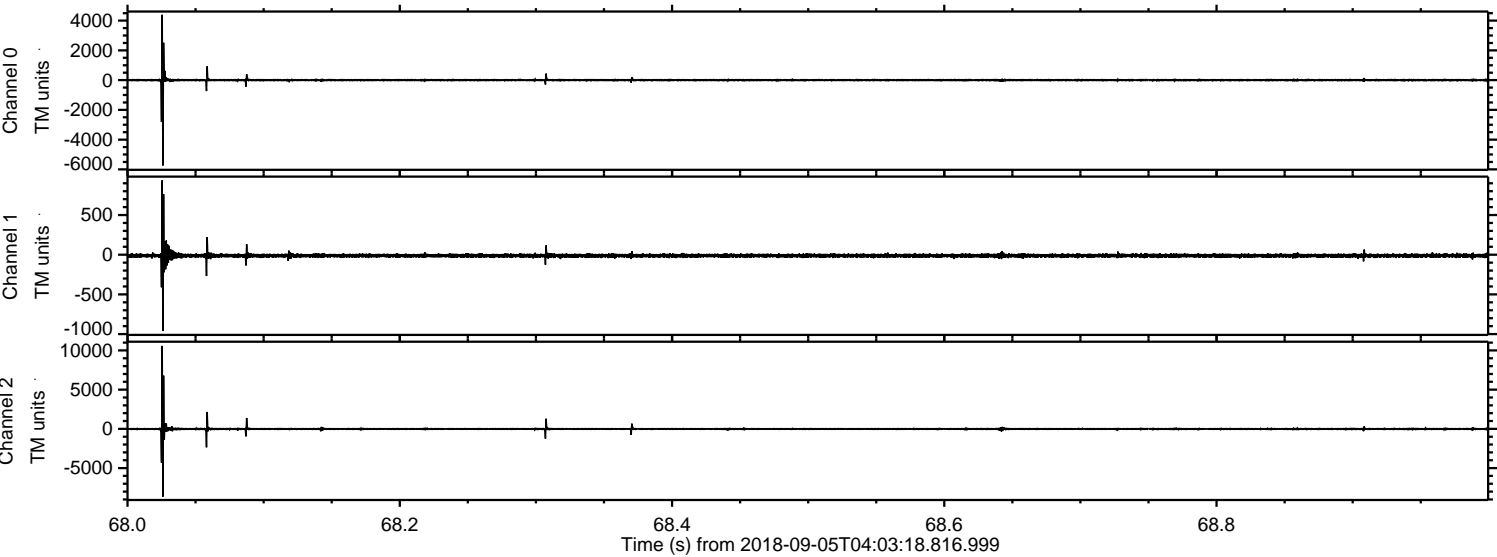


ELMAVAN 3D WAVEFORMS (Measured data sampled at 50 kHz) 51000 packets of 144 samples from 2018-09-05T04:03:18.816.999. Part 144/147

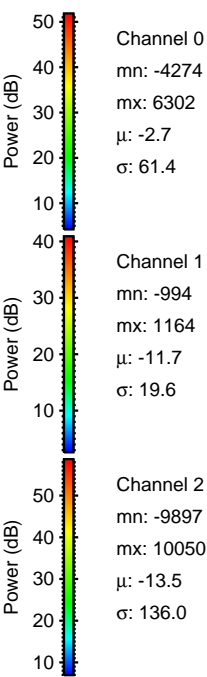
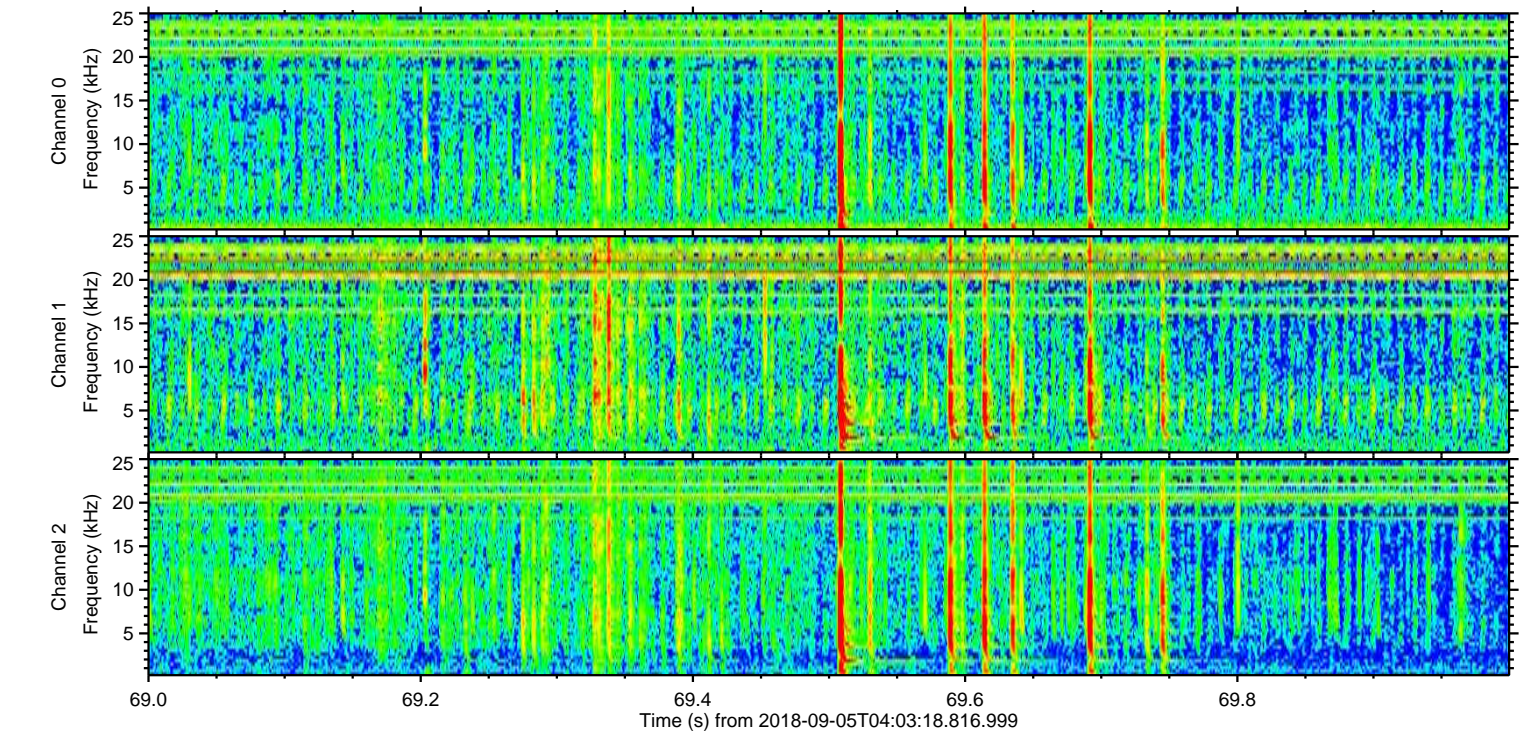
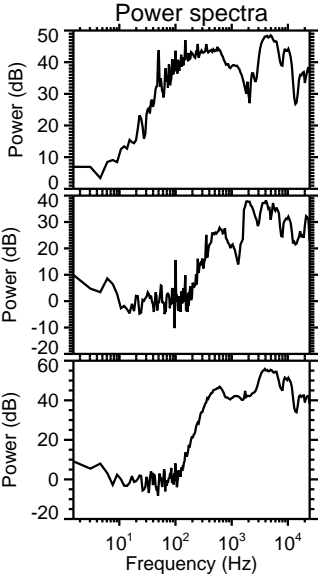
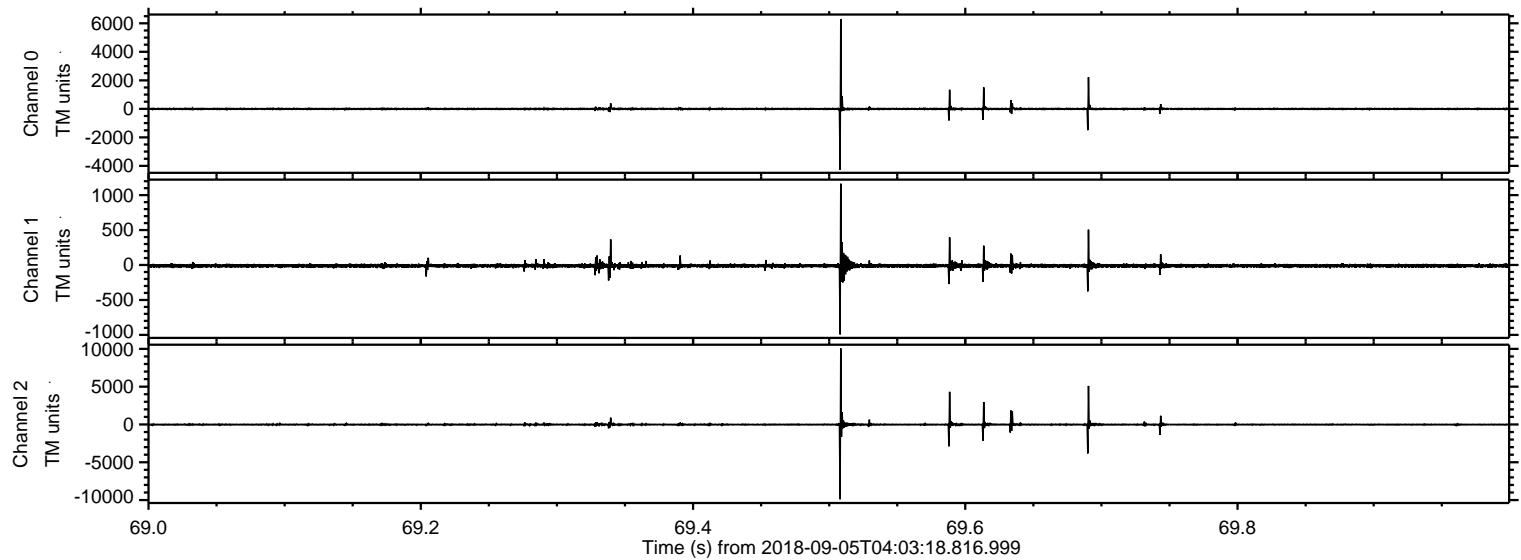
Processed Wed Sep 5 06:11:20 2018 by ELM ver.2012-10-06 from 001__elm20180905_040317__dat00.bin



Processed Wed Sep 5 06:11:21 2018 by ELM ver.2012-10-06 from 001__elm20180905_040317__dat00.bin

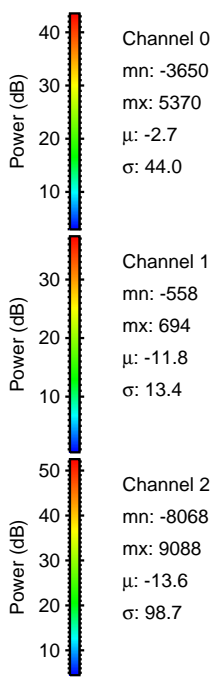
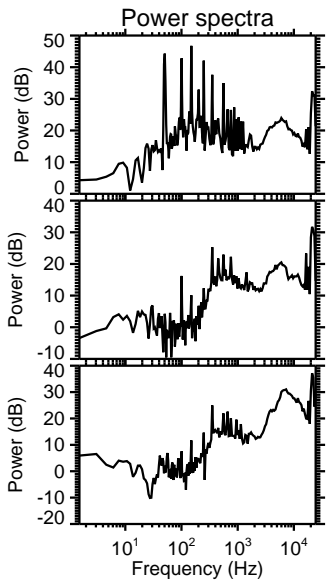
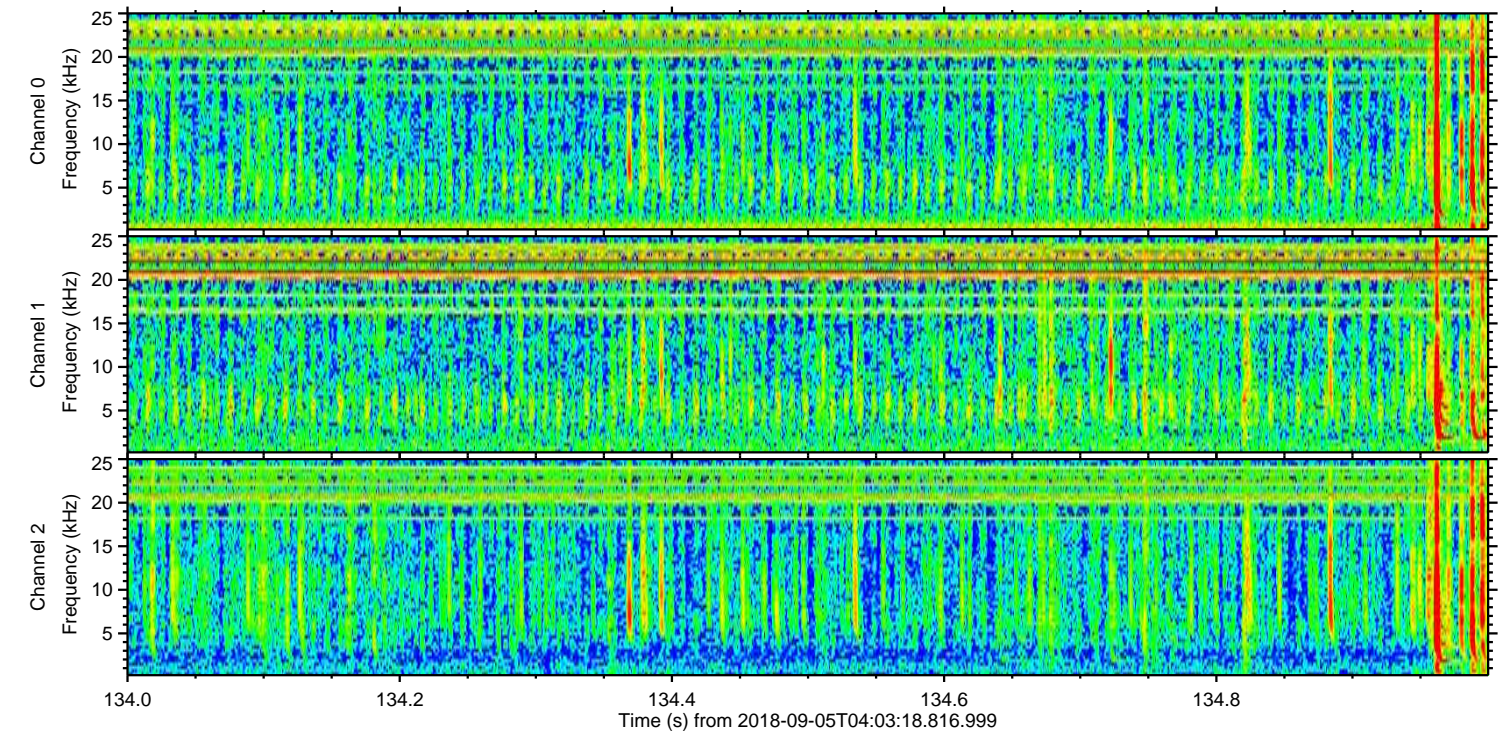
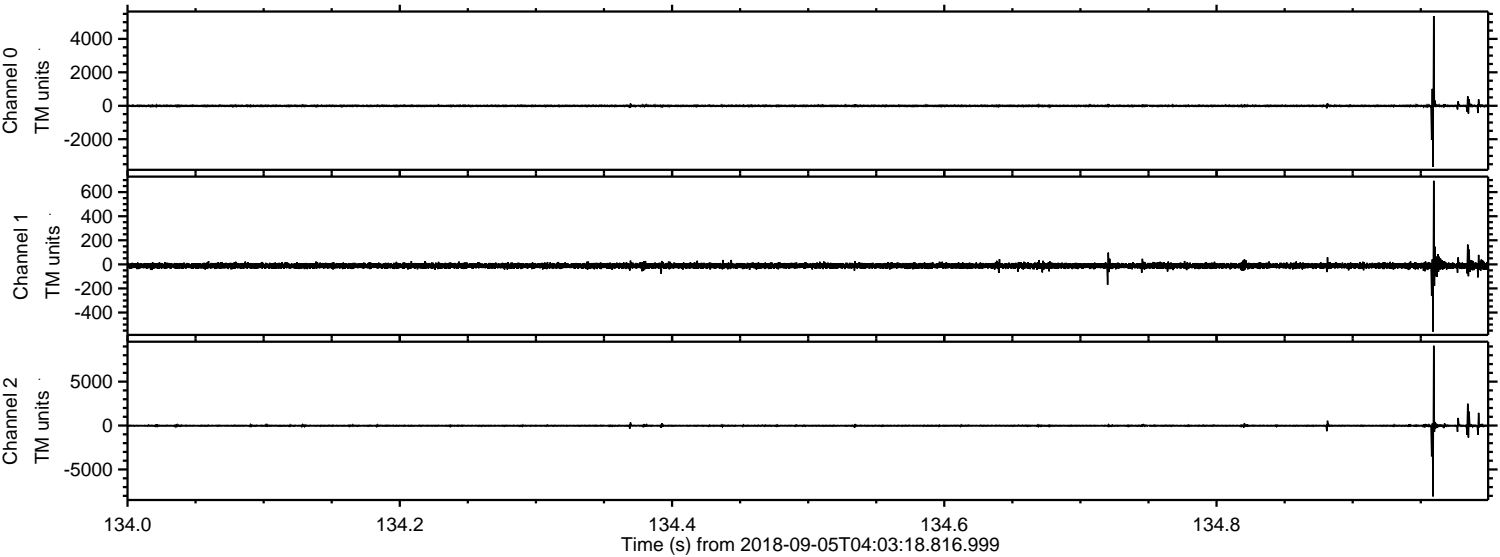


Processed Wed Sep 5 06:11:21 2018 by ELM ver.2012-10-06 from 001__elm20180905_040317__dat00.bin

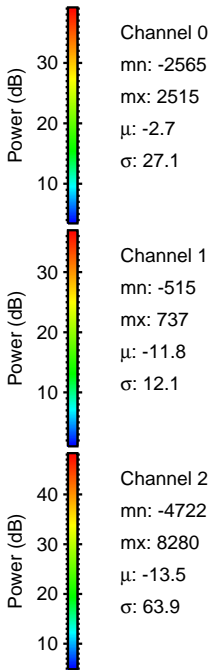
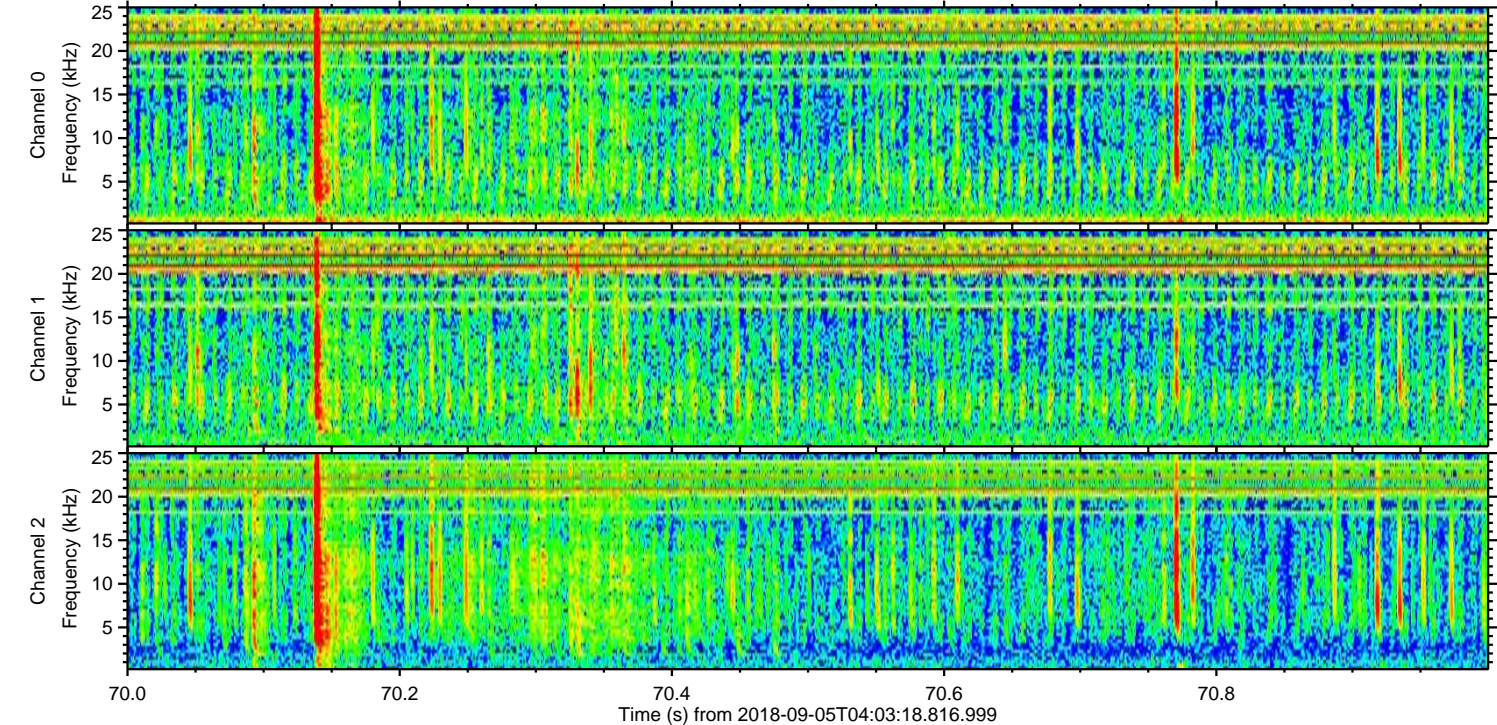
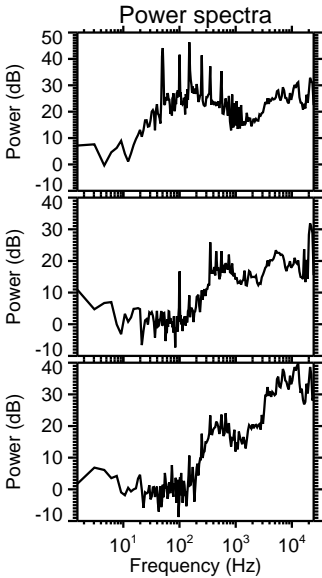
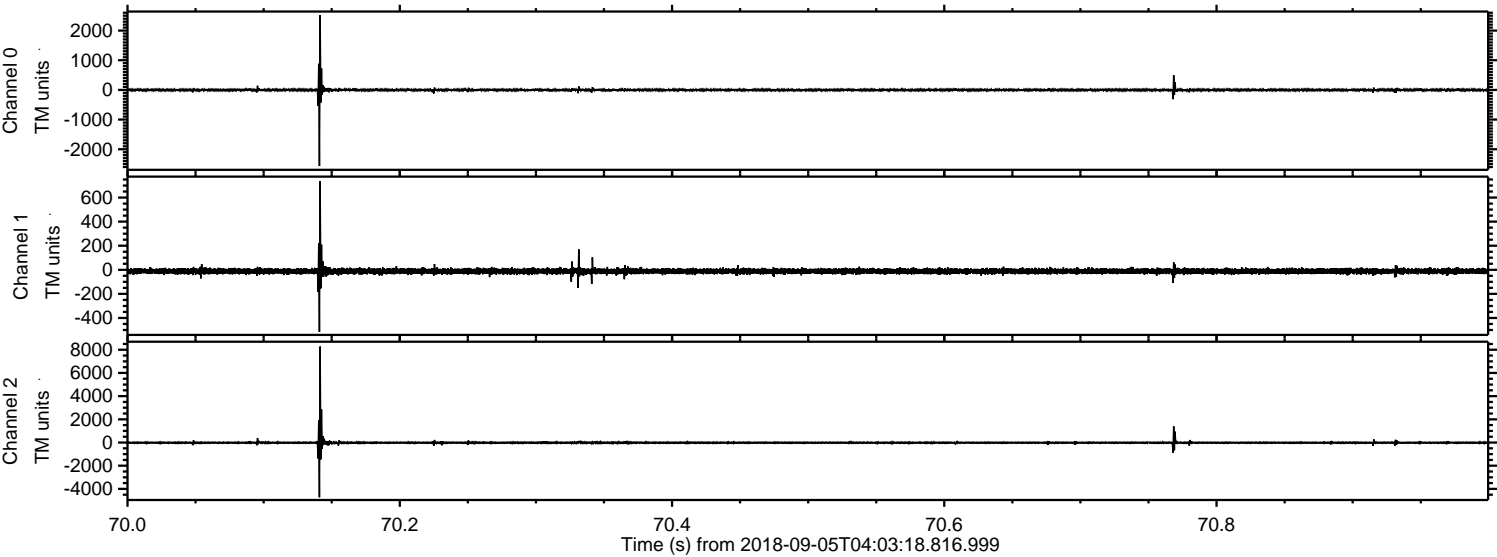


ELMAVAN 3D WAVEFORMS (Measured data sampled at 50 kHz) 51000 packets of 144 samples from 2018-09-05T04:03:18.816.999. Part 135/147

Processed Wed Sep 5 06:11:22 2018 by ELM ver.2012-10-06 from 001__elm20180905_040317__dat00.bin

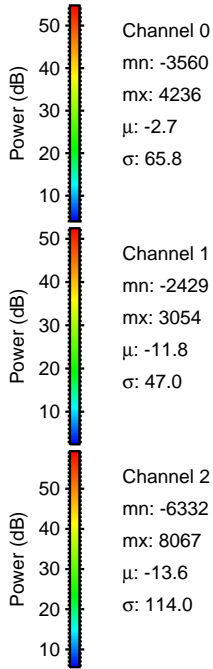
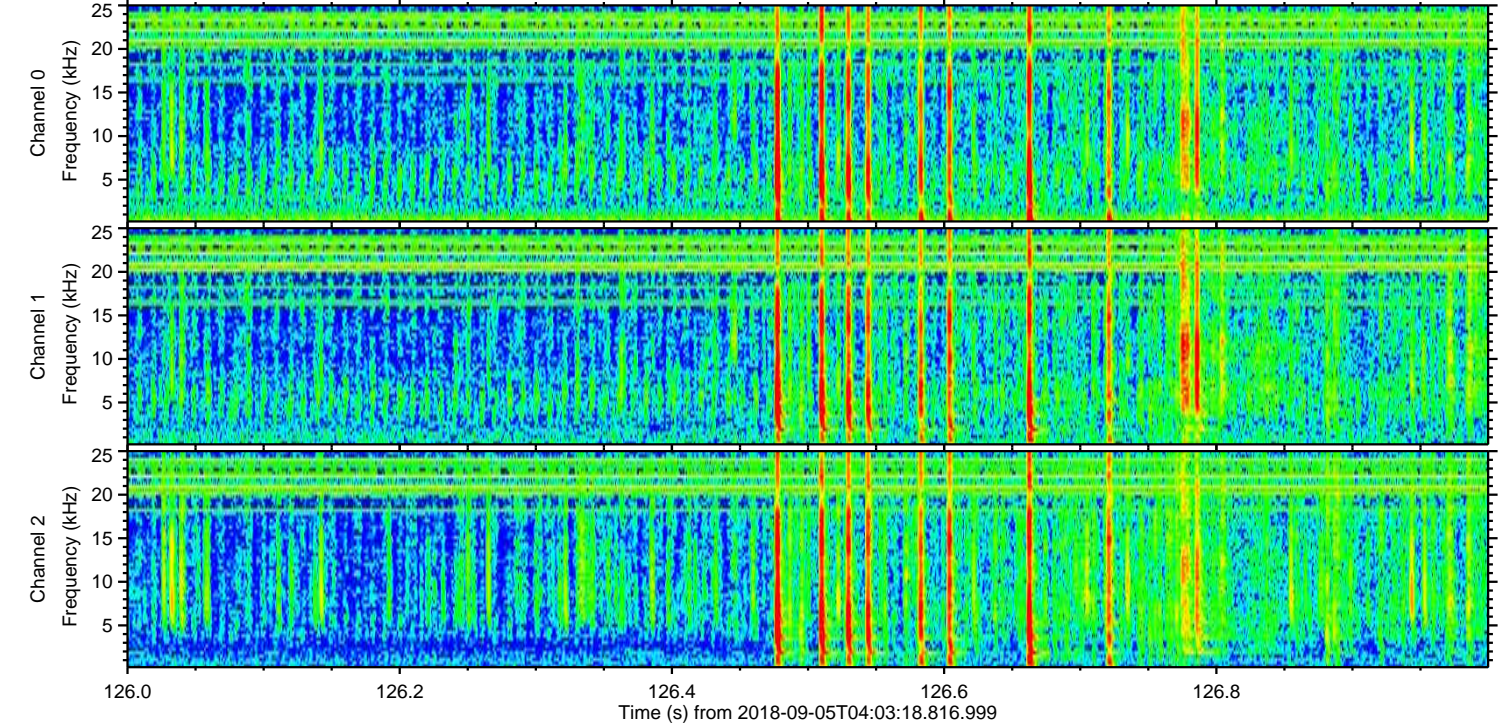
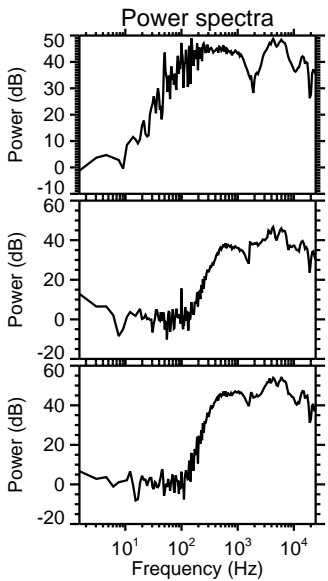
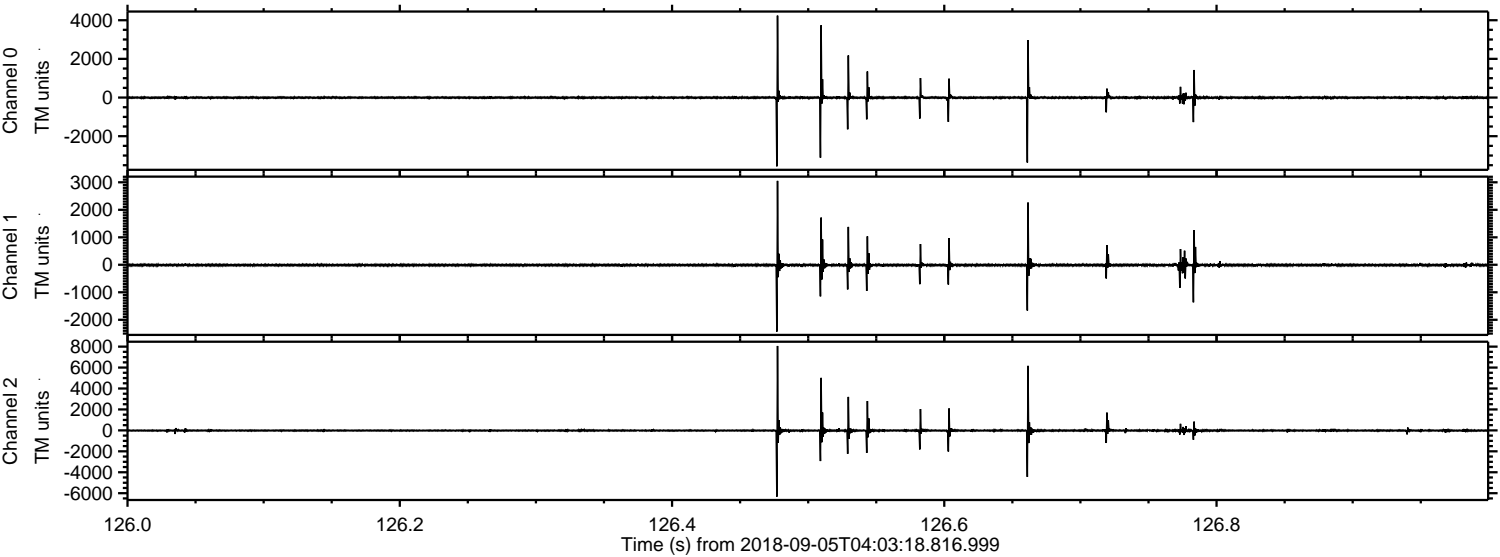


Processed Wed Sep 5 06:11:23 2018 by ELM ver.2012-10-06 from 001__elm20180905_040317__dat00.bin

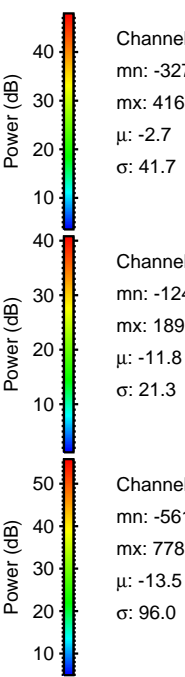
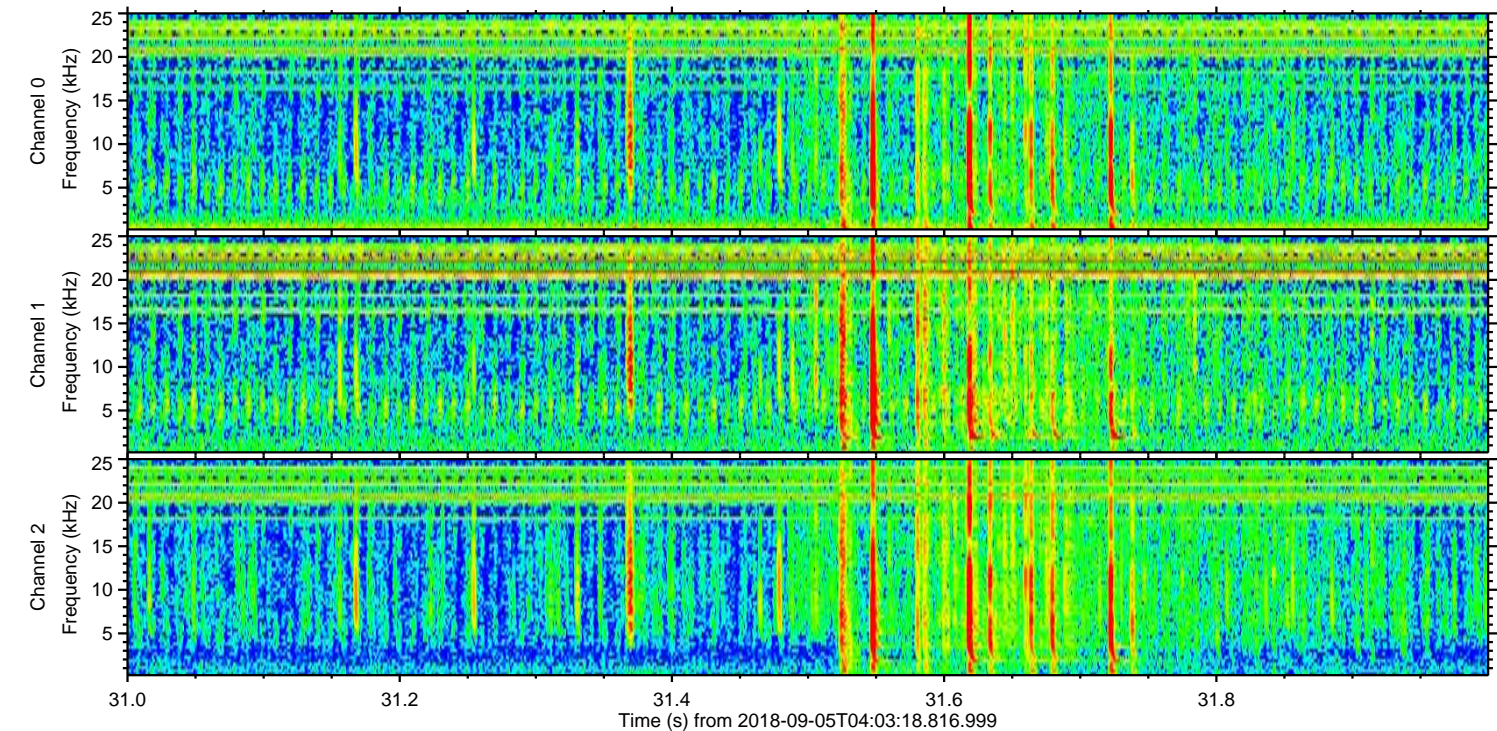
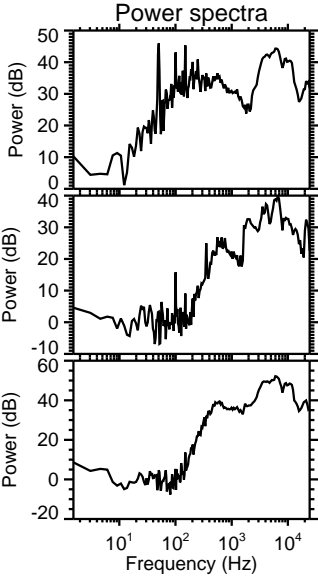
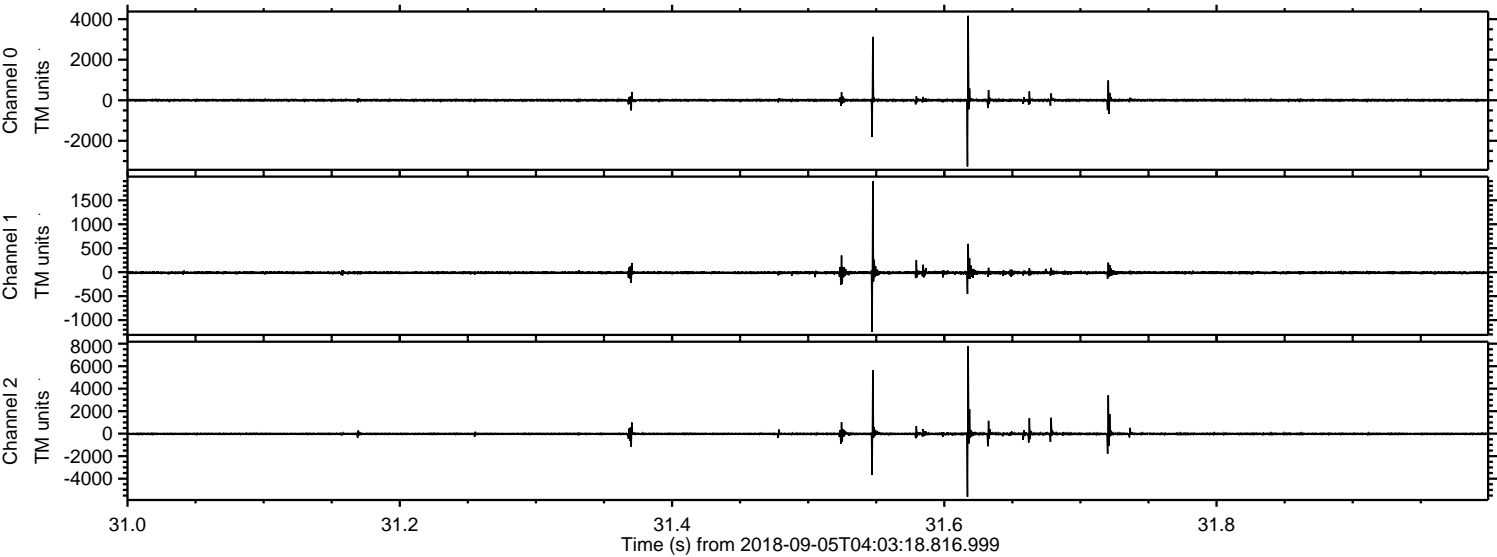


ELMAVAN 3D WAVEFORMS (Measured data sampled at 50 kHz) 51000 packets of 144 samples from 2018-09-05T04:03:18.816.999. Part 127/147

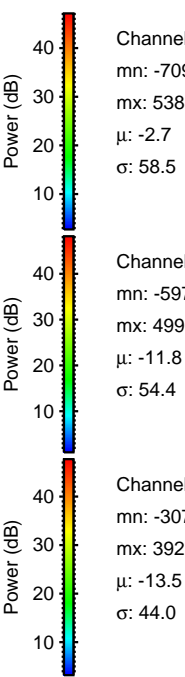
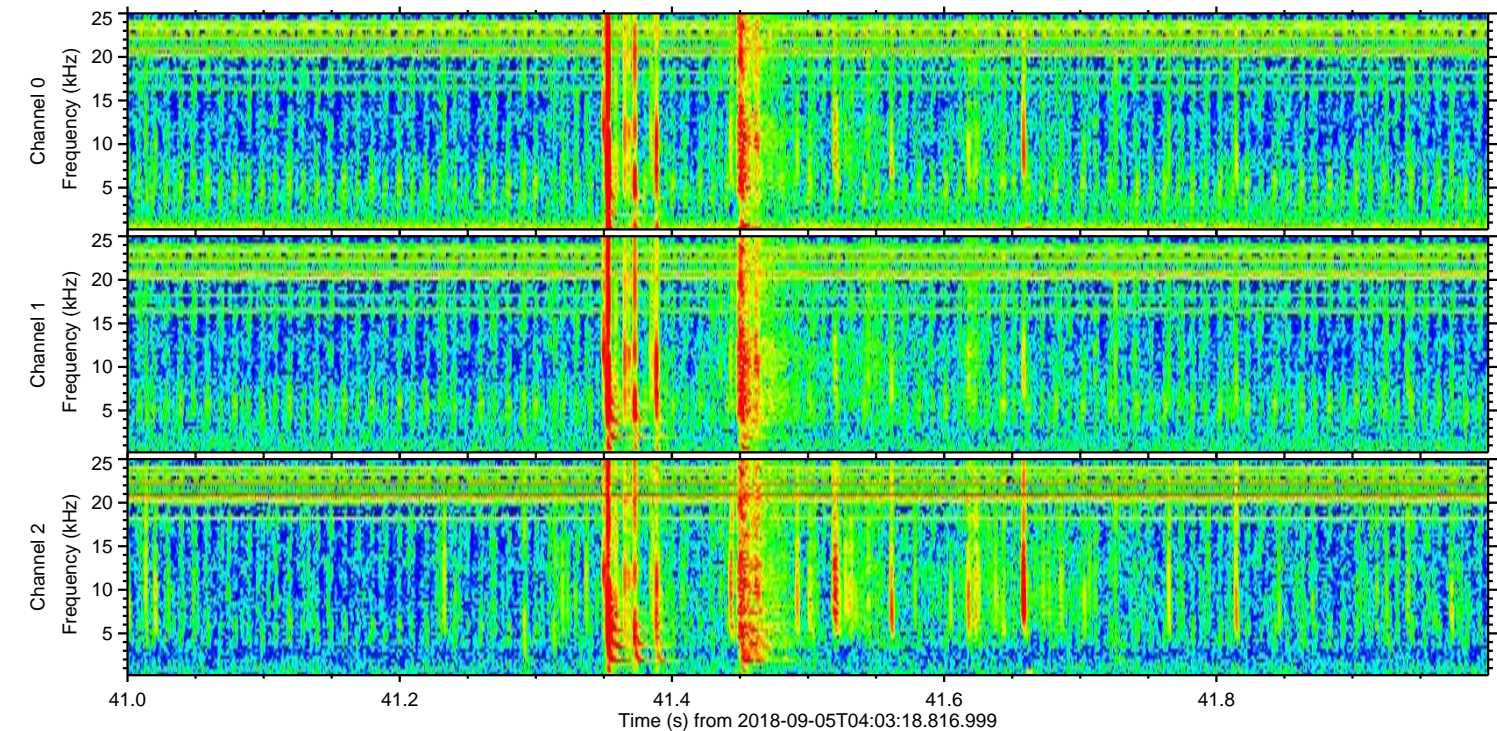
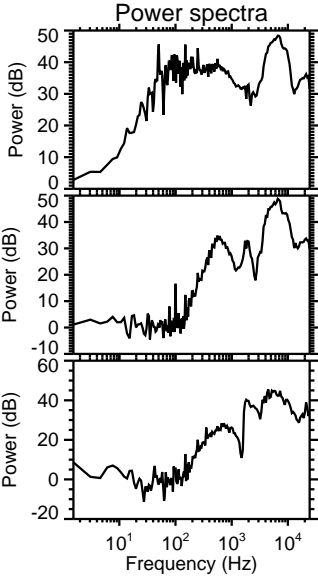
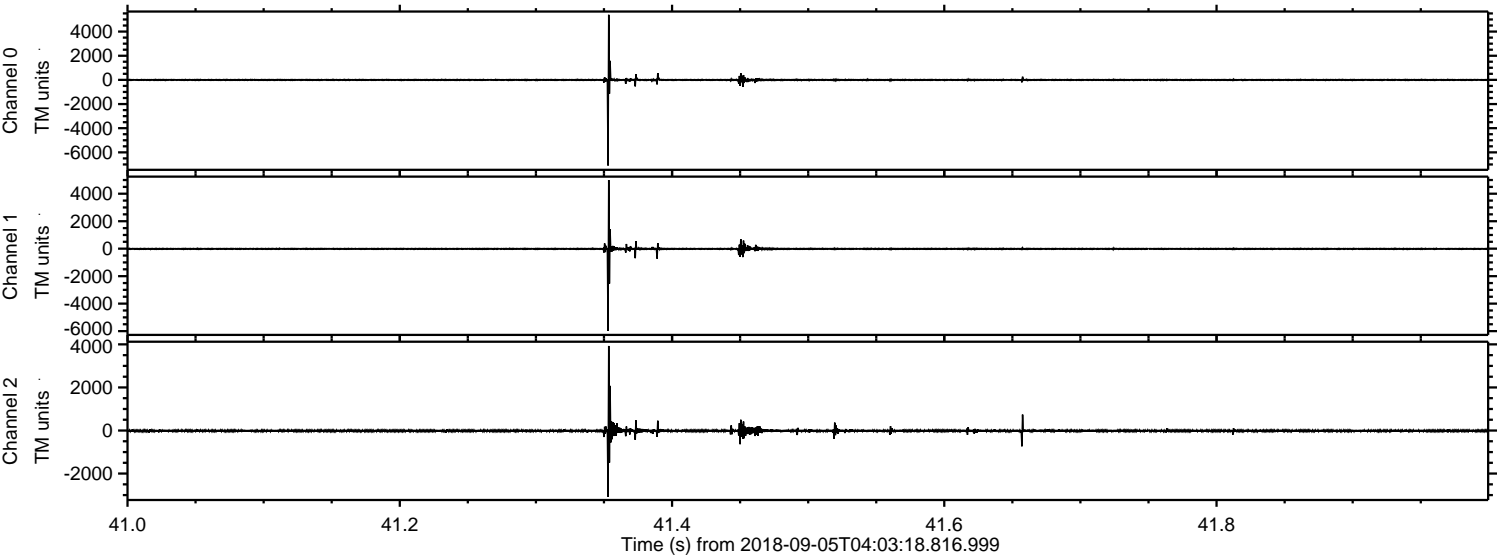
Processed Wed Sep 5 06:11:24 2018 by ELM ver.2012-10-06 from 001__elm20180905_040317__dat00.bin



Processed Wed Sep 5 06:11:25 2018 by ELM ver.2012-10-06 from 001__elm20180905_040317__dat00.bin



Processed Wed Sep 5 06:11:25 2018 by ELM ver.2012-10-06 from 001__elm20180905_040317__dat00.bin

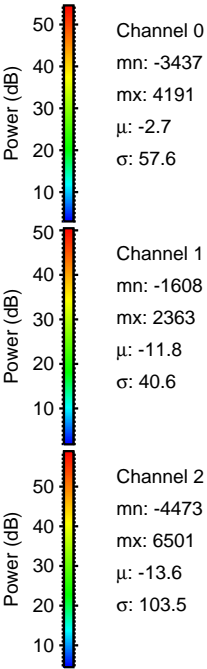
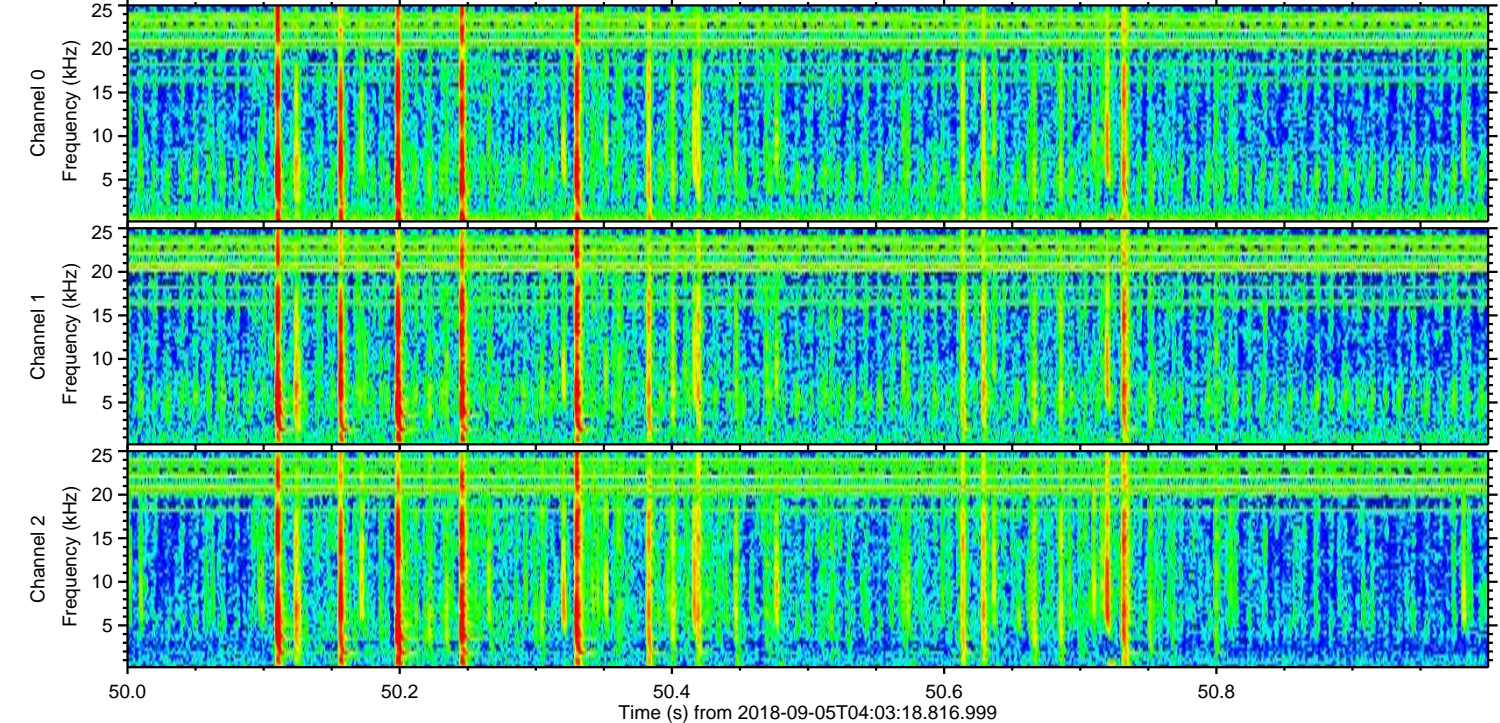
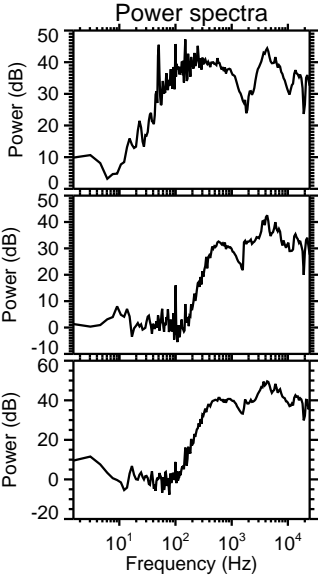
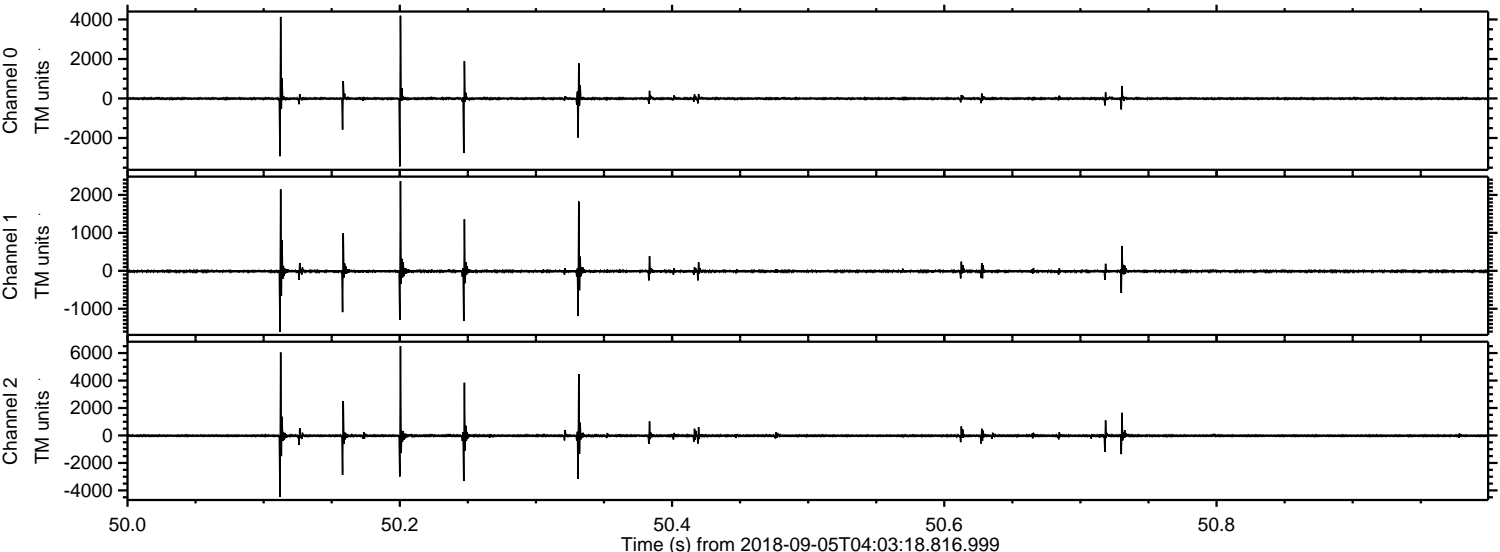


Channel 0
mn: -7090
mx: 5388
 μ : -2.7
 σ : 58.5

Channel 1
mn: -5978
mx: 4996
 μ : -11.8
 σ : 54.4

Channel 2
mn: -3074
mx: 3928
 μ : -13.5
 σ : 44.0

Processed Wed Sep 5 06:11:26 2018 by ELM ver.2012-10-06 from 001__elm20180905_040317__dat00.bin



Processed Wed Sep 5 06:11:26 2018 by ELM ver.2012-10-06 from 001__elm20180905_040317__dat00.bin

