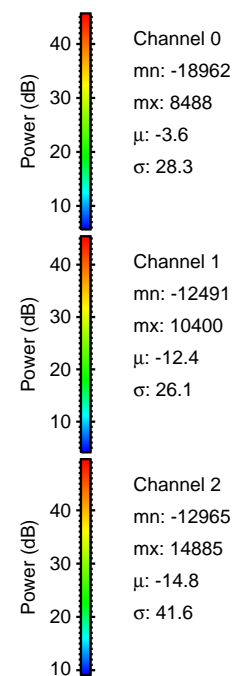
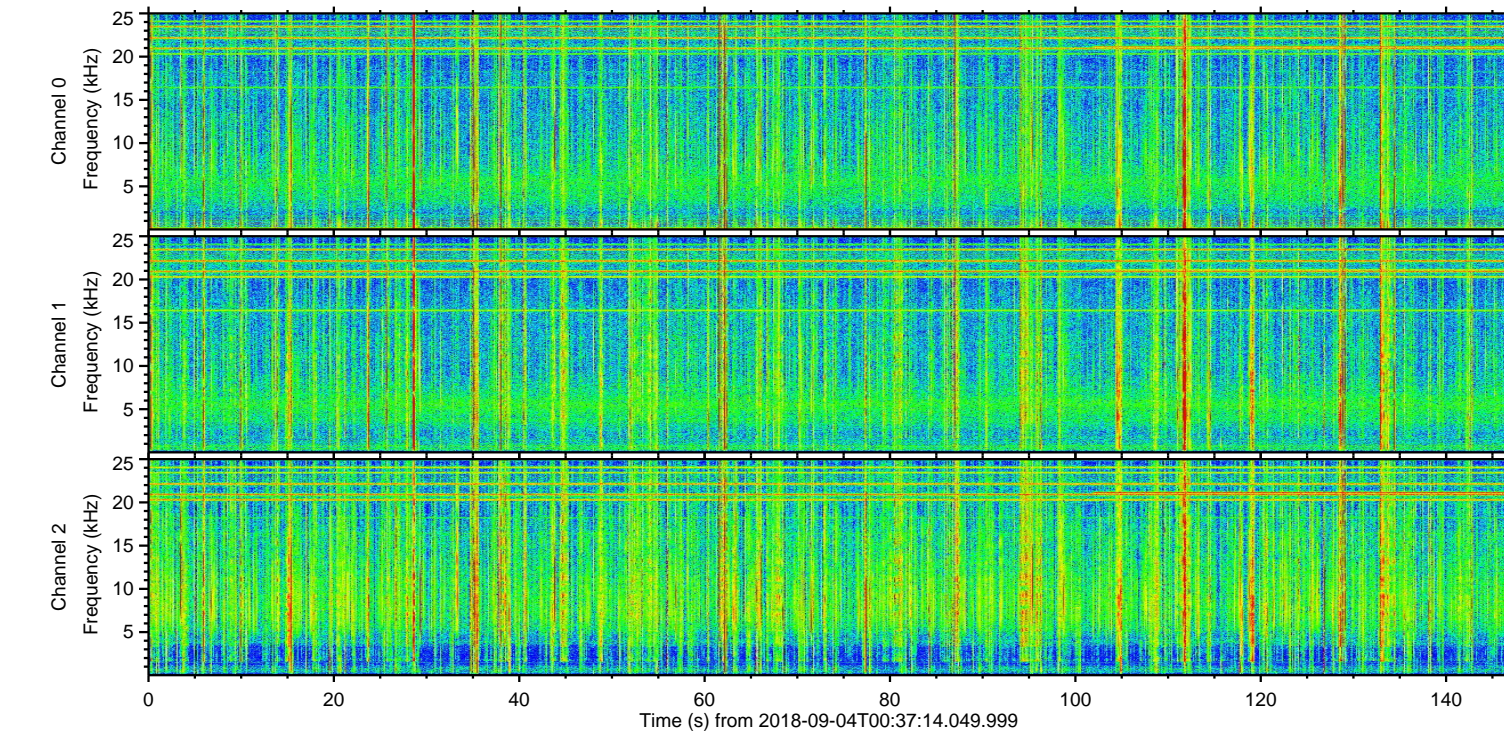
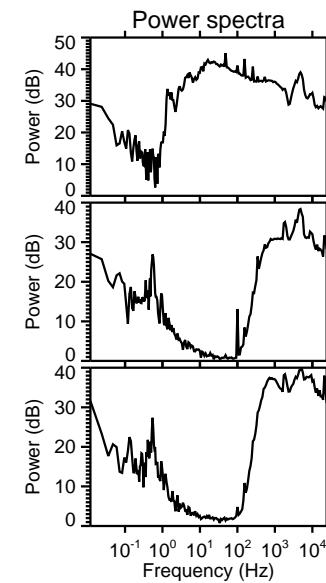
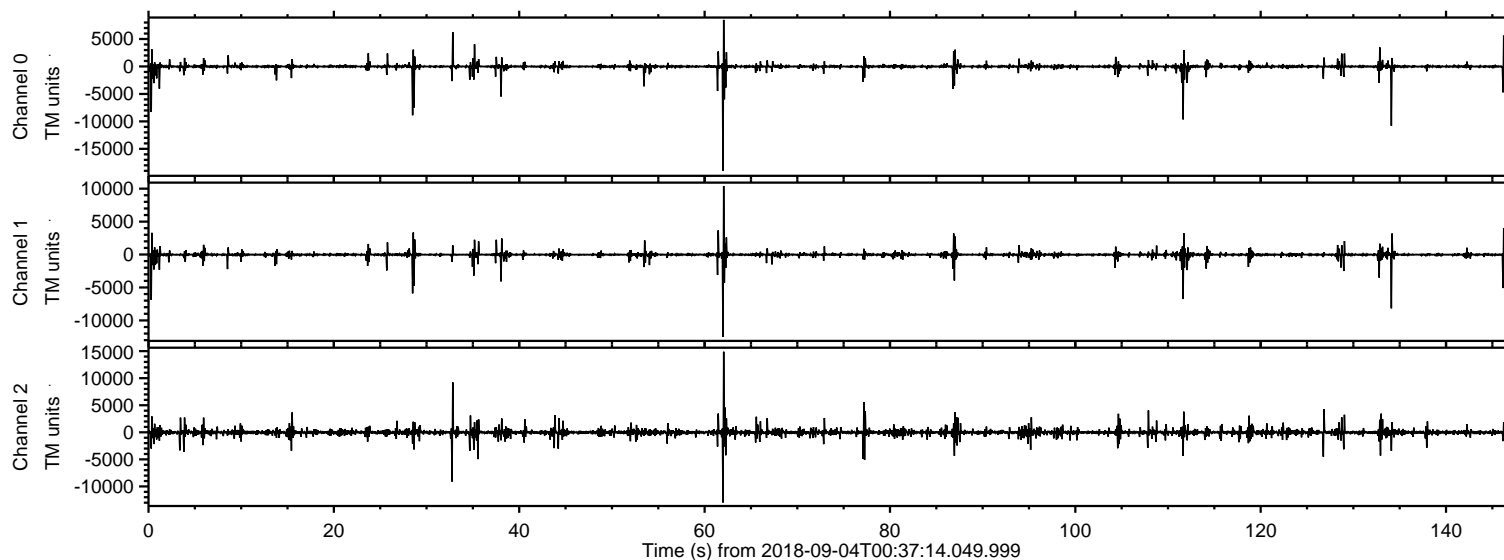
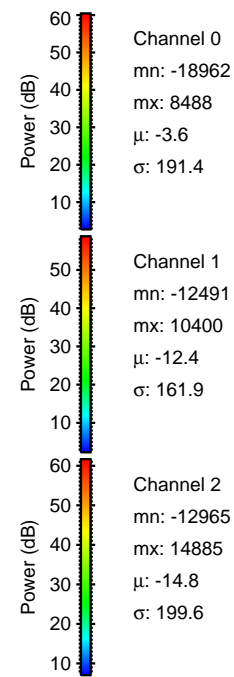
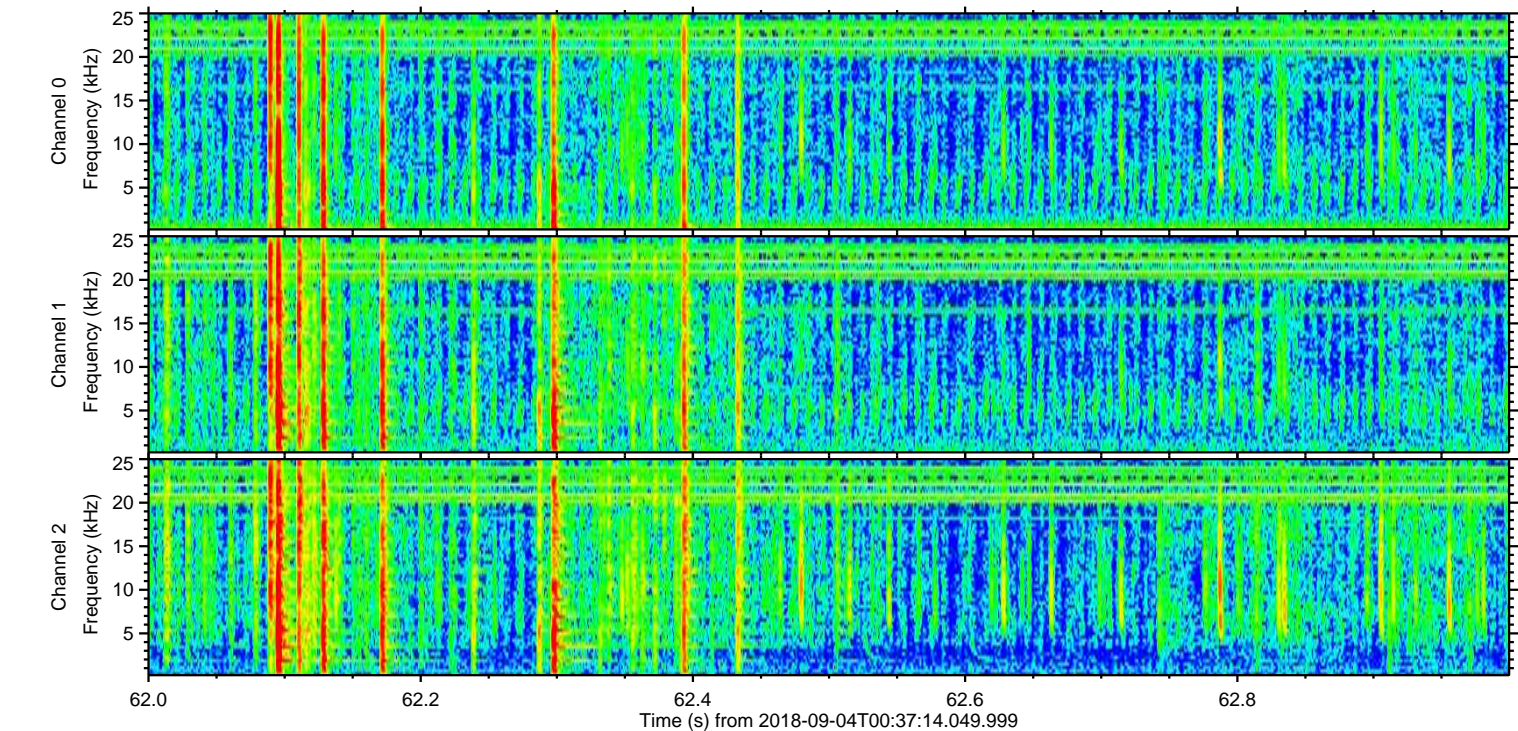
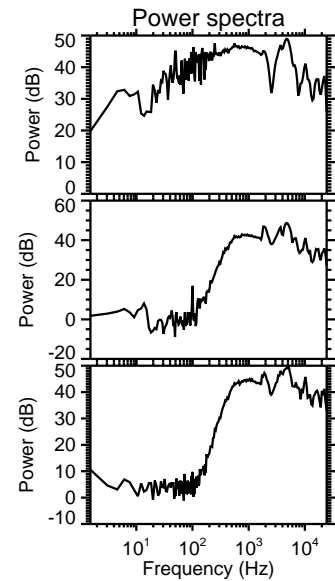
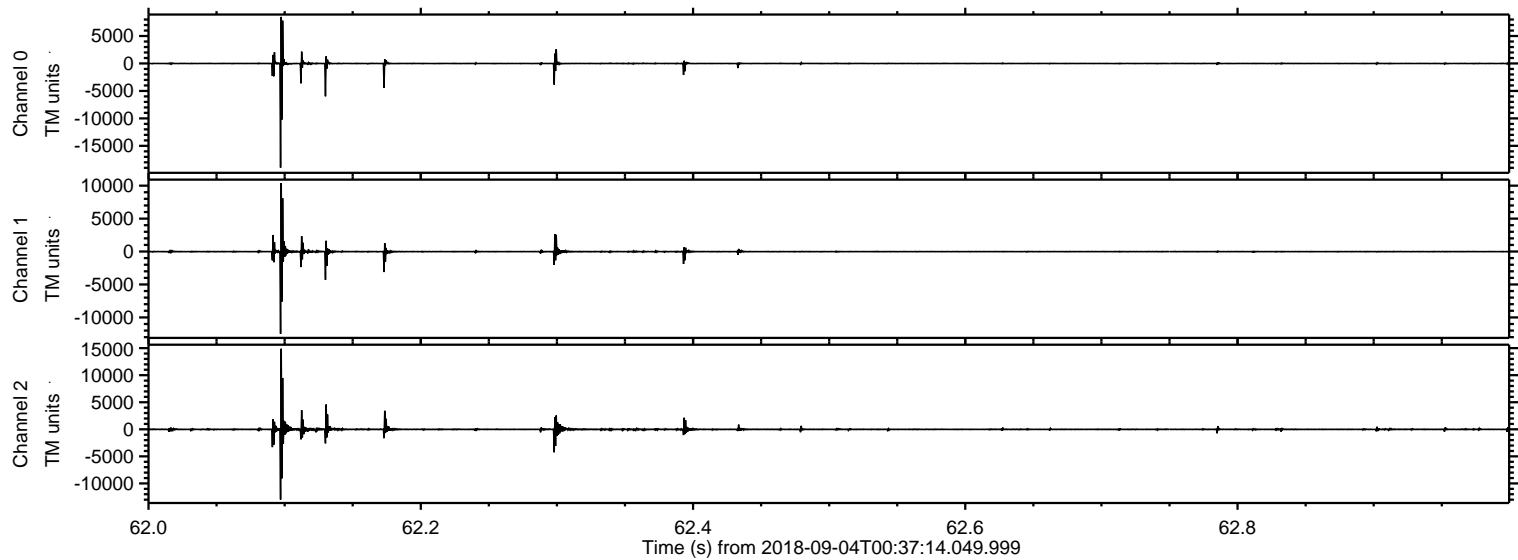


ELMAVAN 3D WAVEFORMS (Measured data sampled at 50 kHz) 51000 packets of 144 samples from 2018-09-04T00:37:14.049.999.

Processed Tue Sep 4 02:44:40 2018 by ELM ver.2012-10-06 from 001__elm20180904_003713__dat00.bin

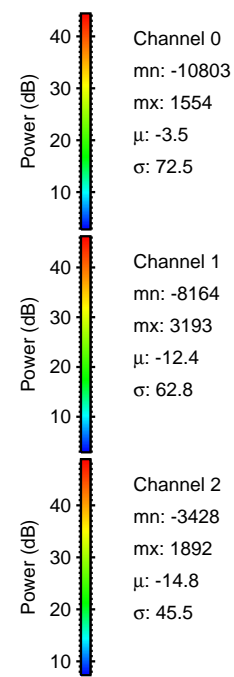
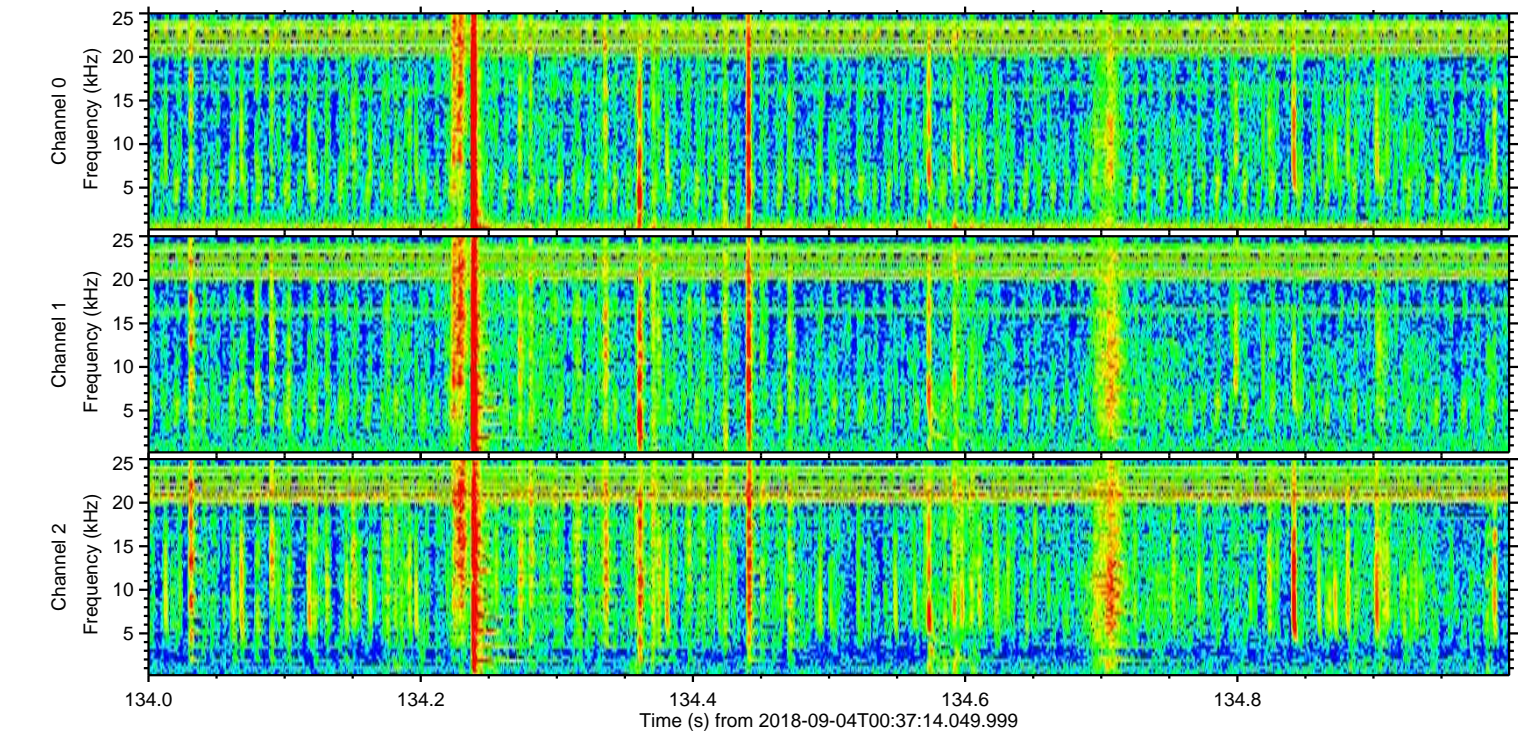
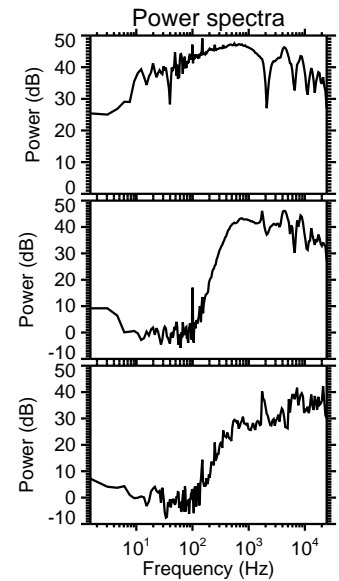
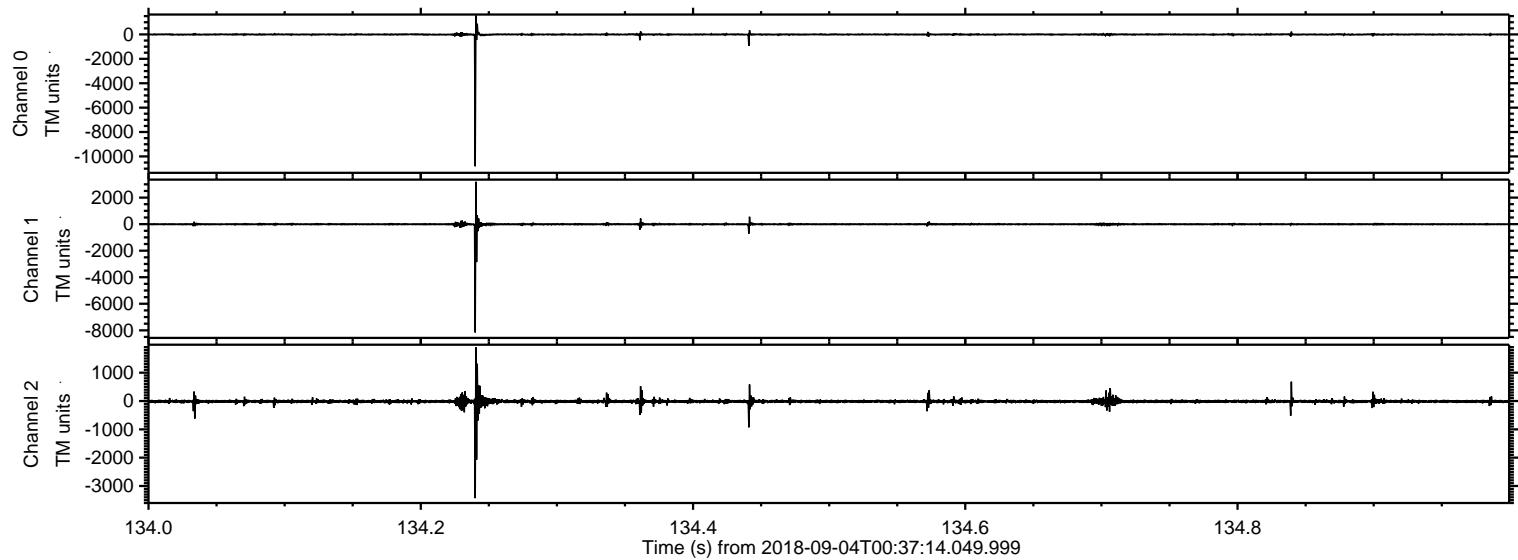


Processed Tue Sep 4 02:44:47 2018 by ELM ver.2012-10-06 from 001__elm20180904_003713__dat00.bin



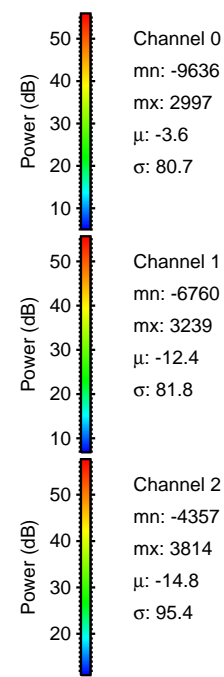
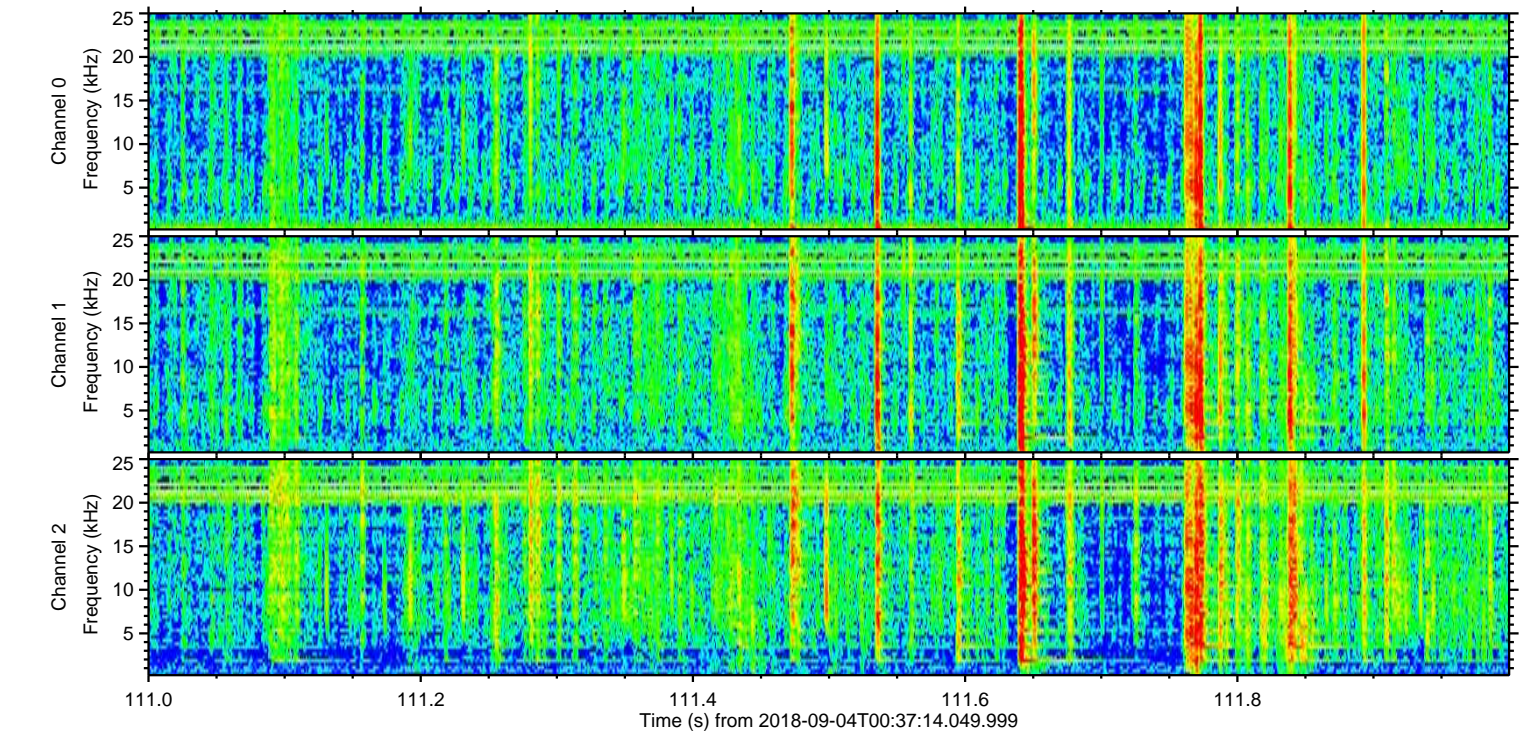
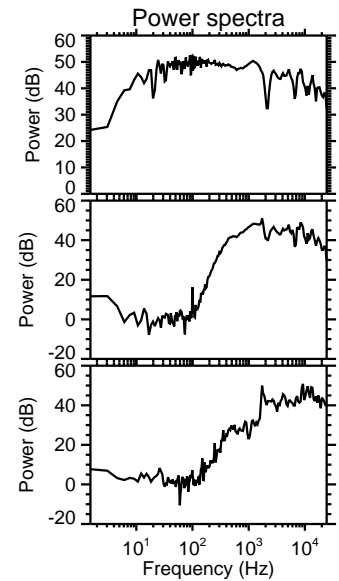
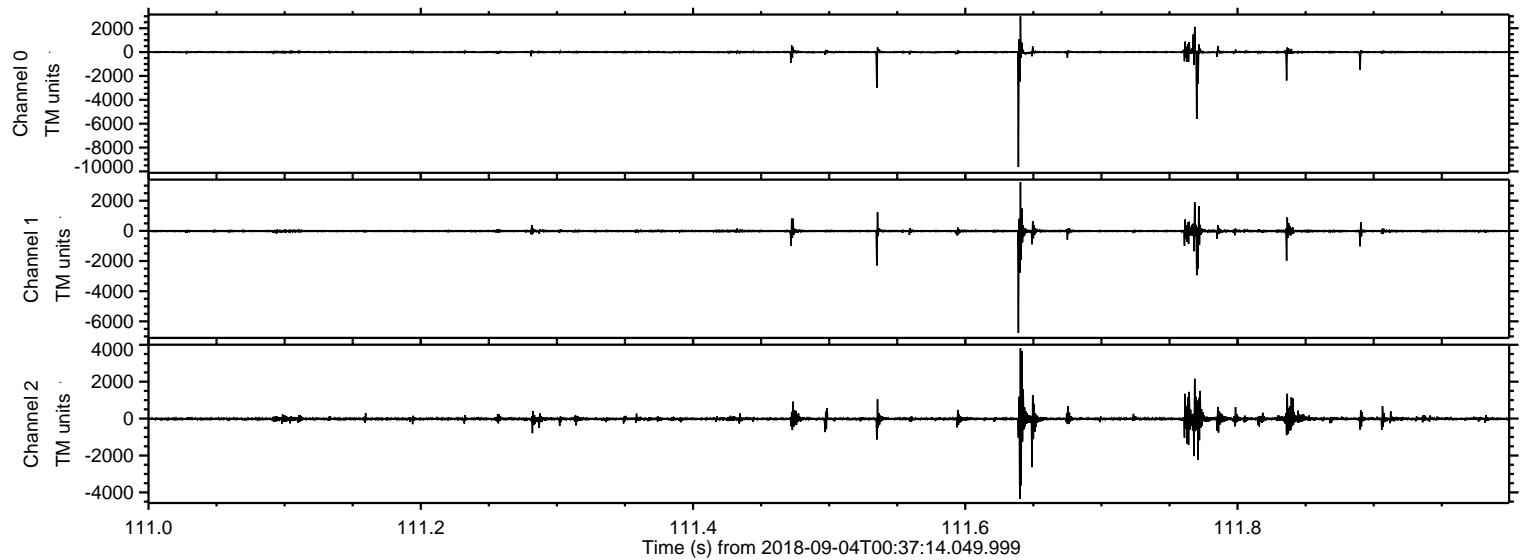
ELMAVAN 3D WAVEFORMS (Measured data sampled at 50 kHz) 51000 packets of 144 samples from 2018-09-04T00:37:14.049.999. Part 135/147

Processed Tue Sep 4 02:44:48 2018 by ELM ver.2012-10-06 from 001__elm20180904_003713__dat00.bin



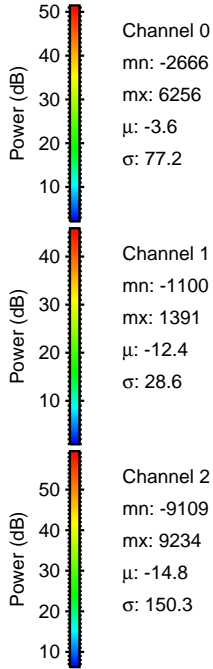
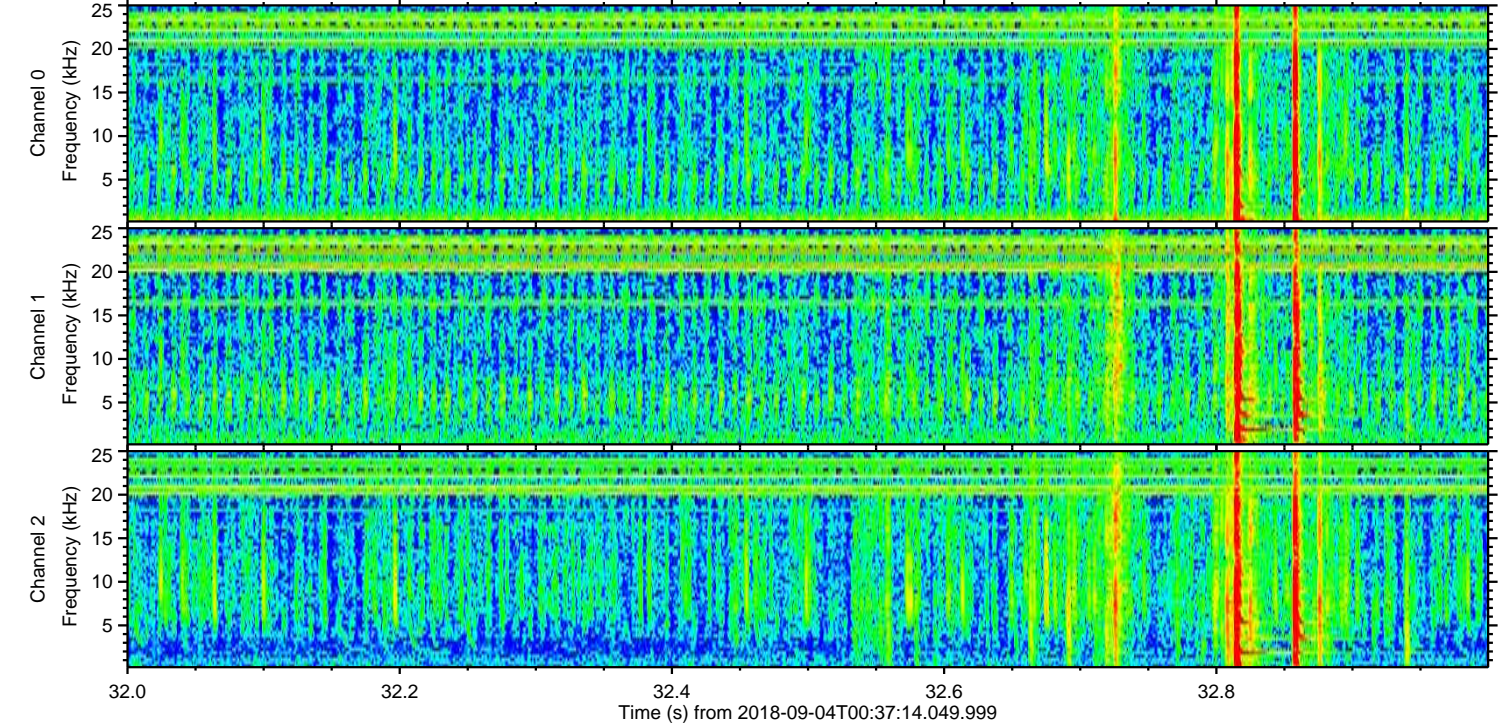
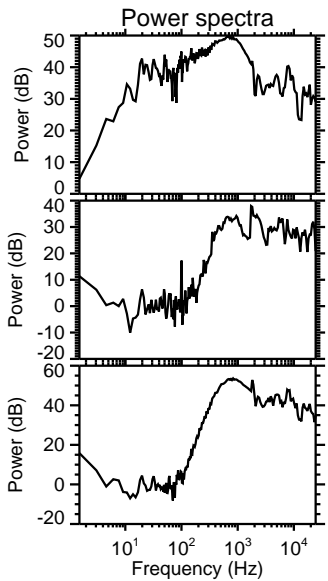
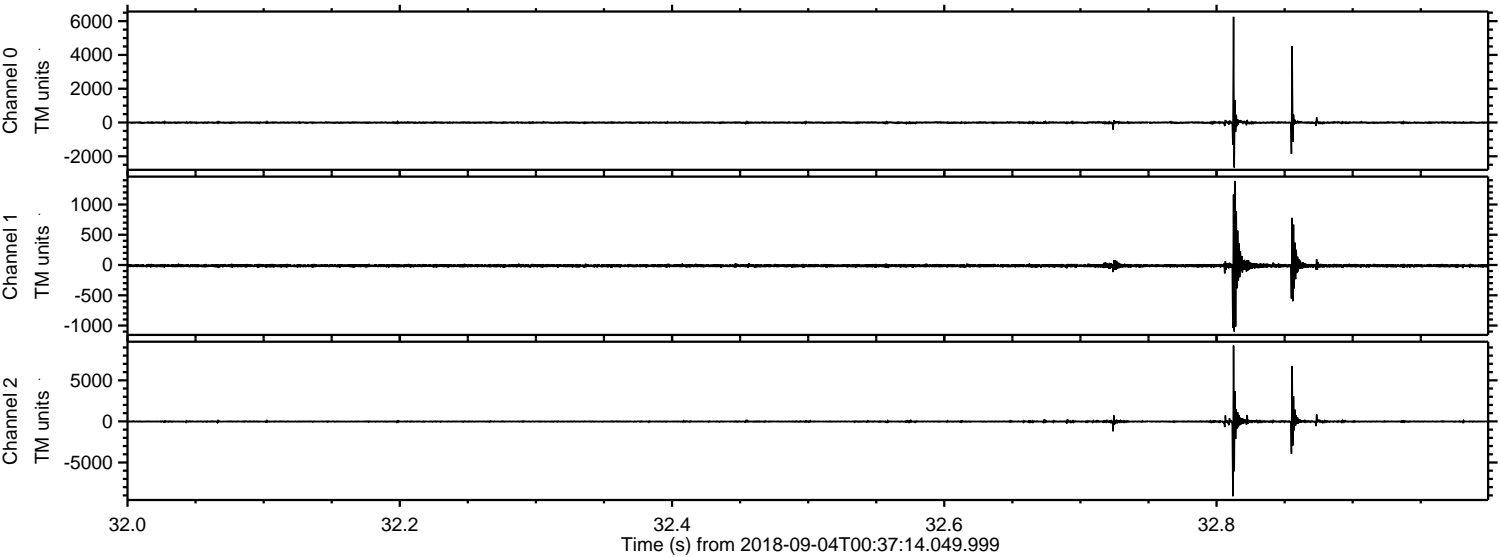
ELMAVAN 3D WAVEFORMS (Measured data sampled at 50 kHz) 51000 packets of 144 samples from 2018-09-04T00:37:14.049.999. Part 112/147

Processed Tue Sep 4 02:44:49 2018 by ELM ver.2012-10-06 from 001__elm20180904_003713__dat00.bin

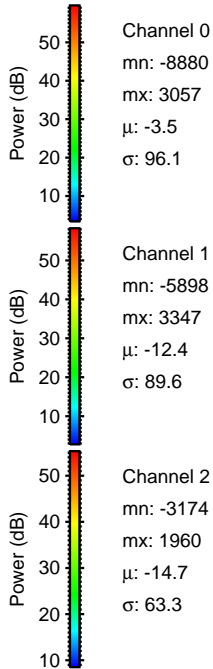
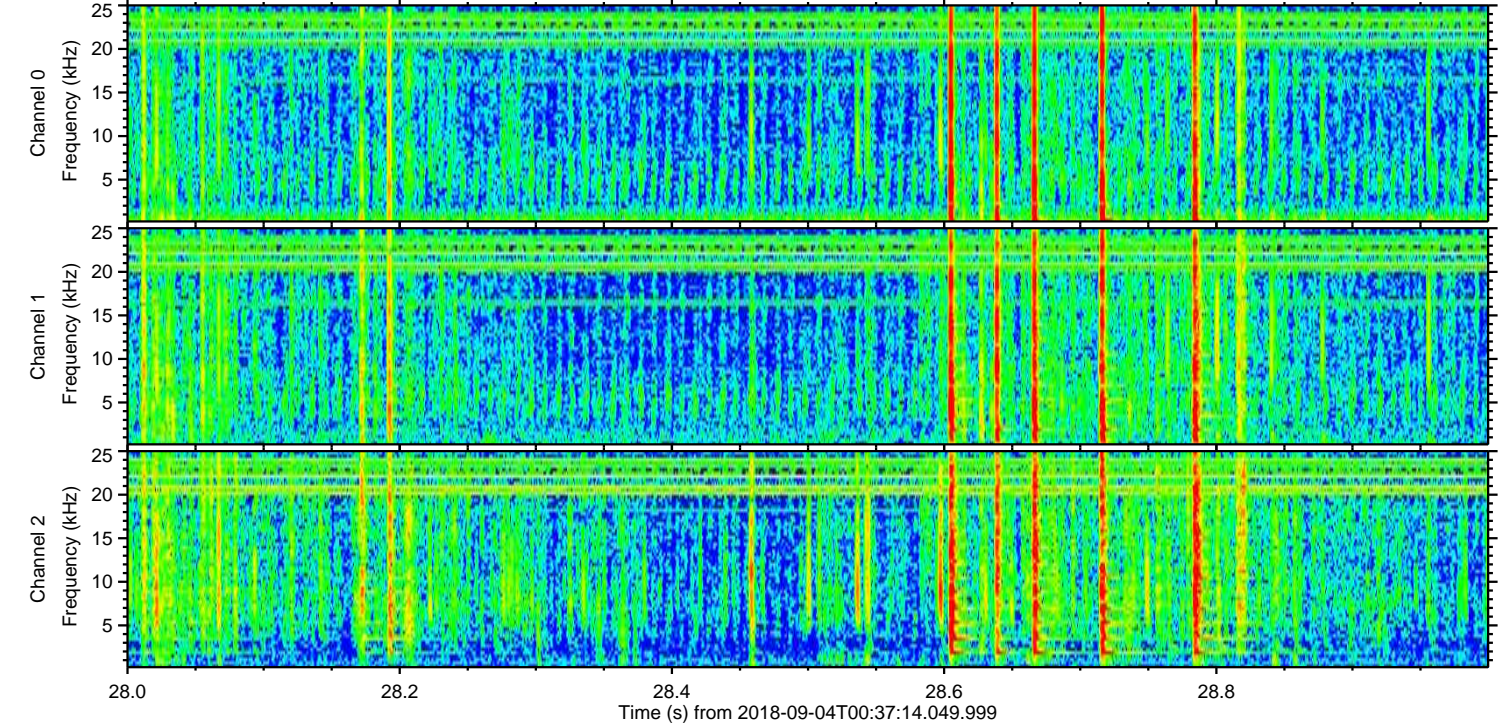
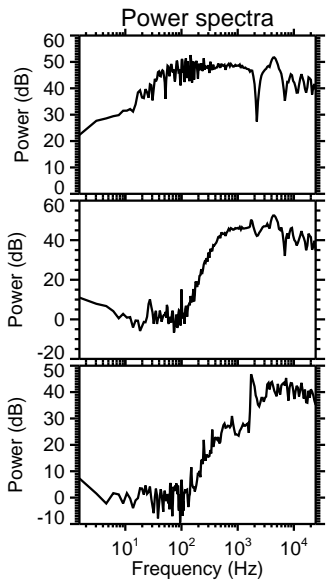
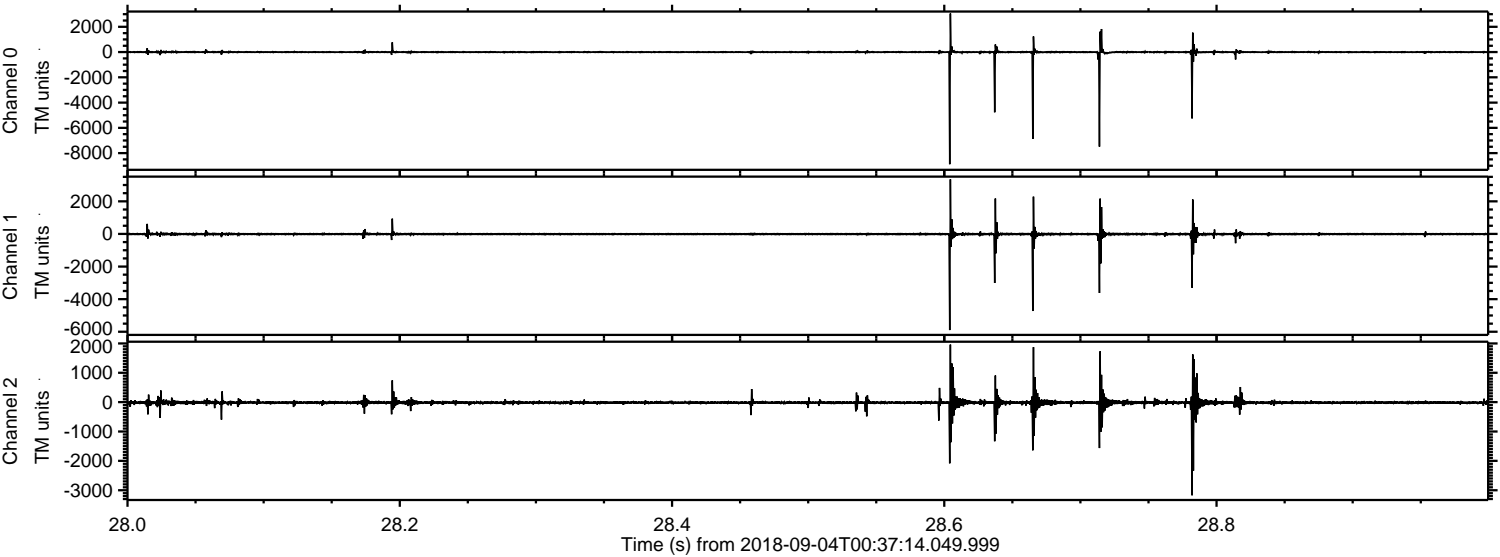


ELMAVAN 3D WAVEFORMS (Measured data sampled at 50 kHz) 51000 packets of 144 samples from 2018-09-04T00:37:14.049.999. Part 33/147

Processed Tue Sep 4 02:44:49 2018 by ELM ver.2012-10-06 from 001__elm20180904_003713__dat00.bin

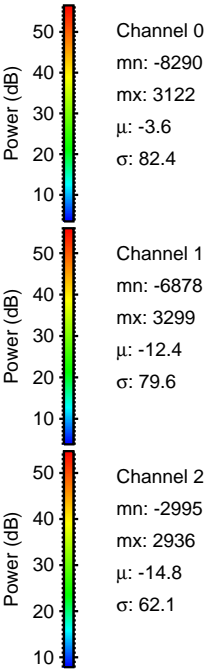
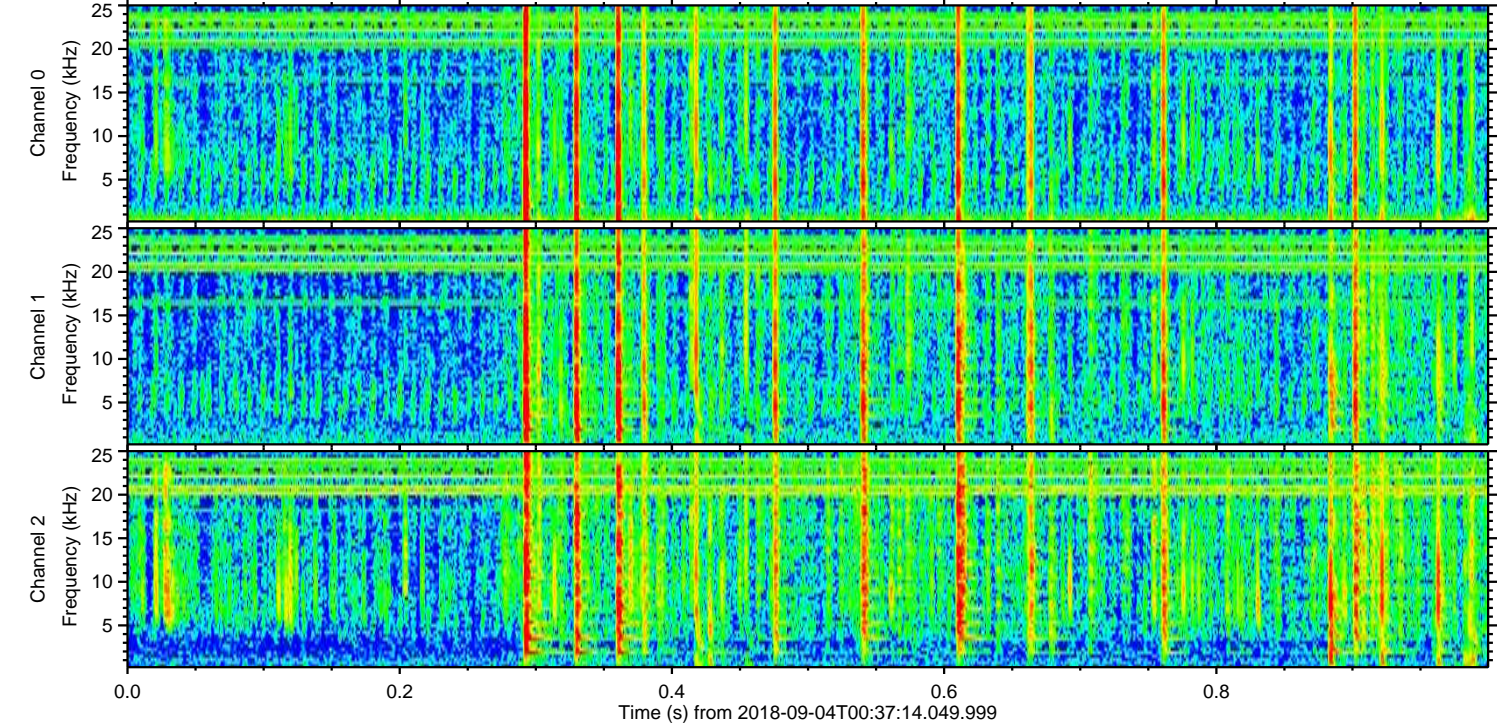
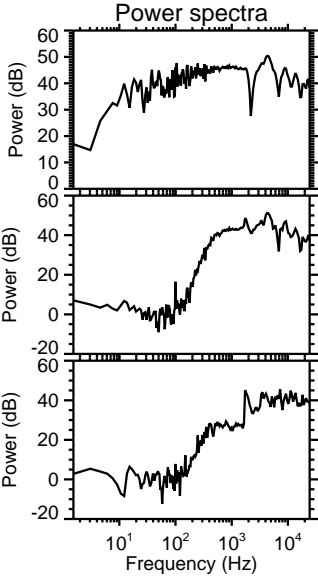
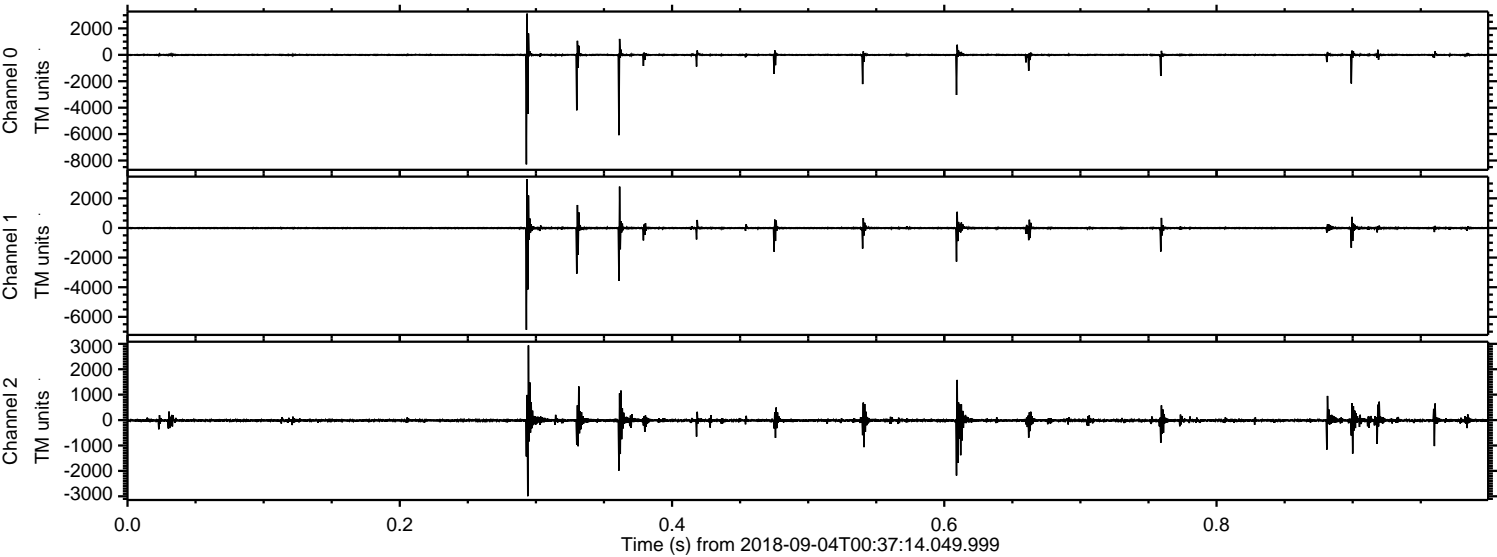


Processed Tue Sep 4 02:44:50 2018 by ELM ver.2012-10-06 from 001__elm20180904_003713__dat00.bin

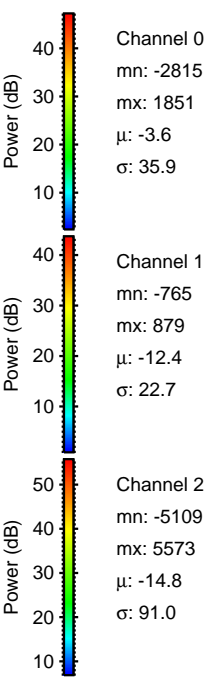
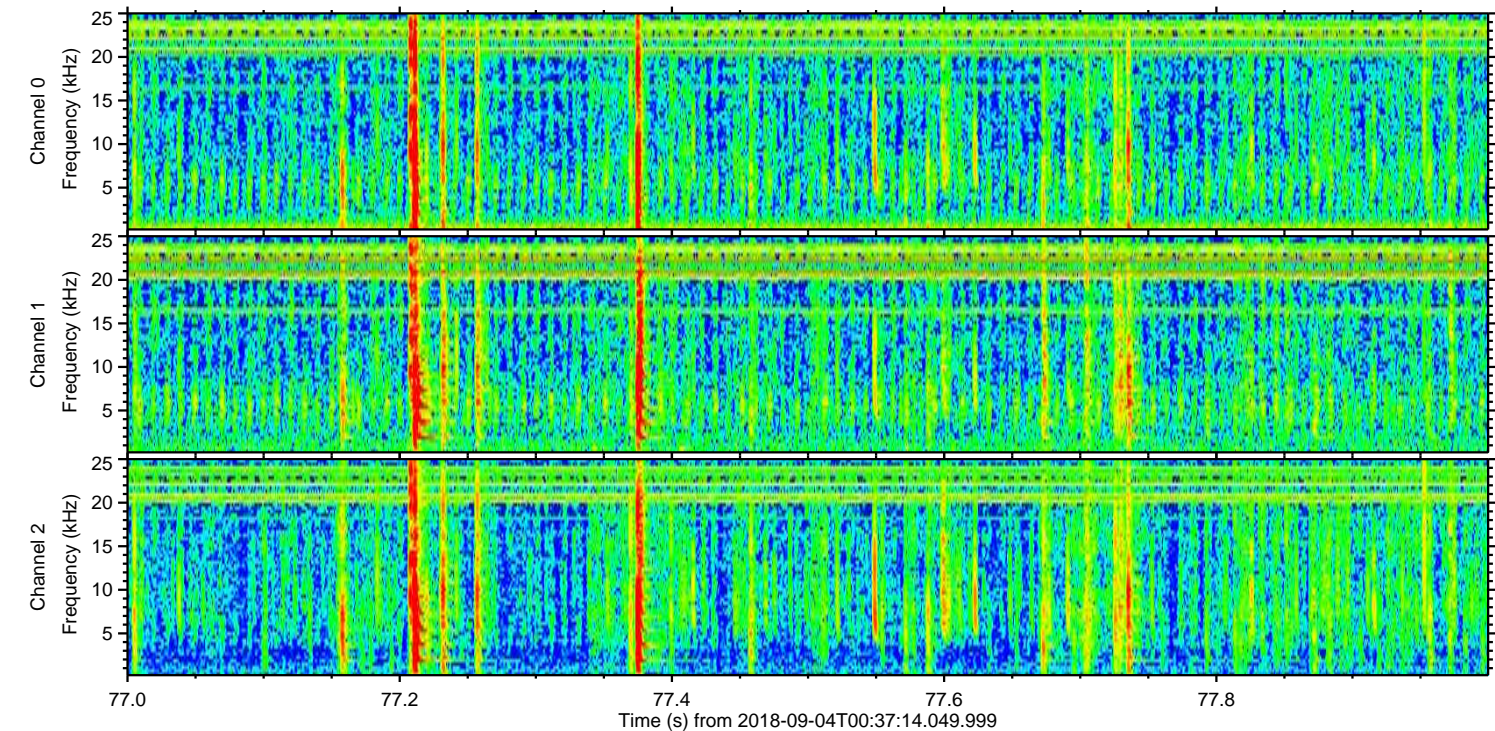
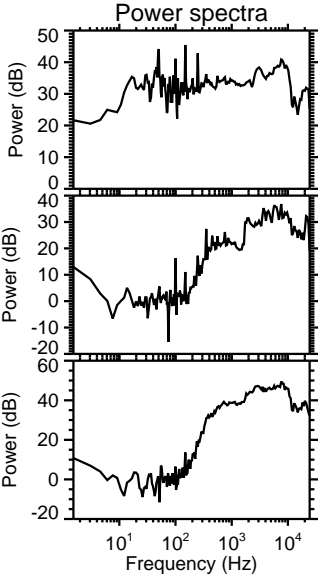
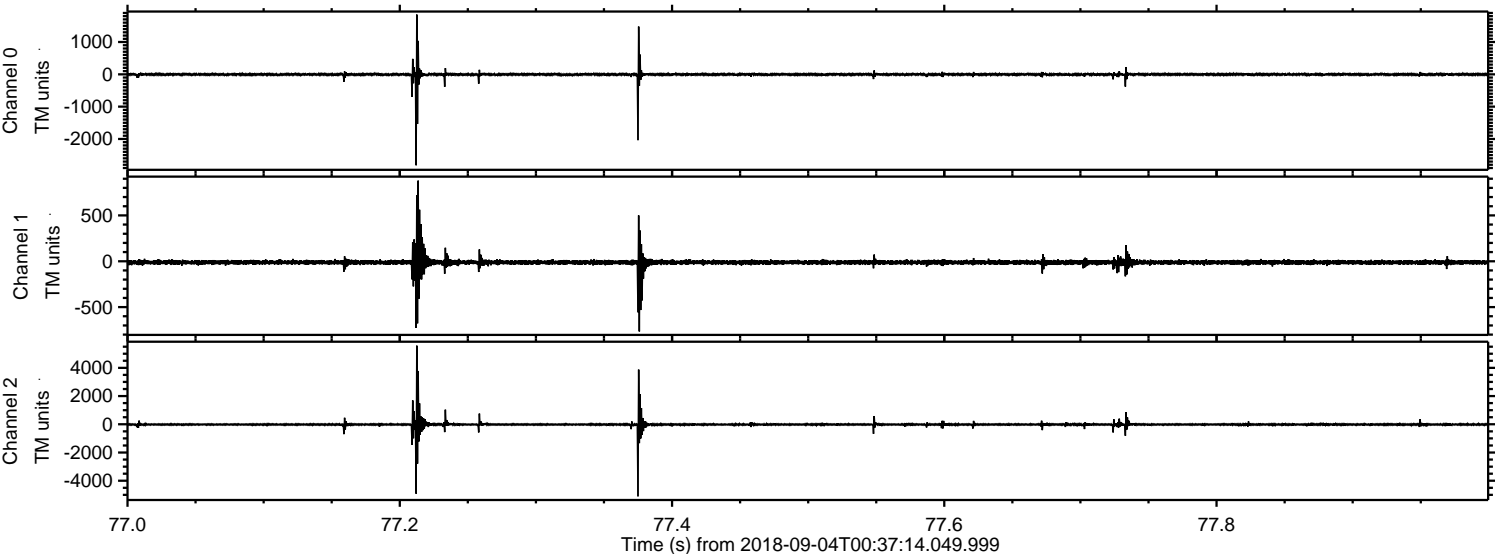


ELMAVAN 3D WAVEFORMS (Measured data sampled at 50 kHz) 51000 packets of 144 samples from 2018-09-04T00:37:14.049.999. Part 1/147

Processed Tue Sep 4 02:44:51 2018 by ELM ver.2012-10-06 from 001__elm20180904_003713__dat00.bin



Processed Tue Sep 4 02:44:52 2018 by ELM ver.2012-10-06 from 001__elm20180904_003713__dat00.bin

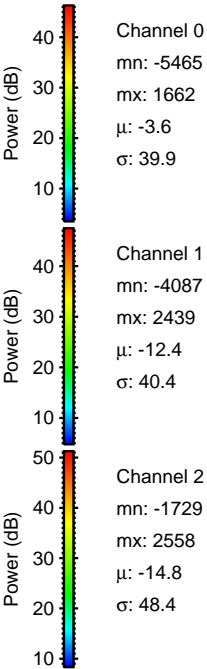
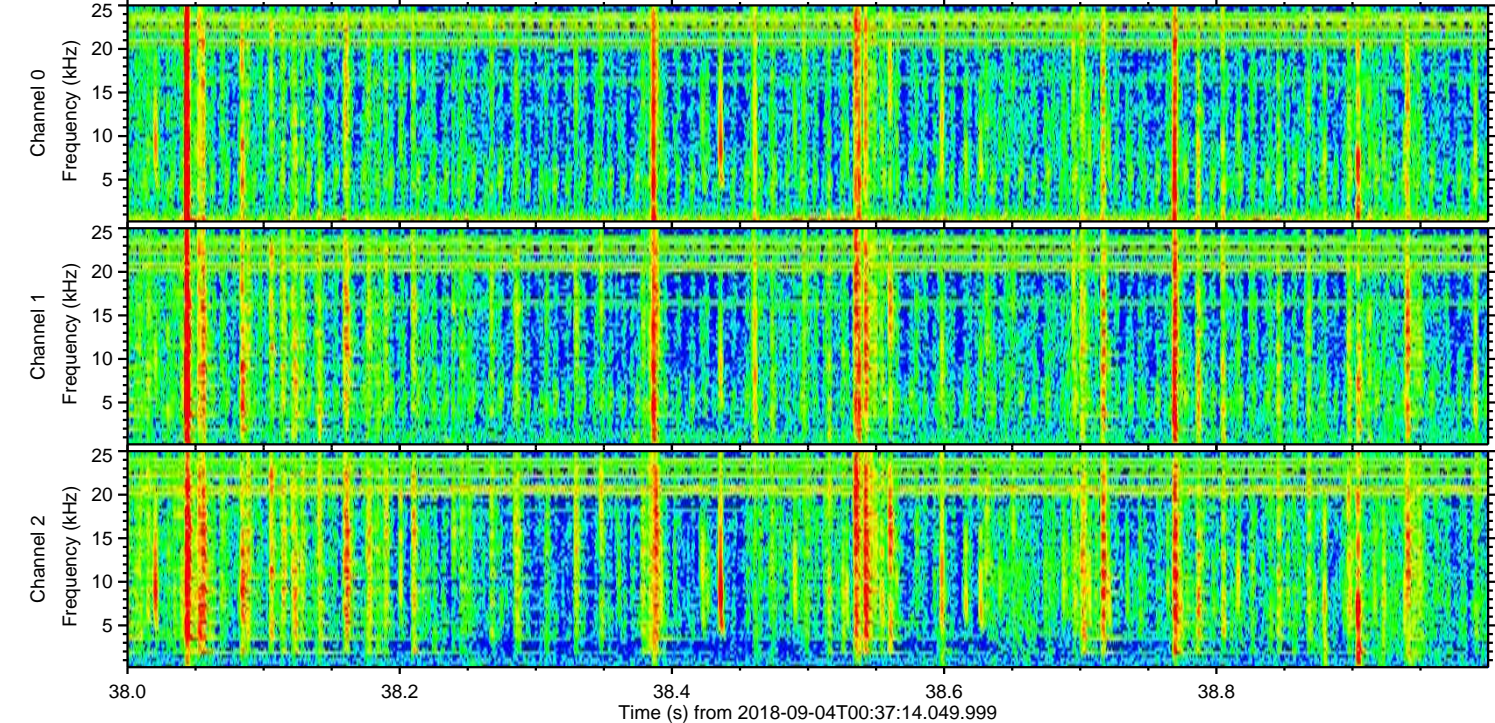
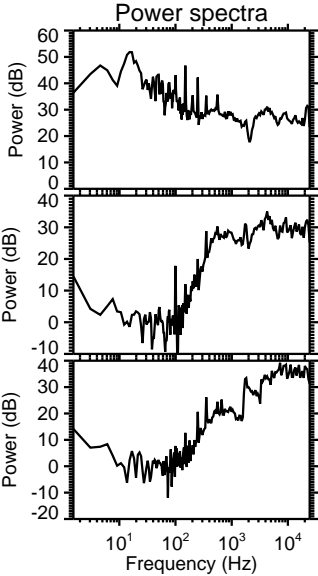
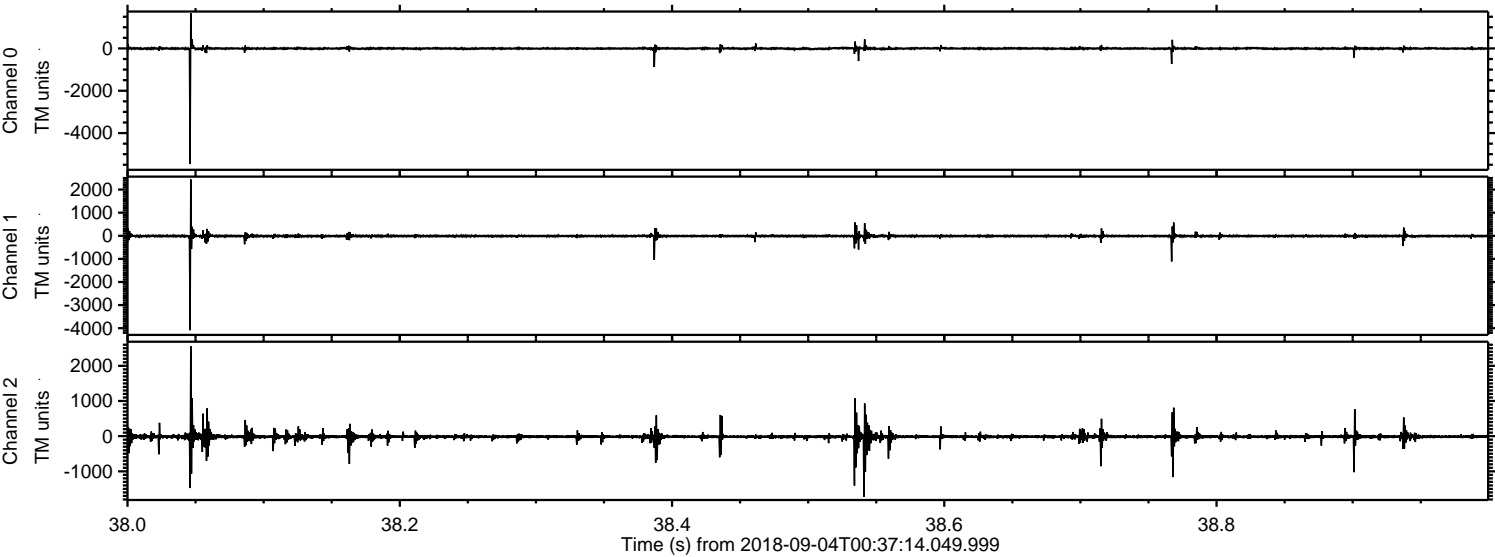


Channel 0
mn: -2815
mx: 1851
 μ : -3.6
 σ : 35.9

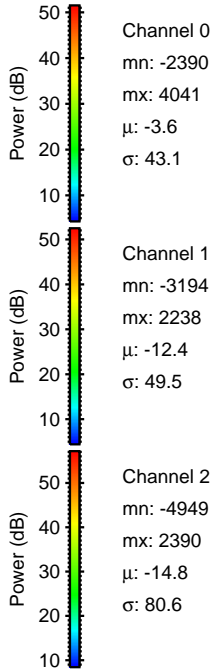
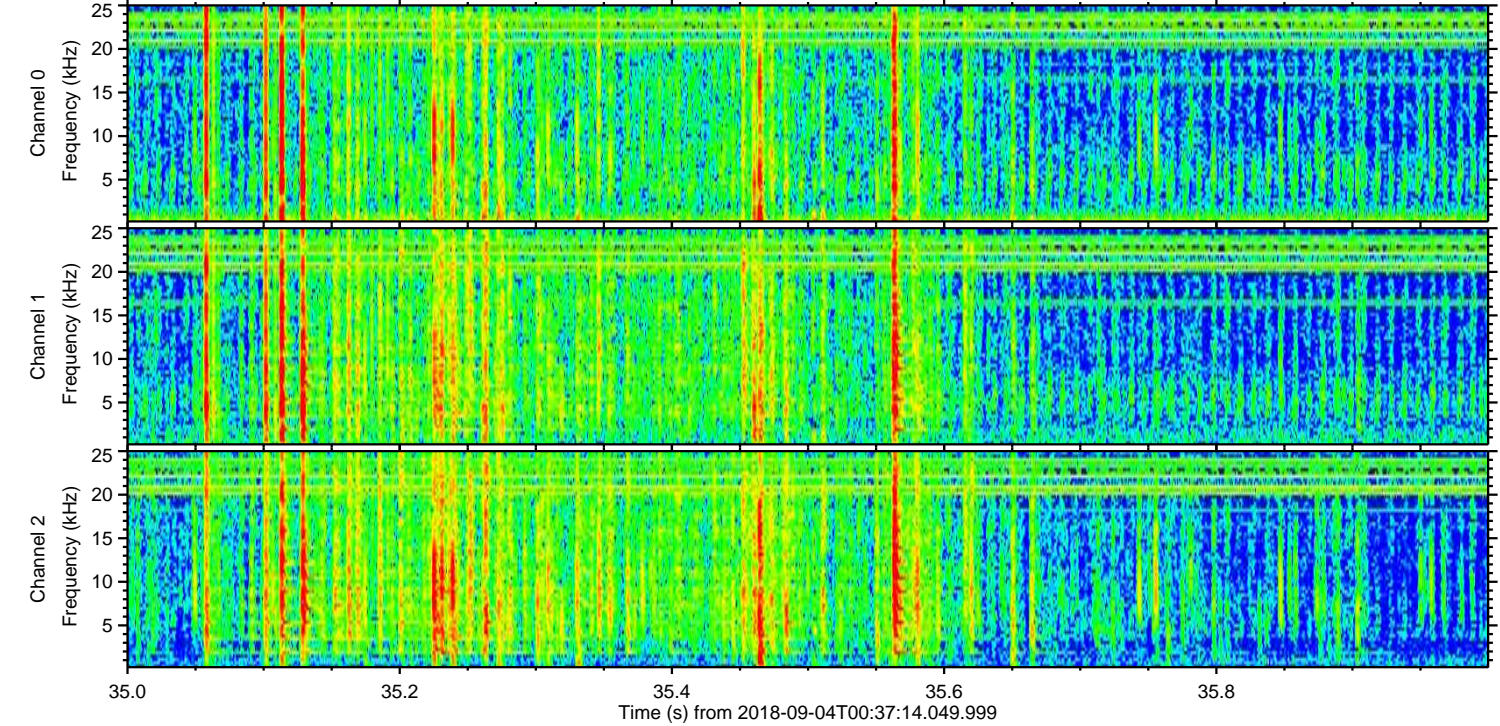
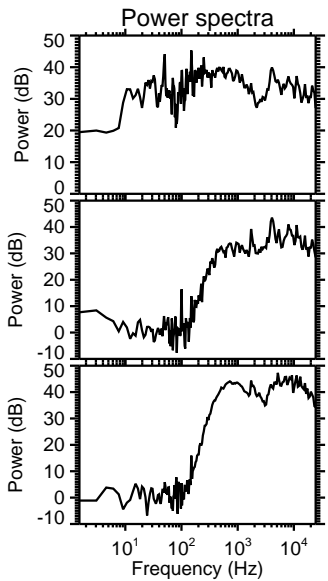
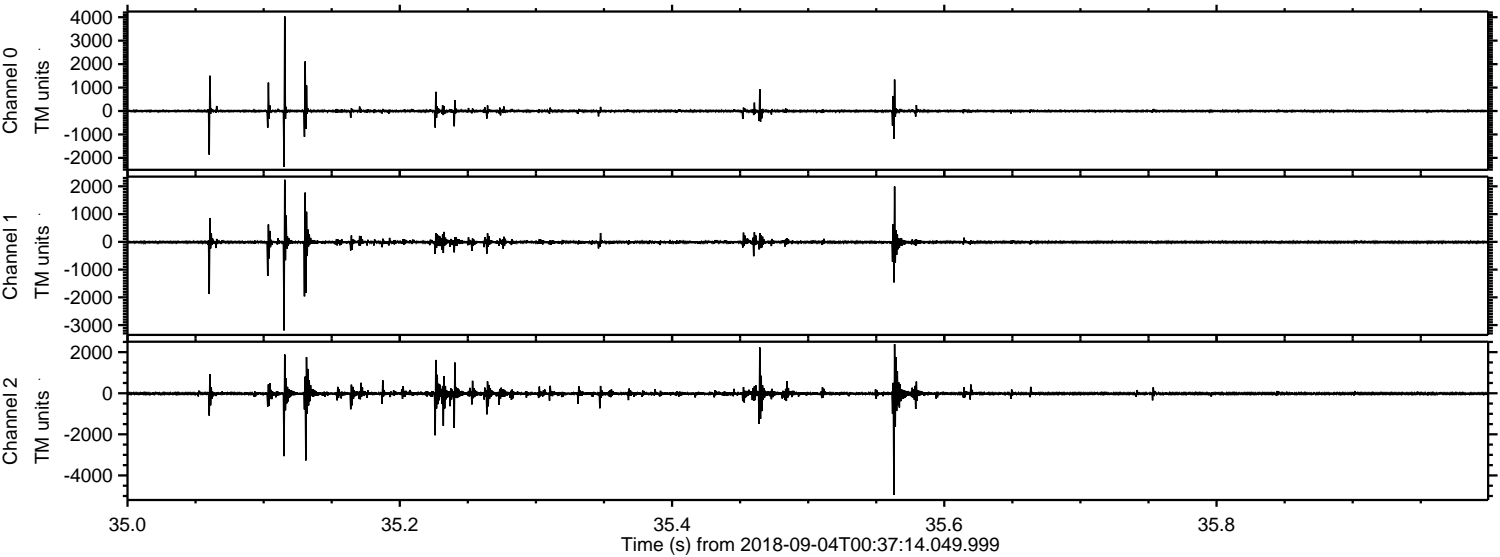
Channel 1
mn: -765
mx: 879
 μ : -12.4
 σ : 22.7

Channel 2
mn: -5109
mx: 5573
 μ : -14.8
 σ : 91.0

Processed Tue Sep 4 02:44:52 2018 by ELM ver.2012-10-06 from 001__elm20180904_003713__dat00.bin



Processed Tue Sep 4 02:44:53 2018 by ELM ver.2012-10-06 from 001__elm20180904_003713__dat00.bin



Channel 0
mn: -2390
mx: 4041
 μ : -3.6
 σ : 43.1

Channel 1
mn: -3194
mx: 2238
 μ : -12.4
 σ : 49.5

Channel 2
mn: -4949
mx: 2390
 μ : -14.8
 σ : 80.6

