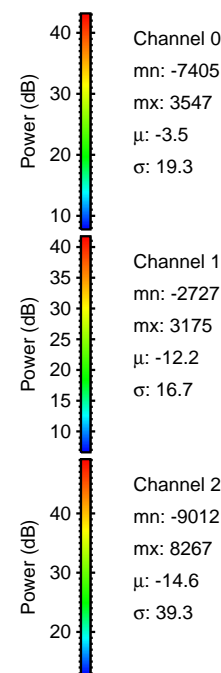
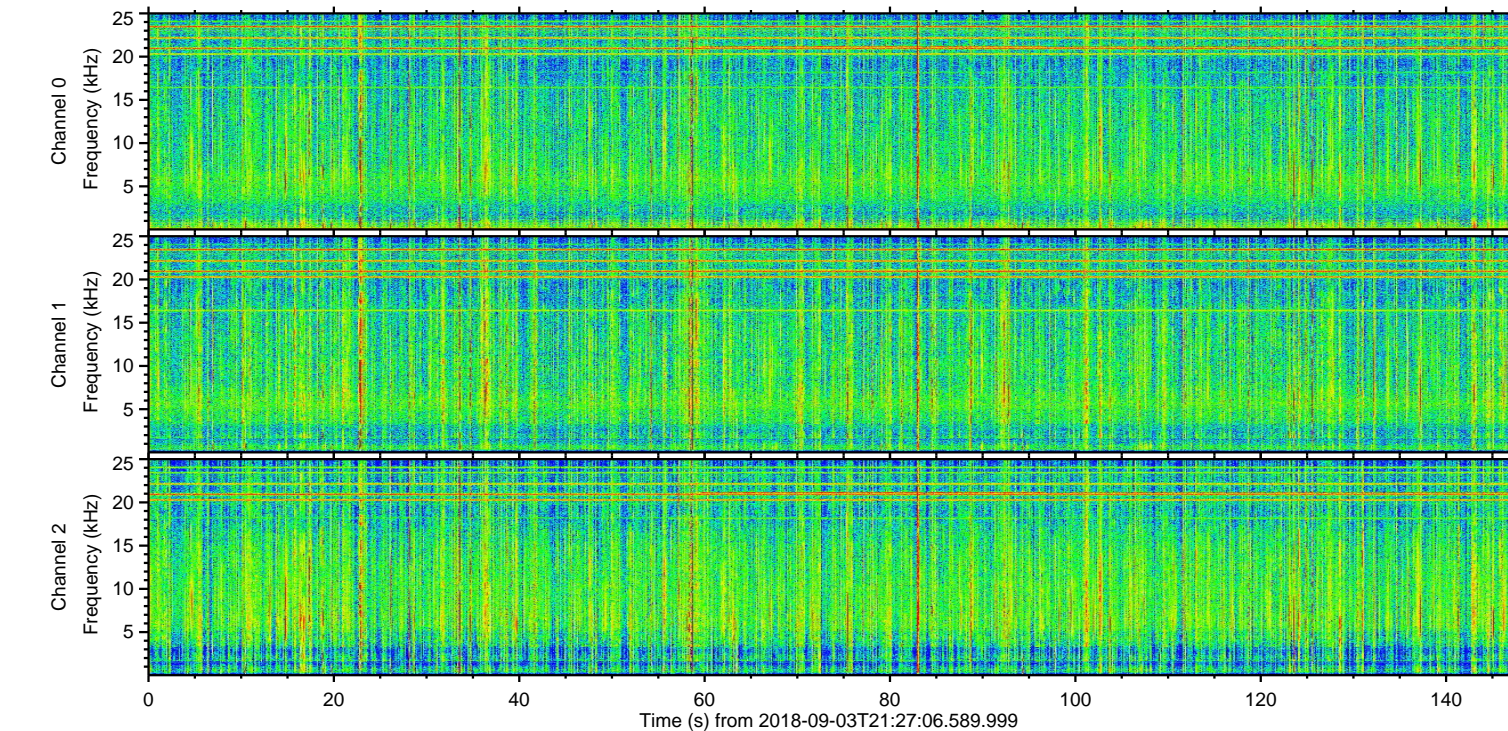
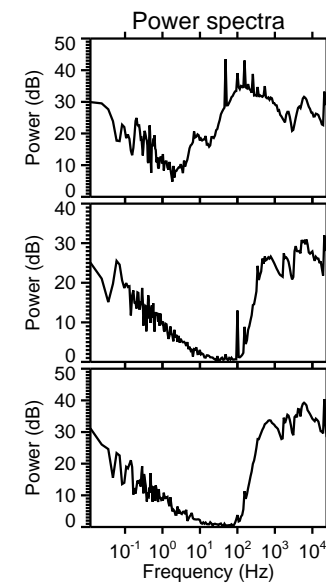
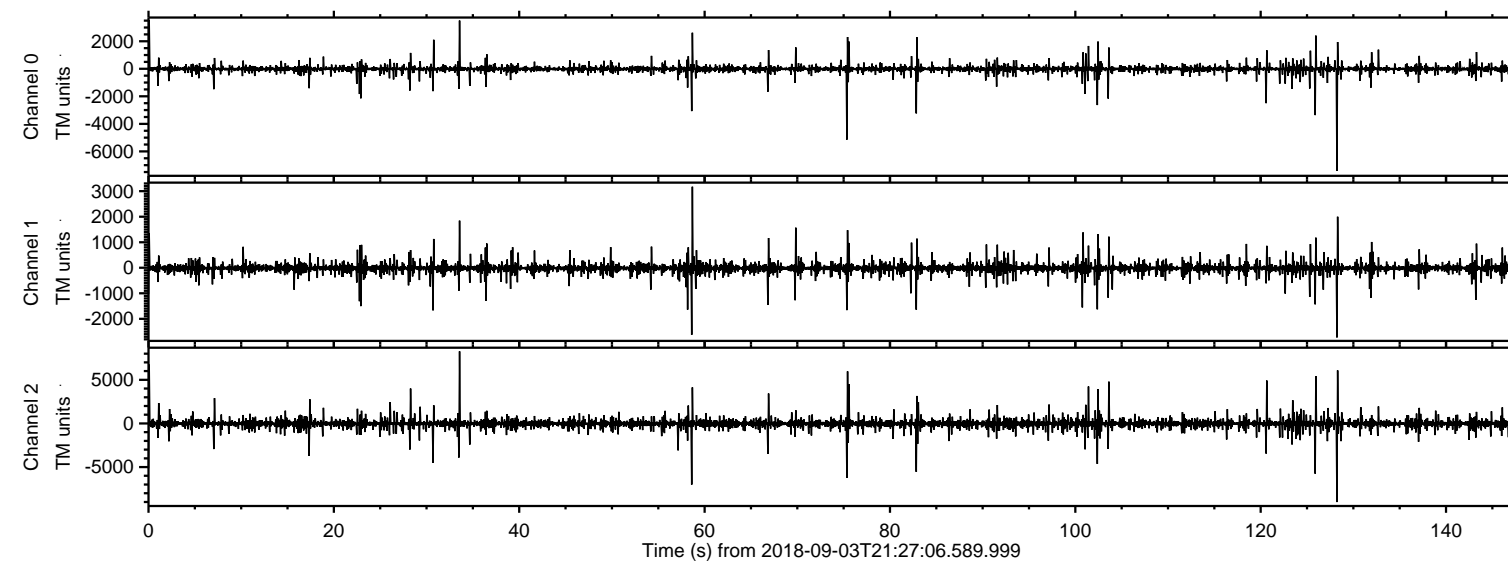


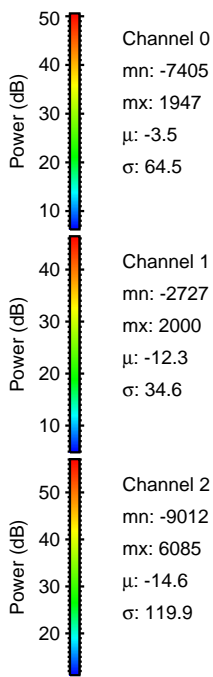
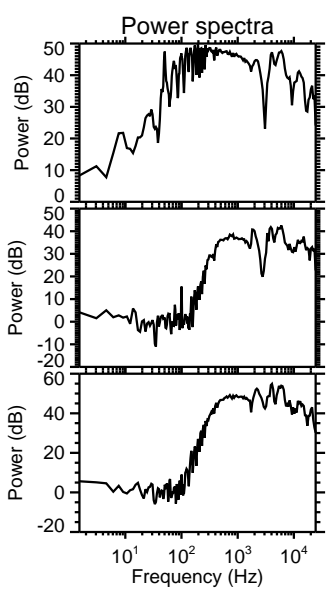
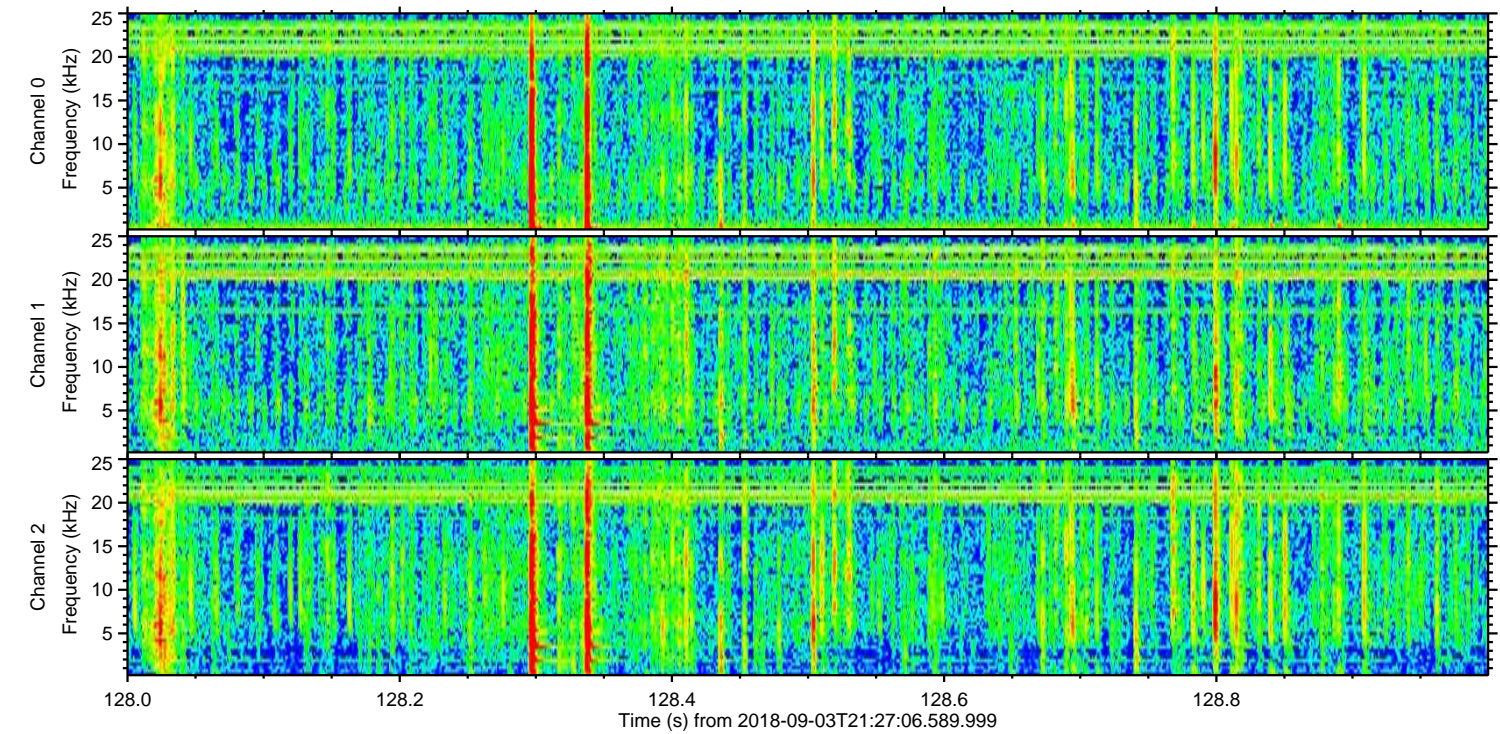
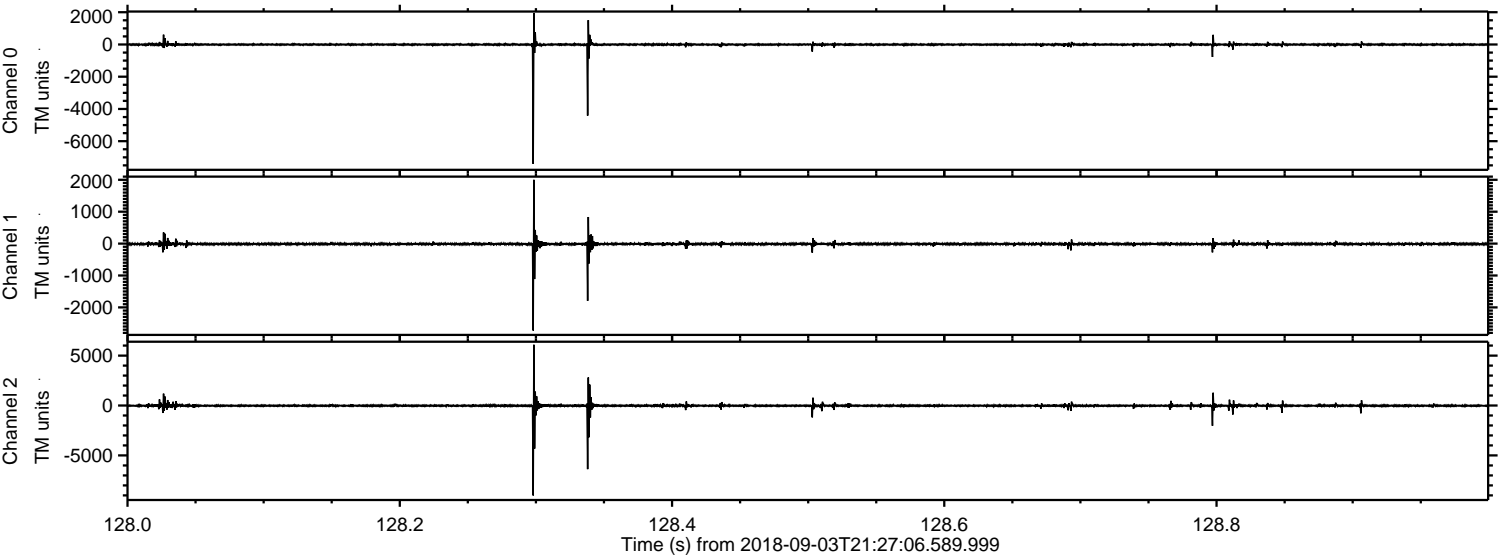
ELMAVAN 3D WAVEFORMS (Measured data sampled at 50 kHz) 51000 packets of 144 samples from 2018-09-03T21:27:06.589.999.

Processed Mon Sep 3 23:35:02 2018 by ELM ver.2012-10-06 from 001__elm20180903_212705__dat00.bin

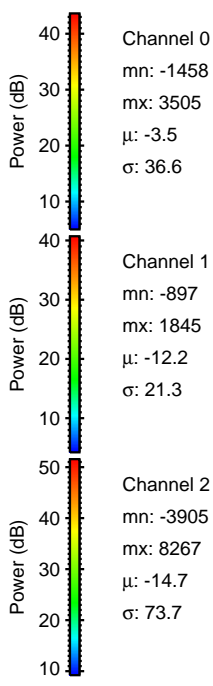
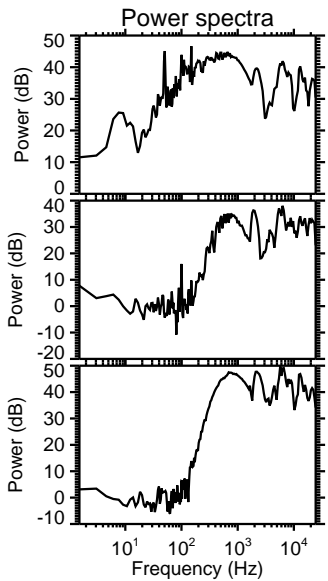
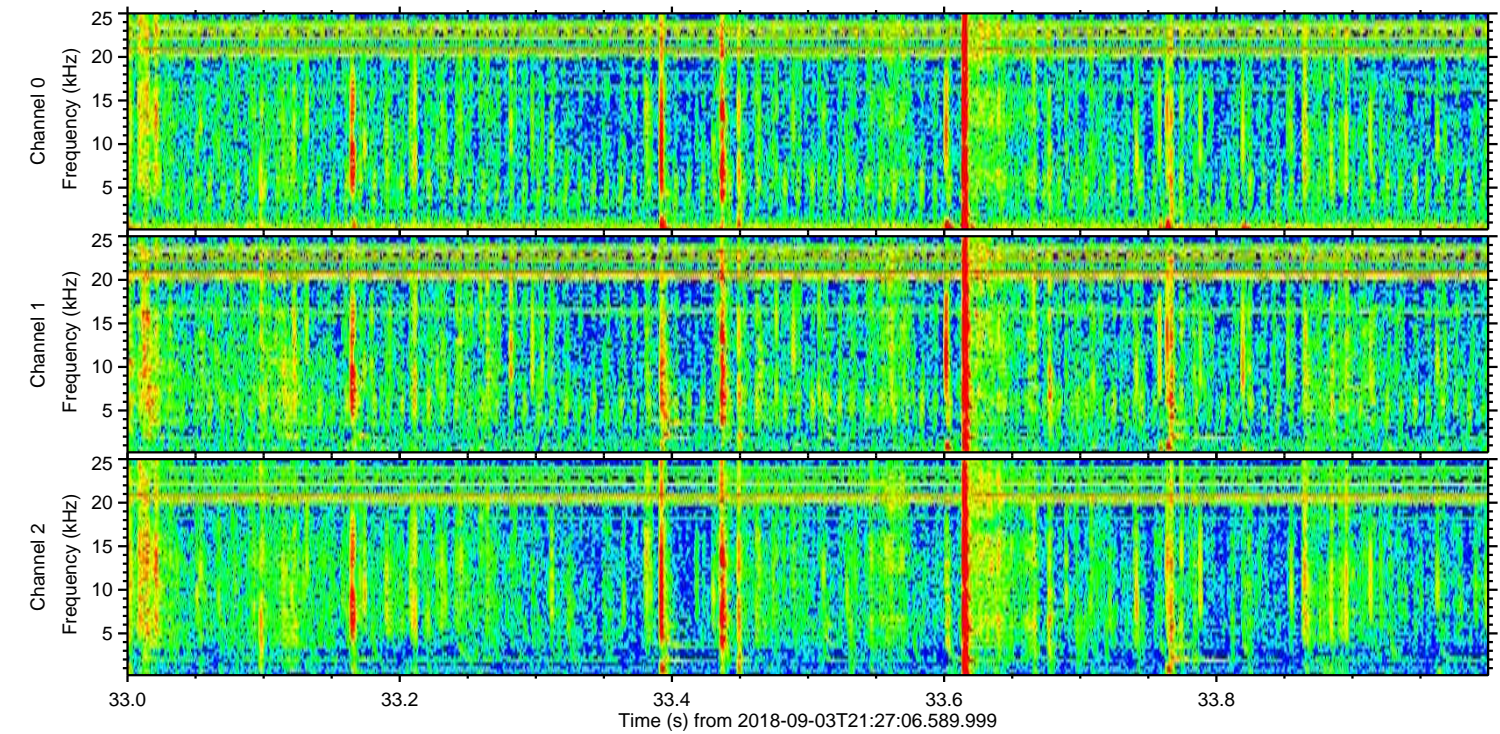
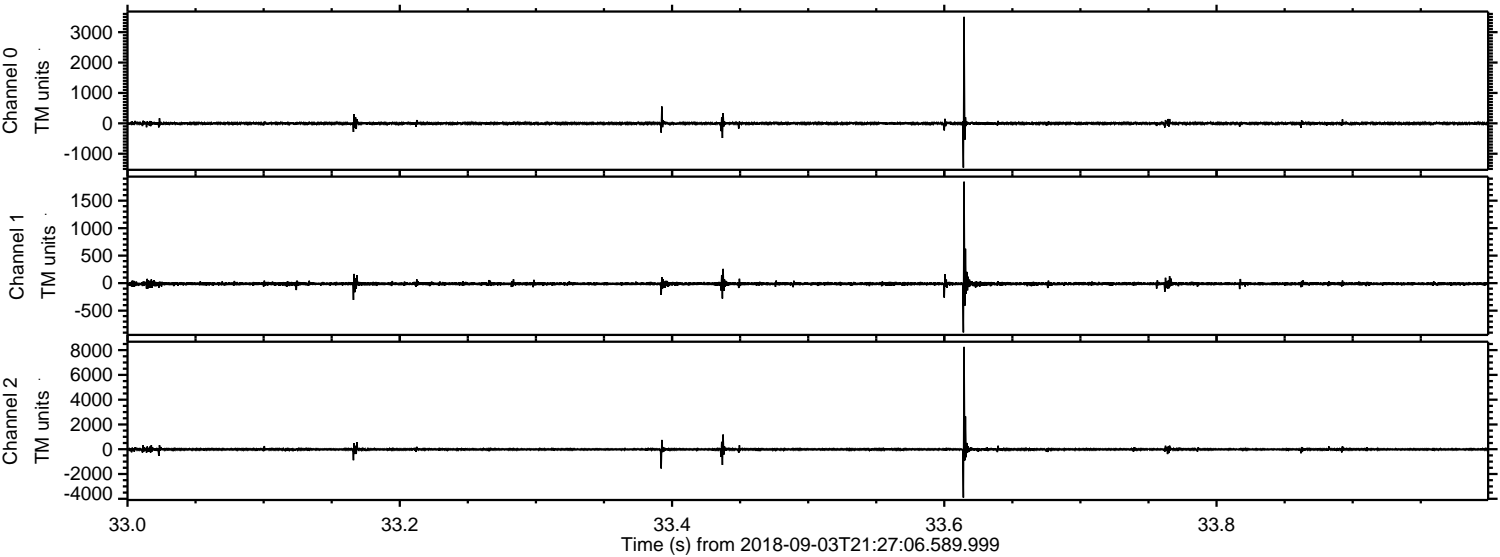


ELMAVAN 3D WAVEFORMS (Measured data sampled at 50 kHz) 51000 packets of 144 samples from 2018-09-03T21:27:06.589.999. Part 129/147

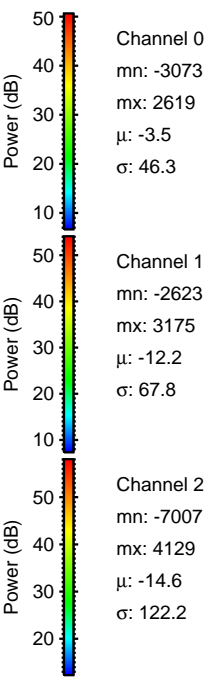
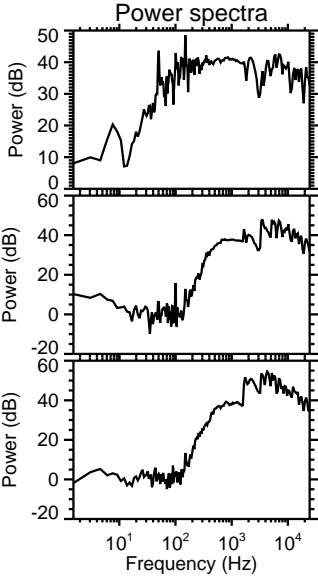
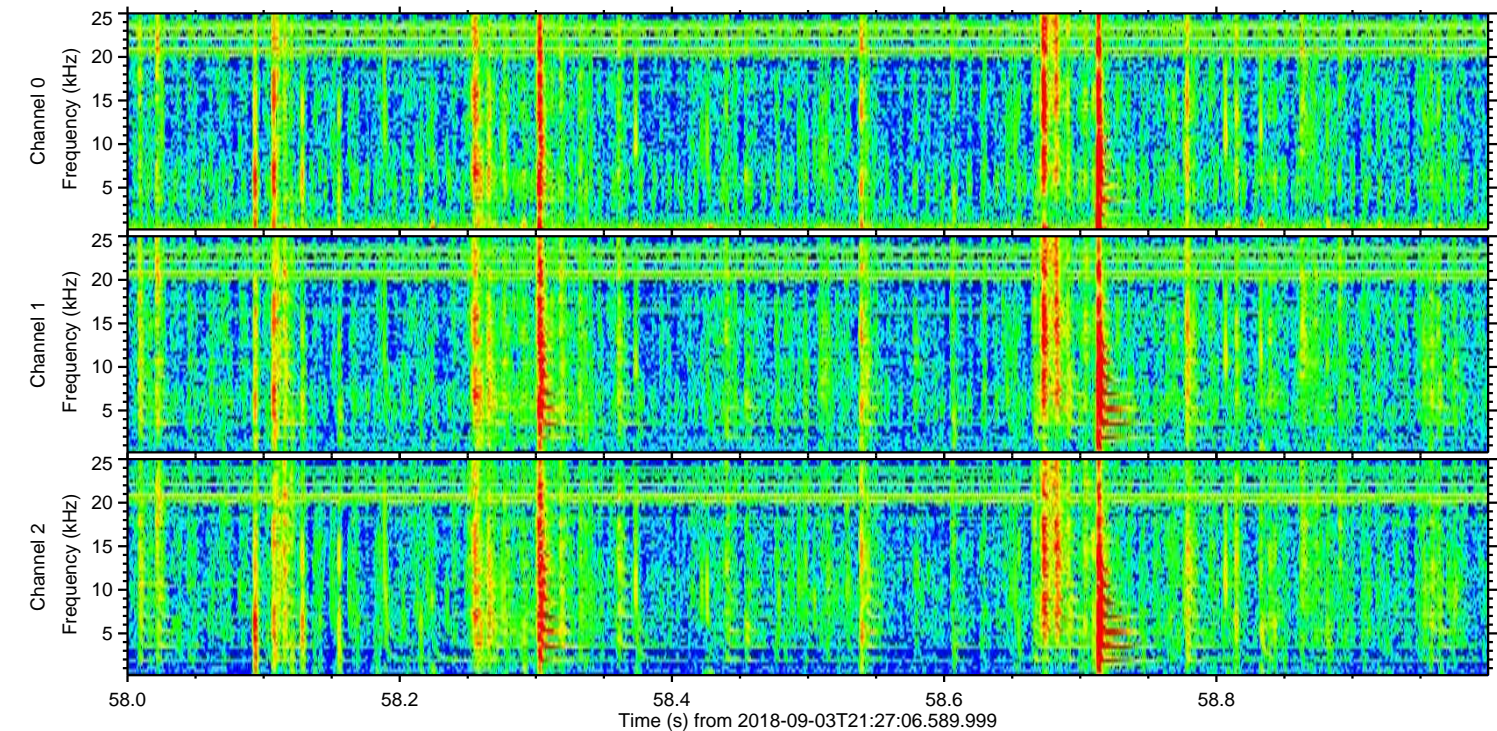
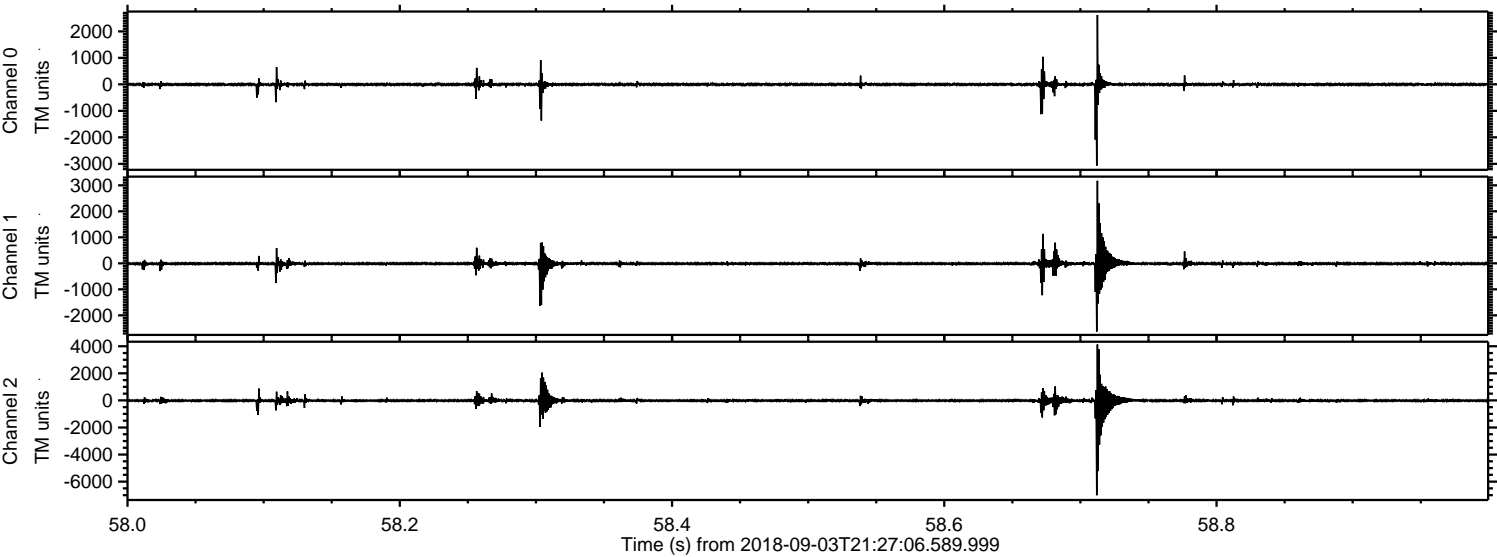
Processed Mon Sep 3 23:35:09 2018 by ELM ver.2012-10-06 from 001__elm20180903_212705__dat00.bin



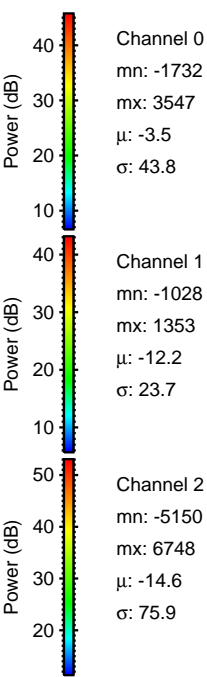
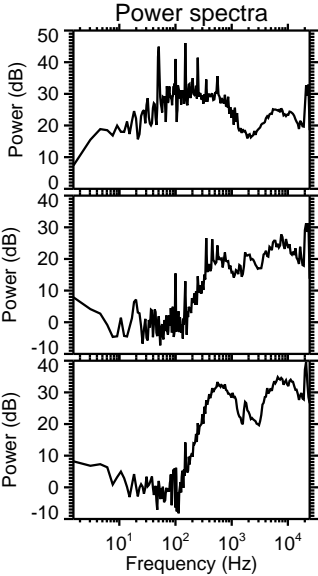
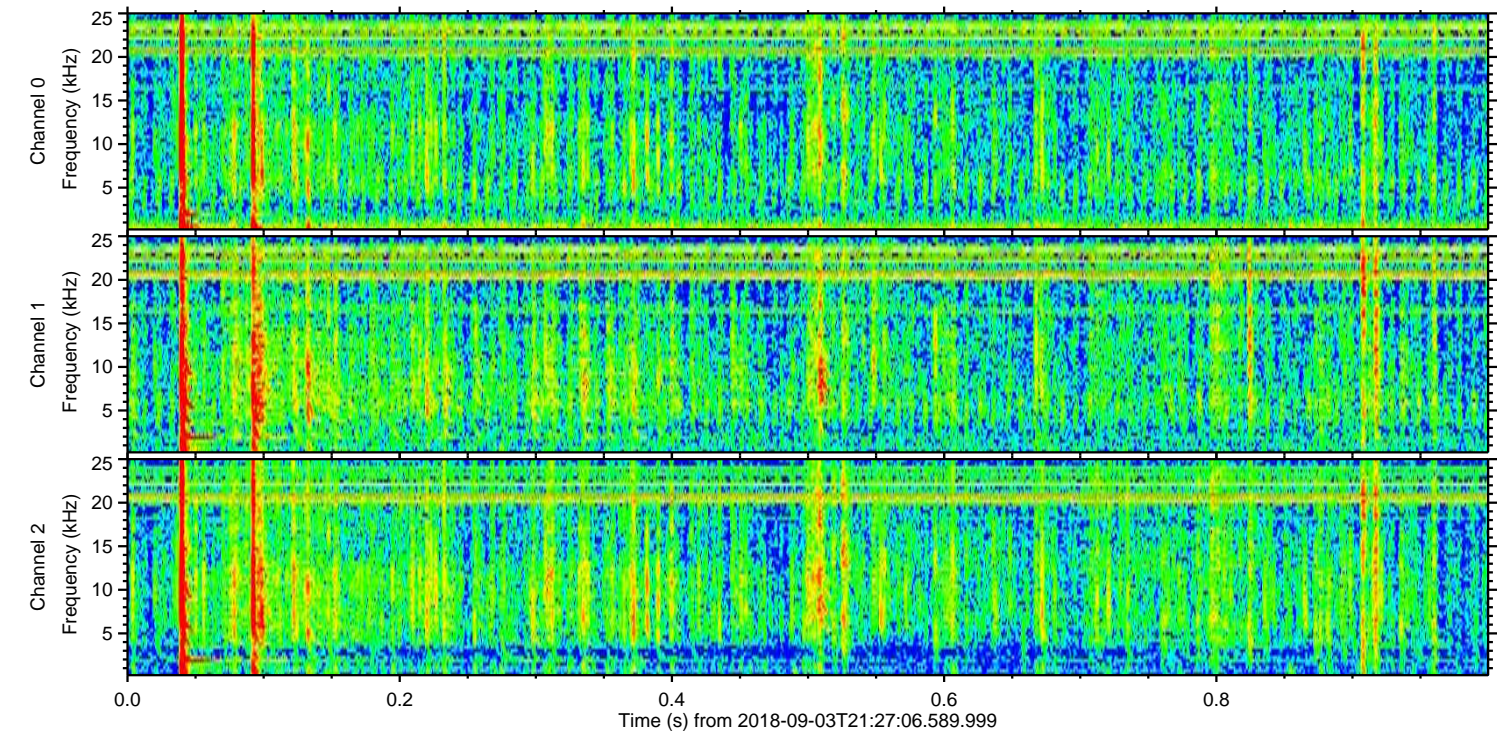
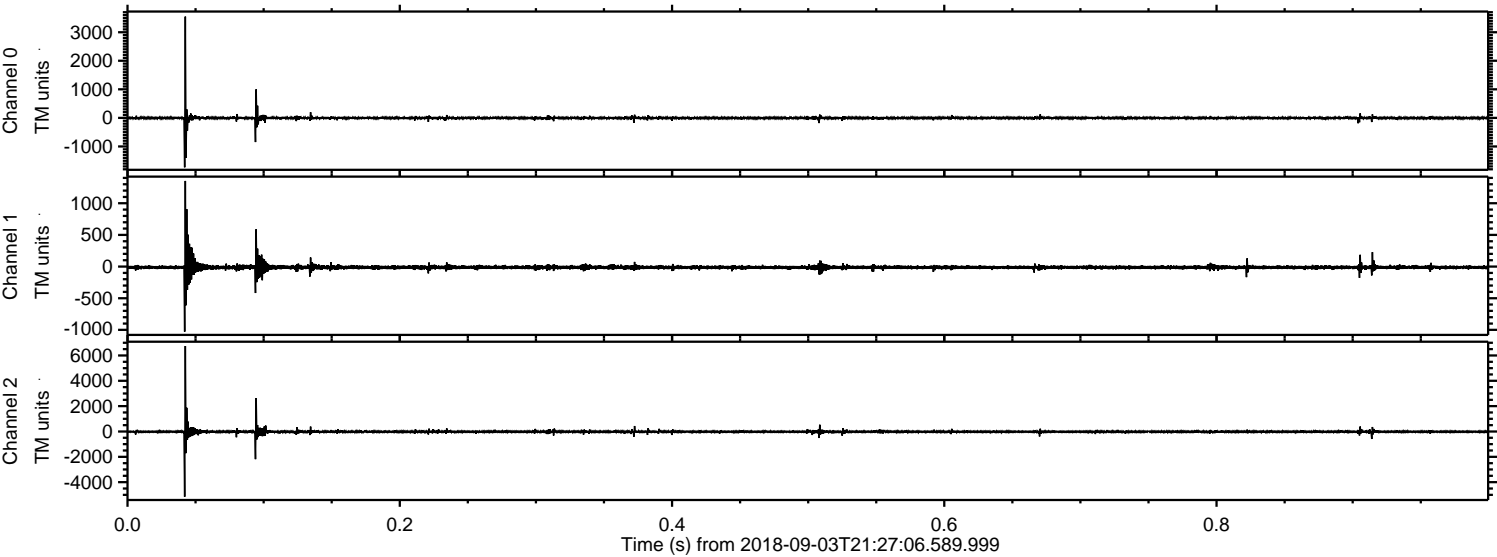
Processed Mon Sep 3 23:35:10 2018 by ELM ver.2012-10-06 from 001__elm20180903_212705__dat00.bin



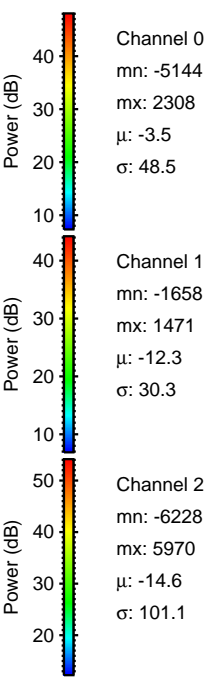
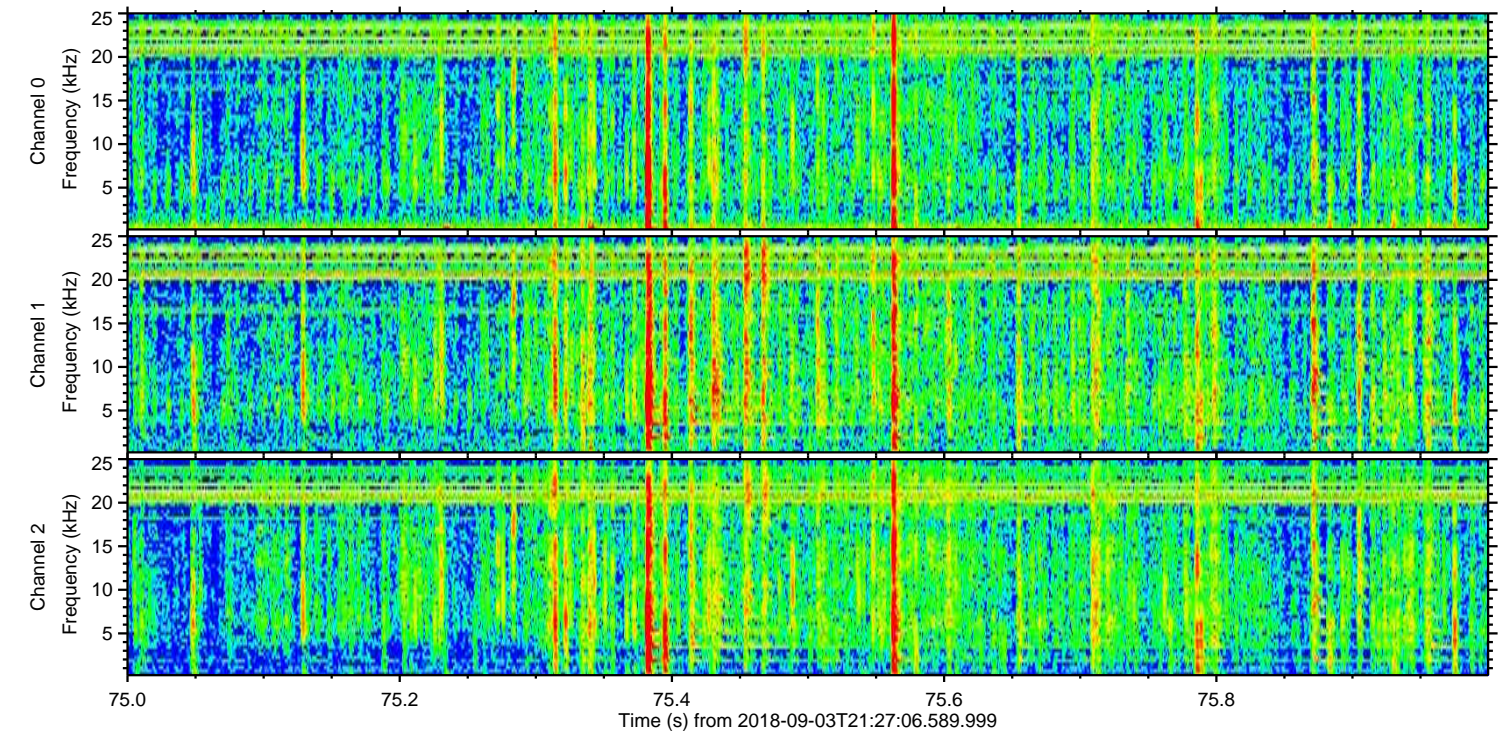
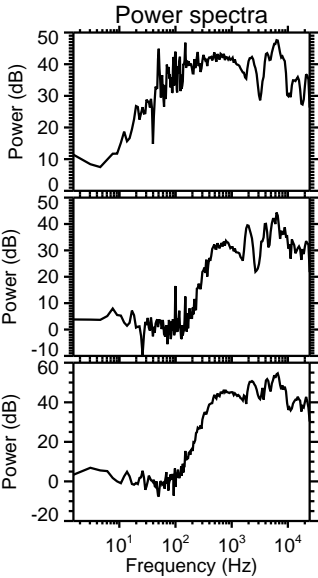
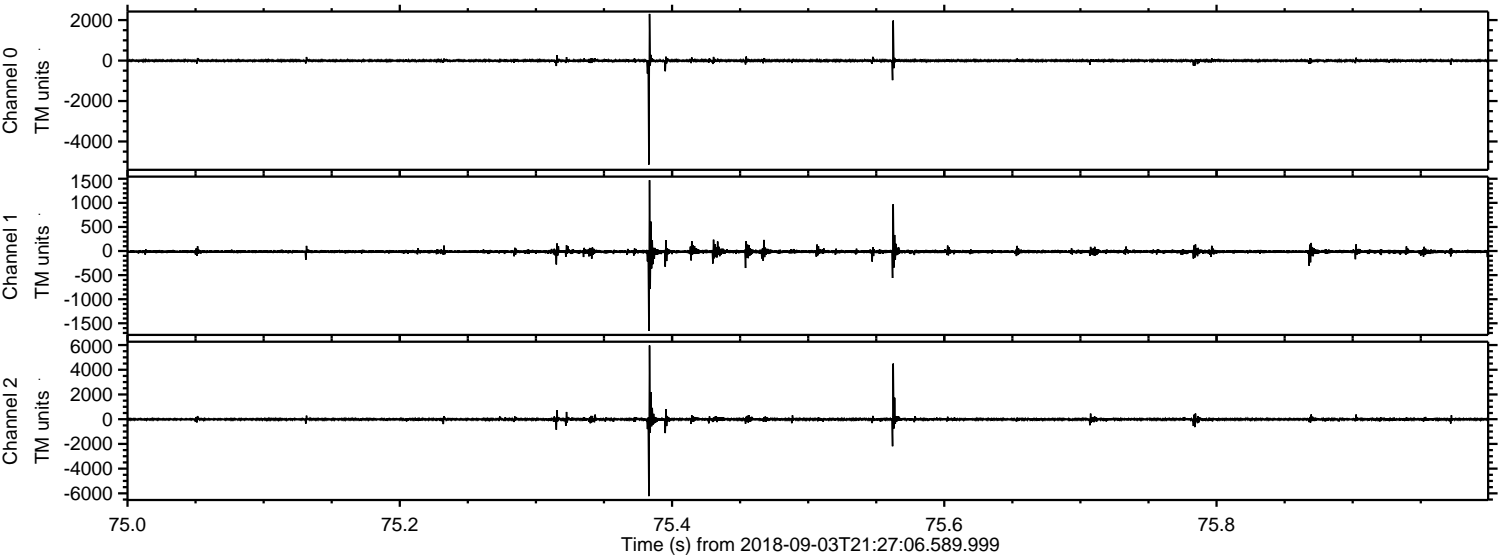
Processed Mon Sep 3 23:35:10 2018 by ELM ver.2012-10-06 from 001__elm20180903_212705__dat00.bin



Processed Mon Sep 3 23:35:11 2018 by ELM ver.2012-10-06 from 001__elm20180903_212705__dat00.bin

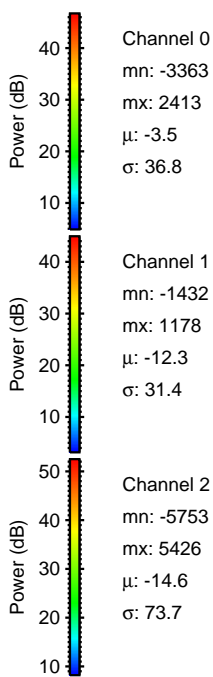
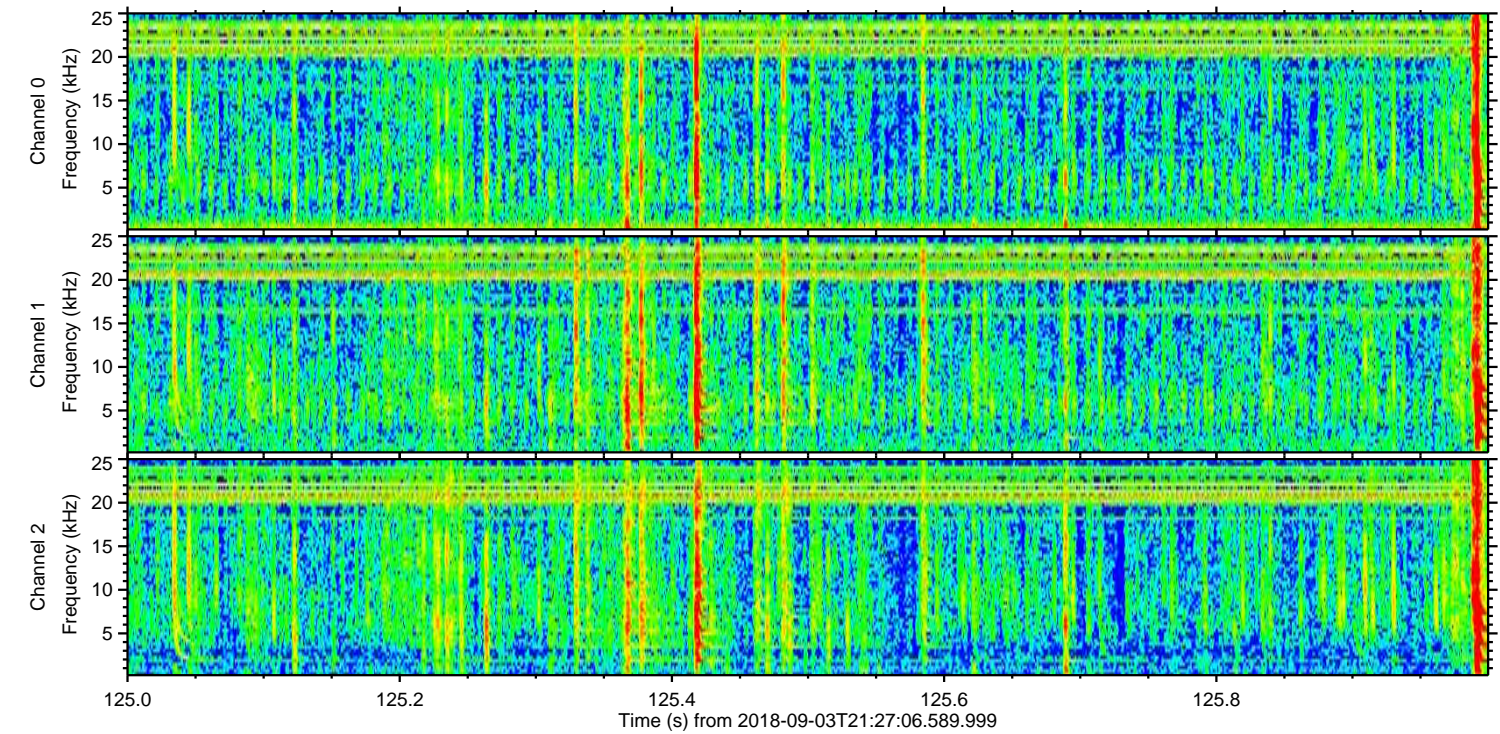
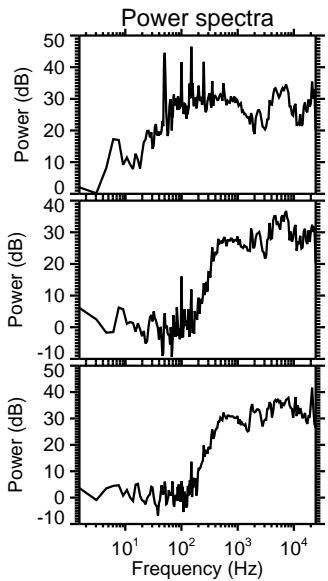
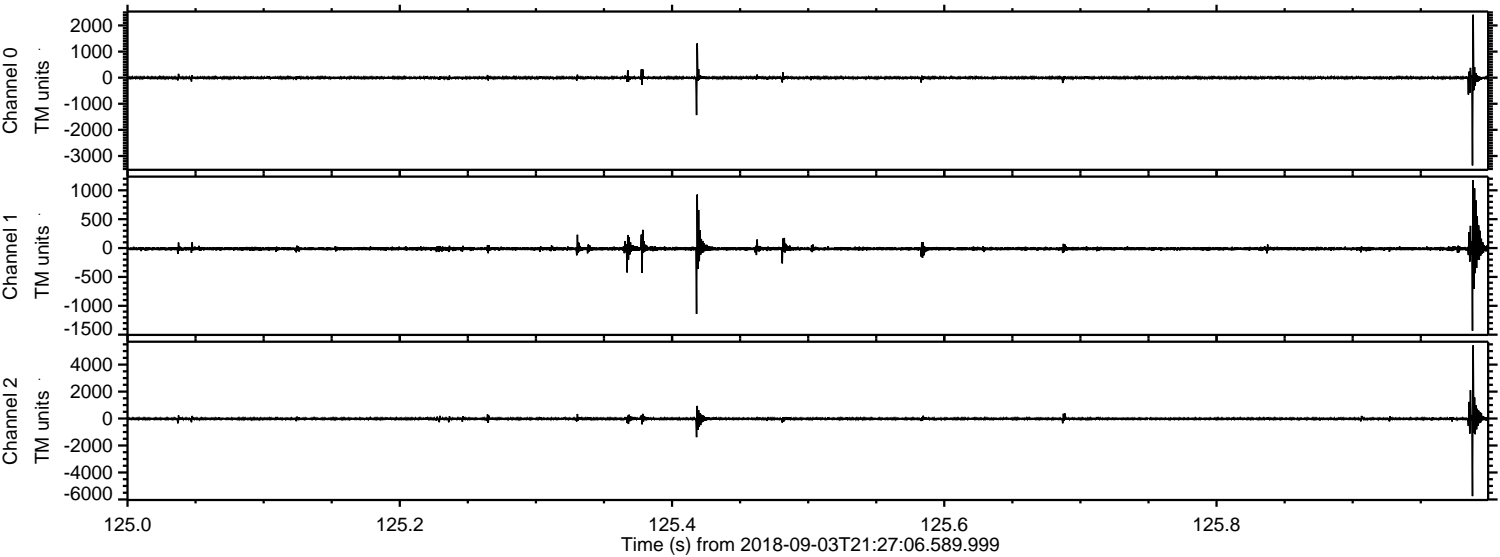


Processed Mon Sep 3 23:35:12 2018 by ELM ver.2012-10-06 from 001__elm20180903_212705__dat00.bin

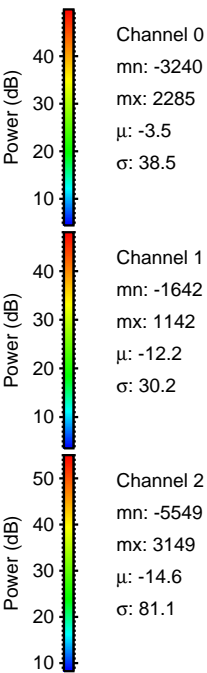
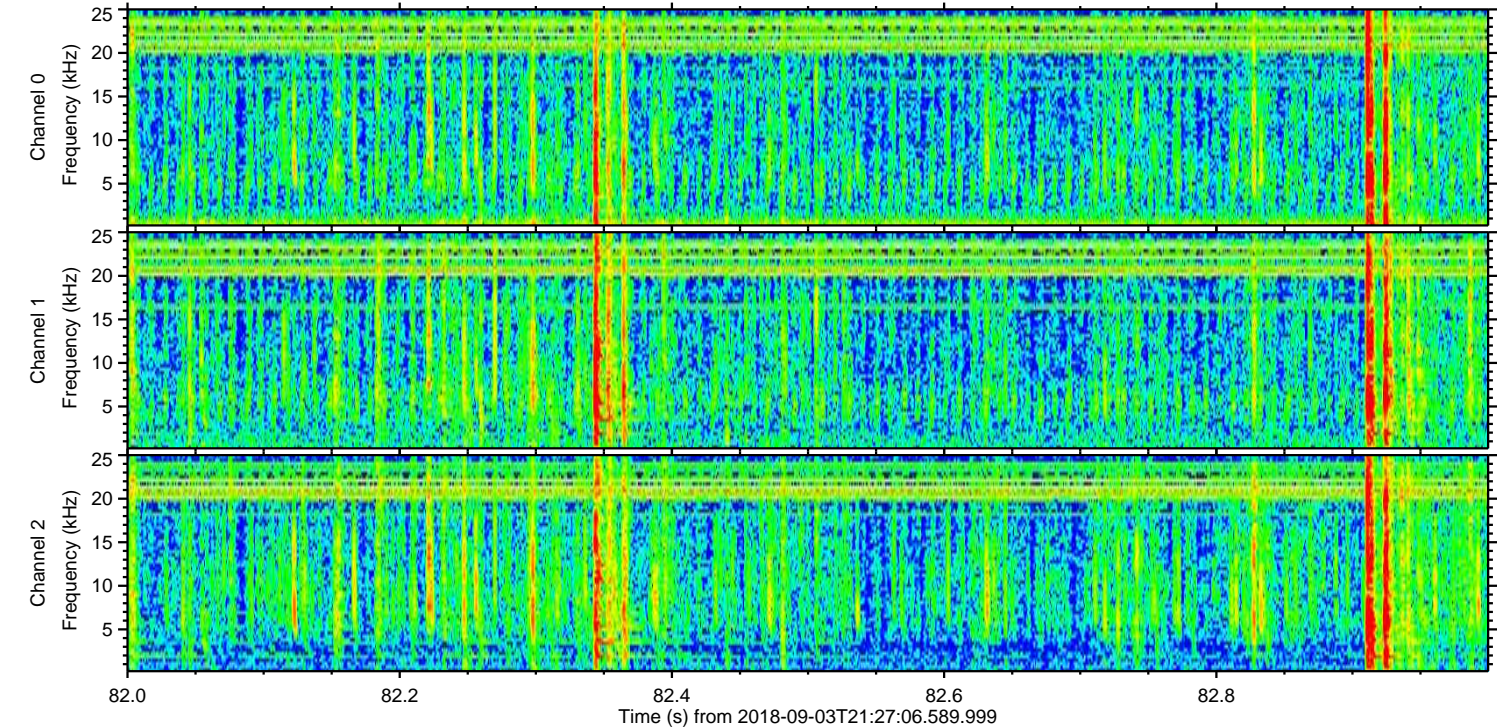
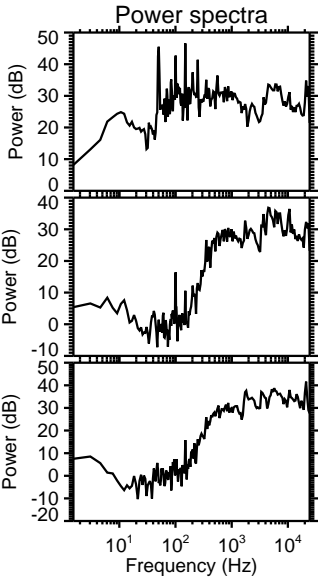
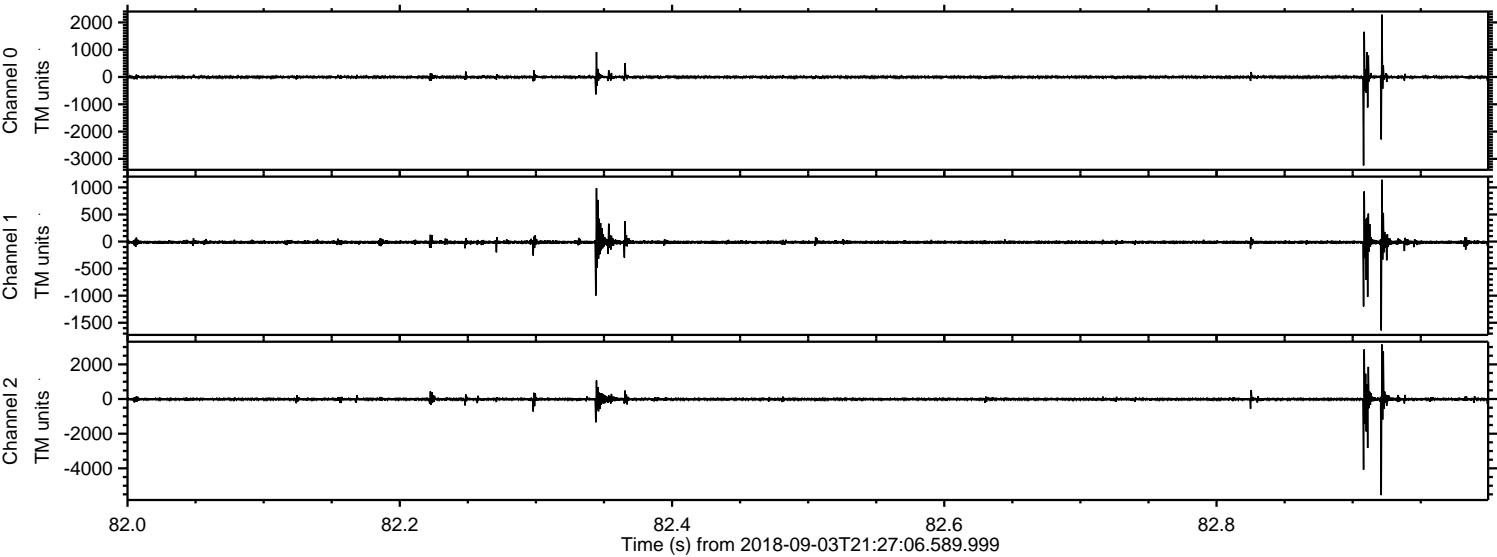


ELMAVAN 3D WAVEFORMS (Measured data sampled at 50 kHz) 51000 packets of 144 samples from 2018-09-03T21:27:06.589.999. Part 126/147

Processed Mon Sep 3 23:35:13 2018 by ELM ver.2012-10-06 from 001__elm20180903_212705__dat00.bin

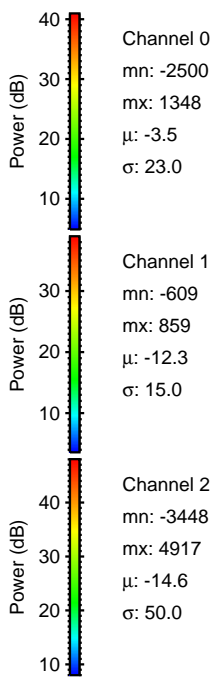
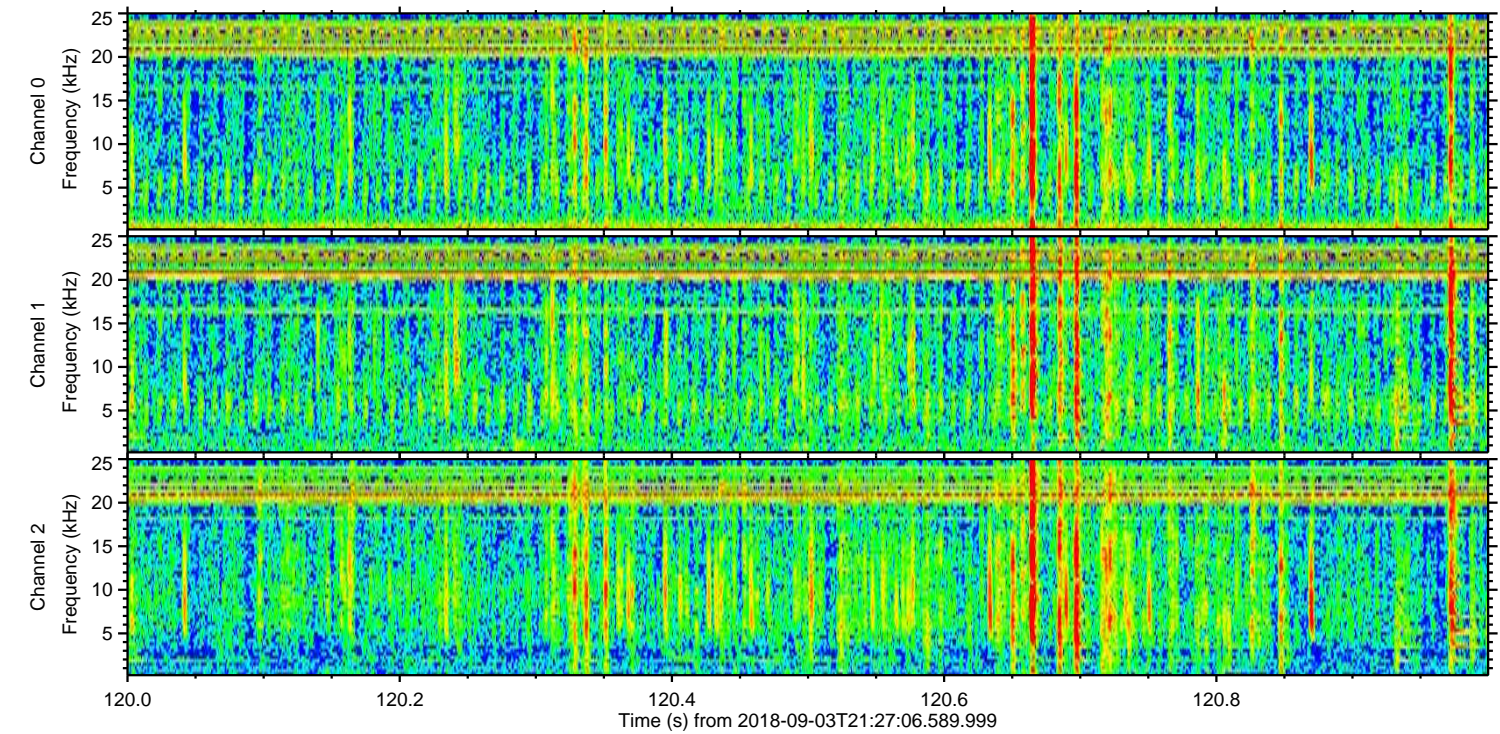
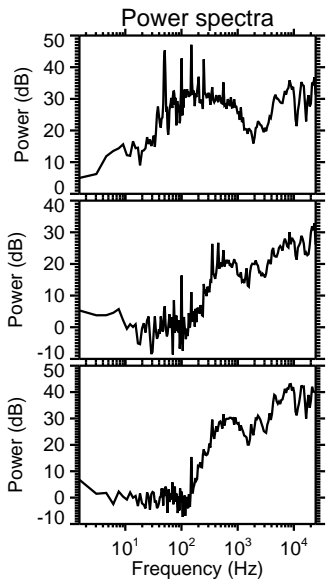
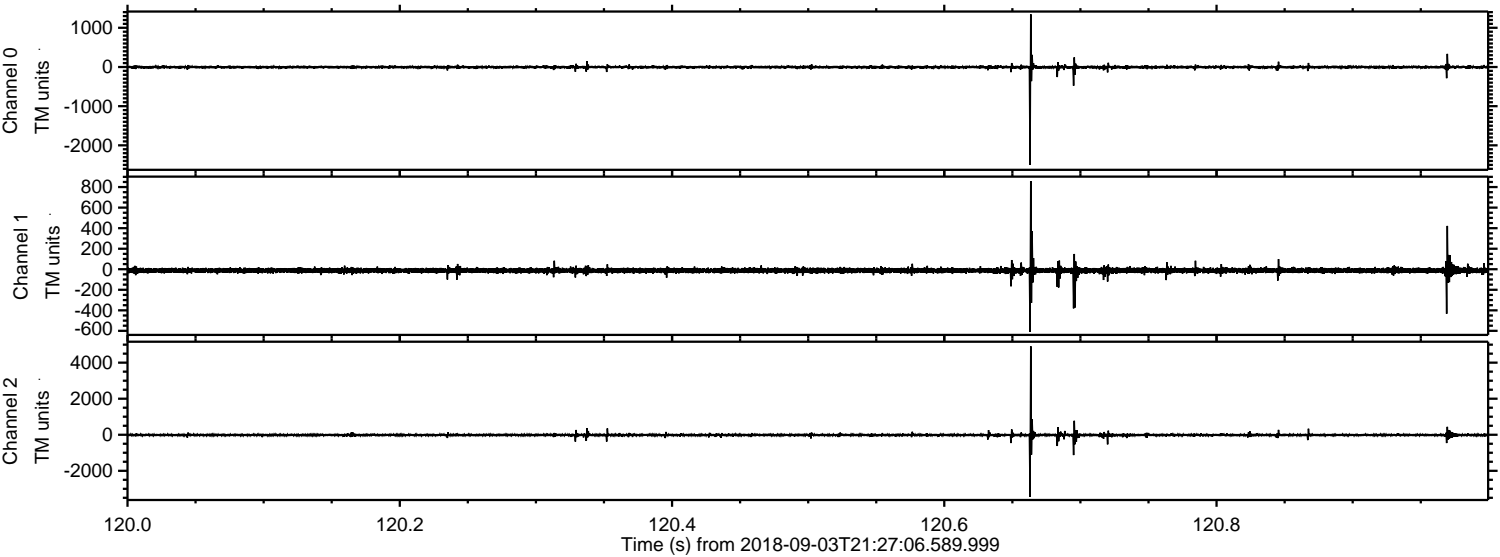


Processed Mon Sep 3 23:35:13 2018 by ELM ver.2012-10-06 from 001__elm20180903_212705__dat00.bin



ELMAVAN 3D WAVEFORMS (Measured data sampled at 50 kHz) 51000 packets of 144 samples from 2018-09-03T21:27:06.589.999. Part 121/147

Processed Mon Sep 3 23:35:14 2018 by ELM ver.2012-10-06 from 001__elm20180903_212705__dat00.bin

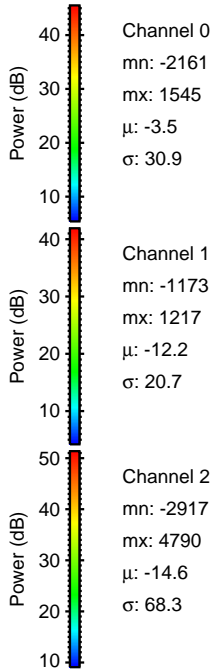
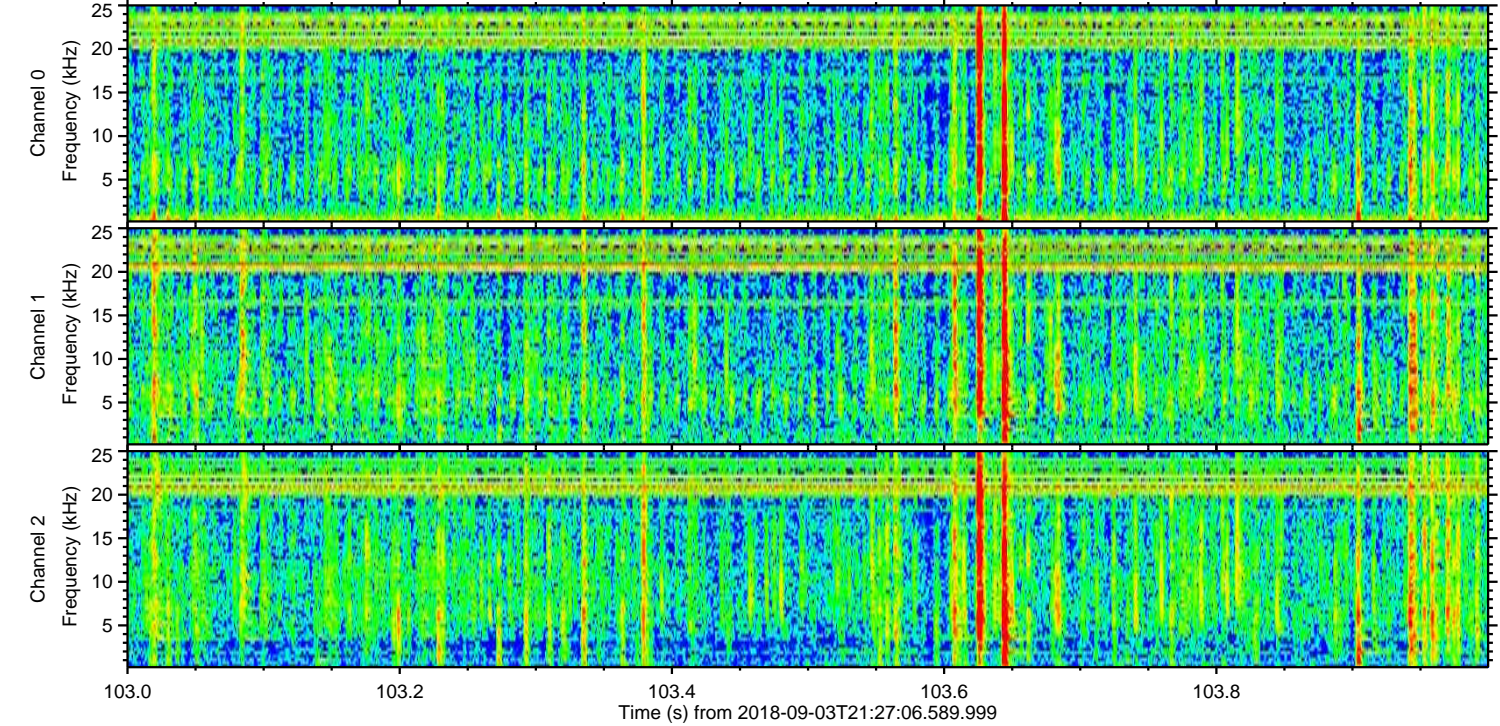
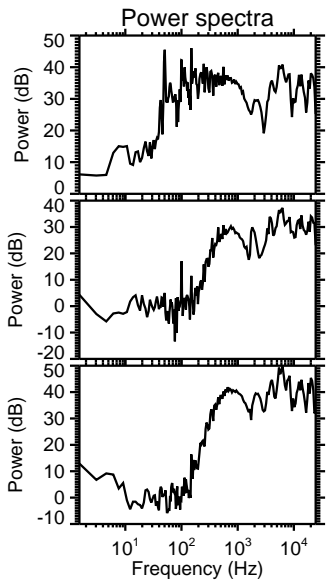
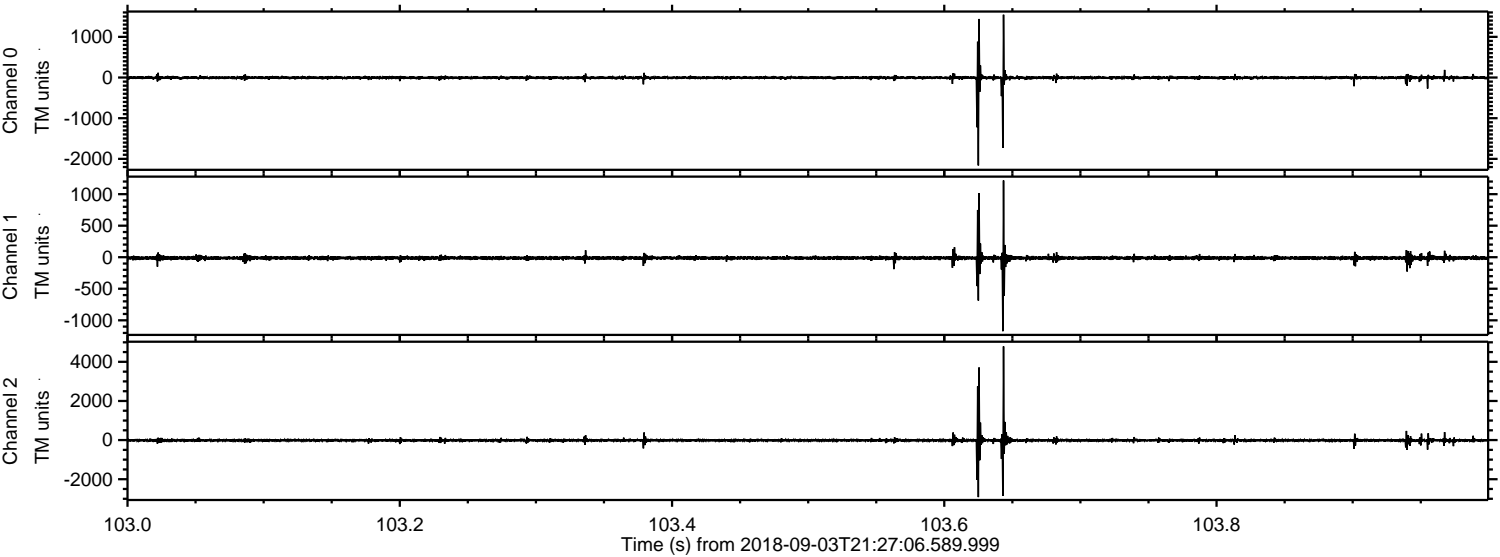


Channel 0
mn: -2500
mx: 1348
 μ : -3.5
 σ : 23.0

Channel 1
mn: -609
mx: 859
 μ : -12.3
 σ : 15.0

Channel 2
mn: -3448
mx: 4917
 μ : -14.6
 σ : 50.0

Processed Mon Sep 3 23:35:15 2018 by ELM ver.2012-10-06 from 001__elm20180903_212705__dat00.bin



Processed Mon Sep 3 23:35:15 2018 by ELM ver.2012-10-06 from 001__elm20180903_212705__dat00.bin

