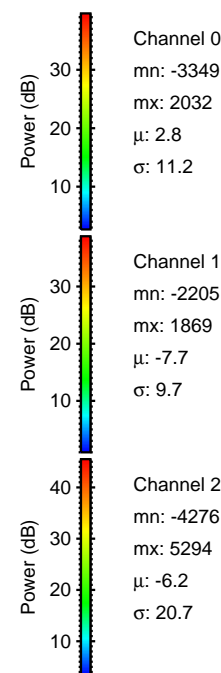
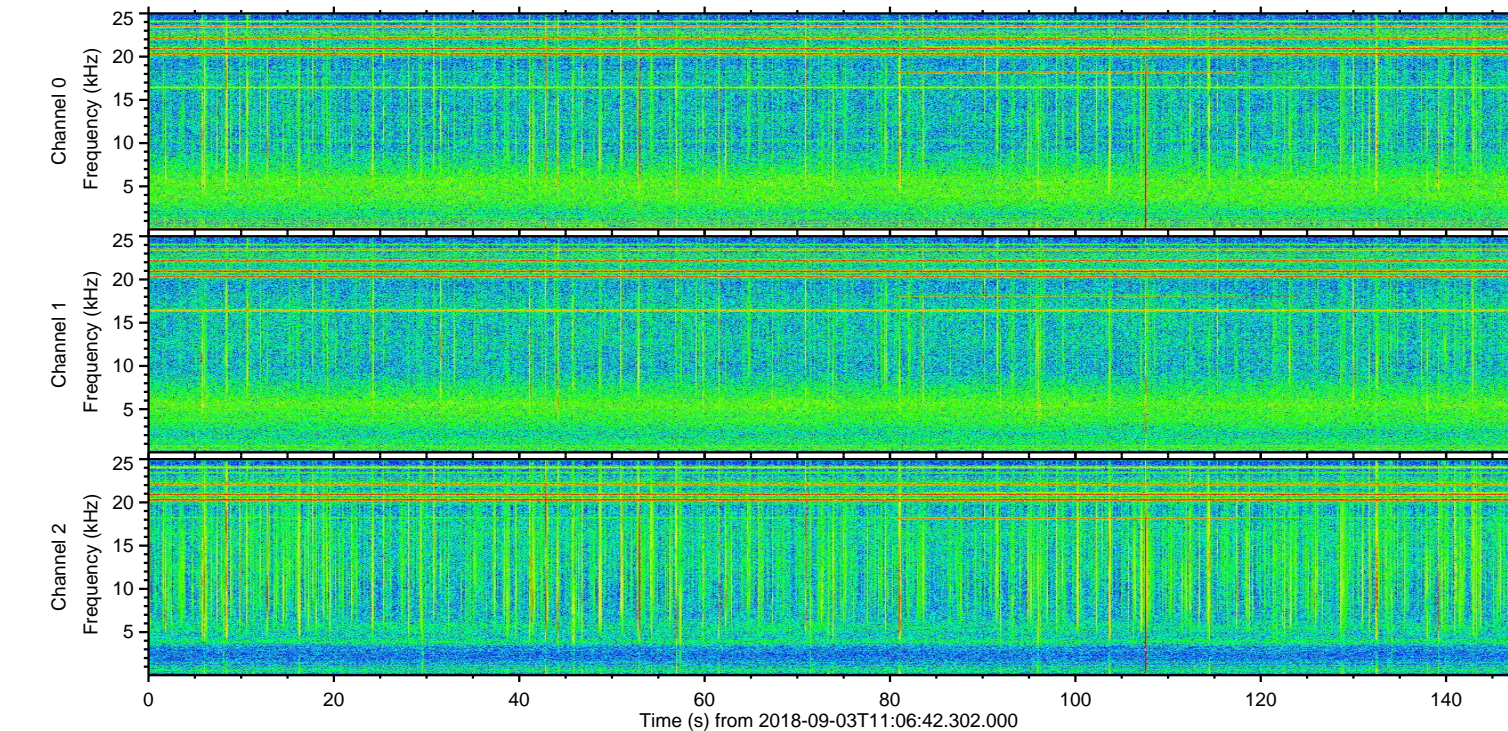
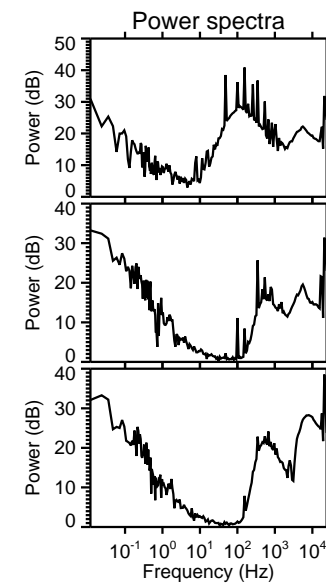
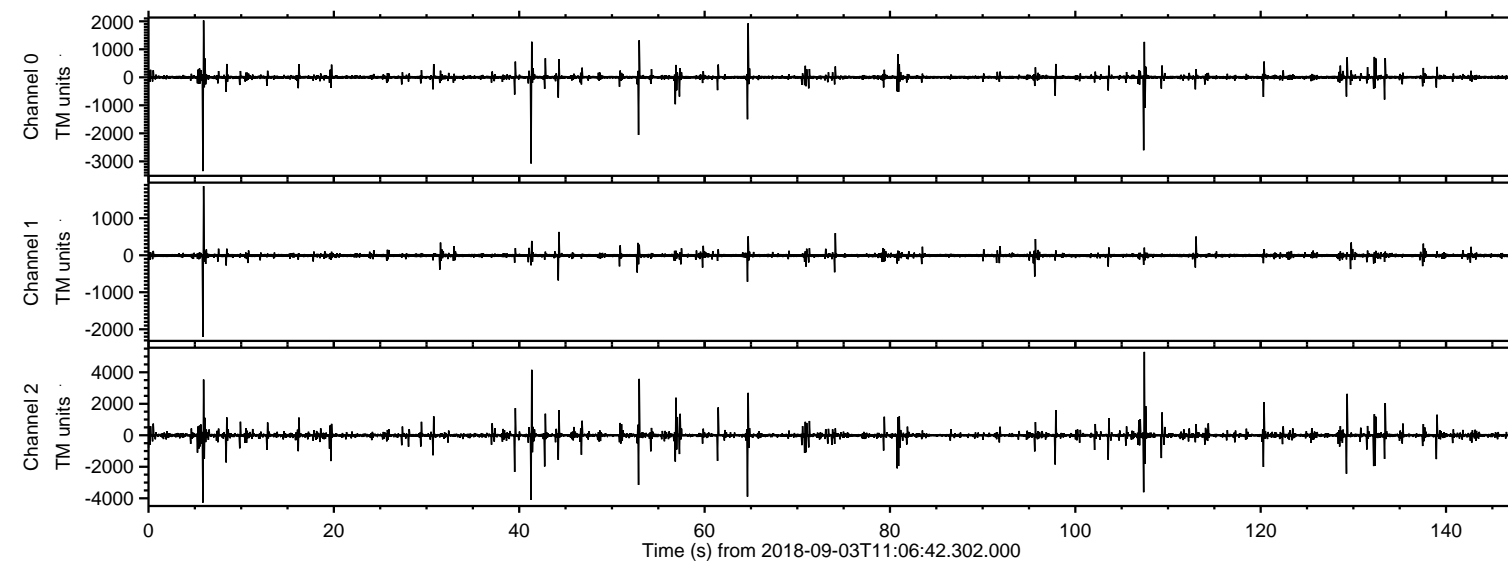


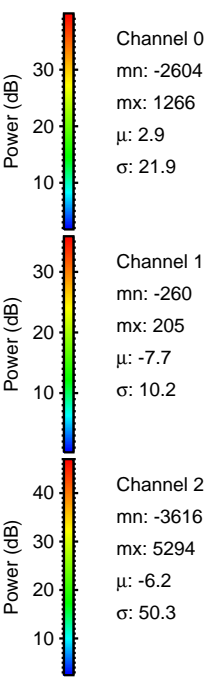
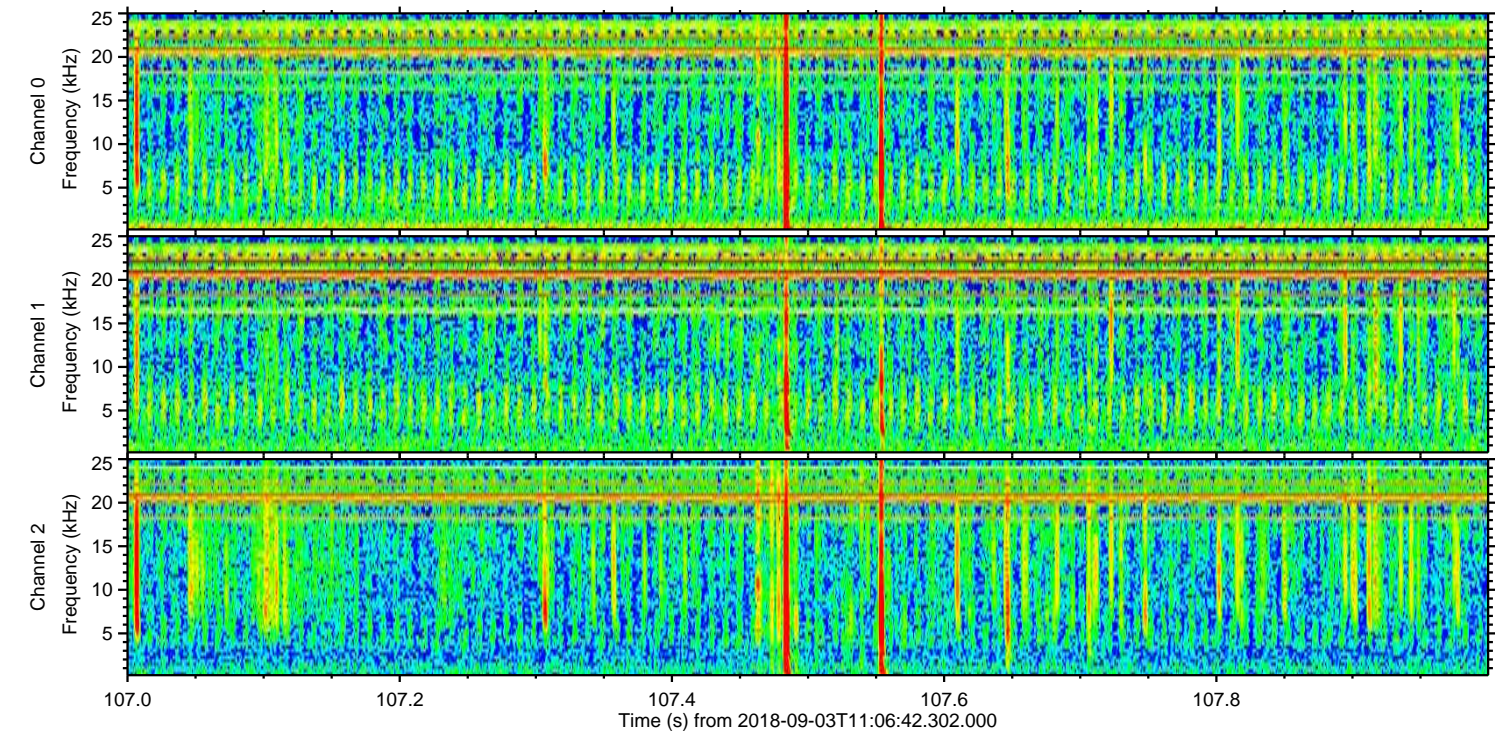
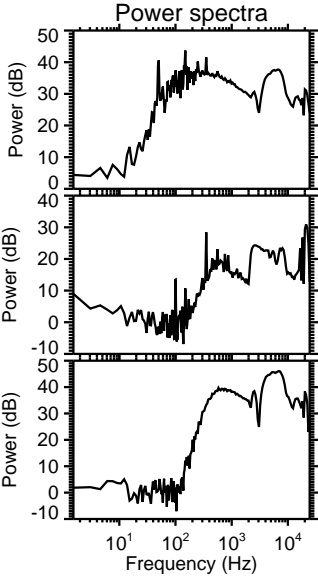
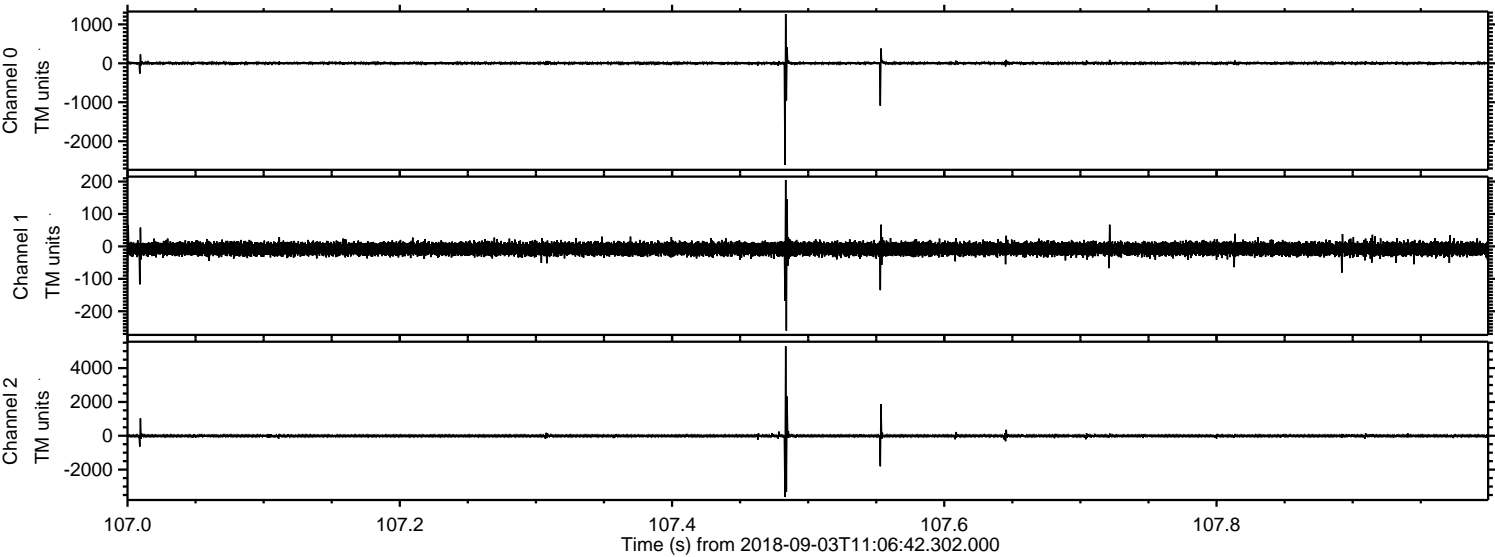
ELMAVAN 3D WAVEFORMS (Measured data sampled at 50 kHz) 51000 packets of 144 samples from 2018-09-03T11:06:42.302.000.

Processed Mon Sep 3 13:14:20 2018 by ELM ver.2012-10-06 from 001__elm20180903_110641__dat00.bin



ELMAVAN 3D WAVEFORMS (Measured data sampled at 50 kHz) 51000 packets of 144 samples from 2018-09-03T11:06:42.302.000. Part 108/147

Processed Mon Sep 3 13:14:27 2018 by ELM ver.2012-10-06 from 001__elm20180903_110641__dat00.bin

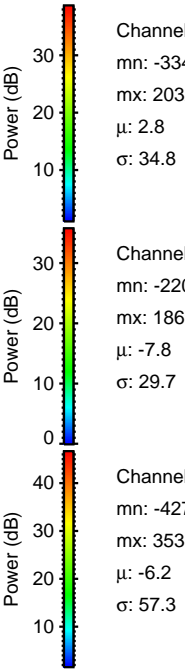
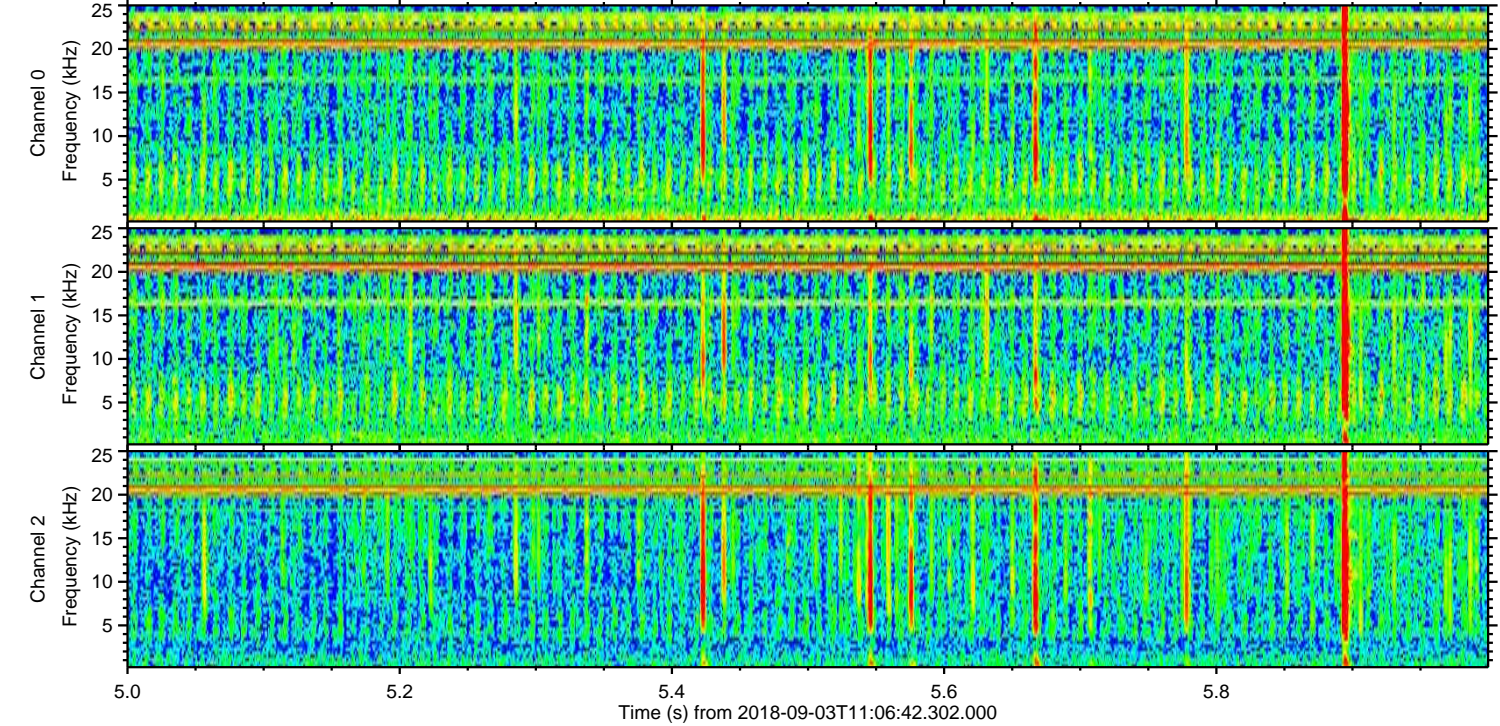
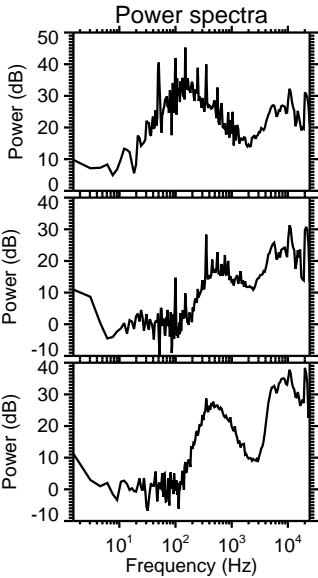
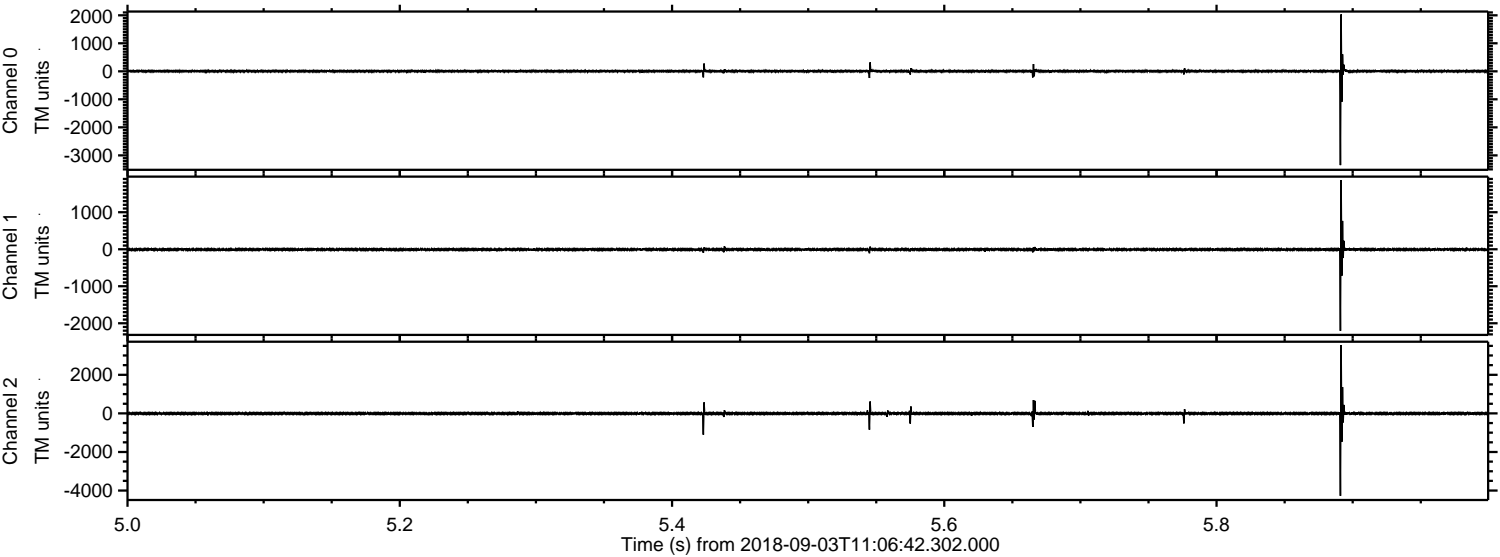


Channel 0
mn: -2604
mx: 1266
 μ : 2.9
 σ : 21.9

Channel 1
mn: -260
mx: 205
 μ : -7.7
 σ : 10.2

Channel 2
mn: -3616
mx: 5294
 μ : -6.2
 σ : 50.3

Processed Mon Sep 3 13:14:28 2018 by ELM ver.2012-10-06 from 001__elm20180903_110641__dat00.bin



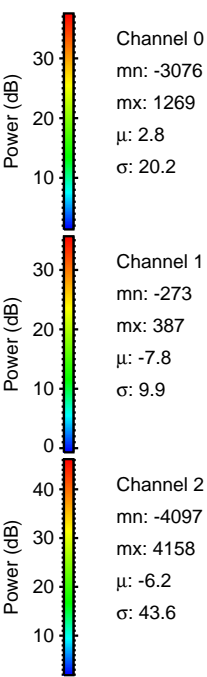
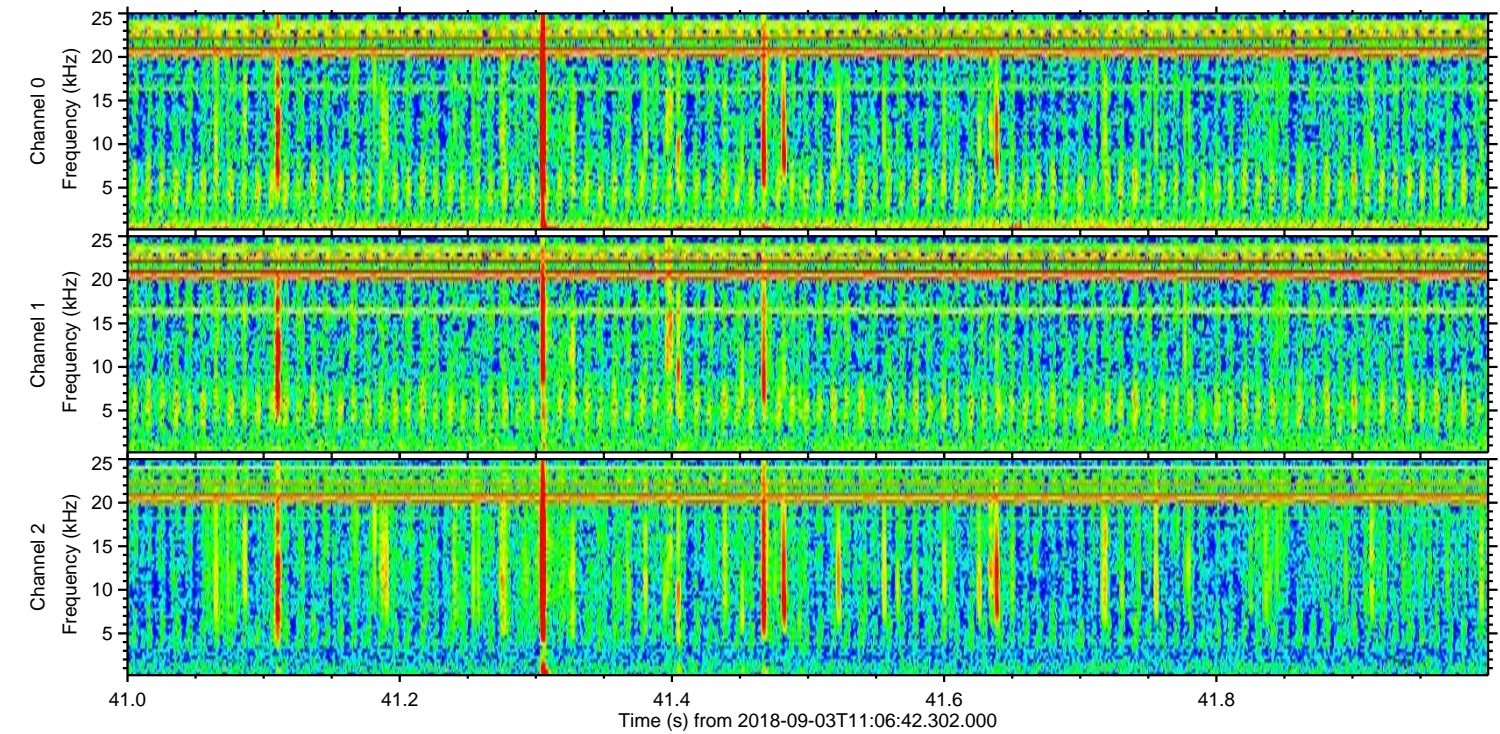
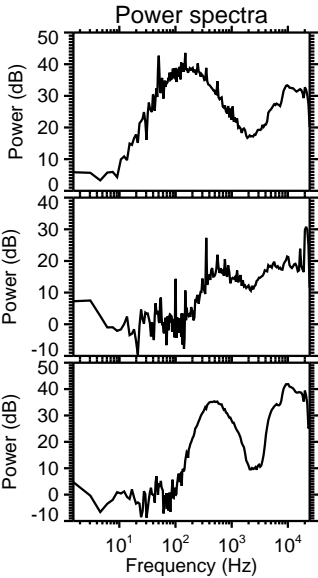
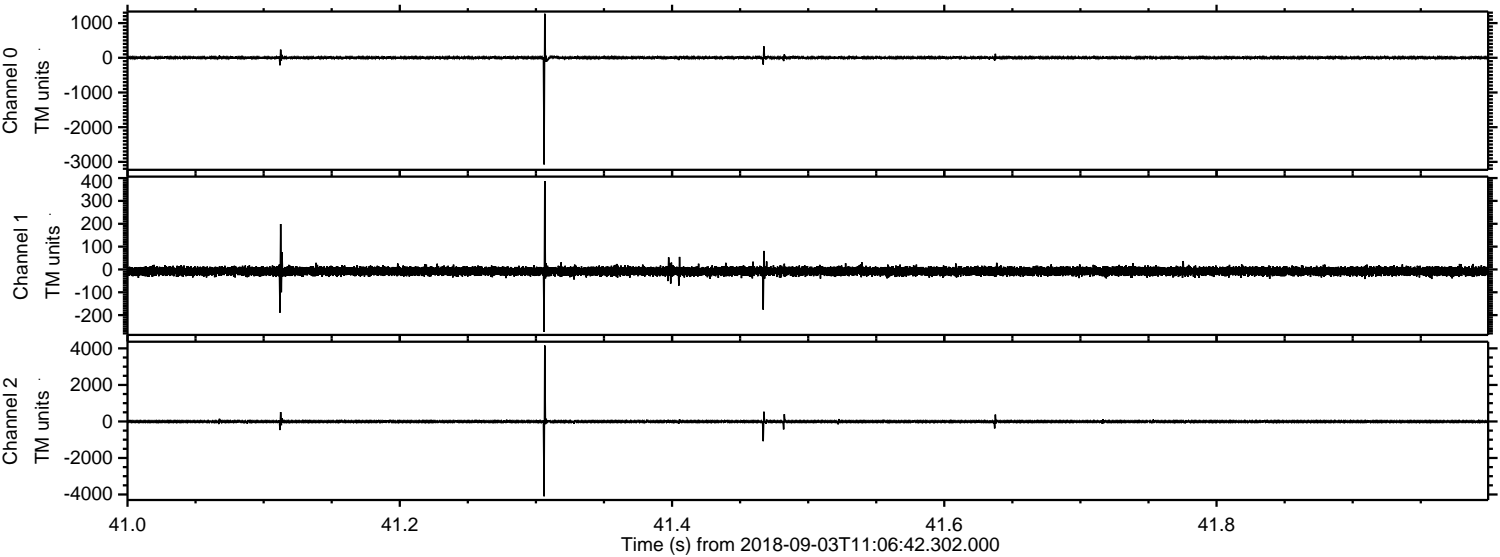
Power spectra

Channel 0
mn: -3349
mx: 2032
 μ : 2.8
 σ : 34.8

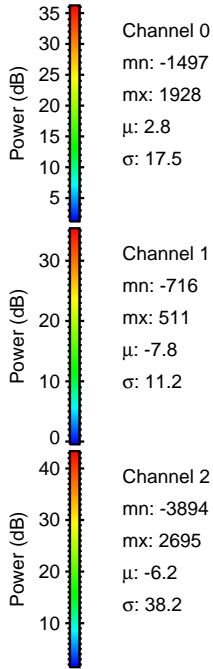
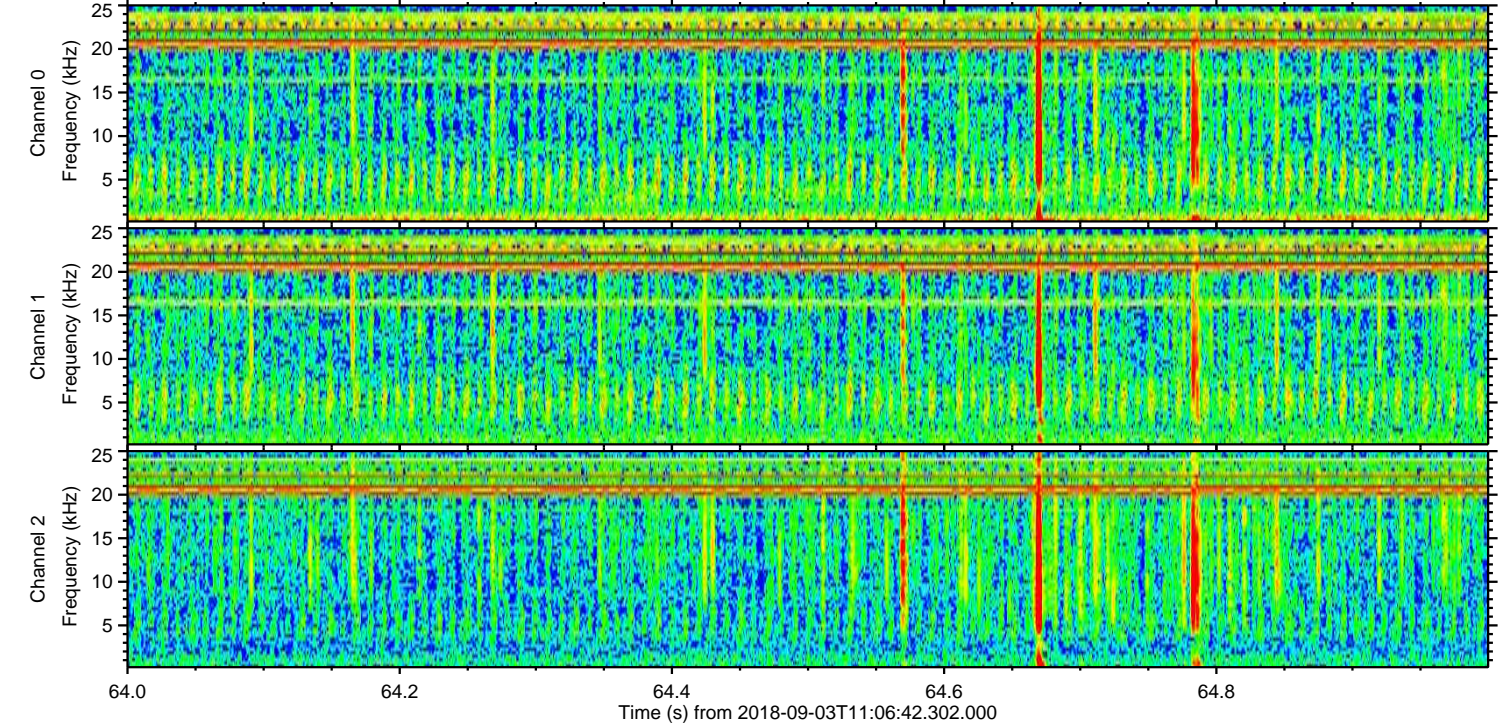
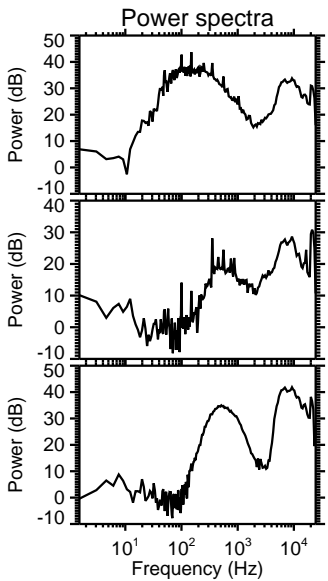
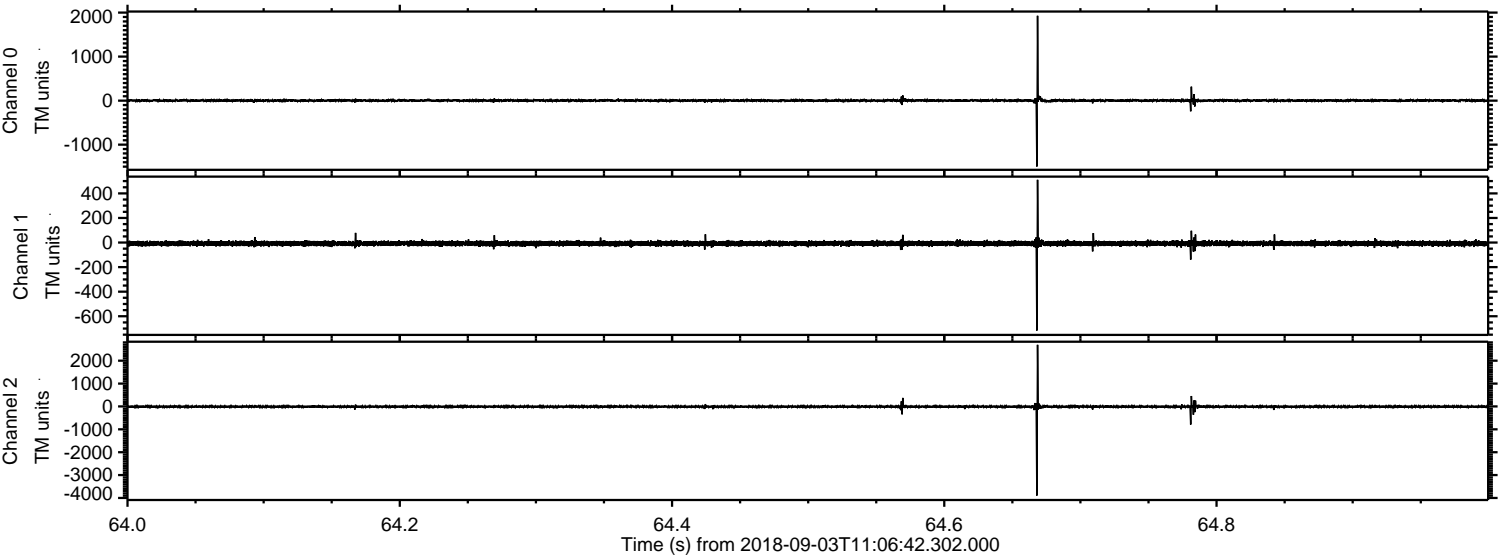
Channel 1
mn: -2205
mx: 1869
 μ : -7.8
 σ : 29.7

Channel 2
mn: -4276
mx: 3538
 μ : -6.2
 σ : 57.3

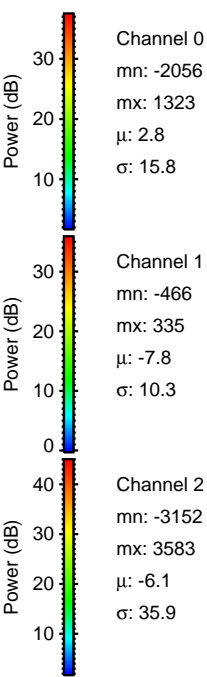
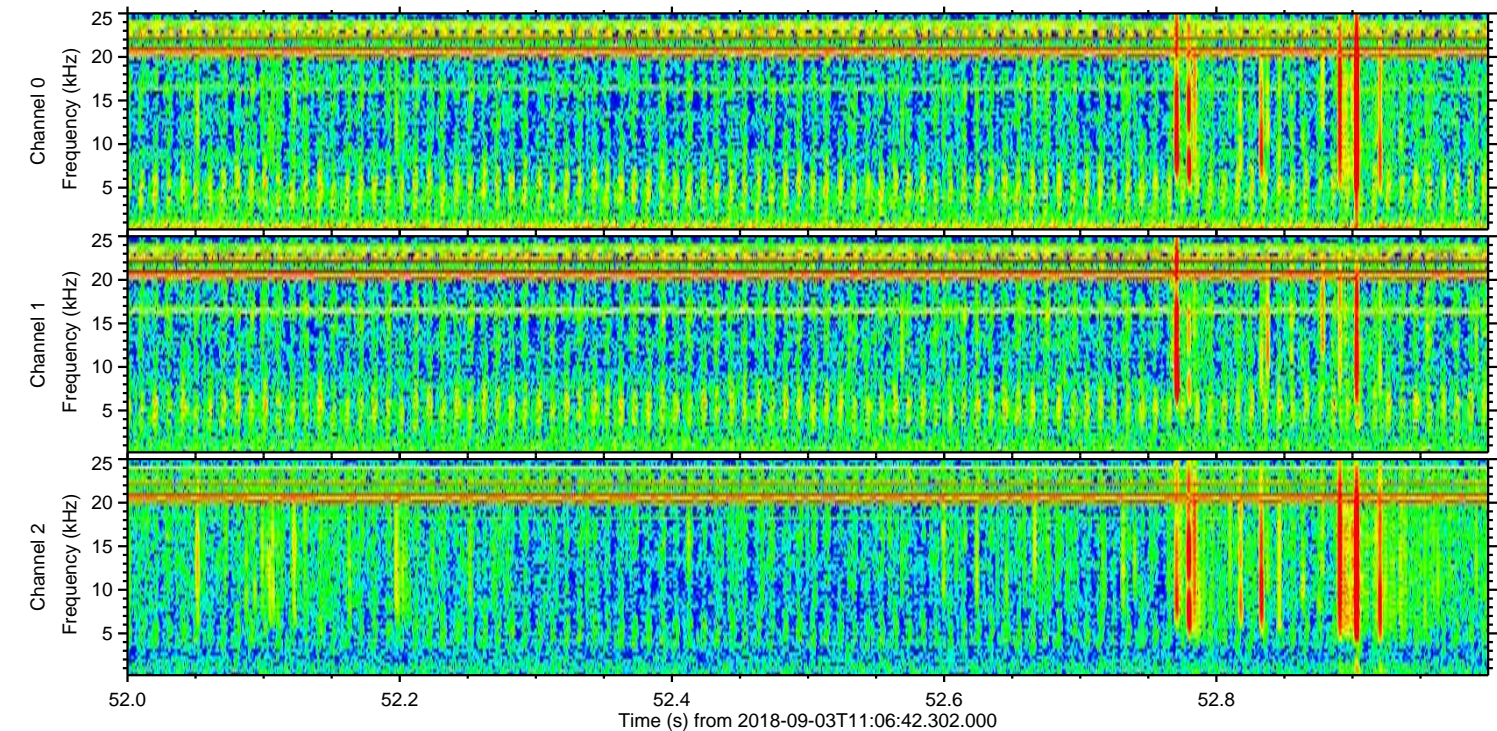
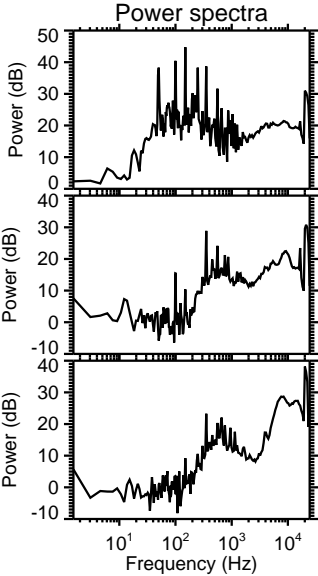
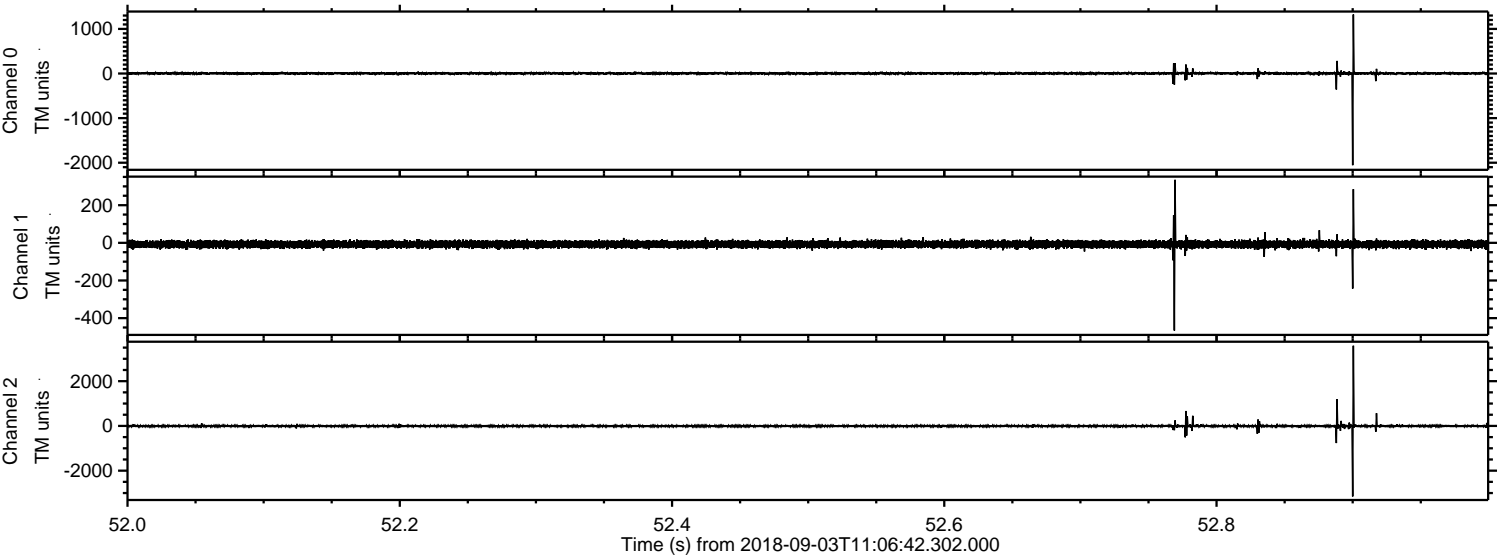
Processed Mon Sep 3 13:14:28 2018 by ELM ver.2012-10-06 from 001__elm20180903_110641__dat00.bin



Processed Mon Sep 3 13:14:29 2018 by ELM ver.2012-10-06 from 001__elm20180903_110641__dat00.bin

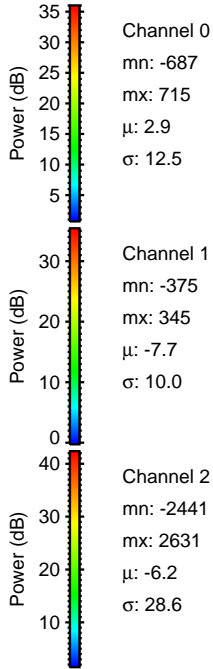
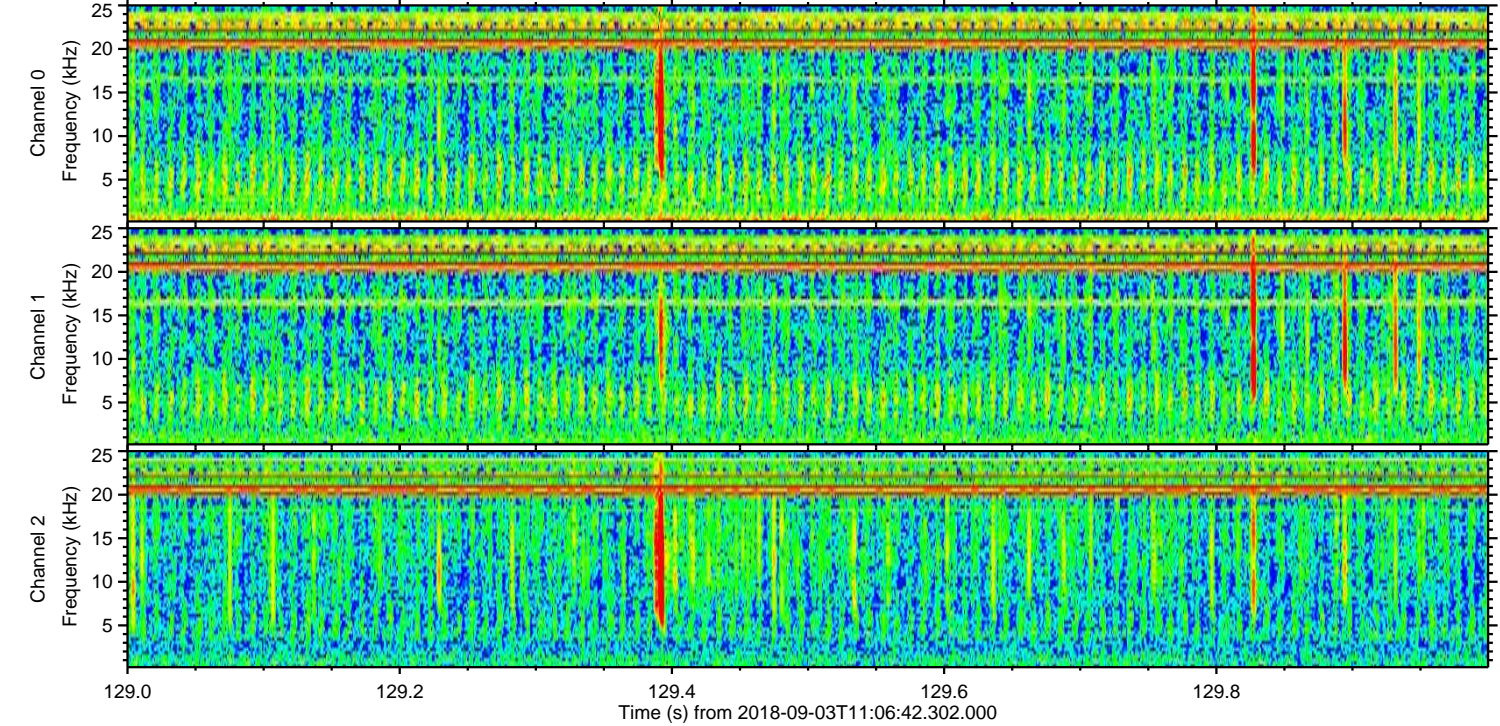
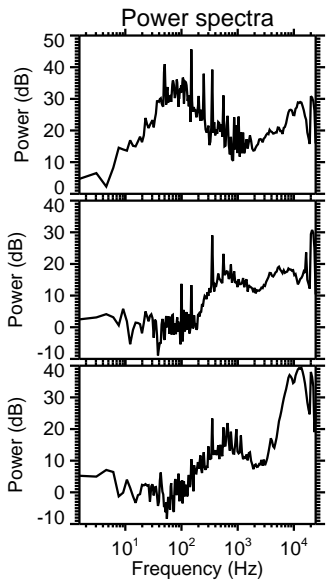
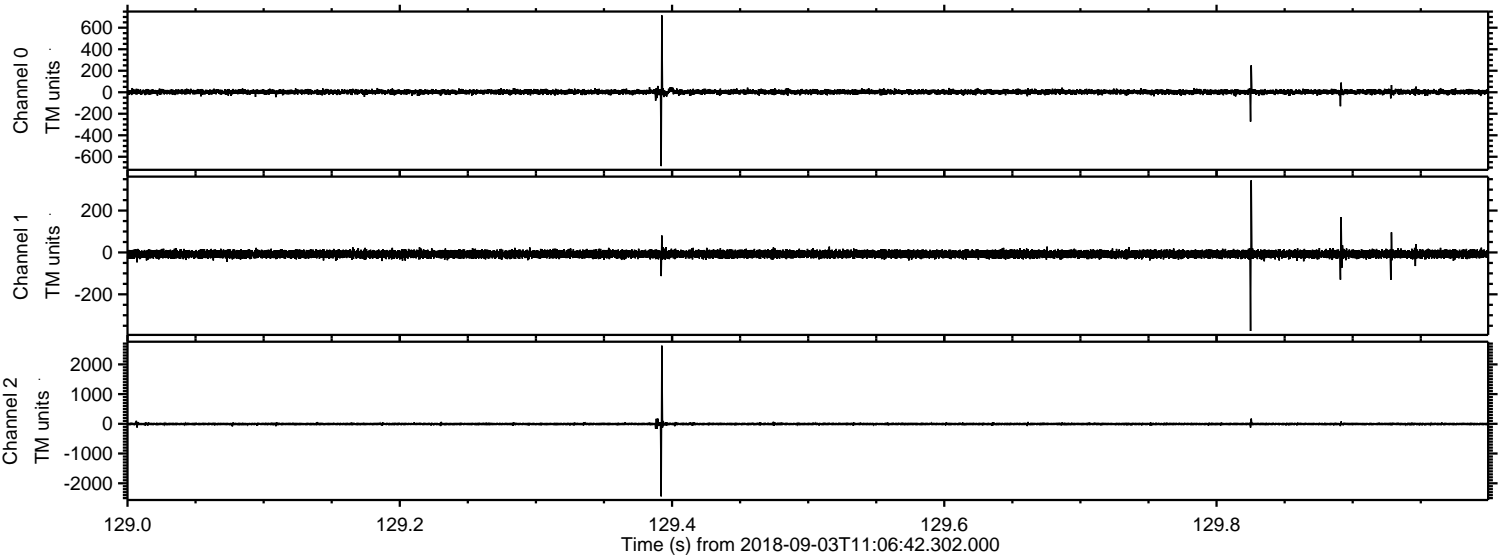


Processed Mon Sep 3 13:14:30 2018 by ELM ver.2012-10-06 from 001__elm20180903_110641__dat00.bin

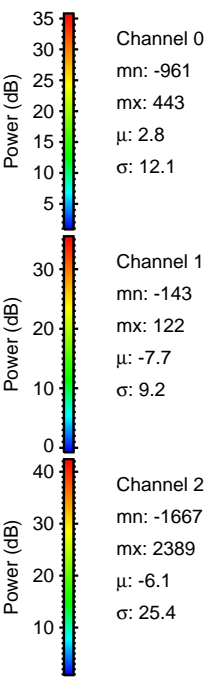
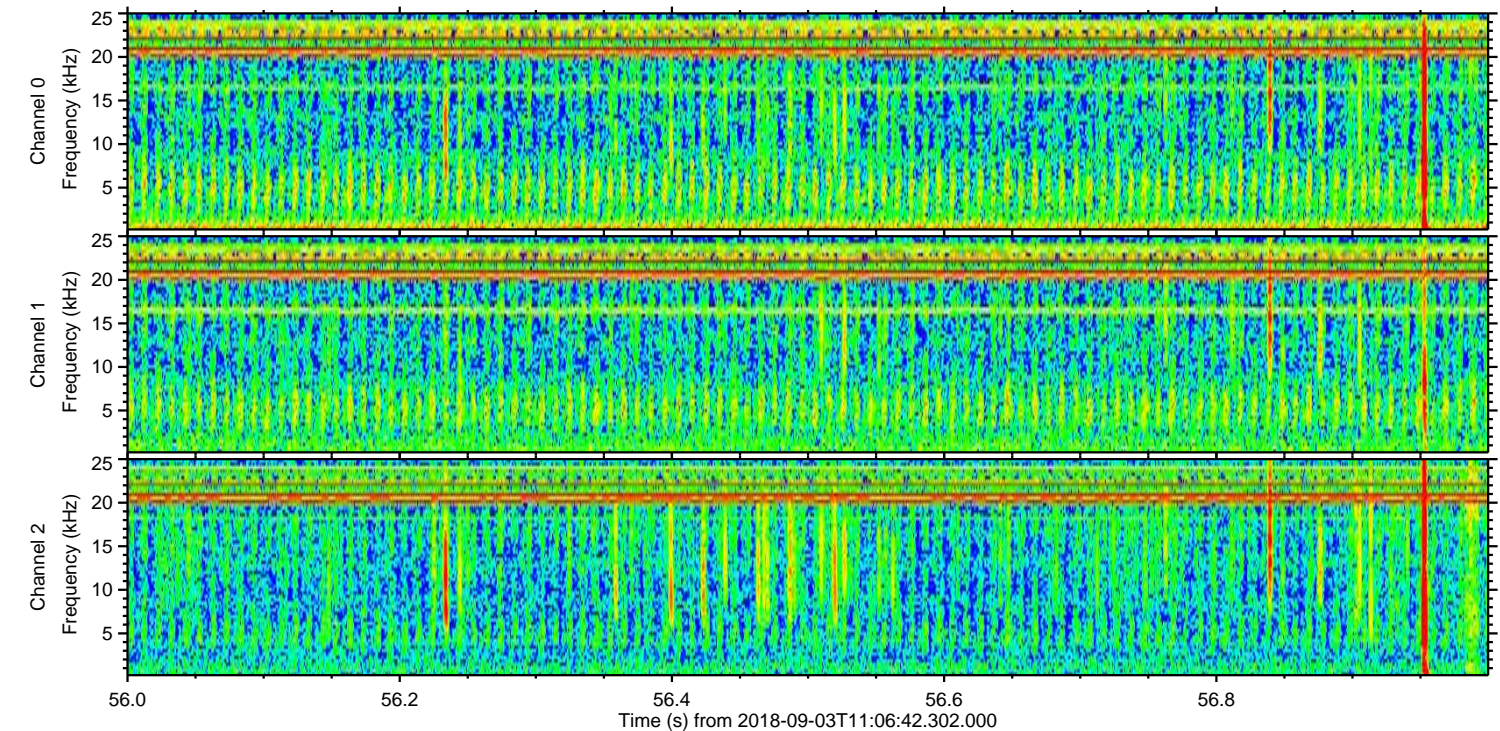
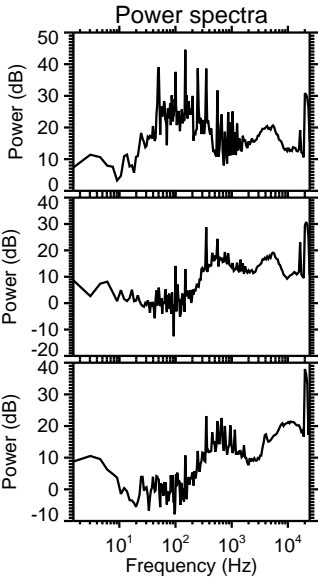
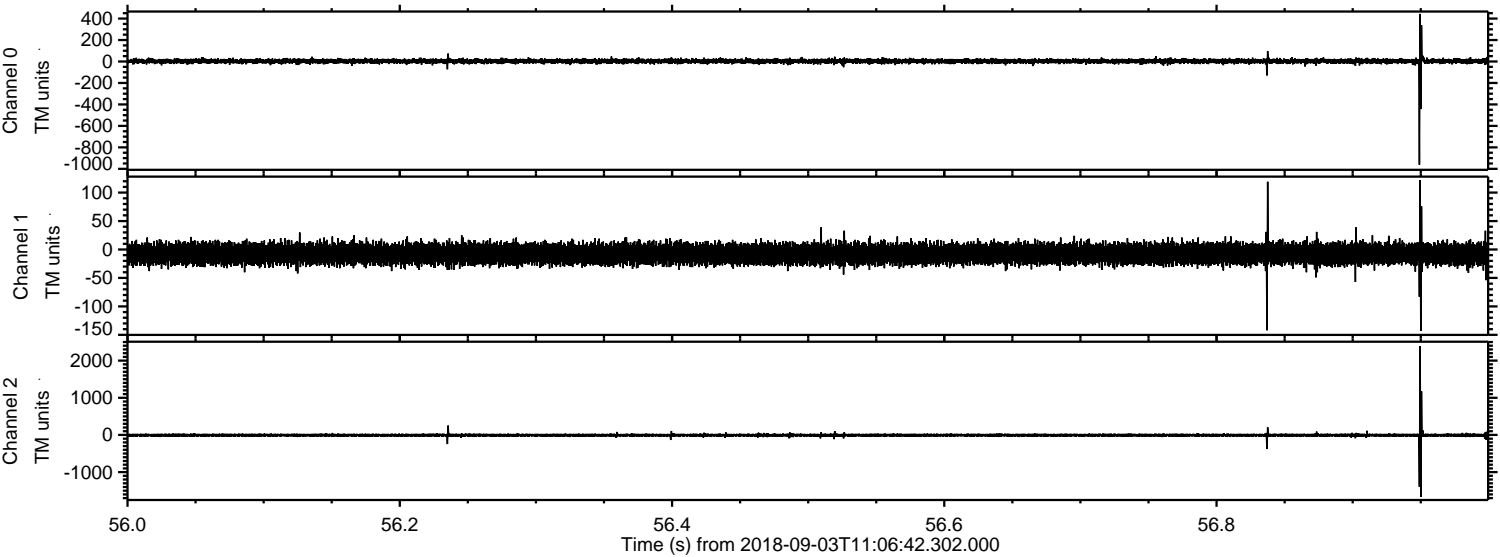


ELMAVAN 3D WAVEFORMS (Measured data sampled at 50 kHz) 51000 packets of 144 samples from 2018-09-03T11:06:42.302.000. Part 130/147

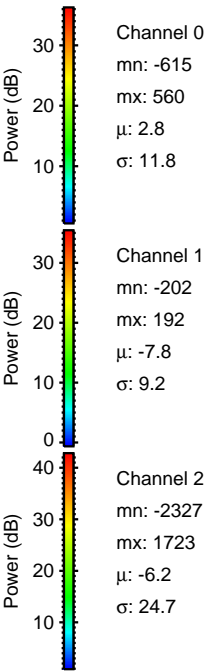
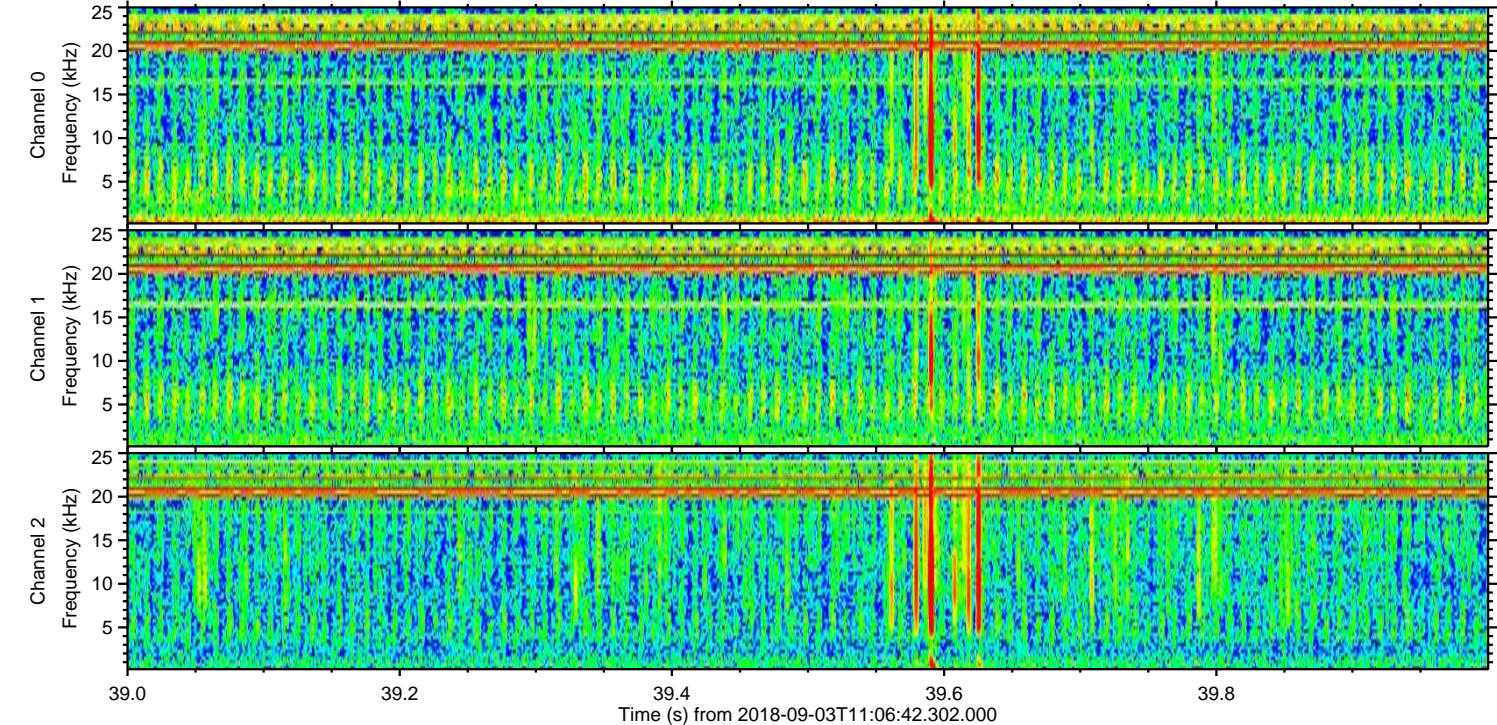
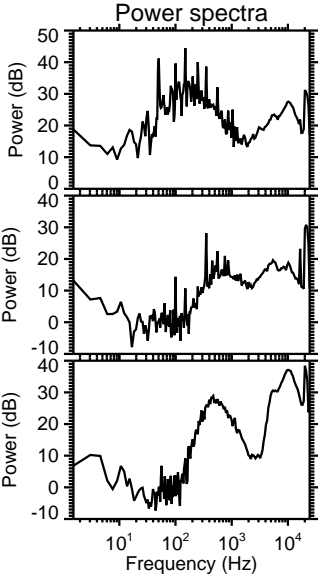
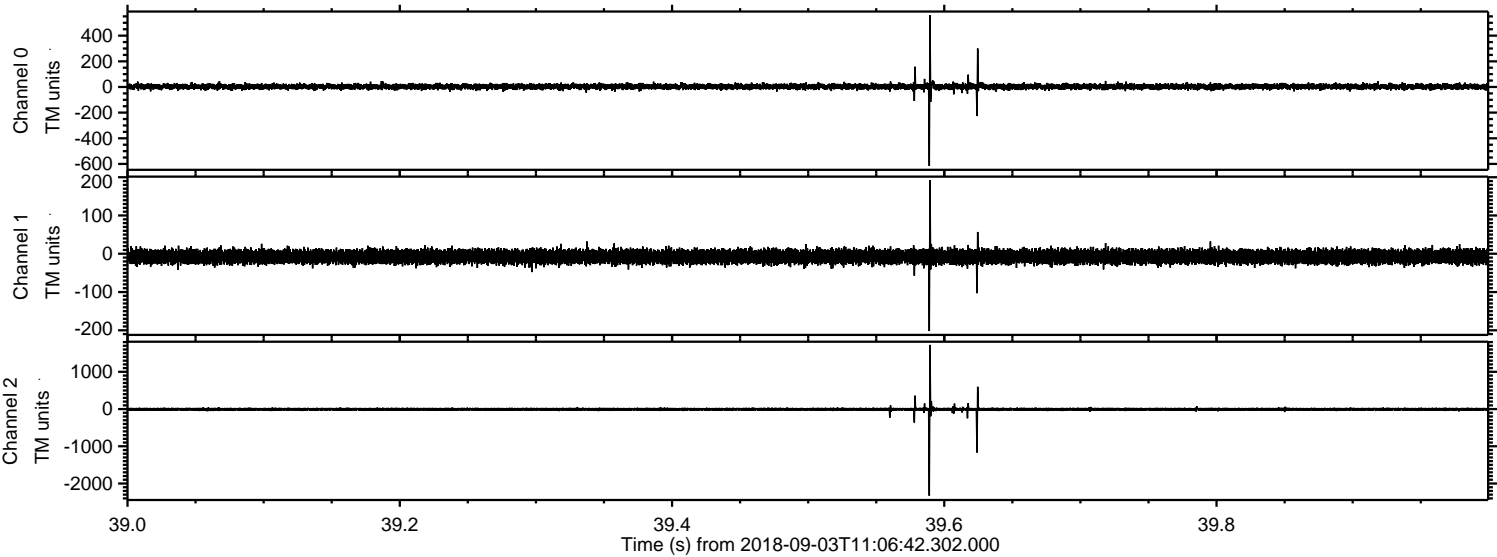
Processed Mon Sep 3 13:14:30 2018 by ELM ver.2012-10-06 from 001__elm20180903_110641__dat00.bin



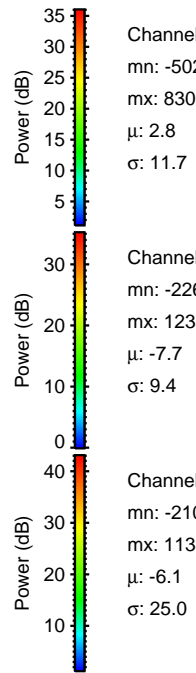
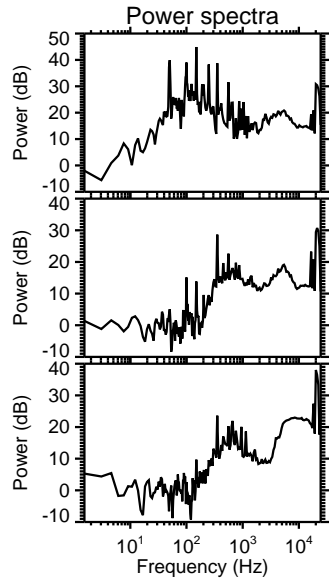
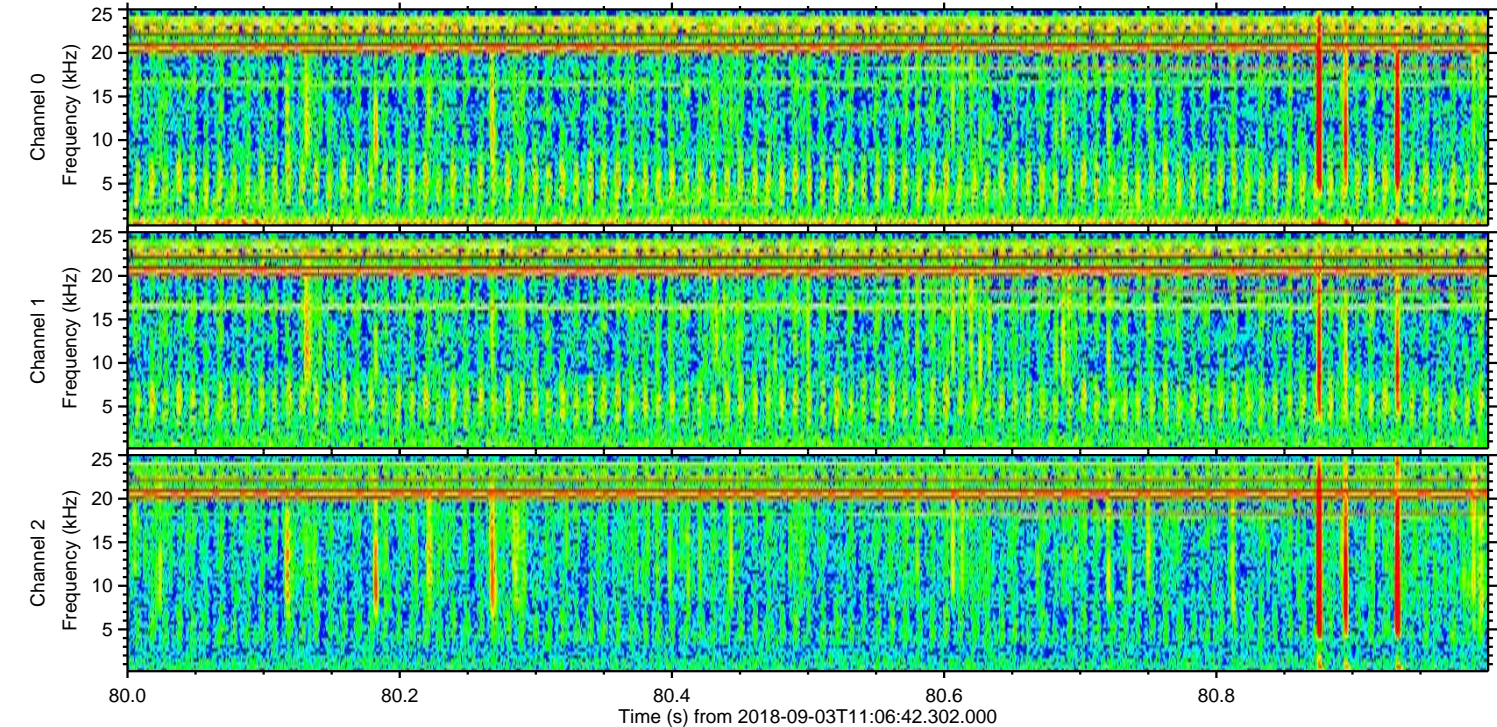
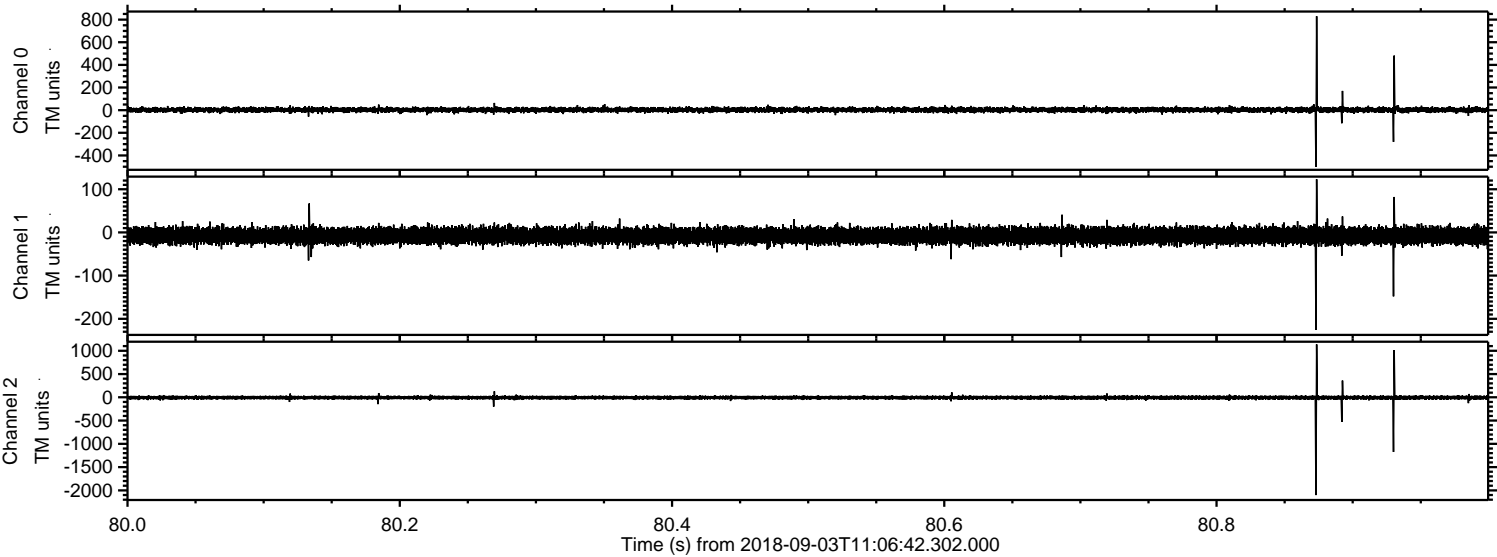
Processed Mon Sep 3 13:14:31 2018 by ELM ver.2012-10-06 from 001__elm20180903_110641__dat00.bin



Processed Mon Sep 3 13:14:32 2018 by ELM ver.2012-10-06 from 001__elm20180903_110641__dat00.bin



Processed Mon Sep 3 13:14:32 2018 by ELM ver.2012-10-06 from 001__elm20180903_110641__dat00.bin



Channel 0
mn: -502
mx: 830
 μ : 2.8
 σ : 11.7

Channel 1
mn: -226
mx: 123
 μ : -7.7
 σ : 9.4

Channel 2
mn: -2102
mx: 1138
 μ : -6.1
 σ : 25.0

