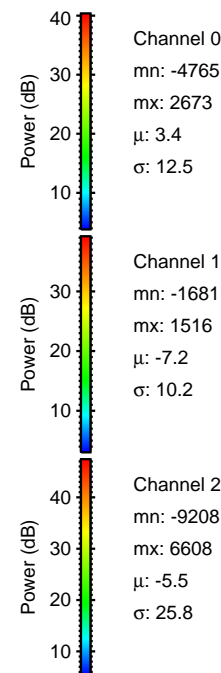
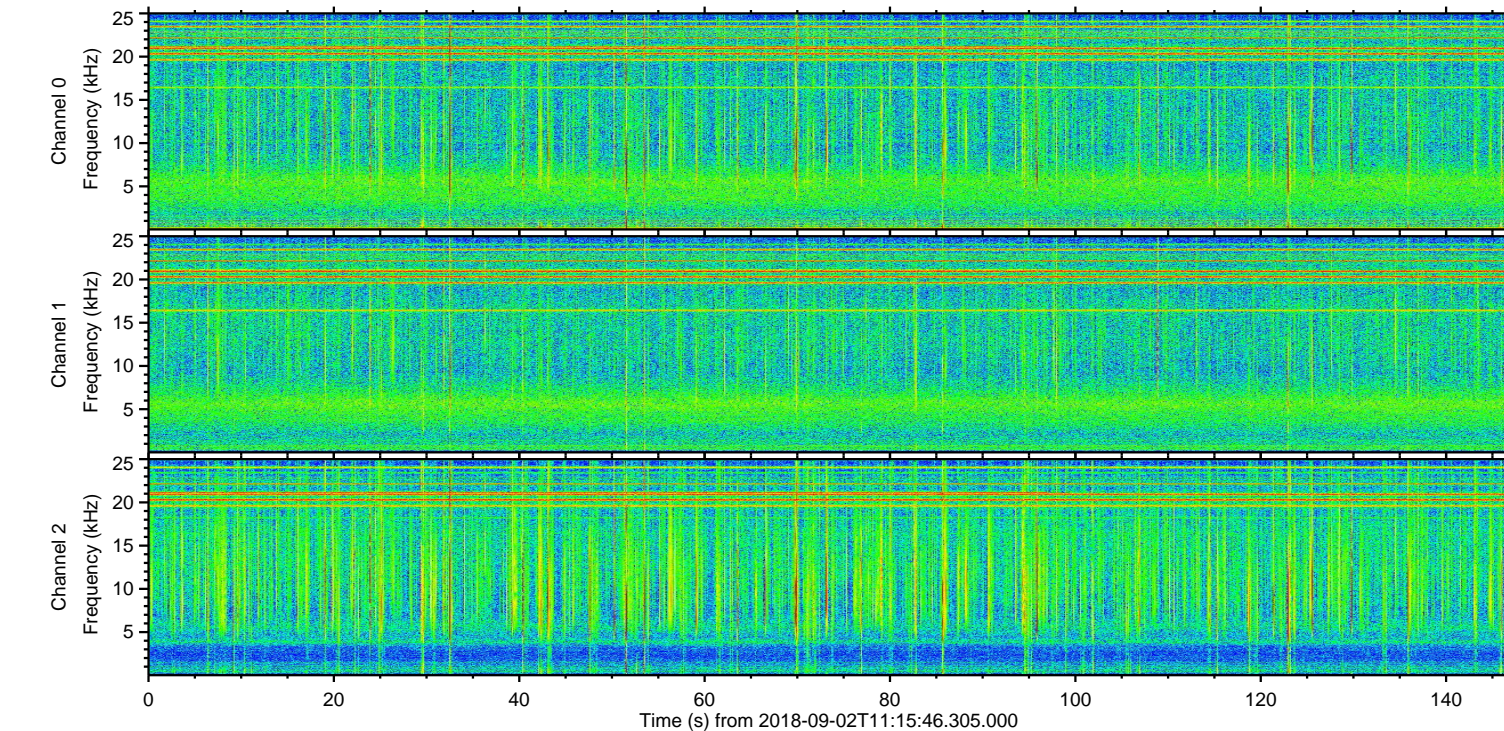
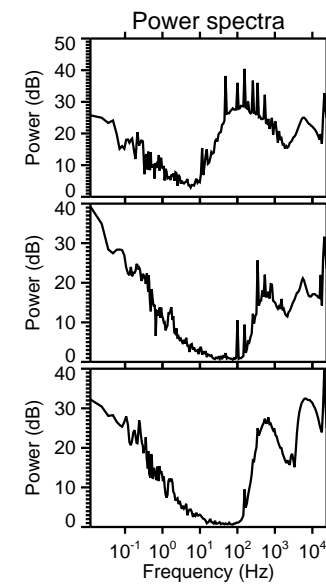
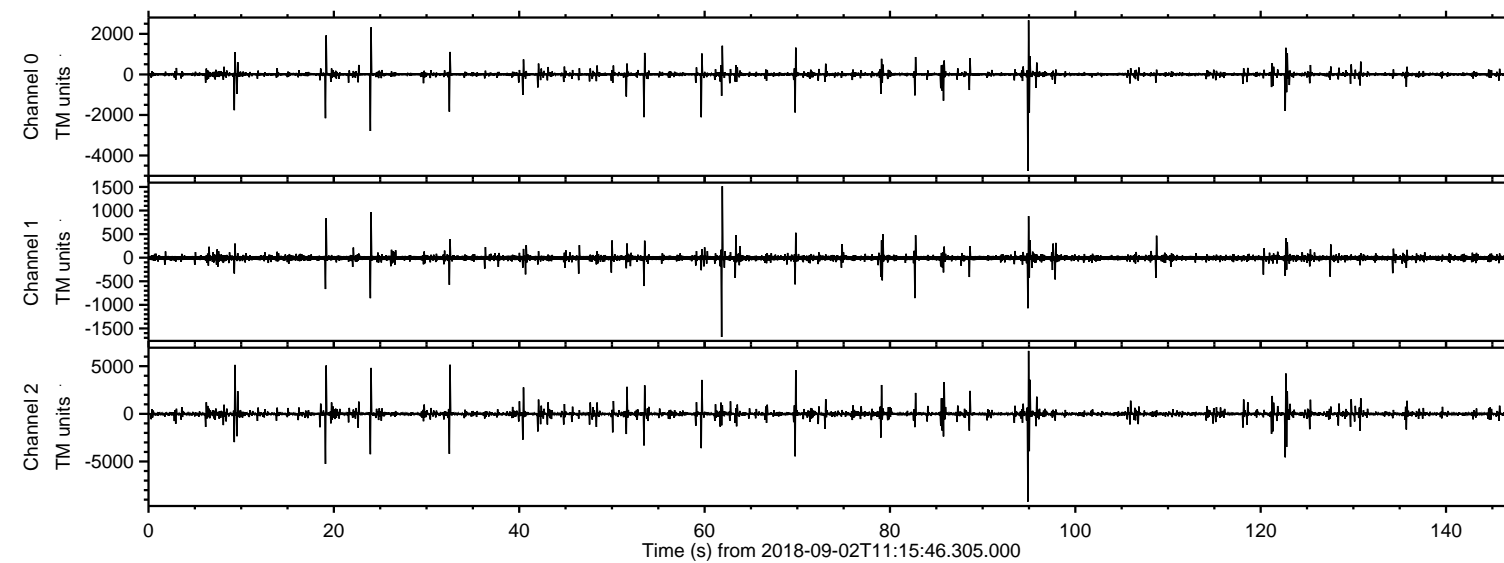
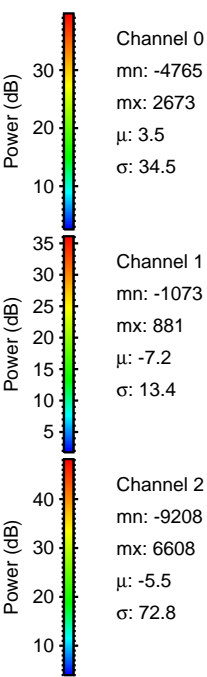
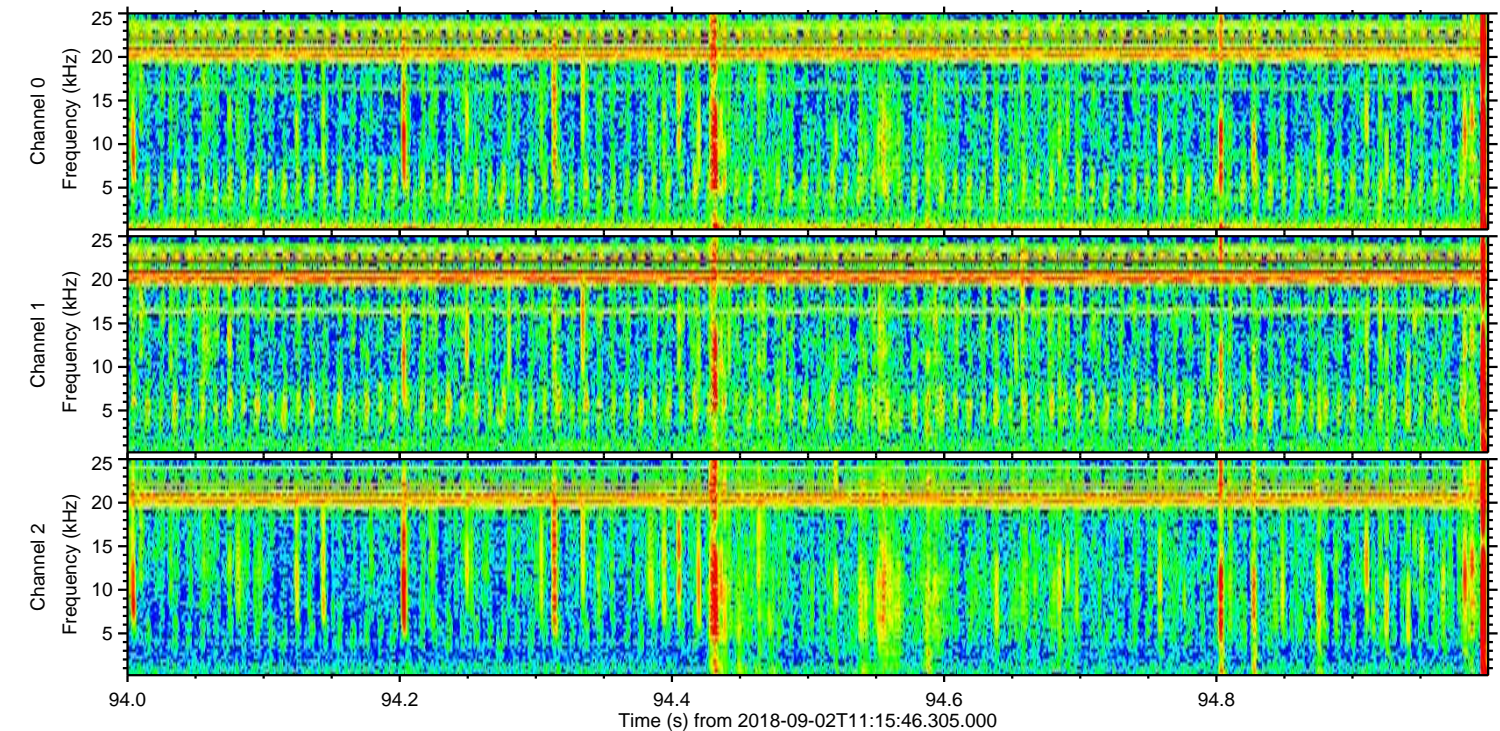
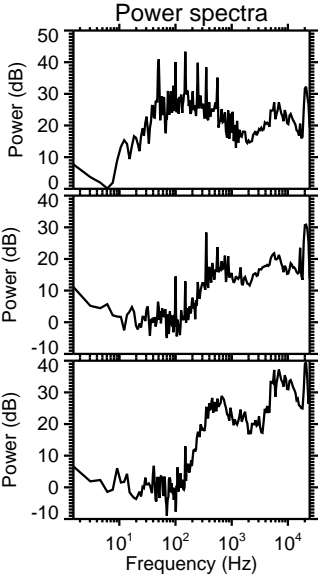
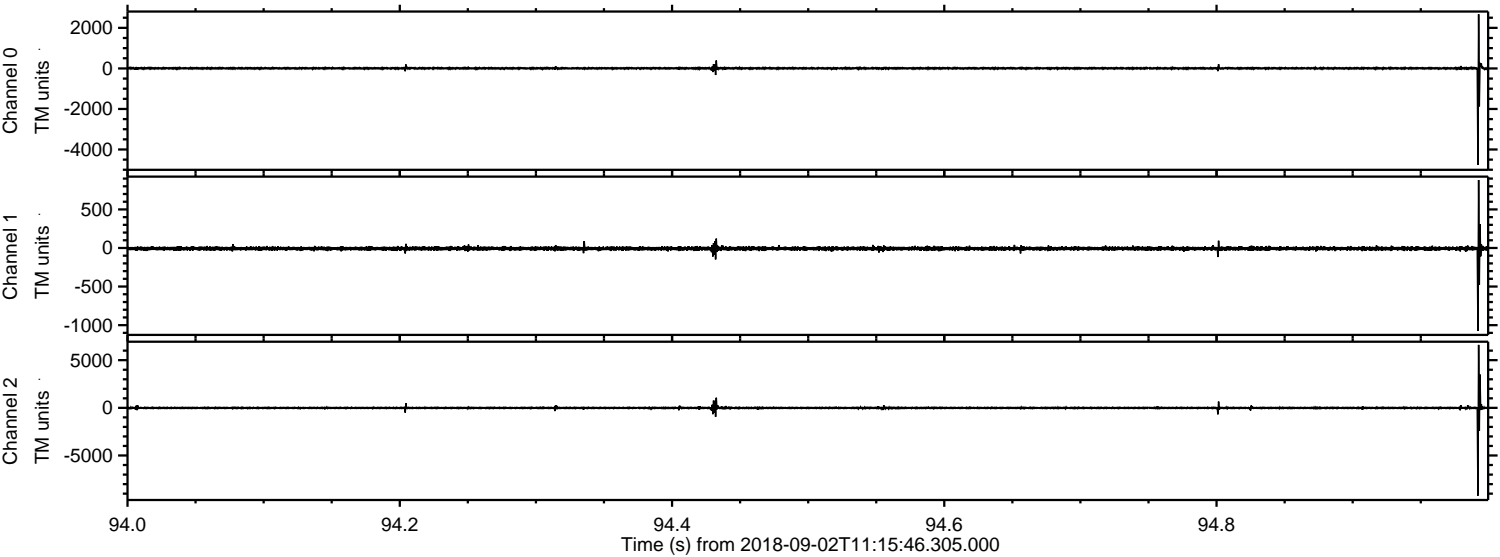


ELMAVAN 3D WAVEFORMS (Measured data sampled at 50 kHz) 51000 packets of 144 samples from 2018-09-02T11:15:46.305.000.

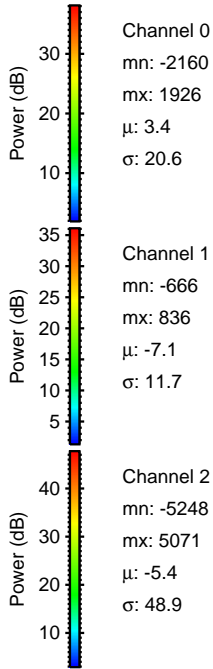
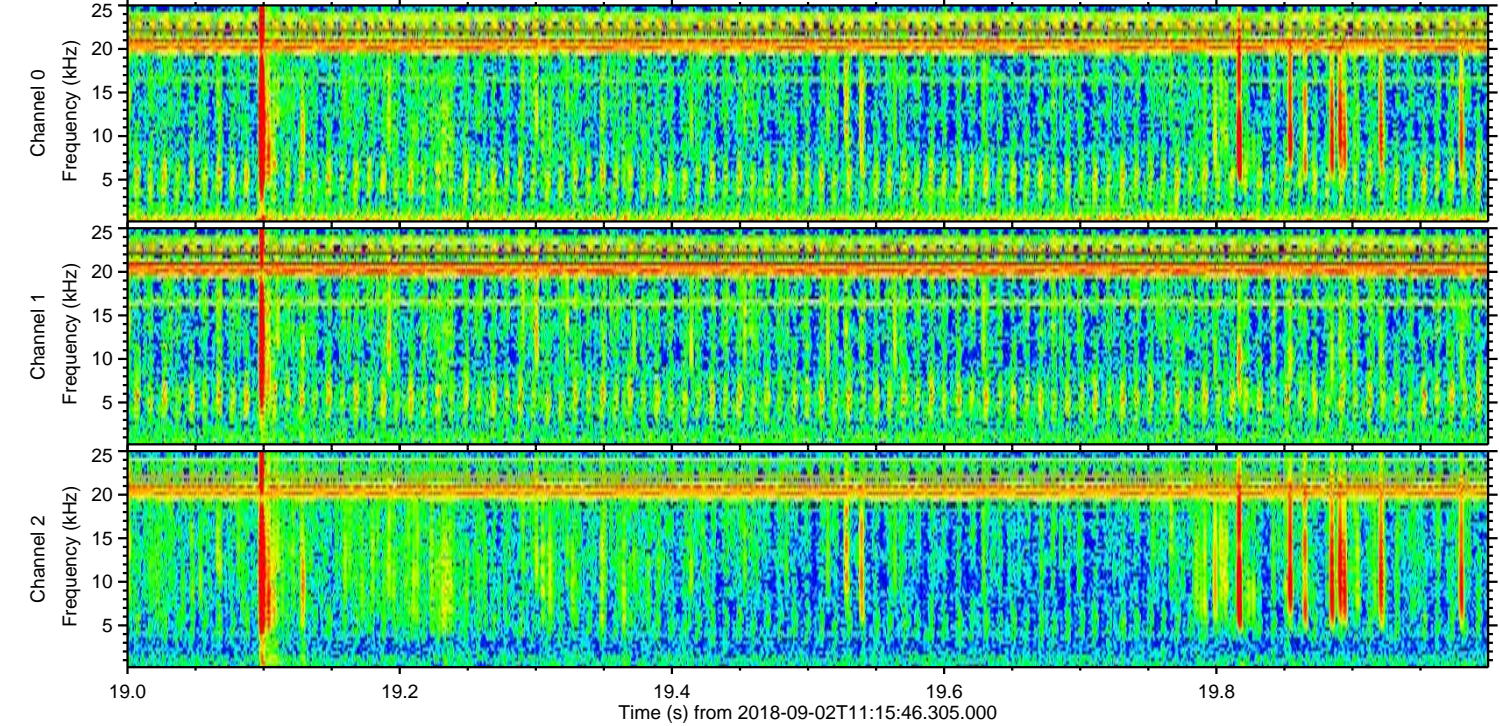
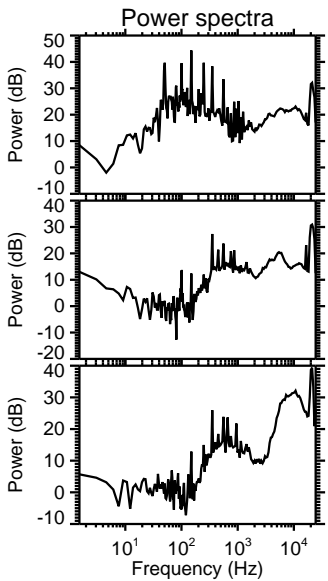
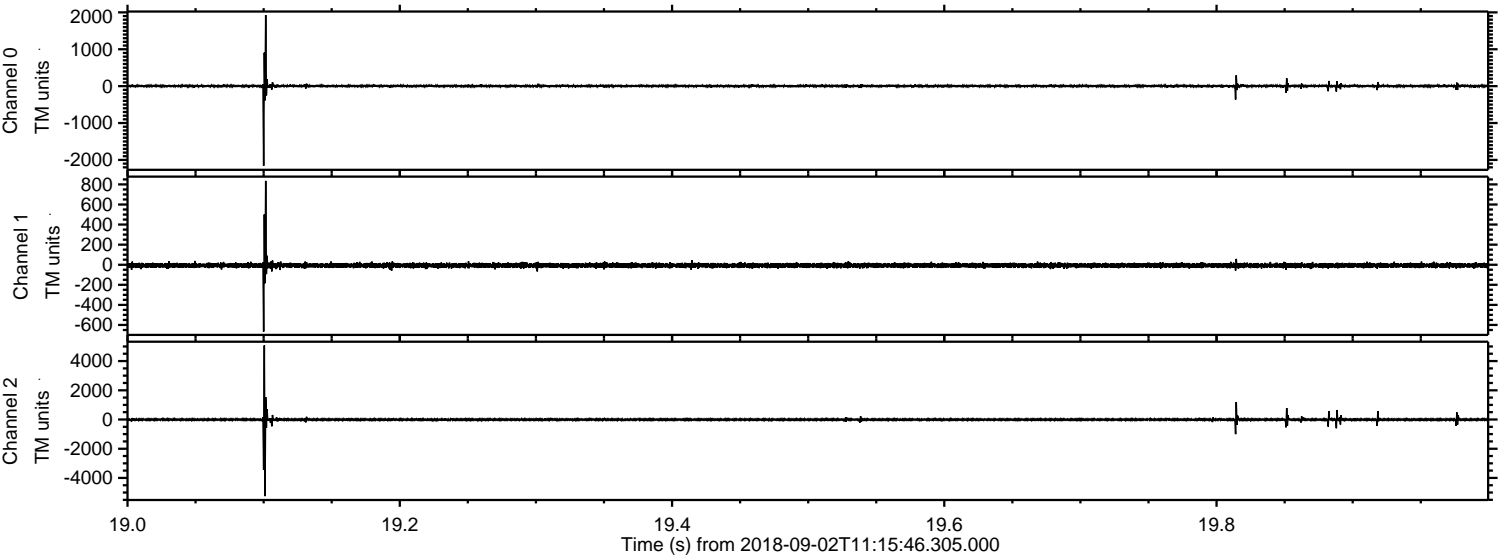
Processed Sun Sep 2 13:23:52 2018 by ELM ver.2012-10-06 from 001__elm20180902_111545__dat00.bin



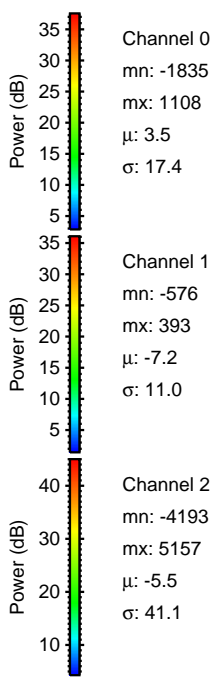
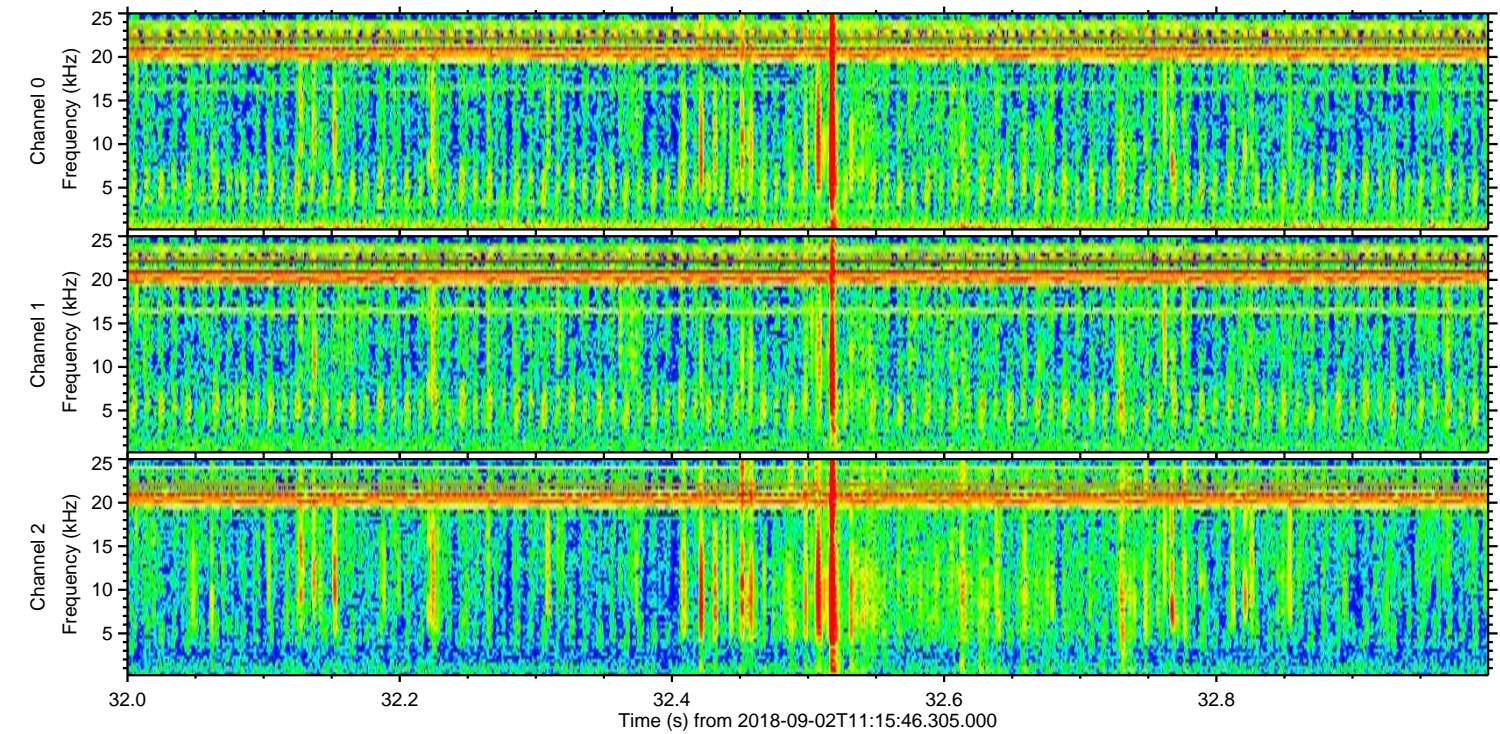
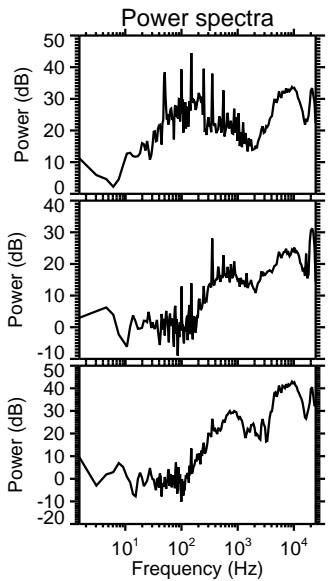
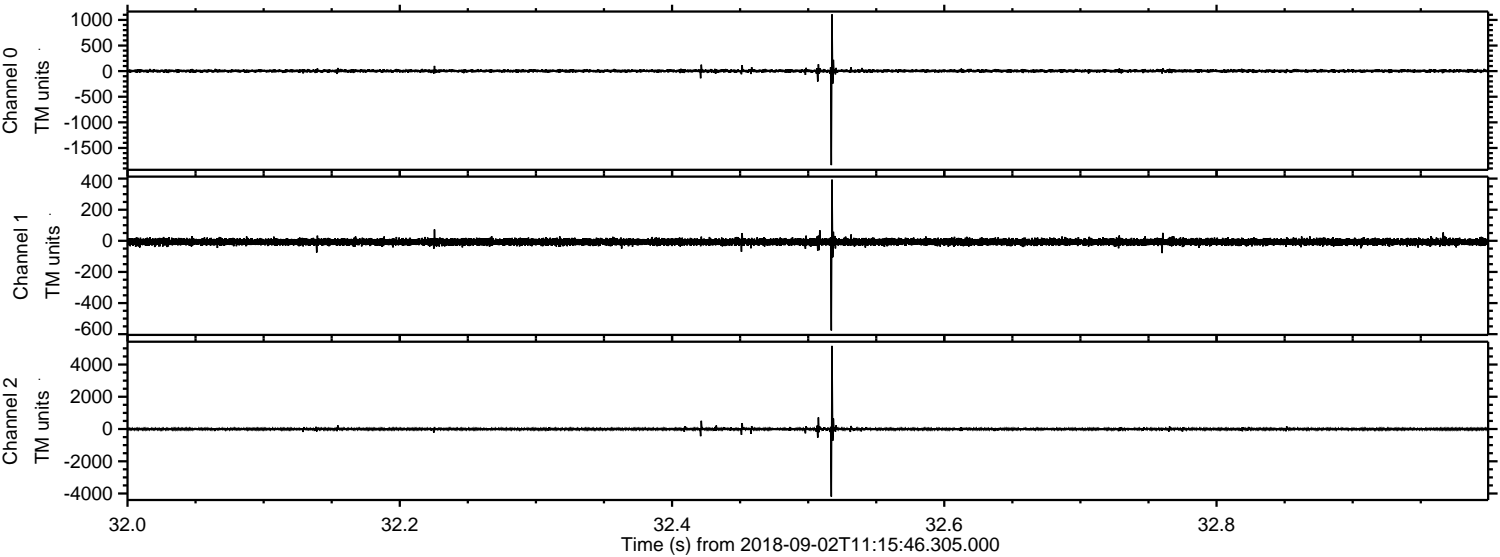
Processed Sun Sep 2 13:23:59 2018 by ELM ver.2012-10-06 from 001__elm20180902_111545__dat00.bin



Processed Sun Sep 2 13:24:00 2018 by ELM ver.2012-10-06 from 001__elm20180902_111545__dat00.bin



Processed Sun Sep 2 13:24:00 2018 by ELM ver.2012-10-06 from 001__elm20180902_111545__dat00.bin

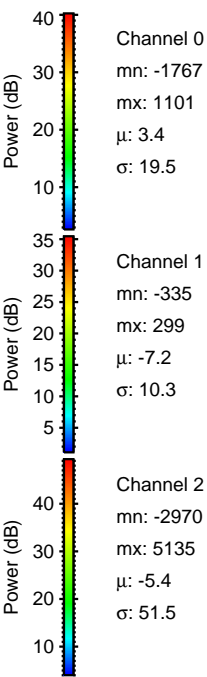
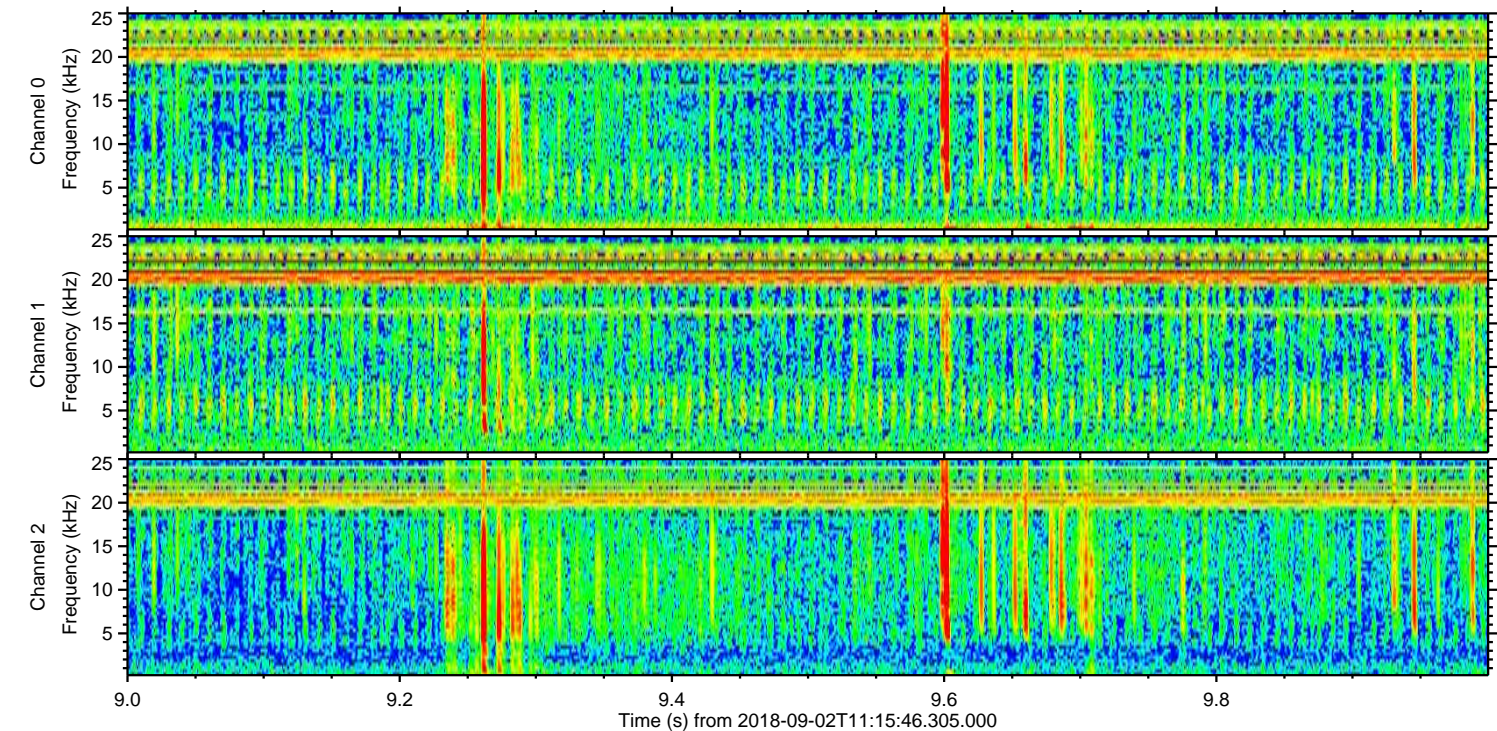
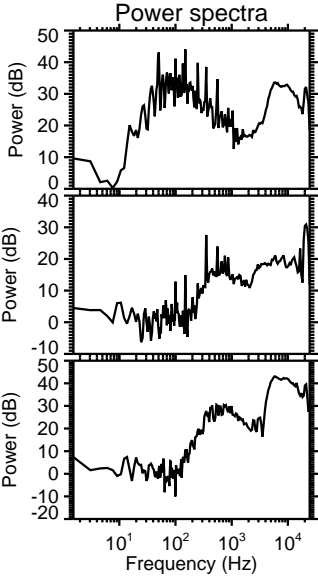
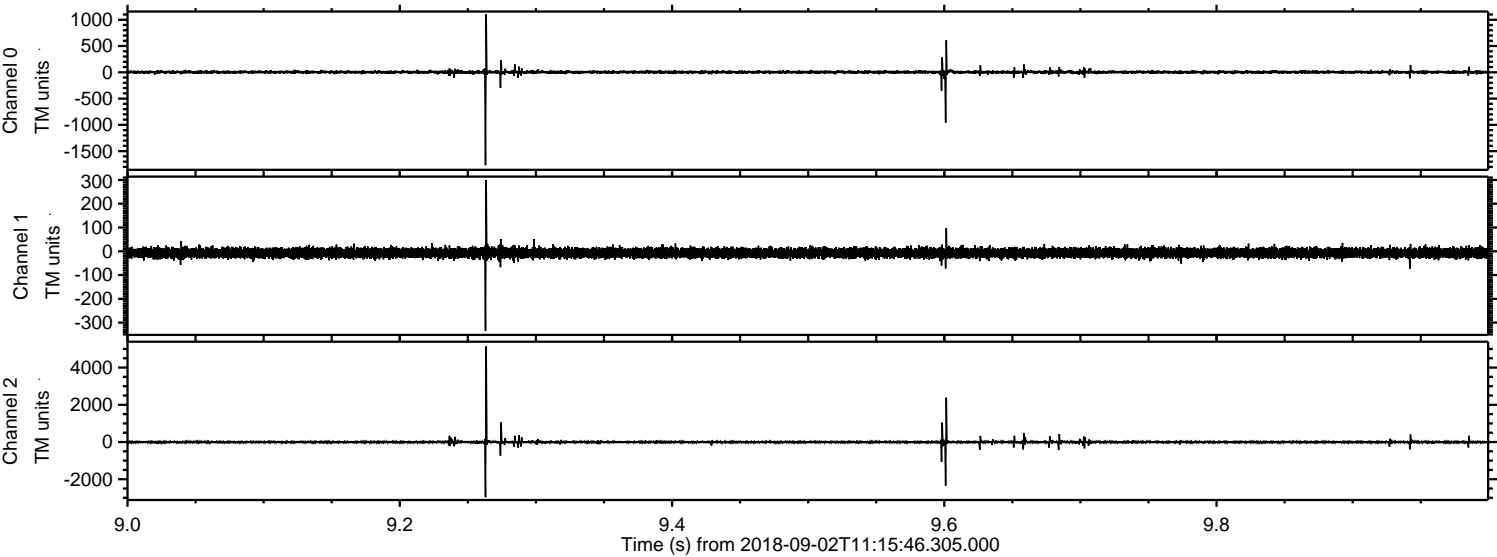


Channel 0
mn: -1835
mx: 1108
 μ : 3.5
 σ : 17.4

Channel 1
mn: -576
mx: 393
 μ : -7.2
 σ : 11.0

Channel 2
mn: -4193
mx: 5157
 μ : -5.5
 σ : 41.1

Processed Sun Sep 2 13:24:01 2018 by ELM ver.2012-10-06 from 001__elm20180902_111545__dat00.bin

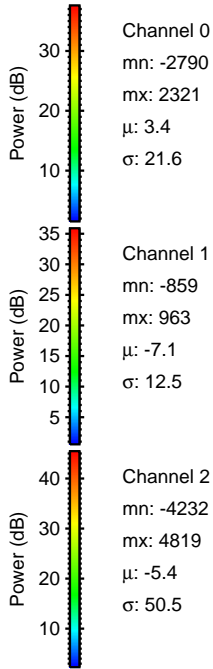
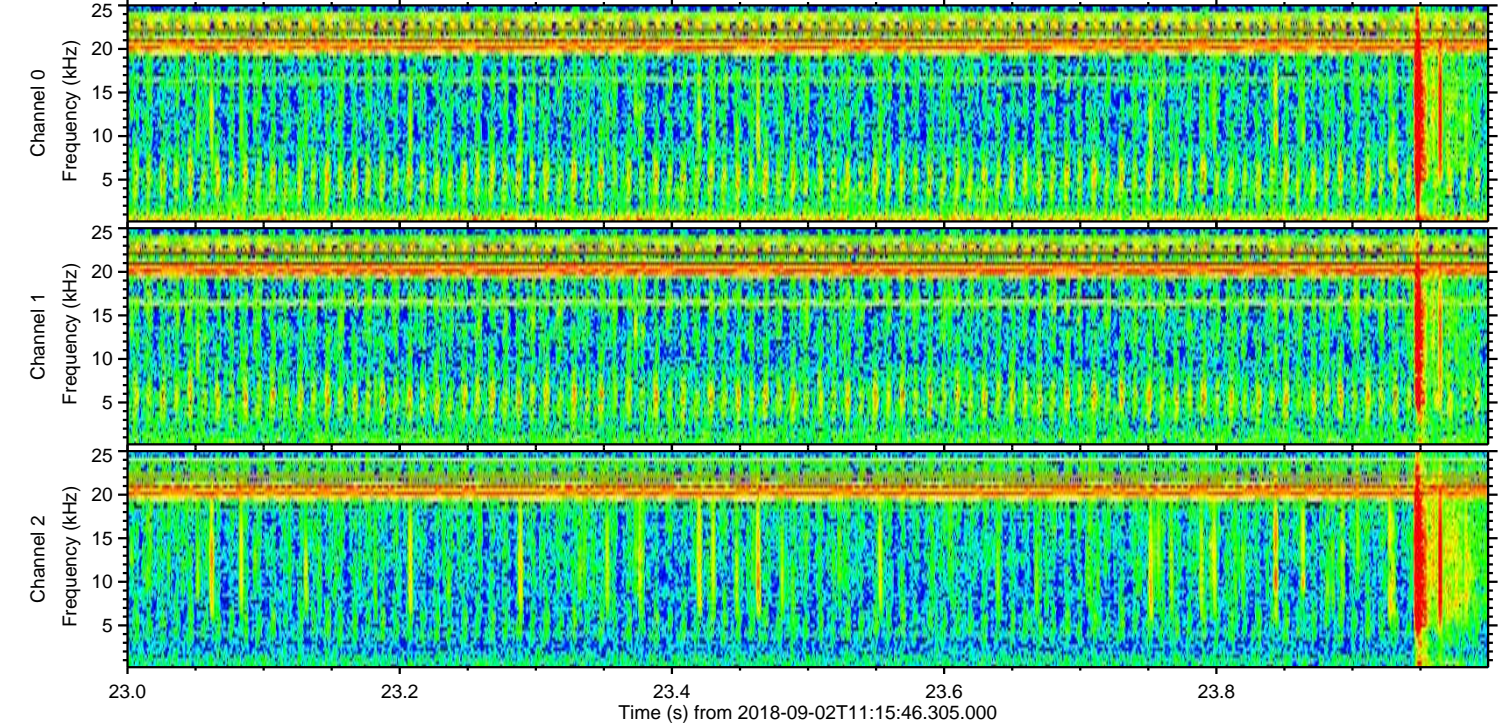
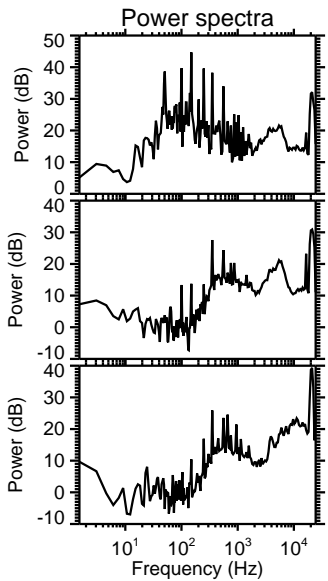
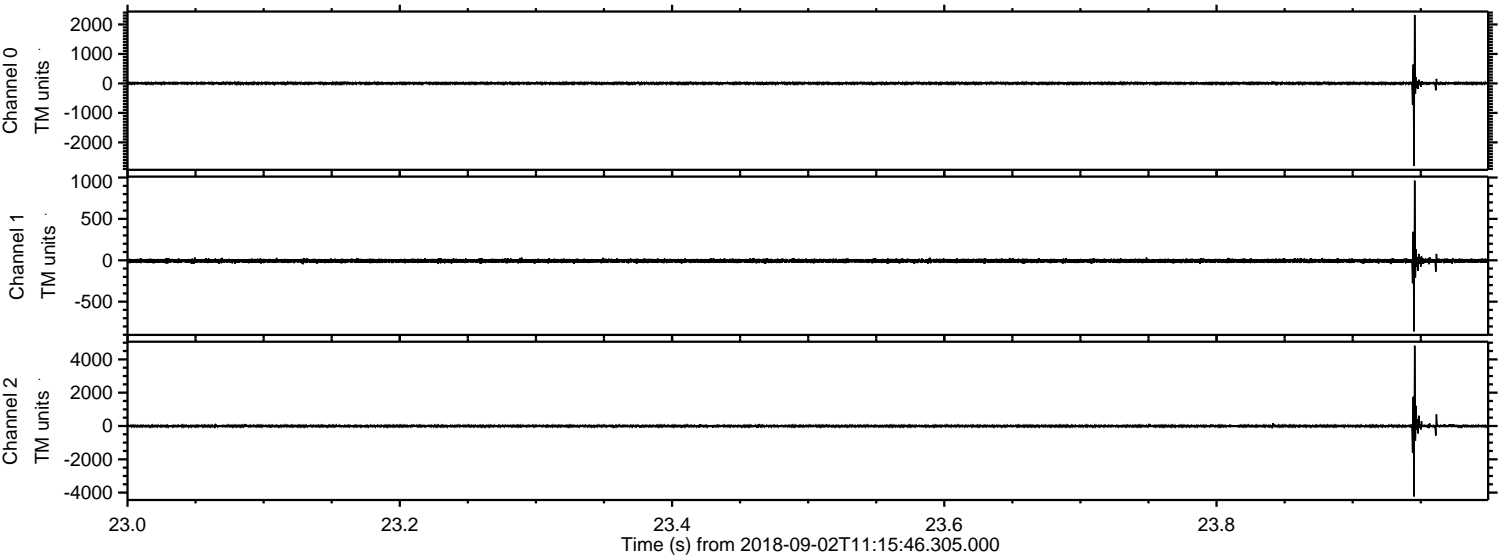


Channel 0
mn: -1767
mx: 1101
 μ : 3.4
 σ : 19.5

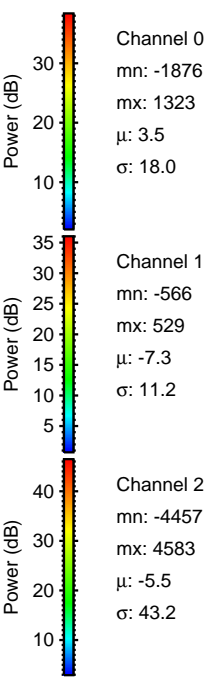
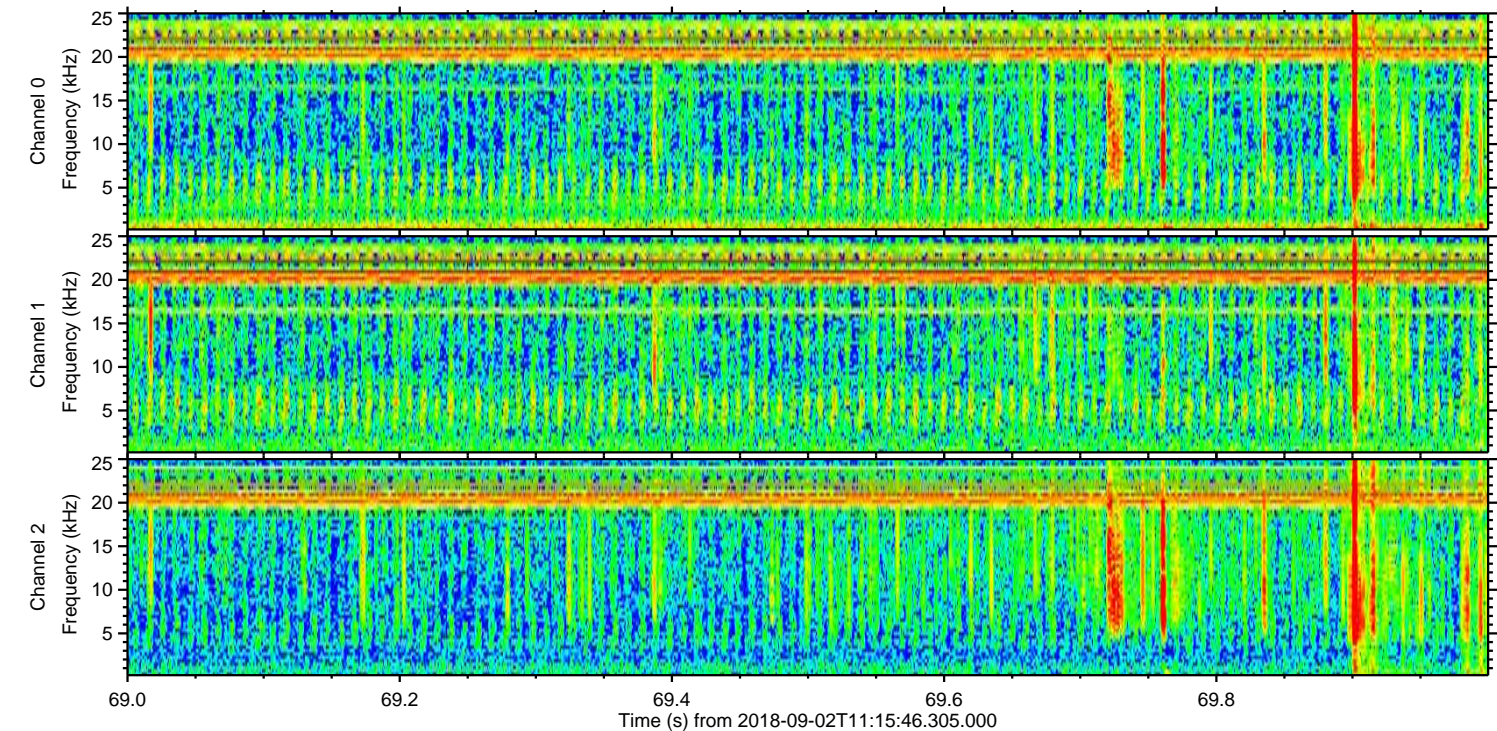
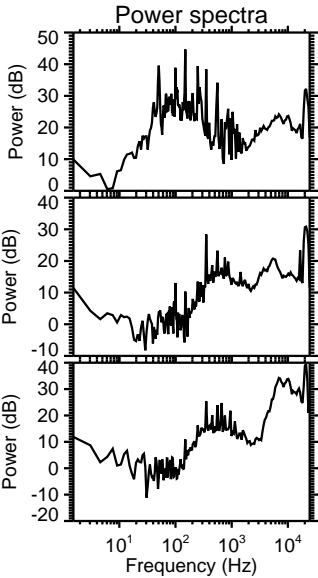
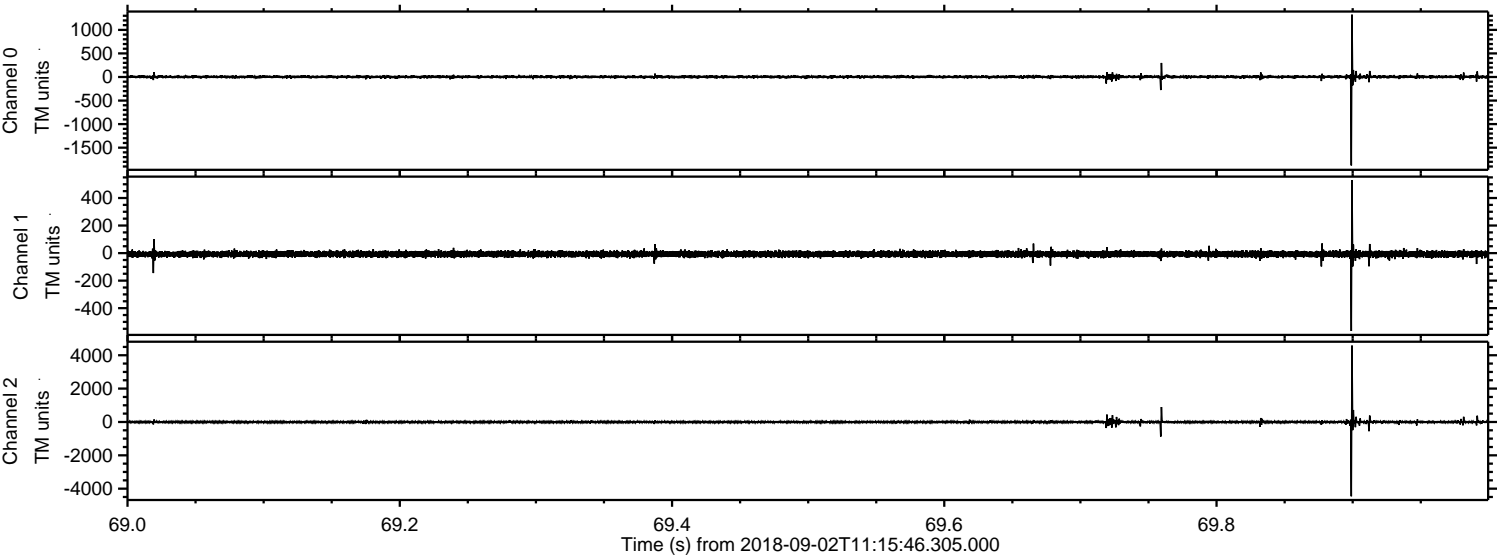
Channel 1
mn: -335
mx: 299
 μ : -7.2
 σ : 10.3

Channel 2
mn: -2970
mx: 5135
 μ : -5.4
 σ : 51.5

Processed Sun Sep 2 13:24:02 2018 by ELM ver.2012-10-06 from 001__elm20180902_111545__dat00.bin

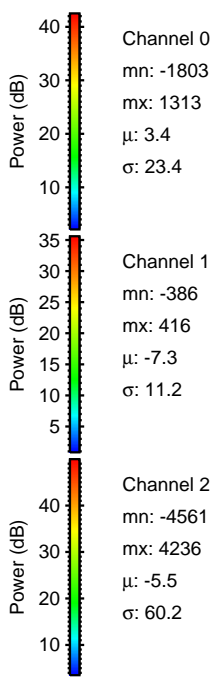
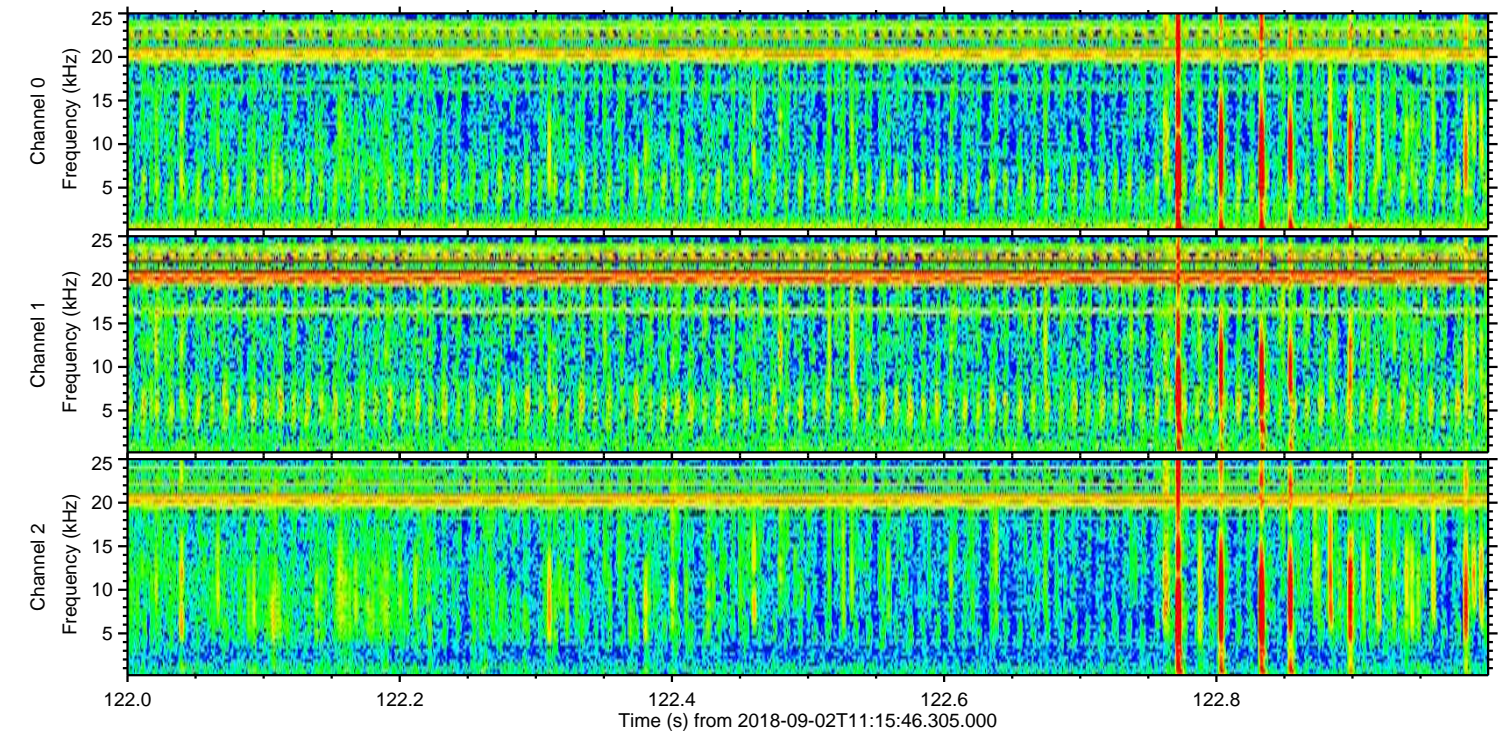
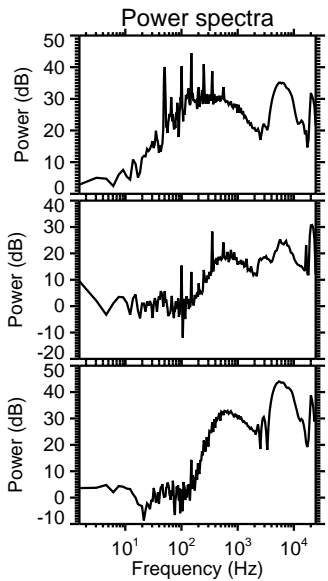
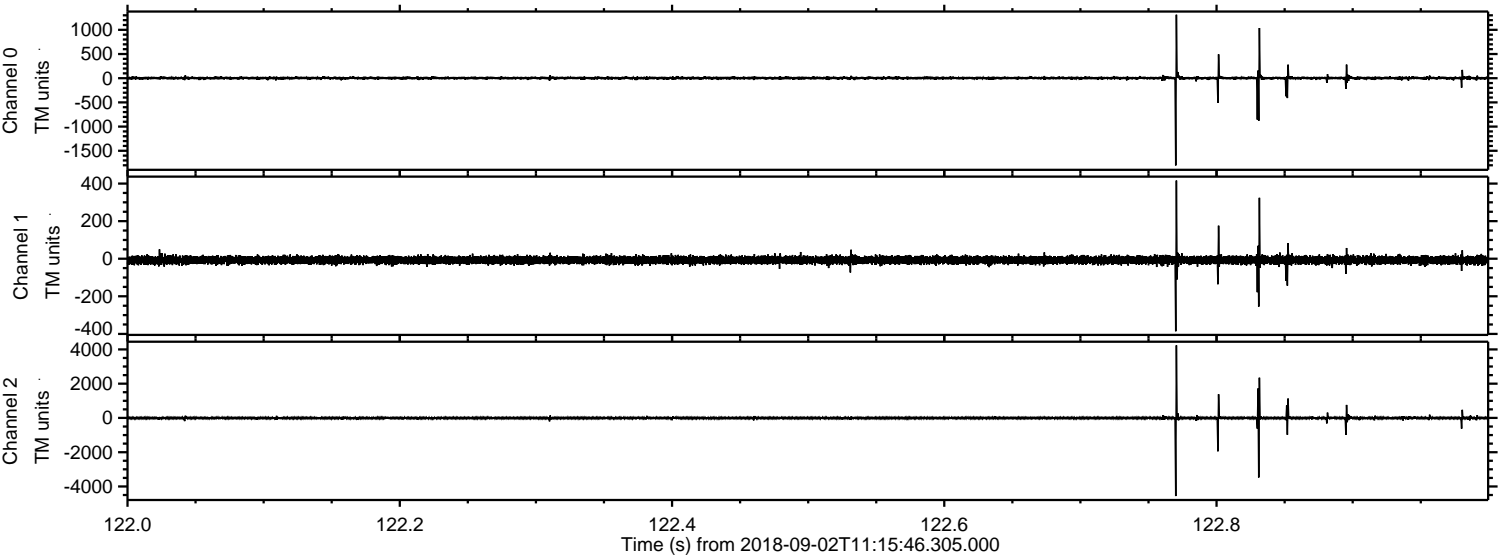


Processed Sun Sep 2 13:24:02 2018 by ELM ver.2012-10-06 from 001__elm20180902_111545__dat00.bin

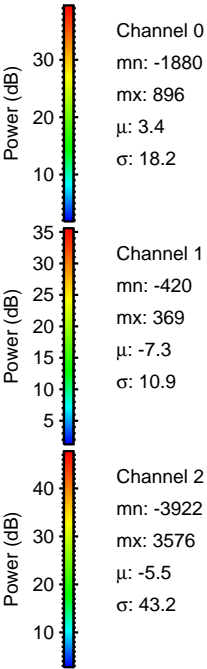
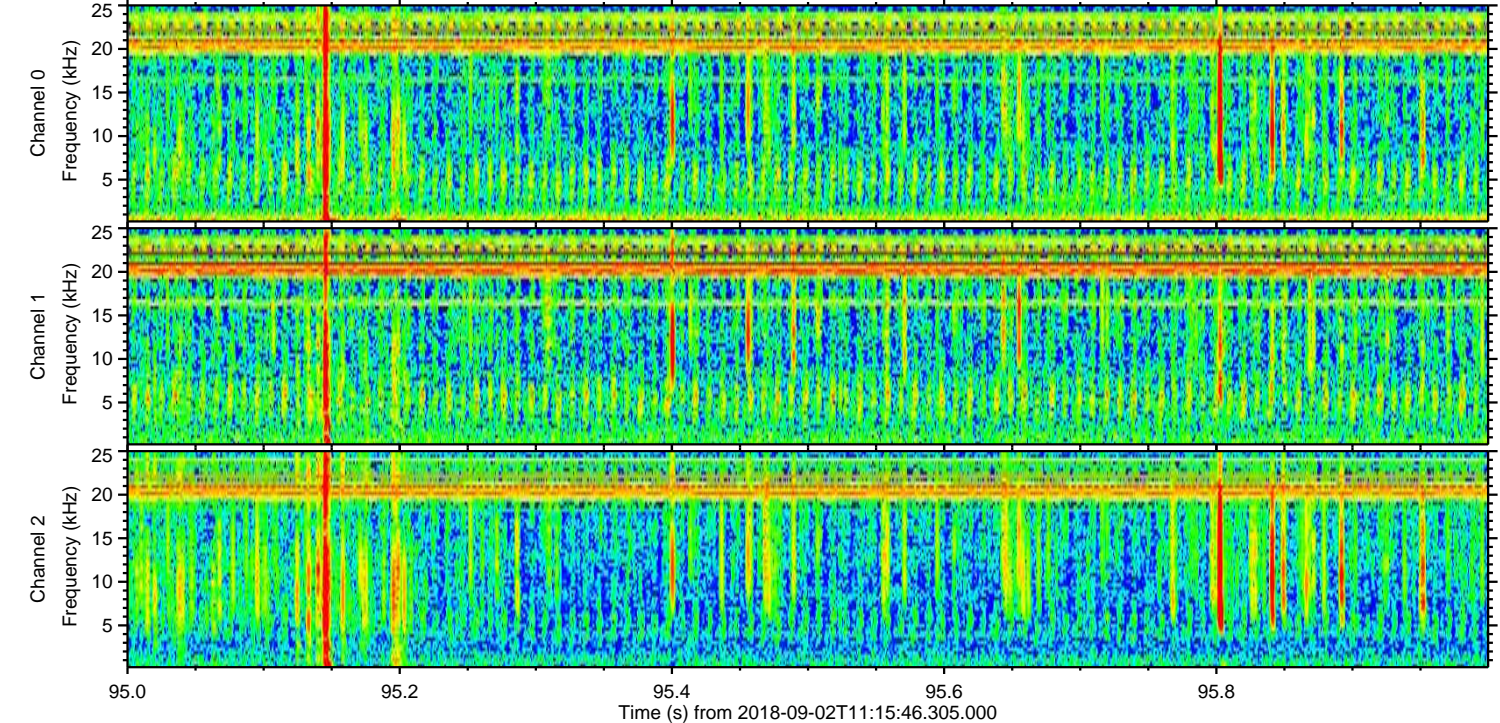
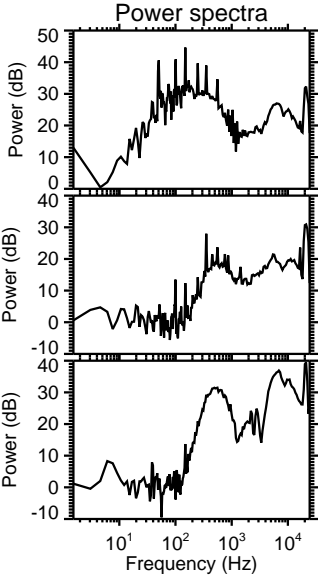
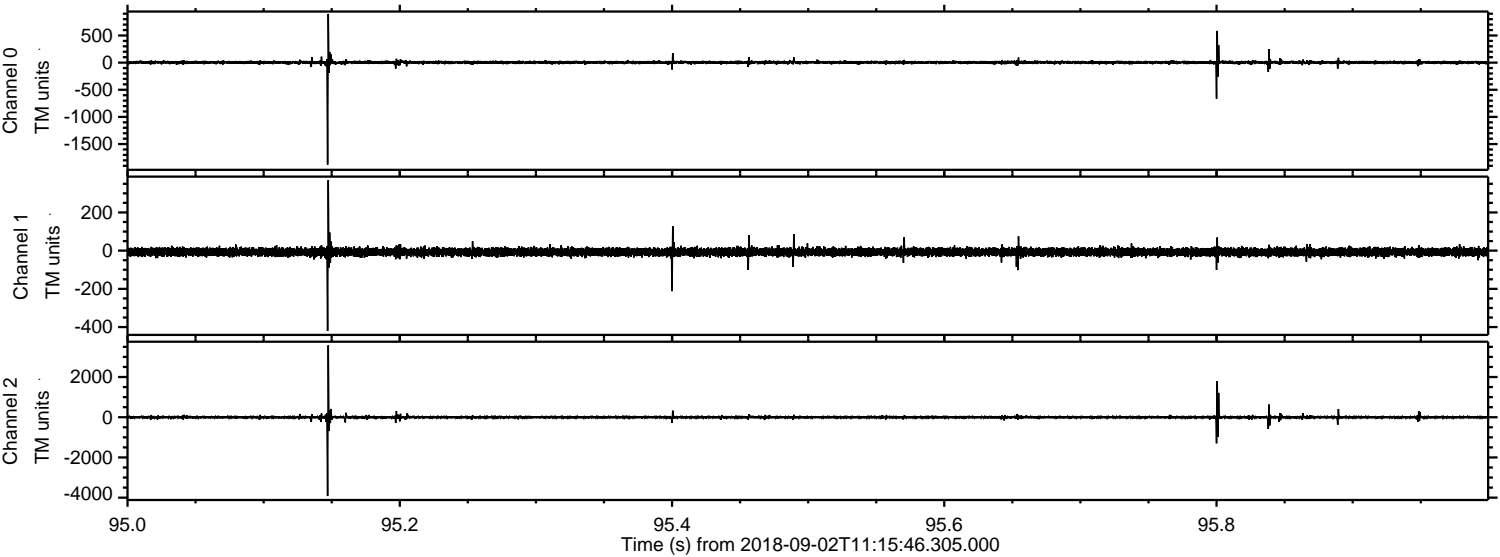


ELMAVAN 3D WAVEFORMS (Measured data sampled at 50 kHz) 51000 packets of 144 samples from 2018-09-02T11:15:46.305.000. Part 123/147

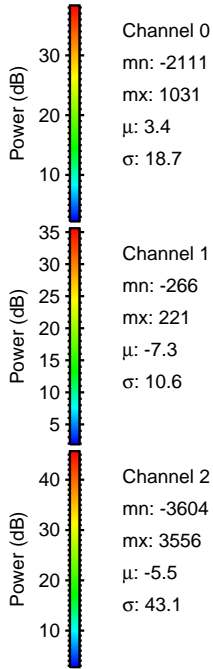
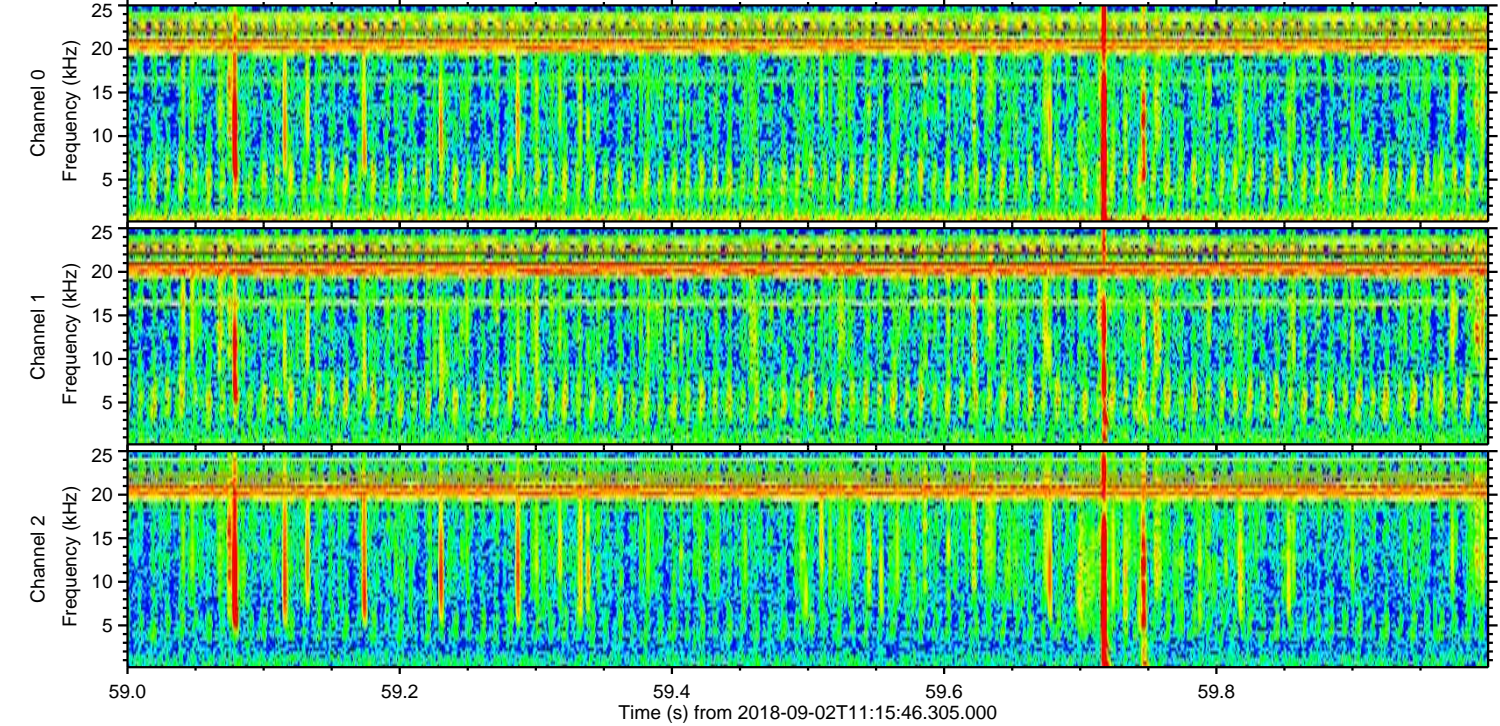
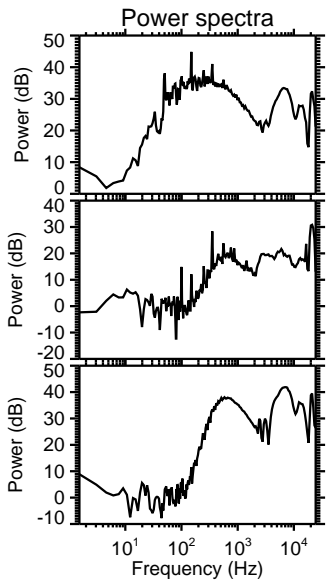
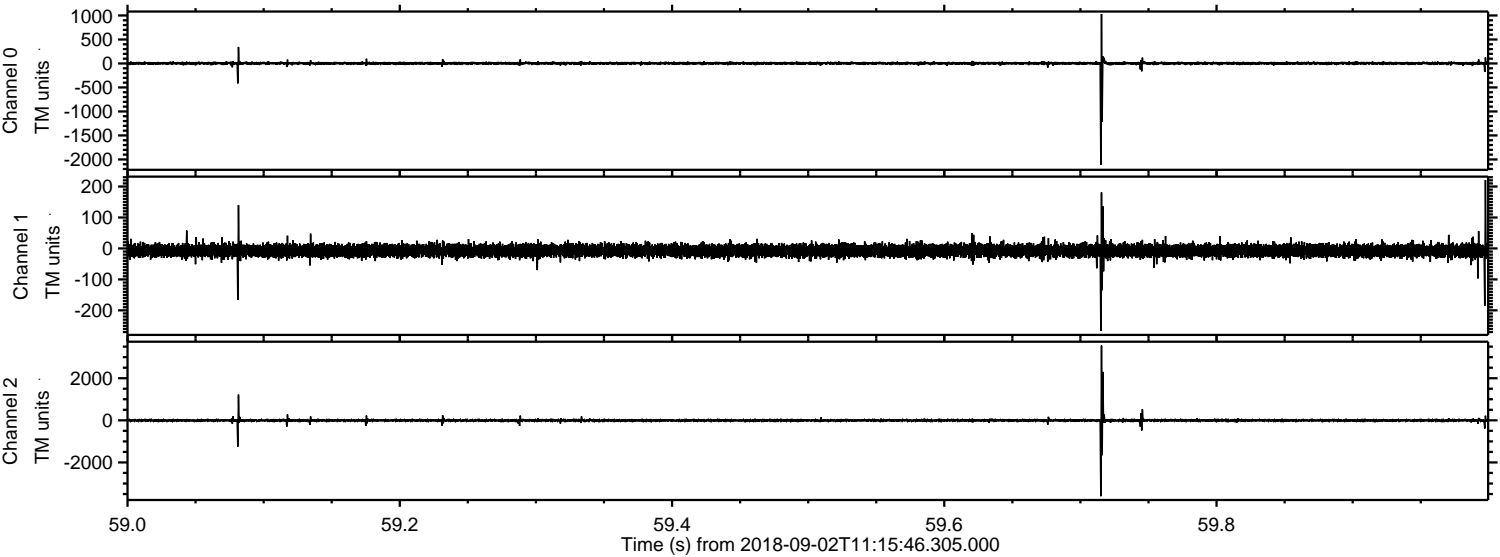
Processed Sun Sep 2 13:24:03 2018 by ELM ver.2012-10-06 from 001__elm20180902_111545__dat00.bin



Processed Sun Sep 2 13:24:04 2018 by ELM ver.2012-10-06 from 001__elm20180902_111545__dat00.bin



Processed Sun Sep 2 13:24:04 2018 by ELM ver.2012-10-06 from 001__elm20180902_111545__dat00.bin



Channel 0
mn: -2111
mx: 1031
 μ : 3.4
 σ : 18.7

Channel 1
mn: -266
mx: 221
 μ : -7.3
 σ : 10.6

Channel 2
mn: -3604
mx: 3556
 μ : -5.5
 σ : 43.1

