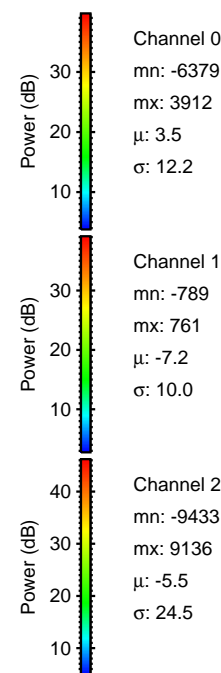
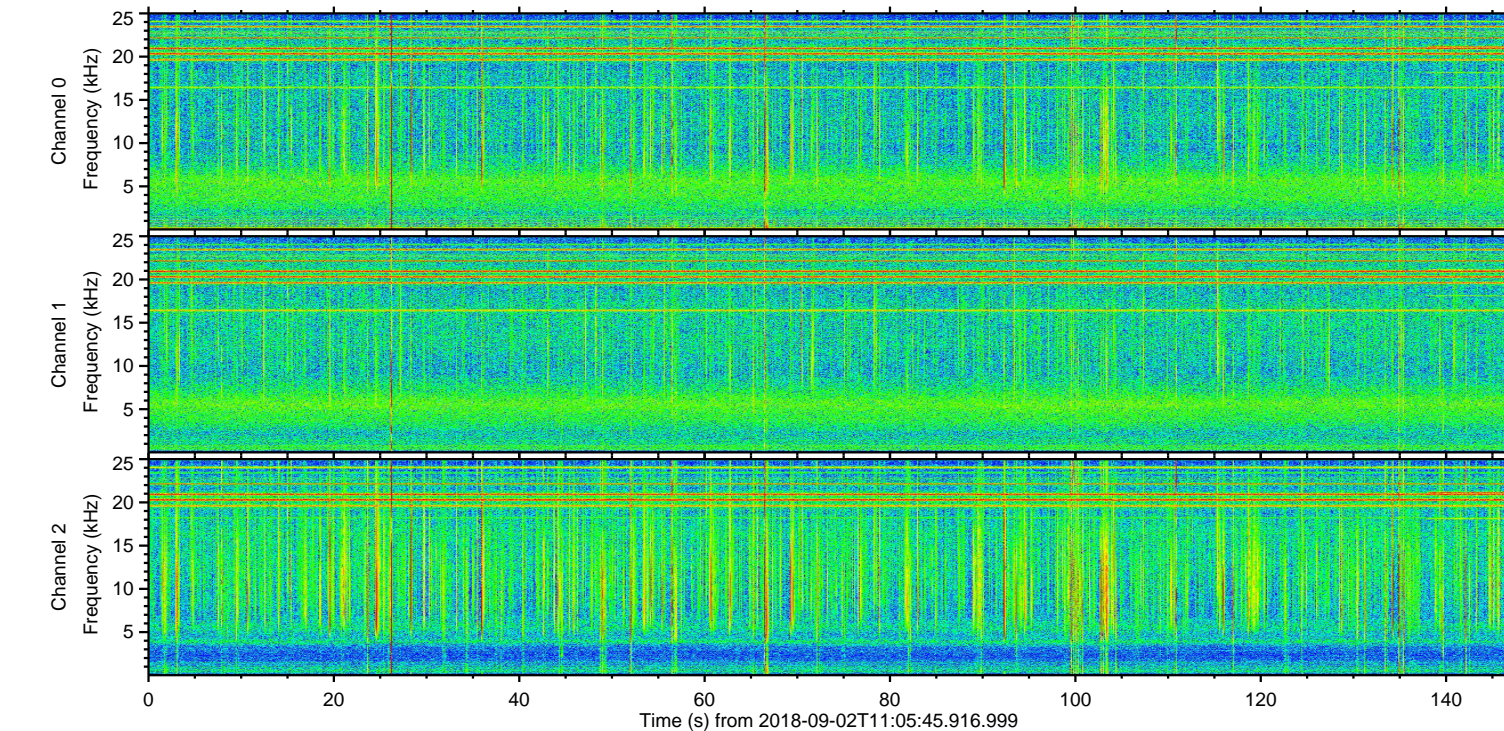
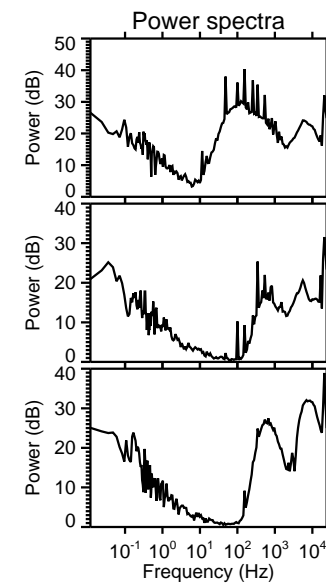
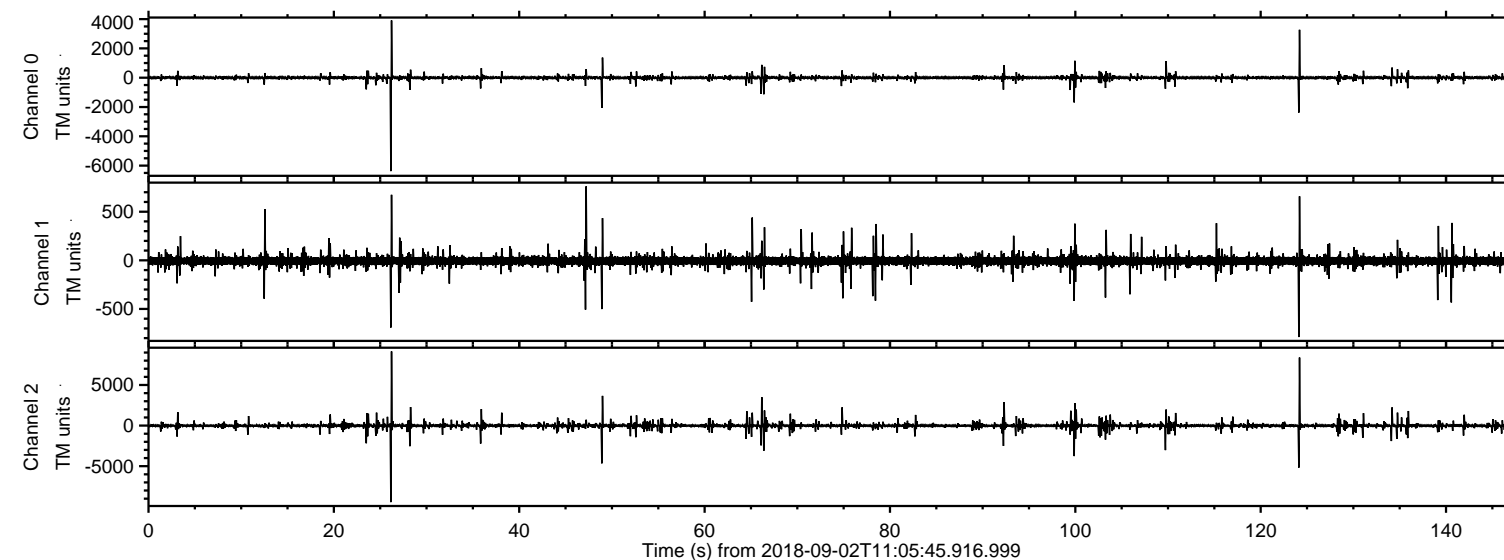
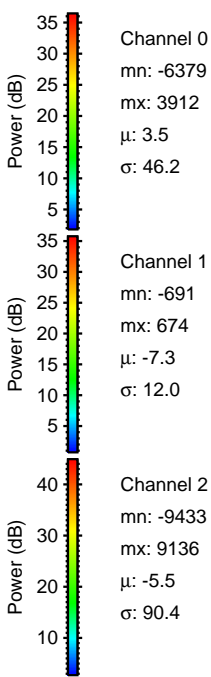
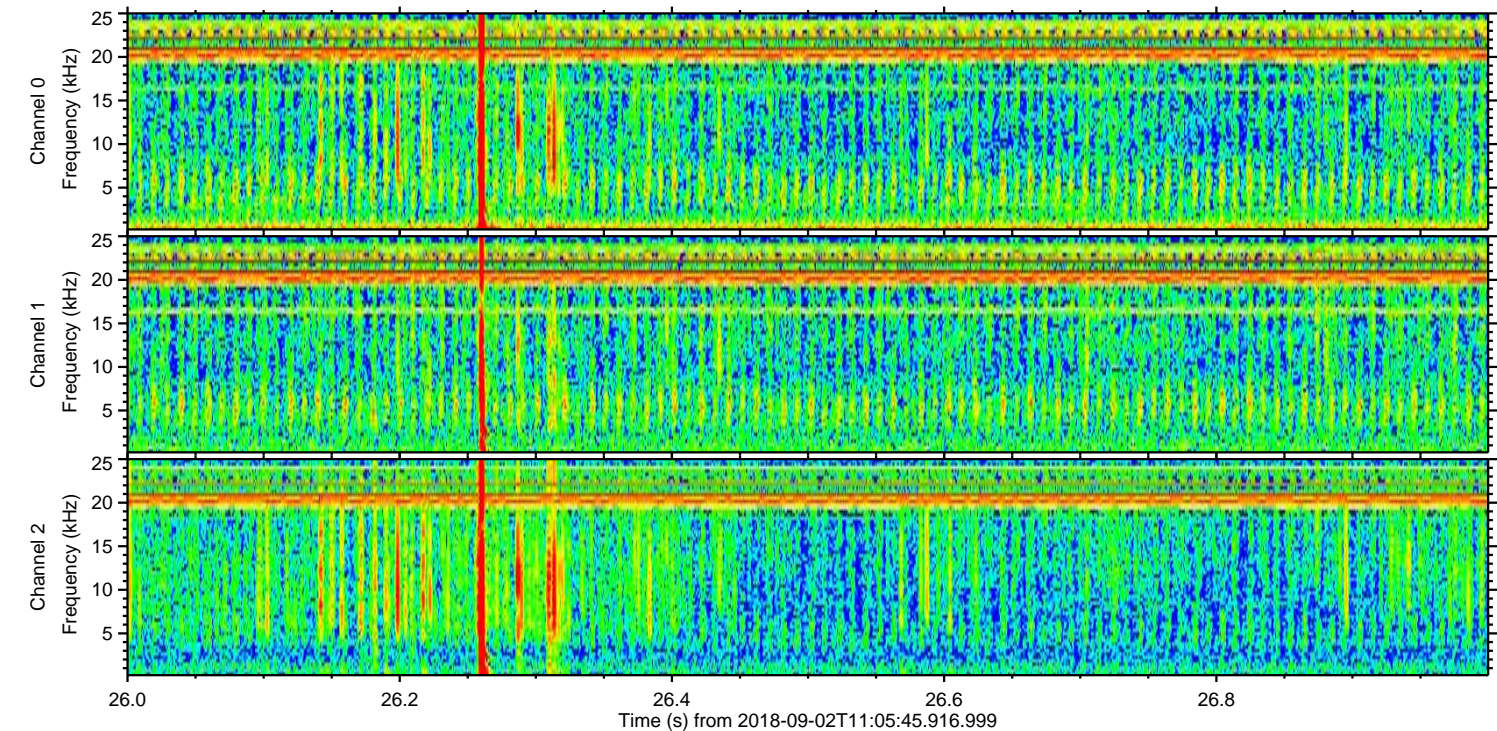
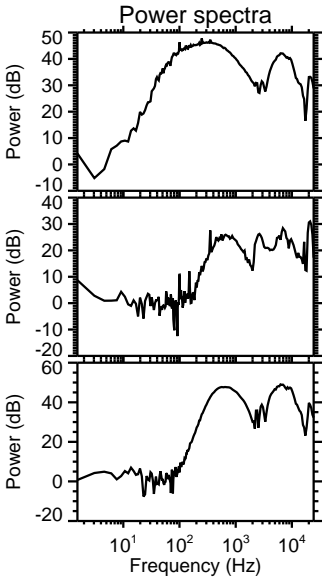
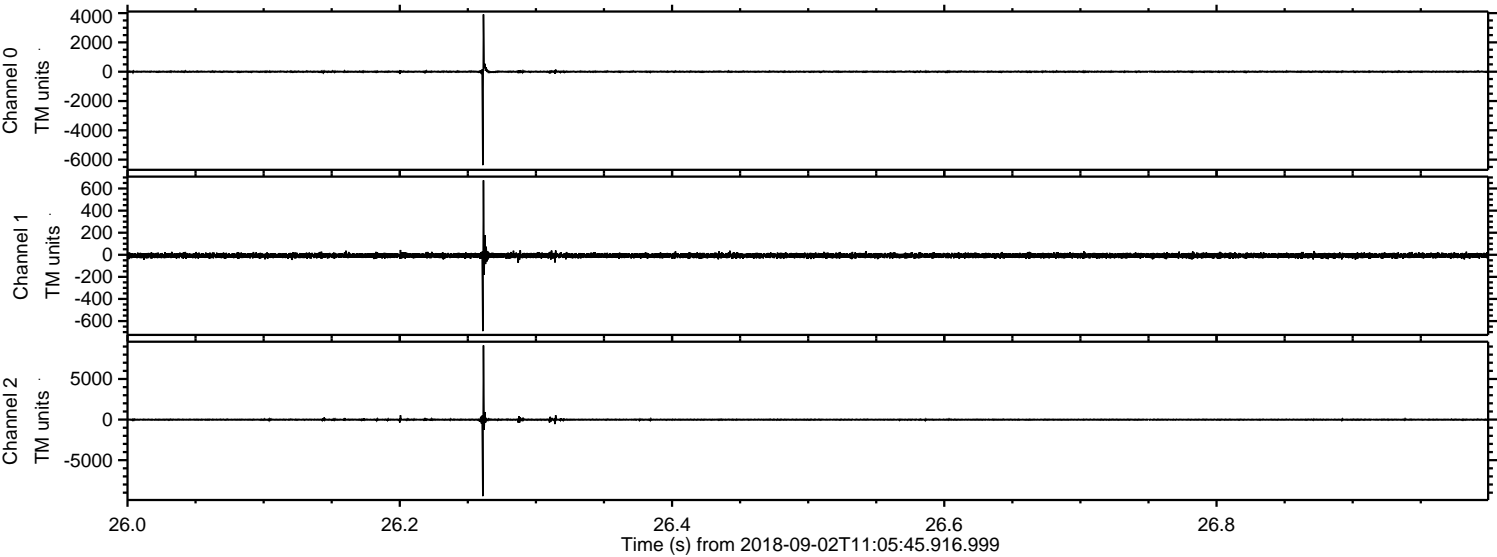


ELMAVAN 3D WAVEFORMS (Measured data sampled at 50 kHz) 51000 packets of 144 samples from 2018-09-02T11:05:45.916.999.

Processed Sun Sep 2 13:13:47 2018 by ELM ver.2012-10-06 from 001__elm20180902_110544__dat00.bin

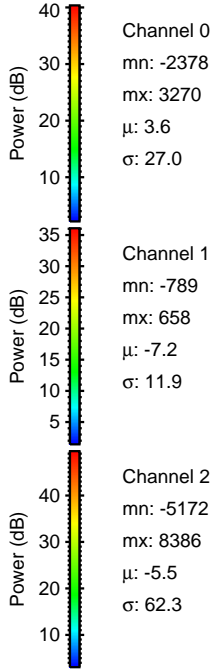
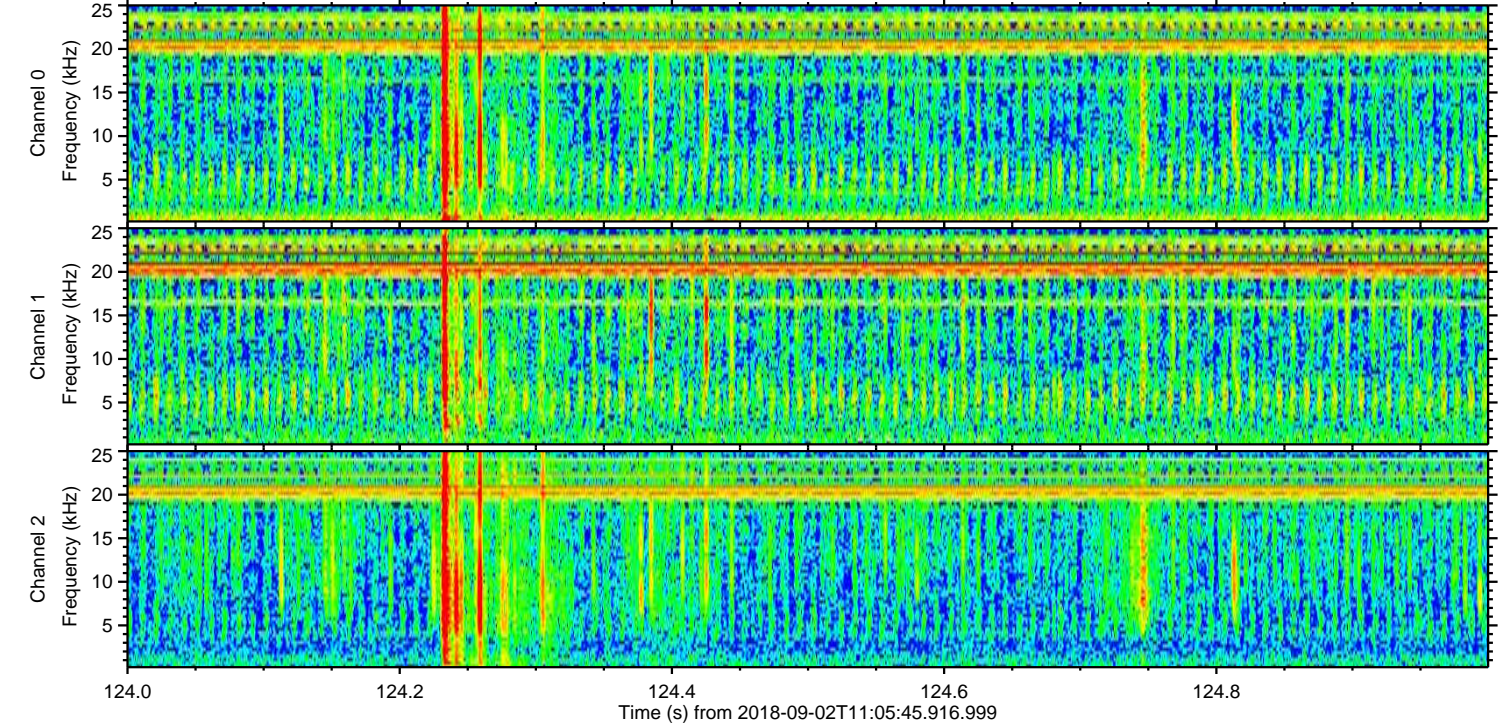
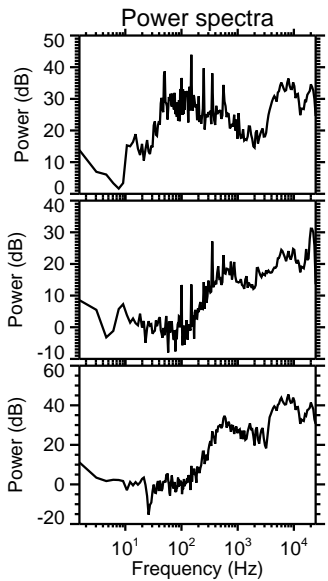
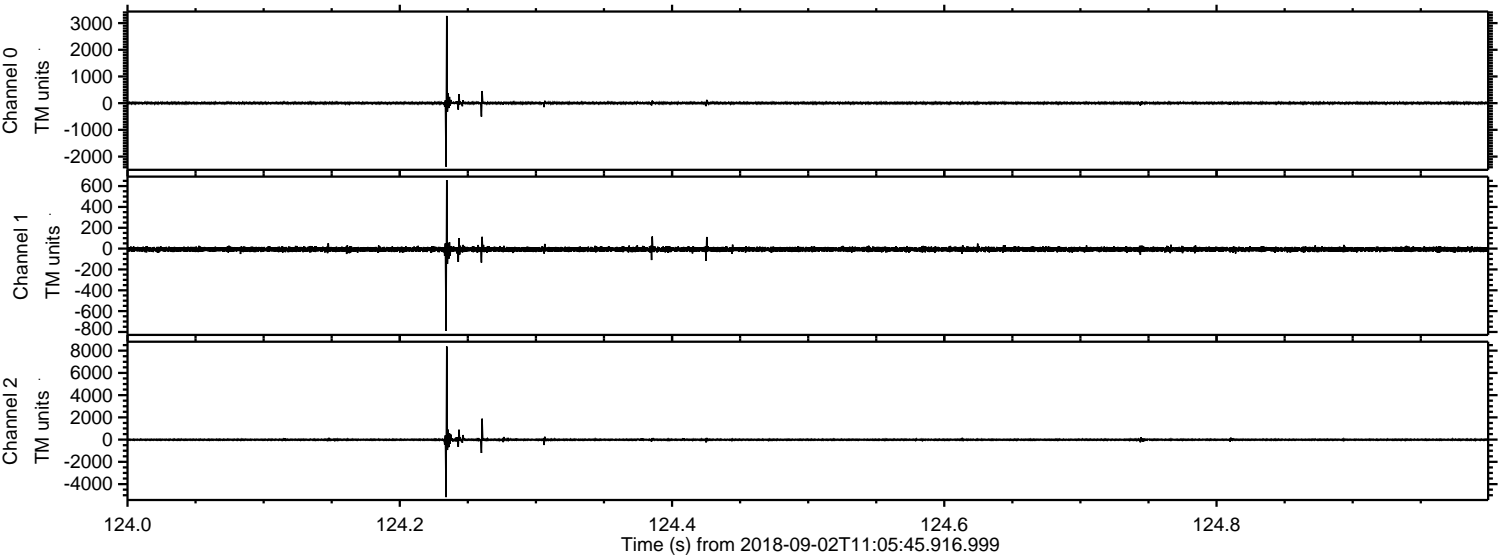


Processed Sun Sep 2 13:13:54 2018 by ELM ver.2012-10-06 from 001__elm20180902_110544__dat00.bin



ELMAVAN 3D WAVEFORMS (Measured data sampled at 50 kHz) 51000 packets of 144 samples from 2018-09-02T11:05:45.916.999. Part 125/147

Processed Sun Sep 2 13:13:55 2018 by ELM ver.2012-10-06 from 001__elm20180902_110544__dat00.bin

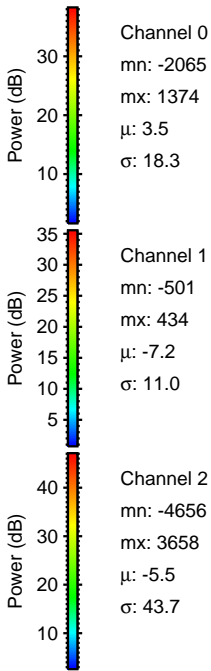
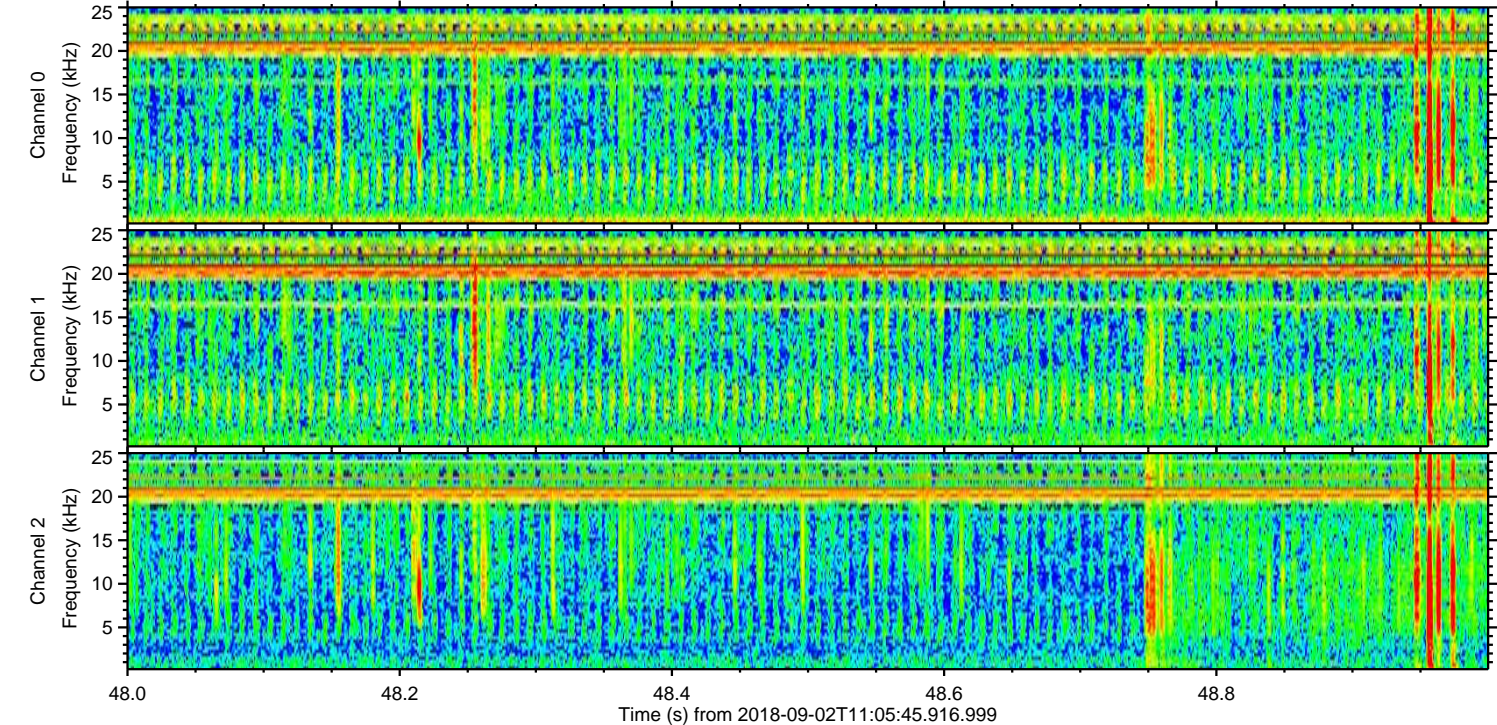
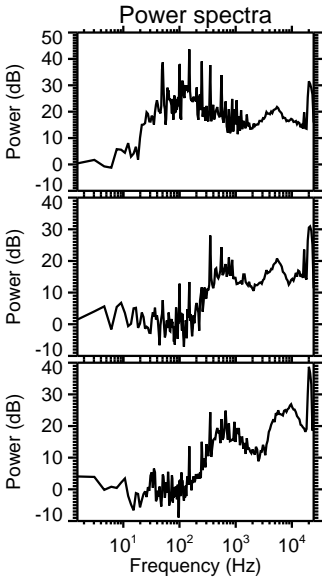
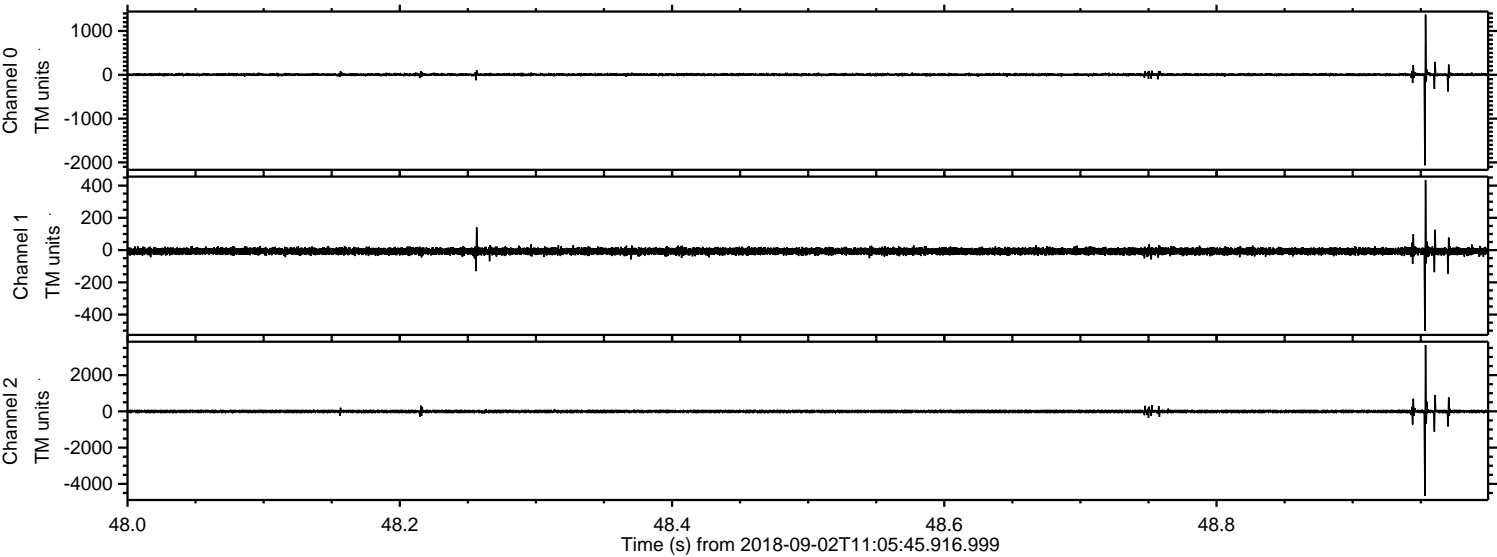


Channel 0
mn: -2378
mx: 3270
 μ : 3.6
 σ : 27.0

Channel 1
mn: -789
mx: 658
 μ : -7.2
 σ : 11.9

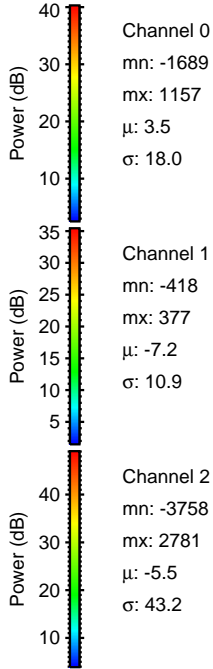
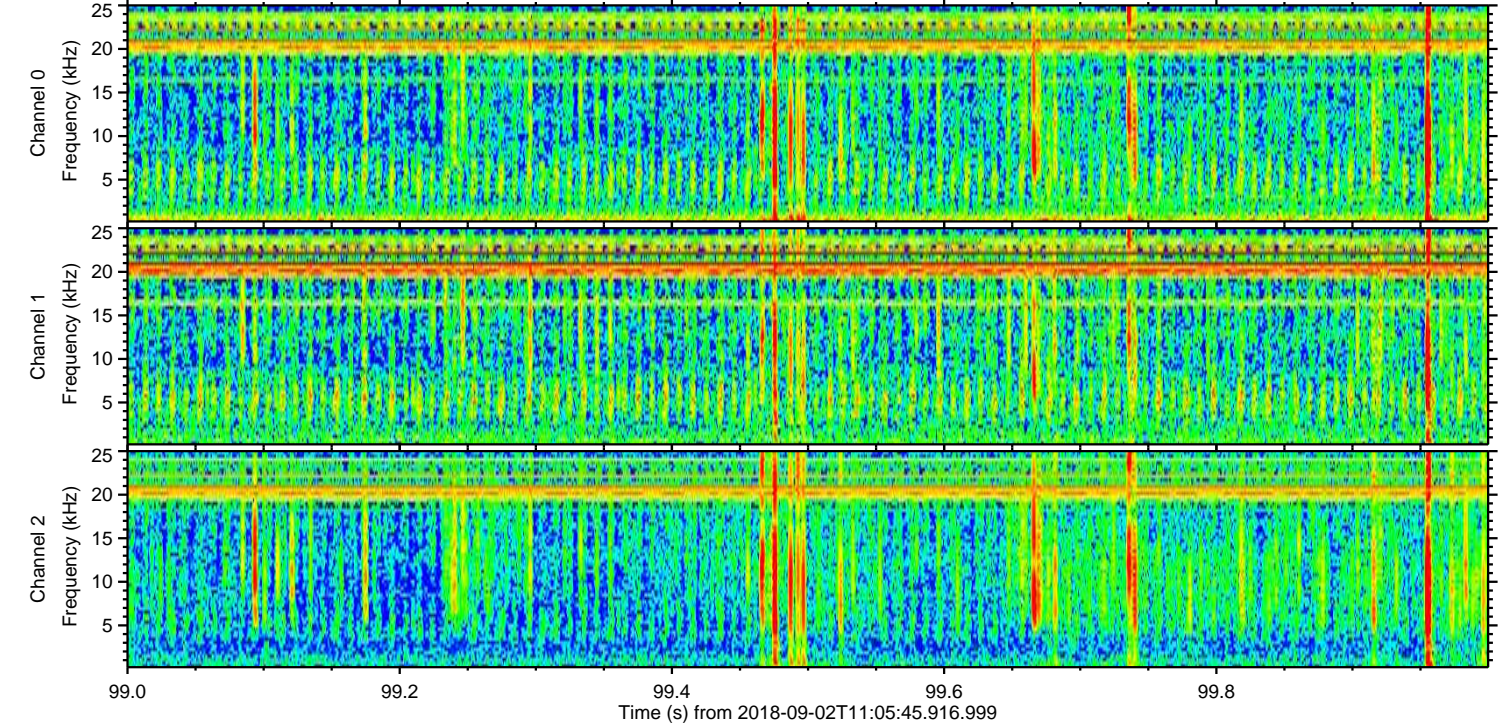
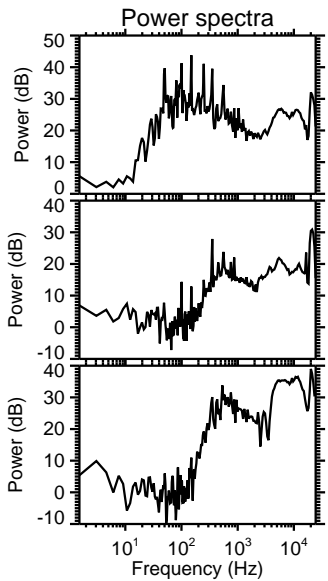
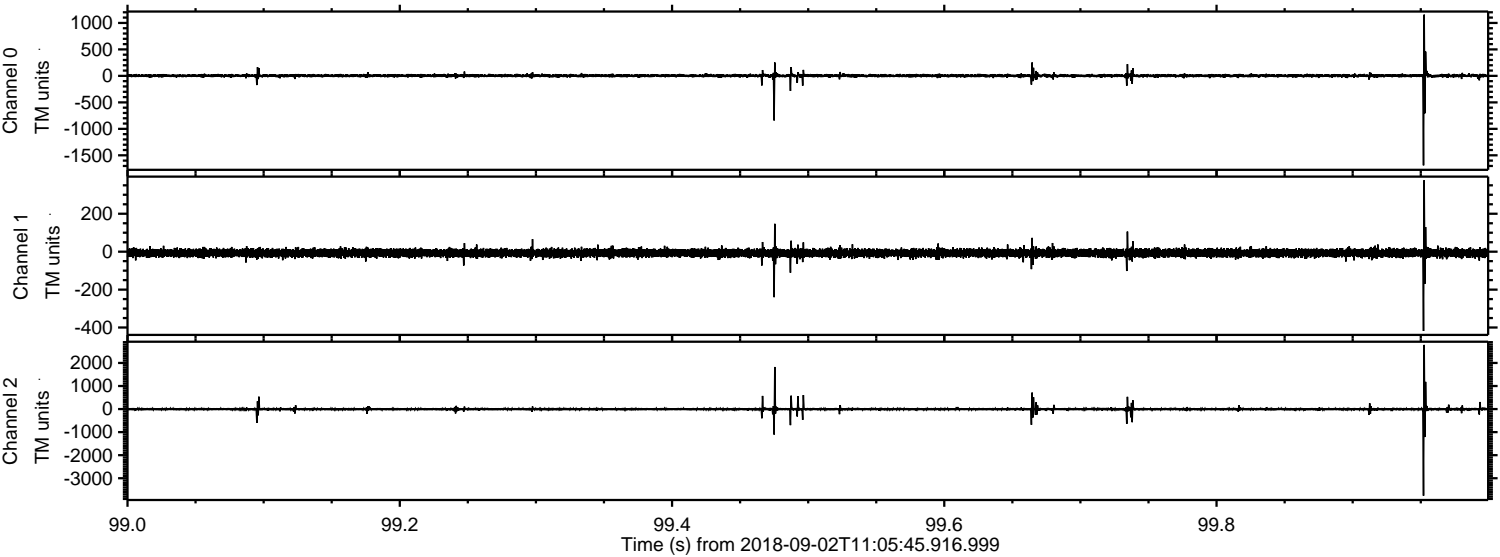
Channel 2
mn: -5172
mx: 8386
 μ : -5.5
 σ : 62.3

Processed Sun Sep 2 13:13:56 2018 by ELM ver.2012-10-06 from 001__elm20180902_110544__dat00.bin

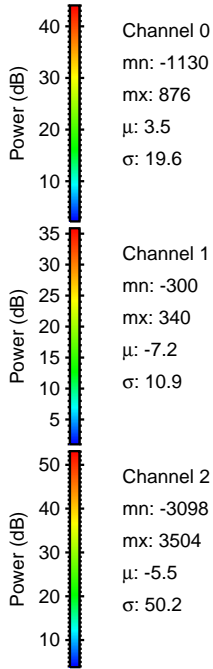
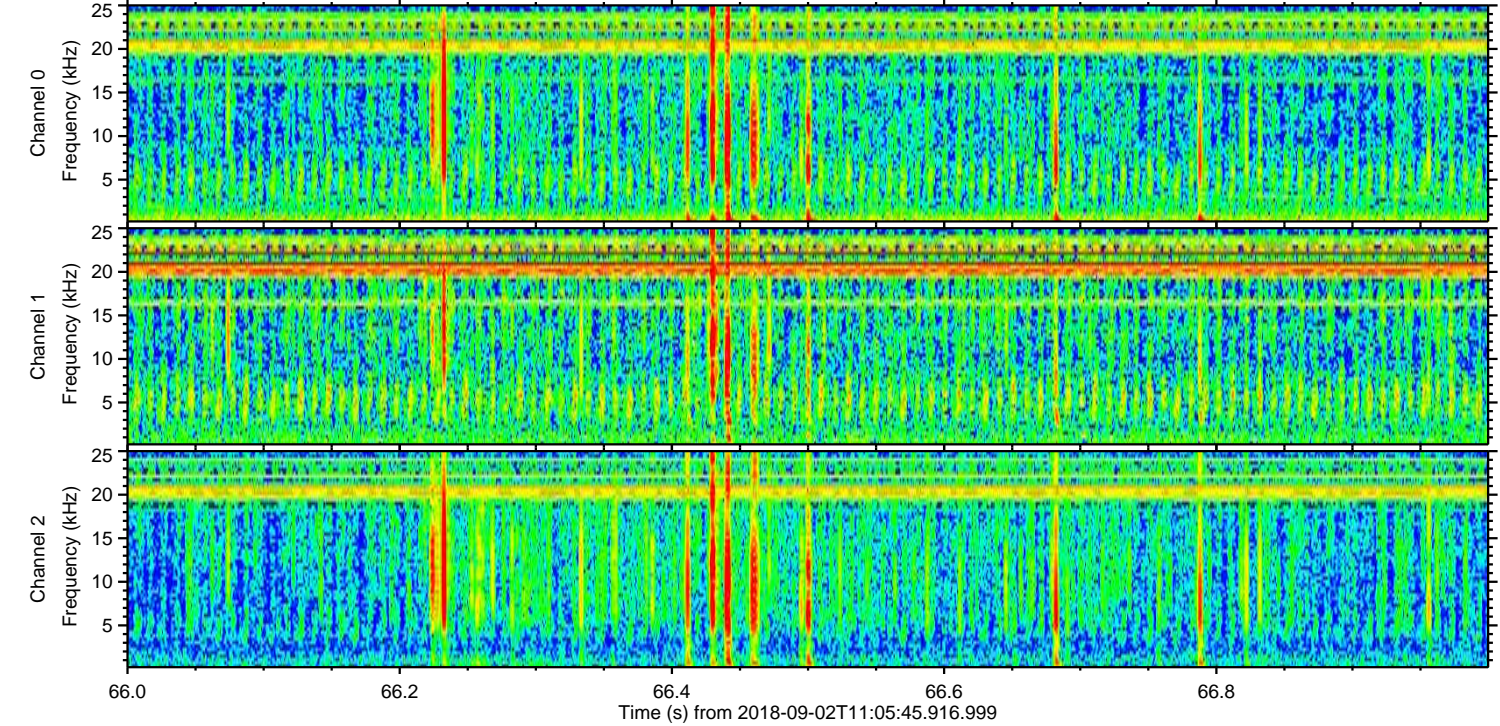
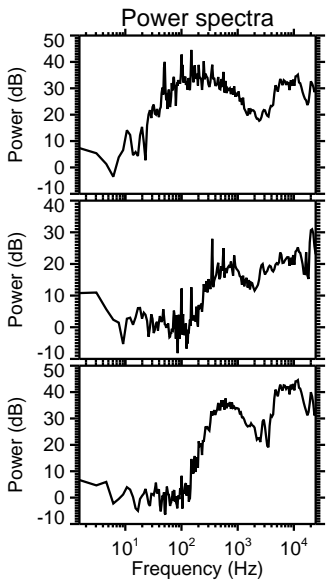
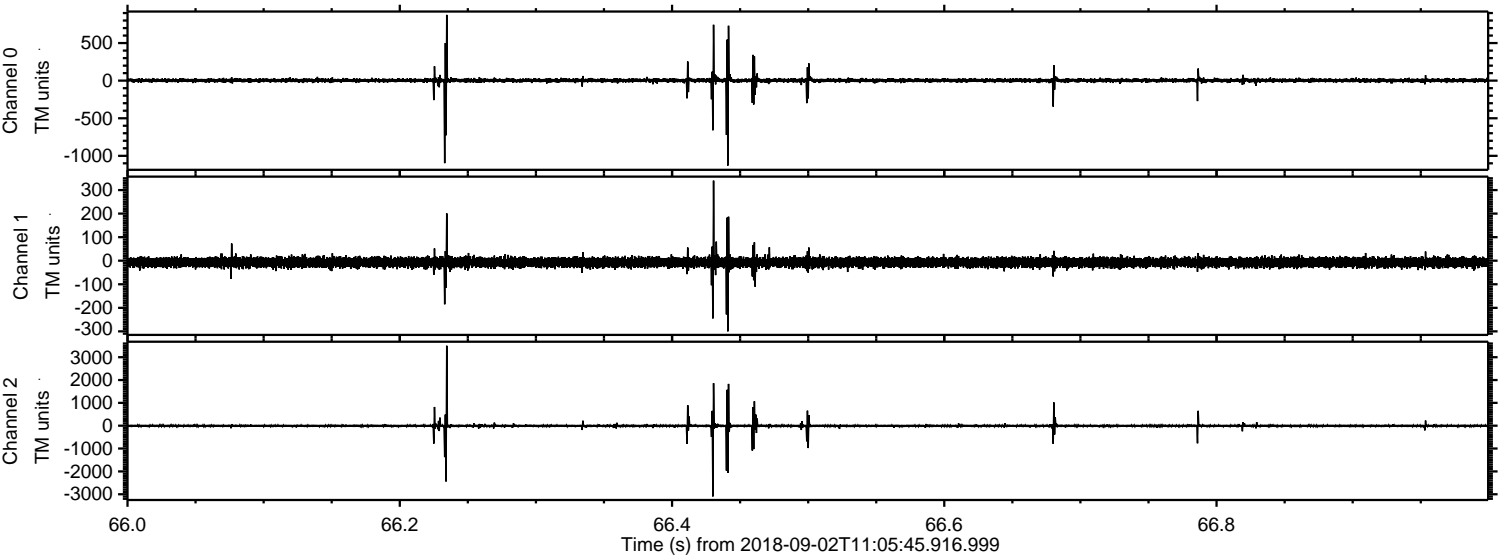


ELMAVAN 3D WAVEFORMS (Measured data sampled at 50 kHz) 51000 packets of 144 samples from 2018-09-02T11:05:45.916.999. Part 100/147

Processed Sun Sep 2 13:13:57 2018 by ELM ver.2012-10-06 from 001__elm20180902_110544__dat00.bin

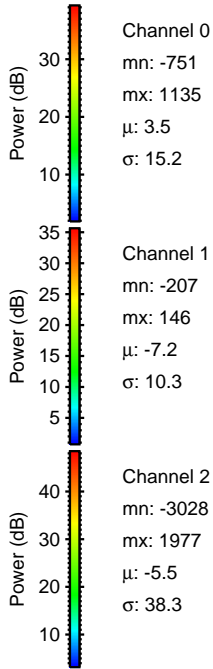
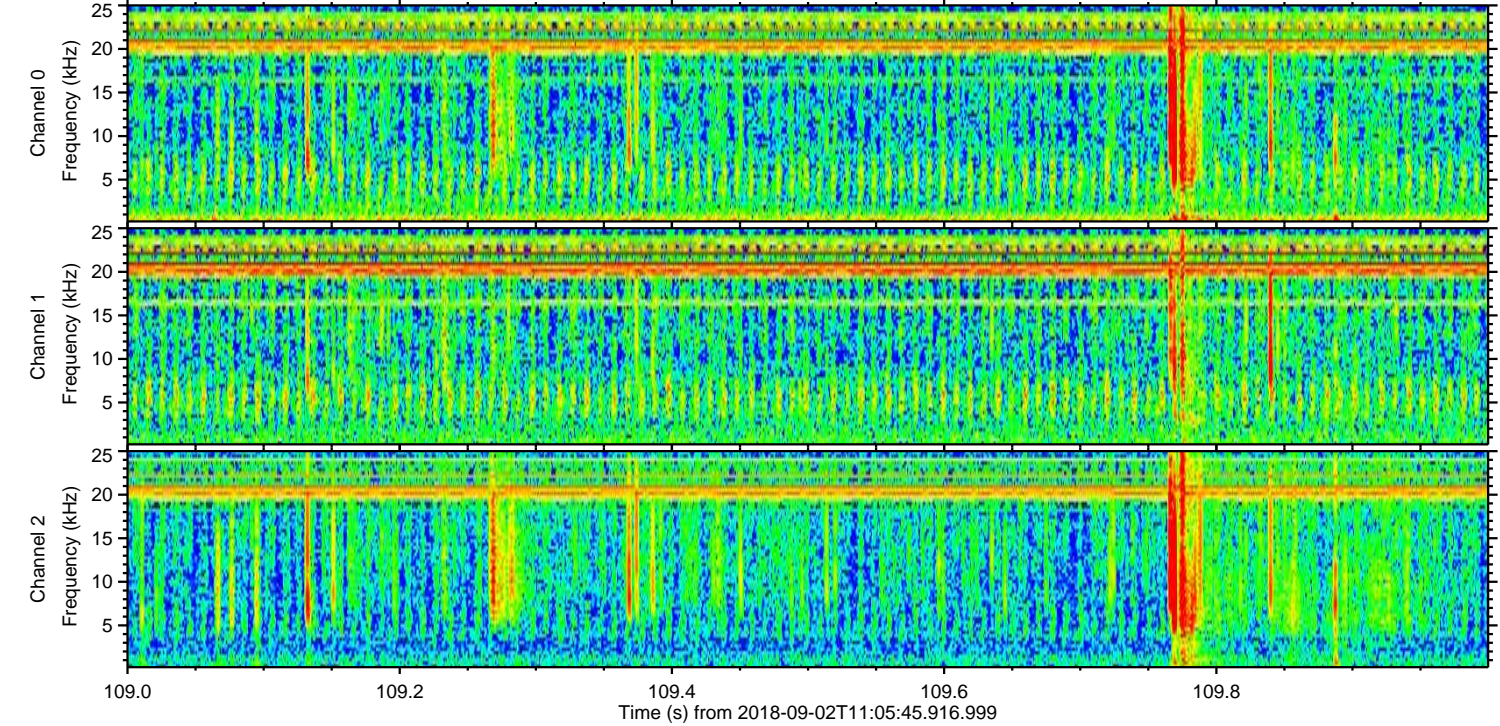
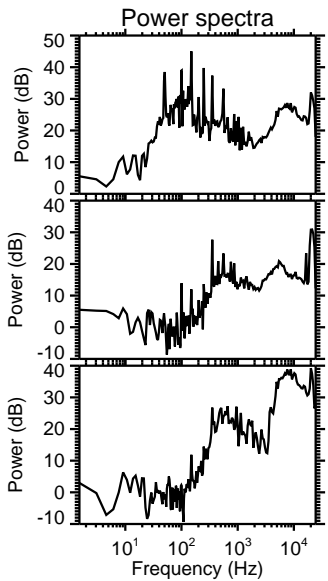
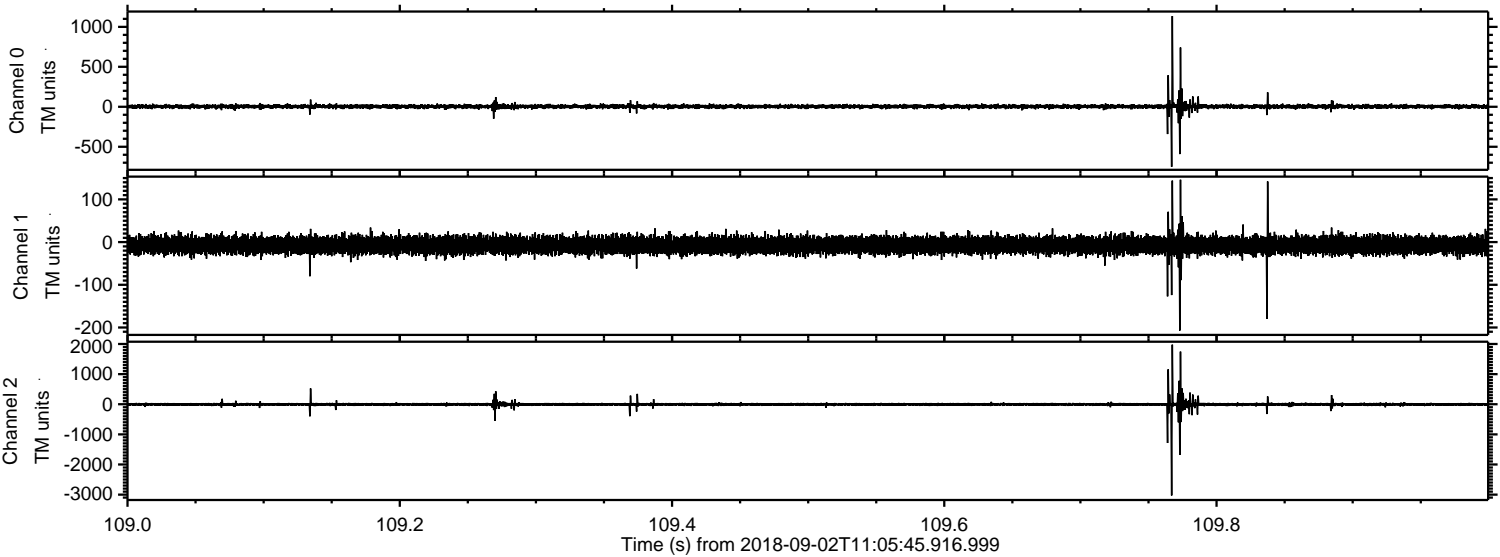


Processed Sun Sep 2 13:13:57 2018 by ELM ver.2012-10-06 from 001__elm20180902_110544__dat00.bin

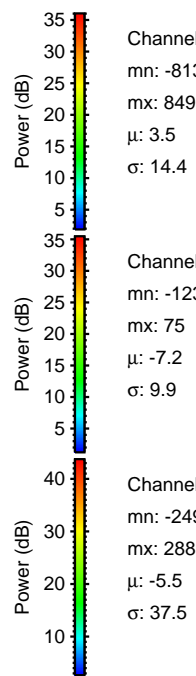
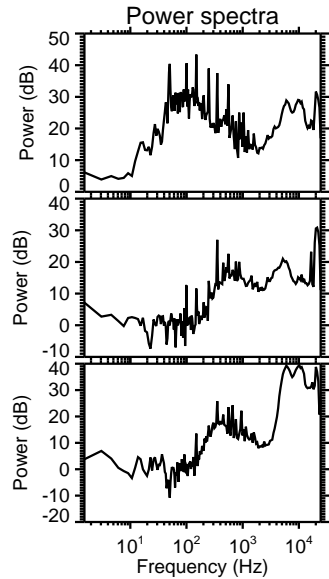
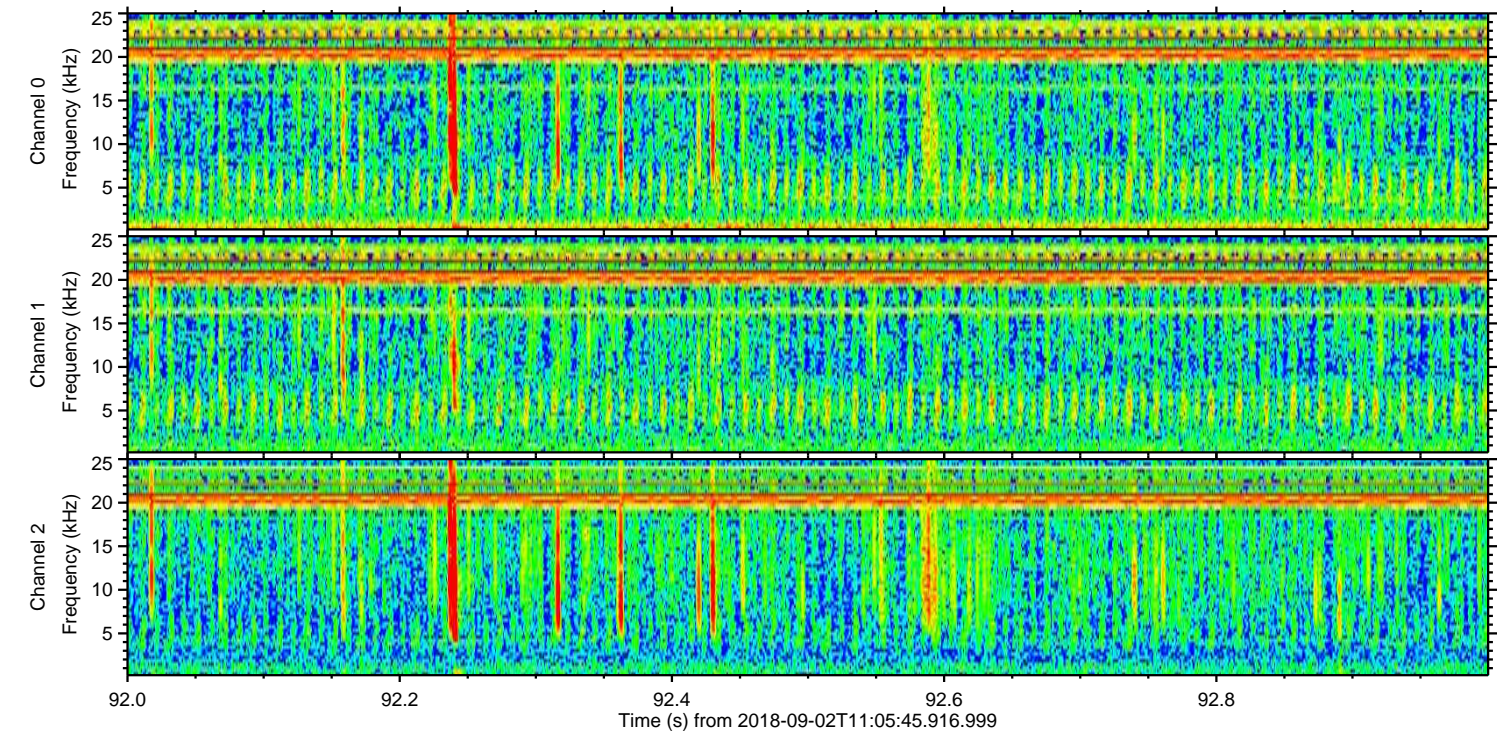
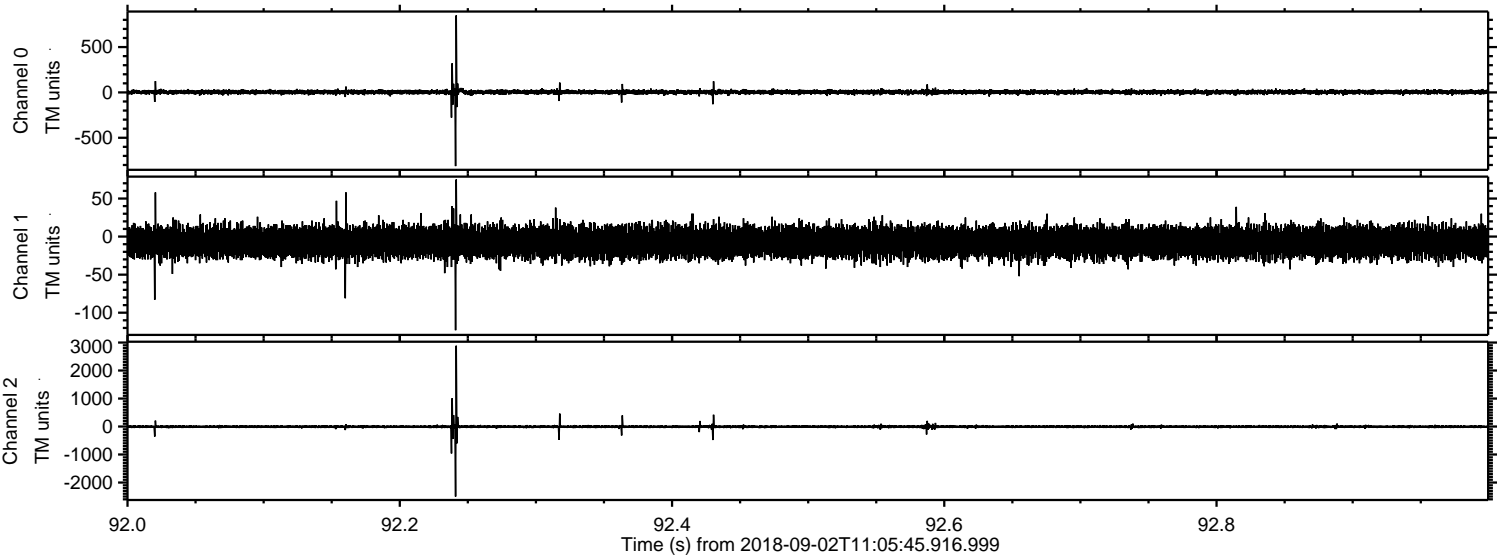


ELMAVAN 3D WAVEFORMS (Measured data sampled at 50 kHz) 51000 packets of 144 samples from 2018-09-02T11:05:45.916.999. Part 110/147

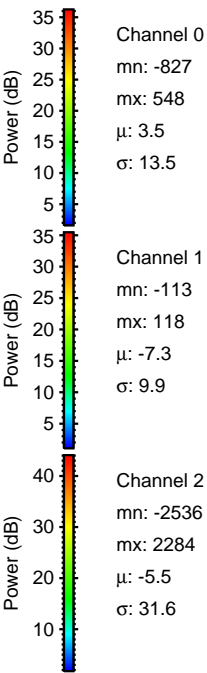
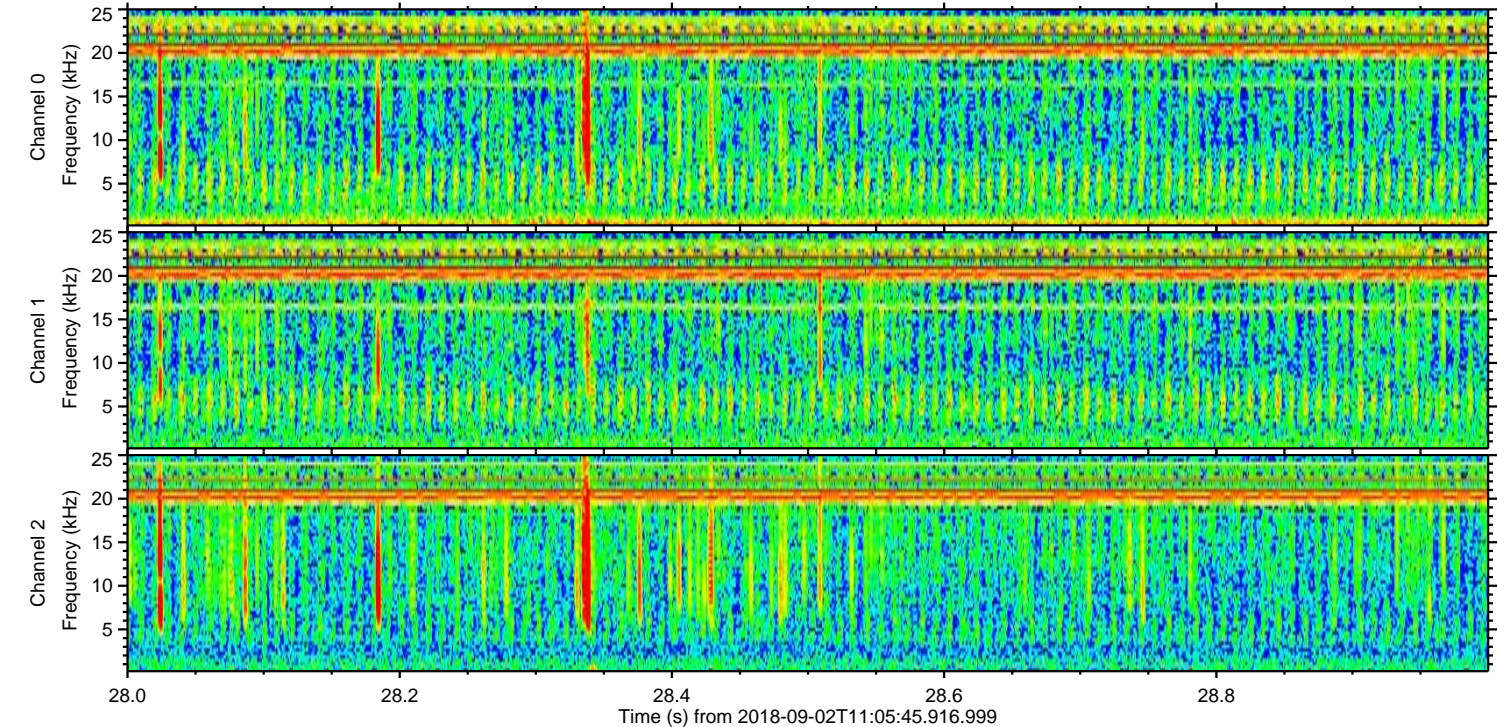
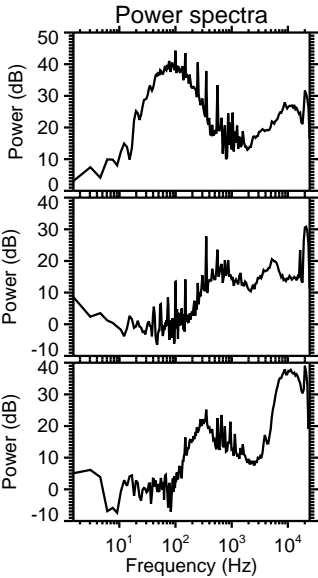
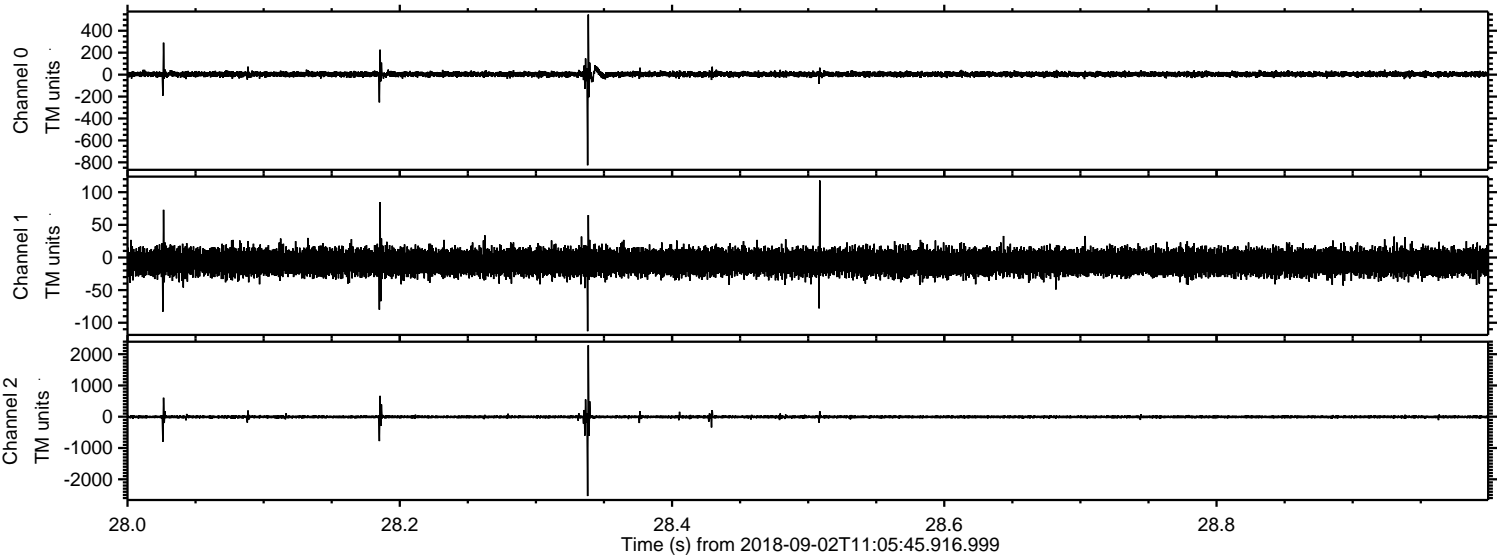
Processed Sun Sep 2 13:13:58 2018 by ELM ver.2012-10-06 from 001__elm20180902_110544__dat00.bin



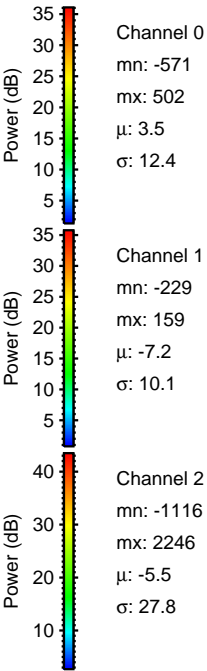
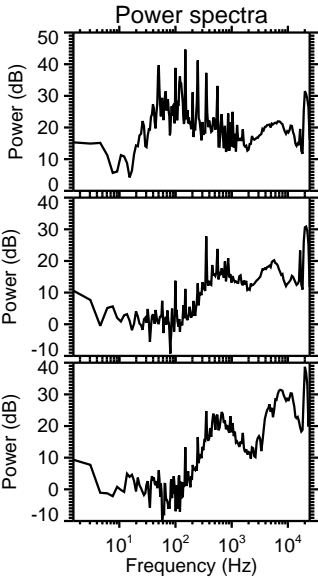
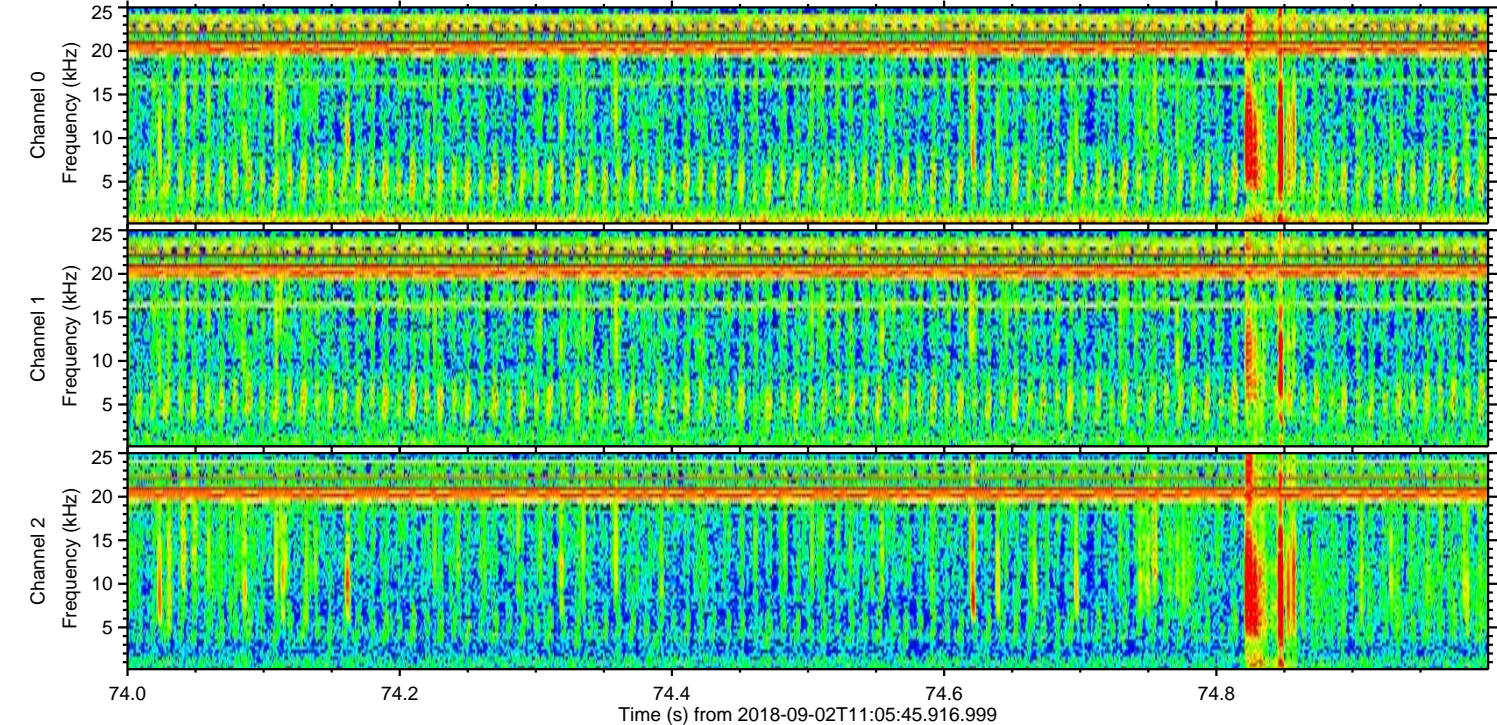
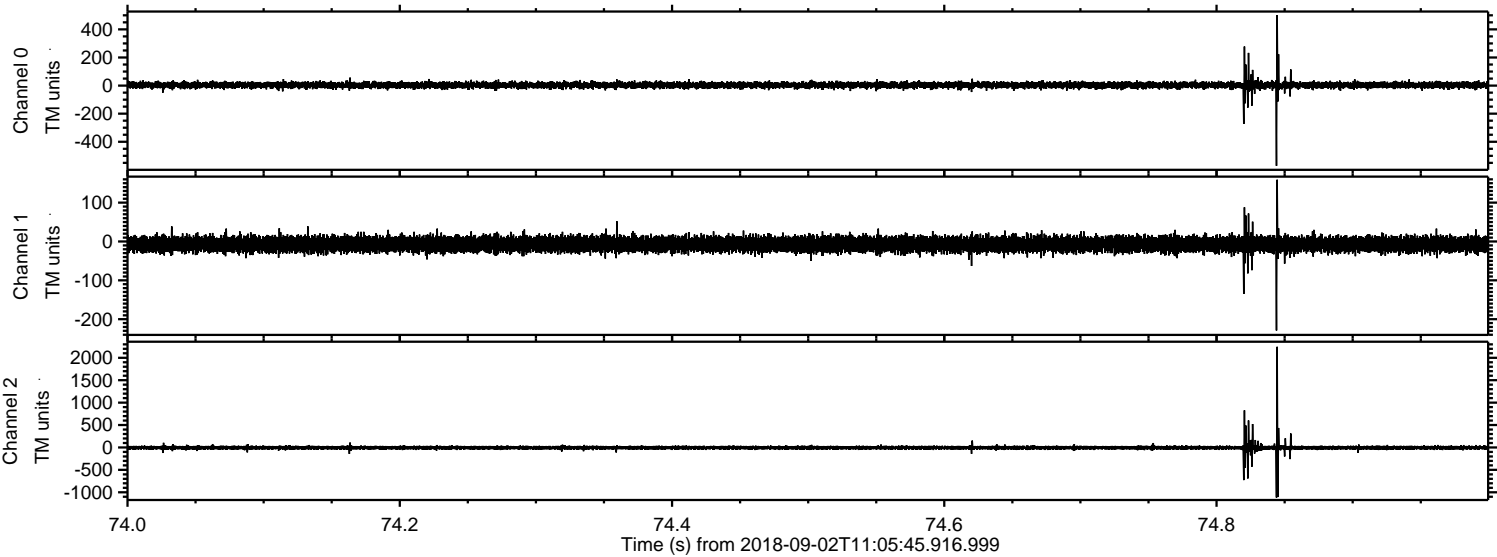
Processed Sun Sep 2 13:13:59 2018 by ELM ver.2012-10-06 from 001__elm20180902_110544__dat00.bin



Processed Sun Sep 2 13:13:59 2018 by ELM ver.2012-10-06 from 001__elm20180902_110544__dat00.bin



Processed Sun Sep 2 13:14:00 2018 by ELM ver.2012-10-06 from 001__elm20180902_110544__dat00.bin



Channel 0
mn: -571
mx: 502
 μ : 3.5
 σ : 12.4

Channel 1
mn: -229
mx: 159
 μ : -7.2
 σ : 10.1

Channel 2
mn: -1116
mx: 2246
 μ : -5.5
 σ : 27.8

Processed Sun Sep 2 13:14:01 2018 by ELM ver.2012-10-06 from 001__elm20180902_110544__dat00.bin

