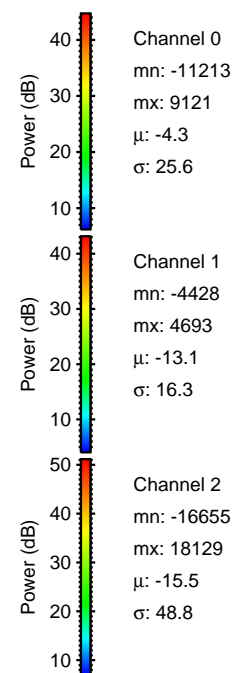
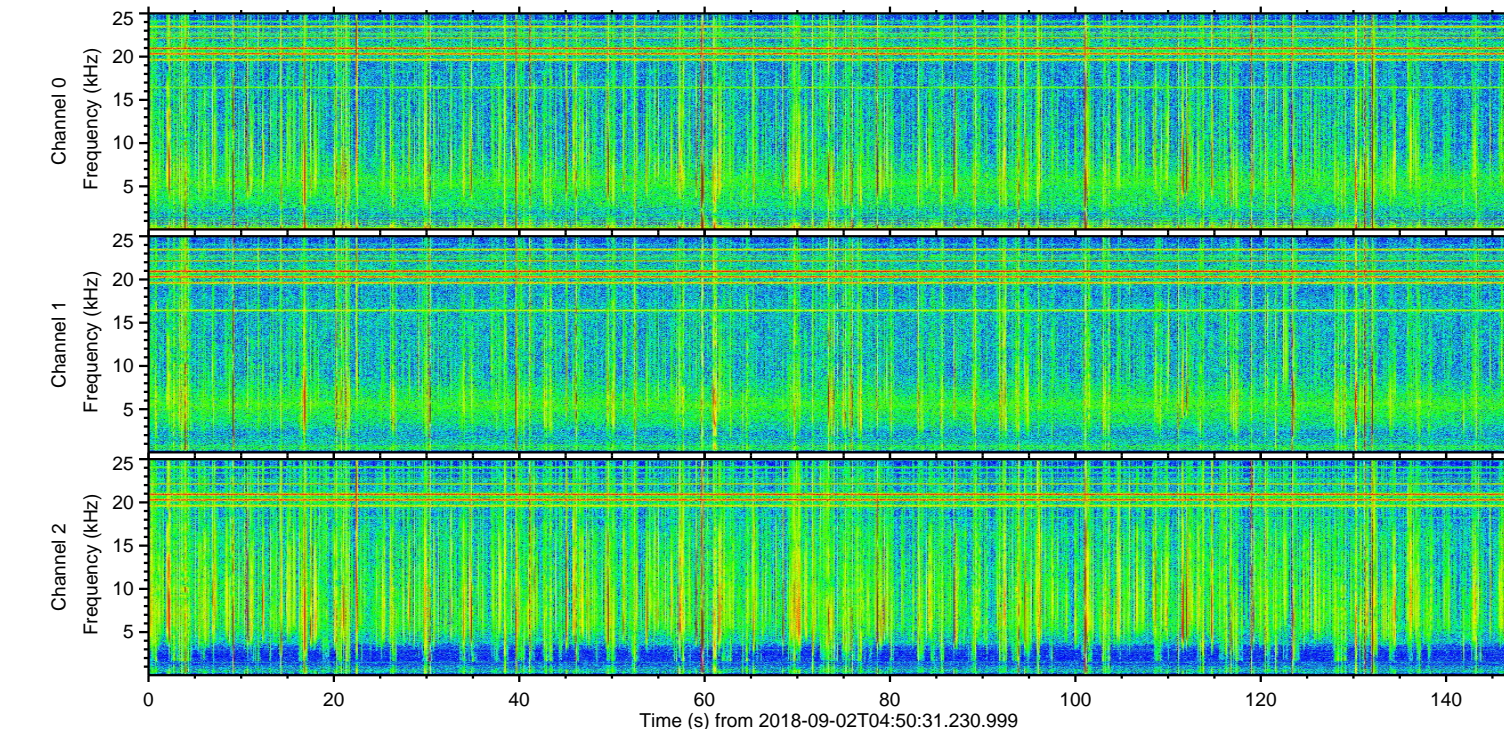
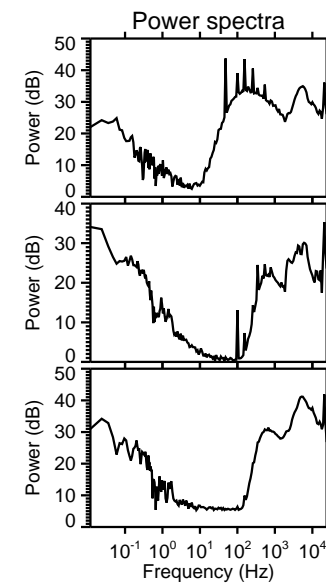
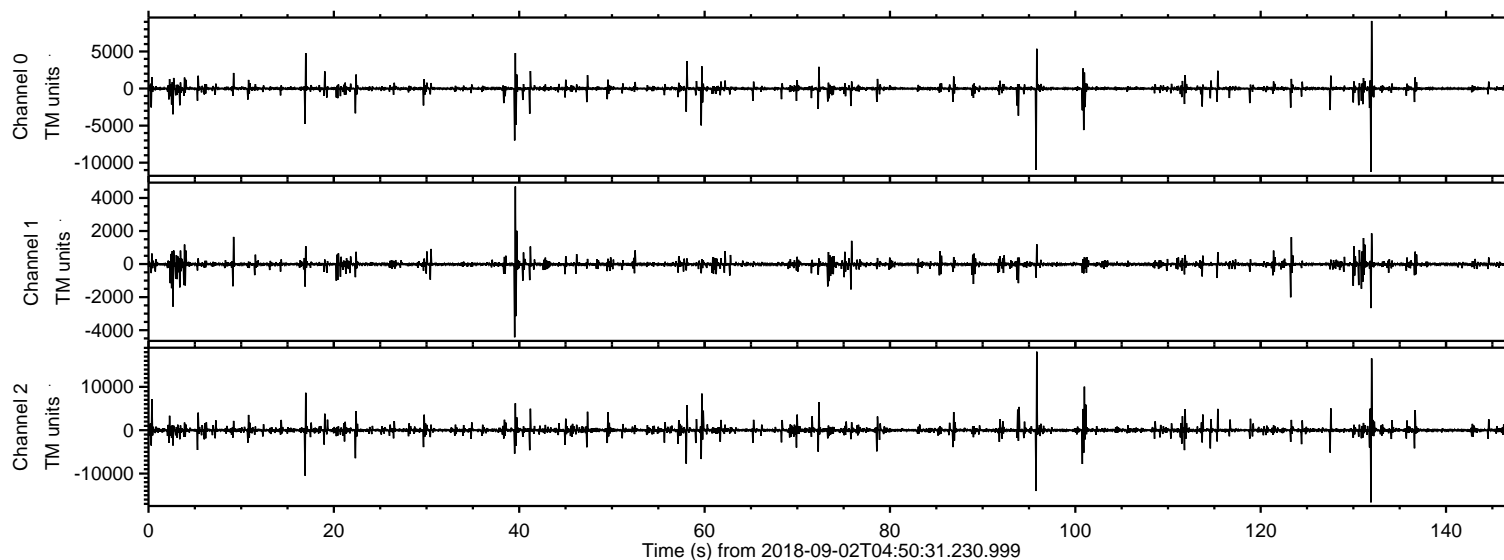
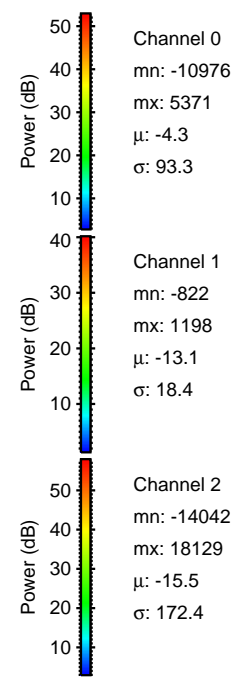
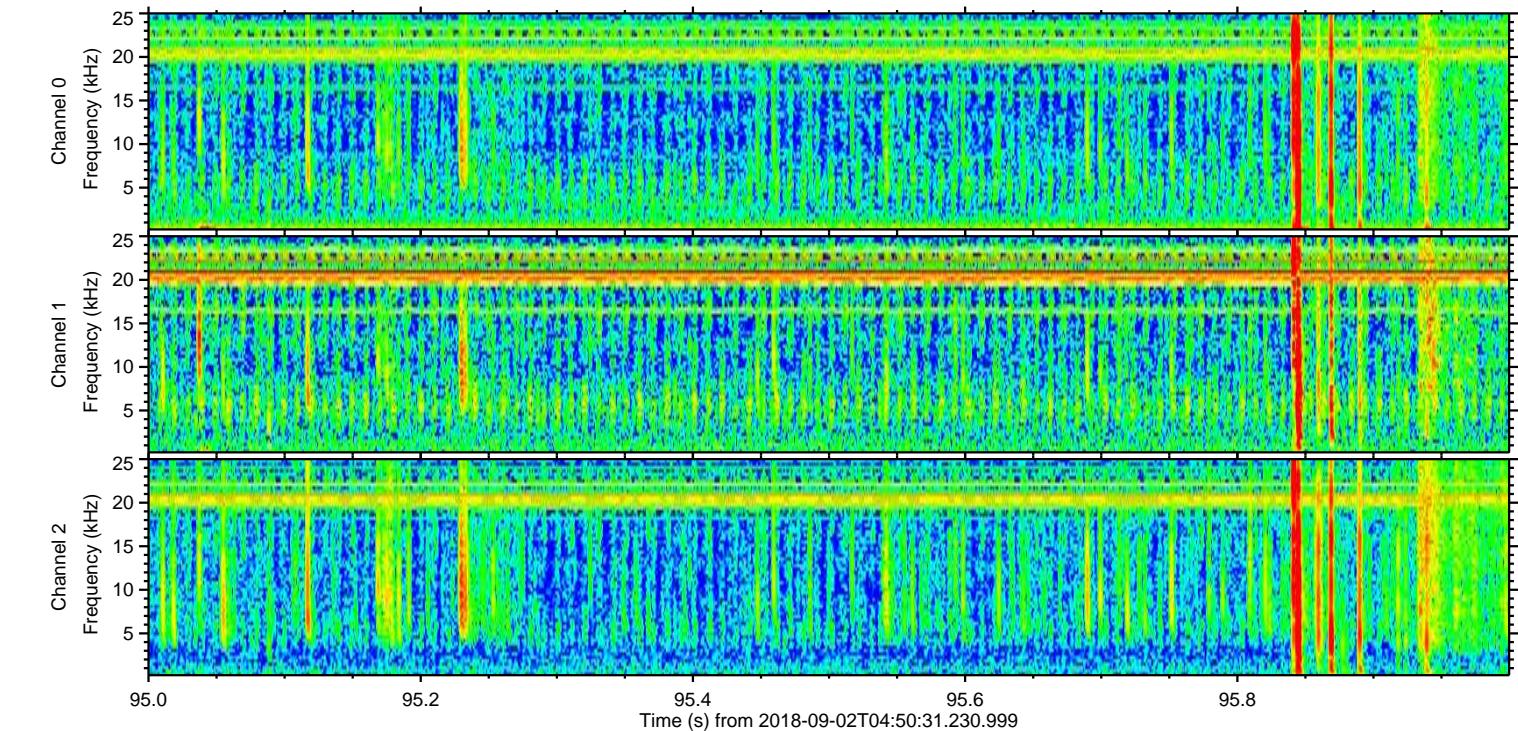
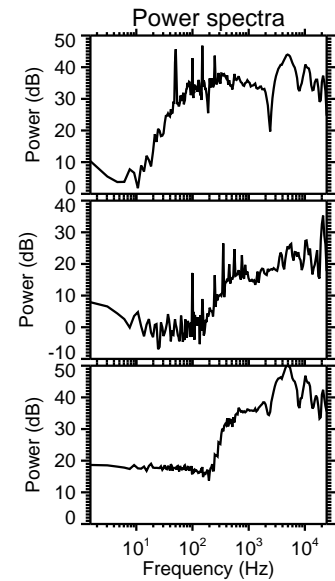
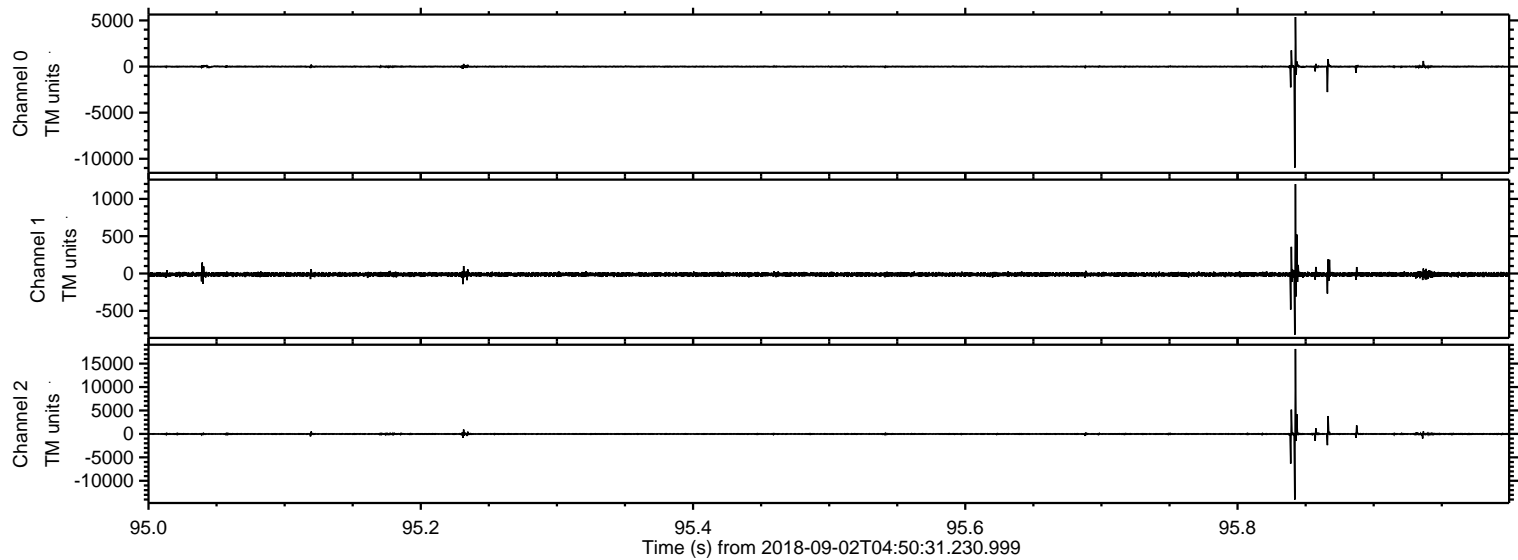


ELMAVAN 3D WAVEFORMS (Measured data sampled at 50 kHz) 51000 packets of 144 samples from 2018-09-02T04:50:31.230.999.

Processed Sun Sep 2 06:58:33 2018 by ELM ver.2012-10-06 from 001__elm20180902_045030__dat00.bin

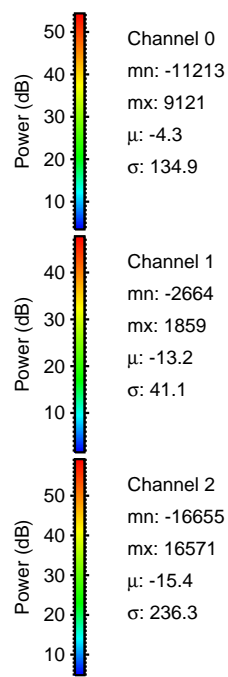
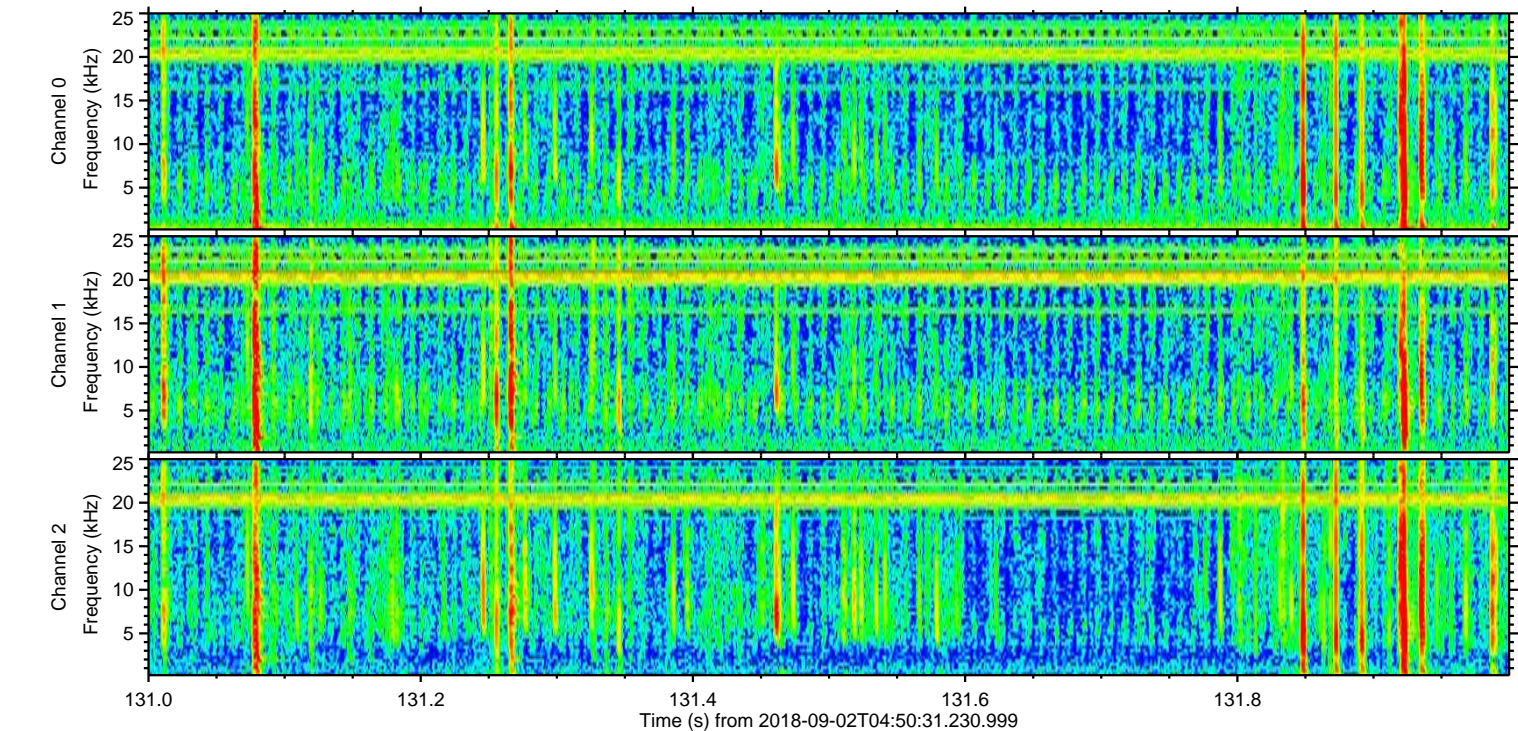
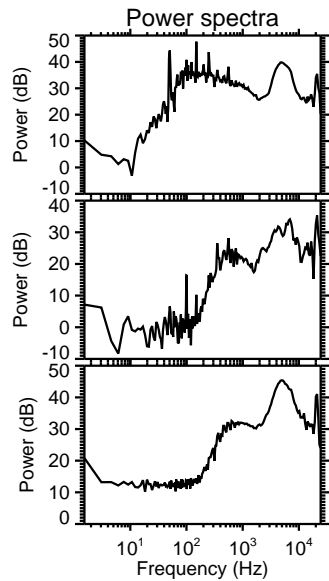
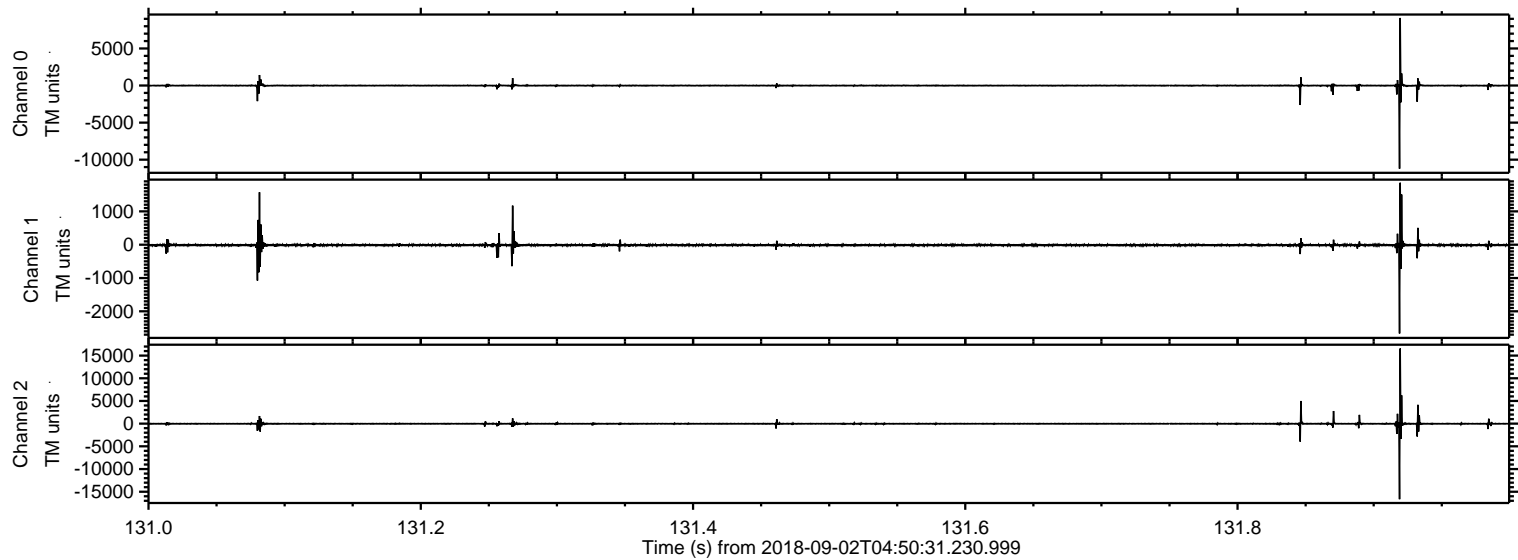


Processed Sun Sep 2 06:58:39 2018 by ELM ver.2012-10-06 from 001__elm20180902_045030__dat00.bin



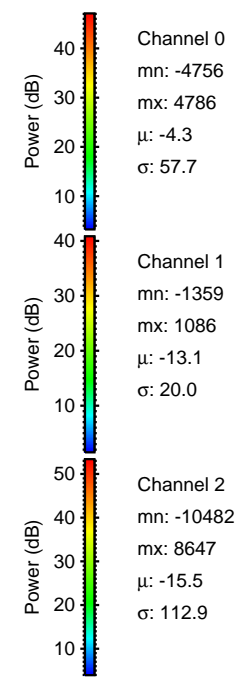
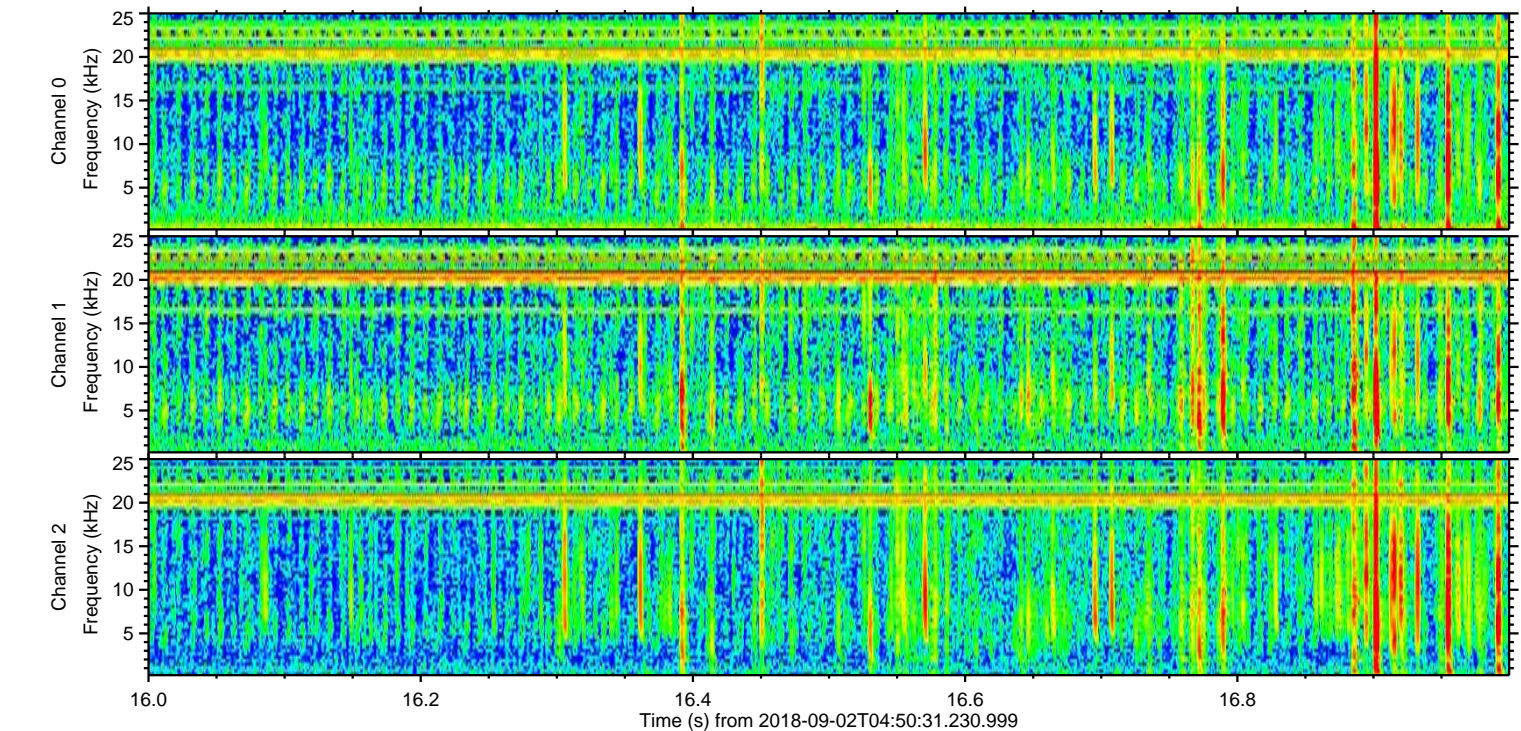
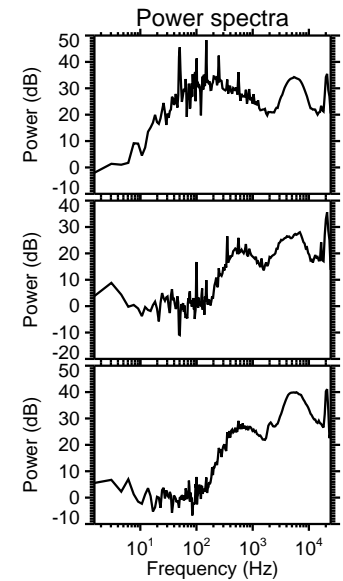
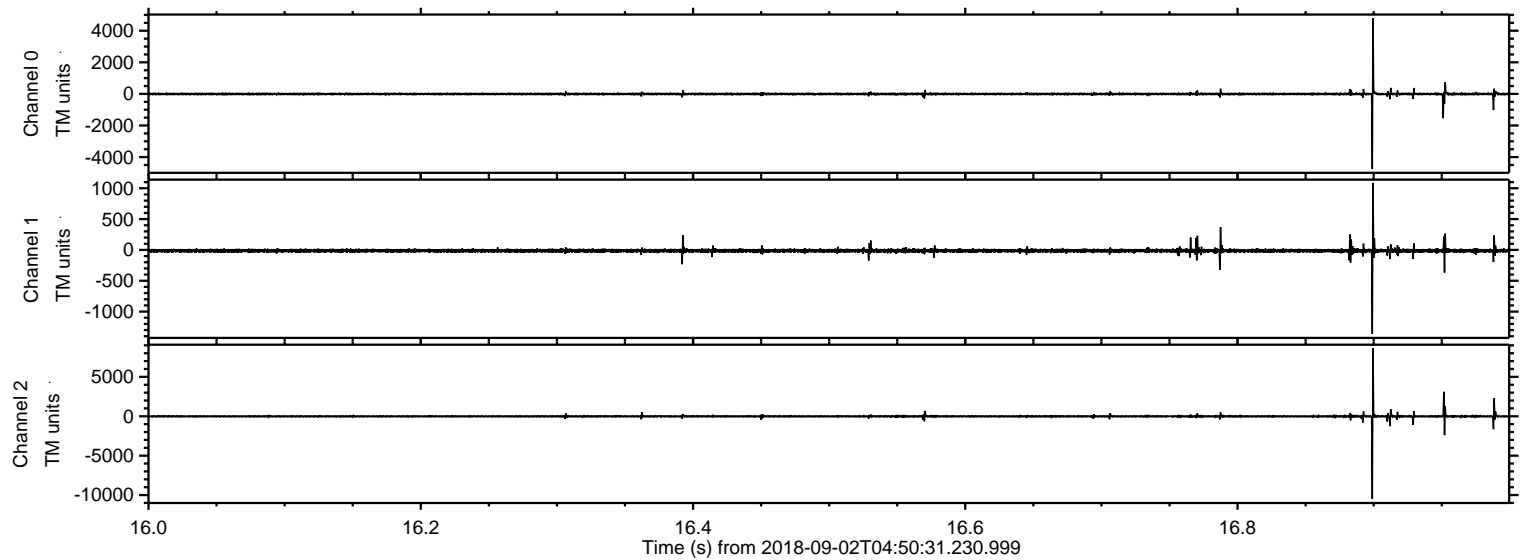
ELMAVAN 3D WAVEFORMS (Measured data sampled at 50 kHz) 51000 packets of 144 samples from 2018-09-02T04:50:31.230.999. Part 132/147

Processed Sun Sep 2 06:58:40 2018 by ELM ver.2012-10-06 from 001__elm20180902_045030__dat00.bin



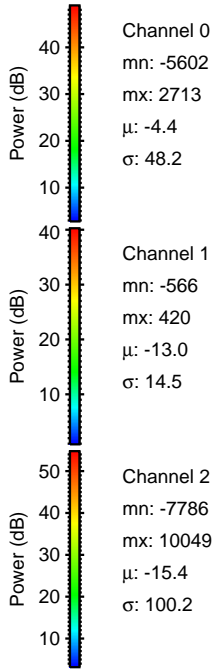
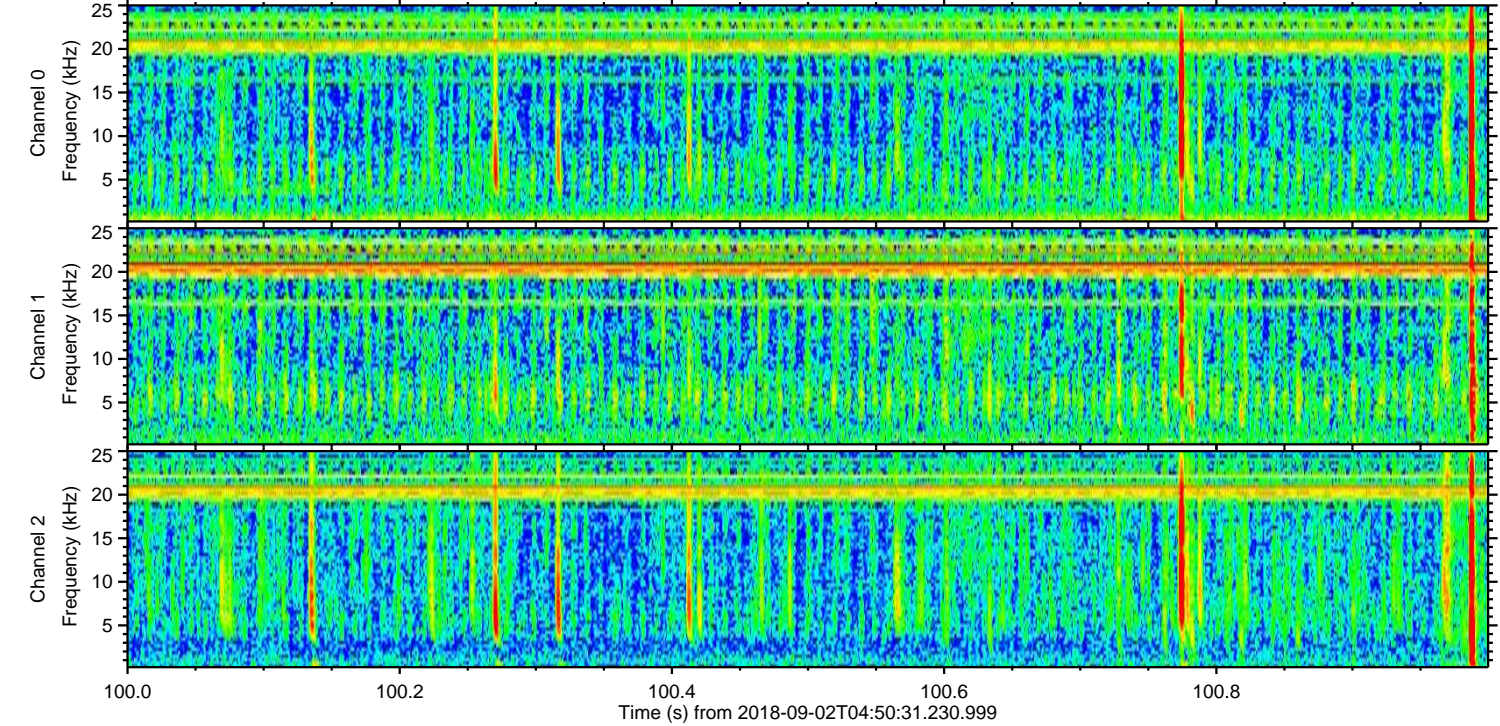
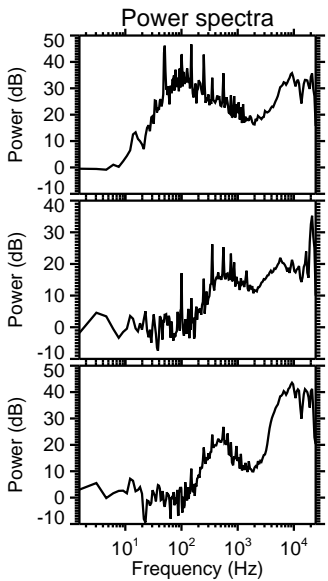
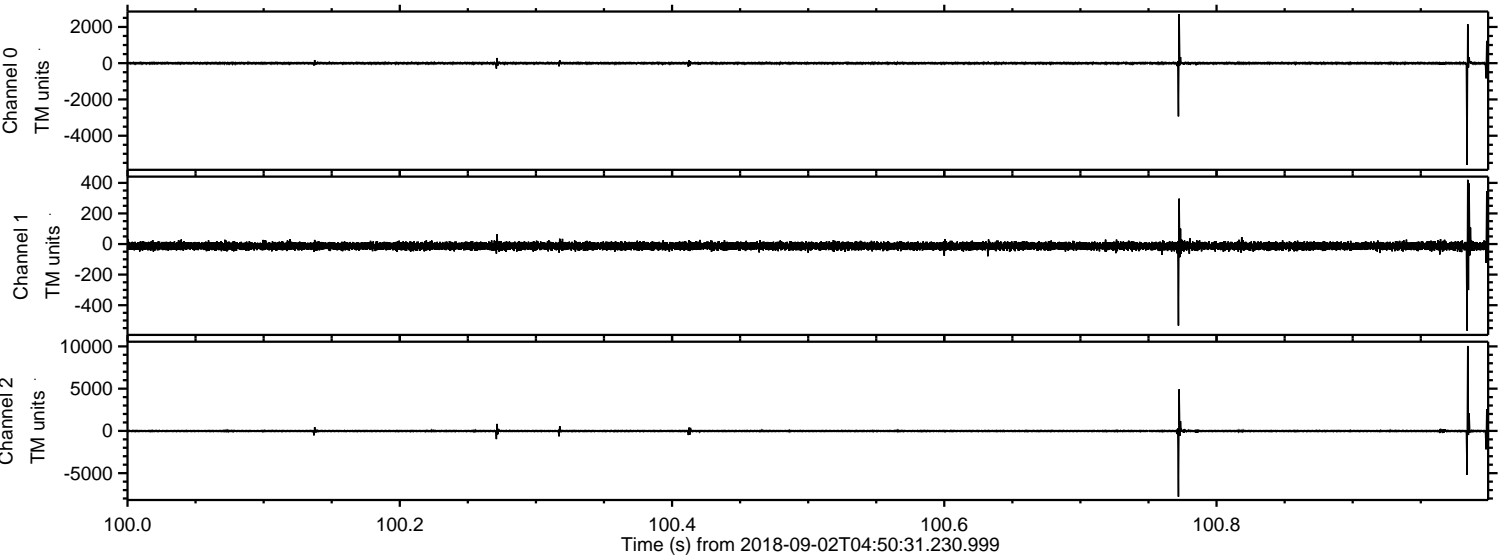
ELMAVAN 3D WAVEFORMS (Measured data sampled at 50 kHz) 51000 packets of 144 samples from 2018-09-02T04:50:31.230.999. Part 17/147

Processed Sun Sep 2 06:58:41 2018 by ELM ver.2012-10-06 from 001__elm20180902_045030__dat00.bin

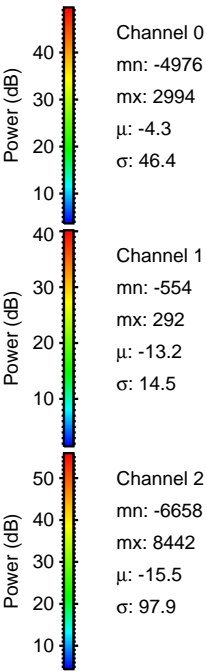
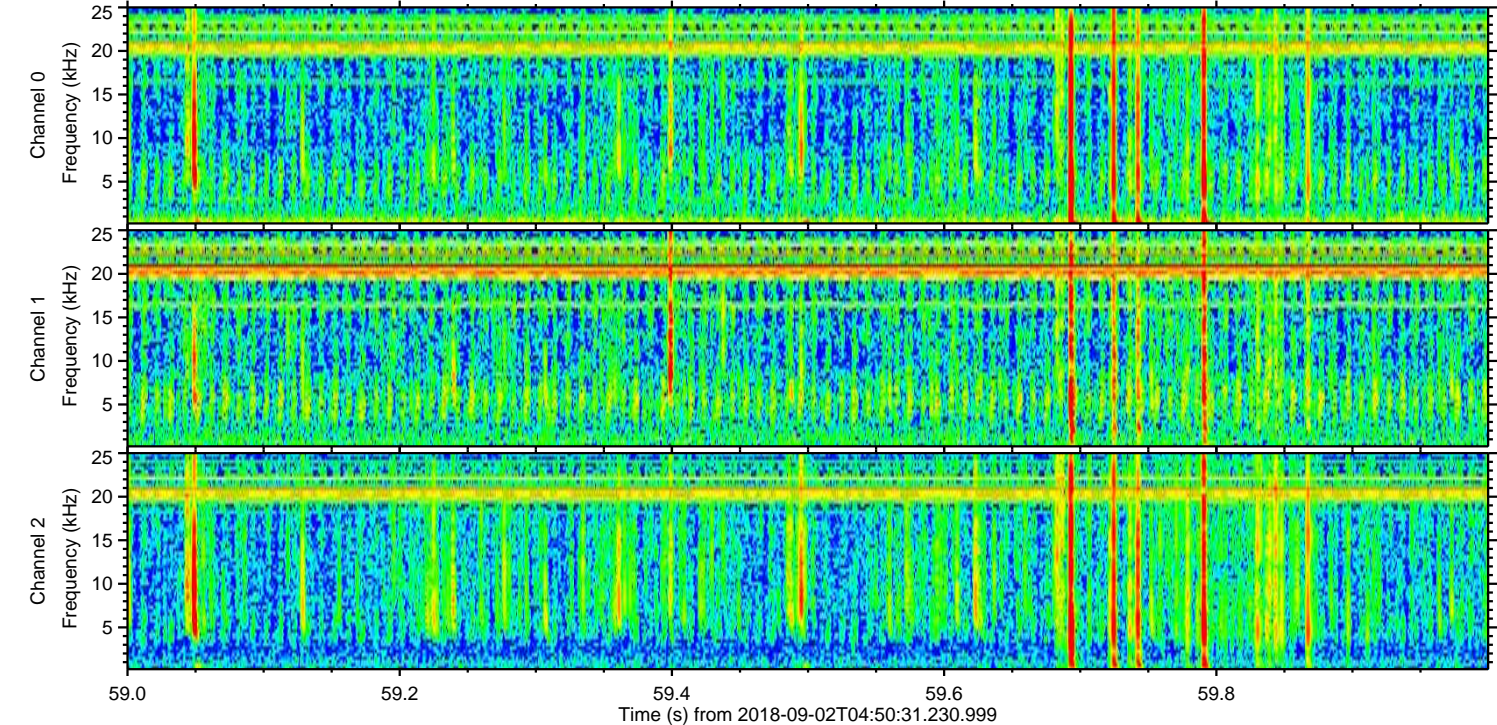
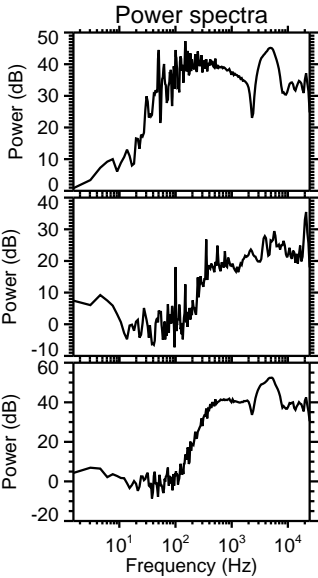
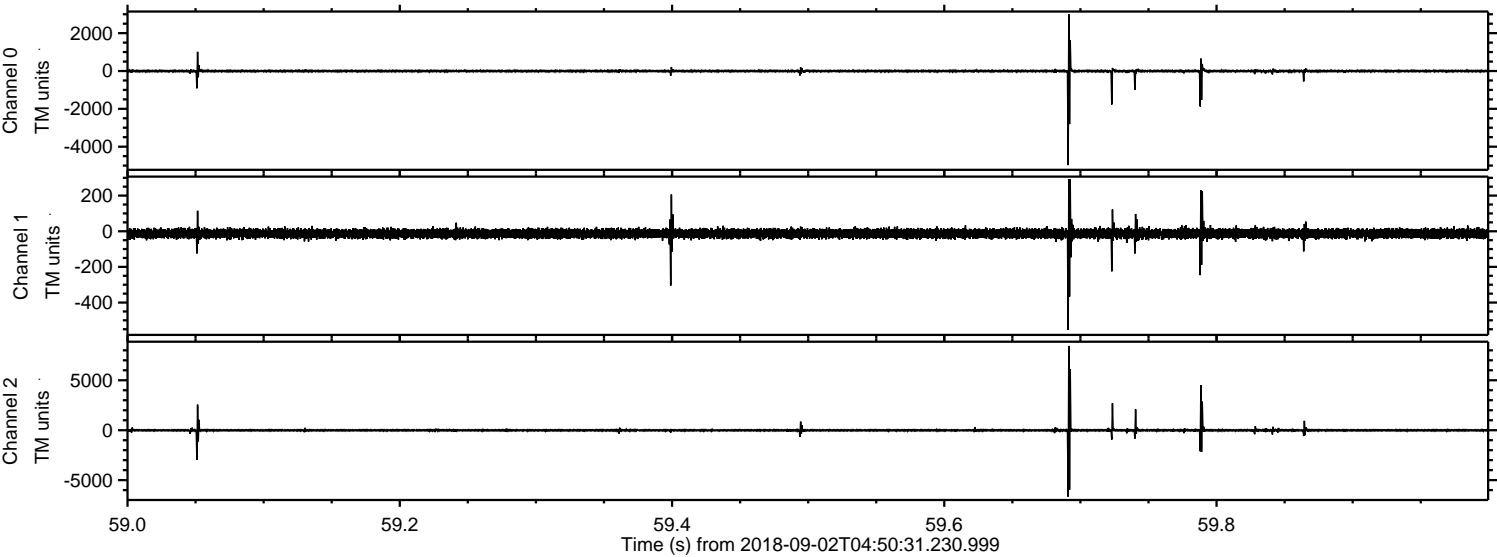


ELMAVAN 3D WAVEFORMS (Measured data sampled at 50 kHz) 51000 packets of 144 samples from 2018-09-02T04:50:31.230.999. Part 101/147

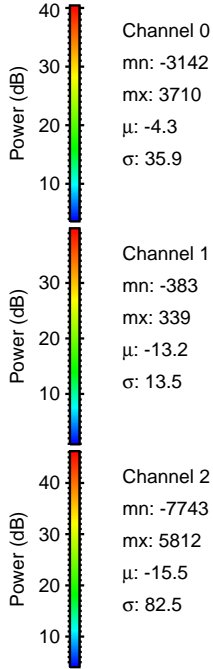
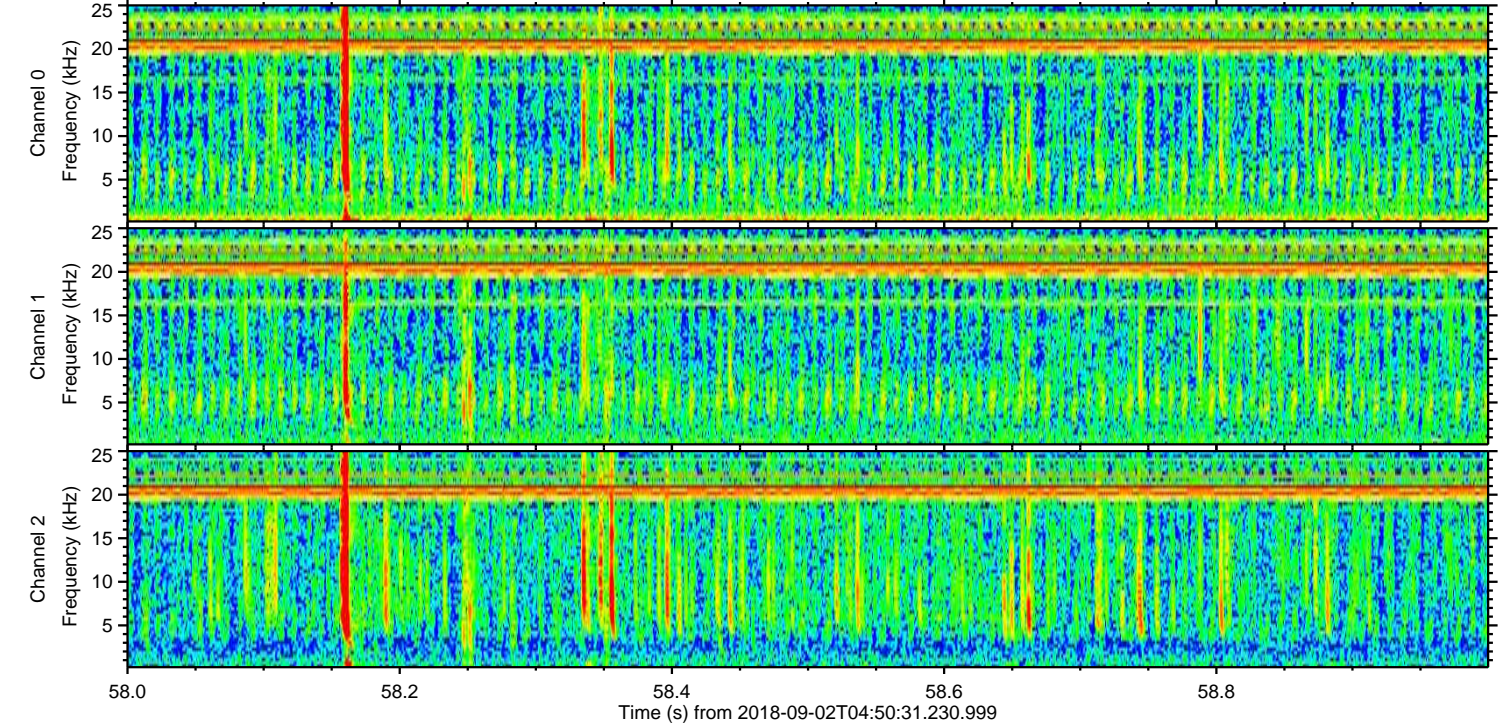
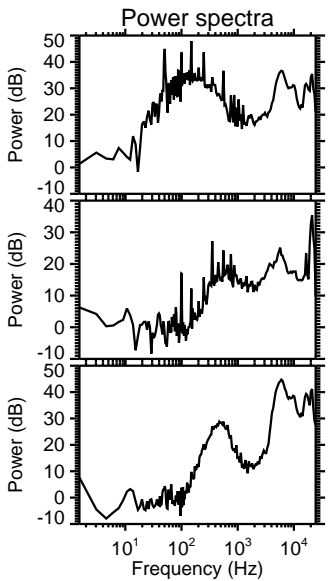
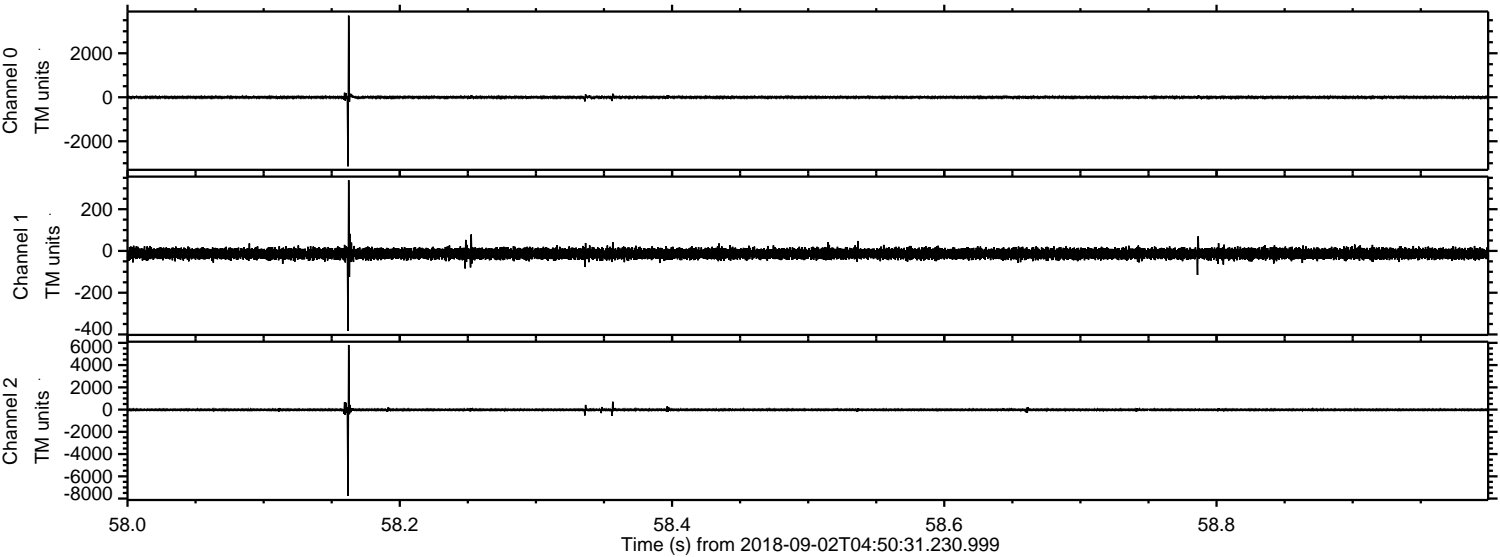
Processed Sun Sep 2 06:58:41 2018 by ELM ver.2012-10-06 from 001__elm20180902_045030__dat00.bin



Processed Sun Sep 2 06:58:42 2018 by ELM ver.2012-10-06 from 001__elm20180902_045030__dat00.bin

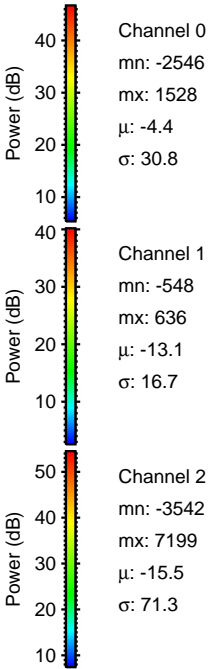
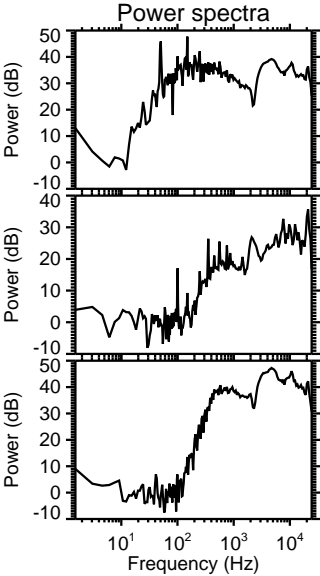
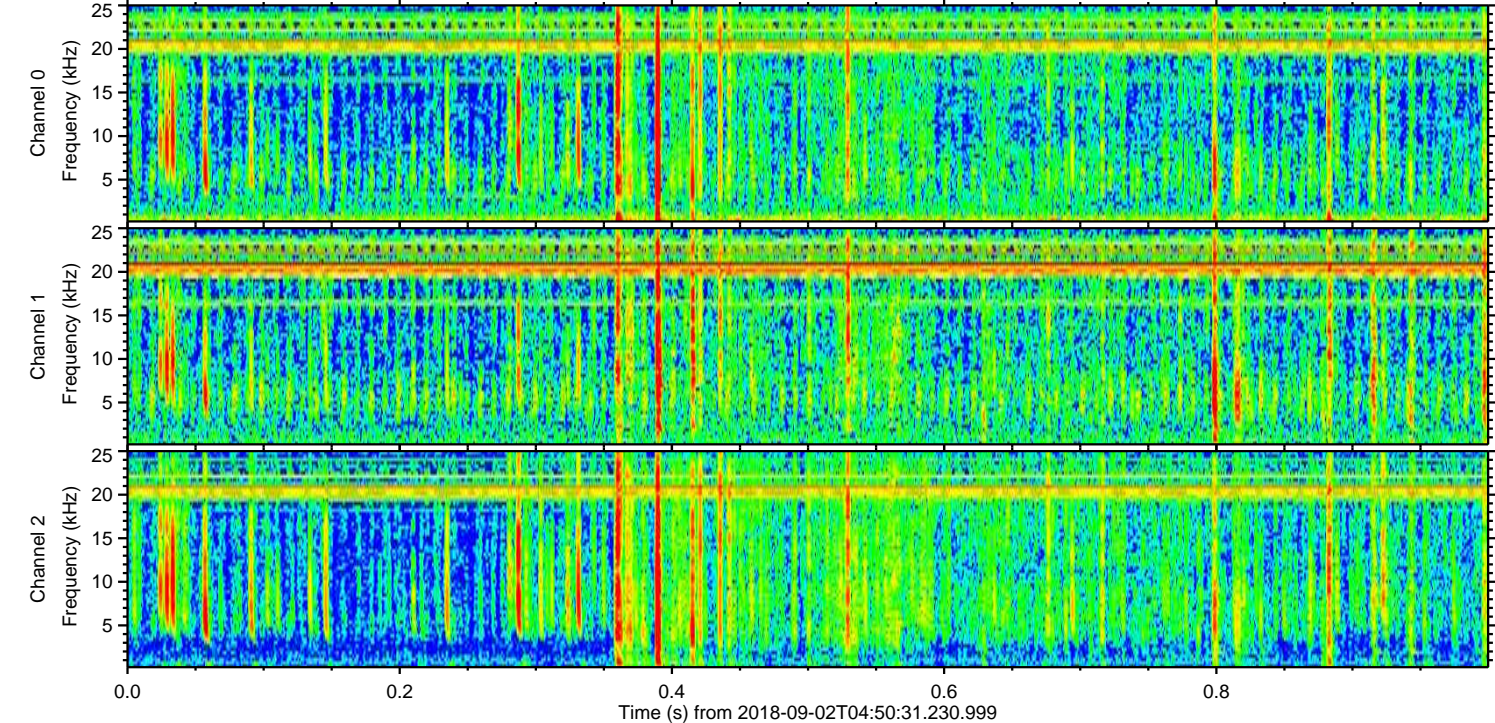
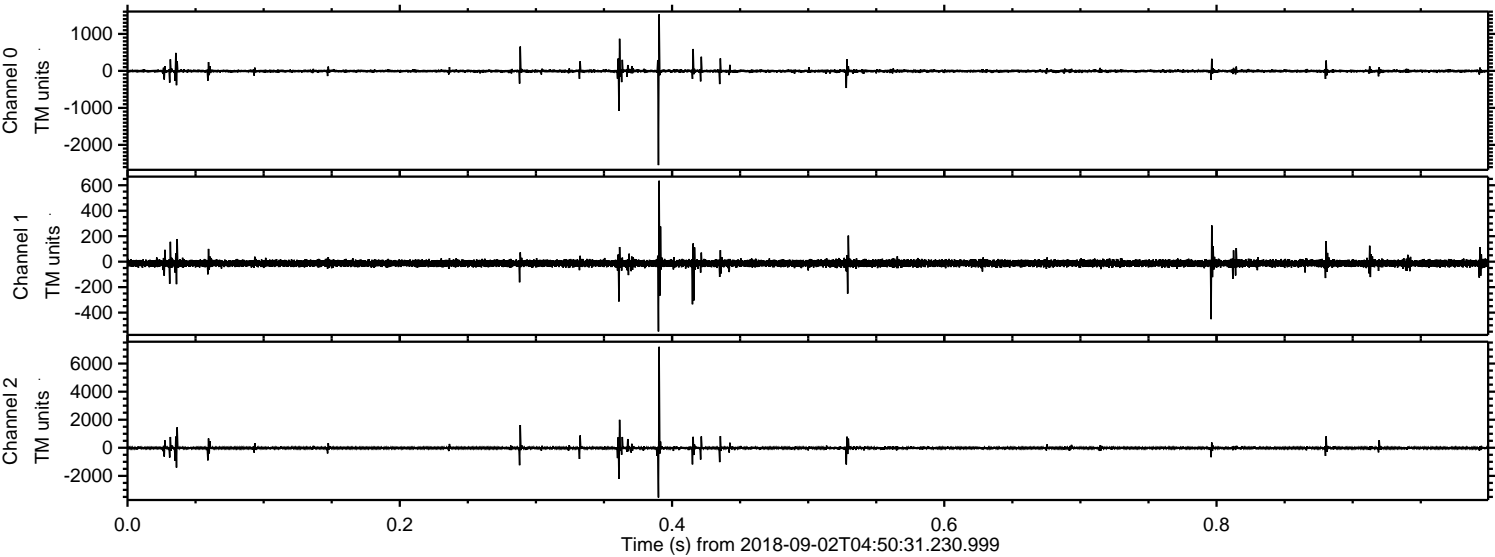


Processed Sun Sep 2 06:58:42 2018 by ELM ver.2012-10-06 from 001__elm20180902_045030__dat00.bin



ELMAVAN 3D WAVEFORMS (Measured data sampled at 50 kHz) 51000 packets of 144 samples from 2018-09-02T04:50:31.230.999. Part 1/147

Processed Sun Sep 2 06:58:43 2018 by ELM ver.2012-10-06 from 001__elm20180902_045030__dat00.bin

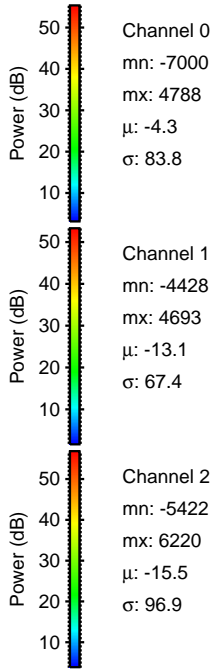
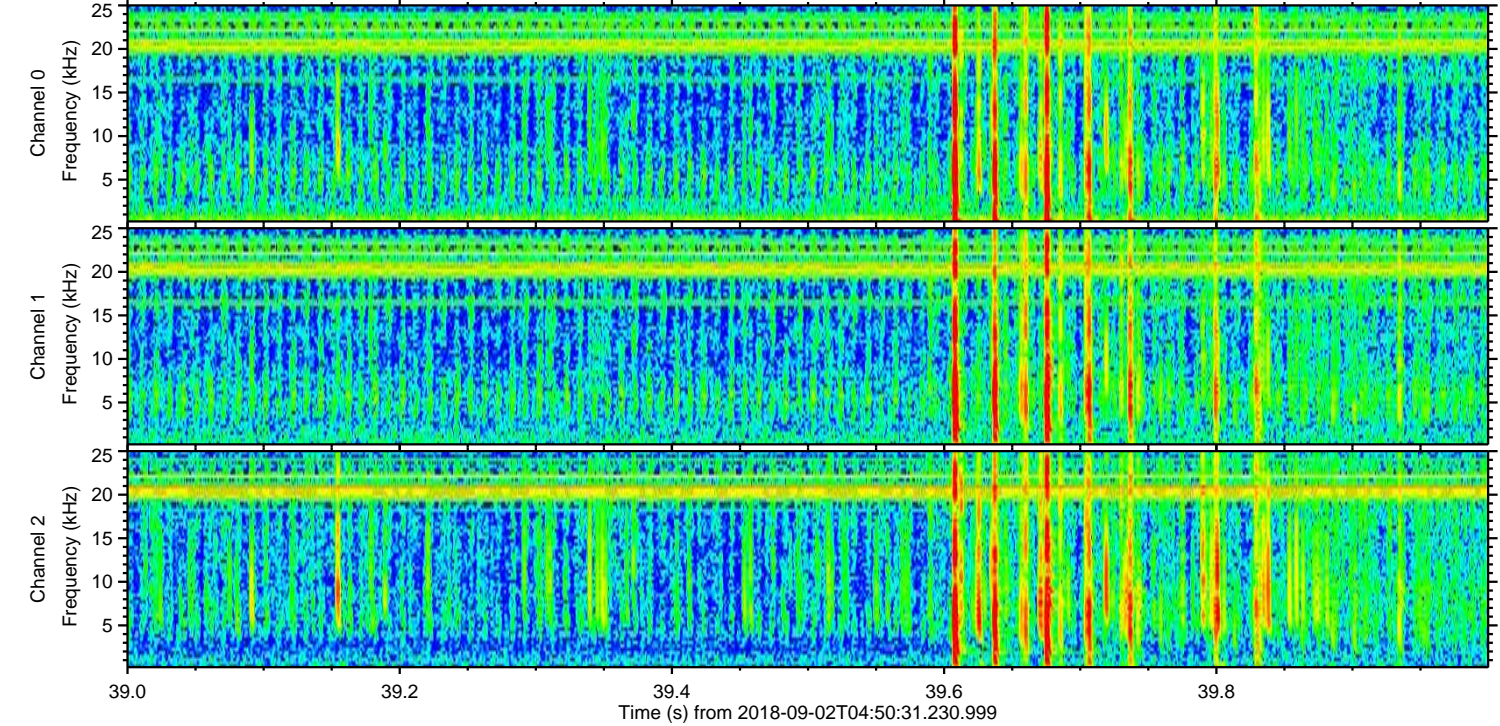
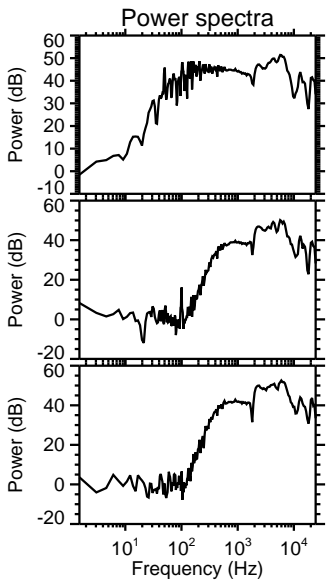
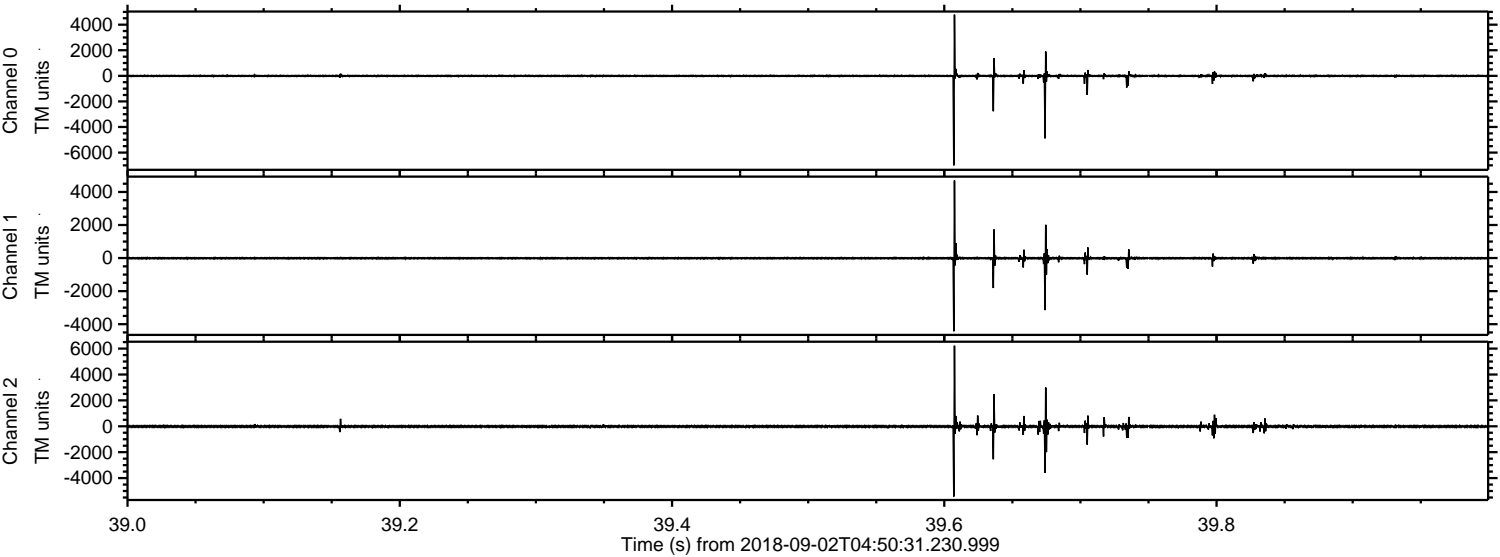


Channel 0
mn: -2546
mx: 1528
 μ : -4.4
 σ : 30.8

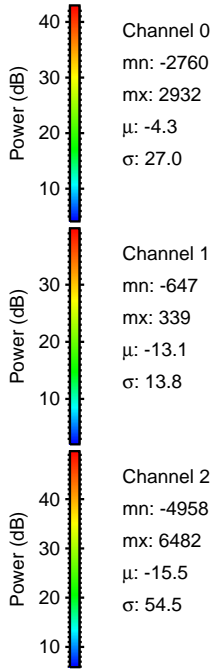
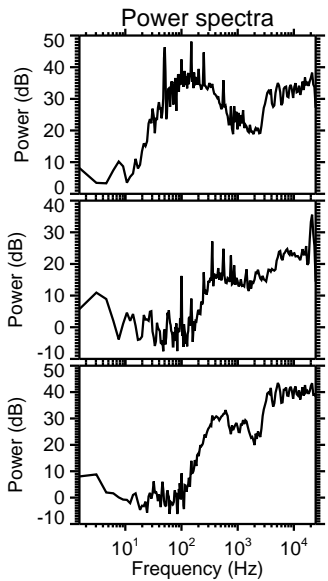
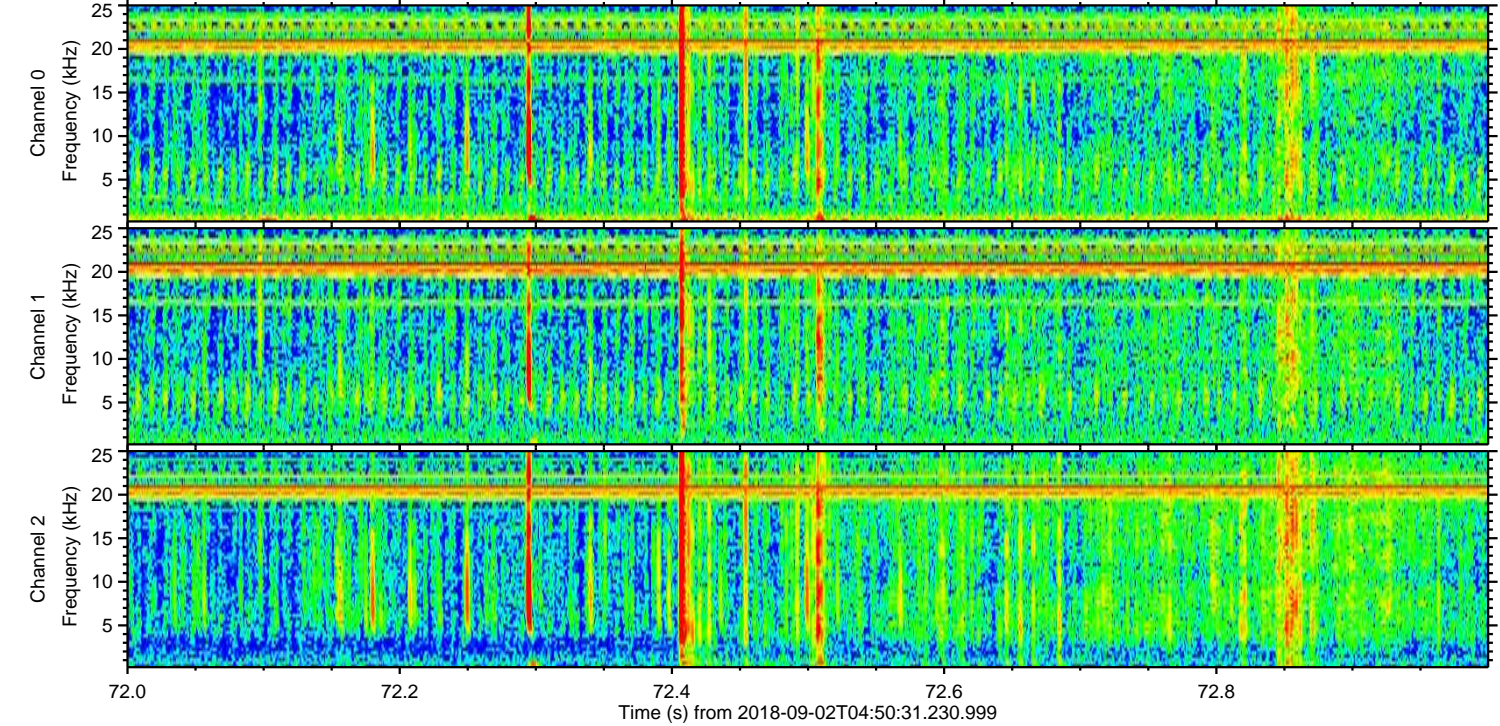
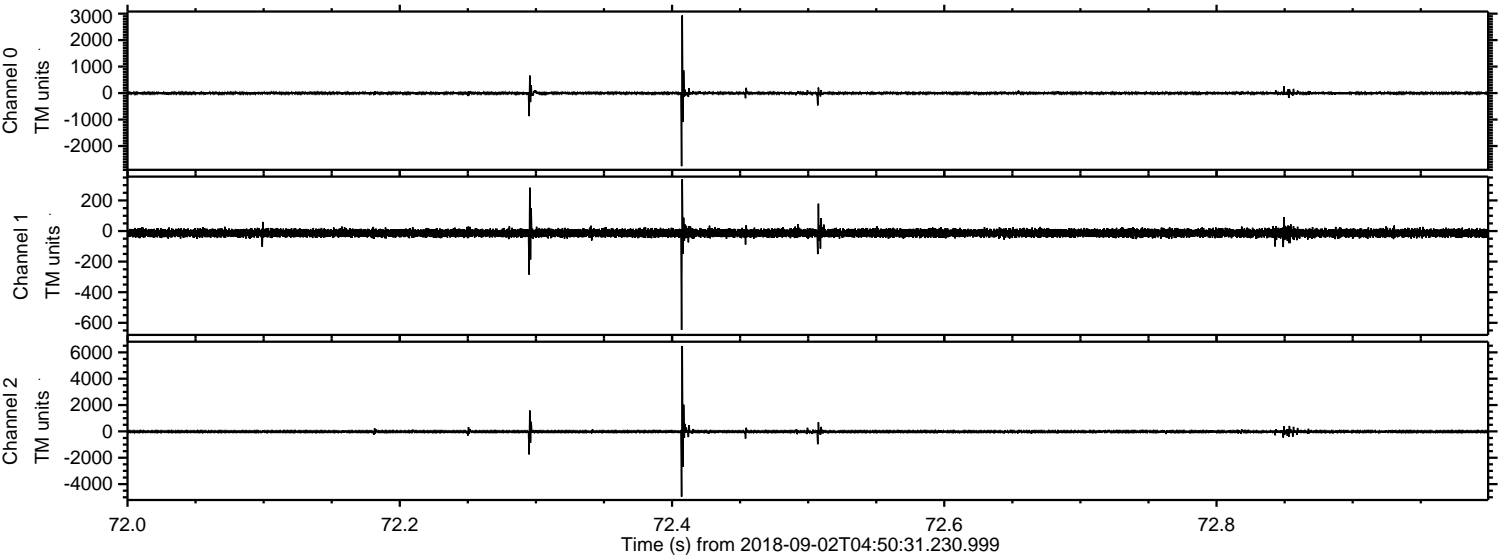
Channel 1
mn: -548
mx: 636
 μ : -13.1
 σ : 16.7

Channel 2
mn: -3542
mx: 7199
 μ : -15.5
 σ : 71.3

Processed Sun Sep 2 06:58:44 2018 by ELM ver.2012-10-06 from 001__elm20180902_045030__dat00.bin



Processed Sun Sep 2 06:58:44 2018 by ELM ver.2012-10-06 from 001__elm20180902_045030__dat00.bin



Processed Sun Sep 2 06:58:45 2018 by ELM ver.2012-10-06 from 001__elm20180902_045030__dat00.bin

