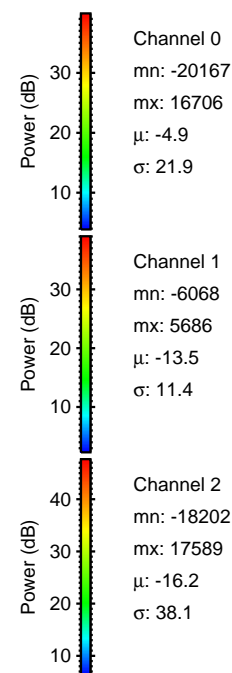
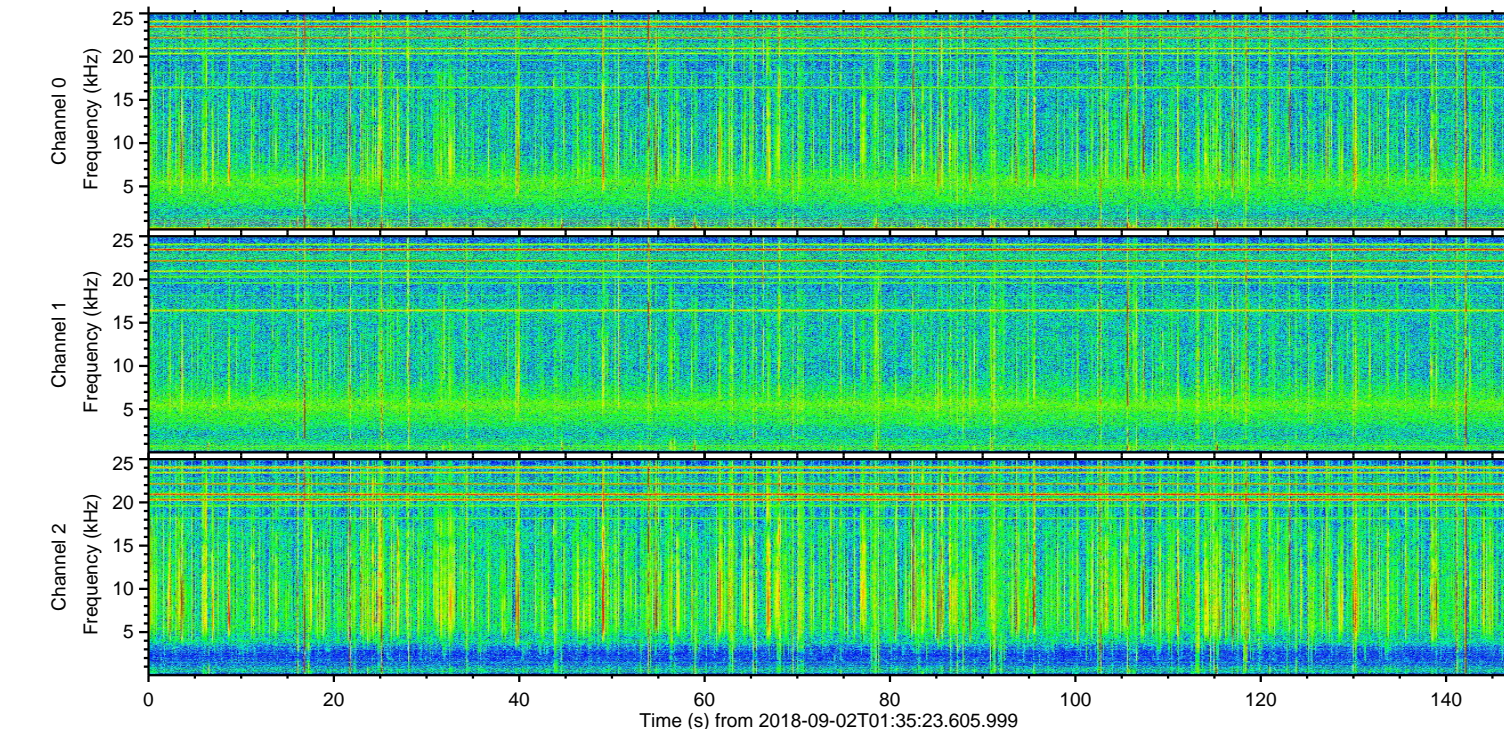
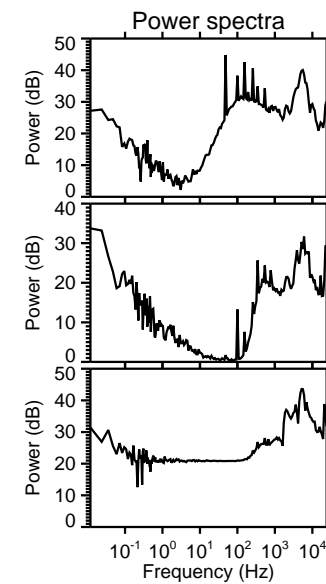
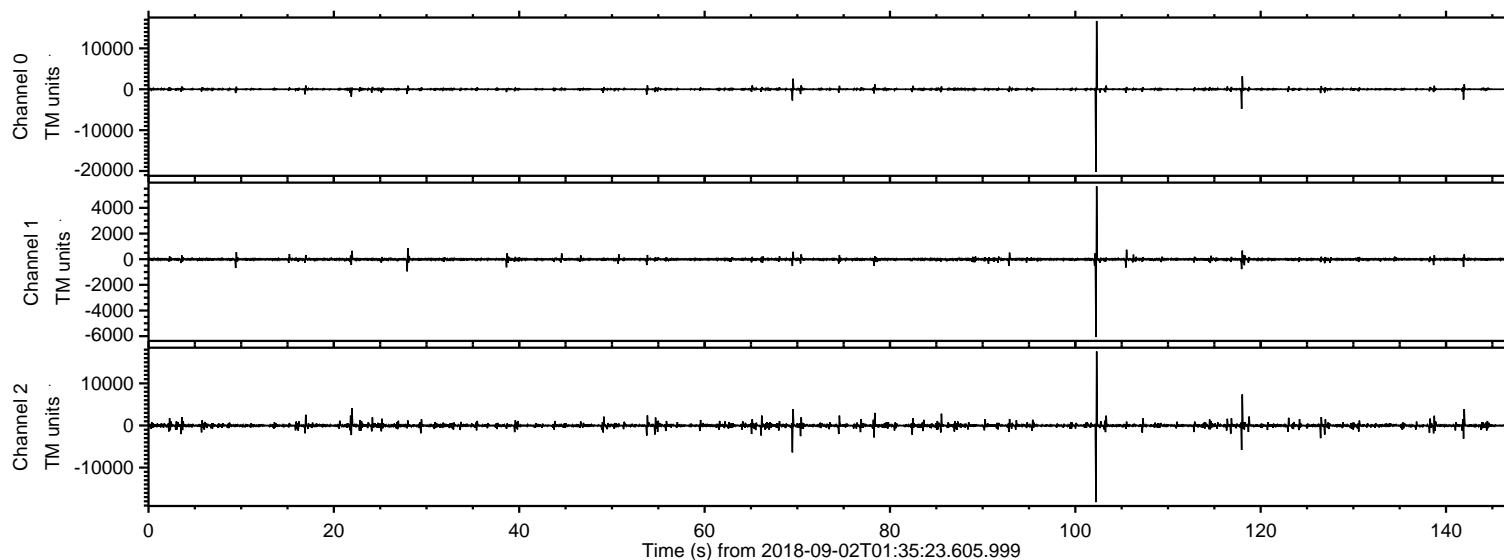


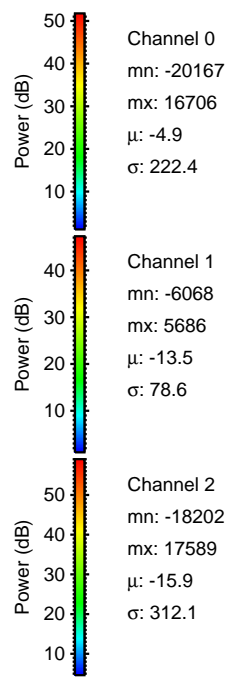
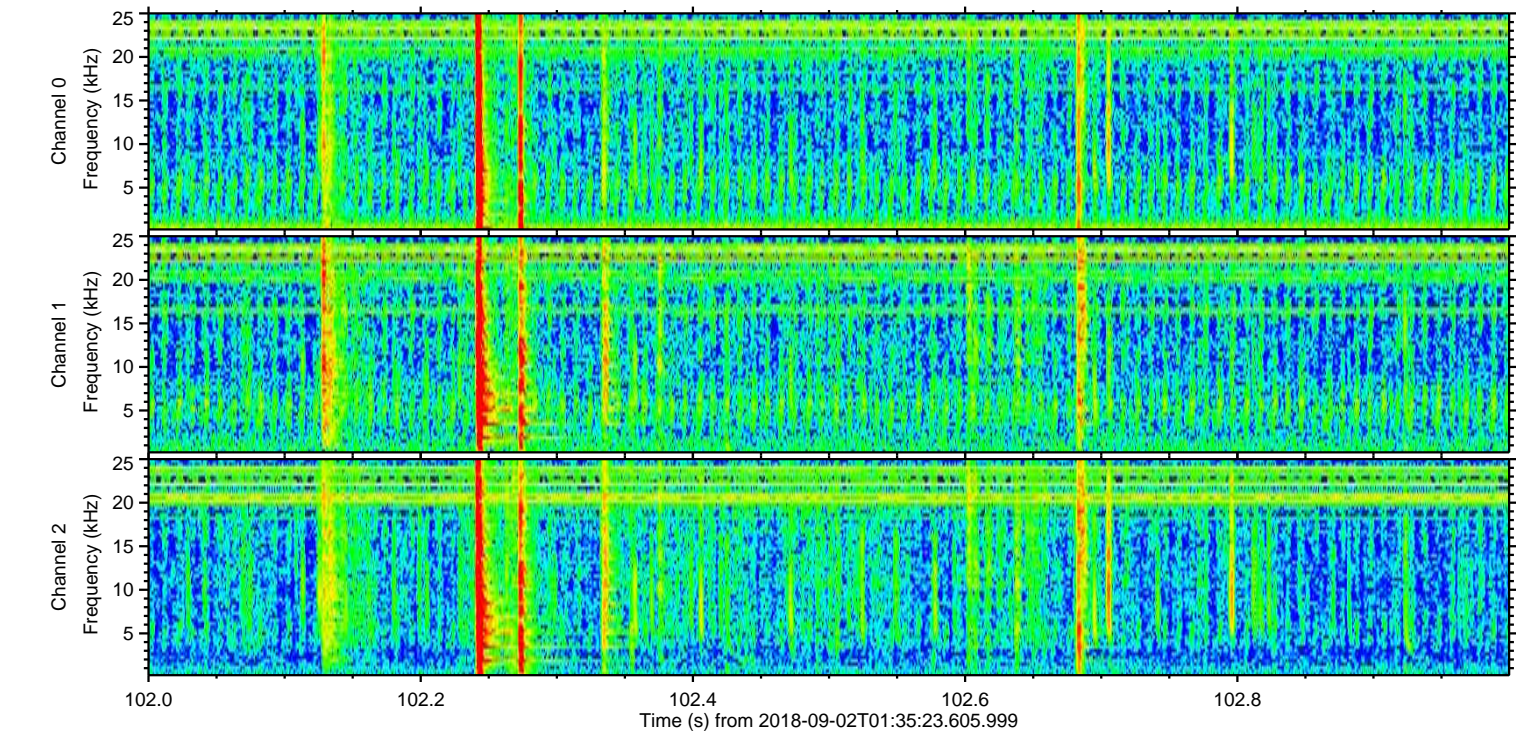
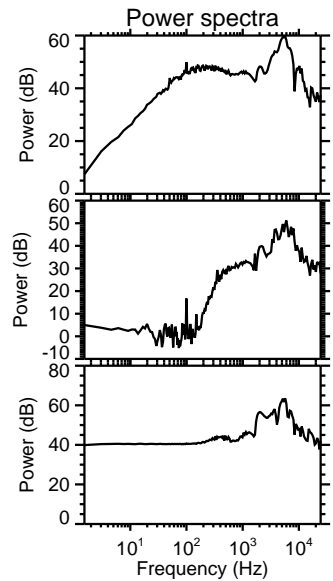
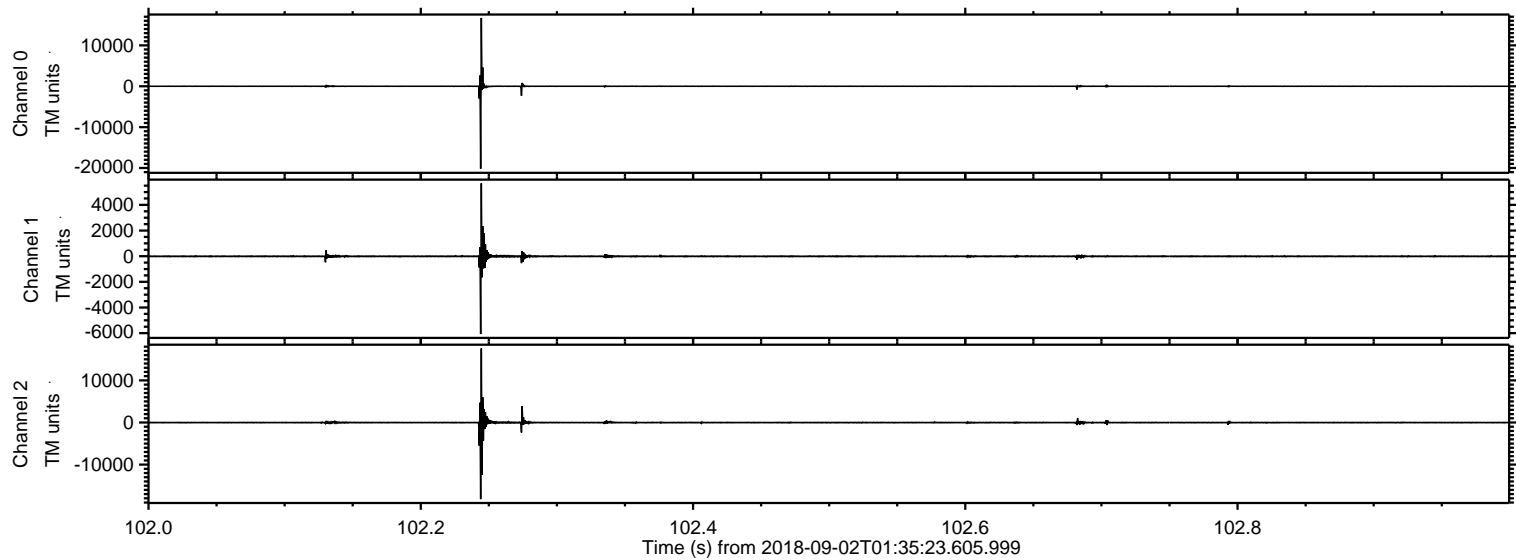
ELMAVAN 3D WAVEFORMS (Measured data sampled at 50 kHz) 51000 packets of 144 samples from 2018-09-02T01:35:23.605.999.

Processed Sun Sep 2 03:42:51 2018 by ELM ver.2012-10-06 from 001__elm20180902_013522__dat00.bin



ELMAVAN 3D WAVEFORMS (Measured data sampled at 50 kHz) 51000 packets of 144 samples from 2018-09-02T01:35:23.605.999. Part 103/147

Processed Sun Sep 2 03:42:59 2018 by ELM ver.2012-10-06 from 001__elm20180902_013522__dat00.bin



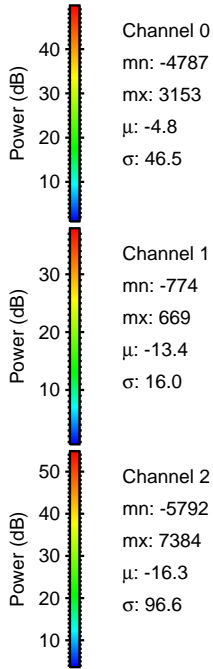
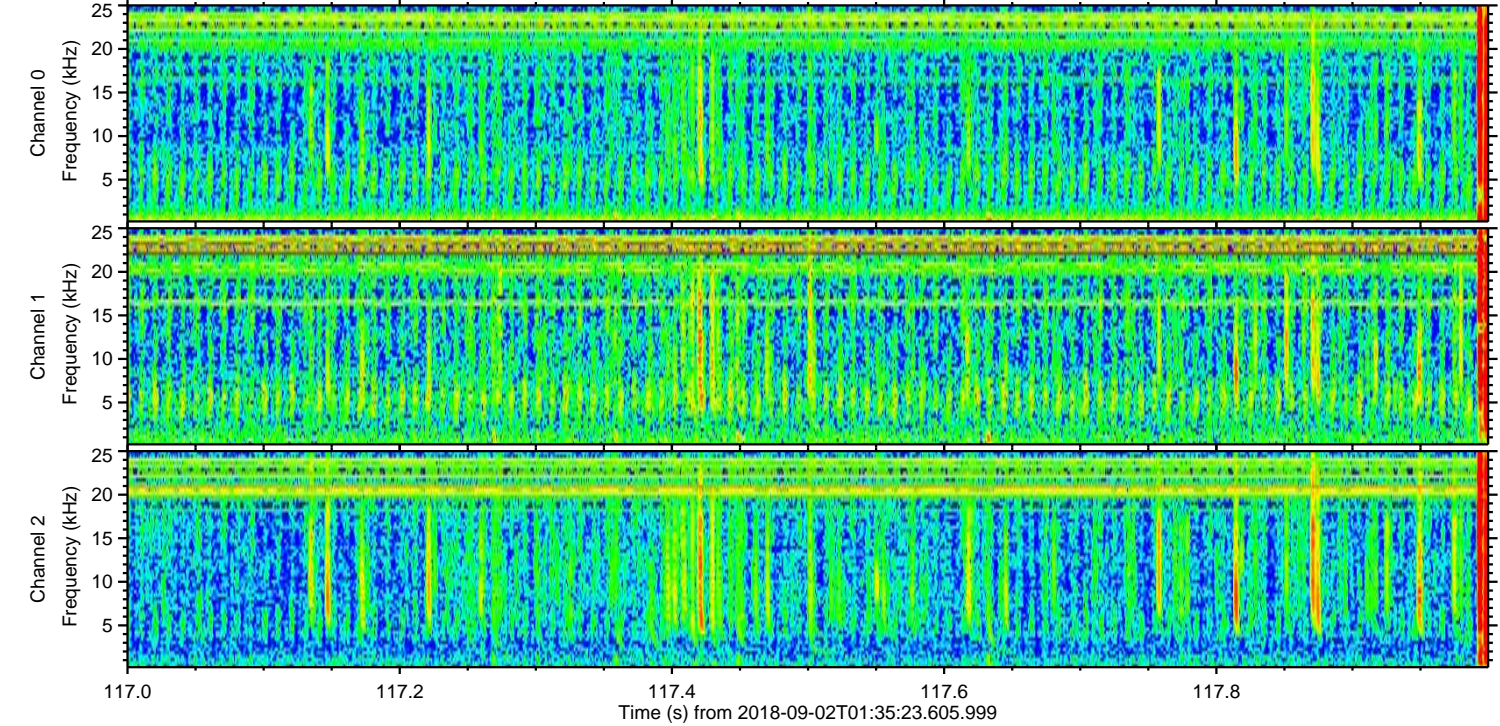
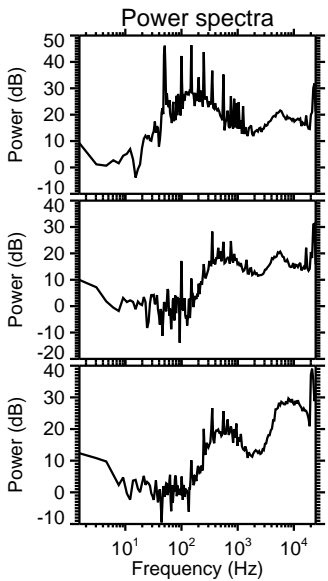
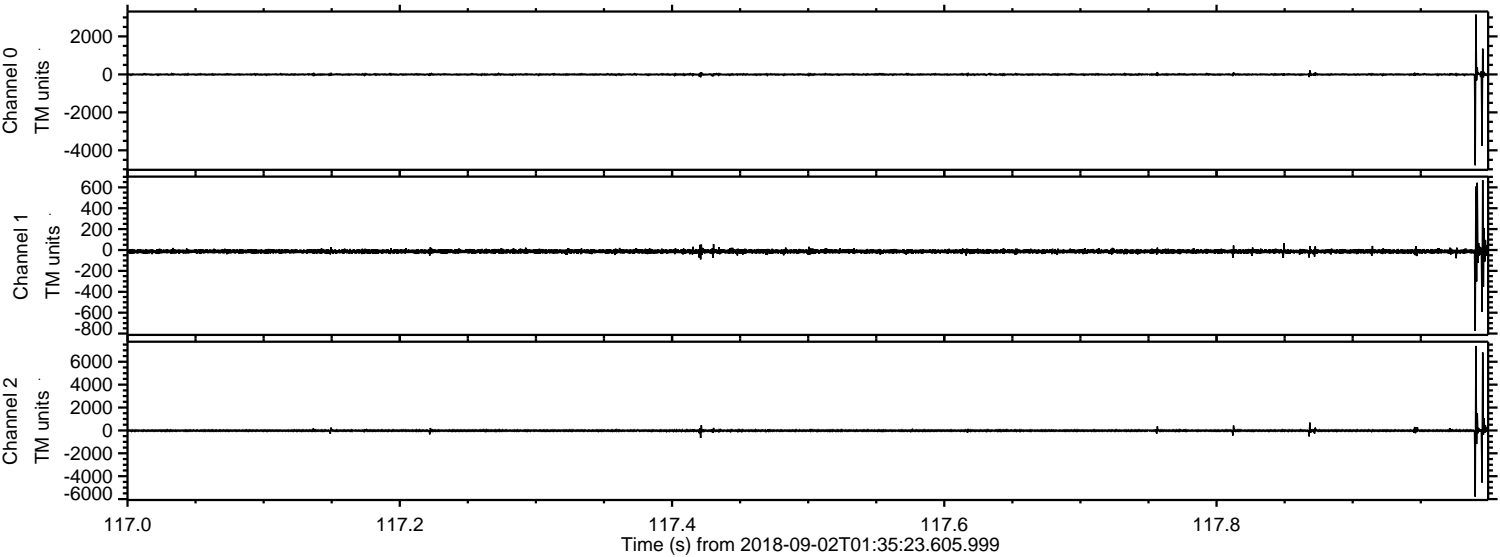
Channel 0
mn: -20167
mx: 16706
 μ : -4.9
 σ : 222.4

Channel 1
mn: -6068
mx: 5686
 μ : -13.5
 σ : 78.6

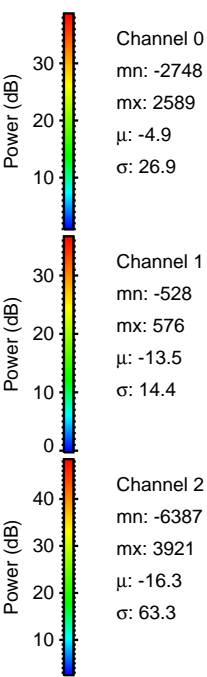
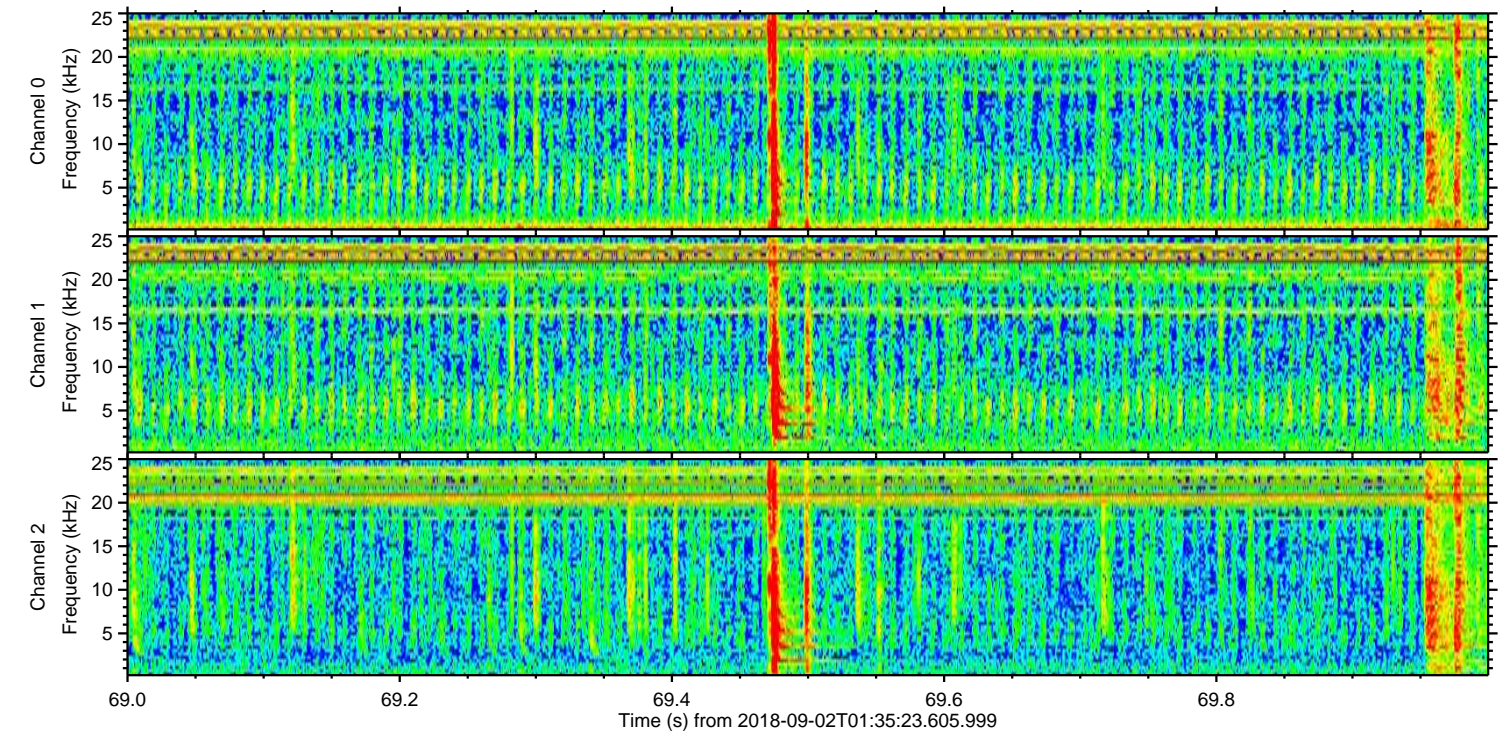
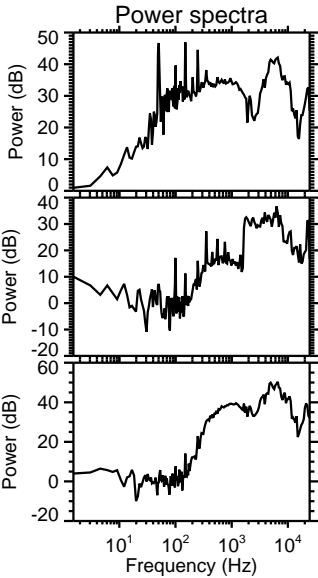
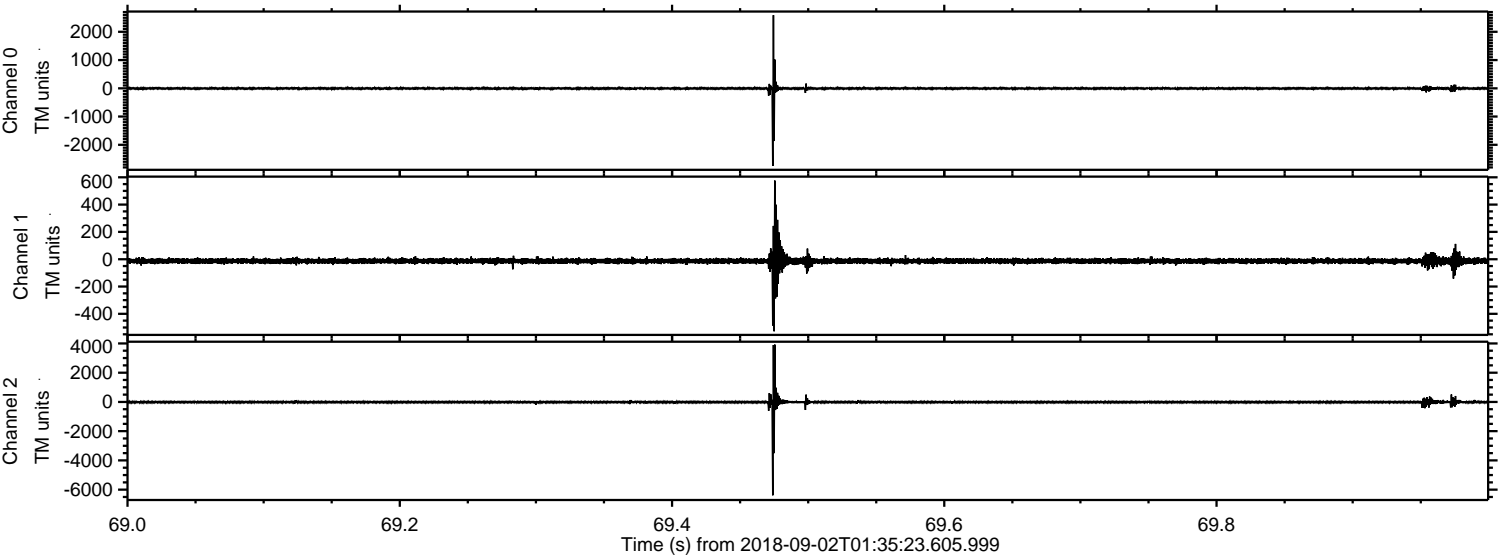
Channel 2
mn: -18202
mx: 17589
 μ : -15.9
 σ : 312.1

ELMAVAN 3D WAVEFORMS (Measured data sampled at 50 kHz) 51000 packets of 144 samples from 2018-09-02T01:35:23.605.999. Part 118/147

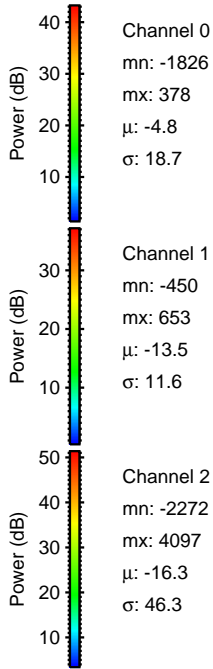
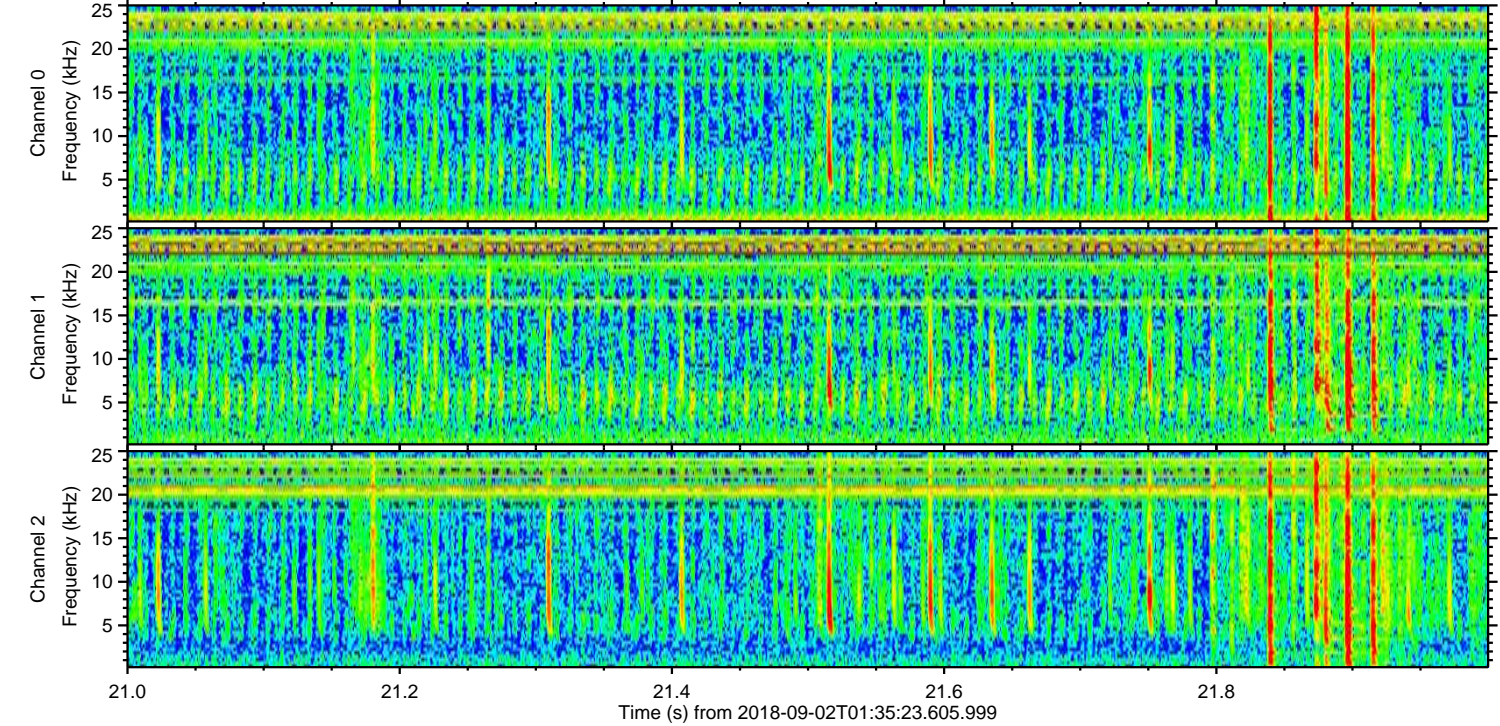
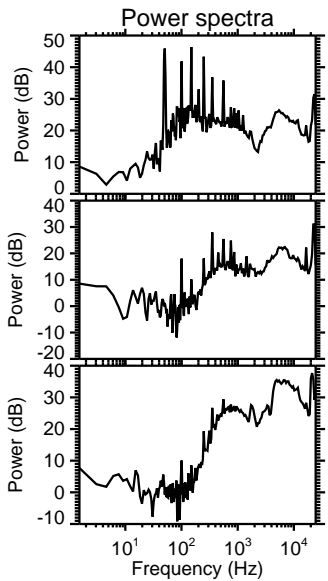
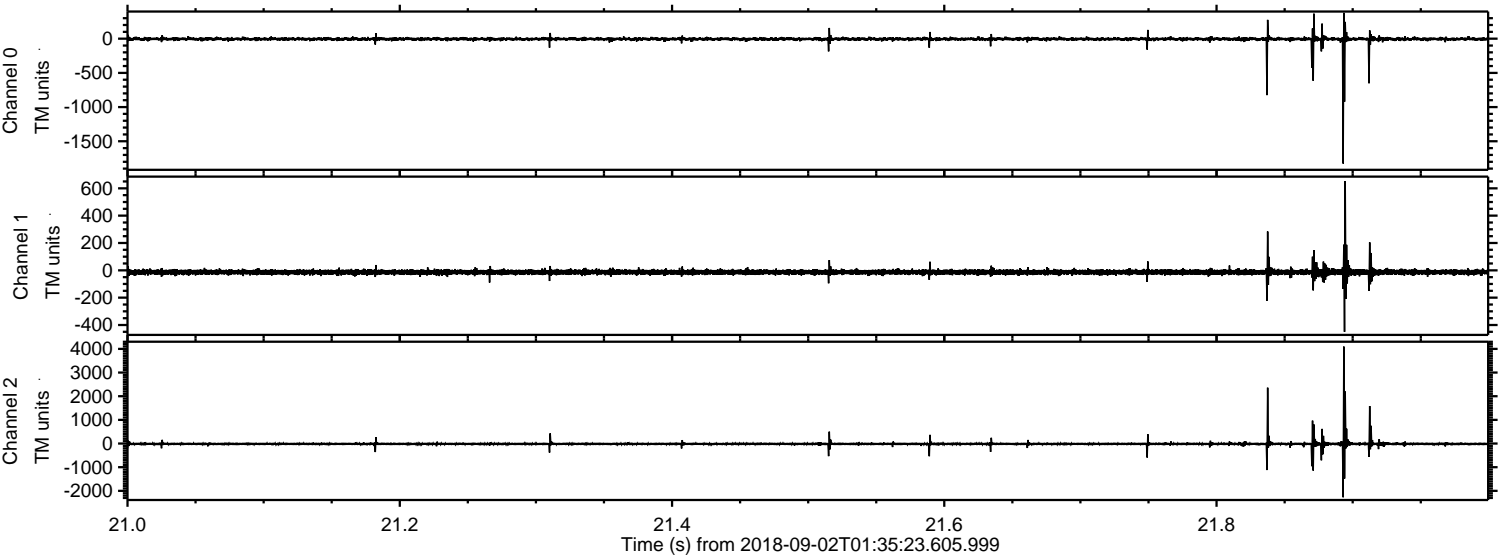
Processed Sun Sep 2 03:43:00 2018 by ELM ver.2012-10-06 from 001__elm20180902_013522__dat00.bin



Processed Sun Sep 2 03:43:01 2018 by ELM ver.2012-10-06 from 001__elm20180902_013522__dat00.bin

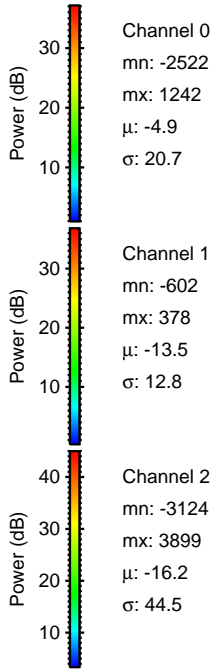
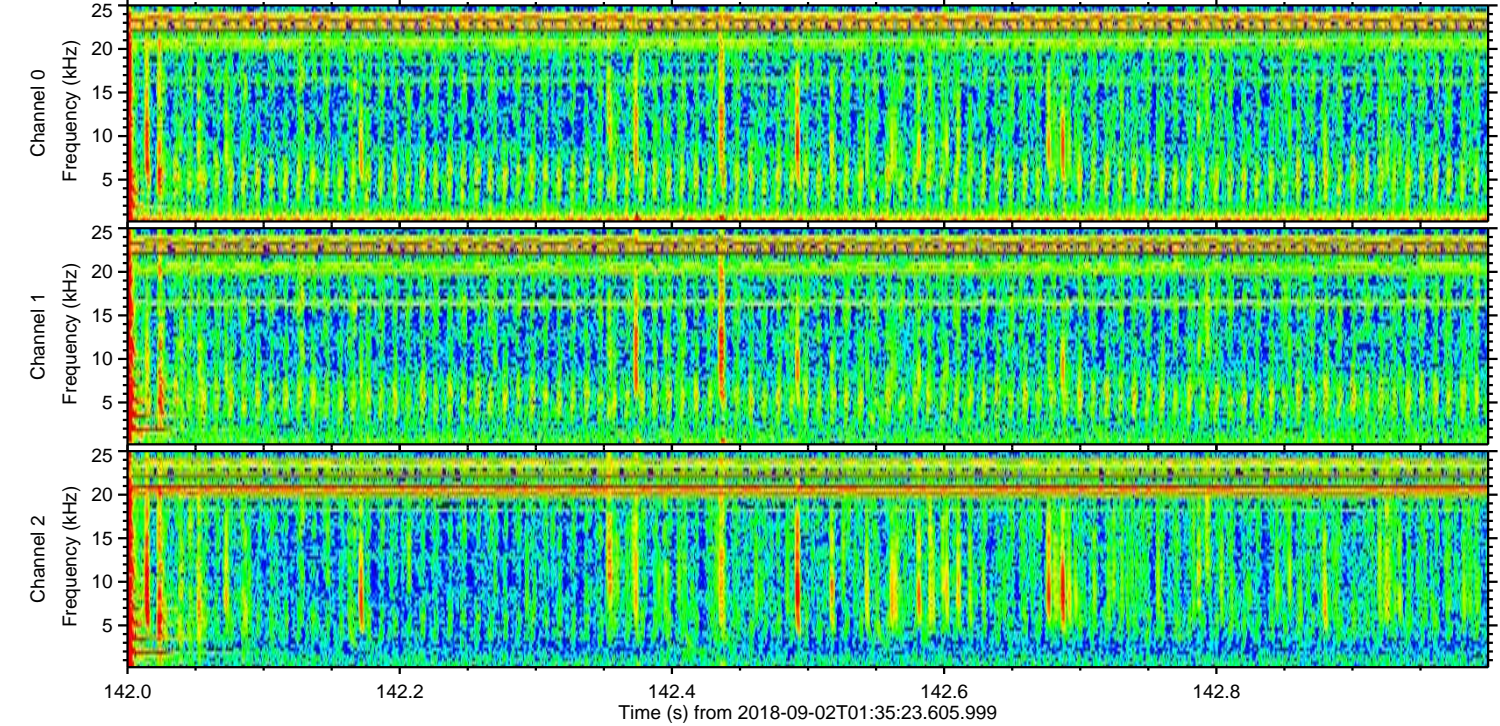
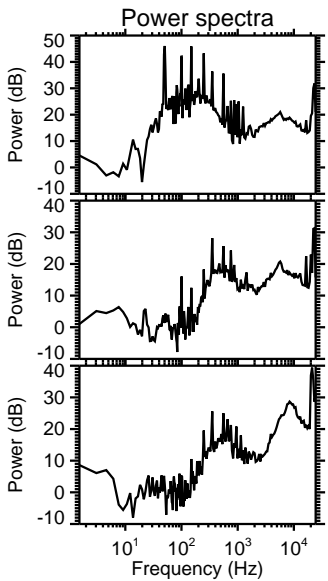
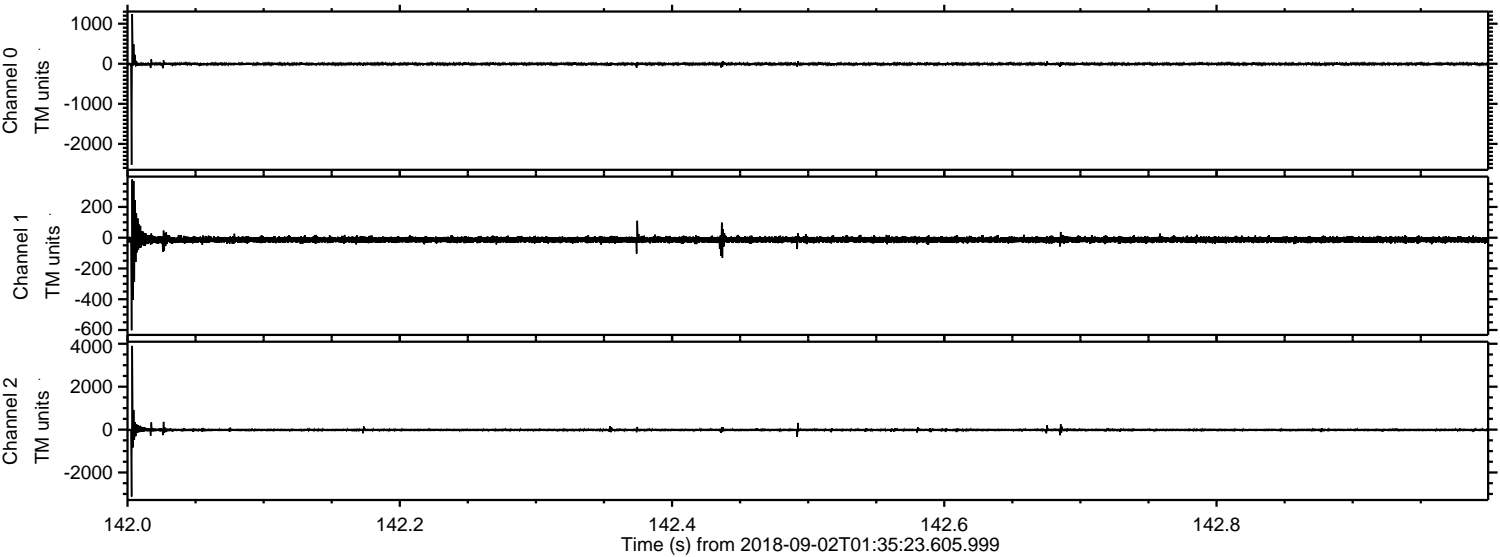


Processed Sun Sep 2 03:43:02 2018 by ELM ver.2012-10-06 from 001__elm20180902_013522__dat00.bin



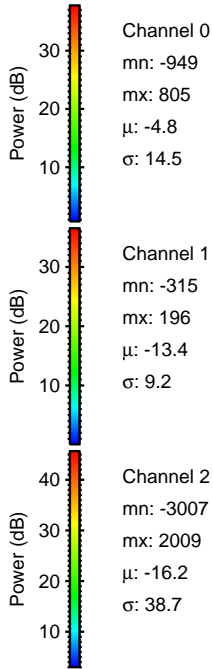
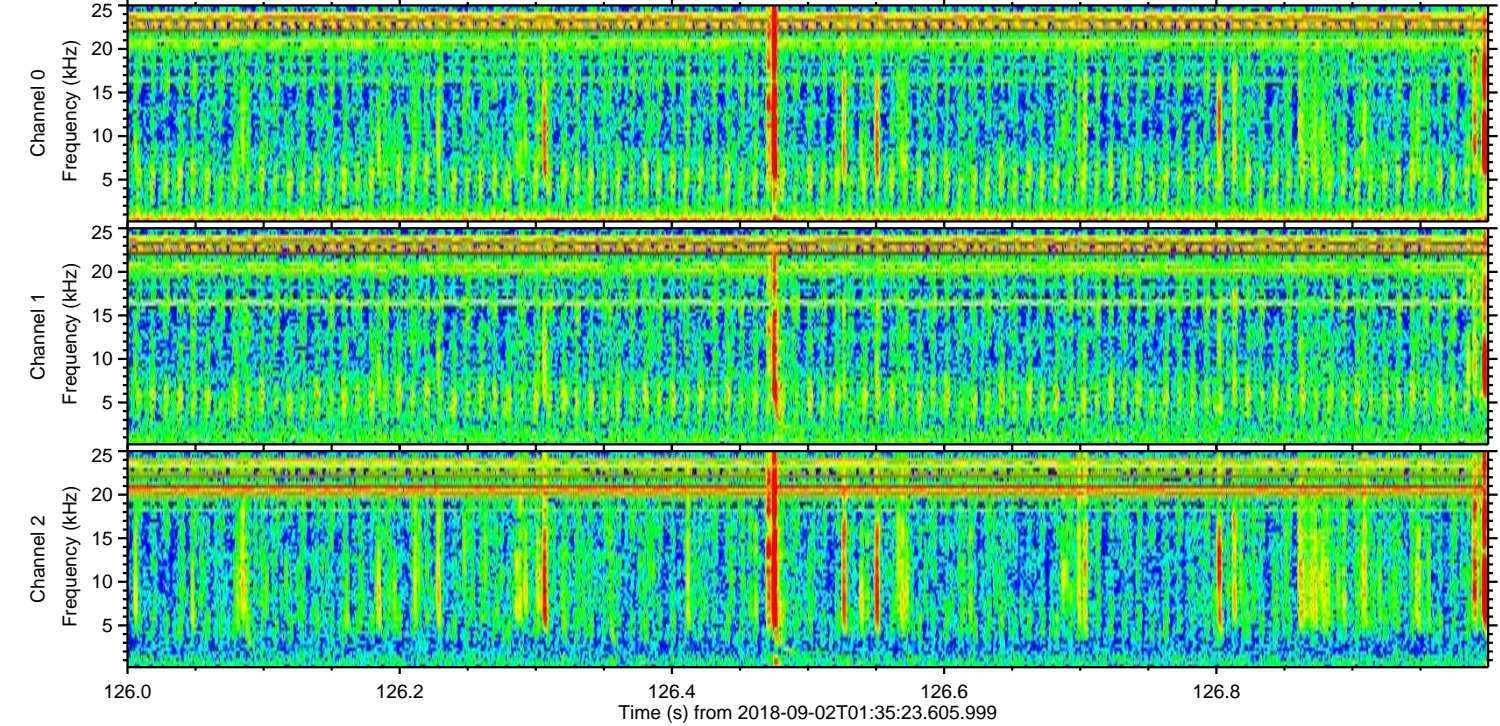
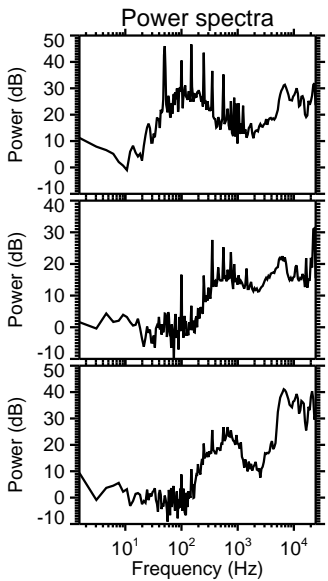
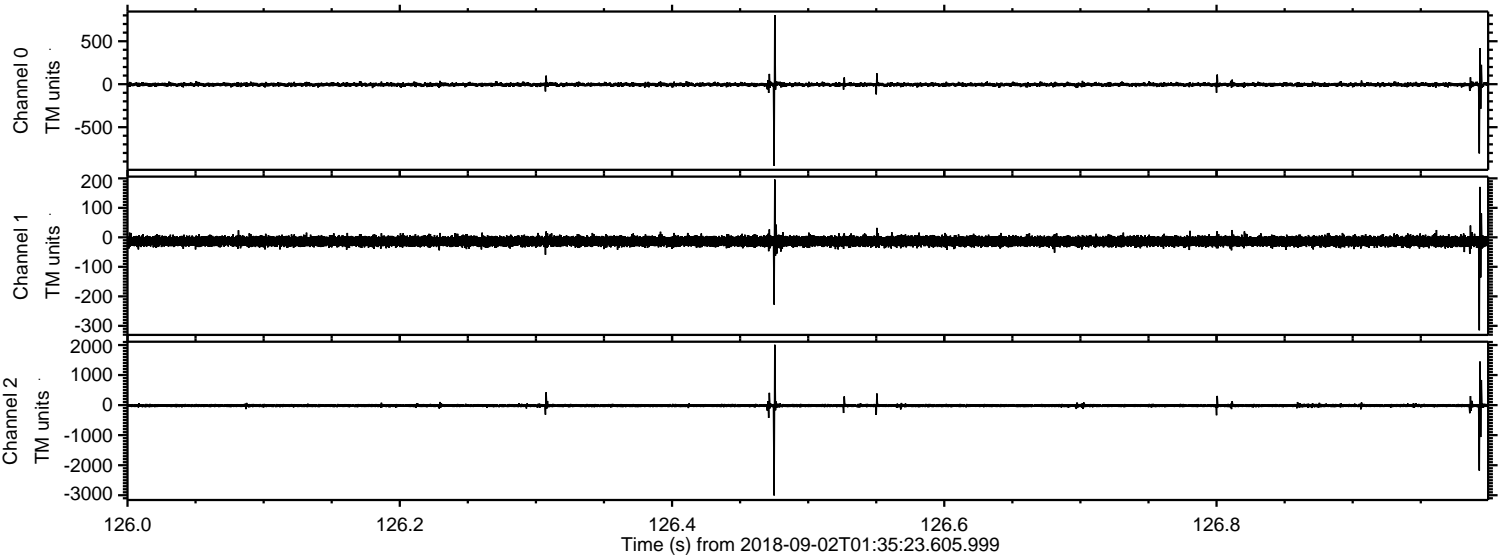
ELMAVAN 3D WAVEFORMS (Measured data sampled at 50 kHz) 51000 packets of 144 samples from 2018-09-02T01:35:23.605.999. Part 143/147

Processed Sun Sep 2 03:43:02 2018 by ELM ver.2012-10-06 from 001__elm20180902_013522__dat00.bin

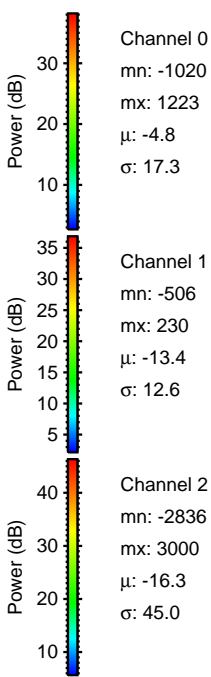
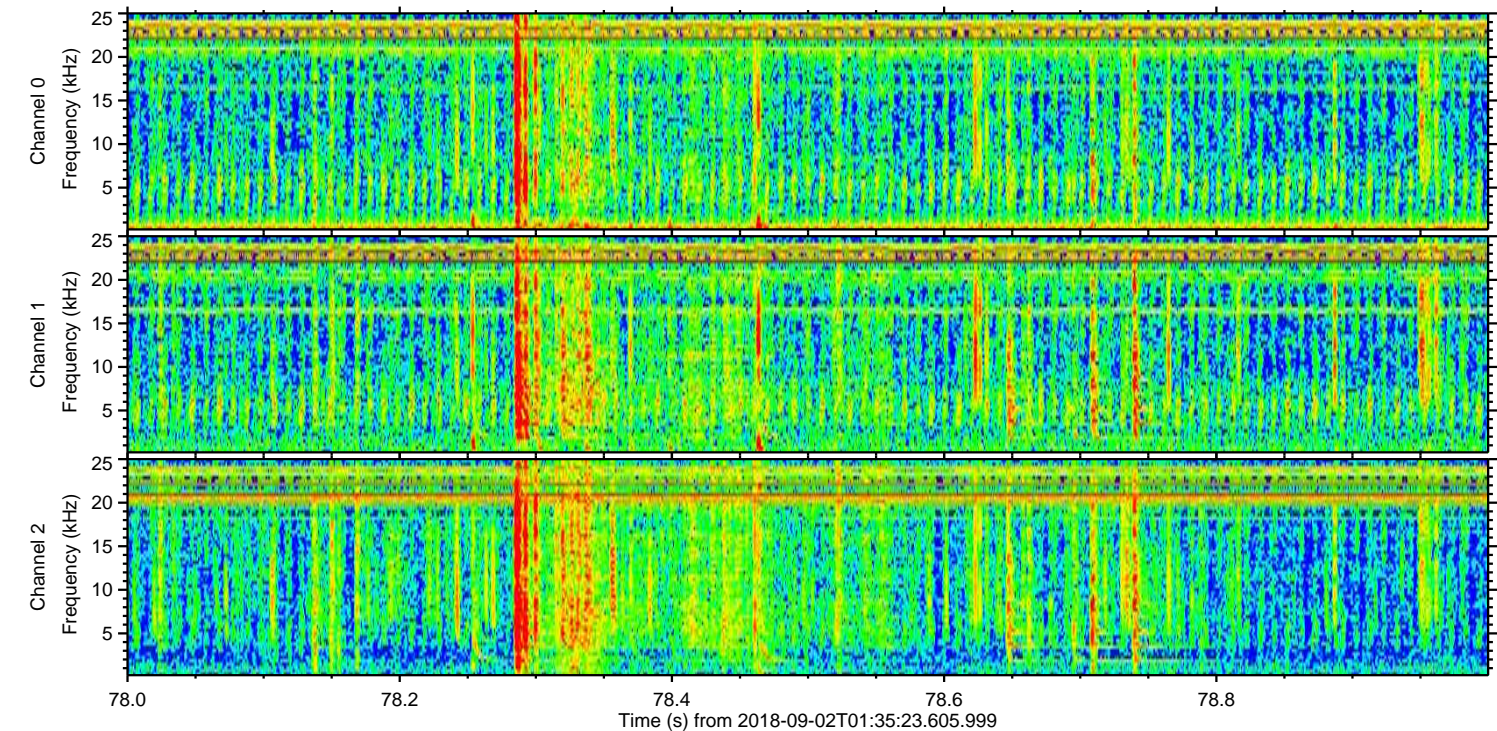
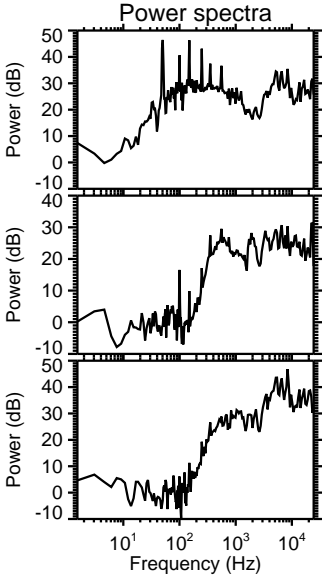
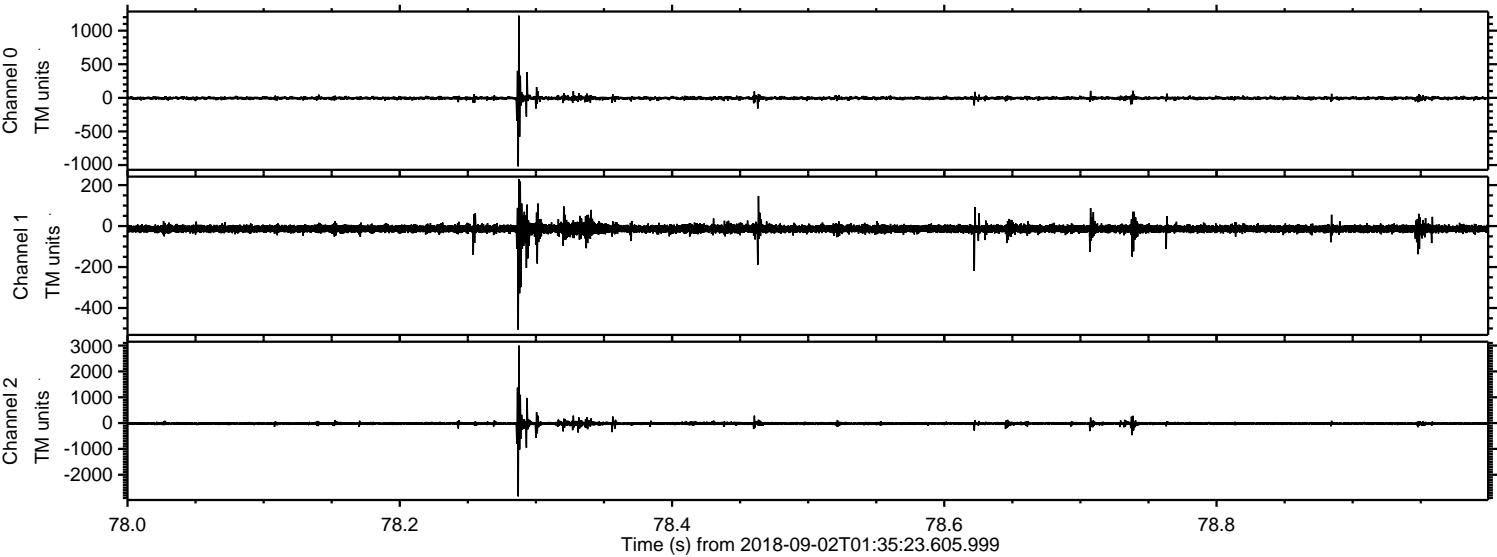


ELMAVAN 3D WAVEFORMS (Measured data sampled at 50 kHz) 51000 packets of 144 samples from 2018-09-02T01:35:23.605.999. Part 127/147

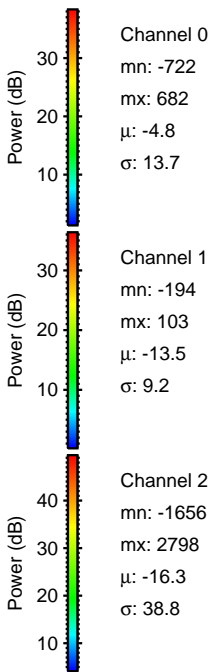
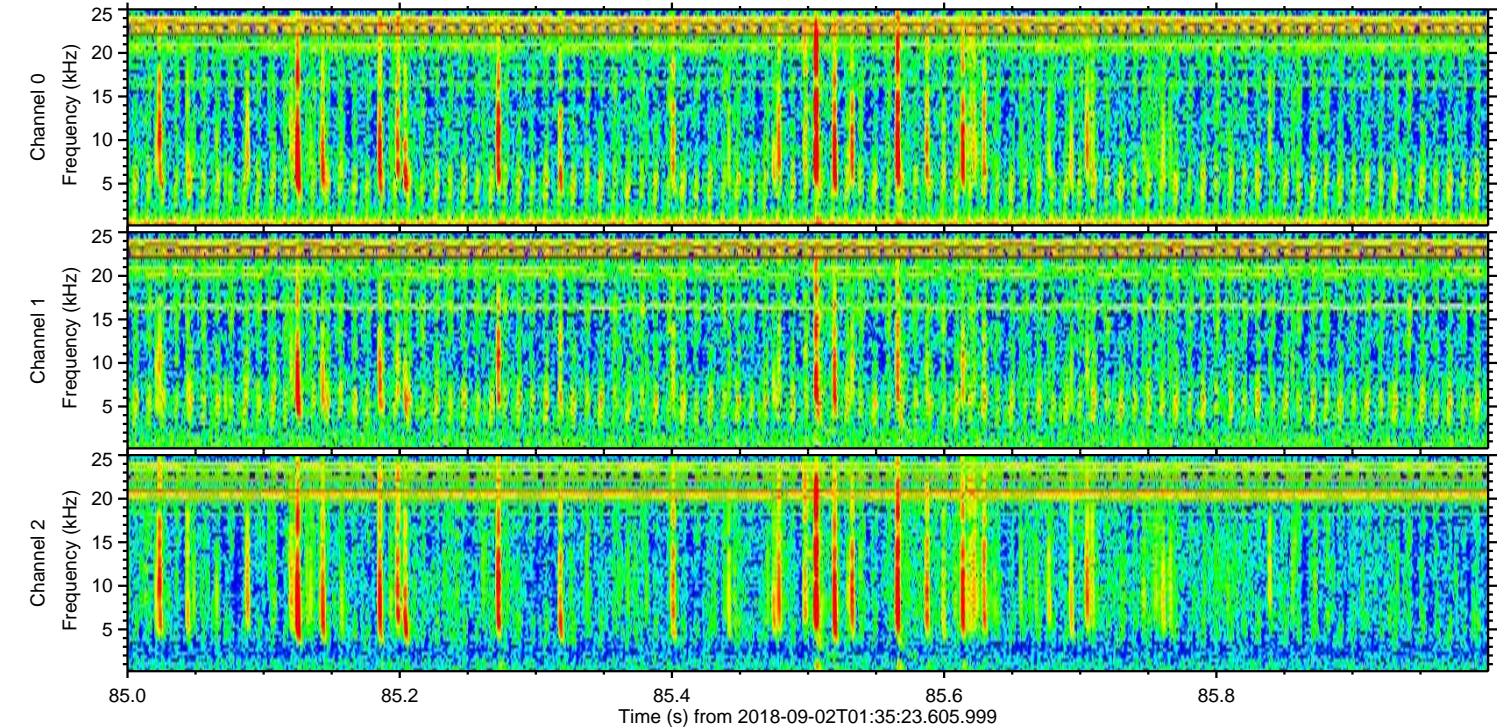
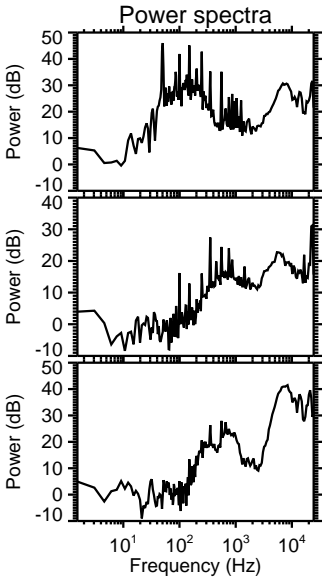
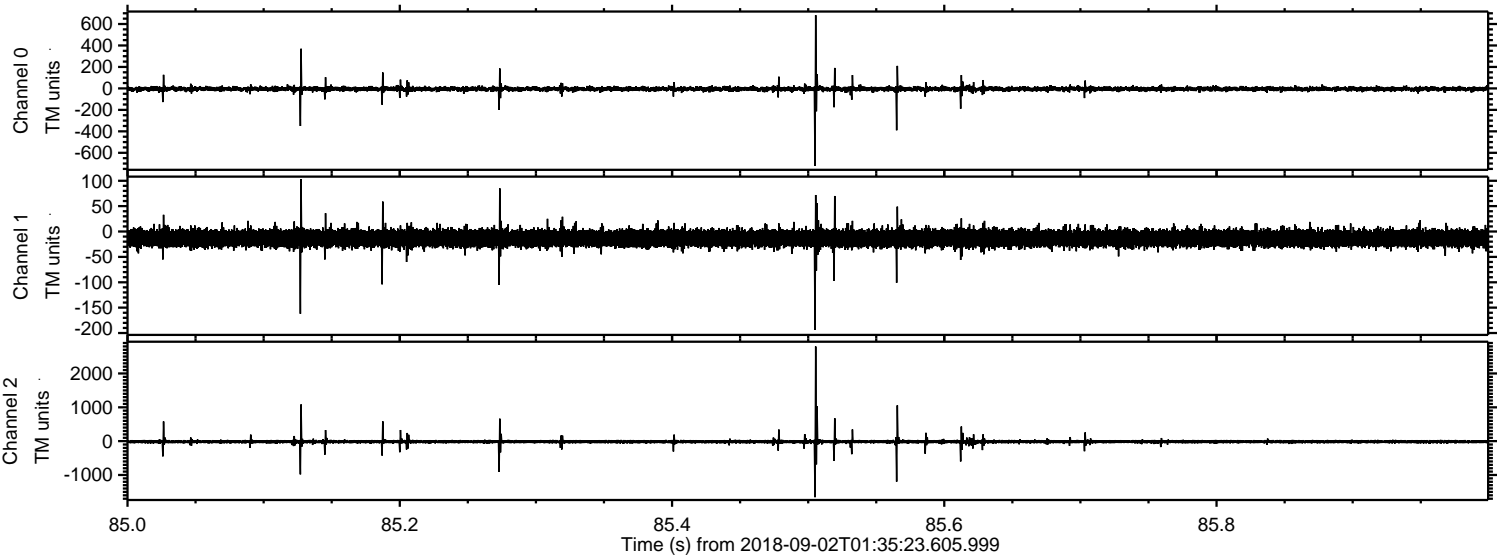
Processed Sun Sep 2 03:43:03 2018 by ELM ver.2012-10-06 from 001__elm20180902_013522__dat00.bin



Processed Sun Sep 2 03:43:04 2018 by ELM ver.2012-10-06 from 001__elm20180902_013522__dat00.bin



Processed Sun Sep 2 03:43:05 2018 by ELM ver.2012-10-06 from 001__elm20180902_013522__dat00.bin



Channel 0
mn: -722
mx: 682
 μ : -4.8
 σ : 13.7

Channel 1
mn: -194
mx: 103
 μ : -13.5
 σ : 9.2

Channel 2
mn: -1656
mx: 2798
 μ : -16.3
 σ : 38.8

Processed Sun Sep 2 03:43:06 2018 by ELM ver.2012-10-06 from 001__elm20180902_013522__dat00.bin

