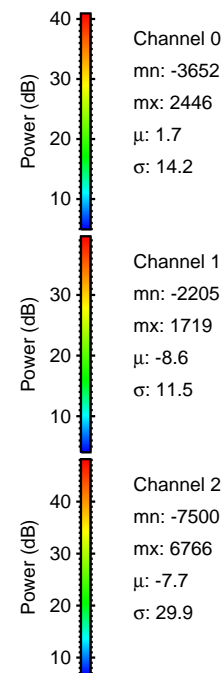
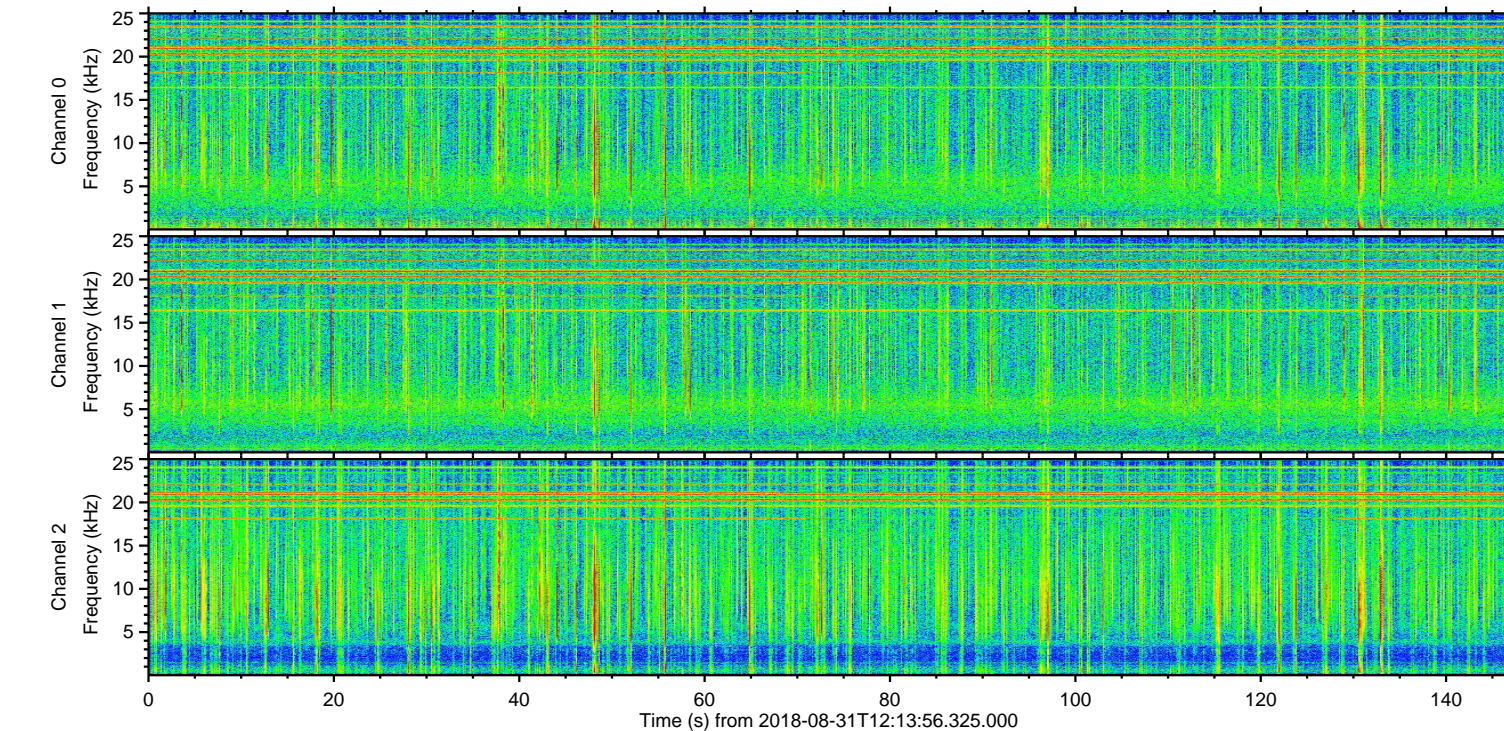
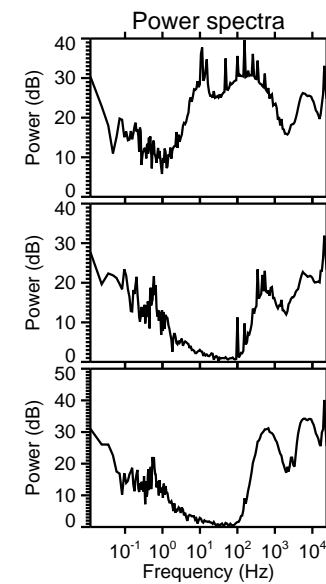
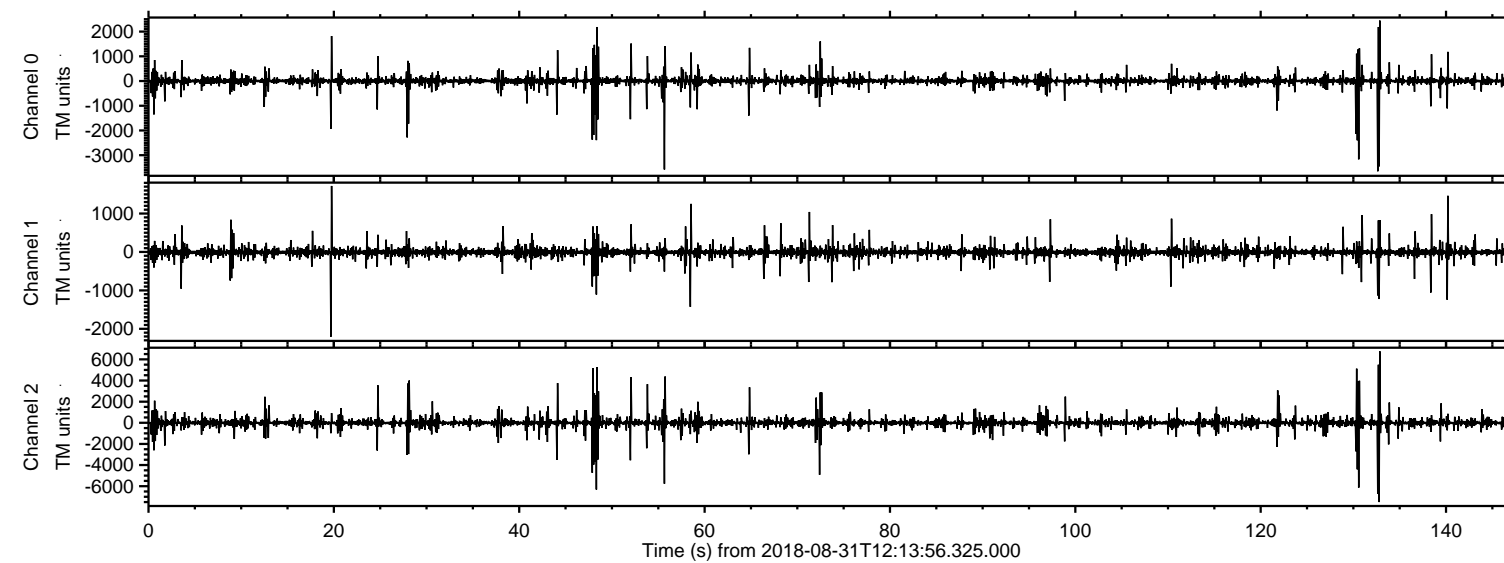


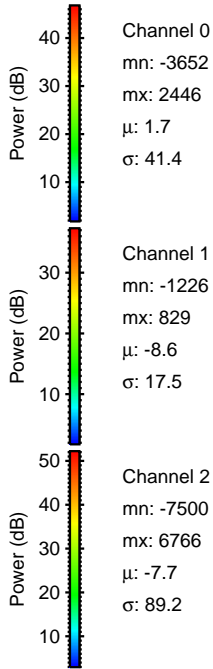
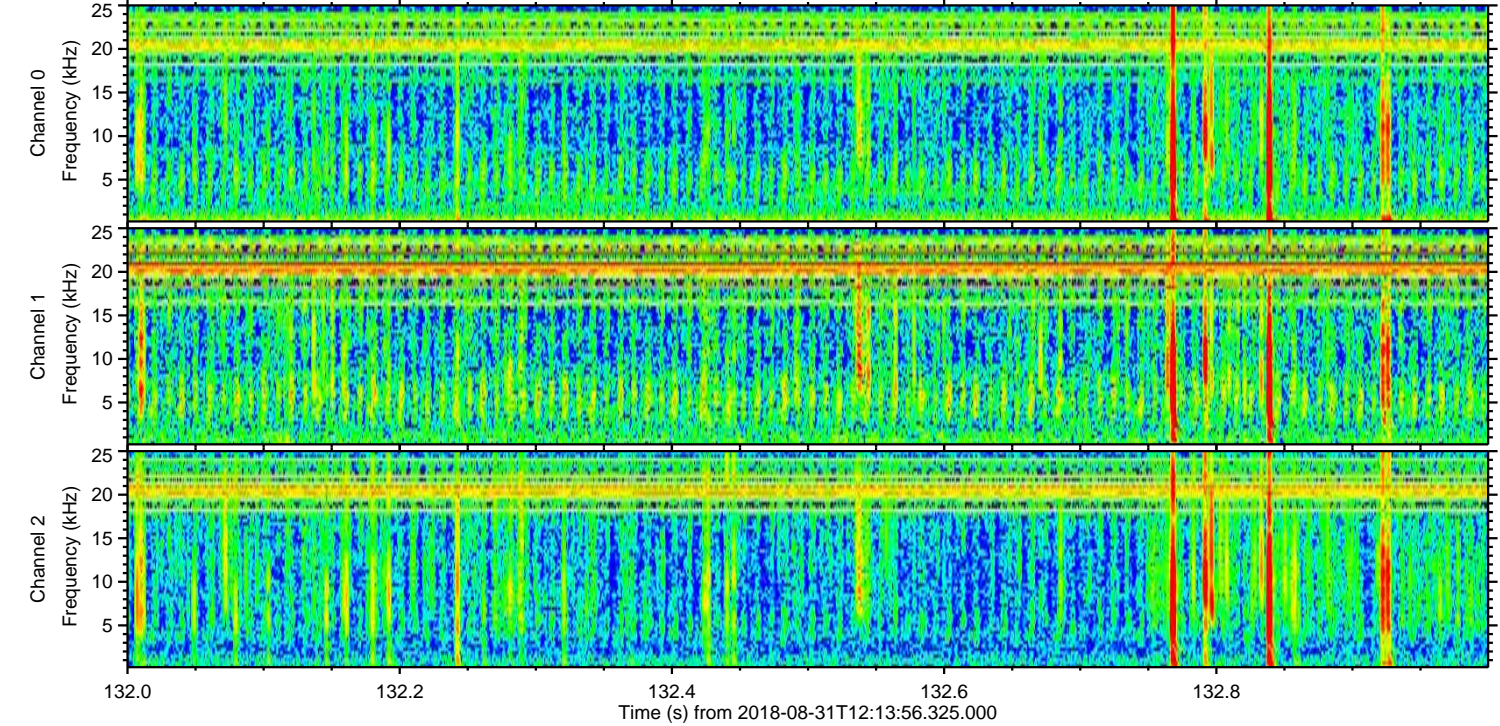
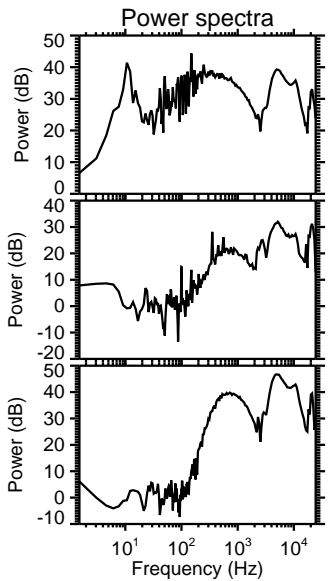
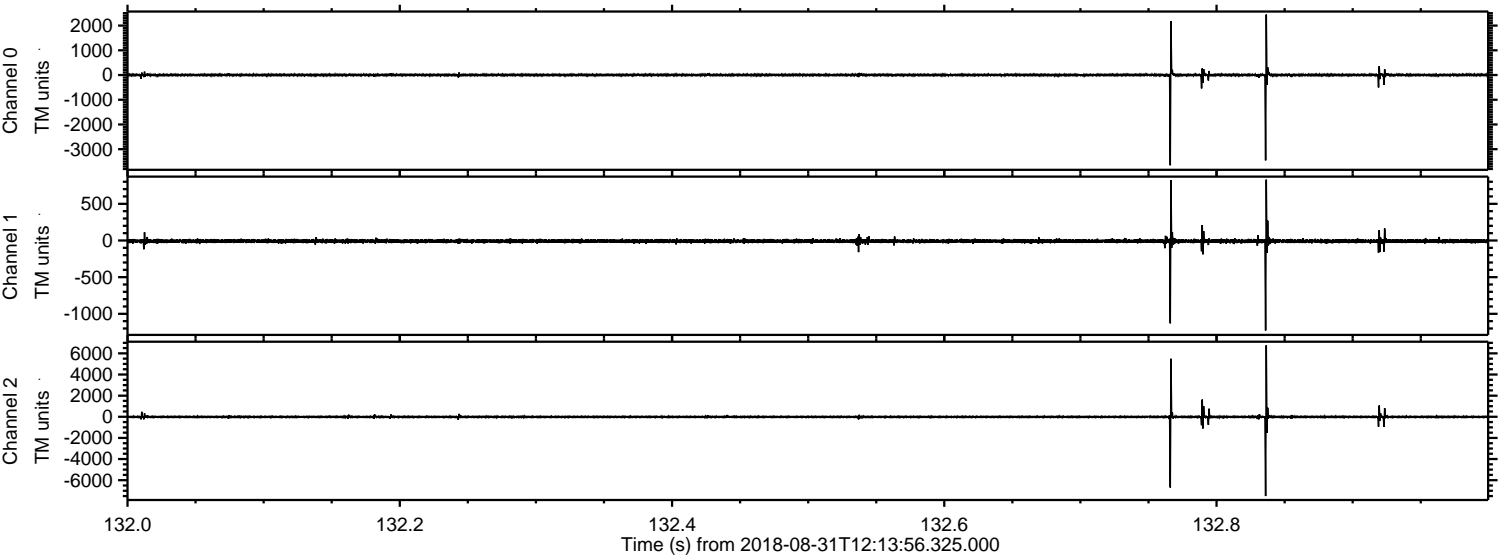
ELMAVAN 3D WAVEFORMS (Measured data sampled at 50 kHz) 51000 packets of 144 samples from 2018-08-31T12:13:56.325.000.

Processed Fri Aug 31 14:22:22 2018 by ELM ver.2012-10-06 from 001__elm20180831_121355__dat00.bin



ELMAVAN 3D WAVEFORMS (Measured data sampled at 50 kHz) 51000 packets of 144 samples from 2018-08-31T12:13:56.325.000. Part 133/147

Processed Fri Aug 31 14:22:29 2018 by ELM ver.2012-10-06 from 001__elm20180831_121355__dat00.bin

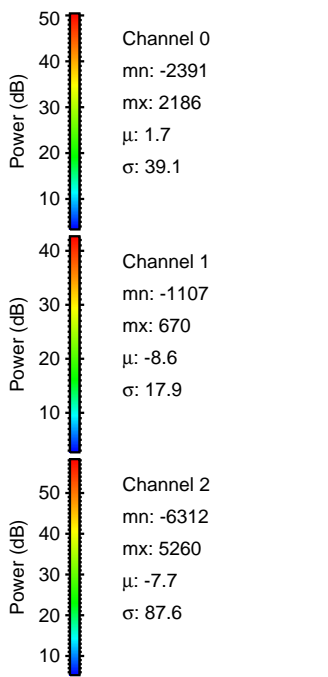
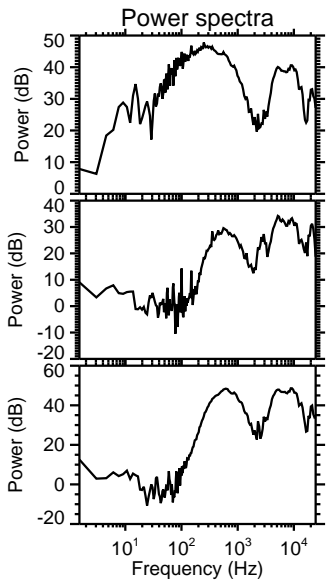
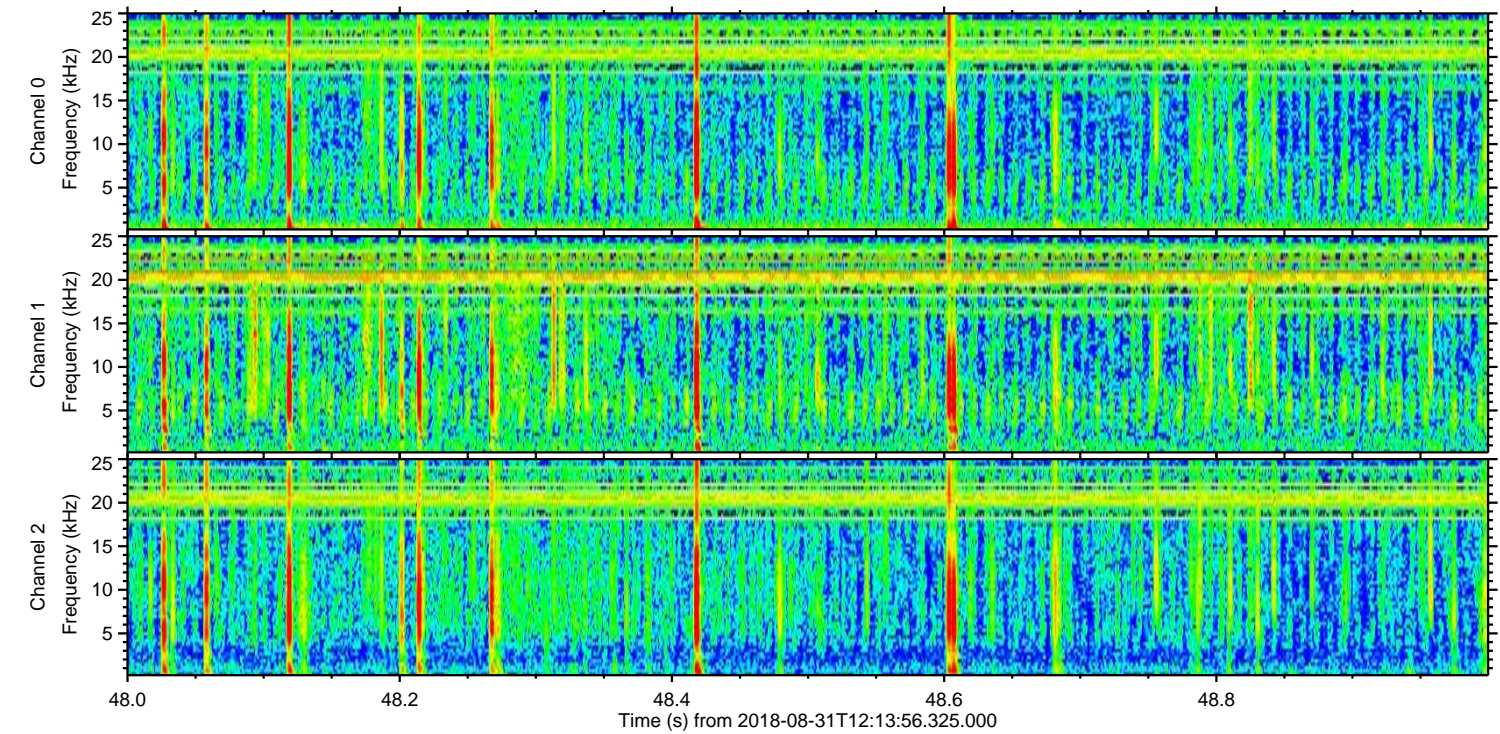
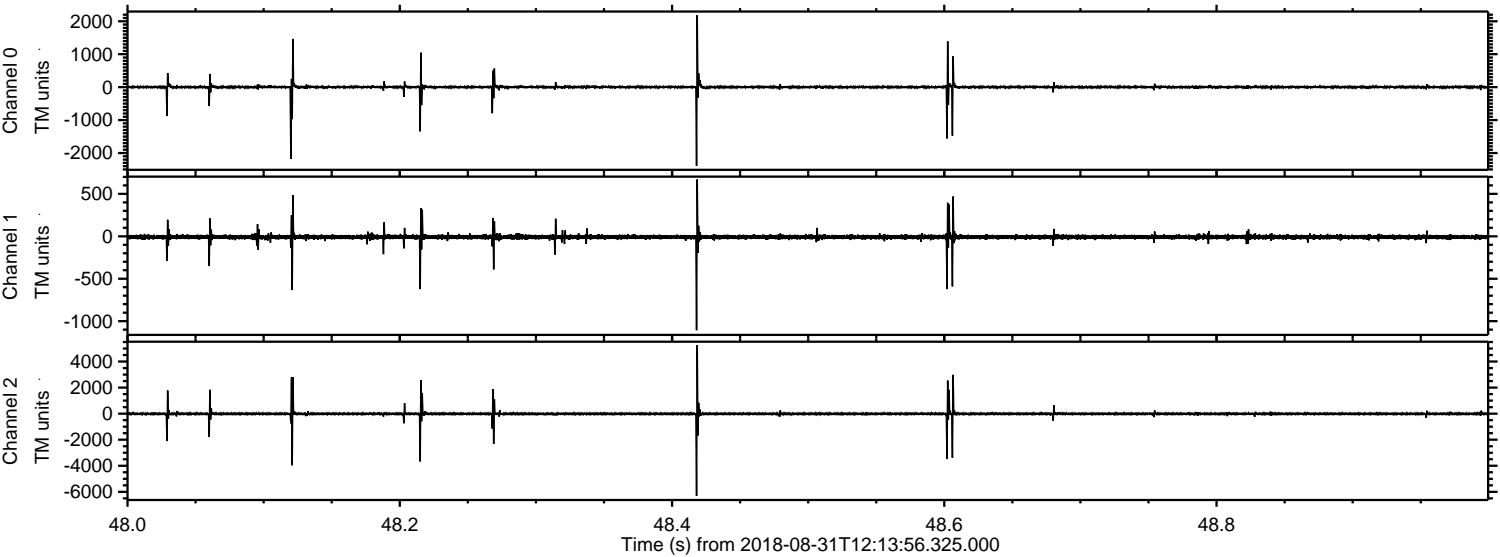


Channel 0
mn: -3652
mx: 2446
 μ : 1.7
 σ : 41.4

Channel 1
mn: -1226
mx: 829
 μ : -8.6
 σ : 17.5

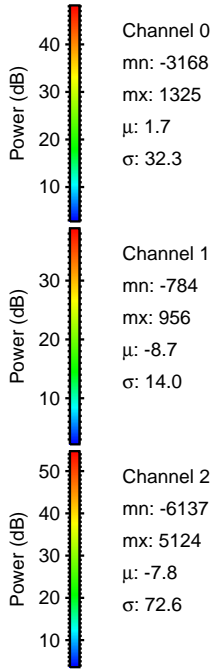
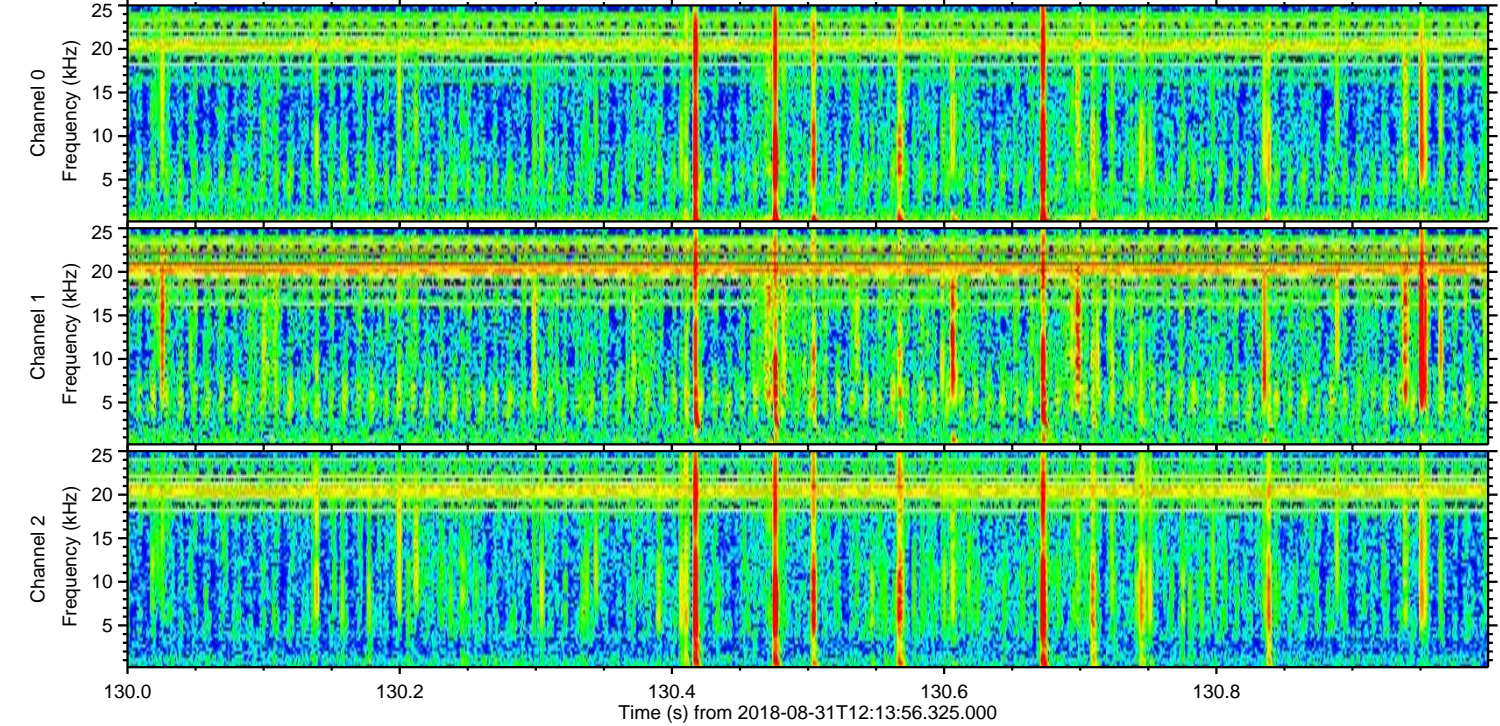
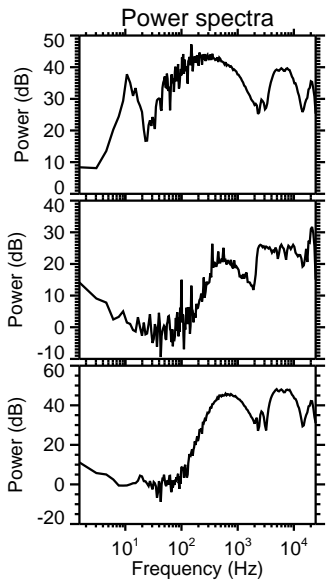
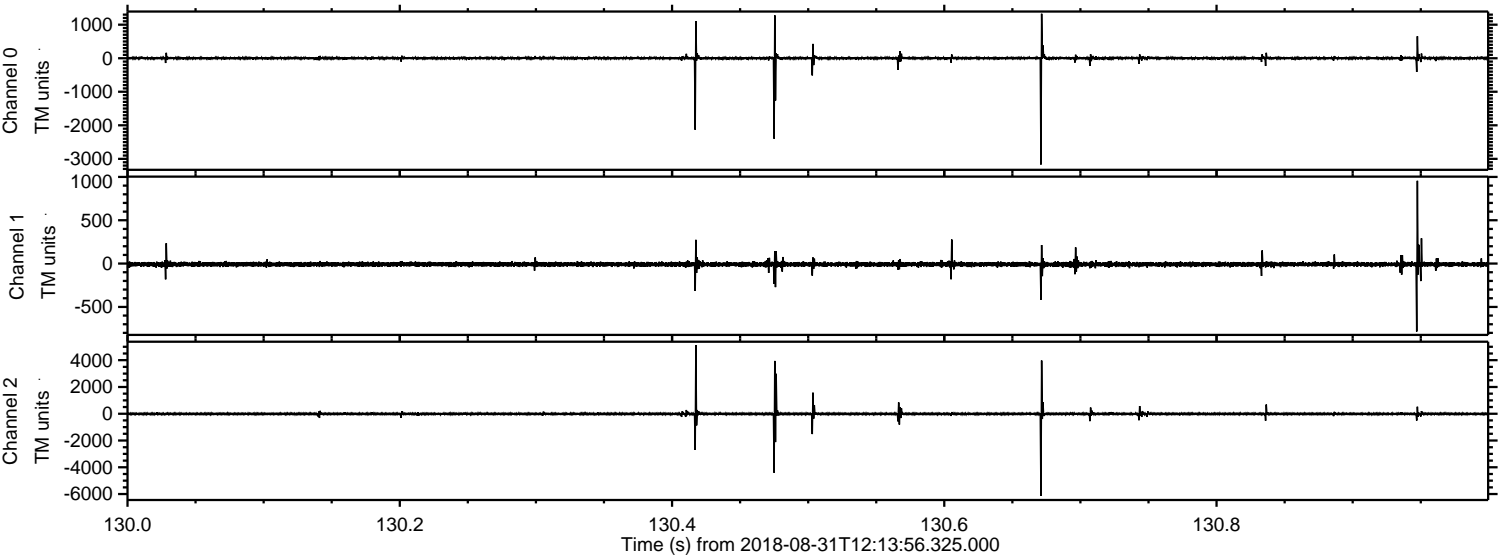
Channel 2
mn: -7500
mx: 6766
 μ : -7.7
 σ : 89.2

Processed Fri Aug 31 14:22:30 2018 by ELM ver.2012-10-06 from 001__elm20180831_121355__dat00.bin



ELMAVAN 3D WAVEFORMS (Measured data sampled at 50 kHz) 51000 packets of 144 samples from 2018-08-31T12:13:56.325.000. Part 131/147

Processed Fri Aug 31 14:22:31 2018 by ELM ver.2012-10-06 from 001__elm20180831_121355__dat00.bin

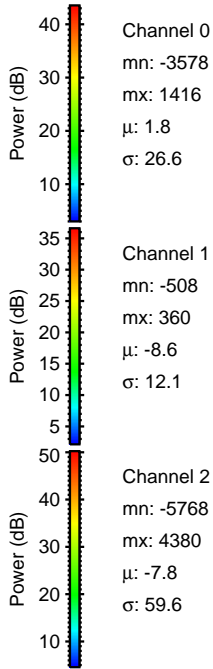
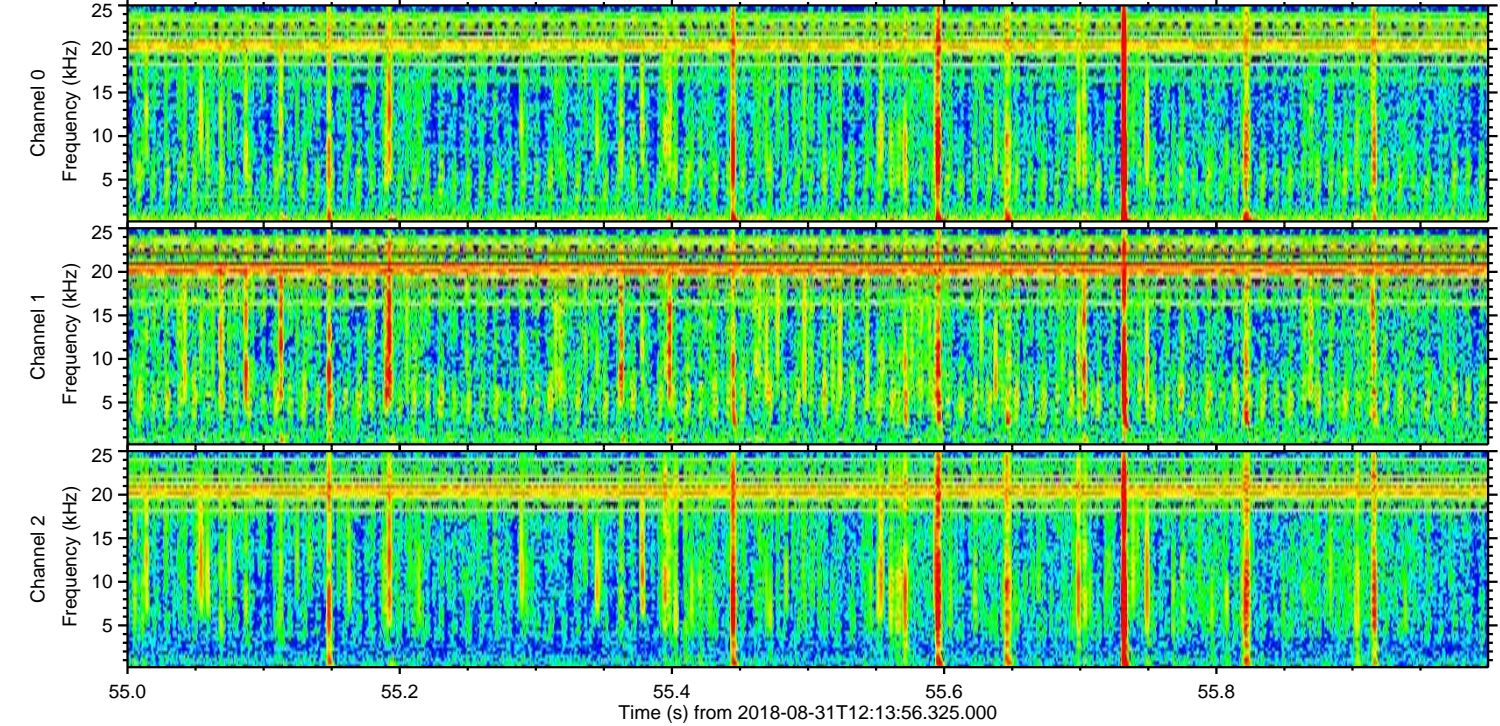
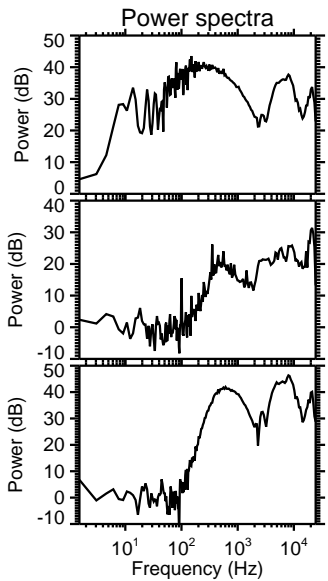
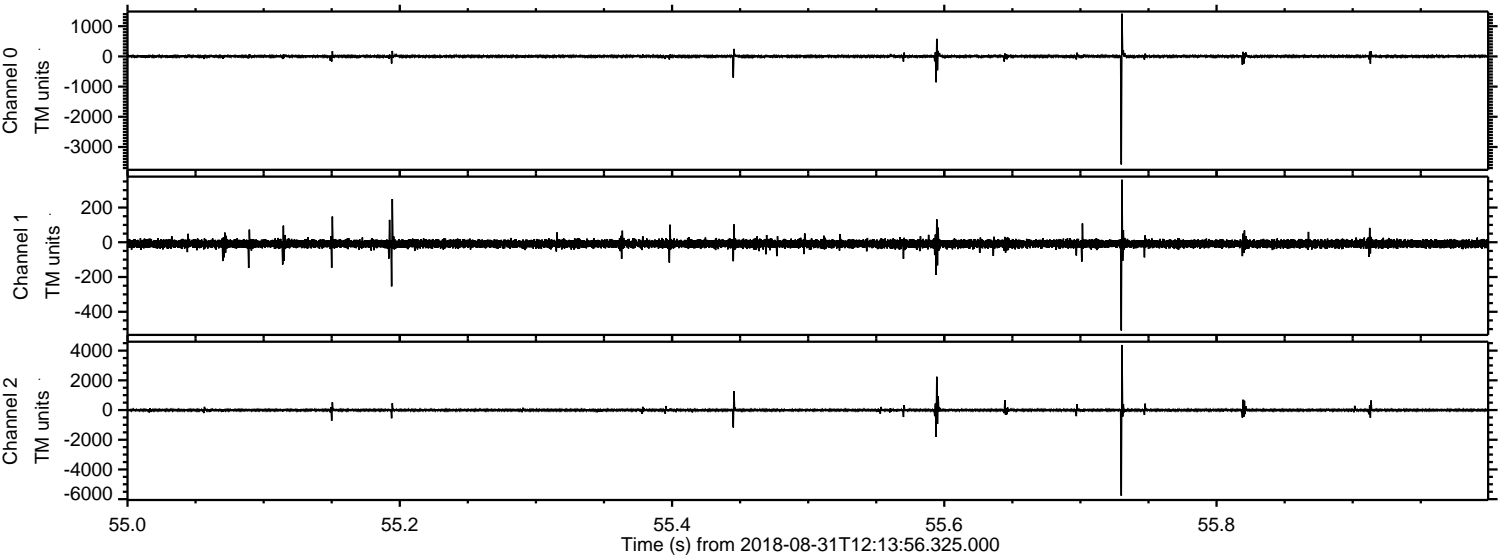


Channel 0
mn: -3168
mx: 1325
 μ : 1.7
 σ : 32.3

Channel 1
mn: -784
mx: 956
 μ : -8.7
 σ : 14.0

Channel 2
mn: -6137
mx: 5124
 μ : -7.8
 σ : 72.6

Processed Fri Aug 31 14:22:31 2018 by ELM ver.2012-10-06 from 001__elm20180831_121355__dat00.bin

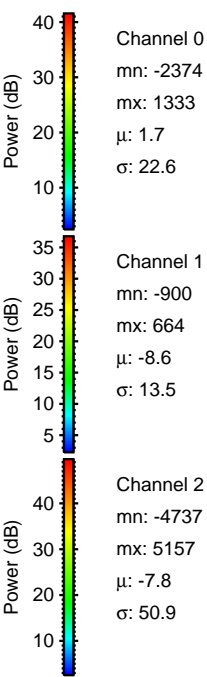
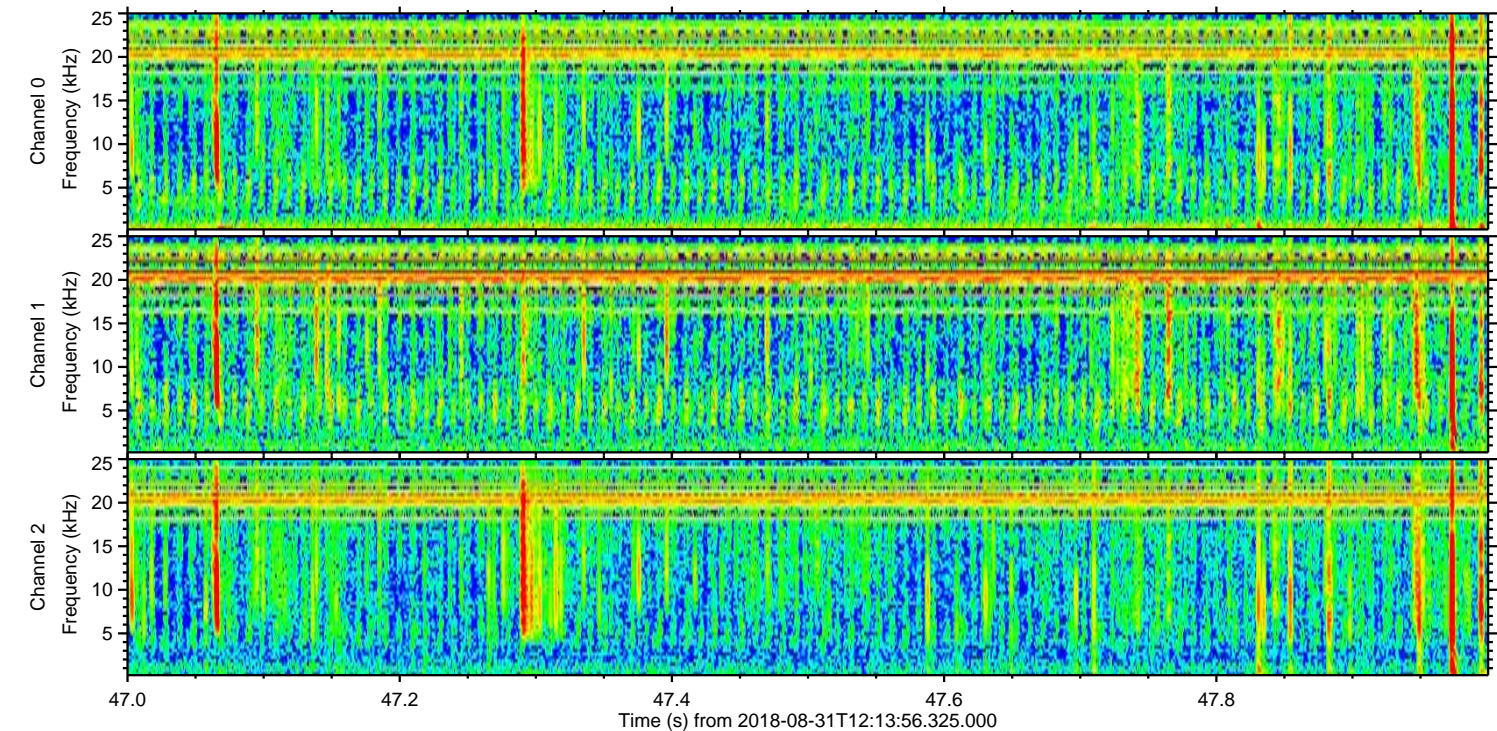
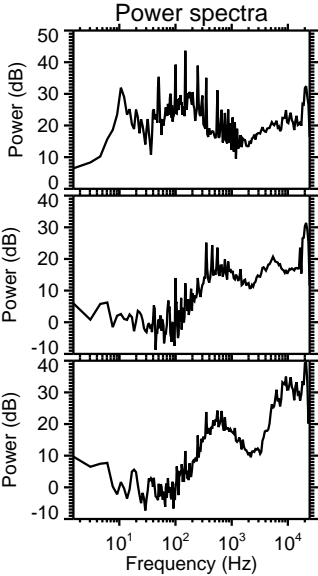
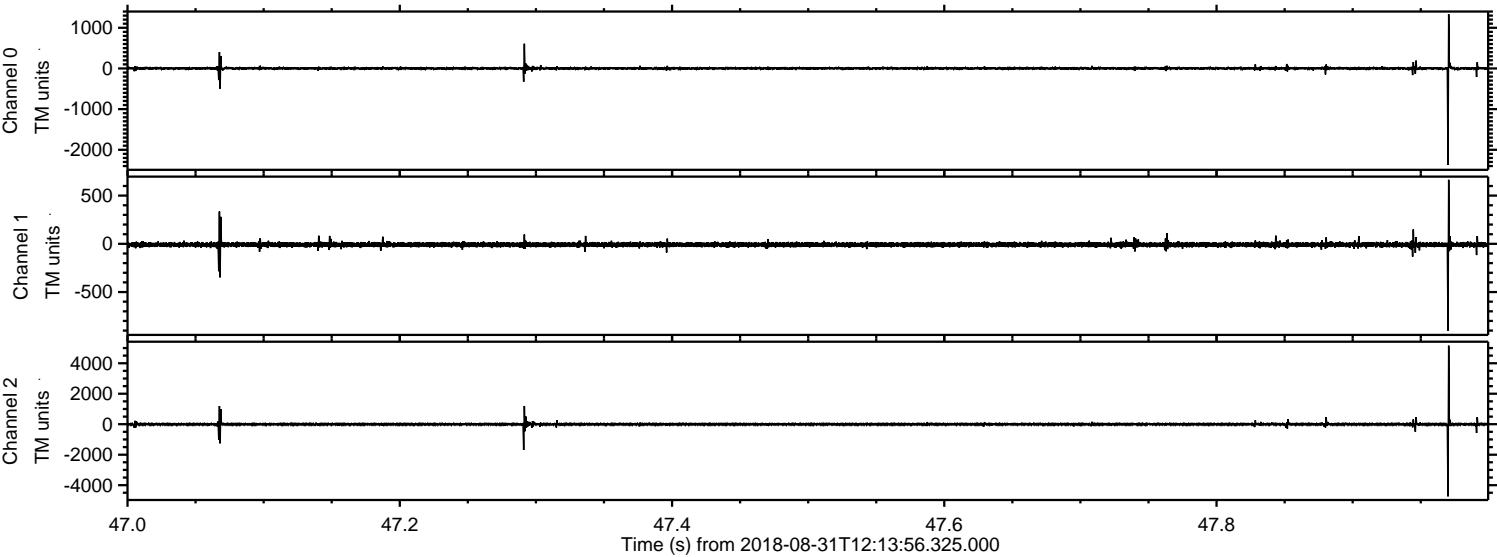


Channel 0
mn: -3578
mx: 1416
 μ : 1.8
 σ : 26.6

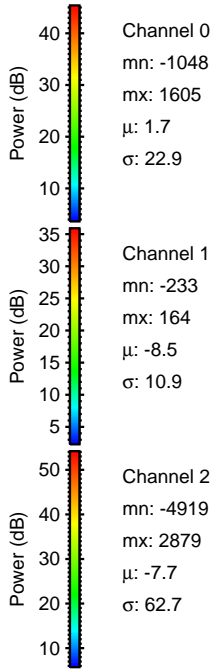
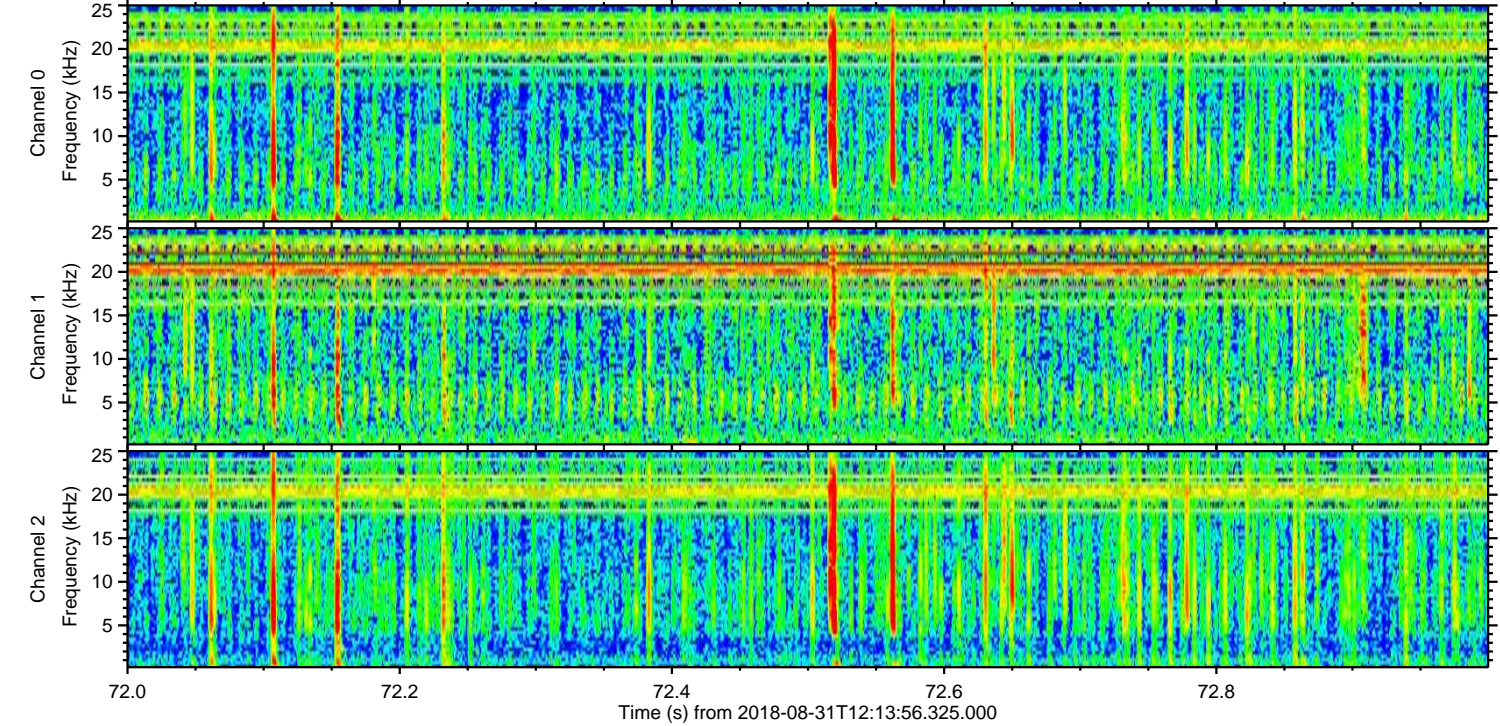
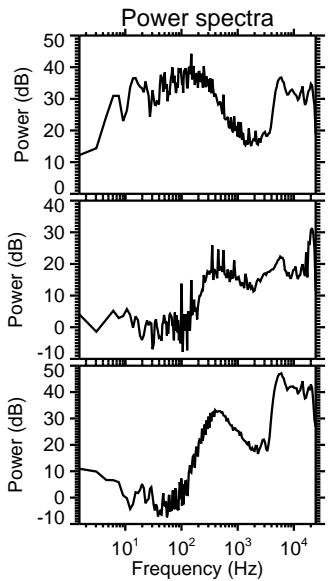
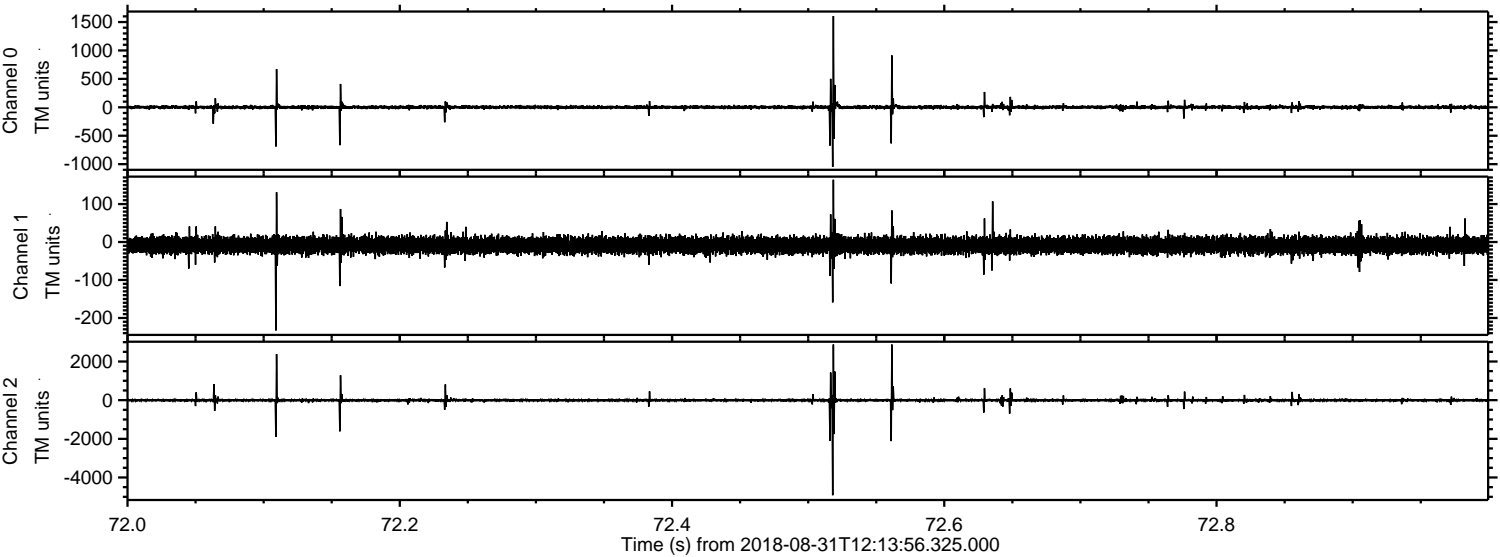
Channel 1
mn: -508
mx: 360
 μ : -8.6
 σ : 12.1

Channel 2
mn: -5768
mx: 4380
 μ : -7.8
 σ : 59.6

Processed Fri Aug 31 14:22:32 2018 by ELM ver.2012-10-06 from 001__elm20180831_121355__dat00.bin



Processed Fri Aug 31 14:22:33 2018 by ELM ver.2012-10-06 from 001__elm20180831_121355__dat00.bin

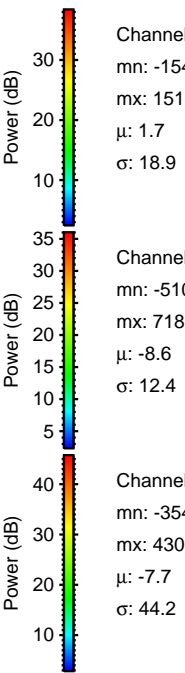
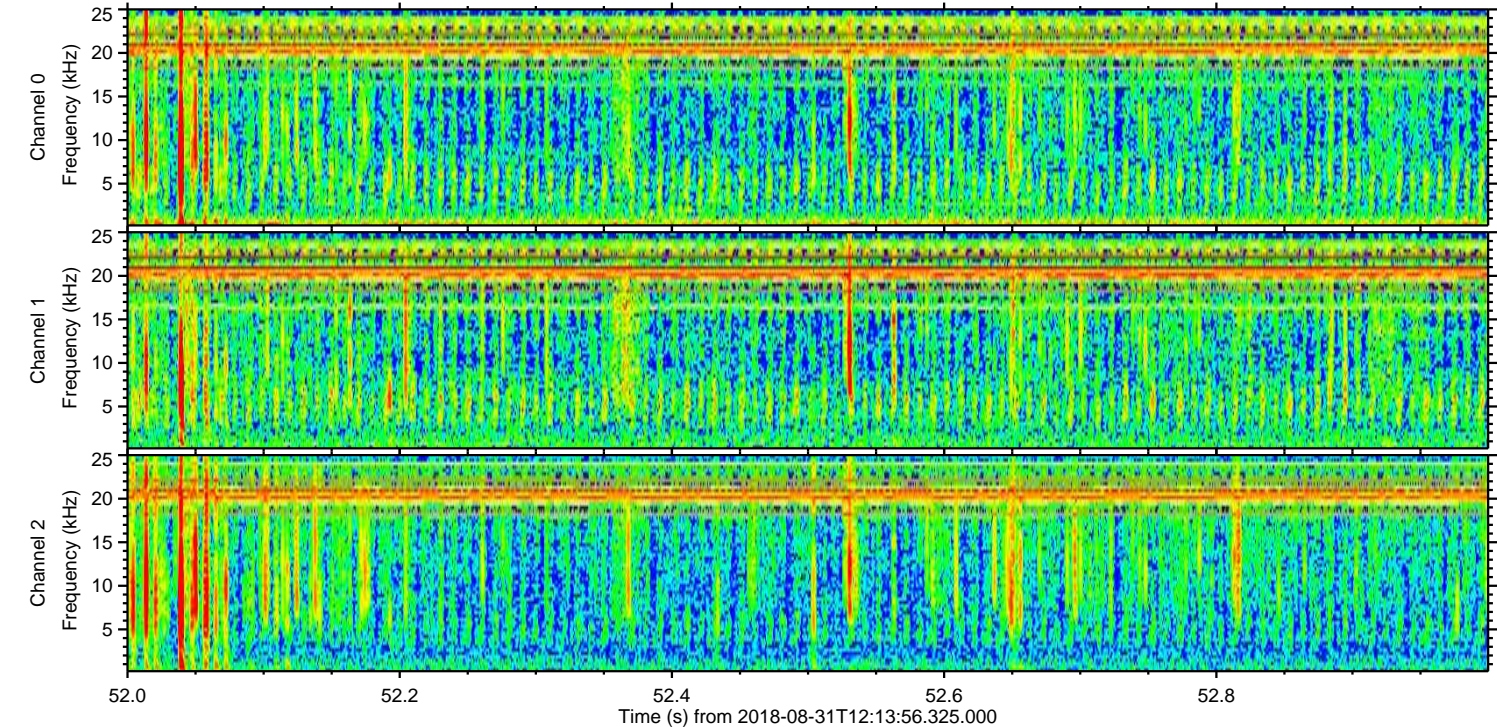
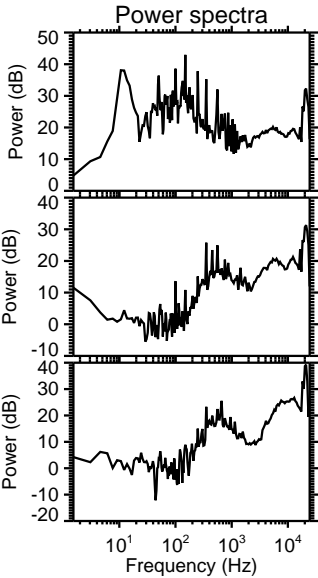
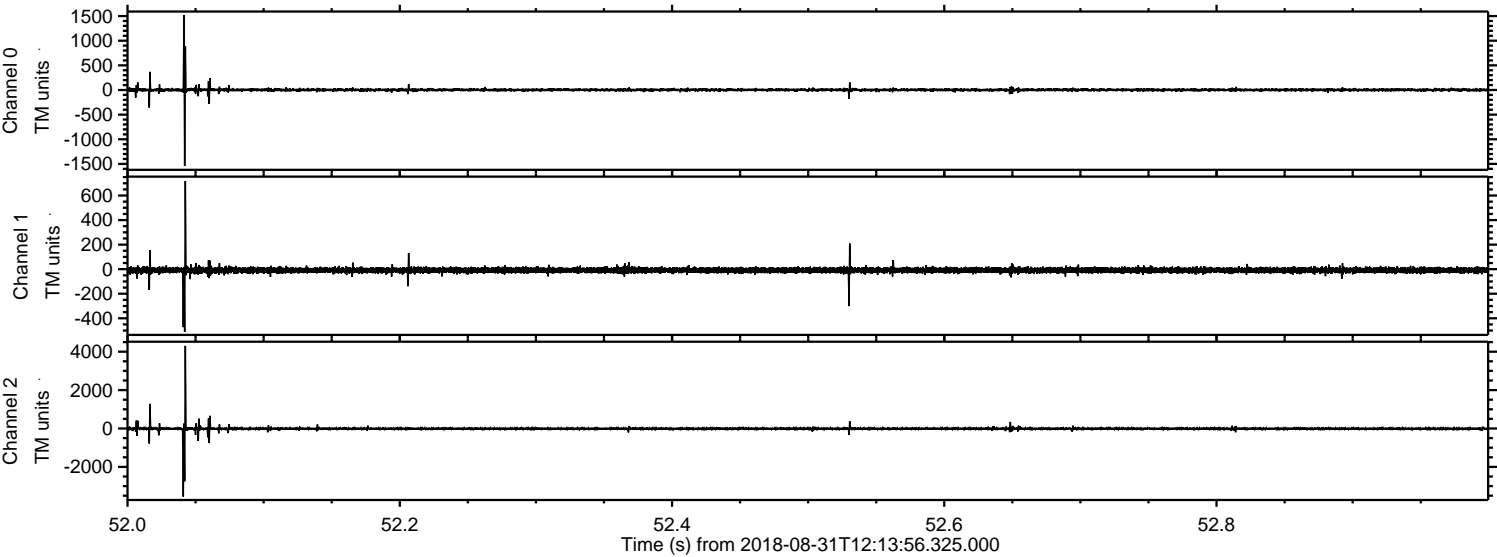


Channel 0
mn: -1048
mx: 1605
 μ : 1.7
 σ : 22.9

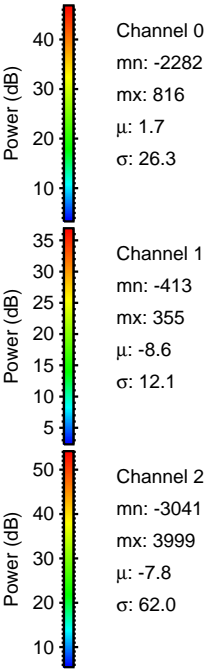
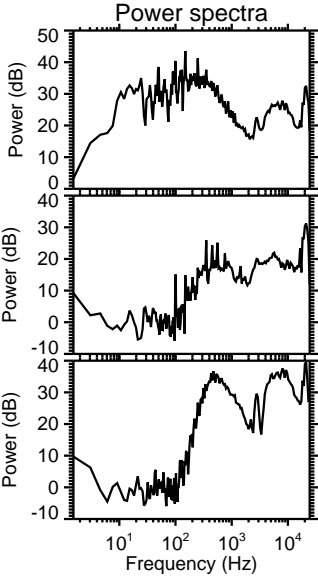
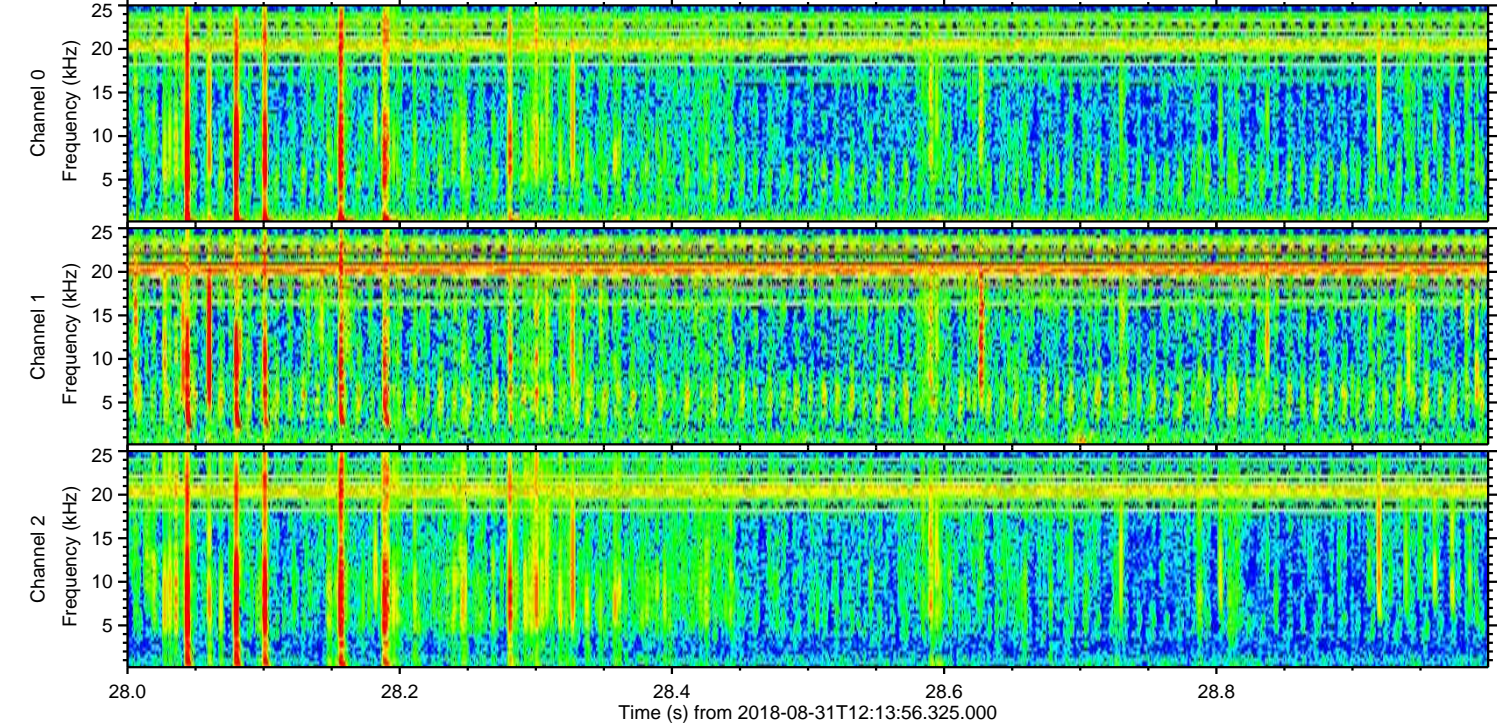
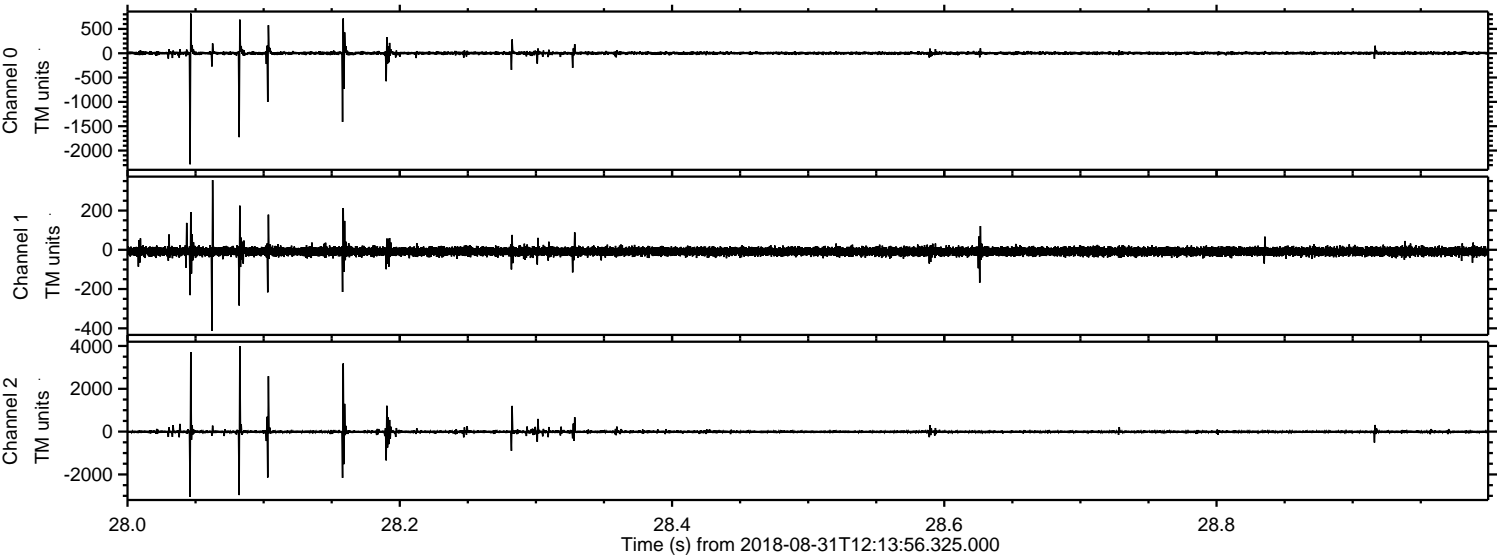
Channel 1
mn: -233
mx: 164
 μ : -8.5
 σ : 10.9

Channel 2
mn: -4919
mx: 2879
 μ : -7.7
 σ : 62.7

Processed Fri Aug 31 14:22:33 2018 by ELM ver.2012-10-06 from 001__elm20180831_121355__dat00.bin



Processed Fri Aug 31 14:22:34 2018 by ELM ver.2012-10-06 from 001__elm20180831_121355__dat00.bin

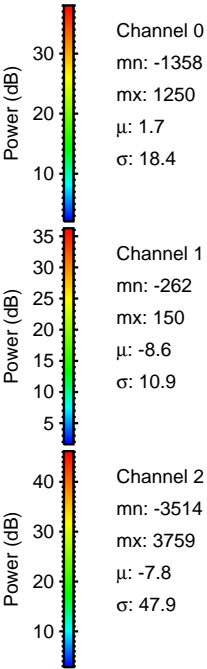
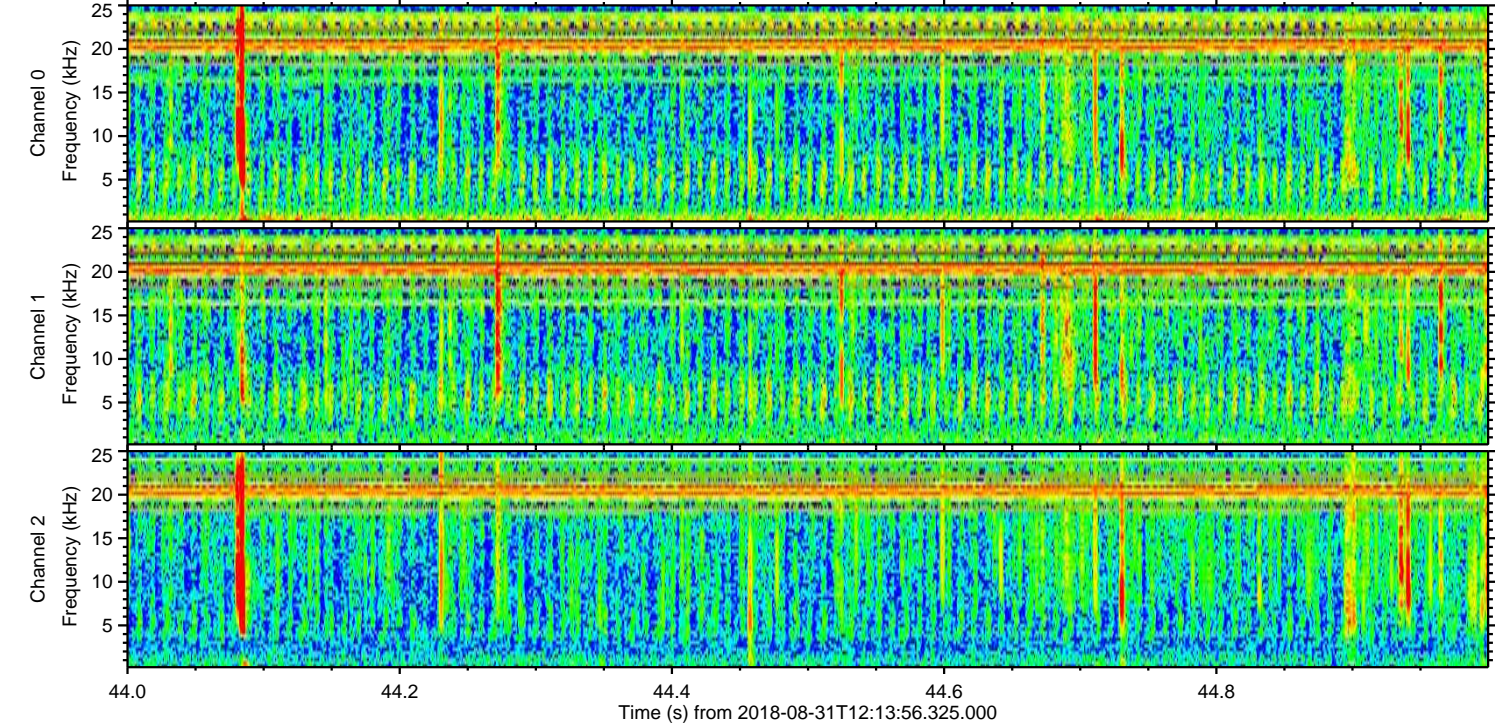
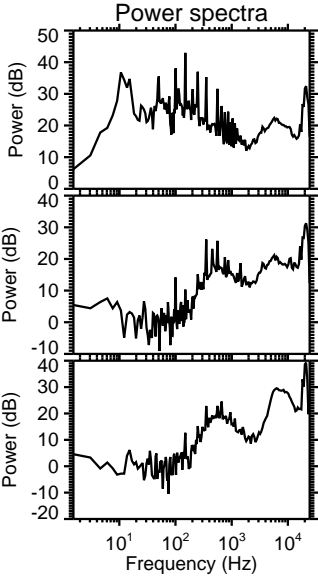
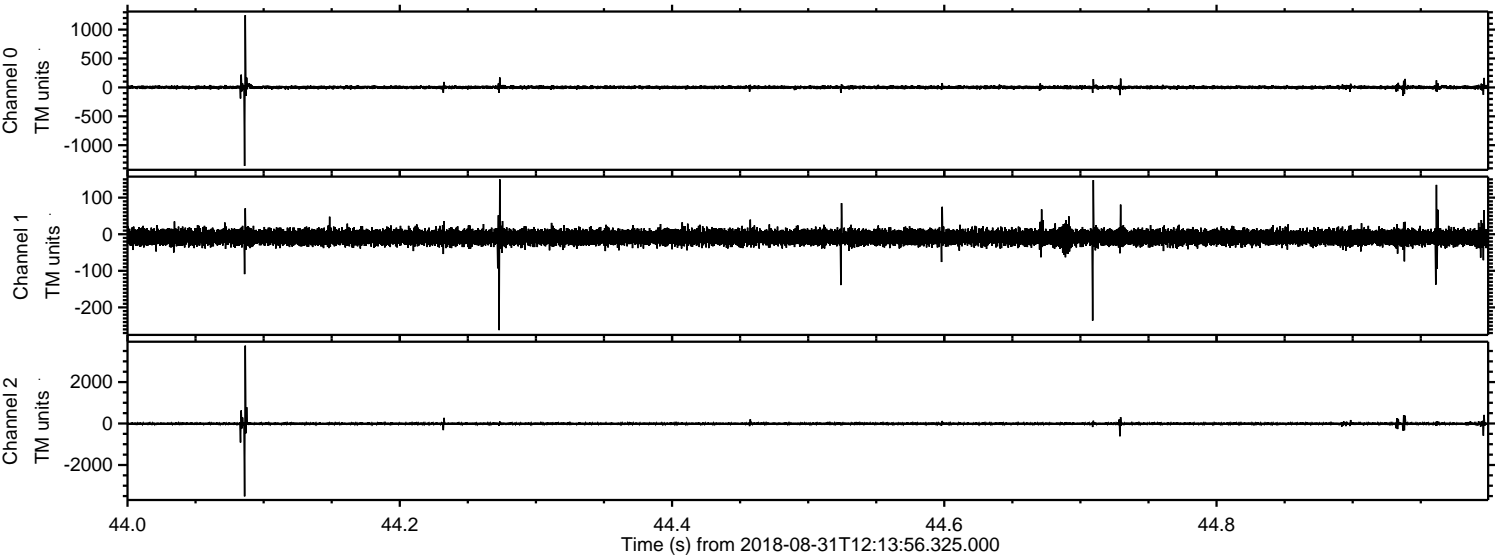


Channel 0
mn: -2282
mx: 816
 μ : 1.7
 σ : 26.3

Channel 1
mn: -413
mx: 355
 μ : -8.6
 σ : 12.1

Channel 2
mn: -3041
mx: 3999
 μ : -7.8
 σ : 62.0

Processed Fri Aug 31 14:22:35 2018 by ELM ver.2012-10-06 from 001__elm20180831_121355__dat00.bin



Processed Fri Aug 31 14:22:35 2018 by ELM ver.2012-10-06 from 001__elm20180831_121355__dat00.bin

