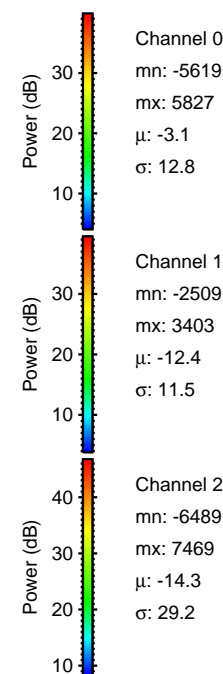
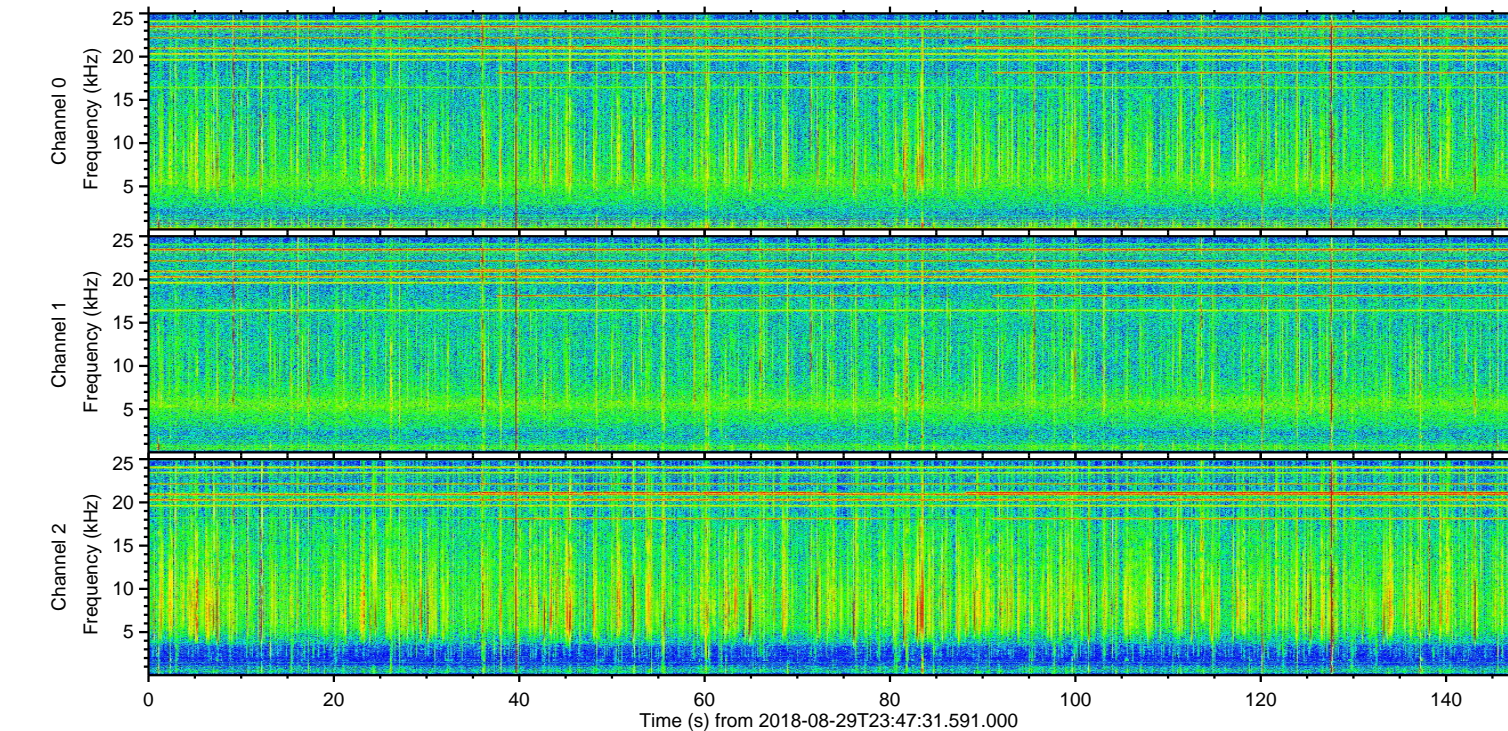
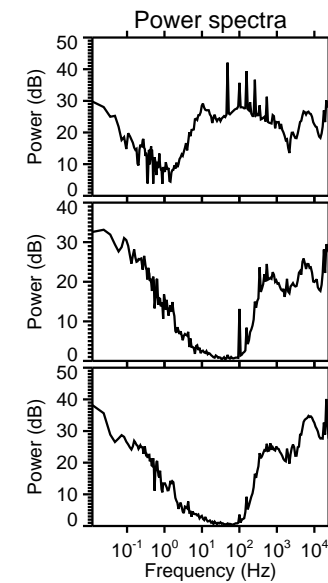
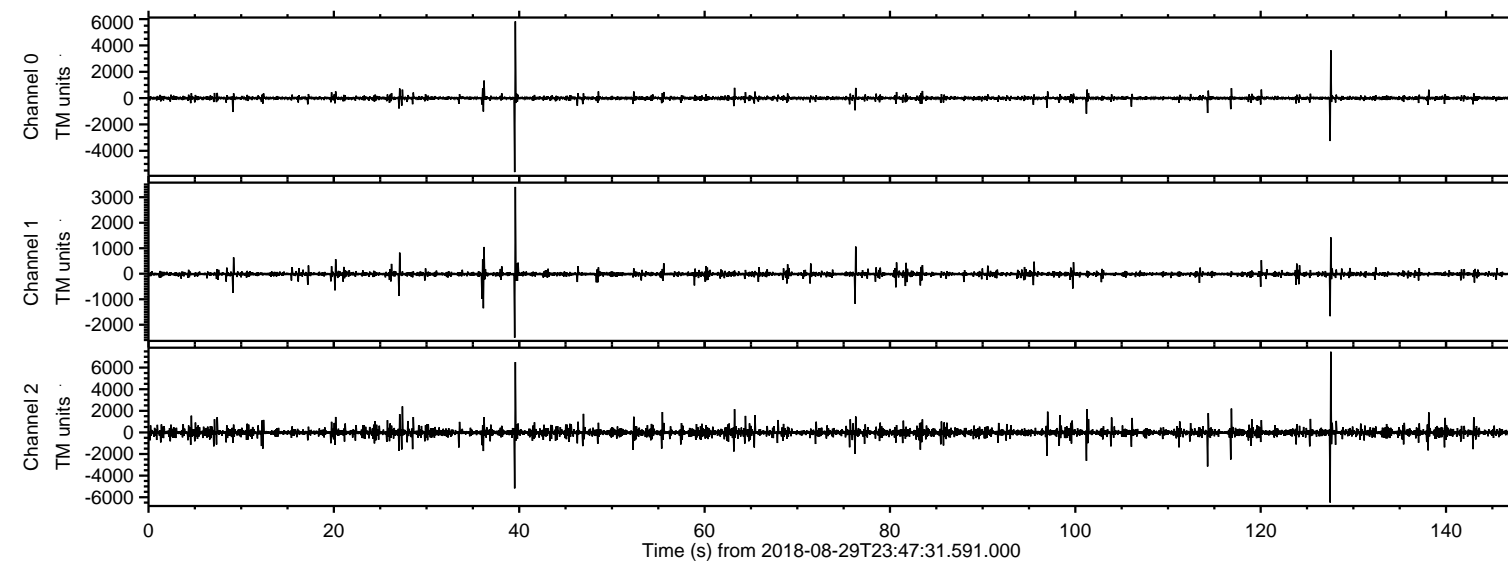


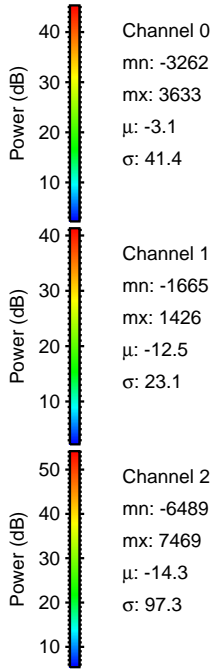
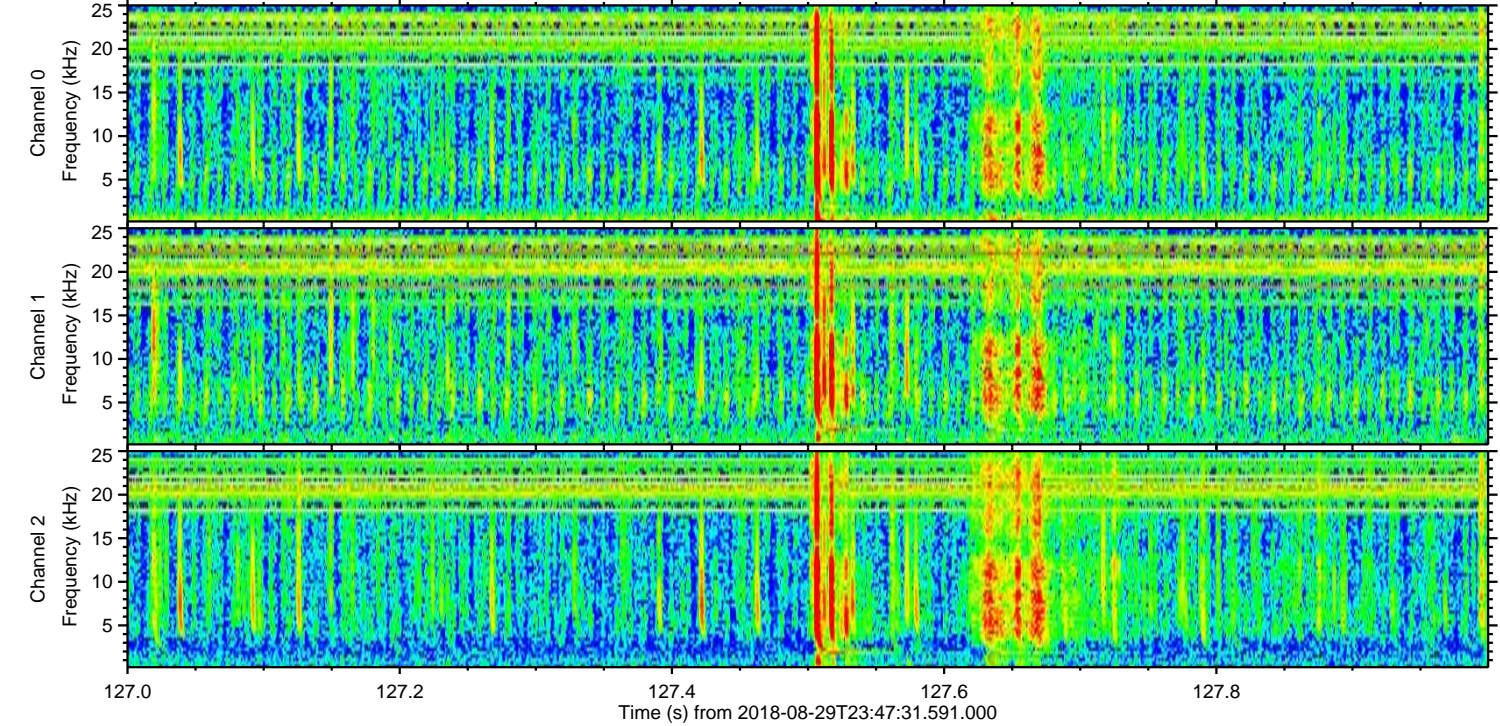
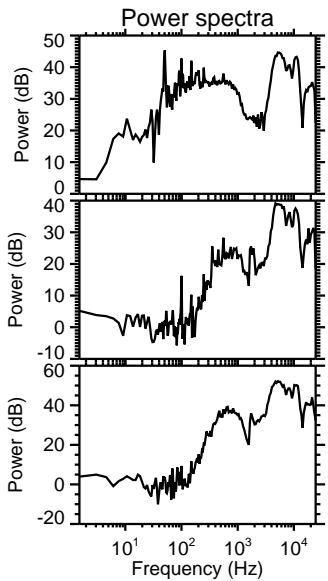
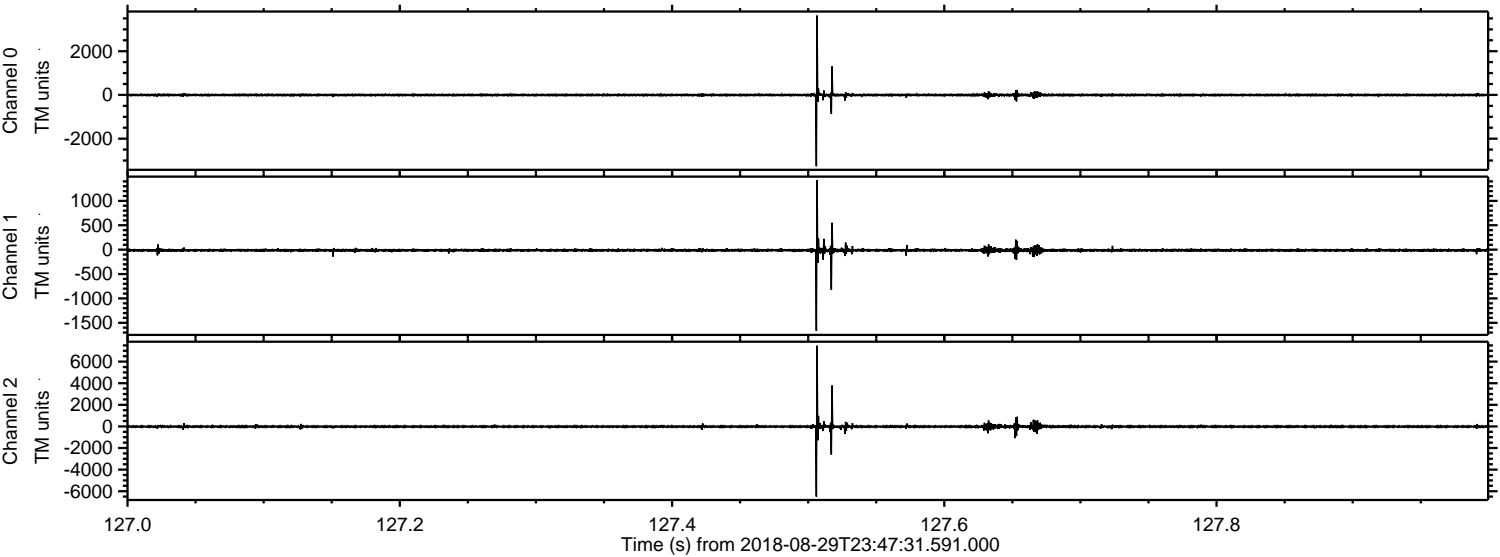
ELMAVAN 3D WAVEFORMS (Measured data sampled at 50 kHz) 51000 packets of 144 samples from 2018-08-29T23:47:31.591.000.

Processed Thu Aug 30 01:55:38 2018 by ELM ver.2012-10-06 from 001__elm20180829_234730__dat00.bin

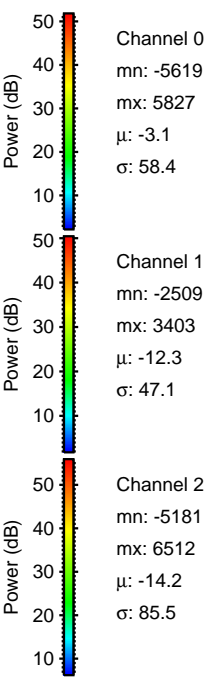
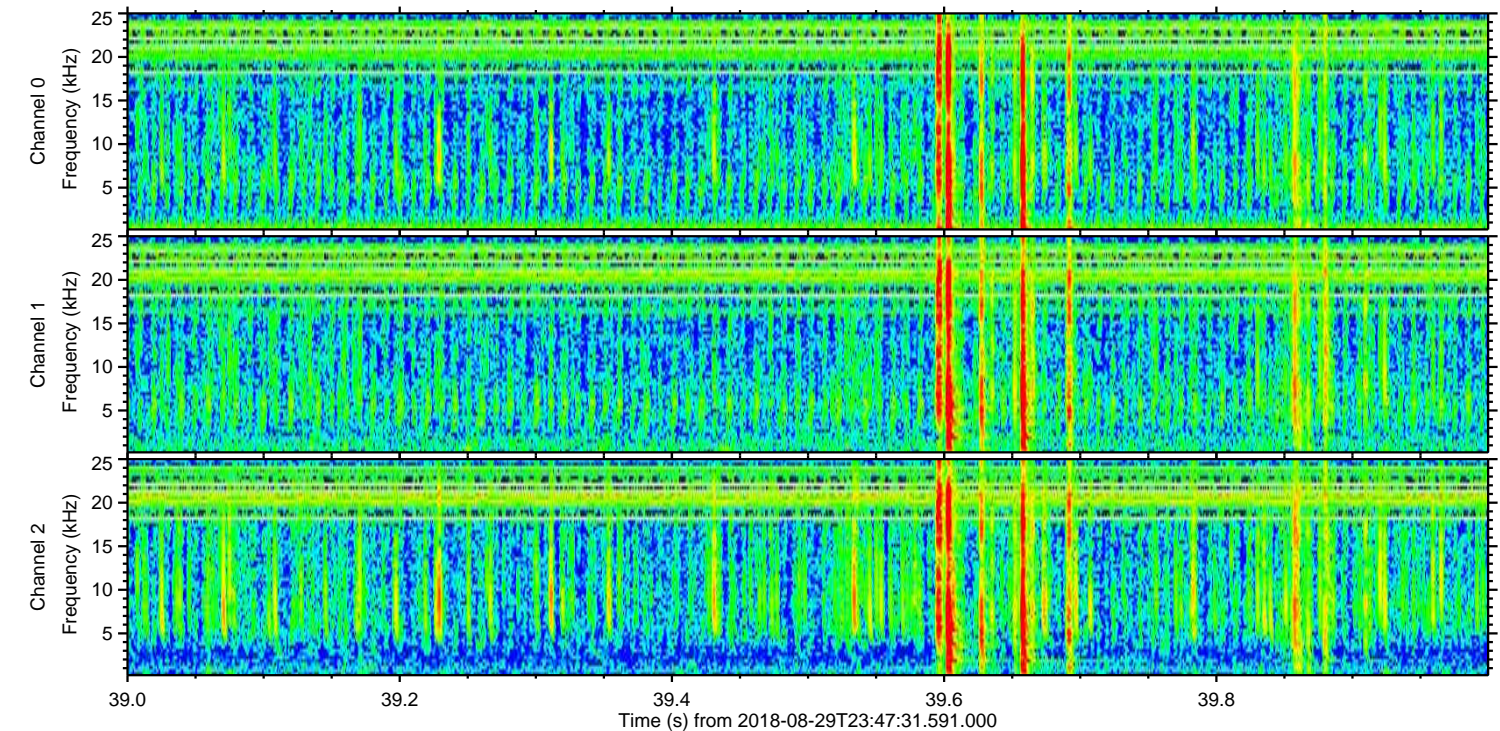
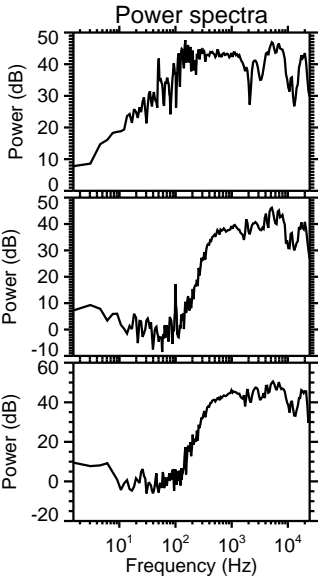
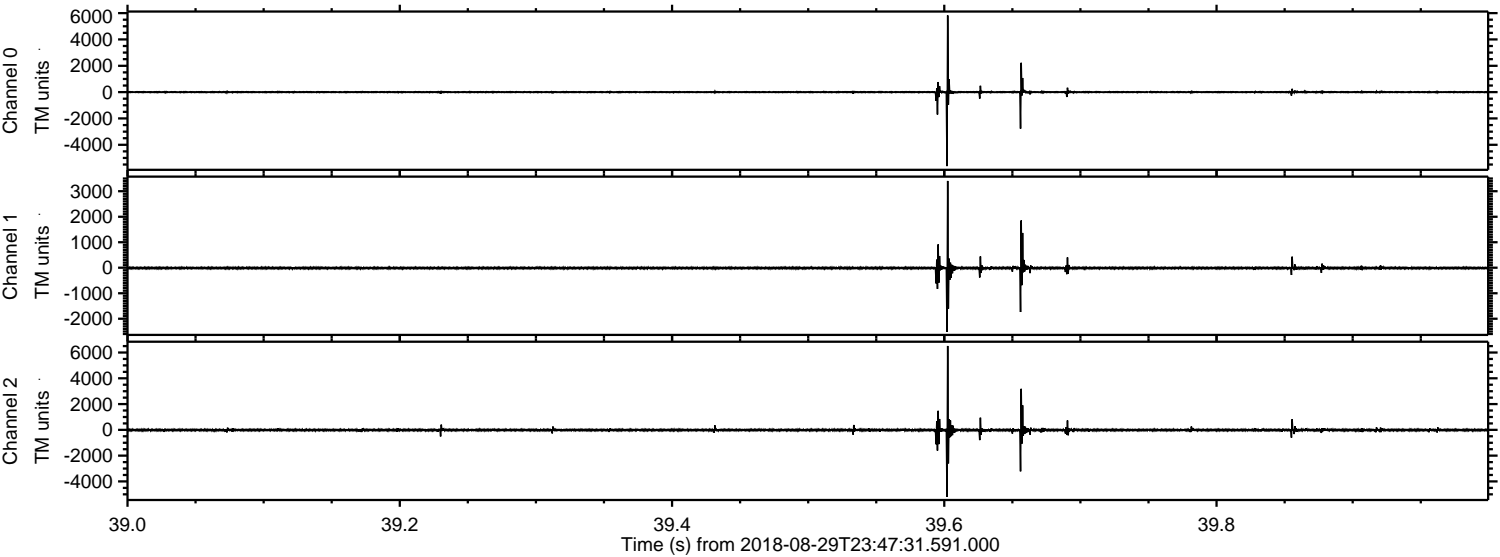


ELMAVAN 3D WAVEFORMS (Measured data sampled at 50 kHz) 51000 packets of 144 samples from 2018-08-29T23:47:31.591.000. Part 128/147

Processed Thu Aug 30 01:55:45 2018 by ELM ver.2012-10-06 from 001__elm20180829_234730__dat00.bin

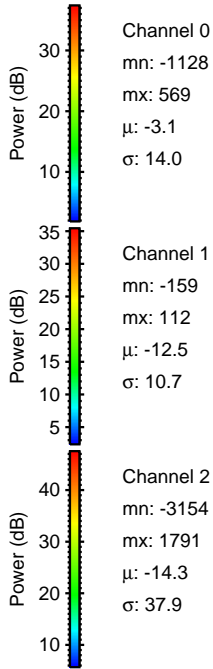
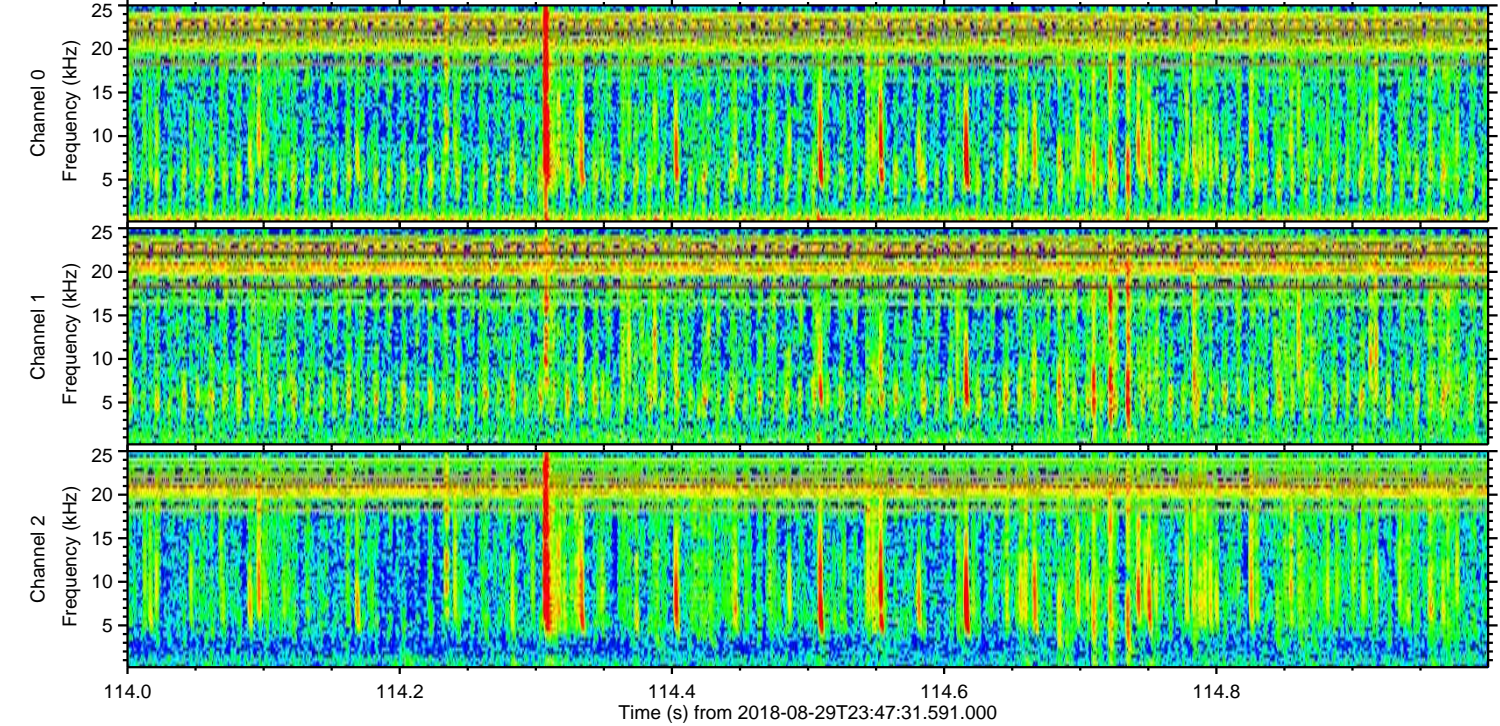
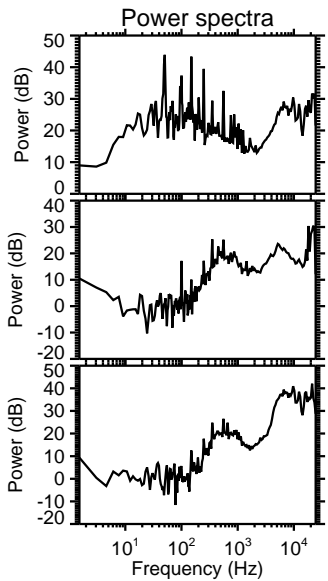
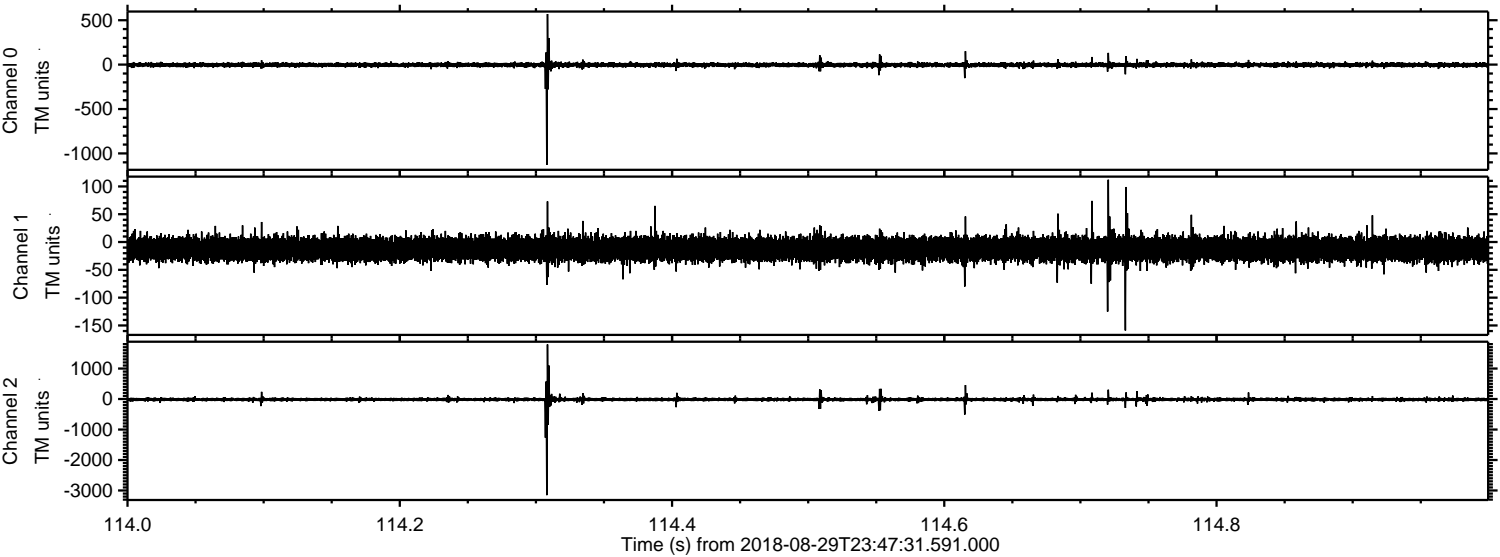


Processed Thu Aug 30 01:55:46 2018 by ELM ver.2012-10-06 from 001__elm20180829_234730__dat00.bin



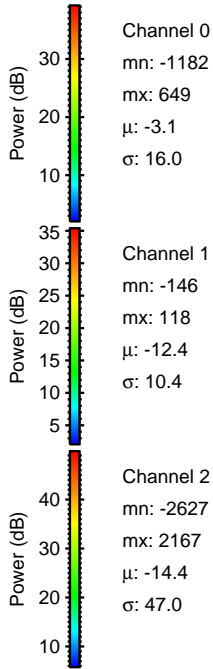
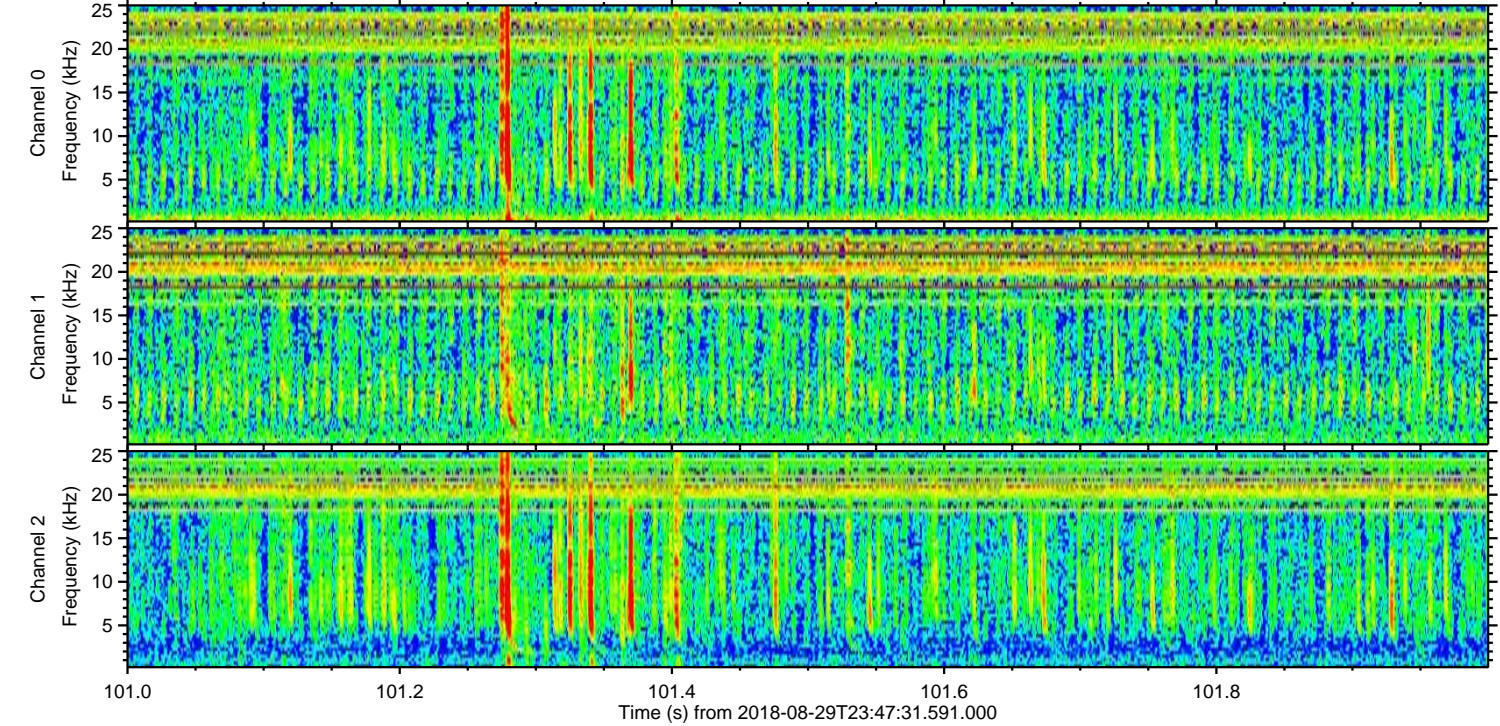
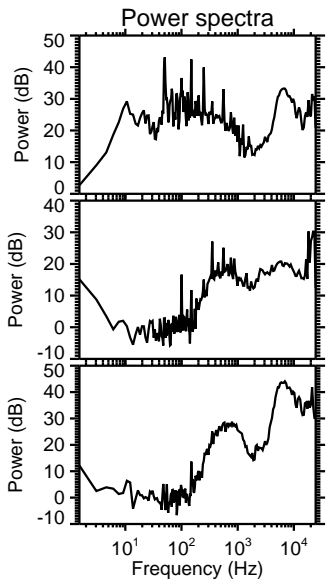
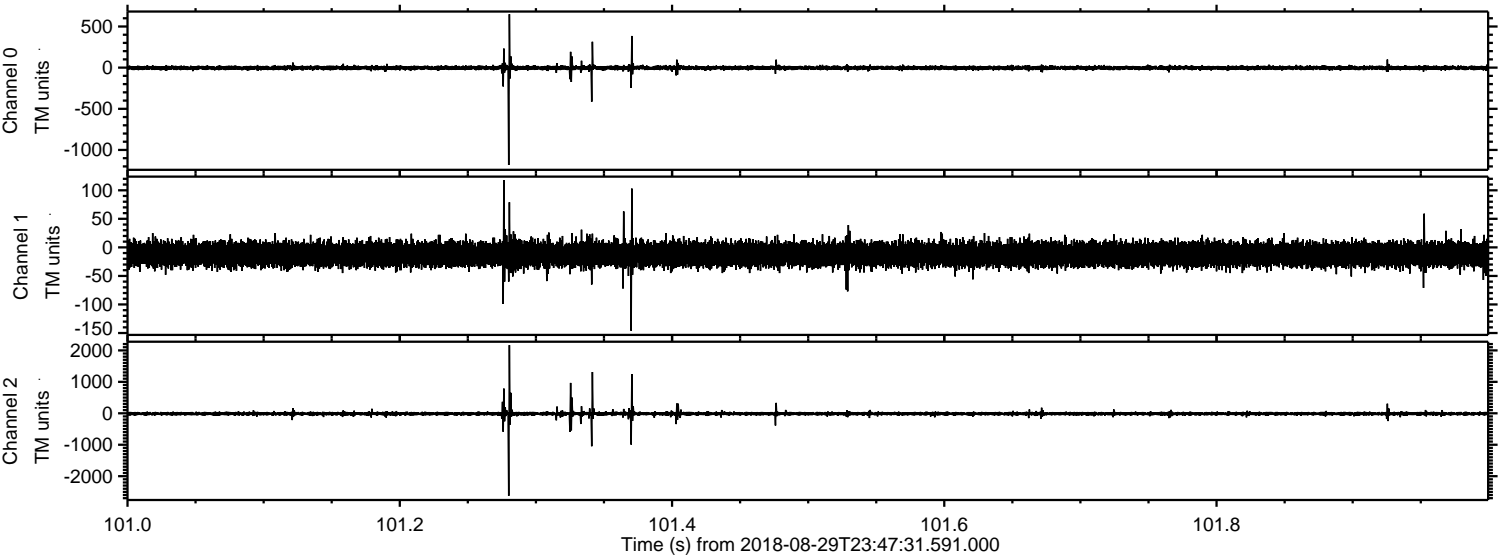
ELMAVAN 3D WAVEFORMS (Measured data sampled at 50 kHz) 51000 packets of 144 samples from 2018-08-29T23:47:31.591.000. Part 115/147

Processed Thu Aug 30 01:55:47 2018 by ELM ver.2012-10-06 from 001__elm20180829_234730__dat00.bin



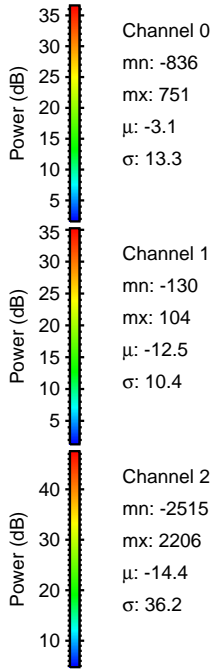
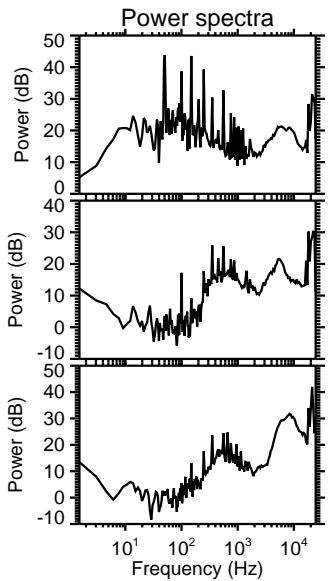
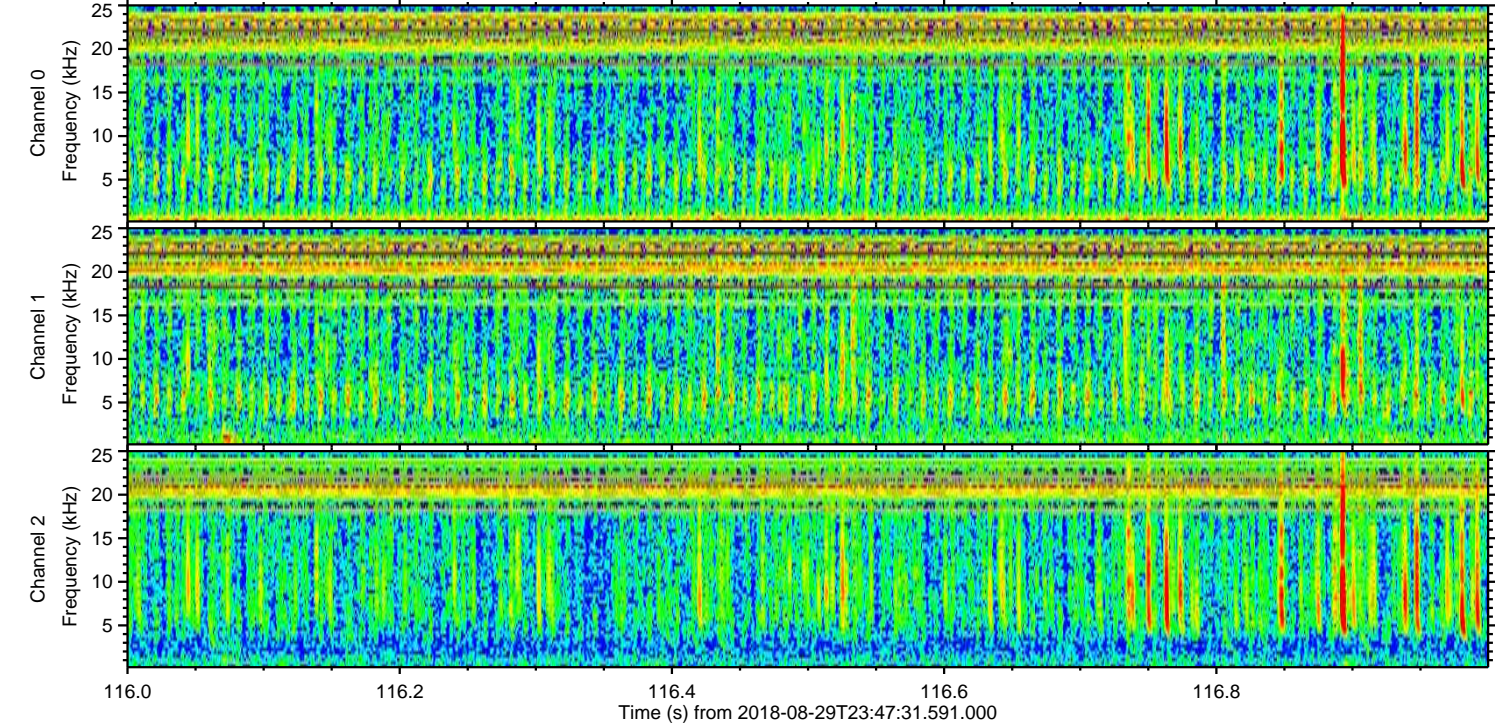
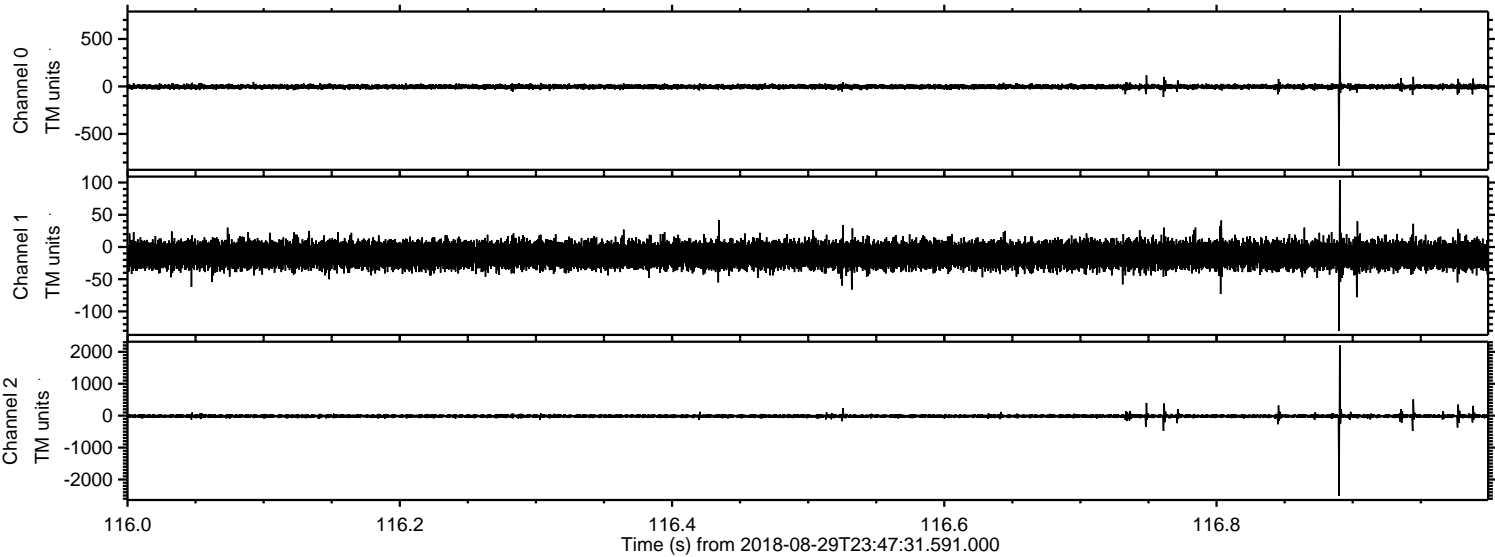
ELMAVAN 3D WAVEFORMS (Measured data sampled at 50 kHz) 51000 packets of 144 samples from 2018-08-29T23:47:31.591.000. Part 102/147

Processed Thu Aug 30 01:55:47 2018 by ELM ver.2012-10-06 from 001__elm20180829_234730__dat00.bin



ELMAVAN 3D WAVEFORMS (Measured data sampled at 50 kHz) 51000 packets of 144 samples from 2018-08-29T23:47:31.591.000. Part 117/147

Processed Thu Aug 30 01:55:48 2018 by ELM ver.2012-10-06 from 001__elm20180829_234730__dat00.bin

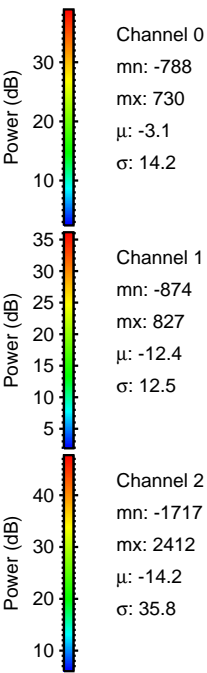
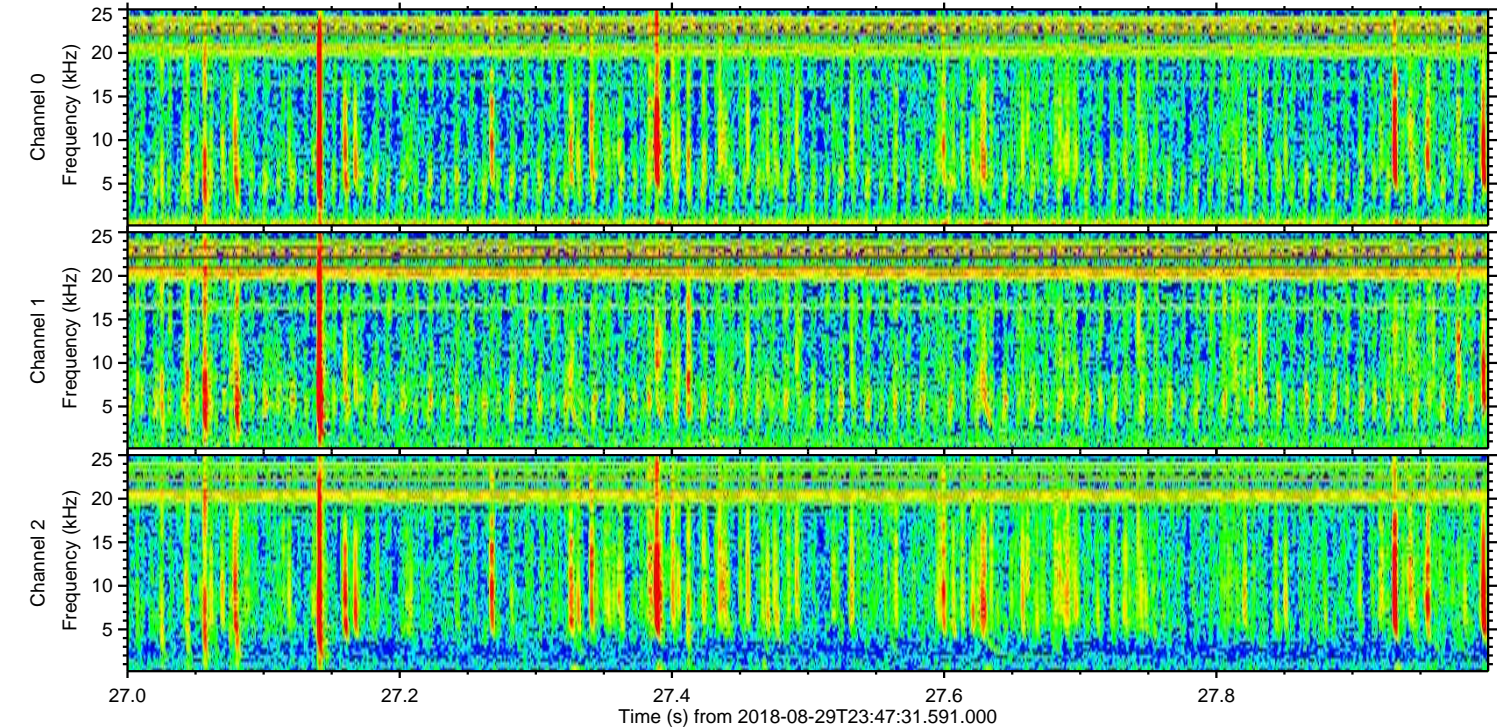
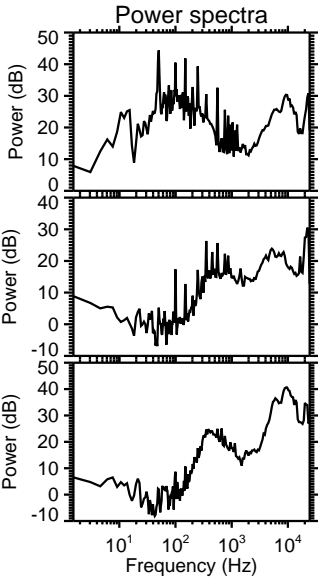
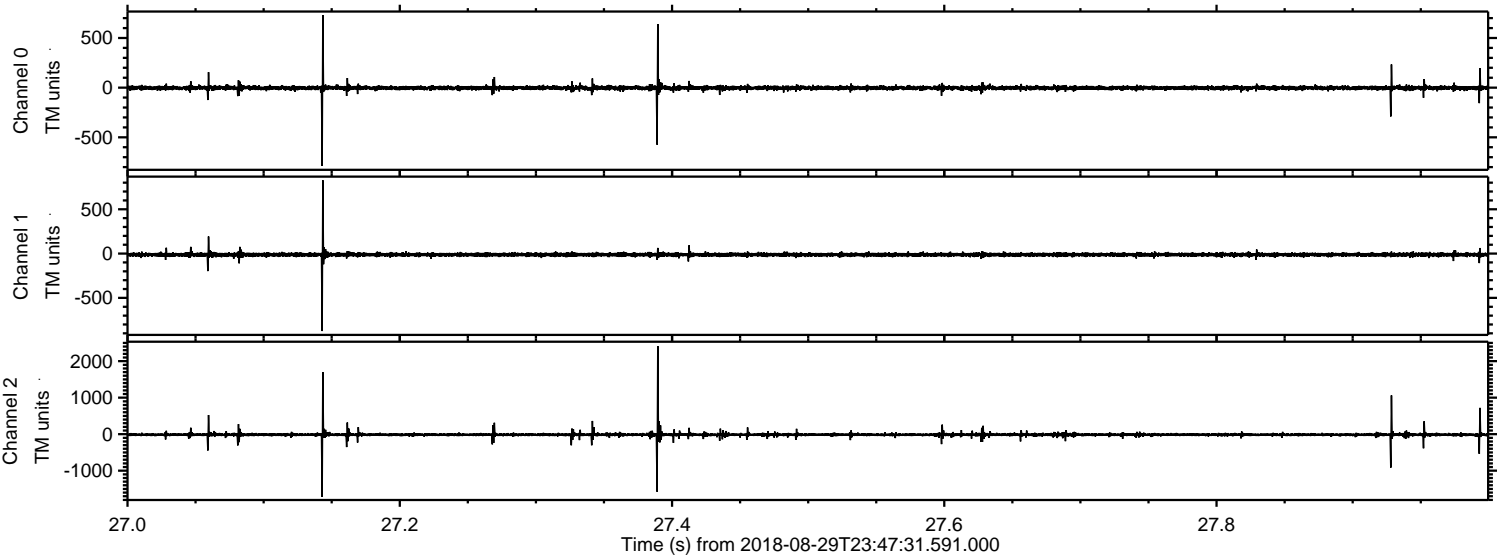


Channel 0
mn: -836
mx: 751
 μ : -3.1
 σ : 13.3

Channel 1
mn: -130
mx: 104
 μ : -12.5
 σ : 10.4

Channel 2
mn: -2515
mx: 2206
 μ : -14.4
 σ : 36.2

Processed Thu Aug 30 01:55:49 2018 by ELM ver.2012-10-06 from 001__elm20180829_234730__dat00.bin



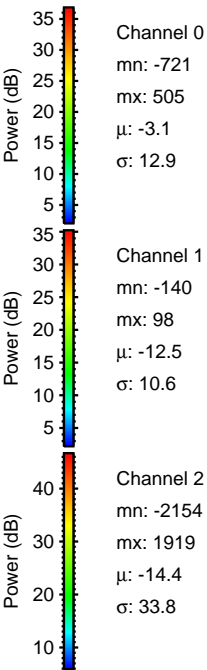
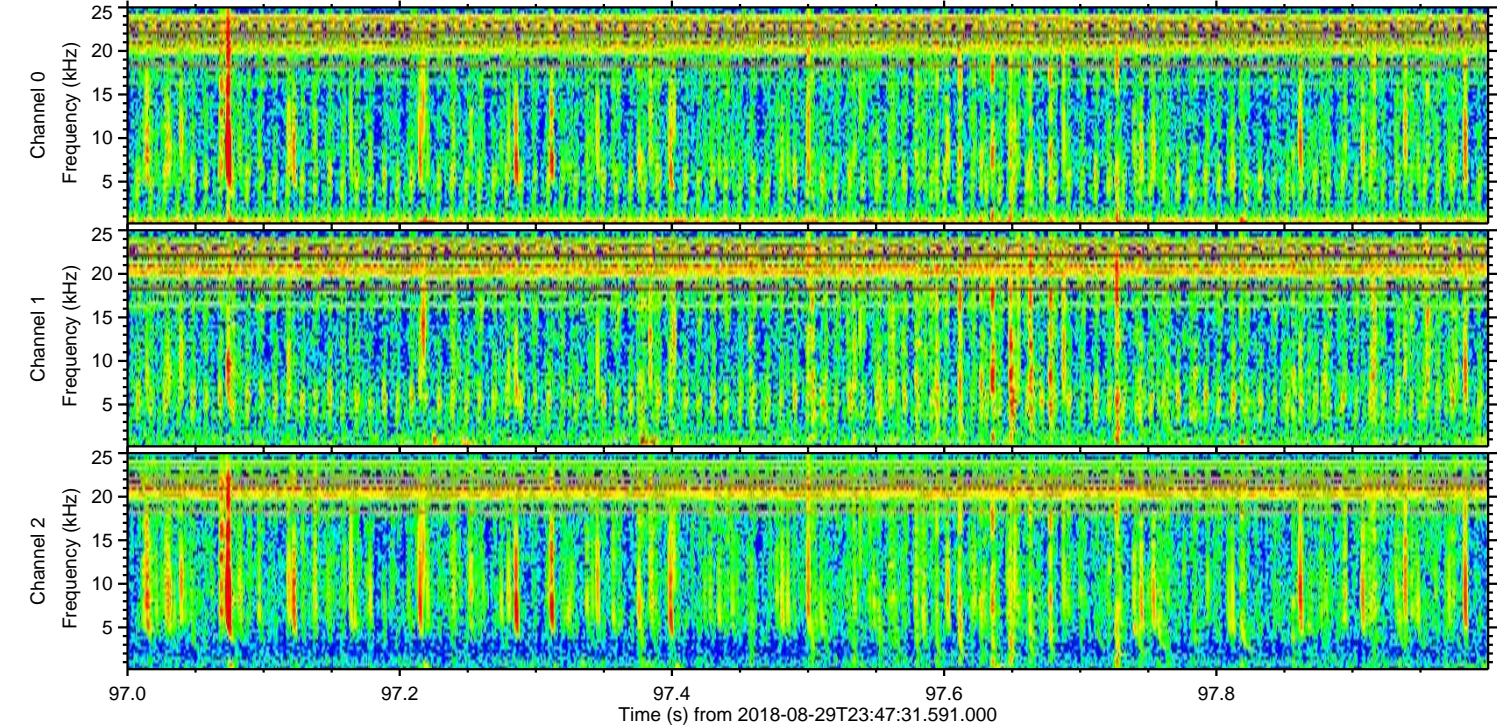
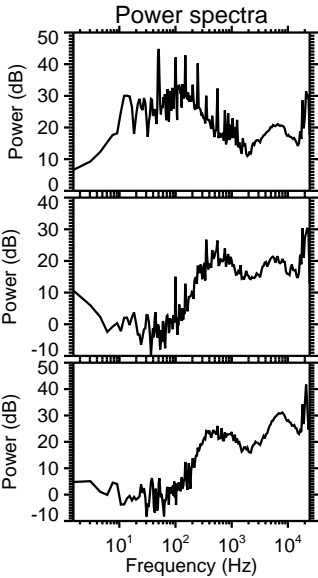
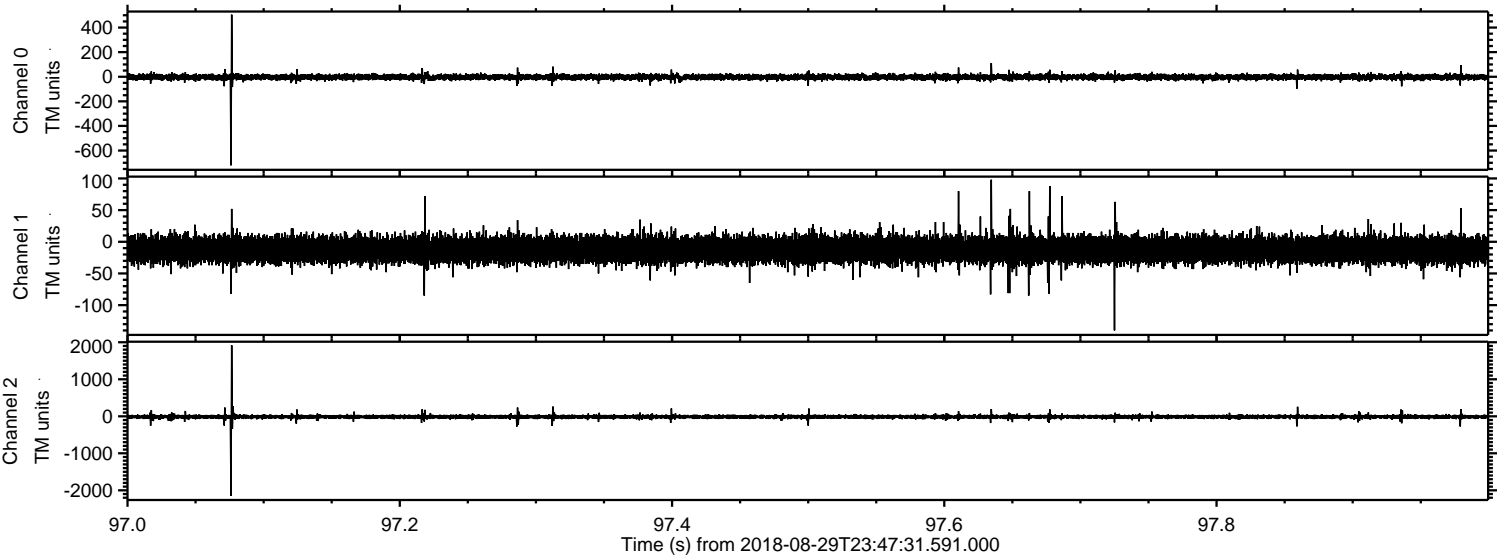
Power spectra

Channel 0
mn: -788
mx: 730
 μ : -3.1
 σ : 14.2

Channel 1
mn: -874
mx: 827
 μ : -12.4
 σ : 12.5

Channel 2
mn: -1717
mx: 2412
 μ : -14.2
 σ : 35.8

Processed Thu Aug 30 01:55:49 2018 by ELM ver.2012-10-06 from 001__elm20180829_234730__dat00.bin

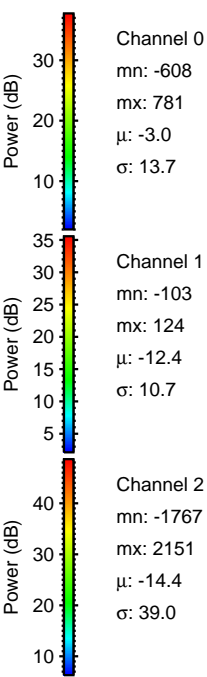
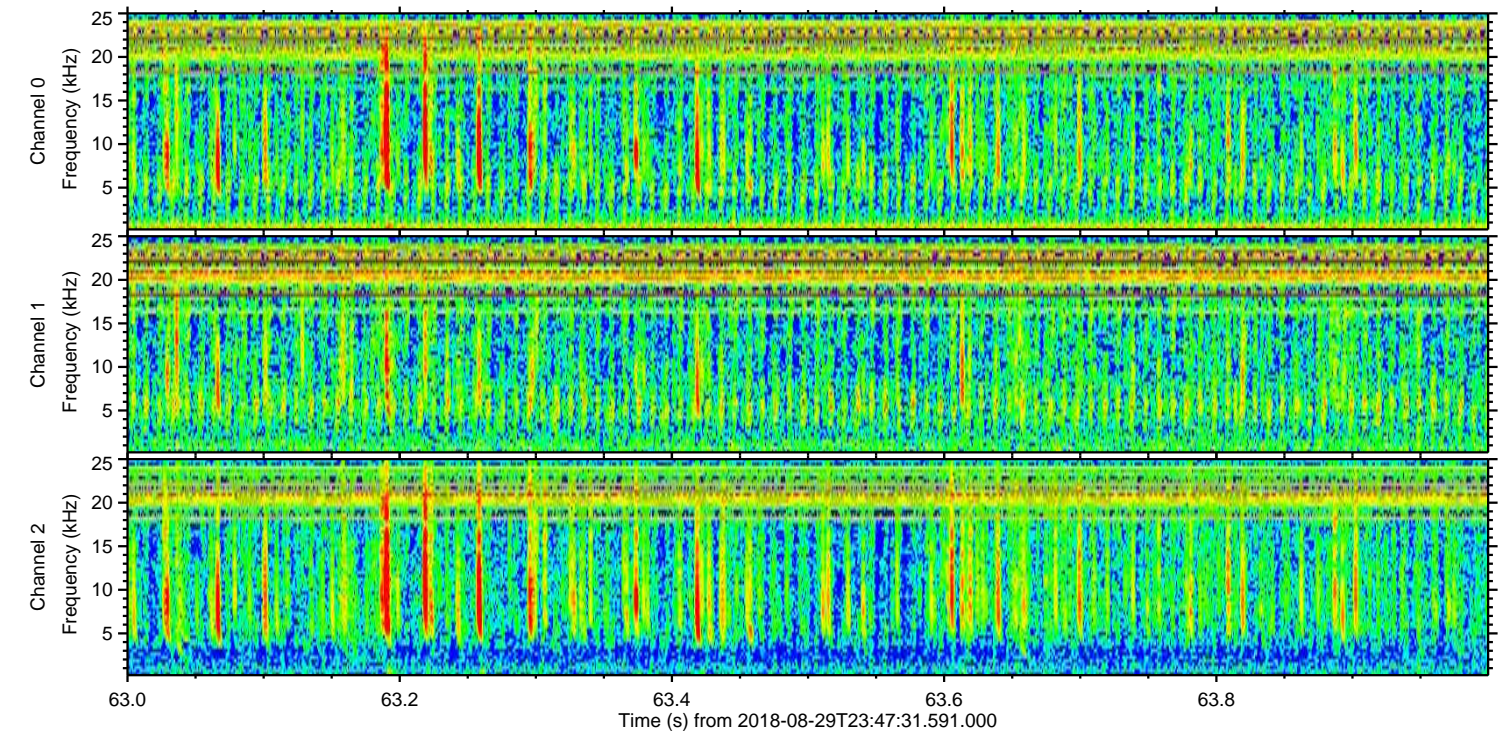
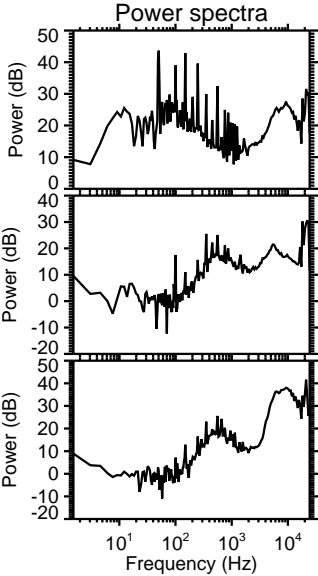
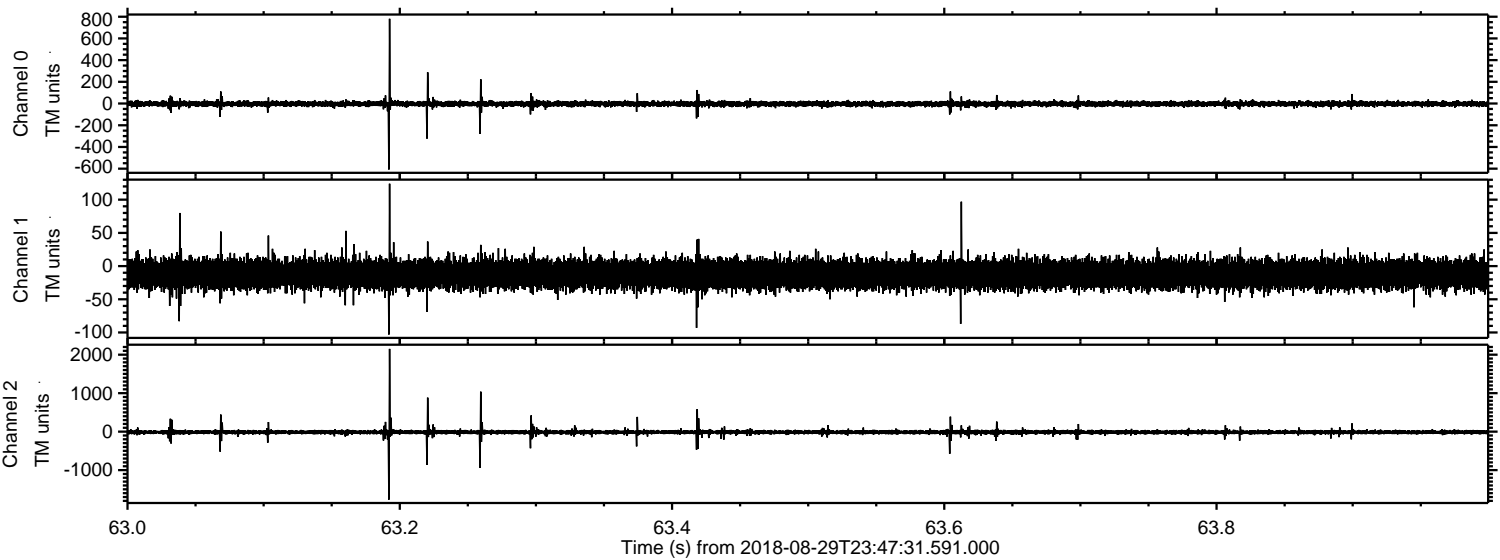


Channel 0
mn: -721
mx: 505
 μ : -3.1
 σ : 12.9

Channel 1
mn: -140
mx: 98
 μ : -12.5
 σ : 10.6

Channel 2
mn: -2154
mx: 1919
 μ : -14.4
 σ : 33.8

Processed Thu Aug 30 01:55:50 2018 by ELM ver.2012-10-06 from 001__elm20180829_234730__dat00.bin



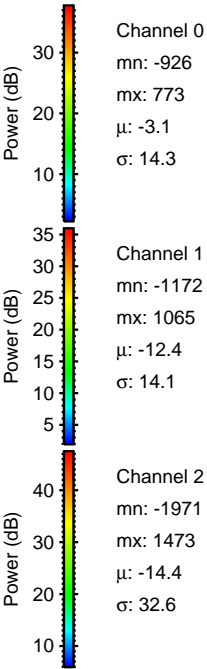
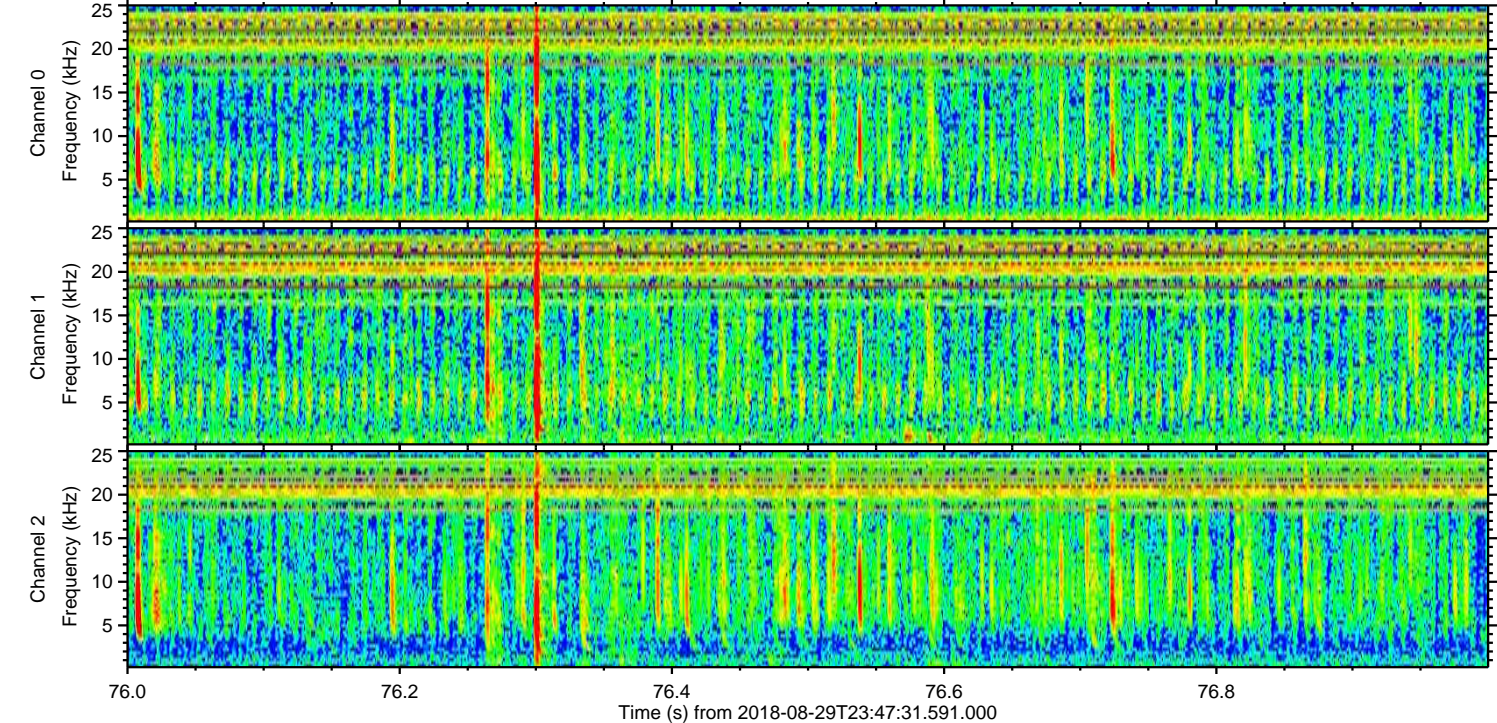
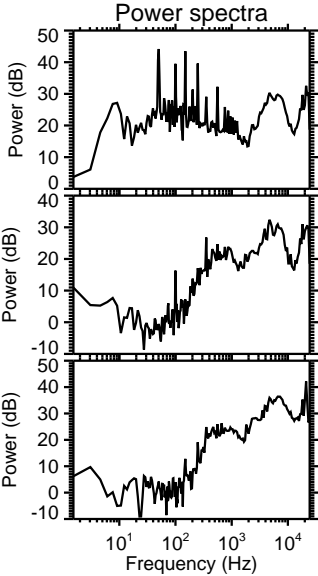
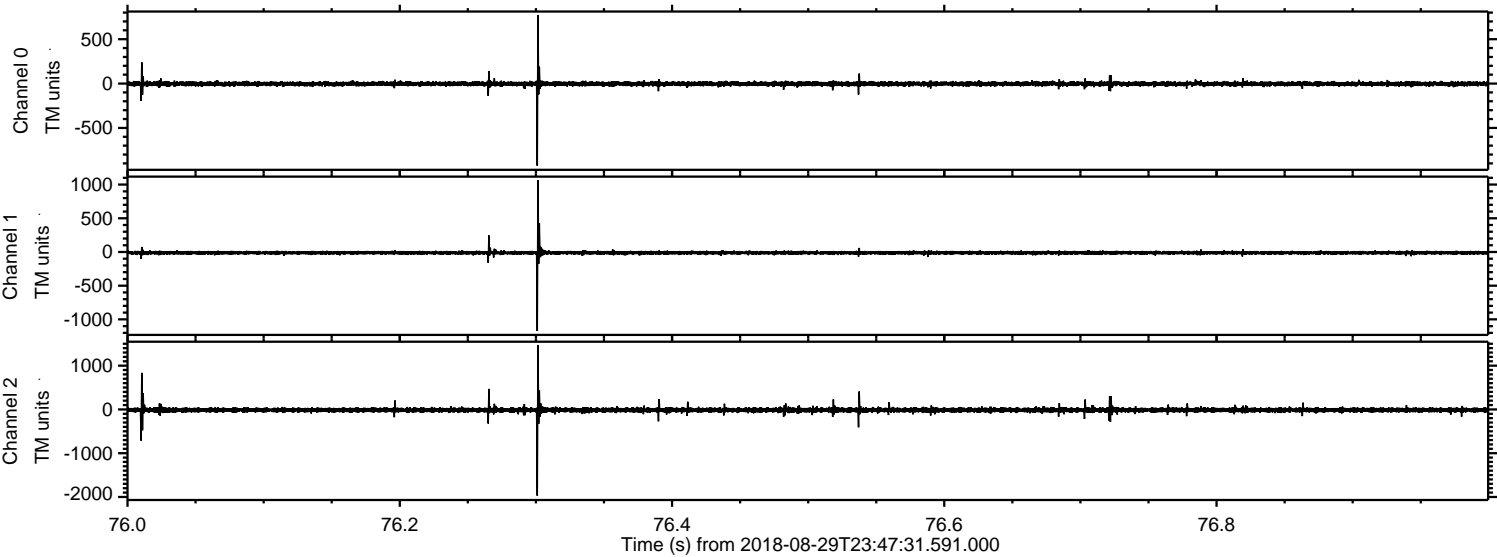
Channel 0
mn: -608
mx: 781
 μ : -3.0
 σ : 13.7

Channel 1
mn: -103
mx: 124
 μ : -12.4
 σ : 10.7

Channel 2
mn: -1767
mx: 2151
 μ : -14.4
 σ : 39.0

ELMAVAN 3D WAVEFORMS (Measured data sampled at 50 kHz) 51000 packets of 144 samples from 2018-08-29T23:47:31.591.000. Part 77/147

Processed Thu Aug 30 01:55:51 2018 by ELM ver.2012-10-06 from 001__elm20180829_234730__dat00.bin



Processed Thu Aug 30 01:55:51 2018 by ELM ver.2012-10-06 from 001__elm20180829_234730__dat00.bin

