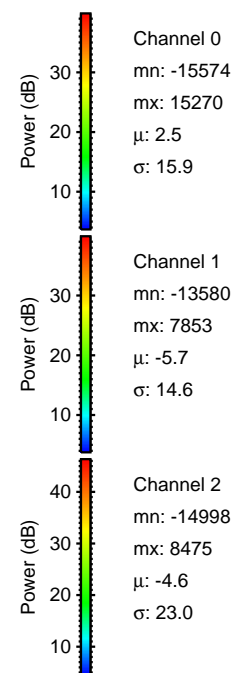
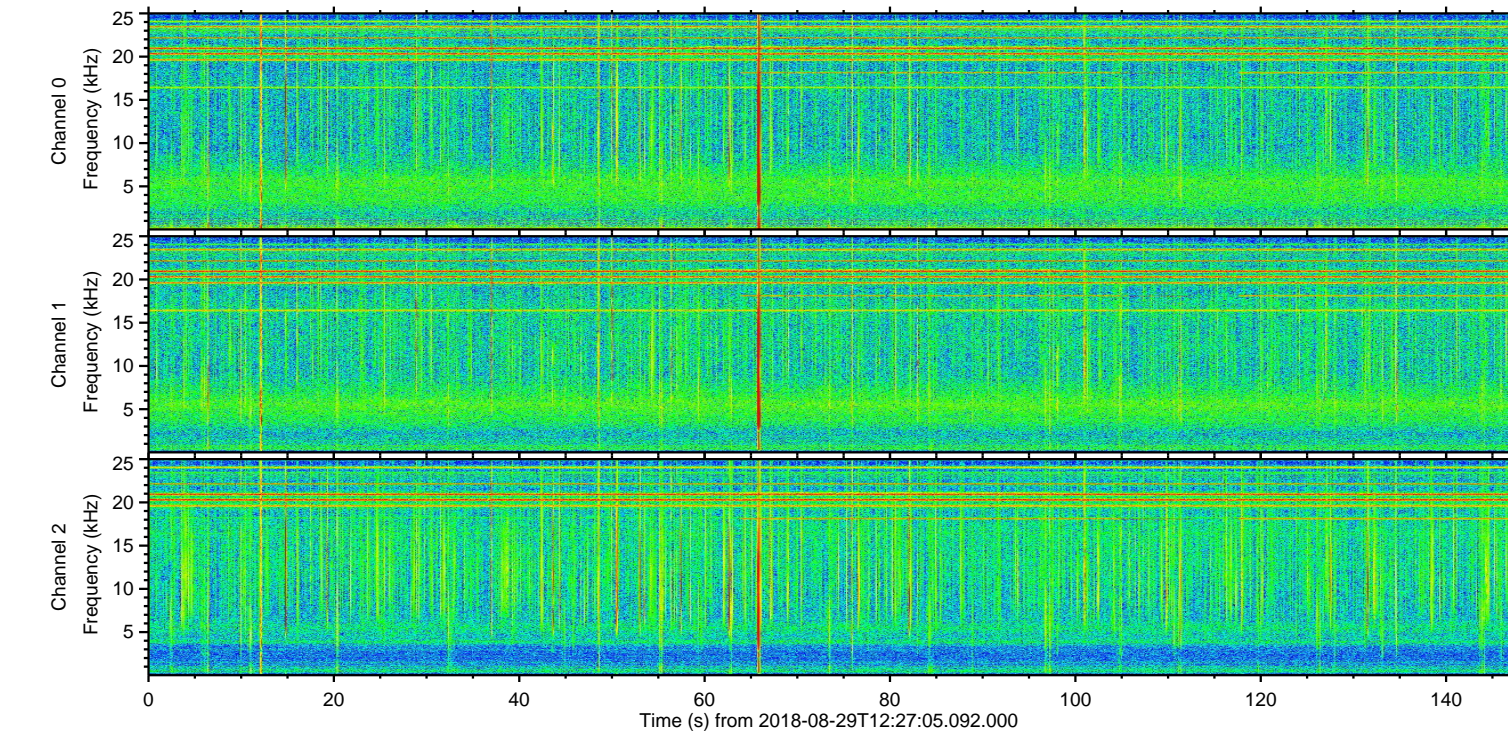
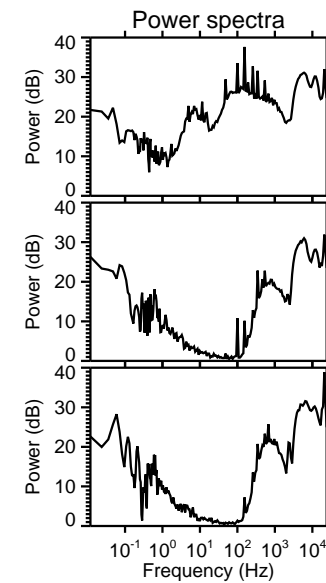
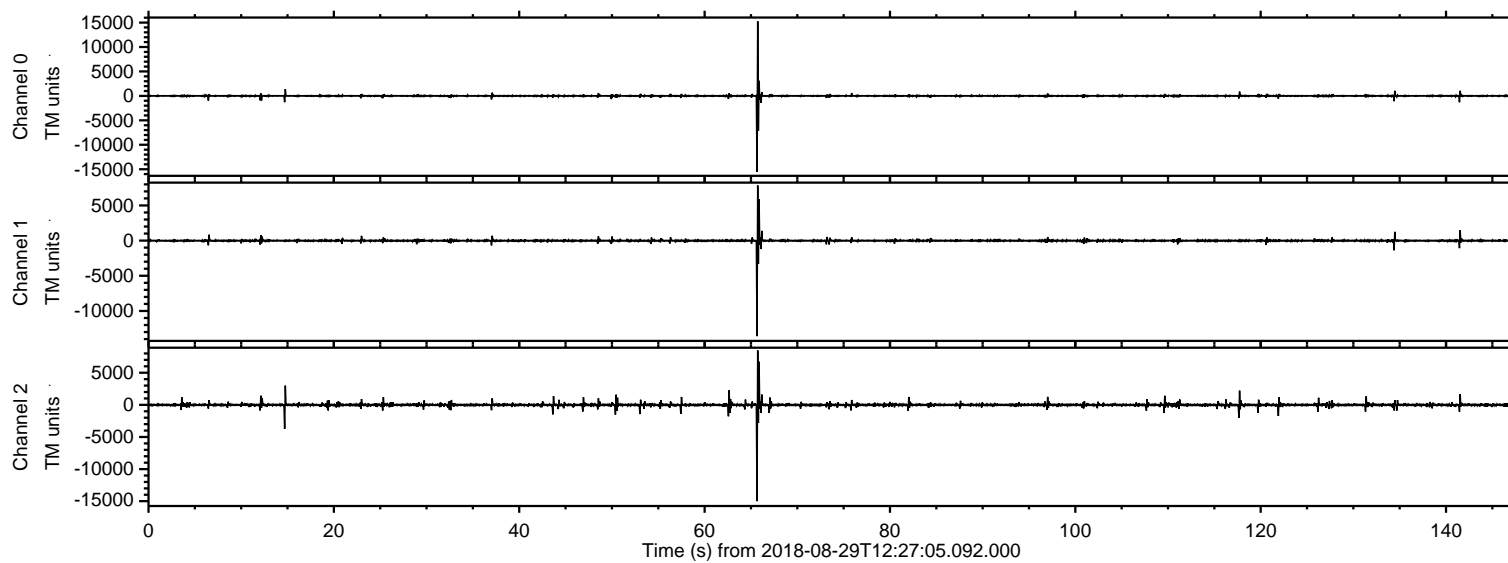
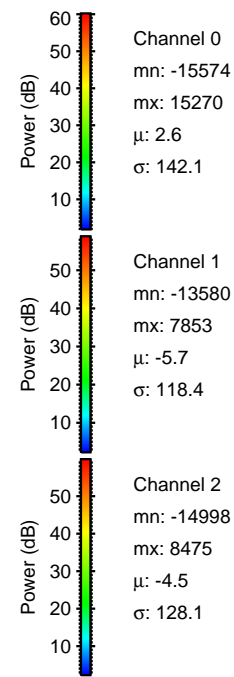
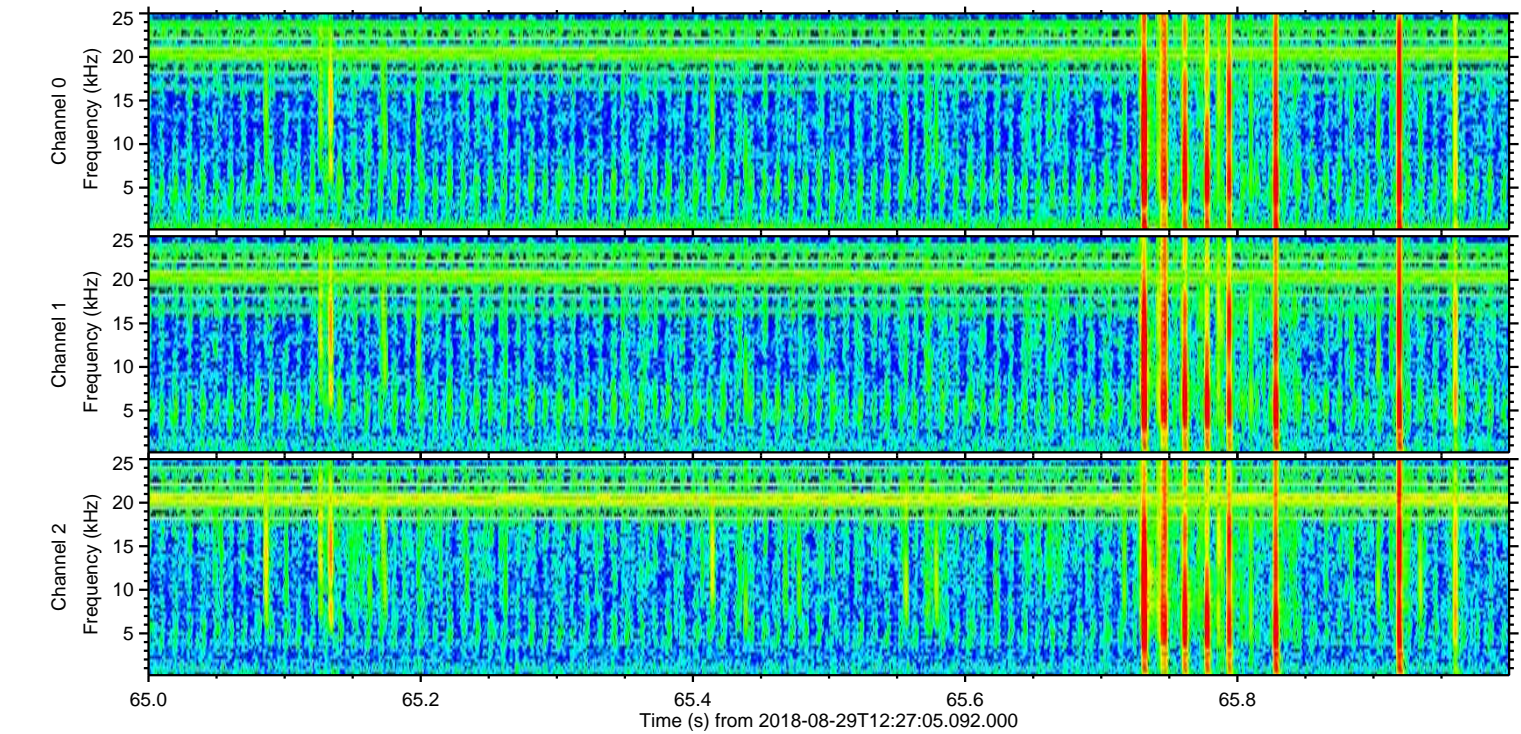
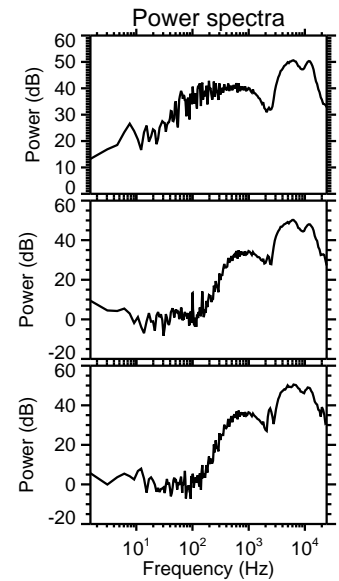
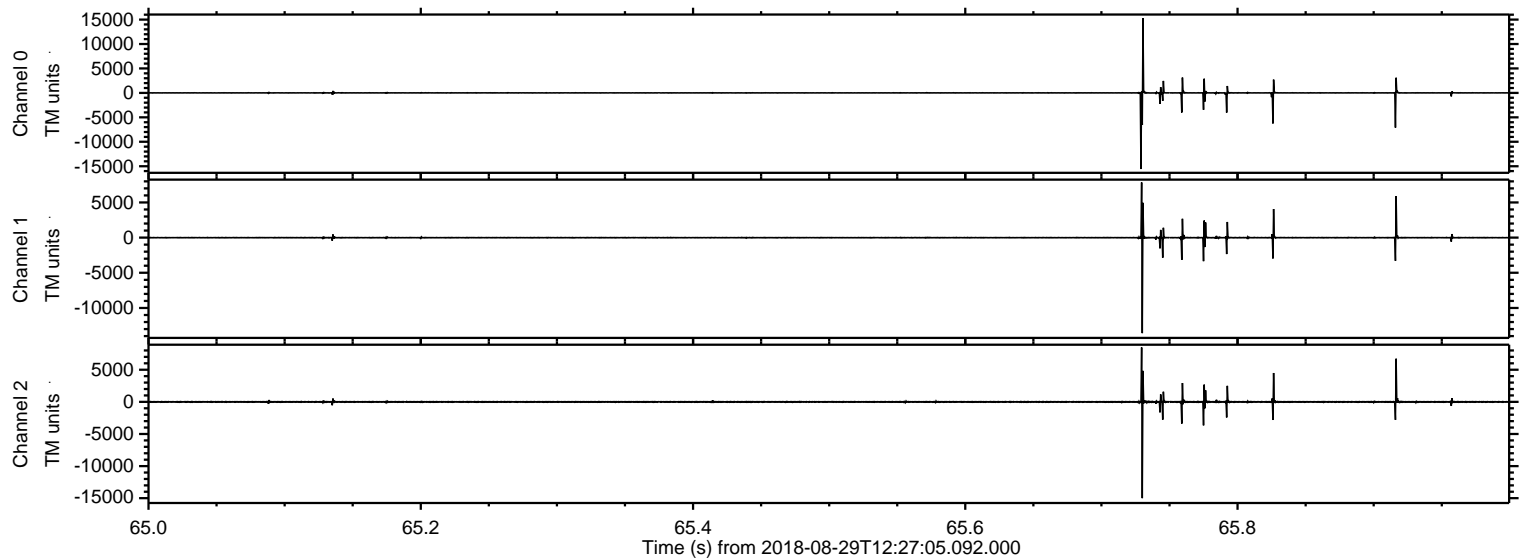


ELMAVAN 3D WAVEFORMS (Measured data sampled at 50 kHz) 51000 packets of 144 samples from 2018-08-29T12:27:05.092.000.

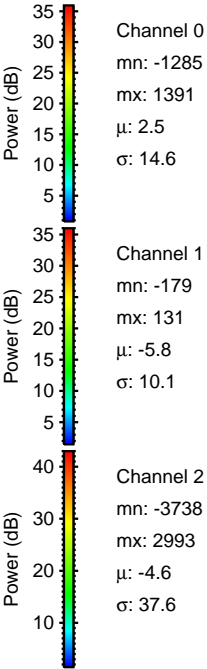
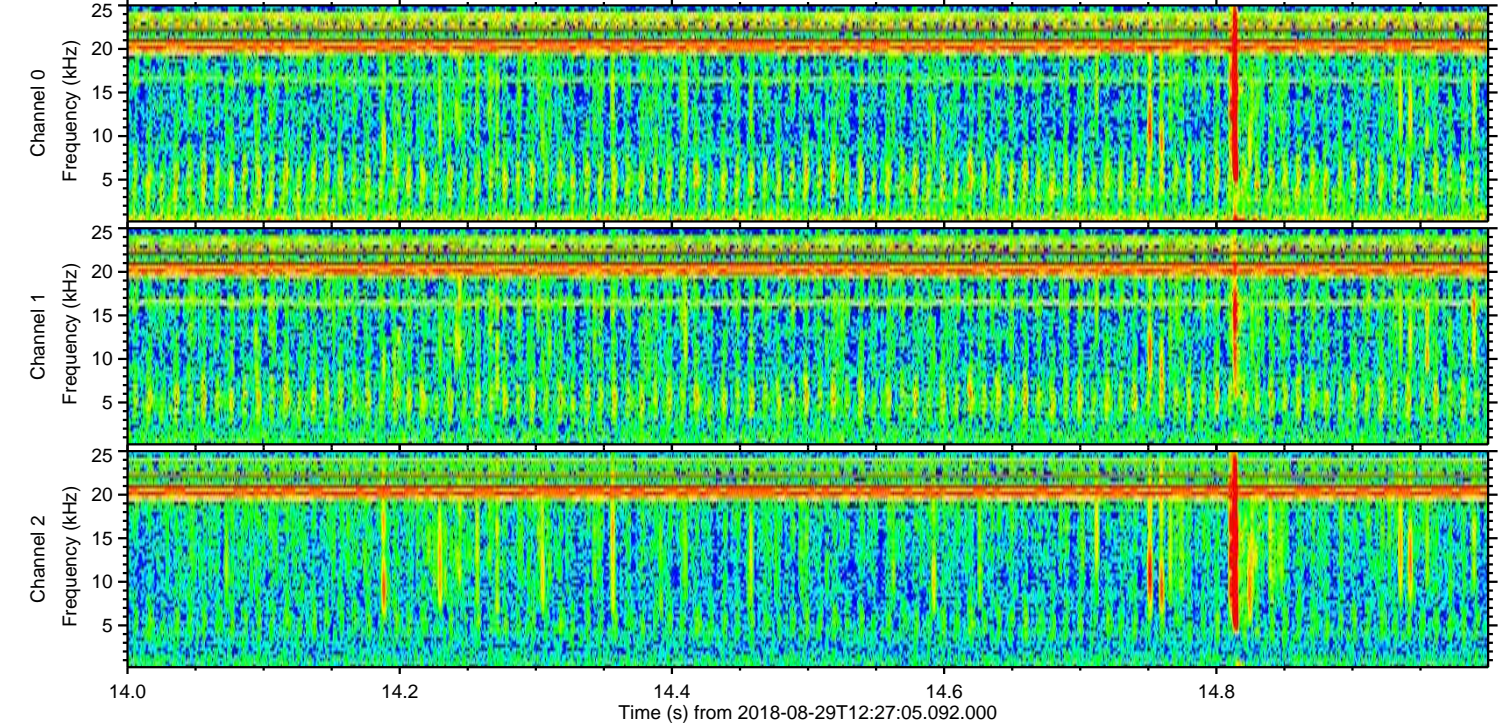
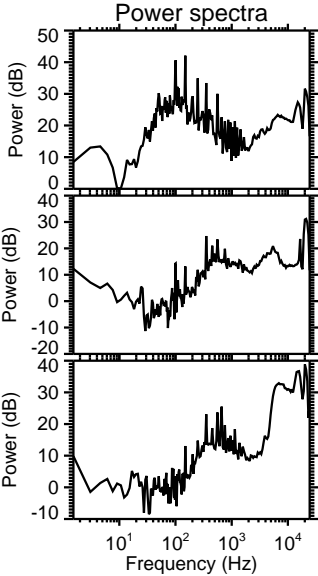
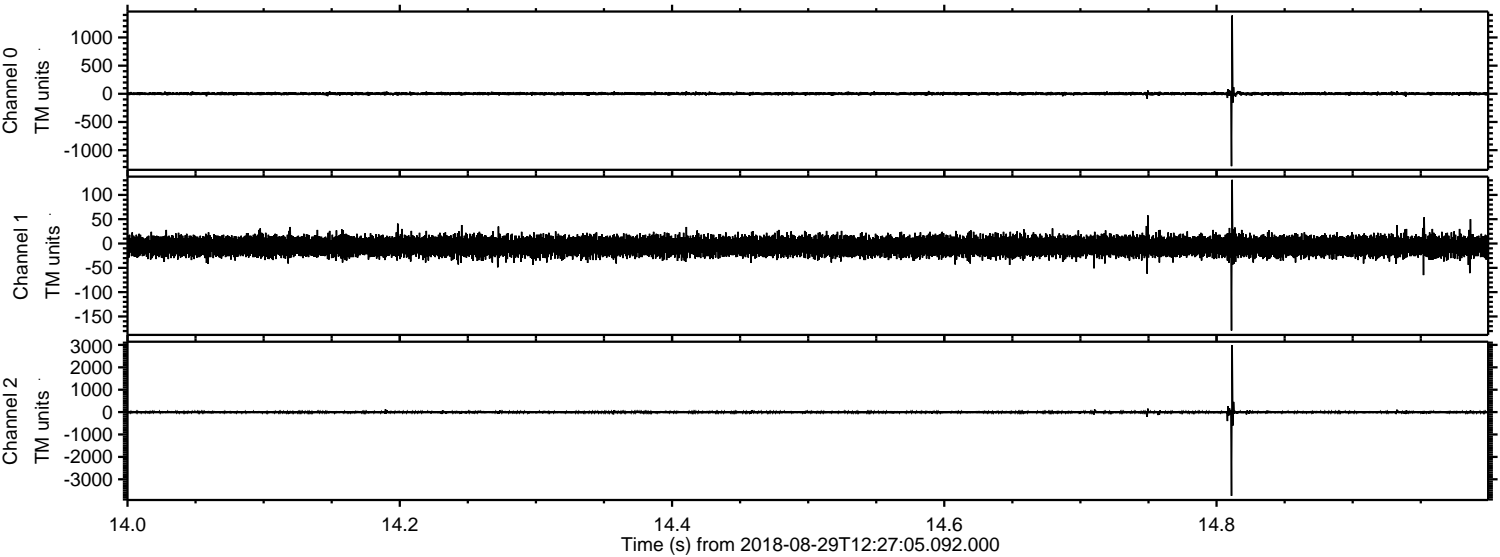
Processed Wed Aug 29 14:35:18 2018 by ELM ver.2012-10-06 from 001__elm20180829_122704__dat00.bin



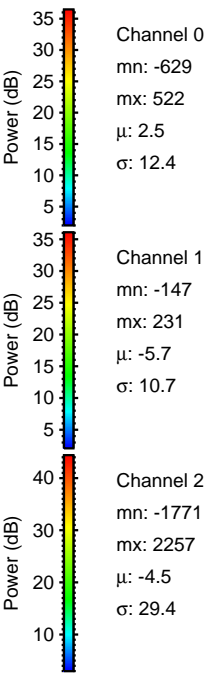
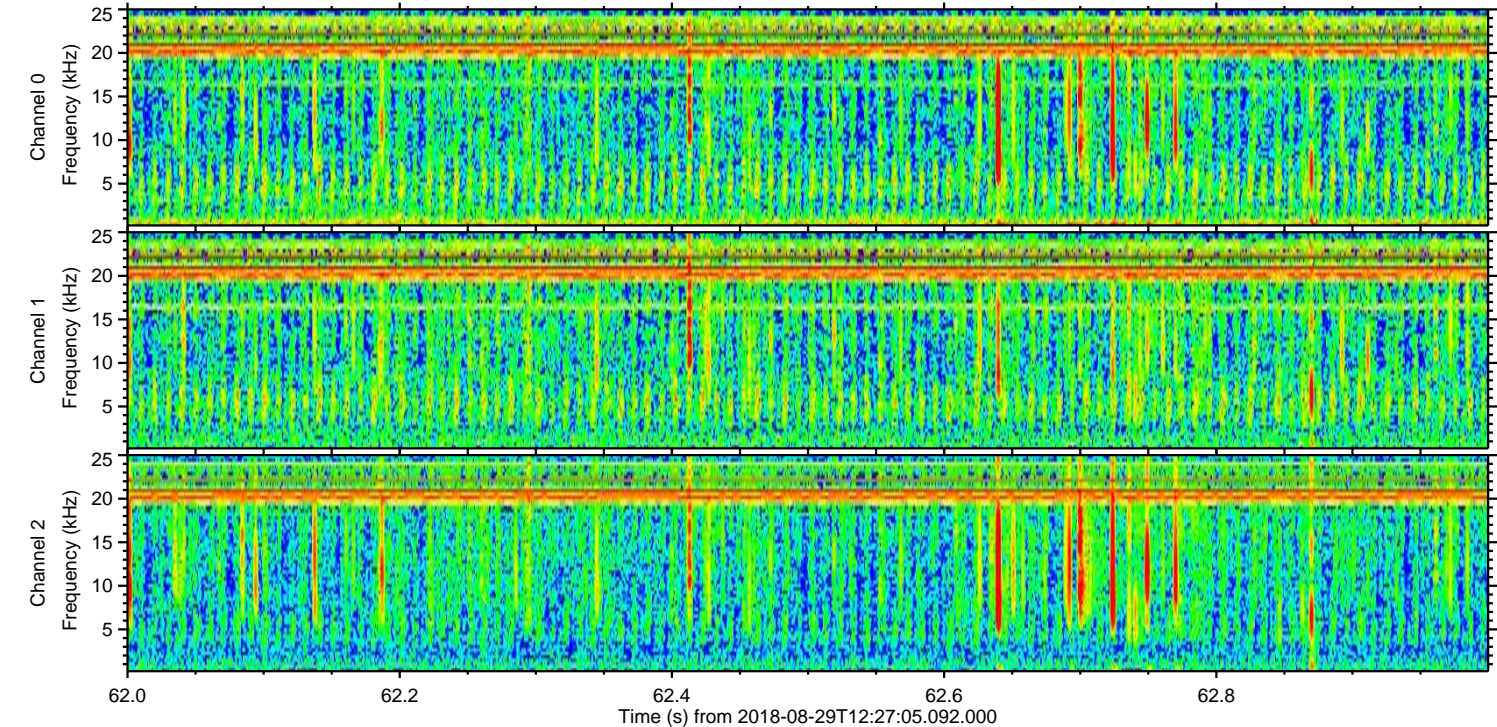
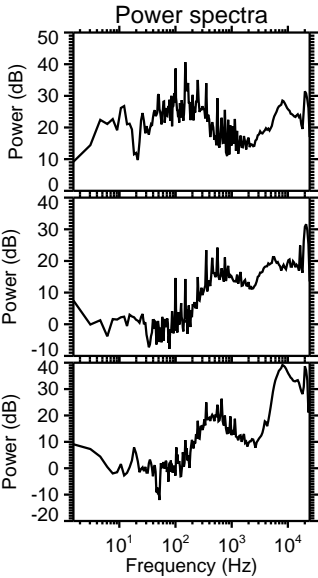
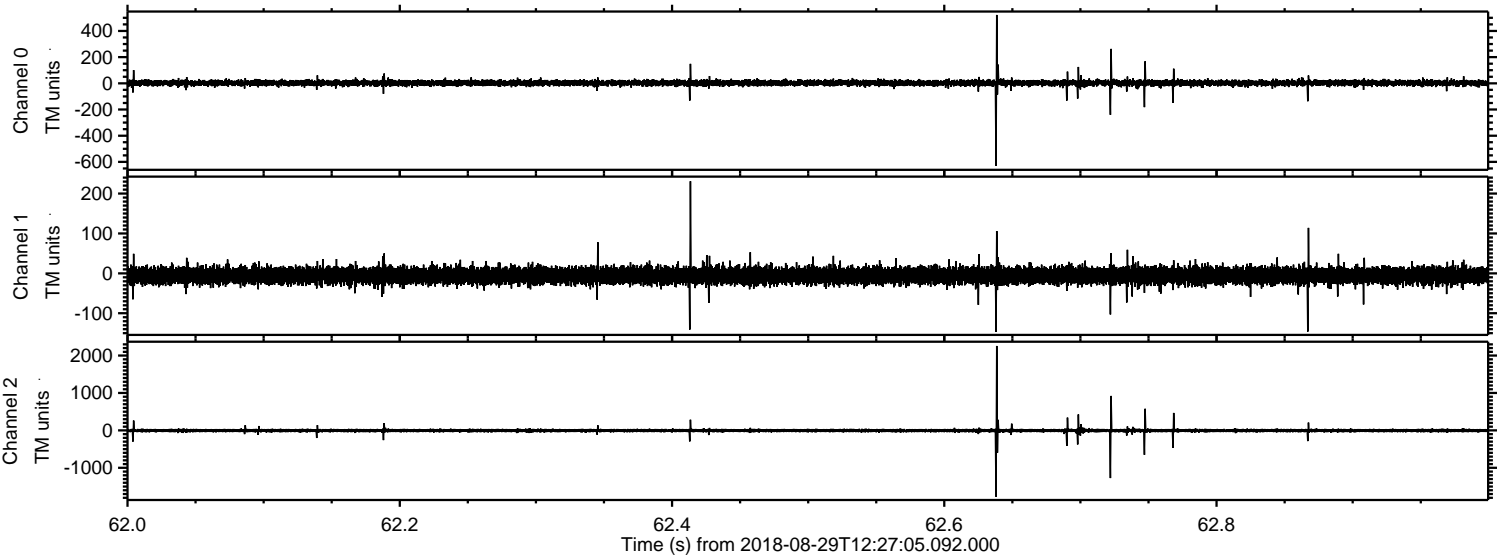
Processed Wed Aug 29 14:35:25 2018 by ELM ver.2012-10-06 from 001__elm20180829_122704__dat00.bin



Processed Wed Aug 29 14:35:26 2018 by ELM ver.2012-10-06 from 001__elm20180829_122704__dat00.bin

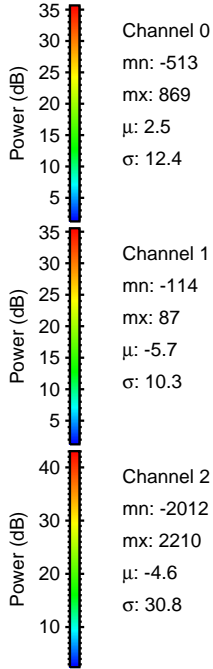
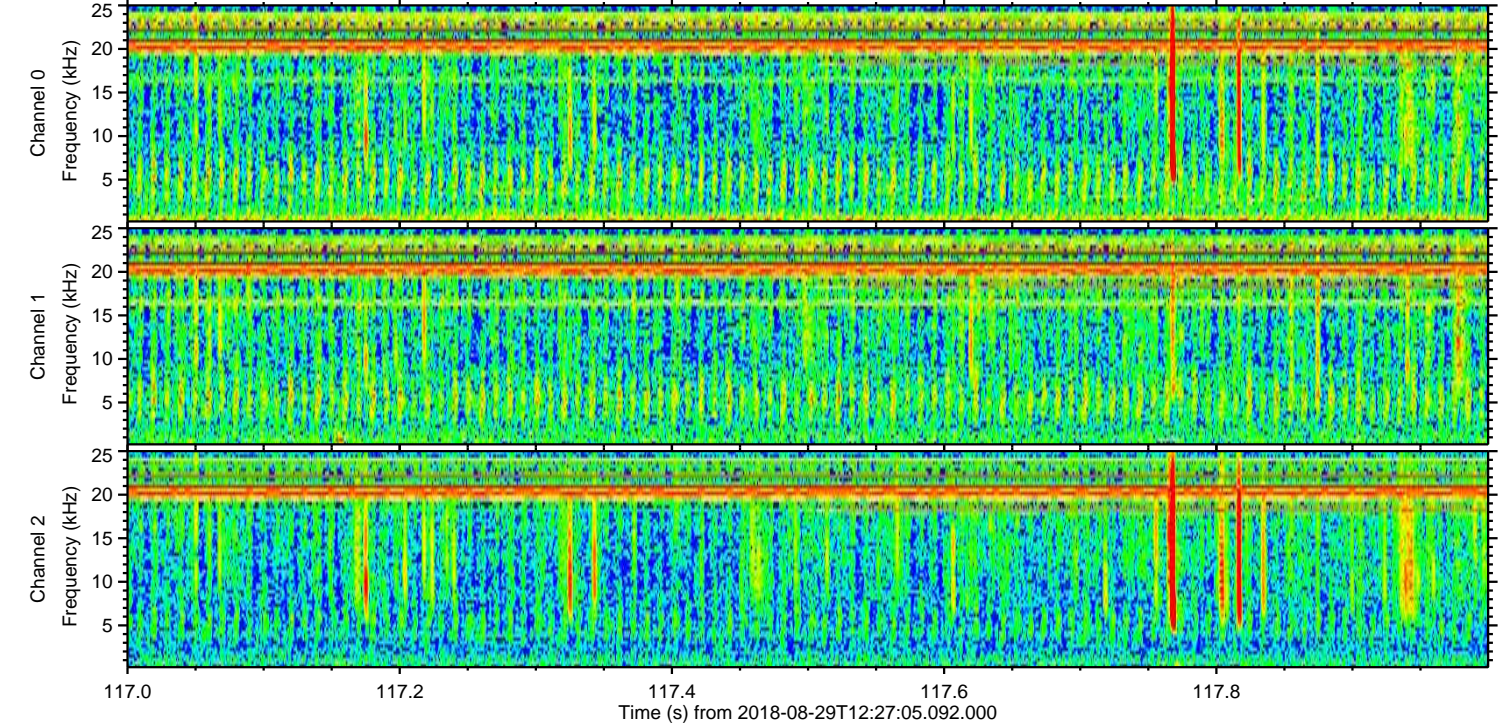
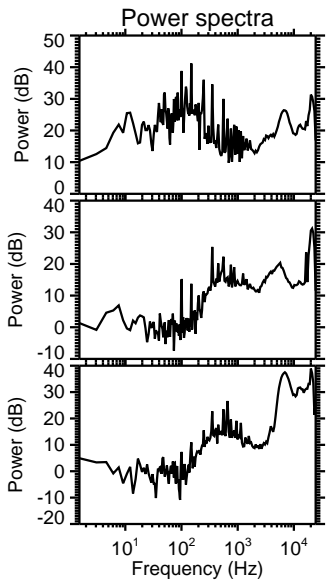
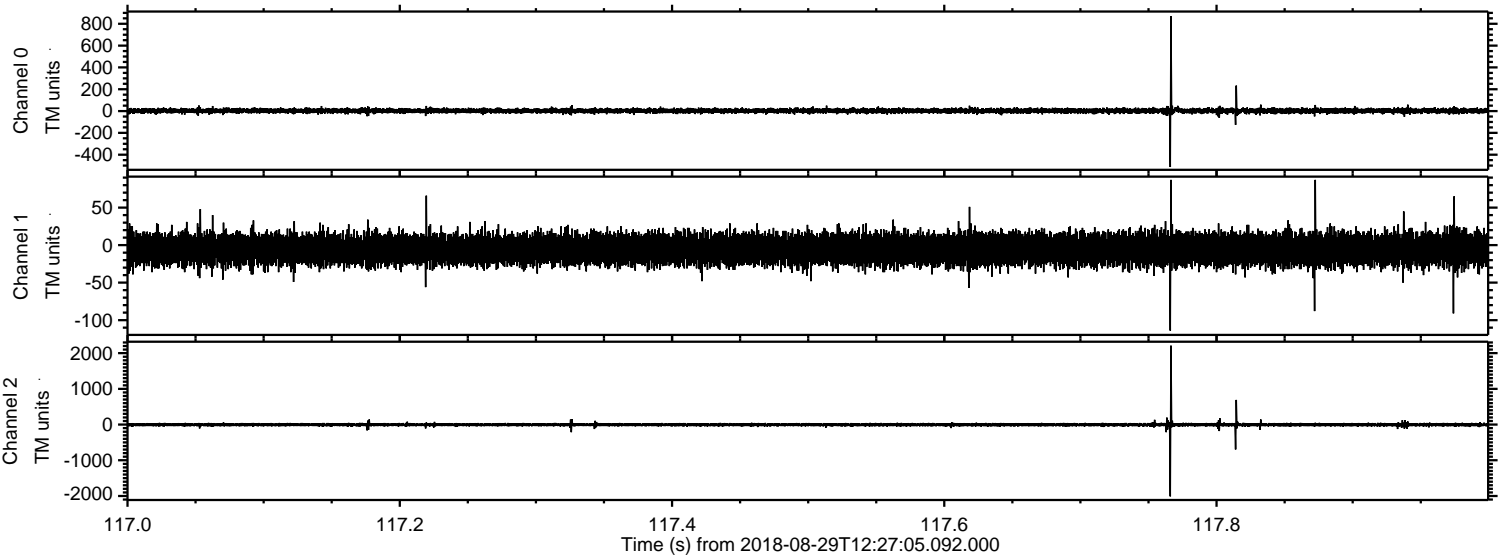


Processed Wed Aug 29 14:35:27 2018 by ELM ver.2012-10-06 from 001__elm20180829_122704__dat00.bin



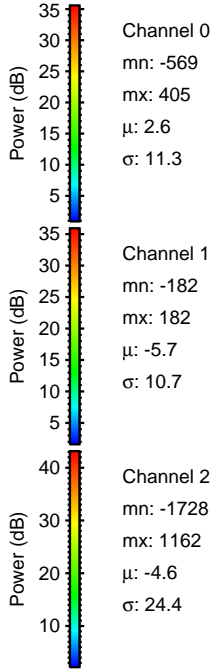
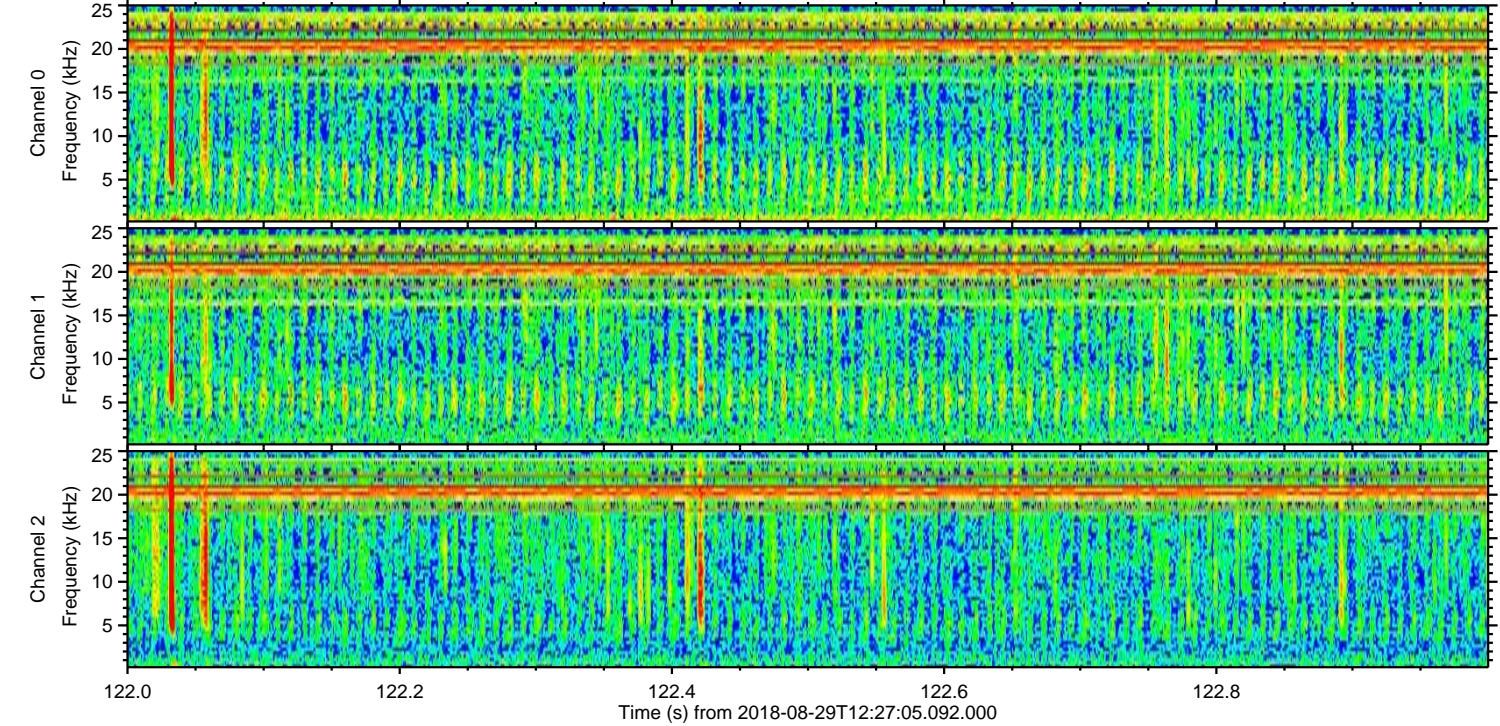
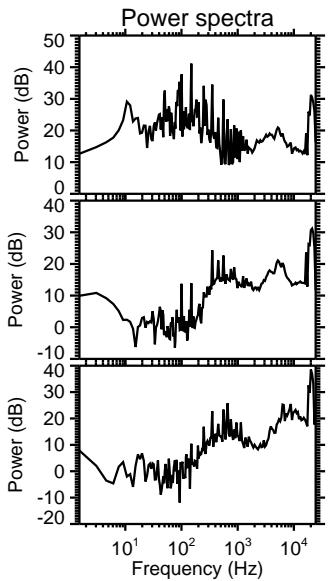
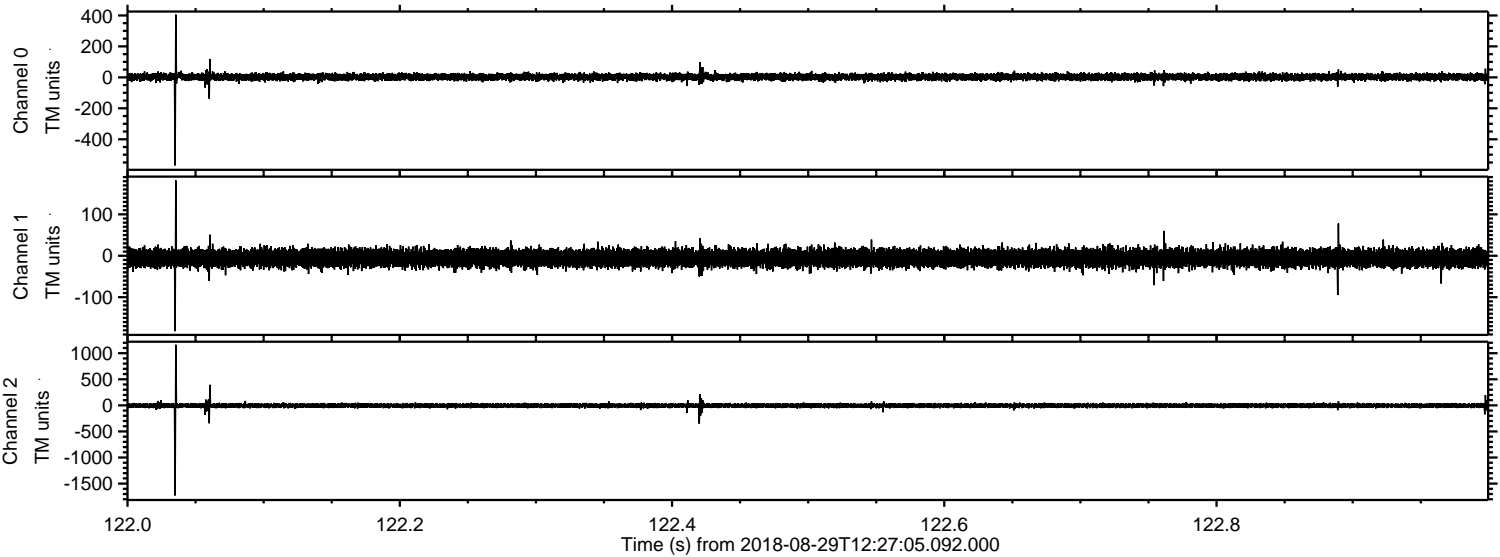
ELMAVAN 3D WAVEFORMS (Measured data sampled at 50 kHz) 51000 packets of 144 samples from 2018-08-29T12:27:05.092.000. Part 118/147

Processed Wed Aug 29 14:35:27 2018 by ELM ver.2012-10-06 from 001__elm20180829_122704__dat00.bin



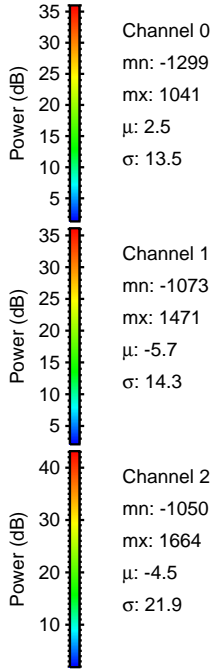
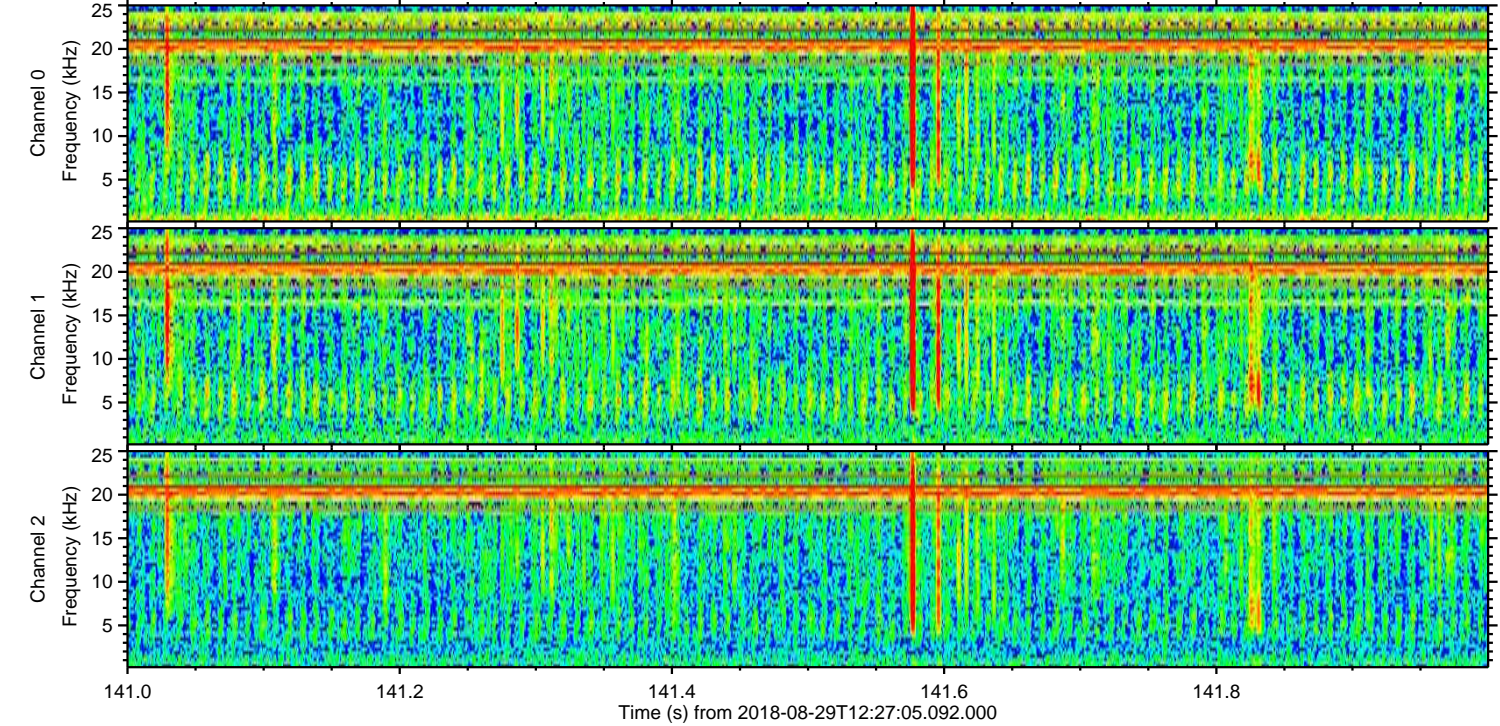
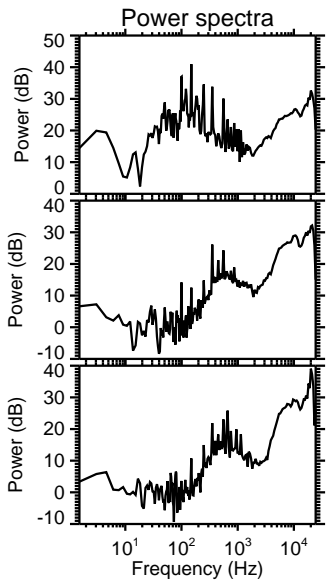
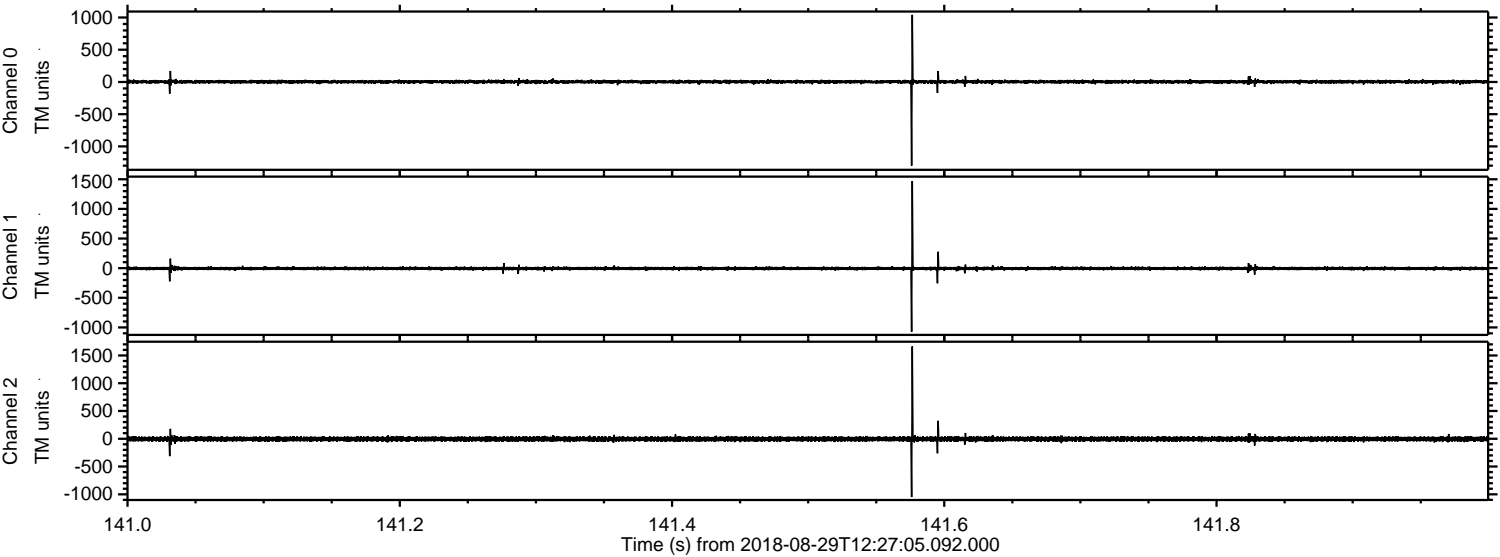
ELMAVAN 3D WAVEFORMS (Measured data sampled at 50 kHz) 51000 packets of 144 samples from 2018-08-29T12:27:05.092.000. Part 123/147

Processed Wed Aug 29 14:35:28 2018 by ELM ver.2012-10-06 from 001__elm20180829_122704__dat00.bin

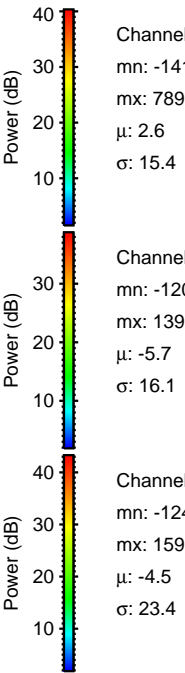
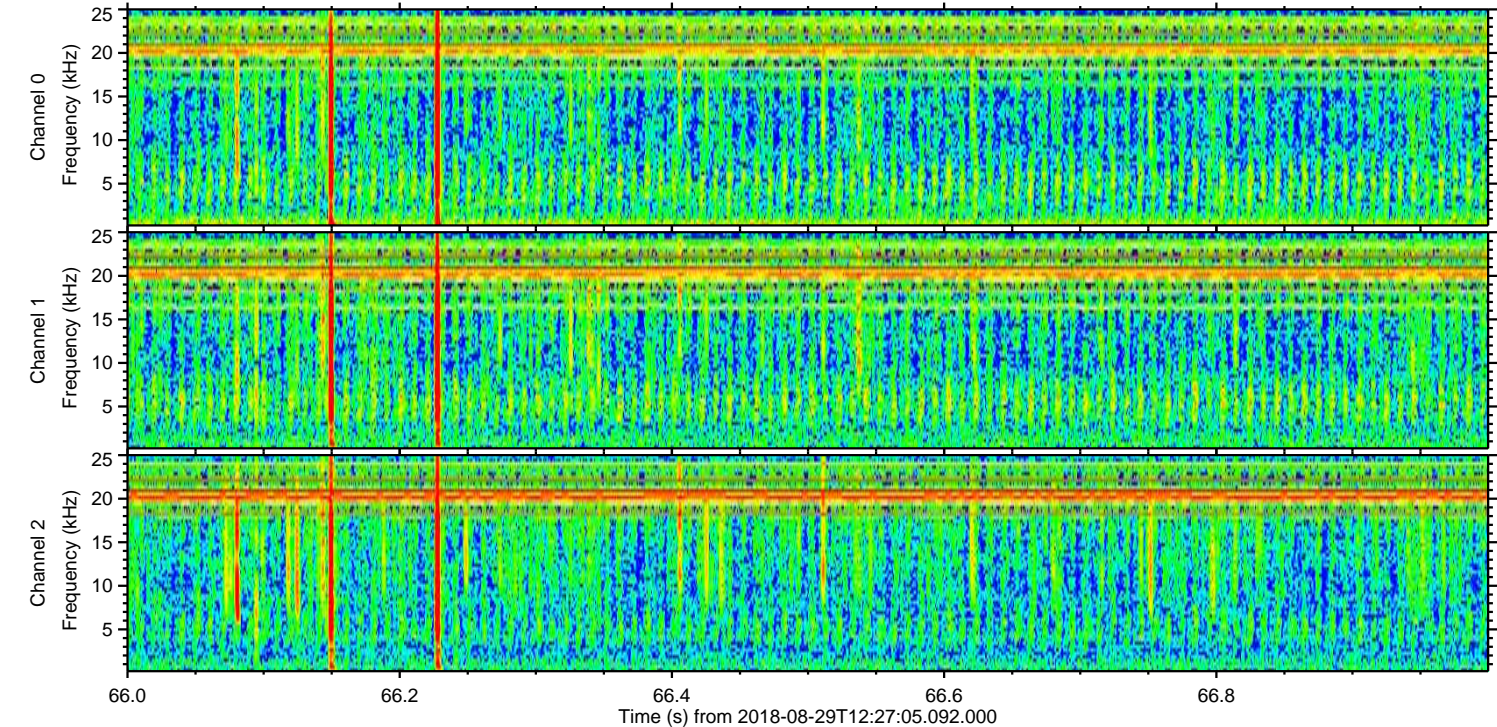
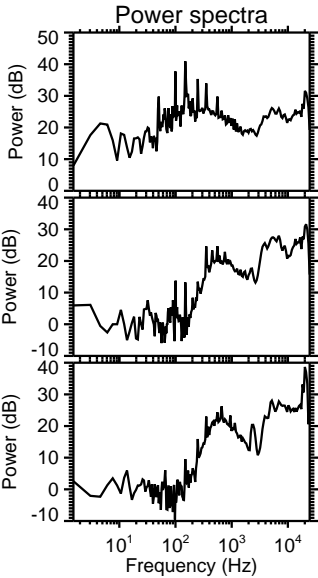
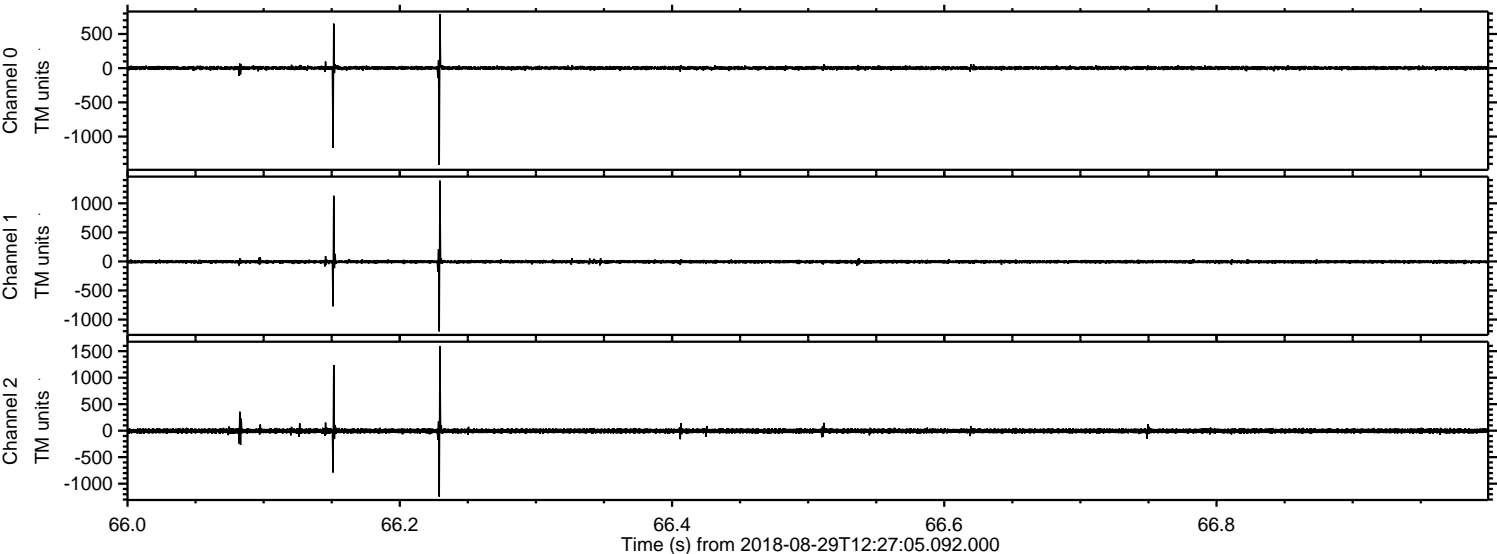


ELMAVAN 3D WAVEFORMS (Measured data sampled at 50 kHz) 51000 packets of 144 samples from 2018-08-29T12:27:05.092.000. Part 142/147

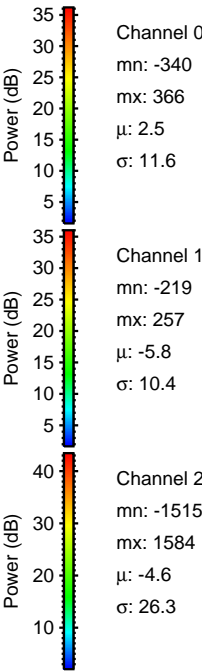
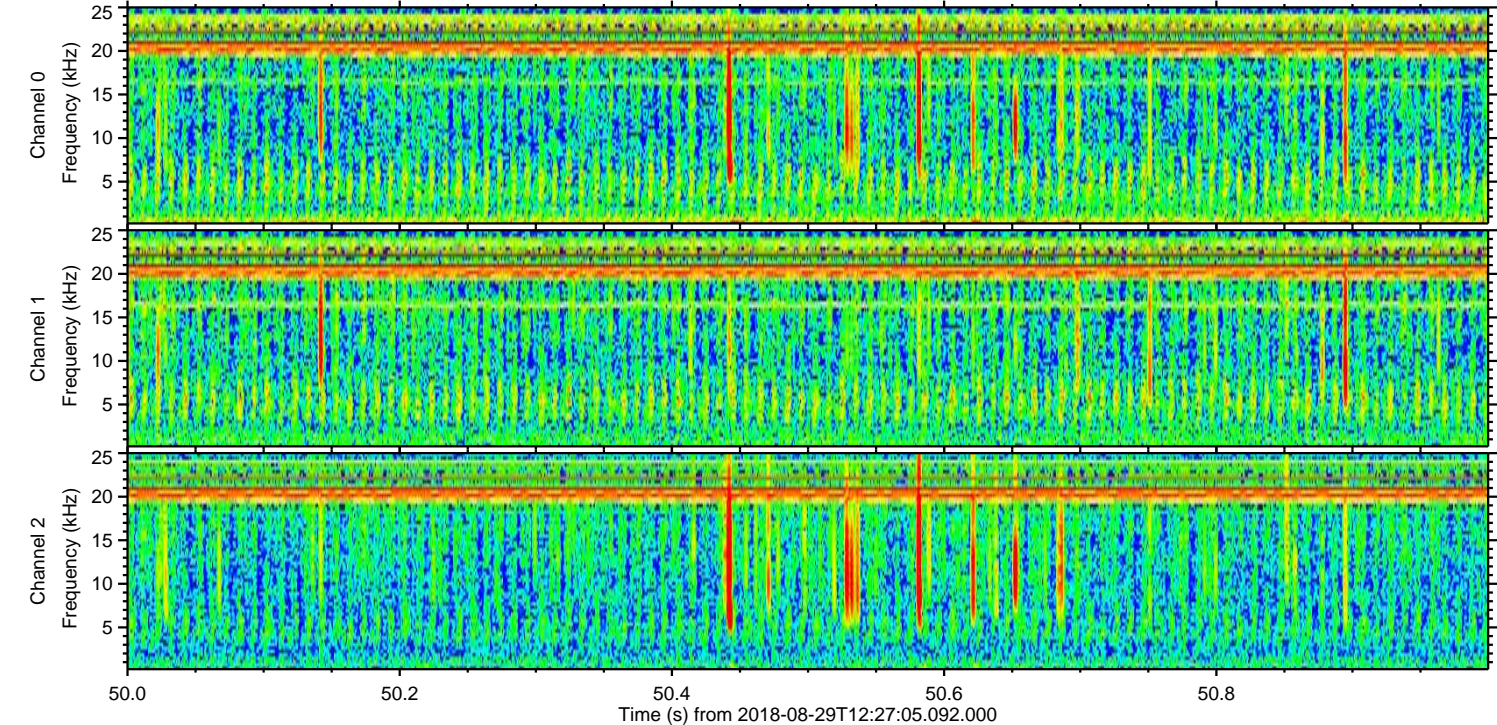
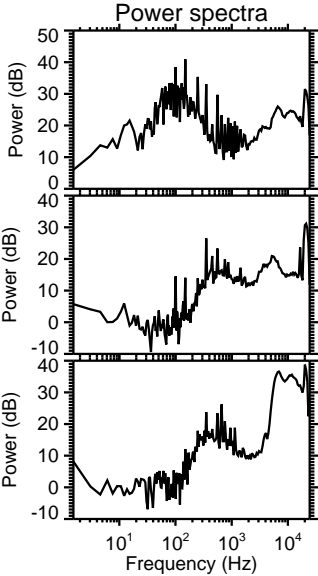
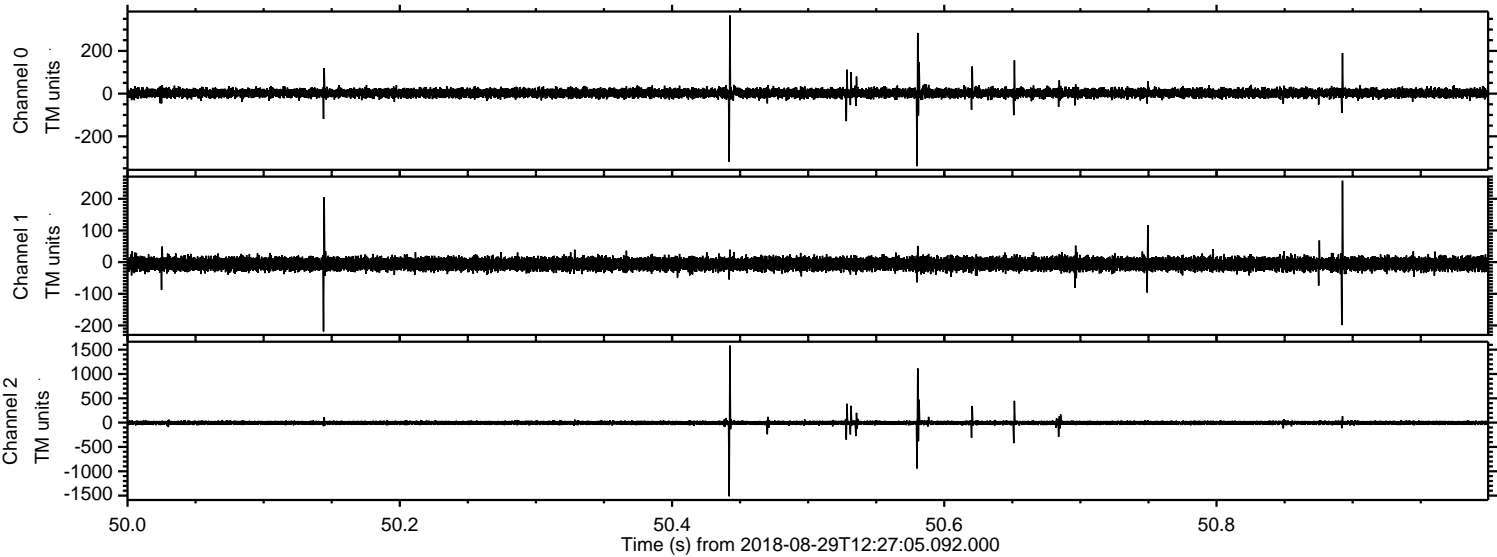
Processed Wed Aug 29 14:35:29 2018 by ELM ver.2012-10-06 from 001__elm20180829_122704__dat00.bin



Processed Wed Aug 29 14:35:29 2018 by ELM ver.2012-10-06 from 001__elm20180829_122704__dat00.bin



Processed Wed Aug 29 14:35:30 2018 by ELM ver.2012-10-06 from 001__elm20180829_122704__dat00.bin



Channel 0
mn: -340
mx: 366
 μ : 2.5
 σ : 11.6

Channel 1
mn: -219
mx: 257
 μ : -5.8
 σ : 10.4

Channel 2
mn: -1515
mx: 1584
 μ : -4.6
 σ : 26.3

Processed Wed Aug 29 14:35:31 2018 by ELM ver.2012-10-06 from 001__elm20180829_122704__dat00.bin

