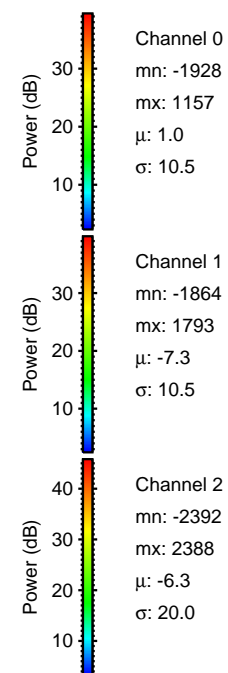
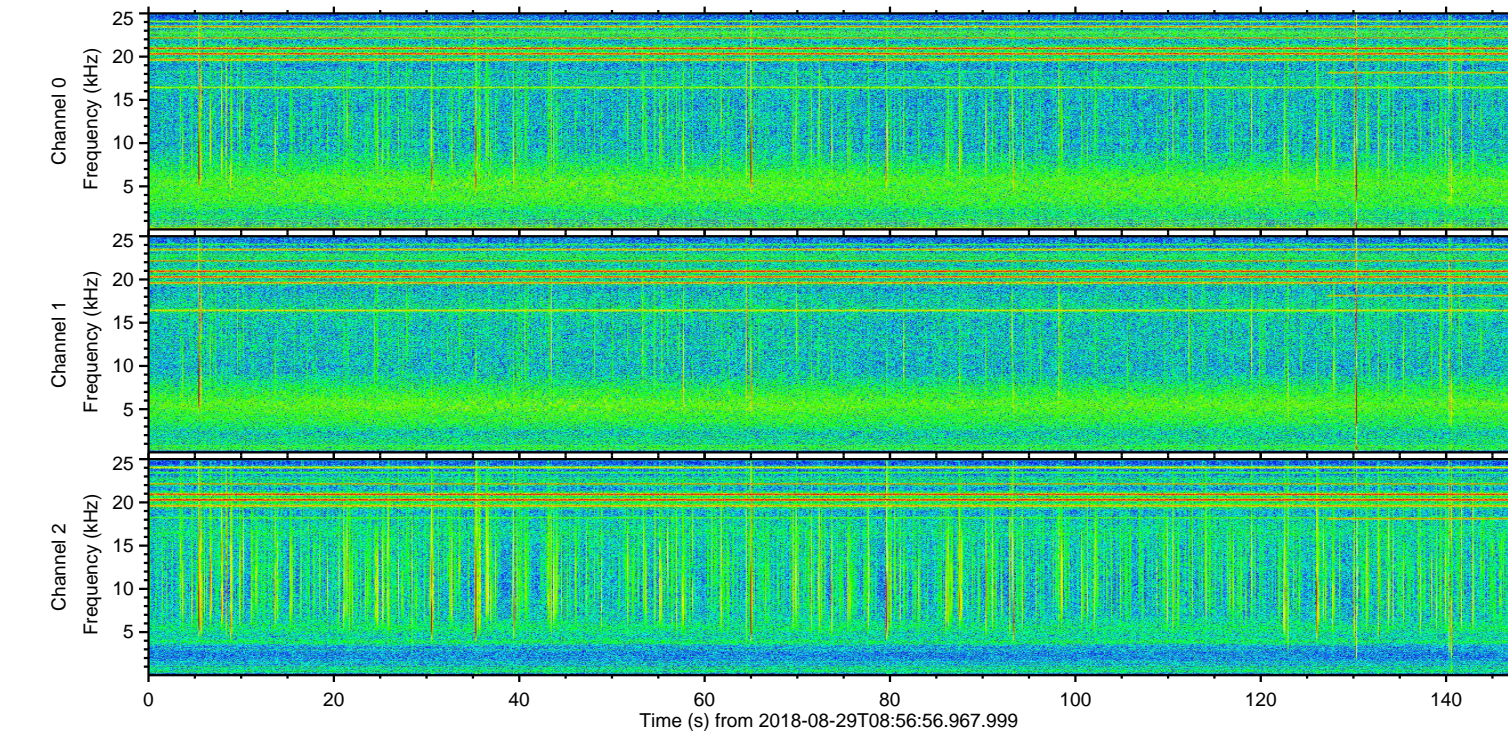
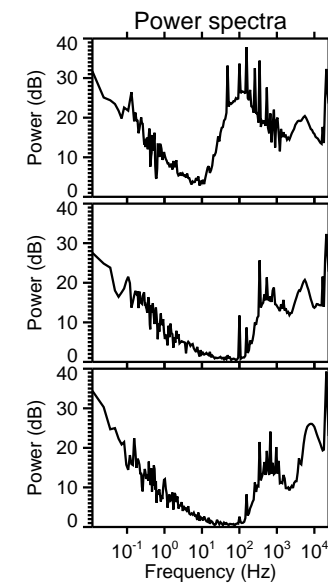
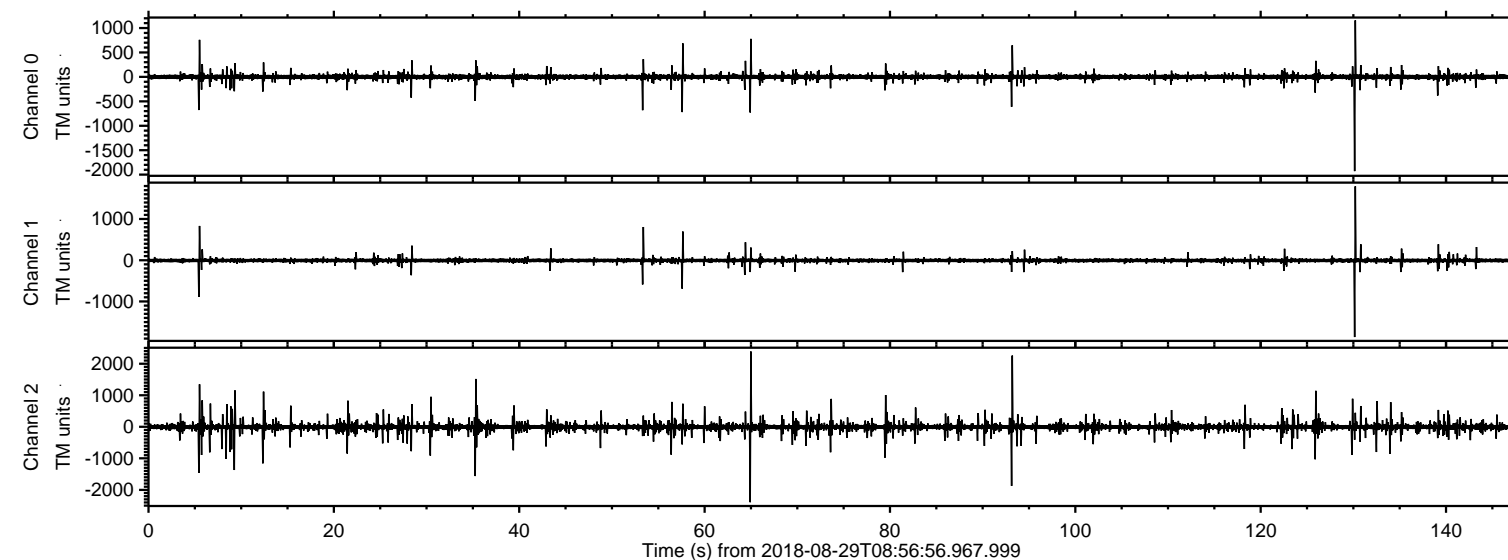
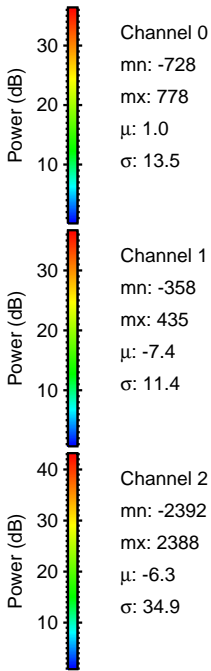
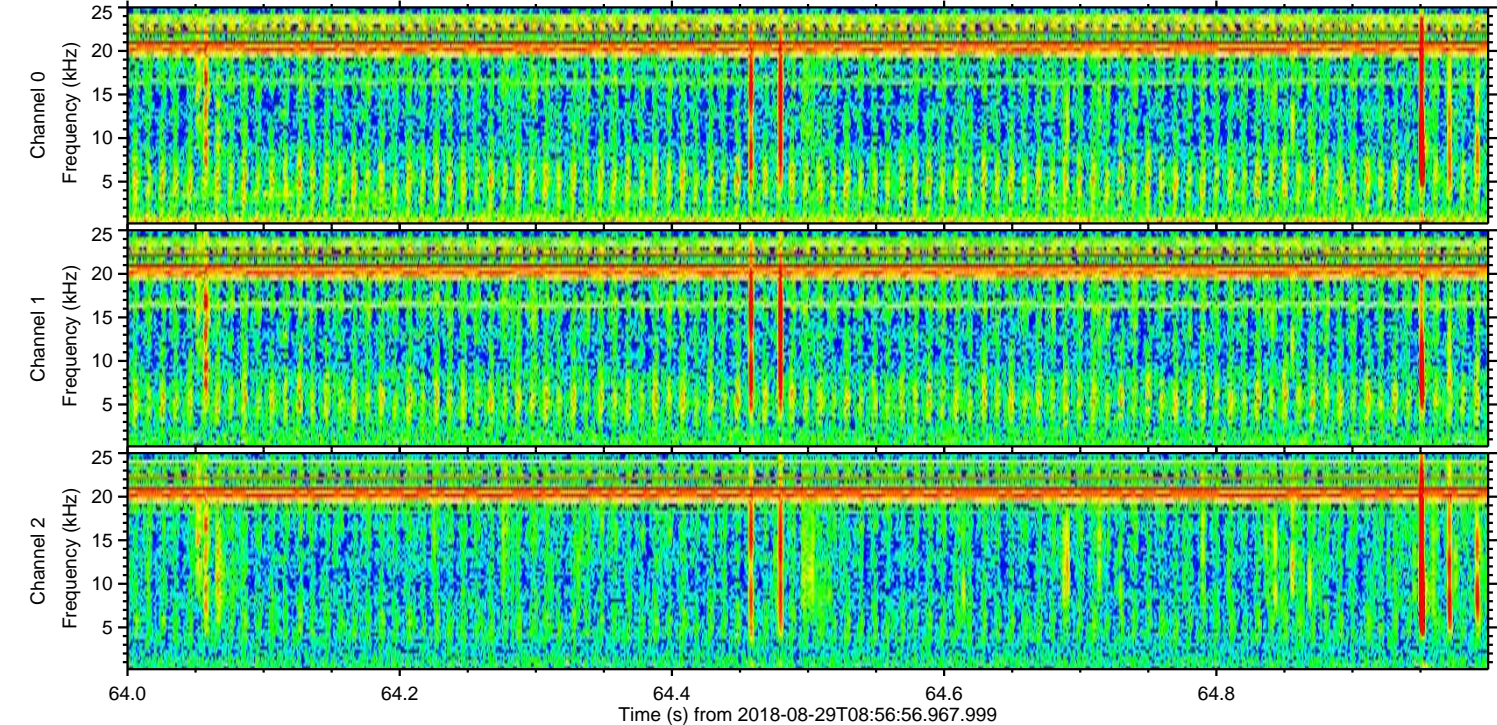
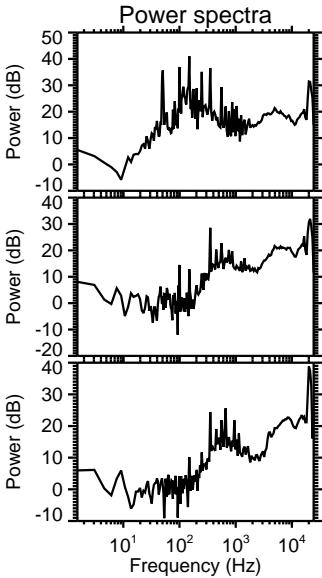
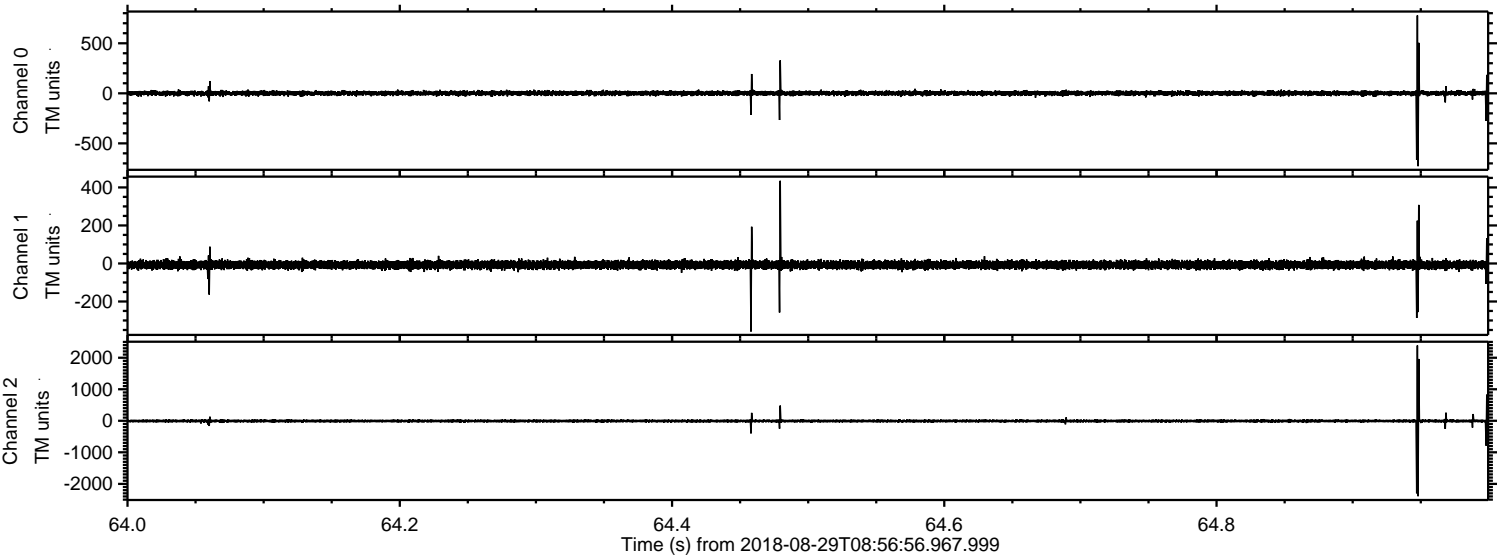


ELMAVAN 3D WAVEFORMS (Measured data sampled at 50 kHz) 51000 packets of 144 samples from 2018-08-29T08:56:56.967.999.

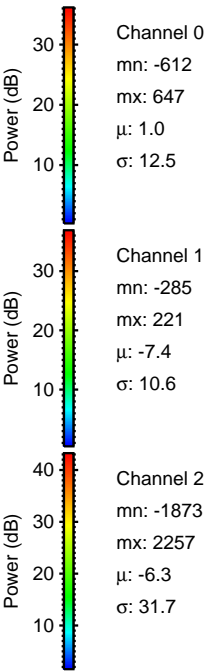
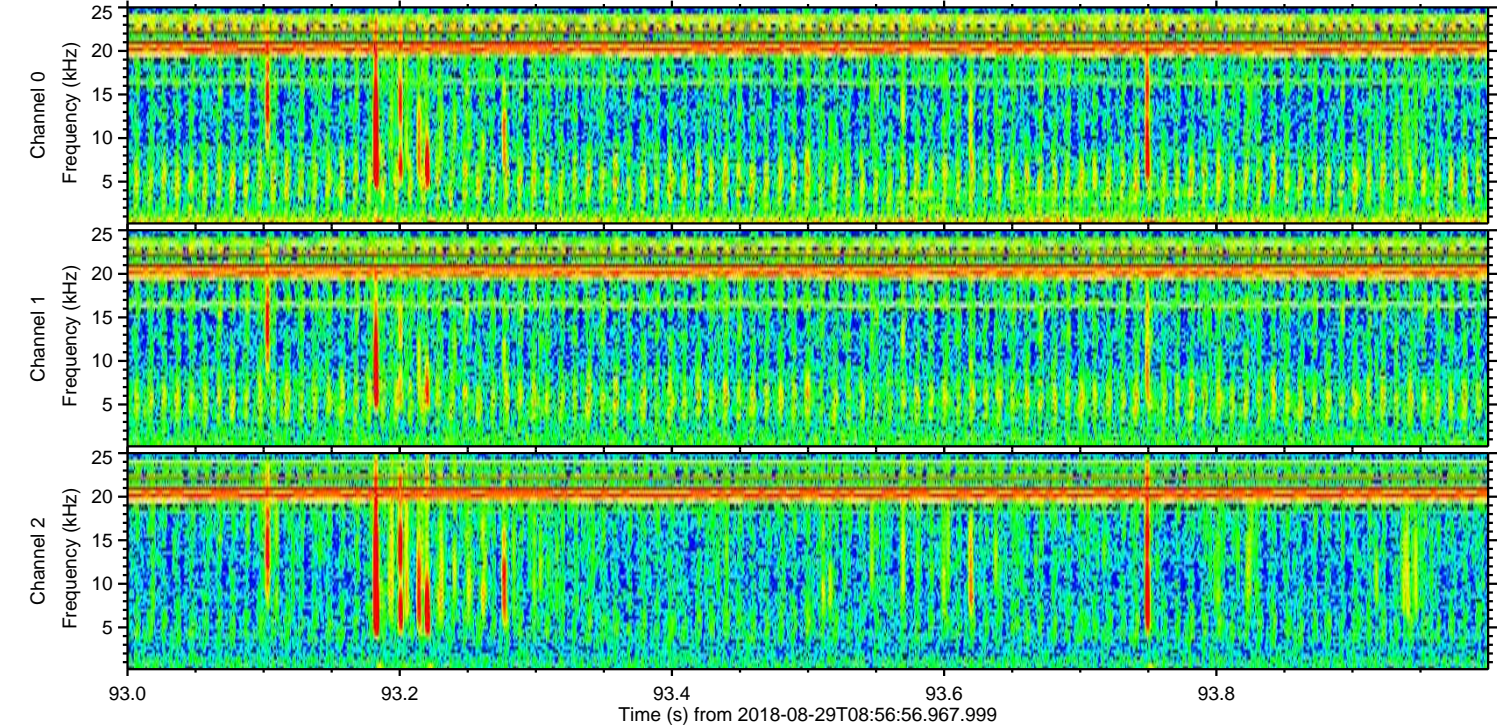
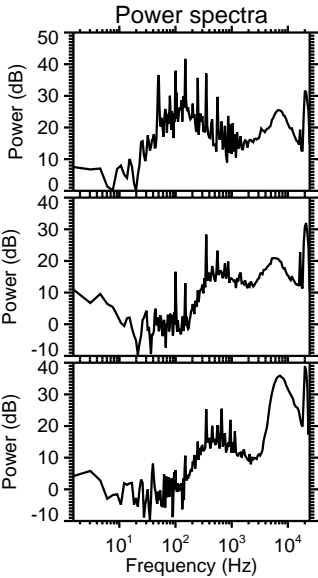
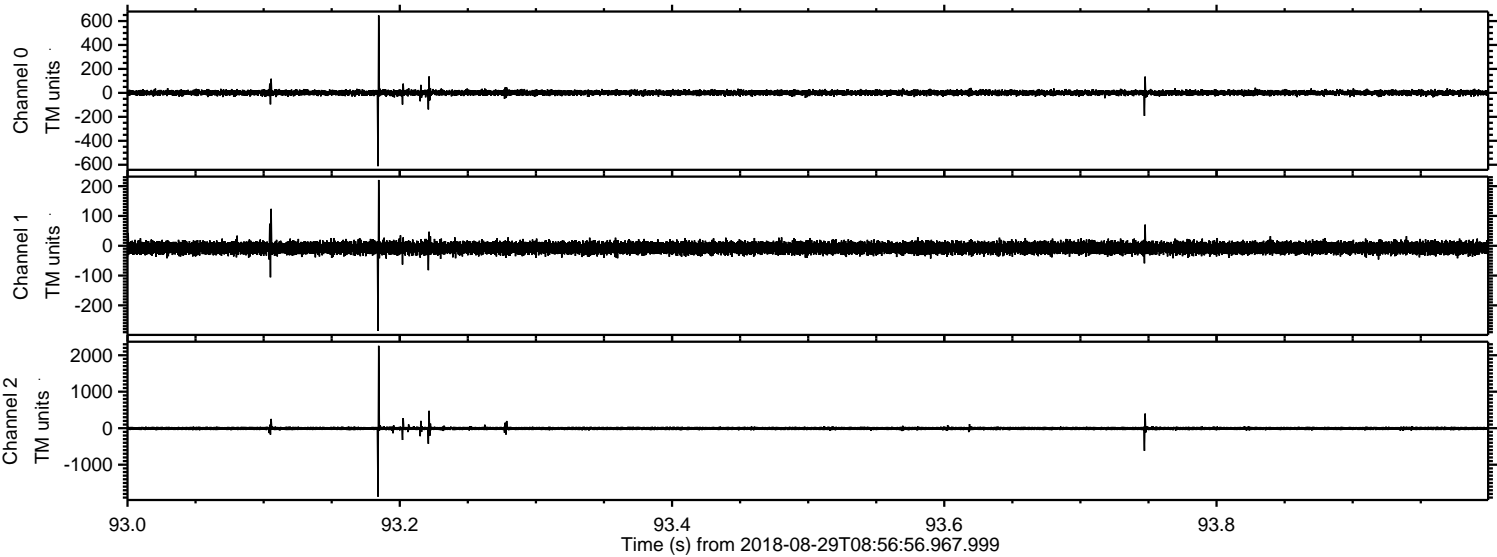
Processed Wed Aug 29 11:05:11 2018 by ELM ver.2012-10-06 from 001__elm20180829_085655__dat00.bin



Processed Wed Aug 29 11:05:18 2018 by ELM ver.2012-10-06 from 001__elm20180829_085655__dat00.bin

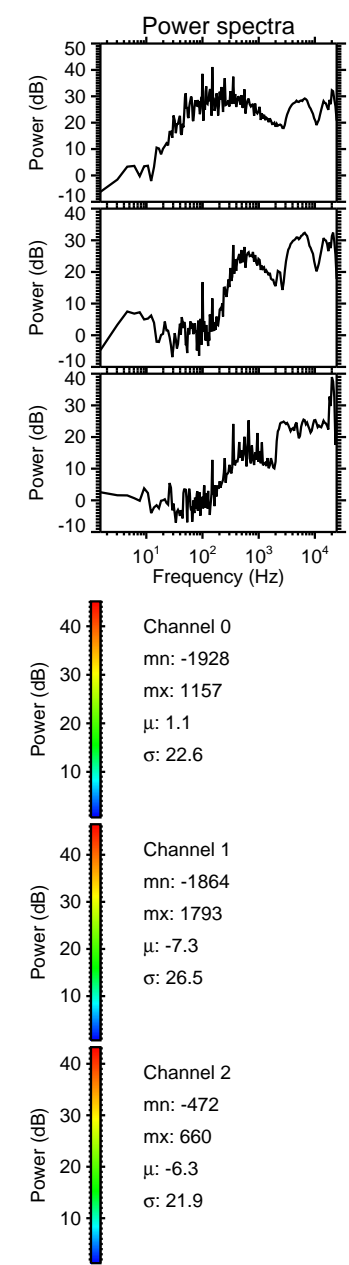
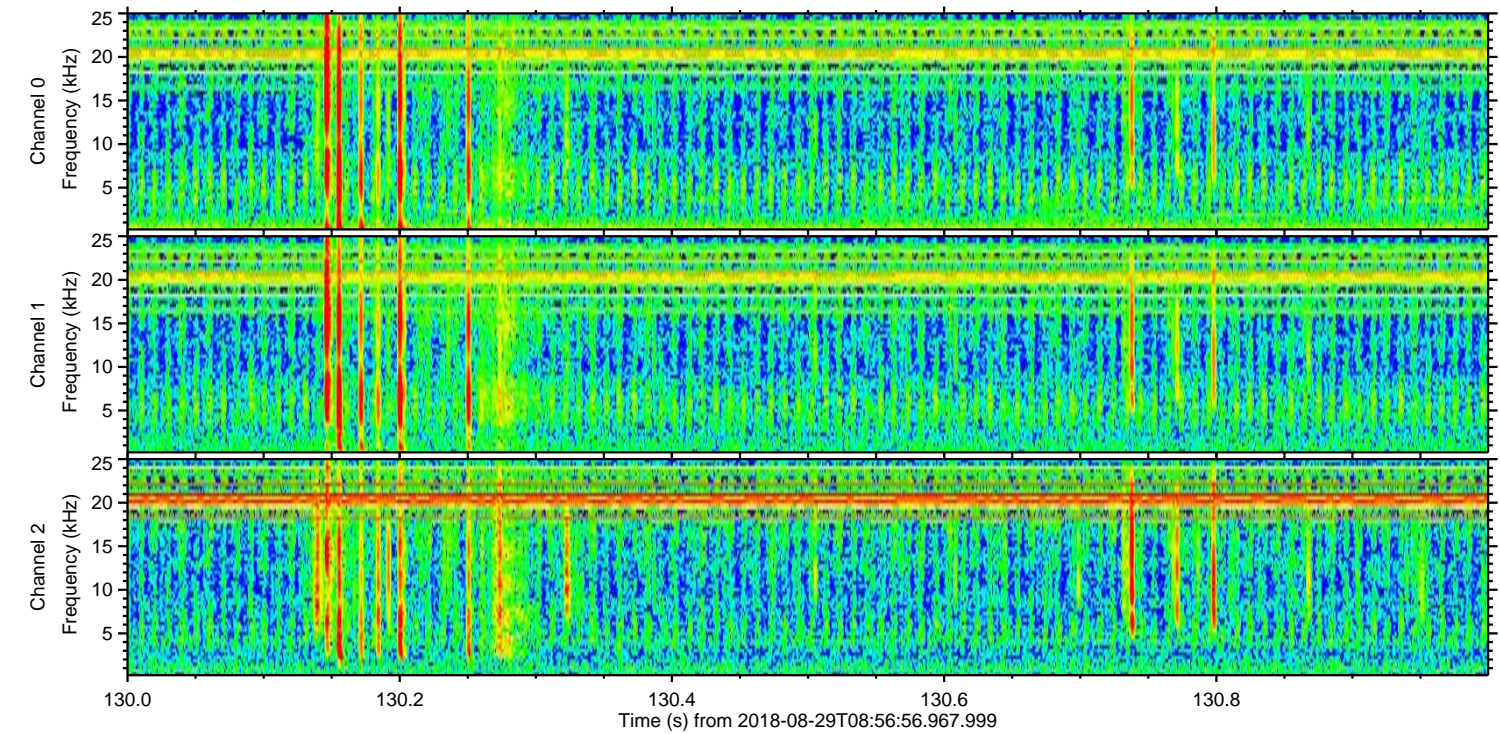
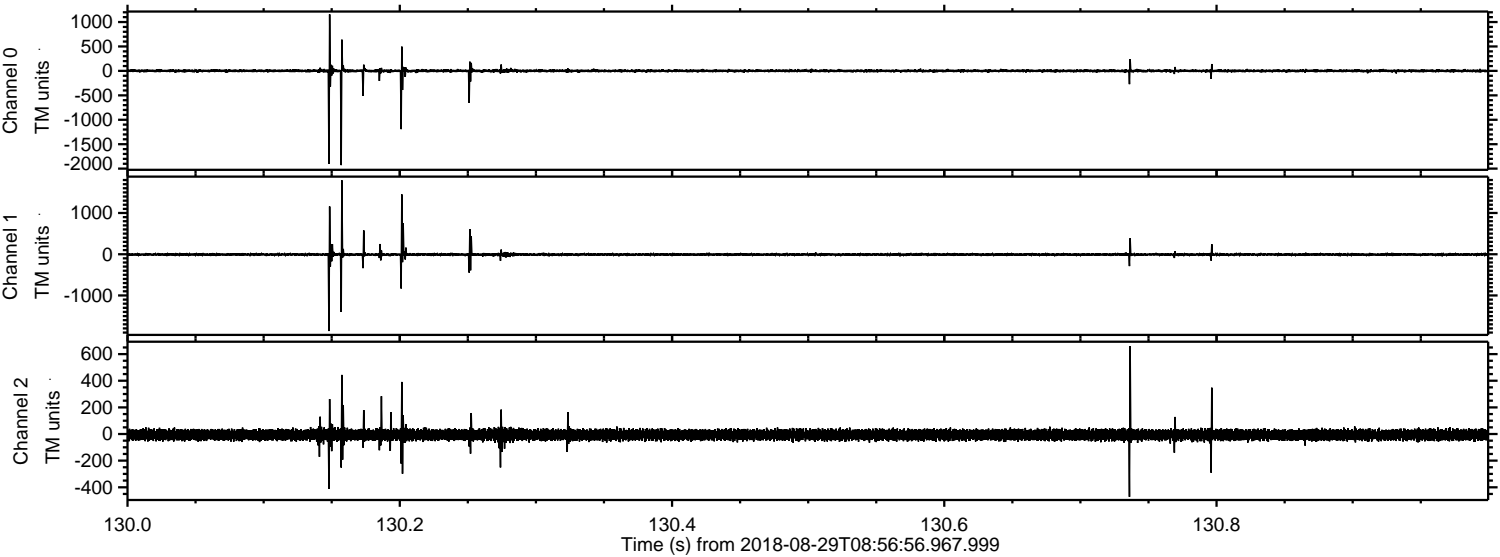


Processed Wed Aug 29 11:05:19 2018 by ELM ver.2012-10-06 from 001__elm20180829_085655__dat00.bin

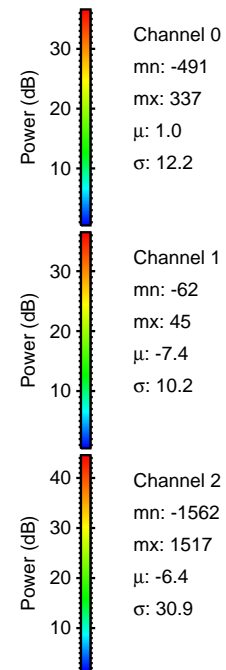
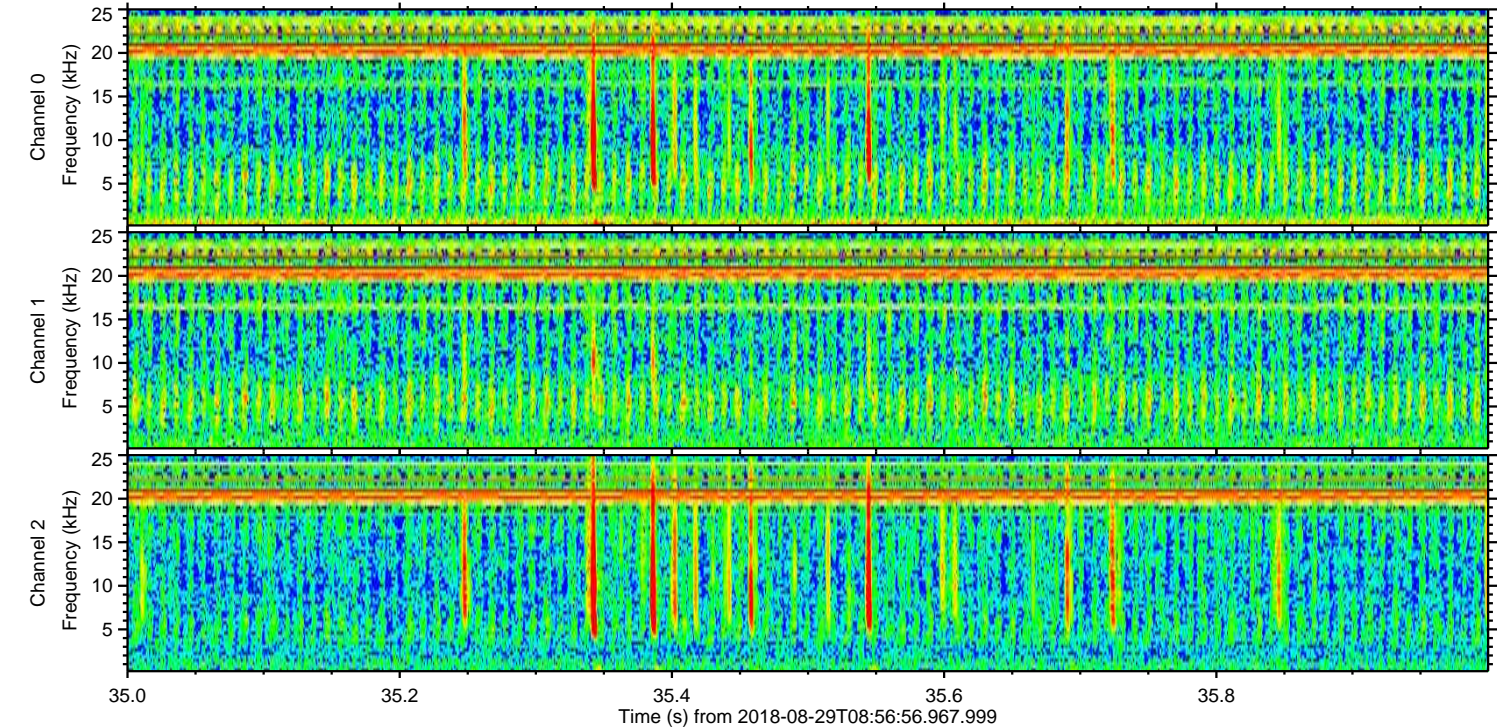
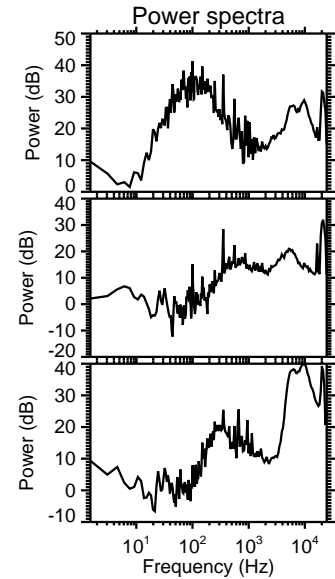
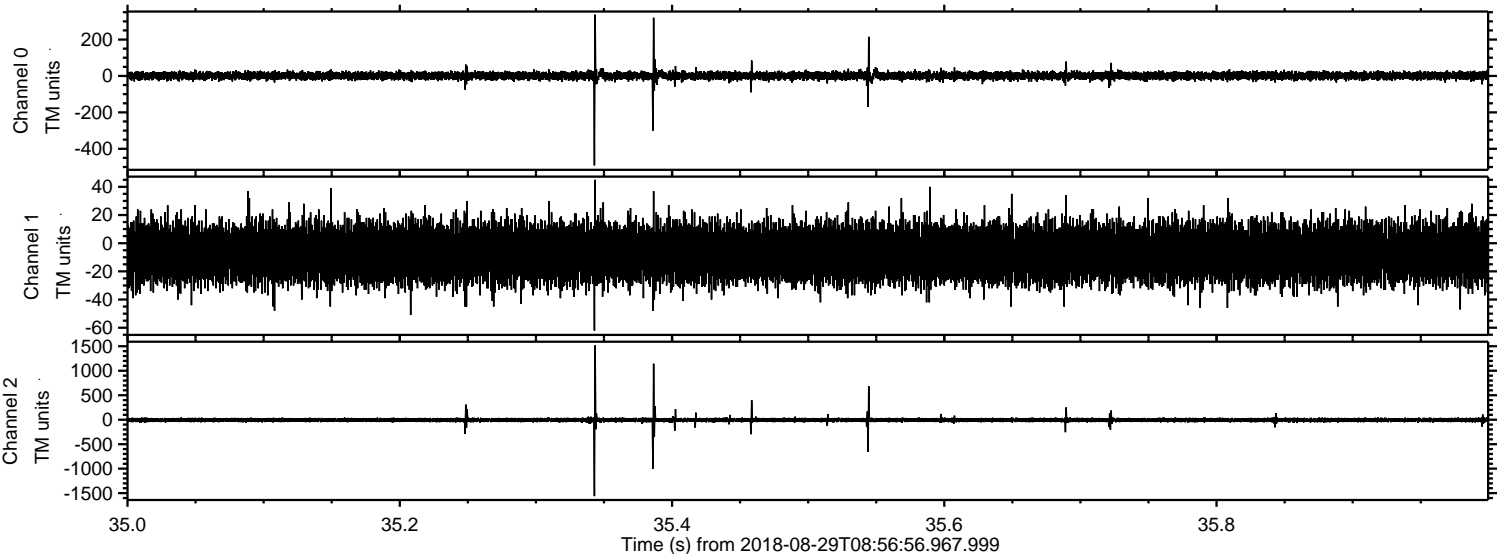


ELMAVAN 3D WAVEFORMS (Measured data sampled at 50 kHz) 51000 packets of 144 samples from 2018-08-29T08:56:56.967.999. Part 131/147

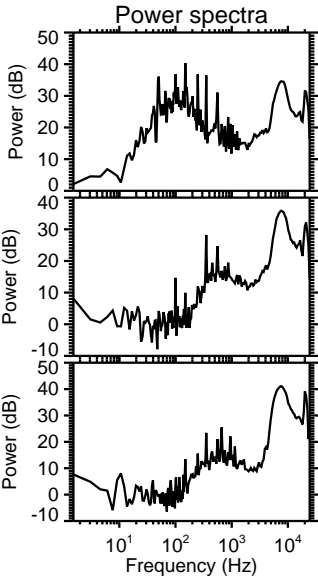
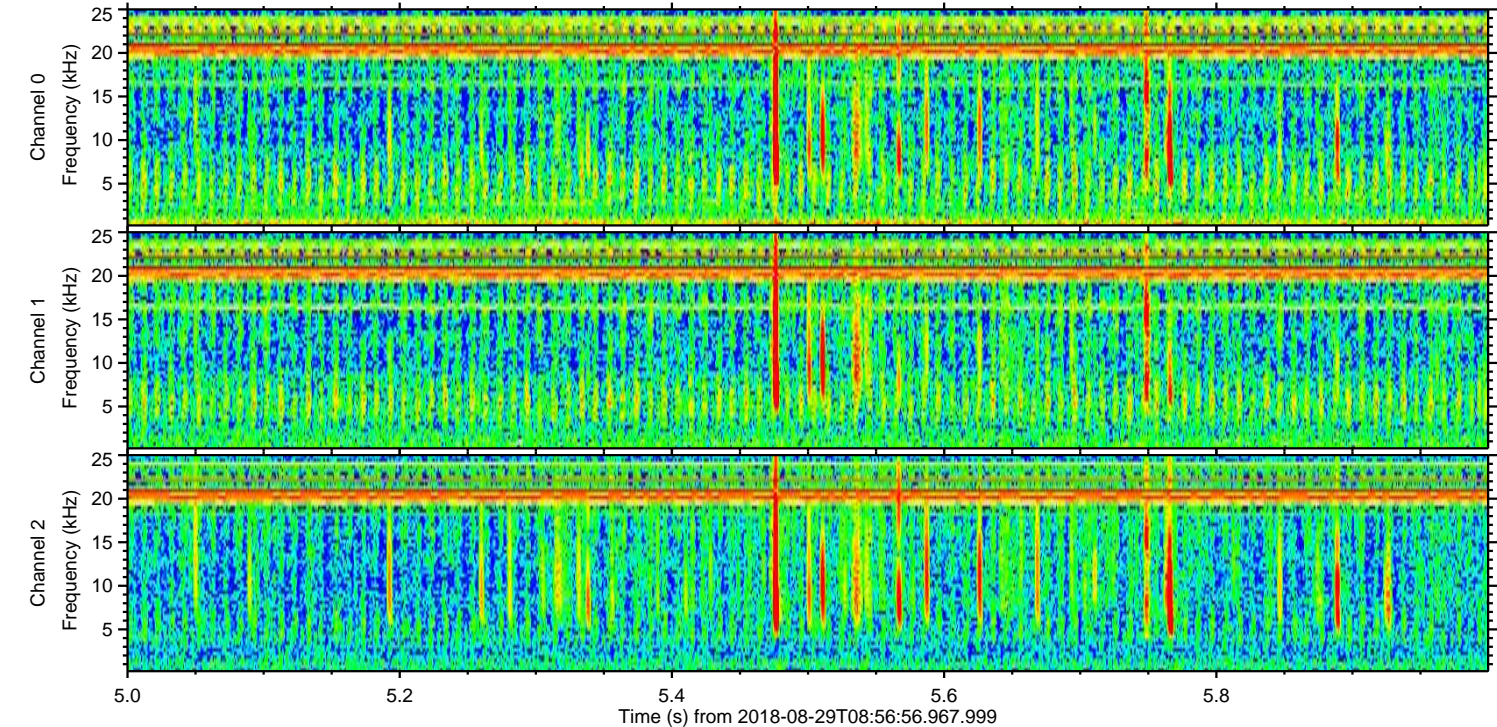
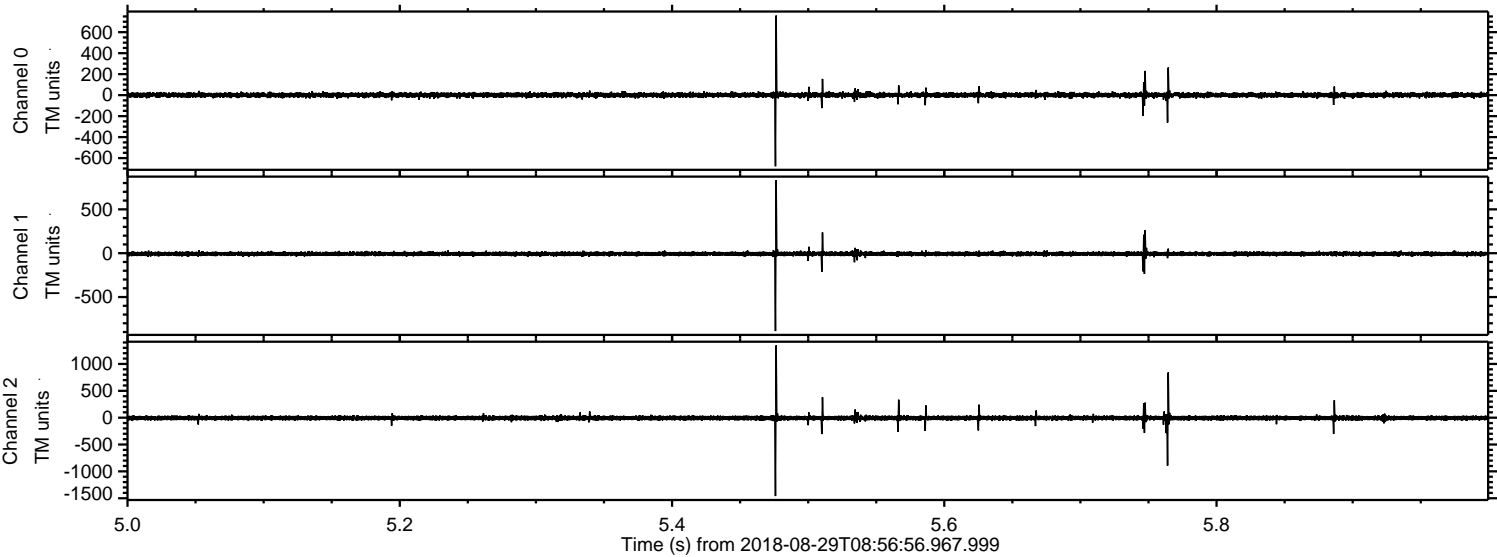
Processed Wed Aug 29 11:05:20 2018 by ELM ver.2012-10-06 from 001__elm20180829_085655__dat00.bin



Processed Wed Aug 29 11:05:20 2018 by ELM ver.2012-10-06 from 001__elm20180829_085655__dat00.bin



Processed Wed Aug 29 11:05:21 2018 by ELM ver.2012-10-06 from 001__elm20180829_085655__dat00.bin

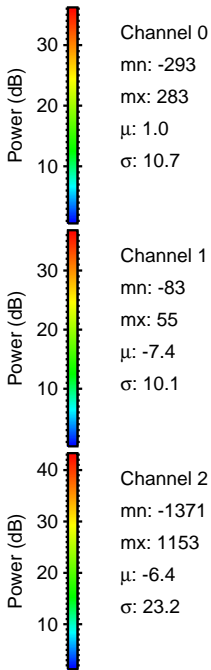
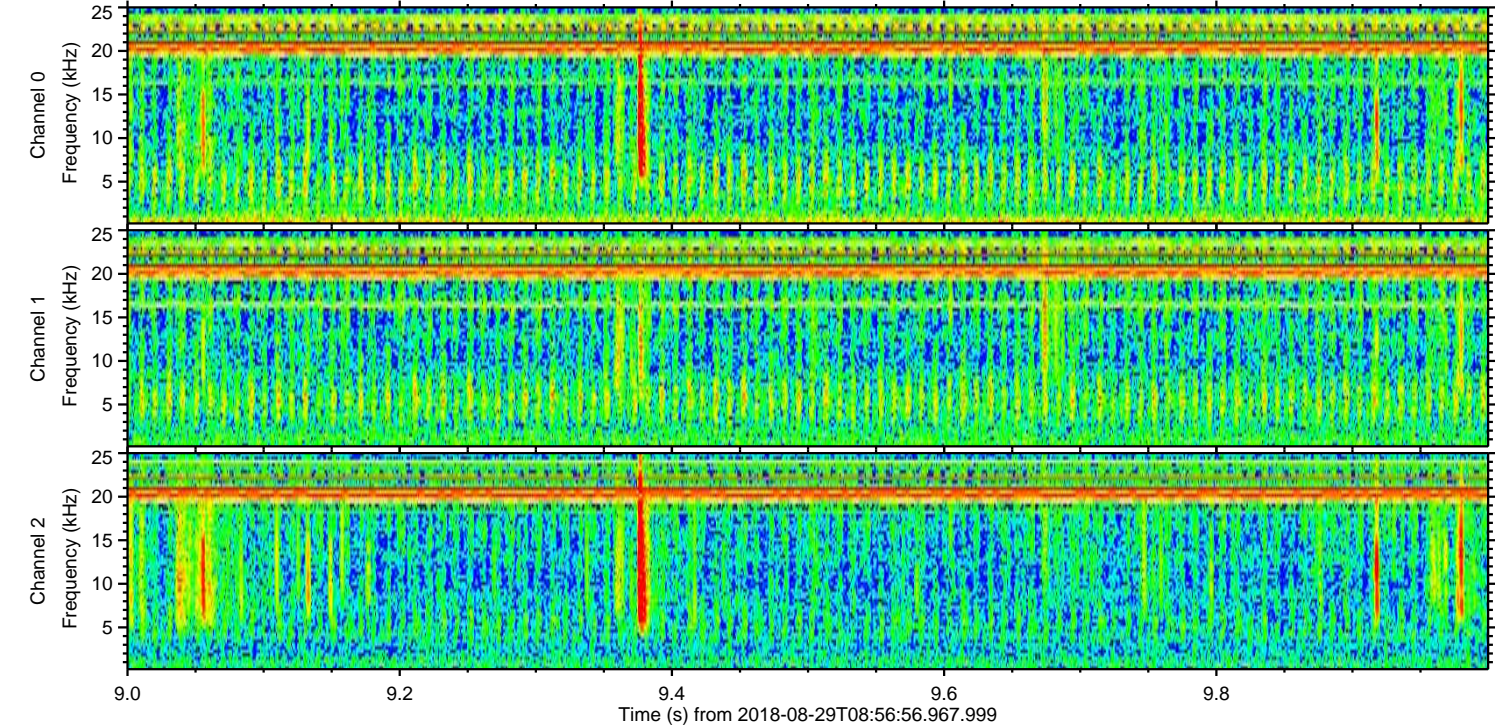
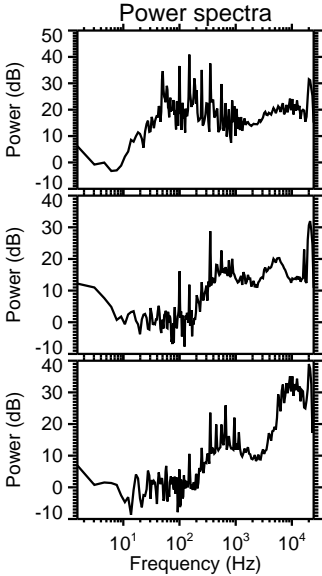
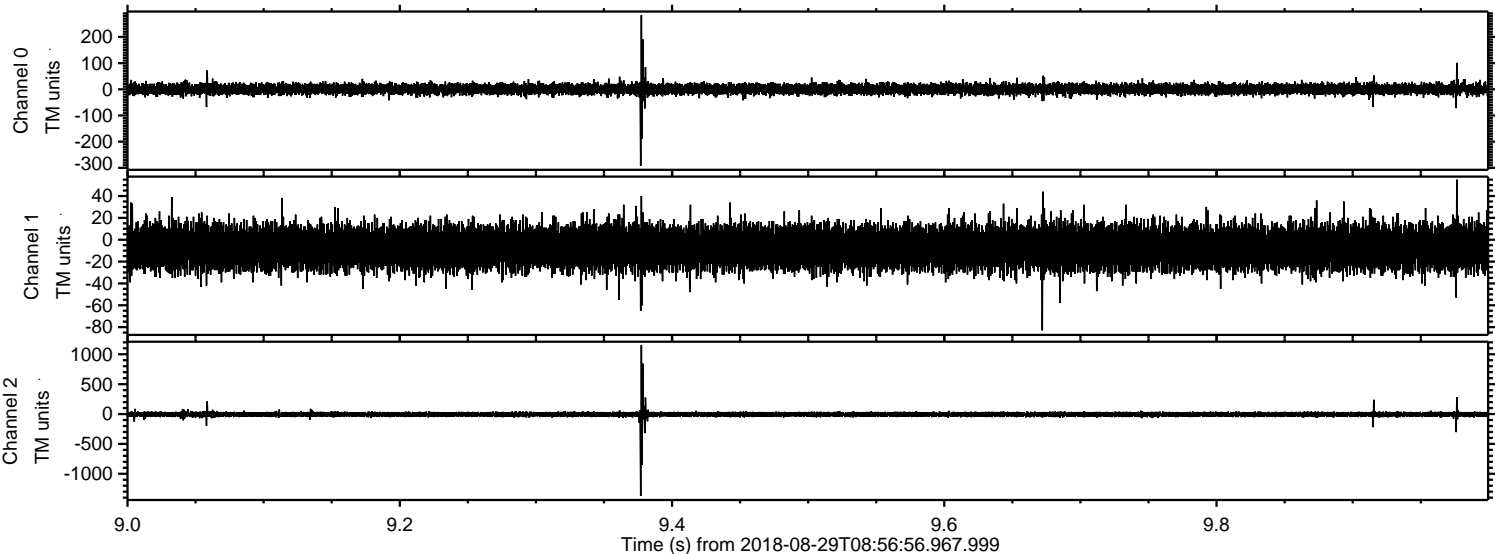


Channel 0
mn: -678
mx: 759
 μ : 1.0
 σ : 15.2

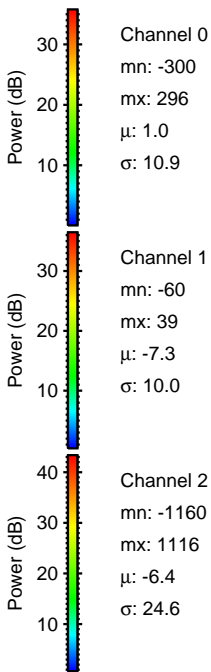
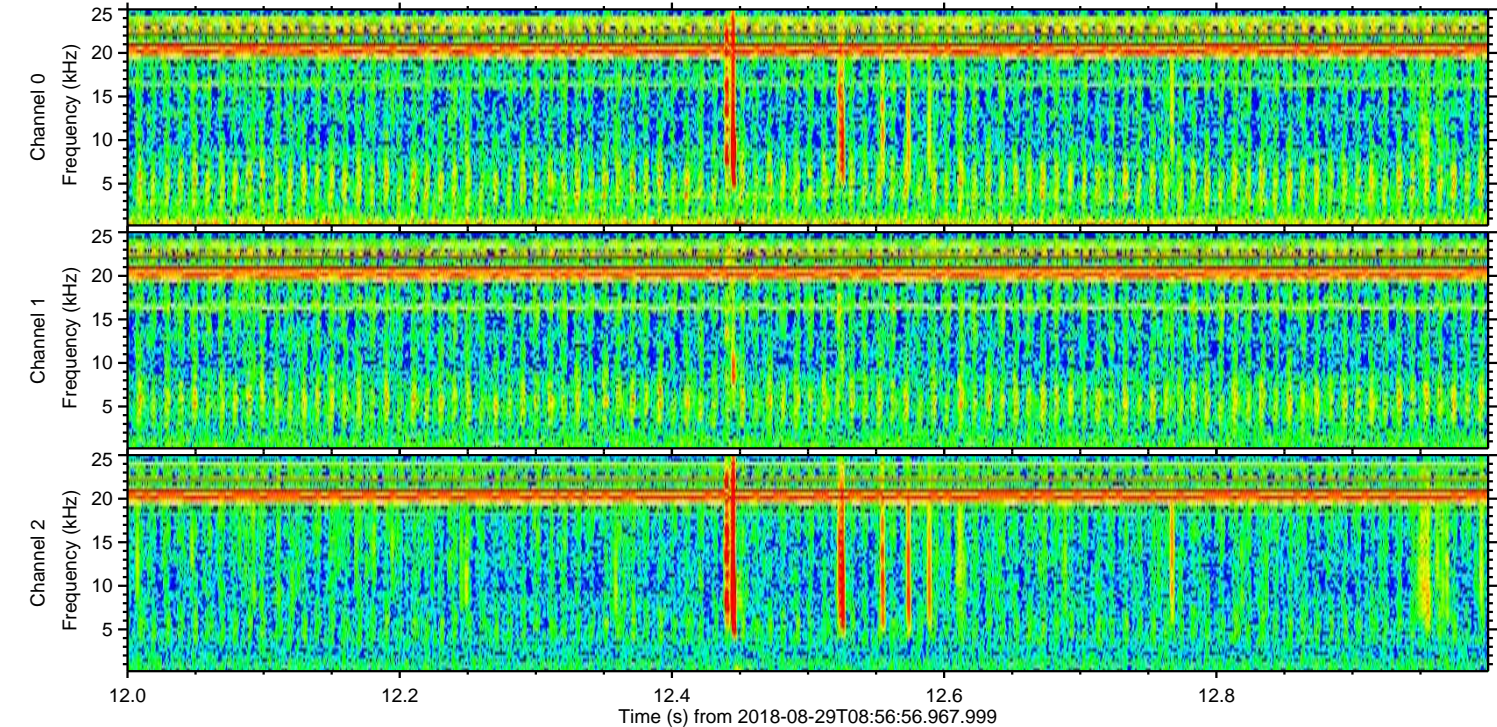
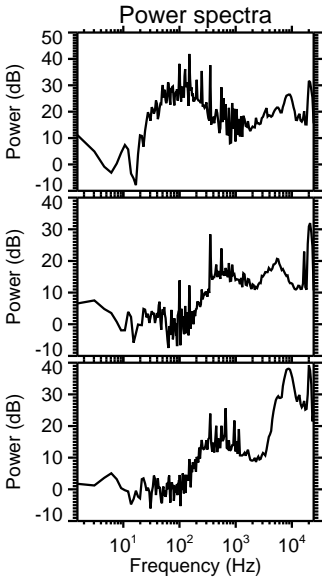
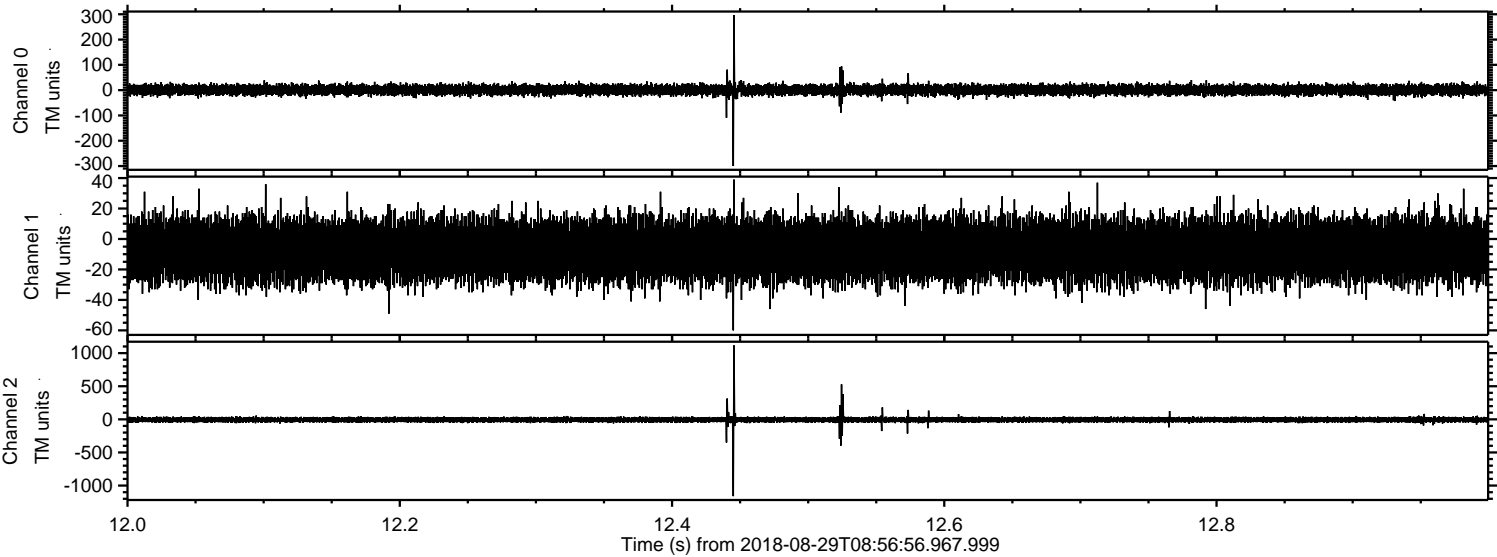
Channel 1
mn: -888
mx: 832
 μ : -7.4
 σ : 16.1

Channel 2
mn: -1460
mx: 1347
 μ : -6.3
 σ : 31.6

Processed Wed Aug 29 11:05:22 2018 by ELM ver.2012-10-06 from 001__elm20180829_085655__dat00.bin

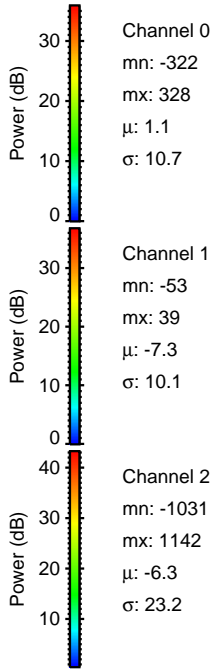
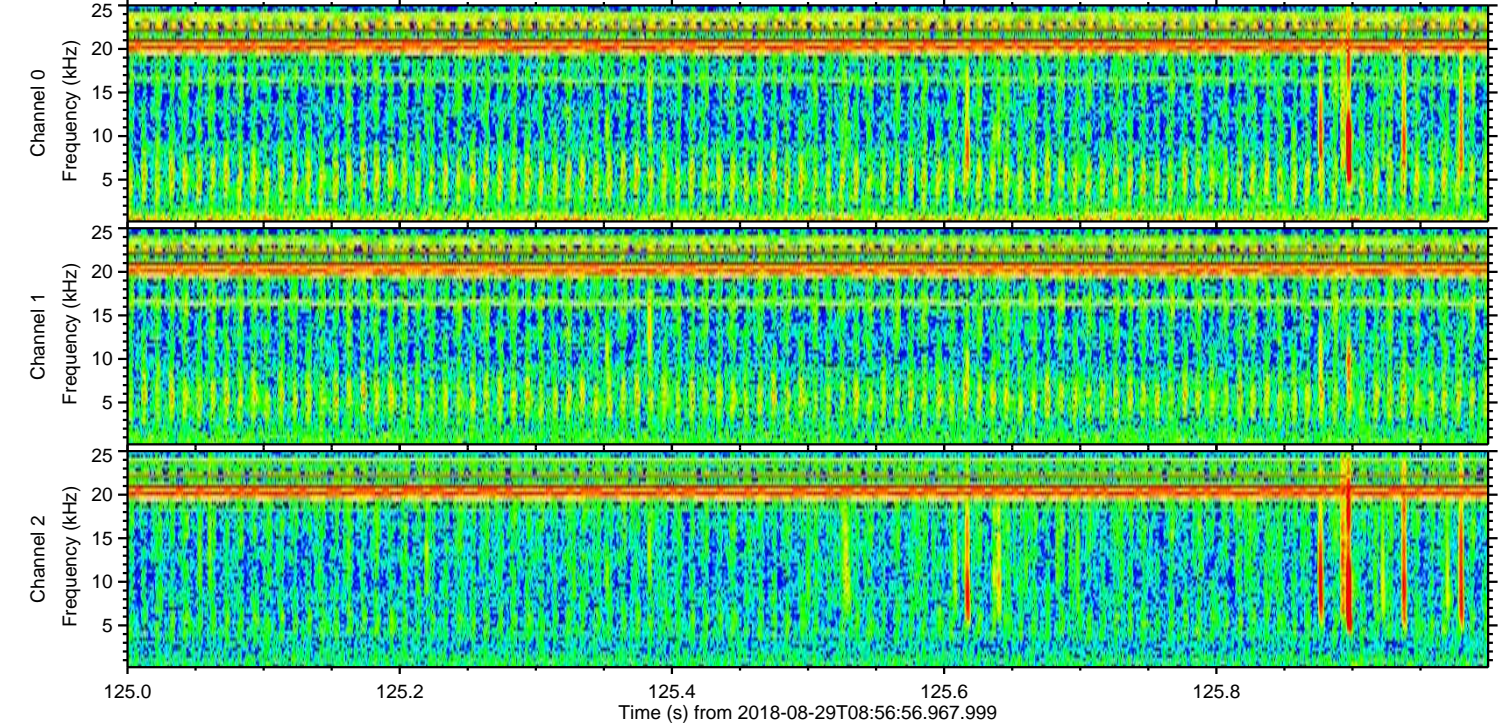
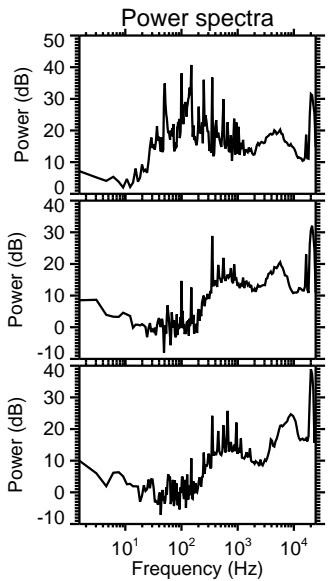
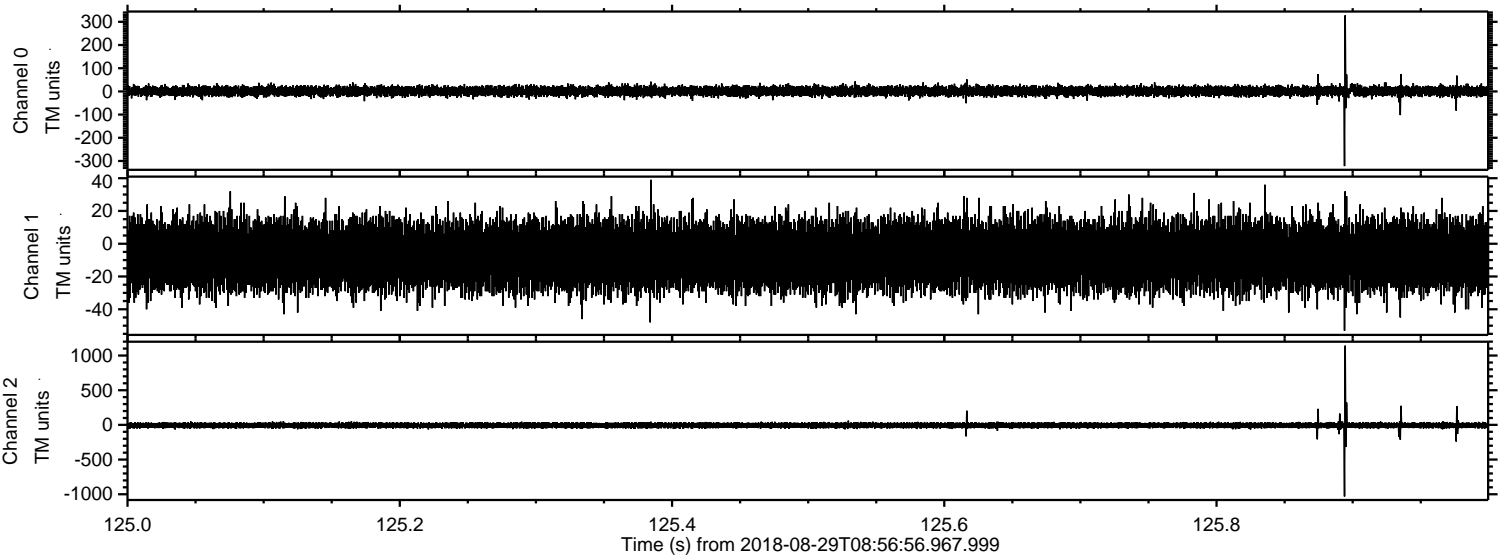


Processed Wed Aug 29 11:05:22 2018 by ELM ver.2012-10-06 from 001__elm20180829_085655__dat00.bin



ELMAVAN 3D WAVEFORMS (Measured data sampled at 50 kHz) 51000 packets of 144 samples from 2018-08-29T08:56:56.967.999. Part 126/147

Processed Wed Aug 29 11:05:23 2018 by ELM ver.2012-10-06 from 001__elm20180829_085655__dat00.bin

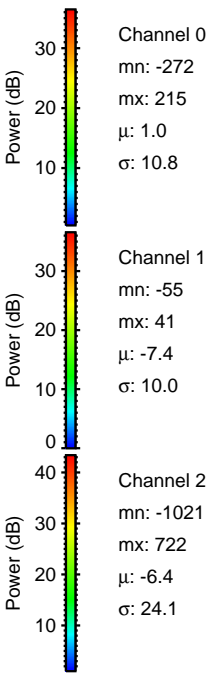
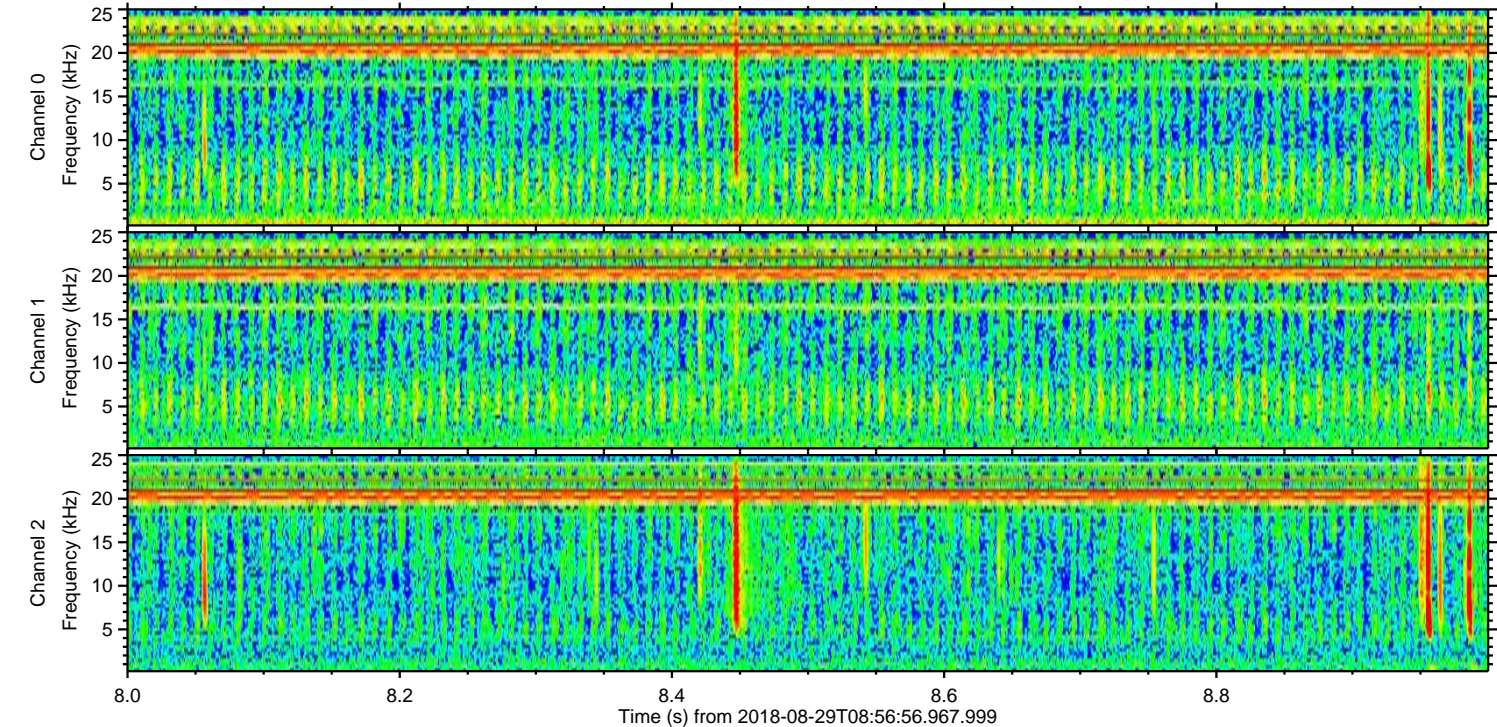
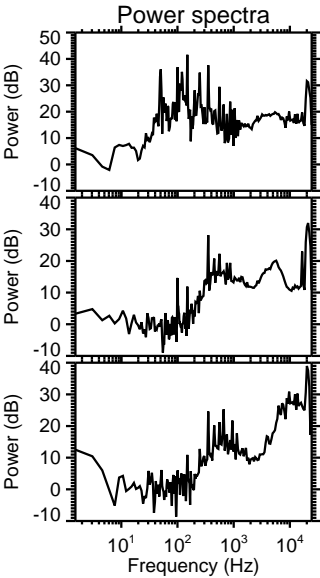
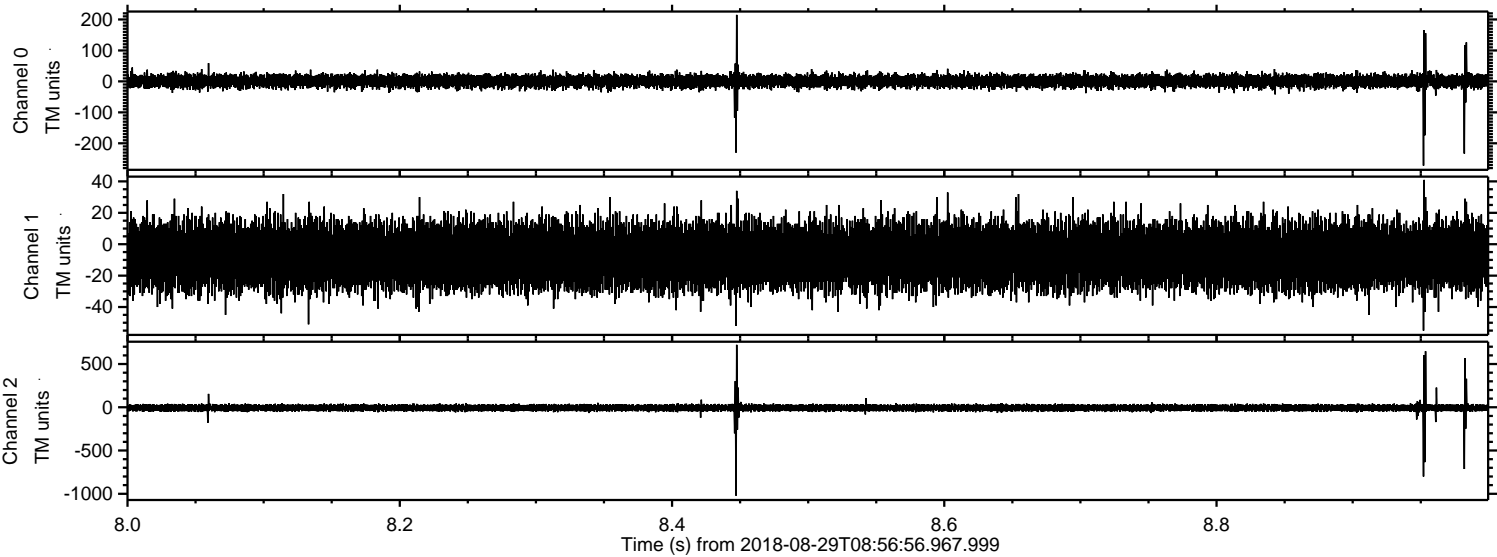


Channel 0
mn: -322
mx: 328
 μ : 1.1
 σ : 10.7

Channel 1
mn: -53
mx: 39
 μ : -7.3
 σ : 10.1

Channel 2
mn: -1031
mx: 1142
 μ : -6.3
 σ : 23.2

Processed Wed Aug 29 11:05:24 2018 by ELM ver.2012-10-06 from 001__elm20180829_085655__dat00.bin



Processed Wed Aug 29 11:05:24 2018 by ELM ver.2012-10-06 from 001__elm20180829_085655__dat00.bin

