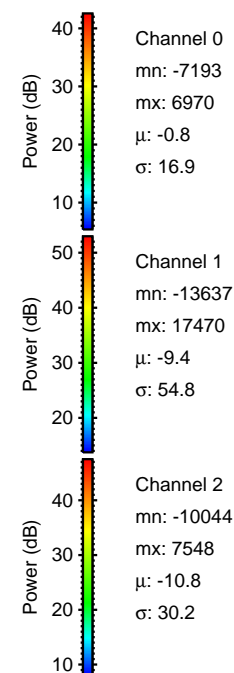
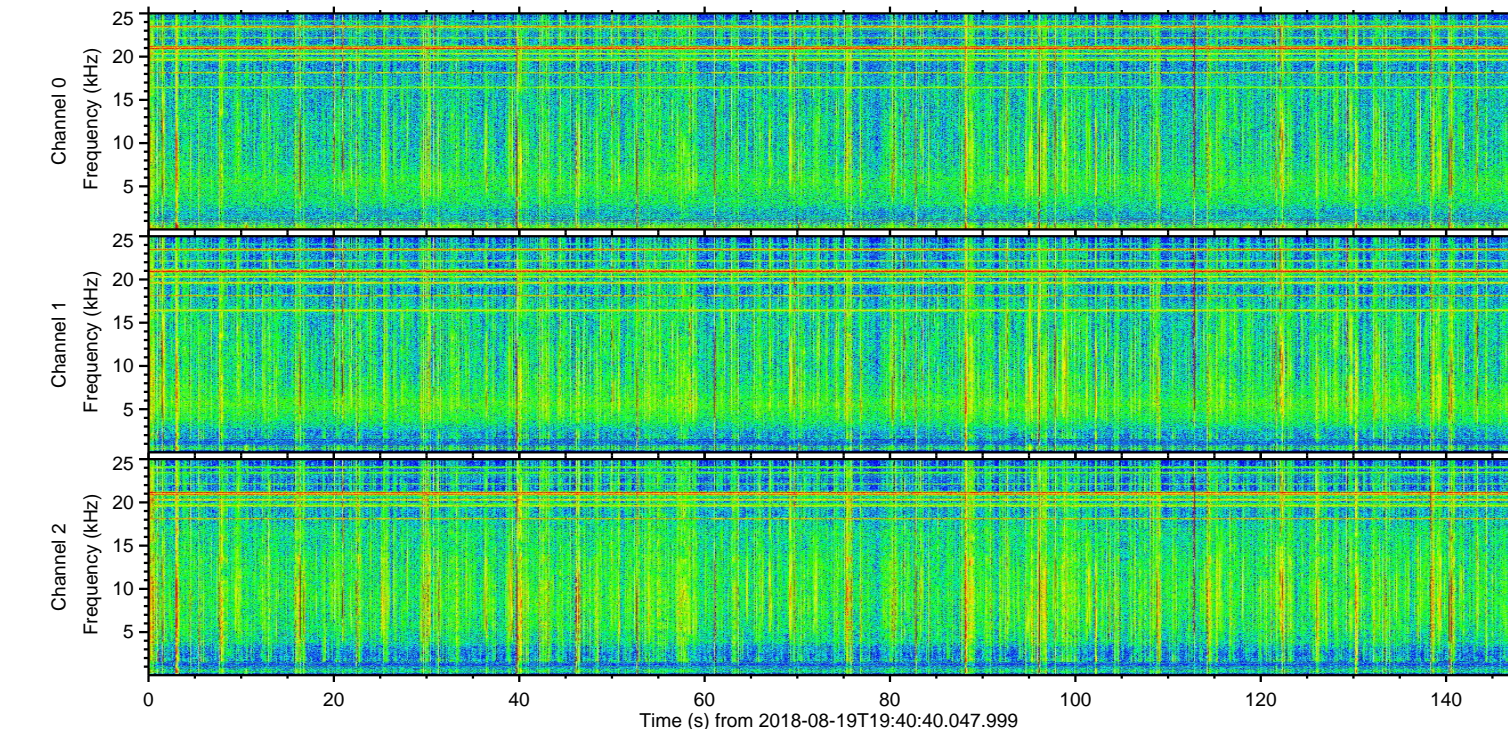
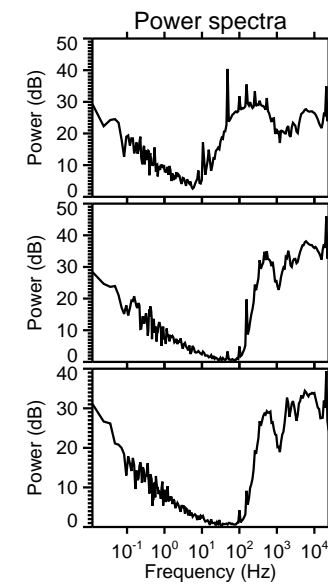
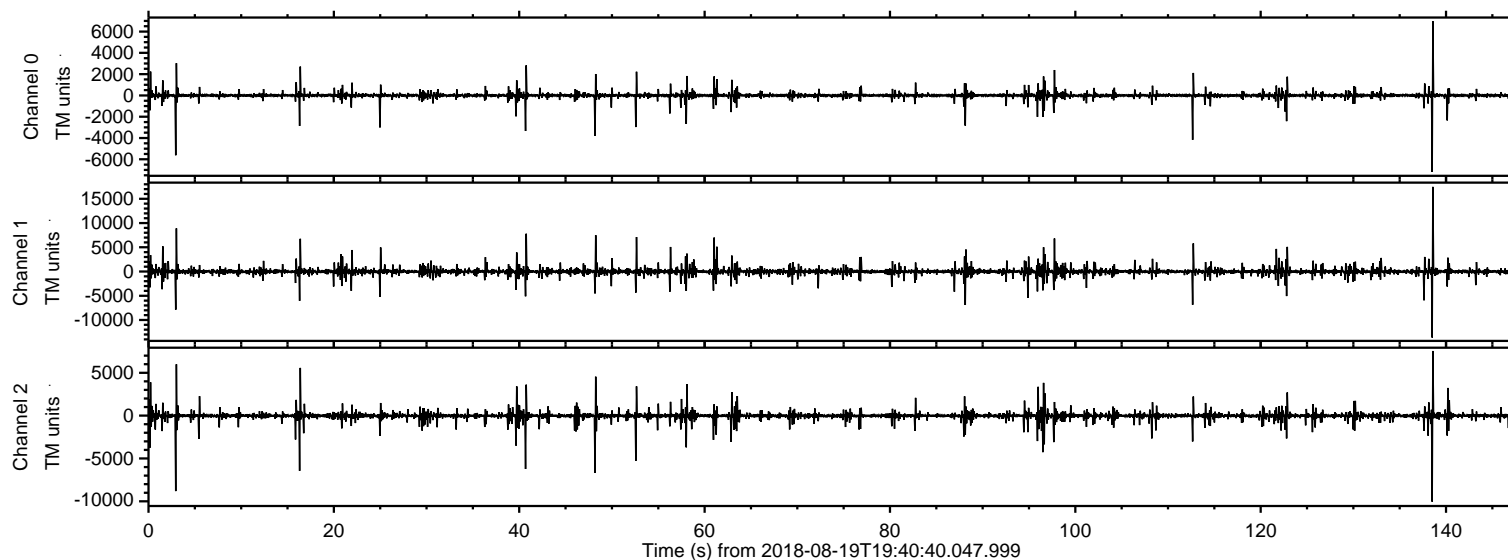


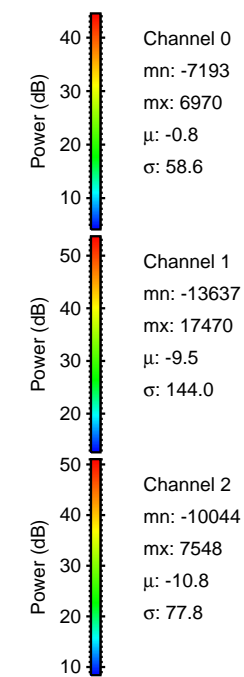
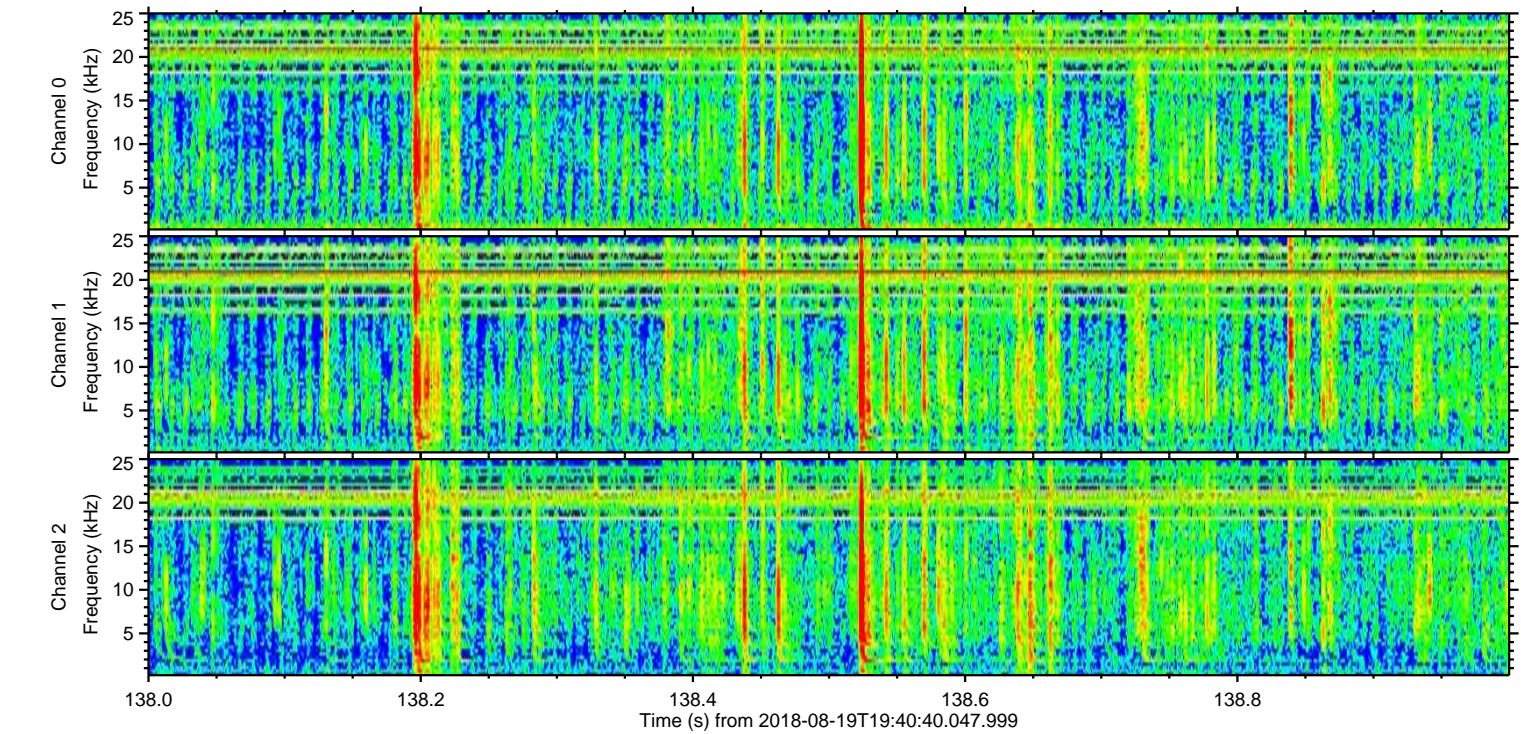
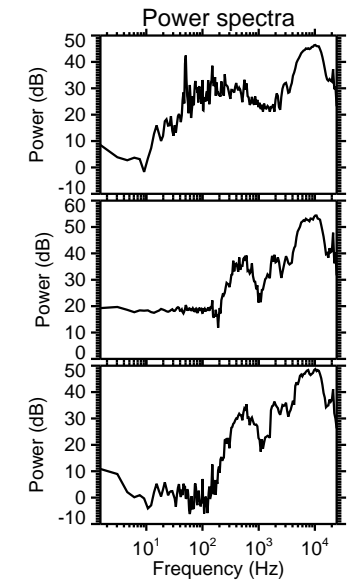
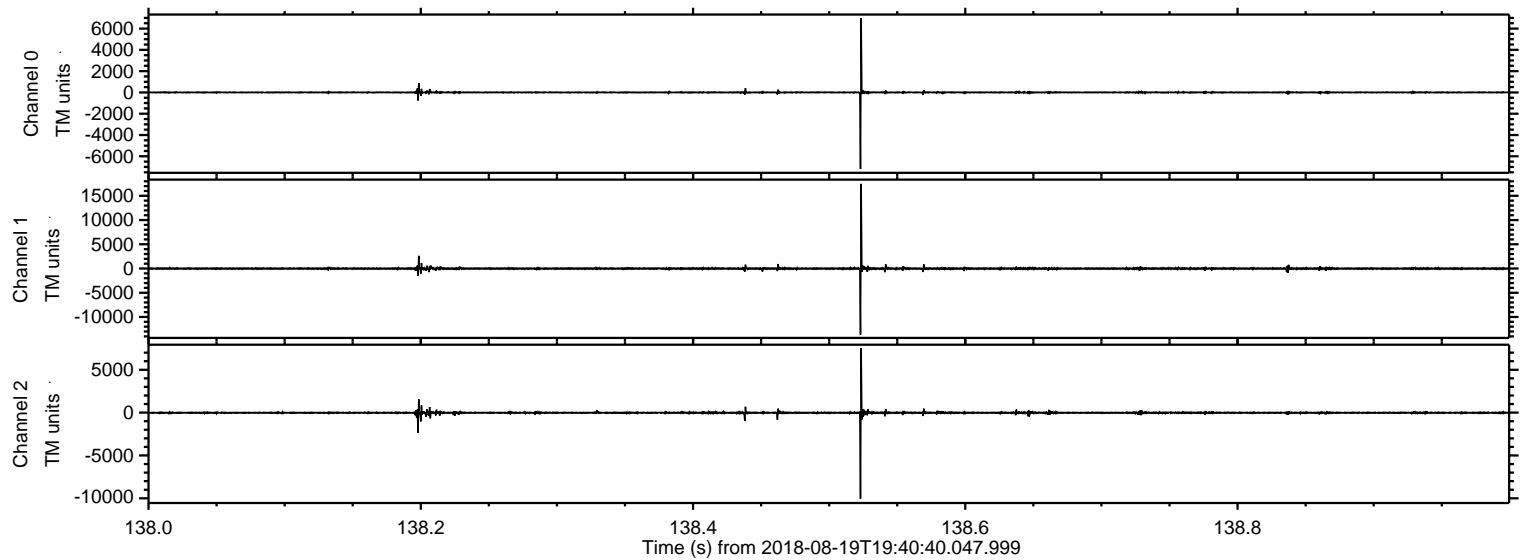
ELMAVAN 3D WAVEFORMS (Measured data sampled at 50 kHz) 51000 packets of 144 samples from 2018-08-19T19:40:40.047.999.

Processed Sun Aug 19 21:49:02 2018 by ELM ver.2012-10-06 from 001__elm20180819_194039__dat00.bin

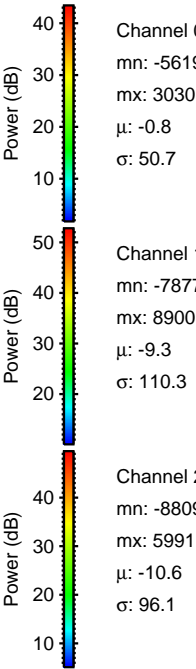
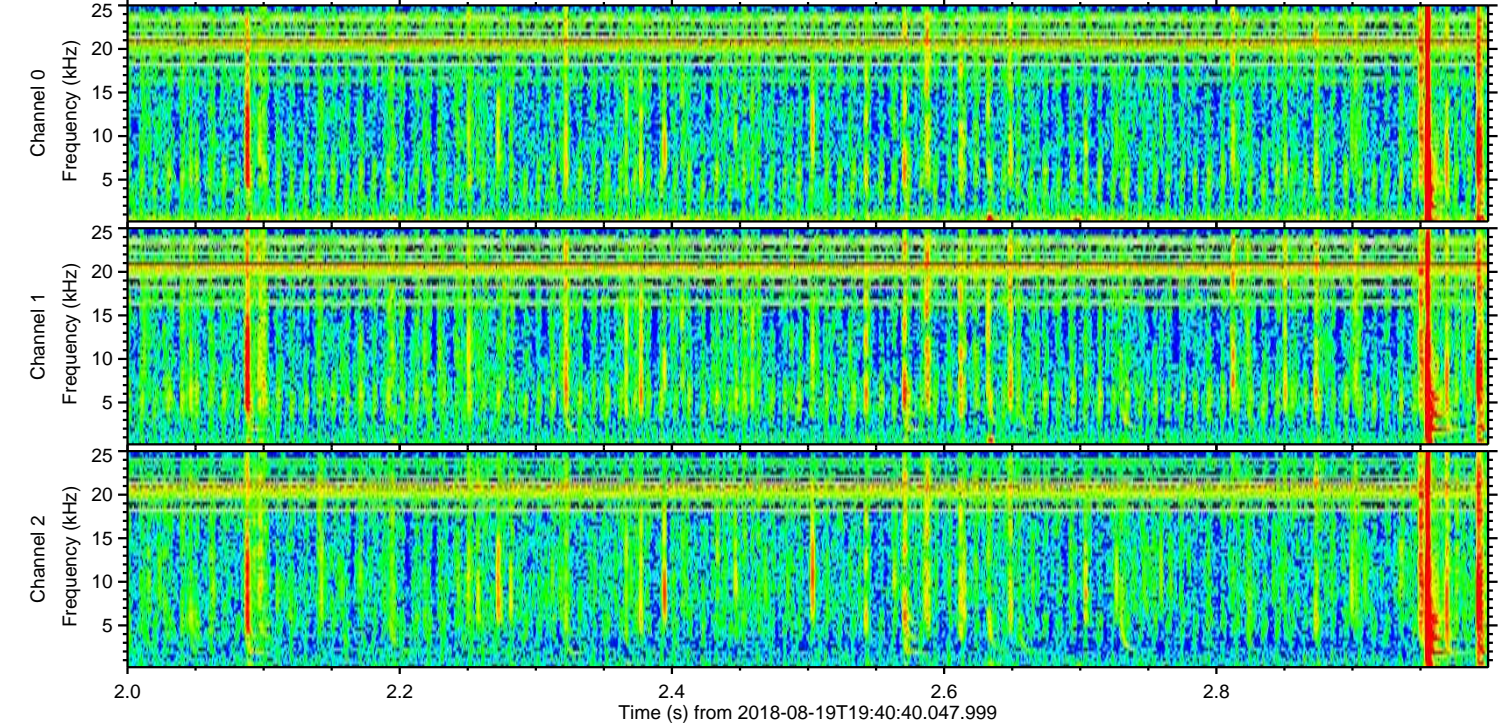
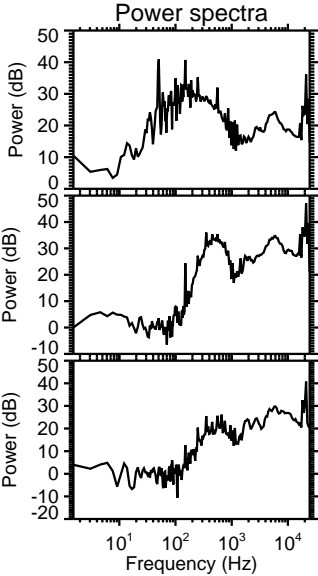
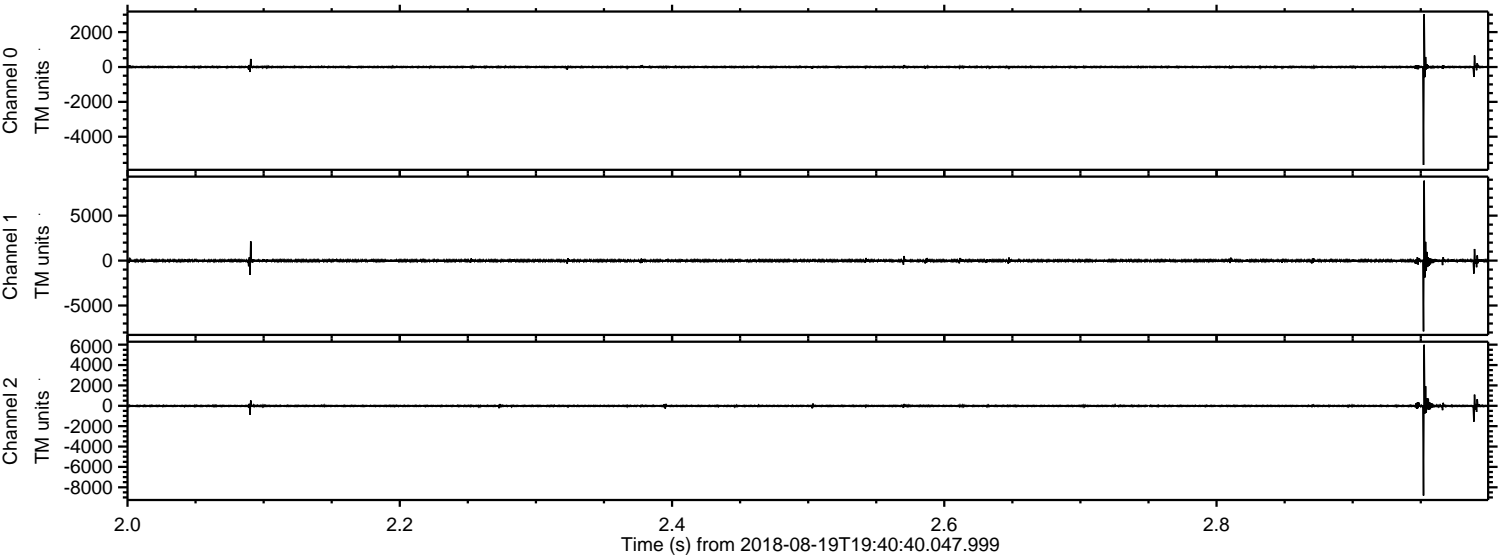


ELMAVAN 3D WAVEFORMS (Measured data sampled at 50 kHz) 51000 packets of 144 samples from 2018-08-19T19:40:40.047.999. Part 139/147

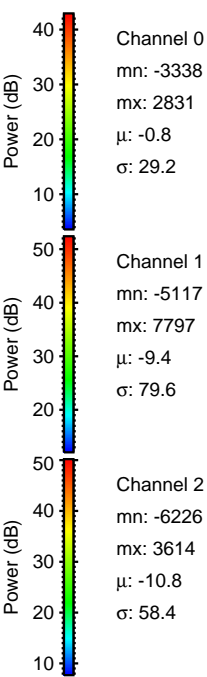
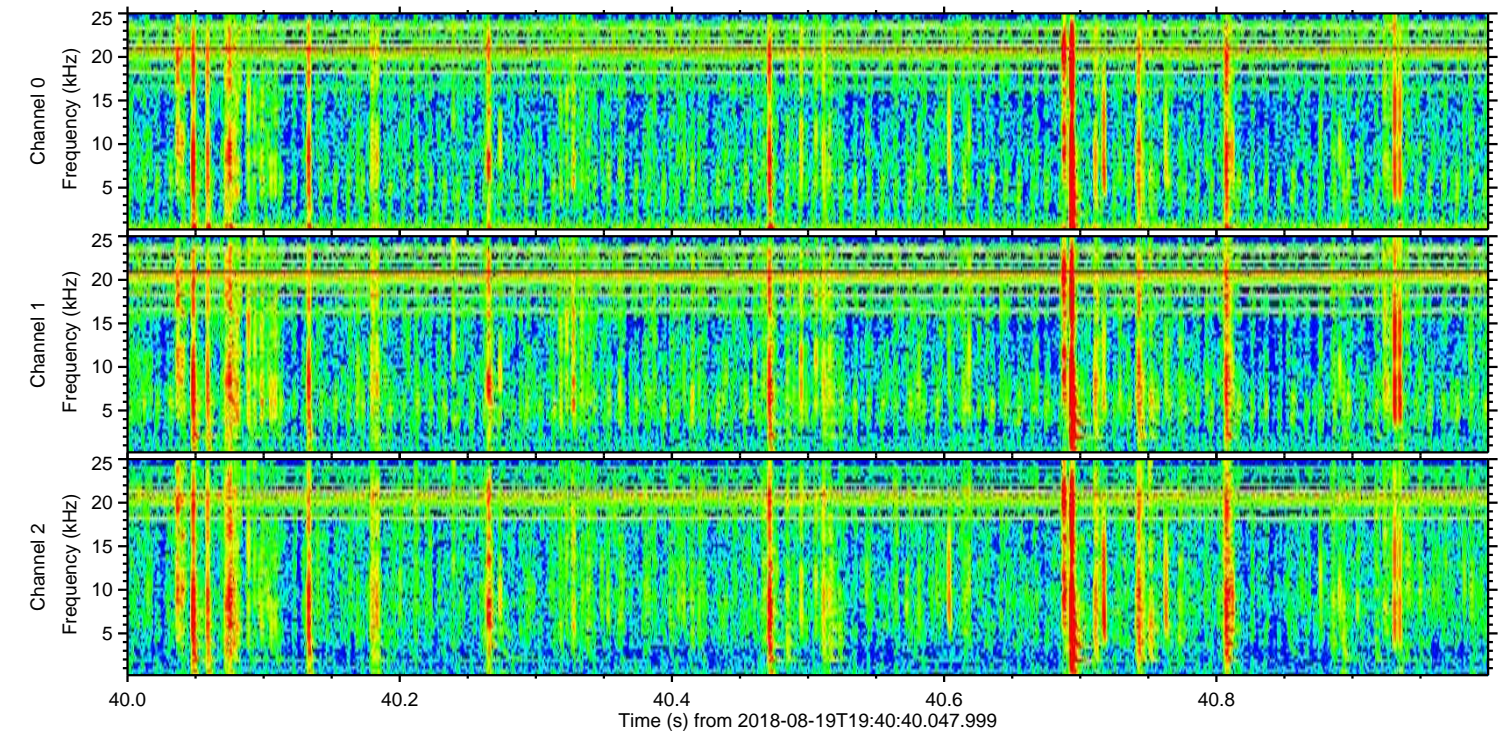
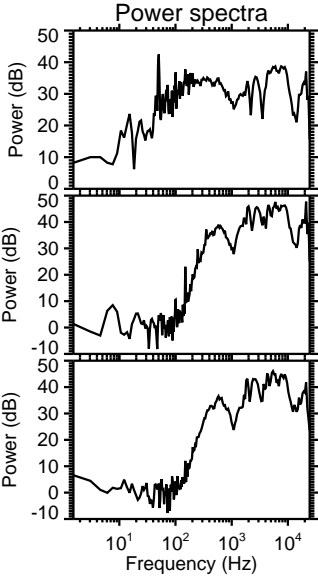
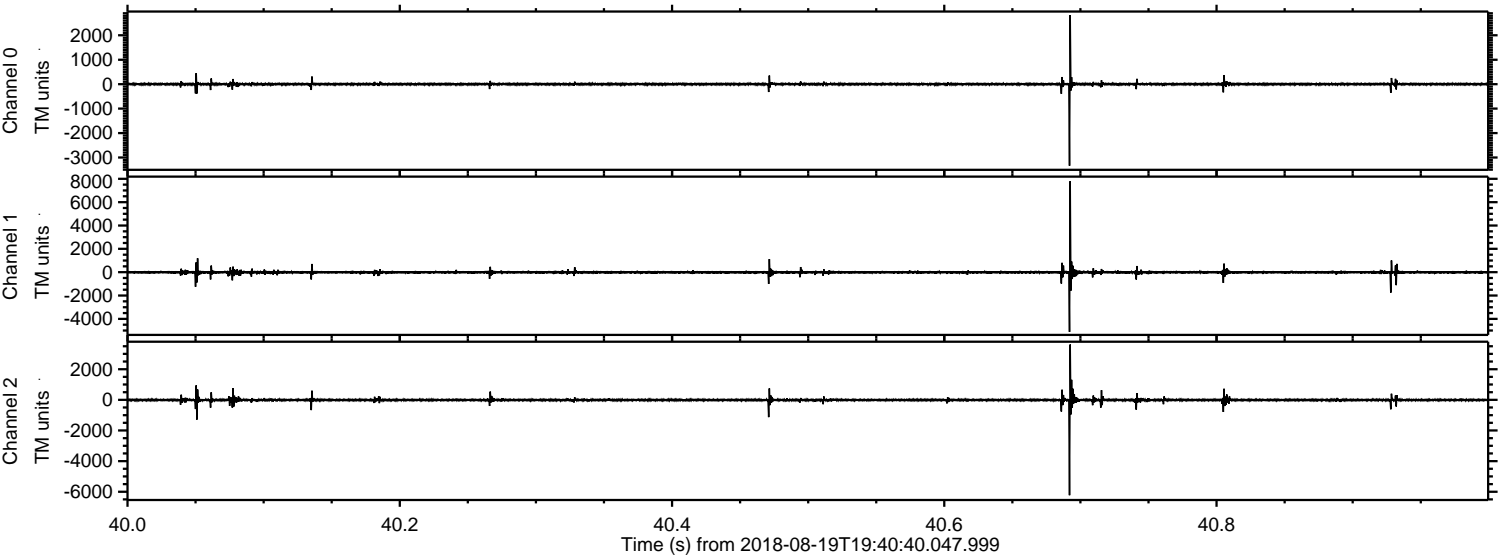
Processed Sun Aug 19 21:49:08 2018 by ELM ver.2012-10-06 from 001__elm20180819_194039__dat00.bin



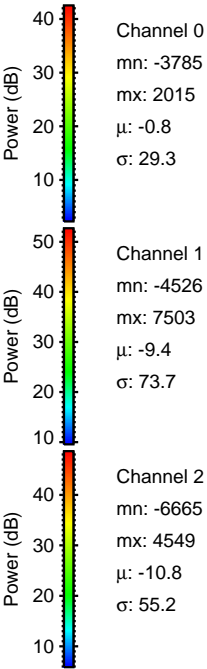
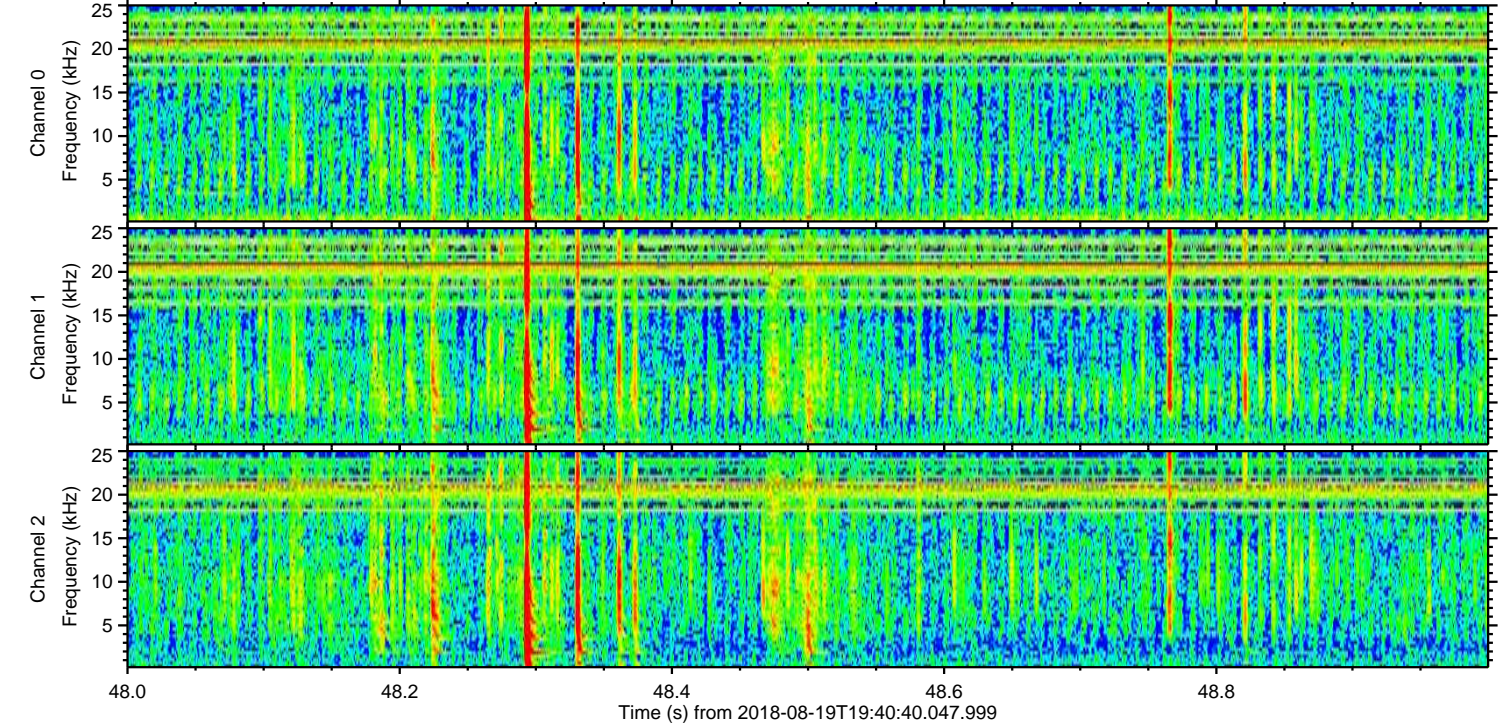
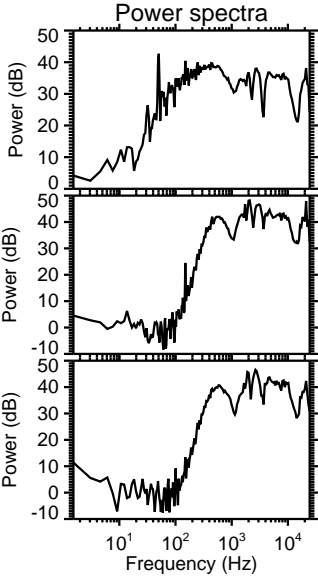
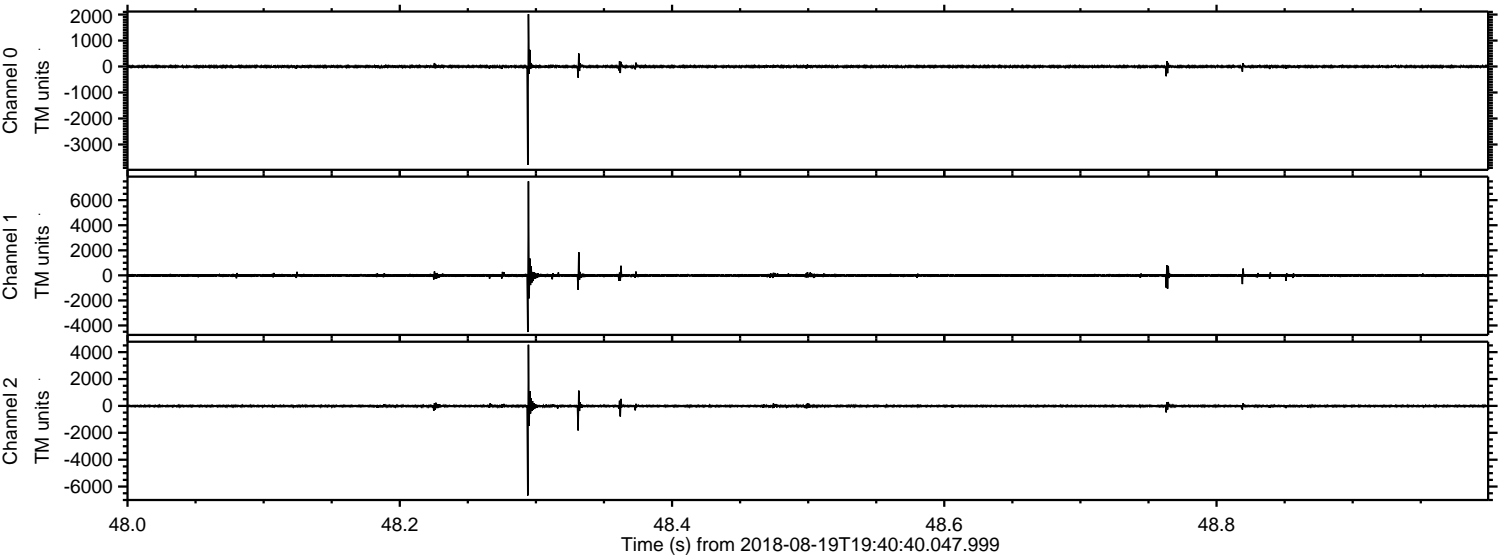
Processed Sun Aug 19 21:49:09 2018 by ELM ver.2012-10-06 from 001__elm20180819_194039__dat00.bin



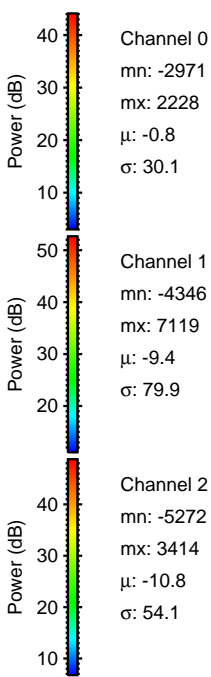
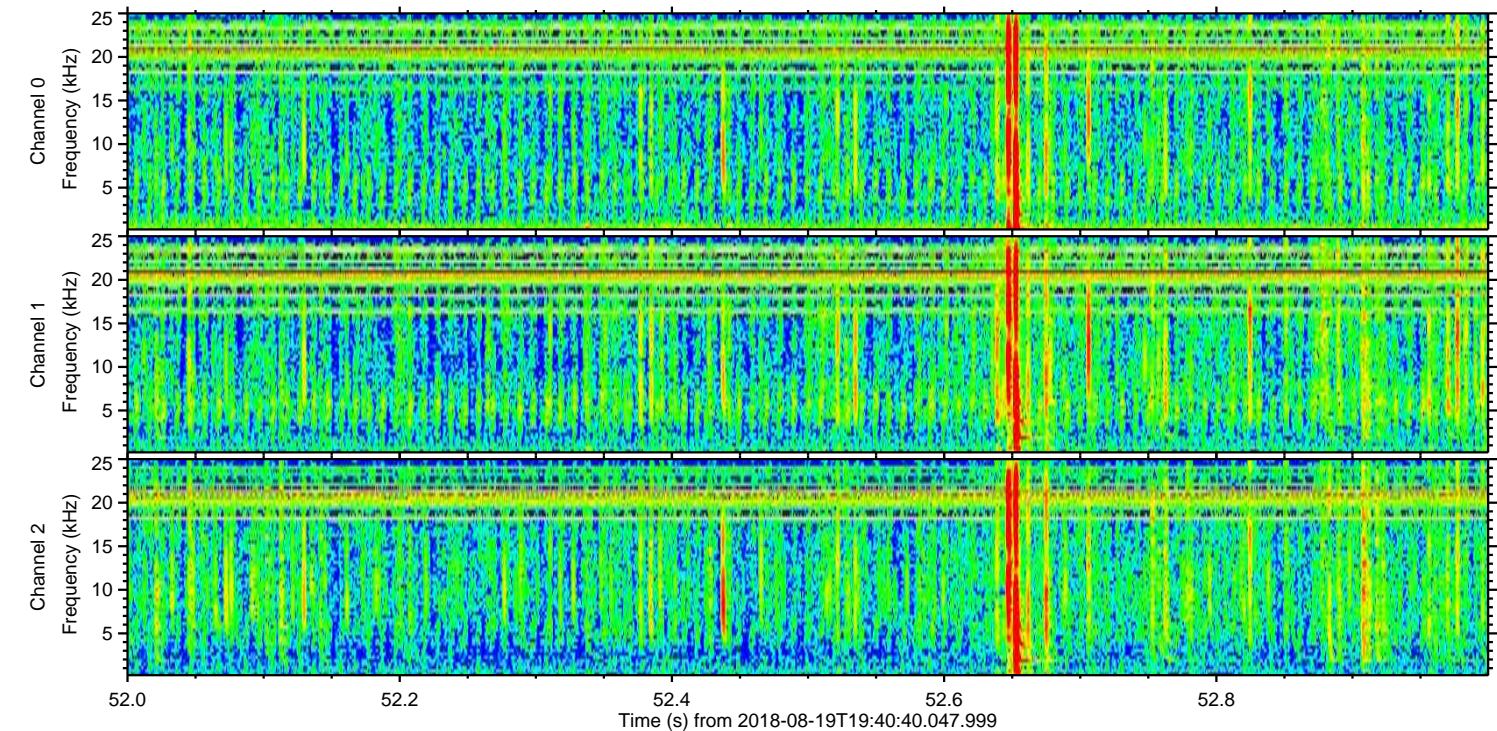
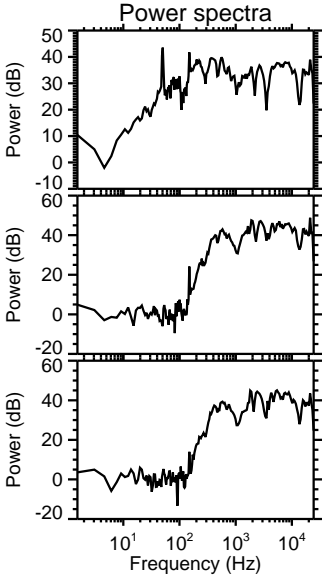
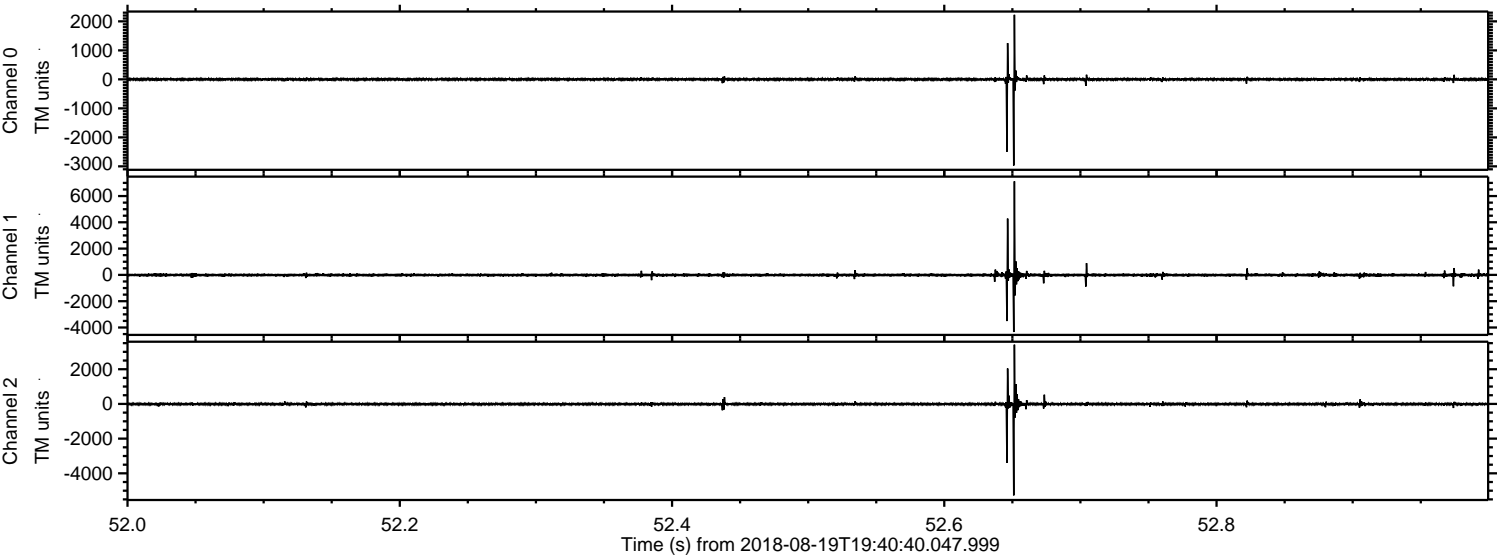
Processed Sun Aug 19 21:49:10 2018 by ELM ver.2012-10-06 from 001__elm20180819_194039__dat00.bin



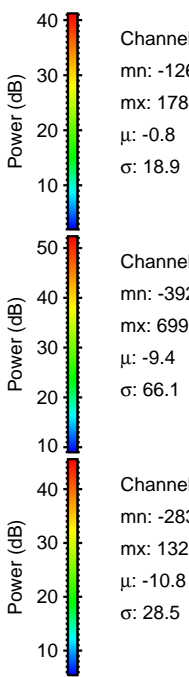
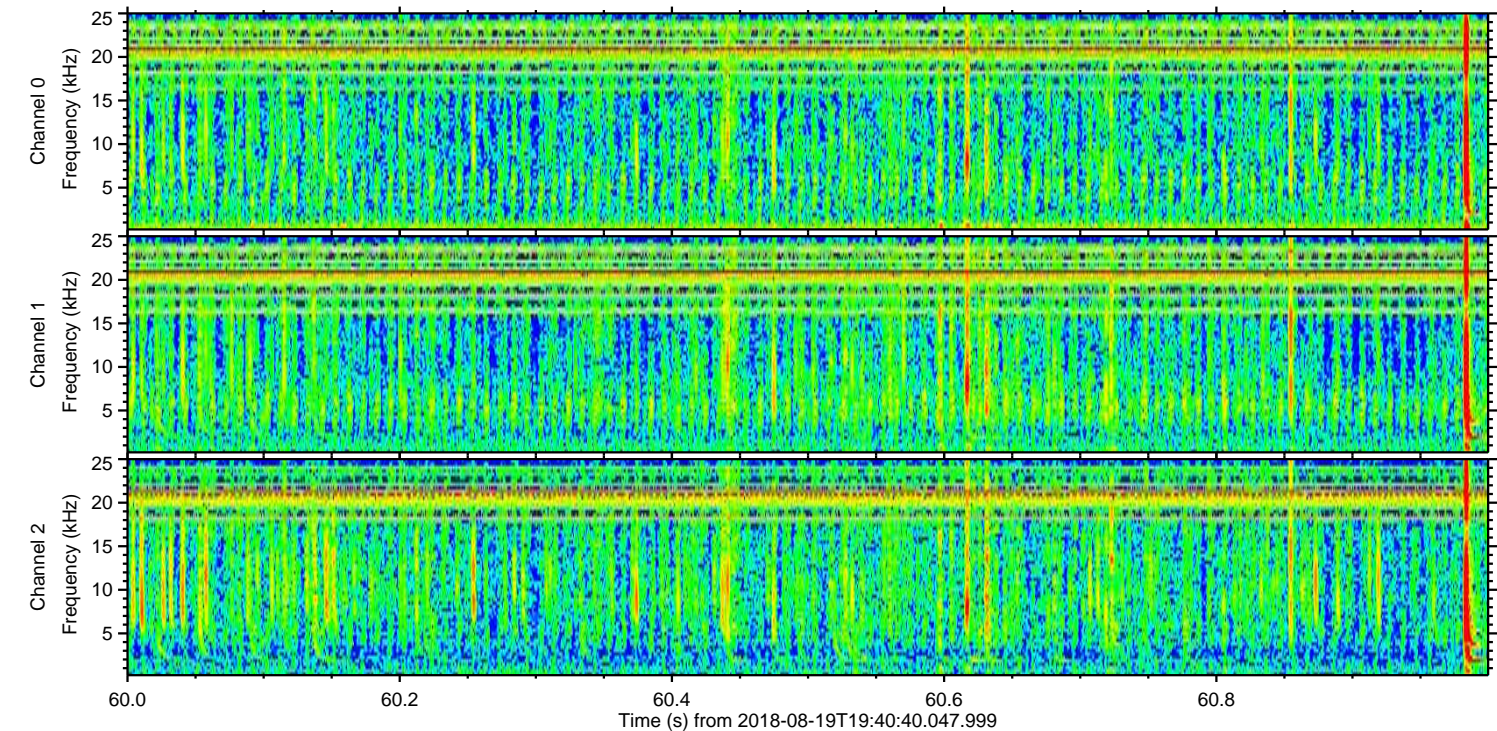
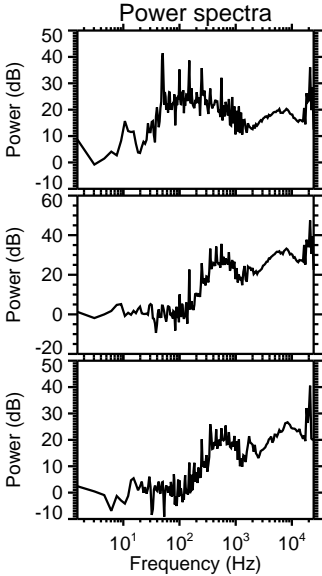
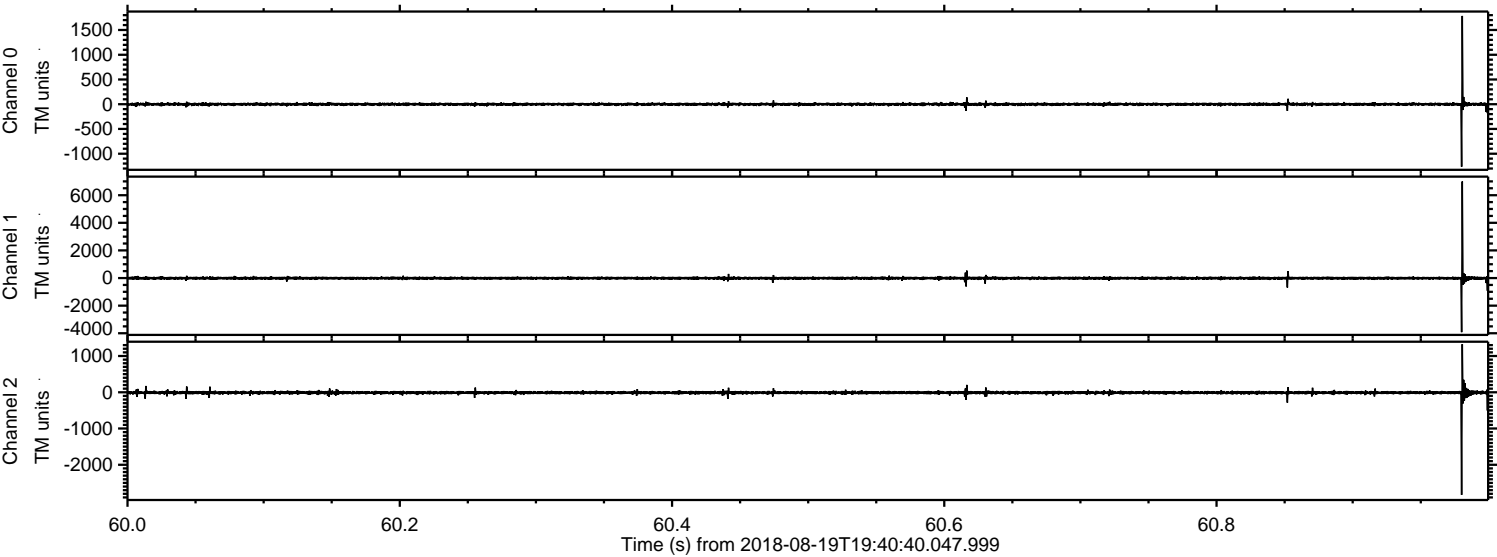
Processed Sun Aug 19 21:49:10 2018 by ELM ver.2012-10-06 from 001__elm20180819_194039__dat00.bin



Processed Sun Aug 19 21:49:11 2018 by ELM ver.2012-10-06 from 001__elm20180819_194039__dat00.bin



Processed Sun Aug 19 21:49:11 2018 by ELM ver.2012-10-06 from 001__elm20180819_194039__dat00.bin

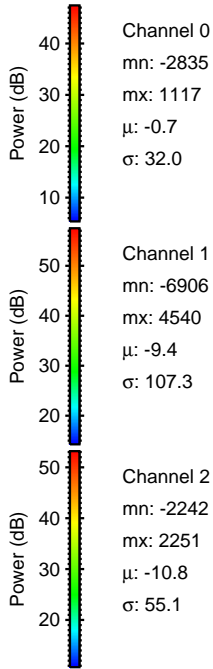
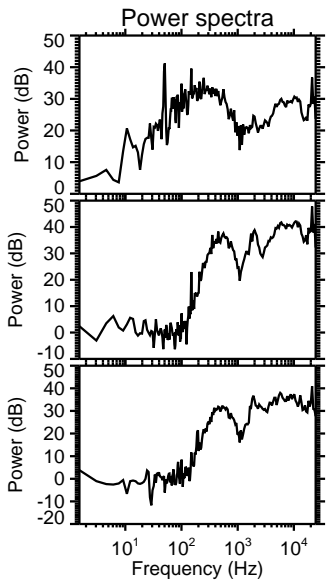
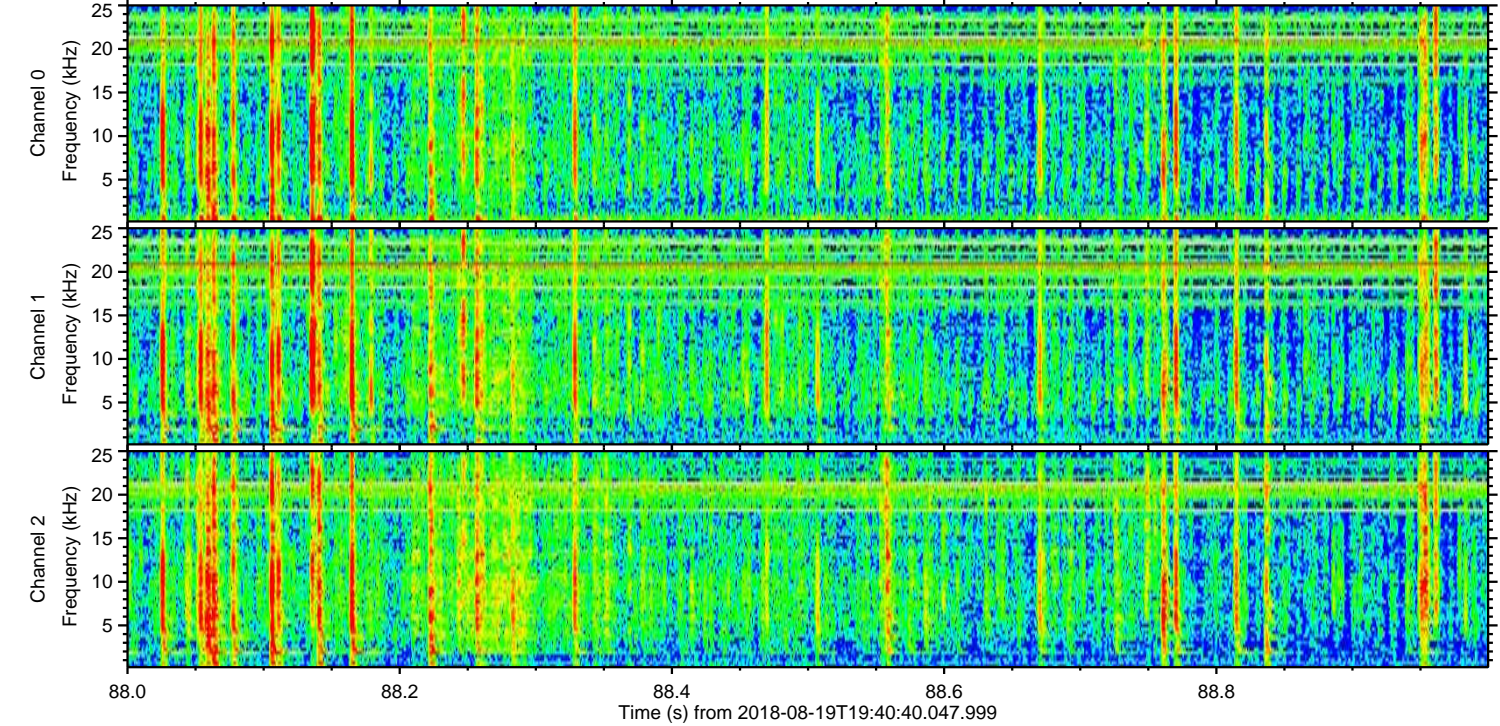
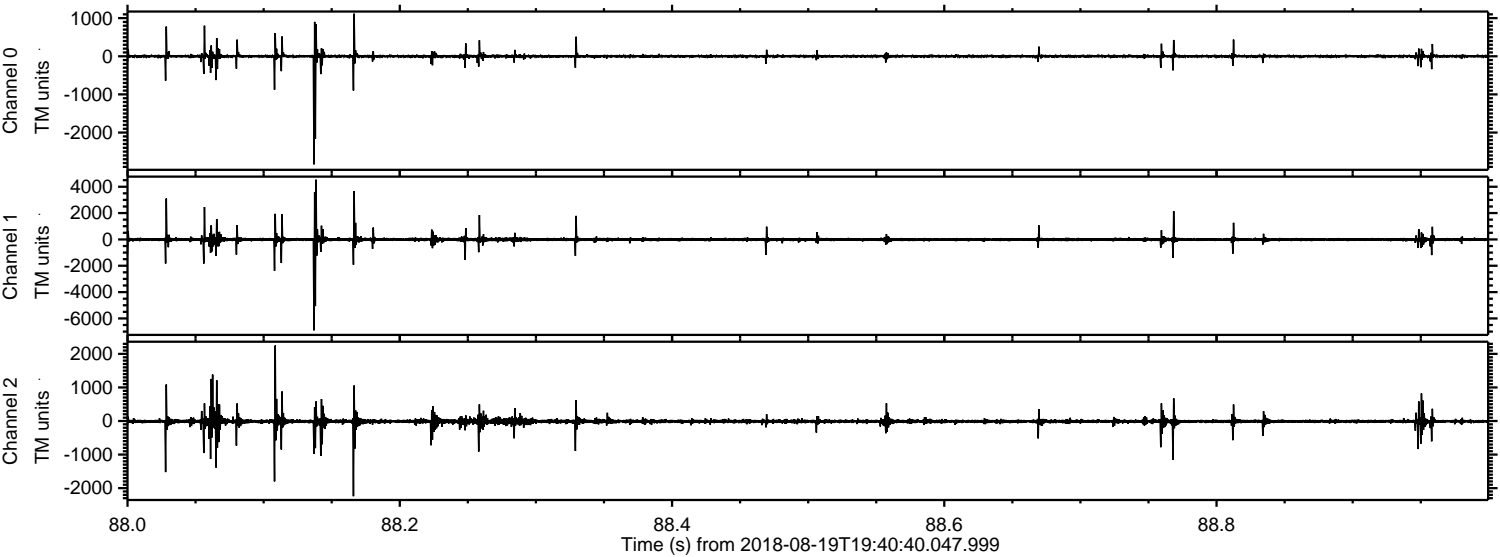


Channel 0
mn: -1263
mx: 1784
 μ : -0.8
 σ : 18.9

Channel 1
mn: -3923
mx: 6996
 μ : -9.4
 σ : 66.1

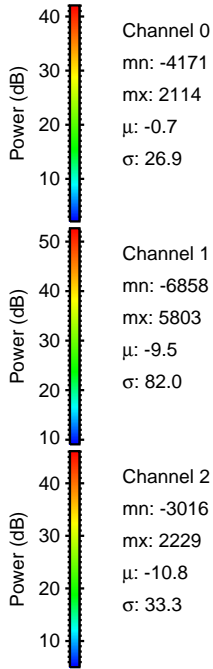
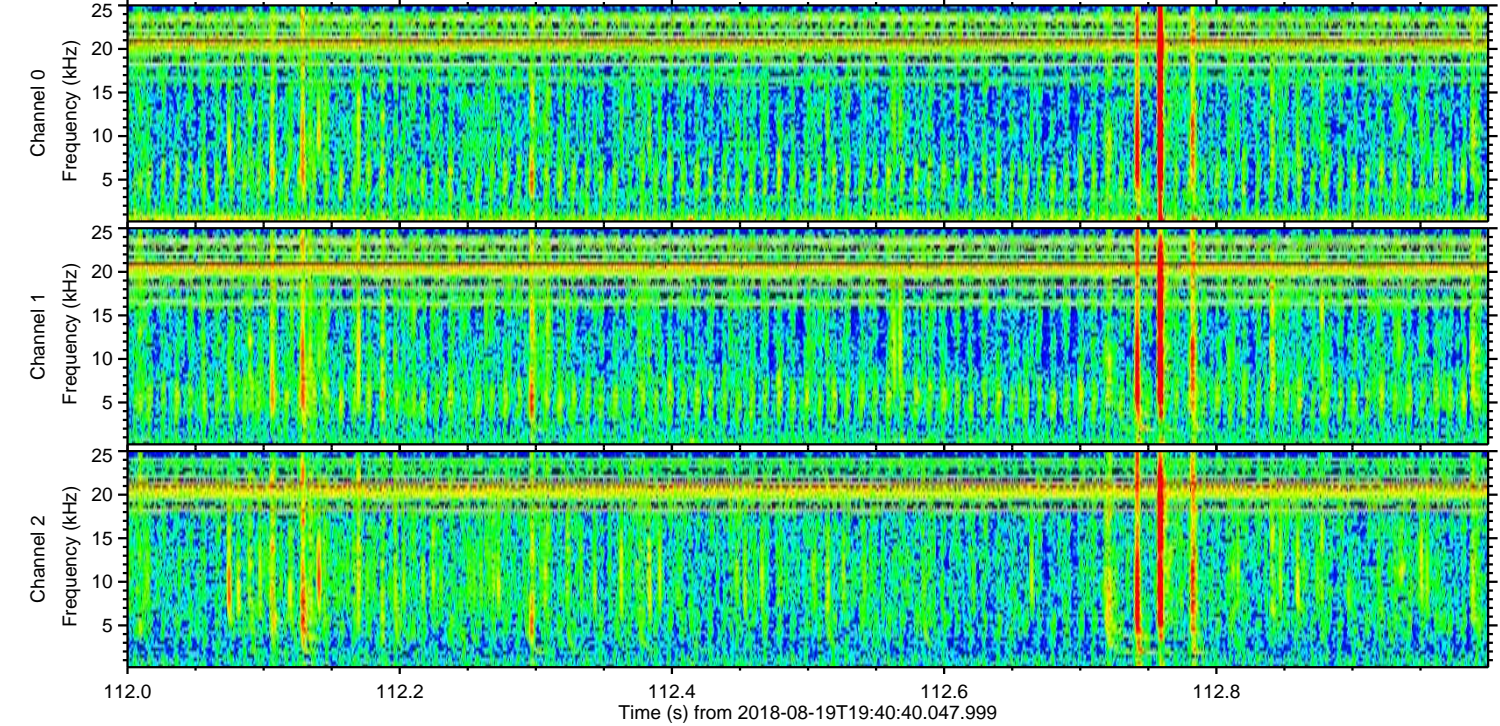
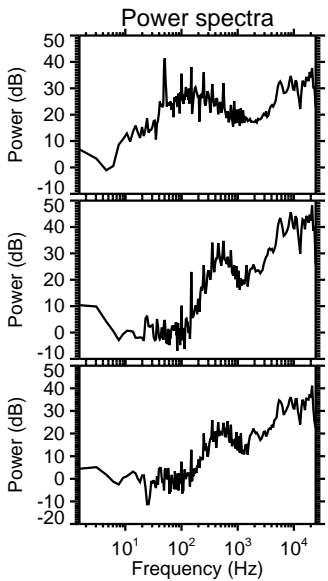
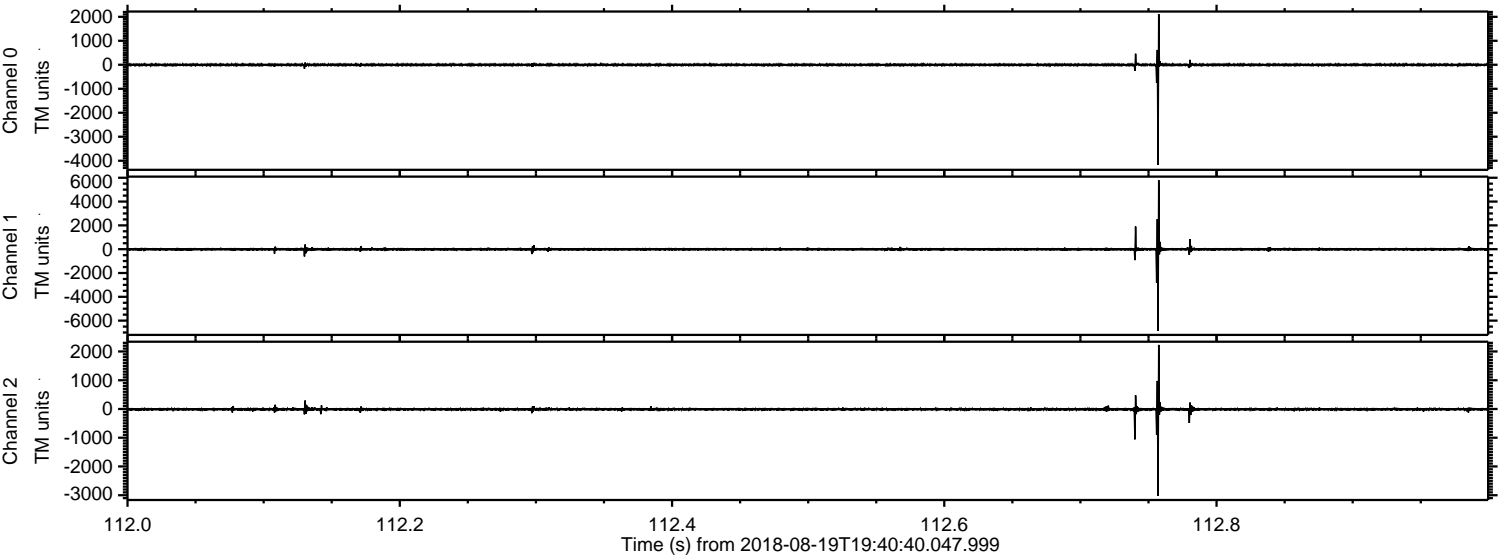
Channel 2
mn: -2830
mx: 1328
 μ : -10.8
 σ : 28.5

Processed Sun Aug 19 21:49:12 2018 by ELM ver.2012-10-06 from 001__elm20180819_194039__dat00.bin

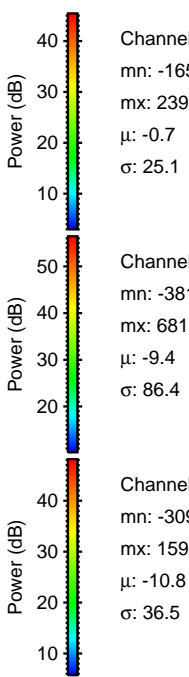
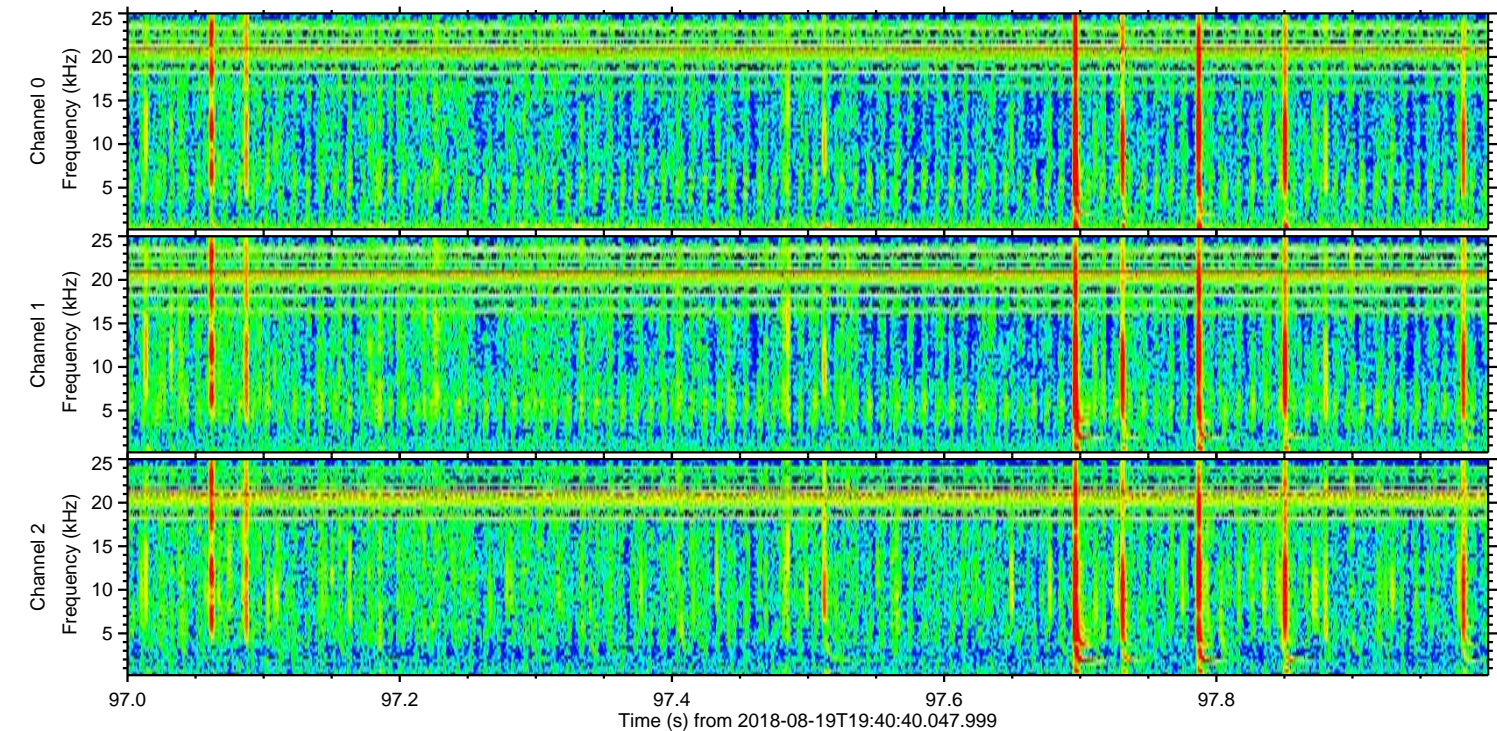
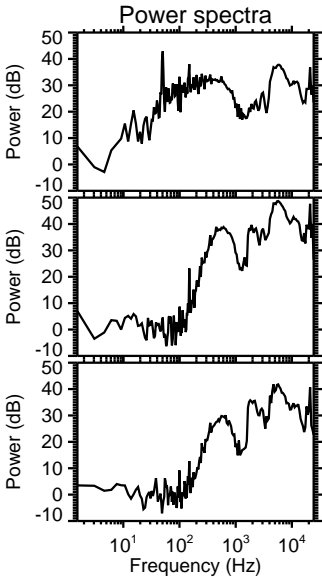
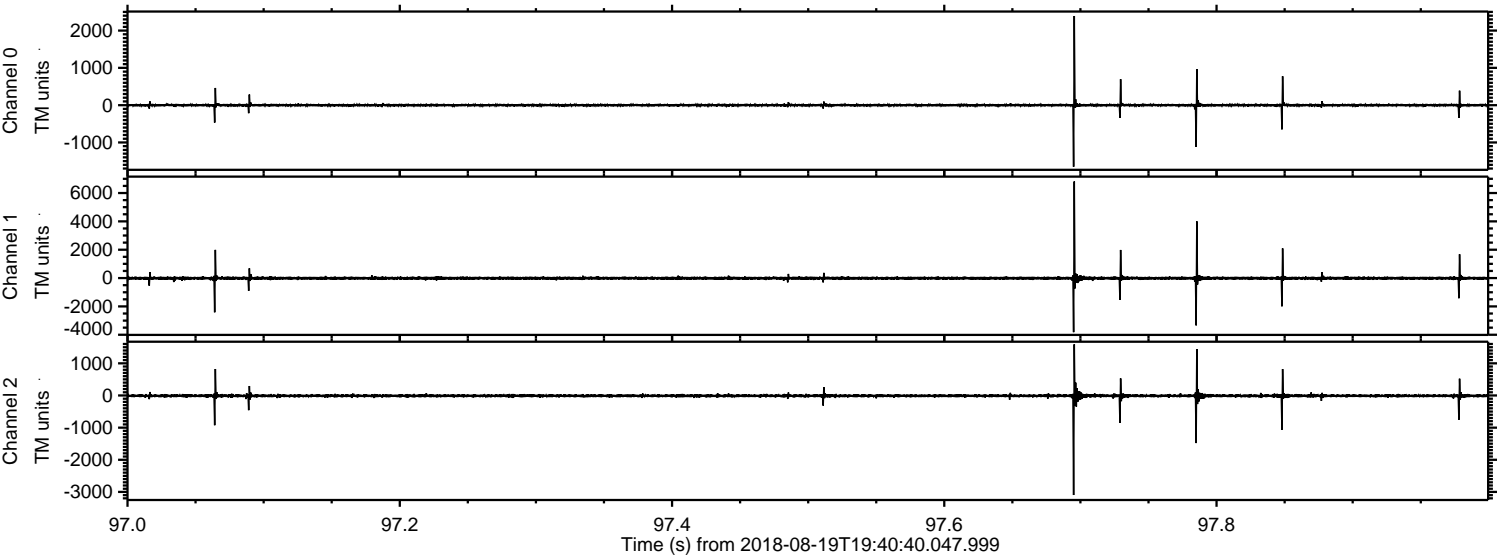


ELMAVAN 3D WAVEFORMS (Measured data sampled at 50 kHz) 51000 packets of 144 samples from 2018-08-19T19:40:40.047.999. Part 113/147

Processed Sun Aug 19 21:49:13 2018 by ELM ver.2012-10-06 from 001__elm20180819_194039__dat00.bin



Processed Sun Aug 19 21:49:13 2018 by ELM ver.2012-10-06 from 001__elm20180819_194039__dat00.bin



Channel 0
mn: -1651
mx: 2391
 μ : -0.7
 σ : 25.1

Channel 1
mn: -3819
mx: 6815
 μ : -9.4
 σ : 86.4

Channel 2
mn: -3096
mx: 1592
 μ : -10.8
 σ : 36.5

Processed Sun Aug 19 21:49:14 2018 by ELM ver.2012-10-06 from 001__elm20180819_194039__dat00.bin

