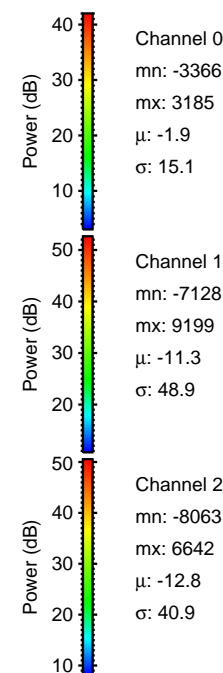
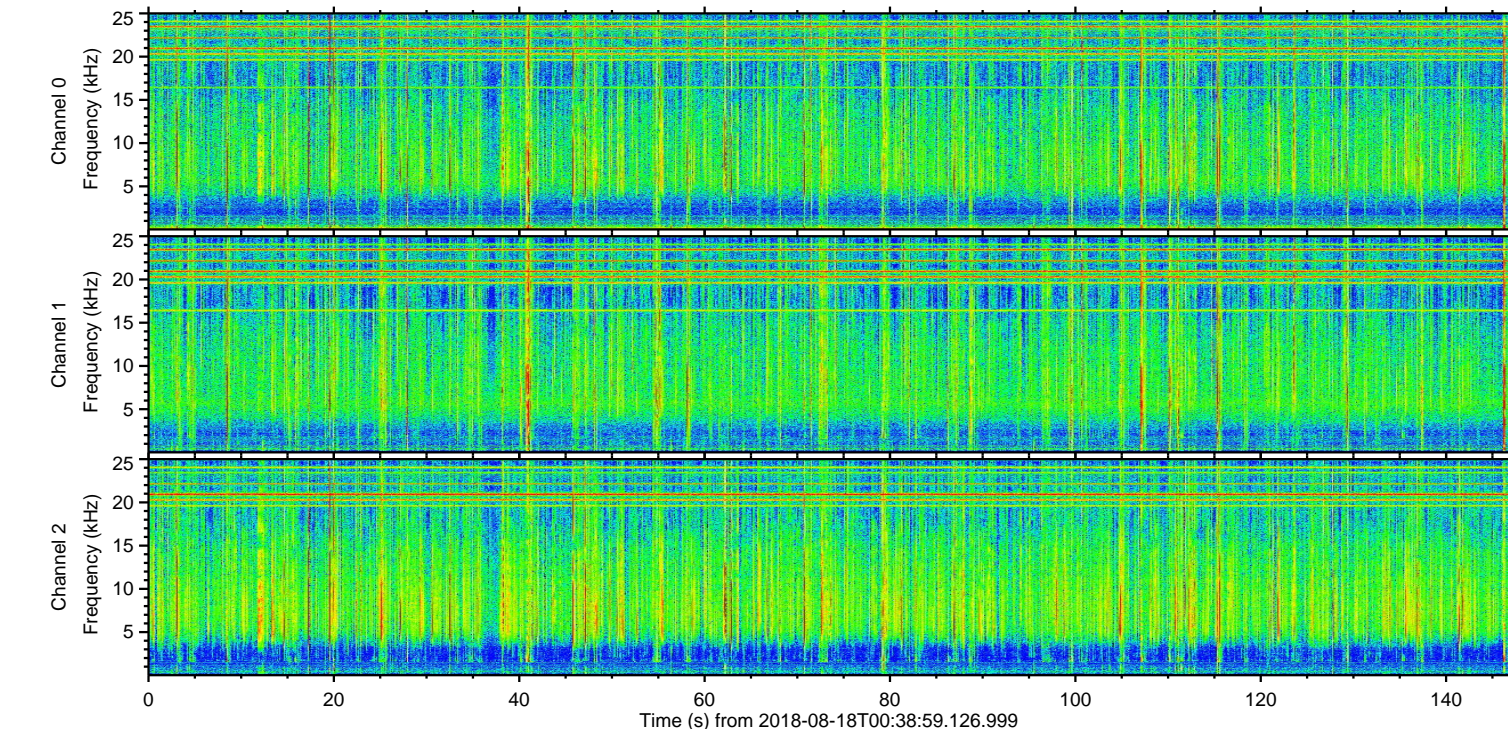
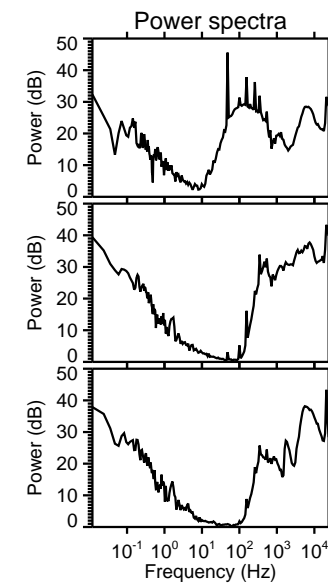
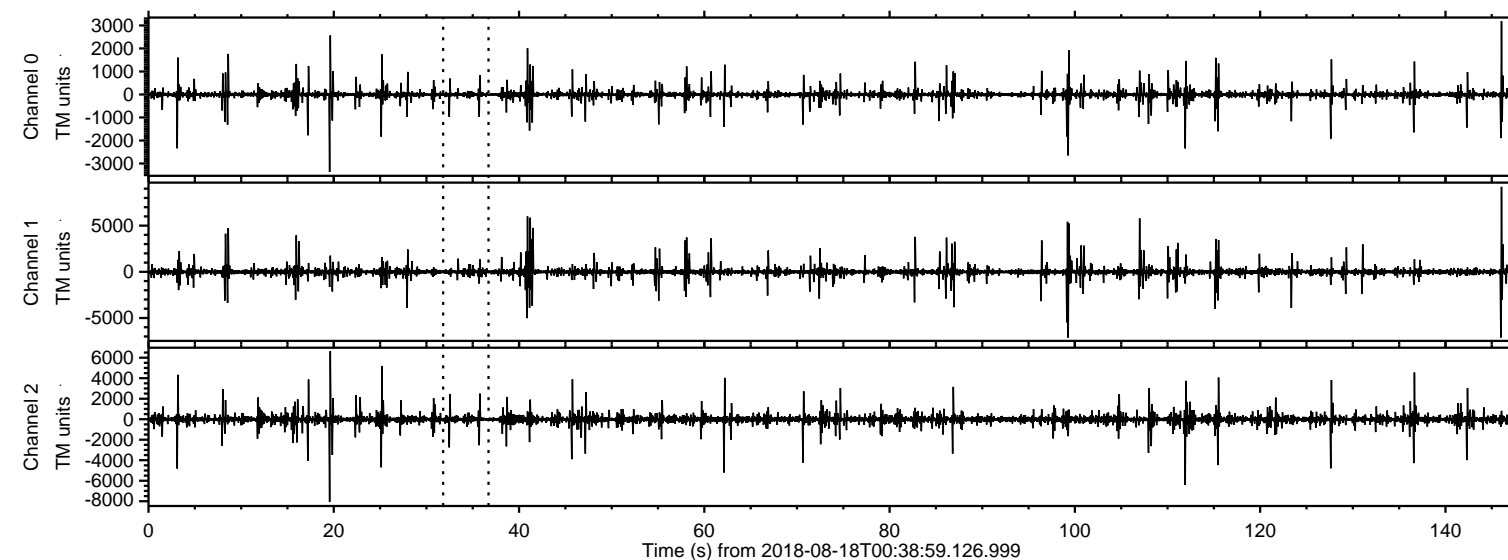


ELMAVAN 3D WAVEFORMS (Measured data sampled at 50 kHz) 50998 packets of 144 samples from 2018-08-18T00:38:59.126.999.

Processed Sat Aug 18 02:46:35 2018 by ELM ver.2012-10-06 from 001__elm20180818_003858__dat00.bin

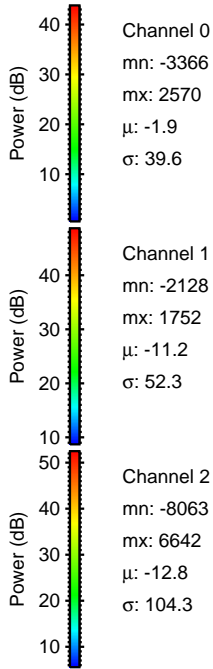
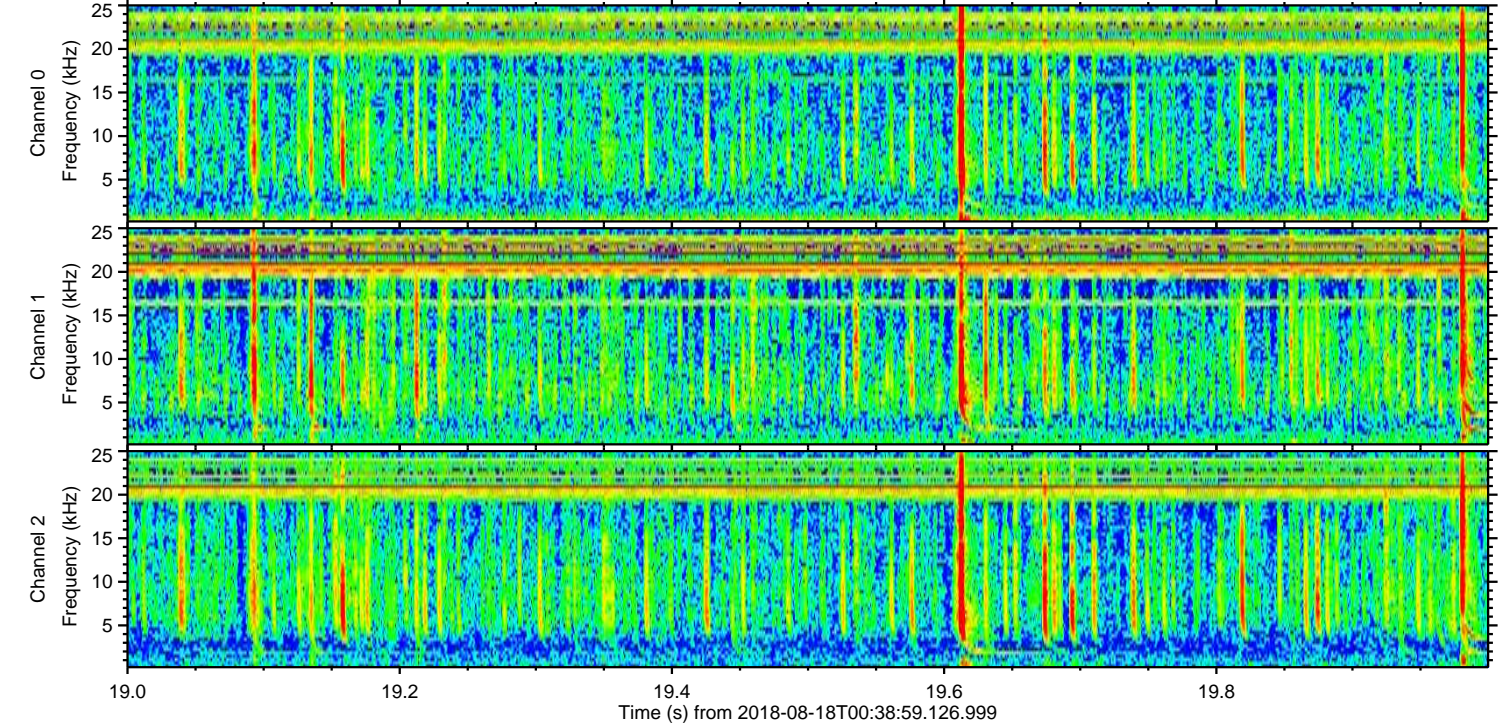
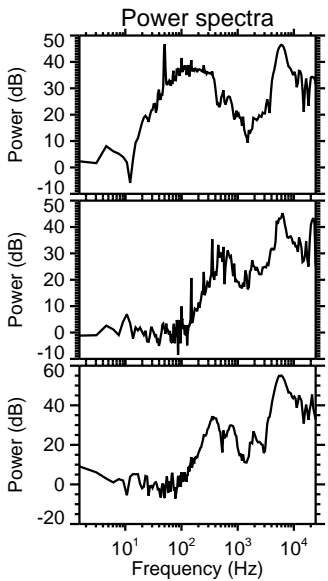
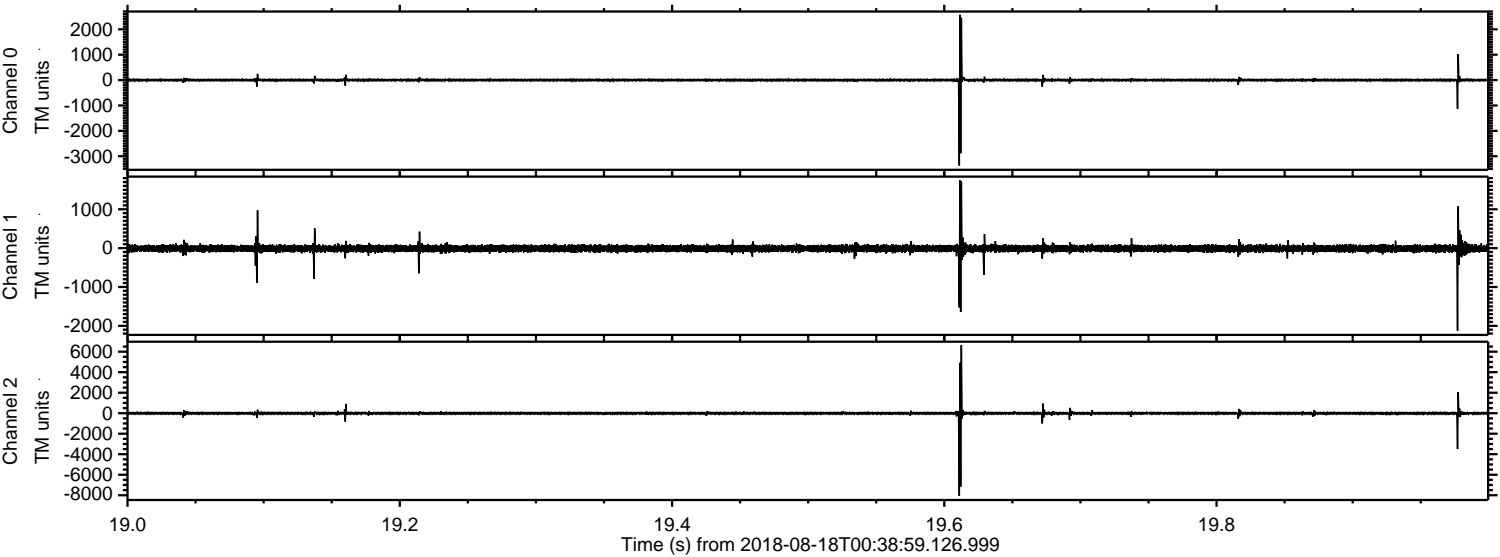


Channel 0
mn: -3366
mx: 3185
 μ : -1.9
 σ : 15.1

Channel 1
mn: -7128
mx: 9199
 μ : -11.3
 σ : 48.9

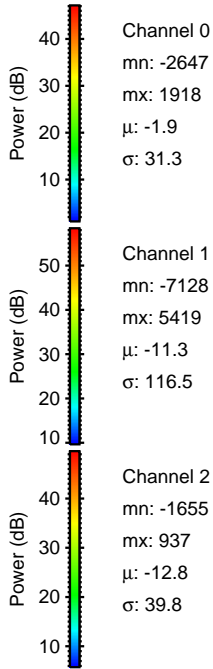
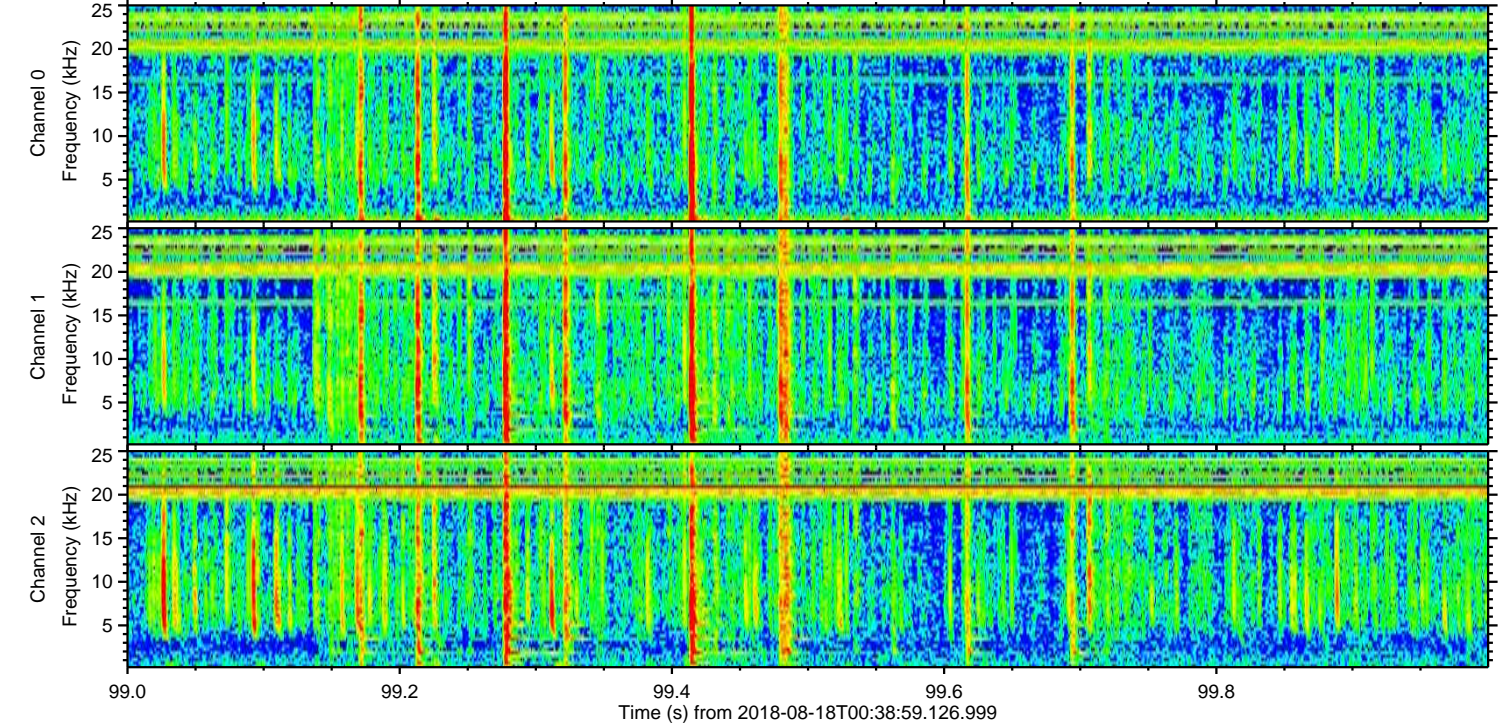
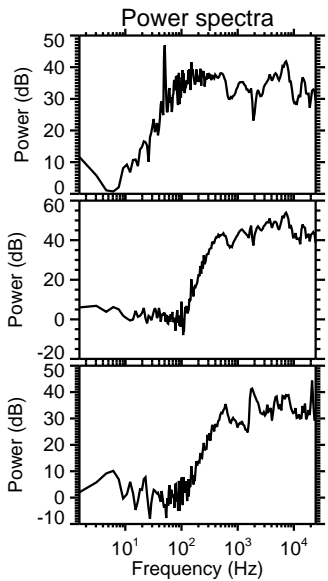
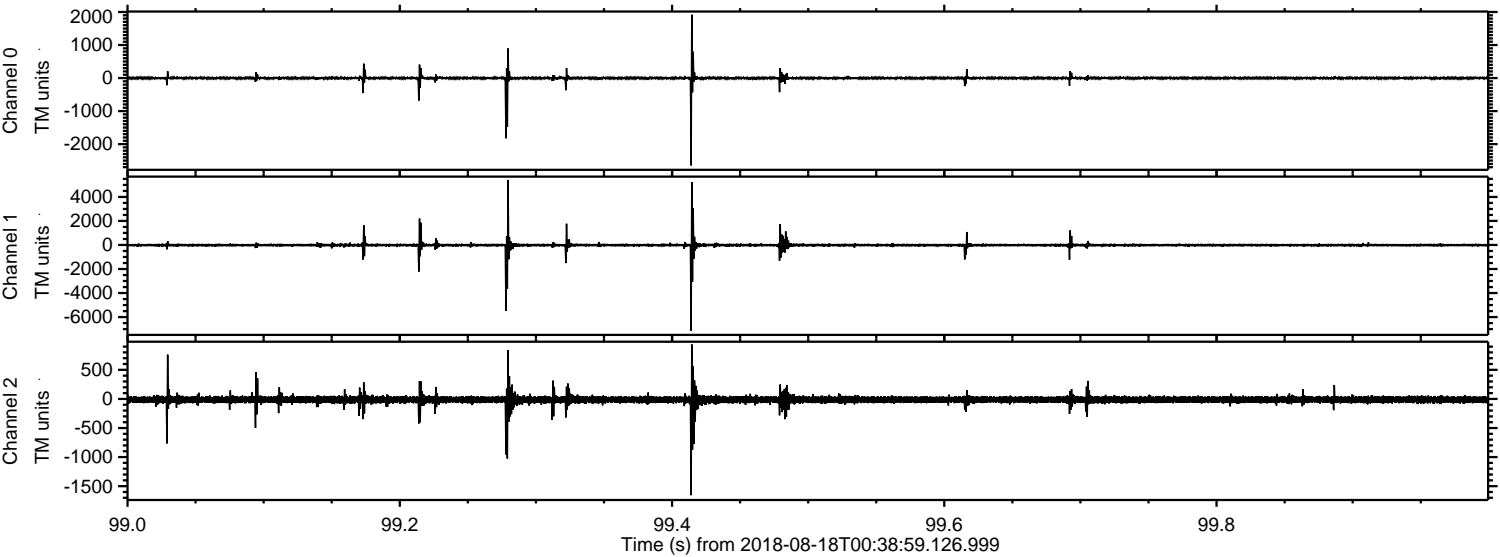
Channel 2
mn: -8063
mx: 6642
 μ : -12.8
 σ : 40.9

Processed Sat Aug 18 02:46:43 2018 by ELM ver.2012-10-06 from 001__elm20180818_003858__dat00.bin



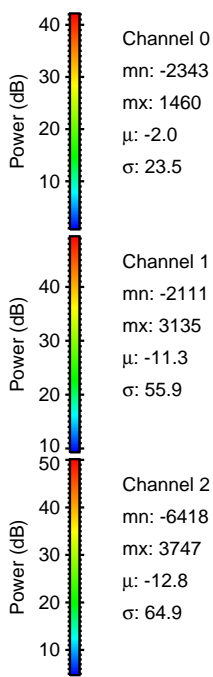
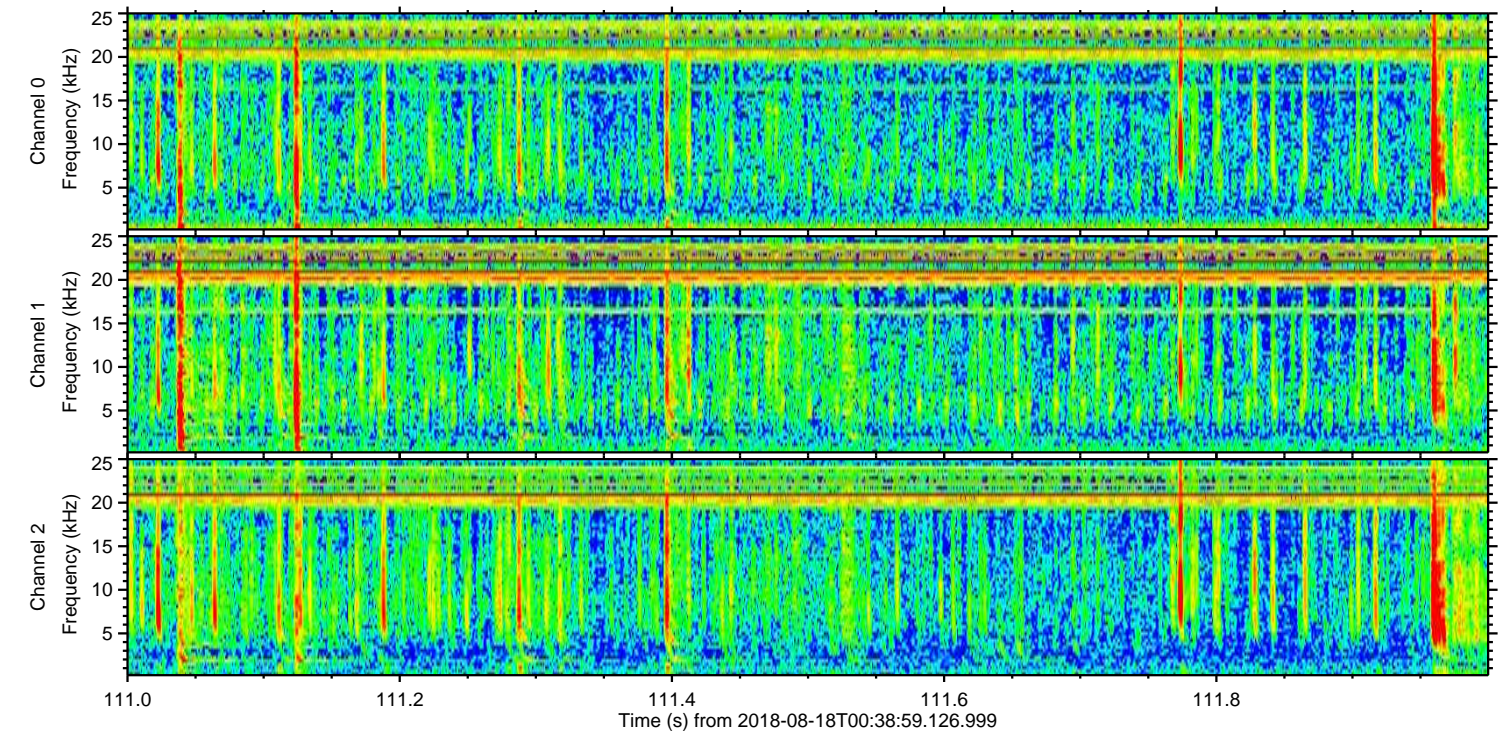
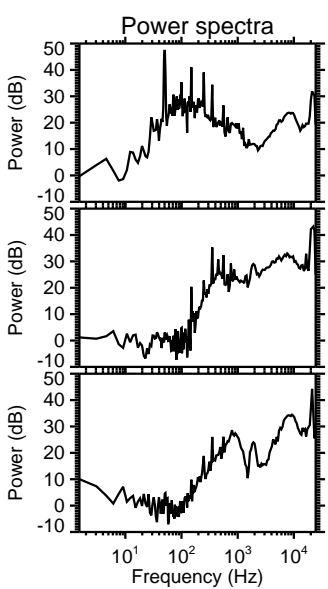
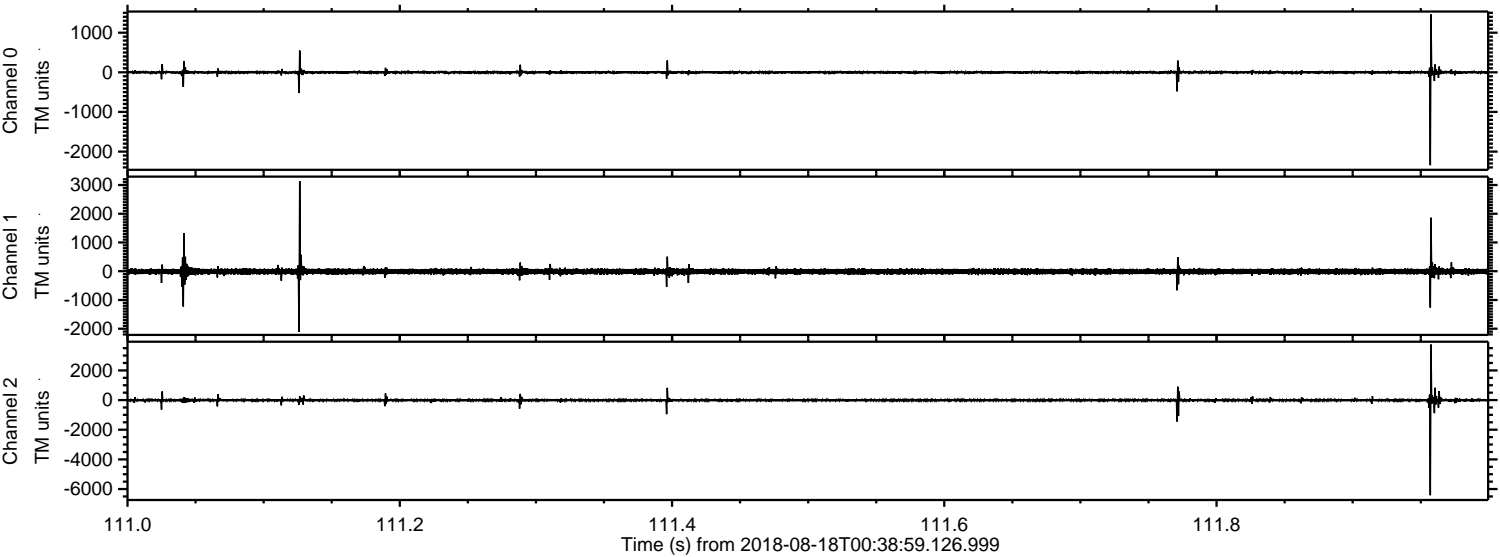
ELMAVAN 3D WAVEFORMS (Measured data sampled at 50 kHz) 50998 packets of 144 samples from 2018-08-18T00:38:59.126.999. Part 100/147

Processed Sat Aug 18 02:46:44 2018 by ELM ver.2012-10-06 from 001__elm20180818_003858__dat00.bin

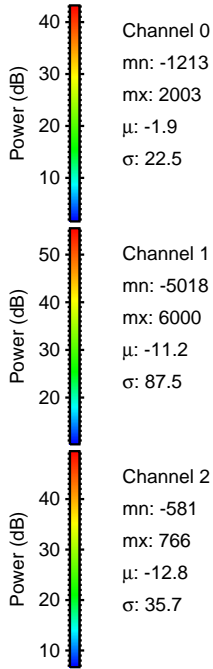
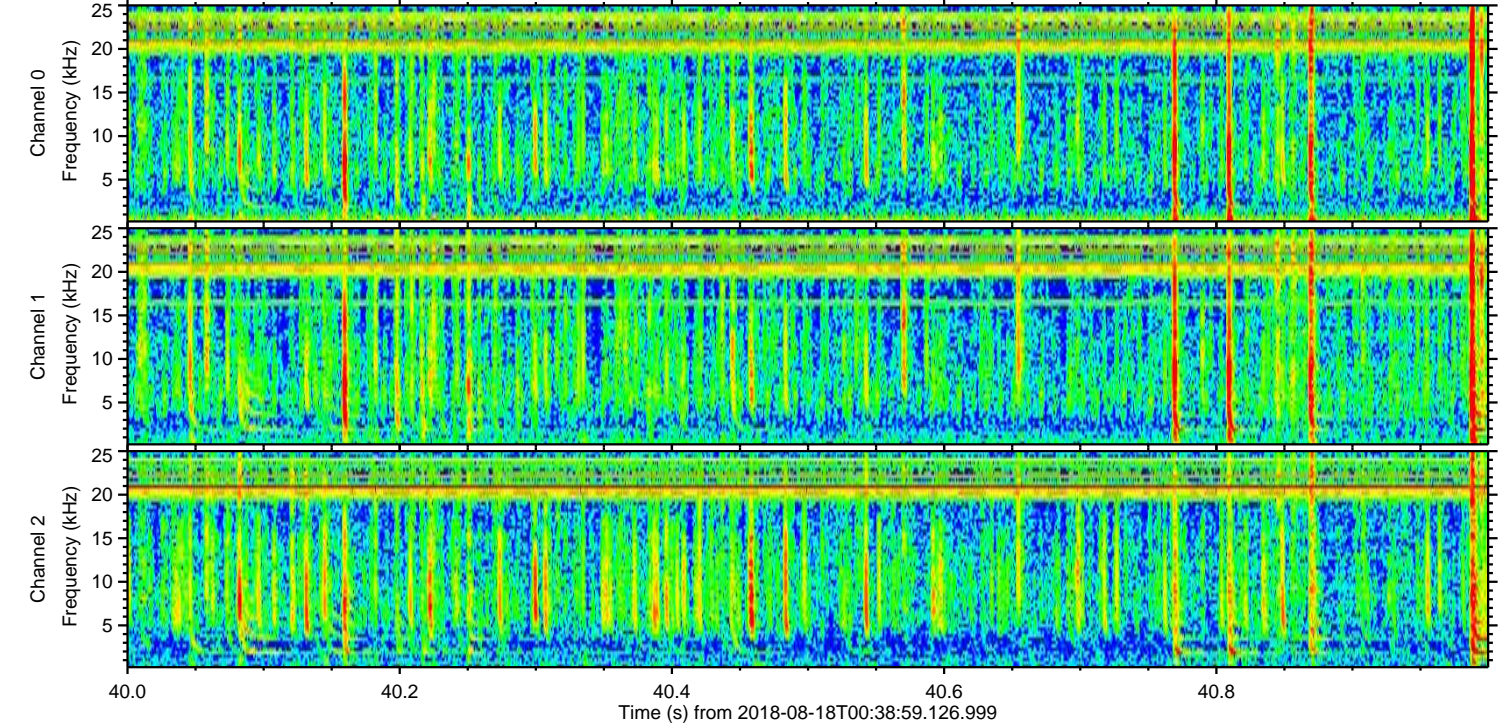
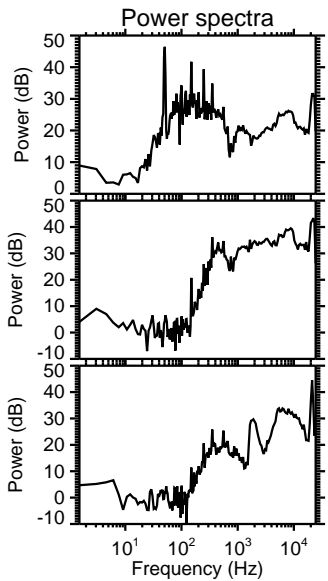
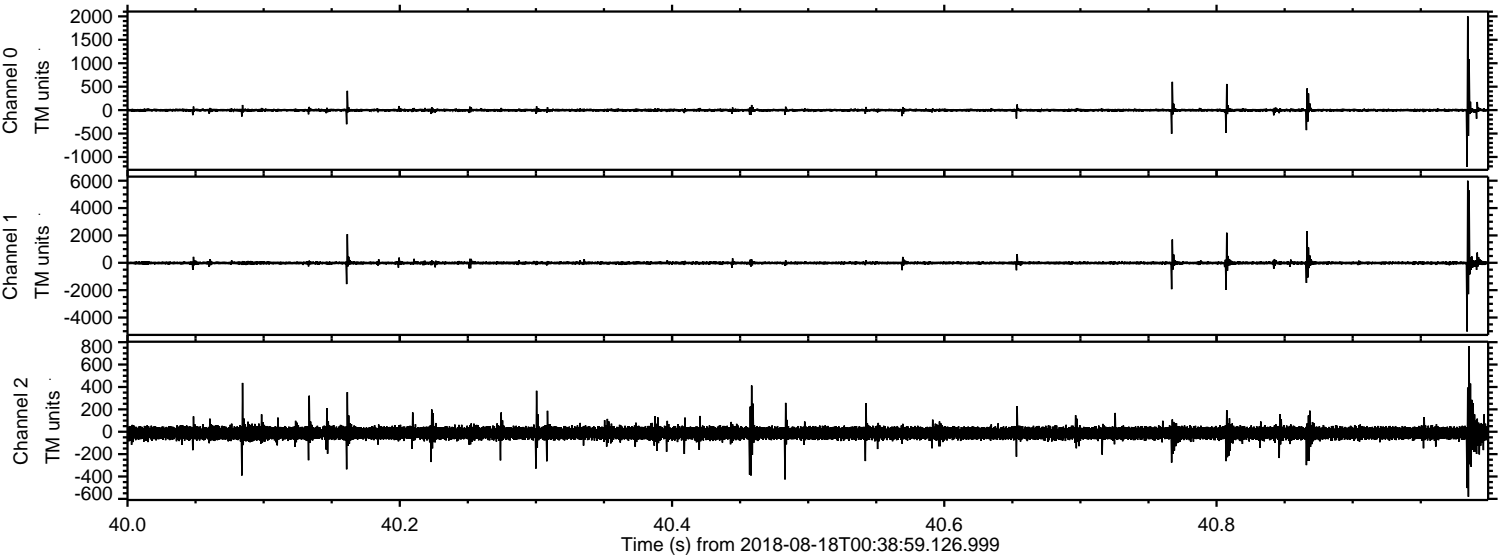


ELMAVAN 3D WAVEFORMS (Measured data sampled at 50 kHz) 50998 packets of 144 samples from 2018-08-18T00:38:59.126.999. Part 112/147

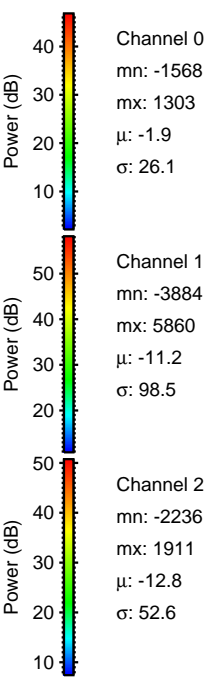
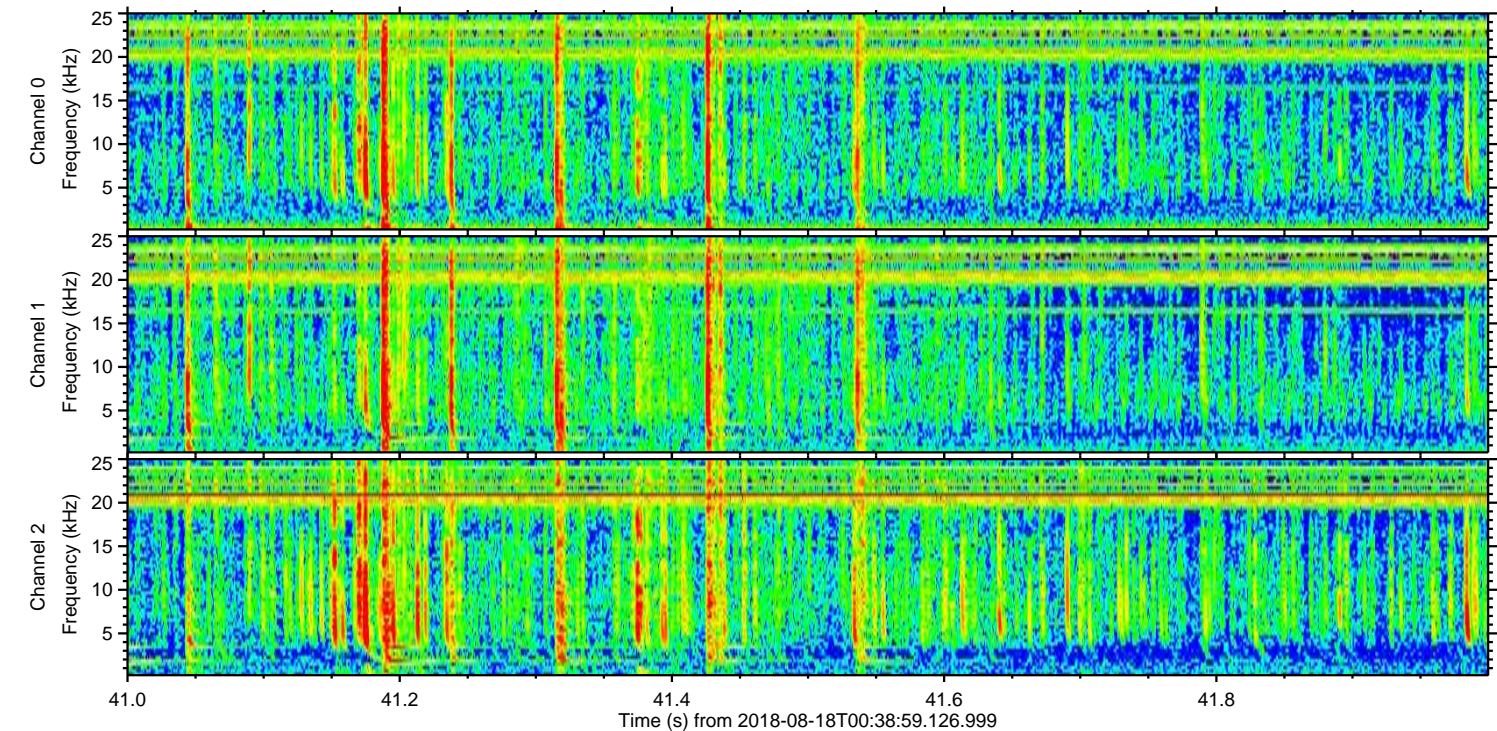
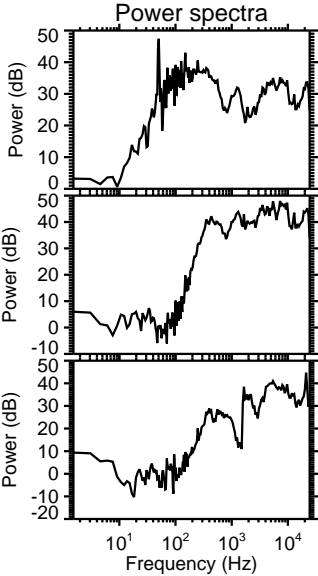
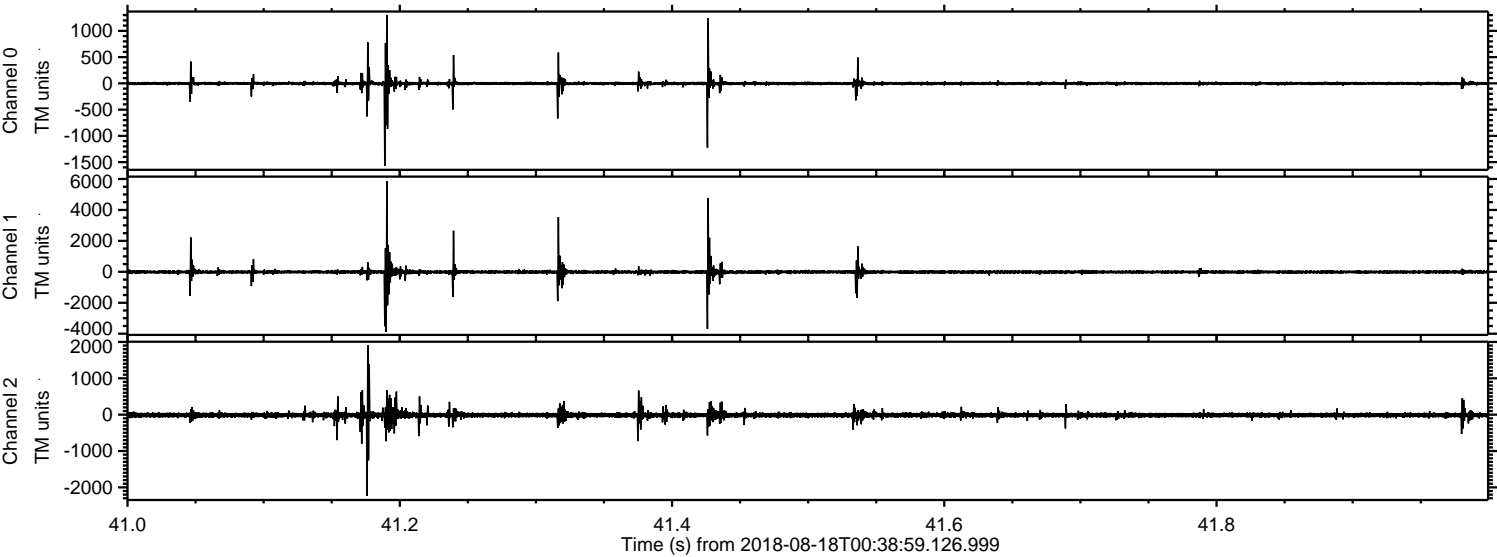
Processed Sat Aug 18 02:46:45 2018 by ELM ver.2012-10-06 from 001__elm20180818_003858__dat00.bin



Processed Sat Aug 18 02:46:46 2018 by ELM ver.2012-10-06 from 001__elm20180818_003858__dat00.bin



Processed Sat Aug 18 02:46:47 2018 by ELM ver.2012-10-06 from 001__elm20180818_003858__dat00.bin



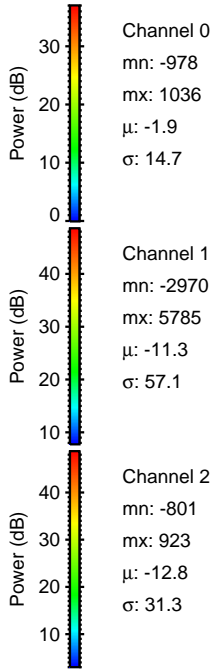
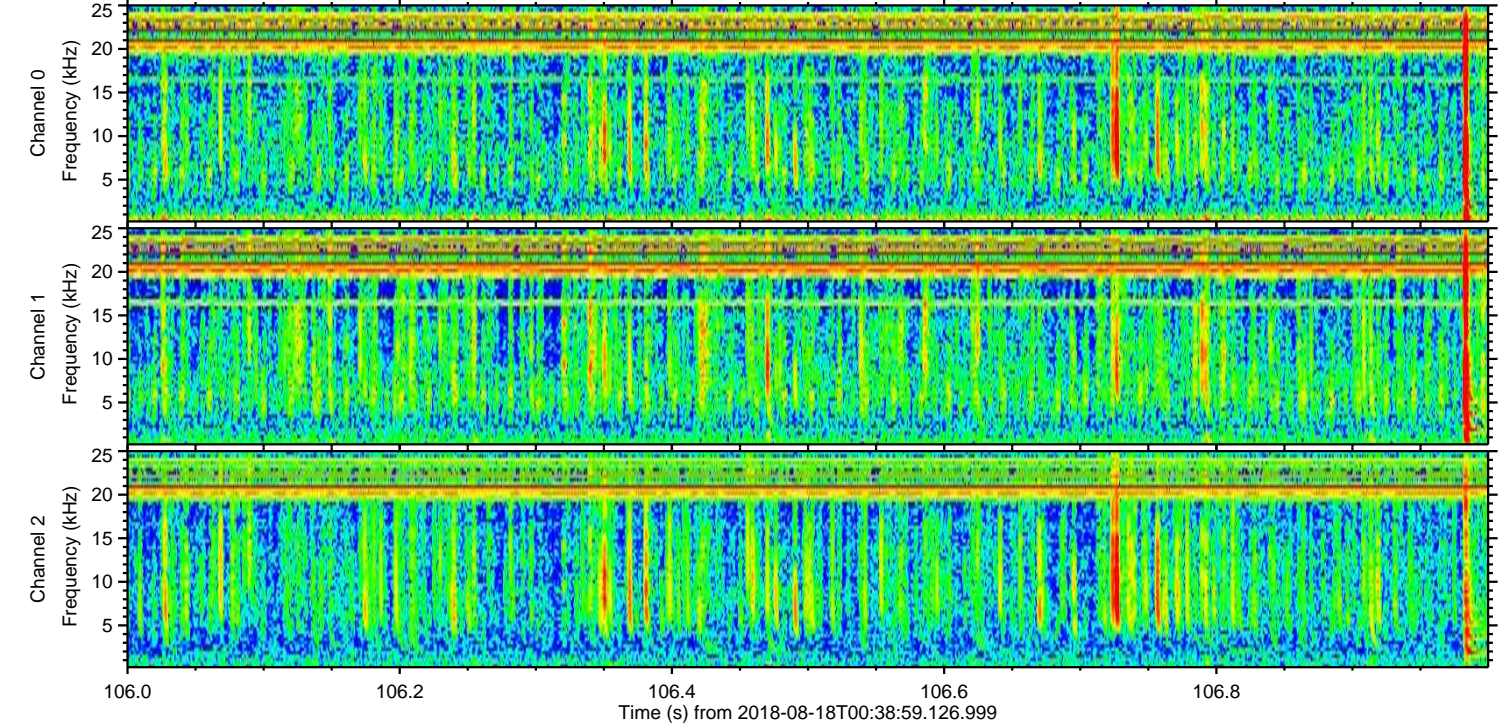
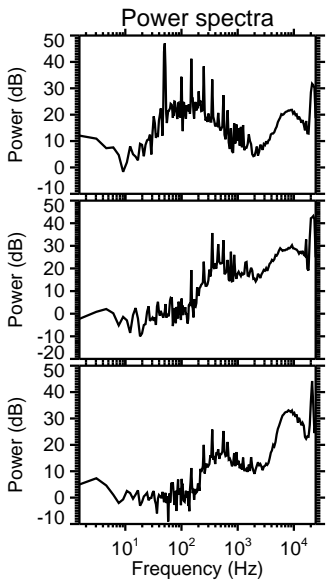
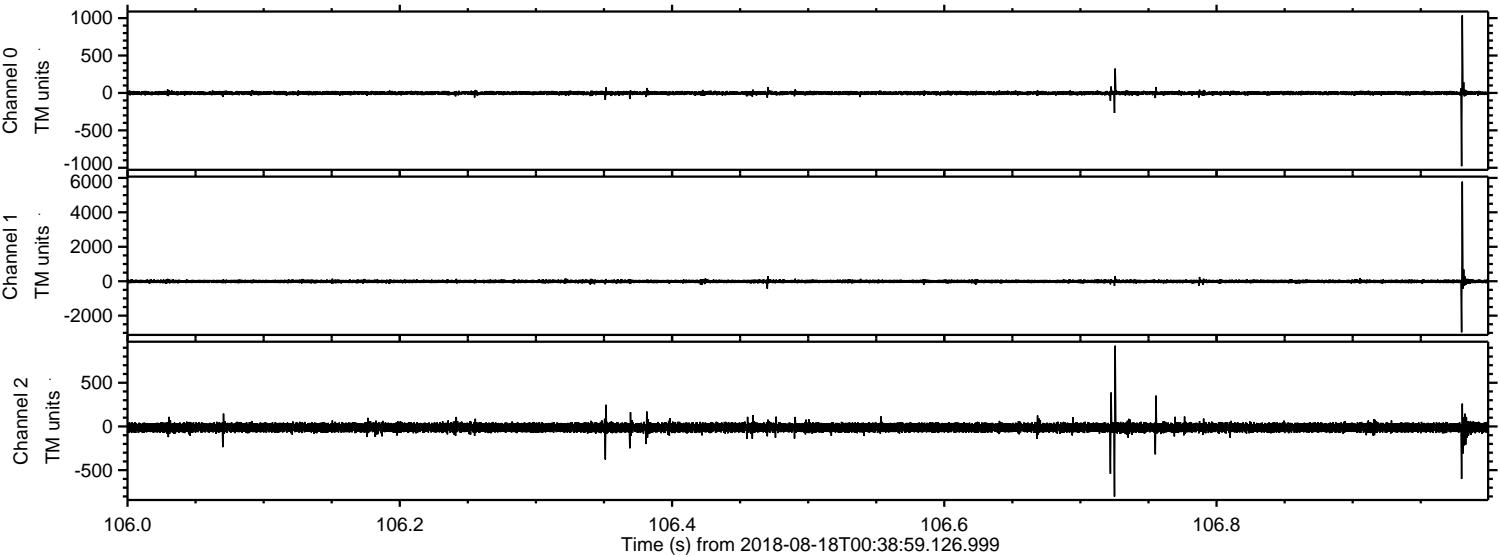
Channel 0
mn: -1568
mx: 1303
 μ : -1.9
 σ : 26.1

Channel 1
mn: -3884
mx: 5860
 μ : -11.2
 σ : 98.5

Channel 2
mn: -2236
mx: 1911
 μ : -12.8
 σ : 52.6

ELMAVAN 3D WAVEFORMS (Measured data sampled at 50 kHz) 50998 packets of 144 samples from 2018-08-18T00:38:59.126.999. Part 107/147

Processed Sat Aug 18 02:46:47 2018 by ELM ver.2012-10-06 from 001__elm20180818_003858__dat00.bin

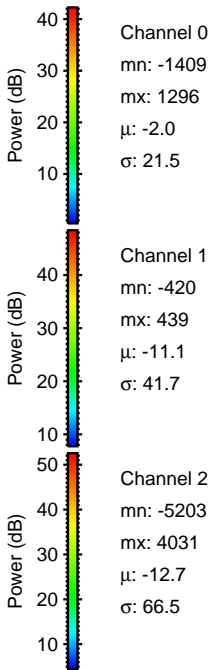
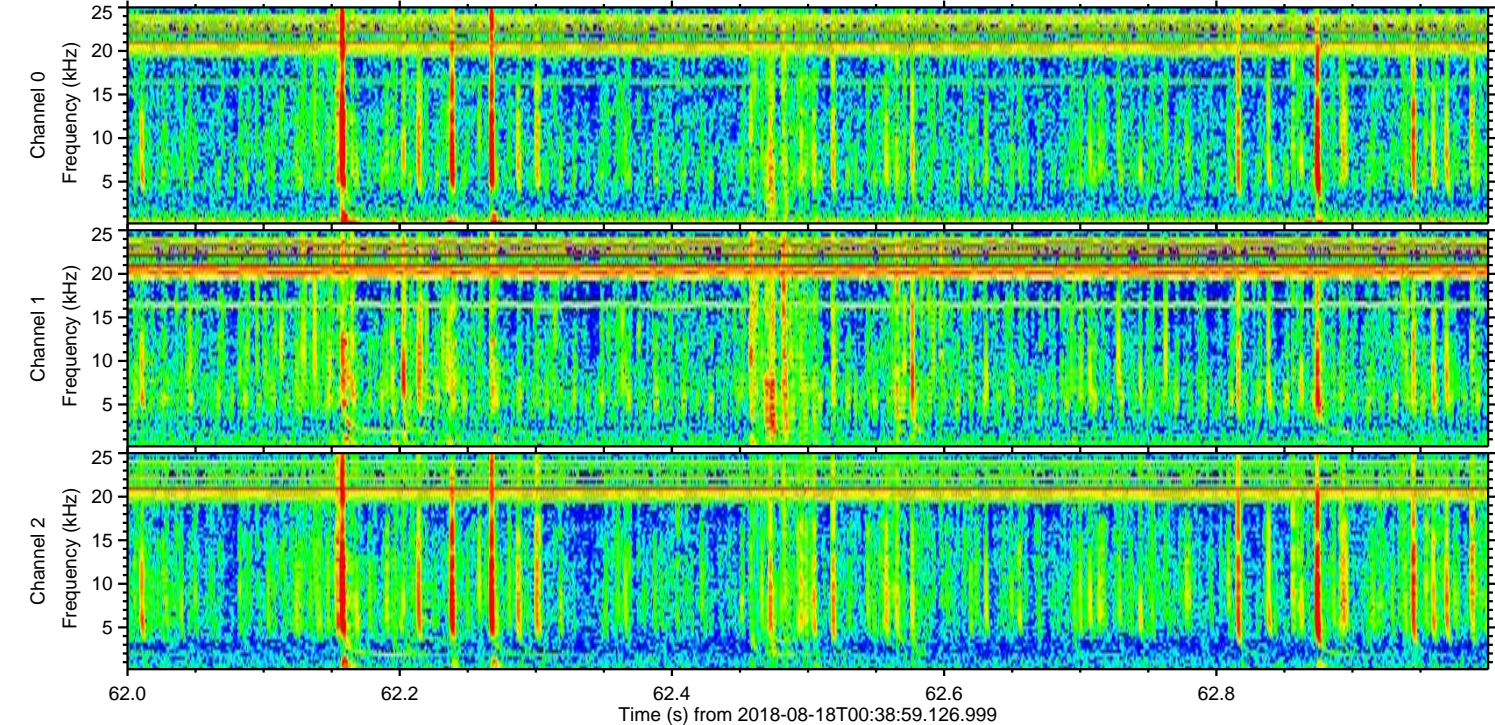
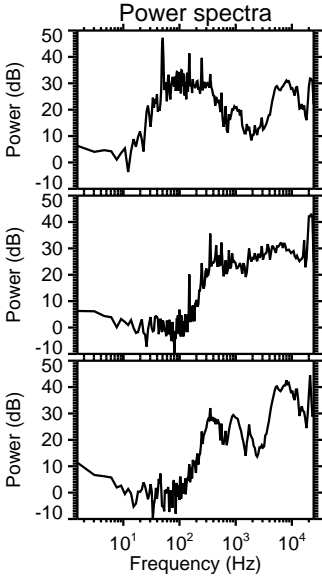
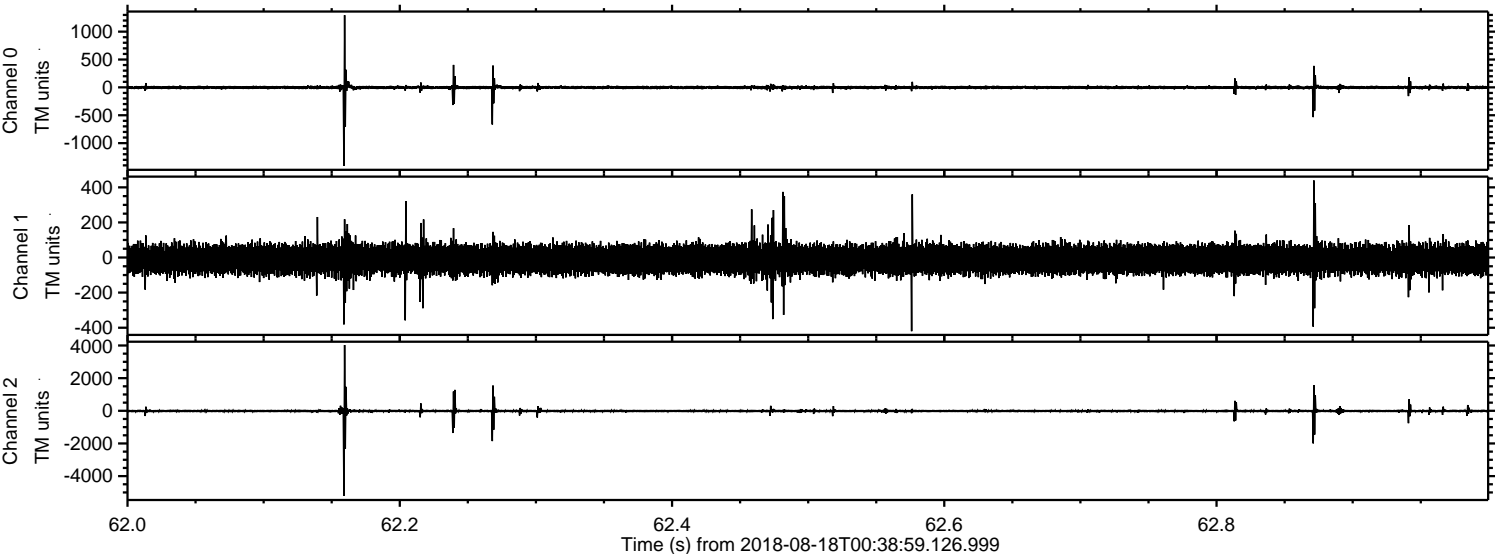


Channel 0
mn: -978
mx: 1036
 μ : -1.9
 σ : 14.7

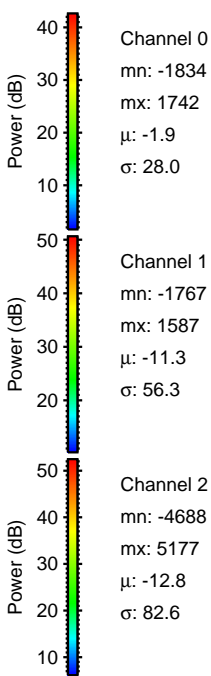
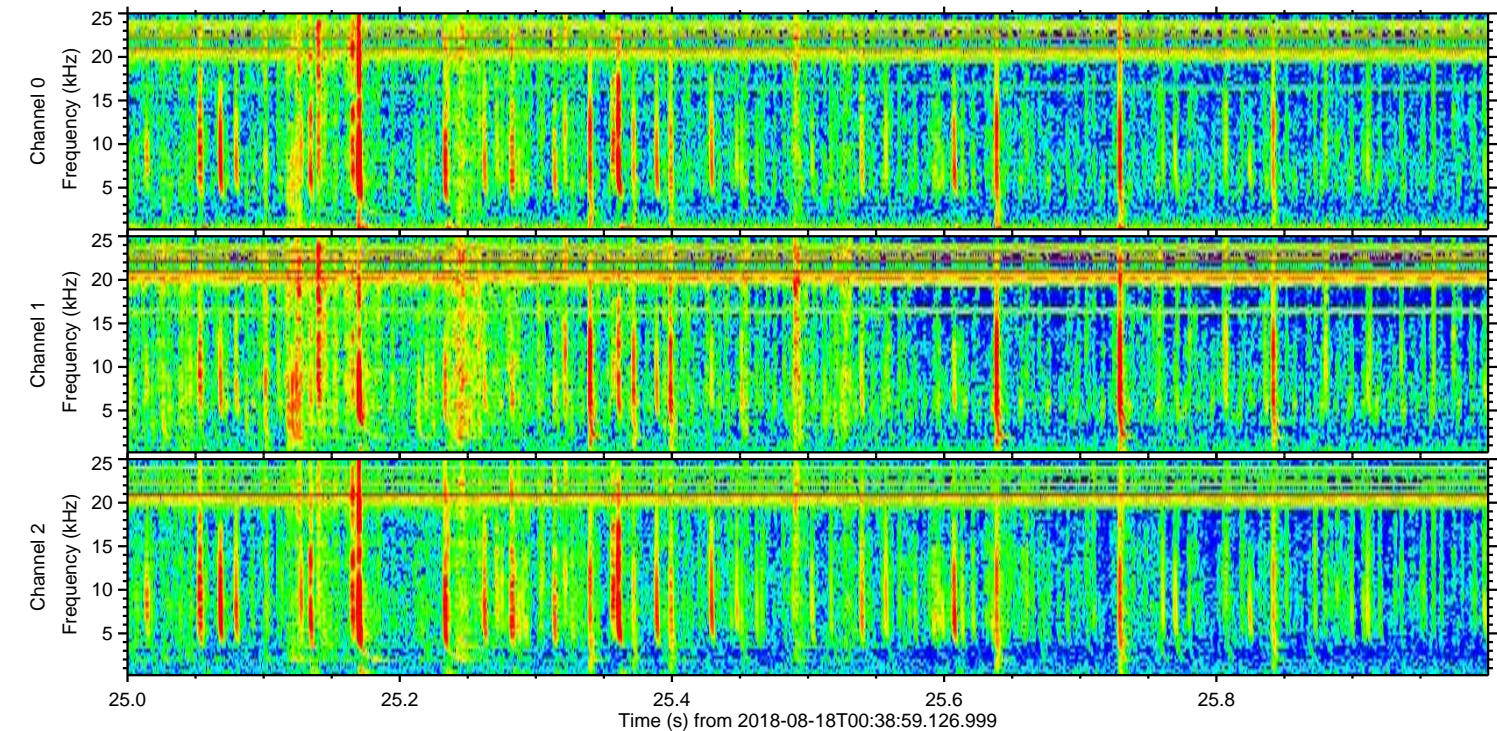
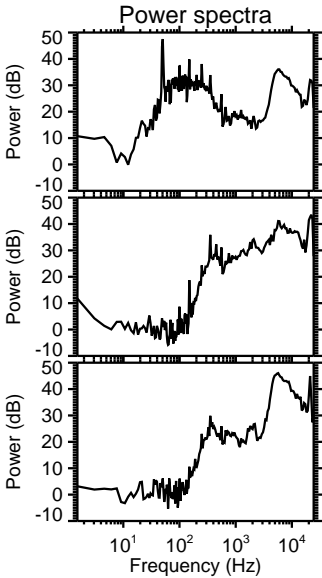
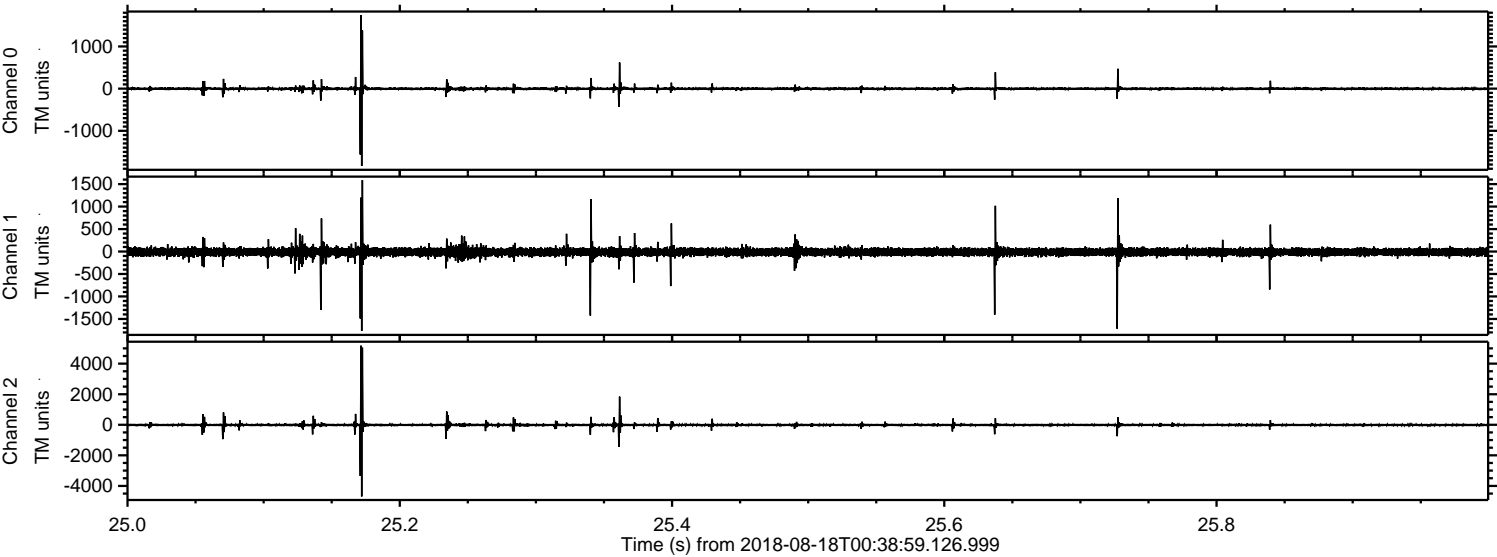
Channel 1
mn: -2970
mx: 5785
 μ : -11.3
 σ : 57.1

Channel 2
mn: -801
mx: 923
 μ : -12.8
 σ : 31.3

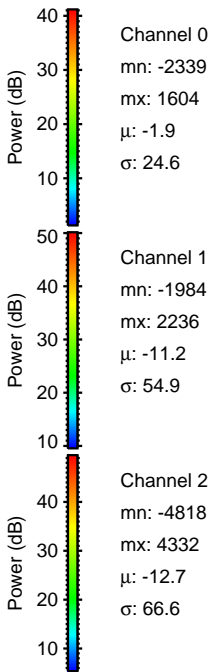
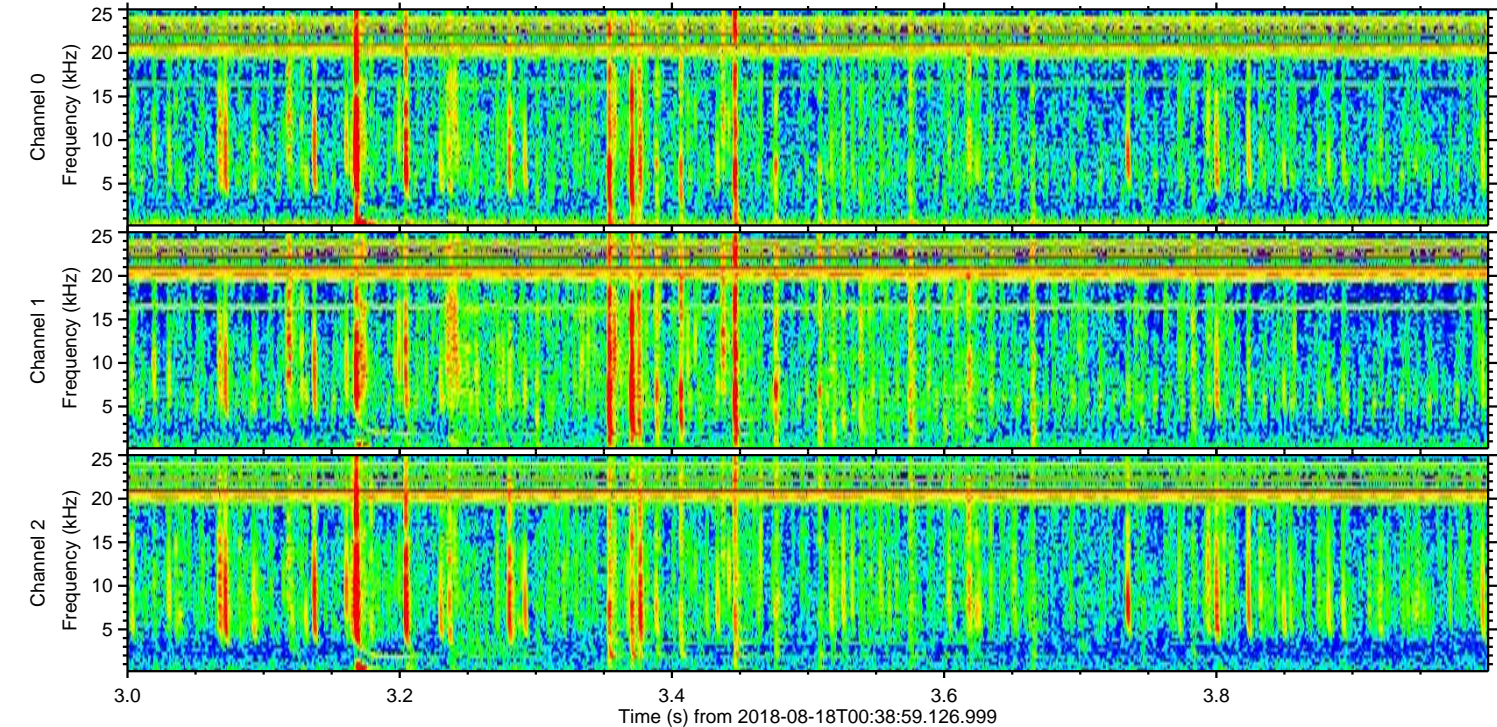
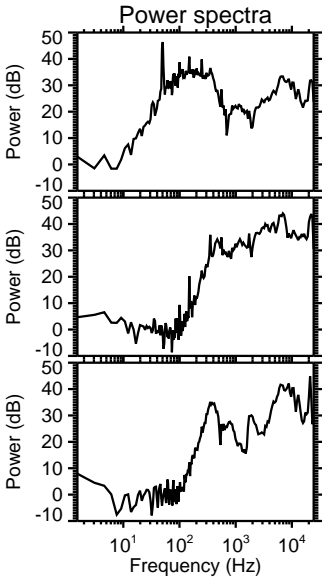
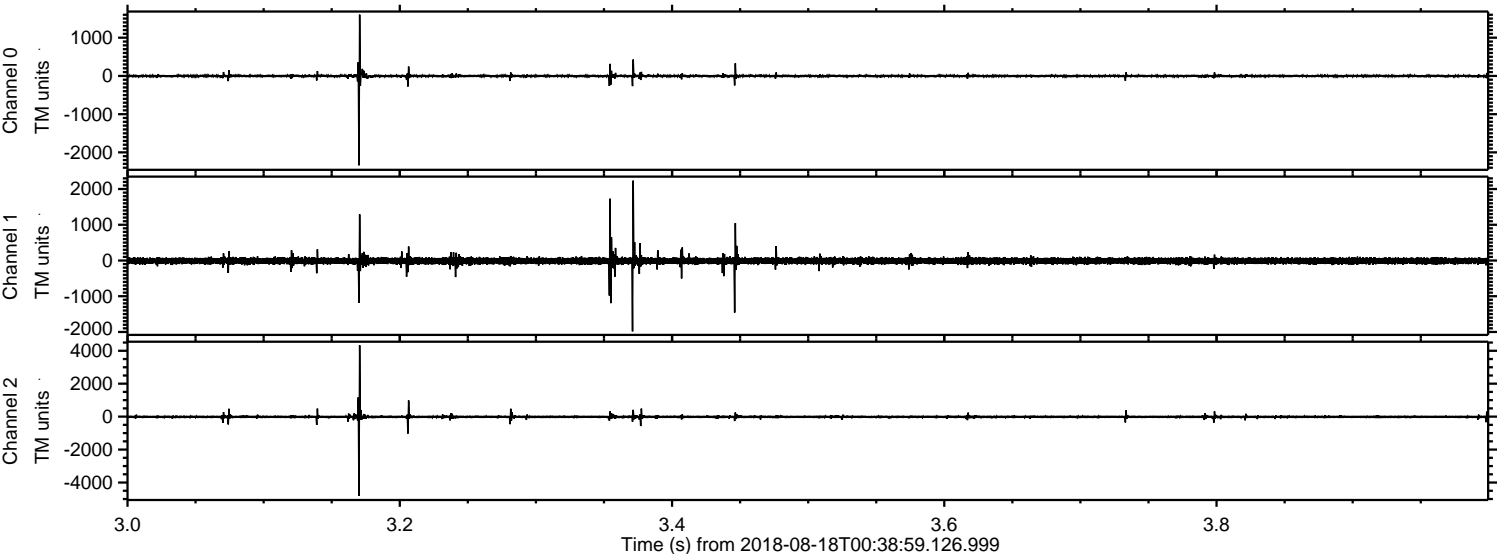
Processed Sat Aug 18 02:46:48 2018 by ELM ver.2012-10-06 from 001__elm20180818_003858__dat00.bin



Processed Sat Aug 18 02:46:49 2018 by ELM ver.2012-10-06 from 001__elm20180818_003858__dat00.bin



Processed Sat Aug 18 02:46:50 2018 by ELM ver.2012-10-06 from 001__elm20180818_003858__dat00.bin



Processed Sat Aug 18 02:46:51 2018 by ELM ver.2012-10-06 from 001__elm20180818_003858__dat00.bin

