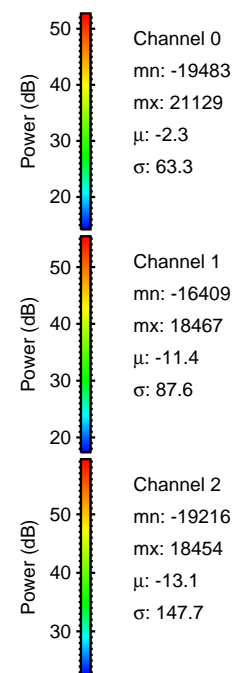
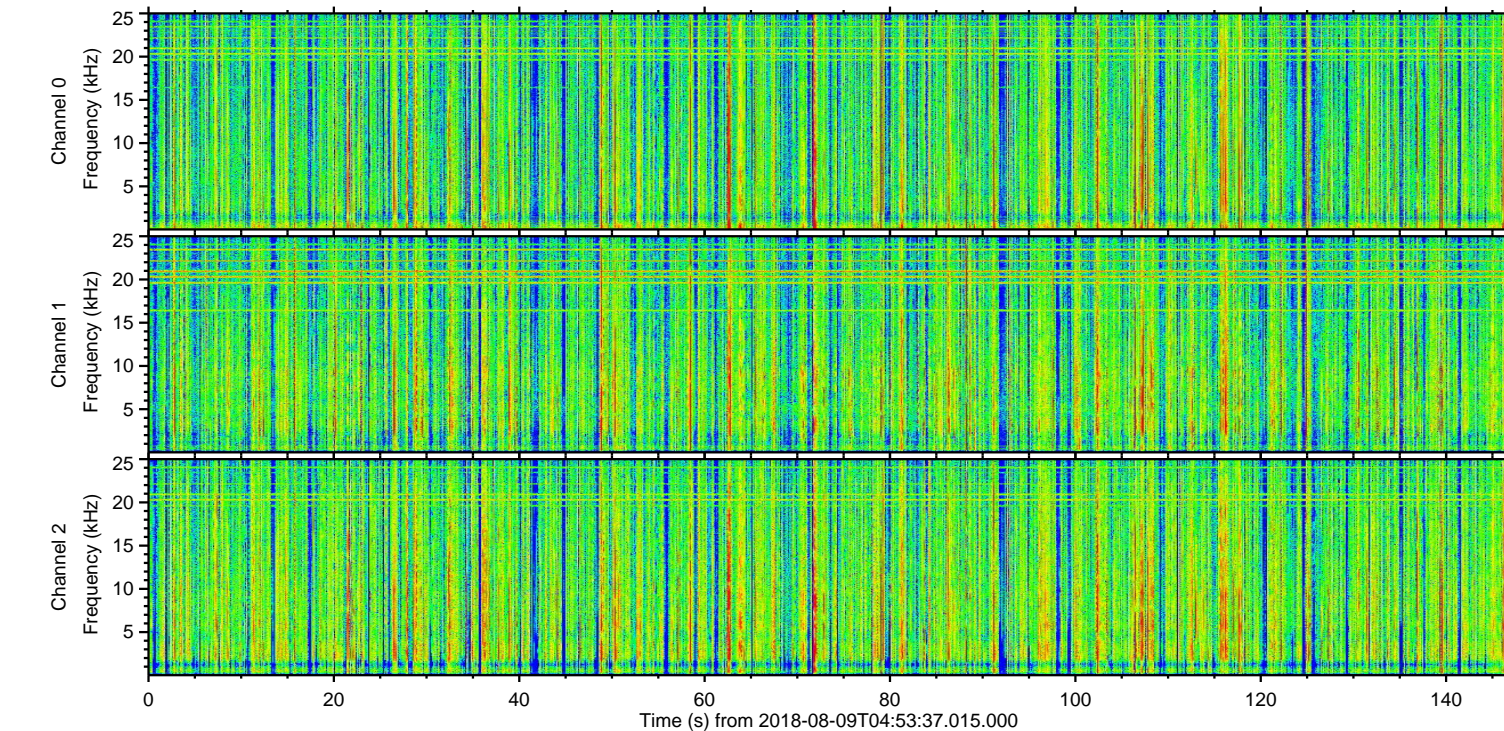
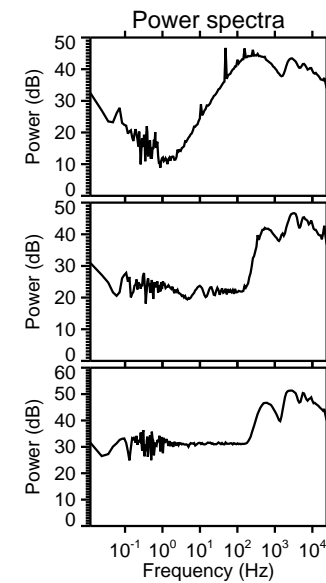
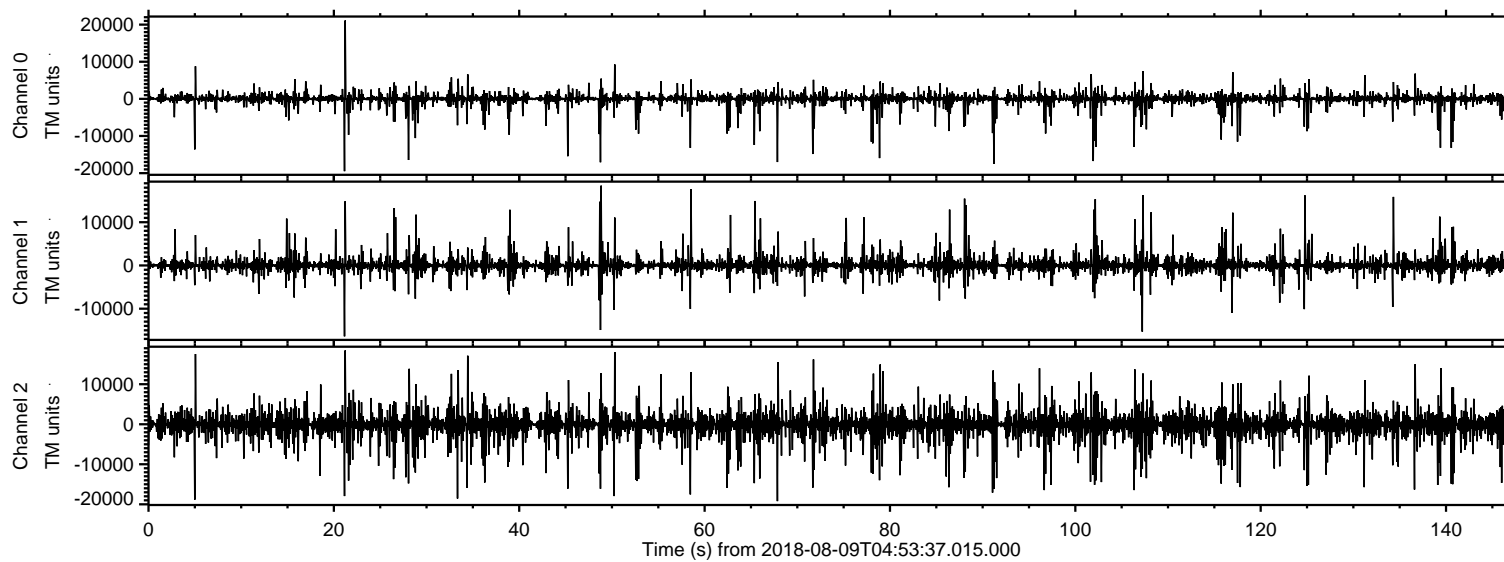
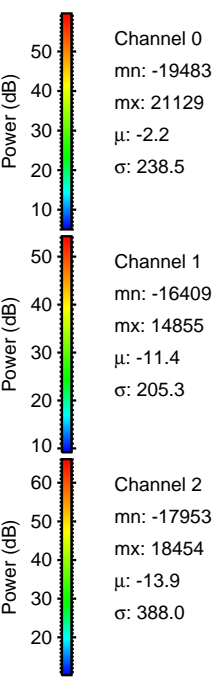
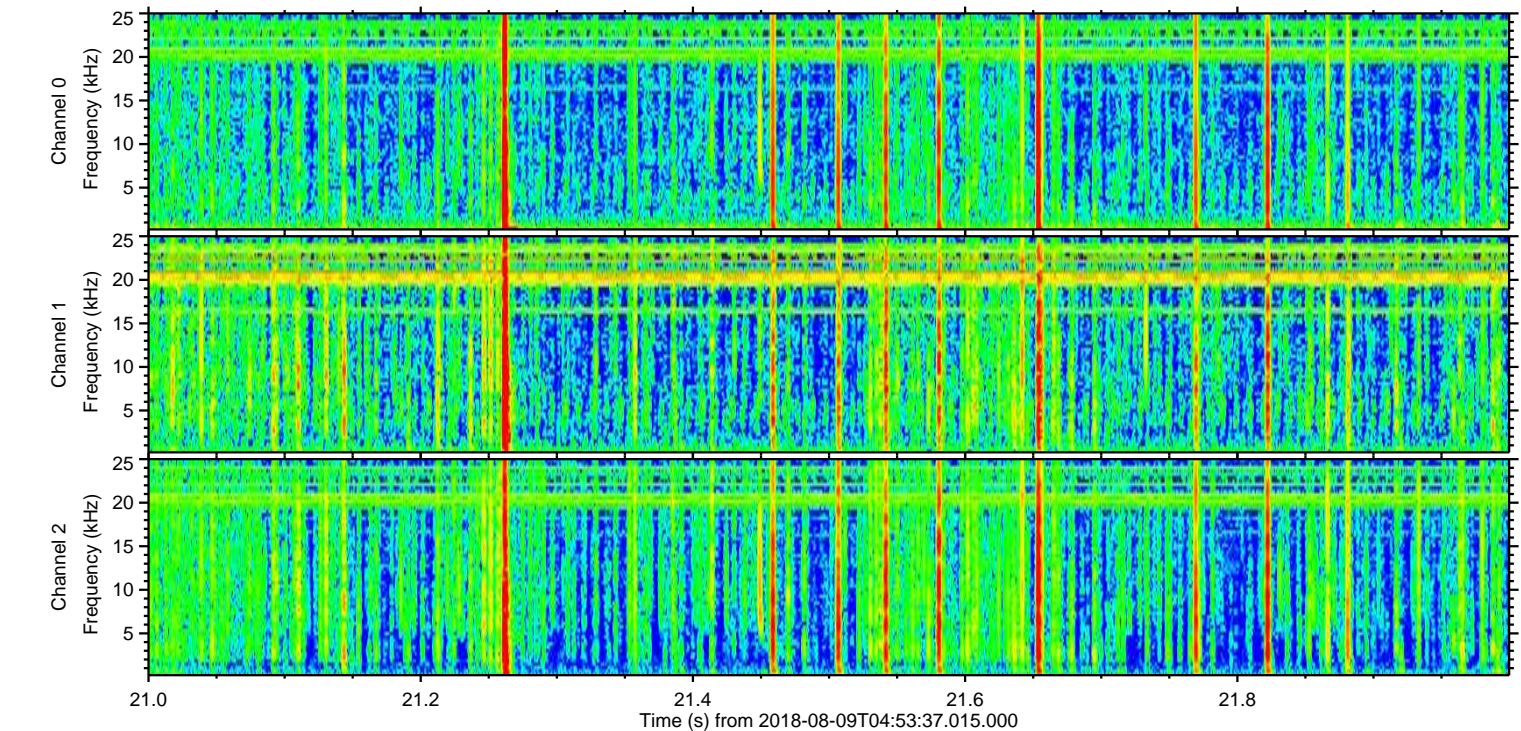
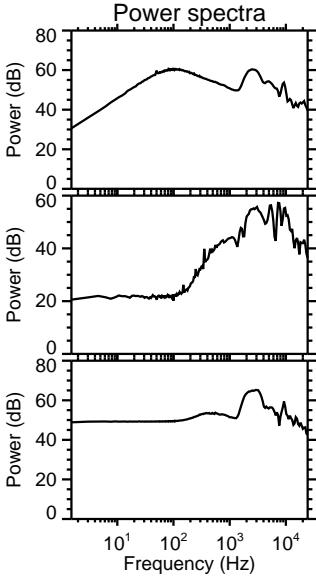
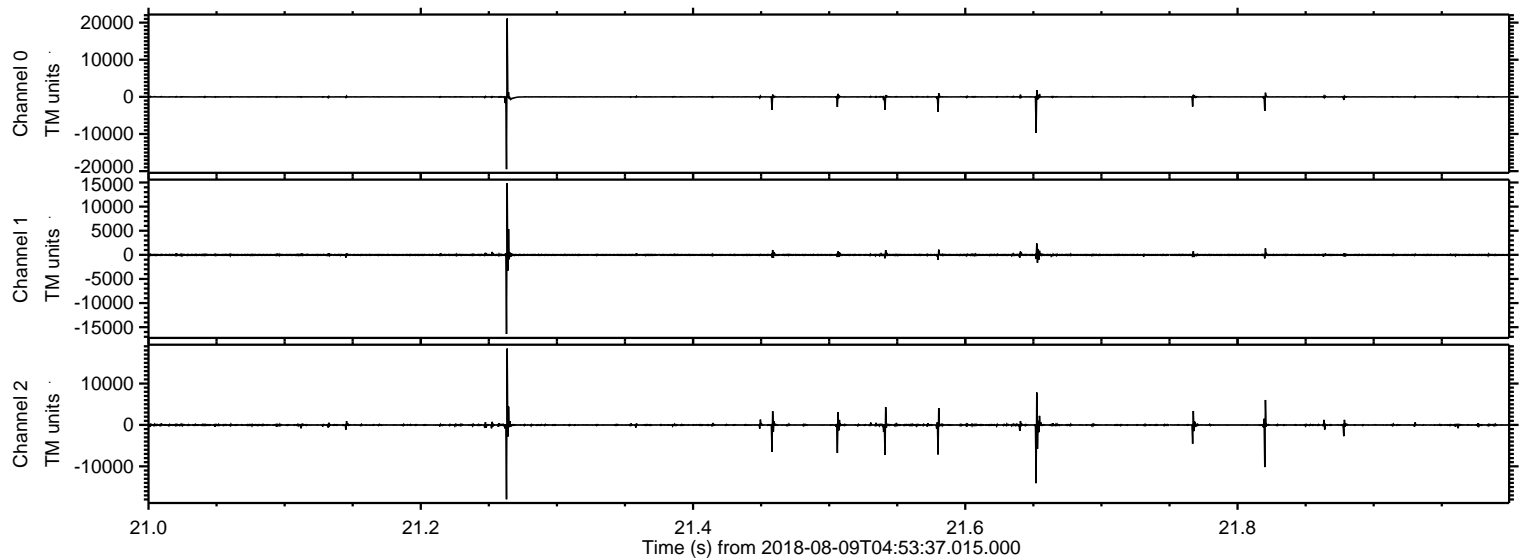


ELMAVAN 3D WAVEFORMS (Measured data sampled at 50 kHz) 51000 packets of 144 samples from 2018-08-09T04:53:37.015.000.

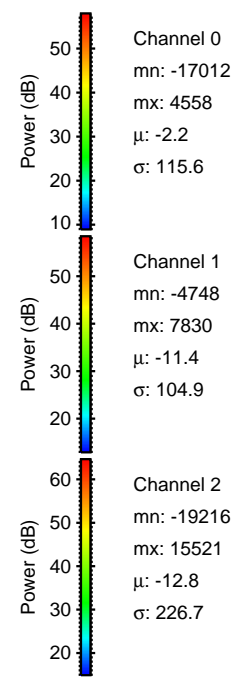
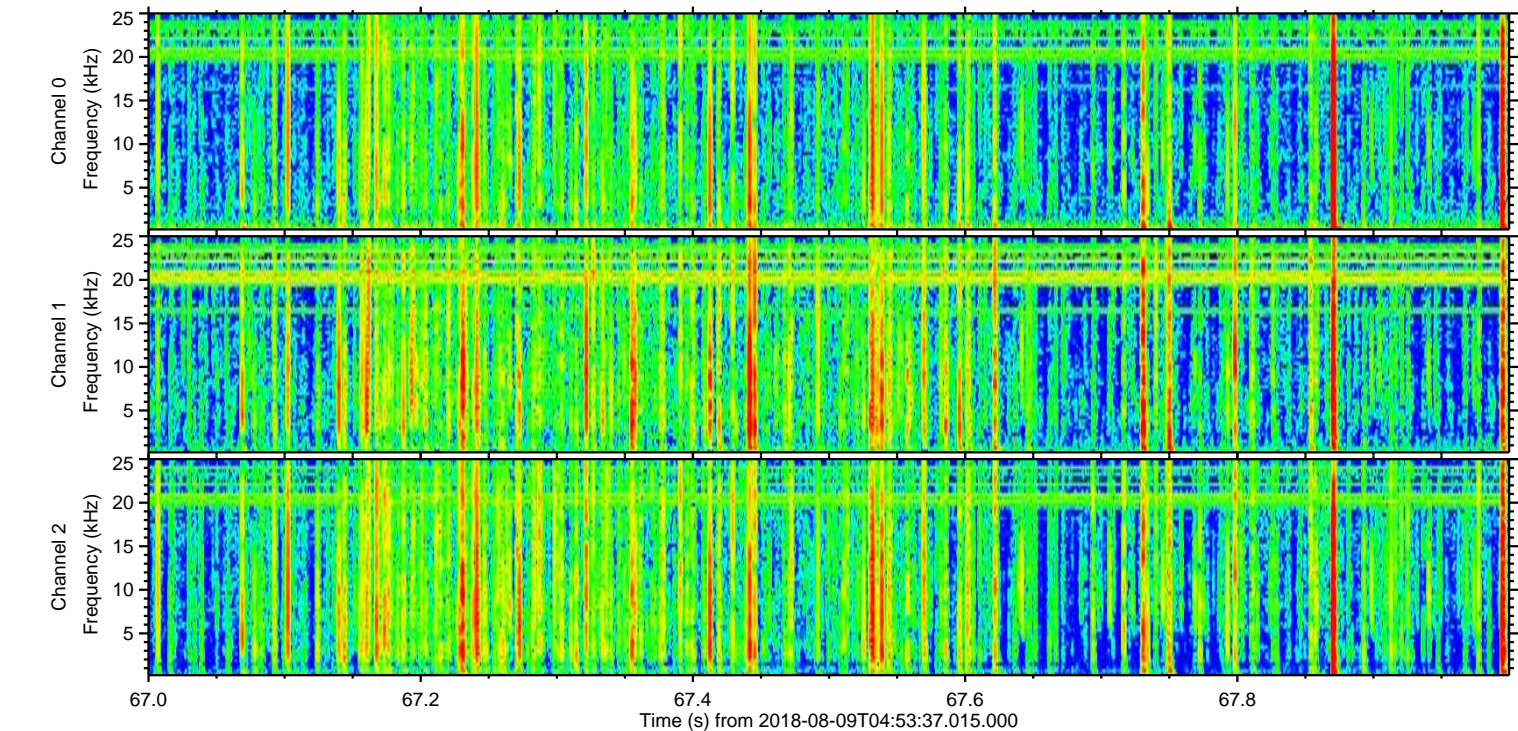
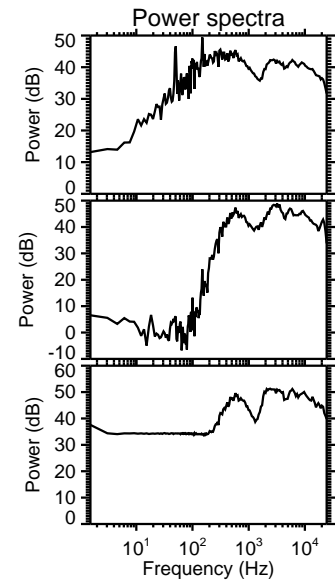
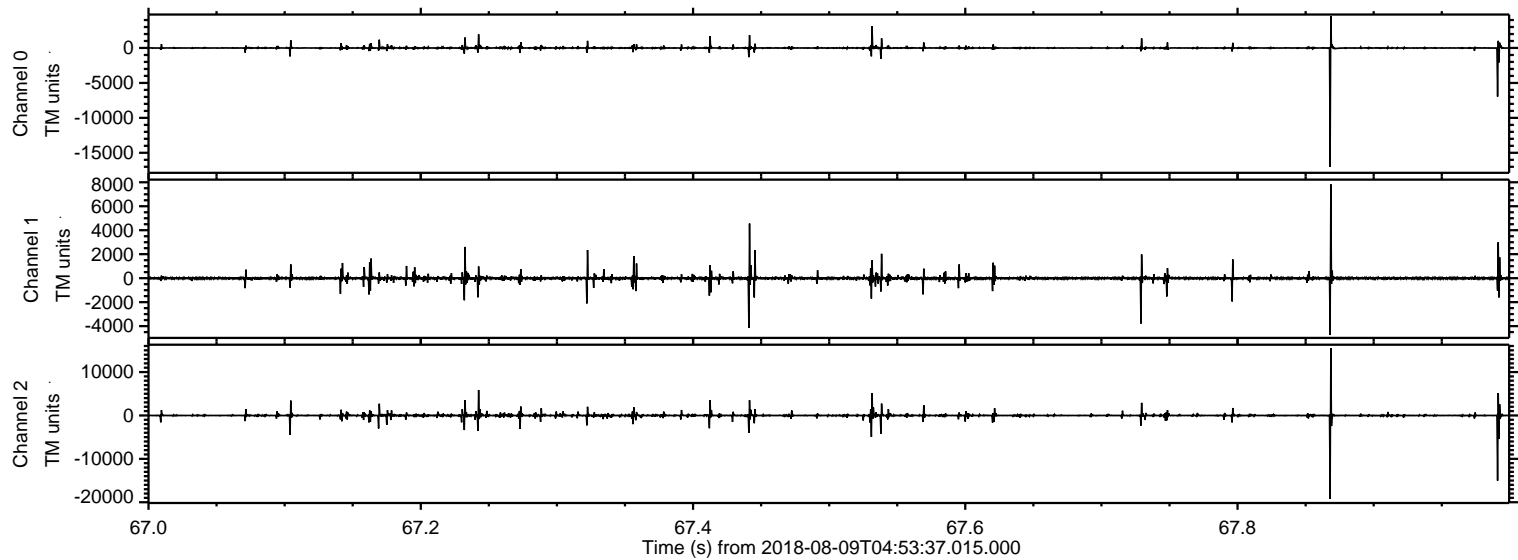
Processed Thu Aug 9 19:41:08 2018 by ELM ver.2012-10-06 from 001__elm20180809_045336__dat00.bin



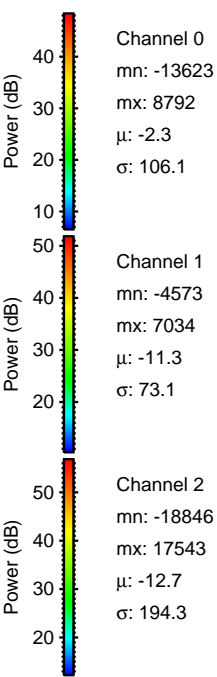
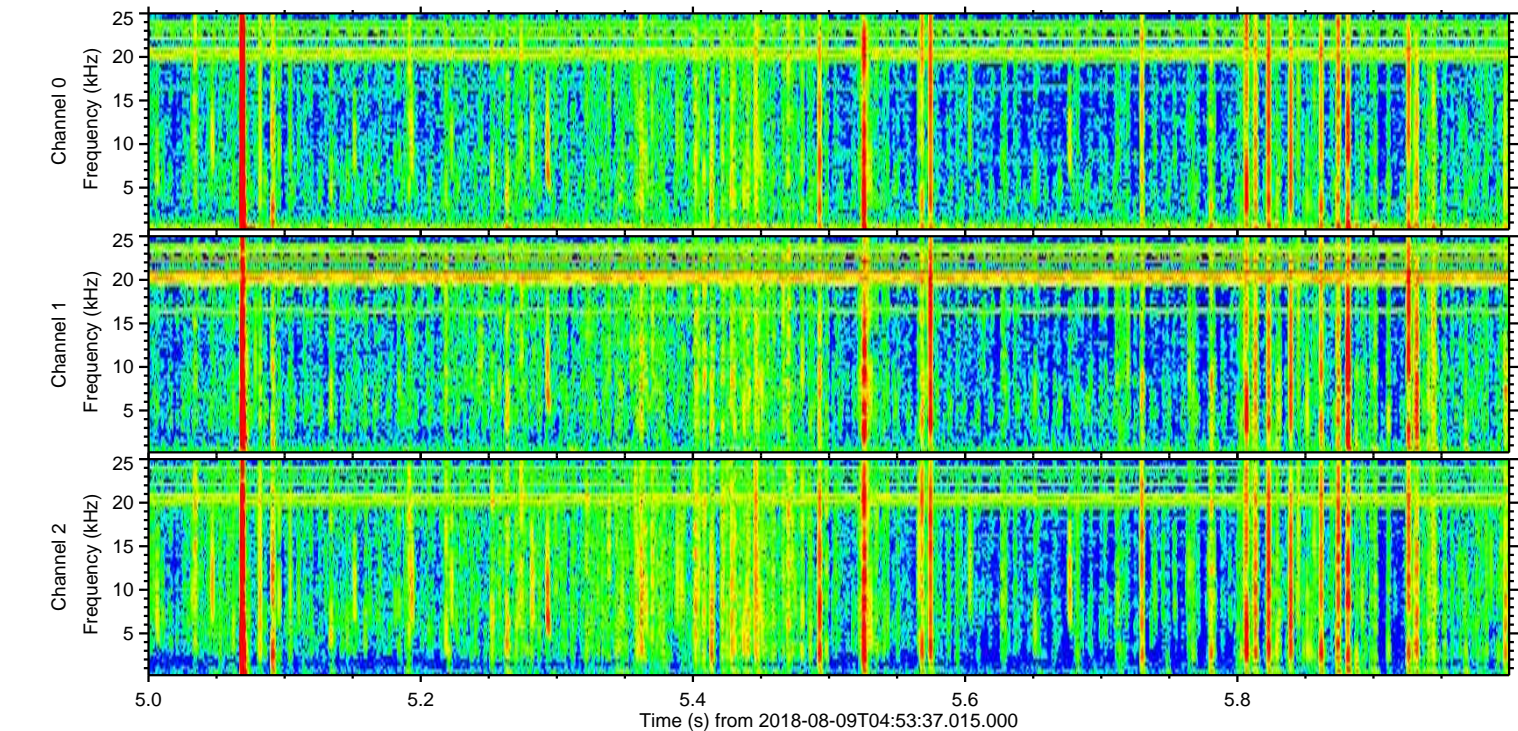
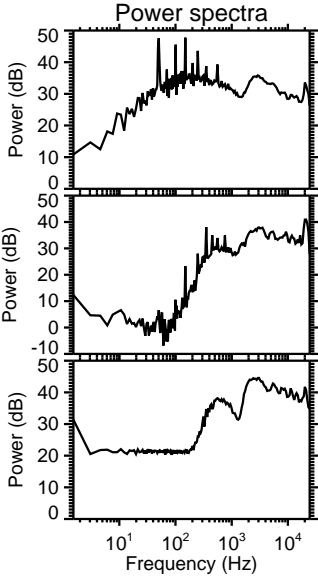
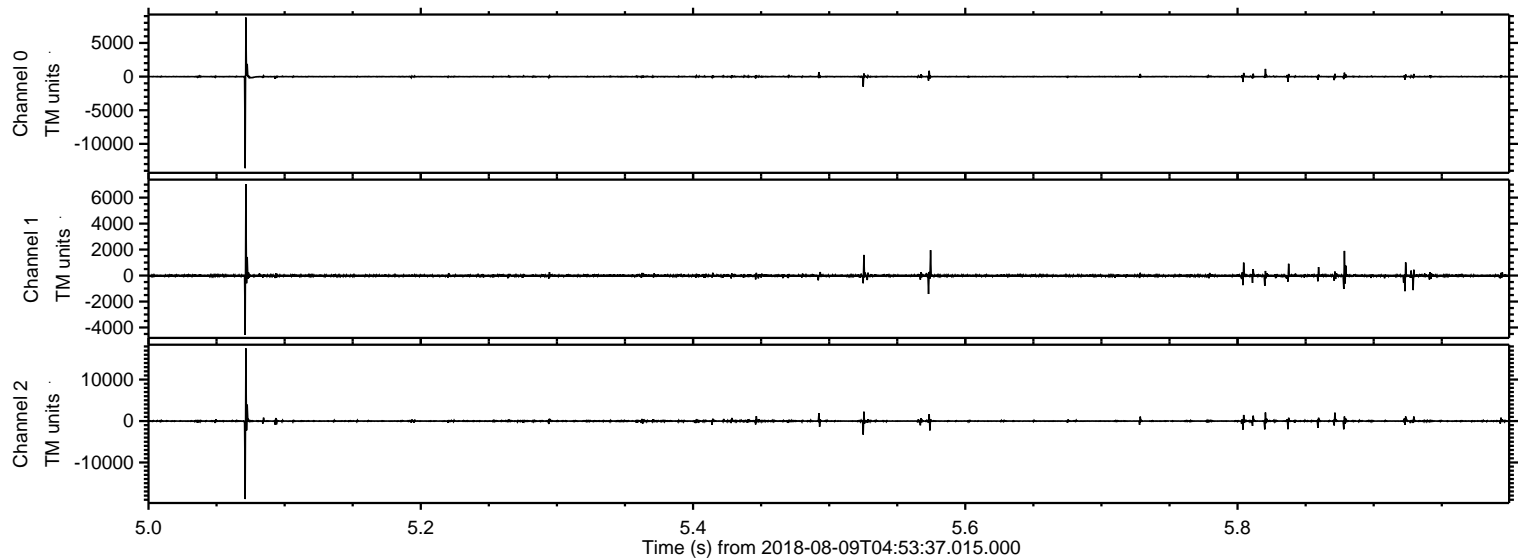
Processed Thu Aug 9 19:41:16 2018 by ELM ver.2012-10-06 from 001__elm20180809_045336__dat00.bin



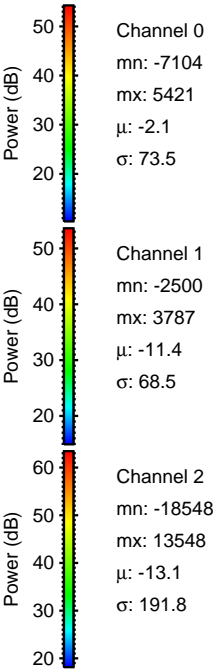
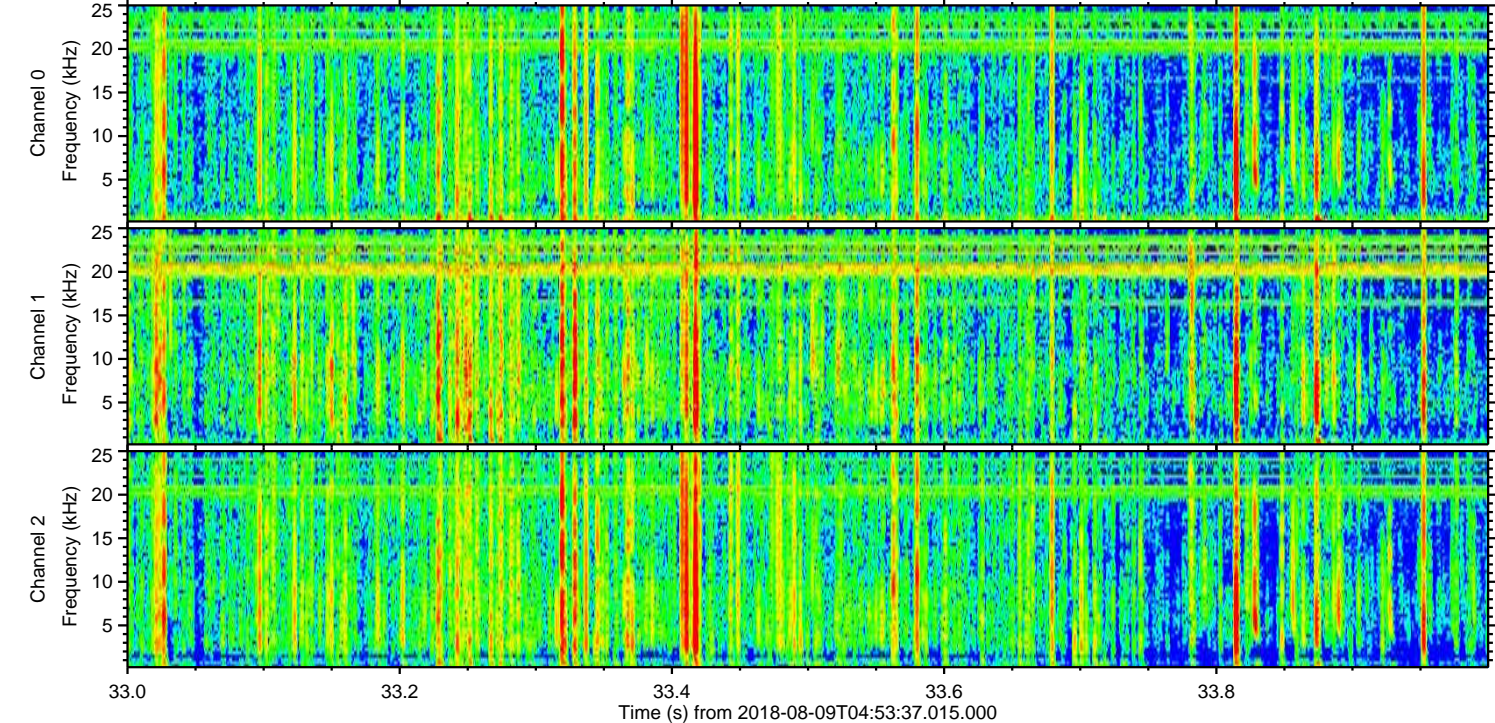
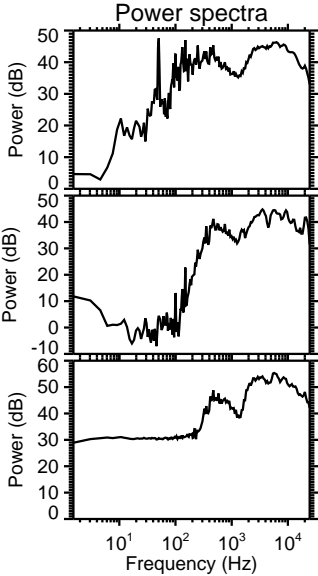
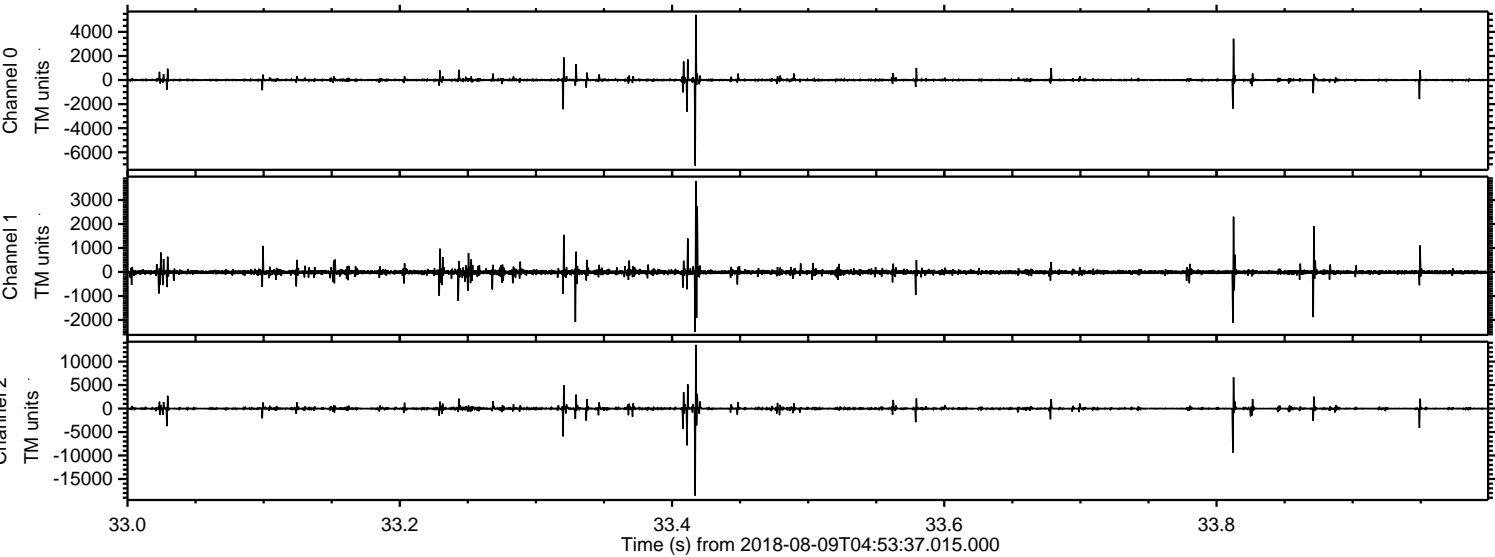
Processed Thu Aug 9 19:41:17 2018 by ELM ver.2012-10-06 from 001__elm20180809_045336__dat00.bin



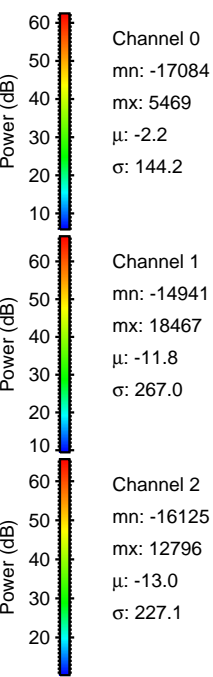
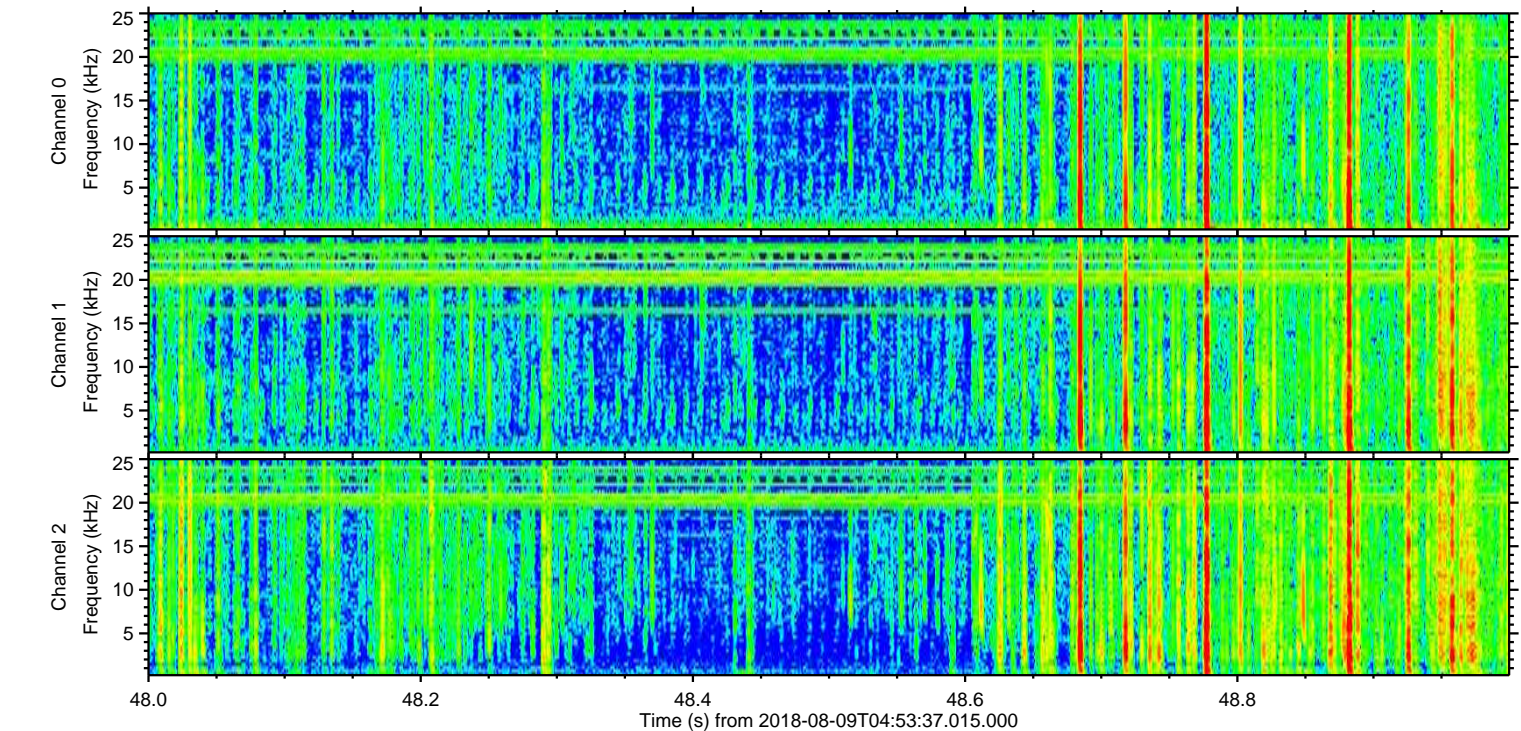
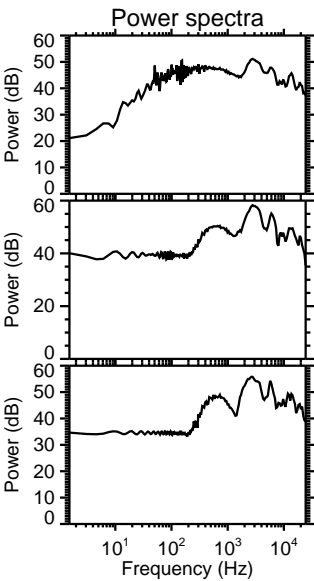
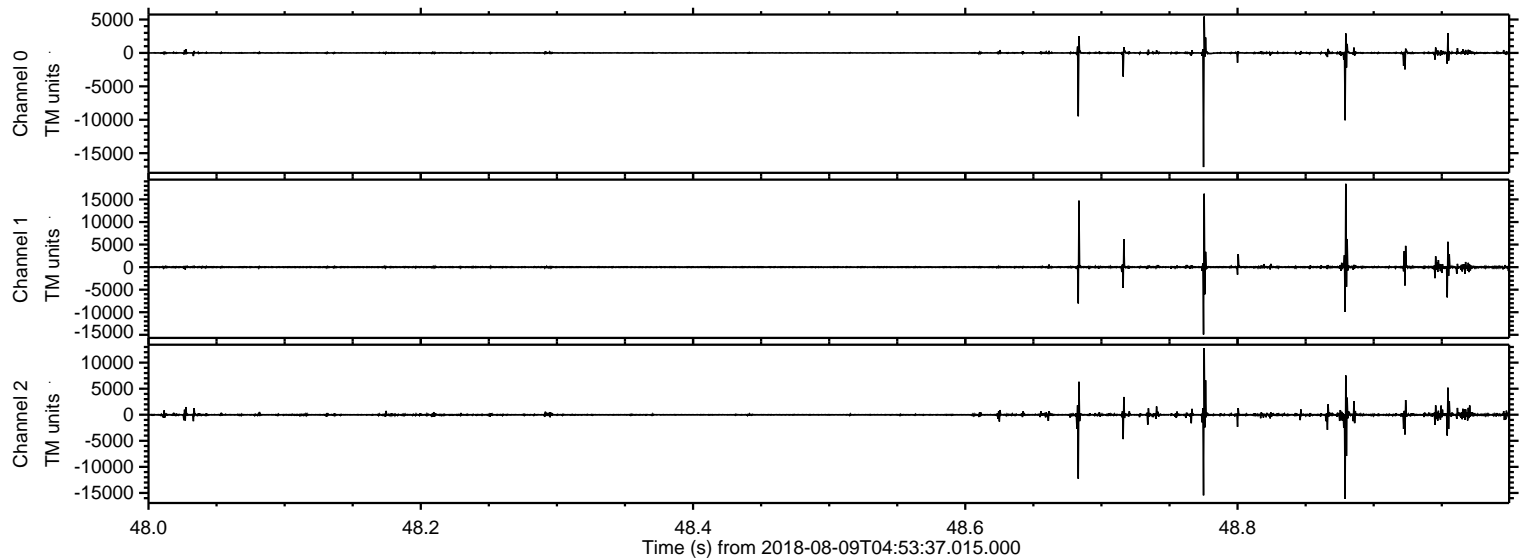
Processed Thu Aug 9 19:41:17 2018 by ELM ver.2012-10-06 from 001__elm20180809_045336__dat00.bin



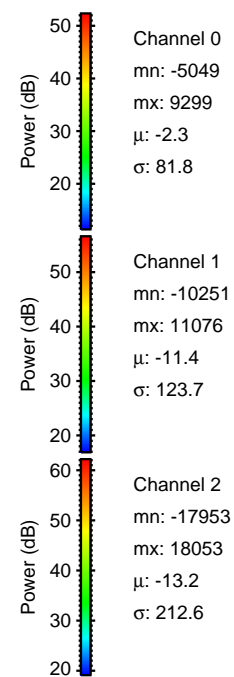
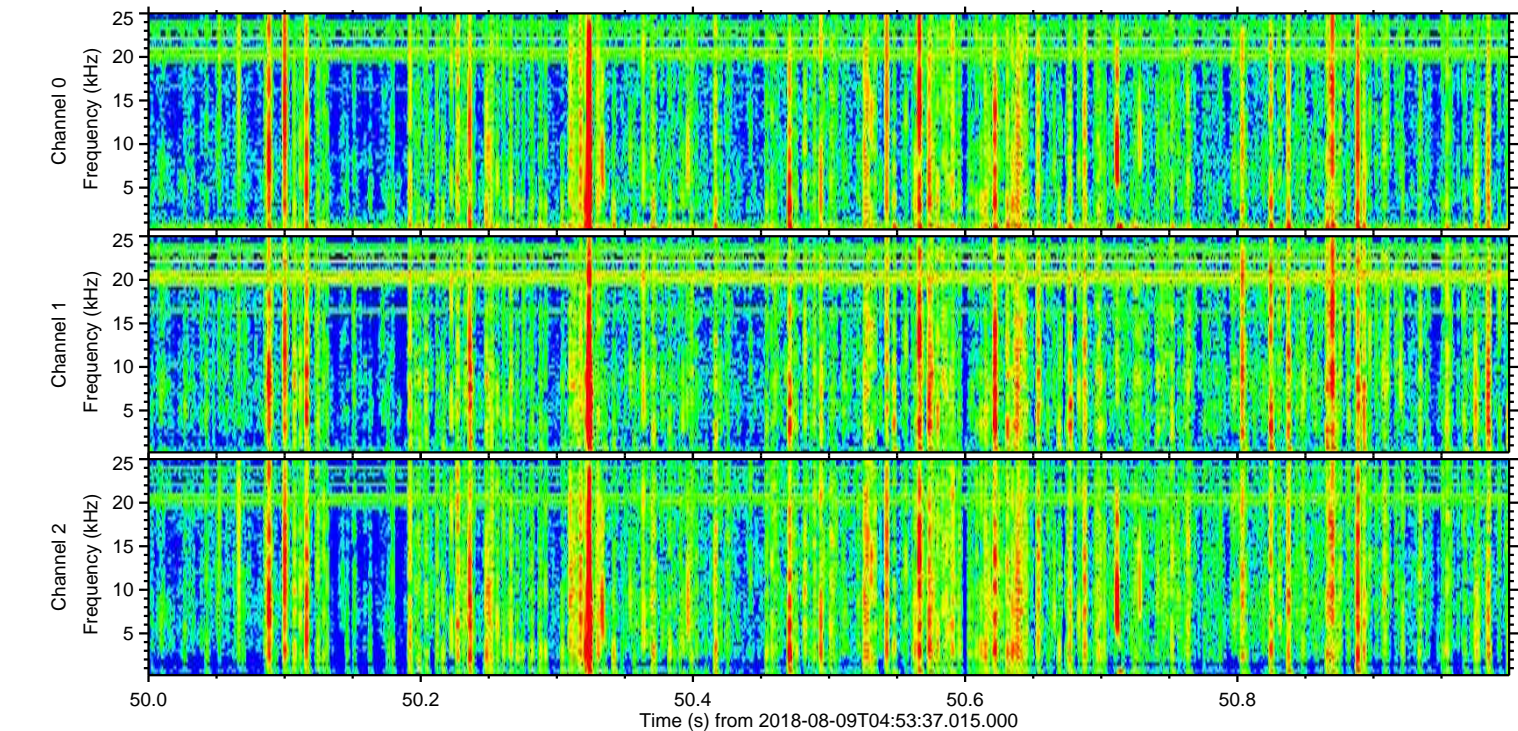
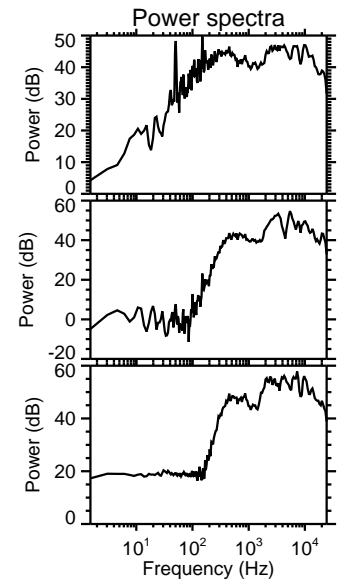
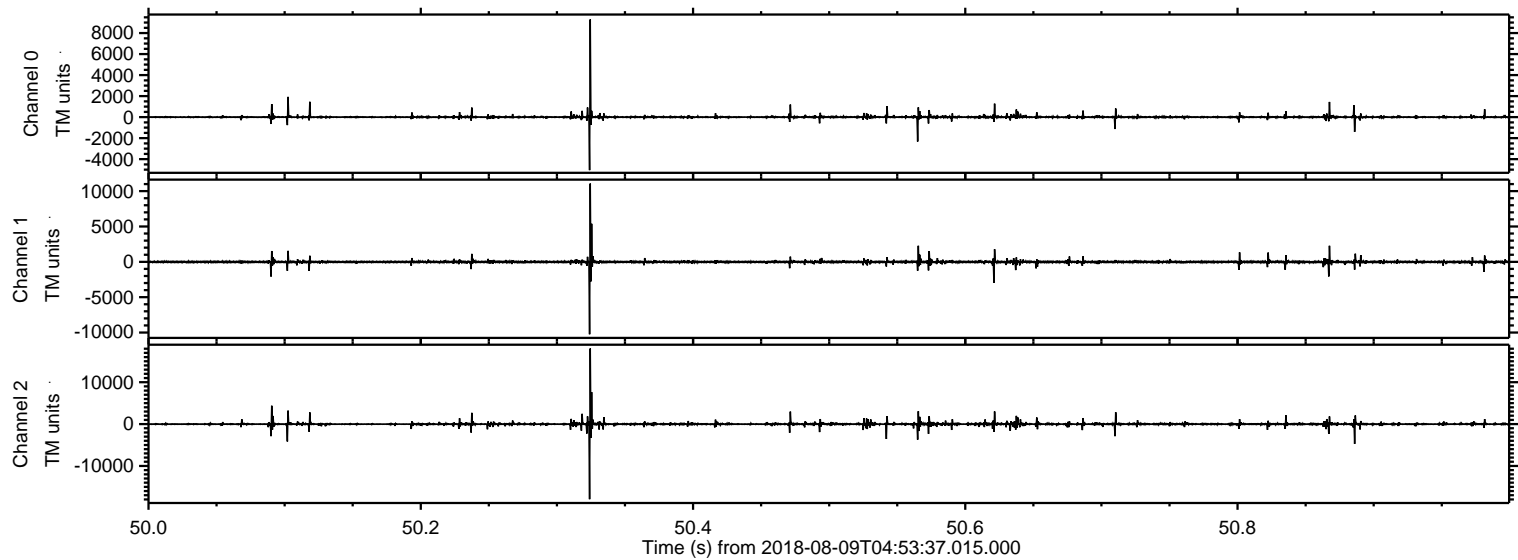
Processed Thu Aug 9 19:41:18 2018 by ELM ver.2012-10-06 from 001__elm20180809_045336__dat00.bin



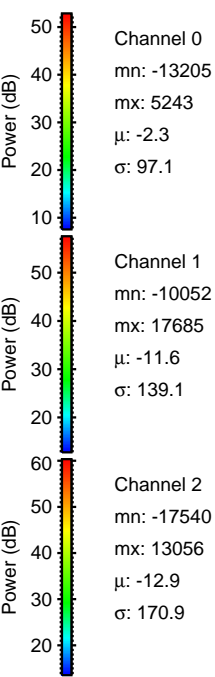
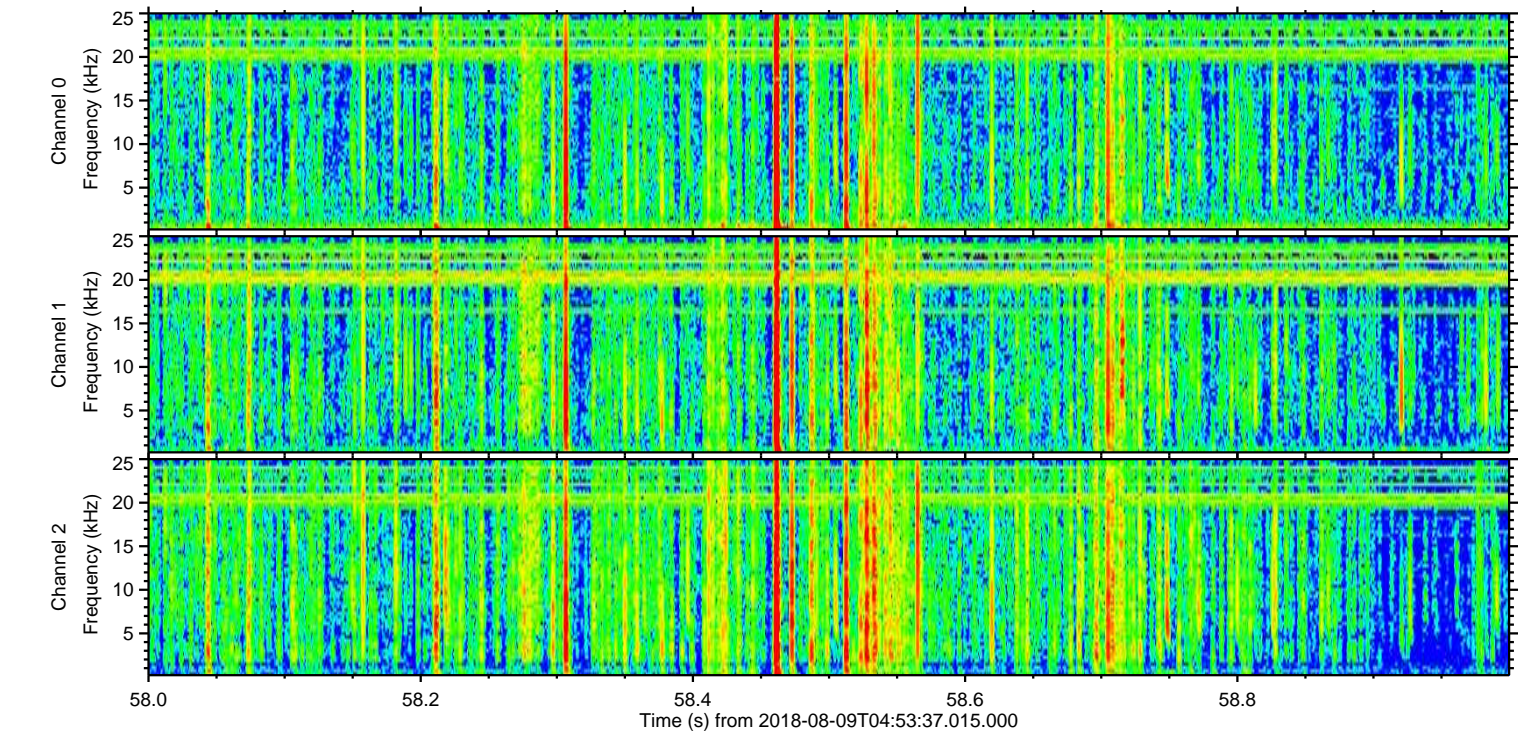
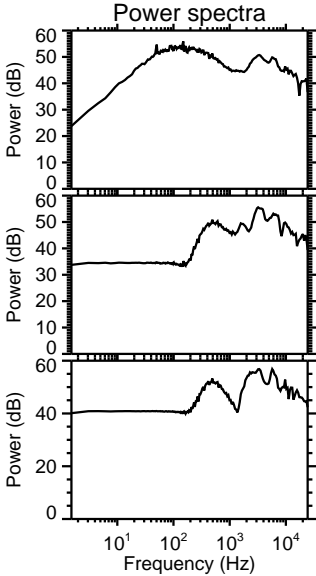
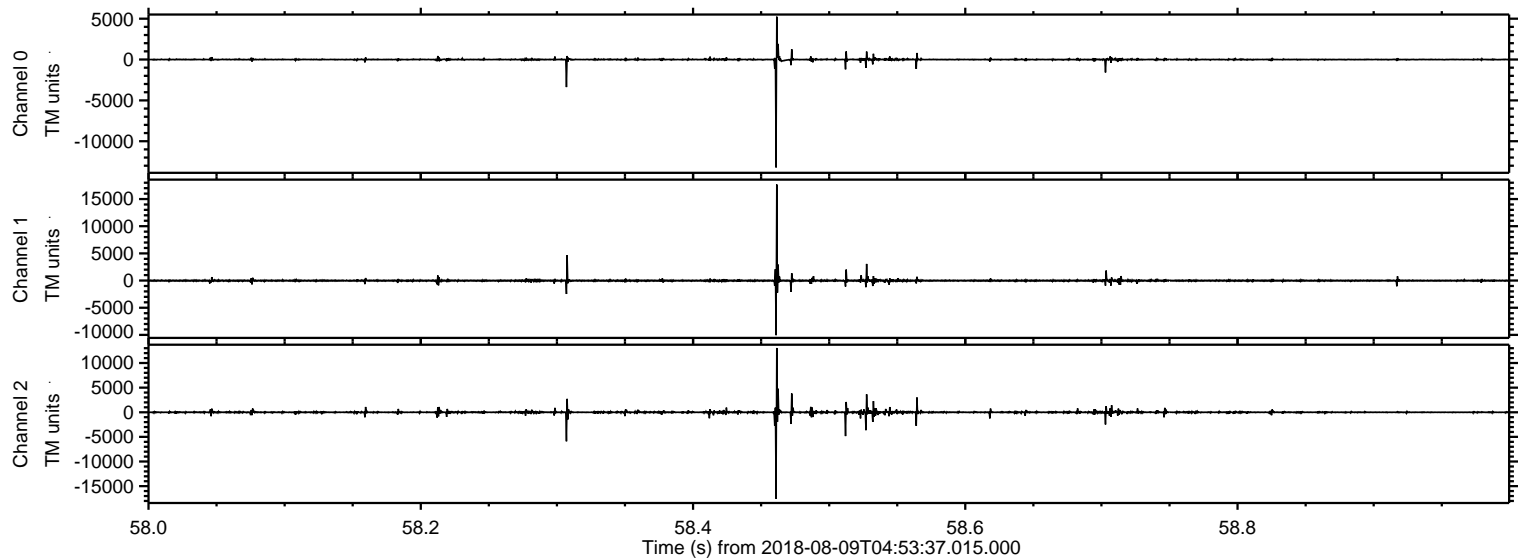
Processed Thu Aug 9 19:41:19 2018 by ELM ver.2012-10-06 from 001__elm20180809_045336__dat00.bin



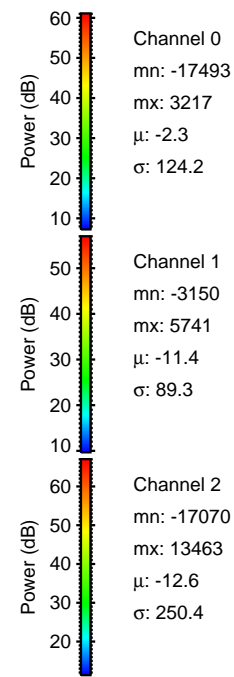
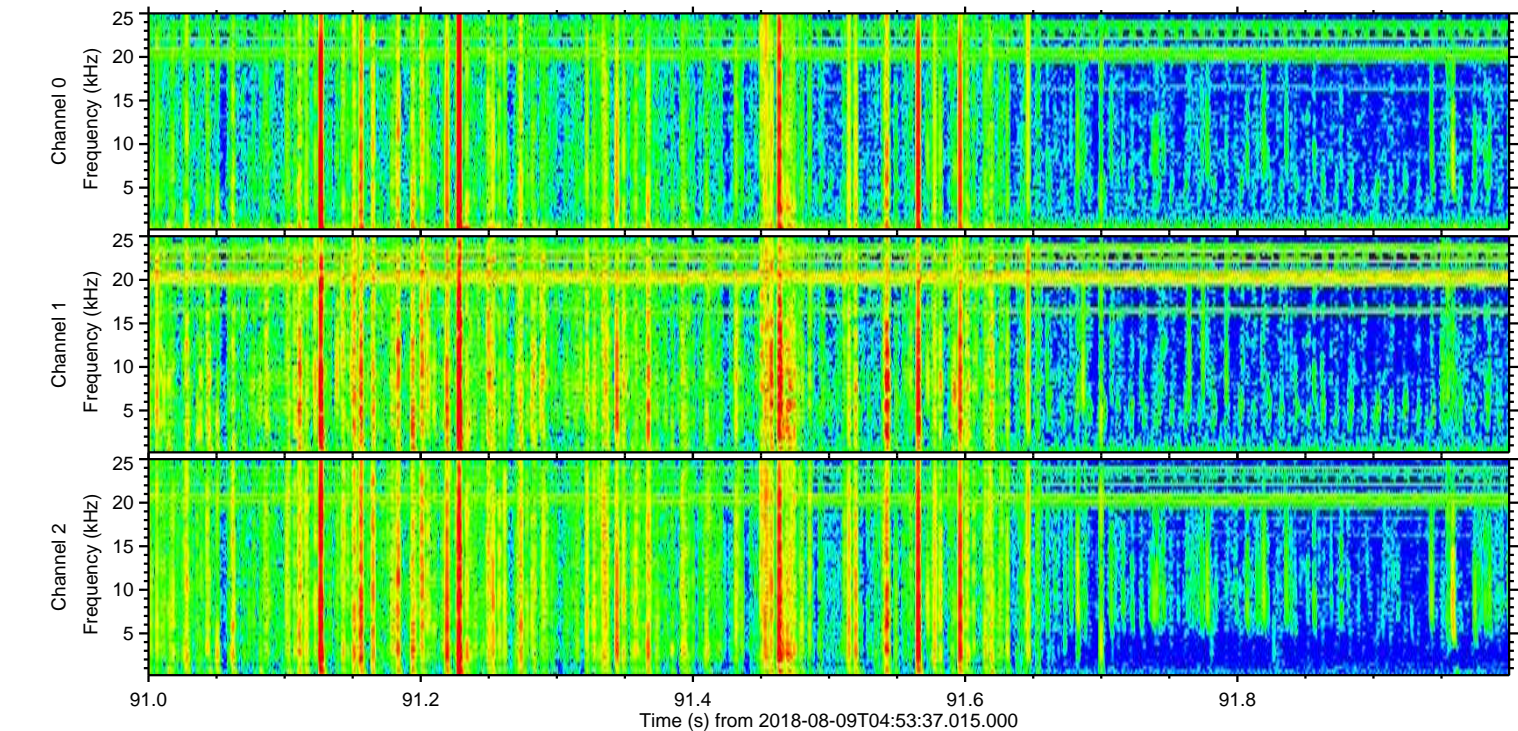
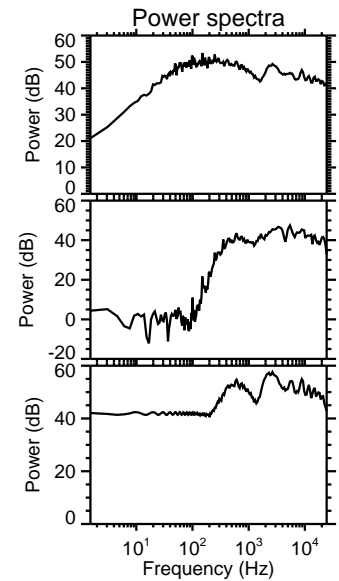
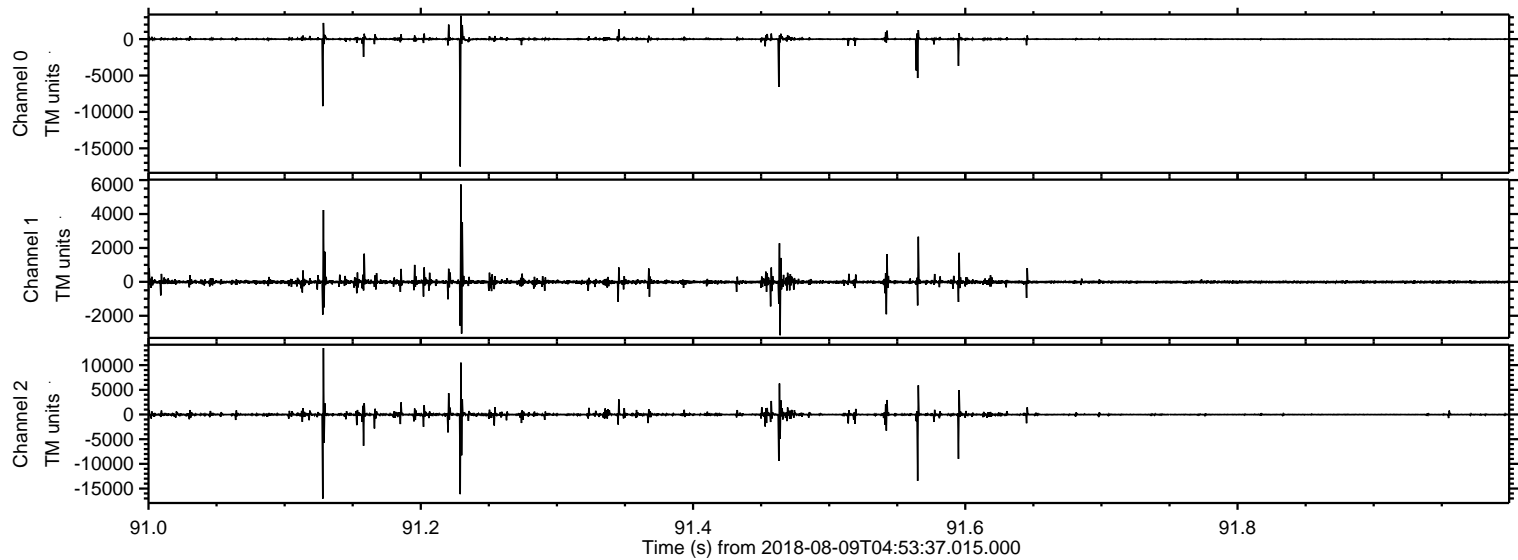
Processed Thu Aug 9 19:41:20 2018 by ELM ver.2012-10-06 from 001__elm20180809_045336__dat00.bin



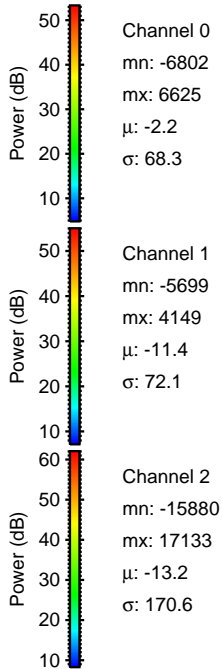
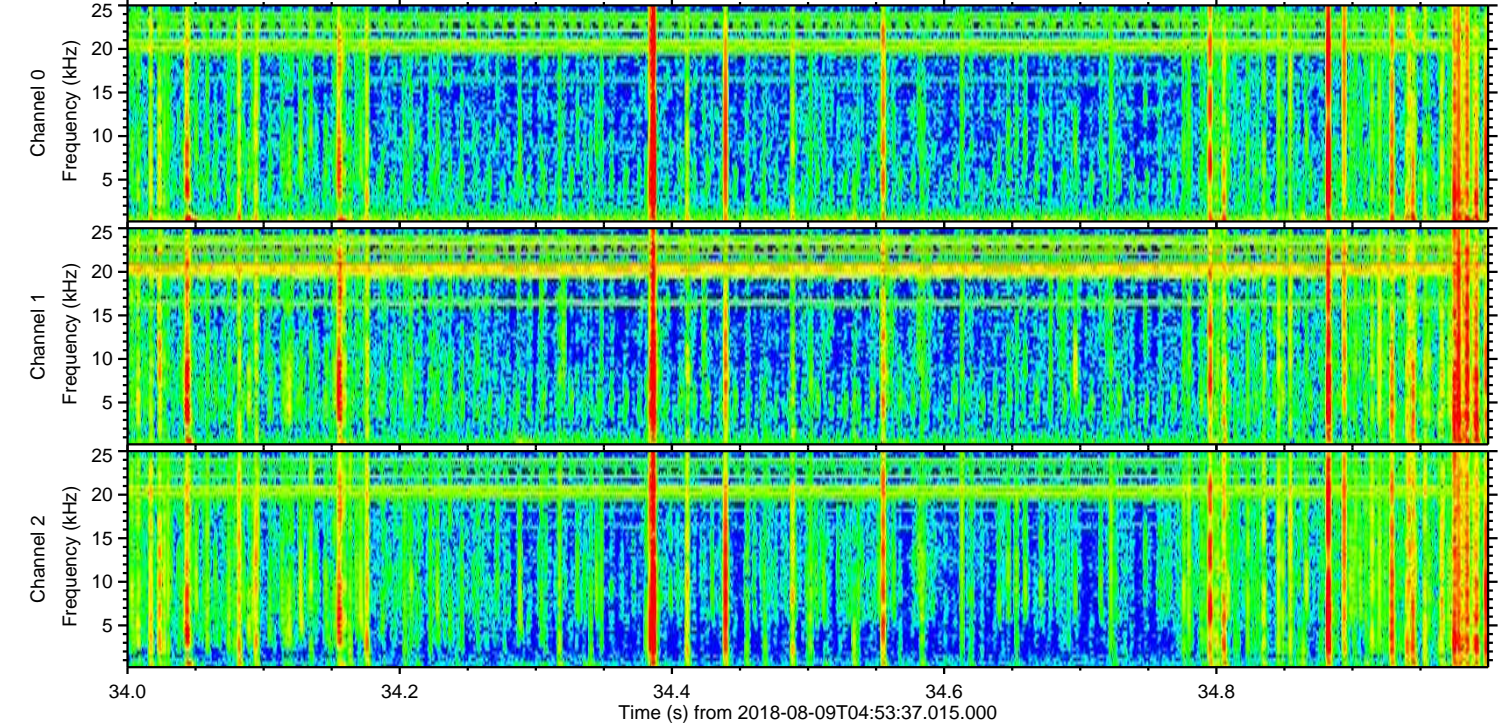
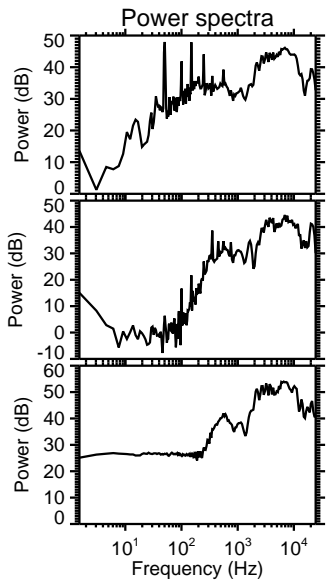
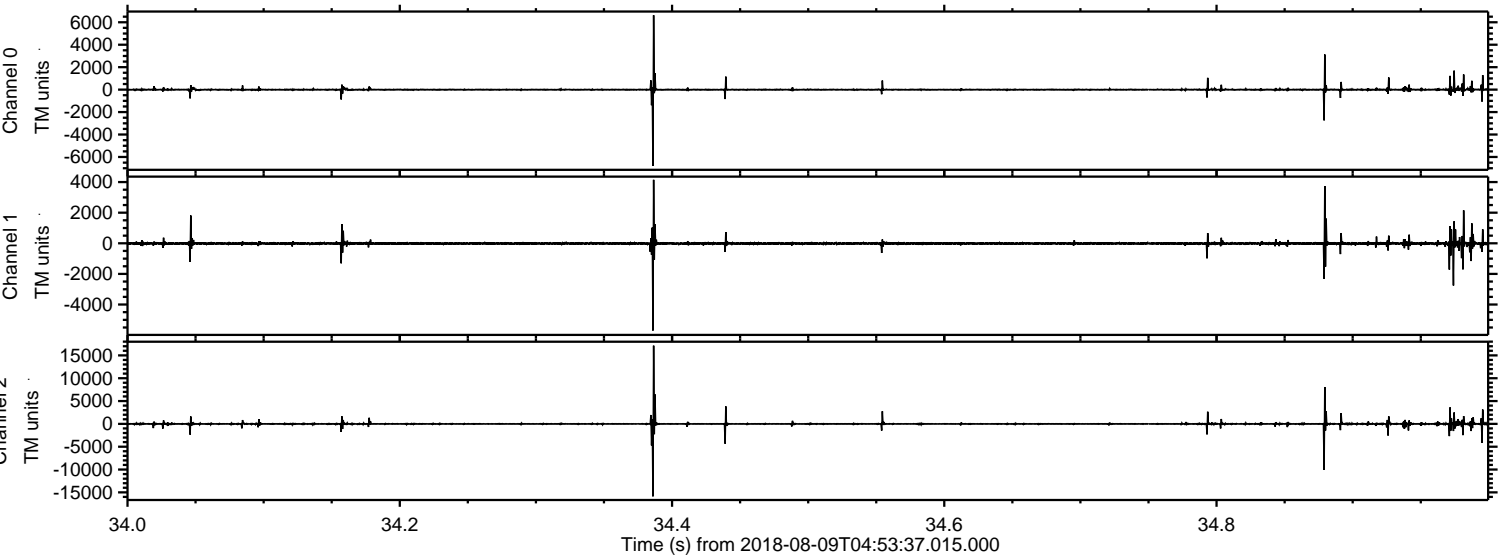
Processed Thu Aug 9 19:41:21 2018 by ELM ver.2012-10-06 from 001__elm20180809_045336__dat00.bin



Processed Thu Aug 9 19:41:22 2018 by ELM ver.2012-10-06 from 001__elm20180809_045336__dat00.bin



Processed Thu Aug 9 19:41:22 2018 by ELM ver.2012-10-06 from 001__elm20180809_045336__dat00.bin

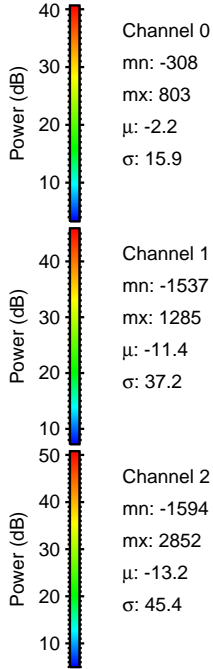
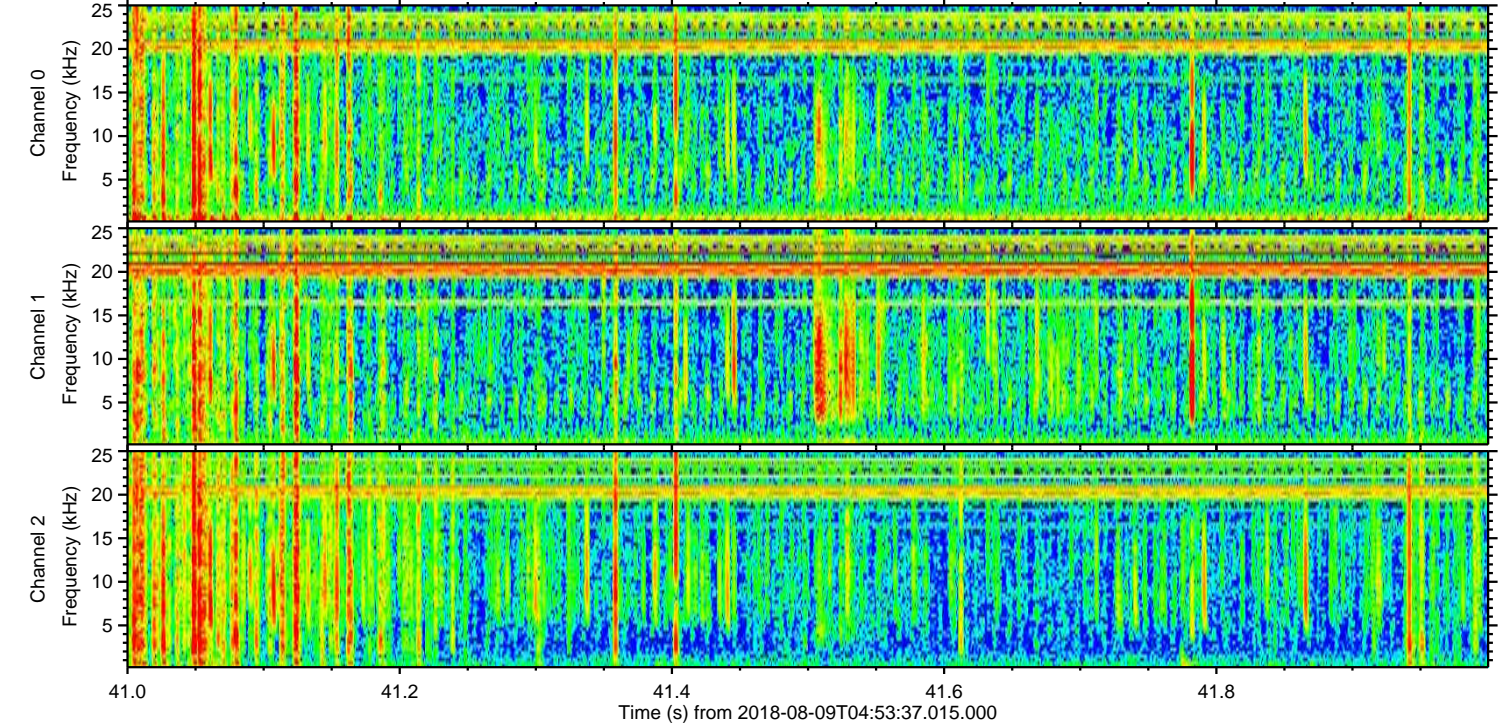
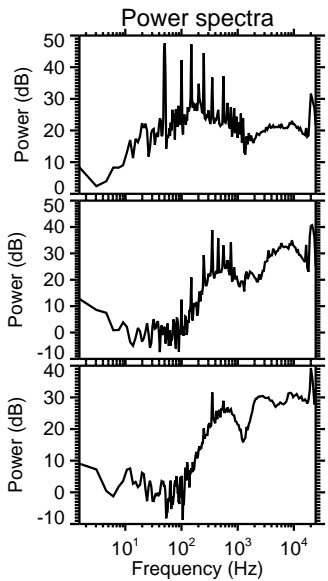
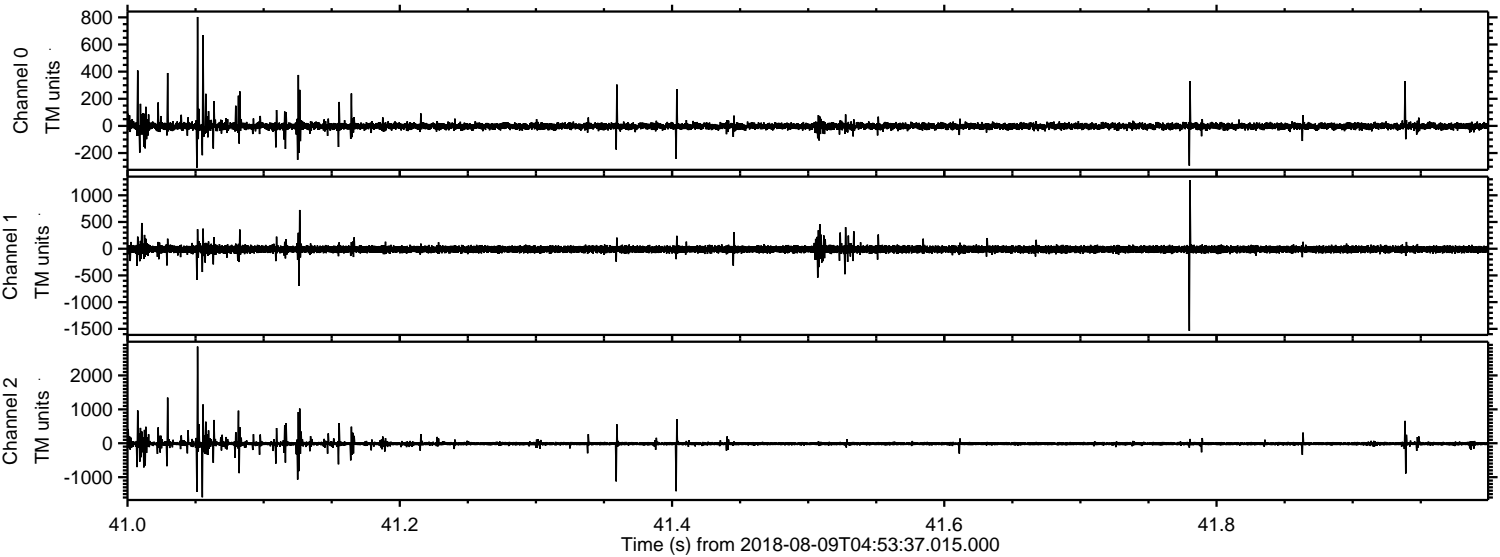


Channel 0
mn: -6802
mx: 6625
 μ : -2.2
 σ : 68.3

Channel 1
mn: -5699
mx: 4149
 μ : -11.4
 σ : 72.1

Channel 2
mn: -15880
mx: 17133
 μ : -13.2
 σ : 170.6

Processed Thu Aug 9 19:41:23 2018 by ELM ver.2012-10-06 from 001__elm20180809_045336__dat00.bin



Channel 0
mn: -308
mx: 803
 μ : -2.2
 σ : 15.9

Channel 1
mn: -1537
mx: 1285
 μ : -11.4
 σ : 37.2

Channel 2
mn: -1594
mx: 2852
 μ : -13.2
 σ : 45.4