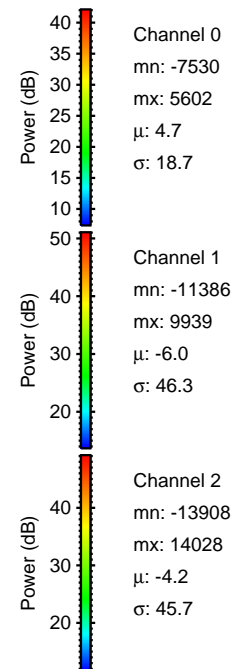
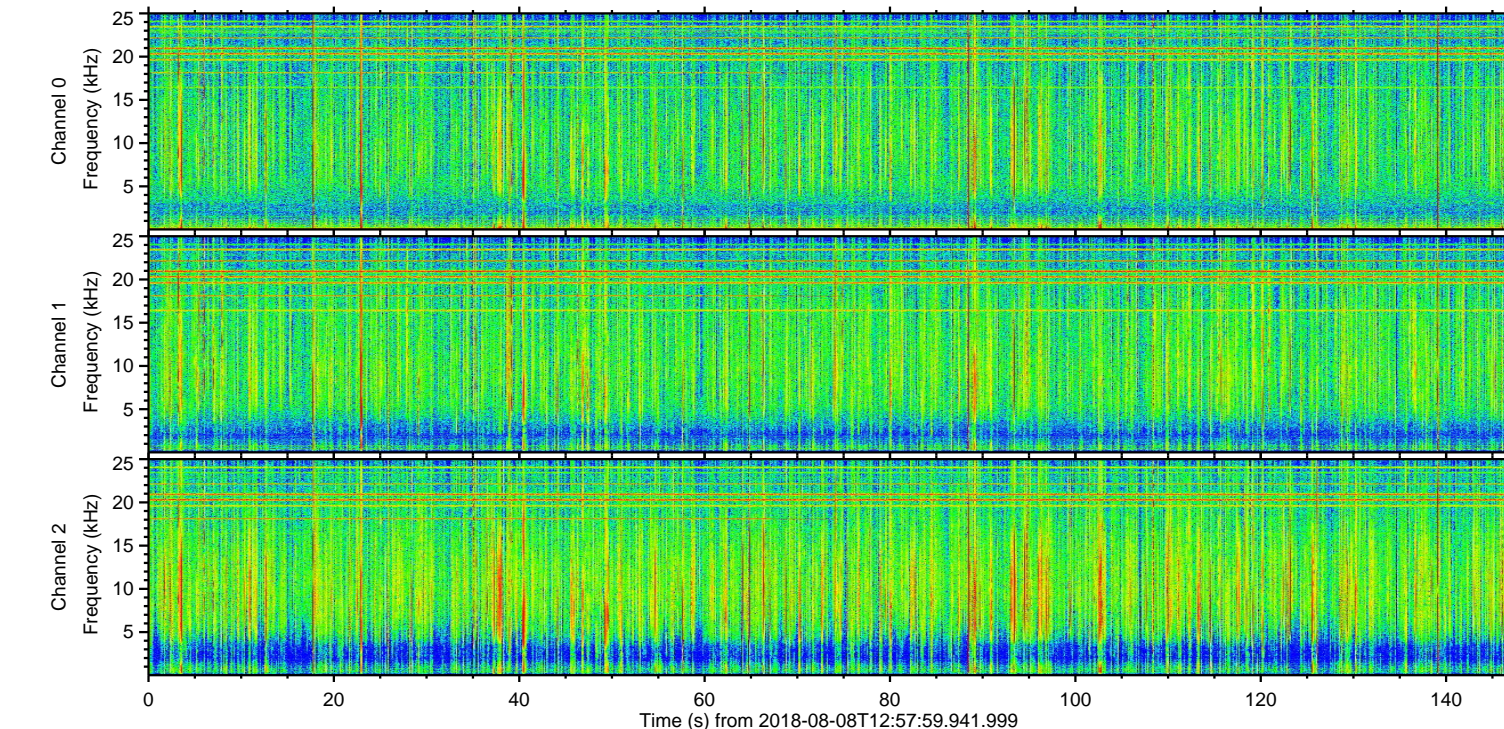
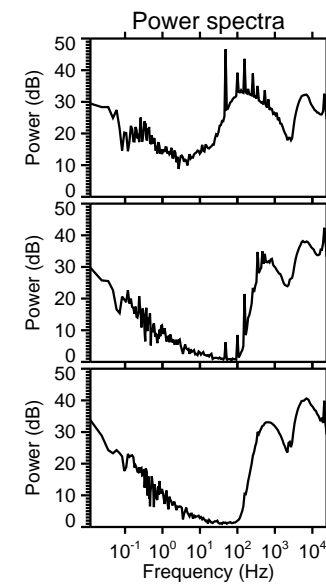
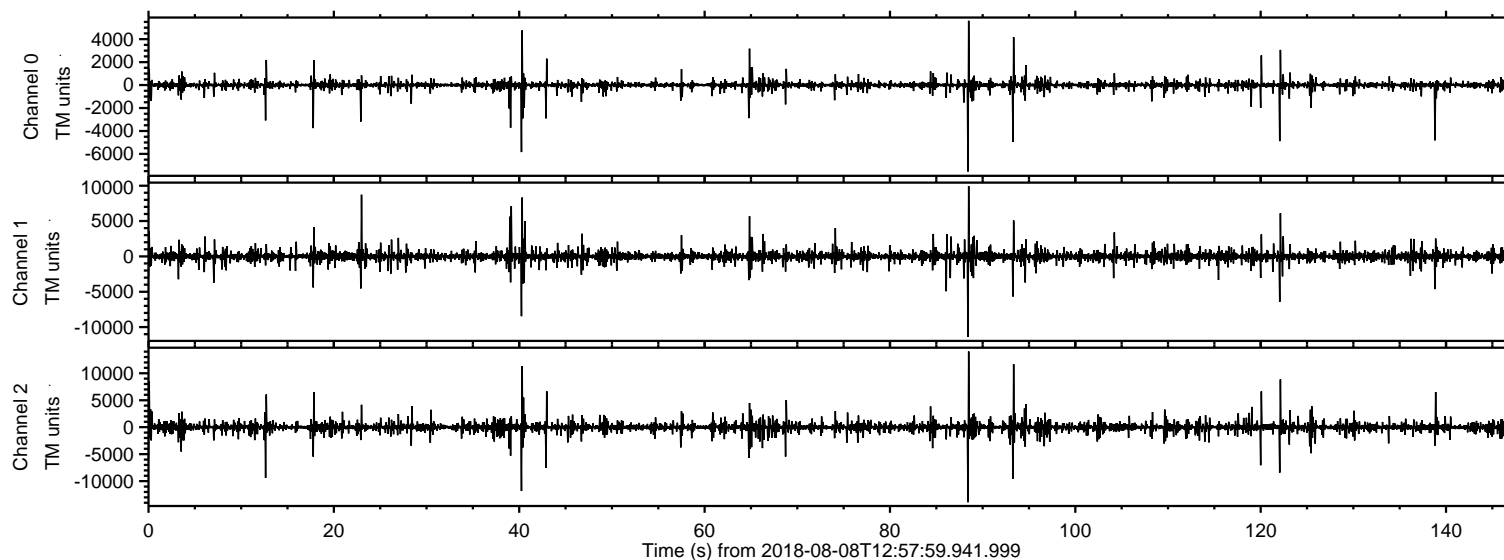
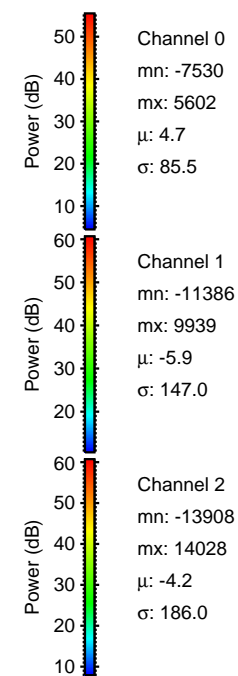
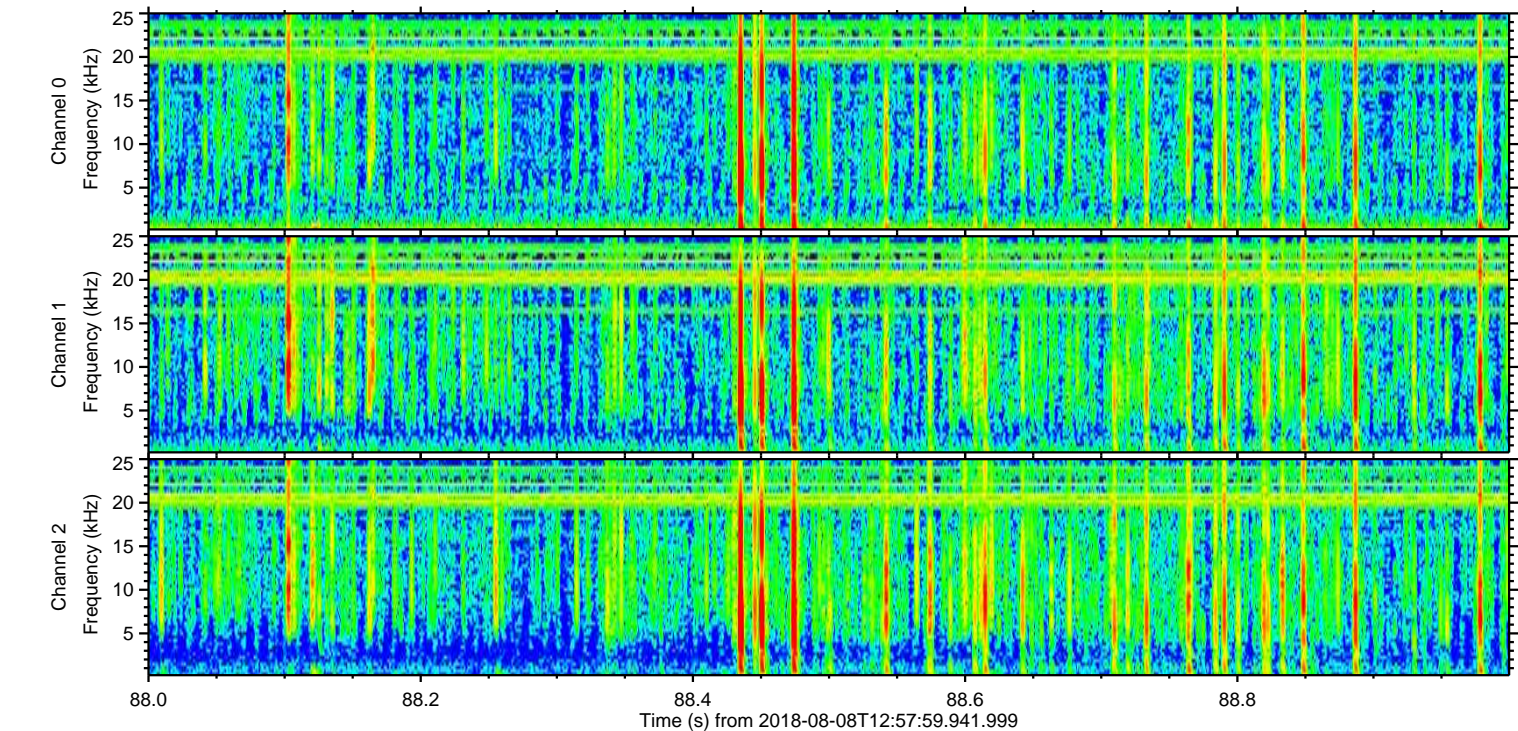
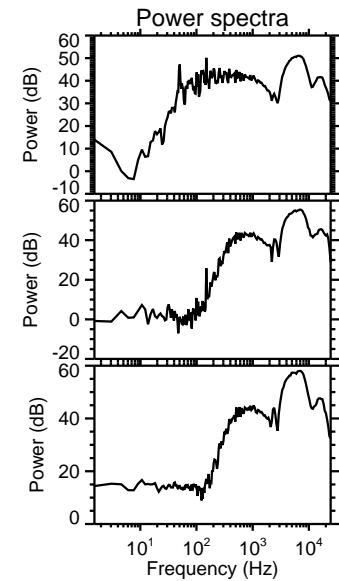
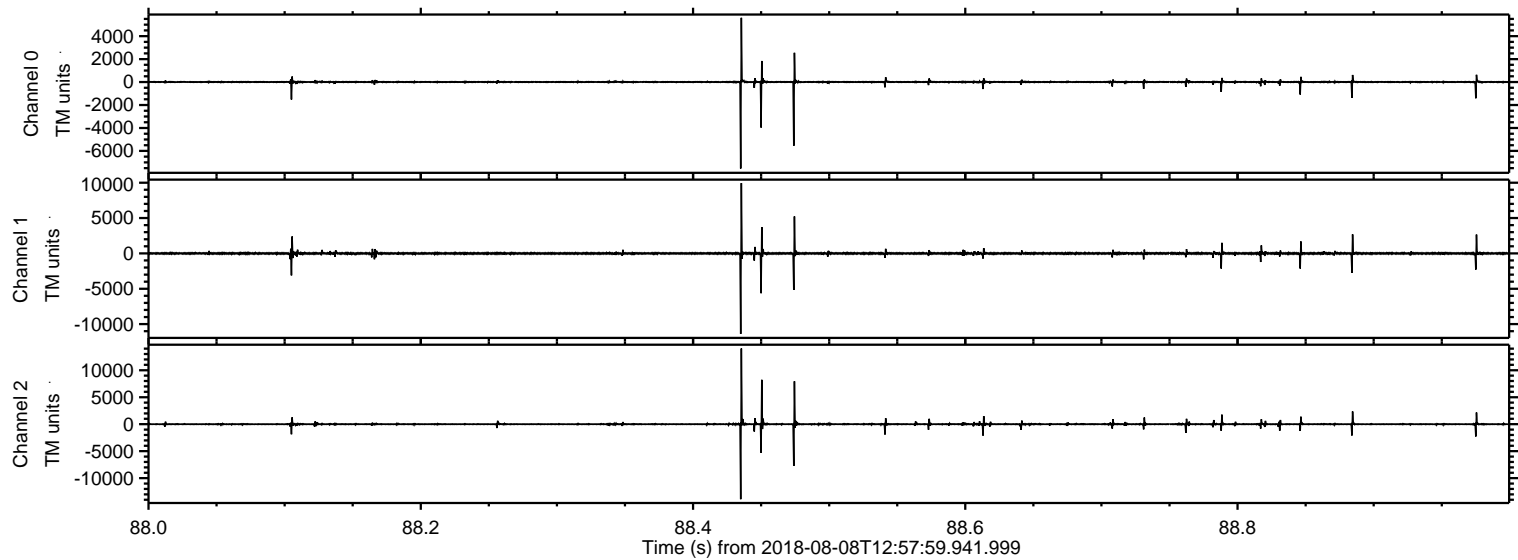


ELMAVAN 3D WAVEFORMS (Measured data sampled at 50 kHz) 51000 packets of 144 samples from 2018-08-08T12:57:59.941.999.

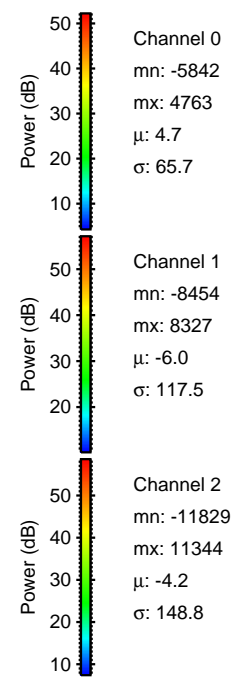
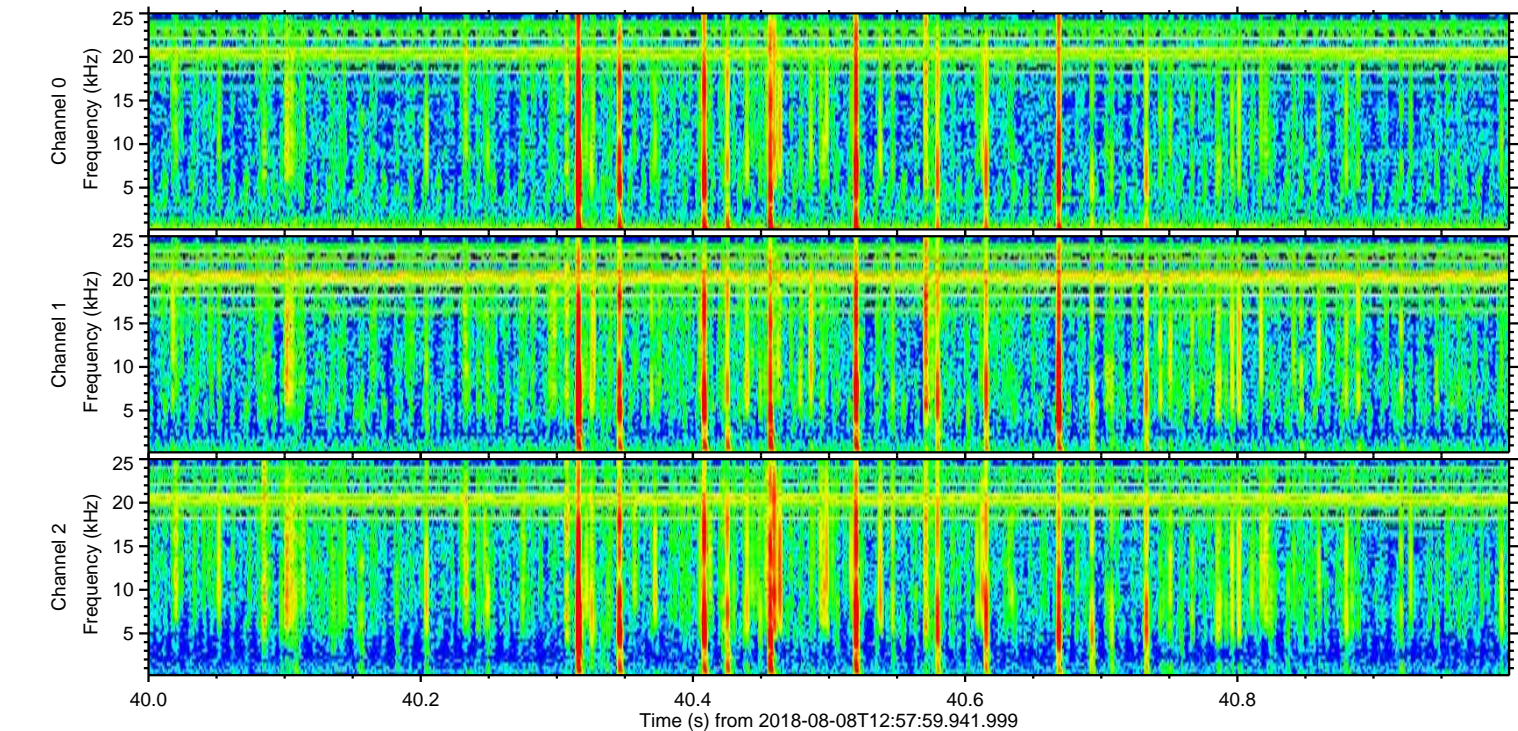
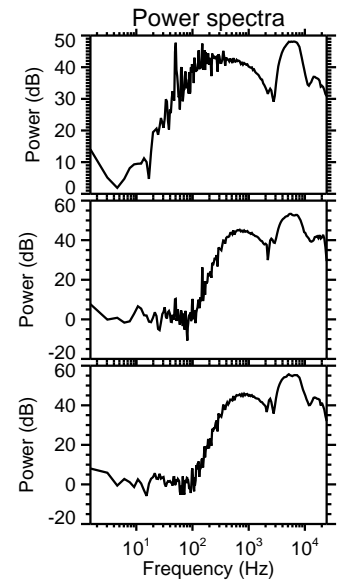
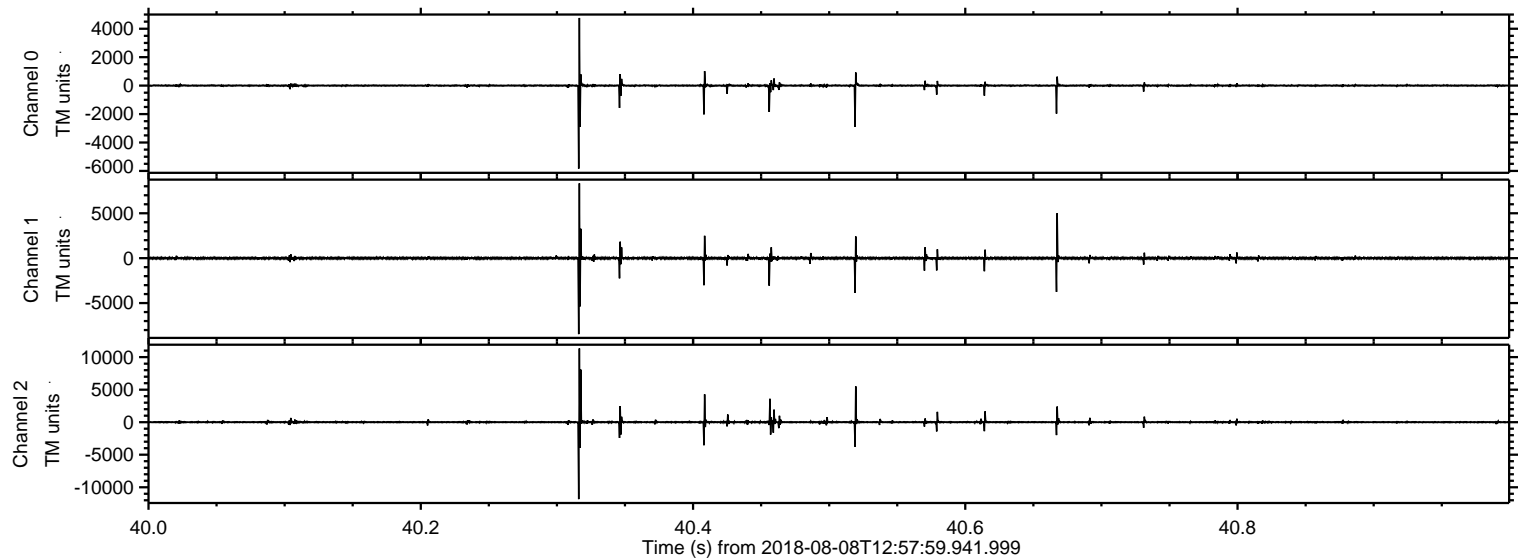
Processed Thu Aug 9 17:16:52 2018 by ELM ver.2012-10-06 from 001__elm20180808_125758__dat00.bin



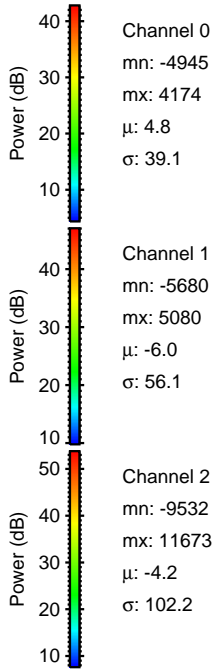
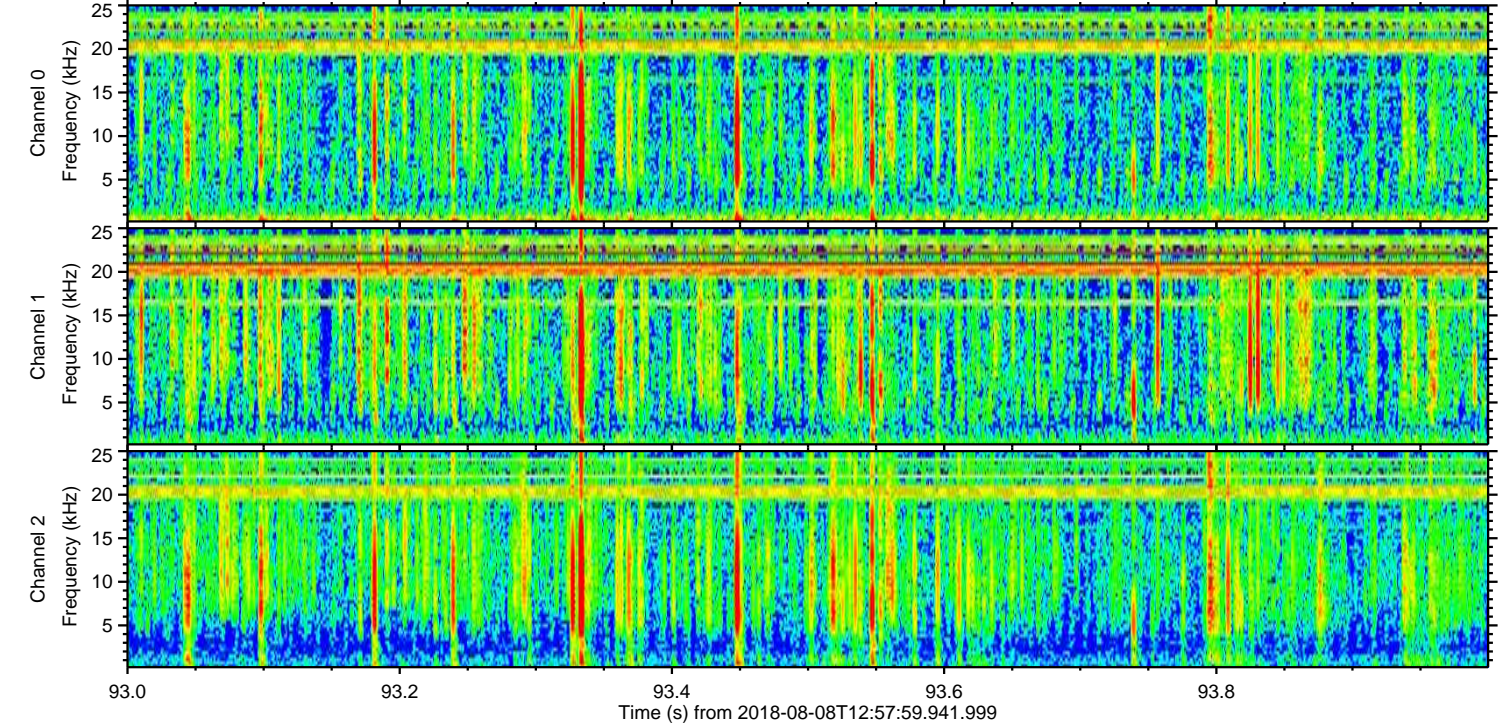
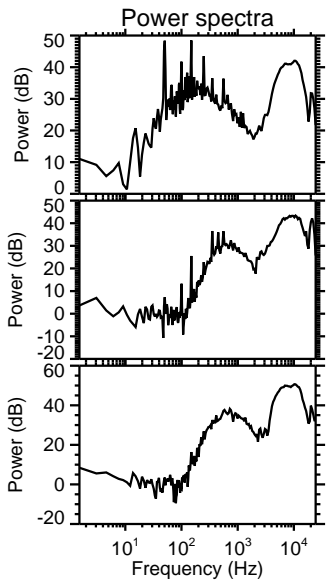
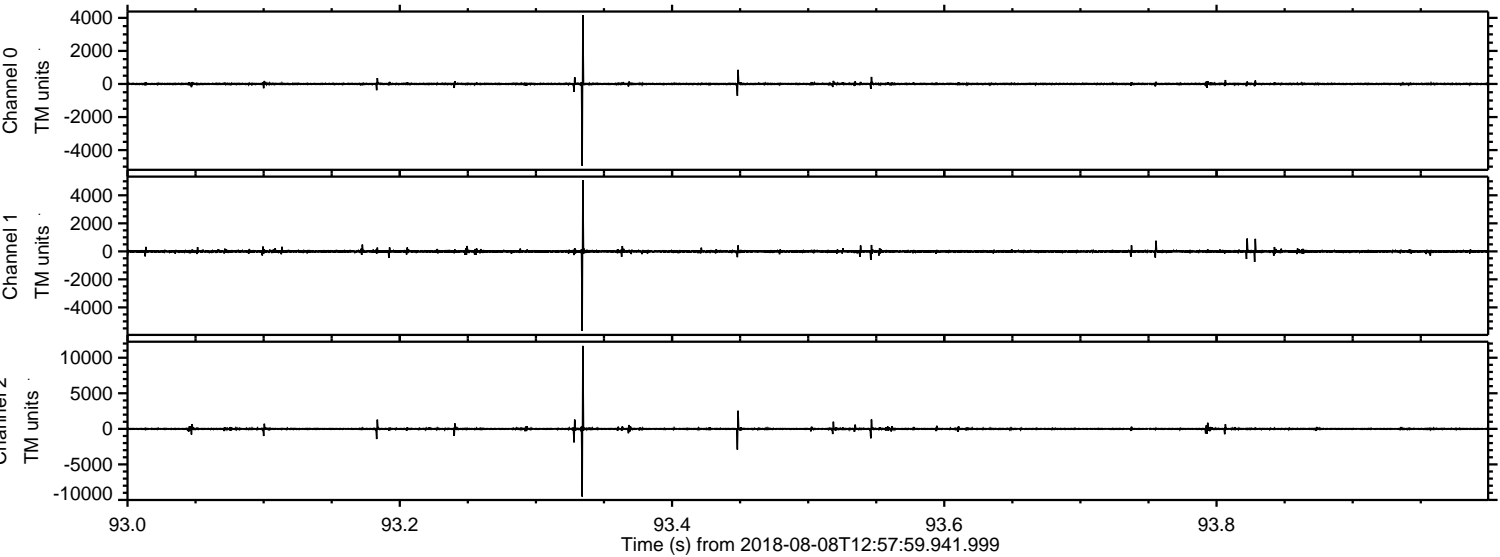
Processed Thu Aug 9 17:17:00 2018 by ELM ver.2012-10-06 from 001__elm20180808_125758__dat00.bin



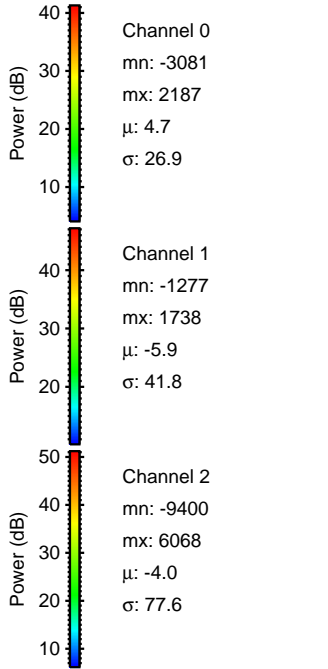
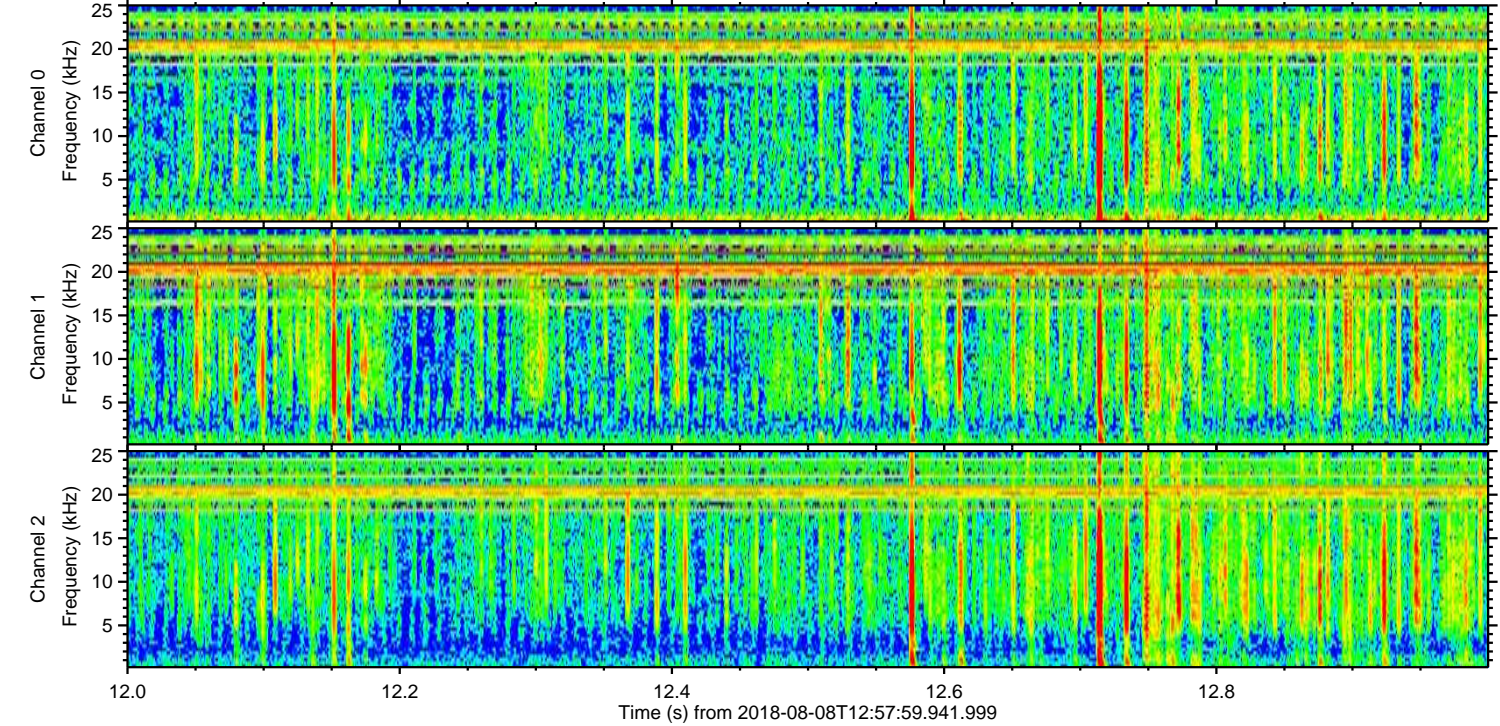
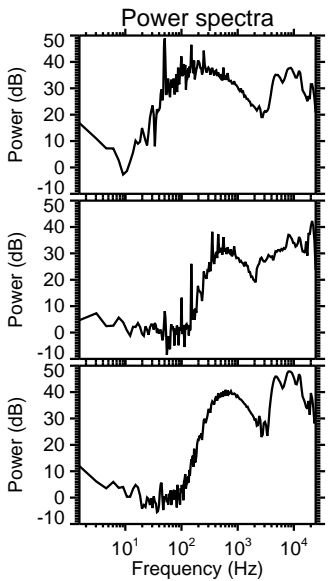
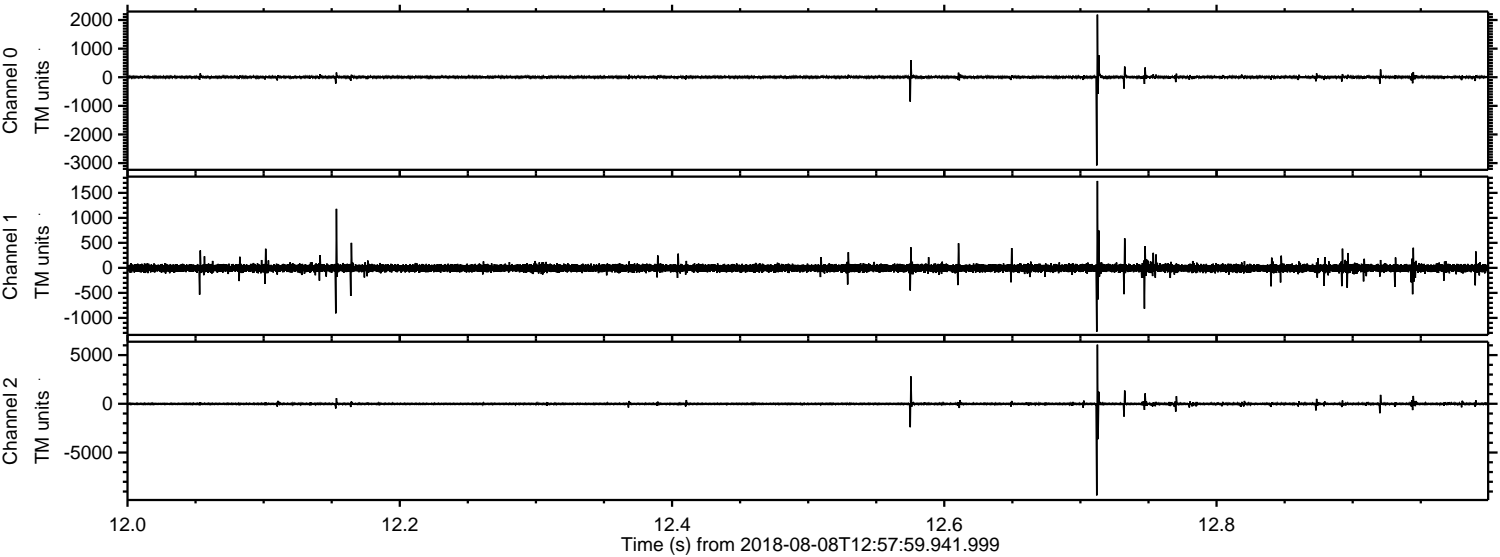
Processed Thu Aug 9 17:17:01 2018 by ELM ver.2012-10-06 from 001__elm20180808_125758__dat00.bin



Processed Thu Aug 9 17:17:01 2018 by ELM ver.2012-10-06 from 001__elm20180808_125758__dat00.bin

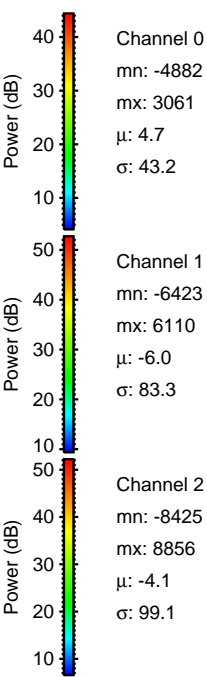
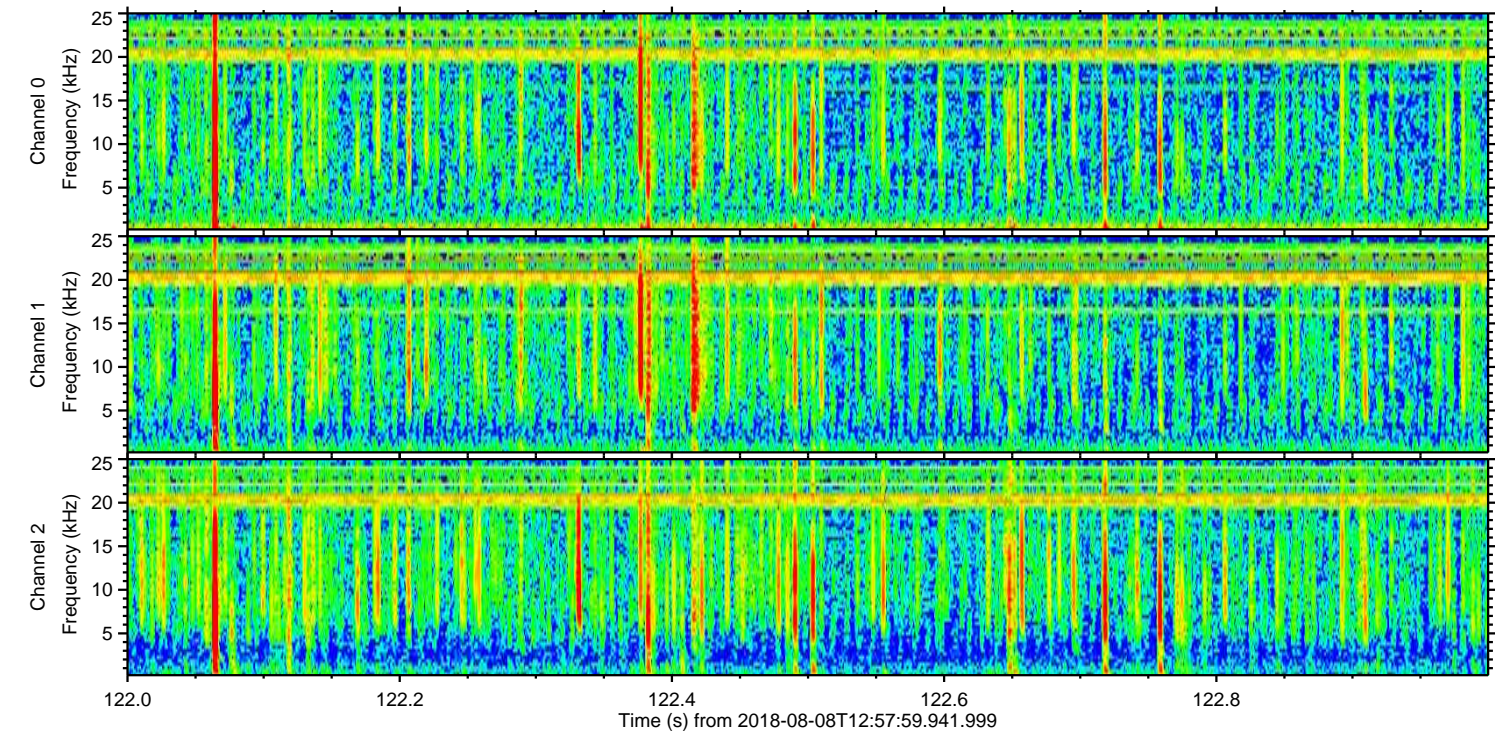
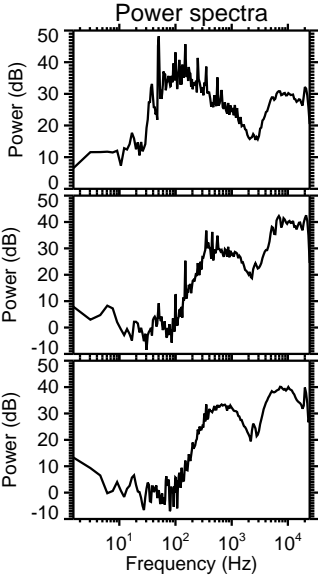
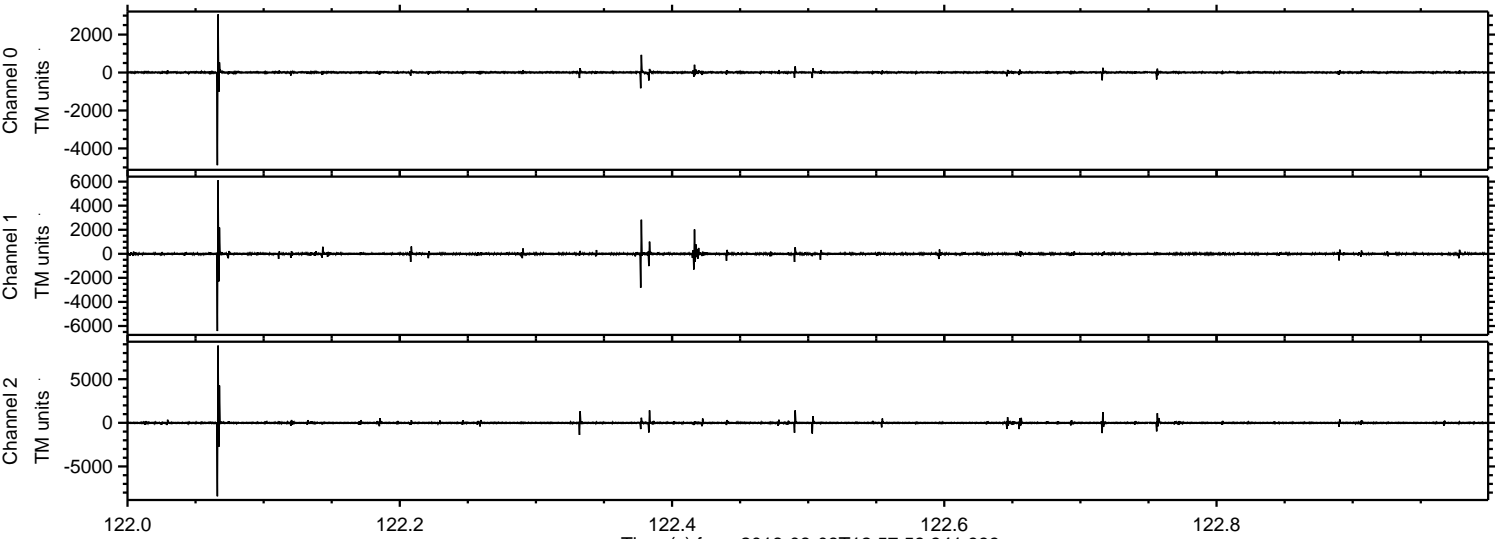


Processed Thu Aug 9 17:17:02 2018 by ELM ver.2012-10-06 from 001__elm20180808_125758__dat00.bin

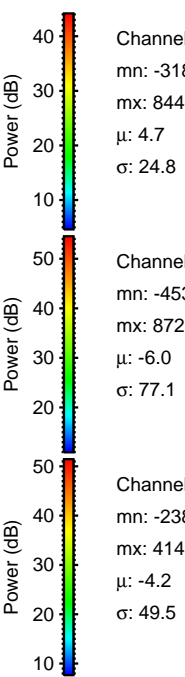
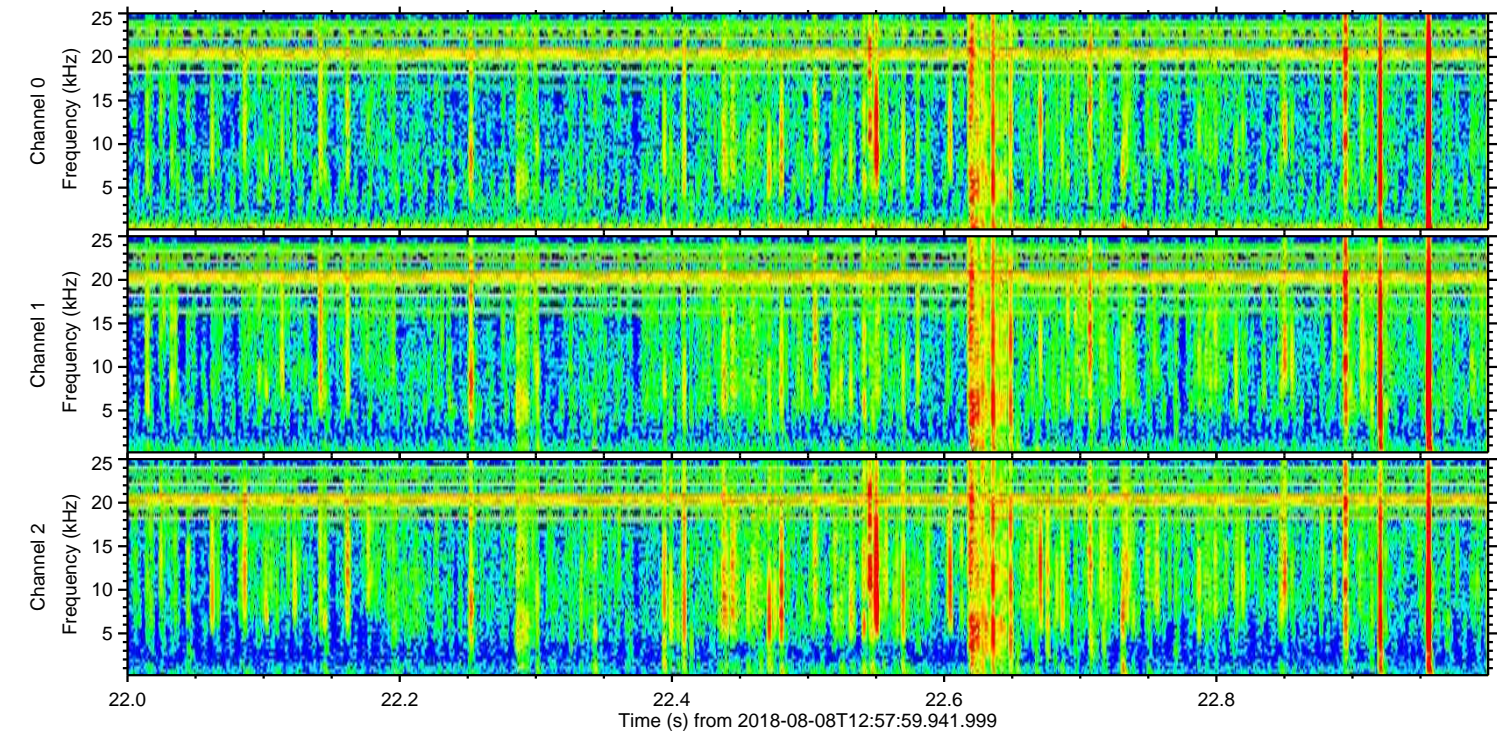
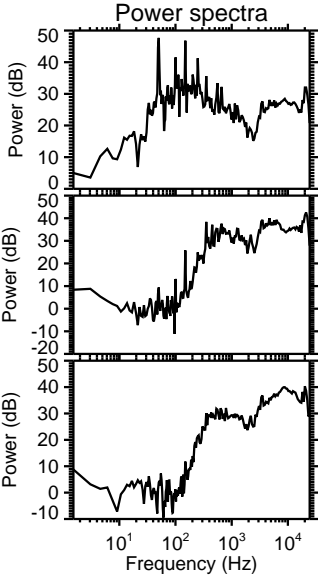
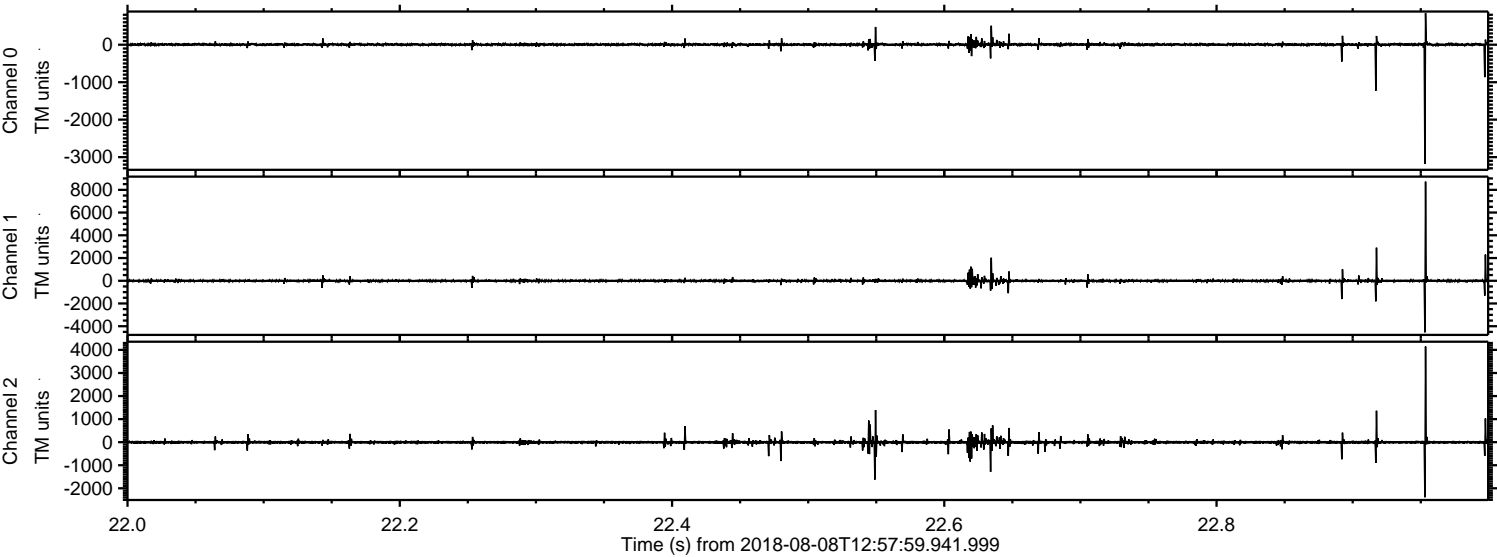


ELMAVAN 3D WAVEFORMS (Measured data sampled at 50 kHz) 51000 packets of 144 samples from 2018-08-08T12:57:59.941.999. Part 123/147

Processed Thu Aug 9 17:17:03 2018 by ELM ver.2012-10-06 from 001__elm20180808_125758__dat00.bin



Processed Thu Aug 9 17:17:04 2018 by ELM ver.2012-10-06 from 001__elm20180808_125758__dat00.bin



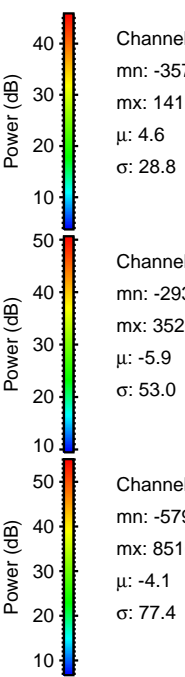
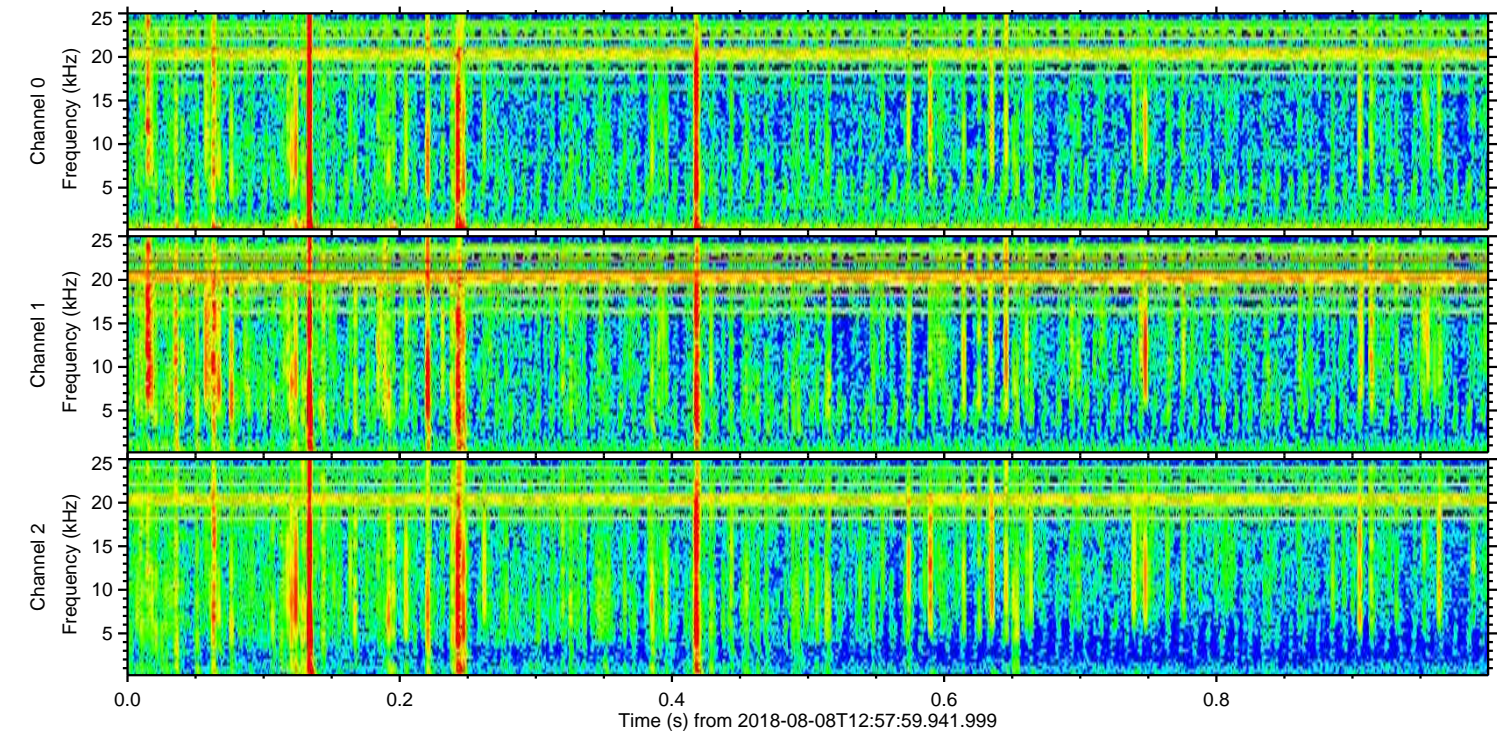
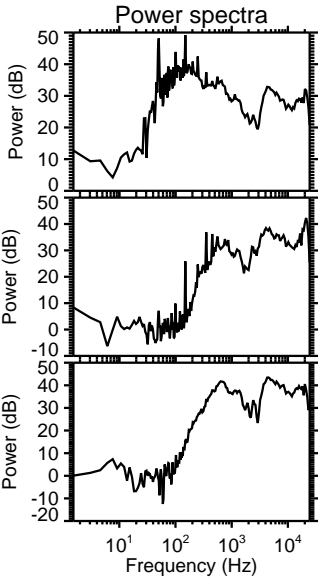
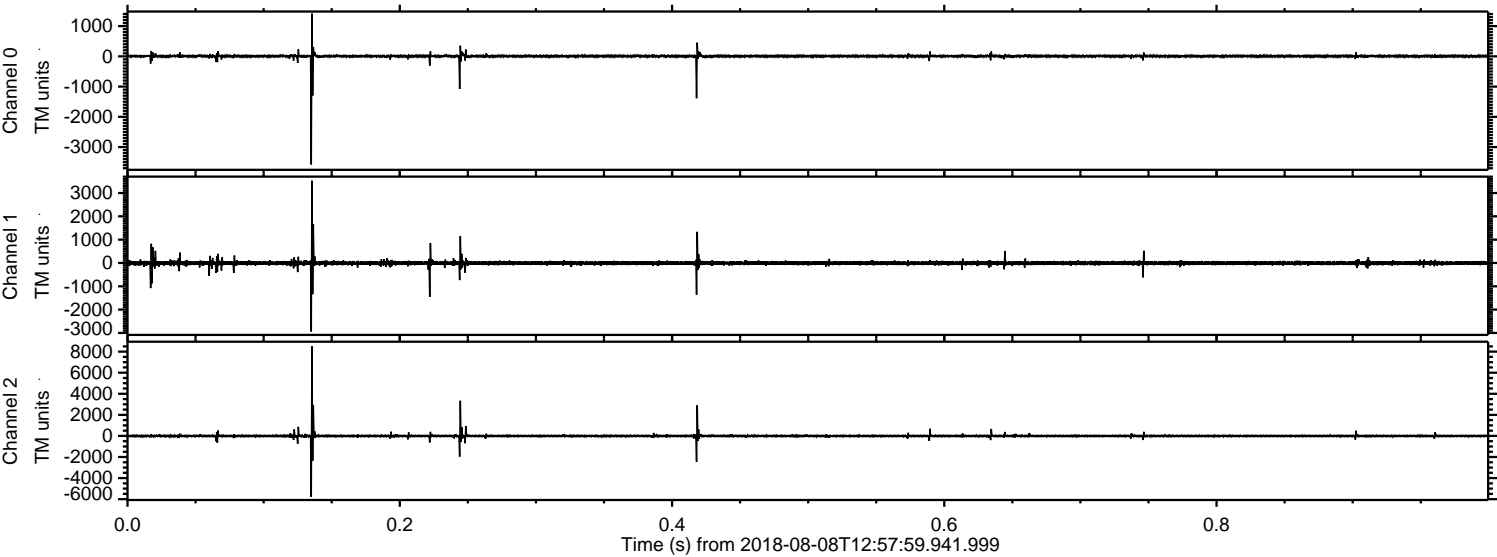
Channel 0
mn: -3181
mx: 844
 μ : 4.7
 σ : 24.8

Channel 1
mn: -4538
mx: 8725
 μ : -6.0
 σ : 77.1

Channel 2
mn: -2388
mx: 4148
 μ : -4.2
 σ : 49.5

ELMAVAN 3D WAVEFORMS (Measured data sampled at 50 kHz) 51000 packets of 144 samples from 2018-08-08T12:57:59.941.999. Part 1/147

Processed Thu Aug 9 17:17:05 2018 by ELM ver.2012-10-06 from 001__elm20180808_125758__dat00.bin

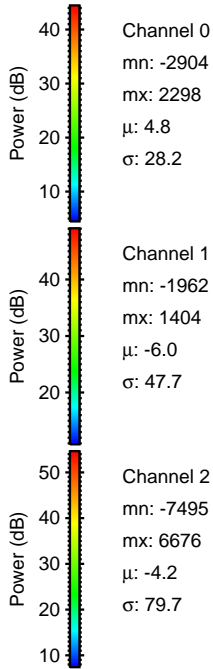
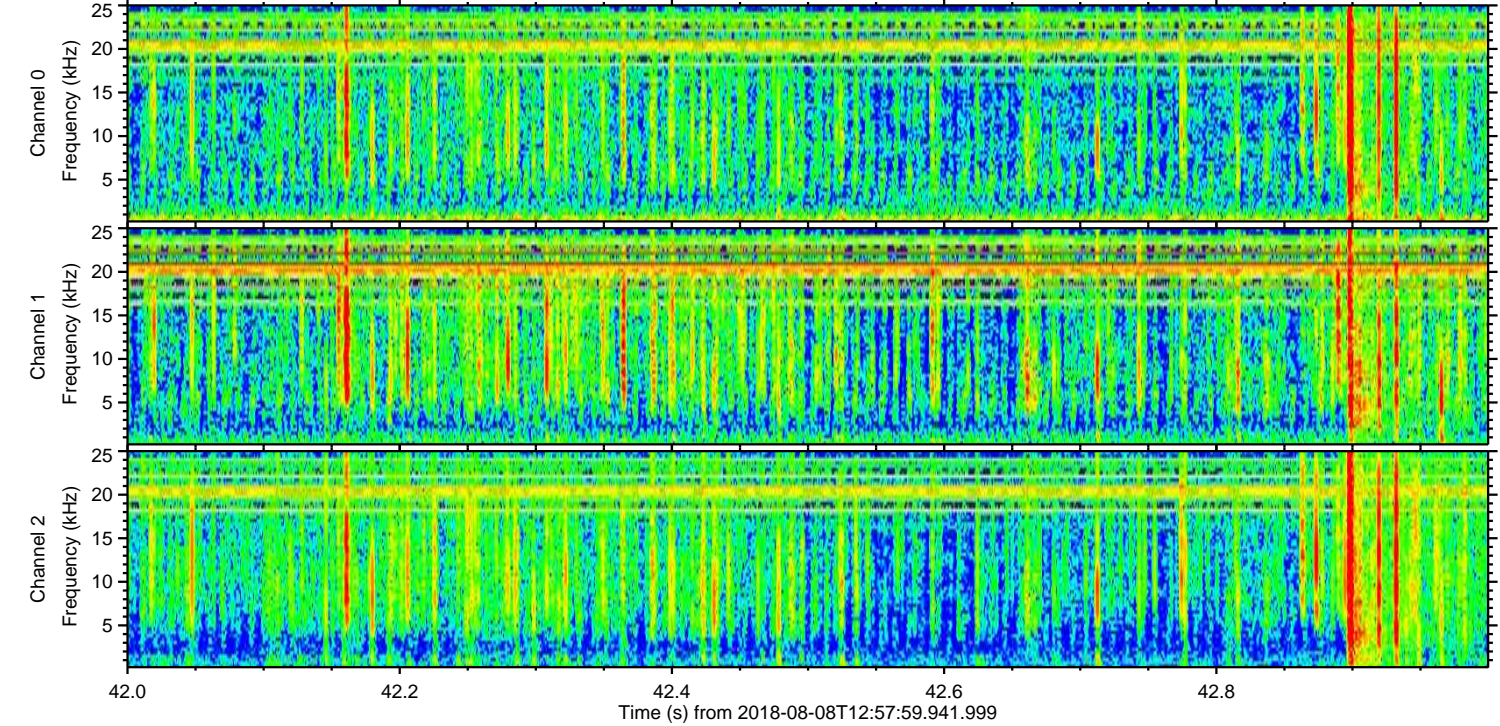
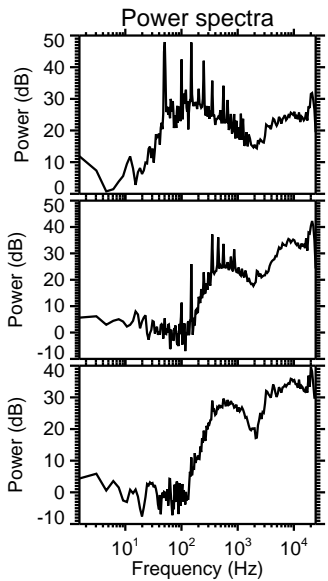
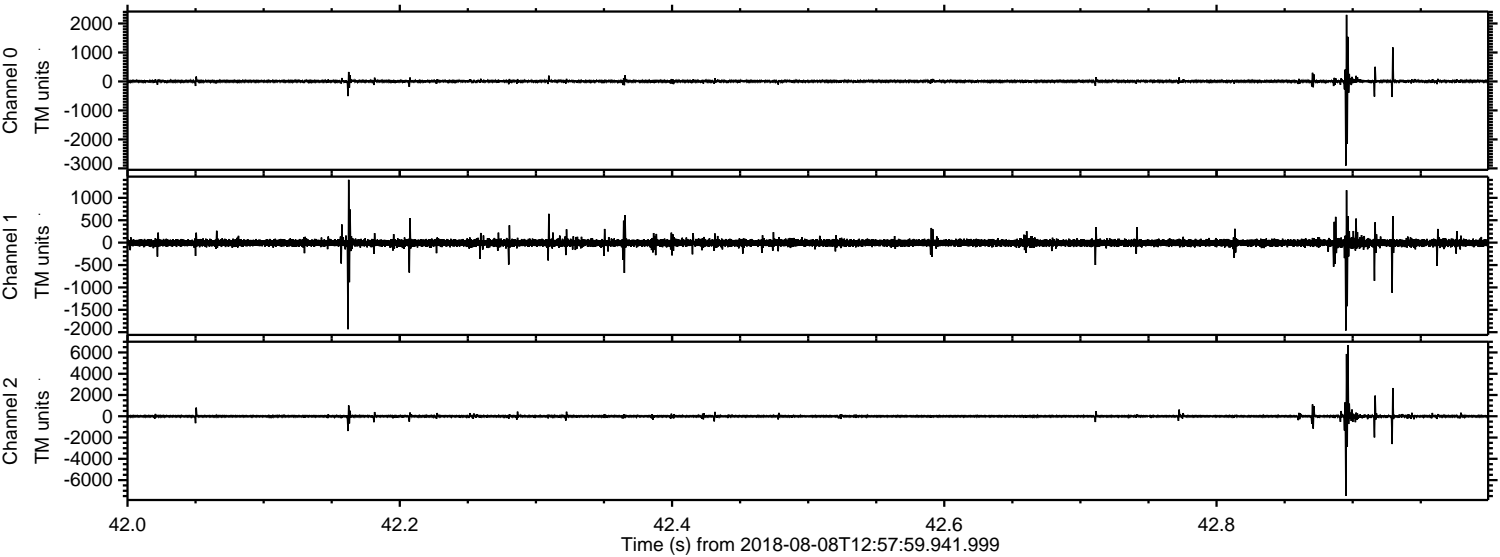


Channel 0
mn: -3573
mx: 1411
 μ : 4.6
 σ : 28.8

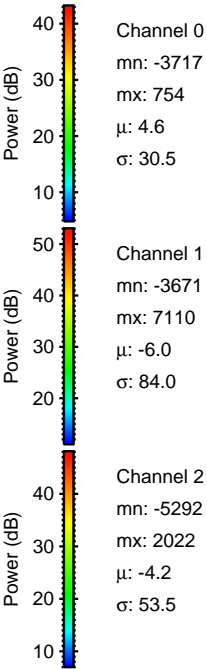
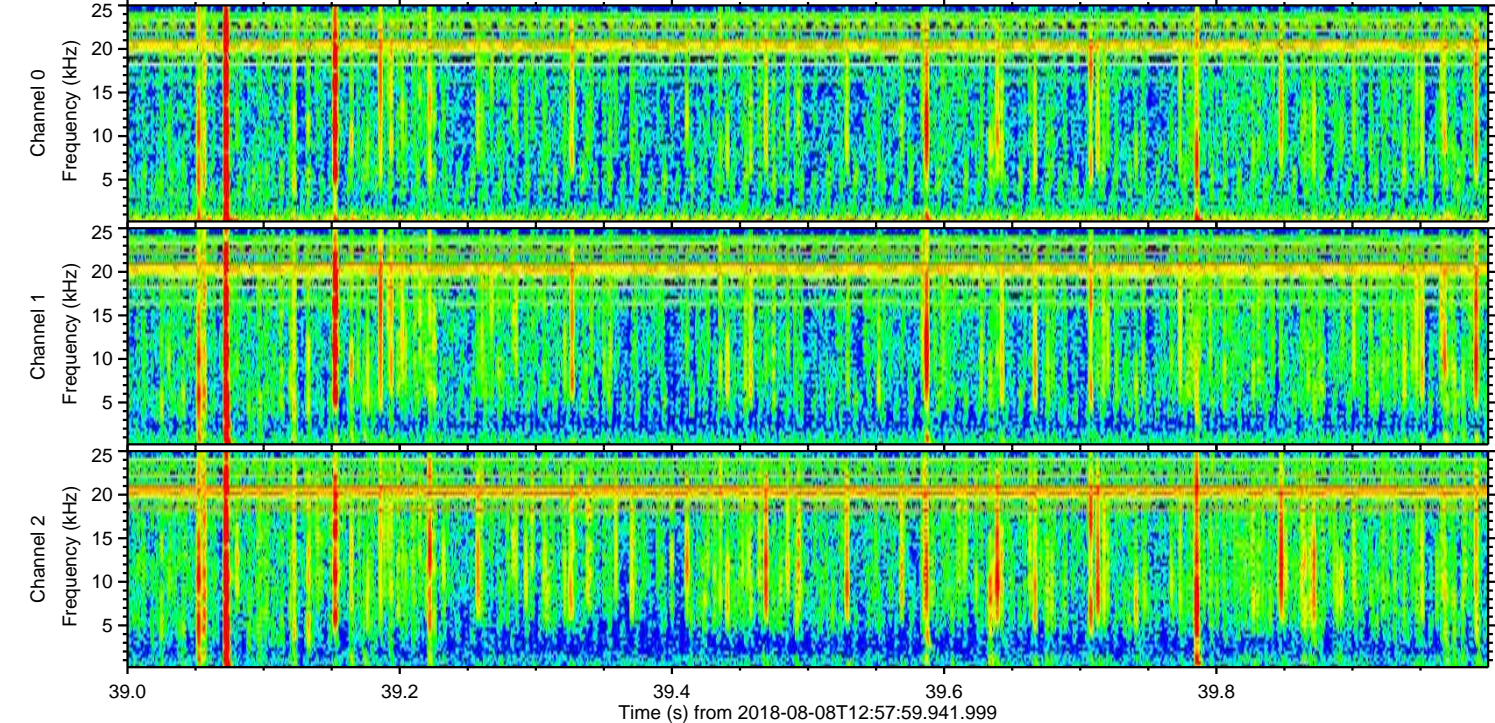
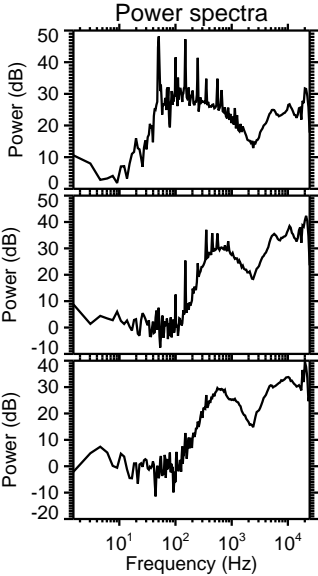
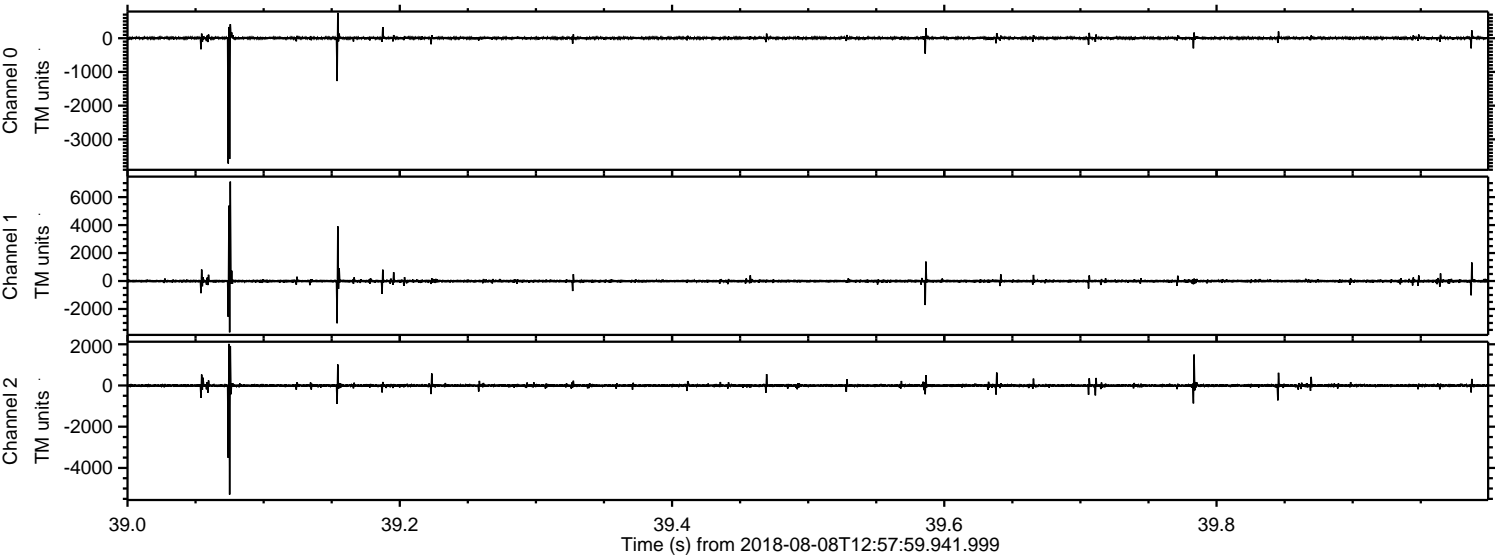
Channel 1
mn: -2938
mx: 3526
 μ : -5.9
 σ : 53.0

Channel 2
mn: -5791
mx: 8516
 μ : -4.1
 σ : 77.4

Processed Thu Aug 9 17:17:05 2018 by ELM ver.2012-10-06 from 001__elm20180808_125758__dat00.bin



Processed Thu Aug 9 17:17:06 2018 by ELM ver.2012-10-06 from 001__elm20180808_125758__dat00.bin



Processed Thu Aug 9 17:17:06 2018 by ELM ver.2012-10-06 from 001__elm20180808_125758__dat00.bin

